

FY2018 Tochigi Prefecture Survey Results

[Outline of results]

(1) Water

Rivers

Radioactive cesium (Cs-134, Cs-137): Not detectable at any location

Lakes and reservoirs

Radioactive cesium (Cs-134, Cs-137): Not detectable at any location

(2) Sediments

Rivers

Cs-134: ND - 31 Bq/kg (dry)

Cs-137: ND - 220 Bq/kg (dry)

Lakes and reservoirs

Cs-134: ND - 79 Bq/kg (dry)

Cs-137: 38 - 1,000 Bq/kg (dry)

(3) Surrounding Environment

(a) Soil

Rivers

Cs-134: ND - 650 Bq/kg (dry)

Cs-137: 1.7 - 6,500 Bq/kg (dry)

Lakes and reservoirs

Cs-134: ND - 130 Bq/kg (dry)

Cs-137: 24 - 1,300 Bq/kg (dry)

(b) Ambient dose rate

Rivers

0.04 - 0.18 μ Sv/h

Lakes and reservoirs

0.04 - 0.11 μ Sv/h

Tochigi River (Water) 1/6

R i v e r s	Location				Sampling Date	Weather	Air temperature (°C)	Water depth (m)	Water										Remarks
	No.	Water area	Location	Municipality					General items					Activity concentration(Bq/L)					
									Water temperature (°C)	Sampling depth (m)	Color	Odor	Transparency (cm)	Electrical conductivity (μS/m)	SS (mg/L)	Turbidity (FNU)	Radioactive cesium Cs-134	Cs-137	
1	Nakagawa River System	Nakagawa River	Ikuyobashishita	Nasushiobara City	2018/5/28	Sunny	20.4	0.5	15.5	0.0	Light grayish yellow green	None	>100	15.8	<1	0.4	<0.76	<0.80	
					2018/8/30	Sunny	24.2	0.5	17.6	0.0	Light grayish yellow green	None	>100	12.7	1	0.7	<0.64	<0.63	
					2018/11/27	Sunny	10.6	0.4	10.1	0.0	Grayish yellow green	None	>100	16.4	<1	0.2	<0.63	<0.63	
			2019/2/1	Cloudy	-1.8	0.2	5.1	0.0	Light grayish yellow green	None	>100	17.3	<1	0.2	<0.51	<0.61			
			2018/5/28	Cloudy	22.3	0.3	16.4	0.0	Light grayish greenish yellow	None	>100	12.1	2	0.9	<0.61	<0.61			
			2018/8/30	Sunny	25.2	0.5	17.9	0.0	Light grayish greenish yellow	None	>100	10.3	2	0.6	<0.81	<0.84			
		2	Nakagawa River	Komei Bridge	Nasushiobara City	2018/11/27	Sunny	10.7	0.4	8.5	0.0	Light grayish yellow green	None	>100	15.7	<1	0.3	<0.66	<0.69
						2019/2/1	Sunny	1.2	0.3	3.4	0.0	Light grayish greenish yellow	None	>100	18.4	<1	0.3	<0.57	<0.66
						2018/5/28	Cloudy	22.2	0.2	14.4	0.0	Grayish yellow	None	>100	17.6	4	2.1	<0.54	<0.88
						2018/8/30	Sunny	25.2	0.3	17.0	0.0	Grayish yellow	None	>100	17.6	5	1.3	<0.89	<0.55
						2018/11/27	Sunny	10.7	0.3	9.3	0.0	Light grayish greenish yellow	None	>100	17.2	1	0.5	<0.55	<0.88
						2019/2/1	Sunny	1.4	0.2	4.2	0.0	Grayish yellow	None	>100	17.7	6	1.7	<0.62	<0.70
		3	Takaomata River	Takaomata Bridge	Nasu Town	2018/5/28	Sunny	21.6	0.1	17.2	0.0	Light grayish yellow green	None	>100	33.7	7	4.7	<0.56	<0.61
						2018/8/30	Sunny	26.2	0.1	20.2	0.0	Grayish yellow green	None	75	30.3	5	2.8	<0.61	<0.80
						2018/11/27	Sunny	11.2	0.3	11.7	0.0	Light grayish yellow green	Faint hydrogen sulfide	>100	33.3	4	2.2	<0.82	<0.84
						2019/2/1	Sunny	1.3	0.1	5.0	0.0	Light grayish yellow green	None	>100	38.1	11	5.6	<0.71	<0.55
						2018/5/8	Cloudy	11.3	0.5	12.8	0.0	Light grayish yellow green	None	>100	19.3	2	1.3	<0.78	<0.80
						2018/6/8	Cloudy	20.0	0.3	17.7	0.0	Light grayish greenish yellow	None	>100	20.5	2	1.1	<0.61	<0.75
		4	Yukawa River	Yukawa Bridge	Nasu Town	2018/7/2	Sunny	29.8	0.2	22.5	0.0	Light grayish yellow green	None	>100	21.7	2	0.6	<0.73	<0.80
						2018/8/6	Cloudy	28.2	0.3	22.3	0.0	Light grayish yellow green	None	>100	21.2	1	0.9	<0.54	<0.84
						2018/9/3	Cloudy	22.4	0.3	18.6	0.0	Light grayish yellow green	None	>100	12.7	3	1.2	<0.73	<0.63
						2018/11/27	Sunny	15.5	0.3	13.0	0.0	Light grayish yellow green	None	>100	22.5	1	0.7	<0.55	<0.69
						2019/2/1	Sunny	2.3	0.3	3.8	0.0	Light grayish yellow green	None	>100	23.5	2	0.6	<0.88	<0.55
						2018/5/28	Sunny	22.8	0.3	19.0	0.0	Grayish yellow	None	>100	15.8	2	1.4	<0.80	<0.92
						2018/8/6	Cloudy	28.2	0.2	21.8	0.0	Grayish yellow	None	>100	17.7	2	1.1	<0.82	<0.92
						2018/11/27	Sunny	13.3	0.3	10.3	0.0	Light grayish yellow	None	>100	18.2	<1	0.4	<0.71	<0.69
						2019/2/1	Sunny	2.8	0.3	5.0	0.0	Grayish yellow	None	>100	19.1	<1	0.6	<0.76	<0.75
						2018/5/8	Cloudy	12.7	0.6	12.6	0.0	Light grayish yellow green	None	75	10.4	6	4.1	<0.80	<0.48
						2018/8/6	Cloudy	28.3	0.3	25.6	0.0	Light grayish yellow green	None	>100	13.4	4	1.5	<0.76	<0.75
						2018/11/27	Sunny	16.4	0.3	11.2	0.0	Light grayish yellow green	None	>100	11.0	1	0.9	<0.67	<0.87
		5	Nakagawa River	Kamikuroiso	Nasushiobara City/ Nasu Town	2019/2/1	Sunny	4.2	0.2	2.6	0.0	Light grayish yellow green	None	>100	11.7	2	0.8	<0.71	<0.74
						2018/5/8	Cloudy	13.2	0.3	12.9	0.0	Light grayish yellow green	None	65	12.2	6	4.6	<0.62	<0.84
						2018/6/8	Cloudy	24.1	0.3	21.4	0.0	Light grayish yellow green	None	>100	20.2	2	1.6	<0.61	<0.63
						2018/7/2	Sunny	33.2	0.2	27.3	0.0	Light grayish yellow green	None	>100	15.0	2	1.0	<0.77	<0.92
						2018/8/6	Cloudy	28.7	0.3	27.3	0.0	Light grayish yellow green	None	>100	19.7	2	1.5	<0.87	<0.75
						2018/9/3	Cloudy	24.4	0.4	20.5	0.0	Grayish yellow green	None	54	14.7	4	2.7	<0.76	<0.80
						2018/11/27	Sunny	16.9	0.3	11.5	0.0	Light grayish yellow green	None	>100	16.4	<1	0.6	<0.84	<0.88
						2019/2/1	Sunny	5.5	0.2	2.7	0.0	Light grayish yellow green	None	>100	16.8	<1	0.5	<0.71	<0.69
						2018/5/8	Cloudy	14.2	0.2	13.6	0.0	Light grayish yellow green	None	>100	14.5	10	3.9	<0.76	<0.61
						2018/6/8	Cloudy	26.3	0.4	22.2	0.0	Grayish yellow green	None	>100	16.7	2	1.0	<0.68	<0.88
						2018/7/2	Sunny	35.3	0.3	26.1	0.0	Light grayish yellow green	None	>100	17.5	3	1.4	<0.52	<0.96
						2018/8/6	Cloudy	30.7	0.6	25.1	0.0	Grayish yellow green	None	>100	18.2	3	1.2	<0.69	<0.69
6	Yosasa River	Yosasa Bridge	Nasu Town	2018/9/3	Cloudy	26.5	0.3	20.6	0.0	Grayish yellow green	None	75	15.0	4	2.0	<0.74	<0.63		
				2018/11/3	Sunny	17.1	0.4	13.5	0.0	Light grayish yellow green	None	>100	16.4	<1	0.6	<0.68	<0.69		
				2019/2/1	Sunny	6.0	0.3	7.0	0.0	Light grayish yellow green	None	>100	18.4	1	0.5	<0.67	<0.74		

Tochigi River (Water)2/6

No.	Location			Sampling Date	Weather	Air temperature (°C)	Water depth (m)	Water										Remarks		
	Water area	Location	Municipality					General items						Activity concentration(Bq/L)						
								Water temperature (°C)	Sampling depth (m)	Color	Odor	Transparency (cm)	Electrical conductivity (μS/m)	SS (mg/L)	Turbidity (FNU)	Radioactive cesium				
													Cs-134	Cs-137						
10	Matsuba River	Tributary	Otawara City	2018/5/8	Cloudy	13.4	0.4	13.1	0.0	Grayish yellow green	None	>100	30	9.2	7	6.1	<-0.74	<-0.80		
				2018/6/8	Cloudy	25.7	0.3	20.7	0.0	Light grayish yellow	None	>100	12.5	2	1.4	<-0.57	<-0.80			
				2018/7/2	Sunny	34.0	0.3	25.4	0.0	Light grayish yellow green	None	>100	13.5	4	1.0	<-0.62	<-0.61			
				2018/8/6	Cloudy	29.2	0.3	24.9	0.0	Light grayish greenish yellow	None	>100	13.3	2	0.8	<-0.65	<-0.75			
				2018/9/3	Cloudy	26.2	0.3	21.5	0.0	Grayish greenish yellow	None	>100	74	10.5	4	2.6	<-0.71	<-0.80		
	Sabigawa River	Udagawa Bridge	Otawara City	2018/11/3	Sunny	17.4	0.3	12.0	0.0	Light grayish yellow green	None	>100	10.0	3	0.9	<-0.68	<-0.84			
				2019/2/1	Sunny	6.0	0.2	3.6	0.0	Light grayish yellow green	None	>100	10.3	<1	0.9	<-0.59	<-0.63			
				2018/5/8	Cloudy	13.1	0.3	14.4	0.0	Light grayish yellow green	None	>100	12.3	3	1.7	<-0.86	<-0.61			
				2018/8/4	Sunny	28.8	0.3	21.9	0.0	Light grayish yellow green	None	>100	15.2	2	0.8	<-0.68	<-0.84			
				2018/11/3	Sunny	12.8	0.3	15.1	0.0	Light grayish yellow green	None	>100	13.8	<1	0.5	<-0.67	<-0.84			
12	Momura River	Momuranaka Bridge	Otawara City	2019/2/4	Sunny	10.7	0.3	10.1	0.0	Light grayish yellow green	None	>100	14.2	1	0.5	<-0.71	<-0.48			
				2018/5/8	Cloudy	12.8	0.4	14.5	0.0	Light grayish yellow green	None	>100	17.1	2	1.1	<-0.92	<-0.75			
				2018/8/4	Sunny	28.1	0.3	18.3	0.0	Light grayish yellow green	None	>100	18.7	1	0.6	<-0.80	<-0.70			
				2018/11/3	Sunny	11.8	0.3	15.8	0.0	Light grayish yellow green	None	>100	18.4	<1	0.4	<-0.86	<-0.80			
				2019/2/4	Sunny	8.6	0.3	14.1	0.0	Light grayish yellow green	None	>100	19.0	<1	0.4	<-0.64	<-0.75			
13	Nakagawa River System	Yunohara	Nasushiobara City	2018/5/29	Sunny	24.4	0.3	17.5	0.0	Light grayish yellow green	None	>100	24.2	1	0.9	<-0.82	<-0.84			
				2018/8/29	Cloudy	22.2	0.3	18.7	0.0	Light grayish yellow green	None	>100	18.3	1	1.2	<-0.66	<-0.88			
				2018/11/4	Sunny	10.2	0.3	10.4	0.0	Light grayish yellow green	None	>100	22.3	<1	0.5	<-0.78	<-0.55			
				2019/2/12	Sunny	2.9	0.2	6.0	0.0	Light grayish yellow green	None	>100	27.2	2	1.3	<-0.66	<-0.80			
				2018/5/29	Sunny	21.2	0.3	16.4	0.0	Light grayish greenish yellow	None	>100	22.0	1	0.8	<-0.66	<-0.74			
		14	Hokigawa River	Sekiba Bridge	Nasushiobara City	2018/8/29	Cloudy	24.1	0.6	19.0	0.0	Light grayish yellow green	None	>100	16.9	2	1.5	<-0.71	<-0.69	
						2018/11/4	Sunny	13.4	0.3	10.3	0.0	Light grayish yellow green	None	>100	21.8	<1	0.5	<-0.83	<-0.84	
						2019/2/1	Sunny	2.5	0.3	4.8	0.0	Light grayish yellow green	None	>100	26.3	<1	0.6	<-0.62	<-0.61	
						2018/5/8	Cloudy	11.8	0.4	13.6	0.0	Light grayish yellow green	None	>100	16.3	2	1.9	<-0.65	<-0.74	
						2018/8/4	Sunny	26.4	0.3	23.4	0.0	Light grayish yellow green	None	>100	20.2	2	0.9	<-0.80	<-0.84	
15	Hokigawa River	Iwai Bridge	Otawara City	2018/11/3	Sunny	10.1	0.3	12.7	0.0	Light grayish yellow green	None	>100	18.8	<1	0.4	<-0.54	<-0.75			
				2019/2/4	Sunny	7.8	0.3	6.2	0.0	Light grayish yellow green	None	>100	22.4	<1	0.3	<-0.62	<-0.75			
				2018/5/8	Cloudy	14.1	0.4	14.5	0.0	Light grayish yellow green	None	>100	16.3	4	2.5	<-0.67	<-0.63			
				2018/6/5	Sunny	23.3	0.4	19.6	0.0	Light grayish yellow green	None	>100	17.4	2	1.2	<-0.78	<-0.75			
				2018/7/3	Sunny	31.2	0.3	24.9	0.0	Light grayish yellow green	None	>100	18.4	1	0.7	<-0.55	<-0.69			
		16	Hokigawa River	Hokigawa Bridge	Otawara City	2018/8/4	Sunny	31.8	0.3	25.8	0.0	Light grayish yellow green	None	>100	18.5	2	0.8	<-0.54	<-0.66	
						2018/9/3	Cloudy	22.1	0.4	19.5	0.0	Light grayish yellow green	None	>100	16.6	8	2.4	<-0.75	<-0.80	
						2018/11/3	Sunny	15.8	0.3	15.4	0.0	Light grayish yellow green	None	>100	17.1	2	0.9	<-0.72	<-0.69	
						2019/2/4	Sunny	14.6	0.3	10.5	0.0	Light grayish yellow green	None	>100	18.5	3	0.8	<-0.62	<-0.66	
						2018/5/8	Cloudy	14.2	0.4	14.5	0.0	Light grayish yellow green	None	>100	16.1	5	4.9	<-0.86	<-0.61	
17	Nakagawa River	Shimaka Bridge	Nakagawa Town	2018/6/5	Sunny	24.2	0.3	21.5	0.0	Light grayish yellow green	None	>100	17.1	3	1.6	<-0.77	<-0.69			
				2018/7/3	Sunny	32.4	0.1	26.9	0.0	Light grayish yellow green	None	>100	20.3	1	1.0	<-0.62	<-0.55			
				2018/8/4	Sunny	32.1	0.2	28.3	0.0	Light grayish yellow green	None	>100	18.5	1	0.9	<-0.80	<-0.55			
				2018/9/3	Cloudy	22.8	0.3	21.3	0.0	Light grayish yellow green	None	>100	16.4	4	1.6	<-0.80	<-0.80			
				2018/11/3	Sunny	12.4	0.3	14.2	0.0	Light grayish yellow green	None	>100	17.0	<1	0.4	<-0.54	<-0.80			
		18	Mumogawa River	Kosoi Bridge	Nakagawa Town	2019/2/4	Sunny	15.1	0.2	10.9	0.0	Light grayish yellow green	None	>100	18.8	1	0.8	<-0.69	<-0.84	
						2018/5/8	Cloudy	14.3	0.3	14.3	0.0	Light grayish yellow green	None	>100	61	10.2	7	5.2	<-0.75	<-0.69
						2018/6/5	Sunny	24.7	0.4	20.7	0.0	Light grayish yellow green	None	>100	12.6	2	1.2	<-0.77	<-0.75	
						2018/7/3	Sunny	34.8	0.3	28.1	0.0	Light grayish yellow green	None	>100	14.6	4	1.4	<-0.57	<-0.80	
						2018/8/4	Sunny	32.5	0.3	28.4	0.0	Light grayish greenish yellow	None	>100	14.9	3	1.4	<-0.71	<-0.88	
18	Mumogawa River	Kosoi Bridge	Nakagawa Town	2018/9/3	Cloudy	24.2	0.3	20.9	0.0	Light grayish greenish yellow	None	>100	76	11.5	9	4.2	<-0.80	<-0.75		
				2018/11/3	Sunny	13.2	0.4	12.4	0.0	Light grayish yellow green	None	>100	12.7	3	1.5	<-0.82	<-0.88			
				2019/2/4	Sunny	15.8	0.3	6.7	0.0	Light grayish greenish yellow	None	>100	15.0	1	0.7	<-0.86	<-0.88			

Tochigi River (Water) 3/6

No.	Location			Sampling Date	Weather	Air temperature (°C)	Water depth (m)	Water										Remarks
	Water area	Location	Municipality					General items					Activity concentration(Bq/L)					
								Water temperature (°C)	Sampling depth (m)	Color	Odor	Transparency (cm)	Electrical conductivity (mS/m)	SS (mg/L)	Turbidity (FNU)	Radioactive cesium		
													Cs-134	Cs-137				
R i v e r s	19	Arakawa River	Saikachi Bridge	Shioya Town	2018/5/29	Cloudy	27.4	0.9	19.1	0.0	Light grayish greenish yellow	None	>100	6.8	4	3.7	<-0.51	<-0.84
					2018/8/29	Cloudy	23.2	1.0	20.2	0.0	Light grayish greenish yellow	None	>100	6.0	3	1.6	<-0.67	<-0.75
					2018/11/4	Cloudy	14.3	1.0	12.7	0.0	Light grayish greenish yellow	None	>100	7.3	<1	0.5	<-0.76	<-0.84
					2019/2/1	Sunny	5.8	0.8	6.4	0.0	Light grayish greenish yellow	None	>100	7.3	<1	0.6	<-0.81	<-0.75
					2018/5/19	Sunny	23.6	0.4	19.4	0.0	Light grayish yellow green	None	>100	13.5	3	1.8	<-0.77	<-0.80
		20	Renjo Bridge	Sakura City	2018/8/9	Cloudy	29.4	0.4	22.9	0.0	Light grayish yellow green	None	>100	13.2	4	1.9	<-0.63	<-0.84
					2018/11/3	Sunny	9.1	0.3	14.6	0.0	Light grayish yellow green	None	>100	14.6	<1	0.3	<-0.77	<-0.84
					2019/2/7	Cloudy	6.8	0.2	8.6	0.0	Light grayish greenish yellow	None	>100	17.6	<1	0.4	<-0.64	<-0.75
					2018/5/29	Cloudy	27.5	0.2	21.3	0.0	Light grayish greenish yellow	None	>100	13.4	5	6.0	<-0.84	<-0.69
					2018/8/29	Cloudy	23.4	0.3	21.5	0.0	Light grayish greenish yellow	None	>100	11.8	6	3.3	<-0.73	<-0.80
	21	Uchikawa River	Tanaka Bridge	Yaita City	2018/11/4	Cloudy	14.5	0.3	12.8	0.0	Light grayish greenish yellow	None	>100	10.7	2	0.8	<-0.70	<-0.75
					2019/2/1	Sunny	5.5	0.2	7.0	0.0	Light grayish greenish yellow	None	>100	10.3	<1	0.5	<-0.79	<-0.70
					2018/5/19	Sunny	24.0	0.4	21.5	0.0	Light grayish yellow green	None	74	18.8	4	2.2	<-0.71	<-0.75
					2018/8/9	Cloudy	29.4	0.2	23.6	0.0	Light grayish yellow green	None	65	17.0	5	2.5	<-0.58	<-0.84
					2018/11/3	Sunny	9.6	0.4	13.6	0.0	Light grayish greenish yellow	None	>100	17.8	2	0.8	<-0.61	<-0.75
		22	Asahi Bridge	Sakura City	2019/2/7	Cloudy	6.8	0.2	8.9	0.0	Light grayish yellow green	None	>100	23.1	1	0.7	<-0.84	<-0.75
					2018/5/19	Sunny	27.5	0.4	21.0	0.0	Grayish yellow green	None	>100	17.6	4	2.8	<-0.67	<-0.55
					2018/6/5	Sunny	27.3	0.3	25.1	0.0	Light grayish yellow green	None	>100	18.4	3	2.0	<-0.78	<-0.69
					2018/7/3	Sunny	34.7	0.2	30.2	0.0	Light grayish yellow	None	>100	19.3	6	2.3	<-0.81	<-0.63
					2018/8/9	Cloudy	25.3	0.3	24.0	0.0	Light grayish greenish yellow	None	62	14.3	8	2.8	<-0.68	<-0.84
23	Arakawa River	Mukada Bridge	Nasu Karasuyama City	2018/9/3	Cloudy	24.8	0.3	22.2	0.0	Light grayish yellow green	None	>100	14.7	10	3.3	<-0.83	<-0.80	
				2018/11/3	Sunny	15.1	0.2	16.0	0.0	Light grayish yellow green	None	>100	19.0	<1	0.4	<-0.77	<-0.80	
				2019/2/7	Cloudy	8.3	0.2	8.1	0.0	Light grayish yellow	None	>100	23.3	<1	0.6	<-0.80	<-0.88	
				2018/5/19	Sunny	27.3	0.5	21.7	0.0	Grayish yellow	None	30	16.3	15	9.2	<-0.62	<-0.69	
				2018/6/5	Sunny	27.1	0.4	23.6	0.0	Light grayish yellow	None	77	18.9	4	3.0	<-0.77	<-0.84	
	24	Egawa River	Tributary	2018/7/3	Sunny	34.6	0.2	31.2	0.0	Light grayish greenish yellow	None	>100	19.5	5	2.4	<-0.62	<-0.61	
				2018/8/9	Cloudy	25.4	0.3	24.3	0.0	Grayish greenish yellow	None	25	17.6	7	3.4	<-0.65	<-0.96	
				2018/9/3	Cloudy	24.4	0.2	22.6	0.0	Light grayish greenish yellow	None	36	16.9	16	5.4	<-0.72	<-0.75	
				2018/11/3	Sunny	14.9	0.3	14.0	0.0	Light grayish greenish yellow	None	>100	18.4	2	1.4	<-0.87	<-0.84	
				2019/2/7	Cloudy	8.1	0.2	5.0	0.0	Light grayish greenish yellow	None	>100	20.8	2	1.2	<-0.66	<-0.66	
25	Kinugawa River	Kawaji Daiichi Power Station, front	Nikko City	2018/5/31	Cloudy	21.4	0.4	9.1	0.0	Light grayish yellow green	None	>100	7.4	<1	0.7	<-0.77	<-0.61	
				2018/8/17	Sunny	22.2	0.4	22.6	0.0	Light grayish yellow green	None	54	8.6	7	5.5	<-0.80	<-0.69	
				2018/11/20	Sunny	8.7	0.4	11.9	0.0	Light grayish yellow green	None	42	9.9	9	7.7	<-0.71	<-0.75	
				2019/2/13	Sunny	3.6	0.3	7.4	0.0	Light grayish yellow green	None	>100	11.7	4	2.3	<-0.79	<-0.75	
				2018/5/31	Cloudy	16.0	0.3	14.5	0.0	Light grayish yellow green	None	>100	8.7	<1	0.8	<-0.75	<-0.80	
	26	Yunishi River	Maesawa Bridge	2018/8/17	Sunny	19.5	0.3	16.3	0.0	Light grayish yellow green	None	>100	7.9	<1	0.7	<-0.82	<-0.63	
				2018/11/20	Sunny	6.7	0.3	8.7	0.0	Light grayish yellow green	None	>100	9.9	<1	0.1	<-0.73	<-0.84	
				2019/2/12	Sunny	0.2	0.2	2.5	0.0	Light grayish yellow green	None	>100	10.1	<1	0.3	<-0.68	<-0.80	
				2018/5/31	Cloudy	21.2	0.5	12.9	0.0	Light grayish yellow green	None	>100	8.8	<1	0.8	<-0.57	<-0.55	
				2018/8/29	Cloudy	22.1	0.5	18.4	0.0	Light grayish yellow green	None	41	7.5	9	1.6	<-0.71	<-0.88	
27	Ojika River	Tributary	2018/11/20	Sunny	8.7	0.3	11.7	0.0	Light grayish yellow green	None	80	8.6	2	1.4	<-0.59	<-0.63		
			2019/2/13	Sunny	3.5	0.4	4.4	0.0	Light grayish yellow green	None	>100	9.0	<1	0.5	<-0.69	<-0.69		
			2018/5/22	Sunny	26.0	0.3	13.0	0.0	Light grayish yellow green	None	>100	7.7	<1	0.9	<-0.74	<-0.84		
			2018/8/17	Sunny	23.1	0.3	17.8	0.0	Light grayish greenish yellow	None	22	5.8	41	4.7	<-0.86	<-0.92		
			2018/11/20	Sunny	7.7	0.4	11.3	0.0	Light grayish yellow green	None	>100	8.0	6	2.7	<-0.85	<-0.84		
28	Kinugawa River	Kosagoe	2019/2/13	Sunny	3.2	0.2	4.6	0.0	Light grayish yellow green	None	>100	11.3	<1	0.8	<-0.69	<-0.75		

Tochigi River (Water) 4/6

No.	Location			Sampling Date	Weather	Air temperature (°C)	Water depth (m)	Water										Remarks		
	Water area	Location	Municipality					General items					Activity concentration(Bq/L)							
								Water temperature (°C)	Sampling depth (m)	Color	Odor	Transparency (cm)	Electrical conductivity (μS/m)	SS (mg/L)	Turbidity (FNU)	Radioactive cesium Cs-134	Cs-137			
R i v e r s	Tonegawa River System	Itaana River	Tributary	Nikko City	2018/5/23	Cloudy	21.7	0.2	16.8	0.0	Light grayish yellow green	None	>100	8.1	<1	0.5	<-0.58	<-0.69		
					2018/6/19	Sunny	29.5	0.2	21.2	0.0	Light grayish yellow green	None	>100	7.6	<1	0.5	<-0.61	<-0.88		
					2018/7/6	Cloudy	19.8	0.3	18.4	0.0	Light grayish yellow green	None	>100	7.2	1	0.8	<-0.73	<-0.55		
					2018/8/16	Cloudy	27.8	0.3	20.6	0.0	Light grayish yellow green	None	>100	6.9	1	0.4	<-0.72	<-0.63		
					2018/9/10	Cloudy	25.0	0.3	19.5	0.0	Light grayish yellow green	None	>100	6.9	1	0.9	<-0.67	<-0.80		
					2018/11/20	Sunny	7.2	0.4	10.2	0.0	Light grayish yellow green	None	>100	7.5	<1	0.3	<-0.61	<-0.84		
			2019/2/13	Sunny	2.8	0.3	2.4	0.0	Light grayish yellow green	None	>100	7.4	<1	0.3	<-0.66	<-0.75				
			2018/5/23	Cloudy	14.4	0.2	10.8	0.0	Grayish yellow green	None	>100	18.6	2	1.2	<-0.66	<-0.66				
			2018/8/16	Sunny	23.8	0.3	15.1	0.0	Grayish yellow green	None	>100	18.9	<1	0.9	<-0.66	<-0.63				
			2018/11/26	Sunny	7.2	0.3	8.2	0.0	Light grayish yellow green	None	>100	16.6	<1	0.4	<-0.75	<-0.80				
			2019/2/4	Sunny	5.0	0.3	7.3	0.0	Light grayish yellow green	None	>100	18.8	<1	0.4	<-0.77	<-0.75				
			2018/5/22	Sunny	22.7	0.3	9.7	0.0	Light grayish yellow green	None	>100	11.2	6	1.7	<-0.76	<-0.69				
		31	Daiya River	Shinkyo Bridge	Nikko City	2018/8/9	Cloudy	27.2	0.3	12.9	0.0	Light grayish yellow green	None	>100	10.5	1	0.7	<-0.73	<-0.84	
						2018/11/1	Sunny	11.7	0.4	8.7	0.0	Light grayish yellow green	None	>100	11.3	1	0.3	<-0.84	<-0.84	
						2019/2/4	Sunny	11.2	0.3	7.1	0.0	Light grayish yellow green	None	>100	11.9	<1	0.3	<-0.73	<-0.84	
						2018/5/22	Sunny	22.8	0.2	14.4	0.0	Light grayish yellow	None	>100	11.7	1	0.7	<-0.66	<-0.55	
						2018/8/9	Cloudy	27.5	0.2	20.1	0.0	Light grayish yellow	None	>100	5.3	<1	0.5	<-0.76	<-0.69	
						2018/11/1	Sunny	9.4	0.3	10.3	0.0	Light grayish yellow green	None	>100	9.7	1	1.0	<-0.76	<-0.84	
		32	Shidobuchi River	Sujichigai Bridge	Nikko City	2019/2/4	Sunny	11.0	0.4	6.3	0.0	Light grayish yellow green	None	>100	12.5	1	0.5	<-0.76	<-0.87	
						2018/5/31	Sunny	20.8	0.3	13.8	0.0	Light grayish yellowish green	None	>100	12.3	1	1.3	<-0.70	<-0.69	
						2018/6/19	Sunny	27.4	0.2	20.2	0.0	Light grayish yellow green	None	>100	12.3	4	1.4	<-0.78	<-0.88	
						2018/7/9	Cloudy	29.6	0.2	21.0	0.0	Light grayish yellow green	None	>100	12.3	1	0.7	<-0.87	<-0.80	
						2018/8/17	Sunny	26.8	0.2	19.4	0.0	Light grayish yellow green	None	>100	11.6	4	0.8	<-0.92	<-0.63	
						2018/9/4	Cloudy	22.1	0.3	16.3	0.0	Light grayish yellow green	None	>100	11.3	3	0.8	<-0.59	<-0.84	
		33	Kinugawa River System	Daiya River	Kaishin Bridge (Hariga)	Nikko City	2018/11/1	Sunny	13.2	0.4	11.2	0.0	Light grayish yellow green	None	>100	11.2	1	0.6	<-0.76	<-0.69
							2019/2/13	Sunny	7.8	0.2	9.0	0.0	Light grayish yellow green	None	>100	12.0	5	1.6	<-0.74	<-0.63
							2018/5/31	Cloudy	18.0	0.1	15.4	0.0	Light grayish greenish yellow	None	>100	9.1	1	1.1	<-0.81	<-0.66
							2018/6/19	Sunny	25.2	0.1	16.7	0.0	Light grayish greenish yellow	None	>100	9.5	2	1.9	<-0.63	<-0.69
							2018/7/6	Cloudy	20.1	0.3	16.7	0.0	Light grayish greenish yellow	None	76	9.0	6	3.6	<-0.78	<-0.66
							2018/8/17	Sunny	25.8	0.4	21.3	0.0	Light grayish greenish yellow	None	46	8.9	15	2.2	<-0.83	<-0.84
				2018/9/4	Cloudy	22.9	0.4	18.3	0.0	Light grayish yellow green	None	>100	9.6	3	2.2	<-0.64	<-0.63			
				2018/11/1	Sunny	13.9	0.4	13.3	0.0	Grayish yellow green	None	72	10.0	30	6.4	<-0.67	<-0.69			
				2019/2/7	Sunny	0.3	0.3	4.6	0.0	Light grayish yellow green	None	>100	11.4	1	0.6	<-0.61	<-0.80			
				2018/5/19	Sunny	20.4	0.6	14.1	0.0	Light grayish yellow green	None	>100	10.2	6	2.3	<-0.61	<-0.75			
				2018/8/9	Cloudy	28.4	0.7	19.9	0.0	Grayish yellow green	None	28	10.2	32	24	<-0.63	<-0.69			
				34	Kinugawa River	Sanuki	Shioya Town	2018/11/4	Sunny	20.1	0.2	17.7	0.0	Light grayish yellow green	None	>100	16.7	1	0.5	<-0.61
		2019/2/14	Sunny					5.2	0.5	4.8	0.0	Light grayish yellow green	None	>100	13.0	2	1.2	<-0.55	<-0.63	
		2018/5/19	Sunny					22.1	0.5	16.0	0.0	Grayish yellow green	None	>100	11.2	5	2.0	<-0.82	<-0.84	
		2018/8/9	Cloudy					29.1	0.2	21.1	0.0	Grayish greenish yellow	None	32	10.8	31	18	<-0.80	<-0.80	
		2018/11/4	Sunny					19.5	0.3	15.3	0.0	Light grayish yellow green	None	>100	11.4	2	1.2	<-0.66	<-0.69	
		2019/2/14	Sunny					6.8	0.2	7.6	0.0	Light grayish yellow green	None	>100	13.2	2	0.8	<-0.85	<-0.80	
		35	Nishi-Kinugawa River	Nishi-Kinugawa Bridge	Utsunomiya City	2018/5/10	Rain	12.2	1.0	13.2	0.0	Light grayish yellow green	None	>100	13.8	7	1.9	<-0.81	<-0.54	
2018/8/24	Cloudy					29.2	1.1	24.5	0.0	Light grayish yellow green	None	75	20.3	12	4.0	<-0.67	<-0.69			
2018/11/17	Sunny					12.7	0.8	14.0	0.0	Light grayish yellow green	None	>100	16.1	3	1.7	<-0.89	<-0.88			
2019/2/15	Cloudy					5.1	0.9	7.8	0.0	Light grayish yellow green	None	>100	18.3	2	0.6	<-0.74	<-0.84			
2018/5/10	Rain					12.2	1.0	13.2	0.0	Light grayish yellow green	None	>100	13.8	7	1.9	<-0.81	<-0.54			
2018/8/24	Cloudy					29.2	1.1	24.5	0.0	Light grayish yellow green	None	75	20.3	12	4.0	<-0.67	<-0.69			
36	Kinugawa River	Kimugawa Bridge (Hoshakuji Temple)	Utsunomiya City	2018/5/10	Rain	12.2	1.0	13.2	0.0	Light grayish yellow green	None	>100	13.8	7	1.9	<-0.81	<-0.54			
				2018/8/24	Cloudy	29.2	1.1	24.5	0.0	Light grayish yellow green	None	75	20.3	12	4.0	<-0.67	<-0.69			
				2018/11/17	Sunny	12.7	0.8	14.0	0.0	Light grayish yellow green	None	>100	16.1	3	1.7	<-0.89	<-0.88			
				2019/2/15	Cloudy	5.1	0.9	7.8	0.0	Light grayish yellow green	None	>100	18.3	2	0.6	<-0.74	<-0.84			
				2018/5/10	Rain	12.2	1.0	13.2	0.0	Light grayish yellow green	None	>100	13.8	7	1.9	<-0.81	<-0.54			
				2018/8/24	Cloudy	29.2	1.1	24.5	0.0	Light grayish yellow green	None	75	20.3	12	4.0	<-0.67	<-0.69			
37	Kinugawa River	Daidozumi Bridge	Mooka City	2018/5/10	Rain	12.2	1.0	13.2	0.0	Light grayish yellow green	None	>100	13.8	7	1.9	<-0.81	<-0.54			
				2018/8/24	Cloudy	29.2	1.1	24.5	0.0	Light grayish yellow green	None	75	20.3	12	4.0	<-0.67	<-0.69			
				2018/11/17	Sunny	12.7	0.8	14.0	0.0	Light grayish yellow green	None	>100	16.1	3	1.7	<-0.89	<-0.88			

Tochigi River (Water) 5/6

No.	Location			Sampling Date	Weather	Air temperature (°C)	Water depth (m)	Water											Remarks
	Water area	Location	Municipality					General items					Activity concentration(Bq/L)						
								Water temperature (°C)	Sampling depth (m)	Color	Odor	Transparency (cm)	Electrical conductivity (μS/cm)	SS (mg/L)	Turbidity (FNU)	Radioactive cesium Cs-134	Cs-137		
R i v e r s	Tonogawa River System	Kinugawa River System	Egawa River	Tributary	Shimotsuke City	2018/5/10	Rain	11.3	1.0	13.1	0.0	Light grayish yellow green	None	27	14.0	14	12	<-0.77	<-0.69
						2018/6/4	Sunny	23.4	0.5	20.0	0.0	Light grayish greenish yellow	None	>100	18.6	2	1.9	<-0.58	<-0.84
						2018/7/5	Rain	26.7	0.9	22.2	0.0	Light grayish greenish yellow	None	76	18.6	3	2.2	<-0.81	<-0.69
						2018/8/24	Cloudy	30.0	1.0	24.5	0.0	Light grayish greenish yellow	None	65	15.0	4	2.0	<-0.71	<-0.75
						2018/9/5	Sunny	25.9	1.1	22.7	0.0	Grayish yellow	None	24	18.1	54	13	<-0.75	<-0.75
						2018/11/17	Sunny	12.2	0.2	12.4	0.0	Light grayish yellow green	None	>100	23.3	4	1.5	<-0.84	<-0.88
			Akabori River	Nikko City Hall, front	Nikko City	2019/2/15	Cloudy	5.1	0.3	6.3	0.0	Light grayish greenish yellow	None	39	25.6	13	7.6	<-0.85	<-0.88
						2018/5/22	Sunny	22.1	0.2	10.7	0.0	Light grayish greenish yellow	None	>100	11.7	4	0.6	<-0.72	<-0.80
						2018/8/9	Cloudy	27.3	0.2	15.4	0.0	Light grayish greenish yellow	None	>100	10.5	2	0.9	<-0.74	<-0.75
						2018/11/1	Sunny	8.1	0.2	9.3	0.0	Light grayish yellow green	None	>100	11.1	1	0.9	<-0.78	<-0.88
						2019/2/14	Sunny	2.2	0.2	5.2	0.0	Light grayish greenish yellow	None	>100	12.1	<1	0.5	<-0.75	<-0.69
						2018/5/22	Sunny	19.8	0.2	14.4	0.0	Light grayish greenish yellow	None	>100	14.9	2	0.8	<-0.66	<-0.55
		Kiwadajima		Nikko City	2018/8/9	Cloudy	27.1	0.3	17.5	0.0	Light grayish greenish yellow	None	>100	15.4	3	0.8	<-0.87	<-0.69	
					2018/11/1	Sunny	7.0	0.3	11.7	0.0	Light grayish yellow green	None	>100	17.7	<1	0.4	<-0.61	<-0.75	
					2019/2/14	Sunny	1.8	0.3	7.8	0.0	Light grayish greenish yellow	None	>100	17.7	<1	0.4	<-0.74	<-0.69	
					2018/5/22	Sunny	28.6	0.3	22.8	0.0	Light grayish greenish yellow	None	>100	15.5	2	1.5	<-0.68	<-0.75	
					2018/6/19	Sunny	23.3	0.6	19.5	0.0	Light grayish greenish yellow	None	>100	15.1	9	2.6	<-0.78	<-0.88	
					2018/7/6	Cloudy	22.2	0.6	21.3	0.0	Light grayish yellow	None	48	11.5	15	6.6	<-0.74	<-0.55	
		Tagawa River	Ozobashi Bridge	Utanoimiya City	2018/8/9	Cloudy	28.2	0.6	21.8	0.0	Light grayish yellow	None	>100	15.4	3	0.9	<-0.74	<-0.69	
					2018/9/4	Cloudy	25.0	0.6	20.7	0.0	Light grayish yellow green	None	>100	15.8	6	2.9	<-0.71	<-0.75	
					2018/11/1	Sunny	19.1	0.4	17.2	0.0	Light grayish greenish yellow	None	>100	16.2	2	0.7	<-0.79	<-0.84	
					2019/2/7	Sunny	15.8	0.4	11.2	0.0	Light grayish yellow	None	>100	16.7	4	2.1	<-0.66	<-0.69	
					2018/5/22	Sunny	29.8	0.2	23.7	0.0	Light grayish yellow green	None	>100	19.8	5	2.2	<-0.77	<-0.66	
					2018/8/9	Cloudy	28.5	0.2	21.1	0.0	Light grayish yellow green	None	>100	19.7	3	1.5	<-0.51	<-0.92	
					2018/11/1	Sunny	19.9	0.2	17.2	0.0	Light grayish yellow	None	>100	19.4	2	0.9	<-0.85	<-0.63	
					2019/2/7	Sunny	15.6	0.2	12.5	0.0	Light grayish yellow green	None	>100	19.9	6	2.3	<-0.61	<-0.88	
					2018/5/30	Cloudy	27.4	0.1	21.9	0.0	Light grayish yellow	None	>100	24.7	3	1.4	<-0.76	<-0.75	
					2018/8/4	Sunny	33.3	0.3	27.7	0.0	Light grayish greenish yellow	None	>100	24.4	2	1.2	<-0.73	<-0.55	
Tagawa River	Meiji Bridge	Kaminokawa Town	2018/11/17	Sunny	11.2	0.3	15.1	0.0	Light grayish greenish yellow	None	>100	27.4	2	1.2	<-0.76	<-0.69			
			2019/2/14	Sunny	8.0	0.3	11.1	0.0	Light grayish yellow	None	>100	26.0	7	4.8	<-0.66	<-0.75			
			2018/5/10	Rain	12.7	0.8	14.0	0.0	Grayish yellow	None	26	18.7	18	5.6	<-0.60	<-0.70			
			2018/8/24	Cloudy	30.4	0.7	25.8	0.0	Grayish yellow	None	28	23.6	25	9.0	<-0.77	<-0.69			
Yanabashi Bridge		Oyama City	2018/11/17	Sunny	14.2	0.4	15.7	0.0	Grayish greenish yellow	None	>100	29.5	4	1.7	<-0.75	<-0.88			
			2019/2/15	Cloudy	5.5	0.2	8.0	0.0	Light grayish yellow	None	>100	31.6	3	1.8	<-0.63	<-0.69			
			2018/5/30	Cloudy	23.4	0.2	19.6	0.0	Light grayish yellow green	None	>100	11.7	2	1.1	<-0.76	<-0.84			
			2018/8/4	Sunny	28.7	0.3	24.4	0.0	Light grayish yellow green	None	>100	9.3	1	1.1	<-0.60	<-0.80			
Kurokawa River	Kajima Bridge	Kanuma City	2018/11/6	Cloudy	16.8	0.2	15.6	0.0	Light grayish yellow green	None	>100	9.9	<1	0.2	<-0.91	<-0.84			
			2019/2/12	Sunny	2.9	0.3	5.2	0.0	Light grayish yellow green	None	>100	11.4	<1	0.2	<-0.61	<-0.69			
			2018/5/30	Cloudy	25.2	0.1	20.3	0.0	Light grayish greenish yellow	None	>100	18.9	3	1.7	<-0.65	<-0.88			
	Onari Bridge	Mibu Town	2018/8/4	Sunny	32.4	0.3	26.0	0.0	Light grayish greenish yellow	None	>100	15.1	2	0.9	<-0.77	<-0.70			
			2018/11/6	Rain	17.5	0.3	17.5	0.0	Light grayish greenish yellow	None	>100	17.2	1	0.4	<-0.71	<-0.84			
			2019/2/12	Sunny	7.8	0.3	11.1	0.0	Light grayish greenish yellow	None	>100	23.4	13	2.8	<-0.71	<-0.75			
Oashi River	Akaishi Bridge	Kanuma City	2018/5/30	Cloudy	24.3	0.1	19.8	0.0	Light grayish yellow green	None	>100	9.0	2	0.8	<-0.73	<-0.84			
			2018/8/4	Sunny	29.9	0.3	24.7	0.0	Light grayish yellow green	None	>100	7.5	<1	0.3	<-0.80	<-0.63			
			2018/11/6	Cloudy	17.0	0.2	16.1	0.0	Light grayish yellow green	None	>100	7.2	<1	0.4	<-0.69	<-0.84			
			2019/2/12	Sunny	4.6	0.2	7.9	0.0	Light grayish yellow green	None	>100	7.6	1	0.7	<-0.88	<-0.80			
			2018/5/30	Cloudy	23.5	0.1	21.2	0.0	Light grayish yellow	None	>100	20.0	6	2.5	<-0.62	<-0.84			
Koyabu River	Koyabu Bridge		2018/8/4	Sunny	29.1	0.2	25.7	0.0	Grayish greenish yellow	None	>100	19.5	4	2.4	<-0.49	<-0.66			
			2018/11/6	Cloudy	17.1	0.2	16.1	0.0	Light grayish greenish yellow	None	>100	17.0	4	2.3	<-0.73	<-0.75			
			2019/2/12	Sunny	3.8	0.2	3.6	0.0	Light grayish yellow	None	>100	21.4	3	2.4	<-0.73	<-0.85			

Tochigi River (Water)6/6

R i v e r s	Location				Sampling Date	Weather	Air temperature (°C)	Water depth (m)	Water										Remarks				
	No.	Water area		Municipality					General items					Activity concentration(Bq/L)									
		Location	Location						Water temperature (°C)	Sampling depth (m)	Color	Odor	Transparency (cm)	Electrical conductivity (mS/m)	SS (mg/L)	Turbidity (FNU)	Radioactive cesium Cs-134	Cs-137					
49	50	Tongawa River System	Watarase River Area	Omoi River Area	Omoi River	Tamotsu Bridge	Tochigi City	2018/5/30	Cloudy	26.3	0.2	22.4	0.0	Light grayish yellow green	None	>100	13.9	7	2.7	<-0.76	<-0.55		
								2018/8/4	Sunny	31.7	0.4	25.7	0.0	Light grayish yellow green	None	>100	10.3	<1	0.3	<-0.74	<-0.80		
								2018/11/6	Cloudy	18.2	0.2	17.7	0.0	Light grayish yellow green	None	>100	12.7	2	0.3	<-0.67	<-0.96		
						2019/2/12	Sunny	7.7	0.2	10.7	0.0	Light grayish yellow green	None	>100	15.9	5	1.6	<-0.61	<-0.83				
						2018/5/10	Sunny	14.4	0.7	15.0	0.0	Light grayish yellow	None	44	13.6	16	4.1	<-0.71	<-0.66				
						2018/6/4	Sunny	27.4	0.4	25.1	0.0	Grayish greenish yellow	None	>100	24.6	7	3.5	<-0.61	<-0.84				
					Otone-ohashi Bridge	Oyama City	2018/7/5	Rain	25.4	0.3	24.7	0.0	Light grayish yellow green	None	74	21.5	9	3.9	<-0.51	<-0.63			
							2018/8/24	Sunny	34.1	0.6	27.3	0.0	Grayish greenish yellow	None	53	17.6	62	12	<-0.61	<-0.92			
							2018/9/5	Sunny	30.2	1.2	23.1	0.0	Grayish yellow	None	40	13.1	29	6.3	<-0.75	<-0.75			
							2018/11/17	Sunny	16.6	0.3	16.0	0.0	Light grayish greenish yellow	None	>100	20.3	5	1.9	<-0.62	<-0.66			
							2019/2/8	Cloudy	8.0	0.3	8.8	0.0	Light grayish yellow green	None	>100	27.2	7	2.5	<-0.64	<-0.75			
							2018/5/10	Cloudy	14.4	0.7	17.0	0.0	Grayish yellow	None	32	23.3	19	9.6	<-0.55	<-0.74			
				2018/6/4			Sunny	28.2	0.7	24.9	0.0	Grayish greenish yellow	None	56	28.3	7	3.3	<-0.78	<-0.75				
				2018/7/5			Cloudy	26.3	0.8	23.4	0.0	Light grayish greenish yellow	None	>100	30.5	5	3.8	<-0.66	<-0.66				
				2018/8/24			Sunny	33.8	0.9	27.9	0.0	Grayish yellow green	None	60	27.4	14	6.8	<-0.69	<-0.80				
				2018/9/5			Sunny	31.2	1.0	24.5	0.0	Grayish yellow	None	36	20.7	29	9.6	<-0.52	<-0.69				
				2018/11/28			Sunny	11.3	0.6	13.5	0.0	Light grayish greenish yellow	None	82	30.3	6	2.3	<-0.81	<-0.55				
				2019/2/8			Cloudy	8.2	0.7	10.3	0.0	Light grayish greenish yellow	None	>100	33.9	5	2.2	<-0.71	<-0.66				
				Uzama River Area			Uzama River	Uzama Bridge	Tochigi City	2018/5/10	Sunny	12.6	0.3	9.0	0.0	Light grayish yellow green	None	>100	5.7	3	0.7	<-0.65	<-0.61
										2018/6/8	Sunny	27.8	0.2	21.0	0.0	Light grayish yellow green	None	>100	21.7	<1	1.1	<-0.70	<-0.63
										2018/7/5	Cloudy	24.8	0.2	17.4	0.0	Light grayish yellow green	None	>100	9.9	<1	0.5	<-0.89	<-0.80
										2018/8/2	Sunny	25.0	0.3	18.1	0.0	Light grayish yellow green	None	>100	8.2	<1	0.6	<-0.65	<-0.55
										2018/9/11	Cloudy	20.4	0.2	18.2	0.0	Light grayish yellow green	None	>100	19.4	<1	0.4	<-0.74	<-0.83
										2018/11/26	Sunny	11.1	0.3	8.2	0.0	Grayish yellowish green	None	>100	15.4	<1	0.2	<-0.81	<-0.84
					Watarase River Area	Watarase River		Watarase River intake weir at Sori Power Station	Nikko City	2019/2/6	Cloudy	5.0	0.2	3.7	0.0	Light grayish yellow green	None	>100	18.1	<1	0.5	<-0.84	<-0.55
										2018/5/18	Cloudy	24.8	0.2	20.7	0.0	Light grayish yellow green	None	>100	13.4	1	0.8	<-0.60	<-0.69
										2018/8/27	Sunny	37.4	0.2	25.1	0.0	Light grayish yellow green	None	>100	9.5	2	1.7	<-0.78	<-0.69
										2018/11/28	Sunny	18.6	0.4	13.9	0.0	Light grayish yellow green	None	>100	14.6	<1	0.6	<-0.87	<-0.88
										2019/2/8	Sunny	5.8	0.2	5.9	0.0	Light grayish yellow green	None	>100	15.5	<1	0.5	<-0.71	<-0.70
										2018/5/18	Cloudy	25.7	0.5	22.1	0.0	Light grayish greenish yellow	None	>100	14.9	2	1.5	<-0.62	<-0.75
								Hajika Bridge	Ashikaga City	2018/8/27	Sunny	37.8	0.5	25.7	0.0	Light grayish greenish yellow	None	>100	9.9	2	1.4	<-0.70	<-0.80
										2018/11/28	Sunny	17.2	0.7	14.3	0.0	Light grayish yellow green	None	>100	15.2	1	0.7	<-0.66	<-0.80
										2019/2/8	Sunny	7.6	0.5	7.2	0.0	Light grayish greenish yellow	None	>100	16.9	2	0.8	<-0.75	<-0.75
										2018/5/18	Cloudy	29.1	0.3	25.6	0.0	Light grayish yellow green	None	>100	21.1	4	2.6	<-0.77	<-0.69
										2018/8/27	Sunny	35.4	0.3	26.9	0.0	Light grayish yellow green	None	62	12.6	2	1.7	<-0.74	<-0.75
										2018/11/28	Sunny	15.3	0.5	14.0	0.0	Grayish yellow green	None	>100	24.1	5	1.9	<-0.51	<-0.88
				Nakabashi Bridge	Tatebayashi City	2019/2/8	Sunny	8.1	0.3	6.5	0.0	Light grayish yellow green	None	>100	25.2	3	1.9	<-0.85	<-0.61				
						2018/5/18	Sunny	30.4	0.1	27.2	0.0	Light grayish yellow green	None	>100	25.0	21	11	<-0.60	<-0.69				
						2018/6/4	Sunny	29.5	0.1	27.3	0.0	Grayish yellow green	None	34	28.0	29	18	<-0.82	<-0.84				
						2018/7/5	Cloudy	25.4	0.1	26.7	0.0	Light grayish yellow green	None	85	26.0	8	3.2	<-0.60	<-0.61				
						2018/8/27	Sunny	34.3	0.2	27.5	0.0	Light grayish yellow green	None	>100	16.0	5	3.0	<-0.80	<-0.69				
						2018/9/11	Cloudy	22.2	0.7	23.1	0.0	Light grayish yellow green	None	60	18.8	17	7.0	<-0.62	<-0.75				
						2018/11/28	Sunny	12.6	0.2	13.4	0.0	Light grayish yellow green	None	>100	26.9	2	2.1	<-0.81	<-0.87				
						2019/2/8	Cloudy	9.2	0.2	8.4	0.0	Light grayish yellow green	None	>100	30.0	6	3.6	<-0.69	<-0.83				

Tochigi River (Sediment) 1/6

No.	Location			Sampling Date	Weather	Air temperature (°C)	Water depth (m)	Sediment															Remarks				
	Water area	Location	Municipality					Sediment temperature (°C)	Sample length (cm)	Color	Odor	Grain size distribution(%)					Sediment content (%)	Density (g/cm ³)	Property	Activity concentration [Bq/kg(dry)]							
												Coarse gravel	Medium gravel	Fine gravel	Coarse sand	Medium sand				Fine sand	Silt	Clay		Cs-134	Cs-137	Total	
1	Nakagawa River	Irayobashichita	Nasuohibara City	2018/5/28	Sunny	20.4	0.5	17.6	6	Dark olive	None	0.0	8.7	16.1	35.1	35.2	3.0	0.5	1.5	74.3	2.676	Sand/gravel	<5.4	14	14		
				2018/8/30	Sunny	24.2	0.5	17.9	3	Dull yellowish brown	None	0.0	24.6	34.6	26.6	11.8	1.2	0.4	0.8	85.1	2.659	Sand/gravel	<5.2	11	11		
				2018/11/27	Sunny	10.6	0.4	10.0	3	Brownish gray	None	1.7	23.0	9.3	13.6	47.2	2.4	0.2	2.6	72.3	2.689	Sand/gravel	<6.2	15	15		
				2018/2/1	Cloudy	-1.8	0.2	5.8	7	Dark olive	None	0.0	1.9	4.2	22.7	57.2	9.0	1.0	3.7	74.2	2.685	Sand	<5.2	21	21		
				2018/5/28	Cloudy	22.3	0.3	15.5	7	Dull yellowish brown	None	0.0	48.2	23.0	8.3	16.8	2.5	0.5	0.7	78.2	2.654	Gravel/sand	<5.3	23	23		
		2		Komei Bridge	Nasuohibara City	2018/8/30	Sunny	25.2	0.5	18.2	5	Grayish yellowish brown	None	0.0	0.3	1.7	17.6	66.6	11.8	0.0	1.9	72.9	2.696	Sand	<6.0	26	26
						2018/11/27	Sunny	10.7	0.4	8.1	5	Grayish yellowish brown	None	0.0	14.6	5.9	13.3	56.1	7.8	0.5	1.9	73.6	2.724	Sand	<4.6	14	14
						2018/2/1	Sunny	1.2	0.3	4.1	7	Grayish olive	None	0.0	20.0	13.6	13.5	44.3	6.0	1.4	1.3	76.2	2.684	Sand/gravel	<5.4	15	15
						2018/5/28	Cloudy	22.2	0.2	16.9	4	Dark brown	None	0.0	33.4	21.3	20.9	20.5	2.7	1.4	0.9	70.5	2.765	Gravel/sand	<4.8	37	37
						2018/8/30	Sunny	25.2	0.3	17.7	3	Dull yellowish brown	None	0.0	27.1	23.4	20.7	22.2	4.2	1.5	1.0	73.6	2.791	Sand/gravel	<5.4	39	39
3	Takoatama River	Takoatama Bridge	Nasu Town	2018/11/27	Sunny	10.7	0.3	9.3	3	Brownish gray	None	0.0	62.9	22.1	9.2	5.0	0.4	0.4	75.1	2.757	Sand/gravel	<4.7	17	17			
				2018/2/1	Sunny	1.4	0.2	4.0	4	Brown	None	0.0	0.1	0.4	5.1	72.8	15.8	2.1	3.9	71.3	2.756	Sand	<5.1	56	56		
				2018/5/28	Sunny	21.6	0.1	17.5	5	Dark brown	None	0.0	15.5	10.9	13.6	48.4	7.9	2.3	1.4	68.0	2.737	Sand/gravel	<5.9	20	20		
				2018/8/30	Sunny	26.2	0.1	20.7	3	Dull yellowish brown	None	0.0	44.5	31.5	16.0	7.0	0.4	0.2	0.5	69.6	2.635	Sand/gravel	<5.3	36	36		
				2018/11/27	Sunny	11.2	0.3	11.7	3	Grayish yellowish brown	None	0.0	31.6	29.5	19.4	17.4	1.0	0.4	0.7	75.7	2.778	Sand/gravel	<4.3	13	13		
4	Yakawa River	Yakawa Bridge	Nasuohibara City/ Nasu Town	2018/2/1	Sunny	1.3	0.1	5.4	5	Dark brown	None	2.4	46.6	22.8	15.7	11.0	0.7	0.2	0.7	79.1	2.761	Gravel/sand	<5.1	13	13		
				2018/5/28	Cloudy	11.2	0.5	12.3	6	Olive brown	None	0.0	1.8	13.2	21.2	55.1	6.0	0.5	2.0	74.6	2.717	Sand	9.2	69	78.2		
				2018/6/8	Cloudy	20.0	0.3	17.6	3	Grayish yellowish brown	None	0.0	35.0	12.9	15.5	22.0	3.1	0.6	1.0	75.6	2.716	Sand/gravel	<5.7	35	35		
				2018/7/2	Sunny	29.8	0.2	23.0	7	Dark grayish yellow	None	2.1	19.9	10.4	19.7	39.7	5.6	1.0	1.6	74.0	2.754	Sand	<5.2	47	47		
				2018/8/6	Cloudy	28.2	0.3	22.7	3	Brownish gray	None	0.0	19.8	16.0	19.7	36.8	5.8	0.6	1.3	76.3	2.724	Sand/gravel	<5.5	49	49		
				2018/9/3	Cloudy	22.4	0.3	18.7	6	Dark grayish yellow	None	0.0	6.0	6.0	6.3	34.3	42.2	2.2	1.0	77.5	2.800	Sand	8.0	80	88.0		
				2018/11/27	Sunny	15.5	0.3	12.7	3	Brownish gray	None	0.0	27.7	25.4	22.3	21.8	1.5	0.3	1.1	77.4	2.782	Sand/gravel	<4.5	19	19		
				2018/2/1	Sunny	2.2	0.3	3.7	5	Olive brown	None	0.0	37.1	23.4	20.1	16.8	1.0	0.4	1.1	80.6	2.709	Gravel/sand	<5.0	27	27		
				2018/5/28	Sunny	22.8	0.3	19.7	4	Blackish brown	Faint earth	0.0	40.4	28.1	12.0	13.8	2.2	0.9	0.6	79.0	2.725	Gravel/sand	<5.7	36	36		
				5	Nakagawa River	Kamikuroiso	Nasuohibara City/ Nasu Town	2018/8/6	Cloudy	28.2	0.2	22.0	3	Blackish brown	None	0.0	29.4	37.9	18.2	12.5	1.0	0.2	0.8	76.2	2.777	Sand/gravel	<5.2
2018/11/27	Sunny	13.3	0.3					10.1	3	Grayish yellowish brown	None	0.0	61.1	29.9	7.0	1.4	0.0	0.1	0.4	83.9	2.770	Gravel/sand	<4.7	9.9	9.9		
2018/2/1	Sunny	2.8	0.3					5.2	4	Blackish brown	None	4.1	57.6	17.1	9.3	10.4	0.7	0.0	0.8	76.8	2.764	Gravel/sand	<7.7	18	18		
2018/5/28	Cloudy	12.7	0.6					12.8	4	Extremely dark brown	Faint earth	0.0	47.7	18.4	13.1	18.1	1.8	0.2	0.8	79.1	2.863	Gravel/sand	7.3	93	100.3		
2018/8/6	Cloudy	28.3	0.3					26.1	3	Grayish yellowish brown	None	0.0	31.7	30.6	17.3	17.2	2.4	0.0	0.7	78.6	2.877	Sand/gravel	<4.7	42	42		
6	Yosasa River	Yosasa Bridge	Nasu Town	2018/11/27	Sunny	16.4	0.3	11.0	3	Dark brown	None	0.0	53.7	32.2	7.2	4.2	1.0	0.3	0.4	84.5	2.718	Gravel/sand	<4.7	51	51		
				2018/2/1	Sunny	4.2	0.2	2.6	5	Dark brown	None	0.0	84.7	8.9	2.6	2.0	0.3	0.1	0.5	85.0	2.721	Gravel	<4.4	35	35		
				2018/5/28	Cloudy	13.2	0.3	13.0	7	Olive brown	None	0.0	0.4	1.0	0.8	40.3	47.5	6.7	3.4	69.9	2.734	Sand	13	120	133		
				2018/6/8	Cloudy	24.1	0.3	21.6	3	Brownish gray	None	1.7	31.8	24.0	24.0	17.1	0.6	0.0	0.8	83.0	2.779	Sand/gravel	7.9	73	80.9		
				2018/7/2	Sunny	33.2	0.2	27.7	5	Grayish olive	None	0.0	27.9	25.4	25.8	17.7	1.3	0.9	0.9	79.1	2.748	Gravel/sand	<5.1	50	50		
				2018/8/6	Cloudy	28.7	0.3	27.9	5	Brownish gray	None	0.0	12.9	18.5	26.5	36.9	2.5	0.7	2.0	78.2	2.755	Sand/gravel	<7.9	56	56		
				2018/9/3	Cloudy	24.4	0.4	21.5	4	Dark grayish yellow	None	0.0	2.0	1.7	7.1	56.5	21.8	5.7	5.3	71.3	2.752	Sand	17	170	187		
				2018/11/27	Sunny	16.9	0.3	11.3	3	Brownish gray	None	0.0	15.1	12.5	18.5	49.0	2.1	0.9	2.0	88.4	3.038	Sand/gravel	8.1	93	101.1		
				2018/2/1	Sunny	5.5	0.2	3.0	5	Grayish olive	None	3.9	32.1	17.0	15.8	28.3	1.5	0.5	0.9	77.7	2.798	Gravel/sand	<4.5	39	39		
				2018/5/28	Cloudy	14.2	0.2	14.0	7	Grayish olive	None	0.0	13.6	11.4	22.9	47.8	2.2	0.8	1.4	78.2	2.762	Sand/gravel	<4.3	33	33		
7	Kurokawa River	Shinden Bridge	Nasuohibara City/ Nasu Town	2018/6/8	Cloudy	26.3	0.4	22.3	3	Brownish gray	None	1.4	35.9	11.1	14.3	34.9	1.4	0.0	1.0	76.0	2.749	Sand/gravel	<5.4	25	25		
				2018/7/2	Sunny	35.3	0.3	25.6	7	Grayish olive	None	2.1	27.9	17.3	20.3	28.7	2.1	0.6	1.0	79.8	2.721	Gravel/sand	<5.7	20	20		
				2018/8/6	Cloudy	30.7	0.6	26.2	10	Brownish gray	None	0.0	0.0	1.2	31.6	64.5	0.6	0.1	1.9	75.2	2.666	Sand	<4.8	22	22		
				2018/9/3	Cloudy	26.5	0.3	19.6	7	Dark grayish yellow	None	0.0	39.9	13.9	20.3	22.6	2.1	0.1	0.9	79.7	2.771	Sand/gravel	<4.6	30	30		
				2018/11/27	Sunny	17.1	0.4	14.1	8	Grayish olive	None	0.0	35.6	38.5	23.5	12.9	0.4	0.4	0.7	84.9	2.662	Gravel/sand	<5.2	16	16		
				2018/2/1	Sunny	6.0	0.3	7.2	8	Grayish olive	None	0.0	46.9	23.1	14.9	13.6	0.3	0.0	1.2	77.0	2.713	Gravel/sand	<3.7	15	15		
				2018/5/28	Sunny	6.0	0.3	7.2	8	Grayish olive	None	0.0	46.9	23.1	14.9	13.6	0.3	0.0	1.2	77.0	2.713	Gravel/sand	<3.7	15	15		

Tochigi River (Sediment) 2/6

Location				Sediment																	Activity concentration [Bq/kg(dry)]			Remarks	
No.	Water area	Location	Municipality	Sampling Date	Weather	Air temperature (°C)	Water depth (m)	Sediment temperature (°C)	Sample length (cm)	Color	Odeur	Grain size distribution(%)						Sediment content (%)	Density (g/cm ³)	Property	Radioactive cesium				
												Coarse gravel	Medium gravel	Fine gravel	Coarse sand	Medium sand	Fine sand				Silt	Clay	Cs-134		Cs-137
10	Manshu River	Tributary		2018/5/8	Cloudy	13.4	0.4	13.6	7	Grayish olive	None	0.0	3.0	4.9	17.8	64.0	7.6	1.0	1.8	78.1	2.713	Sand	<5.5	48	48
				2018/6/8	Cloudy	25.7	0.3	20.4	3	Grayish yellowish brown	None	0.0	54.9	17.2	7.1	0.6	0.0	0.2	89.4	2.653	Gravel/sand	<4.2	18	18	
				2018/7/2	Sunny	34.0	0.3	25.5	7	Grayish olive	None	0.0	7.8	40.7	39.1	10.0	0.4	1.0	1.0	89.7	2.661	Sand/gravel	<4.2	27	27
				2018/8/6	Cloudy	29.2	0.3	25.5	5	Grayish yellowish brown	None	0.0	30.6	32.7	22.1	13.6	0.4	0.0	0.7	84.2	2.699	Sand/gravel	<5.4	32	32
				2018/9/3	Cloudy	26.2	0.3	21.9	6	Dark grayish yellow	None	7.4	31.5	17.1	21.1	19.8	0.9	0.4	1.7	80.6	2.724	Gravel/sand	<5.1	38	38
	Subigawa River	Utagawa Bridge	Oiwara City	2018/1/3	Sunny	17.4	0.3	11.2	7	Grayish olive	None	1.8	38.0	22.1	18.0	17.9	0.7	0.4	1.1	79.5	2.676	Gravel/sand	<5.6	37	37
				2019/2/1	Sunny	6.0	0.2	3.8	7	Grayish olive	None	0.0	35.3	24.1	17.3	20.1	1.2	0.0	2.0	83.0	2.655	Sand/gravel	<5.4	38	38
				2018/5/8	Cloudy	13.1	0.3	13.8	5	Dark olive	None	4.1	41.0	17.7	8.5	20.6	6.4	0.8	1.1	81.1	2.711	Sand/gravel	<4.1	10	10
				2018/8/4	Sunny	28.8	0.3	25.6	5	Dark olive	None	0.0	39.1	24.5	11.4	16.1	6.8	0.7	1.4	78.7	2.667	Gravel/sand	<4.7	17	17
				2018/11/2	Sunny	12.8	0.3	14.9	5	Dark olive	None	0.0	24.6	14.3	8.6	23.5	14.1	2.5	2.4	74.3	2.681	Sand/gravel	<5.1	34	34
Momura River	Momozanaka Bridge		2018/2/4	Sunny	10.7	0.3	10.8	5	Grayish olive	None	8.3	15.0	2.5	1.4	47.1	24.2	0.8	3.8	78.7	2.669	Sand/gravel	<4.6	23	23	
			2018/5/8	Cloudy	12.8	0.4	14.6	5	Olive brown	None	3.3	38.6	21.4	19.1	15.9	0.6	0.4	0.7	80.3	2.678	Gravel/sand	6.6	42	48.6	
			2018/8/4	Sunny	28.1	0.3	18.2	5	Yellowish brown	None	0.0	36.5	26.7	19.2	14.2	1.6	0.8	1.1	78.1	2.643	Gravel/sand	3.8	41	44.8	
			2018/11/3	Sunny	11.8	0.3	18.5	5	Yellowish brown	None	2.3	31.3	14.2	11.5	29.8	7.5	1.6	2.0	77.5	2.676	Sand/gravel	7.6	94	101.6	
			2019/2/4	Sunny	8.6	0.3	13.8	5	Yellowish brown	None	4.2	47.7	31.6	13.2	2.8	0.1	0.0	0.5	83.1	2.604	Gravel/sand	<5.3	27	27	
13	Yanohara		Nasuhobara City	2018/5/29	Sunny	24.4	0.3	18.5	7	Dark grayish yellow	None	0.0	36.2	16.4	6.3	37.2	3.0	0.0	0.9	72.7	2.708	Sand/gravel	<5.8	91	91
				2018/8/29	Cloudy	22.2	0.3	19.0	7	Olive brown	None	0.0	3.2	6.3	17.6	58.8	10.4	0.6	3.0	70.3	2.694	Sand	<6.4	10	10
				2018/11/4	Sunny	10.2	0.3	11.2	7	Olive brown	None	0.0	22.6	7.6	16.8	42.7	7.5	0.1	2.7	72.2	2.697	Sand	<5.3	12	12
				2019/2/12	Sunny	2.9	0.2	5.9	5	Dark olive brown	None	0.0	7.0	10.5	21.3	49.7	8.9	0.1	2.4	73.4	2.745	Sand	<6.6	8.4	8.4
				2018/5/29	Sunny	21.2	0.3	16.4	6	Dark grayish yellow	None	0.0	33.9	34.6	19.8	10.1	0.8	0.2	0.6	75.9	2.643	Gravel/sand	5.5	28	33.5
	Sekibu Bridge		Oiwara City	2018/8/29	Cloudy	24.1	0.4	21.0	6	Dark olive	None	2.2	31.3	24.8	21.9	14.5	2.5	1.0	1.9	72.6	2.614	Gravel/sand	6.1	50	56.1
				2018/11/4	Sunny	13.4	0.3	10.3	5	Dark olive	None	5.3	43.0	21.2	14.1	5.0	0.5	0.3	0.6	80.7	2.639	Gravel/sand	<5.5	24	24
				2019/2/1	Sunny	2.5	0.3	4.9	5	Dark olive	None	0.0	71.8	27.1	0.9	0.0	0.0	0.2	77.9	2.581	Gravel/sand	<5.2	13	13	
				2018/5/8	Cloudy	11.8	0.4	14.2	6	Olive brown	None	2.2	7.3	5.3	12.9	88.9	11.0	0.9	1.6	76.1	2.771	Sand/gravel	<4.4	7.3	7.3
				2018/8/4	Sunny	26.4	0.3	23.9	7	Olive brown	None	0.0	17.5	14.0	22.5	41.6	1.8	0.7	1.9	78.0	2.722	Sand/gravel	<4.7	9.5	9.5
Hokigawa River	Iwai Bridge		Oiwara City	2018/11/3	Sunny	10.1	0.3	12.6	7	Olive brown	None	0.0	0.1	2.4	24.9	63.4	5.4	1.0	2.7	75.4	2.843	Sand	<4.6	5.9	5.9
				2019/2/4	Sunny	7.8	0.3	6.1	7	Olive brown	None	0.0	0.9	19.9	55.8	17.9	2.5	0.6	2.6	78.1	2.643	Sand/gravel	<4.6	9.4	9.4
				2018/5/8	Cloudy	14.1	0.4	14.1	5	Yellowish brown	None	2.8	22.8	6.0	3.3	42.6	20.5	0.4	1.6	73.5	2.741	Sand/gravel	<4.9	11	11
				2018/6/5	Sunny	23.3	0.4	19.9	3	Dull yellowish brown	None	0.0	54.4	23.8	12.2	7.2	2.0	0.0	0.4	87.8	2.679	Gravel/sand	<4.4	6.5	6.5
				2018/7/7	Sunny	31.2	0.3	25.8	6	Yellowish brown	None	0.0	10.5	5.0	20.2	57.8	4.1	0.8	1.6	78.4	2.734	Sand/gravel	<4.4	8.0	8.0
Hokigawa Bridge			Oiwara City	2018/8/4	Sunny	31.8	0.3	25.5	6	Yellowish brown	None	0.0	19.4	12.4	24.5	38.4	3.3	0.7	1.3	78.8	2.682	Sand/gravel	<4.5	7.4	7.4
				2018/9/3	Cloudy	22.1	0.4	20.0	6	Yellowish gray	None	0.0	0.0	0.1	0.9	35.2	55.4	5.1	3.4	71.6	2.728	Sand	<5.2	31	31
				2018/11/3	Sunny	15.8	0.3	13.8	6	Yellowish brown	None	0.0	0.3	0.6	11.4	76.3	6.5	1.2	1.9	76.1	2.658	Sand	<5.8	11	11
				2019/2/4	Sunny	14.6	0.3	9.8	6	Yellowish brown	None	0.0	4.0	12.2	43.9	33.6	2.2	0.9	1.2	81.1	2.647	Sand	<4.0	6.5	6.5
				2018/5/8	Cloudy	14.2	0.4	14.6	5	Olive brown	None	0.0	43.3	32.7	13.1	9.5	0.6	0.3	0.5	80.4	2.692	Gravel/sand	<4.0	10	10
Nakagawa River	Shimizu Bridge		Nakagawa Town	2018/6/5	Sunny	24.2	0.3	21.4	3	Grayish yellowish brown	None	0.0	37.5	27.9	18.6	13.0	2.4	0.0	0.7	87.2	2.706	Sand/gravel	<4.2	11	11
				2018/7/7	Sunny	32.4	0.1	26.3	6	Yellowish brown	None	0.0	2.3	0.6	2.9	78.1	15.3	1.0	1.9	72.6	2.642	Sand	<5.1	16	16
				2018/8/4	Sunny	32.1	0.2	28.8	5	Yellowish brown	None	0.0	32.5	29.4	18.0	14.8	4.2	0.4	0.8	81.8	2.683	Gravel/sand	<4.6	11	11
				2018/9/3	Cloudy	22.8	0.3	21.3	5	Yellowish brown	None	1.4	50.5	25.6	15.1	5.7	0.8	0.2	0.5	85.4	2.645	Gravel/sand	<4.1	9.6	9.6
				2018/11/3	Sunny	12.4	0.3	14.0	3	Grayish yellowish brown	None	1.0	54.5	24.2	10.6	7.3	1.5	0.2	0.6	82.3	2.670	Gravel/sand	<5.7	7.1	7.1
Mumogawa River	Kosoi Bridge		Nakagawa Town	2019/2/4	Sunny	15.1	0.2	11.0	5	Yellowish brown	None	8.0	42.8	28.3	14.5	4.8	0.8	0.0	0.8	81.4	2.651	Gravel/sand	<4.0	11	11
				2018/5/8	Cloudy	14.3	0.3	14.4	7	Grayish olive	None	0.0	0.2	0.7	5.7	78.2	11.2	1.6	2.3	73.8	2.722	Sand	<3.3	6.7	6.7
				2018/6/5	Sunny	24.7	0.4	21.0	5	Brownish gray	None	0.0	0.1	1.0	10.6	77.5	7.1	1.8	2.0	74.3	2.707	Sand	<5.6	8.1	8.1
				2018/7/7	Sunny	24.8	0.3	27.4	7	Grayish olive	None	0.0	1.0	0.8	4.4	73.3	16.6	2.0	1.9	74.6	2.694	Sand	<5.2	14	14
				2018/8/4	Sunny	32.5	0.3	28.6	7	Grayish olive	None	0.0	1.9	1.6	5.9	63.5	23.0	2.2	1.9	74.0	2.700	Sand	<5.9	16	16
18				2018/9/3	Cloudy	24.2	0.3	21.8	8	Grayish olive	None	0.0	3.9	2.0	4.5	54.1	24.3	7.2	4.1	70.9	2.655	Sand	<5.6	10	10
				2018/11/3	Sunny	13.2	0.4	12.1	3	Brownish gray	None	0.0	36.6	16.3	18.8	21.7	4.4	0.5	1.8	81.0	2.730	Sand/gravel	<4.8	12	12
				2019/2/4	Sunny	15.8	0.3	6.6	6	Grayish olive	None	0.0	38.1	28.8	20.8	10.2	0.9	0.6	1.3	80.7	2.690	Gravel/sand	<4.4	7.5	7.5

Tochigi River (Sediment) 3/6

No.	Location			Sampling Date	Weather	Air temperature (°C)	Water depth (m)	Sediment																	Remarks	
	Water area	Location	Municipality					General items																		
								Sediment temperature (°C)	Sample length (cm)	Color	Oder	Grain size distribution(%)					Sediment content (%)			Density (g/cm ³)	Property	Activity concentration [Bq/kg(dry)]				
												Coarse gravel	Medium gravel	Fine gravel	Coarse sand	Medium sand	Fine sand	Silt	Clay			Cs-134	Cs-137	Total		
R i v e r s	Nakagawa River System	Anakawa River	Sakachi Bridge	Shiyoa Town	2018/5/29	Cloudy	27.4	0.9	20.2	4	Dark olive	None	0.0	49.4	32.0	18.5	2.5	0.1	0.2	0.4	83.6	2.657	Gravel/sand	<6.3	25	25
					2018/8/29	Cloudy	23.2	1.0	20.9	6	Dark olive	None	1.4	31.3	30.6	28.9	6.0	0.3	0.2	1.3	77.4	2.612	Gravel/sand	<5.7	34	34
					2018/1/14	Cloudy	14.3	1.0	12.8	5	Dark olive	None	0.0	34.2	50.6	12.4	1.8	0.4	0.0	0.7	90.3	2.769	Gravel/sand	<6.0	23	23
					2019/2/1	Sunny	5.8	0.8	7.0	6	Dark olive	None	0.0	24.7	26.4	24.9	9.2	1.4	1.7	1.7	72.7	2.638	Gravel/sand	<4.4	34	34
		2018/5/19	Sunny	23.4	0.4	19.0	3	Grayish yellowish brown	None	0.0	22.9	11.6	11.0	44.0	7.9	0.7	1.9	78.1	2.764	Sand/gravel	<5.2	6.7	6.7			
		2018/8/9	Cloudy	29.4	0.4	22.6	5	Olive brown	None	0.0	25.4	6.7	5.2	42.8	17.8	0.8	1.3	76.9	2.716	Sand/gravel	<5.8	6.8	6.8			
		2018/1/13	Sunny	9.1	0.3	14.9	5	Brownish gray	None	0.0	34.3	10.7	10.6	32.4	9.3	0.6	2.1	77.6	2.775	Sand/gravel	<4.9	15	15			
		2019/2/7	Cloudy	6.8	0.2	9.0	5	Olive brown	None	0.0	24.2	8.8	6.3	44.9	12.6	1.3	1.9	79.3	2.721	Sand/gravel	<5.1	7.9	7.9			
		2018/5/29	Cloudy	27.5	0.2	19.0	6	Dark brown	None	0.0	10.8	9.5	31.1	40.7	4.5	1.0	2.4	69.3	2.691	Sand/gravel	11	86	97			
		2018/8/29	Cloudy	23.4	0.3	21.9	6	Dull yellowish brown	None	0.0	2.2	5.7	26.7	59.4	3.3	1.0	1.8	72.9	2.798	Sand	<6.3	53	53			
		2018/1/14	Cloudy	14.5	0.3	12.8	5	Dull yellowish brown	None	3.6	36.4	36.8	25.1	13.8	1.5	0.9	2.1	81.3	2.711	Sand/gravel	5.4	56	61.4			
		2019/2/1	Sunny	5.5	0.2	7.3	6	Dull yellowish brown	None	0.0	20.6	14.8	27.5	31.0	7.2	1.4	2.5	73.6	2.690	Sand	<6.3	57	57			
	2018/5/19	Sunny	24.0	0.4	21.1	3	Dull yellowish brown	None	1.5	42.8	20.6	17.0	15.1	1.8	0.6	0.8	83.0	2.662	Sand/gravel	3.5	26	29.5				
	2018/8/9	Cloudy	29.4	0.2	23.6	5	Yellowish brown	None	0.0	4.8	3.1	12.2	74.4	3.6	0.0	1.9	71.9	2.625	Sand/gravel	<5.9	47	47				
	2018/1/13	Sunny	9.6	0.4	13.4	3	Dull yellowish brown	None	6.9	25.2	13.4	25.8	23.9	1.6	0.6	2.6	78.3	2.756	Sand/gravel	<4.7	32	32				
	2019/2/7	Cloudy	6.8	0.2	8.2	5	Yellowish brown	None	0.0	21.4	23.8	30.7	20.8	0.7	1.0	1.6	82.3	2.682	Gravel/sand	<5.0	32	32				
	2018/5/19	Sunny	27.5	0.4	20.9	3	Dull yellowish brown	None	3.6	50.5	15.5	8.7	17.8	1.6	0.3	2.0	80.4	2.675	Sand/gravel	<5.1	9.0	9.0				
	2018/6/5	Sunny	27.2	0.3	24.9	3	Dull yellowish brown	None	0.0	26.6	18.7	14.3	32.7	5.7	0.3	1.8	76.3	2.680	Sand/gravel	<4.6	13	13				
	2018/7/3	Sunny	34.7	0.2	30.8	7	Brown	None	0.0	25.3	21.9	13.3	35.0	2.9	0.5	1.1	79.2	2.654	Sand/gravel	<5.1	13	13				
	2018/8/9	Cloudy	25.3	0.3	24.6	6	Brown	None	1.8	37.9	24.2	19.0	13.7	2.2	0.1	1.1	81.5	2.706	Gravel/sand	<4.0	10	10				
	2018/9/3	Cloudy	24.8	0.3	23.0	7	Brown	None	0.0	22.7	19.9	21.9	26.9	5.6	1.0	1.9	77.9	2.644	Sand/gravel	<5.3	13	13				
	2018/1/13	Sunny	15.1	0.2	16.4	5	Dull yellow orange	None	0.0	21.9	11.1	8.7	38.5	13.4	4.2	2.3	76.1	2.696	Sand/gravel	<5.0	17	17				
	2019/2/7	Cloudy	8.2	0.2	8.3	7	Brown	None	0.0	21.5	22.1	20.5	22.5	1.2	0.1	2.2	80.8	2.671	Gravel/sand	<4.8	9.4	9.4				
	2018/5/19	Sunny	27.2	0.5	21.3	3	Brownish gray	None	0.0	3.2	2.2	5.4	97.2	26.4	1.5	4.1	72.9	2.675	Sand	<5.3	18	18				
2018/6/5	Sunny	27.1	0.4	23.3	3	Dull yellowish brown	None	1.8	47.0	9.5	8.2	20.6	9.6	2.1	1.2	75.5	2.675	Sand/gravel	<5.6	18	18					
2018/7/3	Sunny	34.6	0.2	31.8	6	Yellowish gray	Faint sewage	0.0	24.7	10.4	9.0	27.6	18.3	5.8	4.2	65.9	2.663	Silt/sand	<6.2	37	37					
2018/8/9	Cloudy	25.4	0.3	23.2	5	Dull yellowish brown	None	3.4	38.8	13.0	10.5	23.5	8.2	1.3	1.3	77.5	2.714	Gravel/sand	<4.5	22	22					
2018/9/3	Cloudy	24.4	0.2	23.2	6	Yellowish gray	None	0.0	39.1	18.1	15.2	21.2	4.6	0.4	1.4	77.0	2.644	Sand/gravel	<5.5	14	14					
2018/1/13	Sunny	14.9	0.3	14.1	3	Dull yellowish brown	None	3.7	48.6	25.7	14.5	5.6	0.9	0.4	0.5	81.6	2.733	Gravel/sand	<5.2	20	20					
2019/2/7	Cloudy	8.1	0.2	5.4	6	Dull yellowish brown	None	0.0	33.4	42.7	19.8	3.2	0.1	0.7	82.7	2.665	Gravel/sand	<4.9	13	13						
2018/5/1	Cloudy	21.4	0.4	10.9	5	Dark olive	None	0.0	12.5	17.4	30.7	36.1	1.3	0.0	2.1	75.0	2.710	Sand/gravel	<4.8	23	23					
2018/8/17	Sunny	22.2	0.4	23.3	5	Olive gray	None	0.0	0.4	2.5	7.7	84.1	27.5	5.9	1.9	74.6	2.633	Sand	<5.2	35	35					
2018/1/20	Sunny	8.7	0.4	11.9	5	Brownish gray	None	0.0	3.4	3.9	3.6	43.2	38.7	3.3	4.0	73.0	2.669	Sand	<5.4	48	48					
2019/2/13	Sunny	3.6	0.3	8.1	7	Dark grayish yellow	None	0.0	3.5	1.5	3.0	42.9	44.7	1.6	2.8	72.7	2.654	Sand	<6.1	48	48					
2018/5/1	Cloudy	16.0	0.3	15.5	6	Brownish gray	None	0.0	0.1	9.3	69.8	18.9	0.0	0.1	1.8	79.4	2.623	Sand	<2.5	3.6	3.6					
2018/8/17	Sunny	19.5	0.3	17.1	6	Yellowish gray	None	0.0	14.4	13.4	24.1	44.7	1.8	0.1	1.4	77.5	2.632	Sand/gravel	<5.4	9.2	9.2					
2018/1/20	Sunny	6.7	0.3	8.4	5	Brownish gray	None	3.3	29.4	25.6	22.3	17.0	1.2	0.3	1.0	83.4	2.695	Sand/gravel	<5.0	4.8	4.8					
2018/2/12	Sunny	0.2	0.2	2.6	5	Brownish gray	None	0.0	4.2	13.2	41.9	36.7	0.8	0.8	2.4	74.5	2.636	Sand	<3.8	5.1	5.1					
2018/5/1	Cloudy	21.2	0.5	13.4	5	Grayish olive	None	0.0	36.1	55.7	7.8	0.1	0.0	0.0	0.3	92.3	2.686	Gravel/sand	<3.2	3.3	3.3					
2018/8/29	Cloudy	22.1	0.5	19.9	5	Gray	None	2.3	39.7	36.4	16.9	3.7	0.2	0.4	0.4	81.7	2.655	Sand/gravel	<6.0	11	11					
2018/1/20	Sunny	8.7	0.3	11.6	3	Brownish gray	None	1.3	38.5	37.7	19.1	2.3	0.0	0.2	0.9	80.7	2.669	Sand/gravel	<5.5	12	12					
2019/2/13	Sunny	3.5	0.4	6.2	5	Grayish olive	None	1.8	53.3	24.0	13.3	5.6	0.6	0.4	1.0	79.6	2.657	Gravel/sand	<4.7	6.1	6.1					
2018/5/22	Sunny	26.0	0.3	13.2	5	Dark olive	None	0.0	26.6	33.6	20.4	18.0	0.7	0.0	0.8	81.4	2.739	Gravel/sand	<4.5	11	11					
2018/8/17	Sunny	23.1	0.3	19.0	5	Brown	None	1.8	41.6	19.0	12.6	22.0	2.7	0.0	0.7	81.2	2.737	Gravel/sand	<6.8	10	10					
2018/1/20	Sunny	7.7	0.4	11.1	5	Brownish gray	None	0.0	5.7	12.9	23.1	45.1	9.2	1.7	2.4	74.1	2.686	Sand	<5.6	35	35					
2019/2/13	Sunny	3.2	0.2	5.1	6	Dark olive	None	0.0	20.7	28.4	28.9	17.9	1.7	0.5	2.0	79.2	2.676	Sand/gravel	<4.0	12	12					

Tochigi River (Sediment) 4/6

Location				Sampling Date	Weather	Air temperature (°C)	Water depth (m)	Sediment														Activity concentration [Bq/kg(dry)]			Remarks	
No.	Water area	Location	Municipality					Sediment temperature (°C)	Sample length (cm)	Color	Odeur	Grain size distribution(%)					Sediment content (%)	Density (g/cm ³)	Property	Radioactive cesium						
												Coarse gravel	Medium gravel	Fine gravel	Coarse sand	Medium sand				Fine sand	Silt	Clay	Cs-134	Cs-137		Total
R i v e r s	Tonegawa River System	Ihama River	Tributary	Nikko City	2018/5/23	Cloudy	21.7	0.2	17.3	8	Blackish brown	None	0.0	54.9	42.3	2.5	0.1	1.0	0.0	0.2	84.1	2.657	Sand/gravel	-4.9	1.9	1.9
					2018/6/19	Sunny	29.5	0.2	22.1	6	Blackish brown	None	0.0	21.8	28.6	33.2	14.3	1.2	0.0	1.0	76.2	2.720	Sand/gravel	-4.9	1.7	1.7
					2018/7/6	Cloudy	19.8	0.3	18.6	6	Olive brown	None	0.0	34.5	42.3	18.0	4.1	0.3	0.5	0.5	79.2	2.662	Gravel/sand	-3.7	1.7	1.7
					2018/8/16	Cloudy	27.8	0.3	21.9	7	Olive brown	None	1.2	88.1	36.5	13.0	0.8	0.1	0.0	0.5	90.5	2.635	Gravel/sand	-3.9	1.3	1.3
					2018/9/10	Cloudy	25.6	0.2	20.5	5	Olive brown	None	0.0	25.8	41.0	26.2	5.4	0.3	0.4	1.0	79.4	2.665	Gravel/sand	-5.9	2.4	2.4
					2018/11/20	Sunny	7.2	0.4	9.8	5	Dull yellowish brown	None	0.0	37.3	35.3	22.0	4.4	0.1	0.4	0.5	86.3	2.695	Sand/gravel	-5.1	1.8	1.8
					2019/2/13	Sunny	2.8	0.3	3.7	7	Olive brown	None	1.3	67.1	23.8	6.3	0.8	0.1	0.2	0.5	76.3	2.629	Gravel/sand	-6.1	3.3	3.3
					2018/5/23	Cloudy	14.4	0.2	11.4	7	Dull yellowish brown	None	0.0	28.2	16.0	13.6	41.0	3.1	0.0	1.1	76.3	3.029	Sand/gravel	-0.46	2.2	2.2
					2018/8/16	Sunny	23.8	0.3	16.4	5	Dark brown	None	2.0	29.0	11.1	10.1	30.4	12.3	3.5	1.7	71.0	2.688	Sand/gravel	-0.87	6.8	6.8
					2018/11/26	Sunny	7.2	0.3	8.4	5	Brownish gray	None	0.0	3.4	0.0	26.6	53.0	2.5	0.1	2.5	73.7	2.745	Sand	-0.52	6.6	6.6
		2019/2/24	Sunny	5.6	0.3	7.0	3	Grayish yellowish brown	None	0.0	0.7	5.0	13.2	70.2	7.5	1.0	2.7	72.3	2.751	Sand	-3.7	4.8	4.8			
		2018/5/22	Sunny	22.7	0.3	9.9	5	Grayish olive	None	0.0	12.3	26.9	37.4	19.5	2.6	0.1	1.2	77.7	2.701	Sand/gravel	-5.9	1.0	1.0			
		2018/8/9	Cloudy	27.2	0.3	14.9	5	Olive black	None	2.8	2.7	21.2	48.4	21.3	1.5	0.7	1.4	77.0	2.651	Sand	-4.5	6.6	6.6			
		2018/11/1	Sunny	11.7	0.4	8.6	5	Brownish gray	None	0.0	19.2	18.2	27.7	25.7	6.7	0.7	1.8	77.5	2.709	Sand/gravel	-4.2	1.5	1.5			
		2019/2/4	Sunny	11.2	0.3	7.0	3	Brownish gray	None	0.0	48.4	24.9	16.7	8.0	1.1	0.0	1.0	76.4	2.709	Sand	-5.4	8.8	8.8			
		2018/5/22	Sunny	22.8	0.2	14.7	5	Olive black	None	0.0	41.3	34.3	16.8	6.7	0.5	0.0	0.5	79.1	2.696	Gravel/sand	6.5	8.3	8.3			
		2018/8/9	Cloudy	27.5	0.2	20.3	5	Olive black	None	0.0	21.9	28.8	11.5	14.3	1.6	0.6	1.5	82.7	2.665	Sand/gravel	6.4	8.2	8.4			
		2018/11/11	Sunny	9.4	0.3	10.0	5	Brownish gray	None	0.0	54.0	39.7	5.5	0.3	0.0	0.2	0.3	94.6	2.717	Gravel/sand	-5.1	4.1	4.1			
		2019/2/4	Sunny	11.0	0.4	6.1	5	Brownish gray	None	2.4	47.8	35.7	11.8	1.3	0.2	0.1	0.7	89.7	2.652	Sand/gravel	-6.7	4.8	4.8			
		2018/5/31	Sunny	20.8	0.3	14.4	5	Dark brown	None	0.0	0.1	5.5	36.2	52.9	3.5	0.0	1.9	74.6	2.688	Sand	-5.7	1.7	1.7			
		2018/6/19	Sunny	27.4	0.2	20.2	6	Dark brown	None	0.0	0.8	4.6	29.3	55.4	5.2	2.5	2.2	74.9	2.687	Sand	-2.9	6.2	6.2			
		2018/7/9	Cloudy	29.6	0.2	22.0	6	Dull yellowish brown	None	0.0	0.5	7.2	41.7	44.2	2.8	1.5	2.2	74.7	2.679	Sand	-5.1	7.4	7.4			
		2018/8/17	Sunny	26.8	0.2	21.1	6	Dark brown	None	0.0	0.1	6.1	28.8	48.8	13.5	0.1	2.8	72.1	2.696	Sand	-2.9	5.0	5.0			
		2018/9/4	Cloudy	22.1	0.3	16.8	6	Dark brown	None	0.0	0.1	0.4	8.6	69.7	18.1	0.1	2.9	71.4	2.841	Sand	-6.5	6.5	6.5			
		2018/11/1	Sunny	13.2	0.4	11.1	10	Grayish yellowish brown	None	0.0	0.0	0.3	4.1	63.2	27.7	1.0	3.8	76.0	2.754	Sand	-4.6	9.0	9.0			
		2019/2/13	Sunny	7.8	0.2	10.3	6	Dark brown	None	0.0	0.0	0.3	9.5	62.4	23.4	0.6	3.8	75.1	2.742	Sand	-4.9	5.2	5.2			
		2018/5/31	Cloudy	18.0	0.1	17.0	3	Dark brown	None	0.0	27.4	8.3	10.8	26.0	19.6	4.1	3.8	73.6	2.707	Sand	-4.2	2.2	2.2			
		2018/6/19	Sunny	25.2	0.1	17.2	5	Dark brown	None	0.0	0.0	0.0	0.6	37.2	34.3	23.0	4.9	69.3	2.660	Sand	-5.5	2.9	2.9			
		2018/7/6	Cloudy	20.1	0.3	17.4	5	Dark brown	None	0.0	0.0	0.0	0.6	75.0	17.2	4.3	3.0	74.0	2.715	Sand	-5.2	6.3	6.3			
		2018/8/17	Sunny	25.8	0.4	21.3	4	Dark brown	None	0.0	0.0	0.0	0.0	18.6	72.3	9.1	62.0	2.613	Silt	-7.1	6.1	6.1				
		2018/9/4	Cloudy	22.9	0.4	18.5	5	Brown	None	0.0	0.0	0.0	0.0	6.8	82.0	11.2	55.8	2.522	Silt	-9.7	8.9	8.9				
		2018/11/1	Sunny	13.9	0.4	13.5	10	Grayish yellowish brown	None	0.0	0.0	0.0	0.0	0.5	45.0	44.6	9.9	67.0	2.660	Silt	-6.1	1.9	1.9			
		2019/2/7	Sunny	0.3	0.3	4.8	5	Dark olive	None	0.0	17.6	33.3	31.8	14.7	1.5	0.0	1.4	85.2	2.722	Gravel/sand	-4.7	5.0	5.0			
		2018/5/19	Sunny	20.4	0.4	14.0	3	Grayish yellowish brown	None	0.0	28.2	5.0	6.7	31.8	18.7	6.7	2.9	74.0	2.701	Sand/gravel	7.4	5.0	5.4			
		2018/8/9	Cloudy	28.4	0.7	20.3	5	Dark brown	None	0.0	2.3	1.6	2.6	13.5	35.7	30.5	13.9	59.7	2.635	Silt/sand	-6.4	5.9	5.9			
		2018/11/4	Sunny	20.1	0.2	17.9	5	Dark brown	None	0.0	2.3	24.5	18.6	25.8	26.2	0.5	0.0	2.1	77.7	2.699	Sand/gravel	-4.5	1.0	1.0		
		2019/2/14	Sunny	5.2	0.5	5.2	3	Dull yellowish brown	None	1.8	44.3	22.3	18.8	12.5	1.2	0.0	1.2	81.9	2.701	Gravel/sand	-5.5	1.5	1.5			
		2018/5/19	Sunny	22.1	0.5	15.7	3	Brownish gray	None	2.8	33.8	21.5	21.3	16.7	2.7	0.4	0.8	80.8	2.735	Sand/gravel	-0.53	2.3	2.3			
		2018/8/9	Cloudy	29.1	0.2	21.7	5	Grayish yellowish brown	None	0.0	32.0	17.9	38.1	22.8	7.7	0.6	1.0	83.1	2.730	Sand/gravel	-0.50	2.1	2.1			
		2018/11/4	Sunny	19.5	0.3	15.3	5	Grayish yellowish brown	None	0.0	1.2	1.1	1.6	43.0	39.7	9.8	3.8	75.9	2.826	Sand	-5.1	7.4	7.4			
		2019/2/14	Sunny	6.8	0.2	6.7	5	Grayish yellowish brown	None	6.6	28.0	5.7	7.6	35.5	13.4	1.5	1.7	77.2	2.717	Sand/gravel	-5.7	1.2	1.2			
		2018/5/10	Rain	12.2	1.6	13.0	5	Grayish yellowish brown	None	0.0	3.7	0.5	0.4	24.5	54.8	12.8	3.3	71.5	2.726	Sand	-6.0	2.3	2.3			
		2018/8/24	Cloudy	29.2	1.1	24.8	4	Olive brown	None	4.1	36.3	7.9	5.1	12.1	7.5	3.6	1.4	75.5	2.651	Gravel/sand	-5.0	6.7	6.7			
		2018/11/7	Sunny	12.7	0.8	13.5	5	Grayish yellowish brown	None	0.0	0.0	0.2	0.2	22.7	59.1	14.0	4.0	67.1	2.697	Sand	-5.8	3.6	3.6			
		2019/2/15	Cloudy	5.1	0.9	8.3	5	Dark grayish yellow	None	0.0	0.2	3.0	9.2	57.7	29.2	2.0	3.8	75.4	2.725	Sand	-5.5	9.8	9.8			

Tochigi River (Sediment) 5/6

No.	Location				Sampling Date	Weather	Air temperature (°C)	Water depth (m)	Sediment																			
	Water area		Location	Municipality					Sediment temperature (°C)	Sample length (cm)	Color	Odor	Grain size distribution(%)							Sediment content (%)	Density (g/cm ³)	Property	Activity concentration [Bq/kg(dry)]			Remarks		
	Coarse sand	Medium sand											Fine sand	Silt	Clay	Radionuclide cesium			Total									
			Coarse gravel	Medium gravel					Fine gravel	Cs-134	Cs-137	Total																
38	Egawa River	Tributary	Shimosuke City	2018/5/10	Rain	11.3	1.0	12.7	10	Grayish yellowish brown	None	0.0	0.2	17.3	0.6	2.6	9.6	53.6	33.1	35.6	2.457	Silt	31	220	251			
				2018/6/4	Sunny	23.4	0.5	18.2	6	Olive brown	None	2.7	47.4	17.6	11.1	18.8	1.4	0.0	1.0	82.6	2.669	Gravel/sand	<5.9	12	12	12		
				2018/7/5	Rain	26.7	0.9	23.1	6	Grayish olive	None	4.0	41.7	19.3	16.1	16.5	1.0	0.3	1.2	81.9	2.666	Gravel/sand	<3.9	9.9	9.9			
				2018/8/24	Cloudy	30.0	1.0	24.8	6	Grayish olive	None	5.6	51.7	14.3	8.6	17.7	1.5	0.1	0.6	80.3	2.678	Gravel/sand	<5.3	15	15	15		
	39	Akabori River	Nikko City Hall, front	Nikko City	2018/9/5	Sunny	25.9	1.1	23.1	3	Blackish brown	None	0.0	3.4	1.2	1.4	34.7	30.4	15.9	13.2	53.1	2.617	Silt	<1.0	61	61		
					2018/11/17	Sunny	12.2	0.2	12.7	10	Brownish gray	Faint sewage	0.0	0.0	0.0	0.4	17.7	18.4	45.2	18.4	31.0	2.588	Silt	<17	94	94		
					2019/2/15	Cloudy	5.1	0.3	6.5	6	Grayish olive	None	6.0	45.5	11.8	12.0	22.0	1.4	0.2	1.2	82.6	2.712	Sand/gravel	<3.7	11	11	11	
					2018/5/22	Sunny	22.1	0.2	12.8	5	Blackish brown	None	1.4	9.9	11.7	15.8	39.6	14.1	5.3	2.1	71.0	2.734	Sand/gravel	13	150	163		
	40	Kiwadajima			2018/8/9	Cloudy	27.3	0.2	17.2	7	Blackish brown	None	0.0	0.1	0.6	1.9	70.3	21.7	3.1	2.4	70.1	2.653	Sand	21	200	221		
					2018/11/1	Sunny	8.1	0.2	9.0	5	Grayish yellowish brown	None	0.0	0.2	2.2	3.6	52.9	15.6	19.8	5.8	64.4	2.669	Gravel/sand	20	210	230		
					2019/2/14	Sunny	2.2	0.2	5.6	6	Dark brown	None	2.3	15.5	26.2	16.9	18.7	7.4	9.0	4.0	59.4	2.696	Sand/gravel	8.5	89	98.3		
					2018/5/22	Sunny	19.8	0.2	14.6	6	Dull yellowish brown	None	0.0	21.8	17.9	16.5	35.4	7.1	0.2	1.1	78.8	3.120	Sand/gravel	<6.0	13	13	13	
	41	Tagawa River	Ozobashi Bridge	Utsunomiya City	2018/8/9	Cloudy	27.1	0.3	19.6	8	Grayish yellowish brown	None	0.0	0.9	0.7	3.7	70.0	19.1	3.2	2.4	70.3	2.833	Sand	<7.6	68	68		
					2018/11/1	Sunny	7.0	0.3	11.4	3	Brownish gray	None	5.4	8.2	5.2	11.5	54.8	10.9	1.8	2.3	73.6	2.981	Sand/gravel	<5.1	30	30		
					2019/2/14	Sunny	1.8	0.3	7.2	8	Dull yellowish brown	None	2.9	24.1	11.1	12.1	34.5	8.8	3.0	3.6	67.6	2.738	Sand/gravel	<6.5	28	28	28	
					2018/5/22	Sunny	28.6	0.3	23.0	5	Brown	None	0.0	23.5	20.2	22.3	31.3	1.1	0.1	1.6	81.1	2.741	Sand/gravel	<6.0	9.3	9.3		
	42	Kamagawa River	Tanukushi Bridge		2018/6/19	Sunny	23.3	0.6	19.1	6	Brown	None	0.0	12.9	14.8	22.2	34.1	2.9	0.4	1.7	76.6	2.737	Sand/gravel	<5.7	10	10		
					2018/7/6	Cloudy	22.2	0.4	21.5	6	Brown	None	0.0	19.1	30.1	25.5	21.3	3.3	0.6	1.9	78.2	2.641	Sand/gravel	<6.1	16	16		
					2018/8/9	Cloudy	28.2	0.4	21.9	6	Brown	None	1.8	29.2	20.4	22.3	25.2	1.6	0.5	1.0	78.2	2.682	Sand/gravel	<4.3	7.8	7.8		
					2018/9/4	Cloudy	25.0	0.6	20.3	6	Brown	None	0.0	24.8	16.4	24.1	30.0	2.5	0.4	1.9	78.7	2.780	Sand/gravel	<4.7	9.9	9.9		
	43	Tagawa River	Meiji Bridge	Kaminokawa Town	2018/11/1	Sunny	19.1	0.4	16.9	3	Grayish yellowish brown	None	6.8	21.3	5.9	17.3	40.8	5.5	0.7	1.9	77.4	2.927	Sand/gravel	<4.9	6.7	6.7		
					2019/2/7	Sunny	15.8	0.4	12.1	6	Brown	None	0.0	20.9	24.1	25.3	26.1	1.5	0.1	2.1	82.5	2.704	Gravel/sand	<4.6	7.2	7.2		
					2018/5/22	Sunny	29.8	0.2	23.8	4	Dull yellowish brown	None	0.0	27.6	30.7	21.2	17.5	1.4	0.7	0.8	78.9	2.671	Gravel/sand	<5.0	25	25		
					2018/8/9	Cloudy	28.5	0.2	21.8	3	Grayish olive	None	4.0	27.7	14.3	19.2	32.1	3.4	1.9	1.2	74.7	2.837	Sand/gravel	<6.9	37	37		
	44	Tagawa River	Yanubashi Bridge	Oyama City	2018/11/1	Sunny	19.9	0.2	17.0	3	Dark brown	None	3.8	40.5	17.9	12.1	19.0	3.4	1.5	1.5	77.2	2.728	Sand/gravel	<5.8	29	29		
					2019/2/7	Sunny	15.6	0.2	12.6	5	Grayish olive	None	0.0	21.3	14.0	17.3	38.5	5.2	1.0	2.8	77.3	2.680	Sand/gravel	<6.1	40	40		
					2018/5/30	Cloudy	27.4	0.1	21.3	6	Yellowish brown	None	2.9	27.5	19.5	3.7	1.1	0.0	0.3	87.9	2.649	Gravel/sand	<4.9	5.7	5.7			
					2018/8/4	Sunny	33.3	0.3	28.4	3	Grayish yellowish brown	None	0.0	28.8	23.5	14.2	28.2	3.8	0.5	0.9	79.4	2.652	Sand/gravel	<4.2	8.7	8.7		
	45	Kurokawa River	Kajima Bridge	Kanuma City	2018/11/17	Sunny	11.2	0.3	14.6	3	Dull yellowish brown	None	3.1	80.9	12.1	0.3	1.2	1.6	0.4	0.4	89.7	2.656	Gravel/sand	<4.5	5.6	5.6		
					2019/2/14	Sunny	8.0	0.3	12.0	6	Brown	None	8.3	79.3	10.1	1.7	0.3	0.0	0.1	0.2	89.2	2.699	Gravel	<4.4	6.4	6.4		
					2018/5/10	Rain	12.7	0.8	14.0	3	Grayish yellowish brown	None	0.0	48.3	22.6	16.4	10.3	1.2	0.2	1.0	83.1	2.692	Gravel/sand	<5.3	36	36		
					2018/8/24	Cloudy	30.4	0.7	26.2	4	Dark brown	None	19.3	23.3	8.9	6.3	11.1	10.5	12.6	7.9	63.6	2.534	Silt/gravel	<8.5	51	51		
	46	Oashi River	Akashi Bridge	Kanumi City	2018/11/17	Sunny	14.2	0.4	15.7	3	Grayish yellowish brown	None	2.0	33.0	19.6	21.4	16.1	3.6	2.4	1.9	78.6	2.705	Sand/gravel	<4.7	28	28		
					2019/2/15	Cloudy	5.5	0.2	7.1	5	Dark brown	None	0.0	38.9	23.9	19.4	12.3	2.7	1.1	1.8	79.7	2.706	Gravel/sand	<4.8	22	22		
					2018/5/30	Cloudy	23.4	0.2	18.8	5	Olive brown	None	4.1	20.4	42.7	25.0	6.6	0.2	0.3	0.6	84.2	2.677	Gravel/sand	<2.9	4.0	4.0		
					2018/8/4	Sunny	28.7	0.3	25.2	3	Brownish gray	None	0.0	7.3	34.2	35.4	19.5	1.7	0.7	1.2	83.2	2.629	Sand	<4.5	5.8	5.8		
	47	Oashi River	Akashi Bridge	Kanumi City	2018/11/6	Cloudy	16.8	0.2	16.3	5	Dull yellowish brown	None	0.0	61.5	34.7	3.2	8.1	0.0	0.0	0.4	82.2	2.355	Gravel/sand	<3.2	3.1	3.1		
					2019/2/12	Sunny	2.9	0.3	4.8	3	Dull yellowish brown	None	0.0	16.5	26.6	36.7	18.3	0.2	0.0	2.8	79.6	2.675	Sand/gravel	<5.0	4.8	4.8		
					2018/5/30	Cloudy	25.2	0.1	20.2	5	Dull yellowish brown	None	0.0	53.6	25.0	11.7	7.5	1.6	0.3	0.4	83.1	2.706	Gravel/sand	<0.77	2.9	2.9		
					2018/8/4	Sunny	32.4	0.3	26.4	3	Grayish yellowish brown	None	0.0	20.7	34.8	19.3	18.8	5.2	0.5	0.9	85.0	2.685	Sand/gravel	<4.3	4.9	4.9		
48	Koyabu River	Koyabu Bridge	Kanumi City	2018/11/6	Rain	17.5	0.3	17.8	5	Dull yellowish brown	None	0.0	37.8	38.4	13.4	6.4	3.0	0.3	0.7	85.2	2.681	Gravel/sand	<0.64	2.8	2.8			
				2019/2/12	Sunny	7.8	0.3	12.0	5	Dull yellowish brown	None	0.0	49.3	32.1	12.1	4.7	1.1	0.1	0.7	83.0	2.675	Gravel/sand	<5.1	4.8	4.8			
				2018/5/30	Cloudy	24.3	0.1	17.0	5	Grayish olive	None	0.0	50.3	36.8	8.4	3.2	0.8	0.2	0.3	89.4	2.700	Gravel/sand	<1.7	2.8	2.8			
				2018/8/4	Sunny	29.9	0.3	24.9	3	Brownish gray	None	0.0	26.3	16.6	10.9	26.4	7.4	0.9	1.2	81.2	2.676	Sand/gravel	<4.1	5.0	5.0			
48	Koyabu River	Koyabu Bridge	Kanumi City	2018/11/6	Cloudy	17.1	0.2	16.3	5	Grayish olive	Faint rottenness	0.0	36.4	30.3	16.0	14.5	1.5	0.7	0.7	81.0	2.688	Sand/gravel	<4.9	14	14			
				2018/11/6	Cloudy	17.1	0.2	16.3	5	Grayish olive	None	0.0	30.4	20.0	21.8	23.1	2.2	0.5	1.9	76.8	2.696	Gravel/sand	<5.1	20	20			
				2019/2/12	Sunny	3.8	0.2	4.3	5	Dull yellowish brown	None	4.4	35.0	23.3	18.8	15.5	1.2	0.8	1.1	78.8	2.700	Gravel/sand	<4.5	13	13			

Tochigi River (Sediment) 6/6

No.	Location				Sampling Date	Weather	Air temperature (°C)	Water depth (m)	Sediment																	Remarks			
	Water area		Location	Municipality					General items													Activity concentration [Bq/kg(dry)]							
									Sediment temperature (°C)	Sample length (cm)	Color	Odor	Grain size distribution(%)					Sediment content (%)			Density (g/cm ³)	Property	Radioactive cesium						
													Coarse gravel	Medium gravel	Fine gravel	Coarse sand	Medium sand	Fine sand	Silt	Clay				Cs-134	Cs-137		Total		
R i v e r s	49	Omoi River Area	Omoi River	Tamotsu Bridge	Tochigi City	2018/5/30	Cloudy	26.3	0.2	21.5	5	Dull yellowish brown	None	2.6	40.3	16.4	17.7	24.5	1.3	0.5	0.8	77.4	2.685	Sand/gravel	<3.3	3.4	3.4		
						2018/8/4	Sunny	31.7	0.4	25.9	3	Dull yellow orange	None	0.0	38.0	26.4	17.1	16.1	1.4	0.3	0.8	82.1	2.653	Sand/gravel	<0.56	3.0	3.0		
						2018/1/16	Cloudy	18.2	0.2	17.8	5	Dull yellowish brown	None	0.0	39.2	34.7	14.3	9.2	1.6	0.0	1.0	57.0	2.648	Gravel/sand	<0.72	1.8	1.8		
						2018/2/12	Sunny	7.7	0.2	11.0	5	Olive brown	None	1.4	59.4	27.9	8.5	2.2	0.1	0.0	0.4	84.4	2.647	Gravel/sand	<0.78	1.9	1.9		
						2018/5/10	Sunny	14.4	0.7	14.7	5	Grayish yellowish brown	None	6.2	36.5	13.3	7.2	23.9	9.2	1.9	1.7	77.0	2.742	Sand/gravel	<0.51	1.8	1.8		
						2018/6/4	Sunny	27.4	0.4	24.4	6	Dull yellowish brown	None	3.5	29.8	9.9	8.5	28.0	17.1	2.0	1.1	82.5	2.694	Sand/gravel	<4.1	7.0	7.0		
		50	Omoi River Area	Omoi River	Otsone-obashi Bridge	Oyama City	2018/7/5	Rain	25.4	0.3	24.8	5	Brown	None	3.8	49.9	17.0	6.4	13.1	7.3	1.5	0.9	83.2	2.711	Sand/gravel	<0.72	2.7	2.7	
							2018/8/24	Sunny	34.1	0.4	28.0	5	Dull yellowish brown	None	0.0	22.9	4.1	1.4	9.9	46.9	9.5	5.3	43.9	2.619	Sand/silt	<12	5.1	5.1	
							2018/9/5	Sunny	30.2	1.2	23.2	5	Brown	None	0.0	0.1	0.1	0.1	2.5	45.9	38.6	12.9	58.1	2.643	Silt	20	220	240	
							2018/11/17	Sunny	16.6	0.9	19.7	5	Grayish yellowish brown	None	9.1	33.0	6.1	2.7	17.2	28.2	1.9	1.7	76.5	2.796	Sand/gravel	<5.0	6.8	6.8	
							2018/2/8	Cloudy	8.0	0.3	9.2	5	Brown	None	0.0	22.6	36.6	17.2	25.9	6.2	0.1	1.5	83.7	2.737	Gravel/sand	<3.6	4.5	4.5	
							2018/5/10	Cloudy	14.4	0.7	16.7	5	Dull yellowish brown	None	0.0	1.7	2.2	4.9	19.6	12.6	48.3	10.7	52.3	2.655	Silt	<0.76	4.3	4.3	
	51	Utsuna River Area	Utsuna River	Utsuna Bridge	Tochigi City	2018/6/4	Sunny	28.2	0.7	18.7	5	Grayish yellowish brown	None	0.0	2.3	1.5	3.5	13.4	12.7	51.3	15.3	52.3	2.648	Silt	<0.91	3.3	3.3		
						2018/7/5	Cloudy	26.3	0.8	24.4	5	Dull yellowish brown	None	0.0	1.9	1.4	1.9	8.3	13.1	56.5	16.9	49.6	2.631	Silt	<0.87	7.3	7.3		
						2018/8/24	Sunny	33.8	0.9	30.3	5	Dull yellowish brown	None	0.0	7.1	3.1	3.7	13.2	18.3	47.2	7.4	49.4	2.574	Silt/gravel	<9.5	28	28		
						2018/9/5	Sunny	31.2	1.0	24.7	5	Grayish yellowish brown	None	0.0	2.9	3.5	7.1	27.0	17.0	35.4	7.1	51.0	2.657	Silt	<8.1	26	26		
						2018/11/28	Sunny	11.3	0.6	13.0	5	Brown	None	0.0	2.1	0.5	2.4	6.2	13.6	67.3	7.9	50.5	2.730	Silt	<1.3	<1.4	-		
						2019/2/8	Cloudy	8.2	0.7	11.1	5	Dull yellowish brown	None	0.0	1.5	0.7	9.5	34.4	20.4	23.3	10.2	52.1	2.737	Silt	<0.90	<0.80	-		
	52	Tongogawa River System	Watarase River Area	Watarase River	Watarase River intake weir at Sorf Power Station	Nikko City	2018/5/10	Sunny	12.6	0.3	9.5	7	Grayish olive	None	0.0	25.7	19.6	22.4	29.6	1.0	0.6	1.1	76.5	2.697	Gravel/sand	<4.3	9.9	9.9	
							2018/6/8	Sunny	27.8	0.2	21.8	6	Grayish yellowish brown	Faint fab	0.0	44.9	29.7	11.2	12.2	0.8	0.4	0.7	82.0	2.656	Gravel/sand	<5.0	12	12	
							2018/7/5	Cloudy	24.8	0.2	20.9	7	Olive black	None	0.0	16.6	19.9	31.6	26.2	3.9	0.7	1.2	76.6	2.685	Sand/gravel	<5.3	13	13	
							2018/8/2	Sunny	25.0	0.3	18.5	7	Olive black	None	0.0	17.5	12.1	18.0	44.6	6.4	0.1	1.4	77.2	2.668	Sand/gravel	<5.6	12	12	
							2018/9/11	Cloudy	20.4	0.2	18.1	10	Olive black	None	0.0	24.6	41.2	26.8	6.1	0.2	0.4	0.7	88.9	2.646	Sand/gravel	<5.7	15	15	
							2018/11/28	Sunny	11.1	0.3	8.0	3	Brownish gray	None	0.0	14.3	19.0	32.4	31.2	1.1	0.1	2.0	78.9	2.800	Sand/gravel	<4.5	13	13	
53			Tongogawa River System	Watarase River Area	Watarase River	Hajika Bridge	Ashikaga City	2019/2/6	Cloudy	5.0	0.2	3.9	7	Olive black	None	0.0	18.8	16.7	36.0	23.0	3.1	0.6	1.9	77.0	2.674	Sand/gravel	<6.6	15	15
								2018/5/18	Cloudy	24.8	0.2	20.4	5	Blackish brown	Faint phytoplankton	0.0	9.0	14.3	45.0	26.5	1.4	1.7	2.2	74.8	2.714	Sand	<5.3	11	11
								2018/8/27	Sunny	37.4	0.2	25.3	5	Blackish brown	None	0.0	13.7	15.2	30.1	36.5	3.1	0.1	1.4	79.4	2.816	Sand	<5.1	6.8	6.8
								2018/11/28	Sunny	18.6	0.4	13.5	3	Brownish gray	None	0.0	5.4	24.5	46.3	20.9	0.9	0.5	1.6	79.4	2.729	Sand	<4.9	6.6	6.6
								2019/2/8	Sunny	5.8	0.2	5.8	5	Dark olive	None	0.0	6.7	8.6	21.0	51.8	8.6	0.1	3.2	76.7	2.798	Sand/gravel	<5.1	8.3	8.3
								2018/5/18	Cloudy	25.7	0.5	21.3	5	Dark olive brown	None	0.0	37.1	16.2	14.6	24.8	3.0	0.4	3.8	80.2	2.776	Gravel/sand	<6.63	3.6	3.6
54	Tongogawa River System	Watarase River Area	Watarase River	Nakabashi Bridge	Ashikaga City	2018/8/27	Sunny	37.8	0.5	27.7	5	Dark olive brown	None	7.4	56.3	19.1	8.9	7.2	0.6	0.0	0.3	84.3	2.796	Gravel/sand	<4.7	4.8	4.8		
						2018/11/28	Sunny	17.2	0.7	13.9	3	Grayish yellowish brown	None	0.0	30.9	21.8	15.5	27.5	2.8	0.5	0.9	81.3	2.876	Sand/gravel	<0.45	2.8	2.8		
						2019/2/8	Sunny	7.6	0.5	7.8	5	Dark olive brown	None	0.0	1.4	0.3	0.2	37.7	53.7	1.6	5.1	71.8	2.738	Sand	<5.0	11	11		
						2018/5/18	Cloudy	29.1	0.3	25.3	6	Blackish brown	None	1.9	33.4	12.1	8.7	24.8	12.9	1.7	4.6	81.9	2.837	Sand/gravel	<4.4	10	10		
						2018/8/27	Sunny	35.4	0.3	27.0	6	Blackish brown	None	8.2	33.3	9.9	7.8	25.2	12.1	1.8	1.7	81.9	2.772	Sand/gravel	<5.0	6.1	6.1		
						2018/11/28	Sunny	15.3	0.5	13.0	3	Brownish gray	None	0.0	1.3	2.0	6.2	40.6	44.2	2.9	2.8	74.3	2.781	Sand	<5.1	11	11		
55	Tongogawa River System	Watarase River Area	Watarase River	Watarase-obashi Bridge	Tatebayashi City	2019/2/8	Sunny	8.1	0.3	8.2	6	Dark grayish yellow	None	0.0	0.3	1.5	7.7	45.8	37.6	3.1	4.2	77.0	2.717	Sand	<3.5	5.1	5.1		
						2018/5/18	Sunny	30.4	0.1	26.8	5	Blackish brown	None	0.0	33.8	22.7	8.1	24.6	9.5	0.5	0.8	85.5	2.948	Sand/gravel	<3.7	7.0	7.0		
						2018/6/4	Sunny	29.5	0.1	28.2	6	Blackish brown	None	0.0	13.0	15.4	8.3	38.3	22.3	1.4	1.4	77.0	2.785	Sand/gravel	<4.3	9.5	9.5		
						2018/7/5	Cloudy	25.4	0.1	25.8	5	Blackish brown	None	0.0	41.5	12.2	8.5	29.9	6.6	0.2	1.1	77.7	2.924	Gravel/sand	<5.2	4.4	4.4		
						2018/8/27	Sunny	34.3	0.2	28.7	5	Blackish brown	None	5.4	48.7	15.1	6.3	17.9	4.6	1.1	1.0	83.3	2.821	Gravel/sand	<4.3	13	13		
						2018/9/11	Cloudy	22.2	0.7	23.0	5	Blackish brown	None	1.0	52.1	13.9	4.9	18.1	7.4	1.8	0.8	81.6	2.840	Gravel/sand	<4.3	13	13		
56	Tongogawa River System	Watarase River Area	Watarase River	Shinkai Bridge	Tochigi City	2018/11/28	Sunny	12.6	0.2	13.4	5	Grayish yellowish brown	None	0.0	17.3	35.9	17.9	21.3	6.2	0.5	0.9	85.0	2.802	Sand/gravel	<3.5	6.8	6.8		
						2019/2/8	Cloudy	9.2	0.2	9.0	3	Blackish brown	None	0.0	28.5	31.8	14.0	18.7	5.5	0.4	1.1	84.3	2.874	Gravel/sand	<3.0	4.2	4.2		

Tochigi River (Surrounding Environment) 1/6

R i v e r s	Location				Sampling Date	Weather	Air temperature (°C)	Surrounding Environment (Soil, Air dose)											Remarks						
	No.	Water area		Municipality				Left bank					Right bank					Air Dose (μSv/h)							
		Location	Location					Color	Odor	Property	Activity concentration [Bq/kg(dry)]			Color	Odor	Property	Activity concentration [Bq/kg(dry)]								
						Cs-134	Cs-137	Total	Air Dose (μSv/h)				Cs-134	Cs-137	Total										
1	2	Nakagawa River	Ikyobashishita	Nasuhiobara City	2018/5/28	Sunny	20.4	-	-	-	-	-	-	-	-	Blackish brown	Faint earth	Loamy	70	730	800	0.06	Left bank/Unable to collect samples due to privately owned land		
					2018/8/30	Sunny	24.2	-	-	-	-	-	-	-	-	-	-	Blackish brown	None	Loamy	88	890	978	0.06	Left bank/Unable to collect samples due to privately owned land
					2018/11/27	Sunny	10.6	-	-	-	-	-	-	-	-	-	-	Brownish gray	None	Loamy	95	1,000	1,095	0.06	Left bank/Unable to collect samples due to privately owned land
					2019/2/1	Cloudy	-1.8	-	-	-	-	-	-	-	-	-	-	Dark brown	None	Loamy	140	1,800	1,940	0.06	Left bank/Unable to collect samples due to privately owned land
					2018/5/28	Cloudy	22.3	Dark brown	Faint earth	Loamy	560	5,300	5,860	0.09	Dark brown	Faint earth	Loamy	48	530	578	0.09				
		2018/8/30	Sunny	25.2	Grayish yellowish brown	Faint earth	Loamy	210	2,100	2,310	0.08	Dull yellowish brown	None	Loamy	62	640	702	0.07							
		2018/11/27	Sunny	10.7	Dull yellowish brown	None	Loamy	180	2,100	2,280	0.08	Dull yellowish brown	None	Loamy	95	870	965	0.09							
		2019/2/1	Sunny	1.2	Dark brown	Faint earth	Loamy	160	1,700	1,860	0.09	Brown	None	Loamy	49	610	659	0.09							
		2018/5/28	Cloudy	22.2	Blackish brown	Faint earth	Loamy	180	1,800	1,980	0.08	Blackish brown	Faint earth	Loamy	230	2,100	2,330	0.10							
		2018/8/30	Sunny	25.2	Blackish brown	Faint earth	Loamy	89	960	1,049	0.07	Dull yellowish brown	None	Loamy	310	3,400	3,710	0.10							
	2018/11/27	Sunny	10.7	Dull yellowish brown	None	Loamy	70	790	860	0.07	Dull yellowish brown	None	Loamy	260	2,800	3,060	0.10								
	2019/2/1	Sunny	1.4	Dark brown	Faint earth	Loamy	82	1,000	1,082	0.07	Dark brown	Faint earth	Loamy	240	2,900	3,140	0.10								
	2018/5/28	Sunny	21.6	Blackish brown	Faint earth	Loamy	100	960	1,060	0.12	Blackish brown	Faint earth	Loamy	290	2,900	3,190	0.09								
	2018/8/30	Sunny	26.2	Blackish brown	None	Loamy	130	1,600	1,730	0.09	Dark brown	None	Loamy	100	1,200	1,300	0.08								
	2018/11/27	Sunny	11.2	Grayish yellowish brown	None	Loamy	80	930	1,030	0.10	Dull yellowish brown	None	Loamy	120	1,500	1,620	0.09								
	2019/2/1	Sunny	1.5	Dark brown	Faint earth	Loamy	130	1,500	1,630	0.11	Blackish brown	Faint earth	Loamy	200	2,600	2,800	0.07								
	2018/5/28	Cloudy	11.5	Blackish brown	Faint earth	Loamy	170	1,500	1,670	0.10	Blackish brown	Faint earth	Loamy	110	1,200	1,310	0.07								
	2018/8/30	Cloudy	20.0	Dull yellowish brown	None	Loamy	76	770	846	0.08	Dull yellowish brown	None	Loamy	61	780	841	0.07								
	2018/11/27	Sunny	29.8	Dull yellowish brown	Faint earth	Loamy	110	1,200	1,310	0.11	Brown	Faint earth	Loamy	61	620	681	0.07								
	2018/5/28	Cloudy	28.2	Brown	None	Loamy	140	1,400	1,540	0.08	Dull yellowish brown	None	Loamy	83	120	128.3	0.07								
	2018/8/30	Cloudy	22.4	Blackish brown	Faint earth	Loamy	140	1,800	1,940	0.10	Blackish brown	Faint earth	Loamy	130	1,500	1,630	0.08								
	2018/11/27	Sunny	15.5	Dark brown	None	Loamy	140	1,700	1,840	0.10	Dull yellowish brown	None	Loamy	170	2,100	2,270	0.09								
	2019/2/1	Sunny	2.3	Dark brown	Faint earth	Loamy	210	2,700	2,910	0.10	Dull yellowish brown	Faint earth	Loamy	82	1,100	1,182	0.08								
	2018/5/28	Sunny	22.8	Dark brown	Faint earth	Loamy	650	6,500	7,150	0.11	Brown	Faint earth	Loamy	330	3,300	3,630	0.08								
	2018/8/30	Cloudy	28.2	Dull yellowish brown	None	Loamy	320	3,300	3,620	0.10	Dull yellowish brown	None	Loamy	300	3,000	3,300	0.09								
	2018/11/27	Sunny	13.3	Brown	None	Loamy	120	1,400	1,520	0.11	Brown	None	Loamy	190	2,300	2,490	0.09								
	2019/2/1	Sunny	2.8	Dark brown	Faint earth	Loamy	280	3,600	3,880	0.11	Brown	Faint earth	Loamy	330	4,300	4,630	0.08								
2018/5/28	Cloudy	12.7	Dull yellowish brown	Faint earth	Loamy	200	1,600	1,800	0.13	Blackish brown	Faint earth	Loamy	67	800	867	0.11									
2018/8/30	Cloudy	28.3	Dull yellowish brown	None	Loamy	67	820	887	0.12	Dull yellowish brown	None	Loamy	420	4,700	5,120	0.12									
2018/11/27	Sunny	16.4	Dull yellowish brown	None	Loamy	78	970	1,048	0.10	Dull yellowish brown	None	Loamy	130	1,600	1,730	0.12									
2019/2/1	Sunny	4.2	Dull yellowish brown	Faint earth	Loamy	180	2,400	2,580	0.13	Dull yellowish brown	Faint earth	Loamy	170	1,800	1,970	0.12									
2018/5/28	Cloudy	13.2	Blackish brown	Faint earth	Loamy	150	1,500	1,650	0.08	Dark brown	Faint earth	Loamy	150	1,600	1,750	0.10									
2018/8/30	Cloudy	24.1	Grayish yellowish brown	None	Loamy	100	1,100	1,200	0.08	Dull yellowish brown	None	Loamy	14	120	134	0.10									
2018/11/27	Sunny	33.2	Dull yellowish brown	Faint earth	Loamy	170	1,800	1,970	0.12	Dull yellow orange	Faint earth	Loamy	220	2,200	2,420	0.12									
2018/5/28	Cloudy	28.7	Dull yellowish brown	None	Loamy	91	950	1,041	0.08	Dull yellowish brown	None	Loamy	250	2,400	2,650	0.09									
2018/8/30	Cloudy	24.4	Blackish brown	Faint earth	Loamy	68	740	808	0.09	Dark brown	Faint earth	Loamy	33	400	433	0.11									
2018/11/27	Sunny	16.9	Brownish gray	None	Loamy	120	1,500	1,620	0.09	Dark brown	None	Loamy	150	1,700	1,850	0.10									
2019/2/1	Sunny	5.5	Grayish yellowish brown	Faint earth	Loamy	110	1,100	1,210	0.13	Dull yellowish brown	Faint earth	Loamy	130	1,500	1,630	0.10									
2018/5/28	Cloudy	14.2	Dark brown	Faint earth	Loamy	37	470	507	0.08	Blackish brown	Faint earth	Loamy	93	780	873	0.06									
2018/8/30	Cloudy	26.3	Dull yellowish brown	None	Loamy	35	300	335	0.07	Dull yellowish brown	None	Loamy	49	500	549	0.05									
2018/11/27	Sunny	35.3	Dull yellowish brown	Faint earth	Loamy	46	470	516	0.08	Blackish brown	Faint earth	Loamy	150	1,200	1,350	0.06									
2018/5/28	Cloudy	30.7	Dull yellowish brown	None	Loamy	28	270	298	0.07	Dull yellow orange	None	Loamy	55	570	625	0.06									
2018/8/30	Cloudy	26.5	Dark brown	Faint earth	Loamy	59	660	719	0.08	Blackish brown	Faint earth	Loamy	58	520	578	0.05									
2018/11/3	Sunny	17.1	Dark brown	Faint earth	Loamy	44	540	584	0.07	Blackish brown	Faint earth	Loamy	47	530	577	0.06									
2019/2/1	Sunny	6.0	Brown	Faint earth	Loamy	64	820	884	0.08	Dull yellowish brown	Faint earth	Loamy	65	840	905	0.05									

Tochigi River (Surrounding Environment) 2/6

Location				Sampling Date	Weather	Air temperature (°C)	Surrounding Environment (Soil, Air dose)											Remarks				
No.	Water area	Location	Municipality				Left bank					Right bank					Air Dose (µSv/h)					
							Color	Odor	Property	Activity concentration [Bq/kg(dry)]			Air Dose (µSv/h)	Color	Odor	Property			Activity concentration [Bq/kg(dry)]			
			Radioactive cesium					Radioactive cesium														
			Cs-134	Cs-137	Total				Cs-134	Cs-137	Total											
R i v e r s	Nakagawa River System	Matsuba River	Tributary	Otawara City	2018/5/8	Cloudy	13.4	Dark olive brown	Faint earth	Loamy	66	540	606	0.07	Blackish brown	Faint earth	Loamy	51	550	601	0.08	
					2018/6/8	Cloudy	25.7	Dull yellow orange	None	Loamy	34	460	494	0.06	Dull yellowish brown	None	Loamy	73	800	873	0.07	
					2018/7/2	Sunny	34.0	Yellowish brown	Faint earth	Loamy	10	83	93	0.06	Dark brown	Faint earth	Loamy	120	970	1,090	0.08	
					2018/8/6	Cloudy	29.2	Dull yellowish brown	None	Loamy	45	590	635	0.06	Dull yellowish brown	None	Loamy	40	460	500	0.07	
					2018/9/3	Cloudy	26.2	Brown	Faint earth	Loamy	37	460	497	0.06	Blackish brown	Faint earth	Loamy	59	610	669	0.08	
					2018/11/3	Sunny	17.4	Dark olive brown	Faint earth	Loamy	54	590	644	0.05	Dark brown	Faint earth	Loamy	45	560	605	0.08	
		11	Sabigawa River	Udagawa Bridge	Otawara City	2019/2/1	Sunny	6.0	Olive brown	Faint earth	Loamy	9.3	120	129.3	0.06	Dark brown	Faint earth	Loamy	71	870	941	0.07
						2018/5/8	Cloudy	13.1	Dark brown	Faint earth	Loamy	52	440	492	0.06	Blackish brown	Faint earth	Loamy	15	220	235	0.06
						2018/8/4	Sunny	28.8	Dull yellowish brown	Faint earth	Loamy	83	930	1,013	0.05	Blackish brown	Faint earth	Loamy	21	300	321	0.04
						2018/11/3	Sunny	12.8	Dull yellowish brown	Faint earth	Loamy	64	640	704	0.06	Blackish brown	Faint earth	Loamy	19	210	229	0.05
						2019/2/4	Sunny	10.7	Dull yellowish brown	None	Loamy	21	270	291	0.05	Dull yellowish brown	None	Loamy	19	220	239	0.05
						2018/5/8	Cloudy	12.8	Blackish brown	Faint earth	Loamy	390	3,700	4,090	0.09	Blackish brown	Faint earth	Loamy	64	560	624	0.07
	12	Momura River	Momuranaka Bridge	Otawara City	2018/8/4	Sunny	28.1	Brown	Faint earth	Loamy	110	1,100	1,210	0.07	Dull yellowish brown	Faint earth	Loamy	76	720	796	0.05	
					2018/11/3	Sunny	11.8	Brown	Faint earth	Loamy	110	1,200	1,310	0.07	Dull yellowish brown	Faint earth	Loamy	55	540	595	0.05	
	13	Nakagawa River System	Yuzohara	Nasushiobara City	2019/2/4	Sunny	8.6	Grayish yellowish brown	None	Loamy	130	1,700	1,830	0.08	Grayish yellowish brown	None	Loamy	51	620	671	0.05	
					2018/5/29	Sunny	24.4	Dark brown	Faint earth	Loamy	96	950	1,046	0.06	Dark brown	Faint earth	Loamy	120	1,300	1,420	0.05	
					2018/8/29	Cloudy	22.2	Dark brown	Faint earth	Loamy	77	950	1,027	0.07	Blackish brown	Faint earth	Loamy	64	660	724	0.05	
					2018/11/4	Sunny	10.2	Blackish brown	None	Loamy	88	920	1,008	0.09	Dark brown	None	Loamy	97	1,100	1,197	0.06	
					2019/2/12	Sunny	2.9	Blackish brown	Faint earth	Loamy	110	1,300	1,410	0.07	Dark brown	Faint earth	Loamy	49	510	559	0.06	
					2018/5/29	Sunny	21.2	Black	Faint earth	Loamy	110	1,100	1,210	0.11	Blackish brown	Faint earth	Loamy	170	1,700	1,870	0.14	
			14	Sekiba Bridge	Nasushiobara City	2018/8/29	Cloudy	24.1	Black	Faint earth	Loamy	87	890	977	0.11	Blackish brown	Faint earth	Loamy	96	990	1,086	0.14
						2018/11/4	Sunny	13.4	Black	Faint earth	Loamy	310	3,500	3,810	0.13	Blackish brown	Faint earth	Loamy	88	1,000	1,088	0.18
						2019/2/1	Sunny	2.5	Blackish brown	Faint earth	Loamy	72	770	842	0.12	Blackish brown	Faint earth	Loamy	140	1,900	2,040	0.14
						2018/5/8	Cloudy	11.8	Brown	Faint earth	Loamy	120	1,300	1,420	0.07	Dark brown	Faint earth	Loamy	71	780	851	0.06
						2018/8/4	Sunny	26.4	Brown	Faint earth	Loamy	24	290	314	0.06	Grayish yellowish brown	None	Loamy	110	1,200	1,310	0.06
						2018/11/3	Sunny	10.1	Brown	Faint earth	Loamy	28	320	348	0.06	Grayish yellowish brown	Faint earth	Loamy	81	950	1,031	0.06
	15	Hokigawa River	Iwai Bridge	Otawara City	2019/2/4	Sunny	7.8	Dull yellowish brown	None	Loamy	55	620	675	0.06	Dark grayish yellow	None	Loamy	65	710	775	0.06	
					2018/5/8	Cloudy	14.1	Dull yellow orange	Faint earth	Loamy	55	490	545	0.06	Yellowish brown	Faint earth	Loamy	9.1	100	109.1	0.06	
					2018/6/5	Sunny	23.3	Grayish yellowish brown	None	Loamy	22	230	252	0.06	Dull yellowish brown	None	Loamy	29	270	299	0.05	
					2018/7/3	Sunny	31.2	Dull yellow orange	Faint earth	Loamy	28	300	328	0.07	Yellowish brown	Faint earth	Loamy	19	180	199	0.06	
2018/8/4					Sunny	31.8	Dull yellow orange	None	Loamy	30	230	260	0.07	Yellowish brown	None	Loamy	18	180	198	0.05		
2018/9/3					Cloudy	22.1	Brown	Faint earth	Loamy	77	720	797	0.06	Yellowish brown	Faint earth	Loamy	16	190	206	0.04		
16			Hokigawa Bridge	Otawara City	2018/11/3	Sunny	15.8	Dull yellow orange	Faint earth	Loamy	25	270	295	0.07	Yellowish brown	Faint earth	Loamy	21	240	261	0.05	
					2019/2/4	Sunny	14.6	Dull yellow orange	None	Loamy	17	170	187	0.07	Yellowish brown	None	Loamy	22	230	252	0.05	
					2018/5/8	Cloudy	14.2	Brown	Faint earth	Loamy	6.6	110	116.6	0.06	Dull yellowish brown	Faint earth	Loamy	14	89	103	0.05	
					2018/6/5	Sunny	24.2	Yellowish brown	None	Loamy	<7.9	33	33	0.04	Dull yellow orange	None	Loamy	9.1	99	108.1	0.04	
					2018/7/3	Sunny	32.4	Brown	None	Loamy	14	160	174	0.06	Dull yellowish brown	Faint earth	Loamy	12	93	105	0.06	
					2018/8/4	Sunny	32.1	Dull yellow orange	None	Loamy	14	120	134	0.05	Dull yellowish brown	None	Loamy	13	110	123	0.05	
17	Nakagawa River	Shimaka Bridge	Nakagawa Town	2018/9/3	Cloudy	22.8	Dull yellow orange	Faint earth	Loamy	<7.4	16	16	0.04	Dull yellowish brown	Faint earth	Loamy	12	130	142	0.04		
				2018/11/3	Sunny	12.4	Dull yellowish brown	None	Loamy	<9.2	24	24	0.04	Brown	None	Loamy	<8.7	29	29	0.04		
				2019/2/4	Sunny	15.1	Dull yellow orange	None	Loamy	<6.9	16	16	0.05	Dull yellowish brown	None	Loamy	20	210	230	0.05		
				2018/5/8	Cloudy	14.3	Dark brown	Faint earth	Loamy	9.4	140	149.4	0.06	Dark brown	Faint earth	Loamy	11	110	121	0.06		
				2018/6/5	Sunny	24.7	Grayish yellowish brown	None	Loamy	11	110	121	0.05	Grayish yellowish brown	None	Loamy	6.1	61	67.1	0.06		
				2018/7/3	Sunny	34.8	Grayish yellowish brown	None	Loamy	20	230	250	0.05	Grayish yellowish brown	Faint earth	Loamy	12	110	122	0.06		
	18	Mumogawa River	Koei Bridge	Nakagawa Town	2018/8/4	Sunny	32.5	Dull yellowish brown	None	Loamy	11	130	141	0.05	Grayish yellowish brown	Faint earth	Loamy	7.5	100	107.5	0.05	
					2018/9/3	Cloudy	24.2	Dull yellowish brown	Faint earth	Loamy	14	170	184	0.04	Grayish yellowish brown	Faint earth	Loamy	21	190	211	0.05	
					2018/11/3	Sunny	13.2	Dark brown	None	Loamy	16	180	196	0.04	Grayish yellowish brown	None	Loamy	<8.6	95	95	0.05	
					2019/2/4	Sunny	15.8	Dull yellowish brown	None	Loamy	15	190	205	0.05	Olive brown	None	Loamy	12	150	162	0.06	

Tochigi River (Surrounding Environment) 3/6

Location				Sampling Date	Weather	Air temperature (°C)	Surrounding Environment (Soil, Air dose)										Remarks						
No.	Water area	Location	Municipality				Left bank					Right bank											
							Color	Odor	Property	Activity concentration [Bq/kg(dry)]			Air Dose (µSv/h)	Color	Odor	Property		Activity concentration [Bq/kg(dry)]			Air Dose (µSv/h)		
							Radioactive cesium			Radioactive cesium													
							Cs-134	Cs-137	Total				Cs-134	Cs-137	Total								
R i v e r s	Nakagawa River System	Ankawa River	Saikachi Bridge	Shiyoa Town	2018/5/29	Cloudy	27.4	Dark brown	Faint earth	Loamy	19	180	199	0.06	Brown	Faint earth	Loamy	74	750	824	0.07		
					2018/8/29	Cloudy	23.2	Dark brown	Faint earth	Loamy	34	300	334	0.07	Dull yellowish brown	Faint earth	Loamy	120	1,100	1,220	0.06		
					2018/11/4	Cloudy	14.3	Dark brown	Faint earth	Loamy	56	550	606	0.08	Dull yellowish brown	Faint earth	Loamy	80	1,000	1,080	0.06		
			2019/2/1	Sunny	5.8	Dark brown	Faint earth	Loamy	38	360	398	0.07	Dull yellowish brown	Faint earth	Loamy	46	610	656	0.06				
			2018/5/19	Sunny	23.6	Dull yellowish brown	None	Loamy	76	720	796	0.05	Dull yellowish brown	None	Loamy	19	200	219	0.03				
			2018/8/9	Cloudy	29.4	Dark brown	Faint earth	Loamy	34	390	424	0.07	Dull yellowish brown	Faint earth	Loamy	22	210	232	0.06				
		20		Renjo Bridge	Sakara City	2018/11/3	Sunny	9.1	Blackish brown	Faint earth	Loamy	62	660	722	0.06	Grayish yellowish brown	None	Loamy	<7.4	12	12	0.04	
						2019/2/7	Cloudy	6.8	Dull yellowish brown	Faint earth	Loamy	28	300	328	0.07	Dull yellowish brown	Faint earth	Loamy	17	210	227	0.05	
						2018/5/29	Cloudy	27.5	Dull yellowish brown	Faint earth	Loamy	85	820	905	0.07	Dull yellow orange	None	Loamy	62	620	682	0.06	
		21		Tanaka Bridge	Yaita City	2018/8/29	Cloudy	23.4	Dark brown	Faint earth	Loamy	66	660	726	0.06	Dark brown	Faint earth	Loamy	34	290	324	0.06	
						2018/11/4	Cloudy	14.5	Dark brown	Faint earth	Loamy	130	1,600	1,730	0.07	Dull yellowish brown	Faint earth	Loamy	25	320	345	0.07	
						2019/2/1	Sunny	5.5	Grayish yellowish brown	Faint earth	Loamy	51	640	691	0.06	Grayish yellowish brown	Faint earth	Loamy	29	330	359	0.06	
		22		Asahi Bridge	Sakara City	2018/5/19	Sunny	24.0	Dull yellowish brown	None	Loamy	22	280	302	0.06	Blackish brown	None	Loamy	37	390	427	0.05	
						2018/8/9	Cloudy	29.4	Blackish brown	Faint earth	Loamy	36	400	436	0.07	Blackish brown	Faint earth	Loamy	46	500	546	0.04	
						2018/11/3	Sunny	9.6	Blackish brown	None	Loamy	29	340	369	0.05	Grayish yellowish brown	None	Loamy	30	370	400	0.04	
		23		Ankawa River	Mukada Bridge	Nasu Karasuyama City	2019/2/7	Cloudy	6.8	Blackish brown	Faint earth	Loamy	30	390	420	0.07	Blackish brown	Faint earth	Loamy	18	180	196	0.05
							2018/5/19	Sunny	27.5	Dull yellowish brown	None	Loamy	<9.9	76	76	0.05	Brown	None	Loamy	15	160	175	0.05
							2018/8/5	Sunny	27.5	Dull yellow orange	None	Loamy	21	160	181	0.05	Dull yellowish brown	None	Loamy	22	180	202	0.05
		24		Egawa River	Tributary	Nasu Karasuyama City	2018/7/3	Sunny	34.7	Dull yellowish brown	Faint earth	Loamy	9.8	91	100.8	0.05	Dull yellow orange	Faint earth	Loamy	21	260	281	0.05
							2018/8/9	Cloudy	25.3	Dull yellowish brown	Faint earth	Loamy	<7.9	69	69	0.05	Dull yellowish brown	Faint earth	Loamy	20	160	180	0.05
							2018/9/3	Cloudy	24.8	Dull yellowish brown	Faint earth	Loamy	14	120	134	0.05	Dull yellow orange	Faint earth	Loamy	19	220	239	0.05
							2018/11/3	Sunny	15.1	Dull yellowish brown	None	Loamy	<8.9	87	87	0.04	Dull yellowish brown	None	Loamy	13	140	153	0.05
							2019/2/7	Cloudy	8.3	Dull yellowish brown	Faint earth	Loamy	<12	77	77	0.06	Dull yellowish brown	Faint earth	Loamy	15	150	165	0.05
							2018/5/19	Sunny	27.3	Dull yellowish brown	None	Loamy	14	91	105	0.05	Brown	None	Loamy	<0.75	1.7	1.7	0.04
25				Kinugawa River	Kawaji Daiichi Power Station, front	Nikko City	2018/6/5	Sunny	27.1	Dull yellowish brown	None	Loamy	12	130	142	0.05	Dull yellow orange	None	Loamy	<7.8	13	13	0.04
							2018/7/3	Sunny	34.6	Dull yellowish brown	Faint earth	Loamy	9.3	130	139.3	0.05	Dull yellow orange	None	Loamy	10	95	105	0.05
							2018/8/9	Cloudy	25.4	Blackish brown	Faint earth	Loamy	14	120	134	0.05	Dark brown	Faint earth	Loamy	12	120	132	0.05
							2018/9/3	Cloudy	24.4	Dull yellowish brown	Faint earth	Loamy	13	140	153	0.04	Dull yellowish brown	Faint earth	Loamy	<8.1	8.4	8.4	0.04
							2018/11/3	Sunny	14.9	Brown	None	Loamy	<11	64	64	0.05	Dull yellow orange	None	Loamy	<1.1	3.5	3.5	0.04
							2019/2/7	Cloudy	8.1	Dull yellowish brown	Faint earth	Loamy	8.7	120	128.7	0.05	Dull yellow orange	Faint earth	Loamy	<3.6	3.0	3.0	0.05
26		Yamishi River	Maesawa Bridge	Nikko City	2018/5/31	Cloudy	21.4	Brown	Faint earth	Loamy	76	800	876	0.10	Blackish brown	Faint earth	Loamy	320	3,100	3,420	0.08		
					2018/8/17	Sunny	22.2	Brown	Faint earth	Loamy	120	1,300	1,420	0.10	Blackish brown	Faint earth	Loamy	330	3,500	3,830	0.10		
					2018/11/20	Sunny	8.7	Dull yellowish brown	None	Loamy	68	740	808	0.09	Blackish brown	None	Loamy	200	2,300	2,500	0.08		
					2019/2/13	Sunny	3.6	Brown	Faint earth	Loamy	89	1,200	1,289	0.08	Blackish brown	Faint earth	Loamy	83	1,100	1,183	0.08		
					2018/5/31	Cloudy	16.0	Dark brown	Faint earth	Loamy	22	210	232	0.05	Blackish brown	Faint earth	Loamy	<8.7	83	83	0.04		
					2018/8/17	Sunny	19.5	Blackish brown	Faint earth	Loamy	<6.5	64	64	0.06	Blackish brown	Faint earth	Loamy	<8.2	13	13	0.04		
27		Ojika River	Tributary	Nikko City	2018/11/20	Sunny	6.7	Brownish gray	None	Sandy	11	150	161	0.06	Blackish brown	None	Loamy	<8.5	15	15	0.04		
					2019/2/12	Sunny	0.2	-	-	-	-	-	-	-	-	-	-	-	-	-	0.04	Unable to collect samples due to snow on the ground	
					2018/5/31	Cloudy	21.2	Blackish brown	Faint earth	Loamy	250	2,400	2,650	0.11	Grayish yellow	Faint earth	Loamy	9.0	110	119.0	0.09		
					2018/8/29	Cloudy	22.1	Blackish brown	Faint earth	Loamy	130	1,500	1,630	0.11	Grayish yellow	None	Loamy	<9.4	54	54	0.10		
					2018/11/20	Sunny	8.7	Blackish brown	None	Loamy	140	1,400	1,540	0.11	Brownish gray	None	Sandy	<8.8	48	48	0.09		
					2019/2/13	Sunny	3.5	Blackish brown	Faint earth	Loamy	160	2,100	2,260	0.11	Dull yellow orange	None	Loamy	<8.2	77	77	0.08		
28		Kinugawa River	Kouagoe	Nikko City	2018/5/22	Sunny	26.0	Dark brown	Faint earth	Loamy	130	1,200	1,330	0.11	Dull yellowish brown	Faint earth	Loamy	55	560	615	0.08		
					2018/8/17	Sunny	23.1	Dark brown	Faint earth	Loamy	150	1,700	1,850	0.11	Dark brown	Faint earth	Loamy	43	440	483	0.07		
					2018/11/20	Sunny	7.7	Brown	None	Loamy	110	1,200	1,310	0.11	Brown	None	Loamy	10	130	140	0.07		
2019/2/13	Sunny	3.2	Brown	Faint earth	Loamy	93	1,200	1,293	0.10	Dark brown	Faint earth	Loamy	58	610	668	0.07							

Tochigi River (Surrounding Environment) 4/6

Location					Sampling Date	Weather	Air temperature (°C)	Surrounding Environment (Soil, Air dose)												Remarks			
No.	Water area		Location	Municipality				Left bank						Right bank									
	Color	Odor						Property	Activity concentration [Bq/kg(dry)]			Air Dose (µSv/h)	Color	Odor	Property	Activity concentration [Bq/kg(dry)]			Air Dose (µSv/h)				
Cs-134			Cs-137	Total	Cs-134	Cs-137	Total																
R i v e r s	Tohogawa River System	Kinugawa River System	Itana River	Tributary	Nikko City	2018/5/23	Cloudy	21.7	Grayish yellowish brown	Faint earth	Loamy	140	1,400	1,540	0.11	Brown	None	Loamy	10	120	130	0.08	
						2018/6/19	Sunny	29.5	Blackish brown	Faint earth	Loamy	96	960	1,056	0.10	Dull yellowish brown	Faint earth	Loamy	6.7	93	99.7	0.07	
						2018/7/6	Cloudy	19.8	Dark brown	Faint earth	Loamy	91	1,000	1,091	0.12	Dull yellowish brown	Faint earth	Loamy	9.3	110	119.3	0.08	
						2018/8/16	Cloudy	27.8	Dark brown	Faint earth	Loamy	120	1,200	1,320	0.09	Dull yellowish brown	None	Sandy	<6.6	60	60	0.07	
						2018/9/10	Cloudy	25.0	Dark brown	Faint earth	Loamy	110	1,100	1,210	0.12	Dull yellowish brown	Faint earth	Loamy	44	430	474	0.07	
						2018/11/20	Sunny	7.2	Dark brown	None	Loamy	110	1,400	1,510	0.11	Dull yellowish brown	None	Loamy	<9.2	91	91	0.08	
						2019/2/13	Sunny	7.8	Dark brown	Faint earth	Loamy	120	1,300	1,420	0.11	Dull yellowish brown	Faint earth	Loamy	<8.9	84	84	0.07	
						2018/5/23	Cloudy	14.4	Brown	Faint earth	Loamy	<6.4	29	29	0.06	-	-	-	-	-	-	-	(Right bank)Unable to collect samples due to privately owned land
						2018/8/16	Sunny	23.8	Brown	Faint earth	Loamy	22	250	272	0.06	-	-	-	-	-	-	-	(Right bank)Unable to collect samples due to privately owned land
						2018/11/26	Sunny	7.2	Dull yellowish brown	None	Loamy	6.6	69	75.6	0.06	-	-	-	-	-	-	-	(Right bank)Unable to collect samples due to privately owned land
						2019/2/4	Sunny	5.0	Dull yellowish brown	None	Loamy	31	410	441	0.06	-	-	-	-	-	-	-	(Right bank)Unable to collect samples due to privately owned land
						2018/5/22	Sunny	22.7	Blackish brown	Faint earth	Loamy	44	440	484	0.07	Blackish brown	Faint earth	Loamy	48	430	498	0.06	
			2018/8/9	Cloudy	27.2	Blackish brown	Faint earth	Loamy	50	520	570	0.06	Blackish brown	Faint earth	Loamy	140	1,400	1,540	0.06				
			2018/11/1	Sunny	11.7	Blackish brown	None	Loamy	78	770	848	0.05	Blackish brown	None	Loamy	71	840	911	0.05				
			2019/2/4	Sunny	11.2	Blackish brown	None	Loamy	36	460	496	0.05	Blackish brown	None	Loamy	200	2,700	2,900	0.05				
			2018/5/22	Sunny	22.8	Blackish brown	Faint earth	Loamy	70	490	560	0.07	Blackish brown	Faint earth	Loamy	100	1,100	1,200	0.08				
			2018/8/9	Cloudy	27.5	Blackish brown	Faint earth	Loamy	49	480	529	0.08	Blackish brown	Faint earth	Loamy	130	1,400	1,530	0.08				
			2018/11/1	Sunny	9.4	Blackish brown	None	Loamy	51	610	661	0.07	Blackish brown	None	Loamy	220	2,600	2,820	0.07				
			2019/2/4	Sunny	11.0	Dark brown	None	Loamy	42	510	552	0.07	Dull yellowish brown	None	Loamy	410	4,600	5,010	0.07				
			2018/5/31	Sunny	20.8	Blackish brown	None	Loamy	100	910	1,010	0.08	Blackish brown	None	Sandy	<5.5	7.2	7.2	0.05				
			2018/6/19	Sunny	27.4	Blackish brown	Faint earth	Loamy	240	2,400	2,640	0.09	Blackish brown	None	Sandy	<8.0	8.8	8.8	0.04				
			2018/7/9	Cloudy	29.6	Dark brown	Faint earth	Loamy	96	970	1,066	0.07	Brownish gray	None	Sandy	<5.1	14	14	0.05				
			2018/8/17	Sunny	26.8	Blackish brown	Faint earth	Loamy	74	730	804	0.09	Blackish brown	None	Sandy	<6.1	14	14	0.04				
			2018/9/4	Cloudy	22.1	Blackish brown	Faint earth	Loamy	82	880	962	0.08	Blackish brown	None	Sandy	<6.0	11	11	0.04				
			2018/11/1	Sunny	13.2	Blackish brown	None	Loamy	150	1,400	1,550	0.08	Brownish gray	None	Sandy	<4.1	12	12	0.04				
			2019/2/13	Sunny	7.8	Blackish brown	Faint earth	Loamy	91	1,200	1,291	0.07	Blackish brown	None	Sandy	<7.8	18	18	0.04				
			2018/5/31	Cloudy	18.0	Dark brown	Faint earth	Loamy	49	500	549	0.06	Dark brown	Faint earth	Loamy	180	1,600	1,780	0.07				
			2018/6/19	Sunny	24.2	Blackish brown	Faint earth	Loamy	110	1,200	1,310	0.06	Blackish brown	Faint earth	Loamy	200	1,800	2,000	0.07				
			2018/7/6	Cloudy	20.1	Blackish brown	Faint earth	Loamy	150	1,300	1,450	0.07	Blackish brown	Faint earth	Loamy	78	840	918	0.08				
2018/8/17	Sunny	25.8	Blackish brown	Faint earth	Loamy	28	310	338	0.07	Blackish brown	Faint earth	Loamy	79	860	939	0.08							
2018/9/4	Cloudy	22.9	Blackish brown	Faint earth	Loamy	45	570	615	0.07	Blackish brown	Faint earth	Loamy	79	960	1,039	0.08							
2018/11/1	Sunny	13.9	Dull yellowish brown	None	Loamy	110	1,200	1,310	0.07	Grayish yellowish brown	None	Loamy	140	1,300	1,440	0.07							
2019/2/7	Sunny	0.3	Brown	Faint earth	Loamy	56	630	686	0.07	Blackish brown	Faint earth	Loamy	29	350	379	0.09							
2018/5/19	Sunny	20.4	Brownish gray	None	Loamy	38	410	448	0.05	Grayish yellowish brown	None	Loamy	22	210	232	0.05							
2018/8/9	Cloudy	28.4	Dark brown	Faint earth	Loamy	12	150	162	0.05	Blackish brown	Faint earth	Loamy	14	140	154	0.05							
2018/11/4	Sunny	20.1	Dark brown	Faint earth	Loamy	<9.0	87	87	0.05	Blackish brown	Faint earth	Loamy	22	240	262	0.06							
2019/2/14	Sunny	5.2	Dark brown	Faint earth	Loamy	<10	70	70	0.05	Blackish brown	Faint earth	Loamy	8.8	86	94.8	0.05							
2018/5/19	Sunny	22.1	Brownish gray	None	Sandy	<7.3	14	14	0.05	Grayish yellowish brown	None	Sandy	6.8	34	40.8	0.05							
2018/8/9	Cloudy	29.1	Grayish yellowish brown	None	Sandy	<5.2	7.7	7.7	0.05	Dark brown	Faint earth	Sandy	<6.5	29	29	0.05							
2018/11/4	Sunny	19.5	Dull yellowish brown	None	Sandy	<3.6	7.9	7.9	0.05	Dull yellowish brown	None	Loamy	12	140	152	0.05							
2019/2/14	Sunny	6.8	Dull yellowish brown	None	Sandy	<3.6	8.3	8.3	0.05	Dull yellowish brown	None	Sandy	<8.2	54	54	0.05							
2018/5/10	Rain	12.2	Brownish gray	None	Loamy	25	270	295	0.06	Grayish yellowish brown	None	Sandy	<5.1	15	15	0.06							
2018/8/24	Cloudy	29.2	Dark brown	Faint earth	Loamy	19	220	239	0.05	Brown	None	Loamy	<6.0	12	12	0.05							
2018/11/17	Sunny	12.7	Dull yellowish brown	None	Loamy	25	250	275	0.06	Brownish gray	None	Loamy	<7.5	11	11	0.05							
2019/2/15	Cloudy	5.1	Grayish yellowish brown	Faint earth	Loamy	<10	110	110	0.07	Grayish yellowish brown	Faint earth	Loamy	<6.6	14	14	0.04							

Tochigi River (Surrounding Environment) 5/6

Location					Sampling Date	Weather	Air temperature (°C)	Surrounding Environment (Soil, Air dose)										Remarks							
No.	Water area		Location	Municipality				Left bank					Right bank												
								Color	Odor	Property	Activity concentration [Bq/kg(dry)]			Air Dose (µSv/h)	Color	Odor	Property		Activity concentration [Bq/kg(dry)]			Air Dose (µSv/h)			
								Cs-134	Cs-137	Total					Cs-134	Cs-137	Total								
R i v e r s	Tonegawa River System	Kingogawa River System	Egawa River	Tributary	Shimotsuke City	2018/5/10	Rain	11.3	Dull yellowish brown	None	Loamy	11	75	86	0.06	Brown	None	Loamy	11	93	104	0.06			
						2018/6/4	Sunny	23.4	Dark brown	Faint earth	Loamy	18	150	168	0.04	Dull yellowish brown	None	Loamy	12	130	142	0.05			
						2018/7/5	Rain	26.7	Dark brown	Faint earth	Loamy	12	120	132	0.05	Dull yellowish brown	Faint earth	Loamy	11	130	141	0.05			
						2018/8/24	Cloudy	30.0	Dark brown	None	Loamy	30	290	320	0.05	Dull yellowish brown	Faint earth	Loamy	<6.7	64	64	0.05			
						2018/9/5	Sunny	25.9	Blackish brown	None	Loamy	29	320	349	0.05	Grayish yellowish brown	None	Loamy	<8.1	72	72	0.05			
						2018/11/17	Sunny	12.2	Blackish brown	None	Loamy	32	400	432	0.06	Dull yellowish brown	None	Loamy	13	150	163	0.05			
			Akabori River	Nikko City Hall, front	Nikko City	2019/2/15	Cloudy	5.1	Dull yellowish brown	Faint earth	Loamy	17	170	187	0.05	Dull yellowish brown	Faint earth	Loamy	<7.1	53	53	0.05			
						2018/5/22	Sunny	22.1	-	-	-	-	-	-	-	Blackish brown	Faint earth	Loamy	60	590	650	0.06	Left bank/Unable to collect samples due to privately owned land		
						2018/8/9	Cloudy	27.3	-	-	-	-	-	-	-	Blackish brown	Faint earth	Loamy	60	590	650	0.05	Left bank/Unable to collect samples due to privately owned land		
						2018/11/1	Sunny	8.1	-	-	-	-	-	-	-	Blackish brown	None	Loamy	24	270	294	0.05	Left bank/Unable to collect samples due to privately owned land		
						2019/2/14	Sunny	2.2	-	-	-	-	-	-	-	Blackish brown	Faint earth	Loamy	57	730	787	0.05	Left bank/Unable to collect samples due to privately owned land		
						2018/5/22	Sunny	19.8	Grayish yellowish brown	Faint earth	Loamy	24	250	274	0.05	Blackish brown	Faint earth	Loamy	30	390	420	0.05			
		40			Kiwadajima			2018/8/9	Cloudy	27.1	Blackish brown	Faint earth	Loamy	46	500	546	0.05	Blackish brown	Faint earth	Loamy	44	510	554	0.05	
								2018/11/1	Sunny	7.0	Blackish brown	None	Loamy	32	380	412	0.04	Dark brown	None	Loamy	16	200	216	0.04	
		41		Kingogawa River System	Tagawa River	Ozobushi Bridge	Utsunomiya City	2019/2/14	Sunny	1.8	Grayish yellowish brown	Faint earth	Sandy	29	330	359	0.05	Blackish brown	Faint earth	Sandy	19	230	249	0.05	
								2018/5/22	Sunny	28.6	Blackish brown	Faint earth	Loamy	12	210	222	0.04	Blackish brown	Faint earth	Loamy	6.6	96	102.6	0.04	
								2018/6/19	Sunny	23.5	Blackish brown	Faint earth	Loamy	32	300	332	0.04	Blackish brown	Faint earth	Loamy	14	150	164	0.04	
								2018/7/6	Cloudy	22.2	Blackish brown	Faint earth	Loamy	22	210	232	0.05	Blackish brown	Faint earth	Loamy	12	130	142	0.06	
								2018/8/9	Cloudy	28.2	Blackish brown	Faint earth	Loamy	18	170	188	0.05	Blackish brown	Faint earth	Loamy	<8.7	81	81	0.06	
								2018/9/4	Cloudy	25.0	Blackish brown	Faint earth	Loamy	18	200	218	0.05	Blackish brown	Faint earth	Loamy	27	340	367	0.06	
					Kamagawa River	Tsukashi Bridge		2018/11/1	Sunny	19.1	Blackish brown	None	Loamy	15	170	185	0.05	Blackish brown	None	Loamy	25	310	335	0.05	
								2019/2/7	Sunny	15.8	Dark brown	Faint earth	Loamy	13	170	183	0.05	Dark brown	Faint earth	Loamy	11	100	111	0.06	
								2018/5/22	Sunny	29.8	Blackish brown	Faint earth	Loamy	<8.1	58	58	0.05	Blackish brown	Faint earth	Loamy	59	510	569	0.05	
								2018/8/9	Cloudy	28.5	Blackish brown	Faint earth	Loamy	<10	99	99	0.05	Blackish brown	Faint earth	Loamy	46	550	596	0.04	
								2018/11/1	Sunny	19.9	Dull yellowish brown	None	Loamy	<6.7	84	84	0.04	Blackish brown	None	Loamy	49	460	509	0.05	
								2019/2/7	Sunny	15.6	Brown	Faint earth	Loamy	<5.6	29	29	0.05	Blackish brown	Faint earth	Clay-loamy	42	580	622	0.05	
		43		Kingogawa River System	Tagawa River	Meiji Bridge	Kaminokawa Town	2018/5/30	Cloudy	27.4	Grayish yellow	None	Loamy	15	150	165	0.04	Dull yellowish brown	None	Loamy	34	330	364	0.04	
								2018/8/4	Sunny	33.3	Brownish gray	None	Sandy	19	270	289	0.04	Grayish yellowish brown	Faint earth	Loamy	8.0	130	138.0	0.04	
								2018/11/17	Sunny	11.2	Brownish gray	None	Loamy	27	290	317	0.05	Dull yellowish brown	Faint earth	Loamy	26	270	296	0.05	
					Yanabashi Bridge	Oyama City	2019/2/14	Sunny	8.0	Dark grayish yellow	None	Loamy	27	350	377	0.04	Dull yellowish brown	Faint earth	Loamy	8.7	110	118.7	0.04		
							2018/5/10	Rain	12.7	Brownish gray	None	Loamy	9.3	61	70.3	0.05	Brownish gray	Faint earth	Loamy	7.4	61	68.4	0.05		
							2018/8/24	Cloudy	30.4	Blackish brown	Faint earth	Loamy	<7.0	73	73	0.04	Blackish brown	Faint earth	Loamy	<7.0	44	44	0.04		
		45	Watarase River Area	Kurokawa River	Kajima Bridge	Kanama City	2018/11/17	Sunny	14.2	Grayish yellowish brown	None	Loamy	10	120	130	0.05	Blackish brown	None	Loamy	10	98	108	0.04		
							2019/2/15	Cloudy	5.5	Grayish yellowish brown	Faint earth	Loamy	9.6	110	119.6	0.04	Dark brown	Faint earth	Loamy	<9.2	86	86	0.04		
							2018/5/30	Cloudy	23.4	Dull yellowish brown	None	Loamy	<6.0	68	68	0.06	Blackish brown	Faint earth	Loamy	37	320	357	0.05		
							2018/8/4	Sunny	28.7	Grayish yellowish brown	None	Loamy	<5.9	44	44	0.04	Grayish yellowish brown	None	Loamy	21	250	271	0.04		
							2018/11/6	Cloudy	16.8	Dark brown	Faint earth	Loamy	11	110	121	0.05	Blackish brown	Faint earth	Loamy	25	280	305	0.05		
							2019/2/12	Sunny	2.9	Dark brown	Faint earth	Loamy	16	170	186	0.05	Blackish brown	Faint earth	Loamy	<14	91	91	0.05		
				Onari Bridge	Mibu Town	2018/5/30	Cloudy	25.2	Dark brown	Faint earth	Loamy	19	280	299	0.04	Brown	None	Loamy	11	75	86	0.05			
						2018/8/4	Sunny	32.4	Dull yellowish brown	None	Loamy	13	170	183	0.04	Dull yellowish brown	None	Sandy	10	130	140	0.04			
						2018/11/6	Rain	17.5	Dull yellowish brown	Faint earth	Loamy	20	230	250	0.05	Brown	Faint earth	Loamy	<10	98	98	0.05			
						2019/2/12	Sunny	7.8	Dull yellowish brown	Faint earth	Loamy	23	250	273	0.04	Brown	Faint earth	Loamy	<11	99	99	0.06			
2018/5/30	Cloudy					24.3	Dull yellow orange	None	Loamy	22	270	292	0.05	Grayish yellowish brown	Faint earth	Loamy	27	270	297	0.05					
2018/8/4	Sunny					29.9	Dull yellowish brown	None	Loamy	9.4	110	119.4	0.04	Brownish gray	None	Sandy	11	140	151	0.04					
47		Watarase River Area	Onari River	Akaiishi Bridge	Kanama City	2018/11/6	Cloudy	17.0	Brown	Faint earth	Loamy	10	92	102	0.05	Blackish brown	Faint earth	Loamy	25	260	285	0.05			
						2019/2/12	Sunny	4.6	Brown	Faint earth	Loamy	<12	130	130	0.04	Blackish brown	Faint earth	Loamy	24	300	324	0.05			
						2018/5/30	Cloudy	23.5	Dull yellow orange	None	Loamy	<8.9	93	93	0.05	Dark brown	Faint earth	Loamy	19	160	179	0.05			
						2018/8/4	Sunny	29.1	Blackish brown	None	Loamy	15	150	165	0.04	Blackish brown	None	Loamy	<13	22	22	0.04			
						2018/11/6	Cloudy	17.1	Dark brown	Faint earth	Loamy	<7.3	20	20	0.06	Blackish brown	Faint earth	Loamy	<16	24	24	0.05			
						2019/2/12	Sunny	3.8	Dark brown	Faint earth	Loamy	<6.9	66	66	0.05	Dark brown	Faint earth	Loamy	<13	58	58	0.04			
48		Watarase River Area	Koyabu River	Koyabu Bridge		2018/5/30	Cloudy	23.5	Dull yellow orange	None	Loamy	<8.9	93	93	0.05	Dark brown	Faint earth	Loamy	19	160	179	0.05			
						2018/8/4	Sunny	29.1	Blackish brown	None	Loamy	15	150	165	0.04	Blackish brown	None	Loamy	<13	22	22	0.04			

Tochigi River (Surrounding Environment) 6/6

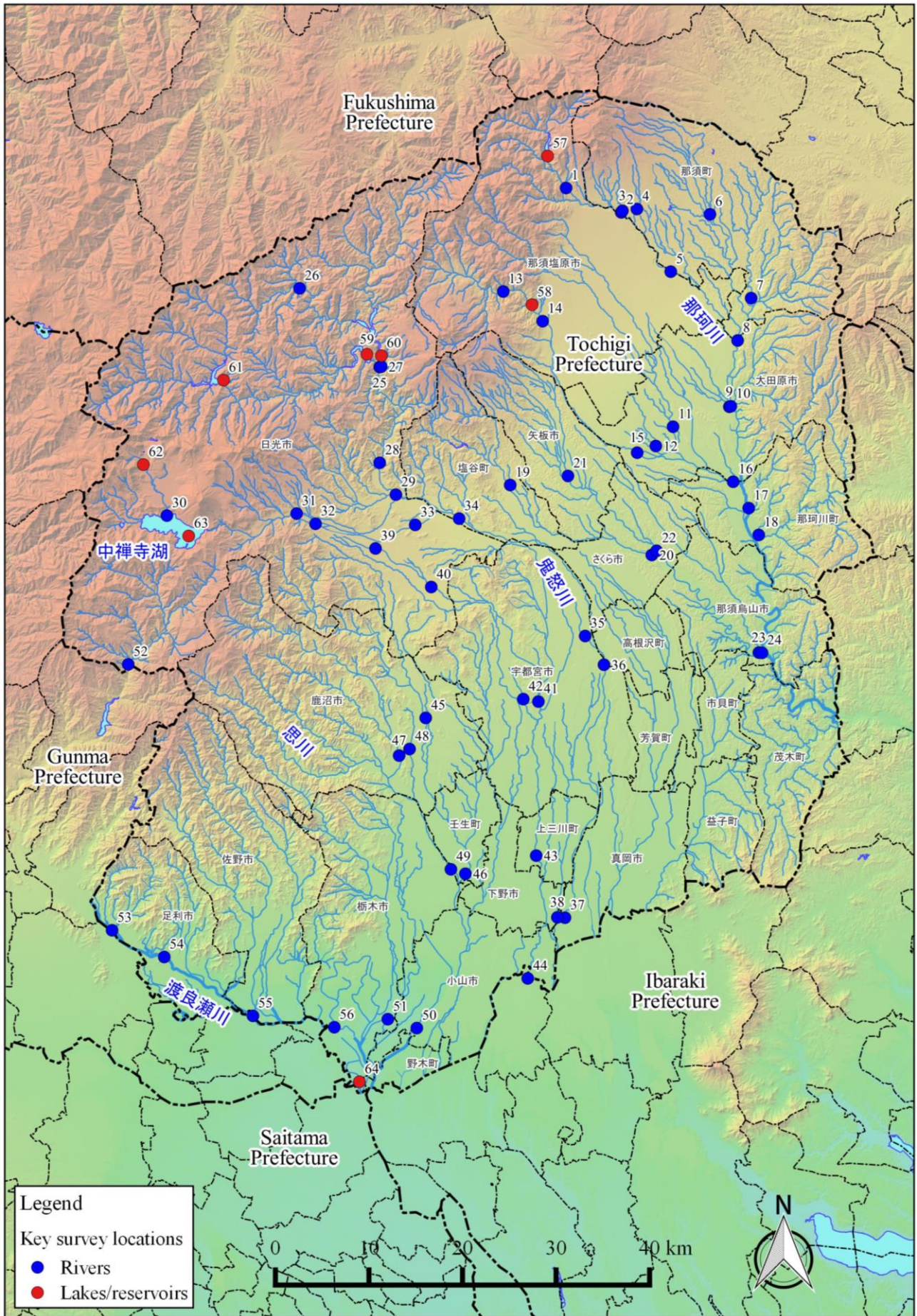
Location					Sampling Date	Weather	Air temperature (°C)	Surrounding Environment (Soil, Air dose)										Remarks							
No.	Water area		Location	Municipality				Left bank					Right bank												
								Color	Odor	Property	Activity concentration [Bq/kg(dry)]			Air Dose (µSv/h)	Color	Odor	Property		Activity concentration [Bq/kg(dry)]			Air Dose (µSv/h)			
								Cs-134	Cs-137	Total					Cs-134	Cs-137	Total								
R i v e r s	49	Omori River Area	Omori River	Tanotsu Bridge	Tochigi City	2018/5/30	Cloudy	26.3	Dark brown	None	Loamy	22	190	212	0.05	Grayish yellowish brown	None	Loamy	8.6	76	84.6	0.05			
						2018/8/4	Sunny	31.7	Grayish yellowish brown	None	Loamy	11	90	101	0.04	Brownish gray	None	Loamy	20	190	210	0.04			
						2018/11/6	Cloudy	18.2	Blackish brown	Faint earth	Loamy	9.1	88	97.1	0.05	Dull yellowish brown	Faint earth	Loamy	21	200	221	0.05			
						2019/2/12	Sunny	7.7	Blackish brown	Faint earth	Loamy	9.7	120	129.7	0.05	Dull yellowish brown	Faint earth	Loamy	12	130	142	0.04			
						2018/5/10	Sunny	14.4	Grayish yellowish brown	None	Loamy	12	170	182	0.06	Dull yellowish brown	None	Loamy	<8.1	46	46	0.06			
				50	Omori River Area	Omori River	Otsome-chashi Bridge	Oyama City	2018/6/4	Sunny	27.4	Dull yellowish brown	Faint earth	Loamy	23	220	243	0.05	Dark brown	Faint earth	Loamy	<9.5	81	81	0.05
									2018/7/5	Rain	25.4	Brown	Faint earth	Loamy	23	160	183	0.04	Dark brown	Faint earth	Loamy	<10	75	75	0.04
									2018/8/24	Sunny	34.1	Brown	Faint earth	Loamy	6.9	86	92.9	0.05	Dull yellowish brown	None	Loamy	<7.6	66	66	0.05
									2018/9/5	Sunny	30.2	Blackish brown	None	Loamy	<8.5	100	100	0.05	Blackish brown	None	Loamy	13	110	123	0.05
									2018/11/17	Sunny	16.6	Grayish yellowish brown	None	Loamy	<8.8	71	71	0.05	Dark brown	None	Loamy	<10	88	88	0.05
	51	Uzuma River Area	Uzuma River	Uzuma Bridge	Tochigi City	2019/2/8	Cloudy	8.0	Brown	Faint earth	Loamy	11	140	151	0.05	Dark brown	Faint earth	Loamy	<11	100	100	0.05			
						2018/5/10	Cloudy	14.4	Dull yellowish brown	None	Loamy	18	190	208	0.06	Grayish yellowish brown	None	Loamy	<9.2	72	72	0.05			
						2018/6/4	Sunny	28.2	Dull yellowish brown	Faint earth	Loamy	16	180	196	0.05	Dull yellowish brown	Faint earth	Loamy	<8.4	88	88	0.04			
						2018/7/5	Cloudy	26.3	Blackish brown	None	Loamy	24	170	194	0.06	Brown	Faint earth	Loamy	9.7	96	105.7	0.04			
						2018/8/24	Sunny	33.8	Blackish brown	Faint earth	Loamy	17	130	147	0.06	Dark brown	Faint earth	Loamy	<8.8	62	62	0.04			
						2018/9/5	Sunny	31.2	Blackish brown	None	Loamy	11	130	141	0.05	Grayish yellowish brown	None	Loamy	<8.4	84	84	0.04			
						2018/11/28	Sunny	11.3	Dull yellowish brown	None	Loamy	18	170	188	0.05	Dull yellowish brown	None	Loamy	<13	62	62	0.05			
						2019/2/8	Cloudy	8.2	Dull yellowish brown	Faint earth	Loamy	9.7	130	139.7	0.06	Brown	Faint earth	Loamy	<8.6	62	62	0.04			
						2018/5/10	Sunny	12.4	Dark olive	None	Sandy	<8.5	15	15	0.10	Dull yellowish brown	Faint earth	Loamy	47	530	567	0.11			
						52	Tonegawa River System	Watarase River Area	Watarase River intake weir at Sori Power Station	Nikko City	2018/6/8	Sunny	27.8	Dark olive	None	Sandy	<6.1	19	19	0.11	Dull yellowish brown	Faint earth	Loamy	29	250
2018/7/5	Cloudy	24.8	Gray	None	Sandy						<4.6	20	20	0.12	Blackish brown	Faint earth	Loamy	43	450	493	0.14				
2018/8/2	Sunny	25.0	Dark olive	None	Sandy						<5.7	16	16	0.11	Dull yellowish brown	Faint earth	Loamy	22	230	252	0.12				
2018/9/11	Cloudy	20.4	Dark olive	None	Sandy						<8.2	30	30	0.12	Dark brown	Faint earth	Loamy	51	500	551	0.12				
2018/11/26	Sunny	11.1	Brownish gray	None	Sandy						<3.4	16	16	0.12	Dull yellowish brown	None	Sandy	<6.8	21	21	0.12				
2019/2/6	Cloudy	5.0	Dark olive	None	Sandy						<6.4	12	12	0.11	Dull yellowish brown	None	Loamy	38	360	398	0.11				
2018/5/18	Cloudy	24.8	Blackish brown	Faint earth	Loamy						<8.9	57	57	0.04	Blackish brown	Faint earth	Loamy	16	140	156	0.05				
2018/8/27	Sunny	37.4	Dull yellowish brown	None	Loamy						14	130	144	0.04	Dull yellowish brown	Faint earth	Loamy	<7.3	60	60	0.05				
2018/11/28	Sunny	18.6	Grayish yellowish brown	None	Loamy						6.4	64	70.4	0.04	Grayish yellowish brown	None	Loamy	<7.0	51	51	0.05				
53	Watarase River Area	Watarase River	Hajika Bridge	Ashikaga City	2019/2/8						Sunny	5.8	Brown	None	Loamy	<11	80	80	0.04	Dull yellowish brown	None	Loamy	18	230	248
					2018/5/18	Cloudy	25.7	Brown	Faint earth	Loamy	7.5	100	107.5	0.04	Blackish brown	Faint earth	Loamy	7.4	110	117.4	0.05				
					2018/8/27	Sunny	37.4	Dull yellowish brown	None	Loamy	14	130	144	0.04	Dull yellowish brown	Faint earth	Loamy	<7.3	60	60	0.05				
					2018/11/28	Sunny	17.2	Brown	None	Loamy	<9.4	62	62	0.05	Brown	None	Loamy	7.5	74	81.5	0.05				
					2019/2/8	Sunny	7.6	Brown	Faint earth	Loamy	13	120	133	0.04	Dark brown	Faint earth	Loamy	<13	73	73	0.05				
54	Watarase River Area	Watarase River	Nakabashi Bridge	Tatebayashi City	2018/5/18	Cloudy	29.1	Dark brown	Faint earth	Loamy	12	120	132	0.06	Dark olive brown	Faint earth	Loamy	8.2	56	64.2	0.05				
					2018/8/27	Sunny	35.4	Grayish yellowish brown	None	Loamy	13	100	113	0.06	Dark grayish yellow	None	Loamy	<7.4	64	64	0.05				
					2018/11/28	Sunny	15.3	Brownish gray	None	Loamy	16	170	186	0.06	Brownish gray	None	Loamy	<5.8	45	45	0.05				
					2019/2/8	Sunny	8.1	Yellowish brown	None	Loamy	8.1	91	99.1	0.06	Dark olive brown	None	Loamy	<6.5	42	42	0.06				
					2018/5/18	Sunny	30.4	Dark brown	Faint earth	Loamy	<6.8	46	46	0.05	Blackish brown	Faint earth	Loamy	20	160	180	0.05				
55	Watarase River Area	Watarase River	Shankai Bridge	Tochigi City	2018/6/4	Sunny	29.5	Brown	Faint earth	Loamy	<9.2	77	77	0.05	Blackish brown	Faint earth	Loamy	19	130	149	0.04				
					2018/7/5	Cloudy	25.4	Dark brown	Faint earth	Loamy	16	120	136	0.05	Blackish brown	Faint earth	Loamy	10	130	140	0.04				
					2018/8/27	Sunny	34.3	Dull yellowish brown	Faint earth	Loamy	<8.3	73	73	0.05	Grayish yellowish brown	Faint earth	Loamy	24	250	274	0.06				
					2018/9/11	Cloudy	22.2	Dark brown	Faint earth	Loamy	<10	85	85	0.04	Dark brown	Faint earth	Loamy	20	220	240	0.05				
					2018/11/28	Sunny	12.6	Dull yellowish brown	None	Loamy	<8.5	61	61	0.05	Blackish brown	None	Loamy	12	130	142	0.05				
					2019/2/8	Cloudy	9.2	Dark brown	Faint earth	Loamy	8.9	95	103.9	0.05	Grayish yellowish brown	Faint earth	Loamy	12	170	182	0.04				

Tochigi Lakes and Reservoirs (Sediment) 1/1

No.	Location			Municipality	Sampling Date	Weather	Air temperature (°C)	Water depth (m)	Sediment																Activity concentration [Bq/kg(dry)]			Remarks	
	Water area	Location	Center						Sediment temperature (°C)	Sample length (cm)	Color	Odor	General items						Grain size distribution(%)				Sediment content (%)	Density (g/cm ³)	Property	Radioactive cesium			
													Coarse gravel	Medium gravel	Fine gravel	Coarse sand		Medium sand	Fine sand	Silt	Clay	Cs-134				Cs-137	Total		
57	Nakagawa River System	Myama Dam Reservoir	Center	Nanushibara City	2018/5/28	Sunny	19.3	37.5	10.1	7	Dark olive	None	0.0	0.0	0.0	0.1	0.1	0.3	59.0	40.6	32.4	2.587	Silt	73	950	1,023			
					2018/8/30	Sunny	24.2	23.0	18.6	10	Grayish yellowish brown	None	0.0	0.0	0.0	0.0	0.1	0.3	57.9	41.6	28.6	2.518	Silt	53	640	693			
					2018/10/9	Cloudy	17.2	33.7	13.7	10	Dull yellowish brown	None	0.0	0.0	0.0	0.0	0.0	0.2	54.5	45.1	29.9	2.609	Silt	41	520	561			
		2018/12/12	Sunny		3.0	33.0	7.3	10	Dark olive	None	0.0	0.0	0.0	0.0	0.1	0.5	60.3	39.0	34.3	2.572	Silt	69	800	869					
		2018/5/29	Sunny		23.2	22.5	11.8	10	Grayish yellowish brown	None	0.0	0.0	0.0	0.0	0.2	4.3	66.5	29.1	39.3	2.545	Silt	-19	170	170					
		2018/8/29	Cloudy		24.0	20.6	19.7	10	Blackish brown	None	0.0	0.0	0.0	0.0	0.2	2.0	70.5	27.4	30.6	2.425	Silt	33	380	413					
	58	Shibara Dam Reservoir	Center	Nanushibara City	2018/10/9	Sunny	21.4	21.0	15.5	7	Blackish brown	None	0.0	0.0	0.0	0.3	15.7	39.8	23.7	19.3	46.2	2.551	Silt/sand	16	170	186			
					2018/12/12	Cloudy	3.5	24.5	9.1	5	Blackish brown	None	0.0	0.0	0.0	0.4	31.6	42.4	18.2	7.4	46.7	2.656	Silt	-10	84	84			
					2018/5/31	Sunny	19.2	78.3	5.6	10	Dark olive	None	0.0	0.0	0.0	0.4	1.3	34.4	63.8	38.0	2.587	Silt	-17	190	190				
					2018/8/17	Sunny	23.4	63.0	14.5	10	Dark olive	None	0.0	0.0	0.0	0.1	0.6	30.0	69.3	35.5	2.606	Silt	15	220	232				
					2018/10/18	Sunny	18.0	84.2	6.8	10	Dark olive	None	0.0	0.0	0.0	0.2	0.5	30.7	68.6	39.2	2.624	Silt	23	210	233				
					2018/12/10	Sunny	4.2	81.7	11.1	10	Dark olive	None	0.0	0.0	0.0	0.4	2.6	2.9	31.2	63.0	34.3	2.663	Silt	79	1,000	1,079			
59	Kawaji Dam Reservoir	Center	Nanushibara City	2018/5/31	Cloudy	20.0	37.5	7.5	5	Brown	None	0.0	0.0	0.0	0.0	3.3	70.7	26.0	46.9	2.577	Silt	-16	85	85					
				2018/8/17	Sunny	19.3	48.9	8.5	10	Dull yellowish brown	None	0.0	0.0	0.0	0.1	14.2	69.3	16.5	42.1	2.582	Silt	-12	61	61					
				2018/10/18	Sunny	15.4	48.5	15.6	5	Dull yellowish brown	None	0.0	0.0	0.0	0.0	2.0	68.3	29.6	43.9	2.578	Silt	-14	150	150					
				2018/12/10	Sunny	1.8	42.1	9.3	6	Dark olive	None	0.0	0.0	0.0	0.0	0.7	57.0	42.3	39.3	2.587	Silt	-14	130	130					
				2018/5/31	Cloudy	14.1	69.2	8.8	10	Olive black	None	0.0	0.0	0.0	0.1	0.4	48.4	51.1	35.9	2.490	Silt	-19	85	85					
				2018/8/17	Sunny	18.2	66.8	10.2	10	Olive black	None	0.0	0.0	0.0	0.1	0.4	54.1	45.3	30.5	2.502	Silt	-19	75	75					
60	Kinugawa River System	Kawamata Dam Reservoir	Center	Nikko City	2018/10/18	Sunny	14.8	76.5	8.5	10	Olive black	None	0.0	0.0	0.0	0.1	0.5	48.1	51.3	35.6	2.584	Silt	-18	38	38				
					2018/12/10	Sunny	2.1	76.5	5.8	10	Olive black	None	0.0	0.0	0.1	0.2	0.2	32.2	67.4	31.6	2.568	Silt	-16	82	82				
					2018/5/23	Cloudy	14.5	13.0	11.4	10	Black	None	0.0	0.0	0.0	0.1	0.5	55.4	44.0	17.5	2.466	Silt	33	310	343				
		2018/8/16	Rain		23.0	12.0	13.3	10	Black	None	0.0	0.0	0.0	0.1	0.3	43.2	56.5	10.9	2.257	Silt	-53	500	500						
		2018/10/2	Sunny		16.3	12.5	12.0	8	Black	None	0.0	0.0	0.0	0.0	0.1	42.1	57.8	15.1	2.304	Silt	55	530	583						
		2018/12/3	Cloudy		8.2	12.0	6.0	10	Black	Faint hydrogen sulfide	0.0	0.0	0.0	0.1	0.2	0.5	43.1	56.1	12.4	2.384	Silt	-44	240	240					
	61	Kinugawa River System	Lake Yumoko	Center	Nikko City	2018/5/23	Cloudy	12.3	163.2	4.9	10	Black	None	0.0	0.0	0.1	0.3	0.9	44.1	54.7	13.3	2.280	Silt	63	650	713			
						2018/8/16	Sunny	24.2	168.0	10.6	10	Black	None	0.0	0.0	0.0	0.0	1.5	48.0	50.4	13.6	2.188	Silt	-47	440	440			
						2018/10/2	Sunny	14.5	164.1	4.1	10	Black	Faint swamp	0.0	0.0	0.0	0.0	1.2	42.3	56.4	12.3	2.209	Silt	-46	460	460			
			2018/11/26	Sunny		8.4	165.0	4.0	10	Black	Faint hydrogen sulfide	0.0	0.0	0.0	0.1	0.5	44.6	54.8	12.2	2.258	Silt	-67	570	570					
			2018/5/18	Sunny		29.2	5.5	20.8	4	Dark grayish yellow	None	0.0	0.0	0.0	0.1	0.4	4.0	76.6	19.0	37.5	2.609	Silt	16	110	126				
			2018/8/27	Sunny		30.6	3.7	26.5	4	Yellowish gray	None	0.0	0.0	0.0	0.1	0.1	6.7	60.7	32.3	33.7	2.519	Silt	-15	100	100				
64	Watarase River System	Watarase Reservoir	Center	Tochigi City	2018/10/17	Sunny	20.5	6.9	20.7	8	Dark grayish yellow	None	0.0	0.0	0.0	0.4	6.6	63.1	29.9	35.8	2.515	Silt	-18	77	77				
					2018/12/11	Sunny	4.0	7.0	12.1	10	Dark grayish yellow	None	0.0	0.0	0.0	0.0	0.2	1.3	57.0	41.5	29.0	2.595	Silt	-21	100	100			

Tochigi Reservoirs (Surrounding Environment) 1/1

L a k e s R e s e r v o i r s	Location				Sampling Date	Weather	Air temperature (°C)	Surrounding Environment(Soil,Air dose)						Remarks	
	No.	Water area	Location					Municipality	Soil			Air Dose (μSv/h)			
									General items						
									Color	Odor	Property	Activity concentration [Bq/kg(dry)]			
												Radioactive cesium			
Cs-134	Cs-137	Total													
57	Nakagawa River System	Miyama Dam Reservoir	Center	Nasushiobara City	2018/5/28	Sunny	19.3	Grayish yellowish brown	Faint earth	Loamy	100	1,100	1,200	0.07	
					2018/8/30	Sunny	24.2	Grayish yellowish brown	None	Loamy	27	320	347	0.06	
					2018/10/9	Cloudy	17.2	Brown	Faint earth	Loamy	<5.5	24	24	0.05	
		2018/12/12	Sunny		3.0	Brown	None	Loamy	41	500	541	0.05			
		2018/5/29	Sunny		23.2	Dull yellowish brown	Faint earth	Loamy	130	1,300	1,430	0.08			
		2018/8/29	Cloudy		24.0	Brown	Faint earth	Loamy	6.5	57	63.5	0.08			
	58	Shiobara Dam Reservoir	Center	Nasushiobara City	2018/10/9	Sunny	21.4	Brown	Faint earth	Loamy	12	120	132	0.07	
					2018/12/12	Cloudy	3.5	Grayish yellowish brown	Faint earth	Loamy	16	200	216	0.07	
					2018/5/31	Sunny	19.2	Dark olive	Faint earth	Loamy	62	590	652	0.11	
					2018/8/17	Sunny	23.4	Olive brown	Faint earth	Loamy	40	500	540	0.11	
					2018/10/18	Sunny	18.0	Olive brown	Faint earth	Loamy	66	740	806	0.10	
					2018/12/10	Sunny	4.2	Olive brown	None	Loamy	79	800	879	0.11	
60	Ikari Dam Reservoir	Center	Nasushiobara City	2018/5/31	Cloudy	20.0	Dark brown	None	Loamy	120	1,100	1,220	0.07		
				2018/8/17	Sunny	19.3	Dark brown	Faint earth	Loamy	53	650	703	0.09		
				2018/10/18	Sunny	15.4	Dark brown	Faint earth	Loamy	82	990	1,072	0.11		
				2018/12/10	Sunny	1.8	Dark brown	Faint earth	Loamy	75	910	985	0.10		
				2018/5/31	Cloudy	14.1	Blackish brown	Faint earth	Loamy	<7.0	29	29	0.06		
				2018/8/17	Sunny	18.2	Dark brown	Faint earth	Loamy	11	89	100	0.06		
61	Kinugawa River System	Kawamata Dam Reservoir	Center	Nikko City	2018/10/18	Sunny	14.8	Blackish brown	Faint earth	Loamy	<8.6	47	47	0.06	
					2018/12/10	Sunny	2.1	Blackish brown	Faint earth	Loamy	<8.0	39	39	0.06	
					2018/5/23	Cloudy	14.5	Dull yellowish brown	Faint earth	Loamy	<5.1	27	27	0.07	
		2018/8/16	Rain		23.0	Brown	Faint earth	Loamy	<7.2	78	78	0.06			
		2018/10/2	Sunny		16.3	Brown	Faint earth	Loamy	<6.4	34	34	0.06			
		2018/12/3	Cloudy		8.2	Brown	None	Loamy	<5.9	42	42	0.07			
63	Lake Chuzenji	Center	Nikko City	2018/5/23	Cloudy	12.3	Black	Faint earth	Loamy	38	360	398	0.05		
				2018/8/16	Sunny	24.2	Blackish brown	Faint earth	Loamy	29	320	349	0.05		
				2018/10/2	Sunny	14.5	Black	Faint earth	Loamy	74	780	854	0.06		
				2018/11/26	Sunny	8.4	Blackish brown	Faint earth	Loamy	41	510	551	0.06		
				2018/5/18	Sunny	29.2	Brown	Faint earth	Loamy	22	180	202	0.05		
				2018/8/27	Sunny	30.6	Brown	None	Loamy	46	540	586	0.05		
64	Watarase River System	Watarase Reservoir	Center	Tochigi City	2018/10/17	Sunny	20.5	Dull yellowish brown	Faint earth	Loamy	12	140	152	0.05	
					2018/12/11	Sunny	4.0	Light yellowish brown	Faint earth	Loamy	20	240	260	0.04	



Survey Locations (Tochigi Prefecture)