

FY2018 Miyagi Prefecture Survey Results

[Outline of results]

(1) Water

Rivers

Radioactive cesium (Cs-134, Cs-137): Not detectable at any location

Lakes and reservoirs

Radioactive cesium (Cs-134, Cs-137): Not detectable at any location

Coastal areas

Radioactive cesium (Cs-134, Cs-137): Not detectable at any location

(2) Sediments

Rivers

Cs-134: ND - 66 Bq/kg (dry)

Cs-137: 4.8 - 620Bq/kg (dry)

Lakes and reservoirs

Cs-134: ND - 180 Bq/kg (dry)

Cs-137: 3.0 - 1,800 Bq/kg (dry)

Coastal areas

Cs-134: ND - 38 Bq/kg (dry)

Cs-137: ND - 380 Bq/kg (dry)

(3) Surrounding Environment

(a) Soil

Rivers

Cs-134: ND - 330 Bq/kg (dry)

Cs-137: 1.7 - 3,300 Bq/kg (dry)

Lakes and reservoirs

Cs-134: ND - 150 Bq/kg (dry)

Cs-137: 6.8 - 1,500 Bq/kg (dry)

(b) Ambient dose rate

Rivers

0.04 - 0.20 μ Sv/h

Lakes and reservoirs

0.03 - 0.14 μ Sv/h

Miyagi River (Water) 1/4

No.	Location			Sampling Date	Weather	Air temperature (°C)	Water depth (m)	Water							Activity concentration(Bq/L)		Remarks		
	Water area	Location	Municipality					Water temperature (°C)	Sampling depth (m)	Color	Odor	Transparency (cm)	Electrical conductivity (mS/m)	SS (mg/L)	Turbidity (FNU)	Radioactive cesium			
																Cs-134		Cs-137	
R i v e r s	1	Shishiori River	Kinzan Bridge	Kesennuma City	2018/5/7	Cloudy	17.5	0.3	11.2	0.0	Yellowish white	None	>100	13.9	<1	0.4	<-0.69	<-0.92	
					2018/8/13	Sunny	25.0	0.2	15.8	0.0	Greenish yellowish white	None	>100	13.2	1	0.6	<-0.60	<-0.84	
					2018/11/9	Rain	15.5	0.3	12.3	0.0	Greenish yellowish white	None	>100	12.9	1	0.6	<-0.73	<-0.88	
			2019/1/13		Sunny	3.6	0.4	2.7	0.0	Light grayish greenish yellow	None	>100	14.4	1	0.5	<-0.61	<-0.55		
			2018/5/6		Cloudy	21.5	0.8	15.2	0.0	Light grayish yellow green	None	80	259	3	1.9	<-0.65	<-0.75		
			2018/8/12		Sunny	27.8	0.4	23.8	0.0	Grayish yellow	None	26	546	13	11	<-0.77	<-0.66		
	2	Namiita Bridge	Kesennuma City	2018/11/10	Cloudy	18.2	1.7	14.3	0.0	Grayish greenish yellow	None	60	133	6	4.3	<-0.67	<-0.84		
				2019/1/13	Sunny	0.0	0.9	7.6	0.0	Light grayish greenish yellow	None	>100	3,500	1	0.8	<-0.82	<-0.69		
				2018/5/7	Cloudy	14.8	0.3	14.1	0.0	Light grayish yellow	None	>100	11.8	<1	1.2	<-0.56	<-0.74		
				2018/8/13	Sunny	30.3	0.3	22.4	0.0	Greenish yellowish white	None	>100	12.4	3	1.8	<-0.68	<-0.88		
				2018/11/11	Sunny	9.7	0.3	11.5	0.0	Light grayish greenish yellow	None	>100	11.7	1	0.7	<-0.51	<-0.84		
				2019/1/14	Sunny	0.4	0.3	3.3	0.0	Light grayish greenish yellow	None	>100	12.6	1	1.0	<-0.65	<-0.75		
	3	Tateyama-ohashi Bridge	Kesennuma City	2018/5/5	Sunny	20.1	0.2	14.2	0.0	Light grayish yellow	None	94	25.1	3	1.8	<-0.74	<-0.84		
				2018/8/13	Sunny	30.3	0.3	21.3	0.0	Light grayish yellow	None	91	33.5	9	3.6	<-0.83	<-0.55		
				2018/11/11	Sunny	15.4	0.7	12.5	0.0	Light grayish greenish yellow	None	>100	14.3	2	1.2	<-0.78	<-0.63		
2019/1/14				Sunny	3.2	0.6	3.2	0.0	Light grayish greenish yellow	None	>100	296	1	0.7	<-0.81	<-0.80			
2018/5/5				Sunny	21.0	3.5	14.5	0.0	Grayish yellow green	None	>100	744	3	2.1	<-0.76	<-0.66			
2018/8/12				Sunny	27.2	2.5	21.9	0.0	Grayish greenish yellow	None	86	729	3	2.1	<-0.72	<-0.63			
4	Okawa River	Kamiyama Bridge	Kesennuma City	2018/11/11	Sunny	11.9	3.4	12.3	0.0	Grayish greenish yellow	None	>100	373	1	1.0	<-0.65	<-0.75		
				2019/1/13	Cloudy	0.0	3.7	4.0	0.0	Dark grayish yellowish green	None	>100	2,110	2	1.0	<-0.71	<-0.75		
				2018/5/5	Sunny	16.8	0.3	16.0	0.0	Grayish greenish yellow	None	45	438	9	3.8	<-0.58	<-0.75		
				2018/8/12	Cloudy	25.1	1.4	24.9	0.0	Dark grayish yellow green	None	56	385	4	3.9	<-0.86	<-0.70		
				2018/11/11	Sunny	15.9	0.9	14.9	0.0	Grayish greenish yellow	None	>100	1,290	1	1.4	<-0.66	<-0.80		
				2019/1/13	Sunny	6.4	0.7	7.2	0.0	Light grayish yellow	None	>100	2,040	3	2.2	<-0.69	<-0.80		
5	Okawa River Estuary	Kesennuma City	2018/5/4	Sunny	14.0	0.3	13.6	0.0	Light grayish yellow	None	13	10.5	43	34	<-0.49	<-0.70			
			2018/8/18	Sunny	24.3	0.4	20.2	0.0	Light grayish yellow	None	55	10.0	7	5.3	<-0.88	<-0.83			
			2018/11/6	Cloudy	16.0	0.2	11.4	0.0	Light grayish yellow	None	>100	19.2	1	2.1	<-0.61	<-0.88			
			2019/1/17	Sunny	2.0	0.3	0.8	0.0	Light grayish yellow	None	>100	20.7	2	1.8	<-0.92	<-0.80			
			2018/5/4	Cloudy	11.9	0.5	13.6	0.0	Light grayish greenish yellow	None	12	9.9	63	45	<-0.63	<-0.54			
			2018/8/18	Sunny	21.5	0.4	19.7	0.0	Grayish greenish yellow	None	39	8.2	13	9.4	<-0.73	<-0.70			
6	Omose River	Ozaki Bridge	Kesennuma City	2018/11/6	Cloudy	16.4	0.3	11.5	0.0	Light grayish yellow green	None	>100	16.7	2	3.1	<-0.73	<-0.84		
				2019/1/17	Cloudy	3.3	0.4	1.1	0.0	Grayish yellow	None	>100	17.4	2	2.4	<-0.83	<-0.63		
				2018/5/2	Cloudy	20.2	0.4	13.4	0.0	Light grayish yellow green	None	57	8.4	6	4.4	<-0.77	<-0.75		
				2018/8/19	Sunny	23.6	0.4	20.3	0.0	Light grayish greenish yellow	None	47	10.5	13	7.7	<-0.83	<-0.96		
				2018/11/12	Sunny	12.4	0.4	12.0	0.0	Light grayish yellow	None	>100	13.2	2	1.9	<-0.67	<-0.75		
				2019/1/18	Cloudy	0.8	0.4	1.5	0.0	Light grayish yellow	None	>100	15.7	1	1.4	<-0.78	<-0.75		
7	Arima River	Unanda Bridge	Kurihara City	2018/5/9	Rain	8.6	2.2	8.3	0.0	Yellow greenish white	None	>100	9.0	<1	0.6	<-0.86	<-0.55		
				2018/8/9	Rain	30.9	1.6	19.7	0.0	Light grayish yellow green	None	90	8.9	5	2.7	<-0.70	<-0.55		
				2018/11/3	Sunny	9.2	0.9	8.1	0.0	Light grayish yellow green	None	>100	13.3	<1	0.9	<-0.58	<-0.80		
				2019/1/15	Cloudy	-0.5	0.5	0.7	0.0	Light grayish greenish yellow	None	>100	16.7	<1	0.5	<-0.55	<-0.75		
				2018/5/15	Sunny	27.1	0.4	14.7	0.0	Light grayish yellow	None	86	11.0	4	3.1	<-0.73	<-0.61		
				2018/8/21	Sunny	27.9	0.3	21.8	0.0	Light grayish yellow	None	88	10.7	3	3.2	<-0.67	<-0.63		
8	Kinryu River	Obata Bridge	Kurihara City	2018/11/7	Cloudy	18.1	0.4	12.4	0.0	Light grayish yellow	None	>100	13.1	<1	0.8	<-0.80	<-0.84		
				2019/1/15	Cloudy	1.5	0.3	0.6	0.0	Light grayish greenish yellow	None	>100	14.1	<1	0.9	<-0.78	<-0.80		
				2018/5/15	Sunny	24.0	0.5	13.4	0.0	Greenish yellowish white	None	>100	6.3	1	0.7	<-0.83	<-0.61		
				2018/8/21	Sunny	29.2	0.6	19.4	0.0	Greenish yellowish white	None	>100	8.6	<1	0.8	<-0.78	<-0.75		
				2018/11/7	Sunny	17.4	0.8	11.0	0.0	Light grayish greenish yellow	None	>100	8.9	<1	0.4	<-0.72	<-0.63		
				2019/1/16	Sunny	2.0	0.5	8.1	0.0	Light grayish greenish yellow	None	>100	8.9	<1	0.4	<-0.68	<-0.69		
9	Kitakami River	Tome-ohashi Bridge (Tome)	Tome City	2018/5/4	Rain	13.4	0.3	11.9	0.0	Light grayish greenish yellow	None	32	10.4	21	13	<-0.55	<-0.61		
				2018/8/18	Sunny	25.6	0.4	20.9	0.0	Grayish yellow	None	56	12.1	18	13	<-0.60	<-0.80		
				2018/11/12	Cloudy	10.0	0.3	10.5	0.0	Grayish yellow	None	>100	30.4	8	3.9	<-0.70	<-0.88		
				2019/1/17	Cloudy	2.5	0.4	2.6	0.0	Light grayish greenish yellow	None	>100	18.5	3	3.1	<-0.63	<-0.69		
				2018/5/2	Cloudy	20.2	0.4	13.4	0.0	Light grayish yellow green	None	57	8.4	6	4.4	<-0.77	<-0.75		
				2018/8/19	Sunny	23.6	0.4	20.3	0.0	Light grayish greenish yellow	None	47	10.5	13	7.7	<-0.83	<-0.96		
10	Kitakami River System	Sanhasama River	Doman Bridge (Kurikoma Dam)	Kurihara City	2018/11/12	Sunny	12.4	0.4	12.0	0.0	Light grayish yellow	None	>100	13.2	2	1.9	<-0.67	<-0.75	
					2019/1/18	Cloudy	0.8	0.4	1.5	0.0	Light grayish yellow	None	>100	15.7	1	1.4	<-0.78	<-0.75	
					2018/5/9	Rain	8.6	2.2	8.3	0.0	Yellow greenish white	None	>100	9.0	<1	0.6	<-0.86	<-0.55	
					2018/8/9	Rain	30.9	1.6	19.7	0.0	Light grayish yellow green	None	90	8.9	5	2.7	<-0.70	<-0.55	
					2018/11/3	Sunny	9.2	0.9	8.1	0.0	Light grayish yellow green	None	>100	13.3	<1	0.9	<-0.58	<-0.80	
					2019/1/15	Cloudy	-0.5	0.5	0.7	0.0	Light grayish greenish yellow	None	>100	16.7	<1	0.5	<-0.55	<-0.75	
11	Nihasama River	Kajiya Bridge	Kurihara City	2018/5/15	Sunny	27.1	0.4	14.7	0.0	Light grayish yellow	None	86	11.0	4	3.1	<-0.73	<-0.61		
				2018/8/21	Sunny	27.9	0.3	21.8	0.0	Light grayish yellow	None	88	10.7	3	3.2	<-0.67	<-0.63		
				2018/11/7	Cloudy	18.1	0.4	12.4	0.0	Light grayish yellow	None	>100	13.1	<1	0.8	<-0.80	<-0.84		
				2019/1/15	Cloudy	1.5	0.3	0.6	0.0	Light grayish greenish yellow	None	>100	14.1	<1	0.9	<-0.78	<-0.80		
				2018/5/15	Sunny	24.0	0.5	13.4	0.0	Greenish yellowish white	None	>100	6.3	1	0.7	<-0.83	<-0.61		
				2018/8/21	Sunny	29.2	0.6	19.4	0.0	Greenish yellowish white	None	>100	8.6	<1	0.8	<-0.78	<-0.75		
12	Hasama River	Hanayama Dam, inflow area	Kurihara City	2018/11/7	Sunny	17.4	0.8	11.0	0.0	Light grayish greenish yellow	None	>100	8.9	<1	0.4	<-0.72	<-0.63		
				2019/1/16	Sunny	2.0	0.5	8.1	0.0	Light grayish greenish yellow	None	>100	8.9	<1	0.4	<-0.68	<-0.69		
				2018/5/4	Rain	13.4	0.3	11.9	0.0	Light grayish greenish yellow	None	32	10.4	21	13	<-0.55	<-0.61		
				2018/8/18	Sunny	25.6	0.4	20.9	0.0	Grayish yellow	None	56	12.1	18	13	<-0.60	<-0.80		
				2018/11/12	Cloudy	10.0	0.3	10.5	0.0	Grayish yellow	None	>100	30.4	8	3.9	<-0.70	<-0.88		
				2019/1/17	Cloudy	2.5	0.4	2.6	0.0	Light grayish greenish yellow	None	>100	18.5	3	3.1	<-0.63	<-0.69		
13	Wakayamagi	Kurihara City	Kurihara City	2018/5/4	Rain	13.4	0.3	11.9	0.0	Light grayish greenish yellow	None	32	10.4	21	13	<-0.55	<-0.61		
				2018/8/18	Sunny	25.6	0.4	20.9	0.0	Grayish yellow	None	56	12.1	18	13	<-0.60	<-0.80		
				2018/11/12	Cloudy	10.0	0.3	10.5	0.0	Grayish yellow	None	>100	30.4	8	3.9	<-0.70	<-0.88		
				2019/1/17	Cloudy	2.5	0.4	2.6	0.0	Light grayish greenish yellow	None	>100	18.5	3	3.1	<-0.63	<-0.69		

Miyagi River (Water) 2/4

No.	Location			Sampling Date	Weather	Air temperature (°C)	Water depth (m)	Water							Activity concentration(Bq/L)		Remarks		
	Water area	Location	Municipality					Water temperature (°C)	Sampling depth (m)	Color	Odor	Transparency (cm)	Electrical conductivity (mS/m)	SS (mg/L)	Turbidity (FNU)	Radioactive cesium			
																Cs-134		Cs-137	
R i v e r s	14	Hasama River	Yamayoshida Bridge	Tome City	2018/5/2	Cloudy	19.6	0.6	16.7	0.0	Grayish yellow	None	18	14.8	27	23	-0.72	-0.54	
					2018/8/19	Sunny	21.9	1.2	21.3	0.0	Grayish yellow	None	33	12.8	13	10	-0.57	-0.88	
					2018/11/12	Cloudy	10.2	0.6	11.3	0.0	Grayish yellow green	None	86	17.0	7	5.0	-0.63	-0.75	
					2019/1/18	Cloudy	0.4	0.4	0.4	0.0	Grayish yellow	None	>100	20.1	2	3.2	-0.80	-0.84	
	15	Eai River	Todoroki Bridge (Todoroki)	Osaki City	2018/5/16	Sunny	28.5	0.3	15.7	0.0	Light grayish yellow	None	>100	6.7	2	1.3	-0.52	-0.86	
					2018/8/17	Sunny	23.2	0.5	16.9	0.0	Light grayish yellow green	None	24	6.1	17	17	-0.77	-0.61	
					2018/11/13	Sunny	12.5	0.5	10.6	0.0	Greenish yellowish white	None	>100	11.7	<1	0.6	-0.87	-0.96	
					2019/1/16	Snow	1.8	0.5	4.0	0.0	Light grayish greenish yellow	None	>100	10.8	<1	0.9	-0.58	-0.84	
	16	Eai River	Shimizu lock gate	Osaki City	2018/5/1	Sunny	27.2	0.3	16.9	0.0	Light grayish yellow green	None	28	8.7	12	8.5	-0.60	-0.80	
					2018/8/22	Sunny	27.8	0.3	20.0	0.0	Grayish yellow	None	26	9.9	18	19	-0.63	-0.88	
					2018/11/13	Sunny	16.1	0.4	13.7	0.0	Light grayish yellow	None	>100	15.7	4	2.5	-0.75	-0.75	
					2019/1/19	Sunny	3.4	0.4	2.6	0.0	Light grayish greenish yellow	None	>100	13.7	2	1.6	-0.63	-0.80	
	17	Kitakami River System	In Furukawa District, Osaki City	Shinborisaihon, entrance	Osaki City	2018/5/1	Sunny	27.0	1.6	16.3	0.0	Grayish yellow green	None	60	13.2	14	9.8	-0.65	-0.74
						2018/8/17	Sunny	19.3	1.4	22.1	0.0	Grayish yellow	None	66	27.8	11	8.3	-0.76	-0.63
						2018/11/16	Sunny	8.8	1.3	11.1	0.0	Grayish yellow	None	44	29.7	9	10	-0.65	-0.92
						2019/1/19	Sunny	4.3	1.3	1.5	0.0	Dark grayish yellow green	None	72	31.5	4	5.6	-0.57	-0.80
	18	Dekigawa River	Kogota Bridge	Misato Town	2018/5/3	Rain	17.4	1.7	15.4	0.0	Grayish reddish yellow	None	15	13.3	49	41	-0.63	-0.60	
					2018/8/17	Sunny	21.3	0.8	22.3	0.0	Grayish reddish yellow	None	28	15.9	19	13	-0.61	-0.70	
					2018/11/16	Sunny	12.5	0.4	9.6	0.0	Grayish greenish yellow	None	75	18.9	5	5.8	-0.61	-0.63	
					2019/1/19	Cloudy	5.2	0.4	3.0	0.0	Grayish yellow	None	52	29.6	9	7.4	-0.66	-0.80	
19	Eai River	Oikawa Bridge (Tandai)	Wakuya Town /Ishinomaki City	2018/5/2	Cloudy	17.8	0.3	16.3	0.0	Grayish yellow	None	16	12.3	52	50	-0.66	-0.75		
				2018/8/22	Sunny	33.2	0.6	25.7	0.0	Grayish yellow	None	24	11.8	25	19	-0.74	-0.80		
				2018/11/16	Sunny	16.7	0.4	10.9	0.0	Grayish greenish yellow	None	77	15.6	9	4.8	-0.67	-0.75		
				2019/1/18	Snow	-0.8	0.3	1.6	0.0	Dark grayish yellow green	None	>100	17.5	2	2.4	-0.82	-0.69		
20	Kyu-Kitakami River	Kadonowaki	Ishinomaki City	2018/5/19	Cloudy	16.0	8.9	13.8	0.0	Grayish yellow	None	60	12.1	67	43	-0.70	-0.48		
				2018/8/25	Sunny	32.8	9.3	26.8	0.0	Grayish greenish yellow	None	60	119	7	6.1	-0.70	-0.92		
				2018/11/15	Sunny	13.4	8.1	11.4	0.0	Grayish greenish yellow	None	>100	132	3	2.5	-0.84	-0.88		
				2019/1/20	Cloudy	4.8	8.5	2.2	0.0	Dark grayish yellow green	None	>100	332	2	1.8	-0.83	-0.84		
21	Naruse River	Ono Bridge (Ono)	Higashi-Matsushima City	2018/5/19	Cloudy	13.7	0.5	14.3	0.0	Grayish yellow	None	14	12.1	39	30	-0.74	-0.88		
				2018/8/25	Sunny	32.7	0.8	26.7	0.0	Dark grayish yellow green	None	46	13.9	21	13	-0.78	-0.75		
				2018/11/15	Sunny	15.2	0.6	11.8	0.0	Dark grayish greenish yellow	None	73	19.4	7	5.7	-0.88	-0.84		
				2019/1/20	Cloudy	2.1	0.6	2.1	0.0	Grayish yellow green	None	87	18.3	5	4.7	-0.65	-0.80		
22	Sumoshi River	Tagajozeki Weir	Tagajo City	2018/5/26	Sunny	23.3	0.3	22.2	0.0	Grayish greenish yellow	None	21	28.1	32	29	-0.54	-0.80		
				2018/8/24	Cloudy	25.1	0.5	25.7	0.0	Grayish yellow	None	46	26.7	11	6.0	-0.74	-0.67		
				2018/11/17	Cloudy	16.1	0.6	11.2	0.0	Grayish greenish yellow	None	81	161	4	3.9	-0.67	-0.69		
				2019/1/22	Sunny	6.4	0.4	2.8	0.0	Grayish greenish yellow	None	48	118	9	10	-0.76	-0.75		
23	Sumoshi River	Nenbutsu Bridge	Tagajo City	2018/5/26	Sunny	20.9	0.5	18.3	0.0	Grayish greenish yellow	None	25	2,360	13	11	-0.76	-0.84		
				2018/8/24	Cloudy	24.5	0.9	27.1	0.0	Dark grayish yellow green	None	33	1,400	12	6.3	-0.82	-0.63		
				2018/11/17	Cloudy	9.8	0.9	17.1	0.0	Grayish greenish yellow	None	86	4,670	2	2.0	-0.60	-0.63		
				2019/1/22	Sunny	3.2	0.8	4.8	0.0	Dark grayish yellow green	None	92	3,430	4	2.8	-0.83	-0.88		
24	Teizan-unga Canal (Kyu-sumoshi River)	Teizan Bridge	Shichigahama Town/Tagajo City	2018/5/26	Sunny	22.2	0.8	19.2	0.0	Grayish greenish yellow	None	80	3,830	8	6.2	-0.77	-0.55		
				2018/8/24	Cloudy	26.0	1.3	25.8	0.0	Dark grayish greenish yellow	None	65	2,460	4	2.4	-0.78	-0.88		
				2018/11/17	Cloudy	11.6	1.6	15.3	0.0	Dark grayish greenish yellow	None	62	3,690	4	2.3	-0.61	-0.69		
				2019/1/22	Snow	3.8	0.7	5.4	0.0	Dark grayish yellow green	None	>100	4,800	3	1.9	-0.68	-0.75		
25	Nanakita River System	Nanakita River	Nanakita Bridge	Sendai City	2018/5/20	Sunny	20.7	0.4	15.4	0.0	Grayish yellow green	None	53	14.4	14	11	-0.70	-0.75	
					2018/8/24	Rain	26.7	0.5	25.7	0.0	Light grayish greenish yellow	None	>100	19.6	2	1.8	-0.74	-0.84	
					2018/11/17	Sunny	15.1	0.3	11.9	0.0	Light grayish yellow	None	>100	25.9	2	1.7	-0.74	-0.74	
					2019/1/23	Sunny	5.1	0.3	1.1	0.0	Light grayish greenish yellow	None	>100	25.5	2	2.2	-0.51	-0.63	
26	Nanakita River System	Nanakita River	Fukuda-obashi Bridge	Sendai City	2018/5/24	Sunny	21.3	0.4	22.4	0.0	Light grayish yellow	None	28	84.4	8	6.0	-0.70	-0.69	
					2018/8/29	Rain	20.4	0.7	21.1	0.0	Grayish yellow	None	38	13.4	26	12	-0.77	-0.80	
					2018/11/18	Sunny	14.5	0.4	11.6	0.0	Grayish yellow	None	>100	370	2	2.3	-0.58	-0.69	
					2019/1/23	Cloudy	7.6	0.3	5.5	0.0	Dark grayish yellow green	None	78	549	8	4.8	-0.76	-0.69	

Miyagi River (Water) 3/4

No.	Location			Sampling Date	Weather	Air temperature (°C)	Water depth (m)	Water								Activity concentration(Bq/L)		Remarks
	Water area	Location	Municipality					Water temperature (°C)	Sampling depth (m)	Color	Odor	Transparency (cm)	Electrical conductivity (mS/m)	SS (mg/L)	Turbidity (FNU)	Radioactive cesium		
																Cs-134	Cs-137	
27	Nanakita River System	Umeda River	Fukuda Bridge	Sendai City	2018/5/24	Sunny	22.4	0.5	21.7	0.0	Grayish yellow	None	28	22.9	22	17	-0.68	<-0.63
					2018/8/29	Cloudy	19.5	1.6	21.2	0.0	Dark grayish yellow	None	27	14.8	24	12	<-0.61	<-0.75
					2018/11/18	Sunny	11.8	0.8	12.6	0.0	Grayish greenish yellow	None	43	1,250	5	3.2	<-0.75	<-0.69
					2019/1/23	Sunny	7.4	0.4	3.1	0.0	Light grayish yellow	None	>100	198	2	2.5	<-0.78	<-0.80
					2018/5/24	Sunny	21.2	0.4	20.1	0.0	Dark grayish yellow	None	46	1,010	8	8.1	<-0.56	<-0.61
28	Nanakita River	Takasago Bridge	Sendai City	2018/8/30	Cloudy	23.4	0.5	21.5	0.0	Grayish yellow	None	36	78.6	13	10	<-0.66	<-0.84	
				2018/11/18	Sunny	10.9	0.3	11.7	0.0	Grayish yellow	None	62	1,550	7	4.6	<-0.63	<-0.75	
				2019/1/23	Cloudy	5.6	0.5	5.5	0.0	Grayish yellow green	None	>100	3,330	3	2.7	<-0.75	<-0.75	
				2018/5/24	Sunny	23.2	0.6	18.0	0.0	Light grayish greenish yellow	None	>100	263	1	1.5	<-0.68	<-0.75	
				2018/8/30	Cloudy	26.5	0.6	20.6	0.0	Grayish yellow	None	52	28.8	17	9.2	<-0.60	<-0.66	
29	Natori River	Yuriage-ohashi Bridge	Sendai City/Natori City	2018/11/18	Sunny	7.3	0.5	9.5	0.0	Light grayish yellow	None	>100	949	1	1.2	<-0.63	<-0.75	
				2019/1/24	Sunny	2.8	0.6	5.3	0.0	Dark grayish yellow green	None	>100	2,930	12	5.1	<-0.63	<-0.63	
				2018/5/22	Sunny	25.0	0.3	19.4	0.0	Greenish yellowish pale gray	None	>100	9.2	1	1.3	<-0.80	<-0.80	
				2018/8/31	Cloudy	23.0	0.3	18.1	0.0	Greenish yellowish white	None	>100	7.9	2	1.6	<-0.67	<-0.54	
				2018/11/19	Cloudy	11.1	0.3	10.5	0.0	Greenish yellowish white	None	>100	11.1	<1	0.4	<-0.66	<-0.80	
30	Natori River System	Yakushi Bridge	Natori City	2019/1/24	Snow	0.5	0.4	2.5	0.0	Greenish yellowish white	None	>100	11.6	<1	0.7	<-0.75	<-0.88	
				2018/5/29	Sunny	26.8	0.4	22.4	0.0	Yellowish dark gray	None	23	18.2	35	24	<-0.60	<-0.88	
				2018/8/31	Cloudy	24.7	0.6	18.2	0.0	Grayish greenish yellow	None	39	12.5	13	9.4	<-0.78	<-0.54	
				2018/11/19	Cloudy	13.8	0.5	11.0	0.0	Grayish yellow green	None	87	19.3	8	2.9	<-0.80	<-0.63	
				2019/1/24	Sunny	3.0	0.4	2.5	0.0	Light grayish yellow	None	>100	21.2	2	1.9	<-0.78	<-0.84	
31	Masuda River	Koyama Bridge	Natori City	2018/5/29	Sunny	26.4	0.7	25.1	0.0	Greenish yellowish dark gray	None	18	68.8	27	22	<-0.66	<-0.70	
				2018/8/30	Cloudy	23.4	1.2	21.9	0.0	Grayish yellow	None	32	19.2	14	13	<-0.52	<-0.54	
				2018/11/19	Cloudy	10.0	1.7	10.5	0.0	Grayish greenish yellow	None	52	109	7	4.3	<-0.61	<-0.69	
				2019/1/25	Sunny	2.5	1.2	3.0	0.0	Dark grayish yellow green	None	>100	1,170	4	3.0	<-0.68	<-0.55	
				2018/4/24	Rain	13.9	0.6	13.6	0.0	Grayish yellow green	None	96	16.6	6	3.4	<-0.79	<-0.63	
33	Abukuma River System	Abukuma River	Hadeniwa Bridge	Marumori Town	2018/5/23	Cloudy	23.3	0.4	18.0	0.0	Grayish yellow green	None	85	18.8	7	5.2	<-0.82	<-0.75
					2018/6/8	Sunny	25.6	0.5	22.7	0.0	Dark grayish yellow green	None	78	21.3	5	3.1	<-0.63	<-0.80
					2018/7/21	Cloudy	32.9	0.4	30.3	0.0	Grayish yellow green	None	67	23.0	4	2.7	<-0.72	<-0.75
					2018/8/15	Sunny	29.4	1.0	27.1	0.0	Light grayish greenish yellow	None	52	18.4	9	3.8	<-0.65	<-0.84
					2018/9/4	Cloudy	26.6	0.4	23.1	0.0	Grayish yellow green	None	66	18.8	8	5.7	<-0.85	<-0.84
					2018/10/15	Cloudy	15.2	0.6	15.8	0.0	Grayish greenish yellow	None	89	19.8	5	3.1	<-0.58	<-0.63
					2018/12/12	Cloudy	3.6	0.6	6.0	0.0	Grayish greenish yellow	None	83	25.5	6	3.4	<-0.74	<-0.84
					2019/1/29	Cloudy	3.4	0.6	3.4	0.0	Grayish greenish yellow	None	>100	27.7	4	2.8	<-0.65	<-0.69
					2019/2/13	Sunny	3.9	0.6	4.1	0.0	Grayish greenish yellow	None	>100	25.2	6	4.3	<-0.70	<-0.63
					2018/4/24	Rain	14.0	0.3	13.7	0.0	Light grayish yellow green	None	85	16.2	6	3.7	<-0.69	<-0.75
					2018/5/23	Cloudy	23.2	0.4	19.4	0.0	Light grayish yellow	None	59	18.7	8	5.5	<-0.67	<-0.80
					2018/6/8	Sunny	30.5	0.3	23.9	0.0	Light grayish greenish yellow	None	92	18.7	3	2.2	<-0.74	<-0.75
					2018/7/21	Sunny	32.2	0.3	30.8	0.0	Grayish yellow green	None	52	22.8	10	6.1	<-0.80	<-0.63
					2018/8/15	Sunny	30.3	0.3	28.2	0.0	Light grayish yellow	None	62	17.9	8	4.0	<-0.78	<-0.63
					2018/9/4	Cloudy	25.0	0.3	23.2	0.0	Grayish yellow green	None	69	18.4	10	5.6	<-0.62	<-0.63
2018/10/15	Cloudy	17.9	0.3	16.7	0.0	Light grayish yellow	None	96	19.5	2	1.9	<-0.75	<-0.80					
2018/12/12	Sunny	7.7	0.4	6.0	0.0	Light grayish greenish yellow	None	>100	24.9	3	2.1	<-0.67	<-0.75					
34	Abukuma River System	Marumori Bridge	Marumori Town	2019/1/29	Cloudy	4.5	0.4	4.1	0.0	Grayish yellow	None	64	27.0	15	5.7	<-0.94	<-0.69	
				2019/2/13	Sunny	3.8	0.3	5.3	0.0	Grayish yellow	None	45	25.6	14	5.8	<-0.84	<-0.48	

Miyagi River (Water) 4/4

No.	Location			Sampling Date	Weather	Air temperature (°C)	Water depth (m)	Water							Activity concentration(Bq/L)		Remarks	
	Water area	Location	Municipality					Water temperature (°C)	Sampling depth (m)	Color	Odor	Transparency (cm)	Electrical conductivity (mS/m)	SS (mg/L)	Turbidity (FNU)	Radioactive cesium		
																Cs-134		Cs-137
R i v e r s	35	Abukuma River	Higashine Bridge	Kakuda City	2018/4/26	Sunny	21.7	0.4	14.6	0.0	Grayish greenish yellow	None	23	13.7	57	24	-0.73	<-0.88
					2018/6/8	Sunny	28.5	0.3	26.7	0.0	Greenish yellowish white	None	>100	19.9	6	3.0	-0.78	<-0.80
					2018/8/11	Sunny	29.9	0.5	25.7	0.0	Grayish yellow	None	20	13.5	51	25	-0.56	<-0.70
					2018/10/15	Cloudy	19.5	0.7	16.9	0.0	Grayish greenish yellow	None	92	19.2	5	3.0	-0.83	<-0.80
					2018/12/13	Sunny	5.9	0.5	5.8	0.0	Grayish yellow	None	33	24.6	23	11	-0.55	<-0.80
	36	Shiroishi River	Before the confluence with Kawaharokozawa (Sunaoshi Bridge)	Shiroishi City	2019/1/27	Sunny	5.6	0.4	4.2	0.0	Light grayish greenish yellow	None	>100	25.9	3	2.1	-0.74	<-0.75
					2018/4/24	Rain	14.1	0.4	9.8	0.0	Grayish yellow green	None	>100	5.8	2	2.0	-0.69	<-0.92
					2018/7/20	Sunny	30.7	0.4	21.9	0.0	Grayish yellowish green	None	>100	7.2	<1	0.8	-0.74	<-0.88
					2018/11/21	Sunny	11.5	0.6	10.6	0.0	Light grayish yellow	None	>100	10.3	2	1.1	-0.77	<-0.87
					2019/1/28	Sunny	2.1	0.6	1.5	0.0	Light grayish greenish yellow	None	>100	10.9	1	0.8	-0.81	<-0.75
	37	Saikawa River	Etsubo Bridge	Shiroishi City	2018/4/25	Rain	12.8	0.4	12.7	0.0	Grayish yellow green	None	34	11.9	11	8.3	-0.71	<-0.84
					2018/7/21	Sunny	30.5	0.3	25.2	0.0	Grayish yellow green	None	55	11.7	11	8.7	-0.63	<-0.75
					2018/11/20	Cloudy	11.5	0.4	9.9	0.0	Light grayish yellow	None	>100	12.4	1	0.9	-0.69	<-0.85
	38	Matsukawa River	Miya-ohashi Bridge	Zao Town	2019/1/28	Sunny	5.4	0.5	1.8	0.0	Light grayish yellow green	None	>100	23.4	1	1.3	-0.74	<-0.80
					2018/4/25	Rain	12.1	0.4	10.7	0.0	Grayish greenish yellow	None	86	12.8	8	3.5	-0.67	<-0.77
					2018/7/20	Sunny	31.6	0.3	26.1	0.0	Light grayish yellow green	None	>100	26.2	2	1.6	-0.80	<-0.69
	39	Arakawa River	Niragami Bridge	Murata Town/Ogawara Town	2018/11/20	Sunny	13.3	0.4	9.4	0.0	Light grayish greenish yellow	None	>100	21.1	2	1.1	-0.80	<-0.84
					2019/1/28	Sunny	8.3	0.3	4.1	0.0	Light grayish greenish yellow	None	>100	24.4	<1	0.6	-0.75	<-0.69
					2018/5/30	Cloudy	22.0	0.4	19.9	0.0	Grayish yellow	None	35	18.1	23	13	-0.54	<-0.80
					2018/8/12	Cloudy	25.2	0.5	22.3	0.0	Grayish yellow	None	28	16.6	27	12	-0.78	<-0.69
					2018/11/20	Sunny	12.7	0.4	8.7	0.0	Grayish yellow	None	82	20.9	8	4.2	-0.77	<-0.63
	40	Shiroishi River	Shirahata Bridge	Shibata Town	2019/1/28	Sunny	10.4	0.4	2.2	0.0	Grayish greenish yellow	None	>100	27.3	3	3.0	-0.68	<-0.69
					2018/5/23	Cloudy	20.3	0.5	17.6	0.0	Grayish yellow green	None	58	12.0	9	5.8	-0.85	<-0.80
					2018/8/12	Sunny	26.0	0.5	22.6	0.0	Light grayish yellow	None	42	13.3	13	8.0	-0.61	<-0.66
					2018/11/20	Sunny	9.1	0.3	9.6	0.0	Light grayish greenish yellow	None	>100	17.0	3	1.8	-0.63	<-0.83
					2019/1/27	Sunny	3.8	0.3	3.4	0.0	Light grayish yellow green	None	>100	22.1	1	1.3	-0.51	<-0.69
	41	Tsukinoki-ohashi Bridge	Kakuda City/Shibata Town	2018/4/25	Cloudy	13.6	0.6	11.9	0.0	Grayish greenish yellow	None	95	10.9	7	4.1	-0.60	<-0.80	
				2018/6/9	Cloudy	23.3	0.3	22.8	0.0	Light grayish greenish yellow	None	84	16.1	4	3.1	-0.63	<-0.75	
				2018/8/12	Sunny	24.5	0.5	23.7	0.0	Grayish yellow	None	30	13.7	19	12	-0.66	<-0.69	
				2018/10/16	Sunny	16.2	0.4	15.8	0.0	Light grayish greenish yellow	None	>100	15.2	3	2.4	-0.72	<-0.69	
				2018/12/11	Sunny	6.8	0.4	5.9	0.0	Light grayish greenish yellow	None	>100	19.0	2	1.5	-0.81	<-0.69	
	42	Abukuma River	Abukuma-ohashi Bridge (Iwanuma)	Iwanuma City/Watari Town	2019/1/27	Sunny	0.3	0.5	3.2	0.0	Light grayish greenish yellow	None	>100	52.2	2	1.6	-0.60	<-0.75
					2018/4/26	Sunny	18.2	0.4	13.4	0.0	Grayish greenish yellow	None	25	15.6	56	22	-0.88	<-0.88
					2018/5/23	Cloudy	19.3	0.4	19.0	0.0	Grayish greenish yellow	None	43	16.6	10	7.4	-0.68	<-0.80
					2018/6/9	Sunny	22.6	0.4	24.8	0.0	Dark grayish greenish yellow	None	43	19.5	10	4.9	-0.73	<-0.63
2018/7/20					Sunny	28.7	0.6	31.2	0.0	Dark grayish greenish yellow	None	33	21.1	7	5.0	-0.63	<-0.75	
2018/8/11					Sunny	27.5	1.0	23.8	0.0	Grayish yellow	None	27	14.0	30	16	-0.73	<-0.70	
2018/9/4					Cloudy	22.9	0.6	22.0	0.0	Grayish yellow green	None	71	17.2	10	6.1	-0.48	<-0.80	
2018/10/16					Sunny	20.2	0.6	16.4	0.0	Grayish greenish yellow	None	>100	18.3	3	2.2	-0.70	<-0.80	
2018/12/13					Sunny	6.9	0.8	5.8	0.0	Grayish yellow green	None	72	24.4	8	5.1	-0.62	<-0.80	
2019/1/25					Cloudy	4.4	0.6	3.4	0.0	Dark grayish yellow green	None	>100	26.1	3	1.9	-0.65	<-0.84	
2019/2/13					Sunny	3.3	0.5	4.0	0.0	Grayish yellow green	None	>100	23.4	6	4.1	-0.51	<-0.80	
43					Offshore of Abukuma River Estuary (Watari-ohashi Bridge)			2018/4/26	Sunny	17.0	0.5	13.7	0.0	Grayish greenish yellow	None	33	19.4	17
	2018/6/9	Sunny	25.5	0.7				24.0	0.0	Grayish yellow	None	43	339	3	2.9	-0.72	<-0.80	
	2018/8/11	Sunny	29.3	0.5				25.3	0.0	Grayish yellow	None	24	43.9	34	20	-0.70	<-0.75	
	2018/10/16	Sunny	18.9	0.6				17.3	0.0	Light grayish yellow	None	>100	189	4	3.3	-0.70	<-0.74	
	2018/12/13	Sunny	7.7	0.4				7.1	0.0	Light grayish greenish yellow	None	53	542	3	2.0	-0.55	<-0.88	
2019/1/25	Cloudy	3.4	0.5	5.1	0.0	Grayish yellow	None	>100	1.410	2	1.8	-0.68	<-0.75					

Miyagi River (Sediment)1/4

Location				Sampling Date	Weather	Air temperature (°C)	Water depth (m)	Sediment																		Remarks								
No.	Water area	Location	Municipality					Sediment temperature (°C)	Sample length (cm)	Color	Odor	General items						Grain size distribution(%)						Sediment content			Density		Activity concentration (Bq/kg(dry))					
												Coarse gravel		Medium gravel		Fine gravel		Coarse sand		Medium sand		Fine sand		Silt			Clay		%		Property		Radiocesium	
												Coarse gravel	Medium gravel	Fine gravel	Coarse sand	Medium sand	Fine sand	Silt	Clay	Coarse gravel	Medium gravel	Fine gravel	Coarse sand	Medium sand	Fine sand		Silt	Clay	Coarse sand	Medium sand	Fine sand	Silt	Clay	Co-134
1	Shishino River	Kinzan Bridge	Kesennuma City	2018/5/7	Cloudy	17.5	0.3	Blackish brown	Faint swamp	0.0	8.5	30.6	29.3	23.4	8.3	2.8	1.4	76.3	2.754	Gravel/sand	5.4	47	62.4											
				2018/8/13	Sunny	25.0	0.2	Blackish brown	Faint sewage	0.0	36.7	32.2	8.9	8.6	6.1	6.6	1.8	73.5	2.654	Gravel/sand	<-5.4	51	51											
				2018/11/9	Rain	15.5	0.3	Blackish brown	Faint swamp	0.0	27.2	28.4	17.3	17.4	6.2	1.8	1.7	74.6	2.745	Gravel/sand	<-5.4	56	56											
2	Namiita Bridge	Kesennuma City	2019/1/13	Sunny	3.6	0.4	Dark grayish yellow	None	0.0	34.2	28.6	19.5	11.8	3.3	0.7	2.0	75.8	2.713	Sand/gravel	<-5.2	51	51												
			2018/5/6	Cloudy	21.5	0.8	Blackish brown	Faint sewage	0.0	0.0	0.0	0.0	1.1	51.1	34.0	13.8	56.6	2.681	Sand/silt	<-11	74	74												
			2018/8/12	Sunny	27.8	0.4	Black	Faint sewage	0.0	10.4	6.4	2.6	11.4	17.2	28.9	23.2	56.7	2.614	Silt	<-7.9	62	62												
3	Tateyama-ohashi Bridge	Kesennuma City	2018/11/10	Cloudy	18.2	1.7	Blackish brown	Faint sewage	2.0	21.0	7.6	2.6	13.9	11.0	22.0	19.6	53.9	2.714	Sand/silt	<-8.3	53	53												
			2019/1/13	Sunny	0.0	0.9	Blackish brown	Faint sewage	0.0	6.6	1.9	2.0	3.0	17.4	39.0	30.1	48.5	2.668	Silt/sand	<-10	70	70												
			2018/5/7	Cloudy	14.8	0.3	Blackish brown	Faint phytoplankton	0.0	17.0	13.5	30.0	35.8	1.7	0.7	1.3	78.5	2.772	Sand/gravel	<-4.7	21	21												
4	Okawa River	Kaniyama Bridge	Kesennuma City	2018/8/13	Sunny	30.3	0.3	Dark grayish yellow	Faint sewage	0.0	38.2	18.9	18.6	22.0	1.5	0.0	0.8	79.4	2.781	Sand/gravel	<-4.7	16	16											
				2018/11/11	Sunny	9.7	0.3	Blackish brown	None	0.0	27.4	18.2	20.9	30.3	1.2	0.3	1.8	76.7	2.775	Sand/gravel	<-5.2	19	19											
				2019/1/14	Sunny	0.4	0.3	Blackish brown	Faint algae	0.0	24.0	17.8	28.7	27.1	0.8	0.1	1.7	77.2	2.771	Sand/gravel	<-5.2	24	24											
5	Okawa River Estuary	Kesennuma City	2018/5/5	Sunny	20.1	0.2	Olive black	Faint metal	0.0	0.0	0.0	0.1	0.6	11.5	55.7	20.3	11.8	58.9	2.697	Sand/silt	<-8.2	94	94											
			2018/8/13	Sunny	30.5	0.3	Blackish brown	None	0.0	0.5	1.2	3.6	63.8	24.5	4.1	2.3	72.0	2.874	Sand	<-5.0	26	26												
			2018/11/11	Sunny	15.4	0.7	Dark brown	None	0.0	9.7	3.7	16.6	60.6	4.1	0.0	3.3	72.1	2.712	Sand/gravel	<-4.8	26	26												
6	Onose River	Osaki Bridge	Kesennuma City	2019/1/14	Sunny	3.2	0.6	Dark olive brown	None	0.0	5.5	3.0	8.3	74.1	6.4	0.0	2.7	72.1	2.752	Sand	<-4.5	22	22											
				2018/5/5	Sunny	21.0	1.5	Olive black	Faint sewage	0.0	0.0	0.0	0.1	16.8	31.8	29.9	21.4	45.4	2.696	Silt/sand	14	170	184											
				2018/8/12	Sunny	27.2	2.5	Black	Faint sewage	0.0	0.1	0.2	0.6	1.8	5.8	56.9	34.7	39.5	2.587	Silt	31	200	291											
7	Arima River	Unanda Bridge	Kuribara City	2018/11/11	Sunny	11.0	0.4	Olive black	Faint sewage	0.0	0.0	0.0	0.2	2.1	5.2	53.8	38.7	36.5	2.633	Silt	16	210	226											
				2019/1/13	Cloudy	0.0	3.7	Black	Faint sewage	0.0	0.9	0.1	0.4	1.8	6.4	57.0	33.3	35.7	2.629	Silt	<-15	210	210											
				2018/5/5	Sunny	16.8	0.3	Olive black	Faint sewage	0.0	6.4	4.0	5.4	18.7	18.9	32.2	14.4	54.2	2.705	Silt	<-9.1	80	80											
8	Kinryu River	Obata Bridge	Kuribara City	2018/8/12	Cloudy	25.1	1.4	Black	Faint sewage	0.0	6.5	8.1	4.1	6.1	6.9	44.3	24.2	41.8	2.599	Silt	<-13	97	97											
				2018/11/11	Sunny	15.9	0.9	Olive black	Faint sewage	0.0	18.1	22.5	13.5	14.1	12.2	12.7	6.9	70.0	2.661	Sand/silt/gravel	<-7.0	29	29											
				2018/5/4	Sunny	14.0	0.3	Blackish brown	None	0.0	11.7	7.3	5.0	15.4	20.7	24.8	15.1	80.3	2.687	Sand/silt	<-9.1	80	80											
9	Kitakami River	Tome-ohashi Bridge (Tome)	Tome City	2018/5/4	Sunny	14.0	0.3	Blackish brown	None	0.0	8.2	10.3	22.7	49.0	5.8	1.6	2.4	76.2	2.696	Sand/gravel	<-7.6	89	89											
				2018/8/18	Sunny	24.3	0.4	Blackish brown	None	0.0	28.7	20.8	23.7	24.4	0.8	0.6	1.0	78.1	2.689	Sand/gravel	7.5	94	101.5											
				2018/11/6	Cloudy	16.0	0.2	Blackish brown	Faint swamp	0.0	16.9	25.5	29.2	24.1	1.4	0.7	2.3	78.8	2.678	Sand/gravel	6.6	79	85.6											
10	Saihasama River System	Doran Bridge (Kurikoma Dam)	Kuribara City	2019/1/17	Sunny	2.0	0.3	Blackish brown	None	0.0	27.1	26.3	23.0	20.5	1.0	0.5	1.8	78.5	2.680	Sand/gravel	7.7	91	98.7											
				2018/5/4	Cloudy	11.9	0.5	Blackish brown	None	0.0	8.1	7.3	22.7	50.5	1.6	2.4	77.8	2.856	Sand/gravel	6.6	81	87.6												
				2018/8/18	Sunny	21.5	0.4	Blackish brown	None	0.0	16.4	12.5	21.2	33.3	13.9	0.5	2.4	75.3	2.670	Sand/gravel	9.4	95	104.6											
11	Nahasama River	Kajiya Bridge	Kuribara City	2018/11/6	Cloudy	16.4	0.3	Blackish brown	Faint sewage	0.0	1.0	1.4	8.7	73.0	11.2	1.0	3.8	74.9	2.696	Sand	<-5.9	73	73											
				2019/1/17	Cloudy	3.3	0.4	Blackish brown	None	0.0	0.4	2.5	8.7	61.8	20.8	2.0	3.9	74.4	2.645	Sand	<-6.2	91	91											
				2018/5/2	Cloudy	20.2	0.4	Dark brown	Faint swamp	0.0	1.6	0.6	0.2	29.8	56.3	5.8	5.7	69.4	2.736	Sand	<-6.8	32	32											
12	Hasama River	Hanayama Dam, inflow area	Kuribara City	2018/8/19	Sunny	23.6	0.4	Blackish brown	None	0.0	0.0	0.0	0.1	30.9	57.5	8.6	2.9	69.2	2.689	Sand	<-6.3	34	34											
				2018/11/12	Sunny	12.4	0.4	Blackish brown	Faint sewage	2.5	10.9	2.6	0.7	23.8	50.0	5.3	4.1	70.8	2.708	Sand/gravel	<-6.6	28	28											
				2019/1/18	Cloudy	0.9	0.4	Olive black	Faint sewage	0.0	0.8	0.4	0.4	5.3	46.5	30.1	16.5	55.9	2.663	Sand/silt	<-7.2	93	93											
13	Wakayamagi	Kuribara City	2018/5/9	Rain	8.6	2.2	Grayish yellowish brown	None	0.0	1.7	3.9	6.5	69.9	14.2	1.8	1.7	75.9	3.066	Sand/gravel	<-7.3	12	12												
			2018/8/9	Rain	30.9	1.6	Dark brown	None	0.0	1.5	1.3	6.9	72.8	13.8	1.0	2.8	74.2	2.874	Sand	<-4.2	11	11												
			2018/11/3	Sunny	9.2	0.9	Blackish brown	None	0.0	3.0	15.5	23.2	45.8	9.4	0.0	3.1	71.4	2.866	Sand/gravel	<-5.2	11	11												
14	Nahasama River	Kajiya Bridge	Kuribara City	2019/1/15	Cloudy	-0.5	0.5	Dull yellowish brown	None	0.0	0.7	6.0	18.3	64.5	6.8	0.9	2.7	71.8	2.805	Sand/gravel	<-4.8	12	12											
				2018/5/15	Sunny	27.1	0.4	Dull yellowish brown	None	0.0	16.7	19.2	11.9	48.7	4.5	1.9	2.2	76.6	2.701	Sand/gravel	<-4.1	27	27											
				2018/8/21	Sunny	27.0	0.3	Dark brown	None	0.0	7.0	17.1	23.4	41.0	6.1	2.3	3.0	71.4	2.667	Sand/gravel	<-6.8	32	32											
15	Wakayamagi	Kuribara City	2018/11/7	Cloudy	18.1	0.4	Dark brown	None	0.0	16.0	16.2	18.8	40.3	4.8	0.7	3.3	77.2	2.737	Sand/gravel	<-4.1	25	25												
			2019/1/15	Cloudy	1.5	0.3	Dull yellowish brown	None	0.0	14.6	14.3	17.3	45.8	3.8	0.5	3.7	75.5	2.714	Sand/gravel	<-4.5	31	31												
			2018/5/15	Sunny	24.0	0.5	Blackish brown	None	0.0	13.2	15.3	28.1	39.1	1.5	0.5	2.3	70.9	2.650	Sand/gravel	<-5.3	17	17												
16	Wakayamagi	Kuribara City	2018/8/21	Sunny	29.2	0.6	Blackish brown	None	0.0	22.4	17.8	14.5	18.2	6.0	0.0	1.2	74.8	2.730	Sand/gravel	<-5.0	7.0	7.0												
			2018/11/7	Sunny	17.4	0.8	Blackish brown	None	0.0	12.9	18.1	18.0	45.9	4.4	0.1	2.7	74.5	2.717	Sand/gravel	<-4.7	6.7	6.7												
			2019/1/16	Sunny	2.0	0.5	Dark olive brown	Faint swamp	0.0	22.5	28.2	17.7	28.2	1.5	0.8	1.1	78.5	2.774	Sand/gravel	<-4.1	9.1	9.1												
17	Wakayamagi	Kuribara City	2018/5/4	Rain	13.4	0.3	Grayish yellowish brown	Faint metal	1.4	24.2	13.4	13.1	37.7	7.3	1.8	1.2	80.1	2.763	Sand/gravel	<-3.9	27	27												
			2018/8/18	Sunny	25.6	0.4	Dark brown	None	1.8	26.1	10.6	12.0	42.4	5.3	0.4	1.4	78.4	2.766	Sand/gravel	<-3.7	22	22												
			2018/11/12	Cloudy	10.0	0.3	Blackish brown	Faint swamp	0.0	31.8	12.7	7.9	41.4	4.5	0.1	1.6	78.5	2.787	Sand/gravel	<-4.4	27	27												
18	Wakayamagi	Kuribara City	2019/1/17	Cloudy	2.5	0.4	Blackish brown	None	0.0	31.1	11.0	10.4	39.6	5.6	0.0	2.2	78.4	2.836	Sand/gravel	<-4.1	26	26												

Miyagi River (Sediment)3/4

No.	Location			Sampling Date	Weather	Air temperature (°C)	Water depth (m)	Sediment														Remarks					
	Water area	Location	Municipality					Sediment temperature (°C)	Sample length (cm)	Color	Odor	General items						Grain size distribution(%)		Sediment content			Density		Activity concentration (Bq/kg(dry))		
												Coarse gravel	Medium gravel	Fine gravel	Coarse sand	Medium sand	Fine sand	Silt	Clay	%	Property		(g/cm ³)	Radioactive cesium			
																								Cs-134	Cs-137	Total	
27	Nanakita River System	Umeda River	Fukuda Bridge	Sendai City	2018/5/24	Sunny	22.4	0.3	Olive black	Faint sewage	0.0	1.1	0.4	0.7	27.3	48.3	14.3	11.8	61.1	2.625	Silt/sand	7.0	88	95.0			
					2018/8/29	Cloudy	19.5	1.6	21.5	3	Black	Faint sewage	0.0	2.1	2.9	2.3	53.6	22.0	11.0	6.1	57.9	2.587	Sand/silt/gravel	<7.0	41	41	
					2018/11/18	Sunny	11.8	0.8	15.1	3	Olive black	Faint sewage	0.0	0.9	1.2	1.5	28.4	48.8	12.2	7.0	67.1	2.632	Sand	<6.0	57	57	
		2019/1/23	Sunny		7.4	0.4	6.0	3	Dark grayish yellow	Faint sewage	0.0	0.6	1.6	4.0	71.9	12.7	1.5	7.8	74.3	2.647	Sand/gravel	<4.4	36	36			
		2018/5/24	Sunny		21.2	0.4	20.3	3	Blackish brown	None	0.0	0.3	0.8	1.5	16.2	39.1	30.2	12.0	60.7	2.589	Sand/silt	<6.3	54	54			
		2018/8/30	Cloudy		23.4	0.5	23.8	3	Blackish brown	Faint sewage	0.0	0.7	0.4	1.3	8.0	57.6	20.6	11.4	65.5	2.563	Sand/silt	<5.3	55	55			
	28	Nanakita River	Takanago Bridge	Sendai City	2018/11/18	Sunny	10.9	0.3	12.5	3	Dark olive brown	None	0.1	0.3	0.8	7.5	30.7	32.0	8.7	60.8	2.588	Sand/silt	<7.1	42	42		
					2019/1/23	Cloudy	5.6	0.5	5.6	3	Olive black	Faint seaweed	0.0	0.1	0.0	0.4	13.2	62.2	14.4	9.7	60.6	2.615	Sand/silt	<7.5	52	52	
					2018/5/24	Sunny	23.2	0.6	18.9	3	Blackish brown	Faint sewage	0.0	0.7	2.5	2.8	21.4	33.6	27.6	11.6	57.8	2.646	Silt/sand	<6.7	51	51	
					2018/8/30	Cloudy	26.5	0.6	22.8	3	Blackish brown	Faint seaweed	0.0	0.2	0.5	1.6	45.5	43.1	5.1	3.9	74.0	2.664	Sand/gravel	<5.6	14	14	
					2018/11/18	Sunny	7.3	0.5	10.9	3	Olive black	Faint sewage	0.0	1.4	1.7	2.3	35.0	32.6	17.3	9.7	64.1	2.644	Sand/silt	<7.3	32	32	
					2019/1/24	Sunny	2.8	0.6	5.4	3	Olive black	Faint sewage	0.0	0.0	0.2	1.5	35.4	35.2	15.0	12.8	70.0	2.609	Sand/silt	<5.4	40	40	
29	Natori River System	Natori River	Yuriage-obashi Bridge	Sendai City/Natori City	2018/5/22	Sunny	25.0	0.3	20.2	3	Blackish brown	None	0.0	25.1	31.4	26.5	1.8	3.9	0.9	66.3	2.716	Sand/gravel	<6.4	24	25		
					2018/8/31	Cloudy	23.0	0.3	20.0	3	Blackish brown	None	0.0	30.2	33.6	17.7	10.2	2.9	3.7	1.7	79.0	2.730	Gravel/sand	<4.0	7.1	7.1	
					2018/11/19	Cloudy	11.1	0.3	10.9	3	Blackish brown	None	0.0	40.7	44.8	10.5	2.0	0.5	1.0	0.4	75.5	2.691	Gravel/sand	<4.6	18	18	
		2019/1/24	Snow		0.5	0.4	2.5	3	Blackish brown	Faint swamp	0.0	33.3	30.2	21.4	7.9	2.0	3.6	1.6	78.8	2.742	Gravel/sand	<4.7	15	15			
		2018/5/29	Sunny		26.8	0.4	21.3	3	Olive black	Faint sewage	0.0	1.3	2.3	2.0	18.2	27.7	31.2	17.3	34.0	2.624	Silt/sand	20	210	230			
		2018/8/31	Cloudy		24.7	0.6	20.1	3	Olive black	Faint sewage	0.0	0.0	0.0	0.3	13.6	23.8	41.9	20.5	37.4	2.564	Silt/sand	18	210	228			
	30	Natori River System	Masuda River	Koyama Bridge	Natori City	2018/11/19	Cloudy	13.8	0.5	11.4	3	Blackish brown	Faint sewage	0.0	0.3	1.0	0.6	23.0	36.9	29.0	9.4	58.4	2.647	Sand/silt	<10	100	100
						2019/1/24	Sunny	3.0	0.4	3.0	3	Olive black	Faint sewage	0.0	0.0	0.0	0.2	2.8	29.5	42.2	25.3	38.7	2.569	Silt/sand	<13	190	190
						2018/5/29	Sunny	26.4	0.7	24.2	3	Olive black	None	0.0	0.0	0.0	0.2	9.9	31.4	33.6	24.9	50.7	2.590	Silt/sand	29	240	289
			2018/8/30	Cloudy		23.4	1.2	22.2	5	Olive black	Faint sewage	0.0	0.0	0.0	0.9	23.2	32.7	25.5	17.8	54.0	2.584	Silt/sand	25	210	235		
			2018/11/19	Cloudy		10.0	1.7	11.0	5	Olive black	Faint sewage	0.0	0.0	0.0	0.2	13.7	42.3	30.3	13.7	53.6	2.603	Sand/silt	26	310	336		
			2019/1/25	Sunny		2.4	1.2	4.9	4	Dark olive brown	Faint seaweed	0.0	0.0	0.2	0.9	16.7	28.9	28.8	24.5	48.5	2.654	Silt/sand	21	230	251		
31	Abukuma River System	Masuda River	Bishamon Bridge	Natori City	2018/4/24	Rain	13.9	0.6	13.5	3	Grayish yellowish brown	Faint swamp	0.0	0.8	3.5	17.6	61.1	14.2	0.6	2.2	74.7	2.702	Sand	7.8	75	82.8	
					2018/5/23	Cloudy	23.3	0.4	18.3	3	Dark brown	None	0.0	16.0	28.7	17.1	29.5	9.9	0.1	1.7	81.6	2.749	Sand/gravel	<5.1	50	50	
					2018/6/8	Sunny	25.6	0.5	23.8	3	Dull yellowish brown	Faint swamp	0.0	23.6	18.4	8.3	36.1	12.4	0.1	1.1	78.3	2.759	Sand/gravel	6.6	68	74.6	
		2018/7/21	Cloudy		32.9	0.4	29.6	3	Blackish brown	None	0.0	0.0	0.0	0.3	78.4	18.3	0.1	2.9	71.8	2.696	Sand	<8.7	82	82			
		2018/8/15	Sunny		29.4	1.0	27.1	3	Dull yellowish brown	Faint swamp	0.0	0.0	0.0	0.0	77.2	19.3	1.5	2.0	69.8	2.696	Sand	10	130	140			
		2018/9/4	Cloudy		26.6	0.4	23.7	3	Blackish brown	None	0.0	0.7	0.1	0.7	55.5	40.6	0.6	1.9	71.7	2.817	Sand	<6.7	94	94			
	32	Abukuma River System	Masuda River	Hadenawa Bridge	Natori City	2018/10/15	Cloudy	15.2	0.6	16.2	3	Dark brown	None	0.0	0.0	0.3	10.7	74.1	11.9	1.1	1.9	72.6	2.696	Sand	<6.4	63	63
						2018/12/12	Cloudy	3.6	0.6	6.1	3	Dark grayish yellow	Faint algae	0.0	21.8	15.9	0.5	20.4	37.6	1.7	1.9	69.8	2.723	Sand/gravel	<7.8	120	120
						2019/1/29	Cloudy	3.4	0.6	4.0	3	Dark grayish yellow	None	0.0	0.0	0.0	0.4	78.5	16.2	2.0	2.9	69.8	2.649	Sand	11	140	151
			2019/2/13	Sunny		3.9	0.6	4.6	3	Dark grayish yellow	Faint swamp	0.0	0.4	3.7	4.5	58.6	27.8	1.5	3.7	69.4	2.774	Sand	14	170	184		
			2018/4/24	Rain		14.0	0.3	14.4	3	Grayish yellowish brown	Faint algae	0.0	13.2	22.5	30.3	28.6	3.0	1.0	1.5	78.5	2.682	Sand/gravel	<4.7	46	46		
			2018/5/23	Cloudy		23.2	0.4	20.1	3	Dark brown	Faint swamp	0.0	16.7	17.9	28.5	31.6	4.1	0.0	1.3	80.7	2.679	Sand/gravel	<5.0	44	44		
33	Abukuma River System	Masuda River	Hadenawa Bridge	Natori City	2018/6/8	Sunny	30.5	0.3	24.9	3	Dull yellowish brown	Faint swamp	0.0	23.7	24.5	24.2	22.6	4.0	0.0	1.0	80.7	2.644	Sand/gravel	<4.7	37	37	
					2018/7/21	Sunny	32.2	0.3	31.3	3	Grayish yellowish brown	Faint algae	2.6	28.1	24.7	21.9	16.4	4.4	0.5	1.3	79.2	2.663	Sand/gravel	<6.5	68	68	
					2018/8/15	Sunny	30.3	0.3	28.3	3	Olive brown	Faint swamp	0.0	34.6	21.3	18.7	16.4	6.0	1.6	1.5	80.9	2.686	Sand/gravel	7.9	84	91.9	
		2018/9/4	Cloudy		25.0	0.3	23.3	3	Grayish yellowish brown	Faint algae	0.0	26.6	27.3	25.7	16.5	2.6	0.0	1.4	83.0	2.675	Sand/gravel	<5.7	37	37			
		2018/10/15	Cloudy		17.9	0.3	17.6	3	Olive brown	None	0.0	16.0	19.0	35.4	31.0	2.6	0.5	1.7	77.3	2.601	Sand/gravel	<4.2	37	37			
		2018/12/12	Sunny		7.7	0.4	6.2	3	Blackish brown	Faint swamp	1.7	21.9	21.8	30.1	21.6	0.8	1.6	78.5	2.656	Sand/gravel	<5.6	29	29				
34	Abukuma River System	Masuda River	Marumori Bridge	Marumori Town	2019/1/29	Cloudy	4.5	0.4	3.9	3	Dark brown	Faint swamp	0.0	23.3	23.5	29.6	19.2	1.8	0.4	2.2	81.1	2.649	Sand/gravel	<4.3	36	36	
					2019/2/13	Sunny	3.8	0.3	4.4	3	Blackish brown	Faint phytoplankton	0.0	29.8	23.2	29.3	14.9	1.0	0.5	1.4	76.5	2.640	Sand/gravel	<5.0	32	32	

Miyagi River (Sediment) 4/4

No.	Location			Sampling Date	Weather	Air temperature (°C)	Water depth (m)	Sediment																Remarks					
	Water area	Location	Municipality					Sediment temperature (°C)	Sample length (cm)	Color	Odor	General items					Grain size distribution(%)					Sediment content (%)			Density (g/cm ³)	Property	Activity concentration (Bq/kg(dry))		
												Coarse gravel	Medium gravel	Fine gravel	Coarse sand	Medium sand	Fine sand	Silt	Clay	Organic	Inorganic	Co-134	Cs-137				Total		
R i v e r S y s t e m	35	Abukuma River	Higashine Bridge	Kakuda City	2018/4/26	Sunny	21.7	0.4	15.6	0.0	9.2	21.9	16.3	40.3	1.4	0.4	1.4	81.1	2.694	Sand/gravel	-4.0	29	20						
					2018/6/8	Sunny	28.5	0.3	24.6	0.0	25.7	24.0	22.1	1.6	0.5	1.0	82.1	2.670	Sand/gravel	-4.8	25	25							
					2018/8/11	Sunny	29.9	0.5	25.5	3	Dull yellowish brown	Faint swamp	0.0	0.0	21.5	27.3	26.9	21.9	1.4	0.0	1.0	91.2	2.671	Sand/gravel	-4.3	27	27		
					2018/10/15	Cloudy	19.5	0.7	17.3	3	Dark grayish yellow	None	0.0	0.0	0.4	1.4	18.3	73.8	4.1	0.0	1.9	76.5	2.660	Sand	-5.7	30	30		
					2018/12/13	Sunny	5.9	0.5	5.9	3	Dull yellowish brown	None	0.0	0.0	1.5	10.5	44.5	37.2	2.9	1.0	2.6	77.3	2.653	Sand/gravel	-5.3	42	42		
					2019/1/27	Sunny	5.6	0.4	4.2	3	Grayish yellowish brown	None	0.0	0.0	2.7	11.3	41.7	38.0	2.9	0.1	3.4	77.4	2.638	Sand/gravel	-4.6	43	43		
					2018/4/24	Rain	14.1	0.4	9.4	3	Grayish yellowish brown	None	0.0	0.0	25.4	16.7	6.3	23.6	21.9	3.2	2.9	76.1	2.671	Sand/gravel	-4.8	47	47		
					2018/7/20	Sunny	30.7	0.4	22.4	3	Grayish yellowish brown	None	0.0	0.0	24.7	10.7	5.8	26.8	23.2	6.0	2.9	73.3	2.638	Sand/gravel	7.0	60	67.0		
					2018/11/21	Sunny	11.5	0.6	11.5	3	Grayish yellowish brown	None	0.0	0.0	25.2	26.0	10.9	23.0	10.2	2.4	2.4	79.1	2.680	Sand/gravel	-4.5	41	41		
					2019/1/28	Sunny	2.1	0.6	2.0	3	Dark brown	Faint swamp	0.0	0.0	23.7	22.2	8.5	31.5	10.5	1.6	2.2	81.1	2.653	Sand/gravel	-4.6	40	40		
	2018/4/25	Rain	12.8	0.4	12.7	3	Blackish brown	None	0.0	0.0	8.1	13.3	34.6	40.2	0.8	1.3	1.8	75.3	2.657	Sand/gravel	7.2	72	79.2						
	2018/7/21	Sunny	30.5	0.3	26.2	3	Blackish brown	Faint swamp	0.0	0.0	10.3	12.5	41.4	32.0	0.8	1.6	1.5	73.6	2.627	Sand/gravel	8.2	100	108.2						
	2018/11/20	Cloudy	11.5	0.4	10.1	3	Blackish brown	Faint swamp	0.0	0.0	6.0	1.3	2.0	71.7	15.3	0.9	2.8	67.5	2.668	Sand/gravel	10	110	120						
	2019/1/28	Sunny	5.4	0.5	2.3	3	Grayish yellowish brown	Faint phytoplankton	0.0	0.0	7.4	8.5	5.9	51.8	20.6	2.5	3.4	67.0	2.630	Sand/gravel	11	120	131						
	2018/4/25	Rain	12.1	0.4	11.1	3	Black	None	0.0	0.0	1.1	4.2	4.2	48.2	3.3	3.3	3.3	70.5	2.813	Sand	-4.7	16	16						
	2018/7/20	Sunny	31.6	0.3	26.1	3	Black	Faint algae	0.0	0.0	4.2	4.1	34.5	50.7	3.8	1.0	1.7	77.5	2.827	Sand/gravel	-3.5	6.1	6.1						
	2018/11/20	Sunny	13.3	0.4	10.1	3	Blackish brown	Faint swamp	0.0	0.0	3.5	11.5	37.0	42.7	2.1	0.9	2.4	78.0	2.810	Sand/gravel	-4.6	7.1	7.1						
	2019/1/28	Sunny	8.3	0.3	4.4	3	Blackish brown	Faint swamp	0.0	0.0	2.9	13.3	28.6	45.3	6.7	0.1	3.1	79.4	2.937	Sand/gravel	-4.2	5.4	5.4						
	2018/5/30	Cloudy	22.0	0.4	20.1	3	Blackish brown	Faint swamp	0.0	0.0	16.9	20.5	28.3	32.3	0.9	0.1	1.2	79.8	2.802	Sand/gravel	-4.8	13	13						
	2018/8/12	Cloudy	25.2	0.5	22.4	3	Blackish brown	Faint sewage	0.0	0.0	0.6	1.1	2.0	13.7	37.3	27.9	17.5	53.0	2.564	Silt/sand	18	150	168						
	2018/11/20	Sunny	12.7	0.4	8.9	3	Dark brown	Faint swamp	0.0	0.0	6.3	14.6	42.7	31.0	2.3	0.8	2.3	78.8	2.693	Sand/gravel	-5.1	9.3	9.3						
	2019/1/28	Sunny	10.4	0.4	2.9	3	Dark brown	Faint swamp	0.0	0.0	9.3	15.3	43.0	27.0	1.8	0.8	2.9	78.5	2.688	Sand/gravel	-4.9	9.5	9.5						
	2018/5/23	Cloudy	20.3	0.3	18.4	3	Dark grayish yellow	None	0.0	0.0	0.0	0.0	0.3	68.0	28.7	1.1	1.9	71.5	2.789	Sand	-4.9	18	18						
	2018/8/12	Sunny	26.0	0.5	23.0	3	Grayish yellowish brown	Faint swamp	0.0	0.0	9.2	10.3	5.8	49.6	20.4	1.6	3.1	75.4	2.769	Sand/gravel	-4.7	24	24						
	2018/11/20	Sunny	9.1	0.3	9.8	3	Blackish brown	Faint swamp	0.0	0.0	13.8	12.8	15.3	54.7	1.9	0.1	1.4	78.0	2.753	Sand/gravel	-4.7	8.0	8.0						
	2019/1/27	Sunny	3.8	0.3	4.1	3	Dark grayish yellow	None	0.0	0.0	0.3	1.4	3.7	74.9	13.6	2.3	3.8	73.5	2.702	Sand	-5.6	23	23						
	2018/4/25	Cloudy	13.6	0.6	11.9	3	Olive black	Faint sewage	0.0	0.0	0.0	0.0	0.3	2.5	41.7	39.5	16.1	44.8	2.602	Silt/sand	16	160	176						
	2018/6/9	Cloudy	23.3	0.3	22.7	3	Grayish olive	Faint sewage	0.0	0.0	0.0	0.0	0.0	5.0	55.9	28.8	10.3	47.2	2.613	Sand/silt	16	140	156						
	2018/8/12	Sunny	24.7	0.5	24.1	3	Blackish brown	Faint sewage	0.0	0.0	0.0	0.0	0.0	4.1	48.0	33.0	14.9	61.4	2.607	Silt/sand	-7.7	89	89						
	2018/10/16	Sunny	16.2	0.4	16.1	3	Olive black	Faint sewage	0.0	0.0	0.7	8.4	44.0	29.3	17.7	52.7	50.8	2.527	Sand/silt	20	180	200							
	2018/12/11	Sunny	6.8	0.4	6.7	3	Dark olive brown	Faint sewage	0.0	0.0	0.0	0.0	0.4	9.7	56.8	21.6	11.5	49.9	2.626	Sand/silt	13	140	153						
	2019/1/27	Sunny	0.3	0.5	3.6	3	Olive black	Faint sewage	0.0	0.0	0.0	0.2	11.4	59.9	18.1	10.4	62.4	2.633	Sand/silt	10	120	130							
	2018/4/26	Sunny	18.2	0.4	15.5	3	Blackish brown	Faint sewage	0.0	0.0	0.0	0.4	28.2	29.5	26.6	15.4	52.0	2.669	Sand/silt	43	440	483							
	2018/5/23	Cloudy	19.3	0.4	19.2	3	Dark olive brown	None	0.0	0.0	0.0	0.8	21.2	29.4	38.0	10.6	51.1	2.634	Sand/silt	31	360	391							
	2018/6/9	Sunny	22.6	0.4	25.1	3	Olive brown	Faint sewage	0.0	0.0	0.1	0.3	4.5	15.2	55.2	24.7	42.3	2.532	Silt/sand	52	490	542							
	2018/7/20	Sunny	28.7	0.6	32.4	3	Olive black	Faint sewage	0.0	0.0	0.4	4.5	26.1	46.5	22.6	48.7	2.603	Silt/sand	41	520	561								
	2018/8/11	Sunny	27.5	1.0	23.5	3	Grayish yellowish brown	Faint sewage	0.0	1.0	0.6	0.7	19.5	20.9	37.6	19.8	33.2	2.604	Silt/sand	49	510	559							
	2018/9/4	Cloudy	22.9	0.6	22.1	3	Olive black	Faint sewage	0.0	0.0	0.0	0.8	7.5	41.1	36.2	14.4	52.7	2.628	Sand/silt	31	320	351							
	2018/10/16	Sunny	20.2	0.6	17.2	3	Yellowish gray	Faint swamp	0.0	0.0	0.2	3.5	29.3	41.3	25.5	42.0	2.530	Sand/silt	66	620	686								
	2018/12/13	Sunny	6.9	0.8	6.2	3	Dark olive brown	Faint sewage	0.0	0.0	0.0	0.0	5.2	30.7	28.1	21.0	15.2	60.2	2.646	Sand	26	310	336						
	2019/1/25	Cloudy	4.4	0.6	4.2	3	Olive black	Faint sewage	0.0	0.0	0.0	0.5	8.8	27.5	41.7	21.4	29.5	2.550	Sand/silt	45	570	615							
	2019/2/13	Sunny	3.3	0.5	5.5	3	Dark olive brown	Faint sewage	0.0	0.0	0.0	3.4	29.1	30.4	25.3	11.8	59.0	2.625	Sand/silt	26	300	326							
	2018/4/26	Sunny	17.0	0.5	15.4	3	Dark grayish yellow	Faint seaweed	2.0	2.3	5.1	14.3	33.4	29.6	7.9	5.3	73.4	2.692	Sand	13	150	163							
2018/6/9	Sunny	25.5	0.7	24.7	3	Dark olive brown	Faint seaweed	0.0	12.7	10.7	14.7	44.0	14.9	1.5	1.5	77.4	2.706	Sand/gravel	-5.0	41	41								
2018/8/11	Sunny	29.3	0.5	24.8	3	Grayish yellowish brown	Faint seaweed	0.0	6.8	9.4	21.1	50.4	6.6	3.3	2.5	81.1	2.658	Sand/gravel	-4.5	28	28								
2018/10/16	Sunny	18.9	0.6	17.6	3	Blackish brown	None	0.0	16.3	17.1	17.3	29.5	14.9	2.2	2.7	80.6	2.668	Sand/gravel	-4.6	39	39								
2018/12/13	Sunny	7.7	0.4	7.3	3	Blackish brown	None	0.0	4.2	7.8	17.3	34.0	25.0	14.4	7.3	69.1	2.704	Sand	-7.1	91	91								
2019/1/25	Cloudy	3.4	0.5	5.3	3	Grayish olive	Faint seaweed	0.0	1.0	8.8	15.4	34.4	20.3	19.2	13.8	67.4	2.635	Sand/silt	29	340	369								

Miyagi River (Surrounding Environment) 1/4

No.	Location			Sampling Date	Weather	Air temperature (°C)	Surrounding Environment (Soil, Air dose)										Remarks					
	Water area	Location	Municipality				Left bank			Right bank			Activity concentration [Bq/kg(dry)]			Air Dose (μSv/h)						
							Color	Odor	Property	Color	Odor	Property	Radioactive cesium									
													Cs-134	Cs-137	Total							
R i v e r s	Shishioi River	Kinzan Bridge	Kesennuma City	2018/5/7	Cloudy	17.5	Blackish brown	Faint earth	Loamy	64	590	654	0.05	Dark brown	Faint earth	Loamy	23	270	293	0.04		
				2018/8/13	Sunny	25.0	Blackish brown	Faint earth	Loamy	17	220	237	0.05	Dark brown	Faint earth	Loamy	15	190	205	0.05		
				2018/11/9	Rain	15.5	Blackish brown	Faint earth	Loamy	15	180	195	0.05	Blackish brown	Faint earth	Loamy	21	200	221	0.06		
				2019/1/13	Sunny	3.6	Blackish brown	Faint earth	Loamy	51	650	701	0.05	Black	Faint earth	Loamy	13	150	163	0.05		
				2018/5/6	Cloudy	21.5	Blackish brown	Faint earth	Loamy	8.1	110	118.1	0.04	Dark brown	Faint earth	Loamy	15	130	145	0.04		
		2		Namita Bridge	2018/8/12	Sunny	27.8	Dark brown	Faint earth	Loamy	10	120	130	0.05	Dull yellowish brown	Faint earth	Loamy	<5.7	14	14	0.04	
					2018/11/10	Cloudy	18.2	Dark brown	Faint earth	Loamy	<10	75	75	0.05	Dark brown	Faint earth	Loamy	20	240	260	0.05	
					2019/1/13	Sunny	0.0	Blackish brown	Faint earth	Loamy	13	140	153	0.04	Dark brown	Faint earth	Loamy	18	200	218	0.05	
					2018/5/7	Cloudy	14.8	Blackish brown	Faint earth	Loamy	27	220	247	0.05	Dark brown	Faint earth	Loamy	31	250	281	0.05	
					2018/8/13	Sunny	30.3	Dark brown	Faint earth	Loamy	24	230	254	0.05	Dark brown	Faint earth	Loamy	18	190	208	0.05	
	3	Tateyama-ohashi Bridge	2018/11/11	Sunny	9.7	Dark brown	Faint earth	Loamy	20	240	260	0.05	Dark brown	Faint earth	Loamy	11	130	141	0.05			
			2019/1/14	Sunny	0.4	Blackish brown	Faint earth	Loamy	<8.3	72	72	0.05	Dark brown	Faint earth	Loamy	13	150	163	0.05			
			2018/5/5	Sunny	20.1	Dark brown	Faint earth	Loamy	37	340	377	0.04	Blackish brown	Faint earth	Loamy	35	330	365	0.04			
			2018/8/13	Sunny	30.5	Blackish brown	Faint earth	Loamy	19	220	239	0.04	Blackish brown	Faint earth	Loamy	25	280	305	0.04			
			2018/11/11	Sunny	15.4	Blackish brown	Faint earth	Loamy	23	290	313	0.04	Blackish brown	Faint earth	Loamy	18	190	208	0.04			
	4	Okawa River	Kamiyama Bridge	2019/1/14	Sunny	3.2	Blackish brown	Faint earth	Loamy	26	250	276	0.05	Blackish brown	Faint earth	Loamy	17	200	217	0.04		
				2018/5/5	Sunny	21.0	Dark brown	Faint earth	Loamy	8.5	53	61.5	0.04	Dull yellowish brown	Faint earth	Loamy	<6.6	58	58	0.04		
				2018/8/12	Sunny	27.2	Dark brown	Faint earth	Loamy	<8.4	25	25	0.04	Dark brown	Faint earth	Loamy	17	150	167	0.04		
				2018/11/11	Sunny	11.9	Blackish brown	Faint earth	Loamy	<7.1	11	11	0.04	Dark brown	Faint earth	Loamy	<7.5	57	57	0.05		
				2019/1/13	Cloudy	0.0	Dark brown	Faint earth	Loamy	<8.6	71	71	0.04	Dark brown	Faint earth	Loamy	<8.9	49	49	0.04		
	5	Okawa River Estuary	2018/5/5	Sunny	16.8	Dark brown	Faint earth	Loamy	<4.0	24	24	0.04	-	-	-	-	-	-	-	(Right bank) Unable to collect samples due to construction		
			2018/8/12	Cloudy	25.1	Grayish yellowish brown	Faint earth	Loamy	<5.0	33	33	0.04	-	-	-	-	-	-	-	(Right bank) Unable to collect samples due to removal of the bridge		
			2018/11/11	Sunny	15.9	Grayish yellowish brown	Faint earth	Loamy	<6.6	61	61	0.04	-	-	-	-	-	-	-	(Right bank) Soil not exposed		
			2019/1/13	Sunny	6.4	Blackish brown	Faint earth	Loamy	<9.1	61	61	0.04	-	-	-	-	-	-	-	(Right bank) Soil not exposed		
			2018/5/4	Sunny	14.0	Dark brown	Faint earth	Loamy	34	480	514	0.06	Dark brown	Faint earth	Loamy	89	820	909	0.07			
	6	Onose River	Ozaki Bridge	2018/8/18	Sunny	24.3	Brown	Faint earth	Loamy	29	260	289	0.06	Dark brown	Faint earth	Loamy	39	400	439	0.05		
				2018/11/6	Cloudy	16.0	Dark brown	Faint earth	Loamy	27	340	367	0.06	Blackish brown	Faint earth	Loamy	31	290	321	0.06		
				2019/1/17	Sunny	2.0	Brown	Faint earth	Loamy	62	750	812	0.06	Dark brown	Faint earth	Loamy	49	610	659	0.06		
				2018/5/4	Cloudy	11.9	Dark brown	Faint earth	Loamy	37	390	427	0.06	Grayish yellowish brown	Faint earth	Loamy	48	530	578	0.07		
				2018/8/18	Sunny	21.5	Dull yellowish brown	Faint earth	Loamy	88	820	908	0.07	Dark brown	Faint earth	Loamy	54	550	604	0.06		
	7	Arima River	Unanda Bridge	2018/11/6	Cloudy	16.0	Dark brown	Faint earth	Loamy	27	340	367	0.06	Blackish brown	Faint earth	Loamy	31	290	321	0.06		
				2019/1/17	Sunny	2.0	Brown	Faint earth	Loamy	62	750	812	0.06	Dark brown	Faint earth	Loamy	49	610	659	0.06		
				2018/5/4	Cloudy	11.9	Dark brown	Faint earth	Loamy	37	390	427	0.06	Grayish yellowish brown	Faint earth	Loamy	48	530	578	0.07		
				2018/8/18	Sunny	21.5	Dull yellowish brown	Faint earth	Loamy	88	820	908	0.07	Dark brown	Faint earth	Loamy	54	550	604	0.06		
				2018/11/6	Cloudy	16.4	Dull yellowish brown	Faint earth	Loamy	85	880	965	0.07	Dull yellowish brown	Faint earth	Loamy	27	290	317	0.07		
	8	Kinryu River	Obata Bridge	2019/1/17	Cloudy	3.3	Brown	Faint earth	Loamy	92	1,200	1,292	0.08	Blackish brown	Faint earth	Loamy	63	760	823	0.07		
				2018/5/2	Cloudy	20.2	Dull yellowish brown	Faint earth	Loamy	9.5	120	129.5	0.05	Dull yellowish brown	Faint earth	Loamy	29	320	349	0.05		
				2018/8/19	Sunny	23.6	Dull yellowish brown	Faint earth	Loamy	<7.0	63	63	0.04	Dark brown	Faint earth	Loamy	41	410	451	0.04		
				2018/11/12	Sunny	12.4	Dull yellowish brown	Faint earth	Loamy	13	160	173	0.05	Dark brown	Faint earth	Loamy	10	120	130	0.04		
				2019/1/18	Cloudy	0.8	Dark brown	Faint earth	Loamy	14	140	154	0.04	Dark brown	Faint earth	Loamy	22	230	252	0.05		
9	Kitakami River	Tome-ohashi Bridge (Tome)	2018/5/9	Rain	8.6	Brown	Faint earth	Loamy	39	370	409	0.06	Blackish brown	Faint earth	Loamy	94	850	944	0.07			
			2018/8/9	Rain	30.9	Grayish yellowish brown	Faint earth	Loamy	49	510	559	0.05	Grayish yellowish brown	Faint earth	Loamy	27	340	367	0.05			
			2018/11/3	Sunny	9.2	Dark brown	Faint earth	Loamy	52	630	682	0.06	Dark brown	Faint earth	Loamy	20	230	250	0.06			
			2019/1/15	Cloudy	-0.5	Dark brown	Faint earth	Loamy	58	630	688	0.05	Dark brown	Faint earth	Loamy	92	1,100	1,192	0.05			
			2018/5/15	Sunny	27.1	Brown	Faint earth	Loamy	33	340	373	0.05	Blackish brown	Faint earth	Loamy	48	430	478	0.06			
10	Kitakami River System	Sanhasama River	Doman Bridge (Kurikoma Dam)	2018/8/21	Sunny	27.9	Brown	Faint earth	Loamy	30	320	350	0.06	Blackish brown	Faint earth	Loamy	140	1,400	1,540	0.06		
				2018/11/7	Cloudy	18.1	Dull yellowish brown	Faint earth	Loamy	43	430	473	0.06	Dull yellowish brown	Faint earth	Loamy	34	390	424	0.06		
				2019/1/15	Cloudy	1.5	Dull yellowish brown	Faint earth	Loamy	47	580	627	0.05	Blackish brown	Faint earth	Loamy	74	820	894	0.06		
				2018/5/15	Sunny	24.0	Blackish brown	Faint earth	Loamy	94	820	914	0.07	Dull yellowish brown	Faint earth	Sandy	<4.9	48	48	0.04		
				2018/8/21	Sunny	29.2	Dull yellowish brown	Faint earth	Loamy	76	810	886	0.06	Dull yellowish brown	Faint earth	Sandy	<4.5	6.3	6.3	0.04		
11	Nihassama River	Kajiya Bridge	2018/11/7	Sunny	17.4	Blackish brown	Faint earth	Loamy	76	750	826	0.06	Olive brown	Faint earth	Sandy	<6.0	21	21	0.04			
			2019/1/16	Sunny	2.0	Blackish brown	Faint earth	Loamy	40	420	460	0.07	Dull yellowish brown	Faint earth	Sandy	<7.6	17	17	0.04			
			2018/5/4	Rain	13.4	Blackish brown	Faint earth	Loamy	38	380	418	0.04	Dark brown	Faint earth	Loamy	<12	84	84	0.04			
			2018/8/18	Sunny	25.6	Blackish brown	Faint earth	Loamy	190	1,800	1,990	0.05	Brown	Faint earth	Loamy	<11	75	75	0.04			
			2018/11/12	Cloudy	10.0	Blackish brown	Faint earth	Loamy	24	240	264	0.04	Dull yellowish brown	Faint earth	Loamy	<5.6	67	67	0.04			
12	Hasama River	Wakayanagi	2019/1/17	Cloudy	2.5	Blackish brown	Faint earth	Loamy	30	330	360	0.04	Dark brown	Faint earth	Loamy	<7.4	70	70	0.04			

Miyagi River (Surrounding Environment) 2/4

No.	Location			Sampling Date	Weather	Air temperature (°C)	Surrounding Environment (Soil, Air dose)											Remarks				
	Water area	Location	Municipality				Left bank			Right bank												
							Color	Odor	Property	Activity concentration [Bq/kg(dry)]			Air Dose (µSv/h)	Color	Odor	Property	Activity concentration [Bq/kg(dry)]			Air Dose (µSv/h)		
										Radioactive cesium							Radioactive cesium					
Cs-134	Cs-137	Total	Cs-134	Cs-137	Total	Cs-134	Cs-137	Total														
R i v e r s	14	Hasama River	Yamayoshida Bridge	Tome City	2018/5/2	Cloudy	19.6	Dull yellowish brown	Faint earth	Loamy	<7.9	62	62	0.04	Blackish brown	Faint earth	Loamy	25	230	255	0.04	
					2018/8/19	Sunny	21.9	Dark brown	Faint earth	Loamy	9.8	65	74.8	0.04	Blackish brown	Faint earth	Loamy	21	210	231	0.04	
					2018/11/12	Cloudy	10.2	Dark brown	Faint earth	Loamy	<7.0	73	73	0.05	Blackish brown	Faint earth	Loamy	<8.4	83	83	0.04	
	15	Eai River	Todoroki Bridge (Todoroki)	Osaki City	2019/1/18	Cloudy	0.4	Blackish brown	Faint earth	Loamy	9.6	120	129.6	0.04	Blackish brown	Faint earth	Loamy	26	320	346	0.05	
					2018/5/16	Sunny	28.5	Dark brown	Faint earth	Loamy	7.8	120	127.8	0.04	Dark brown	Faint earth	Loamy	41	380	421	0.05	
					2018/8/17	Sunny	23.2	Dark brown	Faint earth	Loamy	<6.8	42	42	0.04	Blackish brown	Faint earth	Loamy	22	200	222	0.04	
					2018/11/13	Sunny	12.5	Dark brown	Faint earth	Loamy	10	130	140	0.04	Blackish brown	Faint earth	Loamy	18	210	228	0.04	
					2019/1/16	Snow	1.8	Dark brown	Faint earth	Loamy	11	110	121	0.04	-	-	-	-	-	-	-	(Right bank) Unable to collect samples due to snow on the ground
					2018/5/1	Sunny	27.2	Dull yellowish brown	Faint earth	Loamy	45	480	525	0.04	Dark brown	Faint earth	Loamy	23	240	263	0.04	
	16	Shimizu lock gate	Osaki City	2018/8/22	Sunny	27.8	Dark brown	Faint earth	Loamy	11	110	121	0.04	Blackish brown	Faint earth	Loamy	23	270	293	0.05		
				2018/11/13	Sunny	16.1	Dark brown	Faint earth	Loamy	<10	89	89	0.04	Blackish brown	Faint earth	Loamy	16	170	186	0.05		
				2019/1/19	Sunny	3.4	Blackish brown	Faint earth	Loamy	17	180	197	0.04	Blackish brown	Faint earth	Loamy	17	210	227	0.04		
	17	Kitakami River System	In Furukawa District, Osaki City	Shinborisaihon, entrance	2018/5/1	Sunny	27.0	Brown	Faint earth	Loamy	33	330	363	0.05	Brown	Faint earth	Loamy	18	160	178	0.04	
					2018/8/17	Sunny	19.3	Blackish brown	Faint earth	Loamy	36	250	286	0.04	Blackish brown	Faint earth	Loamy	8.4	85	93.4	0.04	
					2018/11/16	Sunny	8.8	Blackish brown	Faint earth	Loamy	28	330	358	0.04	Blackish brown	Faint earth	Loamy	9.6	97	106.6	0.04	
	18	Dekigawa River	Kogota Bridge	Misato Town	2019/1/19	Sunny	4.3	Blackish brown	Faint earth	Loamy	33	330	363	0.04	Dark brown	Faint earth	Loamy	10	110	120	0.04	
					2018/5/3	Rain	17.4	Grayish yellowish brown	Faint earth	Sandy	11	130	141	0.05	Blackish brown	Faint earth	Loamy	10	120	130	0.04	
					2018/8/17	Sunny	21.3	Dull yellowish brown	Faint earth	Sandy	9.5	100	109.5	0.04	Dark brown	Faint earth	Loamy	8.3	120	128.3	0.04	
	19	Eai River	Oikawa Bridge (Tandai)	Wakuya Town /Ishinomaki City	2018/11/16	Sunny	12.5	Dull yellowish brown	Faint earth	Sandy	11	120	131	0.04	Blackish brown	Faint earth	Loamy	11	110	121	0.04	
					2019/1/19	Cloudy	5.2	Dark brown	Faint earth	Sandy	14	140	154	0.05	Blackish brown	Faint earth	Loamy	15	150	165	0.04	
					2018/5/2	Cloudy	17.8	Brown	Faint earth	Sandy	13	140	153	0.04	Dark brown	Faint earth	Loamy	<7.5	41	41	0.05	
					2018/8/22	Sunny	33.2	Dark brown	Faint earth	Sandy	11	150	161	0.04	Dark brown	Faint earth	Loamy	<8.0	50	50	0.04	
					2018/11/16	Sunny	16.7	Dark brown	Faint earth	Sandy	12	140	152	0.04	Dark brown	Faint earth	Loamy	<7.7	84	84	0.04	
					2019/1/18	Snow	-0.8	Dull yellowish brown	Faint earth	Sandy	13	170	183	0.04	Blackish brown	Faint earth	Loamy	<9.2	90	90	0.05	
	20	Kyu-Kitakami River	Kadonowaki	Ishinomaki City	2018/5/19	Cloudy	16.0	Blackish brown	Faint earth	Loamy	<6.5	12	12	0.04	Dull yellowish brown	Faint earth	Loamy	<7.2	65	65	0.05	
					2018/8/25	Sunny	32.8	Brown	Faint earth	Loamy	<6.5	15	15	0.05	Dull yellowish brown	Faint earth	Loamy	8.2	84	92.2	0.04	
					2018/11/15	Sunny	13.4	Dull yellowish brown	Faint earth	Loamy	<0.85	4.3	4.3	0.05	Dark brown	Faint earth	Loamy	12	110	122	0.05	
	21	Narusue River	Ono Bridge (Ono)	Higashi-Matsushima City	2019/1/20	Cloudy	4.8	Brown	Faint earth	Loamy	<4.0	6.1	6.1	0.05	Dark brown	Faint earth	Loamy	<12	96	96	0.05	
					2018/5/19	Cloudy	13.7	Dark brown	Faint earth	Loamy	20	130	150	0.04	Dark brown	Faint earth	Loamy	14	130	144	0.04	
					2018/8/25	Sunny	32.7	Dark brown	Faint earth	Loamy	16	140	156	0.04	Dark brown	Faint earth	Loamy	16	140	156	0.05	
					2018/11/15	Sunny	15.2	Blackish brown	Faint earth	Loamy	16	190	206	0.04	Blackish brown	Faint earth	Loamy	12	150	162	0.06	
					2019/1/20	Cloudy	2.1	Dark brown	Faint earth	Loamy	16	160	176	0.05	Dark brown	Faint earth	Loamy	16	200	216	0.05	
					2018/5/26	Sunny	23.3	Dull yellowish brown	Faint earth	Loamy	9.7	99	108.7	0.04	Dark brown	Faint earth	Loamy	33	270	303	0.04	
	22	Sunaoishi River	Tagajozeki Weir	Tagajo City	2018/8/24	Cloudy	25.1	Dull yellowish brown	Faint earth	Loamy	7.7	98	105.7	0.04	Dull yellowish brown	Faint earth	Loamy	17	190	207	0.04	
					2018/11/17	Cloudy	16.1	Dark brown	Faint earth	Loamy	10	100	110	0.04	Dull yellowish brown	Faint earth	Loamy	24	290	314	0.04	
					2019/1/22	Sunny	6.4	Dull yellowish brown	Faint earth	Loamy	8.9	94	102.9	0.04	Brown	Faint earth	Loamy	14	170	184	0.04	
2018/5/26					Sunny	20.9	Brown	Faint earth	Loamy	<7.7	56	56	0.04	Dull yellowish brown	Faint earth	Loamy	<5.8	13	13	0.04		
2018/8/24					Cloudy	24.5	Dark brown	Faint earth	Loamy	8.4	130	138.4	0.04	Dark brown	Faint earth	Loamy	<6.6	15	15	0.04		
2018/11/17					Cloudy	9.8	Grayish yellowish brown	Faint earth	Loamy	38	470	508	0.04	Dark brown	Faint earth	Loamy	<7.5	18	18	0.04		
23	Teizan-unga Canal (Kyu-sunaoshi River)	Teizan Bridge	Shichigahama Town/Tagajo City	2019/1/22	Sunny	3.2	Blackish brown	Faint earth	Loamy	24	310	334	0.04	Dark brown	Faint earth	Loamy	<7.2	9.4	9.4	0.04		
				2018/5/26	Sunny	22.2	Dull yellowish brown	Faint earth	Loamy	<6.4	14	14	0.04	Dull yellowish brown	Faint earth	Loamy	<7.0	35	35	0.04		
				2018/8/24	Cloudy	26.0	Dark brown	Faint earth	Loamy	12	140	152	0.04	Dark brown	Faint earth	Loamy	21	170	191	0.04		
				2018/11/17	Cloudy	11.6	Dark brown	Faint earth	Loamy	9.4	110	119.4	0.04	Dull yellowish brown	Faint earth	Loamy	<5.6	39	39	0.04		
				2019/1/22	Snow	3.8	Dark brown	Faint earth	Loamy	12	140	152	0.04	Dull yellowish brown	Faint earth	Loamy	<6.8	29	29	0.04		
				2018/5/20	Sunny	20.7	Dark brown	Faint earth	Loamy	<6.8	9.1	9.1	0.04	Dark brown	Faint earth	Loamy	13	150	163	0.04		
25	Nanakita River System	Nanakita River	Sendai City	2018/8/24	Rain	26.7	Dark brown	Faint earth	Loamy	<3.2	3.8	3.8	0.04	Dark brown	Faint earth	Loamy	18	150	168	0.04		
				2018/11/17	Sunny	15.1	Dark brown	Faint earth	Loamy	<6.4	10	10	0.04	Dark brown	Faint earth	Loamy	35	350	385	0.04		
				2019/1/23	Sunny	5.1	Blackish brown	Faint earth	Loamy	<5.4	11	11	0.04	Blackish brown	Faint earth	Loamy	21	250	271	0.04		
26	Nanakita River System	Fukuda-ohashi Bridge	Sendai City	2018/5/24	Sunny	21.3	Dark brown	Faint earth	Loamy	15	160	175	0.04	Blackish brown	Faint earth	Loamy	12	110	122	0.04		
				2018/8/29	Rain	20.4	Blackish brown	Faint earth	Loamy	9.9	120	129.9	0.04	Blackish brown	Faint earth	Loamy	5.0	56	61.0	0.04		
				2018/11/18	Sunny	14.5	Dark brown	Faint earth	Loamy	22	250	272	0.04	Blackish brown	Faint earth	Loamy	17	180	197	0.04		
2019/1/23	Cloudy	7.6	Blackish brown	Faint earth	Loamy	14	190	204	0.04	Dark brown	Faint earth	Loamy	17	220	237	0.04						

Miyagi River (Surrounding Environment) 3/4

No.	Location			Sampling Date	Weather	Air temperature (°C)	Surrounding Environment (Soil, Air dose)													Remarks		
	Water area	Location	Municipality				Left bank						Right bank									
							Color	Odor	Property	Activity concentration [Bq/kg(dry)]			Air Dose (μSv/h)	Color	Odor	Property	Activity concentration [Bq/kg(dry)]				Air Dose (μSv/h)	
										Cs-134	Cs-137	Total					Cs-134	Cs-137	Total			
R i v e r s	27	Nanakita River System	Umeda River	Fukuda Bridge	Sendai City	2018/5/24	Sunny	22.4	Dark brown	Faint earth	Loamy	11	110	121	0.04	Dark brown	Faint earth	Loamy	<5.8	20	20	0.04
						2018/8/29	Cloudy	19.5	Dark brown	Faint earth	Loamy	15	170	185	0.04	Blackish brown	Faint earth	Loamy	22	280	302	0.04
						2018/11/18	Sunny	11.8	Blackish brown	Faint earth	Sandy	28	310	338	0.04	Blackish brown	Faint earth	Loamy	13	140	153	0.04
		28	Nanakita River	Takasago Bridge	Sendai City	2019/1/23	Sunny	7.4	Dark brown	Faint earth	Sandy	30	340	370	0.06	Blackish brown	Faint earth	Loamy	17	170	187	0.04
						2018/5/24	Sunny	21.2	Dark brown	Faint earth	Sandy	<8.4	55	55	0.04	Dark brown	Faint earth	Sandy	20	210	230	0.04
						2018/8/30	Cloudy	23.4	Dull yellowish brown	Faint earth	Loamy	<3.7	5.8	5.8	0.04	Dark brown	Faint earth	Sandy	10	110	120	0.04
	29		Natori River	Yuriage-ohashi Bridge	Sendai City/Natori City	2018/11/18	Sunny	10.9	Dark brown	Faint earth	Loamy	<5.7	18	18	0.04	Blackish brown	Faint earth	Sandy	18	190	208	0.04
						2019/1/23	Cloudy	5.6	Blackish brown	Faint earth	Loamy	<6.8	73	73	0.04	Dark brown	Faint earth	Loamy	20	240	260	0.04
						2018/5/24	Sunny	23.2	Dark brown	Faint earth	Loamy	<8.9	11	11	0.04	Dark brown	Faint earth	Loamy	<4.3	6.3	6.3	0.04
		30	Natori River System	Yakushi Bridge	Sendai City/Natori City	2018/8/30	Cloudy	26.5	Blackish brown	Faint earth	Loamy	<8.9	24	24	0.04	Dark brown	Faint earth	Loamy	<4.8	8.7	8.7	0.04
						2018/11/18	Sunny	7.3	Dark brown	Faint earth	Loamy	<8.4	24	24	0.04	Dark brown	Faint earth	Loamy	<0.70	1.7	1.7	0.04
						2019/1/24	Sunny	2.8	Dull yellowish brown	Faint earth	Loamy	<5.5	26	26	0.04	Dark brown	Faint earth	Loamy	<2.7	4.2	4.2	0.04
	31		Masuda River	Koyama Bridge	Natori City	2018/5/22	Sunny	25.0	Dark brown	Faint earth	Loamy	7.9	110	117.9	0.04	Brown	Faint earth	Loamy	<8.8	23	23	0.04
						2018/8/31	Cloudy	23.0	Brown	Faint earth	Loamy	10	89	99	0.04	Dark brown	Faint earth	Loamy	<6.2	43	43	0.04
						2018/11/19	Cloudy	11.1	Brown	Faint earth	Sandy	<7.7	29	29	0.04	Dark brown	Faint earth	Loamy	<9.1	33	33	0.04
		32	Bishamon Bridge	Natori City	2019/1/24	Snow	0.5	Brown	Faint earth	Loamy	17	200	217	0.04	Blackish brown	Faint earth	Loamy	<4.6	41	41	0.04	
					2018/5/29	Sunny	26.8	Grayish yellowish brown	Faint earth	Loamy	64	580	644	0.06	Grayish yellowish brown	Faint earth	Loamy	69	530	599	0.05	
					2018/8/31	Cloudy	24.7	Blackish brown	Faint earth	Loamy	49	570	619	0.04	Blackish brown	Faint earth	Loamy	53	540	593	0.05	
	33		Abukuma River System	Abukuma River	Marumori Town	2018/11/19	Cloudy	13.8	Dull yellowish brown	Faint earth	Loamy	55	590	645	0.06	Blackish brown	Faint earth	Loamy	43	500	543	0.06
						2019/1/24	Sunny	3.0	Dull yellowish brown	Faint earth	Loamy	39	460	499	0.06	Blackish brown	Faint earth	Loamy	55	570	625	0.06
						2018/5/29	Sunny	26.4	Dull yellowish brown	Faint earth	Loamy	14	140	154	0.04	Blackish brown	Faint earth	Loamy	44	380	424	0.04
		34	Marumori Bridge	Marumori Town	2018/8/30	Cloudy	23.4	Dark brown	Faint earth	Loamy	16	190	206	0.04	Blackish brown	Faint earth	Loamy	11	130	141	0.04	
					2018/11/19	Cloudy	10.0	Dark brown	Faint earth	Loamy	17	190	207	0.04	Dark brown	Faint earth	Loamy	23	240	263	0.04	
					2019/1/25	Sunny	2.5	Grayish yellowish brown	Faint earth	Loamy	29	330	359	0.04	Dark brown	Faint earth	Loamy	17	220	237	0.04	
	33		Hadeniwa Bridge	Marumori Town	2018/4/24	Rain	13.9	Dark brown	Faint earth	Loamy	170	1,900	2,070	0.20	Dark brown	Faint earth	Loamy	140	1,600	1,740	0.15	
					2018/5/23	Cloudy	23.3	Dark brown	Faint earth	Loamy	150	1,600	1,750	0.12	Brown	Faint earth	Loamy	90	780	870	0.09	
					2018/6/8	Sunny	25.6	Dark brown	Faint earth	Loamy	260	2,600	2,860	0.11	Dull yellowish brown	Faint earth	Loamy	120	1,100	1,220	0.10	
34		Marumori Bridge	Marumori Town	2018/7/21	Cloudy	32.9	Blackish brown	Faint earth	Loamy	180	1,800	1,980	0.15	Dull yellowish brown	Faint earth	Loamy	45	470	515	0.09		
				2018/8/15	Sunny	29.4	Dull yellowish brown	Faint earth	Loamy	190	2,000	2,190	0.14	Dark brown	Faint grass	Loamy	130	1,400	1,530	0.12		
				2018/9/4	Cloudy	26.6	Blackish brown	Faint earth	Loamy	190	1,900	2,090	0.20	Blackish brown	Faint earth	Loamy	130	1,400	1,530	0.12		
	34	Marumori Bridge	Marumori Town	2018/10/15	Cloudy	15.2	Dark brown	Faint earth	Sandy	150	1,700	1,850	0.13	Dark brown	Faint earth	Loamy	23	280	303	0.09		
				2018/12/12	Cloudy	3.6	Blackish brown	Faint earth	Loamy	180	2,200	2,380	0.11	Dark brown	Faint earth	Loamy	110	1,200	1,310	0.08		
				2019/1/29	Cloudy	3.4	Blackish brown	Faint earth	Sandy	86	970	1,056	0.11	Blackish brown	Faint earth	Loamy	140	1,800	1,940	0.09		
34		Marumori Bridge	Marumori Town	2019/2/13	Sunny	3.9	Blackish brown	Faint earth	Sandy	150	1,800	1,950	0.12	Dark brown	Faint earth	Loamy	95	1,200	1,295	0.09		
				2018/4/24	Rain	14.0	Dull yellowish brown	Faint grass	Sandy	33	340	373	0.16	Dull yellowish brown	Faint grass	Sandy	44	350	394	0.12		
				2018/5/23	Cloudy	23.2	Dull yellowish brown	Faint earth	Sandy	29	330	359	0.10	Dull yellowish brown	Faint earth	Loamy	36	370	406	0.07		
	34	Marumori Bridge	Marumori Town	2018/6/8	Sunny	30.5	Dull yellow orange	Faint earth	Sandy	22	320	342	0.09	Dull yellow orange	Faint earth	Sandy	32	340	372	0.09		
				2018/7/21	Sunny	32.2	Dull yellowish brown	Faint earth	Loamy	32	390	422	0.09	Dull yellowish brown	Faint earth	Loamy	27	360	387	0.07		
				2018/8/15	Sunny	30.3	Dull yellowish brown	Faint earth	Sandy	36	360	396	0.12	Brown	Faint earth	Sandy	31	350	381	0.10		
34		Marumori Bridge	Marumori Town	2018/9/4	Cloudy	25.0	Dark brown	Faint grass	Loamy	60	630	690	0.11	Blackish brown	Faint earth	Loamy	32	390	422	0.09		
				2018/10/15	Cloudy	17.9	Dull yellowish brown	Faint earth	Sandy	23	230	253	0.10	Dull yellowish brown	Faint earth	Loamy	31	340	371	0.06		
				2018/12/12	Sunny	7.7	Dark brown	Faint earth	Sandy	27	350	377	0.09	Blackish brown	Faint earth	Sandy	38	390	428	0.06		
	34	Marumori Bridge	Marumori Town	2019/1/29	Cloudy	4.5	Dark brown	Faint earth	Sandy	66	780	846	0.09	Dark brown	Faint earth	Sandy	47	570	617	0.08		
				2019/2/13	Sunny	3.8	Dark brown	Faint earth	Sandy	24	260	284	0.10	Blackish brown	Faint earth	Sandy	40	470	510	0.07		

Miyagi River (Surrounding Environment) 4/4

No.	Location			Sampling Date	Weather	Air temperature (°C)	Surrounding Environment (Soil, Air dose)													Remarks		
	Water area	Location	Municipality				Left bank						Right bank									
							Color	Odor	Property	Activity concentration [Bq/kg(dry)]			Air Dose (μSv/h)	Color	Odor	Property	Activity concentration [Bq/kg(dry)]				Air Dose (μSv/h)	
										Radioactive cesium							Radioactive cesium					
Cs-134	Cs-137	Total	Cs-134	Cs-137	Total	Cs-134	Cs-137	Total														
35	Abukuma River	Higashine Bridge	Kakuda City	2018/4/26	Sunny	21.7	Dark brown	Faint earth	Loamy	150	1,600	1,750	0.13	Dark brown	Faint earth	Loamy	59	560	619	0.13		
				2018/6/8	Sunny	28.5	Grayish yellowish brown	Faint earth	Loamy	120	1,200	1,320	0.09	Dull yellowish brown	Faint earth	Loamy	50	520	570	0.10		
				2018/8/11	Sunny	29.9	Dark brown	Faint earth	Loamy	92	930	1,022	0.11	Dull yellowish brown	Faint earth	Loamy	43	590	633	0.10		
				2018/10/15	Cloudy	19.5	Blackish brown	Faint earth	Loamy	24	290	314	0.11	Brown	Faint earth	Loamy	89	1,000	1,089	0.08		
				2018/12/13	Sunny	5.9	Dark brown	Faint earth	Loamy	88	1,100	1,188	0.09	Dark brown	Faint earth	Loamy	37	430	467	0.08		
				2019/1/27	Sunny	5.6	Blackish brown	Faint earth	Loamy	140	1,500	1,640	0.09	Dark brown	Faint earth	Loamy	45	500	545	0.09		
	36	Shiroishi River	Before the confluence with Kawaharokozawa (Sunosshi Bridge)	Shiroishi City	2018/4/24	Rain	14.1	Blackish brown	Faint earth	Loamy	210	1,900	2,110	0.13	Dark brown	Faint earth	Loamy	55	500	555	0.11	
					2018/7/20	Sunny	30.7	Dark brown	Faint earth	Loamy	49	460	509	0.10	Dark brown	Faint earth	Loamy	77	740	817	0.07	
					2018/11/21	Sunny	11.5	Blackish brown	Faint earth	Loamy	170	2,000	2,170	0.09	Dark brown	Faint earth	Loamy	57	680	737	0.06	
					2019/1/28	Sunny	2.1	Blackish brown	Faint earth	Loamy	100	1,200	1,300	0.07	Blackish brown	Faint earth	Loamy	45	510	555	0.06	
					2018/4/25	Rain	12.8	Blackish brown	Faint earth	Loamy	120	1,100	1,220	0.09	Blackish brown	Faint earth	Loamy	130	1,300	1,430	0.11	
					2018/7/21	Sunny	30.5	Dull yellowish brown	Faint earth	Loamy	330	3,300	3,630	0.07	Grayish yellowish brown	Faint earth	Loamy	87	910	997	0.08	
37	Saikawa River	Etsubo Bridge	Shiroishi City	2018/11/20	Cloudy	11.5	Dark brown	Faint earth	Loamy	140	1,500	1,640	0.08	Dark brown	Faint earth	Loamy	50	510	560	0.06		
				2019/1/28	Sunny	5.4	Dark brown	Faint earth	Loamy	140	1,700	1,840	0.07	Blackish brown	Faint earth	Loamy	56	710	766	0.08		
				2018/4/25	Rain	12.1	Blackish brown	Faint earth	Loamy	57	510	567	0.07	Blackish brown	Faint earth	Loamy	90	880	970	0.09		
				2018/7/20	Sunny	31.6	Dark brown	Faint earth	Loamy	38	520	558	0.06	Grayish yellowish brown	Faint earth	Loamy	61	630	691	0.08		
38	Matsukawa River	Miya-ohashi Bridge	Zao Town	2018/11/20	Sunny	13.3	Blackish brown	Faint earth	Loamy	84	1,000	1,084	0.06	Blackish brown	Faint earth	Loamy	39	470	509	0.06		
				2019/1/28	Sunny	8.3	Blackish brown	Faint earth	Sandy	30	290	320	0.05	Blackish brown	Faint earth	Loamy	69	850	919	0.06		
				2018/5/30	Cloudy	22.0	Dull yellowish brown	Faint earth	Loamy	44	370	414	0.07	Dull yellowish brown	Faint earth	Loamy	28	340	368	0.06		
				2018/8/12	Cloudy	25.2	Dull yellowish brown	Faint earth	Loamy	89	910	999	0.07	Dark brown	Faint earth	Loamy	63	690	753	0.07		
39	Arakawa River	Niragami Bridge	Murata Town /Ogawara Town	2018/1/20	Sunny	12.7	Grayish yellowish brown	Faint earth	Loamy	34	360	394	0.05	Dark brown	Faint earth	Loamy	39	410	449	0.05		
				2019/1/28	Sunny	10.4	Dark brown	Faint earth	Loamy	24	290	314	0.06	Dark brown	Faint earth	Loamy	57	560	617	0.06		
				2018/5/23	Cloudy	20.3	Dark brown	Faint earth	Loamy	18	190	208	0.04	Dark brown	Faint earth	Loamy	39	380	419	0.06		
				2018/8/12	Sunny	26.0	Dark brown	Faint earth	Loamy	21	240	261	0.06	Dark brown	Faint earth	Loamy	34	340	374	0.07		
40	Abukuma River System	Shiroishi River	Shirahata Bridge	Shibata Town	2018/11/20	Sunny	9.1	Blackish brown	Faint earth	Loamy	25	250	275	0.05	Dark brown	Faint earth	Loamy	22	270	292	0.06	
					2019/1/27	Sunny	3.8	Blackish brown	Faint earth	Loamy	26	330	356	0.05	Blackish brown	Faint earth	Loamy	38	420	458	0.05	
					2018/4/25	Cloudy	13.6	Blackish brown	Faint earth	Loamy	180	1,700	1,880	0.07	Blackish brown	Faint earth	Loamy	81	790	871	0.09	
					2018/6/9	Cloudy	23.3	Dull yellowish brown	Faint earth	Loamy	58	640	698	0.06	Dull yellowish brown	Faint earth	Loamy	56	600	656	0.06	
					2018/8/12	Sunny	24.5	Dark brown	Faint earth	Loamy	170	1,800	1,970	0.07	Dark brown	Faint earth	Loamy	68	830	898	0.08	
					2018/10/16	Sunny	16.2	Blackish brown	Faint earth	Loamy	35	370	405	0.05	Blackish brown	Faint earth	Loamy	51	510	561	0.07	
		41	Tauginoki-ohashi Bridge	Kakuda City /Shibata Town	Shibata Town	2018/12/11	Sunny	6.8	Blackish brown	Faint earth	Loamy	66	740	806	0.06	Blackish brown	Faint earth	Loamy	59	620	679	0.07
						2019/1/27	Sunny	0.3	Blackish brown	Faint earth	Loamy	93	1,000	1,093	0.05	Blackish brown	Faint earth	Loamy	76	840	916	0.07
						2018/4/26	Sunny	18.2	Blackish brown	Faint earth	Loamy	120	1,100	1,220	0.12	Blackish brown	Faint earth	Loamy	95	1,000	1,095	0.11
						2018/5/23	Cloudy	19.3	Dark brown	Faint earth	Loamy	120	1,300	1,420	0.08	Dark brown	Faint earth	Loamy	55	480	535	0.08
						2018/6/9	Sunny	22.6	Grayish yellowish brown	Faint earth	Loamy	100	1,000	1,100	0.10	Dull yellowish brown	Faint earth	Loamy	71	690	761	0.08
						2018/7/20	Sunny	28.7	Dull yellowish brown	Faint earth	Loamy	90	1,000	1,090	0.10	Blackish brown	Faint earth	Loamy	69	740	809	0.08
42	Abukuma River	Abukuma-ohashi Bridge (Iwanuma)	Iwanuma City/Watari Town	2018/8/11	Sunny	27.5	Dark brown	Faint earth	Loamy	190	2,000	2,190	0.10	Dull yellowish brown	Faint earth	Loamy	82	940	1,022	0.10		
				2018/9/4	Cloudy	22.9	Blackish brown	Faint earth	Loamy	71	880	951	0.11	Blackish brown	Faint earth	Loamy	110	1,000	1,110	0.10		
				2018/10/16	Sunny	20.2	Dark brown	Faint earth	Loamy	120	1,400	1,520	0.07	Blackish brown	Faint earth	Loamy	50	500	550	0.08		
				2018/12/13	Sunny	6.9	Blackish brown	Faint earth	Loamy	83	1,100	1,183	0.08	Dark brown	Faint earth	Loamy	75	940	1,015	0.09		
				2019/1/25	Cloudy	4.4	Blackish brown	Faint earth	Loamy	120	1,500	1,620	0.08	Blackish brown	Faint earth	Loamy	140	1,600	1,740	0.09		
				2019/2/13	Sunny	3.3	Dark brown	Faint earth	Loamy	64	720	784	0.08	Blackish brown	Faint earth	Loamy	58	630	688	0.09		
				2018/4/26	Sunny	17.0	Dark brown	Faint earth	Loamy	<8.3	42	42	0.05	Blackish brown	Faint earth	Loamy	79	880	959	0.08		
				2018/6/9	Sunny	25.5	Dull yellowish brown	Faint earth	Sandy	<8.3	19	19	0.04	Grayish yellowish brown	Faint earth	Loamy	73	790	863	0.07		
				2018/8/11	Sunny	29.3	Dull yellowish brown	Faint earth	Sandy	<7.1	38	38	0.04	Dark brown	Faint earth	Loamy	70	720	790	0.08		
				2018/10/16	Sunny	18.9	Dark brown	Faint earth	Loamy	<5.6	19	19	0.05	Dark brown	Faint earth	Loamy	46	400	446	0.07		
				2018/12/13	Sunny	7.7	Blackish brown	Faint earth	Loamy	<8.0	45	45	0.05	Blackish brown	Faint earth	Loamy	48	590	638	0.06		
				2019/1/25	Cloudy	3.4	Dull yellowish brown	Faint earth	Loamy	<8.8	50	50	0.04	Dark brown	Faint earth	Loamy	30	310	340	0.07		
43	Offshore of Abukuma River Estuary (Watari-ohashi Bridge)			2018/6/9	Sunny	25.5	Dull yellowish brown	Faint earth	Sandy	<8.3	19	19	0.04	Grayish yellowish brown	Faint earth	Loamy	73	790	863	0.07		
				2018/8/11	Sunny	29.3	Dull yellowish brown	Faint earth	Sandy	<7.1	38	38	0.04	Dark brown	Faint earth	Loamy	70	720	790	0.08		
				2018/10/16	Sunny	18.9	Dark brown	Faint earth	Loamy	<5.6	19	19	0.05	Dark brown	Faint earth	Loamy	46	400	446	0.07		
				2018/12/13	Sunny	7.7	Blackish brown	Faint earth	Loamy	<8.0	45	45	0.05	Blackish brown	Faint earth	Loamy	48	590	638	0.06		

Miyagi Lakes and Reservoirs (Water)3/3

No.	Location			Sampling Date	Weather	Air temperature (°C)	Water depth (m)	Water										Remarks									
	Water area	Location	Municipality					General items						Activity concentration(Bq/L)													
								Water temperature (°C)	Sampling depth (m)	Color	Odor	Secchi disk depth (m)	Electrical conductivity (mS/m)	SS (mg/L)	Turbidity (FNU)	Radioactive cesium											
													Cs-134	Cs-137													
58	Lake Amanuma	Lake exit	Sendai City	Surface layer	2018/5/29	Sunny	25.8	0.3	21.5	0.0	Grayish yellow	None	>0.3	23.6	14	5.4	<0.63	<0.75									
				Deep layer																Unable to collect samples from the deep layer due to shallow water							
				Surface layer	2018/8/27	Cloudy	26.5	0.4	25.6	0.0	Grayish greenish yellow	None	>0.4	18.6	4	3.4	<0.75	<0.55		Unable to collect samples from the deep layer due to shallow water							
				Deep layer																	Unable to collect samples from the deep layer due to shallow water						
				Surface layer	2018/10/30	Sunny	16.5	0.5	14.2	0.0	Grayish yellow	None	>0.5	18.4	6	4.0	<0.49	<0.70		Unable to collect samples from the deep layer due to shallow water							
				Deep layer																		Unable to collect samples from the deep layer due to shallow water					
59	Natori River System	Kamafusa Dam	Dam site	Kawasaki Town	Surface layer	2018/5/28	Cloudy	17.8	29.8	18.1	0.5	Dark grayish yellow green	None	2.5	13.3	1	1.5	<0.77	<0.66								
					Deep layer																						
					Surface layer	2018/8/27	Cloudy	24.4	14.6	23.7	0.5	Dark grayish yellow green	None	2.3	8.9	1	1.4	<0.72	<0.75								
					Deep layer																						
					Surface layer	2018/10/18	Sunny	11.2	25.1	16.6	0.5	Grayish yellow green	None	1.6	8.7	4	3.4	<0.72	<0.86								
		Deep layer																									
		60	Tatumizu Dam	Dam site	Natori City	Surface layer	2018/5/22	Sunny	27.0	0.4	22.9	0.0	Grayish yellow green	None	>0.4	9.6	<1	1.4	<0.75	<0.69							
						Deep layer																					
						Surface layer	2018/10/18	Sunny	17.0	0.8	19.2	0.0	Grayish greenish yellow	None	>0.8	9.0	2	2.0	<0.65	<0.80							
						Deep layer																					
Surface layer	2018/5/28					Sunny	21.4	0.6	21.3	0.0	Grayish yellow green	None	>0.6	9.7	1	1.5	<0.76	<0.75									
61	Murata Dam	Dam site	Murata Town	Deep layer																							
				Surface layer	2018/10/21	Sunny	20.9	0.5	16.8	0.0	Grayish yellow green	None	>0.5	8.6	2	2.2	<0.84	<0.55									
				Deep layer																							
				Surface layer	2018/5/25	Sunny	24.9	0.5	18.1	0.0	Light grayish greenish yellow	None	>0.5	7.5	8	3.5	<0.81	<0.70									
				Deep layer																							
				62	Abukuma River System	Kawarago Dam	Dam site	Shiroishi City	Surface layer	2018/8/13	Sunny	26.3	1.0	27.0	0.0	Grayish yellow green	None	>1.0	9.7	5	3.4	<0.86	<0.69				
									Deep layer																		
									Surface layer	2018/10/17	Cloudy	13.5	0.6	14.1	0.0	Grayish yellow green	None	>0.6	7.8	7	5.2	<0.77	<0.70				
									Deep layer																		
									Surface layer	2018/12/11	Sunny	0.6	0.3	5.1	0.0	Light grayish greenish yellow	None	>0.3	8.8	4	1.2	<0.62	<0.80				
Deep layer																											
63	Shichikasyuku Dam	Dam site	Shichikashuku Town						Surface layer	2018/5/25	Sunny	22.5	32.8	16.9	0.5	Dark grayish yellow green	None	4.5	5.9	<1	0.8	<0.66	<0.88				
									Deep layer																		
									Surface layer	2018/8/13	Sunny	28.3	24.1	26.9	0.5	Light grayish yellow green	None	5.0	7.3	<1	0.9	<0.65	<0.92				
									Deep layer																		
				Surface layer	2018/10/17	Rain	12.7	23.0	17.3	0.5	Grayish greenish yellow	None	4.5	7.2	<1	1.3	<0.70	<0.55									
				Deep layer																							
				Surface layer	2018/12/17	Sunny	10.5	30.8	7.2	0.5	Grayish yellow green	None	2.4	7.9	3	3.3	<0.67	<0.69									
				Deep layer																							
				Surface layer	2018/5/30	Cloudy	23.4	1.0	24.2	0.0	Grayish greenish yellow	None	>1.0	19.6	12	9.9	<0.64	<0.55									
				64	Lake Bagyunuma	Lake exit	Shiroishi City	Deep layer																			
Surface layer	2018/8/13	Sunny	30.1					1.4	31.9	0.0	Grayish yellow	None	1.0	16.9	5	4.9	<0.65	<0.66									
Deep layer																											
Surface layer	2018/10/21	Sunny	16.4					0.6	15.7	0.0	Grayish yellow	None	>0.6	14.5	19	19	<0.81	<0.80									
Deep layer																											
Surface layer	2018/12/11	Cloudy	6.0					0.9	4.5	0.0	Grayish yellow	None	>0.9	14.9	11	10	<0.65	<0.92									
Deep layer																											

L a k e s a n d R e s e r v o i r s

Miyagi Lakes and Reservoirs (Sediment) 1/2

Location				Sampling Date	Weather	Air temperature (°C)	Water depth (m)	Sediment																		Remarks			
								General items											Activity concentration [Bq/kg(dry)]										
								Sediment temperature (°C)	Sample length (cm)	Color	Odor	Grain size distribution(%)					Sediment content (%)	Density (g/cm ³)	Property	Radioactive cesium									
Coarse gravel	Medium gravel	Fine gravel	Coarse sand	Medium sand	Fine sand	Silt	Clay					Cs-134	Cs-137	Total															
L a k e s a n d R e s e r v o i r s	44	Kurikoma Dam	Dam site	Kurihara City	2018/5/9	Rain	7.8	23.3	12.8	3	Blackish brown	Faint metal	0.0	9.4	12.8	8.2	16.6	15.3	29.8	8.0	53.8	2.640	Sand/gravel/silt	<8.6	45	45			
					2018/8/9	Rain	23.7	14.1	24.3	5	Dull yellowish brown	None	0.0	0.7	0.7	1.8	42.9	26.4	22.4	5.1	65.4	2.736	Sand/silt	<5.1	30	30			
					2018/10/26	Sunny	11.4	6.5	13.6	5	Dark brown	Faint swamp	0.0	3.7	9.5	18.1	47.3	16.1	2.9	2.5	71.7	2.770	Sand/gravel	<5.5	15	15			
		2018/12/20	Sunny		3.2	12.6	3.3	5	Blackish brown	None	0.0	2.4	5.8	13.7	68.2	7.4	0.1	2.6	80.3	2.990	Sand/gravel	<4.4	11	11					
		2018/5/15	Sunny		19.3	27.0	8.4	5	Olive black	Faint sewage	0.0	0.0	0.0	0.1	0.2	0.2	50.8	48.7	27.4	2.530	Silt	<23	160	160					
		2018/8/16	Rain		22.2	21.2	10.3	5	Olive black	Faint sewage	0.0	0.0	0.0	0.0	0.1	0.2	24.4	75.2	30.2	2.519	Silt	<22	140	140					
	45	Harayama Dam	Dam site			2018/10/24	Cloudy	16.3	19.7	9.6	5	Grayish olive	Faint sewage	0.0	0.0	0.0	0.0	0.1	0.1	25.1	74.7	28.1	2.522	Silt	<18	150	150		
						2018/12/20	Sunny	3.7	24.8	4.8	1	Grayish olive	Faint sewage	0.0	0.0	0.0	0.0	0.1	0.1	24.8	74.9	22.4	2.538	Silt	<25	180	180		
						2018/5/16	Sunny	24.5	61.0	8.3	5	Grayish olive	Faint sewage	0.0	0.0	0.0	0.1	2.9	3.6	53.8	39.6	30.9	2.559	Silt	23	200	223		
						2018/8/21	Sunny	23.8	50.7	9.2	5	Grayish olive	Faint sewage	0.0	0.0	0.0	0.0	0.1	0.2	40.7	59.0	27.4	2.513	Silt	<22	120	120		
	46	Naruko Dam	Dam site		Osaki City	2018/10/23	Sunny	13.3	42.8	8.2	5	Olive	Faint sewage	0.0	0.0	0.0	0.0	0.1	0.1	21.5	78.3	35.6	2.534	Silt	<14	86	86		
						2018/12/19	Rain	1.6	49.6	5.3	5	Dark olive	Faint sewage	0.0	0.0	0.0	0.0	0.0	0.0	34.2	65.8	40.6	2.583	Silt	<12	80	80		
						2018/5/3	Cloudy	18.6	1.8	19.0	5	Olive black	Faint sewage	0.0	0.0	0.5	1.1	7.7	10.5	53.8	26.5	22.3	2.441	Silt/sand	<24	160	160		
						2018/10/25	Sunny	20.4	1.0	17.8	5	Olive black	Faint sewage	0.0	0.0	0.1	0.3	2.1	13.7	52.0	31.8	26.1	2.441	Silt/sand	<20	140	140		
	48	Lake Naganuma	Lake exit		Tome City	2018/5/3	Cloudy	17.8	1.4	18.0	3	Olive black	Faint sewage	0.0	0.0	0.0	0.4	5.7	40.8	34.4	18.7	25.2	2.365	Silt/sand	<23	180	180		
						2018/8/19	Sunny	28.8	0.9	26.6	3	Olive black	Faint sewage	0.0	0.5	0.9	0.7	7.7	38.8	35.2	16.3	27.8	2.345	Silt/sand	<20	200	200		
						2018/10/25	Sunny	16.3	1.1	17.2	3	Olive black	Faint sewage	0.0	0.9	4.0	2.4	17.0	36.6	20.6	18.6	23.7	2.386	Sand/silt	25	210	235		
						2018/12/18	Sunny	5.2	1.3	5.5	3	Olive black	Faint sewage	0.0	0.0	0.8	0.5	9.5	34.2	37.1	18.1	23.0	2.358	Silt/sand	<23	190	190		
	49	Shukunosawatameike Pond	Pond exit		Kurihara City	2018/5/1	Sunny	28.7	0.6	20.2	3	Brown	None	0.0	2.0	3.0	5.8	20.1	18.5	25.8	24.9	58.9	2.591	Sand/silt	12	130	142		
						2018/8/22	Sunny	32.0	0.6	30.2	3	Blackish brown	Faint swamp	3.5	18.5	10.5	12.9	35.5	13.2	4.0	2.0	74.3	2.639	Sand/gravel	<5.8	68	68		
						2018/10/24	Cloudy	18.7	0.9	18.0	3	Dull yellowish brown	None	0.0	6.1	6.0	11.1	30.4	14.9	16.9	14.6	60.5	2.601	Sand/gravel	<5.3	16	16		
						2018/12/18	Sunny	4.7	0.8	6.3	3	Blackish brown	Faint sewage	0.0	6.6	4.5	11.0	48.0	17.9	2.6	9.4	72.6	2.661	Sand	8.7	110	118.7		
	50	Futatsuishi Dam	Dam site		Kami Town	2018/5/17	Rain	18.4	48.5	6.7	5	Olive black	Faint sewage	0.0	0.0	0.0	0.0	0.1	28.2	71.7	26.2	2.547	Silt	<18	78	78			
						2018/8/20	Sunny	25.7	45.0	8.0	5	Gray	Faint sewage	0.0	0.0	0.0	0.0	0.1	39.6	60.2	25.7	2.543	Silt	<22	69	69			
						2018/10/22	Sunny	16.6	39.5	6.2	5	Olive black	Faint hydrogen sulfide	0.0	0.0	0.0	0.0	0.1	0.0	37.4	62.5	23.8	2.493	Silt	<18	130	130		
						2018/12/19	Sunny	4.4	-	-	-	-	-	-	-	-	-	-	-	-	-	-	-	-	-	-	-	-	Unable to collect samples due to road closure.
		51	Urushizawa Dam	Dam site			2018/5/17	Rain	17.1	27.9	7.9	5	Olive black	Faint sewage	0.0	0.0	0.0	0.0	0.1	0.8	69.4	29.6	38.6	2.508	Silt	<15	69	69	
							2018/8/20	Sunny	23.0	20.0	9.8	5	Olive black	Faint sewage	0.0	0.0	0.0	0.0	0.1	0.7	60.7	38.4	38.5	2.515	Silt	<14	65	65	
							2018/10/22	Sunny	14.2	14.9	8.8	5	Olive black	Faint sewage	0.0	0.0	0.0	0.1	0.1	0.5	49.8	49.5	41.5	2.517	Silt	<11	46	46	
							2018/12/19	Sunny	2.5	-	-	-	-	-	-	-	-	-	-	-	-	-	-	-	-	-	-	-	-
52	Minamikawa Dam	Dam site		Taiwa Town	2018/5/22	Sunny	24.6	26.1	12.5	5	Blackish brown	Faint sewage	0.0	0.4	0.4	0.7	2.6	10.7	56.8	28.4	34.0	2.459	Silt	14	210	224			
					2018/8/23	Sunny	29.2	25.0	19.4	5	Olive black	Faint sewage	0.0	0.6	1.3	2.2	3.9	2.5	42.6	47.0	19.7	2.420	Silt	<32	100	100			
					2018/10/27	Cloudy	18.8	25.9	10.2	5	Olive black	Faint hydrogen sulfide	0.0	0.0	0.2	0.7	1.7	1.1	28.2	68.1	15.8	2.415	Silt	<43	150	150			
					2018/12/16	Sunny	5.5	20.7	4.4	1	Olive black	Faint sewage	0.0	0.0	0.0	0.7	1.6	0.8	56.6	40.4	16.9	2.495	Silt	<37	190	190			
53	Miyatoko Dam	Dam site			2018/5/22	Sunny	22.3	0.5	18.2	3	Dull yellowish brown	Faint sewage	0.0	13.4	16.5	6.3	9.8	22.9	25.7	5.3	68.6	2.649	Sand/gravel	<6.1	13	13			
					2018/10/27	Rain	14.8	0.8	17.4	3	Yellowish brown	None	0.0	27.2	18.2	2.3	2.6	14.5	28.1	7.0	70.8	2.630	Sand/gravel	<2.8	3.0	3.0			
54	Sumoshi River System	Sounoseki Dam	Dam site	Rifu Town	2018/5/20	Sunny	17.3	4.9	13.2	5	Black	Faint sewage	0.0	0.0	0.0	1.0	4.8	2.2	43.4	48.5	14.3	2.324	Silt	49	580	629			
					2018/8/23	Sunny	33.7	7.5	16.3	5	Black	Faint hydrogen sulfide	0.0	0.0	0.0	0.8	3.7	2.2	49.6	43.8	14.4	2.343	Silt	66	960	1,026			
					2018/10/30	Cloudy	14.6	5.6	13.4	5	Black	Faint sewage	0.0	0.0	0.0	0.8	3.2	2.1	53.6	40.3	15.9	2.398	Silt	97	1,300	1,397			
					2018/12/16	Sunny	0.3	4.8	5.4	5	Black	Faint sewage	0.0	0.0	0.0	0.5	1.8	1.2	64.1	32.4	12.1	2.427	Silt	<56	420	420			
55	Nanakita River System	Nanakita Dam	Dam site		2018/5/21	Sunny	22.0	5.5	19.5	3	Dark grayish yellow	Faint swamp	0.0	32.6	16.5	8.8	20.4	10.2	5.2	6.4	72.8	2.606	Sand/gravel	<5.1	18	18			
					2018/8/28	Rain	20.5	1.1	23.8	3	Brown	None	0.0	24.1	12.7	5.3	15.5	13.2	20.1	9.2	46.3	2.439	Sand/gravel	<9.8	34	34			
					2018/10/20	Cloudy	17.5	4.3	17.5	3	Dull yellowish brown	None	0.0	8.1	8.4	7.3	32.2	23.5	10.6	10.0	61.8	2.461	Sand/gravel	<5.6	13	13			
					2018/12/14	Snow	1.6	6.6	6.2	3	Dark brown	Faint swamp	0.0	5.2	13.2	9.1	25.1	16.5	21.8	9.0	47.4	2.540	Sand/gravel	<12	120	120			
56	Marutazawatameike Pond	Pond exit		Sendai City	2018/5/20	Sunny	24.2	0.4	20.3	3	Blackish brown	Faint sewage	0.0	46.5	15.3	6.6	4.3	19.0	5.8	2.6	69.4	2.648	Sand/gravel	<6.0	56	56			
					2018/8/29	Rain	19.7	0.3	21.5	3	Blackish brown	Faint sewage	0.0	15.9	14.6	10.9	32.9	18.7	3.3	3.7	73.6	2.668	Sand/gravel	19	200	219			
					2018/10/30	Sunny	18.0	0.3	16.2	3	Olive black	Faint sewage	0.0	30.8	15.4	8.2	15.6	19.7	5.2	5.1	54.5	2.627	Silt/sand/gravel	18	190	208			
					2018/12/16	Cloudy	7.6	0.4	6.1	3	Olive black	Faint sewage	0.0	6.6	9.0	4.9	18.1	46.2	8.4	6.8	52.5	2.656	Silt/sand	13	170	183			
57	Natori River System	Okura Dam	Dam site		2018/5/21	Sunny	21.7	38.5	13.7	5	Dull yellowish brown	Faint swamp	3.2	19.2	12.9	5.4	15.7	26.7	12.1	4.8	65.7	2.516	Sand/gravel	<7.6	14	14			
					2018/8/28	Rain	21.0	30.4	24.3	3	Olive brown	None	2.1	7.2	3.2	6.3	39.7	31.7	6.1	3.7	74.6	2.518	Sand/gravel	<5.1	12	12			
					2018/10/20	Cloudy	16.1	26.1	16.7	3	Olive brown	Faint swamp	0.0	6.3	24.1	19.0	17.2	20.4	8.1	5.0	74.1	2.559	Sand/gravel	<6.1	13	13			
					2018/12/14	Snow	2.1	25.7	6.1	3	Blackish brown	Faint sewage	0.0	0.8	3.														

Miyagi Lakes and Reservoirs (Sediment) 2/2

L a k e s a n d R e s e r v o i r s	Location				Sampling Date	Weather	Air temperature (°C)	Water depth (m)	Sediment														Remarks			
	No.	Water area	Location	Municipality					Sediment temperature (°C)	Sample length (cm)	Color	Odor	General items							Sediment content (%)	Density (g/cm ³)	Property		Activity concentration [Bq/kg(dry)]		
													Grain size distribution(%)											Radioactive cesium		
													Coarse gravel	Medium gravel	Fine gravel	Coarse sand	Medium sand	Fine sand	Silt					Clay	Cs-134	Cs-137
58	Lake Amanuma	Lake exit	Sendai City	2018/5/29	Sunny	25.8	0.3	21.4	3	Olive black	Faint sewage	0.0	2.2	7.4	18.1	56.0	11.9	1.5	3.0	75.7	2.667	Sand/gravel	28	300	328	
				2018/8/27	Cloudy	26.5	0.4	25.6	3	Olive black	Faint sewage	0.0	5.0	9.3	16.0	49.0	14.7	2.6	3.4	74.8	2.621	Sand/silt	24	290	314	
				2018/10/30	Sunny	16.5	0.5	14.5	3	Black	Faint sewage	0.0	3.9	7.9	16.3	47.4	14.9	5.3	4.3	77.1	2.635	Sand/silt	21	250	271	
				2018/12/16	Cloudy	6.6	0.4	5.8	3	Black	Faint sewage	0.0	3.6	7.9	17.7	48.6	15.1	1.9	5.3	76.0	2.651	Sand/gravel	21	260	281	
59	Natori River System	Kamafusa Dam	Dam site	Kawasaki Town	2018/5/28	Cloudy	17.8	29.8	14.0	5	Olive black	Faint sewage	0.0	0.0	0.0	0.7	0.7	0.6	43.7	54.3	26.1	2.524	Silt	25	140	165
					2018/8/27	Cloudy	24.4	14.6	20.3	5	Olive black	Faint sewage	0.0	0.0	0.0	0.0	0.1	0.2	41.3	58.4	23.3	2.469	Silt	<26	140	140
					2018/10/18	Sunny	11.2	25.1	15.9	5	Olive black	Faint sewage	0.0	0.0	0.0	0.0	0.0	0.1	39.5	60.3	24.8	2.581	Silt	<25	130	130
					2018/12/17	Sunny	3.4	21.0	6.9	5	Olive black	Faint sewage	0.0	0.0	0.0	0.0	0.0	0.1	43.7	56.1	24.4	2.512	Silt	<27	120	120
60	Natori River System	Tarumizu Dam	Dam site	Natori City	2018/5/22	Sunny	27.0	0.4	22.5	3	Blackish brown	Faint swamp	0.0	10.5	9.9	10.4	24.9	23.1	18.6	2.7	67.6	2.745	Sand/gravel	12	150	162
					2018/10/18	Sunny	17.0	0.8	21.3	3	Blackish brown	None	0.0	28.9	15.0	9.2	18.7	17.4	8.6	2.2	73.8	2.793	Sand/gravel	10	93	103
61	Abukuma River System	Murata Dam	Dam site	Murata Town	2018/5/28	Sunny	21.4	0.6	21.2	3	Olive black	Faint sewage	0.0	26.2	22.3	16.4	22.2	8.8	1.8	2.3	77.7	2.699	Gravel/sand	5.9	41	46.9
					2018/10/21	Sunny	20.9	0.5	17.6	3	Olive black	Faint phytoplankton	0.0	12.8	28.3	22.3	26.3	7.4	0.0	2.9	81.1	2.709	Sand/gravel	<4.7	28	28
62	Abukuma River System	Kawarago Dam	Dam site	Shiroishi City	2018/5/25	Sunny	24.9	0.5	17.8	3	Brown	Faint swamp	0.0	19.6	23.4	11.5	23.6	13.2	6.2	2.6	68.0	2.711	Sand/gravel	59	650	709
					2018/8/13	Sunny	26.3	1.0	27.2	3	Dark brown	Faint swamp	0.0	13.7	22.7	17.0	19.5	9.6	12.6	4.9	68.0	2.641	Sand/silt/gravel	31	340	371
					2018/10/17	Cloudy	13.5	0.6	14.8	3	Dark brown	Faint sewage	0.0	18.4	34.4	8.6	5.5	6.4	21.3	5.5	48.6	2.519	Sand/gravel	15	150	165
					2018/12/11	Sunny	0.6	0.3	4.5	3	Blackish brown	Faint sewage	0.0	1.1	3.0	12.8	39.4	21.1	13.9	8.9	33.2	2.740	Sand/silt	<15	170	170
63	Abukuma River System	Shichikasyuku Dam	Dam site	Shichikashuku Town	2018/5/25	Sunny	22.5	32.8	12.1	5	Gray	Faint sewage	0.0	0.0	0.0	0.0	0.1	0.8	27.4	71.7	30.1	2.653	Silt	110	1,300	1,410
					2018/8/13	Sunny	28.3	24.1	11.0	5	Grayish olive	Faint sewage	0.0	0.0	0.0	0.0	0.0	0.8	28.9	70.3	29.7	2.591	Silt	180	1,800	1,980
					2018/10/17	Rain	12.7	23.0	11.0	5	Olive black	Faint sewage	0.0	1.1	0.5	0.7	0.7	1.1	25.7	70.2	29.0	2.531	Silt	130	1,400	1,530
					2018/12/17	Sunny	10.5	30.8	7.8	5	Gray	Faint sewage	0.0	0.0	0.0	0.1	0.0	0.1	25.4	74.4	29.8	2.597	Silt	74	830	904
64	Lake Bagyunuma	Lake exit	Shiroishi City	2018/5/30	Cloudy	23.4	1.0	23.9	3	Blackish brown	Faint sewage	0.0	4.2	14.1	9.7	27.3	19.4	18.9	6.3	56.2	2.708	Sand/silt/gravel	60	720	780	
				2018/8/13	Sunny	30.1	1.4	27.2	5	Blackish brown	Faint sewage	0.0	0.4	1.9	1.5	3.9	6.4	43.6	42.2	16.7	2.095	Silt	98	820	918	
				2018/10/21	Sunny	16.4	0.6	15.9	3	Blackish brown	Faint sewage	0.0	1.8	7.6	4.4	18.2	22.0	31.4	14.8	54.3	2.625	Sand/silt	85	950	1,035	
				2018/12/11	Cloudy	6.0	0.9	4.8	3	Dark grayish yellow	None	0.0	18.6	21.7	8.5	18.8	11.8	15.1	5.5	53.3	2.669	Sand/gravel	61	750	811	

Miyagi Lakes and Reservoirs (Surrounding Environment) 1/2

Lakes and Reservoirs	Location				Sampling Date	Weather	Air temperature (°C)	Surrounding Environment(Soil,Air dose)							Remarks	
								Soil			Air Dose (μSv/h)					
	General items			Activity concentration [Bq/kg(dry)]												
	No.	Water area	Location	Municipality				Color	Odor	Property		Radioactive cesium				
Cs-134					Cs-137	Total										
44	Kitakami River System	Kurikoma Dam	Dam site	Kurihara City	2018/5/9	Rain	7.8	Blackish brown	Faint earth	Loamy	46	530	576	0.05		
					2018/8/9	Rain	23.7	Dark brown	Faint earth	Loamy	19	200	219	0.05		
					2018/10/26	Sunny	11.4	Blackish brown	Faint earth	Loamy	35	420	455	0.06		
					2018/12/20	Sunny	3.2	Dark brown	Faint earth	Loamy	33	400	433	0.05		
		45	Hanayama Dam		Dam site	Kurihara City	2018/5/15	Sunny	19.3	Blackish brown	Faint earth	Loamy	92	810	902	0.06
							2018/8/16	Rain	22.2	Blackish brown	Faint earth	Loamy	130	1,300	1,430	0.06
							2018/10/24	Cloudy	16.3	Blackish brown	Faint earth	Loamy	46	560	606	0.06
							2018/12/20	Sunny	3.7	Blackish brown	Faint earth	Loamy	75	800	875	0.07
	46	Kitakami River System	Naruko Dam	Dam site	Osaki City	2018/5/16	Sunny	24.5	Blackish brown	Faint earth	Loamy	51	530	581	0.04	
						2018/8/21	Sunny	23.8	Blackish brown	Faint earth	Loamy	16	130	146	0.04	
						2018/10/23	Sunny	13.3	Blackish brown	Faint earth	Loamy	18	170	188	0.04	
						2018/12/19	Rain	1.6	Dark brown	Faint earth	Loamy	<9.9	150	150	0.05	
	47	Kitakami River System	Lake Izunuma	Lake exit	Tome City	2018/5/3	Cloudy	18.6	Dull yellowish brown	Faint earth	Loamy	<5.0	6.8	6.8	0.04	
						2018/10/25	Sunny	20.4	Dull yellowish brown	Faint earth	Loamy	<6.2	9.8	9.8	0.04	
						2018/5/3	Cloudy	17.8	Blackish brown	Faint earth	Loamy	17	130	147	0.05	
						2018/8/19	Sunny	28.8	Blackish brown	Faint earth	Loamy	17	170	187	0.04	
48	Kitakami River System	Lake Naganuma	Lake exit	Tome City	2018/10/25	Sunny	16.3	Blackish brown	Faint earth	Loamy	9.9	96	105.9	0.04		
					2018/12/18	Sunny	5.2	Blackish brown	Faint earth	Loamy	<12	93	93	0.04		
					2018/5/1	Sunny	28.7	Brown	Faint earth	Loamy	20	170	190	0.04		
					2018/8/22	Sunny	32.0	Brown	Faint earth	Loamy	11	150	161	0.04		
49	Kitakami River System	Shukunosawatameike Pond	Pond exit	Kurihara City	2018/10/24	Cloudy	18.7	Brown	Faint earth	Loamy	14	120	134	0.04		
					2018/12/18	Sunny	4.7	Brown	Faint earth	Loamy	14	170	184	0.04		
					2018/5/17	Rain	18.4	Brown	Faint earth	Loamy	<10	28	28	0.04		
					2018/8/20	Sunny	25.7	Brown	Faint earth	Loamy	<11	62	62	0.04		
50	Kitakami River System	Futatsuishi Dam	Dam site	Kami Town	2018/10/22	Sunny	16.6	Dull yellowish brown	Faint earth	Loamy	<12	69	69	0.04		
					2018/12/19	Sunny	4.4	-	-	-	-	-	-	Unable to collect samples due to road closure.		
					2018/5/17	Rain	17.1	Grayish yellowish brown	Faint earth	Loamy	<6.9	37	37	0.04		
					2018/8/20	Sunny	23.0	Blackish brown	Faint earth	Loamy	<7.6	46	46	0.04		
51	Naruse River System	Urushizawa Dam	Dam site	Kami Town	2018/10/22	Sunny	14.2	Black	Faint earth	Loamy	<5.3	13	13	0.04		
					2018/12/19	Sunny	2.5	Blackish brown	Faint earth	Loamy	<6.6	7.3	7.3	0.03		
					2018/5/22	Sunny	24.6	Dark brown	Faint earth	Loamy	24	160	184	0.04		
					2018/8/23	Sunny	29.2	Dull yellowish brown	Faint earth	Loamy	22	310	332	0.04		
52	Naruse River System	Minamikawa Dam	Dam site	Taiwa Town	2018/10/27	Cloudy	18.8	Blackish brown	Faint earth	Loamy	21	260	281	0.04		
					2018/12/16	Sunny	5.5	Blackish brown	Faint earth	Loamy	29	310	339	0.04		
					2018/5/22	Sunny	22.3	Blackish brown	Faint earth	Loamy	12	170	182	0.04		
					2018/10/27	Rain	14.8	Blackish brown	Faint earth	Loamy	<11	100	100	0.05		
53	Naruse River System	Miyatoko Dam	Dam site	Taiwa Town	2018/10/27	Rain	14.8	Blackish brown	Faint earth	Loamy	<11	100	100	0.05		

Miyagi Lakes and Reservoirs (Surrounding Environment) 2/2

Location					Sampling Date	Weather	Air temperature (°C)	Surrounding Environment(Soil,Air dose)						Remarks	
								Soil							Air Dose (μSv/h)
								General items							
								Color	Odor	Property	Activity concentration [Bq/kg(dry)]				
Cs-134	Cs-137	Total													
No.	Water area	Location		Municipality											
54	Sunaoshi River System	Sounoseki Dam	Dam site	Rifu Town	2018/5/20	Sunny	17.3	Dark brown	Faint earth	Loamy	8.6	67	75.6	0.04	
					2018/8/23	Sunny	33.7	Dull yellowish brown	Faint earth	Loamy	6.7	82	88.7	0.04	
					2018/10/30	Cloudy	14.6	Dull yellowish brown	Faint earth	Loamy	12	120	132	0.04	
					2018/12/16	Sunny	0.3	Dark brown	Faint earth	Loamy	21	230	251	0.04	
55	Nanakita River System	Nanakita Dam	Dam site	Sendai City	2018/5/21	Sunny	22.0	Blackish brown	Faint earth	Loamy	12	110	122	0.04	
					2018/8/28	Rain	20.5	Dull yellowish brown	Faint earth	Loamy	<9.5	31	31	0.04	
					2018/10/20	Cloudy	17.5	Brown	Faint earth	Loamy	<7.7	24	24	0.04	
					2018/12/14	Snow	1.6	Dark brown	Faint earth	Loamy	<8.9	53	53	0.03	
56	Marutazawatameike Pond		Pond exit	Sendai City	2018/5/20	Sunny	24.2	Blackish brown	Faint earth	Loamy	<5.9	80	80	0.04	
					2018/8/29	Rain	19.7	Brown	Faint earth	Loamy	<5.5	19	19	0.04	
					2018/10/30	Sunny	18.0	Dull yellowish brown	Faint earth	Loamy	<8.0	23	23	0.04	
					2018/12/16	Cloudy	7.6	Blackish brown	Faint earth	Loamy	33	410	443	0.04	
57	Natori River System	Okura Dam	Dam site	Sendai City	2018/5/21	Sunny	21.7	Blackish brown	Faint earth	Loamy	17	170	187	0.04	
					2018/8/28	Rain	21.0	Blackish brown	Faint earth	Loamy	14	140	154	0.04	
					2018/10/20	Cloudy	16.1	Blackish brown	Faint earth	Loamy	<9.9	71	71	0.04	
					2018/12/14	Snow	2.1	Blackish brown	Faint earth	Loamy	<10	65	65	0.04	
58	Lake Amanuma		Lake exit	Sendai City	2018/5/29	Sunny	25.8	Brown	Faint earth	Loamy	16	130	146	0.04	
					2018/8/27	Cloudy	26.5	Dark brown	Faint earth	Sandy	7.3	100	107.3	0.04	
					2018/10/30	Sunny	16.5	Dull yellowish brown	Faint earth	Sandy	<5.8	53	53	0.04	
					2018/12/16	Cloudy	6.6	Blackish brown	Faint earth	Sandy	8.5	90	98.5	0.04	
59	Natori River System	Kamafusa Dam	Dam site	Kawasaki Town	2018/5/28	Cloudy	17.8	Blackish brown	Faint earth	Loamy	19	220	239	0.04	
					2018/8/27	Cloudy	24.4	Blackish brown	Faint earth	Loamy	24	210	234	0.04	
					2018/10/18	Sunny	11.2	Blackish brown	Faint earth	Loamy	13	110	123	0.04	
					2018/12/17	Sunny	3.4	Blackish brown	Faint earth	Loamy	16	180	196	0.04	
60	Tarumizu Dam		Dam site	Natori City	2018/5/22	Sunny	27.0	Brown	Faint earth	Loamy	11	120	131	0.05	
					2018/10/18	Sunny	17.0	Dark brown	Faint earth	Loamy	15	140	155	0.04	
61	Murata Dam		Dam site	Murata Town	2018/5/28	Sunny	21.4	Blackish brown	Faint earth	Loamy	71	700	771	0.04	
					2018/10/21	Sunny	20.9	Dark brown	Faint earth	Loamy	10	120	130	0.04	
62	Abukuma River System	Kawarago Dam	Dam site	Shiroishi City	2018/5/25	Sunny	24.9	Blackish brown	Faint earth	Loamy	67	640	707	0.05	
					2018/8/13	Sunny	26.3	Dark brown	Faint earth	Loamy	62	540	602	0.06	
					2018/10/17	Cloudy	13.5	Blackish brown	Faint earth	Loamy	12	110	122	0.06	
					2018/12/11	Sunny	0.6	Blackish brown	Faint earth	Loamy	66	800	866	0.05	
63	Shichikasyuku Dam		Dam site	Shichikashuku Town	2018/5/25	Sunny	22.5	Blackish brown	Faint earth	Loamy	55	520	575	0.08	
					2018/8/13	Sunny	28.3	Brown	Faint earth	Loamy	67	690	757	0.10	
					2018/10/17	Rain	12.7	Brown	Faint earth	Loamy	26	290	316	0.08	
					2018/12/17	Sunny	10.5	Blackish brown	Faint earth	Loamy	66	800	866	0.08	
64	Lake Bagyunuma		Lake exit	Shiroishi City	2018/5/30	Cloudy	23.4	Dark brown	Faint earth	Loamy	42	440	482	0.12	
					2018/8/13	Sunny	30.1	Dark brown	Faint earth	Loamy	150	1,500	1,650	0.14	
					2018/10/21	Sunny	16.4	Blackish brown	Faint earth	Loamy	100	1,200	1,300	0.12	

Miyagi Lakes and Reservoirs (Surrounding Environment) 3/2

Location				Sampling Date	Weather	Air temperature (°C)	Surrounding Environment(Soil,Air dose)							Remarks
							Soil			General items				
No.	Water area	Location	Municipality				Color	Odor	Property	Activity concentration [Bq/kg(dry)]				
										Radioactive cesium				
									Cs-134	Cs-137	Total			
				2018/12/11	Cloudy	6.0	Blackish brown	Faint earth	Loamy	80	930	1,010	0.10	

Miyagi Coastal (Water) 1/2

No.	Location		Sampling Date	Weather	Air temperature (°C)	Water depth (m)	Water										Remarks
							General items				Activity concentration(Bq/L)						
	Water area						Water temperature (°C)	Sampling depth (m)	Color	Odor	Secchi disk depth (m)	Salinity (%)	SS (mg/L)	Turbidity (FNU)	Radioactive cesium		
										Cs-134	Cs-137						
65	Kesennuma Bay (B)	Offshore of Hachigasaki	Surface layer	2018/5/20	Sunny	13.9	18.2	12.7	0.5	Dark grayish yellow green	None	4.6	19.6	1	1.5	<0.90	<0.80
			Deep layer					11.6	17.2	-	None		31.2	1	0.7	<0.74	<0.69
			Surface layer	2018/8/20	Sunny	22.5	15.6	23.6	0.5	Dark grayish yellow green	None	2.0	28.7	1	0.8	<0.69	<0.70
			Deep layer					23.3	14.6	-	None		31.0	1	0.7	<0.56	<0.47
			Surface layer	2018/11/12	Cloudy	11.0	16.0	16.0	0.5	Dark grayish yellow green	None	5.3	30.5	2	1.2	<0.87	<0.88
			Deep layer					17.3	15.0	-	None		32.0	1	1.2	<0.86	<0.96
Surface layer	2019/2/10	Sunny	1.4	15.7	6.7	0.5	Dark grayish yellow green	None	5.5	32.6	1	0.8	<0.69	<0.86			
Deep layer					7.0	14.7	-	None		31.7	1	0.8	<0.58	<0.80			
66	Kesennuma Bay (C)	Offshore of Oshimakita	Surface layer	2018/5/20	Sunny	13.0	42.0	12.3	0.5	Dark grayish yellowish green	None	4.0	24.3	2	1.6	<0.63	<0.63
			Deep layer					10.3	41.0	-	None		27.6	1	0.8	<0.57	<0.63
			Surface layer	2018/8/20	Sunny	23.7	38.5	23.7	0.5	Dark grayish yellow green	None	4.0	25.8	<1	0.5	<0.80	<0.54
			Deep layer					19.9	37.5	-	None		31.8	2	1.5	<0.75	<0.70
			Surface layer	2018/11/12	Cloudy	9.2	39.4	15.5	0.5	Dark grayish yellow green	None	9.7	29.0	2	0.8	<0.80	<0.69
			Deep layer					16.7	38.4	-	None		32.2	2	1.4	<0.87	<0.75
Surface layer	2019/2/10	Sunny	1.2	40.4	7.6	0.5	Dark grayish yellow green	None	8.5	31.2	1	0.5	<0.73	<0.63			
Deep layer					7.6	39.4	-	None		32.3	2	0.8	<0.74	<0.69			
67	Offshore of Tsuyagawa River Estuary	Offshore of Tsuyagawa River Estuary	Surface layer	2018/5/22	Sunny	20.5	11.4	14.6	0.5	Dark grayish green	None	2.9	30.2	2	2.3	<0.78	<0.84
			Deep layer					12.6	10.4	-	None		33.5	3	1.5	<0.73	<0.63
			Surface layer	2018/11/14	Sunny	10.7	12.8	16.6	0.5	Dark grayish green	None	6.5	31.7	1	0.8	<0.77	<0.69
			Deep layer					17.0	11.8	-	None		32.4	<1	0.6	<0.78	<0.61
68	All other neighboring sea areas	Oppa Bay (Jyusanhama Beach)	Surface layer	2018/5/22	Sunny	23.7	17.5	14.0	0.5	Grayish yellow	None	0.5	15.1	18	1.8	<0.80	<0.69
			Deep layer					13.0	16.5	-	None		32.9	3	2.2	<0.66	<0.80
			Surface layer	2018/8/20	Sunny	28.6	17.5	22.8	0.5	Grayish yellow green	None	2.0	11.1	4	3.4	<0.69	<0.69
			Deep layer					22.0	16.5	-	None		30.6	2	1.6	<0.65	<0.75
			Surface layer	2018/11/14	Sunny	17.3	18.2	14.9	0.5	Dark grayish yellow green	None	4.7	17.2	<1	1.5	<0.75	<0.84
			Deep layer					17.7	17.2	-	None		32.6	2	1.5	<0.62	<0.61
Surface layer	2019/2/9	Cloudy	0.6	17.7	6.9	0.5	Dark grayish yellowish green	None	5.3	25.7	2	1.7	<0.73	<0.69			
Deep layer					9.5	16.7	-	None		32.5	1	0.7	<0.75	<0.69			
69	Neighboring sea area of Ishinomaki (C)	Lake Mangokuura , M-6 (center)	Surface layer	2018/5/24	Sunny	21.4	3.5	18.8	0.5	Dark grayish yellowish green	None	>3.5	29.8	<1	0.9	<0.76	<0.75
			Deep layer					18.2	2.5	-	None		30.6	1	0.9	<0.85	<0.96
			Surface layer	2018/8/21	Cloudy	23.6	3.0	25.4	0.5	Dark grayish yellow green	None	>3.0	28.2	1	1.2	<0.80	<0.69
			Deep layer					25.5	2.0	-	None		29.2	2	1.4	<0.63	<0.69
			Surface layer	2018/11/15	Sunny	10.6	3.5	15.5	0.5	Dark grayish yellowish green	None	3.1	31.6	3	2.0	<0.58	<0.84
			Deep layer					15.9	2.5	-	None		31.6	2	1.5	<0.74	<0.84
Surface layer	2019/2/8	Cloudy	-0.2	3.2	5.5	0.5	Dark grayish yellowish green	None	2.7	31.5	3	2.0	<0.55	<0.84			
Deep layer					5.4	2.2	-	None		32.4	2	1.6	<0.66	<0.80			
70	Neighboring sea area of Ishinomaki (B-3)	Offshore of Kitakami River Estuary	Surface layer	2018/5/24	Sunny	18.9	8.8	17.2	0.5	Grayish greenish yellow	None	1.5	24.9	15	12	<0.61	<0.55
			Deep layer					16.8	7.8	-	None		30.8	5	4.1	<0.61	<0.66
			Surface layer	2018/8/21	Cloudy	24.3	8.1	23.3	0.5	Grayish yellow green	None	2.0	15.6	6	3.9	<0.67	<0.75
			Deep layer					23.1	7.1	-	None		31.3	35	17	<0.73	<0.69
			Surface layer	2018/11/15	Sunny	6.7	8.4	14.8	0.5	Dark grayish yellow green	None	2.8	23.1	2	2.0	<0.81	<0.61
			Deep layer					17.5	7.4	-	None		31.9	2	2.5	<0.78	<0.55
Surface layer	2019/2/9	Cloudy	-1.8	8.9	4.5	0.5	Grayish yellow green	None	3.9	17.1	3	2.3	<0.73	<0.80			
Deep layer					8.1	7.9	-	None		31.9	3	1.8	<0.69	<0.84			
71	Neighboring sea area of Ishinomaki (C)	Offshore of Naruse	Surface layer	2018/5/22	Sunny	17.5	14.8	15.3	0.5	Dark grayish yellow green	None	3.0	30.2	2	1.4	<0.85	<0.80
			Deep layer					12.9	13.8	-	None		33.7	8	6.0	<0.60	<0.66
			Surface layer	2018/8/23	Sunny	28.3	14.8	26.8	0.5	Dark grayish yellow green	None	3.0	14.4	3	2.4	<0.78	<0.75
			Deep layer					23.1	13.8	-	None		30.2	2	0.7	<0.79	<0.88
			Surface layer	2018/11/13	Sunny	11.8	14.9	16.2	0.5	Dark grayish yellowish green	None	5.1	30.7	1	0.9	<0.74	<0.75
			Deep layer					17.6	13.9	-	None		32.4	1	1.9	<0.71	<0.63
Surface layer	2019/2/5	Sunny	3.0	15.3	6.8	0.5	Dark grayish yellowish green	None	4.7	32.0	2	1.3	<0.73	<0.69			

Miyagi Coastal (Water) 2/2

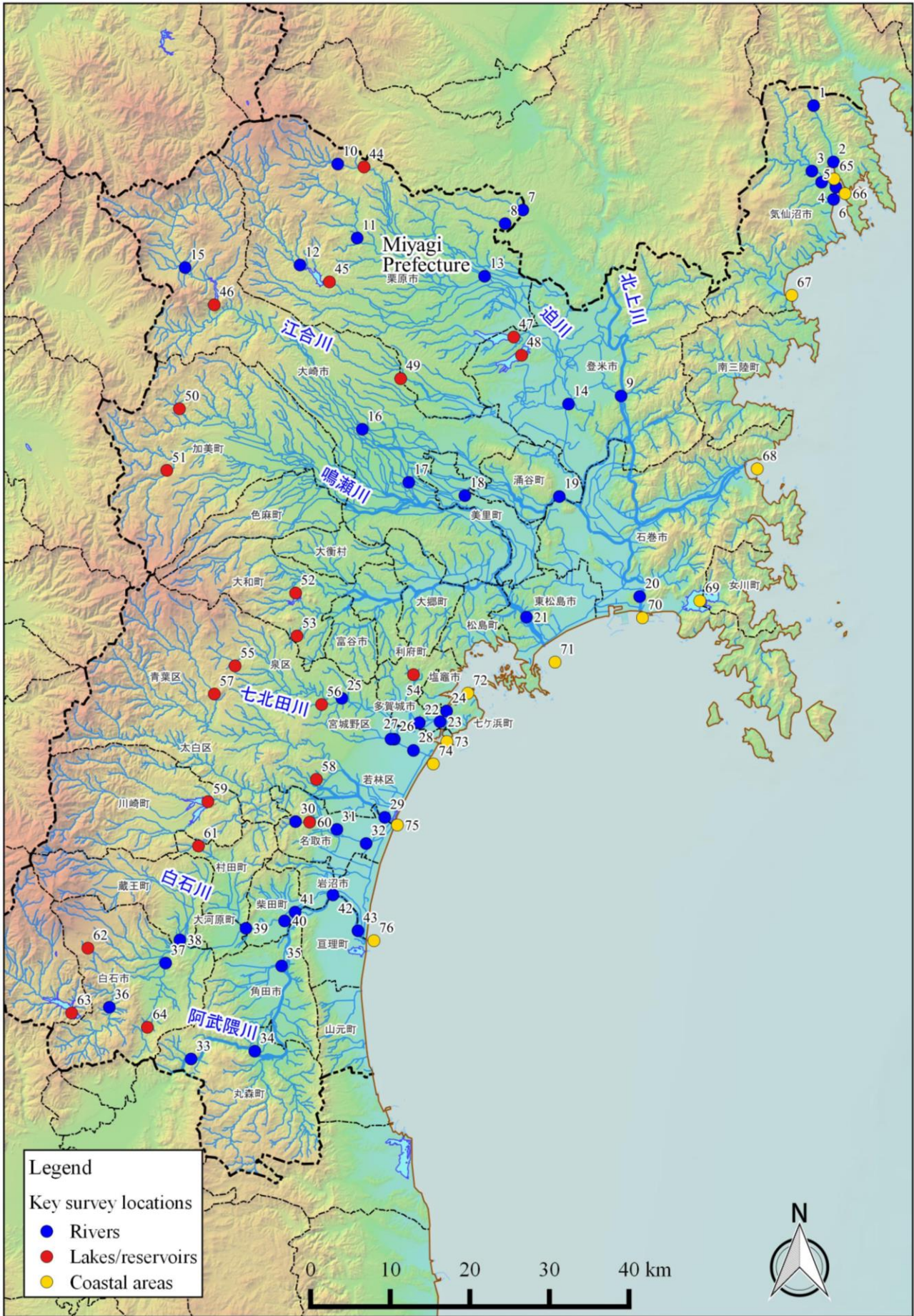
Location				Sampling Date	Weather	Air temperature (°C)	Water depth (m)	Water										Remarks
								General items							Activity concentration(Bq/L)			
No.	Water area							Water temperature (°C)	Sampling depth (m)	Color	Odor	Secchi disk depth (m)	Salinity (%)	SS (mg/L)	Turbidity (FNU)	Radioactive cesium		
			Deep layer													Cs-134	Cs-137	
				2017/2/3	Sunny	21.7	12.0	7.5	14.3	-	None	1.2	33.2	3	1.7	<0.74	<0.63	

Miyagi Coastal (Water) 3/2

No.	Location		Sampling Date	Weather	Air temperature (°C)	Water depth (m)	Water										Remarks	
							General items				Activity concentration(Bq/L)							
	Water area						Water temperature (°C)	Sampling depth (m)	Color	Odor	Secchi disk depth (m)	Salinity (%)	SS (mg/L)	Turbidity (FNU)	Radioactive cesium			
										Cs-134	Cs-137							
72	Matsushima Bay (B)	Nishihama Beach	Surface layer	2018/5/22	Sunny	22.5	13.5	17.8	0.5	Dark grayish yellow green	None	3.0	30.4	2	1.7	<0.63	<0.63	
			Deep layer					15.3	12.5	-	None		32.4	6	4.8	<0.76	<0.75	
			Surface layer	2018/8/23	Sunny	30.0	12.5	27.7	0.5	Dark grayish yellow green	None	2.0	25.1	3	2.2	<0.63	<0.75	
			Deep layer					24.0	11.5	-	None		28.6	27	20	<0.74	<0.69	
			Surface layer	2018/11/13	Sunny	13.5	13.4	16.6	0.5	Grayish yellow green	None	2.0	30.3	5	4.0	<0.75	<0.69	
			Deep layer					15.6	12.4	-	None		30.8	6	5.1	<0.71	<0.75	
	Surface layer	2019/2/5	Sunny	3.8	13.0	5.4	0.5	Dark grayish yellow green	None	1.8	32.6	6	3.3	<0.74	<0.80			
	Deep layer					5.7	12.0	-	None		32.8	10	4.3	<0.61	<0.88			
	73	Neighboring sea area of Sendai Port (A)	Naiko Inner Port, 4-Nai	Surface layer	2018/5/22	Sunny	13.3	18.3	14.8	0.5	Dark grayish green	None	2.9	29.8	2	2.0	<0.73	<0.75
				Deep layer					11.9	17.3	-	None		32.8	6	5.1	<0.79	<0.75
				Surface layer	2018/8/23	Sunny	25.5	17.6	26.1	0.5	Dark grayish yellow green	None	4.0	24.6	1	0.4	<0.79	<0.92
				Deep layer					22.4	16.6	-	None		25.9	2	1.7	<0.58	<0.80
Surface layer				2018/11/13	Cloudy	11.5	18.5	18.1	0.5	Dark grayish yellowish green	None	3.0	31.3	2	2.1	<0.77	<0.63	
Deep layer								16.9	17.5	-	None		32.2	6	3.6	<0.67	<0.84	
Surface layer		2019/2/5	Sunny	1.1	17.3	7.3	0.5	Dark grayish yellowish green	None	3.6	32.7	5	1.5	<0.74	<0.69			
Deep layer						8.9	16.3	-	None		33.0	5	2.0	<0.79	<0.75			
74		Neighboring sea area of Sendai Port (B)	Gamo-3	Surface layer	2018/5/22	Sunny	13.3	17.0	15.0	0.5	Dark grayish green	None	3.8	30.4	<1	0.8	<0.76	<0.63
				Deep layer					12.2	16.0	-	None		32.7	5	3.6	<0.61	<0.80
				Surface layer	2018/8/23	Sunny	25.5	16.4	24.9	0.5	Dark grayish yellow green	None	4.0	27.4	2	1.2	<0.81	<0.55
				Deep layer					22.5	15.4	-	None		27.8	<1	0.5	<0.72	<0.80
	Surface layer			2018/11/13	Cloudy	11.7	10.1	16.3	0.5	Dark grayish yellow green	None	3.9	31.2	2	1.6	<0.61	<0.80	
	Deep layer							16.8	9.1	-	None		31.4	1	1.3	<0.93	<0.84	
	Surface layer	2019/2/5	Sunny	-0.2	17.5	7.7	0.5	Dark grayish yellow green	None	3.4	33.4	3	1.7	<0.74	<0.88			
	Deep layer					8.5	16.5	-	None		32.7	7	3.0	<0.73	<0.69			
	75	All other neighboring sea areas	Ido-5	Surface layer	2018/5/21	Sunny	17.5	7.0	15.9	0.5	Dark grayish yellow green	None	2.3	25.3	3	1.7	<0.75	<0.55
				Deep layer					15.9	6.0	-	None		26.2	7	2.6	<0.77	<0.80
				Surface layer	2018/8/22	Sunny	27.7	6.0	25.2	0.5	Dark grayish yellow green	None	2.5	7.3	2	1.7	<0.63	<0.75
				Deep layer					24.7	5.0	-	None		28.8	2	1.5	<0.76	<0.75
Surface layer				2018/11/16	Sunny	5.7	5.3	14.8	0.5	Dark grayish yellow green	None	4.6	30.9	1	0.6	<0.78	<0.69	
Deep layer								13.9	4.3	-	None		31.6	2	1.2	<0.61	<0.69	
Surface layer		2019/2/6	Cloudy	-0.1	3.6	7.7	0.5	Dark grayish yellow green	None	>3.6	30.2	3	1.5	<0.69	<0.80			
Deep layer						8.7	2.6	-	None		33.1	3	1.0	<0.86	<0.88			
76		Offshore of Abukuma River Estuary	Offshore of Abukuma River Estuary	Surface layer	2018/5/21	Sunny	20.9	11.0	16.4	0.5	Grayish yellow green	None	3.9	27.8	3	1.6	<0.76	<0.97
				Deep layer					16.6	10.0	-	None		28.5	4	1.4	<0.67	<0.80
				Surface layer	2018/6/14	Sunny	24.1	9.7	26.3	0.5	Dark grayish green	None	4.8	26.3	1	0.6	<0.80	<0.55
				Deep layer					19.2	8.7	-	None		30.7	2	0.6	<0.83	<0.74
	Surface layer			2018/7/8	Cloudy	21.1	10.0	21.5	0.5	Dark grayish green	None	2.8	23.2	4	2.2	<0.68	<0.55	
	Deep layer							21.0	9.0	-	None		28.7	1	0.6	<0.79	<0.75	
	Surface layer			2018/8/22	Sunny	28.1	9.3	26.6	0.5	Dark grayish yellow green	None	3.0	26.8	2	1.2	<0.70	<0.66	
	Deep layer							24.2	8.3	-	None		27.3	3	1.4	<0.84	<0.66	
	Surface layer			2018/9/8	Rain	24.5	10.3	23.9	0.5	Dark grayish green	None	3.3	28.3	2	1.3	<0.85	<0.84	
	Deep layer							22.9	9.3	-	None		31.8	8	4.4	<0.58	<0.69	
	Surface layer			2018/10/6	Sunny	23.6	10.5	22.3	0.5	Dark grayish yellowish green	None	2.9	25.7	2	1.7	<0.81	<0.75	
	Deep layer							21.7	9.5	-	None		31.3	3	2.0	<0.81	<0.84	
	Surface layer			2018/11/16	Sunny	8.7	8.8	15.7	0.5	Dark grayish yellow green	None	2.7	30.9	3	2.5	<0.79	<0.75	
	Deep layer							17.1	7.8	-	None		33.9	3	2.5	<0.61	<0.75	
	Surface layer			2018/12/5	Cloudy	15.0	11.5	14.5	0.5	Dark grayish bluish green	None	5.0	30.9	2	1.3	<0.68	<0.84	
	Deep layer							14.7	10.5	-	None		32.0	3	1.4	<0.70	<0.74	
	Surface layer			2019/1/22	Sunny	7.6	10.7	9.2	0.5	Dark grayish bluish green	None	>10.7	31.0	3	1.3	<0.83	<0.69	
	Deep layer							9.4	9.7	-	None		32.4	2	0.8	<0.72	<0.63	
Surface layer	2019/2/6	Cloudy	3.5	8.5	7.1	0.5	Dark grayish yellow green	None	4.8	20.9	3	2.0	<0.80	<0.84				

Miyagi Coastal (Water) 4/2

Location				Sampling Date	Weather	Air temperature (°C)	Water depth (m)	Water										Remarks
								General items						Activity concentration(Bq/L)				
No.	Water area							Water temperature (°C)	Sampling depth (m)	Color	Odor	Secchi disk depth (m)	Salinity (%)	SS (mg/L)	Turbidity (FNU)	Radioactive cesium		
			Deep layer	2017/2/6	Cloudy	2.2	0.2	9.0	7.5	-	None	4.0	33.3	2	0.8	Cs-134	Cs-137	
																<0.75	<0.63	



Survey Locations (Miyagi Prefecture)