

FY2017 Saitama Prefecture Survey Results

[Outline of results]

(1) Water

Rivers

Radioactive cesium (Cs-134, Cs-137): Not detectable at any location

(2) Sediments

Rivers

Cs-134: ND – 8.3 Bq/kg (dry)

Cs-137: 3.8 - 51 Bq/kg (dry)

(3) Surrounding Environment

(a) Soil

Rivers

Cs-134: ND - 40 Bq/kg (dry)

Cs-137: 23 - 310 Bq/kg (dry)

(b) Ambient dose rate

Rivers

0.04 - 0.07 μ Sv/h

Saitama River (Water) 1/1

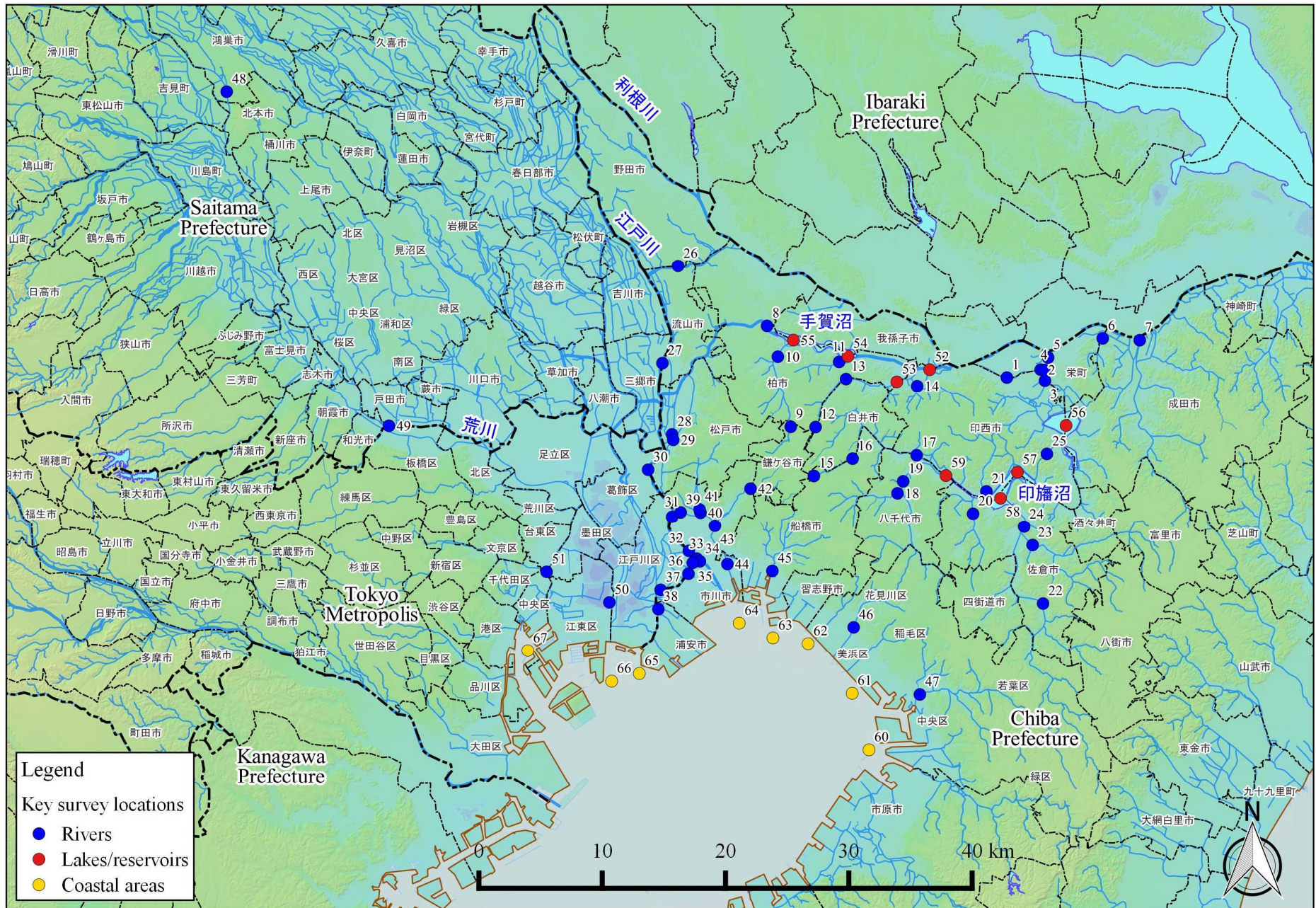
	Location				Sampling Date	Weather	Air temperature (°C)	Water depth (m)	Water										Remarks		
	No.	Water area	Location	Municipality					General items											Activity concentration(Bq/L)	
									Water temperature (°C)	Sampling depth (m)	Color	Odor	Transparency (cm)	Electrical conductivity (mS/m)	SS (mg/L)	Turbidity (FNU)	Radioactive cesium				
																	Cs-134	Cs-137			
R i v e r s	48	Arakawa River System	Arakawa River Middle Reaches	Onari Bridge	Konosu City	2017/5/24	Cloudy	27.2	2.3	18.5	0.0	Grayish greenish yellow	None	28	14.6	13	6.9	<0.78	<0.75		
						2017/8/25	Cloudy	32.7	1.8	23.5	0.0	Grayish yellow green	None	47	18.9	8	4.7	<0.75	<0.63		
						2017/11/20	Cloudy	8.4	2.0	8.7	0.0	Grayish yellow green	None	>100	20.8	5	3.2	<0.70	<0.66		
						2018/1/30	Sunny	6.0	2.5	5.9	0.0	Dark grayish yellow green	None	>100	22.2	4	2.2	<0.60	<0.80		
	49	Arakawa River System	Arakawa River Lower Reaches	Sasame Bridge	Toda City /Wako City /Itabashi City	2017/5/24	Cloudy	23.3	0.4	23.0	0.0	Dark grayish yellow	Faint sewage	48	33.3	9	4.2	<0.66	<0.75		
						2017/8/25	Cloudy	30.5	0.4	26.2	0.0	Yellow greenish dark gray	None	58	30.0	9	5.1	<0.73	<0.88		
						2017/11/16	Cloudy	13.2	0.3	13.6	0.0	Grayish yellow green	None	70	30.2	5	3.6	<0.75	<0.96		
						2018/1/30	Sunny	5.8	0.2	8.9	0.0	Grayish yellow	None	73	45.5	4	2.7	<0.54	<0.80		

Saitama River (Sediment) 1/1

R i v e r s	Location				Sampling Date	Weather	Air temperature (°C)	Water depth (m)	Sediment																	Remarks				
	No.	Water area		Location					Municipality	Sediment temperature (°C)	Sample length (cm)	Color	Odor	General items										Sediment content (%)	Density (g/cm ³)		Property	Activity concentration [Bq/kg(dry)]		
														Grain size distribution(%)														Radioactive cesium		
														Coarse gravel	Medium gravel	Fine gravel	Coarse sand	Medium sand	Fine sand	Silt	Clay	Cs-134	Cs-137					Total		
48	Arakawa River System	Arakawa River Middle Reaches		Onari Bridge	Kosono City	2017/5/24	Cloudy	27.2	2.3	19.9	2	Blackish brown	None	12.4	50.9	14.4	11.8	7.3	2.5	0.1	0.7	84.6	2.692	Gravel/sand	<3.0	4.9	4.9			
						2017/8/25	Cloudy	32.7	1.8	23.5	2	Blackish brown	None	0.0	0.0	0.1	0.2	30.4	55.9	9.7	3.8	73.9	2.682	Sand	<3.1	8.9	8.9			
						2017/11/20	Cloudy	8.4	2.0	9.5	4	Blackish brown	None	0.0	12.0	2.0	0.8	30.3	49.5	2.8	2.6	71.4	2.686	Sand/gravel	<3.5	3.8	3.8			
						2018/1/30	Sunny	6.0	2.5	6.0	4	Blackish brown	None	0.0	8.3	0.8	0.4	43.3	42.8	2.7	1.8	74.1	2.707	Sand/gravel	<3.6	4.8	4.8			
		49	Arakawa River System	Arakawa River Lower Reaches		Susame Bridge	Toda City /Wako City /Habashi City	2017/5/24	Cloudy	23.3	0.4	23.0	2	Blackish brown	Faint sewage	4.7	32.7	5.0	5.1	20.6	16.3	9.3	6.3	52.8	2.667	Sand/silt/gravel	8.3	50	58.3	
								2017/8/25	Cloudy	30.5	0.4	25.9	5	Blackish brown	None	5.9	27.9	3.8	2.4	18.7	21.6	11.7	7.9	46.4	2.676	Silt/sand/gravel	<7.7	51	51	
								2017/11/16	Cloudy	13.2	0.3	12.0	2	Blackish brown	None	10.6	40.9	8.8	6.9	18.5	7.3	4.6	2.5	72.1	2.735	Sand/gravel	<4.9	19	19	
								2018/1/30	Sunny	5.8	0.2	8.3	1	Blackish brown	None	9.9	57.0	9.4	6.9	13.0	2.5	1.3	1.0	81.7	2.737	Sand/gravel	<5.0	11	11	

Saitama River (Surrounding Environment) 1/1

Location					Sampling Date	Weather	Air temperature (°C)	Surrounding Environment(Soil,Air dose)											Remarks			
No.	Water area	Location	Municipality	Left bank					Right bank													
				Color				Odor	Property	Activity concentration [Bq/kg(dry)]			Air Dose (µSv/h)	Color	Odor	Property	Activity concentration [Bq/kg(dry)]			Air Dose (µSv/h)		
										Radioactive cesium							Radioactive cesium					
			Cs-134	Cs-137	Total				Cs-134	Cs-137	Total											
R i v e r s	48	Arakawa River System	Arakawa River Middle Reaches	Onari Bridge	Konosu City	2017/5/24	Cloudy	27.2	Grayish yellowish brown	Faint earth	Loamy	5.9	41	46.9	0.06	Dark grayish yellow	Faint earth	Loamy	6.0	37	43.0	0.06
						2017/8/25	Cloudy	32.7	Grayish yellowish brown	Faint earth	Loamy	7.5	41	48.5	0.07	Blackish brown	Faint earth	Loamy	6.0	39	45.0	0.06
						2017/11/20	Cloudy	8.4	Grayish yellowish brown	Faint earth	Loamy	<9.0	23	23	0.06	Blackish brown	Faint earth	Loamy	<8.3	26	26	0.06
						2018/1/30	Sunny	6.0	Grayish yellowish brown	Faint earth	Loamy	<9.1	46	46	0.06	Dark grayish yellow	Faint earth	Loamy	<8.7	32	32	0.06
	49	Arakawa River Lower Reaches	Sasame Bridge	Toda City /Wako City /Itabashi City	2017/5/24	Cloudy	23.3	Dark brown	Faint earth	Loamy	40	310	350	0.04	Blackish brown	Faint earth	Loamy	15	130	145	0.05	
					2017/8/25	Cloudy	30.5	Dark brown	Faint earth	Loamy	30	250	280	0.04	Blackish brown	Faint earth	Loamy	9.3	72	81.3	0.05	
					2017/11/16	Cloudy	13.2	Dark brown	Faint earth	Loamy	14	130	144	0.04	Blackish brown	Faint earth	Loamy	11	83	94	0.05	
					2018/1/30	Sunny	5.8	Dark brown	Faint earth	Loamy	27	250	277	0.04	Blackish brown	Faint earth	Loamy	9.0	78	87.0	0.06	



Survey Locations (Chiba,Saitama,Tokyo Prefectures)