

## FY2017 Chiba Prefecture Survey Results

[Outline of results]

### (1) Water

Rivers

Radioactive cesium (Cs-134, Cs-137): Not detectable at any location

Lakes and reservoirs

Radioactive cesium (Cs-134, Cs-137): Not detectable at any location

Coastal areas

Radioactive cesium (Cs-134, Cs-137): Not detectable at any location

### (2) Sediments

Rivers

Cs-134: ND - 280 Bq/kg (dry)

Cs-137: 8.1 - 2,000 Bq/kg (dry)

Lakes and reservoirs

Cs-134: 15 - 320 Bq/kg (dry)

Cs-137: 120 - 2,700 Bq/kg (dry)

Coastal areas

Cs-134: ND - 1.4 Bq/kg (dry)

Cs-137: 1.2 - 76 Bq/kg (dry)

### (3) Surrounding Environment

#### (a) Soil

Rivers

Cs-134: ND - 670 Bq/kg (dry)

Cs-137: 2.4 - 5,100 Bq/kg (dry)

Lakes and reservoirs

Cs-134: 45 - 1,200 Bq/kg (dry)

Cs-137: 350 - 8,000 Bq/kg (dry)

#### (b) Ambient dose rate

Rivers

0.04 - 0.14  $\mu$ Sv/h

Lakes and reservoirs

0.06 - 0.12  $\mu$ Sv/h

# Chiba River (Water) 1/4

No.	Location			Sampling Date	Weather	Air temperature (°C)	Water depth (m)	Water								Activity concentration(Bq/L)		Remarks
	Water area	Location	Municipality					Water temperature (°C)	Sampling depth (m)	Color	Odor	Transparency (cm)	Electrical conductivity (mS/m)	SS (mg/L)	Turbidity (FNU)	Radioactive cesium		
																Cs-134	Cs-137	
1	Shogen River	Fukama-ohashi Bridge	Inzai City /Sakae Town	2017/5/19	Sunny	26.0	1.8	24.5	0.0	Light grayish greenish yellow	None	21	29.9	10	8.7	<0.77	<0.84	
				2017/8/24	Cloudy	35.5	1.9	29.9	0.0	Greenish yellowish black	None	21	29.3	12	8.4	<0.79	<0.84	
				2017/11/7	Sunny	17.8	2.0	15.6	0.0	Grayish greenish yellow	None	36	24.1	6	5.6	<0.72	<0.84	
				2018/1/25	Sunny	2.8	1.8	4.2	0.0	Grayish yellow	None	36	33.4	6	6.6	<0.65	<0.61	
				2017/5/18	Sunny	22.0	1.5	21.3	0.0	Light grayish greenish yellow	Faint sewage	19	29.2	24	13	<0.77	<0.84	
				2017/8/24	Cloudy	34.3	1.8	28.3	0.0	Yellow greenish dark gray	None	21	20.5	14	11	<0.74	<0.55	
				2017/11/7	Sunny	13.0	0.3	14.7	0.0	Yellowish dark gray	None	25	20.6	20	14	<0.63	<0.75	
		2018/1/26		Sunny	5.5	1.5	4.1	0.0	Dark grayish greenish yellow	None	43	35.6	8	7.3	<0.51	<0.88		
		2017/5/19		Sunny	20.7	0.5	22.5	0.0	Light grayish yellow	None	20	28.7	17	11	<0.67	<0.75		
		2017/8/18		Cloudy	31.8	0.7	29.5	0.0	Grayish greenish yellow	None	35	29.0	9	10	<0.76	<0.88		
		2017/11/7		Sunny	15.2	0.8	15.4	0.0	Grayish greenish yellow	None	20	18.8	18	16	<0.75	<0.63		
		2018/1/26		Sunny	5.0	0.5	5.0	0.0	Grayish yellow green	None	37	35.8	9	8.8	<0.53	<0.55		
		2017/5/19		Sunny	23.7	0.4	24.6	0.0	Light grayish greenish yellow	None	21	28.9	15	12	<0.73	<0.75		
		2017/8/18		Sunny	33.0	0.8	28.2	0.0	Grayish greenish yellow	None	26	28.7	9	7.6	<0.77	<0.75		
	2017/11/7	Sunny	19.1	0.4	16.2	0.0	Yellowish dark gray	None	24	19.1	18	14	<0.76	<0.92				
	2018/1/26	Sunny	3.8	0.3	4.2	0.0	Grayish greenish yellow	None	38	35.1	8	7.0	<0.84	<0.92				
	2017/5/20	Sunny	26.2	0.6	24.2	0.0	Light grayish greenish yellow	None	35	27.1	7	5.5	<0.58	<0.75				
	2017/8/18	Sunny	30.0	1.3	26.5	0.0	Grayish greenish yellow	None	30	27.8	8	7.5	<0.68	<0.80				
	2017/11/7	Sunny	20.2	1.2	14.9	0.0	Grayish greenish yellow	None	40	23.7	11	7.3	<0.67	<0.75				
	2018/1/26	Sunny	1.3	0.6	3.2	0.0	Grayish greenish yellow	None	42	36.9	8	7.4	<0.65	<0.61				
	2017/5/19	Sunny	24.0	0.2	25.5	0.0	Grayish yellow	Faint sewage	26	57.1	15	8.0	<0.58	<0.69				
	2017/8/18	Sunny	30.0	0.2	24.1	0.0	Grayish yellow	None	25	93.4	42	25	<0.69	<0.75				
	2017/11/7	Sunny	22.5	0.2	16.5	0.0	Grayish greenish yellow	None	36	63.4	17	14	<0.66	<0.80				
	2018/1/26	Sunny	0.8	0.1	3.9	0.0	Light grayish greenish yellow	None	45	128	12	16	<0.76	<0.88				
	2017/5/20	Sunny	24.0	0.6	21.2	0.0	Light grayish greenish yellow	None	49	32.3	7	6.4	<0.67	<0.84				
	2017/8/18	Cloudy	25.8	0.5	24.3	0.0	Grayish greenish yellow	None	36	147	12	11	<0.87	<0.69				
	2017/11/7	Sunny	20.3	1.2	15.8	0.0	Grayish greenish yellow	None	32	127	9	6.7	<0.76	<0.75				
	2018/1/26	Sunny	-1.0	0.6	3.5	0.0	Grayish yellow green	None	38	35.6	6	5.5	<0.65	<0.70				
8	Ohori River	Kitakashiwa Bridge	Kashiwa City	2017/5/31	Cloudy	26.0	0.5	22.0	0.0	Light grayish greenish yellow	None	>100	31.5	3	2.4	<0.77	<0.75	
				2017/8/18	Cloudy	28.8	1.1	26.3	0.0	Dark grayish yellow green	None	>100	43.6	2	2.5	<0.79	<0.84	
				2017/11/1	Cloudy	16.7	0.2	15.6	0.0	Grayish yellow green	None	81	39.3	5	3.5	<0.51	<0.84	
				2018/1/17	Cloudy	6.5	0.3	6.8	0.0	Grayish yellow green	None	68	37.4	7	4.8	<0.63	<0.84	
				2017/5/23	Sunny	20.8	0.2	20.5	0.0	Light grayish greenish yellow	None	>100	38.9	4	2.1	<0.77	<0.80	
				2017/8/22	Cloudy	28.7	0.2	26.8	0.0	Light grayish greenish yellow	None	83	37.4	5	0.9	<0.68	<0.63	
				2017/11/10	Cloudy	14.7	0.2	15.9	0.0	Grayish yellow green	None	86	39.9	4	1.7	<0.57	<0.75	
				2018/1/19	Sunny	11.2	0.2	11.9	0.0	Grayish yellow green	None	>100	40.7	3	1.4	<0.90	<0.70	
				2017/5/31	Cloudy	28.5	0.4	23.1	0.0	Grayish greenish yellow	Faint sewage	27	53.9	20	11	<0.70	<0.92	
				2017/8/18	Cloudy	30.8	0.9	26.1	0.0	Dark grayish yellow green	None	80	51.8	4	4.5	<0.74	<0.88	
9	Otsu River	Sanno Bridge, under	Kamagaya City	2017/11/1	Cloudy	16.9	0.2	16.0	0.0	Grayish greenish yellow	None	33	48.6	20	8.7	<0.61	<0.92	
				2018/1/17	Cloudy	6.8	0.2	7.5	0.0	Grayish greenish yellow	None	75	51.5	7	3.7	<0.76	<0.88	
				2017/5/12	Sunny	27.0	0.7	27.0	0.0	Light grayish greenish yellow	None	27	32.7	13	10	<0.81	<0.75	
				2017/8/18	Cloudy	29.7	0.6	27.8	0.0	Dark grayish greenish yellow	None	25	30.9	15	10	<0.55	<0.75	
				2017/11/1	Cloudy	19.0	0.7	17.6	0.0	Grayish yellow green	None	67	40.0	3	2.7	<0.66	<0.63	
		2018/1/17		Cloudy	8.3	0.3	7.3	0.0	Dark grayish greenish yellow	None	>100	43.0	2	2.0	<0.54	<0.63		
		2017/5/22		Sunny	23.2	0.1	21.2	0.0	Light grayish greenish yellow	Faint sewage	>100	41.2	3	1.3	<0.52	<0.63		
		2017/8/22		Cloudy	28.5	0.1	24.8	0.0	Light grayish greenish yellow	Faint sewage	>100	39.3	3	1.9	<0.62	<0.75		
		2017/11/10		Cloudy	15.2	0.1	15.9	0.0	Dark grayish yellow	None	>100	41.6	2	1.6	<0.63	<0.75		
		2018/1/19		Cloudy	12.5	0.1	12.2	0.0	Dark grayish yellow	None	>100	42.3	2	1.1	<0.58	<0.79		
10	Someirotoshi	Someishinbashi Bridge	Kashiwa City	2017/5/31	Cloudy	26.2	0.4	24.0	0.0	Light grayish yellow	None	39	32.9	19	9.1	<0.66	<0.63	
				2017/8/18	Cloudy	27.0	0.5	25.7	0.0	Dark grayish greenish yellow	None	47	32.4	10	5.6	<0.73	<0.88	
				2017/11/1	Cloudy	15.5	0.4	16.4	0.0	Grayish yellow	None	76	32.9	5	2.3	<0.76	<0.75	
				2018/1/17	Cloudy	8.0	0.3	8.1	0.0	Grayish yellow	None	74	39.1	11	5.6	<0.78	<0.88	
				2017/5/19	Sunny	20.7	0.5	22.5	0.0	Light grayish yellow	None	20	28.7	17	11	<0.67	<0.75	
11	Feeder rivers of Lake Teganuma	Downstream of Karuizawasakai Bridge	Kamagaya City /Shiroi City	2017/5/19	Sunny	20.7	0.5	22.5	0.0	Light grayish yellow	None	20	28.7	17	11	<0.67	<0.75	
				2017/8/18	Cloudy	31.8	0.7	29.5	0.0	Grayish greenish yellow	None	35	29.0	9	10	<0.76	<0.88	
				2017/11/7	Sunny	15.2	0.8	15.4	0.0	Grayish greenish yellow	None	20	18.8	18	16	<0.75	<0.63	
				2018/1/26	Sunny	5.0	0.5	5.0	0.0	Grayish yellow green	None	37	35.8	9	8.8	<0.53	<0.55	
				2017/5/19	Sunny	23.7	0.4	24.6	0.0	Light grayish greenish yellow	None	21	28.9	15	12	<0.73	<0.75	
		2017/8/18		Sunny	33.0	0.8	28.2	0.0	Grayish greenish yellow	None	26	28.7	9	7.6	<0.77	<0.75		
		2017/11/7		Sunny	19.1	0.4	16.2	0.0	Yellowish dark gray	None	24	19.1	18	14	<0.76	<0.92		
		2018/1/26		Sunny	3.8	0.3	4.2	0.0	Grayish greenish yellow	None	38	35.1	8	7.0	<0.84	<0.92		
		2017/5/20		Sunny	26.2	0.6	24.2	0.0	Light grayish greenish yellow	None	35	27.1	7	5.5	<0.58	<0.75		
		2017/8/18		Sunny	30.0	1.3	26.5	0.0	Grayish greenish yellow	None	30	27.8	8	7.5	<0.68	<0.80		
2017/11/7	Sunny	20.2	1.2	14.9	0.0	Grayish greenish yellow	None	40	23.7	11	7.3	<0.67	<0.75					
12	Kanayamaotoshi	Nauchi Bridge	Shiroi City	2018/1/26	Sunny	1.3	0.6	3.2	0.0	Grayish greenish yellow	None	42	36.9	8	7.4	<0.65	<0.61	
				2017/5/19	Sunny	24.0	0.2	25.5	0.0	Grayish yellow	Faint sewage	26	57.1	15	8.0	<0.58	<0.69	
				2017/8/18	Sunny	30.0	0.2	24.1	0.0	Grayish yellow	None	25	93.4	42	25	<0.69	<0.75	
				2017/11/7	Sunny	22.5	0.2	16.5	0.0	Grayish greenish yellow	None	36	63.4	17	14	<0.66	<0.80	
				2018/1/26	Sunny	0.8	0.1	3.9	0.0	Light grayish greenish yellow	None	45	128	12	16	<0.76	<0.88	

# Chiba River (Water) 2/4

No.	Location				Sampling Date	Weather	Air temperature (°C)	Water depth (m)	Water										Remarks
	Water area	Location	Municipality	General items					Water temperature (°C)	Sampling depth (m)	Color	Odor	Transparency (cm)	Electrical conductivity (mS/m)	SS (mg/L)	Turbidity (FNU)	Activity concentration(Bq/L)		
																	Radioactive cesium Cs-134	Cs-137	
14	Feeder Rivers of Teganuma Lake	Kamenari River	Kamenari Bridge	Inzai City	2017/5/19	Sunny	24.0	0.9	23.0	0.0	Light grayish yellow	Faint sewage	52	30.8	7	6.1	<-0.69	<-0.92	
					2017/8/24	Cloudy	32.7	0.9	28.7	0.0	Grayish greenish yellow	None	55	34.9	8	8.2	<-0.49	<-0.84	
					2017/11/1	Sunny	17.1	0.8	15.1	0.0	Dark grayish greenish yellow	None	61	32.1	4	3.4	<-0.93	<-0.84	
					2018/1/17	Cloudy	8.5	0.7	6.1	0.0	Grayish yellow	None	>100	33.6	2	1.7	<-0.57	<-0.63	
15	Igusasuuro Channel	Downstream of Igusasuuro Channel	Kamagaya City	2017/5/23	Sunny	26.7	0.1	29.0	0.0	Light grayish yellow	None	41	39.8	6	6.4	<-0.77	<-0.75		
				2017/8/22	Cloudy	29.5	0.1	28.0	0.0	Light grayish yellow green	Faint sewage	65	31.8	4	2.8	<-0.73	<-0.92		
				2017/11/8	Rain	15.2	0.1	16.7	0.0	Light grayish yellow	Faint sewage	>100	41.5	<1	0.8	<-0.61	<-0.88		
				2018/1/19	Cloudy	11.0	0.1	9.4	0.0	Dark grayish yellow green	None	62	39.2	4	4.2	<-0.70	<-0.74		
16	Futae River	Tomigaya Bridge	Funabashi City /Shiroi City	2017/5/23	Sunny	21.2	0.2	24.0	0.0	Light grayish yellow	Faint sewage	>100	38.2	2	1.3	<-0.72	<-0.88		
				2017/8/22	Cloudy	28.7	0.2	25.6	0.0	Light grayish yellow	None	>100	36.4	2	0.8	<-0.81	<-0.63		
				2017/11/8	Cloudy	13.9	0.3	15.2	0.0	Light grayish yellow	None	>100	40.2	<1	0.6	<-0.76	<-0.84		
				2018/1/27	Sunny	8.5	0.2	9.4	0.0	Grayish greenish yellow	None	>100	39.6	1	0.6	<-0.83	<-0.69		
17	Kanzaki River	Kanzaki Bridge	Yachiyo City /Inzai City	2017/5/16	Sunny	24.0	1.8	22.1	0.0	Light grayish yellow green	None	36	25.5	11	6.4	<-0.71	<-0.55		
				2017/8/17	Cloudy	29.1	1.7	26.0	0.0	Dark grayish yellow green	None	39	22.7	7	5.6	<-0.79	<-0.75		
				2017/11/8	Cloudy	13.0	1.3	14.6	0.0	Dark grayish yellow green	None	85	37.2	4	2.8	<-0.82	<-0.75		
				2018/1/26	Sunny	3.3	1.3	5.9	0.0	Grayish yellow green	None	62	36.5	5	3.8	<-0.71	<-0.92		
18	Kannou River	Kannou Bridge	Yachiyo City	2017/5/16	Sunny	21.8	0.6	19.9	0.0	Light grayish yellow green	None	59	33.3	10	5.4	<-0.69	<-0.69		
				2017/8/24	Cloudy	31.2	0.5	28.7	0.0	Dark grayish greenish yellow	None	44	34.7	5	3.8	<-0.62	<-0.88		
				2017/11/8	Rain	16.2	0.4	15.2	0.0	Dark grayish yellow green	None	>100	43.6	3	2.0	<-0.90	<-0.96		
				2018/1/27	Sunny	3.8	0.3	4.5	0.0	Dark grayish yellow green	None	78	45.0	3	2.6	<-0.83	<-0.61		
19	Inba Discharge Channel (upper reaches)	Yachiyo Bridge	Yachiyo City	2017/5/16	Sunny	24.8	3.0	21.2	0.0	Light grayish yellow green	Faint sewage	32	26.7	9	6.2	<-0.84	<-0.80		
				2017/8/24	Cloudy	30.6	3.1	28.3	0.0	Dark grayish yellow green	None	34	30.4	6	4.3	<-0.62	<-0.55		
				2017/11/8	Cloudy	14.1	2.5	15.3	0.0	Dark grayish yellow green	None	38	35.4	9	5.9	<-0.67	<-0.88		
				2018/1/27	Sunny	4.2	2.8	4.7	0.0	Grayish yellow	None	34	38.8	8	5.7	<-0.87	<-0.75		
20	Feeder rivers of Lake Inbanuma	Teguri River	Munsei Bridge	Sakura City	2017/5/16	Cloudy	20.2	0.7	21.3	0.0	Light grayish yellow	None	>100	33.1	4	2.6	<-0.60	<-0.80	
					2017/8/17	Cloudy	28.2	0.6	24.4	0.0	Grayish yellow green	None	95	36.1	3	4.2	<-0.76	<-0.75	
					2017/11/6	Cloudy	20.9	0.5	15.4	0.0	Dark grayish greenish yellow	None	>100	35.6	2	1.8	<-0.68	<-0.75	
					2018/1/25	Sunny	3.0	0.4	5.7	0.0	Light grayish yellow green	None	>100	38.8	1	1.4	<-0.77	<-0.55	
21	Moroto River	Moroto Bridge	Inzai City	2017/5/16	Cloudy	21.0	1.0	22.3	0.0	Light grayish greenish yellow	None	36	25.6	12	9.5	<-0.88	<-0.75		
				2017/8/17	Cloudy	27.0	0.9	25.6	0.0	Grayish yellow green	None	65	24.0	5	5.2	<-0.76	<-0.75		
				2017/11/6	Sunny	21.9	1.5	14.2	0.0	Grayish yellow green	None	83	27.8	5	3.7	<-0.77	<-0.78		
				2018/1/25	Sunny	3.8	1.0	4.0	0.0	Grayish yellow green	None	>100	27.4	2	2.3	<-0.68	<-0.69		
22	Kashima River	Iwatomi Bridge	Sakura City	2017/5/18	Sunny	21.8	0.8	17.3	0.0	Light grayish yellow green	None	76	31.2	8	3.7	<-0.69	<-0.88		
				2017/8/17	Cloudy	24.8	1.3	20.5	0.0	Dark grayish yellow	None	75	27.9	7	3.8	<-0.67	<-0.69		
				2017/11/6	Sunny	12.8	1.1	12.6	0.0	Dark grayish yellow green	None	>100	32.9	4	2.7	<-0.76	<-0.92		
				2018/1/25	Sunny	1.8	0.7	5.6	0.0	Grayish greenish yellow	None	>100	46.6	3	1.9	<-0.51	<-0.80		
23	Takasaki River	Ryuto Bridge	Sakura City	2017/5/18	Sunny	23.5	1.0	18.3	0.0	Light grayish greenish yellow	None	78	36.7	5	3.8	<-0.68	<-0.75		
				2017/8/17	Cloudy	25.1	1.0	22.3	0.0	Grayish greenish yellow	None	68	35.5	5	4.7	<-0.58	<-0.75		
				2017/11/6	Sunny	16.2	0.8	13.2	0.0	Grayish greenish yellow	None	58	36.7	9	5.2	<-0.76	<-0.55		
				2018/1/25	Sunny	1.2	0.7	4.9	0.0	Grayish yellow green	None	>100	40.1	3	2.1	<-0.65	<-0.75		
24	Kashima River	Kashima Bridge	Sakura City	2017/5/18	Cloudy	22.8	1.7	20.5	0.0	Light grayish yellow	None	53	35.2	6	5.2	<-0.75	<-0.80		
				2017/8/17	Cloudy	25.8	2.5	22.8	0.0	Dark grayish yellow	None	56	30.4	7	4.6	<-0.65	<-0.80		
				2017/11/6	Sunny	18.6	0.2	14.4	0.0	Grayish yellow green	None	>100	36.7	3	2.8	<-0.91	<-0.63		
				2018/1/25	Sunny	1.2	1.5	5.7	0.0	Grayish yellow green	None	67	38.0	6	4.2	<-0.76	<-0.80		
25	Inbasuuro Channel	Tsurumaki Bridge	Inzai City	2017/5/18	Sunny	20.8	2.5	21.0	0.0	Grayish greenish yellow	None	21	28.9	27	14	<-0.52	<-0.69		
				2017/8/17	Cloudy	29.7	2.5	25.8	0.0	Grayish greenish yellow	None	25	29.5	12	8.1	<-0.80	<-0.80		
				2017/11/6	Sunny	20.6	2.2	16.0	0.0	Dark grayish greenish yellow	None	30	22.9	12	7.0	<-0.77	<-0.61		
				2018/1/25	Sunny	2.5	2.5	5.0	0.0	Light grayish yellow	None	33	31.2	19	14	<-0.63	<-0.80		
26	Edogawa River System	Tonegana Canal	Unga Bridge	Nagareyama City/Noda City	2017/5/15	Cloudy	15.2	0.3	18.2	0.0	Light grayish greenish yellow	Faint sewage	36	37.1	14	6.4	<-0.78	<-0.75	
					2017/8/23	Cloudy	31.6	0.4	28.8	0.0	Grayish yellow	Faint sewage	32	47.9	19	7.1	<-0.71	<-0.74	
					2017/11/15	Cloudy	10.0	0.5	13.0	0.0	Grayish greenish yellow	None	56	42.3	8	4.1	<-0.67	<-0.69	
					2018/1/30	Sunny	0.3	0.3	4.9	0.0	Grayish greenish yellow	None	57	62.2	8	4.9	<-0.58	<-0.69	

# Chiba River (Water) 3/4

R i v e r s	Location				Sampling Date	Weather	Air temperature (°C)	Water depth (m)	Water										Remarks
	No.	Water area	Location	Municipality					Water temperature (°C)	Sampling depth (m)	General items		Transparency (cm)	Electrical conductivity (mS/m)	SS (mg/L)	Turbidity (FNU)	Activity concentration(Bq/L)		
											Color	Odor					Cs-134	Cs-137	
27	Edogawa River	Nagareyama Bridge	Nagareyama City/Misato City	2017/5/24	Cloudy	23.5	0.4	20.4	0.0	Grayish greenish yellow	None	39	13.7	12	7.0	<0.57	<0.75		
				2017/8/23	Cloudy	30.4	0.4	24.8	0.0	Grayish yellow	None	25	16.6	23	14	<0.79	<0.80		
				2017/11/15	Cloudy	12.9	0.3	11.1	0.0	Grayish yellow green	None	96	24.2	6	3.4	<0.70	<0.80		
				2018/1/30	Sunny	2.0	0.2	3.6	0.0	Dark grayish yellow green	None	90	26.5	4	2.8	<0.54	<0.99		
	28	Sakagawa River	Benten Bridge	Matsudo City	2017/5/15	Cloudy	21.1	2.1	21.0	0.0	Light grayish yellow green	Faint sewage	65	32.3	6	5.8	<0.52	<0.75	
					2017/8/23	Cloudy	32.4	2.1	27.8	0.0	Dark grayish yellow green	None	68	21.7	4	2.3	<0.71	<0.66	
					2017/11/10	Cloudy	14.6	2.1	14.7	0.0	Grayish yellow green	Faint sewage	91	46.8	3	2.4	<0.67	<0.69	
					2018/1/19	Sunny	10.5	2.3	10.2	0.0	Grayish yellow green	None	33	47.5	10	9.0	<0.70	<0.69	
	29	Shinsaka River	Sakane Bridge	Matsudo City	2017/5/15	Cloudy	22.9	0.6	19.8	0.0	Light grayish greenish yellow	None	65	29.6	6	4.5	<0.88	<0.80	
					2017/8/23	Cloudy	30.8	0.8	26.2	0.0	Grayish yellow green	None	60	31.8	4	3.4	<0.78	<0.96	
					2017/11/10	Sunny	12.0	0.6	13.7	0.0	Grayish yellow green	None	87	41.7	4	3.2	<0.60	<0.75	
					2018/1/19	Sunny	9.3	0.8	10.2	0.0	Grayish yellow green	None	33	26.2	8	3.4	<0.61	<0.70	
	30	Shinkatsushika Bridge	Matsudo City /Katsushika City	Matsudo City /Katsushika City	2017/5/27	Cloudy	24.1	0.5	18.2	0.0	Grayish greenish yellow	None	41	14.4	25	12	<0.82	<0.75	
					2017/8/25	Cloudy	34.0	0.2	26.1	0.0	Dark grayish greenish yellow	None	22	18.3	29	13	<0.73	<0.63	
					2017/11/15	Cloudy	15.0	0.1	12.6	0.0	Grayish yellow green	None	63	23.5	4	3.1	<0.68	<0.75	
					2018/1/19	Sunny	8.1	1.2	6.8	0.0	Grayish yellow green	None	>100	31.9	3	2.3	<0.73	<0.88	
	31	Ichikawa Bridge	Ichikawa City /Edogawa City	Ichikawa City /Edogawa City	2017/5/9	Cloudy	20.5	0.5	18.2	0.0	Light grayish greenish yellow	None	39	13.6	15	8.6	<0.72	<0.80	
					2017/8/25	Cloudy	31.0	0.5	25.0	0.0	Grayish greenish yellow	None	74	18.2	4	3.2	<0.84	<0.75	
					2017/11/13	Cloudy	11.2	0.2	10.7	0.0	Grayish yellow green	None	32	26.1	15	9.7	<0.63	<0.63	
					2018/1/17	Cloudy	7.0	0.5	4.9	0.0	Dark grayish yellow green	None	57	28.5	8	4.4	<0.75	<0.80	
	32	Vicinity of Keiyo Road	Ichikawa City /Edogawa City	Ichikawa City /Edogawa City	2017/5/27	Sunny	25.3	2.4	17.1	0.0	Light grayish yellow	None	39	14.1	22	9.4	<0.55	<0.63	
					2017/8/28	Cloudy	31.4	3.4	24.9	0.0	Light grayish yellow	None	42	20.4	8	6.4	<0.76	<0.92	
					2017/11/27	Cloudy	13.5	4.0	9.9	0.0	Dark grayish yellowish green	None	83	26.9	2	2.2	<0.67	<0.99	
					2018/1/29	Sunny	8.8	4.3	3.5	0.0	Grayish yellow green	None	63	31.5	3	2.6	<0.81	<0.84	
	33	Gyotoku Movable Weir (upper reaches)	Ichikawa City	Ichikawa City	2017/5/27	Sunny	26.0	2.9	19.8	0.0	Light grayish yellow	None	37	17.0	12	9.0	<0.73	<0.84	
					2017/6/20	Sunny	28.0	4.2	24.9	0.0	Light grayish yellow	None	43	28.0	6	4.3	<0.69	<0.75	
					2017/7/19	Cloudy	31.2	3.5	29.5	0.0	Dark grayish yellow green	None	49	30.4	5	2.1	<0.61	<0.75	
					2017/8/28	Cloudy	30.7	3.9	25.4	0.0	Grayish yellow green	None	52	38.6	5	4.3	<0.64	<0.80	
	34	Shingyotokubashi Bridge	Ichikawa City	Ichikawa City	2017/9/22	Cloudy	28.0	4.0	22.8	0.0	Grayish yellow green	None	63	38.8	7	5.0	<0.67	<0.63	
					2017/11/27	Cloudy	14.0	3.8	9.8	0.0	Dark grayish green	None	83	28.2	3	2.9	<0.71	<0.84	
					2018/1/29	Sunny	7.2	3.9	3.4	0.0	Grayish yellow green	None	58	58.5	5	3.9	<0.72	<0.55	
					2017/5/8	Sunny	25.0	0.2	22.8	0.0	Light grayish yellow	None	34	3,700	7	4.3	<0.66	<0.84	
	35	Edogawa Floodgate, down	Ichikawa City /Edogawa City	Ichikawa City /Edogawa City	2017/8/25	Cloudy	33.2	0.3	31.3	0.0	Grayish yellow	None	21	3,800	38	18	<0.61	<0.80	
					2017/11/15	Sunny	15.7	0.6	14.9	0.0	Dark grayish yellow green	None	35	4,250	15	8.0	<0.78	<0.61	
					2018/1/24	Sunny	5.3	0.5	7.7	0.0	Dark grayish greenish yellow	None	50	4,570	5	3.1	<0.65	<0.84	
					2017/5/27	Sunny	26.2	8.1	17.4	0.0	Light grayish yellow	None	31	13.6	36	15	<0.51	<0.97	
	36	8 km Point to the estuary	Ichikawa City /Edogawa City	Ichikawa City /Edogawa City	2017/8/28	Cloudy	30.5	8.3	24.6	0.0	Dark grayish yellow green	None	54	19.6	7	5.2	<0.79	<0.75	
					2017/11/27	Cloudy	14.5	6.9	10.0	0.0	Dark grayish yellow green	None	84	27.2	3	2.1	<0.67	<0.92	
					2018/1/29	Sunny	6.3	8.3	6.2	0.0	Dark grayish yellow green	None	67	791	2	2.5	<0.47	<0.69	
					2017/5/27	Sunny	26.6	4.4	18.4	0.0	Light grayish yellow	None	42	15.0	22	10	<0.81	<0.84	
	36	Kyuu-Edogawa River	8 km Point to the estuary	Ichikawa City /Edogawa City	2017/8/28	Cloudy	29.6	5.7	24.8	0.0	Grayish yellow green	None	51	26.8	7	4.4	<0.84	<0.75	
					2017/11/27	Cloudy	14.0	4.2	10.3	0.0	Dark grayish yellow green	None	87	27.8	3	2.6	<0.73	<0.69	
					2018/1/29	Sunny	5.0	4.5	6.8	0.0	Dark grayish yellow green	None	>100	787	3	2.3	<0.66	<0.75	

# Chiba River (Water) 4/4

No.	Location			Sampling Date	Weather	Air temperature (°C)	Water depth (m)	Water										Remarks		
	Water area	Location	Municipality					General items											Activity concentration(Bq/L)	
								Water temperature (°C)	Sampling depth (m)	Color	Odor	Transparency (cm)	Electrical conductivity (mS/m)	SS (mg/L)	Turbidity (FNU)	Cs-134	Cs-137			
37	Kyu-Edogawa River	Imai Bridge	Ichikawa City /Edogawa City	2017/5/27	Sunny	27.6	4.6	18.8	0.0	Light grayish yellow green	None	32	17.2	24	11	<0.72	<0.63			
				2017/8/28	Cloudy	29.3	5.4	25.5	0.0	Dark grayish yellow green	None	44	27.4	8	4.4	<0.68	<0.69			
				2017/11/27	Sunny	15.0	5.2	10.3	0.0	Grayish yellow green	None	84	40.3	3	2.3	<0.83	<0.80			
		2018/1/29	Sunny	5.8	5.4	9.0	0.0	Dark grayish yellow green	None	>100	1,580	3	2.7	<0.86	<0.80					
		2017/5/8	Sunny	27.0	3.6	22.5	0.0	Light grayish yellow	None	30	1,090	12	10	<0.65	<0.75					
		2017/6/29	Cloudy	25.8	3.5	25.2	0.0	Dark grayish yellow green	None	74	933	3	2.5	<0.81	<0.84					
	38	Kyu-Edogawa River	Urayasu Bridge	Urayasu City/Edogawa City	2017/7/19	Sunny	29.1	4.0	29.1	0.0	Dark grayish greenish yellow	Faint sewage	58	189	4	2.0	<0.85	<0.84		
					2017/8/28	Cloudy	26.5	4.0	24.3	0.0	Grayish yellow	None	42	27.8	10	6.6	<0.94	<0.80		
					2017/9/22	Sunny	25.1	3.5	23.1	0.0	Grayish greenish yellow	None	59	1,440	7	3.6	<0.75	<0.92		
					2017/11/27	Sunny	12.0	2.9	10.2	0.0	Grayish yellow green	Faint sewage	86	147	4	4.3	<0.82	<0.89		
					2018/1/29	Sunny	5.0	3.0	6.5	0.0	Dark grayish yellow green	Faint sewage	75	1,250	3	2.7	<0.51	<0.88		
					2017/5/9	Cloudy	23.0	0.9	18.1	0.0	Light grayish yellow	None	42	12.7	10	7.7	<0.63	<0.88		
39	Mamagawa River	Nemoto Floodgate	Ichikawa City	2017/8/25	Cloudy	32.5	1.2	26.3	0.0	Dark grayish yellow green	None	68	18.3	3	3.1	<0.82	<0.84			
				2017/11/13	Cloudy	13.8	0.7	14.6	0.0	Grayish yellow green	Faint sewage	62	50.4	4	3.7	<0.88	<0.69			
				2018/1/17	Cloudy	9.0	0.5	4.9	0.0	Dark grayish yellow green	None	91	28.3	5	3.3	<0.48	<0.80			
				2017/5/8	Sunny	27.2	0.8	20.0	0.0	Light grayish yellow	Faint sewage	56	54.0	7	3.6	<0.57	<0.84			
				2017/8/25	Cloudy	34.5	0.5	26.6	0.0	Grayish yellow green	Faint sewage	59	53.7	10	3.8	<0.93	<0.69			
				2017/11/13	Cloudy	16.7	0.7	15.2	0.0	Grayish yellow green	Faint sewage	43	54.0	8	5.8	<0.75	<0.75			
40	Edogawa River System	Kokubu River	Suwada Bridge	2018/1/17	Cloudy	8.9	0.8	11.5	0.0	Dark grayish yellow green	Faint sewage	70	62.2	9	3.5	<0.62	<0.84			
				2017/5/8	Sunny	24.0	0.5	20.2	0.0	Light grayish greenish yellow	Faint sewage	58	47.2	2	3.6	<0.72	<0.75			
				2017/8/25	Cloudy	35.0	0.4	27.2	0.0	Grayish yellow green	None	68	87.7	2	1.9	<0.93	<0.88			
		41	Edogawa River System	Haruki River	Before the confluence with Kokubu River	2017/11/13	Cloudy	17.7	0.4	16.4	0.0	Grayish yellow green	Faint sewage	62	55.6	2	3.1	<0.74	<0.80	
						2018/1/17	Rain	10.0	0.5	10.9	0.0	Grayish yellow green	Faint sewage	32	76.7	14	6.0	<0.74	<0.75	
						2017/5/23	Sunny	23.0	0.9	25.0	0.0	Light grayish greenish yellow	None	>100	43.4	3	2.1	<0.78	<0.88	
42	Edogawa River System	Hasen-okashiwa River	Downstream of Nakazawashinbashi Bridge	2017/8/22	Cloudy	28.4	1.1	23.8	0.0	Dark grayish yellow green	Faint sewage	>100	42.6	3	1.0	<0.85	<0.63			
				2017/11/8	Cloudy	15.9	0.8	16.7	0.0	Dark grayish yellow green	None	>100	44.9	3	2.6	<0.76	<0.84			
				2018/1/27	Sunny	7.0	0.5	9.7	0.0	Dark grayish yellow green	None	38	48.2	5	4.3	<0.89	<0.61			
		43	Edogawa River System	Okashiwa River	Sengen Bridge	2017/5/8	Sunny	28.2	1.2	22.0	0.0	Light grayish yellow	Faint sewage	57	78.1	6	3.8	<0.60	<0.84	
						2017/8/25	Cloudy	37.1	0.4	27.8	0.0	Dark grayish yellow green	Faint sewage	>100	50.0	3	2.0	<0.70	<0.75	
						2017/11/13	Cloudy	18.2	1.7	15.4	0.0	Dark grayish yellow green	Faint sewage	80	69.0	2	2.8	<0.69	<0.88	
44	Edogawa River System	Mamagawa River	Mitomae Bridge	2018/1/17	Cloudy	10.0	1.9	10.8	0.0	Dark grayish yellow green	Faint sewage	76	48.5	5	3.1	<0.78	<0.75			
				2017/5/11	Cloudy	24.2	3.5	22.0	0.0	Light grayish greenish yellow	None	75	179	5	3.8	<0.65	<0.69			
				2017/6/20	Sunny	28.0	2.9	24.3	0.0	Light grayish greenish yellow	Faint sewage	>100	653	3	1.5	<0.62	<0.80			
		2017/7/19	Sunny	32.5	3.5	29.6	0.0	Dark grayish yellow green	Faint sewage	70	46.3	3	1.3	<0.85	<0.63					
		2017/8/7	Sunny	31.2	2.5	27.6	0.0	Dark grayish greenish yellow	Faint sewage	75	901	3	2.0	<0.54	<0.88					
		2017/9/22	Cloudy	28.5	2.2	23.9	0.0	Dark grayish yellow green	Faint sewage	61	1,370	4	2.1	<0.67	<0.63					
45	Ebigawa River	Yachiyo Bridge	Funabashi City	2017/11/9	Sunny	16.2	3.3	15.7	0.0	Grayish yellow green	None	76	779	2	1.9	<0.83	<0.75			
				2018/1/24	Sunny	6.0	2.8	7.4	0.0	Grayish yellow green	None	70	678	3	2.6	<0.76	<0.69			
				2017/5/11	Sunny	25.0	1.9	24.0	0.0	Light grayish yellow green	Faint sewage	88	1,790	6	2.8	<0.74	<0.92			
				2017/8/7	Sunny	31.8	1.4	26.8	0.0	Dark grayish greenish yellow	None	>100	745	2	1.5	<0.60	<0.74			
				2017/11/9	Sunny	18.9	1.9	15.4	0.0	Dark grayish yellow green	Faint sewage	>100	1,320	1	0.9	<0.82	<0.69			
				2018/1/18	Sunny	10.8	1.9	10.3	0.0	Grayish greenish yellow	None	31	480	10	5.0	<0.78	<0.63			
46	Inba Discharge Channel (lower reaches)	Shinhanamigawa Bridge	Chiba City	2017/5/11	Sunny	27.0	2.1	23.0	0.0	Light grayish greenish yellow	None	79	2,210	2	1.3	<0.73	<0.75			
				2017/6/20	Sunny	23.0	2.8	23.5	0.0	Light grayish greenish yellow	Faint sewage	>100	2,350	2	1.0	<0.90	<0.63			
				2017/7/19	Sunny	31.2	3.5	31.0	0.0	Dark grayish reddish yellow	None	39	1,530	10	5.6	<0.65	<0.84			
				2017/8/7	Sunny	36.5	2.2	28.8	0.0	Grayish yellow	None	42	551	7	5.6	<0.71	<0.63			
				2017/9/22	Cloudy	27.0	3.0	24.6	0.0	Dark grayish yellow green	None	>100	334	1	0.8	<0.73	<0.84			
				2017/11/9	Sunny	21.2	4.0	16.5	0.0	Dark grayish yellow green	None	91	1,500	3	2.1	<0.87	<0.84			
47	Miyako River	Miyako Bridge	Chiba City	2018/1/18	Sunny	12.0	4.1	8.9	0.0	Grayish yellow	None	28	186	13	6.8	<0.77	<0.78			
				2017/5/11	Sunny	21.8	1.4	20.9	0.0	Light grayish yellow green	None	>100	978	2	2.1	<0.70	<0.80			
				2017/8/7	Sunny	32.8	2.4	26.9	0.0	Dark grayish greenish yellow	None	63	1,690	2	2.5	<0.69	<0.66			
				2017/11/9	Sunny	19.8	1.9	15.4	0.0	Dark grayish yellowish green	None	>100	738	2	1.6	<0.75	<0.88			
				2018/1/18	Sunny	6.5	1.8	9.2	0.0	Grayish yellow	None	28	505	14	9.7	<0.63	<0.92			





# Chiba River (Sediment) 3/4

No.	Location				Sampling Date	Weather	Air temperature (°C)	Water depth (m)	Sediment																	Remarks
	Water area	Location	Municipality	General items													Activity concentration [Bq/kg(dry)]									
				Sediment temperature (°C)					Sample length (cm)	Color	Odor	Grain size distribution(%)							Sediment content (%)	Density (g/cm <sup>3</sup> )	Property	Radioactive cesium				
												Course gravel	Medium gravel	Fine gravel	Course sand	Medium sand	Fine sand	Silt				Clay	Cs-134	Cs-137	Total	
27	Edogawa River	Nagareyama Bridge	Nagareyama City /Misato City	2017/5/24	Cloudy	23.5	0.4	20.7	3	Blackish brown	Faint sewage	0.0	1.8	0.2	0.0	34.8	57.4	1.0	3.7	75.1	2,894	Sand	5.3	5.2	37.3	
				2017/8/23	Cloudy	30.4	0.4	24.0	5	Blackish brown	Faint softness	0.0	0.0	0.1	0.7	3.8	66.3	29.1	34.8	2,472	Silt	34	220	254		
				2017/11/15	Cloudy	12.9	0.3	11.3	5	Blackish brown	None	0.0	1.5	1.1	0.4	4.1	58.5	28.2	6.2	57.6	2,697	Sand/silt	13	90	103	
28	Sakagawa River	Benten Bridge	Matsudo City	2018/1/30	Sunny	2.0	0.2	4.0	3	Blackish brown	Faint sewage	0.0	7.2	0.2	0.3	5.6	44.0	32.7	10.1	54.7	2,620	Silt/sand	24	200	224	
				2017/5/15	Cloudy	21.1	2.1	22.0	6	Black	Faint sewage	0.0	0.0	0.5	2.2	22.8	59.9	8.1	6.5	47.0	2,640	Silt/sand	120	920	1,040	
				2017/8/23	Cloudy	32.4	2.1	26.4	4	Black	Faint sewage	0.0	0.2	1.4	2.4	22.2	60.8	7.7	5.3	52.3	2,642	Silt/sand	96	850	946	
				2017/11/10	Cloudy	14.6	2.1	14.9	4	Black	Faint sewage	0.0	0.2	1.1	1.5	19.0	68.7	5.6	4.0	63.8	2,690	Sand/silt	63	550	613	
				2018/1/19	Sunny	10.5	2.3	8.8	5	Olive black	Faint sewage	0.0	0.2	0.6	1.7	26.8	59.2	5.4	6.1	64.0	2,676	Sand/silt	65	630	695	
29	Shinsaka River	Sakane Bridge	Matsudo City	2017/5/15	Cloudy	22.9	0.6	19.9	5	Olive black	Faint sewage	0.0	5.0	2.7	2.1	57.3	28.4	0.5	4.0	72.3	2,744	Sand	110	720	830	
				2017/8/23	Cloudy	30.8	0.8	26.0	2	Olive black	Faint sewage	4.6	7.7	3.6	2.5	52.5	26.6	0.5	2.0	73.9	2,743	Sand/gravel	71	610	681	
				2017/11/10	Sunny	12.0	0.6	13.8	2	Black	None	2.2	10.6	3.9	3.1	53.0	23.8	1.7	1.6	72.3	2,744	Sand/gravel	74	620	694	
				2018/1/19	Sunny	9.3	0.8	10.0	2	Olive black	Faint sewage	1.2	8.0	3.1	1.8	54.8	27.4	1.6	2.1	74.3	2,716	Sand/gravel	64	640	704	
30	Shinkasushika Bridge	Matsudo City /Katsushika City	2017/5/27	Cloudy	24.1	0.5	25.1	5	Olive black	Faint sewage	0.0	0.0	0.0	0.6	1.6	19.6	54.6	23.6	43.8	2,533	Silt/sand	27	220	247		
			2017/8/25	Cloudy	34.0	0.2	28.9	3	Olive black	None	0.0	0.0	0.0	0.0	0.2	2.3	67.2	30.3	36.7	2,467	Silt	28	210	238		
			2017/11/15	Cloudy	15.0	0.1	14.9	6	Olive black	None	0.0	0.2	0.4	2.2	36.7	44.7	15.8	49.8	2,669	Silt/sand	33	230	263			
31	Edogawa River System	Ichikawa Bridge	Ichikawa City /Edogawa City	2018/1/19	Sunny	8.1	1.2	6.0	5	Olive black	Faint sewage	0.0	0.0	0.0	0.1	2.6	49.8	36.5	11.0	46.0	2,595	Silt/sand	17	150	167	
				2017/5/9	Cloudy	20.5	0.5	18.2	3	Blackish brown	None	3.0	21.1	6.2	4.7	31.1	27.9	3.3	2.8	82.3	2,713	Sand/gravel	6.6	33	39.6	
				2017/8/25	Cloudy	31.0	0.5	26.0	3	Blackish brown	None	5.5	44.1	3.4	1.9	34.8	8.5	0.3	1.5	77.4	2,807	Sand/gravel	8.2	86	94.2	
		2017/11/13	Cloudy	11.2	0.2	11.0	3	Blackish brown	None	0.0	1.9	0.6	0.6	10.4	69.6	11.8	5.1	62.4	2,709	Sand/silt/gravel	12	81	93			
		2018/1/17	Cloudy	7.0	0.5	5.1	2	Dark olive brown	Faint earth	13.2	35.6	4.4	1.6	19.9	21.9	2.2	1.4	74.3	2,794	Gravel/sand	<7.9	67	67			
		2017/5/27	Sunny	25.3	2.4	17.9	3	Olive brown	None	0.0	0.0	0.0	0.2	40.6	48.1	6.5	4.6	71.7	2,788	Sand/silt	7.4	50	57.4			
		2017/8/28	Cloudy	31.4	3.4	25.0	3	Olive brown	None	0.0	0.0	0.0	0.1	35.3	51.4	7.4	5.8	72.6	2,740	Sand	7.8	55	62.8			
33	Edogawa River	Vicinity of Keiyo Road	Ichikawa City	2017/1/27	Cloudy	13.5	4.0	9.5	3	Dark grayish yellow	None	0.0	0.0	0.0	0.2	32.4	60.9	5.2	1.5	75.6	2,844	Sand	14	97	111	
				2018/1/29	Sunny	8.8	4.3	4.5	3	Dark grayish yellow	None	0.0	0.3	0.0	0.1	35.6	60.3	1.0	2.8	76.0	3,010	Sand	<8.1	34	34	
				2017/5/27	Sunny	26.0	2.9	20.1	3	Olive black	None	0.0	0.0	0.0	0.0	9.7	72.0	8.5	9.9	65.1	2,864	Sand/silt	7.0	53	60.0	
				2017/6/20	Sunny	28.0	4.2	24.8	4	Olive black	None	0.0	0.0	0.0	0.0	14.3	68.0	10.5	7.2	65.4	2,750	Sand/silt	<6.2	57	57	
				2017/7/19	Cloudy	31.2	3.5	29.0	4	Blackish brown	None	0.0	0.0	0.0	0.1	11.0	77.0	5.7	6.2	56.8	2,807	Sand/silt	5.8	61	66.8	
		2017/8/25	Cloudy	30.7	3.9	26.0	5	Olive black	Faint sewage	0.0	0.0	0.0	0.0	11.7	41.7	32.6	14.0	53.7	2,652	Silt/sand	9.3	68	77.3			
		2017/9/22	Cloudy	28.0	4.0	23.3	6	Olive black	None	0.0	0.0	0.0	0.0	5.7	51.0	28.8	18.5	47.1	2,689	Silt/sand	12	98	110			
		2017/11/27	Cloudy	14.0	3.8	9.5	3	Olive black	None	0.0	0.0	0.0	0.0	12.8	83.6	1.6	1.9	75.5	2,852	Sand/silt	<4.5	28	28			
		2018/1/29	Sunny	7.2	3.9	4.0	3	Olive black	None	0.0	0.0	0.0	0.0	19.0	77.1	1.0	2.8	73.8	2,909	Sand	<6.4	31	31			
		2017/5/8	Sunny	25.0	0.2	21.8	4	Black	Faint sewage	0.0	1.6	1.4	2.8	18.5	55.6	13.8	6.4	74.4	2,699	Sand/silt	<2.6	14	14			
34	Shingyotokubashi Bridge	Ichikawa City	2017/8/25	Cloudy	33.2	0.3	30.3	3	Olive black	Faint hydrogen sulfide	0.0	3.7	3.0	1.5	13.7	54.9	17.1	6.3	71.1	2,729	Sand/silt	<3.3	16	16		
			2017/11/15	Sunny	15.7	0.6	14.8	3	Olive black	None	0.0	0.8	2.6	2.0	20.7	65.4	4.8	3.8	70.4	2,750	Sand	<4.9	8.1	8.1		
			2018/1/24	Sunny	5.3	0.5	7.5	3	Olive black	Faint seaweed	0.0	2.2	2.1	1.6	19.9	56.6	10.8	6.9	67.6	2,713	Sand/silt	<5.2	14	14		
35	Edogawa River	Edogawa Floodgate, down	Ichikawa City /Edogawa City	2017/5/27	Sunny	26.2	8.1	17.9	2	Blackish brown	None	0.0	0.0	0.0	0.8	54.3	40.9	2.0	1.9	67.2	2,699	Sand	<4.1	22	22	
				2017/8/28	Cloudy	30.5	8.3	25.8	2	Blackish brown	None	0.0	0.0	0.0	0.4	62.4	34.3	1.0	2.0	72.8	2,664	Sand/gravel	<3.6	20	20	
				2017/11/27	Cloudy	14.5	6.9	9.8	3	Blackish brown	None	0.0	0.0	0.1	0.5	50.6	46.8	0.1	1.9	73.3	2,835	Sand	<5.6	19	19	
				2018/1/29	Sunny	6.3	8.3	8.5	3	Blackish brown	None	0.0	0.1	1.1	1.1	34.4	58.4	1.7	4.2	67.4	2,729	Sand	<6.0	21	21	
				2017/5/27	Sunny	26.6	4.4	19.7	4	Blackish brown	Faint sewage	0.0	0.0	0.0	0.2	4.2	58.6	25.8	11.2	57.0	2,672	Sand/silt	14	140	154	
36	Edogawa River	8 km Point to the estuary	Ichikawa City /Edogawa City	2017/8/28	Cloudy	29.6	5.7	25.0	3	Blackish brown	None	0.0	0.0	0.0	0.1	3.0	48.8	37.1	11.1	55.7	2,643	Sand/silt	9.6	93	102.6	
				2017/11/27	Cloudy	14.0	4.2	10.0	5	Blackish brown	Faint sewage	0.0	0.0	0.1	0.3	2.2	49.7	36.9	11.0	58.5	2,668	Sand/silt	10	88	98	
				2018/1/29	Sunny	5.0	4.5	8.5	3	Blackish brown	None	0.0	0.0	0.2	0.0	4.0	77.7	11.7	6.4	64.2	2,748	Sand/silt	<6.1	56	56	





# Chiba River (Surrounding Environment) 1/4

Location				Sampling Date	Weather	Air temperature (°C)	Surrounding Environment(Soil,Air dose)													Remarks			
No.	Water area	Location	Municipality				Left bank						Right bank										
							Color	Odor	Property	Activity concentration [Bq/kg(dry)]			Air Dose (µSv/h)	Color	Odor	Property	Activity concentration [Bq/kg(dry)]				Air Dose (µSv/h)		
			Radioactive cesium						Radioactive cesium														
			Cs-134	Cs-137	Total	Cs-134	Cs-137	Total				Cs-134	Cs-137	Total									
R i v e r s	1	Shogen River	Fukama-obashi Bridge	Inzai City/Sakae Town	2017/5/19	Sunny	26.0	Blackish brown	Faint earth	Loamy	48	350	398	0.08	Dark brown	Faint earth	Loamy	70	450	520	0.09		
					2017/8/24	Cloudy	35.5	Dark brown	Faint earth	Loamy	53	460	513	0.09	Dull yellowish brown	Faint earth	Loamy	170	1,200	1,370	0.11		
					2017/11/7	Sunny	17.8	Dark brown	Faint earth	Loamy	42	310	352	0.08	Dark brown	Faint earth	Loamy	120	900	1,020	0.10		
			2018/1/25		Sunny	2.8	Blackish brown	Faint earth	Loamy	49	510	559	0.07	Dark brown	Faint earth	Loamy	160	1,400	1,560	0.08			
			2017/5/18		Sunny	22.0	Blackish brown	Faint earth	Loamy	22	210	232	0.06	Blackish brown	Faint earth	Loamy	40	250	290	0.06			
			2017/8/24		Cloudy	34.3	Dark brown	Faint earth	Loamy	14	150	164	0.07	Dark brown	Faint earth	Loamy	39	290	329	0.07			
		2	Tongagawa River System	Nagato River	Nagato Bridge	Sakae Town	2017/11/7	Sunny	13.0	Dark brown	Faint earth	Loamy	16	140	156	0.06	Blackish brown	Faint earth	Loamy	41	310	351	0.06
							2018/1/26	Sunny	5.5	Dark brown	Faint earth	Loamy	31	310	341	0.07	Dark brown	Faint earth	Loamy	17	140	157	0.06
							2017/5/19	Sunny	20.7	Blackish brown	Faint earth	Loamy	55	330	385	0.06	Blackish brown	Faint earth	Loamy	130	1,000	1,130	0.08
							2017/8/18	Cloudy	31.8	Blackish brown	Faint earth	Loamy	8.0	85	93.0	0.06	Blackish brown	Faint earth	Loamy	130	920	1,050	0.07
							2017/11/7	Sunny	15.2	Dark brown	Faint earth	Loamy	37	310	347	0.06	Dark brown	Faint earth	Loamy	62	580	642	0.07
							2018/1/26	Sunny	5.0	Dark brown	Faint earth	Loamy	17	150	167	0.06	Dark brown	Faint earth	Loamy	69	550	619	0.08
	3		Tongagawa River System	Nagato River	Intake at Maeshinden Water Purification Plant	Sakae Town	2017/5/19	Sunny	23.7	Blackish brown	Faint earth	Loamy	69	440	509	0.06	Blackish brown	None	Loamy	57	460	517	0.08
							2017/8/18	Sunny	33.0	Blackish brown	Faint earth	Loamy	23	200	223	0.05	Dark brown	Faint earth	Loamy	12	110	122	0.07
							2017/11/7	Sunny	19.1	Blackish brown	Faint earth	Loamy	63	500	563	0.05	Blackish brown	Faint earth	Loamy	40	350	390	0.08
							2018/1/26	Sunny	3.8	Blackish brown	Faint earth	Loamy	33	420	453	0.06	Dark brown	Faint earth	Loamy	38	330	368	0.07
							2017/5/20	Sunny	26.2	Dull yellowish brown	Faint earth	Loamy	13	77	90	0.06	Dark brown	Faint earth	Loamy	43	300	343	0.07
							2017/8/18	Sunny	30.0	Dark brown	Faint earth	Loamy	7.2	40	47.2	0.06	Dark brown	Faint earth	Loamy	38	300	338	0.06
	4	Tongagawa River System	Nagato River	Fujimi Bridge	Sakae Town	2017/11/7	Sunny	20.2	Dark brown	Faint earth	Loamy	6.0	72	78.0	0.06	Dark brown	Faint earth	Loamy	45	350	395	0.06	
						2018/1/26	Sunny	1.3	Dark brown	Faint earth	Loamy	8.5	55	63.5	0.06	Dark brown	Faint earth	Loamy	51	530	581	0.06	
						2017/5/19	Sunny	24.0	Dark brown	Faint earth	Loamy	71	530	601	0.07	Blackish brown	Faint earth	Loamy	57	400	457	0.08	
						2017/8/18	Sunny	30.0	Dark brown	Faint earth	Loamy	71	560	631	0.07	Blackish brown	Faint earth	Loamy	69	550	619	0.08	
						2017/11/7	Sunny	22.5	Blackish brown	Faint earth	Loamy	39	330	369	0.07	Dark brown	Faint earth	Loamy	57	420	477	0.08	
						2018/1/26	Sunny	0.8	Blackish brown	Faint earth	Loamy	45	460	505	0.07	Dark brown	Faint earth	Loamy	51	450	501	0.08	
	5	Tongagawa River System	Nagato River	Ryudai River	Narita City/Sakae Town	2017/5/20	Sunny	24.0	Black	Faint earth	Loamy	18	130	148	0.07	Dull yellowish brown	Faint earth	Loamy	57	320	377	0.05	
						2017/8/18	Cloudy	25.8	Blackish brown	Faint earth	Loamy	28	190	218	0.06	Dull yellowish brown	Faint earth	Loamy	42	270	312	0.06	
						2017/11/7	Sunny	20.3	Blackish brown	Faint earth	Loamy	19	130	149	0.06	Blackish brown	Faint earth	Loamy	26	210	236	0.05	
						2018/1/26	Sunny	-1.0	Blackish brown	Faint earth	Loamy	13	120	133	0.05	Dull yellowish brown	Faint earth	Loamy	41	330	371	0.05	
						2017/5/31	Cloudy	26.0	Dark brown	Faint earth	Loamy	170	1,300	1,470	0.11	Blackish brown	Faint earth	Loamy	310	2,400	2,710	0.14	
						2017/8/18	Cloudy	28.8	Dark brown	Faint earth	Loamy	210	1,500	1,710	0.13	Blackish brown	Faint earth	Loamy	320	2,600	2,920	0.11	
	6	Tongagawa River System	Nagato River	Ohori River	Kashiwa City	2017/11/1	Cloudy	16.7	Dark brown	Faint earth	Loamy	140	1,100	1,240	0.12	Blackish brown	Faint earth	Loamy	530	4,400	4,930	0.11	
						2018/1/17	Cloudy	6.5	Dark brown	Faint earth	Loamy	140	1,200	1,340	0.11	Blackish brown	Faint earth	Loamy	240	2,100	2,340	0.13	
						2017/5/23	Sunny	20.8	Blackish brown	Faint earth	Loamy	120	870	990	0.10	Blackish brown	Faint earth	Loamy	55	380	435	0.09	
						2017/8/22	Cloudy	28.7	Blackish brown	Faint earth	Loamy	110	870	980	0.09	Dark brown	Faint earth	Loamy	47	380	427	0.09	
						2017/11/10	Cloudy	14.7	Blackish brown	Faint earth	Loamy	88	900	988	0.08	Dark brown	Faint earth	Loamy	43	350	393	0.08	
						2018/1/19	Sunny	11.2	Dark brown	Faint earth	Loamy	88	780	868	0.09	Dark brown	Faint earth	Loamy	47	370	417	0.08	
	7	Tongagawa River System	Nagato River	Otsu River	Kamagaya City	2017/5/31	Cloudy	28.5	Dark brown	Faint earth	Loamy	96	770	866	0.10	Dark brown	Faint earth	Loamy	46	350	396	0.11	
						2017/8/18	Cloudy	30.8	Blackish brown	Faint earth	Loamy	40	370	410	0.09	Dark brown	Faint earth	Loamy	38	220	258	0.09	
						2017/11/1	Cloudy	16.9	Blackish brown	Faint earth	Loamy	71	760	831	0.10	Dark brown	Faint earth	Loamy	26	190	216	0.09	
						2018/1/17	Cloudy	6.8	Blackish brown	Faint earth	Loamy	100	890	990	0.09	Dark brown	Faint earth	Loamy	45	490	535	0.10	
2017/5/12						Sunny	27.0	Blackish brown	Faint earth	Loamy	210	1,600	1,810	0.06	Dark brown	Faint earth	Loamy	210	1,800	2,010	0.06		
2017/8/18						Cloudy	29.7	Blackish brown	Faint earth	Loamy	130	990	1,120	0.06	Blackish brown	Faint earth	Loamy	190	1,500	1,690	0.06		
8	Tongagawa River System	Nagato River	Somemariotoshi	Kashiwa City	2017/11/1	Cloudy	19.0	Blackish brown	Faint earth	Loamy	87	830	917	0.06	Blackish brown	Faint earth	Loamy	86	780	866	0.07		
					2018/1/17	Cloudy	8.3	Blackish brown	Faint earth	Loamy	80	850	930	0.06	Blackish brown	Faint earth	Loamy	94	800	894	0.06		
					2017/5/22	Sunny	23.2	Blackish brown	Faint earth	Loamy	220	1,600	1,820	0.08	Dark brown	Faint earth	Loamy	270	1,700	1,970	0.07		
					2017/8/22	Cloudy	28.5	Extremely dark brown	Faint earth	Loamy	260	1,700	1,960	0.09	Extremely dark brown	Faint earth	Loamy	220	1,600	1,820	0.08		
					2017/11/10	Cloudy	15.2	Blackish brown	Faint earth	Loamy	190	1,800	1,990	0.08	Dark brown	Faint earth	Loamy	190	1,600	1,790	0.07		
					2018/1/19	Cloudy	12.5	Blackish brown	Faint earth	Loamy	130	1,200	1,330	0.07	Dark brown	Faint earth	Loamy	120	840	960	0.07		
9	Tongagawa River System	Nagato River	Kamagaya City /Shiroi City	Kamagaya City /Shiroi City	2017/5/31	Cloudy	26.2	Blackish brown	Faint earth	Loamy	73	560	633	0.06	Blackish brown	Faint earth	Loamy	130	920	1,050	0.08		
					2017/8/18	Cloudy	27.0	Blackish brown	Faint earth	Loamy	97	710	807	0.06	Blackish brown	Faint earth	Loamy	140	1,000	1,140	0.09		
					2017/11/1	Cloudy	15.5	Blackish brown	Faint earth	Loamy	84	730	814	0.06	Blackish brown	Faint earth	Loamy	120	900	1,020	0.08		
					2018/1/17	Cloudy	8.0	Blackish brown	Faint earth	Loamy	74	710	784	0.06	Blackish brown	Faint earth	Loamy	80	680	760	0.08		



# Chiba River (Surrounding Environment) 3/4

No.	Location			Sampling Date	Weather	Air temperature (°C)	Surrounding Environment(Soil,Air dose)													Remarks				
	Water area	Location	Municipality				Left bank						Right bank											
							Color	Odor	Property	Activity concentration [Bq/kg(dry)]			Air Dose (μSv/h)	Color	Odor	Property	Activity concentration [Bq/kg(dry)]				Air Dose (μSv/h)			
										Cs-134	Cs-137	Total					Cs-134	Cs-137	Total					
27	Edogawa River	Nagareyama Bridge	Nagareyama City /Misato City	2017/5/24	Cloudy	23.5	Dark brown	Faint earth	Loamy	77	630	707	0.11	Dark brown	Faint earth	Loamy	35	310	345	0.09				
				2017/8/23	Cloudy	30.4	Blackish brown	Faint earth	Loamy	110	890	1,000	0.11	Dark brown	Faint earth	Loamy	36	350	386	0.10				
				2017/11/15	Cloudy	12.9	Blackish brown	Faint earth	Loamy	86	840	926	0.11	Blackish brown	Faint earth	Loamy	42	360	402	0.08				
28	Sakagawa River	Benten Bridge	Matsudo City	2018/1/30	Sunny	2.0	Blackish brown	Faint earth	Loamy	110	1,000	1,110	0.10	Dark brown	Faint earth	Loamy	33	280	313	0.08				
				2017/5/15	Cloudy	21.1	-	-	-	-	-	-	0.07	-	-	-	-	-	-	-	0.06	Soil not exposed		
				2017/8/23	Cloudy	32.4	-	-	-	-	-	-	-	0.07	-	-	-	-	-	-	-	0.08	Soil not exposed	
				2017/11/10	Cloudy	14.6	-	-	-	-	-	-	-	0.07	-	-	-	-	-	-	-	0.07	Soil not exposed	
				2018/1/19	Sunny	10.5	-	-	-	-	-	-	-	0.07	-	-	-	-	-	-	-	0.07	Soil not exposed	
				2017/5/15	Cloudy	22.9	-	-	-	-	-	-	-	0.06	-	-	-	-	-	-	-	0.06	Soil not exposed	
29	Shinsaka River	Sakane Bridge	Matsudo City	2017/8/23	Cloudy	30.8	-	-	-	-	-	-	0.07	-	-	-	-	-	-	0.06	Soil not exposed			
				2017/11/10	Sunny	12.0	-	-	-	-	-	-	0.06	-	-	-	-	-	-	-	0.06	Soil not exposed		
				2018/1/19	Sunny	9.3	-	-	-	-	-	-	0.06	-	-	-	-	-	-	-	0.05	Soil not exposed		
				2017/5/27	Cloudy	24.1	Dark brown	Faint earth	Loamy	67	490	557	0.09	Dark brown	Faint earth	Loamy	82	600	682	0.09				
				2017/8/25	Cloudy	34.0	Brown	Faint earth	Loamy	69	500	569	0.09	Dark brown	Faint earth	Loamy	120	1,100	1,220	0.10				
				2017/11/15	Cloudy	15.0	Blackish brown	Faint earth	Loamy	47	350	397	0.08	Dark brown	Faint earth	Loamy	78	740	818	0.09				
30	Edogawa River System	Shinkatsushika Bridge	Matsudo City /Katsushika City	2018/1/19	Sunny	8.1	Blackish brown	Faint earth	Loamy	38	480	518	0.08	Dark brown	Faint earth	Loamy	60	520	580	0.09				
				2017/5/9	Cloudy	20.5	Dull yellowish brown	Faint earth	Loamy	54	360	414	0.07	Grayish yellowish brown	Faint earth	Loamy	150	980	1,130	0.10				
				2017/8/25	Cloudy	31.0	Dull yellowish brown	Faint earth	Loamy	56	400	456	0.09	Dark brown	Faint earth	Loamy	140	1,100	1,240	0.12				
				2017/11/13	Cloudy	11.2	Dark brown	Faint earth	Loamy	48	380	428	0.08	Dark brown	Faint earth	Loamy	110	880	990	0.10				
				2018/1/17	Cloudy	7.0	Blackish brown	Faint earth	Loamy	31	330	361	0.07	Dark brown	Faint earth	Loamy	150	1,100	1,250	0.11				
				2017/5/27	Sunny	25.3	Dark brown	Faint earth	Loamy	99	690	789	0.07	Blackish brown	Faint earth	Loamy	58	420	478	0.07				
31	Edogawa River System	Ichikawa Bridge	Ichikawa City /Edogawa City	2017/8/28	Cloudy	31.4	Dull yellowish brown	Faint earth	Loamy	75	690	675	0.08	Blackish brown	Faint earth	Loamy	58	410	468	0.08				
				2017/11/27	Cloudy	13.5	Blackish brown	Faint earth	Loamy	77	690	767	0.08	Blackish brown	Faint earth	Loamy	37	280	317	0.07				
				2018/1/29	Sunny	8.8	Blackish brown	Faint earth	Loamy	76	640	716	0.08	Blackish brown	Faint earth	Loamy	26	380	406	0.07				
				2017/5/27	Sunny	26.0	Blackish brown	Faint earth	Loamy	73	490	563	0.07	Blackish brown	Faint earth	Loamy	86	620	706	0.07				
				2017/6/20	Sunny	28.0	Dark brown	Faint earth	Loamy	78	600	678	0.08	Dull yellowish brown	Faint earth	Loamy	73	570	643	0.07				
				2017/7/19	Cloudy	31.2	Dark brown	Faint earth	Loamy	70	520	590	0.09	Dark brown	Faint earth	Loamy	95	650	745	0.08				
32	Edogawa River	Vicinity of Keiyo Road	Ichikawa City	2017/8/28	Cloudy	30.7	Dark brown	Faint earth	Loamy	66	520	586	0.08	Grayish yellowish brown	Faint earth	Loamy	60	520	580	0.08				
				2017/9/22	Cloudy	28.0	Dark brown	Faint earth	Loamy	42	350	392	0.07	Dark brown	Faint earth	Loamy	56	480	536	0.08				
				2017/11/27	Cloudy	14.0	Blackish brown	Faint earth	Loamy	54	460	514	0.08	Blackish brown	Faint earth	Loamy	46	410	456	0.07				
				2018/1/29	Sunny	7.2	Blackish brown	Faint earth	Loamy	39	400	439	0.08	Blackish brown	Faint earth	Loamy	52	460	512	0.07				
				2017/5/8	Sunny	25.0	Dark brown	Faint earth	Loamy	14	160	174	0.05	Dark brown	Faint earth	Loamy	8.9	52	60.9	0.05				
				2017/8/25	Cloudy	33.2	Dark brown	Faint earth	Loamy	21	150	171	0.06	Dark brown	Faint earth	Loamy	7.8	65	72.8	0.06				
33	Edogawa River	Gyotoku Movable Weir (upper reaches)	Ichikawa City	2017/11/15	Sunny	15.7	Dark brown	Faint earth	Loamy	14	120	134	0.07	Dark brown	Faint earth	Loamy	17	110	127	0.06				
				2018/1/24	Sunny	5.3	Dark brown	Faint earth	Loamy	16	160	176	0.06	Dark brown	Faint earth	Loamy	<8.5	76	76	0.05				
				2017/5/27	Sunny	26.2	Blackish brown	Faint earth	Loamy	250	1,800	2,050	0.11	Blackish brown	Faint earth	Loamy	36	330	366	0.07				
				2017/8/28	Cloudy	30.5	Blackish brown	Faint earth	Loamy	150	1,100	1,250	0.11	Blackish brown	Faint earth	Loamy	35	280	315	0.07				
				2017/11/27	Cloudy	14.5	Blackish brown	Faint earth	Loamy	200	1,700	1,900	0.10	Blackish brown	Faint earth	Loamy	34	300	334	0.07				
				2018/1/29	Sunny	6.3	Blackish brown	Faint earth	Loamy	200	1,900	2,100	0.10	Blackish brown	Faint earth	Loamy	40	370	410	0.07				
34	Edogawa River	Shingyotokubashi Bridge	Ichikawa City /Edogawa City	2017/5/27	Sunny	26.6	Blackish brown	Faint earth	Loamy	47	380	427	0.07	Blackish brown	Faint earth	Loamy	130	940	1,070	0.08				
				2017/8/28	Cloudy	29.6	Dark brown	Faint earth	Loamy	50	430	480	0.08	Blackish brown	Faint earth	Loamy	67	550	617	0.09				
				2017/11/27	Cloudy	14.0	Blackish brown	Faint earth	Loamy	140	1,200	1,340	0.07	Blackish brown	Faint earth	Loamy	57	640	697	0.08				
				2018/1/29	Sunny	5.0	Blackish brown	Faint earth	Loamy	100	940	1,040	0.07	Blackish brown	Faint earth	Loamy	63	510	573	0.08				
				35	Kyu-Edogawa River	Edogawa Floodgate, down	Ichikawa City /Edogawa City	2017/5/27	Sunny	26.6	Blackish brown	Faint earth	Loamy	47	380	427	0.07	Blackish brown	Faint earth	Loamy	130	940	1,070	0.08
								2017/8/28	Cloudy	29.6	Dark brown	Faint earth	Loamy	50	430	480	0.08	Blackish brown	Faint earth	Loamy	67	550	617	0.09
2017/11/27	Cloudy	14.0	Blackish brown					Faint earth	Loamy	140	1,200	1,340	0.07	Blackish brown	Faint earth	Loamy	57	640	697	0.08				
2018/1/29	Sunny	5.0	Blackish brown					Faint earth	Loamy	100	940	1,040	0.07	Blackish brown	Faint earth	Loamy	63	510	573	0.08				
36	Edogawa River	8 km Point to the estuary	Ichikawa City /Edogawa City					2017/5/27	Sunny	26.6	Blackish brown	Faint earth	Loamy	47	380	427	0.07	Blackish brown	Faint earth	Loamy	130	940	1,070	0.08
								2017/8/28	Cloudy	29.6	Dark brown	Faint earth	Loamy	50	430	480	0.08	Blackish brown	Faint earth	Loamy	67	550	617	0.09
				2017/11/27	Cloudy	14.0	Blackish brown	Faint earth	Loamy	140	1,200	1,340	0.07	Blackish brown	Faint earth	Loamy	57	640	697	0.08				
				2018/1/29	Sunny	5.0	Blackish brown	Faint earth	Loamy	100	940	1,040	0.07	Blackish brown	Faint earth	Loamy	63	510	573	0.08				



# Chiba Lakes and Reservoirs (Water) 1/2

		Location		Sampling Date	Weather	Air temperature (°C)	Water depth (m)	Water							Remarks			
No.	Water area	Location						General items				Activity concentration(Bq/L)						
								Water temperature (°C)	Sampling depth (m)	Color	Odor	Secchi disk depth (m)	Electrical conductivity (mS/m)	SS (mg/L)		Turbidity (FNU)	Radioactive cesium	
													Cs-134	Cs-137				
L a k e s  a n d  R e s e r v o i r s	52	Fusashita	Surface layer	2017/6/22	Cloudy	26.9	2.6	24.5	0.5	Dark grayish greenish yellow	None	0.7	29.5	16	13	<0.81	<0.63	
			Deep layer					24.3	1.6	-	-	-	29.4	19	12	<0.61	<0.84	
			Surface layer	2017/9/12	Rain	27.0	2.1	26.1	0.5	Grayish greenish yellow	None	0.6	27.2	25	16	<0.76	<0.69	
			Deep layer					26.1	1.1	-	-	-	26.9	29	18	<0.93	<0.80	
			Surface layer	2017/12/19	Sunny	11.5	2.3	6.5	0.5	Grayish yellow	None	0.6	35.6	19	14	<0.55	<0.80	
			Deep layer					6.0	1.3	-	-	-	35.6	19	13	<0.83	<0.63	
	53	Center area of Shimoteganuma	Surface layer	2018/2/16	Cloudy	7.0	2.3	7.7	0.5	Dark grayish yellow	None	0.5	23.0	23	15	<0.83	<0.88	
			Deep layer					7.6	1.3	-	-	-	22.9	25	17	<0.63	<0.88	
			Surface layer	2017/6/22	Cloudy	27.2	1.8	25.2	0.0	Dark grayish greenish yellow	None	0.6	34.0	33	22	<0.73	<0.96	
			Deep layer					-	-	-	-	-	-	-	-	-	-	Unable to collect samples from the deep layer due to shallow water
			Surface layer	2017/9/12	Cloudy	27.0	1.6	26.1	0.0	Grayish yellow	None	0.4	27.6	47	26	<0.68	<0.88	
			Deep layer					-	-	-	-	-	-	-	-	-	-	Unable to collect samples from the deep layer due to shallow water
	54	Center area of Teganuma	Surface layer	2017/12/19	Sunny	11.0	1.6	6.2	0.0	Grayish yellow	None	0.7	36.8	13	9.5	<0.64	<0.84	
			Deep layer					-	-	-	-	-	-	-	-	-	Unable to collect samples from the deep layer due to shallow water	
			Surface layer	2018/2/16	Cloudy	7.0	1.3	7.9	0.5	Dark grayish yellow	None	0.5	21.6	44	19	<0.81	<0.69	
			Deep layer					-	-	-	-	-	-	-	-	-	-	Unable to collect samples from the deep layer due to shallow water
			Surface layer	2017/6/22	Cloudy	27.0	1.7	24.5	0.0	Dark grayish yellow green	None	0.6	28.1	22	12	<0.79	<0.75	
			Deep layer					-	-	-	-	-	-	-	-	-	-	Unable to collect samples from the deep layer due to shallow water
	55	Nedoshita	Surface layer	2017/9/12	Rain	27.1	1.2	25.8	0.0	Grayish yellow	None	0.6	26.7	30	16	<0.64	<0.69	
			Deep layer					-	-	-	-	-	-	-	-	-	Unable to collect samples from the deep layer due to shallow water	
			Surface layer	2017/12/19	Sunny	11.0	1.3	7.9	0.0	Grayish reddish yellow	None	0.6	36.3	20	15	<0.52	<0.75	
			Deep layer					-	-	-	-	-	-	-	-	-	-	Unable to collect samples from the deep layer due to shallow water
			Surface layer	2018/2/16	Cloudy	8.5	1.4	8.4	0.5	Dark grayish reddish yellow	None	0.7	23.5	21	15	<0.72	<0.63	
			Deep layer					-	-	-	-	-	-	-	-	-	-	Unable to collect samples from the deep layer due to shallow water
56	Center area of Kita-Inbanuma	Surface layer	2017/6/22	Cloudy	27.2	2.1	24.2	0.5	Dark grayish greenish yellow	None	0.7	24.7	13	8.7	<0.58	<0.75		
		Deep layer					24.1	1.1	-	-	-	24.4	13	9.0	<0.64	<0.75		
		Surface layer	2017/9/12	Rain	26.2	1.7	25.2	0.0	Dark grayish yellow	None	1.0	28.8	10	8.3	<0.69	<0.80		
		Deep layer					-	-	-	-	-	-	-	-	-	-	Unable to collect samples from the deep layer due to shallow water	
		Surface layer	2017/12/19	Sunny	10.5	1.8	8.2	0.0	Grayish reddish yellow	None	1.0	34.4	8	5.9	<0.76	<0.84		
		Deep layer					-	-	-	-	-	-	-	-	-	-	Unable to collect samples from the deep layer due to shallow water	
57	Ipponmatsushita	Surface layer	2018/2/16	Cloudy	8.0	1.9	8.1	0.5	Dark grayish yellow green	None	1.0	21.2	12	8.4	<0.78	<0.63		
		Deep layer					-	-	-	-	-	-	-	-	-	-	Unable to collect samples from the deep layer due to shallow water	
		Surface layer	2017/6/22	Cloudy	23.7	1.5	24.2	0.0	Grayish yellow	None	0.5	31.4	38	27	<0.52	<0.75		
		Deep layer					-	-	-	-	-	-	-	-	-	-	Unable to collect samples from the deep layer due to shallow water	
		Surface layer	2017/9/12	Cloudy	27.3	1.4	25.3	0.0	Grayish yellow	None	0.6	30.8	21	11	<0.62	<0.75		
		Deep layer					-	-	-	-	-	-	-	-	-	-	Unable to collect samples from the deep layer due to shallow water	
57	Ipponmatsushita	Surface layer	2017/12/19	Sunny	4.0	1.6	4.5	0.0	Grayish greenish yellow	None	0.9	34.4	10	7.8	<0.69	<0.88		
		Deep layer					-	-	-	-	-	-	-	-	-	-	Unable to collect samples from the deep layer due to shallow water	
		Surface layer	2018/2/16	Cloudy	4.3	1.4	6.9	0.5	Grayish yellow	None	0.5	23.0	43	30	<0.51	<0.69		
		Deep layer					-	-	-	-	-	-	-	-	-	-	Unable to collect samples from the deep layer due to shallow water	
		Surface layer	2017/6/22	Cloudy	25.2	1.6	23.3	0.0	Grayish yellow	None	0.5	32.0	65	39	<0.67	<0.61		
		Deep layer					-	-	-	-	-	-	-	-	-	-	Unable to collect samples from the deep layer due to shallow water	
57	Ipponmatsushita	Surface layer	2017/9/12	Cloudy	28.0	1.4	25.7	0.0	Grayish yellow green	None	0.5	29.8	54	22	<0.62	<0.84		
		Deep layer					-	-	-	-	-	-	-	-	-	-	Unable to collect samples from the deep layer due to shallow water	
		Surface layer	2017/12/19	Sunny	5.5	1.4	5.2	0.0	Grayish yellow	None	0.8	34.2	10	9.1	<0.74	<0.88		
		Deep layer					-	-	-	-	-	-	-	-	-	-	Unable to collect samples from the deep layer due to shallow water	
57	Ipponmatsushita	Surface layer	2018/2/16	Cloudy	4.9	1.4	7.0	0.5	Dark grayish yellow	None	0.5	20.8	30	20	<0.54	<0.80		
		Deep layer					-	-	-	-	-	-	-	-	-	-	Unable to collect samples from the deep layer due to shallow water	

# Chiba Lakes and Reservoirs (Water) 2/2

L a k e s  a n d  R e s e r v o i r s	Location			Sampling Date	Weather	Air temperature (°C)	Water depth (m)	Water								Remarks				
	No.	Water area	Location					General items					Activity concentration(Bq/L)							
								Water temperature (°C)	Sampling depth (m)	Color	Odor	Secchi disk depth (m)	Electrical conductivity (mS/m)	SS (mg/L)	Turbidity (FNU)		Radioactive cesium			
				Cs-134	Cs-137															
58	Lake Inbanuma	Lower area of Josuido water intake	Surface layer	2017/6/22	Cloudy	25.2	1.6	23.1	0.0	Dark grayish yellow	None	0.5	31.9	51	26	<0.57	<0.55			
			Deep layer						-	-	-								Unable to collect samples from the deep layer due to shallow water	
			Surface layer	2017/9/12	Cloudy	27.5	1.4	26.0	0.0	Grayish yellow	None	0.5	27.8	52	19	<0.62	<0.69			
			Deep layer						-	-	-								Unable to collect samples from the deep layer due to shallow water	
			Surface layer	2017/12/19	Sunny	4.8	1.4	4.9	0.0	Grayish yellow	None	0.7	35.4	12	7.8	<0.48	<0.63			
			Deep layer						-	-	-								Unable to collect samples from the deep layer due to shallow water	
	59	Asobashi Bridge	Asobashi Bridge	Surface layer	2018/2/16	Cloudy	4.9	1.4	7.2	0.5	Dark grayish yellow	None	0.5	21.4	26	16	<0.81	<0.88		
				Deep layer						-	-	-							Unable to collect samples from the deep layer due to shallow water	
				Surface layer	2017/6/22	Cloudy	26.9	2.1	24.1	0.5	Dark grayish yellow	None	0.7	31.7	22	11	<0.77	<0.63		
				Deep layer						24.0	1.1	-	None	0.7	31.6	23	13	<0.89	<0.69	
				Surface layer	2017/9/12	Rain	28.8	1.6	26.0	0.0	Grayish greenish yellow	None	0.8	31.3	12	6.6	<0.79	<0.75		
				Deep layer						-	-	-								Unable to collect samples from the deep layer due to shallow water
59	Asobashi Bridge	Asobashi Bridge	Surface layer	2017/12/19	Sunny	5.5	1.6	6.4	0.0	Grayish yellow	None	0.7	38.1	10	6.8	<0.71	<0.84			
			Deep layer						-	-	-							Unable to collect samples from the deep layer due to shallow water		
			Surface layer	2018/2/16	Cloudy	5.1	2.0	7.6	0.5	Dark grayish yellow	None	0.7	25.8	22	14	<0.63	<0.88			
			Deep layer						7.5	1.0	-	None	0.7	25.8	21	13	<0.68	<0.63		

# Chiba Lakes and Reservoirs (Sediment) 1/1

Location			Sampling Date	Weather	Air temperature (°C)	Water depth (m)	Sediment														Activity concentration [Bq/kg(dry)]			Remarks	
							General items											Sediment content (%)	Density (g/cm <sup>3</sup> )	Property					
							No.	Water area	Location	Sediment temperature (°C)	Sample length (cm)	Color	Odor	Coarse gravel	Medium gravel	Grain size distribution(%)						Clay	Cs-134		Radioactive cesium
Fine gravel	Coarse sand	Medium sand	Fine sand	Silt	Total	Cs-137										Total									
L a k e s  R e s e r v o i r s	52	Fusashita	2017/6/22	Cloudy	26.9	2.6	23.8	5	Olive black	Faint sewage	0.0	0.0	0.2	1.0	29.5	57.1	7.7	4.5	65.7	2.692	Sand/silt	35	250	285	
			2017/9/12	Rain	27.0	2.1	25.3	3	Olive black	None	7.1	3.5	2.4	1.3	18.7	51.4	8.8	6.8	55.8	2.663	Sand/silt	49	360	409	
			2017/12/19	Sunny	11.5	2.3	6.5	7	Olive black	Faint sewage	0.0	0.0	0.1	0.2	16.4	65.0	13.7	4.5	53.2	2.678	Sand/silt	38	380	418	
			2018/2/16	Cloudy	7.0	2.3	6.8	5	Olive black	Faint sewage	0.0	1.3	0.1	0.3	14.6	69.4	7.6	6.7	55.5	2.630	Sand/silt	43	390	433	
	53	Center area of Shimotegayama	2017/6/22	Cloudy	27.2	1.8	23.9	10	Olive black	Faint hydrogen sulfide	0.0	0.0	0.0	0.1	11.6	56.3	24.0	7.8	47.3	2.621	Silt	35	270	305	
			2017/9/12	Cloudy	27.0	1.6	25.2	7	Olive black	Faint swamp	0.0	0.0	0.4	11.4	56.4	22.3	9.5	47.5	2.605	Silt/sand	33	180	213		
			2017/12/19	Sunny	11.0	1.6	6.1	10	Olive black	None	0.0	0.0	0.0	0.3	6.3	44.2	37.1	12.0	31.2	2.577	Silt	51	390	441	
			2018/2/16	Cloudy	7.0	1.3	6.8	10	Olive black	Faint sewage	0.0	0.0	0.0	0.3	12.8	48.6	24.0	14.3	40.8	2.611	Silt	39	260	299	
	54	Center area of Tegayama	2017/6/22	Cloudy	27.0	1.7	24.0	10	Olive black	Faint sewage	0.0	0.0	0.0	0.1	2.1	11.6	73.0	13.2	24.4	2.445	Silt	110	850	960	
			2017/9/12	Rain	27.1	1.2	24.3	10	Olive black	Faint swamp	0.0	0.0	0.0	0.1	0.7	9.9	73.5	15.9	22.6	2.428	Silt	88	760	848	
			2017/12/19	Sunny	11.0	1.3	7.0	10	Olive black	Faint hydrogen sulfide	0.0	0.0	0.0	0.0	0.3	9.0	62.3	28.4	22.9	2.450	Silt	78	760	838	
			2018/2/16	Cloudy	8.5	1.4	7.1	10	Olive black	Faint sewage	0.0	0.0	0.0	0.0	0.3	5.7	61.0	33.0	22.6	2.443	Silt	93	920	1,013	
	55	Nedoshita	2017/6/22	Cloudy	27.2	2.1	24.0	10	Olive black	Faint hydrogen sulfide	0.0	0.0	0.0	0.4	7.8	27.7	56.8	7.3	36.1	2.531	Silt	270	1,900	2,170	
			2017/9/12	Rain	26.2	1.7	24.0	10	Olive black	Faint swamp	0.0	0.0	0.0	0.0	0.4	4.9	84.6	10.1	25.8	2.383	Silt	320	2,600	2,920	
			2017/12/19	Sunny	10.5	1.8	7.8	10	Olive black	Faint sewage	0.0	0.0	0.0	0.1	0.8	10.5	53.6	35.0	26.1	2.426	Silt	290	2,400	2,690	
			2018/2/16	Cloudy	8.0	1.9	7.3	8	Olive black	Faint sewage	0.0	0.0	0.0	0.0	0.9	9.6	59.3	30.1	24.7	2.385	Silt	310	2,700	3,010	
	56	Center area of Kita-Inbamama	2017/6/22	Cloudy	23.7	1.5	22.8	10	Olive black	Faint earth	0.0	0.0	0.0	0.1	0.4	1.2	73.2	25.1	20.7	2.457	Silt	38	350	388	
			2017/9/12	Cloudy	27.3	1.4	23.9	10	Olive black	Faint hydrogen sulfide	0.0	0.0	0.0	0.2	1.1	3.9	75.5	19.3	21.5	2.411	Silt	33	300	333	
			2017/12/19	Sunny	4.0	1.6	6.0	10	Olive black	Faint hydrogen sulfide	0.0	0.0	0.0	0.0	0.2	0.5	56.3	43.0	20.5	2.434	Silt	35	310	345	
			2018/2/16	Cloudy	4.3	1.4	6.7	8	Olive black	Faint sewage	0.0	0.0	0.0	0.0	0.1	0.5	61.0	38.4	20.3	2.405	Silt	32	310	342	
		57	Ippommatsushita	2017/6/22	Cloudy	25.2	1.6	23.4	10	Olive black	Faint earth	0.0	0.0	0.0	0.0	1.5	8.1	73.3	17.2	22.9	2.469	Silt	39	330	369
				2017/9/12	Cloudy	28.0	1.4	24.0	10	Olive black	Faint sewage	0.0	0.0	0.0	0.2	1.5	7.2	78.9	12.2	20.4	2.403	Silt	38	370	408
				2017/12/19	Sunny	5.5	1.4	7.5	10	Olive black	None	0.0	0.0	0.0	0.1	1.0	5.2	60.7	33.0	20.6	2.442	Silt	44	310	354
				2018/2/16	Cloudy	4.9	1.4	6.8	10	Olive black	Faint hydrogen sulfide	0.0	0.0	0.0	0.4	1.5	5.8	73.7	18.7	20.4	2.447	Silt	55	360	415
58		Lower area of Josuido water intake	2017/6/22	Cloudy	25.2	1.6	23.0	10	Olive black	Faint sewage	0.0	0.0	0.0	0.1	1.0	21.3	62.3	15.1	25.8	2.496	Silt	76	440	516	
			2017/9/12	Cloudy	27.5	1.4	24.5	10	Olive black	Faint sewage	0.0	0.0	0.0	0.1	0.3	12.0	73.1	14.5	20.7	2.394	Silt	65	470	535	
			2017/12/19	Sunny	4.8	1.4	6.3	8	Olive black	None	0.0	0.0	0.0	0.0	0.6	25.4	52.3	21.8	29.1	2.483	Silt	30	390	420	
			2018/2/16	Cloudy	4.9	1.4	6.9	10	Olive black	Faint sewage	0.0	0.0	0.0	0.1	0.4	19.9	66.2	13.3	24.9	2.466	Silt	37	380	417	
59	Asobashi Bridge	2017/6/22	Cloudy	26.9	2.1	23.8	6	Olive black	None	0.0	0.0	0.2	0.7	15.2	41.7	27.0	15.1	38.2	2.592	Silt/sand	16	120	136		
		2017/9/12	Rain	28.8	1.6	25.0	3	Olive black	None	0.0	0.0	0.0	0.2	26.0	53.3	17.3	3.0	64.6	2.626	Sand/silt	16	180	196		
		2017/12/19	Sunny	5.5	1.6	6.5	4	Olive black	Faint sewage	7.5	0.2	0.1	0.2	27.8	55.6	5.9	2.8	70.0	2.644	Sand/silt	19	170	189		
		2018/2/16	Cloudy	5.1	2.0	6.8	3	Olive black	Faint sewage	0.0	0.1	0.1	0.3	34.0	58.3	3.3	3.6	66.0	2.639	Sand/silt	15	160	175		



# Chiba Lakes and Reservoirs (Surrounding Environment) 1/1

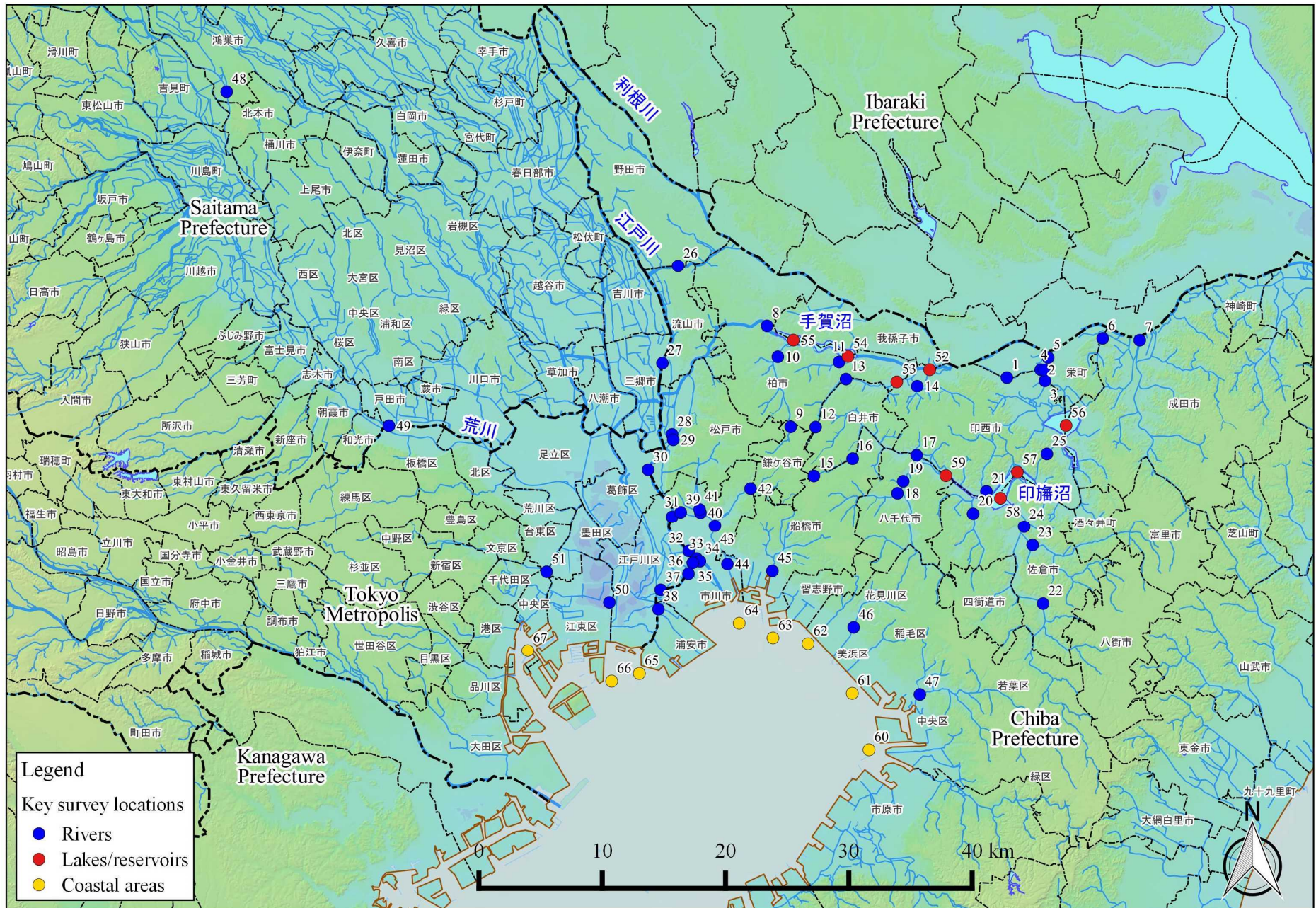
	Location			Sampling Date	Weather	Air temperature (°C)	Surrounding Environment(Soil,Air dose)						Remarks			
							Soil					Air Dose (μSv/h)				
	General items						Activity concentration [Bq/kg(dry)]									
	No.	Water area	Location				Color	Odor	Property	Radioactive cesium						
Cs-134				Cs-137	Total											
L a k e s  a n d  R e s e r v o i r s	52	Lake Teganuma	Fusashita	2017/6/22	Cloudy	26.9	-	-	-	-	-	-	-	No sampling soil location		
				2017/9/12	Rain	27.0	-	-	-	-	-	-	-	-	No sampling soil location	
				2017/12/19	Sunny	11.5	-	-	-	-	-	-	-	-	-	No sampling soil location
				2018/2/16	Cloudy	7.0	-	-	-	-	-	-	-	-	-	No sampling soil location
	53	Lake Teganuma	Center area of Shimoteganuma	2017/6/22	Cloudy	27.2	Blackish brown	Faint earth	Loamy	190	1,400	1,590	0.06			
				2017/9/12	Cloudy	27.0	Blackish brown	Faint earth	Loamy	130	1,100	1,230	0.08			
				2017/12/19	Sunny	11.0	Blackish brown	Faint earth	Loamy	130	1,200	1,330	0.07			
				2018/2/16	Cloudy	7.0	Blackish brown	Faint earth	Loamy	170	1,500	1,670	0.07			
	54	Lake Teganuma	Center area of Teganuma	2017/6/22	Cloudy	27.0	-	-	-	-	-	-	-	-	No sampling soil location	
				2017/9/12	Rain	27.1	-	-	-	-	-	-	-	-	-	No sampling soil location
				2017/12/19	Sunny	11.0	-	-	-	-	-	-	-	-	-	No sampling soil location
				2018/2/16	Cloudy	8.5	-	-	-	-	-	-	-	-	-	No sampling soil location
	55	Lake Teganuma	Nedoshita	2017/6/22	Cloudy	27.2	Extremely dark brown	Faint earth	Loamy	1,200	8,000	9,200	0.10			
				2017/9/12	Rain	26.2	Extremely dark brown	Faint earth	Loamy	670	5,200	5,870	0.12			
				2017/12/19	Sunny	10.5	Extremely dark brown	Faint earth	Loamy	470	3,800	4,270	0.10			
				2018/2/16	Cloudy	8.0	Extremely dark brown	Faint earth	Loamy	740	6,700	7,440	0.11			
	56	Lake Inbanuma	Center area of Kita-Inbanuma	2017/6/22	Cloudy	23.7	Blackish brown	Faint earth	Loamy	54	430	484	0.08			
				2017/9/12	Cloudy	27.3	Blackish brown	Faint earth	Loamy	100	800	900	0.09			
				2017/12/19	Sunny	4.0	Blackish brown	Faint earth	Loamy	49	390	439	0.07			
				2018/2/16	Cloudy	4.3	Blackish brown	Faint earth	Loamy	45	350	395	0.08			
57	Lake Inbanuma	Ipponmatsushita	2017/6/22	Cloudy	25.2	-	-	-	-	-	-	-	-	No sampling soil location		
			2017/9/12	Cloudy	28.0	-	-	-	-	-	-	-	-	-	No sampling soil location	
			2017/12/19	Sunny	5.5	-	-	-	-	-	-	-	-	-	No sampling soil location	
			2018/2/16	Cloudy	4.9	-	-	-	-	-	-	-	-	-	No sampling soil location	
58	Lake Inbanuma	Lower area of Josuido water intake	2017/6/22	Cloudy	25.2	-	-	-	-	-	-	-	-	No sampling soil location		
			2017/9/12	Cloudy	27.5	-	-	-	-	-	-	-	-	-	No sampling soil location	
			2017/12/19	Sunny	4.8	-	-	-	-	-	-	-	-	-	No sampling soil location	
			2018/2/16	Cloudy	4.9	-	-	-	-	-	-	-	-	-	No sampling soil location	
59	Lake Inbanuma	Asobashi Bridge	2017/6/22	Cloudy	26.9	Blackish brown	Faint earth	Loamy	190	1,500	1,690	0.06				
			2017/9/12	Rain	28.8	Blackish brown	Faint earth	Loamy	150	1,100	1,250	0.07				
			2017/12/19	Sunny	5.5	Blackish brown	Faint earth	Loamy	150	1,200	1,350	0.06				
			2018/2/16	Cloudy	5.1	Blackish brown	Faint earth	Loamy	80	880	960	0.07				

# Chiba Coastal (Water) 1/1

No.	Location		Sampling Date	Weather	Air temperature (°C)	Water depth (m)	Water										Remarks
	Water area						General items							Activity concentration(Bq/L)			
							Water temperature (°C)	Sampling depth (m)	Color	Odor	Secchi disk depth (m)	Salinity (‰)	SS (mg/L)	Turbidity (FNU)	Radioactive cesium		
													Cs-134	Cs-137			
60	Tokyo Bay 7	Offshore of Yorogawa River Estuary	Surface layer	2017/6/19	Sunny	22.8	10.2	21.6	0.5	Dark grayish bluish green	None	4.3	30.4	1	0.3	<0.71	<0.63
			Deep layer					17.7	9.2	-	None		31.0	<1	0.4	<0.84	<0.63
			Surface layer	2017/9/14	Sunny	27.0	10.5	26.2	0.5	Dark grayish yellow green	None	5.0	28.1	<1	0.3	<0.82	<0.69
			Deep layer					23.7	9.5	-	None		29.5	1	0.8	<0.80	<0.75
			Surface layer	2017/12/15	Cloudy	7.0	10.5	12.6	0.5	Dark grayish yellowish green	None	4.7	29.1	1	0.6	<0.71	<0.69
			Deep layer					12.3	9.5	-	None		29.9	1	1.5	<0.71	<0.80
Surface layer	2018/2/9	Sunny	5.2	10.4	9.5	0.5	Dark grayish yellow green	None	2.0	28.9	2	1.3	<0.70	<0.88			
Deep layer					8.7	9.4	-	None		31.0	<1	0.8	<0.61	<0.88			
61	Tokyo Bay 5	Offshore of Miyako River Estuary	Surface layer	2017/6/19	Sunny	23.2	9.8	18.4	0.5	Light grayish green	None	2.6	30.5	<1	0.2	<0.76	<0.96
			Deep layer					17.4	8.8	-	None		31.3	<1	0.2	<0.84	<0.69
			Surface layer	2017/9/14	Sunny	27.1	9.0	25.9	0.5	Dark grayish yellow green	None	4.2	28.0	<1	0.4	<0.69	<0.75
			Deep layer					24.0	8.0	-	None		28.9	<1	0.4	<0.73	<0.84
			Surface layer	2017/12/15	Cloudy	7.5	9.8	11.3	0.5	Dark grayish yellow green	None	3.5	29.4	2	1.5	<0.52	<0.80
			Deep layer					11.3	8.8	-	None		29.5	2	1.7	<0.83	<0.88
Surface layer	2018/2/9	Sunny	4.6	9.9	9.0	0.5	Dark grayish yellow green	Faint sewage	3.4	28.8	2	1.4	<0.51	<0.96			
Deep layer					8.5	8.9	-	None		31.2	1	1.2	<0.54	<0.84			
62	Coastal sea area of Makuhari	Offshore of Inbanuma Discharge Channel	Surface layer	2017/6/19	Sunny	23.8	6.2	18.7	0.5	Light grayish yellowish green	Faint hydrogen sulfide	1.3	31.5	1	0.4	<0.84	<0.92
			Deep layer					18.3	5.2	-	Faint hydrogen sulfide		30.5	<1	0.4	<0.69	<0.80
			Surface layer	2017/7/27	Cloudy	25.7	5.0	26.4	0.5	Dark grayish yellow green	None	2.3	27.2	2	1.4	<0.82	<0.88
			Deep layer					25.2	4.0	-	Faint hydrogen sulfide		28.6	1	1.5	<0.59	<0.84
			Surface layer	2017/8/10	Cloudy	28.2	5.5	28.6	0.5	Light grayish yellow green	None	2.4	25.1	1	1.1	<0.60	<0.92
			Deep layer					27.7	4.5	-	None		28.3	1	0.8	<0.61	<0.69
			Surface layer	2017/9/14	Sunny	27.3	5.7	26.2	0.5	Dark grayish yellow green	None	4.6	27.4	<1	0.4	<0.79	<0.63
			Deep layer					25.1	4.7	-	None		27.7	1	0.5	<0.69	<0.84
			Surface layer	2017/10/27	Sunny	20.0	6.5	19.5	0.5	Dark grayish yellow green	None	4.7	26.0	1	1.1	<0.67	<0.61
			Deep layer					19.0	5.5	-	None		28.4	2	1.0	<0.83	<0.61
			Surface layer	2017/12/15	Sunny	6.1	5.2	11.5	0.5	Dark grayish yellow green	Faint sewage	3.2	28.2	1	0.8	<0.66	<0.69
			Deep layer					11.2	4.2	-	None		29.5	1	1.0	<0.79	<0.63
Surface layer	2018/2/9	Sunny	5.9	5.7	10.1	0.5	Dark grayish yellow green	Faint sewage	2.8	26.0	1	0.9	<0.78	<0.84			
Deep layer					8.5	4.7	-	None		31.2	2	0.9	<0.51	<0.80			
63	Approx. 1km offshore of Ebigawa River Estuary	Coastal area of Keiyo Port (Ebigawa River Estuary)	Surface layer	2017/6/19	Cloudy	25.0	7.4	20.4	0.5	Dark grayish greenish yellow	None	2.1	28.9	<1	0.3	<0.75	<0.88
			Deep layer					18.6	6.4	-	None		30.2	<1	0.1	<0.87	<0.55
			Surface layer	2017/9/14	Sunny	28.3	6.9	25.7	0.5	Dark grayish greenish yellow	None	3.2	27.1	<1	0.4	<0.62	<0.69
			Deep layer					25.3	5.9	-	None		27.4	<1	0.2	<0.78	<0.69
			Surface layer	2017/12/15	Cloudy	5.9	7.0	11.1	0.5	Dark grayish yellowish green	None	3.8	29.1	1	0.9	<0.52	<0.75
			Deep layer					11.1	6.0	-	None		29.1	2	1.4	<0.61	<0.69
Surface layer	2018/2/9	Sunny	5.3	7.5	7.9	0.5	Dark grayish yellow green	None	3.1	30.5	2	1.4	<0.61	<0.80			
Deep layer					8.2	6.5	-	None		31.2	5	2.0	<0.63	<0.75			
64	Approx. 1km offshore of Edogawa River Estuary	Coastal area of Keiyo Port (Ebigawa River Estuary)	Surface layer	2017/6/19	Sunny	25.2	5.0	21.2	0.5	Dark grayish yellow green	None	2.0	28.4	1	0.5	<0.59	<0.55
			Deep layer					20.1	4.0	-	None		28.9	1	0.3	<0.64	<0.69
			Surface layer	2017/9/14	Sunny	28.5	5.6	25.8	0.5	Dark grayish yellow green	None	3.1	26.1	1	0.3	<0.77	<0.80
			Deep layer					25.4	4.6	-	None		26.7	2	0.6	<0.64	<0.80
			Surface layer	2017/12/15	Cloudy	5.0	4.5	9.6	0.5	Dark grayish yellow green	None	3.0	28.6	2	1.2	<0.69	<0.69
			Deep layer					9.6	3.5	-	None		28.6	1	1.0	<0.69	<0.92
Surface layer	2018/2/9	Sunny	3.5	5.2	7.0	0.5	Dark grayish yellow green	None	2.3	29.6	4	2.0	<0.82	<0.84			
Deep layer					7.4	4.2	-	None		30.5	4	1.9	<0.81	<0.75			

# Chiba Coastal (Sediment) 1/1

Location		Sampling Date	Weather	Air temperature (°C)	Water depth (m)	Sediment																	Remarks	
No.	Water area					General items											Sediment content (%)		Density (g/cm <sup>3</sup> )	Property	Activity concentration [Bq/kg(dry)]			
						Sediment temperature (°C)	Sample length (cm)	Color	Odor	Coarse gravel	Medium gravel	Fine gravel	Grain size distribution(%)		Fine sand	Silt	Clay	Cs-134			Cs-137	Total		
C o a s t a l s e a	60 Tokyo Bay 7	Offshore of Yonagawa River Estuary	2017/6/19	Sunny	22.8	10.2	19.0	8	Olive black	None	0.0	0.0	0.0	0.1	0.3	1.0	67.2	31.5	38.2	2.638	Silt	<0.65	1.2	1.2
			2017/9/14	Sunny	27.0	10.5	24.2	10	Olive black	None	0.0	0.0	0.2	0.4	1.0	6.9	64.7	26.7	37.2	2.692	Silt/sand	<0.67	1.6	1.6
			2017/12/15	Cloudy	7.0	10.5	13.0	6	Olive black	Medium hydrogen sulfide	1.0	1.3	0.2	0.3	2.0	11.8	55.2	28.2	34.7	2.675	Silt	<6.3	6.4	6.4
	61 Tokyo Bay 5	Offshore of Miyako River Estuary	2018/2/9	Sunny	5.2	10.4	8.1	10	Olive black	None	1.0	0.1	0.1	0.9	1.4	6.2	39.2	31.1	34.6	2.620	Silt	<2.1	2.8	2.8
			2017/6/19	Sunny	23.2	9.8	18.3	10	Olive black	Faint hydrogen sulfide	0.0	0.0	0.0	0.2	1.7	7.0	73.3	18.3	41.5	2.646	Silt	1.4	9.8	11.0
			2017/9/14	Sunny	27.1	9.0	24.3	10	Olive black	Medium hydrogen sulfide	0.0	0.0	0.0	0.3	1.8	6.2	77.7	14.0	48.0	2.703	Silt/sand	<1.1	2.5	2.5
	62 Coastal sea area of Makuhari	Offshore of Inbanamu Discharge Channel	2017/12/15	Cloudy	7.5	9.8	13.1	10	Olive black	Medium hydrogen sulfide	0.0	0.0	0.0	0.2	0.8	7.0	75.8	16.2	37.0	2.655	Silt	<9.6	16	16
			2018/2/9	Sunny	4.6	9.9	8.4	10	Olive black	Medium hydrogen sulfide	0.0	0.9	0.0	0.1	1.2	6.2	65.4	26.2	35.2	2.616	Silt	<10	25	25
			2017/6/19	Sunny	23.8	6.2	22.5	4	Olive black	Faint hydrogen sulfide	0.0	0.0	0.0	0.0	0.3	12.3	75.3	12.2	66.6	2.680	Silt/sand	<4.3	11	11
			2017/7/27	Cloudy	25.7	5.0	26.0	4	Black	Faint rotteness	0.0	0.0	0.0	0.0	0.2	8.3	79.8	11.7	68.7	2.685	Silt/sand	<3.8	11	11
			2017/8/10	Cloudy	28.2	5.5	26.7	3	Olive black	Faint hydrogen sulfide	0.0	0.0	0.0	0.0	0.0	8.9	78.1	13.0	65.8	2.672	Sand/silt	<4.6	12	12
			2017/9/14	Sunny	27.3	5.7	25.6	10	Olive black	Faint hydrogen sulfide	0.0	0.0	0.0	0.0	0.1	7.8	80.2	11.9	61.7	2.676	Silt	<6.6	15	15
			2017/10/27	Sunny	20.0	6.5	18.8	5	Olive black	Faint hydrogen sulfide	0.0	0.0	0.0	0.0	0.0	6.7	86.1	7.1	62.4	2.672	Silt	<5.4	22	22
			2017/12/15	Sunny	6.1	5.2	12.2	9	Olive black	Medium hydrogen sulfide	0.0	0.0	0.0	0.0	0.1	5.1	83.0	11.8	59.3	2.625	Silt/sand	<8.0	24	24
			2018/2/9	Sunny	5.9	5.7	8.2	9	Olive black	Faint hydrogen sulfide	0.0	0.0	0.0	0.1	0.2	7.3	84.6	7.8	65.1	2.657	Silt/sand	<8.3	13	13
			2017/6/19	Cloudy	25.0	7.4	19.4	5	Olive black	None	0.0	0.0	0.0	1.5	73.3	19.6	5.6	70.6	2.728	Sand	<0.86	1.7	1.7	
			63 Approx. 1km offshore of Ebisawa River Estuary	Coastal area of Keiyo Port (Ebisawa River Estuary)	2017/9/14	Sunny	28.3	6.9	26.7	8	Olive black	None	0.0	0.0	0.0	2.3	80.2	9.5	8.0	69.5	2.694	Sand	<0.58	1.3
	2017/12/15	Cloudy			5.9	7.0	11.0	6	Olive black	Faint hydrogen sulfide	0.0	0.2	0.0	0.1	2.1	79.6	12.1	5.9	72.4	2.745	Sand	<2.6	3.3	3.3
	2018/2/9	Sunny			5.3	7.5	8.1	9	Olive black	Faint hydrogen sulfide	0.0	2.6	1.1	0.8	4.5	51.4	28.7	11.0	64.1	2.681	Silt/sand	<3.0	2.5	2.5
	64 Approx. 1km offshore of Edogawa River Estuary	Coastal area of Keiyo Port (Ebisawa River Estuary)	2017/6/19	Sunny	25.2	5.0	20.1	8	Olive black	None	0.0	0.0	0.0	0.0	2.1	89.6	5.3	3.0	70.0	2.693	Sand	<0.83	1.2	1.2
			2017/9/14	Sunny	28.5	5.6	27.5	4	Olive black	Faint hydrogen sulfide	0.0	0.0	0.0	0.1	4.6	78.5	9.2	7.6	65.8	2.609	Sand	<0.97	2.7	2.7
			2017/12/15	Cloudy	5.0	4.5	10.0	7	Olive black	None	0.0	0.5	0.4	0.2	2.9	77.7	10.3	8.1	70.1	2.679	Sand	<3.9	6.9	6.9
			2018/2/9	Sunny	3.5	5.2	7.3	9	Olive black	Faint hydrogen sulfide	0.0	0.3	0.3	0.3	3.3	46.3	31.9	17.7	50.6	2.596	Silt/sand	<11	76	76



Survey Locations (Chiba,Saitama,Tokyo Prefectures)