

FY2017 Gunma Prefecture Survey Results

[Outline of results]

(1) Water

Rivers

Radioactive cesium (Cs-134, Cs-137): Not detectable at any location

Lakes and reservoirs

Radioactive cesium (Cs-134, Cs-137): Not detectable at any location

(2) Sediments

Rivers

Cs-134: ND - 110 Bq/kg (dry)

Cs-137: 1.3 - 770 Bq/kg (dry)

Lakes and reservoirs

Cs-134: ND - 460 Bq/kg (dry)

Cs-137: 28 - 2,300 Bq/kg (dry)

(3) Surrounding Environment

(a) Soil

Rivers

Cs-134: ND - 680 Bq/kg (dry)

Cs-137: 3.1 - 5,900 Bq/kg (dry)

Lakes and reservoirs

Cs-134: ND - 660 Bq/kg (dry)

Cs-137: 16 - 5,400 Bq/kg (dry)

(b) Ambient dose rate

Rivers

0.04 - 0.13 μ Sv/h

Lakes and reservoirs

0.04 - 0.16 μ Sv/h

Gunma River (Water) 1/5

Location				Sampling Date	Weather	Air temperature (°C)	Water depth (m)	Water							Remarks							
No.	Water area		Municipality					General Items				Activity concentration(Bq/L)										
	Water area	Location						Water temperature (°C)	Sampling depth (m)	Color	Odor	Transparency (cm)	Electrical conductivity (mS/m)	SS (mg/L)		Turbidity (FNU)	Radioactive cesium					
												Cs-134	Cs-137									
R i v e r s	1	Tonegawa River	Hirose Bridge	Minakami Town	2017/5/23	Sunny	25.8	0.3	7.9	0.0	Light grayish yellow green	None	>100	3.2	3	1.9	<-0.70	<-0.80				
					2017/8/3	Cloudy	22.0	0.3	17.0	0.0	Light grayish greenish yellow	None	>100	4.2	6	1.9	<-0.70	<-0.75				
					2017/11/25	Cloudy	3.5	0.2	7.8	0.0	Light grayish greenish yellow	None	82	3.3	2	2.0	<-0.61	<-0.92				
					2018/1/15	Sunny	-5.6	0.2	0.5	0.0	Light grayish greenish yellow	None	>100	5.2	<1	0.5	<-0.60	<-0.75				
			2017/5/18		Cloudy	17.7	0.3	8.0	0.0	Grayish yellow green	None	68	3.5	4	2.9	<-0.58	<-0.63					
			2017/6/6		Sunny	26.5	0.3	10.0	0.0	Light grayish yellow green	None	>100	3.1	2	1.7	<-0.63	<-0.88					
			2017/7/3		Sunny	24.7	0.3	13.3	0.0	Grayish greenish yellow	None	97	4.0	4	2.0	<-0.63	<-0.99					
			2017/8/22		Rain	23.2	0.4	17.7	0.0	Grayish yellow green	None	32	3.6	51	15	<-0.85	<-0.63					
			2017/9/4		Cloudy	23.3	0.3	14.5	0.0	Grayish yellow green	None	>100	3.8	3	1.2	<-0.51	<-0.78					
			2017/11/25		Sunny	8.2	0.2	8.6	0.0	Grayish yellow green	None	>100	4.1	1	1.3	<-0.70	<-0.63					
			2018/1/15		Sunny	1.2	0.3	3.4	0.0	Grayish greenish yellow	None	>100	5.5	<1	0.7	<-0.65	<-0.92					
			2017/5/18		Sunny	20.3	0.5	10.2	0.0	Light grayish greenish yellow	None	54	5.5	4	4.1	<-0.68	<-0.69					
	2	Tonegawa River	Tsukiyono Bridge	Minakami Town	2017/8/22	Cloudy	24.3	0.5	19.0	0.0	Grayish yellow	None	62	7.5	3	2.5	<-0.58	<-0.63				
					2017/11/25	Sunny	9.5	0.2	7.4	0.0	Light grayish greenish yellow	None	>100	8.4	<1	0.8	<-0.89	<-0.75				
					2018/1/15	Sunny	2.1	0.5	1.8	0.0	Light grayish greenish yellow	None	>100	11.4	1	0.6	<-0.83	<-0.88				
					2017/5/12	Sunny	22.9	0.3	10.8	0.0	Light grayish yellow green	None	>100	4.1	<1	0.5	<-0.83	<-0.84				
	3	Akaya River	Kosode Bridge	Minakami Town	2017/6/6	Sunny	21.4	0.3	12.2	0.0	Light grayish yellow green	None	>100	5.4	1	0.5	<-0.72	<-0.63				
					2017/7/3	Sunny	25.2	0.3	15.3	0.0	Grayish yellow	None	66	5.3	8	3.6	<-0.72	<-0.84				
					2017/8/4	Sunny	19.2	0.3	15.0	0.0	Light grayish yellow green	None	>100	6.7	2	0.9	<-0.72	<-0.85				
					2017/9/4	Cloudy	20.7	0.3	14.1	0.0	Light grayish yellow green	None	>100	6.2	5	4.2	<-0.90	<-0.54				
	4	Sakura River	In Oonza Yachi	Kawaba Village	2017/11/25	Sunny	8.5	0.2	5.8	0.0	Light grayish yellow green	None	>100	5.9	1	0.2	<-0.72	<-0.69				
					2018/1/16	Sunny	4.0	0.3	3.4	0.0	Light grayish yellow green	None	>100	6.8	<1	0.2	<-0.66	<-0.75				
					2017/5/31	Sunny	28.4	0.4	9.6	0.0	Light grayish yellow	None	>100	3.4	2	0.9	<-0.70	<-0.75				
					2017/8/16	Cloudy	20.2	0.4	15.3	0.0	Light grayish yellow green	None	>100	4.8	<1	0.5	<-0.69	<-0.63				
	5	Tonegawa River System	Tonegawa River Area	Kirinoki Bridge	Katashina Village	2017/11/15	Cloudy	12.4	0.2	6.8	0.0	Light grayish yellow green	None	>100	5.1	<1	0.4	<-0.61	<-0.92			
						2018/1/15	Sunny	3.8	0.3	1.6	0.0	Light grayish yellow green	None	>100	5.9	<1	0.5	<-0.88	<-0.69			
						2017/5/31	Sunny	28.1	0.5	13.5	0.0	Light grayish yellow	None	>100	5.7	<1	0.8	<-0.58	<-0.92			
						2017/6/16	Sunny	26.4	0.4	17.7	0.0	Light grayish yellow	None	>100	9.0	<1	0.3	<-0.90	<-0.80			
				6		Katashina River	Tonemachitakatoya	Numata City	2017/7/3	Sunny	28.3	0.7	17.5	0.0	Dark grayish yellow	None	52	5.7	18	7.8	<-0.74	<-0.75
									2017/8/16	Cloudy	21.3	0.5	16.1	0.0	Light grayish yellow green	None	>100	5.9	2	1.1	<-0.71	<-0.75
									2017/9/4	Cloudy	22.1	0.3	17.0	0.0	Light grayish yellow	None	>100	8.0	1	0.4	<-0.68	<-0.74
									2017/11/15	Sunny	15.6	0.5	8.8	0.0	Light grayish greenish yellow	None	>100	9.0	1	0.6	<-0.77	<-0.84
									2018/1/15	Sunny	5.1	0.5	3.0	0.0	Light grayish greenish yellow	None	>100	11.0	<1	0.3	<-0.75	<-0.75
									2017/5/18	Cloudy	17.5	0.7	11.0	0.0	Grayish yellow green	None	78	6.5	3	2.2	<-0.68	<-0.88
									2017/6/6	Sunny	25.4	0.5	13.8	0.0	Grayish yellow green	None	>100	7.4	4	1.5	<-0.66	<-0.75
									2017/7/3	Sunny	31.2	0.8	18.0	0.0	Grayish yellow	None	62	8.6	10	3.9	<-0.72	<-0.96
	7	Futae Bridge	Numata City	Numata City	2017/8/23	Cloudy	30.4	0.7	18.3	0.0	Grayish yellow green	None	58	9.4	5	2.8	<-0.78	<-0.80				
					2017/9/4	Sunny	26.3	0.7	17.1	0.0	Grayish yellow green	None	>100	10.4	3	1.5	<-0.79	<-0.61				
					2017/11/7	Sunny	10.2	0.6	9.3	0.0	Light grayish yellow green	None	81	10.0	3	1.5	<-0.60	<-0.75				
					2018/1/16	Sunny	11.0	0.4	5.4	0.0	Light grayish yellow green	None	>100	13.1	1	0.7	<-0.68	<-0.84				
8	Agatsuma River	Shinto Bridge	Naganohara Town	2017/5/30	Sunny	22.8	0.4	12.9	0.0	Light grayish yellow green	None	45	21.6	15	9.3	<-0.73	<-0.63					
				2017/8/28	Cloudy	27.7	0.5	17.7	0.0	Light grayish yellow green	None	62	24.0	16	12	<-0.58	<-0.75					
				2017/11/21	Sunny	7.4	0.3	5.3	0.0	Light grayish yellow green	None	52	23.2	14	8.3	<-0.61	<-0.75					
				2018/1/16	Sunny	4.5	0.4	3.5	0.0	Light grayish yellow green	None	46	23.8	17	11	<-0.66	<-0.75					
9	Shirasuma River	Shuttatsu Bridge	Nakanajo Town	2017/5/30	Sunny	19.2	0.3	13.7	0.0	Light grayish yellow green	None	50	43.9	10	10	<-0.60	<-0.75					
				2017/8/28	Sunny	27.2	0.5	18.0	0.0	Light grayish yellow green	None	>100	28.6	4	3.5	<-0.68	<-0.80					
				2017/11/21	Sunny	4.2	0.3	6.0	0.0	Light grayish yellow green	None	>100	17.0	2	0.7	<-0.86	<-0.55					
				2018/1/16	Sunny	6.8	0.4	3.0	0.0	Grayish yellow	None	>100	14.2	<1	0.2	<-0.70	<-0.88					

Gunma River (Water) 2/5

No.	Location			Sampling Date	Weather	Air temperature (°C)	Water depth (m)	Water								Remarks		
	Water area	Location	Municipality					General Items					Activity concentration(Bq/L)					
								Water temperature (°C)	Sampling depth (m)	Color	Odor	Transparency (cm)	Electrical conductivity (mS/m)	SS (mg/L)	Turbidity (FNU)		Radioactive cesium	Radioactive cesium
													Cs-134	Cs-137				
R i v e r s	10	Agatsuma River	Downstream of Azuma Bridge	Higashi-Agatsuma Town	2017/5/19	Sunny	18.6	0.4	15.4	0.0	Grayish yellow	None	32	19.9	31	30	<-0.81	<-0.69
					2017/6/8	Sunny	22.0	0.4	17.4	0.0	Light grayish yellow green	None	>100	31.4	11	5.1	<-0.68	<-0.75
					2017/7/4	Cloudy	25.2	0.4	21.4	0.0	Light grayish yellow green	None	45	19.1	14	8.3	<-0.63	<-0.84
					2017/8/23	Sunny	22.9	0.2	19.1	0.0	Grayish yellow	None	34	19.4	23	15	<-0.79	<-0.92
					2017/9/7	Cloudy	24.0	0.4	18.1	0.0	Light grayish yellow green	None	52	24.6	9	6.7	<-0.52	<-0.84
					2017/11/22	Sunny	5.1	0.3	5.2	0.0	Light grayish yellow green	None	85	20.1	7	4.8	<-0.70	<-0.75
					2018/1/16	Sunny	10.7	0.3	3.6	0.0	Light grayish yellow green	None	>100	24.8	1	0.9	<-0.63	<-0.88
					2017/5/18	Sunny	19.5	0.5	16.3	0.0	Grayish greenish yellow	None	46	12.2	5	2.6	<-0.78	<-0.88
	11	Nakuta River	Tonoda Bridge	Takayama Village	2017/8/23	Sunny	30.4	0.6	19.1	0.0	Grayish greenish yellow	None	38	9.8	11	3.7	<-0.76	<-0.80
					2017/11/22	Sunny	6.5	0.3	4.9	0.0	Grayish greenish yellow	None	>100	10.9	1	0.3	<-0.80	<-0.80
					2018/1/16	Sunny	11.8	0.2	3.2	0.0	Grayish greenish yellow	None	>100	14.5	<1	0.5	<-0.83	<-0.96
					2017/5/18	Sunny	23.2	0.5	15.3	0.0	Grayish yellow green	None	76	17.9	11	4.7	<-0.72	<-0.80
	12	Agatsuma River	Agatsuma Bridge	Shibukawa City	2017/6/8	Sunny	22.0	0.5	18.9	0.0	Grayish yellow green	None	>100	21.8	9	3.0	<-0.70	<-0.75
					2017/7/4	Rain	25.4	0.5	20.4	0.0	Grayish yellow green	None	42	19.1	30	11	<-0.90	<-0.69
					2017/8/22	Cloudy	33.2	0.7	20.7	0.0	Grayish yellow	None	23	16.4	73	46	<-0.83	<-0.75
					2017/9/7	Cloudy	23.6	0.5	17.9	0.0	Grayish yellow green	None	>100	22.7	10	6.3	<-0.67	<-0.75
					2017/11/7	Sunny	12.4	0.7	10.2	0.0	Light grayish yellow green	None	74	19.9	12	8.4	<-0.49	<-0.81
					2018/1/15	Sunny	5.2	0.5	4.7	0.0	Light grayish yellow green	None	>100	21.7	1	0.8	<-0.82	<-0.80
					2017/5/18	Sunny	20.7	0.5	9.8	0.0	Light grayish greenish yellow	None	84	5.5	9	4.5	<-0.72	<-0.69
					2017/6/8	Sunny	22.0	0.5	11.1	0.0	Grayish yellow green	None	>100	4.5	3	1.0	<-0.68	<-0.92
13	Tonegawa River	Taisho Bridge	Shibukawa City	2017/7/4	Cloudy	26.2	0.5	16.6	0.0	Light grayish greenish yellow	None	81	7.0	11	2.6	<-0.73	<-0.92	
				2017/8/22	Sunny	33.4	0.4	18.6	0.0	Light grayish greenish yellow	None	>100	7.1	8	2.6	<-0.62	<-0.69	
				2017/9/7	Cloudy	23.2	0.5	18.3	0.0	Light grayish yellow green	None	>100	12.7	2	1.0	<-0.79	<-0.80	
				2017/11/7	Sunny	18.4	1.0	11.7	0.0	Light grayish yellow green	None	>100	9.1	3	1.4	<-0.78	<-0.88	
				2018/1/15	Sunny	3.8	0.5	6.2	0.0	Light grayish yellow green	None	>100	13.6	1	0.6	<-0.79	<-0.84	
				2017/5/18	Cloudy	16.1	0.1	15.3	0.0	Light grayish yellow green	None	42	11.8	18	9.3	<-0.63	<-0.63	
				2017/8/22	Cloudy	29.7	0.2	22.5	0.0	Grayish yellow green	None	58	18.5	13	4.7	<-0.83	<-0.75	
				2017/11/7	Sunny	22.7	0.1	16.3	0.0	Light grayish yellow green	None	>100	23.1	2	0.5	<-0.77	<-0.85	
14	Takizawa River	Shintakizawa Bridge	Shibukawa City/Yoshioka Town	2018/1/15	Sunny	1.0	0.2	2.6	0.0	Light grayish yellow green	None	>100	23.3	4	1.7	<-0.63	<-0.69	
				2017/5/8	Sunny	22.2	0.3	9.2	0.0	Light grayish yellow green	None	40	7.2	21	12	<-0.65	<-0.84	
				2017/8/1	Cloudy	30.4	0.3	20.0	0.0	Light grayish yellow green	None	45	13.4	9	5.3	<-0.69	<-0.66	
				2017/11/14	Sunny	10.1	0.8	8.8	0.0	Grayish yellow green	None	52	15.2	13	9.0	<-0.55	<-0.63	
15	Tonegawa River	Gunna-ohashi Bridge	Maebashi City	2018/1/17	Cloudy	6.8	0.8	5.0	0.0	Light grayish yellow green	None	75	18.7	5	4.1	<-0.69	<-0.88	
				2017/5/15	Cloudy	16.8	0.4	10.3	0.0	Light grayish yellow green	None	22	7.1	25	14	<-0.94	<-0.88	
				2017/8/1	Cloudy	28.4	0.3	21.2	0.0	Light grayish yellow green	None	50	14.0	14	5.8	<-0.51	<-0.80	
				2017/11/7	Sunny	15.4	0.2	10.3	0.0	Light grayish yellow green	None	46	15.1	15	5.5	<-0.75	<-0.75	
16	Tonegawa River	Fukushima Bridge	Tamamura Town	2018/1/25	Sunny	3.8	0.2	3.6	0.0	Grayish yellow green	None	62	18.5	4	3.3	<-0.77	<-0.85	
				2017/5/30	Sunny	27.6	0.3	22.9	0.0	Grayish yellow	None	35	11.9	22	22	<-0.65	<-0.80	
				2017/8/28	Sunny	28.4	0.3	19.2	0.0	Light grayish yellow	None	87	13.2	6	1.5	<-0.61	<-0.69	
				2017/11/9	Sunny	15.7	0.4	11.2	0.0	Light grayish greenish yellow	None	>100	13.9	3	0.7	<-0.54	<-0.84	
17	Nagai River	Kamigonda Bridge	Takasaki City	2018/1/22	Cloudy	3.6	0.2	6.0	0.0	Light grayish yellow	None	>100	11.8	2	1.2	<-0.73	<-0.78	
				2017/5/30	Sunny	28.6	0.4	21.0	0.0	Light grayish yellow	None	>100	12.0	5	1.4	<-0.67	<-0.84	
				2017/8/28	Sunny	30.6	0.4	21.1	0.0	Light grayish yellow green	None	>100	10.2	2	0.6	<-0.74	<-0.80	
				2017/11/9	Sunny	16.4	0.5	12.2	0.0	Light grayish yellow green	None	>100	10.5	3	0.5	<-0.61	<-0.75	
				2018/1/22	Cloudy	4.5	0.3	4.8	0.0	Light grayish yellow	None	>100	12.1	2	0.8	<-0.72	<-0.92	
				2017/5/15	Cloudy	15.5	0.4	14.2	0.0	Light grayish yellow green	None	>100	16.7	3	1.7	<-0.86	<-0.92	
				2017/8/28	Sunny	28.4	0.4	23.3	0.0	Light grayish greenish yellow	None	>100	14.9	1	0.7	<-0.72	<-0.75	
				2017/11/9	Sunny	15.7	0.4	12.7	0.0	Light grayish yellow green	None	>100	15.6	<1	0.7	<-0.82	<-0.80	
18	Karasu River	Karasugawa Bridge	Amaka City	2018/1/22	Cloudy	3.2	0.4	4.6	0.0	Light grayish yellow green	None	>100	19.3	1	0.6	<-0.67	<-0.74	
				2017/5/15	Cloudy	15.5	0.4	14.2	0.0	Light grayish yellow green	None	>100	16.7	3	1.7	<-0.86	<-0.92	
19	Usui River	Nakase Bridge	Amaka City	2017/8/28	Sunny	28.4	0.4	23.3	0.0	Light grayish greenish yellow	None	>100	14.9	1	0.7	<-0.72	<-0.75	
				2017/11/9	Sunny	15.7	0.4	12.7	0.0	Light grayish yellow green	None	>100	15.6	<1	0.7	<-0.82	<-0.80	

Gunma River (Water) 3/5

No.	Location				Sampling Date	Weather	Air temperature (°C)	Water depth (m)	Water										Remarks
	Water area	Location	Municipality	General Items						Activity concentration(Bq/L)									
				Water temperature (°C)					Sampling depth (m)	Color	Odor	Transparency (cm)	Electrical conductivity (mS/m)	SS (mg/L)	Turbidity (FNU)	Radioactive cesium Cs-134	Radioactive cesium Cs-137		
R i v e r s	20	Usui River	Hanataka Bridge	Takasaki City	2017/5/17	Cloudy	18.1	0.3	17.8	0.0	Grayish yellow	None	92	40.6	5	2.8	<-0.83	<-0.88	
					2017/8/28	Sunny	31.2	0.4	26.0	0.0	Light grayish yellow green	None	>100	28.3	2	0.9	<-0.76	<-0.80	
					2017/11/9	Sunny	15.3	0.7	12.3	0.0	Light grayish yellow green	None	>100	29.7	1	0.7	<-0.94	<-0.80	
					2018/1/22	Cloudy	4.2	0.3	4.5	0.0	Dark grayish yellow green	None	>100	54.9	2	1.6	<-0.65	<-0.84	
	21	Kabura River	Tadakawa Bridge	Shimonita Town	2017/5/15	Cloudy	16.2	0.5	16.0	0.0	Light grayish greenish yellow	None	>100	31.4	<1	0.6	<-0.86	<-0.63	
					2017/8/7	Cloudy	29.3	0.5	21.3	0.0	Light grayish yellow	None	32	16.1	35	8.3	<-0.59	<-0.92	
					2017/11/9	Sunny	17.1	0.4	12.0	0.0	Light grayish yellow green	None	>100	19.8	1	0.7	<-0.65	<-0.80	
					2018/1/26	Sunny	1.2	0.4	0.9	0.0	Light grayish yellow	None	>100	36.3	<1	0.5	<-0.51	<-0.80	
	22	Kabura River	Kaburagawa Bridge	Takasaki City/Fujioka City	2017/5/17	Cloudy	19.0	0.3	19.6	0.0	Light grayish yellow green	None	88	35.3	7	3.9	<-0.68	<-0.80	
					2017/8/22	Cloudy	29.2	0.5	25.5	0.0	Grayish yellow green	None	50	23.7	11	6.3	<-0.74	<-0.69	
					2017/11/7	Sunny	21.8	0.3	14.0	0.0	Light grayish yellow green	None	>100	27.4	2	0.7	<-0.77	<-0.61	
					2018/1/25	Sunny	2.4	0.2	1.2	0.0	Light grayish yellow green	None	>100	40.5	2	1.2	<-0.73	<-0.55	
	23	Ogawa River	Kinzan Bridge	Kanra Town	2017/5/15	Rain	17.1	0.2	16.2	0.0	Light grayish yellow green	None	>100	23.6	<1	0.8	<-0.54	<-0.84	
					2017/8/29	Sunny	32.7	0.3	22.2	0.0	Light grayish yellow green	None	>100	17.0	1	0.3	<-0.73	<-0.80	
					2017/11/9	Sunny	17.3	0.2	13.3	0.0	Light grayish yellow green	None	>100	16.1	7	0.7	<-0.72	<-0.63	
					2018/1/26	Sunny	4.3	0.2	9.7	0.0	Light grayish yellow green	None	>100	22.5	<1	0.5	<-0.86	<-0.69	
	24	Nanmoku River	Ozawa Bridge	Nanmoku Village	2017/5/16	Sunny	19.1	0.2	16.4	0.0	Light grayish yellow green	None	>100	21.2	<1	0.4	<-0.72	<-0.84	
					2017/8/7	Cloudy	28.6	0.4	20.7	0.0	Light grayish greenish yellow	None	41	14.4	12	2.5	<-0.65	<-0.55	
					2017/11/10	Sunny	7.4	0.2	8.2	0.0	Light grayish yellow green	None	>100	16.1	1	0.5	<-0.74	<-0.63	
					2018/1/26	Sunny	-3.2	0.2	0.0	0.0	Grayish yellow green	None	>100	28.4	<1	0.3	<-0.65	<-0.61	
25	Someya River	Yakushi Bridge	Shinto Village	2017/5/18	Cloudy	16.4	0.1	15.9	0.0	Grayish greenish yellow	None	35	18.9	14	5.9	<-0.69	<-0.69		
				2017/8/22	Cloudy	27.2	0.1	22.6	0.0	Grayish greenish yellow	None	44	19.3	12	4.7	<-0.85	<-0.96		
				2017/11/7	Sunny	21.9	0.1	14.6	0.0	Light grayish greenish yellow	None	>100	25.9	2	0.9	<-0.83	<-0.69		
				2018/1/15	Sunny	-0.8	0.2	2.3	0.0	Grayish greenish yellow	None	>100	29.1	2	0.7	<-0.80	<-0.88		
26	Inogawa River	Kamakura Bridge	Takasaki City	2017/5/15	Cloudy	17.9	0.2	16.2	0.0	Light grayish yellow green	None	26	26.1	30	13	<-0.76	<-0.96		
				2017/8/22	Sunny	32.5	0.3	25.7	0.0	Grayish yellow green	None	41	25.8	17	8.5	<-0.81	<-0.75		
				2017/11/7	Sunny	15.8	0.2	14.2	0.0	Light grayish yellow green	None	48	41.1	6	0.9	<-0.75	<-0.75		
				2018/1/25	Sunny	3.6	0.1	8.1	0.0	Grayish greenish yellow	None	52	47.5	6	4.2	<-0.71	<-0.88		
27	Karasu River	Iwakura Bridge	Takasaki City/Tamamura Town	2017/5/15	Cloudy	17.5	0.4	18.4	0.0	Grayish yellow	None	68	36.4	7	3.7	<-0.72	<-0.75		
				2017/8/22	Sunny	29.8	0.4	26.0	0.0	Grayish yellow	None	34	20.6	12	10	<-0.61	<-0.84		
				2017/11/7	Sunny	18.2	0.2	16.2	0.0	Grayish yellow	None	54	35.0	7	2.0	<-0.84	<-0.70		
				2018/1/25	Sunny	3.4	0.2	5.6	0.0	Light grayish yellow	None	72	36.2	3	1.5	<-0.49	<-0.70		
28	Shinkaname Bridge	Ueno Village	2017/5/16	Sunny	19.2	0.3	14.0	0.0	Light grayish yellow green	None	>100	16.3	3	0.7	<-0.57	<-0.63			
			2017/11/10	Sunny	9.7	0.4	9.8	0.0	Light grayish yellowish green	None	>100	13.4	4	2.2	<-0.70	<-0.69			
			2017/5/16	Sunny	21.3	0.5	16.5	0.0	Light grayish yellow green	None	>100	17.4	6	1.5	<-0.67	<-0.84			
29	Morito Bridge	Kanra Town	2017/11/10	Sunny	10.2	0.5	9.4	0.0	Light grayish yellow green	None	>100	14.7	2	1.6	<-0.61	<-0.75			
			2017/5/15	Cloudy	17.6	0.2	16.7	0.0	Light grayish greenish yellow	None	>100	23.2	2	1.2	<-0.68	<-0.80			
30	Tobukyo Bridge	Fujioka City/Kamisato Town	2017/11/7	Sunny	20.7	0.2	11.5	0.0	Light grayish yellow green	None	62	18.8	5	3.7	<-0.85	<-0.63			
			2017/5/15	Cloudy	18.2	0.3	17.1	0.0	Light grayish yellow green	None	>100	23.3	2	1.3	<-0.68	<-0.75			
31	Kanagawa Bridge	Kamisato Town	2017/11/7	Sunny	18.8	0.5	11.7	0.0	Light grayish yellow green	None	65	18.8	5	4.2	<-0.84	<-0.61			
			2017/5/9	Cloudy	22.5	0.3	12.2	0.0	Light grayish yellow green	None	43	11.9	12	8.0	<-0.64	<-0.75			
32	Tonegawa River	Bando-ohashi Bridge	Horjo City	2017/5/9	Cloudy	22.5	0.3	12.2	0.0	Light grayish yellow green	None	43	11.9	12	8.0	<-0.64	<-0.75		
				2017/8/26	Cloudy	24.5	0.5	21.3	0.0	Light grayish yellow green	None	>100	20.3	7	2.8	<-0.87	<-0.63		
				2017/11/16	Sunny	14.2	0.6	11.3	0.0	Grayish yellow green	None	>100	24.0	3	2.0	<-0.51	<-0.88		
				2018/1/19	Sunny	10.8	0.5	7.3	0.0	Light grayish yellow green	None	>100	26.4	8	4.0	<-0.68	<-0.84		

Gunma River (Water) 4/5

Location				Sampling Date	Weather	Air temperature (°C)	Water depth (m)	Water										Remarks	
								General items							Activity concentration(Bq/L)				
								Water temperature (°C)	Sampling depth (m)	Color	Odor	Transparency (cm)	Electrical conductivity (mS/m)	SS (mg/L)	Turbidity (FNU)	Radioactive cesium			
				Cs-134		Cs-137													
R i v e r s	33	Akagishinakawa River	In Shimohosoi Town	Municipality	2017/5/8	Sunny	24.1	0.2	14.0	0.0	Light grayish yellow green	None	>100	16.9	2	1.7	<-0.80	<-0.80	
					2017/8/1	Cloudy	31.0	0.3	23.5	0.0	Light grayish yellow green	None	40	19.0	11	3.2	<-0.65	<-0.61	
					2017/11/14	Cloudy	13.7	0.3	11.3	0.0	Light grayish yellow green	None	62	32.2	6	1.7	<-0.91	<-0.71	
					2018/1/15	Sunny	8.7	0.2	4.1	0.0	Light grayish yellow green	None	>100	26.0	2	0.7	<-0.68	<-0.80	
		34	Momonoki River	Utsuboi Bridge	Maebashi City	2017/5/8	Sunny	26.4	0.3	14.0	0.0	Light grayish yellow green	None	>100	17.3	7	4.8	<-0.81	<-0.75
						2017/8/1	Rain	28.3	0.4	22.6	0.0	Light grayish yellow green	None	55	17.2	15	6.1	<-0.59	<-0.54
						2017/11/14	Cloudy	15.2	0.2	11.6	0.0	Light grayish yellow green	None	>100	34.4	1	0.9	<-0.61	<-0.88
						2018/1/17	Cloudy	7.7	0.3	6.1	0.0	Light grayish yellow green	None	>100	30.2	2	2.0	<-0.80	<-0.92
		35	Arato River	Okuhara Bridge	Municipality	2017/5/8	Sunny	26.5	0.2	18.4	0.0	Grayish yellow	None	42	23.2	10	5.5	<-0.65	<-0.69
						2017/8/1	Rain	26.3	0.3	25.2	0.0	Grayish yellow	None	45	22.1	13	4.5	<-0.47	<-0.80
						2017/11/14	Rain	14.7	0.2	12.4	0.0	Grayish yellow	None	48	29.3	4	1.7	<-0.74	<-0.88
						2018/1/17	Sunny	8.3	0.2	6.6	0.0	Grayish yellow	None	80	27.1	8	3.8	<-0.68	<-0.75
	36	Kasukawa River	Hozumi Bridge	Municipality	2017/5/9	Cloudy	22.2	0.2	18.3	0.0	Grayish yellow green	None	40	29.5	16	7.8	<-0.77	<-0.55	
					2017/8/26	Cloudy	28.3	0.5	23.4	0.0	Grayish yellow green	None	>100	28.6	4	2.1	<-0.75	<-0.80	
					2017/11/16	Sunny	14.1	0.4	12.9	0.0	Grayish yellow green	None	>100	39.1	5	2.0	<-0.72	<-0.84	
					2018/1/17	Cloudy	10.3	0.3	9.1	0.0	Grayish yellow	None	52	44.1	9	4.9	<-0.87	<-0.99	
	37	Hirose River	Nakajima Bridge	Isesaki City	2017/5/9	Cloudy	21.0	0.3	16.7	0.0	Light grayish yellow green	None	62	21.9	18	6.2	<-0.63	<-0.69	
					2017/8/26	Sunny	31.4	0.5	22.2	0.0	Light grayish yellow green	None	76	22.5	11	3.9	<-0.70	<-0.75	
					2017/11/16	Sunny	15.8	0.4	13.9	0.0	Light grayish yellow green	None	>100	37.2	9	2.0	<-0.74	<-0.92	
					2018/1/19	Sunny	9.8	0.3	8.9	0.0	Light grayish yellow green	None	>100	36.4	11	5.2	<-0.74	<-0.88	
	38	Hayakawa River	Hayakawa Bridge	Municipality	2017/5/8	Sunny	29.3	0.4	14.9	0.0	Grayish yellow green	None	32	13.9	22	10	<-0.65	<-0.75	
					2017/8/1	Rain	25.8	0.5	24.1	0.0	Grayish reddish yellow	None	20	12.8	240	58	<-0.65	<-0.48	
					2017/11/14	Cloudy	15.2	0.4	14.2	0.0	Grayish yellow green	None	>100	24.7	3	0.9	<-0.77	<-0.75	
2018/1/17					Cloudy	11.0	0.2	8.7	0.0	Grayish yellow	None	52	21.2	17	5.0	<-0.75	<-0.80		
39	Tonegawa River System	Macjima Bridge	Ota City	2017/5/9	Cloudy	20.5	0.2	15.6	0.0	Grayish greenish yellow	None	40	25.5	28	11	<-0.65	<-0.61		
				2017/8/26	Sunny	33.3	0.4	25.2	0.0	Dark grayish yellow	None	61	29.4	18	5.6	<-0.81	<-0.69		
				2017/11/16	Sunny	15.4	0.2	14.2	0.0	Grayish greenish yellow	None	>100	41.9	1	1.0	<-0.68	<-0.75		
				2018/1/19	Sunny	8.7	0.2	8.1	0.0	Grayish greenish yellow	None	38	45.3	19	8.8	<-0.75	<-0.69		
40	Tonegawa River	Tone-ozeki Weir	Chiyoda Town/Gyoda City	2017/5/9	Sunny	20.1	0.3	14.8	0.0	Grayish yellow	None	45	10.6	9	8.2	<-0.68	<-0.63		
				2017/6/8	Sunny	26.0	0.4	17.9	0.0	Light grayish yellow green	None	>100	14.3	12	6.6	<-0.65	<-0.63		
				2017/7/4	Cloudy	29.2	0.3	22.7	0.0	Grayish yellow	None	38	17.3	13	9.5	<-0.70	<-0.63		
				2017/8/26	Sunny	34.1	0.3	24.2	0.0	Grayish yellow	None	45	18.1	16	7.0	<-0.75	<-0.66		
				2017/9/7	Cloudy	24.8	0.4	21.0	0.0	Grayish yellow	None	72	23.7	5	2.4	<-0.78	<-0.84		
				2017/11/16	Sunny	17.2	0.5	12.6	0.0	Grayish yellow	None	40	27.9	37	15	<-0.78	<-0.75		
				2018/1/19	Sunny	6.8	0.4	6.5	0.0	Grayish yellow	None	52	31.6	47	13	<-0.63	<-0.75		
				2017/5/11	Sunny	17.7	0.4	12.7	0.0	Light grayish yellow green	None	>100	6.6	1	0.5	<-0.68	<-0.69		
41	Koguro River	Kayano Bridge	Kiryu City	2017/6/13	Cloudy	13.2	0.3	11.9	0.0	Light grayish yellow green	None	>100	7.7	2	0.5	<-0.59	<-0.80		
				2017/7/6	Sunny	22.2	0.3	15.3	0.0	Light grayish yellow green	None	>100	7.3	<1	0.4	<-0.77	<-0.80		
				2017/8/3	Cloudy	20.3	0.3	15.7	0.0	Light grayish yellow green	None	>100	7.3	<1	0.2	<-0.66	<-0.75		
				2017/9/12	Cloudy	20.8	0.3	15.3	0.0	Light grayish yellow green	None	>100	7.3	<1	0.3	<-0.73	<-0.92		
				2017/11/20	Cloudy	4.7	0.3	5.9	0.0	Light grayish yellow green	None	>100	7.3	<1	0.1	<-0.67	<-0.88		
				2018/1/19	Sunny	4.2	0.4	4.1	0.0	Grayish yellow green	None	>100	7.6	<1	0.2	<-0.61	<-0.63		
				2017/5/11	Sunny	27.2	0.4	15.3	0.0	Light grayish yellow green	None	>100	10.9	2	1.5	<-0.72	<-0.75		
				2017/8/29	Cloudy	32.4	0.3	20.0	0.0	Light grayish yellow green	None	>100	10.3	1	0.7	<-0.77	<-0.80		
42	Watarase River Area	Takatado	Midori City	2017/11/20	Cloudy	9.2	0.3	8.8	0.0	Light grayish yellow green	None	>100	11.7	<1	0.7	<-0.72	<-0.69		
				2018/1/19	Sunny	10.4	0.1	6.4	0.0	Light grayish yellow green	None	>100	12.1	<1	0.7	<-0.68	<-0.84		
				2017/5/11	Sunny	27.1	0.2	18.2	0.0	Grayish yellow green	None	>100	11.0	2	1.2	<-0.92	<-0.96		
				2017/6/13	Cloudy	18.2	0.2	16.6	0.0	Grayish yellow green	None	>100	10.6	2	0.9	<-0.82	<-0.88		
43	Watarase River	Intake for Akaiwayosui water channel	Kiryu City	2017/7/6	Sunny	30.2	0.3	21.2	0.0	Grayish yellow green	None	>100	10.7	3	0.9	<-0.66	<-0.69		
				2017/8/29	Sunny	31.8	0.2	21.7	0.0	Grayish yellow green	None	>100	10.2	2	0.8	<-0.59	<-0.75		
				2017/9/12	Cloudy	22.3	0.3	20.4	0.0	Grayish yellow green	None	>100	10.5	2	0.6	<-0.83	<-0.75		
				2017/11/20	Sunny	10.2	0.2	10.2	0.0	Grayish yellow green	None	>100	10.4	1	1.3	<-0.75	<-0.88		
				2018/1/19	Sunny	13.2	0.2	7.8	0.0	Light grayish greenish yellow	None	>100	12.2	<1	0.4	<-0.69	<-0.80		

Gunma River (Water) 5/5

Location				Sampling Date	Weather	Air temperature (°C)	Water depth (m)	Water									Remarks			
No.	Water area		Location					Municipality	General items						Activity concentration(Bq/L)					
									Water temperature (°C)	Sampling depth (m)	Color	Odor	Transparency (cm)	Electrical conductivity (mS/m)	SS (mg/L)	Turbidity (FNU)		Radioactive cesium		
				Cs-134	Cs-137															
R i v e r s	44	Tonegawa River System	Watarase River Area	Tatara River	Ejiri Bridge	Oura Town	2017/5/12	Sunny	23.3	0.3	19.5	0.0	Light grayish yellow	None	55	20.2	5	3.2	<-0.63	<-0.69
							2017/8/30	Cloudy	29.1	0.8	25.8	0.0	Grayish yellow green	None	92	22.0	6	2.6	<-0.91	<-0.80
							2017/11/20	Cloudy	3.3	0.2	8.9	0.0	Light grayish yellow	None	>100	34.2	4	2.5	<-0.75	<-0.84
							2018/1/9	Sunny	10.0	0.2	8.0	0.0	Light grayish yellow	None	>100	41.4	8	3.1	<-0.79	<-0.69
	45	Tonegawa River System	Watarase River Area	Kiryu River	Kannon Bridge	Kiryu City	2017/5/11	Sunny	24.2	0.4	16.2	0.0	Grayish greenish yellow	None	>100	8.0	11	2.6	<-0.81	<-0.69
							2017/8/29	Sunny	32.4	0.4	19.6	0.0	Grayish greenish yellow	None	>100	7.6	6	0.6	<-0.73	<-0.75
							2017/11/20	Sunny	7.6	0.3	9.5	0.0	Grayish greenish yellow	None	>100	7.2	<1	0.3	<-0.74	<-0.70
							2018/1/19	Sunny	8.2	0.4	5.2	0.0	Light grayish yellow green	None	>100	7.6	<1	0.6	<-0.68	<-0.75
	46	Tonegawa River System	Watarase River Area	Kiryu River	Sakai Bridge	Kiryu City/Ashikaga City	2017/5/11	Sunny	27.2	0.2	24.1	0.0	Light grayish greenish yellow	None	>100	9.0	3	1.3	<-0.57	<-0.69
							2017/8/29	Sunny	33.3	0.3	23.0	0.0	Light grayish greenish yellow	None	>100	8.3	6	2.2	<-0.86	<-0.84
							2017/11/20	Cloudy	6.4	0.2	8.1	0.0	Light grayish greenish yellow	None	>100	9.0	2	0.5	<-0.73	<-0.84
							2018/1/9	Sunny	15.5	0.2	9.2	0.0	Light grayish greenish yellow	None	>100	8.4	<1	0.3	<-0.65	<-0.69
	47	Tonegawa River System	Watarase River Area	Tsuruuda River	Lake Jonuma	Tatebayashi City	2017/5/12	Sunny	28.5	1.5	27.3	0.0	Grayish yellow	None	20	35.5	16	14	<-0.68	<-0.99
							2017/8/30	Cloudy	30.1	1.0	28.6	0.0	Dark grayish greenish yellow	None	32	31.5	4	2.6	<-0.75	<-0.66
							2017/11/15	Sunny	15.2	1.2	15.1	0.0	Grayish yellow	None	56	41.1	4	3.8	<-0.69	<-0.75
							2018/1/9	Cloudy	7.5	1.0	6.3	0.0	Grayish yellow	None	50	39.5	12	6.6	<-0.83	<-0.75
	48	Tonegawa River System	Watarase River Area	Yatagawa River	Togoda Bridge	Meiwa Town /Itakura Town	2017/5/12	Sunny	29.5	1.2	23.8	0.0	Light grayish greenish yellow	None	40	62.0	10	7.7	<-0.73	<-0.66
							2017/8/30	Sunny	29.8	0.8	26.5	0.0	Light grayish greenish yellow	None	75	35.7	4	2.7	<-0.88	<-0.66
							2017/11/15	Sunny	16.4	1.3	16.1	0.0	Light grayish greenish yellow	None	83	64.7	8	3.6	<-0.69	<-0.80
							2018/1/9	Cloudy	6.2	1.2	9.7	0.0	Light grayish greenish yellow	None	65	72.1	7	3.9	<-0.57	<-0.69

Gunma River (Sediment) 1/5

No.	Location			Sampling Date	Weather	Air temperature (°C)	Water depth (m)	Sediment														Activity concentration [Bq/kg(dry)]			Remarks			
	Water area	Location	Municipality					Sediment temperature (°C)	Sample length (cm)	Color	Odor	General items						Grain size distribution(%)		Silt	Clay	Sediment content (%)	Density (g/cm ³)	Property		Radionuclide cesium		
												Course gravel	Medium gravel	Fine gravel		Medium sand	Fine sand	Total	Cs-134							Cs-137	Total	
														Course sand	Medium sand													
R i v e r s	1	Tonegawa River	Hirose Bridge	Minakami Town	2017/5/23	Sunny	25.8	0.3	9.0	8	Yellowish brown	None	0.0	50.0	23.3	15.2	9.7	1.0	0.0	0.8	8.18	2.641	Sand/gravel	21	110	131		
					2017/8/3	Cloudy	22.0	0.3	15.3	8	Yellowish brown	None	7.3	87.9	4.9	0.0	0.0	0.0	0.0	0.0	0.0	88.6	2.108	Gravel/sand	<3.9	18	18	
					2017/11/25	Cloudy	3.5	0.2	9.4	8	Yellowish brown	None	0.0	1.1	0.3	0.2	7.0	50.9	36.2	4.4	59.6	2.643	Sand	9.5	79	88.5		
					2018/1/15	Sunny	-5.6	0.2	0.2	5	Yellowish brown	None	0.0	0.0	0.2	10.1	86.2	1.5	0.1	2.0	69.1	2.650	Sand	<5.7	29	29		
					2017/5/18	Cloudy	17.7	0.3	8.7	4	Dark grayish yellow	None	0.0	34.8	18.5	17.1	24.9	3.1	0.9	0.9	78.9	2.728	Sand/gravel	<3.5	16	16		
					2017/6/6	Sunny	26.5	0.3	11.0	5	Olive brown	None	0.0	27.5	20.4	25.0	24.2	1.5	0.5	1.0	82.8	2.670	Sand/gravel	<4.3	14	14		
			2017/7/3	Rain	24.7	0.3	15.5	5	Olive brown	None	0.0	26.5	11.8	17.8	34.5	8.1	0.4	1.2	79.5	2.803	Sand/gravel	<3.7	23	23				
			2017/8/22	Rain	23.2	0.4	21.7	4	Grayish olive	None	0.0	27.6	25.3	26.6	18.6	10.0	0.1	0.9	85.2	2.682	Sand/gravel	<3.8	17	17				
			2017/9/4	Cloudy	23.3	0.3	15.4	5	Blackish brown	None	0.0	1.3	14.2	45.1	37.3	1.3	0.0	0.9	75.6	2.617	Sand	<3.9	17	17				
			2017/11/25	Sunny	8.2	0.2	8.8	5	Dark grayish yellow	None	0.0	39.2	20.9	24.0	14.4	0.7	0.0	0.8	80.4	2.716	Sand/gravel	<4.8	14	14				
			2018/1/15	Sunny	1.2	0.3	4.1	5	Dark grayish yellow	None	0.0	40.4	29.4	18.6	10.4	0.7	0.0	0.6	78.0	2.703	Gravel/sand	<5.1	11	11				
			2017/5/18	Sunny	20.3	0.5	15.0	6	Olive brown	None	0.0	0.0	0.3	4.1	66.4	22.1	3.0	4.0	70.4	2.706	Sand	<3.6	23	23				
		2017/8/22	Cloudy	24.3	0.5	20.9	6	Olive brown	None	0.0	6.0	1.5	10.7	66.7	8.9	4.4	1.9	69.8	2.656	Sand/gravel	<4.2	34	34					
		2017/11/25	Sunny	9.5	0.2	8.8	6	Olive brown	None	0.0	0.2	0.9	10.2	74.5	9.3	2.9	2.0	70.0	2.737	Sand	<6.0	15	15					
		2018/1/15	Sunny	2.3	0.5	2.2	5	Olive brown	None	0.0	0.1	0.9	7.9	65.0	15.5	8.3	2.4	72.0	2.671	Sand	<6.0	56	56					
		2017/5/12	Sunny	22.9	0.3	15.8	6	Dull yellowish brown	None	2.5	9.0	16.9	40.0	24.5	3.6	1.9	1.7	73.1	2.701	Sand/gravel	8.0	88	96.0					
		2017/6/6	Sunny	21.4	0.3	12.6	6	Dull yellowish brown	None	0.0	24.2	35.5	27.1	10.5	1.1	0.8	0.8	72.6	2.667	Sand/gravel	2.2	160	182					
		2017/7/3	Sunny	25.2	0.3	16.4	4	Dull yellowish brown	None	0.0	17.7	38.3	33.4	8.7	0.7	0.5	0.9	83.3	2.651	Sand/gravel	9.7	100	109.7					
		2017/8/4	Sunny	19.2	0.3	15.3	7	Dull yellowish brown	None	0.0	27.7	25.0	18.4	22.7	4.2	1.1	0.9	75.2	2.743	Sand/gravel	9.8	120	129.8					
		2017/9/4	Cloudy	20.7	0.3	15.5	5	Dull yellowish brown	None	0.0	34.5	18.6	17.1	24.1	4.3	0.4	0.9	74.3	2.859	Gravel/sand	1.1	98	109					
		2017/11/25	Sunny	8.5	0.2	6.4	7	Dull yellowish brown	None	0.0	49.6	33.0	11.5	4.8	0.6	0.2	0.3	68.2	2.724	Sand/gravel	1.2	78	90					
		2018/1/16	Sunny	4.0	0.3	4.1	5	Grayish yellowish brown	None	0.0	52.5	28.2	10.6	6.5	0.8	1.1	0.4	71.0	2.675	Gravel/sand	8.9	74	82.9					
		2017/5/31	Sunny	28.4	0.4	11.3	6	Dark brown	None	2.2	21.4	13.8	22.2	36.3	2.2	0.6	1.2	80.1	2.797	Sand/gravel	<4.9	11	11					
		2017/8/16	Cloudy	20.2	0.4	15.5	6	Dull yellowish brown	None	0.0	32.2	26.4	25.9	13.7	0.6	0.1	1.2	80.4	2.632	Sand/gravel	<3.8	11	11					
	2017/11/15	Cloudy	12.4	0.2	7.6	8	Dark grayish yellow	None	0.0	35.1	25.8	24.4	21.3	1.9	0.3	1.1	74.5	2.706	Sand/gravel	<5.7	7.3	7.3						
	2018/1/15	Sunny	3.8	0.3	1.6	8	Dark grayish yellow	None	12.0	31.5	19.5	17.8	15.9	1.9	0.7	0.7	78.2	2.699	Sand/gravel	<3.6	5.9	5.9						
	2017/5/31	Sunny	28.1	0.5	13.9	6	Blackish brown	None	0.0	17.6	27.8	23.0	23.1	6.3	0.6	1.6	79.3	2.732	Sand/gravel	<3.0	3.8	3.8						
	2017/6/16	Sunny	26.4	0.4	17.9	5	Grayish yellowish brown	None	0.0	57.5	23.5	5.3	9.0	3.2	0.8	0.8	79.8	2.695	Sand/gravel	<3.7	9.7	9.7						
	2017/7/3	Sunny	28.3	0.7	17.9	5	Blackish brown	None	0.0	25.1	5.4	1.7	17.3	33.8	13.6	3.1	49.6	2.637	Sand/gravel	<7.2	28	28						
	2017/8/16	Cloudy	21.3	0.5	16.3	6	Dark grayish yellow	None	1.6	39.7	24.7	10.3	19.4	3.0	0.0	1.3	79.3	2.803	Sand/gravel	<3.3	6.0	6.0						
	2017/9/4	Cloudy	22.1	0.3	19.4	5	Yellowish gray	None	0.0	32.4	21.2	13.4	26.7	5.1	0.5	0.9	77.9	2.785	Gravel/sand	<3.0	6.0	6.0						
	2017/11/15	Sunny	15.6	0.5	9.7	7	Grayish yellowish brown	None	0.0	20.8	15.9	9.6	30.6	20.2	1.6	1.5	77.3	2.844	Sand/gravel	<4.4	5.3	5.3						
	2018/1/15	Sunny	5.1	0.5	3.3	5	Grayish yellowish brown	None	5.5	30.3	10.5	12.5	31.2	8.0	1.0	1.0	77.9	2.803	Sand/gravel	<5.3	8.8	8.8						
	2017/5/18	Cloudy	17.5	0.7	13.6	5	Dark grayish yellow	None	0.0	3.6	7.3	14.8	96.3	11.7	0.9	3.5	69.2	2.751	Sand/gravel	5.3	29	34.3						
	2017/6/6	Sunny	25.4	0.5	14.1	5	Dark grayish yellow	None	0.0	2.2	3.0	7.2	52.5	24.6	7.1	3.2	65.4	2.742	Sand	5.8	45	50.8						
	2017/7/3	Sunny	31.2	0.8	18.9	5	Dark grayish yellow	None	3.3	11.1	4.7	5.8	26.0	24.9	18.3	5.8	62.5	2.569	Sand/gravel	18	140	158						
	2017/8/23	Cloudy	30.4	0.7	18.5	5	Dull yellowish brown	None	0.0	23.0	20.7	20.0	29.2	4.3	1.2	1.5	78.3	2.984	Sand/gravel	4.7	22	26.7						
	2017/9/4	Sunny	26.3	0.7	16.9	5	Blackish brown	None	0.0	0.0	0.0	7.4	63.9	21.4	4.9	2.4	63.5	2.655	Sand	10	71	81						
	2017/11/7	Sunny	10.2	0.6	9.2	3	Brownish gray	None	0.0	4.6	2.6	9.4	56.8	20.3	3.7	2.7	71.5	2.869	Sand	<5.3	23	23						
	2018/1/16	Sunny	11.0	0.4	6.2	5	Dark grayish yellow	None	0.0	37.8	37.2	17.1	6.9	0.3	0.1	0.6	85.0	2.831	Sand/gravel	<4.4	14	14						
	2017/5/30	Sunny	22.8	0.4	13.6	7	Dark brown	None	0.0	1.7	12.1	26.1	45.1	12.4	0.9	1.7	77.5	2.731	Sand	<3.5	4.2	4.2						
	2017/8/28	Cloudy	27.7	0.5	17.9	5	Dull yellowish brown	None	0.0	0.0	0.0	0.5	28.5	59.9	9.1	2.0	67.3	2.695	Sand	<3.4	4.6	4.6						
	2017/11/21	Sunny	7.4	0.3	6.0	5	Dark brown	None	0.0	0.0	0.6	3.7	53.8	34.9	5.1	1.9	69.6	2.821	Sand	<5.4	9.6	9.6						
	2018/1/16	Sunny	4.5	0.4	4.0	5	Dark brown	None	0.0	0.1	0.8	3.3	64.6	24.5	3.0	3.7	72.2	2.891	Sand	<0.72	2.7	2.7						
	2017/5/30	Sunny	19.2	0.3	14.1	7	Dull yellowish brown	None	0.0	2.8	11.5	15.1	47.4	20.5	1.1	1.7	72.0	2.721	Sand	<3.2	7.7	7.7						
	2017/8/28	Sunny	27.2	0.5	17.8	10	Grayish yellowish brown	None	0.0	0.0	0.8	9.0	70.6	15.7	1.5	2.4	74.8	2.945	Sand	<3.6	4.8	4.8						
	2017/11/21	Sunny	4.2	0.3	7.5	10	Dull yellowish brown	None	0.0	0.0	0.0	0.9	48.4	39.9	8.8	1.9	67.7	2.776	Sand	<4.5	10	10						
	2018/1/16	Sunny	6.8	0.4	3.7	5	Dull yellowish brown	None	0.0	0.2	0.6	3.2	70.7	21.3	1.0	2.9	68.6	2.732	Sand	<5.4	14	14						

Gunma River (Sediment) 3/5

R i v e r s	No.	Location			Sampling Date	Weather	Air temperature (°C)	Water depth (m)	Sediment																	Remarks	
		Water area	Location	Municipality					Sediment temperature (°C)	Sample length (cm)	Color	Odor	General items										Activity concentration [Bq/kg(dry)]				
													Course gravel	Medium gravel	Grain size distribution(%)				Fine sand	Silt	Clay	Sediment content (%)	Density (g/cm ³)	Property	Radioactive cesium		
															Course sand	Medium sand	Fine gravel	Coarse sand							Medium sand		Cs-134
Tonegawa River System	20	Usui River	Hanataka Bridge	Takasaki City	2017/5/17	Cloudy	18.1	0.3	15.9	5	Dark brown	None	0.0	1.5	1.7	13.7	56.6	18.8	3.9	3.8	62.2	2.734	Sand	<4.2	20	20	
					2017/8/28	Sunny	31.2	0.4	26.5	3	Brownish gray	None	0.0	12.3	13.9	20.7	45.8	3.2	2.6	1.5	73.5	2.761	Sand/gravel	<3.9	11	11	
					2017/1/19	Sunny	15.3	0.7	12.5	3	Brownish gray	None	3.6	26.2	8.8	6.4	30.5	17.0	5.4	2.1	70.3	2.774	Sand/gravel	<5.7	13	13	
					2018/1/22	Cloudy	4.2	0.3	6.4	5	Dark brown	Faint sewage	0.0	11.9	2.6	2.9	24.8	38.0	16.5	3.4	71.1	2.727	Sand/gravel	<5.6	22	22	
					2017/5/15	Cloudy	16.2	0.5	16.2	5	Brownish gray	None	0.0	2.4	16.2	52.0	25.9	1.1	0.6	1.9	74.2	2.663	Sand	<3.5	6.5	6.5	
	21	Kabura River	Tadakawa Bridge	Shimomuta Town	2017/8/7	Cloudy	29.3	0.5	21.7	5	Brownish gray	None	1.8	35.8	20.4	18.0	22.5	1.1	0.0	0.4	80.0	2.703	Sand/gravel	<2.9	5.1	5.1	
					2017/1/19	Sunny	17.1	0.4	12.3	3	Brownish gray	None	3.0	27.4	28.1	28.1	14.1	0.1	0.3	1.0	78.6	2.702	Sand/gravel	<4.6	5.0	5.0	
					2018/1/26	Sunny	1.2	0.4	2.2	6	Grayish yellowish brown	None	0.0	31.6	48.7	16.5	2.4	0.1	0.2	0.5	78.3	2.649	Gravel/sand	<1.9	3.2	3.2	
					2017/5/17	Cloudy	19.0	0.3	19.6	5	Grayish olive	None	13.3	34.6	17.3	14.1	10.0	7.9	1.4	1.4	83.3	2.700	Sand/gravel	<3.2	7.0	7.0	
					2017/1/7	Sunny	21.8	0.3	13.9	5	Grayish olive	None	0.0	0.0	0.6	0.5	17.8	63.3	14.9	3.0	71.6	2.705	Sand	<5.2	20	20	
	22	Kaburgawa Bridge	Takasaki City/Fujioka City	2018/1/25	Sunny	2.4	0.2	2.4	4	Grayish olive	None	4.0	38.1	14.0	6.3	16.1	16.6	3.2	1.7	77.2	2.707	Sand/gravel	<4.2	9.1	9.1		
				2017/5/15	Rain	17.1	0.2	16.0	3	Brownish gray	None	0.0	15.3	31.7	28.8	19.0	2.6	0.6	2.1	78.3	2.709	Sand	<3.1	8.7	8.7		
				2017/8/29	Sunny	32.7	0.3	23.0	3	Brownish gray	None	0.0	29.8	31.7	16.8	8.3	2.0	6.4	5.0	74.4	2.713	Sand/gravel	<3.5	17	17		
				2017/1/19	Sunny	17.3	0.2	13.4	3	Brownish gray	Faint sewage	0.0	9.2	8.5	25.0	44.6	8.6	2.1	2.0	76.1	2.747	Sand	<4.5	18	18		
				2018/1/26	Sunny	4.3	0.2	10.6	6	Brownish gray	None	0.0	1.2	10.5	43.1	39.3	2.3	1.1	2.6	78.0	2.717	Sand	<4.9	10	10		
	23	Ogawa River	Kinzan Bridge	Kama Town	2017/5/16	Sunny	19.1	0.2	17.1	3	Brownish gray	None	9.4	39.8	19.8	14.4	12.9	2.5	0.4	0.9	80.0	2.730	Gravel/sand	<3.1	7.9	7.9	
					2017/8/7	Cloudy	28.6	0.4	21.0	3	Brownish gray	None	0.0	20.6	30.6	27.5	15.5	3.5	1.3	1.2	78.5	2.692	Sand/gravel	<3.5	10	10	
					2017/1/10	Sunny	7.4	0.2	8.2	5	Brownish gray	None	0.0	4.5	7.7	9.0	58.5	18.8	0.0	1.7	73.0	2.762	Sand	<4.4	12	12	
					2018/1/26	Sunny	3.2	0.2	1.4	6	Gray	None	0.0	50.5	31.2	6.1	9.3	2.1	0.4	0.5	79.3	2.695	Gravel/sand	<3.3	4.9	4.9	
					2017/5/18	Cloudy	16.4	0.1	16.6	5	Blackish brown	None	0.0	51.8	16.5	9.4	18.8	2.0	0.3	1.2	81.1	3.037	Gravel/sand	2.8	17	19.8	
	24	Namoku River	Ozawa Bridge	Namoku Village	2017/8/22	Cloudy	27.2	0.1	23.2	6	Blackish brown	None	5.6	36.8	8.4	31.5	32.5	7.3	0.1	1.4	77.4	3.041	Sand/gravel	4.4	26	30.4	
					2017/1/17	Sunny	21.9	0.1	15.0	3	Brownish gray	None	0.0	44.0	16.8	20.0	17.8	0.6	0.1	0.7	77.0	2.867	Sand/gravel	<4.9	16	16	
					2018/1/15	Sunny	-0.8	0.2	2.6	5	Blackish brown	None	3.2	24.0	12.2	12.3	38.7	6.2	1.2	2.3	62.9	2.894	Sand/gravel	<2.9	4.1	4.1	
					2017/5/15	Cloudy	17.9	0.2	16.3	6	Dull yellowish brown	None	6.1	33.6	8.1	7.2	32.1	10.5	1.3	1.2	75.3	2.895	Sand/gravel	<2.9	5.8	5.8	
					2017/8/22	Sunny	32.5	0.3	25.7	6	Brownish gray	None	5.5	12.0	7.3	15.0	32.8	18.1	4.6	4.7	80.6	2.774	Sand/gravel	3.7	25	28.7	
	25	Soneya River	Yakushi Bridge	Shinto Village	2017/1/7	Sunny	15.8	0.2	15.3	6	Dull yellowish brown	None	0.0	30.4	17.3	14.2	32.4	3.6	0.3	1.7	78.1	2.810	Gravel/sand	<6.1	9.7	9.7	
					2018/1/25	Sunny	3.6	0.1	6.8	5	Dull yellowish brown	None	0.0	33.5	15.6	10.9	28.0	9.5	0.9	1.7	76.3	2.882	Sand/gravel	<5.0	5.5	5.5	
					2017/5/15	Cloudy	17.5	0.4	17.9	6	Dull yellowish brown	None	7.7	43.7	15.9	11.4	12.4	1.9	4.6	2.6	66.2	2.670	Sand/gravel	<4.5	17	17	
					2017/8/22	Sunny	29.8	0.4	26.2	5	Grayish yellowish brown	None	0.0	33.5	18.7	13.4	17.3	2.3	12.1	2.7	49.8	2.718	Silt/sand	8.8	51	59.8	
					2017/1/7	Sunny	18.2	0.2	13.1	5	Black	Faint sewage	0.0	3.4	3.9	13.4	30.5	10.0	24.1	14.8	49.7	2.719	Silt/sand	10	110	120	
	26	Inogawa River	Kamakura Bridge	Takasaki City	2018/1/25	Sunny	3.4	0.2	5.0	4	Blackish brown	Faint sewage	0.0	18.4	19.8	25.7	23.0	7.5	2.7	3.0	76.3	2.813	Sand/gravel	<5.0	9.8	9.8	
					2017/5/16	Sunny	19.2	0.5	14.2	5	Brownish gray	None	5.8	25.8	11.6	15.0	29.8	9.7	0.6	1.7	79.8	2.715	Sand/gravel	<3.7	8.9	8.9	
					2017/1/10	Sunny	9.7	0.4	10.0	5	Brownish gray	None	0.0	1.0	2.8	15.3	66.1	12.8	0.2	1.9	74.1	2.766	Sand	<3.8	4.4	4.4	
					2017/5/16	Sunny	21.3	0.5	16.6	3	Brownish gray	None	0.0	32.5	28.2	28.8	9.0	2.6	0.6	1.3	82.6	2.697	Sand/gravel	<0.58	2.2	2.2	
					2017/1/10	Sunny	10.2	0.5	9.5	3	Brownish gray	None	0.0	0.7	0.4	3.2	81.5	11.1	1.1	1.9	74.2	2.722	Sand	<0.83	4.9	4.9	
	27	Karasu River	Iwakura Bridge	Takasaki City/Tamamura Town	2017/5/15	Cloudy	17.6	0.2	16.8	5	Olive black	None	0.0	32.2	28.6	25.4	12.1	0.2	0.6	0.9	79.9	2.704	Sand/gravel	<0.66	1.6	1.6	
					2017/1/7	Sunny	20.7	0.2	12.0	6	Olive black	None	0.0	18.2	26.7	26.4	23.8	2.9	0.6	1.6	80.2	2.748	Gravel/sand	<0.45	1.3	1.3	
					2017/5/15	Cloudy	18.2	0.3	16.9	5	Grayish olive	None	0.0	33.0	38.6	19.7	7.3	0.4	0.4	0.8	82.4	2.690	Sand/gravel	<0.46	2.4	2.4	
					2017/1/7	Sunny	18.8	0.5	11.5	3	Grayish olive	None	0.0	32.5	17.3	9.9	13.0	14.6	9.3	3.4	77.7	2.745	Sand/gravel	1.7	13	14.7	
					2017/5/9	Cloudy	22.5	0.3	14.3	5	Blackish brown	None	0.0	0.6	0.4	1.0	35.8	52.6	6.6	2.9	70.7	2.738	Sand	<3.7	9.7	9.7	
	28	Shinkaname Bridge	Ueno Village	Kama Town	2017/8/26	Cloudy	24.5	0.5	21.6	5	Blackish brown	None	0.0	0.1	0.7	2.4	60.9	24.6	8.5	2.9	73.9	2.746	Sand/gravel	<3.3	16	16	
					2017/1/16	Sunny	14.2	0.6	13.0	8	Dull yellowish brown	None	13.9	28.0	12.2	12.2	25.3	6.1	1.2	1.1	79.0	2.814	Sand/gravel	<4.2	7.0	7.0	
					2018/1/19	Sunny	10.8	0.5	7.8	5	Dark grayish yellow	None	2.7	14.3	14.5	17.9	41.3	7.4	0.7	1.3	77.5	2.793	Sand/gravel	<3.9	5.5	5.5	

Gunma River (Sediment) 5/5

R i v e r s	Location				Sampling Date	Weather	Air temperature (°C)	Water depth (m)	Sediment																Remarks		
	No.	Water area	Location	Municipality					General items											Activity concentration [Bq/kg(dry)]							
									Sediment temperature (°C)	Sample length (cm)	Color	Odor	Grain size distribution(%)					Silt	Clay	Sediment content (%)	Density (g/cm ³)	Property	Radioactive cesium				
													Course gravel	Medium gravel	Fine gravel	Course sand	Medium sand						Fine sand	Cs-134		Cs-137	Total
45	45	Tonegawa River System	Watarase River Area	Kannon Bridge	Kiryu City	2017/5/11	Sunny	24.2	0.4	17.8	5	Dark brown	None	0.0	18.2	41.7	19.4	15.1	2.9	1.1	1.7	74.8	2.709	Gravel/sand	7.4	52	59.4
						2017/8/29	Sunny	32.4	0.4	23.1	5	Dark brown	None	0.0	3.4	16.1	18.8	38.4	13.9	7.9	1.5	66.5	2.852	Gravel/sand	11	73	84
						2017/11/20	Sunny	7.6	0.3	9.8	7	Dull yellowish brown	None	0.0	9.0	20.5	21.8	38.8	7.9	1.4	73.5	2.826	Sand/gravel	<5.3	42	42	
						2018/1/19	Sunny	8.2	0.4	3.9	5	Dark brown	None	0.0	9.8	14.8	27.1	35.1	9.0	2.9	1.5	72.5	2.743	Sand/gravel	<5.4	52	52
						2017/5/11	Sunny	27.2	0.2	24.2	5	Blackish brown	None	0.0	33.7	32.0	20.1	11.7	0.8	0.5	1.1	84.8	2.712	Gravel/sand	<3.3	19	19
						2017/8/29	Sunny	33.3	0.3	24.7	10	Blackish brown	None	0.0	32.5	26.4	18.3	16.9	2.5	1.1	1.2	79.2	2.810	Gravel/sand	<3.0	14	14
	46	Tonegawa River System	Watarase River Area	Sakai Bridge	Kiryu City/Ashikaga City	2017/11/20	Cloudy	6.4	0.2	8.5	7	Blackish brown	None	5.8	39.2	21.4	18.1	12.3	1.5	0.2	0.8	78.0	2.739	Gravel/sand	5.0	35	40.0
						2018/1/19	Sunny	15.3	0.2	9.4	6	Blackish brown	None	0.0	22.4	47.5	23.5	5.3	0.2	1.0	93.0	2.701	Gravel/sand	<4.1	12	12	
						2017/5/12	Sunny	28.3	1.5	24.2	10	Olive black	Faint swamp	0.0	0.0	0.4	1.8	11.2	70.0	16.7	20.5	3.327	Silt	91	550	641	
						2017/8/30	Cloudy	30.1	1.0	27.7	7	Black	Faint sewage	0.0	5.1	1.1	0.9	2.4	9.3	59.3	21.9	23.9	3.328	Silt	81	560	641
						2017/11/15	Sunny	15.2	1.2	15.1	7	Olive black	None	0.0	1.9	0.3	0.7	1.9	10.3	45.8	39.0	20.0	2.306	Silt	82	630	712
						2018/1/19	Cloudy	7.5	1.0	7.8	10	Olive black	None	0.0	4.3	0.3	0.2	1.5	6.9	45.0	41.8	18.4	2.273	Silt	110	770	880
47	Tonegawa River System	Watarase River Area	Tsurunda River	Lake Jomama	Takebayashi City	2017/5/12	Sunny	29.5	1.2	23.8	5	Olive black	None	0.0	0.0	0.0	0.0	8.2	25.7	51.1	15.0	20.5	2.395	Silt	24	180	204
						2017/8/30	Sunny	29.8	0.8	22.8	6	Black	Faint sewage	0.0	0.0	0.3	0.7	54.4	19.1	12.9	12.6	44.5	2.679	Silt	7.2	49	56.2
						2017/11/15	Sunny	16.4	1.3	16.1	8	Olive black	None	0.0	0.0	0.1	32.2	48.9	10.5	8.3	63.0	2.666	Sand/silt	<6.8	57	57	
						2018/1/19	Cloudy	6.2	1.2	10.5	8	Olive black	Faint sewage	0.0	0.1	0.1	0.4	40.5	50.3	3.5	5.2	69.0	2.782	Sand/silt	<5.3	22	22
						2017/5/12	Sunny	29.5	1.2	23.8	5	Olive black	None	0.0	0.0	0.0	0.0	8.2	25.7	51.1	15.0	20.5	2.395	Silt	24	180	204
						2017/8/30	Sunny	29.8	0.8	22.8	6	Black	Faint sewage	0.0	0.0	0.3	0.7	54.4	19.1	12.9	12.6	44.5	2.679	Silt	7.2	49	56.2
48	Tonegawa River System	Watarase River Area	Yatagawa River	Togoda Bridge	Meiwa Town /Itakura Town	2017/11/15	Sunny	16.4	1.3	16.1	8	Olive black	None	0.0	0.0	0.1	32.2	48.9	10.5	8.3	63.0	2.666	Sand/silt	<6.8	57	57	
						2018/1/19	Cloudy	6.2	1.2	10.5	8	Olive black	Faint sewage	0.0	0.1	0.1	0.4	40.5	50.3	3.5	5.2	69.0	2.782	Sand/silt	<5.3	22	22

Gunma River (Surrounding Environment) 1/5

No.	Location				Sampling Date	Weather	Air temperature (°C)	Surrounding Environment (Soil, Air dose)													Remarks						
	Water area	Location	Municipality	Left bank				Right bank			Color	Odor	Property	Activity concentration [Bq/kg(dry)]			Air Dose (μSv/h)	Color	Odor	Property		Activity concentration [Bq/kg(dry)]			Air Dose (μSv/h)		
				Color				Odor	Property	Radioactive cesium				Color	Odor	Property						Radioactive cesium					
										Cs-134												Cs-137	Total	Cs-134		Cs-137	Total
1	Tongawara River	Hirose Bridge	Minakami Town	2017/5/23	Sunny	25.8	Dull yellow orange	Faint earth	Loamy	12	90	102	0.09	Brown	Faint earth	Loamy	26	190	216	0.10							
				2017/8/3	Cloudy	22.0	Dark brown	Faint earth	Loamy	8.8	57	65.8	0.07	Dull yellowish brown	Faint earth	Loamy	22	260	282	0.07							
				2017/11/25	Cloudy	3.5	Dull yellowish brown	Faint earth	Loamy	5.3	56	61.3	0.09	Dark brown	Faint earth	Loamy	48	360	408	0.07							
				2018/1/15	Sunny	-5.6	Dark brown	Faint earth	Loamy	16	100	116	0.06	Dark brown	Faint earth	Loamy	7.1	78	85.1	0.06							
2	Tongawara River	Tsukiyono Bridge	Minakami Town	2017/5/18	Cloudy	17.7	Blackish brown	Faint earth	Loamy	29	220	249	0.05	Blackish brown	Faint earth	Loamy	190	1,400	1,590	0.06							
				2017/6/6	Sunny	26.5	Blackish brown	Faint earth	Loamy	53	360	413	0.06	Dull yellowish brown	Faint earth	Loamy	64	440	504	0.06							
				2017/7/3	Sunny	24.7	Blackish brown	Faint earth	Loamy	39	240	279	0.06	Blackish brown	Faint earth	Loamy	74	670	744	0.06							
				2017/8/22	Rain	23.2	Blackish brown	Faint earth	Loamy	17	120	137	0.04	Blackish brown	Faint earth	Loamy	130	1,100	1,230	0.05							
				2017/9/4	Cloudy	23.5	Blackish brown	Faint earth	Loamy	36	320	356	0.05	Blackish brown	Faint earth	Loamy	130	1,000	1,130	0.05							
				2017/11/25	Sunny	8.2	Blackish brown	Faint earth	Loamy	23	260	283	0.07	Blackish brown	Faint earth	Loamy	96	750	846	0.07							
				2018/1/15	Sunny	1.2	Blackish brown	Faint earth	Loamy	19	190	209	0.05	Blackish brown	Faint earth	Loamy	24	240	264	0.05							
				2017/5/18	Sunny	20.3	Black	Faint earth	Loamy	62	430	492	0.05	Blackish brown	Faint earth	Loamy	28	210	238	0.04							
3	Akaya River	Kosode Bridge		2017/8/22	Cloudy	24.3	Blackish brown	Faint earth	Loamy	15	110	125	0.05	Blackish brown	Faint earth	Loamy	30	210	240	0.04							
				2017/11/25	Sunny	9.5	Blackish brown	Faint earth	Loamy	17	82	99	0.06	Blackish brown	Faint earth	Loamy	19	180	199	0.05							
				2018/1/15	Sunny	2.3	Blackish brown	Faint earth	Loamy	24	230	254	0.05	Blackish brown	Faint earth	Loamy	21	210	231	0.04							
				2017/5/12	Sunny	22.9	Grayish yellowish brown	Faint earth	Loamy	130	950	1,080	0.13	Dull yellow orange	None	Loamy	360	2,500	2,860	0.11							
4	Sakura River	In Oouza Yachi	Kawaba Village	2017/6/6	Sunny	21.4	Dark brown	None	Loamy	190	1,300	1,490	0.13	Dark brown	Faint earth	Loamy	490	3,500	3,990	0.10							
				2017/7/3	Sunny	25.2	Blackish brown	Faint earth	Loamy	450	3,500	3,950	0.11	Blackish brown	Faint earth	Loamy	270	2,200	2,470	0.09							
				2017/8/4	Sunny	19.2	Blackish brown	Faint earth	Loamy	530	2,700	3,230	0.12	Blackish brown	Faint earth	Loamy	380	2,300	2,680	0.09							
				2017/9/4	Cloudy	20.7	Blackish brown	Faint earth	Loamy	650	5,200	5,850	0.11	Blackish brown	Faint earth	Loamy	420	3,200	3,620	0.09							
				2017/11/25	Sunny	8.5	Blackish brown	Faint earth	Loamy	110	1,100	1,210	0.11	Blackish brown	Faint earth	Loamy	320	2,600	2,920	0.09							
				2018/1/16	Sunny	4.0	Blackish brown	Faint earth	Loamy	130	1,100	1,230	0.05	Dark brown	Faint earth	Loamy	180	1,800	1,980	0.05							
				2017/5/31	Sunny	28.4	Grayish yellowish brown	None	Loamy	26	170	196	0.07	Dark brown	Faint earth	Loamy	43	280	323	0.07							
				2017/8/16	Cloudy	20.2	Grayish yellowish brown	Faint earth	Loamy	42	350	392	0.06	Dark brown	Faint earth	Loamy	98	780	878	0.07							
5	Tongawara River System	Tongawara River Area	Katashina Village	2017/11/15	Cloudy	12.4	Blackish brown	Faint earth	Loamy	42	350	392	0.07	Blackish brown	Faint earth	Loamy	94	830	924	0.06							
				2018/1/15	Sunny	3.8	-	-	-	-	-	-	0.04	-	-	-	-	-	-	0.04	Unable to collect samples due to snow on the ground						
				2017/5/31	Sunny	28.1	Dark grayish yellow	None	Sandy	<4.4	16	16	0.05	Brown	Faint earth	Sandy	7.3	41	48.3	0.06							
				2017/6/16	Sunny	26.4	Yellowish brown	None	Sandy	10	130	140	0.06	Dull yellowish brown	Faint earth	Sandy	9.8	49	58.8	0.07							
				2017/7/3	Sunny	28.3	Olive brown	None	Sandy	5.0	29	34.0	0.06	Brown	Faint earth	Sandy	7.7	37	44.7	0.07							
				2017/8/16	Cloudy	21.3	Dark grayish yellow	Faint earth	Sandy	<4.7	19	19	0.06	Brown	Faint earth	Loamy	7.3	70	77.3	0.07							
				2017/9/4	Cloudy	22.1	Dark brown	None	Sandy	<7.3	49	49	0.06	Brown	Faint earth	Sandy	6.4	71	77.4	0.06							
				2017/11/15	Sunny	15.6	Dark grayish yellow	None	Sandy	<6.9	19	19	0.05	Grayish yellowish brown	Faint earth	Sandy	<10	63	63	0.07							
				2018/1/15	Sunny	5.1	Grayish yellowish brown	None	Sandy	<8.1	17	17	0.04	Grayish yellowish brown	Faint earth	Loamy	15	110	125	0.05							
				2017/5/18	Cloudy	17.5	Blackish brown	Faint earth	Loamy	110	660	770	0.05	Dark brown	Faint earth	Loamy	53	380	433	0.05							
				2017/6/6	Sunny	25.4	Brown	None	Loamy	79	580	659	0.05	Dull yellowish brown	None	Loamy	16	150	166	0.05							
				2017/7/3	Sunny	31.2	Blackish brown	Faint earth	Loamy	78	650	728	0.05	Blackish brown	Faint earth	Loamy	42	310	352	0.05							
2017/8/23	Cloudy	30.4	Blackish brown	Faint earth	Loamy	110	970	1,080	0.04	Dark brown	Faint earth	Loamy	38	300	338	0.05											
2017/9/4	Sunny	26.3	Blackish brown	Faint earth	Loamy	100	800	900	0.04	Dark brown	Faint earth	Loamy	54	430	484	0.05											
2017/11/7	Sunny	10.2	Blackish brown	None	Loamy	52	470	522	0.04	Blackish brown	None	Loamy	52	470	522	0.05											
2018/1/16	Sunny	11.0	Blackish brown	Faint earth	Loamy	54	490	544	0.04	Blackish brown	Faint earth	Loamy	120	1,000	1,120	0.05											
8	Agatsuma River	Shinto Bridge	Naganohara Town	2017/5/30	Sunny	22.8	Blackish brown	Faint earth	Loamy	27	290	317	0.04	Blackish brown	None	Loamy	10	74	84	0.05							
				2017/8/28	Cloudy	27.7	Blackish brown	Faint earth	Loamy	110	900	1,010	0.04	Blackish brown	None	Loamy	5.7	51	56.7	0.04							
				2017/11/21	Sunny	7.4	Blackish brown	Faint earth	Loamy	100	980	1,080	0.04	Blackish brown	Faint earth	Loamy	19	210	229	0.04							
				2018/1/16	Sunny	4.5	Blackish brown	Faint earth	Loamy	66	580	646	0.04	Blackish brown	Faint earth	Loamy	7.6	50	57.6	0.04							
9	Shirasuna River	Shuttatsu Bridge	Nakanajo Town	2017/5/30	Sunny	19.2	Blackish brown	Faint earth	Loamy	28	230	258	0.04	Blackish brown	None	Loamy	24	120	144	0.04							
				2017/8/28	Sunny	27.2	Blackish brown	Faint earth	Loamy	290	1,900	2,190	0.04	Blackish brown	None	Loamy	160	1,400	1,560	0.04							
				2017/11/21	Sunny	4.2	Blackish brown	Faint earth	Loamy	41	410	451	0.04	Blackish brown	Faint earth	Loamy	64	570	634	0.04							
				2018/1/16	Sunny	6.8	Blackish brown	Faint earth	Loamy	120	880	1,000	0.04	Blackish brown	Faint earth	Loamy	24	230	254	0.04							

Gunma River (Surrounding Environment) 2/5

R i v e r s	Location				Sampling Date	Weather	Air temperature (°C)	Surrounding Environment (Soil, Air dose)											Remarks		
	No.	Water area		Municipality				Left bank				Right bank				Air Dose (μSv/h)					
		Color	Odor					Property	Activity concentration [Bq/kg(dry)]			Color	Odor	Property	Activity concentration [Bq/kg(dry)]						
									Radioactive cesium						Radioactive cesium						
				Cs-134	Cs-137	Total				Cs-134	Cs-137	Total									
10	Agatsuma River	Downstream of Azuma Bridge	Higashi-Agatsuma Town	2017/5/19	Sunny	18.6	Grayish yellowish brown	None	Sandy	-4.8	13	13	0.04	Blackish brown	Faint earth	Loamy	40	320	360	0.04	
				2017/6/8	Sunny	22.0	Dull yellowish brown	None	Loamy	<4.1	8.1	8.1	0.04	Blackish brown	Faint earth	Loamy	50	400	450	0.04	
				2017/7/4	Cloudy	25.2	Grayish yellowish brown	Faint earth	Loamy	<4.1	7.1	7.1	0.04	Blackish brown	Faint earth	Loamy	49	420	469	0.05	
				2017/8/23	Sunny	22.9	Grayish yellowish brown	None	Sandy	<5.0	7.2	7.2	0.04	Blackish brown	Faint earth	Loamy	23	210	233	0.04	
				2017/9/7	Cloudy	24.0	Grayish yellowish brown	None	Sandy	<3.7	5.1	5.1	0.04	Blackish brown	Faint earth	Loamy	24	150	174	0.04	
				2017/11/22	Sunny	5.1	Grayish yellowish brown	None	Sandy	<4.1	4.8	4.8	0.04	Blackish brown	Faint earth	Loamy	94	870	964	0.04	
				2018/1/16	Sunny	10.7	Grayish yellowish brown	None	Sandy	<6.4	19	19	0.04	Blackish brown	Faint earth	Loamy	58	520	578	0.04	
				2017/5/18	Sunny	19.5	Blackish brown	Faint earth	Loamy	50	370	420	0.04	Dark brown	Faint earth	Loamy	14	80	94	0.04	
				2017/8/23	Sunny	30.4	Blackish brown	Faint earth	Loamy	85	590	675	0.04	Dark brown	Faint earth	Loamy	20	140	160	0.04	
				2017/11/22	Sunny	6.5	Blackish brown	Faint earth	Loamy	90	690	780	0.04	Dull yellowish brown	Faint earth	Loamy	13	110	123	0.04	
	11	Nakuta River	Tonoda Bridge	Takayama Village	2018/1/16	Sunny	11.8	Blackish brown	Faint earth	Loamy	42	310	352	0.04	Dark brown	Faint earth	Loamy	11	110	121	0.04
					2017/5/18	Sunny	23.2	Blackish brown	Faint earth	Loamy	34	350	384	0.04	Blackish brown	Faint earth	Loamy	140	1,000	1,140	0.04
	12	Agatsuma River	Agatsuma Bridge	Shibukawa City	2017/6/8	Sunny	22.0	Grayish yellowish brown	Faint earth	Loamy	91	590	681	0.04	Blackish brown	Faint earth	Loamy	160	1,100	1,260	0.04
					2017/7/4	Rain	25.4	Blackish brown	Faint earth	Loamy	120	860	980	0.04	Blackish brown	Faint earth	Loamy	130	980	1,110	0.04
					2017/8/22	Cloudy	33.2	Blackish brown	Faint earth	Loamy	55	420	475	0.04	Blackish brown	Faint earth	Loamy	150	1,200	1,350	0.04
					2017/9/7	Cloudy	23.6	Blackish brown	Faint earth	Loamy	98	780	878	0.04	Blackish brown	Faint earth	Loamy	160	1,200	1,360	0.04
					2017/11/7	Sunny	12.4	Blackish brown	None	Loamy	38	320	358	0.04	Blackish brown	None	Loamy	58	490	548	0.04
					2018/1/15	Sunny	5.2	Blackish brown	Faint earth	Loamy	160	1,400	1,560	0.04	Blackish brown	Faint earth	Loamy	150	1,400	1,550	0.04
					2017/5/18	Sunny	20.7	Dark brown	Faint earth	Loamy	43	300	343	0.04	Blackish brown	Faint earth	Loamy	100	680	780	0.04
					2017/6/8	Sunny	22.0	Dull yellowish brown	Faint earth	Loamy	54	430	484	0.04	Blackish brown	None	Loamy	680	5,000	5,680	0.05
					2017/7/4	Cloudy	26.2	Dark brown	Faint earth	Loamy	54	510	564	0.06	Blackish brown	Faint earth	Loamy	500	3,600	4,100	0.04
2017/8/22					Sunny	37.4	Dark brown	Faint earth	Loamy	46	430	476	0.04	Blackish brown	Faint earth	Loamy	410	3,200	3,610	0.04	
13	Tonegawa River	Taisho Bridge	Shibukawa City	2017/9/7	Cloudy	23.2	Dark brown	Faint earth	Loamy	63	450	513	0.04	Blackish brown	Faint earth	Loamy	260	2,200	2,460	0.04	
				2017/11/7	Sunny	18.4	Dull yellowish brown	None	Loamy	40	320	360	0.04	Dull yellowish brown	None	Loamy	50	440	490	0.04	
				2018/1/15	Sunny	3.8	Dull yellowish brown	None	Loamy	34	350	384	0.04	Grayish yellowish brown	None	Loamy	670	5,900	6,570	0.04	
				2017/5/18	Cloudy	16.1	Dark brown	Faint earth	Loamy	27	230	257	0.04	Dull yellowish brown	Faint earth	Loamy	43	290	333	0.04	
				2017/8/22	Cloudy	29.7	Dark brown	Faint earth	Loamy	120	830	950	0.04	Dull yellowish brown	Faint earth	Loamy	18	130	148	0.04	
				2017/11/7	Sunny	22.7	Dull yellowish brown	None	Loamy	24	200	224	0.04	Dull yellowish brown	None	Loamy	15	130	145	0.04	
				2018/1/15	Sunny	1.0	Grayish yellowish brown	None	Loamy	42	430	472	0.04	Grayish yellowish brown	Faint earth	Loamy	26	190	216	0.04	
				2017/5/8	Sunny	22.2	Dull yellowish brown	None	Loamy	7.5	58	65.5	0.04	Dull yellowish brown	None	Loamy	11	90	101	0.04	
				2017/8/1	Cloudy	30.4	Dull yellowish brown	Faint earth	Loamy	<6.2	22	22	0.04	Dull yellowish brown	Faint earth	Loamy	7.8	73	80.8	0.04	
				2017/11/14	Sunny	10.1	Dull yellowish brown	Faint earth	Loamy	<9.3	20	20	0.04	Dark brown	Faint earth	Loamy	38	420	458	0.04	
14	Takizawa River	Shintakizawa Bridge	Shibukawa City/Yoshioka Town	2018/1/17	Cloudy	6.8	Yellowish brown	None	Loamy	<5.8	11	11	0.04	Dull yellowish brown	None	Loamy	13	88	101	0.04	
				2017/5/15	Cloudy	16.8	Dull yellowish brown	Faint earth	Loamy	11	62	73	0.04	Grayish yellowish brown	Faint earth	Loamy	10	67	77	0.04	
				2017/8/1	Cloudy	28.4	Dull yellowish brown	Faint earth	Loamy	9.1	70	79.1	0.04	Blackish brown	Faint earth	Loamy	6.9	74	80.9	0.04	
				2017/11/7	Sunny	15.4	Dark brown	Faint earth	Loamy	12	65	77	0.04	Blackish brown	Faint earth	Loamy	<10	57	57	0.04	
				2018/1/25	Sunny	3.8	Dark brown	Faint earth	Loamy	8.0	45	53.0	0.04	Blackish brown	Faint earth	Loamy	12	87	99	0.04	
15	Tonegawa River	Gunma-ohashi Bridge	Maebashi City	2017/5/30	Sunny	27.6	Blackish brown	None	Loamy	78	460	538	0.04	Blackish brown	None	Loamy	38	380	418	0.05	
				2017/8/28	Sunny	28.4	Dark brown	Faint earth	Loamy	61	550	611	0.05	Blackish brown	None	Loamy	40	340	380	0.04	
				2017/11/9	Sunny	15.7	Dark brown	None	Loamy	120	1,200	1,320	0.05	Blackish brown	None	Loamy	85	740	825	0.05	
				2018/1/22	Cloudy	3.6	Blackish brown	Faint earth	Loamy	88	720	808	0.04	Black	Faint earth	Loamy	31	370	401	0.05	
				2017/5/30	Sunny	28.6	Dark brown	Faint earth	Loamy	28	220	248	0.04	Dark brown	None	Loamy	22	170	192	0.06	
16	Tonegawa River	Fukushima Bridge	Tamamura Town	2017/8/28	Sunny	30.6	Blackish brown	None	Loamy	62	500	562	0.04	Grayish yellowish brown	None	Loamy	34	260	294	0.04	
				2017/11/9	Sunny	16.4	Blackish brown	None	Loamy	<5.9	28	28	0.04	Grayish yellowish brown	None	Loamy	28	250	278	0.05	
				2018/1/22	Cloudy	4.5	Blackish brown	Faint earth	Loamy	22	230	252	0.04	Dull yellowish brown	Faint earth	Loamy	31	240	271	0.05	
				2017/5/15	Cloudy	15.5	Dull yellowish brown	None	Loamy	29	280	309	0.05	Grayish yellowish brown	None	Loamy	39	320	359	0.05	
				2017/11/9	Sunny	15.7	Dull yellowish brown	Faint earth	Loamy	34	260	294	0.05	Blackish brown	None	Loamy	160	1,200	1,360	0.05	
17	Nagai River	Kamigonda Bridge	Takasaki City	2018/1/22	Cloudy	3.2	Dark brown	Faint earth	Loamy	79	710	789	0.05	Dark brown	Faint earth	Loamy	60	620	680	0.06	
				2017/5/30	Sunny	27.6	Blackish brown	None	Loamy	78	460	538	0.04	Blackish brown	None	Loamy	38	380	418	0.05	
				2017/8/28	Sunny	28.4	Dark brown	Faint earth	Loamy	61	550	611	0.05	Blackish brown	None	Loamy	40	340	380	0.04	
				2017/11/9	Sunny	15.7	Dark brown	None	Loamy	120	1,200	1,320	0.05	Blackish brown	None	Loamy	85	740	825	0.05	
				2018/1/22	Cloudy	3.6	Blackish brown	Faint earth	Loamy	88	720	808	0.04	Black	Faint earth	Loamy	31	370	401	0.05	
18	Karasu River Area	Karasugawa Bridge	Takasaki City	2017/5/30	Sunny	28.6	Dark brown	Faint earth	Loamy	28	220	248	0.04	Dark brown	None	Loamy	22	170	192	0.06	
				2017/8/28	Sunny	30.6	Blackish brown	None	Loamy	62	500	562	0.04	Grayish yellowish brown	None	Loamy	34	260	294	0.04	
				2017/11/9	Sunny	16.4	Blackish brown	None	Loamy	<5.9	28	28	0.04	Grayish yellowish brown	None	Loamy	28	250	278	0.05	
				2018/1/22	Cloudy	4.5	Blackish brown	Faint earth	Loamy	22	230	252	0.04	Dull yellowish brown	Faint earth	Loamy	31	240	271	0.05	
				2017/5/15	Cloudy	15.5	Dull yellowish brown	None	Loamy	29	280	309	0.05	Grayish yellowish brown	None	Loamy	39	320	359	0.05	
19	Utsu River	Nakase Bridge	Armaka City	2017/11/9	Sunny	15.7	Dull yellowish brown	Faint earth	Loamy	34	260	294	0.05	Blackish brown	None	Loamy	160	1,200	1,360	0.05	
				2017/8/28	Sunny	28.4	Dark brown	None	Loamy	63	440	503	0.05	Grayish yellowish brown	None	Loamy	39	320	359	0.05	
				2018/1/22	Cloudy	3.2	Dark brown	Faint earth	Loamy	79	710	789	0.05	Dark brown	Faint earth	Loamy	60	620	680	0.06	

Gunma River (Surrounding Environment) 3/5

No.	Location				Sampling Date	Weather	Air temperature (°C)	Surrounding Environment (Soil, Air dose)														Remarks
	Water area	Location	Municipality	Left bank						Right bank												
				Color				Odor	Property	Activity concentration [Bq/kg(dry)]			Air Dose (μSv/h)	Color	Odor	Property	Activity concentration [Bq/kg(dry)]			Air Dose (μSv/h)		
										Radioactive cesium							Radioactive cesium					
							Cs-134	Cs-137	Total		Cs-134	Cs-137	Total									
R i v e r s	Tonegawa River System	Karasu River Area	Usui River	Hanataka Bridge	Takasaki City	2017/5/17	Cloudy	18.1	Dark brown	Faint earth	Loamy	24	170	194	0.04	Dark brown	Faint earth	Loamy	33	280	313	0.04
						2017/8/28	Sunny	31.2	Dull yellowish brown	None	Loamy	25	220	245	0.04	Grayish yellowish brown	None	Loamy	21	200	221	0.04
						2017/11/9	Sunny	15.3	Dull yellowish brown	None	Loamy	30	240	270	0.04	Dark brown	None	Loamy	25	210	235	0.04
			Kabura River	Tadakawa Bridge	Shimonita Town	2018/1/22	Cloudy	4.2	Dull yellowish brown	Faint earth	Loamy	31	270	301	0.04	Dark brown	Faint earth	Loamy	26	300	326	0.04
						2017/5/15	Cloudy	16.2	Brown	None	Loamy	15	97	112	0.06	Brown	None	Loamy	15	92	107	0.07
						2017/8/7	Cloudy	29.3	Grayish yellowish brown	None	Loamy	16	110	126	0.05	Dull yellowish brown	None	Loamy	14	120	134	0.06
						2017/11/9	Sunny	17.1	Brown	None	Loamy	23	200	223	0.06	Brownish gray	None	Loamy	29	260	289	0.06
						2018/1/26	Sunny	1.2	Grayish yellowish brown	None	Loamy	20	190	210	0.05	Brownish gray	None	Loamy	53	490	543	0.06
						2017/5/17	Cloudy	19.0	Brown	Faint earth	Loamy	<6.7	31	31	0.04	Brown	Faint earth	Loamy	<5.5	35	35	0.04
			Ogawa River	Kinzan Bridge	Kanra Town	2017/8/22	Cloudy	29.2	Dull yellowish brown	Faint earth	Loamy	16	160	176	0.04	Dull yellowish brown	Faint earth	Loamy	<3.6	14	14	0.04
						2017/11/7	Sunny	21.8	Dull yellowish brown	Faint earth	Loamy	11	96	107	0.04	Blackish brown	Faint earth	Loamy	<7.0	8.5	8.5	0.04
						2018/1/25	Sunny	2.4	Dull yellowish brown	Faint earth	Loamy	12	130	142	0.04	Dull yellowish brown	Faint earth	Loamy	7.3	53	60.3	0.04
			Nanmoku River	Ozawa Bridge	Nanmoku Village	2017/5/15	Rain	17.1	Blackish brown	None	Loamy	25	140	165	0.04	Grayish yellowish brown	None	Loamy	40	290	330	0.05
						2017/8/29	Sunny	32.7	Blackish brown	None	Loamy	11	60	71	0.04	Blackish brown	None	Loamy	18	160	178	0.04
						2017/11/9	Sunny	17.3	Blackish brown	None	Loamy	14	99	113	0.04	Grayish yellowish brown	None	Loamy	33	270	303	0.04
						2018/1/26	Sunny	4.3	Brownish gray	Faint earth	Loamy	26	140	166	0.04	Dark brown	Faint earth	Loamy	30	230	260	0.04
		Someya River	Yakushi Bridge	Shinto Village	2017/5/16	Sunny	19.1	Brown	None	Loamy	52	360	412	0.04	Blackish brown	None	Loamy	37	250	287	0.05	
					2017/8/7	Cloudy	28.6	Dull yellowish brown	None	Loamy	26	220	246	0.04	Blackish brown	None	Loamy	92	730	822	0.04	
					2017/11/10	Sunny	7.4	Brown	None	Loamy	42	290	332	0.05	Blackish brown	None	Loamy	48	380	428	0.05	
		Inogawa River	Kamakura Bridge	Takasaki City	2018/1/26	Sunny	-3.2	Dull yellowish brown	Faint earth	Loamy	61	520	581	0.04	Dark brown	Faint earth	Loamy	110	910	1,020	0.05	
					2017/5/18	Cloudy	16.4	Blackish brown	Faint earth	Loamy	40	350	390	0.04	Dark brown	Faint earth	Loamy	14	150	164	0.04	
					2017/8/22	Cloudy	27.2	Blackish brown	Faint earth	Loamy	31	230	261	0.04	Dark brown	Faint earth	Loamy	9.6	80	89.6	0.04	
		Karasu River	Iwakura Bridge	Takasaki City/Tamamura Town	2017/11/7	Sunny	21.9	Blackish brown	None	Loamy	30	210	240	0.04	Blackish brown	None	Loamy	20	190	210	0.04	
					2018/1/15	Sunny	-0.8	Brownish gray	None	Loamy	18	200	218	0.04	Brown	None	Loamy	16	150	166	0.04	
					2017/5/15	Cloudy	17.9	Blackish brown	Faint earth	Loamy	13	66	79	0.04	Blackish brown	Faint earth	Loamy	7.9	83	90.9	0.04	
					2017/8/22	Sunny	32.5	Blackish brown	Faint earth	Loamy	19	120	139	0.04	Blackish brown	Faint earth	Loamy	11	120	131	0.05	
					2017/11/7	Sunny	15.8	Blackish brown	Faint earth	Loamy	8.1	54	62.1	0.04	Blackish brown	Faint earth	Loamy	18	170	188	0.04	
		Kanna River	Morito Bridge	Kanna Town	2018/1/25	Sunny	3.6	Blackish brown	Faint earth	Loamy	8.8	66	74.8	0.04	Blackish brown	Faint earth	Loamy	15	120	135	0.05	
					2017/5/15	Cloudy	17.5	Dark brown	Faint earth	Loamy	15	130	145	0.04	Dark brown	Faint earth	Loamy	15	110	125	0.05	
					2017/8/22	Sunny	29.8	Dull yellowish brown	Faint earth	Loamy	16	120	136	0.04	Dark brown	Faint earth	Loamy	11	110	121	0.04	
					2017/11/7	Sunny	18.2	Dark brown	Faint earth	Loamy	9.7	85	94.7	0.04	Dark brown	Faint earth	Loamy	10	120	130	0.04	
		Tobukyo Bridge	Fujioka City/Kamisato Town	Kamisato Town	2018/1/25	Sunny	3.4	Dark brown	Faint earth	Loamy	16	150	166	0.04	Dark brown	Faint earth	Loamy	11	76	87	0.04	
2017/5/16	Sunny				19.2	Dull yellowish brown	None	Loamy	88	690	778	0.05	Dull yellowish brown	None	Loamy	28	200	228	0.05			
2017/11/10	Sunny				9.7	Brown	Faint earth	Loamy	55	500	555	0.06	Blackish brown	Faint earth	Loamy	56	380	436	0.06			
Kannugawa Bridge	Kamisato Town	Kamisato Town	2017/5/16	Sunny	21.3	Dark brown	None	Loamy	29	170	199	0.05	Brownish gray	None	Sandy	<4.3	8.9	8.9	0.04			
			2017/11/10	Sunny	10.2	Brown	None	Loamy	13	99	112	0.05	Brownish gray	None	Sandy	<6.2	12	12	0.05			
Tonegawa River Area	Tonegawa River	Bando-obashi Bridge	Honjo City	2017/5/15	Cloudy	17.6	Dark brown	Faint earth	Loamy	8.2	75	83.2	0.05	Dark brown	Faint earth	Loamy	27	160	187	0.04		
				2017/11/7	Sunny	20.7	Blackish brown	Faint earth	Loamy	20	120	140	0.04	Grayish olive	Faint earth	Loamy	13	110	123	0.04		
				2017/5/15	Cloudy	18.2	Blackish brown	Faint earth	Loamy	12	81	93	0.04	Blackish brown	Faint earth	Loamy	7.5	72	79.5	0.05		
				2017/11/7	Sunny	18.8	Blackish brown	Faint earth	Loamy	8.9	63	71.9	0.04	Blackish brown	Faint earth	Loamy	12	84	96	0.04		
				2017/5/9	Cloudy	22.5	Dull yellowish brown	None	Loamy	12	88	100	0.04	Grayish yellowish brown	None	Loamy	9.4	50	59.4	0.05		
2017/8/26	Cloudy	24.5	Dark brown	Faint earth	Loamy	19	130	149	0.04	Dull yellowish brown	Faint earth	Loamy	23	220	243	0.05						
2017/11/16	Sunny	14.2	Dull yellowish brown	Faint earth	Loamy	13	84	97	0.05	Dark brown	Faint earth	Loamy	11	110	121	0.04						
2018/1/19	Sunny	10.8	Brown	Faint earth	Loamy	10	88	98	0.04	Dark brown	Faint earth	Loamy	9.7	74	83.7	0.04						

Gunma River (Surrounding Environment) 4/5

Location				Sampling Date	Weather	Air temperature (°C)	Surrounding Environment (Soil, Air dose)													Remarks		
No.	Water area	Location	Municipality				Left bank						Right bank									
							Color	Odor	Property	Activity concentration [Bq/kg(dry)]			Air Dose (μSv/h)	Color	Odor	Property	Activity concentration [Bq/kg(dry)]				Air Dose (μSv/h)	
Cs-134	Cs-137	Total	Cs-134	Cs-137	Total																	
R i v e r s	Tonegawa River Area	Akagishirakawa River	In Shimobosoi Town	Machibashi City	2017/5/8	Sunny	24.1	Grayish yellowish brown	None	Loamy	7.9	64	71.9	0.04	Dull yellowish brown	None	Loamy	4.8	47	51.8	0.04	
					2017/8/1	Cloudy	31.0	Blackish brown	Faint earth	Loamy	8.2	78	86.2	0.05	Dark brown	Faint earth	Loamy	<5.0	14	14	0.04	
					2017/11/14	Cloudy	13.7	Blackish brown	Faint earth	Loamy	12	100	112	0.04	Dark brown	Faint earth	Loamy	<8.2	66	66	0.04	
					2018/1/15	Sunny	8.7	Dark brown	Faint earth	Loamy	16	130	146	0.05	Dark brown	Faint earth	Loamy	<5.8	18	18	0.04	
					2017/5/8	Sunny	26.4	Dull yellowish brown	None	Loamy	6.8	39	45.8	0.04	Dull yellowish brown	None	Loamy	22	130	152	0.04	
		34	Momonoki River	Utsuboi Bridge	Machibashi City	2017/8/1	Rain	28.3	Brown	Faint earth	Loamy	7.5	65	72.5	0.04	Brown	Faint earth	Loamy	35	210	245	0.04
						2017/11/14	Cloudy	15.2	Dark brown	Faint earth	Loamy	17	110	127	0.04	Blackish brown	Faint earth	Loamy	14	120	134	0.04
						2018/1/17	Cloudy	7.7	Grayish yellowish brown	None	Loamy	8.3	58	66.3	0.04	Dull yellowish brown	None	Loamy	10	94	104	0.04
						2017/5/8	Sunny	26.5	Grayish yellowish brown	None	Loamy	<5.1	33	33	0.04	Grayish yellowish brown	None	Loamy	8.5	41	49.5	0.04
						2017/8/1	Rain	26.3	Grayish yellowish brown	Faint earth	Loamy	<5.2	32	32	0.04	Dark brown	Faint earth	Loamy	13	88	101	0.04
	35	Arato River	Okuhara Bridge	Machibashi City	2017/11/14	Rain	14.7	Dark brown	Faint earth	Loamy	<7.0	31	31	0.04	Dark brown	Faint earth	Loamy	13	120	133	0.04	
					2018/1/17	Sunny	8.3	Brown	None	Loamy	<3.0	3.1	3.1	0.04	Grayish yellowish brown	None	Loamy	<8.7	21	21	0.04	
					2017/5/9	Cloudy	22.2	Grayish yellowish brown	None	Loamy	9.6	81	90.6	0.04	Dull yellowish brown	None	Loamy	8.7	50	58.7	0.04	
					2017/8/26	Cloudy	28.3	Dull yellowish brown	Faint earth	Loamy	15	89	104	0.05	Dull yellowish brown	Faint earth	Loamy	9.3	71	80.3	0.04	
					2017/11/16	Sunny	14.1	Dark brown	Faint earth	Loamy	11	140	151	0.04	Dull yellowish brown	Faint earth	Loamy	8.2	49	57.2	0.04	
	36	Kasukawa River	Hozumi Bridge	Iseaki City	2018/1/17	Cloudy	10.3	Dull yellowish brown	None	Loamy	8.0	110	118.0	0.04	Dull yellowish brown	Faint earth	Loamy	<5.8	27	27	0.04	
					2017/5/9	Cloudy	21.0	Dull yellowish brown	None	Loamy	11	63	74	0.04	Grayish yellowish brown	None	Loamy	34	230	264	0.05	
					2017/8/26	Sunny	31.4	Brown	Faint earth	Loamy	26	160	186	0.04	Brown	Faint earth	Loamy	37	230	267	0.06	
					2017/11/16	Sunny	15.8	Dark brown	Faint earth	Loamy	13	96	109	0.05	Dull yellowish brown	Faint earth	Loamy	19	130	149	0.05	
					2018/1/19	Sunny	9.8	Dark brown	Faint earth	Loamy	14	110	124	0.04	Dull yellowish brown	Faint earth	Loamy	15	150	165	0.04	
37	Hirose River	Nakajima Bridge	Iseaki City	2017/5/8	Sunny	29.3	Dull yellowish brown	None	Loamy	14	110	124	0.04	Dull yellowish brown	None	Loamy	23	130	153	0.04		
				2017/8/1	Rain	25.8	Brown	Faint earth	Loamy	13	78	91	0.05	Brown	Faint earth	Loamy	19	160	179	0.05		
				2017/11/14	Cloudy	15.2	Brown	Faint earth	Loamy	17	140	157	0.04	Brown	Faint earth	Loamy	31	240	271	0.04		
				2018/1/17	Cloudy	11.0	Brown	None	Loamy	15	100	115	0.04	Brown	None	Loamy	22	220	242	0.04		
				2017/5/9	Cloudy	20.5	Dull yellowish brown	None	Loamy	23	150	173	0.04	Dull yellow orange	None	Loamy	32	240	272	0.04		
38	Hayakawa River	Hayakawa Bridge	Iseaki City	2017/8/26	Sunny	33.3	Brown	Faint earth	Loamy	19	170	189	0.05	Dull yellowish brown	Faint earth	Loamy	9.0	91	100.0	0.06		
				2017/11/16	Sunny	15.4	Dull yellow orange	None	Loamy	8.0	93	101.0	0.04	Dull yellowish brown	None	Loamy	12	110	122	0.05		
				2018/1/19	Sunny	8.7	Brown	Faint earth	Loamy	8.2	86	94.2	0.04	Grayish yellowish brown	Faint earth	Loamy	13	110	123	0.04		
				2017/5/9	Sunny	20.1	Dull yellow orange	None	Loamy	28	190	218	0.05	Dull yellow orange	None	Loamy	13	87	100	0.04		
				2017/8/1	Sunny	26.0	Brown	None	Loamy	18	150	168	0.04	Brown	None	Loamy	<4.9	10	10	0.04		
39	Tonegawa River System	Tonegawa River	Tone-ozeki Weir	Chiyoda Town / Gyoda City	2017/7/4	Cloudy	29.2	Dull yellowish brown	Faint earth	Loamy	23	240	263	0.05	Dark brown	Faint earth	Loamy	24	150	174	0.05	
					2017/8/26	Sunny	34.1	Dark brown	Faint earth	Loamy	20	160	180	0.04	Dark brown	Faint earth	Loamy	24	150	174	0.04	
					2017/9/7	Cloudy	24.8	Blackish brown	Faint earth	Loamy	25	220	245	0.04	Dark brown	Faint earth	Loamy	14	120	134	0.04	
					2017/11/16	Sunny	17.2	Blackish brown	Faint earth	Loamy	15	200	215	0.04	Dark brown	Faint earth	Loamy	10	57	67	0.04	
					2018/1/19	Sunny	6.8	Dark brown	Faint earth	Loamy	20	120	140	0.04	Dark brown	Faint earth	Loamy	29	220	249	0.04	
40	Tonegawa River	Tone-ozeki Weir	Chiyoda Town / Gyoda City	2017/5/11	Sunny	17.7	Blackish brown	Faint earth	Loamy	110	790	900	0.09	Blackish brown	Faint earth	Loamy	77	550	627	0.08		
				2017/6/13	Cloudy	13.2	Blackish brown	Faint earth	Loamy	13	160	173	0.09	Blackish brown	Faint earth	Loamy	48	320	368	0.07		
				2017/7/6	Sunny	22.2	Blackish brown	Faint earth	Loamy	47	420	467	0.09	Blackish brown	Faint earth	Loamy	15	140	155	0.07		
				2017/8/3	Cloudy	20.3	Blackish brown	Faint earth	Loamy	310	1900	2,210	0.09	Blackish brown	Faint earth	Loamy	120	740	860	0.07		
				2017/9/12	Cloudy	20.8	Blackish brown	Faint earth	Loamy	99	830	929	0.06	Dull yellowish brown	Faint earth	Loamy	32	310	342	0.08		
41	Koguro River	Kayano Bridge	Kiryu City	2017/11/20	Cloudy	4.7	Dark brown	Faint earth	Loamy	220	1,700	1,920	0.07	Blackish brown	Faint earth	Loamy	85	710	795	0.07		
				2018/1/19	Sunny	4.2	Blackish brown	Faint earth	Loamy	82	830	912	0.08	Blackish brown	Faint earth	Loamy	70	610	680	0.07		
				2017/5/11	Sunny	27.2	Dark brown	None	Loamy	12	120	132	0.05	Dull yellow orange	None	Loamy	<6.3	32	32	0.05		
				2017/8/29	Cloudy	32.4	Blackish brown	Faint earth	Loamy	20	160	180	0.04	Dull yellowish brown	Faint earth	Loamy	<5.5	27	27	0.04		
				2017/11/20	Cloudy	9.2	Dark brown	Faint earth	Loamy	33	310	343	0.05	Brown	Faint earth	Loamy	24	170	194	0.04		
42	Watarase River Area	Watarase River	Intake for Akaiwayosui water channel	Kiryu City	2018/1/19	Sunny	10.4	Blackish brown	Faint earth	Loamy	8.6	66	74.6	0.06	Dull yellowish brown	Faint earth	Loamy	<6.8	69	69	0.06	
					2017/5/11	Sunny	27.1	Brown	None	Loamy	<6.5	13	13	0.04	Blackish brown	None	Loamy	24	160	184	0.05	
					2017/6/13	Cloudy	18.2	Dull yellowish brown	Faint earth	Loamy	<3.5	14	14	0.05	Blackish brown	Faint earth	Loamy	11	85	96	0.06	
					2017/7/6	Sunny	30.2	Brown	Faint earth	Sandy	<5.5	21	21	0.04	Blackish brown	Faint earth	Loamy	16	110	126	0.06	
					2017/8/29	Sunny	31.8	Dull yellowish brown	Faint earth	Loamy	<4.4	12	12	0.04	Blackish brown	Faint earth	Loamy	49	390	439	0.05	
43	Tatara River	Ejiri Bridge	Oura Town	2017/9/12	Cloudy	22.3	Dull yellowish brown	Faint earth	Loamy	5.7	34	39.7	0.04	Blackish brown	Faint earth	Loamy	23	160	183	0.04		
				2017/11/20	Sunny	10.2	Dull yellowish brown	Faint earth	Loamy	<7.6	18	18	0.04	Dark brown	Faint earth	Loamy	24	180	204	0.05		
				2018/1/19	Sunny	13.2	Dull yellowish brown	Faint earth	Loamy	<8.1	13	13	0.04	Blackish brown	Faint earth	Loamy	36	280	316	0.05		
				2017/5/12	Sunny	23.3	Dark brown	None	Loamy	30	300	330	0.04	Dull yellowish brown	None	Loamy	21	130	151	0.04		
				2017/8/30	Cloudy	29.1	Blackish brown	Faint earth	Loamy	41	360	401	0.04	Dark brown	Faint earth	Loamy	14	130	144	0.04		
44	Tatara River	Ejiri Bridge	Oura Town	2017/11/20	Cloudy	3.3	Blackish brown	Faint earth	Loamy	60	450	510	0.05	Dull yellowish brown	Faint earth	Loamy	21	160	181	0.04		
				2018/1/9	Sunny	10.0	Blackish brown	Faint earth	Loamy	51	420	471	0.04	Dull yellowish brown	Faint earth	Loamy	13	120	133	0.04		

Gunma River (Surrounding Environment) 5/5

R i v e r s	Location					Sampling Date	Weather	Air temperature (°C)	Surrounding Environment (Soil, Air dose)														Remarks
	No.	Water area		Location	Municipality				Left bank					Right bank					Air Dose (μSv/h)				
									Color	Odor	Property	Activity concentration [Bq/kg(dry)]			Color	Odor	Property	Activity concentration [Bq/kg(dry)]					
												Radioactive cesium						Radioactive cesium					
Cs-134			Cs-137			Total			Cs-134			Cs-137			Total								
45	45	Tonegawa River System	Watarase River Area	Kiryu River	Kannon Bridge	Kiryu City	2017/5/11	Sunny	24.2	Dull yellowish brown	None	Loamy	17	110	127	0.05	Blackish brown	Faint earth	Loamy	<5.0	19	19	0.04
							2017/8/29	Sunny	32.4	Blackish brown	Faint earth	Loamy	20	120	140	0.05	Dull yellowish brown	Faint earth	Loamy	29	240	269	0.04
							2017/11/20	Sunny	7.6	Blackish brown	Faint earth	Loamy	13	140	153	0.04	Dark brown	Faint earth	Loamy	<8.5	14	14	0.04
					2018/1/19	Sunny	8.2	Blackish brown	Faint earth	Loamy	11	120	131	0.05	Blackish brown	Faint earth	Loamy	<7.9	26	26	0.05		
					2017/5/11	Sunny	27.2	Dark brown	Faint earth	Loamy	21	100	121	0.05	Brown	None	Loamy	8.3	54	62.3	0.05		
					2017/8/29	Sunny	33.3	Dark brown	Faint earth	Loamy	11	110	121	0.04	Dull yellowish brown	Faint earth	Loamy	6.3	41	47.3	0.04		
	46	Tonegawa River System	Watarase River Area	Kiryu River	Sakai Bridge	Kiryu City/Ashikaga City	2017/11/20	Cloudy	6.4	Dull yellow orange	Faint earth	Loamy	<6.9	36	36	0.05	Brown	Faint earth	Loamy	<6.7	27	27	0.04
							2018/1/9	Sunny	15.5	Grayish yellowish brown	Faint earth	Loamy	<6.9	25	25	0.04	Dull yellow orange	Faint earth	Loamy	<5.6	26	26	0.04
							2017/5/12	Sunny	28.5	Brown	Faint earth	Loamy	40	240	280	0.04	Dull yellowish brown	Faint earth	Loamy	54	330	384	0.04
							2017/8/30	Cloudy	30.1	Dull yellowish brown	Faint earth	Loamy	36	200	236	0.04	Dull yellowish brown	Faint earth	Loamy	25	190	215	0.04
							2017/11/15	Sunny	15.2	Blackish brown	Faint earth	Loamy	67	560	627	0.04	Blackish brown	Faint earth	Loamy	75	520	595	0.04
							2018/1/9	Cloudy	7.5	Dark brown	Faint earth	Loamy	34	210	244	0.04	Blackish brown	Faint earth	Loamy	26	270	296	0.04
47	Tonegawa River System	Watarase River Area	Kiryu River	Lake Jonuma	Tatebayashi City	2017/5/12	Sunny	29.5	Brown	Faint earth	Loamy	6.4	35	41.4	0.04	Brown	Faint earth	Loamy	8.4	85	93.4	0.04	
						2017/8/30	Sunny	29.8	Light yellowish brown	Faint earth	Loamy	<4.5	17	17	0.04	Brown	Faint earth	Loamy	14	96	110	0.04	
						2017/11/15	Sunny	16.4	Dull yellow orange	Faint earth	Loamy	11	95	106	0.04	Grayish yellowish brown	Faint earth	Loamy	<9.1	54	54	0.04	
						2018/1/9	Cloudy	6.2	Dull yellow orange	Faint earth	Loamy	7.4	62	69.4	0.05	Brown	Faint earth	Loamy	9.6	58	67.6	0.04	
48	Tonegawa River System	Watarase River Area	Kiryu River	Togoda Bridge	Meiwa Town /Itakura Town	2017/5/12	Sunny	29.5	Brown	Faint earth	Loamy	6.4	35	41.4	0.04	Brown	Faint earth	Loamy	8.4	85	93.4	0.04	
						2017/8/30	Sunny	29.8	Light yellowish brown	Faint earth	Loamy	<4.5	17	17	0.04	Brown	Faint earth	Loamy	14	96	110	0.04	
						2017/11/15	Sunny	16.4	Dull yellow orange	Faint earth	Loamy	11	95	106	0.04	Grayish yellowish brown	Faint earth	Loamy	<9.1	54	54	0.04	
						2018/1/9	Cloudy	6.2	Dull yellow orange	Faint earth	Loamy	7.4	62	69.4	0.05	Brown	Faint earth	Loamy	9.6	58	67.6	0.04	

Gunma Lakes and Reservoirs (Sediment) 2/2

Location				Sampling Date	Weather	Air temperature (°C)	Water depth (m)	Sediment																	Activity concentration [Bq/kg(dry)]			Remarks	
No.	Water area	Location						Municipality	Sediment temperature (°C)	Sample length (cm)	Color	Odor	Grain size distribution(%)										Sediment content (%)	Density (g/cm ³)	Property	Radioactive cesium			
		Course gravel	Medium gravel										Fine gravel	Coarse sand	Medium sand	Fine sand	Silt	Clay	Cs-134	Cs-137	Total								
61	Lake Haruma	Center	Takasaki City/Higashi-Agatsuma Town	2017/5/17	Cloudy	9.1	15.1	7.4	10	Black	Faint hydrogen sulfide	0.0	0.0	0.0	0.1	0.3	0.8	64.8	34.2	8.6	2.164	Silt	74	390	464				
				2017/8/22	Cloudy	24.6	14.5	10.8	10	Black	Faint hydrogen sulfide	0.0	0.0	0.0	0.1	0.2	0.5	58.6	40.6	8.0	2.190	Silt	23	170	193				
				2017/10/13	Rain	11.7	13.8	12.5	10	Black	Faint sewage	0.0	0.0	0.0	0.1	0.3	0.6	50.1	48.9	8.3	2.191	Silt	42	180	222				
				2017/11/15	Sunny	8.2	14.8	9.4	10	Black	Faint sewage	0.0	0.0	0.0	0.1	0.3	0.6	46.8	52.3	7.7	2.107	Silt	-10	190	190				
				2017/5/15	Rain	13.7	23.0	6.5	10	Blackish brown	None	0.0	0.0	0.0	0.1	0.3	7.7	75.8	16.2	33.7	2.437	Silt	47	280	327				
				2017/8/7	Cloudy	25.1	15.0	16.2	10	Blackish brown	None	0.0	0.0	0.0	0.1	0.6	8.5	75.3	15.5	34.4	2.474	Silt	23	190	213				
				2017/10/6	Sunny	13.7	13.2	14.1	10	Grayish yellowish brown	Medium hydrogen sulfide	0.0	0.0	0.0	0.0	0.1	0.8	82.7	16.4	27.1	2.331	Silt	68	500	568				
				2017/12/8	Sunny	6.4	7.0	5.1	10	Grayish yellowish brown	None	0.0	1.0	0.9	1.0	3.4	6.4	72.9	14.4	33.2	2.309	Silt	35	400	435				
				2017/5/15	Rain	13.0	12.0	7.1	10	Blackish brown	None	0.0	0.0	0.1	0.4	3.8	56.1	19.8	24.1	2.350	Silt	64	650	714					
				63	Lake Usaiko (Sakamoto Dam)	Center	Annaka City	2017/8/7	Cloudy	24.7	12.5	9.7	10	Blackish brown	Faint hydrogen sulfide	0.0	0.0	0.0	0.2	2.1	79.4	18.4	25.6	2.309	Silt	89	770	859	
2017/10/6	Sunny	12.4	12.8					11.0	10	Black	Medium hydrogen sulfide	0.0	0.0	0.0	0.0	0.1	3.1	78.3	18.4	27.3	2.324	Silt	65	710	775				
2017/12/8	Sunny	4.4	12.4					11.2	10	Blackish brown	Faint rotteness	0.0	0.0	0.0	0.0	0.1	3.1	78.8	17.9	20.9	2.352	Silt	100	880	980				
2017/5/15	Rain	17.2	35.0					5.5	10	Gray	None	0.0	0.0	0.0	0.1	0.2	0.2	49.3	50.3	30.9	2.624	Silt	83	550	633				
2017/8/7	Cloudy	27.2	18.0					7.4	10	Brownish gray	None	0.0	0.0	0.0	0.0	0.1	48.3	51.6	32.8	2.553	Silt	60	440	500					
2017/10/5	Sunny	14.7	25.0					7.2	10	Yellowish gray	Faint sewage	0.0	0.0	0.0	0.0	0.0	1.6	51.2	47.1	38.2	2.550	Silt	60	460	520				
2017/12/7	Sunny	2.6	36.0					8.4	10	Brownish gray	Faint hydrogen sulfide	0.0	0.0	0.0	0.0	0.1	1.6	63.6	34.6	33.1	2.596	Silt	62	380	442				
2017/5/15	Cloudy	17.4	18.0					13.1	10	Grayish olive	Faint rotteness	0.0	0.0	0.0	0.0	0.2	0.3	46.2	53.3	26.0	2.577	Silt	93	620	713				
2017/8/7	Rain	27.1	11.2					22.5	10	Brownish gray	Faint rotteness	0.0	0.0	0.4	0.4	1.4	8.1	39.7	49.8	30.8	2.537	Silt	44	280	324				
65	Lake Oshio (Oshio Dam)	Center	Tomioka City					2017/10/5	Sunny	18.2	16.5	19.7	10	Brownish gray	Faint hydrogen sulfide	0.0	0.0	0.0	0.1	0.1	0.2	39.0	60.7	27.0	2.509	Silt	71	640	711
				2017/12/7	Sunny	8.9	18.2	8.3	10	Brownish gray	None	0.0	0.0	0.0	0.0	0.1	45.0	54.9	24.6	2.563	Silt	28	290	318					
				2017/5/16	Sunny	22.7	74.0	7.3	10	Yellowish gray	None	0.0	0.0	0.0	0.0	0.1	0.1	14.0	85.8	34.5	2.738	Silt	16	130	146				
				2017/8/29	Sunny	29.1	72.8	8.4	10	Brownish gray	None	0.0	0.0	0.0	0.0	0.0	13.2	86.7	37.4	2.639	Silt	13	130	143					
				2017/10/5	Sunny	17.8	70.0	11.4	10	Brownish gray	None	0.0	0.0	0.0	0.0	0.1	0.1	14.4	85.5	34.3	2.664	Silt	25	150	175				
				2017/12/7	Sunny	10.2	82.0	10.2	10	Brownish gray	None	0.0	0.0	0.0	0.0	0.0	14.4	85.5	39.2	2.734	Silt	24	230	254					
				2017/5/16	Sunny	21.7	7.4	14.1	10	Brownish gray	None	0.0	0.0	0.1	1.1	8.0	68.8	22.1	27.7	2.489	Silt	40	260	300					
				2017/8/29	Sunny	27.2	7.5	13.7	10	Brownish gray	None	0.0	0.0	0.0	0.1	2.6	6.6	75.5	15.2	30.3	2.419	Silt	40	240	280				
				2017/10/5	Sunny	16.2	8.7	15.3	10	Brownish gray	None	0.0	0.0	0.0	0.3	10.6	16.0	56.4	16.7	36.3	2.526	Silt	27	200	227				
				2017/12/7	Sunny	6.9	15.5	5.3	10	Brownish gray	None	0.0	0.0	0.0	0.0	0.6	4.1	23.7	21.5	28.5	2.457	Silt	22	250	272				
68	Lake Kusaki (Kusaki Dam)	Center	Midoru City	2017/5/11	Sunny	26.0	24.5	10.6	7	Blackish brown	None	0.0	0.0	3.4	18.9	22.4	10.5	54.9	9.5	39.9	2.615	Silt/gravel	63	330	393				
				2017/8/3	Cloudy	19.0	27.5	5.7	7	Blackish brown	None	0.0	0.0	0.0	0.2	0.8	20.2	66.2	12.7	41.6	2.552	Silt	41	380	421				
				2017/10/5	Sunny	12.5	25.0	17.2	5	Blackish brown	None	0.0	0.0	1.9	3.5	10.5	22.7	47.1	13.5	40.4	2.561	Silt/sand	58	410	468				
				2017/12/8	Sunny	3.2	37.5	9.6	8	Blackish brown	None	0.0	0.0	0.0	0.0	0.2	8.3	74.1	17.4	37.2	2.530	Silt	54	450	504				
				2017/5/11	Sunny	23.0	30.0	11.0	5	Brownish gray	None	0.0	0.0	0.0	0.2	2.8	81.7	15.1	21.8	2.405	Silt	72	460	532					
				2017/8/29	Sunny	28.9	27.5	12.8	5	Brownish gray	None	0.0	0.0	0.0	0.0	0.1	0.3	45.1	54.4	22.5	2.509	Silt	53	530	583				
				2017/10/5	Cloudy	16.8	28.5	7.2	10	Brownish gray	Faint sewage	0.0	0.0	0.0	0.1	0.4	58.3	41.3	22.7	2.438	Silt	75	580	655					
				2017/12/4	Cloudy	11.2	38.9	9.9	10	Grayish olive	None	0.0	0.0	0.0	0.0	0.1	0.3	53.6	46.1	23.0	2.473	Silt	93	1,000	1,093				
				2017/5/29	Sunny	19.5	18.0	7.5	5	Dark brown	None	0.0	0.0	0.0	0.1	0.4	1.1	69.1	29.3	27.5	2.434	Silt	150	1,100	1,250				
				2017/8/28	Sunny	19.0	22.0	13.1	10	Brown	None	0.0	0.0	0.0	0.3	2.5	14.2	63.5	19.6	32.6	2.438	Silt	210	1,800	2,010				
70	Lake Nozori (Nozori Dam)	Center	Nakanjo Town	2017/10/12	Cloudy	14.2	21.4	13.7	10	Brownish gray	None	0.0	0.0	0.0	0.1	0.8	71.6	27.6	25.9	2.445	Silt	140	1,200	1,340					
				2017/11/21	Cloudy	-5.0	-	-	-	-	-	-	-	-	-	-	-	-	-	-	-	-	-	-	-	-	Unable to collect samples due to snow on the ground		
				2017/5/12	Sunny	25.5	1.8	21.8	10	Black	Faint swamp	0.0	0.0	0.0	0.0	0.1	0.9	77.5	21.6	17.2	2.369	Silt	75	470	545				
				2017/8/30	Sunny	31.2	1.8	26.8	10	Black	Faint sewage	0.0	0.0	0.0	0.1	3.6	3.2	44.8	48.3	18.7	2.377	Silt	52	380	432				
				2017/10/2	Cloudy	22.7	1.9	22.4	10	Black	None	0.0	0.0	0.0	0.1	2.2	3.1	62.9	31.8	19.1	2.417	Silt	42	370	412				
				2017/12/11	Sunny	7.5	1.9	6.1	10	Black	Faint swamp	0.0	0.0	0.0	0.1	0.3	0.9	75.5	23.2	16.6	2.383	Silt	46	480	526				
				2017/5/12	Sunny	22.5	6.0	17.9	10	Black	Faint swamp	0.0	0.0	0.0	0.3	0.0	0.0	71.4	28.3	17.2	2.379	Silt	35	200	235				
				2017/8/30	Cloudy	29.0	5.6	23.8	10	Black	Faint swamp	0.0	0.0	0.0	0.1	0.2	86.5	13.2	18.8	2.356	Silt	26	200	226					
				2017/10/2	Cloudy	24.4	5.0	21.5	10	Black	None	0.0	0.0	0.0	0.1	0.3	65.0	34.5	18.7	2.380	Silt	25	250	275					
				2017/12/11	Sunny	4.2	5.0	8.2	10	Olive black	Faint swamp	0.0	0.0	0.0	0.0	0.0	0.1	64.5	35.3	18.3	2.365	Silt	37	300	337				

Gunma Lakes and Reservoirs (Surrounding Environment) 1/3

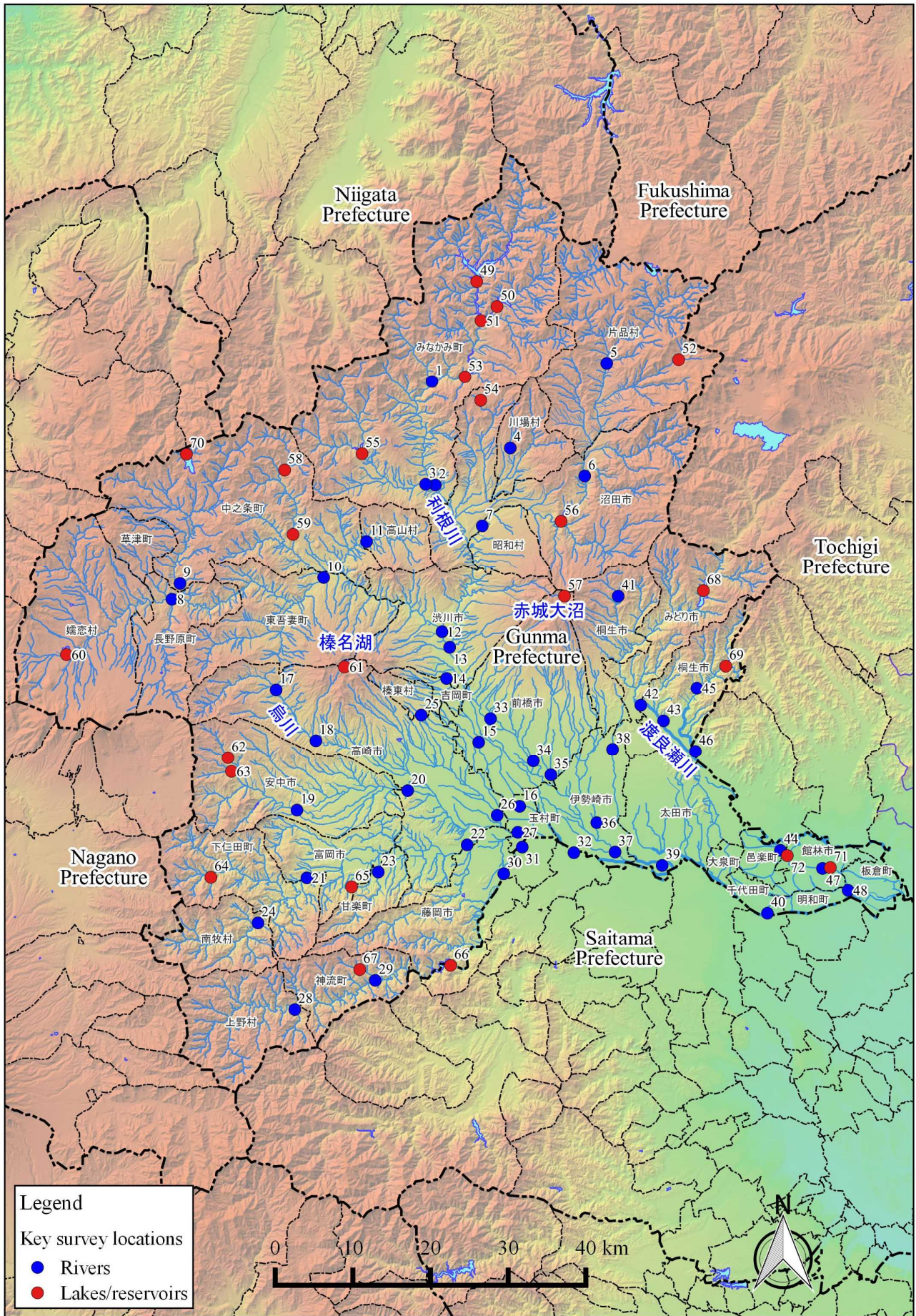
No.	Water area	Location		Municipality	Sampling Date	Weather	Air temperature (°C)	Surrounding Environment(Soil,Air dose)							Remarks	
								Soil			Air Dose (µSv/h)					
								General items			Activity concentration [Bq/kg(dry)]			Radioactive cesium		
								Color	Odor	Property	Cs-134	Cs-137	Total			
L a k e s a n d R e s e r v o i r s	49	Lake Okutone (Yagisawa Dam)	Center	Minakami Town	2017/5/24	Rain	14.2	Yellowish brown	Faint earth	Loamy	20	160	180	0.12		
					2017/8/4	Sunny	24.2	Dull yellowish brown	Faint earth	Loamy	67	560	627	0.12		
					2017/10/19	Rain	6.7	Blackish brown	Faint earth	Loamy	72	630	702	0.08		
					2017/11/24	Snow	2.2	Dull yellowish brown	Faint earth	Loamy	67	610	677	0.10		
					2017/5/23	Sunny	25.8	Yellowish brown	Faint earth	Loamy	110	740	850	0.14		
					2017/8/3	Cloudy	23.8	Yellowish brown	Faint earth	Loamy	83	510	593	0.16		
		50	Lake Naramata (Naramata Dam)		Center	Minakami Town	2017/10/18	Cloudy	15.8	Olive brown	None	Loamy	110	860	970	0.14
							2017/11/24	Snow	2.0	Olive brown	Faint earth	Loamy	16	200	216	0.13
							2017/5/23	Sunny	24.2	Dull yellowish brown	Faint earth	Loamy	100	780	880	0.09
							2017/8/4	Sunny	25.3	Blackish brown	Faint earth	Loamy	150	1,200	1,350	0.12
							2017/10/18	Cloudy	11.7	Blackish brown	Faint earth	Loamy	170	1,300	1,470	0.11
							2017/11/24	Sunny	2.2	Dark brown	Faint earth	Loamy	12	89	101	0.10
	52	Lake Marunuma (Marunuma Dam)	Center	Katashina Village	2017/6/6	Sunny	14.2	Dull yellowish brown	Faint earth	Loamy	17	140	157	0.07		
					2017/8/16	Rain	16.1	Brown	Faint earth	Loamy	34	270	304	0.07		
					2017/10/11	Sunny	19.0	Dark brown	Faint earth	Loamy	22	210	232	0.07		
					2017/11/14	Rain	13.2	Olive brown	Faint earth	Loamy	26	240	266	0.07		
					2017/5/23	Sunny	24.1	Brown	Faint earth	Loamy	89	680	769	0.06		
					2017/8/3	Cloudy	22.1	Dull yellowish brown	Faint earth	Loamy	48	370	418	0.04		
	53	Lake Fujiwara (Fujiwara Dam)	Center	Minakami Town	2017/10/18	Sunny	16.5	Dull yellowish brown	None	Loamy	100	810	910	0.05		
					2017/12/1	Sunny	7.9	Blackish brown	None	Loamy	140	1,200	1,340	0.05		
					2017/5/12	Sunny	16.0	Grayish yellowish brown	Faint earth	Loamy	190	1,300	1,490	0.13		
					2017/8/4	Cloudy	20.3	Dull yellowish brown	Faint earth	Loamy	140	980	1,120	0.09		
					2017/10/11	Sunny	20.0	Grayish yellowish brown	Faint earth	Loamy	200	1,700	1,900	0.13		
					2017/11/15	Sunny	13.4	Dull yellowish brown	Faint earth	Loamy	200	1,700	1,900	0.12		
	54	Lake Tanbara (Tanbara Dam)	Center	Numata City	2017/5/23	Sunny	21.2	Dark brown	Faint earth	Loamy	110	700	810	0.07		
					2017/8/3	Cloudy	21.8	Blackish brown	Faint earth	Loamy	100	780	880	0.06		
					2017/10/18	Sunny	13.6	Black	None	Loamy	93	870	963	0.05		
					2017/12/1	Sunny	4.7	Black	None	Loamy	77	650	727	0.06		
55	Lake Akaya (Aimata Dam)	Center	Minakami Town	2017/5/12	Cloudy	24.2	Blackish brown	Faint earth	Loamy	91	610	701	0.07			
				2017/8/4	Cloudy	24.7	Blackish brown	Faint earth	Loamy	100	810	910	0.06			
				2017/10/11	Sunny	26.8	Blackish brown	Faint earth	Loamy	84	720	804	0.07			
				2017/12/4	Sunny	5.5	Blackish brown	Faint earth	Loamy	83	600	683	0.07			
56	Lake Sonohara (Sonohara Dam)	Center	Numata City	2017/5/12	Cloudy	16.1	Blackish brown	Faint earth	Loamy	40	280	320	0.05			
				2017/8/3	Cloudy	18.6	Dark brown	Faint earth	Loamy	52	370	422	0.04			
				2017/10/11	Sunny	19.2	Dark brown	Faint earth	Loamy	47	400	447	0.04			
				2017/11/14	Cloudy	12.3	Dark brown	Faint earth	Loamy	77	620	697	0.04			
57	Lake Akagionuma	Center	Maebashi City	2017/5/12	Cloudy	16.1	Blackish brown	Faint earth	Loamy	40	280	320	0.05			
				2017/8/3	Cloudy	18.6	Dark brown	Faint earth	Loamy	52	370	422	0.04			
				2017/10/11	Sunny	19.2	Dark brown	Faint earth	Loamy	47	400	447	0.04			
				2017/11/14	Cloudy	12.3	Dark brown	Faint earth	Loamy	77	620	697	0.04			

Gunma Lakes and Reservoirs (Surrounding Environment) 2/3

Lakes and Reservoirs	Location				Sampling Date	Weather	Air temperature (°C)	Surrounding Environment(Soil,Air dose)							Remarks
								Soil			Air Dose (μSv/h)				
	General items			Activity concentration [Bq/kg(dry)]											
	No.	Water area	Location	Municipality				Color	Odor	Property		Radioactive cesium			
Cs-134					Cs-137	Total									
Lakes	58	Agatsuma River Area	Lake Okushima (Shimagawa Dam)	Center	Nakanajo Town	2017/5/19	Sunny	18.4	Dark brown	None	Loamy	130	870	1,000	0.10
						2017/8/23	Cloudy	22.4	Dull yellowish brown	Faint earth	Loamy	180	1,400	1,580	0.10
						2017/10/13	Rain	13.2	Blackish brown	Faint earth	Loamy	420	3,400	3,820	0.09
			2017/12/5	Sunny	5.2	Dark brown	Faint earth	Loamy	660	5,400	6,060	0.09			
			2017/5/19	Sunny	19.2	Blackish brown	Faint earth	Loamy	51	470	521	0.06			
			2017/8/23	Cloudy	23.3	Blackish brown	Faint earth	Loamy	60	530	590	0.06			
	59	Lake Shimako (Nakanajo Dam)	Center	Nakanajo Town	2017/10/13	Rain	12.4	Blackish brown	Faint earth	Loamy	47	440	487	0.06	
					2017/12/5	Sunny	10.3	Dark brown	Faint earth	Loamy	82	650	732	0.06	
					2017/5/29	Sunny	24.8	Dull yellowish brown	None	Loamy	21	220	241	0.05	
	60	Lake Tashiro (Kazawa Dam)	Center	Tsumagoi Village	2017/8/7	Sunny	24.4	Dull yellowish brown	Faint earth	Loamy	15	110	125	0.04	
					2017/10/12	Sunny	14.5	Dark brown	Faint earth	Loamy	72	720	792	0.05	
					2017/11/21	Sunny	2.5	Dark brown	Faint earth	Loamy	28	290	318	0.05	
					2017/5/17	Cloudy	9.1	Blackish brown	None	Loamy	110	870	980	0.10	
	61	Lake Haruna	Center	Takasaki City/ Higashi-Agatsuma Town	2017/8/22	Cloudy	24.6	Blackish brown	Faint earth	Loamy	220	1,700	1,920	0.11	
					2017/10/13	Rain	11.7	Black	Faint earth	Loamy	200	1,700	1,900	0.11	
2017/11/15					Sunny	8.2	Blackish brown	Faint earth	Loamy	190	1,800	1,990	0.09		
2017/5/15					Rain	13.7	Brown	None	Loamy	86	660	746	0.05		
62	Lake Kirizumi (Kirizumi Dam)	Center	Annaka City	2017/8/7	Cloudy	25.1	Brown	None	Loamy	120	1,000	1,120	0.04		
				2017/10/6	Sunny	13.7	Dull yellowish brown	None	Loamy	150	1,200	1,350	0.06		
				2017/12/8	Sunny	6.4	Yellowish brown	None	Loamy	37	330	367	0.05		
				2017/5/15	Rain	13.6	Blackish brown	None	Loamy	34	250	284	0.05		
				2017/8/7	Cloudy	24.7	Blackish brown	None	Loamy	68	480	548	0.05		
				2017/10/6	Sunny	12.4	Blackish brown	None	Loamy	210	1,500	1,710	0.05		
63	Lake Usuiko (Sakamoto Dam)	Center	Annaka City	2017/12/8	Sunny	4.4	Dark brown	None	Loamy	120	1,100	1,220	0.05		
				2017/5/15	Rain	17.2	Dull yellowish brown	None	Loamy	21	160	181	0.06		
				2017/8/7	Cloudy	27.2	Grayish yellowish brown	None	Loamy	36	240	276	0.05		
64	Lake Arafune (Dodairagawa Dam)	Center	Shimonita Town	2017/10/5	Sunny	14.7	Dull yellowish brown	None	Loamy	25	160	185	0.06		
				2017/12/7	Sunny	2.6	Brown	None	Loamy	69	510	579	0.05		
				2017/5/15	Cloudy	17.4	Dull yellowish brown	None	Loamy	17	110	127	0.05		
				2017/8/7	Rain	27.1	Grayish yellowish brown	None	Loamy	51	380	431	0.06		
65	Lake Oshio (Oshio Dam)	Center	Tomioka City	2017/10/5	Sunny	18.2	Brown	None	Loamy	75	710	785	0.05		
				2017/12/7	Sunny	8.9	Dark brown	None	Loamy	34	290	324	0.06		
				2017/5/15	Cloudy	17.4	Dull yellowish brown	None	Loamy	17	110	127	0.05		

Gunma Lakes and Reservoirs (Surrounding Environment) 3/3

L a k e s a n d R e s e r v o i r s	Location				Sampling Date	Weather	Air temperature (°C)	Surrounding Environment(Soil,Air dose)							Remarks
	No.	Water area	Location					Municipality	Soil			Air Dose (μSv/h)			
									General items						
									Color	Odor	Property		Activity concentration [Bq/kg(dry)]		
Radioactive cesium															
			Cs-134	Cs-137	Total										
66	Karasu River Area	Lake Kanna (Shimokubo Dam)	Center	Fujioka City/Kamikawa Town	2017/5/16	Sunny	22.7	Dull yellowish brown	None	Loamy	57	370	427	0.04	
					2017/8/29	Sunny	29.1	Brown	None	Loamy	21	220	241	0.04	
					2017/10/5	Sunny	17.8	Dull yellowish brown	None	Loamy	45	380	425	0.04	
		2017/12/7	Sunny	10.2	Brownish gray	None	Loamy	18	170	188	0.04				
		2017/5/16	Sunny	21.7	Grayish yellowish brown	None	Loamy	6.8	57	63.8	0.05				
		2017/8/29	Sunny	27.2	Dull yellowish brown	None	Loamy	14	92	106	0.05				
	67	Lake Hebikami (Shiozawa Dam)	Center	Kanna Town	2017/10/5	Sunny	16.2	Dull yellowish brown	Faint earth	Loamy	13	98	111	0.06	
					2017/12/7	Sunny	6.9	Brown	None	Loamy	11	90	101	0.05	
					2017/5/11	Sunny	26.0	Dull yellowish brown	Faint earth	Loamy	42	300	342	0.06	
					2017/8/3	Cloudy	19.0	Blackish brown	Faint earth	Loamy	110	830	940	0.06	
					2017/10/5	Sunny	12.5	Dull yellowish brown	Faint earth	Loamy	150	1,100	1,250	0.06	
					2017/12/8	Sunny	3.2	Blackish brown	Faint earth	Loamy	110	870	980	0.06	
68	Watarase River Area	Lake Kusaki (Kusaki Dam)	Center	Midori City	2017/5/11	Sunny	23.0	Dull yellowish brown	Faint earth	Loamy	45	320	365	0.05	
					2017/8/29	Sunny	28.9	Dull yellowish brown	Faint earth	Loamy	26	180	206	0.04	
					2017/10/5	Cloudy	16.8	Dull yellowish brown	Faint earth	Loamy	47	310	357	0.04	
					2017/12/4	Cloudy	11.2	Brown	Faint earth	Loamy	20	130	150	0.04	
					2017/5/29	Sunny	19.5	Dull yellowish brown	None	Loamy	11	72	83	0.05	
					2017/8/28	Sunny	19.0	Dull yellowish brown	None	Loamy	27	190	217	0.05	
69	Lake Umeda (Kiryugawa Dam)	Center	Kiryu City	2017/10/12	Cloudy	14.2	Dull yellowish brown	Faint earth	Loamy	56	520	576	0.05		
				2017/11/21	Cloudy	-5.0	-	-	-	-	-	-	-	Unable to collect samples due to snow on the ground	
				2017/5/12	Sunny	25.5	Grayish yellowish brown	None	Loamy	49	330	379	0.04		
				2017/8/30	Sunny	31.2	Dull yellowish brown	Faint earth	Loamy	17	110	127	0.04		
				2017/10/2	Cloudy	22.7	Dull yellowish brown	Faint earth	Loamy	8.9	50	58.9	0.04		
				2017/12/11	Sunny	7.5	Dull yellowish brown	Faint earth	Loamy	18	220	238	0.04		
70	Nakatsu River Area	Lake Nozori (Nozori Dam)	Center	Nakanajo Town	2017/5/12	Sunny	22.5	Brown	Faint earth	Loamy	<6.1	16	16	0.05	
					2017/8/30	Cloudy	29.0	Dull yellowish brown	Faint earth	Loamy	<4.7	24	24	0.04	
					2017/10/2	Cloudy	24.4	Dark brown	Faint earth	Loamy	<7.4	20	20	0.04	
					2017/12/11	Sunny	4.2	Dull yellowish brown	Faint earth	Loamy	<8.2	22	22	0.04	
					2017/5/12	Sunny	22.5	Brown	Faint earth	Loamy	<6.1	16	16	0.05	
					2017/8/30	Cloudy	29.0	Dull yellowish brown	Faint earth	Loamy	<4.7	24	24	0.04	
71	Watarase River Area	Lake Jonuma	Center	Tatebayashi City	2017/10/2	Cloudy	22.7	Dull yellowish brown	Faint earth	Loamy	8.9	50	58.9	0.04	
					2017/12/11	Sunny	7.5	Dull yellowish brown	Faint earth	Loamy	18	220	238	0.04	
					2017/5/12	Sunny	22.5	Brown	Faint earth	Loamy	<6.1	16	16	0.05	
		2017/8/30	Cloudy		29.0	Dull yellowish brown	Faint earth	Loamy	<4.7	24	24	0.04			
		2017/10/2	Cloudy		24.4	Dark brown	Faint earth	Loamy	<7.4	20	20	0.04			
		2017/12/11	Sunny		4.2	Dull yellowish brown	Faint earth	Loamy	<8.2	22	22	0.04			
72	Lake Tataranuma	Center		2017/5/12	Sunny	22.5	Brown	Faint earth	Loamy	<6.1	16	16	0.05		
				2017/8/30	Cloudy	29.0	Dull yellowish brown	Faint earth	Loamy	<4.7	24	24	0.04		
				2017/10/2	Cloudy	24.4	Dark brown	Faint earth	Loamy	<7.4	20	20	0.04		
				2017/12/11	Sunny	4.2	Dull yellowish brown	Faint earth	Loamy	<8.2	22	22	0.04		
				2017/5/12	Sunny	22.5	Brown	Faint earth	Loamy	<6.1	16	16	0.05		
				2017/8/30	Cloudy	29.0	Dull yellowish brown	Faint earth	Loamy	<4.7	24	24	0.04		



Survey Locations (Gunma Prefecture)