

FY2017 Tochigi Prefecture Survey Results

[Outline of results]

(1) Water

Rivers

Radioactive cesium (Cs-134, Cs-137): Not detectable at any location

Lakes and reservoirs

Radioactive cesium (Cs-134, Cs-137): Not detectable at any location

(2) Sediments

Rivers

Cs-134: ND - 33 Bq/kg (dry)

Cs-137: ND - 260 Bq/kg (dry)

Lakes and reservoirs

Cs-134: ND - 120 Bq/kg (dry)

Cs-137: 47 - 1,000 Bq/kg (dry)

(3) Surrounding Environment

(a) Soil

Rivers

Cs-134: ND - 740 Bq/kg (dry)

Cs-137: 3.0 - 6,400 Bq/kg (dry)

Lakes and reservoirs

Cs-134: ND - 190 Bq/kg (dry)

Cs-137: 19 - 1,400 Bq/kg (dry)

(b) Ambient dose rate

Rivers

0.04 - 0.19 μ Sv/h

Lakes and reservoirs

0.05 - 0.11 μ Sv/h

Tochigi River (Water) 1/6

No.	Location			Sampling Date	Weather	Air temperature (°C)	Water depth (m)	Water							Activity concentration(Bq/L)		Remarks	
	Water area	Location	Municipality					Water temperature (°C)	Sampling depth (m)	Color	Odor	Transparency (cm)	Electrical conductivity (mS/m)	SS (mg/L)	Turbidity (FNU)	Radioactive cesium		
																Cs-134		Cs-137
R i v e r s	1	Nakagawa River	Ikuyobashishita	Nasushiobara City	2017/5/26	Cloudy	15.3	0.5	12.7	0.0	Light grayish yellow green	None	>100	16.0	<1	0.2	<0.63	<-0.69
					2017/8/24	Cloudy	24.5	0.6	15.8	0.0	Light grayish yellow green	None	>100	14.5	<1	0.3	<0.77	<-0.80
	2017/11/2				Sunny	14.5	0.5	10.9	0.0	Light grayish yellow green	None	>100	12.4	<1	0.2	<0.81	<-0.80	
	2018/2/1				Sunny	-1.8	0.3	5.9	0.0	Light grayish yellow green	None	>100	17.1	<1	0.2	<0.63	<-0.63	
	2	Komci Bridge	2017/5/26	Cloudy	15.0	0.3	12.5	0.0	Light grayish greenish yellow	None	>100	10.9	<1	0.4	<0.70	<-0.69		
			2017/8/24	Cloudy	28.9	0.3	17.7	0.0	Light grayish greenish yellow	None	>100	9.4	1	0.5	<0.84	<-0.63		
			2017/11/2	Sunny	15.8	0.5	11.0	0.0	Light grayish yellow green	None	>100	8.8	<1	0.6	<0.83	<-0.92		
			2018/2/1	Sunny	1.2	0.3	3.6	0.0	Light grayish greenish yellow	None	>100	18.0	<1	0.3	<0.65	<-0.75		
	3	Takaomata River	Takaomata Bridge	Nasu Town	2017/5/26	Rain	15.3	0.2	13.2	0.0	Light grayish yellow	None	>100	17.7	4	1.3	<0.77	<-0.69
					2017/8/24	Cloudy	29.1	0.3	18.4	0.0	Light grayish yellow	None	>100	18.5	3	0.9	<0.75	<-0.69
					2017/11/2	Sunny	17.4	0.3	11.6	0.0	Light grayish yellow	None	>100	17.5	1	0.4	<0.80	<-0.75
					2018/2/1	Sunny	2.4	0.2	4.6	0.0	Grayish yellow	None	>100	18.4	2	0.6	<0.71	<-0.88
	4	Yukawa River	Yukawa Bridge	Nasu Town	2017/5/26	Cloudy	15.6	0.1	15.5	0.0	Light grayish yellow green	None	76	33.3	7	3.6	<0.55	<-0.75
					2017/8/24	Cloudy	29.3	0.2	19.7	0.0	Light grayish yellow green	None	82	27.0	8	4.0	<0.77	<-0.69
					2017/11/2	Sunny	16.4	0.3	14.0	0.0	Light grayish yellow green	None	>100	27.1	5	3.0	<0.88	<-0.88
					2018/2/1	Sunny	2.3	0.1	6.4	0.0	Light grayish yellow green	None	>100	33.1	3	1.9	<0.90	<-0.75
	5	Nakagawa River	Kamikuroiso	Nasushiobara City/ Nasu Town	2017/5/6	Sunny	17.4	0.4	12.4	0.0	Light grayish yellow green	None	>100	13.5	2	1.2	<0.84	<-0.63
					2017/6/26	Sunny	24.8	0.3	19.8	0.0	Light grayish yellow green	None	>100	22.2	5	1.6	<0.69	<-0.88
					2017/7/7	Sunny	27.2	0.3	22.4	0.0	Light grayish yellow green	None	>100	22.3	6	2.0	<0.90	<-0.75
					2017/8/1	Cloudy	25.3	0.4	19.8	0.0	Light grayish yellow green	None	>100	21.2	5	1.8	<0.55	<-0.74
					2017/9/4	Sunny	27.2	0.3	16.8	0.0	Light grayish yellow green	None	>100	15.9	3	1.0	<0.88	<-0.74
					2017/11/6	Sunny	14.5	0.3	10.7	0.0	Light grayish yellow green	None	>100	12.1	<1	0.4	<0.77	<-0.55
					2018/2/1	Cloudy	0.2	0.3	3.0	0.0	Light grayish yellow green	None	>100	23.8	1	0.6	<0.67	<-0.88
					2017/5/6	Cloudy	14.8	0.2	13.5	0.0	Grayish yellow	None	>100	17.3	1	0.7	<0.80	<-0.61
	6	Yosasa River	Yosasa Bridge	Nasu Town	2017/8/1	Cloudy	25.4	0.2	18.7	0.0	Light grayish yellow green	None	>100	14.5	<1	0.6	<0.60	<-0.80
					2017/11/2	Sunny	19.6	0.3	13.7	0.0	Light grayish yellow green	None	>100	14.7	<1	0.3	<0.66	<-0.80
					2018/2/1	Sunny	2.8	0.3	4.7	0.0	Grayish yellow	None	>100	18.7	<1	0.5	<0.54	<-0.75
					2017/5/6	Cloudy	19.2	0.3	16.5	0.0	Grayish yellow green	None	>100	11.6	6	4.0	<0.59	<-0.66
	7	Kurokawa River	Shinden Bridge	Nasu Town	2017/8/1	Cloudy	27.2	0.4	21.7	0.0	Light grayish yellow green	None	>100	11.4	6	2.2	<0.69	<-0.66
					2017/11/6	Sunny	16.4	0.4	10.8	0.0	Light grayish yellow green	None	>100	10.3	<1	0.4	<0.75	<-0.69
					2018/2/1	Cloudy	3.1	0.4	1.8	0.0	Light grayish yellow green	None	>100	11.5	<1	0.7	<0.71	<-0.63
					2017/5/6	Cloudy	20.0	0.3	18.1	0.0	Light grayish yellow green	None	>100	25.6	3	3.0	<0.73	<-0.63
	8	Yosasa River	Kawada Bridge	Otawara City	2017/6/26	Sunny	25.5	0.3	22.3	0.0	Light grayish yellow green	None	>100	18.2	4	2.4	<0.79	<-0.84
					2017/7/7	Sunny	30.2	0.3	24.1	0.0	Light grayish yellow green	None	52	15.1	6	5.6	<0.68	<-0.69
					2017/8/1	Cloudy	27.0	0.4	22.3	0.0	Light grayish yellow green	None	>100	47.2	5	2.0	<0.55	<-0.66
					2017/9/4	Cloudy	25.1	0.3	17.6	0.0	Light grayish yellow green	None	65	26.3	2	1.5	<0.82	<-0.70
					2017/11/6	Sunny	17.8	0.3	11.6	0.0	Light grayish yellow green	None	>100	12.2	<1	0.6	<0.54	<-0.55
					2018/2/1	Cloudy	3.8	0.3	1.6	0.0	Light grayish yellow green	None	>100	15.5	<1	0.6	<0.62	<-0.69
					2017/5/6	Sunny	21.4	0.3	16.6	0.0	Light grayish yellow green	None	>100	14.0	2	1.6	<0.69	<-0.66
					2017/6/26	Sunny	27.8	0.2	22.7	0.0	Light grayish yellow green	None	>100	16.9	4	2.3	<0.55	<-0.96
	9	Nakagawa River	Kurobane	Otawara City	2017/7/7	Sunny	30.8	0.2	25.3	0.0	Grayish yellow green	None	64	16.6	6	2.8	<0.77	<-0.63
					2017/8/1	Rain	28.2	0.3	22.3	0.0	Light grayish yellow green	None	>100	16.1	5	2.1	<0.76	<-0.61
					2017/9/4	Cloudy	26.3	0.3	18.9	0.0	Light grayish yellow green	None	>100	15.8	2	1.4	<0.57	<-0.54
					2017/11/6	Sunny	19.7	0.2	13.0	0.0	Light grayish yellow green	None	>100	14.0	<1	0.3	<0.84	<-0.96
					2018/2/1	Cloudy	4.2	0.3	4.9	0.0	Light grayish yellow green	None	>100	18.3	1	0.6	<0.77	<-0.75

Tochigi River (Water) 2/6

No.	Location			Sampling Date	Weather	Air temperature (°C)	Water depth (m)	Water										Remarks	
	Water area	Location	Municipality					Water temperature (°C)	Sampling depth (m)	Color	Odor	Transparency (cm)	Electrical conductivity (mS/m)	SS (mg/L)	Turbidity (FNU)	Activity concentration(Bq/L)			
																Cs-134	Cs-137		
R i v e r s	Nakagawa River System	Matsuba River	Tributary	Otawara City	2017/5/6	Cloudy	20.3	0.3	17.0	0.0	Grayish yellow green	None	>100	13.8	2	2.2	<0.72	<0.60	
					2017/6/26	Sunny	27.4	0.4	22.0	0.0	Grayish yellow green	None	>100	12.1	2	1.7	<0.48	<0.55	
					2017/7/7	Sunny	30.6	0.6	22.7	0.0	Grayish yellow green	None	48	9.5	10	4.6	<0.65	<0.84	
					2017/8/1	Cloudy	28.5	0.3	21.5	0.0	Grayish yellow green	None	>100	9.9	3	1.5	<0.69	<0.46	
					2017/9/4	Cloudy	26.2	0.3	18.7	0.0	Grayish yellow green	None	>100	9.2	2	0.7	<0.81	<0.66	
					2017/11/6	Sunny	19.6	0.3	11.7	0.0	Light grayish yellow green	None	>100	8.4	<1	0.3	<0.68	<0.61	
		11	Sabigawa River	Udagawa Bridge	Otawara City	2018/2/1	Cloudy	4.2	0.3	2.0	0.0	Light grayish yellow green	None	>100	9.6	<1	0.4	<0.48	<0.80
						2017/5/6	Cloudy	16.4	0.2	14.4	0.0	Light grayish yellow green	None	>100	12.4	2	0.9	<0.94	<0.88
						2017/8/5	Cloudy	27.2	0.2	20.2	0.0	Light grayish yellow green	None	>100	14.9	10	1.7	<0.56	<0.75
						2017/11/13	Sunny	12.2	0.2	13.7	0.0	Light grayish yellow green	None	>100	13.6	<1	0.2	<0.63	<0.84
						2018/2/13	Sunny	3.2	0.3	8.4	0.0	Light grayish yellow green	None	>100	14.7	1	0.5	<0.80	<0.69
						2017/5/6	Cloudy	16.5	0.4	14.6	0.0	Light grayish greenish yellow	None	>100	18.6	<1	0.7	<0.62	<0.61
		12	Momura River	Momuranaka Bridge	Otawara City	2017/8/5	Cloudy	26.3	0.4	18.2	0.0	Light grayish yellow green	None	>100	17.1	2	0.6	<0.53	<0.61
						2017/11/13	Sunny	12.3	0.6	15.3	0.0	Light grayish yellow green	None	>100	17.7	<1	0.2	<0.70	<0.81
						2018/2/13	Sunny	0.9	0.4	12.5	0.0	Light grayish yellow green	None	>100	18.6	<1	0.2	<0.61	<0.61
						2017/5/30	Sunny	23.2	0.3	17.2	0.0	Light grayish yellow green	None	>100	25.3	<1	0.8	<0.72	<0.84
						2017/8/24	Sunny	23.7	0.3	18.3	0.0	Light grayish yellow green	None	>100	18.0	<1	0.8	<0.77	<0.80
						2017/11/24	Sunny	4.1	0.3	7.6	0.0	Light grayish yellow green	None	>100	21.3	<1	0.3	<0.61	<0.75
		13	Yunohara		Nasushiobara City	2018/2/13	Cloudy	-1.4	0.2	5.1	0.0	Light grayish yellow green	None	>100	25.6	<1	0.5	<0.80	<0.70
						2017/5/30	Sunny	21.1	0.5	16.1	0.0	Light grayish yellow green	None	>100	23.2	1	0.7	<0.68	<0.80
						2017/8/18	Cloudy	21.6	0.9	17.4	0.0	Grayish yellow green	None	>100	15.2	2	1.7	<0.74	<0.63
						2017/11/24	Sunny	6.8	0.5	8.4	0.0	Light grayish yellow green	None	>100	20.1	<1	0.4	<0.66	<0.75
						2018/2/13	Cloudy	2.3	0.6	3.8	0.0	Light grayish greenish yellow	None	>100	22.6	<1	0.6	<0.81	<0.80
						2017/5/6	Cloudy	16.2	0.4	15.0	0.0	Grayish greenish yellow	None	>100	20.7	3	1.5	<0.63	<0.70
		14	Sekiba Bridge		Nasushiobara City	2017/8/5	Cloudy	25.7	0.5	21.2	0.0	Light grayish yellow green	None	>100	20.5	2	0.8	<0.85	<0.63
						2017/11/13	Sunny	12.8	0.5	11.5	0.0	Light grayish yellow green	None	>100	17.0	<1	0.2	<0.78	<0.80
						2018/2/13	Sunny	-1.2	0.4	2.9	0.0	Light grayish yellow green	None	>100	21.0	1	0.5	<0.77	<0.66
						2017/5/6	Cloudy	17.3	0.3	16.2	0.0	Light grayish yellow green	None	>100	17.1	2	1.8	<0.66	<0.80
						2017/6/6	Sunny	19.2	0.3	17.2	0.0	Light grayish yellow green	None	>100	17.9	3	1.4	<0.69	<0.63
						2017/7/3	Cloudy	23.1	0.4	19.5	0.0	Light grayish yellow green	None	84	16.7	10	4.4	<0.61	<0.84
		15	Hokigawa River	Iwai Bridge	Otawara City	2017/8/5	Sunny	28.3	0.3	21.9	0.0	Light grayish yellow green	None	>100	17.9	2	0.7	<0.65	<0.61
						2017/9/5	Sunny	25.4	0.3	18.8	0.0	Light grayish yellow green	None	>100	17.1	1	0.4	<0.71	<0.61
						2017/11/13	Sunny	15.7	0.3	14.2	0.0	Light grayish yellow green	None	>100	16.6	<1	0.3	<0.74	<0.74
						2018/2/13	Sunny	4.9	0.3	8.4	0.0	Light grayish yellow green	None	>100	18.0	<1	0.4	<0.72	<0.66
						2017/5/6	Cloudy	17.8	0.4	17.3	0.0	Grayish yellow green	None	>100	17.5	5	2.9	<0.73	<0.80
						2017/6/6	Sunny	20.7	0.4	19.1	0.0	Light grayish yellow green	None	>100	17.4	2	1.2	<0.56	<0.79
		16	Hokigawa Bridge		Otawara City	2017/7/3	Cloudy	25.9	0.4	21.5	0.0	Light grayish yellow green	None	70	16.4	7	4.0	<0.73	<0.69
						2017/8/5	Cloudy	29.8	0.2	23.6	0.0	Grayish yellow green	None	>100	17.0	2	1.1	<0.58	<0.92
						2017/9/5	Sunny	28.1	0.3	19.5	0.0	Grayish yellow green	None	>100	16.7	2	0.9	<0.51	<0.71
						2017/11/13	Sunny	15.9	0.2	13.8	0.0	Light grayish greenish yellow	None	>100	15.6	1	0.4	<0.66	<0.92
						2018/2/13	Sunny	5.6	0.3	7.9	0.0	Light grayish yellow green	None	>100	18.3	<1	0.6	<0.60	<0.92
						2017/5/6	Cloudy	18.4	0.3	16.7	0.0	Light grayish yellow green	None	>100	13.7	14	4.0	<0.60	<0.88
		17	Nakagawa River	Shinnaka Bridge	Nakagawa Town	2017/6/6	Sunny	21.3	0.4	18.0	0.0	Light grayish yellow green	None	>100	13.4	3	1.7	<0.70	<0.55
						2017/7/3	Cloudy	26.8	0.3	22.4	0.0	Light grayish yellow green	None	74	12.8	6	3.1	<0.78	<0.80
						2017/8/5	Cloudy	31.2	0.3	22.4	0.0	Light grayish yellow green	None	>100	11.1	1	0.7	<0.69	<0.66
						2017/9/5	Sunny	29.0	0.3	20.7	0.0	Light grayish yellow green	None	>100	10.8	1	0.6	<0.53	<0.47
						2017/11/22	Sunny	9.9	0.3	6.6	0.0	Light grayish yellow green	None	>100	11.1	<1	0.2	<0.75	<0.69
						2018/2/5	Sunny	3.8	0.3	2.9	0.0	Light grayish yellow green	None	>100	13.1	<1	0.6	<0.66	<0.96
		18	Mumogawa River	Kosei Bridge	Nakagawa Town	2017/5/6	Cloudy	18.4	0.3	16.7	0.0	Light grayish yellow green	None	>100	13.7	14	4.0	<0.60	<0.88
						2017/6/6	Sunny	21.3	0.4	18.0	0.0	Light grayish yellow green	None	>100	13.4	3	1.7	<0.70	<0.55
2017/7/3	Cloudy					26.8	0.3	22.4	0.0	Light grayish yellow green	None	74	12.8	6	3.1	<0.78	<0.80		
2017/8/5	Cloudy					31.2	0.3	22.4	0.0	Light grayish yellow green	None	>100	11.1	1	0.7	<0.69	<0.66		
2017/9/5	Sunny					29.0	0.3	20.7	0.0	Light grayish yellow green	None	>100	10.8	1	0.6	<0.53	<0.47		
2017/11/22	Sunny					9.9	0.3	6.6	0.0	Light grayish yellow green	None	>100	11.1	<1	0.2	<0.75	<0.69		

Tochigi River (Water) 3/6

No.	Location				Sampling Date	Weather	Air temperature (°C)	Water depth (m)	Water											Remarks		
	Water area	Location	Municipality	General items																		
				Water temperature (°C)					Sampling depth (m)	Color	Odor	Transparency (cm)	Electrical conductivity (mS/m)	SS (mg/L)	Turbidity (FNU)	Activity concentration(Bq/L)						
Cs-134	Cs-137																					
R I V E R S	19	Arakawa River	Saikachi Bridge	Shiyoa Town	2017/5/30	Sunny	29.2	0.6	22.2	0.0	Light grayish greenish yellow	None	>100	7.2	2	1.6	<0.66	<0.69				
					2017/8/18	Cloudy	24.5	1.1	19.0	0.0	Grayish greenish yellow	None	>100	5.9	3	1.5	<0.72	<0.69				
					2017/11/24	Sunny	10.4	0.8	9.6	0.0	Light grayish greenish yellow	None	>100	6.5	<1	0.4	<0.58	<0.80				
			2018/2/13	Sunny	5.8	1.0	4.5	0.0	Light grayish greenish yellow	None	>100	7.0	<1	0.5	<0.92	<0.78						
			20	Ranjo Bridge	Sakura City	2017/5/8	Sunny	21.2	0.4	18.1	0.0	Grayish greenish yellow	None	>100	14.7	3	1.5	<0.82	<0.84			
						2017/8/19	Cloudy	27.2	0.3	20.6	0.0	Light grayish yellow green	None	>100	11.1	8	2.2	<0.75	<0.84			
		2017/11/22				Sunny	4.8	0.3	9.7	0.0	Light grayish greenish yellow	None	>100	13.1	<1	0.3	<0.63	<0.63				
		21	Uchikawa River	Tanaka Bridge	Yaita City	2018/2/5	Sunny	1.2	0.2	6.1	0.0	Light grayish greenish yellow	None	>100	14.8	1	0.5	<0.70	<0.80			
						2017/5/30	Sunny	27.6	0.2	23.0	0.0	Light grayish yellow	None	>100	12.2	3	1.7	<0.82	<0.84			
						2017/8/18	Cloudy	24.6	0.5	20.9	0.0	Grayish greenish yellow	None	>100	8.2	10.8	4	1.9	<0.82	<0.80		
				22	Asahi Bridge	Sakura City	2017/11/24	Sunny	11.2	0.2	8.5	0.0	Light grayish yellow	None	>100	9.8	<1	0.3	<0.63	<0.84		
							2018/2/13	Cloudy	5.8	0.3	4.0	0.0	Light grayish greenish yellow	None	>100	10.5	<1	0.4	<0.84	<0.54		
	2017/5/8						Sunny	22.1	0.4	20.3	0.0	Grayish yellow	None	52	14.2	10	8.1	<0.42	<0.55			
	23	Arakawa River	Mukada Bridge	Nasu Karasuyama City	2017/8/19	Sunny	28.3	0.3	22.5	0.0	Grayish yellow green	None	>100	13.2	5	2.2	<0.89	<0.80				
					2017/11/22	Sunny	5.2	0.2	10.6	0.0	Light grayish yellow green	None	>100	18.6	<1	0.4	<0.71	<0.70				
					2018/2/5	Sunny	1.4	0.2	7.6	0.0	Light grayish yellow green	None	>100	19.3	5	1.9	<0.79	<0.84				
					2017/5/8	Sunny	28.6	0.4	20.1	0.0	Grayish yellow	None	37	13.9	16	11	<0.76	<0.75				
					2017/6/6	Sunny	22.3	0.4	22.3	0.0	Light grayish yellow green	None	>100	18.4	4	2.3	<0.70	<0.47				
					2017/7/3	Sunny	29.4	0.4	24.1	0.0	Light grayish yellow green	None	45	16.0	11	9.5	<0.69	<0.75				
			24	Egawa River	Tributary	Nasu Karasuyama City	2017/8/19	Cloudy	29.5	0.4	23.7	0.0	Light grayish yellow green	None	>100	13.2	2	1.8	<0.68	<0.88		
							2017/9/5	Sunny	28.4	0.3	22.3	0.0	Light grayish greenish yellow	None	>100	14.9	2	0.8	<0.72	<0.75		
							2017/11/22	Cloudy	10.7	0.3	9.0	0.0	Light grayish greenish yellow	None	>100	17.3	<1	0.3	<0.65	<0.80		
							2018/2/5	Sunny	6.5	0.3	7.1	0.0	Light grayish greenish yellow	None	>100	20.4	1	0.8	<0.67	<0.80		
							2017/5/8	Sunny	26.4	0.4	19.3	0.0	Grayish yellow	None	28	16.7	42	24	<0.56	<0.61		
							2017/6/6	Sunny	22.0	0.4	20.7	0.0	Light grayish greenish yellow	None	>100	18.5	5	3.0	<0.60	<0.75		
	25	Kinugawa River	Kawaji Daichi Power Station, front	Nikko City	2017/7/3	Cloudy	28.2	0.4	24.2	0.0	Grayish yellow	None	28	15.1	30	15	<0.57	<0.63				
					2017/8/19	Sunny	29.3	0.4	24.0	0.0	Light grayish yellow	None	54	14.5	67	11	<0.66	<0.63				
					2017/9/5	Sunny	28.6	0.4	24.2	0.0	Light grayish yellow	None	>100	17.0	5	2.1	<0.71	<0.66				
					2017/11/22	Cloudy	10.8	0.5	6.3	0.0	Light grayish yellow	None	>100	16.8	1	0.8	<0.87	<0.48				
					2018/2/5	Sunny	6.2	0.3	4.3	0.0	Light grayish yellow	None	>100	18.3	4	1.9	<0.73	<0.84				
					2017/6/5	Sunny	18.7	0.5	12.2	0.0	Grayish yellow green	None	>100	10.4	<1	0.4	<0.66	<0.69				
					2017/8/17	Cloudy	21.2	0.4	19.1	0.0	Grayish yellow	None	23	7.2	20	26	<0.70	<0.80				
					2017/11/27	Sunny	8.2	0.3	10.5	0.0	Light grayish yellow green	None	52	7.7	4	8.9	<0.75	<0.69				
					2018/2/5	Sunny	1.4	0.3	5.8	0.0	Light grayish greenish yellow	None	>100	8.4	1	1.9	<0.68	<0.75				
					2017/6/5	Sunny	18.3	0.3	14.0	0.0	Light grayish yellow green	None	>100	8.9	<1	<0.1	<0.65	<0.80				
					26	Yunishi River	Macsawa Bridge	Nikko City	2017/8/17	Cloudy	22.8	0.3	15.7	0.0	Light grayish yellow green	None	65	7.1	2	2.2	<0.61	<0.80
									2017/11/27	Sunny	4.3	0.2	5.5	0.0	Light grayish yellow green	None	>100	8.5	<1	0.1	<0.82	<0.75
	2018/2/5	Sunny	-1.6	0.2					2.2	0.0	Light grayish yellow green	None	>100	9.5	<1	0.2	<0.74	<0.78				
	2017/6/5	Cloudy	20.8	0.5					11.3	0.0	Light grayish yellow green	None	>100	7.7	<1	0.3	<0.60	<0.84				
	2017/8/17	Cloudy	23.9	0.7					18.9	0.0	Grayish yellow green	None	58	6.6	5	5.1	<0.75	<0.63				
	2017/11/27	Sunny	8.4	0.5					7.5	0.0	Light grayish greenish yellow	None	68	7.8	10	8.1	<0.78	<0.80				
	27	Ojika River	Tributary	Nikko City	2018/2/5	Cloudy	1.5	0.5	3.5	0.0	Light grayish yellow green	None	>100	8.6	1	2.0	<0.61	<0.80				
					2017/6/5	Cloudy	21.8	0.2	12.7	0.0	Grayish yellow green	None	>100	8.3	<1	0.5	<0.61	<0.69				
					2017/8/17	Rain	21.7	0.3	18.6	0.0	Grayish yellow green	None	55	7.3	6	4.1	<0.72	<0.69				
					2017/11/27	Sunny	10.3	0.2	8.8	0.0	Light grayish greenish yellow	None	65	8.6	3	4.4	<0.68	<0.92				
					2018/2/5	Sunny	6.2	0.2	4.5	0.0	Light grayish yellow green	None	>100	9.8	<1	0.9	<0.76	<0.66				
					2018/2/5	Sunny	6.2	0.2	4.5	0.0	Light grayish yellow green	None	>100	9.8	<1	0.9	<0.76	<0.66				
	28	Kinugawa River	Kosagoe	Nikko City	2017/6/5	Cloudy	21.8	0.2	12.7	0.0	Grayish yellow green	None	>100	8.3	<1	0.5	<0.61	<0.69				
2017/8/17					Rain	21.7	0.3	18.6	0.0	Grayish yellow green	None	55	7.3	6	4.1	<0.72	<0.69					
2017/11/27					Sunny	10.3	0.2	8.8	0.0	Light grayish greenish yellow	None	65	8.6	3	4.4	<0.68	<0.92					
2018/2/5					Sunny	6.2	0.2	4.5	0.0	Light grayish yellow green	None	>100	9.8	<1	0.9	<0.76	<0.66					
2017/6/5					Cloudy	21.8	0.2	12.7	0.0	Grayish yellow green	None	>100	8.3	<1	0.5	<0.61	<0.69					
2017/8/17					Rain	21.7	0.3	18.6	0.0	Grayish yellow green	None	55	7.3	6	4.1	<0.72	<0.69					

Tochigi River (Water) 4/6

No.	Location				Sampling Date	Weather	Air temperature (°C)	Water depth (m)	Water										Remarks	
	Water area	Location	Municipality	General items										Activity concentration(Bq/L)						
				Water temperature (°C)					Sampling depth (m)	Color	Odor	Transparency (cm)	Electrical conductivity (mS/m)	SS (mg/L)	Turbidity (FNU)	Cs-134	Cs-137			
R i v e r s	29	Itaana River	Tributary	Nikko City	2017/5/23	Sunny	28.1	0.3	21.3	0.0	Light grayish yellow green	None	>100	8.6	<1	0.5	<0.69	<-0.84		
					2017/6/14	Sunny	20.4	0.2	18.8	0.0	Light grayish yellow green	None	>100	8.8	<1	0.5	<0.52	<-0.80		
					2017/7/4	Rain	23.7	0.3	17.7	0.0	Light grayish yellow green	None	>100	8.0	<1	0.6	<0.74	<-0.63		
					2017/8/24	Sunny	29.0	0.5	20.6	0.0	Light grayish yellow green	None	>100	7.0	<1	0.4	<0.71	<-0.63		
					2017/9/7	Cloudy	22.3	0.3	18.3	0.0	Light grayish yellow green	None	>100	7.7	<1	0.3	<0.71	<-0.54		
					2017/11/27	Cloudy	11.2	0.2	9.3	0.0	Light grayish yellow green	None	>100	7.0	<1	0.2	<0.72	<-0.75		
					2018/2/5	Cloudy	6.8	0.2	5.1	0.0	Light grayish yellow green	None	>100	7.5	2	0.8	<0.76	<-0.80		
					2017/6/9	Sunny	16.0	0.3	10.9	0.0	Grayish yellow green	None	>100	19.4	4	1.4	<0.65	<-0.55		
		30	Yukawa River		Tributary	2017/8/24	Cloudy	21.0	0.5	13.8	0.0	Grayish yellow green	None	>100	19.5	<1	0.4	<0.55	<-0.84	
						2017/11/20	Cloudy	1.2	0.2	6.1	0.0	Grayish yellow green	None	>100	18.2	1	0.5	<0.94	<-0.80	
						2018/2/14	Sunny	-2.2	0.2	3.9	0.0	Grayish yellow green	None	>100	19.4	2	1.0	<0.72	<-0.80	
						2017/6/9	Sunny	18.0	0.2	9.8	0.0	Light grayish yellow green	None	>100	11.9	<1	0.2	<0.68	<-0.80	
		31	Daiya River		Shinkyo Bridge	2017/8/17	Rain	21.1	0.4	12.0	0.0	Light grayish yellow green	None	>100	10.2	<1	0.3	<0.61	<-0.80	
						2017/11/27	Sunny	8.6	0.3	7.4	0.0	Light grayish yellow green	None	>100	11.5	<1	0.2	<0.68	<-0.75	
						2018/2/14	Sunny	5.0	0.3	6.0	0.0	Light grayish yellow green	None	>100	12.0	5	1.6	<0.82	<-0.80	
						2017/5/23	Sunny	24.0	0.2	16.1	0.0	Light grayish yellow green	None	68	12.7	5	2.4	<0.77	<-0.96	
	32	Shidobuchi River	Sujichigai Bridge	2017/8/19	Cloudy	22.7	0.3	17.2	0.0	Light grayish yellow green	None	>100	5.8	<1	0.5	<0.75	<-0.75			
				2017/11/27	Sunny	8.1	0.2	7.5	0.0	Light grayish yellow green	None	>100	9.6	<1	0.3	<0.75	<-0.88			
				2018/2/14	Sunny	6.2	0.2	5.3	0.0	Light grayish yellow green	None	>100	11.3	<1	0.3	<0.67	<-0.80			
				2017/5/25	Cloudy	18.9	0.2	14.3	0.0	Light grayish yellowish green	None	>100	12.4	2	0.8	<0.69	<-0.63			
	33	Tonogawa River System	Kinugawa River System	Daiya River	Kaishin Bridge (Harigai)	2017/6/14	Sunny	18.3	0.2	14.3	0.0	Light grayish yellow green	None	>100	12.9	<1	0.4	<0.66	<-0.75	
						2017/7/4	Cloudy	24.2	0.2	14.6	0.0	Light grayish yellow green	None	62	12.1	3	1.7	<0.69	<-0.75	
						2017/8/19	Cloudy	24.7	0.4	16.2	0.0	Light grayish yellow green	None	>100	10.7	4	0.8	<0.63	<-0.69	
						2017/9/7	Cloudy	21.8	0.2	14.0	0.0	Light grayish yellowish green	None	>100	11.8	1	0.4	<0.57	<-0.61	
						2017/11/27	Sunny	11.2	0.2	9.2	0.0	Light grayish yellowish green	None	>100	11.4	1	0.4	<0.65	<-0.88	
						2018/2/5	Sunny	5.8	0.2	7.8	0.0	Light grayish yellowish green	None	>100	12.1	<1	0.4	<0.76	<-0.92	
						2017/5/25	Cloudy	20.0	0.3	12.0	0.0	Light grayish greenish yellow	None	>100	9.2	1	0.6	<0.72	<-0.75	
						2017/6/14	Cloudy	17.7	0.3	12.2	0.0	Light grayish yellow green	None	>100	8.9	<1	0.6	<0.67	<-0.80	
	34	Kinugawa River	Samuki	Shioya Town	2017/7/4	Cloudy	24.0	0.1	15.0	0.0	Light grayish greenish yellow	None	>100	9.5	1	0.7	<0.79	<-0.75		
					2017/8/17	Rain	22.2	0.6	17.7	0.0	Light grayish yellow green	None	85	9.2	21	3.9	<0.77	<-0.84		
					2017/9/7	Cloudy	22.2	0.1	17.9	0.0	Grayish yellow green	None	>100	9.4	1	0.7	<0.73	<-0.71		
					2017/11/24	Sunny	10.4	0.3	10.1	0.0	Light grayish yellow green	None	>100	10.8	3	2.3	<0.62	<-0.75		
35	Nishi-Kinugawa River	Nishi-Kinugawa Bridge	Utsunomiya City	2018/2/13	Sunny	4.5	0.1	7.3	0.0	Light grayish greenish yellow	None	>100	11.7	1	0.7	<0.70	<-0.80			
				2017/5/8	Sunny	17.4	0.6	11.9	0.0	Light grayish yellow green	None	>100	10.9	4	1.8	<0.76	<-0.80			
				2017/8/19	Cloudy	24.8	0.5	18.3	0.0	Light grayish yellow green	None	>100	10.0	5	3.1	<0.61	<-0.84			
				2017/11/28	Cloudy	8.6	1.0	8.9	0.0	Light grayish yellowish green	None	>100	10.1	2	1.5	<0.76	<-0.92			
				2018/2/8	Sunny	4.2	0.5	3.8	0.0	Light grayish yellow green	None	>100	12.6	3	0.9	<0.68	<-0.88			
36	Kinugawa River	Kinugawa Bridge (Hoshakuji Temple)	Utsunomiya City	2017/5/8	Sunny	18.5	1.0	13.4	0.0	Grayish yellow green	None	>100	11.5	2	1.2	<0.73	<-0.61			
				2017/8/19	Cloudy	26.1	0.4	18.6	0.0	Light grayish yellow green	None	95	10.2	10	3.8	<0.75	<-0.55			
				2017/11/28	Cloudy	9.1	1.0	9.6	0.0	Light grayish yellow green	None	>100	11.7	1	0.9	<0.76	<-0.80			
				2018/2/8	Sunny	5.2	0.2	6.2	0.0	Light grayish yellow green	None	>100	13.4	2	0.8	<0.74	<-0.61			
37	Kinugawa River	Daidoizumi Bridge	Mooka City	2017/5/9	Cloudy	23.4	1.1	19.5	0.0	Grayish yellow green	None	>100	16.9	2	1.3	<0.69	<-0.84			
				2017/8/26	Sunny	27.8	0.6	21.7	0.0	Light grayish yellow green	None	>100	14.8	3	1.5	<0.60	<-0.63			
				2017/11/29	Sunny	13.4	1.2	12.5	0.0	Light grayish yellow green	None	>100	16.2	1	0.5	<0.79	<-0.75			
				2018/2/8	Sunny	1.8	0.9	6.3	0.0	Light grayish yellow green	None	>100	18.2	2	0.8	<0.63	<-0.75			

Tochigi River (Water) 5/6

No.	Location			Sampling Date	Weather	Air temperature (°C)	Water depth (m)	Water										Remarks			
	Water area	Location	Municipality					Water temperature (°C)	Sampling depth (m)	Color	Odor	Transparency (cm)	Electrical conductivity (mS/m)	SS (mg/L)	Turbidity (FNU)	Activity concentration(Bq/L)					
																Cs-134	Cs-137				
R i v e r s	Tonogawa River System	Egawa River	Tributary	Shimotsuke City	2017/5/9	Cloudy	23.1	0.8	17.7	0.0	Grayish yellow green	None	>100	16.2	6	2.7	<0.63	<0.69			
					2017/6/12	Sunny	22.8	0.9	19.0	0.0	Grayish yellow green	None	>100	17.7	3	1.4	<0.90	<0.75			
					2017/7/6	Sunny	29.5	1.0	24.5	0.0	Grayish yellow green	None	72	16.8	9	3.9	<0.73	<0.69			
					2017/8/26	Cloudy	28.2	0.6	20.8	0.0	Grayish yellow green	None	>100	15.1	1	0.7	<0.68	<0.75			
					2017/9/8	Cloudy	24.3	0.7	19.9	0.0	Grayish yellow green	None	>100	16.7	4	1.0	<0.78	<0.69			
					2017/11/29	Sunny	15.5	0.2	14.9	0.0	Light grayish yellow green	None	>100	24.5	4	1.7	<0.68	<0.75			
		39	Akabori River	Nikko City Hall, front	Nikko City	2018/2/8	Sunny	1.4	0.8	2.5	0.0	Grayish yellow green	None	>100	25.5	2	1.4	<0.77	<0.70		
						2017/5/23	Sunny	23.2	0.2	10.7	0.0	Light grayish greenish yellow	None	>100	11.8	<1	0.3	<0.71	<0.80		
						2017/8/19	Cloudy	21.4	0.2	13.4	0.0	Light grayish greenish yellow	None	>100	10.6	3	0.7	<0.66	<0.88		
						2017/11/27	Sunny	7.8	0.2	7.7	0.0	Light grayish greenish yellow	None	>100	11.5	2	0.6	<0.61	<0.84		
						2018/2/8	Sunny	-3.7	0.2	4.2	0.0	Light grayish greenish yellow	None	>100	12.0	4	0.5	<0.87	<0.88		
						2017/5/23	Sunny	20.7	0.2	15.5	0.0	Light grayish greenish yellow	None	>100	16.2	2	0.6	<0.69	<0.75		
		40	Kiwadajima		Nikko City	2017/8/19	Cloudy	21.7	0.4	15.4	0.0	Light grayish yellow green	None	>100	13.6	2	0.6	<0.69	<0.80		
						2017/11/27	Sunny	5.2	0.3	9.9	0.0	Light grayish greenish yellow	None	>100	14.6	<1	0.3	<0.75	<0.84		
						2018/2/8	Sunny	-4.5	0.2	7.0	0.0	Light grayish greenish yellow	None	>100	16.8	1	0.4	<0.74	<0.84		
						2017/5/23	Sunny	30.4	0.4	22.8	0.0	Light grayish yellow green	None	>100	15.1	3	1.7	<0.66	<0.84		
						2017/6/14	Sunny	23.5	0.3	19.8	0.0	Light grayish yellow green	None	>100	13.9	2	1.3	<0.73	<0.80		
						2017/7/4	Cloudy	25.4	0.3	20.3	0.0	Grayish yellow green	None	82	13.4	3	1.7	<0.78	<0.98		
		41	Tagawa River	Ozobashi Bridge	Utsunomiya City	2017/8/19	Cloudy	27.7	0.4	21.0	0.0	Light grayish greenish yellow	None	>100	13.6	4	1.8	<0.75	<0.92		
						2017/9/7	Cloudy	26.3	0.3	20.4	0.0	Light grayish yellow green	None	>100	15.1	3	1.1	<0.71	<0.80		
						2017/11/28	Cloudy	9.7	0.3	12.2	0.0	Light grayish yellow green	None	>100	15.6	1	0.7	<0.70	<0.84		
						2018/2/8	Sunny	8.2	0.3	10.5	0.0	Light grayish greenish yellow	None	>100	16.6	2	0.8	<0.89	<0.66		
						2017/5/23	Sunny	29.3	0.1	25.6	0.0	Grayish yellow	None	>100	19.9	3	1.4	<0.68	<0.92		
						2017/8/19	Cloudy	28.4	0.2	21.3	0.0	Grayish yellow	None	>100	19.4	3	1.3	<0.58	<0.84		
		42	Kamagawa River	Tsukushi Bridge	Utsunomiya City	2017/11/28	Cloudy	10.6	0.2	14.4	0.0	Light grayish greenish yellow	None	>100	19.6	4	1.4	<0.65	<0.96		
						2018/2/8	Sunny	9.2	0.1	12.1	0.0	Light grayish yellow green	None	>100	19.6	4	1.4	<0.57	<0.84		
						2017/5/16	Sunny	18.5	0.3	18.2	0.0	Light grayish greenish yellow	None	93	22.7	3	2.5	<0.60	<0.84		
						2017/8/5	Cloudy	29.7	0.3	24.2	0.0	Light grayish greenish yellow	None	>100	23.0	5	1.6	<0.91	<0.80		
2017/11/29	Sunny					17.9	0.3	15.5	0.0	Light grayish greenish yellow	None	>100	24.3	3	1.4	<0.76	<0.80				
2018/2/8	Sunny					0.3	0.3	6.7	0.0	Light grayish yellow	None	>100	29.8	3	1.7	<0.74	<0.61				
43	Tagawa River	Meiji Bridge	Kaminokawa Town	2017/5/9	Cloudy	20.4	0.2	21.7	0.0	Grayish yellow	None	>100	22.9	5	2.6	<0.86	<0.69				
				2017/8/26	Cloudy	29.3	0.3	23.2	0.0	Light grayish yellow green	None	>100	22.1	4	1.3	<0.81	<0.92				
				2017/11/29	Sunny	11.8	0.6	13.4	0.0	Light grayish yellow green	None	>100	26.0	3	1.8	<0.92	<0.69				
				2018/2/8	Sunny	4.6	0.2	7.5	0.0	Light grayish yellow	None	>100	29.4	2	1.9	<0.60	<0.54				
				2017/5/16	Sunny	24.2	0.3	21.9	0.0	Light grayish yellow green	None	>100	10.4	3	1.4	<0.78	<0.92				
				2017/8/5	Cloudy	25.0	0.3	21.0	0.0	Light grayish yellow green	None	>100	10.5	1	0.4	<0.73	<0.61				
44	Yanabashi Bridge	Oyama City	Kaminokawa Town	2017/11/25	Sunny	6.2	0.3	8.8	0.0	Light grayish yellow green	None	>100	9.6	<1	0.3	<0.63	<0.61				
				2018/2/15	Sunny	2.8	0.3	4.8	0.0	Light grayish yellow green	None	>100	11.6	<1	0.6	<0.65	<0.75				
				2017/5/16	Sunny	20.8	0.2	20.0	0.0	Light grayish greenish yellow	None	>100	16.3	4	1.6	<0.89	<0.84				
				2017/8/5	Cloudy	29.1	0.3	23.0	0.0	Light grayish yellow green	None	>100	16.6	2	0.8	<0.60	<0.69				
				2017/11/25	Sunny	15.2	0.2	12.3	0.0	Light grayish greenish yellow	None	42	17.4	38	18	<0.82	<0.63				
				2018/2/15	Sunny	11.8	0.3	15.5	0.0	Light grayish greenish yellow	None	>100	20.8	3	1.7	<0.85	<0.75				
45	Kajima Bridge	Kanuma City	Kanuma City	2017/5/16	Sunny	22.4	0.3	19.4	0.0	Light grayish yellow green	None	>100	8.0	2	1.3	<0.78	<0.80				
				2017/8/5	Cloudy	27.7	0.3	21.4	0.0	Light grayish yellow green	None	>100	8.1	5	0.9	<0.77	<0.61				
				2017/11/25	Sunny	8.2	0.3	11.7	0.0	Light grayish yellow green	None	>100	6.9	<1	0.3	<0.70	<0.70				
				2018/2/15	Sunny	6.4	0.2	6.5	0.0	Light grayish yellow green	None	>100	7.6	<1	0.2	<0.80	<0.69				
				2017/5/16	Sunny	22.8	0.2	24.0	0.0	Light grayish yellow	None	>100	17.4	12	7.9	<0.94	<0.75				
				2017/8/5	Cloudy	26.8	0.4	23.6	0.0	Light grayish yellow	None	>100	18.1	<1	1.2	<0.82	<0.88				
46	Onari Bridge	Mibu Town	Kanuma City	2017/11/25	Sunny	7.8	0.2	8.6	0.0	Light grayish yellow	None	>100	18.2	<1	0.9	<0.80	<0.88				
				2018/2/15	Sunny	5.2	0.2	4.0	0.0	Light grayish yellow	None	>100	20.4	3	2.0	<0.79	<0.96				
				47	Oashi River	Akaiishi Bridge	Kanuma City	2017/5/16	Sunny	22.8	0.2	24.0	0.0	Light grayish yellow	None	>100	17.4	12	7.9	<0.94	<0.75
								2017/8/5	Cloudy	26.8	0.4	23.6	0.0	Light grayish yellow	None	>100	18.1	<1	1.2	<0.82	<0.88
								2017/11/25	Sunny	7.8	0.2	8.6	0.0	Light grayish yellow	None	>100	18.2	<1	0.9	<0.80	<0.88
								2018/2/15	Sunny	5.2	0.2	4.0	0.0	Light grayish yellow	None	>100	20.4	3	2.0	<0.79	<0.96
48	Koyabu River	Koyabu Bridge	Kanuma City					2017/5/16	Sunny	22.8	0.2	24.0	0.0	Light grayish yellow	None	>100	17.4	12	7.9	<0.94	<0.75
								2017/8/5	Cloudy	26.8	0.4	23.6	0.0	Light grayish yellow	None	>100	18.1	<1	1.2	<0.82	<0.88
				2017/11/25	Sunny	7.8	0.2	8.6	0.0	Light grayish yellow	None	>100	18.2	<1	0.9	<0.80	<0.88				
				2018/2/15	Sunny	5.2	0.2	4.0	0.0	Light grayish yellow	None	>100	20.4	3	2.0	<0.79	<0.96				

Tochigi River (Water)6/6

R i v e r s	Location				Sampling Date	Weather	Air temperature (°C)	Water depth (m)	Water										Remarks		
	No.	Water area							Municipality	Water temperature (°C)	Sampling depth (m)	Color	Odor	Transparency (cm)	Electrical conductivity (mS/m)	SS (mg/L)	Turbidity (FNU)	Activity concentration(Bq/L)			
		Location	Location	Location														Cs-134		Cs-137	
49	50	Tonegawa River System	Watarase River Area	Omoi River Area	Omoi River	Tamotsu Bridge	Tochigi City	2017/5/16	Sunny	22.1	0.2	19.7	0.0	Light grayish yellow green	None	>100	11.0	<1	0.5	<0.70	<0.92
								2017/8/5	Cloudy	28.4	0.3	22.2	0.0	Light grayish yellow green	None	>100	12.1	<1	0.5	<0.80	<0.61
								2017/11/25	Sunny	14.1	0.2	13.5	0.0	Light grayish yellow green	None	>100	11.5	3	0.8	<0.90	<0.80
								2018/2/15	Sunny	10.7	0.2	8.8	0.0	Light grayish yellow green	None	>100	15.9	<1	0.2	<0.91	<0.84
								2017/5/9	Cloudy	18.4	0.4	19.8	0.0	Grayish greenish yellow	None	75	23.0	7	3.5	<0.63	<0.99
								2017/6/12	Sunny	23.4	0.5	24.4	0.0	Grayish greenish yellow	None	65	23.4	13	3.9	<0.74	<0.75
								2017/7/6	Sunny	29.2	0.5	24.6	0.0	Grayish greenish yellow	None	60	16.8	15	3.4	<0.51	<0.69
								2017/8/26	Cloudy	30.8	0.6	22.9	0.0	Light grayish yellow green	None	>100	14.7	6	1.6	<0.75	<0.80
								2017/9/8	Sunny	28.2	0.5	22.6	0.0	Grayish greenish yellow	None	>100	17.9	6	1.3	<0.82	<0.61
								2017/11/29	Sunny	6.2	0.3	12.4	0.0	Light grayish greenish yellow	None	>100	20.1	3	1.3	<0.85	<0.88
								2018/2/8	Sunny	6.2	0.5	8.0	0.0	Grayish greenish yellow	None	>100	29.4	1	1.3	<0.51	<0.75
								2017/5/9	Cloudy	18.2	0.8	18.3	0.0	Grayish greenish yellow	None	65	29.2	7	4.1	<0.54	<0.48
								2017/6/12	Sunny	24.4	0.7	23.8	0.0	Grayish greenish yellow	None	60	27.2	13	5.8	<0.74	<0.88
								2017/7/6	Sunny	28.8	0.7	24.4	0.0	Grayish greenish yellow	None	55	23.3	9	4.7	<0.69	<0.63
								2017/8/26	Cloudy	31.2	0.7	23.1	0.0	Grayish greenish yellow	None	72	23.7	7	2.7	<0.66	<0.84
								2017/9/8	Cloudy	28.2	0.8	23.4	0.0	Grayish greenish yellow	None	>100	26.9	21	2.2	<0.75	<0.75
								2017/11/16	Sunny	11.1	0.6	15.0	0.0	Light grayish yellow green	None	72	27.1	11	1.4	<0.63	<0.69
								2018/2/14	Sunny	11.8	0.8	12.2	0.0	Light grayish greenish yellow	None	>100	30.9	3	1.6	<0.74	<0.80
								2017/5/11	Cloudy	14.6	0.3	12.4	0.0	Grayish greenish yellow	None	>100	21.7	<1	0.2	<0.72	<0.84
								2017/6/13	Cloudy	16.4	0.3	13.4	0.0	Light grayish yellow green	None	>100	9.4	<1	0.4	<0.71	<0.80
								2017/7/6	Sunny	23.1	0.3	15.9	0.0	Light grayish yellow green	None	>100	8.5	<1	0.5	<0.70	<0.80
								2017/8/3	Cloudy	19.1	0.3	16.9	0.0	Light grayish yellow green	None	>100	9.1	<1	0.3	<0.71	<0.55
								2017/9/12	Rain	20.7	0.3	17.1	0.0	Light grayish yellow green	None	>100	15.0	<1	0.2	<0.62	<0.84
								2017/11/20	Cloudy	6.2	0.3	7.1	0.0	Light grayish yellow green	None	>100	21.5	<1	0.1	<0.72	<0.69
								2018/2/14	Sunny	3.1	0.3	1.7	0.0	Light grayish yellow green	None	>100	23.8	<1	0.2	<0.83	<0.84
								2017/5/19	Sunny	26.0	0.5	23.6	0.0	Light grayish yellow green	None	>100	15.1	2	1.3	<0.69	<0.63
								2017/8/28	Sunny	29.3	0.3	23.4	0.0	Light grayish yellow green	None	>100	11.8	<1	0.9	<0.67	<0.69
								2017/11/16	Sunny	17.2	0.3	13.2	0.0	Grayish yellow green	None	>100	12.4	4	1.6	<0.75	<0.80
								2018/2/14	Sunny	4.6	0.2	3.7	0.0	Light grayish yellow	None	>100	13.6	<1	0.7	<0.82	<0.75
								2017/5/19	Sunny	26.1	0.6	23.6	0.0	Grayish greenish yellow	None	>100	15.9	2	1.6	<0.59	<0.80
								2017/8/28	Sunny	29.2	0.7	23.7	0.0	Grayish greenish yellow	None	>100	12.3	1	0.6	<0.61	<0.84
								2017/11/16	Sunny	15.7	1.2	12.4	0.0	Light grayish yellow green	None	>100	12.3	2	0.6	<0.74	<0.69
								2018/2/14	Sunny	6.8	0.6	5.5	0.0	Light grayish greenish yellow	None	>100	15.3	3	1.2	<0.74	<0.92
								2017/5/19	Sunny	25.5	0.4	23.2	0.0	Grayish yellow green	None	>100	25.2	2	2.0	<0.64	<0.96
								2017/8/28	Sunny	29.1	0.2	22.5	0.0	Grayish yellow green	None	>100	15.8	6	5.3	<0.54	<0.80
								2017/11/16	Sunny	14.2	1.2	12.6	0.0	Grayish yellow green	None	>100	17.2	9	2.0	<0.61	<0.88
								2018/2/14	Sunny	9.4	0.4	6.8	0.0	Light grayish yellow green	None	>100	20.7	5	2.1	<0.66	<0.80
								2017/5/19	Sunny	23.5	0.2	23.5	0.0	Light grayish greenish yellow	None	>100	29.6	13	7.5	<0.69	<0.88
								2017/6/12	Sunny	24.8	0.1	29.2	0.0	Grayish greenish yellow	None	76	24.3	35	18	<0.86	<0.80
								2017/7/6	Sunny	26.0	0.3	25.1	0.0	Grayish yellow	None	52	21.0	22	9.4	<0.58	<0.69
								2017/8/28	Sunny	29.9	0.5	24.0	0.0	Light grayish yellow green	None	85	19.4	6	2.8	<0.68	<0.88
								2017/9/8	Sunny	22.5	0.4	24.1	0.0	Light grayish yellow green	None	78	22.8	9	2.3	<0.98	<0.84
								2017/11/16	Sunny	13.7	0.2	13.3	0.0	Light grayish yellow green	None	>100	21.8	3	1.8	<0.65	<0.69
								2018/2/14	Sunny	11.5	0.2	9.9	0.0	Light grayish yellow	None	>100	25.2	10	3.8	<0.87	<0.75

Tochigi River (Sediment) 1/6

Location				Sampling Date	Weather	Air temperature (°C)	Water depth (m)	Sediment																		
No.	Water area	Location	Municipality					Sediment temperature (°C)	Sample length (cm)	Color	Odor	Grain size distribution(%)						Sediment content (%)	Density (g/cm ³)	Property	Activity concentration (Bq/kg(dry))		Remarks			
												Coarse gravel	Medium gravel	Fine gravel	Coarse sand	Medium sand	Fine sand				Silt	Clay		Cs-134	Cs-137	Total
R i v e r	Nakagawa River System	Nakagawa River	Buiyobashita	Nasuohobara City	2017/5/26	Cloudy	15.3	0.5	12.1	5	Dark olive	None	2.8	23.6	22.3	22.1	21.4	5.8	0.1	2.1	77.8	2.613	Sand/gravel	6.0	35	41.0
					2017/8/24	Cloudy	24.5	0.6	16.4	6	Dark olive	None	0.0	17.8	29.5	35.4	15.8	0.4	0.1	1.1	80.2	2.639	Sand/gravel	<3.7	7.8	7.8
					2017/11/2	Sunny	14.5	0.5	11.6	7	Grayish olive	None	0.0	4.7	24.6	31.6	16.6	0.6	0.7	1.4	75.2	2.642	Sand	<5.0	11	11
					2018/2/1	Sunny	-1.8	0.3	6.1	5	Dark olive	None	0.0	31.9	33.3	21.4	11.6	0.7	0.1	1.0	75.1	2.656	Sand/gravel	<5.6	9.3	9.3
		2017/5/26	Cloudy	15.0	0.3	13.1	7	Dark brown	None	0.0	13.2	8.2	17.6	38.9	18.9	0.6	2.7	74.9	2.567	Sand/gravel	<3.9	33	33			
		2017/8/24	Cloudy	28.9	0.3	18.9	5	Dull yellowish brown	None	0.0	9.8	7.0	8.2	44.2	26.3	2.9	1.7	73.2	2.680	Sand	<5.2	31	31			
		2017/11/2	Sunny	15.8	0.5	10.9	8	Grayish olive	None	0.0	1.3	1.7	5.7	53.7	34.7	1.0	1.9	68.9	2.668	Sand	<6.0	25	25			
		2018/2/1	Sunny	1.2	0.3	3.1	7	Dark brown	None	0.0	8.9	28.8	32.0	28.8	1.6	0.6	1.2	72.7	2.669	Sand/gravel	<4.9	26	26			
		2017/5/26	Rain	15.3	0.2	13.5	5	Dark brown	None	2.6	35.7	26.8	22.5	9.5	0.7	1.0	1.2	72.7	2.649	Sand/gravel	5.4	46	51.4			
		2017/8/24	Cloudy	29.1	0.3	18.7	5	Dark brown	None	5.6	15.0	8.9	9.8	11.0	6.0	1.8	68.7	2.661	Sand/gravel	7.8	59	66.8				
		2017/11/2	Sunny	17.4	0.3	12.0	5	Dark brown	None	0.0	30.7	23.2	18.1	23.2	3.0	0.5	1.3	74.1	2.792	Sand/gravel	<5.1	18	18			
		2018/2/1	Sunny	2.4	0.2	4.1	4	Dark brown	None	0.0	18.2	24.8	26.3	24.6	3.4	1.1	1.7	70.1	2.705	Sand/gravel	6.1	32	38.1			
	2017/5/26	Cloudy	15.6	0.1	15.7	5	Dark brown	None	0.0	46.3	20.4	15.2	13.8	2.2	1.0	1.0	75.9	2.638	Gravel/sand	4.6	32	36.4				
	2017/8/24	Cloudy	29.3	0.2	18.8	5	Dark brown	None	0.0	4.0	7.9	13.1	53.9	15.7	3.6	1.7	69.0	2.794	Sand	9.7	84	93.7				
	2017/11/2	Sunny	16.4	0.3	14.3	6	Dark brown	None	0.0	35.3	21.3	20.9	20.1	0.8	0.5	0.8	73.3	2.717	Sand/gravel	<6.0	17	17				
	2018/2/1	Sunny	2.3	0.1	5.4	5	Dark brown	None	0.0	20.6	29.0	21.8	24.8	2.8	0.0	1.0	75.3	2.812	Sand/gravel	<6.3	14	14				
	2017/5/26	Sunny	17.4	0.4	12.8	5	Olive black	None	0.0	20.4	22.8	21.1	29.2	4.3	0.6	1.6	77.5	2.731	Sand/gravel	9.3	50	59.3				
	2017/8/24	Sunny	24.8	0.3	18.2	5	Olive brown	None	0.1	28.0	7.2	19.0	33.2	4.3	0.6	1.7	76.5	2.697	Sand/gravel	12	78	90				
	2017/11/2	Sunny	27.2	0.3	22.4	5	Grayish olive	None	0.0	31.7	28.0	18.8	16.8	3.4	0.4	0.8	81.0	2.672	Gravel/sand	6.4	52	58.4				
	2017/5/26	Cloudy	25.3	0.4	23.1	4	Olive black	None	2.4	27.6	22.1	20.5	22.4	3.6	0.5	0.9	81.2	2.741	Sand/gravel	6.1	40	46.1				
	2017/8/24	Sunny	27.2	0.3	17.4	6	Grayish olive	None	0.0	11.7	7.7	13.7	38.1	22.8	4.4	1.6	75.7	2.696	Sand/gravel	12	83	95				
	2017/11/2	Sunny	14.5	0.3	10.1	6	Olive brown	None	0.0	1.8	4.5	19.0	49.3	17.5	2.8	5.1	72.5	2.678	Sand	18	166	178				
	2018/2/1	Cloudy	0.2	0.3	2.8	6	Olive brown	None	0.0	0.0	0.5	13.0	71.9	9.8	1.1	3.8	71.9	2.685	Sand	7.3	91	96.3				
	2017/5/26	Cloudy	14.8	0.2	13.9	5	Blackish brown	None	2.4	52.1	22.0	10.2	8.8	2.3	0.5	0.7	76.1	2.752	Gravel/sand	4.0	28	32.0				
	2017/8/24	Cloudy	25.4	0.2	21.3	5	Blackish brown	None	0.0	77.5	13.4	4.3	3.5	0.7	0.0	0.6	90.8	2.798	Gravel/sand	3.4	21	24.4				
	2017/11/2	Sunny	19.6	0.3	14.8	5	Dark brown	None	0.0	42.7	19.3	16.2	18.4	2.0	0.0	1.5	77.8	2.713	Gravel/sand	<5.2	25	25				
	2018/2/1	Sunny	2.8	0.3	5.3	4	Blackish brown	None	0.0	46.7	28.6	14.4	8.5	1.1	0.3	0.5	79.5	2.705	Gravel/sand	<4.1	22	22				
	2017/5/26	Cloudy	19.2	0.3	16.7	3	Blackish brown	None	2.2	45.1	24.0	13.8	13.1	0.7	0.0	0.8	81.1	2.866	Gravel/sand	12	73	85				
2017/8/24	Cloudy	27.2	0.4	24.7	3	Dark brown	None	0.0	61.1	19.0	9.5	9.2	0.6	0.2	0.4	81.6	2.777	Gravel/sand	4.1	47	51.1					
2017/11/2	Sunny	16.4	0.4	10.6	3	Blackish brown	None	0.0	50.9	26.1	12.5	9.1	0.7	0.0	0.6	79.6	2.913	Gravel/sand	<4.9	33	33					
2018/2/1	Cloudy	3.1	0.4	2.3	4	Brown	None	11.1	30.6	13.3	15.5	25.2	2.3	0.9	1.3	73.7	2.811	Sand/gravel	10	61	71					
2017/5/26	Cloudy	20.0	0.3	18.2	5	Grayish olive	None	0.0	0.6	1.7	12.1	68.6	12.3	1.6	3.8	73.0	2.763	Sand	16	83	99					
2017/8/24	Sunny	25.5	0.3	22.9	6	Grayish olive	None	0.0	1.4	1.9	6.8	56.5	19.0	8.9	5.5	73.1	2.615	Sand/gravel	17	130	147					
2017/11/2	Sunny	30.2	0.3	24.6	6	Grayish olive	None	0.0	6.0	3.9	12.2	29.5	14.1	1.7	2.4	70.6	2.868	Sand/gravel	11	88	99					
2017/5/26	Cloudy	27.0	0.4	23.8	6	Yellowish brown	None	0.0	23.8	6.6	20.3	41.4	4.7	1.3	2.0	77.1	2.768	Sand/gravel	11	93	104					
2017/8/24	Cloudy	25.1	0.3	19.4	7	Grayish olive	None	0.0	0.4	0.3	3.9	62.6	23.2	7.6	2.0	69.9	2.651	Sand/gravel	23	150	173					
2017/11/2	Sunny	17.8	0.3	12.8	8	Grayish olive	None	0.0	0.3	1.0	7.6	51.0	28.1	8.2	3.9	68.7	2.702	Sand	16	150	166					
2018/2/1	Cloudy	3.8	0.3	2.1	8	Grayish olive	None	5.5	34.6	23.8	19.0	15.3	0.4	0.4	1.0	79.9	2.914	Gravel/sand	<5.2	38	38					
2017/5/26	Sunny	21.4	0.3	15.9	5	Grayish olive	None	0.0	26.0	20.4	22.7	18.1	0.0	0.0	0.8	80.5	2.713	Gravel/sand	3.9	18	21.9					
2017/8/24	Sunny	27.8	0.2	23.2	7	Grayish olive	None	0.0	41.5	28.1	19.1	10.4	0.4	0.0	0.6	82.8	2.658	Gravel/sand	3.6	21	24.6					
2017/11/2	Sunny	30.8	0.2	24.9	6	Grayish olive	None	1.5	46.9	23.3	17.2	9.9	0.3	0.3	0.6	85.9	2.654	Gravel/sand	<2.9	23	23					
2017/5/26	Rain	28.2	0.3	22.5	7	Grayish olive	None	0.0	32.9	18.0	12.9	31.8	3.0	0.5	0.9	80.7	2.789	Sand/gravel	4.7	25	29.7					
2017/8/24	Cloudy	26.3	0.3	19.6	6	Grayish olive	None	0.0	23.0	17.1	18.6	36.3	3.7	0.1	1.2	77.7	2.770	Sand/gravel	<5.2	36	36					
2017/11/2	Sunny	19.7	0.2	13.5	8	Grayish olive	None	0.0	9.7	9.0	12.1	25.6	9.7	1.7	2.4	73.6	2.699	Sand/gravel	<5.1	46	46					
2018/2/1	Cloudy	4.2	0.3	4.9	8	Grayish olive	None	10.0	31.5	25.9	22.0	8.9	0.3	0.3	0.9	81.5	2.700	Gravel/sand	<5.1	16	16					

Tochigi River (Surrounding Environment) 1/6

R i v e r s	Location				Sampling Date	Weather	Air temperature (°C)	Surrounding Environment (Soil, Air dose)														Remarks
	No.	Water area	Location	Municipality				Left bank							Right bank							
								Color	Odor	Property	Activity concentration [Bq/kg(dry)]			Air Dose (μSv/h)	Color	Odor	Property	Activity concentration [Bq/kg(dry)]			Air Dose (μSv/h)	
											Radioactive cesium	Cs-134	Cs-137					Total	Radioactive cesium	Cs-134		
1	Nakagawa River	Kuyobashidita	Nasuhobara City	2017/5/26	Cloudy	15.3	-	-	-	-	-	-	-	-	Blackish brown	Faint earth	Loamy	150	1,200	1,350	0.07	(Left bank)Unable to collect samples due to privately owned land
				2017/8/24	Cloudy	24.5	-	-	-	-	-	-	-	-	Blackish brown	Faint earth	Loamy	180	1,400	1,580	0.07	(Left bank)Unable to collect samples due to privately owned land
				2017/11/2	Sunny	14.5	-	-	-	-	-	-	-	-	Blackish brown	Faint earth	Loamy	360	3,100	3,460	0.06	(Left bank)Unable to collect samples due to privately owned land
				2018/2/1	Sunny	1.8	-	-	-	-	-	-	-	-	Blackish brown	Faint earth	Loamy	200	2,000	2,200	0.06	(Left bank)Unable to collect samples due to privately owned land
				2017/5/26	Cloudy	15.0	Blackish brown	Faint earth	Loamy	740	5,700	6,440	0.11	Dark brown	Faint earth	Loamy	120	940	1,060	0.10		
		2017/8/24	Cloudy	28.9	Dark brown	Faint earth	Loamy	380	2,900	3,280	0.11	Brown	Faint earth	Loamy	69	670	739	0.09				
		2017/11/2	Sunny	15.8	Dark brown	Faint earth	Loamy	520	4,200	4,720	0.09	Dark brown	Faint earth	Loamy	120	1,100	1,220	0.10				
		2018/2/1	Sunny	1.2	Blackish brown	Faint earth	Loamy	690	6,400	7,090	0.08	Dark brown	Faint earth	Loamy	64	690	754	0.07				
		2017/5/26	Rain	15.3	Dark brown	Faint earth	Loamy	170	1,300	1,470	0.09	Blackish brown	Faint earth	Loamy	330	2,400	2,730	0.10				
		2017/8/24	Cloudy	29.1	Blackish brown	Faint earth	Loamy	170	1,500	1,670	0.09	Blackish brown	Faint earth	Loamy	580	4,600	5,180	0.12				
	2	Nakagawa River	Komei Bridge	Nasuhobara City	2017/11/2	Sunny	17.4	Dark brown	Faint earth	Loamy	120	1,000	1,120	0.08	Blackish brown	Faint earth	Loamy	630	4,700	5,330	0.09	
					2018/2/1	Sunny	2.4	Dark brown	Faint earth	Loamy	140	1,400	1,540	0.07	Blackish brown	Faint earth	Loamy	420	3,400	3,820	0.10	
	3	Takaomata River	Takaomata Bridge	Nasu Town	2017/5/26	Cloudy	15.6	Blackish brown	Faint earth	Loamy	240	2,000	2,240	0.15	Blackish brown	Faint earth	Loamy	330	2,400	2,730	0.12	
					2017/8/24	Cloudy	29.3	Blackish brown	Faint earth	Loamy	160	1,400	1,560	0.15	Blackish brown	Faint earth	Loamy	240	2,000	2,240	0.11	
	4	Yukawa River	Yukawa Bridge	Nasu Town	2017/11/2	Sunny	16.4	Blackish brown	Faint earth	Loamy	120	1,000	1,120	0.14	Blackish brown	Faint earth	Loamy	320	2,600	2,920	0.10	
					2018/2/1	Sunny	2.3	-	-	-	-	-	-	0.10	Blackish brown	Faint earth	Loamy	180	1,600	1,780	0.08	(Left bank)Unable to collect samples due to snow on the ground
	5	Nakagawa River	Kamikaraiso	Nasuhobara City/ Nasu Town	2017/5/6	Sunny	17.4	Dull yellowish brown	Faint earth	Loamy	290	2,100	2,390	0.12	Grayish yellowish brown	None	Loamy	120	830	950	0.09	
					2017/6/26	Sunny	24.8	Dark brown	Faint earth	Loamy	320	2,300	2,620	0.11	Dark brown	Faint earth	Loamy	110	670	780	0.11	
					2017/7/7	Sunny	27.2	Dark brown	Faint earth	Loamy	140	1,200	1,340	0.11	Dark brown	Faint earth	Loamy	70	500	570	0.11	
					2017/8/1	Cloudy	25.3	Dark brown	Faint earth	Loamy	280	2,200	2,480	0.12	Blackish brown	Faint earth	Loamy	190	1,500	1,690	0.10	
2017/9/4					Sunny	27.2	Blackish brown	Faint earth	Loamy	130	1,100	1,230	0.11	Blackish brown	Faint earth	Loamy	31	250	281	0.11		
2017/11/6					Sunny	14.5	Blackish brown	Faint earth	Loamy	410	3,400	3,810	0.10	Blackish brown	Faint earth	Loamy	66	480	546	0.09		
2018/2/1					Cloudy	0.2	Blackish brown	Faint earth	Loamy	77	650	727	0.08	Blackish brown	Faint earth	Loamy	130	1,100	1,230	0.07		
2017/5/6					Cloudy	14.8	Dull yellowish brown	None	Loamy	700	4,900	5,600	0.12	Dull yellowish brown	None	Loamy	500	3,400	3,900	0.11		
2017/8/1					Cloudy	25.4	Dark brown	Faint earth	Loamy	590	4,400	4,990	0.14	Dull yellowish brown	Faint earth	Loamy	660	5,100	5,760	0.12		
2017/11/2					Sunny	19.6	Dark brown	Faint earth	Loamy	390	3,300	3,690	0.14	Blackish brown	Faint earth	Loamy	260	2,300	2,560	0.10		
6	Yosasa River	Yosasa Bridge	Nasu Town	2018/2/1	Sunny	2.8	Dark brown	Faint earth	Loamy	190	1,600	1,790	0.11	Blackish brown	Faint earth	Loamy	370	3,400	3,770	0.09		
				2017/5/6	Cloudy	19.2	Brown	Faint earth	Loamy	300	2,100	2,400	0.17	Brown	None	Loamy	110	930	1,040	0.14		
7	Kurokawa River	Shinden Bridge	Nasu Town	2017/8/1	Cloudy	27.2	Dull yellowish brown	Faint earth	Loamy	340	2,500	2,840	0.17	Dull yellowish brown	Faint earth	Loamy	460	3,600	4,060	0.14		
				2017/11/6	Sunny	16.4	Dull yellowish brown	Faint earth	Loamy	660	5,400	6,060	0.13	Blackish brown	Faint earth	Loamy	180	1,400	1,580	0.12		
8	Yosasa River	Kawada Bridge	Otawara City	2018/2/1	Cloudy	3.1	Dull yellowish brown	Faint earth	Loamy	130	1,200	1,330	0.10	Blackish brown	Faint earth	Loamy	130	1,100	1,230	0.11		
				2017/5/6	Cloudy	20.0	Dull yellowish brown	None	Loamy	65	470	535	0.12	Brown	Faint earth	Loamy	210	1,500	1,710	0.15		
				2017/6/26	Sunny	25.5	Dark brown	Faint earth	Loamy	120	930	1,050	0.09	Dull yellowish brown	Faint earth	Loamy	120	950	1,070	0.14		
				2017/7/7	Sunny	30.2	Dark brown	Faint earth	Loamy	180	1,400	1,580	0.10	Blackish brown	Faint earth	Loamy	67	560	627	0.12		
				2017/8/1	Cloudy	27.0	Dark brown	Faint earth	Loamy	180	1,500	1,680	0.12	Brown	Faint earth	Loamy	28	240	268	0.12		
				2017/9/4	Cloudy	25.1	Blackish brown	Faint earth	Loamy	160	1,500	1,660	0.10	Dark brown	Faint earth	Loamy	260	2,300	2,560	0.13		
				2017/11/6	Sunny	17.8	Blackish brown	Faint earth	Loamy	220	1,800	2,020	0.09	Dark brown	Faint earth	Loamy	86	660	746	0.12		
				2018/2/1	Cloudy	3.8	Blackish brown	Faint earth	Loamy	87	480	537	0.08	Dark brown	Faint earth	Loamy	140	1,200	1,340	0.10		
				2017/5/6	Sunny	21.4	Brown	None	Loamy	140	940	1,080	0.09	Dull yellowish brown	Faint earth	Loamy	76	600	676	0.06		
				2017/6/26	Sunny	27.8	Dark brown	Faint earth	Loamy	49	390	439	0.09	Dark brown	Faint earth	Loamy	82	590	672	0.05		
9	Nakagawa River	Kurobane	Otawara City	2017/7/7	Sunny	30.8	Blackish brown	Faint earth	Loamy	100	720	820	0.07	Blackish brown	Faint earth	Loamy	72	490	562	0.06		
				2017/8/1	Rain	28.2	Dark brown	Faint earth	Loamy	140	940	1,080	0.08	Dark brown	Faint earth	Loamy	97	720	817	0.06		
				2017/9/4	Cloudy	26.3	Dark brown	Faint earth	Loamy	53	440	493	0.09	Dark brown	Faint earth	Loamy	60	600	660	0.06		
				2017/11/6	Sunny	19.7	Dark brown	Faint earth	Loamy	160	1,100	1,260	0.08	Blackish brown	Faint earth	Loamy	150	1,200	1,350	0.06		
				2018/2/1	Cloudy	4.2	Dark brown	Faint earth	Loamy	59	680	739	0.07	Blackish brown	Faint earth	Loamy	110	910	1,020	0.05		

Tochigi River (Surrounding Environment) 2/6

Location				Sampling Date	Weather	Air temperature (°C)	Surrounding Environment (Soil, Air dose)										Remarks					
No.	Water area	Location	Municipality				Left bank					Right bank										
							Color	Odor	Property	Activity concentration [Bq/kg(dry)]			Air Dose (μSv/h)	Color	Odor	Property		Activity concentration [Bq/kg(dry)]			Air Dose (μSv/h)	
							Cs-134	Cs-137	Total				Cs-134	Cs-137	Total							
R i v e r s	Nakagawa River System	Matsuba River	Tributary	Otagawa City	2017/5/6	Cloudy	20.3	Olive brown	Faint earth	Loamy	76	510	586	0.08	Dull yellowish brown	Faint earth	Loamy	140	920	1,060	0.09	
					2017/6/26	Sunny	27.4	Dark olive brown	Faint earth	Loamy	100	710	810	0.09	Blackish brown	Faint earth	Loamy	140	840	980	0.10	
					2017/7/7	Sunny	20.6	Dark olive brown	Faint earth	Loamy	95	730	825	0.08	Blackish brown	Faint earth	Loamy	120	960	1,080	0.09	
					2017/8/1	Cloudy	28.5	Dull grayish yellow	Faint earth	Loamy	120	930	1,050	0.08	Blackish brown	Faint earth	Loamy	75	530	605	0.08	
					2017/9/4	Cloudy	26.2	Dark olive brown	Faint earth	Loamy	79	680	759	0.08	Blackish brown	Faint earth	Loamy	160	1,200	1,360	0.11	
					2017/11/6	Sunny	19.6	Dark olive brown	Faint earth	Loamy	100	800	900	0.07	Blackish brown	Faint earth	Loamy	98	890	988	0.07	
					2018/2/1	Cloudy	4.2	Dark olive brown	Faint earth	Loamy	83	810	893	0.06	Blackish brown	Faint earth	Loamy	27	230	257	0.07	
					2017/5/6	Cloudy	16.4	Dull yellowish brown	None	Loamy	64	500	564	0.06	Brownish gray	None	Loamy	35	230	265	0.05	
					2017/8/5	Cloudy	27.2	Dull yellowish brown	Faint earth	Loamy	31	230	261	0.07	Blackish brown	Faint earth	Loamy	28	180	208	0.05	
					2017/11/13	Sunny	12.2	Dark brown	Faint earth	Loamy	96	780	876	0.06	Grayish yellowish brown	Faint earth	Loamy	32	270	302	0.06	
		2018/2/13	Sunny	3.2	Dark brown	Faint earth	Loamy	44	400	444	0.04	Blackish brown	Faint earth	Loamy	28	300	328	0.04				
		2017/5/6	Cloudy	16.5	Brownish gray	None	Loamy	420	2,900	3,320	0.08	Grayish yellowish brown	None	Loamy	91	670	761	0.07				
		2017/8/5	Cloudy	26.3	Blackish brown	Faint earth	Loamy	450	3,400	3,850	0.07	Blackish brown	Faint earth	Loamy	250	1,800	2,050	0.07				
		2017/11/13	Sunny	12.3	Blackish brown	Faint earth	Loamy	350	2,800	3,150	0.07	Blackish brown	Faint earth	Loamy	150	1,200	1,350	0.07				
		2018/2/13	Sunny	0.9	Blackish brown	Faint earth	Loamy	230	2,100	2,330	0.06	Blackish brown	Faint earth	Loamy	53	420	473	0.05				
		2017/5/30	Sunny	23.2	Dark brown	Faint earth	Loamy	290	1,900	2,190	0.09	Dark brown	Faint earth	Loamy	75	570	645	0.08				
		2017/8/24	Sunny	23.7	Dark brown	Faint earth	Loamy	180	1,400	1,580	0.07	Blackish brown	Faint earth	Loamy	140	980	1,120	0.06				
		2017/11/24	Sunny	4.1	Dark brown	Faint earth	Loamy	110	940	1,050	0.07	Blackish brown	Faint earth	Loamy	81	670	751	0.06				
		2018/2/13	Cloudy	-1.4	Dark brown	Faint earth	Loamy	99	830	929	0.06	Blackish brown	Faint earth	Loamy	160	1,500	1,660	0.05				
		2017/5/30	Sunny	21.1	Black	Faint earth	Loamy	110	690	800	0.15	Black	Faint earth	Loamy	250	1,900	2,150	0.18				
	2017/8/18	Cloudy	21.6	Black	Faint earth	Loamy	330	2,600	2,930	0.12	Blackish brown	Faint earth	Loamy	85	610	695	0.19					
	2017/11/24	Sunny	6.8	Black	Faint earth	Loamy	210	1,700	1,910	0.12	Black	Faint earth	Loamy	220	1,800	2,020	0.17					
	2018/2/13	Cloudy	2.3	Black	Faint earth	Loamy	82	970	1,052	0.11	Black	Faint earth	Loamy	340	3,000	3,340	0.16					
	2017/5/6	Cloudy	16.2	Grayish yellowish brown	None	Loamy	230	1,500	1,730	0.06	Grayish yellowish brown	None	Loamy	210	1,400	1,610	0.06					
	2017/8/5	Cloudy	25.7	Dull yellowish brown	Faint earth	Loamy	99	770	869	0.06	Blackish brown	Faint earth	Loamy	120	940	1,060	0.05					
	2017/11/13	Sunny	12.8	Dull yellowish brown	Faint earth	Loamy	70	550	620	0.05	Dark brown	Faint earth	Loamy	120	860	980	0.06					
	2018/2/13	Sunny	-1.2	Brown	Faint earth	Loamy	41	380	421	0.05	Blackish brown	Faint earth	Loamy	89	940	1,029	0.05					
	2017/5/6	Cloudy	17.3	Grayish yellowish brown	None	Loamy	150	1,100	1,250	0.06	Yellowish brown	None	Loamy	10	80	90	0.05					
	2017/8/6	Sunny	19.2	Grayish yellowish brown	None	Sandy	54	360	414	0.07	Dull yellowish brown	Faint earth	Loamy	32	160	192	0.06					
	2017/7/3	Cloudy	23.1	Dull yellowish brown	Faint earth	Loamy	35	220	255	0.07	Yellowish brown	Faint earth	Loamy	-8.6	50	50	0.06					
	2017/8/5	Sunny	28.3	Dull yellowish brown	Faint earth	Loamy	42	330	372	0.06	Yellowish brown	Faint earth	Loamy	18	130	148	0.05					
	2017/9/5	Sunny	25.4	Dull yellowish brown	Faint earth	Loamy	37	350	387	0.05	Brown	Faint earth	Loamy	50	400	450	0.06					
	2017/11/13	Sunny	15.7	Brown	Faint earth	Loamy	51	430	481	0.06	Dull yellowish brown	Faint earth	Loamy	44	370	414	0.06					
	2018/2/13	Sunny	4.9	Dull yellow orange	Faint earth	Loamy	32	260	292	0.05	Yellowish brown	Faint earth	Loamy	9.3	61	70.3	0.04					
	2017/5/6	Cloudy	17.8	Dull yellowish brown	None	Loamy	9.5	49	58.5	0.04	Dull yellowish brown	None	Loamy	17	120	137	0.05					
	2017/8/6	Sunny	20.7	Dull yellowish brown	None	Loamy	<4.7	24	24	0.06	Brown	Faint earth	Loamy	15	110	125	0.06					
	2017/7/3	Cloudy	25.9	Dull yellowish brown	Faint earth	Loamy	6.3	62	68.3	0.05	Brown	Faint earth	Loamy	28	140	168	0.06					
	2017/8/5	Cloudy	29.8	Brown	Faint earth	Loamy	70	170	140	0.05	Brown	Faint earth	Loamy	18	170	188	0.05					
	2017/9/5	Sunny	28.1	Brown	Faint earth	Loamy	11	49	60	0.04	Blackish brown	Faint earth	Loamy	78	610	688	0.04					
	2017/11/13	Sunny	15.9	Dull yellowish brown	Faint earth	Loamy	28	210	238	0.05	Brown	Faint earth	Loamy	13	150	163	0.05					
2018/2/13	Sunny	5.6	Brown	Faint earth	Loamy	16	130	146	0.04	Brown	Faint earth	Loamy	17	160	177	0.04						
2017/5/6	Cloudy	18.4	Brownish gray	None	Loamy	30	220	250	0.06	Grayish yellowish brown	None	Loamy	21	170	191	0.05						
2017/8/6	Sunny	21.3	Grayish yellowish brown	None	Loamy	14	97	111	0.06	Grayish yellowish brown	None	Loamy	17	100	117	0.06						
2017/7/3	Cloudy	26.8	Dark brown	Faint earth	Loamy	22	170	192	0.05	Dark brown	Faint earth	Loamy	11	110	121	0.05						
2017/8/5	Cloudy	31.2	Dark brown	Faint earth	Loamy	18	170	188	0.06	Blackish brown	Faint earth	Loamy	23	200	223	0.06						
2017/9/5	Sunny	29.0	Blackish brown	Faint earth	Loamy	23	170	193	0.04	Black	Faint earth	Loamy	21	150	171	0.04						
2017/11/22	Sunny	9.9	Grayish yellowish brown	Faint earth	Loamy	26	210	236	0.06	Dull yellowish brown	Faint earth	Loamy	13	91	104	0.06						
2018/2/5	Sunny	3.8	Dark brown	Faint earth	Loamy	31	180	211	0.06	Blackish brown	Faint earth	Loamy	9.3	130	139.3	0.06						

Tochigi River (Surrounding Environment) 3/6

Location					Sampling Date	Weather	Air temperature (°C)	Surrounding Environment (Soil, Air dose)										Remarks			
No.	Water area	Location	Municipality	Left bank					Right bank												
				Color				Odor	Property	Activity concentration [Bq/kg(dry)]			Air Dose (µSv/h)	Color	Odor	Property	Activity concentration [Bq/kg(dry)]			Air Dose (µSv/h)	
			Radioactive cesium						Radioactive cesium												
			Cs-134	Cs-137	Total				Cs-134	Cs-137	Total										
R i v e r s	Nakagawa River System	Ankawa River	Sakachi Bridge	Shiyoa Town	2017/5/30	Sunny	29.2	Dark brown	Faint earth	Loamy	17	98	115	0.07	Dull yellowish brown	Faint earth	Loamy	130	920	1,050	0.07
					2017/8/18	Cloudy	24.5	Dark brown	Faint earth	Loamy	55	410	465	0.06	Dark brown	Faint earth	Loamy	230	1,900	2,130	0.06
					2017/11/24	Sunny	10.4	Dark brown	Faint earth	Loamy	57	590	647	0.07	Dark brown	Faint earth	Loamy	160	1,500	1,660	0.07
			Renjo Bridge	Sakura City	2018/2/13	Sunny	5.8	Dark brown	Faint earth	Loamy	42	510	552	0.07	Dull yellowish brown	Faint earth	Loamy	59	290	349	0.04
					2017/8/8	Sunny	21.2	Grayish yellowish brown	Faint earth	Loamy	42	320	362	0.06	Grayish yellowish brown	None	Loamy	53	340	393	0.07
					2017/8/19	Cloudy	27.2	Dark brown	Faint earth	Loamy	69	560	629	0.04	Dull yellowish brown	Faint earth	Loamy	30	300	330	0.04
		Uchikawa River	Tanaka Bridge	Yaita City	2017/11/22	Sunny	4.8	Dull yellowish brown	Faint earth	Loamy	39	370	409	0.06	Dull yellowish brown	Faint earth	Loamy	21	170	191	0.06
					2018/2/5	Sunny	1.2	Dark brown	Faint earth	Loamy	14	150	164	0.06	Dull yellowish brown	Faint earth	Loamy	27	340	367	0.05
					2017/5/30	Sunny	27.6	Dark brown	Faint earth	Loamy	110	770	880	0.06	Dark brown	Faint earth	Loamy	120	790	910	0.07
			Asahi Bridge	Sakura City	2017/8/18	Cloudy	24.6	Dark brown	Faint earth	Loamy	66	500	566	0.06	Dark brown	Faint earth	Loamy	120	940	1,060	0.06
					2017/11/24	Sunny	11.2	Dark brown	Faint earth	Loamy	230	2,000	2,230	0.07	Dark brown	Faint earth	Loamy	71	570	641	0.06
					2018/2/13	Cloudy	5.8	Dark brown	Faint earth	Loamy	110	960	1,070	0.07	Dark brown	Faint earth	Loamy	60	510	570	0.06
	Ankawa River	Makada Bridge	Nasu Karasuyama City	2017/5/8	Sunny	22.1	Grayish yellowish brown	Faint earth	Loamy	69	490	559	0.09	Blackish brown	None	Loamy	46	320	366	0.05	
				2017/8/19	Sunny	28.3	Dull yellowish brown	Faint earth	Loamy	33	180	213	0.06	Dark brown	Faint earth	Loamy	56	390	446	0.04	
				2017/11/22	Sunny	5.2	Blackish brown	Faint earth	Loamy	62	630	692	0.08	Blackish brown	Faint earth	Loamy	39	250	289	0.04	
				2018/2/5	Sunny	1.4	Blackish brown	Faint earth	Loamy	26	260	286	0.06	Blackish brown	Faint earth	Loamy	28	240	268	0.05	
				2017/5/8	Sunny	28.6	Grayish yellowish brown	None	Loamy	20	170	190	0.06	Grayish yellowish brown	None	Loamy	14	130	144	0.05	
				2017/6/6	Sunny	22.3	Dull yellowish brown	None	Loamy	18	170	188	0.06	Dull yellowish brown	None	Loamy	14	65	79	0.04	
				2017/7/3	Sunny	29.4	Dull yellowish brown	Faint earth	Loamy	15	82	97	0.05	Dull yellowish brown	Faint earth	Loamy	14	160	174	0.05	
				2017/8/19	Cloudy	29.5	Dull yellowish brown	Faint earth	Loamy	69	530	599	0.05	Dull yellowish brown	Faint earth	Loamy	25	170	195	0.04	
				2017/9/5	Sunny	28.4	Dull yellowish brown	Faint earth	Loamy	25	180	205	0.05	Dull yellowish brown	Faint earth	Loamy	23	190	213	0.05	
				2017/11/22	Cloudy	10.7	Brown	Faint earth	Loamy	11	70	81	0.05	Dull yellowish brown	Faint earth	Loamy	25	160	185	0.05	
	Egawa River	Tributary	Nasu Karasuyama City	2018/2/5	Sunny	6.5	Dull yellowish brown	Faint earth	Loamy	25	230	255	0.05	Dull yellowish brown	Faint earth	Loamy	18	170	188	0.04	
				2017/5/8	Sunny	26.4	Grayish yellowish brown	None	Loamy	21	160	181	0.05	Dull yellowish brown	None	Loamy	16	90	106	0.05	
				2017/6/6	Sunny	22.0	Dull yellowish brown	None	Loamy	9.8	74	83.8	0.05	Dull yellowish brown	None	Loamy	-4.8	4.3	4.5	0.05	
				2017/7/3	Cloudy	28.2	Dull yellowish brown	Faint earth	Loamy	15	120	135	0.05	Dark brown	Faint earth	Loamy	-6.4	26	26	0.04	
				2017/8/19	Sunny	29.3	Dull yellowish brown	Faint earth	Loamy	<9.1	41	41	0.04	Brown	Faint earth	Loamy	-5.1	6.2	6.2	0.04	
				2017/9/5	Sunny	28.6	Blackish brown	Faint earth	Loamy	<9.1	41	41	0.06	Dull yellowish brown	Faint earth	Loamy	-0.80	3.0	3.0	0.04	
2017/11/22				Cloudy	10.8	Dull yellowish brown	Faint earth	Loamy	24	200	224	0.05	Dark brown	Faint earth	Loamy	7.2	60	67.2	0.05		
2018/2/5				Sunny	6.2	Dull yellowish brown	Faint earth	Loamy	19	120	139	0.05	Dark brown	Faint earth	Loamy	-0.94	4.3	4.3	0.04		
Tonogawa River System	Kinugawa River System	Kinugawa River	Kawaji Daichi Power Station, front	Nikko City	2017/6/5	Sunny	18.7	Blackish brown	None	Loamy	140	1,100	1,240	0.10	Black	None	Loamy	170	1,100	1,270	0.10
					2017/8/17	Cloudy	21.2	Dark brown	None	Loamy	160	1,100	1,260	0.10	Blackish brown	None	Loamy	200	1,700	1,900	0.07
					2017/11/27	Sunny	8.2	Brown	Faint earth	Loamy	60	540	600	0.09	Blackish brown	Faint earth	Loamy	56	500	556	0.09
		Yunishi River	Maesawa Bridge	2018/2/5	Sunny	1.4	Brown	Faint earth	Loamy	18	200	218	0.09	Blackish brown	Faint earth	Loamy	140	1,200	1,340	0.08	
				2017/6/5	Sunny	18.3	Dark grayish yellow	Faint earth	Loamy	23	170	193	0.06	Blackish brown	Faint earth	Loamy	-7.6	11	11	0.04	
				2017/8/17	Cloudy	22.8	Blackish brown	Faint earth	Loamy	8.9	65	73.9	0.06	Blackish brown	Faint earth	Loamy	9.5	100	109.5	0.04	
	Ojika River	Tributary	2017/11/27	Sunny	4.3	Grayish yellowish brown	Faint earth	Loamy	22	160	182	0.06	Blackish brown	Faint earth	Loamy	<10	18	18	0.04		
			2018/2/5	Sunny	-1.6	Blackish brown	Faint earth	Loamy	18	170	188	0.05	-	-	-	-	-	-	0.04		
			2017/6/5	Cloudy	20.8	Blackish brown	Faint earth	Loamy	280	2,400	2,680	0.12	Grayish yellow	None	Loamy	51	350	401	0.10		
	Kinugawa River	Kougoe	2017/8/17	Cloudy	23.9	Blackish brown	Faint earth	Loamy	680	5,400	6,080	0.11	Dark grayish yellow	Faint earth	Loamy	21	210	231	0.10		
			2017/11/27	Sunny	8.4	Blackish brown	Faint earth	Loamy	80	720	800	0.11	Dark grayish yellow	Faint earth	Loamy	21	240	261	0.09		
			2018/2/5	Cloudy	1.5	Blackish brown	Faint earth	Loamy	53	430	483	0.10	Grayish yellow	None	Loamy	24	230	254	0.08		
2017/6/5			Cloudy	21.8	Dark brown	Faint earth	Loamy	110	790	900	0.12	Blackish brown	Faint earth	Loamy	190	1,300	1,490	0.10			
2017/8/17			Rain	21.7	Dark brown	Faint earth	Loamy	12	99	111	0.11	Blackish brown	Faint earth	Loamy	190	1,300	1,490	0.10			
2017/11/27			Sunny	10.3	Dark brown	Faint earth	Loamy	260	2,100	2,360	0.12	Blackish brown	Faint earth	Loamy	40	310	350	0.09			
2018/2/5	Sunny	6.2	Dark brown	Faint earth	Loamy	260	2,300	2,560	0.10	Blackish brown	Faint earth	Loamy	12	110	122	0.08					

(Right bank) Unable to collect samples due to snow on the ground

Tochigi River (Surrounding Environment) 4/6

Location				Sampling Date	Weather	Air temperature (°C)	Surrounding Environment (Soil, Air dose)													Remarks				
No.	Water area	Location	Municipality				Left bank						Right bank											
							Color	Odor	Property	Activity concentration [Bq/kg(dry)]			Air Dose (µSv/h)	Color	Odor	Property	Activity concentration [Bq/kg(dry)]				Air Dose (µSv/h)			
			Radioactive cesium						Radioactive cesium															
			Cs-134	Cs-137	Total				Cs-134	Cs-137	Total													
R i v e r s	Tonagawa River System	Kinugawa River System	Itama River	Tributary	Nikko City	2017/5/23	Sunny	28.1	Grayish yellowish brown	Faint earth	Loamy	150	1,200	1,350	0.13	Dull yellowish brown	None	Sandy	11	57	68	0.08		
						2017/6/14	Sunny	20.4	Grayish yellowish brown	Faint earth	Loamy	160	1,200	1,360	0.13	Dull yellowish brown	None	Sandy	26	150	176	0.08		
			2017/7/4	Rain	23.7	Blackish brown	Faint earth	Loamy	160	1,200	1,360	0.13	Dull yellowish brown	Faint earth	Loamy	5.9	58	63.9	0.07					
			2017/8/24	Sunny	29.0	Grayish yellowish brown	Faint earth	Loamy	97	800	937	0.13	Dull yellowish brown	None	Sandy	20	120	140	0.07					
			2017/9/7	Cloudy	22.3	Blackish brown	Faint earth	Loamy	120	1,100	1,220	0.12	Dull yellowish brown	Faint earth	Loamy	7.7	75	82.7	0.07					
			2017/11/27	Cloudy	11.2	Dark brown	Faint earth	Loamy	180	1,400	1,580	0.11	Dull yellowish brown	Faint earth	Loamy	9.2	61	70.2	0.08					
			2018/2/5	Cloudy	6.8	Blackish brown	Faint earth	Loamy	160	1,600	1,760	0.11	Dull yellowish brown	Faint earth	Loamy	130	980	1,110	0.07					
			2017/6/9	Sunny	16.0	Blackish brown	Faint earth	Loamy	5.6	48	53.6	0.05	-	-	-	-	-	-	-	-	-	-	(Right bank)Unable to collect samples due to privately owned land	
			2017/8/24	Cloudy	21.0	Dull yellowish brown	Faint earth	Loamy	23	190	213	0.06	-	-	-	-	-	-	-	-	-	-	(Right bank)Unable to collect samples due to privately owned land	
			2017/11/20	Cloudy	1.2	Dull yellowish brown	Faint earth	Loamy	11	85	96	0.05	-	-	-	-	-	-	-	-	-	-	(Right bank)Unable to collect samples due to privately owned land	
			2018/2/14	Sunny	-2.2	-	-	-	-	-	-	0.04	-	-	-	-	-	-	-	-	-	-	-	(Left bank)Unable to collect samples due to snow on the ground.(Right bank)Unable to collect samples due to privately owned land
			2017/6/9	Sunny	18.0	Blackish brown	Faint earth	Loamy	62	460	522	0.06	Blackish brown	Faint earth	Loamy	150	1,100	1,250	0.06					
			2017/8/17	Rain	21.1	Blackish brown	None	Loamy	57	490	547	0.05	Blackish brown	None	Loamy	67	440	507	0.05					
			2017/11/27	Sunny	8.6	Blackish brown	Faint earth	Loamy	150	1,200	1,350	0.06	Blackish brown	Faint earth	Loamy	170	1,500	1,670	0.05					
			2018/2/14	Sunny	5.0	Blackish brown	Faint earth	Loamy	190	1,800	1,990	0.05	Blackish brown	Faint earth	Loamy	220	1,900	2,120	0.04					
			2017/5/23	Sunny	24.0	Blackish brown	Faint earth	Loamy	67	390	457	0.08	Blackish brown	Faint earth	Loamy	130	980	1,110	0.10					
			2017/8/19	Cloudy	22.7	Dark brown	None	Loamy	120	920	1,040	0.06	Black	None	Loamy	130	940	1,070	0.09					
			2017/11/27	Sunny	8.1	Blackish brown	Faint earth	Loamy	180	1,400	1,580	0.07	Blackish brown	Faint earth	Loamy	260	2,200	2,460	0.08					
			2018/2/14	Sunny	6.2	Blackish brown	Faint earth	Loamy	130	1,200	1,330	0.07	Blackish brown	Faint earth	Loamy	160	1,400	1,560	0.08					
			2017/5/25	Cloudy	18.9	Grayish yellowish brown	Faint earth	Loamy	38	340	378	0.09	Blackish brown	None	Sandy	-4.2	8.8	8.8	0.04					
			2017/6/14	Sunny	18.3	Blackish brown	Faint earth	Loamy	170	1,100	1,270	0.11	Gray	None	Sandy	-3.8	7.6	7.6	0.04					
			2017/7/4	Cloudy	24.2	Blackish brown	Faint earth	Loamy	96	930	1,026	0.09	Blackish brown	None	Sandy	-4.8	9.8	9.8	0.04					
			2017/8/19	Cloudy	24.7	Blackish brown	None	Loamy	220	1,700	1,920	0.09	Brownish gray	None	Sandy	-3.8	7.7	7.7	0.04					
			2017/9/7	Cloudy	21.8	Blackish brown	Faint earth	Loamy	250	2,000	2,250	0.09	Gray	None	Sandy	-6.1	13	13	0.04					
			2017/11/27	Sunny	11.2	Blackish brown	Faint earth	Loamy	190	1,700	1,890	0.07	Yellowish gray	None	Sandy	-8.4	14	14	0.04					
			2018/2/5	Sunny	5.8	Blackish brown	Faint earth	Loamy	130	1,200	1,330	0.09	Blackish brown	None	Sandy	-7.2	14	14	0.04					
			2017/5/25	Cloudy	20.0	Blackish brown	Faint earth	Loamy	100	770	870	0.07	Dark brown	Faint earth	Loamy	120	860	980	0.08					
			2017/6/14	Cloudy	17.7	Blackish brown	Faint earth	Loamy	56	490	546	0.08	Dark brown	Faint earth	Loamy	140	1,100	1,240	0.09					
			2017/7/4	Cloudy	24.0	Blackish brown	Faint earth	Loamy	110	800	910	0.08	Blackish brown	Faint earth	Loamy	210	1,600	1,810	0.08					
			2017/8/17	Rain	22.2	Blackish brown	Faint earth	Loamy	68	550	618	0.08	Blackish brown	Faint earth	Loamy	99	810	909	0.09					
			2017/9/7	Cloudy	22.2	Blackish brown	Faint earth	Loamy	120	960	1,080	0.07	Blackish brown	Faint earth	Loamy	250	1,900	2,150	0.09					
			2017/11/24	Sunny	10.4	Blackish brown	Faint earth	Loamy	120	1,100	1,220	0.07	Brown	Faint earth	Loamy	240	2,000	2,240	0.09					
			2018/2/13	Sunny	4.5	Blackish brown	Faint earth	Loamy	48	490	538	0.07	Blackish brown	Faint earth	Loamy	38	310	348	0.09					
			2017/5/8	Sunny	17.4	Grayish yellowish brown	Faint earth	Loamy	12	100	112	0.05	Grayish yellowish brown	None	Loamy	23	160	183	0.05					
			2017/8/19	Cloudy	24.8	Dark brown	Faint earth	Loamy	25	300	325	0.05	Blackish brown	Faint earth	Loamy	18	160	178	0.04					
			2017/11/28	Cloudy	8.6	Blackish brown	None	Loamy	13	110	123	0.05	Blackish brown	Faint earth	Loamy	14	140	154	0.05					
			2018/2/8	Sunny	4.2	Dark brown	Faint earth	Loamy	10	130	140	0.05	Blackish brown	Faint earth	Loamy	12	100	112	0.06					
			2017/8/8	Sunny	18.5	Brownish gray	None	Sandy	<-3.8	9.2	9.2	0.05	Brownish gray	None	Sandy	-4.8	7.7	7.7	0.05					
			2017/8/19	Cloudy	26.1	Dull yellowish brown	None	Sandy	<-4.7	6.2	6.2	0.04	Brown	None	Sandy	9.7	50	59.7	0.04					
			2017/11/28	Cloudy	9.1	Grayish yellowish brown	None	Sandy	<-8.0	14	14	0.04	Grayish yellowish brown	None	Sandy	-6.8	61	61	0.05					
2018/2/8	Sunny	5.2	Dull yellowish brown	None	Sandy	<-3.8	7.4	7.4	0.05	Dark brown	None	Sandy	-8.6	39	39	0.05								
2017/5/9	Cloudy	23.4	Grayish yellowish brown	None	Loamy	39	310	349	0.06	Grayish yellowish brown	Faint earth	Sandy	-3.6	11	11	0.05								
2017/8/26	Sunny	27.8	Brown	Faint earth	Loamy	17	130	147	0.06	Dull yellowish brown	Faint earth	Loamy	<-3.9	21	21	0.06								
2017/11/29	Sunny	13.4	Blackish brown	Faint earth	Loamy	28	200	228	0.05	Grayish yellowish brown	Faint earth	Sandy	-6.4	14	14	0.04								
2018/2/8	Sunny	1.8	Dark brown	Faint earth	Loamy	19	120	139	0.04	Grayish yellowish brown	Faint earth	Loamy	-9.0	14	14	0.04								

Tochigi River (Surrounding Environment) 5/6

R i v e r s	Location				Sampling Date	Weather	Air temperature (°C)	Surrounding Environment (Soil, Air dose)															Remarks			
	No.	Water area		Municipality				Left bank						Right bank												
		Location	Location					Color	Odor	Property	Activity concentration [Bq/kg(dry)]			Air Dose (µSv/h)	Color	Odor	Property	Activity concentration [Bq/kg(dry)]			Air Dose (µSv/h)					
											Radioactive cesium							Radioactive cesium								
						Cs-134	Cs-137	Total		Cs-134	Cs-137	Total														
38	Kinagawa River System	Egawa River	Tributary	Shimotsuke City	2017/5/9	Cloudy	23.1	Grayish yellowish brown	Faint earth	Loamy	81	610	691	0.05	Brown	Faint earth	Loamy	15	97	112	0.05					
					2017/6/12	Sunny	22.8	Blackish brown	Faint earth	Loamy	14	86	100	0.05	Dull yellowish brown	Faint earth	Loamy	17	150	167	0.05					
					2017/7/6	Sunny	29.5	Blackish brown	Faint earth	Loamy	28	240	268	0.05	Dull yellowish brown	Faint earth	Loamy	20	160	180	0.04					
					2017/8/26	Cloudy	28.2	Blackish brown	Faint earth	Loamy	73	650	723	0.06	Dull yellowish brown	Faint earth	Loamy	21	110	131	0.05					
					2017/9/8	Cloudy	24.3	Blackish brown	Faint earth	Loamy	44	410	454	0.05	Dull yellowish brown	Faint earth	Loamy	14	120	134	0.05					
					2017/11/29	Sunny	15.5	Blackish brown	Faint earth	Loamy	33	270	303	0.05	Dull yellowish brown	Faint earth	Loamy	18	120	138	0.05					
					2018/2/8	Sunny	1.4	Dark brown	Faint earth	Loamy	15	100	115	0.04	Dull yellowish brown	Faint earth	Loamy	15	110	125	0.04					
					2017/5/23	Sunny	23.2	-	-	-	-	-	-	-	Blackish brown	Faint earth	Loamy	27	220	247	0.05	(Left bank)Unable to collect samples due to privately owned land				
					2017/8/19	Cloudy	21.4	-	-	-	-	-	-	-	Blackish brown	None	Loamy	140	1,000	1,140	0.06	(Left bank)Unable to collect samples due to privately owned land				
					2017/11/27	Sunny	7.8	-	-	-	-	-	-	-	Blackish brown	Faint earth	Loamy	52	500	552	0.05	(Left bank)Unable to collect samples due to privately owned land				
					2018/2/8	Sunny	-3.7	-	-	-	-	-	-	-	Blackish brown	Faint earth	Loamy	60	650	710	0.05	(Left bank)Unable to collect samples due to privately owned land				
					39	Kinagawa River System	Akabori River	Nikko City Hall, front	Nikko City	2017/5/23	Sunny	20.7	Grayish yellowish brown	Faint earth	Loamy	68	610	678	0.06	Blackish brown	Faint earth	Loamy	15	140	155	0.05
										2017/8/19	Cloudy	21.7	Blackish brown	None	Loamy	88	680	768	0.05	Blackish brown	None	Loamy	15	160	175	0.05
										2017/11/27	Sunny	5.2	Blackish brown	Faint earth	Loamy	35	330	365	0.05	Black	Faint earth	Loamy	27	220	247	0.04
										2018/2/8	Sunny	-4.5	Grayish yellowish brown	Faint earth	Loamy	56	520	576	0.06	Blackish brown	Faint earth	Loamy	33	370	403	0.05
					40	Kinagawa River System	Kiwadajima			2017/5/23	Sunny	30.4	Grayish yellowish brown	None	Loamy	38	250	288	0.04	Blackish brown	Faint earth	Loamy	11	80	91	0.04
										2017/6/14	Sunny	23.5	Blackish brown	Faint earth	Loamy	17	170	187	0.04	Blackish brown	Faint earth	Loamy	210	1,500	1,710	0.04
										2017/7/4	Cloudy	25.4	Blackish brown	Faint earth	Loamy	37	280	317	0.04	Blackish brown	Faint earth	Loamy	12	92	104	0.04
										2017/8/19	Cloudy	27.7	Blackish brown	None	Loamy	40	440	480	0.04	Blackish brown	None	Loamy	120	1,100	1,220	0.04
					41	Kinagawa River System	Tagawa River	Ozobashi Bridge	Utsunomiya City	2017/9/7	Cloudy	26.3	Blackish brown	Faint earth	Loamy	16	190	206	0.04	Blackish brown	Faint earth	Loamy	17	140	157	0.04
										2017/11/28	Cloudy	9.7	Blackish brown	None	Loamy	16	130	146	0.04	Blackish brown	None	Loamy	32	270	302	0.04
										2018/2/8	Sunny	8.2	Blackish brown	Faint earth	Loamy	12	110	122	0.04	Blackish brown	Faint earth	Loamy	19	120	139	0.04
										2017/5/23	Sunny	29.3	Blackish brown	Faint earth	Loamy	12	65	77	0.05	Blackish brown	Faint earth	Loamy	58	450	508	0.04
					42	Tonogawa River System	Kamagawa River	Tsukushi Bridge		2017/8/19	Cloudy	28.4	Blackish brown	None	Loamy	18	100	118	0.05	Blackish brown	None	Loamy	33	350	383	0.04
										2017/11/28	Cloudy	10.6	Blackish brown	None	Loamy	10	78	88	0.04	Blackish brown	None	Loamy	67	500	567	0.04
										2018/2/8	Sunny	9.2	Blackish brown	Faint earth	Loamy	17	140	157	0.05	Blackish brown	Faint earth	Loamy	56	490	546	0.04
										2017/5/16	Sunny	18.5	Dark grayish yellow	Faint earth	Loamy	34	220	254	0.06	Dull yellowish brown	Faint earth	Loamy	25	170	195	0.04
					43	Tonogawa River System	Tagawa River	Meiji Bridge	Kaminokawa Town	2017/8/5	Cloudy	29.7	Grayish yellowish brown	None	Loamy	40	290	330	0.05	Grayish yellowish brown	None	Loamy	18	100	118	0.04
										2017/11/29	Sunny	17.9	Blackish brown	Faint earth	Loamy	23	150	173	0.04	Dull yellowish brown	Faint earth	Loamy	19	160	179	0.05
										2018/2/8	Sunny	0.3	Dark grayish yellow	Faint earth	Loamy	24	230	254	0.04	Dull yellowish brown	Faint earth	Loamy	15	110	125	0.04
										2017/5/9	Cloudy	20.4	Dull yellowish brown	Faint earth	Loamy	8.4	52	60.4	0.05	Dull yellowish brown	None	Loamy	9.0	76	85.0	0.04
					44	Tonogawa River System	Tagawa River	Yanabashi Bridge	Oyama City	2017/8/26	Cloudy	29.3	Dull yellowish brown	Faint earth	Loamy	17	110	127	0.05	Dull yellowish brown	Faint earth	Loamy	12	93	105	0.05
										2017/11/29	Sunny	11.8	Dull yellowish brown	Faint earth	Loamy	<9.7	62	62	0.04	Blackish brown	Faint earth	Loamy	15	140	155	0.04
										2018/2/8	Sunny	4.6	Blackish brown	Faint earth	Loamy	41	41	82	0.04	Blackish brown	Faint earth	Loamy	27	200	227	0.04
										2017/5/16	Sunny	24.2	Dull yellowish brown	Faint earth	Loamy	15	85	100	0.04	Brown	Faint earth	Loamy	-8.8	-2.4	32	0.04
					45	Watarase River Area	Kurokawa River	Kajijima Bridge	Kanama City	2017/8/5	Cloudy	25.0	Blackish brown	None	Loamy	30	230	260	0.05	Blackish brown	None	Loamy	30	240	270	0.05
										2017/11/25	Sunny	6.2	Dark brown	Faint earth	Loamy	19	150	169	0.05	Blackish brown	Faint earth	Loamy	11	88	99	0.04
										2018/2/15	Sunny	2.8	Dark brown	Faint earth	Loamy	12	98	110	0.06	Blackish brown	Faint earth	Loamy	24	230	254	0.05
										2017/5/16	Sunny	20.8	Dull yellowish brown	Faint earth	Loamy	55	380	435	0.05	Brown	Faint earth	Loamy	7.5	46	53.5	0.05
					46	Watarase River Area	Kurokawa River	Ozumi Bridge	Mibu Town	2017/8/5	Cloudy	29.1	Blackish brown	None	Loamy	53	310	363	0.05	Blackish brown	None	Loamy	23	180	203	0.06
										2017/11/25	Sunny	15.2	Blackish brown	Faint earth	Loamy	36	320	356	0.04	Dull yellowish brown	Faint earth	Loamy	16	89	105	0.04
										2018/2/15	Sunny	11.8	Dull yellowish brown	Faint earth	Loamy	42	380	422	0.04	Brown	Faint earth	Loamy	13	63	76	0.04
										2017/5/16	Sunny	22.4	Brown	Faint earth	Loamy	19	120	139	0.05	Blackish brown	Faint earth	Loamy	30	200	230	0.05
					47	Watarase River Area	Oushi River	Akaiishi Bridge	Kanama City	2017/8/5	Cloudy	27.7	Dull yellowish brown	None	Loamy	22	170	192	0.04	Grayish yellowish brown	None	Loamy	41	270	311	0.04
										2017/11/25	Sunny	8.2	Dark brown	Faint earth	Loamy	13	130	143	0.04	Blackish brown	Faint earth	Loamy	48	340	388	0.04
										2018/2/15	Sunny	6.4	Brown	Faint earth	Loamy	9.2	82	91.2	0.05	Blackish brown	Faint earth	Loamy	40	410	450	0.05
										2017/5/16	Sunny	22.8	Dark brown	None	Loamy	9.6	50	59.6	0.05	Dark brown	None	Loamy	11	92	103	0.05
					48	Watarase River Area	Koyabu River	Koyabu Bridge		2017/8/5	Cloudy	28.8	Blackish brown	None	Loamy	13	110	123	0.04	Grayish yellowish brown	None	Loamy	13	87	100	0.04
2017/11/25	Sunny	7.8	Blackish brown	Faint earth						Loamy	13	71	84	0.05	Blackish brown	Faint earth	Loamy	17	100	117	0.04					
2018/2/15	Sunny	5.2	Dark brown	Faint earth						Loamy	21	140	161	0.05	Dark brown	Faint earth	Loamy	11	67	78	0.04					

Tochigi River (Surrounding Environment) 6/6

Location					Sampling Date	Weather	Air temperature (°C)	Surrounding Environment (Soil, Air dose)														Remarks					
No.	Water area		Location	Municipality				Left bank						Right bank													
	Color	Odor						Property	Activity concentration [Bq/kg(dry)]			Air Dose (µSv/h)	Color	Odor	Property	Activity concentration [Bq/kg(dry)]			Air Dose (µSv/h)								
				Radioactive cesium						Radioactive cesium																	
				Cs-134	Cs-137	Total				Cs-134	Cs-137	Total															
R i v e r s	49	Omoji River Area	Omoji River	Tamotsu Bridge	Tochigi City	2017/5/16	Sunny	22.1	Blackish brown	Faint earth	Loamy	17	120	137	0.05	Dull yellowish brown	Faint earth	Loamy	7.9	46	53.9	0.07					
						2017/8/5	Cloudy	28.4	Grayish yellowish brown	None	Loamy	13	120	133	0.04	Grayish yellowish brown	None	Loamy	14	120	134	0.05					
						2017/11/25	Sunny	14.1	Blackish brown	Faint earth	Loamy	15	87	102	0.04	Grayish yellowish brown	Faint earth	Loamy	12	95	107	0.06					
						2018/2/14	Sunny	10.7	Blackish brown	Faint earth	Loamy	22	180	202	0.04	Dark brown	Faint earth	Loamy	42	256	298	0.04					
						2017/8/9	Cloudy	18.4	Dull yellow orange	Faint earth	Loamy	17	120	137	0.06	Dull yellowish brown	Faint earth	Loamy	12	65	77	0.05					
						2017/6/12	Sunny	23.4	Brown	Faint earth	Loamy	17	120	137	0.07	Blackish brown	Faint earth	Loamy	13	100	113	0.05					
		50	Omoji River Area	Omoji River	Otoe-obashi Bridge	Oyama City	2017/7/6	Sunny	29.2	Brown	Faint earth	Loamy	19	160	179	0.06	Blackish brown	Faint earth	Loamy	7.5	73	80.5	0.05				
							2017/8/26	Cloudy	30.8	Brown	Faint earth	Loamy	24	160	184	0.07	Dull yellowish brown	Faint earth	Loamy	18	120	138	0.05				
							2017/9/8	Sunny	28.2	Brown	Faint earth	Loamy	16	120	136	0.07	Blackish brown	Faint earth	Loamy	15	79	94	0.05				
							2017/11/29	Sunny	6.2	Brown	Faint earth	Loamy	15	210	225	0.06	Blackish brown	Faint earth	Loamy	8.6	66	74.6	0.06				
							2018/2/8	Sunny	6.2	Brown	Faint earth	Loamy	16	130	146	0.04	Dark brown	Faint earth	Loamy	11	79	90	0.04				
							2017/5/9	Cloudy	18.2	Dark brown	Faint earth	Loamy	21	130	151	0.06	Dull yellow orange	Faint earth	Loamy	15	100	115	0.04				
	51	Uzuma River Area	Uzuma River	Uzuma Bridge	Tochigi City	2017/6/12	Sunny	24.4	Dark brown	Faint earth	Loamy	14	110	124	0.06	Blackish brown	Faint earth	Loamy	14	94	108	0.05					
						2017/7/6	Sunny	28.8	Dark brown	Faint earth	Loamy	18	150	168	0.05	Blackish brown	Faint earth	Loamy	12	89	101	0.05					
						2017/8/26	Cloudy	31.2	Dark brown	Faint earth	Loamy	17	150	167	0.06	Dark brown	Faint earth	Loamy	9.2	91	100.5	0.05					
						2017/9/8	Cloudy	28.2	Dark brown	Faint earth	Loamy	16	190	206	0.06	Blackish brown	Faint earth	Loamy	19	160	179	0.05					
						2017/11/16	Sunny	11.1	Dull yellowish brown	None	Loamy	19	140	159	0.05	Dull yellowish brown	None	Loamy	13	100	113	0.04					
						2018/2/14	Sunny	11.8	Blackish brown	None	Loamy	18	140	158	0.06	Dull yellowish brown	Faint earth	Loamy	11	54	65	0.04					
						2017/5/11	Cloudy	14.6	Olive black	None	Sandy	<3.7	20	20	0.11	Blackish brown	Faint earth	Loamy	23	190	213	0.13					
						2017/6/13	Cloudy	16.4	Olive black	None	Sandy	<4.8	21	21	0.11	Dull yellowish brown	Faint earth	Loamy	49	340	389	0.13					
	52	Tosegawa River System	Watarase River Area	Watarase River intake weir at Sori Power Station	Nikko City	2017/7/6	Sunny	23.1	Olive black	None	Sandy	6.0	32	38.0	0.13	Grayish yellowish brown	None	Loamy	12	86	98	0.12					
						2017/8/3	Cloudy	19.1	Olive black	None	Sandy	<3.9	20	20	0.13	Grayish yellowish brown	Faint earth	Sandy	6.2	55	61.2	0.09					
						2017/9/12	Rain	20.7	Olive black	None	Sandy	<6.9	13	13	0.11	Dull yellowish brown	Faint earth	Loamy	47	400	447	0.12					
						2017/11/20	Cloudy	6.2	Olive black	None	Sandy	<5.1	18	18	0.11	Dull yellowish brown	Faint earth	Loamy	67	590	657	0.12					
						2018/2/14	Sunny	3.1	Dark olive	None	Sandy	<7.5	15	15	0.10	Dull yellowish brown	Faint earth	Loamy	32	290	322	0.13					
						2017/5/19	Sunny	26.0	Blackish brown	Faint earth	Loamy	6.9	63	69.9	0.04	Blackish brown	None	Loamy	8.8	79	87.8	0.07					
						53	Watarase River Area	Watarase River	Hajika Bridge	Ashikaga City	2017/8/28	Sunny	29.3	Grayish yellowish brown	Faint earth	Loamy	22	120	142	0.04	Blackish brown	Faint earth	Loamy	18	170	188	0.07
											2017/11/16	Sunny	17.2	Grayish yellowish brown	None	Loamy	10	65	75	0.04	Grayish yellowish brown	None	Loamy	69	470	539	0.06
2018/2/14											Sunny	4.6	Blackish brown	Faint earth	Loamy	11	120	131	0.05	Blackish brown	Faint earth	Loamy	17	110	127	0.06	
2017/5/19											Sunny	26.1	Grayish yellowish brown	Faint earth	Loamy	11	95	106	0.04	Blackish brown	None	Loamy	25	150	175	0.05	
54						Watarase River Area	Watarase River	Nakabashi Bridge	Ashikaga City	2017/8/28	Sunny	29.2	Brown	Faint earth	Loamy	10	88	98	0.04	Blackish brown	Faint earth	Loamy	22	140	162	0.05	
										2017/11/16	Sunny	15.7	Brown	None	Loamy	33	260	293	0.04	Dull yellowish brown	None	Loamy	30	210	240	0.04	
	2018/2/14	Sunny	6.8	Dull yellowish brown	Faint earth					Loamy	<11	25	25	0.04	Blackish brown	None	Loamy	11	85	96	0.05						
	2017/5/19	Sunny	25.5	Grayish yellow	None					Loamy	35	250	285	0.06	Dark olive brown	Faint earth	Loamy	11	55	66	0.05						
55	Watarase River Area	Watarase River	Watarase-obashi Bridge	Tatebayashi City	2017/8/28	Sunny	29.1	Blackish brown	Faint earth	Loamy	27	270	307	0.06	Dark olive brown	Faint earth	Loamy	15	110	125	0.05						
					2017/11/16	Sunny	14.2	Brownish grey	None	Loamy	33	250	283	0.06	Brownish grey	None	Loamy	11	72	83	0.05						
					2018/2/14	Sunny	9.4	Black	None	Loamy	14	140	154	0.06	Dark olive brown	Faint earth	Loamy	<8.3	55	55	0.05						
					2017/5/19	Sunny	23.5	Grayish yellowish brown	Faint earth	Loamy	<6.2	27	27	0.05	Blackish brown	None	Loamy	24	150	174	0.06						
56	Watarase River Area	Watarase River	Shinkai Bridge	Tochigi City	2017/6/12	Sunny	24.8	Blackish brown	Faint earth	Loamy	18	140	158	0.05	Blackish brown	Faint earth	Loamy	14	160	174	0.05						
					2017/7/6	Sunny	26.0	Blackish brown	Faint earth	Loamy	15	110	125	0.04	Blackish brown	Faint earth	Loamy	20	140	160	0.04						
					2017/8/28	Sunny	29.9	Blackish brown	Faint earth	Loamy	12	130	142	0.05	Blackish brown	Faint earth	Loamy	35	330	365	0.05						
					2017/9/8	Sunny	22.5	Blackish brown	Faint earth	Loamy	7.7	76	83.7	0.05	Blackish brown	Faint earth	Loamy	26	210	236	0.05						
					2017/11/16	Sunny	13.7	Grayish yellowish brown	None	Loamy	13	110	123	0.04	Dark brown	None	Loamy	25	130	155	0.04						
					2018/2/14	Sunny	11.5	Grayish red	Faint earth	Loamy	29	210	239	0.05	Blackish brown	Faint earth	Loamy	17	120	137	0.05						

Tochigi Lakes and Reservoirs (Water) 2/2

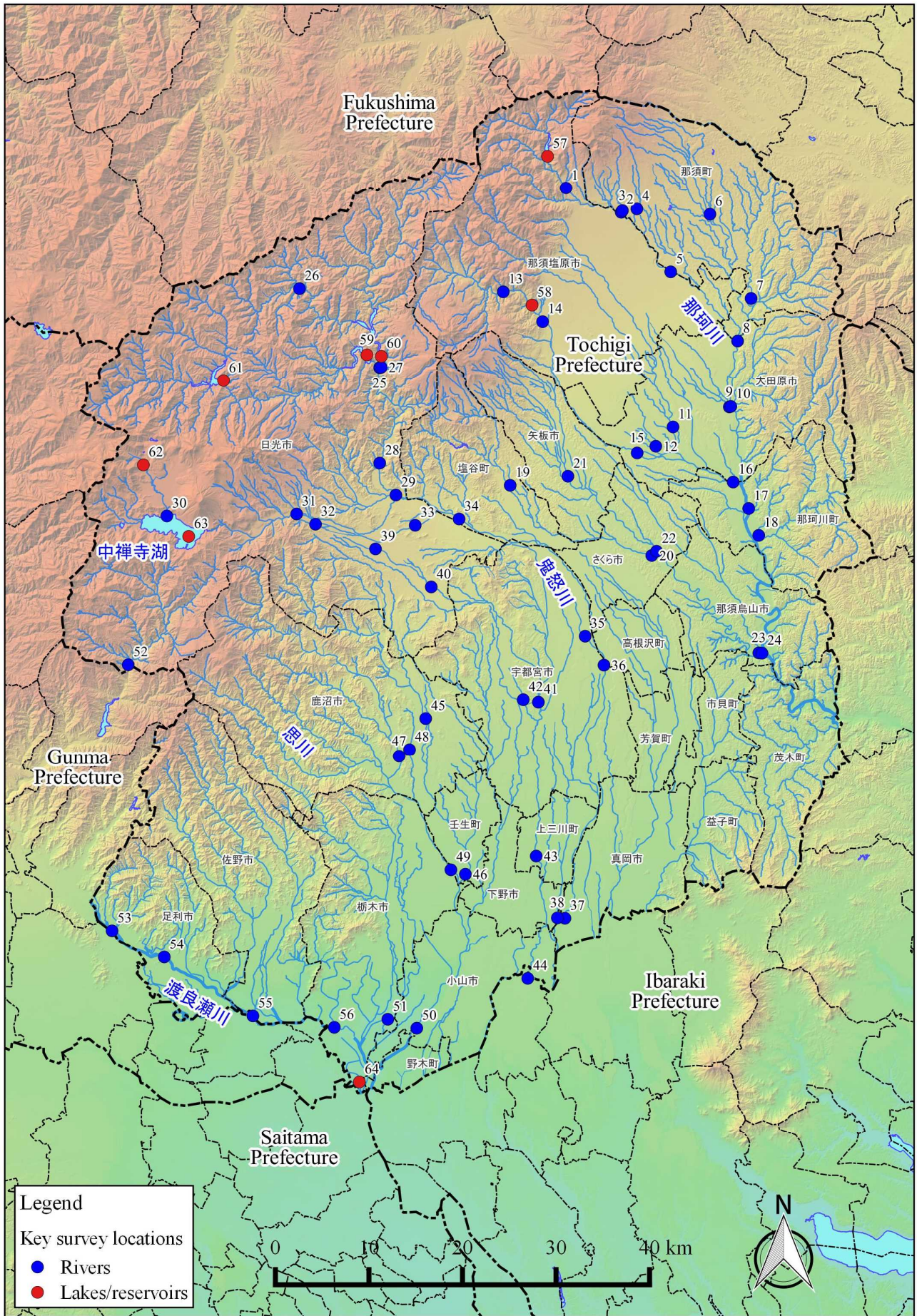
	Location				Sampling Date	Weather	Air temperature (°C)	Water depth (m)	Water										Remarks	
	No.	Water area	Location	Municipality					Water temperature (°C)	Sampling depth (m)	Color	Odor	Secchi disk depth (m)	Electrical conductivity (mS/m)	SS (mg/L)	Turbidity (FNU)	Activity concentration(Bq/L)			
																	Cs-134	Cs-137		
L s k e s a n d R e s e r v o i r s	63	Kimugawa River System	Lake Chuzenji	Center	Nikko City	Surface layer	2017/6/9	Sunny	16.0	161.5	12.8	0.5	Dark grayish yellowish green	None	9.0	11.5	<1	0.4	<0.78	<0.80
						Deep layer				4.8	160.5	-	None		11.7	1	0.8	<0.58	<0.80	
						Surface layer	2017/8/24	Cloudy	21.0	165.5	21.7	0.5	Dark grayish yellowish green	None	9.0	11.2	<1	0.2	<0.69	<0.75
						Deep layer				5.1	164.5	-	None		11.8	<1	0.4	<0.67	<0.80	
						Surface layer	2017/10/6	Cloudy	13.4	163.4	16.2	0.5	Dark grayish yellowish green	None	10.8	11.3	<1	0.3	<0.51	<0.88
						Deep layer				5.0	162.4	-	Faint rottenness		14.0	5	2.8	<0.75	<0.75	
						Surface layer	2017/12/1	Sunny	2.4	161.5	7.9	0.5	Dark grayish yellowish green	None	9.5	11.4	<1	0.3	<0.77	<0.80
						Deep layer				4.1	160.5	-	None		12.1	1	1.7	<0.74	<0.66	
						Surface layer	2017/5/19	Sunny	24.0	5.2	21.2	0.5	Grayish yellow green	None	1.0	22.1	6	5.4	<0.79	<0.80
						Deep layer				20.9	4.2	-	None		22.4	8	5.9	<0.75	<0.69	
64	Watarase River System	Watarase Reservoir	Center	Tochigi City	Surface layer	2017/8/28	Sunny	29.2	3.5	29.3	0.5	Grayish yellow green	None	0.9	22.9	8	8.6	<0.61	<0.69	
					Deep layer				28.7	2.5	-	None		23.0	17	9.3	<0.67	<0.75		
					Surface layer	2017/10/18	Sunny	17.3	6.2	18.6	0.5	Grayish yellow green	None	1.0	21.2	5	4.2	<0.74	<0.75	
					Deep layer				17.9	5.2	-	None		20.4	26	11	<0.69	<0.69		
					Surface layer	2017/12/8	Cloudy	8.5	6.7	9.7	0.5	Grayish yellow green	None	1.3	19.8	6	4.7	<0.81	<0.63	
					Deep layer				9.6	5.7	-	None		19.8	54	18	<0.71	<0.66		

Tochigi Lakes and Reservoirs (Sediment)1/1

No.	Location			Municipality	Sampling Date	Weather	Air temperature (°C)	Water depth (m)	Sediment																	Activity concentration [Bq/kg(dry)]			Remarks	
	Water area	Location							Sediment temperature (°C)	Sample length (cm)	Color	Odor	General items						Grain size distribution(%)					Sediment content (%)	Density (g/cm ³)	Property	Radioactive cesium			
		Coarse gravel	Medium gravel										Fine gravel	Coarse sand	Medium sand	Fine sand	Silt	Clay	Cs-134	Cs-137	Total									
	Water area								Location	Location																				
57	Nakagawa River System	Miyama Dam Reservoir	Center	Naushokuba City	2017/5/26	Cloudy	14.4	37.2	7.8	10	Dark olive	None	0.0	0.0	0.0	0.0	0.1	0.3	59.7	39.9	31.0	2.567	SiB	100	820	920				
					2017/8/24	Cloudy	25.5	40.9	10.2	8	Olive black	None	0.0	0.0	0.1	2.8	6.4	63.1	27.6	36.4	2.577	SiB	90	800	890					
58	Shobara Dam Reservoir	Center	Naushokuba City	2017/10/3	Sunny	22.0	27.0	14.9	10	Dark olive	None	0.0	0.0	0.0	0.0	0.1	0.4	55.7	43.8	38.3	2.569	SiB	28	310	338					
				2017/12/7	Sunny	6.2	29.5	6.6	10	Dark olive	None	0.0	0.0	0.0	0.0	0.1	0.4	64.0	35.5	30.2	2.522	SiB	79	740	819					
59	Kawaji Dam Reservoir	Center	Naushokuba City	2017/5/30	Sunny	21.8	27.2	11.2	10	Grayish yellowish brown	None	0.0	0.0	0.0	0.1	0.1	11.1	74.0	14.7	49.8	2.594	SiB	32	280	282					
				2017/8/18	Cloudy	21.2	19.6	17.1	10	Grayish yellowish brown	None	0.0	0.0	0.0	0.1	0.2	11.3	72.1	16.4	49.5	2.570	SiB	23	190	213					
60	Bari Dam Reservoir	Center	Naushokuba City	2017/10/3	Sunny	20.0	19.0	20.3	10	Dark brown	None	0.0	0.0	0.0	0.2	11.0	70.3	18.4	40.2	2.558	SiB	28	360	388						
				2017/12/7	Sunny	6.8	32.5	8.5	10	Grayish yellowish brown	None	0.0	0.0	0.0	0.0	0.3	4.5	72.8	22.4	34.7	2.490	SiB	39	290	329					
61	Kawamata Dam Reservoir	Center	Nikko City	2017/6/5	Sunny	18.2	72.0	6.2	10	Brownish gray	None	0.0	0.0	0.0	0.1	0.6	31.1	67.9	38.4	2.597	SiB	21	190	211						
				2017/8/17	Cloudy	22.4	67.0	6.5	10	Brownish gray	None	0.0	0.0	0.0	0.0	0.2	42.4	57.3	39.4	2.627	SiB	24	260	284						
62	Lake Yunoko	Center	Nikko City	2017/10/17	Sunny	14.7	62.5	6.6	10	Dark olive	None	0.0	0.0	0.0	0.0	0.1	39.8	60.3	40.7	2.588	SiB	49	430	479						
				2017/12/4	Sunny	6.1	74.5	6.9	10	Dark olive	None	0.0	0.0	0.0	0.1	0.4	31.0	68.3	34.7	2.583	SiB	24	210	234						
63	Lake Chuzenji	Center	Nikko City	2017/6/5	Sunny	24.7	52.2	5.2	6	Dull yellowish brown	None	0.0	0.0	0.0	0.1	0.4	47.8	51.7	32.1	2.530	SiB	42	280	322						
				2017/8/17	Sunny	29.2	54.4	6.7	8	Dull yellowish brown	None	0.0	0.0	0.0	0.0	0.1	37.7	62.3	31.7	2.583	SiB	28	220	248						
64	Watarase Reservoir	Center	Tochigi City	2017/10/17	Sunny	14.8	-	-	-	-	-	-	-	-	-	-	-	-	-	-	-	-	-	-	-	Unable to collect samples due to Dam body construction.				
				2017/12/4	Sunny	7.2	-	-	-	-	-	-	-	-	-	-	-	-	-	-	-	-	-	-	-	-	Unable to collect samples due to Dam body construction.			
65	Watarase Reservoir	Center	Tochigi City	2017/6/5	Sunny	18.3	72.0	5.2	10	Dark brown	None	0.0	0.0	0.0	0.2	0.5	66.4	32.9	38.6	2.487	SiB	<8.9	52	52						
				2017/8/17	Cloudy	22.7	69.3	5.4	10	Brownish gray	None	0.0	0.0	0.0	0.0	0.5	1.2	63.3	35.0	36.7	2.472	SiB	13	86	99					
66	Watarase Reservoir	Center	Tochigi City	2017/10/17	Sunny	20.9	70.5	5.2	8	Olive black	None	0.0	0.0	0.0	0.1	0.3	74.7	24.8	35.1	2.447	SiB	<10	47	47						
				2017/12/4	Cloudy	8.4	76.3	5.6	10	Olive black	None	0.0	0.0	0.0	0.1	0.8	75.7	23.4	35.4	2.426	SiB	13	80	63						
67	Watarase Reservoir	Center	Tochigi City	2017/6/9	Sunny	18.0	12.2	14.0	6	Olive black	Faint sewage	0.0	0.0	0.1	0.1	0.1	60.3	39.5	14.4	2.377	SiB	42	290	332						
				2017/8/24	Cloudy	20.0	12.5	14.5	5	Olive black	None	0.0	0.0	0.2	0.2	0.2	66.1	33.3	19.2	2.387	SiB	35	280	315						
68	Watarase Reservoir	Center	Tochigi City	2017/10/6	Cloudy	10.5	12.5	10.9	5	Olive black	Faint sewage	0.0	0.0	0.0	0.1	0.1	62.2	35.4	11.6	2.348	SiB	110	710	820						
				2017/12/1	Sunny	3.5	12.5	5.4	10	Black	None	0.0	0.0	0.0	0.1	0.3	77.1	22.5	16.0	2.373	SiB	59	500	559						
69	Watarase Reservoir	Center	Tochigi City	2017/6/9	Sunny	16.0	161.5	9.4	8	Olive black	Faint sewage	0.0	0.0	0.0	0.1	0.5	49.3	49.6	12.5	2.188	SiB	69	600	759						
				2017/8/24	Cloudy	21.0	165.5	5.2	5	Black	None	0.0	0.0	0.0	0.0	0.8	63.5	35.7	32.2	2.326	SiB	128	1,000	1,120						
70	Watarase Reservoir	Center	Tochigi City	2017/10/6	Cloudy	13.4	163.4	4.9	7	Black	Faint sewage	0.0	0.0	0.1	0.1	0.7	45.3	54.0	11.7	2.151	SiB	68	640	708						
				2017/12/1	Sunny	2.4	161.5	5.1	10	Black	Faint sewage	0.0	0.0	0.0	0.0	1.2	60.0	38.7	12.7	2.223	SiB	82	700	782						
71	Watarase Reservoir	Center	Tochigi City	2017/5/19	Sunny	24.0	5.2	20.9	5	Yellowish gray	None	0.0	0.0	0.0	0.1	1.8	70.9	27.3	30.1	2.569	SiB	20	110	130						
				2017/8/28	Sunny	29.2	3.5	29.1	8	Yellowish gray	None	0.0	0.0	0.0	0.1	0.8	21.0	62.0	16.0	45.3	2.657	SiB	<8.6	81	81					
72	Watarase Reservoir	Center	Tochigi City	2017/10/18	Sunny	17.3	6.2	17.6	5	Yellowish gray	None	0.0	0.1	0.1	0.4	0.9	6.4	67.3	24.6	39.4	2.595	SiB	<10	120	120					
				2017/12/8	Cloudy	8.8	6.7	10.4	7	Yellowish gray	None	0.0	0.0	0.0	0.1	0.6	4.8	81.0	13.8	43.3	2.606	SiB	13	91	104					

Tochigi Lakes and Reservoirs (Surrounding Environment) 1/1

Location					Sampling Date	Weather	Air temperature (°C)	Surrounding Environment(Soil,Air dose)						Remarks	
								Soil			Air Dose (μSv/h)				
No.	Water area	Location		Municipality				General items			Radioactive cesium				
								Color	Odor	Property	Activity concentration [Bq/kg(dry)]				
											Cs-134	Cs-137	Total		
57	Nakagawa River System	Miyama Dam Reservoir	Center	Nasushiobara City	2017/5/26	Cloudy	14.4	Grayish yellowish brown	Faint earth	Loamy	110	720	830	0.08	
					2017/8/24	Cloudy	25.5	Dull yellowish brown	Faint earth	Loamy	120	950	1,070	0.07	
					2017/10/3	Sunny	22.0	Grayish yellowish brown	Faint earth	Loamy	49	450	499	0.06	
		2017/12/7	Sunny		6.2	Grayish yellowish brown	Faint earth	Loamy	21	240	261	0.07			
		2017/5/30	Sunny		21.8	Dull yellowish brown	Faint earth	Loamy	6.8	51	57.8	0.08			
		2017/8/18	Cloudy		21.2	Dull yellowish brown	Faint earth	Loamy	24	180	204	0.08			
58	Shiobara Dam Reservoir	Center	Nasushiobara City	2017/10/3	Sunny	20.0	Dull yellowish brown	Faint earth	Loamy	12	120	132	0.08		
				2017/12/7	Sunny	6.8	Dull yellowish brown	Faint earth	Loamy	9.8	96	105.8	0.08		
				2017/6/5	Sunny	18.2	Dull yellowish brown	None	Loamy	25	220	245	0.11		
59	Kawaji Dam Reservoir	Center	Nasushiobara City	2017/8/17	Cloudy	22.4	Dull yellowish brown	None	Loamy	62	510	572	0.11		
				2017/10/17	Sunny	14.7	Olive brown	Faint earth	Loamy	45	410	455	0.11		
				2017/12/4	Sunny	6.1	Olive brown	Faint earth	Loamy	52	530	582	0.11		
60	Ikari Dam Reservoir	Center	Nasushiobara City	2017/6/5	Sunny	24.7	Dull yellowish brown	Faint earth	Loamy	190	1,300	1,490	0.09		
				2017/8/17	Sunny	29.2	Dull yellowish brown	Faint earth	Loamy	83	640	723	0.08		
				2017/10/17	Sunny	14.8	-	-	-	-	-	-	-	-	Unable to collect samples due to Dam body construction.
61	Kinugawa River System	Kawamata Dam Reservoir	Center	Nikko City	2017/12/4	Sunny	7.2	-	-	-	-	-	-	-	Unable to collect samples due to Dam body construction.
					2017/6/5	Sunny	18.3	Blackish brown	None	Loamy	20	150	170	0.06	
					2017/8/17	Cloudy	22.7	Dull yellowish brown	None	Loamy	3.8	22	25.8	0.05	
62	Lake Yunoko	Center	Nikko City	2017/10/17	Sunny	20.9	Blackish brown	Faint earth	Loamy	<7.7	19	19	0.05		
				2017/12/4	Cloudy	8.4	Blackish brown	Faint earth	Loamy	<8.2	21	21	0.06		
				2017/6/9	Sunny	18.0	Brown	Faint earth	Loamy	13	75	88	0.06		
				2017/8/24	Cloudy	20.0	Brown	Faint earth	Loamy	15	99	114	0.06		
				2017/10/6	Cloudy	10.5	Brown	Faint earth	Loamy	11	84	95	0.06		
				2017/12/1	Sunny	3.5	Dull yellowish brown	Faint earth	Loamy	11	80	91	0.06		
63	Lake Chuzenji	Center	Nikko City	2017/6/9	Sunny	16.0	Blackish brown	Faint earth	Loamy	68	580	648	0.05		
				2017/8/24	Cloudy	21.0	Black	Faint earth	Loamy	170	1,300	1,470	0.06		
				2017/10/6	Cloudy	13.4	Black	Faint earth	Loamy	99	790	889	0.05		
64	Watarase River System	Watarase Reservoir	Center	Tochigi City	2017/12/1	Sunny	2.4	Black	Faint earth	Loamy	20	150	170	0.06	
					2017/5/19	Sunny	24.0	Dull yellowish brown	Faint earth	Loamy	27	150	177	0.05	
					2017/8/28	Sunny	29.2	Dull yellowish brown	Faint earth	Loamy	180	1,400	1,580	0.05	
					2017/10/18	Sunny	17.3	Blackish brown	Faint earth	Loamy	48	340	388	0.05	
					2017/12/8	Cloudy	8.5	Brown	Faint earth	Loamy	19	170	189	0.05	



Survey Locations (Tochigi Prefecture)