

FY2017 Ibaraki Prefecture Survey Results

[Outline of results]

(1) Water

Rivers

Radioactive cesium (Cs-134, Cs-137): Not detectable at any location

Lakes and reservoirs

Radioactive cesium (Cs-134, Cs-137): Not detectable at any location

Coastal areas

Radioactive cesium (Cs-134, Cs-137): Not detectable at any location

(2) Sediments

Rivers

Cs-134: ND - 180 Bq/kg (dry)

Cs-137: 0.52 - 1,200 Bq/kg (dry)

Lakes and reservoirs

Cs-134: ND - 330 Bq/kg (dry)

Cs-137: 29 - 2,000 Bq/kg (dry)

Coastal areas

Cs-134: ND - 0.57 Bq/kg (dry)

Cs-137: 0.99 - 58 Bq/kg (dry)

(3) Surrounding Environment

(a) Soil

Rivers

Cs-134: ND - 340 Bq/kg (dry)

Cs-137: 12 - 2,500 Bq/kg (dry)

Lakes and reservoirs

Cs-134: ND - 260 Bq/kg (dry)

Cs-137: 16 - 2,400 Bq/kg (dry)

(b) Ambient dose rate

Rivers

0.04 - 0.19 μ Sv/h

Lakes and reservoirs

0.04 - 0.13 μ Sv/h

Ibaraki River (Water) 1/5

No.	Location			Sampling Date	Weather	Air temperature (°C)	Water depth (m)	Water							Activity concentration(Bq/L)		Remarks			
	Water area	Location	Municipality					Water temperature (°C)	Sampling depth (m)	Color	Odor	Transparency (cm)	Electrical conductivity (mS/m)	SS (mg/L)	Turbidity (FNU)	Radioactive cesium				
																Cs-134		Cs-137		
1	Tagagawa River System	Satone River	Yamagoya Bridge	Kitaibaraki City	2017/5/9	Sunny	14.9	0.4	13.0	0.0	Light grayish yellow green	None	>100	14.5	2	0.9	<-0.74	<-0.69		
					2017/8/22	Cloudy	26.8	0.3	18.3	0.0	Grayish yellow green	None	>100	13.5	4	1.5	<-0.71	<-0.75		
2017/11/7					Sunny	17.3	0.4	13.5	0.0	Grayish yellow green	None	>100	11.7	2	1.2	<-0.79	<-0.69			
2018/2/12					Sunny	6.5	0.2	5.6	0.0	Grayish yellow green	None	>100	13.2	<1	0.3	<-0.83	<-0.88			
2017/5/9					Sunny	18.2	0.2	15.6	0.0	Light grayish greenish yellow	None	94	24.0	4	3.4	<-0.72	<-0.69			
2		Murayama Bridge	2017/8/22		Cloudy	27.8	0.4	21.4	0.0	Grayish yellow green	None	>100	19.3	4	1.9	<-0.85	<-0.69			
			2017/11/7		Sunny	19.0	0.3	14.7	0.0	Light grayish greenish yellow	None	>100	17.1	2	1.2	<-0.85	<-0.80			
3		Hanazono River	Kurabeishi		Kitaibaraki City	2018/2/12	Sunny	7.5	0.3	4.7	0.0	Dark grayish yellow green	None	>100	18.3	6	0.7	<-0.80	<-0.92	
						2017/5/9	Sunny	16.5	0.4	12.9	0.0	Light grayish yellow green	None	>100	6.6	3	1.4	<-0.65	<-0.88	
						2017/8/22	Cloudy	24.5	0.3	17.9	0.0	Grayish greenish yellow	None	>100	6.3	2	0.9	<-0.60	<-0.63	
	2017/11/8			Cloudy		17.0	0.4	12.4	0.0	Light grayish yellow green	None	>100	6.0	2	0.7	<-0.79	<-0.84			
	2018/2/13			Sunny		5.0	0.3	2.9	0.0	Grayish yellow	None	82	7.0	8	1.6	<-0.71	<-0.80			
4	Isonare Bridge		Kurabeishi	Kitaibaraki City		2017/5/9	Sunny	17.3	0.3	16.0	0.0	Light grayish yellow green	None	>100	16.1	5	3.2	<-0.58	<-0.69	
						2017/8/22	Sunny	30.2	0.3	23.2	0.0	Grayish greenish yellow	None	82	15.3	6	3.4	<-0.57	<-0.80	
						2017/11/7	Sunny	21.5	0.3	13.5	0.0	Grayish greenish yellow	None	>100	20.8	3	1.6	<-0.84	<-0.96	
						2018/2/12	Sunny	7.8	0.3	6.0	0.0	Grayish greenish yellow	None	71	50.2	3	2.0	<-0.83	<-0.84	
						2017/5/10	Rain	14.8	0.3	12.0	0.0	Light grayish yellow green	None	>100	7.3	2	1.0	<-0.70	<-0.84	
5	Okita River	Sakae Bridge	Takahagi City		2017/8/21	Cloudy	25.5	0.4	17.6	0.0	Grayish greenish yellow	None	>100	7.1	4	1.9	<-0.60	<-0.69		
					2017/11/8	Cloudy	14.5	0.2	12.1	0.0	Grayish yellow	None	>100	6.9	2	1.2	<-0.65	<-0.80		
					2018/2/13	Sunny	3.3	0.2	2.6	0.0	Grayish yellow green	None	>100	7.2	<1	0.4	<-0.60	<-0.92		
					2017/5/9	Cloudy	16.0	0.5	15.5	0.0	Light grayish greenish yellow	None	47	15.5	8	6.4	<-0.72	<-0.84		
					2017/8/22	Sunny	29.5	0.5	23.0	0.0	Light grayish yellow	None	>100	14.3	5	2.9	<-0.66	<-0.92		
6		Sakai Bridge	Sakai Bridge	Kitaibaraki City	2017/11/7	Sunny	23.0	0.8	13.3	0.0	Grayish yellow	None	>100	11.0	4	2.0	<-0.80	<-0.69		
					2018/2/12	Cloudy	7.0	0.2	5.0	0.0	Grayish yellow green	None	>100	12.7	2	0.7	<-0.81	<-0.80		
					2017/5/10	Cloudy	16.7	0.5	15.0	0.0	Light grayish greenish yellow	None	50	13.6	10	6.4	<-0.80	<-0.80		
7		Shinhananuki Bridge	Shinhananuki Bridge		Takahagi City	2017/8/21	Cloudy	27.8	0.4	21.1	0.0	Light grayish yellow	None	>100	12.7	3	1.6	<-0.68	<-0.63	
						2017/11/7	Sunny	19.8	0.3	14.2	0.0	Grayish greenish yellow	None	>100	10.6	2	1.4	<-0.62	<-0.75	
	2018/2/12			Sunny		5.8	0.2	5.8	0.0	Grayish yellow green	None	>100	12.5	1	0.7	<-0.81	<-0.80			
	2017/5/10			Cloudy		16.8	0.3	18.1	0.0	Light grayish greenish yellow	None	>100	14.0	2	1.6	<-0.83	<-0.98			
	2017/8/23			Cloudy		30.0	0.5	24.6	0.0	Grayish yellow green	None	>100	11.9	4	1.9	<-0.61	<-0.84			
8	Kujigawa River System	Yamagata	Hitachiomiya City	2017/11/9	Sunny	17.0	0.3	13.4	0.0	Dark grayish yellowish green	None	>100	11.7	2	1.3	<-0.66	<-0.75			
				2018/2/15	Sunny	11.3	0.5	6.2	0.0	Grayish greenish yellow	None	>100	12.9	2	1.6	<-0.72	<-0.63			
				2017/5/10	Rain	15.8	0.4	17.9	0.0	Light grayish yellow green	None	44	18.0	13	11	<-0.78	<-0.74			
				2017/8/22	Cloudy	30.0	0.3	24.7	0.0	Grayish greenish yellow	None	54	13.2	8	5.0	<-0.80	<-0.84			
				2017/11/15	Sunny	13.5	0.4	12.6	0.0	Grayish yellow green	None	>100	14.0	1	1.0	<-0.93	<-0.75			
9		Sakaki Bridge	Sakaki Bridge	Hitachi City/ Tokai Village	2018/2/9	Sunny	9.5	0.3	5.8	0.0	Dark grayish yellow green	None	>100	14.7	2	1.0	<-0.60	<-0.80		
					2017/5/11	Sunny	19.6	0.5	17.1	0.0	Grayish yellow green	None	>100	18.3	4	2.4	<-0.57	<-0.75		
					2017/8/20	Cloudy	28.0	0.5	21.8	0.0	Grayish yellow green	None	37	12.2	15	9.1	<-0.70	<-0.80		
10		Nakagawa River Area	Nakagawa River		Noguchi	Hitachiomiya City/ Shirosato Town	2017/11/15	Cloudy	16.5	0.4	14.0	0.0	Dark grayish yellow green	None	>100	15.5	<1	0.4	<-0.82	<-0.75
							2018/2/9	Sunny	10.0	0.3	7.2	0.0	Dark grayish yellowish green	None	>100	18.2	1	0.6	<-0.80	<-0.96
	2017/5/11			Sunny			22.2	0.8	18.0	0.0	Grayish yellowish green	None	>100	18.8	6	3.4	<-0.65	<-0.69		
	2017/8/20			Cloudy			25.3	1.2	22.3	0.0	Light grayish yellow	None	23	11.0	22	15	<-0.60	<-0.92		
	2017/11/16			Sunny			10.8	0.5	12.3	0.0	Grayish yellow green	None	>100	16.2	<1	0.5	<-0.60	<-0.92		
11			Shimokunii	Mito City	2018/2/9	Sunny	9.0	1.0	5.4	0.0	Dark grayish yellowish green	None	>100	18.7	1	0.7	<-0.91	<-0.80		

Ibaraki River (Water) 3/5

No.	Location				Sampling Date	Weather	Air temperature (°C)	Water depth (m)	Water								Remarks		
	Water area		Location	Municipality					General items				Activity concentration(Bq/L)						
	Water area	Location	Municipality	Water temperature (°C)					Sampling depth (m)	Color	Odor	Transparency (cm)	Electrical conductivity (mS/m)	SS (mg/L)	Turbidity (FNU)	Radioactive cesium			
											Cs-134	Cs-137							
26	Kitaura River Area	Nagare River	Suhoi Bridge	Kashima City	2017/5/9	Cloudy	19.0	0.1	16.6	0.0	Light grayish yellow	None	>100	38.8	3	3.4	<-0.78	<-0.80	
					2017/8/21	Cloudy	27.5	0.1	27.3	0.0	Light grayish greenish yellow	None	>100	42.7	3	1.4	<-0.68	<-0.84	
					2017/11/21	Sunny	3.8	0.1	8.0	0.0	Dark grayish yellow green	Faint sewage	>100	40.0	2	1.9	<-0.71	<-0.84	
					2018/2/23	Cloudy	5.0	0.3	6.0	0.0	Light grayish yellow	Faint sewage	>100	35.2	1	1.8	<-0.80	<-0.88	
		27	Sonobe River	Sonobeshin Bridge	Omitama City	2017/5/17	Cloudy	13.5	1.7	17.5	0.0	Grayish yellow green	None	29	25.7	21	14	<-0.68	<-0.69
						2017/8/23	Cloudy	26.5	1.6	26.0	0.0	Grayish greenish yellow	None	50	28.9	10	8.3	<-0.75	<-0.80
						2017/11/16	Sunny	13.5	1.6	13.0	0.0	Dark grayish yellow green	None	59	32.1	5	2.5	<-0.63	<-0.80
						2018/2/8	Sunny	8.2	1.9	6.6	0.0	Grayish greenish yellow	None	46	31.0	5	4.7	<-0.58	<-0.69
		28	Sanno River	Tokoro Bridge	Omitama City	2017/5/17	Cloudy	15.0	0.6	17.3	0.0	Light grayish yellow green	None	68	65.9	8	3.4	<-0.74	<-0.75
						2017/8/23	Sunny	28.7	0.6	27.3	0.0	Light grayish yellow green	None	>100	78.2	4	2.4	<-0.78	<-0.69
						2017/11/2	Sunny	20.5	0.9	18.2	0.0	Grayish yellow green	None	>100	35.5	2	1.9	<-0.51	<-0.75
						2018/2/8	Sunny	10.5	0.7	8.8	0.0	Grayish greenish yellow	Faint sewage	22	112	12	9.2	<-0.70	<-0.88
29	Koise River	Heiwa Bridge	Ishioka City	2017/5/17	Cloudy	16.5	0.3	17.9	0.0	Light grayish yellow	None	20	23.0	47	22	<-0.88	<-0.75		
				2017/8/23	Sunny	32.8	0.5	27.0	0.0	Grayish yellow	None	28	19.9	17	13	<-0.48	<-0.92		
				2017/11/2	Sunny	21.2	0.3	15.0	0.0	Grayish yellow	None	59	21.2	16	8.9	<-0.70	<-0.63		
				2018/2/8	Sunny	12.0	0.3	6.2	0.0	Grayish greenish yellow	None	92	18.5	3	2.1	<-0.63	<-0.88		
30	Kajinashi River	Kamishuku Bridge	Namegata City	2017/5/16	Cloudy	20.0	0.5	20.5	0.0	Grayish yellow	None	37	27.0	18	12	<-0.76	<-0.84		
				2017/8/22	Sunny	30.0	0.4	26.5	0.0	Light grayish greenish yellow	None	72	37.2	6	3.5	<-0.61	<-0.84		
				2017/11/20	Cloudy	9.2	0.2	9.7	0.0	Light grayish yellow	None	>100	35.1	2	1.5	<-0.76	<-0.88		
				2018/2/8	Sunny	8.5	0.4	6.2	0.0	Light grayish yellow	None	47	43.8	4	2.7	<-0.87	<-0.69		
31	Hishiki River	Hishiki Bridge	Kasumigaura City	2017/5/17	Cloudy	14.8	0.5	17.1	0.0	Light grayish yellow	None	41	25.2	18	7.7	<-0.66	<-0.75		
				2017/8/23	Sunny	32.5	0.6	27.8	0.0	Light grayish greenish yellow	Faint sewage	85	28.4	7	4.2	<-0.68	<-0.84		
				2017/11/20	Cloudy	8.0	0.5	8.2	0.0	Light grayish yellow green	None	54	25.5	6	5.4	<-0.76	<-0.84		
				2018/2/8	Sunny	5.5	0.4	2.5	0.0	Grayish yellow	None	>100	35.5	2	2.1	<-0.73	<-0.80		
32	Ichinose River	Kawanaka Bridge	Kasumigaura City	2017/5/17	Cloudy	14.6	1.5	18.2	0.0	Grayish yellow	None	36	25.3	19	13	<-0.68	<-0.69		
				2017/8/23	Sunny	32.0	1.0	29.5	0.0	Grayish yellow	None	30	30.0	18	13	<-0.68	<-0.75		
				2017/11/20	Cloudy	6.0	1.2	8.4	0.0	Light grayish yellow	None	21	26.2	28	32	<-0.63	<-0.75		
				2018/2/8	Sunny	4.0	1.4	2.5	0.0	Grayish yellow green	None	36	30.9	5	4.3	<-0.68	<-0.63		
33	Sakai River	Sakai Bridge/ National Route 354	Tsuchiura City	2017/5/18	Sunny	21.6	0.4	16.8	0.0	Light grayish yellow	None	56	42.4	20	9.0	<-0.67	<-0.69		
				2017/8/10	Cloudy	24.5	0.4	22.0	0.0	Light grayish yellow	None	71	40.5	7	5.1	<-0.68	<-0.63		
				2017/11/17	Sunny	9.0	0.2	11.3	0.0	Light grayish yellow	None	21	48.8	33	32	<-0.78	<-0.55		
				2018/2/7	Sunny	8.3	0.3	8.1	0.0	Grayish yellow green	None	26	34.3	20	13	<-0.83	<-0.80		
34	Shinkawa River	Shinten Bridge	Tsuchiura City	2017/5/10	Rain	17.0	1.8	19.4	0.0	Light grayish greenish yellow	None	28	34.9	14	9.7	<-0.54	<-0.69		
				2017/8/10	Cloudy	26.5	1.6	26.5	0.0	Grayish greenish yellow	None	38	26.2	6	5.3	<-0.77	<-0.80		
				2017/11/17	Sunny	5.0	1.8	11.9	0.0	Dark grayish yellow green	None	31	35.2	7	3.9	<-0.72	<-0.69		
				2018/2/7	Sunny	8.2	2.0	6.1	0.0	Grayish yellow	None	21	37.4	22	23	<-0.62	<-0.74		
35	Sakura River	Eiri Bridge	Tsuchiura City/ Tsukuba City	2017/5/18	Sunny	20.1	1.4	17.8	0.0	Grayish greenish yellow	None	28	24.3	22	18	<-0.57	<-0.69		
				2017/8/23	Cloudy	30.0	0.5	28.5	0.0	Light grayish greenish yellow	None	54	23.0	9	5.0	<-0.70	<-0.75		
				2017/11/17	Sunny	11.5	0.2	10.8	0.0	Grayish yellow green	None	66	24.1	3	2.9	<-0.67	<-0.69		
				2018/2/7	Sunny	9.8	0.3	6.2	0.0	Grayish yellow green	None	73	24.5	4	3.1	<-0.83	<-0.75		
36	Bizen River	Bizengawa Bridge	Tsuchiura City	2017/5/10	Rain	16.5	0.6	18.3	0.0	Grayish yellow green	None	20	21.7	23	15	<-0.72	<-0.99		
				2017/8/10	Cloudy	27.4	0.6	24.5	0.0	Grayish yellow green	None	34	29.5	13	8.7	<-0.84	<-0.88		
				2017/11/17	Sunny	11.2	0.7	12.5	0.0	Grayish yellow green	None	65	31.8	5	4.4	<-0.73	<-0.55		
				2018/2/7	Sunny	6.8	0.8	5.4	0.0	Grayish yellow	None	30	34.5	10	8.0	<-0.89	<-0.84		
37	Hanamuro River	Shinwa Bridge	Tsuchiura City	2017/5/18	Sunny	19.5	0.4	18.0	0.0	Grayish greenish yellow	None	40	27.6	19	12	<-0.87	<-0.88		
				2017/8/23	Cloudy	29.5	0.2	29.5	0.0	Light grayish greenish yellow	None	84	26.7	5	3.5	<-0.65	<-0.84		
				2017/11/17	Sunny	15.6	0.2	13.3	0.0	Grayish yellow green	None	>100	30.4	4	3.1	<-0.54	<-0.75		
				2018/2/7	Sunny	6.8	0.2	6.1	0.0	Light grayish yellow green	None	71	40.0	4	4.0	<-0.79	<-0.61		
38	Seimei River	Katsuhashi Bridge	Ami Town	2017/5/10	Rain	16.0	0.5	17.7	0.0	Grayish yellow green	None	33	29.3	13	9.6	<-0.70	<-0.84		
				2017/8/10	Cloudy	24.7	0.4	22.5	0.0	Grayish yellow green	None	29	35.1	21	12	<-0.60	<-0.63		
				2017/11/17	Sunny	13.0	0.4	14.5	0.0	Grayish yellow	None	80	30.6	4	3.7	<-0.51	<-0.80		
				2018/2/7	Sunny	3.0	0.5	3.3	0.0	Grayish yellow green	None	54	43.3	5	4.1	<-0.67	<-0.48		

Ibaraki River (Water) 4/5

No.	Location				Sampling Date	Weather	Air temperature (°C)	Water depth (m)	Water							Activity concentration(Bq/L)		Remarks	
	Water area		Location	Municipality					Water temperature (°C)	Sampling depth (m)	Color	Odor	Transparency (cm)	Electrical conductivity (mS/m)	SS (mg/L)	Turbidity (FNU)	Radioactive cesium		
																	Cs-134		Cs-137
39	Kasumigaura River Area	Onogawa River	Okuhara-ohashi Bridge	Ryugasaki City/ Ushiku City	2017/5/18	Sunny	20.2	0.4	18.6	0.0	Light grayish yellow green	None	38	35.4	14	9.9	<-0.51	<-0.88	
					2017/8/16	Cloudy	21.8	0.3	23.8	0.0	Grayish yellow	None	41	21.8	12	8.3	<-0.90	<-0.69	
2017/11/21		Sunny	9.8	0.4	10.6	0.0	Grayish greenish yellow	None	>100	40.8	3	2.2	<-0.83	<-0.96					
2018/2/23		Cloudy	6.5	0.3	6.8	0.0	Grayish yellow green	None	48	48.8	7	6.1	<-0.69	<-0.69					
40	Shintone River	Shintone Bridge	Inashiki City	2017/5/9	Cloudy	20.0	1.8	20.8	0.0	Grayish greenish yellow	None	20	85.6	16	12	<-0.73	<-0.75		
				2017/8/21	Sunny	29.0	2.3	27.5	0.0	Dark grayish yellow	None	33	31.8	9	7.6	<-0.84	<-0.88		
				2017/11/21	Sunny	10.0	1.4	11.3	0.0	Grayish greenish yellow	None	35	51.9	7	9.2	<-0.71	<-0.80		
				2018/2/23	Cloudy	7.0	1.5	6.0	0.0	Grayish greenish yellow	Faint sewage	25	50.6	11	11	<-0.68	<-0.80		
41	Hitachitonegawa River Area	Yorokoshi River	Horinouchi Bridge	Itako City	2017/5/9	Cloudy	20.0	0.6	19.2	0.0	Grayish yellow green	None	30	40.7	21	13	<-0.91	<-0.88	
					2017/8/21	Sunny	27.8	0.6	26.5	0.0	Grayish yellow	None	72	39.3	5	4.7	<-0.73	<-0.55	
					2017/11/21	Sunny	11.0	0.4	9.9	0.0	Grayish greenish yellow	None	62	35.5	4	4.6	<-0.57	<-0.63	
					2018/2/23	Cloudy	7.5	0.7	6.2	0.0	Grayish greenish yellow	Faint sewage	49	34.3	5	4.1	<-0.51	<-0.80	
42	Maekawa River	Ayame Bridge	Chikusei City	2017/5/9	Cloudy	20.0	2.2	20.6	0.0	Grayish yellow green	None	40	48.5	11	7.1	<-0.69	<-0.88		
				2017/8/16	Cloudy	23.5	2.4	25.0	0.0	Light grayish greenish yellow	None	38	35.2	12	8.8	<-0.79	<-0.63		
				2017/11/22	Sunny	12.5	2.7	10.3	0.0	Dark grayish greenish yellow	None	23	34.8	12	13	<-0.76	<-0.63		
				2018/2/23	Cloudy	6.0	3.5	6.2	0.0	Grayish greenish yellow	Faint sewage	32	44.8	15	11	<-0.58	<-0.75		
43	Kinugawa River	Kawashima Bridge	Chikusei City	2017/5/22	Sunny	29.0	0.7	24.0	0.0	Light grayish yellow green	None	>100	21.1	3	1.7	<-0.72	<-0.84		
				2017/8/14	Cloudy	25.4	0.5	26.0	0.0	Grayish yellow green	None	70	14.2	9	5.2	<-0.80	<-0.69		
		2017/11/13	Sunny	14.0	0.2	11.9	0.0	Grayish yellow green	None	>100	14.5	4	3.1	<-0.69	<-0.84				
		2018/2/19	Sunny	11.0	0.3	7.9	0.0	Dark grayish yellow green	None	>100	18.9	1	0.7	<-0.73	<-0.70				
44	Kinugawa River Area	Takishita Bridge	Moriya City	2017/5/8	Sunny	22.0	0.5	21.8	0.0	Light grayish yellow green	None	35	22.6	13	7.1	<-0.68	<-0.63		
				2017/8/7	Cloudy	30.3	0.4	29.0	0.0	Light grayish yellow green	None	53	26.2	14	6.7	<-0.66	<-0.92		
		2017/11/20	Cloudy	4.9	0.3	9.1	0.0	Grayish yellow green	None	>100	19.3	9	3.3	<-0.63	<-0.69				
		2018/2/19	Sunny	4.2	0.3	6.5	0.0	Dark grayish yellow green	None	>100	26.8	3	2.2	<-0.66	<-0.61				
45	Tagawa River	Tagawa Bridge	Chikusei City	2017/5/22	Sunny	25.0	0.3	25.5	0.0	Light grayish yellow green	None	95	26.8	8	2.8	<-0.81	<-0.80		
				2017/8/7	Sunny	32.6	0.4	24.0	0.0	Light grayish yellow green	None	>100	25.5	5	1.8	<-0.78	<-0.80		
				2017/11/13	Sunny	10.0	0.2	13.1	0.0	Dark grayish yellow green	None	>100	23.1	1	0.5	<-0.67	<-0.55		
				2018/2/19	Sunny	6.3	0.2	9.4	0.0	Grayish yellow green	None	82	29.7	3	1.6	<-0.79	<-0.88		
46	Kokai River	Kuroko Bridge	Chikusei City	2017/5/22	Sunny	28.0	1.1	24.6	0.0	Grayish greenish yellow	Faint sewage	36	22.1	16	7.7	<-0.72	<-0.92		
				2017/8/7	Sunny	27.7	0.8	28.5	0.0	Grayish greenish yellow	None	59	24.2	11	6.8	<-0.56	<-0.48		
		2017/11/13	Cloudy	16.0	0.3	13.8	0.0	Grayish yellow green	None	81	22.8	4	3.5	<-0.67	<-0.84				
		2018/2/19	Sunny	7.5	0.4	7.9	0.0	Grayish yellow green	None	33	28.7	8	5.8	<-0.83	<-0.70				
47	Fumimaki Bridge	Toride City	2017/5/31	Cloudy	24.2	3.2	26.8	0.0	Light grayish greenish yellow	None	33	22.5	11	9.3	<-0.83	<-0.84			
			2017/8/15	Cloudy	23.8	3.0	25.5	0.0	Grayish greenish yellow	None	68	18.6	9	4.4	<-0.68	<-0.80			
			2017/11/14	Cloudy	13.9	1.4	13.3	0.0	Grayish yellow green	None	89	22.9	6	4.0	<-0.87	<-0.80			
			2018/2/24	Sunny	8.8	1.0	6.1	0.0	Grayish greenish yellow	None	87	28.7	5	3.2	<-0.94	<-0.96			
48	Yatagawa River	Maruyama Bridge	Tsukuba City	2017/5/8	Sunny	28.0	1.7	22.6	0.0	Light grayish yellow green	None	34	28.6	15	10	<-0.57	<-0.80		
				2017/8/14	Cloudy	23.8	2.1	25.0	0.0	Light grayish greenish yellow	None	57	21.5	10	7.2	<-0.51	<-0.92		
				2017/11/13	Cloudy	17.0	1.7	13.8	0.0	Grayish yellow green	None	>100	27.5	2	1.8	<-0.60	<-0.63		
				2018/2/23	Sunny	7.0	1.2	7.7	0.0	Grayish yellow green	None	83	29.7	3	3.2	<-0.57	<-0.80		
49	Nishiyata River	Sakaimatsu Bridge	Tsukuba City	2017/5/8	Sunny	26.0	1.1	22.5	0.0	Light grayish yellow green	None	40	26.3	7	5.3	<-0.86	<-0.75		
				2017/8/14	Cloudy	24.6	1.1	26.0	0.0	Light grayish yellow	None	58	20.7	7	5.2	<-0.82	<-0.55		
				2017/11/13	Sunny	15.2	0.5	13.1	0.0	Dark grayish yellow green	None	84	27.2	3	3.1	<-0.89	<-0.75		
				2018/2/23	Sunny	8.0	0.3	8.3	0.0	Grayish yellow green	None	81	28.3	4	3.8	<-0.58	<-0.75		
50	Inari River	Oguki Bridge	Tsukuba City	2017/5/8	Sunny	27.5	0.9	23.3	0.0	Light grayish yellow green	None	34	24.7	14	9.5	<-0.79	<-0.80		
				2017/8/14	Cloudy	24.0	0.9	20.3	0.0	Light grayish yellow	None	57	17.6	8	5.0	<-0.60	<-0.80		
				2017/11/14	Cloudy	15.0	0.7	14.0	0.0	Light grayish greenish yellow	None	68	24.6	6	3.5	<-0.81	<-0.80		
				2018/2/23	Sunny	9.8	0.7	7.7	0.0	Grayish yellow green	None	52	28.4	5	5.6	<-0.68	<-0.75		

Ibaraki River (Water) 5/5

R i v e r s	Location				Sampling Date	Weather	Air temperature (°C)	Water depth (m)	Water										Remarks	
	No.	Water area		Location					Municipality	General items							Activity concentration(Bq/L)			
										Water temperature (°C)	Sampling depth (m)	Color	Odor	Transparency (cm)	Electrical conductivity (mS/m)	SS (mg/L)	Turbidity (FNU)	Cs-134		Cs-137
51	Tonegawa River System	Tonegawa River Area	Tonegawa River	Kurihashi Bridge	Koga City	2017/5/22	Sunny	29.1	0.4	19.5	0.0	Light grayish yellow green	None	29	11.1	24	16	<-0.68	<-0.80	
						2017/8/7	Sunny	32.9	1.3	27.0	0.0	Light grayish greenish yellow	None	40	22.8	18	10	<-0.80	<-0.88	
						2017/11/20	Cloudy	6.8	0.5	7.8	0.0	Grayish yellow green	None	>100	24.0	3	2.4	<-0.81	<-0.92	
				2018/2/19	Sunny	9.5	0.4	7.4	0.0	Grayish yellow	None	90	27.2	3	2.4	<-0.80	<-0.81			
				2017/5/31	Sunny	25.5	0.9	26.0	0.0	Light grayish greenish yellow	None	57	19.7	8	5.9	<-0.65	<-0.75			
				2017/8/21	Cloudy	27.0	0.6	24.5	0.0	Light grayish yellow	None	33	14.6	23	11	<-0.75	<-0.84			
	52	Tonegawa River System	Tonegawa River Area	Tonegawa River	Fukawa	Tone Town	2017/11/14	Cloudy	14.0	0.6	12.8	0.0	Grayish yellow green	None	>100	22.3	4	3.0	<-0.47	<-0.84
							2018/2/24	Sunny	12.8	0.3	7.2	0.0	Grayish yellow green	None	92	28.8	5	3.5	<-0.69	<-0.92
							2017/5/9	Cloudy	23.0	0.3	21.8	0.0	Light grayish yellow green	None	43	31.3	9	7.1	<-0.68	<-0.63
					2017/8/21	Cloudy	27.2	0.3	27.3	0.0	Light grayish greenish yellow	None	53	20.6	9	6.2	<-0.80	<-0.80		
					2017/11/21	Sunny	10.5	0.3	12.1	0.0	Light grayish greenish yellow	None	39	29.3	14	8.0	<-0.68	<-0.92		
					2018/2/23	Cloudy	6.5	0.1	7.1	0.0	Grayish yellow	Faint sewage	25	40.3	28	15	<-0.58	<-0.75		

Ibaraki River (Sediment) 3/5

No.	Location				Sampling Date	Weather	Air temperature (°C)	Water depth (m)	Sediment														Remarks			
	Water area	Location	Municipality	Sediment temperature (°C)					Sample length (cm)	Color	Odor	General items							Sediment content (%)	Density (g/cm³)	Property	Activity concentration [Bq/kg(dry)]				
												Coarse gravel	Medium gravel	Fine gravel	Coarse sand	Medium sand	Fine sand	Silt				Clay		Cs-134	Cs-137	Total
26	Katsura River Area	Nagare River	Suhoi Bridge	Kashima City	2017/5/9	Cloudy	19.0	0.1	17.5	3	Dark brown	Faint sewage	0.0	21.8	11.1	16.1	38.5	8.6	2.0	1.9	82.3	2.745	Sand/gravel	14	68	82
					2017/8/21	Cloudy	27.5	0.1	26.8	1	Blackish brown	Faint sewage	0.0	15.2	6.1	9.2	41.4	22.7	2.3	3.1	73.9	2.650	Sand/silt	13	93	106
					2017/11/21	Sunny	3.8	0.1	9.0	1	Blackish brown	Faint algae	0.0	2.1	3.7	9.8	44.0	34.7	2.5	3.1	66.9	2.651	Sand	13	150	163
					2018/2/23	Cloudy	5.0	0.3	5.7	1	Blackish brown	Faint sewage	0.0	7.0	10.2	15.1	40.9	23.6	1.4	1.9	74.5	2.677	Sand/gravel	11	88	99
27	Sonobe River	Sonobeshin Bridge	Onitama City	2017/5/17	Cloudy	13.5	1.7	17.6	2	Dark brown	Faint sewage	0.0	0.1	1.3	5.3	29.2	7.9	4.3	73.1	2.650	Sand	11	82	93		
				2017/8/23	Cloudy	26.5	1.6	25.3	3	Blackish brown	Faint sewage	0.0	0.4	2.0	7.1	64.5	17.2	4.9	3.9	73.1	2.638	Sand	6.6	63	69.6	
				2017/11/16	Sunny	13.5	1.6	13.0	2	Blackish brown	Faint sewage	0.0	2.5	6.9	17.8	56.3	11.5	3.1	1.9	75.2	2.647	Sand/gravel	8.4	74	82.4	
				2018/2/8	Sunny	8.2	1.9	7.2	3	Blackish brown	Faint sewage	0.0	0.2	1.2	11.8	70.9	11.9	1.7	2.3	76.8	2.634	Sand/gravel	<5.6	39	39	
28	Samso River	Tokoro Bridge	Onitama City	2017/5/17	Cloudy	15.0	0.6	17.0	2	Faint sewage	Faint sewage	0.0	3.6	9.1	13.5	54.3	13.9	3.1	2.6	75.3	2.654	Sand	53	400	453	
				2017/8/23	Sunny	28.7	0.6	26.8	1	Dark grayish yellow	Faint sewage	0.0	10.6	15.0	28.4	41.3	1.9	0.8	2.2	78.9	2.668	Sand/gravel	42	320	362	
				2017/11/21	Sunny	20.5	0.9	18.5	1	Blackish brown	None	0.0	0.3	3.1	10.6	61.0	15.1	5.7	4.3	64.2	2.593	Sand	54	430	484	
				2018/2/8	Sunny	10.5	0.7	8.3	1	Blackish brown	Medium sewage	0.0	0.0	0.0	0.7	39.3	31.8	17.9	10.3	27.2	2.553	Silt/sand	56	350	386	
29	Koise River	Herwa Bridge	Ishioka City	2017/5/17	Cloudy	16.5	0.3	16.8	6	Olive black	Faint algae	0.0	0.1	0.5	8.6	32.5	26.9	22.7	8.8	59.4	2.579	Silt/sand	12	100	112	
				2017/8/23	Sunny	32.8	0.5	26.0	3	Blackish brown	Faint sewage	0.0	0.0	0.0	0.1	17.5	59.0	10.1	13.3	56.4	2.524	Silt/sand	15	120	135	
				2017/11/21	Sunny	21.2	0.3	15.0	4	Olive black	Faint sewage	0.0	0.0	0.0	0.0	8.0	60.1	18.5	13.3	56.7	2.552	Silt/sand	19	130	149	
				2018/2/8	Sunny	12.0	0.3	6.5	3	Olive black	None	0.0	0.0	0.0	0.1	3.7	60.7	24.3	11.2	52.9	2.592	Silt/sand	15	130	145	
30	Kajinashi River	Kamishuku Bridge	Namegata City	2017/5/16	Cloudy	20.0	0.5	19.9	3	Blackish brown	None	0.0	0.3	1.0	10.0	80.8	5.4	0.6	2.0	79.0	2.649	Sand	7.3	38	45.3	
				2017/8/22	Sunny	30.0	0.4	26.2	3	Dark grayish yellow	None	0.0	0.2	1.3	12.2	75.0	8.0	1.1	1.9	79.0	2.651	Sand	<6.1	34	34	
				2017/11/20	Cloudy	9.2	0.2	9.7	5	Blackish brown	Faint sewage	0.0	0.0	0.0	0.0	12.6	51.2	25.8	10.4	59.3	2.609	Sand	19	150	169	
				2018/2/8	Sunny	8.5	0.4	6.5	3	Blackish brown	None	0.0	0.0	0.0	0.0	10.3	44.3	35.6	9.5	41.1	2.527	Sand	23	240	263	
31	Hishiki River	Hishiki Bridge	Kasumigaura City	2017/5/17	Cloudy	14.8	0.5	16.8	3	Blackish brown	None	0.0	0.0	0.6	4.0	67.3	21.8	4.4	2.0	75.6	2.674	Sand	20	150	170	
				2017/8/23	Sunny	32.5	0.6	26.3	4	Blackish brown	Faint swamp	0.0	0.0	0.0	1.3	70.6	25.0	1.0	2.0	72.8	2.616	Sand	19	170	189	
				2017/11/20	Cloudy	8.0	0.5	9.0	4	Blackish brown	None	0.0	0.1	3.4	13.8	68.7	9.3	2.7	2.0	73.6	2.640	Sand	19	170	189	
				2018/2/8	Sunny	5.5	0.4	3.0	3	Blackish brown	None	0.0	0.0	1.0	8.6	63.5	19.1	5.3	2.5	70.4	2.635	Sand	19	180	199	
32	Ichinose River	Kawamaka Bridge	Kasumigaura City	2017/5/17	Cloudy	14.6	1.5	17.8	5	Black	Faint sewage	0.0	0.0	0.3	0.8	27.0	29.9	26.2	15.8	41.1	2.581	Sand/silt/gravel	29	260	289	
				2017/8/23	Sunny	32.0	1.0	28.5	3	Blackish brown	Faint sewage	10.1	9.9	1.6	3.9	23.9	10.4	25.3	15.1	23.6	2.478	Silt/sand/gravel	47	360	407	
				2017/11/20	Cloudy	6.0	1.2	9.0	2	Blackish brown	None	0.0	2.1	5.2	16.4	56.7	8.5	7.8	3.2	70.9	2.644	Sand/silt/gravel	22	220	242	
				2018/2/8	Sunny	4.0	1.4	4.0	3	Blackish brown	None	0.0	0.5	1.1	9.3	60.8	18.6	6.4	3.3	70.7	2.678	Sand/silt/gravel	16	190	206	
33	Sakai River	Sakai Bridge/ National Route 354	Tsuchiura City	2017/5/18	Sunny	21.6	0.4	17.9	2	Olive black	None	5.4	19.9	8.2	12.2	35.2	11.4	4.7	2.9	79.3	2.688	Sand/gravel	8.3	74	82.3	
				2017/8/10	Cloudy	24.5	0.4	24.9	3	Blackish brown	None	0.0	21.6	12.0	6.4	20.3	21.9	11.8	6.1	68.5	2.692	Sand/silt/gravel	<4.0	7.2	7.2	
				2017/11/17	Sunny	9.0	0.2	11.0	3	Olive black	None	0.0	0.1	0.1	1.4	83.9	10.2	2.3	2.0	70.6	2.661	Sand	35	270	305	
				2018/2/7	Sunny	8.3	0.3	9.0	2	Olive black	Faint sewage	0.0	0.0	14.4	15.5	20.7	34.8	6.3	4.7	3.8	72.6	2.616	Sand/gravel/silt	27	230	257
34	Shinkawa River	Shinten Bridge	Tsuchiura City	2017/5/10	Rain	17.0	1.8	18.5	10	Olive black	None	0.0	0.0	0.0	0.2	0.4	2.0	71.7	25.7	23.9	2.470	Silt/sand	76	580	656	
				2017/8/10	Cloudy	26.5	1.6	26.1	5	Olive black	Faint sewage	0.0	0.0	0.0	0.6	0.9	2.2	64.6	31.8	24.4	2.403	Silt	65	580	645	
				2017/11/17	Sunny	5.0	1.8	14.0	7	Olive black	Faint sewage	0.0	0.0	0.0	1.0	0.4	1.5	85.3	12.7	23.3	2.483	Silt	65	530	595	
				2018/2/7	Sunny	8.2	2.0	7.8	10	Olive black	None	0.0	0.0	0.0	1.0	1.4	4.1	76.7	16.8	23.1	2.306	Silt	76	590	666	
35	Sakura River	Eiri Bridge	Tsuchiura City/ Fushiki City	2017/5/18	Sunny	20.1	1.4	17.9	5	Blackish brown	Faint sewage	0.0	0.0	0.0	0.0	7.1	71.2	14.1	7.6	66.8	2.655	Sand	4.3	23	27.3	
				2017/8/23	Cloudy	30.0	0.5	26.6	5	Dark grayish yellow	Faint sewage	0.0	0.0	0.0	0.1	6.1	61.6	24.7	7.6	46.1	2.538	Sand/silt	<8.9	34	34	
				2017/11/17	Sunny	11.5	0.2	11.5	5	Blackish brown	Faint sewage	0.0	0.0	0.0	0.0	11.1	68.3	17.1	3.4	66.8	2.679	Sand/silt	<6.1	8.3	8.3	
				2018/2/7	Sunny	9.8	0.3	6.0	3	Blackish brown	Faint sewage	0.0	1.0	0.7	0.6	12.0	47.2	26.1	12.4	48.8	2.610	Sand/silt	<11	29	29	
36	Bizen River	Bizengawa Bridge	Tsuchiura City	2017/5/10	Rain	16.5	0.6	18.0	5	Olive black	None	0.0	0.0	0.0	0.2	10.3	73.7	9.2	6.5	65.1	2.651	Sand/silt	180	1,200	1,380	
				2017/8/10	Cloudy	27.4	0.6	26.3	2	Olive black	Faint sewage	0.0	0.0	0.0	0.2	5.9	70.6	16.2	7.1	62.0	2.621	Sand/silt	180	1,200	1,380	
				2017/11/17	Sunny	11.2	0.7	12.5	1	Olive black	Faint sewage	0.0	7.0	2.6	4.2	25.6	39.7	16.8	4.1	72.2	2.667	Sand/gravel/silt	69	580	649	
				2018/2/7	Sunny	6.8	0.8	5.3	2	Olive black	Faint sewage	0.0	9.4	3.9	3.7	4.5	21.2	49.5	7.8	50.6	2.670	Silt/sand/gravel	<8.6	31	31	
37	Hanamats River	Shirwa Bridge	Tsuchiura City	2017/5/18	Sunny	19.5	0.4	19.8	3	Blackish brown	None	0.0	63.7	35.0	0.4	0.7	0.1	0.1	0.1	78.8	2.675	Sand/gravel	24	170	194	
				2017/8/23	Cloudy	29.5	0.2	29.5	1	Blackish brown	Faint sewage	1.3	44.9	16.2	10.7	21.1	4.2	0.6	0.9	81.0	2.676	Sand/gravel	18	160	178	
				2017/11/17	Sunny	15.6	0.2	13.0	2	Blackish brown	None	6.0	29.6	11.1	9.7	35.4	6.1	1.0	1.1	75.2	2.718	Sand/gravel	34	260	314	
				2018/2/7	Sunny	6.8	0.2	6.2	2	Blackish brown	None	0.0	8.5	7.3	8.4	53.8	18.6	0.9	2.5	75.5	2.672	Sand/gravel	19	170	189	
38	Seimei River	Katsuhashi Bridge	Ami Town	2017/5/10	Rain	16.0	0.5	17.0	10	Blackish brown	None	0.0	0.5	1.2	2.4	58.5	28.6	5.5	3.3	69.0	2.722	Sand/silt	70	580	650	
				2017/8/10	Cloudy	24.7	0.4	26.0	4	Blackish brown	Faint sewage	0.0	3.3	2.7	3.9	57.7	24.6	4.1	3.8	72.2	2.689	Sand/gravel	64	520	584	
				2017/11/17	Sunny	13.0	0.4	14.3	2	Blackish brown	None	0.0	0.1	0.6	1.2	65.5	28.8	1.9	2.0	72.5	2.733	Sand	55	500	555	
				2018/2/7	Sunny	3.0	0.5	4.0	4	Blackish brown	Faint sewage	0.0	0.8	2.1	3.2	67.3	19.8	4.0	2.9	67.4	2.654	Sand	54	520	574	

Ibaraki River (Sediment) 4/5

No.	Location			Sampling Date	Weather	Air temperature (°C)	Water depth (m)	Sediment																		Remarks
	Water area	Location	Municipality					General items													Activity concentration [Bq/kg(dry)]					
								Sediment temperature (°C)	Sample length (cm)	Color	Odor	Coarse gravel	Medium gravel	Grain size distribution(%)			Fine sand	Silt	Clay	Sediment content (%)	Density (g/cm ³)	Property	Radioactive cesium			
														Fine gravel	Coarse sand	Medium sand							Cs-134	Cs-137	Total	
39	Kasumigawa River Area	Onogawa River	Okuhara-obashi Bridge	Ryugasaki City / Utsunomiya City	2017/5/18	Sunny	20.2	0.4	18.0	3	Blackish brown	None	0.0	0.0	0.0	0.0	12.6	70.7	10.3	6.5	65.2	2.664	Sand	44	310	354
					2017/8/16	Cloudy	21.8	0.3	23.0	3	Blackish brown	Faint swamp	0.0	0.0	0.0	0.0	8.0	59.5	22.0	10.5	59.4	2.579	Sand	40	350	390
					2017/11/21	Sunny	9.8	0.4	10.2	2	Blackish brown	None	0.0	0.0	0.0	0.1	14.8	76.7	3.5	5.0	71.8	2.635	Sand	31	220	251
					2018/2/23	Cloudy	6.5	0.3	6.9	4	Blackish brown	None	0.0	0.0	0.0	0.0	23.5	68.4	3.1	5.0	71.0	2.620	Sand/silt	17	240	257
					2017/5/9	Cloudy	20.0	1.8	20.0	10	Blackish brown	None	0.0	0.0	0.0	0.0	11.9	50.8	23.9	13.0	45.5	2.678	Silt/sand	28	190	218
40	Shintone River	Shintone Bridge	Inashiki City	2017/8/21	Sunny	29.0	2.3	26.8	4	Olive black	Faint sewage	0.0	0.2	0.4	0.7	7.3	31.4	45.8	14.3	39.7	2.641	Silt	26	290	276	
				2017/11/21	Sunny	10.0	1.4	12.0	8	Blackish brown	Faint sewage	0.0	3.8	4.2	4.0	6.8	17.8	49.4	14.1	47.1	2.624	Silt	<10	76	76	
				2018/2/23	Cloudy	7.0	1.5	6.0	4	Olive black	Faint sewage	0.0	0.3	0.6	0.9	13.2	51.5	23.7	9.9	48.3	2.647	Silt/sand	18	190	208	
				2017/5/9	Cloudy	20.0	0.6	19.0	10	Blackish brown	Faint sewage	5.1	8.5	1.8	2.5	14.3	12.1	37.0	18.9	28.6	2.576	Silt	12	87	99	
41	Hinohitetsugawa River Area	Yorokoshi River	Horinosuchi Bridge	Itako City	2017/8/21	Sunny	27.8	0.6	23.7	5	Olive black	Medium sewage	0.0	1.5	1.0	2.9	20.6	17.4	43.0	13.7	29.8	2.568	Silt	17	130	147
					2017/11/21	Sunny	11.0	0.4	10.0	7	Olive black	None	0.0	2.7	0.8	1.3	28.9	12.1	35.8	18.4	30.3	2.495	Silt	<10	75	75
					2018/2/23	Cloudy	7.5	0.7	6.0	3	Olive black	Faint sewage	0.0	0.0	0.4	1.2	34.4	15.5	28.2	20.4	36.6	2.628	Sand/silt	<16	100	100
					2017/5/9	Cloudy	20.0	2.2	20.5	10	Greenish olive	None	0.0	0.0	0.0	0.2	18.8	56.1	10.9	13.9	47.2	2.681	Sand/silt	19	180	199
					2017/8/16	Cloudy	23.5	2.4	24.3	3	Blackish brown	None	0.0	0.0	0.0	0.3	26.7	61.6	7.0	4.4	61.1	2.680	Sand/silt	17	120	137
42	Mackawa River	Ayame Bridge	Chikusei City	2017/11/22	Sunny	12.5	2.7	11.2	6	Olive black	Faint sewage	0.0	0.0	0.0	0.3	22.7	59.8	11.7	5.4	56.4	2.670	Silt/sand	15	200	215	
				2018/2/23	Cloudy	6.0	3.5	6.0	3	Olive black	Faint sewage	0.0	0.0	0.0	0.3	21.5	65.2	8.6	4.4	60.4	2.692	Sand/silt	12	110	122	
				2017/5/22	Sunny	29.0	0.7	20.6	5	Blackish brown	None	0.0	4.6	3.8	5.4	54.7	25.4	2.5	3.7	77.6	2.698	Sand gravel	<3.4	4.7	4.7	
				2017/8/14	Cloudy	25.4	0.5	22.1	3	Dark olive brown	None	5.7	17.2	3.8	4.4	26.3	30.6	8.2	4.0	66.8	2.668	Sand gravel	<3.9	1.7	1.7	
43	Kinugawa River	Kawashima Bridge	Chikusei City	2017/11/13	Sunny	14.0	0.2	12.8	3	Blackish brown	None	0.0	27.0	14.7	17.9	30.9	6.3	2.3	1.4	81.0	2.787	Sand gravel	<0.72	0.78	0.78	
				2018/2/19	Sunny	11.0	0.3	9.0	3	Blackish brown	None	20.0	36.1	10.6	7.4	17.4	3.6	3.1	1.8	82.3	2.664	Sand gravel/silt	<0.49	0.52	0.52	
				2017/5/8	Sunny	22.0	0.5	20.0	10	Black	None	0.0	10.0	6.3	8.3	40.1	30.1	4.6	3.6	78.6	2.729	Sand	13	95	110	
				2017/8/7	Cloudy	30.3	0.4	28.0	3	Olive black	None	1.9	0.6	0.8	2.3	31.0	37.2	19.2	7.1	67.2	2.688	Sand gravel	9.5	67	76.5	
44	Kinugawa River Area	Takishita Bridge	Moriya City	2017/11/20	Cloudy	4.9	0.3	9.7	3	Olive black	None	0.0	0.0	0.0	0.3	36.0	57.8	3.0	2.9	71.6	2.701	Sand	4.2	27	31.2	
				2018/2/19	Sunny	4.2	0.3	7.3	3	Olive black	Faint sewage	0.0	0.2	0.2	1.1	44.8	58.3	11.9	3.5	67.9	2.639	Sand/gravel/silt	<9.4	36	36	
				2017/5/22	Sunny	25.0	0.3	24.0	2	Blackish brown	None	0.0	28.4	8.2	10.1	39.6	10.5	1.3	1.8	82.1	2.710	Sand/gravel	<3.8	1.3	1.3	
				2017/8/7	Sunny	32.6	0.4	26.2	3	Blackish brown	None	0.0	44.1	15.6	13.6	18.1	6.6	0.9	1.2	84.5	2.734	Sand gravel	3.0	19	22.0	
45	Tagawa River	Tagawa Bridge	Chikusei City	2017/11/13	Sunny	10.0	0.2	13.5	3	Blackish brown	None	4.8	40.7	4.2	2.2	12.4	31.0	3.5	1.2	70.7	2.718	Sand gravel	<6.4	34	34	
				2018/2/19	Sunny	6.3	0.2	11.0	1	Blackish brown	Faint sewage	1.6	28.8	6.4	8.3	28.1	19.8	4.0	3.1	68.3	2.673	Sand gravel	<8.0	32	32	
				2017/5/22	Sunny	28.0	1.1	23.6	4	Olive black	Faint sewage	0.0	0.0	0.0	0.5	21.6	55.2	12.7	12.0	40.5	2.596	Silt/sand	1.3	75	88	
				2017/8/7	Sunny	27.1	0.8	28.8	3	Olive black	Faint sewage	0.0	0.0	0.0	0.3	4.6	24.6	45.3	25.3	39.0	2.437	Silt/sand	2.4	100	204	
46	Kokai River	Kuroko Bridge	Chikusei City	2017/11/13	Cloudy	16.0	0.3	14.5	3	Olive black	Faint sewage	0.0	0.0	0.0	1.2	18.2	50.3	21.0	9.3	53.0	2.635	Sand/silt	<9.7	7.1	7.1	
				2018/2/19	Sunny	7.5	0.4	8.0	2	Olive black	None	0.0	0.2	0.9	2.6	19.7	53.1	13.8	9.7	52.9	2.618	Sand/silt	9.9	63	72.9	
				2017/5/31	Cloudy	24.2	3.2	25.1	3	Dark brown	Faint swamp	0.0	0.0	0.0	1.1	74.6	23.2	0.2	1.0	76.1	2.662	Sand	3.8	30	33.8	
		2017/8/15		Cloudy	23.8	3.0	24.3	2	Blackish brown	None	0.0	0.0	0.1	0.9	87.9	9.2	0.0	2.0	74.4	2.668	Sand	4.2	30	34.2		
		2017/11/14		Cloudy	13.9	1.4	13.0	3	Blackish brown	None	0.0	0.0	0.1	2.3	89.6	6.1	0.1	1.9	75.8	2.782	Sand	<5.5	26	26		
47	Fumimaki Bridge	Toride City	2018/2/24	Sunny	8.8	1.0	6.9	3	Dark brown	None	0.0	0.0	0.0	0.0	59.0	38.1	1.0	1.9	74.2	2.788	Sand	<5.4	26	26		
			2017/5/8	Sunny	28.0	1.7	21.0	10	Blackish brown	None	0.0	0.0	0.0	0.1	4.7	72.7	10.9	11.7	58.3	2.620	Silt/sand	16	130	146		
			2017/8/14	Cloudy	23.8	2.1	24.6	7	Black	Faint swamp	0.0	0.0	0.0	0.0	1.8	59.1	28.4	10.7	50.3	2.580	Sand/silt	19	230	249		
			2017/11/13	Cloudy	17.0	1.7	13.2	3	Blackish brown	Faint sewage	0.0	1.4	1.7	1.9	20.1	68.4	3.6	2.9	72.3	2.664	Sand	11	69	80		
48	Kokaigawa River Area	Yatagawa River	Matsuyama Bridge	2018/2/23	Sunny	7.0	1.2	7.4	3	Blackish brown	None	0.0	0.0	0.0	0.0	5.7	92.1	0.2	2.0	70.7	2.628	Sand	6.6	61	67.6	
				2017/5/8	Sunny	26.0	1.1	21.0	10	Dark brown	None	0.0	3.1	3.1	4.1	29.9	19.7	21.0	19.0	45.1	2.482	Silt/sand	8.8	51	59.8	
				2017/8/14	Cloudy	24.6	1.1	24.7	3	Black	Faint sewage	0.0	0.5	0.6	0.4	11.0	63.8	15.1	8.7	60.5	2.632	Silt/sand	13	130	143	
				2017/11/13	Sunny	15.2	0.5	13.2	3	Dark brown	None	0.0	0.0	0.0	0.3	17.9	20.4	38.7	22.7	12.3	2.105	Sand/silt	<10	44	44	
				2018/2/23	Sunny	8.0	0.3	8.9	3	Dark brown	None	0.0	0.0	0.6	2.7	36.7	22.4	23.0	14.7	34.7	2.419	Silt/sand	<20	51	51	
49	Nishiyata River	Sakamatsu Bridge	Tsukuba City	2017/5/8	Sunny	27.5	0.9	19.0	10	Dark brown	None	5.8	31.8	16.0	9.2	20.3	10.5	3.7	2.7	71.3	2.707	Sand/silt	47	310	357	
				2017/8/14	Cloudy	24.0	0.9	24.2	1	Dark brown	Faint sewage	1.6	33.7	14.1	8.2	23.7	12.5	2.4	4.0	81.4	2.649	Sand gravel	40	300	340	
				2017/11/14	Cloudy	15.0	0.7	14.0	3	Dark brown	None	0.0	35.7	18.2	10.5	22.8	9.2	2.5	1.1	78.5	2.689	Sand gravel	24	240	264	
50	Inari River	Ogaki Bridge	Tsukuba City	2018/2/23	Sunny	9.8	0.7	8.0	3	Dark brown	None	1.7	3.0	3.2	10.8	52.9	14.7	11.2	2.8	67.1	2.660	Sand gravel	40	360	400	

Ibaraki River (Sediment) 5/5

R i v e r s	Location				Sampling Date	Weather	Air temperature (°C)	Water depth (m)	Sediment																Remarks				
	No.	Water area							Location	Municipality	Sediment temperature (°C)	Sample length (cm)	Color	Odor	General items								Sediment content (%)	Density (g/cm ³)		Property	Activity concentration [Bq/kg(dry)]		
		Coarse gravel	Medium gravel	Grain size distribution(%)											Fine sand	Silt	Clay	Cs-134	Cs-137	Total									
				Fine gravel																	Coarse sand	Medium sand							
51	Tonegawa River System	Tonegawa River Area	Tonegawa River	Kuribashi Bridge	Kago City	2017/5/22	Sunny	29.1	0.4	16.8	4	Olive black	Faint sewage	0.0	0.0	0.0	0.6	13.1	36.1	35.7	14.5	42.9	2.601	Silt/sand	12	95	107		
						2017/8/7	Sunny	32.9	1.3	26.8	4	Olive black	Faint sewage	0.0	0.0	0.5	24.3	50.4	17.6	7.2	46.9	2.724	Sand/silt	<7.9	62	62			
						2017/11/20	Cloudy	6.8	0.5	8.2	5	Olive black	Faint sewage	0.0	0.0	0.0	4.7	44.4	4.6	2.9	76.2	2.765	Sand/silt	<4.6	25	25			
				2018/2/19	Sunny	9.5	0.4	7.5	2	Olive black	Faint sewage	0.0	0.0	0.0	0.1	21.0	72.7	4.3	2.0	72.2	2.836	Sand	<5.3	8.2	8.2				
				2017/5/31	Sunny	25.5	0.9	24.7	3	Blackish brown	Faint sewage	0.0	0.0	0.1	27.1	65.7	3.2	4.0	71.8	2.723	Sand	4.5	37	41.5					
				2017/8/21	Cloudy	27.0	0.6	24.0	3	Dark brown	None	0.0	0.0	0.0	0.1	9.0	43.3	37.1	10.5	54.8	2.653	Sand/silt	12	91	103				
	2017/11/14	Cloudy	14.0	0.6	12.7	2	Olive black	None	0.0	0.1	0.1	0.0	21.5	74.4	1.0	2.9	71.5	2.782	Sand	<5.5	17	17							
	2018/2/24	Sunny	12.8	0.3	8.8	3	Olive black	None	0.0	0.0	0.0	0.0	19.3	72.6	5.2	2.9	71.5	2.740	Sand	<5.5	15	15							
	2017/5/9	Cloudy	23.0	0.3	20.0	10	Olive black	None	11.6	36.7	11.0	4.1	10.5	19.5	3.2	3.5	77.6	2.648	Sand/gravel	6.0	32	38.0							
	2017/8/21	Cloudy	27.2	0.3	27.0	2	Blackish brown	Faint sewage	1.0	41.2	14.5	5.4	10.9	23.2	3.0	0.9	78.4	2.692	Sand/gravel	3.5	37	40.5							
	2017/11/21	Sunny	10.5	0.3	12.5	2	Olive black	Faint sewage	0.0	49.0	14.9	9.4	16.4	6.7	1.7	2.0	76.7	2.881	Sand/gravel	<6.7	22	22							
	2018/2/23	Cloudy	6.5	0.1	7.5	1	Olive black	Faint sewage	23.2	33.1	9.7	6.3	11.4	10.4	4.4	1.5	76.9	2.666	Sand/gravel	<5.4	30	30							

Ibaraki River (Surrounding Environment) 1/5

R i v e r s	Location				Sampling Date	Weather	Air temperature (°C)	Surrounding Environment(Soil,Air dose)											Remarks		
	No.	Water area		Municipality				Left bank			Right bank										
		Color	Odor					Property	Activity concentration [Bq/kg(dry)]			Air Dose (μSv/h)	Color	Odor	Property	Radioactive cesium					
									Cs-134	Cs-137	Total					Cs-134	Cs-137	Total			
1	Tagagawa River System	Satone River	Yamagoya Bridge	Kitabaraki City	2017/5/9	Sunny	14.9	Blackish brown	None	Loamy	270	1,900	2,170	0.16	Blackish brown	Faint earth	Loamy	340	2,500	2,840	0.19
					2017/8/22	Cloudy	26.8	Blackish brown	Faint earth	Loamy	250	1,900	2,150	0.13	Blackish brown	Faint earth	Loamy	150	1,200	1,350	0.17
					2017/11/7	Sunny	17.3	Blackish brown	Faint earth	Loamy	140	1,200	1,340	0.13	Blackish brown	Faint earth	Loamy	200	1,700	1,900	0.13
					2018/2/12	Sunny	6.5	Blackish brown	Faint earth	Loamy	160	1,500	1,660	0.12	Blackish brown	Faint earth	Loamy	160	1,400	1,560	0.17
					2017/5/9	Sunny	18.2	Blackish brown	Faint earth	Loamy	130	870	1,000	0.09	Blackish brown	Faint earth	Loamy	220	1,700	1,920	0.09
					2017/8/22	Cloudy	27.8	Blackish brown	Faint earth	Loamy	140	1,000	1,140	0.08	Blackish brown	Faint earth	Loamy	220	1,600	1,820	0.08
		2017/11/7	Sunny		19.0	Blackish brown	Faint earth	Loamy	130	1,200	1,330	0.07	Blackish brown	None	Loamy	180	1,400	1,580	0.08		
		2018/2/12	Sunny		7.5	Blackish brown	Faint earth	Loamy	33	300	333	0.07	Blackish brown	Faint earth	Loamy	270	2,200	2,470	0.09		
		2017/5/9	Sunny		16.5	Blackish brown	Faint earth	Loamy	76	510	586	0.10	Blackish brown	Faint earth	Loamy	48	320	368	0.10		
		2017/8/22	Cloudy		24.5	Blackish brown	Faint earth	Loamy	67	420	487	0.09	Blackish brown	Faint earth	Loamy	45	380	425	0.10		
		2017/11/8	Cloudy		17.0	Blackish brown	Faint earth	Loamy	34	260	294	0.09	Dull yellowish brown	Faint earth	Loamy	37	270	307	0.10		
		2018/2/13	Sunny		5.0	Blackish brown	Faint earth	Loamy	50	420	470	0.08	-	-	-	-	-	-	0.08	(Right bank) Unable to collect samples due to snow on the ground	
	2017/5/9	Cloudy	17.3	Dark brown	Faint earth	Loamy	46	280	326	0.08	Blackish brown	Faint earth	Loamy	130	1,000	1,130	0.16				
	2017/8/22	Sunny	30.2	Dark brown	Faint earth	Loamy	31	250	281	0.07	Blackish brown	Faint earth	Loamy	110	960	1,070	0.13				
	2017/11/7	Sunny	21.5	Dark brown	Faint earth	Loamy	45	400	445	0.07	Blackish brown	Faint earth	Loamy	100	870	970	0.13				
	2018/2/12	Sunny	7.8	Dark brown	Faint earth	Loamy	60	470	530	0.07	Blackish brown	Faint earth	Loamy	93	920	1,013	0.13				
	2017/5/10	Rain	14.8	Dull yellowish brown	Faint earth	Sandy	29	220	249	0.08	Dull yellowish brown	Faint earth	Loamy	24	180	204	0.07				
	2017/8/21	Cloudy	25.5	Dull yellowish brown	Faint earth	Sandy	19	180	199	0.07	Dark brown	Faint earth	Loamy	55	450	505	0.06				
	2017/11/8	Cloudy	14.5	Dull yellowish brown	Faint earth	Sandy	16	170	186	0.06	Dull yellowish brown	Faint earth	Loamy	33	350	383	0.05				
	2018/2/13	Sunny	3.3	Dull yellowish brown	Faint earth	Sandy	19	110	129	0.07	Blackish brown	Faint earth	Loamy	21	180	201	0.06				
	2017/5/9	Cloudy	16.0	Dark brown	Faint earth	Loamy	40	240	280	0.11	Dark brown	Faint earth	Loamy	84	550	634	0.11				
	2017/8/22	Sunny	29.5	Dark brown	Faint earth	Loamy	79	610	689	0.09	Dark brown	Faint earth	Loamy	57	370	427	0.10				
	2017/11/7	Sunny	23.0	Dark brown	Faint earth	Loamy	63	490	553	0.10	Dark brown	Faint earth	Loamy	65	320	385	0.10				
	2018/2/12	Cloudy	7.0	Dark brown	Faint earth	Loamy	55	600	655	0.10	Dark brown	Faint earth	Loamy	50	410	460	0.10				
2017/5/10	Cloudy	16.7	Dark brown	Faint earth	Loamy	44	380	424	0.10	Grayish yellowish brown	Faint earth	Loamy	140	870	1,010	0.10					
2017/8/21	Cloudy	27.8	Dark brown	Faint earth	Loamy	39	350	389	0.08	Blackish brown	Faint earth	Loamy	130	940	1,070	0.07					
2017/11/7	Sunny	19.8	Dark brown	Faint earth	Loamy	39	350	389	0.09	Blackish brown	Faint earth	Loamy	63	580	643	0.08					
2018/2/12	Sunny	5.8	Dark brown	Faint earth	Loamy	60	420	480	0.08	Blackish brown	Faint earth	Loamy	94	670	764	0.07					
2017/5/10	Cloudy	16.8	Blackish brown	Faint earth	Loamy	6.7	40	46.7	0.10	Dull yellowish brown	Faint earth	Loamy	16	88	104	0.09					
2017/8/23	Cloudy	30.0	Blackish brown	Faint earth	Loamy	13	98	111	0.09	Grayish yellowish brown	Faint earth	Sandy	10	80	90	0.08					
2017/11/9	Sunny	17.0	Blackish brown	Faint earth	Loamy	27	240	267	0.10	Dull yellowish brown	Faint earth	Sandy	<7.3	30	30	0.10					
2018/2/15	Sunny	11.3	Blackish brown	Faint earth	Loamy	25	200	225	0.08	Dull yellowish brown	Faint earth	Loamy	9.6	70	79.6	0.08					
2017/5/10	Rain	15.8	Blackish brown	Faint earth	Loamy	23	120	143	0.09	Blackish brown	Faint earth	Loamy	82	540	622	0.10					
2017/8/22	Cloudy	30.0	Blackish brown	Faint earth	Loamy	43	270	313	0.07	Blackish brown	Faint earth	Loamy	52	460	512	0.09					
2017/11/15	Sunny	13.5	Dark brown	Faint earth	Loamy	32	210	242	0.07	Blackish brown	Faint earth	Loamy	73	650	723	0.09					
2018/2/9	Sunny	9.5	Dark brown	Faint earth	Loamy	19	200	219	0.07	Blackish brown	Faint earth	Loamy	59	530	589	0.08					
2017/5/11	Sunny	19.6	Blackish brown	Faint earth	Loamy	32	210	242	0.08	Dark brown	Faint earth	Loamy	-4.5	31	31	0.07					
2017/8/20	Cloudy	28.0	Blackish brown	Faint earth	Loamy	39	280	319	0.07	Dark brown	Faint earth	Loamy	5.7	52	57.7	0.06					
2017/11/15	Cloudy	16.5	Blackish brown	Faint earth	Loamy	33	270	303	0.07	Blackish brown	Faint earth	Loamy	<7.9	47	47	0.06					
2018/2/9	Sunny	10.0	Blackish brown	Faint earth	Loamy	27	190	217	0.07	-	-	-	-	-	-	0.06	(Right bank) Unable to collect samples due to snow on the ground				
2017/5/11	Sunny	22.2	Dull yellowish brown	Faint earth	Loamy	18	110	128	0.07	Blackish brown	Faint earth	Loamy	42	330	372	0.09					
2017/8/20	Cloudy	25.3	Dull yellowish brown	Faint earth	Loamy	10	66	76	0.07	Blackish brown	Faint earth	Loamy	59	450	509	0.08					
2017/11/16	Sunny	10.8	Dull yellowish brown	Faint earth	Loamy	21	110	131	0.07	Blackish brown	Faint earth	Loamy	50	420	470	0.07					
2018/2/9	Sunny	9.0	Dull yellowish brown	Faint earth	Loamy	11	120	131	0.07	Blackish brown	Faint earth	Loamy	37	380	417	0.08					

Ibaraki River (Surrounding Environment) 2/5

No.	Location				Sampling Date	Weather	Air temperature (°C)	Surrounding Environment(Soil,Air dose)													Remarks			
		Water area	Location	Municipality				Left bank						Right bank										
								Color	Odor	Property	Activity concentration [Bq/kg(dry)]		Air Dose (μSv/h)	Color	Odor	Property	Activity concentration [Bq/kg(dry)]		Air Dose (μSv/h)					
											Cs-134	Cs-137					Cs-134	Cs-137						
R i v e r S y s t e m	12	Nakagawa River Area	Nakagawa River	Katsuta Bridge	Mito City/Hitachinaka City	2017/5/11	Sunny	22.5	Dark brown	Faint earth	Loamy	32	220	252	0.07	Blackish brown	Faint earth	Loamy	47	390	437	0.09		
						2017/8/2	Sunny	25.0	Dark brown	Faint earth	Loamy	32	250	282	0.06	Blackish brown	Faint earth	Loamy	37	350	387	0.08		
						2017/11/16	Sunny	12.0	Dark brown	Faint earth	Loamy	16	200	216	0.07	Blackish brown	Faint earth	Loamy	54	480	534	0.08		
			2018/2/9	Sunny	4.8	Dark brown	Faint earth	Loamy	18	260	278	0.07	Blackish brown	Faint earth	Loamy	54	450	504	0.07					
			2017/5/11	Sunny	25.2	Dark brown	Faint earth	Loamy	19	120	139	0.08	Blackish brown	Faint earth	Loamy	8.0	38	46.0	0.07					
			2017/8/2	Sunny	23.0	Dull yellowish brown	Faint earth	Loamy	65	570	635	0.07	Dark brown	Faint earth	Loamy	13	90	103	0.07					
		13	Nakamaru River	Yanagisawa Bridge	Hitachinaka City	2017/11/1	Cloudy	18.5	Dark brown	Faint earth	Loamy	36	340	376	0.07	Grayish yellowish brown	Faint earth	Loamy	14	84	98	0.06		
						2018/2/9	Sunny	2.2	Dark brown	Faint earth	Loamy	61	450	511	0.07	Blackish brown	Faint earth	Loamy	15	120	135	0.06		
						2017/5/15	Cloudy	16.8	Blackish brown	Faint earth	Loamy	13	62	75	0.06	Blackish brown	Faint earth	Loamy	19	140	159	0.08		
						2017/8/2	Cloudy	26.5	Blackish brown	Faint earth	Loamy	13	67	80	0.07	Blackish brown	Faint earth	Loamy	34	300	334	0.07		
						2017/11/2	Cloudy	18.8	Blackish brown	Faint earth	Loamy	16	110	126	0.07	Blackish brown	Faint earth	Loamy	29	200	229	0.07		
						2018/2/15	Sunny	9.5	Blackish brown	Faint earth	Loamy	15	110	125	0.07	Blackish brown	Faint earth	Loamy	19	260	279	0.08		
		14	Hinumanae River	Nagaoka Bridge	Ibaraki Town	2017/5/15	Cloudy	17.5	Dark brown	Faint earth	Loamy	<7.3	16	16	0.06	Dark brown	Faint earth	Loamy	<5.4	24	24	0.06		
						2017/8/2	Cloudy	25.5	Dark brown	Faint earth	Loamy	<7.3	17	17	0.07	Dark brown	Faint earth	Loamy	16	110	126	0.06		
						2017/11/2	Cloudy	18.2	Dull yellowish brown	Faint earth	Loamy	<6.5	48	48	0.07	Dark brown	Faint earth	Loamy	9.0	79	88.0	0.06		
	2018/2/16					Cloudy	3.0	Dark brown	Faint earth	Loamy	<7.4	26	26	0.07	Dark brown	Faint earth	Loamy	14	110	124	0.07			
	2017/5/15					Cloudy	16.8	Blackish brown	Faint earth	Loamy	34	270	304	0.06	Blackish brown	Faint earth	Loamy	53	370	423	0.07			
	2017/8/1					Rain	24.0	Blackish brown	Faint earth	Loamy	33	210	243	0.06	Blackish brown	Faint earth	Loamy	37	310	347	0.09			
	15	Hinumagawa River Area	Kansai River	Kansai Bridge	Ibaraki Town	2017/11/2	Cloudy	16.0	Blackish brown	Faint earth	Loamy	27	210	237	0.06	Blackish brown	Faint earth	Loamy	31	280	311	0.07		
						2018/2/16	Cloudy	5.8	Blackish brown	Faint earth	Loamy	24	200	224	0.06	Blackish brown	Faint earth	Loamy	56	390	446	0.07		
						2017/5/15	Cloudy	19.6	-	-	-	-	-	-	0.07	-	-	-	-	-	-	0.07	Soil not exposed	
						2017/8/1	Rain	24.0	-	-	-	-	-	-	0.07	-	-	-	-	-	-	-	0.08	Soil not exposed
						2017/11/2	Sunny	13.2	-	-	-	-	-	-	0.07	-	-	-	-	-	-	-	0.06	Soil not exposed
						2018/2/16	Sunny	7.2	-	-	-	-	-	-	0.07	-	-	-	-	-	-	-	0.07	Soil not exposed
	16	Hinumagawa River Area	Hinumanae River	Nagaoka Bridge	Ibaraki Town	2017/5/11	Sunny	20.8	Blackish brown	Faint earth	Loamy	38	220	258	0.09	Dull yellowish brown	Faint earth	Loamy	80	540	620	0.11		
						2017/8/2	Cloudy	22.2	Blackish brown	Faint earth	Loamy	96	660	756	0.09	Dark brown	Faint earth	Loamy	120	630	750	0.11		
						2017/11/1	Cloudy	16.2	Blackish brown	Faint earth	Loamy	49	480	529	0.08	Dull yellowish brown	Faint earth	Loamy	57	490	547	0.09		
						2018/2/5	Sunny	6.0	Blackish brown	Faint earth	Loamy	66	660	726	0.07	Dull yellowish brown	Faint earth	Loamy	61	520	581	0.10		
						2017/5/15	Cloudy	16.4	-	-	-	-	-	-	0.08	-	-	-	-	-	-	-	0.07	Soil not exposed
						2017/8/22	Sunny	30.5	-	-	-	-	-	-	0.08	-	-	-	-	-	-	-	0.07	Soil not exposed
17	Oya River	Oya Bridge	Hokota City	2017/11/20	Cloudy	10.0	-	-	-	-	-	-	-	-	-	-	-	-	-	0.07	Soil not exposed			
				2018/2/22	Cloudy	2.3	-	-	-	-	-	-	0.07	-	-	-	-	-	-	-	0.07	Soil not exposed		
				2017/5/15	Cloudy	17.1	Dark brown	Faint earth	Loamy	<4.5	27	27	0.06	Dark brown	Faint earth	Loamy	14	120	134	0.07				
				2017/8/22	Sunny	32.3	Dark brown	Faint earth	Loamy	6.5	48	54.5	0.06	Dull yellowish brown	Faint earth	Loamy	15	140	155	0.07				
				2017/11/20	Cloudy	9.2	Dark brown	Faint earth	Loamy	12	150	162	0.06	Dark brown	Faint earth	Loamy	23	180	203	0.07				
				2018/2/8	Sunny	9.2	Dark brown	Faint earth	Loamy	<6.9	43	43	0.06	Dark brown	Faint earth	Loamy	19	170	189	0.07				
18	Hinuma River	Hinuma Bridge	Mito City/Osai Town	2017/5/16	Sunny	22.0	Dark brown	Faint earth	Loamy	49	330	379	0.07	Dark brown	Faint earth	Loamy	48	290	338	0.07				
				2017/8/22	Sunny	30.1	Dull yellowish brown	Faint earth	Loamy	25	180	205	0.07	Dark brown	Faint earth	Loamy	40	290	330	0.07				
				2017/11/20	Cloudy	9.0	Dark brown	Faint earth	Loamy	36	280	316	0.07	Dark brown	Faint earth	Loamy	17	110	127	0.06				
				2018/2/23	Cloudy	6.0	Dark brown	Faint earth	Loamy	25	300	325	0.07	Dark brown	Faint earth	Loamy	33	260	293	0.07				
				2017/5/16	Sunny	20.5	Dull yellowish brown	Faint earth	Loamy	23	250	273	0.08	Blackish brown	Faint earth	Loamy	49	390	439	0.08				
				2017/8/22	Sunny	32.2	Dark brown	Faint earth	Loamy	41	320	361	0.07	Dark brown	Faint earth	Loamy	43	330	373	0.08				
19	Hokota River	Asahi Bridge	Hokota City	2017/11/20	Cloudy	8.8	Dark brown	Faint earth	Loamy	34	280	314	0.08	Blackish brown	Faint earth	Loamy	45	320	365	0.08				
				2018/2/23	Cloudy	5.8	Dark brown	Faint earth	Loamy	47	330	377	0.06	Dark brown	Faint earth	Loamy	43	330	373	0.07				
				2017/5/16	Sunny	24.1	Dark brown	Faint earth	Loamy	32	220	252	0.07	Dark brown	Faint earth	Loamy	45	350	395	0.07				
				2017/8/22	Cloudy	29.2	Dark brown	Faint earth	Loamy	21	220	241	0.06	Dark brown	Faint earth	Loamy	27	230	257	0.07				
				2017/11/21	Sunny	9.0	Dark brown	Faint earth	Loamy	21	270	291	0.07	Dark brown	Faint earth	Loamy	41	340	381	0.07				
				2018/2/23	Cloudy	7.0	Dark brown	Faint earth	Loamy	41	360	401	0.07	Dark brown	Faint earth	Loamy	42	410	452	0.06				
20	Tomoe River	Shintomoegawa Bridge	Hokota City	2017/5/16	Sunny	20.8	Dull yellowish brown	Faint earth	Loamy	48	320	368	0.07	Dark brown	Faint earth	Loamy	100	710	810	0.07				
				2017/8/22	Cloudy	27.9	Dull yellowish brown	Faint earth	Loamy	42	320	362	0.08	Dark brown	Faint earth	Loamy	120	890	1,010	0.08				
				2017/11/21	Sunny	9.0	Dark brown	Faint earth	Loamy	68	510	578	0.07	Dark brown	Faint earth	Loamy	70	600	670	0.08				
				2018/2/22	Rain	3.0	Dark brown	Faint earth	Loamy	53	450	503	0.07	Dark brown	Faint earth	Loamy	89	750	839	0.07				
				2017/5/16	Sunny	20.5	Dark brown	Faint earth	Loamy	57	410	467	0.08	Dark brown	Faint earth	Loamy	61	390	451	0.07				
				2017/8/22	Sunny	27.9	Dark brown	Faint earth	Loamy	48	360	408	0.08	Dark brown	Faint earth	Loamy	29	210	239	0.07				
21	Taiyo River	Tazaka Bridge	Hitachinaka City	2017/11/21	Sunny	7.2	Dark brown	Faint earth	Loamy	64	480	544	0.08	Blackish brown	Faint earth	Loamy	44	340	384	0.07				
				2018/2/22	Cloudy	3.0	Dark brown	Faint earth	Loamy	76	660	736	0.07	Blackish brown	Faint earth	Loamy	29	270	299	0.07				

Ibaraki River (Surrounding Environment) 3/5

No.	Location				Sampling Date	Weather	Air temperature (°C)	Surrounding Environment(Soil,Air dose)										Remarks					
	Water area	Location	Municipality	Left bank				Right bank															
				Color				Odor	Property	Activity concentration [Bq/kg(dry)]			Color	Odor	Property	Radioactive cesium			Air Dose (μSv/h)				
										Cs-134	Cs-137	Total				Cs-134	Cs-137			Total			
26	Kitaura River Area	Nagare River	Suhoi Bridge	Kashima City	2017/5/9	Cloudy	19.0	-	-	-	-	-	-	-	-	-	-	-	-	0.07	Soil not exposed		
					2017/8/21	Cloudy	27.5	-	-	-	-	-	-	-	-	-	-	-	-	-	-	0.06	Soil not exposed
					2017/11/21	Sunny	3.8	-	-	-	-	-	-	-	-	-	-	-	-	-	-	0.07	Soil not exposed
					2018/2/23	Cloudy	5.0	-	-	-	-	-	-	-	-	-	-	-	-	-	-	0.07	Soil not exposed
					2017/5/17	Cloudy	13.5	Blackish brown	Faint earth	Loamy	55	450	505	0.08	Blackish brown	Faint earth	Loamy	66	450	516	0.08		
					2017/8/23	Cloudy	26.5	Blackish brown	Faint earth	Loamy	65	740	805	0.07	Blackish brown	Faint earth	Loamy	26	310	336	0.08		
	27	Sonobe River	Sonobeshin Bridge	Omitama City	2017/11/16	Sunny	13.5	Blackish brown	Faint earth	Loamy	53	420	473	0.07	Blackish brown	Faint earth	Loamy	67	550	617	0.06		
					2018/2/8	Sunny	8.2	Blackish brown	Faint earth	Loamy	48	370	418	0.07	Blackish brown	Faint earth	Loamy	47	360	407	0.06		
					2017/5/17	Cloudy	15.0	Blackish brown	Faint earth	Loamy	80	530	610	0.08	Dark brown	Faint earth	Loamy	47	360	407	0.09		
					2017/8/23	Sunny	28.7	Dull yellowish brown	Faint earth	Loamy	57	400	457	0.08	Dull yellowish brown	Faint earth	Loamy	51	340	391	0.08		
					2017/11/2	Sunny	20.5	Blackish brown	Faint earth	Loamy	87	760	847	0.08	Dark brown	Faint earth	Loamy	40	370	410	0.08		
					2018/2/8	Sunny	10.5	Blackish brown	Faint earth	Loamy	150	1,300	1,450	0.08	Dark brown	Faint earth	Loamy	28	260	288	0.09		
28	Sanno River	Tokoro Bridge	Ishioka City	2017/5/17	Cloudy	16.5	Dark brown	Faint earth	Loamy	160	1,200	1,360	0.09	Blackish brown	Faint earth	Loamy	150	950	1,100	0.08			
				2017/8/23	Sunny	32.8	Dark brown	Faint earth	Loamy	71	650	721	0.09	Blackish brown	Faint earth	Loamy	190	1,500	1,690	0.09			
				2017/11/2	Sunny	21.2	Dark brown	Faint earth	Loamy	130	1,100	1,230	0.08	Blackish brown	Faint earth	Loamy	150	1,100	1,250	0.09			
				2018/2/8	Sunny	12.0	Dark brown	Faint earth	Loamy	170	1,400	1,570	0.09	Blackish brown	Faint earth	Loamy	120	1,100	1,220	0.09			
				2017/5/16	Cloudy	20.0	Dark brown	Faint earth	Loamy	39	280	319	0.07	Blackish brown	Faint earth	Loamy	24	200	224	0.07			
				2017/8/22	Sunny	30.0	Dark brown	Faint earth	Loamy	34	220	254	0.06	Blackish brown	Faint earth	Loamy	30	190	220	0.06			
29	Kajinashi River	Kamishuku Bridge	Namegata City	2017/11/20	Cloudy	9.2	Dark brown	Faint earth	Loamy	37	360	397	0.06	Blackish brown	Faint earth	Loamy	40	380	420	0.06			
				2018/2/8	Sunny	8.5	Dark brown	Faint earth	Loamy	49	340	389	0.06	Blackish brown	Faint earth	Loamy	31	230	261	0.06			
				2017/5/17	Cloudy	14.8	Blackish brown	Faint earth	Loamy	29	290	319	0.09	Dark brown	Faint earth	Loamy	90	620	710	0.08			
				2017/8/23	Sunny	32.5	Dark brown	Faint earth	Loamy	45	370	415	0.08	Dark brown	Faint earth	Loamy	36	320	356	0.08			
				2017/11/20	Cloudy	8.0	Dark brown	Faint earth	Loamy	51	370	421	0.08	Dark brown	Faint earth	Loamy	68	520	588	0.08			
				2018/2/8	Sunny	5.5	Dark brown	Faint earth	Loamy	42	380	422	0.07	Dark brown	Faint earth	Loamy	61	700	761	0.07			
30	Kasumigaura River Area	Ichinose River	Kawanaka Bridge	Kasumigaura City	2017/5/17	Cloudy	14.6	Blackish brown	Faint earth	Loamy	56	490	546	0.08	Dark brown	Faint earth	Loamy	25	180	205	0.08		
					2017/8/23	Sunny	32.0	Blackish brown	Faint earth	Loamy	81	600	681	0.07	Dark brown	Faint earth	Loamy	16	180	196	0.07		
					2017/11/20	Cloudy	6.0	Blackish brown	Faint earth	Loamy	42	380	422	0.06	Dark brown	Faint earth	Loamy	17	170	187	0.07		
					2018/2/8	Sunny	4.0	Blackish brown	Faint earth	Loamy	25	370	395	0.07	Dark brown	Faint earth	Loamy	29	280	309	0.07		
					2017/5/18	Sunny	21.6	Dark brown	Faint earth	Loamy	130	910	1,040	0.09	Dark brown	Faint earth	Loamy	27	190	217	0.07		
					2017/8/10	Cloudy	24.5	Blackish brown	Faint earth	Loamy	150	1,200	1,350	0.07	Dark brown	Faint earth	Loamy	33	210	243	0.07		
31	Sakai River	Sakai Bridge/ National Route 354	Tsuchiura City	2017/11/17	Sunny	9.0	Blackish brown	Faint earth	Loamy	100	770	870	0.08	Dark brown	Faint earth	Loamy	39	270	309	0.07			
				2018/2/7	Sunny	8.3	Blackish brown	Faint earth	Loamy	93	830	923	0.08	Dark brown	Faint earth	Loamy	19	190	209	0.07			
				2017/5/10	Rain	17.0	Dark brown	Faint earth	Loamy	130	900	1,030	0.07	Dark brown	Faint earth	Loamy	140	1,100	1,240	0.07			
				2017/8/10	Cloudy	26.5	Dark brown	Faint earth	Loamy	110	760	870	0.07	Dark brown	Faint earth	Loamy	100	760	860	0.06			
				2017/11/17	Sunny	5.0	Dark brown	Faint earth	Loamy	82	770	852	0.07	Blackish brown	Faint earth	Loamy	120	960	1,080	0.08			
				2018/2/7	Sunny	8.2	Dark brown	Faint earth	Loamy	100	1,100	1,200	0.07	Blackish brown	Faint earth	Loamy	150	1,300	1,450	0.08			
32	Sakura River	Eiri Bridge	Tsuchiura City/ Tsukuba City	2017/5/18	Sunny	20.1	Blackish brown	Faint earth	Loamy	24	120	144	0.07	Blackish brown	Faint earth	Loamy	14	95	109	0.08			
				2017/8/23	Cloudy	30.0	Dark brown	Faint earth	Loamy	11	74	83	0.06	Blackish brown	Faint earth	Loamy	19	120	139	0.08			
				2017/11/17	Sunny	11.5	Dark brown	Faint earth	Loamy	16	160	176	0.06	Grayish yellowish brown	Faint earth	Loamy	15	120	135	0.08			
				2018/2/7	Sunny	9.8	Dark brown	Faint earth	Loamy	14	150	164	0.06	Blackish brown	Faint earth	Loamy	16	120	136	0.08			
				2017/5/10	Rain	16.5	Blackish brown	Faint earth	Loamy	94	640	734	0.10	Dark brown	Faint earth	Loamy	71	530	601	0.09			
				2017/8/10	Cloudy	27.4	Blackish brown	Faint earth	Loamy	98	670	768	0.09	Dark brown	Faint earth	Loamy	60	370	430	0.08			
33	Bizen River	Bizengawa Bridge	Tsuchiura City	2017/11/17	Sunny	11.2	Blackish brown	None	Loamy	73	570	643	0.08	Blackish brown	None	Loamy	92	740	832	0.09			
				2018/2/7	Sunny	6.8	Blackish brown	Faint earth	Loamy	56	490	546	0.11	Blackish brown	Faint earth	Loamy	55	500	555	0.10			
				2017/5/18	Sunny	19.5	Blackish brown	Faint earth	Loamy	110	770	880	0.11	Blackish brown	Faint earth	Loamy	150	1,100	1,250	0.11			
				2017/8/23	Cloudy	29.5	Dark brown	Faint earth	Loamy	89	660	749	0.10	Blackish brown	Faint earth	Loamy	85	520	605	0.10			
				2017/11/17	Sunny	15.6	Blackish brown	Faint earth	Loamy	130	1,200	1,330	0.11	Blackish brown	Faint earth	Loamy	180	1,500	1,680	0.10			
				2018/2/7	Sunny	6.8	Blackish brown	Faint earth	Loamy	88	890	978	0.12	Blackish brown	Faint earth	Loamy	100	910	1,010	0.10			
34	Hanamuro River	Shinwa Bridge	Ami Town	2017/5/10	Rain	16.0	Dull yellowish brown	Faint earth	Loamy	66	530	596	0.10	Brown	Faint earth	Loamy	55	500	555	0.10			
				2017/8/10	Cloudy	24.7	Blackish brown	Faint earth	Loamy	100	800	900	0.10	Dull yellowish brown	Faint earth	Loamy	130	990	1,120	0.10			
				2017/11/17	Sunny	13.0	Dull yellowish brown	Faint earth	Loamy	88	900	988	0.10	Dark brown	Faint earth	Loamy	140	1,000	1,140	0.11			
				2018/2/7	Sunny	3.0	Dull yellowish brown	Faint earth	Loamy	58	520	578	0.10	Dark brown	Faint earth	Loamy	99	870	969	0.11			

Ibaraki River (Surrounding Environment) 4/5

No.	Location				Sampling Date	Weather	Air temperature (°C)	Surrounding Environment(Soil,Air dose)											Remarks				
	Water area	Location	Municipality	Left bank						Right bank													
				Color				Odor	Property	Activity concentration [Bq/kg(dry)]			Air Dose (μSv/h)	Color	Odor	Property	Activity concentration [Bq/kg(dry)]			Air Dose (μSv/h)			
										Radioactive cesium							Radioactive cesium						
			Cs-134	Cs-137	Total				Cs-134	Cs-137	Total												
R i v e r s	39	Kasumigaura River Area	Onogawa River	Okuhara-ohashi Bridge	Ryugasaki City/ Utsunomiya City	2017/5/18	Sunny	20.2	Brownish gray	Faint earth	Loamy	6.4	51	57.4	0.08	Brownish gray	Faint earth	Loamy	<5.7	40	40	0.09	
						2017/8/16	Cloudy	21.8	Dark brown	Faint earth	Loamy	12	140	152	0.08	Blackish brown	Faint earth	Loamy	24	160	184	0.09	
						2017/11/21	Sunny	9.8	Blackish brown	Faint earth	Loamy	<7.1	29	29	0.09	Blackish brown	Faint earth	Loamy	10	65	75	0.09	
			40	Shintone River	Shintone Bridge	Inashiki City	2018/2/23	Cloudy	6.5	Blackish brown	Faint earth	Loamy	9.9	82	91.9	0.09	Blackish brown	Faint earth	Loamy	9.1	55	64.1	0.09
							2017/5/9	Cloudy	20.0	Blackish brown	Faint earth	Loamy	23	150	173	0.05	Dark brown	Faint earth	Loamy	170	1,200	1,370	0.07
							2017/8/21	Sunny	29.0	Blackish brown	Faint earth	Loamy	17	140	157	0.06	Blackish brown	Faint earth	Loamy	100	780	880	0.08
	2017/11/21	Sunny					10.0	Blackish brown	Faint earth	Sandy	13	130	143	0.06	Dark brown	Faint earth	Loamy	71	610	681	0.08		
	2018/2/23	Cloudy					7.0	Blackish brown	Faint earth	Sandy	16	180	196	0.06	Blackish brown	Faint earth	Loamy	72	620	692	0.07		
	2017/5/9	Cloudy					20.0	Dark brown	Faint earth	Loamy	22	210	232	0.06	Grayish yellowish brown	Faint earth	Loamy	19	140	159	0.07		
	41	Hitachitongawara River Area	Yorokoshi River	Horinouchi Bridge	Itako City	2017/8/21	Sunny	27.8	Dark brown	Faint earth	Loamy	26	190	216	0.06	Dark brown	Faint earth	Loamy	26	150	176	0.06	
						2017/11/21	Sunny	11.0	Dark brown	Faint earth	Loamy	19	210	229	0.07	Grayish yellowish brown	Faint earth	Loamy	15	95	110	0.06	
						2018/2/23	Cloudy	7.5	Dark brown	Faint earth	Loamy	31	260	291	0.06	Blackish brown	Faint earth	Loamy	11	140	151	0.06	
						2017/5/9	Cloudy	20.0	Brown	Faint earth	Loamy	12	77	89	0.05	Dull yellowish brown	Faint earth	Sandy	27	170	197	0.05	
						2017/8/16	Cloudy	23.5	Dark brown	Faint earth	Loamy	10	67	77	0.05	Dull yellowish brown	Faint earth	Sandy	20	200	220	0.05	
						2017/11/22	Sunny	12.5	Dark brown	Faint earth	Loamy	9.2	70	79.2	0.05	Dull yellowish brown	Faint earth	Loamy	18	130	148	0.05	
	42	Maekawa River	Ayame Bridge	Itako City	2018/2/23	Cloudy	6.0	Dark brown	Faint earth	Loamy	8.9	58	66.9	0.04	Dark brown	Faint earth	Loamy	16	100	116	0.04		
					2017/5/22	Sunny	29.0	Brownish gray	Faint earth	Loamy	15	80	95	0.07	Dull yellowish brown	Faint earth	Loamy	8.2	62	70.2	0.06		
					2017/8/14	Cloudy	25.4	Blackish brown	Faint earth	Loamy	14	100	114	0.08	Blackish brown	Faint earth	Loamy	<5.2	47	47	0.08		
					2017/11/13	Sunny	14.0	Blackish brown	Faint earth	Loamy	19	120	139	0.07	Blackish brown	Faint earth	Loamy	8.7	80	88.7	0.07		
					2018/2/19	Sunny	11.0	Blackish brown	Faint earth	Loamy	9.5	87	96.5	0.06	Blackish brown	Faint earth	Loamy	7.0	98	105.0	0.07		
					2017/5/8	Sunny	22.0	Dark brown	Faint earth	Loamy	88	710	798	0.08	Dark brown	Faint earth	Sandy	4.4	31	35.4	0.07		
	44	Kinogawa River Area	Kinogawa River	Kawashima Bridge	Chikusei City	2017/8/7	Cloudy	30.3	Blackish brown	Faint earth	Loamy	26	200	226	0.07	Grayish yellowish brown	Faint earth	Sandy	<4.9	12	12	0.07	
						2017/11/20	Cloudy	4.9	Blackish brown	Faint earth	Loamy	15	120	135	0.08	Brownish gray	Faint earth	Sandy	<10	43	43	0.07	
						2018/2/19	Sunny	4.2	Blackish brown	Faint earth	Loamy	84	900	984	0.07	Brownish gray	Faint earth	Sandy	<7.7	34	34	0.07	
			45	Tagawa River	Tagawa Bridge	Chikusei City	2017/5/22	Sunny	25.0	Dull yellowish brown	Faint earth	Loamy	15	120	135	0.06	Dull yellowish brown	Faint earth	Loamy	7.7	40	47.7	0.06
							2017/8/7	Sunny	32.6	Dark brown	Faint earth	Loamy	12	110	122	0.06	Grayish yellowish brown	Faint earth	Loamy	8.8	59	67.8	0.06
							2017/11/13	Sunny	10.0	Dull yellowish brown	Faint earth	Loamy	22	220	242	0.07	Dark brown	Faint earth	Loamy	<6.5	23	23	0.07
	46	Kokai River	Kuroko Bridge	Chikusei City	2018/2/19	Sunny	6.3	Dull yellowish brown	Faint earth	Loamy	16	110	126	0.07	Dark brown	Faint earth	Loamy	<9.3	36	36	0.07		
					2017/5/22	Sunny	28.0	Dull yellowish brown	Faint earth	Loamy	6.2	59	65.2	0.06	Blackish brown	Faint earth	Loamy	19	140	159	0.06		
					2017/8/7	Sunny	27.7	Dull yellowish brown	Faint earth	Loamy	8.7	65	73.7	0.06	Dark brown	Faint earth	Loamy	18	150	168	0.06		
			47	Fumimaki Bridge	Toride City	2017/11/13	Cloudy	16.0	Dark brown	Faint earth	Loamy	20	150	170	0.06	Blackish brown	Faint earth	Loamy	23	200	223	0.06	
						2018/2/19	Sunny	7.5	Dull yellowish brown	Faint earth	Loamy	19	110	129	0.07	Blackish brown	Faint earth	Loamy	13	110	123	0.06	
						2017/5/31	Cloudy	24.2	Grayish yellowish brown	Faint earth	Loamy	130	1,100	1,230	0.07	Dull yellowish brown	Faint earth	Loamy	59	420	479	0.08	
	48	Yatagawa River	Maruyama Bridge	Toride City	2017/8/15	Cloudy	23.8	Blackish brown	Faint earth	Loamy	210	1,600	1,810	0.09	Blackish brown	Faint earth	Loamy	66	450	516	0.08		
					2017/11/14	Cloudy	13.9	Blackish brown	Faint earth	Loamy	120	1,000	1,120	0.08	Blackish brown	Faint earth	Loamy	38	350	388	0.09		
					2018/2/24	Sunny	8.8	Blackish brown	Faint earth	Loamy	79	630	709	0.08	Blackish brown	Faint earth	Loamy	48	330	378	0.08		
			49	Nishiyata River	Sakaimatsu Bridge	Tsukuba City	2017/5/8	Sunny	28.0	Dark brown	Faint earth	Loamy	92	650	742	0.07	Grayish yellowish brown	Faint earth	Loamy	54	450	504	0.08
							2017/8/14	Cloudy	23.8	Blackish brown	Faint earth	Loamy	120	850	970	0.08	Blackish brown	Faint earth	Loamy	110	920	1,030	0.08
							2017/11/13	Cloudy	17.0	Dark brown	Faint earth	Loamy	73	650	723	0.09	Dark brown	Faint earth	Loamy	67	560	627	0.07
50	Inari River	Oguki Bridge	Tsukuba City	2018/2/23	Sunny	7.0	Dark brown	Faint earth	Loamy	82	610	692	0.07	Dark brown	Faint earth	Loamy	43	410	453	0.07			
				2017/5/8	Sunny	26.0	Dull yellowish brown	Faint earth	Loamy	<5.8	25	25	0.05	Dull yellowish brown	Faint earth	Loamy	15	72	87	0.06			
				2017/8/14	Cloudy	24.6	Blackish brown	Faint earth	Loamy	<6.9	29	29	0.05	Blackish brown	Faint earth	Loamy	9.0	59	68.0	0.06			
				2017/11/13	Sunny	15.2	Blackish brown	Faint earth	Loamy	<8.2	28	28	0.05	Blackish brown	Faint earth	Loamy	15	87	102	0.06			
				2018/2/23	Sunny	8.0	Blackish brown	Faint earth	Loamy	<10	27	27	0.05	Blackish brown	Faint earth	Loamy	<9.7	68	68	0.06			
				2017/5/8	Sunny	27.5	Dark brown	Faint earth	Loamy	120	830	950	0.08	Dull yellowish brown	Faint earth	Loamy	120	860	980	0.12			
2017/8/14	Cloudy	24.0	Blackish brown	Faint earth	Loamy	120	970	1,090	0.08	Blackish brown	Faint earth	Loamy	49	340	389	0.10							
2017/11/14	Cloudy	15.0	Dark brown	Faint earth	Loamy	87	740	827	0.08	Dark brown	Faint earth	Loamy	73	670	743	0.11							
2018/2/23	Sunny	9.8	Dark brown	Faint earth	Loamy	86	850	936	0.08	Dark brown	Faint earth	Loamy	66	650	716	0.10							

Ibaraki River (Surrounding Environment) 5/5

R i v e r s	Location				Sampling Date	Weather	Air temperature (°C)	Surrounding Environment(Soil,Air dose)													Remarks					
	No.	Water area		Location				Municipality	Left bank						Right bank											
									Color	Odor	Property	Activity concentration [Bq/kg(dry)]			Air Dose (µSv/h)	Color	Odor	Property	Activity concentration [Bq/kg(dry)]			Air Dose (µSv/h)				
												Radioactive cesium							Radioactive cesium							
			Cs-134	Cs-137	Total				Cs-134	Cs-137	Total															
51	Tonegawa River System	Tonegawa River Area	Tonegawa River	Kurihasbi Bridge	Koga City	2017/5/22	Sunny	29.1	Grayish yellowish brown	Faint earth	Loamy	11	70	81	0.07	Dull yellowish brown	Faint earth	Loamy	26	160	186	0.07				
						2017/8/7	Sunny	32.9	Grayish yellowish brown	Faint earth	Loamy	17	98	115	0.08	Grayish yellowish brown	Faint earth	Loamy	11	110	121	0.07				
						2017/11/20	Cloudy	6.8	Grayish yellowish brown	Faint earth	Loamy	<8.5	49	49	0.07	Dark brown	Faint earth	Loamy	17	91	108	0.06				
						2018/2/19	Sunny	9.5	Grayish yellowish brown	Faint earth	Loamy	<7.5	47	47	0.07	Dark brown	Faint earth	Loamy	<8.2	69	69	0.05				
						2017/5/31	Sunny	25.5	Grayish yellowish brown	Faint earth	Loamy	88	650	738	0.09	Grayish yellowish brown	Faint earth	Sandy	5.8	48	53.8	0.06				
				52	Tonegawa River System	Tonegawa River Area	Tonegawa River	Fukawa	Tone Town	2017/8/21	Cloudy	27.0	Blackish brown	Faint earth	Loamy	56	410	466	0.08	Blackish brown	Faint earth	Loamy	9.0	77	86.0	0.06
										2017/11/14	Cloudy	14.0	Dark brown	None	Loamy	78	660	738	0.10	Blackish brown	Faint earth	Sandy	9.8	62	71.8	0.07
										2018/2/24	Sunny	12.8	Dark brown	Faint earth	Loamy	56	480	536	0.08	Dark brown	Faint earth	Loamy	<8.0	37	37	0.07
										2017/5/9	Cloudy	23.0	Dull yellowish brown	Faint earth	Loamy	22	160	182	0.04	Dull yellowish brown	Faint earth	Loamy	<6.6	35	35	0.05
										2017/8/21	Cloudy	27.2	Dark brown	Faint earth	Loamy	21	160	181	0.05	Dark brown	Faint earth	Loamy	<4.7	23	23	0.05
53	Tonegawa River System	Tonegawa River Area	Tonegawa River	Sawara	Inashiki City	2017/11/21	Sunny	10.5	Dull yellowish brown	Faint earth	Loamy	15	150	165	0.05	Dull yellowish brown	Faint earth	Loamy	<9.3	31	31	0.06				
						2018/2/23	Cloudy	6.5	Dull yellowish brown	Faint earth	Loamy	16	140	156	0.04	Grayish yellowish brown	Faint earth	Loamy	<6.9	36	36	0.05				

Ibaraki Lakes and Reservoirs (Water) 1/4

No.	Location		Sampling Date	Weather	Air temperature (°C)	Water depth (m)	Water										Remarks
	Water area	Location					General items					Activity concentration(Bq/L)					
							Water temperature (°C)	Sampling depth (m)	Color	Odor	Secchi disk depth (m)	Electrical conductivity (mS/m)	SS (mg/L)	Turbidity (FNU)	Radioactive cesium		
		Cs-134	Cs-137														
54	Hiroura	Surface layer	2017/5/15	Cloudy	18.1	2.4	19.2	0.5	Dark grayish yellow	None	1.0	1,730	13	15	<0.72	<0.80	
		Deep layer					19.0	1.4	-	None		1,750	16	14	<0.70	<0.84	
		Surface layer	2017/8/21	Cloudy	27.9	2.4	26.6	0.5	Dark grayish yellow	None	0.7	1,360	10	11	<0.79	<0.80	
		Deep layer					26.3	1.4	-	None		1,400	12	12	<0.67	<0.75	
		Surface layer	2017/11/16	Sunny	14.0	2.4	13.4	0.5	Grayish yellow	None	1.2	284	5	5.8	<0.73	<0.69	
		Deep layer					13.4	1.4	-	None		282	5	5.4	<0.68	<0.75	
	55	Himama	Miyamae	Surface layer	2018/2/16	Sunny	6.5	2.3	7.1	0.5	Dark grayish greenish yellow	None	2,240	3	6.7	<0.77	<0.66
				Deep layer					6.9	1.3	-	None	2,260	4	6.7	<0.69	<0.66
				Surface layer	2017/5/15	Cloudy	17.0	3.0	18.6	0.5	Dark grayish yellow	None	0.9	1,040	11	11	<0.54
			Deep layer					18.8	2.0	-	None		1,420	11	13	<0.59	<0.88
			Surface layer	2017/8/21	Cloudy	26.8	3.0	26.6	0.5	Dark grayish yellow	None	0.7	881	11	7.8	<0.81	<0.92
			Deep layer					25.9	2.0	-	None		1,250	10	9.6	<0.58	<0.69
56	Oyazawa	Miyamae	Surface layer	2017/11/16	Sunny	12.5	3.0	13.4	0.5	Grayish yellow	None	245	4	4.0	<0.68	<0.96	
			Deep layer					13.2	2.0	-	None	243	3	3.5	<0.54	<0.84	
			Surface layer	2018/2/16	Sunny	6.5	2.9	7.1	0.5	Dark grayish greenish yellow	None	1.6	2,100	3	5.9	<0.71	<0.84
		Deep layer					7.0	1.9	-	None		2,140	4	6.7	<0.85	<0.96	
		Surface layer	2017/5/15	Cloudy	17.0	2.0	17.9	0.5	Grayish yellow	None	0.9	161	12	12	<0.57	<0.75	
		Deep layer					17.8	1.0	-	None		258	12	11	<0.81	<0.69	
57	Offshore of Tamatsukuri	Oyazawa	Surface layer	2017/8/21	Cloudy	26.8	2.2	26.2	0.5	Dark grayish yellow	None	407	15	12	<0.81	<0.92	
			Deep layer					25.8	1.2	-	None	502	18	15	<0.79	<0.75	
			Surface layer	2017/11/16	Sunny	12.5	2.0	14.0	0.5	Grayish yellow	None	1.0	193	7	7.5	<0.58	<0.96
		Deep layer					13.7	1.0	-	None		190	8	7.4	<0.66	<0.69	
		Surface layer	2018/2/16	Sunny	6.5	1.9	7.7	0.5	Dark grayish greenish yellow	None	1.5	2,170	4	6.2	<0.73	<0.70	
		Deep layer					-	-	-	-		-	-	-	-	Unable to collect samples from the deep layer due to shallow water	
58	Lake Kasumigaura	Offshore of Tamatsukuri	Surface layer	2017/5/23	Sunny	26.4	6.7	23.2	0.5	Light grayish yellow	None	31.0	25	23	<0.76	<0.80	
			Deep layer					21.9	5.7	-	None	28.4	19	13	<0.73	<0.69	
			Surface layer	2017/8/17	Cloudy	25.3	6.5	26.4	0.5	Light grayish yellow	None	1.0	32.4	24	18	<0.79	<0.80
			Deep layer					26.0	5.5	-	None		31.2	21	17	<0.57	<0.63
			Surface layer	2017/11/22	Cloudy	4.5	6.4	10.4	0.5	Grayish yellow green	None	0.7	25.6	13	12	<0.66	<0.75
			Deep layer					10.9	5.4	-	None		26.7	15	13	<0.73	<0.84
		Offshore of Kakeuma	Surface layer	2018/2/22	Snow	1.5	6.3	5.3	0.5	Grayish yellow green	None	1.3	30.3	11	8.8	<0.81	<0.55
			Deep layer					5.1	5.3	-	None		30.9	11	8.7	<0.75	<0.80
			Surface layer	2017/5/23	Sunny	22.1	2.7	21.8	0.5	Light grayish yellow	None	0.4	30.0	26	17	<0.85	<0.80
			Deep layer					21.6	1.7	-	None		30.1	71	35	<0.63	<0.88
			Surface layer	2017/8/17	Cloudy	27.0	1.9	25.7	0.0	Light grayish yellow	None	0.6	29.9	20	14	<0.60	<0.63
			Deep layer					-	-	-	-		-	-	-	-	Unable to collect samples from the deep layer due to shallow water
59	Center	Offshore of Kakeuma	Surface layer	2017/11/22	Cloudy	3.5	2.1	9.3	0.5	Grayish yellow green	None	0.6	26.3	17	17	<0.65	<0.80
			Deep layer					9.7	1.1	-	None		25.4	16	17	<0.51	<0.84
			Surface layer	2018/2/22	Snow	0.9	2.1	4.6	0.5	Grayish yellow green	None	1.0	37.5	20	16	<0.90	<0.63
			Deep layer					5.2	1.1	-	None		29.7	20	16	<0.71	<0.75
			Surface layer	2017/5/23	Sunny	21.3	6.0	22.0	0.5	Light grayish yellow green	None	0.9	30.8	9	7.9	<0.73	<0.63
			Deep layer					21.8	5.0	-	None		30.9	12	10	<0.72	<0.88
		Center	Surface layer	2017/8/17	Cloudy	26.3	6.1	26.0	0.5	Light grayish greenish yellow	None	0.8	35.2	25	17	<0.58	<0.69
			Deep layer					25.8	5.1	-	None		35.5	26	19	<0.62	<0.69
			Surface layer	2017/11/22	Sunny	4.5	6.7	10.3	0.5	Grayish yellow	None	0.7	27.9	16	15	<0.73	<0.92
			Deep layer					10.8	5.7	-	None		27.7	17	16	<0.59	<0.75
			Surface layer	2018/2/22	Snow	2.8	6.2	4.8	0.5	Grayish yellow green	None	1.3	30.9	16	12	<0.65	<0.96
			Deep layer					4.6	5.2	-	None		31.1	15	12	<0.68	<0.63

Ibaraki Lakes and Reservoirs (Water) 3/4

L a k e s R e s e r v o i r s	Location			Sampling Date	Weather	Air temperature (°C)	Water depth (m)	Water										Remarks
	No.	Water area	Location					General items					Activity concentration(Bq/L)					
								Water temperature (°C)	Sampling depth (m)	Color	Odor	Secchi disk depth (m)	Electrical conductivity (mS/m)	SS (mg/L)	Turbidity (FNU)	Radioactive cesium		
				Cs-134	Cs-137													
66	Mizunuma Dam	Center	Surface layer	2017/5/18	Cloudy	22.8	17.1	16.3	0.5	Dark grayish yellow green	None	1.7	6.4	1	1.6	<0.82	<0.88	
			Deep layer					8.6	16.1	-	None		7.8	3	3.8	<0.63	<0.75	
			Surface layer	2017/8/23	Sunny	27.9	12.7	21.9	0.5	Dark grayish greenish yellow	None	2.1	6.0	1	1.3	<0.63	<0.69	
			Deep layer					13.5	11.7	-	Faint hydrogen sulfide		11.8	6	9.1	<0.75	<0.69	
			Surface layer	2017/11/8	Cloudy	15.5	16.7	12.0	0.5	Dark grayish yellow green	None	4.1	5.7	<1	0.9	<0.71	<0.84	
			Deep layer					10.5	15.7	-	None		6.2	2	1.8	<0.83	<0.84	
		Surface layer	2018/2/13	Sunny	0.8	19.5	2.3	0.5	Dark grayish yellow green	None	4.0	6.9	1	1.4	<0.81	<0.75		
		Deep layer					3.2	18.5	-	None		6.9	2	1.5	<0.79	<0.99		
		Surface layer	2017/5/18	Rain	18.1	15.1	16.8	0.5	Dark grayish yellow green	None	2.5	7.6	1	2.2	<0.72	<0.75		
		Deep layer					8.3	14.1	-	None		8.5	3	3.9	<0.57	<0.96		
		Surface layer	2017/8/23	Cloudy	30.0	15.6	24.4	0.5	Dark grayish yellow green	None	2.5	7.7	<1	1.1	<0.79	<0.69		
		Deep layer					9.2	14.6	-	None		9.1	3	6.0	<0.77	<0.92		
	Surface layer	2017/11/8	Cloudy	17.0	16.1	12.6	0.5	Dark grayish greenish yellow	None	2.2	7.0	2	2.0	<0.69	<0.80			
	Deep layer					8.0	15.1	-	Faint hydrogen sulfide		11.3	8	7.1	<0.65	<0.84			
	Surface layer	2018/2/13	Sunny	7.3	16.0	3.8	0.5	Dark grayish yellow green	None	3.3	8.4	2	2.2	<0.67	<0.88			
	Deep layer					3.7	15.0	-	None		8.5	2	2.2	<0.63	<0.80			
	Surface layer	2017/5/18	Cloudy	21.8	27.5	17.5	0.5	Dark grayish greenish yellow	None	1.6	6.1	8	3.9	<0.68	<0.88			
	Deep layer					7.5	26.5	-	None		7.9	3	4.0	<0.78	<0.80			
	Surface layer	2017/8/23	Cloudy	31.0	17.4	24.1	0.5	Dark grayish greenish yellow	None	1.7	6.8	1	1.5	<0.91	<0.96			
	Deep layer					18.6	16.4	-	None		8.6	10	5.5	<0.89	<0.84			
	Surface layer	2017/11/9	Sunny	17.0	25.5	12.7	0.5	Grayish greenish yellow	None	3.1	6.3	2	2.0	<0.72	<0.84			
	Deep layer					11.9	24.5	-	None		6.5	2	1.9	<0.81	<0.69			
	Surface layer	2018/2/14	Sunny	2.0	26.0	2.7	0.5	Grayish yellow	None	3.2	6.9	3	3.1	<0.63	<0.80			
	Deep layer					3.8	25.0	-	None		6.9	4	3.7	<0.81	<0.75			
Surface layer	2017/5/17	Cloudy	18.9	23.9	18.8	0.5	Dark grayish greenish yellow	None	1.5	11.4	4	4.3	<0.81	<0.84				
Deep layer					6.8	22.9	-	None		12.7	2	3.0	<0.76	<0.75				
Surface layer	2017/8/21	Cloudy	28.2	18.8	23.1	0.5	Dark grayish yellow green	None	3.5	12.2	<1	1.0	<0.76	<0.69				
Deep layer					8.6	17.8	-	None		14.2	9	12	<0.76	<0.84				
Surface layer	2017/11/10	Sunny	12.8	27.4	12.5	0.5	Dark grayish yellow green	None	1.8	9.2	3	3.9	<0.53	<0.55				
Deep layer					7.2	26.4	-	Faint hydrogen sulfide		16.8	24	22	<0.49	<0.61				
Surface layer	2018/2/14	Sunny	6.2	26.3	4.3	0.5	Grayish greenish yellow	None	2.8	9.0	2	1.9	<0.61	<0.66				
Deep layer					4.0	25.3	-	None		9.1	2	2.0	<0.86	<0.61				
Surface layer	2017/5/17	Cloudy	17.5	24.3	16.4	0.5	Light grayish greenish yellow	None	2.1	13.1	1	1.7	<0.72	<0.63				
Deep layer					7.4	23.3	-	None		10.1	3	3.1	<0.84	<0.69				
Surface layer	2017/8/21	Cloudy	24.1	21.2	22.6	0.5	Dark grayish yellow green	None	1.5	7.9	4	3.5	<0.85	<0.92				
Deep layer					21.2	20.2	-	None		8.4	7	3.5	<0.88	<0.69				
Surface layer	2017/11/9	Sunny	16.3	24.6	14.2	0.5	Dark grayish greenish yellow	None	1.8	6.5	3	4.4	<0.76	<0.88				
Deep layer					13.5	23.6	-	None		6.9	5	3.3	<0.83	<0.61				
Surface layer	2018/2/14	Sunny	9.2	25.7	3.9	0.5	Dark grayish greenish yellow	None	3.0	7.6	1	1.5	<0.85	<0.75				
Deep layer					4.3	24.7	-	None		8.3	5	1.9	<0.54	<0.93				

Ibaraki Lakes and Reservoirs (Water) 4/4

L a k e s a n d R e s e r v o i r s	Location			Sampling Date	Weather	Air temperature (°C)	Water depth (m)	Water										Remarks
	No.	Water area	Location					General items					Activity concentration(Bq/L)					
								Water temperature (°C)	Sampling depth (m)	Color	Odor	Secchi disk depth (m)	Electrical conductivity (mS/m)	SS (mg/L)	Turbidity (FNU)	Radioactive cesium		
				Cs-134	Cs-137													
71	Fujiigawa Dam	Center	Surface layer	2017/5/19	Sunny	26.9	13.5	19.9	0.5	Dark grayish yellow green	None	2.7	14.5	<1	1.2	<0.66	<0.69	
			Deep layer					10.5	12.5	-	None		16.7	4	3.9	<0.74	<0.80	
			Surface layer	2017/8/24	Sunny	28.5	10.3	25.9	0.5	Dark grayish yellow green	None	1.7	13.9	1	1.3	<0.54	<0.80	
			Deep layer					19.7	9.3	-	Faint hydrogen sulfide		17.5	12	13	<0.67	<0.88	
			Surface layer	2017/11/15	Cloudy	11.4	14.1	12.3	0.5	Dark grayish yellow green	None	2.3	12.9	1	1.5	<0.61	<0.84	
			Deep layer					11.0	13.1	-	None		13.0	5	3.2	<0.74	<0.63	
			Surface layer					4.4	0.5	Dark grayish yellow green	None		14.7	<1	1.2	<0.49	<0.66	
			Deep layer	2018/2/15	Sunny	7.2	15.3	4.2	14.3	-	None	3.8	20.6	1	1.5	<0.86	<0.66	
			Surface layer					20.1	0.5	Dark grayish green	None		10.6	<1	0.6	<0.62	<0.69	
			Deep layer	2017/5/19	Sunny	27.0	12.5	9.9	11.5	-	None	5.5	11.8	<1	2.2	<0.82	<0.84	
			Surface layer					27.2	0.5	Dark grayish yellow green	None		9.3	<1	0.5	<0.99	<0.96	
			Deep layer	2017/8/24	Sunny	29.5	11.5	12.9	10.5	-	Faint hydrogen sulfide	2.7	13.0	4	6.3	<0.63	<0.69	
			Surface layer					13.2	0.5	Dark grayish yellow green	None		7.9	<1	1.1	<0.63	<0.80	
			Deep layer	2017/11/15	Cloudy	15.0	13.5	10.4	12.5	-	Faint hydrogen sulfide	8.2	14.7	13	14	<0.80	<0.75	
Surface layer	4.7	0.5	Dark grayish greenish yellow					None	8.9	1	1.5		<0.72	<0.84				
Deep layer	2018/2/15	Sunny	7.8	14.0	4.7	13.0	-	None	3.5	9.0	1	1.6	<0.81	<0.88				
Surface layer					4.7	13.0	-	None		9.0	1	1.6	<0.81	<0.88				

Ibaraki Lakes and Reservoirs (Sediment) 1/2

Location			Sampling Date	Weather	Air temperature (°C)	Water depth (m)	Sediment															Activity concentration [Bq/kg(dry)]			Remarks	
No.	Water area	Location					Sediment temperature (°C)	Sample length (cm)	Color	Odor	Grain size distribution(%)							Sediment content (%)	Density (g/cm ³)	Property	Radioactive cesium					
											Course gravel	Medium gravel	Fine gravel	Course sand	Medium sand	Fine sand	Silt				Clay	Cs-134	Cs-137	Total		
											0.0	0.0	0.4	0.3	1.8	11.7	70.3				15.5					45.0
L a k e s a n d R e s e r v o i r s	54	Hiroura	2017/5/15	Cloudy	18.1	2.4	19.0	8	Olive black	Faint hydrogen sulfide	0.0	0.0	0.4	0.3	1.8	11.7	70.3	15.5	45.0	2.618	Silt	10	58	68		
			2017/8/21	Cloudy	27.9	2.4	25.0	6	Olive black	None	0.0	0.2	0.2	0.0	0.0	0.0	84.1	15.5	43.7	2.638	Silt	<9.9	73	73		
			2017/11/16	Sunny	14.0	2.4	14.5	5	Olive black	Faint hydrogen sulfide	0.0	0.6	0.7	0.5	1.8	12.3	67.3	16.8	43.3	2.636	Silt	<10	54	54		
			2018/2/16	Sunny	6.5	2.3	8.1	5	Olive black	Faint hydrogen sulfide	0.0	0.8	0.6	0.5	2.0	12.4	67.1	16.6	41.4	2.584	Silt	<14	65	65		
		55	Hinuma	Miyamae	2017/5/15	Cloudy	17.0	3.0	19.0	11	Black	Faint hydrogen sulfide	0.0	0.0	0.0	0.1	4.8	0.6	72.4	22.1	24.5	2.559	Silt	17	82	99
					2017/8/21	Cloudy	26.8	3.0	24.1	8	Black	Faint hydrogen sulfide	0.0	0.0	0.0	0.0	0.4	3.9	75.0	20.7	25.5	2.606	Silt	<9.7	40	40
					2017/11/16	Sunny	12.5	3.0	15.2	5	Olive black	Faint hydrogen sulfide	0.0	0.0	0.0	0.1	1.0	6.9	65.8	26.3	24.5	2.608	Silt	17	110	127
					2018/2/16	Sunny	6.5	2.9	8.8	5	Olive black	Medium hydrogen sulfide	0.0	0.0	0.0	0.1	0.8	5.6	62.9	30.6	23.4	2.480	Silt	<20	47	47
	56	Oyazawa	2017/5/15	Cloudy	17.0	2.0	19.6	11	Black	None	0.0	0.0	0.0	0.0	0.4	4.6	81.5	13.5	33.3	2.512	Silt	45	310	355		
			2017/8/21	Cloudy	26.8	2.2	24.9	9	Black	Faint hydrogen sulfide	0.0	0.0	0.0	0.0	0.1	3.1	82.3	14.5	32.0	2.543	Silt	33	260	293		
			2017/11/16	Sunny	12.5	2.0	15.2	10	Black	None	0.0	0.0	0.0	0.0	0.4	3.1	70.4	26.1	28.6	2.551	Silt	28	280	308		
			2018/2/16	Sunny	6.5	1.9	8.5	8	Black	Faint hydrogen sulfide	0.0	0.0	0.0	0.0	0.2	4.5	51.5	43.7	34.3	2.411	Silt	34	240	274		
			2017/5/23	Sunny	26.4	6.7	20.4	5	Olive black	None	0.0	0.0	0.0	0.0	0.6	10.3	65.8	23.3	22.0	2.470	Silt	57	340	397		
			2017/8/17	Cloudy	25.3	6.5	25.0	4	Olive black	Faint algae	0.0	0.0	0.0	0.0	0.2	0.7	77.1	22.0	15.9	2.423	Silt	51	390	441		
			2017/11/22	Cloudy	4.5	6.4	11.8	10	Olive black	None	0.0	0.0	0.0	0.0	0.1	1.1	75.5	23.3	18.1	2.419	Silt	40	310	350		
			2018/2/22	Snow	1.5	6.3	6.0	10	Olive black	Faint hydrogen sulfide	0.0	0.0	0.0	0.0	0.1	0.8	59.5	39.6	17.0	2.382	Silt	36	390	426		
	58	Lake Kasumigaura	Offshore of Kakeuma	2017/5/23	Sunny	22.1	2.7	21.0	5	Blackish brown	None	0.0	0.0	0.0	0.2	15.2	71.0	8.9	4.6	57.9	2.709	Sand	25	210	235	
				2017/8/17	Cloudy	27.0	1.9	24.4	4	Blackish brown	None	0.0	0.0	0.0	0.2	41.8	51.1	3.0	4.0	75.1	2.690	Sand/gravel	15	79	94	
				2017/11/22	Cloudy	3.5	2.1	9.8	4	Blackish brown	None	0.0	0.3	0.9	0.1	32.4	61.4	2.0	2.9	73.9	2.693	Sand	13	78	91	
				2018/2/22	Snow	0.9	2.1	5.5	3	Blackish brown	None	0.0	1.7	3.2	0.4	35.3	50.6	5.6	3.2	71.1	2.647	Sand/silt/gravel	10	110	120	
			59	Center	2017/5/23	Sunny	21.3	6.0	19.9	5	Olive black	Faint hydrogen sulfide	0.0	0.0	0.0	0.0	0.1	0.3	80.0	19.7	14.1	2.331	Silt	59	350	409
					2017/8/17	Cloudy	26.3	6.1	25.4	5	Olive black	Faint sewage	0.0	0.0	0.0	0.0	0.4	0.7	76.4	22.5	15.1	2.381	Silt	43	370	413
					2017/11/22	Sunny	4.5	6.7	12.7	10	Olive black	Faint hydrogen sulfide	0.0	0.0	0.0	0.0	0.1	0.3	70.5	29.2	15.0	2.401	Silt	34	270	304
					2018/2/22	Snow	2.8	6.2	6.0	10	Olive black	None	0.0	0.0	0.0	0.0	0.1	0.3	53.9	45.8	15.6	2.363	Silt	<32	310	310
60	Offshore of Aso	2017/5/23	Sunny	22.0	1.7	22.0	5	Olive black	None	0.0	1.9	0.8	0.2	2.0	91.1	2.1	1.9	75.1	2.671	Sand	11	83	94			
		2017/8/17	Sunny	26.8	2.2	25.0	5	Olive black	None	0.0	0.0	0.0	0.1	2.9	90.9	4.2	2.0	72.6	2.712	Sand	9.6	84	93.6			
		2017/11/22	Sunny	6.0	2.2	10.3	3	Olive black	None	0.0	0.0	0.0	0.1	2.8	93.2	2.0	2.0	75.3	2.712	Sand	11	78	89			
		2018/2/22	Snow	2.7	2.6	5.8	2	Olive black	None	0.0	0.4	0.4	0.1	3.1	93.0	1.1	2.0	72.0	2.658	Sand/silt	7.1	86	93.1			
		2017/5/30	Sunny	24.0	6.7	21.3	6	Olive black	Faint sewage	0.0	0.0	0.0	0.0	0.1	0.5	76.4	23.0	12.8	2.261	Silt	42	330	372			
		2017/8/17	Sunny	27.5	6.5	25.0	5	Olive black	Faint sewage	0.0	0.0	0.0	0.1	0.2	1.7	63.8	34.2	13.3	2.306	Silt	36	250	286			
		2017/11/22	Cloudy	9.8	6.7	14.0	10	Olive black	Faint hydrogen sulfide	0.0	0.0	0.0	0.0	0.1	0.9	75.9	23.1	14.1	2.349	Silt	51	290	341			
		2018/2/22	Snow	2.0	6.6	7.0	10	Olive black	Faint hydrogen sulfide	0.0	0.0	0.0	0.0	0.1	0.9	51.9	47.1	13.9	2.192	Silt	44	280	324			
62	Lake Kitaura	2017/5/30	Sunny	24.7	2.4	21.8	5	Olive black	Faint sewage	0.0	0.0	0.0	0.0	0.5	57.6	34.2	7.7	47.0	2.574	Silt/sand	15	110	125			
		2017/8/17	Sunny	25.0	2.7	24.4	4	Olive black	Faint sewage	0.0	0.0	0.0	0.0	1.2	62.2	24.7	12.1	51.3	2.640	Sand/silt	13	100	113			
		2017/11/22	Sunny	9.5	2.6	11.8	5	Olive black	Faint sewage	0.0	0.0	0.0	0.0	0.9	58.9	33.2	7.0	52.3	2.638	Silt/sand	12	91	103			
		2018/2/22	Rain	2.3	2.6	6.0	5	Olive black	Faint hydrogen sulfide	0.0	0.0	0.0	0.1	5.4	69.1	20.9	4.5	64.2	2.585	Silt/sand	7.6	68	75.6			
	63	Lake Sotonasskaura	2017/5/30	Sunny	28.8	1.7	22.5	4	Olive black	None	0.0	0.0	0.0	0.0	1.6	93.3	1.1	4.0	73.2	2.659	Sand	<4.1	34	34		
			2017/8/17	Sunny	25.5	2.9	25.0	3	Olive black	None	0.0	0.0	0.0	0.1	2.8	79.1	10.9	7.1	63.3	2.691	Sand/silt	9.3	75	84.3		
			2017/11/22	Sunny	8.2	4.0	10.5	3	Olive black	None	0.0	0.0	0.0	0.0	3.2	86.9	7.2	2.8	73.1	2.722	Sand	<6.8	50	50		
			2018/2/22	Rain	2.0	3.0	5.8	6	Olive black	None	0.0	1.5	0.1	0.1	1.4	60.8	23.8	12.3	60.6	2.575	Sand/silt	<8.0	41	41		
64	Hitachitone River	2017/5/30	Sunny	24.9	4.8	21.9	3	Olive black	None	0.0	0.1	0.0	0.2	12.9	81.9	2.1	2.9	74.1	2.673	Sand	10	49	59			
		2017/8/17	Sunny	26.8	4.8	25.0	4	Olive black	None	0.0	0.0	0.0	0.4	15.2	78.1	2.4	4.0	74.1	2.715	Sand	7.5	55	62.5			
		2017/11/22	Sunny	9.0	5.1	12.0	4	Olive black	None	0.0	0.0	0.0	0.1	5.5	87.5	5.0	2.0	74.4	2.739	Sand	7.7	61	68.7			
		2018/2/22	Rain	2.8	5.0	6.0	4	Olive black	None	0.0	0.0	0.2	1.2	33.7	60.0	2.0	2.9	73.9	2.653	Sand	<6.1	59	59			
65	Lake Ushikumama	Center of Lake Ushikumama	2017/5/31	Cloudy	23.8	1.6	24.3	7	Olive black	Faint hydrogen sulfide	0.0	0.0	0.0	0.1	2.6	8.7	73.3	15.4	22.2	2.380	Silt	74	550	624		
			2017/8/15	Cloudy	23.5	1.8	25.7	6	Olive black	None	0.0	0.0	0.0	0.1	2.2	8.0	66.9	22.8	22.2	2.425	Silt	52	530	582		
			2017/11/14	Cloudy	12.0	1.4	13.2	8	Olive black	None	0.0	0.0	0.0	0.2	2.4	11.1	67.9	18.5	25.0	2.424	Silt	65	470	535		
			2018/2/24	Sunny	4.5	1.5	6.8	10	Olive black	Faint hydrogen sulfide	0.0	0.0	0.0	0.1	4.2	14.0	69.4	12.3	24.3	2.394	Silt	44	410	454		

Ibaraki Lakes and Reservoirs (Sediment) 2/2

Location			Sampling Date	Weather	Air temperature (°C)	Water depth (m)	Sediment													Activity concentration [Bq/kg(dry)]			Remarks		
							General items				Grain size distribution(%)							Sediment content (%)	Density (g/cm ³)	Property	Radioactive cesium				
No.	Water area	Location	Sediment temperature (°C)	Sample length (cm)	Color	Odor	Course gravel	Medium gravel	Fine gravel	Course sand	Medium sand	Fine sand	Silt	Clay	Cs-134	Cs-137	Total								
L a k e s	66	Mizunuma Dam	Center	2017/5/18	Cloudy	22.8	17.1	7.1	6	Blackish brown	None	0.0	0.0	0.0	0.1	0.1	2.0	67.2	30.5	18.0	2.288	Silt	330	2,000	2,330
				2017/8/23	Sunny	27.9	12.7	11.5	10	Blackish brown	Faint hydrogen sulfide	0.0	0.0	0.0	0.3	0.3	2.3	53.8	43.3	15.0	2.241	Silt	170	1,500	1,670
				2017/1/8	Cloudy	15.5	16.7	10.8	10	Blackish brown	Faint hydrogen sulfide	0.0	0.0	0.0	0.2	0.2	2.5	60.3	36.8	14.3	2.242	Silt	140	1,400	1,540
				2018/2/13	Sunny	0.8	19.5	4.3	4	Blackish brown	Faint sewage	0.0	0.0	0.0	0.2	0.5	1.9	70.0	27.3	15.4	2.242	Silt	180	1,700	1,880
	67	Koyama Dam	Center	2017/5/18	Rain	18.1	15.1	7.0	10	Blackish brown	Faint sewage	0.0	0.0	0.2	0.4	0.9	3.7	44.0	50.8	26.9	2.527	Silt	50	390	440
				2017/8/23	Cloudy	30.0	15.6	8.2	10	Blackish brown	Faint hydrogen sulfide	0.0	0.0	0.1	0.3	2.0	5.8	41.8	50.0	21.8	2.471	Silt	130	900	1,030
				2017/1/8	Cloudy	17.0	16.1	8.2	10	Blackish brown	Faint hydrogen sulfide	0.0	0.0	0.0	0.0	0.1	0.5	46.7	52.7	23.7	2.474	Silt	140	1,200	1,340
				2018/2/13	Sunny	7.3	16.0	4.3	5	Olive black	Faint sewage	0.0	0.0	0.0	0.0	0.1	3.1	59.5	37.2	25.1	2.502	Silt	48	460	508
	68	Hananki Dam	Center	2017/5/18	Cloudy	21.8	27.5	8.0	9	Blackish brown	Faint sewage	0.0	0.0	0.0	0.3	0.7	0.9	41.6	56.5	19.6	2.300	Silt	150	1,000	1,150
				2017/8/23	Cloudy	31.0	17.4	8.5	10	Blackish brown	Faint sewage	0.0	0.0	0.0	0.1	0.1	3.7	57.1	39.0	19.6	2.346	Silt	140	1,100	1,240
				2017/1/9	Sunny	17.0	25.5	12.0	8	Blackish brown	Faint sewage	0.0	0.0	0.0	0.3	0.3	1.2	46.9	51.4	19.0	2.361	Silt	110	1,200	1,310
				2018/2/14	Sunny	2.0	26.0	4.2	5	Blackish brown	Faint sewage	0.0	0.0	0.0	0.1	0.2	2.7	47.0	50.0	24.6	2.273	Silt	120	940	1,060
69	Jyuo Dam	Center	2017/5/17	Cloudy	18.9	23.9	7.0	12	Black	Faint sewage	0.0	0.0	0.0	0.0	0.0	0.8	54.5	44.7	21.4	2.410	Silt	110	730	840	
			2017/8/21	Cloudy	28.2	18.8	7.1	10	Black	Faint sewage	0.0	0.0	0.0	0.0	1.3	9.1	35.9	53.7	18.8	2.438	Silt	63	550	613	
			2017/1/10	Sunny	12.8	27.4	7.5	10	Black	Faint hydrogen sulfide	0.0	0.0	0.0	0.5	2.1	1.9	61.0	34.6	23.7	2.484	Silt	66	590	656	
			2018/2/14	Sunny	6.2	26.3	4.8	10	Black	Faint sewage	0.0	4.7	0.0	0.1	0.1	1.7	43.1	50.3	21.8	2.319	Silt	60	840	900	
70	Ryujin Dam	Center	2017/5/17	Cloudy	17.5	24.3	6.8	9	Olive black	Faint sewage	0.0	0.0	0.0	0.3	0.1	0.7	50.0	48.8	21.0	2.386	Silt	43	330	373	
			2017/8/21	Cloudy	24.1	21.2	10.5	3	Olive black	Faint sewage	0.0	0.0	0.0	1.0	0.9	0.6	43.3	54.1	15.3	2.309	Silt	49	320	369	
			2017/1/9	Sunny	16.3	24.6	14.2	10	Olive black	Faint sewage	0.0	0.0	0.0	1.0	4.6	10.6	41.7	42.1	21.3	2.302	Silt	44	290	334	
			2018/2/14	Sunny	9.2	25.7	4.2	1	Blackish brown	None	13.1	78.0	4.5	0.7	1.1	0.6	0.9	1.2	54.7	2.528	Sand	<13	47	47	
71	Fujigawa Dam	Center	2017/5/19	Sunny	26.9	13.5	11.9	3	Blackish brown	Faint sewage	0.0	0.0	0.0	0.1	0.3	0.4	50.9	48.2	25.7	2.490	Silt	43	290	333	
			2017/8/24	Sunny	28.5	10.3	14.5	5	Blackish brown	Faint sewage	0.0	0.0	0.0	0.4	0.3	0.4	67.1	31.9	21.8	2.444	Silt	26	280	306	
			2017/1/15	Cloudy	11.4	14.1	11.2	5	Blackish brown	Faint sewage	0.0	0.0	0.0	0.1	0.2	0.3	46.1	53.4	22.2	2.504	Silt	39	360	399	
			2018/2/15	Sunny	7.2	15.3	5.0	5	Blackish brown	Faint sewage	0.0	0.0	0.0	0.1	0.6	1.2	67.1	31.0	25.5	2.333	Silt	34	290	324	
72	Iida Dam	Center	2017/5/19	Sunny	27.0	12.5	7.5	11	Black	Faint sewage	0.0	0.0	0.0	0.0	0.2	1.1	70.5	28.2	22.8	2.501	Silt	39	390	429	
			2017/8/24	Sunny	29.5	11.5	10.7	10	Black	None	0.0	0.0	0.0	0.2	3.9	15.5	45.4	35.0	25.3	2.465	Silt	9.5	100	109.5	
			2017/1/15	Cloudy	15.0	13.5	8.0	10	Black	Faint hydrogen sulfide	0.0	0.1	0.9	1.6	5.2	7.1	36.6	48.6	17.7	2.531	Silt	<10	29	29	
			2018/2/15	Sunny	7.8	14.0	5.0	4	Black	Faint hydrogen sulfide	0.0	1.0	0.3	0.8	8.6	28.2	39.9	21.2	45.6	2.522	Silt	11	97	108	

Ibaraki Lakes and Reservoirs (Surrounding Environment) 1/2

No.	Location		Sampling Date	Weather	Air temperature (°C)	Surrounding Environment (Soil, Air dose)							Remarks		
						Soil				Air Dose (μSv/h)					
	Color	Odor				Property	Activity concentration [Bq/kg(dry)]			Total					
							Radioactive cesium								
Water area	Location	Cs-134	Cs-137	Total											
L a k e s a n d R e s e r v o i r s	54	Hiroura	2017/5/15	Cloudy	18.1	Dark brown	Faint earth	Loamy	110	810	920	0.08			
			2017/8/21	Cloudy	27.9	Blackish brown	Faint earth	Loamy	140	1,000	1,140	0.10			
			2017/11/16	Sunny	14.0	Dark brown	Faint earth	Loamy	75	600	675	0.08			
			2018/2/16	Sunny	6.5	Dark brown	Faint earth	Loamy	17	160	177	0.07			
	55	Hinuma	Miyamae	2017/5/15	Cloudy	17.0	Dull yellowish brown	Faint earth	Loamy	<7.7	28	28	0.05		
				2017/8/21	Cloudy	26.8	Dull yellowish brown	Faint earth	Loamy	<5.0	19	19	0.07		
				2017/11/16	Sunny	12.5	Dull yellowish brown	Faint earth	Loamy	<8.3	22	22	0.06		
				2018/2/16	Sunny	6.5	Dull yellowish brown	Faint earth	Loamy	<8.2	26	26	0.06		
	56		Oyazawa	2017/5/15	Cloudy	17.0	-	-	-	-	-	-	-	No sampling soil location	
				2017/8/21	Cloudy	26.8	-	-	-	-	-	-	-	-	No sampling soil location
				2017/11/16	Sunny	12.5	-	-	-	-	-	-	-	-	No sampling soil location
				2018/2/16	Sunny	6.5	-	-	-	-	-	-	-	-	No sampling soil location
57		Offshore of Tamatsukuri	2017/5/23	Sunny	26.4	Brownish gray	None	Sandy	<4.5	26	26	0.06			
			2017/8/17	Cloudy	25.3	Olive black	Faint earth	Sandy	<4.7	23	23	0.06			
			2017/11/22	Cloudy	4.5	Olive black	Faint earth	Sandy	<5.2	16	16	0.06			
			2018/2/22	Snow	1.5	Olive black	Faint earth	Sandy	<6.9	37	37	0.06			
58	Lake Kasumigaura	Offshore of Kakeuma	2017/5/23	Sunny	22.1	Grayish yellowish brown	Faint earth	Loamy	16	91	107	0.07			
			2017/8/17	Cloudy	27.0	Olive brown	Faint earth	Loamy	9.0	70	79.0	0.06			
			2017/11/22	Cloudy	3.5	Dark olive brown	Faint earth	Loamy	13	82	95	0.07			
			2018/2/22	Snow	0.9	Blackish brown	Faint earth	Sandy	6.1	52	58.1	0.06			
59		Center	2017/5/23	Sunny	21.3	-	-	-	-	-	-	-	No sampling soil location		
			2017/8/17	Cloudy	26.3	-	-	-	-	-	-	-	-	No sampling soil location	
			2017/11/22	Sunny	4.5	-	-	-	-	-	-	-	-	No sampling soil location	
			2018/2/22	Snow	2.8	-	-	-	-	-	-	-	-	No sampling soil location	
60		Offshore of Aso	2017/5/23	Sunny	22.0	Dull yellow orange	None	Sandy	20	120	140	0.08			
			2017/8/17	Sunny	26.8	Dark olive brown	Faint earth	Loamy	29	200	229	0.08			
			2017/11/22	Sunny	6.0	Dark olive brown	Faint earth	Sandy	29	180	209	0.08			
			2018/2/22	Snow	2.7	Blackish brown	Faint earth	Sandy	18	170	188	0.07			
61	Lake Kitaura	Offshore of Kamaya	2017/5/30	Sunny	24.0	Blackish brown	None	Loamy	36	290	326	0.07			
			2017/8/17	Sunny	27.5	Blackish brown	Faint earth	Loamy	210	1,700	1,910	0.07			
			2017/11/22	Cloudy	9.8	Blackish brown	Faint earth	Loamy	150	1,300	1,450	0.07			
			2018/2/22	Snow	2.0	Blackish brown	Faint earth	Loamy	46	470	516	0.06			
62		Jingu Bridge	2017/5/30	Sunny	24.7	Brown	Faint earth	Sandy	26	150	176	0.05			
			2017/8/17	Sunny	25.0	Brown	Faint earth	Sandy	<4.8	28	28	0.04			
			2017/11/22	Sunny	9.5	Brown	Faint earth	Sandy	<5.0	23	23	0.04			
			2018/2/22	Rain	2.3	Dull yellowish brown	Faint earth	Sandy	<6.0	24	24	0.04			
63	Hitachitone River	Lake Sotonasakaura	2017/5/30	Sunny	28.8	Dark brown	Faint earth	Loamy	12	91	103	0.05			
			2017/8/17	Sunny	25.5	Dark brown	Faint earth	Loamy	9.1	76	85.1	0.05			
			2017/11/22	Sunny	8.2	Blackish brown	Faint earth	Loamy	8.2	92	100.2	0.05			
			2018/2/22	Rain	2.0	Blackish brown	Faint earth	Loamy	13	76	89	0.05			
64		Ikisu	2017/5/30	Sunny	24.9	Blackish brown	Faint earth	Loamy	11	110	121	0.05			
			2017/8/17	Sunny	26.8	Blackish brown	Faint earth	Loamy	21	220	241	0.05			
			2017/11/22	Sunny	9.0	Blackish brown	Faint earth	Loamy	11	120	131	0.05			
			2018/2/22	Rain	2.8	Blackish brown	Faint earth	Loamy	24	140	164	0.05			
65	Lake Ushikunuma	Center of Lake Ushikunuma	2017/5/31	Cloudy	23.8	Dark brown	Faint earth	Loamy	28	220	248	0.08			
			2017/8/15	Cloudy	23.5	Dark brown	Faint earth	Loamy	33	240	273	0.07			
			2017/11/14	Cloudy	12.0	Dull yellowish brown	Faint earth	Loamy	29	220	249	0.07			
			2018/2/24	Sunny	4.5	Dark brown	Faint earth	Loamy	20	230	250	0.07			

Ibaraki Lakes and Reservoirs (Surrounding Environment) 2/2

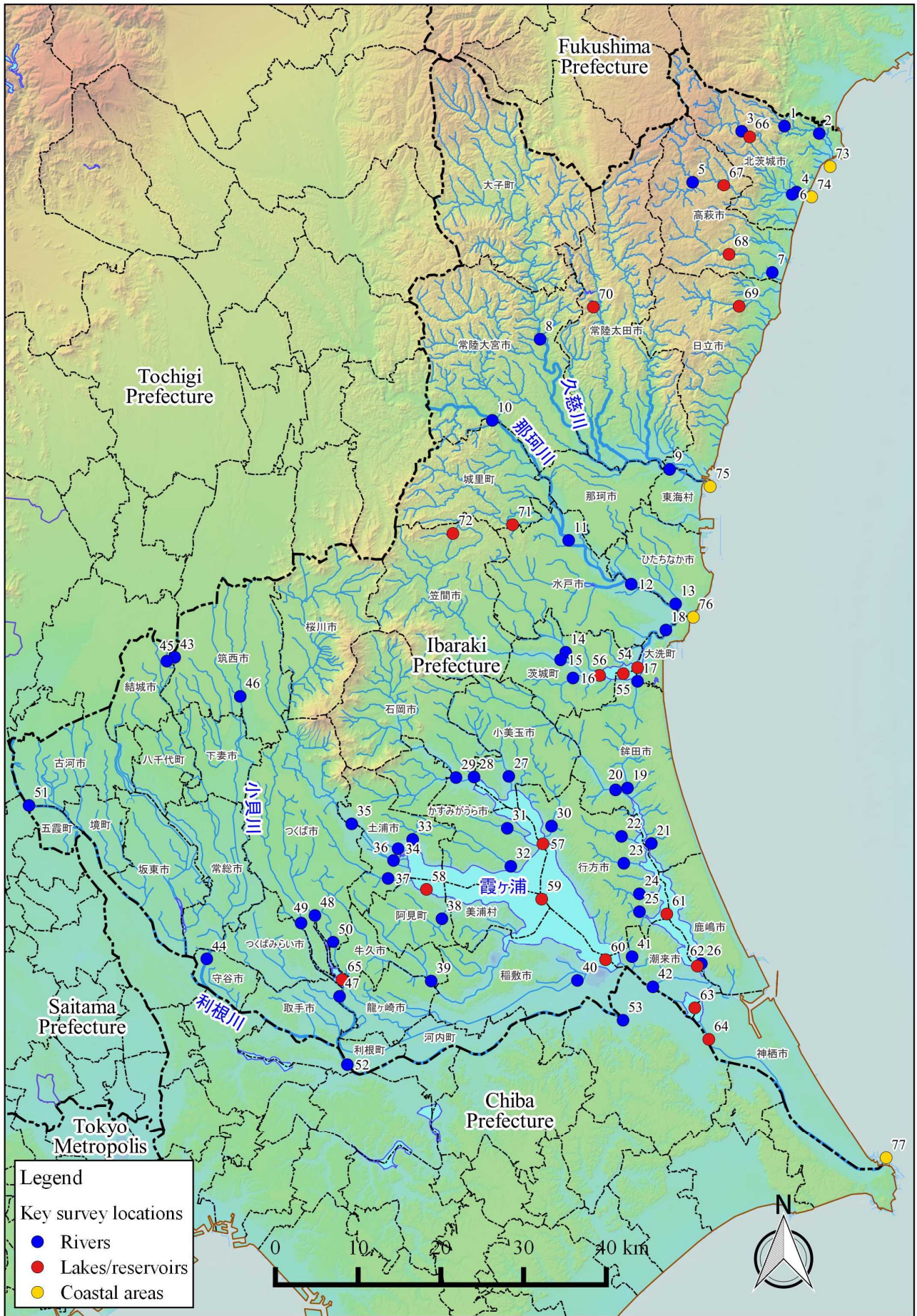
	Location			Sampling Date	Weather	Air temperature (°C)	Surrounding Environment (Soil, Air dose)						Remarks
							Soil			Air Dose (μSv/h)			
	General items						Activity concentration [Bq/kg(dry)]						
	No.	Water area	Location				Color	Odor	Property		Radioactive cesium		
Cs-134				Cs-137	Total								
L a k e s a n d R e s e r v o i r s	66	Mizunuma Dam	Center	2017/5/18	Cloudy	22.8	Blackish brown	Faint earth	Loamy	41	290	331	0.10
				2017/8/23	Sunny	27.9	Blackish brown	Faint earth	Loamy	42	290	332	0.11
				2017/11/8	Cloudy	15.5	Brownish gray	Faint earth	Loamy	37	300	337	0.10
				2018/2/13	Sunny	0.8	Blackish brown	Faint earth	Loamy	43	380	423	0.10
	67	Koyama Dam	Center	2017/5/18	Rain	18.1	Dull yellowish brown	Faint earth	Sandy	48	340	388	0.08
				2017/8/23	Cloudy	30.0	Dull yellowish brown	Faint earth	Sandy	46	390	436	0.09
				2017/11/8	Cloudy	17.0	Dull yellowish brown	Faint earth	Sandy	43	330	373	0.09
				2018/2/13	Sunny	7.3	Dull yellowish brown	Faint earth	Sandy	36	290	326	0.08
	68	Hananuki Dam	Center	2017/5/18	Cloudy	21.8	Dull yellowish brown	Faint earth	Loamy	86	620	706	0.12
				2017/8/23	Cloudy	31.0	Dark brown	Faint earth	Loamy	100	820	920	0.12
				2017/11/9	Sunny	17.0	Dull yellowish brown	Faint earth	Loamy	95	750	845	0.11
				2018/2/14	Sunny	2.0	Dull yellowish brown	Faint earth	Loamy	100	870	970	0.11
	69	Jyuou Dam	Center	2017/5/17	Cloudy	18.9	Blackish brown	None	Loamy	200	1,600	1,800	0.08
				2017/8/21	Cloudy	28.2	Dark brown	Faint earth	Loamy	150	1,200	1,350	0.09
				2017/11/10	Sunny	12.8	Blackish brown	Faint earth	Loamy	240	1,800	2,040	0.09
				2018/2/14	Sunny	6.2	Blackish brown	Faint earth	Loamy	260	2,400	2,660	0.08
	70	Ryujin Dam	Center	2017/5/17	Cloudy	17.5	Dark brown	Faint earth	Loamy	23	200	223	0.07
				2017/8/21	Cloudy	24.1	Dark brown	Faint earth	Loamy	16	150	166	0.07
				2017/11/9	Sunny	16.3	Dark brown	Faint earth	Loamy	28	200	228	0.07
				2018/2/14	Sunny	9.2	Dark brown	Faint earth	Loamy	25	230	255	0.07
	71	Fujigawa Dam	Center	2017/5/19	Sunny	26.9	Black	Faint earth	Loamy	120	790	910	0.11
				2017/8/24	Sunny	28.5	Black	Faint earth	Loamy	64	550	614	0.13
				2017/11/15	Cloudy	11.4	Black	Faint earth	Loamy	73	630	703	0.11
				2018/2/15	Sunny	7.2	Black	Faint earth	Loamy	39	370	409	0.11
	72	Iida Dam	Center	2017/5/19	Sunny	27.0	Dark brown	Faint earth	Loamy	67	620	687	0.08
				2017/8/24	Sunny	29.5	Dark brown	Faint earth	Loamy	57	380	437	0.09
				2017/11/15	Cloudy	15.0	Dark brown	Faint earth	Loamy	88	590	678	0.08
				2018/2/15	Sunny	7.8	Dark brown	Faint earth	Loamy	56	580	636	0.08

Ibaraki Coastal (Water) 1/1

Location		Sampling Date	Weather	Air temperature (°C)	Water depth (m)	Water										Remarks
						General items					Activity concentration(Bq/L)					
No.	Water area					Water temperature (°C)	Sampling depth (m)	Color	Odor	Secchi disk depth (m)	Salinity (‰)	SS (mg/L)	Turbidity (FNU)	Radioactive cesium		
														Cs-134	Cs-137	
C o a s t a l a r e a s	73 Offshore of Satone River Estuary	Surface layer	2017/5/16	Cloudy	18.1	11.8	15.5	0.5	Dark grayish yellowish green	None	3.5	28.8	2	1.4	<-0.77	<-0.61
		Deep layer					14.3	10.8	-	None			30.4	2	1.3	<-0.88
		Surface layer	2017/8/1	Cloudy	22.5	12.6	21.5	0.5	Dark grayish green	None	6.0	29.8	1	0.5	<-0.62	<-0.75
		Deep layer					21.0	11.6	-	None			30.1	1	0.6	<-0.54
		Surface layer	2017/1/11	Sunny	16.5	12.5	16.7	0.5	Dark grayish yellowish green	None	4.0	29.6	1	1.2	<-0.58	<-0.80
		Deep layer					16.8	11.5	-	None			30.9	10	4.2	<-0.70
	Surface layer	2018/2/5	Sunny	6.5	12.4	9.5	0.5	Dark grayish yellowish green	None	4.0	31.9	3	1.5	<-0.60	<-0.48	
	Deep layer					9.8	11.4	-	None			32.1	5	1.6	<-0.77	<-0.66
	74 Offshore of Okita River Estuary	Surface layer	2017/5/16	Cloudy	18.0	11.1	15.9	0.5	Dark grayish yellow green	None	2.5	24.0	3	1.8	<-0.86	<-0.66
		Deep layer					14.0	10.1	-	None			25.9	1	0.3	<-0.80
		Surface layer	2017/8/1	Cloudy	23.5	11.2	21.7	0.5	Dark grayish bluish green	None	7.5	29.8	1	0.3	<-0.65	<-0.61
		Deep layer					21.3	10.2	-	None			30.0	<1	0.3	<-0.73
		Surface layer	2017/1/11	Sunny	16.5	12.0	16.3	0.5	Dark grayish yellow green	None	3.5	28.4	1	0.7	<-0.78	<-0.80
		Deep layer					16.8	11.0	-	None			30.3	3	2.2	<-0.81
	Surface layer	2018/2/5	Sunny	7.0	11.5	9.8	0.5	Dark grayish yellow green	None	6.0	31.7	1	0.8	<-0.77	<-0.88	
	Deep layer					10.2	10.5	-	None			32.0	3	0.8	<-0.76	<-0.84
	75 Offshore of Momiya River/Kujigawa River Estuaries	Surface layer	2017/5/16	Cloudy	19.0	9.2	17.8	0.5	Grayish yellow green	None	2.5	15.1	6	4.0	<-0.80	<-0.98
		Deep layer					15.4	8.2	-	None			23.7	14	5.1	<-0.90
		Surface layer	2017/8/1	Cloudy	23.0	10.6	22.0	0.5	Dark grayish greenish yellow	None	3.0	28.1	2	1.7	<-0.69	<-0.55
		Deep layer					20.3	9.6	-	None			30.9	1	0.9	<-0.62
		Surface layer	2017/1/11	Sunny	16.0	9.3	16.9	0.5	Dark grayish yellow green	None	2.0	26.9	3	1.8	<-0.71	<-0.88
		Deep layer					17.3	8.3	-	None			30.2	2	0.8	<-0.81
	Surface layer	2018/2/5	Sunny	4.3	10.2	9.4	0.5	Dark grayish yellow green	None	3.5	29.8	2	1.2	<-0.59	<-0.55	
	Deep layer					10.3	9.2	-	None			32.1	2	0.8	<-0.89	<-0.55
76 Neighboring water body of Ken-o Offshore of Nakagawa River	Surface layer	2017/5/16	Cloudy	20.8	6.3	16.7	0.5	Grayish greenish yellow	None	1.5	18.3	8	4.1	<-0.77	<-0.70	
	Deep layer					15.3	5.3	-	None			23.4	5	3.2	<-0.59	<-0.94
	Surface layer	2017/8/1	Rain	24.5	6.0	24.2	0.5	Grayish greenish yellow	None	2.5	8.3	5	3.7	<-0.73	<-0.70	
	Deep layer					21.1	5.0	-	None			29.9	3	1.4	<-0.60	<-0.70
	Surface layer	2017/1/11	Sunny	14.5	4.8	14.8	0.5	Grayish yellow	None	1.5	7.2	13	11	<-0.69	<-0.55	
	Deep layer					16.4	3.8	-	None			27.6	9	4.9	<-0.80	<-0.55
Surface layer	2018/2/5	Sunny	3.0	7.6	9.9	0.5	Grayish yellow green	None	2.5	28.7	4	1.7	<-0.79	<-0.80		
Deep layer					10.5	6.6	-	None			32.0	5	2.7	<-0.71	<-0.80	
77 Offshore of Tonegawa River Estuary	Surface layer	2017/5/24	Cloudy	22.8	8.1	17.9	0.5	Dark grayish yellow green	None	3.5	30.5	3	1.2	<-0.68	<-0.69	
	Deep layer					15.9	7.1	-	None			32.0	2	0.9	<-0.69	<-0.84
	Surface layer	2017/8/30	Cloudy	33.7	8.3	27.5	0.5	Grayish yellow green	None	1.4	16.3	4	2.9	<-0.76	<-0.63	
	Deep layer					23.1	7.3	-	None			31.3	1	0.5	<-0.63	<-0.75
	Surface layer	2017/11/29	Sunny	14.3	8.1	14.7	0.5	Dark grayish yellow green	None	3.1	22.2	2	1.9	<-0.66	<-0.75	
	Deep layer					16.2	7.1	-	None			31.2	12	4.8	<-0.57	<-0.80
Surface layer	2018/2/28	Cloudy	11.0	8.2	10.2	0.5	Grayish yellow green	None	3.5	24.2	4	2.6	<-0.57	<-0.80		
Deep layer					11.2	7.2	-	None			31.6	3	1.4	<-0.62	<-0.55	

Ibaraki Coastal (Sediment) 1/1

Location		Sampling Date	Weather	Air temperature (°C)	Water depth (m)	Sediment																	Activity concentration [Bq/kg(dry)]			Remarks
No.	Water area					Sediment temperature (°C)	Sample length (cm)	Color	Odor	General items							Sediment content (%)	Density (g/cm ³)	Property	Radioactive cesium						
										Coarse gravel	Medium gravel	Fine gravel	Coarse sand	Medium sand	Fine sand	Silt				Clay	Cs-134	Cs-137	Total			
C o a s t a l	73	Offshore of Satone River Estuary	2017/5/16	Cloudy	18.1	11.8	14.0	7	Olive black	None	0.0	0.0	0.1	1.2	24.0	65.6	3.7	5.4	68.8	2.641	Sand	-4.1	29	29		
			2017/8/1	Cloudy	22.5	12.6	21.7	5	Olive black	None	0.0	0.0	0.1	0.5	8.8	72.9	14.3	3.4	71.1	2.663	Sand	-4.8	16	16		
			2017/11/1	Sunny	16.5	12.5	16.5	3	Olive black	None	0.0	0.0	0.0	0.1	2.6	55.8	36.0	5.5	66.5	2.592	Sand	-6.9	25	25		
			2018/2/5	Sunny	6.5	12.4	9.0	4	Olive black	None	0.0	0.0	0.0	0.1	4.3	46.1	44.9	4.7	59.7	2.575	Sand	-7.3	40	40		
			2017/5/16	Cloudy	18.0	11.1	14.9	7	Olive black	None	0.0	0.0	0.0	1.0	31.3	59.4	3.5	4.8	78.5	2.828	Sand	-3.8	4.6	4.6		
	74	Offshore of Okita River Estuary	2017/8/1	Cloudy	23.5	11.2	22.0	5	Olive black	None	0.0	0.0	0.0	0.2	13.2	71.6	10.7	4.3	74.7	2.690	Sand	-2.3	9.0	9.0		
			2017/11/1	Sunny	16.5	12.0	16.5	5	Olive black	None	0.0	0.0	0.0	0.1	22.1	65.7	8.4	3.7	78.9	3.057	Sand	-4.4	6.0	6.0		
			2018/2/5	Sunny	7.0	11.5	10.0	4	Olive black	None	0.0	0.0	0.0	0.2	10.2	63.1	22.7	3.8	74.0	2.780	Sand	-4.5	5.8	5.8		
			2017/5/16	Cloudy	19.0	9.2	16.8	5	Olive black	None	0.0	0.0	0.0	0.0	4.2	73.7	16.8	5.3	75.5	2.701	Sand	-3.6	13	13		
			2017/8/1	Cloudy	23.0	10.6	21.8	8	Olive black	None	0.0	0.0	0.0	0.2	6.9	67.8	21.7	3.4	73.9	2.665	Sand	-4.3	14	14		
75	Offshore of Momiya River/Kujigawa River Estuaries	2017/11/1	Sunny	16.0	9.3	17.2	8	Olive black	None	0.0	0.0	0.0	0.0	0.6	78.9	16.5	4.0	70.0	2.678	Sand	-5.2	9.9	9.9			
		2018/2/5	Sunny	4.3	10.2	10.5	8	Olive black	None	0.0	0.0	0.0	0.0	0.6	34.6	50.4	14.5	80.7	2.610	Sand/silt	-9.1	58	58			
		2017/5/16	Cloudy	20.8	6.3	16.7	5	Olive black	None	0.0	0.5	0.4	0.6	10.3	80.5	3.9	3.8	73.1	2.792	Sand	-4.7	8.5	8.5			
		2017/8/1	Rain	24.5	6.0	22.0	10	Olive black	None	0.0	0.0	0.0	0.1	4.4	81.2	10.0	4.4	73.4	2.704	Sand	-5.3	8.9	8.9			
		2017/11/1	Sunny	14.5	4.8	16.9	3	Olive black	None	0.0	0.0	0.0	0.0	3.8	75.7	16.2	4.4	72.8	2.712	Sand	-5.3	9.9	9.9			
76	Neighboring water body of Ken-o Offshore of Nakagawa River	2018/2/5	Sunny	3.0	7.6	10.5	8	Olive black	None	0.0	0.0	0.0	0.0	4.4	72.0	19.7	3.9	72.6	2.733	Sand	-5.5	14	14			
		2017/5/24	Cloudy	22.8	8.1	17.8	4	Olive black	None	0.0	0.0	0.0	0.0	1.1	93.7	1.1	4.0	73.6	2.667	Sand	-0.81	0.99	0.99			
		2017/8/30	Cloudy	33.7	8.3	24.2	1	Olive black	None	0.0	0.0	0.0	0.0	0.6	93.4	3.1	3.0	75.0	2.667	Sand	-0.72	1.0	1.0			
		2017/11/29	Sunny	14.3	8.1	16.0	3	Olive black	None	0.0	0.0	0.0	0.3	3.0	76.9	17.9	2.0	73.6	2.700	Sand	0.57	3.8	4.37			
		2018/2/28	Cloudy	11.0	8.2	11.1	3	Olive black	None	0.0	0.0	0.0	0.1	1.3	86.9	7.8	4.0	73.3	2.693	Sand	-2.5	3.0	3.0			



Survey Locations (Ibaraki Prefecture)