

FY2017 Miyagi Prefecture Survey Results

[Outline of results]

(1) Water

Rivers

Radioactive cesium (Cs-134, Cs-137): Not detectable at any location

Lakes and reservoirs

Radioactive cesium (Cs-134, Cs-137): Not detectable at any location

Coastal areas

Radioactive cesium (Cs-134, Cs-137): Not detectable at any location

(2) Sediments

Rivers

Cs-134: ND - 85 Bq/kg (dry)

Cs-137: 1.5 - 630Bq/kg (dry)

Lakes and reservoirs

Cs-134: ND - 300 Bq/kg (dry)

Cs-137: 1.7 - 2,100 Bq/kg (dry)

Coastal areas

Cs-134: ND - 66 Bq/kg (dry)

Cs-137: 0.90 - 500 Bq/kg (dry)

(3) Surrounding Environment

(a) Soil

Rivers

Cs-134: ND - 400 Bq/kg (dry)

Cs-137: 2.4 - 3,400Bq/kg (dry)

Lakes and reservoirs

Cs-134: ND - 240 Bq/kg (dry)

Cs-137: 6.2 - 2,000 Bq/kg (dry)

(b) Ambient dose rate

Rivers

0.04 - 0.24 μ Sv/h

Lakes and reservoirs

0.04 - 0.14 μ Sv/h

Miyagi River (Water)1/4

| No. | Location | | | Sampling Date | Weather | Air temperature (°C) | Water depth (m) | Water | | | | | | | | | | Remarks | | | |
|--------|------------|------------------------|---------------------------|----------------|---------------|-----------------------------|-----------------|------------------------|-----------------------|-------------------------------|----------------------------|-------------------------------|--------------------------------|-------------------------------|-----------------|--------------------|-------|---------|-------|-------|-------|
| | Water area | Location | Municipality | | | | | General items | | | | | Activity concentration(Bq/L) | | | | | | | | |
| | | | | | | | | Water temperature (°C) | Sampling depth (m) | Color | Odor | Transparency (cm) | Electrical conductivity (mS/m) | SS (mg/L) | Turbidity (FNU) | Radioactive cesium | | | | | |
| | | | | Cs-134 | Cs-137 | | | | | | | | | | | | | | | | |
| Rivers | 1 | Shishiori River | Kinzan Bridge | Kesennuma City | 2017/5/11 | Sunny | 16.0 | 0.2 | 11.4 | 0.0 | Yellowish white | None | >100 | 15.4 | <1 | 0.3 | <0.76 | <0.75 | | | |
| | | | | | 2017/8/8 | Rain | 22.3 | 0.3 | 16.7 | 0.0 | Greenish yellowish white | None | >100 | 13.8 | 2 | 0.6 | <0.62 | <0.80 | | | |
| | 2017/11/9 | | Sunny | | 13.7 | 0.3 | 10.2 | 0.0 | Yellow greenish white | None | >100 | 13.6 | <1 | 0.1 | <0.70 | <0.69 | | | | | |
| | 2018/1/29 | | Snow | | -0.2 | 0.2 | 1.9 | 0.0 | Yellowish pale gray | None | >100 | 14.4 | <1 | 0.1 | <0.69 | <0.84 | | | | | |
| | 2 | Namiita Bridge | 2017/5/12 | | Cloudy | 15.6 | 1.0 | 12.7 | 0.0 | Grayish yellow green | None | 88 | 2,880 | 3 | 2.3 | <0.83 | <0.88 | | | | |
| | | | 2017/8/10 | | Rain | 21.2 | 0.7 | 16.9 | 0.0 | Grayish greenish yellow | None | 43 | 39.0 | 14 | 7.4 | <0.67 | <0.80 | | | | |
| | | | 2017/11/10 | | Sunny | 8.4 | 1.2 | 11.8 | 0.0 | Grayish yellow green | None | 91 | 546 | 1 | 0.6 | <0.70 | <0.48 | | | | |
| | | | 2018/1/30 | | Sunny | -2.0 | 1.5 | 6.8 | 0.0 | Light grayish greenish yellow | None | >100 | 1,550 | <1 | 0.6 | <0.51 | <0.63 | | | | |
| | 3 | Tateyama-ohashi Bridge | 2017/5/12 | | Cloudy | 18.4 | 0.2 | 14.3 | 0.0 | Light grayish yellow green | None | >100 | 14.9 | 1 | 1.6 | <0.77 | <0.80 | | | | |
| | | | 2017/8/9 | | Cloudy | 23.4 | 1.0 | 17.7 | 0.0 | Grayish greenish yellow | None | 41 | 8.4 | 13 | 7.6 | <0.92 | <0.69 | | | | |
| | | | 2017/11/11 | | Sunny | 14.3 | 0.4 | 11.4 | 0.0 | Light grayish yellow green | None | >100 | 10.7 | <1 | 0.4 | <0.68 | <0.88 | | | | |
| | | | 2018/1/29 | | Sunny | 1.6 | 0.3 | 3.7 | 0.0 | Light grayish yellow | None | >100 | 12.5 | 1 | 0.7 | <0.83 | <0.80 | | | | |
| | 4 | Kamiyama Bridge | 2017/5/12 | | Sunny | 16.8 | 0.3 | 20.3 | 0.0 | Light grayish greenish yellow | None | 70 | 420 | 7 | 3.9 | <0.68 | <0.79 | | | | |
| | | | 2017/8/9 | | Cloudy | 26.0 | 0.6 | 17.9 | 0.0 | Light grayish yellow | None | 52 | 12.8 | 23 | 6.5 | <0.75 | <0.63 | | | | |
| | | | 2017/11/10 | | Sunny | 15.1 | 0.6 | 11.1 | 0.0 | Light grayish greenish yellow | None | >100 | 31.2 | <1 | 0.5 | <0.73 | <0.75 | | | | |
| | | | 2018/1/29 | | Sunny | 2.4 | 0.6 | 4.4 | 0.0 | Grayish yellow green | None | >100 | 1,260 | 2 | 1.6 | <0.86 | <0.70 | | | | |
| | 5 | Okawa River Estuary | 2017/5/12 | | Sunny | 17.1 | 2.7 | 14.0 | 0.0 | Light grayish yellow green | None | 83 | 4,230 | 2 | 1.3 | <0.72 | <0.79 | | | | |
| | | | 2017/8/10 | | Cloudy | 21.3 | 1.8 | 18.4 | 0.0 | Grayish greenish yellow | None | 59 | 39.4 | 7 | 3.9 | <0.88 | <0.69 | | | | |
| | | | 2017/11/10 | | Sunny | 16.5 | 2.6 | 11.6 | 0.0 | Dark grayish greenish yellow | None | 82 | 475 | 1 | 0.9 | <0.84 | <0.69 | | | | |
| | | | 2018/1/30 | | Snow | -0.7 | 3.8 | 2.9 | 0.0 | Grayish yellow green | None | 35 | 1,850 | 2 | 1.4 | <0.65 | <0.92 | | | | |
| | 6 | Omose River | Ozaki Bridge | | 2017/5/10 | Rain | 13.7 | 1.0 | 13.8 | 0.0 | Grayish greenish yellow | None | 25 | 493 | 19 | 17 | <0.68 | <0.75 | | | |
| | | | | | 2017/8/9 | Rain | 23.8 | 0.5 | 19.9 | 0.0 | Grayish greenish yellow | None | 25 | 32.7 | 25 | 22 | <0.58 | <0.69 | | | |
| | | | | | 2017/11/14 | Cloudy | 13.8 | 0.7 | 12.3 | 0.0 | Light grayish yellow green | None | 70 | 1,920 | 3 | 1.9 | <0.81 | <0.80 | | | |
| | | | | | 2018/1/30 | Cloudy | -0.8 | 0.8 | 4.3 | 0.0 | Grayish greenish yellow | None | 18 | 2,520 | 55 | 48 | <0.66 | <0.80 | | | |
| | 7 | Arima River | Unanda Bridge | | Kurihara City | 2017/5/9 | Sunny | 23.8 | 0.2 | 22.2 | 0.0 | Light grayish yellow green | None | 90 | 25.0 | 3 | 3.3 | <0.76 | <0.84 | | |
| | | | | | | 2017/8/4 | Cloudy | 22.2 | 0.3 | 21.5 | 0.0 | Light grayish greenish yellow | None | 88 | 16.3 | 4 | 3.5 | <0.55 | <0.66 | | |
| | | | | | | 2017/11/4 | Cloudy | 13.9 | 0.3 | 12.0 | 0.0 | Light grayish yellow green | None | >100 | 12.1 | 2 | 2.4 | <0.86 | <0.66 | | |
| | | | | | | 2018/1/28 | Cloudy | 0.3 | 0.3 | 0.4 | 0.0 | Light grayish yellow | None | >100 | 20.8 | <1 | 1.5 | <0.69 | <0.69 | | |
| | 8 | Kinryu River | Obata Bridge | | | 2017/5/8 | Sunny | 24.1 | 0.2 | 20.1 | 0.0 | Grayish greenish yellow | None | 7 | 24.5 | 110 | 120 | <0.83 | <0.80 | | |
| | | | | | | 2017/8/4 | Cloudy | 21.1 | 0.3 | 22.6 | 0.0 | Grayish yellow green | None | 55 | 15.1 | 11 | 6.9 | <0.51 | <0.84 | | |
| | | | | | | 2017/11/7 | Sunny | 14.9 | 0.3 | 9.1 | 0.0 | Grayish yellow green | None | 90 | 12.1 | 3 | 3.1 | <0.63 | <0.63 | | |
| | | | | | | 2018/1/28 | Cloudy | -0.3 | 0.3 | 0.3 | 0.0 | Grayish yellow | None | >100 | 23.9 | 3 | 2.8 | <0.55 | <0.48 | | |
| | 9 | Kitakami River | Tome-ohashi Bridge (Tome) | | | Tome City | 2017/5/14 | Cloudy | 12.6 | 0.7 | 12.4 | 0.0 | Grayish yellow green | None | 25 | 10.8 | 29 | 22 | <0.63 | <0.75 | |
| | | | | | | | 2017/8/11 | Cloudy | 22.8 | 0.7 | 21.1 | 0.0 | Grayish yellow green | None | >100 | 12.3 | 3 | 2.7 | <0.59 | <0.69 | |
| | | | | | | | 2017/11/12 | Cloudy | 10.5 | 0.3 | 10.3 | 0.0 | Light grayish yellow green | None | >100 | 12.2 | 1 | 1.5 | <0.70 | <0.75 | |
| | | | | | | | 2018/1/25 | Sunny | -1.5 | 0.4 | 1.1 | 0.0 | Light grayish yellow | None | >100 | 15.4 | 1 | 1.2 | <0.63 | <0.88 | |
| | 10 | Kitakami River System | Sanhasama River | | | Doman Bridge (Kurikoma Dam) | Kurihara City | 2017/5/8 | Sunny | 21.4 | 2.2 | 11.2 | 0.0 | Light grayish yellow green | None | >100 | 9.5 | 2 | 1.6 | <0.67 | <0.92 |
| | | | | | | | | 2017/8/16 | Cloudy | 18.3 | 1.2 | 16.0 | 0.0 | Light grayish yellow green | None | >100 | 9.2 | 2 | 1.2 | <0.81 | <0.80 |
| | | | | | | | | 2017/11/6 | Sunny | 14.5 | 0.7 | 10.2 | 0.0 | Light grayish yellow green | None | >100 | 11.5 | <1 | 0.6 | <0.73 | <0.66 |
| | | | | | | | | 2018/1/31 | Sunny | -0.8 | 1.2 | 1.1 | 0.0 | Light grayish greenish yellow | None | >100 | 22.2 | <1 | 0.6 | <0.70 | <0.75 |
| | 11 | Nihasama River | Kajiya Bridge | | | 2017/5/18 | | Sunny | 22.9 | 0.3 | 13.6 | 0.0 | Light grayish greenish yellow | None | 95 | 11.6 | 4 | 3.3 | <0.76 | <0.69 | |
| | | | | | | 2017/8/15 | | Rain | 21.1 | 0.6 | 19.3 | 0.0 | Grayish yellow | None | 39 | 9.5 | 13 | 7.0 | <0.81 | <0.88 | |
| | | | | | | 2017/11/6 | | Sunny | 14.2 | 0.4 | 9.7 | 0.0 | Greenish yellowish white | None | >100 | 12.6 | <1 | 0.6 | <0.63 | <0.69 | |
| | | | | | | 2018/1/27 | | Snow | -3.7 | 0.2 | 0.4 | 0.0 | Light grayish yellow | None | >100 | 13.3 | <1 | 0.9 | <0.77 | <0.74 | |
| | 12 | Hasama River | Hanayama Dam, inflow area | | | 2017/5/18 | | Sunny | 23.6 | 0.3 | 14.6 | 0.0 | Light grayish yellow green | None | >100 | 6.1 | 3 | 1.7 | <0.54 | <0.69 | |
| | | | | | | 2017/8/16 | | Cloudy | 21.6 | 0.5 | 16.4 | 0.0 | Yellow greenish pale gray | None | >100 | 8.1 | 1 | 0.9 | <0.69 | <0.55 | |
| | | | | | | 2017/11/6 | | Sunny | 12.7 | 0.6 | 9.3 | 0.0 | Light grayish greenish yellow | None | >100 | 8.4 | <1 | 0.4 | <0.87 | <0.55 | |
| | | | | | | 2018/1/27 | | Sunny | -1.5 | 0.3 | 0.8 | 0.0 | Greenish yellowish pale gray | None | >100 | 9.1 | <1 | 0.3 | <0.72 | <0.54 | |
| | 13 | Wakayanagi | 2017/5/18 | | | Sunny | | 17.1 | 0.3 | 14.1 | 0.0 | Grayish greenish yellow | None | 38 | 14.1 | 14 | 9.9 | <0.70 | <0.88 | | |
| | | | 2017/8/5 | | | Cloudy | | 23.2 | 0.8 | 22.5 | 0.0 | Grayish greenish yellow | None | 51 | 21.0 | 16 | 9.5 | <0.69 | <0.48 | | |
| | | | 2017/11/7 | | | Sunny | | 18.3 | 0.5 | 11.5 | 0.0 | Light grayish yellow | None | 82 | 12.7 | 3 | 2.5 | <0.88 | <0.92 | | |
| | | | 2018/1/28 | | | Cloudy | | 0.4 | 0.3 | 0.8 | 0.0 | Light grayish yellow | None | >100 | 19.7 | 3 | 2.2 | <0.77 | <0.70 | | |

Miyagi River (Water) 2/4

| R i v e r s | Location | | | | Sampling Date | Weather | Air temperature (°C) | Water depth (m) | Water | | | | | | | | | | Remarks | | |
|----------------------------|-----------------------|--|----------------------------------|-------------------------------|---------------|---------|----------------------|-----------------|------------------------|-------------------------|------------------------------|------|-------------------|--------------------------------|-----------|-----------------|--------|--------|---------|---|--|
| | No. | Water area | Location | Municipality | | | | | General items | | | | | | | | | | | Activity concentration(Bq/L) | |
| | | | | | | | | | Water temperature (°C) | Sampling depth (m) | Color | Odor | Transparency (cm) | Electrical conductivity (mS/m) | SS (mg/L) | Turbidity (FNU) | Cs-134 | Cs-137 | | | |
| 14 | Hasama River | Yamayoshida Bridge | Tome City | 2017/5/14 | Cloudy | 13.1 | 1.5 | 12.8 | 0.0 | Grayish yellow green | None | 12 | 11.6 | 74 | 45 | <0.63 | <0.96 | | | | |
| | | | | 2017/8/11 | Cloudy | 22.9 | 1.3 | 21.3 | 0.0 | Grayish yellow | None | 22 | 12.8 | 23 | 21 | <0.65 | <0.55 | | | | |
| | | | | 2017/11/12 | Cloudy | 11.1 | 0.6 | 9.5 | 0.0 | Grayish greenish yellow | None | 56 | 16.8 | 7 | 5.7 | <0.63 | <0.80 | | | | |
| | | | | 2018/1/25 | Sunny | -2.1 | 0.5 | 0.9 | 0.0 | Grayish greenish yellow | None | 54 | 20.2 | 8 | 5.5 | <0.92 | <0.66 | | | | |
| | 15 | Eai River | Todoroki Bridge (Todoroki) | Osaki City | 2017/5/16 | Cloudy | 16.2 | 0.6 | 12.5 | 0.0 | Grayish yellow green | None | 82 | 5.8 | 5 | 3.3 | <0.73 | <0.80 | | | |
| | | | | | 2017/8/17 | Cloudy | 22.7 | 0.4 | 17.2 | 0.0 | Grayish yellow green | None | 58 | 7.4 | 7 | 2.5 | <0.75 | <0.92 | | | |
| | | | | | 2017/11/13 | Sunny | 13.6 | 0.5 | 9.8 | 0.0 | Greenish yellowish white | None | >100 | 8.0 | <1 | 0.5 | <0.69 | <0.75 | | | |
| | | | | | 2018/1/27 | Snow | -1.8 | - | - | - | - | - | - | - | - | - | - | - | - | Unable to collect samples due to snow on the ground | |
| | 16 | Eai River | Shimizu lock gate | Osaki City | 2017/5/17 | Sunny | 16.6 | 0.5 | 11.9 | 0.0 | Light grayish yellow green | None | 84 | 9.2 | 5 | 3.7 | <0.78 | <0.63 | | | |
| | | | | | 2017/8/14 | Cloudy | 22.2 | 0.6 | 19.2 | 0.0 | Grayish yellow green | None | 47 | 9.8 | 11 | 5.1 | <0.51 | <0.63 | | | |
| | | | | | 2017/11/13 | Sunny | 14.7 | 0.4 | 11.2 | 0.0 | Light grayish yellow | None | >100 | 12.2 | 1 | 1.6 | <0.73 | <0.75 | | | |
| | | | | | 2018/1/24 | Snow | -3.3 | 0.3 | 2.2 | 0.0 | Yellowish pale gray | None | >100 | 14.5 | 1 | 1.1 | <0.68 | <0.75 | | | |
| | 17 | Kitakami River System | In Furukawa District, Osaki City | Shinborisaihon, entrance | 2017/5/14 | Rain | 13.0 | 1.2 | 13.3 | 0.0 | Grayish greenish yellow | None | 75 | 11.6 | 8 | 4.6 | <0.66 | <0.55 | | | |
| | | | | | 2017/8/14 | Rain | 23.8 | 1.4 | 21.6 | 0.0 | Grayish yellow green | None | 54 | 14.6 | 9 | 5.3 | <0.69 | <0.55 | | | |
| | | | | | 2017/11/13 | Sunny | 10.7 | 1.5 | 9.4 | 0.0 | Grayish greenish yellow | None | 47 | 29.8 | 6 | 7.6 | <0.88 | <0.63 | | | |
| | | | | | 2018/1/24 | Snow | -2.7 | 1.6 | 1.7 | 0.0 | Dark grayish yellow green | None | >100 | 20.4 | 2 | 2.0 | <0.86 | <0.55 | | | |
| | 18 | Dekigawa River | Kogota Bridge | Misato Town | 2017/5/14 | Rain | 15.0 | 2.2 | 13.3 | 0.0 | Grayish yellow | None | 11 | 23.3 | 80 | 55 | <0.48 | <0.69 | | | |
| | | | | | 2017/8/14 | Cloudy | 23.8 | 0.6 | 22.4 | 0.0 | Grayish yellow | None | 21 | 15.0 | 35 | 20 | <0.67 | <0.96 | | | |
| | | | | | 2017/11/13 | Sunny | 6.5 | 0.5 | 7.8 | 0.0 | Dark grayish yellow green | None | 65 | 23.1 | 7 | 7.5 | <0.66 | <0.69 | | | |
| | | | | | 2018/1/24 | Snow | -2.6 | 0.6 | 2.7 | 0.0 | Grayish greenish yellow | None | 70 | 25.6 | 5 | 4.9 | <0.77 | <0.84 | | | |
| | 19 | Eai River | Oikawa Bridge (Tandai) | Wakuya Town /Ishinomaki City | 2017/5/19 | Sunny | 21.1 | 0.7 | 17.0 | 0.0 | Grayish greenish yellow | None | 28 | 11.6 | 29 | 17 | <0.70 | <0.75 | | | |
| | | | | | 2017/8/12 | Cloudy | 24.1 | 1.2 | 20.5 | 0.0 | Grayish reddish yellow | None | 28 | 13.5 | 32 | 14 | <0.61 | <0.61 | | | |
| | | | | | 2017/11/12 | Cloudy | 11.9 | 0.5 | 10.0 | 0.0 | Grayish yellow | None | 73 | 14.6 | 7 | 3.9 | <0.70 | <0.80 | | | |
| | | | | | 2018/1/25 | Sunny | -4.1 | 0.4 | 0.9 | 0.0 | Grayish yellow | None | 73 | 19.7 | 6 | 3.3 | <0.61 | <0.66 | | | |
| | 20 | Kyu-Kitakami River | Kadonowaki | Ishinomaki City | 2017/5/19 | Sunny | 24.7 | 4.2 | 17.5 | 0.0 | Grayish yellow green | None | 28 | 11.3 | 16 | 14 | <0.78 | <0.80 | | | |
| | | | | | 2017/8/12 | Rain | 21.7 | 8.8 | 21.3 | 0.0 | Grayish yellow | None | >100 | 549 | 10 | 2.6 | <0.71 | <0.69 | | | |
| | | | | | 2017/11/14 | Cloudy | 14.3 | 10.2 | 10.1 | 0.0 | Dark grayish yellow green | None | >100 | 90.7 | 2 | 2.8 | <0.72 | <0.75 | | | |
| | | | | | 2018/1/23 | Cloudy | 5.0 | 6.5 | 2.1 | 0.0 | Dark grayish yellow green | None | >100 | 348 | 2 | 2.0 | <0.78 | <0.88 | | | |
| | 21 | Naruse River | Ono Bridge (Ono) | Higashi-Matsushima City | 2017/5/19 | Sunny | 23.3 | 0.7 | 21.6 | 0.0 | Dark grayish reddish yellow | None | 14 | 12.7 | 67 | 29 | <0.69 | <0.69 | | | |
| | | | | | 2017/8/12 | Rain | 22.8 | 0.8 | 20.4 | 0.0 | Dark grayish greenish yellow | None | 23 | 12.8 | 39 | 15 | <0.49 | <0.74 | | | |
| | | | | | 2017/11/14 | Cloudy | 9.5 | 0.4 | 8.7 | 0.0 | Dark grayish greenish yellow | None | 54 | 13.6 | 5 | 3.2 | <0.75 | <0.80 | | | |
| | | | | | 2018/1/23 | Sunny | 2.5 | 0.5 | 0.7 | 0.0 | Grayish yellow | None | 74 | 12.9 | 4 | 3.3 | <0.64 | <0.55 | | | |
| | 22 | Sunaoshi River | Tagajozeki Weir | Tagajo City | 2017/5/21 | Sunny | 25.9 | 0.7 | 23.9 | 0.0 | Grayish yellow green | None | 19 | 28.7 | 30 | 26 | <0.57 | <0.84 | | | |
| | | | | | 2017/8/22 | Cloudy | 28.0 | 0.5 | 23.4 | 0.0 | Grayish yellow green | None | 42 | 27.6 | 13 | 8.7 | <0.71 | <0.84 | | | |
| | | | | | 2017/11/15 | Sunny | 15.2 | 0.7 | 12.2 | 0.0 | Grayish greenish yellow | None | 84 | 219 | 6 | 3.2 | <0.80 | <0.92 | | | |
| | | | | | 2018/1/22 | Cloudy | 0.2 | 0.4 | 0.5 | 0.0 | Grayish yellow green | None | 42 | 51.7 | 13 | 11 | <0.74 | <0.88 | | | |
| | 23 | Sunaoshi River | Nenbutsu Bridge | Tagajo City | 2017/5/21 | Sunny | 24.0 | 1.0 | 20.5 | 0.0 | Grayish yellow green | None | 28 | 1,050 | 18 | 19 | <0.73 | <0.80 | | | |
| | | | | | 2017/8/22 | Sunny | 28.6 | 0.6 | 25.1 | 0.0 | Grayish greenish yellow | None | 24 | 1,140 | 17 | 12 | <0.83 | <0.84 | | | |
| | | | | | 2017/11/15 | Sunny | 11.9 | 0.5 | 13.2 | 0.0 | Grayish yellow green | None | 85 | 2,510 | 3 | 2.5 | <0.70 | <0.69 | | | |
| | | | | | 2018/1/22 | Cloudy | 0.2 | 0.5 | 7.2 | 0.0 | Yellow greenish pale gray | None | >100 | 4,430 | 1 | 1.3 | <0.60 | <0.84 | | | |
| | 24 | Teizan-unga Canal (Kyu-sunaoshi River) | Teizan Bridge | Shichigahama Town/Tagajo City | 2017/5/21 | Sunny | 29.3 | 1.5 | 21.8 | 0.0 | Grayish yellow green | None | 86 | 3,030 | 3 | 1.9 | <0.57 | <0.63 | | | |
| | | | | | 2017/8/22 | Cloudy | 26.1 | 0.6 | 24.8 | 0.0 | Grayish yellow green | None | 66 | 3,500 | 5 | 3.0 | <0.79 | <0.69 | | | |
| | | | | | 2017/11/15 | Sunny | 14.2 | 1.2 | 15.5 | 0.0 | Grayish greenish yellow | None | 55 | 3,920 | 6 | 2.2 | <0.69 | <0.84 | | | |
| | | | | | 2018/1/22 | Cloudy | 1.0 | 0.8 | 4.5 | 0.0 | Light grayish yellow green | None | >100 | 4,380 | 2 | 2.1 | <0.79 | <0.80 | | | |
| | 25 | Nanakita River System | Nanakita River | Sendai City | 2017/5/21 | Sunny | 26.6 | 0.5 | 22.1 | 0.0 | Grayish yellow green | None | 50 | 16.7 | 10 | 7.0 | <0.87 | <0.69 | | | |
| 2017/8/22 | | | | | Cloudy | 28.2 | 0.6 | 22.0 | 0.0 | Grayish yellow green | None | 31 | 16.3 | 26 | 19 | <0.59 | <0.80 | | | | |
| 2017/11/17 | | | | | Cloudy | 7.1 | 0.4 | 8.1 | 0.0 | Grayish yellow green | None | 88 | 18.5 | 4 | 3.1 | <0.85 | <0.96 | | | | |
| 2018/1/21 | | | | | Sunny | 1.5 | 0.4 | 3.2 | 0.0 | Light grayish yellow | None | >100 | 17.5 | 2 | 2.2 | <0.70 | <0.81 | | | | |
| 26 | Nanakita River System | Fukuda-ohashi Bridge | Sendai City | 2017/5/24 | Cloudy | 22.2 | 0.3 | 21.7 | 0.0 | Grayish yellow green | None | 43 | 54.6 | 16 | 9.7 | <0.60 | <0.69 | | | | |
| | | | | 2017/8/23 | Sunny | 33.8 | 0.7 | 25.3 | 0.0 | Light grayish yellow | None | 28 | 19.9 | 22 | 9.8 | <0.71 | <0.75 | | | | |
| | | | | 2017/11/16 | Sunny | 9.5 | 0.4 | 11.4 | 0.0 | Grayish yellow green | None | 45 | 243 | 7 | 1.6 | <0.91 | <0.92 | | | | |
| | | | | 2018/1/21 | Cloudy | 5.2 | 0.3 | 4.0 | 0.0 | Grayish greenish yellow | None | 67 | 35.8 | 6 | 5.1 | <0.61 | <0.48 | | | | |

Miyagi River (Water)3/4

| No. | Location | | | Sampling Date | Weather | Air temperature (°C) | Water depth (m) | Water | | | | | | | | | | Remarks | | |
|----------------------------|------------|-----------------------|-----------------------|-----------------|-----------------------|-------------------------|-----------------|------------------------|--------------------|-------|------|-------------------------------|--------------------------------|-----------|------------------------------|--------|--------|---------|-------|-------|
| | Water area | Location | Municipality | | | | | General items | | | | | | | Activity concentration(Bq/L) | | | | | |
| | | | | | | | | Water temperature (°C) | Sampling depth (m) | Color | Odor | Transparency (cm) | Electrical conductivity (mS/m) | SS (mg/L) | Turbidity (FNU) | Cs-134 | Cs-137 | | | |
| R i v e r s | 27 | Nanakita River System | Umeda River | Fukuda Bridge | Sendai City | 2017/5/24 | Cloudy | 22.6 | 0.8 | 21.5 | 0.0 | Grayish greenish yellow | None | 22 | 22.6 | 28 | 23 | <0.76 | <0.80 | |
| | | | | | | 2017/8/23 | Sunny | 30.9 | 0.5 | 25.8 | 0.0 | Grayish greenish yellow | None | 45 | 18.4 | 11 | 4.3 | <0.66 | <0.80 | |
| | | | | | | 2017/11/16 | Sunny | 9.8 | 0.5 | 9.6 | 0.0 | Dark grayish greenish yellow | None | 83 | 67.3 | 4 | 2.3 | <0.60 | <0.84 | |
| | | 28 | Nanakita River System | Nanakita River | Takasago Bridge | Sendai City | 2018/1/21 | Cloudy | 5.3 | 0.5 | 3.7 | 0.0 | Dark grayish greenish yellow | None | 46 | 26.4 | 10 | 7.0 | <0.89 | <0.80 |
| | | | | | | | 2017/5/24 | Cloudy | 20.0 | 0.5 | 20.8 | 0.0 | Grayish yellow green | None | 44 | 355 | 10 | 8.4 | <0.73 | <0.75 |
| | | | | | | | 2017/8/23 | Sunny | 28.3 | 0.8 | 23.1 | 0.0 | Grayish yellow green | None | 56 | 493 | 6 | 2.0 | <0.69 | <0.75 |
| | 29 | | Natori River System | Natori River | Yuriage-ohashi Bridge | Sendai City/Natori City | 2017/11/16 | Sunny | 10.3 | 0.3 | 11.2 | 0.0 | Grayish greenish yellow | None | 78 | 1,430 | 3 | 1.3 | <0.61 | <0.75 |
| | | | | | | | 2018/1/21 | Cloudy | 4.9 | 0.4 | 4.0 | 0.0 | Grayish greenish yellow | None | 79 | 687 | 3 | 2.8 | <0.80 | <0.69 |
| | | | | | | | 2017/5/27 | Cloudy | 19.0 | 0.3 | 17.5 | 0.0 | Grayish greenish yellow | None | 90 | 492 | 6 | 3.6 | <0.67 | <0.63 |
| | | 30 | Natori River System | Natori River | Yuriage-ohashi Bridge | Sendai City/Natori City | 2017/8/23 | Sunny | 32.1 | 0.6 | 23.7 | 0.0 | Grayish yellow | None | 64 | 52.2 | 5 | 2.5 | <0.66 | <0.55 |
| | | | | | | | 2017/11/16 | Sunny | 11.1 | 0.6 | 11.6 | 0.0 | Grayish yellow green | None | 93 | 1,150 | 3 | 1.5 | <0.61 | <0.92 |
| | | | | | | | 2018/1/20 | Sunny | 1.8 | 0.3 | 4.0 | 0.0 | Light grayish yellow | None | 83 | 348 | 3 | 2.4 | <0.61 | <0.66 |
| | 31 | | Natori River System | Masuda River | Yakushi Bridge | Natori City | 2017/5/27 | Cloudy | 19.2 | 0.3 | 16.2 | 0.0 | Yellowish white | None | >100 | 10.0 | <1 | 0.9 | <0.60 | <0.75 |
| | | | | | | | 2017/8/24 | Cloudy | 26.7 | 0.5 | 19.7 | 0.0 | Greenish yellowish pale gray | None | >100 | 8.8 | 1 | 1.2 | <0.71 | <0.55 |
| | | | | | | | 2017/11/17 | Sunny | 9.7 | 0.4 | 8.1 | 0.0 | Greenish yellowish pale gray | None | >100 | 9.7 | <1 | 0.3 | <0.76 | <0.96 |
| | | 32 | Natori River System | Masuda River | Koyama Bridge | Natori City | 2018/1/19 | Sunny | 7.0 | 0.4 | 4.4 | 0.0 | Yellow greenish pale gray | None | >100 | 9.8 | 1 | 1.2 | <0.67 | <0.75 |
| | | | | | | | 2017/5/27 | Cloudy | 17.3 | 0.7 | 16.5 | 0.0 | Grayish yellow green | None | 50 | 18.7 | 11 | 8.4 | <0.70 | <0.88 |
| | | | | | | | 2017/8/26 | Rain | 22.5 | 0.7 | 20.4 | 0.0 | Grayish yellow | None | 21 | 18.0 | 64 | 53 | <0.66 | <0.69 |
| | 33 | | Abukuma River System | Abukuma River | Hadeniwa Bridge | Marumori Town | 2017/11/17 | Sunny | 10.2 | 0.3 | 9.6 | 0.0 | Grayish yellow | None | 48 | 25.8 | 8 | 11 | <0.75 | <0.80 |
| | | | | | | | 2018/1/20 | Sunny | -1.0 | 0.4 | 2.5 | 0.0 | Dark grayish yellow | None | 17 | 9.6 | 41 | 36 | <0.70 | <0.63 |
| | | | | | | | 2017/5/27 | Rain | 16.5 | 1.0 | 16.7 | 0.0 | Grayish yellow | None | 33 | 32.4 | 16 | 13 | <0.68 | <0.75 |
| | | 34 | Abukuma River System | Abukuma River | Marumori Bridge | Marumori Town | 2017/8/26 | Sunny | 25.2 | 1.0 | 22.8 | 0.0 | Grayish yellow | None | 18 | 10.6 | 45 | 47 | <0.59 | <0.88 |
| | | | | | | | 2017/11/17 | Sunny | 11.4 | 1.5 | 10.6 | 0.0 | Grayish yellow green | None | 74 | 779 | 4 | 2.3 | <0.61 | <0.75 |
| | | | | | | | 2018/1/20 | Sunny | 6.2 | 0.9 | 4.9 | 0.0 | Grayish yellow | None | 23 | 56.8 | 21 | 23 | <0.61 | <0.69 |
| | 33 | | Abukuma River System | Abukuma River | Hadeniwa Bridge | Marumori Town | 2017/4/27 | Cloudy | 16.4 | 0.6 | 13.4 | 0.0 | Dark grayish yellowish green | None | 77 | 17.2 | 7 | 3.2 | <0.74 | <0.80 |
| | | | | | | | 2017/5/28 | Sunny | 20.9 | 0.5 | 18.1 | 0.0 | Light grayish yellow green | None | 51 | 16.7 | 11 | 6.3 | <0.76 | <0.80 |
| | | | | | | | 2017/6/12 | Sunny | 21.2 | 1.2 | 19.7 | 0.0 | Light grayish yellow green | None | 70 | 22.1 | 7 | 3.4 | <0.74 | <0.75 |
| 34 | | Abukuma River System | Abukuma River | Marumori Bridge | Marumori Town | 2017/7/11 | Sunny | 32.1 | 0.8 | 27.1 | 0.0 | Grayish yellow green | None | 78 | 21.3 | 3 | 2.0 | <0.68 | <0.55 | |
| | | | | | | 2017/8/30 | Rain | 20.7 | 0.6 | 22.4 | 0.0 | Grayish yellow green | None | 68 | 21.1 | 5 | 3.9 | <0.81 | <0.69 | |
| | | | | | | 2017/9/13 | Sunny | 30.3 | 0.6 | 22.1 | 0.0 | Grayish yellow green | None | 82 | 18.9 | 5 | 3.8 | <0.80 | <0.80 | |
| | 34 | Abukuma River System | Abukuma River | Marumori Bridge | Marumori Town | 2017/10/16 | Cloudy | 15.1 | 0.3 | 15.1 | 0.0 | Light grayish greenish yellow | None | 78 | 19.8 | 6 | 3.7 | <0.65 | <0.63 | |
| | | | | | | 2017/12/12 | Snow | 1.4 | 0.4 | 5.7 | 0.0 | Light grayish yellow | None | >100 | 22.3 | 3 | 2.0 | <0.75 | <0.92 | |
| | | | | | | 2018/1/16 | Sunny | 10.0 | 0.4 | 4.0 | 0.0 | Light grayish greenish yellow | None | >100 | 22.0 | 2 | 2.1 | <0.68 | <0.75 | |
| 34 | | Abukuma River System | Abukuma River | Marumori Bridge | Marumori Town | 2018/2/8 | Sunny | 3.2 | 0.4 | 4.3 | 0.0 | Light grayish greenish yellow | None | >100 | 23.7 | 2 | 2.1 | <0.51 | <0.80 | |
| | | | | | | 2017/4/27 | Cloudy | 16.4 | 0.3 | 14.2 | 0.0 | Grayish yellow green | None | 90 | 16.7 | 6 | 2.9 | <0.76 | <0.69 | |
| | | | | | | 2017/5/28 | Sunny | 20.9 | 0.5 | 18.9 | 0.0 | Light grayish yellow green | None | 66 | 18.8 | 8 | 4.2 | <0.57 | <0.75 | |
| | 34 | Abukuma River System | Abukuma River | Marumori Bridge | Marumori Town | 2017/6/12 | Sunny | 19.6 | 0.5 | 20.3 | 0.0 | Light grayish yellow green | None | 95 | 22.3 | 5 | 2.7 | <0.71 | <0.55 | |
| | | | | | | 2017/7/11 | Sunny | 30.5 | 0.3 | 29.3 | 0.0 | Light grayish yellow | None | >100 | 20.9 | 4 | 2.2 | <0.61 | <0.70 | |
| | | | | | | 2017/8/30 | Rain | 22.0 | 0.4 | 22.8 | 0.0 | Light grayish yellow green | None | 84 | 19.4 | 4 | 2.5 | <0.79 | <0.84 | |
| 34 | | Abukuma River System | Abukuma River | Marumori Bridge | Marumori Town | 2017/9/13 | Sunny | 27.0 | 0.3 | 22.6 | 0.0 | Grayish yellow green | None | >100 | 19.1 | 3 | 2.1 | <0.76 | <0.69 | |
| | | | | | | 2017/10/16 | Cloudy | 12.6 | 0.7 | 15.0 | 0.0 | Light grayish greenish yellow | None | 82 | 19.8 | 4 | 2.6 | <0.73 | <0.80 | |
| | | | | | | 2017/12/12 | Snow | 1.0 | 0.3 | 6.4 | 0.0 | Light grayish yellow | None | >100 | 21.5 | 3 | 1.8 | <0.48 | <0.92 | |
| | 34 | Abukuma River System | Abukuma River | Marumori Bridge | Marumori Town | 2018/1/16 | Sunny | 11.1 | 0.3 | 6.2 | 0.0 | Light grayish yellow | None | >100 | 21.6 | 2 | 1.5 | <0.75 | <0.84 | |
| | | | | | | 2018/2/8 | Sunny | 4.5 | 0.3 | 4.8 | 0.0 | Light grayish greenish yellow | None | >100 | 22.8 | 2 | 2.0 | <0.61 | <0.84 | |

Miyagi River (Water) 4/4

| No. | Location | | | Sampling Date | Weather | Air temperature (°C) | Water depth (m) | Water | | | | | | | | | | Remarks |
|-----|--|---|---------------------------|---------------|---------|----------------------|-----------------|------------------------|--------------------|-------------------------------|--------------|-------------------|--------------------------------|-----------|------------------------------|--------|--------|---------|
| | Water area | Location | Municipality | | | | | General items | | | | | | | Activity concentration(Bq/L) | | | |
| | | | | | | | | Water temperature (°C) | Sampling depth (m) | Color | Odor | Transparency (cm) | Electrical conductivity (mS/m) | SS (mg/L) | Turbidity (FNU) | Cs-134 | Cs-137 | |
| 35 | Abukuma River | Higashine Bridge | Kakuda City | 2017/4/27 | Cloudy | 13.5 | 0.4 | 13.8 | 0.0 | Grayish yellow green | None | 68 | 16.2 | 9 | 3.6 | <0.60 | <0.70 | |
| | | | | 2017/6/11 | Sunny | 19.6 | 1.0 | 19.7 | 0.0 | Grayish greenish yellow | None | 70 | 22.1 | 6 | 3.3 | <0.76 | <0.55 | |
| | | | | 2017/8/28 | Cloudy | 22.9 | 0.5 | 24.3 | 0.0 | Grayish yellow green | None | 58 | 17.9 | 9 | 6.2 | <0.62 | <0.80 | |
| | | | | 2017/10/16 | Cloudy | 11.4 | 0.5 | 15.2 | 0.0 | Greenish yellowish white | None | 84 | 19.3 | 6 | 3.3 | <0.75 | <0.80 | |
| | | | | 2017/12/12 | Snow | 4.8 | 0.3 | 6.5 | 0.0 | Grayish greenish yellow | None | >100 | 21.2 | 2 | 1.8 | <0.86 | <0.80 | |
| 36 | Shiroishi River | Before the confluence with Kawaharagoza (Sunaoshi Bridge) | Shiroishi City | 2018/1/17 | Cloudy | 4.2 | 0.5 | 4.2 | 0.0 | Light grayish greenish yellow | None | >100 | 22.2 | 2 | 1.8 | <0.80 | <0.60 | |
| | | | | 2017/4/25 | Sunny | 18.7 | 0.8 | 8.7 | 0.0 | Grayish yellow green | None | 55 | 6.2 | 4 | 7.6 | <0.69 | <0.69 | |
| | | | | 2017/7/12 | Cloudy | 29.6 | 0.6 | 20.2 | 0.0 | Light grayish yellow green | None | >100 | 7.3 | 1 | 0.9 | <0.48 | <0.92 | |
| | | | | 2017/11/20 | Cloudy | 4.6 | 0.5 | 9.8 | 0.0 | Light grayish yellow green | None | >100 | 6.8 | 2 | 1.9 | <0.78 | <0.92 | |
| | | | | 2018/1/16 | Sunny | 8.8 | 0.4 | 3.4 | 0.0 | Light grayish yellow green | None | >100 | 7.5 | 1 | 1.3 | <0.78 | <0.75 | |
| 37 | Saikawa River | Etsubo Bridge | Shiroishi City | 2017/4/25 | Sunny | 21.4 | 0.4 | 12.5 | 0.0 | Grayish yellow green | None | 95 | 12.4 | 5 | 5.1 | <0.55 | <0.66 | |
| | | | | 2017/7/11 | Sunny | 36.3 | 0.4 | 27.4 | 0.0 | Grayish yellow green | None | 67 | 11.2 | 8 | 6.6 | <0.70 | <0.75 | |
| | | | | 2017/11/19 | Cloudy | 6.3 | 0.5 | 8.9 | 0.0 | Grayish yellow green | None | >100 | 11.1 | 2 | 2.1 | <0.68 | <0.69 | |
| | | | | 2018/1/17 | Rain | 5.6 | 0.3 | 4.4 | 0.0 | Light grayish yellow | None | >100 | 15.7 | 3 | 2.2 | <0.51 | <0.54 | |
| 38 | Matsukawa River | Miya-ohashi Bridge | Zao Town | 2017/4/25 | Sunny | 21.9 | 0.5 | 14.5 | 0.0 | Light grayish greenish yellow | None | >100 | 16.4 | 2 | 1.9 | <0.71 | <0.75 | |
| | | | | 2017/7/12 | Cloudy | 29.5 | 0.4 | 21.8 | 0.0 | Light grayish greenish yellow | None | >100 | 24.6 | 2 | 1.5 | <0.90 | <0.63 | |
| | | | | 2017/11/19 | Cloudy | 6.7 | 0.7 | 7.9 | 0.0 | Greenish yellowish pale gray | None | >100 | 18.1 | 3 | 2.0 | <0.60 | <0.69 | |
| | | | | 2018/1/17 | Rain | 6.3 | 0.3 | 5.6 | 0.0 | Light grayish yellow | None | >100 | 22.7 | 2 | 1.6 | <0.70 | <0.75 | |
| 39 | Arakawa River | Niragami Bridge | Murata Town /Ogawara Town | 2017/5/26 | Cloudy | 18.0 | 0.5 | 17.0 | 0.0 | Grayish yellow | None | 28 | 19.1 | 25 | 16 | <0.83 | <0.69 | |
| | | | | 2017/8/28 | Cloudy | 28.4 | 0.7 | 21.5 | 0.0 | Grayish greenish yellow | None | 48 | 16.4 | 14 | 8.4 | <0.72 | <0.69 | |
| | | | | 2017/11/19 | Sunny | 6.0 | 0.5 | 6.8 | 0.0 | Grayish yellow | None | >100 | 21.3 | 3 | 3.0 | <0.68 | <0.96 | |
| | | | | 2018/1/18 | Sunny | 11.7 | 0.4 | 6.3 | 0.0 | Grayish yellow | None | 24 | 21.1 | 19 | 17 | <0.74 | <0.84 | |
| 40 | Shiroishi River | Shirahata Bridge | Shibata Town | 2017/5/26 | Cloudy | 17.5 | 0.5 | 15.6 | 0.0 | Grayish yellow green | None | 42 | 13.4 | 8 | 6.2 | <0.65 | <0.63 | |
| | | | | 2017/8/27 | Sunny | 27.7 | 1.0 | 20.1 | 0.0 | Grayish yellow | None | 45 | 10.9 | 14 | 6.8 | <0.71 | <0.84 | |
| | | | | 2017/11/19 | Sunny | 5.7 | 0.4 | 8.7 | 0.0 | Light grayish greenish yellow | None | >100 | 13.2 | 3 | 2.5 | <0.79 | <0.96 | |
| | | | | 2018/1/18 | Sunny | 11.0 | 0.5 | 4.8 | 0.0 | Grayish yellow | None | 18 | 14.5 | 26 | 23 | <0.57 | <0.75 | |
| 41 | Tsukinoki-ohashi Bridge | Kakuda City /Shibata Town | Kakuda City /Shibata Town | 2017/4/26 | Sunny | 17.3 | 0.6 | 15.2 | 0.0 | Dark grayish greenish yellow | None | 52 | 12.3 | 16 | 9.1 | <0.67 | <0.92 | |
| | | | | 2017/6/11 | Sunny | 23.0 | 0.3 | 19.9 | 0.0 | Grayish greenish yellow | None | 28 | 15.8 | 16 | 9.7 | <0.82 | <0.88 | |
| | | | | 2017/8/27 | Sunny | 23.6 | 0.8 | 20.8 | 0.0 | Grayish greenish yellow | None | 45 | 10.9 | 15 | 8.4 | <0.75 | <0.69 | |
| | | | | 2017/10/14 | Cloudy | 14.5 | 0.6 | 15.2 | 0.0 | Grayish yellow green | None | 53 | 14.9 | 11 | 7.0 | <0.72 | <0.88 | |
| | | | | 2017/12/13 | Sunny | 3.6 | 0.5 | 5.5 | 0.0 | Light grayish greenish yellow | None | >100 | 16.0 | 2 | 1.5 | <0.66 | <0.63 | |
| | | | | 2018/1/18 | Sunny | 6.9 | 0.5 | 5.0 | 0.0 | Grayish yellow | None | 18 | 15.9 | 28 | 25 | <0.76 | <0.75 | |
| | | | | 2017/4/26 | Cloudy | 20.6 | 0.8 | 14.5 | 0.0 | Grayish yellowish green | None | 69 | 15.0 | 8 | 6.6 | <0.74 | <0.63 | |
| 42 | Abukuma River | Abukuma-ohashi Bridge (Iwanuma) | Iwanuma City/Watari Town | 2017/5/26 | Cloudy | 17.4 | 0.7 | 18.0 | 0.0 | Grayish yellow green | None | 49 | 16.7 | 10 | 6.9 | <0.78 | <0.88 | |
| | | | | 2017/6/11 | Sunny | 26.8 | 1.2 | 20.9 | 0.0 | Grayish yellow green | None | 53 | 20.7 | 6 | 4.0 | <0.61 | <0.75 | |
| | | | | 2017/7/11 | Sunny | 30.9 | 0.8 | 28.3 | 0.0 | Grayish yellow green | None | 65 | 19.5 | 4 | 2.6 | <0.74 | <0.84 | |
| | | | | 2017/8/26 | Sunny | 30.6 | 0.6 | 24.5 | 0.0 | Grayish yellow | Faint sewage | 35 | 15.5 | 17 | 11 | <0.80 | <0.75 | |
| | | | | 2017/9/13 | Sunny | 25.9 | 0.7 | 20.7 | 0.0 | Grayish yellow green | None | 64 | 17.7 | 6 | 3.6 | <0.67 | <0.84 | |
| | | | | 2017/10/14 | Cloudy | 14.8 | 0.4 | 16.5 | 0.0 | Light grayish yellow green | None | 73 | 20.2 | 6 | 3.6 | <0.84 | <0.55 | |
| | | | | 2017/12/13 | Sunny | 3.0 | 0.4 | 5.5 | 0.0 | Grayish yellow green | None | >100 | 19.7 | 2 | 1.8 | <0.83 | <0.84 | |
| | | | | 2018/1/19 | Sunny | 5.9 | 0.4 | 4.6 | 0.0 | Grayish yellow | None | 43 | 17.4 | 11 | 8.4 | <0.66 | <0.84 | |
| | | | | 2018/2/8 | Sunny | 1.2 | 0.4 | 3.2 | 0.0 | Grayish yellow green | None | >100 | 19.3 | 2 | 1.8 | <0.88 | <0.69 | |
| | | | | 2017/4/26 | Cloudy | 18.4 | 0.8 | 16.7 | 0.0 | Grayish yellow green | None | >100 | 22.4 | 4 | 4.4 | <0.67 | <0.84 | |
| 43 | Offshore of Abukuma River Estuary (Watari-ohashi Bridge) | | | 2017/6/11 | Sunny | 22.7 | 0.8 | 21.5 | 0.0 | Grayish yellow green | None | 65 | 43.6 | 5 | 3.3 | <0.57 | <0.69 | |
| | | | | 2017/8/27 | Sunny | 27.3 | 1.1 | 24.1 | 0.0 | Grayish yellow | None | 37 | 20.4 | 10 | 8.3 | <0.68 | <0.84 | |
| | | | | 2017/10/14 | Cloudy | 15.7 | 0.8 | 16.5 | 0.0 | Light grayish greenish yellow | Faint earth | 58 | 98.3 | 7 | 4.2 | <0.54 | <0.80 | |
| | | | | 2017/12/13 | Sunny | 4.1 | 0.9 | 6.0 | 0.0 | Grayish yellow green | None | >100 | 64.7 | 3 | 1.7 | <0.75 | <0.84 | |
| | | | | 2018/1/19 | Sunny | 6.9 | 0.5 | 4.9 | 0.0 | Grayish yellow | None | 25 | 15.4 | 22 | 17 | <0.79 | <0.88 | |

Miyagi River (Surrounding Environment) 1/4

| No. | Location | | | Sampling Date | Weather | Air temperature (°C) | Surrounding Environment(Soil,Air dose) | | | | | | | | | | | | Remarks | | | | |
|------------|---------------------|-----------------------------|-------------------------|---------------|-------------|----------------------|--|-------------|----------|-------------------------------------|----------------|-------------|------------------|-------------------------|-------------|----------|-------------------------------------|------------|-------------|------------------|--|-----|--|
| | Water area | Location | Municipality | | | | Left bank | | | | | | Right bank | | | | | | | | | | |
| | | | | | | | Color | Odor | Property | Activity concentration [Bq/kg(dry)] | | | Air Dose (μSv/h) | Color | Odor | Property | Activity concentration [Bq/kg(dry)] | | | Air Dose (μSv/h) | | | |
| | | | | | | | | | | Radioactive cesium | | | | | | | Radioactive cesium | | | | | | |
| Cs-134 | Cs-137 | Total | Cs-134 | Cs-137 | Total | Cs-134 | Cs-137 | Total | | | | | | | | | | | | | | | |
| 1 | Shishiori River | Kinzan Bridge | Kesennuma City | 2017/5/11 | Sunny | 16.0 | Blackish brown | Faint earth | Loamy | 87 | 550 | 637 | 0.06 | Dark brown | Faint earth | Loamy | 100 | 630 | 730 | 0.06 | | | |
| | | | | 2017/8/8 | Rain | 22.3 | Dark brown | Faint earth | Loamy | 21 | 170 | 191 | 0.06 | Dull yellowish brown | Faint earth | Loamy | 12 | 120 | 132 | 0.07 | | | |
| 2 | Shishiori River | Namiita Bridge | Kesennuma City | 2017/11/9 | Sunny | 13.7 | Blackish brown | Faint earth | Loamy | 24 | 300 | 324 | 0.06 | Dark brown | Faint earth | Loamy | 38 | 310 | 348 | 0.06 | | | |
| | | | | 2018/1/29 | Snow | -0.2 | Blackish brown | Faint earth | Loamy | 130 | 1,000 | 1,130 | 0.05 | Dark brown | Faint earth | Loamy | 37 | 270 | 307 | 0.04 | | | |
| 3 | Okawa River | Tateyama-ohashi Bridge | Kesennuma City | 2017/5/12 | Cloudy | 15.6 | Dark brown | Faint earth | Loamy | 42 | 260 | 302 | 0.06 | Dark brown | Faint earth | Loamy | 32 | 230 | 262 | 0.04 | | | |
| | | | | 2017/8/10 | Rain | 21.2 | Blackish brown | Faint earth | Loamy | 9.0 | 87 | 96.0 | 0.06 | Blackish brown | Faint earth | Loamy | 26 | 220 | 246 | 0.05 | | | |
| | | | | 2017/11/10 | Sunny | 8.4 | Dark brown | Faint earth | Loamy | 11 | 82 | 93 | 0.04 | Blackish brown | Faint earth | Loamy | 11 | 140 | 151 | 0.05 | | | |
| | | | | 2018/1/30 | Sunny | -2.0 | Dark brown | Faint earth | Loamy | <6.5 | 47 | 47 | 0.04 | Blackish brown | Faint earth | Loamy | 27 | 210 | 237 | 0.05 | | | |
| | | | | 2017/5/12 | Cloudy | 18.4 | Dark brown | Faint earth | Sandy | 16 | 110 | 126 | 0.06 | Dull yellowish brown | Faint earth | Loamy | 26 | 200 | 226 | 0.06 | | | |
| | | | | 2017/8/9 | Cloudy | 23.4 | Blackish brown | Faint earth | Loamy | 28 | 230 | 258 | 0.07 | Grayish yellowish brown | Faint earth | Loamy | 17 | 150 | 167 | 0.05 | | | |
| | | | | 2017/11/11 | Sunny | 14.3 | Dark brown | Faint earth | Loamy | 14 | 84 | 98 | 0.06 | Dark brown | Faint earth | Loamy | 21 | 160 | 181 | 0.06 | | | |
| | | | | 2018/1/29 | Sunny | 1.6 | Grayish yellowish brown | Faint earth | Sandy | <5.7 | 52 | 52 | 0.05 | Dark brown | Faint earth | Loamy | 21 | 150 | 171 | 0.05 | | | |
| | | | | 2017/5/12 | Sunny | 16.8 | Dull yellowish brown | Faint earth | Loamy | 32 | 260 | 292 | 0.05 | Blackish brown | Faint earth | Loamy | 67 | 480 | 547 | 0.05 | | | |
| | | | | 2017/8/9 | Cloudy | 26.0 | Blackish brown | Faint earth | Loamy | 34 | 230 | 264 | 0.06 | Blackish brown | Faint earth | Loamy | 13 | 160 | 173 | 0.06 | | | |
| | | | | 4 | Okawa River | Kamiyama Bridge | Kesennuma City | 2017/11/10 | Sunny | 15.1 | Blackish brown | Faint earth | Loamy | 32 | 320 | 352 | 0.06 | Dark brown | Faint earth | Loamy | 30 | 220 | 250 |
| 2018/1/29 | Sunny | 2.4 | Grayish yellowish brown | | | | | Faint earth | Loamy | 15 | 150 | 165 | 0.05 | Blackish brown | Faint earth | Loamy | 37 | 320 | 357 | 0.05 | | | |
| 2017/5/12 | Sunny | 17.1 | Brown | | | | | Faint earth | Loamy | 18 | 120 | 138 | 0.05 | Dark brown | Faint earth | Loamy | 11 | 78 | 89 | 0.04 | | | |
| 2017/8/10 | Cloudy | 21.3 | Dull yellowish brown | | | | | Faint earth | Loamy | 11 | 110 | 121 | 0.04 | Dark brown | Faint earth | Loamy | 21 | 160 | 181 | 0.04 | | | |
| 2017/11/10 | Sunny | 16.5 | Dark brown | | | | | Faint earth | Loamy | 23 | 190 | 213 | 0.04 | Dark brown | Faint earth | Loamy | 11 | 150 | 161 | 0.04 | | | |
| 5 | Okawa River Estuary | | Kesennuma City | 2018/1/30 | Snow | -0.7 | Dark brown | Faint earth | Loamy | 8.5 | 89 | 97.5 | 0.04 | Dark brown | Faint earth | Loamy | 10 | 110 | 120 | 0.04 | | | |
| | | | | 2017/5/10 | Rain | 13.7 | Dull yellowish brown | Faint earth | Loamy | 35 | 180 | 215 | 0.04 | Dull yellowish brown | Faint earth | Loamy | <4.2 | 9.5 | 9.5 | 0.05 | | | |
| | | | | 2017/8/9 | Rain | 23.8 | - | - | - | - | - | - | - | - | - | - | - | - | - | - | - | - | (Left bank)Unable to collect samples due to construction |
| | | | | 2017/11/14 | Cloudy | 13.8 | Blackish brown | Faint earth | Loamy | <9.9 | 51 | 51 | 0.05 | - | - | - | - | - | - | - | - | - | (Right bank)Unable to collect samples due to construction |
| 6 | Omoze River | Ozaki Bridge | Kesennuma City | 2018/1/30 | Cloudy | -0.8 | Blackish brown | Faint earth | Loamy | 5.4 | 54 | 59.4 | 0.04 | - | - | - | - | - | - | - | (Right bank)Unable to collect samples due to construction | | |
| | | | | 2017/5/9 | Sunny | 23.8 | Brown | Faint earth | Loamy | 97 | 710 | 807 | 0.09 | Brown | Faint earth | Loamy | 70 | 530 | 600 | 0.09 | | | |
| | | | | 2017/8/4 | Cloudy | 22.2 | Blackish brown | Faint earth | Loamy | 170 | 1,000 | 1,170 | 0.08 | Dull yellowish brown | Faint earth | Sandy | 55 | 440 | 495 | 0.08 | | | |
| | | | | 2017/11/4 | Cloudy | 13.9 | Dark brown | Faint earth | Loamy | 86 | 620 | 706 | 0.07 | Blackish brown | Faint earth | Loamy | 80 | 650 | 730 | 0.08 | | | |
| | | | | 2018/1/28 | Cloudy | 0.3 | Blackish brown | Faint earth | Loamy | 83 | 830 | 913 | 0.06 | Dark brown | Faint earth | Loamy | 55 | 460 | 515 | 0.06 | | | |
| | | | | 2017/5/8 | Sunny | 24.1 | Brown | Faint earth | Loamy | 290 | 1,900 | 2,190 | 0.11 | Dark brown | Faint earth | Loamy | 120 | 780 | 900 | 0.10 | | | |
| | | | | 2017/8/4 | Cloudy | 21.1 | Brown | Faint earth | Loamy | 190 | 1,100 | 1,290 | 0.08 | Dull yellowish brown | Faint earth | Loamy | 92 | 560 | 652 | 0.08 | | | |
| | | | | 2017/11/7 | Sunny | 14.9 | Dull yellowish brown | Faint earth | Loamy | 120 | 910 | 1,030 | 0.08 | Dull yellowish brown | Faint earth | Loamy | 94 | 690 | 784 | 0.09 | | | |
| | | | | 2018/1/28 | Cloudy | -0.3 | Dull yellowish brown | Faint earth | Loamy | 68 | 640 | 708 | 0.07 | Dark brown | Faint earth | Loamy | 57 | 440 | 497 | 0.06 | | | |
| | | | | 2017/5/14 | Cloudy | 12.6 | Dark brown | Faint earth | Loamy | 69 | 580 | 649 | 0.06 | Blackish brown | Faint earth | Loamy | 86 | 690 | 776 | 0.05 | | | |
| | | | | 2017/8/11 | Cloudy | 22.8 | Grayish yellowish brown | Faint earth | Loamy | 22 | 140 | 162 | 0.04 | Blackish brown | Faint earth | Loamy | 41 | 300 | 341 | 0.05 | | | |
| | | | | 2017/11/12 | Cloudy | 10.5 | Dull yellowish brown | Faint earth | Loamy | 25 | 180 | 205 | 0.05 | Dark brown | Faint earth | Loamy | 25 | 260 | 285 | 0.06 | | | |
| | | | | 2018/1/25 | Sunny | -1.5 | Dull yellowish brown | Faint earth | Loamy | 14 | 170 | 184 | 0.04 | Blackish brown | Faint earth | Loamy | 18 | 170 | 188 | 0.04 | | | |
| | | | | 2017/5/8 | Sunny | 21.4 | Brown | Faint earth | Loamy | 200 | 1,400 | 1,600 | 0.08 | Brown | Faint earth | Loamy | 240 | 1,700 | 1,940 | 0.08 | | | |
| | | | | 2017/8/16 | Cloudy | 18.3 | Dark brown | Faint earth | Loamy | 80 | 550 | 630 | 0.08 | Grayish yellowish brown | Faint earth | Loamy | 72 | 520 | 592 | 0.07 | | | |
| | | | | 2017/11/6 | Sunny | 14.5 | Dark brown | Faint earth | Loamy | 120 | 950 | 1,070 | 0.06 | Dark brown | Faint earth | Loamy | 64 | 500 | 564 | 0.06 | | | |
| | | | | 2018/1/31 | Sunny | -0.8 | Brown | Faint earth | Loamy | 25 | 240 | 265 | 0.04 | - | - | - | - | - | - | - | - | - | (Right bank) Unable to collect samples due to snow on the ground |
| 7 | Arima River | Unanda Bridge | Kurihara City | 2017/5/18 | Sunny | 22.9 | Dull yellowish brown | Faint earth | Loamy | 100 | 700 | 800 | 0.07 | Blackish brown | Faint earth | Loamy | 150 | 1,100 | 1,250 | 0.07 | | | |
| | | | | 2017/8/15 | Rain | 21.1 | Dull yellowish brown | Faint earth | Loamy | 53 | 430 | 483 | 0.06 | Dark brown | Faint earth | Loamy | 65 | 510 | 575 | 0.05 | | | |
| | | | | 2017/11/6 | Sunny | 14.2 | Dark brown | Faint earth | Loamy | 55 | 490 | 545 | 0.07 | Blackish brown | Faint earth | Loamy | 80 | 700 | 780 | 0.07 | | | |
| | | | | 2018/1/27 | Snow | -3.7 | Brown | Faint earth | Loamy | 27 | 330 | 357 | 0.05 | Blackish brown | Faint earth | Loamy | 81 | 840 | 921 | 0.05 | | | |
| 8 | Kinryu River | Obata Bridge | Kurihara City | 2017/5/18 | Sunny | 23.6 | Blackish brown | Faint earth | Loamy | 230 | 1,600 | 1,830 | 0.08 | Dull yellowish brown | Faint earth | Loamy | 28 | 210 | 238 | 0.05 | | | |
| | | | | 2017/8/16 | Cloudy | 21.6 | Blackish brown | Faint earth | Loamy | 82 | 690 | 772 | 0.08 | Grayish yellowish brown | Faint earth | Sandy | <6.0 | 28 | 28 | 0.04 | | | |
| | | | | 2017/11/6 | Sunny | 12.7 | Blackish brown | Faint earth | Loamy | 87 | 710 | 797 | 0.08 | Dull yellowish brown | Faint earth | Sandy | <5.3 | 11 | 11 | 0.04 | | | |
| 9 | Kitakami River | Tome-ohashi Bridge (Tome) | Tome City | 2018/1/27 | Snow | -1.5 | Blackish brown | Faint earth | Loamy | 110 | 960 | 1,070 | 0.06 | - | - | - | - | - | - | - | (Right bank) Unable to collect samples due to snow on the ground | | |
| | | | | 2017/5/18 | Sunny | 17.1 | Blackish brown | Faint earth | Loamy | 50 | 370 | 420 | 0.05 | Dark brown | Faint earth | Loamy | 21 | 130 | 151 | 0.05 | | | |
| | | | | 2017/8/5 | Cloudy | 23.2 | Blackish brown | Faint earth | Loamy | 300 | 2,300 | 2,600 | 0.05 | Dull yellowish brown | Faint earth | Loamy | 16 | 110 | 126 | 0.05 | | | |
| | | | | 2017/11/7 | Sunny | 18.3 | Blackish brown | Faint earth | Loamy | 40 | 330 | 370 | 0.04 | Dark brown | Faint earth | Loamy | 10 | 73 | 83 | 0.04 | | | |
| 10 | Sanhasama River | Doman Bridge (Kurikoma Dam) | Kurihara City | 2018/1/28 | Cloudy | 0.4 | Black | Faint earth | Loamy | 33 | 370 | 403 | 0.05 | Grayish yellowish brown | Faint earth | Loamy | 11 | 100 | 111 | 0.04 | | | |

Miyagi River (Surrounding Environment) 2/4

| No. | Location | | | Sampling Date | Weather | Air temperature (°C) | Surrounding Environment (Soil, Air dose) | | | | | | | | | | | | | Remarks | |
|-----|--|----------------------------------|--------------------------------|---------------|---------|----------------------|--|-------------|----------|-------------------------------------|--------|-------|------------------|-------------------------|-------------|----------|-------------------------------------|--------|-------|---------|---|
| | Water area | Location | Municipality | | | | Left bank | | | | | | Right bank | | | | | | | | |
| | | | | | | | Color | Odor | Property | Activity concentration [Bq/kg(dry)] | | | Air Dose (μSv/h) | Color | Odor | Property | Activity concentration [Bq/kg(dry)] | | | | Air Dose (μSv/h) |
| | | | | | | | | | | Cs-134 | Cs-137 | Total | | | | | Cs-134 | Cs-137 | Total | | |
| 14 | Hasama River | Yamayoshida Bridge | Tome City | 2017/5/14 | Cloudy | 13.1 | Blackish brown | Faint earth | Loamy | 12 | 86 | 98 | 0.04 | Dark brown | Faint earth | Loamy | 65 | 360 | 425 | 0.04 | |
| | | | | 2017/8/11 | Cloudy | 22.9 | Dark brown | Faint earth | Loamy | 13 | 97 | 110 | 0.04 | Blackish brown | Faint earth | Loamy | 17 | 200 | 217 | 0.04 | |
| | | | | 2017/11/12 | Cloudy | 11.1 | Dull yellowish brown | Faint earth | Loamy | 13 | 75 | 88 | 0.05 | Blackish brown | Faint earth | Loamy | 26 | 210 | 236 | 0.04 | |
| | | | | 2018/1/25 | Sunny | -2.1 | Dark brown | Faint earth | Loamy | <6.2 | 62 | 62 | 0.04 | Blackish brown | Faint earth | Loamy | 35 | 230 | 265 | 0.04 | |
| 15 | Eai River | Todoroki Bridge (Todoroki) | Osaki City | 2017/5/16 | Cloudy | 16.2 | Dark brown | Faint earth | Loamy | 32 | 200 | 232 | 0.04 | Dark brown | Faint earth | Loamy | 61 | 360 | 421 | 0.05 | |
| | | | | 2017/8/17 | Cloudy | 22.7 | Dull yellowish brown | Faint earth | Loamy | 23 | 190 | 213 | 0.04 | Blackish brown | Faint earth | Loamy | 39 | 310 | 349 | 0.05 | |
| | | | | 2017/11/13 | Sunny | 13.6 | Dark brown | Faint earth | Loamy | 17 | 140 | 157 | 0.04 | Blackish brown | Faint earth | Loamy | 43 | 380 | 423 | 0.05 | |
| | | | | 2018/1/27 | Snow | -1.8 | - | - | - | - | - | - | - | - | - | - | - | - | - | - | Unable to collect samples due to snow on the ground |
| 16 | Eai River | Shimizu lock gate | Osaki City | 2017/5/17 | Sunny | 16.6 | Dark brown | Faint earth | Loamy | 100 | 800 | 900 | 0.05 | Blackish brown | Faint earth | Loamy | 99 | 600 | 699 | 0.06 | |
| | | | | 2017/8/14 | Cloudy | 22.2 | Dark brown | Faint earth | Loamy | 16 | 190 | 206 | 0.04 | Blackish brown | Faint earth | Loamy | 9.0 | 110 | 119.0 | 0.05 | |
| | | | | 2017/11/13 | Sunny | 14.7 | Blackish brown | Faint earth | Loamy | 53 | 430 | 483 | 0.04 | Dark brown | Faint earth | Loamy | 25 | 190 | 215 | 0.06 | |
| | | | | 2018/1/24 | Snow | -3.3 | Dark brown | Faint earth | Loamy | 42 | 460 | 502 | 0.05 | Blackish brown | Faint earth | Loamy | 23 | 150 | 173 | 0.04 | |
| 17 | Kitakami River System | In Furukawa District, Osaki City | Shinborisaihon, entrance | 2017/5/14 | Rain | 13.0 | Blackish brown | Faint earth | Loamy | 14 | 150 | 164 | 0.05 | Blackish brown | Faint earth | Loamy | 47 | 390 | 437 | 0.04 | |
| | | | | 2017/8/14 | Rain | 23.8 | Blackish brown | Faint earth | Loamy | 37 | 290 | 327 | 0.04 | Dark brown | Faint earth | Loamy | 9.0 | 120 | 129.0 | 0.05 | |
| | | | | 2017/11/13 | Sunny | 10.7 | Blackish brown | Faint earth | Loamy | 29 | 240 | 269 | 0.05 | Dark brown | Faint earth | Loamy | 18 | 150 | 168 | 0.04 | |
| | | | | 2018/1/24 | Snow | -2.7 | Blackish brown | Faint earth | Loamy | 30 | 290 | 320 | 0.04 | Blackish brown | Faint earth | Loamy | 10 | 110 | 120 | 0.04 | |
| 18 | Dekigawa River | Kogota Bridge | Misato Town | 2017/5/14 | Rain | 15.0 | Blackish brown | Faint earth | Loamy | 26 | 160 | 186 | 0.04 | Dark brown | Faint earth | Loamy | 14 | 140 | 154 | 0.05 | |
| | | | | 2017/8/14 | Cloudy | 23.8 | Dull yellowish brown | Faint earth | Loamy | 11 | 94 | 105 | 0.05 | Dark brown | Faint earth | Loamy | 11 | 120 | 131 | 0.04 | |
| | | | | 2017/11/13 | Sunny | 6.5 | Dull yellowish brown | Faint earth | Loamy | 13 | 110 | 123 | 0.05 | Blackish brown | Faint earth | Loamy | 20 | 180 | 200 | 0.04 | |
| | | | | 2018/1/24 | Snow | -2.6 | Dull yellowish brown | Faint earth | Sandy | 8.9 | 91 | 99.9 | 0.04 | Blackish brown | Faint earth | Loamy | 26 | 210 | 236 | 0.04 | |
| 19 | Eai River | Oikawa Bridge (Tandai) | Wakuya Town /Ishinomaki City | 2017/5/19 | Sunny | 21.1 | Dull yellowish brown | Faint earth | Sandy | 6.3 | 54 | 60.3 | 0.05 | Dark brown | Faint earth | Loamy | 13 | 64 | 77 | 0.05 | |
| | | | | 2017/8/12 | Cloudy | 24.1 | Dark brown | Faint earth | Sandy | 11 | 120 | 131 | 0.04 | Dull yellowish brown | Faint earth | Loamy | 11 | 74 | 85 | 0.04 | |
| | | | | 2017/11/12 | Cloudy | 11.9 | Dull reddish brown | Faint earth | Sandy | 8.6 | 69 | 77.6 | 0.04 | Dark brown | Faint earth | Loamy | 12 | 72 | 84 | 0.04 | |
| | | | | 2018/1/25 | Sunny | -4.1 | Dark brown | Faint earth | Sandy | 14 | 88 | 102 | 0.04 | Blackish brown | Faint earth | Loamy | <7.0 | 26 | 26 | 0.04 | |
| 20 | Kyu-Kitakami River | Kadonowaki | Ishinomaki City | 2017/5/19 | Sunny | 24.7 | Dull yellowish brown | Faint earth | Loamy | 5.9 | 53 | 58.9 | 0.05 | Dark brown | Faint earth | Loamy | 21 | 150 | 171 | 0.04 | |
| | | | | 2017/8/12 | Rain | 21.7 | Grayish yellowish brown | Faint earth | Loamy | <4.4 | 20 | 20 | 0.04 | Dull yellowish brown | Faint earth | Loamy | 10 | 110 | 120 | 0.04 | |
| | | | | 2017/11/14 | Cloudy | 14.3 | Brown | Faint earth | Loamy | <5.5 | 27 | 27 | 0.05 | Grayish yellowish brown | Faint earth | Loamy | 10 | 71 | 81 | 0.05 | |
| | | | | 2018/1/23 | Cloudy | 5.0 | Grayish yellowish brown | Faint earth | Loamy | <8.1 | 11 | 11 | 0.04 | Dull yellowish brown | Faint earth | Loamy | 11 | 98 | 109 | 0.04 | |
| 21 | Naruse River | Ono Bridge (Ono) | Higashi-Matsushima City | 2017/5/19 | Sunny | 23.3 | Dull yellowish brown | Faint earth | Loamy | 51 | 430 | 481 | 0.04 | Grayish yellowish brown | Faint earth | Loamy | 35 | 240 | 275 | 0.05 | |
| | | | | 2017/8/12 | Rain | 22.8 | Blackish brown | Faint earth | Loamy | 24 | 150 | 174 | 0.05 | Grayish yellowish brown | Faint earth | Loamy | 22 | 190 | 212 | 0.04 | |
| | | | | 2017/11/14 | Cloudy | 9.5 | Dark brown | Faint earth | Loamy | 27 | 240 | 267 | 0.05 | Dark brown | Faint earth | Loamy | 17 | 170 | 187 | 0.05 | |
| | | | | 2018/1/23 | Sunny | 2.5 | Blackish brown | Faint earth | Loamy | 29 | 220 | 249 | 0.04 | Dark brown | Faint earth | Loamy | 16 | 120 | 136 | 0.04 | |
| 22 | Sunaoshi River | Tagajozeki Weir | Tagajo City | 2017/5/21 | Sunny | 25.9 | Brown | Faint earth | Loamy | 31 | 210 | 241 | 0.04 | Dull yellowish brown | None | Loamy | 77 | 540 | 617 | 0.04 | |
| | | | | 2017/8/22 | Cloudy | 28.0 | Grayish yellowish brown | Faint earth | Loamy | 23 | 190 | 213 | 0.04 | Grayish yellowish brown | Faint earth | Loamy | 18 | 170 | 188 | 0.04 | |
| | | | | 2017/11/15 | Sunny | 15.2 | Dark brown | Faint earth | Loamy | 16 | 130 | 146 | 0.04 | Dull yellowish brown | Faint earth | Loamy | 27 | 200 | 227 | 0.04 | |
| | | | | 2018/1/22 | Cloudy | 0.2 | Dark brown | Faint earth | Loamy | 12 | 110 | 122 | 0.04 | Dull yellowish brown | Faint earth | Loamy | 29 | 230 | 259 | 0.04 | |
| 23 | Nerabutsu Bridge | Nerabutsu Bridge | Tagajo City | 2017/5/21 | Sunny | 24.0 | Brown | Faint earth | Loamy | 4.5 | 28 | 32.5 | 0.04 | Dark brown | Faint earth | Loamy | <5.7 | 16 | 16 | 0.04 | |
| | | | | 2017/8/22 | Sunny | 28.6 | Grayish yellowish brown | Faint earth | Loamy | 23 | 210 | 233 | 0.04 | Grayish yellowish brown | Faint earth | Loamy | <3.9 | 13 | 13 | 0.04 | |
| | | | | 2017/11/15 | Sunny | 11.9 | Grayish yellowish brown | Faint earth | Loamy | 28 | 230 | 258 | 0.04 | Dark brown | Faint earth | Loamy | <9.6 | 23 | 23 | 0.04 | |
| | | | | 2018/1/22 | Cloudy | 0.2 | Grayish yellowish brown | Faint earth | Loamy | 7.8 | 87 | 94.8 | 0.04 | Dull yellowish brown | Faint earth | Loamy | <7.4 | 9.1 | 9.1 | 0.04 | |
| 24 | Teizan-unga Canal (Kyu-sumaoshi River) | Teizan Bridge | Shichigahama Town /Tagajo City | 2017/5/21 | Sunny | 29.3 | Dull yellowish brown | Faint earth | Loamy | <4.3 | 7.8 | 7.8 | 0.04 | Dull yellowish brown | Faint earth | Loamy | 31 | 210 | 241 | 0.04 | |
| | | | | 2017/8/22 | Cloudy | 26.1 | Dull yellowish brown | Faint earth | Loamy | <4.3 | 17 | 17 | 0.04 | Dark brown | Faint earth | Loamy | 8.5 | 72 | 80.5 | 0.04 | |
| | | | | 2017/11/15 | Sunny | 14.2 | Dark brown | Faint earth | Loamy | 24 | 190 | 214 | 0.04 | Dull yellowish brown | Faint earth | Loamy | 13 | 110 | 123 | 0.04 | |
| | | | | 2018/1/22 | Cloudy | 1.0 | Dark brown | Faint earth | Loamy | 21 | 130 | 151 | 0.04 | Dark brown | Faint earth | Loamy | 9.2 | 87 | 96.2 | 0.04 | |
| 25 | Nanakita River System | Nanakita River | Sendai City | 2017/5/21 | Sunny | 26.6 | Dull yellowish brown | Faint earth | Loamy | 5.4 | 24 | 29.4 | 0.04 | Dull yellowish brown | Faint earth | Loamy | 43 | 330 | 373 | 0.04 | |
| | | | | 2017/8/22 | Cloudy | 28.2 | Blackish brown | Faint earth | Loamy | <4.3 | 11 | 11 | 0.04 | Dark brown | Faint earth | Loamy | 15 | 140 | 155 | 0.04 | |
| | | | | 2017/11/17 | Cloudy | 7.1 | Dull yellowish brown | Faint earth | Loamy | <5.3 | 5.5 | 5.5 | 0.04 | Dark brown | Faint earth | Loamy | 22 | 150 | 172 | 0.04 | |
| | | | | 2018/1/21 | Sunny | 1.5 | Dark brown | Faint earth | Loamy | <7.3 | 15 | 15 | 0.04 | Dark brown | Faint earth | Loamy | 21 | 150 | 171 | 0.04 | |
| 26 | Fukuda-ohashi Bridge | Fukuda-ohashi Bridge | Sendai City | 2017/5/24 | Cloudy | 22.2 | Dull yellowish brown | Faint earth | Loamy | 25 | 260 | 285 | 0.04 | Blackish brown | Faint earth | Loamy | 38 | 350 | 388 | 0.04 | |
| | | | | 2017/8/23 | Sunny | 33.8 | Blackish brown | Faint earth | Loamy | 29 | 220 | 249 | 0.04 | Blackish brown | Faint earth | Loamy | 14 | 110 | 124 | 0.04 | |
| | | | | 2017/11/16 | Sunny | 9.5 | Blackish brown | Faint earth | Loamy | 13 | 110 | 123 | 0.04 | Blackish brown | Faint earth | Loamy | 11 | 99 | 110 | 0.05 | |
| | | | | 2018/1/21 | Cloudy | 5.2 | Dark brown | Faint earth | Loamy | 8.8 | 82 | 90.8 | 0.04 | Blackish brown | Faint earth | Loamy | 14 | 100 | 114 | 0.04 | |

Miyagi River (Surrounding Environment) 3/4

| No. | Location | | | Sampling Date | Weather | Air temperature (°C) | Surrounding Environment (Soil, Air dose) | | | | | | | | | | | | | Remarks | |
|--------|-----------------------|-----------------------|-------------------------|---------------|-------------------------|----------------------|--|----------------------|-------------|-------------------------------------|-------|-------------------------|-------------------------|-------------------------|-------------|-------------|-------------------------------------|-------|-------|---------|------------------|
| | Water area | Location | Municipality | | | | Left bank | | | | | | Right bank | | | | | | | | |
| | | | | | | | Color | Odor | Property | Activity concentration [Bq/kg(dry)] | | | Air Dose (μSv/h) | Color | Odor | Property | Activity concentration [Bq/kg(dry)] | | | | Air Dose (μSv/h) |
| | | | | | | | | | | Radioactive cesium | | | | | | | Radioactive cesium | | | | |
| Cs-134 | Cs-137 | Total | Cs-134 | Cs-137 | Total | Cs-134 | Cs-137 | Total | | | | | | | | | | | | | |
| 27 | Nanakita River System | Umeda River | Fukuda Bridge | Sendai City | 2017/5/24 | Cloudy | 22.6 | Dull yellowish brown | Faint earth | Loamy | 69 | 490 | 559 | 0.05 | Dark brown | Faint earth | Sandy | 29 | 220 | 249 | 0.05 |
| | | 2017/8/23 | Sunny | | 30.9 | Dull yellowish brown | Faint earth | Loamy | 14 | 130 | 144 | 0.04 | Blackish brown | Faint earth | Loamy | 12 | 100 | 112 | 0.04 | | |
| 28 | Nanakita River | Takasago Bridge | Sendai City | 2017/11/16 | Sunny | 9.8 | Dark brown | Faint earth | Sandy | 49 | 420 | 469 | 0.05 | Dark brown | Faint earth | Sandy | 25 | 220 | 245 | 0.05 | |
| | | | | 2018/1/21 | Cloudy | 5.3 | Dull yellowish brown | Faint earth | Sandy | 45 | 360 | 405 | 0.06 | Dull yellowish brown | Faint earth | Sandy | 18 | 230 | 248 | 0.04 | |
| | | | | 2017/5/24 | Cloudy | 20.0 | Dull yellowish brown | Faint earth | Sandy | 11 | 66 | 77 | 0.04 | Brown | Faint earth | Loamy | 66 | 450 | 516 | 0.04 | |
| | | 2017/8/23 | Sunny | 28.3 | Dark brown | Faint earth | Sandy | <3.8 | 25 | 25 | 0.04 | Blackish brown | Faint earth | Loamy | 27 | 220 | 247 | 0.04 | | | |
| | | 2017/11/16 | Sunny | 10.3 | Dark brown | Faint earth | Loamy | <6.8 | 25 | 25 | 0.04 | Dark brown | Faint earth | Sandy | 18 | 180 | 198 | 0.05 | | | |
| | | 2018/1/21 | Cloudy | 4.9 | Blackish brown | Faint earth | Loamy | <5.6 | 37 | 37 | 0.04 | Blackish brown | Faint earth | Sandy | 13 | 140 | 153 | 0.04 | | | |
| 29 | Natori River | Yuriage-ohashi Bridge | Sendai City/Natori City | 2017/5/27 | Cloudy | 19.0 | Dark brown | Faint earth | Loamy | <6.4 | 14 | 14 | 0.04 | Brown | Faint earth | Sandy | <5.1 | 13 | 13 | 0.04 | |
| | | | | 2017/8/23 | Sunny | 32.1 | Dark brown | Faint earth | Loamy | <5.1 | 20 | 20 | 0.04 | Dark brown | Faint earth | Loamy | 0.81 | 5.1 | 5.91 | 0.04 | |
| | | | | 2017/11/16 | Sunny | 11.1 | Dark brown | Faint earth | Loamy | <8.8 | 11 | 11 | 0.04 | Dark brown | Faint earth | Sandy | <0.59 | 2.4 | 2.4 | 0.04 | |
| | | 2018/1/20 | Sunny | 1.8 | Dark brown | Faint earth | Loamy | <11 | 20 | 20 | 0.04 | Grayish yellowish brown | Faint earth | Loamy | <9.0 | 30 | 30 | 0.04 | | | |
| | | 2017/5/27 | Cloudy | 19.2 | Dull yellowish brown | Faint earth | Loamy | 7.0 | 65 | 72.0 | 0.04 | Blackish brown | Faint earth | Loamy | 87 | 630 | 717 | 0.05 | | | |
| | | 2017/8/24 | Cloudy | 26.7 | Brown | Faint earth | Loamy | <4.7 | 35 | 35 | 0.04 | Dark brown | Faint earth | Loamy | 6.5 | 60 | 66.5 | 0.04 | | | |
| 30 | Natori River System | Yakushi Bridge | Natori City | 2017/11/17 | Sunny | 9.7 | Brown | Faint earth | Loamy | <7.7 | 46 | 46 | 0.04 | Dark brown | Faint earth | Loamy | <9.3 | 48 | 48 | 0.04 | |
| | | | | 2018/1/19 | Sunny | 7.0 | Brown | Faint earth | Loamy | 11 | 110 | 121 | 0.04 | Dull yellowish brown | Faint earth | Loamy | 8.6 | 43 | 51.6 | 0.04 | |
| | | | | 2017/5/27 | Cloudy | 17.3 | Dull yellowish brown | Faint earth | Loamy | 120 | 940 | 1,060 | 0.08 | Blackish brown | Faint earth | Loamy | 75 | 670 | 745 | 0.08 | |
| | | 2017/8/26 | Rain | 22.5 | Grayish yellowish brown | Faint earth | Loamy | 93 | 900 | 993 | 0.07 | Dark brown | Faint earth | Loamy | 68 | 580 | 648 | 0.07 | | | |
| | | 2017/11/17 | Sunny | 10.2 | Dull yellowish brown | Faint earth | Loamy | 95 | 740 | 835 | 0.07 | Dull yellowish brown | Faint earth | Loamy | 46 | 390 | 436 | 0.06 | | | |
| | | 2018/1/20 | Sunny | -1.0 | Dark brown | Faint earth | Loamy | 71 | 560 | 631 | 0.06 | Dark brown | Faint earth | Loamy | 35 | 380 | 415 | 0.06 | | | |
| 31 | Masuda River | Koyana Bridge | Natori City | 2017/5/27 | Rain | 16.5 | Dark brown | Faint earth | Loamy | 54 | 360 | 414 | 0.04 | Blackish brown | Faint earth | Loamy | 73 | 490 | 563 | 0.04 | |
| | | | | 2017/8/26 | Sunny | 25.2 | Dark brown | Faint earth | Loamy | 14 | 110 | 124 | 0.05 | Blackish brown | Faint earth | Loamy | 20 | 180 | 200 | 0.05 | |
| | | | | 2017/11/17 | Sunny | 11.4 | Dark brown | Faint earth | Loamy | 35 | 300 | 335 | 0.04 | Grayish yellowish brown | Faint earth | Loamy | 27 | 290 | 317 | 0.05 | |
| | | 2018/1/20 | Sunny | 6.2 | Dull yellowish brown | Faint earth | Loamy | 23 | 150 | 173 | 0.04 | Dark brown | Faint earth | Loamy | 37 | 370 | 407 | 0.04 | | | |
| | | 2017/4/27 | Cloudy | 16.4 | Blackish brown | Faint earth | Loamy | 240 | 1,600 | 1,840 | 0.24 | Dull yellowish brown | Faint earth | Loamy | 78 | 640 | 718 | 0.15 | | | |
| | | 2017/5/28 | Sunny | 20.9 | Dark brown | Faint earth | Loamy | 400 | 2,800 | 3,200 | 0.14 | Dark brown | Faint earth | Loamy | 220 | 1,700 | 1,920 | 0.12 | | | |
| 33 | Abukuma River System | Hadeniwa Bridge | Marumori Town | 2017/6/12 | Sunny | 21.2 | Dark brown | Faint earth | Loamy | 270 | 1,600 | 1,870 | 0.13 | Dull yellowish brown | Faint earth | Loamy | 300 | 2,000 | 2,300 | 0.11 | |
| | | | | 2017/7/11 | Sunny | 32.1 | Blackish brown | Faint earth | Loamy | 160 | 1,200 | 1,360 | 0.19 | Dull yellowish brown | Faint earth | Loamy | 340 | 2,300 | 2,640 | 0.11 | |
| | | | | 2017/8/30 | Rain | 20.7 | Blackish brown | Faint earth | Loamy | 360 | 2,900 | 3,260 | 0.13 | Grayish yellowish brown | Faint earth | Loamy | <2.2 | 3.2 | 3.2 | 0.07 | |
| | | | | 2017/9/13 | Sunny | 30.3 | Blackish brown | Faint earth | Loamy | 200 | 1,600 | 1,800 | 0.20 | Dark brown | Faint earth | Loamy | <3.2 | 5.0 | 5.0 | 0.06 | |
| | | | | 2017/10/16 | Cloudy | 15.1 | Blackish brown | Faint earth | Loamy | 280 | 2,300 | 2,580 | 0.12 | Blackish brown | Faint earth | Loamy | <4.8 | 6.0 | 6.0 | 0.05 | |
| | | | | 2017/12/12 | Snow | 1.4 | Dark brown | Faint earth | Loamy | 170 | 1,600 | 1,770 | 0.13 | Grayish yellowish brown | Faint earth | Loamy | 67 | 730 | 797 | 0.12 | |
| | | 2018/1/16 | Sunny | 10.0 | Blackish brown | Faint earth | Sandy | 110 | 980 | 1,090 | 0.14 | Dull yellowish brown | Faint earth | Loamy | 120 | 1,100 | 1,220 | 0.11 | | | |
| | | 2018/2/8 | Sunny | 3.2 | Blackish brown | Faint earth | Loamy | 320 | 3,100 | 3,420 | 0.14 | Dull yellowish brown | Faint earth | Loamy | 49 | 440 | 489 | 0.09 | | | |
| | | 2017/4/27 | Cloudy | 16.4 | Dull yellowish brown | Faint earth | Sandy | 54 | 450 | 504 | 0.15 | Dark brown | Faint grass | Loamy | 140 | 970 | 1,110 | 0.14 | | | |
| | | 2017/5/28 | Sunny | 20.9 | Dark brown | Faint earth | Loamy | 48 | 400 | 448 | 0.12 | Dark brown | Faint earth | Loamy | 66 | 520 | 586 | 0.09 | | | |
| | | 2017/6/12 | Sunny | 19.6 | Dull yellowish brown | Faint earth | Sandy | 100 | 690 | 790 | 0.13 | Dull yellowish brown | Faint earth | Loamy | 81 | 530 | 611 | 0.11 | | | |
| | | 2017/7/11 | Sunny | 30.5 | Dull yellowish brown | Faint earth | Loamy | 88 | 590 | 678 | 0.11 | Dull yellowish brown | Faint earth | Loamy | 58 | 420 | 478 | 0.09 | | | |
| 34 | Marumori Bridge | Marumori Town | 2017/8/30 | Rain | 22.0 | Dull yellowish brown | Faint earth | Sandy | 43 | 350 | 393 | 0.10 | Dark brown | Faint earth | Loamy | 66 | 550 | 616 | 0.11 | | |
| | | | 2017/9/13 | Sunny | 27.0 | Dark brown | Faint earth | Loamy | 91 | 680 | 771 | 0.10 | Blackish brown | Faint earth | Loamy | 66 | 540 | 606 | 0.09 | | |
| | | | 2017/10/16 | Cloudy | 12.6 | Dark brown | Faint earth | Loamy | 45 | 380 | 425 | 0.10 | Grayish yellowish brown | Faint earth | Loamy | 100 | 810 | 910 | 0.08 | | |
| | | | 2017/12/12 | Snow | 1.0 | Dark brown | Faint earth | Sandy | 36 | 390 | 426 | 0.10 | Grayish yellowish brown | Faint earth | Loamy | 62 | 580 | 642 | 0.10 | | |
| | | | 2018/1/16 | Sunny | 11.1 | Dull yellowish brown | Faint earth | Sandy | 34 | 360 | 394 | 0.11 | Grayish yellowish brown | Faint earth | Loamy | 68 | 510 | 578 | 0.08 | | |
| | | | 2018/2/8 | Sunny | 4.5 | Dull yellowish brown | Faint earth | Sandy | 36 | 410 | 446 | 0.11 | Grayish yellowish brown | Faint earth | Loamy | 41 | 440 | 481 | 0.08 | | |

Miyagi River (Surrounding Environment) 4/4

| No. | Location | | | Sampling Date | Weather | Air temperature (°C) | Surrounding Environment(Soil,Air dose) | | | | | | | | | | | | | | | Remarks | |
|----------------------------|--|--|---------------------------------|--|---------------------------|----------------------|--|-------------------------|----------------------|-------------------------------------|-------------|------------|--------|----------------|----------------------|-------------------------------------|-------------------------|-------------|-------|-------|-------|---------|------|
| | Water area | Location | Municipality | | | | Left bank | | | | | Right bank | | | | | Air Dose (μSv/h) | | | | | | |
| | | | | | | | Color | Odor | Property | Activity concentration [Bq/kg(dry)] | | | Color | Odor | Property | Activity concentration [Bq/kg(dry)] | | | | | | | |
| | | | Radioactive cesium | | | Radioactive cesium | | | Radioactive cesium | | | | | | | | | | | | | | |
| | | | Cs-134 | Cs-137 | Total | Cs-134 | Cs-137 | Total | Cs-134 | Cs-137 | Total | Cs-134 | Cs-137 | Total | | | | | | | | | |
| R i v e r s | 35 | Abukuma River | Higashine Bridge | Kakuda City | 2017/4/27 | Cloudy | 13.5 | Blackish brown | Faint earth | Loamy | 220 | 1,400 | 1,620 | 0.15 | Dark brown | Faint earth | Loamy | 49 | 320 | 369 | 0.11 | | |
| | | | | | 2017/6/11 | Sunny | 19.6 | Dark brown | Faint earth | Loamy | 260 | 2,100 | 2,360 | 0.13 | Dull yellowish brown | Faint earth | Loamy | 56 | 390 | 446 | 0.10 | | |
| | | | | | 2017/8/28 | Cloudy | 22.9 | Dark brown | Faint earth | Loamy | 230 | 1,700 | 1,930 | 0.10 | Dull yellowish brown | Faint earth | Loamy | 84 | 680 | 764 | 0.10 | | |
| | | | | | 2017/10/16 | Cloudy | 11.4 | Blackish brown | Faint earth | Loamy | 220 | 1,800 | 2,020 | 0.11 | Dull yellowish brown | Faint earth | Loamy | 52 | 480 | 532 | 0.09 | | |
| | | | | | 2017/12/12 | Snow | 4.8 | Dark brown | Faint earth | Loamy | 160 | 1,500 | 1,660 | 0.11 | Dull yellowish brown | Faint earth | Sandy | 51 | 390 | 441 | 0.09 | | |
| | | | | | 2018/1/17 | Cloudy | 4.2 | Blackish brown | Faint earth | Loamy | 200 | 1,800 | 2,000 | 0.13 | Dark brown | Faint earth | Loamy | 43 | 390 | 433 | 0.10 | | |
| | | 36 | Shiroishi River | Before the confluence with Kawaharagoza (Sunaoishi Bridge) | Shiroishi City | 2017/4/25 | Sunny | 18.7 | Blackish brown | Faint earth | Loamy | 250 | 1,800 | 2,050 | 0.12 | Blackish brown | Faint grass | Loamy | 99 | 670 | 769 | 0.10 | |
| | | | | | | 2017/7/12 | Cloudy | 29.6 | Dull yellowish brown | Faint earth | Loamy | 120 | 880 | 1,000 | 0.11 | Brown | Faint earth | Loamy | 78 | 630 | 708 | 0.09 | |
| | | | | | | 2017/11/20 | Cloudy | 4.6 | Dark brown | Faint earth | Loamy | 78 | 660 | 738 | 0.09 | Dull yellowish brown | Faint earth | Loamy | 62 | 500 | 562 | 0.08 | |
| | | | | | | 2018/1/16 | Sunny | 8.8 | Dark brown | Faint earth | Loamy | 110 | 1,100 | 1,210 | 0.07 | Dull yellowish brown | Faint earth | Loamy | 36 | 370 | 406 | 0.06 | |
| | | | | | | 2017/4/25 | Sunny | 21.4 | Dull yellowish brown | Faint grass | Loamy | 160 | 970 | 1,130 | 0.10 | Blackish brown | Faint earth | Loamy | 79 | 690 | 769 | 0.09 | |
| | | | | | | 2017/7/11 | Sunny | 36.3 | Dull yellowish brown | Faint earth | Loamy | 230 | 1,800 | 2,030 | 0.08 | Dull yellowish brown | Faint earth | Loamy | 95 | 650 | 745 | 0.08 | |
| | 37 | Saikawa River | Etsubo Bridge | Shiroishi City | 2017/1/19 | Cloudy | 6.3 | Dull yellowish brown | Faint earth | Loamy | 76 | 610 | 686 | 0.08 | Dark brown | Faint earth | Sandy | 190 | 1,500 | 1,690 | 0.08 | | |
| | | | | | 2018/1/17 | Rain | 5.6 | Dark brown | Faint earth | Loamy | 91 | 840 | 931 | 0.07 | Blackish brown | Faint earth | Loamy | 78 | 620 | 698 | 0.08 | | |
| | | | | | 2017/4/25 | Sunny | 21.9 | Blackish brown | Faint earth | Loamy | 27 | 190 | 217 | 0.09 | Dark brown | Faint earth | Loamy | 81 | 600 | 681 | 0.09 | | |
| | | | | | 2017/7/12 | Cloudy | 29.5 | Dull yellowish brown | Faint earth | Loamy | 53 | 390 | 443 | 0.08 | Dull yellowish brown | Faint earth | Loamy | 74 | 520 | 594 | 0.07 | | |
| | | | | | 2017/1/19 | Cloudy | 6.7 | Dark brown | Faint earth | Loamy | 86 | 680 | 766 | 0.06 | Dark brown | Faint earth | Loamy | 92 | 790 | 882 | 0.07 | | |
| | | | | | 2018/1/17 | Rain | 6.3 | Blackish brown | Faint earth | Loamy | 36 | 360 | 396 | 0.07 | Blackish brown | Faint earth | Loamy | 73 | 590 | 663 | 0.08 | | |
| | 38 | Matsukawa River | Miya-ohashi Bridge | Zao Town | 2017/4/25 | Sunny | 21.9 | Blackish brown | Faint earth | Loamy | 27 | 190 | 217 | 0.09 | Dark brown | Faint earth | Loamy | 81 | 600 | 681 | 0.09 | | |
| | | | | | 2017/7/12 | Cloudy | 29.5 | Dull yellowish brown | Faint earth | Loamy | 53 | 390 | 443 | 0.08 | Dull yellowish brown | Faint earth | Loamy | 74 | 520 | 594 | 0.07 | | |
| | | | | | 2017/1/19 | Cloudy | 6.7 | Dark brown | Faint earth | Loamy | 86 | 680 | 766 | 0.06 | Dark brown | Faint earth | Loamy | 92 | 790 | 882 | 0.07 | | |
| | | | | | 2018/1/17 | Rain | 6.3 | Blackish brown | Faint earth | Loamy | 36 | 360 | 396 | 0.07 | Blackish brown | Faint earth | Loamy | 73 | 590 | 663 | 0.08 | | |
| | | | | | 2017/5/26 | Cloudy | 18.0 | Dark brown | Faint earth | Loamy | 140 | 1,000 | 1,140 | 0.06 | Dark brown | Faint earth | Loamy | 200 | 1,300 | 1,500 | 0.07 | | |
| | | | | | 2017/8/28 | Cloudy | 28.4 | Dull yellowish brown | Faint earth | Loamy | 45 | 370 | 415 | 0.08 | Dull yellowish brown | Faint earth | Loamy | 91 | 840 | 931 | 0.07 | | |
| | 39 | Anakawa River | Niragami Bridge | Murata Town/Ogawara Town | 2017/1/19 | Sunny | 6.0 | Grayish yellowish brown | Faint earth | Loamy | 79 | 720 | 799 | 0.07 | Blackish brown | Faint earth | Loamy | 78 | 570 | 648 | 0.07 | | |
| | | | | | 2018/1/18 | Sunny | 11.7 | Dark brown | Faint earth | Loamy | 43 | 330 | 373 | 0.06 | Dark brown | Faint earth | Loamy | 45 | 420 | 465 | 0.06 | | |
| | | | | | 2017/5/26 | Cloudy | 17.5 | Blackish brown | Faint earth | Loamy | 51 | 370 | 421 | 0.07 | Blackish brown | Faint earth | Loamy | 52 | 470 | 522 | 0.07 | | |
| | | | | | 2017/8/27 | Sunny | 27.7 | Blackish brown | Faint earth | Loamy | 23 | 250 | 273 | 0.06 | Dark brown | Faint earth | Loamy | 43 | 370 | 413 | 0.06 | | |
| | | | | | 2017/1/19 | Sunny | 5.7 | Blackish brown | Faint earth | Loamy | 35 | 280 | 315 | 0.05 | Blackish brown | Faint earth | Loamy | 22 | 190 | 212 | 0.06 | | |
| | | | | | 2018/1/18 | Sunny | 11.0 | Blackish brown | Faint earth | Loamy | 51 | 410 | 461 | 0.06 | Dull yellowish brown | Faint earth | Loamy | 50 | 420 | 470 | 0.06 | | |
| | 40 | Abukuma River System | Shiroishi River | Shirahata Bridge | Shibata Town | 2017/4/26 | Sunny | 17.3 | Blackish brown | Faint earth | Loamy | 130 | 870 | 1,000 | 0.08 | Blackish brown | Faint earth | Loamy | 100 | 690 | 790 | 0.09 | |
| | | | | | | 2017/6/11 | Sunny | 23.0 | Dark brown | Faint earth | Loamy | 280 | 2,200 | 2,480 | 0.07 | Dark brown | Faint earth | Loamy | 300 | 2,000 | 2,300 | 0.08 | |
| | | | | | | 2017/8/27 | Sunny | 23.6 | Blackish brown | Faint earth | Loamy | 58 | 510 | 568 | 0.06 | Blackish brown | Faint earth | Loamy | 180 | 1,300 | 1,480 | 0.06 | |
| | | | | | | 2017/10/14 | Cloudy | 14.5 | Dark brown | Faint earth | Loamy | 170 | 1,400 | 1,570 | 0.06 | Blackish brown | Faint earth | Loamy | 55 | 500 | 555 | 0.06 | |
| | | | | | | 2017/12/13 | Sunny | 3.6 | Blackish brown | Faint earth | Loamy | 110 | 900 | 1,010 | 0.06 | Blackish brown | Faint earth | Loamy | 76 | 680 | 756 | 0.08 | |
| | | | | | | 2018/1/18 | Sunny | 6.9 | Blackish brown | Faint earth | Loamy | 120 | 1,100 | 1,220 | 0.06 | Blackish brown | Faint earth | Loamy | 65 | 590 | 655 | 0.07 | |
| | | | 41 | Tsukinoki-ohashi Bridge | Kakuda City /Shibata Town | Shibata Town | 2017/4/26 | Cloudy | 20.6 | Blackish brown | Faint earth | Loamy | 140 | 1,100 | 1,240 | 0.10 | Blackish brown | Faint earth | Loamy | 290 | 2,000 | 2,290 | 0.12 |
| | | | | | | | 2017/5/26 | Cloudy | 17.4 | Dark brown | Faint earth | Loamy | 270 | 1,800 | 2,070 | 0.09 | Blackish brown | Faint earth | Loamy | 210 | 1,500 | 1,710 | 0.11 |
| | | | | | | | 2017/6/11 | Sunny | 26.8 | Blackish brown | Faint earth | Loamy | 180 | 1,400 | 1,580 | 0.11 | Dark brown | Faint earth | Loamy | 150 | 1,200 | 1,350 | 0.10 |
| | | | | | | | 2017/7/11 | Sunny | 30.9 | Grayish yellowish brown | Faint earth | Loamy | 120 | 810 | 930 | 0.10 | Grayish yellowish brown | Faint earth | Loamy | 57 | 370 | 427 | 0.10 |
| | | | | | | | 2017/8/26 | Sunny | 30.6 | Blackish brown | Faint earth | Loamy | 67 | 480 | 547 | 0.07 | Blackish brown | Faint earth | Loamy | 74 | 630 | 704 | 0.08 |
| | | | | | | | 2017/9/13 | Sunny | 25.9 | Blackish brown | Faint earth | Loamy | 92 | 790 | 882 | 0.10 | Blackish brown | Faint earth | Loamy | 76 | 570 | 646 | 0.09 |
| | 42 | Abukuma River | Abukuma-ohashi Bridge (Iwanuma) | Iwanuma City/Watari Town | 2017/10/14 | Cloudy | 14.8 | Blackish brown | Faint earth | Loamy | 170 | 1,400 | 1,570 | 0.08 | Blackish brown | Faint earth | Loamy | 51 | 410 | 461 | 0.09 | | |
| | | | | | 2017/12/13 | Sunny | 3.0 | Dark brown | Faint earth | Loamy | 140 | 1,200 | 1,340 | 0.09 | Blackish brown | Faint earth | Loamy | 390 | 3,400 | 3,790 | 0.09 | | |
| | | | | | 2018/1/19 | Sunny | 5.9 | Dark brown | Faint earth | Loamy | 130 | 1,400 | 1,530 | 0.09 | Blackish brown | Faint earth | Loamy | 160 | 1,400 | 1,560 | 0.08 | | |
| 2018/2/8 | | | | | Sunny | 1.2 | Dark brown | Faint earth | Loamy | 140 | 1,300 | 1,440 | 0.08 | Blackish brown | Faint earth | Loamy | 48 | 410 | 458 | 0.09 | | | |
| 2017/4/26 | | | | | Cloudy | 18.4 | Dark brown | Faint earth | Sandy | 100 | 700 | 800 | 0.10 | Blackish brown | Faint grass | Sandy | 87 | 590 | 677 | 0.09 | | | |
| 2017/6/11 | | | | | Sunny | 22.7 | Dark brown | Faint earth | Loamy | 150 | 1,100 | 1,250 | 0.08 | Dark brown | Faint earth | Loamy | 96 | 710 | 806 | 0.08 | | | |
| 43 | Offshore of Abukuma River Estuary (Watari-ohashi Bridge) | Offshore of Abukuma River Estuary (Watari-ohashi Bridge) | Watari Town | 2017/8/27 | Sunny | 27.3 | Blackish brown | Faint earth | Loamy | 47 | 430 | 477 | 0.06 | Dark brown | Faint earth | Loamy | 96 | 720 | 816 | 0.08 | | | |
| | | | | 2017/10/14 | Cloudy | 15.7 | Grayish yellowish brown | Faint earth | Sandy | 46 | 440 | 486 | 0.06 | Dark brown | Faint earth | Loamy | 40 | 470 | 510 | 0.07 | | | |
| | | | | 2017/12/13 | Sunny | 4.1 | Blackish brown | Faint earth | Sandy | 37 | 380 | 417 | 0.07 | Dark brown | Faint earth | Loamy | 48 | 360 | 408 | 0.06 | | | |
| | | | | 2018/1/19 | Sunny | 6.9 | Dull yellowish brown | Faint earth | Sandy | 10 | 110 | 120 | 0.06 | Blackish brown | Faint earth | Loamy | 96 | 740 | 836 | 0.07 | | | |

Miyagi Lakes and Reservoirs (Water)1/3

| No. | Location | | | | Sampling Date | Weather | Air temperature (°C) | Water depth (m) | Water | | | | | | | | | | Remarks | | | | |
|--|---------------|---------------|------------|---------------|---------------|------------|------------------------------|---------------------------|------------------------|-------------------------|-------|----------------------|-----------------------|--------------------------------|-----------|-----------------|--------------------|-------|--|---|--|--|--|
| | Water area | Location | | Municipality | | | | | General items | | | | | Activity concentration(Bq/L) | | | | | | | | | |
| | | | | | | | | | Water temperature (°C) | Sampling depth (m) | Color | Odor | Secchi disk depth (m) | Electrical conductivity (mS/m) | SS (mg/L) | Turbidity (FNU) | Radioactive cesium | | | | | | |
| | | | | | | Cs-134 | Cs-137 | | | | | | | | | | | | | | | | |
| L a k e s a n d R e s e r v o i r s | 44 | Kurikoma Dam | Dam site | Kurihara City | Surface layer | 2017/5/9 | Sunny | 13.4 | 20.5 | 14.2 | 0.5 | Grayish yellow green | None | 1.5 | 10.0 | 5 | 4.7 | <0.58 | <0.75 | | | | |
| | | | | | Deep layer | | | | | | | | | | | | | | | | | | |
| | | | | | Surface layer | 2017/8/16 | Cloudy | 19.5 | 16.9 | 19.7 | 0.5 | Grayish yellow green | None | 1.4 | 8.7 | 7 | 8.4 | <0.86 | <0.92 | | | | |
| | | | | | Deep layer | | | | | | | | | | | | | | | | | | |
| | | | | | Surface layer | 2017/10/28 | Cloudy | 12.6 | 16.7 | 12.9 | 0.5 | Grayish yellow green | None | 1.3 | 8.7 | 6 | 6.5 | <0.63 | <0.84 | | | | |
| | | | | | Deep layer | | | | | | | | | | | | | | | | | | |
| | | Surface layer | 2017/12/20 | | Cloudy | -0.9 | 9.4 | 2.7 | 0.5 | Grayish yellow green | None | 1.6 | 16.0 | 3 | 6.8 | <0.73 | <0.75 | | | | | | |
| | | Deep layer | | | | | | | | | | | | | | | | | | | | | |
| | | Surface layer | 2017/5/15 | | Rain | 12.4 | 28.7 | 13.0 | 0.5 | Grayish yellow green | None | 3.0 | 6.1 | <1 | 1.3 | <0.63 | <0.70 | | | | | | |
| | | Deep layer | | | | | | | | | | | | | | | | | | | | | |
| | | Surface layer | 2017/8/15 | | Rain | 20.9 | 21.9 | 20.8 | 0.5 | Grayish greenish yellow | None | 1.2 | 7.4 | 6 | 6.8 | <0.77 | <0.69 | | | | | | |
| | | Deep layer | | | | | | | | | | | | | | | | | | | | | |
| | Surface layer | 2017/10/24 | Sunny | 17.8 | 26.3 | 15.6 | 0.5 | Dark grayish yellow green | None | 2.6 | 8.7 | 1 | 1.6 | <0.48 | <0.88 | | | | | | | | |
| | Deep layer | | | | | | | | | | | | | | | | | | | | | | |
| | Surface layer | 2017/12/20 | Snow | 3.6 | 20.0 | 4.3 | 0.5 | Dark grayish yellow green | None | 2.4 | 9.2 | 3 | 3.6 | <0.57 | <0.66 | | | | | | | | |
| | Deep layer | | | | | | | | | | | | | | | | | | | | | | |
| | Surface layer | 2017/5/16 | Sunny | 13.4 | 61.5 | 13.1 | 0.5 | Grayish yellow green | None | 4.0 | 7.3 | 1 | 1.5 | <0.86 | <0.61 | | | | | | | | |
| | Deep layer | | | | | | | | | | | | | | | | | | | | | | |
| | Surface layer | 2017/8/17 | Cloudy | 20.9 | 52.0 | 18.5 | 0.5 | Grayish greenish yellow | None | 1.1 | 8.4 | 5 | 4.2 | <0.65 | <0.84 | | | | | | | | |
| | Deep layer | | | | | | | | | | | | | | | | | | | | | | |
| | Surface layer | 2017/10/24 | Sunny | 14.1 | 52.5 | 13.1 | 0.5 | Grayish greenish yellow | None | 2.8 | 10.9 | 2 | 2.1 | <0.79 | <0.69 | | | | | | | | |
| | Deep layer | | | | | | | | | | | | | | | | | | | | | | |
| | Surface layer | 2017/12/18 | Snow | 2.8 | - | - | - | - | - | - | - | - | - | - | - | - | - | - | - | Unable to collect samples due to snow on the ground | | | |
| | Deep layer | | | | | | | | | | | | | | | | | | | Unable to collect samples due to snow on the ground | | | |
| Surface layer | 2017/5/2 | Sunny | 23.9 | 1.2 | 17.8 | 0.0 | Grayish greenish yellow | None | 1.0 | 26.3 | 33 | 29 | <0.77 | <0.84 | | | | | | | | | |
| Deep layer | | | | | | | | | | | | | | | | | | | Unable to collect samples from the deep layer due to shallow water | | | | |
| Surface layer | 2017/10/26 | Sunny | 18.0 | 1.3 | 14.1 | 0.0 | Dark grayish greenish yellow | None | 0.3 | 12.8 | 20 | 20 | <0.74 | <0.84 | | | | | | | | | |
| Deep layer | | | | | | | | | | | | | | | | | | | Unable to collect samples from the deep layer due to shallow water | | | | |
| Surface layer | 2017/5/2 | Sunny | 17.4 | 1.8 | 16.2 | 0.0 | Grayish yellow green | None | >1.8 | 25.3 | 4 | 3.2 | <0.73 | <0.55 | | | | | | | | | |
| Deep layer | | | | | | | | | | | | | | | | | | | Unable to collect samples from the deep layer due to shallow water | | | | |
| Surface layer | 2017/8/11 | Cloudy | 21.9 | 1.5 | 23.8 | 0.0 | Light grayish yellow green | None | >1.5 | 17.6 | 2 | 1.3 | <0.74 | <0.55 | | | | | | | | | |
| Deep layer | | | | | | | | | | | | | | | | | | | Unable to collect samples from the deep layer due to shallow water | | | | |
| Surface layer | 2017/10/26 | Sunny | 16.8 | 1.8 | 13.8 | 0.0 | Dark grayish yellow green | None | 0.9 | 16.1 | 2 | 1.7 | <0.72 | <0.69 | | | | | | | | | |
| Deep layer | | | | | | | | | | | | | | | | | | | Unable to collect samples from the deep layer due to shallow water | | | | |
| Surface layer | 2017/12/18 | Sunny | 4.1 | 1.5 | 3.2 | 0.0 | Light grayish yellow green | None | >1.5 | 24.1 | <1 | 0.7 | <0.90 | <0.88 | | | | | | | | | |
| Deep layer | | | | | | | | | | | | | | | | | | | Unable to collect samples from the deep layer due to shallow water | | | | |
| Surface layer | 2017/5/16 | Sunny | 20.0 | 0.7 | 16.7 | 0.0 | Light grayish yellow green | None | >0.7 | 10.9 | 4 | 2.3 | <0.63 | <0.75 | | | | | | | | | |
| Deep layer | | | | | | | | | | | | | | | | | | | Unable to collect samples from the deep layer due to shallow water | | | | |
| Surface layer | 2017/8/17 | Cloudy | 23.4 | 0.6 | 24.5 | 0.0 | Grayish greenish yellow | None | >0.6 | 11.1 | 1 | 0.7 | <0.80 | <0.88 | | | | | | | | | |
| Deep layer | | | | | | | | | | | | | | | | | | | Unable to collect samples from the deep layer due to shallow water | | | | |
| Surface layer | 2017/10/26 | Sunny | 19.0 | 0.6 | 16.0 | 0.0 | Grayish yellow | None | >0.6 | 10.5 | 3 | 3.0 | <0.82 | <0.75 | | | | | | | | | |
| Deep layer | | | | | | | | | | | | | | | | | | | Unable to collect samples from the deep layer due to shallow water | | | | |
| Surface layer | 2017/12/18 | Sunny | 2.1 | 0.4 | 5.3 | 0.0 | Grayish yellow | None | >0.4 | 10.4 | 3 | 2.8 | <0.79 | <0.80 | | | | | | | | | |
| Deep layer | | | | | | | | | | | | | | | | | | | Unable to collect samples from the deep layer due to shallow water | | | | |
| Surface layer | 2017/5/17 | Sunny | 17.4 | 47.3 | 15.3 | 0.5 | Grayish yellow green | None | 4.2 | 6.3 | <1 | 0.7 | <0.94 | <0.88 | | | | | | | | | |
| Deep layer | | | | | | | | | | | | | | | | | | | | | | | |
| Surface layer | 2017/8/18 | Rain | 20.6 | 46.8 | 17.9 | 0.5 | Grayish yellow green | None | 2.4 | 6.1 | 1 | 0.8 | <0.72 | <0.80 | | | | | | | | | |
| Deep layer | | | | | | | | | | | | | | | | | | | | | | | |
| Surface layer | 2017/10/25 | Cloudy | 13.4 | 46.5 | 6.0 | 0.5 | Grayish yellow green | None | 2.3 | 9.5 | 4 | 1.8 | <0.63 | <0.80 | | | | | | | | | |
| Deep layer | | | | | | | | | | | | | | | | | | | | | | | |
| Surface layer | 2017/12/19 | Snow | 2.3 | - | - | - | - | - | - | - | - | - | - | - | - | - | - | - | Unable to collect samples due to road closure. | | | | |
| Deep layer | | | | | | | | | | | | | | | | | | | Unable to collect samples due to road closure. | | | | |

Miyagi Lakes and Reservoirs (Water)2/3

| L a k e s a n d R e s e r v o i r s | Location | | | | Sampling Date | Weather | Air temperature (°C) | Water depth (m) | Water | | | | | | | | | | Remarks | | | | |
|--|----------------|------------------------|----------------|---------------|---------------|---------------|----------------------|------------------------------|------------------------------|--------------------|---------------------------|------------------------------|-------------------------------|--------------------------------|------------------------------|-----------------|---------------------------|--|--|--|--|--|--|
| | No. | Water area | Location | Municipality | | | | | General items | | | | | | Activity concentration(Bq/L) | | | | | | | | |
| | | | | | | | | | Water temperature (°C) | Sampling depth (m) | Color | Odor | Secchi disk depth (m) | Electrical conductivity (mS/m) | SS (mg/L) | Turbidity (FNU) | Radioactive cesium Cs-134 | Radioactive cesium Cs-137 | | | | | |
| 51 | Urushizawa Dam | Dam site | Kami Town | Surface layer | 2017/5/17 | Sunny | 19.8 | 36.6 | 12.6 | 0.5 | Grayish yellow green | None | 2.5 | 4.0 | 4 | 4.6 | <0.78 | <0.63 | | | | | |
| | | | | Deep layer | | | | | | 6.6 | 35.6 | - | None | | 4.5 | 4 | 4.3 | <0.79 | <0.69 | | | | |
| | | | | Surface layer | 2017/8/18 | Rain | 21.9 | 19.6 | 18.3 | 0.5 | Dark grayish yellow green | None | 1.4 | 5.2 | 2 | 1.7 | <0.70 | <0.80 | | | | | |
| | | | | Deep layer | | | | | | | 7.5 | 18.6 | - | None | | 5.2 | 4 | 2.5 | <0.65 | <0.69 | | | |
| | | | | Surface layer | 2017/10/25 | Cloudy | 11.3 | 27.1 | 12.0 | 0.5 | Grayish yellow | None | 0.1 | 4.6 | 23 | 28 | <0.70 | <0.69 | | | | | |
| | | Deep layer | | | | | | | 7.4 | 26.1 | - | None | | 6.4 | 10 | 8.0 | <0.65 | <0.69 | | | | | |
| | | Surface layer | 2017/12/19 | Snow | 3.2 | - | - | - | - | - | - | - | - | - | - | - | - | - | - | Unable to collect samples due to snow on the ground | | | |
| | | Deep layer | | | | | | | | | | | | | | | | | - | Unable to collect samples due to snow on the ground | | | |
| | | Naruse River System | Minamikawa Dam | Dam site | Taiwa Town | Surface layer | 2017/5/20 | Sunny | 31.4 | 29.6 | 20.1 | 0.5 | Grayish yellow green | None | 2.3 | 8.9 | 1 | 1.8 | <0.65 | <0.69 | | | |
| | | | | | | Deep layer | | | | | | | | | | | | | | | | | |
| | Surface layer | | | | | 2017/8/19 | Rain | 20.1 | 31.8 | 21.7 | 0.5 | Dark grayish yellow green | None | 1.3 | 7.8 | 1 | 1.4 | <0.76 | <0.80 | | | | |
| | Deep layer | | | | | | | | | | | | | | | | | | | | | | |
| | Surface layer | | | | | 2017/10/27 | Sunny | 15.4 | 30.4 | 14.2 | 0.5 | Dark grayish yellow | None | 1.8 | 7.0 | 5 | 6.1 | <0.70 | <0.55 | | | | |
| | Deep layer | | | | | | | | | | | | | | | | | | | | | | |
| | Surface layer | | 2017/12/17 | Snow | 0.8 | 29.0 | 11.2 | 0.5 | Dark grayish greenish yellow | None | 1.5 | 8.2 | 3 | 4.0 | <0.61 | <0.69 | | | | | | | |
| | Deep layer | | | | | | | | | | | | | | | | | | | | | | |
| | Miyatoko Dam | | Dam site | | | Surface layer | 2017/5/20 | Sunny | 28.7 | 0.7 | 22.1 | 0.0 | Grayish yellow green | None | >0.7 | 9.4 | 6 | 4.0 | <0.63 | <0.88 | | | |
| | | | | | | Deep layer | | | | | | | | | | | | | | | | Unable to collect samples from the deep layer due to shallow water | |
| | | Surface layer | | | | 2017/10/27 | Sunny | 18.0 | 0.5 | 15.6 | 0.0 | Grayish yellow green | None | >0.5 | 7.9 | 4 | 5.4 | <0.76 | <0.80 | | | | |
| | | Deep layer | | | | | | | | | | | | | | | | | | | Unable to collect samples from the deep layer due to shallow water | | |
| | 54 | Sunaoshi River System | Sounosaki Dam | Dam site | Rifu Town | Surface layer | 2017/5/20 | Sunny | 23.4 | 7.0 | 21.8 | 0.5 | Grayish yellow green | None | 2.4 | 21.1 | 2 | 1.8 | <0.70 | <0.75 | | | |
| | | | | | | Deep layer | | | | | | | | | | | | | | | | | |
| | | | | | | Surface layer | 2017/8/18 | Cloudy | 21.3 | 8.9 | 23.0 | 0.5 | Dark grayish greenish yellow | None | 0.8 | 17.5 | 2 | 1.6 | <0.70 | <0.75 | | | |
| | | | | | | Deep layer | | | | | | | | | | | | | | | | | |
| | | | | | | Surface layer | 2017/10/22 | Rain | 16.6 | 6.9 | 16.0 | 0.5 | Dark grayish yellow green | None | 1.8 | 19.6 | 3 | 4.4 | <0.72 | <0.69 | | | |
| | | Deep layer | | | | | | | | | | | | | | | | | | | | | |
| | | Surface layer | 2017/12/17 | Sunny | 2.4 | 6.5 | 4.1 | 0.5 | Grayish greenish yellow | None | 1.7 | 21.3 | 5 | 5.3 | <0.61 | <0.75 | | | | | | | |
| | | | | | | | 4.1 | 5.5 | - | None | | 21.5 | 5 | 5.7 | <0.52 | <0.84 | | | | | | | |
| 55 | | Nanakita River System | Nanakita Dam | Dam site | | Surface layer | 2017/5/23 | Sunny | 25.5 | 4.4 | 22.1 | 0.5 | Light grayish greenish yellow | None | 2.0 | 6.9 | 3 | 3.5 | <0.81 | <0.63 | | | |
| | | | | | | Deep layer | | | | | | | | | | | | | | | | | |
| | Surface layer | | | | | 2017/8/21 | Rain | 21.6 | 1.6 | 22.1 | 0.0 | Dark grayish yellow green | None | 0.1 | 5.6 | 100 | 170 | <0.72 | <0.80 | | | | |
| | Deep layer | | | | | | | | | | | | | | | | | | | | | Unable to collect samples from the deep layer due to shallow water | |
| | Surface layer | | | | | 2017/10/21 | Cloudy | 14.4 | 0.5 | 14.3 | 0.0 | Light grayish yellow green | None | >0.5 | 7.2 | <1 | 0.9 | <0.61 | <0.80 | | | | |
| | Deep layer | | | | | | | | | | | | | | | | | Unable to collect samples from the deep layer due to shallow water | | | | | |
| | Surface layer | 2017/12/16 | Cloudy | 6.8 | 1.2 | 6.1 | 0.0 | Dark grayish greenish yellow | None | >1.2 | 7.7 | 1 | 1.1 | <0.71 | <0.84 | | | | | | | | |
| | | | | | | - | - | - | - | - | - | - | - | - | - | - | - | - | - | Unable to collect samples from the deep layer due to shallow water | | | |
| | 56 | Marutazawatameike Pond | Pond exit | | Sendai City | Surface layer | 2017/5/23 | Sunny | 21.9 | 0.2 | 22.3 | 0.0 | Grayish greenish yellow | Faint swamp | >0.2 | 31.8 | 23 | 16 | <0.70 | <0.63 | | | |
| | | | | | | Deep layer | | | | | | | | | | | | | | | | | |
| Surface layer | | | | | | 2017/8/21 | Cloudy | 22.6 | 0.4 | 22.9 | 0.0 | Light grayish yellow | None | >0.4 | 25.9 | 13 | 6.9 | <0.82 | <0.84 | | | | |
| Deep layer | | | | | | | | | | | | | | | | | | | | | | | |
| Surface layer | | | | | | 2017/10/20 | Rain | 14.3 | 0.4 | 14.2 | 0.0 | Dark grayish greenish yellow | None | >0.4 | 13.4 | 23 | 12.0 | <0.63 | <0.88 | | | | |
| Deep layer | | | | | | | | | | | | | | | | | | | | | | | |
| Surface layer | | 2017/12/14 | Sunny | 7.4 | 0.3 | 5.9 | 0.0 | Light grayish yellow | None | >0.3 | 37.4 | 12 | 5.9 | <0.64 | <0.88 | | | | | | | | |
| | | | | | | - | - | - | - | - | - | - | - | - | - | - | - | - | Unable to collect samples from the deep layer due to shallow water | | | | |
| 57 | | Natori River System | Okura Dam | Dam site | | Surface layer | 2017/5/23 | Sunny | 23.7 | 39.1 | 20.3 | 0.5 | Light grayish greenish yellow | None | 2.3 | 5.6 | 3 | 2.8 | <0.65 | <0.96 | | | |
| | | | | | | Deep layer | | | | | | | | | | | | | | | | | |
| | Surface layer | | | | | 2017/8/21 | Rain | 20.5 | 32.4 | 20.7 | 0.5 | Grayish yellow green | None | 1.8 | 6.2 | 3 | 4.8 | <0.63 | <0.71 | | | | |
| | Deep layer | | | | | | | | | | | | | | | | | | | | | | |
| | Surface layer | | | | | 2017/10/21 | Cloudy | 16.4 | 25.8 | 9.2 | 31.4 | - | None | | 7.0 | 4 | 4.0 | <0.63 | <0.61 | | | | |
| | Deep layer | | | | | | | | | | | | | | | | | | | | | | |
| | Surface layer | 2017/12/16 | Cloudy | 3.7 | 26.5 | 5.0 | 0.5 | Grayish yellow green | None | 1.8 | 7.3 | 4 | 3.9 | <0.79 | <0.80 | | | | | | | | |
| | | | | | | 4.7 | 25.5 | - | None | | 7.5 | 6 | 5.4 | <0.81 | <0.69 | | | | | | | | |

Miyagi Lakes and Reservoirs (Water)3/3

| No. | Location | | | Sampling Date | Weather | Air temperature (°C) | Water depth (m) | Water | | | | | | | | Remarks | | | | | | | |
|-----|----------------------|--------------|---------------------|----------------|---------------|----------------------|-----------------|------------------------|--------------------|-------|------------------------------|-------------------------------|--------------------------------|-----------|-----------------|---------|---------------------------|---------------------------|-------|---|--|--|--|
| | Water area | Location | Municipality | | | | | General items | | | | | Activity concentration(Bq/L) | | | | | | | | | | |
| | | | | | | | | Water temperature (°C) | Sampling depth (m) | Color | Odor | Secchi disk depth (m) | Electrical conductivity (mS/m) | SS (mg/L) | Turbidity (FNU) | | Radioactive cesium Cs-134 | Radioactive cesium Cs-137 | | | | | |
| 58 | Lake Amanuma | Lake exit | Sendai City | Surface layer | 2017/5/24 | Rain | 23.4 | 0.5 | 23.2 | 0.0 | Grayish greenish yellow | Faint swamp | >0.5 | 29.1 | 25 | 14 | <0.70 | <0.96 | - | | | | |
| | | | | Deep layer | - | - | - | - | - | - | - | - | - | - | - | - | - | - | - | - | Unable to collect samples from the deep layer due to shallow water | | |
| | | | | Surface layer | 2017/8/24 | Rain | 25.6 | 0.4 | 25.0 | 0.0 | Dark grayish yellow green | None | >0.4 | 28.8 | 6 | 4.0 | <0.73 | <0.69 | - | - | - | | |
| | | | | Deep layer | - | - | - | - | - | - | - | - | - | - | - | - | - | - | - | - | - | Unable to collect samples from the deep layer due to shallow water | |
| | | | | Surface layer | 2017/10/18 | Cloudy | 16.1 | 0.3 | 16.1 | 0.0 | Grayish yellow green | None | >0.3 | 24.4 | 6 | 4.1 | <0.63 | <0.92 | - | - | - | | |
| | | | | Deep layer | - | - | - | - | - | - | - | - | - | - | - | - | - | - | - | - | - | - | Unable to collect samples from the deep layer due to shallow water |
| 59 | Natori River System | Kamafusa Dam | Dam site | Kawasaki Town | Surface layer | 2017/5/26 | Cloudy | 16.3 | 30.7 | 17.0 | 0.5 | Dark grayish yellow green | None | 2.5 | 8.9 | <1 | 1.2 | <0.63 | <0.92 | - | | | |
| | | | | | Deep layer | - | - | - | - | - | - | - | - | - | - | - | - | - | - | - | - | Unable to collect samples from the deep layer due to shallow water | |
| | | | | | Surface layer | 2017/8/24 | Sunny | 26.7 | 17.7 | 22.0 | 0.5 | Grayish yellow green | None | 2.1 | 7.6 | 1 | 1.4 | <0.84 | <0.80 | - | - | - | |
| | | | | | Deep layer | - | - | - | - | 18.9 | 16.7 | - | None | - | 8.1 | 18 | 12 | <0.64 | <0.75 | - | - | - | |
| | | | | | Surface layer | 2017/10/20 | Rain | 12.7 | 21.2 | 15.8 | 0.5 | Dark grayish yellow green | None | 1.4 | 9.5 | 6 | 4.8 | <0.67 | <0.69 | - | - | - | |
| | | | | | Deep layer | - | - | - | - | 15.7 | 20.2 | - | None | - | 9.6 | 7 | 5.3 | <0.78 | <0.69 | - | - | - | |
| 60 | Natori River System | Tatumizu Dam | Dam site | Natori City | Surface layer | 2017/12/14 | Sunny | 1.5 | 18.6 | 6.0 | 0.5 | Grayish yellow green | None | 2.5 | 16.3 | 3 | 2.7 | <0.75 | <0.80 | - | | | |
| | | | | | Deep layer | - | - | - | - | - | - | - | - | - | - | - | - | - | - | - | - | Unable to collect samples from the deep layer due to shallow water | |
| | | | | | Surface layer | 2017/5/25 | Rain | 16.5 | 0.8 | 20.4 | 0.0 | Light grayish yellow green | None | >0.8 | 8.9 | 2 | 1.3 | <0.74 | <0.63 | - | - | - | |
| | | | | | Deep layer | - | - | - | - | - | - | - | - | - | - | - | - | - | - | - | - | - | Unable to collect samples from the deep layer due to shallow water |
| | | | | | Surface layer | 2017/10/18 | Cloudy | 15.6 | 0.5 | 18.2 | 0.0 | Grayish greenish yellow | None | >0.5 | 9.0 | 3 | 3.1 | <0.70 | <0.80 | - | - | - | |
| | | | | | Deep layer | - | - | - | - | - | - | - | - | - | - | - | - | - | - | - | - | - | Unable to collect samples from the deep layer due to shallow water |
| 61 | Abukuma River System | Murata Dam | Dam site | Murata Town | Surface layer | 2017/5/25 | Rain | 15.8 | 0.5 | 20.4 | 0.0 | Grayish yellow green | None | >0.5 | 9.2 | 1 | 1.8 | <0.78 | <0.80 | - | | | |
| | | | | | Deep layer | - | - | - | - | - | - | - | - | - | - | - | - | - | - | - | - | - | Unable to collect samples from the deep layer due to shallow water |
| | | | | | Surface layer | 2017/10/20 | Rain | 13.6 | 0.4 | 14.9 | 0.0 | Grayish yellow green | None | >0.4 | 9.2 | 2 | 1.8 | <0.79 | <0.96 | - | - | - | |
| | | | | | Deep layer | - | - | - | - | - | - | - | - | - | - | - | - | - | - | - | - | - | Unable to collect samples from the deep layer due to shallow water |
| | | | | | Surface layer | 2017/5/25 | Rain | 14.3 | 0.7 | 19.2 | 0.0 | Light grayish yellow | None | >0.7 | 8.2 | 7 | 4.0 | <0.63 | <0.80 | - | - | - | |
| | | | | | Deep layer | - | - | - | - | - | - | - | - | - | - | - | - | - | - | - | - | - | Unable to collect samples from the deep layer due to shallow water |
| 62 | Abukuma River System | Kawarago Dam | Dam site | Shiroishi City | Surface layer | 2017/8/28 | Cloudy | 19.2 | 0.8 | 20.5 | 0.0 | Grayish yellow green | None | 0.7 | 7.4 | 2 | 1.4 | <0.72 | <0.96 | - | | | |
| | | | | | Deep layer | - | - | - | - | - | - | - | - | - | - | - | - | - | - | - | - | Unable to collect samples from the deep layer due to shallow water | |
| | | | | | Surface layer | 2017/10/17 | Sunny | 14.1 | 0.6 | 13.3 | 0.0 | Light grayish greenish yellow | None | >0.6 | 8.3 | 3 | 1.4 | <0.78 | <0.84 | - | - | - | |
| | | | | | Deep layer | - | - | - | - | - | - | - | - | - | - | - | - | - | - | - | - | - | Unable to collect samples from the deep layer due to shallow water |
| | | | | | Surface layer | 2017/12/11 | Sunny | 5.8 | 0.3 | 7.8 | 0.0 | Grayish yellow | None | >0.3 | 8.4 | 10 | 3.8 | <0.83 | <0.96 | - | - | - | |
| | | | | | Deep layer | - | - | - | - | - | - | - | - | - | - | - | - | - | - | - | - | - | Unable to collect samples from the deep layer due to shallow water |
| 63 | Shichikashyuku Dam | Dam site | Shichikashyuku Town | Surface layer | 2017/5/29 | Sunny | 18.7 | 35.9 | 17.5 | 0.5 | Dark grayish yellowish green | None | 2.0 | 6.0 | 2 | 1.8 | <0.60 | <0.80 | - | | | | |
| | | | | Deep layer | - | - | - | - | - | - | - | - | - | - | - | - | - | - | - | - | Unable to collect samples from the deep layer due to shallow water | | |
| | | | | Surface layer | 2017/8/29 | Cloudy | 25.7 | 31.1 | 2.8 | 0.5 | Light grayish yellow green | None | 3.8 | 6.9 | <1 | 0.6 | <0.52 | <0.55 | - | - | - | | |
| | | | | Deep layer | - | - | - | - | 10.4 | 30.1 | - | None | - | 6.3 | 1 | 1.6 | <0.79 | <0.84 | - | - | - | | |
| | | | | Surface layer | 2017/10/17 | Sunny | 12.0 | 31.3 | 17.3 | 0.5 | Grayish yellow green | None | 4.2 | 6.6 | <1 | 1.2 | <0.80 | <0.69 | - | - | - | | |
| | | | | Deep layer | - | - | - | - | 11.2 | 30.3 | - | None | - | 7.6 | 2 | 2.7 | <0.80 | <0.84 | - | - | - | | |
| 64 | Lake Bagyunuma | Lake exit | Shiroishi City | Surface layer | 2017/5/25 | Rain | 15.8 | 1.5 | 21.5 | 0.0 | Grayish yellow | None | 0.8 | 15.5 | 11 | 11 | <0.63 | <0.84 | - | | | | |
| | | | | Deep layer | - | - | - | - | - | - | - | - | - | - | - | - | - | - | - | - | Unable to collect samples from the deep layer due to shallow water | | |
| | | | | Surface layer | 2017/8/29 | Cloudy | 30.8 | 1.1 | 27.1 | 0.0 | Grayish yellow | None | 0.4 | 14.9 | 8 | 8.2 | <0.84 | <0.75 | - | - | - | | |
| | | | | Deep layer | - | - | - | - | - | - | - | - | - | - | - | - | - | - | - | - | - | Unable to collect samples from the deep layer due to shallow water | |
| | | | | Surface layer | 2017/10/18 | Sunny | 12.7 | 1.0 | 16.0 | 0.0 | Grayish greenish yellow | None | 0.3 | 14.9 | 13 | 11 | <0.54 | <0.75 | - | - | - | | |
| | | | | Deep layer | - | - | - | - | - | - | - | - | - | - | - | - | - | - | - | - | - | Unable to collect samples from the deep layer due to shallow water | |
| 64 | Lake Bagyunuma | Lake exit | Shiroishi City | Surface layer | 2017/12/10 | Sunny | 9.8 | 1.0 | 5.2 | 0.0 | Grayish greenish yellow | None | >1.0 | 13.4 | 8 | 6.9 | <0.73 | <0.84 | - | | | | |
| | | | | Deep layer | - | - | - | - | - | - | - | - | - | - | - | - | - | - | - | - | Unable to collect samples from the deep layer due to shallow water | | |

L a k e s a n d R e s e r v o i r s

Miyagi Lakes and Reservoirs (Sediment) 2/2

| Location | | | | Sampling Date | Weather | Air temperature (°C) | Water depth (m) | Sediment | | | | | | | | | | | | | Activity concentration [Bq/kg(dry)] | | | Remarks | | | |
|--|----------------|----------------------|-------------------|---------------|--------------------|----------------------|-----------------|---------------------------|--------------------|----------------|--------------|----------------------------|---------------|-------------|-------------|-------------|-----------|----------------------|------------------------------|----------|-------------------------------------|------------------|------------------|-------------|--------|-------|-------|
| No. | Water area | Location | Municipality | | | | | Sediment temperature (°C) | Sample length (cm) | Color | Odor | Grain size distribution(%) | | | | | | Sediment content (%) | Density (g/cm ³) | Property | Radioactive cesium | | | | | | |
| | | | | | | | | | | | | Coarse gravel | Medium gravel | Fine gravel | Coarse sand | Medium sand | Fine sand | | | | Silt | Clay | Cs-134 | | Cs-137 | Total | |
| L a k e s a n d R e s e r v o i r s | 58 | Lake Amamura | Lake exit | Sendai City | 2017/5/24 | Rain | 23.4 | 0.5 | 23.3 | 3 | Black | Faint sewage | 0.0 | 9.8 | 13.5 | 16.9 | 38.2 | 14.3 | 2.2 | 5.2 | 63.1 | 2.577 | Sand/silt | 92 | 620 | 712 | |
| | | | | | 2017/8/24 | Rain | 25.6 | 0.4 | 24.8 | 3 | Black | Faint sewage | 0.0 | 0.2 | 3.4 | 10.6 | 43.9 | 29.4 | 7.1 | 5.3 | 56.1 | 2.568 | Sand/gravel/silt | 140 | 1,100 | 1,240 | |
| | | | | | 2017/10/18 | Cloudy | 16.1 | 0.3 | 16.4 | 5 | Olive black | Faint sewage | 0.0 | 0.8 | 3.5 | 14.4 | 55.9 | 21.5 | 1.1 | 2.9 | 76.3 | 2.631 | Sand/gravel | 32 | 300 | 332 | |
| | | | | | 2017/12/14 | Sunny | 7.5 | 0.2 | 5.7 | 3 | Black | Faint sewage | 0.0 | 1.9 | 6.3 | 15.8 | 49.5 | 21.1 | 2.4 | 3.0 | 77.6 | 2.650 | Sand/gravel | 45 | 420 | 465 | |
| | 59 | Natori River System | Kamafusa Dam | Dam site | Kawasaki Town | 2017/5/26 | Cloudy | 16.3 | 30.7 | 11.6 | 5 | Olive black | Faint sewage | 0.0 | 0.0 | 0.0 | 0.0 | 0.1 | 0.2 | 53.8 | 45.9 | 27.0 | 2.485 | Silt | 83 | 530 | 613 |
| | | | | | | 2017/8/24 | Sunny | 26.7 | 17.7 | 18.5 | 5 | Olive black | Faint sewage | 0.0 | 0.0 | 0.0 | 0.2 | 0.7 | 3.3 | 53.4 | 42.5 | 29.0 | 2.511 | Silt | 16 | 150 | 166 |
| | | | | | | 2017/10/20 | Rain | 12.7 | 21.2 | 15.3 | 5 | Olive black | Faint sewage | 0.0 | 0.0 | 0.2 | 1.2 | 1.2 | 1.3 | 55.7 | 40.5 | 27.6 | 2.485 | Silt | 16 | 150 | 166 |
| | | | | | | 2017/12/14 | Sunny | 1.5 | 18.6 | 6.8 | 5 | Olive black | Faint sewage | 0.0 | 0.0 | 0.2 | 0.4 | 1.2 | 2.2 | 60.4 | 35.5 | 27.5 | 2.500 | Silt | <10 | 150 | 150 |
| | 60 | Natori River System | Tatumizu Dam | Dam site | Natori City | 2017/5/25 | Rain | 16.5 | 0.8 | 20.2 | 3 | Brown | None | 0.0 | 15.9 | 18.1 | 11.3 | 17.1 | 14.5 | 13.7 | 9.4 | 50.9 | 2.708 | Sand/gravel | 18 | 140 | 158 |
| | | | | | | 2017/10/18 | Cloudy | 15.6 | 0.5 | 18.0 | 5 | Blackish brown | Faint swamp | 0.0 | 24.9 | 24.1 | 12.5 | 13.8 | 9.1 | 12.3 | 3.3 | 74.4 | 2.720 | Gravel/sand | 4.4 | 34 | 38.4 |
| | 61 | Abukuma River System | Murata Dam | Dam site | Murata Town | 2017/5/25 | Rain | 15.8 | 0.5 | 20.5 | 3 | Grayish olive | None | 0.0 | 28.0 | 14.5 | 12.5 | 19.7 | 12.9 | 7.0 | 5.6 | 44.6 | 2.531 | Sand/gravel | 21 | 120 | 141 |
| | | | | | | 2017/10/20 | Rain | 13.6 | 0.4 | 15.3 | 5 | Olive black | Faint sewage | 0.0 | 25.5 | 30.6 | 18.0 | 18.4 | 5.3 | 1.0 | 1.3 | 79.1 | 2.680 | Gravel/sand | <5.0 | 29 | 29 |
| | 62 | Abukuma River System | Kawarago Dam | Dam site | Shiroishi City | 2017/5/25 | Rain | 14.3 | 0.7 | 19.2 | 3 | Yellowish brown | None | 0.0 | 28.6 | 23.4 | 14.0 | 11.9 | 6.7 | 11.7 | 3.7 | 38.4 | 2.630 | Sand/gravel | 55 | 360 | 415 |
| | | | | | | 2017/8/28 | Cloudy | 19.2 | 0.8 | 20.2 | 3 | Grayish yellowish brown | Faint swamp | 0.0 | 20.1 | 27.9 | 19.0 | 16.1 | 6.0 | 8.0 | 3.0 | 78.0 | 2.713 | Gravel/sand | 20 | 160 | 180 |
| | | | | | | 2017/10/17 | Sunny | 14.1 | 0.6 | 13.5 | 5 | Dull yellowish brown | Faint algae | 0.0 | 34.0 | 25.8 | 10.5 | 10.0 | 5.1 | 11.6 | 3.1 | 75.5 | 2.681 | Gravel/sand | 34 | 320 | 354 |
| | | | | | | 2017/12/11 | Sunny | 5.8 | 0.3 | 8.0 | 3 | Blackish brown | Faint sewage | 0.0 | 5.4 | 11.7 | 15.7 | 42.8 | 17.9 | 3.3 | 3.2 | 71.8 | 2.760 | Sand/gravel | 7.3 | 36 | 43.3 |
| | 63 | Abukuma River System | Shichikasyaku Dam | Dam site | Shichikashuku Town | 2017/5/29 | Sunny | 18.7 | 35.9 | 8.4 | 5 | Olive black | Faint sewage | 0.0 | 0.0 | 0.0 | 0.0 | 0.1 | 1.0 | 37.5 | 61.4 | 30.6 | 2.599 | Silt | 300 | 2,000 | 2,300 |
| | | | | | | 2017/8/29 | Cloudy | 25.7 | 31.1 | 12.3 | 5 | Gray | Faint sewage | 0.0 | 0.0 | 0.0 | 0.0 | 0.0 | 1.0 | 27.9 | 71.1 | 30.1 | 2.550 | Silt | 250 | 2,100 | 2,350 |
| | | | | | | 2017/10/17 | Sunny | 12.0 | 31.3 | 12.3 | 5 | Grayish olive | Faint sewage | 0.0 | 0.0 | 0.0 | 0.1 | 0.1 | 0.6 | 25.5 | 73.8 | 30.1 | 2.577 | Silt | 210 | 1,700 | 1,910 |
| | | | | | | 2017/12/11 | Sunny | 3.6 | 31.4 | 8.2 | 5 | Gray | Faint sewage | 0.0 | 0.0 | 0.0 | 0.0 | 0.1 | 0.7 | 33.2 | 66.1 | 31.1 | 2.547 | Silt | 110 | 1,000 | 1,110 |
| 64 | Lake Bagyunuma | Lake exit | Shiroishi City | 2017/5/25 | Rain | 15.8 | 1.5 | 21.2 | 5 | Olive black | Faint sewage | 0.0 | 0.0 | 0.0 | 1.7 | 6.4 | 4.4 | 42.2 | 45.2 | 15.6 | 2.038 | Silt | 140 | 930 | 1,070 | | |
| | | | | 2017/8/29 | Cloudy | 30.8 | 1.1 | 28.0 | 5 | Blackish brown | Faint sewage | 0.0 | 21.7 | 25.0 | 13.5 | 13.2 | 5.9 | 7.7 | 13.0 | 52.8 | 2.512 | Silt/gravel/sand | 17 | 190 | 207 | | |
| | | | | 2017/10/18 | Sunny | 12.7 | 1.0 | 16.2 | 5 | Blackish brown | Faint sewage | 0.0 | 21.5 | 19.1 | 9.4 | 8.9 | 6.1 | 25.1 | 9.9 | 32.0 | 2.418 | Silt/sand/gravel | 56 | 420 | 476 | | |
| | | | | 2017/12/10 | Sunny | 9.8 | 1.0 | 5.2 | 3 | Blackish brown | Faint sewage | 0.0 | 7.3 | 16.0 | 14.4 | 29.4 | 16.9 | 9.5 | 6.6 | 53.6 | 2.695 | Sand | 100 | 930 | 1,030 | | |

Miyagi Lakes and Reservoirs (Surrounding Environment) 2/2

| Location | | | | | Sampling Date | Weather | Air temperature (°C) | Surrounding Environment(Soil,Air dose) | | | | | | | Remarks | | | | | |
|----------|------------------------|---------------|-----------|--------------------|---------------|---------|----------------------|--|-------------|----------|--------------|-------|-------|------|---------|----------|-------------------------------------|--------|-------|------------------|
| | | | | | | | | Soil | | | | | Color | Odor | | Property | Activity concentration [Bq/kg(dry)] | | | Air Dose (μSv/h) |
| | | | | | | | | General items | | | | | | | | | Radioactive cesium | | | |
| | | | | | | | | No. | Water area | Location | Municipality | | | | | | Cs-134 | Cs-137 | Total | |
| 54 | Sunaoshi River System | Sounoseki Dam | Dam site | Rifu Town | 2017/5/20 | Sunny | 23.4 | Dark brown | Faint earth | Loamy | 41 | 300 | 341 | 0.05 | | | | | | |
| | | | | | 2017/8/18 | Cloudy | 21.3 | Dull yellowish brown | Faint earth | Loamy | 31 | 180 | 211 | 0.04 | | | | | | |
| | | | | | 2017/10/22 | Rain | 16.6 | Blackish brown | Faint earth | Loamy | 18 | 150 | 168 | 0.04 | | | | | | |
| | | | | | 2017/12/17 | Sunny | 2.4 | Dull yellowish brown | Faint earth | Loamy | 36 | 270 | 306 | 0.04 | | | | | | |
| 55 | Nanakita River System | Nanakita Dam | Dam site | Sendai City | 2017/5/23 | Sunny | 25.5 | Dark brown | Faint earth | Loamy | 26 | 240 | 266 | 0.04 | | | | | | |
| | | | | | 2017/8/21 | Rain | 21.6 | Brown | Faint earth | Loamy | 5.7 | 38 | 43.7 | 0.04 | | | | | | |
| | | | | | 2017/10/21 | Cloudy | 14.4 | Grayish yellowish brown | Faint earth | Loamy | 9.4 | 81 | 90.4 | 0.04 | | | | | | |
| | | | | | 2017/12/16 | Cloudy | 6.8 | Dark brown | Faint earth | Loamy | 12 | 67 | 79 | 0.04 | | | | | | |
| 56 | Marutazawatameike Pond | | Pond exit | Sendai City | 2017/5/23 | Sunny | 21.9 | Dull yellowish brown | Faint earth | Loamy | 55 | 450 | 505 | 0.04 | | | | | | |
| | | | | | 2017/8/21 | Cloudy | 22.6 | Dark brown | Faint earth | Loamy | 20 | 220 | 240 | 0.04 | | | | | | |
| | | | | | 2017/10/20 | Rain | 14.3 | Blackish brown | Faint earth | Loamy | 26 | 260 | 286 | 0.04 | | | | | | |
| | | | | | 2017/12/14 | Sunny | 7.4 | Blackish brown | Faint earth | Loamy | 19 | 180 | 199 | 0.04 | | | | | | |
| 57 | Natori River System | Okura Dam | Dam site | Sendai City | 2017/5/23 | Sunny | 23.7 | Extremely dark brown | Faint earth | Loamy | 45 | 300 | 345 | 0.04 | | | | | | |
| | | | | | 2017/8/21 | Rain | 20.5 | Blackish brown | Faint earth | Loamy | 18 | 110 | 128 | 0.04 | | | | | | |
| | | | | | 2017/10/21 | Cloudy | 16.4 | Blackish brown | Faint earth | Loamy | 11 | 95 | 106 | 0.04 | | | | | | |
| | | | | | 2017/12/16 | Cloudy | 3.7 | Blackish brown | Faint earth | Loamy | 15 | 140 | 155 | 0.04 | | | | | | |
| 58 | Lake Amanuma | | Lake exit | Sendai City | 2017/5/24 | Rain | 23.4 | Dark brown | Faint earth | Loamy | 32 | 260 | 292 | 0.05 | | | | | | |
| | | | | | 2017/8/24 | Rain | 25.6 | Dark brown | Faint earth | Sandy | 35 | 210 | 245 | 0.04 | | | | | | |
| | | | | | 2017/10/18 | Cloudy | 16.1 | Dull yellowish brown | Faint earth | Sandy | 25 | 150 | 175 | 0.05 | | | | | | |
| | | | | | 2017/12/14 | Sunny | 7.5 | Dark brown | Faint earth | Loamy | 18 | 150 | 168 | 0.04 | | | | | | |
| 59 | Natori River System | Kamafusa Dam | Dam site | Kawasaki Town | 2017/5/26 | Cloudy | 16.3 | Blackish brown | Faint earth | Loamy | 33 | 220 | 253 | 0.04 | | | | | | |
| | | | | | 2017/8/24 | Sunny | 26.7 | Blackish brown | Faint earth | Loamy | 41 | 250 | 291 | 0.04 | | | | | | |
| | | | | | 2017/10/20 | Rain | 12.7 | Blackish brown | Faint earth | Loamy | 26 | 260 | 286 | 0.04 | | | | | | |
| | | | | | 2017/12/14 | Sunny | 1.5 | Blackish brown | Faint earth | Loamy | 20 | 220 | 240 | 0.04 | | | | | | |
| 60 | Tarumizu Dam | | Dam site | Natori City | 2017/5/25 | Rain | 16.5 | Grayish brown | Faint earth | Loamy | 110 | 770 | 880 | 0.06 | | | | | | |
| | | | | | 2017/10/18 | Cloudy | 15.6 | Grayish yellowish brown | Faint earth | Loamy | 23 | 250 | 273 | 0.04 | | | | | | |
| 61 | Murata Dam | | Dam site | Murata Town | 2017/5/25 | Rain | 15.8 | Dark brown | Faint earth | Loamy | 70 | 590 | 660 | 0.04 | | | | | | |
| | | | | | 2017/10/20 | Rain | 13.6 | Dark brown | Faint earth | Loamy | 25 | 210 | 235 | 0.04 | | | | | | |
| | | | | | 2017/5/25 | Rain | 14.3 | Blackish brown | Faint earth | Loamy | 240 | 1,900 | 2,140 | 0.06 | | | | | | |
| | | | | | 2017/8/28 | Cloudy | 19.2 | Dark brown | Faint earth | Loamy | 64 | 470 | 534 | 0.05 | | | | | | |
| 62 | Abukuma River System | | Dam site | Shiroishi City | 2017/10/17 | Sunny | 14.1 | Blackish brown | Faint earth | Loamy | 42 | 360 | 402 | 0.05 | | | | | | |
| | | | | | 2017/12/11 | Sunny | 5.8 | Blackish brown | Faint earth | Loamy | 23 | 240 | 263 | 0.05 | | | | | | |
| | | | | | 2017/5/29 | Sunny | 18.7 | Dull yellowish brown | Faint earth | Loamy | 180 | 1,400 | 1,580 | 0.10 | | | | | | |
| | | | | | 2017/8/29 | Cloudy | 25.7 | Blackish brown | Faint earth | Loamy | 170 | 1,300 | 1,470 | 0.10 | | | | | | |
| 63 | Shichikasyuku Dam | | Dam site | Shichikashuku Town | 2017/10/17 | Sunny | 12.0 | Blackish brown | Faint earth | Loamy | 240 | 2,000 | 2,240 | 0.09 | | | | | | |
| | | | | | 2017/12/11 | Sunny | 3.6 | Dark brown | Faint earth | Loamy | 200 | 1,500 | 1,700 | 0.09 | | | | | | |
| | | | | | 2017/5/25 | Rain | 15.8 | Blackish brown | Faint earth | Loamy | 210 | 1,400 | 1,610 | 0.14 | | | | | | |
| 64 | Lake Bagyunuma | | Lake exit | Shiroishi City | 2017/8/29 | Cloudy | 30.8 | Blackish brown | Faint earth | Loamy | 130 | 970 | 1,100 | 0.10 | | | | | | |
| | | | | | 2017/10/18 | Sunny | 12.7 | Blackish brown | Faint earth | Loamy | 180 | 1,500 | 1,680 | 0.13 | | | | | | |
| | | | | | 2017/12/10 | Sunny | 9.8 | Blackish brown | Faint earth | Loamy | 180 | 1,600 | 1,780 | 0.13 | | | | | | |

L a k e s a n d R e s e r v o i r s

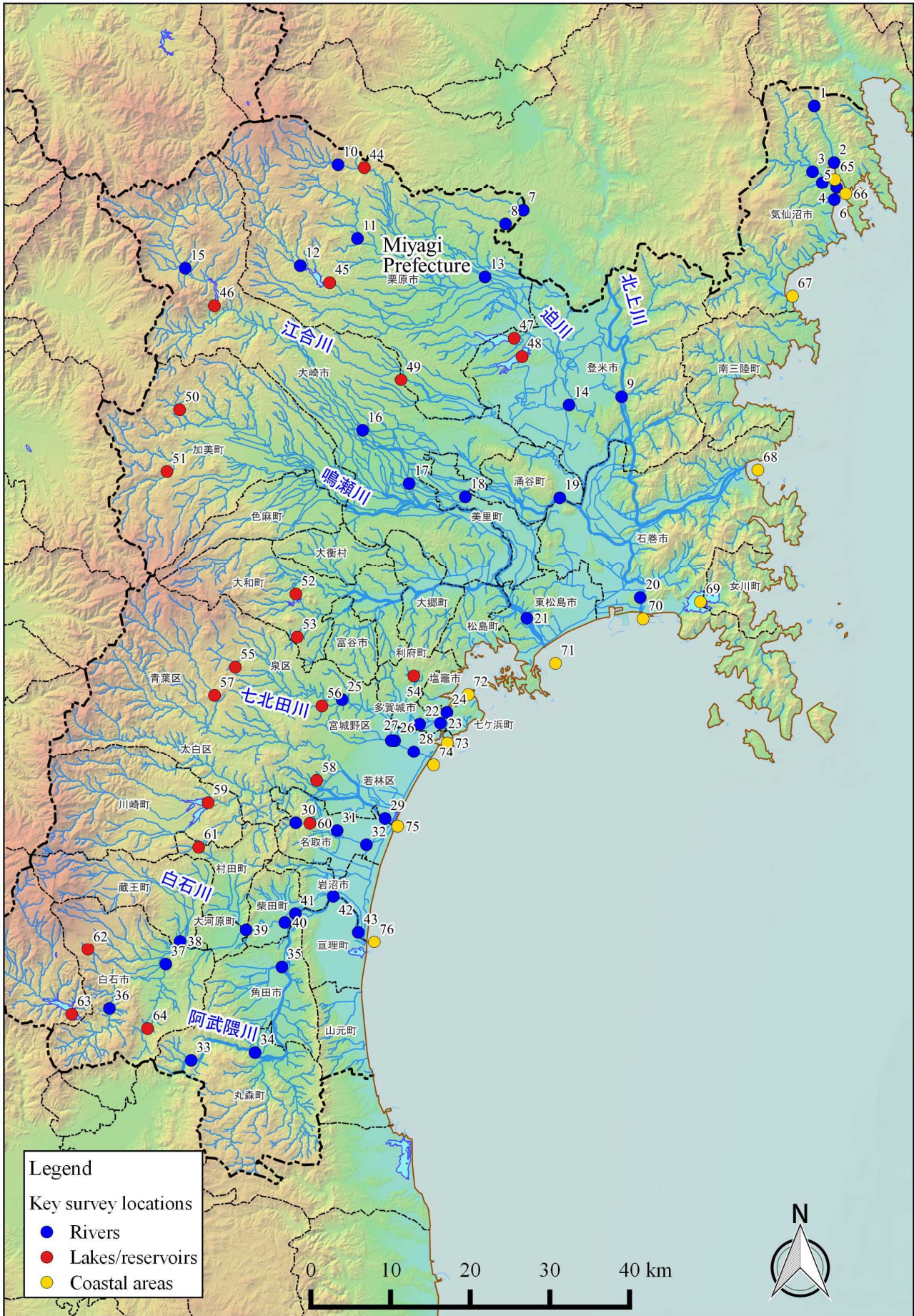
Miyagi Coastal (Water) 1/2

| No. | Location | | Sampling Date | Weather | Air temperature (°C) | Water depth (m) | Water | | | | | | | | | | Remarks |
|---------------|--|-------------------------------------|---------------|------------|----------------------|-----------------|------------------------------|--------------------|-------|------------------------------|-----------------------|--------------|-----------|------------------------------|--------------------|-------|---------|
| | | | | | | | General items | | | | | | | Activity concentration(Bq/L) | | | |
| | Water area | | | | | | Water temperature (°C) | Sampling depth (m) | Color | Odor | Secchi disk depth (m) | Salinity (‰) | SS (mg/L) | Turbidity (FNU) | Radioactive cesium | | |
| 65 | Kesennuma Bay (B) | Offshore of Hachigasaki | Surface layer | 2017/5/22 | Sunny | 22.1 | 17.1 | 16.4 | 0.5 | Dark grayish yellow green | None | 2.8 | 31.6 | 1 | 1.0 | <0.62 | <0.69 |
| | | | Deep layer | | | | | 11.1 | 16.1 | - | None | | 33.6 | <1 | 0.4 | <0.72 | <0.84 |
| | | | Surface layer | 2017/8/25 | Sunny | 24.4 | 17.0 | 22.4 | 0.5 | Dark grayish yellow green | None | 3.0 | 28.6 | 1 | 0.5 | <0.71 | <0.75 |
| | | | Deep layer | | | | | 19.3 | 16.0 | - | None | | 32.7 | 2 | 0.7 | <0.75 | <0.63 |
| | | | Surface layer | 2017/11/15 | Sunny | 13.7 | 19.0 | 14.9 | 0.5 | Dark grayish green | None | 4.8 | 30.1 | 1 | 0.6 | <0.91 | <0.88 |
| | | | Deep layer | | | | | 15.3 | 18.0 | - | None | | 33.1 | 3 | 1.1 | <0.89 | <0.92 |
| Surface layer | 2018/2/4 | Sunny | 3.0 | 16.2 | 7.1 | 0.5 | Grayish yellow green | None | 5.5 | 29.1 | <1 | 0.8 | <0.72 | <0.84 | | | |
| Deep layer | | | | | 9.0 | 15.2 | - | None | | 29.1 | <1 | 0.4 | <0.60 | <0.80 | | | |
| 66 | Kesennuma Bay (C) | Offshore of Oshimakita | Surface layer | 2017/5/22 | Sunny | 21.8 | 37.7 | 16.2 | 0.5 | Dark grayish yellowish green | None | 3.5 | 31.2 | 1 | 0.9 | <0.76 | <0.75 |
| | | | Deep layer | | | | | 12.1 | 36.7 | - | None | | 33.8 | <1 | 0.6 | <0.74 | <0.84 |
| | | | Surface layer | 2017/8/25 | Sunny | 27.0 | 38.0 | 22.5 | 0.5 | Dark grayish yellow green | None | 3.0 | 26.6 | 1 | 0.6 | <0.83 | <0.75 |
| | | | Deep layer | | | | | 17.0 | 37.0 | - | None | | 32.9 | 2 | 1.5 | <0.79 | <0.63 |
| | | | Surface layer | 2017/11/15 | Sunny | 13.6 | 38.0 | 14.2 | 0.5 | Dark grayish bluish green | None | 9.5 | 29.0 | <1 | 0.7 | <0.87 | <0.69 |
| | | | Deep layer | | | | | 14.9 | 37.0 | - | None | | 32.9 | 2 | 0.9 | <0.73 | <0.55 |
| Surface layer | 2018/2/4 | Sunny | 2.8 | 41.0 | 6.2 | 0.5 | Dark grayish yellow green | None | 7.5 | 21.1 | 1 | 0.8 | <0.63 | <0.80 | | | |
| Deep layer | | | | | 7.9 | 40.0 | - | None | | 27.6 | 1 | 0.5 | <0.78 | <0.84 | | | |
| 67 | Offshore of Tsuyagawa River Estuary | Offshore of Tsuyagawa River Estuary | Surface layer | 2017/5/24 | Cloudy | 17.9 | 11.5 | 14.9 | 0.5 | Dark grayish yellowish green | None | 3.8 | 30.9 | 1 | 1.0 | <0.73 | <0.61 |
| | | | Deep layer | | | | | 13.3 | 10.5 | - | None | | 33.2 | <1 | 0.5 | <0.61 | <0.85 |
| | | | Surface layer | 2017/11/30 | Sunny | 5.1 | 11.2 | 11.4 | 0.5 | Dark grayish bluish green | None | >11.2 | 33.1 | <1 | 0.4 | <0.61 | <0.80 |
| | | | Deep layer | | | | | 12.0 | 10.2 | - | None | | 33.4 | <1 | 0.3 | <0.58 | <0.75 |
| 68 | All other neighboring sea areas | Oppa Bay (Jyusanhama Beach) | Surface layer | 2017/5/23 | Sunny | 17.6 | 17.5 | 15.0 | 0.5 | Dark grayish yellow green | None | 4.7 | 27.7 | <1 | 0.7 | <0.67 | <0.84 |
| | | | Deep layer | | | | | 12.0 | 16.5 | - | None | | 33.8 | <1 | 0.2 | <0.66 | <0.75 |
| | | | Surface layer | 2017/8/25 | Sunny | 31.9 | 20.0 | 23.4 | 0.5 | Grayish yellow | None | 0.4 | 7.0 | 35 | 35 | <0.85 | <0.80 |
| | | | Deep layer | | | | | 19.2 | 19.0 | - | None | | 33.0 | <1 | 0.9 | <0.81 | <0.75 |
| | | | Surface layer | 2017/11/16 | Sunny | 8.7 | 17.8 | 12.5 | 0.5 | Dark grayish green | None | 4.8 | 21.0 | 1 | 0.7 | <0.77 | <0.75 |
| | | | Deep layer | | | | | 13.6 | 16.8 | - | None | | 33.5 | 1 | 0.5 | <0.68 | <0.92 |
| Surface layer | 2018/2/7 | Sunny | 5.2 | 16.8 | 8.5 | 0.5 | Grayish yellowish green | None | 3.6 | 31.8 | 2 | 1.9 | <0.80 | <0.84 | | | |
| Deep layer | | | | | 8.8 | 15.8 | - | None | | 32.6 | 12 | 7.6 | <0.80 | <0.75 | | | |
| 69 | Neighboring sea area of Ishinomaki (C) | Lake Mangokuura , M-6 (center) | Surface layer | 2017/5/23 | Sunny | 18.2 | 2.8 | 20.2 | 0.5 | Dark grayish yellow green | None | >2.8 | 30.7 | <1 | 0.7 | <0.67 | <0.75 |
| | | | Deep layer | | | | | 20.2 | 1.8 | - | None | | 30.7 | <1 | 0.7 | <0.70 | <0.75 |
| | | | Surface layer | 2017/8/24 | Sunny | 27.2 | 3.2 | 25.5 | 0.5 | Dark grayish yellow green | None | 2.5 | 30.1 | 3 | 2.1 | <0.76 | <0.80 |
| | | | Deep layer | | | | | 25.3 | 2.2 | - | None | | 31.0 | 2 | 1.5 | <0.77 | <0.92 |
| | | | Surface layer | 2017/11/16 | Sunny | 11.5 | 3.7 | 13.3 | 0.5 | Dark grayish green | None | >3.7 | 31.6 | 3 | 1.5 | <0.89 | <0.75 |
| | | | Deep layer | | | | | 13.4 | 2.7 | - | None | | 31.7 | 2 | 1.3 | <0.65 | <0.84 |
| | | | Surface layer | 2018/2/7 | Sunny | 2.9 | 3.5 | 5.6 | 0.5 | Dark grayish yellow green | None | >3.5 | 29.8 | 3 | 2.4 | <0.76 | <0.80 |
| | | | Deep layer | | | | | 4.8 | 2.5 | - | None | | 30.9 | 2 | 1.3 | <0.78 | <0.63 |
| 70 | Neighboring sea area of Ishinomaki (B-3) | Offshore of Kitakami River Estuary | Surface layer | 2017/5/23 | Sunny | 15.9 | 7.9 | 17.4 | 0.5 | Dark grayish yellow green | None | 1.7 | 20.8 | 5 | 2.8 | <0.67 | <0.75 |
| | | | Deep layer | | | | | 13.4 | 6.9 | - | None | | 32.4 | 7 | 5.0 | <0.88 | <0.80 |
| | | | Surface layer | 2017/8/24 | Sunny | 24.6 | 8.3 | 23.5 | 0.5 | Dark grayish yellow green | None | 4.0 | 20.5 | 3 | 1.5 | <0.69 | <0.80 |
| | | | Deep layer | | | | | 22.9 | 7.3 | - | None | | 31.5 | <1 | 0.2 | <0.77 | <0.75 |
| | | | Surface layer | 2017/11/17 | Cloudy | 3.8 | 8.1 | 12.2 | 0.5 | Dark grayish yellowish green | None | 1.8 | 20.5 | 4 | 3.0 | <0.75 | <0.80 |
| | | | Deep layer | | | | | 14.7 | 7.1 | - | None | | 31.8 | 7 | 5.1 | <0.84 | <0.80 |
| Surface layer | 2018/2/9 | Cloudy | -0.2 | 8.2 | 4.5 | 0.5 | Grayish yellow green | None | 3.2 | 18.8 | 2 | 2.0 | <0.78 | <0.80 | | | |
| Deep layer | | | | | 6.6 | 7.2 | - | None | | 31.2 | 5 | 2.6 | <0.72 | <0.99 | | | |
| 71 | Neighboring sea area of Ishinomaki (C) | Offshore of Naruse | Surface layer | 2017/5/20 | Sunny | 22.4 | 14.3 | 17.8 | 0.5 | Grayish yellow green | None | 1.5 | 32.3 | 3 | 3.1 | <0.66 | <0.85 |
| | | | Deep layer | | | | | 11.8 | 13.3 | - | None | | 33.1 | <1 | 0.5 | <0.68 | <0.75 |
| | | | Surface layer | 2017/8/23 | Sunny | 29.6 | 13.8 | 25.0 | 0.5 | Dark grayish yellow green | None | 3.0 | 23.6 | 2 | 0.5 | <0.52 | <0.69 |
| | | | Deep layer | | | | | 22.5 | 12.8 | - | None | | 32.0 | <1 | 0.2 | <0.84 | <0.69 |
| | | | Surface layer | 2017/11/14 | Cloudy | 14.3 | 14.9 | 13.3 | 0.5 | Dark grayish green | None | 3.9 | 29.2 | 2 | 1.6 | <0.75 | <0.84 |
| | | | Deep layer | | | | | 15.5 | 13.9 | - | None | | 32.4 | 5 | 3.9 | <0.68 | <0.75 |
| Surface layer | 2018/2/6 | Sunny | 1.7 | 14.6 | 6.0 | 0.5 | Dark grayish yellowish green | None | 7.5 | 26.6 | 1 | 1.4 | <0.74 | <0.92 | | | |
| Deep layer | | | | | 7.5 | 13.6 | - | None | | 31.5 | 3 | 2.8 | <0.65 | <0.63 | | | |

Coastal areas

Miyagi Coastal (Water) 2/2

| No. | Location | | Sampling Date | Weather | Air temperature (°C) | Water depth (m) | Water | | | | | | | | | | Remarks | |
|---------------|---|---|-------------------------|---------------|----------------------|-----------------|-------------------------|----------------------|-------|------------------------------|---------------------------|--------------|-----------|------------------------------|--------------------|-------|---------|-------|
| | | | | | | | General items | | | | | | | Activity concentration(Bq/L) | | | | |
| | Water area | | | | | | Water temperature (°C) | Sampling depth (m) | Color | Odor | Secchi disk depth (m) | Salinity (‰) | SS (mg/L) | Turbidity (FNU) | Radioactive cesium | | | |
| | | | | | | | | | | Cs-134 | Cs-137 | | | | | | | |
| 72 | Matsushima Bay (B) | Nishihama Beach | Surface layer | 2017/5/20 | Sunny | 22.6 | 14.2 | 19.0 | 0.5 | Grayish yellow green | None | 1.4 | 30.0 | 3 | 2.2 | <0.81 | <0.84 | |
| | | | Deep layer | | | | | 12.8 | 13.2 | - | None | | 32.7 | 18 | 10 | <0.76 | <0.69 | |
| | | | Surface layer | 2017/8/23 | Cloudy | 29.1 | 12.8 | 26.1 | 0.5 | Dark grayish yellow green | None | 2.0 | 28.1 | 4 | 1.3 | <0.67 | <0.74 | |
| | | | Deep layer | | | | | 23.8 | 11.8 | - | None | | 30.7 | 8 | 2.7 | <0.75 | <0.66 | |
| | | | Surface layer | 2017/11/14 | Cloudy | 14.8 | 13.5 | 14.1 | 0.5 | Dark grayish yellowish green | None | 3.2 | 32.2 | 3 | 2.2 | <0.57 | <0.75 | |
| | | | Deep layer | | | | | 14.0 | 12.5 | - | None | | 32.1 | 5 | 4.0 | <0.78 | <0.75 | |
| | Surface layer | 2018/2/6 | Sunny | 2.8 | 13.2 | 3.9 | 0.5 | Grayish yellow green | None | 3.0 | 31.8 | 2 | 1.7 | <0.80 | <0.84 | | | |
| | Deep layer | | | | | 4.5 | 12.2 | - | None | | 32.0 | 5 | 4.0 | <0.79 | <0.92 | | | |
| | 73 | Neighboring sea area of Sendai Port (A) | Naiko Inner Port, 4-Nai | Surface layer | 2017/5/20 | Sunny | 18.6 | 18.7 | 15.5 | 0.5 | Dark grayish yellow green | None | 1.2 | 26.7 | 3 | 2.5 | <0.85 | <0.75 |
| | | | | Deep layer | | | | | 11.1 | 17.7 | - | None | | 33.2 | 5 | 4.5 | <0.68 | <0.92 |
| | | | | Surface layer | 2017/8/22 | Sunny | 23.3 | 19.4 | 23.5 | 0.5 | Dark grayish yellow green | None | 3.5 | 25.9 | <1 | 0.5 | <0.81 | <0.75 |
| | | | | Deep layer | | | | | 21.7 | 18.4 | - | None | | 32.4 | 6 | 4.9 | <0.77 | <0.84 |
| Surface layer | | | | 2017/11/14 | Cloudy | 10.0 | 18.6 | 14.8 | 0.5 | Dark grayish green | None | 3.5 | 30.5 | 3 | 2.2 | <0.69 | <0.84 | |
| Deep layer | | | | | | | | 15.7 | 17.6 | - | None | | 31.4 | 6 | 4.6 | <0.95 | <0.92 | |
| Surface layer | | | | 2018/2/6 | Sunny | -2.6 | 19.0 | 5.3 | 0.5 | Grayish yellow green | None | 3.5 | 28.3 | 2 | 1.8 | <0.70 | <0.88 | |
| Deep layer | | | | | | | | 6.1 | 18.0 | - | None | | 31.5 | 10 | 9.0 | <0.88 | <0.84 | |
| 74 | Neighboring sea area of Sendai Port (B) | Gamo-3 | Surface layer | 2017/5/20 | Sunny | 19.6 | 17.7 | 14.6 | 0.5 | Dark grayish yellow green | None | 1.9 | 25.6 | 3 | 2.5 | <0.56 | <0.61 | |
| | | | Deep layer | | | | | 11.5 | 16.7 | - | None | | 33.0 | 4 | 3.8 | <0.84 | <0.61 | |
| | | | Surface layer | 2017/8/22 | Cloudy | 22.6 | 17.0 | 23.3 | 0.5 | Dark grayish yellow green | None | 4.0 | 27.4 | 1 | 0.2 | <0.61 | <0.69 | |
| | | | Deep layer | | | | | 21.9 | 16.0 | - | None | | 32.4 | 2 | 1.2 | <0.81 | <0.75 | |
| | | | Surface layer | 2017/11/14 | Cloudy | 9.9 | 17.1 | 14.3 | 0.5 | Dark grayish green | None | 5.0 | 29.7 | 1 | 1.2 | <0.69 | <0.80 | |
| | | | Deep layer | | | | | 15.9 | 16.1 | - | None | | 32.6 | 4 | 3.9 | <0.58 | <0.75 | |
| | | | Surface layer | 2018/2/6 | Sunny | -2.7 | 17.5 | 4.9 | 0.5 | Dark grayish yellowish green | None | 10.0 | 25.6 | <1 | 0.5 | <0.72 | <0.69 | |
| | | | Deep layer | | | | | 6.0 | 16.5 | - | None | | 30.7 | 3 | 2.3 | <0.86 | <0.75 | |
| 75 | All other neighboring sea areas | Ido-5 | Surface layer | 2017/5/28 | Sunny | 17.5 | 5.5 | 17.2 | 0.5 | Dark grayish yellow green | None | 2.5 | 19.2 | 4 | 2.2 | <0.72 | <0.75 | |
| | | | Deep layer | | | | | 16.2 | 4.5 | - | None | | 31.2 | 5 | 3.0 | <0.88 | <0.75 | |
| | | | Surface layer | 2017/8/23 | Cloudy | 23.7 | 7.0 | 22.6 | 0.5 | Dark grayish yellow green | None | 3.5 | 23.7 | 3 | 0.7 | <0.74 | <0.84 | |
| | | | Deep layer | | | | | 22.7 | 6.0 | - | None | | 31.8 | 4 | 0.7 | <0.57 | <0.74 | |
| | | | Surface layer | 2017/11/13 | Sunny | 4.6 | 4.5 | 11.7 | 0.5 | Dark grayish yellowish green | None | 2.8 | 15.1 | 3 | 2.2 | <0.84 | <0.88 | |
| | | | Deep layer | | | | | 14.8 | 3.5 | - | None | | 32.3 | 5 | 3.4 | <0.76 | <0.84 | |
| | | | Surface layer | 2018/2/8 | Sunny | 0.9 | 4.8 | 5.8 | 0.5 | Grayish yellow green | None | 1.8 | 27.8 | 8 | 6.1 | <0.89 | <0.99 | |
| | | | Deep layer | | | | | 6.1 | 3.8 | - | None | | 29.3 | 9 | 6.4 | <0.65 | <0.80 | |
| 76 | Offshore of Abukuma River Estuary | Offshore of Abukuma River Estuary | Surface layer | 2017/5/25 | Rain | 16.9 | 9.7 | 20.1 | 0.5 | Grayish yellow green | None | 1.8 | 8.6 | 6 | 3.1 | <0.74 | <0.80 | |
| | | | Deep layer | | | | | 17.6 | 8.7 | - | None | | 30.8 | 1 | 0.5 | <0.76 | <0.63 | |
| | | | Surface layer | 2017/6/13 | Sunny | 19.4 | 10.6 | 18.6 | 0.5 | Dark grayish green | None | 7.5 | 23.8 | 1 | 0.4 | <0.67 | <0.75 | |
| | | | Deep layer | | | | | 17.9 | 9.6 | - | None | | 31.6 | <1 | 0.2 | <0.72 | <0.63 | |
| | | | Surface layer | 2017/7/4 | Cloudy | 24.0 | 10.2 | 21.2 | 0.5 | Dark grayish green | None | 5.5 | 15.0 | 4 | 2.8 | <0.71 | <0.80 | |
| | | | Deep layer | | | | | 16.4 | 9.2 | - | None | | 32.3 | <1 | 0.6 | <0.68 | <0.80 | |
| | | | Surface layer | 2017/8/22 | Cloudy | 27.7 | 9.7 | 24.4 | 0.5 | Dark grayish yellow green | None | 2.5 | 25.3 | 4 | 0.5 | <0.91 | <0.75 | |
| | | | Deep layer | | | | | 23.1 | 8.7 | - | None | | 32.0 | 12 | 2.6 | <0.69 | <0.80 | |
| | | | Surface layer | 2017/9/8 | Sunny | 26.5 | 10.5 | 22.1 | 0.5 | Dark grayish yellowish green | None | 2.3 | 19.7 | 6 | 3.1 | <0.88 | <0.66 | |
| | | | Deep layer | | | | | 23.1 | 9.5 | - | None | | 30.3 | <1 | 0.5 | <0.42 | <0.70 | |
| | | | Surface layer | 2017/10/10 | Cloudy | 24.0 | 10.7 | 19.8 | 0.5 | Dark grayish green | None | 3.5 | 29.4 | 2 | 1.2 | <0.75 | <0.69 | |
| | | | Deep layer | | | | | 19.9 | 9.7 | - | None | | 31.4 | 1 | 0.6 | <0.70 | <0.69 | |
| | | | Surface layer | 2017/11/17 | Sunny | 8.0 | 10.0 | 13.8 | 0.5 | Dark grayish green | None | 5.5 | 24.5 | 2 | 1.1 | <0.68 | <0.75 | |
| | | | Deep layer | | | | | 15.5 | 9.0 | - | None | | 32.7 | 4 | 1.5 | <0.75 | <0.63 | |
| | | | Surface layer | 2017/12/7 | Sunny | 5.7 | 11.0 | 11.3 | 0.5 | Dark grayish green | None | 4.2 | 31.7 | 2 | 0.8 | <0.74 | <0.55 | |
| | | | Deep layer | | | | | 11.4 | 10.0 | - | None | | 32.2 | 6 | 2.0 | <0.60 | <0.74 | |
| | | | Surface layer | 2018/1/20 | Sunny | 4.2 | 9.7 | 7.5 | 0.5 | Dark grayish green | None | 3.0 | 26.0 | 5 | 3.0 | <0.87 | <0.61 | |
| | | | Deep layer | | | | | 8.6 | 8.7 | - | None | | 33.0 | 2 | 1.0 | <0.73 | <0.48 | |
| Surface layer | 2018/2/8 | Sunny | 4.0 | 11.0 | 7.1 | 0.5 | Grayish yellowish green | None | 3.0 | 27.7 | 2 | 1.9 | <0.83 | <0.88 | | | | |
| Deep layer | | | | | 7.6 | 10.0 | - | None | | 31.0 | 2 | 1.4 | <0.73 | <0.75 | | | | |



Survey Locations (Miyagi Prefecture)