

FY2016 Chiba Prefecture Survey Results

[Outline of results]

(1) Water

Rivers

Radioactive cesium (Cs-134, Cs-137): Not detectable at any location

Lakes and reservoirs

Radioactive cesium (Cs-134, Cs-137): Not detectable at any location

Coastal areas

Radioactive cesium (Cs-134, Cs-137): Not detectable at any location

(2) Sediments

Rivers

Cs-134: ND - 630 Bq/kg (dry)

Cs-137: 5.9 - 3,500 Bq/kg (dry)

Lakes and reservoirs

Cs-134: ND - 390 Bq/kg (dry)

Cs-137: 66 - 2,200 Bq/kg (dry)

Coastal areas

Cs-134: ND - 13 Bq/kg (dry)

Cs-137: 1.2 - 58 Bq/kg (dry)

(3) Surrounding Environment

(a) Soil

Rivers

Cs-134: ND - 660 Bq/kg (dry)

Cs-137: 17 - 3,800 Bq/kg (dry)

Lakes and reservoirs

Cs-134: 52 - 1,100 Bq/kg (dry)

Cs-137: 300 - 6,400 Bq/kg (dry)

(b) Ambient dose rate

Rivers

0.03 - 0.15 μ Sv/h

Lakes and reservoirs

0.07 - 0.13 μ Sv/h

Chiba River (Water) 1/4

No.	Location				Sampling Date	Weather	Air temperature (°C)	Water depth (m)	Water											Remarks
	Water area	Location	Municipality	Water temperature (°C)					Sampling depth (m)	General items			Transparency (cm)	Electrical conductivity (mS/m)	SS (mg/L)	Turbidity (FNU)	Activity concentration(Bq/L)			
										Color	Odor	Radioactive cesium Cs-134					Cs-137			
R i v e r s	Tongawa River System	Shogen River	Fukama-ohashi Bridge	Inzai City /Sakae Town	2016/5/10	Cloudy	24.6	2.1	21.8	0.0	Grayish greenish yellow	None	28	26.2	11	7.2	<0.77	<0.78		
					2016/8/26	Cloudy	34.9	2.2	30.4	0.0	Grayish greenish yellow	None	24	20.3	7	6.2	<0.91	<0.88		
					2016/11/29	Cloudy	13.1	1.9	10.3	0.0	Grayish greenish yellow	None	36	27.1	9	9.2	<0.81	<0.84		
			2017/1/27		Cloudy	4.6	1.6	3.9	0.0	Grayish yellow	None	36	30.9	8	8.7	<0.57	<0.69			
			2016/5/10		Cloudy	19.8	1.8	19.0	0.0	Grayish reddish yellow	Faint sewage	18	27.4	34	20	<0.77	<0.55			
			2016/8/26		Sunny	33.6	1.8	28.4	0.0	Light grayish yellow	Faint sewage	23	18.7	12	8.3	<0.85	<0.63			
		2	Inbei Bridge	Inzai City /Sakae Town	2016/11/28	Sunny	14.1	1.9	10.5	0.0	Light grayish yellow	Faint sewage	30	30.2	14	13	<0.78	<0.69		
					2017/1/26	Sunny	9.7	1.7	5.4	0.0	Light grayish greenish yellow	None	32	30.2	13	10	<0.58	<0.69		
					2016/5/10	Cloudy	19.0	0.6	19.2	0.0	Light grayish yellow	None	20	27.2	44	24	<0.83	<0.80		
					2016/8/26	Sunny	29.8	0.5	28.7	0.0	Light grayish yellow	None	27	16.1	15	13	<0.68	<0.63		
					2016/11/29	Cloudy	9.5	0.5	9.6	0.0	Light grayish yellow	None	31	29.2	14	12	<0.79	<0.55		
					2017/1/27	Cloudy	9.6	0.5	4.6	0.0	Light grayish yellow	None	28	33.3	26	16	<0.81	<0.75		
		3	Intake at Maeshinden Water Purification Plant	Inzai City /Sakae Town	2016/5/9	Cloudy	22.8	0.2	19.5	0.0	Light grayish reddish yellow	Faint sewage	28	23.1	18	9.9	<0.58	<0.80		
					2016/8/25	Sunny	30.5	0.4	27.8	0.0	Light grayish reddish yellow	Faint sewage	24	16.4	38	20	<0.51	<0.84		
					2016/11/28	Cloudy	13.2	0.5	10.1	0.0	Light grayish reddish yellow	Faint sewage	25	29.8	23	16	<0.60	<0.75		
					2017/1/26	Sunny	7.0	0.5	4.4	0.0	Light grayish reddish yellow	None	33	34.0	12	9.7	<0.70	<0.84		
					2016/5/9	Cloudy	21.8	0.7	19.8	0.0	Light grayish yellow	Faint sewage	48	20.2	14	8.1	<0.80	<0.75		
					2016/8/25	Sunny	30.8	1.5	27.4	0.0	Grayish greenish yellow	Faint sewage	44	17.1	9	6.6	<0.76	<0.69		
		4	Nagato River	Nagato Bridge	Sakae Town	2016/11/28	Cloudy	12.3	1.0	9.8	0.0	Light grayish yellow	Faint sewage	27	29.6	24	16	<0.70	<0.84	
						2017/1/26	Sunny	6.1	0.5	4.3	0.0	Grayish greenish yellow	None	43	31.5	10	8.0	<0.63	<0.69	
						2016/5/9	Cloudy	25.0	0.2	19.0	0.0	Grayish reddish yellow	Faint sewage	20	54.2	55	45	<0.65	<0.75	
						2016/8/25	Cloudy	32.1	0.7	23.9	0.0	Grayish reddish yellow	Faint sewage	54	43.1	16	10	<0.82	<0.88	
						2016/11/28	Cloudy	13.0	0.2	11.2	0.0	Grayish reddish yellow	Faint sewage	23	34.7	33	27	<0.68	<0.88	
						2017/1/26	Sunny	5.6	0.2	6.1	0.0	Light grayish reddish yellow	Faint sewage	32	98.7	23	20	<0.77	<0.99	
		5	Fujimi Bridge	Sakae Town	2016/5/9	Cloudy	22.8	0.4	21.5	0.0	Light grayish greenish yellow	None	53	54.5	9	8.4	<0.61	<0.88		
					2016/8/25	Cloudy	31.1	1.4	25.3	0.0	Light grayish greenish yellow	None	21	27.9	22	25	<0.76	<0.75		
					2016/11/28	Cloudy	12.5	0.6	10.3	0.0	Light grayish greenish yellow	None	76	127	7	6.5	<0.76	<0.75		
					2017/1/26	Sunny	2.7	0.5	4.1	0.0	Light grayish yellow	None	48	33.2	9	7.9	<0.76	<0.92		
					2016/5/20	Cloudy	19.5	0.4	18.1	0.0	Light grayish yellow green	None	82	31.4	6	1.5	<0.74	<0.69		
					2016/8/8	Cloudy	29.0	0.4	26.4	0.0	Grayish yellow	None	41	29.9	23	8.6	<0.54	<0.84		
6	Ryudai River	Ryumatsuno Bridge	Narita City/Sakae Town	2016/11/18	Sunny	10.0	0.1	12.8	0.0	Grayish yellow	None	94	34.2	2	2.0	<0.64	<0.92			
				2017/1/23	Sunny	4.5	0.2	5.9	0.0	Grayish greenish yellow	None	63	37.2	5	4.2	<0.51	<0.84			
				2016/5/16	Cloudy	21.1	0.2	17.4	0.0	Light grayish greenish yellow	None	>100	40.3	7	2.4	<0.82	<0.80			
				2016/8/16	Sunny	28.2	0.2	22.5	0.0	Light grayish greenish yellow	None	75	44.1	8	3.5	<0.69	<0.75			
				2016/11/8	Cloudy	13.6	0.2	14.6	0.0	Light grayish greenish yellow	None	>100	40.2	5	3.0	<0.66	<0.75			
				2017/1/19	Cloudy	9.9	0.2	10.2	0.0	Light grayish greenish yellow	None	>100	40.7	3	2.4	<0.84	<0.75			
7	Nekona River	Shinkawa Floodgate	Narita City	2016/5/20	Cloudy	18.5	0.3	19.0	0.0	Light grayish greenish yellow	Faint sewage	39	53.1	21	11	<0.79	<0.69			
				2016/8/8	Cloudy	29.0	0.3	27.3	0.0	Light grayish greenish yellow	None	47	65.4	12	5.8	<0.70	<0.80			
				2016/11/18	Sunny	11.7	0.5	12.6	0.0	Light grayish greenish yellow	None	95	58.7	2	2.0	<0.66	<0.80			
				2017/1/23	Sunny	8.0	0.5	8.1	0.0	Light grayish greenish yellow	None	>100	65.4	2	1.6	<0.58	<0.84			
				2016/5/20	Cloudy	19.0	0.6	18.8	0.0	Light grayish yellow green	None	31	32.5	19	9.8	<0.74	<0.80			
				2016/8/8	Sunny	30.5	0.5	29.0	0.0	Light grayish greenish yellow	None	30	34.3	18	9.4	<0.78	<0.80			
8	Ohori River	Kitakashiwa Bridge	Kashiwa City	2016/11/18	Sunny	14.5	0.7	14.8	0.0	Grayish greenish yellow	None	78	37.6	4	2.9	<0.65	<0.66			
				2017/1/23	Sunny	6.5	0.4	8.8	0.0	Light grayish greenish yellow	None	>100	37.9	3	2.0	<0.84	<0.84			
				2016/5/16	Cloudy	21.9	0.1	18.3	0.0	Light grayish greenish yellow	Faint sewage	>100	40.7	4	2.3	<0.55	<0.92			
				2016/8/16	Cloudy	31.0	0.1	24.2	0.0	Light grayish greenish yellow	Faint sewage	>100	38.5	8	3.8	<0.86	<0.69			
				2016/11/8	Cloudy	13.4	0.1	14.6	0.0	Light grayish greenish yellow	Faint sewage	59	39.5	18	7.3	<0.63	<0.61			
				2017/1/19	Cloudy	8.9	0.1	11.0	0.0	Light grayish greenish yellow	None	>100	40.8	4	2.3	<0.60	<0.88			
9	Otsu River	Sanno Bridge, under	Kamagaya City	2016/5/20	Cloudy	20.5	0.5	19.0	0.0	Light grayish yellow	None	45	31.2	21	7.7	<0.55	<0.75			
				2016/8/8	Sunny	31.5	0.5	27.6	0.0	Light grayish yellow	None	31	33.4	23	8.1	<0.87	<0.69			
				2016/11/18	Sunny	15.5	0.4	13.5	0.0	Light grayish yellow	None	87	35.9	3	2.0	<0.80	<0.92			
		10		Kaminuma Bridge	Kashiwa City	2017/1/23	Sunny	8.0	0.5	8.1	0.0	Light grayish greenish yellow	None	>100	40.8	4	2.3	<0.60	<0.88	
						2016/5/20	Cloudy	19.0	0.6	18.8	0.0	Light grayish yellow green	None	31	32.5	19	9.8	<0.74	<0.80	
						2016/8/8	Sunny	30.5	0.5	29.0	0.0	Light grayish greenish yellow	None	30	34.3	18	9.4	<0.78	<0.80	
11	Someirotoshi	Someishinbashi Bridge	2016/11/18	Sunny		14.5	0.7	14.8	0.0	Grayish greenish yellow	None	78	37.6	4	2.9	<0.65	<0.66			
			2017/1/23	Sunny		6.5	0.4	8.8	0.0	Light grayish greenish yellow	None	>100	37.9	3	2.0	<0.84	<0.84			
			2016/5/16	Cloudy		21.9	0.1	18.3	0.0	Light grayish greenish yellow	Faint sewage	>100	40.7	4	2.3	<0.55	<0.92			
12	Downstream of Karuizawasakai Bridge		Kamagaya City /Shiroi City	2016/8/16	Cloudy	31.0	0.1	24.2	0.0	Light grayish greenish yellow	Faint sewage	>100	38.5	8	3.8	<0.86	<0.69			
				2016/11/8	Cloudy	13.4	0.1	14.6	0.0	Light grayish greenish yellow	Faint sewage	59	39.5	18	7.3	<0.63	<0.61			
				2017/1/19	Cloudy	8.9	0.1	11.0	0.0	Light grayish greenish yellow	None	>100	40.8	4	2.3	<0.60	<0.88			
13	Nauchi Bridge	Shiroi City		2016/5/20	Cloudy	20.5	0.5	19.0	0.0	Light grayish yellow	None	45	31.2	21	7.7	<0.55	<0.75			
				2016/8/8	Sunny	31.5	0.5	27.6	0.0	Light grayish yellow	None	31	33.4	23	8.1	<0.87	<0.69			
				2016/11/18	Sunny	15.5	0.4	13.5	0.0	Light grayish yellow	None	87	35.9	3	2.0	<0.80	<0.92			
2017/1/23	Sunny		5.5	0.3	7.8	0.0	Light grayish yellow	None	>100	37.6	2	1.5	<0.66	<0.84						

Chiba River (Water) 2/4

No.	Location				Sampling Date	Weather	Air temperature (°C)	Water depth (m)	Water										Remarks
	Water area	Location	Municipality	Water temperature (°C)					Sampling depth (m)	Color	Odor	Transparency (cm)	Electrical conductivity (mS/m)	SS (mg/L)	Turbidity (FNU)	Activity concentration(Bq/L)			
																Cs-134	Cs-137		
14	Feeder Rivers of Teganuma Lake	Kamenari River	Kamenari Bridge	Inzai City	2016/5/10	Cloudy	23.2	0.8	22.2	0.0	Light grayish yellow	Faint sewage	38	25.3	17	8.4	<0.61	<0.55	
					2016/8/26	Sunny	33.1	0.6	27.2	0.0	Light grayish yellow	Faint sewage	69	31.4	7	4.9	<0.68	<0.92	
					2016/11/29	Sunny	13.8	0.6	11.5	0.0	Light grayish yellow	Faint sewage	>100	32.7	7	4.0	<0.76	<0.75	
					2017/1/27	Sunny	4.3	0.7	5.6	0.0	Light grayish yellow	Faint sewage	>100	33.5	3	2.0	<0.70	<0.99	
15	Igusasu Channel	Downstream of Igusasu Channel	Kamagaya City	2016/5/16	Sunny	23.7	0.1	22.5	0.0	Light grayish yellow green	Faint sewage	36	38.2	6	3.8	<0.91	<0.69		
				2016/9/1	Sunny	29.7	0.1	23.6	0.0	Light grayish yellow green	Faint sewage	>100	30.0	3	2.2	<0.78	<0.88		
				2016/11/8	Cloudy	13.7	0.1	13.5	0.0	Light grayish yellow green	Faint sewage	>100	38.6	1	1.4	<0.71	<0.63		
				2017/1/19	Cloudy	4.7	0.1	8.3	0.0	Light grayish greenish yellow	None	86	46.6	5	3.2	<0.69	<0.75		
16	Futae River	Tomigaya Bridge	Funabashi City /Shiroi City	2016/5/16	Sunny	24.6	0.2	22.8	0.0	Light grayish yellow	Faint sewage	>100	38.0	3	1.7	<0.48	<0.75		
				2016/9/1	Sunny	29.2	0.2	23.6	0.0	Light grayish yellow	Faint sewage	>100	37.6	2	1.3	<0.72	<0.80		
				2016/11/8	Cloudy	12.8	0.2	12.5	0.0	Light grayish yellow	None	>100	41.2	<1	0.6	<0.74	<0.81		
				2017/1/19	Cloudy	5.5	0.2	9.5	0.0	Light grayish yellow	None	>100	38.6	1	1.2	<0.60	<0.88		
17	Kanzaki River	Kanzaki Bridge	Yachiyo City /Inzai City	2016/5/20	Cloudy	20.2	1.6	20.0	0.0	Light grayish yellow green	None	48	26.9	12	6.4	<0.71	<0.78		
				2016/8/9	Sunny	31.0	1.5	27.4	0.0	Light grayish yellow	None	47	33.1	6	3.0	<0.54	<0.69		
				2016/11/18	Sunny	20.0	1.5	13.6	0.0	Light grayish yellow green	None	78	34.4	4	3.0	<0.66	<0.61		
				2017/1/24	Sunny	4.5	1.4	5.4	0.0	Grayish yellow green	None	42	37.4	8	6.6	<0.76	<0.75		
18	Kannou River	Kannou Bridge	Yachiyo City	2016/5/20	Sunny	20.0	0.6	18.6	0.0	Grayish greenish yellow	None	70	32.5	8	3.6	<0.67	<0.74		
				2016/8/9	Sunny	35.5	0.6	25.7	0.0	Light grayish greenish yellow	None	70	38.8	5	2.5	<0.66	<0.70		
				2016/11/18	Sunny	17.0	0.5	13.7	0.0	Light grayish greenish yellow	None	60	43.0	4	2.7	<0.75	<0.84		
				2017/1/24	Sunny	6.0	0.7	7.3	0.0	Grayish greenish yellow	None	67	45.4	3	2.9	<0.68	<0.84		
19	Inba Discharge Channel (upper reaches)	Yachiyo Bridge	Yachiyo City	2016/5/20	Cloudy	20.0	2.6	20.2	0.0	Grayish reddish yellow	Faint sewage	35	25.4	22	13	<0.67	<0.61		
				2016/8/9	Sunny	34.0	2.9	28.1	0.0	Light grayish yellow green	None	26	28.5	10	5.2	<0.72	<0.69		
				2016/11/18	Sunny	16.5	2.8	14.8	0.0	Grayish greenish yellow	None	27	34.8	10	8.1	<0.77	<0.80		
				2017/1/24	Sunny	7.5	2.8	7.1	0.0	Light grayish reddish yellow	None	30	40.3	14	8.8	<0.79	<0.75		
20	Feeder rivers of Lake Inbanuma	Teguri River	Munsei Bridge	Sakura City	2016/5/16	Cloudy	23.4	0.5	20.7	0.0	Light grayish greenish yellow	None	85	33.7	9	4.2	<0.59	<0.63	
					2016/8/9	Sunny	35.5	0.6	27.1	0.0	Light grayish greenish yellow	None	78	33.3	5	2.6	<0.84	<0.48	
					2016/11/21	Cloudy	12.5	0.5	13.4	0.0	Light grayish greenish yellow	None	>100	36.7	2	1.9	<0.58	<0.88	
					2017/1/24	Sunny	6.0	0.4	4.8	0.0	Light grayish greenish yellow	None	>100	40.2	<1	0.9	<0.93	<0.63	
21	Moroto River	Moroto Bridge	Inzai City	2016/5/16	Cloudy	24.3	0.9	22.5	0.0	Light grayish greenish yellow	None	40	28.0	15	9.8	<0.66	<0.63		
				2016/8/9	Sunny	35.0	0.9	28.8	0.0	Grayish greenish yellow	None	37	28.3	12	7.3	<0.57	<0.63		
				2016/11/21	Cloudy	13.0	0.9	13.2	0.0	Grayish greenish yellow	None	57	25.5	6	4.9	<0.72	<0.69		
				2017/1/24	Sunny	3.5	0.9	3.8	0.0	Grayish greenish yellow	None	97	29.9	1	1.6	<0.72	<0.84		
22	Kashima River	Iwatomi Bridge	Sakura City	2016/5/16	Cloudy	18.8	0.6	20.2	0.0	Light grayish yellow green	None	86	31.1	11	3.8	<0.67	<0.88		
				2016/8/10	Sunny	33.5	0.7	24.0	0.0	Light grayish yellow green	None	62	35.4	6	2.9	<0.66	<0.48		
				2016/11/21	Cloudy	13.0	0.9	14.4	0.0	Light grayish greenish yellow	None	86	32.6	4	3.4	<0.61	<0.84		
				2017/1/25	Sunny	6.0	0.6	6.6	0.0	Light grayish yellow green	None	>100	34.8	2	1.6	<0.81	<0.69		
23	Takasaki River	Ryuto Bridge	Sakura City	2016/5/16	Cloudy	21.1	0.8	19.8	0.0	Light grayish greenish yellow	Faint sewage	85	50.3	6	3.3	<0.71	<0.63		
				2016/8/10	Sunny	33.5	0.8	27.0	0.0	Grayish yellow	None	65	39.8	7	3.8	<0.63	<0.63		
				2016/11/21	Cloudy	14.0	0.7	14.4	0.0	Grayish yellow	None	61	36.1	6	5.5	<0.68	<0.84		
				2017/1/25	Sunny	10.0	0.8	7.0	0.0	Light grayish yellow green	None	81	44.8	3	2.3	<0.85	<0.75		
24	Kashima River	Kashima Bridge	Sakura City	2016/5/16	Cloudy	23.5	2.4	21.7	0.0	Light grayish yellow	None	53	38.3	10	6.5	<0.66	<0.80		
				2016/8/10	Sunny	31.5	2.2	29.2	0.0	Grayish yellow	None	41	39.0	10	5.0	<0.66	<0.70		
				2016/11/21	Cloudy	15.0	2.4	14.1	0.0	Light grayish yellow	None	68	32.7	5	3.1	<0.75	<0.63		
				2017/1/25	Sunny	10.5	1.3	8.2	0.0	Light grayish greenish yellow	None	76	37.6	2	2.0	<0.84	<0.92		
25	Inbasu Channel	Tsurumaki Bridge	Inzai City	2016/5/16	Cloudy	25.3	2.5	21.4	0.0	Light grayish greenish yellow	None	22	28.4	23	12	<0.69	<0.63		
				2016/8/10	Sunny	31.0	2.6	29.0	0.0	Light grayish yellow green	None	17	29.5	24	16	<0.76	<0.75		
				2016/11/21	Cloudy	14.0	2.5	13.4	0.0	Light grayish greenish yellow	None	22	26.7	16	10	<0.51	<0.96		
				2017/1/25	Sunny	7.5	2.7	6.4	0.0	Light grayish greenish yellow	None	28	28.2	21	16	<0.76	<0.84		
26	Edogawa River System	Tonecunga Canal	Unga Bridge	Nagareyama City/Noda City	2016/5/19	Sunny	23.8	0.3	23.1	0.0	Light grayish greenish yellow	Faint sewage	30	43.5	23	10	<0.67	<0.75	
					2016/8/10	Sunny	31.0	0.3	30.8	0.0	Grayish greenish yellow	None	25	58.8	22	10	<0.73	<0.69	
					2016/11/15	Sunny	17.3	0.3	14.8	0.0	Grayish greenish yellow	Faint sewage	50	36.1	11	5.6	<0.53	<0.70	
					2017/1/26	Sunny	10.8	0.3	7.8	0.0	Light grayish greenish yellow	Faint sewage	63	58.4	5	4.2	<0.68	<0.84	

Chiba River (Water) 3/4

R i v e r s	Location				Sampling Date	Weather	Air temperature (°C)	Water depth (m)	Water										Remarks
	No.	Water area	Location	Municipality					Water temperature (°C)	Sampling depth (m)	General items		Transparency (cm)	Electrical conductivity (mS/m)	SS (mg/L)	Turbidity (FNU)	Activity concentration(Bq/L)		
											Color	Odor					Cs-134	Cs-137	
27	Edogawa River	Nagareyama Bridge	Nagareyama City/Misato City	2016/5/19	Sunny	23.7	0.4	20.5	0.0	Light grayish greenish yellow	None	51	18.6	10	5.8	<0.75	<0.88		
				2016/8/10	Sunny	31.5	0.8	29.8	0.0	Grayish greenish yellow	None	25	24.3	28	13	<0.87	<0.66		
				2016/11/15	Sunny	15.5	0.4	13.1	0.0	Light grayish greenish yellow	Faint sewage	64	29.4	7	5.2	<0.88	<0.80		
				2017/1/26	Sunny	11.6	0.5	4.3	0.0	Light grayish greenish yellow	None	84	32.3	3	3.3	<0.69	<0.63		
	28	Sakagawa River	Benten Bridge	Matsudo City	2016/5/23	Sunny	29.8	2.0	26.7	0.0	Light grayish greenish yellow	Faint sewage	62	41.6	7	5.6	<0.52	<0.92	
					2016/8/11	Cloudy	30.0	2.3	28.0	0.0	Light grayish yellow green	Faint sewage	41	31.6	9	3.3	<0.78	<0.61	
					2016/11/22	Sunny	14.0	2.0	14.3	0.0	Grayish greenish yellow	None	57	38.7	4	3.1	<0.63	<0.69	
					2017/1/26	Sunny	3.5	2.0	5.8	0.0	Grayish greenish yellow	Faint sewage	22	44.5	14	12	<0.89	<0.66	
	29	Shinsaka River	Sakane Bridge	Matsudo City	2016/5/23	Sunny	30.4	0.6	25.0	0.0	Light grayish yellow	None	71	38.1	14	5.7	<0.78	<0.55	
					2016/8/11	Cloudy	30.5	0.6	27.0	0.0	Grayish yellow	Faint sewage	47	35.6	4	3.9	<0.75	<0.75	
					2016/11/22	Sunny	14.0	0.5	15.2	0.0	Light grayish greenish yellow	None	68	39.9	6	4.4	<0.93	<0.92	
					2017/1/26	Sunny	6.0	0.4	6.7	0.0	Light grayish greenish yellow	Faint sewage	>100	39.8	3	2.8	<0.83	<0.96	
	30	Shinkatsushika Bridge	Matsudo City /Katsushika City	Matsudo City /Katsushika City	2016/5/23	Sunny	28.0	0.7	23.7	0.0	Light grayish greenish yellow	None	38	23.4	12	8.5	<0.85	<0.66	
					2016/8/11	Cloudy	30.5	0.4	20.2	0.0	Grayish greenish yellow	None	28	24.1	12	6.7	<0.81	<0.66	
					2016/11/22	Sunny	17.0	0.4	13.6	0.0	Light grayish yellow	None	78	27.7	4	2.7	<0.83	<0.75	
					2017/1/26	Sunny	8.0	0.6	5.2	0.0	Light grayish yellow green	None	88	26.7	3	2.4	<0.61	<0.78	
	31	Ichikawa Bridge	Ichikawa City /Edogawa City	Ichikawa City /Edogawa City	2016/5/24	Sunny	25.9	0.4	23.0	0.0	Light grayish greenish yellow	None	58	23.6	6	3.9	<0.82	<0.70	
					2016/8/11	Sunny	33.0	0.5	28.8	0.0	Grayish yellow	None	38	23.9	9	6.8	<0.61	<0.75	
					2016/11/22	Sunny	20.0	0.4	13.1	0.0	Light grayish greenish yellow	None	>100	26.8	2	2.7	<0.74	<0.80	
					2017/1/26	Sunny	8.5	0.6	5.9	0.0	Light grayish greenish yellow	None	90	28.6	2	2.4	<0.73	<0.80	
	32	Edogawa River System	Edogawa River	Vicinity of Keiyo Road	2016/5/12	Sunny	25.5	3.3	21.4	0.0	Grayish greenish yellow	None	59	20.8	7	6.6	<0.80	<0.88	
					2016/9/1	Sunny	31.2	3.0	22.4	0.0	Grayish yellow	None	6	17.2	130	92	<0.62	<0.75	
					2016/11/25	Sunny	9.5	4.0	10.6	0.0	Dark grayish yellow green	None	73	27.8	4	3.5	<0.65	<0.78	
					2017/1/23	Sunny	8.5	4.0	5.0	0.0	Grayish yellow green	None	59	31.8	6	5.2	<0.76	<0.88	
	33	Edogawa River	Gyotoku Movable Weir (upper reaches)	Ichikawa City	2016/5/12	Sunny	25.1	3.8	22.7	0.0	Grayish greenish yellow	None	50	29.2	7	5.6	<0.64	<0.80	
					2016/6/22	Cloudy	23.5	3.8	24.3	0.0	Dark grayish yellow green	None	40	26.7	4	2.8	<0.82	<0.75	
					2016/7/26	Cloudy	24.9	4.0	24.8	0.0	Grayish yellow green	None	54	24.8	5	4.0	<0.65	<0.80	
					2016/9/1	Sunny	32.0	2.9	25.8	0.0	Light grayish yellow	None	10	18.1	43	62	<0.70	<0.75	
	34	Edogawa River	Shingyotokubashi Bridge	Ichikawa City	2016/9/26	Sunny	25.0	3.0	21.3	0.0	Light grayish greenish yellow	None	36	18.4	9	14	<0.76	<0.69	
					2016/11/25	Sunny	8.2	4.5	10.1	0.0	Dark grayish yellow green	None	21	39.7	18	21	<0.65	<0.70	
					2017/1/23	Sunny	8.2	4.0	4.9	0.0	Grayish yellow green	None	36	87.9	10	7.9	<0.71	<0.75	
					2016/5/23	Sunny	27.6	0.1	23.4	0.0	Light grayish yellow	None	68	4,460	6	2.4	<0.62	<0.74	
	35	Edogawa River	Edogawa Floodgate, down	Ichikawa City /Edogawa City	2016/8/8	Cloudy	29.8	0.3	29.5	0.0	Grayish yellow	None	28	3,930	38	16	<0.68	<0.84	
					2016/11/9	Sunny	11.5	0.3	12.2	0.0	Grayish yellow	None	55	4,670	38	14	<0.61	<0.69	
					2017/1/30	Sunny	12.8	0.2	9.1	0.0	Grayish yellow	None	88	4,700	5	3.0	<0.84	<0.80	
					2016/5/12	Sunny	24.3	8.0	20.8	0.0	Grayish greenish yellow	None	48	21.6	9	5.6	<0.51	<0.69	
	36	Edogawa River	8 km Point to the estuary	Ichikawa City /Edogawa City	2016/9/1	Sunny	31.3	8.7	22.0	0.0	Light grayish yellow	None	8	17.1	180	110	<0.64	<0.84	
					2016/11/25	Sunny	9.0	8.6	12.2	0.0	Dark grayish yellow green	None	>100	587	3	2.3	<0.87	<0.80	
					2017/1/23	Sunny	8.2	8.4	8.2	0.0	Grayish yellow green	None	85	1,820	2	2.8	<0.51	<0.84	
					2016/5/12	Sunny	22.6	5.4	21.1	0.0	Grayish greenish yellow	None	59	23.7	7	4.8	<0.51	<0.69	
	36	Edogawa River	8 km Point to the estuary	Ichikawa City /Edogawa City	2016/9/1	Sunny	31.3	4.0	21.8	0.0	Light grayish yellow	None	8	16.4	180	110	<0.74	<0.80	
					2016/11/25	Sunny	7.2	4.8	12.5	0.0	Dark grayish yellow green	None	86	489	5	4.2	<0.69	<0.70	
					2017/1/23	Sunny	7.8	5.0	7.8	0.0	Grayish yellow green	None	86	1,320	3	2.8	<0.54	<0.96	

Chiba River (Sediment) 1/4

No.	Location			Sampling Date	Weather	Air temperature (°C)	Water depth (m)	Sediment																	Remarks			
	Water area	Location	Municipality					Sediment temperature (°C)	Sample length (cm)	Color	Odor	Grain size distribution (%)										Sediment content (%)	Density (g/cm ³)	Property		Activity concentration [Bq/kg(dry)]		
												Course gravel	Medium gravel	Fine gravel	Coarse sand	Medium sand	Fine sand	Silt	Clay	Cs-134	Cs-137					Total		
1	Shogen River	Fukami-obashi Bridge	Izumi City/Sakae Town	2016/5/10	Cloudy	24.6	2.1	20.8	0.0	0.0	0.0	2.9	40.4	45.9	10.8	45.6	2,627	Silt	150	810	960							
				2016/8/26	Cloudy	34.9	2.2	27.7	0.0	0.0	0.0	0.1	5.6	51.8	36.2	6.3	50.1	2,621	Silt	130	670	800						
				2016/11/29	Cloudy	13.1	1.9	10.7	0.0	0.0	0.2	0.3	13.4	47.3	27.9	11.0	49.4	2,655	Silt	98	790	888						
				2017/1/27	Cloudy	4.6	1.6	4.0	0.0	0.0	0.0	0.2	6.1	42.4	38.8	12.6	46.7	2,582	Silt	120	780	900						
				2016/5/10	Cloudy	19.8	1.8	19.3	2	Blackish brown	None	0.0	1.2	0.5	0.8	27.8	38.5	24.6	6.6	67.1	2,724	Sand/gravel	<5.2	5.9	5.9			
		2016/8/26	Sunny	33.6	1.8	28.4	3	Olive black	Faint sewage	0.0	6.2	2.9	2.0	35.2	31.8	15.4	6.6	62.4	2,681	Sand/gravel	5.0	28	33.0					
		2016/11/28	Sunny	14.1	1.9	9.9	3	Dark olive brown	Faint sewage	0.0	1.4	1.4	1.0	28.3	32.2	27.3	8.4	64.2	2,683	Sand	<5.2	19	19					
		2017/1/26	Sunny	9.7	1.7	3.9	2	Blackish brown	Faint sewage	2.2	29.4	8.7	4.4	30.4	13.7	6.8	4.4	79.5	2,685	Sand/gravel	<4.2	25	25					
		2016/5/10	Cloudy	19.0	0.6	20.5	3	Olive black	Faint sewage	0.0	0.8	0.9	1.0	4.5	15.8	56.9	20.1	30.0	2,527	Silt	77	330	407					
		2016/8/26	Sunny	29.8	0.5	28.1	1	Olive black	Faint sewage	0.0	1.6	1.5	1.8	7.3	18.3	52.4	17.1	25.8	2,467	Silt	69	430	499					
	2016/11/29	Cloudy	9.5	0.5	10.2	5	Olive black	Faint sewage	0.0	0.0	0.0	0.7	1.7	11.7	64.6	21.4	23.1	2,484	Silt	69	420	489						
	2017/1/27	Cloudy	9.6	0.5	5.3	5	Olive black	Faint sewage	0.0	0.0	0.0	0.3	2.0	12.3	57.3	28.2	27.1	2,411	Silt	58	300	358						
	2016/5/9	Cloudy	22.8	0.2	20.8	3	Olive black	None	0.0	0.7	0.2	0.5	61.0	34.7	1.0	1.9	76.8	2,821	Sand	19	100	119						
	2016/8/25	Sunny	30.5	0.4	27.5	4	Olive black	Faint sewage	0.0	0.6	0.3	0.7	65.3	27.2	1.5	4.4	76.0	2,760	Sand	28	140	168						
	2016/11/28	Cloudy	13.2	0.5	9.0	4	Olive black	Faint sewage	0.0	1.8	0.2	0.4	58.6	35.2	2.0	1.8	78.3	2,845	Sand	17	110	127						
	2017/1/26	Sunny	7.0	0.5	3.0	3	Olive black	None	0.0	1.0	0.8	1.1	52.5	29.4	8.5	6.7	59.9	2,654	Sand	20	100	206						
	2016/5/9	Cloudy	21.8	0.7	19.8	5	Olive black	Medium sewage	0.0	1.0	0.1	0.7	10.4	59.7	9.5	8.7	57.7	2,685	Silt	32	150	182						
	2016/8/25	Sunny	30.8	1.5	27.2	3	Olive black	Faint sewage	0.0	0.0	0.0	0.7	22.2	55.8	11.2	10.1	57.0	2,640	Silt/sand	23	150	173						
	2016/11/28	Cloudy	12.3	1.0	10.3	4	Olive black	Faint sewage	0.0	0.0	0.1	1.4	24.6	49.9	15.5	8.4	60.0	2,676	Silt	14	100	104						
	2017/1/26	Sunny	6.1	0.5	4.2	4	Olive black	None	0.0	0.0	0.5	1.0	12	23.2	48.5	13.9	11.7	55.7	2,571	Silt/sand	21	130	151					
2016/5/9	Cloudy	25.0	0.2	21.2	2	Blackish brown	None	0.0	4.8	2.3	5.7	61.3	19.6	1.8	4.5	77.4	2,769	Sand/gravel	12	78	90							
2016/8/25	Cloudy	32.1	0.7	23.5	3	Blackish brown	Faint sewage	0.0	1.6	2.8	8.2	48.7	33.4	1.6	3.7	76.0	2,743	Sand/gravel	11	54	65							
2016/11/28	Cloudy	13.0	0.2	11.2	3	Blackish brown	Faint sewage	0.0	6.5	4.0	4.2	47.5	29.6	3.1	5.1	66.6	2,761	Sand/gravel	17	88	105							
2017/1/26	Sunny	5.6	0.2	6.1	2	Blackish brown	Faint sewage	1.2	3.8	2.9	9.1	73.5	6.7	1.0	1.8	76.5	2,683	Sand/gravel	5.6	35	40.6							
2016/5/9	Cloudy	22.8	0.4	21.8	3	Olive black	Faint sewage	0.0	0.0	0.0	3.4	8.4	23.8	46.2	18.1	36.7	2,575	Silt	140	700	840							
2016/8/25	Cloudy	31.1	1.4	26.0	4	Olive black	Faint sewage	0.0	0.0	0.0	0.3	1.4	16.9	58.1	23.3	30.9	2,483	Silt	92	490	582							
2016/11/28	Cloudy	12.5	0.6	11.2	5	Olive black	Faint sewage	0.0	0.0	0.0	0.6	3.5	15.3	63.5	17.3	32.1	2,502	Silt	43	330	373							
2017/1/26	Sunny	2.7	0.5	5.1	5	Olive black	Faint sewage	0.0	0.0	0.2	0.2	1.9	14.6	71.6	11.6	31.7	2,427	Silt	47	450	497							
2016/5/20	Cloudy	19.5	0.4	20.1	5	Black	Faint sewage	0.0	0.0	0.0	0.2	21.3	65.5	4.6	8.5	37.0	2,673	Silt/sand	440	2,300	2,740							
2016/8/8	Cloudy	29.0	0.4	26.5	5	Blackish brown	Faint sewage	0.0	0.0	0.0	0.3	18.8	63.7	11.6	5.6	62.4	2,644	Silt	250	1,500	1,750							
2016/11/18	Sunny	10.0	0.1	13.3	5	Olive black	None	0.0	0.0	0.0	0.1	14.3	71.1	8.6	5.8	66.1	2,680	Silt/sand	200	1,200	1,400							
2017/1/23	Sunny	4.5	0.2	6.0	5	Black	Faint sewage	0.0	0.0	0.0	0.1	17.8	71.9	3.2	7.0	68.5	2,716	Sand/silt	180	1,100	1,280							
2016/5/16	Cloudy	21.1	0.2	17.8	5	Blackish brown	Faint earth	0.0	7.6	11.7	22.2	42.4	10.6	0.8	4.7	77.1	2,747	Sand/gravel	48	250	298							
2016/8/16	Sunny	28.2	0.2	22.8	5	Blackish brown	None	0.0	7.3	6.1	6.4	39.2	22.8	12.7	5.6	66.6	2,636	Sand	57	370	427							
2016/11/8	Cloudy	13.6	0.2	14.7	5	Blackish brown	None	3.6	32.4	8.7	9.3	29.3	11.1	2.9	2.8	70.4	2,733	Sand/gravel	53	350	403							
2017/1/19	Cloudy	9.9	0.2	10.0	3	Blackish brown	Faint sewage	4.4	27.1	12.9	13.9	30.6	6.2	2.6	2.4	77.1	2,652	Sand/gravel	34	270	304							
2016/5/20	Cloudy	18.5	0.3	19.6	7	Olive black	Faint sewage	0.0	0.0	0.0	0.6	1.9	32.6	46.7	18.4	33.4	2,448	Silt	350	2,000	2,350							
2016/8/8	Cloudy	29.0	0.3	28.0	5	Blackish brown	None	0.0	0.0	0.0	0.5	1.9	23.5	53.2	21.0	30.2	2,371	Silt	360	1,900	2,260							
2016/11/18	Sunny	11.7	0.5	14.0	5	Olive black	None	0.0	0.0	0.0	0.1	2.5	73.2	17.9	6.4	50.9	2,622	Silt	230	1,500	1,730							
2017/1/23	Sunny	8.0	0.5	7.0	5	Olive black	Faint sewage	0.0	0.0	0.0	0.0	2.7	74.2	12.7	10.3	60.8	2,616	Sand/silt	120	780	900							
2016/5/20	Cloudy	19.0	0.6	19.0	5	Blackish brown	None	0.0	20.1	4.6	3.2	28.0	37.4	2.3	4.5	71.4	2,686	Sand/gravel	44	280	324							
2016/8/8	Sunny	30.5	0.5	29.0	5	Blackish brown	None	0.0	1.3	0.1	0.2	1.9	9.4	37.6	29.5	42.4	2,539	Silt	<9.5	24	24							
2016/11/18	Sunny	14.5	0.7	14.0	10	Blackish brown	None	0.0	0.3	2.1	2.1	51.1	40.4	1.8	2.3	64.3	2,467	Sand	63	430	493							
2017/1/23	Sunny	6.5	0.4	6.5	5	Olive black	None	6.1	15.2	5.4	1.6	33.5	30.0	4.0	4.3	73.7	2,647	Sand/gravel	53	330	383							
2016/5/16	Cloudy	21.9	0.1	18.2	3	Blackish brown	Faint sewage	0.0	27.9	15.1	13.0	26.2	13.5	2.6	1.9	77.7	2,717	Sand/gravel	91	520	611							
2016/8/16	Cloudy	31.0	0.1	25.1	1	Blackish brown	Faint sewage	13.5	58.4	0.8	0.9	3.9	17.0	3.3	2.3	58.6	2,576	Gravel/sand	96	570	666							
2016/11/8	Cloudy	13.4	0.1	14.4	1	Blackish brown	Faint sewage	14.3	33.9	9.2	5.9	13.1	18.0	3.4	2.2	70.2	2,611	Gravel/sand	57	340	397							
2017/1/19	Cloudy	8.9	0.1	9.1	1	Blackish brown	Faint sewage	2.4	12.4	4.9	3.3	23.3	44.3	5.3	4.1	68.8	2,635	Sand/gravel	80	580	660							
2016/5/20	Cloudy	20.5	0.5	19.5	5	Blackish brown	None	0.0	10.7	9.6	15.8	48.5	9.1	3.1	3.1	77.5	2,717	Sand/gravel	54	310	364							
2016/8/8	Sunny	31.5	0.5	27.5	5	Blackish brown	None	0.0	0.7	2.2	4.0	58.9	24.5	5.5	4.3	74.1	2,648	Sand/silt	54	360	414							
2016/11/18	Sunny	15.5	0.4	13.5	5	Dark brown	None	0.0	1.9	8.4	25.3	52.7	8.0	1.0	2.6	74.1	2,660	Sand/gravel	53	340	393							
2017/1/23	Sunny	5.5	0.3	7.0	5	Blackish brown	None	0.0	16.5	7.5	11.6	44.9	14.4	1.5	3.7	74.9	2,679	Sand/gravel	39	370	409							

Chiba River (Sediment) 2/4

No.	Location			Sampling Date	Weather	Air temperature (°C)	Water depth (m)	Sediment														Activity concentration [Bq/kg(dry)]			Remarks	
	Water area	Location	Municipality					Sediment temperature (°C)	Sample length (cm)	Color	Odor	Grain size distribution(%)							Sediment content (%)	Density (g/cm ³)	Property	Radioactive cesium				
												Course gravel	Medium gravel	Fine gravel	Course sand	Medium sand	Fine sand	Silt				Clay	Cs-134	Cs-137		Total
14	Feeder Rivers of Teganuma Lake	Kamenari River	Kamenari Bridge	Inzai City	2016/5/10	Cloudy	23.2	0.8	19.3	4	Olive black	Faint sewage	0.0	0.0	0.0	38.8	45.7	5.7	8.6	59.0	2.709	Sand/silt	46	320	366	
					2016/8/26	Sunny	33.1	0.6	27.1	5	Blackish brown	Faint sewage	0.0	0.0	0.4	1.8	55.0	35.3	3.6	3.9	72.8	2.707	Sand/silt	35	220	255
					2016/11/29	Sunny	13.8	0.6	11.3	4	Blackish brown	Faint sewage	0.0	0.7	1.3	3.1	63.7	23.3	4.1	3.3	73.6	2.662	Sand/silt	46	360	406
15	Igasuhiro Channel	Downstream of Igasuhiro Channel	Kamagaya City	2017/1/27	Sunny	4.3	0.7	5.6	4	Blackish brown	Faint sewage	0.0	1.4	0.6	1.3	44.5	35.0	8.9	8.3	70.3	2.617	Sand/silt	27	230	257	
				2016/5/16	Sunny	23.7	0.1	21.6	5	Black	Faint sewage	0.0	38.5	15.8	10.6	23.6	6.9	2.4	2.3	70.4	2.711	Gravel/sand	150	860	1,010	
				2016/9/1	Sunny	29.7	0.1	24.0	3	Black	Faint sewage	5.3	29.1	15.4	12.2	26.2	5.7	3.6	2.4	69.3	2.710	Gravel/sand	120	850	970	
				2016/11/8	Cloudy	13.7	0.1	13.2	2	Black	Faint sewage	2.1	35.0	14.0	9.3	27.6	7.0	2.9	2.1	76.0	2.752	Gravel/sand	110	670	780	
				2017/1/19	Cloudy	4.7	0.1	8.1	3	Olive black	Faint sewage	5.2	49.9	11.3	7.5	18.2	4.5	2.0	1.5	75.7	2.713	Gravel/sand	110	690	800	
16	Futae River	Tomiyaga Bridge	Funabashi City/Shirosi City	2016/5/16	Sunny	24.6	0.2	23.2	5	Dark olive brown	Faint earth	0.0	1.7	1.1	4.2	75.0	14.2	0.0	3.7	77.4	2.696	Sand	53	310	363	
				2016/9/1	Sunny	29.2	0.2	23.9	5	Olive black	None	0.0	1.3	0.7	3.4	66.7	24.1	1.0	2.9	76.9	2.662	Sand	48	340	388	
				2016/11/8	Cloudy	12.8	0.2	12.0	3	Olive black	None	0.0	10.1	1.6	4.2	52.5	27.3	1.8	2.6	77.0	2.668	Sand	59	320	379	
17	Kanzaki River	Kanzaki Bridge	Yachiyo City/Inzai City	2017/1/19	Cloudy	5.5	0.2	9.1	3	Dark olive brown	None	0.0	13.0	0.8	2.8	80.8	28.4	0.9	3.3	76.6	2.683	Sand	37	330	367	
				2016/5/20	Cloudy	20.2	1.6	19.0	5	Olive black	Faint sewage	0.0	0.1	0.3	0.3	10.3	84.1	2.0	3.0	71.2	2.666	Sand/silt	47	290	337	
				2016/8/9	Sunny	31.0	1.5	27.5	5	Olive black	Faint sewage	0.0	0.6	0.5	0.1	5.0	68.0	15.2	10.6	48.1	2.568	Silt	110	550	660	
18	Kannou River	Kannou Bridge	Yachiyo City	2016/11/18	Sunny	20.0	1.4	14.0	5	Olive black	None	0.0	1.4	0.9	0.2	6.3	74.1	9.3	7.7	55.9	2.657	Silt	77	560	637	
				2017/1/24	Sunny	4.5	1.4	5.0	5	Olive black	None	0.0	0.1	0.5	0.1	5.4	63.0	18.9	11.9	51.1	2.620	Silt/sand	46	250	296	
				2016/5/20	Sunny	20.0	0.6	18.5	5	Olive black	Faint sewage	0.0	0.0	0.0	0.3	1.7	61.8	22.8	13.4	45.4	2.545	Silt	100	620	720	
				2016/8/9	Sunny	35.5	0.6	25.0	5	Olive black	Faint sewage	0.0	0.0	0.0	0.3	2.0	54.0	32.6	11.1	39.2	2.491	Silt	95	560	655	
				2016/11/18	Sunny	17.0	0.5	14.0	5	Olive black	None	0.0	0.0	0.0	0.0	1.1	75.7	14.2	8.9	58.2	2.605	Silt	71	400	471	
19	Ito Doshage Channel (upper reaches)	Yachiyo Bridge	Yachiyo City	2017/1/24	Sunny	6.0	0.7	7.0	5	Olive black	None	0.0	0.0	0.0	0.1	0.7	71.3	15.8	12.1	47.3	2.552	Sand/silt	64	440	504	
				2016/5/20	Cloudy	20.0	2.6	19.5	7	Olive black	Faint swamp	0.0	0.0	0.3	0.9	4.5	23.8	48.4	22.1	26.0	2.407	Silt	210	1,100	1,310	
				2016/8/9	Sunny	34.0	2.9	28.0	5	Olive black	Faint sewage	15.1	7.6	3.5	2.1	8.1	30.1	26.8	6.7	52.4	2.630	Silt/gravel	22	84	106	
20	Feeder rivers of Lake Inbanuma	Teguri River	Mumei Bridge	Sakura City	2016/11/18	Sunny	16.5	2.8	15.5	5	Olive black	None	0.0	0.0	0.0	0.7	7.9	41.7	35.9	13.8	25.9	2.510	Silt	150	1,100	1,250
					2017/1/24	Sunny	7.5	2.8	6.0	5	Olive black	None	13.0	11.1	4.0	3.1	17.8	31.5	13.3	6.3	50.1	2.615	Silt/sand	30	360	390
					2016/5/16	Cloudy	23.4	0.5	20.9	3	Blackish brown	None	1.0	3.4	17.5	64.0	6.7	5.2	2.3	74.4	2.690	Sand/gravel	130	730	860	
					2016/8/9	Sunny	35.5	0.6	28.0	5	Blackish brown	None	3.1	12.9	13.7	17.7	45.6	4.3	0.7	2.0	79.1	2.727	Sand/gravel	110	550	660
					2016/11/21	Cloudy	12.5	0.5	13.0	5	Dark brown	None	0.0	7.7	6.0	5.6	58.2	18.0	2.4	2.1	70.8	2.706	Sand/gravel	120	730	850
21	Moroto River	Moroto Bridge	Inzai City	2017/1/24	Sunny	6.0	0.4	5.0	5	Blackish brown	None	0.0	20.7	14.0	11.8	43.0	8.0	0.7	1.9	78.0	2.756	Sand/silt	87	580	667	
				2016/5/16	Cloudy	24.3	0.9	20.2	5	Olive black	Faint sewage	0.0	2.9	0.6	1.3	24.2	40.2	23.1	7.8	50.4	2.622	Silt	31	150	181	
				2016/8/9	Sunny	35.0	0.9	27.0	5	Olive black	None	0.0	0.7	0.6	0.9	15.2	32.0	35.8	14.8	42.0	2.573	Silt	29	190	219	
				2016/11/21	Cloudy	13.0	0.9	13.2	5	Olive black	None	0.0	2.5	2.1	2.3	45.8	39.8	2.8	4.7	69.0	2.710	Sand/silt	15	130	145	
				2017/1/24	Sunny	3.5	0.9	3.0	5	Olive black	None	0.0	0.0	0.1	1.0	49.3	40.6	3.1	5.9	72.8	2.651	Sand/silt	19	140	159	
22	Kashima River	Iwatoni Bridge	Sakura City	2016/5/16	Cloudy	18.8	0.6	20.1	5	Extremely dark brown	Faint sewage	0.0	0.0	0.3	4.0	66.6	25.3	0.6	3.4	75.7	2.713	Sand	10	73	83	
				2016/8/10	Sunny	33.5	0.7	26.0	5	Grayish olive	None	0.4	0.4	1.0	56.9	37.9	1.8	1.7	77.3	2.741	Sand	12	60	72		
				2016/11/21	Cloudy	13.0	0.9	14.0	5	Blackish brown	None	0.0	0.8	1.9	3.7	66.7	23.0	2.0	1.9	76.9	2.704	Sand/gravel	9.3	57	66.3	
				2017/1/25	Sunny	6.0	0.6	6.5	5	Blackish brown	None	0.0	3.3	0.6	1.2	43.6	51.3	1.1	1.9	74.6	2.762	Sand	11	57	68	
				2016/5/16	Cloudy	21.1	0.8	20.0	3	Brown	Faint sewage	0.0	0.0	0.1	6.2	71.0	15.5	4.1	3.0	72.7	2.682	Sand	18	100	118	
23	Takasaki River	Ryuto Bridge	Sakura City	2016/8/10	Sunny	33.5	0.8	25.5	5	Blackish brown	None	0.0	0.2	1.0	12.9	89.0	19.5	7.4	54.5	2.625	Silt/sand	35	190	225		
				2016/11/21	Cloudy	14.0	0.7	13.5	5	Dark brown	None	0.0	2.3	3.4	9.6	64.8	16.2	1.6	2.2	69.6	2.696	Sand/gravel	20	91	111	
				2017/1/25	Sunny	10.0	0.8	6.5	5	Dark brown	None	0.0	2.3	5.3	5.0	59.0	19.4	5.4	3.7	70.2	2.639	Sand/gravel	17	110	127	
				2016/5/16	Cloudy	23.5	2.4	21.5	3	Olive black	None	0.0	32.7	6.0	3.9	18.9	29.9	5.3	3.3	62.1	2.720	Gravel/sand	8.5	35	43.5	
				2016/8/10	Sunny	31.5	2.2	28.3	5	Black	Faint sewage	0.0	0.0	0.0	3.8	41.6	31.7	13.6	9.3	56.0	2.668	Silt	72	360	432	
24	Kashima River	Kashima Bridge	Inzai City	2016/11/21	Cloudy	15.0	2.4	13.5	5	Olive black	None	0.0	0.0	0.0	2.2	19.6	47.6	17.3	13.3	35.7	2.621	Silt	42	270	312	
				2017/1/25	Sunny	10.5	1.3	8.0	5	Olive black	None	0.0	0.0	0.0	0.6	10.1	59.9	14.3	15.1	52.3	2.533	Silt/sand	35	220	255	
				2016/5/16	Cloudy	25.3	2.5	21.2	3	Black	Faint sewage	0.0	0.0	0.0	1.2	75.0	18.0	1.0	4.8	80.6	2.747	Sand	13	77	90	
				2016/8/10	Sunny	31.0	2.6	28.5	5	Blackish brown	None	0.0	0.4	0.2	0.7	26.5	27.7	37.9	6.6	56.6	2.698	Silt/sand	-6.0	25	25	
				2016/11/21	Cloudy	14.0	2.5	12.5	5	Dark brown	None	0.0	4.4	0.8	0.9	48.9	22.2	18.5	4.3	51.6	2.776	Silt/sand	7.9	55	62.9	
25	Inbasuhiro Channel	Tsurumaki Bridge	Inzai City	2017/1/25	Sunny	7.5	2.7	5.5	5	Olive	None	0.0	1.1	0.5	0.3	4.7	33.7	51.0	8.8	48.1	2.677	Silt	-7.4	20	20	
				2016/5/19	Sunny	23.8	0.3	21.8	5	Blackish brown	Faint sewage	0.0	0.4	0.2	0.6	4.7	32.8	46.7	14.8	20.1	2.517	Silt/sand	630	3,500	4,130	
				2016/8/10	Sunny	31.0	0.3	29.8	5	Blackish brown	Faint sewage	0.0	1.6	1.7	1.6	10.7	30.7	41.4	12.2	31.6	2.520	Silt	220	1,100	1,320	
26	Edogawa River System	Tonegawa Canal	Unga Bridge	Nagareyama City/Noda City	2016/11/15	Sunny	17.3	0.3	15.0	4	Olive black	Faint sewage	0.0	0.0	0.0	0.7	2.1	25.4	61.0	10.8	35.3	2.432	Silt/sand	350	2,300	2,650
					2017/1/26	Sunny	10.8	0.3	7.0	4	Olive black	Faint sewage	0.0	0.0	0.0	0.8	3.2	31.1	43.6	21.3	32.3	2.397	Silt	250	2,000	2,250

Chiba River (Sediment) 3/4

No.	Location			Sampling Date	Weather	Air temperature (°C)	Water depth (m)	Sediment																	Remarks		
	Water area	Location	Municipality					General items										Activity concentration [Bq/kg(dry)]									
								Sediment temperature (°C)	Sample length (cm)	Color	Odor	Grain size distribution(%)						Sediment content (%)	Density (g/cm ³)	Property	Radioactive cesium						
												Course gravel	Medium gravel	Fine gravel	Course sand	Medium sand	Fine sand				Silt	Clay	Cs-134	Cs-137		Total	
R i v e r s	Edogawa River System	Edogawa River	Nagareyama Bridge	Nagareyama City /Misato City	2016/5/19	Sunny	23.7	0.4	20.9	5	Blackish brown	None	0.0	0.0	0.3	0.2	6.3	88.3	2.0	2.9	71.2	2.736	Sand	<4.5	39	39	
					2016/8/10	Sunny	31.5	0.8	28.5	5	Blackish brown	Faint sewage	0.0	1.3	1.3	0.4	2.0	29.8	46.8	18.4	40.7	2,607	Silt	30	170	200	
					2016/11/15	Sunny	15.5	0.4	14.0	3	Blackish brown	None	0.0	4.8	1.3	0.9	9.0	40.4	28.7	14.9	42.8	2,674	Sand/silt	39	290	329	
					2017/1/26	Sunny	11.6	0.5	4.8	5	Blackish brown	None	0.0	0.0	0.0	0.1	6.6	71.9	14.4	7.0	60.8	2,700	Sand	19	83	102	
		28	Sakagawa River	Benten Bridge	Matsudo City	2016/5/23	Sunny	29.8	2.0	22.0	4	Black	Faint sewage	0.0	1.2	2.5	2.9	30.4	55.7	2.8	4.6	71.1	2,730	Sand/silt	150	750	900
						2016/8/11	Cloudy	30.0	2.3	28.0	5	Olive black	Faint sewage	0.0	2.2	2.2	1.7	29.6	55.3	3.8	4.9	69.6	2,703	Sand/silt	130	670	800
						2016/11/22	Sunny	14.0	2.0	13.5	5	Black	Faint sewage	0.0	1.1	2.4	2.5	27.2	52.5	8.6	5.7	60.2	2,637	Silt/sand	130	840	970
						2017/1/26	Sunny	3.5	2.0	7.0	5	Black	Faint sewage	0.0	2.0	0.6	2.0	24.9	60.8	4.5	5.2	68.5	2,635	Sand/silt	98	680	778
		29	Shinsaka River	Sakane Bridge	Matsudo City	2016/5/23	Sunny	30.4	0.6	23.9	2	Olive black	Faint sewage	5.7	18.9	6.6	3.5	39.9	20.8	2.0	2.6	70.8	2,746	Sand/gravel	130	680	810
						2016/8/11	Cloudy	30.5	0.6	27.0	5	Gray	Faint sewage	2.9	27.1	10.2	7.2	34.6	13.7	1.4	2.9	76.6	2,723	Gravel/sand	140	750	890
						2016/11/22	Sunny	14.0	0.5	13.8	10	Black	Faint sewage	0.0	0.8	2.8	5.5	51.7	28.7	6.8	3.8	75.6	2,705	Silt/sand	110	660	770
						2017/1/26	Sunny	6.0	0.4	7.0	5	Black	Faint sewage	2.4	8.8	4.3	2.1	49.6	27.7	1.5	3.6	73.3	2,720	Sand/silt	110	680	790
		30	Shinkatsushika Bridge	Matsudo City /Katsushika City	2016/5/23	Sunny	28.0	0.7	22.3	4	Black	Faint sewage	0.0	0.0	0.0	0.4	2.2	35.8	49.4	12.2	48.9	2,699	Sand/silt	67	350	417	
					2016/8/11	Cloudy	30.5	0.4	28.5	5	Olive black	None	0.0	0.3	1.0	2.0	16.4	61.0	11.1	8.5	68.8	2,690	Sand/silt	19	130	149	
					2016/11/22	Sunny	17.0	0.4	13.5	5	Olive black	Faint sewage	0.0	0.0	0.0	0.3	0.8	23.5	57.3	18.2	44.5	2,511	Silt	30	160	190	
					2017/1/26	Sunny	8.0	0.6	5.5	5	Olive black	Faint sewage	0.0	0.0	0.0	0.3	3.7	48.6	34.3	13.1	50.4	2,639	Silt/sand	23	170	193	
		31	Ichikawa Bridge	Ichikawa City /Edogawa City	2016/5/24	Sunny	25.9	0.4	22.7	2	Blackish brown	Faint sewage	0.0	0.0	0.0	0.3	6.2	46.4	19.3	10.3	51.5	2,620	Sand/silt/gravel	89	540	629	
					2016/8/11	Sunny	33.0	0.5	28.0	5	Olive black	None	5.1	27.0	3.4	2.8	42.8	15.1	1.6	2.2	75.4	2,746	Sand/gravel	16	130	146	
					2016/11/22	Sunny	20.0	0.4	13.0	5	Blackish brown	None	7.2	46.3	3.7	1.2	34.7	6.0	0.0	0.8	81.3	2,809	Sand/gravel	24	150	174	
					2017/1/26	Sunny	8.5	0.6	5.0	5	Blackish brown	Faint clam	10.5	40.8	5.3	2.3	31.1	7.9	0.7	1.4	80.2	2,761	Sand/silt	13	95	108	
		32	Edogawa River	Vicinity of Keijo Road	Ichikawa City /Edogawa City	2016/5/12	Sunny	25.5	3.3	21.5	5	Blackish brown	None	0.0	0.0	0.0	0.1	47.6	46.5	2.0	3.9	74.9	2,811	Sand/silt	14	56	70
						2016/9/1	Sunny	31.2	3.0	21.9	3	Blackish brown	None	0.0	0.0	0.0	0.3	35.8	54.1	4.2	5.7	70.4	2,806	Sand	14	75	89
						2016/11/25	Sunny	9.5	4.0	10.6	3	Olive black	None	0.0	0.0	0.0	0.1	28.7	63.1	4.3	3.8	74.7	2,764	Sand	6.3	50	56.3
						2017/1/23	Sunny	8.5	4.0	5.0	2	Olive black	None	0.0	0.0	0.0	0.3	44.8	45.4	5.3	4.2	74.5	2,801	Sand	5.7	49	54.7
		33	Edogawa River	Gyotoku Movable Weir (upper reaches)	Ichikawa City	2016/5/12	Sunny	25.1	3.8	20.9	3	Blackish brown	None	0.0	0.0	0.0	0.0	7.9	86.4	1.0	4.7	76.9	2,942	Sand/silt	7.7	46	53.7
						2016/6/22	Cloudy	23.5	3.8	23.6	4	Dark brown	None	0.0	0.1	0.2	24.6	69.3	2.5	3.4	73.8	2,796	Sand	10	42	52	
						2016/7/26	Cloudy	24.9	4.0	25.0	4	Olive black	None	0.0	0.0	0.0	0.3	14.0	76.3	3.1	6.4	66.7	2,876	Sand/silt	15	67	82
						2016/9/1	Sunny	32.0	2.9	22.3	3	Blackish brown	Faint swamp	0.0	0.0	0.0	0.0	11.0	83.0	2.3	3.8	74.9	2,860	Sand/silt	6.4	42	48.4
						2016/9/26	Sunny	25.0	3.0	20.2	5	Olive black	None	0.0	0.0	0.0	0.0	16.3	71.7	4.6	7.5	39.4	2,701	Sand/silt	23	130	153
						2016/11/25	Sunny	8.2	4.5	11.0	3	Blackish brown	None	0.0	0.0	0.0	0.0	10.8	79.0	4.9	5.3	74.0	2,764	Sand/silt	8.0	65	73.0
						2017/1/23	Sunny	8.2	4.0	5.0	3	Blackish brown	Faint sewage	0.0	0.0	0.0	0.1	15.1	63.7	9.6	11.5	51.8	2,768	Sand/silt	15	120	135
						2016/5/23	Sunny	27.6	0.1	22.4	4	Black	Faint swamp	0.0	5.4	5.2	1.9	20.4	55.8	2.6	5.1	74.8	2,728	Sand/silt	5.2	23	28.2
		34	Edogawa River	Shingyotokubashi Bridge	Ichikawa City	2016/8/8	Cloudy	29.8	0.3	29.2	6	Olive black	Faint sewage	0.0	5.4	1.4	1.1	7.6	15.7	50.3	18.6	61.7	2,684	Sand/silt	<5.2	12	12
						2016/11/9	Sunny	11.5	0.3	12.2	5	Olive black	Faint sewage	0.0	6.5	3.0	2.3	21.7	52.6	10.1	3.9	78.5	2,713	Sand/silt	<4.8	16	16
						2017/1/30	Sunny	12.8	0.2	8.9	4	Olive black	Faint sewage	0.0	8.1	3.5	1.4	19.0	57.2	6.2	4.6	74.4	2,732	Sand	<5.6	8.3	8.3
		35	Edogawa River	Edogawa Floodgate, down	Ichikawa City /Edogawa City	2016/5/12	Sunny	24.3	8.0	21.8	3	Blackish brown	None	0.0	0.0	0.0	1.6	78.5	17.0	0.0	2.9	75.4	2,774	Sand	<5.4	15	15
						2016/9/1	Sunny	31.3	8.7	22.0	3	Blackish brown	Faint sewage	0.0	1.4	0.1	0.2	30.6	56.1	5.9	5.8	73.6	2,699	Sand/silt	8.0	51	59.0
						2016/11/25	Sunny	9.0	8.6	13.0	1	Blackish brown	None	0.0	0.0	0.0	2.1	56.5	35.1	3.4	3.0	72.7	2,715	Sand	<5.7	17	17
						2017/1/23	Sunny	8.2	8.4	9.6	2	Blackish brown	None	0.0	0.2	0.4	2.3	55.5	33.7	3.0	4.9	69.7	2,640	Sand	<4.7	24	24
		36	Edogawa River	8 km Point to the estuary	Ichikawa City	2016/5/12	Sunny	22.6	5.4	21.8	3	Blackish brown	None	0.0	0.0	0.0	0.0	11.2	77.0	6.3	5.6	70.1	2,787	Sand/silt	8.8	60	68.8
						2016/9/1	Sunny	31.3	4.0	23.8	5	Blackish brown	Faint hydrogen sulfide	0.0	0.0	0.0	0.2	7.0	77.1	8.5	7.5	70.7	2,723	Sand/silt	7.5	88	65.5
						2016/11/25	Sunny	7.2	4.8	15.0	3	Blackish brown	None	0.0	0.0	0.0	0.1	7.4	83.8	4.4	4.5	68.2	2,732	Sand	7.0	32	39.0
						2017/1/23	Sunny	7.8	5.0	10.5	2	Blackish brown	Faint sewage	0.0	0.0	0.0	0.1	7.1	57.7	24.0	11.1	62.7	2,713	Sand/silt	14	97	111

Chiba River (Sediment) 4/4

Location				Sampling Date	Weather	Air temperature (°C)	Water depth (m)	Sediment																	Activity concentration [Bq/kg(dry)]			Remarks
								Sediment temperature (°C)	Sample length (cm)	Color	Odor	Grain size distribution (%)								Sediment content (%)	Density (g/cm ³)	Property						
												Course gravel		Medium gravel		Fine gravel		Coarse sand					Medium sand					
No.	Water area		Location	Municipality																		Cs-134	Cs-137	Total				
R i v e r s	37	Kyu-Edogawa River	Imai Bridge	Ichikawa City /Edogawa City	2016/5/12	Sunny	23.6	4.6	19.9	0.0	0.0	0.0	0.0	42.1	18.2	19.2	10.6	48.8	2.653	Silt/sand	25	150	175	Sampling in September for a typhoon				
					2016/9/1	Sunny	30.5	4.6	21.6	0.0	0.0	0.0	0.4	35.1	20.9	29.0	18.7	39.5	2.637	Sand/silt	23	100	205					
					2016/11/25	Sunny	7.0	4.3	14.3	0.0	0.0	0.0	0.7	78.5	16.0	2.0	2.9	75.2	2.780	Sand/silt	4.1	18	22.1					
					2017/1/23	Sunny	8.0	5.6	10.8	0.0	0.0	0.0	1.3	60.5	12.5	12.3	13.3	60.6	2.691	Sand/silt	12	64	76					
					2016/5/23	Sunny	27.2	2.8	21.4	0.0	0.0	0.3	0.5	0.8	4.6	70.7	23.3	28.7	2.535	Silt	51	320	371					
			38	Uraysu Bridge	Uraysu City/Edogawa City	2016/6/22	Cloudy	23.9	2.1	24.0	5	Black	Medium hydrogen sulfide	0.0	0.0	0.0	0.9	0.5	4.5	61.0	33.1	27.5	2.516		Silt	50	320	370
						2016/7/26	Cloudy	25.0	2.8	25.8	10	Black	Medium hydrogen sulfide	3.2	0.0	0.0	0.4	1.0	4.8	66.9	23.7	31.0	2.506		Silt	45	290	335
						2016/8/8	Cloudy	29.6	3.8	28.2	10	Olive black	Faint sewage	0.0	0.0	0.0	1.3	0.9	3.6	65.9	28.2	29.5	2.515		Silt	45	330	375
						2016/9/26	Cloudy	26.8	3.7	19.4	5	Olive black	Faint hydrogen sulfide	0.0	0.0	0.0	0.3	0.3	2.6	61.3	35.5	34.0	2.491		Silt	49	320	369
						2016/11/9	Cloudy	11.3	3.4	17.7	8	Olive black	Faint sewage	0.0	0.0	0.0	0.5	0.7	3.2	71.2	24.5	31.4	2.541		Silt	52	290	342
	39	Managawa River	Nemoto Floodgate	Ichikawa City	2017/1/30	Sunny	9.8	4.2	9.5	5	Olive black	Faint sewage	0.0	0.0	0.0	0.3	0.6	5.0	78.9	15.2	35.0	2.515	Silt		39	290	329	
					2016/5/24	Sunny	26.4	1.4	22.4	3	Olive black	Faint sewage	0.0	13.0	4.1	4.2	44.9	29.4	1.9	2.4	78.3	2.681	Sand/gravel		33	170	203	
					2016/8/11	Sunny	31.0	1.0	29.0	5	Black	Faint sewage	3.0	5.4	2.8	3.7	45.2	34.8	1.8	3.5	76.7	2.673	Sand		26	160	186	
					2016/11/22	Sunny	21.0	1.6	15.0	10	Olive black	Faint sewage	0.0	1.6	0.3	0.7	18.6	75.9	0.0	2.9	74.0	2.662	Sand/silt		27	190	217	
					2017/1/26	Sunny	10.0	1.2	5.0	5	Black	Faint sewage	0.0	2.3	0.9	0.8	31.3	59.8	0.4	4.2	75.7	2.659	Sand/silt		25	200	225	
					2016/5/13	Sunny	24.5	0.9	22.8	5	Olive black	Faint sewage	0.0	5.0	5.7	11.1	58.6	13.5	0.9	5.3	78.1	2.684	Sand		33	190	221	
					2016/8/9	Cloudy	32.8	0.9	26.4	4	Black	Faint sewage	0.0	1.0	2.0	8.2	66.6	16.5	2.0	3.8	74.1	2.666	Sand		14	230	271	
					2016/11/9	Sunny	14.0	1.1	14.3	3	Black	Faint sewage	0.0	2.6	7.3	5.4	62.3	15.4	3.6	3.5	66.0	2.648	Sand		45	340	385	
					2017/1/30	Cloudy	18.0	0.9	13.7	3	Olive black	Faint sewage	0.0	2.3	4.9	11.3	64.5	12.5	1.8	2.7	74.5	2.635	Sand		33	210	243	
					40	Kokubu River	Suwada Bridge	Ichikawa City	2016/5/13	Sunny	25.1	0.5	22.1	7	Black	Faint sewage	0.0	0.0	0.0	0.9	36.5	54.6	2.5		5.4	65.0	2.664	Sand
	2016/8/8	Sunny	33.2	0.6					28.1	5	Black	Faint sewage	0.0	0.0	0.0	1.9	33.1	55.9	5.3	3.8	70.0	2.638	Sand		36	220	256	
	2016/11/9	Sunny	13.6	0.8					14.9	6	Black	Faint sewage	0.0	0.2	0.6	1.3	55.9	38.5	0.4	3.1	77.2	2.641	Sand		14	120	134	
	2017/1/30	Sunny	17.3	0.3					13.4	4	Black	Faint sewage	0.0	0.4	1.8	3.0	51.8	38.0	2.2	2.9	71.7	2.617	Sand		35	190	225	
	2016/5/16	Cloudy	24.0	0.6					22.2	5	Black	Faint sewage	0.0	0.0	3.6	21.0	70.9	1.6	0.0	2.8	78.4	2.687	Sand		31	170	201	
	41	Hanku River	Before the confluence with Kokubu River	Ichikawa City	2016/8/15	Cloudy	31.5	0.8	25.4	4	Black	Faint sewage	0.0	8.7	12.3	21.6	49.8	4.5	1.6	1.5	76.3	2.676	Sand		36	190	226	
2016/11/8					Cloudy	14.2	0.7	15.8	3	Black	Faint sewage	0.0	3.6	9.5	16.1	61.1	7.1	0.1	2.6	77.3	2.642	Sand	27	180	207			
2017/1/19					Sunny	12.0	0.9	12.0	4	Black	Faint sewage	0.0	3.1	7.9	15.2	68.6	2.5	0.0	2.6	78.6	2.650	Sand/gravel	23	190	213			
2016/5/13					Sunny	26.5	1.6	22.8	3	Black	Faint sewage	0.0	1.5	4.9	7.1	70.0	12.0	1.4	3.2	79.2	2.697	Sand	20	110	130			
2016/8/8					Cloudy	34.7	1.0	27.1	3	Black	Faint sewage	0.0	8.8	7.7	9.6	62.8	7.8	1.3	1.9	73.7	2.666	Sand	19	130	149			
42	Hasen-okashawa River	Downstream of Nakazawashinbashi Bridge	Kamagaya City /Ichikawa City	2016/11/9	Sunny	15.0	2.0	13.9	3	Black	Faint sewage	0.0	16.5	9.4	8.5	55.9	6.9	0.0	2.9	76.9	2.647	Sand	17	110	127			
				2017/1/30	Sunny	12.4	1.6	11.8	4	Olive black	Faint sewage	0.0	2.3	3.8	5.2	78.8	7.3	0.0	2.7	78.6	2.695	Sand	14	110	124			
				2016/5/13	Sunny	23.0	3.0	20.5	5	Black	Medium hydrogen sulfide	0.0	0.4	0.2	0.3	7.9	54.2	19.4	17.6	51.2	2.619	Silt	50	330	380			
				2016/6/22	Cloudy	22.7	2.6	22.4	5	Black	Medium hydrogen sulfide	0.0	0.0	0.0	0.2	6.9	48.5	27.6	16.9	36.1	2.534	Silt	94	570	664			
				2016/7/26	Cloudy	26.2	2.5	24.5	8	Black	Medium hydrogen sulfide	0.0	0.0	0.0	0.1	9.1	64.4	16.3	10.1	53.6	2.597	Silt	42	290	332			
				2016/8/15	Cloudy	33.4	3.4	25.5	7	Black	Medium hydrogen sulfide	0.0	0.0	0.0	0.6	2.7	23.7	50.2	22.8	28.5	2.443	Silt	100	580	680			
				2016/9/26	Cloudy	28.1	3.0	24.2	5	Black	Medium hydrogen sulfide	0.0	0.0	0.0	0.1	7.1	68.8	13.6	10.4	55.7	2.645	Silt/sand	26	190	216			
				2016/11/25	Sunny	13.6	3.6	15.4	6	Black	Medium hydrogen sulfide	0.0	0.1	0.8	0.7	17.6	67.6	6.2	7.0	67.4	2.659	Silt/sand	41	290	331			
				2017/1/16	Sunny	7.0	3.0	10.5	6	Black	Faint hydrogen sulfide	0.0	0.0	0.0	1.0	23.7	51.3	12.8	11.3	52.7	2.597	Silt/sand	64	370	434			
				2016/5/13	Sunny	19.3	2.2	21.2	5	Black	Faint sewage	0.0	0.0	0.0	0.1	57.6	37.4	1.0	3.9	77.4	2.729	Sand	6.6	35	41.6			
43	Okashawa River	Sengen Bridge	Ichikawa City	2016/8/15	Cloudy	34.5	2.0	27.9	5	Black	Faint sewage	0.0	0.3	0.5	0.1	38.2	41.5	11.3	8.1	61.6	2.668	Sand/silt	25	120	145			
				2016/11/25	Sunny	11.5	2.6	15.5	5	Black	Faint sewage	0.0	0.0	0.0	0.0	51.2	44.8	0.7	3.3	76.7	2.704	Sand/silt	6.4	29	35.4			
				2017/1/16	Sunny	7.5	1.7	11.1	4	Black	Faint sewage	0.0	0.0	0.0	0.3	54.9	37.1	3.0	4.8	73.9	2.633	Sand/silt	-3.7	44	44			
				2016/5/24	Sunny	28.6	2.7	23.2	3	Olive black	Faint sewage	0.0	0.4	0.5	1.2	46.6	34.4	10.0	6.9	56.6	2.682	Sand/silt	32	180	212			
				2016/6/22	Cloudy	22.9	3.1	24.0	4	Black	Faint sewage	0.0	1.5	0.7	2.8	40.1	25.0	16.9	13.1	45.5	2.625	Sand/silt	53	280	333			
44	Managawa River	Mitomae Bridge	Ichikawa City	2016/7/26	Cloudy	26.2	3.1	25.0	4	Black	Faint sewage	0.0	0.3	0.4	1.4	35.5	29.0	21.2	12.3	48.3	2.617	Silt/sand	41	290	331			
				2016/8/15	Cloudy	30.4	2.7	28.4	4	Olive black	Faint sewage	0.0	0.1	0.5	0.4	29.1	36.2	20.2	13.6	43.9	2.619	Sand/silt	40	300	340			
				2016/9/26	Sunny	27.8	3.5	24.0	5	Olive black	Faint sewage	0.0	0.3	0.2	0.4	44.8	48.4	2.0	3.8	76.7	2.711	Sand	17	82	99			
				2016/11/25	Sunny	8.7	2.9	15.6	4	Olive black	Faint sewage	0.0	0.1	0.7	1.0	51.4	41.8	1.7	3.3	77.4	2.688	Sand	11	78	89			
				2017/1/16	Sunny	6.2	3.3	10.5	4	Olive black	Faint sewage	0.0	0.2	0.2	1.1	45.3	39.8	7.7	5.7	46.3	2.644	Sand/silt	31	180	211			
				2016/5/24	Sunny	27.2	1.9	22.1	4	Olive black	Faint sewage	0.0	0.3	0.8	1.1	40.1	48.8	3.7	5.3	58.7	2.690	Silt/sand	12	70	82			
				2016/8/15	Cloudy	30.3	1.5	24.5	5	Black	Faint sewage	0.0	0.0	0.3	0.7	34.0	52.3	5.5	7.2	60.1	2.686	Sand	13	85	98			
				2016/11/25	Sunny	4.8	1.7	14.2	4	Black	Faint sewage	0.0	1.8	1.9	1.1	40.0	50.4	1.7	3.2	76.3	2.668	Sand	6.2	45	51.2			
				2017/1/16	Sunny	1.2	3.2	11.0	6	Black	Faint sewage	0.0	0.0	0.0	0.2	22.6	68.1	3.5	5.6	73.0	2.676	Sand	8.2	64	72.2			
				45	Ebigawa River	Yachiyo Bridge	Funabashi City	2016/11/25	Sunny	7.5	1.7	11.1	4	Black	Faint sewage	0.0	0.0	0.0	0.3	54.9	37.1	3.0	4.8	73.9	2.633	Sand/silt	-3.7	44
2016/5/24	Sunny	28.6	2.7					23.2	3	Olive black	Faint sewage	0.0	0.4	0.5	1.2	46.6	34.4	10.0	6.9	56.6	2.682	Sand/silt	32	180	212			
2016/6/22	Cloudy	22.9	3.1					24.0	4	Black	Faint sewage	0.0	1.5	0.7	2.8	40.1	25.0	16.9	13.1	45.5	2.625	Sand/silt	53	280	333			
2016/7/26	Cloudy	26.2	3.1					25.0	4	Black	Faint sewage	0.0	0.3	0.4	1.4	35.5	29.0	21.2	12.3	48.3	2.617	Silt/sand	41	290	331			
2016/8/15	Cloudy	30.4	2.7					28.4	4	Olive black	Faint sewage	0.0	0.1	0.5	0.4	29.1	36.2	20.2	13.6	43.9	2.619	Sand/silt	40	300	340			
46	Inba Discharge Channel (lower reaches)	Shinkanamigawa Bridge	Chiba City	2016/9/26	Sunny	27.8	3.5	24.0	5	Olive black	Faint sewage	0.0	0.3	0.2	0.4	44.8	48.4	2.0	3.8	76.7	2.711	Sand	17	82	99			
				2016/11/25	Sunny	8.7	2.9	15.6	4	Olive black	Faint sewage	0.0	0.1	0.7	1.0	51.4	41.8	1.7	3.3	77.4								

Chiba River (Surrounding Environment) 1/4

No.	Location			Sampling Date	Weather	Air temperature (°C)	Surrounding Environment(Soil,Air dose)												Remarks				
	Water area	Location	Municipality				Left bank						Right bank										
							Color	Odor	Property	Activity concentration [Bq/kg(dry)]			Color	Odor	Property	Activity concentration [Bq/kg(dry)]				Air Dose (μSv/h)			
										Cs-134	Cs-137	Total				Cs-134	Cs-137	Total					
R i v e r s	1	Shogen River	Fukama-obashi Bridge	Inzai City/Sakae Town	2016/5/10	Cloudy	24.6	Dark brown	Faint earth	Loamy	76	420	496	0.09	Dark brown	Faint earth	Loamy	72	330	402	0.11		
					2016/8/26	Cloudy	34.9	Dark brown	Faint earth	Loamy	99	560	659	0.09	Dark brown	Faint earth	Loamy	91	480	571	0.11		
					2016/11/29	Cloudy	13.1	Dark brown	Faint earth	Loamy	69	450	519	0.09	Dull yellowish brown	Faint earth	Loamy	46	260	306	0.10		
			2017/1/27		Cloudy	4.6	Dark brown	Faint earth	Loamy	59	380	439	0.08	Dull yellowish brown	Faint earth	Loamy	38	190	228	0.09			
			2016/5/10		Cloudy	19.8	Blackish brown	Faint earth	Loamy	49	230	279	0.06	Blackish brown	Faint earth	Loamy	88	400	488	0.06			
			2016/8/26		Sunny	33.6	Dark brown	Faint earth	Loamy	18	100	118	0.07	Blackish brown	Faint earth	Loamy	47	260	307	0.07			
		2	Tongawaga River System	Nagato River	Nagato Bridge	Sakae Town	2016/1/28	Sunny	14.1	Dark brown	Faint earth	Loamy	13	110	123	0.07	Dark brown	Faint earth	Loamy	39	250	289	0.07
							2017/1/26	Sunny	9.7	Dark brown	Faint earth	Loamy	15	100	115	0.07	Dark brown	Faint earth	Loamy	47	300	347	0.07
							2016/5/10	Cloudy	19.0	Blackish brown	Faint earth	Loamy	79	390	469	0.06	Blackish brown	Faint earth	Loamy	140	690	830	0.08
				2016/8/26	Sunny		29.8	Dark brown	Faint earth	Loamy	76	420	496	0.07	Dark brown	Faint earth	Loamy	150	780	930	0.08		
				2016/11/29	Cloudy		9.5	Dark brown	Faint earth	Loamy	36	180	216	0.06	Grayish yellowish brown	Faint earth	Loamy	85	500	585	0.08		
				2017/1/27	Cloudy		9.6	Dark brown	Faint earth	Loamy	48	240	288	0.06	Dull yellowish brown	Faint earth	Loamy	69	380	449	0.08		
	3		Intake at Maeshinden Water Purification Plant	Intake at Maeshinden Water Purification Plant	Intake at Maeshinden Water Purification Plant	Inzai City/Sakae Town	2016/5/9	Cloudy	22.8	Blackish brown	Faint earth	Loamy	61	280	341	0.06	Blackish brown	Faint earth	Loamy	77	390	467	0.08
							2016/8/25	Sunny	30.5	Blackish brown	Faint earth	Loamy	37	250	287	0.06	Dark brown	Faint earth	Loamy	41	260	301	0.07
							2016/11/28	Cloudy	13.2	Blackish brown	Faint earth	Loamy	42	290	332	0.06	Dark brown	Faint earth	Loamy	20	130	150	0.07
							2017/1/26	Sunny	7.0	Blackish brown	Faint earth	Loamy	46	360	406	0.06	Blackish brown	Faint earth	Loamy	47	230	277	0.06
							2016/5/9	Cloudy	21.8	Blackish brown	Faint earth	Loamy	170	810	980	0.08	Dark brown	Faint earth	Loamy	62	400	462	0.08
							2016/8/25	Sunny	30.8	Dark brown	Faint earth	Loamy	29	160	189	0.07	Dark brown	Faint earth	Loamy	67	350	417	0.07
	4	Fujimi Bridge	Fujimi Bridge	Fujimi Bridge	Sakae Town	2016/11/28	Cloudy	12.3	Dark brown	Faint earth	Loamy	36	210	246	0.06	Dark brown	Faint earth	Loamy	31	180	211	0.07	
						2017/1/26	Sunny	6.1	Dark brown	Faint earth	Loamy	12	120	132	0.07	Dark brown	Faint earth	Loamy	36	230	266	0.07	
						2016/5/9	Cloudy	25.0	Blackish brown	Faint earth	Loamy	87	420	507	0.08	Dark brown	Faint earth	Loamy	86	410	496	0.09	
						2016/8/25	Cloudy	32.1	Blackish brown	Faint earth	Loamy	110	650	760	0.08	Dull yellowish brown	Faint earth	Loamy	32	200	232	0.09	
						2016/11/28	Cloudy	13.0	Blackish brown	Faint earth	Loamy	120	640	760	0.08	Dark brown	Faint earth	Loamy	48	310	358	0.09	
						2017/1/26	Sunny	5.6	Blackish brown	Faint earth	Loamy	120	590	710	0.07	Dark brown	Faint earth	Loamy	46	270	316	0.08	
	5	Ryudai River	Ryudai River	Ryudai River	Narita City/Sakae Town	2016/5/9	Cloudy	22.8	Blackish brown	Faint earth	Loamy	31	160	191	0.07	Blackish brown	Faint earth	Loamy	71	390	461	0.08	
						2016/8/25	Cloudy	31.1	Blackish brown	Faint earth	Loamy	21	150	171	0.06	Blackish brown	Faint earth	Loamy	55	400	455	0.06	
						2016/11/28	Cloudy	12.5	Dark brown	Faint earth	Loamy	34	180	214	0.07	Blackish brown	Faint earth	Loamy	70	410	480	0.06	
						2017/1/26	Sunny	2.7	Dark brown	Faint earth	Loamy	23	160	183	0.06	Blackish brown	Faint earth	Loamy	76	590	666	0.06	
						2016/5/20	Cloudy	19.5	Dark brown	Faint earth	Loamy	190	940	1,130	0.13	Dark brown	Faint earth	Loamy	320	1,500	1,820	0.15	
						2016/8/8	Cloudy	29.0	Dark brown	Faint earth	Loamy	210	1,000	1,210	0.11	Dark brown	Faint earth	Loamy	290	1,500	1,790	0.14	
	6	Ohori River	Kitakashwa Bridge	Kashiwa City	2016/11/18	Sunny	10.0	Dark brown	Faint earth	Loamy	150	1,000	1,150	0.12	Dark brown	Faint earth	Loamy	630	3,800	4,430	0.11		
					2017/1/23	Sunny	4.5	Dark brown	Faint earth	Loamy	230	1,400	1,630	0.12	Dark brown	Faint earth	Loamy	470	3,100	3,570	0.11		
					2016/5/16	Cloudy	21.1	Blackish brown	Faint earth	Loamy	210	1,100	1,310	0.11	Dark brown	Faint earth	Loamy	73	410	483	0.10		
			2016/8/16		Sunny	28.2	Blackish brown	Faint earth	Loamy	180	1,100	1,280	0.12	Dark brown	Faint earth	Loamy	120	670	790	0.09			
			2016/11/8		Cloudy	13.6	Blackish brown	Faint earth	Loamy	160	910	1,070	0.11	Dark brown	Faint earth	Loamy	58	400	458	0.09			
			2017/1/19		Cloudy	9.9	Blackish brown	Faint earth	Loamy	170	920	1,090	0.09	Dark brown	Faint earth	Loamy	67	330	397	0.08			
		7	Otsu River	Sanno Bridge, under	Kamagaya City	2016/5/20	Cloudy	18.5	Blackish brown	Faint earth	Loamy	110	600	710	0.12	Dark brown	Faint earth	Loamy	140	870	1,010	0.11	
						2016/8/8	Cloudy	29.0	Blackish brown	Faint earth	Loamy	180	970	1,150	0.10	Blackish brown	Faint earth	Loamy	18	90	108	0.09	
						2016/11/18	Sunny	11.7	Blackish brown	Faint earth	Loamy	110	690	800	0.10	Blackish brown	Faint earth	Loamy	32	200	232	0.08	
				2017/1/23		Sunny	8.0	Dark brown	Faint earth	Loamy	65	440	505	0.09	Dark brown	Faint earth	Loamy	30	220	250	0.11		
				2016/5/20		Cloudy	19.0	Blackish brown	Faint earth	Loamy	98	600	698	0.08	Blackish brown	Faint earth	Loamy	56	350	406	0.07		
				2016/8/8		Sunny	30.5	Blackish brown	Faint earth	Loamy	180	1,200	1,380	0.07	Blackish brown	Faint earth	Loamy	250	1,400	1,650	0.06		
	8	Somemizotoshi	Somemizotoshi Bridge	Kashiwa City	2016/11/18	Sunny	14.5	Blackish brown	Faint earth	Loamy	170	1,100	1,270	0.07	Dark brown	Faint earth	Loamy	200	1,300	1,500	0.06		
					2017/1/23	Sunny	6.5	Blackish brown	Faint earth	Loamy	310	2,100	2,410	0.07	Dark brown	Faint earth	Loamy	270	1,600	1,870	0.07		
2016/5/16					Cloudy	21.9	Blackish brown	Faint earth	Loamy	210	1,200	1,410	0.09	Blackish brown	Faint earth	Loamy	280	1,400	1,680	0.08			
2016/8/16			Cloudy		31.0	Blackish brown	Faint earth	Loamy	220	1,200	1,420	0.09	Dark brown	Faint earth	Loamy	320	1,600	1,920	0.08				
2016/11/8			Cloudy		13.4	Dark brown	Faint earth	Loamy	160	910	1,070	0.09	Blackish brown	Faint earth	Loamy	190	1,300	1,490	0.08				
2017/1/19			Cloudy		8.9	Blackish brown	Faint earth	Loamy	140	770	910	0.08	Blackish brown	Faint earth	Loamy	190	1,000	1,190	0.07				
9	Downstream of Karuzawasakai Bridge	Downstream of Karuzawasakai Bridge	Kamagaya City /Shiroi City	2016/5/20	Cloudy	20.5	Blackish brown	Faint earth	Loamy	110	620	730	0.06	Blackish brown	Faint earth	Loamy	350	1,800	2,150	0.10			
				2016/8/8	Sunny	31.5	Blackish brown	Faint earth	Loamy	110	640	750	0.07	Dark brown	Faint earth	Loamy	83	550	633	0.09			
				2016/11/18	Sunny	15.5	Blackish brown	Faint earth	Loamy	150	880	1,030	0.06	Blackish brown	Faint earth	Loamy	420	2,300	2,720	0.09			
		2017/1/23		Sunny	5.5	Blackish brown	Faint earth	Loamy	79	470	549	0.06	Blackish brown	Faint earth	Loamy	100	880	980	0.09				
		10		Nauchi Bridge	Nauchi Bridge	Shiroi City	2016/5/20	Cloudy	20.5	Blackish brown	Faint earth	Loamy	110	620	730	0.06	Blackish brown	Faint earth	Loamy	350	1,800	2,150	0.10
							2016/8/8	Sunny	31.5	Blackish brown	Faint earth	Loamy	110	640	750	0.07	Dark brown	Faint earth	Loamy	83	550	633	0.09
11	Nauchi Bridge	Nauchi Bridge	Shiroi City	2016/11/18	Sunny	15.5	Blackish brown	Faint earth	Loamy	150	880	1,030	0.06	Blackish brown	Faint earth	Loamy	420	2,300	2,720	0.09			
				2017/1/23	Sunny	5.5	Blackish brown	Faint earth	Loamy	79	470	549	0.06	Blackish brown	Faint earth	Loamy	100	880	980	0.09			

Chiba River (Surrounding Environment) 2/4

No.	Location				Sampling Date	Weather	Air temperature (°C)	Surrounding Environment(Soil,Air dose)													Remarks
	Water area	Location	Municipality	Left bank						Right bank											
				Color				Odor	Property	Activity concentration [Bq/kg(dry)]			Air Dose (μSv/h)	Color	Odor	Property	Activity concentration [Bq/kg(dry)]			Air Dose (μSv/h)	
										Cs-134	Cs-137	Total					Cs-134	Cs-137	Total		
14	Feeder Rivers of Teganuma Lake	Kamenari River	Kamenari Bridge	Inzai City	2016/5/10	Cloudy	23.2	Blackish brown	Faint earth	Loamy	170	910	1,080	0.07	Blackish brown	Faint earth	Loamy	110	550	660	0.09
					2016/8/26	Sunny	33.1	Blackish brown	Faint earth	Loamy	140	760	900	0.10	Blackish brown	Faint earth	Loamy	110	640	750	0.10
					2016/11/29	Sunny	13.8	Blackish brown	Faint earth	Loamy	120	730	850	0.09	Blackish brown	Faint earth	Loamy	91	580	671	0.10
15	Igasu Channel	Downstream of Igasu Channel	Kamagaya City	2017/1/27	Sunny	4.3	Dark brown	Faint earth	Loamy	120	910	1,030	0.09	Blackish brown	Faint earth	Loamy	78	490	568	0.08	
				2016/5/16	Sunny	23.7	Grayish yellowish brown	Faint earth	Loamy	110	550	660	0.09	Blackish brown	Faint earth	Loamy	69	340	409	0.08	
				2016/9/1	Sunny	29.7	Blackish brown	Faint earth	Loamy	73	430	503	0.08	Blackish brown	Faint earth	Loamy	87	410	497	0.08	
				2016/11/8	Cloudy	13.7	Blackish brown	Faint earth	Loamy	67	380	447	0.08	Blackish brown	Faint earth	Loamy	76	420	496	0.08	
				2017/1/19	Cloudy	4.7	Blackish brown	Faint earth	Loamy	54	440	494	0.07	Blackish brown	Faint earth	Loamy	91	580	671	0.07	
				2016/5/16	Sunny	24.6	Dark brown	Faint earth	Loamy	120	610	730	0.09	Dark brown	Faint earth	Loamy	230	1,200	1,430	0.10	
				2016/9/1	Sunny	29.2	Blackish brown	Faint earth	Loamy	69	400	469	0.09	Blackish brown	Faint earth	Loamy	110	630	740	0.09	
16	Futae River	Tonigaya Bridge	Funabashi City /Shiroi City	2016/11/8	Cloudy	12.8	Dark brown	Faint earth	Loamy	84	580	664	0.08	Dark brown	Faint earth	Loamy	66	380	446	0.09	
				2017/1/19	Cloudy	5.5	Dark brown	Faint earth	Loamy	69	430	499	0.08	Blackish brown	Faint earth	Loamy	76	530	606	0.08	
				2016/5/20	Cloudy	20.2	Dark brown	Faint earth	Loamy	110	500	610	0.08	Dark brown	Faint earth	Loamy	130	710	840	0.07	
17	Kanzaki River	Kanzaki Bridge	Yachiyo City /Inzai City	2016/8/9	Sunny	31.0	Dark brown	Faint earth	Loamy	63	360	423	0.08	Dark brown	Faint earth	Loamy	56	320	376	0.06	
				2016/11/18	Sunny	20.0	Dark brown	Faint earth	Loamy	92	580	672	0.08	Dark brown	Faint earth	Loamy	91	530	621	0.07	
				2017/1/24	Sunny	4.5	Dark brown	Faint earth	Loamy	110	520	630	0.08	Dark brown	Faint earth	Loamy	45	350	395	0.07	
18	Kannou River	Kannou Bridge	Yachiyo City	2016/5/20	Sunny	20.0	Blackish brown	Faint earth	Loamy	140	700	840	0.08	Dark brown	Faint earth	Loamy	150	800	950	0.08	
				2016/8/9	Sunny	35.5	Blackish brown	Faint earth	Loamy	110	610	720	0.08	Dark brown	Faint earth	Loamy	140	810	950	0.07	
				2016/11/18	Sunny	17.0	Blackish brown	Faint earth	Loamy	130	970	1,100	0.08	Dark brown	Faint earth	Loamy	180	1,100	1,280	0.08	
				2017/1/24	Sunny	6.0	Blackish brown	Faint earth	Loamy	87	560	647	0.07	Blackish brown	Faint earth	Loamy	83	530	613	0.07	
19	Inba Discharge Channel (upper reaches)	Yachiyo Bridge	Yachiyo City	2016/5/20	Cloudy	20.0	Blackish brown	Faint earth	Loamy	34	250	284	0.09	Blackish brown	Faint earth	Loamy	190	940	1,130	0.07	
				2016/8/9	Sunny	34.0	Dark brown	Faint earth	Loamy	60	390	360	0.08	Dark brown	Faint earth	Loamy	370	2,100	2,470	0.08	
				2016/11/18	Sunny	16.5	Blackish brown	Faint earth	Loamy	56	290	346	0.08	Dark brown	Faint earth	Loamy	260	1,500	1,760	0.06	
20	Feeder rivers of Lake Inbanuma	Teguri River	Mumei Bridge	Sakura City	2017/1/24	Sunny	7.5	Blackish brown	Faint earth	Loamy	41	290	331	0.08	Blackish brown	Faint earth	Loamy	170	1,000	1,170	0.07
					2016/5/16	Cloudy	23.4	Dark brown	Faint earth	Loamy	120	620	740	0.08	Dark brown	Faint earth	Loamy	130	650	780	0.09
					2016/8/9	Sunny	35.5	Dark brown	Faint earth	Loamy	110	620	730	0.08	Blackish brown	Faint earth	Loamy	68	310	378	0.09
					2016/11/21	Cloudy	12.5	Dark brown	Faint earth	Loamy	220	1,200	1,420	0.07	Dark brown	Faint earth	Loamy	110	610	720	0.08
					2017/1/24	Sunny	6.0	Blackish brown	Faint earth	Loamy	120	850	970	0.07	Dark brown	Faint earth	Loamy	51	370	421	0.08
21	Moroto River	Moroto Bridge	Inzai City	2016/5/16	Cloudy	24.3	Blackish brown	Faint earth	Loamy	110	590	700	0.07	Blackish brown	Faint earth	Loamy	83	380	463	0.07	
				2016/8/9	Sunny	35.0	Dark brown	Faint earth	Loamy	53	280	333	0.08	Blackish brown	Faint earth	Loamy	120	710	830	0.07	
				2016/11/21	Cloudy	13.0	Dark brown	Faint earth	Loamy	66	310	376	0.06	Dark brown	Faint earth	Loamy	93	480	573	0.06	
				2017/1/24	Sunny	3.5	Blackish brown	Faint earth	Loamy	48	320	368	0.06	Blackish brown	Faint earth	Loamy	52	370	422	0.06	
				2016/5/16	Cloudy	18.8	Extremely dark brown	Faint earth	Loamy	27	120	147	0.05	Dark brown	Faint earth	Loamy	<4.5	17	17	0.05	
22	Kashima River	Iwatomi Bridge	Sakura City	2016/8/10	Sunny	33.5	Dark brown	Faint earth	Loamy	25	100	125	0.05	Dark brown	Faint earth	Loamy	46	200	246	0.06	
				2016/1/21	Cloudy	13.0	Blackish brown	Faint earth	Loamy	22	120	142	0.05	Dark brown	Faint earth	Loamy	7.4	59	66.4	0.05	
				2017/1/25	Sunny	6.0	Dark brown	Faint earth	Loamy	16	77	93	0.03	Dull yellowish brown	Faint earth	Loamy	<4.8	17	17	0.06	
				2016/5/16	Cloudy	21.1	Dark brown	Faint earth	Loamy	19	100	119	0.07	Dark brown	Faint earth	Loamy	56	270	326	0.06	
				2016/8/10	Sunny	33.5	Dark brown	Faint earth	Loamy	61	350	411	0.06	Dark brown	Faint earth	Loamy	160	930	1,090	0.06	
23	Takasaki River	Ryuto Bridge	Sakura City	2016/1/21	Cloudy	14.0	Blackish brown	Faint earth	Loamy	20	140	160	0.06	Dark brown	Faint earth	Loamy	73	420	493	0.05	
				2017/1/25	Sunny	10.0	Blackish brown	Faint earth	Loamy	22	140	162	0.06	Dark brown	Faint earth	Loamy	27	190	217	0.05	
				2016/5/16	Cloudy	23.5	Dark brown	Faint earth	Loamy	110	540	650	0.06	Dark brown	Faint earth	Loamy	95	520	615	0.06	
				2016/8/10	Sunny	31.5	Dark brown	Faint earth	Loamy	88	520	608	0.05	Dark brown	Faint earth	Loamy	35	150	185	0.06	
				2016/11/21	Cloudy	15.0	Dark brown	Faint earth	Loamy	130	740	870	0.06	Dark brown	Faint earth	Loamy	100	680	780	0.07	
24	Kashima River	Kashima Bridge	Sakura City	2017/1/25	Sunny	10.5	Blackish brown	Faint earth	Loamy	93	550	643	0.06	Dark brown	Faint earth	Loamy	84	730	814	0.06	
				2016/5/16	Cloudy	25.3	Blackish brown	Faint earth	Loamy	66	390	456	0.08	Dark brown	Faint earth	Loamy	18	76	94	0.07	
				2016/8/10	Sunny	31.0	Blackish brown	Faint earth	Loamy	140	870	1,010	0.06	Blackish brown	Faint earth	Loamy	51	330	381	0.06	
				2016/11/21	Cloudy	14.0	Dark brown	None	Loamy	82	470	552	0.08	Dark brown	None	Loamy	120	800	920	0.08	
				2017/1/25	Sunny	7.5	Dark brown	Faint earth	Loamy	73	400	473	0.08	Dark brown	Faint earth	Loamy	40	250	290	0.07	
25	Inbasu Channel	Tsurumaki Bridge	Inzai City	2016/5/19	Sunny	23.8	Dark brown	Faint earth	Loamy	61	330	391	0.10	Dark brown	Faint earth	Loamy	140	910	1,050	0.10	
				2016/8/10	Sunny	31.0	Grayish yellowish brown	Faint earth	Loamy	75	470	545	0.11	Dark brown	Faint earth	Loamy	180	980	1,160	0.11	
				2016/11/15	Sunny	17.3	Blackish brown	Faint earth	Loamy	82	460	542	0.09	Blackish brown	Faint earth	Loamy	160	860	1,020	0.09	
26	Edogawa River System	Tonegawa Canal	Unga Bridge	Nagareyama City/Noda City	2017/1/26	Sunny	10.8	Dark brown	Faint earth	Loamy	58	450	508	0.10	Dark brown	Faint earth	Loamy	82	700	782	0.11

Chiba River (Surrounding Environment) 3/4

Location				Sampling Date	Weather	Air temperature (°C)	Surrounding Environment(Soil,Air dose)										Remarks							
No.	Water area	Location	Municipality				Left bank					Right bank												
							Color	Odor	Property	Activity concentration [Bq/kg(dry)]			Air Dose (μSv/h)	Color	Odor	Property		Activity concentration [Bq/kg(dry)]			Air Dose (μSv/h)			
			Radioactive cesium						Radioactive cesium															
			Cs-134	Cs-137	Total	Cs-134	Cs-137	Total				Cs-134	Cs-137	Total										
27	Edogawa River	Nagareyama Bridge	Nagareyama City /Misato City	2016/5/19	Sunny	23.7	Dark brown	Faint earth	Loamy	200	1,100	1,300	0.11	Dark brown	Faint earth	Loamy	74	430	504	0.10				
				2016/8/10	Sunny	31.5	Dull yellowish brown	Faint earth	Loamy	160	880	1,040	0.12	Dark brown	Faint earth	Loamy	97	500	597	0.11				
				2016/11/15	Sunny	15.5	Blackish brown	Faint earth	Loamy	150	860	1,010	0.09	Dark brown	Faint earth	Loamy	75	440	515	0.09				
28	Sakagawa River	Benten Bridge	Matsudo City	2017/1/26	Sunny	11.6	Dark brown	Faint earth	Loamy	90	640	730	0.12	Blackish brown	Faint earth	Loamy	81	540	621	0.10				
				2016/5/23	Sunny	29.8	-	-	-	-	-	-	0.08	-	-	-	-	-	-	-	0.07	Soil not exposed		
				2016/8/11	Cloudy	30.0	-	-	-	-	-	-	0.09	-	-	-	-	-	-	-	-	0.07	Soil not exposed	
				2016/11/22	Sunny	14.0	-	-	-	-	-	-	0.08	-	-	-	-	-	-	-	-	0.06	Soil not exposed	
				2017/1/26	Sunny	3.5	-	-	-	-	-	-	0.07	-	-	-	-	-	-	-	-	-	0.07	Soil not exposed
				2016/5/23	Sunny	30.4	-	-	-	-	-	-	0.07	-	-	-	-	-	-	-	-	-	0.07	Soil not exposed
29	Shinsaka River	Sakane Bridge	Matsudo City	2016/8/11	Cloudy	30.5	-	-	-	-	-	-	0.07	-	-	-	-	-	-	-	0.06	Soil not exposed		
				2016/11/22	Sunny	14.0	-	-	-	-	-	-	0.06	-	-	-	-	-	-	-	-	0.06	Soil not exposed	
				2017/1/26	Sunny	6.0	-	-	-	-	-	-	0.06	-	-	-	-	-	-	-	-	-	0.06	Soil not exposed
				2016/5/23	Sunny	28.0	Dark brown	Faint earth	Loamy	92	440	532	0.08	Dark brown	Faint earth	Loamy	230	1,100	1,330	0.10				
30	Edogawa River System	Shinkatsushika Bridge	Matsudo City /Katsushika City	2016/8/11	Cloudy	30.5	Brown	Faint earth	Loamy	100	490	590	0.09	Dull yellowish brown	Faint earth	Loamy	180	1,000	1,180	0.09				
				2016/11/22	Sunny	17.0	Dark brown	Faint earth	Loamy	36	210	246	0.09	Brown	Faint earth	Loamy	120	760	880	0.09				
				2017/1/26	Sunny	8.0	Dark brown	Faint earth	Loamy	50	310	360	0.09	Dark brown	Faint earth	Loamy	69	550	619	0.08				
31	Edogawa River System	Ichikawa Bridge	Ichikawa City /Edogawa City	2016/5/24	Sunny	25.9	Blackish brown	Faint earth	Loamy	75	470	545	0.09	Dull yellowish brown	Faint earth	Loamy	200	1,100	1,300	0.12				
				2016/8/11	Sunny	33.0	Dark brown	Faint earth	Loamy	100	650	750	0.08	Dark brown	Faint earth	Loamy	170	1,000	1,170	0.10				
				2016/11/22	Sunny	20.0	Dark brown	Faint earth	Loamy	65	420	485	0.06	Dull yellowish brown	Faint earth	Loamy	190	1,100	1,290	0.11				
32	Edogawa River System	Vicinity of Keiyo Road	Ichikawa City /Edogawa City	2017/1/26	Sunny	8.5	Dark brown	Faint earth	Loamy	62	430	492	0.08	Dark brown	Faint earth	Loamy	130	820	950	0.11				
				2016/5/12	Sunny	25.5	Blackish brown	Faint earth	Loamy	120	630	750	0.09	Blackish brown	Faint earth	Loamy	81	370	451	0.08				
				2016/9/1	Sunny	31.2	Blackish brown	Faint earth	Loamy	88	470	558	0.08	Blackish brown	Faint earth	Loamy	66	400	466	0.07	Sampling in September for a typhoon			
				2016/11/25	Sunny	9.5	Blackish brown	Faint earth	Loamy	91	600	691	0.09	Blackish brown	Faint earth	Loamy	58	290	348	0.08				
				2017/1/23	Sunny	8.5	Dark brown	Faint earth	Loamy	93	550	643	0.08	Blackish brown	Faint earth	Loamy	73	390	463	0.08				
				2016/5/12	Sunny	25.1	Blackish brown	Faint earth	Loamy	80	440	520	0.08	Blackish brown	Faint earth	Loamy	93	520	613	0.09				
33	Edogawa River	Gyotoku Movable Weir (upper reaches)	Ichikawa City	2016/6/22	Cloudy	23.5	Blackish brown	Faint earth	Loamy	76	380	456	0.08	Dark brown	Faint earth	Loamy	150	770	920	0.08				
				2016/7/26	Cloudy	24.9	Dark brown	Faint earth	Loamy	84	440	524	0.08	Dark brown	Faint earth	Loamy	120	690	810	0.08				
				2016/9/1	Sunny	32.0	Blackish brown	Faint earth	Loamy	69	410	479	0.08	Dark brown	Faint earth	Loamy	76	510	586	0.07	Sampling in September for a typhoon			
				2016/9/26	Sunny	25.0	Blackish brown	Faint earth	Loamy	83	510	593	0.08	Blackish brown	Faint earth	Loamy	93	610	703	0.08				
				2016/11/25	Sunny	8.2	Blackish brown	Faint earth	Loamy	95	560	655	0.08	Dark brown	Faint earth	Loamy	140	790	930	0.09				
				2017/1/23	Sunny	8.2	Blackish brown	Faint earth	Loamy	74	470	544	0.08	Dull yellowish brown	Faint earth	Loamy	110	680	790	0.08				
34	Edogawa River	Shingyotokubashi Bridge	Ichikawa City /Edogawa City	2016/5/23	Sunny	27.6	Blackish brown	Faint earth	Loamy	17	90	107	0.07	Dark brown	Faint earth	Loamy	7.3	36	43.3	0.06				
				2016/8/8	Cloudy	29.8	Dark brown	Faint earth	Loamy	17	130	147	0.07	Dark brown	Faint earth	Loamy	5.7	27	32.7	0.06				
				2016/11/9	Sunny	11.5	Dark brown	Faint earth	Loamy	29	150	179	0.06	Dark brown	Faint earth	Loamy	9.0	64	73.0	0.06				
				2017/1/30	Sunny	12.8	Dark brown	Faint earth	Loamy	25	140	165	0.06	Dark brown	Faint earth	Loamy	13	72	85	0.06				
				2016/5/12	Sunny	24.3	Blackish brown	Faint earth	Loamy	100	500	600	0.10	Blackish brown	Faint earth	Loamy	70	340	410	0.08				
35	Edogawa River	Edogawa Floodgate, down	Ichikawa City /Edogawa City	2016/9/1	Sunny	31.3	Blackish brown	Faint earth	Loamy	96	630	726	0.10	Blackish brown	Faint earth	Loamy	50	410	460	0.07	Sampling in September for a typhoon			
				2016/11/25	Sunny	9.0	Dark brown	Faint earth	Loamy	120	700	820	0.10	Blackish brown	Faint earth	Loamy	57	390	447	0.08				
				2017/1/23	Sunny	8.2	Blackish brown	Faint earth	Loamy	140	880	1,020	0.10	Blackish brown	Faint earth	Loamy	67	400	467	0.07				
36	Edogawa River	8 km Point to the estuary	Ichikawa City /Edogawa City	2016/5/12	Sunny	22.6	Blackish brown	Faint earth	Loamy	82	430	512	0.08	Dark brown	Faint earth	Loamy	110	640	750	0.08				
				2016/9/1	Sunny	31.3	Blackish brown	Faint earth	Loamy	72	440	512	0.07	Blackish brown	Faint earth	Loamy	97	700	797	0.09	Sampling in September for a typhoon			
				2016/11/25	Sunny	7.2	Blackish brown	Faint earth	Loamy	84	520	604	0.08	Blackish brown	Faint earth	Loamy	100	640	740	0.10				
				2017/1/23	Sunny	7.8	Dark brown	Faint earth	Loamy	55	250	305	0.07	Dark brown	Faint earth	Loamy	90	700	790	0.08				

Chiba River (Surrounding Environment) 4/4

No.	Location			Sampling Date	Weather	Air temperature (°C)	Surrounding Environment(Soil,Air dose)											Remarks						
	Water area	Location	Municipality				Left bank					Right bank												
							Color	Odor	Property	Activity concentration [Bq/kg(dry)]			Air Dose (μSv/h)	Color	Odor	Property	Activity concentration [Bq/kg(dry)]			Air Dose (μSv/h)				
										Radioactive cesium							Radioactive cesium							
			Cs-134	Cs-137	Total	Cs-134	Cs-137	Total				Cs-134	Cs-137	Total										
37	Kyu-Edogawa River	Imai Bridge	Ichikawa City /Edogawa City	2016/5/12	Sunny	23.6	-	-	-	-	-	-	0.06	Blackish brown	Faint earth	Loamy	93	440	533	0.08	(Left bank) Soil not exposed			
				2016/9/1	Sunny	30.5	-	-	-	-	-	-	-	-	-	0.06	Blackish brown	Faint earth	Loamy	61	420	481	0.07	(Left bank) Soil not exposed Sampling in September for a typhoon
38	Kyu-Edogawa River	Urayasu Bridge	Urayasu City/Edogawa City	2016/11/25	Sunny	7.0	-	-	-	-	-	-	-	0.06	Blackish brown	Faint earth	Loamy	54	340	394	0.08	(Left bank) Soil not exposed		
				2017/1/23	Sunny	8.0	-	-	-	-	-	-	-	-	-	0.06	Dark brown	Faint earth	Loamy	47	320	367	0.08	(Left bank) Soil not exposed
				2016/5/23	Sunny	27.2	Dark brown	Faint earth	Loamy	660	3,300	3,960	0.07	Blackish brown	Faint earth	Loamy	130	750	880	0.07				
				2016/6/22	Cloudy	23.9	Blackish brown	Faint earth	Loamy	390	1,900	2,290	0.07	Blackish brown	Faint earth	Loamy	58	360	418	0.07				
				2016/7/26	Cloudy	25.0	Dark brown	Faint earth	Loamy	490	2,500	2,990	0.07	Blackish brown	Faint earth	Loamy	120	600	720	0.08				
		2016/8/8	Cloudy	29.6	Dark brown	Faint earth	Loamy	460	2,400	2,860	0.07	Blackish brown	Faint earth	Loamy	120	600	720	0.08						
		2016/9/26	Cloudy	26.8	Blackish brown	Faint earth	Loamy	330	2,000	2,330	0.07	Blackish brown	Faint earth	Loamy	290	1,500	1,790	0.07						
		2016/11/9	Cloudy	11.3	Dark brown	Faint earth	Loamy	320	2,000	2,320	0.07	Blackish brown	Faint earth	Loamy	62	380	442	0.08						
		2017/1/30	Sunny	9.8	Dark brown	Faint earth	Loamy	420	2,900	3,320	0.07	Dark brown	Faint earth	Loamy	70	460	530	0.07						
		39	Mamagawa River	Nemoto Floodgate	Ichikawa City	2016/5/24	Sunny	26.4	Blackish brown	Faint earth	Loamy	290	1,600	1,890	0.09	-	-	-	-	-	-	0.06	(Right bank) Soil not exposed	
2016/8/11	Sunny					31.0	Blackish brown	Faint earth	Loamy	180	990	1,170	0.08	-	-	-	-	-	-	0.06	(Right bank) Soil not exposed			
2016/11/22	Sunny					21.0	Dark brown	Faint earth	Loamy	240	1,300	1,540	0.09	-	-	-	-	-	-	-	0.08	(Right bank) Soil not exposed		
40	Kokubu River	Suwada Bridge	Ichikawa City	2017/1/26	Sunny	10.0	Blackish brown	Faint earth	Loamy	160	1,200	1,360	0.08	-	-	-	-	-	-	0.06	(Right bank) Soil not exposed			
				2016/5/13	Sunny	24.5	-	-	-	-	-	-	-	-	-	-	-	-	-	-	0.09	Soil not exposed		
				2016/8/8	Cloudy	32.8	-	-	-	-	-	-	-	-	-	-	-	-	-	-	0.08	Soil not exposed		
				2016/11/9	Sunny	14.0	-	-	-	-	-	-	-	-	-	-	-	-	-	-	0.08	Soil not exposed		
				2017/1/30	Cloudy	18.0	-	-	-	-	-	-	-	-	-	-	-	-	-	-	0.08	Soil not exposed		
				2016/5/13	Sunny	25.1	-	-	-	-	-	-	-	-	-	-	-	-	-	-	0.07	Soil not exposed		
				2016/8/8	Sunny	33.2	-	-	-	-	-	-	-	-	-	-	-	-	-	-	0.07	Soil not exposed		
41	Haraki River	Before the confluence with Kokubu River	Ichikawa City	2016/11/9	Sunny	13.6	-	-	-	-	-	-	-	0.07	-	-	-	-	-	-	0.08	Soil not exposed		
				2017/1/30	Sunny	17.3	-	-	-	-	-	-	-	-	-	-	-	-	-	-	0.07	Soil not exposed		
				2016/5/16	Cloudy	24.0	Blackish brown	Faint earth	Loamy	26	150	176	0.06	Blackish brown	Faint earth	Loamy	<5.3	37	37	0.05				
				2016/8/15	Cloudy	31.5	Blackish brown	Faint earth	Loamy	40	170	210	0.06	Blackish brown	Faint earth	Loamy	9.2	44	53.2	0.06				
42	Hasen-okashiwa River	Downstream of Nakazawashinbashi Bridge	Kamagaya City /Ichikawa City	2016/11/8	Cloudy	14.2	Black	Faint earth	Loamy	26	140	166	0.05	Dark brown	Faint earth	Loamy	<7.9	25	25	0.04				
				2017/1/19	Sunny	12.0	Blackish brown	Faint earth	Loamy	23	170	193	0.05	Blackish brown	Faint earth	Loamy	<5.3	22	22	0.04				
				2016/5/13	Sunny	26.5	-	-	-	-	-	-	-	-	-	-	-	-	-	-	0.05	Soil not exposed		
				2016/8/8	Cloudy	34.7	-	-	-	-	-	-	-	-	-	-	-	-	-	-	0.05	Soil not exposed		
				2016/11/9	Sunny	15.0	-	-	-	-	-	-	-	-	-	-	-	-	-	-	0.05	Soil not exposed		
43	Okashiwa River	Sengen Bridge	Ichikawa City	2017/1/30	Sunny	12.4	-	-	-	-	-	-	-	0.05	-	-	-	-	-	-	0.05	Soil not exposed		
				2016/5/13	Sunny	23.0	Dark brown	Faint earth	Loamy	40	240	280	0.06	Dull yellowish brown	Faint earth	Loamy	21	130	151	0.05				
				2016/6/22	Cloudy	22.7	Dark brown	Faint earth	Loamy	88	340	428	0.06	Dark brown	Faint earth	Loamy	34	190	224	0.06				
				2016/7/26	Cloudy	26.2	Dark brown	Faint earth	Loamy	55	240	295	0.05	Dark brown	Faint earth	Loamy	38	220	258	0.07				
				2016/8/15	Cloudy	33.4	Dark brown	Faint earth	Loamy	41	230	271	0.06	Dull yellowish brown	Faint earth	Loamy	25	130	155	0.07				
				2016/9/26	Cloudy	28.1	Dark brown	Faint earth	Loamy	54	330	384	0.05	Dark brown	Faint earth	Loamy	35	240	275	0.05				
				2016/11/25	Sunny	13.6	Dark brown	Faint earth	Loamy	41	260	301	0.06	Dark brown	Faint earth	Loamy	24	140	164	0.05				
44	Mamagawa River	Mitomae Bridge	Ichikawa City	2017/1/16	Sunny	7.0	Dark brown	Faint earth	Loamy	23	180	203	0.06	Dark brown	Faint earth	Loamy	15	100	115	0.06				
				2016/5/13	Sunny	19.3	Blackish brown	Faint earth	Loamy	110	670	780	0.07	Blackish brown	Faint earth	Loamy	140	780	920	0.07				
				2016/8/15	Cloudy	34.5	Dull yellowish brown	Faint earth	Loamy	110	600	710	0.07	Dull yellowish brown	Faint earth	Loamy	120	550	670	0.08				
				2016/11/25	Sunny	11.5	Blackish brown	Faint earth	Loamy	110	570	680	0.06	Blackish brown	Faint earth	Loamy	53	410	463	0.06				
				2017/1/16	Sunny	7.5	Blackish brown	Faint earth	Loamy	78	590	668	0.07	Blackish brown	Faint earth	Loamy	67	410	477	0.07				
45	Ebigawa River	Yachiyo Bridge	Funabashi City	2016/5/24	Sunny	28.6	Dark brown	Faint earth	Loamy	40	210	250	0.07	Blackish brown	Faint earth	Loamy	26	130	156	0.06				
				2016/6/22	Cloudy	22.9	Blackish brown	Faint earth	Loamy	51	250	301	0.07	Blackish brown	Faint earth	Loamy	68	310	378	0.06				
				2016/7/26	Cloudy	26.2	Dark brown	Faint earth	Loamy	170	880	1,050	0.07	Grayish yellowish brown	Faint earth	Loamy	70	400	470	0.06				
				2016/8/15	Cloudy	30.4	Dark brown	Faint earth	Loamy	25	180	205	0.08	Blackish brown	Faint earth	Loamy	65	320	385	0.06				
				2016/9/26	Sunny	27.8	Blackish brown	Faint earth	Loamy	52	280	332	0.07	Dark brown	Faint earth	Loamy	49	290	339	0.06				
				2016/11/25	Sunny	8.7	Dark brown	Faint earth	Loamy	52	260	312	0.07	Blackish brown	Faint earth	Loamy	73	460	533	0.06				
				2017/1/16	Sunny	6.2	Blackish brown	Faint earth	Loamy	61	450	511	0.08	Blackish brown	Faint earth	Loamy	52	360	412	0.06				
46	Inba Discharge Channel (lower reaches)	Shinhanamigawa Bridge	Chiba City	2016/5/24	Sunny	27.2	Dark brown	Faint earth	Loamy	17	95	112	0.07	Blackish brown	Faint earth	Loamy	140	700	840	0.07				
				2016/8/15	Cloudy	30.3	Dull yellowish brown	Faint earth	Loamy	12	92	104	0.06	Dark brown	Faint earth	Loamy	110	630	740	0.08				
				2016/11/25	Sunny	4.8	Dark brown	Faint earth	Loamy	7.8	59	66.8	0.06	Blackish brown	Faint earth	Loamy	83	650	733	0.08				
				2017/1/16	Sunny	1.2	Dark brown	Faint earth	Loamy	26	120	146	0.06	Dark brown	Faint earth	Loamy	99	600	699	0.08				
				2016/5/24	Sunny	27.2	Dark brown	Faint earth	Loamy	17	95	112	0.07	Blackish brown	Faint earth	Loamy	140	700	840	0.07				
47	Miyako River	Miyako Bridge	Chiba City	2016/8/15	Cloudy	30.3	Dull yellowish brown	Faint earth	Loamy	12	92	104	0.06	Dark brown	Faint earth	Loamy	110	630	740	0.08				
				2016/11/25	Sunny	4.8	Dark brown	Faint earth	Loamy	7.8	59	66.8	0.06	Blackish brown	Faint earth	Loamy	83	650	733	0.08				
				2017/1/16	Sunny	1.2	Dark brown	Faint earth	Loamy	26	120	146	0.06	Dark brown	Faint earth	Loamy	99	600	699	0.08				

Chiba Lakes and Reservoirs (Water) 2/2

L a k e s a n d R e s e r v o i r s	Location			Sampling Date	Weather	Air temperature (°C)	Water depth (m)	Water							Remarks					
	No.	Water area	Location					General items				Activity concentration(Bq/L)								
								Water temperature (°C)	Sampling depth (m)	Color	Odor	Secchi disk depth (m)	Electrical conductivity (mS/m)	SS (mg/L)		Turbidity (FNU)	Radioactive cesium			
													Cs-134	Cs-137						
58	Lake Inbanuma	Lower area of Josuido water intake	Surface layer	2016/6/19	Cloudy	29.0	1.6	26.8	0.0	Dark grayish yellow	None	0.5	26.3	23	14	<0.54	<0.80			
			Deep layer	-	-	-	-	-	-	-	-	-	-	-	-	-	-	-	Unable to collect samples from the deep layer due to shallow water	
			Surface layer	2016/9/28	Cloudy	28.0	1.3	25.0	0.0	Dark grayish greenish yellow	None	0.9	30.6	15	13	<0.65	<0.75	-	Unable to collect samples from the deep layer due to shallow water	
			Deep layer	-	-	-	-	-	-	-	-	-	-	-	-	-	-	-	Unable to collect samples from the deep layer due to shallow water	
			Surface layer	2016/12/21	Sunny	7.0	1.3	8.0	0.0	Dark grayish yellow	None	0.7	40.4	11	11	<0.80	<0.88	-	Unable to collect samples from the deep layer due to shallow water	
			Deep layer	-	-	-	-	-	-	-	-	-	-	-	-	-	-	-	-	Unable to collect samples from the deep layer due to shallow water
			Surface layer	2017/2/13	Sunny	6.0	1.5	4.8	0.0	Reddish yellowish dark gray	None	0.4	34.4	35	24	<0.61	<0.88	-	Unable to collect samples from the deep layer due to shallow water	
			Deep layer	-	-	-	-	-	-	-	-	-	-	-	-	-	-	-	-	Unable to collect samples from the deep layer due to shallow water
	59	Asobashi Bridge		Surface layer	2016/6/19	Cloudy	29.3	1.9	27.3	0.0	Dark grayish greenish yellow	None	1.0	24.4	5	3.2	<0.68	<0.75	-	
				Deep layer	-	-	-	-	-	-	-	-	-	-	-	-	-	-	-	Unable to collect samples from the deep layer due to shallow water
				Surface layer	2016/9/28	Cloudy	27.5	1.7	25.2	0.0	Dark grayish yellow green	None	1.2	31.1	6	5.7	<0.76	<0.80	-	Unable to collect samples from the deep layer due to shallow water
				Deep layer	-	-	-	-	-	-	-	-	-	-	-	-	-	-	-	Unable to collect samples from the deep layer due to shallow water
				Surface layer	2016/12/21	Sunny	8.8	1.5	8.2	0.0	Grayish yellow	None	1.0	35.8	9	6.9	<0.61	<0.84	-	Unable to collect samples from the deep layer due to shallow water
				Deep layer	-	-	-	-	-	-	-	-	-	-	-	-	-	-	-	-
59			Surface layer	2017/2/13	Sunny	7.2	1.9	6.5	0.0	Reddish yellowish gray	None	0.6	37.5	30	14	<0.63	<0.66	-		
			Deep layer	-	-	-	-	-	-	-	-	-	-	-	-	-	-	-	Unable to collect samples from the deep layer due to shallow water	

Chiba Lakes and Reservoirs (Sediment) 1/1

No.	Location		Sampling Date	Weather	Air temperature (C)	Water depth (m)	Sediment																Activity concentration [Bq/kg(dry)]			Remarks
	Water area	Location					General items										Sediment content (%)	Density (g/cm ³)	Property	Radioactive cesium						
							Sediment temperature (C)	Sample length (cm)	Color	Odor	Grain size distribution(%)									Silt	Clay	Ca-134	Cs-137	Total		
											Coarse gravel	Medium gravel	Fine gravel	Coarse sand	Medium sand	Fine sand										
L a k e s	52	Fusashita	2016/6/17	Sunny	26.4	2.7	23.8	7	Olive black	Faint sewage	0.0	0.0	0.0	0.3	12.8	64.3	13.1	9.6	64.7	2.657	Silt/sand	50	300	350		
			2016/9/28	Cloudy	27.0	2.2	24.5	2	Black	Faint sewage	0.0	0.1	0.1	0.1	10.1	78.4	5.7	5.5	66.1	2.669	Sand/silt	55	320	375		
			2016/12/21	Sunny	17.0	2.3	8.1	3	Olive black	None	0.0	0.0	0.0	0.1	11.9	69.3	11.1	7.7	62.8	2.665	Sand/silt	58	380	438		
			2017/2/13	Sunny	10.0	2.3	5.2	3	Olive black	None	1.9	3.2	0.8	0.4	11.8	62.4	11.6	7.9	51.2	2.595	Silt/sand/gravel	65	440	505		
	53	Center area of Shimotegama	2016/6/17	Sunny	27.2	1.8	23.5	10	Olive black	Faint hydrogen sulfide	0.0	0.0	0.0	0.4	10.7	54.8	24.9	9.2	50.3	2.627	Silt	64	290	354		
			2016/9/28	Cloudy	27.2	1.4	24.5	6	Black	Faint sewage	0.0	0.0	0.0	0.4	11.1	45.9	26.1	16.5	43.2	2.610	Silt	27	170	197		
			2016/12/21	Sunny	16.2	1.5	8.2	5	Black	None	0.0	0.6	1.0	0.3	13.7	53.9	22.5	8.1	49.0	2.655	Silt/sand/gravel	35	200	235		
			2017/2/13	Sunny	10.5	1.5	5.9	10	Olive black	None	0.0	0.0	0.0	0.3	9.8	46.7	31.6	11.6	34.7	2.554	Silt/sand/gravel	45	270	315		
	54	Center area of Tegama	2016/6/17	Sunny	26.5	1.5	23.9	15	Olive black	None	0.0	0.0	0.0	0.3	0.5	7.2	76.6	15.4	22.6	2.454	Silt	130	860	990		
			2016/9/28	Cloudy	27.0	1.2	24.0	13	Olive black	Faint hydrogen sulfide	0.0	0.0	0.0	0.3	1.4	8.5	67.6	22.3	23.1	2.442	Silt	140	890	1,030		
			2016/12/21	Sunny	16.5	1.2	7.8	10	Olive black	None	0.0	0.0	0.0	0.1	0.9	12.0	76.2	10.7	27.0	2.438	Silt	84	810	894		
			2017/2/13	Sunny	10.5	1.4	6.5	12	Olive black	None	0.0	0.0	0.0	0.0	0.7	8.2	73.4	17.8	23.5	2.352	Silt	140	910	1,050		
55	Nedoshita	2016/6/17	Sunny	26.1	2.2	23.2	10	Olive black	Faint sewage	0.0	0.0	0.0	0.5	4.1	16.6	58.5	20.3	32.3	2.479	Silt	390	2,100	2,490			
		2016/9/28	Cloudy	27.5	1.7	23.5	10	Olive black	Faint sewage	0.0	0.0	0.0	0.1	2.5	21.9	58.9	16.6	35.7	2.509	Silt	360	2,100	2,460			
		2016/12/21	Sunny	16.0	1.8	10.5	10	Olive black	Faint sewage	0.0	0.0	0.0	0.3	4.1	15.5	65.6	14.5	31.0	2.467	Silt	320	2,200	2,520			
		2017/2/13	Sunny	10.5	1.8	7.2	10	Olive black	None	0.0	0.0	0.0	0.1	5.2	25.0	44.5	25.2	36.3	2.427	Silt	330	1,900	2,230			
R e s e r v o i r s	56	Center area of Kita-Inbunuma	2016/6/19	Cloudy	29.0	1.6	24.0	10	Olive black	Faint hydrogen sulfide	0.0	0.0	0.0	1.1	0.5	1.8	77.5	19.1	21.3	2.445	Silt	48	300	348		
			2016/9/28	Cloudy	28.5	1.3	23.8	13	Olive black	Faint hydrogen sulfide	0.0	0.0	0.0	0.1	0.6	1.7	74.6	23.1	21.3	2.466	Silt	47	310	357		
			2016/12/21	Sunny	9.0	1.4	7.5	10	Olive black	Faint earth	0.0	0.0	0.0	0.0	0.0	1.3	77.5	21.2	20.7	2.465	Silt	52	340	392		
			2017/2/13	Sunny	4.0	1.4	6.5	10	Olive black	Faint earth	0.0	0.0	0.0	0.0	0.3	0.7	71.7	27.3	20.2	2.358	Silt	45	360	405		
	57	Ippommatsushita	2016/6/19	Cloudy	29.1	1.6	24.9	9	Olive black	None	0.0	0.0	0.0	0.6	1.1	8.1	73.5	16.7	22.4	2.472	Silt	64	360	424		
			2016/9/28	Cloudy	27.6	1.3	22.8	11	Olive black	Faint hydrogen sulfide	0.0	0.0	0.0	0.7	1.4	8.2	72.4	17.3	24.1	2.443	Silt	50	330	380		
			2016/12/21	Sunny	6.8	1.5	8.0	10	Olive black	None	0.0	0.0	0.0	0.4	0.7	6.5	81.8	10.5	21.3	2.509	Silt	55	410	465		
			2017/2/13	Sunny	5.0	1.5	6.2	10	Olive black	Faint sewage	0.0	0.0	0.0	0.1	0.9	6.3	72.8	20.0	21.8	2.377	Silt	61	390	451		
	58	Lower area of Josuido water intake	2016/6/19	Cloudy	29.0	1.6	25.0	7	Olive black	Faint hydrogen sulfide	0.0	0.0	0.0	0.4	0.5	26.0	60.2	12.9	29.3	2.525	Silt	76	410	486		
			2016/9/28	Cloudy	28.0	1.3	21.8	11	Olive black	Faint earth	0.0	0.0	0.0	0.2	1.2	35.0	47.4	16.2	31.3	2.519	Silt	53	380	433		
			2016/12/21	Sunny	7.0	1.3	8.8	10	Olive black	Faint earth	0.0	0.0	0.0	0.1	1.2	33.8	49.4	15.7	28.0	2.474	Silt	65	430	495		
			2017/2/13	Sunny	6.0	1.5	6.3	12	Olive black	Faint sewage	0.0	0.0	0.0	0.0	1.0	25.3	53.9	19.8	27.8	2.421	Silt	52	330	382		
59	Asobashi Bridge	2016/6/19	Cloudy	29.3	1.9	25.0	6	Olive black	Faint sewage	0.0	0.0	0.0	0.6	23.9	67.6	4.0	4.0	68.2	2.659	Sand/silt	12	78	90			
		2016/9/28	Cloudy	27.5	1.7	23.6	4	Olive black	Faint sewage	0.0	0.0	0.9	0.2	0.5	26.8	64.0	3.2	4.5	66.1	2.661	Sand/silt	29	150	179		
		2016/12/21	Sunny	8.8	1.5	8.0	3	Olive black	None	0.0	0.0	0.0	0.2	24.5	58.2	9.0	8.1	60.7	2.611	Sand/silt	17	100	117			
		2017/2/13	Sunny	7.2	1.9	6.5	4	Black	Faint sewage	0.0	0.0	0.0	0.0	5.9	24.8	56.3	13.0	30.1	2.407	Silt	<8.6	66	66			

Chiba Lakes and Reservoirs (Surrounding Environment) 1/1

	Location			Sampling Date	Weather	Air temperature (°C)	Surrounding Environment(Soil,Air dose)						Remarks			
							Soil									
	No.	Water area	Location				General items			Activity concentration [Bq/kg(dry)]				Air Dose (μSv/h)		
							Color	Odor	Property	Radioactive cesium						
Cs-134				Cs-137	Total											
Lakes and Reservoirs	52	Lake Teganuma	Fusashita	2016/6/17	Sunny	26.4	-	-	-	-	-	-	-	No sampling location		
				2016/9/28	Cloudy	27.0	-	-	-	-	-	-	-	-	No sampling location	
				2016/12/21	Sunny	17.0	-	-	-	-	-	-	-	-	-	No sampling location
				2017/2/13	Sunny	10.0	-	-	-	-	-	-	-	-	-	No sampling location
	53	Lake Teganuma	Center area of Shimoteganuma	2016/6/17	Sunny	27.2	Blackish brown	Faint earth	Loamy	480	2,400	2,880	0.07			
				2016/9/28	Cloudy	27.2	Blackish brown	Faint earth	Loamy	260	1,400	1,660	0.07			
				2016/12/21	Sunny	16.2	Blackish brown	Faint earth	Loamy	170	1,100	1,270	0.07			
				2017/2/13	Sunny	10.5	Blackish brown	Faint earth	Loamy	150	1,100	1,250	0.07			
	54	Lake Teganuma	Center area of Teganuma	2016/6/17	Sunny	26.5	-	-	-	-	-	-	-	-	No sampling location	
				2016/9/28	Cloudy	27.0	-	-	-	-	-	-	-	-	-	No sampling location
				2016/12/21	Sunny	16.5	-	-	-	-	-	-	-	-	-	No sampling location
				2017/2/13	Sunny	10.5	-	-	-	-	-	-	-	-	-	No sampling location
	55	Lake Teganuma	Nedoshita	2016/6/17	Sunny	26.1	Extremely dark brown	Faint earth	Loamy	530	2,800	3,330	0.13			
				2016/9/28	Cloudy	27.5	Extremely dark brown	Faint earth	Loamy	1,100	6,400	7,500	0.12			
				2016/12/21	Sunny	16.0	Extremely dark brown	Faint earth	Loamy	570	3,800	4,370	0.12			
				2017/2/13	Sunny	10.5	Extremely dark brown	Faint earth	Loamy	570	3,600	4,170	0.11			
	56	Lake Inbanuma	Center area of Kita-Inbanuma	2016/6/19	Cloudy	29.0	Blackish brown	Faint earth	Loamy	120	540	660	0.10			
				2016/9/28	Cloudy	28.5	Blackish brown	Faint earth	Loamy	110	530	640	0.09			
				2016/12/21	Sunny	9.0	Blackish brown	Faint earth	Loamy	290	1,800	2,090	0.11			
				2017/2/13	Sunny	4.0	Blackish brown	Faint earth	Sandy	92	640	732	0.13			
57	Lake Inbanuma	Ipponmatsushita	2016/6/19	Cloudy	29.1	-	-	-	-	-	-	-	-	No sampling location		
			2016/9/28	Cloudy	27.6	-	-	-	-	-	-	-	-	-	No sampling location	
			2016/12/21	Sunny	6.8	-	-	-	-	-	-	-	-	-	No sampling location	
			2017/2/13	Sunny	5.0	-	-	-	-	-	-	-	-	-	No sampling location	
58	Lake Inbanuma	Lower area of Josuido water intake	2016/6/19	Cloudy	29.0	-	-	-	-	-	-	-	-	No sampling location		
			2016/9/28	Cloudy	28.0	-	-	-	-	-	-	-	-	-	No sampling location	
			2016/12/21	Sunny	7.0	-	-	-	-	-	-	-	-	-	No sampling location	
			2017/2/13	Sunny	6.0	-	-	-	-	-	-	-	-	-	No sampling location	
59	Lake Inbanuma	Asobashi Bridge	2016/6/19	Cloudy	29.3	Dark brown	Faint earth	Loamy	52	300	352	0.07				
			2016/9/28	Cloudy	27.5	Blackish brown	Faint earth	Loamy	160	890	1,050	0.07				
			2016/12/21	Sunny	8.8	Blackish brown	Faint earth	Loamy	120	820	940	0.07				
			2017/2/13	Sunny	7.2	Dark brown	Faint earth	Loamy	100	630	730	0.07				

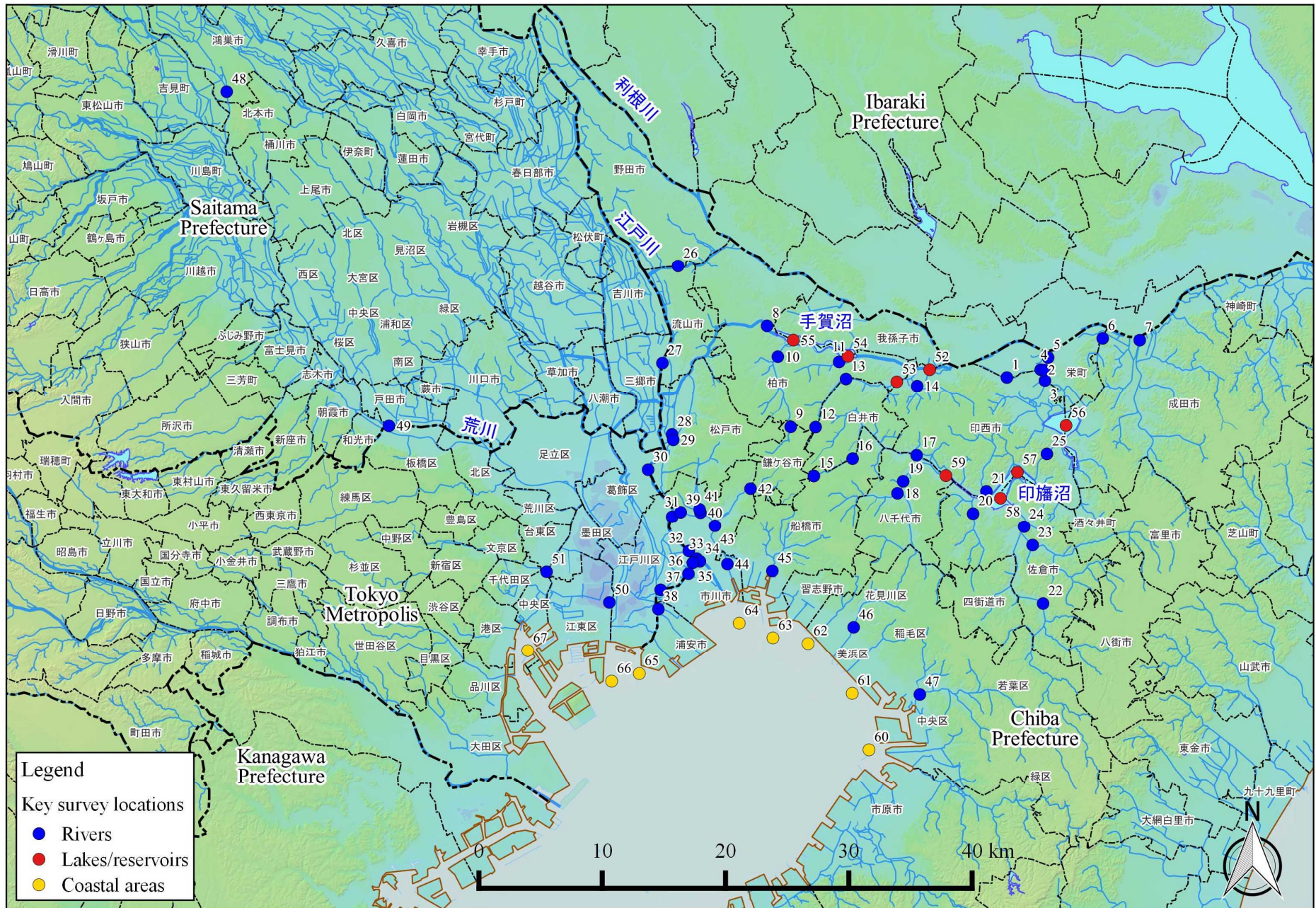
Chiba Coastal (Water) 1/1

No.	Location			Sampling Date	Weather	Air temperature (C)	Water depth (m)	Water							Remarks			
	Water area	Surface layer	Deep layer					General items				Activity concentration(Bq/L)						
								Water temperature (C)	Sampling depth (m)	Color	Odor	Secchi disk depth (m)	Salinity (‰)	SS (mg/L)		Turbidity (FNU)	Radioactive cesium	
60	Tokyo Bay 7	Offshore of Yorogawa River Estuary	Surface layer	2016/6/3	Cloudy	20.9	9.7	21.8	0.5	Yellow greenish black	None	2.1	28.2	<1	0.5	<0.64	<0.80	
			Deep layer					19.6	8.7	-	None		30.8	<1	0.3	<0.81	<0.69	
			Surface layer	2016/9/15	Cloudy	27.5	10.0	25.6	0.5	Greenish yellowish dark gray	None	1.0	23.0	3	2.5	<0.70	<0.92	
			Deep layer					24.1	9.0	-	None		29.0	3	2.1	<0.57	<0.75	
			Surface layer	2016/12/16	Sunny	7.0	10.5	12.8	0.5	Dark grayish yellow green	None	4.0	29.5	2	1.3	<0.79	<0.92	
			Deep layer					12.4	9.5	-	None		29.8	2	1.2	<0.66	<0.69	
	Surface layer	2017/2/22	Cloudy	9.2	11.6	9.3	0.5	Dark grayish yellow green	None	1.6	30.1	6	3.7	<0.73	<0.70			
	Deep layer					8.9	10.6	-	None		30.2	15	8.4	<0.69	<0.61			
	61	Tokyo Bay 5	Offshore of Miyako River Estuary	Surface layer	2016/6/3	Cloudy	20.8	9.1	21.4	0.5	Greenish yellowish black	None	1.6	28.7	<1	0.5	<0.71	<0.66
				Deep layer					19.4	8.1	-	None		30.3	1	0.7	<0.66	<0.61
				Surface layer	2016/9/15	Cloudy	27.7	8.4	25.2	0.5	Greenish yellowish dark gray	None	2.0	25.0	2	1.3	<0.83	<0.75
				Deep layer					24.4	7.4	-	None		28.0	<1	0.9	<0.58	<0.99
Surface layer				2016/12/16	Sunny	7.5	9.9	12.1	0.5	Dark grayish yellow green	None	5.0	29.5	1	1.2	<0.82	<0.92	
Deep layer								11.7	8.9	-	None		29.7	1	1.1	<0.77	<0.84	
Surface layer		2017/2/22	Cloudy	9.0	8.8	9.2	0.5	Dark grayish yellow green	None	1.8	29.9	6	4.0	<0.77	<0.69			
Deep layer						8.7	7.8	-	None		30.3	6	4.1	<0.60	<0.88			
62		Coastal sea area of Makuhari	Offshore of Inbanuma Discharge Channel	Surface layer	2016/6/3	Cloudy	20.1	5.3	21.1	0.5	Greenish yellowish black	None	2.1	27.5	1	0.6	<0.84	<0.75
				Deep layer					20.4	4.3	-	None		29.0	3	1.5	<0.69	<0.84
				Surface layer	2016/7/29	Sunny	31.0	6.8	28.8	0.5	Yellowish dark gray	Faint seaweed	1.8	24.1	8	8.8	<0.79	<0.63
				Deep layer					25.0	5.8	-	None		26.9	1	1.4	<0.90	<0.69
	Surface layer			2016/8/24	Cloudy	27.3	5.2	27.9	0.5	Light grayish reddish yellow	None	1.4	21.4	4	3.6	<0.85	<0.75	
	Deep layer							26.4	4.2	-	None		25.1	4	2.1	<0.84	<0.80	
	Surface layer			2016/9/15	Cloudy	27.9	5.4	25.3	0.5	Greenish yellowish dark gray	Faint sewage	1.5	25.7	1	1.5	<0.73	<0.75	
	Deep layer							25.0	4.4	-	None		26.2	2	0.7	<0.66	<0.84	
	Surface layer			2016/10/31	Cloudy	18.0	5.3	20.1	0.5	Dark grayish yellow green	None	3.5	26.1	2	1.5	<0.59	<0.70	
	Deep layer							19.9	4.3	-	None		29.5	2	1.7	<0.74	<0.54	
	Surface layer			2016/12/16	Sunny	7.0	6.0	11.9	0.5	Dark grayish yellow green	None	4.9	27.7	1	1.1	<0.88	<0.88	
	Deep layer							11.4	5.0	-	None		29.8	2	1.2	<0.67	<0.88	
Surface layer	2017/2/22	Cloudy	7.8	6.1	9.6	0.5	Dark grayish yellow green	None	1.6	29.7	5	4.0	<0.80	<0.61				
Deep layer					8.7	5.1	-	None		30.1	8	4.5	<0.86	<0.55				
63	Approx. 1km offshore of Ebigawa River Estuary	Coastal area of Keiyo Port (Ebigawa River Estuary)	Surface layer	2016/6/3	Cloudy	20.3	5.7	20.4	0.5	Greenish yellowish black	None	2.3	28.5	<1	0.4	<0.88	<0.48	
			Deep layer					20.3	4.7	-	None		28.7	<1	0.8	<0.75	<0.61	
			Surface layer	2016/9/15	Cloudy	28.0	6.2	25.7	0.5	Greenish yellowish dark gray	Faint sewage	2.5	23.4	2	1.4	<0.68	<0.80	
			Deep layer					24.2	5.2	-	None		28.4	2	1.0	<0.62	<0.55	
			Surface layer	2016/12/16	Sunny	7.2	6.8	11.4	0.5	Dark grayish yellow green	None	5.3	29.5	1	1.1	<0.55	<0.84	
			Deep layer					11.2	5.8	-	None		29.4	2	1.1	<0.75	<0.88	
	Surface layer	2017/2/22	Cloudy	5.8	7.0	9.7	0.5	Grayish yellow green	None	1.8	29.8	5	3.5	<0.76	<0.84			
	Deep layer					9.2	6.0	-	None		29.9	7	4.6	<0.76	<0.69			
	64	Approx. 1km offshore of Edogawa River Estuary	Coastal area of Keiyo Port (Ebigawa River Estuary)	Surface layer	2016/6/3	Cloudy	20.9	6.7	20.7	0.5	Dark grayish yellow green	None	2.2	28.0	2	1.4	<0.81	<0.69
				Deep layer					20.1	5.7	-	None		28.6	3	1.8	<0.77	<0.88
				Surface layer	2016/9/15	Cloudy	28.7	4.4	25.3	0.5	Greenish yellowish dark gray	None	2.0	24.8	2	1.5	<0.57	<0.80
				Deep layer					24.8	3.4	-	None		25.8	3	1.4	<0.77	<0.75
Surface layer				2016/12/16	Sunny	7.8	6.8	10.5	0.5	Dark grayish yellow green	None	5.5	29.1	2	0.9	<0.61	<0.75	
Deep layer								10.1	5.8	-	None		29.4	2	0.8	<0.83	<0.96	
Surface layer	2017/2/22	Sunny	5.8	3.6	9.0	0.5	Grayish yellow green	None	2.2	29.6	5	3.0	<0.73	<0.61				
Deep layer					8.7	2.6	-	None		29.7	5	3.5	<0.77	<0.70				

Coastal area

Chiba Coastal (Sediment) 1/1

Location					Sediment																				Remarks	
No.	Water area	Sampling Date	Weather	Air temperature (°C)	Water depth (m)	General items														Sediment content (%)	Density (g/cm ³)	Property	Activity concentration [Bq/kg(dry)]			
						Sediment temperature (°C)	Sample length (cm)	Color	Odor	Grain size distribution(%)								Radioactive cesium								
						Coarse gravel	Medium gravel	Fine gravel	Coarse sand	Medium sand	Fine sand	Silt	Clay				Cs-134	Cs-137	Total							
C o s t a l s e a s	60 Tokyo Bay 7	Offshore of Yonagawa River Estuary	2016/6/3	Cloudy	20.9	9.7	20.2	7	Olive black	Faint hydrogen sulfide	0.0	0.7	0.6	0.6	1.1	5.3	63.6	28.1	39.1	2.674	Silt	<1.4	3.2	3.2		
			2016/9/15	Cloudy	27.5	10.0	23.5	6	Olive black	Faint hydrogen sulfide	0.0	0.0	0.0	0.5	1.8	15.7	59.9	22.2	43.2	2.656	Silt	1.1	4.7	5.8		
			2016/12/16	Sunny	7.0	10.5	12.5	8	Olive black	None	0.0	0.0	0.0	0.6	1.5	6.5	71.7	19.7	40.0	2.592	Silt	<1.9	4.8	4.8		
	61 Tokyo Bay 5	Offshore of Miyako River Estuary	2017/2/22	Cloudy	9.2	11.6	8.5	9	Olive black	Faint shore	0.0	0.0	0.0	0.6	2.1	13.8	57.3	25.8	40.9	2.647	Silt	<1.3	3.2	3.2		
			2016/6/3	Cloudy	20.8	9.1	20.0	11	Black	Medium hydrogen sulfide	0.0	0.1	0.2	0.0	2.0	4.8	76.4	16.7	41.7	2.675	Silt	<1.9	12	12		
			2016/9/15	Cloudy	27.7	8.4	24.0	3	Olive black	Faint hydrogen sulfide	2.3	6.0	2.5	2.6	6.6	9.6	47.6	22.8	45.3	2.641	Silt	<1.5	2.7	2.7		
	62 Coastal sea area of Makuhari	Offshore of Inbanuma Discharge Channel	2016/12/16	Sunny	7.5	9.9	12.0	12	Olive black	Faint hydrogen sulfide	0.0	0.0	0.0	0.7	3.6	79.3	16.4	39.6	2.603	Silt/sand	1.6	15	16.6			
			2017/2/22	Cloudy	9.0	8.8	8.8	3	Olive black	Faint shore	0.0	0.0	0.2	1.7	6.2	10.4	57.5	24.2	41.7	2.603	Silt	<1.2	1.2	1.2		
			2016/6/3	Cloudy	20.1	5.3	21.8	7	Black	Faint hydrogen sulfide	0.0	0.3	0.1	0.1	0.5	16.2	73.4	9.4	65.1	2.714	Sand/silt	<5.3	12	12		
			2016/7/29	Sunny	31.0	6.8	26.0	6	Olive black	Faint hydrogen sulfide	0.0	0.0	0.0	0.0	0.1	7.4	82.9	9.6	61.6	2.667	Silt/sand	<4.8	21	21		
			2016/8/24	Cloudy	27.3	5.2	25.0	5	Olive black	Faint hydrogen sulfide	0.0	0.0	0.0	0.2	6.5	81.9	11.4	57.4	2.668	Silt/sand	<7.4	52	52			
			2016/9/15	Cloudy	27.9	5.4	24.0	6	Olive black	Faint hydrogen sulfide	0.0	0.0	0.0	0.0	0.2	5.1	83.0	11.8	61.8	2.647	Silt/sand	8.8	46	54.8		
2016/10/31			Cloudy	18.0	5.3	21.3	5	Olive black	Medium hydrogen sulfide	0.0	0.0	0.0	0.0	0.2	5.3	78.6	18.8	52.2	2.632	Silt/sand	13	58	71			
2016/12/16			Sunny	7.0	6.0	11.8	10	Black	Faint sewage	0.0	0.0	0.0	0.0	0.3	16.8	75.4	7.5	66.4	2.669	Sand/silt	1.4	9.2	10.6			
2017/2/22			Cloudy	7.8	6.1	9.0	3	Olive black	Faint sewage	0.0	0.0	0.0	0.0	0.1	2.1	83.7	14.1	46.4	2.614	Silt	<6.7	58	58			
63 Approx. 1km offshore of Ebisawa River Estuary			Coastal area of Keiyo Port (Ebisawa River Estuary)	2016/6/3	Cloudy	20.3	5.7	21.0	7	Black	None	0.0	0.2	0.0	0.1	5.9	83.8	6.2	3.9	71.3	2.745	Sand/silt	<0.91	1.7	1.7	
				2016/9/15	Cloudy	28.0	6.2	23.5	3	Black	Faint hydrogen sulfide	0.0	0.0	0.0	0.2	4.1	85.1	4.0	6.8	73.3	2.718	Sand	<0.61	1.5	1.5	
				2016/12/16	Sunny	7.2	6.8	10.5	3	Black	None	0.0	0.0	0.0	0.1	2.9	57.9	31.5	7.6	62.3	2.647	Sand/silt	<1.0	3.5	3.5	
64 Approx. 1km offshore of Edogawa River Estuary	Coastal area of Keiyo Port (Ebisawa River Estuary)	2017/2/22	Cloudy	5.8	7.0	8.9	2	Olive black	None	0.0	0.0	0.0	0.2	4.9	76.3	10.3	8.4	69.4	2.703	Sand	<0.64	1.5	1.5			
		2016/6/3	Cloudy	20.9	6.7	20.0	11	Black	Medium hydrogen sulfide	0.0	0.0	0.1	0.1	0.3	42.0	43.4	14.1	55.7	2.688	Silt/sand	<7.6	37	37			
		2016/9/15	Cloudy	28.7	4.4	24.0	3	Black	Faint hydrogen sulfide	0.0	0.0	0.0	0.3	4.4	60.5	23.1	11.7	60.1	2.625	Sand/silt	<6.5	23	23			
		2016/12/16	Sunny	7.8	6.8	10.3	5	Olive black	Faint shore	0.0	0.0	0.0	0.1	4.4	86.4	3.7	5.4	68.5	2.645	Sand/silt	<0.74	3.3	3.3			
2017/2/22	Sunny	5.8	3.6	8.8	4	Olive black	Faint hydrogen sulfide	0.0	0.0	0.0	0.3	9.5	59.2	18.8	12.3	61.0	2.647	Sand/silt	<4.9	17	17					



Survey Locations (Chiba,Saitama,Tokyo Prefectures)