

FY2016 Tochigi Prefecture Survey Results

[Outline of results]

(1) Water

Rivers

Radioactive cesium (Cs-134, Cs-137): Not detectable at any location

Lakes and reservoirs

Radioactive cesium (Cs-134, Cs-137): Not detectable at any location

(2) Sediments

Rivers

Cs-134: ND - 44 Bq/kg (dry)

Cs-137: 1.0 - 210 Bq/kg (dry)

Lakes and reservoirs

Cs-134: ND - 290 Bq/kg (dry)

Cs-137: 44 - 1,500 Bq/kg (dry)

(3) Surrounding Environment

(a) Soil

Rivers

Cs-134: ND - 1,200 Bq/kg (dry)

Cs-137: 2.0 - 6,100 Bq/kg (dry)

Lakes and reservoirs

Cs-134: ND - 260 Bq/kg (dry)

Cs-137: 16 - 1,600 Bq/kg (dry)

(b) Ambient dose rate

Rivers

0.03 - 0.33 μ Sv/h

Lakes and reservoirs

0.05 - 0.13 μ Sv/h

Tochigi River (Water) 1/6

No.	Location			Sampling Date	Weather	Air temperature (°C)	Water depth (m)	Water										Remarks
	Water area	Location	Municipality					General items							Activity concentration(Bq/L)			
								Water temperature (°C)	Sampling depth (m)	Color	Odor	Transparency (cm)	Electrical conductivity (mS/m)	SS (mg/L)	Turbidity (FNU)	Cs-134	Cs-137	
R i v e r s	1	Nakagawa River	Ikuyobashishita	Nasushiobara City	2016/5/27	Cloudy	16.0	0.3	13.1	0.0	Light grayish yellow green	None	>100	16.4	<1	0.2	<0.71	<0.69
					2016/8/24	Cloudy	22.5	0.5	14.0	0.0	Light grayish yellow green	None	>100	7.4	1	0.6	<0.79	<0.66
					2016/11/1	Cloudy	10.7	0.5	10.5	0.0	Light grayish yellow green	None	>100	14.7	<1	0.1	<0.85	<0.75
			2017/2/2		Snow	-3.4	0.5	5.2	0.0	Light grayish yellow green	None	>100	18.1	1	0.4	<0.77	<0.61	
			2016/5/27		Cloudy	16.5	0.2	14.4	0.0	Light grayish greenish yellow	None	>100	12.6	<1	0.3	<0.77	<0.80	
			2016/8/24		Cloudy	24.2	0.3	15.4	0.0	Light grayish greenish yellow	None	>100	7.9	2	1.1	<0.72	<0.66	
	2	Komei Bridge	Nasushiobara City	2016/11/1	Cloudy	11.0	0.3	11.1	0.0	Light grayish greenish yellow	None	>100	15.1	<1	0.2	<0.49	<0.74	
				2017/2/2	Cloudy	0.5	0.3	4.0	0.0	Light grayish greenish yellow	None	>100	17.6	<1	0.4	<0.84	<0.55	
	3	Takaomata River	Takaomata Bridge	Nasu Town	2016/5/27	Cloudy	15.3	0.2	13.6	0.0	Light grayish yellow	None	>100	17.0	3	0.7	<0.90	<0.84
					2016/8/24	Cloudy	23.7	0.3	16.8	0.0	Light grayish yellow	None	>100	16.9	7	1.8	<0.54	<0.88
					2016/11/1	Cloudy	11.2	0.2	11.0	0.0	Light grayish yellow	None	>100	16.8	3	0.7	<0.59	<0.88
					2017/2/2	Cloudy	0.6	0.3	4.3	0.0	Light grayish yellow	None	>100	17.6	<1	0.2	<0.79	<0.92
	4	Yukawa River	Yukawa Bridge	Nasu Town	2016/5/27	Cloudy	16.4	0.2	15.9	0.0	Light grayish greenish yellow	None	>100	31.4	6	3.0	<0.78	<0.63
					2016/8/24	Cloudy	22.5	0.2	19.0	0.0	Light grayish greenish yellow	None	>100	25.2	5	2.4	<0.74	<0.70
					2016/11/1	Sunny	14.1	0.2	13.2	0.0	Light grayish greenish yellow	None	>100	30.8	4	2.1	<0.68	<0.66
	5	Nakagawa River	Kamikuroiso	Nasushiobara City/ Nasu Town	2017/2/2	Sunny	-1.2	0.2	4.9	0.0	Light grayish greenish yellow	None	85	38.0	5	3.0	<0.77	<0.61
					2016/5/6	Sunny	22.0	0.3	14.2	0.0	Light grayish yellow green	None	88	19.0	4	1.5	<0.81	<0.84
					2016/6/2	Sunny	18.4	0.2	16.2	0.0	Light grayish yellow green	None	>100	20.9	2	0.8	<0.57	<0.66
					2016/7/1	Sunny	29.1	0.4	18.9	0.0	Light grayish greenish yellow	None	>100	24.1	2	1.0	<0.50	<0.61
					2016/8/1	Sunny	29.5	0.4	24.6	0.0	Light grayish yellow green	None	>100	22.8	4	1.5	<0.41	<0.61
					2016/9/1	Sunny	25.5	0.3	16.9	0.0	Light grayish yellow green	None	>100	11.2	4	2.0	<0.66	<0.75
					2016/11/2	Cloudy	10.0	0.3	10.8	0.0	Light grayish yellow green	None	>100	21.9	1	0.6	<0.68	<0.88
					2017/2/2	Sunny	-0.5	0.3	2.6	0.0	Light grayish yellow green	None	>100	24.5	13	2.8	<0.72	<0.55
					2016/5/6	Sunny	20.6	0.4	11.6	0.0	Grayish greenish yellow	None	>100	14.6	2	0.8	<0.78	<0.88
					2016/8/1	Cloudy	28.8	0.3	24.0	0.0	Grayish greenish yellow	None	>100	16.8	1	1.2	<0.80	<0.55
	6	Yosasa River	Yosasa Bridge	Nasu Town	2016/11/1	Sunny	16.7	0.3	13.6	0.0	Light grayish yellow	None	>100	16.7	<1	0.7	<0.68	<0.75
					2017/2/2	Sunny	1.2	0.2	2.5	0.0	Grayish yellow	None	>100	17.3	<1	0.3	<0.77	<0.80
					2016/5/6	Cloudy	22.4	0.5	14.6	0.0	Grayish greenish yellow	None	>100	10.3	5	2.5	<0.77	<0.75
					2016/8/1	Sunny	30.4	0.3	26.9	0.0	Grayish yellow green	None	>100	13.0	7	3.2	<0.60	<0.63
	7	Kurokawa River	Shinden Bridge	Nasu Town	2016/11/2	Cloudy	12.6	0.4	9.7	0.0	Grayish yellow green	None	>100	10.8	<1	0.5	<0.49	<0.74
					2017/2/2	Sunny	0.1	0.3	2.4	0.0	Grayish yellow green	None	>100	10.9	1	0.8	<0.50	<0.66
					2016/5/6	Cloudy	19.5	0.4	15.6	0.0	Grayish yellow green	None	55	17.6	4	2.4	<0.67	<0.80
	8	Yosasa River	Kawada Bridge	Otawara City	2016/6/2	Sunny	22.3	0.3	21.5	0.0	Light grayish yellow green	None	>100	13.7	3	0.8	<0.57	<0.48
					2016/7/1	Sunny	27.3	0.3	23.6	0.0	Light grayish greenish yellow	None	>100	13.5	1	0.7	<0.78	<0.63
					2016/8/1	Sunny	31.5	0.4	26.7	0.0	Light grayish yellow green	None	>100	19.1	1	0.9	<0.73	<0.66
					2016/9/1	Sunny	28.2	0.3	20.0	0.0	Light grayish yellow green	None	>100	20.9	4	2.0	<0.80	<0.84
2016/11/2					Cloudy	13.1	0.3	10.6	0.0	Light grayish yellow green	None	>100	24.8	<1	0.5	<0.69	<0.69	
2017/2/2					Sunny	1.6	0.3	2.3	0.0	Light grayish yellow green	None	>100	17.8	2	0.9	<0.82	<0.66	
2016/5/6					Cloudy	19.5	0.2	15.2	0.0	Light grayish yellow green	None	>100	15.4	3	2.0	<0.74	<0.88	
2016/6/2					Sunny	23.1	0.3	18.4	0.0	Grayish yellowish green	None	>100	15.2	5	1.6	<0.75	<0.66	
9	Nakagawa River	Kurobane	Otawara City	2016/7/1	Sunny	31.4	0.2	23.6	0.0	Grayish yellow	None	>100	15.3	<1	1.5	<0.61	<0.75	
				2016/8/1	Sunny	32.2	0.4	27.1	0.0	Light grayish yellowish green	None	>100	17.8	3	1.1	<0.75	<0.84	
				2016/9/1	Sunny	30.0	0.2	21.0	0.0	Light grayish yellow green	None	>100	13.2	3	1.6	<0.58	<0.75	
				2016/11/2	Sunny	13.7	0.2	13.7	0.0	Light grayish greenish yellow	None	>100	14.2	<1	0.5	<0.81	<0.75	
				2017/2/2	Sunny	5.4	0.3	7.3	0.0	Light grayish yellow green	None	>100	17.4	<1	0.6	<0.73	<0.63	

Tochigi River (Water) 2/6

No.	Location			Sampling Date	Weather	Air temperature (°C)	Water depth (m)	Water										Remarks	
	Water area	Location	Municipality					General items							Activity concentration(Bq/L)				
								Water temperature (°C)	Sampling depth (m)	Color	Odor	Transparency (cm)	Electrical conductivity (mS/m)	SS (mg/L)	Turbidity (FNU)	Cs-134	Cs-137		
R i v e r s	10	Matsuba River	Tributary	Otawara City	2016/5/6	Cloudy	20.5	0.4	15.6	0.0	Grayish yellow	None	>100	62	12.0	6	4.1	<0.58	<0.92
					2016/6/2	Sunny	22.2	0.4	17.8	0.0	Grayish yellow	None	>100	13.0	1	0.6	<0.67	<0.99	
					2016/7/1	Sunny	31.2	0.4	22.1	0.0	Grayish yellow	None	>100	12.2	2	1.8	<0.84	<0.74	
					2016/8/1	Sunny	32.4	0.3	26.4	0.0	Grayish yellow green	None	>100	11.8	2	1.3	<0.73	<0.66	
					2016/9/1	Sunny	32.2	0.2	20.1	0.0	Grayish yellow green	None	>100	7.9	3	1.3	<0.71	<0.75	
					2016/11/2	Cloudy	13.9	0.2	11.2	0.0	Light grayish greenish yellow	None	>100	8.9	<1	0.5	<0.59	<0.55	
					2017/2/2	Sunny	5.3	0.2	3.3	0.0	Light grayish yellow green	None	>100	9.7	2	0.6	<0.57	<0.66	
					2016/5/6	Sunny	19.4	0.2	14.5	0.0	Light grayish yellow green	None	>100	12.1	3	0.9	<0.60	<0.88	
					2016/8/2	Sunny	27.6	0.2	21.8	0.0	Light grayish yellow green	None	>100	15.1	2	0.7	<0.51	<0.63	
					2016/11/4	Sunny	16.2	0.2	15.9	0.0	Light grayish yellow green	None	>100	14.1	1	0.4	<0.73	<0.75	
	11	Sabigawa River	Udagawa Bridge	Otawara City	2017/2/3	Sunny	7.1	0.3	8.2	0.0	Light grayish yellow green	None	>100	13.6	6	1.6	<0.63	<0.75	
					2016/5/6	Sunny	21.6	0.4	14.9	0.0	Light grayish yellow green	None	>100	17.7	2	0.6	<0.73	<0.63	
					2016/8/2	Sunny	27.3	0.4	17.7	0.0	Light grayish yellow green	None	>100	18.7	2	0.7	<0.91	<0.80	
					2016/11/4	Sunny	15.8	0.5	16.0	0.0	Light grayish yellow green	None	>100	18.2	1	0.3	<0.62	<0.74	
	12	Momura River	Momuranaka Bridge	Otawara City	2017/2/3	Sunny	7.2	0.4	13.4	0.0	Light grayish yellow green	None	>100	17.7	<1	0.3	<0.70	<0.75	
					2016/5/30	Rain	13.0	0.5	14.9	0.0	Light grayish yellow green	None	>100	25.4	<1	0.5	<0.48	<0.75	
					2016/8/29	Cloudy	24.1	0.2	17.7	0.0	Light grayish greenish yellow	None	>100	15.5	7	3.6	<0.73	<0.69	
					2016/11/7	Sunny	6.5	0.3	9.0	0.0	Light grayish greenish yellow	None	>100	23.2	<1	0.5	<0.60	<0.67	
	13	Yunohara		Nasushiobara City	2017/2/3	Sunny	2.1	0.2	4.1	0.0	Light grayish yellow green	None	>100	24.9	1	0.7	<0.67	<0.74	
					2016/5/30	Cloudy	22.3	0.5	16.5	0.0	Grayish yellow green	None	>100	23.9	1	0.6	<0.77	<0.88	
2016/8/29					Sunny	26.0	0.5	18.0	0.0	Grayish yellow green	None	>100	15.0	2	2.2	<0.54	<0.88		
2016/11/7					Sunny	10.6	0.5	10.5	0.0	Grayish yellow green	None	>100	22.0	<1	0.7	<0.67	<0.88		
14	Sekiba Bridge		Nasushiobara City	2017/2/3	Sunny	4.4	0.6	4.9	0.0	Light grayish greenish yellow	None	>100	25.6	<1	0.6	<0.75	<0.60		
				2016/5/6	Sunny	21.9	0.5	15.0	0.0	Light grayish yellow green	None	>100	18.9	2	1.3	<0.69	<0.88		
				2016/8/2	Cloudy	27.5	0.5	22.6	0.0	Light grayish yellow green	None	>100	21.5	3	0.9	<0.73	<0.66		
				2016/11/4	Sunny	13.6	0.4	12.8	0.0	Light grayish yellow green	None	>100	19.5	1	0.6	<0.62	<0.63		
15	Hokigawa River	Iwai Bridge	Otawara City	2017/2/3	Sunny	6.2	0.5	4.8	0.0	Light grayish yellow green	None	>100	22.2	1	0.5	<0.66	<0.88		
				2016/5/6	Sunny	22.8	0.4	17.2	0.0	Light grayish yellow green	None	>100	17.3	4	1.7	<0.60	<0.80		
				2016/6/3	Sunny	21.2	0.2	17.6	0.0	Light grayish yellow green	None	>100	19.0	2	0.9	<0.91	<0.48		
				2016/7/12	Sunny	30.0	0.3	21.3	0.0	Light grayish yellow green	None	>100	17.8	4	1.2	<0.60	<0.88		
16	Hokigawa River		Otawara City	2016/8/2	Sunny	29.1	0.4	23.3	0.0	Light grayish yellow green	None	>100	18.5	3	0.9	<0.76	<0.69		
				2016/9/1	Sunny	33.1	0.3	23.3	0.0	Light grayish yellow green	None	>100	15.0	6	2.3	<0.79	<0.75		
				2016/11/4	Sunny	16.3	0.3	15.8	0.0	Light grayish yellow green	None	>100	17.8	1	0.7	<0.84	<0.88		
				2017/2/3	Sunny	8.6	0.3	9.7	0.0	Light grayish yellow green	None	>100	16.9	3	0.9	<0.74	<0.61		
				2016/5/6	Cloudy	23.6	0.3	18.7	0.0	Grayish yellow green	None	>100	17.4	4	1.9	<0.62	<0.92		
				2016/6/3	Sunny	21.4	0.3	17.4	0.0	Grayish yellow green	None	>100	19.4	2	0.6	<0.71	<0.69		
				2016/7/12	Sunny	31.6	0.3	27.3	0.0	Grayish yellow green	None	>100	17.8	3	1.2	<0.61	<0.61		
				2016/8/2	Sunny	30.8	0.3	28.3	0.0	Grayish yellow green	None	>100	17.4	3	1.4	<0.65	<0.81		
17	Nakagawa River	Shimaka Bridge	Nakagawa Town	2016/9/1	Sunny	31.2	0.3	22.6	0.0	Grayish yellow green	None	>100	14.8	3	1.9	<0.65	<0.84		
				2016/11/4	Sunny	16.0	0.2	16.2	0.0	Grayish yellow green	None	>100	18.0	1	0.7	<0.79	<0.55		
				2017/2/3	Sunny	9.2	0.3	8.6	0.0	Grayish yellow green	None	>100	18.9	15	4.3	<0.72	<0.70		
				2016/5/6	Cloudy	21.7	0.3	16.2	0.0	Light grayish yellow green	None	>100	12.0	3	1.7	<0.71	<0.88		
				2016/6/3	Sunny	22.4	0.3	18.2	0.0	Light grayish greenish yellow	None	>100	13.5	2	0.7	<0.71	<0.70		
				2016/7/12	Sunny	34.5	0.3	24.4	0.0	Light grayish yellow green	None	>100	12.6	1	0.7	<0.86	<0.69		
				2016/8/2	Sunny	30.4	0.3	24.2	0.0	Light grayish yellow green	None	>100	10.4	14	5.4	<0.85	<0.88		
				2016/9/1	Sunny	31.2	0.3	21.8	0.0	Light grayish yellow green	None	>100	8.7	2	1.4	<0.80	<0.75		
18	Mumogawa River	Kosci Bridge	Nakagawa Town	2016/11/8	Cloudy	11.0	0.3	9.6	0.0	Light grayish yellow green	None	>100	11.6	<1	0.5	<0.81	<0.75		
				2017/2/6	Sunny	13.7	0.3	6.5	0.0	Light grayish yellow green	None	>100	12.7	3	1.3	<0.70	<0.70		

Tochigi River (Water) 3/6

No.	Location				Sampling Date	Weather	Air temperature (°C)	Water depth (m)	Water										Remarks	
	Water area	Location	Municipality	General items										Activity concentration(Bq/L)						
				Water temperature (°C)					Sampling depth (m)	Color	Odor	Transparency (cm)	Electrical conductivity (mS/m)	SS (mg/L)	Turbidity (FNU)	Radioactive cesium Cs-134	Cs-137			
R i v e r s	19	Arakawa River	Saikachi Bridge	Shioya Town	2016/5/30	Cloudy	21.2	0.6	17.2	0.0	Light grayish yellow green	None	>100	6.9	3	1.2	<0.64	<-0.84		
					2016/8/29	Rain	25.7	0.5	19.4	0.0	Light grayish yellow green	None	>100	5.6	5	3.7	<0.86	<-0.75		
					2016/11/7	Sunny	15.5	0.7	13.5	0.0	Light grayish yellow green	None	>100	7.0	<1	0.9	<0.54	<-0.75		
			20	Renjo Bridge	Sakura City	2017/2/3	Sunny	8.4	1.0	7.3	0.0	Light grayish greenish yellow	None	>100	6.3	<1	0.7	<0.82	<-0.80	
						2016/5/7	Sunny	23.8	0.3	20.7	0.0	Light grayish yellow green	None	>100	12.8	4	2.6	<0.51	<-0.63	
						2016/8/6	Sunny	31.8	0.2	27.4	0.0	Light grayish yellow green	None	>100	12.1	3	0.7	<0.47	<-0.75	
	21	Uchikawa River	Tanaka Bridge	Yaita City	2016/11/8	Sunny	10.6	0.2	13.1	0.0	Light grayish yellow green	None	>100	14.3	<1	0.4	<0.64	<-0.61		
					2017/2/6	Sunny	7.2	0.2	8.9	0.0	Light grayish greenish yellow	None	>100	12.7	<1	0.5	<0.76	<-0.80		
					2016/5/30	Sunny	19.7	0.2	20.1	0.0	Light grayish yellow	None	>100	14.3	1	0.9	<0.89	<-0.80		
			22	Asahi Bridge	Sakura City	2016/8/29	Cloudy	28.9	0.2	21.6	0.0	Light grayish yellow	None	>100	8.8	2	1.0	<0.68	<-0.73	
						2016/11/7	Sunny	11.5	0.2	12.1	0.0	Light grayish yellow	None	>100	10.1	<1	0.5	<0.56	<-0.84	
						2017/2/3	Sunny	9.4	0.2	7.0	0.0	Light grayish yellow	None	>100	9.8	2	0.7	<0.80	<-0.61	
	23	Arakawa River	Mukada Bridge	Nasu Karasuyama City	2016/5/7	Sunny	25.3	0.2	20.0	0.0	Grayish yellow green	None	>100	16.2	7	4.8	<0.69	<-0.75		
					2016/8/6	Sunny	31.4	0.2	26.4	0.0	Grayish yellow green	None	>100	13.1	4	1.6	<0.80	<-0.66		
					2016/11/8	Cloudy	11.0	0.2	13.5	0.0	Grayish yellow green	None	>100	15.1	1	0.5	<0.67	<-0.80		
			24	Egawa River	Tributary	2017/2/6	Sunny	7.5	0.2	10.7	0.0	Grayish yellow green	None	>100	15.1	2	1.1	<0.65	<-0.55	
						2016/5/7	Sunny	25.5	0.2	20.1	0.0	Light grayish yellow green	None	>100	15.9	8	7.8	<0.71	<-0.69	
						2016/6/3	Sunny	23.8	0.2	23.2	0.0	Light grayish yellow	None	>100	19.3	5	1.6	<0.89	<-0.84	
	25	Kinugawa River	Kawaji Daiichi Power Station, front	Nikko City	2016/6/3	Sunny	28.8	0.2	27.5	0.0	Light grayish greenish yellow	None	>100	16.9	5	2.4	<0.65	<-0.69		
					2016/8/6	Sunny	31.2	0.3	26.4	0.0	Light grayish yellow green	None	>100	13.2	5	2.1	<0.58	<-0.75		
					2016/9/6	Sunny	29.0	0.5	25.2	0.0	Light grayish yellow green	None	>100	13.9	2	1.3	<0.71	<-0.80		
					2016/11/8	Cloudy	15.2	0.3	11.9	0.0	Light grayish yellow green	None	>100	18.2	<1	0.6	<0.60	<-0.66		
					2017/2/6	Sunny	14.3	0.3	9.2	0.0	Light grayish greenish yellow	None	>100	20.4	10	3.5	<0.63	<-0.69		
					2016/5/7	Sunny	27.5	0.3	22.4	0.0	Grayish yellow	None	>100	17.4	11	9.2	<0.67	<-0.96		
			26	Yunishi River	Masawa Bridge	2016/6/3	Sunny	23.6	0.4	22.8	0.0	Light grayish yellow	None	75	19.1	2	2.2	<0.55	<-0.75	
						2016/7/12	Sunny	30.0	0.3	28.4	0.0	Grayish yellow	None	>100	17.8	6	2.9	<0.67	<-0.80	
						2016/8/6	Sunny	30.9	0.4	26.3	0.0	Light grayish yellow	None	>100	15.5	4	1.9	<0.76	<-0.61	
						2016/9/6	Sunny	28.7	0.4	25.1	0.0	Grayish greenish yellow	None	>100	16.2	3	1.8	<0.70	<-0.55	
2016/11/8						Cloudy	15.3	0.3	9.3	0.0	Grayish yellow	None	28	16.6	31	34	<0.77	<-0.84		
2017/2/6						Sunny	14.1	0.4	9.3	0.0	Grayish yellow	None	>100	16.4	2	1.5	<0.80	<-0.55		
27	Ojika River	Tributary	2016/5/24	Sunny	28.1	0.4	9.9	0.0	Light grayish yellow	None	>100	10.4	<1	0.5	<0.57	<-0.75				
			2016/8/26	Sunny	27.1	0.5	19.0	0.0	Grayish greenish yellow	None	24	12.5	7	8.7	<0.90	<-0.69				
			2016/11/26	Sunny	8.6	0.4	9.9	0.0	Grayish greenish yellow	None	>100	9.6	<1	1.4	<0.65	<-0.80				
			2017/2/8	Cloudy	2.2	0.3	6.1	0.0	Light grayish greenish yellow	None	>100	9.7	<1	0.6	<0.67	<-0.92				
			2016/5/24	Cloudy	24.5	0.3	15.3	0.0	Light grayish yellow green	None	>100	9.0	<1	0.1	<0.61	<-0.63				
			2016/8/26	Sunny	26.9	0.3	18.1	0.0	Light grayish yellow green	None	>100	8.2	2	1.2	<0.74	<-0.80				
28	Kinugawa River	Kosagoc	2016/11/26	Sunny	3.1	0.3	5.8	0.0	Light grayish greenish yellow	None	>100	10.3	<1	0.3	<0.56	<-0.80				
			2017/2/8	Cloudy	0.2	0.3	2.8	0.0	Light grayish yellow green	None	>100	10.2	<1	0.2	<0.67	<-0.69				
			2016/5/24	Sunny	19.8	0.4	13.5	0.0	Light grayish yellow green	None	>100	8.4	<1	0.4	<0.67	<-0.96				
			2016/8/26	Sunny	29.1	0.4	18.2	0.0	Light grayish greenish yellow	None	13	7.9	37	57	<0.56	<-0.70				
			2016/11/26	Sunny	6.2	0.5	9.4	0.0	Light grayish greenish yellow	None	>100	8.2	<1	1.2	<0.71	<-0.85				
			2017/2/8	Cloudy	2.1	0.4	5.1	0.0	Light grayish yellow green	None	>100	9.0	1	0.5	<0.78	<-0.75				
28	Kinugawa River	Kosagoc	2016/5/24	Sunny	24.5	0.3	12.7	0.0	Light grayish yellow green	None	>100	9.4	<1	0.6	<0.61	<-0.61				
			2016/8/26	Sunny	26.1	0.3	18.9	0.0	Light grayish yellow	None	18	6.7	68	72	<0.54	<-0.80				
			2016/11/26	Cloudy	10.2	0.4	9.4	0.0	Light grayish yellow green	None	>100	8.5	8	3.9	<0.86	<-0.75				
			2017/2/8	Sunny	2.4	0.2	5.7	0.0	Light grayish greenish yellow	None	>100	10.6	2	1.1	<0.81	<-0.88				

Tochigi River (Water) 4/6

Location				Sampling Date	Weather	Air temperature (°C)	Water depth (m)	Water							Activity concentration(Bq/L)		Remarks		
No.	Water area		Location					Municipality	Water temperature (°C)	Sampling depth (m)	Color	Odor	Transparency (cm)	Electrical conductivity (mS/m)	SS (mg/L)	Turbidity (FNU)		Radioactive cesium Cs-134	Cs-137
R i v e r s	Tonegawa River System	Kinugawa River System	Itaana River	Tributary	Nikko City	2016/5/25	Cloudy	22.7	0.2	17.0	0.0	Light grayish yellow green	None	>100	8.5	<1	0.3	<0.63	<0.80
						2016/6/7	Cloudy	17.0	0.2	16.2	0.0	Light grayish yellow green	None	>100	9.1	<1	0.3	<0.80	<0.75
						2016/7/8	Cloudy	21.7	0.2	18.1	0.0	Light grayish yellow green	None	>100	8.1	<1	0.3	<0.51	<0.84
						2016/8/25	Sunny	29.7	0.2	21.3	0.0	Grayish yellow	None	32	6.7	13	16	<0.62	<0.92
						2016/9/2	Sunny	30.1	0.4	18.1	0.0	Grayish yellow	None	>100	6.8	<1	0.5	<0.76	<0.75
						2016/11/26	Sunny	10.2	0.2	9.3	0.0	Light grayish greenish yellow	None	>100	7.4	<1	0.3	<0.53	<0.61
			2017/2/8	Sunny	7.4	0.1	5.5	0.0	Light grayish yellow green	None	>100	7.3	<1	0.3	<0.76	<0.80			
			2016/5/25	Cloudy	17.6	0.2	11.5	0.0	Light grayish yellow green	None	>100	18.7	4	1.4	<0.66	<0.75			
			2016/8/25	Sunny	21.6	0.2	14.0	0.0	Grayish yellow green	None	>100	17.9	1	0.7	<0.72	<0.66			
			2016/11/24	Snow	-1.5	0.3	5.5	0.0	Grayish yellow green	None	>100	18.5	<1	0.4	<0.89	<0.88			
			2017/2/9	Snow	-2.2	0.2	6.0	0.0	Grayish yellow green	None	>100	16.7	3	1.7	<0.75	<0.63			
			2016/5/21	Sunny	17.5	0.3	8.9	0.0	Light grayish yellow green	None	>100	11.6	2	0.2	<0.63	<0.84			
		2016/8/12	Cloudy	27.2	0.3	10.1	0.0	Light grayish yellow green	None	>100	11.7	<1	0.4	<0.81	<0.75				
		2016/11/16	Sunny	4.0	0.2	7.4	0.0	Light grayish yellow green	None	>100	9.8	<1	0.2	<0.60	<0.92				
		2017/2/9	Snow	0.2	0.2	6.2	0.0	Light grayish yellow green	None	>100	11.9	<1	0.3	<0.72	<0.88				
		2016/5/21	Sunny	17.2	0.2	14.1	0.0	Light grayish yellow green	None	>100	11.6	<1	0.5	<0.66	<0.69				
		2016/8/12	Cloudy	27.0	0.2	17.9	0.0	Light grayish yellow	None	>100	12.4	2	1.0	<0.83	<0.74				
		2016/11/16	Sunny	7.2	0.2	8.4	0.0	Light grayish yellow	None	>100	11.3	3	2.1	<0.81	<0.75				
		2017/2/9	Snow	1.2	0.2	3.5	0.0	Light grayish yellow	None	>100	11.3	<1	0.4	<0.54	<0.88				
		2016/5/21	Sunny	18.8	0.3	17.3	0.0	Light grayish yellowish green	None	>100	12.1	<1	0.3	<0.85	<0.96				
		2016/6/7	Cloudy	16.2	0.2	12.9	0.0	Light grayish yellowish green	None	>100	12.3	3	0.6	<0.64	<0.69				
		2016/7/8	Cloudy	22.3	0.2	15.5	0.0	Light grayish yellowish green	None	>100	12.2	3	1.1	<0.74	<0.84				
		2016/8/12	Sunny	30.6	0.3	19.1	0.0	Light grayish yellowish green	None	>100	12.0	2	0.9	<0.72	<0.69				
		2016/9/2	Sunny	30.8	0.2	15.7	0.0	Light grayish yellowish green	None	>100	10.9	3	1.0	<0.80	<0.69				
		2016/11/16	Sunny	12.7	0.2	9.7	0.0	Light grayish yellowish green	None	>100	11.6	<1	0.4	<0.71	<0.75				
		2017/2/8	Sunny	1.2	0.1	4.2	0.0	Light grayish yellowish green	None	>100	10.0	<1	0.4	<0.72	<0.70				
		2016/5/24	Sunny	27.2	0.2	17.6	0.0	Light grayish greenish yellow	None	>100	10.4	7	2.8	<0.87	<0.66				
		2016/6/7	Cloudy	18.1	0.2	13.8	0.0	Light grayish greenish yellow	None	>100	10.6	1	0.8	<0.71	<0.88				
		2016/7/8	Cloudy	25.6	0.2	19.2	0.0	Light grayish greenish yellow	None	>100	11.1	7	2.2	<0.72	<0.88				
		2016/8/26	Sunny	29.6	0.5	24.8	0.0	Light grayish greenish yellow	None	22	9.5	27	31	<0.68	<0.84				
		2016/9/2	Sunny	31.2	0.5	22.9	0.0	Light grayish yellow green	None	40	9.3	11	15	<0.70	<0.63				
		2016/11/7	Sunny	15.2	0.2	10.7	0.0	Light grayish greenish yellow	None	>100	10.7	2	1.8	<0.59	<0.66				
		2017/2/3	Sunny	8.7	0.1	8.4	0.0	Light grayish greenish yellow	None	>100	13.0	2	1.1	<0.82	<0.66				
		2016/5/7	Sunny	20.1	0.4	13.3	0.0	Light grayish yellow green	None	>100	10.9	4	1.8	<0.68	<0.75				
		2016/8/6	Sunny	26.1	0.4	19.7	0.0	Light grayish yellow green	None	>100	11.3	5	1.7	<0.54	<0.84				
		2016/11/14	Cloudy	14.5	0.5	11.0	0.0	Light grayish yellow green	None	>100	11.2	4	1.2	<0.78	<0.84				
		2017/2/7	Sunny	6.4	0.5	6.1	0.0	Grayish yellow green	None	>100	12.8	2	0.8	<0.68	<0.80				
		2016/5/7	Sunny	22.9	0.5	15.4	0.0	Light grayish yellow green	None	>100	12.0	3	1.4	<0.87	<0.75				
		2016/8/6	Sunny	28.1	0.3	21.2	0.0	Light grayish greenish yellow	None	>100	13.0	3	0.8	<0.62	<0.55				
		2016/11/14	Cloudy	13.2	0.3	12.7	0.0	Light grayish greenish yellow	None	>100	13.3	1	0.8	<0.71	<0.75				
		2017/2/7	Sunny	7.8	0.3	8.2	0.0	Light grayish yellow green	None	>100	13.7	2	1.1	<0.77	<0.55				
		2016/5/10	Cloudy	24.4	0.8	18.7	0.0	Light grayish yellow green	None	85	16.2	12	2.6	<0.56	<0.80				
2016/8/12	Sunny	32.0	0.3	27.7	0.0	Grayish yellow green	None	>100	19.3	7	2.8	<0.84	<0.75						
2016/11/5	Cloudy	12.6	0.3	13.3	0.0	Grayish yellow green	None	>100	17.8	3	1.2	<0.73	<0.70						
2017/2/7	Sunny	7.6	0.3	7.4	0.0	Grayish yellow green	None	>100	17.3	4	1.8	<0.88	<0.75						

Tochigi River (Water) 5/6

No.	Location				Sampling Date	Weather	Air temperature (°C)	Water depth (m)	Water										Remarks			
	Water area	Location	Municipality	General items										Activity concentration(Bq/L)								
				Water temperature (°C)					Sampling depth (m)	Color	Odor	Transparency (cm)	Electrical conductivity (mS/m)	SS (mg/L)	Turbidity (FNU)	Radioactive cesium Cs-134	Cs-137					
R i v e r s	38	Egawa River	Tributary	Shimotsuke City	2016/5/10	Cloudy	24.8	1.2	17.6	0.0	Grayish yellow green	None	84	14.9	7	2.6	<0.71	<0.84				
					2016/6/6	Cloudy	21.0	1.2	18.7	0.0	Grayish yellow green	None	>100	16.7	6	1.8	<0.71	<0.75				
					2016/7/5	Cloudy	20.0	0.4	21.3	0.0	Grayish yellow green	None	>100	18.5	10	3.0	<0.80	<0.75				
					2016/8/12	Sunny	31.1	0.3	24.3	0.0	Grayish yellow green	None	>100	16.3	3	1.8	<0.73	<0.55				
					2016/9/6	Sunny	31.0	1.2	24.1	0.0	Grayish greenish yellow	None	82	18.7	8	3.2	<0.81	<0.63				
					2016/11/5	Cloudy	12.2	0.4	12.9	0.0	Grayish yellow green	None	>100	23.5	1	1.1	<0.65	<0.96				
					2017/2/7	Sunny	6.2	0.3	3.4	0.0	Grayish yellow green	None	>100	25.3	3	1.5	<0.73	<0.48				
					39	Akabori River	Nikko City Hall, front	Nikko City	2016/5/21	Sunny	15.5	0.3	9.7	0.0	Light grayish greenish yellow	None	>100	11.5	<1	0.3	<0.73	<0.75
									2016/8/12	Cloudy	26.9	0.2	12.1	0.0	Light grayish greenish yellow	None	>100	11.5	<1	0.5	<0.66	<0.69
									2016/11/16	Sunny	8.8	0.2	8.3	0.0	Light grayish greenish yellow	None	>100	11.4	2	0.5	<0.58	<0.78
	2017/2/7	Sunny	2.4	0.2					5.7	0.0	Light grayish greenish yellow	None	>100	11.8	<1	0.3	<0.62	<0.63				
	40	Kiwadajima		Nikko City	2016/5/21	Sunny	14.0	0.4	13.8	0.0	Grayish greenish yellow	None	>100	13.1	3	0.6	<0.74	<0.80				
					2016/8/12	Cloudy	27.3	0.3	16.2	0.0	Grayish greenish yellow	None	>100	15.8	3	0.8	<0.77	<0.60				
					2016/11/16	Sunny	12.4	0.2	12.0	0.0	Grayish greenish yellow	None	>100	15.2	<1	0.4	<0.70	<0.80				
					2017/2/7	Sunny	1.2	0.1	8.0	0.0	Light grayish greenish yellow	None	>100	17.7	<1	0.3	<0.50	<0.48				
	41	Kinugawa River System	Tagawa River	Ozobashi Bridge	Utsunomiya City	2016/5/21	Sunny	23.0	0.5	20.7	0.0	Light grayish yellow green	None	>100	14.5	4	1.4	<0.77	<0.75			
						2016/6/7	Cloudy	20.2	0.2	18.0	0.0	Light grayish yellow green	None	>100	15.0	3	1.4	<0.71	<0.66			
						2016/7/8	Cloudy	25.5	0.3	20.8	0.0	Light grayish yellow green	None	>100	15.1	3	0.9	<0.71	<0.75			
						2016/8/12	Sunny	32.2	0.4	24.3	0.0	Light grayish yellow green	None	>100	15.7	4	1.4	<0.51	<0.61			
						2016/9/2	Sunny	31.0	0.3	22.0	0.0	Light grayish yellow green	None	>100	14.5	4	2.0	<0.66	<0.84			
2016/11/14						Cloudy	16.1	0.3	13.6	0.0	Light grayish yellow green	None	>100	16.1	2	1.1	<0.53	<0.70				
2017/2/7						Sunny	8.5	0.3	10.8	0.0	Light grayish yellow green	None	>100	19.1	8	3.3	<0.68	<0.84				
2016/5/21						Sunny	25.3	0.2	23.2	0.0	Light grayish yellow	None	>100	19.4	6	1.8	<0.75	<0.69				
2016/8/12						Sunny	31.8	0.2	24.3	0.0	Grayish reddish yellow	None	>100	19.3	3	1.5	<0.87	<0.92				
2016/11/14						Cloudy	16.2	0.3	16.2	0.0	Grayish reddish yellow	None	>100	19.6	1	0.8	<0.65	<0.92				
42	Tonegawa River System	Kamagawa River	Tsukushi Bridge		2017/2/7	Sunny	7.8	0.1	10.9	0.0	Grayish yellow	None	>100	20.2	3	1.3	<0.61	<0.55				
					2016/5/7	Sunny	18.2	0.3	17.7	0.0	Light grayish reddish yellow	None	>100	20.2	6	3.4	<0.60	<0.88				
					2016/8/6	Sunny	33.1	0.3	25.4	0.0	Grayish yellow	None	>100	19.7	6	1.2	<0.75	<0.63				
					2016/11/5	Cloudy	11.1	0.3	13.5	0.0	Light grayish yellow green	None	>100	23.9	5	3.1	<0.86	<0.70				
43	Tagawa River	Meiji Bridge	Kaminokawa Town		2017/2/7	Sunny	6.1	0.3	8.4	0.0	Light grayish yellow	None	>100	23.0	11	3.4	<0.63	<0.60				
					2016/5/10	Cloudy	21.6	0.7	18.1	0.0	Grayish yellow	None	28	24.3	34	11	<0.79	<0.92				
					2016/8/12	Sunny	30.5	0.3	25.6	0.0	Grayish yellow	None	>100	24.6	2	1.2	<0.58	<0.54				
					2016/11/5	Sunny	17.1	0.3	14.0	0.0	Grayish yellow	None	>100	29.2	<1	0.6	<0.52	<0.79				
44	Yanabashi Bridge		Oyama City		2017/2/7	Sunny	7.2	0.3	7.9	0.0	Grayish yellow	None	>100	30.2	4	1.5	<0.63	<0.84				
					2016/5/7	Sunny	24.5	0.3	21.0	0.0	Grayish yellow	None	22	9.3	120	71	<0.56	<0.75				
					2016/8/6	Sunny	25.2	0.6	21.4	0.0	Grayish yellow green	None	>100	9.6	4	0.6	<0.67	<0.55				
					2016/11/26	Sunny	4.1	0.2	7.1	0.0	Light grayish greenish yellow	None	>100	9.9	3	1.6	<0.65	<0.80				
					2017/2/9	Snow	0.3	0.3	4.8	0.0	Light grayish yellow green	None	72	11.4	3	4.4	<0.82	<0.80				
					2016/5/7	Sunny	23.5	0.2	19.8	0.0	Light grayish yellow green	None	28	15.3	19	14	<0.79	<0.63				
					2016/8/6	Sunny	31.7	0.7	25.3	0.0	Dark grayish yellow	None	73	13.8	11	2.3	<0.69	<0.63				
					2016/11/26	Sunny	8.1	0.3	13.3	0.0	Light grayish yellow green	None	>100	18.1	2	2.0	<0.60	<0.80				
					2017/2/9	Cloudy	1.1	0.2	6.3	0.0	Light grayish greenish yellow	None	>100	24.3	7	1.6	<0.62	<0.74				
					2016/5/7	Sunny	23.8	0.2	20.3	0.0	Light grayish yellow	None	>100	6.9	3	1.3	<0.84	<0.80				
45	Watarase River Area	Omori River Area	Kajijima Bridge	Kanuma City	2016/8/6	Sunny	30.2	0.4	22.1	0.0	Light grayish yellow	None	>100	7.7	1	0.2	<0.85	<0.96				
					2016/11/26	Sunny	6.7	0.4	10.2	0.0	Light grayish yellow green	None	72	7.3	5	4.1	<0.67	<0.80				
					2017/2/9	Snow	0.7	0.2	6.4	0.0	Light grayish yellow green	None	>100	7.7	3	0.8	<0.75	<0.96				
					2016/5/7	Sunny	23.9	0.1	26.6	0.0	Light grayish yellow	None	>100	16.2	8	3.7	<0.78	<0.69				
46	Kurokawa River	Onari Bridge	Mibu Town		2016/8/6	Sunny	29.7	0.2	23.2	0.0	Grayish yellow	None	>100	16.4	4	1.6	<0.71	<0.63				
					2016/11/26	Sunny	5.0	0.1	7.4	0.0	Light grayish greenish yellow	None	>100	18.0	2	1.6	<0.79	<0.75				
					2017/2/9	Snow	0.7	0.1	3.4	0.0	Light grayish yellow	None	87	19.6	2	2.1	<0.50	<0.70				
					2016/5/7	Sunny	23.9	0.1	26.6	0.0	Light grayish yellow	None	>100	16.2	8	3.7	<0.78	<0.69				
47	Oashi River	Akaishi Bridge	Kanuma City		2016/8/6	Sunny	29.7	0.2	23.2	0.0	Grayish yellow	None	>100	16.4	4	1.6	<0.71	<0.63				
					2016/11/26	Sunny	5.0	0.1	7.4	0.0	Light grayish greenish yellow	None	>100	18.0	2	1.6	<0.79	<0.75				
					2017/2/9	Snow	0.7	0.1	3.4	0.0	Light grayish yellow	None	87	19.6	2	2.1	<0.50	<0.70				
					2016/5/7	Sunny	23.9	0.1	26.6	0.0	Light grayish yellow	None	>100	16.2	8	3.7	<0.78	<0.69				
48	Koyabu River	Koyabu Bridge			2016/8/6	Sunny	29.7	0.2	23.2	0.0	Grayish yellow	None	>100	16.4	4	1.6	<0.71	<0.63				
					2016/11/26	Sunny	5.0	0.1	7.4	0.0	Light grayish greenish yellow	None	>100	18.0	2	1.6	<0.79	<0.75				
					2017/2/9	Snow	0.7	0.1	3.4	0.0	Light grayish yellow	None	87	19.6	2	2.1	<0.50	<0.70				
					2016/5/7	Sunny	23.9	0.1	26.6	0.0	Light grayish yellow	None	>100	16.2	8	3.7	<0.78	<0.69				

Tochigi River (Water)6/6

No.	Location				Sampling Date	Weather	Air temperature (°C)	Water depth (m)	Water										Remarks
	Water area		Location	Municipality					General items							Activity concentration(Bq/L)			
									Water temperature (°C)	Sampling depth (m)	Color	Odor	Transparency (cm)	Electrical conductivity (mS/m)	SS (mg/L)	Turbidity (FNU)	Radioactive cesium Cs-134	Cs-137	
R i v e r s	Tonegawa River System	Omoi River Area	Omoi River	Tamotsu Bridge	Tochigi City	2016/5/7	Sunny	22.3	0.1	18.3	0.0	Light grayish reddish yellow	None	>100	10.3	<1	0.4	<0.71	<0.88
						2016/8/6	Sunny	31.0	0.5	23.4	0.0	Light grayish yellow	None	>100	9.9	3	0.6	<0.71	<0.75
						2016/11/26	Sunny	7.7	0.4	13.0	0.0	Light grayish yellow green	None	>100	12.2	<1	0.4	<0.53	<0.74
						2017/2/9	Cloudy	1.1	0.1	9.7	0.0	Light grayish yellow green	None	>100	15.7	<1	0.2	<0.48	<0.54
				2016/5/10	Cloudy	20.0	0.4	17.4	0.0	Grayish greenish yellow	None	57	17.3	32	8.6	<0.74	<0.75		
				2016/6/6	Cloudy	23.4	0.3	20.7	0.0	Grayish greenish yellow	None	72	23.9	3	3.1	<0.75	<0.75		
				2016/7/5	Cloudy	21.5	0.3	22.6	0.0	Grayish greenish yellow	None	80	17.5	13	2.9	<0.65	<0.55		
				2016/8/12	Sunny	28.8	0.2	25.1	0.0	Grayish greenish yellow	None	>100	16.8	5	1.8	<0.92	<0.66		
				2016/9/6	Sunny	34.0	0.6	25.4	0.0	Light grayish greenish yellow	None	82	15.7	15	2.9	<0.72	<0.84		
				2016/11/5	Sunny	18.2	0.3	16.1	0.0	Grayish greenish yellow	None	>100	20.4	8	3.5	<0.65	<0.55		
		2017/2/7	Sunny	7.3	0.3	8.0	0.0	Grayish greenish yellow	None	>100	22.8	5	2.3	<0.67	<0.75				
		2016/5/10	Cloudy	20.4	0.6	18.3	0.0	Grayish yellow	None	37	25.3	15	8.4	<0.84	<0.84				
		2016/6/6	Cloudy	24.8	1.0	19.8	0.0	Grayish yellow	None	52	27.5	8	2.6	<0.55	<0.75				
		2016/7/5	Cloudy	21.0	0.8	21.6	0.0	Grayish yellow	None	68	22.8	12	3.8	<0.80	<0.75				
		2016/8/12	Sunny	27.1	0.8	23.9	0.0	Grayish yellow	None	>100	28.3	24	7.0	<0.76	<0.84				
		2016/9/6	Sunny	34.3	1.2	26.4	0.0	Light grayish yellow green	None	79	25.0	8	1.7	<0.79	<0.63				
		2016/11/17	Sunny	15.4	0.8	16.3	0.0	Light grayish yellow	None	>100	26.3	6	2.9	<0.84	<0.70				
		2017/2/10	Sunny	9.6	0.8	12.0	0.0	Grayish yellow	None	62	30.6	38	17	<0.63	<0.66				
		2016/5/12	Sunny	17.0	1.0	13.7	0.0	Light grayish yellow green	None	>100	20.2	2	0.5	<0.65	<0.55				
		2016/6/2	Sunny	20.5	0.2	14.5	0.0	Light grayish yellow green	None	>100	10.0	<1	0.3	<0.62	<0.61				
	2016/7/13	Cloudy	23.0	0.2	18.9	0.0	Light grayish yellow green	None	>100	16.7	<1	0.5	<0.72	<0.80					
	2016/8/4	Sunny	25.0	1.2	16.8	0.0	Light grayish yellow green	None	>100	7.2	<1	<0.1	<0.79	<0.92					
	2016/9/29	Cloudy	20.7	0.4	15.5	0.0	Light grayish yellow green	None	>100	8.0	<1	0.5	<0.62	<0.84					
	2016/11/24	Snow	0.8	0.2	6.5	0.0	Light grayish yellow green	None	>100	19.4	<1	0.2	<0.62	<0.63					
	2017/2/9	Cloudy	2.3	0.3	3.2	0.0	Grayish reddish yellow	None	>100	27.5	<1	0.2	<0.84	<0.47					
	2016/5/23	Sunny	31.3	0.3	22.1	0.0	Light grayish yellow green	None	>100	13.5	<1	0.5	<0.75	<0.75					
	2016/8/29	Sunny	29.6	0.5	21.6	0.0	Light grayish yellow green	None	>100	8.8	9	4.7	<0.73	<0.75					
	2016/11/17	Sunny	9.8	0.3	10.7	0.0	Light grayish yellow green	None	>100	14.2	<1	0.9	<0.84	<0.88					
	2017/2/10	Sunny	6.2	0.2	4.7	0.0	Light grayish yellow green	None	>100	15.4	2	1.3	<0.82	<0.75					
	2016/5/23	Sunny	31.6	0.6	23.5	0.0	Grayish greenish yellow	None	>100	13.6	2	0.7	<0.78	<0.55					
	2016/8/29	Sunny	30.0	0.8	22.4	0.0	Grayish greenish yellow	None	80	9.3	7	3.3	<0.58	<0.75					
	2016/11/17	Sunny	13.3	0.5	12.0	0.0	Grayish greenish yellow	None	>100	14.8	<1	0.9	<0.62	<0.66					
	2017/2/10	Sunny	7.2	0.6	6.7	0.0	Grayish greenish yellow	None	>100	18.1	2	1.3	<0.84	<0.70					
	2016/5/23	Sunny	30.7	0.3	25.6	0.0	Grayish yellow green	None	68	20.7	3	1.9	<0.84	<0.75					
	2016/8/29	Sunny	29.5	0.4	22.5	0.0	Grayish yellow green	None	70	10.9	18	5.0	<0.63	<0.84					
	2016/11/17	Sunny	16.4	0.3	14.0	0.0	Light grayish yellow green	None	>100	20.6	2	1.4	<0.79	<0.80					
	2017/2/10	Sunny	10.3	0.2	8.7	0.0	Grayish yellow green	None	>100	24.8	20	5.4	<0.75	<0.79					
	2016/5/23	Sunny	28.4	0.1	24.0	0.0	Light grayish greenish yellow	None	80	24.9	8	5.0	<0.90	<0.55					
	2016/6/6	Cloudy	25.2	0.2	23.4	0.0	Light grayish greenish yellow	None	42	20.7	8	3.9	<0.59	<0.80					
	2016/7/5	Cloudy	23.4	0.3	23.5	0.0	Light grayish greenish yellow	None	40	18.1	34	14	<0.65	<0.61					
2016/8/29	Cloudy	28.7	1.0	21.2	0.0	Light grayish greenish yellow	None	65	13.9	13	5.7	<0.67	<0.69						
2016/9/6	Sunny	37.2	0.2	27.8	0.0	Grayish greenish yellow	None	72	20.5	7	2.7	<0.71	<0.69						
2016/11/17	Sunny	16.2	0.4	14.0	0.0	Light grayish greenish yellow	None	85	24.4	3	2.3	<0.78	<0.84						
2017/2/10	Sunny	9.8	0.1	8.4	0.0	Light grayish greenish yellow	None	>100	25.7	5	3.5	<0.80	<0.60						

Tochigi River (Sediment) 1/6

No.	Location			Sampling Date	Weather	Air temperature (°C)	Water depth (m)	Sediment														Activity concentration [Bq/kg(dry)]			Remarks	
	Water area	Location	Municipality					Sediment temperature (°C)	Sample length (cm)	Color	Odeur	Grain size distribution(%)						Sediment content (%)	Density (g/cm³)	Property	Radioactive cesium					
												Coarse gravel	Medium gravel	Fine gravel	Coarse sand	Medium sand	Fine sand				Silt	Clay	Cs-134	Cs-137		Total
R i v e r	Nakagawa River System	Nakagawa River	Buyobashihata	Nasuhobara City	2016/5/27	Cloudy	16.0	0.3	13.3	5	Grayish olive	None	3.0	17.8	18.9	26.5	22.0	2.9	0.1	1.9	74.6	2.679	Sand/gravel	<3.1	14	14
					2016/8/24	Cloudy	22.5	0.5	14.3	5	Dark olive	None	1.9	46.4	11.3	16.2	21.8	1.5	0.1	0.8	84.8	2.696	Gravel/sand	<4.2	7.3	7.3
					2016/11/1	Cloudy	10.2	0.5	11.7	5	Dark olive	None	0.0	35.1	27.1	23.6	11.3	0.8	0.4	1.5	78.2	2.645	Gravel/sand	<4.2	13	13
			2017/2/2	Snow	-3.4	0.5	5.4	5	Dark olive	None	0.0	4.0	17.9	30.2	40.6	3.6	0.8	3.1	73.7	2.651	Sand/gravel	<5.2	18	18		
			2016/5/27	Cloudy	16.5	0.2	14.4	5	Dark olive	None	0.0	23.9	26.8	28.6	18.3	0.9	0.0	1.4	84.6	2.727	Sand/gravel	<4.0	19	19		
			2016/8/24	Cloudy	24.2	0.3	15.7	5	Dark olive	None	0.0	23.8	15.3	17.9	32.9	7.8	1.2	1.2	73.7	2.697	Sand/gravel	<4.7	18	18		
		2016/11/1	Cloudy	11.0	0.3	12.2	5	Dull reddish brown	None	0.0	25.7	35.1	28.0	9.8	0.2	0.4	0.8	88.7	2.684	Gravel/sand	<3.6	11	11			
		2017/2/2	Cloudy	0.5	0.3	5.6	5	Dark brown	None	0.0	0.6	8.4	43.6	42.6	2.4	0.1	2.7	73.2	2.682	Sand	<5.5	28	28			
		2016/5/27	Cloudy	15.3	0.2	14.4	5	Blackish brown	None	0.0	28.7	43.9	22.0	4.3	0.1	0.3	0.8	89.7	2.716	Sand/gravel	<3.7	12	12			
		2016/8/24	Cloudy	23.7	0.3	17.0	5	Dark brown	None	0.0	7.3	3.9	11.8	61.6	11.1	0.9	3.5	69.6	2.769	Sand	8.2	44	52.3			
		2016/11/1	Cloudy	11.2	0.2	11.6	4	Dark brown	None	0.0	6.8	15.9	28.0	37.7	7.8	1.2	2.6	68.1	2.699	Sand/gravel	6.7	44	50.7			
		2017/2/2	Cloudy	0.6	0.3	4.2	5	Dark brown	None	0.0	7.6	30.5	32.8	22.6	3.3	1.3	1.8	73.9	2.675	Sand/gravel	<4.1	26	26			
		2016/5/27	Cloudy	16.4	0.2	16.5	5	Dark brown	None	0.0	49.1	28.5	16.5	5.2	0.1	0.2	0.4	86.2	2.729	Sand/gravel	5.5	24	29.3			
		2016/8/24	Cloudy	22.5	0.2	19.2	5	Dark brown	None	0.0	19.7	28.6	22.6	25.5	4.5	0.5	1.6	71.3	2.758	Sand/gravel	<4.5	32	32			
		2016/11/1	Sunny	14.1	0.2	13.1	5	Dark brown	None	3.6	20.5	16.5	18.7	33.5	5.5	0.6	1.1	75.0	2.823	Sand/gravel	4.9	27	31.9			
		2017/2/2	Sunny	-1.2	0.2	5.0	5	Dark brown	None	0.0	41.7	17.6	9.8	23.4	5.5	0.9	1.2	80.2	2.801	Gravel/sand	<4.3	19	19			
		2016/5/6	Sunny	22.0	0.3	16.1	5	Grayish olive	None	0.0	17.7	29.0	30.2	21.4	0.2	0.0	1.6	95.4	2.715	Gravel/sand	<4.2	11	11			
		2016/6/2	Sunny	18.4	0.2	17.6	4	Olive brown	None	0.0	29.2	27.3	23.8	17.9	0.9	0.1	0.9	86.9	2.695	Sand/gravel	5.5	36	35.3			
		2016/7/1	Sunny	29.1	0.4	18.7	6	Olive brown	None	1.9	48.7	17.2	11.0	15.2	4.4	0.9	0.6	86.8	2.713	Sand/gravel	6.1	36	36.1			
		2016/8/1	Sunny	29.5	0.3	25.3	7	Grayish olive	None	7.2	23.6	17.9	21.2	23.2	4.8	1.5	2.9	79.7	2.697	Sand/gravel	11	60	71			
		2016/9/1	Sunny	25.5	0.3	18.2	5	Olive black	None	0.0	5.9	9.8	20.5	52.6	8.7	0.0	2.5	77.8	2.736	Sand	9.5	57	86.3			
		2016/11/2	Cloudy	10.0	0.3	11.2	5	Grayish olive	None	0.0	42.6	26.7	14.8	12.8	2.1	0.3	0.6	80.3	2.647	Sand/gravel	7.3	57	64.3			
		2017/2/2	Sunny	4.5	0.3	3.9	5	Olive black	None	0.0	5.3	9.4	28.3	46.9	5.9	1.7	2.5	70.9	2.700	Sand	15	120	135			
		2016/5/6	Sunny	20.6	0.4	12.5	5	Blackish brown	None	6.9	40.4	12.5	7.5	21.2	8.4	1.2	1.5	78.2	2.824	Gravel/sand	9.3	39	48.3			
	2016/8/1	Cloudy	28.8	0.3	24.8	5	Blackish brown	None	3.8	88.2	7.0	0.6	0.2	0.0	0.0	0.1	94.3	2.689	Gravel/sand	<3.7	6.9	6.9				
	2016/11/1	Sunny	16.7	0.3	14.4	5	Blackish brown	Faint sewage	2.8	15.4	3.8	4.7	43.2	23.9	2.2	4.1	65.5	2.705	Sand/gravel	2.1	130	151				
	2017/2/2	Sunny	1.2	0.2	2.7	5	Blackish brown	None	0.0	61.3	18.5	9.2	8.8	1.0	0.6	0.6	84.3	2.654	Gravel/sand	4.1	19	23.1				
	2016/5/6	Cloudy	22.4	0.5	15.7	5	Dark brown	None	8.6	75.9	6.1	3.6	4.6	0.4	0.4	0.5	77.7	2.739	Gravel/sand	10	65	75				
	2016/8/1	Sunny	30.4	0.3	28.4	5	Olive brown	None	10.1	68.6	13.0	4.4	3.0	0.4	0.3	0.2	73.7	2.648	Gravel/sand	<5.5	44	44				
	2016/11/2	Cloudy	12.6	0.4	10.4	3	Dark brown	None	0.0	58.0	21.0	11.7	7.9	0.4	0.3	0.8	76.9	2.808	Gravel/sand	15	70	85				
	2017/2/2	Sunny	0.1	0.3	2.8	3	Olive brown	None	10.7	31.7	5.9	12.4	33.3	3.8	0.6	1.5	75.1	2.827	Sand/gravel	9.5	57	66.3				
	2016/5/6	Cloudy	19.5	0.4	17.3	6	Gray	None	0.0	0.0	0.0	1.8	70.4	19.9	3.6	4.3	71.3	2.752	Sand	18	86	104				
	2016/6/2	Sunny	22.3	0.3	22.0	5	Grayish olive	None	2.6	55.2	35.1	5.4	1.1	0.2	0.1	0.3	94.4	2.626	Sand/gravel	<7.1	21	21				
	2016/7/1	Sunny	27.3	0.3	25.1	7	Dark olive	None	0.0	26.5	9.7	3.0	45.8	10.7	2.2	2.1	75.3	2.765	Sand/gravel	15	58	73				
	2016/8/1	Sunny	31.5	0.4	28.2	7	Dark olive	None	0.0	15.6	41.4	29.1	12.2	0.4	0.3	1.0	88.5	2.720	Sand	5.5	36	41.5				
	2016/9/1	Sunny	28.2	0.3	20.7	7	Grayish olive	None	0.0	0.0	0.4	5.2	56.0	29.2	5.9	3.4	67.6	2.703	Sand	18	120	138				
	2016/11/2	Cloudy	13.1	0.3	11.4	7	Olive brown	None	0.0	1.9	2.8	18.3	62.3	11.0	1.6	2.2	69.8	2.709	Sand/gravel	19	85	104				
	2017/2/2	Sunny	1.6	0.3	1.6	7	Grayish olive	None	0.0	38.0	13.5	15.2	29.7	1.8	0.5	1.6	83.9	2.918	Gravel/sand	16	72	88				
	2016/5/6	Cloudy	19.5	0.2	16.4	6	Grayish olive	None	0.0	33.9	24.0	24.7	15.1	0.5	0.8	1.2	89.7	2.721	Gravel/sand	<4.0	17	17				
	2016/6/2	Sunny	23.1	0.3	20.1	6	Grayish olive	None	1.2	52.3	20.1	16.1	8.9	0.3	0.3	0.5	93.6	2.699	Gravel/sand	3.6	19	22.6				
	2016/7/1	Sunny	31.4	0.2	24.1	6	Grayish olive	None	3.1	36.4	20.2	23.7	14.3	0.7	0.4	1.2	83.4	2.691	Gravel/sand	7.9	32	39.9				
	2016/8/1	Sunny	32.2	0.4	26.5	7	Olive gray	None	5.7	36.5	20.6	21.7	14.4	0.4	0.0	0.7	84.6	2.672	Gravel/sand	<4.0	16	16				
	2016/9/1	Sunny	30.0	0.2	22.5	7	Grayish olive	None	0.0	0.0	0.2	7.9	67.1	2.8	0.1	2.0	74.1	2.688	Sand	5.2	36	41.2				
	2016/11/2	Sunny	13.7	0.2	14.1	7	Grayish olive	None	0.0	39.2	29.2	20.1	10.5	0.1	0.0	0.8	90.9	2.853	Sand/gravel	<3.3	24	24				
	2017/2/2	Sunny	5.4	0.3	6.7	7	Grayish olive	None	2.3	55.7	16.0	17.1	8.1	0.1	0.0	0.8	91.1	2.664	Gravel/sand	<4.6	15	15				

Tochigi River (Surrounding Environment) 1/6

No.	Location			Sampling Date	Weather	Air temperature (°C)	Surrounding Environment(Soil,Air dose)													Remarks								
	Water area	Location	Municipality				Left bank						Right bank															
							Color	Odor	Property	Activity concentration [Bq/kg(dry)]			Air Dose (µSv/h)	Color	Odor	Property	Activity concentration [Bq/kg(dry)]				Air Dose (µSv/h)							
										Radioactive cesium							Radioactive cesium											
			Cs-134	Cs-137	Total				Cs-134	Cs-137	Total				Cs-134	Cs-137	Total											
R i v e r s	Nakagawa River System	Nakagawa River	Ikuyobashishita	Nasushiobara City	2016/5/27	Cloudy	16.0	-	-	-	-	-	-	-	-	-	Grayish yellowish brown	None	Loamy	190	990	1,180	0.08	(Left bank)Unable to collect samples due to privately owned land				
					2016/8/24	Cloudy	22.5	-	-	-	-	-	-	-	-	-	-	-	-	Dark brown	Faint earth	Loamy	140	710	850	0.07	(Left bank)Unable to collect samples due to privately owned land	
					2016/11/1	Cloudy	10.7	-	-	-	-	-	-	-	-	-	-	-	-	Black	Faint earth	Loamy	360	2,100	2,460	0.07	(Left bank)Unable to collect samples due to privately owned land	
					2017/2/2	Snow	-3.4	-	-	-	-	-	-	-	-	-	-	-	-	Blackish brown	Faint earth	Loamy	580	3,800	4,380	0.06	(Left bank)Unable to collect samples due to privately owned land	
					2016/5/27	Cloudy	16.5	Brown	None	Loamy	840	4,500	5,340	0.11	Brown	Faint grass	Loamy	130	660	790	0.11							
					2016/8/24	Cloudy	24.2	Dark brown	Faint earth	Loamy	480	2,700	3,180	0.11	Dull yellowish brown	Faint earth	Loamy	240	1,400	1,640	0.11							
		2	Nakagawa River	Komci Bridge	Nasushiobara City	2016/11/1	Cloudy	11.0	Blackish brown	Faint earth	Loamy	160	910	1,070	0.12	Dull yellowish brown	Faint earth	Loamy	910	5,400	6,310	0.11						
						2017/2/2	Cloudy	0.5	Dark brown	Faint earth	Loamy	350	2,300	2,650	0.11	Brown	Faint earth	Loamy	71	520	591	0.10						
						2016/5/27	Cloudy	15.3	Dark brown	None	Loamy	190	950	1,140	0.10	Dark brown	None	Loamy	350	2,100	2,450	0.14						
						2016/8/24	Cloudy	23.7	Blackish brown	Faint earth	Loamy	150	890	1,040	0.11	Blackish brown	Faint earth	Loamy	600	3,300	3,900	0.11						
						2016/11/1	Cloudy	11.2	Blackish brown	Faint earth	Loamy	250	1,300	1,550	0.11	Blackish brown	Faint earth	Loamy	390	2,000	2,390	0.12						
						2017/2/2	Cloudy	0.6	Dark brown	Faint earth	Loamy	140	920	1,060	0.10	Blackish brown	Faint earth	Loamy	150	980	1,130	0.11						
		3	Takaomata River	Takaomata Bridge	Nasu Town	2016/5/27	Cloudy	16.4	Dull yellowish brown	Faint earth	Loamy	250	1,400	1,650	0.20	Dull yellowish brown	Faint earth	Loamy	210	1,200	1,410	0.12						
						2016/8/24	Cloudy	22.5	Blackish brown	Faint earth	Loamy	360	2,100	2,460	0.17	Blackish brown	Faint earth	Loamy	560	3,200	3,760	0.12						
						2016/11/1	Sunny	14.1	Blackish brown	None	Loamy	170	990	1,160	0.17	Blackish brown	Faint earth	Loamy	300	1,800	2,100	0.11						
						2017/2/2	Sunny	-1.2	-	-	-	-	-	-	-	-	-	-	-	-	Blackish brown	Faint earth	Loamy	100	850	950	0.12	(Left bank)Unable to collect samples due to freeze
						2016/5/6	Sunny	22.0	Dull yellowish brown	Faint earth	Loamy	93	550	643	0.15	Dull yellowish brown	Faint earth	Loamy	680	3,600	4,280	0.11						
						2016/6/2	Sunny	18.4	Dull yellowish brown	Faint earth	Loamy	370	2,300	2,670	0.18	Brown	Faint earth	Loamy	180	1,000	1,180	0.15						
		5	Nakagawa River	Kamikuroiso	Nasushiobara City/ Nasu Town	2016/7/1	Sunny	29.1	Blackish brown	Faint earth	Loamy	190	1,100	1,290	0.15	Dull yellowish brown	Faint earth	Loamy	170	1,000	1,170	0.11						
						2016/8/1	Sunny	29.5	Dull yellowish brown	Faint earth	Loamy	200	1,100	1,300	0.17	Dull yellowish brown	Faint earth	Loamy	74	410	484	0.11						
2016/9/1	Sunny					25.5	Dark brown	Faint earth	Loamy	210	1,000	1,210	0.14	Dark brown	Faint earth	Loamy	590	3,200	3,790	0.11								
2016/11/2	Cloudy					10.0	Dark brown	Faint earth	Loamy	550	3,300	3,850	0.13	Blackish brown	Faint earth	Loamy	200	1,200	1,400	0.10								
2017/2/2	Sunny					-0.5	Dark brown	Faint earth	Loamy	490	3,400	3,890	0.11	Dark brown	Faint earth	Loamy	68	480	548	0.11								
2016/5/6	Sunny					20.6	Dull yellowish brown	Faint earth	Loamy	1,000	5,400	6,400	0.17	Dark brown	Faint earth	Loamy	590	3,200	3,790	0.14								
2016/8/1	Cloudy					28.8	Dull yellowish brown	Faint earth	Loamy	760	4,400	5,160	0.22	Brown	Faint earth	Loamy	920	4,900	5,820	0.13								
2016/11/1	Sunny					16.7	Dark brown	Faint earth	Loamy	900	5,100	6,000	0.14	Blackish brown	Faint earth	Loamy	700	4,500	5,200	0.13								
2017/2/2	Sunny					1.2	Dark brown	Faint earth	Loamy	140	850	990	0.14	Blackish brown	Faint earth	Loamy	340	2,300	2,640	0.12								
2016/5/6	Cloudy					22.4	Dark brown	Faint earth	Loamy	270	1,500	1,770	0.24	Dull yellowish brown	Faint earth	Loamy	350	1,700	2,050	0.20								
7	Kurokawa River	Shinden Bridge	Nasu Town	2016/8/1	Sunny	30.4	Dark brown	Faint earth	Loamy	1,000	5,400	6,400	0.25	Dull yellowish brown	Faint earth	Loamy	1,200	6,100	7,300	0.19								
				2016/11/2	Cloudy	12.6	Dark brown	Faint earth	Loamy	270	1,600	1,870	0.18	Blackish brown	Faint earth	Loamy	420	2,400	2,820	0.16								
				2017/2/2	Sunny	0.1	Dull yellowish brown	Faint earth	Loamy	66	430	496	0.15	Dull yellowish brown	Faint earth	Loamy	350	2,400	2,750	0.13								
				2016/5/6	Cloudy	19.5	Dull yellowish brown	Faint earth	Loamy	480	2,400	2,880	0.13	Dull yellowish brown	Faint earth	Loamy	290	1,500	1,790	0.21								
8	Yosasa River	Kawada Bridge	Otawara City	2016/6/2	Sunny	22.3	Dull yellowish brown	Faint earth	Loamy	250	1,200	1,450	0.17	Dull yellowish brown	Faint earth	Loamy	840	4,500	5,340	0.33								
				2016/7/1	Sunny	27.3	Blackish brown	Faint earth	Loamy	210	1,100	1,310	0.15	Blackish brown	Faint earth	Loamy	280	1,600	1,880	0.25								
				2016/8/1	Sunny	31.5	Dull yellowish brown	Faint earth	Loamy	300	1,800	2,100	0.14	Dull yellowish brown	Faint earth	Loamy	580	3,400	3,980	0.28								
				2016/9/1	Sunny	28.2	Dark brown	Faint earth	Loamy	240	1,300	1,540	0.14	Brown	Faint earth	Loamy	260	1,500	1,760	0.20								
				2016/11/2	Cloudy	13.1	Dark brown	Faint earth	Loamy	170	1,100	1,270	0.12	Dark brown	Faint earth	Loamy	170	1,000	1,170	0.21								
				2017/2/2	Sunny	1.6	Dark brown	Faint earth	Loamy	170	970	1,140	0.12	Brown	Faint earth	Loamy	290	2,000	2,290	0.15								
				2016/5/6	Cloudy	19.5	Blackish brown	Faint earth	Loamy	78	370	448	0.10	Blackish brown	Faint earth	Loamy	200	950	1,150	0.07								
				2016/6/2	Sunny	23.1	Brown	Faint earth	Loamy	160	930	1,090	0.12	Dull yellowish brown	Faint earth	Loamy	110	560	670	0.09								
9	Nakagawa River	Kurobanc	Otawara City	2016/7/1	Sunny	31.4	Dark brown	Faint earth	Loamy	53	330	383	0.11	Blackish brown	Faint earth	Loamy	99	630	729	0.09								
				2016/8/1	Sunny	32.2	Brown	Faint earth	Loamy	29	210	239	0.10	Grayish yellowish brown	Faint earth	Loamy	96	460	556	0.08								
				2016/9/1	Sunny	30.0	Dark brown	Faint earth	Loamy	57	360	417	0.09	Dark brown	Faint earth	Loamy	130	820	950	0.07								
				2016/11/2	Sunny	13.7	Dark brown	Faint earth	Loamy	130	700	830	0.08	Dark brown	Faint earth	Loamy	210	1,200	1,410	0.07								
				2017/2/2	Sunny	5.4	Dark brown	Faint earth	Loamy	340	2,200	2,540	0.08	Dark brown	Faint earth	Loamy	200	1,200	1,400	0.06								

Tochigi River (Surrounding Environment) 2/6

R i v e r s	Location				Sampling Date	Weather	Air temperature (°C)	Surrounding Environment(Soil,Air dose)											Remarks			
	No.	Water area		Municipality				Left bank					Right bank									
		Location	Color					Odor	Property	Activity concentration [Bq/kg(dry)]			Air Dose (μSv/h)	Color	Odor	Property	Activity concentration [Bq/kg(dry)]			Air Dose (μSv/h)		
										Radioactive cesium							Radioactive cesium					
					Cs-134	Cs-137	Total					Cs-134	Cs-137	Total								
10	Nakagawa River System	Matsuba River	Tributary	Otawara City	2016/5/6	Cloudy	20.5	Grayish yellowish brown	None	Loamy	100	630	730	0.08	Dark brown	Faint earth	Loamy	150	880	1,030	0.11	
					2016/6/2	Sunny	22.2	Dull yellow orange	None	Sandy	230	1,100	1,330	0.13	Brown	Faint earth	Loamy	69	430	499	0.12	
					2016/7/1	Sunny	31.2	Grayish yellowish brown	Faint earth	Loamy	210	1,100	1,310	0.09	Blackish brown	Faint earth	Loamy	54	320	374	0.09	
					2016/8/1	Sunny	32.4	Grayish yellow	Faint earth	Sandy	220	1,200	1,420	0.10	Dull yellowish brown	Faint earth	Loamy	58	310	368	0.10	
					2016/9/1	Sunny	32.2	Dark olive brown	Faint earth	Loamy	140	890	1,030	0.07	Dark brown	Faint earth	Loamy	24	130	154	0.10	
					2016/11/2	Cloudy	13.9	Olive brown	Faint earth	Loamy	170	1,100	1,270	0.07	Blackish brown	Faint earth	Loamy	120	750	870	0.09	
					2017/2/2	Sunny	5.3	Dark olive brown	Faint earth	Loamy	74	400	474	0.09	Blackish brown	Faint earth	Loamy	190	950	1,140	0.11	
					2016/5/6	Sunny	19.4	Blackish brown	Faint earth	Loamy	51	280	331	0.10	Blackish brown	Faint earth	Loamy	40	180	220	0.07	
					2016/8/2	Sunny	27.6	Dark brown	Faint earth	Loamy	69	360	429	0.08	Blackish brown	Faint earth	Loamy	40	230	270	0.06	
					2016/11/4	Sunny	16.2	Blackish brown	Faint earth	Loamy	120	740	860	0.07	Blackish brown	Faint earth	Loamy	46	320	366	0.06	
					2017/2/3	Sunny	7.1	Dark brown	Faint earth	Loamy	120	740	860	0.07	Blackish brown	Faint earth	Loamy	33	280	313	0.06	
					11	Sabigawa River	Udagawa Bridge	Otawara City	2016/5/6	Sunny	21.6	Blackish brown	Faint earth	Loamy	760	3,800	4,560	0.07	Blackish brown	Faint earth	Loamy	140
		2016/8/2	Sunny	27.3					Dark brown	Faint earth	Loamy	86	340	426	0.08	Blackish brown	Faint earth	Loamy	220	1,100	1,320	0.10
		2016/11/4	Sunny	15.8					Blackish brown	Faint earth	Loamy	490	3,200	3,690	0.09	Blackish brown	Faint earth	Loamy	130	610	740	0.07
		2017/2/3	Sunny	7.2					Blackish brown	Faint earth	Loamy	560	3,400	3,960	0.07	Blackish brown	Faint earth	Loamy	94	690	784	0.07
		12	Momura River	Momuranaka Bridge	Otawara City	2016/5/30	Rain	13.0	Dull yellowish brown	Faint earth	Loamy	170	900	1,070	0.13	Dull yellowish brown	Faint earth	Loamy	53	290	343	0.09
						2016/8/29	Cloudy	24.1	Dark brown	Faint earth	Loamy	140	870	1,010	0.09	Blackish brown	Faint earth	Loamy	160	930	1,090	0.08
						2016/11/7	Sunny	6.5	Dark brown	Faint earth	Loamy	190	1,200	1,390	0.09	Blackish brown	Faint earth	Loamy	98	540	638	0.07
						2017/2/3	Sunny	2.1	Dark brown	Faint earth	Loamy	93	690	783	0.07	Blackish brown	Faint earth	Loamy	38	230	268	0.06
		13	Yunohara	Yunohara	Nasushiobara City	2016/5/30	Cloudy	22.3	Blackish brown	Faint earth	Loamy	150	810	960	0.21	Blackish brown	Faint earth	Loamy	310	1,600	1,910	0.29
						2016/8/29	Sunny	26.0	Black	Faint earth	Loamy	110	620	730	0.16	Black	Faint earth	Loamy	240	1,400	1,640	0.22
						2016/11/7	Sunny	10.6	Black	Faint earth	Loamy	98	430	528	0.16	Black	Faint earth	Loamy	110	600	710	0.22
						2017/2/3	Sunny	4.4	Black	Faint earth	Loamy	250	1,600	1,850	0.14	Black	Faint earth	Loamy	300	2,000	2,300	0.21
		14	Sekiba Bridge	Sekiba Bridge	Nasushiobara City	2016/5/6	Sunny	21.9	Dull yellowish brown	Faint earth	Loamy	200	1,000	1,200	0.06	Dull yellowish brown	Faint earth	Loamy	150	710	860	0.07
						2016/8/2	Cloudy	27.5	Dull yellowish brown	Faint earth	Loamy	81	440	521	0.09	Dull yellowish brown	Faint earth	Loamy	100	480	580	0.06
						2016/11/4	Sunny	13.6	Brown	Faint earth	Loamy	78	480	558	0.06	Dull yellowish brown	Faint earth	Loamy	160	970	1,130	0.06
						2017/2/3	Sunny	6.2	Dull yellowish brown	Faint earth	Loamy	97	600	697	0.06	Dark brown	Faint earth	Loamy	100	630	730	0.06
		15	Hokigawa River	Iwai Bridge	Otawara City	2016/5/6	Sunny	22.8	Dull yellowish brown	Faint earth	Loamy	340	1,800	2,140	0.07	Dull yellowish brown	Faint earth	Loamy	19	82	101	0.07
						2016/6/3	Sunny	21.2	Dull yellowish brown	Faint earth	Loamy	44	210	254	0.09	Dull yellowish brown	Faint earth	Loamy	48	270	318	0.09
						2016/7/12	Sunny	30.0	Brown	Faint earth	Loamy	170	710	880	0.05	Dull yellowish brown	Faint earth	Loamy	37	260	297	0.08
						2016/8/2	Sunny	29.1	Dark brown	Faint earth	Loamy	71	350	421	0.10	Dull yellowish brown	Faint earth	Loamy	24	140	164	0.08
		16	Hokigawa Bridge	Hokigawa Bridge	Otawara City	2016/9/1	Sunny	35.1	Dull yellowish brown	Faint earth	Loamy	33	170	203	0.07	Yellowish brown	Faint earth	Loamy	28	140	168	0.07
						2016/11/4	Sunny	16.3	Brown	Faint earth	Loamy	18	87	105	0.07	Light brown	Faint earth	Loamy	90	530	620	0.06
						2017/2/3	Sunny	8.6	Dull yellowish brown	Faint earth	Loamy	26	150	176	0.07	Yellowish brown	Faint earth	Loamy	33	170	203	0.06
						2016/5/6	Cloudy	23.6	Brown	Faint earth	Loamy	32	200	232	0.07	Dark brown	Faint earth	Loamy	23	110	133	0.07
		17	Nakagawa River	Shinnaka Bridge	Nakagawa Town	2016/6/3	Sunny	21.4	Dull yellowish brown	Faint earth	Loamy	15	86	101	0.08	Dull yellowish brown	Faint earth	Loamy	13	75	88	0.07
						2016/7/12	Sunny	31.6	Brown	Faint earth	Loamy	16	120	136	0.06	Dark brown	Faint earth	Loamy	20	96	116	0.07
						2016/8/2	Sunny	30.8	Brown	Faint earth	Loamy	25	130	155	0.06	Brown	Faint earth	Loamy	28	160	188	0.06
						2016/9/1	Sunny	31.2	Brown	Faint earth	Loamy	25	100	125	0.06	Dull yellowish brown	Faint earth	Loamy	7.0	46	53	0.06
		18	Mumogawa River	Kosei Bridge	Nakagawa Town	2016/11/4	Sunny	16.0	Dull yellowish brown	Faint earth	Loamy	75	380	455	0.06	Dark brown	Faint earth	Loamy	47	210	257	0.06
						2017/2/3	Sunny	9.2	Brown	Faint earth	Loamy	12	77	89	0.05	Brown	Faint earth	Loamy	34	200	234	0.05
						2016/5/6	Cloudy	21.7	Dull yellowish brown	Faint earth	Loamy	32	210	242	0.07	Dark brown	Faint earth	Loamy	44	210	254	0.07
						2016/6/3	Sunny	22.4	Dull yellow orange	Faint earth	Loamy	23	91	114	0.08	Dull yellow	Faint earth	Loamy	13	77	90	0.07
		18	Mumogawa River	Kosei Bridge	Nakagawa Town	2016/7/12	Sunny	34.5	Blackish brown	Faint earth	Loamy	50	260	310	0.07	Dark brown	Faint earth	Loamy	28	150	178	0.08
						2016/8/2	Sunny	30.4	Brown	Faint earth	Loamy	39	200	239	0.07	Brown	Faint earth	Loamy	29	140	169	0.07
						2016/9/1	Sunny	31.2	Dark brown	Faint earth	Loamy	19	95	114	0.07	Dark brown	Faint earth	Loamy	21	160	181	0.06
						2016/11/8	Cloudy	11.0	Blackish brown	Faint earth	Loamy	27	150	177	0.07	Blackish brown	Faint earth	Loamy	28	130	158	0.06
		2017/2/6	Sunny	13.7	Dark brown	Faint earth	Loamy	28	160	188	0.07	Dark brown	Faint earth	Loamy	14	80	94	0.06				

Tochigi River (Surrounding Environment) 3/6

No.	Location			Sampling Date	Weather	Air temperature (°C)	Surrounding Environment (Soil, Air dose)											Remarks				
	Water area	Location	Municipality				Left bank						Right bank									
							Color	Odor	Property	Activity concentration [Bq/kg(dry)]			Color	Odor	Property	Activity concentration [Bq/kg(dry)]						
										Radioactive cesium						Radioactive cesium						
			Cs-134	Cs-137	Total	Air Dose (µSv/h)			Cs-134	Cs-137	Total	Air Dose (µSv/h)										
R i v e r s	Nakagawa River System	Arakawa River	Saikachi Bridge	Shioya Town	2016/5/30	Cloudy	21.2	Dark brown	Faint earth	Loamy	120	600	720	0.10	Dull yellowish brown	Faint earth	Loamy	110	630	740	0.10	
					2016/8/29	Rain	25.7	Dark brown	Faint earth	Loamy	36	240	276	0.08	Dark brown	Faint earth	Loamy	48	240	288	0.08	
					2016/11/7	Sunny	15.5	Dark brown	Faint earth	Loamy	34	280	314	0.07	Dark brown	Faint earth	Loamy	88	540	628	0.08	
			Renjo Bridge	Sakura City	2017/2/3	Sunny	8.4	Dark brown	Faint earth	Loamy	48	300	348	0.07	Dark brown	Faint earth	Loamy	72	490	562	0.07	
					2016/5/7	Sunny	23.8	Dark brown	Faint earth	Loamy	67	400	467	0.08	Dull yellowish brown	Faint earth	Loamy	36	170	206	0.07	
					2016/8/6	Sunny	31.8	Dark brown	Faint earth	Loamy	53	350	403	0.07	Dark brown	Faint earth	Loamy	25	140	165	0.07	
		2016/11/8			Sunny	10.6	Dark brown	Faint earth	Loamy	35	250	285	0.07	Dark brown	Faint earth	Loamy	31	210	241	0.06		
		2017/2/6			Sunny	7.2	Dark brown	Faint earth	Loamy	95	580	675	0.07	Dull yellowish brown	Faint earth	Loamy	91	460	551	0.07		
		2016/5/30			Sunny	19.7	Dull yellowish brown	Faint earth	Loamy	350	1,800	2,150	0.09	Brown	Faint earth	Loamy	130	620	750	0.09		
		Uchikawa River	Yaiza City	Tanaka Bridge	2016/8/29	Cloudy	28.9	Dark brown	Faint earth	Loamy	66	370	436	0.09	Dark brown	Faint earth	Loamy	200	1,000	1,200	0.07	
					2016/11/7	Sunny	11.5	Dark brown	Faint earth	Loamy	460	2,600	3,060	0.09	Dark brown	Faint earth	Loamy	100	650	750	0.07	
					2017/2/3	Sunny	9.4	Dark brown	Faint earth	Loamy	210	1,400	1,610	0.07	Dark brown	Faint earth	Loamy	62	410	472	0.06	
				Asahi Bridge	Sakura City	2016/5/7	Sunny	25.3	Dark brown	Faint earth	Loamy	32	220	252	0.08	Olive brown	Faint earth	Loamy	80	450	530	0.08
						2016/8/6	Sunny	31.4	Blackish brown	Faint earth	Loamy	120	690	810	0.09	Dark brown	Faint earth	Loamy	15	110	125	0.07
						2016/11/8	Cloudy	11.0	Dark brown	Faint earth	Loamy	61	420	481	0.08	Dark brown	Faint earth	Loamy	58	340	398	0.07
		Arakawa River	Mukada Bridge	Nasu Karasuyama City	2017/2/6	Sunny	7.5	Blackish brown	Faint earth	Loamy	89	660	749	0.09	Blackish brown	Faint earth	Loamy	22	94	116	0.06	
					2016/5/7	Sunny	25.5	Dull yellowish brown	Faint earth	Loamy	44	240	284	0.07	Dull yellowish brown	Faint earth	Loamy	21	110	131	0.07	
					2016/6/3	Sunny	23.8	Brown	Faint earth	Loamy	25	170	195	0.07	Dull yellow orange	Faint earth	Loamy	50	240	290	0.07	
					2016/7/12	Sunny	28.8	Dull yellowish brown	Faint earth	Loamy	14	99	113	0.06	Brown	Faint earth	Loamy	24	170	194	0.05	
					2016/8/6	Sunny	31.2	Dull yellowish brown	Faint earth	Loamy	18	120	138	0.06	Dull yellowish brown	Faint earth	Loamy	50	250	300	0.06	
					2016/9/6	Sunny	29.0	Dark brown	None	Loamy	48	260	308	0.06	Brown	None	Loamy	24	160	184	0.05	
					2016/11/8	Cloudy	15.2	Dull yellowish brown	Faint earth	Loamy	32	250	282	0.06	Dull yellowish brown	Faint earth	Loamy	41	180	221	0.06	
					2017/2/6	Sunny	14.3	Dull yellowish brown	Faint earth	Loamy	28	120	148	0.06	Dull yellowish brown	Faint earth	Loamy	35	210	245	0.05	
					2016/5/7	Sunny	27.5	Dull yellowish brown	Faint earth	Loamy	25	110	135	0.06	Dull yellowish brown	Faint earth	Loamy	<0.90	2.0	2.0	0.06	
2016/6/3	Sunny				23.6	Dull yellowish brown	Faint earth	Loamy	18	110	128	0.06	Dark brown	Faint earth	Loamy	22	100	122	0.07			
2016/7/12	Sunny				30.0	Dull yellowish brown	Faint earth	Loamy	14	76	90	0.04	Dark brown	Faint earth	Loamy	<0.75	2.1	2.1	0.03			
Egawa River	Tributary				2016/8/6	Sunny	30.9	Dull yellowish brown	Faint earth	Loamy	29	150	179	0.06	Dark brown	Faint earth	Loamy	20	90	110	0.06	
		2016/9/6	Sunny	28.7	Grayish yellowish brown	None	Loamy	8.6	66	74.6	0.06	Dull yellowish brown	None	Loamy	3.9	22	25.9	0.06				
		2016/11/8	Cloudy	15.3	Dull yellowish brown	Faint earth	Loamy	24	130	154	0.05	Dark brown	Faint earth	Loamy	22	180	202	0.05				
		2017/2/6	Sunny	14.1	Dull yellowish brown	Faint earth	Loamy	21	110	131	0.06	Dark brown	Faint earth	Loamy	12	76	88	0.05				
		2016/5/24	Sunny	28.1	Brown	Faint earth	Loamy	120	600	720	0.11	Blackish brown	Faint earth	Loamy	250	1,400	1,650	0.11				
		2016/8/26	Sunny	27.1	Blackish brown	None	Loamy	140	780	920	0.10	Blackish brown	None	Loamy	280	1,600	1,880	0.09				
Tonegawa River System	Kinugawa River System	Kinugawa River	Kawaji Daiichi Power Station, front	2016/11/26	Sunny	8.6	Blackish brown	Faint earth	Loamy	220	1,400	1,620	0.09	Black	Faint earth	Loamy	460	2,400	2,860	0.10		
				2017/2/8	Cloudy	2.2	Brown	Faint earth	Loamy	220	1,500	1,720	0.10	Blackish brown	Faint earth	Loamy	300	1,700	2,000	0.09		
				2016/5/24	Cloudy	24.5	Dark grayish yellow	None	Loamy	<7.6	53	53	0.09	Blackish brown	None	Loamy	6.5	33	39.5	0.05		
		Yunishi River	Maesawa Bridge	2016/8/26	Sunny	26.9	Dark grayish yellow	Faint earth	Loamy	21	120	141	0.06	Blackish brown	Faint earth	Loamy	7.0	32	39	0.05		
				2016/11/26	Sunny	3.1	Blackish brown	Faint earth	Loamy	20	140	160	0.07	Blackish brown	Faint earth	Loamy	<8.8	31	31	0.05		
				2017/2/8	Cloudy	0.2	Dark grayish yellow	Faint earth	Loamy	8.0	64	72.0	0.04	-	-	-	-	-	-	0.04 (Right bank) Unable to collect samples due to snow on the ground		
		Ojika River	Tributary	2016/5/24	Sunny	19.8	Olive black	Faint earth	Loamy	96	410	506	0.14	Grayish white	Faint earth	Sandy	5.8	29	34.8	0.13		
				2016/8/26	Sunny	29.1	Black	Faint earth	Loamy	270	1,500	1,770	0.13	Yellowish gray	Faint earth	Loamy	83	510	593	0.09		
				2016/11/26	Sunny	6.2	Black	Faint earth	Loamy	21	180	201	0.11	Dark grayish yellow	Faint earth	Loamy	500	3,000	3,500	0.10		
		Kinugawa River	Kosagoe	2017/2/8	Cloudy	2.1	Blackish brown	Faint earth	Loamy	120	880	1,000	0.11	Dark grayish yellow	Faint earth	Loamy	33	190	223	0.10		
				2016/5/24	Sunny	24.5	Dark brown	Faint earth	Loamy	170	910	1,080	0.15	Dull yellowish brown	Faint earth	Loamy	130	670	800	0.12		
				2016/8/26	Sunny	26.1	Dark brown	Faint earth	Loamy	160	920	1,080	0.12	Dull yellowish brown	Faint earth	Loamy	120	680	800	0.09		
2016/11/26	Cloudy	10.2	Dark brown	Faint earth	Loamy	250	1,700	1,950	0.11	Dull yellowish brown	Faint earth	Loamy	160	980	1,140	0.10						
2017/2/8	Sunny	2.4	Dark brown	Faint earth	Loamy	270	1,700	1,970	0.14	Dull yellowish brown	Faint earth	Loamy	62	410	472	0.10						

Tochigi River (Surrounding Environment) 4/6

R i v e r s	Location				Sampling Date	Weather	Air temperature (°C)	Surrounding Environment(Soil,Air dose)											Remarks			
	No.	Water area	Location	Municipality				Left bank				Right bank										
								Color	Odor	Property	Activity concentration [Bq/kg(dry)]			Color	Odor	Property	Activity concentration [Bq/kg(dry)]			Air Dose (μSv/h)		
											Radioactive cesium						Radioactive cesium					
			Cs-134	Cs-137	Total				Cs-134	Cs-137	Total											
29		Itana River	Tributary		2016/5/25	Cloudy	22.7	Blackish brown	Faint earth	Loamy	280	1,500	1,780	0.16	Dull yellowish brown	Faint earth	Sandy	32	170	202	0.10	
					2016/6/7	Cloudy	17.0	Blackish brown	Faint earth	Loamy	390	2,100	2,490	0.15	Dull yellowish brown	Faint earth	Sandy	28	130	158	0.09	
					2016/7/8	Cloudy	21.7	Blackish brown	Faint earth	Loamy	300	1,500	1,800	0.11	Dull yellowish brown	None	Sandy	17	66	83	0.09	
					2016/8/25	Sunny	29.7	Blackish brown	Faint earth	Loamy	210	1,300	1,510	0.16	Brown	Faint earth	Sandy	16	93	109	0.08	
30		Yukawa River	Tributary		2016/9/2	Sunny	30.1	Blackish brown	Faint earth	Loamy	230	1,300	1,530	0.13	Brown	Faint earth	Sandy	49	310	359	0.09	
					2016/11/26	Sunny	10.2	Blackish brown	Faint earth	Loamy	230	1,300	1,530	0.13	Dull yellowish brown	Faint earth	Sandy	14	110	124	0.09	
					2017/2/8	Sunny	7.4	Blackish brown	Faint earth	Loamy	200	1,400	1,600	0.14	Dull yellowish brown	Faint earth	Sandy	16	90	106	0.08	
					2016/5/25	Cloudy	17.6	Dull yellowish brown	Faint earth	Loamy	31	150	181	0.06	-	-	-	-	-	-	-	(Right bank)Unable to collect samples due to privately owned land
31		Daiya River	Shinkyo Bridge	Nikko City	2016/8/25	Sunny	21.6	Dull yellowish brown	Faint earth	Loamy	36	240	276	0.06	-	-	-	-	-	-	(Right bank)Unable to collect samples due to privately owned land	
					2016/11/24	Snow	-1.5	Dull yellowish brown	None	Loamy	40	270	310	0.05	-	-	-	-	-	-	(Right bank)Unable to collect samples due to privately owned land	
					2017/2/9	Snow	-2.2	-	-	-	-	-	-	-	-	-	-	-	-	-	-	(Left bank)Due to freeze,Right bank/inable to collect samples due to privately owned land
					2016/5/21	Sunny	17.5	Black	None	Loamy	68	330	398	0.09	Blackish brown	None	Loamy	150	780	930	0.09	
32		Shidobuchi River	Sujichigai Bridge		2016/8/12	Cloudy	27.2	Blackish brown	None	Loamy	95	510	605	0.07	Blackish brown	None	Loamy	110	590	700	0.08	
					2016/11/16	Sunny	4.0	Blackish brown	Faint earth	Loamy	48	300	348	0.07	Blackish brown	Faint earth	Loamy	280	1,900	2,180	0.07	
					2017/2/9	Snow	0.2	Blackish brown	Faint earth	Loamy	87	620	707	0.06	Blackish brown	Faint earth	Loamy	260	1,700	1,960	0.05	
					2016/5/21	Sunny	17.2	Blackish brown	None	Loamy	160	860	1,020	0.11	Blackish brown	None	Loamy	350	1,700	2,050	0.12	
33	Tonegawa River System	Kinugawa River System	Daiya River	Kaishin Bridge (Harigai)	2016/8/12	Cloudy	27.0	Brownish gray	None	Sandy	110	570	680	0.10	Dark brown	None	Loamy	130	740	870	0.11	
					2016/11/16	Sunny	7.2	Blackish brown	Faint earth	Loamy	220	1,300	1,520	0.09	Blackish brown	Faint earth	Loamy	410	2,600	3,010	0.10	
					2017/2/9	Snow	1.2	Blackish brown	Faint earth	Loamy	180	1,200	1,380	0.09	Blackish brown	Faint earth	Loamy	620	3,700	4,320	0.11	
					2016/5/21	Sunny	18.8	Dark brown	None	Loamy	260	1,300	1,560	0.11	Brownish gray	None	Sandy	<2.8	6.8	6.8	0.05	
34		Kinugawa River	Sanuki	Shiyoa Town	2016/6/7	Cloudy	16.2	Blackish brown	Faint earth	Loamy	100	660	760	0.11	Gray	None	Sandy	<4.1	11	11	0.05	
					2016/7/8	Cloudy	22.3	Blackish brown	Faint earth	Loamy	330	1,800	2,130	0.11	Gray	None	Sandy	<5.1	9.1	9.1	0.05	
					2016/8/12	Sunny	30.6	Brownish gray	None	Loamy	300	1,700	2,000	0.12	Brownish gray	None	Sandy	<4.1	21	21	0.07	
					2016/9/2	Sunny	30.8	Blackish brown	Faint earth	Loamy	170	1,000	1,170	0.09	Gray	None	Sandy	<6.4	19	19	0.05	
35		Nishi-Kinugawa River	Nishi-Kinugawa Bridge	Utsunomiya City	2016/11/16	Sunny	12.7	Blackish brown	Faint earth	Loamy	160	970	1,130	0.11	Gray	None	Sandy	<5.6	6.3	6.3	0.04	
					2017/2/8	Sunny	1.2	Blackish brown	Faint earth	Loamy	250	1,600	1,850	0.11	Gray	None	Sandy	1.8	11	12.8	0.04	
					2016/5/24	Sunny	27.2	Dull yellowish brown	Faint earth	Loamy	84	420	504	0.09	Dark brown	Faint earth	Loamy	190	1,000	1,190	0.11	
					2016/6/7	Cloudy	18.1	Dull yellowish brown	Faint earth	Loamy	110	550	660	0.09	Dark brown	Faint earth	Loamy	500	2,800	3,300	0.10	
36		Kinugawa River	Kinugawa Bridge (Hohakuji Temple)		2016/7/8	Cloudy	25.6	Dull yellowish brown	Faint earth	Loamy	200	1,100	1,300	0.09	Dark brown	Faint earth	Loamy	190	1,000	1,190	0.11	
					2016/8/26	Sunny	29.6	Dark brown	None	Loamy	130	750	880	0.08	Blackish brown	None	Loamy	110	630	740	0.10	
					2016/9/2	Sunny	31.2	Dull yellowish brown	Faint earth	Loamy	140	810	950	0.07	Dark brown	Faint earth	Loamy	160	900	1,060	0.10	
					2016/11/7	Sunny	15.2	Dull yellowish brown	Faint earth	Loamy	120	810	930	0.08	Blackish brown	Faint earth	Loamy	51	370	421	0.10	
37		Kinugawa River	Daidozumi Bridge	Mooka City	2017/2/3	Sunny	8.7	Blackish brown	Faint earth	Loamy	49	320	369	0.08	Blackish brown	Faint earth	Loamy	150	1,000	1,150	0.09	
					2016/5/7	Sunny	20.1	Dull yellowish brown	Faint earth	Loamy	49	260	309	0.06	Dull yellowish brown	Faint earth	Loamy	22	140	162	0.06	
					2016/8/6	Sunny	26.1	Blackish brown	Faint earth	Loamy	38	170	208	0.07	Dark brown	Faint earth	Loamy	55	270	325	0.07	
					2016/11/14	Cloudy	14.5	Dark brown	Faint earth	Loamy	52	290	342	0.06	Dark brown	Faint earth	Loamy	18	120	138	0.06	
					2017/2/7	Sunny	6.4	Dark brown	Faint earth	Loamy	15	110	125	0.05	Blackish brown	Faint earth	Loamy	16	98	114	0.06	
					2016/5/7	Sunny	22.9	Dull yellowish brown	Faint earth	Sandy	<5.4	14	14	0.05	Dark brown	Faint earth	Sandy	4.9	29	33.9	0.06	
					2016/8/6	Sunny	28.1	Dull yellowish brown	None	Sandy	<5.1	8.7	8.7	0.07	Dark brown	Faint earth	Sandy	<5.0	24	24	0.08	
					2016/11/14	Cloudy	13.2	Dull yellowish brown	None	Sandy	<4.3	5.3	5.3	0.05	Dark brown	Faint earth	Sandy	16	130	146	0.06	
					2017/2/7	Sunny	7.8	Dull yellowish brown	None	Sandy	<5.2	21	21	0.05	Dark brown	None	Sandy	<4.5	19	19	0.05	
					2016/5/10	Cloudy	24.4	Dull yellowish brown	None	Loamy	48	240	288	0.04	Blackish brown	Faint earth	Loamy	<3.9	13	13	0.05	
					2016/8/12	Sunny	32.0	Grayish yellowish brown	Faint earth	Loamy	47	300	347	0.06	Grayish yellowish brown	Faint earth	Loamy	<5.5	13	13	0.06	
					2016/11/5	Cloudy	12.6	Dark brown	Faint earth	Loamy	10	74	84	0.07	Dull yellowish brown	Faint earth	Loamy	<6.8	18	18	0.05	
					2017/2/7	Sunny	7.6	Dark brown	Faint earth	Loamy	14	92	106	0.06	Grayish yellowish brown	Faint earth	Loamy	<5.6	20	20	0.05	

Tochigi River (Surrounding Environment) 5/6

No.	Location				Sampling Date	Weather	Air temperature (°C)	Surrounding Environment(Soil,Air dose)											Remarks		
	Water area	Location	Municipality	Left bank						Right bank											
				Color				Odor	Property	Activity concentration [Bq/kg(dry)]			Air Dose (μSv/h)	Color	Odor	Property	Activity concentration [Bq/kg(dry)]			Air Dose (μSv/h)	
										Radioactive cesium							Radioactive cesium				
			Cs-134	Cs-137	Total				Cs-134	Cs-137	Total										
38	Egawa River	Tributary	Shimotsuke City	2016/5/10	Cloudy	24.8	Blackish brown	Faint earth	Loamy	110	570	680	0.04	Dark brown	None	Loamy	20	110	130	0.04	
				2016/6/6	Cloudy	21.0	Brownish gray	None	Loamy	52	250	302	0.07	Dark brown	None	Loamy	25	120	145	0.06	
39	Akabori River	Nikko City Hall, front	Nikko City	2016/7/5	Cloudy	20.0	Dark brown	Faint earth	Loamy	120	600	720	0.06	Dark brown	Faint earth	Loamy	33	170	203	0.06	
				2016/8/12	Sunny	31.1	Grayish yellowish brown	Faint earth	Loamy	26	110	136	0.05	Dull yellow orange	Faint earth	Loamy	42	250	292	0.05	
40	Kiwadajima			2016/9/6	Sunny	31.0	Grayish yellowish brown	None	Loamy	70	350	420	0.06	Dull yellowish brown	None	Loamy	17	76	93	0.05	
				2016/11/5	Cloudy	12.2	Dark brown	Faint earth	Loamy	100	670	770	0.05	Dark brown	Faint earth	Loamy	13	96	109	0.06	
41	Tagawa River	Ozobashi Bridge	Usunomiya City	2017/2/7	Sunny	6.2	Blackish brown	Faint earth	Loamy	16	120	136	0.06	Dull yellowish brown	Faint earth	Loamy	20	140	160	0.05	
				2016/5/21	Sunny	15.5	-	-	-	-	-	-	-	-	-	Blackish brown	None	Loamy	91	470	561
42	Kamagawa River	Tsukushi Bridge		2016/8/12	Cloudy	26.9	-	-	-	-	-	-	-	Blackish brown	None	Loamy	210	1,300	1,510	0.07	
				2016/11/16	Sunny	8.8	-	-	-	-	-	-	-	-	-	Blackish brown	Faint earth	Loamy	95	660	755
43	Tagawa River	Meiji Bridge	Kaminokawa Town	2017/2/7	Sunny	2.4	-	-	-	-	-	-	-	Blackish brown	Faint earth	Loamy	76	660	736	0.06	
				2016/5/21	Sunny	14.0	Blackish brown	None	Loamy	130	730	860	0.07	Dark brown	None	Loamy	15	88	103	0.08	
44	Yanabashi Bridge		Oyama City	2016/8/12	Cloudy	27.3	Dull yellowish brown	None	Loamy	11	77	88	0.08	Grayish yellowish brown	None	Loamy	71	430	501	0.07	
				2016/11/16	Sunny	12.4	Blackish brown	Faint earth	Loamy	70	430	500	0.05	Blackish brown	Faint earth	Loamy	8.5	58	66.5	0.05	
45	Kurokawa River	Kajijima Bridge	Kanuma City	2017/2/7	Sunny	1.2	Blackish brown	Faint earth	Loamy	66	420	486	0.06	Blackish brown	Faint earth	Loamy	19	100	119	0.05	
				2016/5/21	Sunny	23.0	Brownish gray	None	Loamy	9.8	55	64.8	0.05	Blackish brown	None	Loamy	82	470	552	0.06	
46	Onari Bridge		Mibu Town	2016/6/7	Cloudy	20.2	Dull yellowish brown	Faint earth	Loamy	54	290	344	0.05	Blackish brown	Faint earth	Loamy	260	1,400	1,660	0.06	
				2016/7/8	Cloudy	25.5	Dark brown	Faint earth	Loamy	46	210	256	0.05	Blackish brown	Faint earth	Loamy	50	240	290	0.06	
47	Oashi River	Akaishi Bridge	Kanuma City	2016/8/12	Sunny	32.2	Brownish gray	None	Loamy	21	110	131	0.05	Dull yellowish brown	Faint earth	Loamy	38	220	258	0.05	
				2016/9/2	Sunny	31.0	Dull yellowish brown	Faint earth	Loamy	50	190	240	0.05	Blackish brown	Faint earth	Loamy	160	960	1,120	0.06	
48	Koyabu River	Koyabu Bridge		2016/11/14	Cloudy	16.1	Dull yellowish brown	Faint earth	Loamy	68	410	478	0.05	Blackish brown	Faint earth	Loamy	200	1,300	1,500	0.06	
				2017/2/7	Sunny	8.5	Dull yellowish brown	Faint earth	Loamy	65	460	525	0.04	Blackish brown	Faint earth	Loamy	72	430	502	0.05	
49				2016/5/21	Sunny	25.3	Blackish brown	None	Loamy	46	190	226	0.05	Blackish brown	None	Loamy	120	580	700	0.06	
				2016/8/12	Sunny	31.8	Grayish yellowish brown	None	Loamy	24	170	194	0.06	Blackish brown	None	Loamy	94	670	764	0.06	
50				2016/11/14	Cloudy	16.2	Blackish brown	Faint earth	Loamy	10	68	78	0.05	Blackish brown	Faint earth	Loamy	93	500	593	0.05	
				2017/2/7	Sunny	7.8	Blackish brown	Faint earth	Loamy	15	76	91	0.05	Blackish brown	Faint earth	Loamy	110	620	730	0.05	
51				2016/5/7	Sunny	18.2	Dull yellow orange	None	Loamy	<5.4	7.1	7.1	0.04	Brown	Faint earth	Loamy	6.1	29	35.1	0.04	
				2016/8/6	Sunny	33.1	Brownish gray	None	Sandy	55	300	355	0.05	Grayish yellowish brown	None	Loamy	47	240	287	0.05	
52				2016/11/5	Cloudy	11.1	Brown	Faint earth	Loamy	57	390	447	0.04	Dull yellowish brown	Faint earth	Loamy	32	190	222	0.05	
				2017/2/7	Sunny	6.1	Dark grayish yellow	Faint earth	Loamy	100	670	770	0.05	Dull yellowish brown	Faint earth	Loamy	22	140	162	0.05	
53				2016/5/10	Cloudy	21.6	Blackish brown	None	Sandy	9.3	44	53.3	0.04	Grayish yellowish brown	None	Loamy	32	170	202	0.04	
				2016/8/12	Sunny	30.5	Dull yellowish brown	None	Loamy	6.6	37	43.6	0.04	Grayish yellowish brown	Faint earth	Loamy	21	99	120	0.05	
54				2016/11/5	Sunny	17.1	Dull yellowish brown	Faint earth	Loamy	9.6	75	84.6	0.05	Dark brown	Faint earth	Loamy	18	94	112	0.04	
				2017/2/7	Sunny	7.2	Dull yellowish brown	Faint earth	Loamy	13	100	113	0.05	Dark brown	Faint earth	Loamy	18	150	168	0.05	
55				2016/5/7	Sunny	24.5	Dull yellowish brown	Faint earth	Loamy	11	71	82	0.05	Dull yellowish brown	Faint earth	Loamy	30	140	170	0.05	
				2016/8/6	Sunny	25.2	Blackish brown	None	Loamy	20	120	140	0.06	Blackish brown	None	Loamy	30	180	210	0.07	
56				2016/11/26	Sunny	4.1	Black	None	Loamy	46	290	336	0.06	Black	None	Loamy	14	62	76	0.05	
				2017/2/9	Snow	0.3	Blackish brown	None	Loamy	33	220	253	0.06	Blackish brown	None	Loamy	29	170	199	0.05	
57				2016/5/7	Sunny	23.5	Dull yellowish brown	Faint earth	Loamy	21	130	151	0.04	Dull yellow orange	None	Sandy	<4.8	8.6	8.6	0.06	
				2016/8/6	Sunny	31.7	Blackish brown	None	Loamy	47	180	227	0.06	Blackish brown	None	Loamy	35	190	225	0.06	
58				2016/11/26	Sunny	8.1	Dark brown	None	Loamy	54	460	514	0.06	Dull yellowish brown	None	Loamy	31	150	181	0.06	
				2017/2/9	Cloudy	1.1	Dull yellowish brown	None	Loamy	32	290	322	0.05	Brown	None	Loamy	19	110	129	0.07	
59				2016/5/7	Sunny	23.8	Brown	Faint earth	Loamy	11	65	76	0.06	Dull yellowish brown	None	Loamy	48	230	278	0.04	
				2016/8/6	Sunny	30.2	Brown	None	Loamy	31	210	241	0.07	Grayish yellowish brown	None	Sandy	24	130	154	0.07	
60				2016/11/26	Sunny	6.7	Dull yellowish brown	None	Loamy	32	240	272	0.06	Blackish brown	None	Loamy	120	760	880	0.06	
				2017/2/9	Snow	0.7	Brown	None	Loamy	34	170	204	0.05	Blackish brown	None	Loamy	48	330	378	0.05	
61				2016/5/7	Sunny	23.9	Grayish yellowish brown	Faint earth	Loamy	6.9	45	51.9	0.09	Dark brown	Faint earth	Loamy	17	88	105	0.07	
				2016/8/6	Sunny	29.7	Blackish brown	Faint earth	Loamy	21	110	131	0.06	Blackish brown	None	Loamy	34	150	184	0.06	
62				2016/11/26	Sunny	5.0	Black	None	Loamy	10	49	59	0.06	Blackish brown	None	Loamy	64	470	534	0.06	
				2017/2/9	Snow	0.7	Dark brown	None	Loamy	31	220	251	0.05	Dark brown	None	Loamy	28	180	208	0.05	

Tochigi River (Surrounding Environment) 6/6

R i v e r s	Location				Sampling Date	Weather	Air temperature (°C)	Surrounding Environment(Soil,Air dose)											Remarks				
	No.	Water area		Municipality				Left bank			Right bank												
		Color	Odor					Property	Activity concentration [Bq/kg(dry)]			Air Dose (μSv/h)	Color	Odor	Property	Activity concentration [Bq/kg(dry)]							
									Radioactive cesium							Radioactive cesium							
				Cs-134	Cs-137	Total		Cs-134	Cs-137	Total		Cs-134	Cs-137	Total									
49	Tongawa River System	Omoi River Area	Omoi River	Tamotsu Bridge	Tochigi City	2016/5/7	Sunny	22.3	Blackish brown	Faint earth	Loamy	18	84	102	0.05	Grayish yellowish brown	Faint earth	Loamy	12	82	94	0.06	
						2016/8/6	Sunny	31.0	Dull yellowish brown	Faint earth	Loamy	27	150	177	0.07	Grayish yellowish brown	None	Loamy	7.9	35	42.9	0.07	
2016/11/26						Sunny	7.7	Blackish brown	None	Loamy	38	220	258	0.05	Dark brown	None	Loamy	32	210	242	0.06		
2017/2/9				Cloudy	1.1	Blackish brown	None	Loamy	17	140	157	0.05	Dull yellowish brown	None	Loamy	25	160	185	0.06				
2016/5/10				Cloudy	20.0	Dull yellowish brown	None	Clay-loamy	38	200	238	0.06	Dull yellowish brown	None	Clay-loamy	36	190	226	0.05				
2016/6/6				Cloudy	23.4	Grayish yellowish brown	None	Loamy	17	120	137	0.08	Brownish gray	None	Loamy	50	270	320	0.08				
50		Tongawa River System	Omoi River Area	Omoi River	Otome-ohashi Bridge	Oyama City	2016/7/5	Cloudy	21.5	Dull yellowish brown	Faint earth	Loamy	27	110	137	0.08	Dark brown	Faint earth	Loamy	39	200	239	0.06
							2016/8/12	Sunny	28.8	Dull yellow orange	Faint earth	Loamy	27	120	147	0.08	Dull yellowish brown	Faint earth	Loamy	23	98	121	0.06
							2016/9/6	Sunny	34.0	Brown	Faint earth	Loamy	37	180	217	0.07	Brownish gray	None	Loamy	40	240	280	0.06
							2016/11/5	Sunny	18.2	Dull yellowish brown	Faint earth	Loamy	15	110	125	0.07	Dark brown	Faint earth	Loamy	18	140	158	0.05
							2017/2/7	Sunny	7.3	Dull yellowish brown	Faint earth	Loamy	13	83	96	0.05	Dark brown	Faint earth	Loamy	17	150	167	0.05
							2016/5/10	Cloudy	20.4	Blackish brown	None	Loamy	45	240	285	0.06	Dull yellowish brown	None	Loamy	37	190	227	0.06
51	Tongawa River System		Uzuma River Area	Uzuma River	Uzuma Bridge	Tochigi City	2016/6/6	Cloudy	24.8	Dull yellowish brown	None	Loamy	24	160	184	0.07	Grayish yellowish brown	None	Loamy	25	120	145	0.07
							2016/7/5	Cloudy	21.0	Dark brown	Faint earth	Loamy	15	100	115	0.07	Dull yellowish brown	Faint earth	Loamy	28	140	168	0.06
							2016/8/12	Sunny	27.1	Dull yellowish brown	Faint earth	Loamy	26	140	166	0.06	Dull yellowish brown	Faint earth	Loamy	18	130	148	0.05
							2016/9/6	Sunny	34.3	Dark brown	None	Loamy	31	150	181	0.07	Brownish gray	None	Loamy	16	120	136	0.05
							2016/11/17	Sunny	15.4	Dark brown	Faint earth	Loamy	11	64	75	0.06	Dull yellowish brown	Faint earth	Loamy	16	94	110	0.06
							2017/2/10	Sunny	9.6	Dark brown	Faint earth	Loamy	26	150	176	0.06	Dull yellowish brown	Faint earth	Loamy	21	99	120	0.05
52		Tongawa River System	Watarase River Area	Watarase River	Watarase River intake weir at Sori Power Station	Nikko City	2016/5/12	Sunny	17.0	Brownish gray	None	Sandy	<4.9	14	14	0.12	Brownish gray	None	Sandy	7.7	40	47.7	0.11
							2016/6/2	Sunny	20.5	Grayish olive	None	Sandy	<4.6	15	15	0.15	Dark grayish yellow	None	Sandy	6.6	37	43.6	0.12
							2016/7/13	Cloudy	23.0	Grayish olive	None	Sandy	<4.6	14	14	0.16	Dark grayish yellow	None	Sandy	17	96	113	0.12
							2016/8/4	Sunny	25.0	Brownish gray	Faint earth	Sandy	<5.9	8.1	8.1	0.15	Brownish gray	None	Sandy	15	86	101	0.13
							2016/9/29	Cloudy	20.7	Grayish olive	None	Sandy	<5.6	15	15	0.13	Olive brown	None	Sandy	15	84	99	0.11
							2016/11/24	Snow	0.8	Grayish olive	None	Sandy	<4.9	15	15	0.13	Dark grayish yellow	None	Sandy	8.4	63	71.4	0.13
53	Tongawa River System		Watarase River Area	Watarase River	Hajika Bridge	Ashikaga City	2017/2/9	Cloudy	2.3	Grayish olive	None	Sandy	<4.5	16	16	0.11	Dull yellowish brown	Faint earth	Loamy	47	390	437	0.11
							2016/5/23	Sunny	31.3	Dark grayish yellow	Faint earth	Loamy	25	120	145	0.04	Dull yellowish brown	Faint earth	Loamy	29	120	149	0.07
							2016/8/29	Sunny	29.6	Grayish yellowish brown	Faint earth	Loamy	8.9	50	58.9	0.05	Dull yellowish brown	Faint earth	Loamy	24	160	184	0.07
							2016/11/17	Sunny	9.8	Dark olive brown	Faint earth	Loamy	38	220	258	0.04	Dull yellowish brown	Faint earth	Loamy	40	250	290	0.07
							2017/2/10	Sunny	6.2	Blackish brown	Faint earth	Loamy	66	390	456	0.04	Blackish brown	Faint earth	Loamy	64	420	484	0.07
							2016/5/23	Sunny	31.6	Dull yellowish brown	Faint earth	Loamy	22	110	132	0.05	Grayish yellowish brown	None	Loamy	40	200	240	0.05
54		Tongawa River System	Watarase River Area	Watarase River	Nakabashi Bridge	Ashikaga City	2016/8/29	Sunny	30.0	Dull yellowish brown	Faint earth	Loamy	29	140	169	0.05	Dull yellowish brown	Faint earth	Loamy	31	180	211	0.05
							2016/11/17	Sunny	13.3	Brown	Faint earth	Loamy	11	62	73	0.04	Blackish brown	Faint earth	Loamy	19	87	106	0.05
							2017/2/10	Sunny	7.2	Dull yellowish brown	Faint earth	Loamy	<7.6	47	47	0.04	Blackish brown	Faint earth	Loamy	12	89	101	0.05
							2016/5/23	Sunny	30.7	Dark brown	Faint earth	Loamy	6.1	38	44.1	0.07	Blackish brown	Faint earth	Loamy	12	65	75	0.07
							2016/8/29	Sunny	29.5	Dark brown	Faint earth	Loamy	20	150	170	0.07	Blackish brown	Faint earth	Loamy	12	46	58	0.06
							2016/11/17	Sunny	16.4	Blackish brown	Faint earth	Loamy	63	360	423	0.08	Blackish brown	Faint earth	Loamy	9.9	53	62.9	0.07
55	Tongawa River System		Watarase River Area	Watarase River	Watarase-ohashi Bridge	Tatebayashi City	2017/2/10	Sunny	10.3	Grayish yellow	None	Loamy	29	190	219	0.06	Dark olive brown	Faint earth	Loamy	16	94	110	0.05
							2016/5/23	Sunny	28.4	Grayish yellowish brown	Faint earth	Loamy	25	120	145	0.06	Blackish brown	Faint earth	Loamy	28	140	168	0.07
							2016/6/6	Cloudy	25.2	Brownish gray	None	Loamy	9.6	73	82.6	0.06	Grayish yellowish brown	None	Loamy	20	100	120	0.06
							2016/7/5	Cloudy	23.4	Grayish yellowish brown	Faint earth	Loamy	18	130	148	0.05	Blackish brown	Faint earth	Loamy	75	330	405	0.07
							2016/8/29	Cloudy	28.7	Grayish yellowish brown	Faint earth	Loamy	45	210	255	0.06	Blackish brown	Faint earth	Loamy	90	500	590	0.07
							2016/9/6	Sunny	37.2	Brownish gray	None	Loamy	15	66	81	0.06	Blackish brown	None	Loamy	45	350	395	0.06
56		Tongawa River System	Watarase River Area	Watarase River	Shinkai Bridge	Tochigi City	2016/11/17	Sunny	16.2	Grayish yellowish brown	Faint earth	Loamy	16	120	136	0.06	Blackish brown	Faint earth	Loamy	96	470	566	0.06
							2017/2/10	Sunny	9.8	Grayish yellowish brown	Faint earth	Loamy	29	180	209	0.05	Blackish brown	Faint earth	Loamy	27	170	197	0.06

Tochigi Lakes and Reservoirs (Water) 2/2

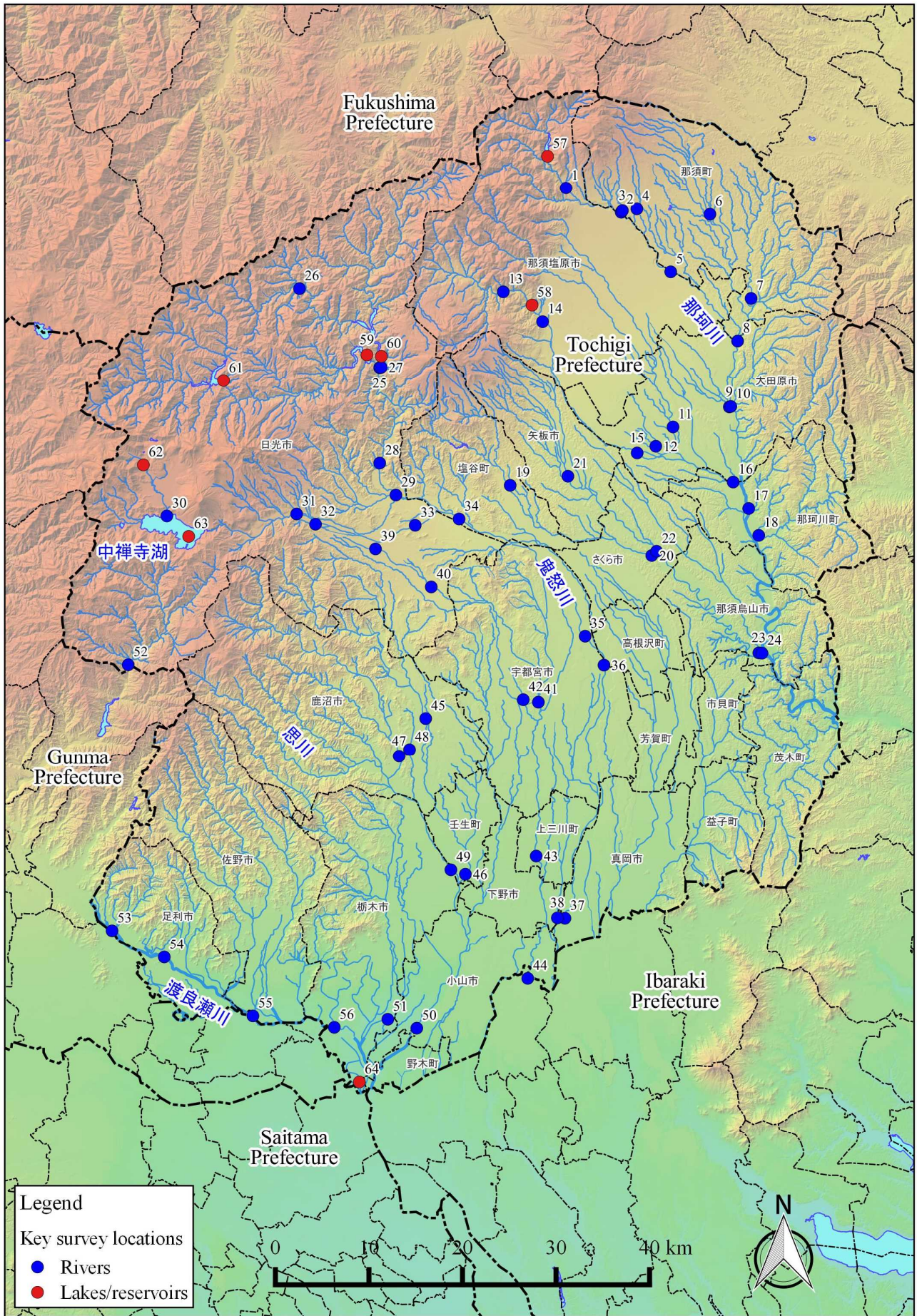
L a k e s a n d R e s e r v o i r s	Location				Sampling Date	Weather	Air temperature (°C)	Water depth (m)	Water								Remarks			
	No.	Water area	Location	Municipality					Water temperature (°C)	Sampling depth (m)	Color	Odor	Secchi disk depth (m)	Electrical conductivity (mS/m)	SS (mg/L)	Turbidity (FNU)		Activity concentration(Bq/L)		
																		Cs-134	Cs-137	
63	Kinugawa River System	Lake Chuzeji	Center	Nikko City	Surface layer	2016/5/25	Cloudy	14.3	162.1	12.7	0.5	Dark grayish green	None	9.3	11.7	<1	0.3	-0.57	<-0.63	
					Deep layer				4.5	161.1	-	-	None		12.5	<1	0.5	-0.57	<-0.75	
					Surface layer	2016/8/25	Sunny	22.7	60.6	22.1	0.5	Dark grayish green	None	13.2	11.5	<1	0.3	-0.70	<-0.80	
					Deep layer				7.1	59.6	-	-	None		12.2	<1	0.4	-0.65	<-0.69	
					Surface layer	2016/10/13	Cloudy	11.9	164.6	16.2	0.5	Dark grayish green	None	16.0	11.1	<1	0.6	-0.76	<-0.55	
					Deep layer				4.7	163.6	-	-	None		12.4	3	5.4	-0.78	<-0.69	
	64	Watarase River System	Watarase Reservoir	Center	Tochigi City	Surface layer	2016/12/1	Cloudy	9.7	161.2	8.9	0.5	Dark grayish yellowish green	None	9.6	11.3	<1	0.6	-0.77	<-0.75
						Deep layer				4.6	160.2	-	-	None		12.1	2	4.9	-0.75	<-0.92
						Surface layer	2016/5/23	Sunny	28.6	5.4	22.6	0.5	Grayish yellow green	None	1.0	20.5	5	5.2	-0.66	<-0.48
						Deep layer				21.8	4.4	-	-	None		20.4	9	8.1	-0.84	<-0.85
						Surface layer	2016/8/29	Cloudy	28.5	3.5	26.4	0.5	Grayish yellow green	None	0.3	20.9	22	13	-0.51	<-0.75
						Deep layer				26.4	2.5	-	-	None		21.0	86	31	-0.78	<-0.75
64	Watarase River System	Watarase Reservoir	Center	Tochigi City	Surface layer	2016/10/11	Sunny	21.0	6.7	20.9	0.5	Grayish yellow green	None	0.8	19.0	7	4.7	-0.59	<-0.84	
					Deep layer				20.7	5.7	-	-	None		19.0	11	8.9	-0.76	<-0.75	
					Surface layer	2016/12/8	Sunny	10.0	7.4	1.2	0.5	Grayish yellow green	None	1.2	18.9	7	5.5	-0.61	<-0.84	
					Deep layer				9.6	6.4	-	-	None		18.9	9	6.9	-0.72	<-0.75	

Tochigi Lakes and Reservoirs (Sediment) 1/1

No.	Location				Sampling Date	Weather	Air temperature (°C)	Water depth (m)	Sediment																Remarks	
	Water area	Location		Municipality					Sediment temperature (°C)	Sample length (cm)	Color	Odor	General items									Sediment content (%)	Density (g/cm ³)	Property		
													Coarse gravel	Medium gravel	Fine gravel	Grain size distribution (%)			Silt	Clay						
																Coarse sand	Medium sand	Fine sand								
Activity concentration [Bq/kg(dry)]																										
Radioactive cesium																										
Cs-134	Cs-137	Total																								
57	Nakagawa River System	Miyama Dam Reservoir	Center	Nanushiobara City	2016/5/27	Cloudy	16.4	38.2	8.9	10	Dark olive	None	0.0	0.0	0.0	0.1	0.1	0.3	72.6	26.9	33.1	2.552	Silt	210	990	1,200
					2016/8/24	Cloudy	21.3	31.8	10.0	10	Dark olive	None	0.0	0.0	0.0	0.0	0.4	62.0	37.5	25.1	2.334	Silt	74	480	554	
					2016/10/19	Sunny	16.8	25.1	11.4	10	Dark olive	None	0.0	0.0	0.0	0.0	0.1	64.2	35.5	30.2	2.539	Silt	79	510	589	
		2016/12/16	Sunny		-2.4	30.5	6.2	8	Dark olive	None	0.0	0.0	0.0	0.1	0.4	1.9	58.1	39.5	28.4	2.488	Silt	110	790	900		
		2016/5/30	Cloudy		18.6	21.4	14.3	7	Blackish brown	None	0.0	0.0	0.0	0.2	0.7	32.2	56.1	10.9	52.6	2.613	Silt	60	390	450		
		2016/8/29	Sunny		26.1	19.0	18.2	10	Grayish yellowish brown	None	0.0	0.0	0.0	0.3	0.2	6.1	73.8	19.6	36.9	2.484	Silt	25	160	185		
	58	Shiobara Dam Reservoir	Center	Nanushiobara City	2016/10/19	Sunny	22.0	20.2	15.8	10	Blackish brown	None	0.0	0.0	0.0	0.3	11.5	66.9	21.3	49.3	2.599	Silt	37	280	317	
					2016/12/2	Sunny	7.8	28.7	8.7	10	Grayish olive	None	0.0	0.0	2.2	0.3	1.1	17.4	65.7	15.0	49.4	2.570	Silt	38	240	278
					2016/5/24	Sunny	23.4	73.8	6.3	10	Dark olive	None	0.0	0.0	0.0	0.0	0.0	0.1	39.5	60.4	39.4	2.645	Silt	44	230	274
					2016/8/26	Sunny	27.6	63.0	8.1	10	Grayish yellowish brown	None	0.0	0.0	0.0	0.0	0.0	0.1	37.5	62.3	40.9	2.574	Silt	23	160	183
					2016/10/18	Sunny	20.2	53.0	7.5	10	Brownish gray	None	0.0	0.0	0.0	0.0	0.0	0.1	30.1	69.8	39.1	2.627	Silt	29	170	199
					2016/12/5	Sunny	14.1	81.0	10.8	10	Dark olive	None	0.0	0.0	0.0	0.0	0.6	1.5	33.9	64.0	35.6	2.570	Silt	290	1,500	1,790
59	Kawaji Dam Reservoir	Center	Nanushiobara City	2016/5/24	Sunny	25.2	56.1	9.4	7	Dull yellowish brown	None	0.0	0.0	0.0	0.3	0.7	0.3	61.1	37.6	28.5	2.477	Silt	43	240	283	
				2016/8/26	Sunny	31.1	52.6	11.7	10	Brown	None	0.0	0.0	0.0	0.0	0.1	0.4	64.5	35.0	31.7	2.422	Silt	49	320	369	
				2016/10/18	Sunny	18.2	42.0	14.8	8	Grayish olive	None	0.0	0.0	0.0	0.1	0.2	2.8	47.9	49.0	37.4	2.529	Silt	40	250	290	
				2016/12/5	Sunny	12.4	44.0	9.5	7	Dull yellow orange	None	0.0	0.0	0.0	0.0	0.1	6.2	67.9	25.8	42.8	2.581	Silt	30	220	250	
				2016/5/25	Sunny	22.0	77.3	7.4	8	Olive black	Faint sewage	0.0	0.0	0.0	0.0	0.1	0.2	46.8	52.9	34.4	2.613	Silt	25	140	165	
				2016/8/26	Sunny	28.2	52.0	9.3	10	Dark grayish yellow	None	0.0	0.1	0.2	1.0	1.8	1.6	70.3	25.1	35.5	2.451	Silt	12	65	77	
60	Ikari Dam Reservoir	Center	Nikko City	2016/10/18	Sunny	18.7	68.0	8.2	10	Grayish yellowish brown	None	0.0	0.0	0.0	0.3	0.6	1.9	77.0	20.2	38.1	2.469	Silt	-9.4	44	44	
				2016/12/5	Sunny	11.4	65.5	8.3	8	Olive black	Faint sewage	0.0	0.0	0.0	0.1	0.3	1.0	73.2	25.5	36.6	2.457	Silt	9.2	52	61.2	
				2016/5/25	Cloudy	18.5	12.5	10.8	5	Olive black	Faint sewage	0.0	0.0	0.0	0.0	0.1	0.2	68.1	31.6	15.5	2.337	Silt	67	430	497	
				2016/8/25	Sunny	22.8	12.2	12.6	3	Olive black	Faint sewage	0.0	0.0	0.0	0.0	0.0	0.3	69.1	30.6	18.9	2.337	Silt	93	650	743	
				2016/10/13	Cloudy	12.7	12.5	11.4	5	Olive black	None	0.0	0.0	0.0	0.0	0.0	0.1	73.4	26.4	13.2	2.298	Silt	16	110	126	
				2016/12/16	Snow	-4.2	10.5	2.4	6	Olive black	Faint sewage	0.0	0.0	0.0	0.1	0.2	1.9	68.6	29.3	23.8	2.388	Silt	50	270	320	
61	Kawamuta Dam Reservoir	Center	Nikko City	2016/5/25	Cloudy	14.3	162.1	4.8	7	Black	Faint sewage	0.0	0.0	0.0	0.0	0.0	1.3	38.0	60.7	13.3	2.201	Silt	130	630	760	
				2016/8/25	Sunny	22.7	60.6	4.4	8	Black	Faint sewage	0.0	0.0	0.0	0.1	0.1	0.8	51.1	48.0	11.8	2.125	Silt	110	820	930	
				2016/10/13	Cloudy	11.9	164.6	4.4	8	Black	None	0.0	0.0	0.0	0.0	0.0	0.3	49.0	50.7	12.3	2.164	Silt	150	980	1,130	
				2016/12/1	Cloudy	9.7	161.2	4.7	6	Black	Faint sewage	0.0	0.0	0.0	0.1	0.1	1.0	49.9	48.8	14.2	2.152	Silt	130	840	970	
				2016/5/23	Sunny	28.6	5.4	24.3	6	Yellowish gray	None	0.0	0.1	0.2	0.4	1.5	9.5	70.1	18.2	44.4	2.637	Silt	19	99	118	
				2016/8/29	Cloudy	28.5	3.5	26.0	6	Yellowish gray	None	0.0	0.0	0.0	0.1	2.7	2.3	70.6	24.3	34.2	2.568	Silt	18	110	128	
64	Watarase River System	Watarase Reservoir	Center	Tochigi City	2016/10/11	Sunny	21.0	6.7	21.1	6	Yellowish gray	None	0.0	0.0	0.0	0.0	0.3	7.6	67.4	24.8	35.5	2.578	Silt	23	120	143
					2016/12/8	Sunny	10.0	7.4	10.5	5	Yellowish gray	None	0.0	0.0	0.0	0.0	0.1	5.1	62.3	32.7	31.5	2.564	Silt	19	110	129

Tochigi Lakes and Reservoirs (Surrounding Environment) 1/1

L a k e s a n d R e s e r v o i r s	Location				Sampling Date	Weather	Air temperature (°C)	Surrounding Environment(Soil,Air dose)						Remarks		
	No.	Water area	Location					Municipality	Soil							
									General items			Activity concentration [Bq/kg(dry)]			Air Dose (μSv/h)	
									Color	Odor	Property	Radioactive cesium				
Cs-134	Cs-137	Total														
57	Nakagawa River System	Miyama Dam Reservoir	Center	Nasushiobara City	2016/5/27	Cloudy	16.4	Dark brown	Faint earth	Loamy	77	360	437	0.07		
					2016/8/24	Cloudy	21.3	Grayish yellowish brown	Faint earth	Loamy	170	1,000	1,170	0.07		
					2016/10/19	Sunny	16.8	Grayish yellowish brown	Faint earth	Loamy	130	840	970	0.07		
					2016/12/16	Sunny	-2.4	Grayish yellowish brown	Faint earth	Loamy	58	410	468	0.06		
		2016/5/30	Cloudy		18.6	Dull yellowish brown	Faint earth	Loamy	27	140	167	0.13				
		2016/8/29	Sunny		26.1	Dull yellowish brown	Faint earth	Loamy	6.6	37	43.6	0.08				
		2016/10/19	Sunny		22.0	Dull yellowish brown	Faint earth	Loamy	100	590	690	0.07				
		2016/12/2	Sunny		7.8	Dull yellowish brown	Faint earth	Loamy	55	350	405	0.10				
	58	Shiobara Dam Reservoir	Center	Nasushiobara City	2016/5/24	Sunny	23.4	Olive brown	Faint earth	Loamy	180	990	1,170	0.13		
					2016/8/26	Sunny	27.6	Dull yellowish brown	None	Loamy	130	670	800	0.13		
					2016/10/18	Sunny	20.2	Brownish gray	None	Sandy	110	610	720	0.12		
					2016/12/5	Sunny	14.1	Olive brown	Faint earth	Loamy	61	360	421	0.12		
					2016/5/24	Sunny	25.2	Brown	Faint earth	Loamy	140	690	830	0.13		
					2016/8/26	Sunny	31.1	Dark brown	Faint earth	Loamy	250	1,300	1,550	0.11		
					2016/10/18	Sunny	18.2	Brown	Faint earth	Loamy	260	1,600	1,860	0.13		
					2016/12/5	Sunny	12.4	Dull yellowish brown	Faint earth	Loamy	120	730	850	0.10		
59	Kinugawa River System	Kawajiri Dam Reservoir	Center	Nikko City	2016/5/24	Sunny	22.0	Dull yellow orange	Faint earth	Loamy	9.8	40	49.8	0.07		
					2016/8/26	Sunny	28.2	Brownish gray	None	Loamy	<5.8	16	16	0.06		
					2016/10/18	Sunny	18.7	Dark brown	None	Loamy	7.3	53	60.3	0.06		
					2016/12/5	Sunny	11.4	Blackish brown	Faint earth	Loamy	9.6	58	67.6	0.07		
					2016/5/25	Cloudy	18.5	Dull yellowish brown	None	Loamy	9.9	70	79.9	0.07		
		60	Ikari Dam Reservoir		Center	Nikko City	2016/8/25	Sunny	22.8	Brown	Faint earth	Loamy	22	100	122	0.07
							2016/10/13	Cloudy	12.7	Brown	Faint earth	Loamy	17	73	90	0.06
							2016/12/16	Snow	-6.2	Brown	Faint earth	Loamy	7.0	40	47.0	0.06
							2016/5/25	Cloudy	14.3	Blackish brown	Faint earth	Loamy	37	210	247	0.07
							2016/8/25	Sunny	22.7	Blackish brown	Faint earth	Loamy	52	270	322	0.07
61	Lake Yunoko	Center	Nikko City	2016/10/13	Cloudy	11.9	Blackish brown	Faint earth	Loamy	230	1,500	1,730	0.05			
				2016/12/1	Cloudy	9.7	Black	Faint earth	Loamy	63	420	483	0.06			
				2016/5/23	Sunny	28.6	Dull yellowish brown	Faint earth	Loamy	80	380	460	0.06			
				2016/8/29	Cloudy	28.5	Dull yellowish brown	Faint earth	Loamy	27	200	227	0.06			
62	Lake Chuzenji	Center	Nikko City	2016/10/11	Sunny	21.0	Dull yellowish brown	Faint earth	Loamy	90	530	620	0.05			
				2016/12/8	Sunny	10.0	Dull yellowish brown	Faint earth	Loamy	17	140	157	0.05			
				2016/5/23	Sunny	28.6	Dull yellowish brown	Faint earth	Loamy	80	380	460	0.06			
				2016/8/29	Cloudy	28.5	Dull yellowish brown	Faint earth	Loamy	27	200	227	0.06			
63	Watarase River System	Watarase Reservoir	Center	Tochigi City	2016/10/11	Sunny	21.0	Dull yellowish brown	Faint earth	Loamy	90	530	620	0.05		
					2016/12/8	Sunny	10.0	Dull yellowish brown	Faint earth	Loamy	17	140	157	0.05		
					2016/5/23	Sunny	28.6	Dull yellowish brown	Faint earth	Loamy	80	380	460	0.06		
					2016/8/29	Cloudy	28.5	Dull yellowish brown	Faint earth	Loamy	27	200	227	0.06		



Survey Locations (Tochigi Prefecture)