

FY2016 Ibaraki Prefecture Survey Results

[Outline of results]

(1) Water

Rivers

Radioactive cesium (Cs-134, Cs-137): Not detectable at any location

Lakes and reservoirs

Radioactive cesium (Cs-134, Cs-137): Not detectable at any location

Coastal areas

Radioactive cesium (Cs-134, Cs-137): Not detectable at any location

(2) Sediments

Rivers

Cs-134: ND - 300 Bq/kg (dry)

Cs-137: 1.7 - 1,600 Bq/kg (dry)

Lakes and reservoirs

Cs-134: ND - 450 Bq/kg (dry)

Cs-137: 23 - 2,300 Bq/kg (dry)

Coastal areas

Cs-134: ND - 8.4 Bq/kg (dry)

Cs-137: 0.81 - 49 Bq/kg (dry)

(3) Surrounding Environment

(a) Soil

Rivers

Cs-134: ND - 640 Bq/kg (dry)

Cs-137: 8.7 - 3,700 Bq/kg (dry)

Lakes and reservoirs

Cs-134: ND - 460 Bq/kg (dry)

Cs-137: 16 - 2,500 Bq/kg (dry)

(b) Ambient dose rate

Rivers

0.05 - 0.18 μ Sv/h

Lakes and reservoirs

0.04 - 0.14 μ Sv/h

Ibaraki River (Water) 1/5

No.	Location			Sampling Date	Weather	Air temperature (°C)	Water depth (m)	Water							Activity concentration(Bq/L)		Remarks			
	Water area	Location	Municipality					Water temperature (°C)	Sampling depth (m)	Color	Odor	Transparency (cm)	Electrical conductivity (mS/m)	SS (mg/L)	Turbidity (FNU)	Radioactive cesium				
																Cs-134		Cs-137		
R i v e r s	Tagagawa River System	Satone River	Yamagoya Bridge	Kitaibaraki City	2016/5/16	Sunny	18.7	0.4	15.4	0.0	Grayish yellow	None	>100	13.8	4	1.4	<-0.67	<-0.63		
					2016/8/15	Cloudy	22.1	0.2	18.0	0.0	Light grayish yellow green	None	>100	13.8	2	0.6	<-0.60	<-0.80		
					2016/11/7	Sunny	8.2	0.3	8.7	0.0	Light grayish yellow green	None	>100	11.9	3	1.3	<-0.82	<-0.75		
			2017/2/7		Sunny	4.5	0.2	6.5	0.0	Light grayish yellow green	None	>100	13.8	6	1.3	<-0.56	<-0.66			
			2016/5/16		Cloudy	21.2	0.2	20.1	0.0	Grayish yellow green	Faint sewage	>100	22.7	3	0.8	<-0.71	<-0.55			
			2016/8/15		Sunny	25.9	0.2	22.6	0.0	Grayish greenish yellow	None	>100	22.3	3	1.6	<-0.71	<-0.84			
		2	Murayama Bridge	Kitaibaraki City	2016/11/7	Sunny	11.0	0.4	9.2	0.0	Grayish greenish yellow	None	>100	17.0	3	0.8	<-0.74	<-0.75		
					2017/2/7	Sunny	6.2	0.4	5.8	0.0	Light grayish yellow green	None	>100	20.0	<1	0.6	<-0.70	<-0.81		
					2016/5/16	Cloudy	17.1	0.2	14.4	0.0	Light grayish yellow green	None	>100	6.5	1	0.3	<-0.77	<-0.88		
					2016/8/15	Cloudy	21.9	0.4	18.2	0.0	Light grayish yellow	None	>100	7.1	1	0.5	<-0.63	<-0.84		
					2016/11/7	Sunny	7.2	0.3	8.0	0.0	Light grayish yellow green	None	>100	6.6	3	0.8	<-0.77	<-0.75		
					2017/2/7	Sunny	1.3	0.3	4.2	0.0	Light grayish yellow green	None	>100	8.0	<1	0.4	<-0.76	<-0.80		
		3	Hanazono River	Kurabeishi	Kitaibaraki City	2016/5/16	Cloudy	18.6	0.4	19.0	0.0	Grayish yellow green	None	80	44.1	6	2.1	<-0.71	<-0.55	
						2016/8/15	Cloudy	25.3	0.3	26.0	0.0	Light grayish yellow green	None	90	16.9	6	3.1	<-0.75	<-0.84	
						2016/11/7	Sunny	9.2	0.5	11.0	0.0	Grayish yellow green	None	>100	31.1	2	1.1	<-0.54	<-0.61	
						2017/2/7	Sunny	5.9	0.4	6.8	0.0	Light grayish yellow green	None	>100	57.9	2	2.0	<-0.67	<-0.70	
						2016/6/2	Sunny	21.7	0.3	14.3	0.0	Grayish yellow green	None	>100	7.1	1	0.7	<-0.78	<-0.66	Sampling in June for the weather badness
						2016/8/15	Cloudy	22.0	0.3	17.2	0.0	Light grayish yellow green	None	>100	7.4	2	0.9	<-0.93	<-0.84	
		4	Isonare Bridge	Takahagi City	Takahagi City	2016/11/8	Sunny	7.2	0.3	5.4	0.0	Light grayish yellow green	None	>100	7.5	2	0.6	<-0.63	<-0.92	
						2017/2/14	Sunny	5.2	0.3	3.5	0.0	Light grayish yellow green	None	>100	7.8	<1	0.3	<-0.57	<-0.70	
						2016/6/2	Sunny	20.5	0.3	17.9	0.0	Light grayish greenish yellow	None	54	15.6	10	4.6	<-0.69	<-0.63	Sampling in June for the weather badness
						2016/8/15	Cloudy	26.0	0.4	23.0	0.0	Grayish yellow green	None	>100	16.8	4	1.8	<-0.78	<-0.55	
						2016/11/8	Sunny	8.0	0.5	7.4	0.0	Light grayish greenish yellow	None	>100	14.8	4	1.4	<-0.67	<-0.74	
						2017/2/14	Sunny	8.5	0.3	6.0	0.0	Light grayish yellow green	None	>100	12.4	3	1.7	<-0.70	<-0.84	
5	Okita River	Sakae Bridge	Takahagi City	2016/6/2	Sunny	23.2	0.4	21.8	0.0	Grayish yellow	None	83	14.1	6	2.3	<-0.81	<-0.69	Sampling in June for the weather badness		
				2016/8/16	Sunny	26.6	0.4	21.0	0.0	Light grayish greenish yellow	None	>100	15.6	5	2.3	<-0.70	<-0.75			
				2016/11/8	Cloudy	11.0	0.3	10.0	0.0	Light grayish greenish yellow	None	>100	11.3	3	1.2	<-0.81	<-0.69			
		2017/2/14		Sunny	5.4	0.3	6.1	0.0	Light grayish greenish yellow	None	>100	12.5	1	0.7	<-0.74	<-0.99				
		2016/5/18		Sunny	25.3	0.8	17.2	0.0	Dark grayish yellow green	None	35	10.8	20	9.0	<-0.86	<-0.75				
		2016/9/2		Sunny	24.3	0.7	20.8	0.0	Light grayish greenish yellow	None	>100	10.7	4	2.5	<-0.67	<-0.80	Sampling in September for a typhoon			
6	Sakai Bridge	Kitaibaraki City	Takahagi City	2016/11/8	Cloudy	11.0	0.4	9.0	0.0	Light grayish greenish yellow	None	>100	12.2	<1	0.5	<-0.82	<-0.61			
				2017/2/13	Sunny	5.0	0.3	5.6	0.0	Light grayish yellow green	None	>100	12.1	<1	0.6	<-0.74	<-0.55			
				2016/5/18	Sunny	20.5	0.8	15.6	0.0	Grayish yellow green	None	22	12.1	44	22	<-0.75	<-0.61			
				2016/8/16	Sunny	30.3	0.3	26.1	0.0	Light grayish yellow green	None	58	38.3	9	4.6	<-0.81	<-0.61			
				2016/11/8	Cloudy	10.8	0.4	9.6	0.0	Grayish yellow green	None	>100	14.4	2	1.2	<-0.75	<-0.88			
				2017/2/14	Sunny	0.0	0.3	4.4	0.0	Grayish yellow green	None	>100	14.3	1	0.8	<-0.75	<-0.84			
7	Shinhananuki Bridge	Takahagi City	Takahagi City	2016/5/18	Sunny	25.3	0.8	19.1	0.0	Grayish yellow green	None	49	14.2	17	5.5	<-0.75	<-0.88			
				2016/9/2	Sunny	26.4	0.5	22.8	0.0	Greenish yellowish white	None	>100	14.0	3	1.8	<-0.57	<-0.80	Sampling in September for a typhoon		
				2016/11/9	Sunny	7.0	0.3	9.8	0.0	Grayish yellow green	None	>100	17.0	1	0.7	<-0.63	<-0.61			
				2017/2/13	Cloudy	7.2	0.3	7.4	0.0	Grayish yellow green	None	>100	18.7	1	0.7	<-0.66	<-0.70			
				2016/5/18	Sunny	19.0	2.0	19.3	0.0	Dark grayish yellow green	None	43	14.1	18	9.9	<-0.68	<-0.66			
				2016/9/2	Sunny	28.3	1.5	23.0	0.0	Grayish yellow green	None	>100	14.5	6	3.0	<-0.68	<-0.88	Sampling in September for a typhoon		
8	Kujigawa River	Yamagata	Hitachiomiya City	2016/11/9	Sunny	10.0	1.0	10.6	0.0	Light grayish yellow green	None	>100	17.7	2	0.9	<-0.70	<-0.75			
				2017/2/13	Sunny	9.0	1.5	7.2	0.0	Grayish yellow green	None	>100	39.9	2	0.7	<-0.63	<-0.69			
				2016/5/18	Sunny	25.3	0.8	19.1	0.0	Grayish yellow green	None	49	14.2	17	5.5	<-0.75	<-0.88			
9	Sakaki Bridge	Hitachi City/ Tokai Village	Hitachiomiya City/ Shiroato Town	2016/9/2	Sunny	26.4	0.5	22.8	0.0	Greenish yellowish white	None	>100	14.0	3	1.8	<-0.57	<-0.80	Sampling in September for a typhoon		
				2016/11/9	Sunny	7.0	0.3	9.8	0.0	Grayish yellow green	None	>100	17.0	1	0.7	<-0.63	<-0.61			
				2017/2/13	Cloudy	7.2	0.3	7.4	0.0	Grayish yellow green	None	>100	18.7	1	0.7	<-0.66	<-0.70			
				2016/5/18	Sunny	19.0	2.0	19.3	0.0	Dark grayish yellow green	None	43	14.1	18	9.9	<-0.68	<-0.66			
				2016/9/2	Sunny	28.3	1.5	23.0	0.0	Grayish yellow green	None	>100	14.5	6	3.0	<-0.68	<-0.88	Sampling in September for a typhoon		
				2016/11/9	Sunny	10.0	1.0	10.6	0.0	Light grayish yellow green	None	>100	17.7	2	0.9	<-0.70	<-0.75			
10	Nakagawa River System	Nakagawa River Area	Nakagawa River	Shimokunii	Mito City	2017/2/13	Sunny	9.0	1.5	7.2	0.0	Grayish yellow green	None	>100	39.9	2	0.7	<-0.63	<-0.69	

Ibaraki River (Water) 2/5

No.	Location				Sampling Date	Weather	Air temperature (°C)	Water depth (m)	Water							Activity concentration(Bq/L)		Remarks	
	Water area		Location	Municipality					Water temperature (°C)	Sampling depth (m)	Color	Odor	Transparency (cm)	Electrical conductivity (mS/m)	SS (mg/L)	Turbidity (FNU)	Radioactive cesium		
																	Cs-134		Cs-137
12	Nakagawa River Area	Nakagawa River	Katsuta Bridge	Mito City/ Hitachinaka City	2016/5/18	Sunny	22.5	4.2	18.3	0.0	Grayish yellow green	Medium hydrogen sulfide	33	31	12	6.5	<-0.67	<-0.63	
					2016/8/16	Sunny	29.1	4.2	27.2	0.0	Grayish yellow green	None	59	709	3	1.8	<-0.61	<-0.84	
					2016/11/9	Sunny	10.8	4.7	10.9	0.0	Grayish yellow green	None	>100	26.0	2	1.2	<-0.57	<-0.74	
		2017/2/13	Sunny	5.7	4.1	7.5	0.0	Grayish yellow green	None	>100	541	2	1.4	<-0.87	<-0.78				
		2016/5/18	Sunny	17.5	0.7	22.8	0.0	Dark grayish yellow green	None	52	110	10	3.1	<-0.71	<-0.48				
		2016/8/16	Sunny	31.1	1.3	28.0	0.0	Grayish yellow green	None	46	282	10	5.7	<-0.60	<-0.69				
	13	Nakamaru River	Yanagisawa Bridge	Hitachinaka City	2016/11/9	Sunny	11.5	1.6	13.6	0.0	Grayish yellow green	None	64	81.3	6	2.9	<-0.80	<-0.55	
					2017/2/13	Sunny	3.6	1.1	7.6	0.0	Light grayish yellow green	Faint sewage	77	606	7	4.1	<-0.72	<-0.84	
					2016/5/19	Sunny	25.5	0.4	20.4	0.0	Grayish yellow green	None	48	19.8	18	5.9	<-0.59	<-0.69	
					2016/9/2	Sunny	27.3	0.3	24.9	0.0	Grayish yellow green	None	71	20.3	7	3.9	<-0.70	<-0.75	
					2016/11/10	Cloudy	7.9	0.2	10.2	0.0	Grayish yellow green	None	>100	23.1	3	2.8	<-0.88	<-0.99	
					2017/2/7	Sunny	6.0	0.3	7.0	0.0	Grayish yellow green	None	>100	25.2	4	3.9	<-0.93	<-0.63	
14	Hinumamae River	Nagaoka Bridge	Ibaraki Town	2016/5/19	Sunny	21.1	0.2	20.6	0.0	Grayish yellow green	Faint sewage	56	23.4	6	2.5	<-0.61	<-0.69		
				2016/9/2	Sunny	27.0	0.5	24.2	0.0	Grayish yellow green	None	58	25.6	12	4.8	<-0.68	<-0.75		
				2016/11/10	Cloudy	4.0	0.2	9.0	0.0	Grayish yellow green	None	>100	27.5	3	1.6	<-0.85	<-0.84		
				2017/2/7	Sunny	4.3	0.2	8.0	0.0	Grayish reddish yellow	None	>100	27.2	4	1.7	<-0.72	<-0.84		
				2016/5/19	Sunny	25.0	0.9	19.9	0.0	Grayish yellow green	None	69	34.0	5	3.2	<-0.52	<-0.84		
				2016/9/2	Sunny	25.1	0.4	23.5	0.0	Grayish yellow green	None	68	36.7	10	4.9	<-0.74	<-0.69		
	15	Hinuma River	Takahashi	Ibaraki Town	2016/11/10	Cloudy	6.2	0.2	9.0	0.0	Grayish yellow green	None	>100	25.0	3	1.8	<-0.72	<-0.96	
					2017/2/7	Sunny	5.0	0.2	6.4	0.0	Light grayish yellow green	None	>100	25.2	2	1.5	<-0.77	<-0.70	
					2016/5/19	Sunny	21.1	0.2	20.6	0.0	Grayish yellow green	Faint sewage	56	23.4	6	2.5	<-0.61	<-0.69	
					2016/9/2	Sunny	27.0	0.5	24.2	0.0	Grayish yellow green	None	58	25.6	12	4.8	<-0.68	<-0.75	
					2016/11/10	Cloudy	4.0	0.2	9.0	0.0	Grayish yellow green	None	>100	27.5	3	1.6	<-0.85	<-0.84	
					2017/2/7	Sunny	4.3	0.2	8.0	0.0	Grayish reddish yellow	None	>100	27.2	4	1.7	<-0.72	<-0.84	
16	Kansei River	Kansei Bridge	Hokota City	2016/5/19	Sunny	25.0	0.9	19.9	0.0	Grayish yellow green	None	69	34.0	5	3.2	<-0.52	<-0.84		
				2016/9/2	Sunny	25.1	0.4	23.5	0.0	Grayish yellow green	None	68	36.7	10	4.9	<-0.74	<-0.69		
				2016/11/10	Cloudy	2.8	0.3	9.0	0.0	Grayish yellow	None	72	40.9	11	4.5	<-0.75	<-0.69		
				2017/2/7	Sunny	5.0	0.6	7.0	0.0	Grayish greenish yellow	None	>100	36.1	3	1.7	<-0.74	<-0.66		
				2016/5/19	Sunny	19.0	0.5	19.7	0.0	Grayish yellow green	None	22	1,210	21	5.8	<-0.77	<-0.88		
				2016/8/16	Sunny	26.8	0.8	28.0	0.0	Grayish yellow green	Faint sewage	58	2,180	6	2.6	<-0.52	<-0.69		
17	Daiya River	Oya Bridge	Hokota City	2016/11/9	Sunny	9.8	0.6	14.0	0.0	Grayish yellow green	None	90	2,520	4	2.7	<-0.68	<-0.80		
				2017/2/7	Sunny	7.0	0.7	10.5	0.0	Grayish yellow green	None	>100	3,090	1	1.5	<-0.51	<-0.75		
				2016/5/25	Cloudy	20.9	1.0	20.5	0.0	Grayish greenish yellow	None	74	42.4	10	4.1	<-0.83	<-0.75		
				2016/8/25	Sunny	27.8	1.4	24.8	0.0	Grayish yellow	None	73	39.8	5	4.3	<-0.77	<-0.74		
				2016/11/21	Cloudy	11.8	1.0	12.5	0.0	Light grayish greenish yellow	None	71	42.3	7	3.7	<-0.48	<-0.69		
				2017/2/2	Sunny	5.1	1.1	7.1	0.0	Light grayish yellow green	None	93	51.0	5	2.5	<-0.48	<-0.92		
18	Hinuma River	Hinuma Bridge	Mito City/ Oarai Town	2016/5/25	Cloudy	25.0	0.9	21.1	0.0	Grayish greenish yellow	None	77	28.0	12	5.7	<-0.46	<-0.66		
				2016/8/25	Sunny	29.0	1.3	25.0	0.0	Grayish yellow green	None	38	23.7	19	8.3	<-0.70	<-0.75		
				2016/11/21	Cloudy	10.2	0.7	12.3	0.0	Light grayish yellow green	None	84	29.1	7	3.6	<-0.65	<-0.84		
				2017/2/2	Sunny	6.0	0.9	8.0	0.0	Grayish yellow green	None	93	32.0	7	2.9	<-0.90	<-0.66		
				2016/5/25	Cloudy	23.2	0.3	19.5	0.0	Grayish yellow	None	93	27.6	7	3.6	<-0.61	<-0.69		
				2016/8/25	Sunny	25.9	0.2	22.6	0.0	Grayish yellow	None	68	25.2	11	6.8	<-0.57	<-0.61		
19	Tomoe River	Shintomoegawa Bridge	Hokota City	2016/11/21	Cloudy	14.6	0.2	13.6	0.0	Grayish yellow	None	>100	26.9	9	4.0	<-0.60	<-0.80		
				2017/2/6	Sunny	13.6	0.2	11.4	0.0	Light grayish reddish yellow	None	45	27.6	14	8.4	<-0.91	<-0.80		
				2016/5/25	Cloudy	21.9	0.2	20.2	0.0	Light grayish yellow	None	>100	29.7	5	3.2	<-0.88	<-0.48		
				2016/8/25	Sunny	27.3	0.4	25.0	0.0	Light grayish yellow	None	86	27.6	9	5.8	<-0.66	<-0.92		
				2016/11/21	Cloudy	13.2	0.3	13.2	0.0	Light grayish yellow	None	>100	28.7	6	4.0	<-0.67	<-0.63		
				2017/2/6	Sunny	13.8	0.2	11.5	0.0	Light grayish greenish yellow	None	>100	30.0	3	1.9	<-0.68	<-0.75		
	20	Taiyo River	Tazuka Bridge	Namegata City	2016/5/25	Cloudy	27.0	0.2	21.6	0.0	Grayish greenish yellow	None	43	30.7	15	6.8	<-0.70	<-0.65	
					2016/8/25	Sunny	31.3	0.5	24.9	0.0	Grayish yellow	None	42	27.4	22	12	<-0.76	<-0.75	
					2016/11/21	Cloudy	13.8	0.3	13.3	0.0	Light grayish yellow	None	22	29.0	34	22	<-0.67	<-0.75	
					2017/2/6	Sunny	10.0	0.4	10.0	0.0	Light grayish greenish yellow	None	35	28.4	21	14	<-0.69	<-0.75	
					2016/5/25	Sunny	26.5	0.3	21.9	0.0	Grayish greenish yellow	None	25	30.2	34	12	<-0.71	<-0.55	
					2016/8/25	Sunny	28.5	0.8	24.1	0.0	Grayish yellow green	None	33	26.2	18	12	<-0.78	<-0.75	
21	Takeda River	Uchijuku-ohashi Bridge	Namegata City	2016/11/21	Cloudy	13.4	0.4	13.2	0.0	Light grayish greenish yellow	None	63	29.2	10	6.2	<-0.51	<-0.69		
				2017/2/6	Sunny	13.8	0.4	10.6	0.0	Light grayish greenish yellow	None	54	29.4	17	6.5	<-0.75	<-0.69		
				2016/5/25	Sunny	25.2	0.2	21.4	0.0	Grayish greenish yellow	Faint sewage	37	30.7	14	6.6	<-0.48	<-0.69		
				2016/8/25	Sunny	27.1	0.1	23.0	0.0	Light grayish greenish yellow	None	48	28.2	16	11	<-0.48	<-0.69		
				2016/11/21	Cloudy	13.2	0.2	13.4	0.0	Grayish greenish yellow	None	68	29.7	6	4.5	<-0.72	<-0.75		
				2017/2/2	Sunny	5.0	0.2	5.0	0.0	Light grayish yellow	None	50	29.8	11	7.9	<-0.49	<-0.60		
22	Yamada River	Nioroshi Bridge	Namegata City	2016/5/25	Cloudy	23.2	0.3	19.5	0.0	Grayish yellow	None	93	27.6	7	3.6	<-0.61	<-0.69		
				2016/8/25	Sunny	25.9	0.2	22.6	0.0	Grayish yellow	None	68	25.2	11	6.8	<-0.57	<-0.61		
				2016/11/21	Cloudy	14.6	0.2	13.6	0.0	Grayish yellow	None	>100	26.9	9	4.0	<-0.60	<-0.80		
				2017/2/6	Sunny	13.6	0.2	11.4	0.0	Light grayish reddish yellow	None	45	27.6	14	8.4	<-0.91	<-0.80		
				2016/5/25	Cloudy	21.9	0.2	20.2	0.0	Light grayish yellow	None	>100	29.7	5	3.2	<-0.88	<-0.48		
				2016/8/25	Sunny	27.3	0.4	25.0	0.0	Light grayish yellow	None	86	27.6	9	5.8	<-0.66	<-0.92		
23	Kurakawa River	Kurakawa Bridge	Namegata City	2016/11/21	Cloudy	13.2	0.3	13.2	0.0	Light grayish yellow	None	>100	28.7	6	4.0	<-0.67	<-0.63		
				2017/2/6	Sunny	13.8	0.2	11.5	0.0	Light grayish greenish yellow	None	>100	30.0	3	1.9	<-0.68	<-0.75		
				2016/5/25	Cloudy	27.0	0.2	21.6	0.0	Grayish greenish yellow	None	43	30.7	15	6.8	<-0.70	<-0.65		
				2016/8/25	Sunny	31.3	0.5	24.9	0.0	Grayish yellow	None	42	27.4	22	12	<-0.76	<-0.75		
				2016/11/21	Cloudy	13.8	0.3	13.3	0.0	Light grayish yellow	None	22	29.0	34	22	<-0.67	<-0.75		
				2017/2/6	Sunny	10.0	0.4	10.0	0.0	Light grayish greenish yellow	None	35	28.4	21	14	<-0.69	<-0.75		
24	Gantsu River	JA Yokohashi Bridge	Namegata City	2016/5/25	Sunny	26.5	0.3	21.9	0.0	Grayish greenish yellow	None	25	30.2	34	12	<-0.71	<-0.55		
				2016/8/25	Sunny	28.5	0.8	24.1	0.0	Grayish yellow green	None	33	26.2	18	12	<-0.78	<-0.75		
				2016/11/21	Cloudy	13.4	0.4	13.2	0.0	Light grayish greenish yellow	None	63	29.2	10	6.2	<-0.51	<-0.69		
				2017/2/6	Sunny	13.8	0.4	10.6	0.0	Light grayish greenish yellow	None	54	29.4	17	6.5	<-0.75	<-0.69		
				2016/5/25	Sunny	25.2	0.2	21.4	0.0	Grayish greenish yellow	Faint sewage	37	30.7	14	6.6	<-0.48	<-0.69		
				2016/8/25	Sunny	27.1	0.1	23.0	0.0	Light grayish greenish yellow	None	48	28.2	16	11	<-0.48	<-0.69		
25	Gantsu River	JA Yokohashi Bridge	Namegata City	2016/11/21	Cloudy	13.2	0.2	13											

Ibaraki River (Water) 3/5

No.	Location				Sampling Date	Weather	Air temperature (°C)	Water depth (m)	Water							Activity concentration(Bq/L)		Remarks	
	Water area		Location	Municipality					Water temperature (°C)	Sampling depth (m)	Color	Odor	Transparency (cm)	Electrical conductivity (mS/m)	SS (mg/L)	Turbidity (FNU)	Radioactive cesium		
																	Cs-134		Cs-137
26	Kitaura River Area	Nagare River	Suhoi Bridge	Kashima City	2016/5/25	Cloudy	23.5	0.1	21.5	0.0	Grayish yellow	Faint sewage	84	41.2	5	1.9	<-0.61	<-0.75	
					2016/8/25	Sunny	30.1	0.6	28.9	0.0	Grayish yellow	None	45	41.0	9	6.5	<-0.66	<-0.80	
					2016/11/17	Sunny	9.1	0.1	11.3	0.0	Grayish greenish yellow	Faint sewage	>100	39.1	2	2.0	<-0.63	<-0.69	
					2017/2/2	Sunny	4.0	0.2	4.1	0.0	Grayish yellow	Faint sewage	>100	43.0	4	1.5	<-0.54	<-0.80	
27		Sonobe River	Sonobeshin Bridge	Omitama City	2016/5/25	Cloudy	23.5	1.6	22.2	0.0	Dark grayish yellow green	None	38	27.2	11	1.5	<-0.75	<-0.61	
					2016/8/25	Sunny	31.0	2.0	24.8	0.0	Grayish greenish yellow	None	50	22.4	12	10	<-0.48	<-0.88	
					2016/11/21	Cloudy	12.0	1.8	12.0	0.0	Grayish yellow green	None	73	26.1	6	3.6	<-0.51	<-0.80	
					2017/2/2	Sunny	6.2	1.7	6.5	0.0	Grayish yellow green	None	72	30.6	8	5.1	<-0.84	<-0.55	
28		Sanno River	Tokoro Bridge	Omitama City	2016/5/25	Cloudy	27.9	0.5	22.4	0.0	Grayish yellow green	None	67	65.1	17	4.0	<-0.66	<-0.69	
					2016/8/25	Sunny	29.1	0.8	26.0	0.0	Grayish yellow green	None	>100	34.8	6	4.3	<-0.63	<-0.84	
					2016/11/21	Cloudy	12.4	0.5	13.1	0.0	Light grayish yellow green	None	>100	51.9	2	1.1	<-0.67	<-0.69	
					2017/2/2	Sunny	3.3	0.7	5.7	0.0	Grayish yellow green	None	>100	63.2	5	2.0	<-0.54	<-0.63	
29		Koise River	Heiwa Bridge	Ishioka City	2016/5/25	Cloudy	23.9	0.4	21.9	0.0	Grayish yellow	None	27	23.2	30	14	<-0.78	<-0.55	
					2016/8/25	Sunny	28.5	0.5	22.0	0.0	Grayish yellow	None	23	17.9	24	16	<-0.73	<-0.80	
					2016/11/21	Cloudy	12.0	0.3	11.6	0.0	Light grayish yellow	None	55	22.0	7	4.0	<-0.74	<-0.84	
					2017/2/2	Sunny	3.9	0.4	6.4	0.0	Grayish yellow	None	60	16.9	8	3.4	<-0.62	<-0.70	
30		Kajinashi River	Kamishuku Bridge	Namegata City	2016/5/26	Cloudy	28.9	0.4	22.1	0.0	Grayish greenish yellow	None	42	35.6	15	8.2	<-0.59	<-0.63	
					2016/8/26	Sunny	31.2	0.6	28.0	0.0	Grayish yellow	None	52	30.2	14	7.1	<-0.79	<-0.88	
					2016/11/22	Sunny	16.0	0.3	14.8	0.0	Light grayish greenish yellow	None	72	35.0	7	2.9	<-0.72	<-0.75	
					2017/2/2	Sunny	7.6	0.5	9.4	0.0	Grayish greenish yellow	None	83	39.3	4	2.6	<-0.64	<-0.92	
31		Hishiki River	Hishiki Bridge	Kasumigaura City	2016/5/26	Cloudy	23.6	0.3	23.5	0.0	Grayish yellow	None	54	27.6	15	4.7	<-0.60	<-0.75	
					2016/8/25	Cloudy	28.0	0.8	28.1	0.0	Light grayish yellow	None	72	26.4	6	4.1	<-0.88	<-0.80	
					2016/11/22	Sunny	17.0	0.4	14.8	0.0	Light grayish yellow green	None	91	24.2	3	2.5	<-0.80	<-0.84	
					2017/2/1	Sunny	8.9	0.6	9.5	0.0	Light grayish greenish yellow	None	>100	28.9	2	1.8	<-0.54	<-0.80	
32	Tonegawa River System	Ichinose River	Kawanaka Bridge	Kasumigaura City	2016/5/24	Sunny	30.5	1.1	25.4	0.0	Grayish yellow	Faint sewage	38	29.7	15	8.2	<-0.71	<-0.80	
					2016/8/25	Sunny	26.3	1.7	28.2	0.0	Grayish greenish yellow	None	28	24.6	29	17	<-0.79	<-0.80	
					2016/11/22	Sunny	12.8	1.3	14.0	0.0	Grayish yellow	None	19	25.7	33	24	<-0.75	<-0.69	
					2017/2/1	Sunny	9.0	1.3	8.2	0.0	Grayish yellow	None	17	30.0	26	30	<-0.75	<-0.69	
33		Sakai River	Sakai Bridge/ National Route 354	Tsuchiura City	2016/5/25	Cloudy	26.5	0.3	21.1	0.0	Grayish yellow	None	34	42.5	24	11	<-0.85	<-0.81	
					2016/9/3	Sunny	28.4	0.4	26.5	0.0	Grayish yellow green	None	>100	73.9	7	3.8	<-0.81	<-0.69	Sampling in September for a typhoon
					2016/11/29	Sunny	8.0	0.4	12.2	0.0	Dark grayish yellow green	Faint earth	8	43.7	130	75	<-0.63	<-0.75	
					2017/2/1	Cloudy	9.8	0.5	10.0	0.0	Grayish yellow	None	43	47.3	11	7.3	<-0.61	<-0.66	
34		Shinkawa River	Shinten Bridge	Tsuchiura City	2016/5/24	Sunny	30.2	1.8	25.0	0.0	Grayish yellow	Faint sewage	45	31.6	14	6.0	<-0.79	<-0.84	
					2016/9/3	Sunny	30.2	1.9	27.2	0.0	Grayish greenish yellow	None	45	26.3	9	6.9	<-0.85	<-0.69	Sampling in September for a typhoon
					2016/11/16	Sunny	10.0	1.8	13.0	0.0	Grayish greenish yellow	None	37	29.0	14	13	<-0.78	<-0.84	
					2017/2/1	Cloudy	7.8	2.0	7.5	0.0	Grayish yellow	Faint sewage	34	38.6	11	10	<-0.58	<-0.92	
35		Sakura River	Eiri Bridge	Tsuchiura City/ Tsukuba City	2016/5/23	Sunny	23.1	0.5	24.0	0.0	Grayish yellow	None	38	24.3	35	21	<-0.93	<-0.75	
					2016/9/3	Sunny	27.8	0.5	25.0	0.0	Grayish yellow green	None	57	25.3	10	6.8	<-0.81	<-0.88	Sampling in September for a typhoon
					2016/11/29	Sunny	10.3	0.5	9.0	0.0	Light grayish greenish yellow	None	40	23.0	15	9.7	<-0.72	<-0.69	
					2017/2/6	Sunny	9.0	0.2	9.0	0.0	Grayish greenish yellow	None	68	23.9	7	4.1	<-0.70	<-0.75	
36		Bizen River	Bizengawa Bridge	Tsuchiura City	2016/5/24	Sunny	28.0	0.6	24.5	0.0	Grayish yellow green	Faint sewage	43	32.1	20	15	<-0.62	<-0.81	
					2016/9/3	Sunny	31.2	0.6	28.4	0.0	Grayish yellow green	None	53	31.4	4	3.4	<-0.68	<-0.80	Sampling in September for a typhoon
					2016/11/16	Sunny	10.3	0.5	12.8	0.0	Grayish yellow green	None	41	32.6	11	8.4	<-0.91	<-0.69	
					2017/2/1	Cloudy	5.0	0.8	7.6	0.0	Light grayish yellow green	None	35	33.1	10	5.4	<-0.59	<-0.66	
37		Hanamuro River	Shinwa Bridge	Tsuchiura City	2016/5/24	Sunny	22.6	0.2	22.0	0.0	Grayish greenish yellow	Faint sewage	63	29.9	16	7.8	<-0.52	<-0.84	
					2016/9/3	Sunny	30.8	0.3	27.2	0.0	Grayish yellow green	None	78	28.4	7	4.7	<-0.81	<-0.69	Sampling in September for a typhoon
					2016/11/16	Sunny	12.7	0.3	13.0	0.0	Grayish greenish yellow	None	89	28.7	5	4.8	<-0.61	<-0.55	
					2017/2/1	Cloudy	3.0	0.2	8.5	0.0	Grayish greenish yellow	None	73	39.2	6	3.5	<-0.84	<-0.75	
38		Seimei River	Katsuhashi Bridge	Ami Town	2016/5/23	Sunny	30.5	0.6	21.5	0.0	Grayish yellow green	None	37	29.8	12	4.3	<-0.67	<-0.61	
					2016/9/2	Sunny	30.0	0.5	28.9	0.0	Light grayish yellow green	None	81	36.8	8	4.3	<-0.63	<-0.63	Sampling in September for a typhoon
					2016/11/16	Sunny	11.6	0.5	13.2	0.0	Grayish yellow	None	83	29.0	8	4.8	<-0.77	<-0.66	
					2017/2/1	Cloudy	8.2	0.6	10.3	0.0	Grayish yellow	None	65	40.3	7	4.3	<-0.70	<-0.66	

Ibaraki River (Water) 4/5

No.	Location				Sampling Date	Weather	Air temperature (°C)	Water depth (m)	Water							Activity concentration(Bq/L)		Remarks		
	Water area		Location	Municipality					Water temperature (°C)	Sampling depth (m)	Color	Odor	Transparency (cm)	Electrical conductivity (mS/m)	SS (mg/L)	Turbidity (FNU)	Radioactive cesium			
																	Cs-134		Cs-137	
39	Kasumigaura River Area	Onogawa River	Okuhara-ohashi Bridge	Ryugasaki City/ Ushiku City	2016/5/24	Sunny	32.0	0.4	22.6	0.0	Grayish yellow green	None	26	36.6	19	15	<-0.73	<-0.63		
					2016/9/1	Sunny	26.8	0.5	26.5	0.0	Grayish yellow	None	46	38.8	11	6.2	<-0.57	<-0.88	Sampling in September for a typhoon	
2016/11/16					Sunny	12.0	0.4	13.0	0.0	Grayish yellow green	None	75	35.0	7	4.9	<-0.68	<-0.96			
40		Shintone River	Shintone Bridge	Inashiki City	2017/2/1	Cloudy	9.8	0.4	9.2	0.0	Grayish yellow green	None	53	48.8	11	5.7	<-0.91	<-0.84		
					2016/5/24	Sunny	30.2	1.0	25.0	0.0	Dark grayish yellow	None	27	40.5	12	8.8	<-0.71	<-0.61		
					2016/8/27	Cloudy	24.3	1.5	27.0	0.0	Dark grayish greenish yellow	None	35	22.3	13	11	<-0.67	<-0.80		
	2016/11/16	Sunny	12.1	1.7	14.0	0.0	Dark grayish yellow	None	27	25.4	20	20	<-0.69	<-0.66						
41	Hitachitonegawa River Area	Yorokoshi River	Horinouchi Bridge	Itako City	2017/2/2	Sunny	7.5	2.6	6.0	0.0	Dark grayish yellow	None	26	46.2	19	15	<-0.67	<-0.48		
					2016/5/25	Sunny	24.0	0.5	19.9	0.0	Grayish yellow	None	34	36.8	23	11	<-0.81	<-0.69		
					2016/8/27	Cloudy	26.0	0.5	24.0	0.0	Grayish yellow	Faint sewage	33	36.5	18	13	<-0.73	<-0.66		
		2016/11/17	Sunny	11.3	0.6	11.2	0.0	Grayish yellow	None	39	34.6	13	12	<-0.72	<-0.80					
		2017/2/2	Sunny	7.2	0.7	7.0	0.0	Light grayish yellow green	None	33	34.6	12	9.2	<-0.78	<-0.75					
		2016/5/24	Sunny	25.0	2.2	22.5	0.0	Dark grayish yellow green	None	29	41.7	10	4.3	<-0.89	<-0.63					
	42	Maekawa River	Ayame Bridge	Chikusei City	2016/8/27	Cloudy	25.8	2.6	27.8	0.0	Dark grayish yellow green	None	45	24.2	4	3.8	<-0.66	<-0.75		
					2016/11/17	Sunny	12.7	2.4	12.4	0.0	Grayish yellow green	None	42	30.5	9	9.1	<-0.65	<-0.63		
					2017/2/2	Sunny	1.2	2.7	5.0	0.0	Grayish yellow green	None	34	40.4	13	9.2	<-0.91	<-0.69		
					2016/5/18	Sunny	25.0	0.6	18.5	0.0	Grayish yellow green	None	55	16.4	10	3.6	<-0.59	<-0.75		
43	Kinugawa River Area	Kinugawa River	Kawashima Bridge	Chikusei City	2016/8/9	Sunny	34.2	0.5	26.0	0.0	Light grayish yellowish green	None	>100	21.3	4	2.2	<-0.87	<-0.69		
					2016/11/14	Cloudy	14.5	0.4	12.5	0.0	Light grayish yellow green	None	>100	18.3	2	1.1	<-0.70	<-0.66		
					2017/2/9	Snow	2.0	0.3	6.6	0.0	Light grayish yellow green	None	>100	25.3	6	2.6	<-0.85	<-0.84		
					2016/5/23	Sunny	22.2	0.3	23.0	0.0	Grayish yellow green	Faint sewage	49	24.6	19	4.8	<-0.70	<-0.70		
		44	Tagawa River	Tagawa Bridge	Moriya City	2016/9/2	Sunny	26.2	0.4	25.4	0.0	Grayish yellow green	None	23	21.5	41	16	<-0.51	<-0.80	Sampling in September for a typhoon
						2016/11/15	Cloudy	15.5	0.4	13.8	0.0	Grayish yellow green	None	88	22.1	6	3.2	<-0.79	<-0.73	
						2017/2/6	Sunny	11.3	0.3	9.8	0.0	Grayish yellow green	None	>100	28.1	6	2.9	<-0.74	<-0.64	
						2016/5/18	Sunny	20.0	0.4	17.3	0.0	Grayish yellow	None	31	19.3	22	6.4	<-0.75	<-0.75	
45	Kokai River	Kuroko Bridge	Chikusei City	2016/8/9	Sunny	31.9	0.3	24.8	0.0	Light grayish yellow green	Faint sewage	>100	26.1	21	4.6	<-0.73	<-0.74			
				2016/11/14	Cloudy	12.8	0.3	13.5	0.0	Light grayish yellow green	None	>100	28.6	1	0.9	<-0.56	<-0.70			
				2017/2/9	Snow	1.8	0.4	7.2	0.0	Grayish yellow	None	42	30.8	10	11	<-0.58	<-0.80			
				2016/5/18	Sunny	24.4	0.6	20.5	0.0	Grayish yellow	None	30	17.8	24	9.2	<-0.73	<-0.69			
				2016/8/9	Sunny	37.5	0.9	28.4	0.0	Grayish greenish yellow	Faint fish	52	23.1	10	5.3	<-0.68	<-0.63			
		46	Fumimaki Bridge	Toride City	2016/11/14	Cloudy	16.0	0.4	13.5	0.0	Grayish greenish yellow	None	88	24.2	5	3.6	<-0.80	<-0.69		
					2017/2/9	Snow	2.3	0.3	6.0	0.0	Light grayish greenish yellow	None	58	28.6	8	6.1	<-0.82	<-0.88		
					2016/5/23	Sunny	34.0	0.6	25.8	0.0	Grayish greenish yellow	None	42	20.1	9	6.2	<-0.88	<-0.48		
					2016/9/1	Sunny	27.2	2.4	25.8	0.0	Grayish greenish yellow	None	25	19.5	49	18	<-0.97	<-0.69	Sampling in September for a typhoon	
					2016/11/28	Sunny	11.8	1.5	11.0	0.0	Grayish yellow green	None	41	22.9	19	9.8	<-0.68	<-0.80		
47	Yatagawa River	Maruyama Bridge	Tsukuba City	2017/2/1	Cloudy	7.2	1.4	6.8	0.0	Grayish yellow green	None	60	27.3	10	5.4	<-0.70	<-0.70			
				2016/5/23	Sunny	27.0	2.4	24.0	0.0	Grayish greenish yellow	None	39	26.0	12	4.4	<-0.74	<-0.66			
				2016/9/2	Cloudy	25.0	1.1	26.6	0.0	Grayish yellow green	None	73	36.3	7	4.6	<-0.74	<-0.80	Sampling in September for a typhoon		
				2016/11/29	Sunny	9.0	0.9	10.0	0.0	Light grayish yellow green	None	97	26.8	4	3.3	<-0.72	<-0.75			
				2017/2/6	Sunny	13.4	1.4	9.5	0.0	Grayish yellow green	None	78	29.7	6	3.4	<-0.68	<-0.69			
				2016/5/23	Sunny	28.8	1.1	25.0	0.0	Light grayish yellow	None	53	24.6	7	3.6	<-0.57	<-0.88			
				2016/9/2	Sunny	27.5	0.2	26.8	0.0	Grayish yellow green	None	48	27.5	12	7.4	<-0.78	<-0.63	Sampling in September for a typhoon		
				2016/11/29	Sunny	7.0	0.3	12.7	0.0	Light grayish yellow	None	31	24.7	18	11	<-0.74	<-0.69			
48	Nishiyata River	Sakaimatsu Bridge	Tsukuba City	2017/2/6	Sunny	11.1	0.2	9.5	0.0	Light grayish yellow	None	63	28.8	7	4.5	<-0.72	<-0.75			
				2016/5/23	Sunny	31.1	1.0	25.5	0.0	Grayish yellow green	Faint sewage	77	22.7	7	2.7	<-0.66	<-0.61			
				2016/9/2	Sunny	32.1	0.6	26.5	0.0	Grayish yellow	None	>100	25.5	4	2.2	<-0.87	<-0.80	Sampling in September for a typhoon		
				2016/11/28	Cloudy	12.0	0.7	12.1	0.0	Grayish greenish yellow	None	42	21.6	11	7.1	<-0.74	<-0.75			
				2017/2/6	Sunny	11.0	0.6	10.8	0.0	Grayish yellow green	None	>100	29.5	6	2.4	<-0.67	<-0.84			
49	Inari River	Oguki Bridge		2016/5/23	Sunny	27.0	2.4	24.0	0.0	Grayish greenish yellow	None	39	26.0	12	4.4	<-0.74	<-0.66			
				2016/9/2	Cloudy	25.0	1.1	26.6	0.0	Grayish yellow green	None	73	36.3	7	4.6	<-0.74	<-0.80	Sampling in September for a typhoon		
50				2016/11/29	Sunny	9.0	0.9	10.0	0.0	Light grayish yellow green	None	97	26.8	4	3.3	<-0.72	<-0.75			
				2017/2/6	Sunny	13.4	1.4	9.5	0.0	Grayish yellow green	None	78	29.7	6	3.4	<-0.68	<-0.69			
				2016/5/23	Sunny	28.8	1.1	25.0	0.0	Light grayish yellow	None	53	24.6	7	3.6	<-0.57	<-0.88			
				2016/9/2	Sunny	27.5	0.2	26.8	0.0	Grayish yellow green	None	48	27.5	12	7.4	<-0.78	<-0.63	Sampling in September for a typhoon		
				2016/11/29	Sunny	7.0	0.3	12.7	0.0	Light grayish yellow	None	31	24.7	18	11	<-0.74	<-0.69			
				2017/2/6	Sunny	11.1	0.2	9.5	0.0	Light grayish yellow	None	63	28.8	7	4.5	<-0.72	<-0.75			
				2016/5/23	Sunny	31.1	1.0	25.5	0.0	Grayish yellow green	Faint sewage	77	22.7	7	2.7	<-0.66	<-0.61			
				2016/9/2	Sunny	32.1	0.6	26.5	0.0	Grayish yellow	None	>100	25.5	4	2.2	<-0.87	<-0.80	Sampling in September for a typhoon		
				2016/11/28	Cloudy	12.0	0.7	12.1	0.0	Grayish greenish yellow	None	42	21.6	11	7.1	<-0.74	<-0.75			
				2017/2/6	Sunny	11.0	0.6	10.8	0.0	Grayish yellow green	None	>100	29.5	6	2.4	<-0.67	<-0.84			

Ibaraki River (Water) 5/5

R i v e r s	Location				Sampling Date	Weather	Air temperature (°C)	Water depth (m)	Water								Remarks			
	No.	Water area		Location					Municipality	General items					Activity concentration(Bq/L)					
										Water temperature (°C)	Sampling depth (m)	Color	Odor	Transparency (cm)	Electrical conductivity (mS/m)	SS (mg/L)		Turbidity (FNU)	Radioactive cesium	
		Cs-134	Cs-137																	
51	Tonegawa River System	Tonegawa River Area	Tonegawa River	Kurihashi Bridge	Koga City	2016/5/18	Sunny	24.3	0.5	20.2	0.0	Grayish yellow green	None	61	16.1	10	6.3	<-0.82	<-0.55	
						2016/8/9	Sunny	32.8	0.9	29.2	0.0	Grayish yellow green	None	42	23.2	12	6.5	<-0.70	<-0.70	
						2016/11/14	Cloudy	13.5	0.3	12.0	0.0	Light grayish yellow green	None	71	27.9	6	4.3	<-0.90	<-0.66	
				2017/2/9	Cloudy	2.5	0.2	4.5	0.0	Light grayish yellow green	None	>100	29.1	5	3.1	<-0.66	<-0.55			
				2016/5/23	Sunny	24.5	0.6	22.8	0.0	Grayish yellow green	None	32	21.7	15	13	<-0.69	<-0.84			
				2016/9/1	Sunny	30.3	1.0	24.8	0.0	Light grayish yellow	None	20	17.4	50	33	<-0.61	<-0.80	Sampling in September for a typhoon		
	52	Tonegawa River System	Tonegawa River Area	Tonegawa River	Fukawa	Tone Town	2016/11/28	Sunny	9.0	0.3	9.5	0.0	Light grayish yellow green	None	79	26.8	5	4.1	<-0.79	<-0.80
							2017/2/1	Sunny	10.6	0.7	8.0	0.0	Grayish yellow green	None	63	28.3	7	5.3	<-0.63	<-0.69
							2016/5/24	Sunny	28.0	0.5	24.2	0.0	Grayish yellow green	None	32	30.6	22	9.6	<-0.75	<-0.66
							2016/8/27	Cloudy	24.0	0.4	25.2	0.0	Grayish greenish yellow	None	13	23.0	91	39	<-0.86	<-0.55
							2016/11/17	Sunny	15.6	0.5	13.0	0.0	Grayish yellow green	None	77	27.6	6	5.5	<-0.76	<-0.75
							2017/2/6	Sunny	13.0	0.3	8.2	0.0	Light grayish greenish yellow	None	32	38.2	38	12	<-0.66	<-0.66
53	Tonegawa River System	Tonegawa River Area	Tonegawa River	Sawara	Inashiki City	2016/5/18	Sunny	24.3	0.5	20.2	0.0	Grayish yellow green	None	61	16.1	10	6.3	<-0.82	<-0.55	
						2016/8/9	Sunny	32.8	0.9	29.2	0.0	Grayish yellow green	None	42	23.2	12	6.5	<-0.70	<-0.70	
						2016/11/14	Cloudy	13.5	0.3	12.0	0.0	Light grayish yellow green	None	71	27.9	6	4.3	<-0.90	<-0.66	

Ibaraki River (Sediment) 1/5

No.	Location			Sampling Date	Weather	Air temperature (°C)	Water depth (m)	Sediment																Remarks			
	Water area	Location	Municipality					General items																			
								Sediment temperature (°C)	Sample length (cm)	Color	Odor	Grain size distribution (%)					Sediment content (%)	Density (g/cm ³)	Property	Activity concentration [Bq/kg(dry)]							
												Coarse gravel	Medium gravel	Fine gravel	Coarse sand	Medium sand				Fine sand	Silt	Clay	Cs-134		Cs-137	Total	
R i v e r s	1	Satone River	Yamagaya Bridge	Kaiibaraki City	2016/5/16	Sunny	18.7	0.2	15.3	5	Black	Faint sewage	0.0	1.4	2.8	8.9	32.0	26.6	21.4	6.8	68.9	2.774	Sand/silt	30	200	230	
					2016/6/15	Cloudy	22.1	0.2	19.8	5	Blackish brown	None	0.0	2.7	5.0	10.0	43.1	24.6	10.1	4.5	71.6	2.777	Sand/gravel	31	200	251	
					2016/11/7	Sunny	8.2	0.3	8.2	3	Blackish brown	None	0.0	17.8	22.2	28.8	23.0	6.5	2.0	1.2	78.9	2.857	Sand/gravel	6.7	20	35.7	
					2017/2/7	Sunny	4.5	0.2	6.2	3	Black	None	0.0	19.1	21.3	25.0	24.4	6.7	2.4	1.1	81.7	2.847	Sand/gravel/silt	5.0	21	26.0	
					2016/5/16	Cloudy	21.2	0.2	20.1	5	Dark brown	Faint sewage	0.0	0.4	4.8	51.1	34.4	2.6	2.7	4.1	71.0	2.716	Sand/gravel	14	67	81	
					2016/8/15	Sunny	25.9	0.2	22.8	3	Dark brown	Faint sewage	0.0	0.6	3.8	46.8	39.6	3.3	2.2	3.8	74.6	2.687	Sand	8.2	98	66.2	
	2	Murayama Bridge	Kaiibaraki City	2016/11/7	Sunny	11.0	0.4	9.3	2	Dark brown	None	0.0	28.9	35.3	24.1	8.1	1.4	1.0	1.2	80.5	2.706	Sand/gravel	6.2	49	55.2		
				2017/2/7	Sunny	6.2	0.4	5.4	3	Dark brown	None	0.0	19.8	31.7	30.0	15.9	0.6	0.0	1.9	77.3	2.674	Sand/gravel	7.4	56	63.4		
				2016/5/16	Cloudy	17.1	0.2	14.3	5	Brown	None	0.0	12.3	18.3	41.7	22.2	1.5	2.0	2.0	74.8	2.678	Sand/gravel	7.1	28	35.1		
				2016/8/15	Cloudy	21.9	0.4	18.9	3	Dull yellowish brown	None	2.6	39.4	13.9	14.4	25.2	2.8	0.9	0.9	79.9	2.732	Sand/gravel	6.0	34	40.0		
				2016/11/7	Sunny	7.2	0.3	8.8	3	Brown	None	8.2	28.5	18.7	21.0	21.2	1.0	0.5	0.9	82.4	2.712	Sand/gravel	5.5	26	31.5		
				2017/2/7	Sunny	1.3	0.3	4.7	3	Dull yellowish brown	None	0.0	7.1	12.4	48.7	28.3	0.4	0.8	2.3	78.0	2.633	Sand/gravel	6.2	29	35.2		
	3	Tagagawa River System	Hanazono River	Korabeishi	Kaiibaraki City	2016/5/16	Cloudy	18.6	0.4	18.0	5	Blackish brown	None	1.1	14.4	11.0	10.0	23.7	17.4	11.1	11.3	77.1	2.625	Sand/gravel	-4.8	33	33
						2016/8/15	Cloudy	25.3	0.3	26.0	3	Dull yellowish brown	None	0.0	37.1	21.7	21.1	17.2	1.3	0.5	1.2	82.5	2.678	Sand/gravel	-4.0	21	21
						2016/11/7	Sunny	9.2	0.5	11.0	3	Dark brown	None	4.6	37.5	13.3	20.1	19.3	3.1	1.3	0.9	81.6	2.634	Sand/gravel	9.1	46	55.1
						2017/2/7	Sunny	5.9	0.4	8.0	2	Dull yellowish brown	None	0.0	40.3	11.6	9.4	27.7	9.4	0.6	1.0	76.8	2.622	Sand/gravel	15	66	81
						2016/6/2	Sunny	21.7	0.3	13.5	3	Blackish brown	None	0.0	23.1	29.7	19.6	19.1	6.6	0.5	1.4	77.4	2.740	Sand/gravel	5.9	35	40.9
						2016/8/15	Cloudy	22.0	0.3	18.2	3	Brown	None	0.0	14.6	39.1	28.6	11.9	3.5	0.9	1.3	80.2	2.701	Sand/gravel	-4.2	11	11
	4	Tagagawa River System	Isonare Bridge	Hanazono River	Kaiibaraki City	2016/11/8	Sunny	7.2	0.3	6.7	3	Brown	None	0.0	18.0	21.5	16.1	33.0	9.6	0.6	1.2	80.1	2.722	Sand/gravel	-4.5	19	19
						2017/2/14	Sunny	5.2	0.3	3.9	3	Brown	None	0.0	10.8	19.6	15.2	32.8	16.7	2.1	2.7	75.4	2.707	Sand/gravel	-3.6	31	31
						2016/6/2	Sunny	20.5	0.3	17.8	5	Brown	None	2.0	27.6	23.4	13.7	20.1	10.9	0.9	1.4	84.0	2.700	Sand/gravel	10	48	58
						2016/8/15	Cloudy	26.0	0.4	23.0	5	Dull yellowish brown	None	0.0	8.7	33.2	24.5	25.7	5.1	1.2	1.7	77.4	2.648	Sand/gravel	11	99	70
						2016/11/8	Sunny	8.0	0.5	7.2	3	Brown	None	0.0	8.3	19.7	32.6	34.9	2.4	0.0	2.1	78.2	2.649	Sand/gravel	7.1	37	44.1
						2017/2/14	Sunny	8.5	0.3	5.8	3	Brown	None	0.0	12.3	25.1	29.0	27.5	3.6	0.6	1.9	76.6	2.589	Sand/silt	4.0	35	39.0
5	Tagagawa River System	Okita River	Sakae Bridge	Takahagi City	2016/6/2	Sunny	23.2	0.4	20.8	3	Dull yellowish brown	None	0.0	1.6	11.3	39.1	43.4	2.6	0.3	1.7	75.6	2.640	Sand	8.4	41	49.4	
					2016/8/16	Sunny	26.6	0.4	21.2	3	Dull yellowish brown	None	0.0	7.0	7.6	27.6	51.0	3.6	1.7	1.7	74.3	2.625	Sand/gravel	9.0	61	70.0	
					2016/11/8	Cloudy	11.0	0.3	10.0	3	Brown	None	0.0	0.2	4.6	52.2	39.5	0.7	1.0	1.9	74.0	2.604	Sand	6.0	43	49.0	
					2017/2/14	Sunny	5.4	0.3	6.0	3	Brown	None	0.0	13.5	12.1	24.7	39.2	6.1	1.5	2.9	76.2	2.589	Sand/gravel	7.3	43	50.3	
					2016/5/18	Sunny	25.3	0.8	19.5	5	Dark brown	None	5.8	24.5	13.1	18.6	17.3	11.2	6.8	5.8	77.9	2.633	Sand/gravel	-5.8	28	28	
					2016/9/2	Sunny	24.1	0.7	21.8	3	Dark brown	None	0.0	25.3	32.1	16.3	20.4	3.7	0.9	1.4	82.4	2.624	Gravel/sand/silt	-4.1	8.6	8.6	
6	Tagagawa River System	Sakai Bridge	Kaiibaraki City	Kaiibaraki City	2016/11/8	Cloudy	11.0	0.4	9.2	4	Dark brown	None	0.0	0.5	0.6	2.8	51.9	31.3	8.7	4.3	70.9	2.638	Sand/silt	6.3	33	39.3	
					2017/2/13	Sunny	5.0	0.3	5.8	3	Dark brown	None	0.0	0.9	1.5	6.8	75.2	8.9	1.6	5.2	73.4	2.613	Sand/gravel	-2.3	13	13	
					2016/5/18	Sunny	20.5	0.8	15.3	5	Blackish brown	None	0.0	0.0	0.1	1.7	47.5	38.9	6.9	4.9	73.5	2.668	Sand/silt	5.1	24	29.1	
					2016/8/16	Sunny	30.3	0.3	26.0	5	Blackish brown	None	1.8	29.9	21.1	18.0	14.7	9.3	2.6	2.6	81.1	2.671	Sand/gravel	-3.9	6.4	6.4	
					2016/11/8	Cloudy	10.8	0.4	9.8	2	Blackish brown	None	9.6	16.4	1.5	2.3	14.7	42.7	9.6	3.2	68.1	2.641	Sand/gravel/silt	-6.5	28	28	
					2017/2/14	Sunny	0.6	0.3	4.1	2	Dull yellowish brown	None	0.0	4.0	0.1	0.9	26.2	47.7	13.3	7.8	61.1	2.589	Sand	6.9	34	40.9	
7	Tagagawa River System	Hanamaki River	Shinbanamaki Bridge	Takahagi City	2016/5/18	Sunny	25.3	0.8	19.0	5	Blackish brown	Faint sewage	5.6	61.1	18.1	6.7	4.2	1.4	1.6	1.3	81.9	2.646	Gravel/sand	-4.7	22	22	
					2016/9/2	Sunny	26.4	0.5	23.8	5	Dull yellowish brown	None	4.2	52.7	12.2	5.0	20.5	4.3	0.3	0.9	84.2	2.688	Sand/gravel	-4.2	10	10	
					2016/11/9	Sunny	7.0	0.3	11.2	3	Grayish yellowish brown	None	0.0	21.7	7.5	6.3	47.0	15.0	0.7	2.1	78.8	2.676	Sand/gravel	-4.7	9.5	9.5	
					2017/2/13	Cloudy	7.2	0.3	6.2	3	Grayish yellowish brown	None	2.2	32.9	10.1	8.4	34.4	9.9	0.3	1.9	78.8	2.675	Sand/gravel	-3.7	8.8	8.8	
					2016/5/18	Sunny	19.0	2.0	18.4	5	Dark brown	None	0.0	0.4	0.1	0.3	5.9	44.1	36.8	12.5	58.0	2.633	Silt	19	92	111	
					2016/9/2	Sunny	28.3	1.5	22.5	3	Blackish brown	Faint sewage	0.0	0.0	0.0	0.0	16.9	56.0	19.5	7.5	51.4	2.632	Sand/silt	15	99	114	
8	Nakagawa River System	Nakagawa River Area	Nakagawa River	Mito City	2016/11/9	Sunny	10.0	1.0	11.0	3	Blackish brown	Faint swamp	0.0	0.0	0.0	0.0	9.3	67.5	17.4	5.8	63.5	2.651	Sand/silt	9.7	57	66.7	
					2017/2/13	Sunny	9.6	1.5	7.0	5	Blackish brown	Faint sewage	0.0	0.0	0.0	0.1	7.2	61.4	24.1	7.2	58.6	2.614	Sand/silt	8.2	57	65.2	
					2016/11/9	Sunny	10.0	1.0	11.0	3	Blackish brown	Faint swamp	0.0	0.0	0.0	0.0	9.3	67.5	17.4	5.8	63.5	2.651	Sand/silt	9.7	57	66.7	

Ibaraki River (Sediment) 4/5

No.	Location				Sampling Date	Weather	Air temperature (°C)	Water depth (m)	Sediment																	Remarks
	Water area	Location	Municipality	General items										Activity concentration [Bq/kg(dry)]												
				Sediment temperature (°C)					Sample length (cm)	Color	Odor	Grain size distribution(%)					Sediment content (%)	Density (g/cm ³)	Property	Radioactive cesium						
												Coarse gravel	Medium gravel	Fine gravel	Coarse sand	Medium sand				Fine sand	Silt	Clay	Cs-134	Cs-137	Total	
R i v e r s	Kasumigawa River Area	Onogawa River	Okuhara-obashi Bridge	Ryugasaki City/ Utsunomiya City	2016/5/24	Sunny	32.0	0.4	22.8	5	Blackish brown	None	0.0	0.0	0.0	0.0	24.9	62.7	8.4	4.0	68.1	2.647	Sand	55	310	365
					2016/9/1	Sunny	26.8	0.5	26.0	3	Blackish brown	None	0.0	0.0	0.0	0.1	14.3	71.4	6.8	7.6	64.2	2.603	Sand	53	520	373
					2016/11/16	Sunny	12.0	0.4	13.1	5	Blackish brown	None	0.0	0.0	0.0	0.2	16.7	74.0	4.3	4.8	71.2	2.641	Sand	42	280	322
		Shintone River	Shintone Bridge	Inashiki City	2017/2/1	Cloudy	9.8	0.4	9.4	4	Blackish brown	None	0.0	0.0	0.0	0.0	13.0	74.0	5.6	7.8	63.0	2.611	Sand	40	340	380
					2016/5/24	Sunny	30.2	1.0	25.0	5	Olive black	None	0.0	2.7	1.3	1.9	13.6	59.3	31.0	10.2	46.4	2.631	Silt/gravel	40	200	240
					2016/8/27	Cloudy	24.3	1.5	27.2	5	Olive black	Faint sewage	0.0	0.0	0.7	1.9	15.9	50.6	20.6	10.3	50.8	2.619	Silt	42	180	222
	2016/11/16				Sunny	12.1	1.7	12.2	8	Blackish brown	Faint sewage	0.0	0.0	0.0	0.4	20.5	59.7	14.0	5.4	57.5	2.665	Silt/sand	31	160	191	
	2017/2/2				Sunny	7.5	2.6	6.2	5	Olive black	Faint sewage	0.0	0.0	0.1	0.3	6.7	38.0	36.8	18.1	44.1	2.516	Silt/sand	31	230	263	
	2016/5/25				Sunny	24.0	0.5	20.5	7	Olive black	Faint sewage	0.0	1.2	2.5	3.1	25.1	19.5	32.3	16.4	36.4	2.569	Silt	15	100	115	
	Hnashitongawa River Area	Yorokoshi River	Horinosuchi Bridge	Itako City	2016/8/27	Cloudy	26.0	0.5	24.0	5	Olive black	Faint sewage	0.0	2.0	0.8	2.4	19.8	21.3	36.2	17.5	39.3	2.592	Silt	24	130	154
					2016/11/17	Sunny	11.3	0.6	11.2	3	Olive black	Faint sewage	0.0	3.1	2.6	5.7	31.6	11.1	34.4	11.7	24.2	2.397	Silt	<8.2	27	27
					2017/2/2	Sunny	7.2	0.7	7.0	3	Dark olive brown	Faint sewage	0.0	0.0	0.0	0.3	7.7	17.3	47.3	27.8	24.5	Silt	37	240	277	
		Mackawa River	Ayame Bridge	Itako City	2016/5/24	Sunny	25.0	2.2	22.7	7	Dark grayish yellow	Faint swamp	0.0	0.7	3.2	5.1	32.9	42.0	11.0	5.2	57.8	2.659	Silt/sand	27	150	177
					2016/8/27	Cloudy	25.8	2.6	26.0	5	Olive black	Faint sewage	0.0	0.0	0.0	0.3	19.6	59.7	10.7	9.6	50.7	2.633	Silt	30	210	240
					2016/11/17	Sunny	12.7	2.4	12.2	8	Blackish brown	Faint sewage	0.0	0.0	0.0	0.2	30.0	60.5	6.7	2.6	59.1	2.680	Silt/sand	17	120	137
	Kinogawa River Area	Kinogawa River	Takishita Bridge	Moriya City	2017/2/2	Sunny	1.2	2.7	5.8	4	Dark olive brown	Faint sewage	0.0	0.0	0.0	0.3	35.3	55.1	3.5	5.7	57.8	2.655	Silt/sand	19	120	139
					2016/5/18	Sunny	25.0	0.6	19.5	5	Dark olive brown	None	0.0	38.6	18.7	17.5	21.3	1.8	0.8	1.2	81.3	2.704	Sand/gravel	<0.7	1.7	1.7
					2016/8/9	Sunny	34.2	0.5	24.9	3	Dark olive brown	None	2.8	12.2	4.4	8.1	47.3	19.0	3.1	3.2	78.0	2.693	Sand	<0.76	6.7	6.7
					2016/11/14	Cloudy	14.5	0.4	14.7	3	Dark olive brown	None	6.6	16.0	1.7	2.3	44.2	26.6	1.2	1.5	74.3	2.693	Sand/gravel	1.2	5.8	7.0
					2017/2/9	Snow	2.0	0.3	6.2	3	Dark olive brown	None	2.0	25.9	2.8	5.4	33.5	23.6	3.2	3.7	76.7	2.655	Sand/gravel	<3.3	9.2	9.2
					2016/5/23	Sunny	22.2	0.3	21.9	5	Olive black	Faint sewage	0.0	0.6	0.8	2.3	32.8	55.7	3.2	4.5	75.3	2.754	Sand	<4.7	19	19
	Tagawa River	Tagawa Bridge	Chikusei City	2016/9/2	Sunny	26.2	0.4	24.2	5	Olive black	None	0.0	0.0	0.0	0.6	20.9	54.6	17.9	6.0	61.7	2.667	Sand/silt	9.7	44	53.7	
				2016/11/15	Cloudy	15.5	0.4	14.0	6	Olive black	None	0.0	0.2	0.4	0.8	44.4	49.4	2.9	1.9	74.7	2.789	Sand	4.3	18	22.3	
				2017/2/6	Sunny	11.3	0.3	8.0	5	Olive black	None	0.0	0.0	0.0	1.5	41.5	47.7	3.4	5.8	73.7	2.702	Sand	<3.6	31	31	
				2016/5/18	Sunny	20.0	0.4	17.3	3	Blackish brown	None	0.0	47.1	18.3	8.7	17.8	5.6	1.3	1.3	80.8	2.795	Gravel/sand	<4.4	18	18	
				2016/8/9	Sunny	31.9	0.3	24.0	3	Blackish brown	Faint sewage	9.4	48.4	11.1	9.8	16.1	3.0	1.2	1.1	76.0	2.707	Gravel/sand	<3.8	13	13	
				2016/11/14	Cloudy	12.8	0.3	14.0	3	Blackish brown	None	1.5	42.4	15.9	17.4	20.4	1.3	0.0	1.2	84.8	2.716	Sand/gravel	2.4	14	16.4	
	Kokai River	Kuroko Bridge	Toride City	2017/2/9	Snow	1.8	0.4	6.6	2	Blackish brown	None	5.1	41.1	13.3	13.2	21.0	3.9	0.8	1.6	79.7	2.653	Sand/gravel	<3.8	15	15	
				2016/5/18	Sunny	24.4	0.6	19.5	5	Olive black	Faint sewage	0.0	0.0	0.1	0.6	9.3	61.0	14.8	14.3	51.8	2.610	Sand/silt	21	100	121	
				2016/8/9	Sunny	37.5	0.8	28.1	5	Olive black	Faint sewage	0.0	0.2	0.5	0.9	26.0	46.8	14.3	11.3	48.7	2.599	Silt/sand	16	90	106	
				2016/11/14	Cloudy	16.0	0.4	13.4	5	Olive black	Faint sewage	0.0	0.0	0.0	0.6	9.2	55.0	29.7	5.4	47.4	2.622	Silt/sand	23	110	133	
				2017/2/9	Snow	2.3	0.3	6.8	4	Olive black	Faint sewage	0.0	0.0	0.0	0.7	14.1	52.8	19.6	12.8	51.9	2.545	Sand/silt	15	100	115	
				2016/5/23	Sunny	34.0	0.6	26.0	5	Blackish brown	Faint swamp	0.0	0.5	0.8	10.3	84.7	1.7	0.0	1.9	75.8	2.676	Sand/gravel	6.9	28	34.9	
	Yatagawa River	Matsuyama Bridge	Tsukuba City	2016/9/1	Sunny	27.2	2.4	25.9	5	Dark brown	None	0.0	0.2	0.2	3.6	87.8	4.4	1.0	2.9	75.1	2.652	Sand/gravel	6.1	32	38.1	
				2016/11/28	Sunny	11.8	1.5	10.9	3	Blackish brown	None	0.0	0.0	0.0	1.7	80.7	13.8	1.0	2.9	75.5	2.744	Sand	<5.5	32	32	
				2017/2/1	Cloudy	7.2	1.4	7.1	4	Dark brown	None	0.0	0.0	0.0	1.6	77.8	16.7	1.1	3.0	77.0	2.639	Sand	6.0	30	36.0	
				2016/5/23	Sunny	27.0	2.4	21.5	5	Blackish brown	Faint sewage	0.0	0.0	0.0	0.0	4.1	75.0	12.3	8.7	56.7	2.614	Silt/sand	24	130	154	
				2016/9/2	Cloudy	25.0	1.1	24.8	5	Black	Faint sewage	0.0	0.0	0.2	0.4	15.8	76.7	3.0	4.0	71.4	2.627	Sand/silt	20	98	118	
				2016/11/29	Sunny	9.0	0.8	11.0	5	Blackish brown	Faint sewage	0.0	0.0	0.0	0.2	0.4	21.7	54.2	23.5	33.2	2.454	Silt	67	380	447	
Nishiyata River	Sakamatsu Bridge	Tsukuba City	2017/2/6	Sunny	13.4	1.4	8.0	5	Blackish brown	None	0.0	0.0	0.0	0.0	4.8	86.1	2.7	6.5	71.4	2.641	Sand/silt	14	88	102		
			2016/5/23	Sunny	28.8	1.1	22.6	5	Blackish brown	Faint sewage	0.0	0.0	0.6	4.7	26.7	47.1	14.1	6.8	59.2	2.583	Sand/silt	22	120	142		
			2016/9/2	Sunny	27.5	0.2	27.2	3	Black	Faint sewage	0.0	10.4	4.5	10.6	45.8	19.5	4.7	4.6	74.8	2.680	Sand/silt/gravel	10	57	67		
			2016/11/29	Sunny	7.0	0.3	10.3	2	Blackish brown	Faint sewage	0.0	8.1	3.8	5.3	56.0	12.7	8.0	6.1	57.0	2.687	Sand/silt/gravel	13	100	113		
			2017/2/6	Sunny	11.1	0.2	8.2	2	Blackish brown	Faint sewage	8.7	8.3	1.9	2.8	38.4	24.6	7.0	8.3	45.5	2.627	Sand/silt/gravel	13	82	95		
			2016/5/23	Sunny	31.1	1.0	20.5	5	Dark brown	Faint sewage	0.0	41.7	21.6	12.2	12.2	16.9	3.6	2.8	1.2	78.1	2.674	Sand/gravel/silt	54	300	354	
Inari River	Ogaki Bridge	Tsukuba City	2016/9/2	Sunny	32.1	0.6	27.0	3	Dark brown	None	0.0	29.7	23.1	18.5	21.3	3.7	1.5	1.9	79.0	2.637	Sand/gravel/silt	56	290	346		
			2016/11/28	Cloudy	12.0	0.7	12.0	3	Dull yellowish brown	None	0.0	22.9	6.5	9.5	43.6	11.5	3.2	2.8	76.0	2.665	Sand/gravel/silt	63	320	383		
			2017/2/6	Sunny	11.0	0.6	11.6	3	Dark brown	Faint sewage	0.0	11.2	3.3	7.0	47.2	22.3	4.1	4.9	70.3	2.632	Sand/silt	49	350	399		

Ibaraki River (Sediment) 5/5

R i v e r s	Location				Sampling Date	Weather	Air temperature (°C)	Water depth (m)	Sediment																	Remarks			
	No.	Water area							Location	Municipality	Sediment temperature (°C)	Sample length (cm)	Color	Odor	General items								Sediment content (%)	Density (g/cm ³)	Property		Activity concentration [Bq/kg(dry)]		
		Coarse gravel	Medium gravel	Grain size distribution(%)											Coarse sand	Medium sand	Fine sand	Silt	Clay	Cs-134	Cs-137	Total							
				Fine gravel																							Coarse sand		
51	Tonegawa River System	Tonegawa River Area	Tonegawa River	Kuribashi Bridge	Koga City	2016/5/18	Sunny	24.3	0.5	19.2	3	Olive black	Faint sewage	0.0	0.0	0.0	0.7	32.4	58.0	4.3	4.7	76.5	2.926	Sand/silt	<3.6	21	21		
						2016/8/9	Sunny	32.8	0.9	28.2	5	Blackish brown	Faint sewage	0.0	0.0	0.4	9.8	61.3	19.8	8.7	56.8	2.670	Sand	12	55	67			
						2016/11/4	Cloudy	13.5	0.3	12.3	4	Olive black	None	0.0	0.0	0.3	7.0	59.9	30.7	0.1	1.9	74.6	2.740	Sand	<4.5	17	17		
				2017/2/9	Cloudy	2.5	0.2	3.8	3	Olive black	Faint sewage	0.0	0.0	0.5	22.1	53.6	13.5	10.3	36.6	2.639	Sand/silt	18	96	114					
				2016/5/23	Sunny	24.5	0.6	23.5	5	Blackish brown	None	0.0	0.0	0.1	20.7	70.2	5.1	3.9	74.3	2.730	Sand	7.6	28	35.6					
				2016/9/1	Sunny	30.3	1.0	24.8	5	Dark olive brown	Medium swamp	0.0	0.0	0.0	0.2	1.2	24.1	48.9	25.6	41.6	2.523	Silt	22	160	182				
	2016/11/28	Sunny	9.0	0.3	9.3	3	Olive black	None	0.0	0.0	0.0	0.1	28.3	62.4	5.3	3.9	63.0	2.698	Sand	6.9	34	40.9							
	2017/2/1	Sunny	10.6	0.7	8.2	3	Blackish brown	None	0.0	0.0	0.0	0.0	25.3	63.2	5.2	6.3	70.6	2.788	Sand	<4.0	20	20							
	2016/5/24	Sunny	28.0	0.5	24.1	3	Grayish yellowish brown	Faint sewage	11.6	36.4	9.1	4.6	13.1	14.5	7.5	3.4	70.3	2.693	Gravel/sand/silt	<4.9	17	17							
	2016/8/27	Cloudy	24.0	0.4	25.2	3	Olive black	None	6.8	30.2	7.8	5.4	9.2	22.5	13.1	4.9	63.3	2.635	Silt/gravel/sand	<5.8	26	26							
	2016/11/17	Sunny	15.6	0.5	12.8	3	Blackish brown	Faint sewage	4.1	37.8	9.0	3.7	13.8	23.6	4.6	3.8	75.9	2.689	Sand/gravel/silt	<5.3	37	37							
	2017/2/6	Sunny	13.0	0.3	8.3	1	Brownish gray	Faint sewage	2.6	27.6	7.8	6.3	14.0	23.7	13.8	4.3	60.6	2.627	Sand/silt/gravel	<4.2	21	21							

Ibaraki River (Surrounding Environment) 1/5

R i v e r s	Location				Sampling Date	Weather	Air temperature (°C)	Surrounding Environment(Soil,Air dose)											Remarks			
	No.	Water area		Municipality				Left bank			Right bank											
		Activity concentration [Bq/kg(dry)]	Radioactive cesium					Air Dose (µSv/h)	Color	Odor	Property	Activity concentration [Bq/kg(dry)]			Air Dose (µSv/h)							
												Cs-134	Cs-137	Total		Cs-134	Cs-137	Total				
1	1	Sotone River	Yamagoya Bridge	Kitabaraki City	2016/5/16	Sunny	18.7	Blackish brown	Faint earth	Loamy	390	1,900	2,290	0.15	Black	Faint earth	Loamy	220	1,200	1,420	0.14	
					2016/8/15	Cloudy	22.1	Blackish brown	Faint earth	Loamy	550	2,800	3,350	0.14	Blackish brown	Faint earth	Loamy	510	2,800	3,310	0.18	
					2016/11/7	Sunny	8.2	Blackish brown	Faint earth	Loamy	260	1,700	1,960	0.15	Blackish brown	Faint earth	Loamy	640	3,700	4,340	0.17	
					2017/2/7	Sunny	4.5	Blackish brown	Faint earth	Loamy	470	2,800	3,270	0.13	Blackish brown	Faint earth	Loamy	470	2,900	3,370	0.16	
					2016/5/16	Cloudy	21.2	Blackish brown	Faint earth	Loamy	240	1,200	1,440	0.08	Blackish brown	Faint earth	Loamy	290	1,500	1,790	0.10	
		2016/8/15	Sunny	25.9	Dull yellowish brown	Faint earth	Loamy	160	850	1,010	0.09	Blackish brown	Faint earth	Loamy	390	2,200	2,590	0.10				
		2016/11/7	Sunny	11.0	Blackish brown	Faint earth	Loamy	120	820	940	0.09	Dark brown	Faint earth	Loamy	420	2,400	2,820	0.10				
		2017/2/7	Sunny	6.2	Blackish brown	Faint earth	Loamy	260	1,600	1,860	0.08	Blackish brown	Faint earth	Loamy	120	670	790	0.08				
		2016/5/16	Cloudy	17.1	Blackish brown	Faint earth	Loamy	120	500	620	0.10	Blackish brown	Faint earth	Loamy	91	470	561	0.11				
		2016/8/15	Cloudy	21.9	Blackish brown	Faint earth	Loamy	110	550	660	0.10	Dull yellowish brown	Faint earth	Loamy	58	370	428	0.11				
	2	Tagagawa River System	Hanazono River	Kurabeishi	Kitabaraki City	2016/11/7	Sunny	7.2	Blackish brown	Faint earth	Loamy	78	480	558	0.09	Blackish brown	Faint earth	Loamy	60	410	470	0.10
						2017/2/7	Sunny	1.3	Blackish brown	Faint earth	Loamy	120	660	780	0.08	Blackish brown	Faint earth	Loamy	77	530	607	0.09
						2016/5/16	Cloudy	18.6	Dark brown	Faint earth	Loamy	75	390	465	0.08	Dark brown	Faint earth	Loamy	200	1,000	1,200	0.15
						2016/8/15	Cloudy	25.3	Brown	Faint earth	Loamy	85	470	555	0.08	Dull yellowish brown	Faint earth	Loamy	170	960	1,130	0.16
						2016/11/7	Sunny	9.2	Blackish brown	Faint earth	Loamy	95	490	585	0.07	Blackish brown	Faint earth	Loamy	200	1,300	1,500	0.15
			2017/2/7	Sunny	5.9	Dark brown	Faint earth	Loamy	54	380	434	0.07	Dark brown	Faint earth	Loamy	140	970	1,110	0.14			
			2016/6/2	Sunny	21.7	Blackish brown	Faint earth	Sandy	21	140	161	0.07	Dark brown	Faint earth	Loamy	80	450	530	0.07			
			2016/8/15	Cloudy	22.0	Dull yellowish brown	Faint earth	Sandy	44	230	274	0.08	Dull yellowish brown	Faint earth	Loamy	45	200	245	0.07			
			2016/11/8	Sunny	7.2	Dull yellowish brown	Faint earth	Sandy	19	140	159	0.08	Dark brown	Faint earth	Loamy	43	340	383	0.06			
			2017/2/14	Sunny	5.2	Grayish yellowish brown	Faint earth	Sandy	21	160	181	0.06	Dark brown	Faint earth	Loamy	28	190	218	0.06			
3	Tagagawa River System	Okita River	Sakae Bridge	Takahagi City	2016/6/2	Sunny	20.5	Blackish brown	Faint earth	Loamy	89	450	539	0.11	Dark brown	Faint earth	Loamy	95	540	635	0.10	
					2016/8/15	Cloudy	26.0	Dull yellowish brown	Faint earth	Loamy	90	500	590	0.11	Dark brown	Faint earth	Loamy	74	580	654	0.12	
					2016/11/8	Sunny	8.0	Dark brown	Faint earth	Loamy	53	340	393	0.10	Dark brown	Faint earth	Loamy	96	550	646	0.11	
					2017/2/14	Sunny	8.5	Dark brown	Faint earth	Loamy	86	520	606	0.10	Dark brown	Faint earth	Loamy	84	510	594	0.11	
					2016/6/2	Sunny	23.2	Grayish yellowish brown	Faint earth	Loamy	130	690	820	0.10	Dull yellowish brown	Faint earth	Loamy	140	770	910	0.07	
		2016/8/16	Sunny	26.6	Dull yellowish brown	Faint earth	Loamy	210	1,200	1,410	0.08	Grayish yellowish brown	Faint earth	Loamy	160	950	1,110	0.09				
		2016/11/8	Cloudy	11.0	Dark brown	Faint earth	Loamy	140	790	930	0.10	Blackish brown	Faint earth	Loamy	150	770	920	0.09				
		2017/2/14	Sunny	5.4	Dark brown	Faint earth	Loamy	47	320	367	0.10	Dark brown	Faint earth	Loamy	120	710	830	0.09				
		2016/5/18	Sunny	25.3	Blackish brown	Faint earth	Loamy	50	210	260	0.09	Dark brown	Faint earth	Loamy	32	130	162	0.09				
		2016/6/2	Sunny	24.3	Blackish brown	Faint earth	Loamy	29	230	259	0.10	Grayish yellowish brown	Faint earth	Sandy	<5.9	17	17	0.08				
4	Kujigawa River System	Kujigawa River	Yamagata	Hitachiomiya City	2016/11/8	Cloudy	11.0	Blackish brown	Faint earth	Loamy	16	100	116	0.10	Dark brown	Faint earth	Sandy	7.3	58	65.3	0.09	
					2017/2/13	Sunny	5.0	Blackish brown	Faint earth	Loamy	7.3	48	55.3	0.09	Grayish yellowish brown	Faint earth	Sandy	8.8	57	65.8	0.09	
					2016/5/18	Sunny	20.5	Blackish brown	Faint earth	Loamy	45	220	265	0.08	Blackish brown	Faint earth	Loamy	200	920	1,120	0.08	
					2016/8/16	Sunny	30.3	Dull yellowish brown	Faint earth	Loamy	94	590	684	0.08	Grayish yellowish brown	Faint earth	Loamy	41	770	211	0.10	
					2016/11/8	Cloudy	10.8	Blackish brown	Faint earth	Loamy	37	240	277	0.08	Blackish brown	Faint earth	Loamy	84	660	744	0.09	
		2017/2/14	Sunny	0.0	Blackish brown	Faint earth	Loamy	19	170	189	0.08	Blackish brown	Faint earth	Loamy	78	450	528	0.09				
		2016/5/18	Sunny	25.3	Blackish brown	Faint earth	Loamy	44	270	314	0.07	Blackish brown	Faint earth	Loamy	6.8	28	34.8	0.07				
		2016/9/2	Sunny	26.4	Blackish brown	Faint earth	Loamy	62	350	412	0.08	Blackish brown	Faint earth	Loamy	13	60	73	0.06				
		2016/11/9	Sunny	7.0	Blackish brown	Faint earth	Loamy	43	300	343	0.08	Blackish brown	Faint earth	Loamy	<6.6	43	43	0.07				
		2017/2/13	Cloudy	7.2	Blackish brown	Faint earth	Loamy	35	240	275	0.08	Dark brown	Faint earth	Loamy	14	110	124	0.07				
5	Nakagawa River System	Nakagawa River Area	Nakagawa River	Mito City	2016/5/18	Sunny	19.0	Dark brown	Faint earth	Loamy	48	210	258	0.06	Blackish brown	Faint earth	Loamy	100	500	600	0.10	
					2016/9/2	Sunny	28.3	Dark brown	Faint earth	Loamy	25	160	185	0.07	Blackish brown	Faint earth	Loamy	89	430	519	0.08	
					2016/11/9	Sunny	10.0	Dull yellowish brown	Faint earth	Loamy	21	140	161	0.07	Dark brown	Faint earth	Loamy	72	460	532	0.10	
					2017/2/13	Sunny	9.0	Dark brown	Faint earth	Loamy	17	100	117	0.06	Blackish brown	Faint earth	Loamy	56	340	396	0.09	

Ibaraki River (Surrounding Environment) 2/5

No.	Location				Sampling Date	Weather	Air temperature (°C)	Surrounding Environment (Soil, Air dose)											Remarks								
	Water area	Location	Municipality	Left bank				Right bank			Activity concentration [Bq/kg(dry)]			Air Dose (μSv/h)													
				Color				Odor	Property	Color	Odor	Property	Radioactive cesium			Color	Odor	Property		Radioactive cesium							
													Cs-134	Cs-137	Total					Cs-134	Cs-137	Total					
R i v e r s	Nakagawa River Area	Nakagawa River	Katsuta Bridge	Mito City/ Hitachinaka City	2016/5/18	Sunny	22.5	Dark brown	Faint earth	Loamy				Blackish brown	Faint earth	Loamy				100	560	660	0.09				
					2016/8/16	Sunny	29.1	Dull yellowish brown	Faint earth	Loamy	50	300	350	0.07	Grayish yellowish brown	Faint earth	Loamy	91	510	601	0.08						
					2016/11/9	Sunny	10.8	Dark brown	Faint earth	Loamy	45	260	305	0.07	Blackish brown	Faint earth	Loamy	55	380	435	0.09						
					2017/2/13	Sunny	5.7	Dark brown	Faint earth	Loamy	23	210	233	0.06	Blackish brown	Faint earth	Loamy	61	410	471	0.08						
					2016/5/18	Sunny	17.5	Dull yellowish brown	Faint earth	Loamy	21	110	131	0.08	Blackish brown	Faint earth	Loamy	7.1	45	52.1	0.08						
		Nakagawa River Area	Nakamaru River	Yanagisawa Bridge	Hitachinaka City	2016/8/16	Sunny	31.1	Dull yellowish brown	Faint earth	Loamy	77	410	487	0.08	Dull yellowish brown	Faint earth	Loamy	61	410	471	0.07					
						2016/11/9	Sunny	11.5	Dark brown	Faint earth	Loamy	36	170	206	0.08	Blackish brown	Faint earth	Loamy	15	76	91	0.07					
						2017/2/13	Sunny	3.6	Dark brown	Faint earth	Loamy	27	160	187	0.08	Dark brown	Faint earth	Loamy	5.7	27	32.7	0.07					
						2016/5/19	Sunny	25.5	Grayish yellowish brown	Faint earth	Loamy	21	120	141	0.08	Blackish brown	Faint earth	Loamy	110	570	680	0.09					
						2016/9/2	Sunny	27.3	Dark brown	Faint earth	Loamy	17	85	102	0.07	Dark brown	Faint earth	Loamy	81	440	521	0.07	Sampling in September for a typhoon				
	Nakagawa River System	Hinumanae River	Nagaoka Bridge	Ibaraki Town	2016/11/10	Cloudy	7.9	Blackish brown	Faint earth	Loamy	17	120	137	0.07	Blackish brown	Faint earth	Loamy	55	290	345	0.08						
					2017/2/7	Sunny	6.0	Blackish brown	Faint earth	Loamy	19	86	105	0.07	Dark brown	Faint earth	Loamy	67	420	487	0.08						
					2016/5/19	Sunny	21.8	Dark brown	Faint earth	Loamy	<5.9	8.7	8.7	0.07	Dull yellowish brown	Faint earth	Loamy	13	52	65	0.07						
					2016/9/2	Sunny	26.8	Dark brown	Faint earth	Loamy	6.2	24	30.2	0.06	Dark brown	Faint earth	Loamy	6.9	46	52.9	0.06	Sampling in September for a typhoon					
					2016/11/10	Cloudy	6.2	Dark brown	Faint earth	Loamy	<8.1	31	31	0.07	Dark brown	Faint earth	Loamy	17	78	95	0.08						
	Hinumagawa River Area	Hinuma River	Takahashi	Ibaraki Town	2017/2/7	Sunny	5.0	Dark brown	Faint earth	Loamy	<5.8	18	18	0.07	Dark brown	Faint earth	Loamy	7.3	56	63.3	0.07						
					2016/5/19	Sunny	21.1	Blackish brown	Faint earth	Loamy	69	320	389	0.06	Blackish brown	Faint earth	Loamy	92	520	612	0.10						
					2016/9/2	Sunny	27.0	Blackish brown	Faint earth	Loamy	57	370	427	0.06	Blackish brown	Faint earth	Loamy	55	300	355	0.08	Sampling in September for a typhoon					
					2016/11/10	Cloudy	4.0	Blackish brown	Faint earth	Loamy	29	240	269	0.07	Blackish brown	Faint earth	Loamy	84	400	484	0.08						
					2017/2/7	Sunny	4.3	Blackish brown	Faint earth	Loamy	20	170	190	0.06	Blackish brown	Faint earth	Loamy	73	460	533	0.07						
	Hokota City	Daiya River	Oya Bridge	Hokota City	2016/5/19	Sunny	25.0	-	-	-	-	-	-	0.06	-	-	-	-	-	-	-	-	-	0.07	Soil not exposed		
					2016/9/2	Sunny	25.1	-	-	-	-	-	-	-	-	-	0.06	-	-	-	-	-	-	-	-	0.08	Soil not exposed
					2016/11/10	Sunny	2.8	-	-	-	-	-	-	-	-	-	0.08	-	-	-	-	-	-	-	-	0.07	Soil not exposed
					2017/2/7	Sunny	5.0	-	-	-	-	-	-	-	-	-	0.08	-	-	-	-	-	-	-	-	0.08	Soil not exposed
					2016/5/19	Sunny	19.0	Dark brown	Faint earth	Loamy	67	400	467	0.11	Dark brown	Faint earth	Loamy	170	980	1,150	0.11						
Mito City/ Orai Town	Hinuma River	Hinuma Bridge	Mito City/ Orai Town	2016/8/16	Sunny	26.8	Grayish yellowish brown	Faint earth	Loamy	70	440	510	0.10	Dull yellowish brown	Faint earth	Loamy	160	930	1,090	0.11							
				2016/11/9	Sunny	9.8	Blackish brown	Faint earth	Loamy	85	490	575	0.10	Dark brown	Faint earth	Loamy	170	1,000	1,170	0.11							
				2017/2/7	Sunny	7.0	Blackish brown	Faint earth	Loamy	63	460	523	0.08	Dull yellowish brown	Faint earth	Loamy	160	970	1,130	0.10							
				2016/5/25	Cloudy	20.9	-	-	-	-	-	-	-	-	-	0.08	-	-	-	-	-	-	-	-	0.09	Soil not exposed	
				2016/8/25	Sunny	27.8	-	-	-	-	-	-	-	-	-	0.09	-	-	-	-	-	-	-	-	0.08	Soil not exposed	
Hokota City	Hokota River	Asahi Bridge	Hokota City	2016/11/21	Cloudy	11.8	-	-	-	-	-	-	0.09	-	-	-	-	-	-	-	-	-	-	0.08	Soil not exposed		
				2017/2/2	Sunny	5.1	-	-	-	-	-	-	-	-	-	0.08	-	-	-	-	-	-	-	-	0.06	Soil not exposed	
				2016/5/25	Cloudy	25.0	Dull yellowish brown	Faint earth	Loamy	25	130	155	0.06	Dull yellowish brown	Faint earth	Loamy	19	120	139	0.07							
				2016/8/25	Sunny	29.0	Dark brown	Faint earth	Loamy	12	58	70	0.05	Dark brown	Faint earth	Loamy	58	290	348	0.07							
				2016/11/21	Cloudy	10.2	Dark brown	Faint earth	Loamy	22	120	142	0.06	Dark brown	Faint earth	Loamy	17	130	147	0.08							
Tomoe River	Shintomogawa Bridge	Hokota City	Hokota City	2017/2/2	Sunny	6.0	Dark brown	Faint earth	Loamy	8.9	52	60.9	0.05	Dark brown	Faint earth	Loamy	16	68	84	0.07							
				2016/5/25	Cloudy	23.2	Dark brown	Faint earth	Loamy	62	280	342	0.08	Dark brown	Faint earth	Loamy	110	580	690	0.08							
				2016/8/25	Sunny	25.9	Dark brown	Faint earth	Loamy	61	350	411	0.07	Blackish brown	Faint earth	Loamy	32	190	222	0.06							
				2016/11/21	Cloudy	14.6	Blackish brown	Faint earth	Loamy	57	310	367	0.07	Blackish brown	Faint earth	Loamy	36	260	296	0.07							
				2017/2/6	Sunny	13.6	Dull yellowish brown	Faint earth	Loamy	100	500	600	0.07	Dark brown	Faint earth	Loamy	44	280	324	0.07							
Kitaura River Area	Takeda River	Uchijuku-ohashi Bridge	Namegata City	2016/5/25	Cloudy	21.9	Dark brown	Faint earth	Loamy	77	440	517	0.08	Blackish brown	Faint earth	Loamy	120	570	690	0.09							
				2016/8/25	Sunny	27.3	Blackish brown	Faint earth	Loamy	92	530	622	0.07	Blackish brown	Faint earth	Loamy	88	490	578	0.08							
				2016/11/21	Cloudy	13.2	Dark brown	Faint earth	Loamy	48	340	388	0.08	Blackish brown	Faint earth	Loamy	74	430	504	0.08							
				2017/2/6	Sunny	13.8	Dull yellowish brown	Faint earth	Loamy	70	410	480	0.08	Blackish brown	Faint earth	Loamy	65	400	465	0.08							
				2016/5/25	Cloudy	27.0	Dull yellowish brown	Faint earth	Loamy	24	150	174	0.08	Dull yellowish brown	Faint earth	Loamy	70	340	410	0.09							
Yamada River	Nioroshi Bridge	Namegata City	Namegata City	2016/8/25	Sunny	31.3	Dark brown	Faint earth	Loamy	23	140	163	0.05	Dark brown	Faint earth	Loamy	65	370	435	0.06							
				2016/11/21	Cloudy	13.8	Dark brown	Faint earth	Loamy	28	150	178	0.07	Blackish brown	Faint earth	Loamy	66	500	566	0.08							
				2017/2/6	Sunny	10.0	Dull yellowish brown	Faint earth	Loamy	23	180	205	0.07	Blackish brown	Faint earth	Loamy	36	280	316	0.08							
				2016/5/25	Sunny	26.5	Dark brown	Faint earth	Loamy	59	350	409	0.08	Dark brown	Faint earth	Loamy	100	560	660	0.09							
				2016/8/25	Sunny	28.5	Dark brown	Faint earth	Loamy	52	280	332	0.07	Dark brown	Faint earth	Loamy	65	390	455	0.08							
Kurakawa River	Kurakawa Bridge	Namegata City	Namegata City	2016/11/21	Cloudy	13.4	Dark brown	Faint earth	Loamy	76	440	516	0.07	Dark brown	Faint earth	Loamy	120	530	650	0.08							
				2017/2/6	Sunny	13.8	Dull yellowish brown	Faint earth	Loamy	54	350	404	0.07	Dark brown	Faint earth	Loamy	120	800	920	0.08							
				2016/5/25	Sunny	25.2	Dark brown	Faint earth	Loamy	99	510	609	0.09	Dark brown	Faint earth	Loamy	76	430	506	0.08							
				2016/8/25	Sunny	27.1	Blackish brown	Faint earth	Loamy	48	330	378	0.08	Blackish brown	Faint earth	Loamy	50	370	420	0.07							
				2016/11/21	Cloudy	13.2	Blackish brown	Faint earth	Loamy	52	250	302	0.07	Blackish brown	Faint earth	Loamy	33	240	273	0.07							
Gantsu River	JA Yokohashi Bridge	Namegata City	Namegata City	2017/2/2	Sunny	5.0	Dull yellowish brown	Faint earth	Loamy	49	350	399	0.09	Dark brown	Faint earth	Loamy	40	270	310	0.07							

Ibaraki River (Surrounding Environment) 3/5

No.	Location				Sampling Date	Weather	Air temperature (°C)	Surrounding Environment(Soil,Air dose)														Remarks		
	Water area	Location	Municipality	Left bank							Right bank													
				Color				Odor	Property	Activity concentration [Bq/kg(dry)]			Air Dose (µSv/h)	Color	Odor	Property	Activity concentration [Bq/kg(dry)]			Air Dose (µSv/h)				
										Radioactive cesium							Radioactive cesium							
Cs-134	Cs-137	Total	Cs-134	Cs-137	Total	Cs-134	Cs-137	Total																
26	Kitaura River Area	Nagare River	Suhoi Bridge	Kashima City	2016/5/25	Cloudy	23.5	-	-	-	-	-	-	-	-	-	-	-	-	-	0.08	Soil not exposed		
					2016/8/25	Sunny	30.1	-	-	-	-	-	-	-	-	-	-	-	-	-	-	-	0.06	Soil not exposed
					2016/1/17	Sunny	9.1	-	-	-	-	-	-	-	-	-	-	-	-	-	-	-	0.07	Soil not exposed
					2017/2/2	Sunny	4.0	-	-	-	-	-	-	-	-	-	-	-	-	-	-	-	0.08	Soil not exposed
27		Sonobe River	Sonobeshin Bridge	Omitama City	2016/5/25	Cloudy	23.5	Dark brown	Faint earth	Loamy	59	250	309	0.06	Blackish brown	Faint earth	Loamy	120	860	980	0.07			
					2016/8/25	Sunny	31.0	Blackish brown	Faint earth	Loamy	44	260	304	0.06	Blackish brown	Faint earth	Loamy	89	490	579	0.08			
					2016/1/21	Cloudy	12.0	Blackish brown	Faint earth	Loamy	40	310	350	0.06	Blackish brown	Faint earth	Loamy	73	510	583	0.08			
					2017/2/2	Sunny	6.2	Blackish brown	Faint earth	Loamy	40	310	350	0.05	Blackish brown	Faint earth	Loamy	120	790	910	0.07			
28		Sanno River	Tokoro Bridge	Omitama City	2016/5/25	Cloudy	27.9	Dark brown	Faint earth	Loamy	270	1,300	1,570	0.10	Dull yellowish brown	Faint earth	Loamy	85	420	505	0.09			
					2016/8/25	Sunny	29.1	Dark brown	Faint earth	Loamy	160	1,100	1,260	0.09	Dark brown	Faint earth	Loamy	150	830	980	0.10			
					2016/1/21	Cloudy	12.4	Dark brown	Faint earth	Loamy	120	850	970	0.09	Dark brown	Faint earth	Loamy	48	310	358	0.09			
					2017/2/2	Sunny	3.3	Dull yellowish brown	Faint earth	Loamy	45	350	395	0.08	Dark brown	Faint earth	Loamy	42	200	242	0.09			
29		Koise River	Heiwa Bridge	Ishioka City	2016/5/25	Cloudy	23.9	Grayish yellowish brown	Faint earth	Loamy	180	940	1,120	0.10	Blackish brown	Faint earth	Loamy	110	530	640	0.08			
					2016/8/25	Sunny	28.5	Dark brown	Faint earth	Loamy	200	970	1,170	0.09	Blackish brown	Faint earth	Loamy	120	590	710	0.08			
					2016/1/21	Cloudy	12.0	Blackish brown	Faint earth	Loamy	220	1,400	1,620	0.09	Blackish brown	Faint earth	Loamy	58	440	498	0.08			
					2017/2/2	Sunny	3.9	Dark brown	Faint earth	Loamy	110	700	810	0.08	Blackish brown	Faint earth	Loamy	69	470	539	0.08			
30		Kajinashi River	Kamishuku Bridge	Namegata City	2016/5/26	Cloudy	28.9	Grayish yellowish brown	Faint earth	Loamy	76	330	406	0.07	Grayish yellowish brown	Faint earth	Loamy	42	250	292	0.06			
					2016/8/26	Sunny	31.2	Blackish brown	Faint earth	Loamy	76	410	486	0.07	Blackish brown	Faint earth	Loamy	67	360	427	0.06			
					2016/1/22	Sunny	16.0	Blackish brown	Faint earth	Loamy	30	220	250	0.08	Blackish brown	Faint earth	Loamy	36	220	256	0.07			
					2017/2/2	Sunny	7.6	Dark brown	Faint earth	Loamy	38	250	288	0.07	Blackish brown	Faint earth	Loamy	18	180	198	0.06			
31		Hishiki River	Hishiki Bridge	Kasumigaura City	2016/5/26	Cloudy	23.6	Dark brown	Faint earth	Loamy	67	350	417	0.08	Dark brown	Faint earth	Loamy	82	480	562	0.08			
					2016/8/25	Cloudy	28.0	Blackish brown	Faint earth	Loamy	56	300	356	0.07	Dark brown	Faint earth	Loamy	78	490	568	0.09			
					2016/1/22	Sunny	17.0	Dark brown	Faint earth	Loamy	25	160	195	0.08	Dark brown	Faint earth	Loamy	68	440	508	0.08			
					2017/2/1	Sunny	8.9	Dark brown	Faint earth	Loamy	41	280	321	0.07	Dark brown	Faint earth	Loamy	40	280	320	0.08			
32	Tonegawa River System	Kasumigaura River Area	Ichinose River	Kawanaka Bridge	Kasumigaura City	2016/5/24	Sunny	30.5	Dark brown	Faint earth	Loamy	120	680	800	0.07	Dark brown	Faint earth	Loamy	43	270	313	0.07		
						2016/8/25	Sunny	26.3	Dark brown	Faint earth	Loamy	68	390	458	0.06	Dark brown	Faint earth	Loamy	34	240	274	0.07		
						2016/1/22	Sunny	12.8	Blackish brown	Faint earth	Loamy	72	430	502	0.07	Blackish brown	Faint earth	Loamy	41	250	291	0.07		
						2017/2/1	Sunny	9.0	Blackish brown	Faint earth	Loamy	34	340	374	0.07	Dark brown	Faint earth	Loamy	31	220	251	0.07		
33		Sakai River	Sakai Bridge/ National Route 354	Tsuchiura City	2016/5/25	Cloudy	26.5	Blackish brown	Faint earth	Loamy	190	850	1,040	0.11	Blackish brown	Faint earth	Loamy	22	160	182	0.06			
					2016/9/3	Sunny	28.4	Blackish brown	Faint earth	Loamy	81	420	501	0.10	Dark brown	Faint earth	Loamy	49	240	289	0.06	Sampling in September for a typhoon		
					2016/1/29	Sunny	8.0	Dark brown	Faint earth	Loamy	130	770	900	0.09	Blackish brown	Faint earth	Loamy	34	220	254	0.06			
					2017/2/1	Cloudy	9.8	Blackish brown	Faint earth	Loamy	120	830	950	0.09	Dark brown	Faint earth	Loamy	31	250	281	0.06			
34		Shinkawa River	Shinten Bridge	Tsuchiura City	2016/5/24	Sunny	30.2	Blackish brown	Faint earth	Loamy	190	930	1,120	0.07	Blackish brown	Faint earth	Loamy	120	540	660	0.08			
					2016/9/3	Sunny	30.2	Blackish brown	Faint earth	Loamy	140	730	870	0.06	Dark brown	Faint earth	Loamy	130	760	890	0.08	Sampling in September for a typhoon		
					2016/1/16	Sunny	10.0	Blackish brown	Faint earth	Loamy	130	920	1,050	0.07	Blackish brown	Faint earth	Loamy	220	1,200	1,420	0.08			
					2017/2/1	Cloudy	7.8	Dark brown	Faint earth	Loamy	110	620	730	0.07	Blackish brown	Faint earth	Loamy	89	530	719	0.08			
35		Sakura River	Eiri Bridge	Tsuchiura City/ Tsukuba City	2016/5/23	Sunny	23.1	Dark brown	Faint earth	Loamy	35	130	165	0.06	Grayish yellowish brown	Faint earth	Loamy	28	140	168	0.05			
					2016/9/3	Sunny	27.8	Dark brown	Faint earth	Loamy	13	80	93	0.05	Blackish brown	Faint earth	Loamy	25	150	175	0.08	Sampling in September for a typhoon		
					2016/1/29	Sunny	10.3	Blackish brown	Faint earth	Loamy	17	140	157	0.06	Blackish brown	Faint earth	Loamy	12	89	101	0.08			
					2017/2/6	Sunny	9.0	Dark brown	Faint earth	Loamy	22	110	132	0.06	Blackish brown	Faint earth	Loamy	15	99	114	0.09			
36		Bizen River	Bizengawa Bridge	Tsuchiura City	2016/5/24	Sunny	28.0	Grayish yellowish brown	Faint earth	Loamy	130	660	790	0.11	Blackish brown	Faint earth	Loamy	140	650	790	0.08			
					2016/9/3	Sunny	31.2	Dark brown	Faint earth	Loamy	95	500	595	0.08	Blackish brown	Faint earth	Loamy	200	1,200	1,400	0.09	Sampling in September for a typhoon		
					2016/1/16	Sunny	10.3	Blackish brown	Faint earth	Loamy	84	520	604	0.09	Blackish brown	Faint earth	Loamy	130	720	850	0.09			
					2017/2/1	Cloudy	5.0	Dark brown	Faint earth	Loamy	65	480	545	0.10	Blackish brown	Faint earth	Loamy	65	450	515	0.08			
37		Hanamuro River	Shirwa Bridge	Tsuchiura City	2016/5/24	Sunny	22.6	Dark brown	Faint earth	Loamy	130	700	830	0.11	Blackish brown	Faint earth	Loamy	160	870	1,030	0.12			
					2016/9/3	Sunny	30.8	Grayish yellowish brown	Faint earth	Loamy	110	640	750	0.10	Blackish brown	Faint earth	Loamy	140	710	850	0.10	Sampling in September for a typhoon		
					2016/1/16	Sunny	12.7	Blackish brown	Faint earth	Loamy	150	910	1,060	0.10	Blackish brown	Faint earth	Loamy	180	1,100	1,280	0.10			
					2017/2/1	Cloudy	3.0	Dark brown	Faint earth	Loamy	140	810	950	0.10	Blackish brown	Faint earth	Loamy	110	710	820	0.10			
38		Seimei River	Katsushashi Bridge	Ami Town	2016/5/23	Sunny	30.5	Dull yellowish brown	Faint earth	Loamy	200	970	1,170	0.12	Dark brown	Faint earth	Loamy	250	1,400	1,650	0.12			
					2016/9/2	Sunny	30.0	Dark brown	Faint earth	Loamy	30	160	190	0.11	Dark brown	Faint earth	Loamy	62	400	462	0.11	Sampling in September for a typhoon		
					2016/1/16	Sunny	11.6	Blackish brown	Faint earth	Loamy	160	1,000	1,160	0.10	Blackish brown	Faint earth	Loamy	79	480	559	0.11			
					2017/2/1	Cloudy	8.2	Dark brown	Faint earth	Loamy	110	660	770	0.11	Blackish brown	Faint earth	Loamy	44	330	374	0.12			

Ibaraki River (Surrounding Environment) 4/5

No.	Location				Sampling Date	Weather	Air temperature (°C)	Surrounding Environment(Soil,Air dose)											Remarks			
	Water area	Location	Municipality	Left bank						Right bank												
				Color				Odor	Property	Activity concentration [Bq/kg(dry)]			Air Dose (μSv/h)	Color	Odor	Property	Activity concentration [Bq/kg(dry)]					
										Radioactive cesium							Radioactive cesium					
			Cs-134	Cs-137	Total				Cs-134	Cs-137	Total	Air Dose (μSv/h)										
39	Kasumigaura River Area	Onogawa River	Okuhara-obashi Bridge	Ryugasaki City/ Utsunomiya City	2016/5/24	Sunny	32.0	Blackish brown	Faint earth	Loamy	35	190	225	0.08	Brownish gray	Faint earth	Loamy	<8.0	25	25	0.10	Sampling in September for a typhoon
					2016/9/1	Sunny	26.8	Dark brown	Faint earth	Loamy	68	370	438	0.09	Blackish brown	Faint earth	Loamy	120	780	900	0.09	
40	Shintone River	Shintone Bridge	Inashiki City	Inashiki City	2016/11/16	Sunny	12.0	Blackish brown	Faint earth	Loamy	67	330	397	0.09	Blackish brown	Faint earth	Loamy	62	440	502	0.09	
					2017/2/1	Cloudy	9.8	Blackish brown	Faint earth	Loamy	60	520	580	0.09	Blackish brown	Faint earth	Loamy	85	600	685	0.10	
41	Hitachitongawara River Area	Yorokoshi River	Horinouchi Bridge	Itako City	2016/5/24	Sunny	30.2	Blackish brown	Faint earth	Loamy	39	180	219	0.08	Blackish brown	Faint earth	Loamy	170	940	1,110	0.08	
					2016/8/27	Cloudy	24.5	Blackish brown	Faint earth	Loamy	30	140	170	0.05	Blackish brown	Faint earth	Loamy	150	810	960	0.08	
42	Maekawa River	Ayame Bridge	Chikusei City	Chikusei City	2016/11/16	Sunny	12.1	Blackish brown	Faint earth	Loamy	29	190	219	0.06	Blackish brown	Faint earth	Loamy	170	1,000	1,170	0.07	
					2017/2/2	Sunny	7.5	Blackish brown	Faint earth	Loamy	39	260	299	0.07	Dark brown	Faint earth	Loamy	160	1,100	1,260	0.07	
43	Kinugawa River Area	Kawashima Bridge	Moriya City	Moriya City	2016/5/25	Sunny	24.0	Dull yellowish brown	Faint earth	Loamy	40	250	290	0.08	Dull yellowish brown	Faint earth	Loamy	25	130	155	0.07	
					2016/8/27	Cloudy	26.0	Dark brown	Faint earth	Loamy	46	290	336	0.06	Blackish brown	Faint earth	Loamy	21	140	161	0.06	
44	Tagawa River	Tagawa Bridge	Chikusei City	Chikusei City	2016/11/17	Sunny	11.3	Blackish brown	Faint earth	Loamy	33	220	253	0.07	Dark brown	Faint earth	Loamy	46	220	266	0.07	
					2017/2/2	Sunny	7.2	Dark brown	Faint earth	Loamy	22	150	173	0.06	Dark brown	Faint earth	Loamy	21	170	191	0.07	
45	Kokai River	Kuroko Bridge	Toride City	Toride City	2016/5/24	Sunny	25.0	Dark brown	Faint earth	Loamy	24	100	124	0.06	Dull yellowish brown	Faint earth	Loamy	33	190	223	0.06	
					2016/8/27	Cloudy	25.8	Dark brown	Faint earth	Loamy	20	100	120	0.06	Dull yellowish brown	Faint earth	Loamy	24	150	174	0.05	
46	Kokai River	Fumimaki Bridge	Toride City	Toride City	2016/11/17	Sunny	12.7	Dark brown	Faint earth	Loamy	14	97	111	0.06	Dull yellowish brown	Faint earth	Loamy	28	140	168	0.05	
					2017/2/2	Sunny	1.2	Brown	Faint earth	Loamy	16	88	104	0.05	Dull yellowish brown	Faint earth	Sandy	26	120	146	0.05	
47	Kokai River	Kuroko Bridge	Toride City	Toride City	2016/5/18	Sunny	25.0	Blackish brown	Faint earth	Loamy	35	140	175	0.07	Blackish brown	Faint earth	Loamy	9.5	64	73.5	0.06	
					2016/8/9	Sunny	34.2	Grayish yellowish brown	Faint earth	Loamy	31	160	191	0.08	Blackish brown	Faint earth	Loamy	12	100	112	0.07	
48	Yatagawa River	Maruyama Bridge	Tsukuba City	Tsukuba City	2016/11/14	Cloudy	14.5	Blackish brown	Faint earth	Loamy	27	130	157	0.07	Blackish brown	Faint earth	Loamy	12	75	87	0.07	
					2017/2/9	Snow	2.0	Blackish brown	Faint earth	Loamy	19	130	149	0.08	Blackish brown	Faint earth	Loamy	7.9	46	53.9	0.07	
49	Nishiyata River	Sakaimatsu Bridge	Tsukuba City	Tsukuba City	2016/5/23	Sunny	22.2	Blackish brown	Faint earth	Loamy	37	180	217	0.08	Brownish gray	Faint earth	Sandy	8.7	40	48.7	0.08	Sampling in September for a typhoon
					2016/9/2	Sunny	26.2	Blackish brown	Faint earth	Loamy	13	86	99	0.08	Grayish yellowish brown	Faint earth	Sandy	-4.8	24	24	0.06	
50	Inari River	Oguki Bridge	Tsukuba City	Tsukuba City	2016/11/15	Sunny	15.5	Blackish brown	Faint earth	Loamy	30	200	230	0.07	Grayish yellowish brown	Faint earth	Sandy	6.1	33	39.1	0.06	
					2017/2/6	Sunny	11.3	Blackish brown	Faint earth	Loamy	<5.2	25	25	0.08	Brownish gray	Faint earth	Sandy	18	120	138	0.07	
50	Inari River	Oguki Bridge	Tsukuba City	Tsukuba City	2016/5/18	Sunny	20.0	Blackish brown	Faint earth	Loamy	45	210	255	0.07	Blackish brown	Faint earth	Loamy	<6.5	31	31	0.07	
					2016/8/9	Sunny	31.9	Grayish yellowish brown	Faint earth	Loamy	43	230	273	0.07	Grayish yellowish brown	Faint earth	Loamy	5.7	30	35.7	0.07	
50	Inari River	Oguki Bridge	Tsukuba City	Tsukuba City	2016/11/14	Cloudy	12.8	Blackish brown	Faint earth	Loamy	41	180	221	0.06	Dark brown	Faint earth	Loamy	<8.7	31	31	0.07	
					2017/2/9	Snow	1.8	Blackish brown	Faint earth	Loamy	<6.6	20	20	0.07	Dark brown	Faint earth	Loamy	29	160	189	0.07	
50	Inari River	Oguki Bridge	Tsukuba City	Tsukuba City	2016/5/18	Sunny	24.4	Dark brown	Faint earth	Loamy	11	85	96	0.06	Blackish brown	Faint earth	Loamy	23	110	133	0.06	
					2016/8/9	Sunny	37.5	Dull yellowish brown	Faint earth	Loamy	17	120	137	0.08	Grayish yellowish brown	Faint earth	Loamy	39	170	209	0.08	
50	Inari River	Oguki Bridge	Tsukuba City	Tsukuba City	2016/11/14	Cloudy	16.0	Dark brown	Faint earth	Loamy	13	91	104	0.07	Dark brown	Faint earth	Loamy	34	150	184	0.07	
					2017/2/9	Snow	2.3	Dull yellowish brown	Faint earth	Loamy	10	79	89	0.07	Dark brown	Faint earth	Loamy	22	140	162	0.07	
50	Inari River	Oguki Bridge	Tsukuba City	Tsukuba City	2016/5/23	Sunny	34.0	Blackish brown	Faint earth	Loamy	170	800	970	0.09	Blackish brown	Faint earth	Loamy	48	410	458	0.08	Sampling in September for a typhoon
					2016/9/1	Sunny	27.2	Blackish brown	Faint earth	Loamy	110	610	720	0.08	Dark brown	Faint earth	Loamy	61	400	461	0.08	
50	Inari River	Oguki Bridge	Tsukuba City	Tsukuba City	2016/11/28	Sunny	11.8	Blackish brown	Faint earth	Loamy	49	310	359	0.08	Blackish brown	Faint earth	Loamy	47	300	347	0.08	
					2017/2/1	Cloudy	7.2	Dark brown	Faint earth	Loamy	63	470	533	0.10	Dark brown	Faint earth	Loamy	51	280	331	0.09	
50	Inari River	Oguki Bridge	Tsukuba City	Tsukuba City	2016/5/23	Sunny	27.0	Grayish yellowish brown	Faint earth	Loamy	140	690	830	0.09	Dark brown	Faint earth	Loamy	180	760	940	0.08	
					2016/9/2	Cloudy	25.0	Blackish brown	Faint earth	Loamy	160	1,000	1,160	0.08	Blackish brown	Faint earth	Loamy	190	980	1,170	0.08	
50	Inari River	Oguki Bridge	Tsukuba City	Tsukuba City	2016/11/29	Sunny	9.0	Blackish brown	Faint earth	Loamy	130	870	1,000	0.09	Dark brown	Faint earth	Loamy	93	540	633	0.09	Sampling in September for a typhoon
					2017/2/6	Sunny	13.4	Dark brown	Faint earth	Loamy	68	450	498	0.10	Dark brown	Faint earth	Loamy	39	340	379	0.09	
50	Inari River	Oguki Bridge	Tsukuba City	Tsukuba City	2016/5/23	Sunny	28.8	Blackish brown	Faint earth	Loamy	17	66	83	0.06	Blackish brown	Faint earth	Loamy	14	74	88	0.07	
					2016/9/2	Sunny	27.5	Blackish brown	Faint earth	Loamy	<5.9	12	12	0.05	Blackish brown	Faint earth	Loamy	15	81	96	0.06	
50	Inari River	Oguki Bridge	Tsukuba City	Tsukuba City	2016/11/29	Sunny	7.0	Blackish brown	Faint earth	Loamy	<7.3	16	16	0.06	Blackish brown	Faint earth	Loamy	19	89	108	0.05	
					2017/2/6	Sunny	11.1	Grayish yellowish brown	Faint earth	Loamy	<5.2	16	16	0.06	Blackish brown	Faint earth	Loamy	12	58	70	0.06	
50	Inari River	Oguki Bridge	Tsukuba City	Tsukuba City	2016/5/23	Sunny	31.1	Dull yellowish brown	Faint earth	Loamy	90	490	580	0.08	Grayish yellowish brown	Faint earth	Loamy	120	610	730	0.12	
					2016/9/2	Sunny	32.1	Blackish brown	Faint earth	Loamy	190	950	1,140	0.08	Blackish brown	Faint earth	Loamy	290	1,500	1,790	0.11	
50	Inari River	Oguki Bridge	Tsukuba City	Tsukuba City	2016/11/28	Cloudy	12.0	Blackish brown	Faint earth	Loamy	130	1,000	1,130	0.09	Blackish brown	Faint earth	Loamy	140	820	960	0.11	Sampling in September for a typhoon
					2017/2/6	Sunny	11.0	Dark brown	Faint earth	Loamy	110	670	780	0.08	Blackish brown	Faint earth	Loamy	120	760	880	0.10	

Ibaraki River (Surrounding Environment) 5/5

R i v e r s	Location				Sampling Date	Weather	Air temperature (°C)	Surrounding Environment(Soil,Air dose)											Remarks							
	No.	Water area		Location				Municipality	Left bank			Air Dose (µSv/h)	Right bank			Air Dose (µSv/h)										
									Color	Odor	Property		Activity concentration [Bq/kg(dry)]				Color	Odor		Property	Activity concentration [Bq/kg(dry)]					
													Radioactive cesium								Radioactive cesium					
Cs-134	Cs-137	Total	Cs-134	Cs-137	Total																					
51	Tonegawa River System	Tonegawa River Area	Tonegawa River	Kurihashi Bridge	Koga City	2016/5/18	Sunny	24.3	Blackish brown	Faint earth	Loamy	16	110	126	0.06	Dark brown	Faint earth	Loamy	36	170	206	0.05				
						2016/8/9	Sunny	32.8	Grayish yellowish brown	Faint earth	Loamy	12	83	95	0.08	Grayish yellowish brown	Faint earth	Loamy	28	140	168	0.08				
						2016/11/14	Cloudy	13.5	Blackish brown	Faint earth	Loamy	10	57	67	0.07	Dark brown	Faint earth	Loamy	32	160	192	0.07				
						2017/2/9	Cloudy	2.5	Grayish yellowish brown	Faint earth	Loamy	11	57	68	0.08	Dark brown	Faint earth	Loamy	5.9	29	34.9	0.07				
						2016/5/23	Sunny	24.5	Dark brown	Faint earth	Loamy	95	480	575	0.09	Grayish yellowish brown	Faint earth	Sandy	9.5	49	58.5	0.07				
						2016/9/1	Sunny	30.3	Dark brown	Faint earth	Loamy	80	400	480	0.10	Dark brown	Faint earth	Sandy	<8.3	33	33	0.06	Sampling in September for a typhoon			
				52	Tonegawa River System	Tonegawa River Area	Tonegawa River	Fukawa	Tone Town	2016/11/28	Sunny	9.0	Dark brown	Faint earth	Loamy	90	550	640	0.09	Blackish brown	Faint earth	Loamy	9.3	62	71.3	0.07
										2017/2/1	Sunny	10.6	Blackish brown	Faint earth	Loamy	110	640	750	0.11	Grayish yellowish brown	Faint earth	Sandy	9.9	51	60.9	0.07
										2016/5/24	Sunny	28.0	Dull yellowish brown	Faint earth	Loamy	29	170	199	0.07	Grayish yellowish brown	Faint earth	Loamy	7.4	35	42.4	0.06
										2016/8/27	Cloudy	24.0	Blackish brown	Faint earth	Loamy	35	150	185	0.06	Blackish brown	Faint earth	Loamy	<5.8	31	31	0.06
										2016/11/17	Sunny	15.6	Blackish brown	Faint earth	Loamy	30	170	200	0.06	Blackish brown	Faint earth	Loamy	<5.6	32	32	0.05
										2017/2/6	Sunny	13.0	Dull yellowish brown	Faint earth	Loamy	37	180	217	0.06	Blackish brown	Faint earth	Loamy	<5.1	30	30	0.05
53	Tonegawa River System	Tonegawa River Area	Tonegawa River	Sawara	Inashiki City	2016/11/17	Sunny	15.6	Blackish brown	Faint earth	Loamy	30	170	200	0.06	Blackish brown	Faint earth	Loamy	<5.6	32	32	0.05				
						2017/2/6	Sunny	13.0	Dull yellowish brown	Faint earth	Loamy	37	180	217	0.06	Blackish brown	Faint earth	Loamy	<5.1	30	30	0.05				

Ibaraki Lakes and Reservoirs (Water) 1/4

No.	Location		Sampling Date	Weather	Air temperature (°C)	Water depth (m)	Water										Remarks		
	Water area	Location					General items					Activity concentration(Bq/L)							
							Water temperature (°C)	Sampling depth (m)	Color	Odor	Secchi disk depth (m)	Electrical conductivity (mS/m)	SS (mg/L)	Turbidity (FNU)	Radioactive cesium				
				Cs-134	Cs-137														
54	Hiroura	Surface layer	2016/5/21	Sunny	22.0	2.4	20.4	0.5	Grayish yellow	None	0.7	1,250	18	15	<0.68	<0.69			
		Deep layer					19.7	1.4	-	None		1,190	23	19	<0.60	<0.75			
		Surface layer	2016/8/15	Cloudy	30.1	2.4	28.1	0.5	Dark grayish greenish yellow	None	0.7	2,020	5	4.4	<0.77	<0.66			
		Deep layer					27.5	1.4	-	None		2,040	4	4.6	<0.60	<0.78			
		Surface layer	2016/11/16	Sunny	15.5	2.5	15.4	0.5	Grayish yellow	None	0.9	411	10	5.0	<0.70	<0.84			
		Deep layer					14.7	1.5	-	None		425	10	5.9	<0.91	<0.80			
	55	Himama	Miyamae	Surface layer	2017/2/16	Sunny	7.2	2.4	6.3	0.5	Grayish yellow green	None	1.0	2,050	4	4.4	<0.58	<0.99	
				Deep layer					6.6	1.4	-	None		2,050	5	4.8	<0.68	<0.88	
				Surface layer	2016/5/21	Sunny	21.8	2.8	20.1	0.5	Grayish yellow	None	0.8	1,140	14	9.2	<0.76	<0.75	
			Deep layer					19.8	1.8	-	None		1,130	15	12	<0.80	<0.80		
			Surface layer	2016/8/15	Cloudy	30.2	3.0	28.0	0.5	Dark grayish greenish yellow	None	0.5	1,670	6	5.9	<0.69	<0.75		
			Deep layer					27.8	2.0	-	None		1,900	6	5.7	<0.74	<0.80		
56	Oyazawa	Miyamae	Surface layer	2016/11/16	Sunny	15.3	3.1	14.5	0.5	Grayish yellow	None	0.9	377	9	7.8	<0.59	<0.61		
			Deep layer					13.9	2.1	-	None		563	12	11	<0.46	<0.74		
			Surface layer	2017/2/16	Sunny	6.5	3.0	6.7	0.5	Grayish yellow green	None	1.1	2,010	4	4.2	<0.70	<0.70		
		Deep layer					6.7	2.0	-	None		2,090	4	4.0	<0.74	<0.61			
		Surface layer	2016/5/21	Sunny	21.5	2.0	20.1	0.5	Grayish yellow	None	0.8	654	12	9.7	<0.78	<0.63			
		Deep layer					19.6	1.0	-	None		576	11	7.3	<0.68	<0.75			
57	Offshore of Tamatsukuri	Oyazawa	Surface layer	2016/8/15	Cloudy	30.2	2.1	28.0	0.5	Dark grayish greenish yellow	None	0.7	1,340	10	9.2	<0.83	<0.61		
			Deep layer					27.7	1.1	-	None		1,520	8	5.1	<0.69	<0.84		
			Surface layer	2016/11/16	Sunny	14.8	2.2	14.3	0.5	Grayish yellow	None	1.0	402	11	10	<0.63	<0.99		
		Deep layer					14.2	1.2	-	None		513	13	11	<0.72	<0.92			
		Surface layer	2017/2/16	Sunny	6.3	2.1	7.3	0.5	Grayish yellow green	None	1.0	1,950	4	4.2	<0.58	<0.84			
		Deep layer					7.2	1.1	-	None		2,100	4	4.4	<0.83	<0.84			
58	Lake Kasumigaura	Offshore of Tamatsukuri	Surface layer	2016/5/26	Cloudy	22.5	6.4	22.3	0.5	Grayish yellow	None	0.8	30.4	17	9.5	<0.75	<0.66		
			Deep layer					21.8	5.4	-	None		28.4	30	31	<0.50	<0.55		
			Surface layer	2016/8/26	Sunny	28.0	6.9	30.8	0.5	Grayish yellow	None	1.0	30.9	19	16	<0.80	<0.69		
			Deep layer					26.8	5.9	-	None		19.9	31	23	<0.54	<0.88		
			Surface layer	2016/11/22	Cloudy	12.7	6.5	12.7	0.5	Light grayish yellow green	None	1.0	25.3	14	14	<0.61	<0.88		
			Deep layer					12.6	5.5	-	None		26.7	18	17	<0.61	<0.75		
		Offshore of Kakeuma	Surface layer	2017/2/8	Sunny	6.0	7.2	7.0	0.5	Grayish yellow green	None	1.0	27.9	9	8.3	<0.75	<0.63		
			Deep layer					6.9	6.2	-	None		29.8	19	15	<0.66	<0.75		
			Surface layer	2016/5/26	Cloudy	23.0	1.7	21.8	0.0	Grayish yellow green	None	0.8	29.9	24	15	<0.77	<0.80		
			Deep layer					-	-	-	-		-	-	-	-	-	Unable to collect samples from the deep layer due to shallow water	
			Surface layer	2016/8/26	Sunny	28.8	2.5	29.1	0.5	Grayish yellow	None	0.4	20.9	15	14	<0.60	<0.99		
			Deep layer					28.1	1.5	-	None		21.2	15	13	<0.78	<0.75		
59	Center	Offshore of Kakeuma	Surface layer	2016/11/22	Sunny	12.2	2.1	12.8	0.5	Light grayish yellow	None	0.5	25.6	20	21	<0.87	<0.88		
			Deep layer					13.0	1.1	-	None		25.3	19	19	<0.68	<0.80		
			Surface layer	2017/2/8	Sunny	7.8	2.2	6.4	0.5	Light grayish yellow	None	0.9	29.8	13	12	<0.70	<0.61		
			Deep layer					6.2	1.2	-	None		29.3	12	11	<0.66	<0.48		
			Surface layer	2016/5/26	Cloudy	21.9	6.0	21.3	0.5	Dark grayish yellow green	None	1.0	31.1	16	11	<0.66	<0.75		
			Deep layer					21.2	5.0	-	None		31.2	19	12	<0.71	<0.84		
		Center	Surface layer	2016/8/26	Sunny	28.0	6.6	30.6	0.5	Grayish greenish yellow	None	0.5	31.9	16	16	<0.70	<0.75		
			Deep layer					27.8	5.6	-	None		32.2	19	22	<0.78	<0.55		
			Surface layer	2016/11/22	Sunny	13.0	6.2	13.0	0.5	Light grayish yellow	None	0.7	27.5	12	12	<0.63	<0.80		
			Deep layer					12.7	5.2	-	None		27.5	13	13	<0.70	<0.75		
			Surface layer	2017/2/8	Sunny	4.5	6.3	6.3	0.5	Grayish yellow	None	0.4	29.0	22	20	<0.83	<0.75		
			Deep layer					5.6	5.3	-	None		29.2	25	23	<0.66	<0.80		

Ibaraki Lakes and Reservoirs (Water) 3/4

No.	Location		Sampling Date	Weather	Air temperature (°C)	Water depth (m)	Water										Remarks	
	Water area	Location					General items					Activity concentration(Bq/L)						
							Water temperature (°C)	Sampling depth (m)	Color	Odor	Secchi disk depth (m)	Electrical conductivity (mS/m)	SS (mg/L)	Turbidity (FNU)	Radioactive cesium			
													Cs-134	Cs-137				
L a k e s R e s e r v o i r s	66	Mizunuma Dam	Center	Surface layer	2016/5/10	Cloudy	16.0	17.9	16.2	0.5	Dark grayish yellow green	None	2.4	6.2	1	1.3	<0.80	<0.92
				Deep layer					6.7	16.9	-	None		6.6	2	2.5	<0.77	<0.75
				Surface layer	2016/8/24	Sunny	27.8	13.0	21.5	0.5	Grayish yellow green	None	0.7	4.3	9	12	<0.70	<0.75
				Deep layer					17.8	12.0	-	None		4.9	7	5.7	<0.78	<0.75
				Surface layer	2016/11/22	Sunny	13.0	17.5	10.3	0.5	Dark grayish yellow green	None	3.4	6.3	2	1.6	<0.86	<0.61
				Deep layer					9.2	16.5	-	None		6.6	4	2.4	<0.56	<0.61
	67	Koyama Dam	Center	Surface layer	2017/2/7	Sunny	4.0	17.8	3.6	0.5	Dark grayish yellow green	None	3.1	6.6	2	2.1	<0.54	<0.74
				Deep layer					3.2	16.8	-	None		6.7	2	2.3	<0.87	<0.70
				Surface layer	2016/5/10	Rain	17.3	14.7	17.8	0.5	Dark grayish yellow green	None	2.2	8.2	4	2.9	<0.65	<0.80
				Deep layer					7.2	13.7	-	None		8.5	5	6.8	<0.68	<0.80
				Surface layer	2016/8/24	Sunny	28.0	15.8	21.7	0.5	Light grayish yellow	None	0.3	5.2	26	31	<0.56	<0.70
				Deep layer					8.3	14.8	-	Faint hydrogen sulfide		10.1	5	4.4	<0.77	<0.66
68	Hanamuki Dam	Center	Surface layer	2016/11/22	Sunny	17.0	15.6	11.6	0.5	Dark grayish yellow green	None	2.6	7.8	2	3.2	<0.66	<0.84	
			Deep layer					7.9	14.6	-	Faint hydrogen sulfide		11.4	9	11	<0.76	<0.75	
			Surface layer	2017/2/8	Sunny	2.0	16.1	4.2	0.5	Dark grayish yellow green	None	3.5	8.3	1	2.4	<0.65	<0.92	
			Deep layer					4.0	15.1	-	None		8.3	2	2.4	<0.61	<0.84	
			Surface layer	2016/5/9	Cloudy	21.8	26.9	18.4	0.5	Dark grayish yellow green	None	1.7	7.3	2	2.2	<0.91	<0.80	
			Deep layer					6.7	25.9	-	None		6.8	1	1.7	<0.73	<0.93	
69	Jyuo Dam	Center	Surface layer	2016/8/26	Sunny	28.5	20.3	22.1	0.5	Grayish yellow green	None	1.6	5.7	3	5.3	<0.80	<0.75	
			Deep layer					10.9	19.3	-	Faint hydrogen sulfide		9.3	6	7.6	<0.74	<0.63	
			Surface layer	2016/11/21	Cloudy	13.0	24.5	11.2	0.5	Dark grayish yellow green	None	3.2	6.7	2	2.2	<0.69	<0.70	
			Deep layer					10.6	23.5	-	Faint hydrogen sulfide		9.2	3	2.8	<0.83	<0.61	
			Surface layer	2017/2/8	Sunny	5.5	28.0	4.0	0.5	Dark grayish greenish yellow	None	3.3	6.7	2	1.9	<0.81	<0.70	
			Deep layer					4.1	27.0	-	None		6.8	110	44	<0.63	<0.66	
70	Ryujin Dam	Center	Surface layer	2016/5/10	Rain	17.0	23.3	18.5	0.5	Dark grayish yellowish green	None	4.5	11.7	<1	0.9	<0.77	<0.84	
			Deep layer					6.2	22.3	-	None		12.2	3	4.5	<0.65	<0.75	
			Surface layer	2016/8/24	Cloudy	25.1	18.5	19.9	0.5	Light grayish yellow	None	0.3	9.4	68	84	<0.77	<0.60	
			Deep layer					7.8	17.5	-	None		13.9	9	6.6	<0.56	<0.60	
			Surface layer	2016/11/21	Cloudy	13.2	26.8	11.4	0.5	Dark grayish greenish yellow	None	2.5	9.8	2	2.5	<0.66	<0.69	
			Deep layer					9.7	25.8	-	Faint hydrogen sulfide		20.0	22	28	<0.70	<0.84	
70	Ryujin Dam	Center	Surface layer	2017/2/8	Sunny	7.8	26.5	3.9	0.5	Dark grayish yellow green	None	3.0	11.4	3	3.1	<0.77	<0.88	
			Deep layer					3.8	25.5	-	None		11.6	97	65	<0.54	<0.69	
			Surface layer	2016/5/9	Cloudy	22.2	25.1	18.7	0.5	Reddish yellowish black	None	2.0	7.9	2	1.3	<0.68	<0.80	
			Deep layer					6.7	24.1	-	None		9.8	7	7.3	<0.70	<0.75	
			Surface layer	2016/8/26	Sunny	31.0	20.2	22.1	0.5	Grayish greenish yellow	None	1.7	6.6	11	5.7	<0.60	<0.88	
			Deep layer					8.6	19.2	-	Faint hydrogen sulfide		15.2	20	16	<0.62	<0.88	
70	Ryujin Dam	Center	Surface layer	2016/11/22	Sunny	17.2	23.2	13.4	0.5	Dark grayish yellow	None	2.4	7.8	2	3.0	<0.69	<0.66	
			Deep layer					10.1	22.2	-	Faint hydrogen sulfide		17.0	18	22	<0.52	<0.78	
			Surface layer	2017/2/7	Sunny	2.0	24.7	4.0	0.5	Dark grayish yellow green	None	3.5	7.9	1	1.7	<0.72	<0.99	
			Deep layer					3.9	23.7	-	None		8.2	2	1.3	<0.99	<0.88	

Ibaraki Lakes and Reservoirs (Water) 4/4

L a k e s a n d R e s e r v o i r s	Location			Sampling Date	Weather	Air temperature (°C)	Water depth (m)	Water										Remarks
	No.	Water area	Location					General items					Activity concentration(Bq/L)					
								Water temperature (°C)	Sampling depth (m)	Color	Odor	Secchi disk depth (m)	Electrical conductivity (mS/m)	SS (mg/L)	Turbidity (FNU)	Radioactive cesium		
				Cs-134	Cs-137													
71	Fujiigawa Dam	Center	Surface layer	2016/5/11	Cloudy	20.1	13.0	19.3	0.5	Dark grayish yellow green	None	1.9	13.4	<1	1.0	<0.75	<0.84	
			Deep layer					11.1	12.0	-	None		14.7	7	7.7	<0.63	<0.69	
			Surface layer	2016/8/25	Sunny	27.8	9.7	20.2	0.5	Grayish yellow green	None	1.8	9.0	3	3.9	<0.77	<0.66	
			Deep layer					19.7	8.7	-	None		9.8	8	4.7	<0.63	<0.70	
			Surface layer					12.5	0.5	Dark grayish yellow green	None	3.2	15.6	1	1.9	<0.47	<0.75	
			Deep layer	2016/11/10	Cloudy	10.0	15.2	11.4	14.2	-	None		15.7	12	5.5	<0.80	<0.69	
			Surface layer					4.5	0.5	Grayish greenish yellow	None	4.2	14.2	<1	1.2	<0.72	<0.88	
			Deep layer	2017/2/6	Sunny	11.8	14.5	4.8	13.5	-	None		19.1	1	1.5	<0.78	<0.80	
			Surface layer					20.1	0.5	Dark grayish yellow green	None	4.0	9.6	<1	0.4	<0.79	<0.63	
			Deep layer	2016/5/11	Rain	21.5	13.3	7.7	12.3	-	None		10.4	2	3.1	<0.81	<0.80	
			Surface layer					24.1	0.5	Grayish yellow green	None	2.3	7.6	<1	1.3	<0.77	<0.75	
			Deep layer	2016/8/25	Sunny	28.8	13.4	11.0	12.4	-	Faint hydrogen sulfide		11.6	5	7.9	<0.74	<0.84	
			Surface layer					14.1	0.5	Dark grayish yellow green	None	5.4	9.6	<1	1.2	<0.56	<0.74	
			Deep layer	2016/11/10	Cloudy	14.2	13.1	9.3	12.1	-	Faint hydrogen sulfide		14.2	16	11	<0.52	<0.66	
Surface layer					5.3	0.5	Grayish yellow green	None	4.2	11.7	1	1.9	<0.63	<0.92				
Deep layer	2017/2/6	Sunny	11.0	13.5	5.1	12.5	-	None		11.2	1	1.7	<0.84	<0.80				

Ibaraki Lakes and Reservoirs (Sediment) 1/2

Location			Sampling Date	Weather	Air temperature (°C)	Water depth (m)	Sediment																	Activity concentration [Bq/kg(dry)]			Remarks
No.	Water area	Location					Sediment temperature (°C)	Sample length (cm)	Color	Odor	Grain size distribution(%)							Sediment content (%)	Density (g/cm³)	Property	Radioactive cesium						
											Coarse gravel	Medium gravel	Fine gravel	Coarse sand	Medium sand	Fine sand	Silt				Clay	Cs-134	Cs-137	Total			
L a k e s a n d R e s e r v o i r s	54	Hiroura	2016/5/21	Sunny	22.0	2.4	19.1	5	Black	Faint sewage	0.0	0.0	0.1	0.7	2.2	10.9	68.4	17.7	43.0	2.633	Silt	20	100	120			
			2016/8/15	Cloudy	30.1	2.4	27.0	5	Black	Faint hydrogen sulfide	0.0	0.7	0.5	0.4	2.0	11.5	65.2	19.7	45.2	2.612	Silt	18	79	97			
			2016/11/16	Sunny	15.5	2.5	15.6	7	Olive black	None	0.0	0.3	0.5	0.3	2.2	12.2	63.2	21.3	43.7	2.629	Silt	16	80	96			
			2017/2/16	Sunny	7.2	2.4	7.5	5	Olive black	None	0.0	0.0	0.0	0.3	1.5	10.8	65.7	21.7	42.7	2.527	Silt	14	80	94			
	55	Hinuma	Miyamae	2016/5/21	Sunny	21.8	2.8	18.9	7	Black	Faint hydrogen sulfide	0.0	0.0	0.0	0.1	0.6	4.6	77.2	17.6	24.9	2.596	Silt	8.8	36	44.8		
				2016/8/15	Cloudy	30.2	3.0	27.2	8	Black	Faint hydrogen sulfide	0.0	0.0	0.0	0.1	0.6	4.4	75.3	19.7	22.7	2.555	Silt	49	270	319		
				2016/11/16	Sunny	15.3	3.1	16.0	7	Olive black	Faint hydrogen sulfide	0.0	0.0	0.0	0.1	0.7	5.3	73.0	21.0	23.9	2.571	Silt	7.8	56	63.8		
				2017/2/16	Sunny	6.5	3.0	9.2	5	Black	Faint hydrogen sulfide	0.0	0.0	0.0	0.0	0.6	4.7	76.8	17.9	25.0	2.477	Silt	3.7	23	26.7		
	56		Oyazawa	2016/5/21	Sunny	21.5	2.0	20.1	7	Black	Faint sewage	0.0	0.0	0.0	0.1	0.3	4.6	72.0	23.1	33.2	2.533	Silt/sand	69	370	439		
				2016/8/15	Cloudy	30.2	2.1	28.1	5	Black	Faint hydrogen sulfide	0.0	0.0	0.0	0.2	0.6	4.9	75.3	19.0	35.8	2.508	Silt	52	280	332		
				2016/11/16	Sunny	14.8	2.2	15.2	10	Olive black	None	0.0	0.0	0.0	0.1	0.4	5.6	69.7	24.3	34.4	2.517	Silt	51	300	351		
				2017/2/16	Sunny	6.3	2.1	9.0	5	Black	Faint hydrogen sulfide	0.0	0.0	0.0	0.0	0.4	3.8	80.3	15.5	33.0	2.447	Silt	28	260	288		
57	Lake Kasumigaura	Offshore of Tamatsukuri	2016/5/26	Cloudy	22.5	6.4	20.5	8	Olive black	Faint sewage	0.0	0.0	0.0	0.0	0.5	4.7	71.4	23.5	16.5	2.405	Silt	60	400	460			
			2016/8/26	Sunny	28.0	6.9	26.2	7	Olive black	Faint sewage	0.0	0.0	0.0	0.1	0.7	1.3	62.9	35.0	18.5	2.390	Silt	66	380	446			
			2016/11/22	Cloudy	12.7	6.5	13.2	5	Olive black	None	0.0	0.0	0.0	0.0	0.2	1.3	76.4	22.1	17.8	2.407	Silt	77	480	557			
			2017/2/8	Sunny	6.0	7.2	6.4	5	Olive black	Faint sewage	0.0	0.0	0.0	0.0	0.1	1.0	75.3	23.7	16.6	2.354	Silt	64	380	444			
		58		Offshore of Kakeuma	2016/5/26	Cloudy	23.0	1.7	21.0	5	Blackish brown	None	0.0	0.0	0.0	0.2	48.6	46.3	1.8	3.0	76.9	2.691	Sand	16	67	83	
					2016/8/26	Sunny	28.8	2.5	27.0	6	Dark olive brown	None	0.0	0.9	2.7	0.4	37.0	53.2	0.0	4.7	77.7	2.701	Sand/gravel	20	110	130	
					2016/11/22	Sunny	12.2	2.1	13.0	3	Blackish brown	None	0.0	0.3	1.3	0.3	38.0	52.7	3.6	3.8	74.4	2.686	Sand	18	85	103	
					2017/2/8	Sunny	7.8	2.2	6.0	3	Blackish brown	None	0.0	0.1	0.2	0.0	41.9	51.8	2.0	3.9	77.7	2.668	Sand	6.8	62	68.8	
		59		Center	2016/5/26	Cloudy	21.9	6.0	20.3	10	Olive black	Faint hydrogen sulfide	0.0	0.0	0.0	0.0	0.3	1.5	72.3	25.8	14.8	2.376	Silt	90	380	470	
					2016/8/26	Sunny	28.0	6.6	26.8	8	Olive black	Faint sewage	0.0	0.0	0.0	0.0	0.2	0.3	66.6	32.9	15.3	2.369	Silt	88	440	528	
					2016/11/22	Sunny	13.0	6.2	13.2	8	Olive black	Faint sewage	0.0	0.0	0.0	0.0	0.2	0.6	73.4	25.8	14.8	2.376	Silt	66	440	506	
					2017/2/8	Sunny	4.5	6.3	6.1	4	Olive black	Faint sewage	0.0	0.0	0.0	0.0	0.1	0.3	80.8	18.9	16.3	2.343	Silt	51	420	471	
60		Offshore of Aso	2016/5/26	Cloudy	25.0	2.1	21.0	5	Olive black	None	0.0	0.0	0.0	0.0	2.8	92.9	1.3	3.0	75.5	2.712	Sand/silt	14	93	107			
			2016/8/26	Sunny	26.8	2.6	26.9	4	Olive black	Faint fish	0.0	0.0	0.0	0.1	2.8	91.3	3.0	2.9	75.1	2.696	Sand	21	84	105			
			2016/11/22	Sunny	13.3	2.3	13.0	6	Olive black	None	0.0	0.0	0.0	0.1	2.6	93.2	1.2	3.0	74.7	2.690	Sand	14	94	108			
			2017/2/8	Sunny	4.5	2.6	5.9	4	Dark olive brown	Faint sewage	0.0	0.0	0.0	0.1	2.3	92.6	3.1	2.0	69.7	2.665	Sand	14	92	106			
61		Offshore of Kamaya	2016/5/26	Cloudy	24.0	6.3	20.0	5	Olive black	Faint sewage	0.0	0.0	0.0	0.0	1.4	1.3	75.5	21.8	12.8	2.314	Silt	71	350	421			
			2016/8/26	Sunny	25.8	6.2	26.7	7	Olive black	Faint hydrogen sulfide	0.0	0.0	0.0	0.0	0.3	0.6	66.0	33.1	14.2	2.284	Silt	48	330	378			
			2016/11/22	Sunny	14.7	6.6	13.9	8	Black	Faint sewage	0.0	0.0	0.0	0.0	0.2	1.2	72.5	26.1	14.2	2.305	Silt	40	300	340			
			2017/2/8	Sunny	4.1	7.0	6.3	4	Olive black	None	0.0	0.0	0.0	0.0	0.1	0.8	70.6	28.4	14.2	2.297	Silt	49	310	359			
62	Lake Kitaura	Jingu Bridge	2016/5/26	Cloudy	24.0	2.7	21.4	4	Olive black	Faint sewage	0.0	0.0	0.4	3.1	22.3	54.6	14.2	5.3	61.3	2.647	Sand/silt	15	85	100			
			2016/8/26	Sunny	26.9	2.7	27.2	4	Olive black	Faint sewage	0.0	4.6	3.7	6.5	25.9	47.5	5.6	6.2	60.1	2.658	Sand/silt	<7.4	53	53			
			2016/11/22	Sunny	15.1	2.7	13.2	8	Olive black	Faint sewage	0.0	0.0	0.0	0.2	10.6	68.1	14.0	7.2	55.1	2.652	Sand/silt	14	93	107			
			2017/2/8	Sunny	6.0	3.1	6.3	4	Olive black	None	0.0	0.0	0.0	0.0	1.0	67.2	21.0	10.9	59.8	2.594	Silt/sand	12	110	122			
63		Lake Sotonasskaura	2016/5/26	Sunny	24.0	2.6	21.5	5	Olive black	Faint sewage	0.0	0.0	0.0	0.0	2.8	85.8	7.4	4.0	70.0	2.670	Sand/silt	12	52	64			
			2016/8/26	Sunny	27.9	4.3	27.1	3	Olive black	None	0.0	4.0	0.4	0.0	1.6	76.8	10.7	6.4	67.0	2.673	Sand/silt	10	57	67			
			2016/11/22	Sunny	16.2	2.8	13.0	5	Olive black	None	0.0	0.0	0.0	0.1	2.7	86.4	6.4	4.5	67.1	2.695	Sand/silt	19	74	93			
			2017/2/8	Sunny	6.8	2.9	6.5	4	Olive black	None	0.0	0.0	0.0	0.1	1.9	84.8	6.8	6.5	72.0	2.613	Sand/silt	6.9	51	57.9			
64	Hitachitone River	Ikisu	2016/5/26	Sunny	24.6	4.8	22.0	2	Olive black	None	0.0	1.6	0.6	0.9	11.7	79.4	2.0	3.8	74.3	2.709	Sand	14	72	86			
			2016/8/26	Sunny	28.7	5.0	27.6	4	Olive black	None	0.0	0.0	0.0	0.0	9.7	83.5	2.9	3.9	74.0	2.693	Sand	8.9	53	61.9			
			2016/11/22	Sunny	15.8	5.0	13.2	4	Olive black	None	0.0	0.0	0.0	1.0	14.6	77.2	1.9	5.2	75.6	2.691	Sand	10	54	64			
			2017/2/8	Sunny	7.8	5.3	6.4	2	Olive black	None	0.0	0.1	0.1	2.0	17.6	76.3	2.0	2.0	76.6	2.687	Sand	5.6	51	56.6			
65	Lake Ushikumama	Center of Lake Ushikumama	2016/5/24	Sunny	26.0	1.6	23.5	5	Blackish brown	None	0.0	0.0	0.0	0.2	2.0	6.2	72.7	18.9	22.3	2.394	Silt	110	620	730			
			2016/9/1	Sunny	28.2	1.3	26.0	5	Blackish brown	Faint swamp	0.0	0.0	0.0	0.4	3.1	10.0	71.2	15.2	23.6	2.411	Silt	96	490	586			
			2016/11/28	Cloudy	10.2	1.4	9.6	5	Olive black	None	0.0	0.0	0.0	0.3	4.4	11.7	71.9	11.7	23.8	2.421	Silt	86	530	616			
			2017/2/1	Sunny	3.4	1.2	6.9	10	Olive black	None	0.0	0.0	0.0	0.1	1.3	7.2	63.9	27.6	22.6	2.365	Silt	80	570	650			

Ibaraki Lakes and Reservoirs (Sediment) 2/2

Location			Sampling Date	Weather	Air temperature (°C)	Water depth (m)	Sediment														Activity concentration [Bq/kg dry]			Remarks		
							General items				Grain size distribution(%)							Sediment content (%)	Density (g/cm ³)	Property	Radioactive cesium					
No.	Water area	Location	Sediment temperature (°C)	Sample length (cm)	Color	Odor	Course gravel	Medium gravel	Fine gravel	Course sand	Medium sand	Fine sand	Silt	Clay	Cs-134	Cs-137	Total									
L a k e s	66	Mizunuma Dam	Center	2016/5/10	Cloudy	16.0	17.9	6.9	6	Blackish brown	Faint sewage	0.0	0.0	0.0	0.3	0.0	1.6	63.9	34.2	16.8	2.284	Silt	450	2,300	2,750	
				2016/8/24	Sunny	27.8	13.0	18.1	5	Blackish brown	None	0.0	0.0	0.0	1.2	0.9	2.6	69.1	26.3	16.6	2.225	Silt	390	2,100	2,490	
				2016/11/22	Sunny	13.0	17.5	10.3	5	Blackish brown	Faint sewage	0.0	0.0	0.0	0.5	0.1	2.7	58.3	38.5	16.6	2.235	Silt	340	1,800	2,140	
	67	Koyama Dam	Center	2017/2/7	Sunny	4.0	17.8	4.0	6	Blackish brown	Faint sewage	0.0	0.0	0.0	0.3	0.3	2.9	67.5	29.1	18.1	2.196	Silt	280	1,700	1,980	
				2016/5/10	Rain	17.3	14.7	6.5	7	Blackish brown	Faint sewage	0.0	0.0	0.1	0.3	3.2	41.2	55.0	26.2	2.477	Silt	140	590	730		
				2016/8/24	Sunny	28.0	15.8	8.0	10	Blackish brown	Faint sewage	0.0	0.0	0.0	0.1	0.2	1.2	42.4	56.2	21.2	2.399	Silt	50	350	400	
				2016/11/22	Sunny	17.0	15.6	8.5	5	Blackish brown	Faint sewage	0.0	0.0	2.3	12	7.0	6.6	5.4	39.3	38.3	20.5	2.472	Silt/gravel	30	190	220
				2017/2/8	Sunny	2.0	16.1	4.3	4	Blackish brown	Faint hydrogen sulfide	0.0	1.1	0.7	0.7	0.7	2.8	50.0	44.1	25.8	2.349	Silt	87	710	797	
	68	Hananki Dam	Center	2016/5/9	Cloudy	21.8	26.9	7.8	7	Blackish brown	Faint sewage	0.0	0.0	0.0	0.0	3.1	61.8	35.1	20.9	2.374	Silt	270	1,400	1,670		
				2016/8/26	Sunny	28.5	20.3	10.0	4	Blackish brown	Faint sewage	0.0	0.0	0.0	0.8	0.8	1.4	60.1	36.9	19.7	2.306	Silt	170	1,300	1,470	
				2016/11/21	Cloudy	13.0	24.5	9.5	8	Blackish brown	Faint sewage	0.0	0.0	0.0	0.6	0.5	2.0	47.8	49.0	20.5	2.320	Silt	180	1,000	1,180	
				2017/2/8	Sunny	5.5	28.0	5.3	10	Blackish brown	Faint sewage	0.0	0.0	0.0	0.2	0.2	2.9	65.8	31.0	26.0	2.301	Silt	210	1,300	1,510	
2016/5/10				Rain	17.0	23.3	7.0	9	Black	Faint sewage	0.0	0.0	0.0	0.0	0.2	0.5	68.9	30.5	20.7	2.404	Silt	210	1,100	1,310		
69	Jyuo Dam	Center	2016/8/24	Cloudy	25.1	18.5	10.8	8	Blackish brown	Faint sewage	0.0	0.3	2.1	2.3	5.8	6.5	42.3	40.8	20.8	2.446	Silt	63	480	543		
			2016/11/21	Cloudy	13.2	26.8	8.3	12	Blackish brown	Faint sewage	0.0	0.0	0.0	0.9	1.3	4.0	69.5	24.2	24.7	2.334	Silt	180	1,300	1,480		
			2017/2/8	Sunny	7.8	26.5	4.2	10	Black	Faint hydrogen sulfide	0.0	0.0	0.0	0.0	0.1	0.4	39.8	59.8	20.9	2.333	Silt	220	1,300	1,520		
			2016/5/9	Cloudy	22.2	25.1	8.9	5	Olive black	Faint earth	0.0	0.0	0.0	0.7	1.4	2.1	55.4	40.5	19.3	2.338	Silt	59	390	449		
			2016/8/26	Sunny	31.0	20.2	11.0	5	Olive black	Faint sewage	0.0	0.0	0.0	0.8	0.7	0.7	59.3	38.4	19.7	2.326	Silt	92	640	732		
70	Ryujin Dam	Center	2016/11/22	Sunny	17.2	23.2	10.5	5	Olive black	Faint sewage	0.0	0.0	0.0	0.9	0.6	1.6	50.8	46.1	22.0	2.342	Silt	75	430	505		
			2017/2/7	Sunny	2.0	24.7	4.0	8	Olive black	Faint sewage	0.0	0.0	0.0	0.2	0.1	0.2	46.7	52.8	20.5	2.288	Silt	45	390	435		
			2016/5/11	Cloudy	20.1	13.0	11.2	3	Black	Faint sewage	0.0	0.0	0.0	0.2	0.2	0.4	53.4	45.8	24.9	2.473	Silt	62	310	372		
			2016/8/25	Sunny	27.8	9.7	20.0	3	Olive black	Faint sewage	0.0	0.0	0.0	0.8	0.6	1.3	61.0	36.3	21.9	2.4	Silt	65	320	385		
			2016/11/10	Cloudy	10.0	15.2	12.0	3	Blackish brown	Faint sewage	0.0	0.0	0.0	0.3	1.3	3.7	67.2	27.5	24.0	2.4	Silt	48	330	378		
71	Fujiigawa Dam	Center	2017/2/6	Sunny	11.8	14.5	5.0	4	Blackish brown	Faint sewage	0.0	0.0	0.0	0.2	0.4	0.9	50.1	48.4	25.7	2.4	Silt	42	260	302		
			2016/5/11	Rain	21.5	13.3	8.0	10	Black	Faint hydrogen sulfide	0.0	0.0	0.0	0.0	0.1	0.2	59.9	39.8	22.9	2.483	Silt	8.5	56	64.5		
			2016/8/25	Sunny	28.8	13.4	10.0	5	Black	Faint sewage	4.1	10.4	1.8	5.6	13.8	12.7	31.9	19.7	33.3	2.589	Silt/sand	13	70	83		
			2016/11/10	Cloudy	14.2	13.1	11.2	12	Black	Faint sewage	0.0	0.0	0.5	0.7	1.8	71.8	25.3	18.0	2.389	Silt	12	33	45			
			2017/2/6	Sunny	11.0	13.5	6.0	3	Black	Faint hydrogen sulfide	0.0	10.3	5.7	3.6	6.2	8.3	33.8	32.2	23.1	2.420	Silt	13	85	98		
72	Iida Dam	Center	2016/5/10	Cloudy	16.0	17.9	6.9	6	Blackish brown	Faint sewage	0.0	0.0	0.0	0.3	0.0	1.6	63.9	34.2	16.8	2.284	Silt	450	2,300	2,750		
			2016/8/24	Sunny	27.8	13.0	18.1	5	Blackish brown	None	0.0	0.0	0.0	1.2	0.9	2.6	69.1	26.3	16.6	2.225	Silt	390	2,100	2,490		
			2016/11/22	Sunny	13.0	17.5	10.3	5	Blackish brown	Faint sewage	0.0	0.0	0.0	0.5	0.1	2.7	58.3	38.5	16.6	2.235	Silt	340	1,800	2,140		
			2017/2/7	Sunny	4.0	17.8	4.0	6	Blackish brown	Faint sewage	0.0	0.0	0.0	0.3	0.3	2.9	67.5	29.1	18.1	2.196	Silt	280	1,700	1,980		

Ibaraki Lakes and Reservoirs (Surrounding Environment) 1/2

No.	Location		Sampling Date	Weather	Air temperature (°C)	Surrounding Environment (Soil, Air dose)							Remarks	
						Soil			General items					
	Color	Odor				Property	Activity concentration [Bq/kg(dry)]			Air Dose (μSv/h)				
							Radioactive cesium		Total					
Water area		Location	Cs-134		Cs-137		Total							
54	Hiroura	2016/5/21	Sunny	22.0	Dark brown	Faint earth	Loamy	370	2,000	2,370	0.10			
		2016/8/15	Cloudy	30.1	Dull yellowish brown	Faint earth	Loamy	150	780	930	0.10			
		2016/11/16	Sunny	15.5	Dull yellowish brown	Faint earth	Loamy	110	580	690	0.10			
		2017/2/16	Sunny	7.2	Dull yellowish brown	Faint earth	Loamy	89	540	629	0.12			
	55	Hinuma	Miyamae	2016/5/21	Sunny	21.8	Brown	Faint earth	Loamy	7.0	40	47.0	0.07	
			2016/8/15	Cloudy	30.2	Dull yellowish brown	Faint earth	Loamy	8.3	43	51.3	0.06		
			2016/11/16	Sunny	15.3	Dull yellowish brown	Faint earth	Loamy	7.2	32	39.2	0.06		
			2017/2/16	Sunny	6.5	Dull yellowish brown	Faint earth	Loamy	8.4	38	46.4	0.07		
	56	Hinuma	Oyazawa	2016/5/21	Sunny	21.5	-	-	-	-	-	-	-	No sampling soil location
			2016/8/15	Cloudy	30.2	-	-	-	-	-	-	-	-	No sampling soil location
			2016/11/16	Sunny	14.8	-	-	-	-	-	-	-	-	No sampling soil location
			2017/2/16	Sunny	6.3	-	-	-	-	-	-	-	-	No sampling soil location
57	Lake Kasumigaura	Offshore of Tamatsukuri	2016/5/26	Cloudy	22.5	Olive black	None	Sandy	5.3	24	29.3	0.06		
		2016/8/26	Sunny	28.0	Olive black	Faint earth	Sandy	<4.8	18	18	0.06			
		2016/11/22	Cloudy	12.7	Olive black	Faint earth	Sandy	<5.3	22	22	0.06			
		2017/2/8	Sunny	6.0	Gray	None	Sandy	<4.4	16	16	0.07			
58	Lake Kasumigaura	Offshore of Kakeuma	2016/5/26	Cloudy	23.0	Dark grayish yellow	Faint earth	Loamy	33	180	213	0.07		
		2016/8/26	Sunny	28.8	Dark olive brown	Faint earth	Loamy	19	110	129	0.07			
		2016/11/22	Sunny	12.2	Blackish brown	Faint earth	Sandy	35	200	235	0.08			
		2017/2/8	Sunny	7.8	Olive brown	Faint earth	Sandy	7.2	59	66.2	0.07			
59	Lake Kasumigaura	Center	2016/5/26	Cloudy	21.9	-	-	-	-	-	-	-	No sampling soil location	
		2016/8/26	Sunny	28.0	-	-	-	-	-	-	-	-	No sampling soil location	
		2016/11/22	Sunny	13.0	-	-	-	-	-	-	-	-	No sampling soil location	
		2017/2/8	Sunny	4.5	-	-	-	-	-	-	-	-	No sampling soil location	
60	Lake Kasumigaura	Offshore of Aso	2016/5/26	Cloudy	25.0	Dark grayish yellow	Faint earth	Sandy	42	230	272	0.08		
		2016/8/26	Sunny	26.8	Dark olive brown	Faint earth	Sandy	23	150	173	0.08			
		2016/11/22	Sunny	13.3	Dark grayish yellow	Faint earth	Sandy	18	110	128	0.08			
		2017/2/8	Sunny	4.5	Dark olive brown	Faint earth	Sandy	38	240	278	0.09			
61	Lake Kitaura	Offshore of Kamaya	2016/5/26	Cloudy	24.0	Blackish brown	Faint earth	Loamy	110	560	670	0.07		
		2016/8/26	Sunny	25.8	Black	Faint earth	Loamy	79	450	529	0.07			
		2016/11/22	Sunny	14.7	Blackish brown	Faint earth	Loamy	85	510	595	0.07			
		2017/2/8	Sunny	4.1	Blackish brown	Faint earth	Loamy	77	570	647	0.08			
62	Lake Kitaura	Jingu Bridge	2016/5/26	Cloudy	24.0	Brown	Faint earth	Loamy	6.7	39	45.7	0.04		
		2016/8/26	Sunny	26.9	Dull yellowish brown	Faint earth	Sandy	<4.9	23	23	0.04			
		2016/11/22	Sunny	15.1	Brown	Faint earth	Sandy	<4.5	22	22	0.05			
		2017/2/8	Sunny	6.0	Dull yellowish brown	Faint earth	Loamy	14	97	111	0.04			
63	Hitachitone River	Lake Sotonasakaura	2016/5/26	Sunny	24.0	Blackish brown	Faint earth	Loamy	16	80	96	0.05		
		2016/8/26	Sunny	27.9	Dark brown	Faint earth	Loamy	16	88	104	0.04			
		2016/11/22	Sunny	16.2	Blackish brown	Faint earth	Loamy	10	86	96	0.05			
		2017/2/8	Sunny	6.8	Blackish brown	Faint earth	Loamy	12	87	99	0.05			
64	Hitachitone River	Ikisu	2016/5/26	Sunny	24.6	Blackish brown	Faint earth	Loamy	30	170	200	0.05		
		2016/8/26	Sunny	28.7	Blackish brown	Faint earth	Loamy	28	140	168	0.05			
		2016/11/22	Sunny	15.8	Blackish brown	Faint earth	Loamy	20	120	140	0.05			
		2017/2/8	Sunny	7.8	Blackish brown	Faint earth	Loamy	31	140	171	0.05			
65	Lake Ushikunuma	Center of Lake Ushikunuma	2016/5/24	Sunny	26.0	Dark brown	Faint earth	Loamy	47	270	317	0.08		
		2016/9/1	Sunny	28.2	Blackish brown	Faint earth	Loamy	48	280	328	0.07	Sampling in September for a typhoon		
		2016/11/28	Cloudy	10.2	Dark brown	Faint earth	Loamy	39	270	309	0.08			
			2017/2/1	Sunny	3.4	Dark brown	Faint earth	Loamy	14	140	154	0.07		

Ibaraki Lakes and Reservoirs (Surrounding Environment) 2/2

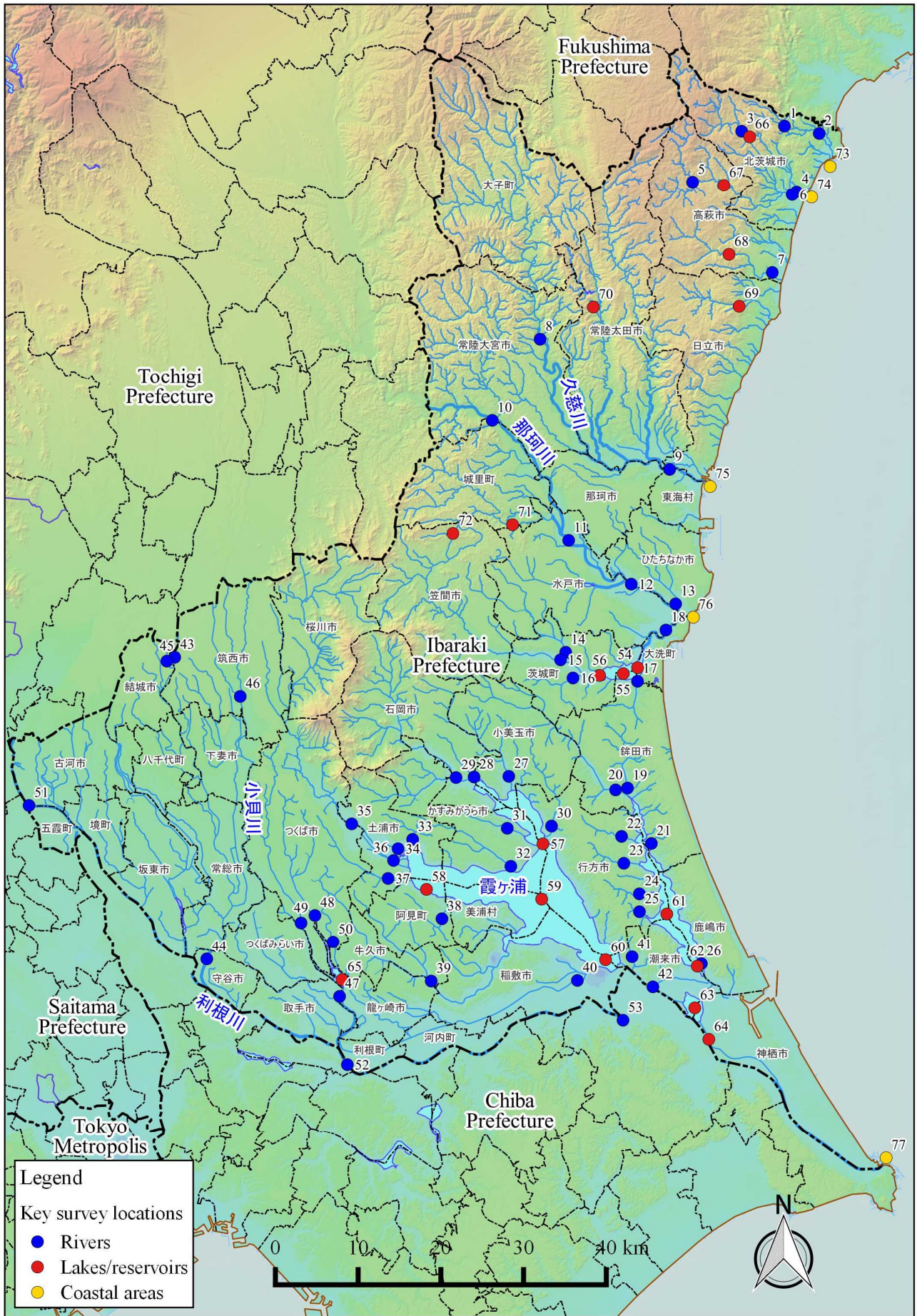
	Location			Sampling Date	Weather	Air temperature (°C)	Surrounding Environment (Soil, Air dose)						Remarks	
							Soil			Air Dose (μSv/h)				
	General items						Activity concentration [Bq/kg(dry)]							
	No.	Water area	Location				Color	Odor	Property		Radioactive cesium			
Cs-134				Cs-137	Total									
L a k e s a n d R e s e r v o i r s	66	Mizunuma Dam	Center	2016/5/10	Cloudy	16.0	Blackish brown	Faint earth	Loamy	71	340	411	0.12	
				2016/8/24	Sunny	27.8	Grayish yellowish brown	Faint earth	Loamy	30	210	240	0.12	
				2016/11/22	Sunny	13.0	Blackish brown	Faint earth	Loamy	43	300	343	0.11	
				2017/2/7	Sunny	4.0	Grayish yellowish brown	Faint earth	Loamy	41	300	341	0.12	
	67	Koyama Dam	Center	2016/5/10	Rain	17.3	Dull yellowish brown	Faint earth	Loamy	76	330	406	0.09	
				2016/8/24	Sunny	28.0	Dull yellowish brown	Faint earth	Sandy	53	310	363	0.09	
				2016/11/22	Sunny	17.0	Dull yellowish brown	Faint earth	Sandy	24	120	144	0.07	
				2017/2/8	Sunny	2.0	Dull yellowish brown	Faint earth	Sandy	50	240	290	0.10	
	68	Hananuki Dam	Center	2016/5/9	Cloudy	21.8	Dark brown	Faint earth	Loamy	240	1,300	1,540	0.14	
				2016/8/26	Sunny	28.5	Dark brown	Faint earth	Loamy	100	640	740	0.14	
				2016/11/21	Cloudy	13.0	Dull yellowish brown	Faint earth	Loamy	190	1,100	1,290	0.13	
				2017/2/8	Sunny	5.5	Dark brown	Faint earth	Loamy	170	870	1,040	0.14	
	69	Jyuou Dam	Center	2016/5/10	Rain	17.0	Blackish brown	Faint earth	Loamy	460	2,500	2,960	0.10	
				2016/8/24	Cloudy	25.1	Brownish gray	Faint earth	Loamy	99	580	679	0.09	
				2016/11/21	Cloudy	13.2	Blackish brown	Faint earth	Loamy	290	1,600	1,890	0.10	
				2017/2/8	Sunny	7.8	Blackish brown	Faint earth	Loamy	190	1,200	1,390	0.10	
	70	Ryujin Dam	Center	2016/5/9	Cloudy	22.2	Brown	Faint earth	Loamy	22	140	162	0.08	
				2016/8/26	Sunny	31.0	Brown	Faint earth	Loamy	27	150	177	0.07	
				2016/11/22	Sunny	17.2	Brown	Faint earth	Loamy	39	170	209	0.07	
				2017/2/7	Sunny	2.0	Dark brown	Faint earth	Loamy	32	180	212	0.08	
	71	Fujigawa Dam	Center	2016/5/11	Cloudy	20.1	Black	Faint earth	Loamy	160	770	930	0.12	
				2016/8/25	Sunny	27.8	Black	Faint earth	Loamy	95	540	635	0.13	
				2016/11/10	Cloudy	10.0	Black	Faint earth	Loamy	110	620	730	0.12	
				2017/2/6	Sunny	11.8	Black	Faint earth	Loamy	95	560	655	0.12	
72	Iida Dam	Center	2016/5/11	Rain	21.5	Dark brown	Faint earth	Loamy	93	520	613	0.08		
			2016/8/25	Sunny	28.8	Dark brown	Faint earth	Loamy	100	440	540	0.09		
			2016/11/10	Cloudy	14.2	Dark brown	Faint earth	Loamy	80	550	630	0.09		
			2017/2/6	Sunny	11.0	Dark brown	Faint earth	Loamy	79	500	579	0.10		

Ibaraki Coastal (Water) 1/1

Location		Sampling Date	Weather	Air temperature (°C)	Water depth (m)	Water										Remarks	
No.	Water area					General items					Activity concentration(Bq/L)						
						Water temperature (°C)	Sampling depth (m)	Color	Odor	Secchi disk depth (m)	Salinity (%)	SS (mg/L)	Turbidity (FNU)	Radioactive cesium			
													Cs-134	Cs-137			
C o a s t a l a r e a s	73	Offshore of Satone River Estuary	Surface layer	2016/5/18	Sunny	20.0	12.3	16.0	0.5	Dark grayish bluish green	None	5.5	29.9	2	1.2	<-0.60	<-0.88
			Deep layer					14.3	11.3	-	None		31.2	<1	0.6	<-0.75	<-0.92
			Surface layer	2016/9/2	Sunny	27.0	12.0	24.6	0.5	Grayish yellow green	None	2.5	29.6	3	1.8	<-0.51	<-0.75
			Deep layer					23.6	11.0	-	None		30.5	3	2.0	<-0.62	<-0.80
			Surface layer	2016/11/14	Cloudy	17.5	13.0	17.4	0.5	Dark grayish yellow green	None	3.0	30.9	6	2.6	<-0.68	<-0.69
			Deep layer					17.6	12.0	-	None		31.4	7	3.2	<-0.57	<-0.88
	Surface layer	2017/2/15	Sunny	9.0	12.7	10.8	0.5	Grayish yellowish green	None	6.5	32.2	<1	0.7	<-0.62	<-0.61		
	Deep layer					10.9	11.7	-	None		32.5	3	0.7	<-0.66	<-0.74		
	74	Offshore of Okita River Estuary	Surface layer	2016/5/18	Sunny	19.2	11.7	16.6	0.5	Dark grayish green	None	4.0	28.8	2	0.8	<-0.67	<-0.88
			Deep layer					14.5	10.7	-	None		31.2	<1	0.2	<-0.69	<-0.88
			Surface layer	2016/9/2	Sunny	28.5	12.0	24.8	0.5	Grayish yellow green	None	2.5	26.1	4	2.3	<-0.60	<-0.92
			Deep layer					24.3	11.0	-	None		30.5	2	1.5	<-0.58	<-0.84
			Surface layer	2016/11/14	Cloudy	18.5	11.5	17.6	0.5	Dark grayish yellow green	None	3.0	30.7	8	3.2	<-0.56	<-0.55
			Deep layer					17.9	10.5	-	None		31.6	12	4.4	<-0.56	<-0.55
	Surface layer	2017/2/15	Sunny	8.2	11.7	11.5	0.5	Grayish yellowish green	None	7.0	32.2	1	0.8	<-0.77	<-0.96		
	Deep layer					11.6	10.7	-	None		32.7	7	1.7	<-0.80	<-0.88		
	75	Offshore of Momiya River/Kujigawa River Estuaries	Surface layer	2016/5/18	Sunny	19.7	10.5	17.5	0.5	Dark grayish yellow green	None	2.5	28.4	3	1.8	<-0.57	<-0.69
			Deep layer					15.6	9.5	-	None		31.5	4	1.3	<-0.91	<-0.80
			Surface layer	2016/9/2	Sunny	27.8	10.1	24.4	0.5	Grayish greenish yellow	None	2.5	22.8	4	2.5	<-0.66	<-0.88
			Deep layer					23.6	9.1	-	None		30.4	2	1.5	<-0.60	<-0.84
			Surface layer	2016/11/14	Cloudy	17.0	10.5	17.7	0.5	Dark grayish green	None	3.0	30.7	4	2.4	<-0.59	<-0.69
			Deep layer					17.7	9.5	-	None		31.5	4	2.3	<-0.68	<-0.84
	Surface layer	2017/2/15	Sunny	6.2	10.2	11.3	0.5	Grayish yellow green	None	4.0	30.1	2	1.7	<-0.77	<-0.55		
	Deep layer					11.5	9.2	-	None		32.4	1	0.9	<-0.74	<-0.81		
76	Neighboring water body of Ken-o Offshore of Nakagawa River	Surface layer	2016/5/18	Sunny	18.2	6.0	18.3	0.5	Grayish greenish yellow	None	0.8	10.7	10	6.5	<-0.63	<-0.75	
		Deep layer					15.5	5.0	-	None		29.8	3	0.7	<-0.71	<-0.92	
		Surface layer	2016/9/2	Sunny	26.5	5.2	23.8	0.5	Grayish yellow green	None	2.0	8.3	12	6.8	<-0.62	<-0.99	
		Deep layer					24.0	4.2	-	None		27.6	11	4.9	<-0.71	<-0.84	
		Surface layer	2016/11/14	Cloudy	18.5	5.0	18.1	0.5	Grayish yellow green	None	2.0	30.5	13	7.7	<-0.80	<-0.70	
		Deep layer					17.3	4.0	-	None		26.6	19	11	<-0.77	<-0.70	
Surface layer	2017/2/15	Sunny	7.0	6.1	9.9	0.5	Grayish yellow green	None	2.5	22.9	4	2.3	<-0.75	<-0.69			
Deep layer					11.2	5.1	-	None		31.6	7	2.6	<-0.70	<-0.96			
77	Offshore of Tonegawa River Estuary	Surface layer	2016/6/1	Sunny	23.2	8.2	19.1	0.5	Dark grayish green	None	3.4	26.8	2	0.8	<-0.73	<-0.55	
		Deep layer					16.7	7.2	-	None		31.5	<1	0.4	<-0.66	<-0.63	
		Surface layer	2016/9/17	Cloudy	28.5	8.5	25.2	0.5	Grayish yellow green	None	1.0	11.0	13	8.1	<-0.84	<-0.75	
		Deep layer					24.5	7.5	-	None		29.0	7	3.0	<-0.87	<-0.69	
		Surface layer	2016/12/3	Sunny	14.5	8.0	13.9	0.5	Grayish yellowish green	None	2.9	19.6	3	2.8	<-0.62	<-0.75	
		Deep layer					17.2	7.0	-	None		30.6	1	1.0	<-0.88	<-0.80	
Surface layer	2017/2/16	Sunny	9.0	8.1	11.0	0.5	Dark grayish yellow green	None	2.4	20.4	2	2.0	<-0.70	<-0.81			
Deep layer					12.7	7.1	-	None		32.5	3	1.4	<-0.57	<-0.61			

Ibaraki Coastal (Sediment)1/1

Location		Sampling Date	Weather	Air temperature (°C)	Water depth (m)	Sediment																	Activity concentration [Bq/kg(dry)]			Remarks
No.	Water area					Sediment temperature (°C)	Sample length (cm)	Color	Odor	General items							Sediment content (%)	Density (g/cm ³)	Property	Radioactive cesium						
										Coarse gravel	Medium gravel	Fine gravel	Coarse sand	Medium sand	Fine sand	Silt				Clay	Cs-134	Cs-137	Total			
C o a s t	73 Offshore of Satone River Estuary	2016/5/18	Sunny	20.0	12.3	14.7	6	Olive black	None	0.0	0.0	0.0	0.2	5.7	51.8	38.3	4.0	71.4	2.668	Sand	5.6	29	34.6			
		2016/9/2	Sunny	27.0	12.0	24.2	5	Olive black	None	0.0	0.0	0.0	1.1	10.0	61.3	21.3	6.2	63.6	2.588	Sand	-5.6	36	36			
		2016/11/14	Cloudy	17.5	13.0	17.9	7	Dark olive	Faint shore	0.0	0.0	0.0	0.5	16.6	74.6	4.4	4.0	69.2	2.622	Sand/silt	4.9	30	34.9			
		2017/2/15	Sunny	9.0	12.7	11.5	4	Olive black	None	0.0	0.0	0.0	1.3	11.8	70.3	12.1	4.5	66.5	2.591	Sand	-4.7	30	30			
		2016/5/18	Sunny	19.2	11.7	14.9	6	Olive black	None	0.0	0.0	0.0	0.1	1.8	51.3	40.0	6.9	65.5	2.601	Sand	8.4	49	57.4			
		2016/9/2	Sunny	28.5	12.0	24.8	4	Olive black	None	0.0	0.0	0.0	0.1	6.8	80.0	9.7	3.3	74.8	2.717	Sand	1.3	6.0	7.3			
	a r e a	74 Offshore of Okita River Estuary	2016/11/14	Cloudy	18.5	11.5	18.0	10	Olive black	Faint shore	0.0	0.0	0.0	0.0	13.2	79.6	3.3	4.0	74.5	2.671	Sand	-4.4	6.1	6.1		
			2017/2/15	Sunny	8.2	11.7	10.8	4	Olive black	None	0.0	0.0	0.0	0.5	5.9	70.2	19.0	4.5	70.8	2.665	Sand	-4.2	4.8	4.8		
			2016/5/18	Sunny	19.7	10.5	15.7	7	Olive black	None	0.0	0.0	0.0	0.0	9.5	79.7	6.8	4.0	75.6	2.727	Sand	-4.8	6.8	6.8		
			2016/9/2	Sunny	27.8	10.1	24.0	5	Olive black	None	0.0	0.0	0.0	0.1	1.6	86.2	8.2	4.0	74.9	2.715	Sand	-0.75	4.8	4.8		
			2016/11/14	Cloudy	17.0	10.5	18.0	6	Olive black	Faint to strong odors	0.0	0.0	0.0	0.3	1.4	62.7	26.4	9.2	63.6	2.624	Sand/silt	-5.1	25	25		
			2017/2/15	Sunny	6.2	10.2	10.8	5	Olive black	None	0.0	0.0	0.0	0.2	4.1	83.6	7.0	5.2	72.3	2.669	Sand	-0.9	4.1	4.1		
s e a	75 Offshore of Momiya River/Kujigawa River Estuaries	2016/5/18	Sunny	18.2	6.0	15.8	10	Olive black	None	0.0	0.2	0.8	2.9	70.8	22.4	0.1	2.9	76.7	2.724	Sand	0.61	2.4	3.01			
		2016/9/2	Sunny	26.5	5.2	25.6	3	Olive black	None	0.0	0.0	0.0	0.1	5.8	88.5	0.8	4.9	75.1	2.755	Sand	1.0	5.4	6.4			
		2016/11/14	Cloudy	18.5	5.0	17.0	4	Dark olive	Faint shore	0.0	0.0	0.0	0.1	11.9	80.2	5.4	2.3	77.2	2.777	Sand	0.84	4.9	5.74			
		2017/2/15	Sunny	7.0	6.1	11.2	8	Olive black	None	0.0	0.0	0.0	0.1	21.7	71.8	1.3	5.1	70.3	2.679	Sand	1.0	6.1	7.1			
		2016/9/1	Sunny	23.2	8.2	17.1	6	Olive black	None	0.0	0.0	0.0	0.0	0.5	89.7	5.7	4.1	75.6	2.699	Sand	-0.86	1.1	1.1			
		2016/9/17	Cloudy	28.5	8.5	24.2	2	Olive black	None	0.0	0.1	0.1	0.1	0.8	65.9	27.6	5.4	69.7	2.641	Sand	0.97	7.3	8.27			
	77 Offshore of Tonegawa River Estuary	2016/12/3	Sunny	14.5	8.0	15.0	1	Olive black	None	0.0	0.0	0.4	0.3	1.5	88.8	4.9	3.9	73.2	2.748	Sand	-0.81	1.6	1.6			
		2017/2/16	Sunny	9.0	8.1	12.2	2	Olive black	None	0.0	0.0	0.0	0.0	1.2	92.3	1.4	5.1	70.9	2.662	Sand	-0.53	0.81	0.81			
		Sampling in June for the weather badness																								



Survey Locations (Ibaraki Prefecture)