

FY2016 Miyagi Prefecture Survey Results

[Outline of results]

(1) Water

Rivers

Radioactive cesium (Cs-134, Cs-137): Not detectable at any location

Lakes and reservoirs

Radioactive cesium (Cs-134, Cs-137): Not detectable at any location

Coastal areas

Radioactive cesium (Cs-134, Cs-137): Not detectable at any location

(2) Sediments

Rivers

Cs-134: ND - 140 Bq/kg (dry)

Cs-137: ND - 930Bq/kg (dry)

Lakes and reservoirs

Cs-134: ND - 510 Bq/kg (dry)

Cs-137: 12 - 3,200 Bq/kg (dry)

Coastal areas

Cs-134: ND - 120 Bq/kg (dry)

Cs-137: 1.0 - 590 Bq/kg (dry)

(3) Surrounding Environment

(a) Soil

Rivers

Cs-134: ND - 640 Bq/kg (dry)

Cs-137: 5.1 - 3,200Bq/kg (dry)

Lakes and reservoirs

Cs-134: ND - 370 Bq/kg (dry)

Cs-137: 7.8 - 2,100 Bq/kg (dry)

(b) Ambient dose rate

Rivers

0.04 - 0.27 μ Sv/h

Lakes and reservoirs

0.04 - 0.17 μ Sv/h

Miyagi River (Water) 1/4

R i v e r s	Location				Sampling Date	Weather	Air temperature (°C)	Water depth (m)	Water										Remarks
	No.	Water area	Location	Municipality					General items						Activity concentration(Bq/L)				
									Water temperature (°C)	Sampling depth (m)	Color	Odor	Transparency (cm)	Electrical conductivity (mS/m)	SS (mg/L)	Turbidity (FNU)	Radioactive cesium		
				Cs-134	Cs-137														
1	Shishiori River	Kinzan Bridge	Kesennuma City	2016/5/13	Sunny	20.1	0.2	11.9	0.0	*	None	>100	13.0	<1	0.3	<-0.71	<-0.80		
				2016/8/27	Rain	19.0	0.2	14.8	0.0	Yellow greenish white	None	>100	11.9	<1	0.4	<-0.54	<-0.80		
				2016/1/17	Sunny	7.5	0.2	7.3	0.0	Greenish yellowish white	None	>100	13.6	<1	0.2	<-0.62	<-0.92		
		2017/1/27		Cloudy	2.6	0.2	3.2	0.0	Yellow greenish white	None	>100	14.1	<1	0.2	<-0.62	<-0.75			
		2016/5/14		Sunny	15.8	2.3	13.0	0.0	Light grayish yellow green	None	>100	535	<1	0.6	<-0.56	<-0.80			
		2016/8/28		Sunny	25.4	2.4	20.6	0.0	Light grayish yellow	None	26	27.3	85	89	<0.62	<-0.80			
	2	Namita Bridge	Kesennuma City	2016/1/8	Cloudy	8.9	1.1	13.2	0.0	Grayish yellow green	None	57	2.770	10	10	<-0.83	<-0.55		
				2017/1/27	Cloudy	5.4	1.5	7.4	0.0	Grayish yellow green	None	>100	4.140	2	2.4	<-0.58	<-0.92		
				2016/5/14	Cloudy	17.3	0.2	14.5	0.0	*	None	>100	10.9	4	2.1	<-0.62	<-0.88		
				2016/8/28	Sunny	24.8	0.5	18.3	0.0	Light grayish greenish yellow	None	>100	9.8	3	1.7	<-0.62	<-0.80		
				2016/1/8	Cloudy	13.9	0.3	9.3	0.0	Light grayish greenish yellow	None	>100	12.3	1	0.9	<-0.71	<-0.92		
				2017/1/27	Cloudy	2.3	0.2	3.4	0.0	Yellow greenish white	None	>100	12.3	1	1.2	<-0.75	<-0.80		
	3	Tateyama-ohashi Bridge	Kesennuma City	2016/5/14	Sunny	20.4	0.3	16.7	0.0	Light grayish yellow	None	57	28.3	8	5.2	<-0.54	<-0.69		
2016/8/28				Sunny	25.1	0.7	19.5	0.0	Grayish yellow	None	>100	12.4	4	2.3	<-0.60	<-0.69			
2016/1/8				Cloudy	11.8	0.6	9.8	0.0	Light grayish greenish yellow	None	>100	300	2	1.3	<-0.46	<-0.74			
2017/1/27				Cloudy	3.9	0.8	3.2	0.0	Light grayish greenish yellow	None	70	863	6	4.6	<-0.73	<-0.69			
2016/5/14				Sunny	15.4	0.5	15.7	0.0	Light grayish yellow green	None	>100	1,580	3	2.3	<-0.90	<-0.55			
2016/8/28				Sunny	22.4	0.7	21.7	0.0	Grayish greenish yellow	Faint seaweed	86	3,200	8	5.0	<-0.70	<-0.75			
4	Okawa River	Kamiyama Bridge	Kesennuma City	2016/1/8	Cloudy	14.1	2.3	12.4	0.0	Grayish yellow green	None	>100	2,110	3	2.2	<-0.66	<-0.69		
				2017/1/28	Sunny	2.3	2.8	3.6	0.0	Grayish yellow green	None	>100	2,050	2	2.4	<-0.71	<-0.88		
				2016/5/14	Sunny	17.8	0.5	19.0	0.0	Light grayish yellow	None	42	425	18	11	<-0.47	<-0.80		
				2016/8/27	Cloudy	20.9	1.0	20.5	0.0	Grayish greenish yellow	None	48	930	11	9.4	<-0.62	<-0.84		
				2016/1/9	Sunny	8.0	0.8	11.2	0.0	Grayish yellow green	None	82	3,370	6	3.6	<-0.83	<-0.78		
				2017/1/28	Sunny	5.2	0.8	6.4	0.0	Light grayish greenish yellow	None	80	3,680	7	4.9	<-0.56	<-0.92		
5	Okawa River Estuary	Kesennuma City	2016/5/9	Sunny	17.4	0.2	14.3	0.0	Light grayish yellow green	None	43	15.3	8	8.1	<-0.62	<-0.92			
			2016/8/24	Sunny	25.4	0.3	22.5	0.0	Light grayish yellow	None	88	8.1	7	5.4	<-0.69	<-0.75			
			2016/1/6	Sunny	10.4	0.2	9.4	0.0	Light grayish greenish yellow	None	>100	16.3	1	1.5	<-0.76	<-0.55			
			2017/1/29	Sunny	-0.5	0.2	0.2	0.0	Greenish yellowish white	None	>100	20.1	<1	1.2	<-0.87	<-0.84			
			2016/5/9	Sunny	20.4	0.3	17.5	0.0	Grayish greenish yellow	None	19	13.9	32	39	<-0.72	<-0.84			
			2016/8/24	Sunny	27.6	0.5	23.1	0.0	Grayish yellow	None	56	7.5	12	8.1	<-0.59	<-0.66			
6	Omose River	Obata Bridge	Kurihara City	2016/1/6	Sunny	11.7	0.3	10.3	0.0	Light grayish yellow	None	>100	15.2	2	2.2	<-0.79	<-0.69		
				2017/1/29	Sunny	2.9	0.3	1.4	0.0	Light grayish yellow green	None	40	18.1	7	8.0	<-0.73	<-0.69		
				2016/5/15	Sunny	17.4	0.3	16.6	0.0	Light grayish yellow	None	45	9.9	10	11	<-0.65	<-0.63		
				2016/8/19	Sunny	28.6	1.0	22.6	0.0	Grayish yellow	None	20	9.9	38	33	<-0.67	<-0.75		
				2016/1/9	Sunny	7.7	0.3	9.4	0.0	Yellowish white	None	>100	19.2	6	3.7	<-0.69	<-0.69		
				2017/1/26	Sunny	4.7	0.3	2.1	0.0	Light grayish yellow green	None	>100	13.7	<1	1.3	<-0.78	<-0.80		
7	Arima River	Unanda Bridge	Tome City	2016/5/12	Sunny	16.1	2.8	12.7	0.0	Light grayish yellow green	None	>100	8.4	3	1.8	<-0.68	<-0.69		
				2016/8/21	Sunny	30.8	1.8	23.2	0.0	Grayish greenish yellow	None	41	9.5	19	10	<-0.95	<-0.70		
				2016/1/2	Sunny	5.3	1.8	8.7	0.0	Light grayish yellow green	None	>100	15.3	<1	0.8	<-0.62	<-0.66		
				2017/1/29	Sunny	5.7	1.2	3.0	0.0	Light grayish yellow green	None	>100	17.5	2	1.6	<-0.86	<-0.88		
				2016/5/18	Sunny	23.2	0.3	16.4	0.0	*	None	>100	11.3	<1	1.0	<-0.68	<-0.75		
				2016/8/21	Sunny	31.3	0.3	21.2	0.0	Grayish yellow green	None	65	9.0	9	7.7	<-0.81	<-0.88		
8	Kinryu River	Obata Bridge	Kurihara City	2016/1/13	Sunny	14.9	0.2	10.4	0.0	Greenish yellowish white	None	>100	14.4	1	1.1	<-0.60	<-0.75		
				2017/1/25	Sunny	1.3	0.2	0.6	0.0	Greenish yellowish white	None	>100	14.9	3	1.9	<-0.71	<-0.92		
				2016/5/20	Sunny	21.8	0.3	16.6	0.0	Yellow greenish white	None	>100	8.2	2	0.8	<-0.75	<-0.80		
				2016/8/26	Cloudy	23.7	0.3	17.9	0.0	Light grayish yellow green	None	>100	8.1	4	3.3	<-0.65	<-0.84		
				2016/1/13	Sunny	13.0	0.2	9.8	0.0	Greenish yellowish white	None	>100	8.9	1	0.8	<-0.68	<-0.84		
				2017/1/25	Sunny	0.9	0.3	7.8	0.0	Light grayish yellow green	None	>100	8.4	<1	0.3	<-0.64	<-0.63		
9	Kitakami River	Tome-ohashi Bridge (Tome)	Tome City	2016/5/9	Sunny	20.7	0.5	14.8	0.0	Grayish greenish yellow	None	25	17.1	19	19	<-0.71	<-0.75		
				2016/8/24	Sunny	28.6	0.7	22.2	0.0	Grayish yellow	None	20	9.9	54	39	<-0.59	<-0.66		
				2016/1/6	Sunny	11.9	0.3	11.0	0.0	Light grayish yellow	None	>100	15.8	3	2.9	<-0.41	<-0.66		
				2017/1/26	Sunny	7.2	0.3	2.3	0.0	Light grayish greenish yellow	None	75	16.8	4	3.5	<-0.83	<-0.96		
				2016/5/15	Sunny	17.4	0.3	16.6	0.0	Light grayish yellow	None	45	9.9	10	11	<-0.65	<-0.63		
				2016/8/19	Sunny	28.6	1.0	22.6	0.0	Grayish yellow	None	20	9.9	38	33	<-0.67	<-0.75		
10	Kitakami River System	Sanhasama River	Doman Bridge (Kurikoma Dam)	Kurihara City	2016/1/9	Sunny	7.7	0.3	9.4	0.0	Yellowish white	None	>100	19.2	6	3.7	<-0.69	<-0.69	
					2017/1/26	Sunny	4.7	0.3	2.1	0.0	Light grayish yellow green	None	>100	13.7	<1	1.3	<-0.78	<-0.80	
					2016/5/12	Sunny	16.1	2.8	12.7	0.0	Light grayish yellow green	None	>100	8.4	3	1.8	<-0.68	<-0.69	
					2016/8/21	Sunny	30.8	1.8	23.2	0.0	Grayish greenish yellow	None	41	9.5	19	10	<-0.95	<-0.70	
					2016/1/2	Sunny	5.3	1.8	8.7	0.0	Light grayish yellow green	None	>100	15.3	<1	0.8	<-0.62	<-0.66	
					2017/1/29	Sunny	5.7	1.2	3.0	0.0	Light grayish yellow green	None	>100	17.5	2	1.6	<-0.86	<-0.88	
11	Nihassama River	Kajiya Bridge	Kurihara City	2016/5/18	Sunny	23.2	0.3	16.4	0.0	*	None	>100	11.3	<1	1.0	<-0.68	<-0.75		
				2016/8/21	Sunny	31.3	0.3	21.2	0.0	Grayish yellow green	None	65	9.0	9	7.7	<-0.81	<-0.88		
				2016/1/13	Sunny	14.9	0.2	10.4	0.0	Greenish yellowish white	None	>100	14.4	1	1.1	<-0.60	<-0.75		
				2017/1/25	Sunny	1.3	0.2	0.6	0.0	Greenish yellowish white	None	>100	14.9	3	1.9	<-0.71	<-0.92		
				2016/5/20	Sunny	21.8	0.3	16.6	0.0	Yellow greenish white	None	>100	8.2	2	0.8	<-0.75	<-0.80		
				2016/8/26	Cloudy	23.7	0.3	17.9	0.0	Light grayish yellow green	None	>100	8.1	4	3.3	<-0.65	<-0.84		
12	Hasama River	Hanayama Dam, inflow area	Kurihara City	2016/1/13	Sunny	13.0	0.2	9.8	0.0	Greenish yellowish white	None	>100	8.9	1	0.8	<-0.68	<-0.84		
				2017/1/25	Sunny	0.9	0.3	7.8	0.0	Light grayish yellow green	None	>100	8.4	<1	0.3	<-0.64	<-0.63		
				2016/5/9	Sunny	20.7	0.5	14.8	0.0	Grayish greenish yellow	None	25	17.1	19	19	<-0.71	<-0.75		
				2016/8/24	Sunny	28.6	0.7	22.2	0.0	Grayish yellow	None	20	9.9	54	39	<-0.59	<-0.66		
				2016/1/6	Sunny	11.9	0.3	11.0	0.0	Light grayish yellow	None	>100	15.8	3	2.9	<-0.41	<-0.66		
				2017/1/26	Sunny	7.2	0.3	2.3	0.0	Light grayish greenish yellow	None	75	16.8	4	3.5	<-0.83	<-0.96		

Miyagi River (Water) 2/4

No.	Location			Sampling Date	Weather	Air temperature (°C)	Water depth (m)	Water							Activity concentration(Bq/L)		Remarks	
	Water area	Location	Municipality					Water temperature (°C)	Sampling depth (m)	Color	Odor	Transparency (cm)	Electrical conductivity (mS/m)	SS (mg/L)	Turbidity (FNU)	Radioactive cesium		
																Cs-134		Cs-137
R i v e r s	14	Hasama River	Yamayoshida Bridge	Tome City	2016/5/15	Sunny	17.7	0.8	19.4	0.0	Grayish yellow	None	19	14.4	48	45	<-0.72	<-0.88
					2016/8/19	Sunny	29.9	0.9	26.1	0.0	Grayish yellow	None	32	13.3	27	14	<-0.62	<-0.80
					2016/1/9	Sunny	6.8	0.3	9.5	0.0	Light grayish yellow	None	76	19.0	5	4.9	<-0.65	<-0.55
					2017/1/26	Sunny	3.2	0.3	0.4	0.0	Grayish greenish yellow	None	55	19.7	5	5.6	<-0.76	<-0.69
					2016/5/20	Sunny	21.9	1.0	15.8	0.0	Light grayish yellow green	None	>100	7.9	2	0.9	<-0.48	<-0.80
	15	Eai River	Todoroki Bridge (Todoroki)	Osaki City	2016/8/18	Sunny	26.5	0.9	20.1	0.0	Light grayish greenish yellow	None	>100	6.6	7	4.2	<-0.68	<-0.88
					2016/11/13	Sunny	10.1	1.0	7.2	0.0	Light grayish yellow green	None	>100	10.5	1	0.9	<-0.66	<-0.66
					2017/1/25	Sunny	-1.5	1.2	1.3	0.0	Grayish yellow green	None	>100	10.4	<1	0.8	<-0.66	<-0.80
					2016/5/21	Cloudy	15.7	0.3	13.9	0.0	Yellow greenish white	None	>100	10.6	3	2.1	<-0.63	<-0.69
					2016/8/16	Sunny	27.1	0.3	25.4	0.0	Light grayish greenish yellow	None	>100	13.3	4	2.2	<-0.51	<-0.84
	16	Shinborisaihon, entrance	Osaki City	2016/11/11	Rain	6.9	0.3	8.3	0.0	Light grayish yellow green	None	>100	17.3	4	3.6	<-0.60	<-0.75	
				2017/1/24	Snow	-0.4	0.3	3.3	0.0	Light grayish yellow green	None	>100	14.4	2	1.7	<-0.74	<-0.80	
				2016/5/16	Sunny	17.1	1.8	15.5	0.0	Light grayish yellow green	None	90	14.2	8	5.6	<-0.54	<-0.75	
				2016/8/15	Sunny	27.5	1.5	24.5	0.0	Grayish yellow green	None	86	15.0	4	3.7	<-0.71	<-0.75	
				2016/11/11	Rain	4.9	1.4	6.9	0.0	Light grayish yellow green	None	>100	17.7	6	3.1	<-0.69	<-0.61	
	17	In Furukawa District, Osaki City	Shinborisaihon, entrance	Osaki City	2017/1/24	Snow	-0.3	1.5	1.9	0.0	Dark grayish yellow green	None	>100	16.9	3	2.6	<-0.60	<-0.88
					2016/5/17	Rain	15.5	2.3	15.9	0.0	Grayish yellow	None	16	13.9	56	38	<-0.54	<-0.75
					2016/8/15	Cloudy	27.5	2.2	24.0	0.0	Dark grayish yellow	None	61	15.7	14	9.3	<-0.83	<-0.74
					2016/11/11	Rain	4.3	0.3	6.3	0.0	Light grayish yellow	None	35	16.6	24	16	<-0.69	<-0.63
					2017/1/24	Snow	-1.0	0.2	1.5	0.0	Grayish greenish yellow	None	65	20.3	8	6.0	<-0.60	<-0.69
18	Dekigawa River	Kogota Bridge	Misato Town	2016/5/17	Rain	15.5	2.3	15.9	0.0	Grayish yellow	None	16	13.9	56	38	<-0.54	<-0.75	
				2016/8/15	Cloudy	27.5	2.2	24.0	0.0	Dark grayish yellow	None	61	15.7	14	9.3	<-0.83	<-0.74	
				2016/11/11	Rain	4.3	0.3	6.3	0.0	Light grayish yellow	None	35	16.6	24	16	<-0.69	<-0.63	
				2017/1/24	Snow	-1.0	0.2	1.5	0.0	Grayish greenish yellow	None	65	20.3	8	6.0	<-0.60	<-0.69	
				2016/5/17	Rain	14.7	0.6	15.9	0.0	Grayish yellow	None	25	12.5	32	22	<-0.51	<-0.84	
19	Eai River	Oikawa Bridge (Tandai)	Wakuya Town /Ishinomaki City	2016/8/20	Cloudy	27.1	0.5	24.6	0.0	Grayish yellow	None	34	13.5	27	15	<-0.61	<-0.74	
				2016/11/12	Sunny	11.2	0.3	8.9	0.0	Grayish greenish yellow	None	65	23.7	12	8.2	<-0.73	<-0.74	
				2017/1/23	Cloudy	1.5	0.8	2.7	0.0	Grayish yellow green	None	>100	16.9	4	3.1	<-0.69	<-0.69	
				2016/5/17	Rain	15.7	3.6	16.8	0.0	Grayish yellow	None	37	58.2	6	6.9	<-0.70	<-0.69	
				2016/8/20	Cloudy	28.6	2.7	25.9	0.0	Grayish yellow	None	48	20.4	15	12	<-0.73	<-0.75	
20	Kyu-Kitakami River	Kadonowaki	Ishinomaki City	2016/11/12	Sunny	14.0	2.6	7.8	0.0	Grayish yellow green	None	>100	15.3	3	2.7	<-0.62	<-0.63	
				2017/1/23	Cloudy	3.4	4.5	3.4	0.0	Grayish yellow green	None	>100	15.6	1	1.5	<-0.67	<-0.99	
				2016/5/17	Sunny	16.9	0.8	17.4	0.0	Grayish yellow	None	16	13.1	50	37	<-0.58	<-0.80	
				2016/8/20	Cloudy	27.8	0.9	26.0	0.0	Grayish yellow	None	20	12.6	40	22	<-0.86	<-0.61	
				2016/11/12	Sunny	14.8	0.7	9.9	0.0	Light grayish yellow	None	48	14.9	12	9.7	<-0.80	<-0.55	
21	Narusu River	Ono Bridge (Ono)	Higashi-Matsushima City	2017/1/23	Sunny	4.1	1.1	4.5	0.0	Grayish yellow green	None	70	14.2	8	5.5	<-0.74	<-0.92	
				2016/5/22	Sunny	22.8	0.3	22.4	0.0	Grayish yellow	None	40	27.0	28	23	<-0.73	<-0.55	
				2016/8/12	Sunny	28.6	0.6	28.5	0.0	Grayish yellow	None	22	51.1	26	17	<-0.62	<-0.69	
				2016/11/14	Sunny	16.4	0.5	11.6	0.0	Grayish greenish yellow	None	38	11.4	15	7.4	<-0.69	<-0.80	
				2017/1/21	Sunny	3.4	0.7	3.5	0.0	Grayish yellow green	None	35	108	11	9.7	<-0.81	<-0.92	
22	Sunaoishi River	Tagajozeki Weir	Tagajo City	2016/5/22	Sunny	22.9	1.0	21.5	0.0	Light grayish yellow green	None	50	3,070	6	4.2	<-0.75	<-0.75	
				2016/8/12	Sunny	28.8	1.2	28.8	0.0	Grayish yellow green	None	>100	2,440	3	3.1	<-0.65	<-0.84	
				2016/11/15	Sunny	16.4	0.8	14.8	0.0	Grayish yellow green	None	>100	2,830	4	3.2	<-0.49	<-0.61	
				2017/1/21	Sunny	10.9	1.2	8.9	0.0	Light grayish yellow green	None	>100	3,880	3	2.6	<-0.75	<-0.75	
				2016/5/22	Sunny	23.4	1.0	22.2	0.0	Grayish yellow green	None	40	3,380	19	11	<-0.60	<-0.78	
23	Nenbutsu Bridge	Shichigahama Town/Tagajo City	Shichigahama Town/Tagajo City	2016/8/12	Sunny	25.4	1.2	28.0	0.0	Light grayish yellow green	None	>100	2,980	2	2.0	<-0.71	<-0.80	
				2016/11/14	Sunny	15.9	1.3	15.7	0.0	Grayish yellow green	None	83	3,690	4	2.3	<-0.77	<-0.92	
				2017/1/21	Sunny	9.1	1.8	7.8	0.0	Grayish yellow green	None	>100	3,770	3	2.2	<-0.71	<-0.75	
				2016/5/24	Sunny	25.8	0.3	22.6	0.0	Light grayish yellow green	None	90	21.6	4	2.1	<-0.71	<-0.80	
				2016/8/13	Sunny	26.1	0.3	24.9	0.0	Light grayish yellow green	None	>100	22.7	5	3.1	<-0.67	<-0.84	
24	Teizan-unga Canal (Kyu-sunaoishi River)	Teizan Bridge	Sendai City	2016/11/14	Sunny	13.3	0.3	10.0	0.0	Light grayish yellow green	None	>100	22.8	3	1.8	<-0.69	<-0.61	
				2017/1/22	Cloudy	3.1	0.3	3.4	0.0	Light grayish yellow green	None	65	24.8	4	3.3	<-0.62	<-0.80	
				2016/5/24	Sunny	22.6	0.3	24.9	0.0	Light grayish greenish yellow	None	35	1,070	6	2.5	<-0.74	<-0.70	
				2016/8/1	Sunny	29.4	0.3	31.1	0.0	Grayish greenish yellow	None	41	680	9	7.9	<-0.69	<-0.84	
				2016/11/15	Sunny	18.3	0.7	14.8	0.0	Light grayish greenish yellow	None	>100	1,090	2	1.7	<-0.71	<-0.75	
25	Nanakita River System	Nanakita River	Nanakita Bridge	Sendai City	2017/1/22	Sunny	10.7	0.5	6.0	0.0	Grayish yellow green	None	85	215	5	3.7	<-0.60	<-0.84
					2016/11/15	Sunny	18.3	0.7	14.8	0.0	Light grayish greenish yellow	None	>100	1,090	2	1.7	<-0.71	<-0.75
26	Fukuda-obashi Bridge	Sendai City	2016/11/15	Sunny	18.3	0.7	14.8	0.0	Light grayish greenish yellow	None	>100	1,090	2	1.7	<-0.71	<-0.75		
			2017/1/22	Sunny	10.7	0.5	6.0	0.0	Grayish yellow green	None	85	215	5	3.7	<-0.60	<-0.84		

Miyagi River (Water) 3/4

R i v e r s	Location				Sampling Date	Weather	Air temperature (°C)	Water depth (m)	Water								Remarks			
	No.	Water area	Location	Municipality					General items									Activity concentration(Bq/L)		
									Water temperature (°C)	Sampling depth (m)	Color	Odor	Transparency (cm)	Electrical conductivity (mS/m)	SS (mg/L)	Turbidity (FNU)		Radioactive cesium		
				Cs-134	Cs-137															
27	Nanakita River System	Umeda River	Fukuda Bridge	Sendai City	2016/5/24	Sunny	24.1	0.3	21.3	0.0	Grayish greenish yellow	None	18	23.9	41	24	<-0.69	<-0.63		
					2016/8/1	Sunny	29.0	1.0	27.7	0.0	Grayish yellow	None	23	12.6	32	20	<-0.54	<-0.75		
					2016/11/15	Sunny	17.9	0.8	13.9	0.0	Grayish yellow green	None	72	507	4	2.4	<-0.73	<-0.66		
		2017/1/22	Sunny		6.6	1.2	3.5	0.0	Grayish yellow green	None	>100	265	3	3.0	<-0.69	<-0.88				
		2016/5/22	Sunny		21.4	0.8	22.8	0.0	Grayish yellow	None	42	1,550	11	6.0	<-0.66	<-0.66				
		2016/8/1	Sunny		27.2	1.0	28.4	0.0	Grayish yellow	None	35	1,200	16	16	<-0.83	<-0.55				
	28	Nanakita River	Takasago Bridge	Sendai City	2016/11/15	Sunny	17.0	0.8	13.8	0.0	Grayish yellow green	None	>100	1,190	3	2.2	<-0.77	<-0.69		
					2017/1/22	Sunny	7.9	0.8	6.7	0.0	Grayish yellow green	None	80	1,910	3	4.0	<-0.74	<-0.69		
					2016/5/28	Sunny	20.0	0.3	21.9	0.0	Light grayish yellow	None	54	800	20	9.0	<-0.76	<-0.88		
					2016/8/2	Sunny	27.1	0.3	27.8	0.0	Light grayish greenish yellow	None	66	1,100	3	3.4	<-0.41	<-0.70		
					2016/11/16	Sunny	14.7	0.5	12.7	0.0	Light grayish greenish yellow	None	64	3,100	17	7.8	<-0.77	<-0.75		
					2017/1/17	Sunny	6.1	0.3	7.6	0.0	Light grayish yellow	None	25	2,860	31	16	<-0.82	<-0.92		
	29	Natori River	Yuriage-obashi Bridge	Sendai City/Natori City	2016/5/28	Sunny	21.2	0.2	16.3	0.0	Light grayish yellow	None	>100	9.4	<1	0.7	<-0.87	<-0.66		
					2016/8/2	Cloudy	26.8	0.2	24.5	0.0	Light grayish yellow	None	>100	10.4	3	1.7	<-0.64	<-0.69		
					2016/11/16	Sunny	12.2	0.2	10.7	0.0	Yellowish white	None	>100	11.0	1	0.6	<-0.88	<-0.70		
					2017/1/17	Sunny	4.3	0.2	2.3	0.0	Greenish yellowish white	None	>100	13.1	<1	0.3	<-0.65	<-0.84		
					2016/5/28	Sunny	22.0	0.4	18.7	0.0	Light grayish greenish yellow	None	42	15.5	9	5.0	<-0.77	<-0.63		
					2016/8/2	Sunny	29.0	0.3	26.6	0.0	Grayish yellow	None	58	16.1	13	9.1	<-0.86	<-0.61		
	30	Natori River System	Yakushi Bridge	Natori City	2016/11/16	Sunny	12.7	0.3	10.5	0.0	Light grayish yellow	None	>100	18.8	7	4.0	<-0.63	<-0.69		
					2017/1/17	Sunny	5.7	0.2	3.6	0.0	Light grayish yellow	None	55	20.7	9	6.5	<-0.60	<-0.84		
					2016/5/28	Sunny	23.4	0.9	22.6	0.0	Grayish yellow	None	34	22.5	17	12	<-0.81	<-0.66		
			2016/8/2		Sunny	27.6	1.1	28.3	0.0	Grayish yellow	None	20	57.9	40	24	<-0.65	<-0.66			
			2016/11/16		Sunny	10.4	1.4	10.5	0.0	Light grayish yellow green	None	85	2,140	5	4.0	<-0.56	<-0.78			
			2017/1/17		Sunny	6.8	1.0	5.9	0.0	Light grayish greenish yellow	None	60	2,010	3	3.5	<-0.68	<-0.80			
	31	Masuda River	Koyama Bridge	Natori City	2016/4/27	Sunny	17.7	0.6	16.5	0.0	Grayish yellow green	None	76	18.6	6	3.4	<-0.88	<-0.84		
					2016/5/29	Sunny	24.3	0.8	20.7	0.0	Light grayish yellow green	None	87	19.9	7	3.3	<-0.66	<-0.61		
					2016/6/13	Rain	18.1	0.5	21.6	0.0	Light grayish greenish yellow	None	75	21.1	6	2.3	<-0.78	<-0.66		
2016/7/18					Sunny	30.4	0.7	24.9	0.0	Light grayish yellow green	None	>100	20.7	4	1.7	<-0.84	<-0.69			
2016/8/7					Sunny	30.4	0.8	27.5	0.0	Light grayish greenish yellow	None	71	18.8	8	4.4	<-0.45	<-0.48			
2016/9/11					Cloudy	24.5	1.0	21.8	0.0	Light grayish yellow	None	39	13.5	19	13	<-0.54	<-0.69			
2016/10/4					Cloudy	23.6	0.7	19.7	0.0	Light grayish yellow green	None	92	16.5	8	4.9	<-0.62	<-0.63			
2016/12/10					Cloudy	5.8	0.4	6.9	0.0	Light grayish yellow green	None	>100	21.1	5	3.0	<-0.94	<-0.84			
2017/1/14					Cloudy	-0.3	1.0	3.0	0.0	Grayish yellow green	None	>100	21.9	4	3.4	<-0.71	<-0.75			
2017/2/5					Cloudy	5.4	0.6	4.1	0.0	Grayish yellow green	None	75	21.4	5	3.2	<-0.61	<-0.55			
2016/4/27					Sunny	15.2	0.6	16.6	0.0	Grayish yellow green	None	79	18.4	5	3.4	<-0.59	<-0.96			
2016/5/29					Sunny	28.4	0.3	21.8	0.0	Light grayish yellow green	None	97	20.4	6	2.8	<-0.87	<-0.66			
2016/6/13					Rain	16.9	0.5	22.5	0.0	Light grayish greenish yellow	None	75	21.5	4	2.3	<-0.85	<-0.63			
2016/7/18					Sunny	29.3	0.5	24.9	0.0	Light grayish yellow green	None	>100	20.6	3	1.6	<-0.69	<-0.75			
2016/8/7					Sunny	26.8	0.6	27.8	0.0	Light grayish greenish yellow	None	76	18.0	7	4.3	<-0.80	<-0.61			
32	Bishamon Bridge	Marumori Town	2016/9/11	Cloudy	23.2	0.5	21.8	0.0	Grayish yellow	None	42	13.4	19	14	<-0.81	<-0.75				
			2016/10/4	Cloudy	24.3	0.5	19.9	0.0	Light grayish greenish yellow	None	80	16.1	7	4.6	<-0.64	<-0.63				
			2016/12/10	Sunny	6.4	0.4	7.6	0.0	Light grayish greenish yellow	None	>100	21.3	4	2.9	<-0.86	<-0.84				
			2017/1/14	Cloudy	-0.8	0.3	3.8	0.0	Grayish yellow green	None	85	21.5	4	3.7	<-0.57	<-0.69				
			2017/2/7	Cloudy	4.9	0.5	6.0	0.0	Light grayish yellow green	None	65	20.7	6	3.8	<-0.77	<-0.66				
			33	Abukuma River System	Abukuma River	Marumori Town	2016/4/27	Sunny	15.2	0.6	16.6	0.0	Grayish yellow green	None	79	18.4	5	3.4	<-0.59	<-0.96
							2016/5/29	Sunny	28.4	0.3	21.8	0.0	Light grayish yellow green	None	97	20.4	6	2.8	<-0.87	<-0.66
							2016/6/13	Rain	16.9	0.5	22.5	0.0	Light grayish greenish yellow	None	75	21.5	4	2.3	<-0.85	<-0.63
							2016/7/18	Sunny	29.3	0.5	24.9	0.0	Light grayish yellow green	None	>100	20.6	3	1.6	<-0.69	<-0.75
2016/8/7	Sunny	26.8					0.6	27.8	0.0	Light grayish greenish yellow	None	76	18.0	7	4.3	<-0.80	<-0.61			
2016/9/11	Cloudy	23.2					0.5	21.8	0.0	Grayish yellow	None	42	13.4	19	14	<-0.81	<-0.75			
2016/10/4	Cloudy	24.3					0.5	19.9	0.0	Light grayish greenish yellow	None	80	16.1	7	4.6	<-0.64	<-0.63			
2016/12/10	Sunny	6.4					0.4	7.6	0.0	Light grayish greenish yellow	None	>100	21.3	4	2.9	<-0.86	<-0.84			
2017/1/14	Cloudy	-0.8					0.3	3.8	0.0	Grayish yellow green	None	85	21.5	4	3.7	<-0.57	<-0.69			
34	Marumori Bridge	Marumori Town	2017/2/7	Cloudy	4.9	0.5	6.0	0.0	Light grayish yellow green	None	65	20.7	6	3.8	<-0.77	<-0.66				

Miyagi River (Water) 4/4

No.	Location			Sampling Date	Weather	Air temperature (°C)	Water depth (m)	Water							Activity concentration(Bq/L)		Remarks		
	Water area	Location	Municipality					Water temperature (°C)	Sampling depth (m)	Color	Odor	Transparency (cm)	Electrical conductivity (mS/m)	SS (mg/L)	Turbidity (FNU)	Radioactive cesium			
																Cs-134		Cs-137	
R i v e r s	35	Abukuma River	Higashine Bridge	Kakuda City	2016/4/26	Sunny	22.2	0.6	19.6	0.0	Dark grayish yellow green	None	96	17.6	5	3.3	<-0.61	<-0.84	
					2016/6/12	Cloudy	22.9	0.5	23.5	0.0	Grayish yellow green	None	90	22.1	4	1.5	<-0.78	<-0.66	
					2016/8/4	Sunny	30.4	0.3	27.1	0.0	Grayish yellow	None	26	13.2	50	28	<-0.87	<-0.84	
					2016/10/3	Cloudy	24.8	0.5	20.5	0.0	Grayish yellow green	None	86	15.9	8	5.0	<-0.73	<-0.55	
					2016/12/10	Sunny	6.2	0.5	6.6	0.0	Light grayish yellow green	None	>100	21.2	5	3.2	<-0.83	<-0.80	
					2017/1/19	Sunny	5.9	1.0	3.8	0.0	Grayish yellow green	None	80	23.4	4	3.8	<-0.58	<-0.92	
					2016/4/26	Sunny	24.6	0.6	11.4	0.0	Grayish yellow green	None	>100	6.6	2	2.7	<-0.67	<-0.88	
	36	Shiroishi River	Before the confluence with Kawaharagoza (Sunaoishi Bridge)	Shiroishi City	2016/7/16	Sunny	23.4	0.5	19.7	0.0	Light grayish yellow green	None	>100	7.2	2	1.0	<-0.54	<-0.84	
					2016/11/17	Sunny	10.2	0.6	10.9	0.0	Light grayish yellow green	None	>100	10.2	2	2.1	<-0.82	<-0.75	
					2017/1/15	Snow	-0.8	1.0	3.3	0.0	Light grayish yellow green	None	>100	7.5	1	1.8	<-0.76	<-0.84	
					2016/4/26	Sunny	20.3	0.3	13.7	0.0	Grayish yellow green	None	>100	11.9	4	3.8	<-0.65	<-0.75	
	37	Saikawa River	Etsubo Bridge	Shiroishi City	2016/7/17	Rain	23.1	0.4	20.6	0.0	Light grayish yellow	None	66	13.1	8	7.1	<-0.69	<-0.63	
					2016/11/18	Sunny	6.7	0.2	6.8	0.0	Light grayish yellow green	None	>100	26.8	2	1.8	<-0.81	<-0.80	
					2017/1/15	Cloudy	-1.4	0.2	1.8	0.0	Light grayish yellow green	None	85	15.4	3	2.9	<-0.65	<-0.69	
	38	Matsukawa River	Miya-ohashi Bridge	Zao Town	2016/4/26	Sunny	20.2	0.5	11.4	0.0	Grayish yellow green	None	>100	15.9	3	2.2	<-0.59	<-0.61	
					2016/7/17	Cloudy	21.0	0.3	18.3	0.0	Light grayish yellow green	None	>100	19.3	3	1.9	<-0.60	<-0.80	
					2016/11/17	Cloudy	9.3	0.3	8.5	0.0	Light grayish yellow green	None	>100	31.2	2	1.3	<-0.73	<-0.84	
	39	Arakawa River	Niragami Bridge	Murata Town/Ogawara Town	2017/1/19	Sunny	7.6	0.2	5.0	0.0	Light grayish yellow green	None	>100	23.0	1	1.5	<-0.81	<-0.84	
					2016/5/27	Rain	19.4	0.3	19.7	0.0	Light grayish yellow	None	43	16.5	19	10	<-0.63	<-0.69	
					2016/8/6	Sunny	30.6	0.3	28.6	0.0	Grayish yellow	None	31	15.8	24	14	<-0.72	<-0.69	
	40	Abukuma River System	Shiroishi River	Shirahata Bridge	Shibata Town	2016/11/17	Sunny	9.8	0.2	8.3	0.0	Light grayish greenish yellow	None	72	33.9	8	4.4	<-0.70	<-0.88
						2017/1/19	Sunny	6.4	0.3	2.9	0.0	Light grayish greenish yellow	None	65	24.0	6	5.9	<-0.70	<-0.88
						2016/5/27	Cloudy	19.8	0.5	19.8	0.0	Grayish greenish yellow	None	68	14.7	11	3.7	<-0.60	<-0.61
						2016/8/5	Sunny	27.3	0.4	25.3	0.0	Grayish yellow	None	62	13.8	10	7.6	<-0.76	<-0.61
						2016/11/17	Cloudy	8.7	0.3	9.4	0.0	Light grayish yellow	None	87	17.0	6	3.0	<-0.72	<-0.69
	41	Abukuma River System	Tsukinoki-ohashi Bridge	Kakuda City/Shibata Town	2017/1/16	Sunny	0.4	0.3	1.9	0.0	Yellow greenish white	None	>100	15.7	1	1.7	<-0.62	<-0.69	
					2016/4/25	Sunny	16.8	0.5	17.3	0.0	Grayish yellow	None	83	14.3	7	4.4	<-0.77	<-0.61	
					2016/6/12	Sunny	22.4	0.3	24.3	0.0	Light grayish greenish yellow	None	90	17.9	4	2.8	<-0.68	<-0.84	
					2016/8/5	Sunny	30.5	0.3	29.4	0.0	Light grayish yellow	None	45	15.0	14	10	<-0.62	<-0.63	
					2016/10/3	Sunny	23.4	0.2	19.3	0.0	Grayish yellow green	None	>100	12.8	6	4.4	<-0.64	<-0.96	
					2016/12/12	Sunny	7.4	0.3	6.5	0.0	Light grayish greenish yellow	None	>100	15.1	2	2.0	<-0.76	<-0.75	
					2017/1/16	Cloudy	3.8	0.3	2.6	0.0	Light grayish yellow green	None	80	16.3	4	2.6	<-0.60	<-0.80	
					2016/4/25	Sunny	16.9	0.8	15.9	0.0	Dark grayish yellow green	None	59	17.4	8	5.2	<-0.56	<-0.70	
					2016/5/27	Cloudy	20.8	0.8	21.2	0.0	Light grayish greenish yellow	None	50	18.9	12	5.9	<-0.66	<-0.75	
					2016/6/12	Sunny	22.4	1.0	25.3	0.0	Grayish greenish yellow	None	45	21.0	8	4.5	<-0.57	<-0.75	
42	Abukuma River	Abukuma-ohashi Bridge (Iwanuma)	Iwamura City/Watarai Town	2016/7/17	Cloudy	25.4	1.1	23.6	0.0	Grayish yellow green	None	63	19.0	5	3.6	<-0.47	<-0.80		
				2016/8/5	Sunny	29.7	1.2	26.3	0.0	Grayish yellow	None	47	14.1	21	12	<-0.65	<-0.55		
				2016/9/10	Sunny	30.3	1.0	23.2	0.0	Grayish yellow	None	20	11.3	63	32	<-0.67	<-0.63		
				2016/10/3	Sunny	22.2	1.0	20.2	0.0	Grayish yellow green	None	53	13.4	8	5.2	<-0.64	<-0.69		
				2016/12/12	Sunny	7.1	0.7	5.6	0.0	Light grayish yellow green	None	>100	19.5	4	3.0	<-0.74	<-0.69		
				2017/1/16	Sunny	7.4	1.2	2.4	0.0	Grayish yellow green	None	>100	19.3	3	2.7	<-0.69	<-0.80		
				2017/2/8	Sunny	0.5	0.5	3.2	0.0	Light grayish yellow green	None	65	18.9	4	3.2	<-0.70	<-0.74		
				2016/4/25	Sunny	16.6	0.5	16.1	0.0	Grayish yellow green	None	95	1,200	5	3.3	<-0.67	<-0.82		
				2016/6/12	Sunny	26.2	1.0	25.3	0.0	Grayish greenish yellow	None	55	440	4	2.0	<-0.85	<-0.75		
				2016/8/5	Sunny	30.2	1.0	28.2	0.0	Grayish greenish yellow	None	53	110	10	7.9	<-0.71	<-0.69		
43	Offshore of Abukuma River Estuary (Watarai-ohashi Bridge)			2016/10/3	Cloudy	24.9	0.6	20.6	0.0	Grayish yellow green	None	81	17.3	6	5.1	<-0.74	<-0.75		
				2016/12/12	Sunny	2.6	1.2	4.9	0.0	Light grayish yellow green	None	>100	61.2	2	2.3	<-0.75	<-0.75		
				2017/1/16	Sunny	6.2	1.2	3.8	0.0	Grayish yellow green	None	85	345	4	3.3	<-0.67	<-0.92		

Miyagi River (Sediment) 1/4

Location				Sampling Date	Weather	Air temperature (°C)	Water depth (m)	Sediment														Remarks			
No.	Water area	Location	Municipality					General items																	
								Sediment temperature (°C)	Sample length (cm)	Color	Odor	Grain size distribution (%)				Sediment content (%)				Density (g/cm ³)			Property		Activity concentration [Bq/kg(dry)]
R i v e r	Shahori River	Kinzan Bridge	Kesennuma City	2016/5/13	Sunny	20.1	0.2	11.9	3	Grayish red	Faint algae	0.0	52.2	29.1	11.6	4.9	0.8	0.8	84.7	2.734	Gravel/sand	8.7	36	42.9	
				2016/8/27	Rain	19.0	0.2	14.8	3	Grayish yellowish brown	Faint swamp	0.0	45.5	36.9	8.8	4.6	2.5	0.7	0.9	85.0	2.677	Gravel/sand	8.7	52	60.7
				2016/1/17	Sunny	7.3	0.2	7.4	3	Dull yellowish brown	Faint swamp	0.0	44.0	37.8	13.0	3.7	0.3	0.6	0.6	81.3	2.698	Gravel/sand	7.7	41	48.1
		2017/1/27		Cloudy	2.6	0.2	3.4	3	Dark olive brown	Faint swamp	0.0	38.9	32.3	15.6	10.4	1.5	0.3	1.1	85.2	2.696	Gravel/sand	7.0	48	55.0	
		2016/5/14		Sunny	15.8	2.3	14.2	5	Black	Faint sewage	0.0	5.9	11.7	1.2	9.8	35.2	27.2	19.0	52.9	2.659	Silt	2.2	110	132	
		2016/8/28		Sunny	25.4	2.4	22.2	5	Olive black	Faint sewage	0.0	3.9	0.7	0.2	9.9	13.9	43.6	27.9	48.0	2.636	Silt	14	100	114	
	Okawa River	Naminu Bridge	Kesennuma City	2016/1/18	Cloudy	8.9	1.1	14.1	5	Dark grayish yellow	Faint swamp	0.0	4.0	3.5	4.0	4.4	13.8	51.0	19.2	44.2	2.616	Sand/silt	1.3	99	112
				2017/1/27	Cloudy	5.4	1.5	7.6	5	Olive black	Faint sewage	0.0	0.0	0.0	2.9	4.7	15.5	66.8	10.1	50.3	2.631	Silt/sand	9.1	74	83.1
				2016/5/14	Sunny	17.3	0.2	14.1	3	Dull yellowish brown	Faint algae	0.0	19.8	18.8	32.3	24.2	2.6	1.1	1.1	83.7	2.832	Sand/gravel	5.3	24	29.3
		2016/8/28		Sunny	24.8	0.5	18.4	3	Dark brown	Faint algae	0.0	14.9	18.4	30.8	30.6	2.1	0.7	2.5	76.4	2.789	Sand/gravel	2.9	29	34.0	
		2016/1/18		Cloudy	13.9	0.3	9.5	3	Grayish yellowish brown	Faint swamp	0.0	14.9	17.1	16.7	35.1	12.2	2.0	2.0	75.4	2.711	Sand/gravel	6.7	46	52.7	
		2017/1/27		Cloudy	2.3	0.2	3.6	3	Brown	Faint swamp	0.0	29.3	16.9	15.3	26.3	8.6	1.6	2.1	84.4	2.716	Sand/gravel	<4.7	31	31	
	Okawa River Estuary	Kamiyama Bridge	Kesennuma City	2016/5/14	Sunny	20.4	0.3	16.5	5	Dull yellowish brown	Faint algae	0.0	5.3	4.3	4.8	63.4	13.6	5.2	3.4	73.1	2.780	Sand	6.7	44	50.7
				2016/8/28	Sunny	25.1	0.7	19.4	5	Dark brown	Faint sewage	0.0	12.8	5.6	8.7	52.5	15.3	5.2	4.1	75.8	2.765	Sand/silt	5.7	43	48.7
				2016/1/18	Cloudy	11.8	0.6	10.2	5	Dull yellowish brown	Faint swamp	0.0	2.1	2.8	3.8	70.2	14.7	2.3	4.1	70.6	2.745	Sand	8.3	44	52.3
		2017/1/27		Cloudy	3.9	0.8	3.6	5	Dull yellowish brown	None	0.0	0.7	1.3	3.2	71.5	15.4	3.5	4.4	73.3	2.698	Sand	6.6	45	51.6	
		2016/5/14		Sunny	15.4	0.5	15.4	3	Dull yellow orange	Faint seaweed	0.0	1.6	3.9	25.3	65.2	0.6	0.6	2.1	74.6	2.715	Sand	<0.78	1.3	1.3	
		2016/8/28		Sunny	22.4	0.7	21.7	3	Dull yellowish brown	Faint seaweed	0.0	7.4	15.5	30.5	23.7	0.0	0.7	2.2	78.0	2.751	Sand/gravel	<0.78	<	<	
	Omose River	Osaki Bridge	Kesennuma City	2016/1/18	Cloudy	14.1	2.3	13.0	5	Black	Faint sewage	0.0	0.0	0.0	0.0	4.3	22.5	53.3	19.9	39.0	2.583	Silt/sand	35	220	253
				2017/1/28	Sunny	2.3	2.8	7.6	5	Black	Faint sewage	0.0	0.0	0.0	0.4	1.0	10.5	72.5	15.8	41.7	2.547	Silt	32	220	252
				2016/5/14	Sunny	17.8	0.5	18.2	5	Olive black	Faint seaweed	0.0	5.6	2.8	2.9	7.0	10.2	52.2	19.3	42.1	2.630	Silt	28	150	178
		2016/8/27		Cloudy	20.9	1.0	21.0	5	Black	Faint sewage	0.0	0.4	0.6	0.8	8.0	42.0	32.1	10.0	56.1	2.632	Silt/sand	17	110	127	
		2016/1/19		Sunny	8.0	0.8	12.0	5	Olive brown	Faint seaweed	0.0	9.8	1.8	2.0	25.4	44.9	9.5	6.5	72.7	2.687	Sand/silt	5.7	44	49.7	
		2017/1/28		Sunny	5.2	0.8	8.4	5	Olive black	Faint sewage	0.0	0.2	0.1	1.3	5.7	12.3	62.5	18.0	43.5	2.631	Silt/sand	29	150	179	
Arina River	Utsunoh Bridge	Kurahara City	2016/5/9	Sunny	17.4	0.2	15.1	3	Grayish yellowish brown	Faint algae	0.0	37.6	18.3	17.1	24.3	1.0	0.5	1.3	79.7	2.682	Gravel/sand	17	86	103	
			2016/8/24	Sunny	25.4	0.3	22.4	3	Grayish yellowish brown	Faint swamp	0.0	34.0	29.5	20.2	14.1	0.8	0.7	0.7	89.1	2.653	Sand/gravel	19	120	139	
			2016/1/16	Sunny	10.4	0.2	9.4	3	Dull yellowish brown	Faint algae	0.0	28.7	19.7	21.3	25.7	2.5	0.6	1.5	79.4	2.631	Sand/gravel	24	110	134	
	2017/1/29		Sunny	<0.5	0.2	1.0	3	Dull yellowish brown	Faint algae	0.0	49.5	19.7	13.8	14.7	1.2	0.3	1.2	81.1	2.656	Sand/gravel	15	110	123		
	2016/5/9		Sunny	20.4	0.3	16.0	3	Dark brown	Faint algae	0.0	11.3	3.6	5.0	50.5	25.3	0.9	3.4	77.6	2.719	Sand/gravel	19	110	129		
	2016/8/24		Sunny	27.6	0.5	23.2	3	Blackish brown	Faint swamp	0.0	16.2	13.1	16.6	46.6	5.4	0.8	1.4	78.0	2.740	Sand/gravel	11	76	87		
Kinryu River	Obata Bridge	Kurahara City	2016/1/16	Sunny	11.7	0.3	10.4	3	Dark brown	Faint algae	0.0	4.4	3.0	8.5	62.9	17.3	1.3	1.9	78.2	2.643	Sand/gravel	14	100	114	
			2017/1/29	Sunny	2.9	0.3	2.1	3	Dark brown	Faint algae	0.0	16.6	6.3	14.1	51.5	6.4	0.0	2.2	75.6	2.666	Sand/gravel	12	91	103	
			2016/5/15	Sunny	17.4	0.2	16.6	3	Dull yellowish brown	Faint swamp	0.0	0.0	0.0	1.9	26.7	63.3	4.1	4.0	71.4	2.655	Sand	8.4	52	60.4	
	2016/8/19		Sunny	28.4	1.0	21.8	3	Dull yellowish brown	Faint swamp	0.0	1.1	0.9	5.4	43.2	43.3	2.3	3.9	71.8	2.686	Sand/gravel	<5.1	31	31		
	2016/1/19		Sunny	7.7	0.3	9.4	3	Grayish yellowish brown	Faint algae	0.0	14.5	3.8	1.9	55.4	21.1	1.6	1.6	73.8	2.699	Sand/gravel	2.2	28	33.2		
	2017/1/26		Sunny	4.7	0.3	3.1	3	Dark olive brown	Faint sewage	0.0	45.3	11.8	4.5	25.6	9.8	0.7	2.3	70.8	2.697	Sand/gravel	6.3	30	36.3		
Kitakami River System	Sahasama River	Donan Bridge (Kurikoma Dam)	2016/5/12	Sunny	16.1	2.8	12.0	5	Brown	None	0.0	0.0	0.6	2.5	69.7	24.4	1.0	1.9	70.0	2.738	Sand	<5.1	16	16	
			2016/8/21	Sunny	30.8	1.8	22.1	5	Dull yellowish brown	None	0.0	0.0	0.2	1.5	61.8	31.9	1.7	3.0	67.8	2.704	Sand/gravel	<4.5	16	16	
			2016/1/12	Sunny	5.3	1.8	9.1	5	Brown	Faint swamp	0.0	2.3	5.1	8.7	56.8	23.5	1.0	2.6	69.0	2.855	Sand/gravel	<4.2	19	19	
	2017/1/29		Sunny	5.7	1.2	3.4	5	Dull yellowish brown	Faint swamp	0.0	0.1	1.0	57.0	35.1	3.0	1.8	71.6	2.755	Sand	<3.8	13	13			
	2016/5/18		Sunny	23.2	0.3	16.3	3	Dull yellowish brown	Faint swamp	0.0	8.9	12.1	23.1	47.7	2.7	0.8	4.6	75.4	2.705	Sand/gravel	<3.8	29	29		
	2016/8/21		Sunny	31.3	0.3	20.9	3	Brown	None	0.0	21.2	34.4	21.4	15.9	1.5	3.2	2.5	82.9	2.599	Sand/gravel	10	51	61		
Nhasama River	Kajiya Bridge	Kurahara City	2016/1/13	Sunny	14.9	0.2	10.3	3	Brown	Faint swamp	0.0	15.1	7.3	9.6	54.5	9.4	3.5	2.7	73.9	2.689	Sand/gravel	<3.9	18	18	
			2017/1/25	Sunny	1.2	0.2	0.9	3	Brown	None	0.0	2.0	6.2	18.8	57.6	7.4	3.0	4.9	69.5	2.621	Sand/gravel	7.8	43	50.8	
			2016/5/20	Sunny	21.8	0.3	16.4	3	Dark brown	Faint algae	0.0	6.2	24.3	31.3	34.1	1.5	0.0	2.6	86.6	2.762	Sand/gravel	<3.2	4.8	4.8	
	2016/8/26		Cloudy	23.7	0.3	17.6	3	Grayish yellowish brown	None	0.0	10.0	14.8	16.2	32.6	2.0	2.2	2.2	73.1	2.637	Sand/gravel	<3.9	7.7	7.7		
	2016/1/13		Sunny	13.0	0.2	9.8	3	Grayish yellowish brown	Faint swamp	0.0	4.9	11.8	35.5	42.6	1.9	0.5	2.8	75.4	2.667	Sand/gravel	<4.5	5.2	5.2		
	2017/1/25		Sunny	0.9	0.3	7.8	3	Grayish yellowish brown	Faint swamp	0.0	12.3	21.6	24.9	36.6	1.6	0.4	1.9	76.8	2.775	Sand/gravel	<3.2	3.3	3.3		
Hosuma River	Hanayama Dam, inflow area	Kurahara City	2016/5/9	Sunny	20.7	0.3	14.3	3	Dark brown	Faint algae	0.0	24.9	13.8	11.6	43.3	4.1	0.6	1.7	80.2	2.912	Sand/gravel	5.0	30	35.0	
			2016/8/24	Sunny	28.6	0.7	21.7	3	Grayish brown	None	0.0	5.3	9.7	43.9	38.4	0.7	0.5	2.0	77.7	2.707	Sand/gravel	6.3	24	30.3	
			2016/1/16	Sunny	11.9	0.3	11.2	3	Dark brown	Faint swamp	0.0	43.0	12.6	10.1	30.0	3.1	0.0	1.3	78.6	2.732	Sand/gravel	4.5	33	37.2	
	2017/1/26		Sunny	7.2	0.3	2.8	3	Brown	Faint swamp	0.0	32.0	11.0	13.3	35.8	4.6	1.2	2.2	79.2	2.735	Sand/gravel	<5.3	34	34		

Miyagi River (Sediment) 2/4

No.	Location				Sampling Date	Weather	Air temperature (°C)	Water depth (m)	Sediment																Remarks	
	Water area	Location	Municipality	General items																						
				Sediment temperature (°C)					Sample length (cm)	Color	Odor	Grain size distribution (%)						Sediment content (%)				Activity concentration [Bq/kg(dry)]				
												Coarse gravel	Medium gravel	Fine gravel	Coarse sand	Medium sand	Fine sand	Silt	Clay	Coarse silt	Medium silt	Co-134	Co-137	Total		
14	Hama River	Yamayohda Bridge	Tome City	2016/5/15	Sunny	17.7	0.8	18.9	3	Olive black	Faint sewage	0.0	0.0	0.0	0.1	8.6	34.3	40.7	16.3	32.9	2.573	Silt/sand	29	150	179	
				2016/5/19	Sunny	29.9	0.9	25.3	3	Dark olive brown	Faint sewage	0.0	0.0	0.0	0.2	16.4	61.0	22.4	34.9	2.486	Silt/sand	37	180	217		
				2016/5/19	Sunny	6.8	0.3	9.5	3	Dark brown	Faint swamp	0.0	0.7	21.1	19.9	35.3	14.7	1.0	1.7	79.3	2.857	Sand/gravel	38	34	45	
				2017/1/26	Sunny	3.2	0.3	1.1	3	Dark brown	Faint swamp	0.0	5.1	16.3	13.8	43.4	19.2	0.5	1.8	79.3	2.772	Sand/gravel	-4.0	34	34	
	15	Eai River	Todoroki Bridge (Todoroki)	Osaki City	2016/5/20	Sunny	21.9	1.0	15.2	3	Grayish yellowish brown	Faint swamp	0.0	0.0	0.2	1.5	67.0	28.3	0.1	2.9	74.6	2.746	Sand	-3.9	15	15
					2016/5/18	Sunny	26.5	0.9	19.8	3	Dull yellowish brown	Faint swamp	0.0	0.6	0.1	1.4	46.7	43.8	3.7	3.8	74.2	2.794	Sand	-4.6	18	18
					2016/11/13	Sunny	10.1	1.0	7.2	3	Grayish yellowish brown	Faint swamp	0.0	5.4	16.7	45.9	24.5	3.7	2.0	1.8	77.3	2.633	Sand/gravel	-4.4	12	12
					2017/1/25	Sunny	-1.3	1.2	2.1	3	Grayish yellowish brown	Faint swamp	0.0	17.0	12.1	9.9	29.1	24.3	4.5	3.1	69.3	2.660	Sand/gravel	-5.0	27	27
					2016/5/21	Cloudy	15.7	0.3	13.4	3	Grayish yellowish brown	Faint algae	0.0	38.8	13.9	9.3	29.6	7.1	0.0	1.3	86.2	2.861	Sand/gravel	-4.4	6.2	6.2
					2016/5/16	Sunny	27.1	0.3	25.2	3	Dull yellowish brown	Faint algae	0.0	25.5	8.9	10.2	51.2	2.3	0.1	1.9	78.1	2.499	Sand/gravel	-3.9	9.6	9.6
	16	Shinboraihoon, entrance	Osaki City	2016/11/11	Rain	6.9	0.3	8.4	3	Dull yellowish brown	Faint algae	0.0	26.2	14.3	15.9	35.4	6.0	0.4	2.0	77.5	2.756	Sand/gravel	-3.8	8.4	8.4	
				2017/1/24	Snow	-0.4	0.3	4.6	-1	Brown	Faint seaweed	0.4	30.5	21.6	25.3	19.5	0.9	1.0	1.4	79.2	2.614	Sand/gravel	-4.2	6.9	6.9	
				2016/5/16	Sunny	17.1	1.8	15.8	5	Black	Faint sewage	0.0	0.0	0.0	1.4	21.5	71.2	3.2	2.7	74.0	2.677	Sand/silt	27	130	157	
				2016/5/15	Sunny	27.3	1.5	23.3	5	Black	Faint sewage	0.0	0.3	0.6	1.0	20.8	71.2	1.8	4.4	70.4	2.536	Sand/silt	25	160	185	
17	In Furukawa District, Osaki City	Shinboraihoon, entrance	Osaki City	2016/11/11	Rain	4.9	1.4	7.4	5	Black	Faint sewage	0.0	1.1	1.7	2.0	21.0	67.5	2.0	4.8	72.7	2.627	Sand/silt	24	140	164	
				2017/1/24	Snow	-0.3	1.3	3.2	5	Black	Faint sewage	0.0	0.6	0.6	0.8	19.9	72.3	1.9	3.9	73.4	2.638	Sand/silt	13	100	113	
				2016/5/17	Rain	15.3	2.3	16.5	5	Black	Faint sewage	0.0	0.1	0.7	3.0	68.0	13.9	4.9	9.8	51.1	2.649	Silt/sand	29	120	149	
				2016/5/15	Cloudy	27.5	2.2	23.6	5	Black	Faint sewage	0.0	0.0	0.2	0.2	38.1	33.5	13.0	15.2	38.6	2.922	Silt	24	170	194	
18	Dekigawa River	Kogota Bridge	Maoto Town	2016/11/11	Rain	4.3	0.3	6.4	5	Blackish brown	Faint sewage	0.0	4.9	2.1	3.7	66.2	18.7	3.3	4.1	71.6	2.668	Sand/silt	14	81	95	
				2017/1/24	Snow	-1.0	0.2	1.5	5	Black	Faint sewage	0.0	0.0	0.0	0.4	3.8	4.9	62.3	28.7	20.8	2.441	Silt/sand	19	140	159	
				2016/5/17	Rain	14.7	0.6	15.9	3	Grayish yellowish brown	Faint algae	0.0	3.0	5.2	5.5	88.8	14.1	0.0	3.6	74.4	2.708	Sand	3.9	19	22.9	
				2016/5/20	Cloudy	27.1	0.5	24.3	3	Grayish yellowish brown	Faint swamp	0.0	1.9	4.2	4.9	68.2	17.1	0.0	3.6	76.8	2.711	Sand/gravel	-3.5	7.8	7.9	
19	Eai River	Okawa Bridge (Tandui)	Wakaya Town Ishinomaki City	2016/11/12	Sunny	11.2	0.3	8.7	-1	Blackish brown	Faint sewage	0.4	9.1	9.8	17.8	55.0	5.2	0.8	2.4	78.9	2.703	Sand/silt	-3.2	13	13	
				2017/1/23	Cloudy	1.5	0.8	3.1	3	Dark brown	Faint swamp	0.0	0.5	5.1	13.8	66.2	9.7	0.9	3.7	75.9	2.644	Sand/gravel	-3.7	18	18	
				2016/5/17	Rain	15.7	3.6	15.4	5	Black	Faint sewage	0.0	0.0	0.0	0.6	13.7	37.1	30.9	17.9	47.7	2.639	Silt	16	96	112	
				2016/5/20	Cloudy	27.1	0.5	24.3	3	Blackish brown	Faint sewage	0.0	1.9	4.2	4.9	68.2	17.1	0.0	3.6	76.8	2.711	Sand/gravel	-3.5	7.8	7.9	
20	Kyu-Kiakami River	Kadonowaki	Ishinomaki City	2016/11/12	Sunny	14.0	2.4	9.2	5	Black	Faint sewage	0.0	0.0	0.3	0.3	4.7	20.7	46.1	28.3	38.0	2.529	Silt/sand	16	90	106	
				2017/1/23	Cloudy	3.4	4.5	7.7	5	Black	Faint sewage	0.0	0.0	0.1	0.4	9.4	28.9	33.9	27.3	42.9	2.560	Silt/sand	10	79	89	
				2016/5/17	Sunny	16.9	0.8	16.4	3	Black	Faint sewage	0.0	1.0	4.7	34.7	13.4	35.4	10.9	46.1	2.562	Silt/sand	12	66	78		
				2016/5/20	Cloudy	27.8	0.9	25.7	3	Blackish brown	Faint sewage	0.0	0.0	0.0	3.0	51.5	10.8	19.5	15.2	45.0	2.563	Silt/sand	-9.9	54	54	
21	Nume River	Ono Bridge (Ono)	Higashi-Matsushima City	2016/11/12	Sunny	14.8	0.7	9.8	-1	Blackish brown	Faint sewage	0.0	0.0	1.0	3.9	46.1	19.5	16.1	12.8	45.8	2.541	Silt/sand	-8.3	49	49	
				2017/1/23	Sunny	4.1	1.1	4.1	3	Blackish brown	Faint sewage	0.0	0.0	0.1	2.5	54.0	16.0	14.8	12.6	46.0	2.544	Sand/silt	-9.2	38	38	
				2016/5/22	Sunny	22.3	0.3	21.5	3	Black	Faint sewage	0.0	0.4	2.7	10.7	42.3	31.9	4.8	7.2	54.5	2.638	Sand/silt	7.3	27	34.3	
				2016/5/12	Sunny	28.4	0.4	27.6	3	Blackish brown	Faint sewage	0.0	2.1	3.2	8.8	49.5	27.4	4.8	4.2	62.7	2.622	Sand/silt	8.8	40	48.8	
22	Sunaoshi River	Tagajiroki Weir	Tagajo City	2016/11/14	Sunny	16.4	0.5	10.9	3	Black	Faint swamp	0.0	1.0	2.3	5.8	51.9	32.8	2.4	3.9	66.0	2.633	Sand/silt	6.5	39	45.3	
				2017/1/21	Sunny	3.4	0.7	3.9	3	Blackish brown	Faint sewage	0.0	0.5	2.4	8.7	45.3	24.5	7.9	10.5	66.2	2.635	Sand/silt	7.8	46	53.8	
				2016/5/22	Sunny	22.9	1.0	19.7	3	Black	Faint sewage	0.0	1.8	2.0	2.6	21.3	26.6	31.7	14.1	51.7	2.591	Silt/sand	21	130	151	
				2016/5/22	Sunny	28.8	1.2	27.3	3	Black	Faint sewage	0.0	6.6	2.2	4.6	14.6	8.2	47.1	16.7	73.0	2.580	Silt	36	210	246	
23	Nesubana Bridge	Nesubana Bridge	Tagajo City	2016/11/15	Sunny	16.4	0.8	16.2	3	Black	Faint sewage	0.0	3.6	4.7	8.6	39.1	21.9	13.8	8.4	54.9	2.601	Silt/sand	9.6	68	77.6	
				2017/1/21	Sunny	10.9	1.2	9.3	3	Black	Faint sewage	0.0	11.7	9.3	11.7	36.9	11.2	9.5	6.9	56.8	2.597	Sand/silt	8.2	51	59.2	
				2016/5/22	Sunny	23.4	1.0	18.3	5	Black	Faint sewage	0.0	0.1	0.3	0.7	3.4	17.1	66.2	22.3	33.3	2.575	Silt	51	240	291	
				2016/5/12	Sunny	25.4	1.2	26.4	5	Black	Faint sewage	0.0	4.0	3.5	3.9	9.1	11.4	50.3	17.7	32.4	2.587	Silt	41	210	251	
24	Teizan-unga Canal (Kyu-sunaoshi River)	Teizan Bridge	Shachigahama Town Tagajo City	2016/11/14	Sunny	15.9	1.3	14.4	5	Black	Faint sewage	0.0	1.9	0.7	1.9	2.3	69.3	22.8	25.2	2.532	Silt	68	360	428		
				2017/1/21	Sunny	9.1	1.8	6.4	5	Black	Faint sewage	0.4	4.5	1.2	0.0	0.4	2.3	5.0	68.9	17.6	30.7	2.564	Silt	31	210	241
				2016/5/24	Sunny	25.8	0.3	24.4	3	Blackish brown	Faint swamp	0.4	26.9	12.3	16.9	33.3	6.9	1.5	2.0	81.6	2.702	Sand/gravel	-3.8	9.0	9.0	
				2016/5/13	Sunny	26.1	0.3	24.6	3	Dull yellowish brown	Faint algae	0.0	24.2	12.2	16.6	39.1	5.5	0.0	2.5	79.4	2.679	Sand/gravel	-3.9	13	13	
25	Nanukita River System	Nanukita Bridge	Sendai City	2016/11/14	Sunny	12.3	0.3	10.1	3	Blackish brown	Faint algae	0.0	28.5	9.0	8.7	46.6	8.7	1.3	1.3	78.2	2.869	Sand/gravel	-3.2	8.1	8.1	
				2017/1/22	Cloudy	3.1	0.3	3.9	3	Blackish brown	Faint algae	0.0	19.4	17.6	31.9	23.1	4.2	1.3	2.5	79.3	2.637	Sand/gravel	-4.7	23	23	
				2016/5/24	Sunny	22.6	0.3	24.5	3	Blackish brown	Faint swamp	0.0	2.0	8.1	40.9	44.0	1.6	1.7	1.7	77.6	2.691	Sand/gravel	-3.8	5.3	5.3	
				2016/5/1	Sunny	29.4	0.3	30.7	3	Blackish brown	Faint swamp	0.0	1.7	10.5	44.1	41.3	0.7	0.0	1.7	78.3	2.494	Sand/gravel	-3.1	7.8	7.8	
26	Fukuchi-chashi Bridge	Fukuchi-chashi Bridge	Sendai City	2016/11/15	Sunny	18.3	0.7	15.4	3	Blackish brown	Faint seaweed	0.0	7.1	10.9	11.8	38.9	8.0	0.9	2.4	75.7	2.659	Sand/gravel	-3.9	7.0	7.0	
				2017/1/22	Sunny	10.7	0.5	6.4	3	Dark brown	Faint seaweed	0.4	0.9	2.6	21.0	58.2	12.7	2.9	1.9	76.0	2.621	Sand	-4.1	7.0	7.0	

Miyagi River (Sediment) 3/4

Location				Sediment																		Remarks							
No.	Water area	Location	Municipality	Sampling Date	Weather	Air temperature (°C)	Water depth (m)	General items												Sediment content (%)	Density (g/cm ³)	Property	Activity concentration [Bq/kg(dry)]						
								Sediment temperature (°C)	Sample length (cm)	Color		Odor		Coarse gravel		Medium gravel		Fine gravel					Grain size distribution (%)		Radiocesium				
27	Nanukita River System	Umeda River	Fukuda Bridge	Sendai City	2016/5/24	Sunny	24.1	0.3	21.3	3	Olive black	Faint sewage	0.0	0.0	0.0	0.0	34.0	56.0	4.0	4.9	68.0	2.642	Sand/silt	10	55	65			
					2016/8/1	Sunny	29.0	1.0	27.4	3	Olive black	Faint sewage	0.0	1.7	1.5	2.4	33.4	49.1	5.4	6.5	53.4	2.617	Sand/silt	15	81	96			
					2016/11/15	Sunny	17.9	0.8	15.2	3	Blackish brown	Faint sewage	0.0	4.8	3.3	2.7	28.8	48.4	7.1	2.2	74.5	2.666	Sand/silt	6.7	46	52.7			
					2017/1/22	Sunny	6.6	1.2	6.9	3	Black	Faint sewage	0.0	1.9	3.7	4.1	29.2	29.9	17.2	14.0	62.0	2.564	Sand/silt	5.4	44	49.4			
					2016/5/22	Sunny	21.4	0.8	19.4	3	Dull yellowish brown	Faint seaweed	0.0	9.7	1.8	1.1	41.5	29.5	8.3	8.1	72.1	2.644	Sand/silt	<5.0	16	16			
	28	Nanukita River	Takasago Bridge	Sendai City	2016/8/1	Sunny	27.2	1.0	26.2	3	Olive black	Faint sewage	0.0	0.9	0.8	0.5	47.6	44.3	2.6	3.3	74.2	2.640	Sand/silt	<7.2	9.8	9.8			
					2016/11/15	Sunny	17.0	0.8	16.4	3	Olive brown	Faint sewage	0.0	0.8	1.1	0.6	34.6	42.7	11.4	8.8	45.6	2.655	Silt/sand	0	54	64			
					2017/1/22	Sunny	7.9	0.8	7.9	3	Dull yellowish brown	Faint seaweed	0.0	0.0	0.0	0.7	37.9	42.4	9.3	9.7	57.4	2.602	Sand/silt	<5.9	9.9	9.9			
					2016/5/28	Sunny	20.0	0.3	21.4	3	Dark grayish yellow	Faint sewage	0.0	0.0	0.1	1.0	35.3	40.7	14.1	8.9	60.1	2.658	Sand/silt	15	69	84			
					2016/8/4	Sunny	27.1	0.3	28.2	3	Dark olive brown	Faint sewage	0.0	1.7	1.1	3.0	38.3	38.7	10.9	6.2	70.9	2.672	Sand/silt	<6.5	37	37			
29	Natori River	Variage-obashi Bridge	Sendai City/Natori City	2016/11/16	Sunny	14.7	0.5	12.8	3	Grayish yellowish brown	Faint seaweed	0.0	0.4	0.4	1.1	26.8	35.4	2.0	2.9	76.2	2.708	Sand	<3.9	16	16				
				2017/1/17	Sunny	6.1	0.3	7.8	3	Blackish brown	Faint seaweed	0.4	32.4	22.1	10.5	26.3	6.8	0.5	1.3	81.4	2.711	Sand/gravel	<4.1	10	10				
				2016/5/28	Sunny	21.2	0.2	16.1	3	Dark brown	Faint algae	0.0	38.6	23.1	20.2	13.1	1.9	2.0	1.1	68.0	2.704	Sand/gravel	<4.4	25	25				
				2016/8/2	Cloudy	26.8	0.2	24.1	3	Dark brown	Faint swamp	0.0	36.6	29.3	16.0	4.7	1.3	1.1	1.0	74.1	2.676	Sand/gravel	<5.9	22	22				
				2016/11/16	Sunny	12.2	0.2	10.9	3	Dark brown	Faint algae	0.0	26.2	36.2	24.7	8.2	1.8	2.0	0.9	86.5	2.752	Gravel/sand	<4.0	18	18				
				30	Natori River System	Yakushi Bridge	Natori City	2017/1/17	Sunny	4.3	0.2	2.4	3	Dark brown	Faint algae	0.0	30.2	32.3	23.3	8.2	2.1	2.1	1.7	85.1	2.694	Gravel/sand	<3.9	19	19
								2016/5/28	Sunny	22.0	0.4	19.0	3	Blackish brown	Faint sewage	0.0	1.6	1.9	1.9	42.7	29.3	8.5	4.4	71.1	2.674	Silt/sand	15	95	110
								2016/8/2	Sunny	29.0	0.3	26.8	3	Blackish brown	Faint swamp	0.0	4.6	9.0	29.2	44.0	7.7	2.9	2.6	73.4	2.655	Sand/silt	18	100	118
								2016/11/16	Sunny	12.7	0.3	10.4	3	Brown	Faint algae	0.0	19.1	17.9	14.8	28.9	12.6	3.4	3.4	74.7	2.664	Sand/silt/gravel	11	72	83
								2017/1/17	Sunny	5.7	0.2	3.7	3	Dark brown	Faint sewage	0.0	13.3	9.3	12.6	36.3	18.6	5.7	3.6	62.1	2.633	Sand/gravel	15	120	133
31	Masuda River	Koyama Bridge	Natori City					2016/5/28	Sunny	23.4	0.9	21.6	5	Grayish yellowish brown	Faint sewage	0.0	0.0	0.2	1.2	13.0	58.6	12.7	12.3	59.0	2.622	Silt/sand	51	290	341
								2016/8/2	Sunny	27.6	1.1	28.4	5	Blackish brown	Faint sewage	0.0	0.2	2.1	5.8	24.4	36.4	19.4	11.7	69.7	2.592	Silt/sand	36	259	286
								2016/11/16	Sunny	10.4	1.4	13.1	5	Blackish brown	Faint sewage	0.4	1.0	1.1	2.7	26.3	32.3	22.7	13.9	46.3	2.608	Silt/sand	37	260	297
								2017/1/17	Sunny	6.8	1.0	6.4	5	Olive brown	Faint sewage	0.0	0.0	0.0	0.2	8.6	35.1	36.1	19.9	51.2	2.592	Sand/silt	60	300	360
								2016/8/27	Sunny	17.3	0.6	17.2	3	Yellowish gray	Faint fish	0.0	0.0	0.0	0.6	77.4	18.3	1.0	2.9	72.6	2.725	Sand	27	156	173
				32	Huhomori Bridge	Huhomori	Huhomori	2016/5/29	Sunny	24.3	0.8	20.4	3	Dull yellowish brown	Faint swamp	0.0	3.0	3.6	2.5	44.4	42.7	1.9	1.8	72.2	2.735	Sand	39	180	219
								2016/6/13	Rain	18.1	0.5	21.3	3	Dark grayish yellow	Faint algae	0.0	0.1	0.3	0.1	64.2	32.4	1.0	2.0	71.4	2.716	Sand	20	120	140
								2016/7/18	Sunny	30.4	0.7	24.4	3	Grayish yellowish brown	Faint swamp	0.0	8.5	6.5	6.8	57.4	17.5	0.9	2.5	76.2	2.722	Sand/gravel	22	130	152
								2016/8/7	Sunny	30.4	0.8	26.8	3	Grayish yellowish brown	Faint swamp	0.0	0.0	0.0	0.2	58.5	37.0	2.4	2.0	71.2	2.702	Sand	24	160	184
								2016/9/11	Cloudy	24.3	1.0	21.7	3	Dull yellowish brown	Faint swamp	0.0	0.0	0.2	1.7	63.4	30.9	2.0	1.9	72.6	2.733	Sand	22	140	162
2016/10/4	Cloudy	23.6	0.7					19.9	3	Grayish yellowish brown	Faint swamp	0.0	0.0	0.0	0.2	66.9	27.8	2.3	2.8	73.4	2.778	Sand	14	89	103				
2016/12/10	Cloudy	5.8	0.4					7.2	3	Grayish yellowish brown	Faint swamp	0.0	0.0	0.0	0.2	73.9	22.9	1.1	1.9	71.6	2.711	Sand	17	130	147				
2017/1/14	Cloudy	-0.2	1.0					4.2	3	Dull yellowish brown	Faint swamp	0.0	0.0	0.0	0.2	57.7	39.2	0.2	2.9	72.4	2.752	Sand	24	110	134				
2017/2/5	Cloudy	5.4	0.6					4.4	3	Dull yellowish brown	Faint swamp	0.0	0.0	0.0	0.1	63.6	33.3	0.1	3.0	67.7	2.637	Sand	30	170	200				
33	Abukuma River System	Abukuma River	Maramori Town					2016/4/27	Sunny	15.2	0.6	16.9	3	Blackish brown	Faint swamp	0.0	48.2	20.2	10.3	9.2	8.4	1.5	2.1	84.5	2.686	Gravel/sand	20	110	130
				2016/5/29	Sunny	28.4	0.3	21.5	3	Blackish brown	Faint algae	0.0	33.3	29.2	20.3	9.2	5.3	1.9	0.8	85.5	2.679	Sand/gravel	0	55	63				
				2016/6/13	Rain	16.9	0.5	22.6	3	Dull yellowish brown	Faint algae	0.0	29.1	26.3	22.7	11.2	7.6	1.6	1.5	84.2	2.689	Sand/gravel	15	94	109				
				2016/7/18	Sunny	29.3	0.5	24.3	3	Dull yellowish brown	Faint algae	0.0	27.4	31.3	28.6	10.6	1.4	0.0	0.8	93.0	2.646	Sand/gravel	5.1	35	40.1				
				2016/8/7	Sunny	26.8	0.6	27.7	3	Dull yellowish brown	Faint swamp	0.0	28.6	29.2	15.8	16.9	7.4	0.4	1.7	83.1	2.681	Sand/gravel	14	77	91				
				2016/8/11	Cloudy	23.2	0.5	21.7	3	Dull yellowish brown	Faint swamp	0.0	24.0	22.3	29.7	18.8	3.2	0.6	1.6	80.9	2.664	Sand/gravel	9.2	41	50.2				
				2016/10/4	Cloudy	24.3	0.5	19.9	3	Brown	Faint swamp	0.0	18.4	31.9	25.1	13.4	8.8	1.0	1.5	89.4	2.679	Sand/gravel	8.4	39	47.4				
				2016/12/10	Sunny	6.4	0.4	7.7	3	Brown	Faint algae	0.0	32.8	27.8	23.0	10.0	4.5	0.8	1.2	82.1	2.651	Sand/gravel	9.5	52	61.3				
				2017/1/14	Cloudy	40.8	0.3	4.1	3	Dull yellowish brown	Faint swamp	0.0	36.6	26.9	18.8	9.4	5.8	1.4	1.2	85.8	2.610	Sand/gravel	11	64	73				
				2017/2/7	Cloudy	4.9	0.5	5.4	3	Brown	Faint algae	0.0	29.6	31.2	19.5	12.1	6.0	0.5	1.2	86.5	2.644	Sand/gravel	6.9	53	59.9				

Miyagi River (Sediment) 4/4

Location					Sediment																				Remarks		
No.	Water area	Location	Municipality	Sampling Date	Weather	Air temperature (°C)	Water depth (m)	General items												Sediment content (%)	Density (g/cm ³)	Property	Activity concentration [Bq/kg(dry)]				
								Sediment temperature (°C)	Sample length (cm)	Color		Odor		Grain size distribution (%)									Cs-134	Cs-137		Total	
Coarse gravel		Medium gravel	Fine gravel	Coarse sand	Medium sand	Fine sand	Silt	Clay	Cs-134			Cs-137															
35	Abukuma River	Higashine Bridge	Kakuda City	2016/4/26	Sunny	22.2	0.6	19.4	3	Blackish brown	Faint algae	0.0	1.2	9.6	36.5	48.8	0.5	3.5	78.8	2.637	Gravel/sand	6.5	47	53.8			
				2016/8/12	Cloudy	22.0	0.5	22.8	3	Dark grayish yellow	Faint algae	0.0	0.1	0.5	4.3	77.9	12.2	3.0	2.0	74.3	2.665	Sand	19	89	108		
				2016/8/4	Sunny	30.4	0.3	27.1	3	Dull yellow orange	Faint swamp	0.0	13.1	56.3	25.8	4.3	0.1	0.0	0.0	85.1	2.627	Sand/gravel	4	23	27		
				2016/10/3	Cloudy	24.8	0.5	20.5	3	Dull yellowish brown	Faint swamp	0.0	8.5	25.5	37.9	25.1	0.6	0.3	1.3	77.2	2.623	Sand/gravel	5.5	40	45.5		
				2016/12/10	Sunny	6.2	0.5	6.8	3	Brown	Faint swamp	0.0	7.9	25.3	32.5	30.9	0.5	1.4	1.3	79.6	2.625	Sand/gravel	5.7	40	45.7		
				2017/1/19	Sunny	5.0	1.0	4.4	3	Dull yellowish brown	Faint swamp	0.0	4.4	15.0	32.9	43.5	1.0	0.8	2.4	79.5	2.639	Sand/gravel	5.8	37	42.8		
	36	Shiroishi River	Before the confluence with Kawaharukozawa (Sunashi Bridge)	Shiroishi City	2016/4/26	Sunny	24.6	0.6	12.6	3	Blackish brown	Faint swamp	1.4	25.9	22.1	21.7	22.9	2.5	0.3	2.7	75.1	2.633	Gravel/sand	8.4	48	56.4	
					2016/7/16	Sunny	23.4	0.5	19.8	3	Grayish yellowish brown	Faint swamp	0.0	8.8	9.4	21.1	41.3	12.7	2.2	4.5	73.7	2.624	Sand/gravel	11	60	71	
					2016/11/17	Sunny	10.2	0.4	11.0	3	Dull yellowish brown	Faint swamp	0.0	24.1	17.1	12.1	26.6	14.3	3.2	2.6	77.2	2.663	Sand/gravel	11	56	67	
					2017/1/15	Snow	-0.8	1.0	3.8	3	Brown	Faint algae	0.0	34.0	20.7	15.0	18.9	7.3	2.5	1.8	80.1	2.597	Sand/gravel	6.1	42	48.1	
					2016/4/26	Sunny	20.3	0.3	15.1	3	Blackish brown	Faint algae	0.0	0.9	33.9	32.5	21.6	9.9	0.2	0.0	1.0	80.7	2.660	Sand/gravel	11	81	92
					2016/7/17	Rain	23.1	0.4	20.3	3	Grayish yellowish brown	Faint algae	0.0	30.5	26.5	24.5	15.4	0.6	1.3	1.3	81.1	2.676	Sand/gravel	16	100	116	
37	Sakawa River	Ezusho Bridge	Shiroishi City	2016/11/18	Sunny	6.7	0.2	7.0	3	Brown	Faint algae	0.0	18.4	42.9	28.1	8.8	0.3	0.4	1.1	92.4	2.606	Gravel/sand	8.9	51	59.9		
				2017/1/15	Cloudy	1.4	0.2	2.2	3	Brown	Faint algae	0.0	39.0	36.6	18.5	6.3	0.3	0.2	1.0	83.1	2.618	Sand/gravel	8.3	45	53.3		
				2016/4/26	Sunny	20.2	0.5	12.3	3	Blackish brown	None	0.0	14.8	12.0	36.1	29.0	3.8	1.1	3.2	77.4	2.670	Gravel/sand	-4.2	15	15		
				2016/7/17	Cloudy	21.0	0.3	18.5	3	Blackish brown	Faint swamp	0.0	3.6	12.4	23.5	49.3	8.8	0.9	1.6	78.7	2.870	Sand/gravel	-3.9	10	10		
				2016/11/17	Cloudy	9.3	0.3	8.5	3	Blackish brown	Faint swamp	0.0	8.5	6.0	24.3	51.0	17.0	0.4	2.9	76.0	2.868	Sand/gravel	-4.6	6.0	6.0		
				2017/1/19	Sunny	7.6	0.2	5.0	3	Blackish brown	Faint swamp	0.0	2.4	12.5	24.1	46.7	12.3	0.8	1.6	79.8	2.837	Sand/gravel	-3.3	4.8	4.8		
38	Matsukawa River	Miya-obashi Bridge	Zao Town	2016/5/27	Rain	19.4	0.3	19.7	3	Grayish brown	Faint swamp	0.0	19.3	14.6	26.5	32.2	3.0	1.9	2.5	80.9	2.791	Sand/gravel	-3.3	18	18		
				2016/8/6	Sunny	30.6	0.3	28.2	3	Dark brown	Faint swamp	0.0	33.7	19.3	19.8	22.9	2.2	0.3	1.3	81.5	2.779	Sand/gravel	-3.8	9.5	9.3		
				2016/11/17	Sunny	9.8	0.2	8.3	3	Dark brown	Faint swamp	0.0	25.4	29.3	25.2	13.8	3.2	1.2	2.5	79.8	2.884	Sand/gravel	-4.6	14	14		
				2016/4/26	Sunny	6.4	0.3	3.2	3	Brown	Faint swamp	0.0	27.3	29.4	22.4	23.4	2.4	2.5	1.5	84.5	2.751	Sand/gravel	-3.8	16	16		
				2016/5/27	Cloudy	19.8	0.5	19.8	3	Blackish brown	Faint swamp	0.0	4.8	3.5	14.2	71.7	3.1	1.0	1.8	75.6	2.711	Sand	-5.1	13	13		
				2016/8/5	Sunny	27.3	0.4	25.8	3	Blackish brown	Faint algae	0.0	3.7	2.6	5.3	76.2	9.5	0.9	1.8	75.9	2.766	Sand/gravel	-4.0	9.6	9.6		
39	Abukuma River System	Shiroishi River	Shibata Town	2016/11/17	Cloudy	8.3	0.3	9.6	3	Blackish brown	Faint swamp	0.0	1.1	0.2	2.7	77.3	16.6	0.1	1.9	76.2	2.876	Sand	-4.0	8.4	8.4		
				2017/1/16	Sunny	0.4	0.3	2.4	3	Blackish brown	Faint algae	0.0	12.4	2.0	4.0	63.8	14.5	0.0	3.2	77.0	2.867	Sand/gravel	-4.3	14	14		
				2016/4/25	Sunny	16.8	0.5	16.6	3	Olive black	Faint sewage	0.0	0.0	0.0	0.3	18.1	53.8	16.7	11.1	52.0	2.624	Silt/sand	4.2	210	252		
				2016/6/12	Sunny	22.4	0.3	23.0	3	Blackish brown	Faint sewage	0.0	0.0	0.1	1.3	30.5	32.0	11.3	4.8	66.7	2.884	Sand/silt	38	110	128		
				2016/8/5	Sunny	30.5	0.3	27.6	3	Olive black	Faint sewage	0.0	0.0	0.0	1.7	41.0	33.7	16.4	7.2	58.3	2.642	Sand/silt	30	199	229		
				2016/10/3	Sunny	23.4	0.2	20.2	3	Blackish brown	Faint sewage	0.0	0.0	0.0	0.1	2.2	45.7	36.2	15.9	50.4	2.558	Sand/silt	38	210	248		
40	Abukuma River System	Tsukenoki-obashi Bridge	Kakuda City/Shibata Town	2016/12/12	Sunny	7.4	0.3	6.8	3	Blackish brown	Faint sewage	0.0	0.0	0.0	0.3	6.8	44.0	36.0	13.0	54.2	2.598	Silt/sand	17	140	157		
				2017/1/16	Cloudy	3.8	0.3	4.1	3	Blackish brown	Faint sewage	0.0	0.0	0.0	0.1	3.5	40.9	47.3	9.1	55.1	2.469	Sand/silt	24	160	184		
				2016/4/25	Sunny	16.9	0.8	17.1	3	Olive black	Faint sewage	0.0	0.0	0.0	0.4	8.7	42.8	35.3	12.7	51.6	2.614	Sand/silt	110	620	730		
				2016/5/27	Cloudy	20.8	0.8	21.2	3	Gray	Faint sewage	0.0	0.5	2.0	5.4	57.8	23.6	5.9	4.8	74.9	2.717	Sand/silt	10	75	85		
				2016/8/12	Sunny	22.4	1.0	24.8	3	Olive black	Faint algae	0.0	1.2	2.7	8.2	60.3	20.0	2.9	4.8	77.3	2.707	Sand/silt	11	64	75		
				2016/7/17	Cloudy	25.4	1.1	23.5	3	Blackish brown	Faint sewage	0.0	0.7	2.9	7.9	61.3	21.5	1.9	3.7	72.3	2.795	Sand/silt	9.3	52	61.3		
		42	Abukuma River	Abukuma-obashi Bridge (Iwanuma)	Iwanuma City/Watari Town	2016/8/5	Sunny	29.7	1.2	26.1	3	Blackish brown	Faint swamp	0.0	0.2	1.2	6.7	62.7	23.4	2.5	3.3	76.0	2.724	Sand/silt	13	60	73
						2016/9/10	Sunny	30.3	1.0	23.2	3	Blackish brown	Faint swamp	0.0	0.3	0.3	5.8	58.9	30.5	2.3	2.0	74.8	2.765	Sand	-4.9	41	41
						2016/10/3	Sunny	22.3	1.0	20.1	3	Grayish yellowish brown	Faint swamp	0.0	1.8	2.8	20.1	60.6	10.0	1.0	3.7	75.9	2.718	Sand/gravel	4.0	19	23.0
						2016/12/12	Sunny	7.1	0.7	5.6	3	Dark grayish yellow	Faint swamp	0.0	2.0	2.7	9.8	50.7	24.9	4.9	5.1	67.1	2.692	Sand/silt	5.1	36	41.1
						2017/1/16	Sunny	7.4	1.2	4.2	3	Grayish olive	Faint sewage	0.0	0.7	2.3	12.9	49.5	17.4	11.2	6.2	53.5	2.718	Sand/silt	9.1	64	73.1
						2017/2/8	Sunny	0.5	0.5	3.6	3	Olive brown	Faint swamp	0.0	1.4	1.6	4.6	48.7	29.9	8.6	5.2	64.8	2.721	Sand/silt	10	61	71
43	Offshore of Abukuma River Estuary (Watar-obashi Bridge)			2016/4/25	Sunny	16.0	0.5	15.9	3	Blackish brown	None	0.0	4.7	17.8	46.5	23.9	1.8	2.3	3.0	80.0	2.686	Gravel/sand	5.4	23	28.4		
				2016/10/12	Sunny	26.2	1.0	24.8	3	Blackish brown	Faint seaweed	0.0	0.4	0.8	6.5	60.6	26.9	1.0	3.9	73.4	2.682	Sand	9.7	68	77.7		
				2016/8/5	Sunny	30.2	1.0	27.8	3	Dull yellowish brown	Faint seaweed	0.0	0.2	1.2	10.6	67.0	13.2	3.6	4.2	59.8	2.657	Sand/silt	20	130	150		
				2016/10/3	Cloudy	24.9	0.6	21.0	3	Blackish brown	Faint sewage	0.0	0.0	0.0	0.1	1.9	11.8	60.5	25.6	36.2	2.518	Silt/sand	140	930	1,070		
				2016/12/12	Sunny	2.8	1.2	7.4	3	Blackish brown	Faint seaweed	0.0	2.0	1.0	3.8	28.4	19.8	31.8	13.2	44.0	2.637	Sand/silt	71	370	441		
				2017/1/16	Sunny	6.2	1.2	4.3	3	Blackish brown	Faint sewage	0.0	0.0	0.1	3.5	36.5	30.4	19.7	9.9	48.8	2.663	Sand/silt	53	320	373		

Miyagi River (Surrounding Environment) 1/4

Location				Sampling Date	Weather	Air temperature (°C)	Surrounding Environment (Soil, Air, dose)													Remarks		
No.	Water area	Location	Municipality				Left bank						Right bank									
							Color	Odor	Property	Activity concentration [Bq/kg(dry)]			Air Dose (μSv/h)	Color	Odor	Property	Activity concentration [Bq/kg(dry)]				Air Dose (μSv/h)	
			Radioactive cesium			Radioactive cesium																
			Cs-134	Cs-137	Total	Cs-134	Cs-137	Total				Cs-134	Cs-137	Total								
R i v e r s	1	Shishiori River	Kinzan Bridge	Kesennuma City	2016/5/13	Sunny	20.1	Blackish brown	Faint earth	Loamy	130	720	850	0.09	Dull yellowish brown	Faint earth	Loamy	120	640	760	0.08	
					2016/8/27	Rain	19.0	Blackish brown	Faint earth	Loamy	72	340	412	0.08	Dull yellowish brown	Faint earth	Loamy	48	320	368	0.08	
					2016/1/7	Sunny	7.5	Blackish brown	Faint earth	Loamy	36	240	276	0.07	Blackish brown	Faint earth	Loamy	110	560	670	0.06	
					2017/1/27	Cloudy	2.6	Blackish brown	Faint earth	Loamy	99	660	759	0.07	Blackish brown	Faint earth	Loamy	99	620	719	0.06	
					2016/5/14	Sunny	15.8	Dark brown	Faint earth	Loamy	91	500	591	0.07	Blackish brown	Faint earth	Loamy	60	350	410	0.06	
					2016/8/28	Sunny	25.4	Grayish yellowish brown	Faint earth	Loamy	73	430	503	0.06	Blackish brown	Faint earth	Loamy	48	280	328	0.06	
		2	Namiita Bridge	Kesennuma City	2016/11/8	Cloudy	8.9	Dark brown	Faint earth	Loamy	49	300	349	0.06	Dull yellowish brown	Faint earth	Loamy	58	290	348	0.06	
					2017/1/27	Cloudy	5.4	Dark brown	Faint earth	Loamy	38	210	248	0.06	Brownish gray	Faint earth	Loamy	49	270	319	0.06	
					2016/5/14	Sunny	17.3	Dull yellowish brown	Faint earth	Loamy	49	250	299	0.07	Grayish yellowish brown	Faint earth	Loamy	47	240	287	0.08	
					2016/8/28	Sunny	24.8	Blackish brown	Faint earth	Loamy	33	190	223	0.07	Dark brown	Faint earth	Loamy	33	170	203	0.07	
					2016/11/8	Cloudy	13.9	Dark brown	Faint grass	Loamy	32	190	222	0.07	Dull yellowish brown	Faint earth	Loamy	29	200	229	0.06	
					2017/1/27	Cloudy	2.3	Dull yellowish brown	Faint earth	Loamy	12	86	98	0.06	Dull yellowish brown	Faint earth	Loamy	22	180	202	0.07	
	4	Okawa River	Kamiyama Bridge	Kesennuma City	2016/5/14	Sunny	20.4	Dark brown	Faint earth	Loamy	59	310	369	0.07	Blackish brown	Faint earth	Loamy	91	490	581	0.06	
					2016/8/28	Sunny	25.1	Grayish yellowish brown	Faint earth	Loamy	53	260	313	0.05	Blackish brown	Faint earth	Loamy	40	210	250	0.06	
					2016/11/8	Cloudy	11.8	Brown	Faint earth	Loamy	24	140	164	0.05	Dull yellowish brown	Faint earth	Loamy	75	480	555	0.06	
					2017/1/27	Cloudy	3.9	Dull yellowish brown	Faint earth	Loamy	26	200	226	0.06	Blackish brown	Faint earth	Loamy	83	480	563	0.06	
					2016/5/14	Sunny	15.4	Dull yellowish brown	Faint earth	Loamy	15	71	86	0.07	Dull yellowish brown	Faint earth	Loamy	18	110	128	0.07	
					2016/8/28	Sunny	22.4	Blackish brown	Faint earth	Loamy	7.3	50	57.3	0.06	Blackish brown	Faint earth	Loamy	16	90	106	0.06	
	5	Okawa River Estuary	Kesennuma City	2016/11/8	Cloudy	14.1	Dull yellowish brown	Faint earth	Loamy	16	110	126	0.05	Dull yellowish brown	Faint earth	Loamy	14	93	107	0.05		
				2017/1/28	Sunny	2.3	Brown	Faint earth	Loamy	51	320	371	0.05	Brown	Faint earth	Loamy	55	300	355	0.05		
				2016/5/14	Sunny	17.8	Dull yellowish brown	Faint earth	Loamy	18	100	118	0.06	Dull yellowish brown	Faint earth	Loamy	83	480	563	0.06		
				2016/8/27	Cloudy	20.9	Dull yellowish brown	Faint earth	Loamy	30	140	170	0.06	Grayish yellowish brown	Faint earth	Loamy	14	100	114	0.05		
				2016/11/9	Sunny	8.0	Dull yellowish brown	Faint earth	Loamy	11	77	88	0.05	Brown	Faint earth	Loamy	<7.7	29	29	0.04		
				2017/1/28	Sunny	5.2	Brown	Faint earth	Loamy	20	120	140	0.06	Brown	Faint earth	Loamy	<5.8	17	17	0.05		
	7	Arima River	Unanda Bridge	Kurihara City	2016/5/9	Sunny	17.4	Dark brown	Faint earth	Loamy	390	2,000	2,390	0.11	Dark brown	Faint earth	Loamy	150	850	1,000	0.11	
					2016/8/24	Sunny	25.4	Dark brown	Faint earth	Loamy	180	1,100	1,280	0.10	Dark brown	Faint earth	Loamy	130	770	900	0.08	
					2016/11/6	Sunny	10.4	Brown	Faint earth	Loamy	330	1,900	2,230	0.10	Dark brown	Faint earth	Loamy	96	560	656	0.08	
					2017/1/29	Sunny	-0.5	Dull yellowish brown	Faint earth	Loamy	120	670	790	0.09	Blackish brown	Faint earth	Loamy	500	3,000	3,500	0.07	
					2016/5/9	Sunny	20.4	Dull yellowish brown	Faint earth	Loamy	260	1,300	1,560	0.12	Dull yellowish brown	Faint earth	Loamy	150	820	970	0.12	
					2016/8/24	Sunny	27.6	Dull yellowish brown	Faint earth	Loamy	210	1,200	1,410	0.10	Dark brown	Faint earth	Loamy	93	600	693	0.10	
	8	Kinryu River	Obata Bridge	Kurihara City	2016/11/6	Sunny	11.7	Brown	Faint earth	Loamy	170	1,100	1,270	0.11	Dull yellowish brown	Faint earth	Loamy	130	810	940	0.11	
					2017/1/29	Sunny	2.9	Brown	Faint earth	Loamy	130	650	780	0.09	Brown	Faint earth	Loamy	210	1,400	1,610	0.10	
					2016/5/15	Sunny	17.4	Dark brown	Faint grass	Loamy	65	320	385	0.07	Brown	Faint earth	Loamy	98	480	578	0.05	
					2016/8/19	Sunny	28.6	Dark brown	Faint earth	Loamy	50	280	330	0.05	Blackish brown	Faint earth	Loamy	54	330	384	0.05	
					2016/11/9	Sunny	7.7	Dark brown	Faint grass	Loamy	26	210	236	0.07	Dull yellowish brown	Faint earth	Loamy	35	210	245	0.07	
					2017/1/26	Sunny	4.7	Dull yellowish brown	Faint earth	Loamy	64	450	514	0.06	Dark brown	Faint earth	Loamy	24	140	164	0.05	
	10	Kitakami River System	Sanhasama River	Doman Bridge (Kurikoma Dam)	Kurihara City	2016/5/12	Sunny	16.1	Dull yellowish brown	Faint earth	Clay-loamy	150	800	950	0.09	Dull yellowish brown	Faint earth	Loamy	200	1,000	1,200	0.10
						2016/8/21	Sunny	30.8	Brown	Faint earth	Loamy	140	820	960	0.09	Dark brown	Faint earth	Loamy	160	890	1,050	0.08
						2016/11/2	Sunny	5.3	Brown	Faint earth	Loamy	120	730	850	0.07	Blackish brown	Faint earth	Loamy	110	660	770	0.08
						2017/1/29	Sunny	5.7	Brown	Faint earth	Loamy	120	850	970	0.06	Dark brown	Faint earth	Loamy	230	1,400	1,630	0.07
2016/5/18						Sunny	23.2	Dull yellowish brown	Faint earth	Loamy	140	770	910	0.09	Dark brown	Faint earth	Loamy	290	1,600	1,890	0.09	
2016/8/21						Sunny	31.3	Dull yellowish brown	Faint earth	Loamy	91	550	641	0.08	Blackish brown	Faint earth	Loamy	170	1,000	1,170	0.09	
11	Nihassama River	Kajiya Bridge	Kurihara City	2016/11/13	Sunny	14.9	Dark brown	Faint earth	Loamy	82	550	632	0.08	Blackish brown	Faint grass	Loamy	180	1,100	1,280	0.08		
				2017/1/25	Sunny	1.3	Brown	Faint earth	Loamy	78	450	528	0.07	Blackish brown	Faint earth	Loamy	240	1,500	1,740	0.07		
				2016/5/20	Sunny	21.8	Dark brown	Faint earth	Loamy	640	3,200	3,840	0.11	Dull yellowish brown	Faint earth	Sandy	16	60	76	0.07		
				2016/8/26	Cloudy	23.7	Dull yellowish brown	Faint earth	Loamy	200	1,200	1,400	0.10	Dull yellowish brown	Faint earth	Loamy	38	310	348	0.07		
				2016/11/13	Sunny	13.0	Blackish brown	Faint earth	Loamy	130	800	930	0.09	Dark brown	Faint earth	Loamy	39	300	339	0.05		
				2017/1/25	Sunny	0.9	Blackish brown	Faint earth	Loamy	210	1,300	1,510	0.09	Brown	Faint earth	Loamy	19	150	169	0.05		
12	Hasama River	Hanayama Dam, inflow area	Kurihara City	2016/5/9	Sunny	20.7	Blackish brown	Faint earth	Loamy	220	1,100	1,320	0.06	Dull yellowish brown	Faint earth	Loamy	23	130	153	0.08		
				2016/8/24	Sunny	28.6	Blackish brown	Faint earth	Loamy	54	330	384	0.06	Dull yellowish brown	Faint earth	Loamy	34	190	224	0.06		
				2016/11/6	Sunny	11.9	Blackish brown	Faint earth	Loamy	67	330	397	0.05	Dull yellowish brown	Faint earth	Loamy	24	140	164	0.06		
				2017/1/26	Sunny	7.2	Blackish brown	Faint earth	Loamy	55	380	435	0.05	Dark brown	Faint earth	Loamy	23	130	153	0.05		
13	Wakayanagi			2016/5/9	Sunny	20.7	Blackish brown	Faint earth	Loamy	220	1,100	1,320	0.06	Dull yellowish brown	Faint earth	Loamy	23	130	153	0.08		
				2016/8/24	Sunny	28.6	Blackish brown	Faint earth	Loamy	54	330	384	0.06	Dull yellowish brown	Faint earth	Loamy	34	190	224	0.06		

Miyagi River (Surrounding Environment) 2/4

Location				Sampling Date	Weather	Air temperature (°C)	Surrounding Environment (Soil, Air dose)											Remarks				
No.	Water area	Location	Municipality				Left bank			Right bank			Air Dose (µSv/h)	Color	Odor	Property	Activity concentration [Bq/kg(dry)]			Air Dose (µSv/h)		
							Color	Odor	Property	Radioactive cesium							Radioactive cesium					
						Cs-134	Cs-137	Total	Cs-134	Cs-137	Total	Cs-134	Cs-137	Total								
R i v e r s	14	Hasama River	Yamayoshida Bridge	Tome City	2016/5/15	Sunny	17.7	Dull yellowish brown	Faint earth	Loamy	17	94	111	0.06	Dull yellowish brown	Faint earth	Loamy	74	430	504	0.05	
					2016/8/19	Sunny	29.9	Dark brown	Faint earth	Loamy	17	99	116	0.05	Dark brown	Faint earth	Loamy	24	130	154	0.05	
					2016/1/19	Sunny	6.8	Dull yellowish brown	Faint earth	Loamy	13	76	89	0.05	Dark brown	Faint grass	Loamy	37	200	237	0.05	
					2017/1/26	Sunny	3.2	Brown	Faint earth	Loamy	18	110	128	0.05	Dark brown	Faint earth	Loamy	78	560	638	0.06	
		15	Eai River	Todoroki Bridge (Todoroki)	Osaki City	2016/5/20	Sunny	21.9	Dull yellowish brown	Faint earth	Loamy	33	180	213	0.06	Dark brown	Faint earth	Loamy	46	270	316	0.06
						2016/8/18	Sunny	26.5	Dark brown	Faint earth	Loamy	45	250	295	0.06	Blackish brown	Faint earth	Loamy	29	140	169	0.06
						2016/11/13	Sunny	10.1	Dark brown	Faint earth	Loamy	31	150	181	0.05	Blackish brown	Faint earth	Loamy	94	490	584	0.06
						2017/1/25	Sunny	-1.5	Dark brown	Faint earth	Loamy	32	240	272	0.04	Blackish brown	Faint earth	Loamy	34	230	264	0.04
		16	Eai River	Shinborisaithon, entrance	Osaki City	2016/5/21	Cloudy	15.7	Dull yellowish brown	Faint earth	Loamy	66	440	506	0.06	Dark brown	Faint earth	Loamy	42	190	232	0.07
						2016/8/16	Sunny	27.1	Dull yellowish brown	Faint earth	Loamy	150	730	880	0.05	Blackish brown	Faint earth	Loamy	130	680	810	0.07
						2016/11/11	Rain	6.9	Extremely dark brown	Faint earth	Loamy	28	220	248	0.05	Grayish yellowish brown	Faint earth	Loamy	37	220	257	0.05
						2017/1/24	Snow	-0.4	Blackish brown	Faint earth	Loamy	77	530	607	0.05	Blackish brown	Faint earth	Loamy	38	300	338	0.06
	17	Kitakami River System	In Furukawa District, Osaki City	Shinborisaithon, entrance	2016/5/16	Sunny	17.1	Blackish brown	Faint earth	Loamy	80	390	470	0.07	Dark brown	Faint earth	Loamy	35	170	205	0.05	
					2016/8/15	Sunny	27.5	Dark brown	Faint earth	Loamy	66	360	426	0.06	Dull yellowish brown	None	Loamy	27	130	157	0.05	
					2016/11/11	Rain	4.9	Blackish brown	Faint earth	Loamy	60	370	430	0.06	Blackish brown	Faint earth	Loamy	23	130	153	0.05	
					2017/1/24	Snow	-0.3	Blackish brown	Faint earth	Loamy	51	390	441	0.07	Dark brown	Faint earth	Loamy	17	85	102	0.06	
	18	Kitakami River System	Degigawa River	Kogota Bridge	Misato Town	2016/5/17	Rain	15.5	Brown	Faint earth	Loamy	47	250	297	0.06	Blackish brown	Faint earth	Loamy	33	190	223	0.05
						2016/8/15	Cloudy	27.5	Grayish yellowish brown	None	Sandy	44	250	294	0.06	Dull yellowish brown	Faint earth	Loamy	22	97	119	0.06
						2016/11/11	Rain	4.3	Dull yellowish brown	Faint earth	Loamy	25	150	175	0.07	Blackish brown	Faint earth	Loamy	25	100	125	0.05
						2017/1/24	Snow	-1.0	Dull yellowish brown	Faint earth	Loamy	22	160	182	0.06	Dark brown	Faint earth	Loamy	40	260	300	0.06
	19	Kitakami River System	Eai River	Oikawa Bridge (Tandai)	Wakuya Town /Ishinomaki City	2016/5/17	Rain	14.7	Dull yellowish brown	Faint earth	Sandy	14	69	83	0.05	Dark brown	Faint earth	Loamy	14	70	84	0.05
						2016/8/20	Cloudy	27.1	Dark brown	Faint earth	Loamy	13	76	89	0.05	Dark brown	Faint earth	Loamy	12	76	88	0.05
						2016/11/12	Sunny	11.2	Dull yellowish brown	Faint earth	Loamy	30	160	190	0.05	Dark brown	Faint earth	Loamy	13	65	78	0.05
						2017/1/23	Cloudy	1.5	Dark brown	Faint earth	Loamy	20	160	180	0.04	Dull yellowish brown	Faint earth	Loamy	20	93	113	0.04
	20	Kitakami River System	Kyu-Kitakami River	Kadonowaki	Ishinomaki City	2016/5/17	Rain	15.7	Dull yellowish brown	Faint earth	Loamy	<2.9	7.2	7.2	0.06	Dark brown	Faint earth	Loamy	46	220	266	0.06
						2016/8/20	Cloudy	28.6	Dull yellowish brown	Faint earth	Loamy	<0.58	5.1	5.1	0.06	Dark brown	Faint earth	Loamy	27	210	237	0.05
						2016/11/12	Sunny	14.0	Dull yellowish brown	Faint earth	Loamy	5.7	32	37.7	0.05	Dark brown	Faint earth	Loamy	16	130	146	0.05
						2017/1/23	Cloudy	3.4	Brown	Faint earth	Loamy	<4.9	8.6	8.6	0.05	Brown	Faint earth	Loamy	12	100	112	0.06
	21	Naruse River	Ono Bridge (Ono)	Higashi-Matsumi City	2016/5/17	Sunny	16.9	Dull yellowish brown	Faint earth	Loamy	12	72	84	0.05	Dark brown	Faint earth	Loamy	64	300	364	0.06	
					2016/8/20	Cloudy	27.8	Dark brown	Faint earth	Loamy	64	390	454	0.05	Dull yellowish brown	Faint earth	Loamy	25	170	195	0.05	
					2016/11/12	Sunny	14.8	Dark brown	Faint earth	Loamy	33	250	283	0.05	Dark brown	Faint earth	Loamy	29	200	229	0.05	
					2017/1/23	Sunny	4.1	Dark brown	Faint earth	Sandy	35	230	265	0.05	Brown	Faint earth	Loamy	37	200	237	0.06	
22	Sunaooshi River	Tagajozeki Weir	Tagajo City	2016/5/22	Sunny	22.8	Dull yellowish brown	Faint earth	Loamy	21	140	161	0.06	Dull yellowish brown	Faint earth	Loamy	39	180	219	0.06		
				2016/8/12	Sunny	28.6	Brown	Faint earth	Loamy	29	200	229	0.04	Dull yellowish brown	Faint earth	Loamy	65	420	485	0.05		
				2016/11/14	Sunny	16.4	Dark brown	Faint earth	Loamy	29	190	219	0.05	Dull yellowish brown	Faint earth	Loamy	42	280	322	0.05		
				2017/1/21	Sunny	3.4	Brown	Faint earth	Loamy	32	220	252	0.04	Brown	Faint earth	Loamy	80	430	510	0.04		
23	Sunaooshi River	Nenbutsu Bridge	Tagajo City	2016/5/22	Sunny	22.9	Dark brown	Faint earth	Loamy	42	200	242	0.05	Brown	Faint earth	Loamy	<5.2	17	17	0.04		
				2016/8/12	Sunny	28.8	Dull yellowish brown	Faint earth	Loamy	60	400	460	0.04	Brown	Faint earth	Loamy	3.3	407	20.3	0.04		
				2016/11/15	Sunny	16.4	Dark brown	Faint grass	Loamy	38	210	248	0.04	Dark brown	Faint grass	Loamy	<4.4	11	11	0.04		
				2017/1/21	Sunny	10.9	Dark brown	Faint earth	Loamy	16	96	112	0.04	Brown	Faint earth	Loamy	<7.6	11	11	0.04		
24	Teizan-unga Canal (Kyu-sunaooshi River)	Teizan Bridge	Shichigahama Town/Tagajo City	2016/5/22	Sunny	23.4	Dull yellowish brown	Faint earth	Loamy	<3.4	7.8	7.8	0.05	Dull yellowish brown	Faint earth	Loamy	9.9	75	84.9	0.05		
				2016/8/12	Sunny	25.4	Dull yellowish brown	Faint earth	Loamy	<4.7	6.9	6.9	0.04	Grayish yellowish brown	Faint earth	Loamy	25	130	155	0.05		
				2016/11/14	Sunny	15.9	Dark brown	Faint earth	Loamy	17	72	89	0.04	Dark brown	Faint grass	Loamy	18	130	148	0.05		
				2017/1/21	Sunny	9.1	Dark brown	Faint earth	Loamy	<5.6	6.6	6.6	0.04	Blackish brown	Faint earth	Loamy	8.2	60	68.2	0.05		
25	Nanakita River System	Nanakita River	Nanakita Bridge	Sendai City	2016/5/24	Sunny	25.8	Brown	Faint earth	Loamy	<6.1	7.4	7.4	0.04	Dull yellowish brown	Faint earth	Loamy	97	570	667	0.06	
					2016/8/13	Sunny	26.1	Grayish yellowish brown	Faint earth	Loamy	<4.9	5.8	5.8	0.04	Grayish yellowish brown	Faint earth	Loamy	73	340	413	0.05	
					2016/11/14	Sunny	13.3	Dark brown	Faint earth	Loamy	<8.8	12	12	0.04	Dark brown	Faint grass	Loamy	80	420	500	0.05	
					2017/1/22	Cloudy	3.1	Dull yellowish brown	Faint earth	Loamy	<9.0	16	16	0.04	Dark brown	Faint earth	Loamy	40	310	350	0.04	
26	Nanakita River System	Nanakita River	Fukuda-hashii Bridge	Sendai City	2016/5/24	Sunny	22.6	Dull yellowish brown	Faint grass	Loamy	20	110	130	0.06	Grayish yellowish brown	Faint grass	Loamy	49	250	299	0.06	
					2016/8/11	Sunny	29.4	Black	Faint earth	Loamy	51	290	341	0.04	Blackish brown	Faint earth	Loamy	40	280	320	0.05	
					2016/11/15	Sunny	18.3	Blackish brown	Faint earth	Loamy	38	280	318	0.05	Blackish brown	Faint earth	Loamy	42	320	362	0.05	
					2017/1/22	Sunny	10.7	Dark brown	Faint earth	Loamy	35	250	285	0.05	Blackish brown	Faint earth	Loamy	35	300	335	0.05	

Miyagi River (Surrounding Environment) 3/4

Location				Sampling Date	Weather	Air temperature (°C)	Surrounding Environment (Soil, Air dose)											Remarks		
No.	Water area	Location	Municipality				Left bank					Right bank								
							Color	Odor	Property	Activity concentration [Bq/kg(dry)]			Air Dose (μSv/h)	Color	Odor	Property	Activity concentration [Bq/kg(dry)]			Air Dose (μSv/h)
			Radioactive cesium			Radioactive cesium														
			Cs-134	Cs-137	Total	Cs-134	Cs-137	Total				Cs-134	Cs-137	Total						
27	Nanakita River System	Umeda River	Fukuda Bridge	Sendai City	Sunny	24.1	Dull yellowish brown	Faint earth	Sandy	74	410	484	0.06	Dull yellowish brown	Faint earth	Sandy	18	110	128	0.06
					Sunny	29.0	Dull yellowish brown	Faint earth	Loamy	55	360	415	0.08	Dull yellowish brown	Faint earth	Loamy	27	180	207	0.04
					Sunny	17.9	Dark brown	Faint earth	Loamy	83	510	593	0.06	Blackish brown	Faint earth	Loamy	32	190	222	0.05
					Sunny	6.6	Blackish brown	Faint earth	Loamy	100	570	670	0.06	Dark brown	Faint earth	Loamy	25	180	205	0.05
28	Nanakita River	Takasago Bridge	Sendai City	Sunny	21.4	Dull yellowish brown	Faint earth	Loamy	<4.7	18	18	0.05	Grayish yellowish brown	Faint earth	Loamy	8.0	54	62.0	0.05	
				Sunny	27.2	Dull yellowish brown	Faint earth	Loamy	5.3	32	37.3	0.04	Dull yellowish brown	Faint earth	Loamy	47	280	327	0.05	
				Sunny	17.0	Dark brown	Faint earth	Sandy	22	110	132	0.04	Blackish brown	Faint earth	Loamy	80	430	510	0.05	
				Sunny	7.9	Dark brown	Faint earth	Loamy	11	57	68	0.04	Dark brown	Faint earth	Loamy	38	300	338	0.04	
29	Natori River	Yuriage-obashi Bridge	Sendai City/Natori City	Sunny	20.0	Dull yellowish brown	Faint earth	Loamy	<4.0	6.5	6.5	0.04	Blackish brown	Faint earth	Loamy	99	600	699	0.06	
				Sunny	27.1	Brown	Faint earth	Loamy	<7.1	7.6	7.6	0.04	Dull yellowish brown	Faint earth	Loamy	<7.1	22	22	0.04	
				Sunny	14.7	Dark brown	Faint earth	Loamy	<6.1	15	15	0.04	Brown	Faint earth	Loamy	<7.1	9.8	9.8	0.04	
				Sunny	6.1	Dark brown	Faint earth	Loamy	<6.9	18	18	0.04	Blackish brown	Faint earth	Loamy	82	570	652	0.04	
30	Natori River System	Yakushi Bridge	Natori City	Sunny	21.2	Dull yellowish brown	Faint earth	Loamy	42	230	272	0.05	Extremely dark brown	Faint earth	Loamy	69	360	429	0.06	
				Cloudy	26.8	Dull yellowish brown	Faint earth	Loamy	8.9	41	49.9	0.05	Blackish brown	Faint earth	Loamy	100	600	700	0.06	
				Sunny	12.2	Brown	Faint earth	Loamy	64	300	364	0.05	Blackish brown	Faint earth	Loamy	110	620	730	0.05	
				Sunny	4.3	Brown	Faint earth	Loamy	7.2	53	60.2	0.04	Blackish brown	Faint earth	Loamy	72	560	632	0.05	
31	Masuda River	Koyama Bridge	Natori City	Sunny	22.0	Dark brown	Faint earth	Loamy	180	930	1,110	0.09	Dark brown	Faint earth	Loamy	130	640	770	0.10	
				Sunny	29.0	Dull yellowish brown	Faint earth	Loamy	130	750	880	0.10	Dull yellowish brown	Faint earth	Loamy	110	530	640	0.10	
				Sunny	12.7	Dark brown	Faint earth	Loamy	150	890	1,040	0.10	Dark brown	Faint earth	Loamy	110	660	770	0.09	
				Sunny	5.7	Dark brown	Faint earth	Loamy	88	600	688	0.10	Dark brown	Faint earth	Loamy	88	630	718	0.08	
32	Bishamon Bridge	Natori City	Sunny	23.4	Dark brown	Faint earth	Loamy	94	550	644	0.05	Dark brown	Faint earth	Loamy	74	330	404	0.06		
			Sunny	27.6	Dull yellowish brown	Faint earth	Loamy	25	150	175	0.05	Dull yellowish brown	Faint earth	Loamy	76	500	576	0.06		
			Sunny	10.4	Dark brown	Faint earth	Loamy	63	390	453	0.05	Dark brown	Faint grass	Loamy	63	390	453	0.06		
			Sunny	6.8	Brown	Faint earth	Loamy	38	250	288	0.05	Dark brown	Faint earth	Loamy	150	1,100	1,250	0.05		
33	Abukuma River System	Abukuma River	Marumori Town	Sunny	17.7	Grayish yellowish brown	Faint earth	Loamy	280	1,400	1,680	0.27	Dull yellowish brown	Faint earth	Loamy	250	1,400	1,650	0.14	
				Sunny	24.3	Dull yellowish brown	Faint earth	Loamy	210	1,200	1,410	0.22	Dark brown	Faint earth	Loamy	230	1,200	1,430	0.14	
				Rain	18.1	Blackish brown	Faint earth	Loamy	340	1,700	2,040	0.21	Dark brown	Faint earth	Loamy	530	2,600	3,130	0.17	
				Sunny	30.4	Dull yellowish brown	Faint earth	Loamy	210	990	1,200	0.24	Dark brown	Faint earth	Loamy	310	1,600	1,910	0.16	
				Sunny	30.4	Dull yellowish brown	Faint earth	Loamy	220	1,200	1,420	0.25	Brown	Faint earth	Loamy	280	1,700	1,980	0.16	
				Cloudy	24.5	Blackish brown	Faint earth	Loamy	120	610	730	0.19	Dull yellowish brown	Faint earth	Loamy	130	710	840	0.14	
				Cloudy	23.6	Dark brown	Faint earth	Loamy	190	1,100	1,290	0.15	Dull yellowish brown	Faint earth	Loamy	260	1,400	1,660	0.13	
				Cloudy	5.8	Dark brown	Faint earth	Loamy	240	1,600	1,840	0.21	Dark brown	Faint earth	Loamy	310	2,000	2,310	0.14	
				Cloudy	-0.3	Brown	Faint earth	Loamy	130	840	970	0.15	Dark brown	Faint earth	Loamy	340	2,400	2,740	0.14	
				Cloudy	5.4	Dark brown	Faint earth	Loamy	260	1,900	2,160	0.15	Dark brown	Faint earth	Loamy	180	1,200	1,380	0.13	
				Sunny	15.2	Dull yellowish brown	Faint earth	Loamy	120	620	740	0.19	Dull yellowish brown	Faint earth	Loamy	190	980	1,170	0.17	
				34	Marumori Bridge	Sunny	28.4	Dark brown	Faint earth	Loamy	100	560	660	0.17	Dark brown	Faint earth	Loamy	170	900	1,070
Rain	16.9	Blackish brown	Faint earth			Loamy	140	770	910	0.19	Dark brown	Faint earth	Loamy	190	850	1,040	0.15			
Sunny	29.3	Dark brown	Faint earth			Loamy	140	700	840	0.16	Dark brown	Faint earth	Loamy	160	810	970	0.12			
Sunny	26.8	Brown	Faint earth			Loamy	100	600	700	0.19	Dull yellowish brown	Faint earth	Loamy	150	870	1,020	0.12			
Cloudy	23.2	Dull yellowish brown	Faint earth			Loamy	78	490	568	0.16	Dark brown	Faint earth	Loamy	130	600	730	0.10			
Cloudy	24.3	Dull yellowish brown	Faint earth			Loamy	53	390	443	0.16	Dull yellowish brown	Faint earth	Loamy	100	600	700	0.10			
Sunny	6.4	Dark brown	Faint earth			Loamy	95	560	655	0.15	Dark brown	Faint earth	Loamy	91	560	651	0.10			
Cloudy	-0.8	Dull yellowish brown	Faint earth			Loamy	92	470	562	0.14	Dull yellowish brown	Faint earth	Loamy	150	900	1,050	0.11			
Cloudy	4.9	Dull yellowish brown	Faint earth	Loamy	76	560	636	0.15	Grayish yellowish brown	Faint earth	Loamy	70	520	590	0.08					

Miyagi River (Surrounding Environment) 4/4

Location				Sampling Date	Weather	Air temperature (°C)	Surrounding Environment (Soil, Air dose)										Remarks				
No.	Water area	Location	Municipality				Left bank					Right bank									
							Color	Odor	Property	Activity concentration [Bq/kg(dry)]			Air Dose (μSv/h)	Color	Odor	Property		Activity concentration [Bq/kg(dry)]			Air Dose (μSv/h)
			Radioactive cesium			Radioactive cesium															
			Cs-134	Cs-137	Total	Cs-134	Cs-137	Total				Cs-134	Cs-137	Total							
R i v e r s	35	Abukuma River	Higashine Bridge	Kakuda City	Sunny	22.2	Dark brown	Faint earth	Loamy	480	2,400	2,880	0.20	Brown	Faint earth	Loamy	89	480	569	0.14	
					Cloudy	22.9	Dark brown	Faint earth	Loamy	290	1,500	1,790	0.21	Dull yellowish brown	None	Loamy	340	2,000	2,340	0.15	
					Sunny	30.4	Dull yellowish brown	Faint earth	Loamy	360	1,900	2,260	0.18	Dull yellowish brown	Faint earth	Loamy	88	470	558	0.16	
					Cloudy	24.8	Blackish brown	Faint earth	Loamy	370	2,300	2,670	0.15	Dull yellowish brown	Faint earth	Loamy	94	620	714	0.11	
					Sunny	6.2	Dark brown	Faint earth	Loamy	390	2,200	2,590	0.14	Dark brown	Faint earth	Loamy	100	630	730	0.12	
		36	Shiroishi River	Before the confluence with Kawaharakozawa (Sunoshi Bridge)	Shiroishi City	Sunny	5.9	Dark brown	Faint earth	Loamy	270	1,800	2,070	0.16	Dark brown	Faint earth	Loamy	63	540	603	0.11
						Sunny	24.6	Dark brown	Faint earth	Loamy	340	1,600	1,940	0.14	Dark brown	Faint earth	Loamy	200	1,000	1,200	0.13
						Sunny	23.4	Blackish brown	Faint earth	Loamy	180	1,100	1,280	0.11	Dark brown	Faint earth	Loamy	93	530	623	0.10
						Sunny	10.2	Blackish brown	Faint earth	Loamy	360	2,100	2,460	0.11	Dull yellowish brown	Faint earth	Loamy	99	620	719	0.09
						Snow	-0.8	Dark brown	Faint earth	Loamy	300	1,900	2,200	0.11	Dull yellowish brown	Faint grass	Loamy	97	720	817	0.09
						Sunny	20.3	Grayish yellowish brown	Faint grass	Loamy	170	1,000	1,170	0.11	Dark brown	Faint earth	Loamy	110	630	740	0.10
		37	Saikawa River	Etsubo Bridge	Zao Town	Rain	23.1	Dark brown	Faint earth	Loamy	230	1,300	1,530	0.08	Blackish brown	Faint earth	Loamy	160	850	1,010	0.11
						Sunny	6.7	Dark brown	Faint earth	Loamy	350	2,200	2,550	0.09	Dark brown	Faint earth	Loamy	110	690	800	0.09
						Cloudy	-1.4	Dark brown	Faint earth	Loamy	310	2,100	2,410	0.11	Dark brown	Faint earth	Loamy	140	880	1,020	0.09
		38	Matsukawa River	Miya-ohashi Bridge	Zao Town	Sunny	20.2	Dark brown	Faint earth	Loamy	82	440	522	0.10	Dark brown	Faint earth	Loamy	120	610	730	0.10
	Cloudy					21.0	Blackish brown	Faint earth	Loamy	55	320	375	0.10	Blackish brown	Faint earth	Loamy	180	1,000	1,180	0.08	
	Cloudy					9.3	Dark brown	Faint earth	Loamy	95	560	655	0.08	Blackish brown	Faint earth	Loamy	170	980	1,150	0.09	
	39	Arakawa River	Niragami Bridge	Murata Town /Ogawara Town	Sunny	7.6	Dark brown	Faint earth	Loamy	130	790	920	0.08	Dark brown	Faint earth	Loamy	140	840	980	0.07	
					Rain	19.4	Blackish brown	Faint earth	Loamy	110	600	710	0.10	Dark brown	Faint earth	Loamy	110	610	720	0.09	
					Sunny	30.6	Brown	Faint earth	Loamy	81	460	541	0.10	Dull yellowish brown	Faint earth	Loamy	130	730	860	0.10	
					Sunny	9.8	Dull yellowish brown	Faint earth	Loamy	99	540	639	0.08	Grayish yellowish brown	Faint earth	Loamy	100	690	790	0.07	
	40	Shiroishi River	Shirahata Bridge	Shibata Town	Sunny	6.4	Grayish yellowish brown	Faint earth	Loamy	150	920	1,070	0.09	Dark brown	Faint earth	Loamy	130	880	1,010	0.04	
					Cloudy	19.8	Dark brown	Faint earth	Loamy	83	470	553	0.08	Grayish yellowish brown	Faint earth	Loamy	60	340	400	0.09	
					Sunny	27.3	Dark brown	Faint earth	Loamy	48	270	318	0.07	Dull yellowish brown	Faint earth	Loamy	50	340	390	0.09	
					Cloudy	8.7	Dark brown	Faint earth	Loamy	68	480	548	0.07	Blackish brown	Faint earth	Loamy	47	340	387	0.08	
					Sunny	0.4	Blackish brown	Faint earth	Loamy	63	360	423	0.07	Blackish brown	Faint earth	Loamy	58	340	398	0.08	
					Sunny	16.8	Dark brown	Faint earth	Loamy	190	960	1,150	0.10	Blackish brown	Faint grass	Loamy	140	660	800	0.11	
	41	Tsukinoki-ohashi Bridge	Kakuda City /Shibata Town	Sunny	22.4	Grayish yellowish brown	None	Loamy	290	1,500	1,790	0.10	Grayish yellowish brown	None	Loamy	230	1,100	1,330	0.11		
				Sunny	30.5	Dark brown	Faint earth	Loamy	330	1,900	2,230	0.10	Dull yellowish brown	Faint earth	Loamy	210	1,200	1,410	0.10		
				Sunny	23.4	Blackish brown	Faint earth	Loamy	370	2,000	2,370	0.08	Blackish brown	Faint earth	Loamy	160	990	1,150	0.09		
				Sunny	7.4	Blackish brown	Faint earth	Loamy	220	1,400	1,620	0.07	Blackish brown	Faint earth	Loamy	130	670	800	0.08		
				Cloudy	3.8	Dark brown	Faint earth	Loamy	210	1,300	1,510	0.08	Blackish brown	Faint earth	Loamy	170	1,100	1,270	0.09		
				Sunny	16.9	Blackish brown	Faint earth	Loamy	270	1,500	1,770	0.13	Dark brown	Faint earth	Loamy	120	570	690	0.12		
	42	Abukuma River	Abukuma-ohashi Bridge (Iwanuma)	Iwanuma City/Watari Town	Cloudy	20.8	Grayish yellowish brown	Faint earth	Loamy	290	1,600	1,890	0.13	Dark brown	Faint earth	Loamy	160	770	930	0.11	
					Sunny	22.4	Grayish yellowish brown	None	Loamy	310	1,400	1,710	0.16	Grayish yellowish brown	Faint earth	Loamy	140	870	1,010	0.13	
					Cloudy	25.4	Blackish brown	Faint earth	Loamy	230	1,400	1,630	0.13	Blackish brown	Faint earth	Loamy	91	530	621	0.11	
					Sunny	29.7	Dull yellow orange	None	Loamy	260	1,400	1,660	0.13	Dull yellow orange	Faint earth	Loamy	92	540	632	0.12	
					Sunny	30.3	Blackish brown	Faint earth	Loamy	190	980	1,170	0.11	Dark brown	Faint earth	Loamy	150	840	990	0.10	
					Sunny	22.2	Grayish yellowish brown	Faint earth	Loamy	210	1,200	1,410	0.11	Dark brown	Faint earth	Loamy	130	780	910	0.10	
					Sunny	7.1	Dark brown	Faint earth	Loamy	260	1,700	1,960	0.10	Dull yellowish brown	Faint earth	Loamy	86	620	706	0.10	
					Sunny	7.4	Grayish yellowish brown	Faint earth	Loamy	180	1,000	1,180	0.12	Dull yellowish brown	Faint earth	Loamy	100	570	670	0.10	
					Sunny	0.5	Dark brown	Faint earth	Loamy	230	1,400	1,630	0.11	Dark brown	Faint earth	Loamy	87	630	717	0.12	
					Sunny	16.6	Blackish brown	Faint earth	Loamy	140	690	830	0.11	Dark brown	Faint earth	Loamy	120	620	740	0.11	
Sunny					26.2	Dark brown	Faint earth	Loamy	150	810	960	0.09	Dull yellowish brown	Faint earth	Loamy	130	650	780	0.11		
43					Offshore of Abukuma River Estuary (Watari-ohashi Bridge)		Sunny	30.2	Dull yellowish brown	Faint earth	Loamy	74	400	474	0.08	Blackish brown	Faint earth	Loamy	130	790	920
	Cloudy	24.9	Dull yellowish brown	Faint earth			Loamy	150	940	1,090	0.07	Blackish brown	Faint earth	Loamy	140	840	980	0.09			
	Sunny	2.6	Dark brown	Faint earth			Loamy	79	530	609	0.07	Dark brown	Faint earth	Loamy	82	570	652	0.08			
	Sunny	6.2	Dark brown	Faint earth			Loamy	170	1,000	1,170	0.08	Dark brown	Faint earth	Loamy	120	660	780	0.08			

Miyagi Lakes and Reservoirs (Water)3/3

No.	Location				Sampling Date	Weather	Air temperature (°C)	Water depth (m)	Water										Remarks				
	Water area	Location	Municipality	General items										Activity concentration(Bq/L)									
				Water temperature (°C)					Sampling depth (m)	Color	Odor	Secchi disk depth (m)	Electrical conductivity (mS/m)	SS (mg/L)	Turbidity (FNU)	Radioactive cesium							
															Cs-134	Cs-137							
58	Lake Amanuma	Lake exit	Sendai City	Surface layer	2016/5/23	Sunny	30.3	0.3	27.4	0.0	Grayish yellow	None	>0.3	21.5	7	6.9	<0.81	<0.74					
				Deep layer	-	-	-	-	-	-	-	-	-	-	-	-	-	-	-	Unable to collect samples from the deep layer due to shallow water			
				Surface layer	2016/8/3	Cloudy	28.3	0.5	27.1	-	Grayish yellow	Faint sewage	>0.5	18.8	13	6.2	<0.80	<0.66					
				Deep layer	-	-	-	-	-	-	-	-	-	-	-	-	-	-	-	-	Unable to collect samples from the deep layer due to shallow water		
				Surface layer	2016/10/16	Sunny	15.5	0.5	15.6	-	Light grayish yellow	None	>0.5	23.0	8	6.1	<0.70	<0.80					
				Deep layer	-	-	-	-	-	-	-	-	-	-	-	-	-	-	-	-	-	Unable to collect samples from the deep layer due to shallow water	
59	Natori River System	Kamafusa Dam	Dam site	Kawasaki Town	Surface layer	2016/12/14	Cloudy	5.7	0.4	4.9	0.0	Yellow greenish pale gray	None	0.3	6.5	9	11	<0.63	<0.69				
					Deep layer	-	-	-	-	-	-	-	-	-	-	-	-	-	-	-	Unable to collect samples from the deep layer due to shallow water		
					Surface layer	2016/5/25	Cloudy	20.3	29.6	19.1	0.5	Grayish yellowish green	None	2.8	9.6	<1	1.0	<0.74	<0.66				
					Deep layer	-	-	-	-	-	-	-	-	-	-	-	-	-	-	-	-	Unable to collect samples from the deep layer due to shallow water	
					Surface layer	2016/8/3	Sunny	29.3	24.7	26.9	0.5	Grayish yellow green	None	2.5	10.3	1	1.8	<0.73	<0.66				
					Deep layer	-	-	-	-	-	-	-	-	-	-	-	-	-	-	-	-	-	Unable to collect samples from the deep layer due to shallow water
60	Tarumizu Dam	Dam site	Natori City	Surface layer	2016/10/14	Sunny	17.4	24.3	16.8	0.5	Grayish greenish yellow	None	3.5	8.7	21	19	<0.83	<0.61					
				Deep layer	-	-	-	-	-	-	-	-	-	-	-	-	-	-	-	-	Unable to collect samples from the deep layer due to shallow water		
				Surface layer	2016/10/14	Sunny	17.4	24.3	15.8	23.3	-	None	3.5	8.8	12	13	<0.67	<0.69					
				Deep layer	-	-	-	-	-	-	-	-	-	-	-	-	-	-	-	-	-	Unable to collect samples from the deep layer due to shallow water	
				Surface layer	2016/12/14	Cloudy	4.4	25.1	6.6	0.5	Grayish yellow green	None	2.3	10.3	3	3.0	<0.82	<0.69					
				Deep layer	-	-	-	-	-	-	-	-	-	-	-	-	-	-	-	-	-	Unable to collect samples from the deep layer due to shallow water	
61	Murata Dam	Dam site	Murata Town	Surface layer	2016/5/25	Cloudy	21.0	0.7	21.0	0.0	Grayish yellowish green	None	>0.7	8.2	2	1.4	<0.95	<0.75					
				Deep layer	-	-	-	-	-	-	-	-	-	-	-	-	-	-	-	-	Unable to collect samples from the deep layer due to shallow water		
				Surface layer	2016/10/14	Sunny	18.0	0.7	19.9	0.0	Grayish yellow green	None	>0.7	8.0	4	2.7	<0.51	<0.55					
				Deep layer	-	-	-	-	-	-	-	-	-	-	-	-	-	-	-	-	-	Unable to collect samples from the deep layer due to shallow water	
				Surface layer	2016/5/25	Cloudy	22.0	1.0	20.6	0.0	Light grayish yellow green	None	>1.0	8.3	2	1.9	<0.70	<0.55					
				Deep layer	-	-	-	-	-	-	-	-	-	-	-	-	-	-	-	-	-	Unable to collect samples from the deep layer due to shallow water	
62	Abukuma River System	Kawarago Dam	Dam site	Shiroishi City	Surface layer	2016/10/14	Sunny	11.1	1.2	15.0	0.0	Light grayish yellow	None	>1.2	7.9	4	3.4	<0.74	<0.75				
					Deep layer	-	-	-	-	-	-	-	-	-	-	-	-	-	-	-	-	Unable to collect samples from the deep layer due to shallow water	
					Surface layer	2016/5/26	Cloudy	22.9	1.0	21.6	0.0	Grayish yellow green	None	>1.0	7.9	5	2.6	<0.63	<0.84				
					Deep layer	-	-	-	-	-	-	-	-	-	-	-	-	-	-	-	-	-	Unable to collect samples from the deep layer due to shallow water
					Surface layer	2016/8/4	Sunny	25.3	1.0	25.6	0.0	Grayish yellow green	None	>1.0	7.0	<1	1.2	<0.73	<0.61				
					Deep layer	-	-	-	-	-	-	-	-	-	-	-	-	-	-	-	-	-	Unable to collect samples from the deep layer due to shallow water
63	Shichikasyuku Dam	Dam site	Shichikashuku Town	Surface layer	2016/10/13	Sunny	12.1	1.0	13.1	0.0	Grayish yellow green	None	>1.0	7.7	3	1.5	<0.51	<0.75					
				Deep layer	-	-	-	-	-	-	-	-	-	-	-	-	-	-	-	-	Unable to collect samples from the deep layer due to shallow water		
				Surface layer	2016/12/13	Cloudy	7.8	0.3	7.7	0.0	Grayish yellow	Faint sewage	0.2	8.8	79	50	<0.79	<0.80					
				Deep layer	-	-	-	-	-	-	-	-	-	-	-	-	-	-	-	-	-	Unable to collect samples from the deep layer due to shallow water	
				Surface layer	2016/5/26	Sunny	23.5	40.9	19.4	0.5	Grayish yellowish green	None	3.2	6.2	<1	0.5	<0.70	<0.55					
				Deep layer	-	-	-	-	-	-	-	-	-	-	-	-	-	-	-	-	-	Unable to collect samples from the deep layer due to shallow water	
64	Lake Bagyunuma	Lake exit	Shiroishi City	Surface layer	2016/8/6	Sunny	30.4	27.8	28.2	0.5	Grayish yellowish green	None	5.5	7.1	<1	0.9	<0.51	<0.96					
				Deep layer	-	-	-	-	-	-	-	-	-	-	-	-	-	-	-	-	Unable to collect samples from the deep layer due to shallow water		
				Surface layer	2016/10/13	Sunny	13.1	33.5	16.6	0.5	Grayish yellow green	None	2.5	6.1	2	3.0	<0.69	<0.84					
				Deep layer	-	-	-	-	-	-	-	-	-	-	-	-	-	-	-	-	-	Unable to collect samples from the deep layer due to shallow water	
				Surface layer	2016/12/13	Sunny	5.8	27.5	7.9	0.5	Grayish yellow green	None	3.5	9.8	2	1.9	<0.72	<0.75					
				Deep layer	-	-	-	-	-	-	-	-	-	-	-	-	-	-	-	-	-	Unable to collect samples from the deep layer due to shallow water	
64	Lake Bagyunuma	Lake exit	Shiroishi City	Surface layer	2016/5/26	Sunny	26.9	1.3	23.6	0.0	Grayish yellow	Faint swamp	1.1	15.3	13	11	<0.51	<0.80					
				Deep layer	-	-	-	-	-	-	-	-	-	-	-	-	-	-	-	-	Unable to collect samples from the deep layer due to shallow water		
				Surface layer	2016/8/4	Sunny	28.4	1.2	29.5	0.0	Grayish yellow	None	0.9	16.1	9	12	<0.60	<0.63					
				Deep layer	-	-	-	-	-	-	-	-	-	-	-	-	-	-	-	-	-	Unable to collect samples from the deep layer due to shallow water	
				Surface layer	2016/10/13	Sunny	17.1	1.2	17.7	0.0	Grayish yellow	None	0.2	10.5	44	53	<0.66	<0.96					
				Deep layer	-	-	-	-	-	-	-	-	-	-	-	-	-	-	-	-	-	Unable to collect samples from the deep layer due to shallow water	
64	Lake Bagyunuma	Lake exit	Shiroishi City	Surface layer	2016/12/13	Sunny	12.8	1.0	5.9	0.0	Light grayish yellow	None	0.5	12.2	18	22	<0.66	<0.63					
				Deep layer	-	-	-	-	-	-	-	-	-	-	-	-	-	-	-	-	Unable to collect samples from the deep layer due to shallow water		

Miyagi Lakes and Reservoirs (Sediment)1/2

Location				Sampling Date	Weather	Air temperature (°C)	Water depth (m)	Sediment														Activity concentration [Bq/kg(dry)]			Remarks			
No.	Water area	Location						Municipality	Sediment temperature (°C)	Sample length (cm)	Color	Odor	Grain size distribution(%)					Sediment content (%)	Density (g/cm ³)	Property	Radioactive cesium							
		Course gravel	Medium gravel										Fine gravel	Course sand	Medium sand	Fine sand	Silt				Clay	Cs-134	Cs-137	Total				
L a k e s a n d R e s e r v o i r s	44	Kurikoma Dam	Dam site	Kurihara City	2016/5/18	Sunny	20.1	22.0	12.3	5	Dull yellowish brown	Faint swamp	0.0	0.0	0.0	0.1	4.2	68.5	22.4	4.9	62.5	2.674	Sand	<5.9	23	23		
					2016/8/26	Cloudy	25.9	16.8	19.6	5	Brown	None	0.0	1.5	1.0	3.8	45.8	35.4	6.3	6.2	71.4	2.809	Sand	<4.2	13	13		
					2016/10/21	Sunny	12.4	10.5	12.1	3	Brown	Faint swamp	0.0	0.0	0.0	0.0	0.5	50.3	40.3	8.9	60.5	2.615	Sand/silt	<6.1	43	43		
					2016/12/17	Snow	1.5	15.0	3.8	3	Brown	None	0.0	0.0	0.0	0.0	0.4	26.3	58.7	14.3	55.9	2.570	Silt	11	49	60		
		45	Hanayama Dam		Dam site	Osaki City	2016/5/18	Sunny	24.3	27.7	8.2	5	Olive black	Faint sewage	0.0	0.0	0.0	0.0	0.1	0.1	47.8	52.1	29.8	2.571	Silt	34	200	234
							2016/8/18	Cloudy	23.8	21.3	10.1	5	Olive gray	Faint sewage	0.0	0.0	0.0	0.0	0.1	42.1	57.8	30.3	2.529	Silt	41	200	241	
							2016/10/19	Sunny	20.8	19.4	9.4	5	Grayish olive	Faint sewage	0.0	0.0	0.0	0.0	0.1	0.1	39.4	60.4	29.0	2.545	Silt	25	150	175
							2016/12/20	Sunny	9.9	21.0	5.8	5	Grayish olive	Faint sewage	0.0	0.0	0.0	0.0	0.0	0.0	47.2	52.7	28.4	2.541	Silt	25	140	165
	46	Kitakami River System	Naruko Dam	Dam site	Osaki City	2016/5/20	Sunny	19.7	58.2	8.0	5	Olive gray	Faint sewage	0.0	0.0	0.0	0.0	0.1	26.1	73.9	32.3	2.614	Silt	29	120	149		
						2016/8/18	Sunny	27.4	50.7	6.9	5	Olive gray	Faint sewage	0.0	0.0	0.0	0.0	0.1	0.3	43.6	55.9	33.2	2.560	Silt	27	120	147	
						2016/10/19	Sunny	14.1	49.3	7.3	5	Olive black	Faint sewage	0.0	0.0	0.0	0.0	0.2	47.1	52.7	29.4	2.553	Silt	24	130	154		
						2016/12/20	Sunny	7.3	53.5	5.8	5	Dark olive	Faint sewage	0.0	0.0	0.0	0.0	0.0	0.0	45.5	54.4	25.5	2.523	Silt	29	150	179	
	47	Lake Izunuma	Lake exit	Tome City	2016/5/16	Sunny	19.4	1.8	18.7	5	Olive black	Faint sewage	0.0	0.0	0.0	0.7	9.9	33.2	41.8	14.4	32.6	2.510	Silt/sand	24	150	174		
					2016/10/21	Sunny	17.1	0.8	13.7	5	Olive black	Faint sewage	0.0	0.6	1.5	3.2	28.0	19.4	28.2	19.0	35.9	2.521	Silt/sand	16	120	136		
					2016/5/16	Sunny	19.0	1.8	18.6	5	Black	Faint sewage	0.0	11.3	17.7	5.6	12.4	18.6	21.9	12.6	34.9	2.420	Silt	23	110	133		
					2016/8/19	Sunny	30.3	1.3	26.5	5	Blackish brown	Faint sewage	0.0	0.0	0.0	6.1	14.9	27.4	36.4	15.2	24.7	2.349	Silt/sand	31	210	241		
	48	Lake Naganuma	Lake exit	Tome City	2016/10/21	Sunny	15.3	1.5	16.7	5	Olive black	Faint sewage	0.0	0.0	0.1	1.7	7.3	33.6	35.3	22.1	19.6	2.325	Silt	60	250	310		
					2016/12/17	Cloudy	2.9	1.5	3.4	5	Blackish brown	Faint sewage	0.0	0.1	0.3	1.7	9.2	38.8	31.3	18.7	21.6	2.277	Silt/sand	40	230	270		
					2016/5/19	Sunny	19.6	0.5	20.6	3	Grayish yellowish brown	Faint swamp	0.0	4.3	6.2	13.4	42.3	17.0	3.4	13.4	74.1	2.608	Sand/silt	24	94	118		
					2016/8/19	Sunny	28.3	0.5	28.0	3	Blackish brown	Faint swamp	0.0	9.5	6.3	27.1	40.4	11.6	1.8	3.4	77.0	2.623	Sand/gravel	13	67	80		
	49	Shukunosawatameike Pond	Pond exit	Kurihara City	2016/10/20	Sunny	20.8	0.5	17.8	3	Dull yellowish brown	Faint algae	0.0	5.6	7.9	10.6	41.0	22.7	6.3	5.9	57.8	2.599	Sand/gravel	16	130	146		
					2016/12/16	Cloudy	2.1	0.5	4.8	3	Brown	Faint swamp	0.0	20.4	12.5	14.1	31.2	15.0	4.1	2.7	74.0	2.592	Sand/gravel	12	100	112		
					2016/5/19	Sunny	19.7	44.6	7.8	5	Olive black	Faint sewage	0.0	0.0	0.0	0.0	0.0	0.1	46.7	53.1	34.0	2.552	Silt	24	140	164		
					2016/8/16	Cloudy	25.3	37.2	6.1	5	Grayish olive	Faint sewage	0.0	0.0	0.0	0.0	0.0	0.0	41.5	58.5	32.8	2.461	Silt	36	230	266		
	50	Futatsuishi Dam	Dam site	Kami Town	2016/10/18	Sunny	20.8	47.8	8.3	5	Grayish olive	Faint sewage	0.0	0.0	0.0	0.0	0.1	42.3	57.7	32.7	2.554	Silt	14	67	81			
					2016/12/19	Sunny	9.4	46.5	5.4	5	Grayish olive	Faint sewage	0.0	0.0	0.0	0.0	0.0	0.0	21.6	78.4	20.0	2.493	Silt	23	140	163		
					2016/5/19	Sunny	21.6	32.0	8.4	5	Olive black	Faint sewage	0.0	0.0	0.0	0.0	0.1	1.7	68.6	29.7	42.1	2.516	Silt	50	240	290		
					2016/8/16	Sunny	29.4	20.8	7.3	5	Olive black	Faint sewage	0.0	0.0	0.0	0.0	0.1	0.2	54.5	45.3	36.1	2.476	Silt	<11	74	74		
	51	Naruse River System	Urushizawa Dam	Dam site	Kami Town	2016/10/18	Sunny	19.4	27.7	10.2	5	Grayish olive	Faint sewage	0.0	0.0	0.0	0.1	0.1	0.3	58.5	41.1	38.1	2.528	Silt	16	83	99	
						2016/12/19	Sunny	6.5	33.0	3.8	5	Olive black	Faint sewage	0.0	0.0	0.0	0.0	0.0	0.2	65.1	34.6	39.7	2.482	Silt	<9.8	51	51	
						2016/5/21	Rain	20.4	26.3	13.7	5	Blackish brown	Faint sewage	0.0	0.0	0.0	0.8	5.2	38.2	39.4	16.4	41.9	2.467	Silt/sand	12	91	103	
						2016/8/15	Sunny	25.8	19	14.2	5	Grayish yellowish brown	Faint sewage	0.0	0.0	0.0	0.2	3.0	12.5	66.4	17.9	36.0	2.414	Silt	16	100	116	
	52	Minamikawa Dam	Dam site	Taiwa Town	2016/10/20	Sunny	23.3	25.0	15.8	5	Dull yellowish brown	Faint sewage	0.0	0.0	0.0	0.0	0.5	19.2	49.8	30.5	37.8	2.434	Silt/sand	14	100	114		
					2016/12/16	Sunny	-0.6	25.2	5.8	5	Grayish olive	Faint sewage	0.0	0.0	0.0	0.5	1.0	0.9	54.3	43.3	20.9	2.448	Silt	28	240	268		
					2016/5/21	Cloudy	19.3	1.0	19.5	3	Dull yellowish brown	Faint swamp	0.0	10.4	12.7	3.8	11.3	27.8	21.5	12.5	58.3	2.626	Sand/silt	8.2	35	43.2		
					2016/10/17	Cloudy	16.8	1.0	17.5	3	Yellowish brown	Faint swamp	0.0	9.0	15.8	3.9	7.4	19.0	27.3	17.6	60.9	2.562	Sand/silt	<6.7	12	12		
	53	Sunaoshi River System	Sounoseki Dam	Dam site	Rifu Town	2016/5/21	Rain	14.5	10.0	13.1	5	Black	Faint swamp	0.0	0.0	0.0	3.4	8.7	2.9	53.8	31.2	19.6	2.380	Silt	210	1,400	1,610	
						2016/8/13	Sunny	28.1	7.8	14.2	5	Black	Faint sewage	0.0	0.0	0.4	1.8	4.2	2.8	52.3	38.5	16.3	2.339	Silt	290	1,800	2,090	
						2016/10/17	Cloudy	20.6	4.1	11.4	5	Black	Faint sewage	0.0	0.0	0.0	1.0	5.8	2.8	51.8	38.7	13.4	2.258	Silt	240	1,200	1,440	
						2016/12/15	Sunny	6.1	7.4	5.6	5	Black	Faint sewage	0.0	0.0	0.0	1.5	3.1	1.3	56.4	37.8	16.6	2.359	Silt	220	1,400	1,620	
	54	Nanakita River System	Nanakita Dam	Dam site	Sendai City	2016/5/23	Sunny	24.5	5.3	15.0	5	Dull yellow	Faint algae	0.0	10.3	15.6	19.4	38.2	7.7	5.6	3.2	60.5	2.427	Sand/gravel	<6.3	26	26	
						2016/8/14	Cloudy	24.1	1.5	25.6	3	Grayish yellowish brown	Faint sewage	0.0	7.2	8.4	7.0	31.7	20.4	14.2	11.1	56.5	2.474	Sand/silt	<7.4	23	23	
						2016/10/16	Sunny	21.5	1.0	17.2	3	Olive brown	Faint algae	0.0	11.7	9.8	6.7	30.6	23.3	10.9	7.0	58.7	2.458	Sand/gravel	<5.0	12	12	
						2016/12/15	Sunny	3.4	1.3	5.8	5	Dull yellow orange	Faint swamp	0.0	1.0	10.8	26.5	22.1	11.5	19.8	8.5	54.1	2.452	Sand/gravel	<7.4	38	38	
55	Marutazawatameike Pond	Pond exit	Sendai City	2016/5/24	Sunny	22.7	0.2	25.3	3	Olive black	Faint sewage	0.0	35.6	15.5	15.3	11.5	15.2	3.9	2.9	69.7	2.664	Sand/gravel	15	95	110			
				2016/8/13	Sunny	24.5	0.2	26.7	3	Olive black	Faint sewage	0.0	32.4	21.5	16.7	12.4	12.4	2.7	2.0	81.4	2.665	Sand/gravel	19	94	113			
				2016/10/17	Cloudy	18.6	0.2	16.9	3	Black	Faint sewage	1.7	35.1	14.6	8.8	16.4	18.1	2.9	2.4	85.1	2.678	Sand/gravel	21	150	171			
				2016/12/14	Cloudy	6.2	0.2	6.0	3	Dark olive brown	Faint algae	0.0	5.9	3.1	17.5	35.7	14.3	18.2	5.5	60.0	2.663	Sand/gravel	26	210	236			
56	Natori River System	Okura Dam	Dam site	Sendai City	2016/5/23	Sunny	28.1	37.2	19.4	3	Grayish yellowish brown	Faint swamp	0.0	8.3	5.3	7.0	51.0	23.9	1.0	3.5	75.3	2.637	Sand/gravel	10	47	57		
					2016/8/14	Sunny	23.6	30.4	25.4	3	Olive brown	Faint swamp	0.0	3.6	5.2	9.9	47.7	22.9	5.7	5.0	72.4	2.544	Sand/gravel	7.0	32	39.0		
					2016/10/16	Sunny	20.3	25.7	18.4	3	Dull yellowish brown	Faint sewage	0.0	2.1	2.5	1.3	6.7	40.6	26.6	20.2	45.0	2.462	Sand/silt	9.6	54	63.6		
					2016/12/15	Cloudy	2.0	21.0	4.9	3	Brown	None	0.0	0.0	0.3	4.4	33.1	15.3	26.7	20.2	57.3	2.552	Sand/silt	<6.5	65	65		

Miyagi Lakes and Reservoirs (Sediment)2/2

Location				Sampling Date	Weather	Air temperature (°C)	Water depth (m)	Sediment															Activity concentration [Bq/kg(dry)]			Remarks	
No.	Water area	Location	Municipality					Sediment temperature (°C)	Sample length (cm)	Color	Odor	Grain size distribution(%)							Sediment content (%)	Density (g/cm³)	Property	Radioactive cesium					
												Coarse gravel	Medium gravel	Fine gravel	Coarse sand	Medium sand	Fine sand	Silt				Clay	Cs-134	Cs-137	Total		
L a k e s	58	Lake Amanuma	Lake exit	Sendai City	2016/5/23	Sunny	30.3	0.3	24.5	5	Black	Faint sewage	0.0	4.2	8.4	17.1	42.1	19.6	2.3	6.3	57.8	2.615	Silt/sand	150	870	1,020	
					2016/8/3	Cloudy	28.3	0.5	26.5	3	Black	Faint sewage	0.0	1.9	4.5	14.2	51.7	20.7	3.3	3.8	62.5	2.593	Sand/silt	210	1,300	1,510	
					2016/10/16	Sunny	15.5	0.5	15.6	3	Blackish brown	Faint sewage	0.0	0.0	0.0	6.2	20.1	24.3	31.2	18.2	28.0	2.294	Silt	340	1,900	2,240	
	59	Natori River System	Kamafusa Dam	Dam site	Kawasaki Town	2016/12/14	Cloudy	5.7	0.4	5.3	3	Black	Faint sewage	0.0	0.0	0.0	5.7	23.9	26.3	28.9	15.0	19.7	2.358	Silt	430	2,800	3,230
						2016/5/25	Cloudy	20.3	29.6	13.4	5	Olive black	Faint sewage	0.0	0.0	0.0	0.4	1.0	57.3	41.4	24.3	2.527	Silt	54	290	344	
						2016/8/3	Sunny	29.3	24.7	18.8	5	Olive black	Faint sewage	0.0	0.0	0.0	0.8	0.7	0.6	54.5	43.4	24.5	2.450	Silt	79	400	479
			2016/10/14	Sunny	17.4	24.3	15.8	5	Grayish olive	Faint sewage	0.0	0.0	0.0	0.0	0.1	46.7	53.2	25.2	2.491	Silt	39	240	279				
			2016/12/14	Cloudy	4.4	25.1	6.7	5	Olive black	Faint sewage	0.0	0.0	0.0	0.1	0.2	0.1	49.4	50.2	25.3	2.483	Silt	35	200	235			
			2016/5/25	Cloudy	21.0	0.7	21.1	3	Dark brown	Faint swamp	0.0	17.5	13.5	16.8	21.6	13.7	10.4	6.5	75.7	2.767	Sand/gravel	20	88	108			
	60	Tarumizu Dam	Dam site	Natori City	2016/10/14	Sunny	18.0	0.7	19.2	3	Extremely dark brown	Faint swamp	0.0	23.2	15.9	12.7	21.0	16.7	7.7	2.9	70.1	2.724	Sand/gravel	25	110	135	
					2016/5/25	Cloudy	22.0	1.0	20.6	3	Yellowish brown	Faint swamp	0.0	22.4	21.0	16.1	20.3	9.5	4.6	6.1	86.0	2.673	Sand/gravel	7.6	55	62.6	
	61	Murata Dam	Dam site	Murata Town	2016/10/14	Sunny	11.1	1.2	15.0	3	Dark grayish yellow	Faint algae	0.0	45.5	28.0	12.6	8.1	2.6	1.3	2.0	81.2	2.636	Gravel/sand	7.5	39	46.5	
2016/5/26					Cloudy	22.9	1.0	20.6	3	Dark brown	Faint swamp	0.0	1.7	0.0	39.4	24.0	12.5	16.5	6.0	67.5	2.667	Sand/gravel	49	280	329		
62	Abukuma River System	Kawarago Dam	Dam site	Shiroishi City	2016/8/4	Sunny	25.3	1.0	24.5	3	Dark brown	Faint swamp	0.0	14.0	18.3	16.5	29.1	9.8	8.8	3.6	54.6	2.628	Sand/gravel	56	330	386	
					2016/10/13	Sunny	12.1	1.0	12.4	3	Brown	Faint swamp	0.0	0.0	1.6	20.2	25.4	16.5	30.4	5.9	52.3	2.628	Silt/sand	12	97	109	
		2016/12/13	Cloudy	7.8	0.3	7.4	3	Blackish brown	Faint sewage	0.0	0.4	0.2	6.1	17.8	13.1	36.8	25.7	24.5	2.526	Sand/silt	110	560	670				
		2016/5/26	Sunny	23.5	40.9	10.7	5	Grayish olive	Faint sewage	0.0	0.0	0.0	0.1	0.5	2.1	51.9	45.5	33.3	2.620	Silt	510	2,800	3,310				
63	Shichikasyuku Dam	Dam site	Shichikashuku Town	2016/8/6	Sunny	30.4	27.8	11.4	5	Olive black	Faint sewage	0.0	0.0	0.0	0.1	0.9	27.6	71.5	28.7	2.563	Silt	260	1,500	1,760			
				2016/10/13	Sunny	13.1	33.5	12.2	5	Grayish olive	Faint sewage	0.0	0.0	0.0	0.0	0.4	24.8	74.8	30.9	2.588	Silt	120	880	1,000			
				2016/12/13	Sunny	5.8	27.5	8.1	5	Gny	Faint sewage	0.0	0.0	0.0	0.0	0.0	0.7	28.9	70.4	30.7	2.565	Silt	480	3,200	3,680		
				2016/5/26	Sunny	26.9	1.3	22.4	5	Blackish brown	Faint sewage	0.0	0.0	0.8	7.0	6.6	4.6	56.4	24.5	17.6	2.093	Silt/sand	160	930	1,090		
64	Lake Bagyunuma	Lake exit	Shiroishi City	2016/8/4	Sunny	28.4	1.2	27.7	5	Blackish brown	Faint sewage	0.0	0.0	0.4	1.0	7.8	10.2	56.5	24.1	15.2	2.052	Silt	150	920	1,070		
				2016/10/13	Sunny	17.1	1.2	17.6	5	Black	Faint sewage	0.0	0.0	0.2	3.8	3.4	2.9	49.4	40.3	17.5	2.109	Silt	130	870	1,000		
				2016/12/13	Sunny	12.8	1.0	5.2	3	Blackish brown	Faint sewage	0.0	0.0	0.1	1.7	8.8	6.8	43.7	39.0	16.3	1.995	Silt	110	880	990		

Miyagi Lakes and Reservoirs (Surrounding Environment) 1/2

	Location				Sampling Date	Weather	Air temperature (°C)	Surrounding Environment(Soil,Air dose)							Remarks		
												Soil				Air Dose (μSv/h)	
												General items					
								No.	Water area	Location		Municipality	Color	Odor		Property	Activity concentration [Bq/kg(dry)]
Radioactive cesium																	
									Cs-134	Cs-137	Total						
Lakes and Reservoirs	44	Kitakami River System	Kurikoma Dam	Dam site	Kurihara City	2016/5/18	Sunny	20.1	Blackish brown	Faint earth	Loamy	130	800	930	0.10		
						2016/8/26	Cloudy	25.9	Dark brown	Faint earth	Loamy	120	680	800	0.09		
						2016/10/21	Sunny	12.4	Blackish brown	Faint earth	Loamy	190	1,100	1,290	0.08		
						2016/12/17	Snow	1.5	Dark brown	Faint earth	Loamy	130	680	810	0.06		
						2016/5/18	Sunny	24.3	Blackish brown	Faint earth	Loamy	310	1,600	1,910	0.10		
						2016/8/18	Cloudy	23.8	Blackish brown	Faint earth	Loamy	240	1,300	1,540	0.09		
			45	Hanayama Dam		Dam site	Osaki City	2016/10/19	Sunny	20.8	Dark brown	Faint earth	Loamy	230	1,400	1,630	0.09
								2016/12/20	Sunny	9.9	Dark brown	Faint earth	Loamy	90	560	650	0.09
								2016/5/20	Sunny	19.7	Blackish brown	Faint earth	Loamy	51	280	331	0.06
								2016/8/18	Sunny	27.4	Grayish yellowish brown	Faint earth	Loamy	35	190	225	0.06
								2016/10/19	Sunny	14.1	Dark brown	Faint earth	Loamy	51	300	351	0.06
								2016/12/20	Sunny	7.3	Dull yellowish brown	Faint earth	Loamy	36	180	216	0.06
	47	Lake Izunuma	Lake exit	Tome City	2016/5/16	Sunny	19.4	Dull yellow orange	Faint grass	Loamy	<6.2	7.8	7.8	0.05			
					2016/10/21	Sunny	17.1	Dull yellowish brown	None	Loamy	<6.3	27	27	0.04			
					2016/5/16	Sunny	19.0	Dark brown	Faint earth	Loamy	48	230	278	0.05			
					2016/8/19	Sunny	30.3	Grayish yellowish brown	Faint earth	Loamy	33	180	213	0.05			
					2016/10/21	Sunny	15.3	Dark brown	Faint earth	Loamy	20	120	140	0.04			
					2016/12/17	Cloudy	2.9	Blackish brown	Faint earth	Loamy	25	220	245	0.05			
	49	Shukunosawatameike Pond	Pond exit	Kurihara City	2016/5/19	Sunny	19.6	Brown	Faint earth	Loamy	35	130	165	0.05			
					2016/8/19	Sunny	28.3	Brown	Faint earth	Loamy	23	180	203	0.05			
					2016/10/20	Sunny	20.8	Brown	Faint earth	Loamy	36	210	246	0.05			
					2016/12/16	Cloudy	2.1	Dark brown	Faint earth	Loamy	48	230	278	0.05			
					2016/5/19	Sunny	19.7	Dull yellowish brown	Faint earth	Loamy	33	160	193	0.06			
	50	Futatsuishi Dam	Dam site	Kami Town	2016/8/16	Cloudy	25.3	Dull yellowish brown	Faint earth	Loamy	13	100	113	0.07			
					2016/10/18	Sunny	20.8	Brown	Faint earth	Loamy	13	110	123	0.05			
					2016/12/19	Sunny	9.4	Dull yellowish brown	Faint earth	Loamy	9.9	66	75.9	0.05			
					2016/5/19	Sunny	21.6	Blackish brown	Faint earth	Loamy	23	130	153	0.06			
					2016/8/16	Sunny	29.4	Blackish brown	Faint earth	Loamy	15	73	88	0.05			
2016/10/18					Sunny	19.4	Blackish brown	Faint earth	Loamy	33	210	243	0.04				
2016/12/19					Sunny	6.5	Blackish brown	Faint earth	Loamy	110	790	900	0.04				
52					Minamikawa Dam	Dam site	Taiwa Town	2016/5/21	Rain	20.4	Blackish brown	Faint earth	Loamy	41	220	261	0.05
	2016/8/15	Sunny	25.8	Dull yellowish brown				None	Loamy	59	320	379	0.04				
	2016/10/20	Sunny	23.3	Dark brown				Faint earth	Loamy	38	240	278	0.04				
	2016/12/16	Sunny	-0.6	Dark brown				Faint earth	Loamy	48	280	328	0.04				
	2016/5/21	Cloudy	19.3	Dark brown				Faint earth	Loamy	150	760	910	0.05				
53	Miyatoko Dam	Dam site		2016/10/17	Cloudy	16.8	Blackish brown	Faint earth	Clay-loamy	34	210	244	0.05				

Miyagi Lakes and Reservoirs (Surrounding Environment) 2/2

L a k e s R e s e r v o i r s	Location				Sampling Date	Weather	Air temperature (°C)	Surrounding Environment(Soil,Air dose)						Remarks	
	No.	Water area	Location					Municipality	Soil			Air Dose (μSv/h)			
									General items			Radioactive cesium			
									Color	Odor	Property	Activity concentration [Bq/kg(dry)]			
Cs-134	Cs-137	Total													
54	Sunaoshi River System	Sounoseki Dam	Dam site	Rifu Town	2016/5/21	Rain	14.5	Grayish yellowish brown	Faint earth	Loamy	44	290	334	0.06	
					2016/8/13	Sunny	28.1	Dull yellowish brown	Faint earth	Loamy	75	330	405	0.05	
					2016/10/17	Cloudy	20.6	Dull yellowish brown	Faint earth	Loamy	61	340	401	0.06	
					2016/12/15	Sunny	6.1	Blackish brown	Faint earth	Loamy	56	330	386	0.05	
	55	Nanakita River System	Nanakita Dam	Dam site	Sendai City	2016/5/23	Sunny	24.5	Blackish brown	Faint earth	Loamy	180	1,000	1,180	0.05
						2016/8/14	Cloudy	24.1	Extremely dark brown	Faint earth	Loamy	45	260	305	0.04
						2016/10/16	Sunny	21.5	Dark brown	Faint earth	Loamy	34	190	224	0.04
						2016/12/15	Sunny	3.4	Dark brown	Faint earth	Loamy	59	330	389	0.04
	56	Marutazawatameike Pond	Pond exit	Sendai City	2016/5/24	Sunny	22.7	Blackish brown	Faint earth	Loamy	93	480	573	0.04	
					2016/8/13	Sunny	24.5	Grayish yellowish brown	Faint earth	Loamy	64	410	474	0.04	
					2016/10/17	Cloudy	18.6	Blackish brown	Faint earth	Loamy	55	340	395	0.04	
					2016/12/14	Cloudy	6.2	Dark brown	Faint earth	Loamy	59	380	439	0.04	
	57	Natori River System	Okura Dam	Dam site	Sendai City	2016/5/23	Sunny	28.1	Blackish brown	Faint grass	Loamy	51	200	251	0.05
						2016/8/14	Sunny	23.6	Extremely dark brown	Faint earth	Loamy	21	150	171	0.04
						2016/10/16	Sunny	20.3	Blackish brown	Faint earth	Loamy	56	360	416	0.04
						2016/12/15	Cloudy	2.0	Blackish brown	Faint earth	Loamy	36	210	246	0.04
	58	Lake Amanuma	Lake exit	Sendai City	2016/5/23	Sunny	30.3	Dull yellowish brown	Faint earth	Loamy	22	110	132	0.06	
					2016/8/3	Cloudy	28.3	Dark brown	Faint earth	Loamy	52	250	302	0.07	
					2016/10/16	Sunny	15.5	Brown	Faint earth	Loamy	51	260	311	0.05	
					2016/12/14	Cloudy	5.7	Dull yellowish brown	Faint earth	Loamy	53	320	373	0.05	
	59	Natori River System	Kamafusa Dam	Dam site	Kawasaki Town	2016/5/25	Cloudy	20.3	Blackish brown	Faint earth	Loamy	41	240	281	0.05
						2016/8/3	Sunny	29.3	Blackish brown	Faint earth	Loamy	44	240	284	0.04
						2016/10/14	Sunny	17.4	Blackish brown	Faint earth	Loamy	27	220	247	0.04
						2016/12/14	Cloudy	4.4	Blackish brown	Faint earth	Loamy	43	270	313	0.04
60	Natori River System	Tarumizu Dam	Dam site	Natori City	2016/5/25	Cloudy	21.0	Dark brown	Faint earth	Loamy	110	600	710	0.06	
					2016/10/14	Sunny	18.0	Dark brown	Faint earth	Loamy	53	380	433	0.05	
61	Abukuma River System	Murata Dam	Dam site	Murata Town	2016/5/25	Cloudy	22.0	Blackish brown	Faint earth	Loamy	120	560	680	0.06	
					2016/10/14	Sunny	11.1	Blackish brown	Faint earth	Loamy	110	550	660	0.06	
					2016/5/26	Cloudy	22.9	Blackish brown	Faint earth	Loamy	210	1,100	1,310	0.07	
					2016/8/4	Sunny	25.3	Blackish brown	Faint earth	Loamy	93	570	663	0.07	
62	Abukuma River System	Kawarago Dam	Dam site	Shiroishi City	2016/10/13	Sunny	12.1	Blackish brown	Faint earth	Loamy	120	750	870	0.07	
					2016/12/13	Cloudy	7.8	Dull yellowish brown	Faint earth	Loamy	55	330	385	0.06	
					2016/5/26	Sunny	23.5	Dull yellowish brown	Faint earth	Loamy	210	1,100	1,310	0.14	
					2016/8/6	Sunny	30.4	Dull yellowish brown	Faint earth	Loamy	120	730	850	0.12	
63	Abukuma River System	Shichikasyuku Dam	Dam site	Shichikashuku Town	2016/10/13	Sunny	13.1	Dull yellowish brown	Faint earth	Loamy	120	730	850	0.11	
					2016/12/13	Sunny	5.8	Blackish brown	Faint earth	Loamy	280	1,800	2,080	0.10	
					2016/5/26	Sunny	26.9	Dull yellowish brown	Faint earth	Loamy	270	1,400	1,670	0.17	
					2016/8/4	Sunny	28.4	Blackish brown	Faint earth	Loamy	210	1,200	1,410	0.16	
64	Lake Bagyunuma	Lake exit	Shiroishi City	2016/10/13	Sunny	17.1	Blackish brown	Faint earth	Loamy	370	2,100	2,470	0.17		
				2016/12/13	Sunny	12.8	Blackish brown	Faint earth	Loamy	240	1,700	1,940	0.14		

Miyagi Coastal (Water) 1/2

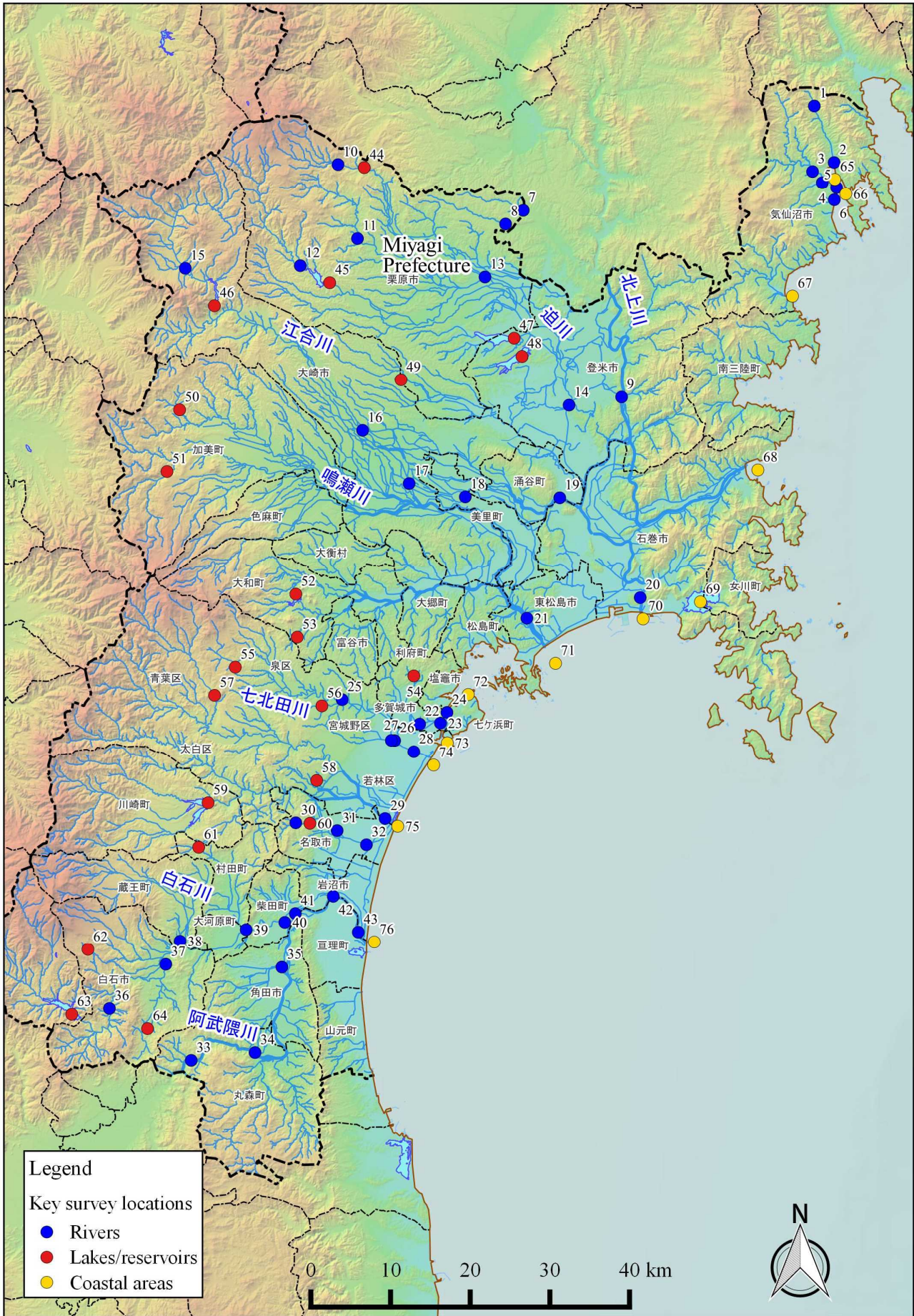
No.	Location Water area		Sampling Date	Weather	Air temperature (°C)	Water depth (m)	Water										Remarks
							General items						Activity concentration(Bq/L)				
							Water temperature (°C)	Sampling depth (m)	Color	Odor	Secchi disk depth (m)	Salinity (‰)	SS (mg/L)	Turbidity (FNU)	Radioactive cesium		
							Cs-134	Cs-137									
65	Kesennuma Bay (B)	Offshore of Hachigasaki	Surface layer	2016/5/27	Cloudy	16.1	17.5	15.1	0.5	Dark grayish yellow green	None	5.0	29.3	<1	0.6	<0.89	<0.80
			Deep layer					12.6	16.5	-	None		31.4	<1	0.2	<0.76	<0.55
			Surface layer	2016/8/1	Cloudy	27.2	15.9	22.1	0.5	Dark grayish yellow green	None	3.5	29.0	2	1.9	<0.92	<0.92
			Deep layer					17.5	14.9	-	None		30.8	1	1.0	<0.75	<0.75
			Surface layer	2016/11/5	Sunny	19.2	18.0	15.7	0.5	Dark grayish yellowish green	None	5.4	31.1	1	0.8	<0.69	<0.84
			Deep layer					15.9	17.0	-	None		31.3	2	0.9	<0.89	<0.55
			Surface layer	2017/2/8	Sunny	0.3	17.5	7.0	0.5	Dark grayish yellow green	None	6.5	30.4	1	0.6	<0.48	<0.92
			Deep layer					8.0	16.5	-	None		31.7	<1	0.5	<0.54	<0.88
66	Kesennuma Bay (C)	Offshore of Oshimakita	Surface layer	2016/5/27	Cloudy	15.6	41.1	15.8	0.5	Dark grayish yellow green	None	4.9	28.8	<1	0.3	<0.86	<0.80
			Deep layer					11.2	31.1	-	None		31.6	<1	0.6	<0.72	<0.75
			Surface layer	2016/8/1	Cloudy	26.2	38.1	24.1	0.5	Dark grayish green	None	5.5	29.1	2	1.3	<0.74	<0.80
			Deep layer					15.9	37.1	-	None		30.9	3	0.9	<0.65	<0.84
			Surface layer	2016/11/5	Sunny	18.5	40.3	15.8	0.5	Dark grayish green	None	7.0	30.7	1	0.5	<0.81	<0.75
			Deep layer					15.9	39.3	-	None		31.3	2	0.8	<0.69	<0.70
			Surface layer	2017/2/8	Sunny	-0.6	40.0	7.6	0.5	Dark grayish yellow green	None	14.0	30.4	<1	0.4	<0.87	<0.74
			Deep layer					8.3	39.0	-	None		31.6	<1	0.4	<0.92	<0.66
67	Offshore of Tsuyagawa River Estuary	Offshore of Tsuyagawa River Estuary	Surface layer	2016/5/26	Cloudy	19.2	12.5	15.9	0.5	Dark grayish green	None	10.5	30.0	<1	0.2	<0.68	<0.84
			Deep layer					15.5	11.5	-	None		31.9	<1	0.1	<0.73	<0.75
			Surface layer	2016/11/14	Cloudy	15.0	11.4	14.7	0.5	Grayish green	None	4.5	31.3	2	0.8	<0.91	<0.88
			Deep layer					14.6	10.4	-	None		31.4	3	1.1	<0.47	<0.84
68	All other neighboring sea areas	Oppa Bay (Jyusanhama Beach)	Surface layer	2016/5/26	Sunny	20.6	18.1	16.5	0.5	Dark grayish yellow green	None	4.3	22.6	2	1.5	<0.87	<0.75
			Deep layer					12.4	17.1	-	None		31.1	<1	0.2	<0.76	<0.75
			Surface layer	2016/8/1	Cloudy	26.3	18.0	22.7	0.5	Dark grayish yellowish green	None	3.8	28.1	2	0.7	<0.74	<0.88
			Deep layer					16.9	17.0	-	None		30.8	5	0.8	<0.67	<0.80
			Surface layer	2016/11/14	Cloudy	18.3	18.5	12.1	0.5	Dark grayish yellow green	None	3.7	16.7	1	1.2	<0.72	<0.84
			Deep layer					15.2	17.5	-	None		31.5	<1	0.4	<0.65	<0.88
			Surface layer	2017/2/8	Sunny	3.3	20.4	8.6	0.5	Grayish yellow green	None	2.0	30.5	6	4.0	<0.78	<0.80
			Deep layer					9.1	19.4	-	None		31.2	7	5.4	<0.78	<0.69
69	Neighboring sea area of Ishinomaki (C)	Lake Mangokuura , M-6 (center)	Surface layer	2016/5/25	Cloudy	21.6	3.2	18.7	0.5	Dark grayish yellow green	None	1.8	29.7	2	2.0	<0.52	<0.99
			Deep layer					18.5	2.2	-	None		29.8	1	1.5	<0.66	<0.84
			Surface layer	2016/8/2	Sunny	28.8	2.7	28.1	0.5	Dark grayish yellow green	None	2.1	29.5	2	1.5	<0.64	<0.84
			Deep layer					27.4	1.7	-	None		29.5	2	1.7	<0.62	<0.63
			Surface layer	2016/11/15	Cloudy	16.3	3.5	13.3	0.5	Dark grayish green	None	>3.5	30.6	1	1.1	<0.65	<0.63
			Deep layer					13.4	2.5	-	None		30.6	1	1.2	<0.66	<0.69
			Surface layer	2017/2/13	Sunny	4.8	3.2	6.4	0.5	Dark grayish yellow green	None	>3.2	30.6	2	1.3	<0.90	<0.61
			Deep layer					5.9	2.2	-	None		31.3	2	1.3	<0.69	<0.74
70	Neighboring sea area of Ishinomaki (B-3)	Offshore of Kitakami River Estuary	Surface layer	2016/5/28	Sunny	13.8	9.0	16.7	0.5	Dark grayish yellowish green	None	4.5	16.6	2	2.2	<0.68	<0.88
			Deep layer					14.0	8.0	-	None		30.6	2	1.3	<0.68	<0.92
			Surface layer	2016/8/2	Sunny	28.7	7.9	27.0	0.5	Dark grayish greenish yellow	None	2.5	13.9	14	6.6	<0.74	<0.69
			Deep layer					22.6	6.9	-	None		30.4	6	2.7	<0.76	<0.69
			Surface layer	2016/11/14	Sunny	9.7	8.2	13.7	0.5	Dark grayish green	None	2.9	22.4	3	2.9	<0.66	<0.55
			Deep layer					15.9	7.2	-	None		31.2	4	3.8	<0.81	<0.69
			Surface layer	2017/2/14	Sunny	1.9	8.3	6.8	0.5	Dark grayish yellow green	None	3.8	24.8	2	1.6	<0.61	<0.75
			Deep layer					7.8	7.3	-	None		30.7	2	1.8	<0.61	<0.75
71	Neighboring sea area of Ishinomaki (C)	Offshore of Naruse	Surface layer	2016/5/24	Sunny	22.1	14.3	17.9	0.5	Dark grayish yellow green	None	2.0	24.7	4	1.3	<0.50	<0.70
			Deep layer					12.6	13.3	-	None		31.5	4	3.3	<0.69	<0.84
			Surface layer	2016/8/3	Sunny	28.9	13.9	28.6	0.5	Grayish yellow green	None	1.4	19.2	10	5.9	<0.69	<0.61
			Deep layer					21.0	12.9	-	None		31.8	28	13	<0.77	<0.55
			Surface layer	2016/11/16	Sunny	13.2	14.4	14.7	0.5	Dark grayish yellowish green	None	2.5	30.6	3	2.9	<0.80	<0.69
			Deep layer					15.1	13.4	-	None		30.6	21	13	<0.66	<0.84
			Surface layer	2017/2/9	Snow	2.4	14.6	6.7	0.5	Dark grayish yellow green	None	3.8	27.6	2	2.1	<0.66	<0.80
			Deep layer					7.9	13.6	-	None		31.1	3	2.7	<0.61	<0.92

Miyagi Coastal (Water) 2/2

No.	Location			Sampling Date	Weather	Air temperature (°C)	Water depth (m)	Water										Remarks
								General items						Activity concentration(Bq/L)				
	Water area							Water temperature (°C)	Sampling depth (m)	Color	Odor	Secchi disk depth (m)	Salinity (‰)	SS (mg/L)	Turbidity (FNU)	Radioactive cesium		
											Cs-134	Cs-137						
72	Matsushima Bay (B)	Nishihama Beach	Surface layer	2016/5/24	Sunny	22.5	13.1	19.0	0.5	Dark grayish yellow green	None	1.8	27.8	3	1.0	<0.78	<0.66	
			Deep layer					18.7	12.1	-	None		29.5	7	2.7	<0.69	<0.75	
			Surface layer	2016/8/3	Sunny	29.8	13.1	28.7	0.5	Dark grayish yellow green	None	2.0	27.8	5	4.5	<0.61	<0.66	
			Deep layer					25.6	12.1	-	None		29.5	17	13	<0.65	<0.70	
			Surface layer	2016/11/16	Sunny	13.0	13.4	13.3	0.5	Dark grayish yellow green	None	3.2	29.7	4	2.8	<0.64	<0.61	
			Deep layer					13.7	12.4	-	None		29.6	8	5.2	<0.84	<0.55	
	Surface layer	2017/2/9	Cloudy	3.6	13.0	4.9	0.5	Dark grayish yellow green	None	2.8	30.1	2	2.0	<0.77	<0.85			
	Deep layer					5.6	12.0	-	None		30.9	9	5.6	<0.66	<0.88			
	73	Neighboring sea area of Sendai Port (A)	Naiko Inner Port, 4-Nai	Surface layer	2016/5/24	Sunny	16.7	19.5	16.6	0.5	Dark grayish yellow green	None	2.2	26.7	<1	0.4	<0.81	<0.70
				Deep layer					11.3	18.5	-	None		31.1	14	9.0	<0.70	<0.55
				Surface layer	2016/8/5	Sunny	24.8	19.6	25.7	0.5	Dark grayish yellow green	None	1.2	27.1	4	3.0	<0.60	<0.55
				Deep layer					19.9	18.6	-	None		31.4	12	8.9	<0.55	<0.55
Surface layer				2016/11/16	Sunny	9.5	19.5	15.3	0.5	Dark grayish yellowish green	None	2.9	30.7	3	2.5	<0.96	<0.75	
Deep layer								15.8	18.5	-	None		31.1	16	13	<0.74	<0.75	
Surface layer		2017/2/10	Snow	1.1	19.4	7.5	0.5	Dark grayish yellow green	None	2.8	29.6	2	2.2	<0.66	<0.63			
Deep layer						7.9	18.4	-	None		31.3	7	4.6	<0.68	<0.80			
74		Neighboring sea area of Sendai Port (B)	Gamo-3	Surface layer	2016/5/24	Sunny	15.1	17.9	17.3	0.5	Dark grayish yellowish green	None	3.8	28.6	<1	0.3	<0.81	<0.80
				Deep layer					1.9	16.9	-	None		30.9	<1	0.4	<0.73	<0.69
				Surface layer	2016/8/5	Sunny	24.2	18.2	26.1	0.5	Dark grayish yellowish green	None	2.0	27.4	3	2.2	<0.89	<0.55
				Deep layer					20.5	17.2	-	None		31.6	12	8.9	<0.73	<0.61
	Surface layer			2016/11/16	Sunny	9.2	18.1	15.1	0.5	Dark grayish yellowish green	None	2.3	30.7	12	8.6	<0.56	<0.70	
	Deep layer							15.7	17.1	-	None		31.2	4	3.4	<0.65	<0.78	
Surface layer	2017/2/10	Snow	1.5	17.9	8.1	0.5	Dark grayish yellow green	None	3.5	30.4	2	1.6	<0.77	<0.61				
Deep layer					8.2	16.9	-	None		31.4	4	2.7	<0.81	<0.61				
75	All other neighboring sea areas	Ido-5	Surface layer	2016/5/23	Sunny	20.1	5.6	17.2	0.5	Dark grayish yellow green	None	2.2	19.7	4	2.4	<0.48	<0.96	
			Deep layer					15.9	4.6	-	None		26.8	5	2.7	<0.66	<0.55	
			Surface layer	2016/8/4	Sunny	26.8	7.6	26.2	0.5	Dark grayish yellow green	None	2.0	18.0	6	4.5	<0.71	<0.69	
			Deep layer					25.3	6.6	-	None		29.3	4	1.6	<0.62	<0.75	
			Surface layer	2016/11/17	Cloudy	7.7	4.4	15.0	0.5	Grayish greenish yellow	None	1.5	30.9	9	6.0	<0.80	<0.70	
			Deep layer					14.6	3.4	-	None		31.0	12	7.1	<0.84	<0.48	
	Surface layer	2017/2/9	Cloudy	2.8	5.1	7.4	0.5	Dark grayish yellow green	None	1.5	24.5	5	3.6	<0.65	<0.84			
	Deep layer					8.3	4.1	-	None		30.3	9	5.6	<0.65	<0.69			
	76	Offshore of Abukuma River Estuary	Offshore of Abukuma River Estuary	Surface layer	2016/5/23	Sunny	23.8	9.3	16.5	0.5	Dark grayish yellowish green	None	3.6	23.8	4	2.8	<0.86	<0.63
				Deep layer					15.0	8.3	-	None		30.0	<1	0.5	<0.92	<0.84
				Surface layer	2016/6/13	Rain	23.0	9.9	18.3	0.5	Dark grayish green	None	7.8	25.7	<1	0.7	<0.74	<0.66
				Deep layer					14.0	8.9	-	None		31.2	1	0.4	<0.74	<0.55
Surface layer				2016/7/5	Cloudy	18.6	8.9	21.5	0.5	Dark grayish yellow green	None	2.5	24.7	3	1.5	<0.80	<0.88	
Deep layer								21.2	7.9	-	None		28.4	1	0.9	<0.68	<0.80	
Surface layer				2016/8/4	Sunny	29.1	10.2	27.1	0.5	Grayish reddish yellow	None	1.0	25.9	25	15	<0.65	<0.55	
Deep layer								23.6	9.2	-	None		30.7	13	8.9	<0.56	<0.61	
Surface layer				2016/9/9	Sunny	27.5	10.5	24.2	0.5	Dark grayish yellow	None	1.2	8.6	20	22	<0.57	<0.84	
Deep layer								25.4	9.5	-	None		29.1	5	1.1	<0.60	<0.75	
Surface layer				2016/10/11	Cloudy	14.1	10.8	19.0	0.5	Dark grayish yellowish green	None	2.9	19.4	3	1.8	<0.67	<0.92	
Deep layer								20.4	9.8	-	None		29.5	1	0.7	<0.72	<0.84	
Surface layer				2016/11/17	Cloudy	9.2	11.0	13.5	0.5	Dark grayish yellow green	None	3.0	19.9	4	2.7	<0.89	<0.69	
Deep layer								15.6	10.0	-	None		30.9	12	2.9	<0.68	<0.75	
Surface layer				2016/12/8	Sunny	6.6	10.4	12.3	0.5	Dark grayish green	None	6.7	30.8	<1	0.5	<0.78	<0.63	
Deep layer								13.3	9.4	-	None		31.5	1	0.7	<0.60	<0.96	
Surface layer				2017/1/24	Snow	0.6	10.6	5.9	0.5	Grayish yellowish green	None	1.5	16.9	6	6.1	<0.73	<0.84	
Deep layer								8.7	9.6	-	None		30.7	13	12	<0.60	<0.99	
Surface layer	2017/2/10	Cloudy	4.3	10.4	7.9	0.5	Dark grayish yellow green	None	2.5	30.8	3	2.1	<0.66	<0.66				
Deep layer					8.9	9.4	-	None		31.3	2	1.6	<0.74	<0.61				

Miyagi Coastal (Sediment) 1/1

No.	Location		Sampling Date	Weather	Air temperature (°C)	Water depth (m)	Sediment																	Activity concentration [Bq/kg(dry)]			Remarks
	Water area	Sediment temperature (°C)					Sample length (cm)	Color	Odor	Grain size distribution(%)					Sediment content (%)	Density (g/cm ³)	Property	Radioactive cesium									
										Coarse gravel	Medium gravel	Fine gravel	Coarse sand	Medium sand				Fine sand	Silt	Clay	Cs-134	Cs-137	Total				
65	Kesennuma Bay (B)	Offshore of Hachigasaki	2016/5/27	Cloudy	16.1	17.5	12.4	7	Olive black	None	0.0	0.0	0.0	0.2	3.1	16.0	49.7	31.0	41.2	2.680	Silt	17	100	117			
			2016/6/1	Cloudy	27.2	15.9	17.4	5	Black	Faint hydrogen sulfide	0.0	0.1	0.5	4.2	21.3	10.3	40.8	22.9	44.5	2.631	Silt/sand	13	82	85			
			2016/1/15	Sunny	19.2	13.0	15.9	5	Blackish brown	Faint sewage	0.0	0.0	0.0	0.1	1.8	8.9	68.5	20.7	34.3	2.603	Silt	24	130	154			
	66	Kesennuma Bay (C)	Offshore of Oshimakita	2017/2/8	Sunny	0.3	17.5	8.1	5	Blackish brown	Faint hydrogen sulfide	0.0	1.8	4.5	24.9	19.3	6.6	25.4	17.6	52.8	2.649	Silt	9.1	47	56.1		
				2016/5/27	Cloudy	15.6	41.1	11.4	10	Olive black	Faint hydrogen sulfide	0.0	0.0	0.0	0.1	0.8	0.9	61.0	37.2	30.9	2.622	Silt	68	330	398		
				2016/8/1	Cloudy	26.2	38.1	14.7	10	Dark olive gray	Faint hydrogen sulfide	0.0	0.0	0.0	0.1	0.3	0.4	64.0	35.2	31.8	2.580	Silt	51	300	351		
	67	Offshore of Tsuyagawa River Estuary	Offshore of Tsuyagawa River Estuary	2016/11/5	Sunny	18.5	40.3	16.0	5	Black	Faint hydrogen sulfide	0.0	0.0	0.0	0.0	0.3	0.6	78.3	20.8	30.8	2.568	Silt	65	320	385		
				2017/2/8	Sunny	-0.6	40.0	8.7	5	Olive black	Faint hydrogen sulfide	0.0	0.0	0.0	0.1	0.2	0.8	78.8	20.2	31.1	2.576	Silt	39	260	299		
				2016/5/26	Cloudy	19.2	12.5	14.0	7	Blackish brown	None	0.0	0.0	0.0	0.5	17.8	76.5	2.2	30.0	72.4	2.718	Sand	<0.91	1.0	1.0		
	68	All other neighboring sea areas	Oppa Bay (Jyusanham Beach)	2016/11/4	Sunny	15.9	11.4	14.5	5	Brownish gray	None	0.0	0.0	0.0	0.2	9.3	77.3	8.1	5.2	70.2	2.743	Sand	<0.91	1.9	1.9		
				2016/5/26	Sunny	20.6	18.1	11.6	7	Blackish brown	Faint shore	0.0	0.0	0.0	0.2	11.1	66.3	18.4	4.0	70.7	2.730	Sand	<2.7	12	12		
				2016/8/1	Cloudy	26.3	18.0	22.0	10	Olive black	None	0.0	0.0	0.0	0.1	10.7	71.9	13.4	4.0	67.0	2.647	Sand	<0.94	7.8	7.8		
	69	Neighboring sea area of Ishinomaki (C)	Lake Mangokuni , M-6 (center)	2016/11/4	Cloudy	18.3	18.5	15.1	6	Blackish brown	None	0.0	0.0	0.0	0.0	9.7	63.3	19.1	7.9	69.8	2.694	Sand/silt	<5.0	18	18		
				2017/2/8	Sunny	3.3	20.4	8.5	5	Olive black	None	0.0	0.0	0.0	0.1	12.6	72.6	9.4	5.3	69.8	2.701	Sand	<3.7	6.5	6.5		
				2016/5/25	Cloudy	21.6	3.2	17.4	10	Olive black	None	0.0	0.0	0.0	1.6	5.2	33.4	37.8	22.1	45.2	2.626	Silt	<7.2	32	32		
	70	Neighboring sea area of Ishinomaki (B-3)	Offshore of Kitakami River Estuary	2016/8/2	Sunny	28.8	2.7	27.1	5	Olive black	None	0.0	0.0	0.0	2.5	17.1	37.8	33.8	18.7	48.0	2.603	Silt/sand	<9.4	35	35		
				2016/11/5	Cloudy	16.3	3.5	13.6	8	Black	None	0.0	0.8	0.4	0.9	1.2	11.4	71.5	13.9	36.7	2.613	Silt/sand	1.5	10	11.5		
				2017/2/13	Sunny	4.8	3.2	5.9	5	Olive black	None	0.0	0.0	0.0	0.4	2.3	20.8	52.3	24.1	40.5	2.548	Silt/sand	<7.3	19	19		
71	Neighboring sea area of Ishinomaki (C)	Offshore of Naruse	2016/5/28	Sunny	13.8	9.0	13.8	5	Blackish brown	None	0.0	0.0	0.0	1.5	42.7	48.8	3.1	4.0	74.4	2.746	Sand	<0.79	2.4	2.4			
			2016/8/2	Sunny	28.7	7.9	24.1	10	Dark brown	None	0.0	0.0	0.0	0.7	57.7	28.8	5.5	7.3	66.3	2.703	Sand/silt	<0.86	5.0	5.0			
			2016/11/4	Sunny	9.7	8.2	14.1	5	Blackish brown	None	0.0	0.6	0.8	5.0	30.9	53.1	5.7	3.9	74.4	2.692	Sand	<0.58	1.8	1.8			
72	Matsushima Bay (B)	Nishihama Beach	2017/2/14	Sunny	1.9	8.3	6.3	5	Blackish brown	None	0.0	0.0	0.0	0.4	18.9	66.3	10.0	4.4	71.8	2.652	Sand	<0.58	3.4	3.4			
			2016/5/24	Sunny	22.1	14.3	11.0	15	Olive black	Faint hydrogen sulfide	0.0	0.0	0.0	0.1	0.2	20.2	62.7	16.9	38.1	2.632	Silt	12	54	66			
			2016/8/3	Sunny	28.9	13.9	19.1	10	Olive black	None	0.0	0.0	0.0	0.0	0.3	23.2	54.8	21.7	44.5	2.607	Silt	13	66	79			
73	Neighboring sea area of Sendai Port (A)	Naiko Inner Port, 4-Nai	2016/11/6	Sunny	13.2	14.4	15.1	5	Blackish brown	None	0.0	0.0	0.0	0.0	0.1	54.2	40.2	5.6	70.3	2.700	Sand/silt	<0.90	2.5	2.5			
			2017/2/9	Snow	2.4	14.6	7.8	5	Olive black	None	0.0	0.0	0.0	0.3	0.5	30.8	46.5	21.9	41.1	2.652	Silt/sand	10	56	66			
			2016/5/24	Sunny	22.5	13.1	12.9	15	Olive black	Faint hydrogen sulfide	0.0	0.0	0.0	0.1	0.3	2.7	65.3	31.7	26.1	2.575	Silt	35	160	195			
74	Neighboring sea area of Sendai Port (B)	Gamo-3	2016/8/3	Sunny	29.8	13.1	23.3	10	Olive black	None	0.0	0.0	0.0	0.2	0.3	4.0	68.1	27.5	27.8	2.551	Silt	43	200	243			
			2016/11/6	Sunny	13.0	13.4	14.0	8	Black	Faint hydrogen sulfide	0.0	0.0	0.0	0.0	0.1	0.4	68.2	31.4	23.4	2.557	Silt	33	170	203			
			2017/2/9	Cloudy	3.6	13.0	5.5	5	Olive black	Faint hydrogen sulfide	0.0	0.0	0.0	0.1	0.2	0.3	67.0	32.4	23.7	2.532	Silt	27	130	157			
75	All other neighboring sea areas	Ito-5	2016/5/24	Sunny	16.7	19.5	10.9	10	Blackish brown	None	0.0	0.0	0.0	0.4	1.8	4.1	59.9	33.8	26.5	2.574	Silt	71	530	601			
			2016/8/5	Sunny	24.8	19.6	19.8	5	Olive black	None	0.0	0.0	0.0	0.0	0.8	3.2	70.2	25.8	27.4	2.536	Silt	62	430	492			
			2016/11/6	Sunny	9.5	19.5	16.1	5	Blackish brown	None	0.0	0.0	0.0	0.0	0.2	0.7	66.2	32.9	24.9	2.591	Silt	63	320	383			
76	Offshore of Abukuma River Estuary	Offshore of Abukuma River Estuary	2017/2/10	Snow	1.1	19.4	8.2	5	Olive black	Faint hydrogen sulfide	0.0	0.0	0.0	0.1	0.3	0.9	66.3	32.5	25.3	2.553	Silt	42	350	392			
			2016/5/24	Sunny	15.1	17.9	12.7	5	Blackish brown	None	0.0	0.0	0.0	0.1	23.4	69.6	2.6	4.3	74.3	2.682	Sand	<5.2	8.0	8.0			
			2016/8/5	Sunny	24.2	18.2	20.5	10	Olive black	None	0.0	0.0	0.0	0.0	0.3	1.0	77.5	21.3	22.8	2.516	Silt	120	590	710			
77	All other neighboring sea areas	Ito-5	2016/11/6	Sunny	9.2	18.1	16.2	10	Blackish brown	None	0.0	0.0	0.0	0.0	4.9	12.6	57.1	25.4	27.8	2.554	Silt/sand	48	250	298			
			2017/2/10	Snow	1.5	17.9	8.2	5	Olive black	None	0.0	0.0	0.0	0.2	1.5	7.8	70.8	19.7	34.4	2.520	Silt	47	290	337			
			2016/5/25	Sunny	20.1	3.6	15.0	5	Brownish gray	None	0.0	0.0	0.0	0.1	46.8	48.2	1.0	3.9	71.5	2.674	Sand	<5.1	8.7	8.7			
78	All other neighboring sea areas	Ito-5	2016/8/4	Sunny	26.8	7.6	24.9	10	Blackish brown	None	0.0	0.0	0.0	0.6	49.6	45.8	0.1	4.0	72.0	2.660	Sand	<3.8	8.4	8.4			
			2016/11/7	Cloudy	7.7	4.4	13.7	5	Brownish gray	None	0.0	0.0	0.0	1.9	77.0	16.1	1.7	3.4	74.3	2.657	Sand	<3.0	3.2	3.2			
			2017/2/9	Cloudy	2.8	5.1	7.8	5	Olive black	None	0.0	0.0	0.0	0.5	71.1	22.2	1.6	4.6	71.5	2.624	Sand	<3.2	3.2	3.2			
79	Offshore of Abukuma River Estuary	Offshore of Abukuma River Estuary	2016/8/23	Sunny	23.8	9.3	15.2	5	Blackish brown	None	0.0	0.0	0.0	0.1	27.2	66.5	2.2	4.0	70.8	2.708	Sand	22	92	114			
			2016/6/13	Rain	23.0	9.9	14.0	7	Blackish brown	None	0.0	0.0	0.0	0.1	15.6	66.9	12.6	5.0	71.1	2.744	Sand	17	100	117			
			2016/7/5	Cloudy	18.6	8.9	19.3	5	Blackish brown	None	0.0	0.0	0.0	0.0	20.9	69.8	5.4	3.9	71.9	2.723	Sand	18	110	128			
80	Offshore of Abukuma River Estuary	Offshore of Abukuma River Estuary	2016/8/4	Sunny	29.1	10.2	24.6	10	Blackish brown	None	0.0	0.0	0.0	0.0	13.3	75.4	8.3	3.0	71.5	2.731	Sand	15	78	93			
			2016/9/9	Sunny	27.5	10.5	24.5	5	Blackish brown	None	0.0	0.0	0.0	0.0	8.9	73.4	14.7	3.0	73.8	2.760	Sand	12	82	94			
			2016/10/11	Cloudy	14.1	10.8	20.5	6	Blackish brown	None	0.0	0.0	0.0	0.1	13.7	64.5	17.8	3.9	74.3	2.714	Sand	14	91	105			
81	Offshore of Abukuma River Estuary	Offshore of Abukuma River Estuary	2016/11/7	Cloudy	9.2	11.0	14.8	5	Blackish brown	None	0.0	0.0	0.0	0.0	5.0	70.4	20.6	3.9	71.1	2.746	Sand	8.8	53	61.8			
			2016/12/8	Sunny	6.6	10.4	13.3	5	Blackish brown	None	0.0	0.0	0.0	0.0	7.2	68.4	20.5	3.9	71.4	2.728	Sand	12	61	73			
			2017/1/24	Snow	0.6	10.6	9.0	5	Blackish brown	None	0.0	0.0	0.0	0.3	11.3	69.7	14.8	3.9	70.1	2.745	Sand	14	83	97			
82	Offshore of Abukuma River Estuary	Offshore of Abukuma River Estuary	2017/2/10	Cloudy	4.3	10.4	7.9	5	Olive black	None	0.0	0.0	0.0	0.0	4.5	67.6	22.6	5.3	67.5	2.689	Sand	18	120	138			



Survey Locations (Miyagi Prefecture)