

FY2016 Iwate Prefecture Survey Results

[Outline of results]

(1) Water

Rivers

Radioactive cesium (Cs-134, Cs-137): Not detectable at any location

Coastal areas

Radioactive cesium (Cs-134, Cs-137): Not detectable at any location

(2) Sediments

Rivers

Cs-134: ND - 31 Bq/kg (dry)

Cs-137: 3.9 - 130 Bq/kg (dry)

Coastal areas

Cs-134: Not detectable at any location (dry)

Cs-137: 0.80 - 12 Bq/kg (dry)

(3) Surrounding Environment

(a) Soil

Rivers

Cs-134: 4.3 - 320 Bq/kg (dry)

Cs-137: 21 - 1,700 Bq/kg (dry)

(b) Ambient dose rate

Rivers

0.04 - 0.13 μ Sv/h

Iwate River (Water) 1/2

No.	Location			Sampling Date	Weather	Air temperature (°C)	Water depth (m)	Water										Remarks
	Water area	Location	Municipality					General items						Activity concentration(Bq/L)				
								Water temperature (°C)	Sampling depth (m)	Color	Odor	Transparency (cm)	Electrical conductivity (mS/m)	SS (mg/L)	Turbidity (FNU)	Radioactive cesium	Radioactive cesium	
Cs-134	Cs-137																	
1	Sakari River Lower Reaches	Sano Bridge	Ofunato City	2016/5/13	Sunny	19.8	0.3	16.9	0.0	Light grayish yellow green	None	>100	31.1	2	0.8	<0.74	<0.88	
				2016/11/7	Sunny	11.6	0.5	11.8	0.0	Light grayish yellow green	None	>100	330	1	0.5	<0.80	<0.88	
2	Kesen River	Aneha Bridge	Rikuzentakada City	2016/5/13	Sunny	19.4	0.3	16.8	0.0	Yellow greenish white	None	>100	42.3	1	0.9	<0.62	<0.75	
				2016/11/7	Sunny	9.4	0.3	10.8	0.0	Light grayish yellow green	None	>100	360	<1	0.5	<0.56	<0.78	
3	Okawa River	Prefectural border with Miyagi	Ichinoseki City	2016/5/15	Sunny	14.1	0.3	13.0	0.0	Light grayish greenish yellow	None	80	12.7	4	3.7	<0.60	<0.80	
				2016/8/27	Rain	21.1	0.5	18.8	0.0	Light grayish yellow green	None	63	9.9	12	5.0	<0.65	<0.63	
				2016/11/7	Sunny	6.8	0.3	7.2	0.0	Greenish yellowish white	None	>100	11.8	3	1.6	<0.74	<0.60	
				2017/2/8	Cloudy	3.2	0.3	4.6	0.0	Greenish yellowish pale gray	None	90	13.3	2	2.1	<0.66	<0.61	
4	Tsuyagawa River	Chiyogahara Bridge		2016/5/15	Sunny	16.5	0.3	13.5	0.0	Greenish yellowish white	None	>100	9.5	1	0.9	<0.76	<0.80	
				2016/11/9	Sunny	6.8	0.2	8.2	0.0	Yellowish white	None	>100	9.8	<1	0.7	<0.68	<0.75	
5	Kurosawa River	Kawarada Bridge	Kanegasaki Town	2016/5/7	Rain	16.3	0.3	13.2	0.0	Light grayish yellow green	None	34	10.5	9	9.7	<0.71	<0.69	
				2016/11/1	Rain	4.5	0.3	8.5	0.0	Light grayish yellow green	None	>100	13.5	<1	1.3	<0.78	<0.80	
6	Isawa River	Oago Bridge		2016/5/7	Rain	15.4	0.5	8.4	0.0	Light grayish yellowish green	None	>100	6.5	2	2.1	<0.60	<0.84	
				2016/8/22	Sunny	27.8	0.3	21.9	0.0	Light grayish greenish yellow	None	47	7.7	10	12	<0.66	<0.69	
				2016/11/1	Rain	6.4	0.5	10.5	0.0	Light grayish yellow green	None	>100	8.5	2	3.4	<0.74	<0.80	
				2017/2/9	Cloudy	-1.0	0.3	1.3	0.0	Yellowish white	None	>100	10.1	<1	0.9	<0.76	<0.88	
7	Isawa River	Sajjin Bridge	Oshu City	2016/5/7	Cloudy	15.4	0.3	11.4	0.0	Light grayish yellow green	None	72	7.2	5	4.7	<0.58	<0.75	
				2016/8/22	Cloudy	31.7	0.3	23.9	0.0	Light grayish greenish yellow	None	>100	10.8	3	3.1	<0.83	<0.84	
				2016/11/1	Rain	4.4	0.3	9.3	0.0	Light grayish yellow green	None	>100	10.4	2	1.9	<0.62	<0.69	
				2017/2/9	Cloudy	-0.8	0.2	1.8	0.0	Light grayish yellow green	None	>100	10.9	1	1.5	<0.63	<0.66	
8	Kitakami River	Fuji Bridge		2016/5/10	Rain	15.8	0.5	14.0	0.0	Grayish yellow	None	27	10.3	13	13	<0.82	<0.80	
				2016/8/22	Cloudy	30.1	0.4	25.3	0.0	Light grayish greenish yellow	None	52	12.5	14	6.7	<0.86	<0.74	
				2016/11/3	Cloudy	8.5	0.3	9.0	0.0	Light grayish yellow green	None	>100	15.3	2	1.4	<0.60	<0.63	
				2017/2/9	Sunny	3.9	0.3	3.7	0.0	Light grayish greenish yellow	None	>100	15.6	2	2.2	<0.79	<0.88	
9	Shiratori River	Shiratori Bridge		2016/5/11	Rain	14.8	0.5	13.1	0.0	Grayish yellow	None	10	8.3	57	74	<0.66	<0.63	
				2016/8/22	Cloudy	25.8	0.2	25.2	0.0	Light grayish yellow	None	75	10.0	7	6.1	<0.74	<0.84	
				2016/11/3	Sunny	11.1	0.2	9.7	0.0	Light grayish greenish yellow	None	>100	17.0	2	1.6	<0.54	<0.70	
				2017/2/9	Cloudy	4.9	0.3	4.3	0.0	Light grayish greenish yellow	None	90	13.4	3	2.8	<0.74	<0.70	
10	Koromo River	Koromogawa Bridge		2016/5/12	Sunny	17.2	0.7	15.7	0.0	Grayish greenish yellow	None	79	7.8	5	4.3	<0.69	<0.96	
				2016/8/29	Cloudy	25.2	0.6	21.0	0.0	Light grayish greenish yellow	None	>100	9.2	3	2.7	<0.70	<0.69	
				2016/11/3	Sunny	11.7	0.3	9.9	0.0	Light grayish greenish yellow	None	>100	11.5	<1	0.8	<0.91	<0.63	
				2017/2/11	Sunny	-0.5	0.2	2.0	0.0	Greenish yellowish white	None	>100	10.6	<1	0.9	<0.61	<0.69	
11	Ota River	Hitosuji Bridge	Hiraiizumi Town	2016/5/12	Sunny	19.0	0.3	17.9	0.0	Light grayish greenish yellow	None	37	13.8	14	10	<0.68	<0.80	
				2016/8/30	Cloudy	28.4	0.3	22.6	0.0	Light grayish greenish yellow	None	>100	18.4	6	4.7	<0.71	<0.75	
				2016/11/3	Sunny	14.3	0.2	10.2	0.0	Light grayish yellow	None	>100	30.5	2	1.7	<0.83	<0.55	
				2017/2/11	Sunny	1.9	0.2	1.2	0.0	Greenish yellowish white	None	>100	22.6	3	2.3	<0.80	<0.55	
12	Iwai River Middle Reaches	Kamino Bridge		2016/5/12	Sunny	21.1	0.5	14.2	0.0	Light grayish yellow green	None	60	11.0	8	5.1	<0.90	<0.88	
				2016/8/30	Rain	26.4	0.7	20.4	0.0	Light grayish yellow green	None	>100	13.2	10	5.3	<0.95	<0.84	
				2016/11/2	Sunny	10.1	0.3	10.1	0.0	Greenish yellowish white	None	>100	19.5	<1	0.8	<0.69	<0.88	
				2017/2/11	Sunny	4.6	0.3	3.5	0.0	Greenish yellowish white	None	>100	16.4	1	1.7	<0.58	<0.80	
13	Iwai River Lower Reaches	Kozenji Bridge	Ichinoseki City	2016/5/12	Sunny	16.7	0.5	13.7	0.0	Light grayish greenish yellow	None	50	12.0	9	5.9	<0.78	<0.92	
				2016/8/29	Sunny	29.3	0.3	22.6	0.0	Light grayish yellow green	None	>100	13.0	4	3.0	<0.65	<0.69	
				2016/11/2	Sunny	6.0	0.2	7.3	0.0	Greenish yellowish white	None	>100	22.5	1	1.2	<0.76	<0.69	
				2017/2/13	Sunny	3.9	0.2	3.2	0.0	Yellow greenish white	None	>100	19.6	2	1.9	<0.61	<0.75	
14	Kitakami River	Chitose Bridge (Kozenji)		2016/5/10	Rain	14.6	0.5	13.5	0.0	Grayish greenish yellow	None	38	10.0	11	13	<0.64	<0.88	
				2016/8/29	Sunny	26.8	0.8	20.9	0.0	Light grayish yellow	None	43	9.5	13	11	<0.73	<0.75	
				2016/11/2	Sunny	10.6	0.5	9.2	0.0	Grayish yellow green	None	>100	13.7	3	2.0	<0.80	<0.80	
				2017/2/13	Sunny	4.9	1.0	4.0	0.0	Light grayish yellow green	None	>100	14.5	3	2.0	<0.84	<0.48	

Iwate River (Water) 2/2

R i v e r s	Location				Sampling Date	Weather	Air temperature (°C)	Water depth (m)	Water										Remarks
	No.	Water area	Location	Municipality					General items						Activity concentration(Bq/L)				
									Water temperature (°C)	Sampling depth (m)	Color	Odor	Transparency (cm)	Electrical conductivity (mS/m)	SS (mg/L)	Turbidity (FNU)	Radioactive cesium Cs-134	Radioactive cesium Cs-137	
15	Sokei River	Unada Bridge	Ichinoseki City	2016/5/8	Sunny	20.1	0.3	16.3	0.0	Yellow greenish white	None	>100	16.9	2	1.9	<0.60	<0.80		
				2016/8/25	Cloudy	29.2	0.3	21.7	0.0	Light grayish yellow green	None	>100	15.8	3	2.4	<0.72	<0.54		
				2016/11/4	Cloudy	9.0	0.3	10.4	0.0	Light grayish yellow green	None	>100	15.8	1	0.8	<0.56	<0.75		
	16	Sarusawa River		Kannon Bridge	2017/2/12	Cloudy	5.8	0.2	5.0	0.0	Yellow greenish white	None	>100	16.1	<1	0.8	<0.65	<0.96	
					2016/5/8	Sunny	16.5	0.5	12.2	0.0	Yellow greenish white	None	>100	19.9	<1	0.3	<0.51	<0.75	
					2016/8/25	Cloudy	22.0	0.7	17.1	0.0	Light grayish yellow green	None	>100	12.6	<1	0.9	<0.70	<0.80	
	17	Satetsu River		Oide Bridge	2016/11/4	Sunny	6.7	0.5	8.7	0.0	Light grayish yellow green	None	>100	27.8	<1	0.5	<0.53	<0.78	
					2017/2/12	Cloudy	1.6	0.5	3.3	0.0	Greenish yellowish white	None	>100	26.4	<1	0.4	<0.85	<0.88	
					2016/5/8	Sunny	19.4	0.3	12.6	0.0	Yellow greenish white	None	>100	15.8	<1	0.5	<0.77	<0.75	
	18	Kitakami River System		Kanzaki Bridge	2016/8/25	Cloudy	26.8	0.5	16.7	0.0	Light grayish yellow green	None	>100	12.7	3	1.6	<0.81	<0.60	
					2016/11/4	Sunny	9.4	0.3	10.3	0.0	Light grayish yellow green	None	>100	16.4	<1	0.4	<0.47	<0.66	
					2017/2/12	Cloudy	3.7	0.2	6.9	0.0	Yellowish white	None	>100	16.5	<1	0.4	<0.42	<0.61	
	19	Suzuyo River Upper Reach		Miyata Bridge	2016/5/8	Sunny	19.8	0.4	16.2	0.0	Yellow greenish white	None	95	15.6	1	0.8	<0.71	<0.80	
					2016/8/25	Cloudy	27.6	1.0	18.7	0.0	Grayish yellow green	None	71	12.5	12	5.1	<0.83	<0.80	
					2016/11/5	Sunny	11.6	0.5	9.9	0.0	Light grayish yellow green	None	>100	16.3	<1	0.6	<0.74	<0.99	
	20	Kitakami River		Kitakamigawa Bridge	2017/2/13	Sunny	6.8	0.5	6.2	0.0	Yellow greenish white	None	>100	16.7	<1	0.6	<0.72	<0.63	
					2016/5/8	Sunny	19.9	0.3	17.8	0.0	Grayish yellow green	None	25	15.3	11	14	<0.74	<0.75	
					2016/8/25	Cloudy	26.3	0.3	20.8	0.0	Light grayish greenish yellow	None	>100	13.3	5	3.0	<0.74	<0.70	
	21	Kinomi River		Higuchi Bridge	2016/11/4	Sunny	11.4	0.3	10.5	0.0	Light grayish yellow green	None	>100	15.0	<1	0.9	<0.61	<0.61	
					2017/2/12	Cloudy	5.8	0.3	4.4	0.0	Yellow greenish white	None	>100	15.7	1	1.2	<0.68	<0.69	
					2016/5/8	Sunny	20.5	0.5	13.6	0.0	Grayish yellow	None	25	10.5	18	18	<0.67	<0.63	
	22	Kinryu River		Tenjin Bridge	2016/8/29	Cloudy	26.4	0.8	21.0	0.0	Light grayish yellow	None	51	10.1	13	10	<0.76	<0.96	
					2016/11/5	Sunny	16.6	0.2	10.6	0.0	Light grayish yellow green	None	>100	14.6	2	1.4	<0.55	<0.66	
					2017/2/13	Sunny	7.4	0.2	4.6	0.0	Yellow greenish white	None	90	14.9	3	2.0	<0.74	<0.70	
	2016/5/13	Kinomi River		Higuchi Bridge	2016/5/13	Sunny	19.4	0.5	14.6	0.0	Light grayish greenish yellow	None	49	19.5	7	6.8	<0.62	<0.75	
					2016/8/29	Cloudy	24.9	0.5	20.6	0.0	Light grayish yellow green	None	>100	17.4	4	2.8	<0.86	<0.63	
					2016/11/5	Sunny	15.1	0.5	11.8	0.0	Light grayish yellow green	None	>100	22.8	<1	1.2	<0.76	<0.61	
	2017/2/14	Kinryu River		Tenjin Bridge	2017/2/14	Sunny	5.1	0.5	3.8	0.0	Light grayish yellow green	None	>100	22.3	2	1.6	<0.81	<0.84	
					2016/5/9	Sunny	20.2	0.3	19.0	0.0	Grayish greenish yellow	None	35	16.4	15	15	<0.47	<0.80	
					2016/8/24	Sunny	28.8	0.5	25.5	0.0	Grayish yellow	None	64	9.2	8	5.8	<0.59	<0.54	
2016/11/6	Kinryu River	Tenjin Bridge	2016/11/6	Sunny	9.9	0.2	10.5	0.0	Light grayish yellow	None	>100	17.2	2	2.3	<0.60	<0.88			
			2017/2/14	Sunny	1.9	0.2	2.1	0.0	Light grayish yellow	None	70	17.0	4	3.9	<0.83	<0.84			

Iwate River (Sediment) 2/2

No.	Location			Sampling Date	Weather	Air temperature (°C)	Water depth (m)	Sediment																Activity concentration [Bq/kg(dry)]			Remarks
	Water area	Location	Municipality					Sediment temperature (°C)	Sample length (cm)	Color	Odor	General items									Sediment content (%)	Density (g/cm ³)	Property	Radioactive cesium			
												Coarse gravel	Medium gravel	Fine gravel	Grain size distribution(%)		Fine sand	Silt	Clay	Cs-134				Cs-137	Total		
															Coarse sand	Medium sand											
R I V E R	15	Soketi River	Unadu Bridge	Ichinosaki City	2016/5/8	Sunny	20.1	0.3	14.8	3	Dull yellowish brown	Faint algae	0.0	1.5	12.6	42.4	39.7	1.3	0.9	1.7	89.1	2.667	Sand/gravel	<3.5	22	22	
					2016/8/25	Cloudy	29.2	0.3	21.8	3	Dull yellowish brown	Faint swamp	0.0	4.2	0.4	59.2	26.6	4.9	2.9	1.9	86.5	2.649	Sand/gravel	<3.9	19	19	
					2016/1/4	Cloudy	9.0	0.3	10.5	3	Dull yellowish brown	Faint swamp	0.0	3.0	13.6	22.6	52.0	5.6	0.8	2.4	73.5	2.635	Sand/gravel	6.9	30	36.9	
		16	Sarusawa River		Kannon Bridge	2017/2/12	Cloudy	5.8	0.2	4.6	3	Dull yellowish brown	Faint algae	0.0	19.6	29.9	25.9	19.4	2.7	1.6	1.5	77.7	2.645	Sand/gravel	4.4	21	25.4
						2016/5/8	Sunny	16.5	0.5	11.8	3	Dull yellowish brown	Faint algae	0.0	20.7	32.4	35.0	10.2	0.4	0.0	1.4	91.9	2.718	Sand/gravel	7.2	30	37.2
						2016/8/25	Cloudy	22.0	0.7	17.1	3	Grayish yellowish brown	Faint swamp	0.0	6.3	7.6	22.9	46.9	10.0	3.9	2.5	77.5	2.739	Sand/gravel	31	130	161
	2016/1/4			Sunny		6.7	0.5	9.1	3	Dull yellowish brown	Faint swamp	0.0	21.5	33.6	29.2	12.9	1.2	0.5	1.3	92.3	2.712	Sand/gravel	6.2	29	35.2		
	2017/2/12			Cloudy		1.6	0.5	4.0	3	Dull yellowish brown	None	0.0	21.8	32.4	29.6	13.3	0.6	0.9	1.3	79.9	2.698	Sand/gravel	5.1	42	47.1		
	2016/5/8			Sunny		19.4	0.3	12.5	3	Dull yellow orange	Faint algae	0.0	3.8	8.9	43.5	39.1	1.4	1.7	1.7	75.0	2.664	Sand/gravel	<5.3	18	18		
	17	Satetsu River	Odoe Bridge	2016/8/25	Cloudy	26.8	0.5	16.8	3	Dull yellowish brown	Faint swamp	0.0	9.3	7.8	21.5	38.7	16.5	4.5	1.7	76.4	2.679	Sand/gravel	4.6	32	36.6		
				2016/1/4	Sunny	9.4	0.3	9.9	3	Dull yellowish brown	Faint algae	0.0	20.2	27.5	23.5	24.5	2.8	0.0	1.5	80.9	2.710	Sand/gravel	<1.9	9.9	9.9		
				2017/2/12	Cloudy	3.7	0.2	7.4	3	Dull yellowish brown	Faint algae	0.0	23.5	32.8	22.7	12.0	6.8	0.9	1.3	80.3	2.654	Sand/gravel	<2.9	18	18		
			Kanzaki Bridge	2016/5/8	Sunny	19.8	0.4	15.7	3	Grayish yellowish brown	Faint algae	0.0	17.8	9.6	7.1	46.8	16.0	1.0	1.7	79.2	2.874	Sand/gravel	<4.0	9.0	9.0		
				2016/8/25	Cloudy	27.6	1.0	18.9	3	Grayish yellowish brown	Faint swamp	0.0	0.1	0.3	2.4	48.9	41.3	4.7	2.4	72.6	2.714	Sand	6.2	24	30.2		
				2016/1/5	Sunny	11.6	0.5	10.1	3	Dull yellow orange	Faint swamp	0.0	2.9	5.5	24.7	60.1	4.0	1.0	1.7	75.7	2.790	Sand/gravel	<3.4	3.9	3.9		
	19	Kitakami River System	Miyata Bridge	2017/2/13	Sunny	6.8	0.5	6.4	3	Olive brown	Faint swamp	0.0	0.9	0.3	3.1	47.5	37.6	5.3	5.3	67.3	2.669	Sand	<4.6	26	26		
				2016/5/8	Sunny	19.9	0.3	15.9	3	Dark brown	Faint algae	0.0	0.1	8.2	36.5	49.5	2.2	1.4	2.1	85.6	2.663	Sand	9.4	40	49.4		
				2016/8/25	Cloudy	26.3	0.3	20.8	3	Dull yellowish brown	Faint swamp	0.0	0.0	0.0	11.8	80.1	6.1	0.0	2.0	74.0	2.655	Sand	6.6	46	52.6		
				2016/1/4	Sunny	11.4	0.3	10.5	3	Dull yellowish brown	None	0.0	0.5	10.7	19.7	63.7	2.7	0.9	1.7	73.6	2.634	Sand/gravel	7.0	34	41.0		
				2017/2/12	Cloudy	5.8	0.3	4.4	3	Dark brown	Faint swamp	0.0	1.9	9.9	38.1	45.5	1.9	0.1	2.6	71.4	2.603	Sand/gravel	5.3	41	46.3		
				2016/5/8	Sunny	20.5	0.5	13.6	3	Grayish yellowish brown	None	0.0	0.0	0.1	40.8	30.5	5.4	2.9	0.1	72.4	2.706	Sand	<5.3	14	14		
	20	Kitakami River	Kitakami-gawa Bridge	2016/8/29	Cloudy	26.4	0.8	21.4	3	Grayish yellowish brown	Faint swamp	0.0	0.1	0.0	0.0	65.7	30.3	0.0	3.9	73.7	2.729	Sand	<5.1	11	11		
2016/1/5				Sunny	16.6	0.2	11.2	3	Dull yellowish brown	Faint algae	0.0	25.5	3.1	1.5	59.7	8.1	0.0	2.1	76.6	2.696	Sand/gravel	<4.8	10	10			
2017/2/13				Sunny	7.4	0.2	4.6	3	Grayish yellowish brown	Faint swamp	0.0	39.1	11.1	4.9	36.4	6.6	0.5	1.5	80.0	2.692	Sand/gravel	<3.1	9.7	9.7			
2016/5/13				Sunny	19.4	0.5	14.5	3	Dull yellowish brown	Faint algae	0.0	10.2	23.6	50.1	12.8	0.7	0.7	1.9	85.6	2.695	Sand/gravel	<4.0	17	17			
2016/8/29				Cloudy	24.9	0.5	21.3	3	Dull yellowish brown	None	0.0	3.8	17.1	53.9	21.4	0.5	0.8	2.3	94.3	2.649	Sand/gravel	<3.2	11	11			
2016/1/5				Sunny	15.1	0.5	11.5	3	Dull yellowish brown	Faint swamp	0.0	12.8	20.6	39.7	23.7	1.3	0.7	1.3	78.6	2.671	Sand/gravel	<4.4	16	16			
21	Kinomi River	Higuchi Bridge	2017/2/14	Sunny	5.1	0.5	4.2	3	Olive brown	Faint swamp	0.0	1.9	7.1	40.4	41.2	4.0	2.4	3.0	70.2	2.617	Sand/gravel	<4.3	16	16			
			2016/5/9	Sunny	20.2	0.3	18.5	3	Grayish yellowish brown	Faint algae	0.0	34.6	13.9	12.9	35.3	0.8	1.0	1.5	77.8	2.657	Sand/gravel	10	44	54			
			2016/8/24	Sunny	28.8	0.5	25.1	3	Grayish yellowish brown	Faint swamp	0.0	28.2	23.4	20.5	26.6	0.3	0.0	1.0	80.4	2.641	Sand/gravel	8.4	47	55.4			
			2016/1/6	Sunny	9.9	0.2	10.7	3	Grayish yellowish brown	Faint swamp	0.0	24.8	22.6	15.5	34.4	0.6	0.6	1.6	73.3	2.623	Sand/gravel	17	73	90			
			2017/2/14	Sunny	1.9	0.2	2.6	3	Brown	Faint swamp	0.0	12.8	23.0	27.8	32.5	0.8	1.9	1.3	69.0	2.607	Sand/gravel	11	76	87			
			2017/2/14	Sunny	1.9	0.2	2.6	3	Brown	Faint swamp	0.0	12.8	23.0	27.8	32.5	0.8	1.9	1.3	69.0	2.607	Sand/gravel	11	76	87			
22	Kinuyu River	Tenjin Bridge	2016/5/9	Sunny	20.2	0.3	18.5	3	Grayish yellowish brown	Faint algae	0.0	34.6	13.9	12.9	35.3	0.8	1.0	1.5	77.8	2.657	Sand/gravel	10	44	54			
			2016/8/24	Sunny	28.8	0.5	25.1	3	Grayish yellowish brown	Faint swamp	0.0	28.2	23.4	20.5	26.6	0.3	0.0	1.0	80.4	2.641	Sand/gravel	8.4	47	55.4			

Iwate River (Surrounding Environment) 2/2

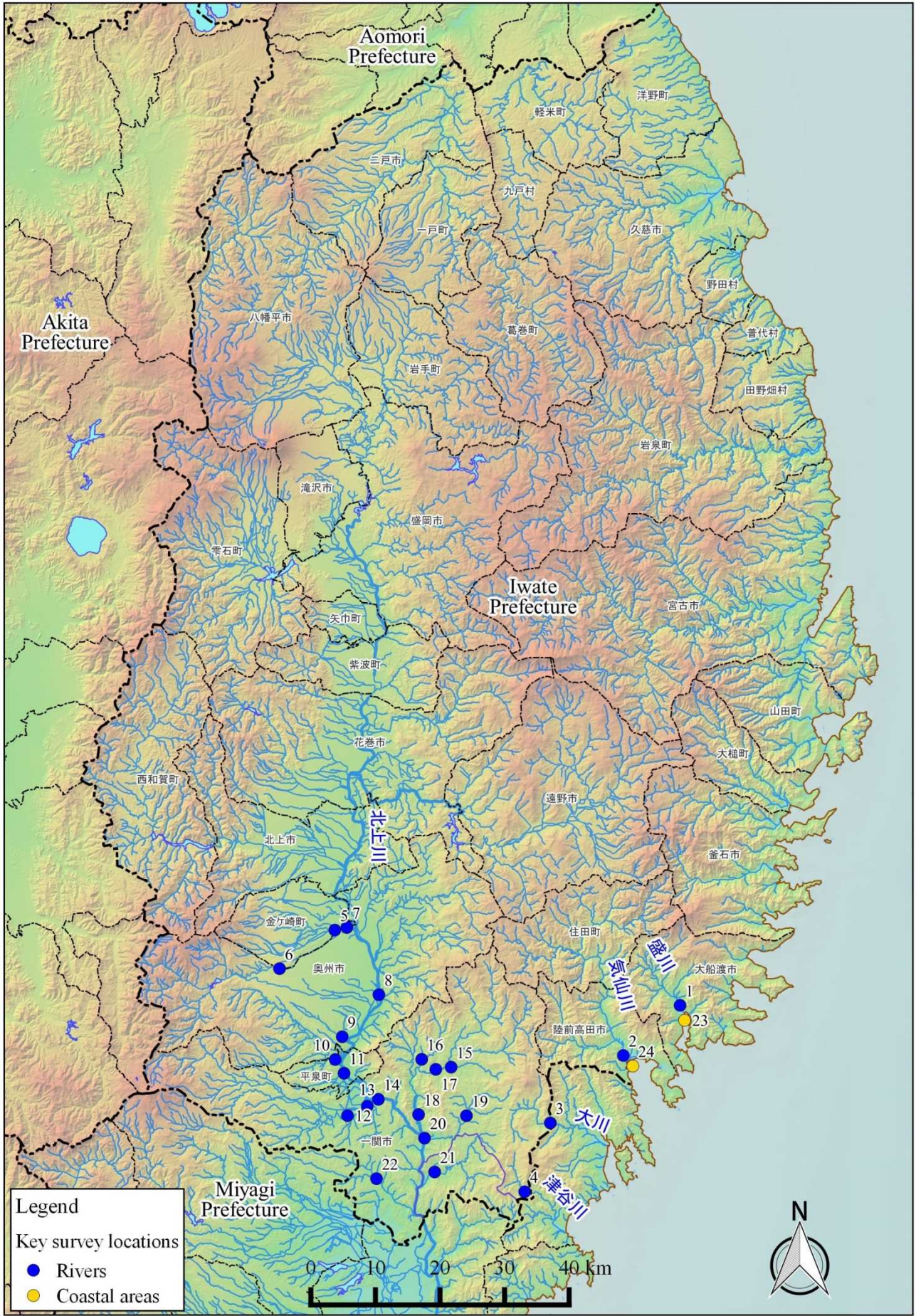
Location				Sampling Date	Weather	Air temperature (°C)	Surrounding Environment(Soil,Air dose)														Remarks
No.	Water area	Location	Municipality				Left bank							Right bank							
							Color	Odor	Property	Activity concentration [Bq/kg(dry)]			Air Dose (μSv/h)	Color	Odor	Property	Activity concentration [Bq/kg(dry)]			Air Dose (μSv/h)	
										Radioactive cesium							Radioactive cesium				
			Cs-134	Cs-137	Total				Cs-134	Cs-137	Total										
R i v e r s	15	Sokei River	Unada Bridge	Ichinoseki City	2016/5/8	Sunny	20.1	Blackish brown	Faint earth	Loamy	60	330	390	0.07	Dull yellowish brown	Faint grass	Loamy	75	400	475	0.06
					2016/8/25	Cloudy	29.2	Blackish brown	Faint earth	Loamy	74	400	474	0.08	Dull yellowish brown	Faint earth	Loamy	60	340	400	0.06
	2016/1/4	Cloudy	9.0	Dark brown	Faint earth	Loamy	48	310	358	0.05	Dull yellowish brown	Faint earth	Loamy	45	230	275	0.06				
	2017/2/12	Cloudy	5.8	Blackish brown	Faint earth	Loamy	80	450	530	0.07	Dark brown	Faint earth	Loamy	47	310	357	0.06				
	2016/5/8	Sunny	16.5	Blackish brown	Faint earth	Loamy	320	1,700	2,020	0.08	Dull yellowish brown	Faint earth	Loamy	180	1,100	1,280	0.08				
	2016/8/25	Cloudy	22.0	Blackish brown	Faint earth	Loamy	170	920	1,090	0.09	Dark brown	Faint earth	Loamy	120	810	930	0.08				
	2016/1/4	Sunny	6.7	Blackish brown	Faint earth	Loamy	190	1,100	1,290	0.06	Dull yellowish brown	Faint earth	Loamy	88	510	598	0.07				
	2017/2/12	Cloudy	1.6	Brown	None	Loamy	59	340	399	0.07	Dull yellowish brown	Faint earth	Loamy	100	610	710	0.06				
	2016/5/8	Sunny	19.4	Dull yellowish brown	Faint earth	Loamy	130	670	800	0.06	Dark brown	Faint earth	Loamy	140	740	880	0.07				
	2016/8/25	Cloudy	26.8	Dark brown	Faint earth	Loamy	54	350	404	0.06	Dark brown	Faint earth	Loamy	130	690	820	0.06				
	2016/1/4	Sunny	9.4	Dark brown	Faint earth	Loamy	130	750	880	0.06	Dark brown	Faint earth	Loamy	72	450	522	0.05				
	2017/2/12	Cloudy	3.7	Blackish brown	Faint earth	Loamy	98	610	708	0.06	Dull yellowish brown	Faint earth	Loamy	71	440	511	0.06				
	2016/5/8	Sunny	19.8	Dull yellowish brown	Faint earth	Loamy	220	1,200	1,420	0.11	Dull yellowish brown	Faint earth	Loamy	150	790	940	0.11				
	2016/8/25	Cloudy	27.6	Grayish yellowish brown	Faint earth	Loamy	190	1,100	1,290	0.12	Blackish brown	Faint earth	Loamy	58	350	408	0.10				
	2016/1/5	Sunny	11.6	Dull yellowish brown	Faint earth	Loamy	170	1,000	1,170	0.09	Blackish brown	Faint earth	Loamy	140	940	1,080	0.09				
	2017/2/13	Sunny	6.8	Dull yellowish brown	Faint earth	Loamy	200	1,200	1,400	0.10	Blackish brown	Faint earth	Loamy	100	720	820	0.10				
	2016/5/8	Sunny	19.9	Dull yellowish brown	Faint grass	Loamy	190	970	1,160	0.12	Grayish yellowish brown	Faint earth	Loamy	280	1,400	1,680	0.12				
	2016/8/25	Cloudy	26.3	Dull yellowish brown	Faint grass	Loamy	170	950	1,120	0.12	Grayish yellowish brown	Faint earth	Loamy	45	280	325	0.10				
	2016/1/4	Sunny	11.4	Dark brown	Faint earth	Loamy	250	1,400	1,650	0.10	Grayish yellowish brown	Faint earth	Loamy	64	350	414	0.10				
	2017/2/12	Cloudy	5.8	Blackish brown	Faint earth	Loamy	180	1,200	1,380	0.10	Blackish brown	None	Loamy	100	700	800	0.10				
	2016/5/8	Sunny	20.5	Dull yellowish brown	Faint grass	Loamy	110	630	740	0.08	Dull yellowish brown	Faint grass	Loamy	100	560	660	0.11				
	2016/8/29	Cloudy	26.4	Dark brown	Faint earth	Loamy	110	730	840	0.08	Dark brown	Faint earth	Loamy	80	430	510	0.09				
	2016/1/5	Sunny	16.6	Dark brown	Faint earth	Loamy	69	500	569	0.08	Dark brown	Faint grass	Loamy	99	460	559	0.09				
	2017/2/13	Sunny	7.4	Dull yellowish brown	Faint earth	Loamy	97	570	667	0.07	Dull yellowish brown	Faint earth	Loamy	96	630	726	0.11				
	2016/5/13	Sunny	19.4	Dull yellowish brown	Faint grass	Loamy	60	280	340	0.06	Dark brown	Faint grass	Loamy	19	110	129	0.06				
	2016/8/29	Cloudy	24.9	Dull yellowish brown	Faint earth	Loamy	45	320	365	0.05	Blackish brown	Faint earth	Loamy	21	140	161	0.06				
	2016/1/5	Sunny	15.1	Dull yellowish brown	Faint grass	Loamy	59	310	369	0.05	Blackish brown	Faint earth	Loamy	18	110	128	0.05				
	2017/2/14	Sunny	5.1	Dull yellowish brown	Faint earth	Loamy	36	190	226	0.05	Blackish brown	Faint earth	Loamy	14	120	134	0.05				
2016/5/9	Sunny	20.2	Dark brown	Faint earth	Loamy	220	1,100	1,320	0.13	Dull yellowish brown	Faint earth	Loamy	140	780	920	0.13					
2016/8/24	Sunny	28.8	Blackish brown	Faint earth	Loamy	61	390	451	0.11	Blackish brown	Faint earth	Loamy	130	630	760	0.10					
2016/1/6	Sunny	9.9	Blackish brown	Faint earth	Loamy	180	1,100	1,280	0.10	Dull yellowish brown	Faint earth	Loamy	120	820	940	0.10					
2017/2/14	Sunny	1.9	Blackish brown	Faint earth	Loamy	240	1,600	1,840	0.11	Dull yellowish brown	Faint earth	Loamy	100	690	790	0.11					

Iwate Coastal(Water) 1/1

	Location			Sampling Date	Weather	Air temperature (°C)	Water depth (m)	Water										Remarks
								General items							Activity concentration(Bq/L)			
	No.	Water area						Water temperature (°C)	Sampling depth (m)	Color	Odor	Secchi disk depth (m)	Salinity (‰)	SS (mg/L)	Turbidity (FNU)	Radioactive cesium		
																Cs-134	Cs-137	
Coastal areas	23	Ofunato Bay (A)	S-31	Surface layer	2016/5/27	Rain	17.6	17.4	16.7	0.5	Dark grayish yellow green	None	3.5	23.6	1	0.9	<0.83	<0.99
				Deep layer					11.6	16.4	-	None		31.2	<1	0.6	<0.65	<0.80
		Surface layer	2016/11/11	Cloudy	5.5	16.8	14.0	0.5	Dark grayish bluish green	None	6.5	30.0	<1	0.7	<0.80	<0.55		
		Deep layer					14.7	15.8	-	None		30.3	2	1.0	<0.69	<0.55		
	24	Hirota Bay	S-34	Surface layer	2016/5/27	Rain	15.6	11.5	15.9	0.5	Dark grayish yellow green	None	5.8	25.7	<1	0.3	<0.61	<0.63
				Deep layer					12.9	10.5	-	None		31.1	<1	0.3	<0.61	<0.75
				Surface layer	2016/11/11	Rain	6.3	11.4	13.9	0.5	Dark grayish yellowish green	None	6.5	30.7	2	1.1	<0.59	<0.88
				Deep layer					14.3	10.4	-	None		31.3	1	1.2	<0.56	<0.93

Iwate Coastal (Sediment) 1/1

	Location		Sampling Date	Weather	Air temperature (°C)	Water depth (m)	Sediment																	Activity concentration [Bq/kg(dry)]			Remarks
							General items										Sediment content (%)	Density (g/cm ³)	Property	Radioactive cesium							
	No.	Water area					Sediment temperature (°C)	Sample length (cm)	Color	Odor	Grain size distribution(%)									Cs-134	Cs-137	Total					
											Coarse gravel	Medium gravel	Fine gravel	Coarse sand	Medium sand	Fine sand	Silt	Clay									
Coastal areas	23	Ofumoto Bay (A)	S-31	2016/5/27	Rain	17.6	17.4	10.9	13	Olive black	None	0.0	0.2	0.5	1.2	11.4	21.8	42.8	22.2	46.9	2.643	Silt	<7.6	12	12		
				2016/11/11	Cloudy	5.5	16.8	15.4	5	Black	Faint hydrogen sulfide	0.0	0.0	0.0	1.5	13.9	17.6	44.1	23.0	49.8	2.591	Silt/sand	<9.5	9.1	9.1		
	24	Hirota Bay	S-34	2016/5/27	Rain	15.6	11.5	13.0	5	Gray	None	0.0	0.0	0.0	0.8	57.8	36.3	2.2	2.9	72.8	2.757	Sand	<0.71	0.88	0.88		
				2016/11/11	Rain	6.3	11.4	13.5	6	Black	None	0.0	0.0	0.0	2.3	79.3	14.4	0.6	3.3	74.0	2.696	Sand	<0.76	0.80	0.80		



Survey Locations (Iwate Prefecture)