

FY2014 Ibaraki Prefecture Survey Results

[Survey Results]

(1) Water

Rivers

Radioactive cesium (Cs-134, Cs-137): Not detectable at any location

Lakes and reservoirs

Radioactive cesium (Cs-134, Cs-137): Not detectable at any location

Coastal areas

Radioactive cesium (Cs-134, Cs-137): Not detectable at any location

(2) Sediments

Rivers

Cs-134: ND - 440 Bq/kg (dry)

Cs-137: 3.7 - 1,200 Bq/kg (dry)

Lakes and reservoirs

Cs-134: 1.2 - 780 Bq/kg (dry)

Cs-137: 3.7 - 2,400 Bq/kg (dry)

Coastal areas

Cs-134: ND - 16 Bq/kg (dry)

Cs-137: 1.2 - 51 Bq/kg (dry)

(3) Surrounding Environment

(a) Soil

Rivers

Cs-134: ND - 2,400 Bq/kg (dry)

Cs-137: ND - 7,200 Bq/kg (dry)

Lakes and reservoirs

Cs-134: ND - 650 Bq/kg (dry)

Cs-137: ND - 2,400 Bq/kg (dry)

(b) Ambient dose rate

Rivers

0.04 - 0.21 μ Sv/h

Lakes and reservoirs

0.04 - 0.18 μ Sv

Ibaraki River (Water) 1/5

| R i v e r s | Location | | | | Sampling Date | Weather | Air temperature (°C) | Water depth (m) | Water | | | | | | | | | | | | Remarks | | |
|----------------------------|-----------------------|-----------------------|--------------------|----------------------------------|---------------|---------|----------------------|-----------------|------------------------|--------------------|-------------------------------|------|-------------------|--------------------------------|-----------|-----------------|--------------------|---------------|--|--|---------|------------------------------|--|
| | No. | Water area | Location | Municipality | | | | | General items | | | | | | | | | | | | | Activity concentration(Bq/L) | |
| | | | | | | | | | Water temperature (°C) | Sampling depth (m) | Color | Odor | Transparency (cm) | Electrical conductivity (mS/m) | SS (mg/L) | Turbidity (FNU) | Radioactive cesium | | | | | | |
| | | | | | | | | | | | | | | | | | Cs-134 | Cs-137 | | | | | |
| 1 | | Satone River | Yamagoya Bridge | Kitaibaraki City | 2014/5/31 | Sunny | 30.0 | 1.0 | 16.0 | 0.0 | Light grayish blue | None | >100 | 4.2 | 4 | 0.2 | <0.51 ± 0.11 | <0.78 ± 0.16 | | | | | |
| | | | | | 2014/8/2 | Sunny | 24.8 | 0.3 | 20.2 | 0.0 | Light grayish green | None | >100 | 10.5 | 12 | 0.4 | <0.60 ± 0.13 | <0.52 ± 0.12 | | | | | |
| 2 | | Satone River | Murayama Bridge | Kitaibaraki City | 2014/11/13 | Cloudy | 15.4 | 0.3 | 12.3 | 0.0 | Light grayish yellowish green | None | >100 | 10.4 | 3 | 0.6 | <0.70 ± 0.15 | <0.59 ± 0.12 | | | | | |
| | | | | | 2015/2/5 | Cloudy | 5.8 | 0.3 | 6.7 | 0.0 | Light grayish yellow green | None | >100 | 12.3 | <1 | 0.7 | <0.67 ± 0.15 | <0.74 ± 0.15 | | | | | |
| 3 | | Hanazono River | Kurabeishi | Kitaibaraki City | 2014/5/31 | Sunny | 28.5 | 0.7 | 18.5 | 0.0 | Light grayish blue | None | >100 | 4.3 | 2 | 0.6 | <0.55 ± 0.10 | <0.71 ± 0.13 | | | | | |
| | | | | | 2014/8/2 | Sunny | 29.6 | 0.6 | 23.1 | 0.0 | Grayish yellowish green | None | >100 | 16.1 | 4 | 0.5 | <0.64 ± 0.14 | <0.60 ± 0.12 | | | | | |
| 4 | | Hanazono River | Isonare Bridge | Kitaibaraki City | 2014/11/4 | Sunny | 16.9 | 0.4 | 13.9 | 0.0 | Light grayish yellow | None | >100 | 15.0 | 9 | 1.2 | <0.65 ± 0.14 | <0.60 ± 0.11 | | | | | |
| | | | | | 2015/2/5 | Cloudy | 6.2 | 0.4 | 5.0 | 0.0 | Light grayish yellowish green | None | >100 | 19.5 | <1 | 0.6 | <0.46 ± 0.093 | <0.92 ± 0.20 | | | | | |
| 5 | | Okita River | Sakae Bridge | Takahagi City | 2014/5/31 | Sunny | 29.9 | 0.5 | 15.0 | 0.0 | Light grayish yellow | None | >100 | 4.2 | 2 | 0.5 | <0.60 ± 0.12 | <0.62 ± 0.16 | | | | | |
| | | | | | 2014/8/2 | Sunny | 31.2 | 0.5 | 20.4 | 0.0 | Dark grayish reddish yellow | None | >100 | 5.6 | 5 | 0.6 | <0.57 ± 0.11 | <0.49 ± 0.069 | | | | | |
| 6 | | Okita River | Sakai Bridge | Kitaibaraki City | 2014/11/13 | Sunny | 16.1 | 0.4 | 11.3 | 0.0 | Light grayish greenish yellow | None | >100 | 6.2 | 3 | 0.5 | <0.52 ± 0.12 | <0.86 ± 0.16 | | | | | |
| | | | | | 2015/2/5 | Cloudy | 4.4 | 0.3 | 3.6 | 0.0 | Light grayish yellow green | None | >100 | 7.1 | <1 | 0.4 | <0.71 ± 0.13 | <0.78 ± 0.16 | | | | | |
| 7 | | Hananuki River | Shitanamaki Bridge | Takahagi City | 2014/5/24 | Sunny | 18.8 | 0.5 | 14.7 | 0.0 | Grayish reddish yellow | None | >100 | 36.6 | 3 | 1.2 | <0.65 ± 0.11 | <0.75 ± 0.13 | | | | | |
| | | | | | 2014/8/7 | Sunny | 26.8 | 0.4 | 24.2 | 0.0 | Light grayish greenish yellow | None | 96 | 20.4 | 5 | 0.9 | <0.62 ± 0.14 | <0.58 ± 0.14 | | | | | |
| 8 | | Kujigawa River System | Yamagata | Hitachiomiya City | 2014/12/1 | Cloudy | 15.2 | 0.7 | 11.8 | 0.0 | Light grayish yellow | None | >100 | 24.2 | 3 | 1.5 | <0.57 ± 0.092 | <0.63 ± 0.16 | | | | | |
| | | | | | 2015/2/7 | Sunny | 5.2 | 0.6 | 4.1 | 0.0 | Light grayish yellow green | None | >100 | 31.9 | 2 | 1.9 | <0.67 ± 0.13 | <0.53 ± 0.086 | | | | | |
| 9 | | Kujigawa River | Sakaki Bridge | Hitachi City/Tokai Village | 2014/5/31 | Sunny | 28.1 | 0.6 | 16.0 | 0.0 | Light grayish yellowish green | None | >100 | 4.1 | 4 | 0.6 | <0.61 ± 0.13 | <0.56 ± 0.15 | | | | | |
| | | | | | 2014/8/2 | Sunny | 30.1 | 0.3 | 18.9 | 0.0 | Light grayish yellow | None | >100 | 6.0 | 9 | 0.6 | <0.59 ± 0.12 | <0.58 ± 0.11 | | | | | |
| 10 | Nakagawa River System | Nakagawa River | Noguchi | Hitachiomiya City/Shirosato Town | 2014/11/4 | Sunny | 14.1 | 0.4 | 10.7 | 0.0 | Light grayish yellow green | None | >100 | 7.0 | 2 | 0.7 | <0.52 ± 0.11 | <0.55 ± 0.092 | | | | | |
| | | | | | 2015/2/17 | Cloudy | 4.0 | 0.6 | 4.8 | 0.0 | Light grayish yellow green | None | >100 | 11.5 | <1 | 0.4 | <0.63 ± 0.13 | <0.47 ± 0.12 | | | | | |
| 11 | | Shimokunii | Mito City | Mito City | 2014/5/24 | Sunny | 19.9 | 0.8 | 15.3 | 0.0 | Grayish yellowish green | None | >100 | 12.2 | 7 | 1.0 | <0.61 ± 0.11 | <0.66 ± 0.12 | | | | | |
| | | | | | 2014/8/7 | Sunny | 25.0 | 0.5 | 22.4 | 0.0 | Grayish reddish yellow | None | 95 | 11.8 | 9 | 0.9 | <0.39 ± 0.11 | <0.42 ± 0.088 | | | | | |
| 11 | | Shimokunii | Mito City | Mito City | 2014/12/1 | Cloudy | 15.2 | 0.5 | 12.1 | 0.0 | Grayish yellow | None | 78 | 11.2 | 6 | 2.8 | <0.50 ± 0.11 | <0.52 ± 0.10 | | | | | |
| | | | | | 2015/2/7 | Sunny | 5.8 | 0.6 | 4.2 | 0.0 | Light grayish yellow green | None | >100 | 12.7 | 5 | 1.6 | <0.61 ± 0.12 | <0.78 ± 0.19 | | | | | |
| 11 | | Shimokunii | Mito City | Mito City | 2014/5/24 | Sunny | 21.8 | 0.4 | 18.2 | 0.0 | Light grayish reddish yellow | None | >100 | 11.8 | 4 | 1.0 | <0.67 ± 0.13 | <0.62 ± 0.11 | | | | | |
| | | | | | 2014/8/7 | Sunny | 29.0 | 0.3 | 26.7 | 0.0 | Grayish reddish yellow | None | 85 | 11.0 | 4 | 0.8 | <0.73 ± 0.17 | <0.62 ± 0.13 | | | | | |
| 11 | | Shimokunii | Mito City | Mito City | 2014/11/14 | Sunny | 18.2 | 0.4 | 13.4 | 0.0 | Grayish reddish yellow | None | >100 | 10.3 | 3 | 1.1 | <0.50 ± 0.11 | <0.63 ± 0.10 | | | | | |
| | | | | | 2015/2/7 | Sunny | 9.0 | 0.4 | 8.7 | 0.0 | Light grayish yellow green | None | >100 | 12.0 | 1 | 0.6 | <0.68 ± 0.14 | <0.60 ± 0.11 | | | | | |
| 11 | | Shimokunii | Mito City | Mito City | 2014/5/24 | Sunny | 22.1 | 0.4 | 20.8 | 0.0 | Grayish yellow | None | >100 | 12.6 | 3 | 0.4 | <0.55 ± 0.14 | <0.66 ± 0.11 | | | | | |
| | | | | | 2014/8/5 | Sunny | 33.6 | 0.5 | 30.1 | 0.0 | Dark grayish yellowish green | None | >100 | 11.5 | 4 | 0.3 | <0.59 ± 0.13 | <0.68 ± 0.14 | | | | | |
| 11 | | Shimokunii | Mito City | Mito City | 2014/11/6 | Sunny | 20.4 | 0.4 | 15.1 | 0.0 | Grayish reddish yellow | None | >100 | 11.2 | 2 | 0.6 | <0.50 ± 0.092 | <0.52 ± 0.11 | | | | | |
| | | | | | 2015/2/2 | Sunny | 6.1 | 0.4 | 4.7 | 0.0 | Dark grayish reddish yellow | None | 84 | 12.5 | 4 | 3.4 | <0.67 ± 0.15 | <0.49 ± 0.10 | | | | | |
| 11 | | Shimokunii | Mito City | Mito City | 2014/5/24 | Sunny | 23.4 | 0.5 | 20.8 | 0.0 | Dark grayish yellow | None | 72 | 13.8 | 22 | 3.7 | <0.42 ± 0.096 | <0.62 ± 0.11 | | | | | |
| | | | | | 2014/8/5 | Sunny | 32.3 | 0.6 | 29.1 | 0.0 | Grayish yellow | None | >100 | 14.4 | 12 | 2.9 | <0.54 ± 0.14 | <0.47 ± 0.096 | | | | | |
| 11 | | Shimokunii | Mito City | Mito City | 2014/11/6 | Cloudy | 17.1 | 0.6 | 15.7 | 0.0 | Dark grayish yellow | None | 88 | 15.1 | 18 | 5.2 | <0.54 ± 0.12 | <0.67 ± 0.14 | | | | | |
| | | | | | 2015/2/9 | Sunny | 7.0 | 0.2 | 5.7 | 0.0 | Grayish greenish yellow | None | 68 | 13.6 | 17 | 4.5 | <0.67 ± 0.12 | <0.56 ± 0.14 | | | | | |
| 11 | | Shimokunii | Mito City | Mito City | 2014/5/23 | Cloudy | 13.8 | 0.6 | 17.2 | 0.0 | Grayish yellow | None | >100 | 16.0 | 2 | 1.2 | <0.64 ± 0.15 | <0.56 ± 0.12 | | | | | |
| | | | | | 2014/8/22 | Sunny | 30.4 | 0.7 | 26.8 | 0.0 | Grayish yellow green | None | >100 | 14.0 | 2 | 0.4 | <0.65 ± 0.11 | <0.62 ± 0.11 | | | | | |
| 11 | | Shimokunii | Mito City | Mito City | 2014/11/17 | Cloudy | 14.8 | 0.6 | 12.9 | 0.0 | Dark grayish greenish yellow | None | >100 | 16.6 | <1 | 0.5 | <0.57 ± 0.12 | <0.63 ± 0.15 | | | | | |
| | | | | | 2015/2/9 | Sunny | 1.5 | 0.1 | 5.8 | 0.0 | Grayish yellow green | None | >100 | 16.8 | 2 | 2.1 | <0.51 ± 0.11 | <0.66 ± 0.12 | | | | | |
| 11 | | Shimokunii | Mito City | Mito City | 2014/5/23 | Cloudy | 19.0 | 1.5 | 19.5 | 0.0 | Greenish yellowish light gray | None | 79 | 21.8 | 1 | 1.8 | <0.58 ± 0.12 | <0.78 ± 0.18 | | | | | |
| | | | | | 2014/8/22 | Sunny | 32.4 | 0.9 | 27.5 | 0.0 | Light grayish greenish yellow | None | 85 | 14.6 | 4 | 0.6 | <0.47 ± 0.10 | <0.85 ± 0.16 | | | | | |
| 11 | | Shimokunii | Mito City | Mito City | 2014/11/17 | Sunny | 15.2 | 1.3 | 14.6 | 0.0 | Grayish greenish yellow | None | >100 | 18.3 | 4 | 0.7 | <0.65 ± 0.14 | <0.49 ± 0.097 | | | | | |
| | | | | | 2015/2/9 | Sunny | 5.5 | 0.5 | 6.8 | 0.0 | Grayish yellow green | None | 68 | 16.8 | 5 | 2.5 | <0.69 ± 0.13 | <0.57 ± 0.12 | | | | | |

Ibaraki River (Water) 4/5

| Location | | | | Sampling Date | Weather | Air temperature (°C) | Water depth (m) | Water | | | | | | | | | | Remarks | | |
|----------------------------|-------------|-------------------|----------------------|----------------------|----------------------------|----------------------|-----------------|------------------------|--------------------|------------------------------|------------------------------|------------------------------|--------------------------------|-----------|-----------------|--------------------|---------------|---------------|---------------|---------------|
| No. | Water area | | Municipality | | | | | General items | | | | | Activity concentration(Bq/L) | | | | | | | |
| | Location | | | | | | | Water temperature (°C) | Sampling depth (m) | Color | Odor | Transparency (cm) | Electrical conductivity (mS/m) | SS (mg/L) | Turbidity (FNU) | Radioactive cesium | | | | |
| | | | | | | | | | | | | | | Cs-134 | Cs-137 | | | | | |
| R i v e r s | 39 | Kasumigaura River | Onogawa River | Ohtsura-shahi Bridge | Ryugasaki City/Ushiku City | 2014/5/16 | Sunny | 22.4 | 0.4 | 21.3 | 0.0 | Dark grayish yellow green | None | 53 | 30.3 | 20 | 9.5 | <0.82 ± 0.20 | <0.68 ± 0.17 | |
| | | | | | | 2014/8/6 | Sunny | 33.2 | 0.4 | 29.4 | 0.0 | Grayish yellow | None | 58 | 49.4 | 12 | 1.5 | <0.51 ± 0.090 | <0.68 ± 0.14 | |
| | | | | | | 2014/11/27 | Sunny | 16.2 | 0.4 | 13.5 | 0.0 | Dark grayish yellow green | None | 43 | 25.5 | 18 | 6.4 | <0.54 ± 0.13 | <0.62 ± 0.17 | |
| | | | 40 | Shintone River | Shintone Bridge | Inashiki City | 2015/2/6 | Sunny | 9.0 | 0.2 | 7.2 | 0.0 | Light grayish greenish yellow | None | 53 | 35.3 | 9 | 3.9 | <0.66 ± 0.14 | <0.54 ± 0.13 |
| | | | | | | | 2014/5/28 | Sunny | 26.0 | 0.8 | 25.4 | 0.0 | Light grayish green | None | 28 | 24.5 | 17 | 11 | <0.55 ± 0.14 | <0.57 ± 0.14 |
| | | | | | | | 2014/8/6 | Sunny | 32.3 | 0.7 | 30.4 | 0.0 | Grayish yellow | None | 39 | 98.7 | 11 | 2.3 | <0.51 ± 0.094 | <0.66 ± 0.15 |
| | | 2014/11/27 | | | | | Sunny | 13.9 | 0.4 | 12.6 | 0.0 | Dark grayish yellow red | None | 39 | 45.6 | 13 | 8.1 | <0.61 ± 0.11 | <0.66 ± 0.15 | |
| | | 2015/2/6 | | | | | Sunny | 10.0 | 2.0 | 6.5 | 0.0 | Grayish greenish yellow | None | 54 | 46.4 | 10 | 8.5 | <0.47 ± 0.12 | <0.51 ± 0.14 | |
| | | 2014/5/28 | | | | | Sunny | 27.5 | 0.7 | 24.0 | 0.0 | Light grayish yellow | None | 42 | 30.6 | 28 | 6.1 | <0.60 ± 0.12 | <0.55 ± 0.14 | |
| | | 41 | Hiachitonegawa River | Yorokoshi River | Horionouchi Bridge | Itako City | 2014/8/19 | Sunny | 32.6 | 0.2 | 27.5 | 0.0 | Light grayish greenish yellow | None | 31 | 34.2 | 38 | 28 | <0.52 ± 0.12 | <0.80 ± 0.14 |
| | | | | | | | 2014/11/20 | Cloudy | 14.0 | 0.5 | 11.3 | 0.0 | Grayish reddish yellow | None | 38 | 36.4 | 7 | 5.0 | <0.48 ± 0.093 | <0.55 ± 0.13 |
| | | | | | | | 2015/2/13 | Sunny | 10.0 | 0.4 | 9.6 | 0.0 | Grayish reddish yellow | None | 53 | 34.1 | 13 | 6.2 | <0.67 ± 0.13 | <0.59 ± 0.13 |
| | 2014/5/28 | | | | | | Sunny | 28.0 | 2.6 | 23.0 | 0.0 | Dark grayish greenish yellow | None | 23 | 34.3 | 18 | 16 | <0.60 ± 0.14 | <0.58 ± 0.14 | |
| | 2014/8/19 | | | | | | Sunny | 31.2 | 2.1 | 28.9 | 0.0 | Grayish yellow red | None | 36 | 33.2 | 11 | 3.4 | <0.55 ± 0.073 | <0.74 ± 0.15 | |
| | 2014/11/20 | | | | | | Cloudy | 14.2 | 2.4 | 13.8 | 0.0 | Dark grayish reddish yellow | None | 37 | 39.8 | 10 | 9.7 | <0.56 ± 0.11 | <0.55 ± 0.11 | |
| | 42 | Maekawa River | Ayame Bridge | Itako City | 2015/2/13 | Sunny | 11.2 | 2.6 | 8.1 | 0.0 | Dark grayish reddish yellow | None | 42 | 36.6 | 9 | 9.0 | <0.65 ± 0.14 | <0.47 ± 0.088 | | |
| | | | | | 2014/5/15 | Sunny | 23.9 | 0.6 | 19.9 | 0.0 | Greenish pale gray | None | >100 | 17.0 | 2 | 0.7 | <0.52 ± 0.12 | <0.51 ± 0.096 | | |
| | | | | | 2014/8/29 | Cloudy | 25.8 | 0.6 | 20.1 | 0.0 | Grayish yellow green | None | >100 | 12.9 | 9 | 1.6 | <0.61 ± 0.13 | <0.47 ± 0.10 | | |
| | | | | | 2014/11/21 | Sunny | 14.8 | 0.6 | 14.2 | 0.0 | Grayish yellow green | None | >100 | 17.1 | 3 | 0.6 | <0.64 ± 0.13 | <0.56 ± 0.12 | | |
| | | | | | 2015/2/13 | Sunny | 5.0 | 0.5 | 8.9 | 0.0 | Light grayish yellow green | None | >100 | 24.1 | 3 | 1.1 | <0.48 ± 0.11 | <0.47 ± 0.088 | | |
| | | | | | 2014/5/16 | Sunny | 22.7 | 0.4 | 19.7 | 0.0 | Dark grayish yellowish green | None | 50 | 21.1 | 12 | 4.4 | <0.74 ± 0.15 | <0.58 ± 0.14 | | |
| | 43 | Kinugawa River | Kinugawa River | Kawashima Bridge | Chikusei City | 2014/8/23 | Sunny | 30.8 | 0.5 | 27.2 | 0.0 | Light grayish reddish yellow | None | 51 | 16.5 | 29 | 7.6 | <0.64 ± 0.12 | <0.62 ± 0.13 | |
| | | | | | | 2014/11/29 | Cloudy | 14.4 | 0.4 | 12.8 | 0.0 | Dark grayish greenish yellow | None | >100 | 19.3 | 4 | 1.9 | <0.63 ± 0.12 | <0.43 ± 0.096 | |
| | | | | | | 2015/2/16 | Sunny | 8.8 | 0.6 | 7.5 | 0.0 | Grayish yellow green | None | 76 | 25.4 | 5 | 1.8 | <0.61 ± 0.14 | <0.71 ± 0.13 | |
| | | | 44 | Kinugawa River | Takishita Bridge | Moriya City | 2014/5/15 | Cloudy | 21.8 | 0.4 | 21.3 | 0.0 | Yellow greenish dark gray | None | 61 | 25.5 | 10 | 3.3 | <0.73 ± 0.16 | <0.62 ± 0.14 |
| | | | | | | | 2014/8/29 | Cloudy | 25.9 | 0.3 | 22.7 | 0.0 | Dark grayish yellow | None | >100 | 23.5 | 5 | 0.9 | <0.59 ± 0.13 | <0.55 ± 0.11 |
| | | | | | | | 2014/11/21 | Sunny | 14.9 | 0.3 | 13.3 | 0.0 | Dark grayish yellow green | None | >100 | 28.9 | 4 | 0.9 | <0.51 ± 0.11 | <0.62 ± 0.094 |
| | 45 | Tagawa River | Tagawa Bridge | Chikusei City | 2015/2/13 | Sunny | 9.5 | 0.4 | 11.0 | 0.0 | Light grayish yellow green | None | 78 | 28.8 | 3 | 1.3 | <0.56 ± 0.13 | <0.71 ± 0.16 | | |
| | | | | | 2014/5/29 | Sunny | 28.4 | 1.3 | 24.3 | 0.0 | Grayish greenish yellow | None | 65 | 19.1 | 13 | 3.4 | <0.56 ± 0.12 | <0.63 ± 0.13 | | |
| | | | | | 2014/8/29 | Cloudy | 25.4 | 0.4 | 24.1 | 0.0 | Dark grayish reddish yellow | None | 58 | 28.1 | 14 | 4.6 | <0.64 ± 0.14 | <0.51 ± 0.14 | | |
| | | | | | 2014/11/21 | Sunny | 14.7 | 0.4 | 13.6 | 0.0 | Dark grayish yellow green | None | >100 | 26.8 | 4 | 1.9 | <0.47 ± 0.11 | <0.62 ± 0.12 | | |
| | | | | | 2015/2/13 | Sunny | 9.0 | 0.4 | 8.4 | 0.0 | Grayish yellow | None | 33 | 26.4 | 12 | 11 | <0.56 ± 0.12 | <0.47 ± 0.10 | | |
| | | | | | 2014/5/16 | Sunny | 22.4 | 0.6 | 20.6 | 0.0 | Dark grayish yellow green | None | 45 | 21.5 | 19 | 9.8 | <0.72 ± 0.17 | <0.64 ± 0.14 | | |
| | 46 | Kokai River | Kuroko Bridge | Chikusei City | 2014/8/23 | Sunny | 29.7 | 1.2 | 28.2 | 0.0 | Grayish yellow | None | 52 | 21.7 | 9 | 0.8 | <0.69 ± 0.16 | <0.56 ± 0.12 | | |
| | | | | | 2014/11/29 | Cloudy | 14.0 | 1.4 | 13.2 | 0.0 | Dark grayish yellow | None | 71 | 21.9 | 13 | 4.3 | <0.65 ± 0.14 | <0.58 ± 0.13 | | |
| | | | | | 2015/2/12 | Sunny | 12.8 | 1.7 | 9.4 | 0.0 | Grayish yellow | None | 55 | 24.0 | 8 | 4.1 | <0.64 ± 0.12 | <0.66 ± 0.11 | | |
| | | | 47 | Yatagawa River | Maruyama Bridge | Toride City | 2014/5/20 | Cloudy | 24.6 | 1.1 | 23.7 | 0.0 | Grayish reddish yellow | None | 37 | 28.6 | 10 | 6.7 | <0.51 ± 0.13 | <0.72 ± 0.16 |
| | | | | | | | 2014/8/23 | Cloudy | 28.7 | 1.2 | 28.1 | 0.0 | Light grayish reddish yellow | None | 40 | 25.2 | 20 | 6.8 | <0.54 ± 0.12 | <0.66 ± 0.16 |
| | | | | | | | 2014/12/5 | Sunny | 13.3 | 1.0 | 11.3 | 0.0 | Dark grayish yellow green | None | 81 | 26.6 | 6 | 2.3 | <0.59 ± 0.11 | <0.58 ± 0.13 |
| | 48 | Kokaigawa River | Yatagawa River | Maruyama Bridge | 2015/2/16 | Sunny | 9.8 | 0.5 | 9.3 | 0.0 | Dark grayish greenish yellow | None | 64 | 28.2 | 13 | 3.6 | <0.50 ± 0.082 | <0.56 ± 0.13 | | |
| 2014/5/20 | | | | | Sunny | 25.9 | 0.5 | 24.6 | 0.0 | Grayish yellow red | None | 45 | 26.6 | 7 | 5.0 | <0.57 ± 0.099 | <0.64 ± 0.16 | | | |
| 2014/8/23 | | | | | Cloudy | 29.1 | 0.5 | 28.1 | 0.0 | Light grayish reddish yellow | None | 56 | 23.5 | 7 | 1.3 | <0.61 ± 0.12 | <0.59 ± 0.14 | | | |
| 49 | | | Nishiyata River | Sakamatsu Bridge | Tsukuba City | 2014/11/29 | Cloudy | 13.8 | 0.2 | 12.6 | 0.0 | Grayish reddish yellow | None | 65 | 33.1 | 8 | 5.3 | <0.52 ± 0.10 | <0.43 ± 0.096 | |
| | | | | | | 2015/2/16 | Sunny | 10.2 | 0.5 | 9.1 | 0.0 | Grayish yellow | None | 84 | 28.0 | 10 | 7.4 | <0.74 ± 0.13 | <0.74 ± 0.15 | |
| | | | | | | 2014/5/29 | Sunny | 25.7 | 0.7 | 24.1 | 0.0 | Dark grayish yellow green | None | 63 | 22.4 | 13 | 3.7 | <0.60 ± 0.13 | <0.52 ± 0.12 | |
| 50 | Inari River | Oguki Bridge | Tsukuba City | 2014/8/28 | Cloudy | 24.8 | 0.5 | 22.4 | 0.0 | Dark grayish yellow red | None | 94 | 18.7 | 5 | 1.0 | <0.54 ± 0.11 | <0.51 ± 0.11 | | | |
| | | | | 2014/12/5 | Sunny | 12.9 | 0.4 | 11.4 | 0.0 | Dark grayish yellow red | None | >100 | 23.2 | 4 | 1.4 | <0.59 ± 0.12 | <0.58 ± 0.12 | | | |
| | | | | 2015/2/6 | Sunny | 13.0 | 0.7 | 8.5 | 0.0 | Grayish greenish yellow | None | 57 | 24.1 | 7 | 2.9 | <0.71 ± 0.16 | <0.57 ± 0.16 | | | |

Ibaraki River (Water) 5/5

| | Location | | | | | Sampling Date | Weather | Air temperature (°C) | Water depth (m) | Water | | | | | | | | | | Remarks |
|----------------------------|----------|-----------------------|----------------|----------------|------------------|---------------|------------|----------------------|-----------------|------------------------|--------------------|-------|------------------------------|-------------------|--------------------------------|-----------|-----------------|--------------------|---------------|--------------|
| | No. | Water area | | Location | Municipality | | | | | General items | | | | | Activity concentration(Bq/L) | | | | | |
| | | | | | | | | | | Water temperature (°C) | Sampling depth (m) | Color | Odor | Transparency (cm) | Electrical conductivity (mS/m) | SS (mg/L) | Turbidity (FNU) | Radioactive cesium | | |
| | | | | | | | | | | | | | | Cs-134 | Cs-137 | | | | | |
| R i v e r s | 51 | Tonegawa River System | Tonegawa River | Tonegawa River | Kurahashi Bridge | Koga City | 2014/5/15 | Cloudy | 24.1 | 0.7 | 17.4 | 0.0 | Greenish dark gray | None | 77 | 13.1 | 8 | 1.7 | <0.61 ± 0.14 | <0.47 ± 0.12 |
| | | | | | | | 2014/8/25 | Cloudy | 25.2 | 0.6 | 24.6 | 0.0 | Grayish yellow | None | 73 | 20.4 | 8 | 0.8 | <0.54 ± 0.12 | <0.55 ± 0.12 |
| | | | | | | | 2014/11/21 | Sunny | 10.8 | 0.3 | 9.7 | 0.0 | Dark grayish yellow | None | 86 | 25.4 | 8 | 4.5 | <0.62 ± 0.12 | <0.60 ± 0.12 |
| | | | | | | | 2015/2/13 | Sunny | 6.1 | 0.4 | 5.7 | 0.0 | Grayish yellow green | None | 85 | 29.8 | 4 | 2.5 | <0.54 ± 0.11 | <0.55 ± 0.14 |
| | | | | | | | 2014/5/16 | Sunny | 23.4 | 0.8 | 20.6 | 0.0 | Dark grayish yellow | None | 60 | 27.6 | 6 | 3.2 | <0.59 ± 0.11 | <0.59 ± 0.13 |
| | 52 | Tonegawa River System | Tonegawa River | Tonegawa River | Fukawa | Tone Town | 2014/8/6 | Sunny | 31.4 | 0.6 | 29.1 | 0.0 | Grayish yellow | None | 82 | 23.2 | 6 | 0.7 | <0.70 ± 0.14 | <0.82 ± 0.16 |
| | | | | | | | 2014/11/27 | Sunny | 14.1 | 0.7 | 11.6 | 0.0 | Dark grayish yellow green | None | 77 | 26.0 | 7 | 4.1 | <0.58 ± 0.11 | <0.58 ± 0.13 |
| | | | | | | | 2015/2/12 | Sunny | 10.7 | 0.8 | 8.4 | 0.0 | Dark grayish yellow green | None | 82 | 25.9 | 7 | 4.6 | <0.73 ± 0.16 | <0.62 ± 0.14 |
| | | | | | | | 2014/5/31 | Sunny | 24.9 | 0.6 | 25.2 | 0.0 | Light grayish reddish yellow | None | 32 | 20.8 | 11 | 6.5 | <0.41 ± 0.096 | <0.51 ± 0.12 |
| | | | | | | | 2014/8/6 | Sunny | 32.1 | 0.2 | 30.2 | 0.0 | Grayish greenish yellow | None | 78 | 29.5 | 5 | 0.8 | <0.58 ± 0.13 | <0.71 ± 0.15 |
| | 53 | Tonegawa River System | Tonegawa River | Tonegawa River | Sawara | Inashiki City | 2014/11/27 | Sunny | 13.8 | 0.4 | 12.5 | 0.0 | Dark grayish yellow red | None | 76 | 33.4 | 6 | 4.4 | <0.58 ± 0.14 | <0.63 ± 0.13 |
| | | | | | | | 2015/2/16 | Sunny | 5.4 | 0.4 | 4.9 | 0.0 | Dark grayish yellow red | None | 42 | 35.8 | 23 | 13 | <0.66 ± 0.12 | <0.56 ± 0.11 |

Ibaraki River (Sediment) 5/5

| R i v e r s | Location | | | | Sampling Date | Weather | Air temperature (°C) | Water depth (m) | Sediment | | | | | | | | | | | | | | | | Remarks | | | |
|----------------------------|-----------------------|-----------------------|------------------|---------------|---------------|------------|----------------------|-----------------|--------------|---------------------------|------------------------|------------------------|-------------|---------------|-----------------------------|-------------|-----------|------|------|--------|--------------------|----------------------|------------------------------|-------------|-------------|-------------------------------------|----------|----|
| | No. | Water area | | Location | | | | | Municipality | Sediment temperature (°C) | Sample length (cm) | Color | Odor | General items | | | | | | | | Sediment content (%) | Density (g/cm ³) | Property | | Activity concentration [Bq/kg(dry)] | | |
| | | Coarse gravel | Medium gravel | | | | | | | | | | | Fine gravel | Grain size distribution (%) | | Fine sand | Silt | Clay | Cs-134 | Radioactive cesium | | | | | | | |
| | | | | | | | | | | | | | | | Coarse sand | Medium sand | | | | | Total | | | | | | | |
| 51 | Tonegawa River System | Tonegawa River | Kurohoshi Bridge | Koga City | 2014/5/15 | Cloudy | 24.1 | 0.7 | 18.3 | 9 | Faint hydrogen sulfide | Faint algae | 0.0 | 0.3 | 1.9 | 14.0 | 27.2 | 34.5 | 12.7 | 9.5 | 68.4 | 2.687 | Sand | 39 ± 5.5 | 110 ± 8.5 | 149 | | |
| | | | | | 2014/8/25 | Cloudy | 25.7 | 0.6 | 23.2 | 4 | Faint hydrogen sulfide | None | 0.0 | 0.0 | 0.9 | 8.9 | 31.2 | 46.9 | 6.3 | 5.8 | 74.8 | 2.748 | Sand | 13 ± 2.5 | 29 ± 4.0 | 42 | | |
| | | | | | 2014/11/21 | Sunny | 10.8 | 0.3 | 9.2 | 4 | Faint hydrogen sulfide | Faint algae | 0.0 | 0.0 | 1.0 | 37.8 | 41.6 | 15.6 | 1.5 | 2.5 | 82.7 | 2.758 | Sand | <6.4 ± 1.9 | 20 ± 3.4 | 20 | | |
| | | | | | 2015/2/13 | Sunny | 6.1 | 0.4 | 6.0 | 3 | Grayish olive | Faint swam | 0.0 | 0.0 | 0.8 | 22.7 | 44.0 | 26.0 | 2.4 | 4.1 | 80.4 | 2.735 | Sand/gravel | 9.9 ± 2.6 | 29 ± 3.5 | 38.9 | | |
| | | | | | 2014/5/16 | Sunny | 23.4 | 0.8 | 19.7 | 5 | Faint hydrogen sulfide | None | 0.0 | 0.3 | 0.2 | 0.2 | 21.0 | 68.6 | 3.2 | 6.7 | 74.1 | 2.789 | Sand | 13 ± 3.3 | 44 ± 5.4 | 57 | | |
| | | | | | 2014/8/6 | Sunny | 31.4 | 0.6 | 27.6 | 4 | Faint hydrogen sulfide | None | 0.0 | 2.4 | 0.9 | 0.3 | 7.0 | 61.5 | 16.0 | 11.5 | 59.0 | 2.663 | Sand/silt | 28 ± 4.3 | 72 ± 7.0 | 100 | | |
| | 52 | Tonegawa River System | Tonegawa River | Fukawa | Tone Town | 2014/11/27 | Sunny | 14.1 | 0.7 | 11.1 | 5 | Faint hydrogen sulfide | None | 0.0 | 0.0 | 0.0 | 0.1 | 0.8 | 21.7 | 53.9 | 23.6 | 61.2 | 2.557 | Silt/sand | 66 ± 7.2 | 170 ± 12 | 236 | |
| | | | | | | 2015/2/12 | Sunny | 10.7 | 0.8 | 8.1 | 4 | Faint hydrogen sulfide | None | 0.0 | 0.0 | 0.2 | 0.2 | 10.6 | 71.3 | 10.7 | 6.9 | 68.6 | 2.697 | Sand | 12 ± 3.1 | 53 ± 5.4 | 65 | |
| | | | | | | 2014/5/31 | Sunny | 24.9 | 0.6 | 27.1 | 7 | Faint hydrogen sulfide | None | 0.0 | 12.5 | 5.1 | 3.4 | 13.0 | 46.8 | 10.1 | 9.2 | 77.4 | 2.682 | Sand | 3.2 ± 0.25 | 11 ± 0.47 | 14.2 | |
| | | | | | | 2014/8/6 | Sunny | 32.1 | 0.2 | 28.2 | 4 | Faint hydrogen sulfide | None | 0.0 | 37.1 | 16.5 | 7.1 | 16.6 | 18.6 | 1.9 | 2.2 | 79.9 | 2.683 | Gravel/sand | <7.8 ± 2.1 | 14 ± 2.8 | 14 | |
| | | | | | | 2014/11/27 | Sunny | 13.8 | 0.4 | 12.0 | 3 | Faint hydrogen sulfide | None | 0.0 | 6.9 | 22.3 | 8.6 | 2.5 | 15.6 | 30.1 | 6.8 | 7.3 | 78.0 | 2.685 | Sand/gravel | 26 ± 4.0 | 64 ± 5.8 | 90 |
| | | | | | | 2015/2/16 | Sunny | 5.4 | 0.4 | 4.8 | 3 | Faint hydrogen sulfide | Faint drain | 3.0 | 23.2 | 20.1 | 11.3 | 25.7 | 13.1 | 1.5 | 2.2 | 87.1 | 2.691 | Sand/gravel | 4.6 ± 1.4 | 15 ± 2.4 | 19.6 | |
| 53 | Tonegawa River System | Tonegawa River | Sawara | Inashiki City | 2014/11/27 | Sunny | 13.8 | 0.4 | 12.0 | 3 | Faint hydrogen sulfide | None | 0.0 | 6.9 | 22.3 | 8.6 | 2.5 | 15.6 | 30.1 | 6.8 | 7.3 | 78.0 | 2.685 | Sand/gravel | 26 ± 4.0 | 64 ± 5.8 | 90 | |
| | | | | | 2015/2/16 | Sunny | 5.4 | 0.4 | 4.8 | 3 | Faint hydrogen sulfide | Faint drain | 3.0 | 23.2 | 20.1 | 11.3 | 25.7 | 13.1 | 1.5 | 2.2 | 87.1 | 2.691 | Sand/gravel | 4.6 ± 1.4 | 15 ± 2.4 | 19.6 | | |

Ibaraki River (Surrounding Environment) 1/5

| Location | | | | Sampling Date | Weather | Air temperature (°C) | Surrounding Environment(Soil,Air dose) | | | | | | | | | | | Remarks | | | | | |
|----------------------------|-----------------------|-----------------------|----------------------------|------------------|------------|----------------------|--|-------------------------------------|-------------|----------------|------------------|------------|---------------------|---------------------|-------------------------------------|-------------|------------|------------------|------------|----------|----------|-----|------|
| | | | | | | | Left bank | | | | | | Right bank | | | | | | | | | | |
| No. | Water area | | Location | Municipality | Color | Odor | Property | Activity concentration [Bq/kg(dry)] | | | Air Dose (μSv/h) | Color | Odor | Property | Activity concentration [Bq/kg(dry)] | | | Air Dose (μSv/h) | | | | | |
| | | | | | | | | Radioactive cesium | | | | | | | Radioactive cesium | | | | | | | | |
| | | | | | | | | Cs-134 | Cs-137 | Total | | | | | Cs-134 | Cs-137 | Total | | | | | | |
| R i v e r s | 1 | Satone River | Yamagoya Bridge | Kitaibaraki City | 2014/5/31 | Sunny | 30.0 | Blackish brown | faint earth | Loamy | 790 ± 30 | 2,100 ± 50 | 2,890 | 0.11 | Blackish brown | faint earth | Loamy | 1,000 ± 34 | 2,700 ± 57 | 3,700 | 0.11 | | |
| | | | | | 2014/8/2 | Sunny | 24.8 | Blackish brown | faint earth | Loamy | 660 ± 24 | 1,800 ± 39 | 2,460 | 0.12 | Blackish brown | faint earth | Loamy | 480 ± 20 | 1,300 ± 33 | 1,780 | 0.11 | | |
| | | | | | 2014/11/13 | Cloudy | 15.4 | Black | faint earth | Loamy | 430 ± 21 | 1,500 ± 40 | 1,930 | 0.17 | Black | faint earth | Loamy | 460 ± 22 | 1,500 ± 40 | 1,960 | 0.17 | | |
| | | | | | 2015/2/5 | Cloudy | 5.8 | Black | None | Loamy | 570 ± 24 | 1,800 ± 44 | 2,370 | 0.21 | Blackish brown | faint earth | Loamy | 290 ± 16 | 990 ± 30 | 1,280 | 0.18 | | |
| | | | | | 2014/5/31 | Sunny | 28.5 | Blackish brown | faint earth | Loamy | 220 ± 16 | 620 ± 27 | 840 | 0.06 | Blackish brown | faint earth | Loamy | 690 ± 31 | 1,900 ± 52 | 2,590 | 0.08 | | |
| | | | | | 2014/8/2 | Sunny | 29.6 | Blackish brown | faint earth | Loamy | 560 ± 25 | 1,700 ± 43 | 2,260 | 0.07 | Blackish brown | faint earth | Loamy | 540 ± 25 | 1,400 ± 40 | 1,940 | 0.10 | | |
| | | | 2014/11/4 | Sunny | 16.9 | Blackish brown | faint earth | Loamy | 150 ± 14 | 520 ± 26 | 670 | 0.13 | Blackish brown | faint earth | Loamy | 680 ± 31 | 2,200 ± 57 | 2,880 | 0.10 | | | | |
| | | | 2015/2/5 | Cloudy | 6.2 | Blackish brown | faint earth | Loamy | 280 ± 17 | 920 ± 31 | 1,200 | 0.11 | Blackish brown | faint earth | Loamy | 520 ± 24 | 1,800 ± 46 | 2,320 | 0.12 | | | | |
| | | | 2014/8/2 | Sunny | 29.9 | Black | None | Loamy | 430 ± 25 | 1,200 ± 42 | 1,630 | 0.07 | Dim yellowish brown | faint earth | Loamy | 170 ± 15 | 470 ± 24 | 640 | 0.08 | | | | |
| | | | 2014/11/13 | Sunny | 31.2 | Blackish brown | faint earth | Loamy | 260 ± 16 | 730 ± 26 | 990 | 0.06 | Blackish brown | faint earth | Loamy | 230 ± 15 | 690 ± 25 | 920 | 0.06 | | | | |
| | | | 3 | Hanazono River | Kurabeishi | Kitaibaraki City | 2014/11/13 | Sunny | 16.1 | Blackish brown | faint earth | Loamy | 340 ± 21 | 1,100 ± 38 | 1,440 | 0.11 | Dark brown | faint earth | Loamy | 210 ± 16 | 600 ± 28 | 810 | 0.13 |
| | | | | | | | 2015/2/5 | Cloudy | 4.4 | Blackish brown | faint earth | Loamy | 190 ± 15 | 630 ± 28 | 820 | 0.12 | Dark brown | faint earth | Loamy | 130 ± 12 | 420 ± 22 | 550 | 0.09 |
| | 2014/5/24 | Sunny | | | | | 18.8 | Blackish brown | faint earth | Loamy | 370 ± 18 | 930 ± 29 | 1,300 | 0.10 | Blackish brown | faint earth | Loamy | 360 ± 18 | 920 ± 29 | 1,280 | 0.13 | | |
| | 2014/8/7 | Sunny | | | | | 26.8 | Blackish brown | faint earth | Loamy | 160 ± 12 | 500 ± 21 | 660 | 0.11 | Dark grayish yellow | faint earth | Loamy | 350 ± 20 | 1,200 ± 37 | 1,550 | 0.17 | | |
| | 2014/12/1 | Cloudy | | | | | 15.2 | Blackish brown | faint earth | Loamy | 280 ± 17 | 850 ± 29 | 1,130 | 0.07 | Dim yellowish brown | Faint grass | Loamy | 250 ± 18 | 840 ± 33 | 1,090 | 0.13 | | |
| | 2015/2/7 | Sunny | | | | | 5.2 | Brown | faint earth | Loamy | 140 ± 12 | 460 ± 21 | 600 | 0.14 | Dark brown | faint earth | Loamy | 250 ± 19 | 910 ± 36 | 1,160 | 0.19 | | |
| | 4 | Tagagawa River System | Isonare Bridge | Takahagi City | 2014/5/31 | Sunny | 28.1 | Dark olive brown | None | Sandy | 35 ± 7.3 | 110 ± 12 | 145 | 0.04 | Blackish brown | None | Sandy | 140 ± 13 | 460 ± 23 | 600 | 0.04 | | |
| | | | | | 2014/8/2 | Sunny | 30.1 | Dim yellowish brown | faint earth | Loamy | 110 ± 12 | 380 ± 21 | 490 | 0.06 | Dark brown | faint earth | Loamy | 76 ± 8.5 | 230 ± 14 | 306 | 0.05 | | |
| | | | | | 2014/11/4 | Sunny | 14.1 | Dim yellowish brown | faint earth | Sandy | 41 ± 8.4 | 130 ± 14 | 171 | 0.07 | Dark brown | faint earth | Loamy | 270 ± 20 | 820 ± 35 | 1,090 | 0.07 | | |
| | | | | | 2015/2/17 | Cloudy | 4.0 | Olive black | Faint grass | Sandy | 42 ± 8.1 | 180 ± 15 | 222 | 0.08 | Dim yellowish brown | faint earth | Loamy | 130 ± 14 | 430 ± 25 | 560 | 0.06 | | |
| | | | | | 2014/5/24 | Sunny | 19.9 | Blackish brown | faint earth | Loamy | 23 ± 5.7 | 88 ± 10 | 111 | 0.08 | Dark brown | faint earth | Loamy | 33 ± 7.9 | 100 ± 11 | 133 | 0.11 | | |
| | | | | | 2014/8/7 | Sunny | 25.6 | Dark brown | faint earth | Loamy | 210 ± 17 | 640 ± 28 | 850 | 0.14 | Dark brown | faint earth | Loamy | 150 ± 11 | 500 ± 20 | 650 | 0.16 | | |
| | 5 | Okita River | Sakai Bridge | Kitaibaraki City | 2014/12/1 | Cloudy | 15.0 | Dark brown | faint earth | Loamy | 180 ± 17 | 560 ± 28 | 740 | 0.09 | Dark brown | faint earth | Loamy | 230 ± 20 | 860 ± 36 | 1,090 | 0.10 | | |
| | | | | | 2015/2/7 | Sunny | 5.8 | Blackish brown | faint earth | Loamy | 150 ± 16 | 500 ± 27 | 650 | 0.13 | Dim yellowish brown | faint earth | Loamy | 220 ± 17 | 700 ± 31 | 920 | 0.16 | | |
| | | | | | 2014/5/24 | Sunny | 21.8 | Blackish brown | Faint grass | Loamy | 47 ± 6.9 | 130 ± 11 | 177 | 0.08 | Blackish brown | Faint grass | Loamy | 44 ± 6.9 | 140 ± 11 | 184 | 0.06 | | |
| | | | | | 2014/8/7 | Sunny | 29.0 | Dark brown | faint earth | Loamy | 170 ± 12 | 490 ± 21 | 660 | 0.11 | Dark grayish yellow | faint earth | Loamy | 260 ± 16 | 820 ± 28 | 1,080 | 0.11 | | |
| | | | | | 2014/11/14 | Sunny | 18.2 | Dark brown | faint earth | Loamy | 46 ± 7.1 | 150 ± 12 | 196 | 0.10 | Dark brown | faint earth | Loamy | 130 ± 12 | 380 ± 20 | 510 | 0.07 | | |
| | | | | | 2015/2/7 | Sunny | 9.0 | Dark brown | faint earth | Loamy | 84 ± 9.9 | 280 ± 17 | 364 | 0.11 | Blackish brown | faint earth | Loamy | 56 ± 7.8 | 220 ± 14 | 276 | 0.11 | | |
| | 6 | Hanunki River | Shinhanunki Bridge | Takahagi City | 2014/5/24 | Sunny | 22.1 | Blackish brown | Faint grass | Loamy | 33 ± 5.5 | 97 ± 8.8 | 130 | 0.09 | Dark brown | faint earth | Loamy | 24 ± 5.7 | 75 ± 7.6 | 99 | 0.08 | | |
| | | | | | 2014/8/5 | Sunny | 33.6 | Dim yellowish brown | Faint grass | Loamy | 94 ± 8.8 | 270 ± 15 | 364 | 0.10 | Dark grayish yellow | None | Sandy | <8.6 ± 2.4 | 22 ± 4.2 | 22 | 0.08 | | |
| 2014/11/6 | | | | | Sunny | 20.4 | Dark brown | faint earth | Loamy | <6.0 ± 1.9 | 8.4 ± 2.3 | 8.4 | 0.10 | Dim yellowish brown | None | Sandy | <4.7 ± 1.6 | 7.7 ± 2.2 | 7.7 | 0.09 | | | |
| 2015/2/2 | | | | | Sunny | 6.1 | Blackish brown | None | Loamy | 41 ± 6.2 | 140 ± 11 | 181 | 0.10 | Blackish brown | None | Sandy | 67 ± 6.9 | 220 ± 13 | 287 | 0.09 | | | |
| 2014/5/24 | | | | | Sunny | 23.4 | Dark brown | faint earth | Loamy | 82 ± 10 | 230 ± 15 | 312 | 0.08 | Dim yellowish brown | faint earth | Loamy | 110 ± 11 | 300 ± 16 | 410 | 0.09 | | | |
| 2014/8/5 | | | | | Sunny | 32.3 | Dark brown | faint earth | Loamy | 170 ± 14 | 480 ± 22 | 650 | 0.09 | Dark brown | faint earth | Loamy | 150 ± 11 | 420 ± 20 | 570 | 0.09 | | | |
| 7 | Kujigawa River System | Kujigawa River | Hitachi City/Tokai Village | 2014/11/6 | Cloudy | 17.1 | Dark brown | faint earth | Loamy | 90 ± 12 | 310 ± 20 | 400 | 0.09 | Dim yellowish brown | faint earth | Loamy | 26 ± 2.8 | 73 ± 4.8 | 99 | 0.09 | | | |
| | | | | 2015/2/9 | Sunny | 7.0 | Yellowish brown | faint earth | Loamy | 11 ± 2.1 | 32 ± 3.4 | 43 | 0.12 | Olive black | faint earth | Loamy | 22 ± 5.0 | 77 ± 9.8 | 99 | 0.11 | | | |
| | | | | 2014/5/23 | Cloudy | 13.8 | Blackish brown | faint earth | Loamy | 17 ± 4.2 | 47 ± 6.1 | 64 | 0.08 | Blackish brown | faint earth | Loamy | 5.1 ± 1.6 | 16 ± 2.7 | 21.1 | 0.08 | | | |
| | | | | 2014/8/22 | Sunny | 30.4 | Blackish brown | faint earth | Loamy | 190 ± 17 | 530 ± 29 | 720 | 0.09 | Dim yellowish brown | Faint grass | Sandy | <4.9 ± 1.3 | 9.0 ± 1.7 | 9.0 | 0.10 | | | |
| | | | | 2014/11/17 | Cloudy | 14.8 | Dark brown | faint earth | Loamy | 100 ± 10 | 340 ± 19 | 440 | 0.09 | Dark brown | None | Sandy | <4.4 ± 1.4 | 9.9 ± 2.4 | 9.9 | 0.09 | | | |
| | | | | 2015/2/9 | Sunny | 1.5 | Dim yellowish brown | faint earth | Loamy | 30 ± 7.1 | 110 ± 11 | 140 | 0.09 | Olive black | faint earth | Loamy | <5.1 ± 1.7 | 18 ± 2.4 | 18 | 0.06 | | | |
| 8 | Nakagawa River System | Nakagawa River | Mito City | 2014/5/23 | Cloudy | 19.0 | Dark brown | Faint grass | Loamy | 110 ± 12 | 320 ± 20 | 430 | 0.08 | Dark brown | faint earth | Loamy | 180 ± 15 | 490 ± 24 | 670 | 0.08 | | | |
| | | | | 2014/8/22 | Sunny | 32.4 | Dark brown | faint earth | Loamy | 49 ± 8.4 | 170 ± 14 | 219 | 0.08 | Dark brown | faint earth | Loamy | 130 ± 13 | 360 ± 22 | 490 | 0.09 | | | |
| | | | | 2014/11/17 | Sunny | 15.2 | Dark brown | faint earth | Loamy | 64 ± 8.1 | 200 ± 14 | 264 | 0.08 | Dark brown | None | Loamy | 44 ± 7.4 | 150 ± 13 | 194 | 0.09 | | | |
| | | | | 2015/2/9 | Sunny | 5.5 | Brown | faint earth | Loamy | 18 ± 2.5 | 52 ± 3.9 | 70 | 0.07 | Brown | faint earth | Loamy | 51 ± 10 | 290 ± 20 | 341 | 0.11 | | | |

Ibaraki River (Surrounding Environment) 5/5

| Location | | | | Sampling Date | Weather | Air temperature (°C) | Surrounding Environment(Soil,Air,dose) | | | | | | | | | | | Remarks | | | | |
|----------------------------|-----------------------|-----------------------|----------------|------------------|------------|----------------------|--|---------------------|-------------------------------------|-------------|----------|------------------|------------|------|------------|-------------------------------------|-------------|----------|------------------|------------|------|------|
| No. | Water area | | Location | | | | Municipality | Left bank | | | | | Right bank | | | | | | | | | |
| | Color | Odor | | | | | | Property | Activity concentration [Bq/kg(dry)] | | | Air Dose (µSv/h) | Color | Odor | Property | Activity concentration [Bq/kg(dry)] | | | Air Dose (µSv/h) | | | |
| | | | | | | | | | Radioactive cesium | | | | | | | Radioactive cesium | | | | | | |
| | | | Cs-134 | Cs-137 | Total | | | | Cs-134 | Cs-137 | Total | | | | | | | | | | | |
| R i v e r s | 51 | Tonegawa River System | Tonegawa River | Kuribashi Bridge | Koga City | 2014/5/15 | Cloudy | 24.1 | Dark brown | Faint grass | Sandy | <6.5 ± 1.8 | <9.7 ± 2.8 | - | 0.05 | Dark brown | Faint grass | Sandy | 32 ± 6.6 | 110 ± 11 | 142 | 0.06 |
| | | | | | | 2014/8/25 | Cloudy | 25.2 | Blackish brown | faint earth | Loamy | <4.2 ± 1.3 | <4.6 ± 1.5 | - | 0.05 | Dark brown | faint earth | Loamy | 100 ± 13 | 330 ± 22 | 430 | 0.05 |
| | | | | | | 2014/11/21 | Sunny | 10.8 | Brown | faint earth | Loamy | <5.4 ± 1.6 | 7.4 ± 1.8 | 7.4 | 0.05 | Dark brown | faint earth | Loamy | 39 ± 10 | 140 ± 15 | 179 | 0.06 |
| | | | | | | 2015/2/13 | Sunny | 6.1 | Brown | faint earth | Loamy | <6.1 ± 1.8 | <6.4 ± 2.0 | - | 0.06 | Dark brown | faint earth | Loamy | 17 ± 2.6 | 50 ± 4.1 | 67 | 0.07 |
| | | | | | | 2014/5/16 | Sunny | 23.4 | Blackish brown | faint earth | Loamy | 130 ± 12 | 360 ± 21 | 490 | 0.09 | Faint hydrogen sulfate | faint earth | Loamy | 52 ± 7.4 | 150 ± 13 | 202 | 0.06 |
| | | | | | | 2014/8/6 | Sunny | 31.4 | Blackish brown | None | Loamy | 140 ± 12 | 410 ± 20 | 550 | 0.10 | Dark grayish yellow | None | Loamy | 62 ± 8.5 | 170 ± 13 | 232 | 0.06 |
| | 52 | Tonegawa River System | Tonegawa River | Fukawa | Tone Town | 2014/11/27 | Sunny | 14.1 | Dark brown | faint earth | Loamy | 100 ± 12 | 340 ± 21 | 440 | 0.09 | Dark brown | faint earth | Loamy | 8.7 ± 1.8 | 21 ± 2.7 | 29.7 | 0.08 |
| | | | | | | 2015/2/12 | Sunny | 10.7 | Dark brown | faint earth | Loamy | 170 ± 6.8 | 610 ± 13 | 780 | 0.12 | Blackish brown | faint earth | Loamy | 19 ± 3.2 | 69 ± 5.2 | 88 | 0.08 |
| | | | | | | 2014/5/31 | Sunny | 24.9 | Brown | faint earth | Loamy | 13 ± 2.6 | 43 ± 3.8 | 56 | 0.06 | Blackish brown | faint earth | Loamy | <8.7 ± 2.0 | <8.7 ± 2.3 | - | 0.06 |
| | | | | | | 2014/8/6 | Sunny | 32.1 | Dark grayish yellow | faint earth | Loamy | 34 ± 6.8 | 100 ± 10 | 134 | 0.07 | Dark grayish yellow | faint earth | Sandy | <5.6 ± 1.6 | 9.4 ± 2.1 | 9.4 | 0.07 |
| | | | | | | 2014/11/27 | Sunny | 13.8 | Dim yellowish brown | faint earth | Loamy | 25 ± 6.8 | 80 ± 10 | 105 | 0.07 | Dark brown | faint earth | Loamy | 11 ± 1.9 | 32 ± 2.7 | 43 | 0.07 |
| | | | | | | 2015/2/16 | Sunny | 5.4 | Dark brown | faint earth | Loamy | 28 ± 6.9 | 110 ± 13 | 138 | 0.06 | Dark brown | faint earth | Loamy | 12 ± 2.3 | 36 ± 3.9 | 48 | 0.07 |
| 53 | Tonegawa River System | Tonegawa River | Sawara | Inashiki City | 2014/11/27 | Sunny | 13.8 | Dim yellowish brown | faint earth | Loamy | 25 ± 6.8 | 80 ± 10 | 105 | 0.07 | Dark brown | faint earth | Loamy | 11 ± 1.9 | 32 ± 2.7 | 43 | 0.07 | |
| | | | | | 2015/2/16 | Sunny | 5.4 | Dark brown | faint earth | Loamy | 28 ± 6.9 | 110 ± 13 | 138 | 0.06 | Dark brown | faint earth | Loamy | 12 ± 2.3 | 36 ± 3.9 | 48 | 0.07 | |

Ibaraki Lakes and Reservoirs (Water) 1/4

| Location | | | | Sampling Date | Weather | Air temperature (°C) | Water depth (m) | Water | | | | | | | | | | Remarks |
|--|------------------|-------------------------|---------------|---------------|-----------|----------------------|-----------------|------------------------|--------------------|------------------------------|---------------------|-----------------------|--------------------------------|------------------------------|-----------------|--------------------|---------------|--------------|
| No. | Water area | Location | | | | | | General items | | | | | | Activity concentration(Bq/L) | | | | |
| | | | | | | | | Water temperature (°C) | Sampling depth (m) | Color | Odor | Secchi disk depth (m) | Electrical conductivity (mS/m) | SS (mg/L) | Turbidity (FNU) | Radioactive cesium | | |
| | | | | | | | | | | | | | Cs-134 | Cs-137 | | | | |
| L a k e s a n d R e s e r v o i r s | 54 | Hiroura | Surface layer | 2014/5/19 | Cloudy | 20.1 | 2.5 | 21.3 | 0.5 | Soft yellow | None | 0.5 | 1,270.0 | 23 | 17 | <0.55 ± 0.13 | <0.64 ± 0.12 | |
| | | | Deep layer | | | | | 20.6 | 1.5 | - | None | | 1,709.0 | 23 | 11 | <0.55 ± 0.14 | <0.56 ± 0.10 | |
| | | | Surface layer | 2014/8/8 | Cloudy | 31.8 | 2.5 | 30.6 | 0.5 | Grayish yellow | None | 0.7 | 1,350.0 | 3 | 2.5 | <0.57 ± 0.12 | <0.59 ± 0.15 | |
| | | | Deep layer | | | | | 29.7 | 1.5 | - | None | | 1,430.0 | 5 | 2.0 | <0.48 ± 0.10 | <0.59 ± 0.10 | |
| | | | Surface layer | 2014/1/7 | Sunny | 18.5 | 2.7 | 17.4 | 0.5 | Dark grayish yellow | None | 1.0 | 1,340.0 | 10 | 7.7 | <0.82 ± 0.18 | <0.65 ± 0.15 | |
| | | | Deep layer | | | | | 17.1 | 1.7 | - | None | | 1,370.0 | 10 | 7.9 | <0.74 ± 0.15 | <0.60 ± 0.13 | |
| | 55 | Hinuma | Miyamac | Surface layer | 2015/2/20 | Sunny | 9.0 | 2.6 | 6.6 | 0.5 | Dark grayish yellow | None | 1.1 | 1,480.0 | 5 | 7.2 | <0.43 ± 0.13 | <0.65 ± 0.14 |
| | | | | Deep layer | | | | | 6.5 | 1.6 | - | None | | 1,520.0 | 8 | 6.7 | <0.50 ± 0.11 | <0.60 ± 0.13 |
| | | | | Surface layer | 2014/5/19 | Cloudy | 20.3 | 3.2 | 21.2 | 0.5 | Soft yellow | None | 0.5 | 1,156.0 | 21 | 19 | <0.74 ± 0.15 | <0.63 ± 0.15 |
| | | | | Deep layer | | | | | 20.3 | 2.2 | - | None | | 1,623.0 | 14 | 6.2 | <0.74 ± 0.14 | <0.63 ± 0.15 |
| | | | | Surface layer | 2014/8/8 | Cloudy | 31.8 | 3.4 | 31.2 | 0.5 | Grayish yellow | None | 0.7 | 1,370.0 | 2 | 2.0 | <0.45 ± 0.10 | <0.52 ± 0.12 |
| | | | | Deep layer | | | | | 30.7 | 2.4 | - | None | | 1,370.0 | 2 | 1.7 | <0.53 ± 0.14 | <0.55 ± 0.14 |
| | 56 | Oyazawa | | Surface layer | 2014/1/7 | Sunny | 18.1 | 3.2 | 16.8 | 0.5 | Dark grayish yellow | None | 1.0 | 1,370.0 | 10 | 8.1 | <0.61 ± 0.12 | <0.50 ± 0.11 |
| | | | | Deep layer | | | | | 16.6 | 2.2 | - | None | | 1,380.0 | 10 | 7.5 | <0.63 ± 0.11 | <0.66 ± 0.15 |
| | | | | Surface layer | 2015/2/20 | Sunny | 8.9 | 3.3 | 6.7 | 0.5 | Dark grayish yellow | None | 1.1 | 1,160.0 | 7 | 7.7 | <0.48 ± 0.096 | <0.59 ± 0.11 |
| | | | | Deep layer | | | | | 6.3 | 2.3 | - | None | | 1,290.0 | 6 | 7.7 | <0.54 ± 0.12 | <0.59 ± 0.12 |
| | | | | Surface layer | 2014/5/19 | Cloudy | 19.8 | 2.5 | 22.0 | 0.5 | Soft yellow | None | 0.4 | 850.0 | 36 | 30 | <0.69 ± 0.16 | <0.51 ± 0.16 |
| | | | | Deep layer | | | | | 21.9 | 1.5 | - | None | | 859.0 | 32 | 29 | <0.79 ± 0.17 | <0.80 ± 0.17 |
| | 57 | Offshore of Tamatsukuri | | Surface layer | 2014/8/8 | Cloudy | 31.7 | 2.4 | 31.3 | 0.5 | Grayish yellow | None | 0.6 | 1,260.0 | 4 | 1.9 | <0.53 ± 0.11 | <0.71 ± 0.17 |
| | | | | Deep layer | | | | | 29.6 | 1.4 | - | None | | 1,350.0 | 3 | 1.9 | <0.47 ± 0.10 | <0.59 ± 0.15 |
| | | | | Surface layer | 2014/1/7 | Sunny | 18.2 | 2.5 | 16.9 | 0.5 | Dark grayish yellow | None | 0.9 | 1,400.0 | 13 | 9.7 | <0.59 ± 0.15 | <0.63 ± 0.16 |
| | | | | Deep layer | | | | | 16.7 | 1.5 | - | None | | 1,720.0 | 14 | 11 | <0.61 ± 0.12 | <0.63 ± 0.11 |
| | | | | Surface layer | 2015/2/20 | Sunny | 8.8 | 2.3 | 8.0 | 0.5 | Dark grayish yellow | None | 1.2 | 899.0 | 8 | 9.0 | <0.69 ± 0.15 | <0.75 ± 0.16 |
| | | | | Deep layer | | | | | 7.9 | 1.3 | - | None | | 919.0 | 7 | 8.4 | <0.64 ± 0.11 | <0.66 ± 0.13 |
| 58 | Lake Kasumigaura | Offshore of Kakeuma | Surface layer | 2014/5/14 | Sunny | 26.2 | 6.6 | 21.1 | 0.5 | Dark yellow green | None | 0.6 | 9.9 | 19 | 12 | <0.48 ± 0.13 | <0.76 ± 0.14 | |
| | | | Deep layer | | | | | 18.8 | 5.6 | - | None | | 10.8 | 25 | 18 | <0.73 ± 0.12 | <0.68 ± 0.15 | |
| | | | Surface layer | 2014/8/13 | Sunny | 31.1 | 6.5 | 28.8 | 0.5 | Greenish yellowish dark gray | None | 0.5 | 25.3 | 18 | 4.4 | <0.52 ± 0.12 | <0.63 ± 0.15 | |
| | | | Deep layer | | | | | 27.2 | 5.5 | - | None | | 26.1 | 22 | 6.0 | <0.52 ± 0.090 | <0.52 ± 0.095 | |
| | | | Surface layer | 2014/1/5 | Cloudy | 16.1 | 6.5 | 16.6 | 0.5 | Dark grayish yellow green | None | 0.8 | 9.6 | 12 | 12 | <0.64 ± 0.13 | <0.55 ± 0.13 | |
| | | | Deep layer | | | | | 16.4 | 5.5 | - | None | | 7.7 | 18 | 14 | <0.64 ± 0.13 | <0.52 ± 0.10 | |
| 59 | Center | | Surface layer | 2015/2/4 | Sunny | 8.2 | 6.9 | 6.3 | 0.5 | Dark grayish yellow green | None | 1.0 | 26.0 | 6 | 6.2 | <0.59 ± 0.12 | <0.63 ± 0.14 | |
| | | | Deep layer | | | | | 5.4 | 5.9 | - | None | | 27.1 | 6 | 7.0 | <0.56 ± 0.11 | <0.58 ± 0.14 | |
| | | | Surface layer | 2014/5/14 | Sunny | 26.1 | 2.1 | 20.7 | 0.5 | Dark yellow green | None | 0.7 | 25.4 | 25 | 19 | <0.75 ± 0.15 | <0.68 ± 0.14 | |
| | | | Deep layer | | | | | 20.2 | 1.1 | - | None | | 25.4 | 22 | 18 | <0.59 ± 0.12 | <0.63 ± 0.15 | |
| | | | Surface layer | 2014/8/13 | Sunny | 29.9 | 2.0 | 28.4 | 0.5 | Yellow greenish dark gray | None | 0.5 | 26.0 | 20 | 6.0 | <0.50 ± 0.094 | <0.55 ± 0.092 | |
| | | | Deep layer | | | | | 28.0 | 1.0 | - | None | | 25.9 | 19 | 5.5 | <0.48 ± 0.093 | <0.63 ± 0.15 | |
| 59 | Center | | Surface layer | 2014/1/5 | Cloudy | 14.9 | 2.2 | 15.7 | 0.5 | Dark grayish yellow green | None | 0.7 | 8.4 | 17 | 14 | <0.45 ± 0.089 | <0.52 ± 0.095 | |
| | | | Deep layer | | | | | 15.9 | 1.2 | - | None | | 8.5 | 13 | 14 | <0.67 ± 0.13 | <0.65 ± 0.13 | |
| | | | Surface layer | 2015/2/4 | Sunny | 7.9 | 2.4 | 5.3 | 0.5 | Dark grayish yellow green | None | 0.9 | 26.5 | 7 | 6.7 | <0.48 ± 0.098 | <0.83 ± 0.18 | |
| | | | Deep layer | | | | | 5.4 | 1.4 | - | None | | 26.7 | 7 | 6.7 | <0.65 ± 0.13 | <0.72 ± 0.15 | |
| | | | Surface layer | 2014/5/14 | Sunny | 24.0 | 6.2 | 20.0 | 0.5 | Deep green | None | 0.8 | 27.3 | 18 | 14 | <0.62 ± 0.13 | <0.72 ± 0.16 | |
| | | | Deep layer | | | | | 19.1 | 5.2 | - | None | | 24.7 | 24 | 16 | <0.62 ± 0.12 | <0.58 ± 0.11 | |
| 59 | Center | | Surface layer | 2014/8/13 | Sunny | 25.8 | 6.3 | 27.4 | 0.5 | Yellowish dark gray | None | 0.7 | 7.7 | 15 | 3.9 | <0.45 ± 0.095 | <0.71 ± 0.15 | |
| | | | Deep layer | | | | | 26.9 | 5.3 | - | None | | 9.2 | 22 | 3.8 | <0.64 ± 0.12 | <0.52 ± 0.077 | |
| | | | Surface layer | 2014/1/5 | Cloudy | 14.8 | 5.5 | 16.6 | 0.5 | Dull yellow green | None | 0.8 | 25.8 | 14 | 12 | <0.57 ± 0.13 | <0.55 ± 0.12 | |
| | | | Deep layer | | | | | 16.6 | 4.5 | - | None | | 25.6 | 16 | 12 | <0.58 ± 0.13 | <0.63 ± 0.13 | |
| | | | Surface layer | 2015/2/4 | Sunny | 7.0 | 6.3 | 5.3 | 0.5 | Dull yellow green | None | 1.0 | 26.3 | 8 | 7.7 | <0.42 ± 0.065 | <0.63 ± 0.15 | |
| | | | Deep layer | | | | | 5.1 | 5.3 | - | None | | 26.7 | 8 | 8.6 | <0.70 ± 0.14 | <0.76 ± 0.19 | |

Ibaraki Lakes and Reservoirs (Water) 2/4

| No. | Location | | Sampling Date | Weather | Air temperature (°C) | Water depth (m) | Water | | | | | | | | | | Remarks | |
|---------------|---------------------------|--------------------|--------------------|---------------|----------------------|-----------------|------------------------|--------------------|---------------------------|------------------------------|------------------------------|--------------------------------|--------------|-----------------|--------------------|---------------|---------------|---------------|
| | Water area | Location | | | | | General items | | | | | Activity concentration(Bq/L) | | | | | | |
| | | | | | | | Water temperature (°C) | Sampling depth (m) | Color | Odor | Secchi disk depth (m) | Electrical conductivity (mS/m) | SS (mg/L) | Turbidity (FNU) | Radioactive cesium | | | |
| | | | | 21.0 | 0.5 | Deep green | None | 0.8 | 28.8 | 17 | 14 | <0.52 ± 0.064 | <0.76 ± 0.15 | | | | | |
| 60 | Lake Kasumigaura | Offshore of Aso | Surface layer | 2014/5/14 | Sunny | 22.0 | 2.2 | 19.9 | 1.2 | - | None | 0.6 | 28.3 | 19 | 13 | <0.65 ± 0.15 | <0.80 ± 0.16 | |
| | | | Deep layer | 2014/8/13 | Sunny | 29.6 | 2.3 | 27.7 | 0.5 | Greenish yellowish dark gray | None | 0.6 | 7.3 | 18 | 4.3 | <0.43 ± 0.094 | <0.62 ± 0.14 | |
| | | | Surface layer | 2014/11/5 | Cloudy | 13.2 | 2.4 | 27.0 | 1.3 | - | None | 0.6 | 5.7 | 19 | 3.5 | <0.59 ± 0.12 | <0.51 ± 0.15 | |
| | | | Deep layer | 2015/2/4 | Sunny | 2.9 | 2.5 | 16.3 | 0.5 | Dull yellow green | None | 1.1 | 30.0 | 13 | 11 | <0.69 ± 0.14 | <0.56 ± 0.12 | |
| | | | Surface layer | | | | | 16.3 | 1.4 | - | None | | 29.8 | 12 | 12 | <0.69 ± 0.12 | <0.74 ± 0.18 | |
| | | | Deep layer | | | | | 5.6 | 0.5 | Dull yellow green | None | | 36.0 | 9 | 9.4 | <0.56 ± 0.085 | <0.58 ± 0.14 | |
| | 61 | Lake Kitaura | Offshore of Kamaya | Surface layer | 2014/5/14 | Sunny | 26.8 | 7.1 | 19.0 | 6.1 | Dark grayish yellow green | None | 0.7 | 27.0 | 12 | 6.9 | <0.65 ± 0.13 | <0.43 ± 0.12 |
| | | | | Deep layer | 2014/8/13 | Sunny | 31.6 | 6.7 | 28.3 | 0.5 | Deep yellow green | None | 0.4 | 25.1 | 18 | 3.8 | <0.50 ± 0.11 | <0.59 ± 0.12 |
| | | | | Surface layer | 2014/11/5 | Cloudy | 17.3 | 6.8 | 28.0 | 5.7 | - | None | 0.8 | 25.3 | 29 | 14 | <0.69 ± 0.14 | <0.62 ± 0.13 |
| | | | | Deep layer | 2015/2/4 | Sunny | 8.8 | 7.1 | 17.4 | 0.5 | Dark grayish yellow green | None | 1.1 | 25.3 | 12 | 9.0 | <0.62 ± 0.12 | <0.58 ± 0.11 |
| | | | | Surface layer | | | | | 6.4 | 5.8 | - | None | | 25.3 | 13 | 8.7 | <0.62 ± 0.12 | <0.87 ± 0.17 |
| | | | | Deep layer | | | | | 17.3 | 0.5 | Deep greenish yellow | None | | 28.7 | 9 | 6.8 | <0.70 ± 0.17 | <0.51 ± 0.13 |
| | | 62 | Jingu Bridge | Surface layer | 2014/5/14 | Sunny | 27.2 | 2.6 | 20.1 | 0.5 | Dark yellow | None | 0.6 | 40.7 | 26 | 18 | <0.54 ± 0.12 | <0.45 ± 0.073 |
| | | | | Deep layer | 2014/8/13 | Sunny | 32.1 | 2.7 | 20.1 | 1.6 | - | None | 0.4 | 41.0 | 26 | 16 | <0.59 ± 0.14 | <0.62 ± 0.12 |
| | | | | Surface layer | 2014/11/5 | Cloudy | 17.1 | 2.9 | 27.9 | 0.5 | Dark greenish yellow | None | 0.5 | 26.2 | 21 | 4.6 | <0.36 ± 0.082 | <0.62 ± 0.14 |
| | | | | Deep layer | 2015/2/4 | Sunny | 7.8 | 2.9 | 27.5 | 1.7 | - | None | 0.9 | 26.4 | 22 | 4.8 | <0.47 ± 0.12 | <0.62 ± 0.12 |
| | | | | Surface layer | | | | | 16.9 | 0.5 | Dark grayish greenish yellow | None | | 32.8 | 23 | 19 | <0.52 ± 0.11 | <0.63 ± 0.16 |
| | | | | Deep layer | | | | | 16.9 | 1.9 | - | None | | 32.4 | 21 | 19 | <0.63 ± 0.13 | <0.62 ± 0.12 |
| 63 | | Lake Sotonasakaura | Surface layer | 2014/5/14 | Sunny | 22.1 | 2.6 | 19.9 | 0.5 | Dull yellow green | None | 0.8 | 42.1 | 17 | 9.2 | <0.56 ± 0.13 | <0.74 ± 0.16 | |
| | | | Deep layer | 2014/8/13 | Sunny | 32.2 | 3.4 | 19.8 | 1.6 | - | None | 0.9 | 41.8 | 17 | 10 | <0.52 ± 0.12 | <0.63 ± 0.10 | |
| | | | Surface layer | 2014/11/5 | Cloudy | 16.7 | 3.0 | 28.8 | 0.5 | Greenish yellowish dark gray | None | 1.0 | 11.2 | 10 | 1.9 | <0.54 ± 0.097 | <0.55 ± 0.11 | |
| | | | Deep layer | 2015/2/4 | Sunny | 7.1 | 2.7 | 27.0 | 2.4 | - | None | 0.6 | 10.2 | 16 | 3.3 | <0.68 ± 0.15 | <0.60 ± 0.15 | |
| | | | Surface layer | | | | | 17.0 | 0.5 | Dull yellow green | None | | 37.5 | 16 | 12 | <0.59 ± 0.12 | <0.65 ± 0.13 | |
| | | | Deep layer | | | | | 17.0 | 2.0 | - | None | | 37.5 | 14 | 12 | <0.56 ± 0.12 | <0.62 ± 0.14 | |
| | 64 | Ibiku | Surface layer | 2014/5/14 | Sunny | 20.9 | 5.1 | 6.3 | 0.5 | Dull yellow green | None | 1.0 | 14.4 | 8 | 8.1 | <0.48 ± 0.096 | <0.68 ± 0.14 | |
| | | | Deep layer | 2014/8/13 | Sunny | 32.2 | 5.0 | 6.2 | 1.7 | - | None | 0.7 | 16.2 | 8 | 7.9 | <0.51 ± 0.11 | <0.59 ± 0.14 | |
| | | | Surface layer | 2014/11/5 | Cloudy | 16.9 | 5.3 | 20.1 | 0.5 | Dark grayish greenish yellow | None | 0.5 | 40.1 | 14 | 4.8 | <0.51 ± 0.10 | <0.59 ± 0.14 | |
| | | | Deep layer | 2015/2/4 | Sunny | 7.4 | 5.2 | 19.8 | 4.1 | - | None | 0.9 | 40.4 | 13 | 7.8 | <0.67 ± 0.12 | <0.71 ± 0.13 | |
| | | | Surface layer | | | | | 28.2 | 0.5 | Dark greenish yellow | None | | 34.9 | 13 | 2.7 | <0.64 ± 0.14 | <0.60 ± 0.095 | |
| | | | Deep layer | | | | | 27.9 | 4.0 | - | None | | 35.1 | 21 | 9.9 | <0.42 ± 0.084 | <0.60 ± 0.14 | |
| 65 | Center of Lake Ushikunuma | Surface layer | 2014/5/20 | Sunny | 24.2 | 1.9 | 17.1 | 0.5 | Dark grayish yellow green | None | 0.9 | 35.8 | 11 | 8.3 | <0.51 ± 0.083 | <0.62 ± 0.10 | | |
| | | Deep layer | 2014/8/20 | Sunny | 32.6 | 1.9 | 17.2 | 4.3 | - | None | 0.9 | 35.9 | 12 | 7.7 | <0.63 ± 0.14 | <0.47 ± 0.096 | | |
| | | Surface layer | 2014/11/12 | Cloudy | 15.6 | 2.0 | 6.7 | 0.5 | Deep yellow | None | 0.5 | 45.3 | 8 | 7.5 | <0.65 ± 0.14 | <0.55 ± 0.12 | | |
| | | Deep layer | 2015/2/12 | Sunny | 10.7 | 1.9 | 4.2 | 0.5 | - | None | 0.6 | 46.7 | 8 | 7.5 | <0.46 ± 0.070 | <0.63 ± 0.13 | | |
| | | Surface layer | | | | | 22.5 | 0.5 | Grayish yellow | None | | 26.9 | 22 | 10 | <0.68 ± 0.14 | <0.58 ± 0.14 | | |
| | | Deep layer | | | | | 22.3 | 0.9 | - | None | | 26.6 | 23 | 12 | <0.77 ± 0.15 | <0.63 ± 0.14 | | |
| | | Surface layer | | | | | 30.4 | 0.5 | Grayish yellow | None | 0.4 | 21.0 | 15 | 3.9 | <0.42 ± 0.079 | <0.74 ± 0.13 | | |
| | | Deep layer | | | | | 29.8 | 0.9 | - | None | | 21.6 | 16 | 5.1 | <0.61 ± 0.11 | <0.71 ± 0.15 | | |
| | | Surface layer | | | | | 14.7 | 0.5 | Grayish yellow | None | 0.3 | 22.7 | 16 | 9.6 | <0.62 ± 0.14 | <0.57 ± 0.13 | | |
| | | Deep layer | | | | | 14.4 | 1.0 | - | None | | 22.9 | 16 | 9.6 | <0.49 ± 0.11 | <0.70 ± 0.18 | | |
| Surface layer | | | | | 6.6 | 0.5 | Grayish yellow | None | 0.6 | 25.5 | 10 | 8.0 | <0.61 ± 0.14 | <0.59 ± 0.12 | | | | |
| Deep layer | | | | | 6.1 | 0.9 | - | None | | 24.6 | 10 | 8.2 | <0.56 ± 0.12 | <0.73 ± 0.17 | | | | |

Ibaraki Lakes and Reservoirs (Water) 3/4

| Location | | | | Sampling Date | Weather | Air temperature (°C) | Water depth (m) | Water | | | | | | | | | | Remarks | |
|---|------------|--------------|------------------------|---------------|---------------|----------------------|-----------------|--------------------|-------|------------------------------|-----------------------------|--------------------------------|-----------|-----------------|--------------------|-----|---------------|---------------|---------------|
| No. | Water area | Location | General items | | | | | | | Activity concentration(Bq/L) | | | | | | | | | |
| | | | Water temperature (°C) | | | | | Sampling depth (m) | Color | Odor | Secchi disk depth (m) | Electrical conductivity (mS/m) | SS (mg/L) | Turbidity (FNU) | Radioactive cesium | | | | |
| | | | | | | | | | | | | | Cs-134 | Cs-137 | | | | | |
| L a k e s R e s e r v o i r s | 66 | Mizunuma Dam | Center | Surface layer | 2014/5/29 | Sunny | 22.1 | 15.3 | 18.7 | 0.5 | Grayish reddish yellow | None | 1.5 | 5.4 | 2 | 1.2 | <0.56 ± 0.12 | <0.41 ± 0.051 | |
| | | | | Deep layer | | | | | 13.1 | 14.3 | - | None | | 5.9 | 2 | 1.1 | <0.56 ± 0.12 | <0.69 ± 0.13 | |
| | | | | Surface layer | 2014/8/1 | Sunny | 31.3 | 12.5 | 22.3 | 0.5 | Dark grayish reddish yellow | None | 1.9 | 5.9 | 2 | 0.3 | <0.67 ± 0.14 | <0.62 ± 0.13 | |
| | | | | Deep layer | | | | | 20.1 | 11.5 | - | None | | 5.9 | 4 | 0.4 | <0.67 ± 0.14 | <0.71 ± 0.14 | |
| | | | | Surface layer | 2014/11/13 | Sunny | 14.8 | 20.1 | 12.3 | 0.5 | Dark grayish yellow green | None | 1.7 | 6.3 | <1 | 0.7 | <0.49 ± 0.12 | <0.60 ± 0.12 | |
| | | | | Deep layer | | | | | 9.6 | 19.1 | - | None | | 7.1 | <1 | 0.7 | <0.56 ± 0.14 | <0.48 ± 0.088 | |
| | 67 | Koyama Dam | Center | Center | Surface layer | 2014/5/29 | Sunny | 23.8 | 15.8 | 22.3 | 0.5 | Dark grayish yellow | None | 1.8 | 6.3 | 2 | 1.9 | <0.61 ± 0.13 | <0.55 ± 0.12 |
| | | | | | Deep layer | | | | | 9.1 | 14.8 | - | None | | 6.3 | 2 | 1.9 | <0.73 ± 0.16 | <0.59 ± 0.12 |
| | | | | | Surface layer | 2014/8/1 | Sunny | 32.2 | 15.4 | 26.9 | 0.5 | Dark grayish yellow | None | 2.2 | 7.2 | 1 | 0.7 | <0.59 ± 0.12 | <0.55 ± 0.11 |
| | | | | | Deep layer | | | | | 17.1 | 14.4 | - | None | | 6.6 | 3 | 1.0 | <0.56 ± 0.14 | <0.52 ± 0.12 |
| | | | | | Surface layer | 2014/11/4 | Sunny | 16.8 | 16.3 | 14.6 | 0.5 | Dark grayish yellow | None | 2.5 | 7.4 | 2 | 1.3 | <0.45 ± 0.083 | <0.51 ± 0.11 |
| | | | | | Deep layer | | | | | 10.0 | 15.3 | - | None | | 8.9 | 5 | 4.6 | <0.45 ± 0.097 | <0.51 ± 0.12 |
| | 68 | Hananuki Dam | Center | Center | Surface layer | 2015/2/3 | Sunny | 5.7 | 15.7 | 4.7 | 0.5 | Dark grayish yellow green | None | 3.4 | 7.7 | 3 | 2.5 | <0.64 ± 0.12 | <0.56 ± 0.094 |
| | | | | | Deep layer | | | | | 4.5 | 14.7 | - | None | | 7.8 | 2 | 2.4 | <0.58 ± 0.11 | <0.71 ± 0.14 |
| | | | | | Surface layer | 2014/5/29 | Cloudy | 23.9 | 18.7 | 20.8 | 0.5 | Yellowish gray | None | 2.6 | 6.0 | 2 | 1.4 | <0.56 ± 0.13 | <0.68 ± 0.14 |
| | | | | | Deep layer | | | | | 16.3 | 17.7 | - | None | | 6.2 | 2 | 2.2 | <0.54 ± 0.12 | <0.62 ± 0.14 |
| | | | | | Surface layer | 2014/8/4 | Sunny | 29.9 | 20.4 | 26.7 | 0.5 | Dark grayish yellow green | None | 2.9 | 6.1 | 2 | 1.3 | <0.50 ± 0.098 | <0.55 ± 0.092 |
| | | | | | Deep layer | | | | | 20.2 | 19.4 | - | None | | 6.3 | 2 | 1.6 | <0.48 ± 0.11 | <0.77 ± 0.14 |
| | 69 | Jyuou Dam | Center | Center | Surface layer | 2014/11/11 | Cloudy | 15.9 | 26.6 | 13.4 | 0.5 | Dark grayish yellow green | None | 2.7 | 6.1 | 1 | 1.1 | <0.61 ± 0.13 | <0.57 ± 0.13 |
| | | | | | Deep layer | | | | | 12.1 | 25.6 | - | None | | 7.6 | <1 | 1.0 | <0.63 ± 0.12 | <0.48 ± 0.10 |
| | | | | | Surface layer | 2015/2/6 | Sunny | 5.1 | 22.3 | 4.5 | 0.5 | Dark grayish yellow green | None | 2.8 | 6.7 | 2 | 3.0 | <0.62 ± 0.13 | <0.62 ± 0.15 |
| | | | | | Deep layer | | | | | 4.3 | 21.3 | - | None | | 6.4 | 2 | 3.0 | <0.56 ± 0.11 | <0.57 ± 0.12 |
| | | | | | Surface layer | 2014/5/30 | Sunny | 27.2 | 26.2 | 24.0 | 0.5 | Grayish yellow | None | 1.5 | 9.1 | 5 | 2.3 | <0.68 ± 0.15 | <0.62 ± 0.13 |
| | | | | | Deep layer | | | | | 17.6 | 25.2 | - | None | | 8.9 | 5 | 3.6 | <0.61 ± 0.14 | <0.55 ± 0.096 |
| 70 | Ryuji Dam | Center | Center | Surface layer | 2014/8/4 | Sunny | 31.2 | 23.4 | 26.1 | 0.5 | Grayish yellow green | None | 2.9 | 9.0 | 2 | 1.4 | <0.50 ± 0.092 | <0.55 ± 0.12 | |
| | | | | Deep layer | | | | | 18.9 | 22.4 | - | None | | 12.0 | 2 | 2.9 | <0.51 ± 0.090 | <0.42 ± 0.088 | |
| | | | | Surface layer | 2014/11/14 | Sunny | 15.6 | 27.3 | 12.7 | 0.5 | Dark grayish yellow | None | 2.7 | 8.5 | 1 | 1.0 | <0.64 ± 0.14 | <0.71 ± 0.14 | |
| | | | | Deep layer | | | | | 10.6 | 26.3 | - | None | | 10.0 | <1 | 0.8 | <0.62 ± 0.14 | <0.62 ± 0.14 | |
| | | | | Surface layer | 2015/2/6 | Sunny | 11.8 | 30.7 | 5.0 | 0.5 | Grayish yellow green | None | 3.4 | 10.3 | 2 | 2.2 | <0.61 ± 0.16 | <0.64 ± 0.14 | |
| | | | | Deep layer | | | | | 4.8 | 29.7 | - | None | | 10.4 | 2 | 2.0 | <0.55 ± 0.11 | <0.57 ± 0.12 | |
| 70 | Ryuji Dam | Center | Center | Surface layer | 2014/5/30 | Sunny | 23.8 | 21.3 | 20.9 | 0.5 | Grayish yellow | None | 2.8 | 6.4 | 2 | 0.7 | <0.59 ± 0.12 | <0.59 ± 0.15 | |
| | | | | Deep layer | | | | | 14.7 | 20.3 | - | None | | 6.2 | 2 | 0.8 | <0.59 ± 0.14 | <0.71 ± 0.16 | |
| | | | | Surface layer | 2014/8/5 | Sunny | 28.8 | 20.2 | 24.6 | 0.5 | Dark grayish reddish yellow | None | 1.7 | 7.1 | 2 | 1.5 | <0.66 ± 0.14 | <0.68 ± 0.12 | |
| | | | | Deep layer | | | | | 20.1 | 19.2 | - | None | | 10.1 | 2 | 1.5 | <0.54 ± 0.10 | <0.55 ± 0.14 | |
| | | | | Surface layer | 2014/11/6 | Sunny | 19.8 | 22.5 | 16.6 | 0.5 | Grayish yellow | None | 2.8 | 6.5 | 3 | 2.5 | <0.54 ± 0.12 | <0.55 ± 0.14 | |
| | | | | Deep layer | | | | | 13.1 | 21.5 | - | None | | 6.1 | 5 | 4.1 | <0.51 ± 0.10 | <0.51 ± 0.12 | |
| 70 | Ryuji Dam | Center | Center | Surface layer | 2015/2/2 | Sunny | 2.1 | 21.6 | 4.3 | 0.5 | Dark grayish yellow red | None | 3.5 | 7.8 | 2 | 1.5 | <0.50 ± 0.13 | <0.60 ± 0.11 | |
| | | | | Deep layer | | | | | 3.9 | 20.6 | - | None | | 7.6 | <1 | 1.5 | <0.67 ± 0.13 | <0.58 ± 0.11 | |

Ibaraki Lakes and Reservoirs (Water) 4/4

| I a k e s a n d R e s e r v o i r s | Location | | | Sampling Date | Weather | Air temperature (°C) | Water depth (m) | Water | | | | | | | | | | Remarks |
|--|--------------|------------|---------------|---------------|---------|----------------------|-----------------|------------------------|--------------------|-----------------------------|------|-----------------------|--------------------------------|------------------------------|-----------------|--------------------|---------------|--------------|
| | No. | Water area | Location | | | | | General items | | | | | | Activity concentration(Bq/L) | | | | |
| | | | | | | | | Water temperature (°C) | Sampling depth (m) | Color | Odor | Secchi disk depth (m) | Electrical conductivity (mS/m) | SS (mg/L) | Turbidity (FNU) | Radioactive cesium | | |
| | | | | Cs-134 | Cs-137 | | | | | | | | | | | | | |
| 71 | Fujigawa Dam | Center | Surface layer | 2014/5/26 | Cloudy | 22.4 | 13.5 | 20.2 | 0.5 | Dark grayish reddish yellow | None | 2.5 | 15.8 | 2 | 1.4 | <0.48 ± 0.11 | <0.42 ± 0.11 | |
| | | | Deep layer | | | | | 9.8 | 12.5 | - | None | | | 17.2 | 2 | 1.0 | <0.59 ± 0.15 | <0.68 ± 0.15 |
| | | | Surface layer | 2014/8/7 | Sunny | 30.1 | 13.5 | 28.6 | 0.5 | Dark grayish reddish yellow | None | 2.0 | 12.1 | <1 | 0.6 | <0.54 ± 0.10 | <0.71 ± 0.15 | |
| | | | Deep layer | | | | | 21.6 | 12.5 | - | None | | | 16.2 | <1 | 0.7 | <0.56 ± 0.13 | <0.55 ± 0.14 |
| | | | Surface layer | 2014/11/10 | Sunny | 18.9 | 13.2 | 15.3 | 0.5 | Dark grayish reddish yellow | None | 3.8 | 17.6 | 1 | 1.6 | <0.68 ± 0.14 | <0.45 ± 0.072 | |
| | | | Deep layer | | | | | 13.1 | 12.2 | - | None | | | 17.9 | 2 | 1.8 | <0.45 ± 0.11 | <0.76 ± 0.15 |
| | | | Surface layer | 2015/2/9 | Sunny | 5.6 | 15.5 | 5.2 | 0.5 | Dark grayish reddish yellow | None | 2.3 | 16.0 | 1 | 1.6 | <0.61 ± 0.14 | <0.62 ± 0.12 | |
| | | | Deep layer | | | | | 5.0 | 14.5 | - | None | | | 19.9 | 2 | 2.2 | <0.58 ± 0.13 | <0.88 ± 0.23 |
| | | | Surface layer | 2014/5/26 | Cloudy | 22.1 | 15.9 | 20.9 | 0.5 | Grayish yellow red | None | 5.5 | 12.9 | <1 | 0.3 | <0.57 ± 0.14 | <0.47 ± 0.11 | |
| | | | Deep layer | | | | | 10.6 | 14.9 | - | None | | | 12.6 | <1 | 1.6 | <0.56 ± 0.13 | <0.65 ± 0.14 |
| | | | Surface layer | 2014/8/7 | Sunny | 32.1 | 15.8 | 28.9 | 0.5 | Grayish yellow green | None | 2.7 | 10.2 | <1 | 0.6 | <0.54 ± 0.096 | <0.68 ± 0.14 | |
| | | | Deep layer | | | | | 20.8 | 14.8 | - | None | | | 12.5 | <1 | 0.6 | <0.56 ± 0.12 | <0.59 ± 0.13 |
| 72 | Bda Dam | Center | Surface layer | 2014/11/10 | Sunny | 19.6 | 17.6 | 16.6 | 0.5 | Grayish yellow green | None | 3.4 | 7.9 | <1 | 0.6 | <0.74 ± 0.16 | <0.70 ± 0.13 | |
| | | | Deep layer | | | | | 14.7 | 16.6 | - | None | | 9.1 | <1 | 0.6 | <0.77 ± 0.15 | <0.74 ± 0.14 | |
| | | | Surface layer | 2015/2/9 | Sunny | 5.5 | 15.8 | 5.4 | 0.5 | Grayish yellow green | None | 3.0 | 12.3 | <1 | 1.7 | <0.59 ± 0.13 | <0.62 ± 0.13 | |
| | | | Deep layer | | | | | 5.1 | 14.8 | - | None | | 12.3 | 1 | 1.6 | <0.45 ± 0.11 | <0.51 ± 0.10 | |

Ibaraki Lakes and Reservoirs (Sediment) 2/2

| Location | | | Sampling Date | Weather | Air temperature (°C) | Water depth (m) | Sediment | | | | | | | | | | | | | | | | Activity concentration [Bq/kg(dry)] | | | | Remarks |
|-----------------------|---------------|--------------|---------------------------|--------------------|----------------------|-----------------|---------------|---------------|------------------------|------------------------|-------------|-----------|------|------|----------------------|------------------------------|----------------------------|--------|--------------------|-------|----------|------------|-------------------------------------|------------|-------|--|---------|
| | | | | | | | General items | | | | | | | | | | Grain size distribution(%) | | | | | | Radioactive cesium | | | | |
| No. | Water area | Location | Sediment temperature (°C) | Sample length (cm) | Color | Odor | Coarse gravel | Medium gravel | Fine gravel | Coarse sand | Medium sand | Fine sand | Silt | Clay | Sediment content (%) | Density (g/cm ³) | Property | Cs-134 | Radioactive cesium | | Total | | | | | | |
| | | | | | | | Coarse sand | Medium sand | Fine sand | Silt | Clay | Cs-137 | | | | | | | | | | | | | | | |
| L a k e s | 66 | Mizunuma Dam | Center | 2014/5/29 | Sunny | 22.1 | 15.3 | 15.1 | 7 | Dark brown | Faint drain | 0.0 | 0.0 | 0.0 | 0.1 | 0.2 | 0.7 | 56.5 | 42.6 | 17.7 | 2,271 | Silt | 720 ± 46 | 2,000 ± 76 | 2,720 | | |
| | | | | 2014/8/1 | Sunny | 31.3 | 12.5 | 18.4 | 6 | Dark brown | Faint drain | 0.0 | 0.0 | 0.1 | 0.1 | 0.2 | 0.5 | 57.1 | 42.0 | 15.8 | 2,256 | Silt | 780 ± 51 | 2,200 ± 87 | 2,980 | | |
| | | | | 2014/11/13 | Sunny | 14.8 | 20.1 | 9.2 | 6 | Dim yellowish brown | None | 0.0 | 0.0 | 0.1 | 0.1 | 0.5 | 4.6 | 60.6 | 34.3 | 18.7 | 2,272 | Silt | 770 ± 43 | 2,400 ± 77 | 3,170 | | |
| | 67 | Koyama Dam | Center | 2015/2/2 | Sunny | 2.3 | 16.3 | 3.8 | 5 | Dark brown | Faint drain | 0.0 | 0.0 | 0.0 | 0.2 | 5.3 | 60.1 | 34.4 | 16.7 | 2,234 | Silt | 640 ± 45 | 2,300 ± 84 | 2,940 | | | |
| | | | | 2014/5/29 | Sunny | 23.8 | 15.8 | 9.7 | 7 | Dark grayish yellow | Faint drain | 0.0 | 0.4 | 0.5 | 0.6 | 1.0 | 13.6 | 41.8 | 42.3 | 36.3 | 2,464 | Silt | 200 ± 16 | 540 ± 26 | 740 | | |
| | | | | 2014/8/1 | Sunny | 32.2 | 15.4 | 15.9 | 7 | Faint hydrogen sulfide | Faint drain | 0.0 | 0.0 | 0.0 | 0.2 | 3.1 | 8.8 | 37.5 | 50.3 | 27.4 | 2,481 | Silt/sand | 170 ± 18 | 520 ± 31 | 690 | | |
| | 68 | Hanasaki Dam | Center | 2014/11/4 | Sunny | 16.8 | 16.3 | 9.2 | 6 | Faint hydrogen sulfide | Faint drain | 0.0 | 1.0 | 2.7 | 2.0 | 3.2 | 2.7 | 34.0 | 54.5 | 22.2 | 2,436 | Silt | 190 ± 24 | 580 ± 36 | 770 | | |
| | | | | 2015/2/3 | Sunny | 5.7 | 15.7 | 4.7 | 5 | Faint hydrogen sulfide | Faint drain | 0.0 | 0.0 | 0.0 | 0.1 | 0.7 | 5.2 | 36.2 | 57.9 | 24.5 | 2,488 | Silt | 350 ± 27 | 1,400 ± 52 | 1,750 | | |
| | | | | 2014/5/29 | Cloudy | 23.9 | 18.7 | 13.1 | 5 | Blackish brown | Faint drain | 0.0 | 3.6 | 5.8 | 9.9 | 14.7 | 7.4 | 27.7 | 30.9 | 23.1 | 2,511 | Silt | 160 ± 19 | 450 ± 31 | 610 | | |
| | 69 | Jyauu Dam | Center | 2014/8/4 | Sunny | 29.9 | 20.4 | 19.8 | 7 | Faint hydrogen sulfide | Faint drain | 0.0 | 0.0 | 0.0 | 0.1 | 0.2 | 0.5 | 58.6 | 40.7 | 22.4 | 2,295 | Silt | 340 ± 28 | 950 ± 47 | 1,290 | | |
| | | | | 2014/11/11 | Cloudy | 15.9 | 26.6 | 11.8 | 5 | Faint hydrogen sulfide | Faint earth | 0.0 | 0.0 | 2.1 | 3.7 | 5.6 | 7.0 | 42.8 | 38.9 | 24.7 | 2,382 | Silt/sand | 260 ± 21 | 790 ± 38 | 1,050 | | |
| | | | | 2015/2/6 | Sunny | 3.1 | 22.9 | 4.3 | 4 | Faint hydrogen sulfide | Faint drain | 0.0 | 0.0 | 0.0 | 0.1 | 0.2 | 1.3 | 58.2 | 40.2 | 25.4 | 2,333 | Silt | 280 ± 25 | 1,100 ± 44 | 1,380 | | |
| 70 | Ryuji Dam | Center | 2014/5/30 | Sunny | 27.2 | 26.2 | 14.6 | 7 | Faint hydrogen sulfide | Faint drain | 0.0 | 0.0 | 0.0 | 0.1 | 0.2 | 1.3 | 52.4 | 46.0 | 23.3 | 2,394 | Silt | 520 ± 38 | 1,400 ± 61 | 1,920 | | | |
| | | | 2014/8/4 | Sunny | 31.2 | 23.4 | 16.8 | 6 | Faint hydrogen sulfide | Faint drain | 0.0 | 0.0 | 0.0 | 0.0 | 0.1 | 46.4 | 53.6 | 15.0 | 2,349 | Silt | 480 ± 40 | 1,500 ± 72 | 1,980 | | | | |
| | | | 2014/11/14 | Sunny | 15.6 | 27.3 | 10.3 | 8 | Faint hydrogen sulfide | Faint drain | 0.0 | 0.0 | 0.0 | 0.1 | 0.1 | 0.2 | 44.4 | 55.3 | 14.5 | 2,386 | Silt | 540 ± 51 | 2,000 ± 88 | 2,540 | | | |
| 71 | Fujiigawa Dam | Center | 2015/2/6 | Sunny | 11.8 | 30.7 | 4.8 | 4 | Faint hydrogen sulfide | Faint drain | 0.0 | 0.0 | 0.0 | 0.1 | 0.1 | 49.4 | 50.3 | 17.3 | 2,331 | Silt | 260 ± 30 | 1,100 ± 56 | 1,360 | | | | |
| | | | 2014/5/30 | Sunny | 23.8 | 21.3 | 13.2 | 7 | Faint hydrogen sulfide | Faint drain | 0.0 | 18.2 | 11.7 | 8.5 | 12.1 | 7.8 | 22.0 | 19.7 | 60.4 | 2,463 | Sand | 1.2 ± 0.30 | 3.7 ± 0.35 | 4.9 | | | |
| | | | 2014/8/5 | Sunny | 28.8 | 20.2 | 18.8 | 3 | Faint hydrogen sulfide | Faint drain | 0.0 | 0.8 | 1.8 | 1.6 | 2.7 | 2.9 | 40.8 | 49.4 | 21.0 | 2,328 | Silt | 190 ± 23 | 710 ± 43 | 900 | | | |
| 72 | Ida Dam | Center | 2014/11/6 | Sunny | 19.8 | 22.5 | 13.2 | 5 | Faint hydrogen sulfide | Faint drain | 0.0 | 0.0 | 0.0 | 0.1 | 0.3 | 1.5 | 50.6 | 47.5 | 19.7 | 2,303 | Silt | 160 ± 21 | 580 ± 40 | 740 | | | |
| | | | 2015/2/2 | Sunny | 2.1 | 21.6 | 3.7 | 4 | Faint hydrogen sulfide | None | 0.0 | 0.0 | 0.0 | 0.0 | 0.1 | 0.2 | 53.8 | 45.9 | 18.6 | 2,386 | Silt | 120 ± 19 | 370 ± 32 | 490 | | | |
| | | | 2014/5/26 | Cloudy | 22.4 | 13.5 | 9.2 | 3 | Brown | None | 0.0 | 5.6 | 5.1 | 9.0 | 31.4 | 23.0 | 11.4 | 14.6 | 50.0 | 2,574 | Silt | 53 ± 6.5 | 140 ± 11 | 193 | | | |
| 73 | Ida Dam | Center | 2014/8/7 | Sunny | 30.1 | 13.5 | 20.6 | 8 | Blackish brown | Faint drain | 0.0 | 0.0 | 0.1 | 0.2 | 0.5 | 1.9 | 61.7 | 35.7 | 26.6 | 2,411 | Silt | 98 ± 15 | 400 ± 28 | 498 | | | |
| | | | 2014/11/10 | Sunny | 18.9 | 13.2 | 13.0 | 7 | Blackish brown | Faint drain | 0.0 | 2.7 | 6.4 | 4.7 | 7.4 | 3.2 | 43.2 | 32.4 | 21.4 | 2,452 | Silt | 34 ± 5.3 | 83 ± 7.7 | 117 | | | |
| | | | 2015/2/9 | Sunny | 5.6 | 15.5 | 5.1 | 3 | Faint hydrogen sulfide | Faint drain | 0.0 | 0.0 | 0.0 | 0.0 | 0.1 | 3.2 | 60.7 | 36.0 | 32.4 | 2,411 | Silt | 96 ± 15 | 250 ± 22 | 346 | | | |
| 74 | Ida Dam | Center | 2014/5/26 | Cloudy | 22.1 | 15.9 | 10.2 | 9 | Black | Faint drain | 0.0 | 0.0 | 0.1 | 0.0 | 2.1 | 9.5 | 57.1 | 31.1 | 18.7 | 2,409 | Silt | 60 ± 12 | 120 ± 17 | 180 | | | |
| | | | 2014/8/7 | Sunny | 32.1 | 15.8 | 19.4 | 7 | Faint hydrogen sulfide | Faint drain | 0.0 | 0.0 | 0.0 | 0.1 | 0.2 | 0.3 | 54.7 | 44.7 | 17.8 | 2,370 | Silt | 4.6 ± 1.0 | 11 ± 0.99 | 15.6 | | | |
| | | | 2014/11/10 | Sunny | 19.6 | 17.6 | 14.0 | 6 | Faint hydrogen sulfide | Faint drain | 0.0 | 1.8 | 3.1 | 1.4 | 5.9 | 16.5 | 42.7 | 28.6 | 25.1 | 2,500 | Silt | 12 ± 3.6 | 43 ± 5.2 | 55 | | | |
| 75 | Ida Dam | Center | 2015/2/9 | Sunny | 5.5 | 15.8 | 4.9 | 4 | Faint hydrogen sulfide | Faint drain | 0.0 | 3.3 | 0.0 | 0.0 | 0.1 | 0.2 | 54.0 | 42.4 | 28.2 | 2,325 | Silt | 26 ± 5.7 | 130 ± 9.2 | 156 | | | |

Ibaraki Lakes and Reservoirs (Surrounding Environment)1/2

| Location | | | Sampling Date | Weather | Air temperature (°C) | Surrounding Environment(Soil,Air dose) | | | | | | | | Remarks | | | |
|--|-------------------|---------------------------|-------------------------|-----------|----------------------|--|---------------------|-------------|-------------------------------------|------------------|------------|------------------|------|---------|----------------------|----------------------|----------------------|
| | | | | | | Soil | | | | Air Dose (μSv/h) | | | | | | | |
| No. | Water area | Location | | | | Color | Odor | Property | Activity concentration [Bq/kg(dry)] | | | Air Dose (μSv/h) | | | | | |
| | | | | | | | | | Radioactive cesium | | | | | | | | |
| | | | | | | | | | Cs-134 | Cs-137 | Total | | | | | | |
| L a k e s a n d R e s e r v o i r s | 54 | Hiroura | 2014/5/19 | Cloudy | 20.1 | Brown | faint earth | Loamy | 250 ± 15 | 690 ± 25 | 940 | 0.13 | | | | | |
| | | | 2014/8/8 | Cloudy | 31.8 | Dim yellowish brown | faint earth | Loamy | 210 ± 16 | 580 ± 26 | 790 | 0.13 | | | | | |
| | | | 2014/11/7 | Sunny | 18.5 | Dark brown | faint earth | Loamy | <3.9 ± 1.3 | 8.9 ± 2.0 | 8.9 | 0.12 | | | | | |
| | | | 2015/2/20 | Sunny | 9.0 | Dark brown | faint earth | Loamy | 11 ± 1.6 | 41 ± 2.6 | 52 | 0.10 | | | | | |
| | 55 | Hinuma | Miyamae | 2014/5/19 | Cloudy | 20.3 | Brown | faint earth | Loamy | <6.9 ± 2.2 | 13 ± 3.1 | 13 | 0.08 | | | | |
| | | | | 2014/8/8 | Cloudy | 31.8 | Brown | faint earth | Loamy | 8.8 ± 1.5 | 22 ± 2.0 | 30.8 | 0.08 | | | | |
| | | | | 2014/11/7 | Sunny | 18.1 | Dim yellowish brown | faint earth | Loamy | <7.1 ± 2.3 | 21 ± 2.9 | 21 | 0.08 | | | | |
| | | | | 2015/2/20 | Sunny | 8.9 | Dark brown | faint earth | Loamy | <7.7 ± 2.5 | 23 ± 3.3 | 23 | 0.07 | | | | |
| | 56 | | Oyazawa | 2014/5/19 | Cloudy | 19.8 | - | - | - | - | - | - | - | - | No sampling location | | |
| | | | | 2014/8/8 | Cloudy | 31.7 | - | - | - | - | - | - | - | - | - | No sampling location | |
| | | | | 2014/11/7 | Sunny | 18.2 | - | - | - | - | - | - | - | - | - | - | No sampling location |
| | | | | 2015/2/20 | Sunny | 8.8 | - | - | - | - | - | - | - | - | - | - | No sampling location |
| | 57 | | Offshore of Tamatsukuri | 2014/5/14 | Sunny | 26.2 | Olive brown | Faint grass | Sandy | 22 ± 4.5 | 58 ± 6.3 | 80 | 0.09 | | | | |
| | | | | 2014/8/13 | Sunny | 31.1 | Olive | None | Sandy | 16 ± 3.6 | 54 ± 6.3 | 70 | 0.08 | | | | |
| | | | | 2014/11/5 | Cloudy | 16.1 | Blackish brown | None | Sandy | 15 ± 2.4 | 43 ± 3.8 | 58 | 0.07 | | | | |
| | | | | 2015/2/4 | Sunny | 8.2 | Olive black | None | Sandy | 7.9 ± 2.1 | 28 ± 3.1 | 35.9 | 0.07 | | | | |
| | 58 | Lake Kasumigaura | Offshore of Kakeuma | 2014/5/14 | Sunny | 26.1 | Olive black | faint earth | Sandy | 13 ± 3.3 | 39 ± 4.6 | 52 | 0.09 | | | | |
| | | | | 2014/8/13 | Sunny | 29.9 | Olive black | None | Loamy | 14 ± 4.1 | 56 ± 6.6 | 70 | 0.09 | | | | |
| | | | | 2014/11/5 | Cloudy | 14.9 | Dark olive brown | faint earth | Loamy | 650 ± 48 | 2,400 ± 92 | 3,050 | 0.09 | | | | |
| | | | | 2015/2/4 | Sunny | 7.9 | Olive black | None | Sandy | 30 ± 6.9 | 120 ± 12 | 150 | 0.09 | | | | |
| | 59 | | Center | 2014/5/14 | Sunny | 24.0 | - | - | - | - | - | - | - | - | No sampling location | | |
| | | | | 2014/8/13 | Sunny | 25.8 | - | - | - | - | - | - | - | - | - | No sampling location | |
| | | | | 2014/11/5 | Cloudy | 14.8 | - | - | - | - | - | - | - | - | - | No sampling location | |
| | | | | 2015/2/4 | Sunny | 7.0 | - | - | - | - | - | - | - | - | - | No sampling location | |
| | 60 | | Offshore of Aso | 2014/5/14 | Sunny | 22.0 | Dark olive brown | faint earth | Sandy | 9.1 ± 3.0 | 21 ± 4.2 | 30.1 | 0.09 | | | | |
| | | | | 2014/8/13 | Sunny | 29.6 | Dark olive brown | Faint grass | Sandy | 85 ± 7.5 | 240 ± 13 | 325 | 0.10 | | | | |
| | | | | 2014/11/5 | Cloudy | 13.2 | Dim yellowish brown | faint earth | Sandy | 16 ± 4.8 | 62 ± 8.2 | 78 | 0.08 | | | | |
| | | | | 2015/2/4 | Sunny | 2.9 | Olive black | None | Sandy | 50 ± 7.3 | 200 ± 14 | 250 | 0.11 | | | | |
| 61 | Lake Kitaura | Offshore of Kamaya | 2014/5/14 | Sunny | 26.8 | Olive brown | Faint grass | Sandy | 31 ± 5.4 | 93 ± 8.1 | 124 | 0.09 | | | | | |
| | | | 2014/8/13 | Sunny | 31.6 | Dark olive brown | Faint grass | Loamy | 120 ± 10 | 370 ± 17 | 490 | 0.08 | | | | | |
| | | | 2014/11/5 | Cloudy | 17.3 | Dark olive brown | faint earth | Loamy | 120 ± 12 | 380 ± 21 | 500 | 0.08 | | | | | |
| | | | 2015/2/4 | Sunny | 8.8 | Dark olive brown | faint earth | Loamy | 76 ± 10 | 270 ± 18 | 346 | 0.09 | | | | | |
| 62 | | Jingu Bridge | 2014/5/14 | Sunny | 27.2 | Light brown | None | Loamy | <5.9 ± 1.7 | 13 ± 2.4 | 13 | 0.04 | | | | | |
| | | | 2014/8/13 | Sunny | 32.1 | Brown | faint earth | Loamy | <6.3 ± 2.1 | 15 ± 2.9 | 15 | 0.05 | | | | | |
| | | | 2014/11/5 | Cloudy | 17.1 | Dark brown | Faint grass | Loamy | 9.9 ± 2.1 | 44 ± 3.7 | 53.9 | 0.06 | | | | | |
| | | | 2015/2/4 | Sunny | 7.8 | Brown | Faint grass | Loamy | 12 ± 2.6 | 48 ± 4.2 | 60 | 0.05 | | | | | |
| 63 | Hitachitone River | Lake Sotonasakaura | 2014/5/14 | Sunny | 22.1 | Dark brown | faint earth | Loamy | 34 ± 6.3 | 82 ± 8.4 | 116 | 0.06 | | | | | |
| | | | 2014/8/13 | Sunny | 32.2 | Dark brown | faint earth | Loamy | 39 ± 6.6 | 130 ± 11 | 169 | 0.06 | | | | | |
| | | | 2014/11/5 | Cloudy | 16.7 | Dark brown | Faint grass | Loamy | 31 ± 3.1 | 100 ± 5.3 | 131 | 0.05 | | | | | |
| | | | 2015/2/4 | Sunny | 7.1 | Dark brown | Faint grass | Loamy | 22 ± 2.7 | 64 ± 4.6 | 86 | 0.05 | | | | | |
| 64 | | Ikisu | 2014/5/14 | Sunny | 20.9 | Dark brown | faint earth | Loamy | 24 ± 5.4 | 84 ± 8.5 | 108 | 0.05 | | | | | |
| | | | 2014/8/13 | Sunny | 32.2 | Dark brown | faint earth | Loamy | 42 ± 7.8 | 180 ± 14 | 222 | 0.07 | | | | | |
| | | | 2014/11/5 | Cloudy | 16.9 | Dim yellowish brown | faint earth | Loamy | 26 ± 7.5 | 64 ± 11 | 90 | 0.08 | | | | | |
| | | | 2015/2/4 | Sunny | 7.4 | Dark brown | Faint grass | Loamy | 46 ± 4.3 | 150 ± 7.7 | 196 | 0.06 | | | | | |
| 65 | Lake Ushikunuma | Center of Lake Ushikunuma | 2014/5/20 | Sunny | 24.2 | Dark brown | faint earth | Loamy | 110 ± 4.3 | 300 ± 6.8 | 410 | 0.07 | | | | | |
| | | | 2014/8/20 | Sunny | 32.6 | Dark brown | faint earth | Loamy | 30 ± 7.1 | 110 ± 9.9 | 140 | 0.07 | | | | | |
| | | | 2014/11/12 | Cloudy | 15.6 | Dark brown | faint earth | Loamy | 14 ± 2.5 | 53 ± 4.3 | 67 | 0.07 | | | | | |
| | | | 2015/2/12 | Sunny | 10.7 | Dark brown | faint earth | Loamy | 49 ± 7.8 | 210 ± 14 | 259 | 0.08 | | | | | |

Ibaraki Lakes and Reservoirs (Surrounding Environment) 2/2

| | Location | | | Sampling Date | Weather | Air temperature (°C) | Surrounding Environment(Soil,Air dose) | | | | | | | | Remarks |
|--|---------------|--------------|------------|---------------|---------|----------------------|--|-------------|----------|-------------------------------------|------------|-------|------------------|--|---------|
| | | | | | | | Soil | | | | | | Air Dose (μSv/h) | | |
| | General items | | | | | | Radioactive cesium | | | | | | | | |
| | No. | Water area | Location | | | | Color | Odor | Property | Activity concentration [Bq/kg(dry)] | | Total | | | |
| Cs-134 | | | | Cs-137 | | | | | | | | | | | |
| L a k e s a n d R e s e r v o i r s | 66 | Mizunuma Dam | Center | 2014/5/29 | Sunny | 22.1 | Dark brown | faint earth | Loamy | 44 ± 6.6 | 120 ± 11 | 164 | 0.14 | | |
| | | | | 2014/8/1 | Sunny | 31.3 | Blackish brown | faint earth | Loamy | 70 ± 8.4 | 270 ± 15 | 340 | 0.14 | | |
| | | | | 2014/11/13 | Sunny | 14.8 | Dark brown | None | Loamy | 21 ± 7.0 | 74 ± 9.7 | 95 | 0.14 | | |
| | | | | 2015/2/3 | Sunny | 2.3 | Blackish brown | faint earth | Loamy | 130 ± 10 | 430 ± 19 | 560 | 0.13 | | |
| | 67 | Koyama Dam | Center | 2014/5/29 | Sunny | 23.8 | Dim yellowish brown | faint earth | Loamy | 17 ± 3.4 | 42 ± 5.2 | 59 | 0.13 | | |
| | | | | 2014/8/1 | Sunny | 32.2 | Dim yellowish brown | Faint grass | Loamy | 63 ± 7.9 | 180 ± 12 | 243 | 0.13 | | |
| | | | | 2014/11/4 | Sunny | 16.8 | Dim yellowish brown | faint earth | Sandy | 26 ± 6.8 | 100 ± 12 | 126 | 0.13 | | |
| | | | | 2015/2/3 | Sunny | 5.7 | Olive black | faint earth | Sandy | 89 ± 9.0 | 330 ± 16 | 419 | 0.10 | | |
| | 68 | Hananuki Dam | Center | 2014/5/29 | Cloudy | 23.9 | Blackish brown | faint earth | Loamy | 97 ± 11 | 290 ± 19 | 387 | 0.18 | | |
| | | | | 2014/8/4 | Sunny | 29.9 | Blackish brown | faint earth | Loamy | 260 ± 19 | 860 ± 34 | 1,120 | 0.17 | | |
| | | | | 2014/11/11 | Cloudy | 15.9 | Blackish brown | faint earth | Loamy | 180 ± 17 | 560 ± 29 | 740 | 0.17 | | |
| | | | | 2015/2/6 | Sunny | 5.1 | Blackish brown | faint earth | Loamy | 220 ± 19 | 750 ± 36 | 970 | 0.16 | | |
| | 69 | Jyuu Dam | Center | 2014/5/30 | Sunny | 27.2 | Dim yellowish brown | faint earth | Loamy | 42 ± 6.4 | 90 ± 9.9 | 132 | 0.14 | | |
| | | | | 2014/8/4 | Sunny | 31.2 | Grayish olive | None | Loamy | 110 ± 9.1 | 360 ± 17 | 470 | 0.13 | | |
| | | | | 2014/11/14 | Sunny | 15.6 | Dim yellowish brown | None | Loamy | 280 ± 19 | 1,000 ± 34 | 1,280 | 0.14 | | |
| | | | | 2015/2/6 | Sunny | 11.8 | Dim yellowish brown | faint earth | Loamy | 600 ± 27 | 2,100 ± 51 | 2,700 | 0.12 | | |
| | 70 | Ryuji Dam | Center | 2014/5/30 | Sunny | 23.8 | Dim yellowish brown | faint earth | Loamy | <5.9 ± 1.7 | <5.9 ± 2.0 | - | 0.08 | | |
| | | | | 2014/8/5 | Sunny | 28.8 | Blackish brown | faint earth | Loamy | 46 ± 6.7 | 120 ± 11 | 166 | 0.08 | | |
| | | | | 2014/11/6 | Sunny | 19.8 | Dark brown | None | Loamy | 41 ± 7.1 | 120 ± 12 | 161 | 0.09 | | |
| | | | | 2015/2/2 | Sunny | 2.1 | Blackish brown | faint earth | Loamy | 71 ± 8.9 | 240 ± 15 | 311 | 0.10 | | |
| | 71 | Fujigawa Dam | Center | 2014/5/26 | Cloudy | 22.4 | Blackish brown | faint earth | Loamy | 130 ± 12 | 340 ± 19 | 470 | 0.11 | | |
| | | | | 2014/8/7 | Sunny | 30.1 | Black | faint earth | Loamy | 76 ± 9.1 | 250 ± 14 | 326 | 0.12 | | |
| | | | | 2014/11/10 | Sunny | 18.9 | Dark brown | faint earth | Loamy | 62 ± 9.2 | 220 ± 16 | 282 | 0.11 | | |
| | | | | 2015/2/9 | Sunny | 5.6 | Blackish brown | faint earth | Loamy | 120 ± 12 | 420 ± 23 | 540 | 0.13 | | |
| 72 | Iida Dam | Center | 2014/5/26 | Cloudy | 22.1 | Dim yellowish brown | faint earth | Loamy | 170 ± 17 | 420 ± 25 | 590 | 0.11 | | | |
| | | | 2014/8/7 | Sunny | 32.1 | Dim yellowish brown | faint earth | Loamy | 140 ± 13 | 480 ± 22 | 620 | 0.12 | | | |
| | | | 2014/11/10 | Sunny | 19.6 | Dark brown | faint earth | Loamy | 90 ± 12 | 370 ± 22 | 460 | 0.10 | | | |
| | | | 2015/2/9 | Sunny | 5.5 | Dark brown | faint earth | Loamy | 130 ± 15 | 420 ± 26 | 550 | 0.09 | | | |

Ibaraki Coastal (Water) 1/1

| Location | | | Sampling Date | Weather | Air temperature (°C) | Water depth (m) | Water | | | | | | | | | | Remarks |
|--|--|---|---------------|------------|----------------------|-----------------|------------------------|-------------------------|-------------------------------------|---------------------------|-----------------------|------------------------------|--------------|-----------------|--------------------|--------------|---------------|
| No. | Water area | | | | | | General items | | | | | Activity concentration(Bq/L) | | | | | |
| | | | | | | | Water temperature (°C) | Sampling depth (m) | Color | Odor | Secchi disk depth (m) | Salinity (‰) | SS (mg/L) | Turbidity (FNU) | Radioactive cesium | | |
| | | | | | | | | | | | | | Cs-134 | Cs-137 | | | |
| C o a s t a l a r e a s | 73 | Offshore of Satone River Estuary | Surface layer | 2014/5/12 | Cloudy | 18.8 | 13.0 | 14.5 | 0.5 | Dark grayish yellow green | None | 2.5 | 30.3 | 5 | 2.2 | <0.62 ± 0.13 | <0.68 ± 0.14 |
| | | | Deep layer | | | | | 14.0 | 12.0 | - | None | | 29.9 | 6 | 2.9 | <0.58 ± 0.14 | <0.59 ± 0.10 |
| | | Surface layer | 2014/8/25 | Cloudy | 28.5 | 13.5 | 23.5 | 0.5 | Yellow greenish gray | None | 5.0 | 28.0 | 4 | 1.1 | <0.61 ± 0.16 | <0.88 ± 0.19 | |
| | | Deep layer | | | | | 20.1 | 12.5 | - | None | | 30.4 | 5 | 0.4 | <0.64 ± 0.13 | <0.67 ± 0.16 | |
| | | Surface layer | 2014/11/19 | Sunny | 17.8 | 14.1 | 17.9 | 0.5 | Dark grayish bluish green | None | 8.5 | 30.6 | 2 | 0.5 | <0.74 ± 0.15 | <0.60 ± 0.11 | |
| | | Deep layer | | | | | 17.7 | 13.1 | - | None | | 30.8 | 4 | 0.4 | <0.63 ± 0.14 | <0.75 ± 0.14 | |
| | Surface layer | 2015/2/3 | Sunny | 9.8 | 13.2 | 9.4 | 0.5 | Grayish yellowish green | None | 3.5 | 30.9 | 5 | 1.5 | <0.67 ± 0.14 | <0.55 ± 0.093 | | |
| | Deep layer | | | | | 8.6 | 12.2 | - | None | | 31.0 | 11 | 2.8 | <0.60 ± 0.14 | <0.65 ± 0.13 | | |
| | 74 | Offshore of Okita River Estuary | Surface layer | 2014/5/12 | Cloudy | 19.0 | 12.6 | 14.9 | 0.5 | Yellow greenish dark gray | None | 3.5 | 30.3 | 12 | 2.4 | <0.51 ± 0.11 | <0.47 ± 0.097 |
| | | | Deep layer | | | | | 14.2 | 11.6 | - | None | | 30.3 | 34 | 4.8 | <0.57 ± 0.12 | <0.71 ± 0.16 |
| | | | Surface layer | 2014/8/25 | Cloudy | 25.8 | 12.3 | 23.6 | 0.5 | Bluish greenish gray | None | 5.0 | 28.1 | 4 | 0.8 | <0.84 ± 0.19 | <0.71 ± 0.17 |
| | | | Deep layer | | | | | 20.3 | 11.3 | - | None | | 30.6 | 6 | 0.9 | <0.61 ± 0.13 | <0.71 ± 0.15 |
| | | | Surface layer | 2014/11/19 | Sunny | 16.0 | 12.7 | 18.4 | 0.5 | Dark grayish bluish green | None | 9.0 | 30.6 | 5 | 0.2 | <0.70 ± 0.15 | <0.60 ± 0.15 |
| | | | Deep layer | | | | | 18.6 | 11.7 | - | None | | 31.1 | 3 | 0.4 | <0.84 ± 0.17 | <0.70 ± 0.14 |
| | Surface layer | 2015/2/3 | Sunny | 10.5 | 13.1 | 9.1 | 0.5 | Grayish yellowish green | None | 3.5 | 31.0 | 4 | 1.3 | <0.60 ± 0.14 | <0.61 ± 0.12 | | |
| | Deep layer | | | | | 9.1 | 12.1 | - | None | | 31.0 | 8 | 2.2 | <0.45 ± 0.11 | <0.52 ± 0.096 | | |
| | 75 | Offshore of Momiya River/Kujigawa River Estuaries | Surface layer | 2014/5/12 | Sunny | 22.5 | 10.2 | 16.9 | 0.5 | Dark grayish yellow green | None | 2.1 | 29.7 | 4 | 2.7 | <0.65 ± 0.14 | <0.75 ± 0.16 |
| | | | Deep layer | | | | | 15.8 | 9.2 | - | None | | 30.2 | 4 | 2.4 | <0.72 ± 0.14 | <0.67 ± 0.12 |
| | | | Surface layer | 2014/8/25 | Cloudy | 24.0 | 9.8 | 22.3 | 0.5 | Grayish reddish yellow | None | 2.0 | 27.4 | 12 | 4.4 | <0.61 ± 0.12 | <0.71 ± 0.12 |
| | | | Deep layer | | | | | 20.4 | 8.8 | - | None | | 30.1 | 25 | 3.8 | <0.47 ± 0.11 | <0.67 ± 0.16 |
| | | | Surface layer | 2014/11/19 | Sunny | 15.2 | 9.6 | 18.3 | 0.5 | Dark grayish green | None | 4.0 | 28.4 | 3 | 0.7 | <0.60 ± 0.14 | <0.55 ± 0.10 |
| | | | Deep layer | | | | | 19.4 | 8.6 | - | None | | 31.0 | 4 | 1.0 | <0.59 ± 0.12 | <0.71 ± 0.13 |
| | Surface layer | 2015/2/3 | Sunny | 9.5 | 11.0 | 10.8 | 0.5 | Grayish yellow green | None | 5.8 | 25.3 | 11 | 1.5 | <0.69 ± 0.13 | <0.65 ± 0.13 | | |
| | Deep layer | | | | | 11.9 | 10.0 | - | None | | 31.3 | 6 | 1.6 | <0.45 ± 0.10 | <0.68 ± 0.14 | | |
| 76 | Neighboring water body of Ken-o Offshore of Nakagawa River | Surface layer | 2014/5/12 | Sunny | 23.0 | 5.3 | 17.5 | 0.5 | Dark grayish green | None | 2.1 | 18.5 | 7 | 2.8 | <0.69 ± 0.14 | <0.62 ± 0.14 | |
| | | Deep layer | | | | | 15.2 | 4.3 | - | None | | 30.4 | 7 | 2.9 | <0.61 ± 0.12 | <0.71 ± 0.16 | |
| | | Surface layer | 2014/8/25 | Light rain | 24.6 | 7.0 | 23.6 | 0.5 | Dark yellow red Dark reddish yellow | None | 2.5 | 8.5 | 8 | 3.2 | <0.66 ± 0.15 | <0.62 ± 0.11 | |
| | | Deep layer | | | | | 21.2 | 6.0 | - | None | | 28.9 | 22 | 5.0 | <0.69 ± 0.12 | <0.67 ± 0.14 | |
| | | Surface layer | 2014/11/19 | Sunny | 12.8 | 6.7 | 14.8 | 0.5 | Grayish yellow green | None | 3.5 | 13.9 | 3 | 0.9 | <0.40 ± 0.11 | <0.63 ± 0.14 | |
| | | Deep layer | | | | | 19.0 | 5.7 | - | None | | 30.1 | 13 | 2.1 | <0.58 ± 0.12 | <0.60 ± 0.14 | |
| Surface layer | 2015/2/3 | Sunny | 5.8 | 6.5 | 8.3 | 0.5 | Grayish yellow green | None | 2.5 | 11.1 | 4 | 2.1 | <0.64 ± 0.15 | <0.62 ± 0.14 | | | |
| Deep layer | | | | | 11.7 | 5.5 | - | None | | 30.1 | 7 | 1.8 | <0.67 ± 0.14 | <0.67 ± 0.13 | | | |
| 77 | Offshore of Tonegawa River Estuary | Surface layer | 2014/5/29 | Sunny | 16.8 | 7.7 | 22.2 | 0.5 | Grayish yellow green | None | 1.7 | 3.5 | 14 | 6.4 | <0.41 ± 0.098 | <0.68 ± 0.14 | |
| | | Deep layer | | | | | 17.1 | 6.7 | - | None | | 31.1 | 6 | 0.8 | <0.61 ± 0.14 | <0.56 ± 0.14 | |
| | | Surface layer | 2014/8/16 | Cloudy | 24.5 | 8.6 | 21.8 | 0.5 | Grayish yellow green | None | 1.6 | 19.4 | 4 | 1.6 | <0.59 ± 0.12 | <0.59 ± 0.12 | |
| | | Deep layer | | | | | 20.4 | 7.6 | - | None | | 29.8 | 4 | 0.5 | <0.67 ± 0.13 | <0.68 ± 0.15 | |
| | | Surface layer | 2014/11/18 | Sunny | 13.2 | 8.1 | 17.1 | 0.5 | Dark grayish bluish green | None | 3.5 | 25.5 | 3 | 0.9 | <0.61 ± 0.14 | <0.62 ± 0.12 | |
| | | Deep layer | | | | | 18.0 | 7.1 | - | None | | 30.0 | 5 | 0.9 | <0.61 ± 0.11 | <0.62 ± 0.15 | |
| | | Surface layer | 2015/2/11 | Cloudy | 8.0 | 8.2 | 7.7 | 0.5 | Dark grayish yellow green | None | 3.0 | 17.3 | 3 | 1.6 | <0.61 ± 0.14 | <0.59 ± 0.15 | |
| | | Deep layer | | | | | 10.4 | 7.2 | - | None | | 30.6 | 12 | 2.7 | <0.51 ± 0.12 | <0.59 ± 0.13 | |

Ibaraki Coastal (Sediment)1/1

| Location | | Sampling Date | Weather | Air temperature (°C) | Water depth (m) | Sediment | | | | | | | | | | | | | | | | | Remarks |
|----------|--|---------------|------------|----------------------|-----------------|---------------------------|--------------------|------------------------|-------------|---------------|---------------|-------------|----------------------------|-----------|------|------|-------------------------------------|----------------------|------------------------------|-----------|--------------------|------------|---------|
| No. | Water area | | | | | General items | | | | | | | | | | | Activity concentration [Bq/kg(dry)] | | | | | | |
| | | | | | | Sediment temperature (°C) | Sample length (cm) | Color | Odor | Coarse gravel | Medium gravel | Fine gravel | Grain size distribution(%) | | | Silt | Clay | Sediment content (%) | Density (t/cm ³) | Property | Radioactive cesium | | |
| | | | | | | | | | | | | Coarse sand | Medium sand | Fine sand | | | | | Cs-134 | Cs-137 | Total | | |
| 73 | Offshore of Satone River Estuary | 2014/5/12 | Cloudy | 18.8 | 13.0 | 13.0 | 10 | Faint hydrogen sulfide | None | 0.0 | 0.0 | 0.2 | 1.6 | 19.5 | 71.4 | 1.8 | 5.5 | 80.4 | 2.724 | Sand | 6.5 ± 1.1 | 14 ± 1.5 | 20.5 |
| | | 2014/8/25 | Cloudy | 28.5 | 13.5 | 21.5 | 10 | Faint hydrogen sulfide | None | 0.0 | 0.0 | 0.2 | 1.2 | 16.0 | 77.0 | 1.6 | 4.0 | 73.8 | 2.664 | Sand | <7.7 ± 2.4 | 27 ± 3.6 | 27 |
| | | 2014/11/19 | Sunny | 17.8 | 14.1 | 17.5 | 10 | Faint hydrogen sulfide | None | 0.0 | 0.0 | 0.1 | 0.5 | 7.5 | 73.4 | 12.1 | 6.4 | 73.6 | 2.673 | Sand | <7.1 ± 2.2 | 25 ± 3.6 | 25 |
| | | 2015/2/3 | Sunny | 9.8 | 13.2 | 9.0 | 10 | Faint hydrogen sulfide | None | 0.0 | 0.0 | 0.0 | 0.3 | 5.7 | 76.1 | 12.2 | 5.7 | 77.1 | 2.642 | Sand | 5.0 ± 1.6 | 25 ± 2.5 | 30.0 |
| | | 2014/5/12 | Cloudy | 19.0 | 12.6 | 15.0 | 10 | Grayish olive | None | 0.0 | 0.1 | 0.3 | 0.5 | 33.6 | 58.8 | 1.9 | 4.8 | 79.4 | 2.688 | Sand | 7.3 ± 1.9 | 13 ± 2.7 | 20.7 |
| 74 | Offshore of Okita River Estuary | 2014/8/25 | Cloudy | 25.8 | 12.3 | 23.0 | 10 | Faint hydrogen sulfide | None | 0.0 | 0.0 | 0.1 | 0.2 | 10.7 | 76.1 | 6.6 | 6.3 | 77.4 | 2.760 | Sand | 2.9 ± 0.42 | 9.2 ± 0.61 | 12.1 |
| | | 2014/11/19 | Sunny | 16.0 | 12.7 | 18.5 | 10 | Faint hydrogen sulfide | None | 0.0 | 0.0 | 0.1 | 0.4 | 19.3 | 62.9 | 11.2 | 6.2 | 77.5 | 2.834 | Sand | 2.6 ± 0.41 | 10 ± 0.53 | 12.6 |
| | | 2015/2/3 | Sunny | 10.5 | 13.1 | 9.0 | 10 | Faint hydrogen sulfide | None | 0.0 | 0.0 | 0.0 | 0.2 | 7.8 | 75.4 | 10.9 | 5.6 | 79.2 | 2.711 | Sand | <4.5 ± 1.4 | 11 ± 1.7 | 11 |
| | | 2014/5/12 | Sunny | 22.5 | 10.2 | 16.5 | 10 | Grayish olive | None | 0.0 | 0.0 | 0.0 | 0.0 | 6.6 | 83.5 | 5.9 | 4.0 | 78.5 | 2.676 | Sand | 4.0 ± 1.1 | 15 ± 1.5 | 19.0 |
| | | 2014/8/25 | Cloudy | 24.0 | 9.8 | 21.0 | 10 | Faint hydrogen sulfide | Faint vomit | 0.0 | 0.0 | 0.1 | 0.1 | 11.2 | 82.1 | 3.0 | 3.7 | 74.8 | 2.668 | Sand/silt | <6.1 ± 1.8 | 13 ± 2.9 | 13 |
| 75 | Offshore of Moniya River/Kujigawa River Estuaries | 2014/11/19 | Sunny | 15.2 | 9.6 | 19.2 | 10 | Faint hydrogen sulfide | None | 0.0 | 0.0 | 0.0 | 1.3 | 73.6 | 17.0 | 8.1 | 74.8 | 2.680 | Sand | 12 ± 2.6 | 51 ± 4.8 | 63 | |
| | | 2015/2/3 | Sunny | 9.5 | 11.0 | 12.0 | 10 | Faint hydrogen sulfide | None | 0.0 | 0.0 | 0.1 | 0.2 | 1.3 | 47.1 | 43.2 | 8.1 | 65.8 | 2.702 | Sand | 16 ± 2.4 | 51 ± 3.9 | 67 |
| | | 2014/5/12 | Sunny | 23.0 | 5.3 | 16.5 | 10 | Gray | None | 0.0 | 0.0 | 0.0 | 0.7 | 68.3 | 23.6 | 1.9 | 3.5 | 79.8 | 2.703 | Sand | 1.1 ± 0.33 | 3.1 ± 0.37 | 4.2 |
| | | 2014/8/25 | Light rain | 24.6 | 7.0 | 23.0 | 10 | Faint hydrogen sulfide | None | 0.0 | 3.7 | 4.1 | 12.9 | 55.8 | 20.1 | 0.5 | 2.9 | 79.7 | 2.713 | Sand | 0.93 ± 0.31 | 3.4 ± 0.34 | 4.33 |
| | | 2014/11/19 | Sunny | 12.8 | 6.7 | 18.5 | 10 | Faint hydrogen sulfide | None | 0.0 | 0.0 | 0.0 | 0.1 | 32.0 | 64.8 | 1.5 | 1.5 | 75.9 | 2.758 | Sand | 2.0 ± 0.38 | 4.0 ± 0.49 | 8.0 |
| 76 | Neighboring water body of Ken-o Offshore of Nakagawa River | 2015/2/3 | Sunny | 5.8 | 6.5 | 10.5 | 10 | Faint hydrogen sulfide | None | 0.0 | 0.0 | 0.7 | 4.0 | 77.8 | 15.8 | 0.1 | 1.7 | 80.6 | 2.706 | Sand | <0.76 ± 0.25 | 2.9 ± 0.27 | 2.9 |
| | | 2014/5/29 | Sunny | 16.8 | 7.7 | 20.2 | 10 | Grayish olive | None | 0.0 | 0.0 | 0.0 | 0.0 | 1.1 | 92.7 | 1.2 | 4.9 | 76.1 | 2.678 | Sand | 0.92 ± 0.26 | 2.8 ± 0.32 | 3.72 |
| | | 2014/8/16 | Cloudy | 24.5 | 8.6 | 20.5 | 10 | Faint hydrogen sulfide | None | 0.0 | 0.0 | 0.1 | 0.1 | 1.1 | 89.1 | 2.1 | 7.5 | 73.7 | 2.667 | Sand | 1.2 ± 0.35 | 4.1 ± 0.48 | 5.3 |
| | | 2014/11/18 | Sunny | 13.2 | 8.1 | 17.8 | 10 | Faint hydrogen sulfide | None | 0.0 | 0.0 | 0.1 | 0.1 | 1.8 | 89.2 | 3.3 | 5.6 | 75.0 | 2.699 | Sand | <0.75 ± 0.25 | 2.4 ± 0.30 | 2.4 |
| | | 2015/2/11 | Cloudy | 8.0 | 8.2 | 9.5 | 10 | Faint hydrogen sulfide | None | 0.0 | 0.0 | 0.0 | 0.1 | 1.3 | 93.3 | 2.1 | 3.2 | 78.3 | 2.713 | Sand | <0.97 ± 0.31 | 1.2 ± 0.39 | 1.2 |

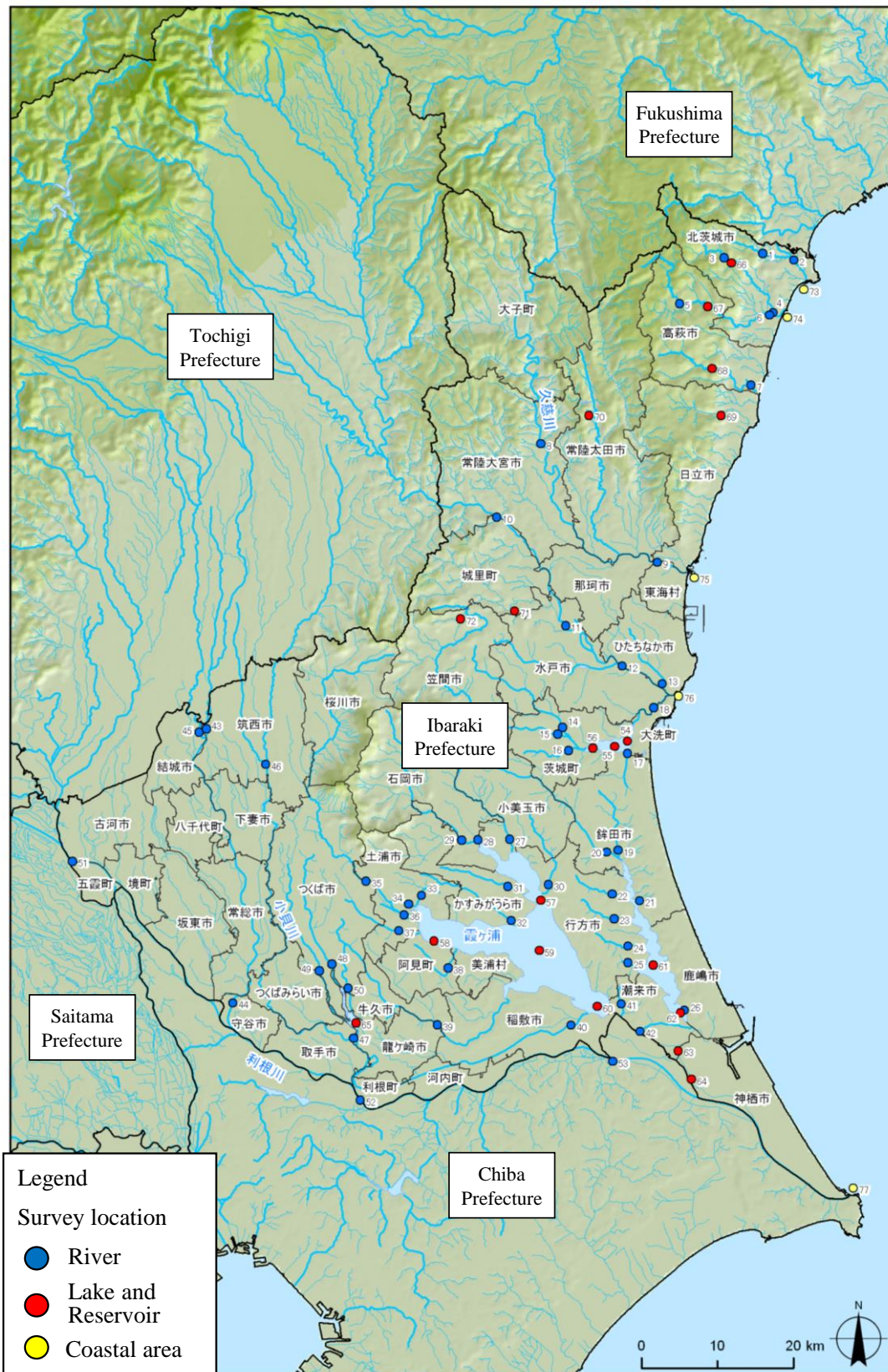


Figure 3.5.5 Survey Locations (Ibaraki Prefecture)