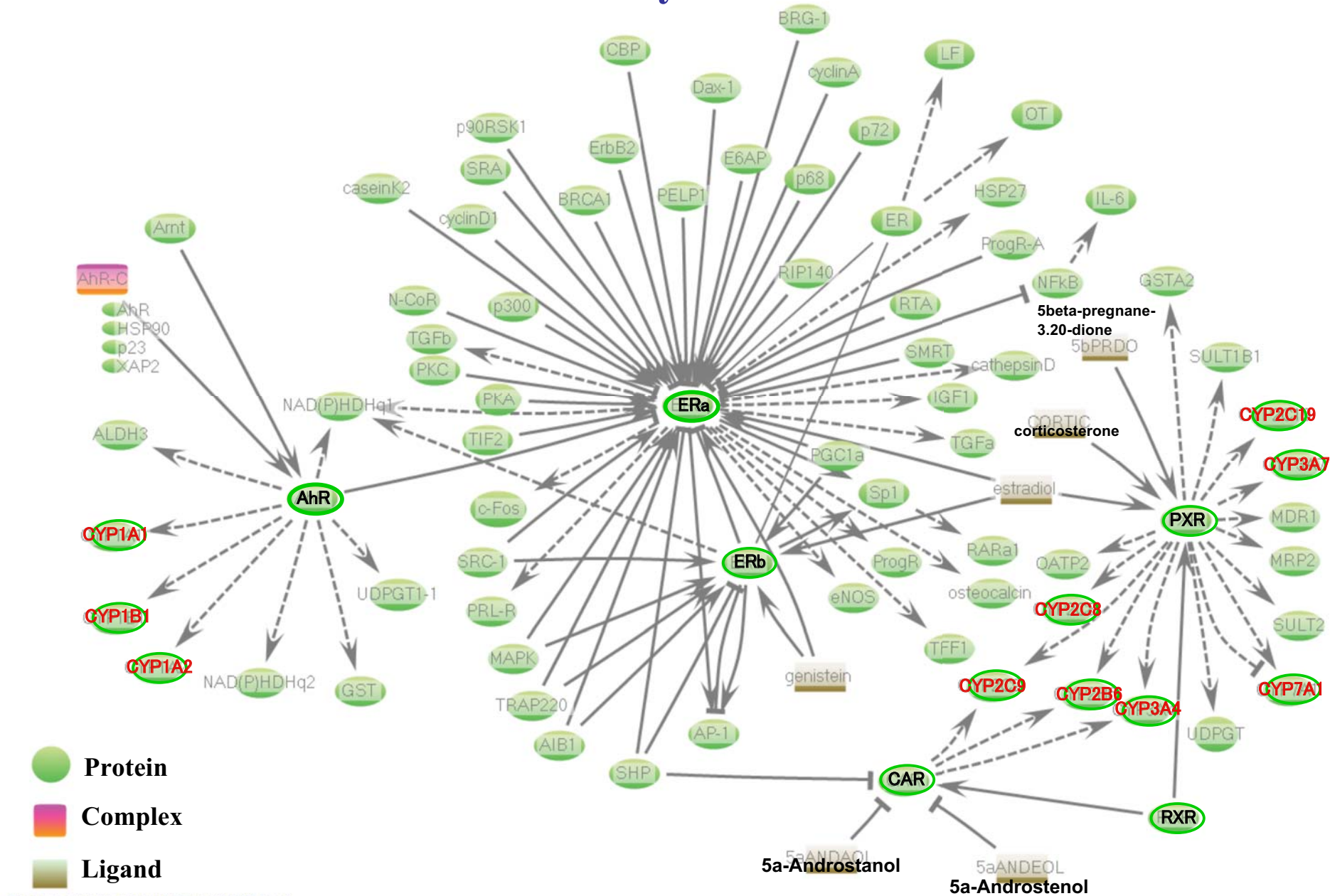
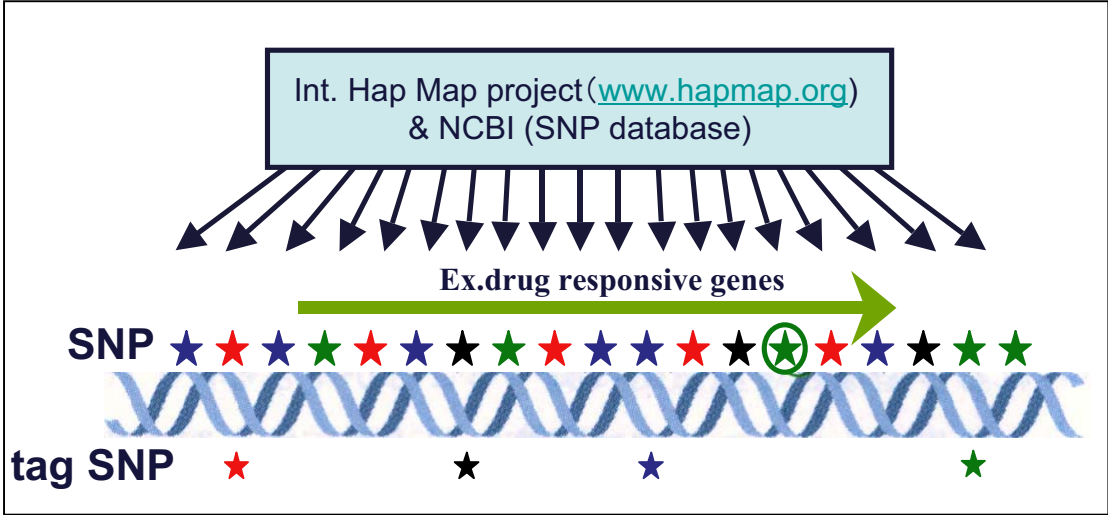


Nuclear Receptor (AhR, ERa, ERb, PXR, CAR, RXR) Network and Cytochrome P450



Analysis of Association of Disease-susceptibility Genes with Polymorphism of Genes Responsive to Environmental Chemicals

• Obtain genotype data by informatics
 • tag SNP selection based on statistical analysis

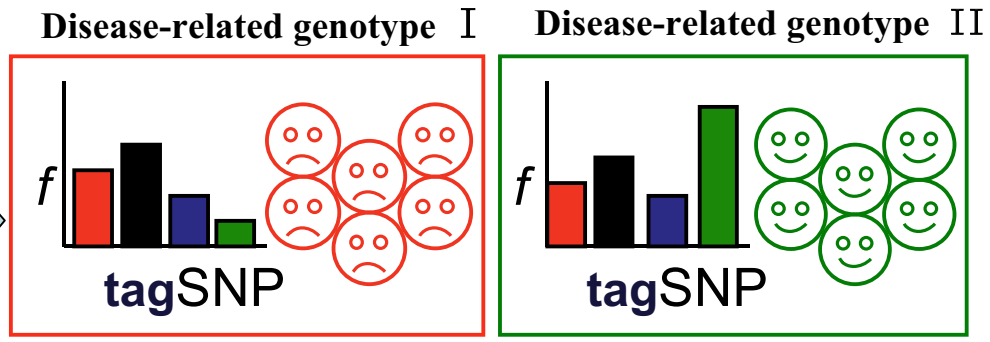


• 15 genes, 384 SNPs
 • Analyze SNPs by a haplotype



210 samples
378 SNP

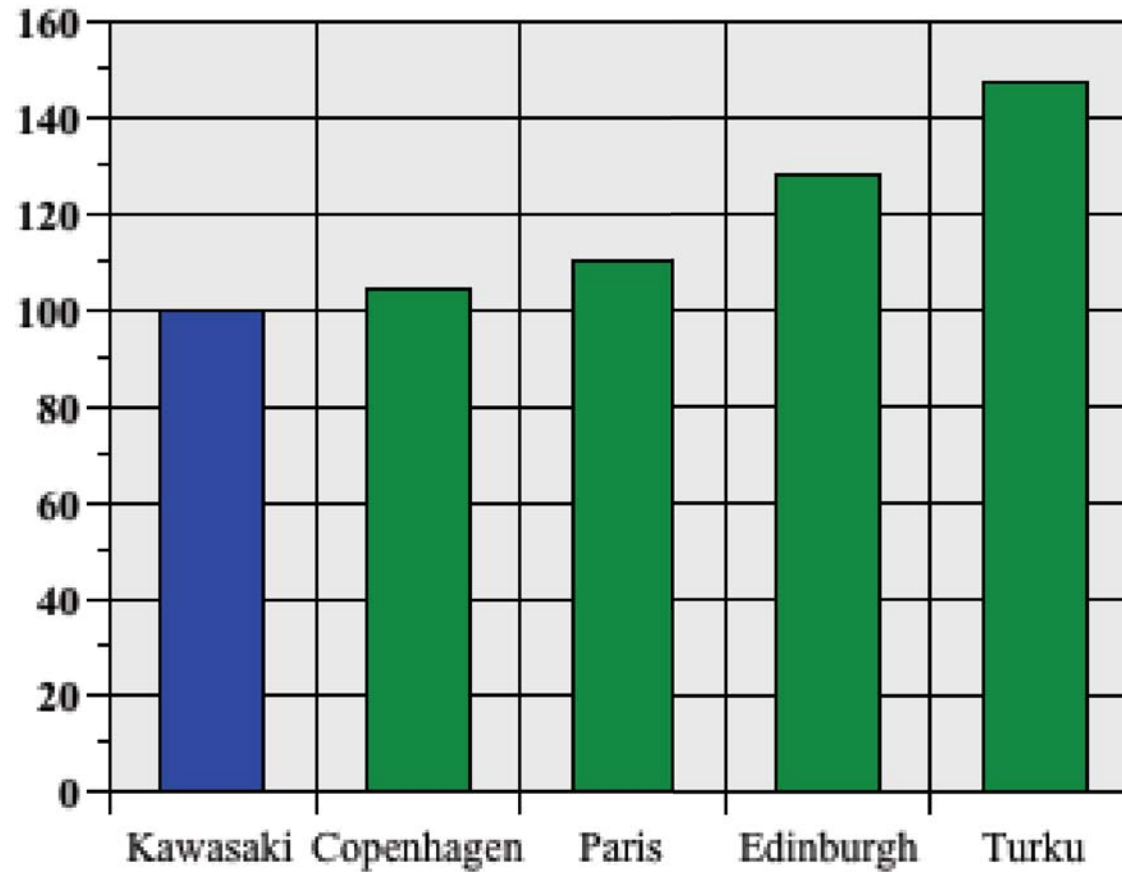
• Biological significance of 384 SNPs
 • Association with disease-related genes
 • Estimate the effects of environmental factors, association of disease



Topics on Endocrine Disruptor Research

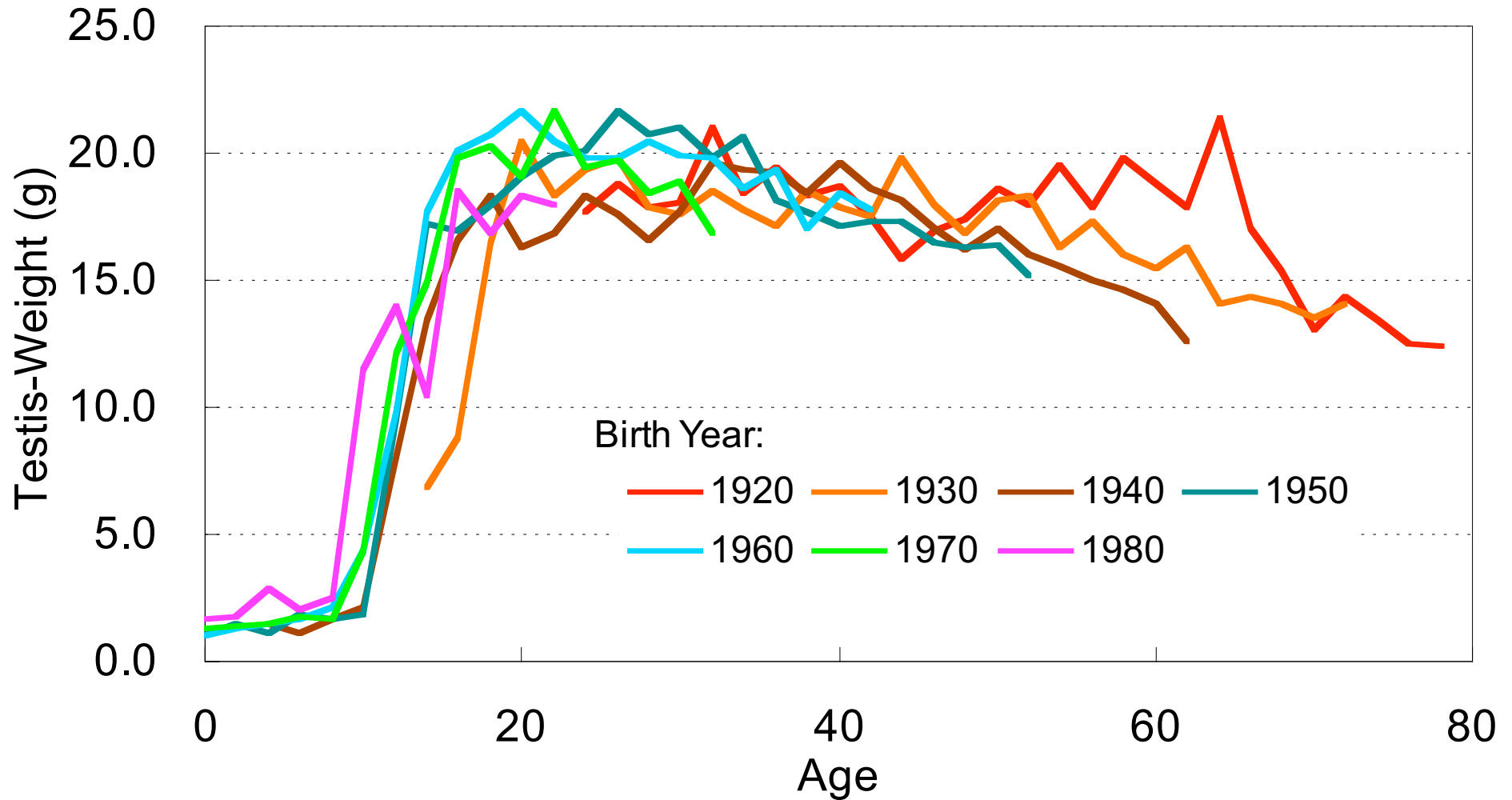
- Status of Japanese men's reproduction
- Phthalate esters
- New chemicals, PBDE, PFOS, PFOA

Relative Difference in Sperm Concentration in Fertile Men International Comparison



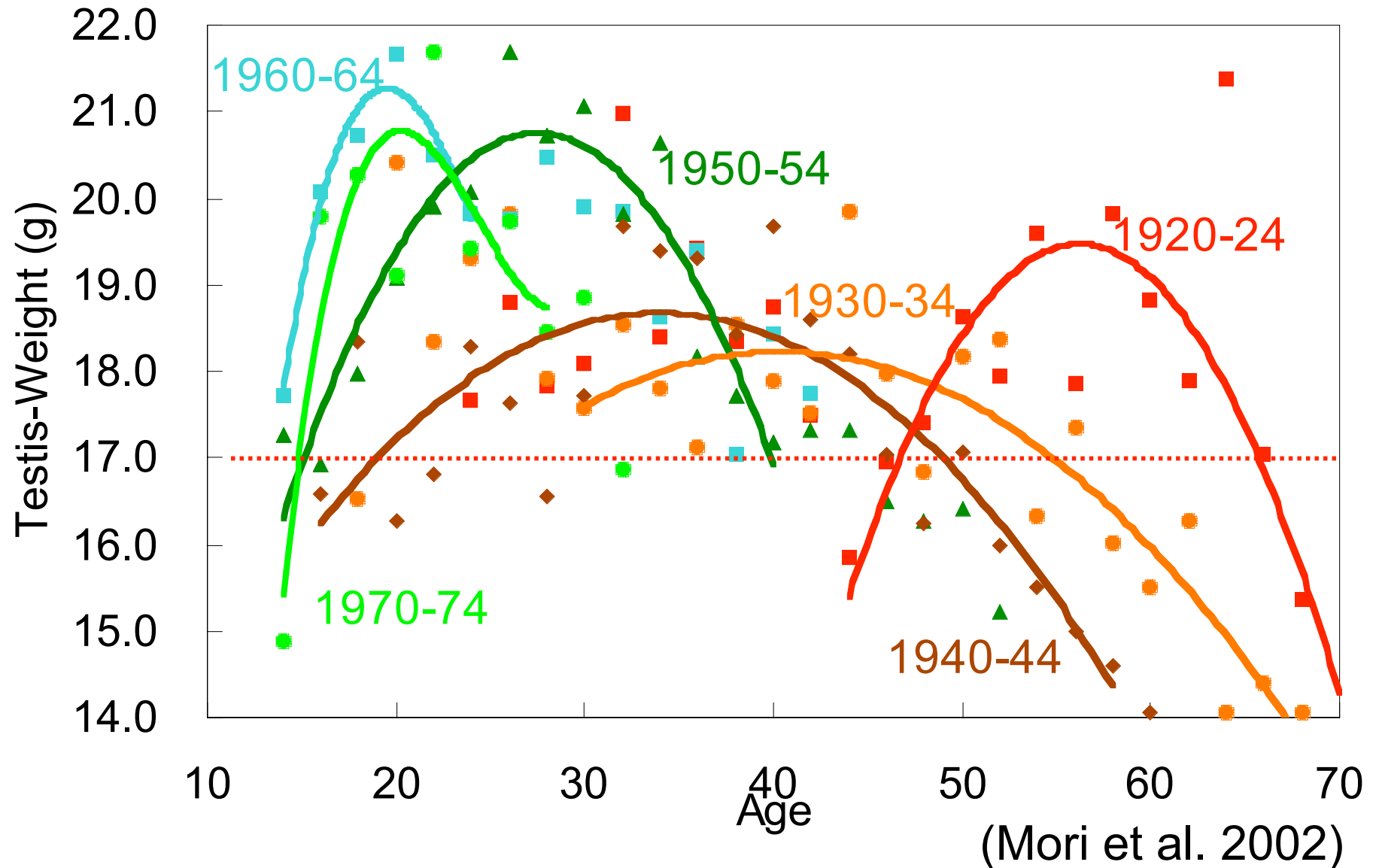
Iwamoto et al. (2006)

Temporal Changes in Testis Weight by Birth Year



(Mori et al. 2002)

Schematic Description of Temporal Testis Weight Change



Sex ratio

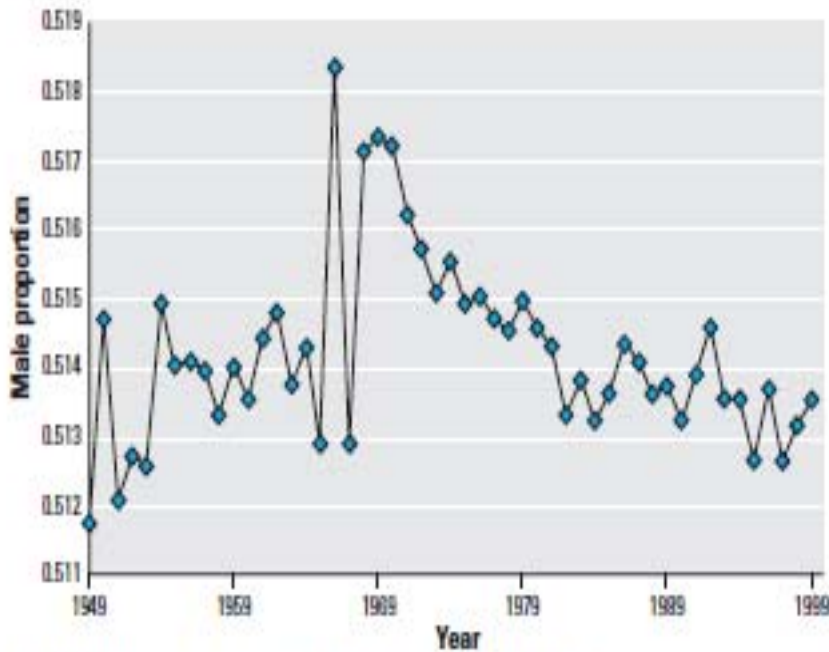


Figure 1. Proportion of male live births, Japan, 1949–1999.

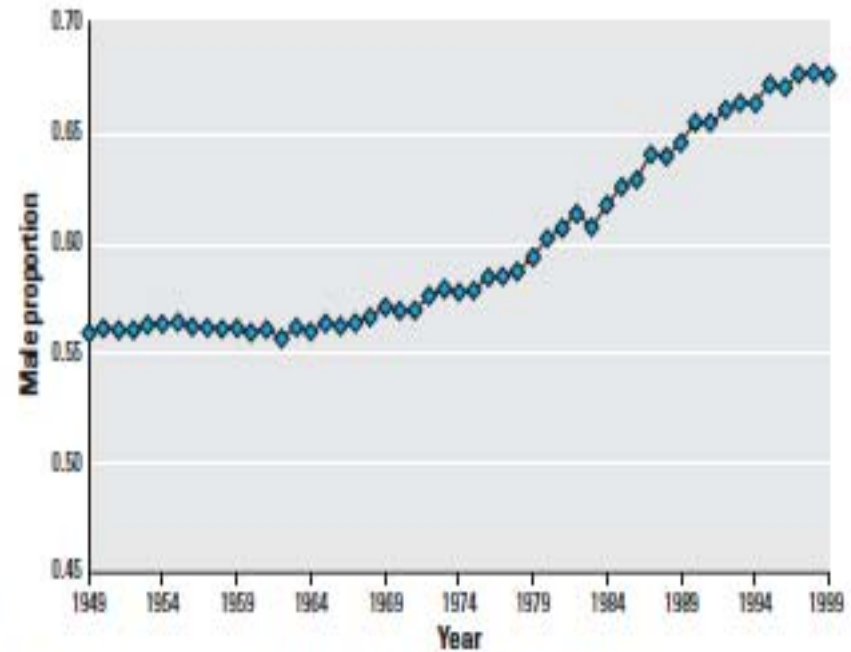


Figure 2. Proportion of male fetal deaths, Japan, 1949–1999.

Davis et al., 2007

Phthalate Esters

- **AGD**

Monoester level in urine in pregnancy and AGD (Swan et al., 2005)

- **T4**

MEHP in urine and free T4 (Meeker et al., 2007)

- **Obesity, Insulin resistance**

Four metabolite and obesity (Stahlhut et al., 2007)

- **Semen parameter**

Monobutyl, monobenzyl phthalate and semen parameter (Duty et al., 2003)

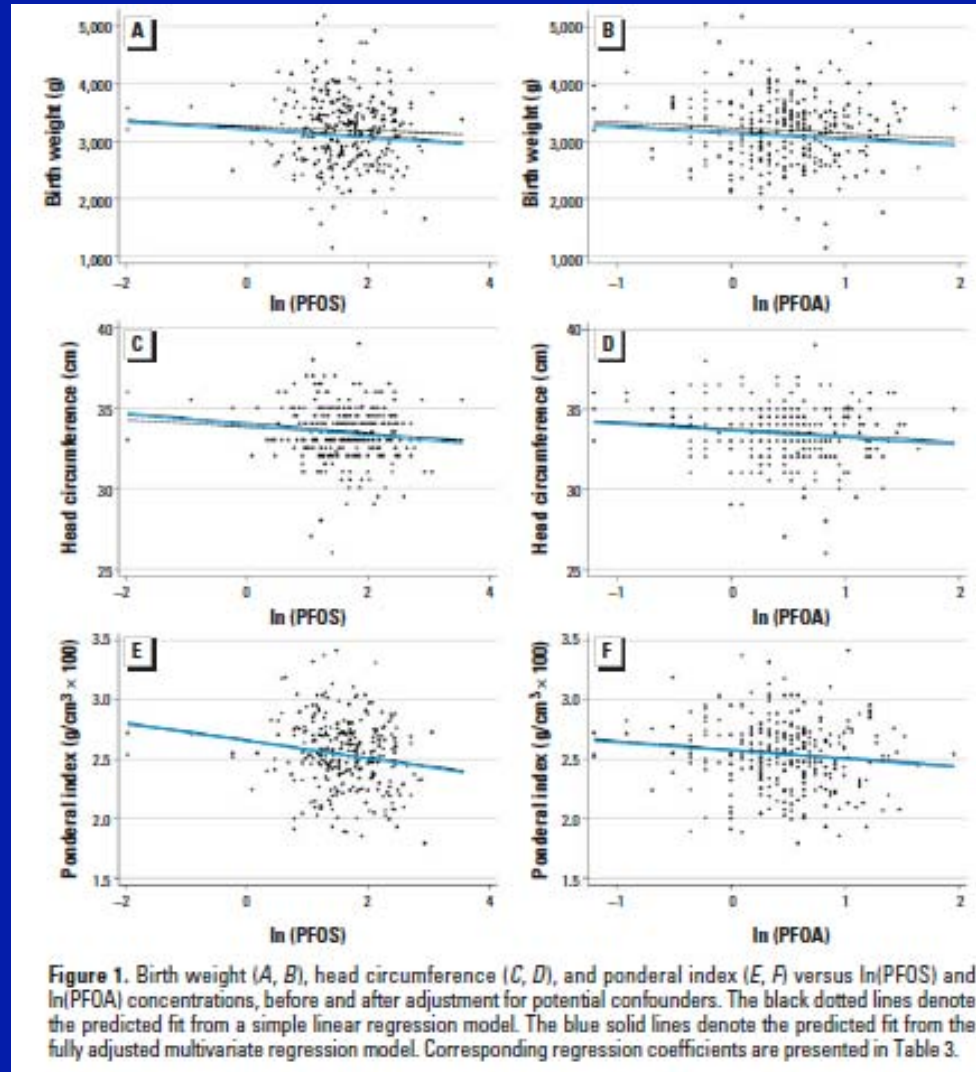
Anogenital index Monobuthyl phthalate (n=85, boy)

Exposure quartile	Low anogenital index		Odds ratio (95% CI)
	yes	no	
1	5	15	1
2 – 3	24	19	3.8 (1.2-12.3)
4	17	5	10.2 (2.5-42.2)

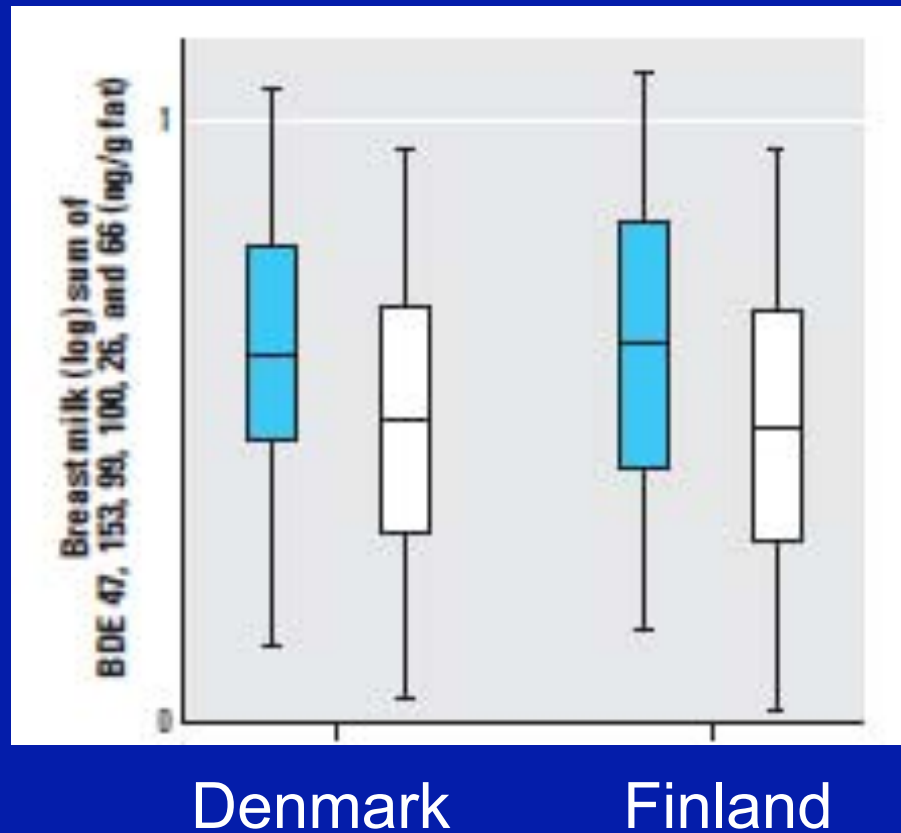
New Chemicals

- PFOS, PFOA- birth weight
- PBDE-cryptorchidism

PFOS, PFOA and Birth Weight



PBDEs in Breast Milk and Cryptorchidism



Main et al., 2007

Summary

More concern about the susceptibility factors

- **Critical windows**

Importance of prospective cohort design for early life studies.

Specimen banking

- **Genetic susceptibility**

Genome (molecular) epidemiology

Acknowledgments

- Dr. Ogata, T.
National Research Institute for Child Health and
Development
- Dr. Sone, H.
National Institute for Environmental Studies