

FY2024 Tokyo Metropolis Survey Results

[Outline of results]

(1) Water

Rivers

Radioactive cesium (Cs-134, Cs-137): ND at all measurement points

Coastal areas

Radioactive cesium (Cs-134, Cs-137): ND at all measurement points

(2) Sediments

Rivers

Cs-134: ND at all measurement points

Cs-137: 36 - 63 Bq/kg (dry)

Coastal areas

Cs-134: ND at all measurement points

Cs-137: 24 - 93 Bq/kg (dry)

(3) Surrounding Environment*

(a) Soil

Rivers

Cs-134: ND at all measurement points

Cs-137: 65 - 350 Bq/kg (dry)

(b) Ambient dose rate

Rivers

0.04 - 0.08 μ Sv/h

*Surveys conducted from May to August

Tokyo River(Water) 1/1

	Location				Sampling Date	Weather	Air temperature (°C)	Water depth (m)	Water										Remarks		
	No.	Water Area	Location	Municipality					General items											Activity concentration(Bq/L)	
									Water temperature (°C)	Sampling depth (m)	Color	Odor	Transparency (cm)	Electrical conductivity (mS/m)	SS (mg/L)	Turbidity (FNU)	Radioactive cesium				
																	Cs-134	Cs-137			
Rivers	50	Arakawa River System	Arakawa River Lower Reaches	Kasai Bridge	Koto City/ Edogawa City	2024/5/2	Sunny	18.7	1.6	19.2	0.0	Light grayish greenish yellow	None	65	1,000	13	3.3	< 0.63	< 0.52		
						2024/8/2	Cloudy	30.2	0.9	29.2	0.0	Grayish greenish yellow	None	26	916	24	6.3	< 0.71	< 0.66		
						2024/11/7	Sunny	16.5	1.8	18.4	0.0	Light grayish yellow	None	42	1,890	19	8.3	< 0.72	< 0.44		
						2025/1/15	Sunny	5.9	1.2	10.9	0.0	Grayish greenish yellow	None	24	4,150	42	13	< 0.31	< 0.61		
	51		Sumida River	Ryogoku Bridge	Chuo City	2024/5/20	Sunny	20.5	3.1	21.0	0.0	Dark grayish yellow green	Faint sewage	66	2,400	5	3.5	< 0.71	< 0.64		
						2024/8/26	Sunny	30.6	3.2	28.2	0.0	Dark grayish yellow green	Faint sewage	67	1,600	8	2.6	< 0.75	< 0.54		
						2024/11/15	Cloudy	17.5	2.3	19.4	0.0	Dark grayish yellow green	None	80	2,670	7	2.4	< 0.57	< 0.47		
						2025/1/20	Sunny	10.5	2.0	12.0	0.0	Dark grayish yellow green	None	>100	1,490	4	2.2	< 0.62	< 0.58		

Tokyo River(Sediment) 1/1

	Location				Sampling Date	Weather	Air temperature (°C)	Water depth (m)	Sediment															Remarks				
	No.	Water Area	Location	Municipality					Sediment temperature (°C)	Sample length (cm)	Color	Odor	General items									Sediment content (%)	Density (Mg/m³)		Property	Activity concentration [Bq/kg(dry)]		
													Grain size distribution(%)						Cs-134	Cs-137	Total							
													Coarse gravel	Medium gravel	Fine gravel	Coarse sand	Medium sand	Fine sand								silt	clay	
Rivers	50	Arakawa River System	Arakawa River Lower Reaches	Kasai Bridge	Koto City/Edogawa City	2024/5/2	Sunny	18.7	1.6	18.5	3	Olive black	Faint swamp	0.0	0.0	0.0	0.1	0.1	2.2	49.5	48.1	34.7	2.59	silt	< 9.0	54 ± 4.7	54	
						2024/8/2	Cloudy	30.2	0.9	28.7	3	Olive black	Faint swamp	0.0	0.0	0.9	1.2	1.0	3.6	43.3	50.0	36.0	2.62	silt	< 8.2	55 ± 4.8	55	
						2024/11/7	Sunny	16.5	1.8	17.8	3	Olive black	Medium swamp	0.0	0.0	0.0	2.2	1.0	3.0	41.4	52.4	35.0	2.63	silt	< 6.9	55 ± 4.0	55	
						2025/1/15	Sunny	5.9	1.2	10.5	3	Grayish olive	Faint swamp	0.0	0.0	0.0	0.0	0.1	0.6	59.8	39.5	29.2	2.60	silt	< 9.2	60 ± 4.4	60	
	51	Sumida River	Ryogoku Bridge	Chuo City	2024/5/20	Sunny	20.5	3.1	22.0	3	Black	Faint hydrogen sulfide	0.0	0.0	2.0	3.2	18.8	43.7	17.3	15.0	55.5	2.62	silt/sand	< 6.5	63 ± 4.5	63		
					2024/8/26	Sunny	30.6	3.2	28.2	2	Black	Faint hydrogen sulfide	0.0	0.0	0.0	6.0	31.9	46.6	5.5	10.0	66.5	2.73	silt/sand	< 5.6	36 ± 3.1	36		
					2024/11/15	Cloudy	17.5	2.3	20.5	3	Black	Medium hydrogen sulfide	0.0	0.0	0.0	4.6	18.9	49.8	11.8	14.9	54.9	2.68	silt/sand	< 6.5	62 ± 4.5	62		
					2025/1/20	Sunny	10.5	2.0	11.8	6	Black	Faint hydrogen sulfide	0.0	0.0	0.0	1.6	31.3	42.8	7.9	16.4	53.8	2.70	silt/sand	< 5.7	53 ± 3.8	53		

Tokyo River(SE) 1/1

Rivers	Location				Sampling Date	Weather	Air temperature (°C)	Surrounding Environment(Soil,Air dose)														Remarks
	No.	Water Area	Location	Municipality				Left bank							Right bank							
								Color	Odor	Property	Activity concentration [Bq/kg(dry)]			Air dose (µSv/h)	Color	Odor	Property	Activity concentration [Bq/kg(dry)]			Air dose (µSv/h)	
											Radioactive cesium							Radioactive cesium				
Cs-134	Cs-137	Total	Cs-134	Cs-137	Total																	
50	Arakawa River System	Arakawa River Lower Reaches	Kasai Bridge	Koto City/Edogawa City	2024/5/2	Sunny	18.7	Dark brown	Faint earth	loamy	< 5.0	65 ± 4.2	65	0.06	Brownish black	Faint earth	Loamy	< 5.6	140 ± 5.9	140	0.08	
					2024/8/2	Cloudy	30.2	Dark brown	Faint earth	loamy	< 5.8	69 ± 4.2	69	0.04	Dark brown	Faint earth	Loamy	< 7.8	350 ± 11	350	0.07	
					2024/5/20	Sunny	20.5	-	-	-	-	-	-	-	0.06	-	-	-	-	-	-	-
51	Sumida River	Ryogoku Bridge	Chuo City	2024/8/26	Sunny	30.6	-	-	-	-	-	-	-	-	-	-	-	-	-	-	0.06	Difficult to collect soils due to topography, etc.*

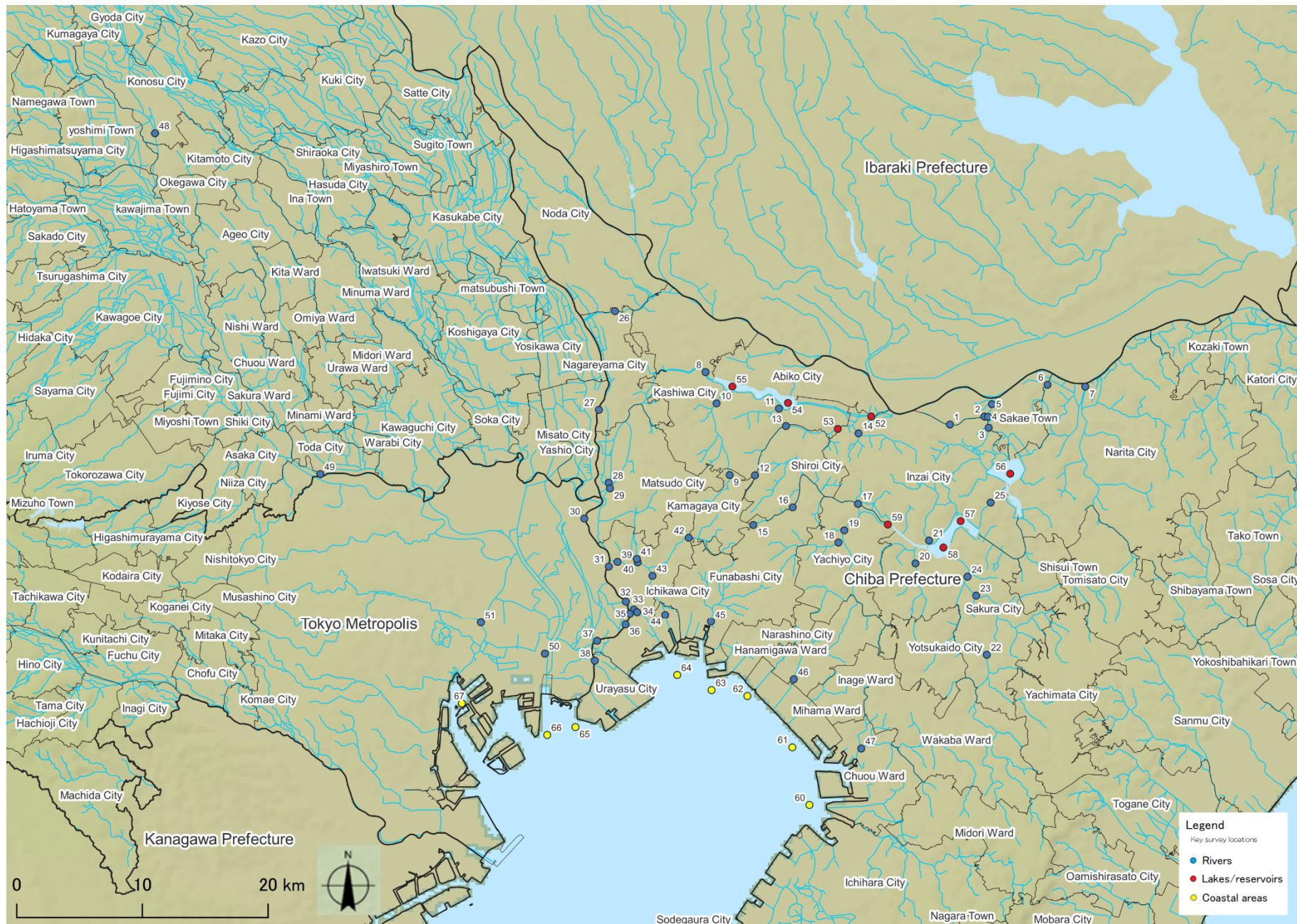
* It may be difficult to collect soils due to artificial soil cover, topography, etc.

Tokyo Coastal(Water) 1/1

No.	Location		Surface layer/ Deep layer	Sampling Date	Weather	Air temperature (°C)	Water depth (m)	Water										Remarks
								General items							Activity concentration(Bq/L)			
	Water Area							Water temperature (°C)	Sampling depth (m)	Color	Odor	Secchi disk depth (m)	Salinity (‰)	SS (mg/L)	Turbidity (FNU)	Radioactive cesium		
										Cs-134	Cs-137							
Coastal areas	65	Approx. 1km offshore of Kyu-Edogawa River Estuary	Offshore of Kyu- Edogawa River Estuary	Surface layer	2024/5/21	Sunny	27.0	6.3	23.5	0.5	Very dark yellow green	None	1.4	10.4	6	4.6	< 0.60	< 0.55
				Deep layer					19.5	5.3	-	None		30.5	12	5.3	< 0.47	< 0.67
				Surface layer	2024/6/11	Sunny	26.0	6.4	24.4	0.5	Dark yellow green	None	1.3	14.8	10	5.4	< 0.42	< 0.63
				Deep layer					22.1	5.4	-	None		28.5	8	2.1	< 0.57	< 0.58
				Surface layer	2024/7/16	Cloudy	29.2	6.1	26.8	0.5	Very dark yellow green	None	1.4	22.4	7	7.9	< 0.65	< 0.51
				Deep layer					26.3	5.1	-	None		26.5	8	7.6	< 0.38	< 0.51
				Surface layer	2024/8/20	Sunny	30.8	6.0	30.0	0.5	Dark yellow green	None	0.8	12.4	20	6.1	< 0.69	< 0.64
				Deep layer					28.8	5.0	-	None		25.9	12	4.4	< 0.60	< 0.55
				Surface layer	2024/9/17	Sunny	28.4	4.7	28.1	0.5	Dark yellow green	None	0.5	8.9	34	12	< 0.55	< 0.58
				Deep layer					28.6	3.7	-	None		22.0	12	4.7	< 0.58	< 0.64
	Surface layer	2024/11/14	Cloudy	17.0	4.9	17.7	0.5	Very dark yellow green	None	2.3	19.6	4	2.4	< 0.49	< 0.55			
	Deep layer					19.2	3.9	-	None		30.5	5	1.5	< 0.47	< 0.58			
	Surface layer	2025/1/15	Sunny	6.8	5.6	10.4	0.5	Very dark yellow green	None	2.8	29.9	5	2.1	< 0.53	< 0.66			
	Deep layer					10.6	4.6	-	None		30.8	5	2.2	< 0.70	< 0.64			
	66	St-8	Offshore of Arakawa River / Kyu-Edogawa River Estuaries	Surface layer	2024/5/21	Cloudy	25.2	4.5	21.0	0.5	Very dark yellow green	None	1.5	20.0	6	3.6	< 0.67	< 0.58
				Deep layer					19.1	3.5	-	None		29.6	9	4.5	< 0.67	< 0.47
				Surface layer	2024/6/11	Sunny	25.5	4.4	22.6	0.5	Dark yellow green	None	1.3	21.4	10	5.7	< 0.71	< 0.61
				Deep layer					22.0	3.4	-	None		26.4	12	5.1	< 0.71	< 0.45
				Surface layer	2024/7/16	Light Rain	26.2	5.2	26.5	0.5	Very dark yellow green	None	1.1	15.5	7	9.4	< 0.68	< 0.52
				Deep layer					25.5	4.2	-	None		27.4	10	5.2	< 0.64	< 0.63
Surface layer				2024/8/20	Sunny	32.0	5.2	29.1	0.5	Very dark yellow green	None	0.8	5.4	14	4.5	< 0.62	< 0.61	
Deep layer								27.8	4.2	-	None		27.9	16	4.3	< 0.58	< 0.69	
Surface layer				2024/9/17	Sunny	27.4	3.8	28.7	0.5	Dull yellow green	None	0.7	7.6	13	5.9	< 0.62	< 0.47	
Deep layer								28.5	2.8	-	None		19.6	14	4.0	< 0.65	< 0.58	
Surface layer	2024/11/14	Cloudy	17.8	3.8	18.5	0.5	Soft yellow green	None	0.8	22.0	16	6.5	< 0.57	< 0.55				
Deep layer					18.9	2.8	-	None		26.5	16	6.5	< 0.66	< 0.40				
Surface layer	2025/1/15	Sunny	9.3	5.0	11.2	0.5	Dark yellow green	None	3.0	31.2	6	2.2	< 0.53	< 0.51				
Deep layer					11.1	4.0	-	None		31.9	6	2.5	< 0.42	< 0.55				
67	Southwestern area of Toyosu Wharf	Offshore of Sumida River Estuary	Surface layer	2024/5/21	Cloudy	28.2	10.5	22.8	0.5	Very dark yellow green	None	1.2	18.4	5	4.0	< 0.52	< 0.52	
			Deep layer					18.5	9.5	-	None		31.5	5	2.1	< 0.53	< 0.55	
			Surface layer	2024/8/20	Sunny	31.5	10.3	29.3	0.5	Very dark reddish yellow	None	0.8	14.8	11	8.1	< 0.60	< 0.58	
			Deep layer					23.9	9.3	-	Medium hydrogen sulfide		30.9	3	0.7	< 0.55	< 0.55	
			Surface layer	2024/11/14	Cloudy	19.0	9.8	19.5	0.5	Very dark yellow green	None	2.8	27.6	6	1.6	< 0.64	< 0.63	
			Deep layer					20.6	8.8	-	None		31.7	1	2.9	< 0.67	< 0.64	
Surface layer	2025/1/15	Sunny	8.7	10.5	11.0	0.5	Dark yellow green	None	3.8	26.7	3	1.5	< 0.55	< 0.40				
Deep layer					11.8	9.5	-	None		31.7	4	2.0	< 0.55	< 0.67				

Tokyo Coastal(Sediment) 1/1

Location			Sampling Date	Weather	Air temperature (°C)	Water depth (m)	Sediment																	Remarks		
							Sediment temperature (°C)	Sample length (cm)	Color	Odor	General items						Grain size distribution(%)					Sediment content (%)	Density (Mg/m ³)		Property	Activity concentration [Bq/kg(dry)]
Coarse gravel	Medium gravel	Fine gravel	Coarse sand	Medium sand	Fine sand	silt					clay	Coarse sand	Medium sand	Fine sand	silt	clay	Radioactive cesium									
No.	Water Area																									
Coastal areas	65	Approx. 1km offshore of Kyu-Edogawa River Estuary	Offshore of Kyu-Edogawa River Estuary	2024/5/21	Sunny	27.0	6.3	19.0	8	Black	None	0.0	0.0	0.0	0.2	0.3	19.0	61.2	19.3	48.7	2.62	silt/clay	< 5.3	70 ± 3.8	70	
				2024/6/11	Sunny	26.0	6.4	20.7	3	Black	None	0.0	0.0	0.0	0.2	0.1	1.9	52.1	45.7	34.4	2.60	silt	< 7.0	66 ± 4.8	66	
				2024/7/16	Cloudy	29.2	6.1	26.8	4	Black	Faint clam	0.0	0.0	0.0	0.1	2.0	30.9	42.8	24.2	55.8	2.68	silt	< 4.5	49 ± 3.0	49	
				2024/8/20	Sunny	30.8	6.0	28.5	3	Black	Faint hydrogen sulfide	0.0	0.0	0.0	0.1	0.1	7.2	70.5	22.1	44.6	2.63	silt	< 5.1	74 ± 3.9	74	
				2024/9/17	Sunny	28.4	4.7	28.2	9	Black	Faint hydrogen sulfide	0.0	0.0	0.0	0.1	0.2	11.3	56.1	32.3	41.8	2.66	silt	< 7.5	65 ± 4.8	65	
				2024/11/14	Cloudy	17.0	4.9	20.1	5	Black	None	0.0	0.0	0.0	0.1	0.2	4.9	66.3	28.5	35.4	2.61	silt	< 7.8	93 ± 5.6	93	
					2025/1/15	Sunny	6.8	5.6	11.1	5	Black	Faint earth	0.0	0.0	0.0	0.0	0.4	16.3	59.2	24.1	41.1	2.64	silt	< 7.8	70 ± 5.2	70
		66	St-8	Offshore of Arakawa River / Kyu-Edogawa River Estuaries	2024/5/21	Cloudy	25.2	4.5	20.7	4	Olive black	None	0.0	0.0	0.0	0.1	0.3	31.1	46.1	22.4	58.5	2.65	silt	< 4.3	36 ± 2.6	36
	2024/6/11				Sunny	25.5	4.4	22.5	7	Olive black	None	0.0	0.0	0.0	0.0	0.1	4.3	58.5	37.1	48.5	2.66	silt	< 7.2	41 ± 3.9	41	
	2024/7/16				Light Rain	26.2	5.2	25.5	5	Olive black	None	0.0	0.0	0.0	0.1	0.2	31.7	42.4	25.6	58.1	2.68	silt	< 6.2	32 ± 3.2	32	
	2024/8/20				Sunny	32.0	5.2	27.8	6	Black	None	0.0	0.0	0.0	0.3	0.1	24.1	50.4	25.1	55.6	2.68	silt	< 5.1	33 ± 2.9	33	
	2024/9/17				Sunny	27.4	3.8	28.4	6	Black	Faint hydrogen sulfide	0.0	0.0	0.0	0.1	0.2	9.5	57.2	33.0	45.1	2.69	silt	< 8.2	42 ± 4.0	42	
	2024/11/14				Cloudy	17.8	3.8	19.9	5	Olive black	None	0.0	0.0	0.0	0.1	0.0	19.4	52.3	28.2	49.3	2.68	silt	< 7.6	49 ± 4.1	49	
					2025/1/15	Sunny	9.3	5.0	11.7	7	Olive black	None	0.0	0.0	0.0	0.2	0.2	15.2	56.5	27.9	43.6	2.69	silt	< 7.6	57 ± 4.8	57
		67	Southwestern area of Toyosu Wharf	Offshore of Sumida River Estuary	2024/5/21	Cloudy	28.2	10.5	17.4	7	Black	Medium hydrogen sulfide	0.0	0.0	0.0	0.0	0.2	0.6	30.8	68.4	23.0	2.61	silt	< 6.5	32 ± 2.7	32
2024/8/20	Sunny				31.5	10.3	21.2	5	Black	Medium hydrogen sulfide	0.0	0.0	0.0	0.3	0.3	0.6	32.3	66.5	21.8	2.63	silt	< 7.0	30 ± 3.1	30		
2024/11/14	Cloudy				19.0	9.8	20.6	7	Black	Medium hydrogen sulfide	0.0	0.0	0.0	0.1	0.3	0.8	43.2	55.6	23.4	2.68	silt	< 8.2	38 ± 3.8	38		
2025/1/15	Sunny				8.7	10.5	11.8	9	Black	Medium hydrogen sulfide	0.0	0.0	0.0	0.0	0.3	1.2	47.8	50.7	21.2	2.71	silt	< 6.6	24 ± 2.8	24		



Survey Locations (Chiba Prefecture, Saitama Prefecture and Tokyo Metropolis)