

FY2024 Saitama Prefecture Survey Results

[Outline of results]

(1) Water

Rivers

Radioactive cesium (Cs-134, Cs-137): ND at all measurement points

(2) Sediments

Rivers

Cs-134: ND at all measurement points

Cs-137: 5.1 - 32 Bq/kg (dry)

(3) Surrounding Environment*

(a) Soil

Rivers

Cs-134: ND at all measurement points

Cs-137: 5.3 - 130 Bq/kg (dry)

(b) Ambient dose rate

Rivers

0.04 - 0.07 μ Sv/h

*Surveys conducted from May to August

Saitama River(Water) 1/1

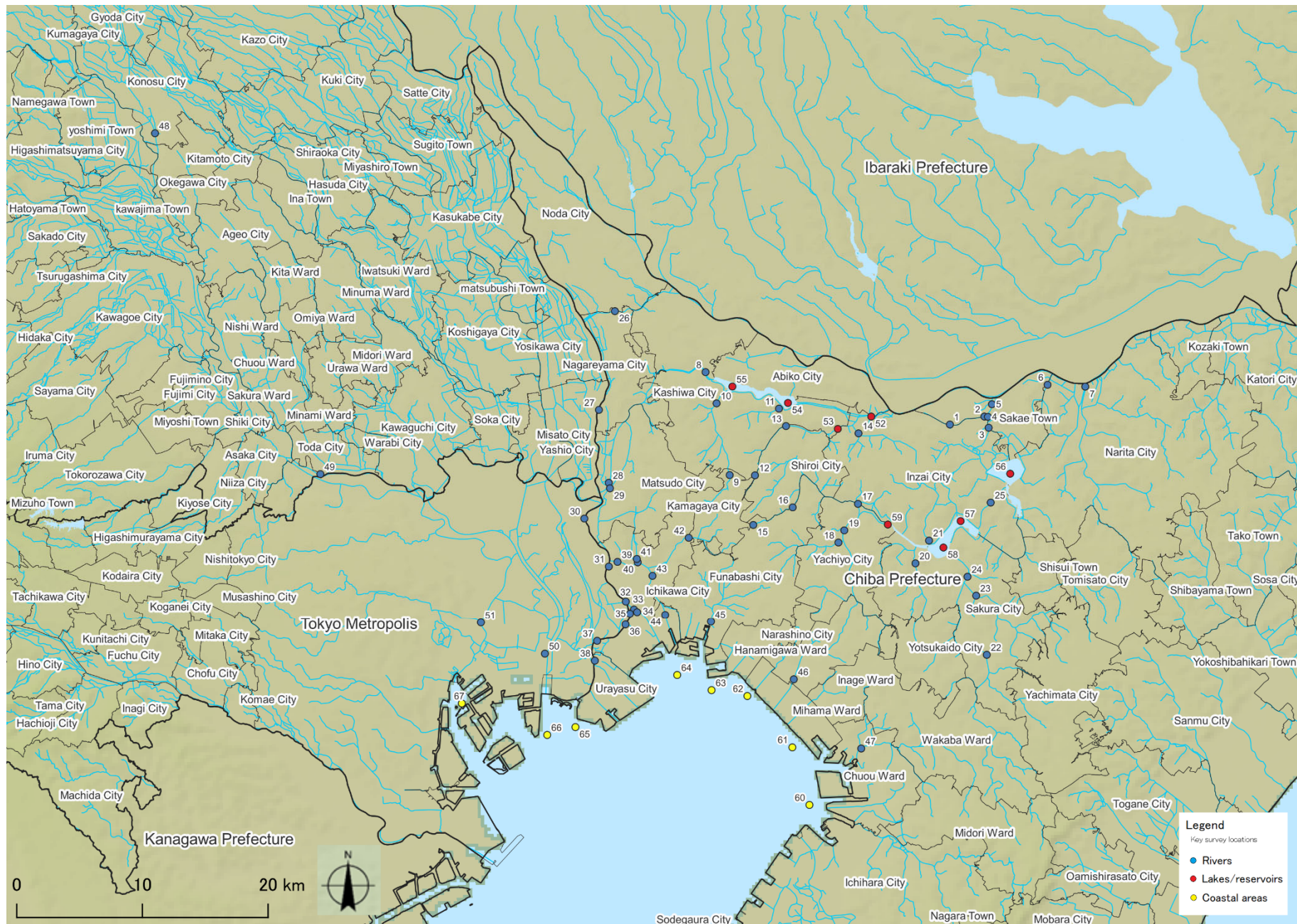
	Location				Sampling Date	Weather	Air temperature (°C)	Water depth (m)	Water										Remarks		
	No.	Water Area	Location	Municipality					General items											Activity concentration(Bq/L)	
									Water temperature (°C)	Sampling depth (m)	Color	Odor	Transparency (cm)	Electrical conductivity (mS/m)	SS (mg/L)	Turbidity (FNU)	Radioactive cesium				
																	Cs-134	Cs-137			
Rivers	48	Arakawa River System	Arakawa River Middle Reaches	Takimamuro Bridge	Konosu City	2024/5/1	Light Rain	14.6	2.3	15.8	0.0	Grayish yellow	None	42	17.1	14	2.3	< 0.47	< 0.52		
						2024/8/1	Sunny	31.0	2.8	28.9	0.0	Grayish greenish yellow	None	73	20.9	9	1.9	< 0.59	< 0.63		
						2024/11/1	Sunny	22.3	2.6	16.9	0.0	Grayish greenish yellow	None	63	22.8	11	5.3	< 0.64	< 0.52		
						2025/1/7	Sunny	11.2	3.2	9.3	0.0	Light grayish yellow green	None	60	23.6	4	1.9	< 0.50	< 0.54		
	49	Arakawa River System	Arakawa River Lower Reaches	Sasame Bridge	Toda City	2024/5/1	Light Rain	17.1	0.5	21.8	0.0	Light grayish yellow	None	50	50.0	11	1.9	< 0.61	< 0.63		
						2024/8/1	Sunny	32.2	0.6	28.5	0.0	Grayish yellow	None	25	23.5	16	4.8	< 0.64	< 0.54		
						2024/11/1	Sunny	21.8	0.5	18.9	0.0	Grayish yellow	None	58	39.1	7	2.4	< 0.54	< 0.47		
						2025/1/7	Light Rain	10.2	0.8	12.9	0.0	Light grayish greenish yellow	None	28	160	6	8.1	< 0.69	< 0.51		

Saitama River(Sediment) 1/1

Rivers	Location				Sampling Date	Weather	Air temperature (°C)	Water depth (m)	Sediment																Remarks		
	No.	Water Area	Location	Municipality					Sediment temperature (°C)	Sample length (cm)	Color	Odor	General items								Activity concentration [Bq/kg(dry)]						
													Grain size distribution(%)								Sediment content (%)	Density (Mg/m ³)	Property	Radioactive cesium			
													Coarse gravel	Medium gravel	Fine gravel	Coarse sand	Medium sand	Fine sand	silt	clay				Cs-134		Cs-137	Total
48	Arakawa River System	Arakawa River Middle Reaches	Takimamuro Bridge	Konosu City	2024/5/1	Light Rain	14.6	2.3	15.3	3	Olive black	Faint swamp	0.0	0.0	0.9	0.6	42.7	50.9	3.0	1.9	78.1	2.74	sand	< 2.5	6.4 ± 0.93	6.4	
					2024/8/1	Sunny	31.0	2.8	28.6	3	Olive black	Faint swamp	0.0	0.2	4.7	2.9	39.9	42.1	5.4	4.8	78.6	2.74	sand	< 2.4	5.1 ± 0.79	5.1	
					2024/11/1	Sunny	22.3	2.6	16.0	3	Olive black	Faint swamp	0.0	0.0	0.5	1.1	40.5	47.2	6.1	4.6	75.7	2.72	sand	< 3.2	7.9 ± 1.3	7.9	
					2025/1/7	Sunny	11.2	3.2	8.6	3	Olive black	Faint swamp	0.0	0.0	0.3	0.4	30.7	53.9	7.7	7.0	77.8	2.72	sand	< 2.6	5.1 ± 0.95	5.1	
49	Arakawa River System	Arakawa River Lower Reaches	Sasame Bridge	Toda City	2024/5/1	Light Rain	17.1	0.5	21.5	3	Brownish black	Faint swamp	0.0	0.0	0.0	0.3	3.4	31.9	47.2	17.2	56.1	2.67	silt	< 5.4	32 ± 3.3	32	
					2024/8/1	Sunny	32.2	0.6	28.1	3	Dark olive brown	Faint swamp	0.0	0.0	2.1	5.1	28.3	33.5	16.4	14.6	73.9	2.70	sand	< 4.1	6.9 ± 1.5	6.9	
					2024/11/1	Sunny	21.8	0.5	18.1	3	Olive black	Faint swamp	0.0	0.0	1.9	2.1	2.4	26.0	49.3	18.3	48.3	2.63	silt	< 8.0	32 ± 4.0	32	
					2025/1/7	Light Rain	10.2	0.8	12.4	3	Olive black	Faint swamp	0.0	0.1	5.9	6.2	29.0	28.2	16.5	14.1	75.6	2.75	sand	< 4.1	10 ± 1.7	10	

Saitama River(SE) 1/1

	Location				Sampling Date	Weather	Air temperature (°C)	Surrounding Environment(Soil,Air dose)													Remarks	
	No.	Water Area	Location	Municipality				Left bank						Right bank								
								Color	Odor	Property	Activity concentration [Bq/kg(dry)]			Air dose (μSv/h)	Color	Odor	Property	Activity concentration [Bq/kg(dry)]				Air dose (μSv/h)
											Radioactive cesium							Radioactive cesium				
			Cs-134	Cs-137	Total				Cs-134	Cs-137	Total											
Rivers	48	Arakawa River System	Arakawa River Middle Reaches	Takimamuro Bridge	Konosu City	2024/5/1	Light Rain	14.6	Brownish black	Faint earth	loamy	< 5.4	11 ± 2.2	11	0.07	Brownish black	Faint earth	Loamy	< 4.8	24 ± 2.5	24	0.07
						2024/8/1	Sunny	31.0	Dull yellow brown	Faint earth	loamy	< 5.3	5.3 ± 1.7	5.3	0.06	Dark brown	Faint earth	Loamy	< 5.2	22 ± 2.6	22	0.06
	49	Arakawa River System	Arakawa River Lower Reaches	Sasame Bridge	Toda City	2024/5/1	Light Rain	17.1	Brownish black	Faint earth	loamy	< 4.6	130 ± 4.7	130	0.06	Dark brown	Faint earth	Loamy	< 4.4	14 ± 2.3	14	0.07
						2024/8/1	Sunny	32.2	Brownish black	Faint earth	loamy	< 6.3	60 ± 3.9	60	0.04	Brownish black	Faint earth	Sandy	< 4.9	8.4 ± 2.1	8.4	0.05



Survey Locations (Chiba Prefecture, Saitama Prefecture and Tokyo Metropolis)