

FY2024 Gunma Prefecture Survey Results

[Outline of results]

(1) Water

Rivers

Radioactive cesium (Cs-134, Cs-137): ND at all measurement points

Lakes and reservoirs

Radioactive cesium (Cs-134, Cs-137): ND at all measurement points

(2) Sediments

Rivers

Cs-134: ND at all measurement points

Cs-137: 0.95 - 450 Bq/kg (dry)

Lakes and reservoirs

Cs-134: ND - 38 Bq/kg (dry)

Cs-137: 28 - 2,500 Bq/kg (dry)

(3) Surrounding Environment

(a) Soil

Rivers

Cs-134: ND - 64 Bq/kg (dry)

Cs-137: ND - 4,200 Bq/kg (dry)

Lakes and reservoirs

Cs-134: ND - 100 Bq/kg (dry)

Cs-137: ND - 6,400 Bq/kg (dry)

(b) Ambient dose rate

Rivers

0.03 - 0.11 μ Sv/h

Lakes and reservoirs

0.04 - 0.16 μ Sv/h

*Surveys conducted from May to August

Gunma River (Water) 1/4

Rivers	Location				Sampling Date	Weather	Air temperature (°C)	Water depth (m)	Water								Activity concentration(Bq/L)		Remarks
	No.	Water Area	Location	Municipality					General items								Radioactive cesium		
									Water temperature (°C)	Sampling depth (m)	Color	Odor	Transparency (cm)	Electrical conductivity (mS/m)	SS (mg/L)	Turbidity (FNU)	Cs-134	Cs-137	
Tonegawa River System Tonegawa River Area	1	Tonegawa River	Hirose Bridge	Minakami Town	2024/5/29	Sunny	24.0	0.3	11.9	0.0	Light grayish yellow green	None	>100	2.9	3	0.7	< 0.77	< 0.88	
					2024/8/6	Cloudy	24.8	0.3	12.7	0.0	Light grayish yellow green	None	>100	2.9	2	1.7	< 0.54	< 0.56	
					2024/11/27	Sunny	10.1	0.3	11.7	0.0	Light grayish yellow green	None	>100	3.9	2	1.4	< 0.71	< 0.64	
					2025/1/15	Sunny	1.1	0.3	5.1	0.0	Dark grayish yellow green	None	>100	4.1	<1	1.0	< 0.78	< 1.0	
	2	Tonegawa River	Tsukiyono Bridge	Minakami Town	2024/5/21	Sunny	22.0	0.3	15.7	0.0	Light grayish greenish yellow	None	>100	3.6	<1	0.7	< 0.73	< 0.75	
					2024/6/11	Sunny	30.1	0.2	16.5	0.0	Grayish greenish yellow	None	>100	3.8	2	0.4	< 0.87	< 0.64	
					2024/7/16	Light Rain	21.1	0.2	15.8	0.0	Grayish greenish yellow	None	50	3.8	6	2.4	< 0.65	< 0.77	
					2024/8/6	Cloudy	30.7	0.2	16.2	0.0	Light grayish greenish yellow	None	>100	3.7	2	1.1	< 0.78	< 0.73	
	3	Akaya River	Kosode Bridge	Minakami Town	2024/9/19	Cloudy	30.7	0.6	21.2	0.0	Light grayish greenish yellow	None	40	5.3	32	5.2	< 0.68	< 0.75	
					2024/11/26	Cloudy	9.2	0.3	10.7	0.0	Light grayish greenish yellow	None	>100	5.0	<1	0.7	< 0.75	< 0.76	
					2025/1/15	Sunny	3.6	0.2	6.1	0.0	Light grayish greenish yellow	None	>100	5.0	<1	0.7	< 0.83	< 0.72	
					2024/5/21	Sunny	18.0	0.2	17.6	0.0	Light grayish greenish yellow	None	>100	9.8	2	1.8	< 0.69	< 0.64	
	4	Sakura River	In Ooaza Yachi	Kawaba Village	2024/8/6	Sunny	28.6	0.2	21.7	0.0	Light grayish greenish yellow	None	18	8.9	19	8.1	< 0.72	< 0.79	
					2024/11/26	Cloudy	9.3	0.3	10.3	0.0	Light grayish greenish yellow	None	>100	8.3	<1	0.6	< 0.79	< 0.78	
					2025/1/15	Sunny	4.1	0.2	3.9	0.0	Light grayish greenish yellow	None	>100	11.9	<1	0.4	< 0.81	< 0.62	
					2024/5/29	Sunny	20.0	0.2	14.6	0.0	Light grayish yellow green	None	>100	5.2	<1	0.3	< 0.58	< 0.69	
	5	Sakura River	In Ooaza Yachi	Kawaba Village	2024/6/12	Sunny	29.8	0.2	15.6	0.0	Light grayish yellow green	None	>100	5.2	<1	0.2	< 0.71	< 0.72	
					2024/7/17	Cloudy	21.9	0.3	15.6	0.0	Light grayish yellow green	None	60	5.3	5	1.4	< 0.65	< 0.73	
					2024/8/6	Cloudy	28.2	0.3	19.8	0.0	Light grayish yellow green	None	>100	6.7	<1	0.8	< 0.59	< 0.72	
					2024/9/19	Cloudy	32.1	0.2	22.5	0.0	Light grayish yellow green	None	>100	5.4	6	2.7	< 0.74	< 0.81	
	6	Katashina River	Kirinoki Bridge	Katashina Village	2024/11/26	Sunny	8.4	0.2	7.9	0.0	Light grayish yellow green	None	>100	5.9	<1	0.3	< 0.60	< 0.77	
					2025/1/15	Sunny	3.1	0.2	5.2	0.0	Light grayish yellow green	None	>100	7.2	<1	0.3	< 0.60	< 0.68	
					2024/5/28	Cloudy	20.0	0.3	13.6	0.0	Light grayish yellow green	None	45	3.7	14	2.4	< 0.84	< 0.80	
					2024/8/6	Light Rain	25.0	0.2	18.4	0.0	Light grayish yellow green	None	>100	5.5	2	1.9	< 0.58	< 0.66	
	7	Katashina River	Tonemachitakatoya	Numata City	2024/11/25	Sunny	7.1	0.3	7.3	0.0	Light grayish yellow green	None	>100	5.5	<1	0.3	< 0.85	< 0.59	
					2025/1/15	Light Snow	0.9	0.2	3.5	0.0	Light grayish yellow green	None	>100	5.7	<1	1.5	< 0.84	< 0.89	
					2024/5/29	Sunny	18.0	0.5	13.5	0.0	Grayish yellow	None	68	6.1	7	1.4	< 0.75	< 0.72	
					2024/6/12	Sunny	28.6	0.7	18.9	0.0	Dark grayish yellow green	None	>100	7.5	<1	0.3	< 0.57	< 0.70	
	8	Agatsuma River	Shinto Bridge	Naganohara Town	2024/7/30	Sunny	29.8	0.7	21.4	0.0	Light grayish yellow green	None	>100	9.0	<1	0.7	< 0.74	< 0.94	
					2024/8/19	Cloudy	28.4	0.5	22.7	0.0	Light grayish yellow green	None	>100	9.4	<1	0.2	< 0.91	< 0.76	
					2024/9/19	Cloudy	31.4	0.5	22.9	0.0	Light grayish yellow green	None	>100	7.9	2	1.2	< 0.81	< 0.96	
					2024/11/25	Sunny	7.4	0.6	8.1	0.0	Light grayish yellow green	None	>100	9.5	2	0.9	< 0.85	< 0.76	
	9	Shirasuna River	Shuttatsu Bridge	Nakanajo Town	2025/1/15	Cloudy	2.8	0.5	4.2	0.0	Light grayish yellow green	None	>100	12.0	3	1.9	< 0.79	< 0.69	
					2024/5/29	Sunny	19.0	0.4	18.7	0.0	Grayish yellow green	None	65	7.7	3	0.7	< 0.60	< 0.66	
					2024/6/12	Sunny	28.7	0.4	17.1	0.0	Grayish yellow green	None	>100	8.4	3	0.8	< 0.64	< 0.73	
					2024/7/30	Sunny	33.5	0.5	22.7	0.0	Grayish yellow green	None	>100	10.5	4	1.9	< 0.78	< 0.64	
	10	Agatsuma River	Downstream of Azuma Bridge	Higashi-Agatsuma Town	2024/8/19	Sunny	32.1	0.3	23.8	0.0	Grayish yellow green	None	41	11.6	15	2.6	< 0.61	< 0.61	
					2024/9/19	Cloudy	28.1	0.3	18.7	0.0	Grayish yellow green	None	65	12.4	11	1.1	< 0.79	< 0.81	
					2024/11/25	Sunny	9.6	0.5	9.3	0.0	Light grayish yellow green	None	12	10.5	41	33	< 0.55	< 0.58	
					2025/1/15	Cloudy	2.7	0.5	6.1	0.0	Grayish yellow green	None	>100	11.4	3	3.8	< 0.60	< 0.66	
	10	Agatsuma River	Downstream of Azuma Bridge	Higashi-Agatsuma Town	2024/5/30	Sunny	28.8	0.6	16.2	0.0	Light grayish yellow	None	45	21.8	16	9.8	< 0.87	< 0.69	
					2024/8/7	Cloudy	25.1	0.3	18.0	0.0	Light grayish yellow green	None	9	26.4	45	20	< 0.78	< 0.81	
					2024/11/28	Sunny	10.6	0.4	7.5	0.0	Light grayish yellow green	None	33	19.0	21	11	< 0.64	< 0.82	
					2025/1/16	Sunny	4.9	0.2	3.9	0.0	Light grayish yellow green	None	46	21.7	15	9.5	< 0.78	< 0.62	
	10	Agatsuma River	Downstream of Azuma Bridge	Higashi-Agatsuma Town	2024/5/23	Sunny	23.0	0.2	15.8	0.0	Grayish yellow	None	30	6.1	10	11	< 0.90	< 0.93	
					2024/8/7	Cloudy	25.6	0.7	18.8	0.0	Grayish reddish yellow	None	5	17.4	310	110	< 0.82	< 0.64	
					2024/11/28	Sunny	9.7	0.3	8.5	0.0	Light grayish yellowish green	None	35	55.5	10	11	< 0.71	< 0.62	
					2025/1/16	Sunny	5.3	0.2	4.4	0.0	Grayish yellow	None	>100	22.4	<1	0.6	< 0.63	< 0.75	
	10	Agatsuma River	Downstream of Azuma Bridge	Higashi-Agatsuma Town	2024/5/21	Sunny	22.0	0.3	17.1	0.0	Grayish greenish yellow	None	85	16.9	3	2.6	< 0.69	< 0.95	
					2024/6/28	Light Rain	21.6	0.3	17.9	0.0	Grayish yellow green	None	>100	24.3	2	1.4	< 0.82	< 0.69	
2024/7/30					Sunny	35.1	0.3	24.7	0.0	Grayish yellow green	None	>100	22.9	<1	1.1	< 0.77	< 0.81		
2024/8/19					Cloudy	28.2	0.2	22.1	0.0	Grayish yellow	None	12	15.2	89	17	< 0.53	< 0.60		
10	Agatsuma River	Downstream of Azuma Bridge	Higashi-Agatsuma Town	2024/9/19	Sunny	28.5	0.2	21.2	0.0	Grayish yellow green	None	>100	18.5	3	1.6	< 0.73	< 0.78		
				2024/11/29	Sunny	12.4	0.2	10.9	0.0	Grayish yellow green	None	>100	21.9	<1	0.8	< 0.74	< 0.77		
10	Agatsuma River	Downstream of Azuma Bridge	Higashi-Agatsuma Town	2025/1/16	Sunny	5.9	0.2	5.6	0.0	Grayish yellow green	None	>100	28.0	<1	1.2	< 0.67	< 0.63		

Gunma River(Water) 3/4

No.	Location			Sampling Date	Weather	Air temperature (°C)	Water depth (m)	Water								Activity concentration(Bq/L)		Remarks	
	Water Area	Location	Municipality					General items					Radioactive cesium						
								Water temperature (°C)	Sampling depth (m)	Color	Odor	Transparency (cm)	Electrical conductivity (mS/m)	SS (mg/L)	Turbidity (FNU)	Cs-134	Cs-137		
23	Ogawa River	Kinzan Bridge	Kanra Town	2024/5/28	Light Rain	20.0	0.2	17.1	0.0	Light grayish yellow green	None	>100	16.2	2	0.6	< 0.68	< 0.85		
				2024/8/5	Sunny	28.6	0.3	24.9	0.0	Light grayish yellow green	None	>100	17.7	<1	0.8	< 0.98	< 0.68		
				2024/11/21	Sunny	20.4	0.2	15.3	0.0	Light grayish yellow	None	>100	18.6	<1	0.4	< 0.88	< 0.96		
				2025/1/17	Sunny	4.1	0.2	6.5	0.0	Light grayish yellow green	None	>100	18.7	<1	0.3	< 0.80	< 0.69		
	24	Nanmoku River	Ozawa Bridge	Nanmoku Village	2024/5/23	Cloudy	30.1	0.2	19.6	0.0	Light grayish yellow green	None	>100	17.3	<1	0.2	< 0.79	< 0.64	
					2024/8/5	Sunny	30.9	0.2	29.9	0.0	Grayish yellow green	None	>100	20.4	<1	0.5	< 0.72	< 0.50	
					2024/11/21	Sunny	17.0	0.3	11.0	0.0	Light grayish yellow	None	>100	17.3	<1	0.1	< 0.78	< 0.81	
	25	Someya River	Yakushi Bridge	Shinto Village	2025/1/17	Sunny	4.3	0.1	2.5	0.0	Grayish yellow green	None	>100	24.6	<1	0.2	< 0.72	< 0.59	
					2024/5/22	Sunny	29.9	0.2	21.4	0.0	Light grayish yellow	None	>100	20.4	2	0.6	< 0.54	< 0.71	
					2024/8/6	Sunny	30.1	0.1	27.1	0.0	Grayish greenish yellow	None	>100	17.7	4	2.2	< 0.75	< 0.78	
	26	Inogawa River	Kamakura Bridge	Takasaki City	2024/11/22	Sunny	18.1	0.2	11.7	0.0	Light grayish yellow green	None	>100	22.8	2	1.2	< 0.66	< 0.66	
					2025/1/14	Sunny	10.1	0.1	6.7	0.0	Grayish greenish yellow	None	>100	25.4	<1	0.7	< 0.69	< 0.43	
					2024/5/24	Sunny	33.1	0.2	25.4	0.0	Grayish greenish yellow	None	71	33.9	11	2.2	< 0.77	< 0.92	
	27	Karasu River	Iwakura Bridge	Takasaki City/Tamamura Town	2024/8/5	Sunny	32.4	0.3	31.0	0.0	Grayish greenish yellow	None	35	24.6	15	4.0	< 0.72	< 0.76	
					2024/11/21	Sunny	15.9	0.4	12.9	0.0	Light grayish yellow	None	80	32.2	6	1.6	< 0.73	< 0.69	
2025/1/14					Sunny	13.9	0.2	11.7	0.0	Grayish greenish yellow	None	93	38.7	8	1.7	< 0.85	< 0.72		
28	Kanna River	Shinkaname Bridge	Ueno Village	2024/5/29	Sunny	33.1	0.3	29.0	0.0	Light grayish yellow	None	24	33.6	54	13	< 0.81	< 0.53		
				2024/8/5	Sunny	34.5	0.3	32.7	0.0	Light grayish yellow	None	35	31.4	15	9.1	< 0.75	< 0.76		
				2024/11/21	Sunny	13.2	0.2	13.5	0.0	Light grayish yellow green	None	26	27.7	11	8.7	< 0.79	< 0.68		
29	Kanna River	Morito Bridge	Kanna Town	2025/1/14	Sunny	13.9	0.3	13.2	0.0	Light grayish yellow	None	46	32.3	7	5.4	< 0.68	< 0.62		
				2024/5/23	Cloudy	24.4	0.2	17.1	0.0	Light grayish yellow green	None	>100	13.6	<1	0.1	< 0.74	< 0.69		
				2024/11/21	Sunny	12.7	0.4	10.9	0.0	Light grayish yellow green	None	>100	14.0	<1	0.7	< 0.66	< 0.78		
30	Kanna River	Tobukyo Bridge	Fujioka City/Kamisato Town	2024/5/23	Cloudy	24.3	0.2	17.5	0.0	Light grayish yellow green	None	>100	15.1	<1	<0.1	< 0.78	< 0.80		
				2024/11/21	Sunny	12.5	0.4	10.6	0.0	Light grayish yellowish green	None	>100	15.4	<1	0.2	< 0.83	< 0.92		
				2024/5/22	Sunny	28.0	0.4	23.0	0.0	Light grayish yellow green	None	>100	28.3	4	0.6	< 0.81	< 0.65		
31	Kanna River	Kannagawa Bridge	Kamisato Town	2024/11/21	Sunny	19.8	0.6	16.7	0.0	Light grayish yellow green	None	88	17.3	8	2.5	< 0.62	< 0.73		
				2024/5/29	Sunny	33.1	0.3	25.7	0.0	Light grayish greenish yellow	None	>100	25.9	10	1.2	< 0.60	< 0.66		
				2024/11/21	Sunny	10.9	0.4	13.3	0.0	Light grayish yellow green	None	>100	17.2	4	1.0	< 0.80	< 0.71		
32	Tonegawa River	Bando-ohashi Bridge	Honjo City	2024/5/29	Sunny	27.5	0.2	21.3	0.0	Light grayish yellow green	None	26	17.7	29	4.1	< 0.73	< 0.88		
				2024/8/7	Sunny	31.5	0.5	25.2	0.0	Light grayish reddish yellow	None	5	15.8	250	65	< 0.53	< 0.70		
				2024/11/21	Sunny	9.9	0.2	13.9	0.0	Light grayish yellow	None	80	28.9	9	1.6	< 0.89	< 0.65		
33	Akagishirakawa River	In Shimohosoi Town		2025/1/16	Sunny	8.0	0.6	8.6	0.0	Light grayish yellow green	None	>100	23.3	3	2.0	< 0.65	< 0.77		
				2024/5/22	Sunny	26.1	0.3	19.0	0.0	Light grayish yellow green	None	42	17.4	14	1.5	< 0.70	< 0.70		
				2024/8/6	Sunny	28.9	0.2	28.2	0.0	Light grayish yellow green	None	65	16.2	14	2.1	< 0.57	< 0.62		
34	Momonoki River	Utsuboi Bridge	Maebashi City	2024/11/22	Sunny	13.0	0.3	9.4	0.0	Light grayish yellow	None	>100	32.8	2	0.6	< 0.83	< 0.70		
				2025/1/17	Sunny	3.9	0.2	5.6	0.0	Light grayish yellow green	None	>100	27.9	<1	0.8	< 0.79	< 0.73		
				2024/5/21	Sunny	28.1	0.4	19.9	0.0	Light grayish yellow green	None	63	17.7	7	1.3	< 0.80	< 0.73		
35	Arato River	Okuhara Bridge		2024/8/6	Cloudy	27.4	0.5	23.7	0.0	Light grayish yellow green	None	9	15.1	20	6.1	< 0.82	< 0.76		
				2024/11/22	Sunny	10.0	0.3	10.2	0.0	Light grayish yellow green	None	26	21.7	13	5.6	< 0.87	< 0.75		
				2025/1/16	Sunny	5.0	0.2	5.4	0.0	Light grayish yellow green	None	73	23.8	3	3.8	< 0.87	< 0.80		
36	Kasukawa River	Hozumi Bridge		2024/5/21	Sunny	33.7	0.4	24.2	0.0	Light grayish yellow green	None	43	28.8	11	2.0	< 0.64	< 0.72		
				2024/8/6	Sunny	32.2	0.4	23.5	0.0	Grayish yellow green	None	16	16.5	38	7.5	< 0.68	< 0.68		
				2024/11/22	Sunny	6.6	0.5	9.8	0.0	Light grayish yellow	None	69	29.3	6	1.5	< 0.68	< 0.76		
37	Hirose River	Nakajima Bridge	Isesaki City	2025/1/16	Sunny	3.0	0.3	4.0	0.0	Light grayish yellow green	None	54	27.6	8	3.8	< 0.80	< 0.75		
				2024/5/29	Sunny	28.7	0.2	22.7	0.0	Light grayish greenish yellow	None	35	31.6	13	3.0	< 0.54	< 0.56		
				2024/8/6	Cloudy	29.5	0.4	26.0	0.0	Grayish yellow green	None	15	33.1	26	5.6	< 0.65	< 0.87		
38	Hayakawa River	Hayakawa Bridge		2024/11/23	Sunny	10.1	0.2	11.0	0.0	Light grayish yellow	None	64	39.7	6	2.4	< 0.70	< 0.64		
				2025/1/16	Sunny	5.0	0.2	6.0	0.0	Grayish yellow green	None	44	46.7	12	4.7	< 0.62	< 0.70		
				2024/5/29	Sunny	30.4	0.3	18.2	0.0	Light grayish greenish yellow	None	49	20.5	11	1.7	< 0.89	< 0.78		
38	Hayakawa River	Hayakawa Bridge		2024/8/6	Cloudy	25.3	0.5	27.3	0.0	Light grayish greenish yellow	None	19	23.0	20	2.2	< 0.82	< 0.73		
				2024/11/23	Sunny	11.0	0.2	10.5	0.0	Light grayish greenish yellow	None	48	28.4	6	1.7	< 0.83	< 0.68		
				2025/1/16	Sunny	10.0	0.2	8.4	0.0	Light grayish greenish yellow	None	63	34.0	7	2.0	< 0.85	< 0.73		
38	Hayakawa River	Hayakawa Bridge		2024/5/21	Sunny	30.1	0.3	22.0	0.0	Light grayish yellow green	None	82	14.3	5	0.7	< 0.58	< 0.56		
				2024/8/6	Cloudy	34.2	0.2	30.8	0.0	Light grayish yellow green	None	58	21.7	3	1.0	< 0.75	< 0.68		
				2024/11/23	Sunny	9.1	0.5	9.5	0.0	Light grayish yellow	None	74	17.8	6	1.1	< 0.62	< 0.73		
38	Hayakawa River	Hayakawa Bridge		2025/1/16	Sunny	2.0	0.3	3.5	0.0	Light grayish yellow green	None	66	18.9	6	1.5	< 0.90	< 0.79		

Gunma River(Sediment) 1/4

No.	Location				Sampling Date	Weather	Air temperature (°C)	Water depth (m)	Sediment temperature (°C)	Sample length (cm)	Color	Odor	Sediment										Activity concentration [Bq/kg(dry)]			Remarks		
	Water Area	Location	Municipality	General items										Radioactive cesium														
				Grain size distribution(%)										Sediment content (%)	Density (Mg/m³)	Property	Cs-134	Cs-137	Total									
				Coarse gravel									Medium gravel							Fine gravel	Coarse sand	Medium sand	Fine sand	silt	clay			
1	Tonogawa River System	Tonogawa River Area	Hirose Bridge	Minakami Town	2024/5/29	Sunny	24.0	0.3	10.3	3	Yellow brown	None	0.0	1.7	36.6	22.8	28.7	8.7	0.6	0.9	77.9	2.69	sand/gravel	< 3.0	24 ± 1.9	24		
					2024/8/6	Cloudy	24.8	0.3	12.8	4	Yellow brown	None	0.0	1.4	37.3	21.4	24.1	10.8	3.1	1.9	79.5	2.70	sand/gravel	< 3.8	24 ± 2.1	24		
					2024/11/27	Sunny	10.1	0.3	11.4	3	Dull yellow brown	None	0.0	21.5	34.9	15.8	17.2	7.1	2.1	1.4	82.0	2.69	sand/gravel	< 8.1	20 ± 3.1	20		
					2025/1/15	Sunny	1.1	0.3	4.8	3	Yellow brown	None	0.0	0.8	38.3	21.7	28.2	7.5	1.9	1.6	77.6	2.68	sand/gravel	< 6.3	29 ± 3.6	29		
					2024/5/21	Sunny	22.0	0.3	12.2	3	Grayish olive	None	0.0	1.1	32.9	40.7	24.7	0.6	0.0	0.0	87.6	2.75	gravel/sand	< 6.7	10 ± 2.1	10		
			2	Tonogawa River	Tsukiyono Bridge	Minakami Town	2024/6/11	Sunny	30.1	0.2	17.7	3	Dark olive	None	0.0	2.6	44.0	40.4	12.8	0.1	0.0	0.1	85.4	2.74	gravel/sand	< 3.4	6.2 ± 1.3	6.2
							2024/7/16	Light Rain	21.1	0.2	15.1	3	Grayish yellow brown	None	0.0	0.3	18.6	50.0	30.8	0.3	0.0	0.0	84.9	2.69	sand/gravel	< 7.0	12 ± 2.7	12
							2024/8/6	Cloudy	30.7	0.2	17.5	4	Grayish olive	None	0.0	0.0	3.7	38.1	55.6	2.1	0.3	0.2	80.3	2.69	gravel/sand	< 7.1	9.9 ± 3.1	9.9
							2024/9/19	Cloudy	30.7	0.6	19.6	4	Grayish olive	None	0.0	0.3	2.0	5.4	56.9	29.8	2.3	3.3	73.9	2.72	sand/gravel	< 6.6	21 ± 3.1	21
							2024/11/26	Cloudy	9.2	0.3	10.5	3	Grayish olive	None	0.0	3.2	10.8	30.3	48.6	5.4	1.2	0.5	81.2	2.74	gravel/sand	< 5.7	14 ± 2.2	14
3	Akaya River	Kosode Bridge	Minakami Town	2025/1/15	Sunny	3.6	0.2	4.8	3	Dark grayish yellow	None	0.0	0.6	29.3	54.3	15.4	0.3	0.0	0.1	81.2	2.72	gravel/sand	< 6.3	12 ± 2.4	12			
				2024/5/21	Sunny	18.0	0.2	17.9	3	Olive brown	None	0.0	1.2	48.1	37.1	13.3	0.2	0.0	0.1	86.5	2.73	sand/gravel	< 3.5	7.7 ± 1.6	7.7			
				2024/8/6	Sunny	28.6	0.2	23.6	4	Olive brown	None	0.0	1.9	28.7	22.3	38.7	6.2	1.3	0.9	86.2	2.79	sand/gravel	< 7.3	10 ± 2.8	10			
				2024/11/26	Cloudy	9.3	0.3	10.1	3	Olive brown	None	0.0	1.2	1.6	7.9	83.1	4.5	1.2	0.5	76.2	2.71	sand	< 5.8	17 ± 3.1	17			
				2025/1/15	Sunny	4.1	0.2	3.9	3	Olive brown	None	0.0	0.0	0.3	9.6	86.3	3.0	0.4	0.4	73.9	2.75	sand	< 2.8	7.6 ± 1.0	7.6			
4	Sakura River	In Ooaza Yachi	Kawaba Village	2024/5/29	Sunny	20.0	0.2	13.5	3	Dark grayish yellow	None	0.0	1.0	35.4	29.0	27.3	5.0	1.7	0.6	73.7	2.76	gravel/sand	< 4.1	55 ± 3.0	55			
				2024/6/12	Sunny	29.8	0.2	15.9	3	Dark brown	None	0.0	2.7	49.0	28.1	17.8	2.1	0.1	0.2	88.4	2.80	gravel/sand	< 6.4	41 ± 4.0	41			
				2024/7/17	Cloudy	21.9	0.3	15.0	3	Dark brown	None	0.0	1.6	39.5	35.6	22.7	0.5	0.0	0.1	85.4	2.83	gravel/sand	< 5.7	42 ± 4.4	42			
				2024/8/6	Cloudy	28.2	0.3	20.8	4	Dark brown	None	0.0	1.1	36.2	41.8	18.4	1.4	0.4	0.7	73.0	2.75	gravel/sand	< 9.2	59 ± 6.2	59			
				2024/9/19	Cloudy	32.1	0.2	18.3	4	Grayish yellow brown	None	0.0	1.3	46.6	29.4	19.4	2.5	0.6	0.2	76.1	2.79	gravel/sand	< 6.0	43 ± 3.9	43			
5	Sakura River	In Ooaza Yachi	Kawaba Village	2024/11/26	Sunny	8.4	0.2	7.9	3	Dark brown	None	0.0	20.5	33.6	25.9	16.3	2.0	1.0	0.7	76.8	2.76	gravel/sand	< 7.3	50 ± 4.7	50			
				2025/1/15	Sunny	3.1	0.2	4.4	3	Dark grayish yellow	None	0.0	0.1	30.3	43.6	21.1	2.7	1.4	0.8	62.7	2.74	gravel/sand	< 7.2	65 ± 6.2	65			
				2024/5/28	Cloudy	20.0	0.3	13.0	4	Dark grayish yellow	None	0.0	0.5	38.5	38.9	21.4	0.7	0.0	0.0	84.0	2.73	sand/gravel	< 3.4	6.3 ± 0.99	6.3			
				2024/8/6	Light Rain	25.0	0.2	18.4	4	Dark grayish yellow	None	0.0	1.7	23.6	41.2	31.4	1.9	0.1	0.1	85.9	2.78	sand/gravel	< 4.1	6.5 ± 2.0	6.5			
				2024/11/25	Sunny	7.1	0.3	7.6	3	Olive brown	None	0.0	0.6	8.8	42.6	45.2	1.7	0.9	0.2	80.1	2.67	sand/gravel	< 4.1	8.1 ± 1.3	8.1			
6	Katashina River	Tonemachitakatoya	Numata City	2025/1/15	Light Snow	0.9	0.2	3.6	3	Dark grayish yellow	None	0.0	0.1	10.5	65.4	23.6	0.4	0.0	0.0	76.2	2.66	sand/gravel	< 3.2	6.5 ± 1.1	6.5			
				2024/5/29	Sunny	18.0	0.5	13.8	4	Grayish yellow brown	None	0.0	0.4	50.0	46.9	2.6	0.1	0.0	0.0	89.4	2.67	sand/gravel	< 2.5	4.5 ± 0.90	4.5			
				2024/6/12	Sunny	28.6	0.7	18.4	3	Grayish olive	None	0.0	1.1	37.1	51.2	9.9	0.6	0.0	0.1	84.5	2.67	gravel/sand	< 2.7	4.5 ± 1.0	4.5			
				2024/7/30	Sunny	29.8	0.7	21.7	3	Grayish olive	None	0.0	0.4	23.0	67.5	8.9	0.1	0.0	0.1	94.7	2.70	sand/gravel	< 1.9	3.6 ± 0.60	3.6			
				2024/8/19	Cloudy	28.4	0.5	23.4	4	Grayish olive	None	0.0	0.3	22.4	74.2	2.9	0.1	0.0	0.1	91.0	2.68	gravel/sand	< 1.5	2.4 ± 0.51	2.4			
7	Katashina River	Futae Bridge	Numata City	2024/9/19	Cloudy	31.4	0.5	18.1	4	Olive black	None	0.0	0.2	22.2	55.1	18.0	3.9	0.4	0.2	83.0	2.73	gravel/sand	< 2.3	3.1 ± 0.77	3.1			
				2024/11/25	Sunny	7.4	0.6	8.1	3	Dark olive	None	0.0	22.9	40.1	17.6	13.0	4.6	1.1	0.7	85.5	2.66	sand/gravel	< 1.1	4.8 ± 0.42	4.8			
				2025/1/15	Cloudy	2.8	0.5	3.6	3	Olive brown	None	0.0	1.2	31.2	43.4	17.4	4.3	1.5	1.0	70.6	2.64	gravel/sand	< 2.4	3.7 ± 0.95	3.7			
				2024/5/29	Sunny	19.0	0.4	15.3	4	Dark grayish yellow	None	0.0	3.8	55.4	25.7	14.2	0.6	0.2	0.1	84.1	2.88	sand/gravel	< 3.4	9.7 ± 1.3	9.7			
				2024/6/12	Sunny	28.7	0.4	18.6	3	Dark grayish yellow	None	0.0	1.7	46.5	27.4	21.7	2.3	0.2	0.2	92.0	2.87	gravel/sand	< 4.5	11 ± 2.2	11			
8	Agatsuma River	Shinto Bridge	Naganohara Town	2024/7/30	Sunny	33.5	0.5	22.2	3	Brownish black	None	0.0	10.3	66.5	13.7	7.7	1.1	0.3	0.4	82.8	2.89	gravel/sand	< 3.4	9.9 ± 1.5	9.9			
				2024/8/19	Sunny	32.1	0.3	25.9	4	Brownish black	None	0.0	0.2	3.4	4.8	30.8	37.0	11.0	12.8	60.5	2.60	sand/gravel	< 8.5	69 ± 6.3	69			
				2024/9/19	Cloudy	28.1	0.3	19.7	3	Dark olive brown	None	0.0	0.1	11.0	39.8	43.9	3.5	1.1	0.6	74.4	2.91	sand/gravel	< 5.9	19 ± 2.9	19			
				2024/11/25	Sunny	9.6	0.5	9.4	3	Olive brown	None	0.0	4.9	41.5	34.3	16.1	1.5	0.8	0.9	69.8	2.67	gravel/sand	< 3.9	23 ± 2.0	23			
				2025/1/15	Cloudy	2.7	0.5	5.5	3	Dark grayish yellow	None	0.0	3.9	31.0	36.1	22.6	3.1	1.6	1.7	65.3	2.70	gravel/sand	< 8.0	37 ± 4.4	37			
9	Shirasuna River	Shuttatsu Bridge	Nakanojo Town	2024/5/30	Sunny	28.8	0.6	13.1	4	Dark brown	None	0.0	0.1	3.0	6.5	71.2	18.7	0.3	0.2	75.4	2.96	sand/gravel	< 3.7	3.8 ± 1.3	3.8			
				2024/8/7	Cloudy	25.1	0.3	19.3	4	Brownish black	None	0.0	0.1	6.2	14.1	64.7	12.8	0.7	1.4	81.2	2.80	sand/gravel	< 3.2	3.5 ± 1.1	3.5			
				2024/11/28	Sunny	10.6	0.4	7.8	3	Dark brown	None	0.0	0.5	0.2	0.1	44.2	50.2	3.5	1.3	77.2	2.76	sand	< 5.7	7.8 ± 1.6	7.8			
				2025/1/16	Sunny	4.9	0.2	3.8	3	Brownish black	None	0.0	0.1	1.1	3.4	79.1	15.3	0.5	0.5	73.4	2.83	sand	< 2.3	5.2 ± 0.94	5.2			
				2024/5/23	Sunny	23.0	0.2	17.0	3	Olive brown	None	0.0	0.1	5.9	41.6	51.4	0.7	0.1	0.2	74.0	2.73	sand	< 3.1	5.5 ± 1.4	5.5			
10	Agatsuma River	Downstream of Azuma Bridge	Higashi-Agatsuma Town	2024/8/7	Cloudy	25.6	0.7	19.6	2	Olive brown	None	0.0	0.0	2.8	2.5	26.3	46.9	11.4	10.1	63.5	2.73	sand	< 9.0	13 ± 3.7	13			
				2024/11/28	Sunny	9.7	0.3	9.1	3	Dull yellow brown	None	0.0	25.0	32.3	23.2	18.6	0.5	0.3	0.1	80.0	2.83	gravel/sand	< 3.0	5.0 ± 0.89	5.0			
				2025/1/16	Sunny	5.3	0.2	3.3	3	Dull yellow brown	None	0.0	0.9	28.6	38.9	30.0	1.2	0.1	0.3	77.5	2.89	sand/gravel	< 2.4	3.2 ± 0.74	3.2			
				2024/5/21	Sunny	22.0	0.3	17.3	3	Brownish black	None	0.0	0.7	37.9	44.4	16.6	0.4	0.0	0.0	92.4	2.86	gravel/sand	< 6.5	5.8 ± 1.5	5.8			
				2024/6/28	Light Rain	21.6	0.3	18.2	3	Brownish black	None	0.0	0.3	27.4	41.5	28.7	1.7	0.1	0.3	82.8	2.79	sand/gravel	< 6.2	6.3 ± 1.9	6.3			
10	Agatsuma River	Downstream of Azuma Bridge	Higashi-Agatsuma Town	2024/7/30	Sunny	35.1	0.3	24.4	3	Brownish black	None	0.0	1.5	49.2	42.7	6.3	0.2	0.0	0.1	86.0	2.75	gravel/sand	< 2.7	5.7 ± 1.2	5.7			
				2024/8/19	Cloudy	28.2	0.2	22.5	2	Brownish black	None	0.0	0.8	45.0	42.6	10.9	0.7	0.0	0.0	88.4	2.81	sand/gravel	< 3.1	5.4 ± 1.2	5.4			
				2024/9/19	Sunny	28.5	0.2	22.2	3	Brownish black	None	0.0	0.3	23.8	43.9	28.7	2.5	0.4	0.4	80.2	2.83	sand/gravel	< 6.5	6.2 ± 1.8	6.2			
				2024/11/29	Sunny	12.4	0.2	11.2	3	Brownish black	None	0.0	11.5	28.8	36.7	22.0	0.8	0.1	0.1	80.8	2.92	sand/gravel	< 2.5	5.8 ± 0.98	5.8			
				2025/1/16	Sunny	5.9	0.2	5.8	3	Brownish black	None	0.0	1.7	50.0	32.6	14.8	0.8	0.0	0.1	82.3	2.81	gravel/sand	< 4.0	5.5 ± 1.2	5.5			

Gunma River(Sediment) 2/4

Rivers	Location				Sampling Date	Weather	Air temperature (°C)	Water depth (m)	Sediment															Remarks			
	No.	Water Area	Location	Municipality					Sediment temperature (°C)	Sample length (cm)	Color	Odor	General items								Activity concentration [Bq/kg(dry)]						
													Grain size distribution(%)								Sediment content (%)	Density (Mg/m ³)	Property		Radioactive cesium		
													Coarse gravel	Medium gravel	Fine gravel	Coarse sand	Medium sand	Fine sand	silt	clay					Cs-134	Cs-137	Total
11	Nakuta River	Tonoda Bridge	Takayama Village	2024/5/21	Sunny	22.0	0.3	20.8	3	Brownish black	None	0.0	0.6	34.8	28.0	25.7	7.6	2.1	1.2	73.6	2.77	gravel/sand	<	7.2	12 ± 2.2	12	
				2024/8/7	Sunny	34.0	0.3	23.0	3	Brownish black	None	0.0	0.2	13.7	30.6	40.1	9.3	3.8	2.3	67.5	2.71	gravel/sand	<	7.5	22 ± 3.9	22	
				2024/11/29	Sunny	8.7	0.3	7.9	3	Brownish black	None	0.0	12.9	35.4	24.1	20.3	4.6	2.0	0.7	75.3	2.76	gravel/sand	<	3.5	9.5 ± 1.3	9.5	
	12	Agatsuma River	Agatsuma Bridge	Shibukawa City	2025/1/16	Sunny	3.4	0.2	3.6	3	Brownish black	None	0.0	0.2	18.0	43.2	29.4	5.7	2.1	1.4	68.4	2.72	gravel/sand	<	7.6	17 ± 2.9	17
					2024/5/22	Sunny	23.0	0.3	17.3	4	Brownish black	None	0.0	1.3	33.2	24.6	35.1	5.1	0.4	0.3	84.3	2.79	gravel/sand	<	2.2	5.3 ± 0.86	5.3
					2024/6/11	Sunny	31.3	0.4	18.5	3	Brownish black	None	0.0	0.4	21.5	30.2	42.0	4.7	0.6	0.6	77.6	2.74	sand/gravel	<	3.3	7.3 ± 1.1	7.3
					2024/7/18	Cloudy	27.1	0.9	19.0	3	Brownish black	None	0.0	0.0	2.3	22.8	61.0	11.1	1.0	1.8	73.1	2.76	sand/gravel	<	5.5	9.0 ± 2.3	9.0
					2024/8/7	Cloudy	30.4	0.4	23.3	4	Brownish black	None	0.0	0.0	9.4	35.5	51.7	2.7	0.4	0.3	80.8	2.79	gravel/sand	<	3.0	5.3 ± 0.95	5.3
					2024/9/19	Cloudy	29.1	0.3	21.7	3	Brownish black	None	0.0	0.0	0.5	7.7	56.5	27.9	3.7	3.7	72.3	2.80	sand	<	2.4	14 ± 1.1	14
					2024/11/29	Sunny	11.7	0.3	10.4	3	Brownish black	None	0.0	14.9	23.9	28.5	29.6	2.4	0.5	0.2	81.7	2.76	sand/gravel	<	4.0	6.2 ± 1.3	6.2
					2025/1/16	Sunny	5.1	0.3	5.6	3	Brownish black	None	0.0	3.4	36.2	29.4	28.0	2.5	0.3	0.2	80.7	2.76	gravel/sand	<	2.6	5.5 ± 0.93	5.5
13	Tonegawa River	Taisho Bridge	Shibukawa City	2024/5/22	Sunny	22.0	0.4	17.8	4	Grayish yellow brown	None	2.1	0.0	7.3	31.3	48.9	9.8	0.4	0.2	78.0	2.78	sand/gravel	<	6.6	12 ± 2.3	12	
				2024/6/11	Sunny	31.8	0.4	22.6	3	Grayish yellow brown	None	0.0	0.0	6.3	26.3	47.3	15.2	3.1	1.8	73.3	2.74	sand/gravel	<	8.4	16 ± 2.9	16	
				2024/7/18	Cloudy	27.2	0.4	17.6	3	Grayish yellow brown	None	0.0	0.1	1.2	4.6	74.1	18.8	0.5	0.7	71.2	2.72	sand	<	8.0	19 ± 3.3	19	
				2024/8/7	Light Rain	28.0	0.3	21.9	4	Grayish yellow brown	None	0.0	0.0	0.7	1.9	68.4	27.3	0.7	1.0	77.5	2.91	sand/gravel	<	4.6	7.7 ± 1.8	7.7	
				2024/9/19	Sunny	30.2	0.3	22.2	3	Brownish black	None	0.0	0.1	7.4	30.6	53.0	7.9	0.6	0.4	80.0	2.87	sand/gravel	<	3.1	6.7 ± 1.1	6.7	
				2024/11/22	Sunny	17.0	0.5	10.8	4	Dark grayish yellow	None	0.0	0.5	8.0	21.2	53.5	12.7	3.0	1.1	78.5	2.85	sand/gravel	<	5.9	13 ± 2.7	13	
14	Takizawa River	Shintakizawa Bridge	Shibukawa City/Yoshioka Town	2025/1/16	Sunny	4.9	0.3	5.3	3	Brownish black	None	0.0	0.6	10.6	37.8	47.3	3.0	0.3	0.4	78.3	2.87	sand/gravel	<	5.9	7.0 ± 1.8	7.0	
				2024/5/30	Sunny	27.1	0.2	20.1	3	Dark olive brown	None	0.0	1.2	12.0	28.6	51.5	4.9	1.5	0.3	72.9	2.90	sand/gravel	<	3.9	11 ± 1.7	11	
				2024/8/6	Sunny	30.3	0.1	27.8	3	Dark olive brown	None	0.0	1.1	32.3	40.0	26.3	0.3	0.0	0.0	85.9	3.00	sand/gravel	<	6.6	10 ± 2.3	10	
				2024/11/22	Sunny	14.8	0.1	10.6	3	Brownish black	None	0.0	0.6	24.6	22.5	45.3	6.3	0.5	0.2	82.0	2.96	gravel/sand	<	3.4	5.3 ± 1.2	5.3	
				2025/1/14	Sunny	10.4	0.1	5.9	3	Brownish black	None	0.0	0.3	18.3	32.5	46.7	1.2	0.6	0.4	77.7	2.98	sand/gravel	<	3.4	4.6 ± 1.0	4.6	
15	Tonegawa River	Gunma'ohashi Bridge	Maebashi City	2024/5/22	Sunny	21.9	0.5	14.8	4	Olive brown	None	0.0	0.9	10.8	4.2	52.0	28.4	3.0	0.7	76.8	2.79	sand/gravel	<	6.9	14 ± 2.5	14	
				2024/8/6	Sunny	26.8	0.3	26.5	3	Dark olive brown	None	0.0	1.2	18.1	11.1	44.4	20.2	3.2	1.8	76.8	2.83	sand/gravel	<	6.0	10 ± 2.1	10	
				2024/11/22	Sunny	13.4	0.5	9.3	2	Grayish yellow brown	None	0.0	3.6	29.6	8.8	45.2	11.1	1.0	0.7	83.2	2.84	gravel/sand	<	4.6	6.9 ± 1.5	6.9	
				2025/1/17	Sunny	6.1	0.5	5.1	3	Olive black	None	0.0	0.0	0.4	2.6	39.8	33.3	12.6	11.3	56.9	2.71	sand	<	8.6	47 ± 5.3	47	
16	Tonegawa River	Fukushima Bridge	Tamamura Town	2024/5/30	Sunny	28.3	0.2	15.1	4	Grayish yellow brown	None	0.0	0.0	0.0	0.6	48.2	42.2	4.9	4.1	69.2	2.75	sand/gravel	<	3.3	9.5 ± 1.4	9.5	
				2024/8/6	Cloudy	29.3	0.5	23.1	4	Grayish yellow brown	None	0.0	3.5	38.2	25.0	27.6	4.9	0.3	0.5	82.6	2.83	sand/gravel	<	7.6	8.8 ± 2.7	8.8	
				2024/11/21	Sunny	13.2	0.2	10.0	3	Dark olive brown	Faint swamp	0.0	1.2	17.3	11.9	48.9	17.0	2.7	1.0	76.5	2.87	sand/gravel	<	4.2	8.0 ± 1.6	8.0	
				2025/1/14	Sunny	8.1	0.3	7.8	3	Olive brown	None	0.0	0.0	1.7	4.9	53.7	30.1	4.6	5.0	63.9	2.75	sand	<	9.4	29 ± 3.9	29	
17	Nagai River	Kamigonda Bridge	Takasaki City	2024/5/23	Sunny	23.0	0.2	16.8	3	Brownish black	None	0.0	0.4	19.6	25.8	43.8	9.1	1.0	0.3	76.1	2.92	sand/gravel	<	7.1	23 ± 3.3	23	
				2024/8/6	Sunny	31.8	0.2	26.7	3	Brownish black	None	0.0	0.5	17.8	30.1	42.8	7.2	0.7	0.9	72.2	2.77	sand/gravel	<	8.9	31 ± 4.2	31	
				2024/11/22	Sunny	17.0	0.4	10.8	3	Dark brown	None	0.0	0.6	34.0	29.2	32.1	2.7	0.6	0.8	75.6	2.83	gravel/sand	<	5.7	19 ± 3.0	19	
				2025/1/16	Sunny	2.7	0.3	5.8	3	Brownish black	None	0.0	0.2	25.0	52.7	20.1	1.2	0.4	0.4	69.0	2.75	sand/gravel	<	9.0	20 ± 3.2	20	
				2024/5/24	Sunny	34.6	0.3	21.0	4	Dark brown	None	0.0	2.7	34.1	10.2	38.8	13.7	0.3	0.2	79.9	2.82	sand/gravel	<	5.2	6.0 ± 1.8	6.0	
18	Karasu River	Karasugawa Bridge	Takasaki City	2024/8/6	Sunny	27.6	0.3	25.2	3	Dark brown	None	0.0	5.5	32.7	30.3	27.9	2.9	0.4	0.3	79.0	2.78	sand/gravel	<	6.5	7.5 ± 2.3	7.5	
				2024/11/22	Sunny	18.1	0.5	11.7	3	Dark brown	None	0.0	2.2	18.3	23.7	42.8	11.8	0.8	0.4	76.9	2.83	sand/gravel	<	5.1	20 ± 2.8	20	
				2025/1/16	Sunny	2.2	0.3	5.8	3	Dark brown	None	0.0	0.6	38.2	27.9	26.7	5.6	0.6	0.4	76.8	2.75	sand/gravel	<	6.5	8.8 ± 1.8	8.8	
				2024/5/28	Light Rain	22.0	0.2	18.7	4	Dark brown	None	0.0	1.1	66.5	28.9	2.9	0.3	0.1	0.2	90.4	2.73	sand/gravel	<	2.4	5.3 ± 0.99	5.3	
				2024/8/6	Sunny	27.4	0.1	25.9	3	Dark brown	None	0.0	0.1	3.7	25.6	59.1	8.7	1.5	1.3	73.6	2.75	sand/gravel	<	8.6	20 ± 3.2	20	
19	Usui River	Nakase Bridge	Annaka City	2024/11/22	Sunny	20.9	0.4	12.6	3	Brownish black	Faint fish	0.0	0.3	16.7	59.6	22.2	0.4	0.5	0.3	77.1	2.71	gravel/sand	<	8.8	14 ± 2.7	14	
				2025/1/17	Sunny	4.1	0.2	4.8	3	Dull yellow brown	None	0.0	0.3	19.2	49.0	25.9	4.3	0.7	0.6	72.2	2.72	sand/gravel	<	9.9	16 ± 3.0	16	
				2024/5/22	Sunny	27.7	0.2	23.2	4	Brownish black	Faint sewage	0.0	0.0	0.7	2.4	26.1	54.3	7.3	9.2	65.2	2.71	sand	<	5.5	18 ± 2.5	18	
				2024/8/7	Sunny	33.4	0.2	31.1	3	Brownish black	None	1.8	0.3	6.2	16.9	54.4	15.3	2.6	2.5	70.3	2.78	gravel/sand	<	6.4	12 ± 3.1	12	
20	Usui River	Hanataka Bridge	Takasaki City	2024/11/22	Sunny	19.4	0.3	11.0	3	Brownish black	None	0.0	1.1	20.0	23.2	44.1	9.0	1.7	0.9	78.8	2.87	sand/gravel	<	4.5	8.4 ± 1.7	8.4	
				2025/1/17	Sunny	7.1	0.1	4.8	3	Brownish black	None	0.0	0.1	3.2	14.2	61.1	16.9	2.2	2.3	73.2	2.81	sand/gravel	<	4.8	17 ± 2.8	17	
				2024/5/23	Sunny	28.9	0.2	20.5	3	Brownish gray	None	0.0	1.7	34.5	34.3	26.1	1.0	1.2	1.2	83.7	2.72	gravel/sand	<	3.2	4.5 ± 1.1	4.5	
				2024/8/6	Sunny	28.7	0.1	26.7	3	Brownish black	None	0.0	0.4	28.5	45.5	25.5	0.1	0.0	0.0	85.1	2.72	gravel/sand	<	2.2	3.6 ± 0.70	3.6	
				2024/11/21	Sunny	17.8	0.4	10.2	3	Dark grayish yellow	None	0.0	2.6	46.9	35.5	14.0	0.8	0.1	0.1	84.8	2.74	gravel/sand	<	1.1	3.0 ± 0.31	3.0	
21	Kabura River	Tadakawa Bridge	Shimonita Town	2025/1/17	Sunny	3.8	0.2	3.1	3	Brownish gray	None	0.0	0.3	31.8	42.4	23.9	1.3	0.2	0.1	80.0	2.78	gravel/sand	<	2.2	3.2 ± 0.72	3.2	
				2024/5/22	Sunny	28.3	0.4	22.7	3	Gray	Faint sewage	0.0	0.0	0.0	2.3	10.5	46.9	20.9	19.4	44.5	2.63	sand/s					

Gunma River(Sediment) 3/4

Rivers	Location				Sampling Date	Weather	Air temperature (°C)	Water depth (m)	Sediment															Remarks			
	No.	Water Area	Location	Municipality					Sediment temperature (°C)	Sample length (cm)	Color	Odor	General items							Sediment		Activity concentration [Bq/kg(dry)]					
													Grain size distribution(%)					Silt	clay	Sediment content (%)	Density (Mg/m³)	Property	Radioactive cesium				
													Coarse gravel	Medium gravel	Fine gravel	Coarse sand	Medium sand						Fine sand		Cs-134	Cs-137	Total
Tonogawa River System	Karasu River Area	Ogawa River	Kinzan Bridge	Kanra Town	2024/5/28	Light Rain	20.0	0.2	18.3	3	Brownish gray	None	0.0	1.1	29.8	29.9	31.8	5.5	1.0	0.9	85.2	2.76	sand/gravel	<	3.6	6.1 ± 1.4	6.1
					2024/8/5	Sunny	28.6	0.3	25.7	4	Brownish gray	None	0.0	0.8	27.6	35.7	29.0	5.0	1.0	0.9	85.7	2.78	sand/gravel	<	3.2	5.1 ± 1.1	5.1
					2024/11/21	Sunny	20.4	0.2	15.0	3	Dark grayish yellow	None	0.0	2.2	45.2	35.8	14.6	0.9	0.7	0.6	83.6	2.79	gravel/sand	<	1.7	4.5 ± 0.80	4.5
		Nanmoku River	Ozawa Bridge	Nanmoku Village	2025/1/17	Sunny	4.1	0.2	5.8	3	Brownish gray	None	0.0	0.5	33.8	37.0	21.0	4.0	2.1	1.6	80.4	2.78	sand/gravel	<	5.9	8.1 ± 1.7	8.1
					2024/5/23	Cloudy	30.1	0.2	18.9	3	Olive black	None	0.0	5.2	56.7	26.6	9.2	0.5	0.8	1.0	93.6	2.69	gravel/sand	<	2.3	3.8 ± 0.77	3.8
					2024/8/5	Sunny	30.9	0.2	29.3	5	Olive black	None	0.0	2.8	49.5	32.7	14.2	0.7	0.0	0.1	84.4	2.71	gravel/sand	<	2.7	3.4 ± 0.87	3.4
		Someya River	Yakushi Bridge	Shinto Village	2024/11/21	Sunny	17.0	0.3	9.8	3	Dark grayish yellow	None	0.0	1.4	45.3	38.2	12.1	2.3	0.5	0.2	81.5	2.78	gravel/sand	<	2.9	5.9 ± 1.1	5.9
					2025/1/17	Sunny	4.3	0.1	2.1	3	Gray	None	0.0	0.6	38.6	41.8	16.4	2.0	0.4	0.2	81.1	2.73	gravel/sand	<	2.0	3.6 ± 0.72	3.6
					2024/5/22	Sunny	29.9	0.2	19.8	4	Brownish black	None	0.0	2.2	26.0	20.1	43.3	4.7	1.4	2.3	78.6	3.01	sand/gravel	<	3.6	10 ± 1.8	10
		Inogawa River	Kamakura Bridge	Takasaki City	2024/8/6	Sunny	30.1	0.1	22.3	3	Brownish black	None	0.0	0.1	11.6	40.5	45.4	2.0	0.3	0.1	75.4	2.82	sand/gravel	<	6.6	11 ± 2.3	11
					2024/11/22	Sunny	18.1	0.2	11.6	4	Brownish black	None	0.0	0.9	19.2	52.6	4.6	0.7	0.3	78.8	3.07	sand/gravel	<	3.1	12 ± 1.8	12	
	2025/1/14				Sunny	10.1	0.1	5.3	3	Brownish black	None	0.0	0.9	21.9	26.5	44.8	5.0	0.5	0.4	80.2	3.00	sand/gravel	<	7.4	8.5 ± 1.9	8.5	
	Karasu River	Iwakura Bridge	Takasaki City/Tamamura Town	2024/5/24	Sunny	33.1	0.2	25.1	3	Brownish black	None	0.0	4.3	29.0	25.8	37.0	3.2	0.3	0.4	83.3	2.97	gravel/sand	<	2.7	3.2 ± 0.82	3.2	
				2024/8/5	Sunny	32.4	0.3	31.4	3	Dark brown	None	0.0	0.2	9.5	14.5	61.5	11.6	1.3	1.4	74.6	2.95	sand/gravel	<	9.9	30 ± 4.4	30	
				2024/11/21	Sunny	15.9	0.4	12.3	3	Grayish yellow brown	None	0.0	3.5	35.6	25.7	30.9	3.6	0.5	0.2	82.4	2.90	gravel/sand	<	1.9	2.4 ± 0.73	2.4	
	Kanna River	Shinkaname Bridge	Ueno Village	2025/1/14	Sunny	13.9	0.2	11.2	3	Brownish black	None	0.0	0.7	16.7	23.0	49.9	8.5	0.6	0.6	81.1	2.93	sand/gravel	<	3.0	3.6 ± 0.84	3.6	
				2024/5/29	Sunny	33.1	0.3	27.7	4	Brownish black	Faint sewage	0.0	0.0	0.0	8.6	24.8	42.3	11.0	13.3	58.4	2.70	silt	<	6.7	25 ± 3.2	25	
				2024/8/5	Sunny	34.5	0.3	31.2	3	Brownish black	None	0.0	0.0	0.2	0.8	22.6	55.0	10.1	11.3	61.5	2.71	silt	<	8.9	29 ± 5.2	29	
	Kanna River	Morito Bridge	Kanna Town	2024/11/21	Sunny	13.2	0.2	12.7	4	Olive black	Faint ditch	0.0	0.0	0.2	0.9	26.8	51.6	11.1	9.4	62.4	2.75	silt/sand	<	5.4	25 ± 3.2	25	
				2025/1/14	Sunny	13.9	0.3	11.9	3	Brownish black	None	0.0	0.0	0.0	0.4	22.0	44.1	11.3	22.2	56.0	2.70	silt	<	7.3	34 ± 3.3	34	
				2024/5/23	Cloudy	24.4	0.2	16.5	4	Brownish gray	None	0.0	3.0	47.1	30.7	17.5	1.1	0.3	0.3	90.1	2.72	gravel/sand	<	4.0	4.0 ± 1.3	4.0	
	Kanna River	Tobukyo Bridge	Fujioka City/Kamisato Town	2024/11/21	Sunny	12.7	0.4	10.3	3	Dark grayish yellow	None	0.0	3.2	30.7	32.7	29.2	2.8	1.0	0.4	84.0	2.76	gravel/sand	<	3.9	5.2 ± 1.1	5.2	
				2024/5/23	Cloudy	24.3	0.2	17.0	4	Brownish gray	None	0.0	0.2	2.8	18.3	54.4	20.0	2.5	1.8	76.0	2.72	sand/gravel	<	0.90	4.0 ± 0.34	4.0	
2024/11/21				Sunny	12.5	0.4	10.0	3	Brownish black	None	0.0	1.8	44.3	43.8	9.8	0.2	0.0	0.1	87.2	2.72	gravel/sand	<	0.85	0.95 ± 0.23	0.95		
Kannagawa Bridge	Kamisato Town	2024/5/22	Sunny	28.0	0.4	22.9	4	Grayish olive	Faint fish	0.0	1.5	45.1	38.7	11.5	1.1	1.1	1.0	80.8	2.69	gravel/sand	<	1.5	2.4 ± 0.56	2.4			
		2024/11/21	Sunny	19.8	0.6	16.0	3	Dark grayish yellow	None	0.0	1.0	50.4	35.3	11.2	1.8	0.2	0.1	86.6	2.76	gravel/sand	<	1.5	1.9 ± 0.52	1.9			
		2024/5/29	Sunny	33.1	0.3	23.8	4	Dark olive	None	0.0	0.5	31.0	30.7	31.5	1.5	1.7	3.1	75.1	2.69	sand/gravel	<	2.6	3.5 ± 0.79	3.5			
Tonogawa River	Bando-ohashi Bridge	Honjo City	2024/11/21	Sunny	10.9	0.4	12.8	3	Olive brown	None	0.0	0.6	36.5	40.6	20.5	0.7	0.8	0.3	84.1	2.73	gravel/sand	<	2.1	2.1 ± 0.67	2.1		
			2024/5/29	Sunny	27.5	0.2	18.6	4	Olive black	None	0.0	0.0	0.8	2.3	73.0	19.2	2.5	2.2	72.2	2.76	sand/gravel	<	4.3	7.8 ± 1.8	7.8		
			2024/8/7	Sunny	31.5	0.5	25.1	5	Grayish yellow brown	None	0.0	1.2	12.3	7.9	61.0	14.1	1.7	1.8	79.6	2.83	sand/gravel	<	2.3	5.2 ± 0.73	5.2		
Akagishirakawa River	In Shimohosoi Town	Maebashi City	2024/11/21	Sunny	9.9	0.2	13.2	4	Grayish yellow brown	None	0.0	0.0	5.0	31.3	60.8	2.2	0.5	0.2	76.8	2.74	sand	<	2.3	2.7 ± 0.54	2.7		
			2025/1/16	Sunny	8.0	0.6	8.0	4	Olive black	None	0.0	1.0	6.3	10.1	78.0	4.2	0.2	0.2	83.9	2.77	sand/gravel	<	3.0	4.8 ± 1.0	4.8		
			2024/5/22	Sunny	26.1	0.3	18.7	4	Brownish black	Faint swamp	0.0	0.5	19.3	16.5	40.4	17.4	3.3	2.6	72.7	2.76	sand/gravel	<	5.4	8.8 ± 1.9	8.8		
Momonoki River	Utsuboi Bridge	Maebashi City	2024/8/6	Sunny	28.9	0.2	26.6	3	Brownish black	None	0.0	0.1	6.7	11.6	61.3	18.4	1.0	0.9	80.0	3.05	sand/gravel	<	5.7	8.7 ± 1.9	8.7		
			2024/11/22	Sunny	13.0	0.3	9.6	3	Dark brown	None	0.0	0.4	10.7	17.9	63.7	6.5	0.5	0.3	80.9	3.18	sand/gravel	<	4.5	5.4 ± 1.5	5.4		
			2025/1/17	Sunny	3.9	0.2	5.1	3	Brownish black	None	0.0	0.0	1.9	5.8	59.9	25.4	4.6	2.4	75.9	2.93	sand	<	4.0	7.1 ± 1.3	7.1		
Arato River	Okuhara Bridge	Maebashi City	2024/5/21	Sunny	28.1	0.4	19.0	4	Brownish black	None	0.0	0.2	7.0	4.8	54.4	28.6	2.3	2.7	71.1	2.86	sand	<	3.7	8.3 ± 2.0	8.3		
			2024/8/6	Cloudy	27.4	0.5	23.9	4	Brownish black	None	0.0	0.6	9.0	12.1	61.7	14.8	1.0	0.8	74.9	2.91	sand/gravel	<	7.9	11 ± 2.6	11		
			2024/11/22	Sunny	10.0	0.3	9.6	4	Dark brown	None	0.0	0.1	10.6	9.3	65.4	13.3	0.8	0.5	78.5	3.02	sand/gravel	<	4.1	7.3 ± 1.4	7.3		
Kasukawa River	Hozumi Bridge	Isesaki City	2025/1/16	Sunny	5.0	0.2	6.0	3	Brownish black	None	0.0	1.8	17.4	8.6	61.0	10.6	0.3	0.3	81.7	3.10	sand/gravel	<	3.6	5.4 ± 1.3	5.4		
			2024/5/21	Sunny	33.7	0.4	21.2	4	Brownish black	Faint swamp	0.0	0.1	3.2	12.6	52.2	25.3	2.9	3.7	70.2	2.76	sand/gravel	<	0.98	3.8 ± 0.40	3.8		
			2024/8/6	Sunny	32.2	0.4	23.0	4	Olive black	None	0.0	0.0	0.1	6.2	77.5	14.8	0.8	0.6	73.9	2.91	sand	<	1.0	3.0 ± 0.38	3.0		
Hirose River	Nakajima Bridge	Isesaki City	2024/11/22	Sunny	6.6	0.5	9.0	4	Grayish yellow brown	None	0.0	0.1	1.5	10.2	72.7	14.3	0.8	0.4	75.9	2.96	sand	<	3.9	3.7 ± 0.95	3.7		
			2025/1/16	Sunny	3.0	0.3	5.0	3	Brownish black	None	0.0	0.2	8.8	21.2	64.0	4.8	0.5	0.5	78.1	2.95	sand	<	1.4	1.7 ± 0.45	1.7		
			2024/5/29	Sunny	28.7	0.2	21.1	3	Brownish black	None	0.0	1.0	8.2	2.6	55.2	30.3	1.4	1.3	78.4	3.08	sand/gravel	<	3.7	4.5 ± 1.1	4.5		
Hayakawa River	Hayakawa Bridge	Isesaki City	2024/8/6	Cloudy	29.5	0.4	27.1	5	Olive black	None	0.0	0.2	3.6	3.4	52.5	37.8	1.2	1.3	73.7	3.13	sand	<	5.9	9.6 ± 2.5	9.6		
			2024/11/23	Sunny	10.1	0.2	10.4	3	Brownish black	None	0.0	1.2	27.0	24.8	41.0	5.6	0.3	0.1	82.9	2.88	sand/gravel	<	4.8	11 ± 2.1	11		
			2025/1/16	Sunny	5.0	0.2	5.0	4	Brownish black	None	0.0	0.4	7.2	10.3	72.8	8.7	0.2	0.4	80.2	2.92	sand/gravel	<	3.6	7.1 ± 1.5	7.1		
Hayakawa River	Hayakawa Bridge	Isesaki City	2024/5/29	Sunny	30.4	0.3	18.0	4	Olive black	None	0.0	0.9	14.7	16.3	44.5	18.8	1.9	2.9	82.3	2.82	sand/gravel	<	4.4	11 ± 1.9	11		
			2024/8/6	Cloudy	25.3	0.5	24.0	5	Olive black	None	0.0	0.1	2.2	3.7	26.9	57.2	7.1	2.8	69.0	2.74	sand	<	6.6	16 ± 3.3	16		
			2024/11/23	Sunny																							

Gunma River(Sediment) 4/4

No.	Location				Sampling Date	Weather	Air temperature (°C)	Water depth (m)	Sediment temperature (°C)	Sample length (cm)	Color	Odor	Sediment										Activity concentration [Bq/kg(dry)]			Remarks				
	Water Area	Location	Municipality	General items										Radioactive cesium																
				Grain size distribution(%)										Sediment content (%)	Density (Mg/m³)	Property	Cs-134	Cs-137	Total											
				Coarse gravel									Medium gravel							Fine gravel	Coarse sand	Medium sand	Fine sand	silt	clay		Cs-134	Cs-137	Total	
39	Hayakawa River	Maejima Bridge	Ota City	2024/5/29	Sunny	23.8	0.4	19.0	4	Olive black	None	0.0	0.7	7.7	4.3	47.9	31.8	2.8	4.8	73.1	2.89	sand/gravel	<	5.5	22 ± 2.5	22				
				2024/8/6	Cloudy	26.2	0.3	27.7	4	Olive black	None	0.0	0.0	0.1	1.6	64.9	30.6	1.5	1.3	64.2	2.74	sand/gravel	<	7.2	35 ± 4.7	35				
40	Tonegawa River	Tone-ozeki Weir	Chiyoda Town /Gyoda City	2024/11/23	Sunny	13.1	0.4	10.4	3	Brownish black	None	0.0	0.1	10.1	47.4	40.4	1.0	0.8	0.2	78.8	2.79	sand/gravel	<	7.6	19 ± 3.3	19				
				2025/1/17	Sunny	8.0	0.3	7.0	3	Olive black	None	0.0	0.0	0.1	1.1	80.0	16.0	1.6	1.2	72.9	2.87	sand	<	6.4	20 ± 3.0	20				
				2024/5/28	Cloudy	20.6	0.2	19.0	4	Olive black	Faint sewage	0.0	0.0	7.3	8.1	9.9	33.7	28.7	12.3	60.0	2.63	sand/silt	<	4.8	30 ± 3.5	30				
				2024/6/28	Light Rain	22.5	0.4	21.1	4	Olive black	None	0.0	0.0	0.0	0.2	0.8	54.4	30.0	14.6	56.2	2.60	sand/silt	<	8.4	30 ± 3.9	30				
				2024/7/19	Cloudy	34.8	0.5	23.5	3	Olive black	Faint sewage	0.0	0.0	0.5	0.9	5.8	30.3	35.9	26.6	35.0	2.56	silt	<	9.3	47 ± 4.1	47				
				2024/8/7	Sunny	26.9	0.2	25.4	3	Olive black	None	0.0	0.0	0.1	0.1	3.8	33.2	40.0	22.8	39.6	2.60	silt	<	9.3	46 ± 5.1	46				
				2024/9/19	Cloudy	26.1	0.2	25.7	3	Olive black	None	0.0	0.0	2.9	3.3	10.1	33.8	29.1	20.8	44.9	2.64	silt	<	7.8	40 ± 3.4	40				
				2024/11/20	Cloudy	13.7	0.3	10.2	3	Olive black	None	0.0	0.0	0.0	0.2	0.8	21.7	51.2	26.1	40.6	2.59	silt	<	8.1	94 ± 6.6	94				
				2025/1/17	Sunny	5.0	0.3	7.0	3	Olive black	None	0.0	0.0	1.4	2.1	7.1	37.5	33.6	18.3	53.0	2.66	sand/silt	<	7.5	38 ± 4.5	38				
				41	Koguro River	Kayano Bridge	Kiryu City	2024/5/29	Sunny	23.0	0.3	15.4	3	Olive black	None	0.0	1.0	25.1	23.6	34.4	12.4	1.5	2.0	75.4	2.80	sand/gravel	<	4.7	22 ± 2.8	22
2024/6/27	Sunny	23.8	0.2					18.0	4	Brownish black	None	0.0	0.4	28.1	23.0	41.1	5.5	0.8	1.1	76.8	2.75	sand/gravel	<	5.7	17 ± 2.8	17				
2024/7/18	Cloudy	32.0	0.3					15.7	3	Olive black	None	0.0	2.0	31.4	16.8	34.7	13.5	0.7	0.9	74.8	2.86	gravel/sand	<	5.4	37 ± 3.8	37				
2024/8/8	Sunny	23.8	0.2					17.8	3	Dark brown	None	0.0	18.5	18.1	12.2	35.5	13.5	1.3	0.9	73.6	2.76	sand/gravel	<	8.4	46 ± 5.0	46				
2024/9/18	Cloudy	26.4	0.3					19.1	3	Brownish black	None	0.0	2.4	23.3	18.7	38.1	15.1	1.8	0.6	76.4	2.90	sand/gravel	<	7.7	39 ± 4.2	39				
2024/11/23	Sunny	9.9	0.4					7.8	3	Brownish black	None	0.0	1.1	27.8	28.3	35.1	6.6	0.9	0.2	79.5	2.90	gravel/sand	<	6.0	23 ± 3.1	23				
2025/1/20	Sunny	8.2	0.4					5.1	3	Olive black	None	0.0	0.2	29.1	32.0	34.7	3.3	0.3	0.4	81.7	2.93	sand/gravel	<	7.6	9.8 ± 2.7	9.8				
2024/5/16	Cloudy	21.0	0.6					16.5	3	Dark brown	Faint fish	0.0	1.3	12.5	16.0	57.1	11.7	0.8	0.6	73.8	2.84	sand/gravel	<	7.0	15 ± 2.5	15				
42	Watarase River	Takatsudo	Midori City					2024/8/7	Cloudy	29.3	0.3	22.3	5	Brownish black	None	0.0	2.8	28.2	23.9	35.1	8.8	0.6	0.6	78.2	2.78	sand/gravel	<	9.2	18 ± 3.9	18
								2024/11/23	Sunny	16.3	0.6	12.0	3	Grayish yellow brown	Faint swamp	0.0	0.1	7.9	19.0	52.3	18.6	1.5	0.6	73.7	2.84	sand/gravel	<	7.1	13 ± 2.8	13
				2025/1/20	Sunny	14.6	0.4	8.2	3	Dark brown	None	0.0	2.0	37.2	18.3	31.6	9.4	1.1	0.4	80.3	2.79	sand/gravel	<	9.7	10 ± 2.9	10				
				2024/5/16	Cloudy	23.1	0.3	15.7	3	Brownish black	None	0.0	0.0	5.1	11.7	66.0	13.4	2.2	1.6	71.5	2.76	sand/gravel	<	7.6	36 ± 4.1	36				
				2024/6/27	Cloudy	30.0	0.3	20.9	4	Brownish black	None	0.0	0.0	0.5	10.1	64.6	20.7	2.2	1.9	75.6	2.72	sand	<	7.0	21 ± 3.2	21				
				2024/7/19	Cloudy	31.1	0.4	20.8	3	Dark brown	None	0.0	0.1	3.5	13.2	62.0	18.3	1.2	1.7	71.4	2.75	sand/gravel	<	5.7	35 ± 4.0	35				
				2024/8/7	Sunny	27.5	0.3	22.4	3	Brownish black	None	0.0	0.0	0.8	5.8	68.1	22.2	1.7	1.4	72.8	2.76	sand/gravel	<	9.4	33 ± 4.4	33				
				2024/9/19	Cloudy	27.9	0.3	24.7	3	Dark brown	None	0.0	1.1	9.1	20.1	59.6	9.0	0.7	0.4	76.7	2.73	sand/gravel	<	7.0	25 ± 3.3	25				
				2024/11/23	Sunny	13.8	0.4	12.0	3	Grayish yellow brown	None	0.0	0.0	0.1	12.3	84.8	1.6	0.8	0.4	73.1	2.75	sand	<	7.9	19 ± 3.4	19				
				2025/1/20	Sunny	12.8	0.3	8.3	3	Brownish black	None	0.0	0.1	1.0	5.3	77.7	13.9	1.1	0.9	74.6	2.76	sand	<	9.6	22 ± 4.4	22				
43	Watarase River	Intake for Akaiwayosui water channel	Kiryu City	2024/5/24	Sunny	30.0	0.4	21.9	4	Brownish black	None	0.0	0.0	0.0	1.5	3.3	21.5	49.0	24.7	48.7	2.52	silt/sand	<	1.9	84 ± 1.6	84				
				2024/8/7	Sunny	32.1	0.2	28.2	3	Brownish black	None	0.0	0.0	3.2	5.0	7.1	12.7	34.0	38.0	43.3	2.53	silt/sand	<	2.0	85 ± 1.9	85				
				2024/11/20	Cloudy	14.0	0.2	10.8	3	Olive black	Faint ditch	0.0	0.7	13.0	13.9	42.0	12.5	8.6	9.3	67.3	2.89	silt/sand	<	9.1	26 ± 3.9	26				
				2025/1/17	Sunny	8.0	0.4	6.0	3	Black	None	0.0	0.3	6.9	10.4	25.2	6.1	15.4	35.7	53.3	2.71	silt/sand	<	2.5	14 ± 1.1	14				
				2024/5/27	Light Rain	18.0	0.4	16.0	3	Dark brown	None	0.0	0.9	48.0	32.2	13.5	2.5	1.2	1.7	79.7	2.74	sand/gravel	<	4.9	17 ± 2.1	17				
				2024/8/7	Cloudy	25.2	0.4	25.5	3	Dark brown	None	0.0	1.6	38.8	27.4	20.0	7.3	3.2	1.7	81.3	2.74	sand/gravel	<	9.1	20 ± 3.4	20				
				2024/11/23	Sunny	14.2	0.3	9.2	3	Dark brown	None	0.0	2.1	49.4	31.4	12.3	3.5	0.9	0.4	82.6	2.75	gravel/sand	<	5.2	18 ± 2.7	18				
				2025/1/20	Sunny	12.2	0.2	8.3	3	Dark brown	None	0.0	0.3	42.1	29.4	20.9	6.0	0.8	0.5	81.8	2.78	sand/gravel	<	9.9	17 ± 3.7	17				
				44	Tatara River	Ejiri Bridge	Oura Town	2024/5/16	Cloudy	21.7	0.3	18.5	3	Brownish black	None	0.0	4.1	35.2	21.7	30.0	6.7	1.4	0.9	79.5	2.73	gravel/sand	<	5.9	31 ± 3.5	31
								2024/8/7	Sunny	32.0	0.3	29.2	3	Brownish black	None	0.0	2.2	26.3	21.9	35.7	7.6	3.7	2.6	78.2	2.74	gravel/sand	<	6.1	24 ± 4.0	24
2024/11/23	Sunny	14.7	0.4					11.4	3	Dark brown	Faint fish	0.0	2.7	61.3	23.8	10.2	1.2	0.6	0.2	83.9	2.73	gravel/sand	<	6.5	13 ± 2.9	13				
2025/1/20	Sunny	11.2	0.3					9.8	3	Brownish black	None	0.0	1.3	45.9	20.2	23.6	6.6	1.6	0.8	78.2	2.76	gravel/sand	<	9.0	38 ± 5.5	38				
2024/5/24	Sunny	31.0	0.6					23.5	3	Olive black	Faint sewage	0.0	0.0	0.0	0.1	0.9	3.2	49.5	46.3	21.3	2.33	silt	<	8.3	450 ± 9.9	450				
2024/8/7	Sunny	30.4	0.7					29.1	3	Olive black	None	0.0	0.0	0.8	3.5	9.9	13.4	51.1	21.3	28.2	2.52	silt	<	8.8	130 ± 7.3	130				
2024/11/20	Cloudy	12.2	1.2					12.0	4	Brownish black	Faint ditch	0.0	0.0	0.0	0.1	0.4	1.8	43.6	54.1	18.5	2.36	silt	<	9.0	440 ± 11	440				
2025/1/17	Sunny	4.0	0.7					8.0	3	Olive black	None	0.0	0.0	0.4	0.0	0.4	6.1	53.7	39.4	19.3	2.36	silt	<	9.2	280 ± 7.6	280				
2024/5/24	Sunny	24.0	0.7					20.5	4	Olive black	Faint sewage	0.0	0.0	0.0	0.7	26.0	24.6	25.2	23.5	25.1	2.53	sand/silt	<	9.2	37 ± 4.3	37				
45	Kiryu River	Kannon Bridge	Kiryu City					2024/8/7	Cloudy	25.2	0.4	25.5	3	Dark brown	None	0.0	1.6	38.8	27.4	20.0	7.3	3.2	1.7	81.3	2.74	sand/gravel	<	9.1	20 ± 3.4	20
				2024/11/23	Sunny	14.2	0.3	9.2	3	Dark brown	None	0.0	2.1	49.4	31.4	12.3	3.5	0.9	0.4	82.6	2.75	gravel/sand	<	5.2	18 ± 2.7	18				
				2025/1/20	Sunny	12.2	0.2	8.3	3	Dark brown	None	0.0	0.3	42.1	29.4	20.9	6.0	0.8	0.5	81.8	2.78	sand/gravel	<	9.9	17 ± 3.7	17				
46	Kiryu River	Sakai Bridge	Kiryu City/Ashikaga City	2024/5/16	Cloudy	21.7	0.3	18.5	3	Brownish black	None	0.0	4.1	35.2	21.7	30.0	6.7	1.4	0.9	79.5	2.73	gravel/sand	<	5.9	31 ± 3.5	31				
				2024/8/7	Sunny	32.0	0.3	29.2	3	Brownish black	None	0.0	2.2	26.3	21.9	35.7	7.6	3.7	2.6	78.2	2.74	gravel/sand	<	6.1	24 ± 4.0	24				
				2024/11/23	Sunny	14.7	0.4	11.4	3	Dark brown	Faint fish	0.0	2.7	61.3	23.8	10.2														

Gunma River (SE) 1/2

Rivers	Location				Sampling Date	Weather	Air temperature (°C)	Surrounding Environment (Soil, Air dose)											Remarks			
	No.	Water Area	Location	Municipality				Left bank			Right bank			Air dose (μSv/h)	Air dose (μSv/h)							
								Color	Odor	Property	Activity concentration [Bq/kg(dry)]					Color	Odor	Property		Activity concentration [Bq/kg(dry)]		
											Radioactive cesium									Radioactive cesium		
Cs-134	Cs-137	Total	Cs-134	Cs-137	Total																	
Tonegawa River System	Tonegawa River Area	Tonegawa River	Hirose Bridge	Minakami Town	2024/5/29	Sunny	24.0	Dull yellow brown	Faint earth	loamy	< 8.4	80 ± 6.4	80	0.08	Dull yellow brown	Faint earth	Loamy	< 8.7	79 ± 6.5	79	0.07	
					2024/8/6	Cloudy	24.8	Dark brown	Faint earth	loamy	< 8.7	80 ± 6.1	80	0.11	Dark brown	Faint earth	Loamy	< 9.2	160 ± 8.9	160	0.09	
			2024/5/21		Sunny	22.0	Brownish black	Faint earth	loamy	< 8.2	230 ± 10	230	0.06	Dark brown	Faint earth	Loamy	< 7.8	310 ± 12	310	0.06		
			2024/6/11		Sunny	30.1	Brownish black	Faint earth	loamy	< 7.5	130 ± 8.3	130	0.07	Dull yellow brown	Faint earth	Loamy	< 8.1	360 ± 14	360	0.07		
			2024/7/16		Light Rain	21.1	Brownish black	Faint earth	loamy	< 8.3	170 ± 8.5	170	0.06	Brownish black	Faint earth	Loamy	8.4 ± 2.0	310 ± 12	318.4	0.06		
			2024/8/6		Cloudy	30.7	Brownish black	Faint earth	loamy	< 9.0	340 ± 12	340	0.08	Brownish black	Faint earth	Loamy	< 8.7	230 ± 11	230	0.06		
		Akaya River	Kosode Bridge			2024/9/19	Cloudy	30.7	Brownish black	Faint earth	loamy	< 6.2	120 ± 8.5	120	0.05	Dark brown	Faint earth	Loamy	< 20 ± 4.0	1,200 ± 25	1,220	0.05
						2024/5/21	Sunny	18.0	Brownish black	Faint earth	loamy	< 8.6	21 ± 3.4	21	0.06	Brownish black	Faint earth	Loamy	< 9.4	170 ± 8.5	170	0.05
						2024/8/6	Sunny	28.6	Brownish black	Faint earth	loamy	< 7.5	66 ± 6.3	66	0.06	Brownish black	Faint earth	Loamy	< 8.5	120 ± 8.5	120	0.06
						2024/5/29	Sunny	20.0	Brownish black	Faint earth	loamy	53 ± 9.3	2,600 ± 51	2,653	0.09	Brownish black	Faint earth	Loamy	30 ± 4.7	1,600 ± 31	1,630	0.07
						2024/6/12	Sunny	29.8	Dull yellow brown	Faint earth	loamy	51 ± 8.4	3,200 ± 51	3,251	0.10	Dull yellow brown	Faint earth	Loamy	32 ± 5.5	2,100 ± 39	2,132	0.07
						2024/7/17	Cloudy	21.9	Brownish black	Faint earth	loamy	27 ± 4.5	1,800 ± 31	1,827	0.08	Brownish black	Faint earth	Loamy	9.5 ± 1.9	810 ± 14	819.5	0.07
	Sakura River	In Ooaza Yachi	Kawaba Village		2024/8/6	Cloudy	28.2	Brownish black	Faint earth	loamy	64 ± 13	3,400 ± 78	3,464	0.09	Brownish black	Faint earth	Loamy	33 ± 6.8	2,300 ± 47	2,333	0.08	
					2024/9/19	Cloudy	32.1	Brownish black	Faint earth	loamy	38 ± 6.4	2,900 ± 47	2,938	0.07	Brownish black	Faint earth	Loamy	< 9.7	1,000 ± 17	1,000	0.06	
					2024/5/28	Cloudy	20.0	Brownish black	Faint earth	loamy	< 7.5	120 ± 7.2	120	0.07	Dark brown	Faint earth	Loamy	< 9.7	510 ± 16	510	0.07	
					2024/8/6	Light Rain	25.0	Dark brown	Faint earth	loamy	< 7.0	240 ± 11	240	0.06	Dark brown	Faint earth	Loamy	11 ± 3.2	410 ± 14	421	0.06	
					2024/5/29	Sunny	18.0	Grayish yellow brown	None	sandy	< 9.4	< 9.5	-	0.07	Brownish black	Faint earth	Loamy	< 9.3	420 ± 14	420	0.07	
					2024/6/12	Sunny	28.6	Dull yellow brown	None	sandy	< 6.2	< 7.3	-	0.06	Brownish black	Faint earth	Loamy	12 ± 3.1	730 ± 18	742	0.07	
	Katashina River	Tonemachitakotaya	Numata City		2024/7/30	Sunny	29.8	Grayish yellow brown	Faint earth	loamy	< 7.2	12 ± 3.2	12	0.07	Brownish black	Faint earth	Loamy	15 ± 4.3	670 ± 24	685	0.07	
					2024/8/19	Cloudy	28.4	Grayish yellow brown	None	sandy	< 7.8	10 ± 2.4	10	0.06	Brownish black	Faint earth	Loamy	< 9.7	510 ± 16	510	0.06	
					2024/9/19	Cloudy	31.4	Dull yellow brown	Faint earth	loamy	< 7.3	12 ± 3.0	12	0.07	Dark brown	Faint earth	Loamy	< 8.8	830 ± 17	830	0.07	
					2024/5/29	Sunny	19.0	Dark brown	Faint earth	loamy	14 ± 2.9	710 ± 19	724	0.04	Dark brown	Faint earth	Loamy	< 6.9	320 ± 13	320	0.05	
2024/6/12					Sunny	28.7	Dull yellow brown	Faint earth	loamy	< 8.1	530 ± 15	530	0.05	Dull yellow brown	Faint earth	Loamy	< 8.6	520 ± 15	520	0.06		
2024/7/30					Sunny	33.5	Dull yellow brown	Faint earth	loamy	< 8.7	370 ± 11	370	0.05	Brownish black	Faint earth	Loamy	< 8.7	380 ± 13	380	0.06		
Agatsuma River	Shinto Bridge	Naganohara Town		2024/8/19	Sunny	32.1	Dark brown	Faint earth	loamy	< 8.2	490 ± 14	490	0.05	Dark brown	Faint earth	Loamy	< 8.1	350 ± 10	350	0.05		
				2024/9/19	Cloudy	28.1	Brownish black	Faint earth	loamy	13 ± 3.6	800 ± 20	813	0.05	Grayish yellow brown	Faint earth	Loamy	< 8.6	100 ± 6.5	100	0.06		
				2024/5/30	Sunny	28.8	Dark brown	Faint earth	loamy	< 8.2	390 ± 14	390	0.04	Brownish black	Faint earth	Loamy	< 8.0	190 ± 9.5	190	0.04		
				2024/8/7	Cloudy	25.1	Brownish black	Faint earth	loamy	< 8.8	420 ± 14	420	0.04	Brownish black	Faint earth	Loamy	< 9.0	160 ± 8.7	160	0.04		
				2024/5/23	Sunny	23.0	Brownish black	Faint earth	loamy	< 8.5	580 ± 14	580	0.04	Brownish black	Faint earth	Loamy	< 9.6	330 ± 11	330	0.04		
				2024/8/7	Cloudy	25.6	Brownish black	Faint earth	loamy	< 9.1	450 ± 13	450	0.04	Brownish black	Faint earth	Loamy	< 9.2	360 ± 14	360	0.04		
Shirasuna River	Shuttatsu Bridge	Nakanonojo Town		2024/5/21	Sunny	22.0	Grayish yellow brown	Faint earth	loamy	< 7.7	10 ± 2.3	10	0.04	Brownish black	Faint earth	Loamy	< 8.1	340 ± 11	340	0.04		
				2024/6/28	Light Rain	21.6	Grayish yellow brown	Faint earth	sandy	< 3.1	9.9 ± 1.5	9.9	0.04	Brownish black	Faint earth	Loamy	< 5.1	150 ± 6.3	150	0.04		
				2024/7/30	Sunny	35.1	Grayish yellow brown	Faint earth	sandy	< 6.3	7.7 ± 2.5	7.7	0.04	Grayish yellow brown	Faint earth	Loamy	< 8.9	120 ± 8.3	120	0.05		
				2024/8/19	Cloudy	28.2	Grayish yellow brown	None	sandy	< 9.0	33 ± 3.8	33	0.03	Grayish yellow brown	Faint earth	Loamy	< 8.5	210 ± 9.6	210	0.03		
				2024/9/19	Sunny	28.5	Grayish yellow brown	None	sandy	< 5.3	11 ± 3.0	11	0.05	Brownish black	Faint earth	Loamy	< 7.1	280 ± 9.7	280	0.04		
				2024/5/21	Sunny	22.0	Dull yellow brown	Faint earth	loamy	< 8.5	89 ± 6.1	89	0.04	Dull yellow brown	Faint earth	Loamy	< 8.6	51 ± 5.1	51	0.04		
Nakuta River	Tonoda Bridge	Takayama Village		2024/8/7	Sunny	34.0	Dark brown	Faint earth	loamy	< 6.8	49 ± 4.5	49	0.03	Dark brown	Faint earth	Loamy	< 8.8	80 ± 5.8	80	0.03		
				2024/5/22	Sunny	23.0	Dark brown	Faint earth	loamy	< 7.0	150 ± 8.8	150	0.04	Brownish black	Faint earth	Loamy	< 8.4	490 ± 14	490	0.04		
				2024/6/11	Sunny	31.3	Dark brown	Faint earth	loamy	< 9.7	99 ± 6.5	99	0.03	Grayish yellow brown	Faint earth	Loamy	13 ± 2.8	650 ± 18	663	0.04		
				2024/7/18	Cloudy	27.1	Brownish black	Faint earth	loamy	< 7.5	38 ± 3.8	38	0.04	Brownish black	Faint earth	Loamy	< 6.8	500 ± 12	500	0.04		
				2024/8/7	Cloudy	30.4	Dark brown	Faint earth	loamy	< 8.5	290 ± 13	290	0.03	Brownish black	Faint earth	Loamy	< 8.4	590 ± 14	590	0.04		
				2024/9/19	Cloudy	29.1	Dark brown	Faint earth	loamy	< 9.0	27 ± 3.9	27	0.04	Brownish black	Faint earth	Loamy	9.9 ± 2.4	540 ± 15	549.9	0.04		
Agatsuma River	Agatsuma Bridge	Shibukawa City		2024/5/22	Sunny	22.0	Dark brown	Faint earth	loamy	< 9.3	260 ± 10	260	0.04	Dark brown	Faint earth	Loamy	42 ± 6.9	2,400 ± 45	2,442	0.04		
				2024/6/11	Sunny	31.8	Dull yellow brown	Faint earth	loamy	< 9.1	280 ± 12	280	0.04	Dark brown	Faint earth	Loamy	41 ± 8.9	2,100 ± 53	2,141	0.04		
				2024/7/18	Cloudy	27.2	Brownish black	Faint earth	loamy	< 7.4	130 ± 7.0	130	0.04	Brownish black	Faint earth	Loamy	17 ± 3.8	830 ± 20	847	0.04		
				2024/8/7	Light Rain	28.0	Dark brown	Faint earth	loamy	< 7.2	300 ± 9.1	300	0.04	Dark brown	Faint earth	Loamy	20 ± 4.9	1,900 ± 27	1,920	0.03		
				2024/9/19	Sunny	30.2	Brownish black	Faint earth	loamy	< 7.4	330 ± 11	330	0.04	Brownish black	Faint earth	Loamy	32 ± 4.8	2,000 ± 35	2,032	0.04		
				2024/5/22	Sunny	27.1	Dull yellow brown	Faint earth	loamy	6.8 ± 1.8	340 ± 12	346.8	0.04	Dull yellow brown	Faint earth	Loamy	< 8.3	120 ± 7.9	120	0.03		
Takizawa River	Shintakizawa Bridge	Shibukawa City/Yoshioka Town		2024/8/6	Sunny	30.3	Dark brown	Faint earth	loamy	< 7.3	160 ± 8.1	160	0.03	Dark brown	Faint earth	Loamy	< 7.2	200 ± 8.7	200	0.03		
				2024/5/22	Sunny	21.9	Brown	Faint earth	loamy	< 7.3	34 ± 3.5	34	0.03	Dark brown	Faint earth	Loamy	< 9.1	70 ± 6.7	70	0.04		
				2024/8/6	Sunny	26.8	Brown	Faint earth	loamy	< 7.1	9.0 ± 2.5	9.0	0.04	Dark brown	Faint earth	Loamy	< 6.1	140 ± 6.4	140	0.04		
				2024/5/30	Sunny	28.3	Dark brown	Faint earth	loamy	< 7.4	39 ± 4.7	39	0.04	Grayish yellow brown	Faint earth	Loamy	< 8.7	53 ± 5.3	53	0.05		
				2024/8/6	Cloudy	29.3	Dull yellow brown	Faint earth	loamy	< 9.9	230 ± 12	230	0.04	Grayish yellow brown	Faint earth	Loamy	< 7.1	13 ± 3.3	13	0.05		
				2024/5/23	Sunny	23.0	Brownish black	Faint earth	loamy	7.1 ± 1.7	480 ± 12	487.1	0.04	Black	Faint earth	Loamy	< 8.6	400 ± 12	400	0.04		
Nagai River	Kamigonda Bridge	Takasaki City		2024/8/6	Sunny	31.8	Brownish black	Faint earth	loamy	17 ± 5.3	1,100 ± 29	1,117	0.05	Dark brown	Faint earth	Loamy	< 9.0	340 ± 11	340	0.05		
				2024/5/24	Sunny	34.6	Brownish black	Faint earth	loamy	< 7.1	9.8 ± 2.1	9.8	0.03	Brownish black	Faint earth	Loamy	< 8.1	210 ± 11	210	0.05		
				2024/8/6	Sunny	27.6	Brownish black	Faint earth	loamy	< 9.7	16 ± 3.7	16	0.03	Brownish black	Faint earth	Loamy	< 8.7	220 ± 12	220	0.03		
				2024/5/28	Light Rain	22.0	Dull yellow brown	Faint earth	loamy	< 8.3	26 ± 3.8	26	0.04	Dark brown	Faint earth	Loamy	< 6.6	100 ± 5.7	100	0.04		
				2024/8/6	Sunny	27.4	Brown	Faint earth	loamy	< 6.5	15 ± 2.8	15	0.04	Dull yellow brown	Faint earth	Loamy	< 9.1	280 ± 13	280	0.03		
				2024/5/22	Sunny	27.7	Dark brown	Faint earth	loamy	< 8.1	170 ± 10	170	0.04	Dark brown	Faint earth	Loamy	< 9.2	27 ± 4.2	27	0.04		
Usui River	Hanataka Bridge	Takasaki City		2024/8/7	Sunny	33.4	Dull yellow brown	Faint earth	loamy	< 9.1	250 ± 11	250	0.04	Dark brown	Faint earth	Loamy	< 9.5	87 ± 7.0	87	0.04		
				2024/5/23	Sunny	28.9	Dull yellow brown	Faint earth	loamy	< 7.5	220 ± 11	220	0.05	Grayish yellow brown	None	Sandy	< 6.0	26 ± 3.4	26	0.05		
				2024/8/6	Sunny	28.7	Dull yellow brown	Faint earth	loamy	< 7.7	140 ± 9.3	140	0.05	Grayish yellow brown	Faint earth	Loamy	< 6.4	34 ± 4.3	34	0.04		
				2024/5/22	Sunny	28.3	Grayish yellow brown	Faint earth	loamy	< 7.6	52 ± 4.7	52	0.05	Dull yellow brown								

Gunma River (SE) 2/2

No.	Water Area	Location		Sampling Date	Weather	Air temperature (°C)	Surrounding Environment (Soil, Air dose)										Remarks					
		Location	Municipality				Left bank					Right bank										
							Color	Odor	Property	Activity concentration [Bq/kg(dry)]			Air dose (μSv/h)	Color	Odor	Property		Activity concentration [Bq/kg(dry)]			Air dose (μSv/h)	
										Radioactive cesium								Radioactive cesium				
Cs-134	Cs-137	Total	Cs-134	Cs-137	Total																	
23	Ogawa River	Kinzan Bridge	Kanra Town	2024/5/28	Light Rain	20.0	Dark brown	Faint earth	loamy	< 7.8	190 ± 10	190	0.04	Dark brown	Faint earth	Loamy	< 8.5	160 ± 9.2	160	0.05		
				2024/8/5	Sunny	28.6	Dark brown	Faint earth	loamy	< 8.3	140 ± 9.0	140	0.05	Dark brown	Faint earth	Loamy	< 9.6	110 ± 7.0	110	0.04		
				2024/5/23	Cloudy	30.1	Dark brown	Faint earth	loamy	< 8.3	340 ± 13	340	0.05	Brownish black	Faint earth	Loamy	< 8.0	210 ± 11	210	0.05		
24	Nanmoku River	Ozawa Bridge	Nanmoku Village	2024/8/5	Sunny	30.9	Dark brown	Faint earth	loamy	< 8.7	68 ± 5.4	68	0.05	Dark brown	Faint earth	Loamy	< 8.1	330 ± 15	330	0.05		
				2024/5/22	Sunny	29.9	Dark brown	Faint earth	loamy	< 6.8	72 ± 5.5	72	0.03	Dark brown	Faint earth	Loamy	< 8.4	150 ± 7.8	150	0.03		
25	Someya River	Yakushi Bridge	Shinto Village	2024/8/6	Sunny	30.1	Brownish black	Faint earth	loamy	< 7.1	78 ± 6.4	78	0.03	Dark brown	Faint earth	Loamy	< 8.8	77 ± 7.0	77	0.03		
				2024/5/24	Sunny	33.1	Dark brown	Faint earth	loamy	< 6.0	17 ± 3.0	17	0.04	Brownish black	Faint earth	Loamy	< 5.3	110 ± 7.7	110	0.05		
26	Inogawa River	Kamakura Bridge	Takasaki City	2024/8/5	Sunny	32.4	Dark brown	Faint earth	loamy	< 8.3	38 ± 5.5	38	0.03	Dark brown	Faint earth	Loamy	< 9.7	52 ± 5.9	52	0.03		
				2024/5/29	Sunny	33.1	Yellow brown	Faint earth	loamy	< 7.9	38 ± 3.8	38	0.04	Dull yellow brown	Faint earth	Loamy	< 8.4	42 ± 5.1	42	0.05		
27	Karasu River	Iwakura Bridge	Takasaki City/Tamamura Town	2024/8/5	Sunny	34.5	Brown	Faint earth	loamy	< 8.2	71 ± 5.9	71	0.04	Dull yellow brown	Faint earth	Loamy	< 8.3	52 ± 6.2	52	0.05		
				2024/5/23	Cloudy	24.4	Dark brown	Faint earth	loamy	13 ± 2.8	720 ± 20	733	0.06	Brownish black	Faint earth	Loamy	< 8.8	280 ± 14	280	0.07		
28	Shinkaname Bridge	Ueno Village	Kanna Town	2024/5/23	Cloudy	24.3	Brownish black	Faint earth	loamy	< 7.8	130 ± 7.5	130	0.06	Brownish black	None	Sandy	< 7.2	< 8.2	-	0.05		
				2024/5/22	Sunny	28.0	Dark brown	Faint earth	loamy	< 7.9	66 ± 6.9	66	0.04	Brownish black	Faint earth	Loamy	< 6.5	100 ± 7.3	100	0.05		
29	Morito Bridge	Fujioka City/Kamisato Town	Kanna River	2024/5/22	Sunny	28.0	Dark brown	Faint earth	loamy	< 9.5	73 ± 6.6	73	0.05	Grayish yellow brown	Faint earth	Loamy	< 5.9	64 ± 4.3	64	0.05		
				2024/5/29	Sunny	33.1	Grayish yellow brown	Faint earth	loamy	< 7.0	110 ± 6.1	110	0.05	Grayish yellow brown	Faint earth	Loamy	< 7.0	58 ± 5.4	58	0.05		
30	Tobukyo Bridge	Fujioka City/Kamisato Town	Kannagawa Bridge	Kamisato Town	2024/5/29	Sunny	33.1	Grayish yellow brown	Faint earth	loamy	< 8.9	68 ± 5.7	68	0.04	Brown	Faint earth	Loamy	< 7.5	100 ± 6.7	100	0.04	
					2024/8/7	Sunny	31.5	Grayish yellow brown	Faint earth	loamy	< 8.7	88 ± 6.3	88	0.05	Brown	Faint earth	Loamy	< 7.2	44 ± 4.7	44	0.04	
31	Kannagawa Bridge	Kamisato Town	Kannagawa Bridge	Kamisato Town	2024/8/6	Sunny	28.9	Brown	Faint earth	loamy	< 9.4	82 ± 7.2	82	0.04	Dull yellow brown	Faint earth	Loamy	< 9.9	73 ± 7.1	73	0.03	
					2024/5/21	Sunny	28.1	Dark brown	Faint earth	loamy	< 6.3	33 ± 4.6	33	0.04	Dull yellow brown	Faint earth	Loamy	< 8.7	120 ± 7.7	120	0.04	
32	Tongegawa River	Bando-ohashi Bridge	Honjo City	2024/8/6	Cloudy	27.4	Brown	Faint earth	loamy	< 6.6	51 ± 5.7	51	0.04	Dark brown	Faint earth	Loamy	< 9.9	130 ± 9.4	130	0.04		
				2024/5/21	Sunny	33.7	Dark brown	Faint earth	loamy	< 6.8	23 ± 3.6	23	0.04	Dark brown	Faint earth	Loamy	< 6.7	26 ± 3.9	26	0.04		
33	Akagishirakawa River	In Shimohosoi Town	Maebashi City	2024/8/6	Sunny	32.2	Grayish yellow brown	Faint earth	loamy	< 6.5	24 ± 3.5	24	0.04	Dull yellow brown	Faint earth	Loamy	< 8.7	14 ± 3.0	14	0.04		
				2024/5/29	Sunny	28.7	Dull yellow brown	Faint earth	loamy	< 7.7	53 ± 5.4	53	0.04	Dull yellow brown	Faint earth	Loamy	< 8.7	45 ± 4.3	45	0.04		
34	Momonoki River	Utsuboi Bridge	Maebashi City	2024/8/6	Cloudy	27.4	Brown	Faint earth	loamy	< 7.3	91 ± 6.4	91	0.03	Dull yellow brown	Faint earth	Loamy	< 6.8	76 ± 5.6	76	0.03		
				2024/5/29	Sunny	30.4	Dull yellow brown	Faint earth	loamy	< 8.3	61 ± 5.1	61	0.05	Dull yellow brown	Faint earth	Loamy	< 8.6	140 ± 7.8	140	0.06		
35	Arato River	Okuhara Bridge	Iseaki City	2024/8/6	Sunny	30.1	Dark brown	Faint earth	loamy	< 9.8	120 ± 7.6	120	0.04	Dull yellow brown	Faint earth	Loamy	< 8.3	200 ± 11	200	0.05		
				2024/5/21	Sunny	30.1	Dark brown	Faint earth	loamy	< 7.2	130 ± 8.5	130	0.05	Dark brown	Faint earth	Loamy	< 7.5	69 ± 6.2	69	0.04		
36	Kasukawa River	Hozumi Bridge	Iseaki City	2024/8/6	Sunny	34.2	Dull yellow brown	Faint earth	loamy	< 8.7	160 ± 8.6	160	0.04	Dull yellow brown	Faint earth	Loamy	8.2 ± 2.3	290 ± 11	298.2	0.04		
				2024/5/29	Sunny	23.8	Dull yellow brown	Faint earth	loamy	< 4.6	62 ± 4.0	62	0.05	Grayish yellow brown	Faint earth	Loamy	< 6.4	54 ± 3.7	54	0.06		
37	Hirose River	Nakajima Bridge	Iseaki City	2024/8/6	Cloudy	26.2	Brown	Faint earth	loamy	< 8.3	75 ± 6.6	75	0.04	Brown	Faint earth	Loamy	< 9.8	25 ± 4.5	25	0.05		
				2024/5/28	Cloudy	20.6	Brownish black	Faint earth	loamy	< 7.6	100 ± 5.1	100	0.05	Dull yellow brown	Faint earth	Loamy	< 5.5	79 ± 4.1	79	0.05		
38	Hayakawa River	Hayakawa Bridge	Ota City	2024/6/28	Light Rain	22.5	Dark brown	Faint earth	loamy	< 6.2	73 ± 4.7	73	0.04	Brown	Faint earth	Loamy	< 7.1	50 ± 4.4	50	0.04		
				2024/7/19	Cloudy	34.8	Brownish black	Faint earth	loamy	< 8.2	130 ± 7.6	130	0.04	Dark brown	Faint earth	Loamy	< 7.6	14 ± 2.7	14	0.05		
39	Maejima Bridge	Ota City	Tonegawa River	Tone-ozeki Weir	Chiyoda Town /Gyoda City	2024/8/7	Sunny	26.9	Dull yellow brown	Faint earth	loamy	< 9.8	120 ± 6.7	120	0.05	Brown	Faint earth	Loamy	< 7.1	68 ± 5.3	68	0.06
						2024/9/19	Cloudy	26.1	Dark brown	Faint earth	loamy	< 7.0	95 ± 6.9	95	0.06	Dull yellow brown	Faint earth	Loamy	< 9.8	100 ± 8.3	100	0.06
40	Tonegawa River	Tone-ozeki Weir	Chiyoda Town /Gyoda City	2024/5/29	Sunny	23.0	Dark brown	Faint earth	loamy	15 ± 2.5	1,200 ± 18	1,215	0.05	Brownish black	Faint earth	Loamy	34 ± 5.0	1,600 ± 32	1,634	0.06		
				2024/6/27	Sunny	23.8	Dull yellow brown	Faint earth	loamy	< 8.5	580 ± 14	580	0.06	Brownish black	Faint earth	Loamy	8.7 ± 1.9	630 ± 15	638.7	0.07		
41	Koguro River	Kayano Bridge	Kiryu City	2024/7/18	Cloudy	32.0	Brown	Faint earth	loamy	< 7.7	100 ± 6.5	100	0.06	Brownish black	Faint earth	Loamy	20 ± 5.5	1,400 ± 32	1,420	0.06		
				2024/8/8	Sunny	23.8	Brownish black	Faint earth	loamy	53 ± 11	4,200 ± 76	4,253	0.07	Dark brown	Faint earth	Loamy	15 ± 2.9	1,400 ± 21	1,415	0.07		
42	Takatsudo	Midori City	Kiryu City	2024/9/18	Cloudy	26.4	Dull yellow brown	Faint earth	loamy	14 ± 3.0	720 ± 20	734	0.06	Brownish black	Faint earth	Loamy	16 ± 3.4	1,100 ± 22	1,116	0.06		
				2024/5/16	Cloudy	21.0	Brownish black	Faint earth	loamy	< 7.3	71 ± 5.0	71	0.05	Dull yellow brown	Faint earth	Loamy	< 9.6	130 ± 7.6	130	0.05		
43	Watarase River	Intake for Akaiwayosui water channel	Kiryu City	2024/8/7	Cloudy	29.3	Brownish black	Faint earth	loamy	< 8.3	76 ± 5.9	76	0.05	Dull yellow brown	Faint earth	Loamy	< 9.4	180 ± 11	180	0.05		
				2024/5/16	Cloudy	23.1	Dull yellow brown	Faint earth	loamy	< 7.9	18 ± 3.1	18	0.05	Dark brown	Faint earth	Loamy	< 6.8	100 ± 6.1	100	0.05		
44	Tatara River	Ejiri Bridge	Oura Town	2024/6/27	Cloudy	30.0	Dull yellow brown	Faint earth	loamy	< 7.3	11 ± 2.8	11	0.05	Dark brown	Faint earth	Loamy	< 7.6	130 ± 7.6	130	0.06		
				2024/7/19	Cloudy	31.1	Dark brown	Faint earth	loamy	< 9.2	10 ± 3.2	10	0.05	Brownish black	Faint earth	Loamy	< 6.7	140 ± 9.2	140	0.06		
45	Kiryu River	Kannon Bridge	Kiryu City	2024/8/7	Sunny	27.9	Brown	Faint earth	loamy	< 8.9	16 ± 3.2	16	0.04	Dark brown	Faint earth	Loamy	< 7.6	200 ± 9.1	200	0.04		
				2024/5/24	Sunny	30.0	Brownish black	Faint earth	loamy	< 9.7	240 ± 12	240	0.05	Dark brown	Faint earth	Loamy	< 7.1	< 9.0	-	0.05		
46	Sakai Bridge	Kiryu City/Ashikaga City	Kiryu River	2024/8/7	Sunny	32.0	Brown	Faint earth	loamy	< 8.9	120 ± 8.3	120	0.04	Dull yellow brown	Faint earth	Loamy	< 8.1	9.3 ± 3.1	9.3	0.05		
				2024/5/27	Light Rain	18.0	Dark brown	Faint earth	loamy	< 7.5	86 ± 5.8	86	0.05	Dark brown	Faint earth	Loamy	< 6.9	120 ± 6.8	120	0.06		
47	Tsuruuda River	Lake Jonuma	Tatebayashi City	2024/8/7	Sunny	30.4	Dark brown	Faint earth	loamy	< 8.5	120 ± 8.2	120	0.05	Dark brown	Faint earth	Loamy	< 6.9	62 ± 4.6	62	0.04		
				2024/5/16	Cloudy	21.7	Dull yellow brown	Faint earth	loamy	< 8.9	42 ± 5.3	42	0.06	Dark brown	Faint earth	Loamy	< 7.5	53 ± 4.4	53	0.05		
48	Yatagawa River	Togoda Bridge	Meiwa Town /Itakura Town	2024/8/7	Sunny	29.1	Dull yellow brown	Faint earth	loamy	< 6.5	< 8.2	-	0.05	Brown	Faint earth	Loamy	< 8.9	27 ± 4.4	27	0.06		
				2024/5/24	Sunny	31.0	Dark brown	Faint earth	loamy	< 7.0	160 ± 8.7	160	0.05	Dark brown	Faint earth	Loamy	< 8.6	300 ± 11	300	0.05		
48	Yatagawa River	Togoda Bridge	Meiwa Town /Itakura Town	2024/8/7	Sunny	30.4	Dark brown	Faint earth	loamy	< 9.0	130 ± 8.6	130	0.06	Brownish black	Faint earth	Loamy	< 8.7	200 ± 9.8	200	0.05		
				2024/5/24	Sunny	24.0	Dull yellow brown	Faint earth	loamy	< 6.7	32 ± 3.8	32	0.06	Dark brown	Faint earth	Loamy	< 8.6	74 ± 6.1	74	0.06		
48	Yatagawa River	Togoda Bridge	Meiwa Town /Itakura Town	2024/8/7	Sunny	29.1	Dull yellow brown	Faint earth	loamy	< 8.0	71 ± 6.0	71	0.06	Dull yellow brown	Faint earth	Loamy	< 8.1	73 ± 5.9	73	0.06		

Gunma Lakes (Water) 1/4

No.	Water Area	Location			Surface layer/ Deep layer	Sampling Date	Weather	Air temperature (°C)	Water depth (m)	Water										Remarks		
		Location	Municipality	General items							Activity concentration(Bq/L)											
				Water temperature (°C)						Sampling depth (m)	Color	Odor	Secchi disk depth (m)	Electrical conductivity (mS/m)	SS (mg/L)	Turbidity (FNU)	Cs-134	Cs-137				
49	Lake Okutone (Yagisawa Dam)	Center	Minakami Town	Surface layer	2024/5/30	Sunny	17.0	84.0	17.1	0.5	Dark grayish yellow green	None	6.0	2.2	<1	0.6	< 0.65	< 0.85				
				Deep layer						6.6	83.0	-	None		2.1	<1	0.9	< 0.54	< 0.56			
				Surface layer	2024/8/29	Cloudy	25.4	98.0	25.2	0.5	Dark grayish yellow green	None	8.0	2.5	<1	0.3	< 0.50	< 0.61				
				Deep layer						9.8	97.0	-	None		2.4	2	0.8	< 0.53	< 0.59			
				Surface layer	2024/10/11	Sunny	13.5	91.5	19.8	0.5	Dark grayish yellow green	None	5.0	2.5	<1	0.7	< 0.98	< 0.68				
				Deep layer						12.8	90.5	-	None		2.2	<1	1.0	< 0.82	< 0.79			
		50	Lake Naramata (Naramata Dam)	Center	Minakami Town	Surface layer	2024/11/27	Cloudy	7.6	83.2	13.2	0.5	Dark grayish yellow green	None	4.0	2.7	<1	0.9	< 0.85	< 0.62		
						Deep layer						12.5	82.2	-	None		2.7	3	1.8	< 0.85	< 0.59	
						Surface layer	2024/5/30	Cloudy	17.0	68.0	18.5	0.5	Dark grayish yellow green	None	8.0	2.6	<1	0.4	< 0.61	< 0.78		
						Deep layer						7.3	67.0	-	None		2.5	<1	0.6	< 0.60	< 0.52	
						Surface layer	2024/8/29	Cloudy	26.1	89.0	25.6	0.5	Dark grayish yellow green	None	5.0	3.2	<1	0.5	< 0.75	< 0.64		
						Deep layer						6.1	88.0	-	None		3.4	<1	0.2	< 0.72	< 0.72	
51	Lake Dogen (Sudagai Dam)	Center	Minakami Town	Surface layer	2024/10/11	Cloudy	15.2	93.3	20.0	0.5	Dark grayish yellow green	None	5.0	3.5	<1	0.7	< 0.52	< 0.50				
				Deep layer						5.5	92.3	-	None		3.6	<1	1.4	< 0.60	< 0.66			
				Surface layer	2024/11/27	Sunny	12.8	98.6	12.5	0.5	Dark grayish yellow green	None	7.0	3.9	<1	0.6	< 0.60	< 0.56				
				Deep layer						5.4	97.6	-	None		3.8	<1	0.6	< 0.68	< 0.88			
				Surface layer	2024/5/30	Cloudy	22.0	49.5	16.7	0.5	Grayish yellow green	None	5.0	3.0	<1	0.6	< 0.77	< 0.85				
				Deep layer						8.0	48.5	-	None		2.3	<1	0.8	< 0.74	< 0.62			
		52	Lake Marunuma (Marunuma Dam)	Center	Katashina Village	Surface layer	2024/8/28	Cloudy	25.9	49.5	23.9	0.5	Dark grayish blue green	None	3.0	4.1	<1	0.5	< 0.80	< 0.78		
						Deep layer						9.9	48.5	-	None		2.6	<1	0.6	< 0.72	< 0.95	
						Surface layer	2024/10/11	Sunny	17.6	42.5	18.2	0.5	Grayish yellow green	None	6.0	4.5	<1	0.8	< 0.80	< 0.62		
						Deep layer						9.5	41.5	-	None		3.2	2	1.6	< 0.61	< 0.55	
						Surface layer	2024/11/27	Sunny	10.8	48.3	10.5	0.5	Grayish yellow green	None	3.0	3.2	<1	1.1	< 0.77	< 0.73		
						Deep layer						10.5	47.3	-	None		4.2	<1	1.1	< 0.72	< 0.76	
53	Lake Fujiwara (Fujiwara Dam)	Center	Minakami Town	Surface layer	2024/5/28	Cloudy	20.0	39.0	15.5	0.5	Grayish yellow green	None	6.0	5.4	<1	0.5	< 0.65	< 0.64				
				Deep layer						7.4	38.0	-	None		7.9	3	0.8	< 0.78	< 0.76			
				Surface layer	2024/8/21	Sunny	28.4	40.6	23.4	0.5	Grayish yellowish green	None	7.0	5.1	<1	0.1	< 0.83	< 0.69				
				Deep layer						7.2	39.6	-	None		9.6	<1	0.3	< 0.88	< 0.64			
				Surface layer	2024/10/9	Light Rain	9.5	42.8	17.6	0.5	Grayish yellow green	None	7.0	5.4	<1	0.8	< 0.88	< 0.82				
				Deep layer						9.0	41.8	-	None		10.5	<1	0.6	< 0.68	< 0.79			
		54	Lake Tanbara (Tanbara Dam)	Center	Numata City	Surface layer	2024/11/25	Sunny	3.9	41.5	10.9	0.5	Grayish yellow green	None	6.0	5.7	<1	0.8	< 0.72	< 0.76		
						Deep layer						11.1	40.5	-	None		5.7	<1	0.7	< 0.85	< 0.53	
						Surface layer	2024/5/30	Sunny	25.0	70.0	12.6	0.5	Grayish yellow green	None	3.0	3.2	<1	1.2	< 0.85	< 0.72		
						Deep layer						8.5	69.0	-	None		2.7	2	1.4	< 0.63	< 0.56	
						Surface layer	2024/8/29	Light Rain	24.8	60.2	21.0	0.5	Grayish yellow green	None	0.5	3.2	9	5.6	< 0.79	< 0.78		
						Deep layer						11.4	59.2	-	None		3.0	<1	0.5	< 0.77	< 0.84	
54	Lake Tanbara (Tanbara Dam)	Center	Numata City	Surface layer	2024/10/10	Sunny	18.1	65.6	17.7	0.5	Grayish yellowish green	None	4.0	3.4	<1	0.9	< 0.82	< 0.79				
				Deep layer						12.6	64.6	-	None		3.2	<1	1.0	< 0.82	< 0.88			
				Surface layer	2024/12/18	Sunny	2.6	66.0	8.0	0.5	Dark grayish yellow green	None	5.5	3.6	<1	0.8	< 0.60	< 0.88				
				Deep layer						7.5	65.0	-	None		3.8	<1	0.9	< 0.76	< 0.79			
				Surface layer	2024/5/29	Sunny	12.0	38.5	13.3	0.5	Dark grayish yellowish green	None	5.0	2.6	<1	0.6	< 0.75	< 0.66				
				Deep layer						9.2	37.5	-	None		2.6	<1	0.8	< 0.52	< 0.63			
		54	Lake Tanbara (Tanbara Dam)	Center	Numata City	Surface layer	2024/8/22	Sunny	24.9	35.9	25.1	0.5	Dark grayish green	None	5.5	2.8	<1	0.3	< 0.90	< 0.69		
						Deep layer						14.3	34.9	-	None		2.7	<1	0.4	< 0.60	< 0.54	
						Surface layer	2024/10/10	Sunny	13.5	35.0	17.0	0.5	Dark grayish yellowish green	None	4.0	3.1	<1	0.8	< 0.71	< 0.62		
						Deep layer						14.9	34.0	-	None		3.2	<1	0.9	< 0.77	< 0.68	
						Surface layer	2024/11/26	Cloudy	7.1	27.5	11.3	0.5	Dark grayish yellowish green	None	3.0	3.5	<1	0.8	< 0.69	< 0.75		
						Deep layer						10.9	26.5	-	None		3.3	<1	0.8	< 0.63	< 0.81	

Gunma Lakes (Water) 4/4

No.	Water Area	Location			Surface layer/ Deep layer	Sampling Date	Weather	Air temperature (°C)	Water depth (m)	Water								Remarks		
		Location	Municipality	General items						Activity concentration(Bq/L)										
				Water temperature (°C)						Sampling depth (m)	Color	Odor	Secchi disk depth (m)	Electrical conductivity (mS/m)	SS (mg/L)	Turbidity (FNU)	Cs-134		Cs-137	
67	Karasu River Area	Lake Hebikami (Shiozawa Dam)	Center	Kanna Town	Surface layer	2024/5/27	Sunny	24.0	14.1	19.1	0.5	Grayish yellow green	None	3.0	11.8	<1	0.5	< 0.67	< 0.62	
					Deep layer					16.5	13.1	-	None		11.9	4	1.8	< 0.72	< 0.82	
					Surface layer	2024/8/27	Light Rain	26.8	6.8	23.0	0.5	Grayish yellow green	None	1.0	14.2	<1	1.0	< 0.69	< 0.62	
					Deep layer					22.9	5.8	-	None		14.5	4	1.5	< 0.73	< 0.61	
					Surface layer	2024/10/9	Light Rain	21.8	17.2	20.9	0.5	Grayish yellow green	None	2.0	13.3	<1	0.9	< 0.71	< 0.75	
					Deep layer					19.6	16.2	-	None		11.7	15	6.8	< 0.92	< 0.68	
Surface layer	2024/12/18	Sunny	5.1	14.8	6.1	0.5	Dark grayish yellow green	None	2.5	14.2	<1	1.4	< 0.94	< 0.82						
Deep layer					5.6	13.8	-	None		14.0	2	1.4	< 0.79	< 0.68						
68	Watarase River Area	Lake Kusaki (Kusaki Dam)	Center	Midori City	Surface layer	2024/5/27	Cloudy	22.0	44.0	19.8	0.5	Dark grayish yellow green	None	5.0	8.0	<1	1.6	< 0.64	< 0.54	
					Deep layer					8.7	43.0	-	None		8.1	<1	0.9	< 0.88	< 0.76	
					Surface layer	2024/8/23	Cloudy	31.2	30.2	27.5	0.5	Grayish yellow green	None	3.0	6.9	<1	0.5	< 0.78	< 0.83	
					Deep layer					14.3	29.2	-	None		8.4	5	2.5	< 0.69	< 0.73	
					Surface layer	2024/10/15	Cloudy	20.8	47.5	19.7	0.5	Dark grayish yellow green	None	5.0	8.5	<1	1.4	< 0.63	< 0.66	
					Deep layer					17.7	46.5	-	None		8.5	2	1.0	< 0.83	< 0.66	
Surface layer	2024/12/20	Sunny	6.0	37.3	9.1	0.5	Grayish yellow green	None	4.5	9.4	<1	1.0	< 0.76	< 0.68						
Deep layer					9.0	36.3	-	None		9.2	<1	1.0	< 0.65	< 0.88						
69	Watarase River Area	Lake Umeda (Kiryugawa Dam)	Center	Kiryu City	Surface layer	2024/5/27	Cloudy	25.0	34.0	20.9	0.5	Grayish yellow green	None	2.0	5.9	<1	1.1	< 0.54	< 0.50	
					Deep layer					7.7	33.0	-	None		5.8	<1	0.7	< 0.49	< 0.66	
					Surface layer	2024/8/23	Cloudy	29.6	25.7	28.0	0.5	Grayish yellow green	None	5.5	5.8	<1	0.5	< 0.79	< 0.64	
					Deep layer					9.3	24.7	-	None		7.0	4	3.7	< 0.76	< 0.78	
					Surface layer	2024/10/16	Cloudy	22.1	17.3	21.1	0.5	Grayish yellow green	None	4.0	6.5	<1	1.0	< 0.82	< 0.76	
					Deep layer					11.2	16.3	-	None		7.6	4	2.1	< 0.85	< 0.76	
Surface layer	2024/12/19	Sunny	6.5	33.2	9.1	0.5	Grayish yellow	None	2.5	6.6	3	1.2	< 0.76	< 0.64						
Deep layer					8.5	32.2	-	None		7.3	9	4.5	< 0.76	< 0.79						
70	Nakatsu River Area	Lake Nozori (Nozori Dam)	Center	Nakanojo Town	Surface layer	2024/6/28	Light Rain	15.7	21.5	17.6	0.5	Grayish yellow green	None	8.0	2.4	<1	0.4	< 0.56	< 0.48	
					Deep layer					13.2	20.5	-	None		2.4	<1	0.3	< 0.60	< 0.84	
					Surface layer	2024/8/26	Cloudy	20.9	10.8	23.1	0.5	Grayish yellow green	None	5.0	2.8	2	0.6	< 0.54	< 0.56	
					Deep layer					23.1	9.8	-	None		2.8	3	0.6	< 0.85	< 0.91	
					Surface layer	2024/10/16	Light Rain	20.6	11.5	18.1	0.5	Grayish yellow green	None	5.0	2.7	<1	0.8	< 0.60	< 0.61	
					Deep layer					18.8	10.5	-	None		2.6	<1	0.7	< 0.68	< 0.61	
Surface layer	2024/11/28	Sunny	7.6	-	-	-	-	-	-	-	-	-	-	-	-	-	-	Unable to collect samples due to location inaccessibility.*		
Deep layer					-	-	-	-	-	-	-	-	-	-	-	-	-	-	-	Unable to collect samples due to location inaccessibility.*
71	Watarase River Area	Lake Jonuma	Center	Tatebayashi City	Surface layer	2024/5/24	Sunny	22.0	1.6	26.0	0.0	Grayish yellow green	None	0.5	29.2	21	8.4	< 0.72	< 0.68	
					Deep layer					-	-	-	-		-	-	-	-	-	-
					Surface layer	2024/9/18	Sunny	34.2	1.5	31.7	0.0	Grayish yellow green	None	0.3	24.5	5	4.7	< 0.60	< 0.57	
					Deep layer					-	-	-	-		-	-	-	-	-	-
					Surface layer	2024/10/8	Light Rain	22.8	1.6	24.8	0.0	Grayish yellow green	None	0.3	36.4	14	5.0	< 0.69	< 0.73	
					Deep layer					-	-	-	-		-	-	-	-	-	-
Surface layer	2024/12/17	Sunny	11.8	1.6	8.8	0.0	Grayish reddish yellow	None	0.5	33.4	25	24	< 0.73	< 0.64						
Deep layer					-	-	-	-		-	-	-	-	-	-	-	-	-	Collect samples from the upper layer due to shallow water	
72	Watarase River Area	Lake Tataranuma	Center	Tatebayashi City	Surface layer	2024/5/24	Sunny	31.0	6.0	26.4	0.5	Dark grayish yellow	None	1.0	19.4	11	6.7	< 0.56	< 0.60	
					Deep layer					23.1	5.0	-	None		18.7	7	3.1	< 0.64	< 0.64	
					Surface layer	2024/9/18	Sunny	34.2	5.5	30.1	0.5	Dark grayish yellow	None	1.0	18.6	8	7.0	< 0.89	< 0.81	
					Deep layer					28.6	4.5	-	None		21.0	10	5.4	< 0.75	< 0.86	
					Surface layer	2024/10/8	Light Rain	21.8	4.5	26.8	0.5	Grayish yellow green	None	0.4	21.1	11	5.5	< 0.78	< 0.93	
					Deep layer					24.8	3.5	-	None		21.6	10	5.7	< 0.73	< 0.62	
Surface layer	2024/12/17	Sunny	10.9	4.5	6.8	0.5	Dark grayish yellow	None	0.5	21.6	23	23	< 0.83	< 0.59						
Deep layer					6.2	3.5	-	None		22.5	25	23	< 0.83	< 0.76						

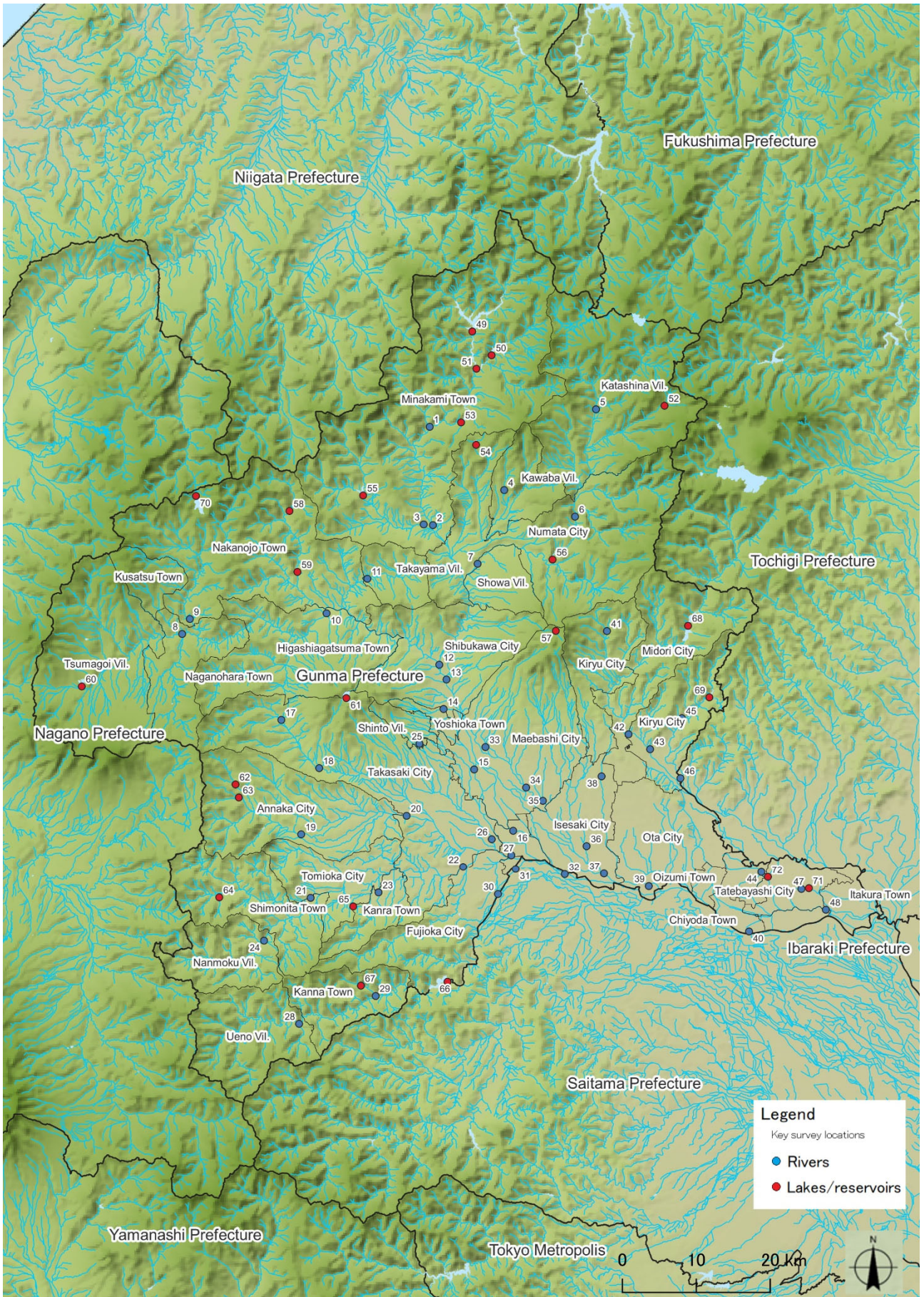
* Reasons for difficulty in entering the study area include winter closures, winter road closures, typhoons and other disasters, construction, etc.

Gunma Lakes (Sediment) 1/2

Location				Sampling Date	Weather	Air temperature (°C)	Water depth (m)	Sediment temperature (°C)	Sediment															Activity concentration [Bq/kg(dry)]			Remarks
									Sample length (cm)	Color	Odor	General items								Sediment content (%)	Density (Mg/m³)	Property	Radioactive cesium				
												Coarse gravel	Medium gravel	Fine gravel	Coarse sand	Medium sand	Fine sand	silt	clay				Cs-134	Cs-137	Total		
Lakes and Reservoirs	Tonegawa River Area	Lake Okutone (Yagisawa Dam)	Center	Minakami Town	2024/5/30	Sunny	17.0	84.0	4.2	3	Grayish olive	None	0.0	0.0	0.0	0.1	0.3	0.4	49.4	49.8	35.8	2.58	silt	11 ± 3.0	460 ± 11	471	
					2024/8/29	Cloudy	25.4	98.0	8.8	4	Grayish olive	None	0.0	0.0	0.0	0.1	0.1	0.4	40.6	58.8	30.0	2.57	silt	7.1 ± 2.1	410 ± 8.2	417.1	
					2024/10/11	Sunny	13.5	91.5	12.6	3	Grayish olive	None	0.0	0.0	0.0	0.1	0.2	0.2	53.1	46.4	32.5	2.59	silt	9.4 ± 2.1	580 ± 10	589.4	
					2024/11/27	Cloudy	7.6	83.2	10.1	3	Grayish olive	None	0.0	0.0	0.0	0.1	0.3	0.8	35.7	63.1	26.8	2.59	silt	< 8.6	540 ± 9.7	540	
		Lake Naramata (Naramata Dam)	Center	Minakami Town	2024/5/30	Cloudy	17.0	68.0	6.5	3	Dark olive	None	0.0	0.0	0.0	0.1	0.1	0.3	45.8	53.7	28.9	2.53	silt	20 ± 4.1	1,300 ± 26	1,320	
					2024/8/29	Cloudy	26.1	89.0	8.8	4	Olive brown	Faint hydrogen sulfide	0.0	0.0	0.0	0.1	2.7	17.4	40.8	39.0	46.6	2.61	silt/sand	< 9.1	560 ± 11	560	
					2024/10/11	Cloudy	15.2	93.3	7.8	3	Dark olive	None	0.0	0.0	0.0	0.1	0.3	0.3	26.0	73.3	22.3	2.55	silt	16 ± 4.8	1,400 ± 25	1,416	
					2024/11/27	Sunny	12.8	98.6	6.3	3	Dark olive	None	0.0	0.0	0.0	0.2	0.4	2.3	41.6	55.5	19.5	2.52	silt	38 ± 9.7	1,400 ± 41	1,438	
		Lake Dogen (Sudagai Dam)	Center	Minakami Town	2024/5/30	Cloudy	22.0	49.5	6.5	3	Grayish olive	None	0.0	0.0	0.2	0.3	0.2	0.4	58.3	40.6	33.6	2.56	silt	< 8.4	300 ± 8.0	300	
					2024/8/28	Cloudy	25.9	49.5	9.5	4	Grayish olive	None	0.0	0.0	0.0	0.2	0.1	0.3	41.9	57.5	35.5	2.58	silt	7.1 ± 1.7	490 ± 7.8	497.1	
					2024/10/11	Sunny	17.6	42.5	10.2	3	Grayish olive	None	0.0	0.0	0.0	0.1	0.0	0.1	57.8	42.0	32.9	2.59	silt	< 9.3	440 ± 11	440	
					2024/11/27	Sunny	10.8	48.3	9.8	3	Grayish olive	None	0.0	0.0	0.0	0.5	0.1	0.3	63.4	35.7	30.4	2.56	silt	7.5 ± 1.4	370 ± 7.3	377.5	
	Lake Marunuma (Marunuma Dam)	Center	Katashina Village	2024/5/28	Cloudy	20.0	39.0	5.5	4	Black	None	0.0	0.0	0.0	0.1	0.2	0.3	45.0	54.4	20.3	2.39	silt	< 9.0	430 ± 8.8	430		
				2024/8/21	Sunny	28.4	40.6	9.6	3	Black	Faint swamp	0.0	0.0	0.0	0.1	0.2	0.6	25.0	74.1	20.0	2.44	silt	< 8.9	210 ± 7.8	210		
				2024/10/9	Light Rain	9.5	42.8	8.5	3	Black	None	0.0	0.0	0.0	0.1	0.0	0.2	38.1	61.6	17.7	2.46	silt	< 9.7	360 ± 9.9	360		
				2024/11/25	Sunny	3.9	41.5	6.2	3	Black	Faint hydrogen sulfide	0.0	0.0	0.0	0.1	0.2	0.2	38.5	61.0	15.3	2.49	silt	11 ± 2.3	950 ± 13	961		
	Lake Fujiwara (Fujiwara Dam)	Center	Minakami Town	2024/5/30	Sunny	25.0	70.0	5.7	4	Dark olive	None	0.0	0.0	0.0	0.1	0.3	0.3	48.9	50.4	27.8	2.52	silt	< 9.6	330 ± 11	330		
				2024/8/29	Light Rain	24.8	60.2	12.1	5	Olive brown	Faint sewage	0.0	0.0	0.0	0.1	0.3	2.2	42.7	54.7	29.5	2.47	silt	< 8.8	400 ± 10	400		
				2024/10/10	Sunny	18.1	65.6	12.4	3	Grayish olive	None	0.0	0.0	0.0	0.3	0.6	3.8	56.9	38.4	37.4	2.57	silt	7.5 ± 2.4	450 ± 11	457.5		
				2024/12/18	Sunny	2.6	66.0	7.0	5	Brownish black	None	0.0	0.0	0.0	0.2	0.2	1.7	59.6	38.3	24.0	2.48	silt	< 9.4	420 ± 12	420		
	Lake Tanbara (Tanbara Dam)	Center	Numata City	2024/5/29	Sunny	12.0	38.5	7.8	4	Grayish olive	None	0.0	0.0	0.0	0.1	0.1	0.3	49.3	50.2	31.7	2.60	silt	18 ± 5.0	760 ± 21	778		
				2024/8/22	Sunny	24.9	35.9	14.7	3	Grayish olive	None	0.0	0.3	3.3	2.2	4.5	4.3	31.7	53.7	40.7	2.69	silt/sand	16 ± 2.9	1,000 ± 15	1,016		
				2024/10/10	Sunny	13.5	35.0	15.0	4	Grayish olive	None	0.0	0.0	0.0	0.1	0.0	0.1	65.5	34.3	26.2	2.61	silt	31 ± 5.8	2,200 ± 30	2,231		
				2024/11/26	Cloudy	7.1	27.5	10.3	3	Grayish olive	None	0.0	0.0	0.0	0.1	0.1	0.0	43.5	56.3	30.5	2.63	silt	20 ± 4.0	1,500 ± 21	1,520		
Lake Akaya (Aimata Dam)	Center	Minakami Town	2024/5/31	Cloudy	16.0	44.0	10.5	4	Olive black	None	0.0	0.0	0.0	0.1	0.7	0.7	58.6	40.6	36.8	2.55	silt	< 9.4	360 ± 12	360			
			2024/8/28	Cloudy	26.8	36.2	19.2	4	Dark olive	Faint sewage	0.0	0.0	0.0	0.2	0.2	0.8	49.0	49.8	34.5	2.57	silt	< 9.4	320 ± 14	320			
			2024/10/17	Sunny	24.6	42.0	12.5	4	Olive black	None	0.0	0.0	0.0	0.1	0.1	0.3	49.6	49.9	34.3	2.62	silt	< 9.6	340 ± 12	340			
			2024/12/18	Light Snow	4.0	41.8	8.0	3	Dark grayish yellow	Faint hydrogen sulfide	0.0	0.0	0.0	0.0	1.1	1.1	65.6	33.2	35.9	2.60	silt	< 9.4	380 ± 12	380			
Lake Sonohara (Sonohara Dam)	Center	Numata City	2024/5/31	Light Rain	18.0	37.4	13.8	3	Grayish olive	None	0.0	0.0	0.0	0.2	1.0	4.0	59.9	34.9	41.6	2.59	silt	< 6.8	170 ± 7.6	170			
			2024/8/22	Cloudy	27.6	25.2	9.6	3	Dark grayish yellow	Faint swamp	0.0	0.0	0.0	0.0	0.1	1.3	58.4	40.2	43.9	2.60	silt	< 8.1	110 ± 7.6	110			
			2024/10/16	Cloudy	20.3	-	-	-	-	-	-	-	-	-	-	-	-	-	-	-	-	-	-	-	-		
			2024/12/17	Sunny	3.6	-	-	-	-	-	-	-	-	-	-	-	-	-	-	-	-	-	-	-	-		
Lake Akagionuma	Center	Maebashi City	2024/5/30	Sunny	20.0	16.6	7.1	3	Brownish black	Faint sewage	0.0	0.0	0.0	0.2	0.2	0.8	36.1	62.7	12.2	2.22	silt	31 ± 6.5	1,700 ± 27	1,731			
			2024/8/23	Cloudy	24.9	16.7	8.9	5	Brownish black	None	0.0	0.0	0.0	0.0	0.3	0.5	42.7	56.5	15.5	2.21	silt	26 ± 6.5	1,600 ± 28	1,626			
			2024/10/16	Cloudy	15.5	17.1	10.3	3	Brownish black	Faint sewage	0.0	0.0	0.0	0.0	0.2	0.1	44.3	55.4	13.3	2.28	silt	26 ± 3.8	1,500 ± 21	1,526			
			2024/11/29	Sunny	0.7	17.5	7.3	3	Brownish black	None	0.0	0.0	0.0	0.1	0.2	0.2	33.3	66.2	13.2	2.20	silt	27 ± 2.7	1,700 ± 17	1,727			
Lake Okushima (Shimagawa Dam)	Center	Nakanajo Town	2024/5/22	Sunny	19.0	41.0	6.8	3	Dark grayish yellow	Faint sewage	0.0	0.0	0.0	0.0	0.1	0.3	63.1	36.5	36.5	2.58	silt	29 ± 8.3	1,600 ± 43	1,629			
			2024/8/28	Light Rain	24.5	33.5	9.6	5	Dark grayish yellow	None	0.0	0.0	0.0	0.2	0.3	0.3	50.0	49.5	24.8	2.43	silt	< 9.5	580 ± 13	580			
			2024/10/17	Sunny	26.4	35.6	8.8	3	Olive brown	None	0.0	0.0	0.0	0.0	0.2	1.0	47.7	51.1	29.8	2.62	silt	< 9.8	590 ± 14	590			
			2024/12/19	Sunny	1.0	25.4	6.0	5	Grayish olive	Faint hydrogen sulfide	0.0	0.0	0.0	0.5	1.0	2.4	69.3	26.8	34.2	2.59	silt	< 9.0	610 ± 14	610			
Lake Shimako (Nakanajo Dam)	Center	Nakanajo Town	2024/5/22	Cloudy	18.0	9.0	13.8	3	Olive black	Faint sewage	0.0	0.0	0.0	0.1	0.2	22.1	45.7	31.9	28.5	2.41	silt	< 7.6	220 ± 8.6	220			
			2024/8/28	Cloudy	24.8	8.0	19.5	4	Brownish black	None	0.0	0.0	0.0	0.0	0.4	13.4	54.4	31.8	27.6	2.34	silt	< 9.9	310 ± 10	310			
			2024/10/17	Sunny	26.4	6.6	16.2	3	Olive black	Faint sewage	0.0	0.0	0.0	0.1	0.3	6.6	55.7	37.3	21.0	2.31	silt	< 8.6	370 ± 11	370			
			2024/12/18	Sunny	3.0	8.0	6.0	4	Brownish black	Faint ditch	0.0	0.0	0.0	0.0	0.2	14.6	58.9	26.3	22.4	2.37	silt	< 9.6	330 ± 10	330			
Lake Tashiro (Kazawa Dam)	Center	Tsumagoi Village	2024/5/23	Sunny	18.0	1.3	11.9	3	Black	None	0.0	0.0	0.0	0.3	0.8	25.7	59.3	13.9	48.9	2.47	silt	< 7.9	29 ± 3.7	29			
			2024/8/26	Sunny	26.4	1.3	20.2	3	Black	None	0.0	0.0	0.0	0.0	0.2	1.1	76.6	22.1	32.7	2.39	silt	< 7.7	43 ± 3.4	43			
			2024/10/16	Cloudy	20.9	1.2	14.8	5	Black	Faint sewage	0.0	0.0	0.0	1.3	1.7	1.4	65.2	30.4	24.4	2.42	silt	< 9.0	130 ± 7.0	130			
			2024/11/28	Cloudy	4.1	1.4	6.2	3	Black	None	0.0	0.0	0.0	2.8	10.0	19.4	48.8	19.0	36.9	2.54	silt	< 6.7	28 ± 3.4	28			
Lake Haruna	Center	Takasaki City / Higashi-Agatsuma Town	2024/5/24	Sunny	27.8	14.9	6.2	4	Black	Faint sewage	0.0	0.0	0.0	0.2	0.6	0.8	44.0	54.4	8.4	2.14	silt	18 ± 4.2	1,000 ± 13	1,018			
			2024/8/22	Sunny	23.6	14.3	9.6	5	Black	Faint sewage	0.0	0.0	0.0	0.0	0.8	0.8	39.6	58.8	6.7	2.21	silt	36 ± 4.1	2,500 ± 23	2,536			
			2024/10/15	Cloudy	16.9	14.1	8.5	4	Black	Faint sewage	0.0	0.0	0.0	0.0	0.2	0.6	32.1	67.1	8.6	2.31	silt	< 9.8	650 ± 10	650			
			2024/11/22	Sunny	12.5	17.0	7.5	5	Black	Faint hydrogen sulfide	0.0	0.0	0.0	0.3	0.2	0.3	26.5	72.7	7.6	2.22	silt	< 9.8	590 ± 9.1	590			
Lake Kirizumi (Kirizumi Dam)	Center	Annaka City	2024/5/24	Sunny	22.3	12.3	9.8	5	Brownish black	None	0.0																

Gunma Lakes (SE) 1/1

	Location	Sampling Date	Weather	Air temperature (°C)	Surrounding Environment(Soil,Air dose)										Remarks	
					Soil											Air dose (μSv/h)
					Color	Odor	Property	Activity concentration [Bq/kg(dry)]								
								Radioactive cesium								
					Cs-134	Cs-137	Total									
Lakes and Reservoirs	Tonegawa River Area	Lake Okutone (Yagisawa Dam)	Center	2024/5/30	Sunny	17.0	Grayish yellow brown	Faint earth	loamy	<	9.2	480 ± 12	480	0.13		
			Center	2024/8/29	Cloudy	25.4	Dark brown	Faint earth	loamy	<	9.3	270 ± 10	270	0.14		
		Lake Naramata (Naramata Dam)	Center	2024/5/30	Cloudy	17.0	Olive brown	Faint earth	loamy	<	8.5	280 ± 11	280	0.15		
			Center	2024/8/29	Cloudy	26.1	Dull yellow brown	Faint earth	loamy	<	9.6	180 ± 9.3	180	0.16		
		Lake Dogen (Sudagai Dam)	Center	2024/5/30	Cloudy	22.0	Dark brown	Faint earth	loamy	12 ± 2.4	660 ± 17	672	0.11			
			Center	2024/8/28	Cloudy	25.9	Brownish black	Faint earth	loamy	<	9.7	440 ± 15	440	0.10		
		Lake Marunuma (Marunuma Dam)	Center	2024/5/28	Cloudy	20.0	Brownish black	Faint earth	loamy	<	6.9	140 ± 8.1	140	0.08		
			Center	2024/8/21	Sunny	28.4	Grayish yellow brown	Faint earth	loamy	<	7.6	85 ± 5.5	85	0.08		
		Lake Fujiwara (Fujiwara Dam)	Center	2024/5/30	Sunny	25.0	Dark brown	Faint earth	loamy	<	9.4	690 ± 16	690	0.06		
			Center	2024/8/29	Light Rain	24.8	Dark brown	Faint earth	loamy	<	9.8	220 ± 11	220	0.06		
		Lake Tanbara (Tanbara Dam)	Center	2024/5/29	Sunny	12.0	Brownish black	Faint earth	loamy	9.0 ± 2.1	590 ± 14	599.0	0.14			
			Center	2024/8/22	Sunny	24.9	Brownish black	Faint earth	loamy	56 ± 6.4	4,000 ± 48	4,056	0.14			
		Lake Akaya (Aimata Dam)	Center	2024/5/31	Cloudy	16.0	Brownish black	Faint earth	loamy	6.9 ± 1.6	440 ± 10	446.9	0.06			
			Center	2024/8/28	Cloudy	26.8	Brownish black	Faint earth	loamy	<	9.0	350 ± 13	350	0.06		
Lake Sonohara (Sonohara Dam)	Center	2024/5/31	Light Rain	18.0	Brownish black	Faint earth	loamy	<	8.5	100 ± 6.4	100	0.08				
	Center	2024/8/22	Cloudy	27.6	Grayish yellow brown	Faint earth	loamy	<	8.8	310 ± 11	310	0.09				
Lake Akagionuma	Center	2024/5/30	Sunny	20.0	Dark brown	Faint earth	loamy	<	5.9	98 ± 5.6	98	0.05				
	Center	2024/8/23	Cloudy	24.9	Dark brown	Faint earth	loamy	<	9.5	440 ± 13	440	0.04				
Agatsuma River Area	Lake Okushima (Shimagawa Dam)	Center	2024/5/22	Sunny	19.0	Brownish black	Faint earth	loamy	100 ± 18	6,400 ± 130	6,500	0.08				
		Center	2024/8/28	Light Rain	24.5	Grayish yellow brown	Faint earth	loamy	71 ± 16	5,300 ± 120	5,371	0.08				
	Lake Shimako (Nakanojo Dam)	Center	2024/5/22	Cloudy	18.0	Dark brown	Faint earth	loamy	<	8.6	240 ± 9.8	240	0.05			
		Center	2024/8/28	Cloudy	24.8	Dark brown	Faint earth	loamy	<	8.4	260 ± 10	260	0.05			
Lake Tashiro (Kazawa Dam)	Center	2024/5/23	Sunny	18.0	Brownish black	Faint earth	loamy	<	9.4	420 ± 12	420	0.04				
	Center	2024/8/26	Sunny	26.4	Brownish black	Faint earth	loamy	<	8.9	440 ± 12	440	0.04				
Karasu River Area	Lake Haruna	Center	2024/5/24	Sunny	27.8	Brownish black	Faint earth	loamy	34 ± 9.2	2,000 ± 56	2,034	0.08				
		Center	2024/8/22	Sunny	23.6	Brownish black	Faint earth	loamy	26 ± 5.8	2,200 ± 43	2,226	0.10				
	Lake Kirizumi (Kirizumi Dam)	Center	2024/5/24	Sunny	22.3	Brownish black	Faint earth	loamy	11 ± 2.4	620 ± 16	631	0.06				
		Center	2024/8/27	Cloudy	24.6	Dark brown	Faint earth	loamy	<	8.0	440 ± 12	440	0.05			
	Lake Usuiko (Sakamoto Dam)	Center	2024/5/24	Sunny	28.6	Dark brown	Faint earth	loamy	<	8.7	350 ± 12	350	0.05			
		Center	2024/8/27	Cloudy	25.1	Brownish black	Faint earth	loamy	<	9.4	310 ± 11	310	0.04			
	Lake Arafune (Dodairagawa Dam)	Center	2024/5/24	Sunny	28.1	Dark brown	Faint earth	loamy	<	6.7	70 ± 5.0	70	0.05			
		Center	2024/8/27	Cloudy	26.4	Olive brown	Faint earth	loamy	<	5.9	< 7.8	-	0.04			
	Lake Oshio (Oshio Dam)	Center	2024/5/27	Cloudy	18.0	Dark brown	Faint earth	loamy	<	8.7	290 ± 11	290	0.06			
		Center	2024/8/27	Light Rain	25.8	Dark brown	Faint earth	loamy	<	6.4	340 ± 10	340	0.07			
	Lake Kanna (Shimokubo Dam)	Center	2024/5/28	Light Rain	20.0	Brownish black	Faint earth	loamy	<	6.5	190 ± 9.1	190	0.05			
		Center	2024/8/27	Cloudy	26.7	Dark brown	Faint earth	loamy	<	8.4	94 ± 7.5	94	0.05			
	Lake Hebikami (Shiozawa Dam)	Center	2024/5/27	Sunny	24.0	Dull yellow brown	Faint earth	loamy	<	8.8	270 ± 11	270	0.06			
		Center	2024/8/27	Light Rain	26.8	Grayish yellow brown	Faint earth	loamy	<	5.9	120 ± 7.4	120	0.07			
Lake Kusaki (Kusaki Dam)	Center	2024/5/27	Cloudy	22.0	Dull yellow brown	Faint earth	loamy	<	9.1	320 ± 11	320	0.06				
	Center	2024/8/23	Cloudy	31.2	Dull yellow brown	Faint earth	loamy	<	8.4	240 ± 10	240	0.07				
Lake Umeda (Kiryugawa Dam)	Center	2024/5/27	Cloudy	25.0	Brown	Faint earth	loamy	<	8.5	110 ± 6.7	110	0.05				
	Center	2024/8/23	Cloudy	29.6	Grayish yellow brown	Faint earth	loamy	<	9.8	180 ± 10	180	0.04				
Lake Nozori (Nozori Dam)	Center	2024/6/28	Light Rain	15.7	Dark brown	Faint earth	loamy	<	6.1	110 ± 5.7	110	0.05				
	Center	2024/8/26	Cloudy	20.9	Dark brown	Faint earth	loamy	<	6.8	520 ± 12	520	0.05				
Lake Jonuma	Center	2024/5/24	Sunny	22.0	Dark brown	Faint earth	loamy	<	8.6	92 ± 6.2	92	0.04				
	Center	2024/9/18	Sunny	34.2	Dark brown	Faint earth	loamy	8.4 ± 2.8	360 ± 13	368.4	0.04					
	Center	2024/5/24	Sunny	31.0	Dark brown	Faint earth	loamy	<	9.5	14 ± 3.2	14	0.05				
Lake Tataranuma	Center	2024/9/18	Sunny	34.2	Dark brown	Faint earth	loamy	<	7.1	30 ± 3.8	30	0.05				



Survey Locations (Gunma Prefecture)