

Progress on treatment of debris from the Great East Japan Earthquake

2013.11.29 Ministry of the Environment

3 most affected prefectures (excludes Evacuation Area)

(1) Debris

- Progress in treatment of debris is as follows.

Iwate: 86%, Miyagi: 94%, Fukushima: 59%
(Total for 3 prefectures: 89%)

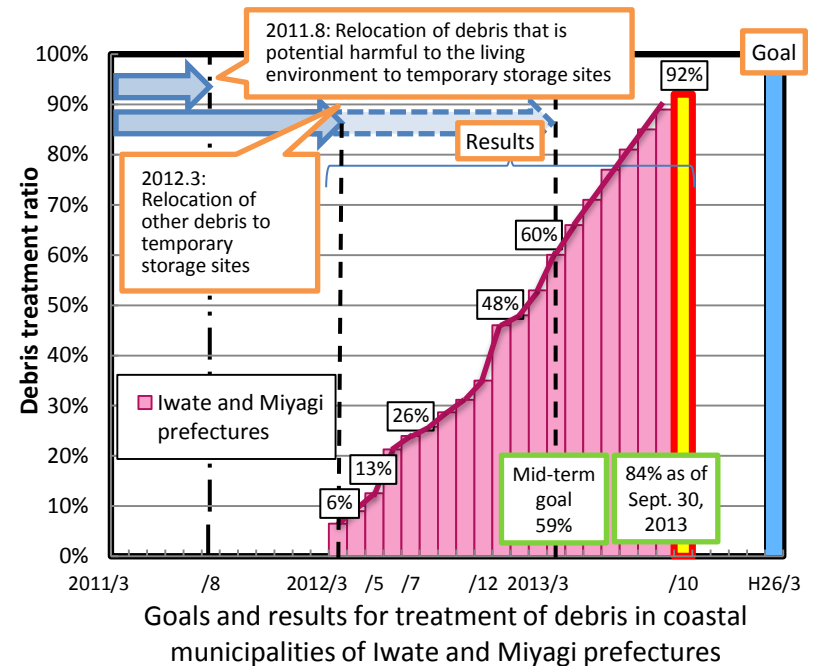
- Treatment is progressing steadily. The treatment ratio is more than 90% in Miyako city, Otsuchi town, Ishinomaki Block and other coastal municipalities which account for approximately 80% of the total debris.

(2) Tsunami deposits

- Progress in treatment of tsunami deposits is as follows.

Iwate: 75%, Miyagi: 86%, Fukushima: 39%
(Total for 3 prefectures: 77%)

- The expected treatment ratio for the end of September was exceeded in both Iwate Prefecture and Miyagi Prefecture.



Treatment progress in coastal municipalities (as of Oct. 31, 2013)

	Estimated amount of debris and tsunami deposits (10000s tons)	Debris				Tsunami deposits				No. of temporary storage sites
		Estimated amount (10000s tons)	Treated			Estimated amount (10000s tons)	Treated			
			Amount (10000s tons)	Ratio (%)	Expected treatment ratio (%)		Amount (10000s tons)	Ratio (%)	Expected treatment ratio (%)	
Iwate	522	377	326(305)	86(82)	145	109(97)	75(63)	34	522	377
Miyagi	1,805	1,087	1,020(968)	94(91)	718	619(564)	86(79)	42	1,805	1,087
Fukushima	337	171	102(99)	59(58)	166	65(59)	39(36)	28	337	171
Total	2,665	1,635	1,447(1,372)	89(85)	1,029	793(720)	77(69)	104	2,665	1,635

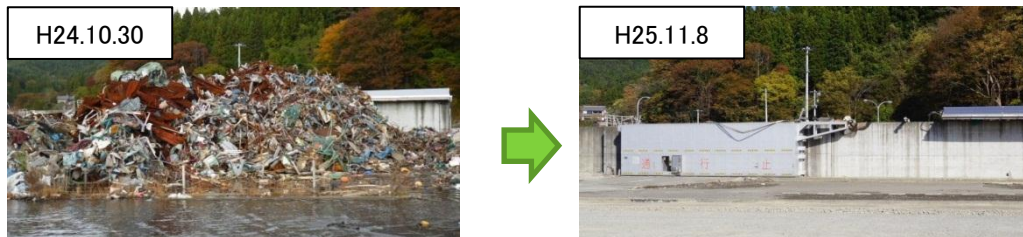
* Figures in () are the results from September 30, 2013.

Treatment in the disaster-affected areas

- 95% of debris has been removed to temporary storage sites, and removal has been completed at 15 municipalities (out of 32 coastal municipalities). The number of temporary storage sites has decreased to 104 (33% of the peak number). The remaining demolition and removal work is being carried out so that treatment will be completed by March 2014.
- 12 temporary incinerators and 16 sorting and shredding facilities are now operating in Iwate, Miyagi, and Fukushima prefectures. Treatment has finished at 22 temporary incinerators (*1) and 8 sorting and shredding facilities (*2).

*1: Kesenuma Block, Eastern Miyagi Block, Natori Area, Iwanuma Area, Watari Area, Sendai City

*2: Noda town, Kesenuma Block, Eastern Miyagi Block, Natori Area, Iwanuma Area, Watari Area



The treatment complete temporary storage sites (Otsuchi town ,Iwate pref.)

Cooperation with debris treatment in areas not affected by the disaster

- Of the approximately 660,000 tons which requires treatment outside the disaster-affected area, treatment of approximately 550,000 tons (82%) has been completed.
- The number of treatment projects is 90 in 18 prefectures. Of these, 64 projects have completed treatment.

Recycling

- Approximately 80% of debris and nearly all of the tsunami deposits can be recycled.
- Materials recycled from debris are being used in public works projects by the national government and by the prefectural and municipal governments in disaster-affected areas.

Approaches to achieving the goal

- For debris and tsunami deposits in Iwate and Miyagi prefectures, continue to carry out steady treatment, aiming to complete treatment as early as possible prior to the goal of March 2014.
- For debris and tsunami deposits in Fukushima Prefecture, complete removal to temporary storage sites by the end of March 2014, aiming to complete treatment as early as possible prior to the goal of the end of March 2015.

Major public works projects using materials recycled from debris and tsunami deposits

	Project	Recycled material	Amount (including planned use)
Iwate	Coastal or river embankment restoration	Tsunami deposits Concrete debris	23
	Coastal disaster-prevention forest restoration	Tsunami deposits Concrete debris	17
	Agricultural field restoration	Tsunami deposits Concrete debris	44
	Park construction	Tsunami deposits Concrete debris	29
	Fishing port projects	Concrete debris	18
	Construction of temporary storage sites	Concrete debris	39
	Other projects	Tsunami deposits Concrete debris	84
Miyagi	Coastal or river embankment restoration	Tsunami deposits Concrete debris	87
	Coastal disaster-prevention forest restoration	Tsunami deposits Concrete debris	140
	Agricultural field restoration	Tsunami deposits	15
	Park construction	Tsunami deposits Concrete debris	229
	Fishing port projects	Concrete debris	29
	Construction of temporary storage sites	Tsunami deposits Concrete debris	83
Other projects	Tsunami deposits Concrete debris	110	
Fukushima	Coastal or river embankment restoration	Concrete debris	9
	Coastal disaster-prevention forest restoration	Concrete debris	9
	Park construction	Tsunami deposits	16
	Other	Concrete debris	16