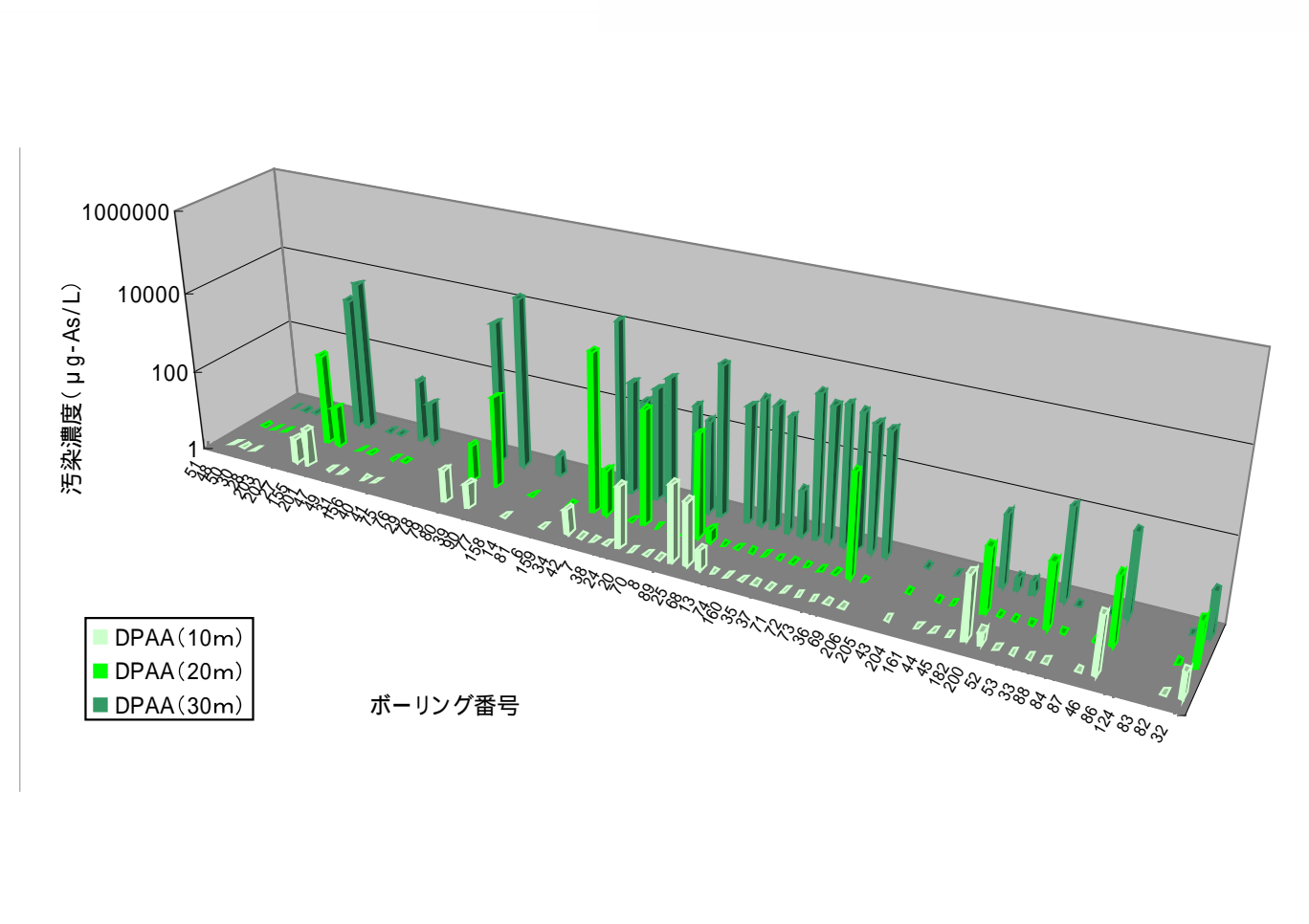
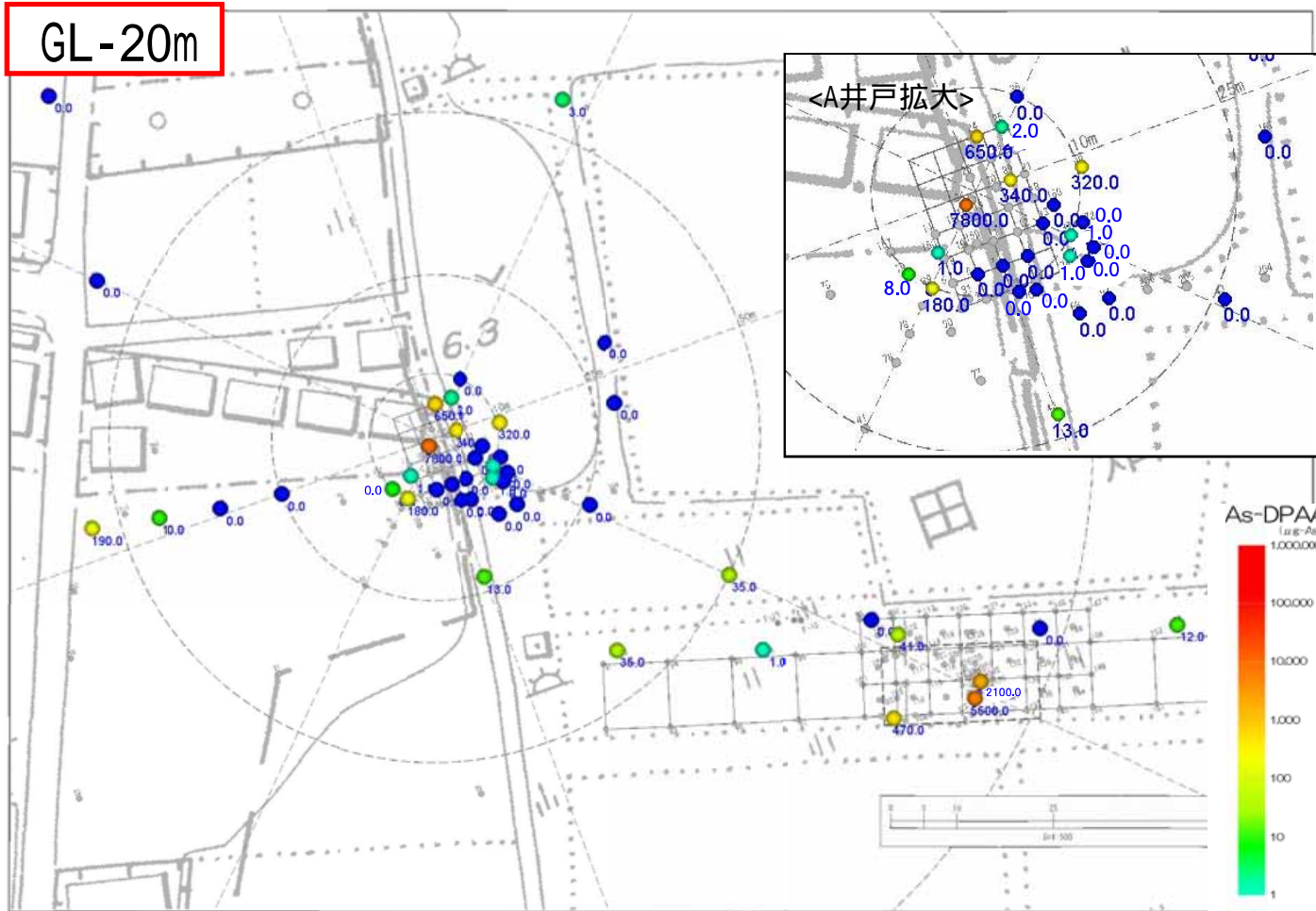
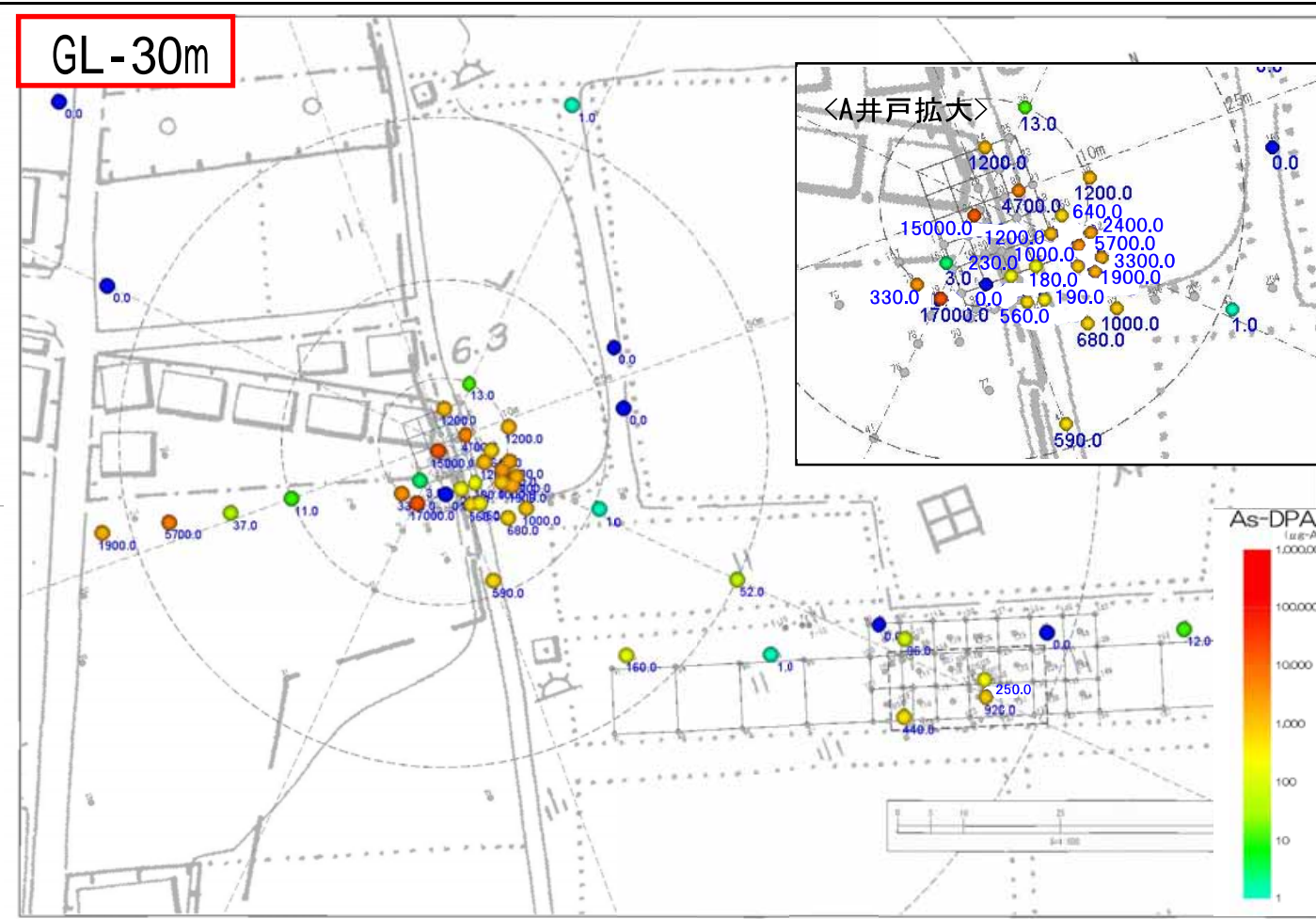
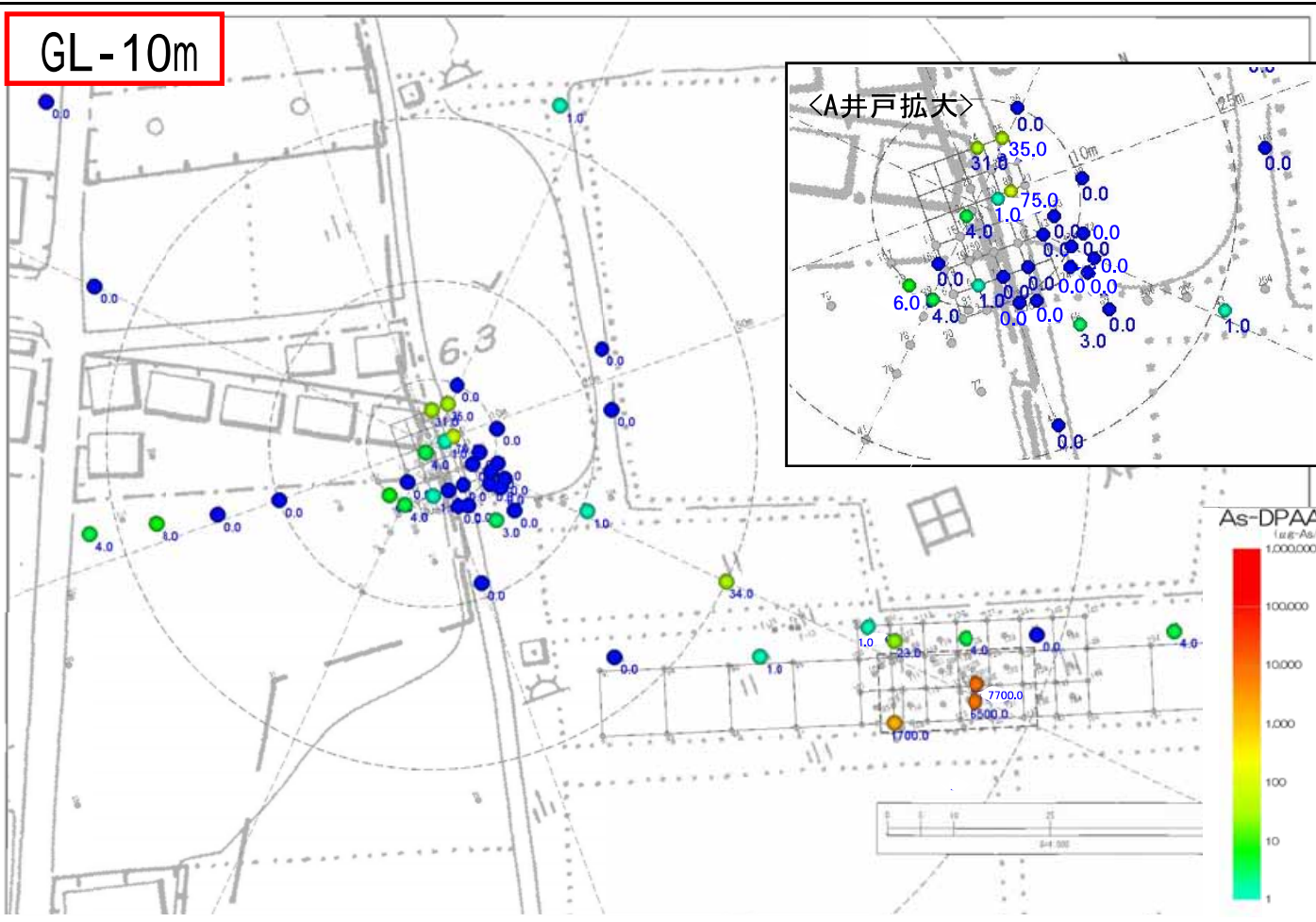
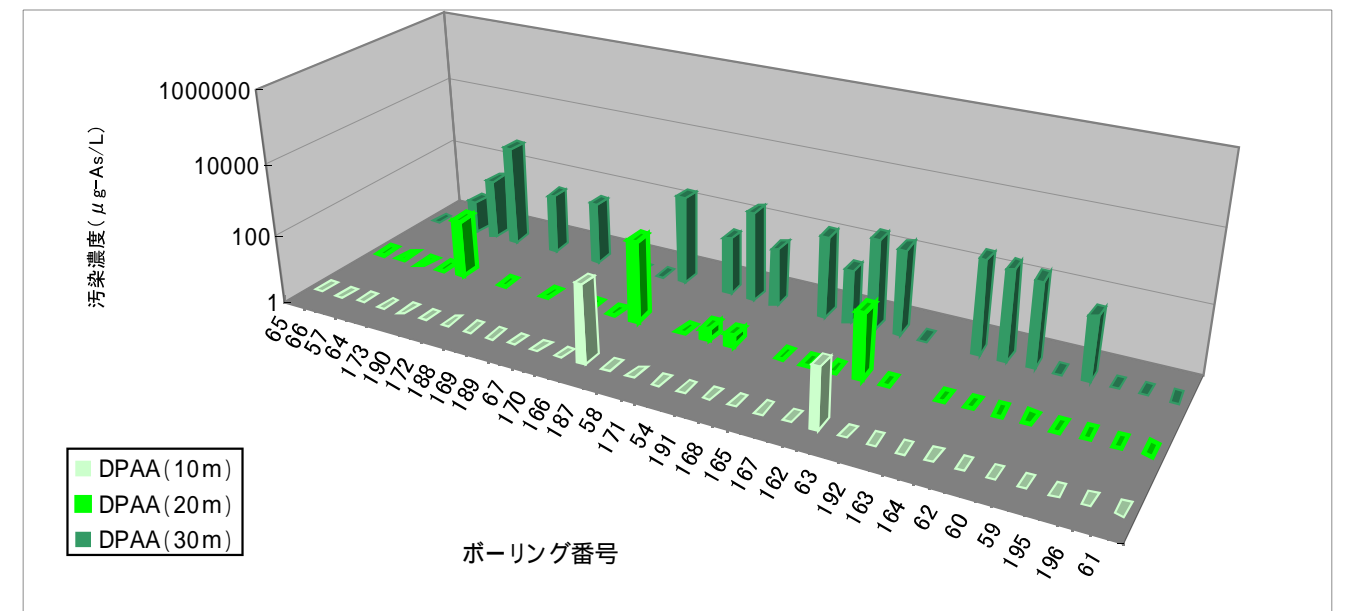
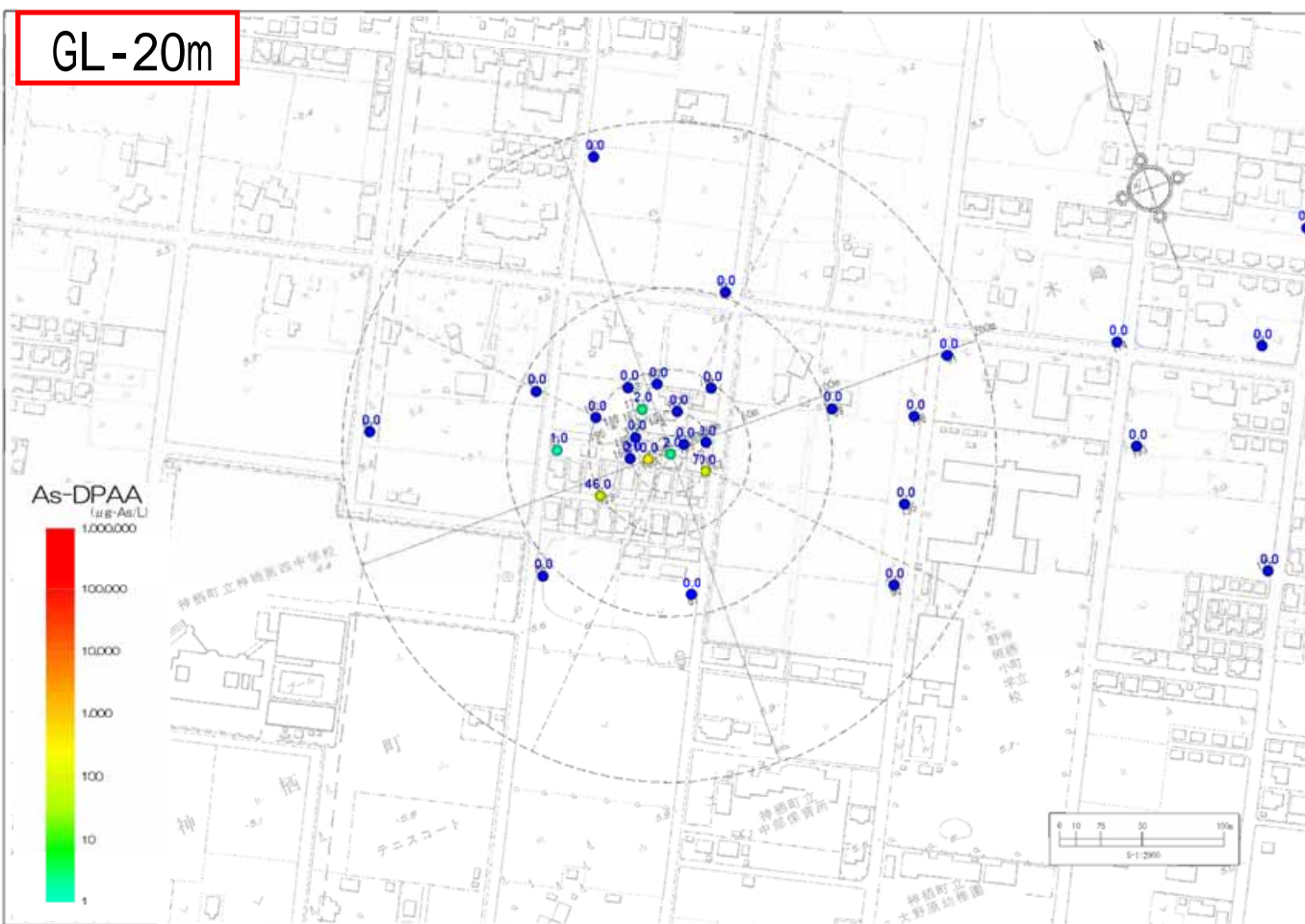
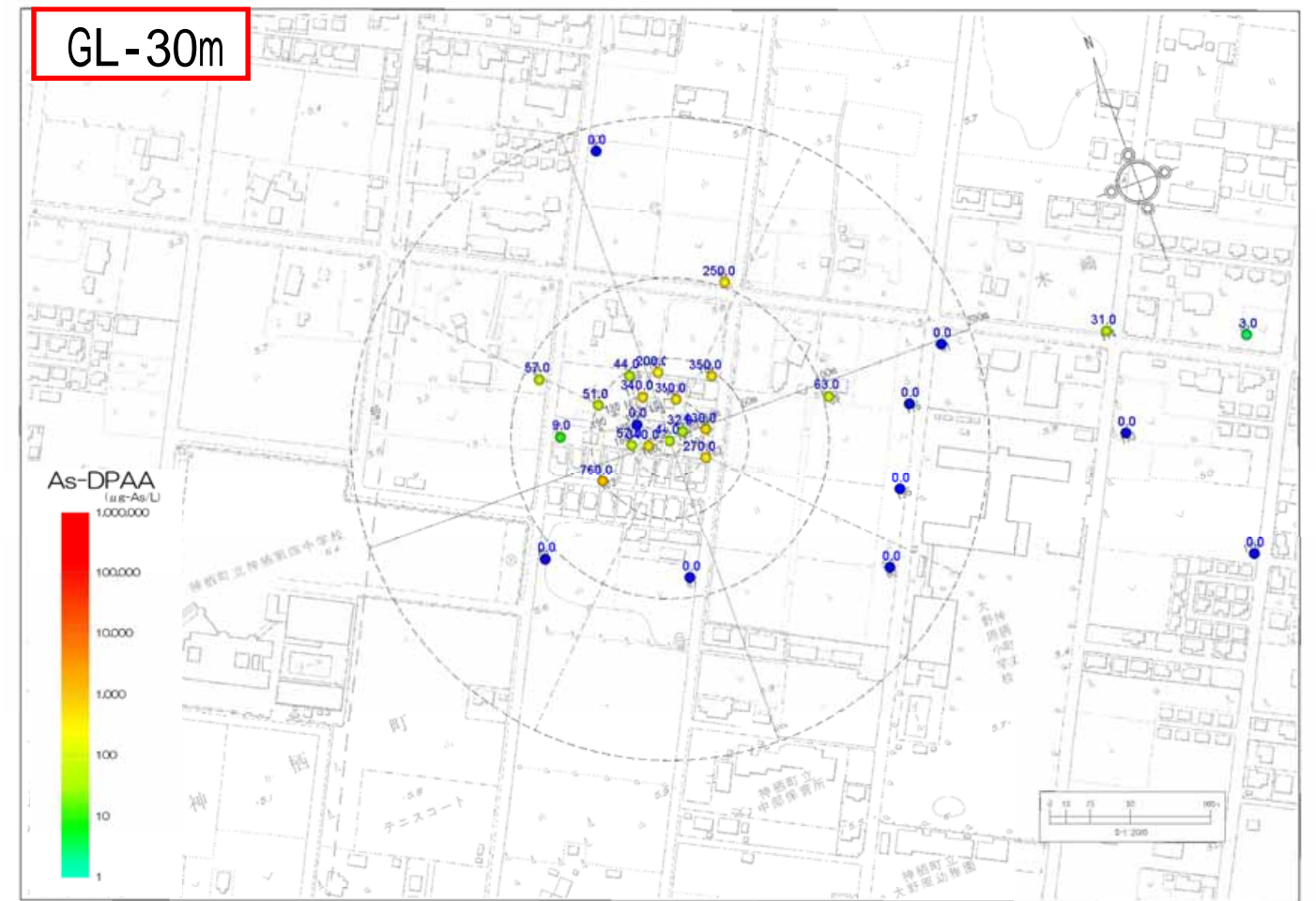
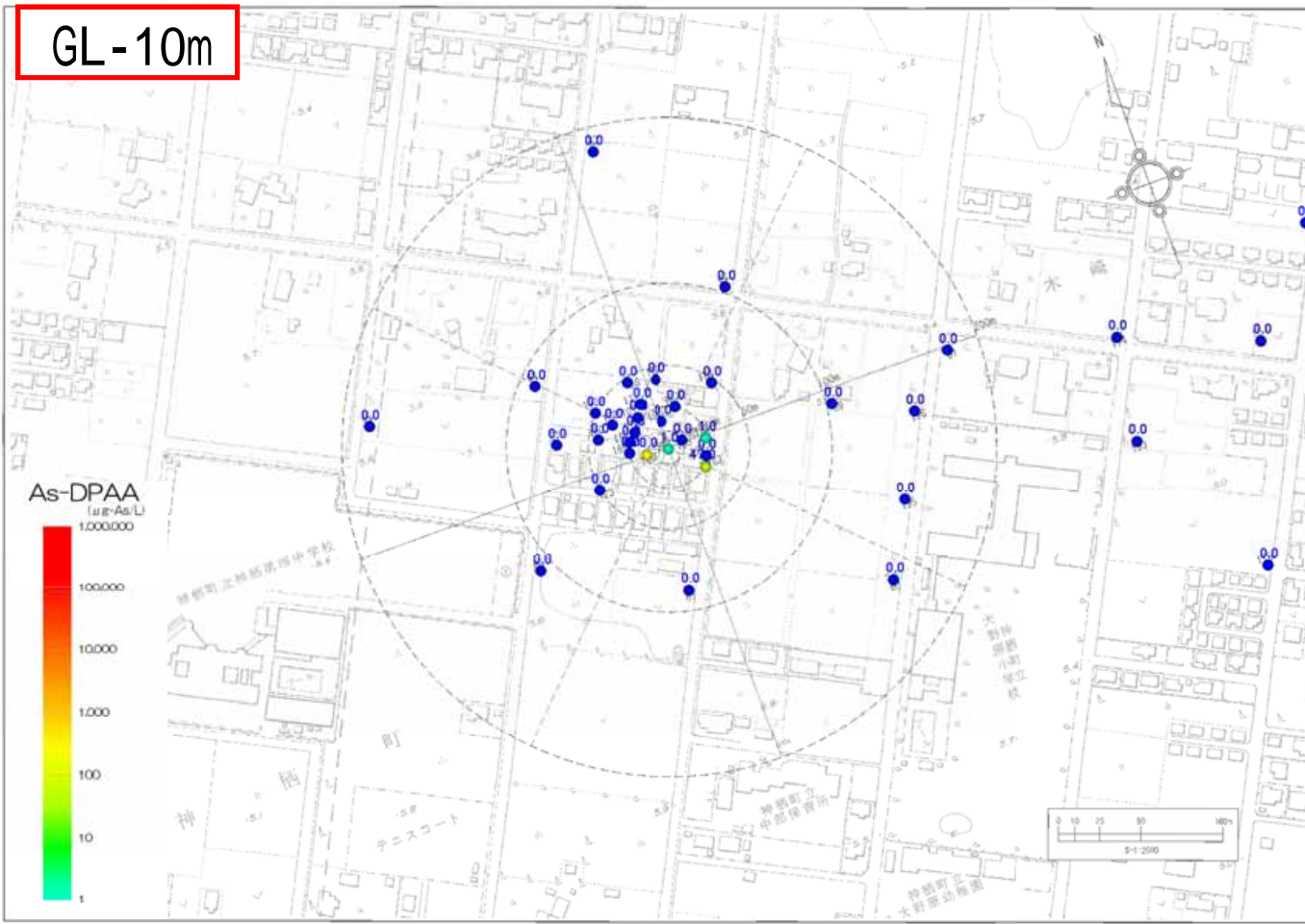


参考図2.4.22 2006年春季(4~5月)A井戸周辺地下水DPAA汚染状況図 単位: $\mu\text{g-As/L}$

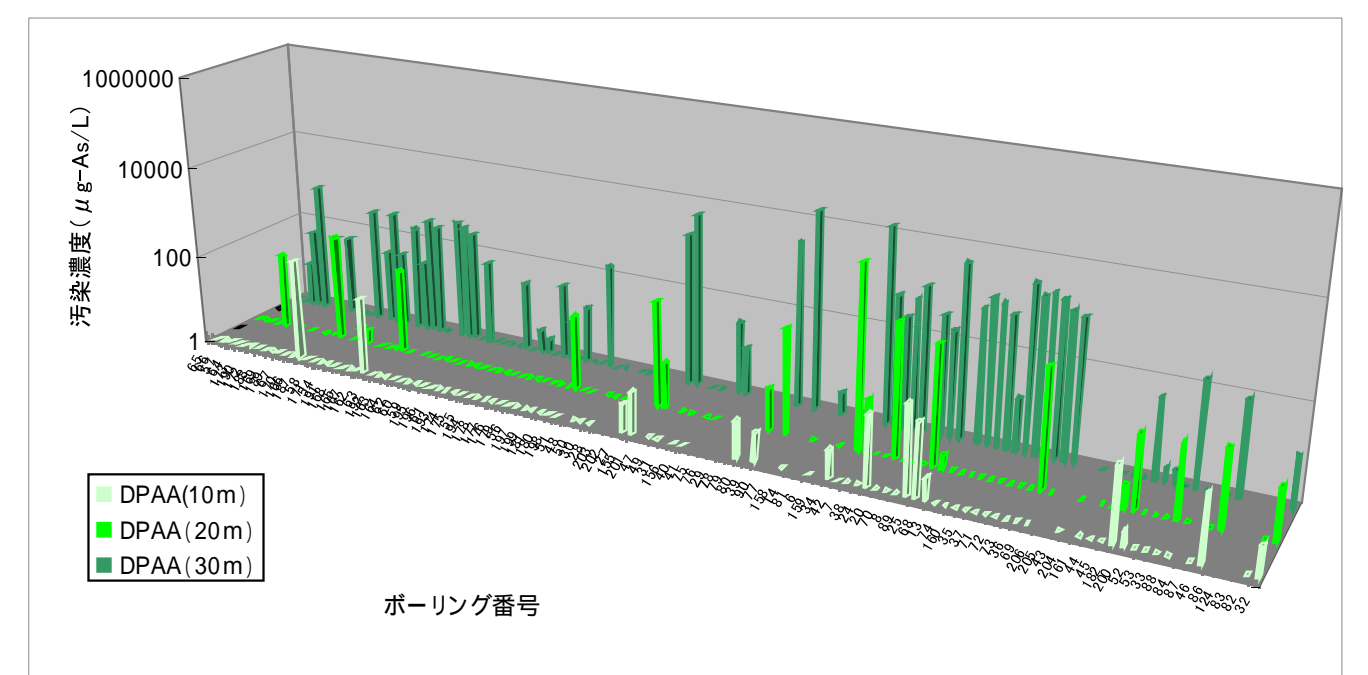
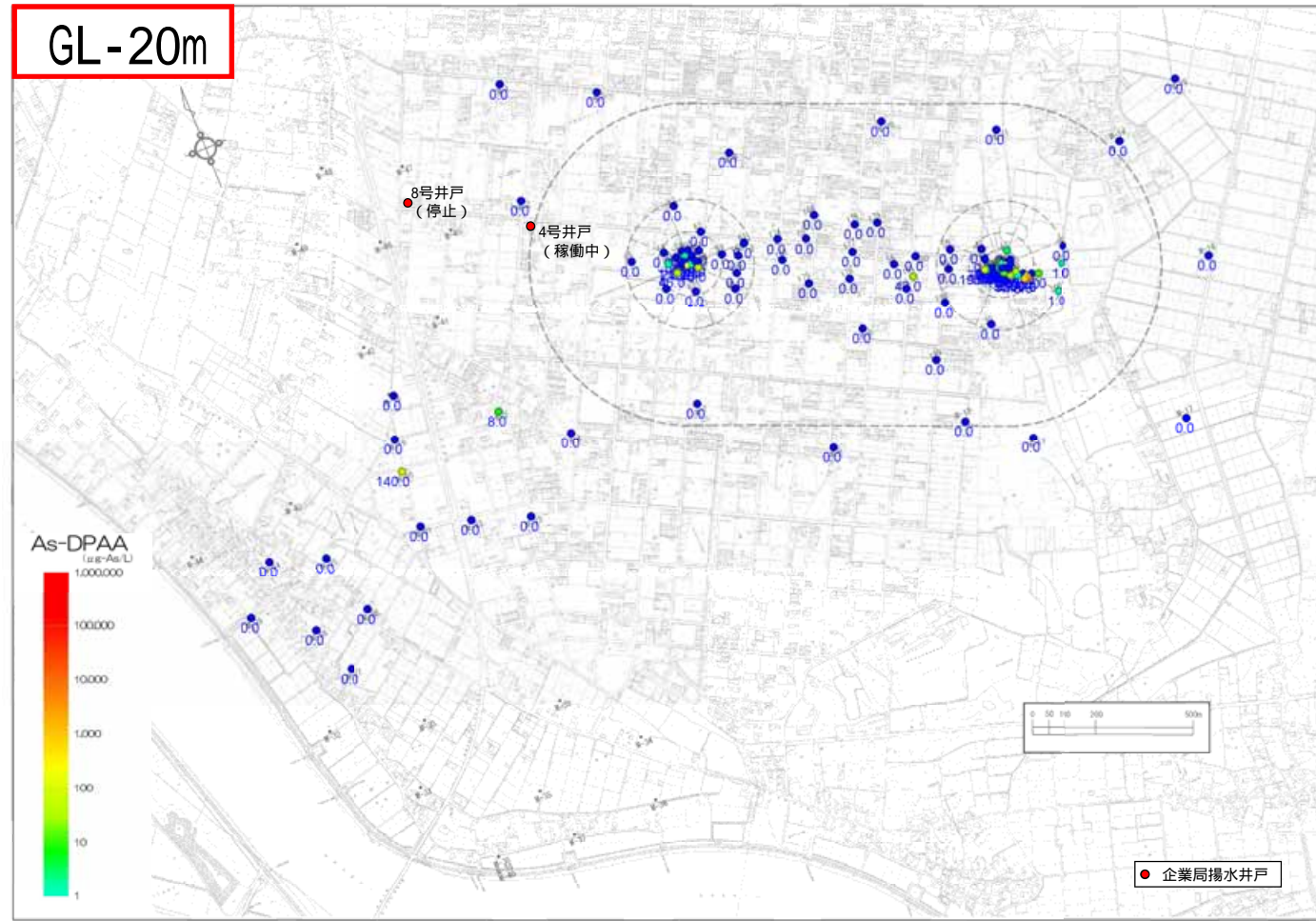
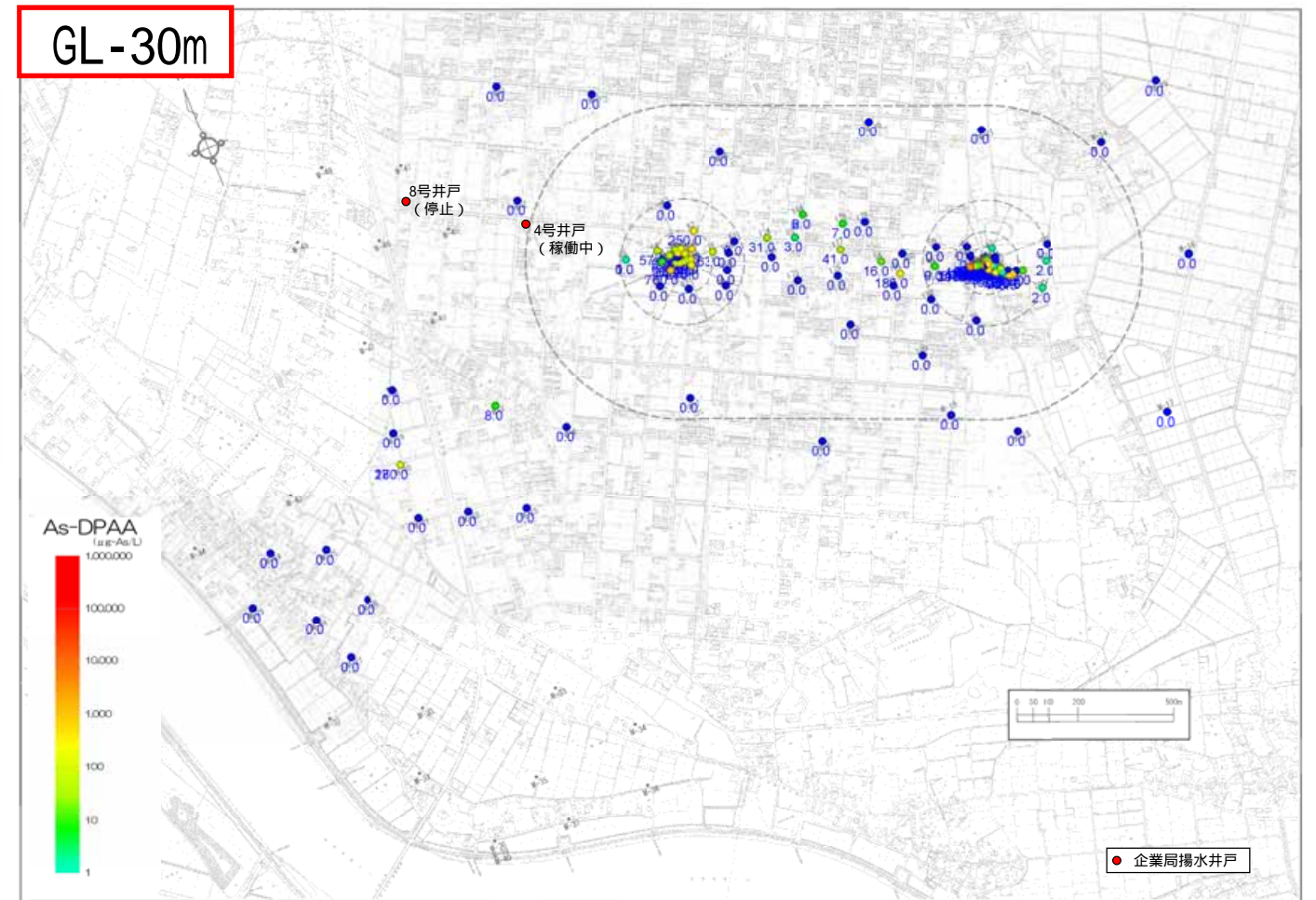
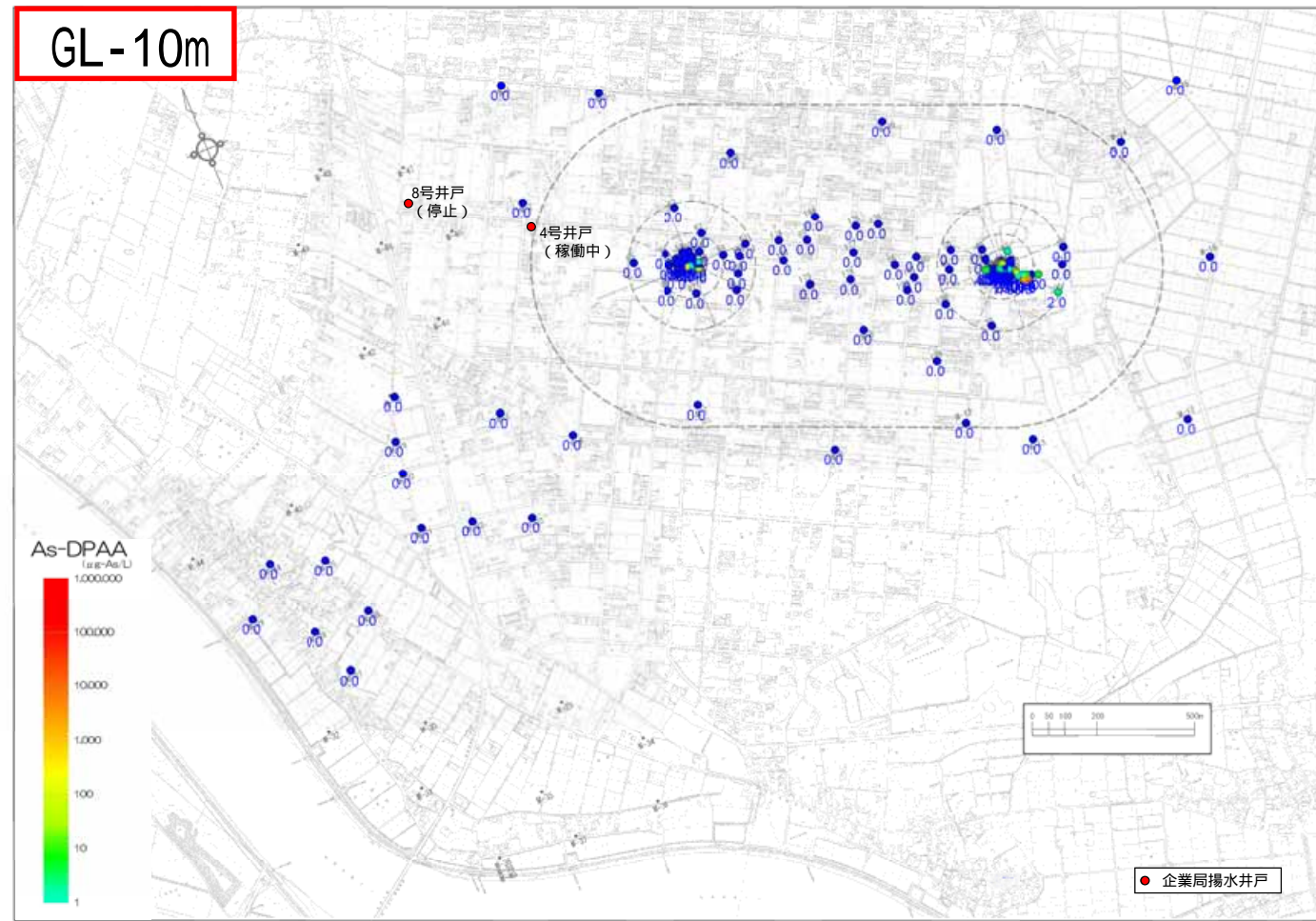


参考図2.4.23 2006年春季(4~5月)B地区地下水DPAA汚染状況図

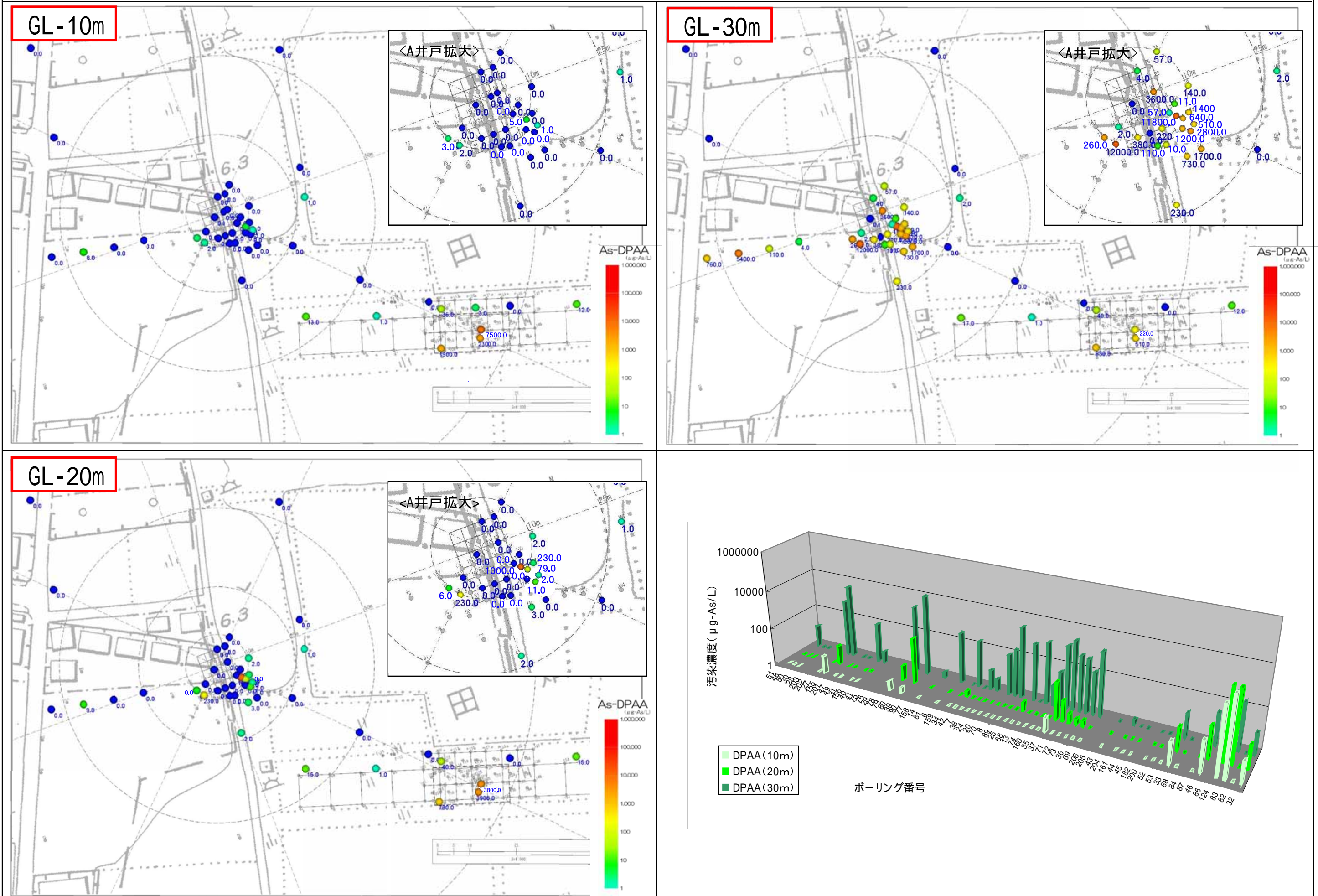
単位: $\mu\text{g-As/L}$



参考図2.4.24 2006年春季(4~5月)ABトラック地下水DPAA汚染状況図 単位: $\mu\text{g-As/L}$

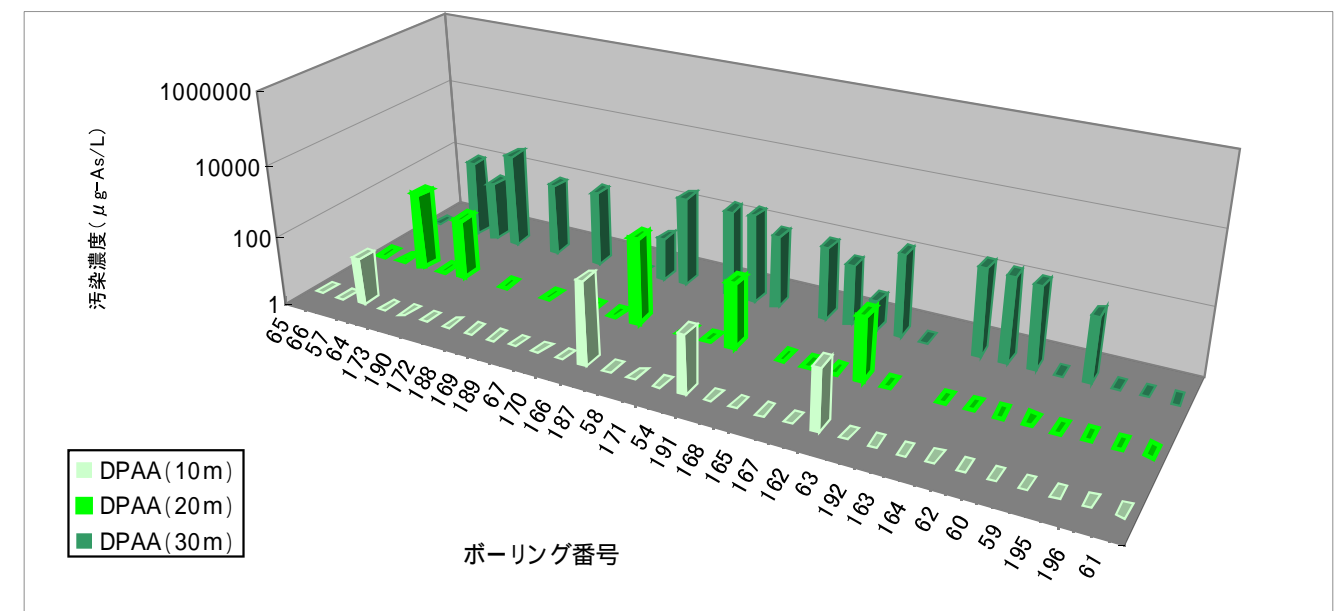
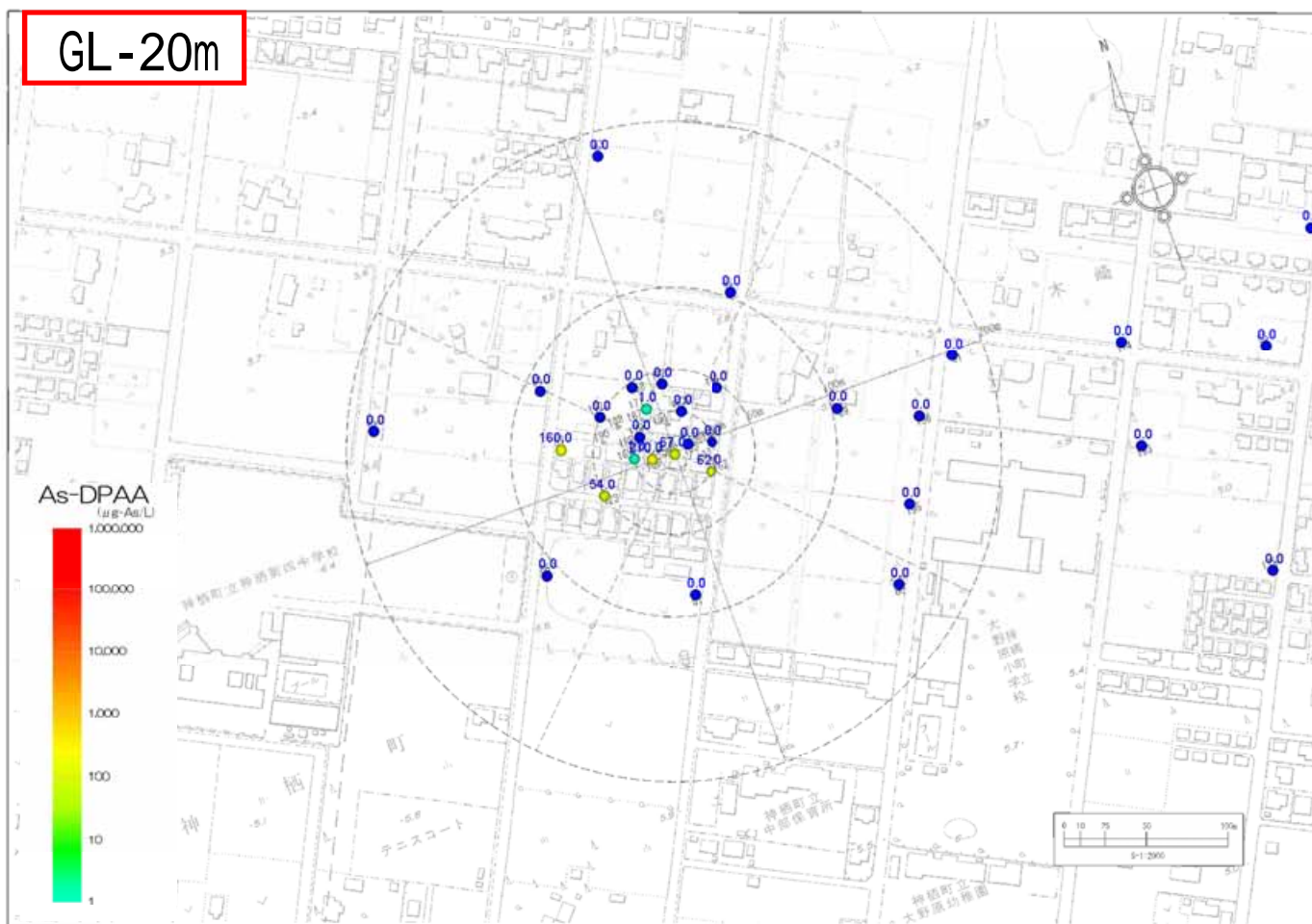
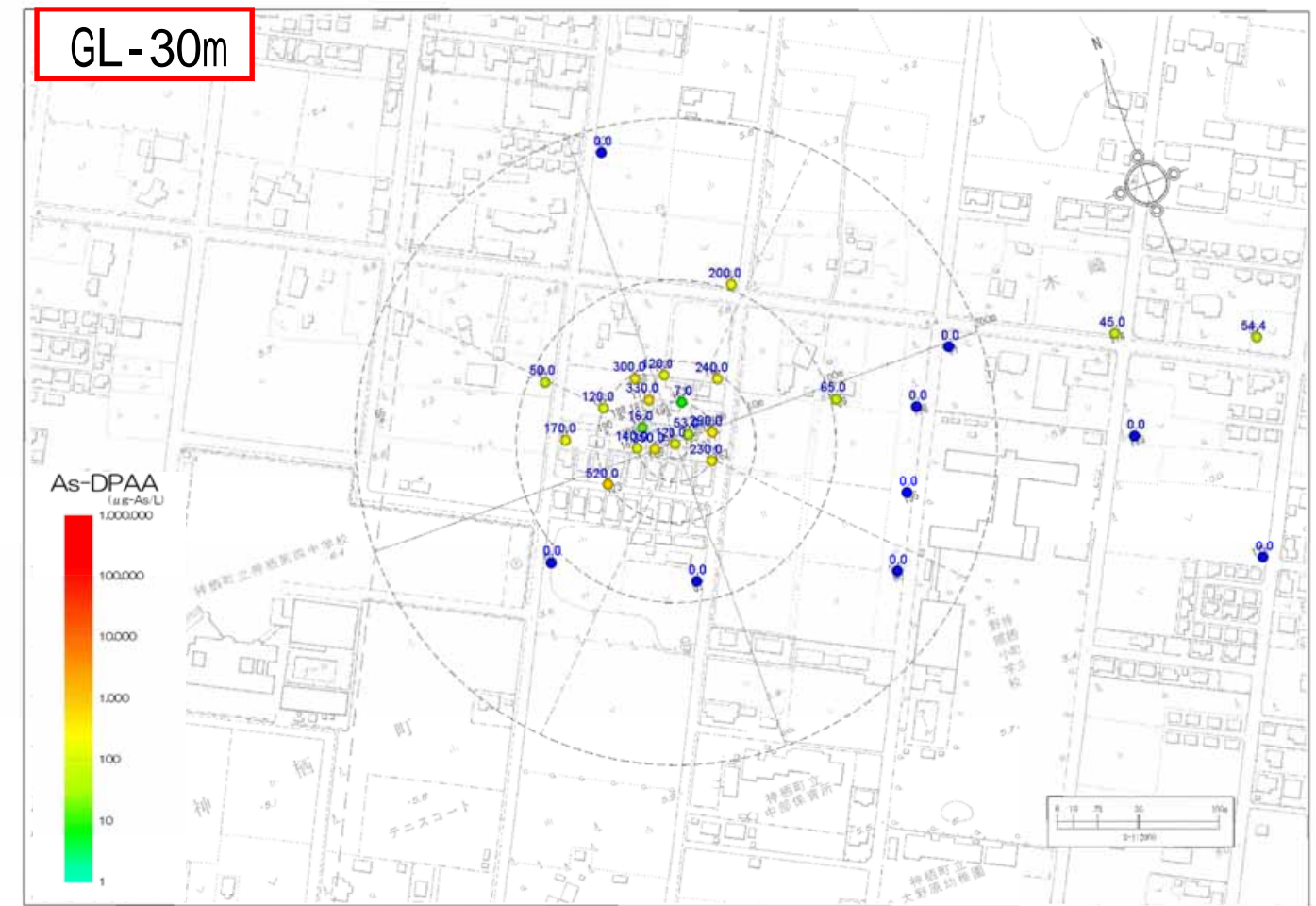
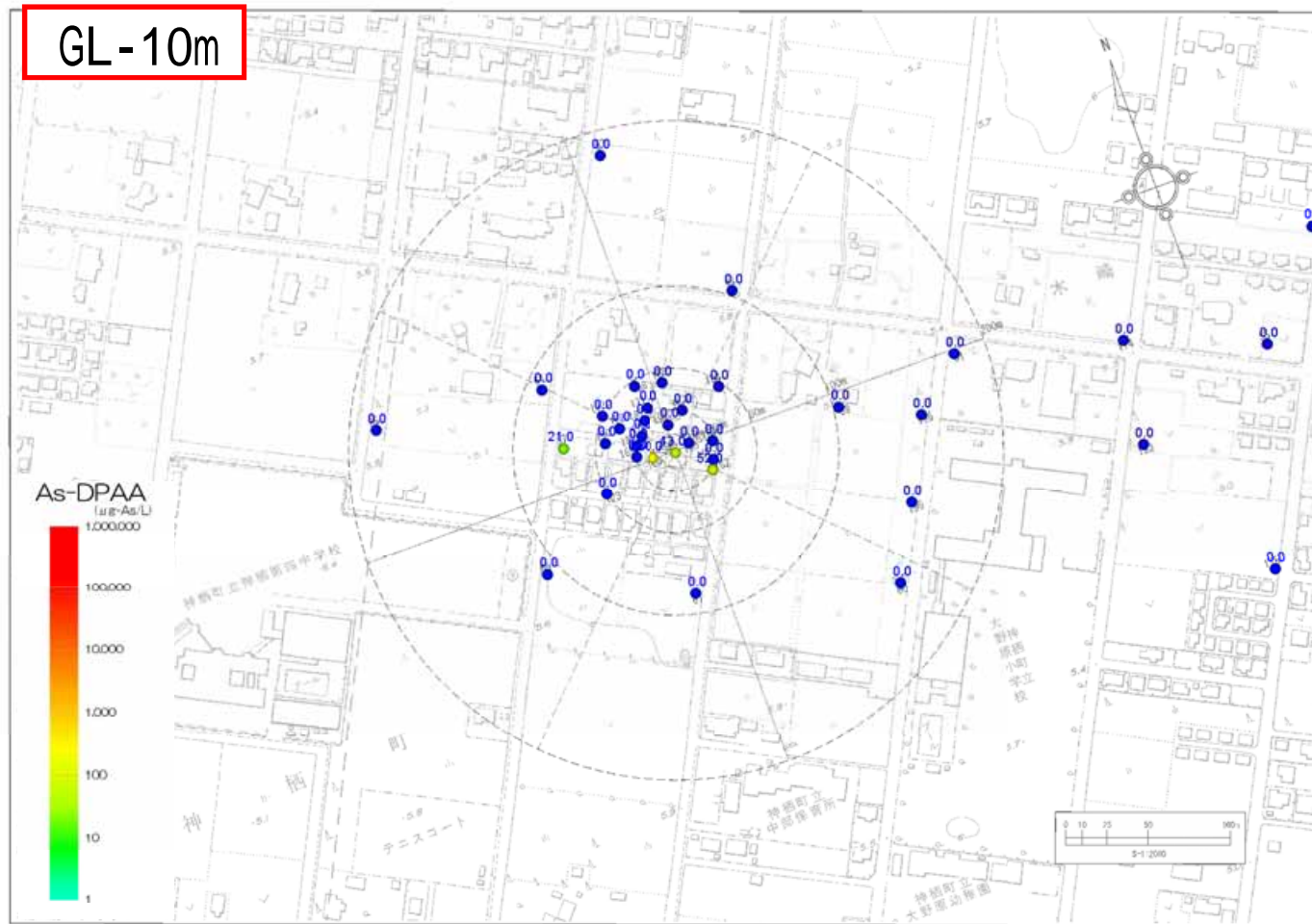


参考図2.4.25 2006年夏季(7~8月)A井戸周辺地下水DPAA汚染状況図 単位: $\mu\text{g-As/L}$

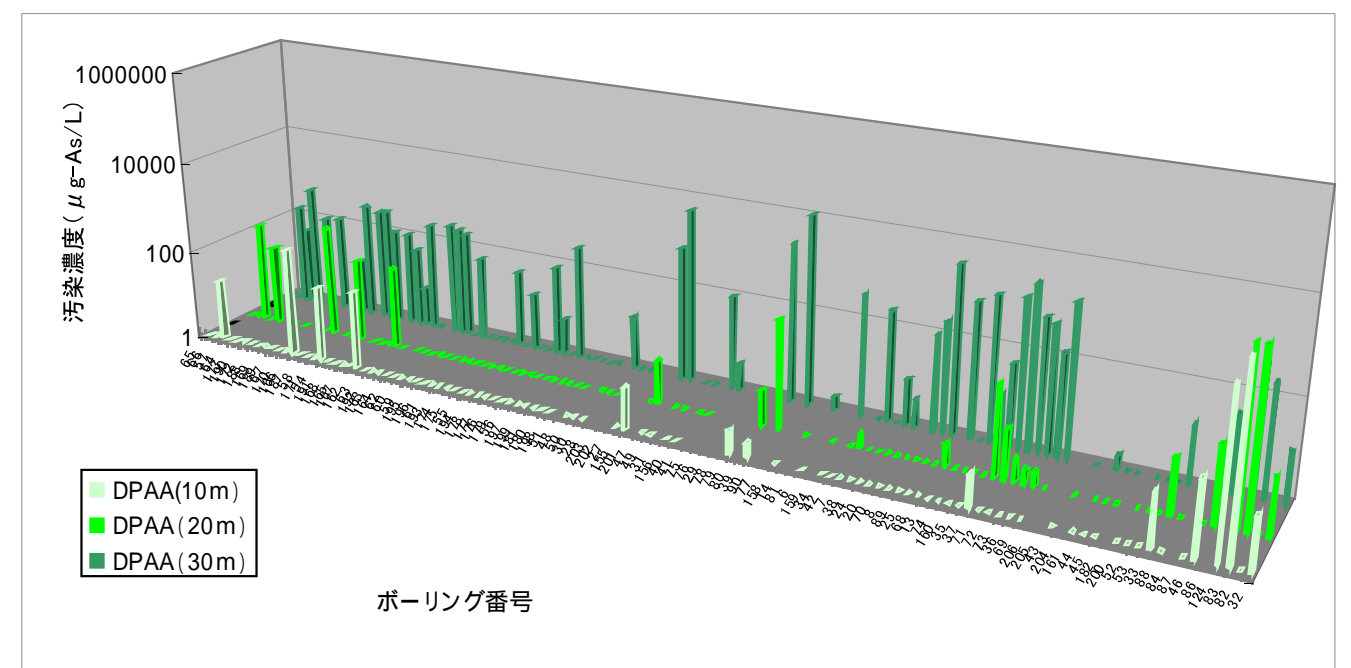
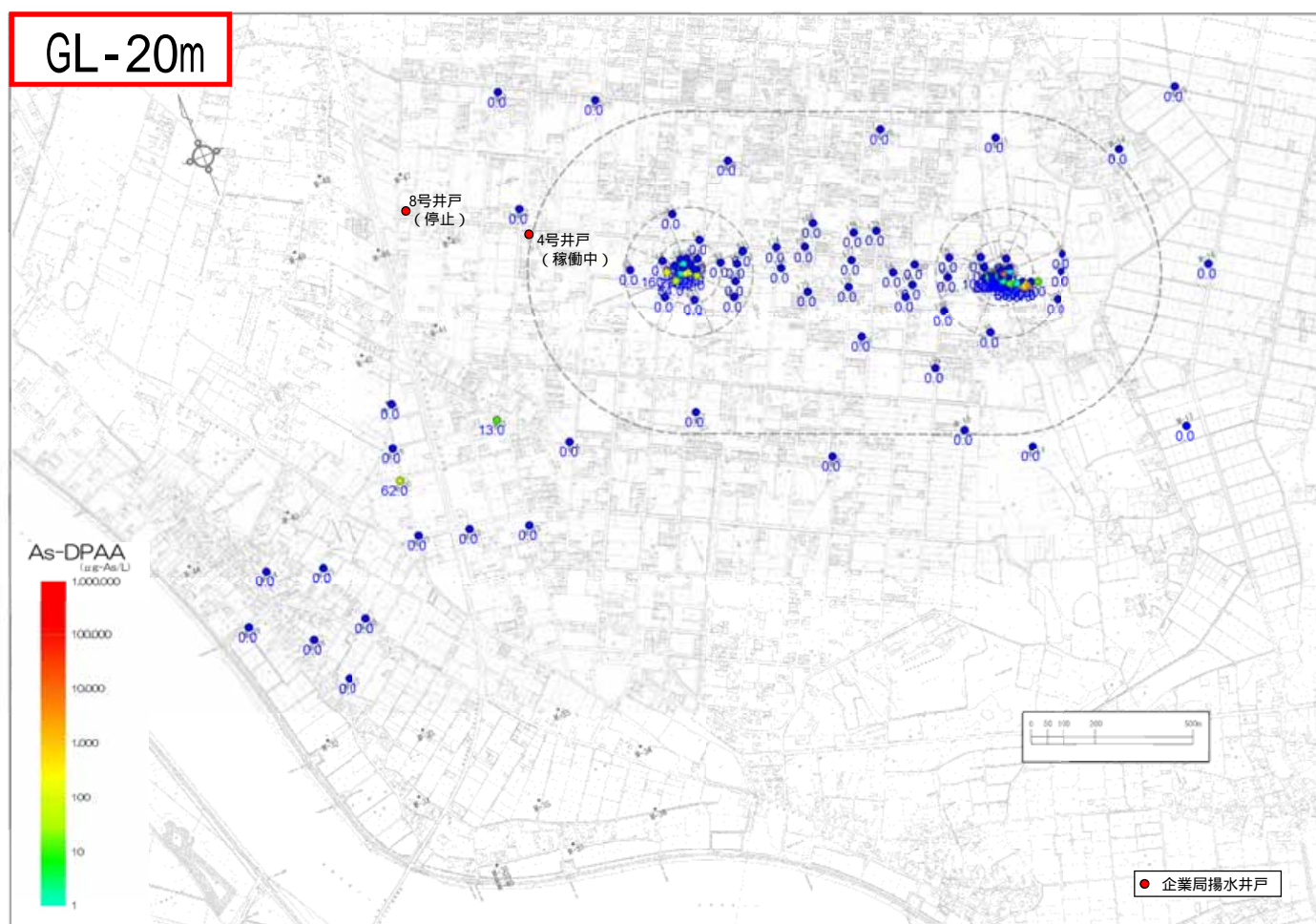
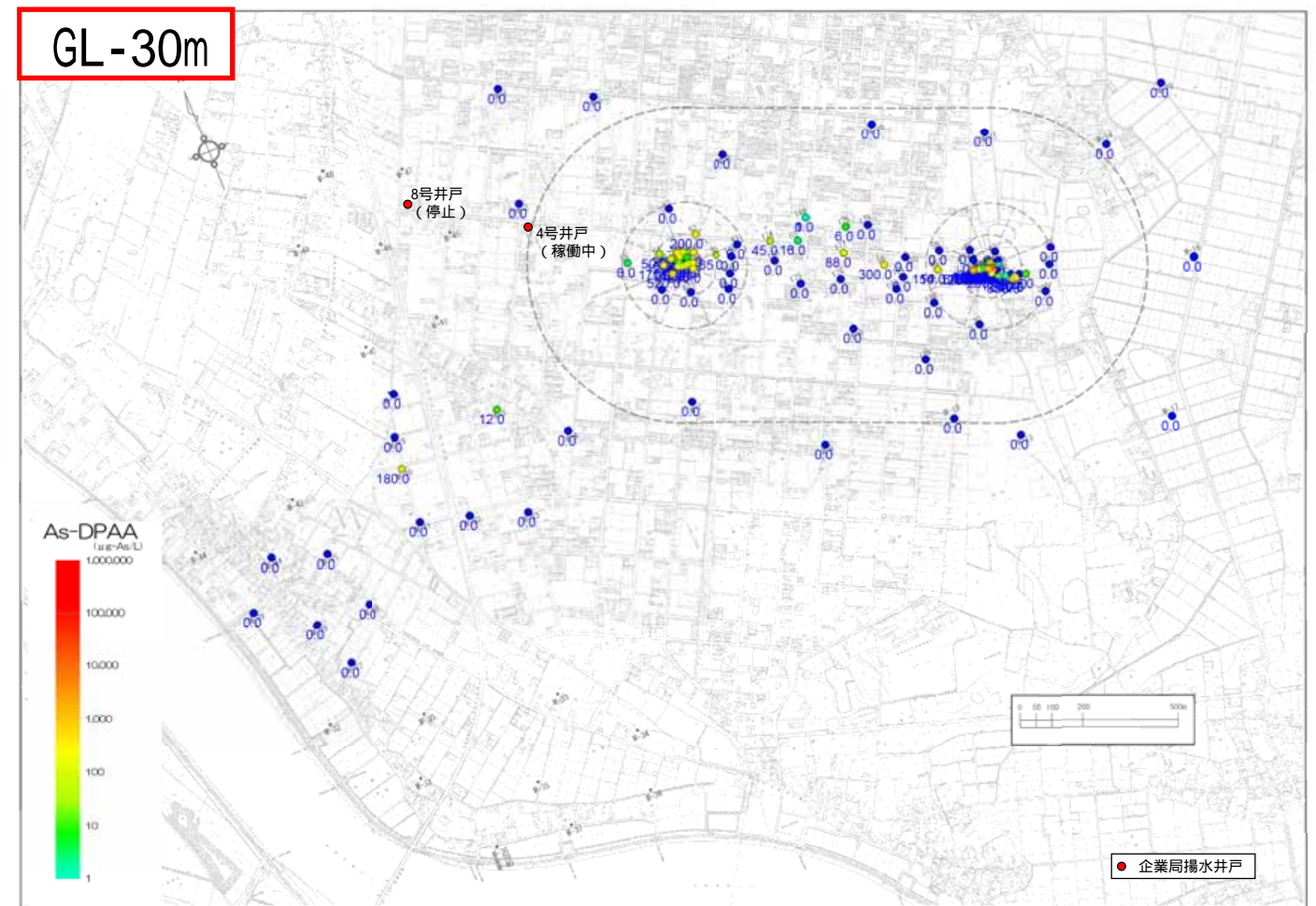
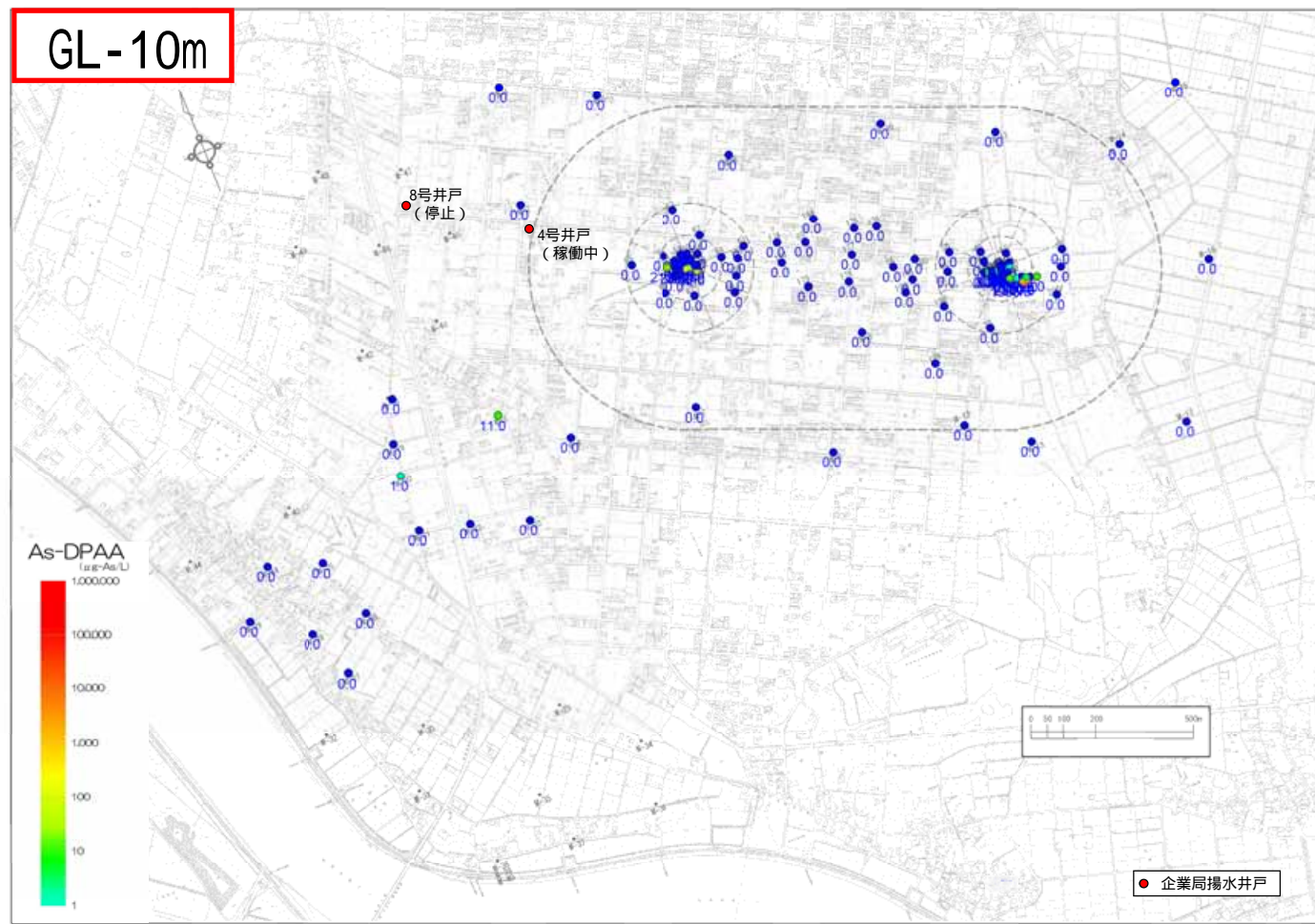


参考図2.4.26 2006年夏季(7~8月)B地区地下水DPAA汚染状況図

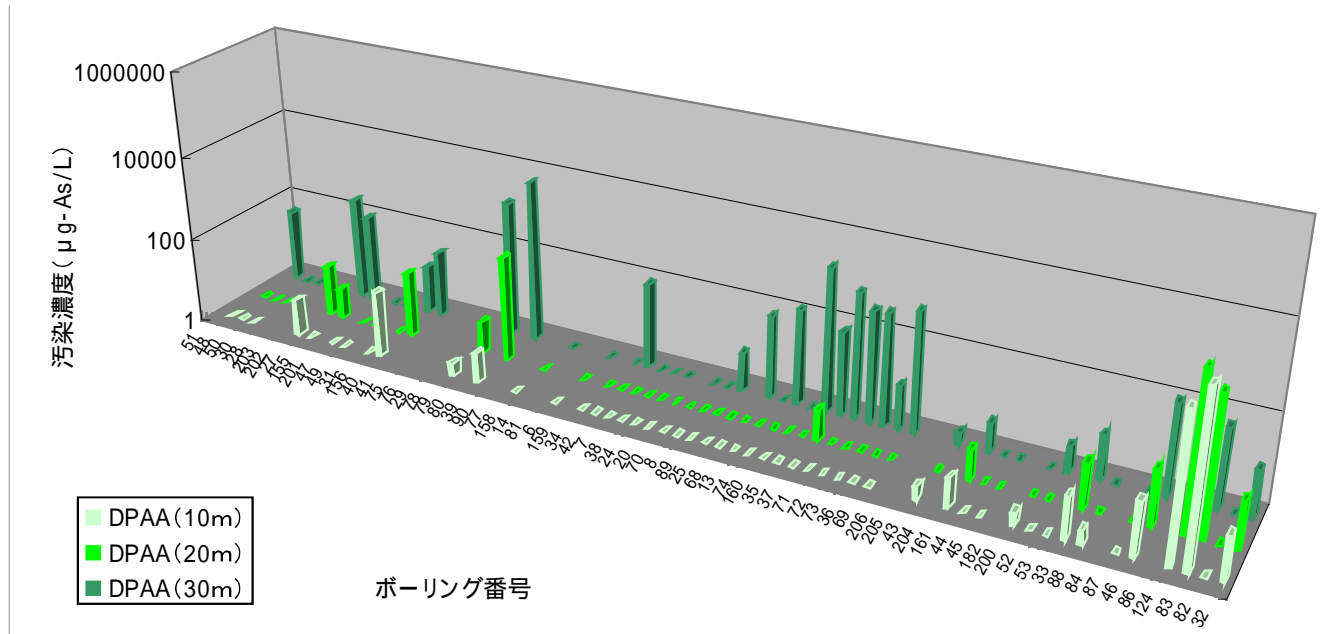
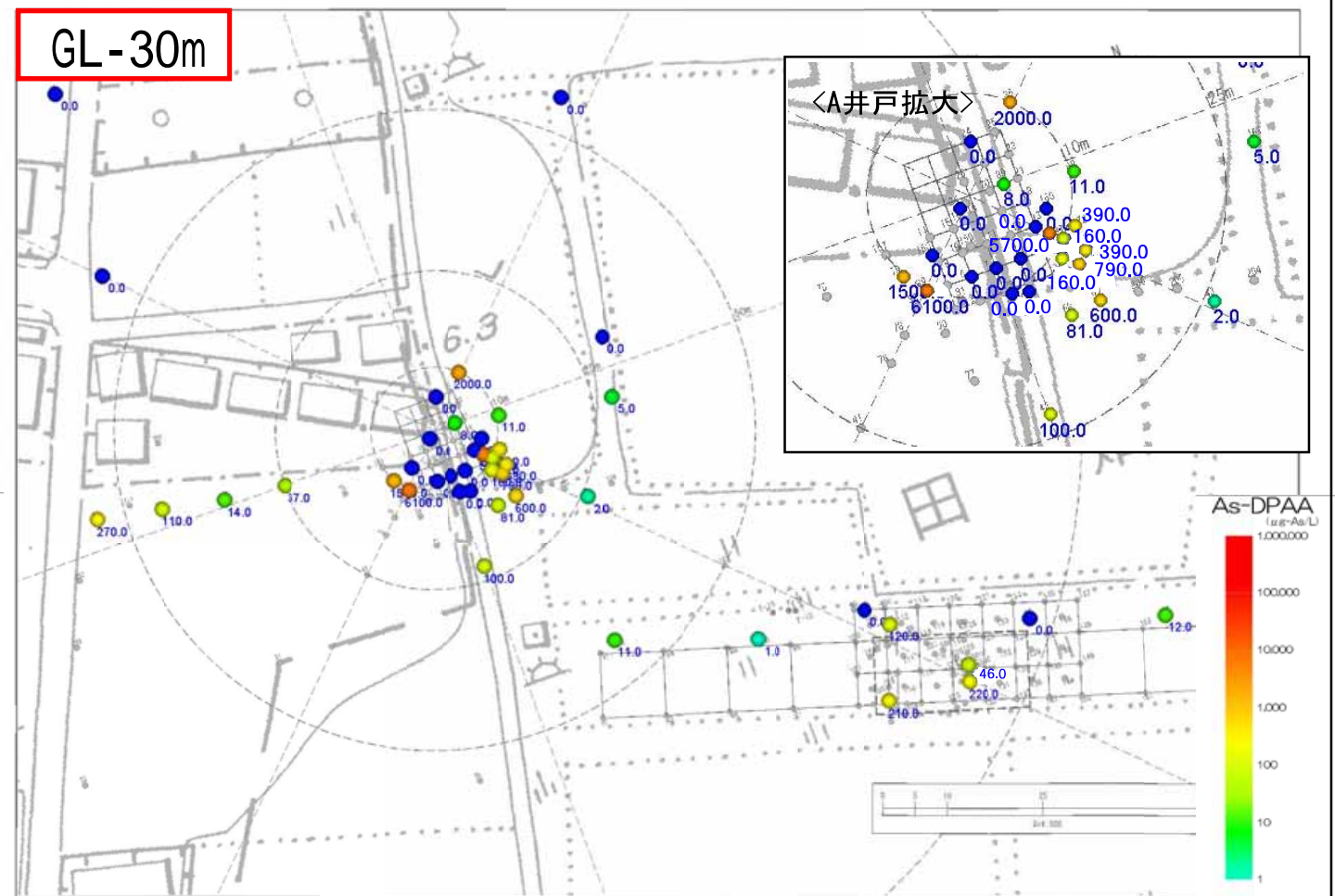
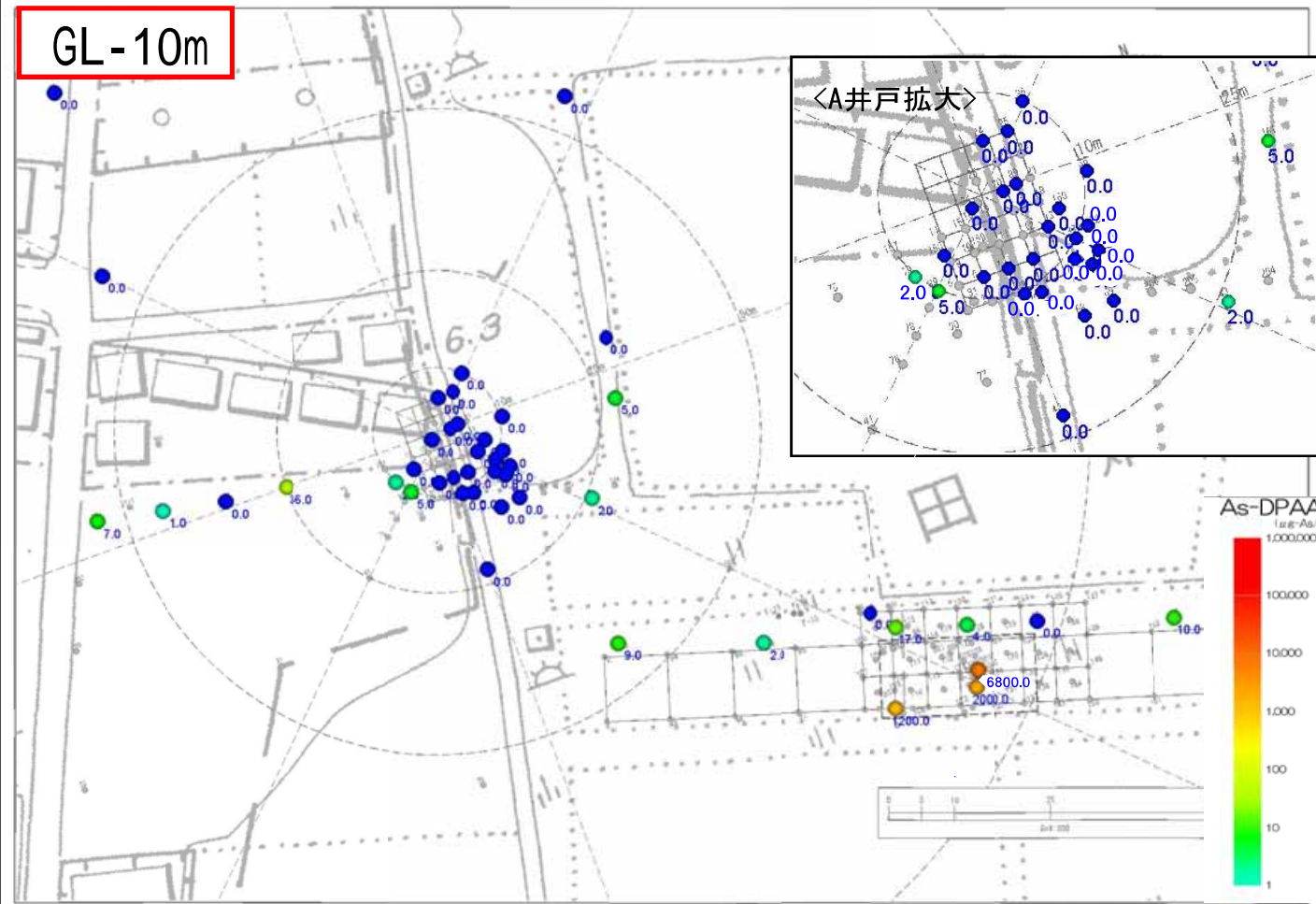
単位: $\mu\text{g-As/L}$



参考図2.4.27 2006年夏季(7~8月)ABトラック地下水DPAA汚染状況図 単位: $\mu\text{g-As/L}$

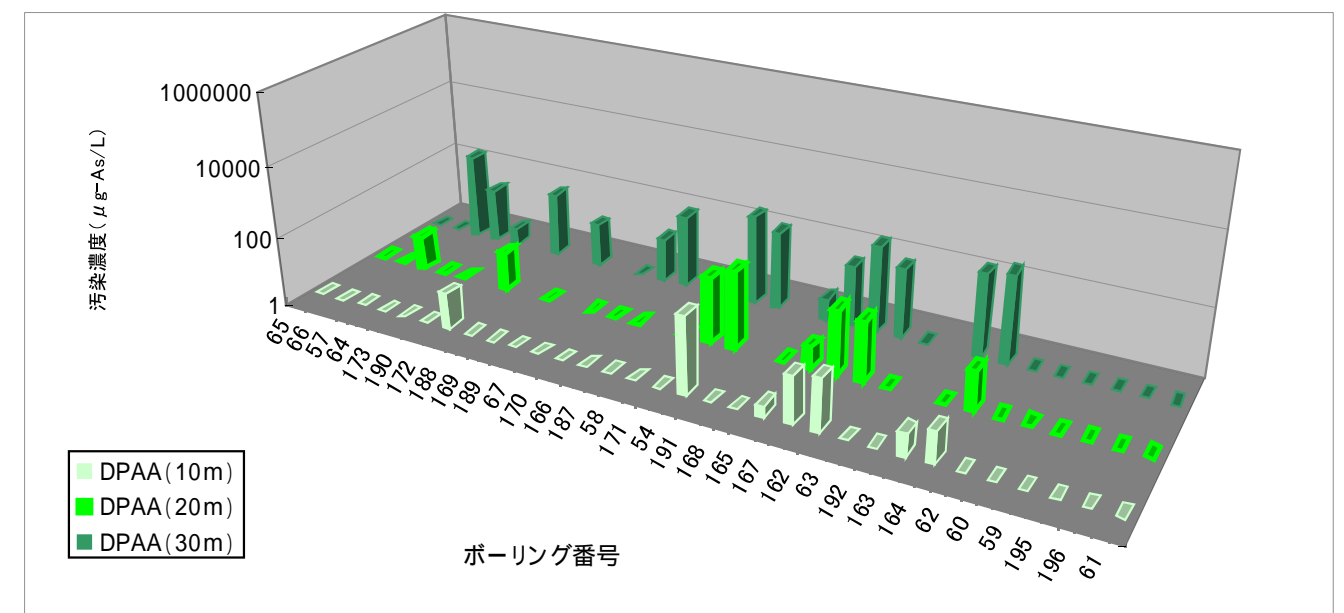
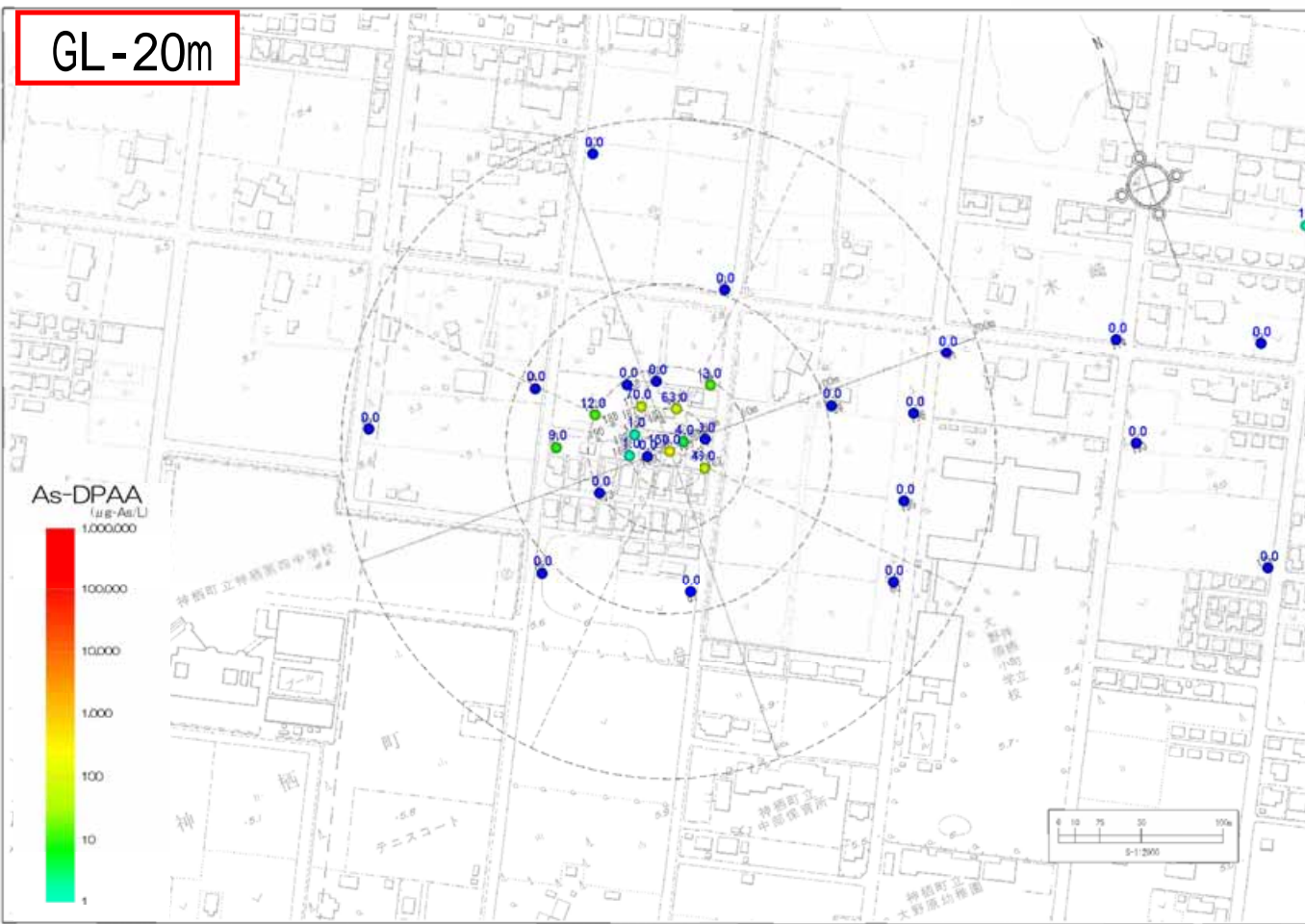
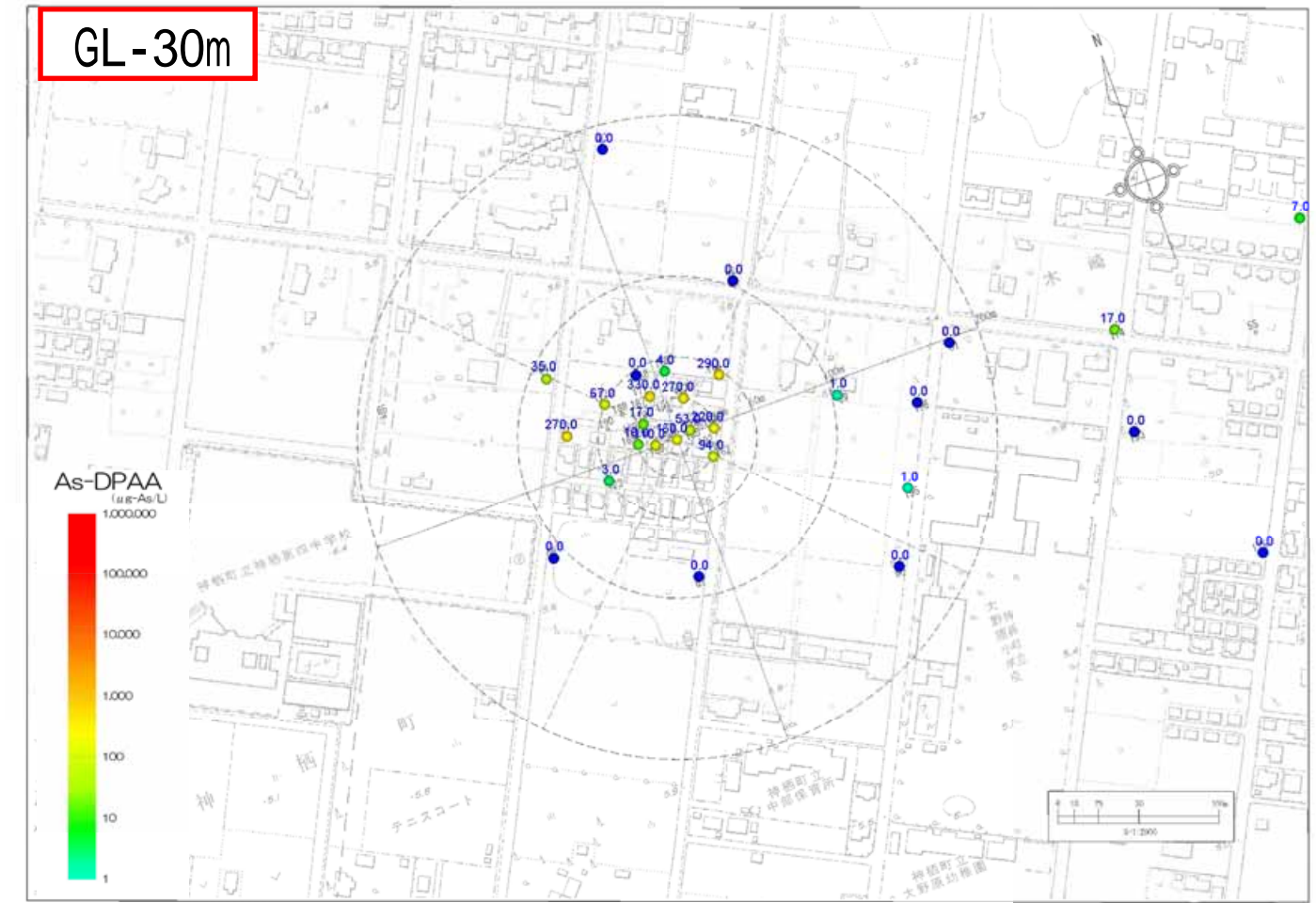
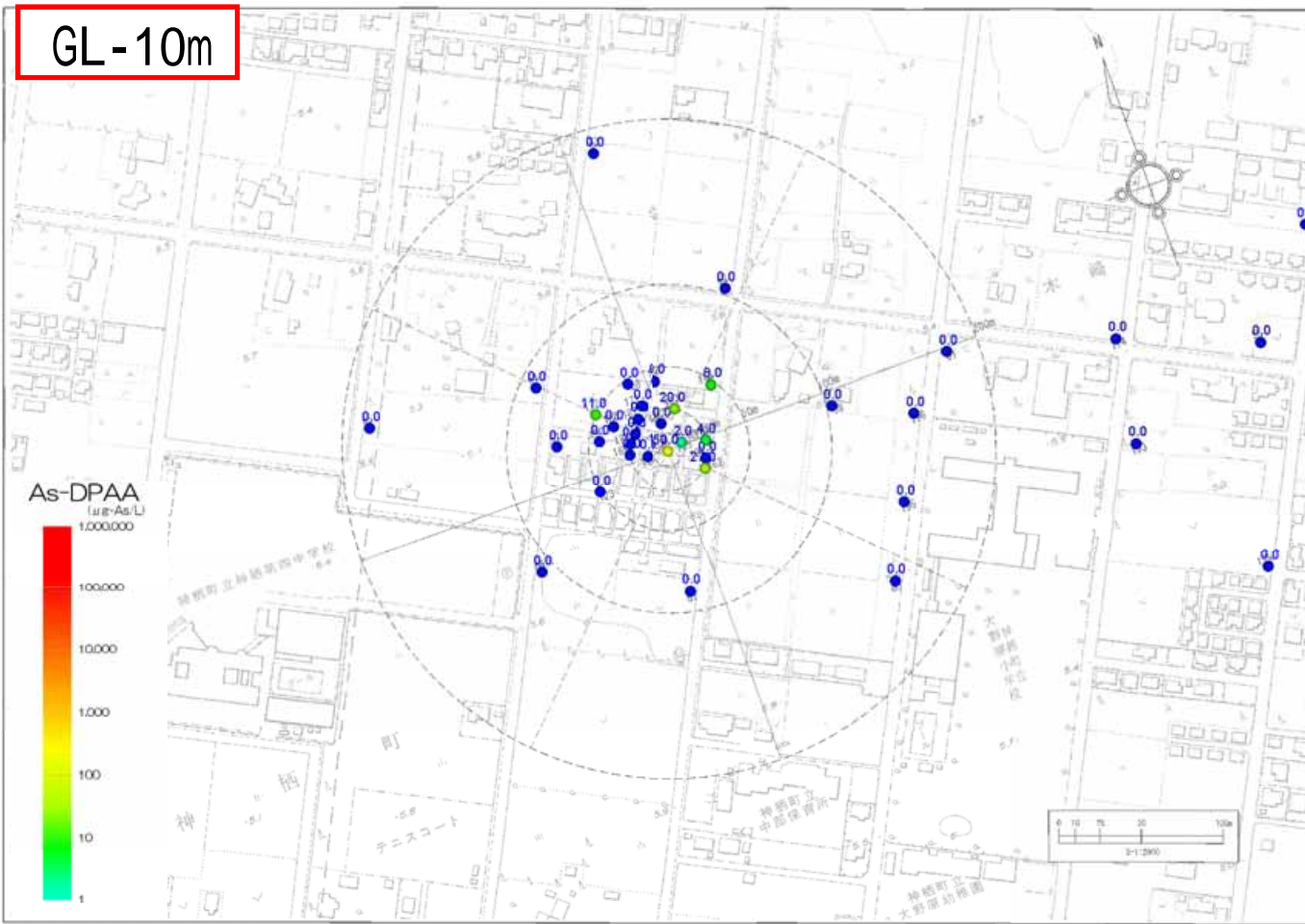


参考図2.4.28 2006年秋季(10~12月)A井戸周辺地下水DPAA汚染状況図 単位: $\mu\text{g-As/L}$

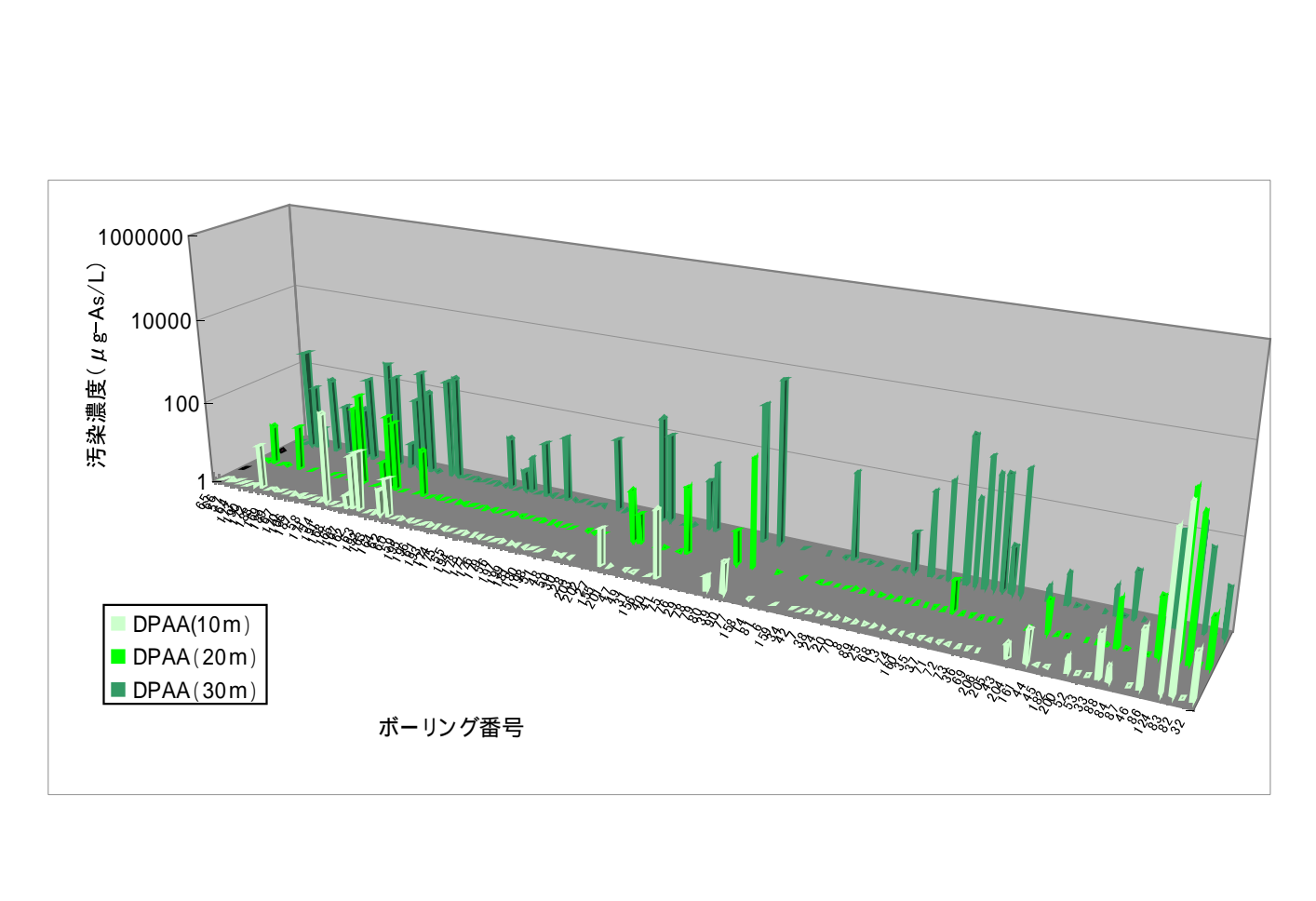
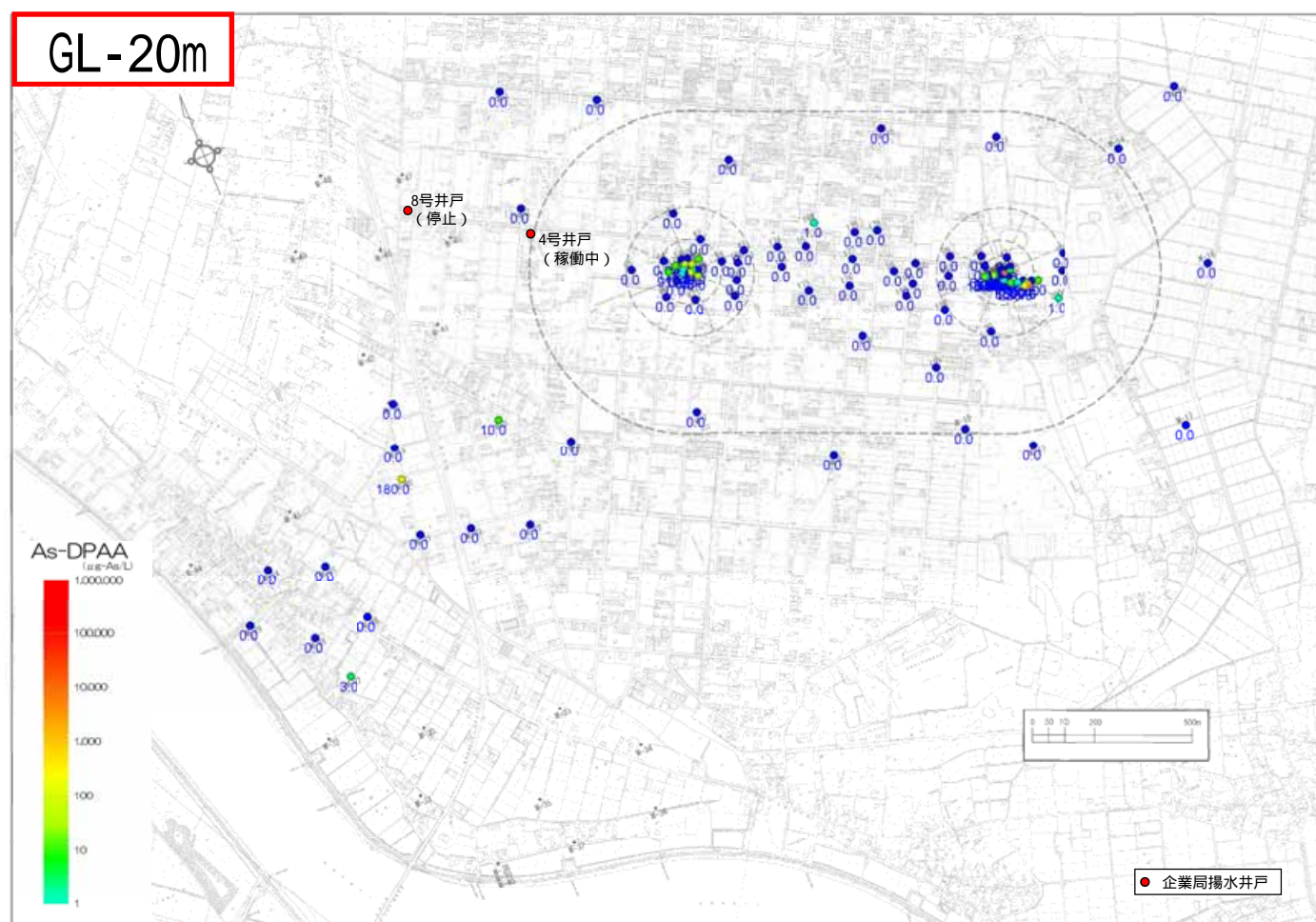
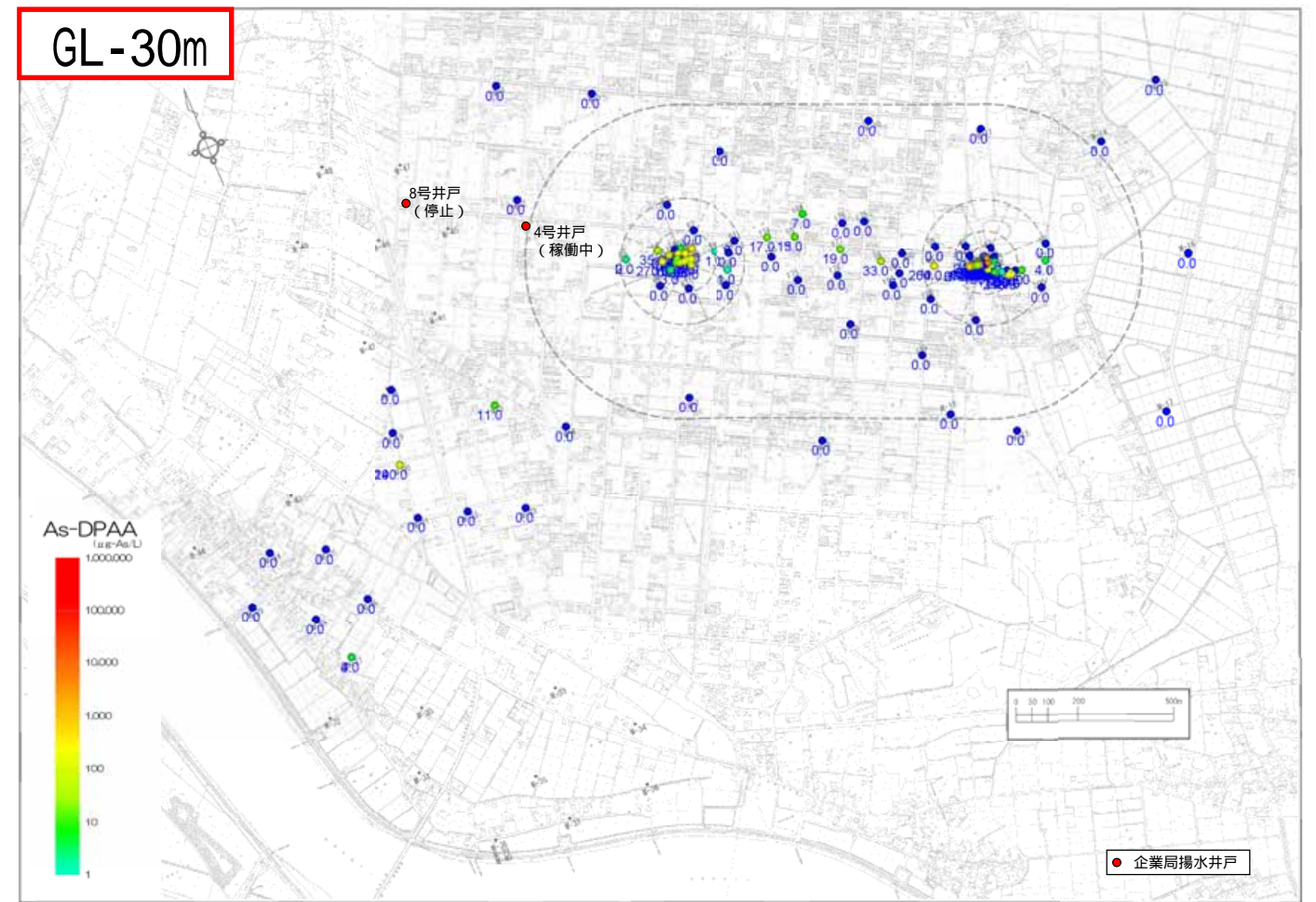
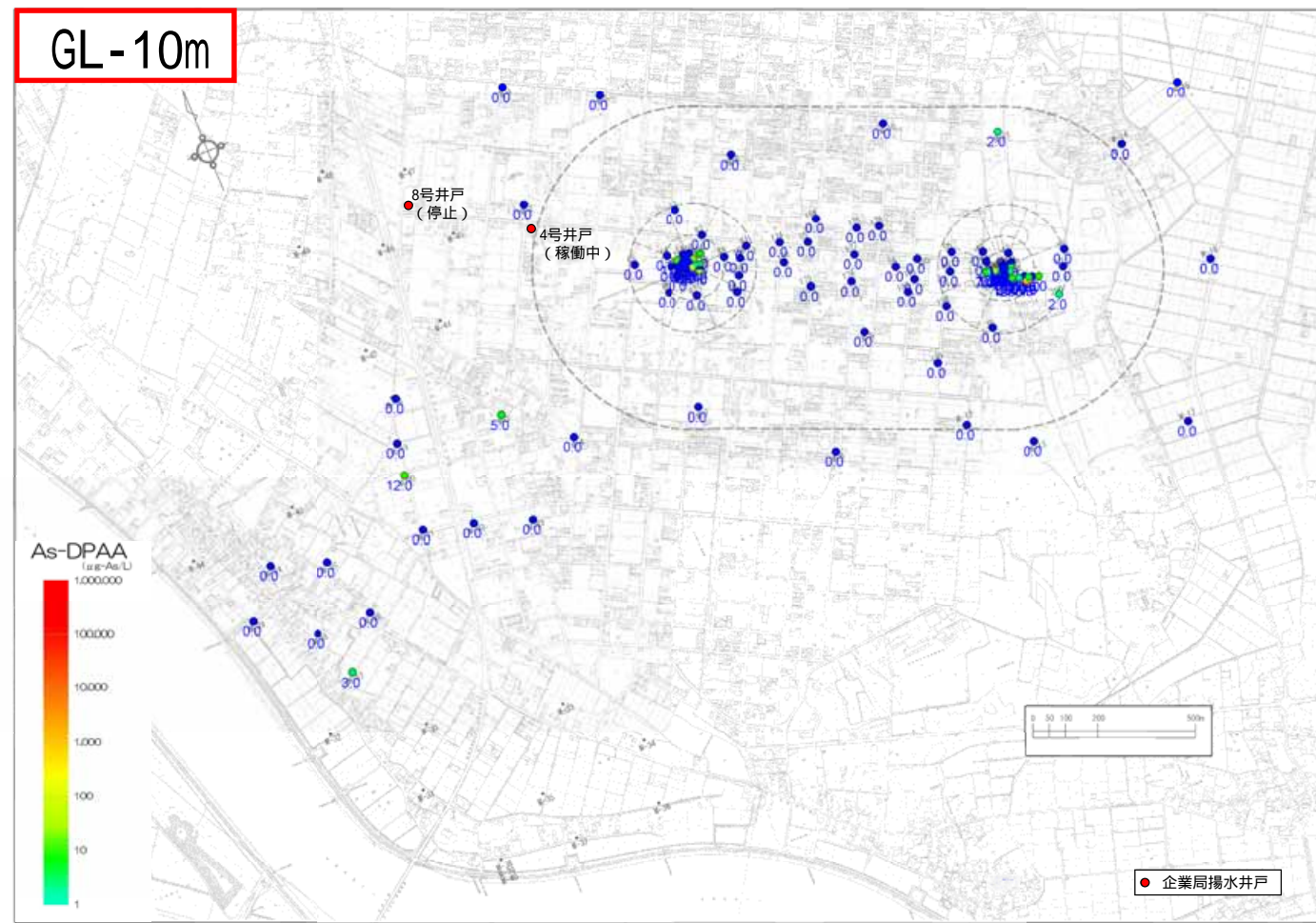


参考図2.4.29 2006年秋季(10~12月)B地区地下水DPAA汚染状況図

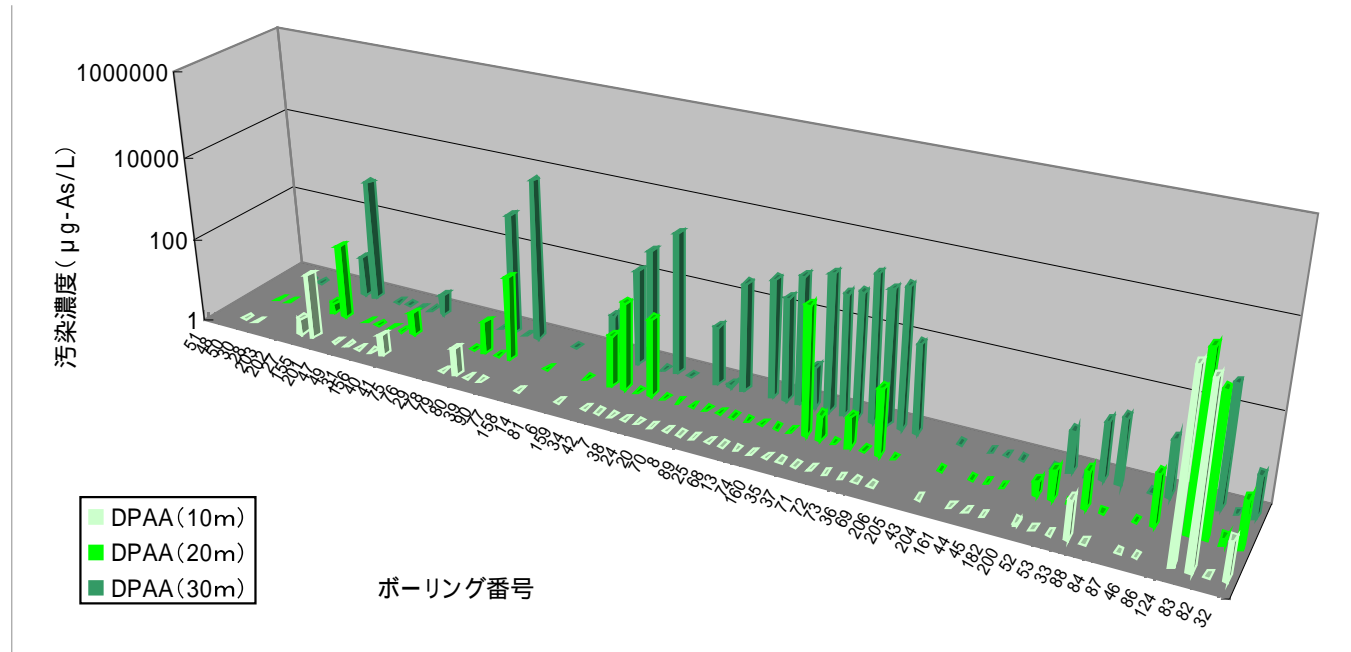
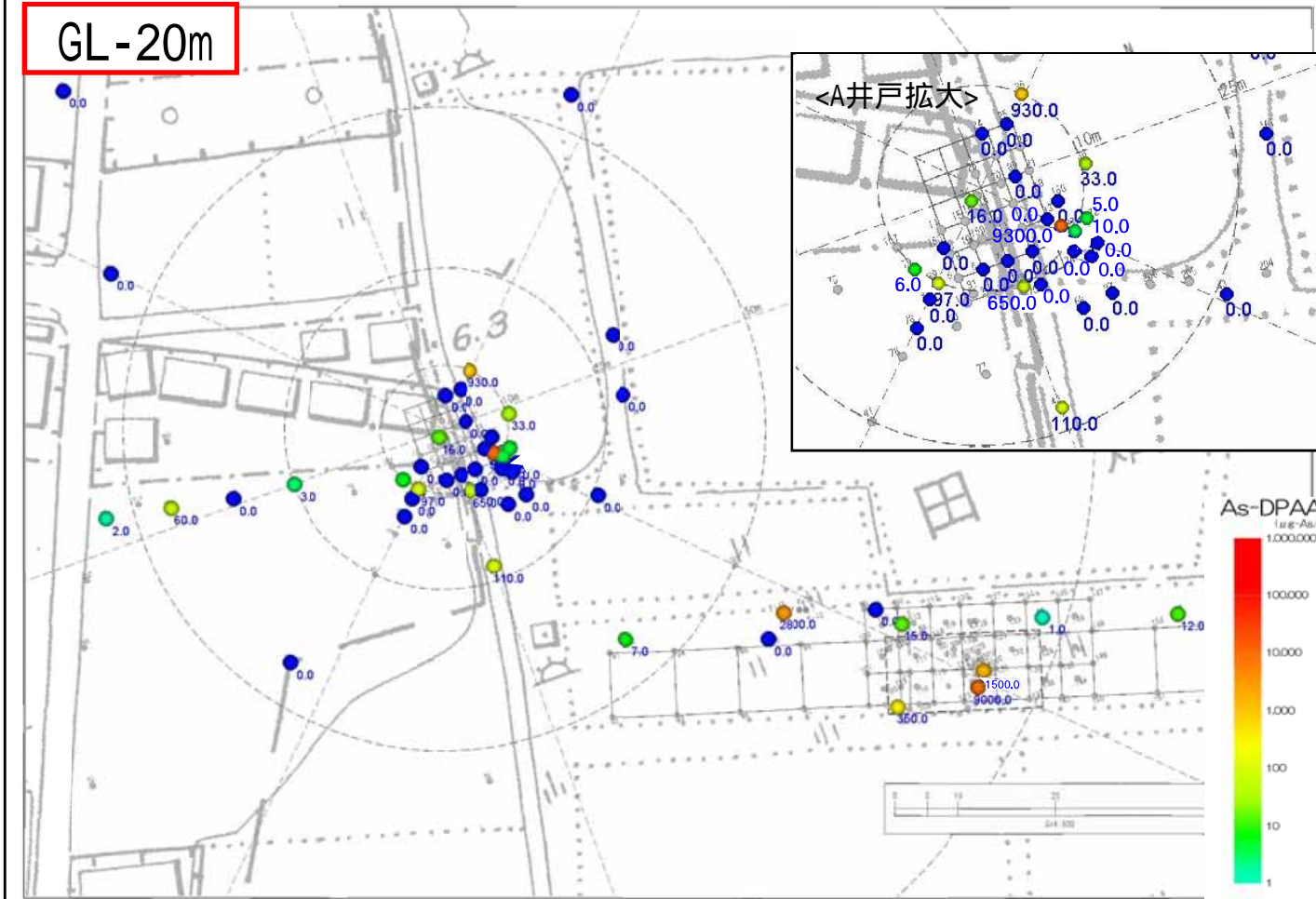
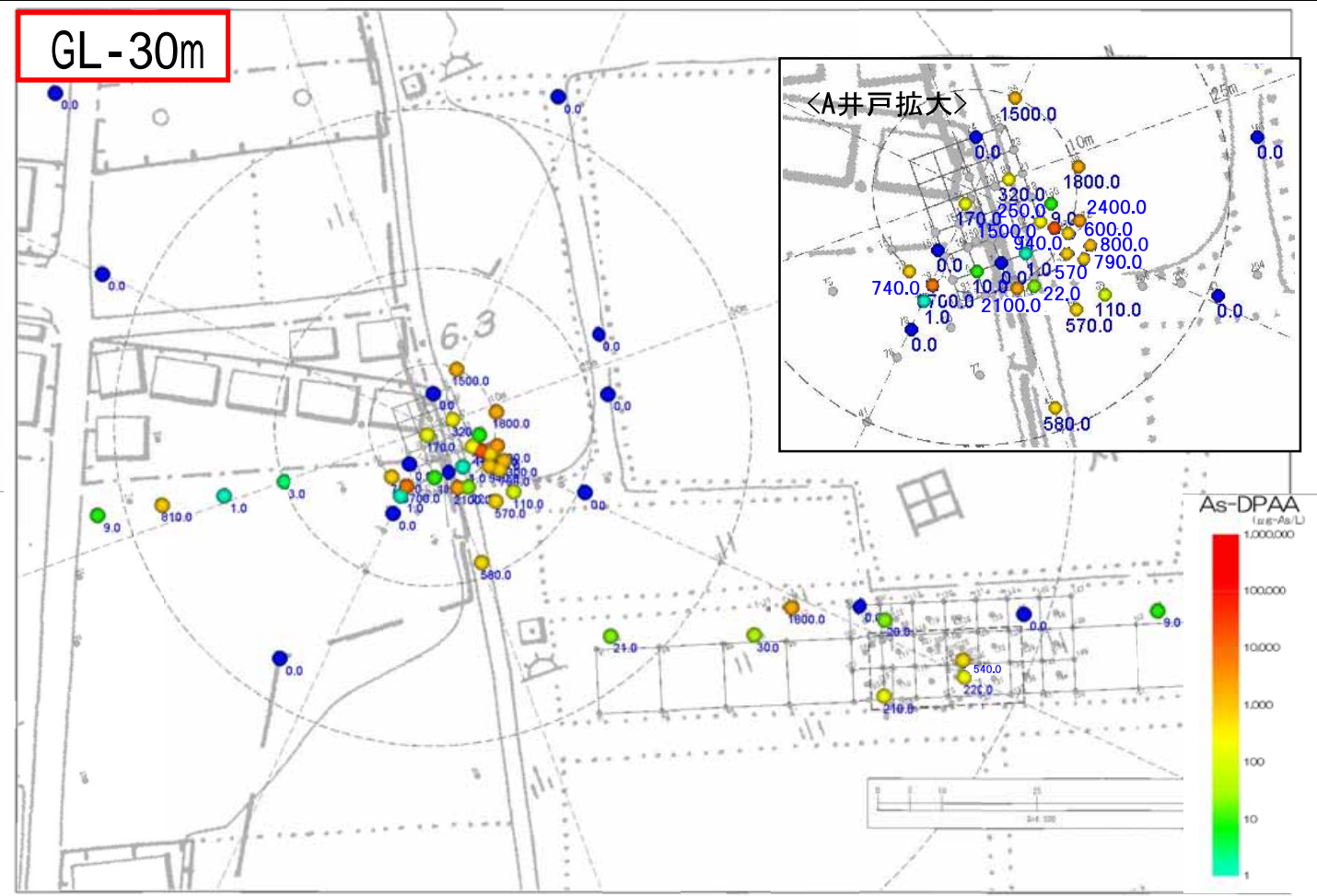
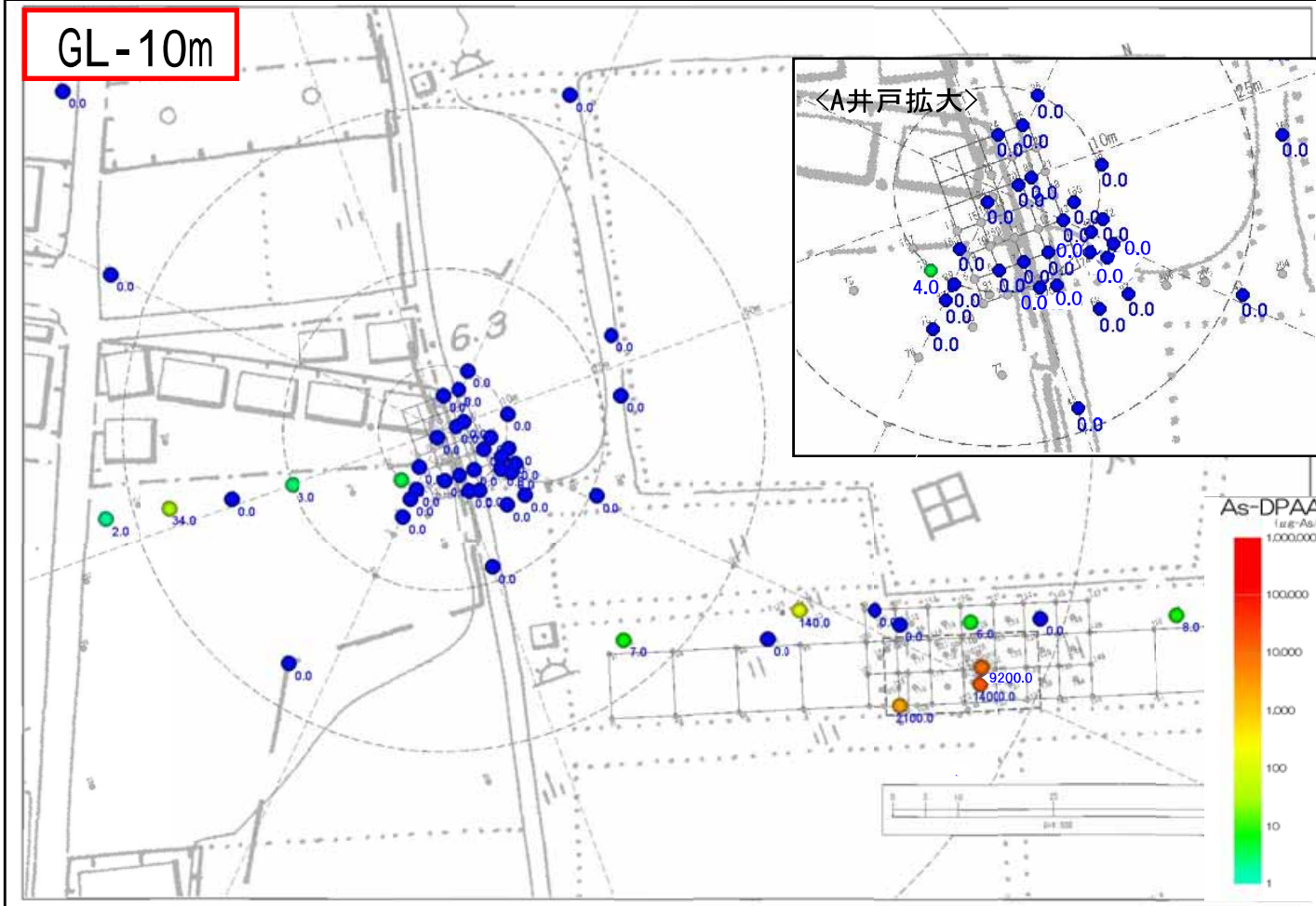
単位: $\mu\text{g-As/L}$



参考図2.4.30 2006年秋季(10~12月)ABトラック地下水DPAA汚染状況図 単位: $\mu\text{g-As/L}$

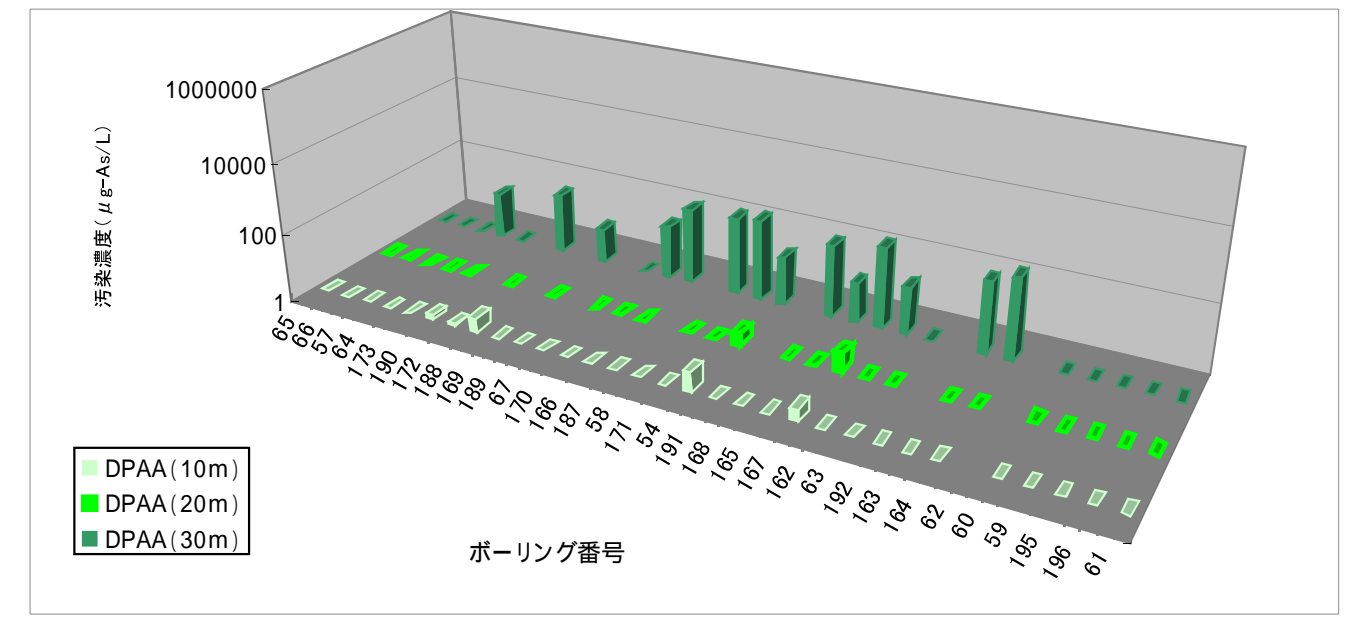
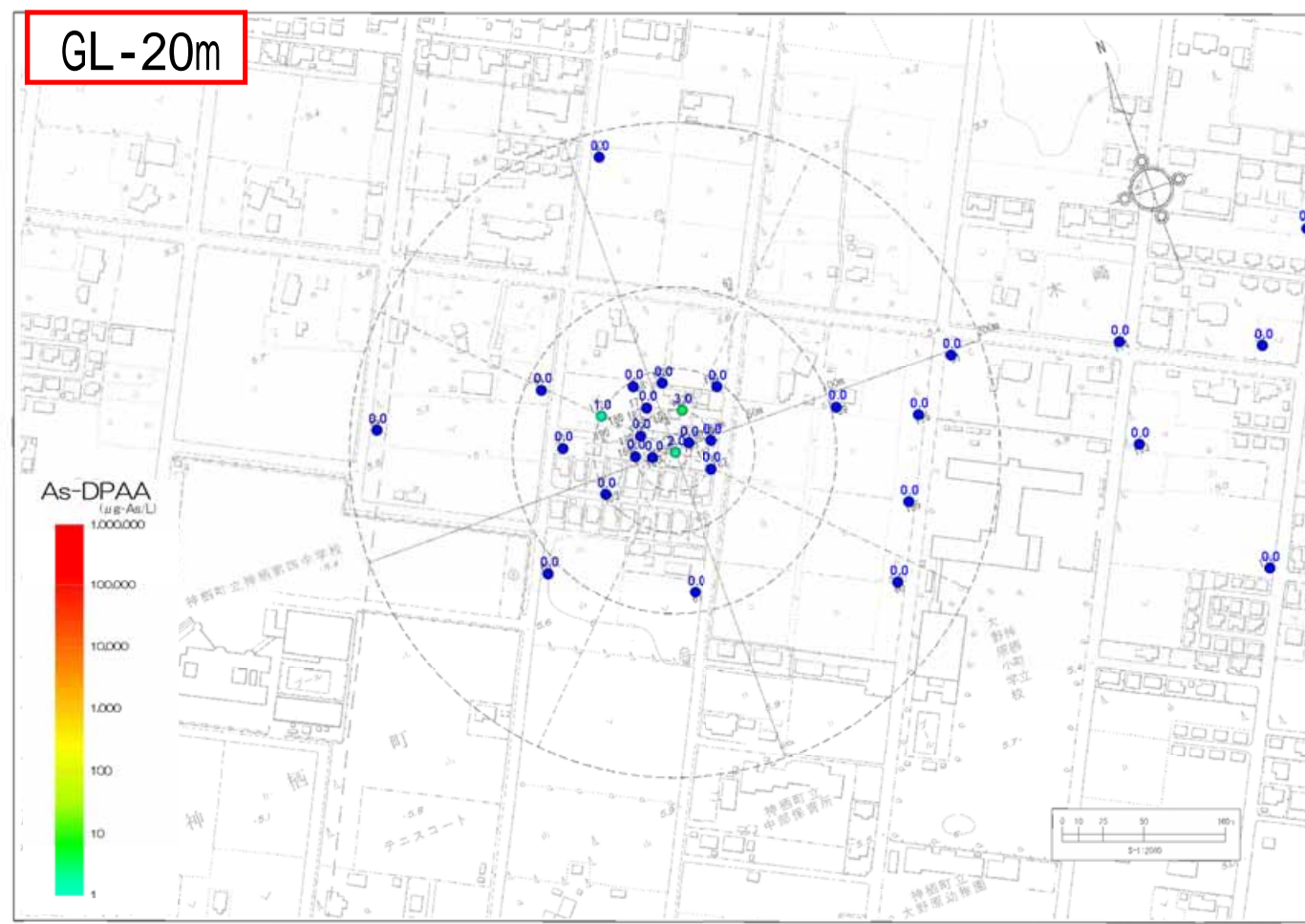
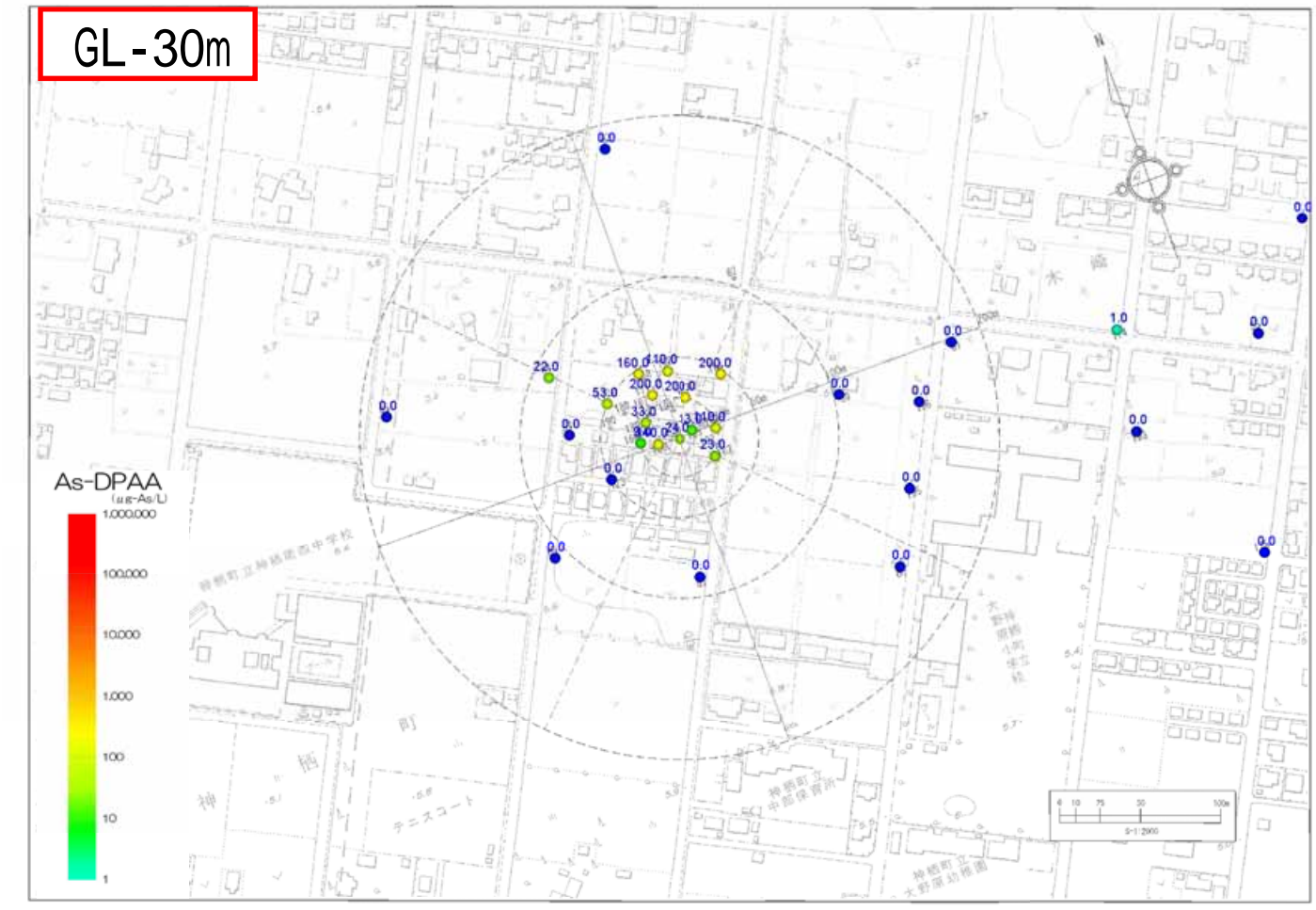
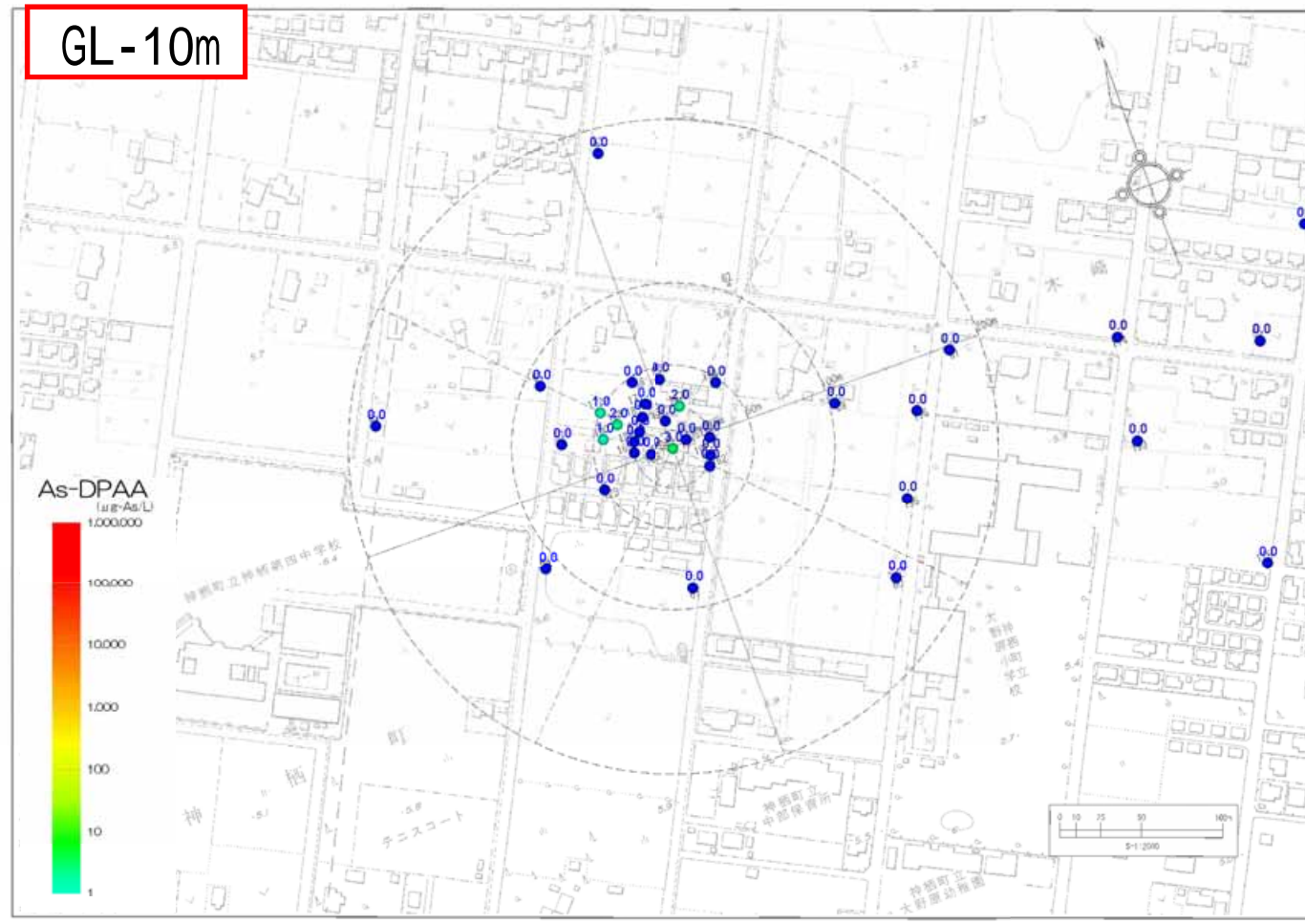


参考図2.4.31 2007年冬季(1~3月)A井戸周辺地下水DPAA汚染状況図 単位: $\mu\text{g-As/L}$



参考図2.4.32 2007年冬季(1~3月)B地区地下水DPAA汚染状況図

単位: $\mu\text{g-As/L}$



参考図2.4.33 2007年冬季(1~3月)ABトラック地下水DPAA汚染状況図 単位: $\mu\text{g-As/L}$

