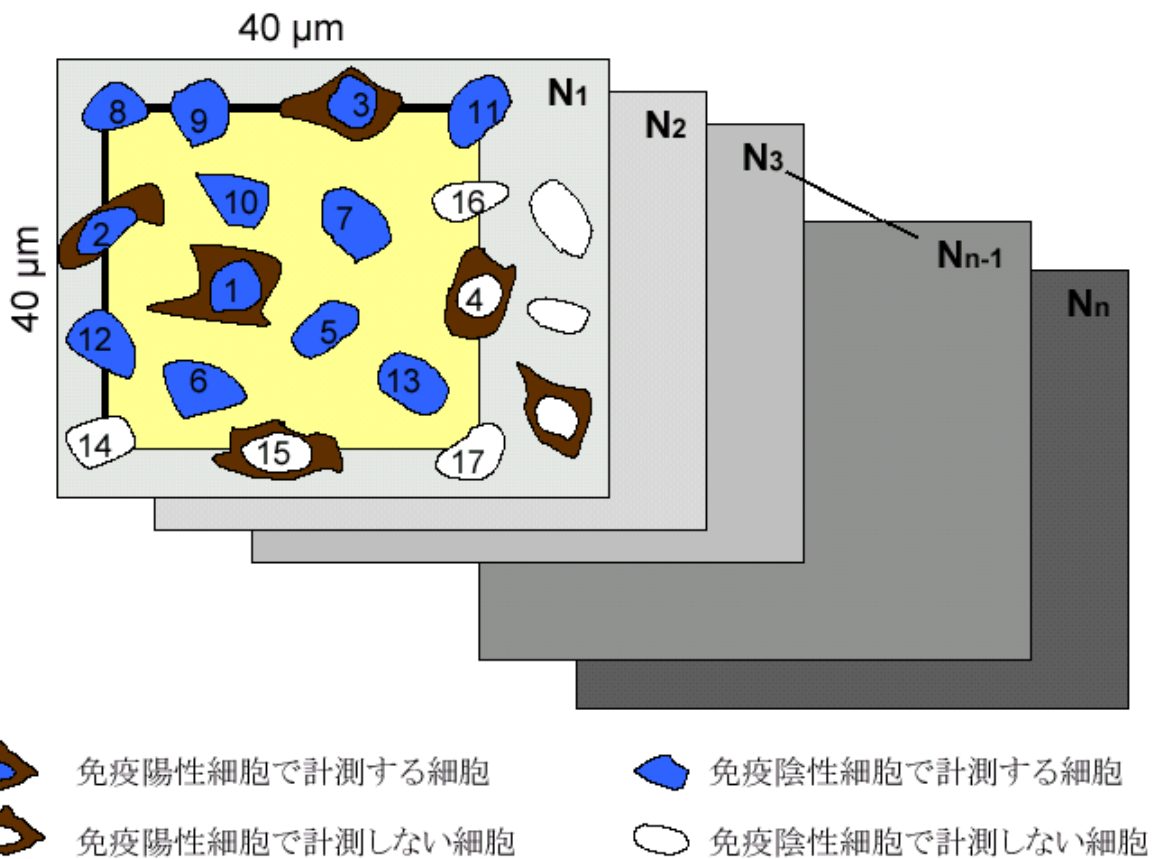


図-1 形態計測法



2次元画像解析システムCosmozone-1SBを使用してパソコン画面上に倍率400倍の顕微鏡で $1600\mu\text{m}^2$ に相当する正方形を描き、倍率400倍の顕微鏡組織像をパソコン画面上に投影する。上記の様に存在する全ての細胞を計測し、免疫陽性細胞出現率、免疫陽性細胞面積、単位正方形面積($1600\mu\text{m}^2$)内の核数を計測した。

Formula

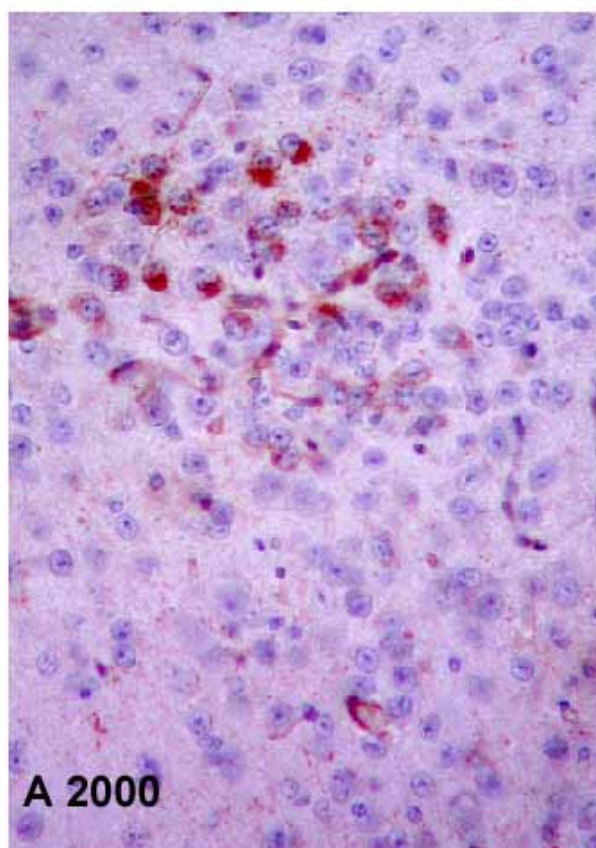
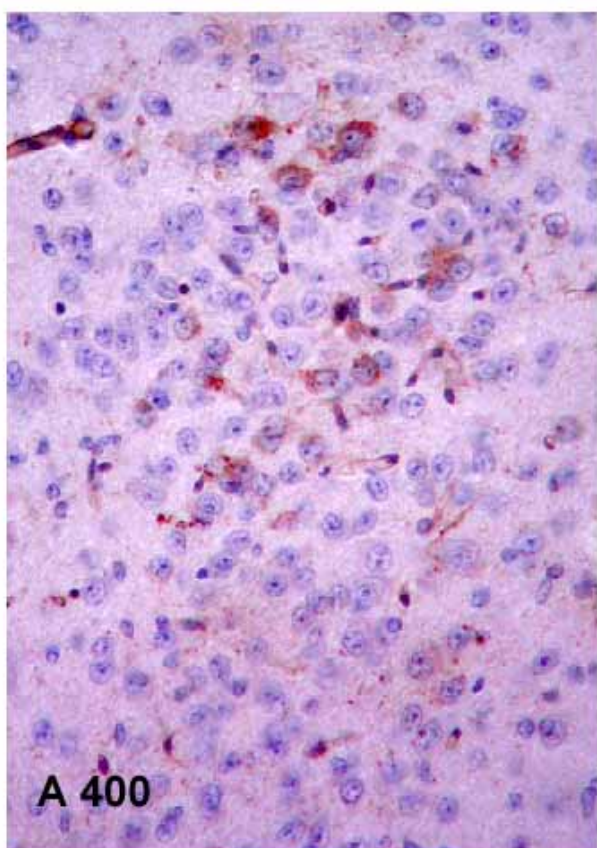
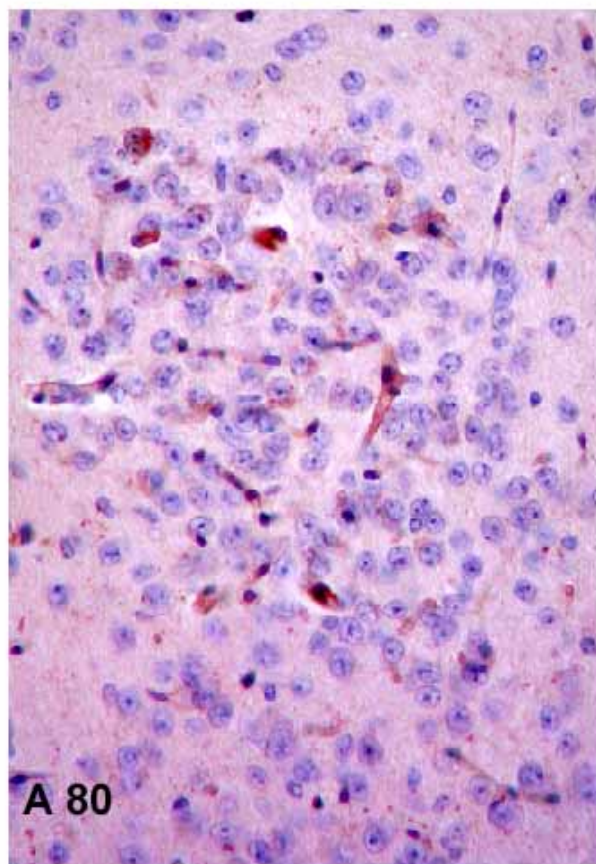
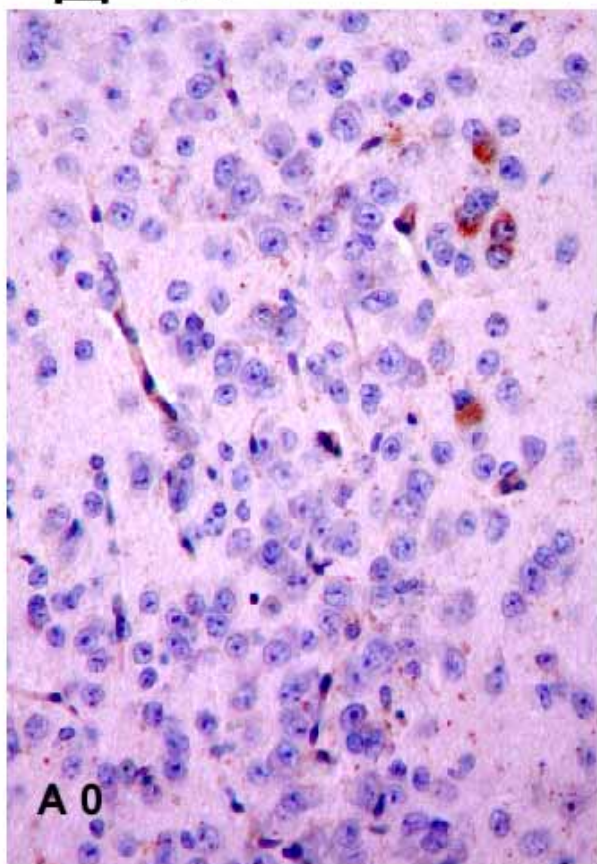
$$T = \bar{N}^{3/2} \times V / 40^3$$

\bar{N} = mean number of adenohipophysial cells in $40^2 \mu\text{m}^2$

V = volume of anterior lobe

T = total number of adenohipophysial cells

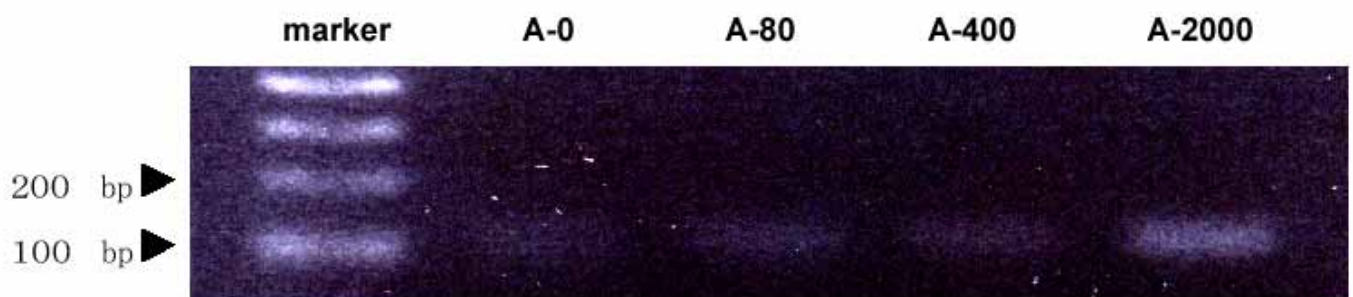
图-2



☒ - 3

Quantitative RT-PCR analysis of expression of ACTH gene in the pituitary of C3H mice

1st samples



2nd samples

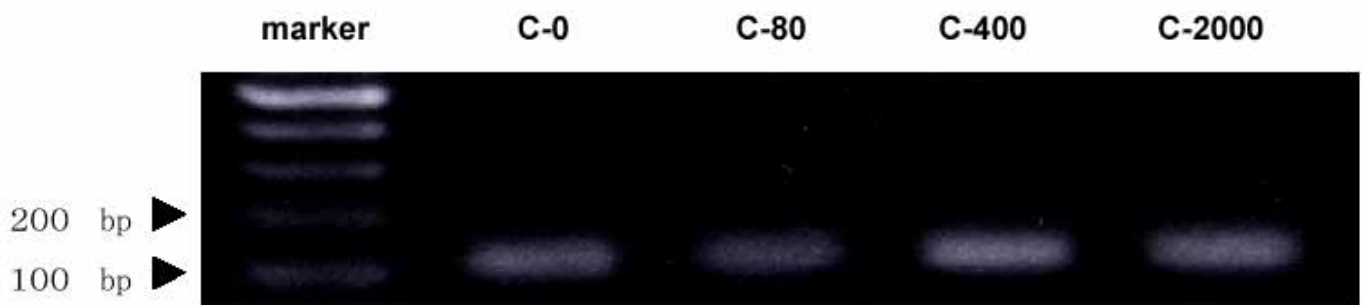


图-4

Quantitative RT-PCR analysis of expression of ACTH gene in the pituitary of C3H with OVA mice

D - 0 D - 80 D - 400 D - 2000



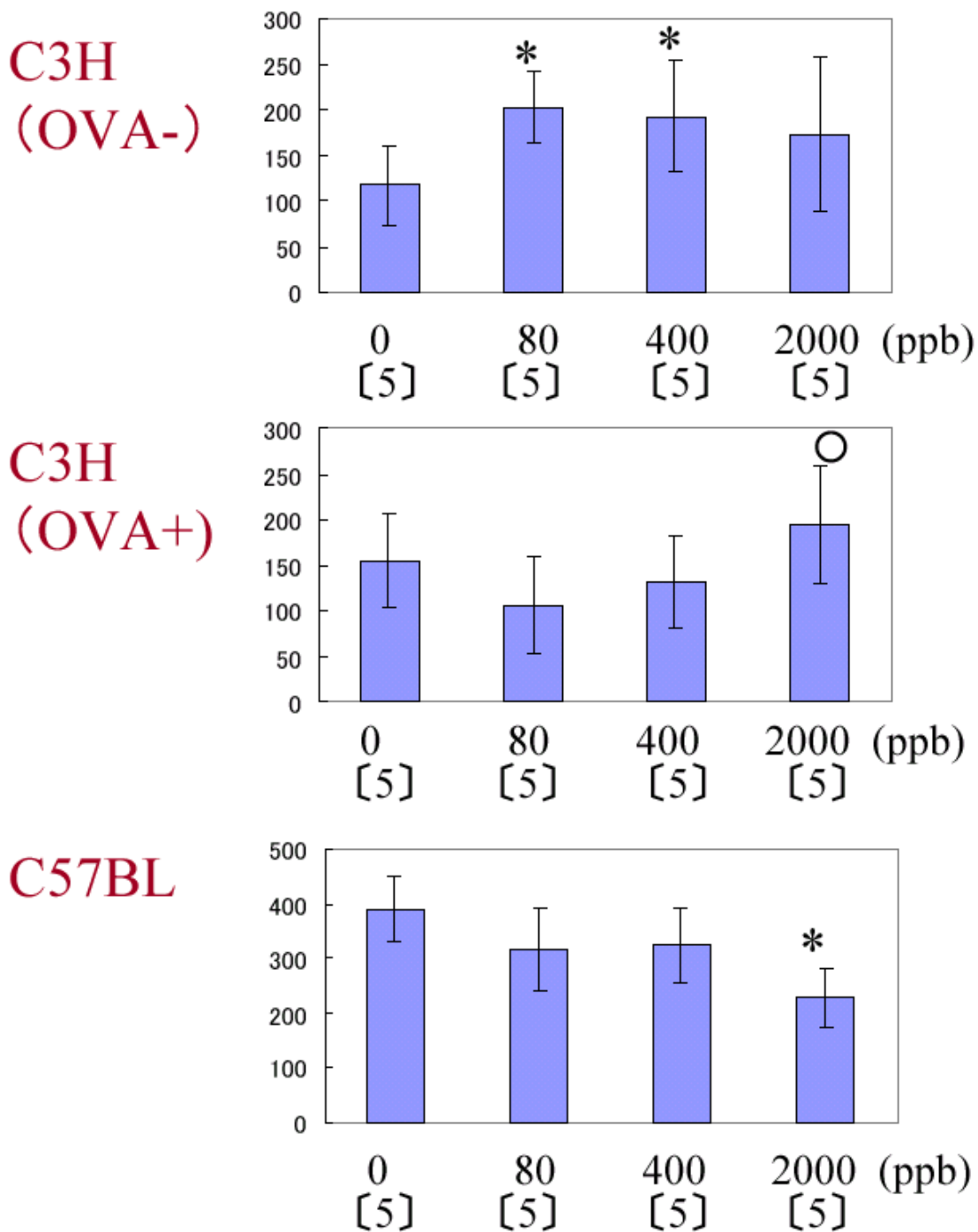
图-5

Quantitative RT-PCR analysis of expression of ACTH gene in the pituitary of C57BL mice

marker E - 0 E - 80 E - 400 E - 2000



図6 血清中のCorticosterone濃度



Values are mean \pm SD.

*P<0.05:それぞれの群の対照に比べて有意差がある。○は、OVA-群の対照との間に有意の差がある。

それぞれの群でSimirovの棄却検定後、Mann-WhitneyのUテストを行った。[]は、マウスの数。

Table 1. CRH-immunoreactive cells in the Paraventricular Nucleus (PVN) of adult C3H mice

| Group of mice (No.) | | Number |
|---------------------|-----|------------------|
| A0 | (5) | 1,068.8 ± 84.7 |
| A80 | (5) | 1,332.8 ± 197.5 |
| A400 | (5) | 2,033.6 ± 259.2* |
| A2000 | (5) | 2,514.4 ± 218.1* |

Values are mean ± SE

*p<0.01 compared with control (A0) by Student's t-test

Table 2. ACTH cells in the anterior pituitary glands of adult C3H mice

| Group of mice (No.) | ACTH-immunoreactive cells | | | Pituitary volume (x10 ⁹ μm ³) |
|------------------------|---------------------------|----------------------------|-----------------------------------|---|
| | Percentage (%) | Number (x10 ⁴) | Cell size (μm ² /cell) | |
| A0 (5) | 7.44 ± 0.39 | 60.40 ± 5.78 | 52.03 ± 1.29 | 1.06 ± 0.07 |
| A80 (5) | 10.05 ± 0.34** | 99.09 ± 5.02** | 52.79 ± 0.53 | 1.20 ± 0.05 |
| A400 (5) | 10.83 ± 0.44** | 111.88 ± 9.06** | 53.42 ± 0.60 | 1.14 ± 0.60 |
| A2000 (5) | 14.02 ± 0.37** | 141.41 ± 9.81** | 46.19 ± 1.67* | 1.02 ± 0.07 |

Values are mean ± SE

*p<0.05, **p<0.01 compared with control (A0) by Student's t-test