

Legislative Infrastructure Underpinning Johkasou Systems

Johkasou Law

The purpose of the Johkasou Law is to promote the appropriate treatment of domestic wastewater, to maintain good water quality of public water bodies and a healthy living environment, and to improve public health via johkasou systems.

To achieve this purpose, it is essential to strengthen regulations at each stage: manufacturing, installation, operation and maintenance, as well as desludging of johkasou. This requires a clear understanding of the people who engage in the johkasou businesses and the business itself, including thoroughly defining the responsibilities of concerned individuals and ensuring that they are professionally certified. The Johkasou Law provides qualifications for johkasou installation workers and johkasou operators, as well as for registration and licensing of systems for johkasou businesses, installation, operation and maintenance, and desludging. Furthermore, the governors and the mayors are authorized to advise and instruct johkasou managers and johkasou vendors to improve the johkasou treatment performance when malfunction is recognized through legal inspections.

The relations among administrative authorities, johkasou users (johkasou managers) and vendors are shown as following.

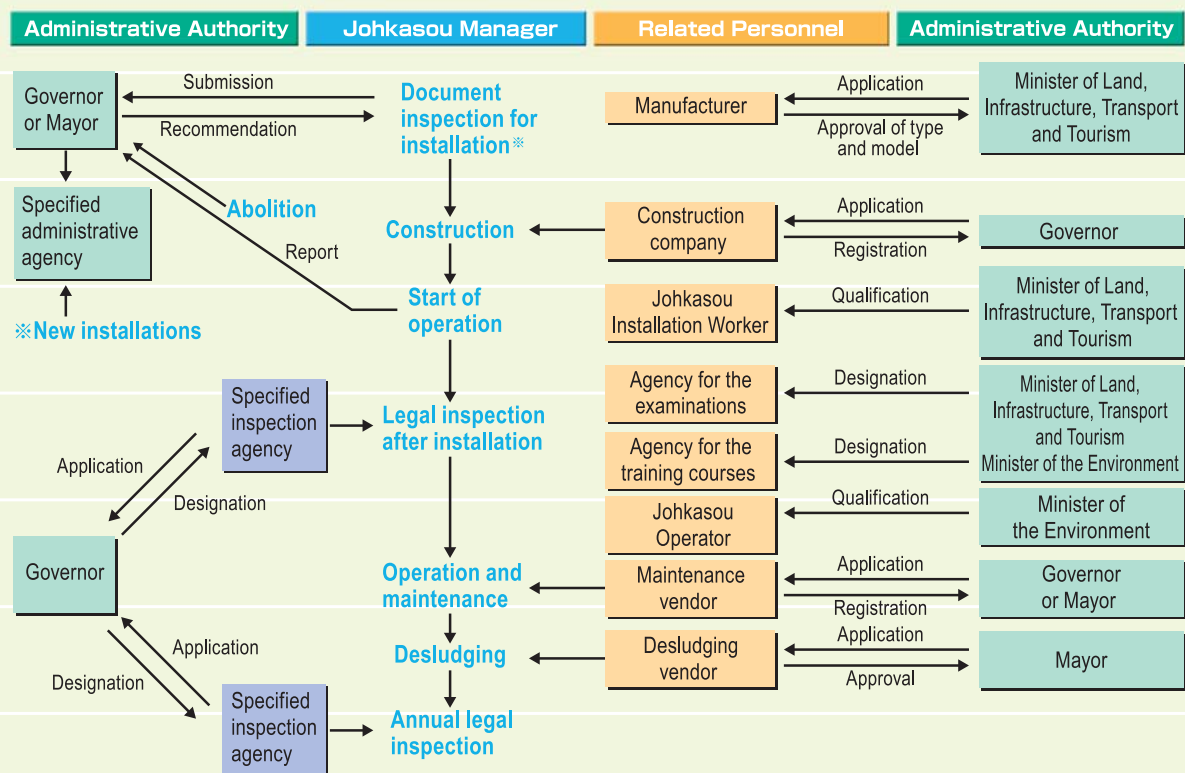


Figure 16 Framework of Johkasou Law

Table 4 Contents of Johkasou Law

Chapter 1 General Rules (Article 1-4)	Chapter 7 Johkasou Installation Workers (Article 42-44)
Chapter 2 Installation of Johkasou (Article 5-7)	Chapter 8 Johkasou Operators (Article 45-47)
Chapter 3 Maintenance and Desludging of Johkasou (Article 8-12)	Chapter 9 Registration of Johkasou O/M Vendors by Regulations (Article 48)
Chapter 4 Approval of Johkasou Type (Article 13-20)	Chapter 10 Others (Article 49-58)
Chapter 5 Registration for Johkasou Installation Business (Article 21-34)	Chapter 11 Penalties (Article 59-68)
Chapter 6 Approval for Johkasou Desludging Business (Article 35-41)	

Related Laws

A johkasou that can treat domestic wastewater and discharge effluent free of sanitary problems should be installed when installing a flush toilet under the Building Standard Law, unless the wastewater is discharged to sewerage systems. The Building Standard Law and its Enforcement Ordinance stipulate details pertaining to johkasou structures, the procedure of document recognition for johkasou installation, and the relation between treatment performance and areas of installation in relation to the johkasou size in terms of PE. Johkasou installation plans and transportation of sludge from johkasou should be carried out in accordance with the Waste Disposal and Public Cleansing Law.

A johkasou over a certain scale should comply with the regulation of effluent standards set under the Water Pollution Control Law and related regulations.