

Oct. 2006

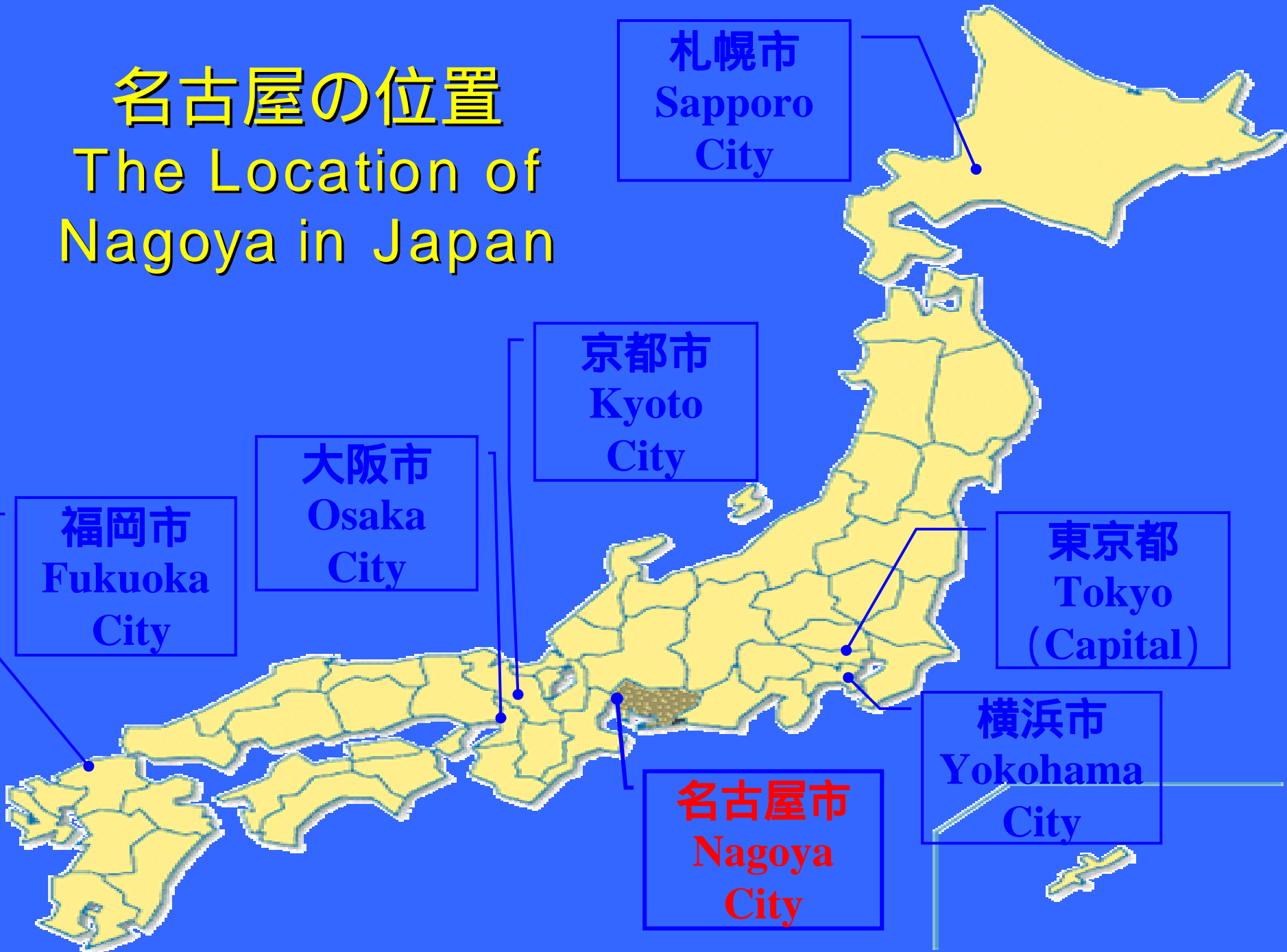
Waste Management in Nagoya

- Environmental Affairs Bureau,
City of Nagoya -



名古屋の位置

The Location of Nagoya in Japan



Outline of Nagoya



■ Population : 2,223,117

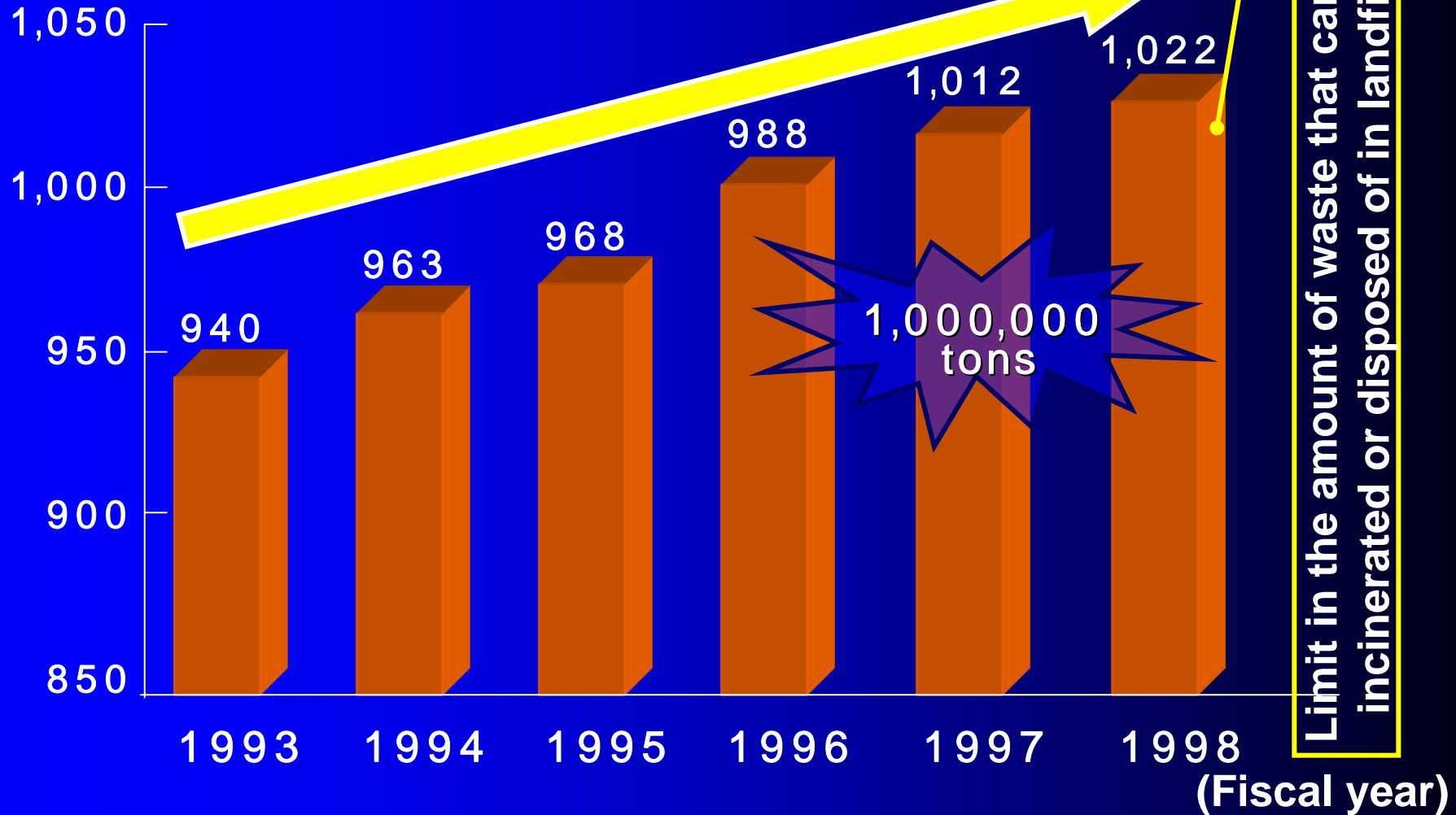
■ No. of Households : 968,534

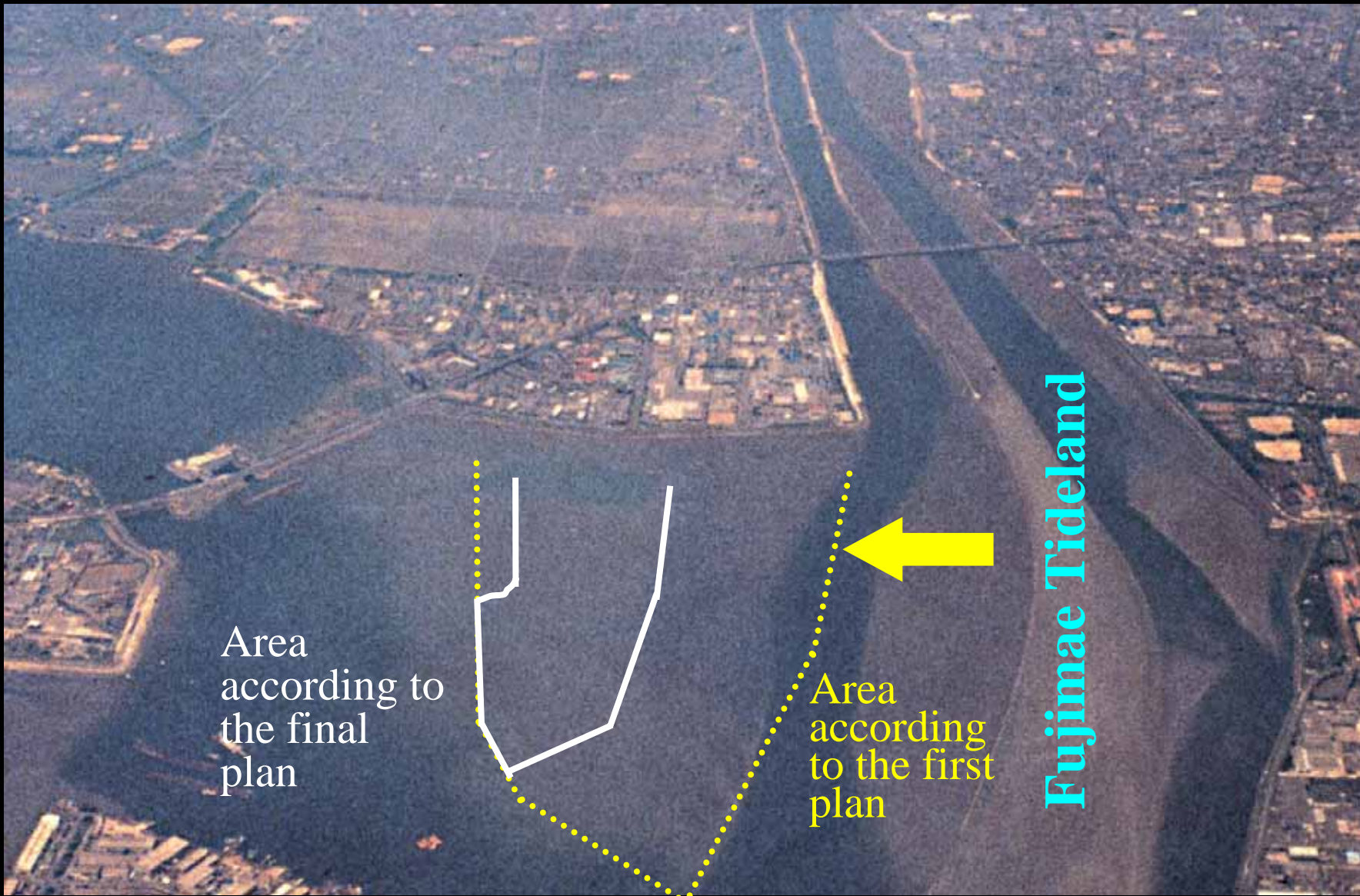
■ Acreage : 326.45 km²

(Oct 1st, 2006)

Increase in the Amount of Waste

(thousand tons) **【Amount of waste】**





Area according to the final plan

Area according to the first plan

Fujimae Tideland

Fujimae Tideland and the area planned as landfill

Emergency Declaration on Waste Management in February 1999

■ February 1999

“Declaration of a State of Emergency in Waste Management”

- Targeting a reduction in the amount of waste by 20%, that is, 200,000 tons, by the end of the 20th century (in two years)
- The amount of waste in FY1998: 1,020,000 tons
→ The targeted amount of waste for FY2000:
less than 800,000 tons

Measures taken after the emergency declaration on waste management (Waste from households)

■ In FY1999-2000

- The area where glass bottles and cans were collected was extended to cover the whole city (from 9 to 16 wards).
- Introduction of a system of using designated trash bags for household waste
- Abolition of the system for the collection of waste using garbage cans
- Increase in the subsidies for the voluntary collection of recyclables by city residents (group collection, setting up recycling stations)
- Collection of newly designated recyclables such as paper and plastic containers and packaging
- Start of the collection of PET bottles at recycling stations, etc.

Measures taken after the emergency declaration on waste management (Business waste)

■ In FY1999-2000

- Prohibition on taking paper, bottles and cans to waste treatment center
- Discontinuation of the acceptance of all industrial wastes
- Introduction of the designated garbage bag system
- Started charging fees for the collection of all waste
- Prohibition on taking PET bottles and polystyrene foam to waste treatment center

Public Relation For Citizens about Introduction of the New Resource Collection System(2000)

■ Pre-Implementation Announcement and Explanation

- Distributed Brochures
- Held 2,300 Local Meetings
- 24% of All the Households Attended



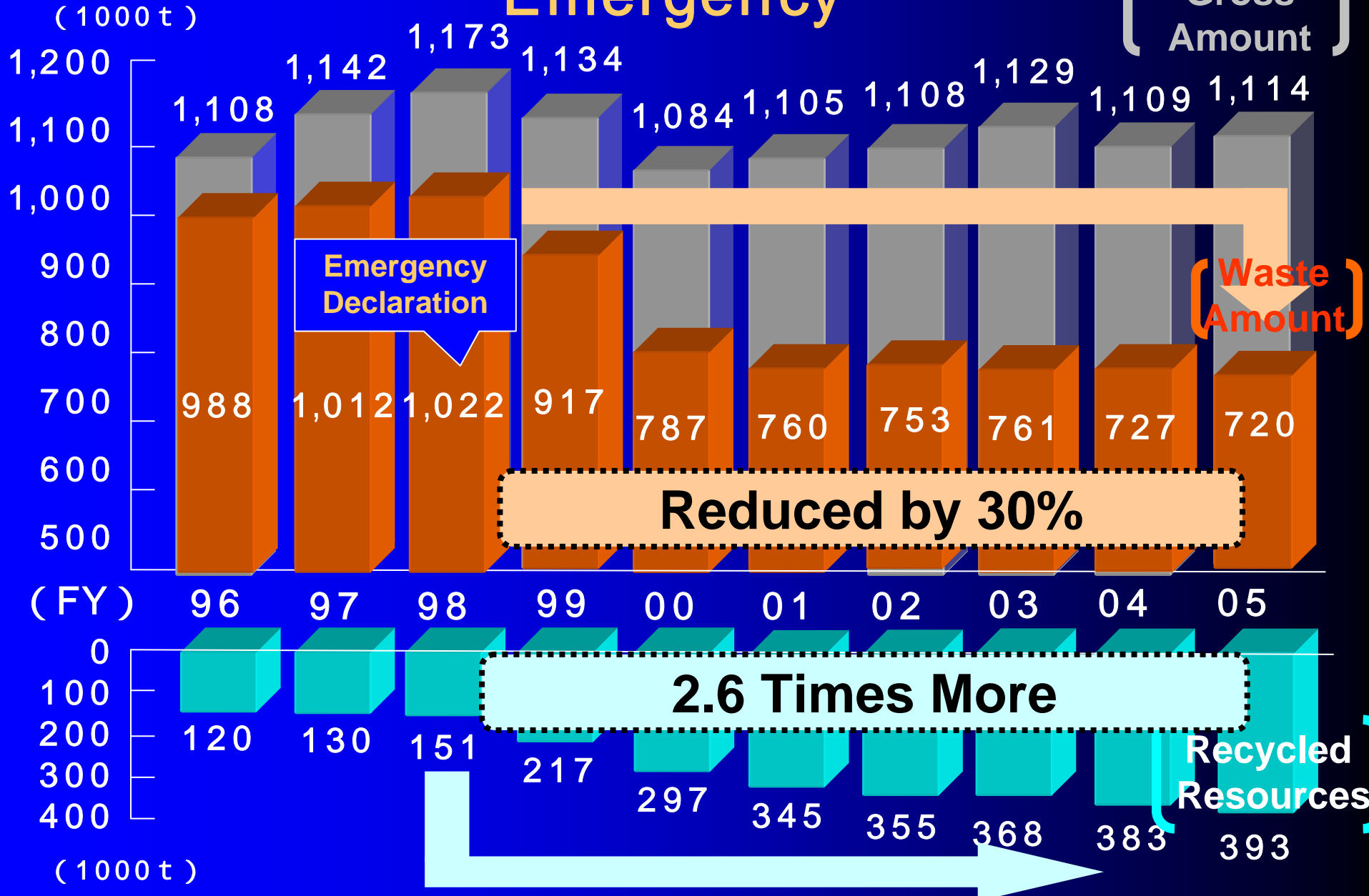
Scene at an explanatory meeting in the local community

Local Residents Engaged in Sorting Out and Recycling Waste



Residents and community staff who are working hard to implement recycling

Aftermath of “Declaration of a Waste Emergency”



Movement to Reduce Plastic Shopping Bags “Eco-Coupyon”

Since 2003



20 Coupyons
Exchangeable
to 50yen
Shopping
Ticket

35,000 Eco-Coupyon Are
Used A Day



Available at 563 Shops (2006)

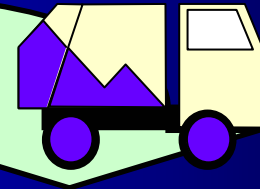
Collecting Garbage as **Recyclables**

(from March 2004)



Garbage Separation
in **households**

Garbage



Collection
by **N.City**

2003 : 4,000 households
2004 : 7,200 households
Goal: By 2010, 20% of the
garbage collected from
households should be
recyclables.



Composting in
a **private plant**

We Aim to Realize
“Environment Capital NAGOYA” by
operation of Citizens and Business Circles

ありがとうございました

Thank you very much!



- City of Nagoya -