

SPECIES INFORMATION

*NES: National Endangered Species of Wild Fauna and Flora



1. *Goniurosaurus kuroiuae*
(Kuroiwa's ground gecko)

Distribution :

Okinawa Island, Sesoko Island,
Kouri Island, Ie Island and Yagaji
island, Okinawa Prefecture

NES designation : 2015

Japanese Red List Category:
Threatened II (VU)



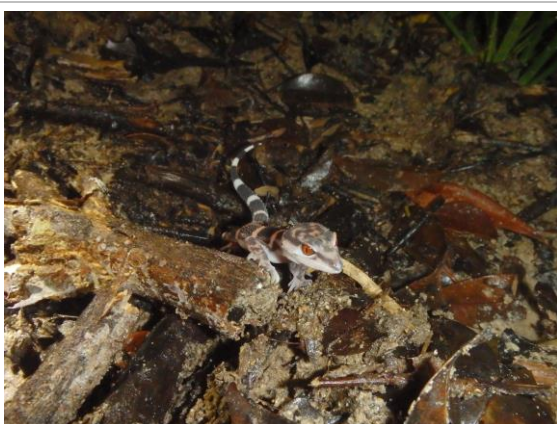
2. *Goniurosaurus orientalis*
(Spotted ground gecko)

Distribution :

Tonaki Island, Okinawa Prefecture

NES designation : 2015

Japanese Red List Category :
IA Critically Endangered(CR)






3. *Goniurosaurus sengokui*
(Sengoku's ground gecko)

Distribution :

Tokashiki Island and Aka Island,
Okinawa Prefecture

NES designation : 2019

Japanese Red List Category :
IB Endangered(EN)

	<p>4. <i>Goniurosaurus splendens</i> (Banded ground gecko) Distribution : Tokunoshima Island, Kagoshima Prefecture NES designation : 2015 Japanese Red List Category : IB Endangered(EN)</p>
	<p>5. <i>Goniurosaurus toyamai</i> (Toyama's ground gecko) Distribution : Iheya Island, Okinawa Prefecture NES designation : 2015 Japanese Red List Category : IA Critically Endangered(CR)</p>
	<p>6. <i>Goniurosaurus yamashinae</i> (Yamashina's ground gecko) Distribution : Kume Island, Okinawa Prefecture NES designation : 2015 Japanese Red List Category : IA Critically Endangered(CR)</p>



7. *Echinotriton andersoni*
(Anderson's crocodile newt,
Ryukyu spiny newt)

Distribution :

Amami-Oshima Island, Uke Island
and Tokunoshima Island in
Kagoshima Prefecture, Okinawa
Island, Sesoko Island and Tokashiki
Island in Okinawa Prefecture

NES designation : 2016

Japanese Red List Category:
Threatened II (VU)