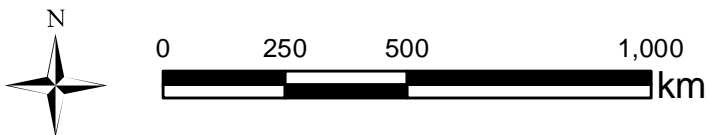
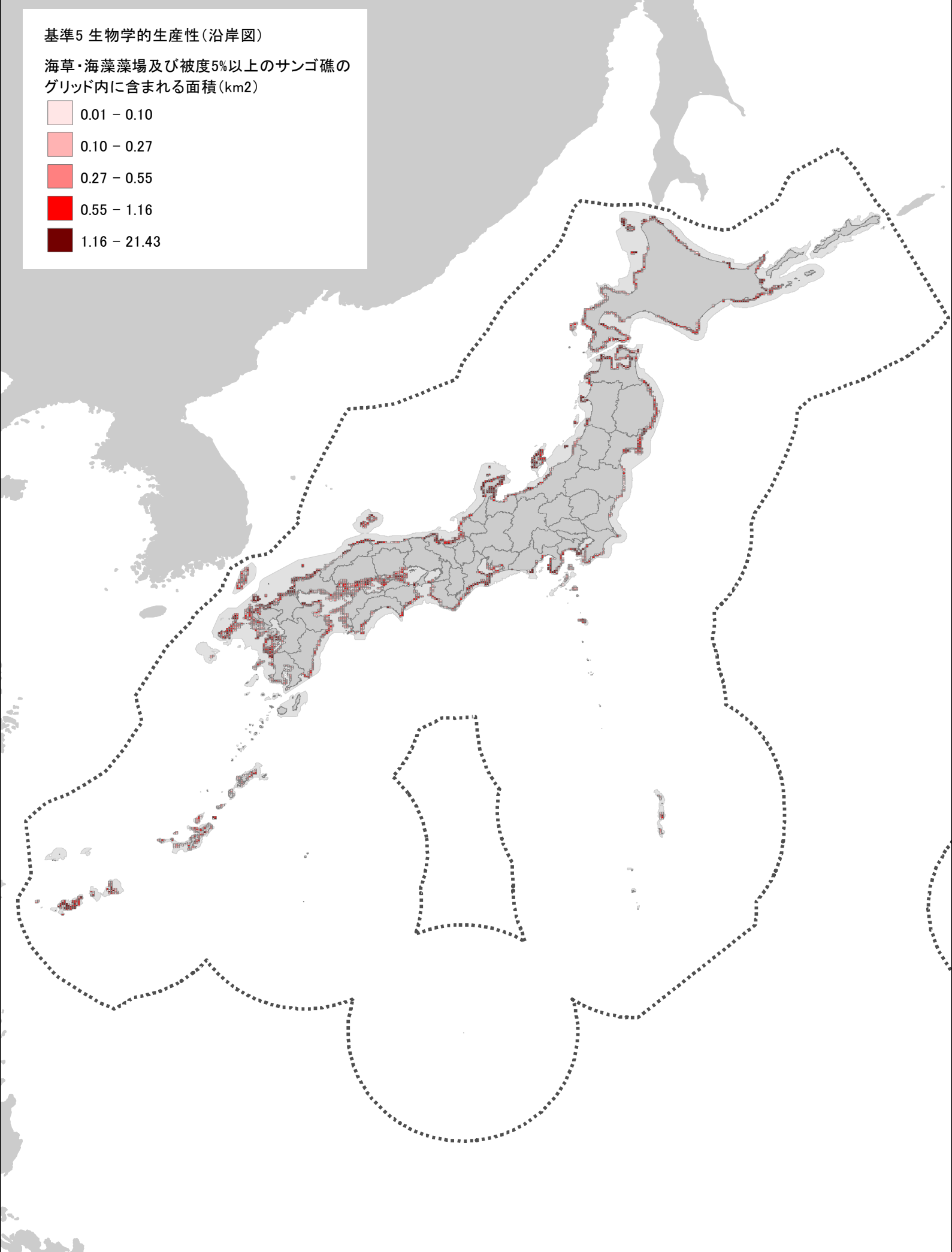
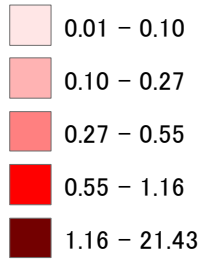


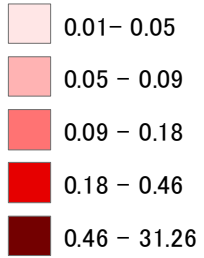
基準5 生物学的生産性(沿岸図)

海草・海藻藻場及び被度5%以上のサンゴ礁の
グリッド内に含まれる面積(km²)

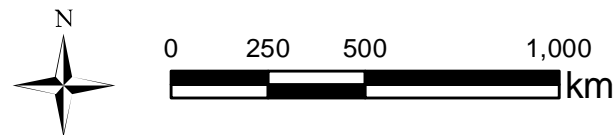
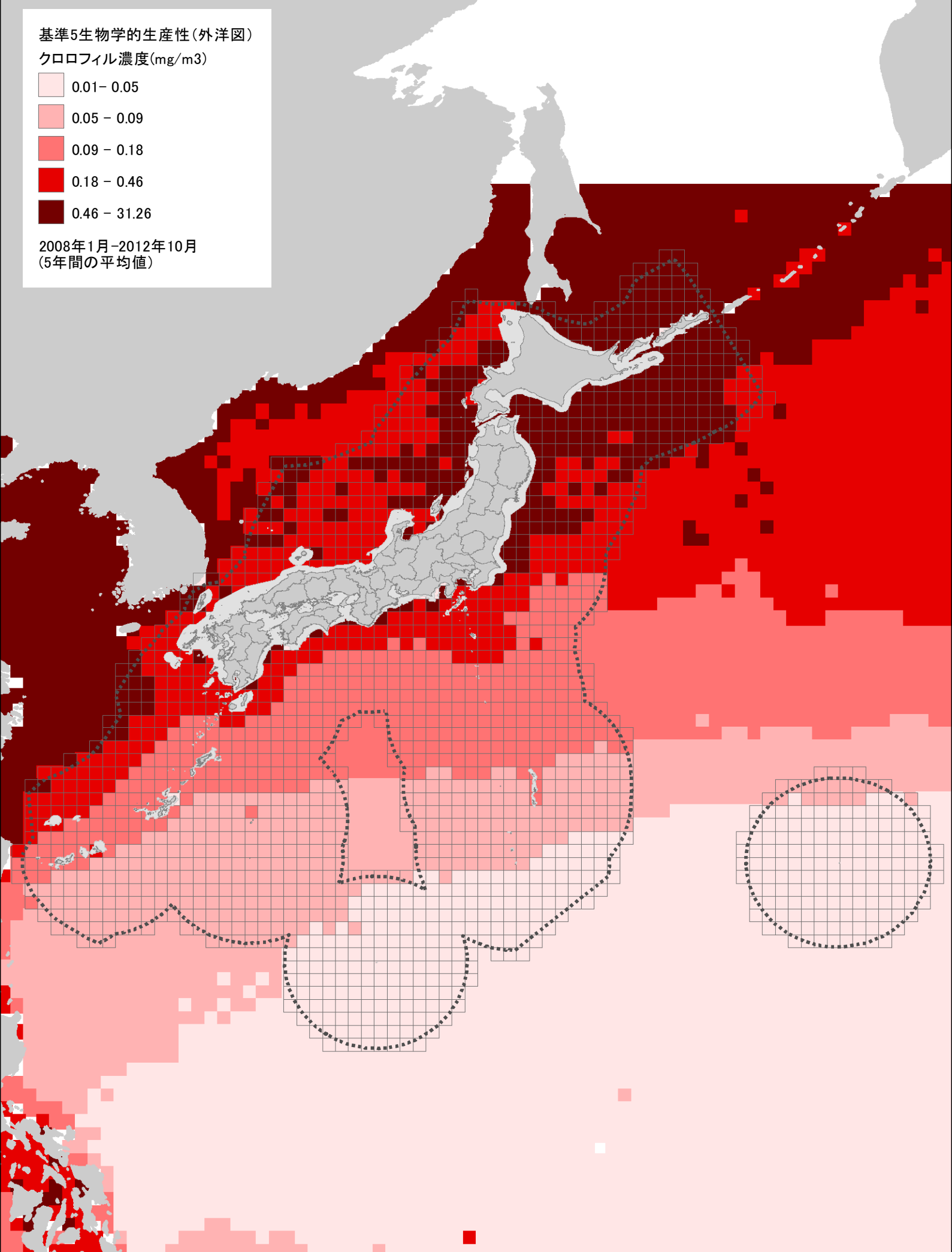


基準5生物学的生産性(外洋図)

クロロフィル濃度(mg/m³)

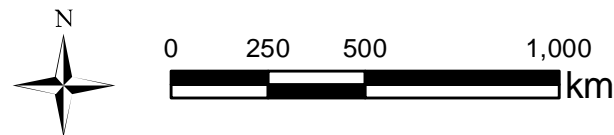
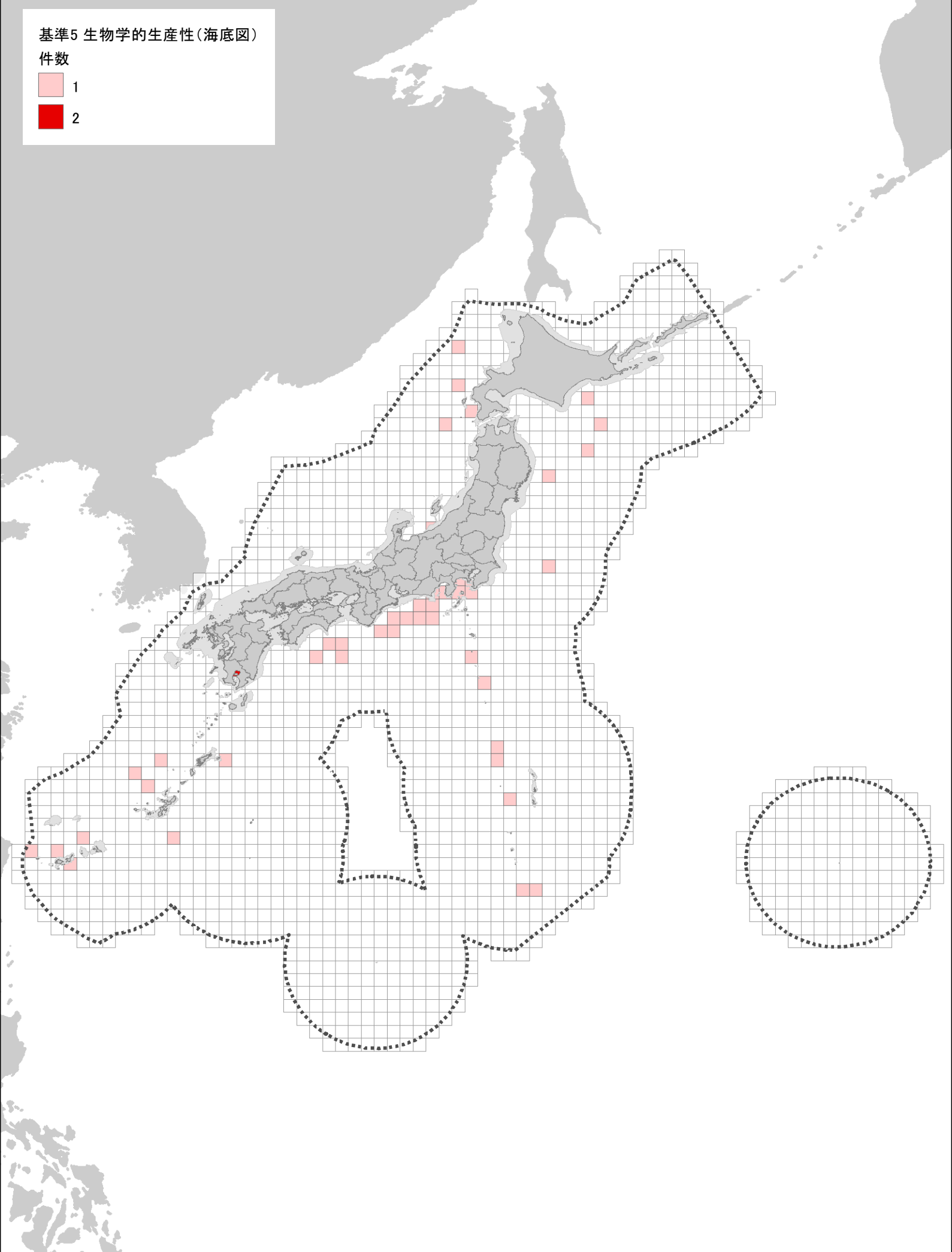
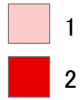


2008年1月-2012年10月
(5年間の平均値)



基準5 生物学的生産性(海底図)

件数



基準6 生物学的多様性(沿岸・外洋図)

種の多様性(ES10)

□ 標本数0

■ 標本数20以下

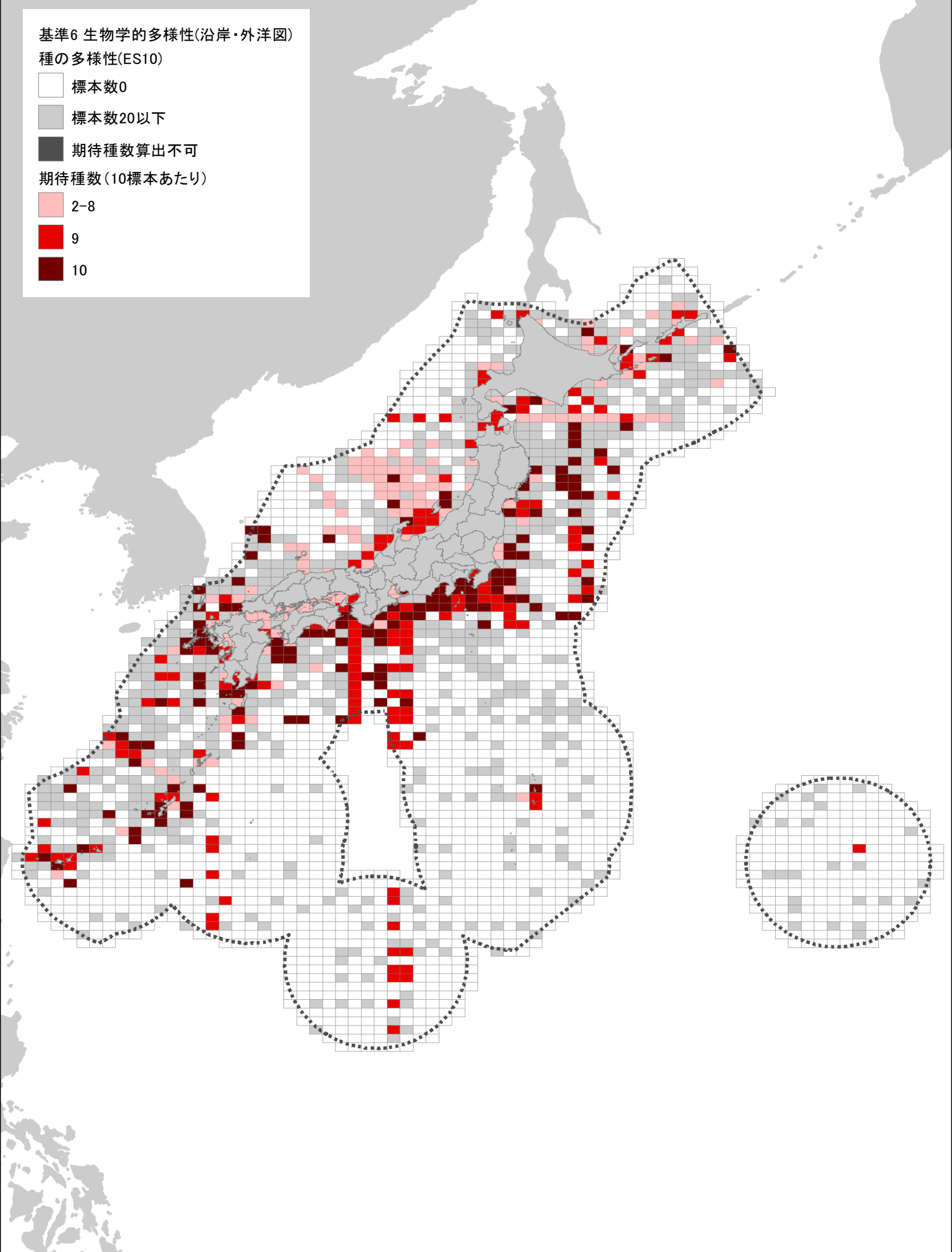
■ 期待種数算出不可

期待種数(10標本あたり)

■ 2-8

■ 9

■ 10

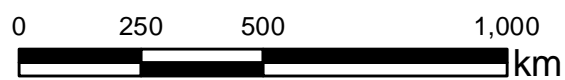
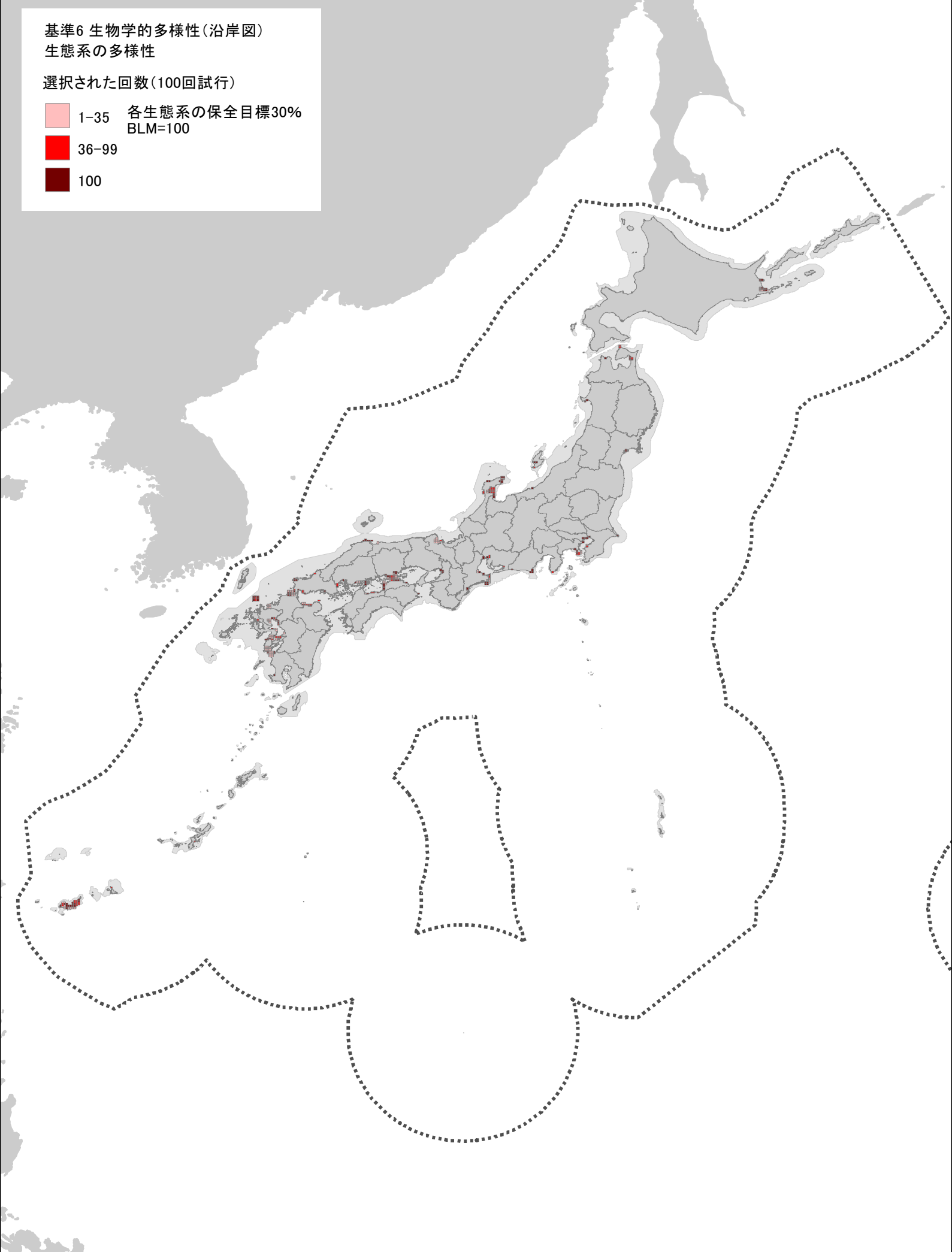
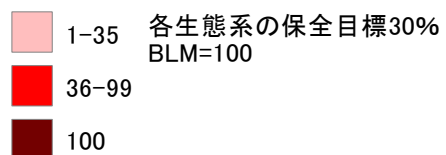


0 250 500 1,000 km



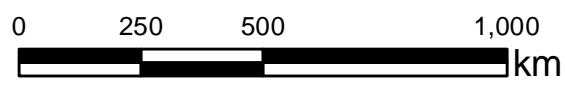
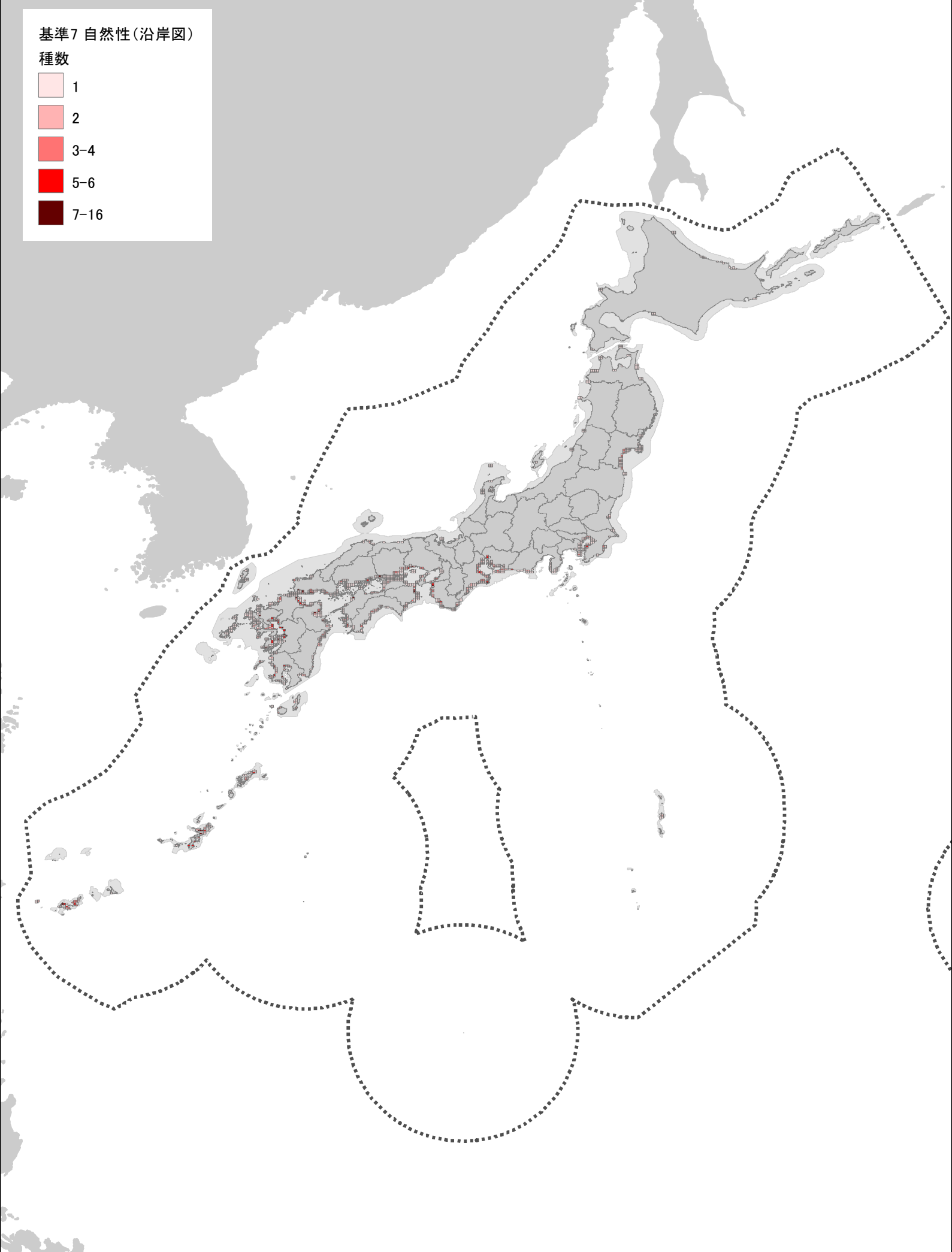
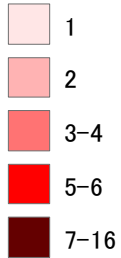
基準6 生物学的多様性(沿岸図)
生態系の多様性

選択された回数(100回試行)



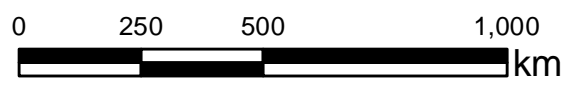
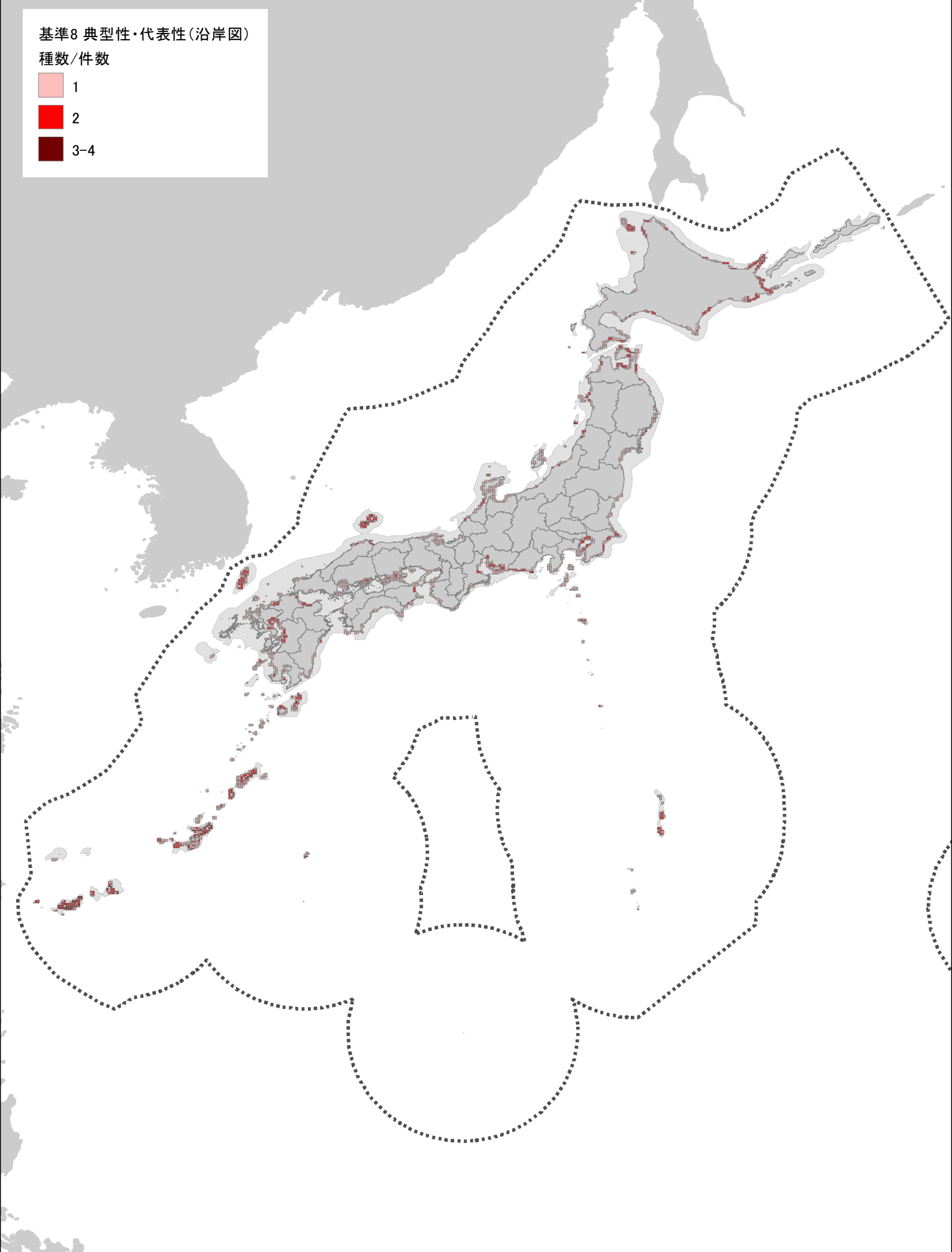
基準7 自然性(沿岸図)

種数



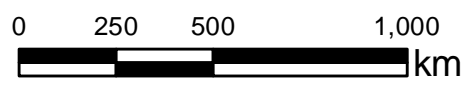
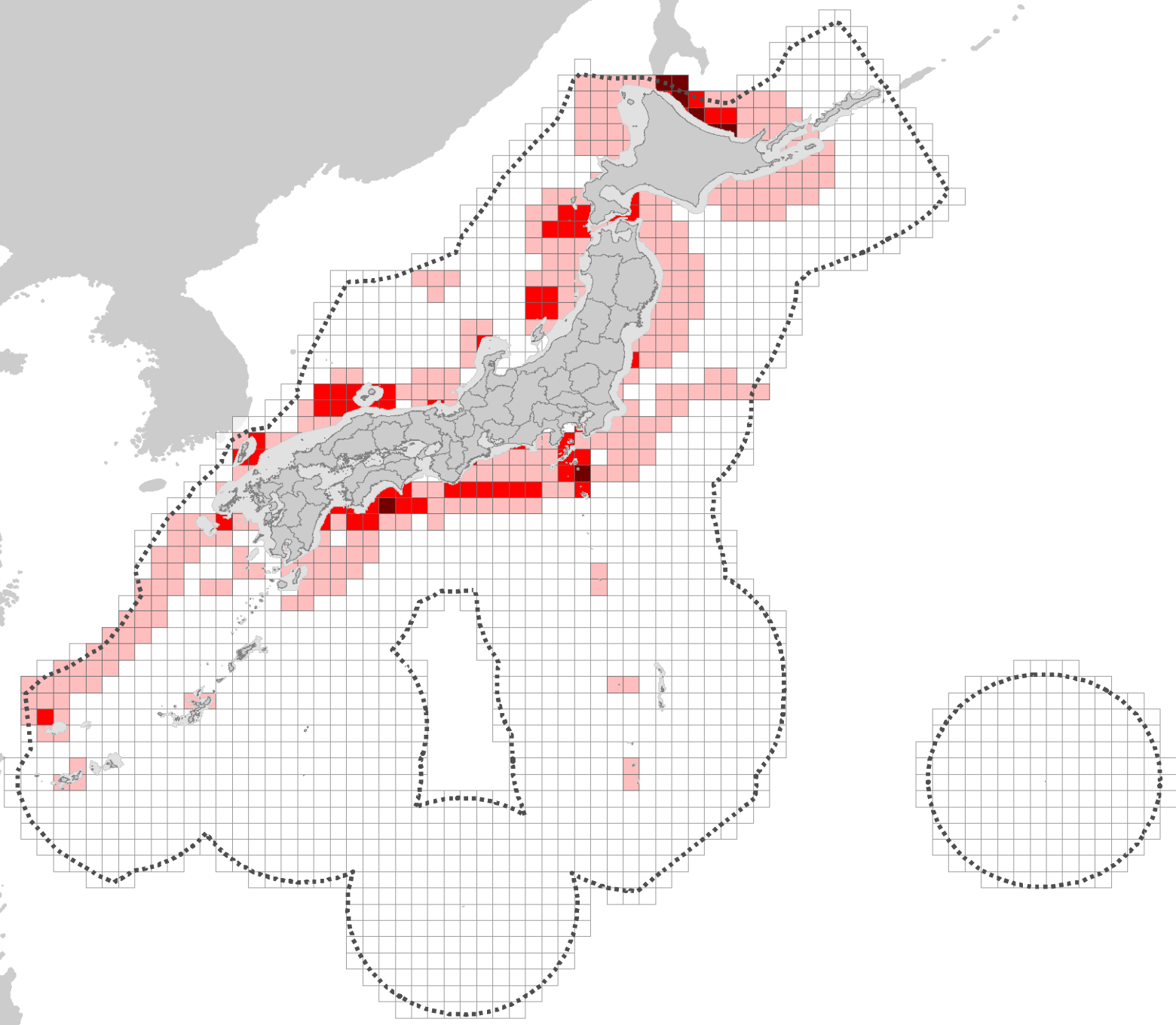
基準8 典型性・代表性(沿岸図)

種数/件数



基準8 典型性・代表性(外洋図)

件数



基準8 典型性・代表性(海底図)

件数

