



# IMPACT OF CLIMATE CHANGE TO TUVALU

By: Mr Kiali M(Foreign Affairs) &  
Ms Tilia T (Environment)

# CONTENT

---



- ✘ *Overview of Tuvalu.*
- ✘ *Ministry of Foreign Affairs Structure.*
- ✘ *Climate Science*
- ✘ *Impacts of Climate Change in Tuvalu*
- ✘ *Problems encountered.*
- ✘ *Way Forward*

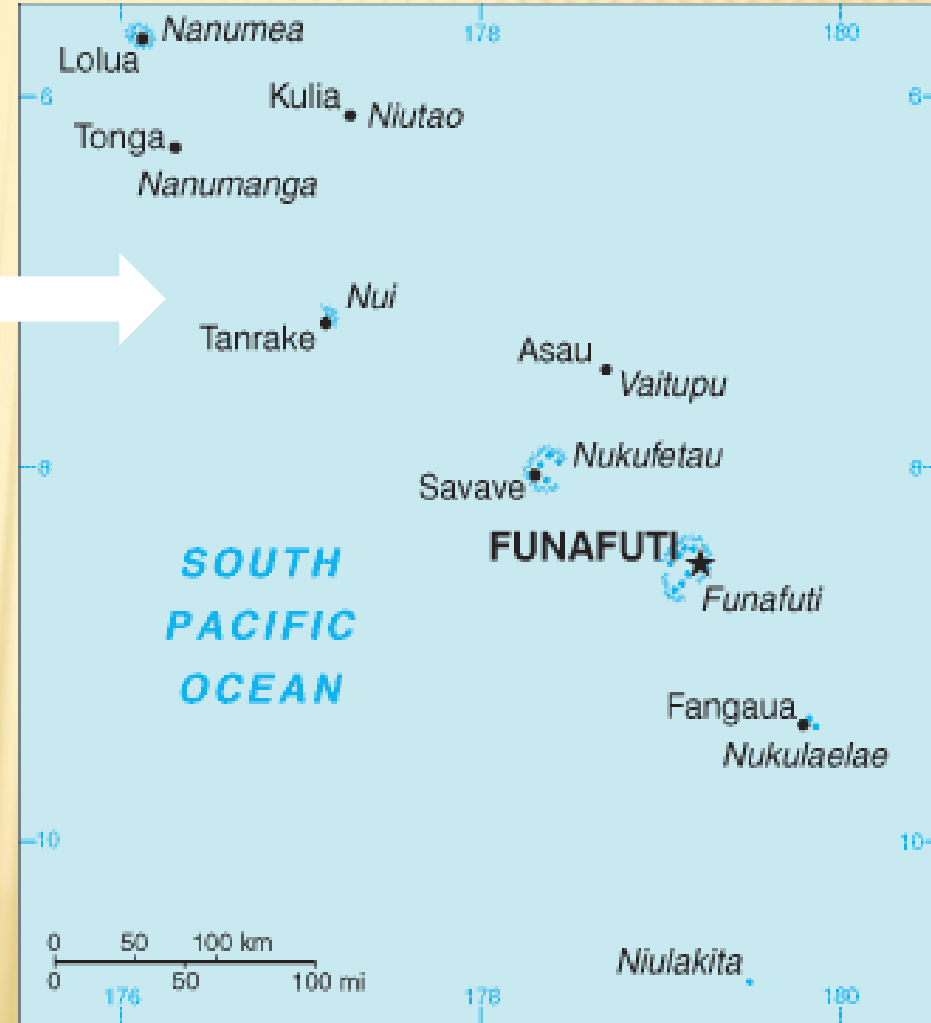
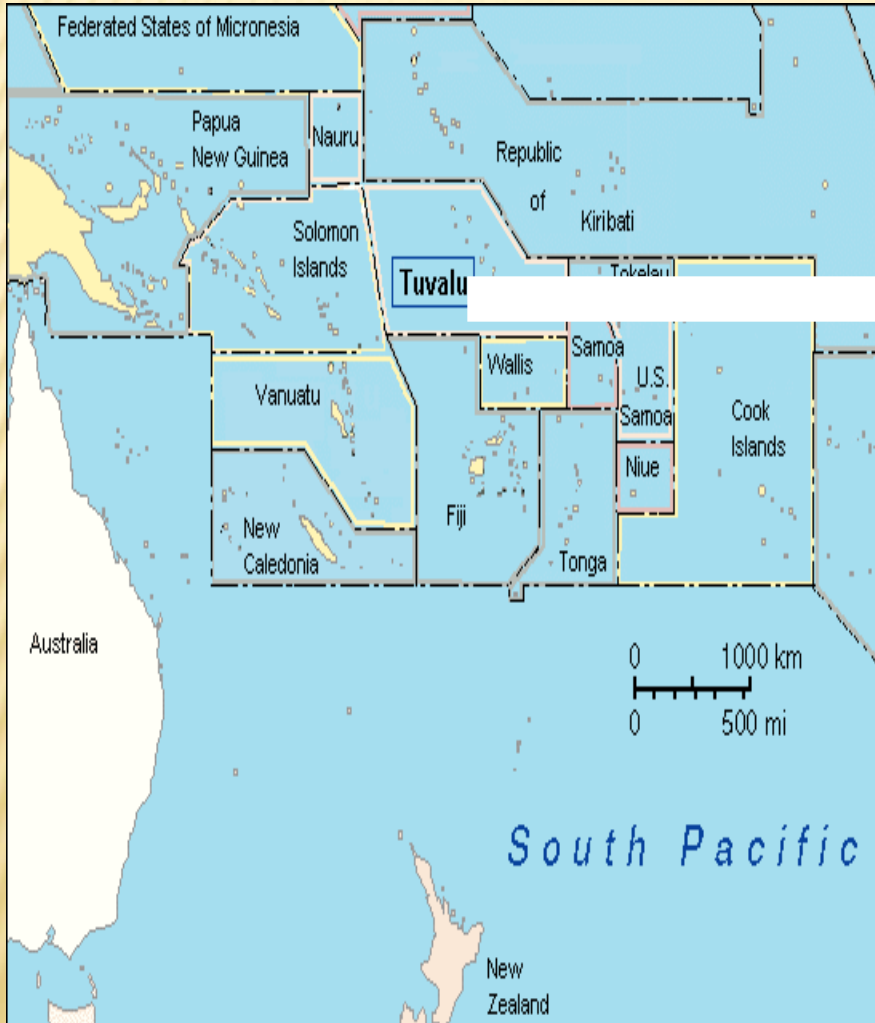
# OVERVIEW OF TUVALU



- ✘ *Polynesian Island nation, located in the Pacific ocean, midway between Hawaii and Australia*
- ✘ *Tuvalu consist of 9 islands. (3 reef islands, 6 atoll islands)*
- ✘ *Population of 10,873*
- ✘ *Land Area of 26 square kilometres.*
- ✘ *757,000 square kilometres Exclusive Economic Zone (EEZ)*



# MAP OF TUVALU



# MINISTRY STRUCTURE



Minister

Permanent  
Secretary

Assistant  
Secretary

Assistant  
Secretary

Foreign  
Affairs

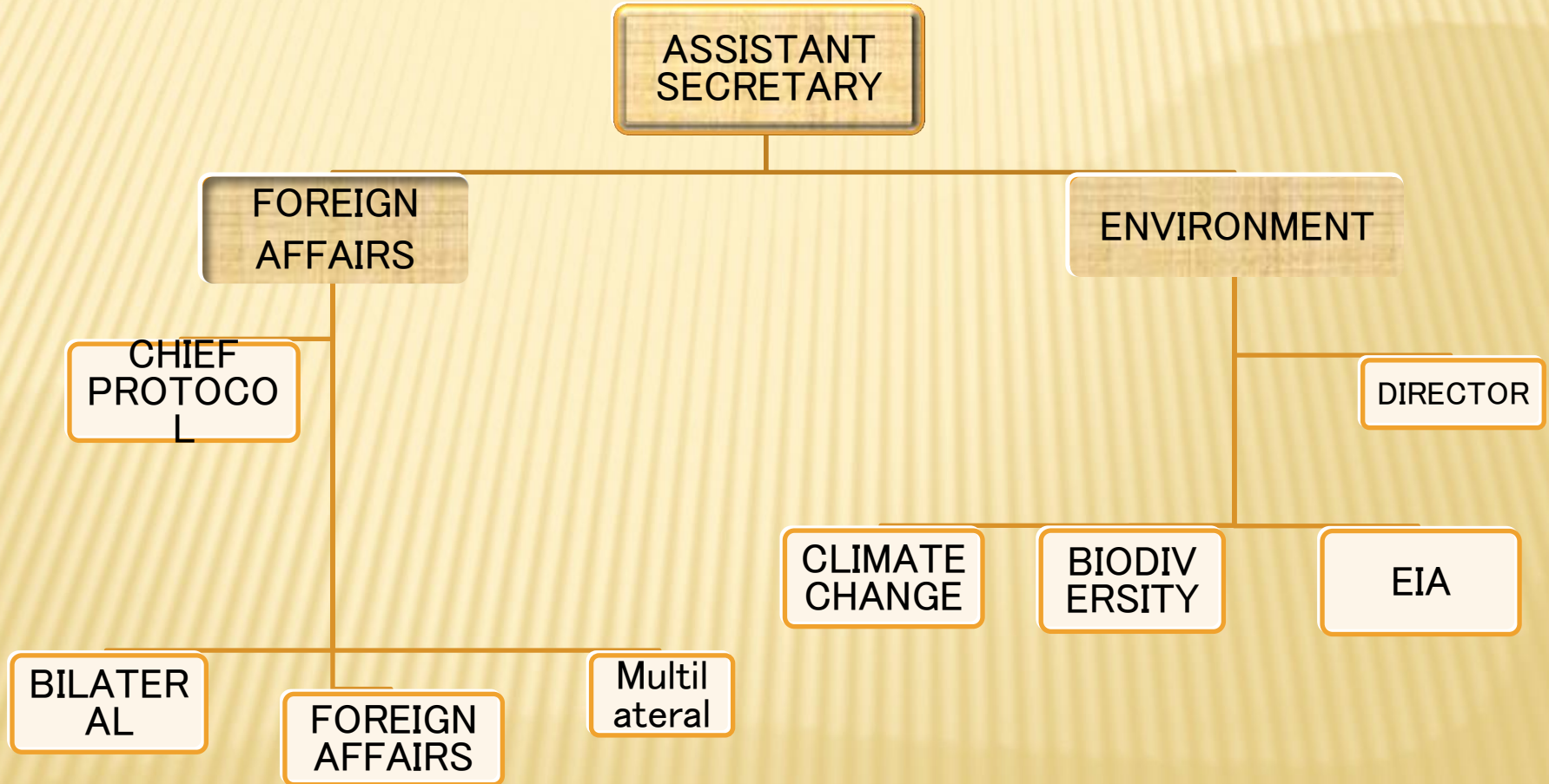
Trade

Tourism

Environment

Labour

# DEPARTMENT STRUCTURE





# PACIFIC CLIMATE CHANGE SCIENCE

*The report of the Pacific Climate Change Science Program of Australia concludes that there will be frequent increase in ;*

- ❑ *Surface air temperature and sea-surface temp.*
- ❑ *Annual and seasonal mean rainfall.*
- ❑ *The intensity and frequency of days of extreme heat.*



# PACIFIC CLIMATE CHANGE SCIENCE

## Cont.

- ❑ *The intensity and frequent days of extreme rainfall.*
- ❑ *The incidence of droughts.*
- ❑ *Ocean acidification*
- ❑ *Mean sea-level rise*





# IMPACTS OF CLIMATE CHANGE IN TUVALU

- ✘ *Frequent droughts.*
- ✘ *Traditional root crops wilt.*
- ✘ *Ocean acidification*
- ✘ *Runoff waste from land.*
- ✘ *Shortage of water.*
- ✘ *Sea level rise.*

# SEA LEVEL RISE

*Report of the IPCC, the sea level is projected to rise another 0.09m to 0.88m by the end of this century at the rate of 5mm an average per year, which is 2-4times higher than that of the past 100years.*

The sea is inextricably linked to Tuvalu's natural and social system and it has always maintained life on the islands. A change in sea level is therefore not an abstract risk but a challenging task to the every day life of Tuvaluans.









# PROJECTS IMPLEMENTED IN TUVALU

## ***GCCA:SPC***

- ❑ *Focus on introducing salt tolerant crops in Funafuti.*
- ❑ *Demonstration sites to be accessible to farmers*
- ❑ *Focus only in F/futi but can outscale to Nukufetau*
- ❑ *Approx 2 yrs*



# NAPA 1/1+

- ❑ *Focus on water, food and coastal protection.*
- ❑ *All islands in Tuvalu.*

## *IIB (Integrated Island Biodiversity)*

- ❑ *Goal: To improve the well-being of Pacific Island communities by applying an ecosystem approach to the conservation of ecosystems, species and genetic diversity in the Pacific region.*

# ODS PROJECT



- *Focus on all import gasses*
- *Manage and monitor ban gasses from entering Tuvalu*
- *Issue license to importers of all different gasses entering Tuvalu*



# PACC PROJECT

---



- *Focus on water security & safety*
- *community underground cistern*
- *'falevatie', compost toilet (IWRM Project)*

# FORAM SAND PROJECT



- *Refer to presentation from Prof Kayanne San*



***Thank You***  
***Fakafetai lasi***