

(News Release)
The Results of Radioactive Material Monitoring of the Surface Water Bodies
within Tochigi Prefecture
(February Samples)

Friday, April 26, 2013
Water Environment Division,
Environment Management Bureau,
Ministry of the Environment
Direct line: 03-5521-8316
Switchboard: 03-3581-3351
Director: Masanobu Miyazaki (ext. 6610)
Deputy Director: Saori Nagasawa (ext. 6614)
Coordinator: Katsuhiko Sato (ext. 6628)

In accordance with the Comprehensive Radiation Monitoring Plan determined by the Monitoring Coordination Meeting, the Ministry of the Environment (MOE) is continuing to monitor radioactive materials in water environments (surface water bodies (rivers, lakes and headwaters, and coasts), etc.).

Samples taken from the surface water bodies of Tochigi Prefecture during the period of February 4-22, 2013 have been measured as part of MOE's efforts to monitor radioactive materials; the results have recently been compiled and are released here.

The monitoring results of radioactive materials in surface water bodies carried out to date can be found at the following web page: <http://www.env.go.jp/jishin/rmp.html#monitoring>

1. Survey Overview

(1) Survey Locations

64 environmental reference points, etc. in the surface water bodies within Tochigi Prefecture
(Rivers: 56 locations, Lakes: 8 locations)

(2) Survey Method

- Measurement of concentrations of radioactive materials (radioactive cesium (Cs-134 and Cs-137), etc.) in water and sediment
- Measurement of concentrations of radioactive materials and spatial dose-rate in soil in the surrounding environment of water and sediment sample collection points (river terraces, etc.)

2. Outline of Results (* denotes the results of the previous survey (October-December 2012))

(1) Water Quality (Lower detection limit: 1Bq/L)

Cs-134+ Cs-137: Not detectable (ND) at any location (* ND at any location)

<Reference>

Specification and Standards for Food, Food Additives, etc. in accordance with the Food Sanitation Act (Drinking Water) (Ministry of Health, Labour and Welfare Public Notice No.130, March 15, 2012)
Radioactive cesium (total for Cs-134+Cs-137): 10Bq/kg

Target value for radioactive materials in tap water (management target for water supply facilities) (March 5, 2012; 0305 Notice No.1 from the Director of the Water Supply Division, Health Service Bureau, Ministry of Health, Labour and Welfare)

Radioactive cesium (total for Cs-134+Cs-137): 10Bq/kg

(2) Sediment (Lower detection limit: 10Bq/kg (dried mud))

For rivers, levels were around 500Bq/kg or below at most locations, and have generally remained constant or had a declining tendency. For lakes and headwaters, levels were around 1,000Bq/kg or below at most locations, and have generally remained constant or had a declining tendency.

(Rivers)

Cs-134+Cs-137: ND-690Bq/kg (dried mud) (*ND-500Bq/kg (dried mud))

(Lakes and headwaters)

Cs-134+Cs-137: 320-4,000Bq/kg (dried mud) (*25-2,500Bq/kg (dried mud))

<Reference> Number of locations by radioactive cesium concentration (500Bq/kg)

Numbers in () denote results measured on the previous occasion.

| | 500 or below | 501 -1,000 | 1,001 -1,500 | 1,501 -2,000 | 2,001 -2,500 | 2,501 -3,000 | 3,001 or more | Total |
|----------------------|--------------|------------|--------------|--------------|--------------|--------------|---------------|---------|
| Rivers | 54 (63) | 1 (0) | 0 (0) | 0 (0) | 0 (0) | 0 (0) | 0 (0) | 55 (63) |
| Lakes and headwaters | 1 (6) | 2 (1) | 0 (0) | 0 (0) | 0 (1) | 0 (0) | 1 (0) | 4 (7) |

(3) Surrounding Environment (Lower detection limit: 10Bq/kg (dry))

(Rivers)

Cs-134+Cs-137: 38-13,300Bq/kg (dry) (*48-9,600Bq/kg (dry))

Spatial dose: 0.07-0.77 μ Sv/h

(Lakes and headwaters)

Cs-134+Cs-137: 141-4,900Bq/kg (dry) (*69-3,600Bq/kg (dry))

Spatial dose: 0.09-0.48 μ Sv/h

(Annex for details)
(Map attached)

Future Plans

MOE intends to continue to measure radioactive materials in water, sediment, etc. in rivers, lakes, etc. in FY2013, since concentrations of radioactive materials seem to show fluctuations, depending on locations, due to minor differences in sampling points or properties of samples of each survey.

| No. | Sampling point | | | | Sampling date | Weather | Full depth m | General items | | | | | Concentration of radioactive material Bq/L | | | Remarks | | |
|-----|---------------------------|--|--|-------------------------------------|-------------------------------------|-----------|--------------------|------------------|-----------------|------------------------------|---------|-----------|--|----------------------------------|----|---|----|--|
| | Water body | Point | Municipality | | | | | Sampling depth m | Transparency cm | Electrical conductivity nS/m | SS mg/L | Turbidity | Radioactive iodine I-131 | Radioactive cesium Cs-134 Cs-137 | | | | |
| 1 | N a k a g a w a R i v e r | Nakagawa River | Kuyobushibita | Nasushiobarashi City | 2013/2/13 | Sunny | 0.4 | 0.0 | >100 | 18 | <1 | 0 | <1 | <1 | <1 | | | |
| 2 | | | Komeibashi Bridge | Nasushiobarashi City/Nasumachi Town | 2013/2/13 | Sunny | 0.4 | 0.0 | >100 | 18 | <1 | 0 | <1 | <1 | <1 | <1 | | |
| 3 | | | Takamatagawa River | Takamatabashi Bridge | Nasumachi Town | 2013/2/14 | Sunny | 0.3 | 0.0 | >100 | 19 | 1 | 1 | <1 | <1 | <1 | <1 | |
| 4 | | | Yukawa River | Yukawabashi Bridge | Nasumachi Town | 2013/2/14 | Sunny | 0.4 | 0.0 | 90 | 36 | 2 | 1 | <1 | <1 | <1 | <1 | |
| 5 | | | Nakagawa River | Kamikuroiso | Nasushiobarashi City/Nasumachi Town | 2013/2/14 | Sunny | 0.4 | 0.0 | 98 | 24 | <1 | 0 | <1 | <1 | <1 | <1 | |
| 6 | | | Yosasagawa River | Yosasabashi Bridge | Nasumachi Town | 2013/2/13 | Sunny | 0.2 | 0.0 | >100 | 13 | <1 | 0 | <1 | <1 | <1 | <1 | |
| 7 | | | Kurokawa River | Shindenbashi Bridge | Nasumachi Town | 2013/2/13 | Sunny | 0.5 | 0.0 | >100 | 7 | <1 | 1 | <1 | <1 | <1 | <1 | |
| 8 | | | Yosasagawa River | Kawadabashi Bridge | Otawarashi City/Nasumachi Town | 2013/2/13 | Sunny | 0.5 | 0.0 | >100 | 10 | 4 | 1 | <1 | <1 | <1 | <1 | |
| 9 | | | Nakagawa River | Kurobane | Nasumachi Town | 2013/2/13 | Sunny | 0.4 | 0.0 | >100 | 12 | 1 | 1 | <1 | <1 | <1 | <1 | |
| 10 | | | Matsubagawa River | Tributary | Otawarashi City | 2013/2/13 | Sunny | 0.3 | 0.0 | >100 | 6 | <1 | 1 | <1 | <1 | <1 | <1 | |
| 11 | | | Sabigawa River | Udagawabashi Bridge | Nasumachi Town | 2013/2/13 | Sunny | 0.2 | 0.0 | >100 | 11 | <1 | 0 | <1 | <1 | <1 | <1 | |
| 12 | | | Memuragawa River | Memurakabashi Bridge | Nasumachi Town | 2013/2/13 | Sunny | 0.4 | 0.0 | >100 | 16 | <1 | 0 | <1 | <1 | <1 | <1 | |
| 13 | | | Yunohara | | Nasushiobarashi City | 2013/2/12 | Sunny | 0.5 | 0.0 | >100 | 19 | <1 | 1 | <1 | <1 | <1 | <1 | |
| 14 | | | Hokigawa River | Sekibashashi Bridge | Nasushiobarashi City | 2013/2/12 | Cloudy, then sunny | 0.7 | 0.0 | >100 | 18 | <1 | 0 | <1 | <1 | <1 | <1 | |
| 15 | | | Iwabashi Bridge | | Otawarashi City | 2013/2/14 | Cloudy | 0.6 | 0.0 | >100 | 15 | <1 | 1 | <1 | <1 | <1 | <1 | |
| 16 | | | Hokigawabashi Bridge | | Otawarashi City | 2013/2/14 | Sunny | 0.4 | 0.0 | >100 | 13 | <1 | 1 | <1 | <1 | <1 | <1 | |
| 17 | | | Nakagawa River | Nishikabashi Bridge | Nakagawamachi Town | 2013/2/14 | Cloudy | 0.2 | 0.0 | >100 | 13 | 1 | 1 | <1 | <1 | <1 | <1 | |
| 18 | | | Mimogawa River | Kosebashi Bridge | Nakagawamachi Town | 2013/2/14 | Sunny | 0.4 | 0.0 | >100 | 8 | <1 | 1 | <1 | <1 | <1 | <1 | |
| 19 | | | Arakawa River | Saikachibashi Bridge | Shiyoumachi Town | 2013/2/12 | Sunny | 0.2 | 0.0 | >100 | 5 | 1 | 1 | <1 | <1 | <1 | <1 | |
| 20 | | | Renjoshashi Bridge | | Sakurashi City | 2013/2/14 | Cloudy | 0.3 | 0.0 | >100 | 12 | <1 | 1 | <1 | <1 | <1 | <1 | |
| 21 | | | Tanakabashi Bridge | | Yatashi City | 2013/2/12 | Cloudy | 0.3 | 0.0 | 65 | 7 | 3 | 4 | <1 | <1 | <1 | <1 | |
| 22 | | | Ashibashi Bridge | | Sakurashi City | 2013/2/14 | Cloudy | 0.4 | 0.0 | >100 | 20 | 1 | 1 | <1 | <1 | <1 | <1 | |
| 23 | | | Arakawa River | Makadabashi Bridge | Nasukarasuyamashi City | 2013/2/13 | Rain | 1.1 | 0.0 | >100 | 18 | 2 | 1 | <1 | <1 | <1 | <1 | |
| 24 | | | Egawa River | Tributary | Nasukarasuyamashi City | 2013/2/15 | Cloudy | 0.3 | 0.0 | >100 | 13 | 2 | 1 | <1 | <1 | <1 | <1 | |
| 25 | Kimugawa River | Kawaji Daichi Power Station, front | | 2013/2/20 | Sunny | 0.6 | 0.0 | >100 | 8 | <1 | 1 | <1 | <1 | <1 | <1 | | | |
| 26 | Yumigawa River | Maesawabashi Bridge | | 2013/2/20 | Sunny | 0.5 | 0.0 | >100 | 10 | <1 | 1 | <1 | <1 | <1 | <1 | | | |
| 27 | Onikagawa River | Tributary | | 2013/2/20 | Sunny | 0.5 | 0.0 | >100 | 8 | <1 | 1 | <1 | <1 | <1 | <1 | | | |
| 28 | Kimugawa River | Kasage | | 2013/2/20 | Sunny | 0.6 | 0.0 | >100 | 10 | <1 | 1 | <1 | <1 | <1 | <1 | | | |
| 29 | Iinagawa River | Tributary | Nikkoshi City | 2013/2/19 | Sunny | - | - | - | - | - | - | - | - | - | - | Unable to collect samples due to construction | | |
| 30 | Yukawa River | Tributary | | 2013/2/20 | Snow | 0.7 | 0.0 | >100 | 16 | 1 | 1 | <1 | <1 | <1 | <1 | | | |
| 31 | Daiyagawa River | Shunkyo Bridge | | 2013/2/20 | Sunny | 0.2 | 0.0 | >100 | 11 | <1 | 0 | <1 | <1 | <1 | <1 | | | |
| 32 | Shidobuchigawa River | Sujichigawabashi Bridge | | 2013/2/21 | Sunny | 0.1 | 0.0 | >100 | 13 | <1 | 0 | <1 | <1 | <1 | <1 | | | |
| 33 | Daiyagawa River | Kashimbashi Bridge (Hariga) | | 2013/2/19 | Cloudy | 0.6 | 0.0 | >100 | 11 | 2 | 1 | <1 | <1 | <1 | <1 | | | |
| 34 | Kimugawa River | Sami | Shiyoumachi Town | 2013/2/19 | Cloudy | 0.3 | 0.0 | >100 | 12 | 2 | 1 | <1 | <1 | <1 | <1 | | | |
| 35 | Nishikimugawa River | Nishikimugawabashi Bridge | Utsunomiya City | 2013/2/21 | Sunny | 0.6 | 0.0 | >100 | 11 | <1 | 1 | <1 | <1 | <1 | <1 | | | |
| 36 | Kimugawa River | Kimugawabashi Bridge (Hoshakui Temple) | Utsunomiya City/Takanawamachi Town | 2013/2/21 | Sunny | 0.2 | 0.0 | >100 | 17 | <1 | 1 | <1 | <1 | <1 | <1 | | | |
| 37 | Daidozumbashi Bridge | | Mookashi City | 2013/2/5 | Sunny | 1.0 | 0.0 | >100 | 23 | <1 | 1 | <1 | <1 | <1 | <1 | | | |
| 38 | Egawa River | Tributary | Shimotsukeshi City | 2013/2/5 | Sunny | 0.3 | 0.0 | 67 | 27 | 4 | 5 | <1 | <1 | <1 | <1 | | | |
| 39 | Nikko City Hall, front | | Nikko City | 2013/2/21 | Sunny | 0.1 | 0.0 | >100 | 13 | 0 | 1 | <1 | <1 | <1 | <1 | | | |
| 40 | Akaborigawa River | Kiwadama | Nikkoshi City | 2013/2/21 | Sunny | 0.5 | 0.0 | >100 | 19 | 4 | 1 | <1 | <1 | <1 | <1 | | | |
| 41 | Tagawa River | Ozebashi Bridge | Utsunomiya City | 2013/2/22 | Sunny | 0.2 | 0.0 | >100 | 15 | 3 | 1 | <1 | <1 | <1 | <1 | | | |
| 42 | Kamagawa River | Tsukushibashi Bridge | Utsunomiya City | 2013/2/21 | Sunny | 0.1 | 0.0 | 82 | 26 | 5 | 2 | <1 | <1 | <1 | <1 | | | |
| 43 | Tagawa River | Meijibashi Bridge | Kaminokawamachi Town | 2013/2/5 | Sunny | 0.2 | 0.0 | >100 | 32 | 6 | 3 | <1 | <1 | <1 | <1 | | | |
| 44 | Yanabashi Bridge | | Oyamashi City | 2013/2/5 | Sunny | 0.6 | 0.0 | >100 | 34 | 3 | 2 | <1 | <1 | <1 | <1 | | | |
| 45 | S a t a R a i s i v e r | Omoigawa River | Kurokawa River | Kajimabashi Bridge | Kanumashi City | 2013/2/4 | Sunny | 0.2 | 0.0 | >100 | 11 | 2 | 1 | <1 | <1 | <1 | | |
| 46 | | | Omaribashi Bridge | Mibumashi Town | 2013/2/5 | Sunny | 0.3 | 0.0 | >100 | 24 | 6 | 2 | <1 | <1 | <1 | <1 | | |
| 47 | | | Oashigawa River | Akaishibashi Bridge | Kanumashi City | 2013/2/4 | Cloudy | 0.3 | 0.0 | >100 | 8 | <1 | 1 | <1 | <1 | <1 | <1 | |
| 48 | | | Kovabugawa River | Kovabubashi Bridge | 2013/2/4 | Rain | 0.2 | 0.0 | >100 | 15 | 4 | 4 | <1 | <1 | <1 | <1 | <1 | |
| 49 | | | Utsunogawa River | Tanotsuchi Bridge | Tochigashi City | 2013/2/6 | Snow | 0.3 | 0.0 | >100 | 18 | 1 | 1 | <1 | <1 | <1 | <1 | |
| 50 | | | Omoigawa River | Otomobashi Bridge | Oyamashi City | 2013/2/5 | Sunny | 0.2 | 0.0 | >100 | 24 | 3 | 2 | <1 | <1 | <1 | <1 | |
| 51 | | | Uzumagawa River | Uzumabashi Bridge | Tochigashi City | 2013/2/6 | Snow | 0.5 | 0.0 | 76 | 31 | 5 | 2 | <1 | <1 | <1 | <1 | |
| 52 | | | Watarasegawa River intake weir at Soni Power Station | | Nikkoshi City | 2013/2/5 | Sunny | 0.2 | 0.0 | >100 | 25 | <1 | 0 | <1 | <1 | <1 | <1 | |
| 53 | | | Haiikabashi Bridge | | Ashikagashi City/Otashi City | 2013/2/7 | Sunny | 0.4 | 0.0 | 94 | 14 | <1 | 1 | <1 | <1 | <1 | <1 | |
| 54 | | | Watarasegawa River | Nakabashi Bridge | Ashikagashi City | 2013/2/7 | Sunny | 1.3 | 0.0 | 83 | 16 | 2 | 2 | <1 | <1 | <1 | <1 | |
| 55 | Watarasegawa River | Watarasegawabashi Bridge | Tatebayashi City | 2013/2/6 | Rain | 0.5 | 0.0 | 71 | 22 | 1 | 1 | <1 | <1 | <1 | <1 | | | |
| 56 | Shinkabashi Bridge | | Tochigashi City | 2013/2/6 | Rain | 0.3 | 0.0 | 63 | 26 | 6 | 3 | <1 | <1 | <1 | <1 | | | |

* Sampling points for rivers are listed from north to south, and for different points along the river, from upstream to downstream.

ORiver: Sediment Monitoring Results

| No. | Sampling point | | | | Sampling date | Weather | Full depth m | General items | | | Concentration of radioactive material Bq/kg (dried mud) | | | | Remarks | | | |
|-----|--------------------|------------------------------|-----------------------|---|--|--------------------|--------------------|------------------|-----------|--------------------|---|--------|-------------|-----|---------|---|----|--|
| | Water body | Point | Municipality | Mud sampling depth cm | | | | Mud content % | Property | Radioactive iodine | Radioactive cesium | | Total | | | | | |
| | | | | | | | | | | I-131 | Cs-134 | Cs-137 | | | | | | |
| 1 | N a k a a g a w a | Nakagawa River | Kuyobashishita | Nasushiobarashi City | 2013/2/13 | Sunny | 0.4 | 4 | 90 | Gravel/sand | <30 | <10 | 15 | 15 | | | | |
| 2 | | | Komebashi Bridge | Nasushiobarashi City/Nasumachi Town | 2013/2/13 | Sunny | 0.4 | 8 | 90 | Sand | <30 | 22 | 42 | 64 | | | | |
| 3 | | Takaomatagawa River | Takaomatabashi Bridge | Nasumachi Town | 2013/2/14 | Sunny | 0.3 | 6 | 81 | Sand | <30 | 67 | 130 | 197 | | | | |
| 4 | | Yukawa River | Yukawabashi Bridge | | 2013/2/14 | Sunny | 0.4 | 6 | 86 | Sand | <30 | 28 | 45 | 73 | | | | |
| 5 | | Nakagawa River | Kamikarasao | Nasushiobarashi City/Nasumachi Town | 2013/2/14 | Sunny | 0.4 | 6 | 94 | Gravel/sand | <30 | <10 | 16 | 16 | | | | |
| 6 | | Yosasagawa River | Yosasabashi Bridge | | 2013/2/13 | Sunny | 0.2 | 2 | 83 | Sand | <30 | 31 | 48 | 79 | | | | |
| 7 | | Kurokawa River | Shundenbashi Bridge | | 2013/2/13 | Sunny | 0.5 | 2 | 89 | Sand | <30 | 38 | 90 | 128 | | | | |
| 8 | | Yosasagawa River | Kawadabashi Bridge | Otarashi City/Nasumachi Town | 2013/2/13 | Sunny | 0.5 | 2 | 89 | Sand | <30 | 47 | 83 | 130 | | | | |
| 9 | | Nakagawa River | Kurohane | | 2013/2/13 | Sunny | 0.4 | 2 | 85 | Sand | <30 | 19 | 39 | 58 | | | | |
| 10 | | Matsubagawa River | Tributary | Otarashi City | 2013/2/13 | Sunny | 0.3 | 3 | 91 | Sand | <30 | 26 | 43 | 69 | | | | |
| 11 | | R i v e r | Sabigawa River | Udagwabashi Bridge | | 2013/2/13 | Sunny | 0.2 | 1 | 84 | Sand | <30 | 63 | 120 | 183 | | | |
| 12 | | | | Momuranakabashi Bridge | | 2013/2/13 | Sunny | 0.4 | 1 | 92 | Gravel/sand | <30 | 35 | 70 | 105 | | | |
| 13 | | | Yunohara | Nasushiobarashi City | | 2013/2/12 | Sunny | 0.5 | 2 | 80 | Sand | <30 | 11 | 25 | 36 | | | |
| 14 | | | Hokigawa River | Sekebashi Bridge | | 2013/2/12 | Cloudy, then sunny | 0.7 | 2 | 88 | Sand | <30 | 63 | 130 | 193 | | | |
| 15 | | | Iwabashi Bridge | Otarashi City | | 2013/2/14 | Cloudy | 0.6 | 2 | 77 | Sand | <30 | 27 | 66 | 93 | | | |
| 16 | | | Hokigawabashi Bridge | | | 2013/2/14 | Sunny | 0.4 | 3 | 81 | Sand | <30 | 15 | 38 | 53 | | | |
| 17 | | | Nakagawa River | Shimabashi Bridge | Nakagawamachi Town | 2013/2/14 | Cloudy | 0.2 | 1 | 92 | Gravel/sand | <30 | <10 | 16 | 16 | | | |
| 18 | | | Mimogawa River | Komebashi Bridge | | 2013/2/14 | Sunny | 0.4 | 4 | 86 | Sand | <30 | 10 | 20 | 30 | | | |
| 19 | | | Araikawa River | Saikachibashi Bridge | Shioyama City | 2013/2/12 | Sunny | 0.2 | 1 | 91 | Gravel/sand | <30 | 58 | 110 | 168 | | | |
| 20 | | | Renjohashi Bridge | Sakurashi City | | 2013/2/14 | Cloudy | 0.3 | 2 | 82 | Sand | <30 | 11 | 22 | 33 | | | |
| 21 | | Uchikawa River | Tanakabashi Bridge | Yatashi City | 2013/2/12 | Cloudy | 0.3 | 2 | 88 | Gravel/sand | <30 | 51 | 92 | 143 | | | | |
| 22 | | Araikawa River | Ashihashi Bridge | Sakurashi City | 2013/2/14 | Cloudy | 0.4 | 2 | 92 | Gravel/sand | <30 | 32 | 50 | 82 | | | | |
| 23 | | Araikawa River | Makabashi Bridge | | 2013/2/15 | Rain | 1.1 | 3 | 72 | Sand | <30 | 36 | 63 | 99 | | | | |
| 24 | | Egawa River | Tributary | Nasukarasuyama City | 2013/2/15 | Cloudy | 0.3 | 2 | 88 | Sand | <30 | 20 | 43 | 63 | | | | |
| 25 | T o n e g a w a | K i n u g a w a | Kimugawa River | Kawaji Daichi Power Station front | 2013/2/20 | Sunny | 0.6 | 2 | 92 | Sand | <30 | 15 | 30 | 45 | | | | |
| 26 | | | Yanishigawa River | Matswabashi Bridge | | 2013/2/20 | Sunny | 0.5 | 2 | 92 | Gravel/sand | <30 | <10 | <10 | - | | | |
| 27 | | | Ohikagawa River | Tributary | | 2013/2/20 | Sunny | 0.3 | 2 | 94 | Gravel/sand | <30 | <10 | 15 | 15 | | | |
| 28 | | | Kimugawa River | Kosogoe | | 2013/2/20 | Sunny | 0.6 | 2 | 90 | Sand | <30 | 240 | 450 | 690 | | | |
| 29 | | | Itanagawa River | Tributary | Nikkoshi City | 2013/2/19 | Sunny | - | - | - | - | - | - | - | - | Unable to collect samples due to construction | | |
| 30 | | | Yakawa River | Tributary | | 2013/2/20 | Snow | 0.7 | 2 | 71 | Sand | <30 | 27 | 45 | 72 | | | |
| 31 | | | Daivagawa River | Shinkyo Bridge | | 2013/2/20 | Sunny | 0.2 | 3 | 89 | Sand | <30 | 14 | 24 | 38 | | | |
| 32 | | | Shidobuchigawa River | Suichigabashi Bridge | | 2013/2/21 | Sunny | 0.1 | 2 | 91 | Gravel/sand | <30 | 76 | 150 | 226 | | | |
| 33 | | | Daivagawa River | Kashibashi Bridge (Hangau) | | 2013/2/19 | Cloudy | 0.6 | 3 | 92 | Sand | <30 | 13 | 13 | 13 | | | |
| 34 | | | Kimugawa River | Sanuki | Shioyama City | 2013/2/19 | Cloudy | 0.3 | 2 | 83 | Sand | <30 | 13 | 29 | 42 | | | |
| 35 | | | Nishikimugawa River | Nishikimugawabashi Bridge | Utsunomiya City | 2013/2/21 | Sunny | 0.6 | 5 | 59 | Sand | <30 | 120 | 240 | 360 | | | |
| 36 | | | Kimugawa River | Kimugawabashi Bridge (Hoshakuji Temple) | Utsunomiya City/Takanezawamachi Town | 2013/2/21 | Sunny | 0.2 | 2 | 88 | Sand | <30 | <10 | 14 | 14 | | | |
| 37 | | | Egawa River | Daidozumabashi Bridge | Mookashi City | 2013/2/5 | Sunny | 1.0 | 2 | 77 | Sand | <30 | 18 | 33 | 51 | | | |
| 38 | | | Tributary | Shimotsukeshi City | | 2013/2/5 | Sunny | 0.3 | 2 | 85 | Sand | <30 | 31 | 57 | 88 | | | |
| 39 | | | Akaborigawa River | Nikko City Hall front | Nikkoshi City | 2013/2/21 | Sunny | 0.1 | 3 | 84 | Sand | <30 | 150 | 300 | 450 | | | |
| 40 | | | Tagawa River | Kiwadajima | Utsunomiya City | 2013/2/21 | Sunny | 0.5 | 3 | 43 | Sand | <30 | 150 | 230 | 380 | | | |
| 41 | | | Tagawa River | Ozobashi Bridge | Utsunomiya City | 2013/2/22 | Sunny | 0.2 | 3 | 90 | Sand | <30 | 53 | 97 | 150 | | | |
| 42 | | | Kamagawa River | Tsukushibashi Bridge | | 2013/2/21 | Sunny | 0.1 | 2 | 87 | Sand | <30 | 45 | 78 | 123 | | | |
| 43 | | | Tagawa River | Meijbashi Bridge | Kaminokawamachi Town | 2013/2/5 | Sunny | 0.2 | 2 | 94 | Gravel/sand | <30 | 12 | 17 | 29 | | | |
| 44 | | | Yanabashi Bridge | Oyamashi City | | 2013/2/5 | Sunny | 0.6 | 3 | 92 | Sand | <30 | 21 | 48 | 69 | | | |
| 45 | | | S r i a s e g a w a | Omoigawa River | Kurokawa River | Kajimabashi Bridge | Kanumashi City | 2013/2/4 | Sunny | 0.2 | 3 | 93 | Gravel/sand | <30 | <10 | <10 | - | |
| 46 | | | | | Onaribashi Bridge | Mibumachi Town | | 2013/2/5 | Sunny | 0.3 | 2 | 94 | Gravel/sand | <30 | <10 | <10 | - | |
| 47 | | | | | Oshigawa River | Akashibashi Bridge | Kanumashi City | 2013/2/4 | Cloudy | 0.3 | 2 | 92 | Sand | <30 | <10 | 11 | 11 | |
| 48 | | | | | Koyabagawa River | Koyababashi Bridge | | 2013/2/4 | Rain | 0.2 | 2 | 86 | Gravel/sand | <30 | 22 | 43 | 65 | |
| 49 | Omoigawa River | Tamotsubashi Bridge | | | Tochigishi City | 2013/2/6 | Snow | 0.2 | 4 | 93 | Gravel/sand | <30 | <10 | <10 | - | | | |
| 50 | Oyamashi Bridge | Oyamashi City | | | | 2013/2/5 | Sunny | 0.2 | 2 | 94 | Sand | <30 | <10 | <10 | - | | | |
| 51 | Uzumagawa River | Uzumabashi Bridge | | | Tochigishi City | 2013/2/6 | Snow | 0.5 | 3 | 81 | Gravel/sand | <30 | 20 | 36 | 56 | | | |
| 52 | Watarasegawa River | Watarasegawa River | | | Watarasegawa River intake weir at Sori Power Station | Nikkoshi City | 2013/2/5 | Sunny | 0.2 | 8 | 93 | Sand | <30 | <10 | 27 | 27 | | |
| 53 | Hajikabashi Bridge | Ashikagashi City/Otashi City | | | | 2013/2/7 | Sunny | 0.4 | 4 | 85 | Sand | <30 | 17 | 29 | 46 | | | |
| 54 | Nakabashi Bridge | Ashikagashi City | | | | 2013/2/7 | Sunny | 1.3 | 3 | 86 | Sand | <30 | 18 | 35 | 53 | | | |
| 55 | Watarasegawa River | Watarasegawabashi Bridge | Tatebayashi City | 2013/2/6 | Rain | 0.5 | 2 | 82 | Clay | <30 | 78 | 150 | 228 | | | | | |
| 56 | Shinkabashi Bridge | Tochigishi City | | 2013/2/6 | Rain | 0.3 | 4 | 87 | Sand/clay | <30 | 13 | 23 | 36 | | | | | |

* Sampling points for rivers are listed from north to south, and for different points along the river, from upstream to downstream.

ORiver: Surrounding Environment Monitoring Results

| No. | Sampling point | | | Sampling date | Weather | Left bank | | | | | Right bank | | | | | Remarks | | | |
|-----|---|---------------------------------------|--------------------------------------|-------------------------------------|--------------------|----------------|---|--------|---------------------------|-------|----------------|----------------|---|--------------------------|--------|---------|----------------|---|---|
| | Water body | Point | Municipality | | | Property | Concentration of radioactive material Bq/kg (dry) | | | | Air dose μSv/h | Property | Concentration of radioactive material Bq/kg (dry) | | | | Air dose μSv/h | | |
| | | | | | | | Radioactive iodine I-131 | Cs-134 | Radioactive cesium Cs-137 | | | | Total | Radioactive iodine I-131 | Cs-134 | | | Radioactive cesium Cs-137 | |
| 1 | Naka-gawa | Nakagawa River | Ikuoyashishita | Nasushiobarashi City | 2013/2/13 | Sunny | - | - | - | - | - | - | - | - | - | - | - | Unable to collect samples due to snow on the ground | |
| 2 | | Komeibashi Bridge | Nasushiobarashi City/Nasumachi Town | 2013/2/13 | Sunny | Loamy | <30 | 1,600 | 3,100 | 4,700 | 0.24 | Sandy | <30 | 600 | 1,100 | 1,700 | 0.28 | | |
| 3 | | Takaomatagawa River | Takaomatabashi Bridge | Nasumachi Town | 2013/2/14 | Sunny | Loamy | <30 | 1,200 | 2,200 | 3,400 | 0.29 | Loamy | <35 | 2,500 | 4,600 | 7,100 | 0.25 | |
| 4 | | Yukawa River | Yukawabashi Bridge | Nasumachi Town | 2013/2/14 | Sunny | Loamy | <30 | 1,200 | 2,300 | 3,500 | 0.34 | Loamy | <30 | 2,200 | 4,000 | 6,200 | 0.35 | |
| 5 | | Nakagawa River | Kaminakuro | Nasushiobarashi City/Nasumachi Town | 2013/2/14 | Sunny | Loamy | <30 | 1,600 | 2,800 | 4,400 | 0.32 | Loamy | <30 | 580 | 1,100 | 1,680 | 0.30 | |
| 6 | | Yosogawa River | Yosogabashi Bridge | Nasumachi Town | 2013/2/13 | Sunny | - | - | - | - | - | - | - | - | - | - | - | - | Unable to collect samples due to snow on the ground |
| 7 | | Kurokawa River | Shindenbashi Bridge | Nasumachi Town | 2013/2/13 | Sunny | - | - | - | - | - | - | - | <30 | 800 | 1,500 | 2,300 | 0.37 | Unable to collect samples due to snow on the ground |
| 8 | | Yosogawa River | Kawadabashi Bridge | Okawarashi City/Nasumachi Town | 2013/2/13 | Sunny | Loamy | <30 | 1,000 | 1,800 | 2,800 | 0.28 | Loamy | <30 | 1,700 | 3,300 | 5,000 | 0.51 | |
| 9 | | Nakagawa River | Kurohane | Nasumachi Town | 2013/2/13 | Sunny | Loamy | <30 | 750 | 1,400 | 2,150 | 0.17 | Loamy | <30 | 200 | 400 | 600 | 0.12 | |
| 10 | | Matsubagawa River | Tributary | Okawarashi City | 2013/2/13 | Sunny | Loamy | <30 | 690 | 1,200 | 1,890 | 0.21 | Loamy | <30 | 330 | 590 | 920 | 0.16 | |
| 11 | | Udagawa River | Udagwabashi Bridge | Okawarashi City | 2013/2/13 | Sunny | Loamy | <30 | 310 | 600 | 910 | 0.14 | Sandy | <30 | 250 | 460 | 710 | 0.11 | |
| 12 | | Momrugawa River | Momranakabashi Bridge | Okawarashi City | 2013/2/13 | Sunny | Loamy | <30 | 640 | 1,100 | 1,740 | 0.20 | Loamy | <30 | 410 | 730 | 1,140 | 0.15 | |
| 13 | | Yamohara | Yamohara | Nasushiobarashi City | 2013/2/12 | Sunny | Loamy | <30 | 990 | 1,900 | 2,890 | 0.23 | Loamy | <30 | 400 | 810 | 1,210 | 0.14 | |
| 14 | | Seikibashi Bridge | Nasushiobarashi City | 2013/2/12 | Cloudy, then sunny | Loamy | <30 | 2,300 | 4,300 | 6,600 | 0.77 | Loamy | <30 | 2,000 | 3,500 | 5,500 | 0.76 | | |
| 15 | | Iwabashi Bridge | Okawarashi City | 2013/2/14 | Cloudy | Loamy | <30 | 400 | 750 | 1,150 | 0.18 | Loamy | <30 | 560 | 1,000 | 1,560 | 0.13 | | |
| 16 | | Hokigawabashi Bridge | Okawarashi City | 2013/2/14 | Sunny | Sandy | <30 | 470 | 860 | 1,330 | 0.15 | Loamy | <30 | 70 | 130 | 209 | 0.12 | | |
| 17 | | Shinakabashi Bridge | Nakagawamachi Town | 2013/2/14 | Cloudy | Loamy | <30 | 97 | 170 | 267 | 0.10 | Loamy | <30 | 200 | 390 | 590 | 0.10 | | |
| 18 | | Koseibashi Bridge | Nakagawamachi Town | 2013/2/14 | Sunny | Loamy | <30 | 250 | 460 | 710 | 0.12 | Loamy | <30 | 110 | 210 | 320 | 0.12 | | |
| 19 | | Shiyamachi Town | Shiyamachi Town | 2013/2/12 | Sunny | Loamy | <30 | 350 | 660 | 1,010 | 0.16 | Loamy | <30 | 440 | 800 | 1,240 | 0.18 | | |
| 20 | | Arakawa River | Renjohashi Bridge | Sakurashi City | 2013/2/14 | Cloudy | Loamy | <30 | 130 | 240 | 370 | 0.10 | Loamy | <30 | 100 | 190 | 290 | 0.11 | |
| 21 | Uchikawa River | Tanakahashi Bridge | Yatashi City | 2013/2/12 | Cloudy | Loamy | <30 | 310 | 580 | 890 | 0.13 | Loamy | <30 | 340 | 640 | 980 | 0.14 | | |
| 22 | Asahibashi Bridge | Sakurashi City | 2013/2/14 | Cloudy | Loamy | <30 | 55 | 110 | 165 | 0.10 | Loamy | <30 | 120 | 220 | 340 | 0.09 | | | |
| 23 | Mukababashi Bridge | Nasukarasuyamachi City | 2013/2/15 | Rain | Loamy | <30 | 63 | 120 | 183 | 0.08 | Loamy | <30 | 34 | 67 | 101 | 0.10 | | | |
| 24 | Egawa River | Tributary | Nasukarasuyamachi City | 2013/2/15 | Cloudy | Loamy | <30 | 150 | 300 | 450 | 0.09 | Loamy | <30 | 81 | 160 | 244 | 0.09 | | |
| 25 | Kimogawa River | Kawai Daiichi Power Station, front | Nasukarasuyamachi City | 2013/2/20 | Sunny | Loamy | <30 | 500 | 920 | 1,420 | 0.19 | Loamy | <30 | 1,000 | 1,900 | 2,900 | 0.21 | | |
| 26 | Yunshigawa River | Macawabashi Bridge | Nikkoshi City | 2013/2/20 | Sunny | - | - | - | - | - | - | - | - | - | - | - | - | Unable to collect samples due to snow on the ground | |
| 27 | Okikagawa River | Tributary | Nikkoshi City | 2013/2/20 | Sunny | Sandy | <30 | 25 | 42 | 67 | 0.13 | Loamy/sandy | <30 | 690 | 1,300 | 1,990 | 0.21 | | |
| 28 | Kosage | Nikkoshi City | 2013/2/20 | Sunny | Loamy | <47 | 3,100 | 5,800 | 8,900 | 0.26 | Loamy | <30 | 650 | 1,200 | 1,850 | 0.23 | | | |
| 29 | Umagawa River | Tributary | Nikkoshi City | 2013/2/19 | Sunny | Loamy | <30 | 610 | 1,200 | 1,810 | 0.27 | Loamy | <30 | 950 | 1,800 | 2,750 | 0.29 | | |
| 30 | Yukawa River | Tributary | Nikkoshi City | 2013/2/20 | Snow | - | - | - | - | - | - | - | - | - | - | - | - | Unable to collect samples due to snow on the ground | |
| 31 | Dayagawa River | Shinkyo Bridge | Nikkoshi City | 2013/2/20 | Sunny | Loamy | <30 | 870 | 1,600 | 2,470 | 0.21 | Loamy | <30 | 720 | 1,300 | 2,020 | 0.15 | | |
| 32 | Shadobachigawa River | Suichigabashi Bridge | Nikkoshi City | 2013/2/21 | Cloudy | - | - | - | - | - | - | - | <69 | 4,600 | 8,700 | 13,300 | 0.21 | | |
| 33 | Dayagawa River | Kaishinbashi Bridge (Harigan) | Nikkoshi City | 2013/2/19 | Cloudy | Loamy | <30 | 830 | 1,500 | 2,330 | 0.24 | Loamy | <30 | 930 | 1,800 | 2,730 | 0.21 | | |
| 34 | Kimogawa River | Sanki | Shiyamachi Town | 2013/2/19 | Cloudy | Loamy | <30 | 260 | 520 | 780 | 0.20 | Loamy/skeletal | <30 | 1,100 | 2,100 | 3,200 | 0.17 | | |
| 35 | Nishikimigawa River | Nishikimigawabashi Bridge | Utsunomiya City | 2013/2/21 | Sunny | Loamy | <30 | 180 | 310 | 490 | 0.10 | Loamy | <30 | 140 | 220 | 360 | 0.09 | | |
| 36 | Kimogawa River | Kimogawabashi Bridge (Hoshaku Temple) | Utsunomiya City/Yakuzawa-omachi Town | 2013/2/21 | Sunny | Sandy | <30 | 23 | 42 | 65 | 0.10 | Loamy | <30 | 47 | 110 | 157 | 0.11 | | |
| 37 | Daizozumabashi Bridge | Mookashi City | 2013/2/5 | Sunny | Loamy | <30 | 110 | 220 | 330 | 0.10 | Loamy | <30 | 13 | 25 | 38 | 0.09 | | | |
| 38 | Egawa River | Tributary | Shimotsukeshi City | 2013/2/5 | Sunny | Loamy/skeletal | <30 | 260 | 490 | 750 | 0.10 | Loamy | <30 | 80 | 160 | 240 | 0.10 | | |
| 39 | Akaribagawa River | Nikko City Hall, front | Nikkoshi City | 2013/2/21 | Sunny | - | - | - | - | - | - | - | 980 | 1,800 | 2,780 | 0.12 | | | |
| 40 | Kiwajima | Nikkoshi City | 2013/2/21 | Sunny | Loamy | <30 | 570 | 1,100 | 1,670 | 0.13 | Loamy | <30 | 1,000 | 1,900 | 2,900 | 0.13 | | | |
| 41 | Tagawa River | Ozobashi Bridge | Utsunomiya City | 2013/2/22 | Sunny | Loamy | <30 | 150 | 290 | 440 | 0.08 | Loamy | <30 | 120 | 220 | 340 | 0.09 | | |
| 42 | Kanagawa River | Taukubashashi Bridge | Utsunomiya City | 2013/2/21 | Sunny | Loamy | <30 | 45 | 82 | 127 | 0.09 | Loamy | <30 | 450 | 870 | 1,320 | 0.09 | | |
| 43 | Tagawa River | Meijibashi Bridge | Kaminokawamachi Town | 2013/2/5 | Sunny | Loamy/skeletal | <30 | 240 | 440 | 680 | 0.08 | Loamy | <30 | 200 | 370 | 570 | 0.07 | | |
| 44 | Yanabashi Bridge | Oyamashi City | 2013/2/5 | Sunny | Loamy | <30 | 31 | 54 | 85 | 0.08 | Loamy/skeletal | <30 | 70 | 140 | 210 | 0.07 | | | |
| 45 | Kaijimbashi Bridge | Kaminashi City | 2013/2/4 | Sunny | Loamy | <30 | 130 | 230 | 360 | 0.10 | Loamy | <30 | 170 | 300 | 470 | 0.10 | | | |
| 46 | Oharibashi Bridge | Mibamachi Town | 2013/2/5 | Sunny | Loamy | <30 | 180 | 300 | 480 | 0.09 | Loamy | <30 | 72 | 130 | 202 | 0.10 | | | |
| 47 | Oashigawa River | Akashibashi Bridge | Kamimashi City | 2013/2/4 | Cloudy | Loamy | <30 | 81 | 150 | 231 | 0.10 | Loamy/sandy | <30 | 180 | 320 | 500 | 0.10 | | |
| 48 | Koyabugawa River | Koyabugabashi Bridge | Kamimashi City | 2013/2/4 | Rain | Loamy | <30 | 120 | 240 | 360 | 0.09 | Loamy | <30 | 590 | 1,100 | 1,690 | 0.11 | | |
| 49 | Onoigawa River | Tamotsubashi Bridge | Tochigashi City | 2013/2/6 | Snow | - | - | - | - | - | - | - | - | - | - | - | - | Unable to collect samples due to snow on the ground | |
| 50 | Onomobashi Bridge | Oyamashi City | 2013/2/5 | Sunny | Loamy | <30 | 190 | 380 | 570 | 0.14 | Loamy | <30 | 170 | 290 | 460 | 0.11 | | | |
| 51 | Uzumagawa River | Uzumabashi Bridge | Tochigashi City | 2013/2/6 | Snow | - | - | - | - | - | - | - | - | - | - | - | - | Unable to collect samples due to snow on the ground | |
| 52 | Waterasegawa River intake weir at Saiti Power Station | Nikkoshi City | 2013/2/5 | Sunny | Sandy | <30 | 280 | 510 | 790 | 0.23 | Sandy | <30 | 19 | 42 | 61 | 0.20 | | | |
| 53 | Waterasegawa River | Hajikabashi Bridge | Ashikagashi City/Otashi City | 2013/2/7 | Sunny | Loamy | <30 | 36 | 68 | 104 | 0.08 | Loamy | <30 | 42 | 79 | 121 | 0.09 | | |
| 54 | Nakabashi Bridge | Ashikagashi City | 2013/2/7 | Sunny | Loamy | <30 | 66 | 130 | 196 | 0.08 | Loamy | <30 | 18 | 32 | 50 | 0.09 | | | |
| 55 | Wateraseohashi Bridge | Tatebayashishi City | 2013/2/6 | Rain | - | - | - | - | - | - | - | - | - | - | - | - | - | Unable to collect samples due to snow on the ground | |
| 56 | Shinkabashi Bridge | Tochigashi City | 2013/2/6 | Rain | - | - | - | - | - | - | - | - | - | - | - | - | - | Unable to collect samples due to snow on the ground | |

*Samples for surrounding environment (soil) were generally collected from 5 points in 3m square in the river terrace, etc., and mixed. Depending on the site situation, factors, such as the area of sampling may be much smaller, may cause figures to vary significantly.

*Air dose was measured with a survey meter, TCS-171 or TCS-172 of Hitachi-Aloka Medical, Ltd.

* Sampling points for rivers are listed from north to south, and for different points along the river, from upstream to downstream.

OLake and Headwater: Water Quality Monitoring Results

| Sampling point | | | | Sampling date | Weather | Full depth m | General items | | | | Concentration of radioactive material Bq/L | | | Remarks |
|----------------|-------------------------------|------------------------|--------|---------------|---------|--------------|------------------|---------------------|--|---------|--|--------------------------|---|--|
| No. | Point | | | | | | Sampling depth m | Secchi disk depth m | Electrical conductivity $\mu\text{S}/\text{m}$ | SS mg/L | Turbidity | Radioactive iodine I-131 | Radioactive cesium Cs-134 Cs-137 | |
| 1 | Nakagawa River System | Miyama Dam Reservoir | Center | 2013/2/13 | Cloudy | - | - | - | - | - | - | - | Unable to collect samples due to freezing | |
| | | | | 2013/2/13 | | | - | - | - | - | - | - | | |
| 2 | | Shiobara Dam Reservoir | Center | 2013/2/19 | Cloudy | 34.0 | 0.5 | 4.0 | 18 | <1 | 1 | <1 | <1 | |
| | | | | 2013/2/19 | | | 33.0 | - | 18 | <1 | <1 | <1 | <1 | |
| 3 | K S R i n y i u s w t e g m a | Kawaji Dam Reservoir | Center | 2013/2/13 | Snow | 79.0 | 0.5 | 1.7 | 9 | <1 | 2 | <1 | <1 | |
| | | | | 2013/2/13 | | | 78.0 | - | 9 | <1 | 2 | <1 | <1 | |
| 4 | | Ikari Dam Reservoir | Center | 2013/2/18 | Snow | 63.5 | 0.5 | 4.8 | 7 | <1 | 1 | <1 | <1 | |
| | | | | 2013/2/18 | | | 62.5 | - | 7 | 3 | 3 | <1 | <1 | |
| 5 | | Kawarata Dam Reservoir | Center | 2013/2/15 | Snow | - | - | - | - | - | - | - | - | Unable to collect samples due to freezing |
| | | | | 2013/2/15 | | | - | - | - | - | - | - | - | |
| 6 | | Yunoko Lake | Center | 2013/2/12 | Sunny | - | - | - | - | - | - | - | - | Unable to collect samples due to freezing |
| | | | | 2013/2/12 | | | - | - | - | - | - | - | - | |
| 7 | | Chuzenjiko Lake | Center | 2013/2/12 | Sunny | 170.0 | 0.5 | 10.2 | 12 | <1 | 0 | <1 | <1 | |
| | | | | 2013/2/12 | | | 169.0 | - | 12 | <1 | 0 | <1 | <1 | |
| 8 | Watarasegawa River | Watarase Reservoir | Center | 2013/2/8 | Sunny | - | - | - | - | - | - | - | - | Unable to collect samples due to strong wind and low water level |
| | | | | 2013/2/8 | | | - | - | - | - | - | - | - | |

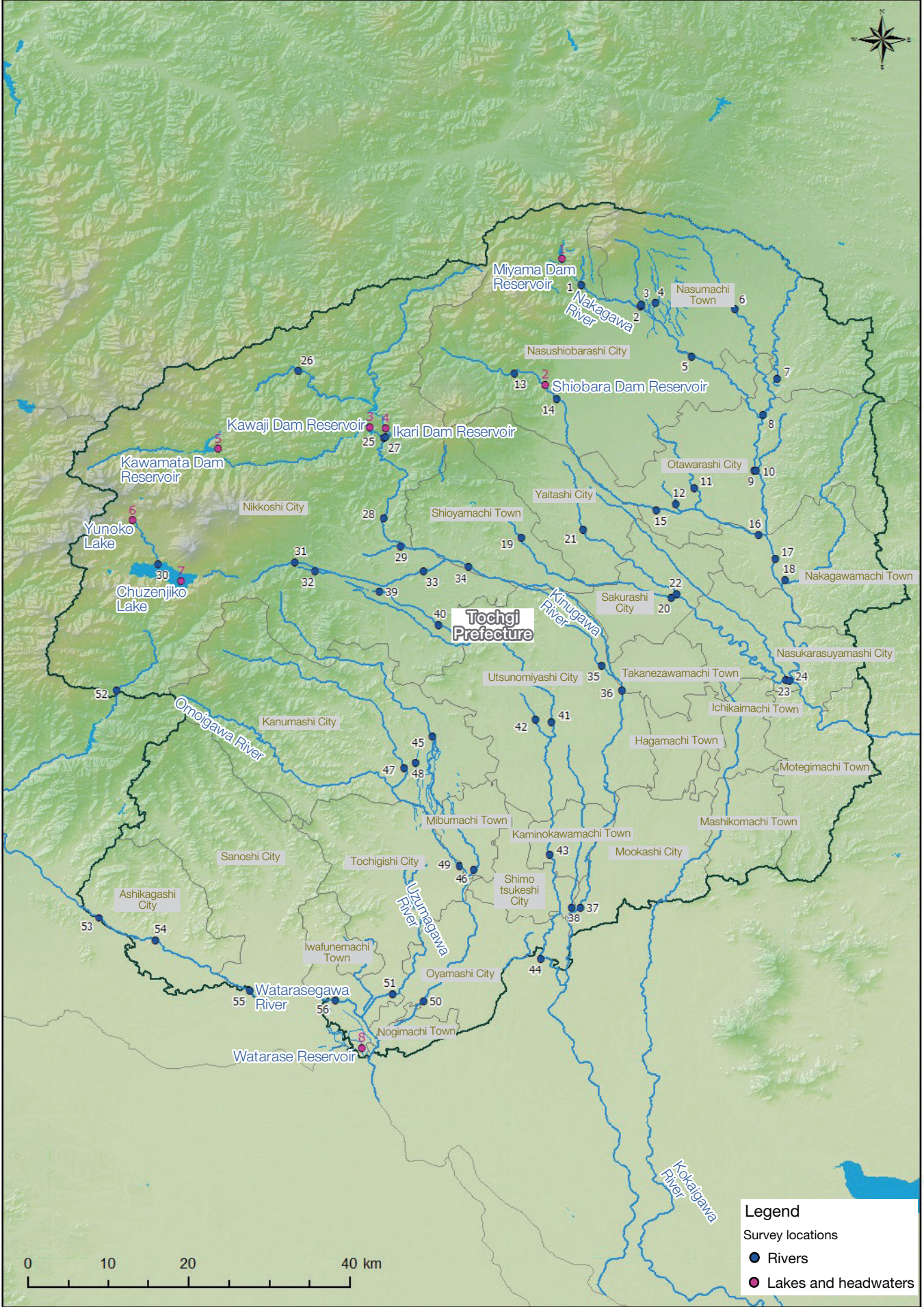
OLake and Headwater: Sediment and Surrounding Environment (Lake Shore) Monitoring Results

| Sampling point | | | | Sampling date | Weather | Full depth m | Sediment | | | | Surrounding environment (lake shore) | | | | | Remarks | | | |
|----------------|-----------------------|------------------------|--------|-----------------------|---------------|--------------|--------------------------|--------|---------------------------|---|--------------------------------------|----------|---|-------|-------|----------------------------------|-------|---|--|
| No. | Point | | | | | | General items | | | Concentration of radioactive material Bq/kg (dried mud) | | | | Soil | | | | | |
| | | | | Mud sampling depth cm | Mud content % | Property | Radioactive iodine I-131 | Cs-134 | Radioactive cesium Cs-137 | | Total | Property | Concentration of radioactive material Bq/kg (dry) | | | Air dose $\mu\text{Sv}/\text{h}$ | | | |
| | | | | | | | | | | | | | | | | | | | |
| 1 | Nakagawa River System | Miyama Dam Reservoir | Center | 2013/2/13 | Cloudy | - | - | - | - | - | - | - | - | - | - | - | - | Unable to collect samples due to freezing, etc. | |
| | | | | 2013/2/19 | | | 34.0 | 10 | 51 | Silt | <30 | 350 | 650 | 1,000 | Loamy | <30 | 1,700 | | 3,200 |
| 2 | | Shiobara Dam Reservoir | Center | 2013/2/19 | Cloudy | 34.0 | 10 | 59 | Silt | <30 | 110 | 210 | 320 | - | - | - | - | - | Unable to collect samples due to increased water level |
| | | | | 2013/2/19 | | | 10 | 50 | Silt | <30 | 1,400 | 2,600 | 4,000 | Loamy | <30 | 370 | 710 | 1,080 | |
| 3 | Kingawa River System | Kawaji Dam Reservoir | Center | 2013/2/13 | Snow | 79.0 | - | - | - | - | - | - | - | - | - | - | - | Unable to collect samples due to freezing, etc. | |
| | | | | 2013/2/13 | | | 10 | 50 | Silt | <30 | 1,400 | 2,600 | 4,000 | Loamy | <30 | 370 | 710 | | 1,080 |
| 4 | | Ikari Dam Reservoir | Center | 2013/2/18 | Snow | 63.5 | - | - | - | - | - | - | - | - | - | - | - | Unable to collect samples due to freezing, etc. | |
| | | | | 2013/2/18 | | | 10 | 50 | Silt | <30 | 1,400 | 2,600 | 4,000 | Loamy | <30 | 370 | 710 | | 1,080 |
| 5 | | Kawarata Dam Reservoir | Center | 2013/2/15 | Snow | - | - | - | - | - | - | - | - | - | - | - | - | Unable to collect samples due to freezing, etc. | |
| | | | | 2013/2/15 | | | - | - | - | - | - | - | - | - | - | - | - | | - |
| 6 | | Yunoko Lake | Center | 2013/2/12 | Sunny | - | - | - | - | - | - | - | - | - | - | - | - | Unable to collect samples due to freezing, etc. | |
| | | | | 2013/2/12 | | | - | - | - | - | - | - | - | - | - | - | - | | - |
| 7 | | Chuzenjiko Lake | Center | 2013/2/12 | Sunny | 170.0 | 8 | 20 | Silt | <30 | 260 | 450 | 710 | - | - | - | - | - | Unable to collect samples due to snow on the ground |
| | | | | 2013/2/12 | | | 8 | 20 | Silt | <30 | 260 | 450 | 710 | Loamy | <30 | 56 | 85 | 141 | |
| 8 | Watarasegawa River | Watarase Reservoir | Center | 2013/2/8 | Sunny | - | - | - | - | - | - | - | - | - | - | - | - | | |
| | | | | 2013/2/8 | | | - | - | - | - | - | - | - | - | - | - | - | | - |

* Samples for surrounding environment (lake shore) were generally collected from 5 points in 3m square on the lake shore, etc., and mixed. Depending on the site situation, factors, such as the area of sampling may be much smaller, may cause figures to vary significantly.

* Air dose was measured with a survey meter, TCS-171 or TCS-172 of Hitachi-Aloka Medical, Ltd.

* Sampling points are listed from north to south.



Legend

- Survey locations
- Rivers
- Lakes and headwaters

0 10 20 40 km