

(News Release)  
The Results of Radioactive Material Monitoring of the Surface Water Bodies  
within Fukushima Prefecture  
(4<sup>th</sup> Time)

Friday, March 30, 2012  
Water Environment Division,  
Environment Management Bureau,  
Ministry of the Environment  
Direct line: 03-5521-8316  
Switchboard: 03-3581-3351  
Director: Nobuo Yoshida (ext. 6610)  
Deputy Director: Tetsuo Furuta (ext. 6614)  
Coordinator: Hiroaki Hase (ext. 6628)

In accordance with the Comprehensive Radiation Monitoring Plan determined by the Monitoring Coordination Meeting, the Ministry of the Environment (MOE) is continuing to monitor radioactive materials in water environments (surface water bodies (rivers, lakes and headwaters, and coasts), etc.).

Samples taken from the surface water bodies of Fukushima Prefecture during the period of February 25-March 14 (4<sup>th</sup> time) have been measured as part of MOE's efforts to monitor radioactive materials; the results have recently been compiled and are released here.

The monitoring results of radioactive materials in surface water bodies carried out to date can be found at the following web page: <http://www.env.go.jp/jishin/rmp.html#monitoring>

1. Survey Overview

(1) Survey Locations

171 environmental reference points, etc. in the surface water bodies within Fukushima Prefecture  
(Rivers: 113 locations, Lakes and headwaters: 25 locations, Coasts and bathing areas: 33 locations)

(2) Survey Method

- Measurement of concentrations of radioactive materials (radioactive iodine (I-131), radioactive cesium (Cs-134 and Cs-137)) in water and sediment
- Measurement of concentrations of radioactive materials and spatial dose-rate in soil in the surrounding environment of water and sediment sample collection points (river terraces, etc.)

2. Outline of Results (\* denotes the results of the previous survey.)

(1) Water Quality

- Radioactive iodine (I-131) Not detectable (ND) at any location (Lower detection limit: 1Bq/L)  
(\* ND at any location)
- Radioactive cesium  
(Rivers)  
Cs-134: ND-1Bq/L (Lower detection limit: 1Bq/L)  
Cs-137: ND-1Bq/L (Lower detection limit: 1Bq/L)  
(\*Cs-134: ND-3Bq/L, Cs-137: ND-5Bq/L)  
(Lakes and headwaters)  
Cs-134: ND-1Bq/L (Lower detection limit: 1Bq/L)  
Cs-137: ND-1Bq/L (Lower detection limit: 1Bq/L)  
(\* ND at any location)  
(Coasts and bathing areas) ND at any location (Lower detection limit: 1Bq/L)  
(\* ND at any location)

<Reference>

“Regulatory Guide: Emergency Preparedness for Nuclear Facilities (Nuclear Safety Commission)”  
Standards for Restrictions on the Intake of Food and Drink (Drinking Water)  
Radioactive iodine (I-131): 300Bq/kg or more

Radioactive cesium (total for Cs-134 + Cs-137): 200Bq/kg or more

(2) Sediment

- Radioactive iodine (I-131) ND at any location (Lower detection limit: 30Bq/kg (dried mud))  
(\* ND at any location)
- Radioactive cesium  
(Rivers)
  - Cs-134: ND-38,000Bq/kg (dried mud) (Lower detection limit: 10Bq/kg (dried mud))
  - Cs-137: ND-54,000Bq/kg (dried mud) (Lower detection limit: 10Bq/kg (dried mud))
  - (\*Cs-134: ND-22,000Bq/kg, Cs-137: ND-30,000Bq/kg)(Lakes and headwaters)
  - Cs-134: ND-110,000Bq/kg (dried mud) (Lower detection limit: 10Bq/kg (dried mud))
  - Cs-137: 17-150,000Bq/kg (dried mud) (Lower detection limit: 10Bq/kg (dried mud))
  - (\*Cs-134: ND-35,000Bq/kg, Cs-137: ND-45,000Bq/kg)(Coasts and bathing areas)
  - Cs-134: ND-200Bq/kg (dried mud) (Lower detection limit: 10Bq/kg (dried mud))
  - Cs-137: ND-280Bq/kg (dried mud) (Lower detection limit: 10Bq/kg (dried mud))
  - (\*Cs-134: ND-500Bq/kg, Cs-137: ND-740Bq/kg)

(3) Surrounding Environment

- Radioactive iodine (I-131) ND at any location (Lower detection limit: 30Bq/kg (dry))
- Radioactive cesium  
(Rivers)
  - Cs-134: ND-29,000Bq/kg (dry) (Lower detection limit: 10Bq/kg (dry))
  - Cs-137: ND-40,000Bq/kg (dry) (Lower detection limit: 10Bq/kg (dry))
  - (\* Cs-134: ND-67,000Bq/kg, Cs-137: ND-87,000Bq/kg)(Lakes and headwaters)
  - Cs-134: 130-88,000Bq/kg (dry)
  - Cs-137: 160-120,000Bq/kg (dry)
  - (\*\*Cs-134: ND-64,000Bq/kg, Cs-137: 30-83,000Bq/kg)(Coasts and bathing areas)
  - Cs-134: ND-490Bq/kg (dry) (Lower detection limit: 10Bq/kg (dry))
  - Cs-137: ND-650Bq/kg (dry) (Lower detection limit: 10Bq/kg (dry))
  - (\*Cs-134: 13-530Bq/kg, Cs-137: 23-720Bq/kg)
- Spatial dose
  - (Rivers) 0.09-9.34μSv/h
  - (Lakes and headwaters) 0.13-14.92μSv/h
  - (Coasts and bathing areas) 0.05-0.27μSv/h

(Annex for details)  
(Map attached)

Future Plans

In coordination with relevant organizations, MOE intends to continue to measure radioactive materials in water, sediment, etc. in rivers, lakes, etc. in Fukushima Prefecture, its neighboring prefectures, etc.

# ORiver (Fukushima Prefecture, Hamadori Area): Water Quality Monitoring Results

(Annex)

Sampling point				Sampling date	Weather	Air temperature °C	Full depth m	General items						Concentration of radioactive material Bq/L			Remarks
No.	Water body	Point	Municipality					Water temperature °C	Sampling depth m	Transparency cm	Electrical conductivity mS/m	SS mg/L	Turbidity	Radioactive iodine I-131	Radioactive cesium		
															Cs-134	Cs-137	
1	Jizogawa River	Hamahatabashi Bridge	Shinchimachi Town	2012/3/1	Sunny	5.1	0.50	5.8	0.0	100 or more	3150.0	4	4.7	<1	<1	<1	
2	Koizumigawa River	Koizumibashi Bridge	Somashi City	2012/3/1	Cloudy	9.6	0.30	10.4	0.0	60	27.0	10	10	<1	<1	<1	
3	Koizumigawa River	Hyakkenbashi Bridge	Somashi City	2012/3/1	Sunny	5.9	0.80	5.1	0.0	85	2870.0	4	5.4	<1	<1	<1	
4	Udagawa River	Horisakabashi Bridge	Somashi City	2012/3/4	Sunny	2.8	0.60	3.0	0.0	100 or more	12.9	1	2.3	<1	<1	<1	
5	Udagawa River	Hyakkenbashi Bridge	Somashi City	2012/2/29	Snow	1.4	0.40	3.5	0.0	32	990.0	32	14	<1	<1	<1	
6	Manogawa River	Ochiaibashi Bridge	Minamisomashi City	2012/3/3	Cloudy	4.7	2.10	5.5	0.0	56	20.8	9	10	<1	<1	<1	
7	Manogawa River	Majimabashi Bridge	Minamisomashi City	2012/3/3	Cloudy	3.8	2.30	5.4	0.0	100 or more	1687.0	6	7.4	<1	<1	<1	Former evacuation-prepared areas in case of emergency
8	Niidagawa River	Kusano	Itatemura Village	2012/3/2	Cloudy	1.8	0.40	2.6	0.0	100 or more	11.0	2	2.1	<1	<1	<1	Deliberate evacuation areas
9	Niidagawa River	Komiya	Itatemura Village	2012/3/2	Cloudy	4.9	0.30	2.9	0.0	100 or more	11.0	1	1.8	<1	<1	<1	Deliberate evacuation areas
10	Niidagawa River	Kidouchibashi Bridge	Minamisomashi City	2012/3/1	Sunny	8.8	0.60	6.8	0.0	100 or more	7.8	<1	0.5	<1	<1	<1	Former evacuation-prepared areas in case of emergency
11	Niidagawa River	Sakekawabashi Bridge	Minamisomashi City	2012/3/3	Cloudy	4.0	1.20	3.6	0.0	100 or more	18.2	2	3.4	<1	<1	<1	Former evacuation-prepared areas in case of emergency
12	Otagawa River	Ishiwatadobashi Bridge	Minamisomashi City	2012/3/3	Cloudy	3.5	0.50	4.2	0.0	100 or more	7.1	<1	1.4	<1	<1	<1	Former evacuation-prepared areas in case of emergency
13	Otagawa River	Kaminouchihashi Bridge	Minamisomashi City	2012/3/1	Sunny	9.1	0.40	7.3	0.0	100 or more	7.2	<1	0.4	<1	<1	<1	Former evacuation-prepared areas in case of emergency
14	Otagawa River	Masudabashi Bridge	Minamisomashi City	2012/3/2	Cloudy	5.0	0.50	7.3	0.0	100 or more	8.5	1	0.4	<1	<1	<1	Former evacuation-prepared areas in case of emergency
15	Otagawa River	JR Tetsudobashi Bridge	Minamisomashi City	2012/3/2	Cloudy	3.6	0.20	6.2	0.0	100 or more	100.0	2	2.1	<1	<1	<1	Former evacuation-prepared areas in case of emergency
16	Otagawa River	Maruyabashi Bridge	Minamisomashi City	2012/3/4	Sunny	3.1	0.20	5.8	0.0	31	1737.0	30	22	<1	<1	<1	Restricted areas
17	Odakagawa River	Zenchobashi Bridge	Minamisomashi City	2012/3/4	Clear	1.6	0.45	2.9	0.0	80	13.8	3	5.6	<1	<1	<1	Restricted areas
18	Odakagawa River	Hatsukarabashi Bridge	Minamisomashi City	2012/3/4	Sunny	2.0	2.10	3.8	0.0	28	2420.0	19	20	<1	<1	<1	Restricted areas
19	Ukedogawa River	Muroharabashi Bridge	Namiemachi Town	2012/3/4	Clear	3.6	0.30	3.1	0.0	100 or more	6.8	<1	0.6	<1	<1	<1	Restricted areas
20	Ukedogawa River	Ukedobashi Bridge	Namiemachi Town	2012/3/4	Clear	4.9	0.40	4.8	0.0	100 or more	19.6	3	3.4	<1	<1	<1	Restricted areas
21	Takasegawa River	Keiobashi Bridge	Namiemachi Town	2012/3/4	Clear	6.6	0.40	5.4	0.0	100 or more	7.4	1	1.3	<1	<1	<1	Restricted areas
22	Maedagawa River	National Route 6, west	Futabamachi Town	2012/3/4	Clear	4.0	0.30	3.1	0.0	100 or more	14.2	3	3.9	<1	<1	1	Restricted areas
23	Maedagawa River	Nakahamabashi Bridge	Namiemachi Town	2012/3/4	Clear	4.0	1.20	4.0	0.0	55	61.3	5	7.6	<1	<1	1	Restricted areas
24	Kumagawa River	National Route 6, west	Okumamachi Town	2012/3/4	Clear	6.6	0.45	5.0	0.0	100 or more	9.4	<1	0.5	<1	<1	<1	Restricted areas
25	Kumagawa River	Mikumabashi Bridge	Okumamachi Town	2012/3/4	Clear	6.9	0.40	4.7	0.0	100 or more	13.0	1	1.7	<1	<1	<1	Restricted areas
26	Tomiokagawa River	National Route 6, west	Tomiokamachi Town	2012/3/4	Clear	4.2	0.30	5.4	0.0	100 or more	12.2	1	1.6	<1	<1	<1	Restricted areas
27	Tomiokagawa River	Kobamabashi Bridge	Tomiokamachi Town	2012/3/4	Clear	6.8	0.40	4.9	0.0	100 or more	14.7	1	2.0	<1	<1	<1	Restricted areas (Samples collected near the previous point due to increased water level)
28	Idegawa River	Motogamabashi Bridge	Narahamachi Town	2012/3/4	Clear	1.8	0.30	3.4	0.0	100 or more	10.4	<1	0.2	<1	<1	<1	Restricted areas
29	Kidogawa River	Nishiyabashi Bridge	Kawauchimura Village	2012/3/4	Cloudy	5.9	0.40	3.4	0.0	100 or more	6.1	<1	0.7	<1	<1	<1	Former evacuation-prepared areas in case of emergency
30	Kidogawa River	Nagatorobashi Bridge	Narahamachi Town	2012/3/4	Clear	5.8	0.30	4.0	0.0	100 or more	5.6	2	4.6	<1	<1	<1	Restricted areas
31	Kidogawa River	Kidokawabashi Bridge	Narahamachi Town	2012/3/4	Clear	4.2	0.30	3.6	0.0	100 or more	6.8	1	3.2	<1	<1	<1	Restricted areas
32	Asamigawa River	Bodabashi Bridge	Hironomachi Town	2012/2/26	Cloudy	3.6	0.40	4.9	0.0	100 or more	14.3	8	3.7	<1	<1	<1	Former evacuation-prepared areas in case of emergency
33	Ohisagawa River	Kageisobashi Bridge	Iwakishi City	2012/2/26	Cloudy	2.9	0.30	4.1	0.0	37	188.0	38	15	<1	<1	<1	
34	Kohisagawa River	Rengobashi Bridge	Iwakishi City	2012/2/26	Cloudy	2.4	0.30	3.3	0.0	100 or more	4.1	4	4.4	<1	<1	<1	
35	Niidagawa River	Kasumidabashi Bridge	Iwakishi City	2012/2/25	Rain	2.0	0.20	5.5	0.0	100 or more	23.6	10	7.8	<1	<1	<1	
36	Niidagawa River	Matsubashi Bridge	Iwakishi City	2012/2/25	Cloudy	2.1	0.50	5.0	0.0	27	52.5	58	31	<1	<1	<1	
37	Natsugawa River	Kitanouchibashi Bridge	Onomachi Town	2012/2/27	Sunny	-0.2	0.40	3.4	0.0	100 or more	15.0	7	4.7	<1	<1	<1	
38	Natsugawa River	Kyudayubashi Bridge	Iwakishi City	2012/2/27	Sunny	3.2	0.40	5.5	0.0	100 or more	12.7	1	1.5	<1	<1	<1	
39	Natsugawa River	Rokujumaibashi Bridge	Iwakishi City	2012/2/27	Sunny	1.9	0.30	2.4	0.0	100 or more	99.2	2	2.1	<1	<1	<1	
40	Yoshimagawa River	Iwaanatsuribashi Bridge	Iwakishi City	2012/2/27	Sunny	4.2	0.30	4.6	0.0	100 or more	11.6	<1	0.3	<1	<1	<1	
41	Yoshimagawa River	Before the confluence with Nats	Iwakishi City	2012/2/27	Sunny	5.2	0.30	7.5	0.0	100 or more	24.2	4	4.4	<1	<1	<1	
42	Fujiwaragawa River	Shimabashi Bridge	Iwakishi City	2012/2/28	Clear	4.2	0.80	6.0	0.0	100 or more	652.0	6	5.0	<1	<1	<1	
43	Fujiwaragawa River	Minatohashi Bridge	Iwakishi City	2012/2/26	Cloudy	5.8	2.80	8.5	0.0	32	1956.0	11	11	<1	<1	<1	
44	Samegawa River	Idoswabashi Bridge	Iwakishi City	2012/2/27	Cloudy	4.8	0.30	5.1	0.0	100 or more	30.1	1	1.9	<1	<1	<1	
45	Samegawa River	Samegawabashi Bridge	Iwakishi City	2012/2/27	Sunny	6.4	0.50	9.3	0.0	46	1173.0	15	13	<1	<1	<1	
46	Shitokigawa River	Komurobashi Bridge	Iwakishi City	2012/2/27	Sunny	3.9	0.90	4.2	0.0	100 or more	8.2	<1	0.5	<1	<1	<1	
47	Bindagawa River	Kobanabashi Bridge	Iwakishi City	2012/2/26	Cloudy	7.1	0.40	7.3	0.0	57	64.9	4	4.3	<1	<1	<1	
48	Bindagawa River	Bindabashi Bridge	Iwakishi City	2012/2/27	Sunny	4.8	0.60	9.2	0.0	79	253.0	4	3.5	<1	<1	<1	

\*Collection points for rivers are listed from north to south, and for different points along the river, from upstream to downstream.

# ORiver (Fukushima Prefecture, Hamadori Area): Sediment Monitoring Results

No.	Sampling point			Sampling date	Weather	Air temperature	Full depth	General items			Property	Concentration of radioactive material Bq/kg (Dried Mud)			Remarks
	Water body	Point	Municipality			°C		°C	m	Mud temperature		Mud sampling depth	Mud content	Radioactive iodine	
										%		I-131	Cs-134	Cs-137	
1	Jizogawa River	Hamahatabashi Bridge	Shinchimachi Town	2012/3/1	Sunny	5.1	0.50	6.6	5	80.3	Sand	<30	<10	18	
2	Koizumigawa River	Koizumibashi Bridge	Somashi City	2012/3/1	Cloudy	9.6	0.30	12.6	5	73.4	Sand with gravel	<30	300	440	
3	Koizumigawa River	Hyakkenbashi Bridge	Somashi City	2012/3/1	Sunny	5.9	0.80	4.1	5	58.8	Silt with sand	<30	700	1,000	
4	Udagawa River	Horisakabashi Bridge	Somashi City	2012/3/4	Sunny	2.8	0.60	1.9	5	76.1	Sand with gravel	<30	690	970	
5	Udagawa River	Hyakkenbashi Bridge	Somashi City	2012/2/29	Snow	1.4	0.40	4.7	5	80.9	Sand with gravel	<30	64	91	
6	Manogawa River	Ochiaibashi Bridge	Minamisomashi City	2012/3/3	Cloudy	4.7	2.10	6.0	5	84.7	Gravel with sand	<30	81	99	
7	Manogawa River	Majimabashi Bridge	Minamisomashi City	2012/3/3	Cloudy	3.8	2.30	6.1	10	63.7	Silt with sand	<30	1,400	2,000	Former evacuation-prepared areas in case of emergency
8	Niidagawa River	Kusano	Iitamura Village	2012/3/2	Cloudy	1.8	0.40	2.6	3	77.5	Sand with silt	<30	1,500	2,200	Deliberate evacuation areas
9	Niidagawa River	Komiya	Iitamura Village	2012/3/2	Cloudy	4.9	0.30	2.9	5	76.3	Sand	<30	2,000	2,700	Deliberate evacuation areas
10	Niidagawa River	Kidouchibashi Bridge	Minamisomashi City	2012/3/1	Sunny	8.8	0.60	5.6	5	78.9	Sand	<30	1,700	2,500	Former evacuation-prepared areas in case of emergency
11	Niidagawa River	Sakekawabashi Bridge	Minamisomashi City	2012/3/3	Cloudy	4.0	1.20	5.0	10	78.9	Sand with silt	<30	500	730	Former evacuation-prepared areas in case of emergency
12	Otagawa River	Ishiwatadobashi Bridge	Minamisomashi City	2012/3/3	Cloudy	3.5	0.50	4.2	10	84.1	Sand with gravel	<30	8,100	11,000	Former evacuation-prepared areas in case of emergency
13	Otagawa River	Kaminouchihashi Bridge	Minamisomashi City	2012/3/1	Sunny	9.1	0.40	7.1	5	80.8	Sand with gravel	<30	7,200	10,000	Former evacuation-prepared areas in case of emergency
14	Otagawa River	Masudabashi Bridge	Minamisomashi City	2012/3/2	Cloudy	5.0	0.50	7.3	3	75.0	Sand	<30	4,100	5,600	Former evacuation-prepared areas in case of emergency
15	Otagawa River	JR Tetsudobashi Bridge	Minamisomashi City	2012/3/2	Cloudy	3.6	0.20	5.9	5	80.7	Sand	<30	1,000	1,400	Former evacuation-prepared areas in case of emergency
16	Otagawa River	Maruyamabashi Bridge	Minamisomashi City	2012/3/4	Sunny	3.1	0.20	7.5	5	85.1	Sand with gravel	<30	28	44	Restricted areas
17	Odakagawa River	Zenchobashi Bridge	Minamisomashi City	2012/3/4	Clear	1.6	0.45	3.2	5	79.8	Sand with silt	<30	500	750	Restricted areas
18	Odakagawa River	Hatsukarabashi Bridge	Minamisomashi City	2012/3/4	Sunny	2.0	2.10	4.4	5	86.3	Sand	<30	20	24	Restricted areas
19	Ukedogawa River	Muroharabashi Bridge	Namiemachi Town	2012/3/4	Clear	3.6	0.30	3.1	3	79.1	Sand with gravel	<30	38,000	54,000	Restricted areas
20	Ukedogawa River	Ukedobashi Bridge	Namiemachi Town	2012/3/4	Clear	4.9	0.40	5.2	3	78.7	Gravel/sand with silt	<30	17,000	24,000	Restricted areas
21	Takasegawa River	Keiobashi Bridge	Namiemachi Town	2012/3/4	Clear	6.6	0.40	5.4	3	88.5	Sand with gravel	<30	1,000	1,400	Restricted areas
22	Maedagawa River	National Route 6, west	Futabamachi Town	2012/3/4	Clear	4.0	0.30	3.6	5	84.8	Sand with gravel	<30	7,600	10,000	Restricted areas
23	Maedagawa River	Nakahamabashi Bridge	Namiemachi Town	2012/3/4	Clear	4.0	1.20	4.9	3	84.1	Gravel/sand with silt	<30	2,700	4,300	Restricted areas
24	Kumagawa River	National Route 6, west	Okumamachi Town	2012/3/4	Clear	6.6	0.45	5.1	5	83.7	Sand with gravel	<30	2,700	3,900	Restricted areas
25	Kumagawa River	Mikumabashi Bridge	Okumamachi Town	2012/3/4	Clear	6.9	0.40	4.8	10	80.5	Sand	<30	4,200	6,000	Restricted areas
26	Tomiokagawa River	National Route 6, west	Tomiokamachi Town	2012/3/4	Clear	4.2	0.30	5.5	5	80.0	Sand with gravel	<30	1,000	1,400	Restricted areas
27	Tomiokagawa River	Kobamabashi Bridge	Tomiokamachi Town	2012/3/4	Clear	6.8	0.40	5.2	10	78.2	Sand	<30	3,900	5,500	Restricted areas (Samples collected near the previous point due to increased water level)
28	Idegawa River	Motogamabashi Bridge	Narahamachi Town	2012/3/4	Clear	1.8	0.30	3.8	3	84.2	Gravel with sand	<30	410	580	Restricted areas
29	Kidogawa River	Nishiyamabashi Bridge	Kawauchimura Village	2012/3/4	Cloudy	5.9	0.40	3.4	3	81.1	Sand with gravel	<30	47	52	Former evacuation-prepared areas in case of emergency
30	Kidogawa River	Nagatorobashi Bridge	Narahamachi Town	2012/3/4	Clear	5.8	0.30	4.0	5	79.5	Sand	<30	260	410	Restricted areas
31	Kidogawa River	Kidokawabashi Bridge	Narahamachi Town	2012/3/4	Clear	4.2	0.30	4.6	5	73.9	Sand	<30	290	390	Restricted areas
32	Asamigawa River	Bodabashi Bridge	Hironomachi Town	2012/2/26	Cloudy	3.6	0.40	5.2	5	80.2	Sand with gravel	<30	600	770	Former evacuation-prepared areas in case of emergency
33	Ohisagawa River	Kageisobashi Bridge	Iwakishi City	2012/2/26	Cloudy	2.9	0.30	4.9	5	83.6	Gravel with sand	<30	190	260	
34	Kohisagawa River	Rengobashi Bridge	Iwakishi City	2012/2/26	Cloudy	2.4	0.30	3.8	5	82.5	Gravel with sand	<30	110	130	
35	Niidagawa River	Kasumidabashi Bridge	Iwakishi City	2012/2/25	Rain	2.0	0.20	5.1	5	84.7	Gravel/sand with silt	<30	50	73	
36	Niidagawa River	Matsubabashi Bridge	Iwakishi City	2012/2/25	Cloudy	2.1	0.50	4.8	10	80.2	Sand with gravel	<30	390	520	
37	Natsugawa River	Kitanouchibashi Bridge	Onomachi Town	2012/2/27	Sunny	-0.2	0.40	3.3	3	77.1	Sand with gravel	<30	29	32	
38	Natsugawa River	Kyudayubashi Bridge	Iwakishi City	2012/2/27	Sunny	3.2	0.40	6.8	5	66.1	Gravel/sand with silt	<30	170	230	
39	Natsugawa River	Rokujumabashi Bridge	Iwakishi City	2012/2/27	Sunny	1.9	0.30	6.2	5	77.9	Sand	<30	38	58	
40	Yoshimagawa River	Iwaanatsuribashi Bridge	Iwakishi City	2012/2/27	Sunny	4.2	0.30	5.4	5	74.6	Sand with gravel	<30	170	260	
41	Yoshimagawa River	Before the confluence with Natsugawa River	Iwakishi City	2012/2/27	Sunny	5.2	0.30	6.9	5	76.7	Sand with gravel	<30	97	140	
42	Fujiwaragawa River	Shimabashi Bridge	Iwakishi City	2012/2/28	Clear	4.2	0.80	8.9	12	56.9	Sand with silt	<30	250	360	
43	Fujiwaragawa River	Minatohashi Bridge	Iwakishi City	2012/2/26	Cloudy	5.8	2.80	10.2	10	74.5	Sand with silt	<30	210	240	
44	Samegawa River	Idosawabashi Bridge	Iwakishi City	2012/2/27	Sunny	4.8	0.30	5.1	5	96.7	Gravel	<30	14	22	
45	Samegawa River	Samegawabashi Bridge	Iwakishi City	2012/2/27	Sunny	6.4	0.50	8.6	5	73.8	Sand	<30	65	92	
46	Shitokigawa River	Komurobashi Bridge	Iwakishi City	2012/2/27	Sunny	3.9	0.90	4.2	5	68.1	Sand	<30	130	170	
47	Bindagawa River	Kobanabashi Bridge	Iwakishi City	2012/2/26	Cloudy	7.1	0.40	7.3	5	72.8	Sand with silt	<30	86	140	
48	Bindagawa River	Bindabashi Bridge	Iwakishi City	2012/2/27	Sunny	4.8	0.60	8.7	5	63.4	Silt with sand	<30	110	150	

\*Collection points for rivers are listed from north to south, and for different points along the river, from upstream to downstream.

# ORiver (Fukushima Prefecture, Hamadori Area): Surrounding Environment Monitoring Results

Sampling point				Sampling date	Weather	Temperature ℃	Left bank					Right bank					Remarks
							Soil			Air dose μSv/h	Soil			Air dose μSv/h			
							Property	Concentration of radioactive material Bq/kg dry			Property	Concentration of radioactive material Bq/kg (dry)					
No.	Water body	Point	Municipality														
							Radioactive iodine I-131	Radioactive cesium Cs-134	Radioactive cesium Cs-137			Radioactive iodine I-131	Radioactive cesium Cs-134	Radioactive cesium Cs-137			
1	Jizogawa River	Hamahatabashi Bridge	Shinchimachi Town	2012/3/1	Sunny	5.1	Sandy	<30	1,000	1,400	0.38	Loamy	<30	900	1,200	0.25	
2	Koizumigawa River	Koizumbashi Bridge	Somashi City	2012/3/1	Cloudy	9.6	Loamy	<30	1,100	1,400	0.35	Loamy	<30	750	990	0.34	
3	Koizumigawa River	Hyakkenbashi Bridge	Somashi City	2012/3/1	Sunny	5.9	Loamy	<30	1,600	2,200	0.36	Loamy	<30	380	500	0.32	(Samples collected near the previous point)
4	Udagawa River	Horisakabashi Bridge	Somashi City	2012/3/4	Sunny	2.8	Loamy	<30	1,200	1,700	0.35	-	-	-	-	-	
5	Udagawa River	Hyakkenbashi Bridge	Somashi City	2012/2/29	Snow	1.4	Loamy	<30	1,900	2,700	0.39	Loamy	<30	470	630	0.33	
6	Manogawa River	Ochiaibashi Bridge	Minamisomashi City	2012/3/3	Cloudy	4.7	-	-	-	-	-	-	-	-	-	-	
7	Manogawa River	Majimabashi Bridge	Minamisomashi City	2012/3/3	Cloudy	3.8	-	-	-	-	-	-	-	-	-	-	Former evacuation-prepared areas in case of emergency
8	Niidagawa River	Kusano	Itatemura Village	2012/3/2	Cloudy	1.8	-	-	-	-	-	-	-	-	-	-	Deliberate evacuation areas
9	Niidagawa River	Komiya	Itatemura Village	2012/3/2	Cloudy	4.9	-	-	-	-	-	-	-	-	-	-	Deliberate evacuation areas
10	Niidagawa River	Kidouchibashi Bridge	Minamisomashi City	2012/3/1	Sunny	8.8	Loamy	<30	4,600	6,300	1.08	Loamy	<30	11,000	15,000	1.31	Former evacuation-prepared areas in case of emergency
11	Niidagawa River	Sakekawabashi Bridge	Minamisomashi City	2012/3/3	Cloudy	4.0	-	-	-	-	-	-	-	-	-	-	Former evacuation-prepared areas in case of emergency
12	Otagawa River	Ishiwatadobashi Bridge	Minamisomashi City	2012/3/3	Cloudy	3.5	-	-	-	-	-	-	-	-	-	-	Former evacuation-prepared areas in case of emergency
13	Otagawa River	Kaminouchihashi Bridge	Minamisomashi City	2012/3/1	Sunny	9.1	Loamy	<30	3,100	4,300	0.95	Loamy	<30	980	1,300	1.06	Former evacuation-prepared areas in case of emergency
14	Otagawa River	Masudabashi Bridge	Minamisomashi City	2012/3/2	Cloudy	5.0	Loamy	<30	1,100	1,600	0.34	Loamy	<30	900	1,300	0.43	Former evacuation-prepared areas in case of emergency (Samples collected near the previous point)
15	Otagawa River	JR Tetsudobashi Bridge	Minamisomashi City	2012/3/2	Cloudy	3.6	Loamy	<30	1,100	1,500	0.38	Loamy	<30	920	1,300	0.43	Former evacuation-prepared areas in case of emergency
16	Otagawa River	Maruyamabashi Bridge	Minamisomashi City	2012/3/4	Sunny	3.1	Loamy	<30	530	840	0.20	-	-	-	-	-	Restricted areas
17	Odakagawa River	Zenchobashi Bridge	Minamisomashi City	2012/3/4	Clear	1.6	-	-	-	-	-	Loamy	<30	950	1,300	0.51	Restricted areas
18	Odakagawa River	Hatsukarabashi Bridge	Minamisomashi City	2012/3/4	Sunny	2.0	Sandy	<30	55	85	0.11	-	-	-	-	-	Restricted areas
19	Ukedogawa River	Muroharabashi Bridge	Namiemachi Town	2012/3/4	Clear	3.6	Loamy	<30	22,000	33,000	9.34	-	-	-	-	-	Restricted areas
20	Ukedogawa River	Ukedobashi Bridge	Namiemachi Town	2012/3/4	Clear	4.9	Sandy	<30	1,300	1,900	1.16	-	-	-	-	-	Restricted areas
21	Takasegawa River	Keiobashi Bridge	Namiemachi Town	2012/3/4	Clear	6.6	Loamy	<30	790	1,000	1.12	-	-	-	-	-	Restricted areas
22	Maedagawa River	National Route 6, west	Futabamachi Town	2012/3/4	Clear	4.0	Loamy	<30	5,700	8,600	4.95	-	-	-	-	-	Restricted areas
23	Maedagawa River	Nakahamabashi Bridge	Namiemachi Town	2012/3/4	Clear	4.0	-	-	-	-	-	Loamy	<30	880	1,200	0.71	Restricted areas
24	Kumagawa River	National Route 6, west	Okumamachi Town	2012/3/4	Clear	6.6	-	-	-	-	-	Clay-loamy	<30	9,200	12,000	4.41	Restricted areas
25	Kumagawa River	Mikumabashi Bridge	Okumamachi Town	2012/3/4	Clear	6.9	-	-	-	-	-	Loamy	<30	10,000	14,000	8.22	Restricted areas
26	Tomiokagawa River	National Route 6, west	Tomiokamachi Town	2012/3/4	Clear	4.2	Loamy	<30	29,000	40,000	6.31	-	-	-	-	-	Restricted areas
27	Tomiokagawa River	Kobamabashi Bridge	Tomiokamachi Town	2012/3/4	Clear	6.8	Loamy	<30	9,300	13,000	2.72	-	-	-	-	-	Restricted areas
28	Idegawa River	Motogamabashi Bridge	Narahamachi Town	2012/3/4	Clear	1.8	-	-	-	-	-	Loamy	<30	5,700	7,800	0.76	Restricted areas
29	Kidogawa River	Nishiyamabashi Bridge	Kawauchimura Village	2012/3/4	Cloudy	5.9	-	-	-	-	-	-	-	-	-	-	Former evacuation-prepared areas in case of emergency
30	Kidogawa River	Nagatorobashi Bridge	Narahamachi Town	2012/3/4	Clear	5.8	Loamy	<30	3,100	4,300	0.78	-	-	-	-	-	Restricted areas
31	Kidogawa River	Kidokawabashi Bridge	Narahamachi Town	2012/3/4	Clear	4.2	-	-	-	-	-	Loamy	<30	1,700	2,300	0.83	Restricted areas
32	Asamigawa River	Bodabashi Bridge	Hironomachi Town	2012/2/26	Cloudy	3.6	Sandy	<30	1,000	1,300	0.34	Loamy	<30	880	1,100	0.47	Former evacuation-prepared areas in case of emergency (Samples collected near the previous point)
33	Ohisagawa River	Kageisobashi Bridge	Iwakishi City	2012/2/26	Cloudy	2.9	-	-	-	-	-	Sandy	<30	670	910	0.36	
34	Kohisagawa River	Rengobashi Bridge	Iwakishi City	2012/2/26	Cloudy	2.4	Loamy	<30	1,500	2,100	0.44	Loamy	<30	560	780	0.42	
35	Niidagawa River	Kasumidabashi Bridge	Iwakishi City	2012/2/25	Rain	2.0	Clay-loamy	<30	470	660	0.28	Loamy	<30	620	830	0.29	
36	Niidagawa River	Matsubashi Bridge	Iwakishi City	2012/2/25	Cloudy	2.1	Loamy	<30	320	460	0.30	Sandy	<30	540	780	0.37	
37	Natsugawa River	Kitanouchibashi Bridge	Onomachi Town	2012/2/27	Sunny	-0.2	-	-	-	-	-	-	-	-	-	-	
38	Natsugawa River	Kyudayubashi Bridge	Iwakishi City	2012/2/27	Sunny	3.2	Sandy	<30	110	170	0.12	Loamy	<30	140	180	0.14	
39	Natsugawa River	Rokujumabashi Bridge	Iwakishi City	2012/2/27	Sunny	1.9	Loamy	<30	780	1,000	0.37	Loamy	<30	960	1,300	0.38	
40	Yoshimigawa River	Iwaanatsuribashi Bridge	Iwakishi City	2012/2/27	Sunny	4.2	Loamy	<30	970	1,200	0.14	Loamy	<30	480	670	0.13	
41	Yoshimigawa River	Before the confluence with Nats	Iwakishi City	2012/2/27	Sunny	5.2	Loamy	<30	890	1,100	0.12	Loamy	<30	400	610	0.13	
42	Fujiwaragawa River	Shimabashi Bridge	Iwakishi City	2012/2/28	Clear	4.2	Loamy	<30	590	830	0.12	Loamy	<30	82	100	0.07	
43	Fujiwaragawa River	Minatoohashi Bridge	Iwakishi City	2012/2/26	Cloudy	5.8	Loamy	<30	510	660	0.16	Loamy	<30	530	740	0.33	
44	Samegawa River	Idosawabashi Bridge	Iwakishi City	2012/2/27	Sunny	4.8	Loamy	<30	70	97	0.15	-	-	-	-	-	(Samples collected near the previous point on the left bank)
45	Samegawa River	Samegawabashi Bridge	Iwakishi City	2012/2/27	Sunny	6.4	Sandy	<30	240	330	0.14	Loamy	<30	200	250	0.15	
46	Shitokigawa River	Komurobashi Bridge	Iwakishi City	2012/2/27	Sunny	3.9	Sandy	<30	110	140	0.18	Sandy	<30	50	87	0.19	
47	Bindagawa River	Kobanabashi Bridge	Iwakishi City	2012/2/26	Cloudy	7.1	Loamy	<30	240	340	0.18	Loamy	<30	410	560	0.21	
48	Bindagawa River	Bindabashi Bridge	Iwakishi City	2012/2/27	Sunny	4.8	Sandy	<30	240	310	0.16	Sandy	<30	340	520	0.22	

\*Air dose was measured with a survey meter, TCS-172 or TCS-161 of Hitachi-Aloka Medical, Ltd.

\*Collection points for rivers are listed from north to south, and for different points along the river, from upstream to downstream.

\*Sampling points with no figures for concentration of radioactive material and air dose are those unable to collect samples due to snow on the ground

# ORiver (Fukushima Prefecture, Nakadori Area): Water Quality Monitoring Results

No.	Sampling point			Sampling date	Weather	Air temperature °C	Full depth m	General items						Concentration of radioactive material Bq/L			Remarks	
	Water body	Point	Municipality					Water temperature °C	Sampling depth m	Transparency cm	Electrical conductivity mS/m	SS mg/L	Turbidity	Radioactive iodine I-131	Radioactive cesium			
															Cs-134	Cs-137		
49	Abukumagawa River	Habutobashi Bridge	Nishigomura Village	2012/3/2	Cloudy	3.1	0.40	5.1	0.0	100 or more	12.8	4	2.2	<1	<1	<1		
50		Tamachiohashi Bridge	Shirakawashi City	2012/3/3	Sunny	5.2	0.60	6.4	0.0	100 or more	12.9	3	3.5	<1	<1	<1		
51	Yantagawa River	Before the confluence with Abukumagawa River	Shirakawashi City	2012/3/2	Cloudy	2.8	0.25	6.8	0.0	100 or more	62.2	1	2.4	<1	<1	<1		
52	Yashirogawa River	Yashirogawabashi Bridge	Tanaguramachi Town	2012/2/28	Sunny	0.4	0.40	2.5	0.0	100 or more	13.9	2	3.0	<1	<1	<1		
53	Kitasugawa River	Yanagibashi Bridge	Hiratomura Village	2012/3/3	Sunny	3.6	0.40	4.4	0.0	70	13.8	4	6.1	<1	<1	<1		
54	Imadegawa River	Nekonakibashi Bridge	Ishikawamachi Town	2012/3/3	Sunny	5.8	0.80	5.8	0.0	47	17.4	10	12	<1	<1	<1		
55	Yashirogawa River	Ojibashi Bridge	Ishikawamachi Town	2012/3/2	Cloudy	4.2	0.60	3.4	0.0	85	15.0	5	6.5	<1	<1	<1		
56	Abukumagawa River	Kawanomebashi Bridge	Tamakawamura Village	2012/3/1	Cloudy	5.7	0.40	4.4	0.0	100 or more	18.4	3	3.6	<1	<1	<1		
57		Emochibashi Bridge	Sukagawashi City	2012/3/1	Sunny	3.0	0.30	3.3	0.0	100 or more	19.8	4	5.0	<1	<1	<1	(Samples collected near the previous point due to increased water level)	
58	Shakadogawa River	Sukagawashi City water intake point	Sukagawashi City	2012/3/1	Sunny	3.6	0.30	4.6	0.0	73	19.9	5	8.1	<1	<1	<1		
59		Before the confluence with Abukumagawa River	Sukagawashi City	2012/3/1	Cloudy	0.7	0.40	3.9	0.0	85	19.0	7	8.1	<1	<1	<1		
60	Sasaharagawa River	Shinbashi Bridge	Koriyamashi City	2012/2/29	Snow	0.2	0.30	2.6	0.0	45	24.2	11	12	<1	<1	<1		
61	Yatagawa River	Yatagawabashi Bridge	Koriyamashi City	2012/2/29	Snow	-1.1	0.30	2.0	0.0	84	28.1	7	7.8	<1	<1	<1		
62	Otakinegawa River	Funehikibashi Bridge	Tamurashi City	2012/2/28	Sunny	-1.2	0.30	0.8	0.0	100 or more	19.5	5	4.0	<1	<1	<1		
63		Before the confluence with Abukumagawa River	Koriyamashi City	2012/3/1	Cloudy	0.5	0.20	2.6	0.0	100 or more	22.0	2	3.0	<1	<1	<1		
64	Ousegawa River	Before the confluence with Babagawa River	Koriyamashi City	2012/2/28	Cloudy	2.9	0.30	3.4	0.0	100 or more	35.4	2	3.7	<1	<1	<1		
65		Makunouchibashi Bridge	Koriyamashi City	2012/2/29	Snow	-0.6	0.20	2.6	0.0	75	35.5	7	7.9	<1	<1	<1		
66		Before the confluence with Abukumagawa River	Koriyamashi City	2012/2/29	Snow	-0.4	0.30	2.8	0.0	80	37.8	6	6.7	<1	<1	<1		
67	Abukumagawa River	Akutsubashi Bridge	Koriyamashi City	2012/2/29	Snow	-1.0	0.40	3.2	0.0	100 or more	31.1	7	6.2	<1	<1	<1		
68		After the confluence with Ishimurogawa River	Koriyamashi City	2012/2/28	Sunny	2.8	0.50	3.8	0.0	100 or more	12.1	1	1.2	<1	<1	<1		
69	Gohyakugawa River	Kamisekishitabashi Bridge	Motomiyashi City	2012/2/28	Sunny	2.0	0.40	2.2	0.0	100 or more	19.2	2	2.1	<1	<1	<1		
70		Before the confluence with Abukumagawa River	Motomiyashi City	2012/2/28	Sunny	1.6	0.30	1.6	0.0	100 or more	18.5	3	3.5	<1	<1	<1		
71	Abukumagawa River	Takadabashi Bridge	Nihonmatsushi City	2012/2/28	Clear	-2.1	0.50	1.9	0.0	85	24.0	6	4.6	<1	<1	<1		
72	Kuchibutogawa River	Kuchibutogawabashi Bridge	Nihonmatsushi City	2012/3/1	Sunny	8.1	0.40	5.5	0.0	100 or more	13.5	5	3.9	<1	<1	<1		
73	Utsushigawa River	Osegawabashi Bridge	Nihonmatsushi City	2012/3/2	Cloudy	3.2	0.60	3.0	0.0	100 or more	18.8	6	5.3	<1	<1	<1		
74	Mizuharagawa River	Getouchibashi Bridge	Fukushimashi City	2012/3/2	Cloudy	2.8	0.40	2.4	0.0	76	14.5	7	7.6	<1	<1	<1		
75	Megamigawa River	Tsurumakibashi Bridge	Fukushimashi City	2012/3/2	Cloudy	3.4	0.20	2.4	0.0	100 or more	23.7	4	4.9	<1	<1	<1		
76	Abukumagawa River	Horaibashi Bridge	Fukushimashi City	2012/3/2	Rain	3.4	0.60	3.2	0.0	100 or more	23.9	4	4.5	<1	<1	<1		
77	Nigorigawa River	Before the confluence with Oorigawa River	Fukushimashi City	2012/3/1	Cloudy	5.1	0.30	6.9	0.0	52	41.6	16	17	<1	1	1		
78	Arakawa River	Hinokurabashi Bridge	Fukushimashi City	2012/3/1	Sunny	3.4	0.45	6.3	0.0	100 or more	42.4	2	2.6	<1	<1	<1	(Samples collected near the previous point due to construction)	
79	Sukawa River	Sukawabashi Bridge	Fukushimashi City	2012/3/1	Cloudy	3.6	0.20	5.9	0.0	100 or more	6.5	<1	0.2	<1	<1	<1		
80	Arakawa River	Before the confluence with Abukumagawa River	Fukushimashi City	2012/3/1	Cloudy	6.1	0.50	9.2	0.0	65	35.2	15	10	<1	<1	<1		
81	Matsukawa River	Before the confluence with Abukumagawa River	Fukushimashi City	2012/3/4	Sunny	1.4	0.30	4.7	0.0	100 or more	22.1	5	3.7	<1	<1	<1		
82	Hattandagawa River	Hattandabashi Bridge	Fukushimashi City	2012/3/4	Sunny	4.8	0.30	4.5	0.0	78	24.1	11	8.1	<1	<1	<1		
83	Surikamigawa River	Totsunabashi Bridge	Fukushimashi City	2012/2/28	Sunny	3.9	0.30	4.2	0.0	100 or more	16.4	2	2.0	<1	<1	<1		
84		Before the confluence with Abukumagawa River	Fukushimashi City	2012/2/29	Snow	-0.5	0.50	2.5	0.0	100 or more	12.7	2	1.8	<1	<1	<1		
85	Abukumagawa River	Taishobashi Bridge	Dateshi City	2012/3/3	Cloudy	3.8	0.30	5.0	0.0	50	24.7	7	8.5	<1	<1	<1		
86	Hirosegawa River	Tatenokoshibashi Bridge	Kawamatamachi Town	2012/3/1	Sunny	4.4	0.60	3.8	0.0	100 or more	13.1	4	3.9	<1	<1	<1		
87		Jizogawarabashi Bridge	Dateshi City	2012/3/3	Cloudy	4.8	0.40	3.4	0.0	66	16.0	5	5.2	<1	<1	<1		
88	Ogunigawa River	Before the confluence with Hirosegawa River	Dateshi City	2012/3/4	Sunny	2.4	0.50	1.9	0.0	39	18.8	10	12	<1	<1	1		
89	Hirosegawa River	Before the confluence with Abukumagawa River	Dateshi City	2012/3/4	Sunny	4.0	0.50	3.4	0.0	50	18.3	7	9.5	<1	<1	<1		
90	Others	Kurokawa River	Tochigi Prefecture Border	Shirakawashi City	2012/3/3	Sunny	5.0	0.45	6.4	0.0	100 or more	15.0	1	1.7	<1	<1	<1	
91		Kujigawa River	Matsuoakabashi Bridge	Tanaguramachi Town	2012/2/28	Sunny	3.4	0.30	4.2	0.0	100 or more	15.5	1	2.1	<1	<1	<1	
92			Takachiharabashi Bridge	Yamatsurimachi Town	2012/2/28	Sunny	4.6	0.30	4.4	0.0	100 or more	12.3	3	2.9	<1	<1	<1	

\*Collection points for rivers are listed from north to south, and for different points along the river, from upstream to downstream.

# ORiver (Fukushima Prefecture, Nakadori Area): Sediment Monitoring Results

No.	Sampling point			Sampling date	Weather	Air temperature °C	Full depth m	General items				Concentration of radioactive material Bq/kg (Dried Mud)			Remarks	
	Water body	Point	Municipality					Mud temperature °C	Mud content cm	Mud content %	Property	Radioactive iodine I-131	Radioactive cesium Cs-134 Cs-137			
49	Abukumagawa River	Habutobashi Bridge	Nishigomura Village	2012/3/2	Cloudy	3.1	0.40	4.2	5	79.1	Sand with silt	<30	38	58		
50		Tamachiohashi Bridge	Shirakawashi City	2012/3/3	Sunny	5.2	0.60	5.5	5	76.4	Sand with gravel	<30	120	160		
51		Yantagawa River	Before the confluence with Abukumagawa River	Shirakawashi City	2012/3/3	Cloudy	2.8	0.25	6.8	5	78.9	Sand	<30	200	290	
52		Yashirogawa River	Yashirogawabashi Bridge	Tanaguramachi Town	2012/2/28	Sunny	0.4	0.40	2.3	5	92.8	Gravel with sand	<30	64	86	
53		Kitasugawa River	Yanagibashi Bridge	Hiratamura Village	2012/3/3	Sunny	3.6	0.40	4.4	5	80.2	Sand	<30	28	42	
54		Imadegawa River	Nekonakibashi Bridge	Ishikawamachi Town	2012/3/3	Sunny	5.8	0.80	5.6	5	75.3	Sand with gravel	<30	19	36	
55		Yashirogawa River	Ojibashi Bridge	Ishikawamachi Town	2012/3/2	Cloudy	4.2	0.60	3.4	5	79.3	Sand with gravel	<30	17	35	
56		Abukumagawa River	Kawanomebashi Bridge	Tamakawamura Village	2012/3/1	Cloudy	5.7	0.40	6.2	3	76.1	Sand	<30	33	44	
57		Abukumagawa River	Emochibashi Bridge	Sukagawashi City	2012/3/1	Sunny	3.0	0.30	3.8	3	83.8	Sand with gravel	<30	10	14	(Samples collected near the previous point due to increased water level)
58		Shakadogawa River	Sukagawashi City water intake point	Sukagawashi City	2012/3/1	Sunny	3.6	0.30	4.6	3	80.3	Sand with gravel	<30	46	80	
59		Abukumagawa River	Before the confluence with Abukumagawa River	Sukagawashi City	2012/3/1	Cloudy	0.7	0.40	3.5	3	80.7	Sand with gravel	<30	61	68	
60		Sasaharagawa River	Shinbashi Bridge	Koriyamashi City	2012/2/29	Snow	0.2	0.30	2.2	3	88.8	Sand with gravel	<30	190	290	
61		Yatagawa River	Yatagawabashi Bridge	Koriyamashi City	2012/2/29	Snow	-1.1	0.30	2.0	5	77.3	Sand with gravel	<30	66	94	
62		Otakegawa River	Funehikibashi Bridge	Tamurashi City	2012/2/28	Sunny	-1.2	0.30	1.2	5	80.6	Sand	<30	74	99	
63		Abukumagawa River	Before the confluence with Abukumagawa River	Koriyamashi City	2012/3/1	Cloudy	0.5	0.20	3.0	3	80.3	Sand with gravel	<30	150	210	
64		Abukumagawa River	Before the confluence with Babagawa River	Koriyamashi City	2012/2/28	Cloudy	2.9	0.30	3.6	5	78.1	Gravel/sand with silt	<30	500	690	
65		Ousegawa River	Makunouchibashi Bridge	Koriyamashi City	2012/2/29	Snow	-0.6	0.20	2.5	3	82.6	Sand with gravel	<30	130	180	
66		Abukumagawa River	Before the confluence with Abukumagawa River	Koriyamashi City	2012/2/29	Snow	-0.4	0.30	2.8	5	77.3	Sand with gravel	<30	650	890	
67		Abukumagawa River	Akutsubashi Bridge	Koriyamashi City	2012/2/29	Snow	-1.0	0.40	2.8	3	81.7	Sand/Gravel with silt	<30	140	210	
68		Abukumagawa River	After the confluence with Ishimurogawa River	Koriyamashi City	2012/2/28	Sunny	2.8	0.50	3.6	3	76.3	Sand with gravel	<30	52	70	
69		Gohyakugawa River	Kamisekishitabashi Bridge	Motomiyashi City	2012/2/28	Sunny	2.0	0.40	2.4	5	79.1	Sand with gravel	<30	90	140	
70		Abukumagawa River	Before the confluence with Abukumagawa River	Motomiyashi City	2012/2/28	Sunny	1.6	0.30	2.2	5	72.0	Sand with gravel	<30	310	420	
71		Abukumagawa River	Takadabashi Bridge	Nihonmatsushi City	2012/2/28	Clear	-2.1	0.50	2.6	10	72.1	Sand with silt	<30	180	260	
72		Kuchibutogawa River	Kuchibutogawabashi Bridge	Nihonmatsushi City	2012/3/1	Sunny	8.1	0.40	3.9	10	76.9	Sand	<30	380	570	
73		Utsushigawa River	Osegawabashi Bridge	Nihonmatsushi City	2012/3/2	Cloudy	3.2	0.60	3.8	3	73.0	Sand	<30	280	390	
74		Mizuharagawa River	Getouchibashi Bridge	Fukushimashi City	2012/3/2	Cloudy	2.8	0.40	2.6	3	73.3	Sand	<30	580	830	
75		Megamigawa River	Tsurumakibashi Bridge	Fukushimashi City	2012/3/2	Cloudy	3.4	0.20	2.6	3	74.5	Sand with gravel	<30	530	810	
76		Abukumagawa River	Horaibashi Bridge	Fukushimashi City	2012/3/2	Rain	3.4	0.60	5.2	3	72.3	Sand	<30	200	260	
77		Nigorigawa River	Before the confluence with Omorigawa River	Fukushimashi City	2012/3/1	Cloudy	5.1	0.30	6.9	5	71.9	Sand	<30	460	630	
78	Arakawa River	Hinokurabashi Bridge	Fukushimashi City	2012/3/1	Sunny	3.4	0.45	6.3	5	76.9	Sand with gravel	<30	43	71	(Samples collected near the previous point due to construction)	
79	Sukawa River	Sukawabashi Bridge	Fukushimashi City	2012/3/1	Cloudy	3.6	0.20	5.9	5	73.9	Sand with gravel	<30	79	120		
80	Arakawa River	Before the confluence with Abukumagawa River	Fukushimashi City	2012/3/1	Cloudy	6.1	0.50	9.2	5	64.7	Sand with gravel	<30	570	810		
81	Matsukawa River	Before the confluence with Abukumagawa River	Fukushimashi City	2012/3/4	Sunny	1.4	0.30	3.4	5	80.4	Sand with gravel	<30	280	410		
82	Hattandagawa River	Hattandabashi Bridge	Fukushimashi City	2012/3/4	Sunny	4.8	0.30	5.2	5	80.0	Sand with gravel	<30	440	650		
83	Surikamigawa River	Totsunabashi Bridge	Fukushimashi City	2012/2/28	Sunny	3.9	0.30	6.4	5	76.1	Sand	<30	100	160		
84	Abukumagawa River	Before the confluence with Abukumagawa River	Fukushimashi City	2012/2/29	Snow	-0.5	0.50	2.6	3	76.0	Sand	<30	350	480		
85	Abukumagawa River	Taishobashi Bridge	Dateshi City	2012/3/3	Cloudy	3.8	0.30	5.2	5	73.9	Sand	<30	480	680		
86	Hirosegawa River	Tatenokoshibashi Bridge	Kawanatamachi Town	2012/3/1	Sunny	4.4	0.60	3.0	10	73.0	Sand	<30	340	430		
87	Hirosegawa River	Jizogawarabashi Bridge	Dateshi City	2012/3/3	Cloudy	4.8	0.40	1.3	5	75.5	Sand	<30	310	470		
88	Ogunigawa River	Before the confluence with Hirosegawa River	Dateshi City	2012/3/4	Sunny	2.4	0.50	2.1	5	78.8	Sand	<30	1,000	1,300		
89	Hirosegawa River	Before the confluence with Abukumagawa River	Dateshi City	2012/3/4	Sunny	4.0	0.50	3.3	3	81.1	Sand	<30	300	410		
90	Kurokawa River	Tochigi Prefecture Border	Shirakawashi City	2012/3/3	Sunny	5.0	0.45	7.8	12	71.2	Sand	<30	51	82		
91	Kujigawa River	Matsuokabashi Bridge	Tanaguramachi Town	2012/2/28	Sunny	3.4	0.30	5.3	3	72.1	Sand	<30	50	100		
92	Kujigawa River	Takachiharabashi Bridge	Yamatsurimachi Town	2012/2/28	Sunny	4.6	0.30	3.1	5	75.9	Sand	<30	18	26		

\*Collection points for rivers are listed from north to south, and for different points along the river, from upstream to downstream.

# ○River (Fukushima Prefecture, Nakadori Area): Sediment Monitoring Results

No.	Sampling point			Sampling date	Weather	Air temperature °C	Left bank					Right bank					Remarks
	Water body	Point	Municipality				Property	Soil			Air dose μSv/h	Property	Soil			Air dose μSv/h	
								Concentration of radioactive material Bq/kgdry					Concentration of radioactive material Bq/kg (dry)				
								Radioactive iodine I-131	Radioactive cesium Cs-134	Cs-137			Radioactive iodine I-131	Radioactive cesium Cs-134	Cs-137		
49	Abukumagawa River	Habutobashi Bridge	Nishigomura Village	2012/3/2	Cloudy	3.1	Loamy	<30	2,500	3,400	0.54	-	-	-	-	-	
50	Abukumagawa River	Tamachiohashi Bridge	Shirakawashi City	2012/3/3	Sunny	5.2	-	-	-	-	-	-	-	-	-	-	
51	Yantagawa River	Before the confluence with Abukumagawa River	Shirakawashi City	2012/3/2	Cloudy	2.8	-	-	-	-	-	-	-	-	-	-	
52	Yashirogawa River	Yashirogawabashi Bridge	Tanaguramachi Town	2012/2/28	Sunny	0.4	Sandy	<30	1,100	1,500	0.24	Sandy	<30	840	1,100	0.26	
53	Kitasugawa River	Yanagibashi Bridge	Hiratamura Village	2012/3/3	Sunny	3.6	-	-	-	-	-	-	-	-	-	-	
54	Imadegawa River	Nekonakibashi Bridge	Ishikawamachi Town	2012/3/3	Sunny	5.8	-	-	-	-	-	-	-	-	-	-	
55	Yashirogawa River	Ojibashi Bridge	Ishikawamachi Town	2012/3/2	Cloudy	4.2	-	-	-	-	-	Loamy	<30	500	700	0.14	
56	Abukumagawa River	Kawanomebashi Bridge	Tamakawamura Village	2012/3/1	Cloudy	5.7	-	-	-	-	-	-	-	-	-	-	
57	Abukumagawa River	Emochibashi Bridge	Sukagawashi City	2012/3/1	Sunny	3.0	-	-	-	-	-	-	-	-	-	-	
58	Shakadogawa River	Sukagawashi City water intake point	Sukagawashi City	2012/3/1	Sunny	3.6	-	-	-	-	-	-	-	-	-	-	
59	Shakadogawa River	Before the confluence with Abukumagawa River	Sukagawashi City	2012/3/1	Cloudy	0.7	-	-	-	-	-	-	-	-	-	-	
60	Sasaharagawa River	Shinbashi Bridge	Koriyamashi City	2012/2/29	Snow	0.2	Clay-loamy	<30	1,100	1,600	0.70	Clay-loamy	<30	1,300	1,800	0.68	
61	Yatagawa River	Yatagawabashi Bridge	Koriyamashi City	2012/2/29	Snow	-1.1	Loamy	<30	1,400	2,000	0.47	Loamy	<30	3,000	4,200	0.47	
62	Otakegawa River	Funchikibashi Bridge	Tamurashi City	2012/2/28	Sunny	-1.2	Loamy	<30	1,200	1,700	0.20	Loamy	<30	310	470	0.23	
63	Otakegawa River	Before the confluence with Abukumagawa River	Koriyamashi City	2012/3/1	Cloudy	0.5	-	-	-	-	-	-	-	-	-	-	
64	Ousegawa River	Before the confluence with Babagawa River	Koriyamashi City	2012/2/28	Cloudy	2.9	Clay-loamy	<30	140	190	0.76	-	-	-	-	-	
65	Ousegawa River	Makunouchibashi Bridge	Koriyamashi City	2012/2/29	Snow	-0.6	Loamy	<30	1,100	1,500	0.75	Loamy	<30	22,000	30,000	0.97	
66	Ousegawa River	Before the confluence with Abukumagawa River	Koriyamashi City	2012/2/29	Snow	-0.4	Clay-loamy	<30	5,900	8,300	1.42	Clay-loamy	<30	2,300	3,100	2.02	
67	Abukumagawa River	Akutsubashi Bridge	Koriyamashi City	2012/2/29	Snow	-1.0	Loamy	<30	520	740	0.58	Loamy	<30	950	1,200	0.80	
68	Gohyakugawa River	After the confluence with Ishimurogawa River	Koriyamashi City	2012/2/28	Sunny	2.8	-	-	-	-	-	-	-	-	-	-	
69	Gohyakugawa River	Kamisekishitabashi Bridge	Motomiya City	2012/2/28	Sunny	2.0	Loamy	<30	9,700	13,000	1.30	Loamy	<30	1,600	2,300	1.25	
70	Gohyakugawa River	Before the confluence with Abukumagawa River	Motomiya City	2012/2/28	Sunny	1.6	Clay-loamy	<30	1,700	2,300	1.50	Loamy	<30	1,600	2,400	1.33	
71	Abukumagawa River	Takadabashi Bridge	Nihonmatsushi City	2012/2/28	Clear	-2.1	Loamy	<30	260	350	0.52	-	-	-	-	-	
72	Kuchibutogawa River	Kuchibutogawabashi Bridge	Nihonmatsushi City	2012/3/1	Sunny	8.1	-	-	-	-	-	-	-	-	-	-	
73	Utsushigawa River	Osegawabashi Bridge	Nihonmatsushi City	2012/3/2	Cloudy	3.2	-	-	-	-	-	Loamy	<30	830	1,000	0.77	
74	Mizuharagawa River	Getouchibashi Bridge	Fukushima City	2012/3/2	Cloudy	2.8	Loamy	<30	2,900	4,100	1.24	-	-	-	-	-	
75	Megamigawa River	Tsurumakibashi Bridge	Fukushima City	2012/3/2	Cloudy	3.4	-	-	-	-	-	Loamy	<30	1,600	2,100	0.81	
76	Abukumagawa River	Horaibashi Bridge	Fukushima City	2012/3/2	Rain	3.4	Loamy	<30	3,200	4,500	0.74	Loamy	<30	5,900	8,300	1.06	
77	Nigorigawa River	Before the confluence with Omorigawa River	Fukushima City	2012/3/1	Cloudy	5.1	-	-	-	-	-	-	-	-	-	-	
78	Arakawa River	Hinokurabashi Bridge	Fukushima City	2012/3/1	Sunny	3.4	-	-	-	-	-	-	-	-	-	-	
79	Sukawa River	Sukawabashi Bridge	Fukushima City	2012/3/1	Cloudy	3.6	-	-	-	-	-	-	-	-	-	-	
80	Arakawa River	Before the confluence with Abukumagawa River	Fukushima City	2012/3/1	Cloudy	6.1	-	-	-	-	-	-	-	-	-	-	
81	Matsukawa River	Before the confluence with Abukumagawa River	Fukushima City	2012/3/4	Sunny	1.4	-	-	-	-	-	-	-	-	-	-	
82	Hattandagawa River	Hattandabashi Bridge	Fukushima City	2012/3/4	Sunny	4.8	Loamy	<30	1,800	2,500	0.72	-	-	-	-	-	
83	Surikamigawa River	Totsunabashi Bridge	Fukushima City	2012/2/28	Sunny	3.9	Sandy	<30	3,900	5,300	0.77	Sandy	<30	3,500	4,800	0.80	
84	Surikamigawa River	Before the confluence with Abukumagawa River	Fukushima City	2012/2/29	Snow	-0.5	Loamy	<30	2,400	3,300	0.98	Sandy	<30	1,400	2,000	0.88	
85	Abukumagawa River	Taishobashi Bridge	Dateshi City	2012/3/3	Cloudy	3.8	-	-	-	-	-	-	-	-	-	-	
86	Hirosegawa River	Tatenokoshibashi Bridge	Kawamatamachi Town	2012/3/1	Sunny	4.4	-	-	-	-	-	-	-	-	-	-	
87	Hirosegawa River	Jizogawarabashi Bridge	Dateshi City	2012/3/3	Cloudy	4.8	-	-	-	-	-	-	-	-	-	-	
88	Ogunigawa River	Before the confluence with Hirosegawa River	Dateshi City	2012/3/4	Sunny	2.4	-	-	-	-	-	-	-	-	-	-	
89	Hirosegawa River	Before the confluence with Abukumagawa River	Dateshi City	2012/3/4	Sunny	4.0	Sandy	<30	1,600	2,200	0.49	Loamy	<30	790	1,000	0.34	
90	Kurokawa River	Tochigi Prefecture Border	Shirakawashi City	2012/3/3	Sunny	5.0	-	-	-	-	-	-	-	-	-	-	
91	Others	Kujigawa River	Matsuokabashi Bridge	Tanaguramachi Town	2012/2/28	Sunny	3.4	Loamy	<30	680	890	0.19	Loamy	<30	280	410	0.20
92	Others	Kujigawa River	Takachiharabashi Bridge	Yamatsurimachi Town	2012/2/28	Sunny	4.6	Loamy	<30	260	340	0.12	Loamy	<30	65	97	0.11

\*Air dose was measured with a survey meter, TCS-172 or TCS-161 of Hitachi-Aloka Medical, Ltd.

\*Collection points for rivers are listed from north to south, and for different points along the river, from upstream to downstream.

\*Sampling points with no figures for concentration of radioactive material and air dose are those unable to collect samples due to snow on the ground



○River (Fukushima Prefecture, Aizu Area): Water Quality Monitoring Results

No.	Sampling point			Sampling date	Weather	Air temperature °C	Full depth m	General items						Concentration of radioactive material Bq/L			Remarks	
	Water body	Point	Municipality					Water temperature °C	Sampling depth m	Transparency cm	Electrical conductivity mS/m	SS mg/L	Turbidity	Radioactive iodine I-131	Radioactive cesium			
															Cs-134	Cs-137		
93	A g a n o g a w a River	Tajimabashi Bridge	Minamiaizumachi Town	2012/3/2	Snow	1.9	0.40	3.6	0.0	100 or more	6.4	1	1.5	<1	<1	<1		
94		Okawabashi Bridge	Aizuwakamatsushi City	2012/3/9	Rain	4.1	0.40	4.2	0.0	100 or more	7.5	2	3.8	<1	<1	<1		
95	Yukawa River	Takimibashi Bridge	Aizuwakamatsushi City	2012/3/2	Cloudy	2.1	0.20	3.0	0.0	100 or more	14.1	1	1.3	<1	<1	<1		
96		Shinyukawabashi Bridge	Aizuwakamatsushi City	2012/3/2	Cloudy	0.8	0.20	4.4	0.0	100 or more	14.4	11	5.6	<1	<1	<1		
97		Before the confluence with Aganogawa River	Aizuwakamatsushi City	2012/3/2	Cloudy	1.2	0.30	5.2	0.0	100 or more	21.1	9	4.8	<1	<1	<1		
98	Miyakawa River	Saikunabashi Bridge	Aizubangemachi Town	2012/3/2	Cloudy	2.5	0.50	4.9	0.0	100 or more	11.3	4	3.6	<1	<1	<1		
99	Aganogawa River	Miyakobashi Bridge	Aizubangemachi Town	2012/3/2	Cloudy	1.5	1.00	4.0	0.0	100 or more	18.6	6	4.2	<1	<1	<1		
100	w a R i v e r	Nippashigawa River	Minamiohashi Bridge	Kitakatashi City	2012/3/1	Sunny	7.2	0.70	6.6	0.0	75	14.5	8	7.3	<1	<1	<1	
101		Kyuyukawa River	Awanomiyabashi Bridge	Yugawamura Village	2012/3/1	Sunny	6.2	0.40	5.8	0.0	75	19.3	9	9.8	<1	<1	<1	
102	R i v e r	Kyumiya River	Josukebashi Bridge	Aizubangemachi Town	2012/3/2	Cloudy	0.4	0.30	4.2	0.0	77	17.2	5	9.1	<1	<1	<1	
103		Tatsukigawa River	Ohashi Bridge	Kitakatashi City	2012/3/1	Cloudy	4.0	0.40	4.8	0.0	100 or more	11.1	6	3.7	<1	<1	<1	
104			Shimokawarabashi Bridge	Kitakatashi City	2012/3/1	Cloudy	4.6	0.30	8.1	0.0	100 or more	15.0	5	4.2	<1	<1	<1	
105		Nigorigawa River	Nigorigawabashi Bridge	Kitakatashi City	2012/3/1	Cloudy	4.9	0.30	5.1	0.0	100 or more	14.0	4	3.8	<1	<1	<1	
106			Yamazakibashi Bridge	Kitakatashi City	2012/3/2	Cloudy	-0.2	0.30	2.4	0.0	100 or more	20.8	7	5.3	<1	<1	<1	
107		Inagawa River	Aoyagibashi Bridge	Minamiaizumachi Town	2012/3/2	Snow	1.4	0.40	2.4	0.0	100 or more	7.4	6	5.5	<1	<1	<1	
108			Kurosawabashi Bridge	Tadamimachi Town	2012/3/2	Cloudy	2.3	0.80	3.2	0.0	49	9.0	14	11	<1	<1	<1	
109		Tadamigawa River	Nishitanibashi Bridge	Kaneyamamachi Town	2012/3/3	Cloudy	2.6	0.60	2.9	0.0	27	10.3	46	55	<1	<1	<1	
110			Fujibashi Bridge	Aizubangemachi Town	2012/2/29	Snow	-0.2	0.60	1.9	0.0	24	10.9	20	29	<1	<1	<1	
111		Aganogawa River	Shingo Dam	Kitakatashi City	2012/2/29	Snow	-0.5	1.20	2.8	0.0	39	9.5	12	19	<1	<1	<1	(Samples collected near the previous point due to snow on the ground)
112		Sukawa River	Sukawano	Inawashiro Town	2012/2/27	Sunny	-2.9	0.70	4.8	0.0	100 or more	88.1	2	0.9	<1	<1	<1	
113		Nagasegawa River	Koganebashi Bridge	Inawashiro Town	2012/2/27	Cloudy	-2.6	0.70	1.8	0.0	100 or more	12.0	5	2.7	<1	<1	<1	(Samples collected near the previous point due to snow on the ground)

\*Collection points for rivers are listed from north to south, and for different points along the river, from upstream to downstream.

# ORiver (Fukushima Prefecture, Aizu Area): Sediment Monitoring Results

No.	Sampling point			Sampling date	Weather	Air temperature °C	Full depth m	General items				concentration of radioactive material Bq/kg (Dried Mu			Remarks	
	Water body	Point	Municipality					Mud temperature °C	Mud sampling depth cm	Mud content %	Property	Radioactive iodine I-131	Radioactive cesium			
													Cs-134	Cs-137		
93	A g a n o g a w a	Aganogawa River	Tajimabashi Bridge	Minamiaizumachi Town	2012/3/2	Snow	1.9	0.40	3.7	5	77.6	Sand with gravel	<30	<10	<10	
94		Okawabashi Bridge	Aizuwakamatsushi City	2012/3/9	Rain	4.1	0.40	4.0	5	81.9	Sand with gravel	<30	<10	<10		
95	Y u k a w a	Yukawa River	Takimibashi Bridge	Aizuwakamatsushi City	2012/3/2	Cloudy	2.1	0.20	3.2	3	75.4	Sand with gravel	<30	98	130	
96			Shinyukawabashi Bridge	Aizuwakamatsushi City	2012/3/2	Cloudy	0.8	0.20	4.1	3	81.8	Sand with gravel	<30	65	110	
97			Before the confluence with Aganogawa River	Aizuwakamatsushi City	2012/3/2	Cloudy	1.2	0.30	5.3	3	80.7	Sand with gravel	<30	160	260	
98	Miyakawa River	Saikunabashi Bridge	Aizubangemachi Town	2012/3/2	Cloudy	2.5	0.50	4.9	3	62.3	Sand with silt	<30	210	320		
99	Aganogawa River	Miyakobashi Bridge	Aizubangemachi Town	2012/3/2	Cloudy	1.5	1.00	-	-	-	-	-	-	-	-	(Samples not collected due to river bottom covered with gravel)
100	Nippashigawa River	Minamiohashi Bridge	Kitakatashi City	2012/3/1	Sunny	7.2	0.70	6.6	3	61.3	Sand with silt	<30	570	730		
101	Kyuyukawa River	Awanomiyabashi Bridge	Yugawamura Village	2012/3/1	Sunny	6.2	0.40	5.8	3	64.7	Sand with silt	<30	390	540		
102	R i v e r	Kyumiya River	Josukebashi Bridge	Aizubangemachi Town	2012/3/2	Cloudy	0.4	0.30	-	-	-	-	-	-	-	(Samples not collected due to river bottom covered with gravel)
103	Tatsukigawa River	Ohashi Bridge	Kitakatashi City	2012/3/1	Cloudy	4.0	0.40	-	-	-	-	-	-	-	-	(Samples not collected due to river bottom covered with gravel)
104	Shimokawarabashi Bridge	Kitakatashi City	2012/3/1	Cloudy	4.6	0.30	8.1	3	63.6	Sand with silt	<30	250	360			
105	Nigorigawa River	Nigorigawabashi Bridge	Kitakatashi City	2012/3/1	Cloudy	4.9	0.30	-	-	-	-	-	-	-	-	(Samples not collected due to river bottom covered with gravel)
106	Yamazakibashi Bridge	Kitakatashi City	2012/3/2	Cloudy	-0.2	0.30	-	-	-	-	-	-	-	-	-	(Samples not collected due to river bottom covered with gravel)
107	Inagawa River	Aoyagibashi Bridge	Minamiaizumachi Town	2012/3/2	Snow	1.4	0.40	2.5	3	76.6	Gravel with sand	<30	<10	<10		
108	Kurosawabashi Bridge	Tadamimachi Town	2012/3/2	Cloudy	2.3	0.80	3.3	10	71.3	Sand	<30	20	24			
109	Tadamigawa River	Nishitanibashi Bridge	Kaneyamamachi Town	2012/3/3	Cloudy	2.6	0.60	-	-	-	-	-	-	-	-	(Samples not collected due to river bottom covered with gravel)
110	Fujibashi Bridge	Aizubangemachi Town	2012/2/29	Snow	-0.2	0.60	0.9	3	66.4	Sand with gravel	<30	18	33		(Samples collected near the previous point due to snow on the ground)	
111	Aganogawa River	Shingo Dam	Kitakatashi City	2012/2/29	Snow	-0.5	1.20	-	-	-	-	-	-	-	-	(Samples collected near the previous point due to snow on the ground)
112	Sukawa River	Sukawano	Inawashiro-machi Town	2012/2/27	Sunny	-2.9	0.70	-	-	-	-	-	-	-	-	(Samples not collected due to river bottom covered with gravel)
113	Nagasegawa River	Koganebashi Bridge	Inawashiro-machi Town	2012/2/27	Cloudy	-2.6	0.70	-	-	-	-	-	-	-	-	(Samples not collected due to river bottom covered with gravel)

\*Collection points for rivers are listed from north to south, and for different points along the river, from upstream to downstream.

# ORiver (Fukushima Prefecture, Aizu Area): Surrounding Environment Monitoring Results

Sampling point				Sampling date	Weather	Air temperature °C	Left bank					Right bank					Remarks	
							Soil			Air dose μSv/h	Soil			Air dose μSv/h				
No.	Water body	Point	Municipality	Property	Concentration of radioactive material Bq/kgdry			Property	Concentration of radioactive material Bq/kg (dry)									
					Radioactive iodine I-131	Radioactive cesium Cs-134	Radioactive cesium Cs-137		Radioactive iodine I-131	Radioactive cesium Cs-134	Radioactive cesium Cs-137							
93	A g a n o g a w a r i v e r	Aganogawa River	Tajimabashi Bridge	Minamiaizumachi Town	2012/3/2	Snow	1.9	-	-	-	-	-	-	-	-	-	-	
94		Okawabashi Bridge	Aizuwakamatsushi City	2012/3/9	Rain	4.1	Loamy	<30	110	140	0.09	-	-	-	-	-	-	
95		Yukawa River	Takimibashi Bridge	Aizuwakamatsushi City	2012/3/2	Cloudy	2.1	-	-	-	-	-	Loamy	<30	280	340	0.17	-
96		Shinyukawabashi Bridge	Aizuwakamatsushi City	2012/3/2	Cloudy	0.8	-	-	-	-	-	-	Loamy	<30	450	680	0.19	-
97		Before the confluence with Agat	Aizuwakamatsushi City	2012/3/2	Cloudy	1.2	-	-	-	-	-	-	-	-	-	-	-	-
98	M i y a k a w a r i v e r	Miyakawa River	Saikunabashi Bridge	Aizubangemachi Town	2012/3/2	Cloudy	2.5	-	-	-	-	-	-	-	-	-	-	-
99		Aganogawa River	Miyakobashi Bridge	Aizubangemachi Town	2012/3/2	Cloudy	1.5	-	-	-	-	-	-	-	-	-	-	-
100	N i p p a s h i g a w a r i v e r	Nippashigawa River	Minamiohashi Bridge	Kitakatashi City	2012/3/1	Sunny	7.2	-	-	-	-	-	-	-	-	-	-	-
101		Kyuyukawa River	Awanomiyabashi Bridge	Yugawamura Village	2012/3/1	Sunny	6.2	-	-	-	-	-	Loamy	<30	1,600	2,200	0.27	-
102	R i v e r	Kyumiya River	Josukebashi Bridge	Aizubangemachi Town	2012/3/2	Cloudy	0.4	-	-	-	-	-	-	-	-	-	-	-
103		Tatsukigawa River	Ohashi Bridge	Kitakatashi City	2012/3/1	Cloudy	4.0	-	-	-	-	-	-	-	-	-	-	-
104		Shimokawarabashi Bridge	Kitakatashi City	2012/3/1	Cloudy	4.6	-	-	-	-	-	-	-	-	-	-	-	-
105	N i g o r i g a w a r i v e r	Nigorigawa River	Nigorigawabashi Bridge	Kitakatashi City	2012/3/1	Cloudy	4.9	-	-	-	-	-	-	-	-	-	-	-
106		Yamazakibashi Bridge	Kitakatashi City	2012/3/2	Cloudy	-0.2	-	-	-	-	-	-	-	-	-	-	-	-
107	I n a g a w a r i v e r	Inagawa River	Aoyagibashi Bridge	Minamiaizumachi Town	2012/3/2	Snow	1.4	-	-	-	-	-	-	-	-	-	-	-
108		Kurosawabashi Bridge	Tadamimachi Town	2012/3/2	Cloudy	2.3	-	-	-	-	-	-	-	-	-	-	-	-
109	T a d a m i g a w a r i v e r	Tadamigawa River	Nishitanibashi Bridge	Kaneyamamachi Town	2012/3/3	Cloudy	2.6	-	-	-	-	-	-	-	-	-	-	-
110		Fujibashi Bridge	Aizubangemachi Town	2012/2/29	Snow	-0.2	-	-	-	-	-	-	-	-	-	-	-	-
111	A g a n o g a w a r i v e r	Shingo Dam	Shingo Dam	Kitakatashi City	2012/2/29	Snow	-0.5	-	-	-	-	-	-	-	-	-	-	-
112		Sukawa River	Sukawano	Inawashiromachi Town	2012/2/27	Sunny	-2.9	-	-	-	-	-	-	-	-	-	-	-
113	N a g a s e g a w a r i v e r	Nagasegawa River	Koganebashi Bridge	Inawashiromachi Town	2012/2/27	Cloudy	-2.6	-	-	-	-	-	-	-	-	-	-	-

\*Air dose was measured with a survey meter, TCS-172 or TCS-161 of Hitachi-Aloka Medical, Ltd.

\*Collection points for rivers are listed from north to south, and for different points along the river, from upstream to downstream.

\*Sampling points with no figures for concentration of radioactive material and air dose are those unable to collect samples due to snow on the ground

# OLake and Headwater: Water Quality Monitoring Results

No.	Sampling point			Sampling date	Weather	Air temperature °C	Full depth m	General items						Concentration of radioactive material Bq/L			Remarks
	Point	Municipality	Water temperature °C					Sampling depth m	Secchi disk depth m	Electrical conductivity mS/m	SS mg/L	Turbidity	Radioactive iodine I-131	Radioactive cesium			
														Cs-134	Cs-137		
1	Soso (farm pond)	Takei	Shinchimachi Town	2012/3/1	Sunny	11.8	0.5	6.0	0.0	0.4	38.9	6	9.4	<1	<1	<1	
2	Soso (farm pond)	Uchizawa	Somashi City	2012/2/29	Snow	1.0	-	-	-	-	-	-	-	-	-	-	(Unable to collect samples due to snow on the ground)
3	Mano Dam		Iitamura Village	2012/3/5	Rain	0.5	0.4	0.5	0.0	0.4 or more	8.9	3	3.4	<1	<1	<1	Deliberate evacuation areas
4	Takanokura Dam Reservoir		Minamisomashi City	2012/3/3	Cloudy	3.7	0.3	2.2	0.0	0.3 or more	7.7	1	2.7	<1	<1	<1	Former evacuation-prepared areas in case of emergency (Samples collected near the previous point due to low water level.)
5	Yokokawa Dam Reservoir		Minamisomashi City	2012/3/3	Sunny	1.9	0.5	2.5	0.0	0.5 or more	5.7	1	1.8	<1	<1	<1	Former evacuation-prepared areas in case of emergency
6	Ogaki Dam		Namiemachi Town	2012/3/4	Clear	1.1	-	0.5	0.0	-	6.2	<1	0.7	<1	<1	<1	Restricted areas
7	Sakashita Dam		Okumamachi Town	2012/3/4	Clear	2.5	2.3	2.8	0.0	2.3 or more	7.5	1	3.1	<1	<1	<1	Restricted areas
8	Takikawa Dam		Tomioamachi Town	2012/3/4	Sunny	-0.8	0.3	1.4	0.0	0.3 or more	7.1	3	2.8	<1	<1	1	Restricted areas (Samples collected near the previous point due to freezing)
9	Kido Dam		Narahamachi Town	2012/3/4	Clear	3.8	0.3	1.2	0.0	0.3 or more	5.4	<1	0.5	<1	<1	<1	Restricted areas (Samples collected near the previous point due to freezing)
10	Iwaki (farm pond)	Shinike	Iwakishi City	2012/2/25	Rain	4.4	0.5	4.3	0.0	0.5 or more	11.0	1	1.7	<1	<1	<1	
11	Kodama Dam Reservoir (Kodamako Lake)		Iwakishi City	2012/2/27	Sunny	0.8	58.7	2.9	0.5	3.7	9.1	2	2.9	<1	<1	<1	
		1 m from the bottom	-	-	-	-	-	2.9	57.7	-	8.7	2	3.1	<1	<1	<1	
12	Iwaki (farm pond)	Kanoritsutsumishita	Iwakishi City	2012/2/27	Sunny	6.2	0.3	5.1	0.0	0.3 or more	115.9	24	13	<1	<1	<1	
13	Takashiba Dam Reservoir (Takashibako Lake)		Iwakishi City	2012/3/5	Rain	3.6	14.6	5.1	0.5	2	12.1	3	4.2	<1	<1	<1	(Sample was collected near the previous point.)
		1 m from the bottom	-	-	-	-	-	4.7	13.6	-	12.2	4	4.8	<1	<1	<1	
14	Shitoki Dam Reservoir		Iwakishi City	2012/3/5	Rain	4.8	38.6	3.9	0.5	3.3	7.5	2	3.5	<1	<1	<1	
		1 m from the bottom	-	-	-	-	-	3.8	37.6	-	7.1	7	7.6	<1	<1	<1	
15	Surikamigawa Dam Reservoir		Fukushima City	2012/2/29	Snow	-0.4	68.7	1.3	0.5	3.3	5.8	1	2.1	<1	<1	<1	
		1 m from the bottom	-	-	-	-	-	1.9	67.7	-	5.8	3	3.5	<1	<1	<1	
16	Ken-poku (farm pond)	Oike Pond	Motomiyashi City	2012/2/28	Sunny	3.2	0.6	4.6	0.0	0.6 or more	8.9	2	3.2	<1	<1	<1	
17	Kenchu (farm pond)	Hounokusa	Koriyamashi City	2012/3/1	Sunny	7.3	0.5	0.8	0.0	0.5 or more	10.7	8	6.8	<1	<1	1	
18	Kenchu (farm pond)	Hirodaira	Sukagawashi City	2012/3/1	Sunny	4.7	0.6	4.7	0.0	0.6 or more	16.1	1	1.9	<1	<1	<1	
19	Ken-nan (farm pond)	Watariike Pond	Yabukimachi Town	2012/3/2	Cloudy	4.1	0.4	4.0	0.0	0.4 or more	22.1	2	4.4	<1	<1	<1	
20	Ken-nan (farm pond)	Izumikawa River	Shirakawashi City	2012/3/3	Sunny	3.5	0.3	3.4	0.0	0.3 or more	12.0	1	3.0	<1	<1	<1	
21	Nanko Lake		Shirakawashi City	2012/3/3	Cloudy	5.8	1.5	4.6	0.0	1.5 or more	16.1	4	5.0	<1	<1	<1	
22	Inawashiroko Lake		Aizuwakamatsushi City	2012/3/2	Snow	2.0	97.2	2.1	0.5	11.2	12.4	<1	0.3	<1	<1	<1	
		1 m from the bottom	-	-	-	-	-	3.4	96.2	-	12.4	<1	0.5	<1	<1	<1	
23	Numazawako Lake		Kaneyamamachi Town	2012/3/3	Cloudy	3.2	94.0	3.5	0.5	9.8	5.2	<1	0.4	<1	<1	<1	
		1 m from the bottom	-	-	-	-	-	3.9	93.0	-	5.5	1	3.1	<1	<1	<1	
24	Okawa Dam Reservoir		Aizuwakamatsushi City	2012/3/9	Rain	2.1	22.5	5.0	0.5	1.8	5.9	3	4.4	<1	<1	<1	
		1 m from the bottom	-	-	-	-	-	4.6	21.5	-	7.1	3	4.4	<1	<1	<1	
25	Tajima Dam Reservoir (Funehanako Lake)		Minamiaizumachi Town	2012/3/2	Snow	3.1	16.0	1.8	0.0	4.4	4.5	1	1.5	<1	<1	<1	(Samples collected near the previous point due to snow on the ground)
		1 m from the bottom	-	-	-	-	-	1.8	15.0	-	4.3	2	1.9	<1	<1	<1	

\*Collection points for rivers are listed from north to south, and for different points along the river, from upstream to downstream.

# OLake and Headwater: Sediment Monitoring Results

No.	Sampling point			Sampling date	Weather	Air temperature °C	Full depth m	General items				Concentration of radioactive material Bq/kg (Dried Mud)			Remarks
	Point	Municipality	Municipality					Property	Mud content %	Radioactive iodine		Radioactive cesium			
										Radioactive iodine I-131	Radioactive cesium Cs-134	Radioactive cesium Cs-137			
1	Soso (farm pond)	Takei	Shinchimachi Town	2012/3/1	Sunny	11.8	0.5	9.7	5	64.7	Sand with silt	<30	89	120	
2	Soso (farm pond)	Uchizawa	Somashi City	2012/2/29	Snow	1.0	-	1.7	3	49.0	Silt	<30	940	1,200	
3	Mano Dam		Itatamura Village	2012/3/5	Rain	0.5	0.4	3.0	5	45.0	Silt	<30	7,400	10,000	Deliberate evacuation areas
4	Takanokura Dam Reservoir		Minamisomashi City	2012/3/3	Cloudy	3.7	0.3	2.2	3	80.1	Sand with silt	<30	630	930	Former evacuation-prepared areas in case of emergency (Sample was collected near the previous point due to low water level.)
5	Yokokawa Dam Reservoir		Minamisomashi City	2012/3/3	Sunny	1.9	0.5	2.5	3	80.4	Sand with gravel	<30	1,400	2,100	Former evacuation-prepared areas in case of emergency
6	Ogaki Dam		Namiemachi Town	2012/3/4	Clear	1.1	-	-0.3	3	41.2	Silt	<30	110,000	150,000	Restricted areas (Samples collected near the previous point due to snow on the ground)
7	Sakashita Dam		Okumamachi Town	2012/3/4	Clear	2.5	2.3	4.0	12	29.6	Silt	<30	5,000	6,800	Restricted areas
8	Takikawa Dam		Tomiokamachi Town	2012/3/4	Sunny	-0.8	0.3	3.4	3	26.0	Silt	<30	46,000	64,000	Restricted areas (Samples collected near the previous point due to freezing)
9	Kido Dam		Narahamachi Town	2012/3/4	Clear	3.8	0.3	5.4	5	77.5	Sand	<30	120	170	Restricted areas (Samples collected near the previous point due to freezing)
10	Iwaki (farm pond)	Shinike	Iwakishi City	2012/2/25	Rain	4.4	0.5	4.3	5	81.7	Silt with sand	<30	210	300	(Samples collected near the previous point due to increased water level)
11	Kodama Dam Reservoir (Kodamako Lake)		Iwakishi City	2012/2/27	Sunny	0.8	58.7	3.5	10	30.1	Silt	<30	760	950	
12	Iwaki (farm pond)	Kanoritsutsumishita	Iwakishi City	2012/2/27	Sunny	6.2	0.3	6.2	5	59.8	Sand with silt	<30	490	710	
13	Takashiba Dam Reservoir (Takashibako Lake)		Iwakishi City	2012/3/5	Rain	3.6	14.6	4.6	10	39.9	Silt	<30	820	1,100	(Sample was collected near the previous point.)
14	Shitoki Dam Reservoir		Iwakishi City	2012/3/5	Rain	4.8	38.6	4.3	10	27.1	Silt	<30	1,400	1,900	
15	Surikamigawa Dam Reservoir		Fukushima City	2012/2/29	Snow	-0.4	68.7	1.4	5	76.1	Sand	<30	56	60	
16	Ken-poku (farm pond)	Oike Pond	Motomiyashi City	2012/2/28	Sunny	3.2	0.6	4.8	5	77.2	Sand with gravel	<30	550	790	
17	Kenchu (farm pond)	Hounokusa	Koriyamashi City	2012/3/1	Sunny	7.3	0.5	3.9	3	64.4	Gravel/silt with sand	<30	710	990	(Samples collected near the previous point due to freezing)
18	Kenchu (farm pond)	Hirodaira	Sukagawashi City	2012/3/1	Sunny	4.7	0.6	5.2	5	73.2	Sand with silt	<30	81	110	
19	Ken-nan (farm pond)	Watarike Pond	Yabukimachi Town	2012/3/2	Cloudy	4.1	0.4	4.0	5	49.1	Silt with sand	<30	<10	17	
20	Ken-nan (farm pond)	Izumikawa River	Shirakawashi City	2012/3/3	Sunny	3.5	0.3	5.0	5	75.9	Sand with silt	<30	260	400	
21	Nanko Lake		Shirakawashi City	2012/3/3	Cloudy	5.8	1.5	4.7	10	18.6	Silt with sand	<30	1,400	1,800	
22	Inawashiroko Lake		Aizuwakamatsushi Ci	2012/3/2	Snow	2.0	97.2	3.4	10	19.1	Silt	<30	35	58	
23	Numazawako Lake		Kaneyamamachi Tow	2012/3/3	Cloudy	3.2	94.0	4.1	10	21.1	Silt	<30	<47	84	
24	Okawa Dam Reservoir		Aizuwakamatsushi Ci	2012/3/9	Rain	2.1	22.5	4.2	10	33.4	Silt	<30	350	480	
25	Tajima Dam Reservoir (Funehana Lake)		Minamiaizumachi Tow	2012/3/2	Snow	3.1	16.0	2.3	10	46.0	Silt	<30	11	23	(Samples collected near the previous point due to snow on the ground)

\*Collection points for rivers are listed from north to south, and for different points along the river, from upstream to downstream.

# ○Lake and Headwater (Fukushima Prefecture, Hamadori Area): Surrounding Environment Monitoring Results:

No.	Sampling point			Sampling date	Weather	Air temperature °C	Soil Property	Concentration of radioactive material Bq/kg (dry)			Air dose μSv/h	Remarks			
	Point	Municipality	Soil Property					Radioactive iodine					Radioactive cesium		
								I-131	Cs-134	Cs-137					
1	Soso (farm pond)	Takei	Shinchimachi Town	2012/3/1	Sunny	11.8	Loamy	<30	960	1,300	0.40				
2	Soso (farm pond)	Uchizawa	Somashi City	2012/2/29	Snow	1.0	-	-	-	-	-				
3	Mano Dam		Iitatemura Village	2012/3/5	Rain	0.5	-	-	-	-	-	Deliberate evacuation areas			
4	Takanokura Dam Reservoir		Minamisomashi City	2012/3/3	Cloudy	3.7	-	-	-	-	-	Former evacuation-prepared areas in case of emergency			
5	Yokokawa Dam Reservoir		Minamisomashi City	2012/3/3	Sunny	1.9	-	-	-	-	-	Former evacuation-prepared areas in case of emergency			
6	Ogaki Dam		Namiemachi Town	2012/3/4	Clear	1.1	Loamy	<30	88,000	120,000	14.92	Restricted areas (Air dose was measured at site with snow on the ground)			
7	Sakashita Dam		Okumamachi Town	2012/3/4	Clear	2.5	Loamy	<30	7,400	10,000	1.81	Restricted areas			
8	Takikawa Dam		Tomiokamachi Town	2012/3/4	Sunny	-0.8	Loamy	<30	7,800	10,000	3.73	Restricted areas			
9	Kido Dam		Narahamachi Town	2012/3/4	Clear	3.8	Loamy	<30	3,400	4,700	0.68	Restricted areas			
10	Iwaki (farm pond)	Shinike	Iwakishi City	2012/2/25	Rain	4.4	Loamy	<30	1,000	1,300	0.37				
11	Kodama Dam Reservoir (Kodamako Lake)		Iwakishi City	2012/2/27	Sunny	0.8	Loamy	<30	120	170	0.13				
12	Iwaki (farm pond)	Kanoritsutsumishita	Iwakishi City	2012/2/27	Sunny	6.2	Loamy	<30	690	940	0.29	(Samples collected near the previous point due to increased water level)			
13	Takashiba Dam Reservoir (Takashibako Lake)		Iwakishi City	2012/3/5	Rain	3.6	Loamy	<30	1,300	1,800	0.34				
14	Shitoki Dam Reservoir		Iwakishi City	2012/3/5	Rain	4.8	Loamy	<30	1,200	1,600	0.45				
15	Surikamigawa Dam Reservoir		Fukushima City	2012/2/29	Snow	-0.4	Loamy	<30	280	400	0.11	(Samples collected near the previous point due to snow on the ground)			
16	Ken-poku (farm pond)	Oike Pond	Motomiyashi City	2012/2/28	Sunny	3.2	Loamy	<30	1,900	2,600	1.01				
17	Kenchu (farm pond)	Hounokusa	Koriyamashi City	2012/3/1	Sunny	7.3	Clay-loamy	<30	2,100	3,000	0.57	(Samples collected near the previous point due to freezing)			
18	Kenchu (farm pond)	Hirodaira	Sukagawashi City	2012/3/1	Sunny	4.7	-	-	-	-	-				
19	Ken-nan (farm pond)	Watariike Pond	Yabukimachi Town	2012/3/2	Cloudy	4.1	Loamy	<30	1,600	2,200	0.23				
20	Ken-nan (farm pond)	Izumikawa River	Shirakawashi City	2012/3/3	Sunny	3.5	-	-	-	-	-				
21	Nanko Lake		Shirakawashi City	2012/3/3	Cloudy	5.8	Clay-loamy	<30	1,200	1,700	0.42				
22	A	Inawashiroko Lake		For the surrounding environments, see the monitoring results of Inawashiroko Lake Bathing Areas											
23	i	Numazawako Lake	Kaneyamamachi Town	2012/3/3	Cloudy	3.2	-	-	-	-	-				
24	z	Okawa Dam Reservoir	Aizuwakamatsushi City	2012/3/9	Rain	2.1	-	-	-	-	-				
25	u	Tajima Dam Reservoir (Funehanako Lake)	Minamiaizumachi Town	2012/3/2	Snow	3.1	-	-	-	-	-				

\*Air dose was measured with a survey meter, TCS-172 or TCS-161 of Hitachi-Aloka Medical, Ltd.

\*Collection points for rivers are listed from north to south, and for different points along the river, from upstream to downstream.

\*Sampling points with no figures for concentration of radioactive material and air dose are those unable to collect samples due to snow on the ground

# Coast and Bathing Area: Water Quality Monitoring Results

No.	Sampling point			Sampling date	Weather	Air temperature °C	Full depth m	General items						Concentration of radioactive material Bq/L			Remarks	
	Water body	Point	Municipality					Water temperature °C	Sampling depth m	Secchi disk depth m	Salinity	SS mg/L	Turbidity	Radioactive iodine I-131	Radioactive cesium			
															Cs-134	Cs-137		
C o a s t s	Neighboring sea area of Soso	Approx. 2,000 m offshore of Tsurushihama Fishing	Shinshiro City	2012/3/14	Sunny	3.2	14.6	5.7	0.5	3.3	31.5	2	3.3	<1	<1	<1		
		1 m from the bottom		-	-	-	-	6.1	13.6	-	32.0	9	9.5	<1	<1	<1		
	Matsukawaura sea area	Around center of Fishing Right Area-1		2012/3/3	Sunny	4.8	2.1	5.4	0.5	2.1 or more	32.2	2	2.8	<1	<1	<1		
		1 m from the bottom		-	-	-	-	5.5	1.1	-	32.2	3	3.5	<1	<1	<1		
	Neighboring sea area of Soso	Approx. 2,000 m offshore of Manogawa River		Shinshiro City	2012/3/14	Sunny	3.2	19.8	5.8	0.5	2.5	31.9	4	5.2	<1	<1	<1	
		1 m from the bottom			-	-	-	-	6.0	18.8	-	32.8	10	11	<1	<1	<1	
	Neighboring sea area of Haramachi City	Approx. 1,000 m offshore of Niidagawa River			2012/3/14	Sunny	3.2	10.6	5.8	0.5	2.0	31.8	5	6.7	<1	<1	<1	
		1 m from the bottom			-	-	-	-	5.8	9.6	-	32.2	13	8.0	<1	<1	<1	
	Approx. 1,000 m offshore of Asamigawa River Estuary				2012/3/2	Cloudy	3.8	11.2	6.4	0.5	1.8	33.3	16	10	<1	<1	<1	
1 m from the bottom		-	-		-	-	5.8	10.2	-	33.3	26	17	<1	<1	<1			
Approx. 1,000 m offshore of Ohisagawa River Estuary		2012/3/2	Cloudy		4.0	10.8	6.2	0.5	1.5	33.3	13	9.6	<1	<1	<1			
	1 m from the bottom	-	-		-	-	6.3	9.8	-	33.4	15	10	<1	<1	<1			
Neighboring sea area of Iwakishi City	Approx. 1,500 m offshore of Natsugawa River	2012/3/2	Cloudy		6.4	17.9	6.7	0.5	2.2	33.5	8	12	<1	<1	<1			
	1 m from the bottom	-	-	-	-	6.8	16.9	-	33.5	8	6.5	<1	<1	<1				
Onahama Port	Approx. 400 m north of Nishibouhatei No. 2	2012/3/2	Cloudy	5.8	16.6	10.4	0.5	3.0	32.4	4	3.8	<1	<1	<1				
	1 m from the bottom	-	-	-	-	10.8	15.6	-	34.2	7	6.2	<1	<1	<1				
Joban coastal sea area	Approx. 1,000 m offshore of Bindagawa River	2012/3/2	Cloudy	7.2	18.3	11.8	0.5	2.7	33.8	4	4.3	<1	<1	<1				
	1 m from the bottom	-	-	-	-	11.8	17.3	-	34.3	2	2.2	<1	<1	<1				
10	Tsurushihama Fishing Port	Tsurushihama Beach	Shinshiro City	2012/3/1	Sunny	8.4	0.6	6.1	0.0	-	-	12	10	<1	<1	<1		
11	Somakowan Bay	Haragama/Obama	Somashi City	2012/2/29	Snow	1.7	0.4	5.0	0.0	-	-	40	12	<1	<1	<1		
12	Kitaizumichikukaigan Seashore	Kitaizumi	Minamisomashi City	2012/3/3	Cloudy	3.8	0.5	5.6	0.0	-	-	20	17	<1	<1	<1		
13	Hattachikaigan Seashore	Hisanohama Beach/Hattachi	Iwakishi City	2012/2/26	Cloudy	5.0	0.3	6.0	0.0	-	-	55	32	<1	<1	<1		
14	Yotsukurakaigan Seashore	Yotsukura	Iwakishi City	2012/2/26	Cloudy	3.8	0.3	6.0	0.0	-	-	71	29	<1	<1	<1		
15	Natsuikaigan Seashore	Shinmaiko Beach	Iwakishi City	2012/2/27	Sunny	1.1	0.5	5.9	0.0	-	-	24	15	<1	<1	<1		
16	Usuisokaigan Seashore	Usuiso	Iwakishi City	2012/2/28	Sunny	4.5	0.4	7.8	0.0	-	-	23	15	<1	<1	<1		
17	Toyomakaigan Seashore	Toyoma	Iwakishi City	2012/2/28	Sunny	6.1	0.5	8.7	0.0	-	-	20	13	<1	<1	<1		
18	Nagasakikaigan Seashore	Nagasaki	Iwakishi City	2012/2/28	Clear	4.0	0.3	10.5	0.0	-	-	10	4.6	<1	<1	<1		
19	Obamakaigan Seashore	Obama	Iwakishi City	2012/2/26	Cloudy	6.4	0.5	11.8	0.0	-	-	22	16	<1	<1	<1		
20	Nakosokaigan Seashore	Nakoso	Iwakishi City	2012/2/26	Cloudy	6.6	0.6	12.2	0.0	-	-	8	5.0	<1	<1	<1		
B a t h i n g a r e s	Inawashiroko Lake	Nagahama Beach	Inawashiro City	2012/2/26	Snow	-1.0	0.4	3.1	0.0	-	-	9	3.4	<1	<1	<1		
		Shidahama Beach	Inawashiro City	2012/2/27	Cloudy	-1.9	0.6	0.5	0.0	-	-	23	15	<1	<1	<1		
	Inawashiroko Lake	jokohama Beach	Inawashiro City	2012/2/27	Snow	-3.3	0.3	0.9	0.0	-	-	6	5.5	<1	<1	<1		
		Hamajihama Beach	Koriyamashi City	2012/2/27	Cloudy	-3.0	0.4	0.2	0.0	-	-	1	1.5	<1	<1	<1		
	Inawashiroko Lake	Yokozawahama Beach	Koriyamashi City	2012/2/27	Cloudy	-2.3	0.4	0.4	0.0	-	-	3	2.7	<1	<1	<1		
		Tatehama Beach	Koriyamashi City	2012/2/27	Cloudy	-1.8	0.5	0.8	0.0	-	-	5	5.0	<1	<1	<1		
	Inawashiroko Lake	Funatsuhama Beach	Koriyamashi City	2012/2/26	Cloudy	-3.2	0.3	2.6	0.0	-	-	12	7.4	<1	<1	<1		
		Funatsukoen Park	Koriyamashi City	2012/2/26	Snow	-2.9	0.2	2.0	0.0	-	-	3	2.4	<1	<1	<1		
	Inawashiroko Lake	Seishogahama Beach	Koriyamashi City	2012/2/26	Cloudy	-3.1	0.3	3.4	0.0	-	-	18	14	<1	<1	<1		
		Akiyahama Beach	Koriyamashi City	2012/2/26	Cloudy	-2.9	0.3	4.9	0.0	-	-	12	4.6	<1	<1	<1		
	Inawashiroko Lake	Sekkahama Beach	Aizuwakamatsushi City	2012/2/26	Snow	-1.4	0.3	3.0	0.0	-	-	2	1.5	<1	<1	<1		
		Nakatahama Beach	Aizuwakamatsushi City	2012/2/26	Cloudy	-1.2	0.3	2.6	0.0	-	-	1	0.7	<1	<1	<1		
	Inawashiroko Lake	Koishigahama Beach	Aizuwakamatsushi City	2012/2/26	Snow	-0.4	0.3	2.9	0.0	-	-	<1	0.1	<1	<1	<1		

\*Collection points for rivers are listed from north to south, and for different points along the river, from upstream to downstream.

# ○Coast and Bathing Area: Sediment Monitoring Results

No.	Sampling point			Sampling date	Weather	Air temperature °C	Full depth m	General items				concentration of radioactive material Bq/kg (Dried Mu			Remarks		
	Water body	Point	Municipality					Mud temperature °C	Mud sampling depth cm	Mud content %	Property	Radioactive iodine				Radioactive cesium	
												I-131	Cs-134	Cs-137			
C o a s t	1	Neighboring sea area of Soso	Approx. 2,000 m offshore of Tsurushihama Fishing	-	2012/3/14	Sunny	3.2	14.6	5.5	3	73.9	Sand	<30	15	23		
	2	Matsukawaura sea area	Around center of Fishing Right Area-1	-	2012/3/3	Sunny	4.8	2.1	5.5	5	75.6	Sand	<30	<10	15		
	3	Neighboring sea area of Soso	Approx. 2,000 m offshore of Manogawa River	-	2012/3/14	Sunny	3.2	19.8	5.8	3	79.9	Sand	<30	16	20		
	4	Neighboring sea area of Haran	Approx. 1,000 m offshore of Niidagawa River	-	2012/3/14	Sunny	3.2	10.6	5.2	3	85.4	Sand	<30	18	26		
	5	Approx. 1,000 m offshore of Asamigawa River Estuary		-	2012/3/2	Cloudy	3.8	11.2	5.8	3	78.5	Sand	<30	200	280		
	6	Approx. 1,000 m offshore of Ohisagawa River Estuary		-	2012/3/2	Cloudy	4.0	10.8	6.3	3	78.9	Sand	<30	85	120		
	7	Neighboring sea area of Iwaki	Approx. 1,500 m offshore of Natsugawa River	-	2012/3/2	Cloudy	6.4	17.9	6.7	5	78.2	Sand	<30	93	130		
	8	Onahama Port	Approx. 400 m north of Nishibouhatei No. 2	-	2012/3/2	Cloudy	5.8	16.6	10.8	10	59.1	Silt with sand	<30	56	100		
	9	Joban coastal sea area	Approx. 1,000 m offshore of Bindagawa River	-	2012/3/2	Cloudy	7.2	18.3	11.8	5	71.6	Sand	<30	110	150		
B a t h i n g	10	Tsurushihama Fishing Port	Tsurushihama Beach	Shinchimachi Town	2012/3/1	Sunny	8.4	0.6	8.1	5	82.0	Sand	<30	<10	<10		
	11	Somakowan Bay	Haragama/Obama	Somashi City	2012/2/29	Snow	1.7	0.4	4.6	5	80.3	Sand	<30	<10	13		
	12	Kitaizumichikukaigan Seashor	Kitaizumi	Minamisomashi City	2012/3/3	Cloudy	3.8	0.5	6.4	5	80.7	Sand	<30	24	32		
	13	Hattachikaigan Seashore	Hisanohama Beach/Hattachi	Iwakishi City	2012/2/26	Cloudy	5.0	0.3	6.0	5	85.9	Sand with gravel	<30	94	130		
	14	Yotsukurakaigan Seashore	Yotsukura	Iwakishi City	2012/2/26	Cloudy	3.8	0.3	5.6	5	82.2	Sand	<30	63	88		
	15	Natsuikaigan Seashore	Shinmaiko Beach	Iwakishi City	2012/2/27	Sunny	1.1	0.5	4.3	5	81.6	Sand	<30	17	26		
	16	Usuisokaigan Seashore	Usuiso	Iwakishi City	2012/2/28	Sunny	4.5	0.4	8.6	10	82.1	Sand	<30	100	120		
	17	Toyomakaigan Seashore	Toyoma	Iwakishi City	2012/2/28	Sunny	6.1	0.5	9.6	10	81.0	Sand	<30	57	86		
	18	Nagasakikaigan Seashore	Nagasaki	Iwakishi City	2012/2/28	Clear	4.0	0.3	10.2	12	77.1	Sand	<30	98	120		
	19	Obamakaigan Seashore	Obama	Iwakishi City	2012/2/26	Cloudy	6.4	0.5	10.9	5	77.2	Sand	<30	23	43		
	20	Nakosokaigan Seashore	Nakoso	Iwakishi City	2012/2/26	Cloudy	6.6	0.6	11.8	5	79.0	Sand	<30	27	46		
	21	Inawashiroko Lake	Nagahama Beach	Inawashiro-machi Town	2012/2/26	Snow	-1.0	0.4	3.0	3	76.5	Sand with gravel	<30	58	84		
	22	Inawashiroko Lake	Shidahama Beach	Inawashiro-machi Town	2012/2/27	Cloudy	-1.9	0.6	0.0	5	78.8	Sand with gravel	<30	29	36		
	23	Inawashiroko Lake	jokohama Beach	Inawashiro-machi Town	2012/2/27	Snow	-3.3	0.3	-0.1	3	80.4	Sand	<30	57	98		
	24	Inawashiroko Lake	Hamajihama Beach	Koriyamashi City	2012/2/27	Cloudy	-3.0	0.4	-0.1	3	75.5	Sand	<30	32	62		
	25	Inawashiroko Lake	Yokozawahama Beach	Koriyamashi City	2012/2/27	Cloudy	-2.3	0.4	0.5	3	79.4	Sand with gravel	<30	<10	16		
	26	Inawashiroko Lake	Tatehama Beach	Koriyamashi City	2012/2/27	Cloudy	-1.8	0.5	1.1	5	74.6	Sand with gravel	<30	35	69		
	27	Inawashiroko Lake	Funatsuhama Beach	Koriyamashi City	2012/2/26	Cloudy	-3.2	0.3	2.3	3	81.8	Sand with gravel	<30	54	73		
	28	Inawashiroko Lake	Funatsuko Park	Koriyamashi City	2012/2/26	Snow	-2.9	0.2	1.8	3	83.0	Sand with gravel	<30	61	81		
	29	Inawashiroko Lake	Seishogahama Beach	Koriyamashi City	2012/2/26	Cloudy	-3.1	0.3	3.0	3	81.2	Sand with gravel	<30	21	34		
	30	Inawashiroko Lake	Akiyamahama Beach	Koriyamashi City	2012/2/26	Cloudy	-2.9	0.3	4.7	3	73.7	Sand with gravel	<30	24	37		
	31	Inawashiroko Lake	Sekkahama Beach	Aizuwakamatsushi City	2012/2/26	Snow	-1.4	0.3	3.1	3	82.5	Sand with gravel	<30	50	72		
	32	Inawashiroko Lake	Nakatahama Beach	Aizuwakamatsushi City	2012/2/26	Cloudy	-1.2	0.3	1.1	3	79.8	Sand with gravel	<30	<10	<10		
	33	Inawashiroko Lake	Koishigahama Beach	Aizuwakamatsushi City	2012/2/26	Snow	-0.4	0.3	2.8	3	74.2	Sand with gravel	<30	64	100		

\*Collection points for rivers are listed from north to south, and for different points along the river, from upstream to downstream.



# ○Bathing Area: Surrounding Environment Monitoring Results

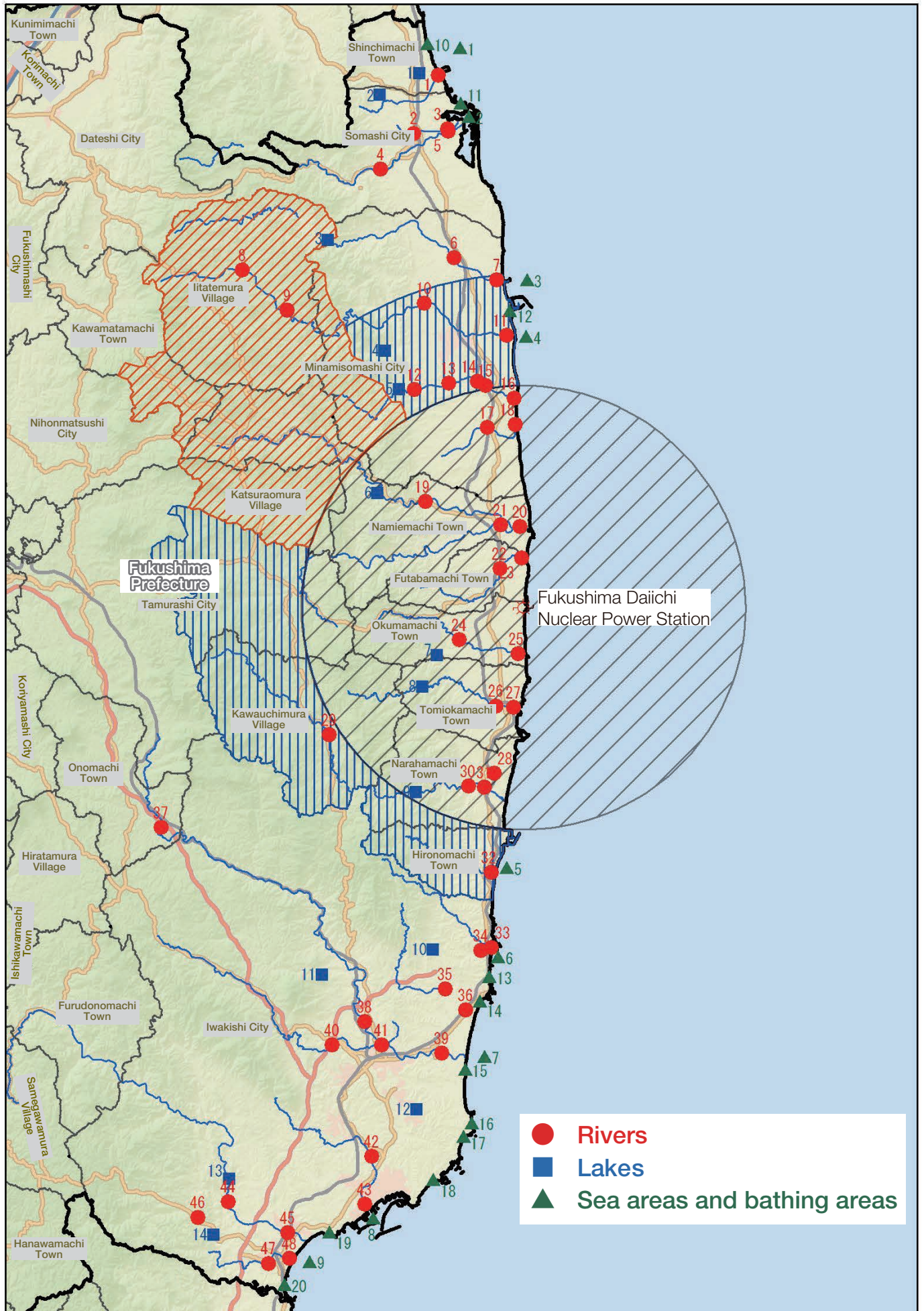
No.	Sampling point			Sampling date	Weather	Air temperature °C	Property	Soil			Air dose μSv/h	Remarks
	Water body	Point	Municipality					Concentration of radioactive material Bq/kg (dry)				
								Radioactive iodine I-131	Radioactive cesium Cs-134 Cs-137			
10	Tsurushihama Fishing Port	Tsurushihama Beach	Shinchimachi Town	2012/3/1	Sunny	8.4	Sandy	<30	<10	<10	0.05	
11	Somakowan Bay	Haragama/Obama	Somashi City	2012/2/29	Snow	1.7	-	-	-	-	-	
12	Kitazumichikukaigan Seashor	Kitazumi	Minamisomashi City	2012/3/3	Cloudy	3.8	Sandy	<30	16	24	0.05	
13	Hattachikaigan Seashore	Hisanohama Beach/Hattachi	Iwakishi City	2012/2/26	Cloudy	5.0	Sandy	<30	63	100	0.15	
14	Yotsukurakaigan Seashore	Yotsukura	Iwakishi City	2012/2/26	Cloudy	3.8	Sandy	<30	490	650	0.27	
15	Natsuikaigan Seashore	Shinmaiko Beach	Iwakishi City	2012/2/27	Sunny	1.1	Sandy	<30	27	40	0.12	
16	Usuisokaigan Seashore	Usuiso	Iwakishi City	2012/2/28	Sunny	4.5	Sandy	<30	89	110	0.11	
17	Toyomakaigan Seashore	Toyoma	Iwakishi City	2012/2/28	Sunny	6.1	Sandy	<30	23	29	0.07	
18	Nagasakikaigan Seashore	Nagasaki	Iwakishi City	2012/2/28	Clear	4.0	Sandy	<30	67	110	0.07	
19	Obamakaigan Seashore	Obama	Iwakishi City	2012/2/26	Cloudy	6.4	Sandy	<30	33	49	0.08	
20	Nakosokaigan Seashore	Nakoso	Iwakishi City	2012/2/26	Cloudy	6.6	Sandy	<30	99	170	0.14	
21	Inawashiroko Lake	Nagahama Beach	Inawashiro-machi Town	2012/2/26	Snow	-1.0	-	-	-	-	-	
22	Inawashiroko Lake	Shidahama Beach	Inawashiro-machi Town	2012/2/27	Cloudy	-1.9	-	-	-	-	-	
23	Inawashiroko Lake	jokohama Beach	Inawashiro-machi Town	2012/2/27	Snow	-3.3	-	-	-	-	-	
24	Inawashiroko Lake	Hamajihama Beach	Koriyamashi City	2012/2/27	Cloudy	-3.0	-	-	-	-	-	
25	Inawashiroko Lake	Yokozawahama Beach	Koriyamashi City	2012/2/27	Cloudy	-2.3	-	-	-	-	-	
26	Inawashiroko Lake	Tatehama Beach	Koriyamashi City	2012/2/27	Cloudy	-1.8	-	-	-	-	-	
27	Inawashiroko Lake	Funatsuhama Beach	Koriyamashi City	2012/2/26	Cloudy	-3.2	-	-	-	-	-	
28	Inawashiroko Lake	Funatsukoen Park	Koriyamashi City	2012/2/26	Snow	-2.9	-	-	-	-	-	
29	Inawashiroko Lake	Seishogahama Beach	Koriyamashi City	2012/2/26	Cloudy	-3.1	-	-	-	-	-	
30	Inawashiroko Lake	Akiyamahama Beach	Koriyamashi City	2012/2/26	Cloudy	-2.9	-	-	-	-	-	
31	Inawashiroko Lake	Sekkahama Beach	Aizuwakamatsushi City	2012/2/26	Snow	-1.4	-	-	-	-	-	
32	Inawashiroko Lake	Nakatahama Beach	Aizuwakamatsushi City	2012/2/26	Cloudy	-1.2	-	-	-	-	-	
33	Inawashiroko Lake	Koishigahama Beach	Aizuwakamatsushi City	2012/2/26	Snow	-0.4	-	-	-	-	-	

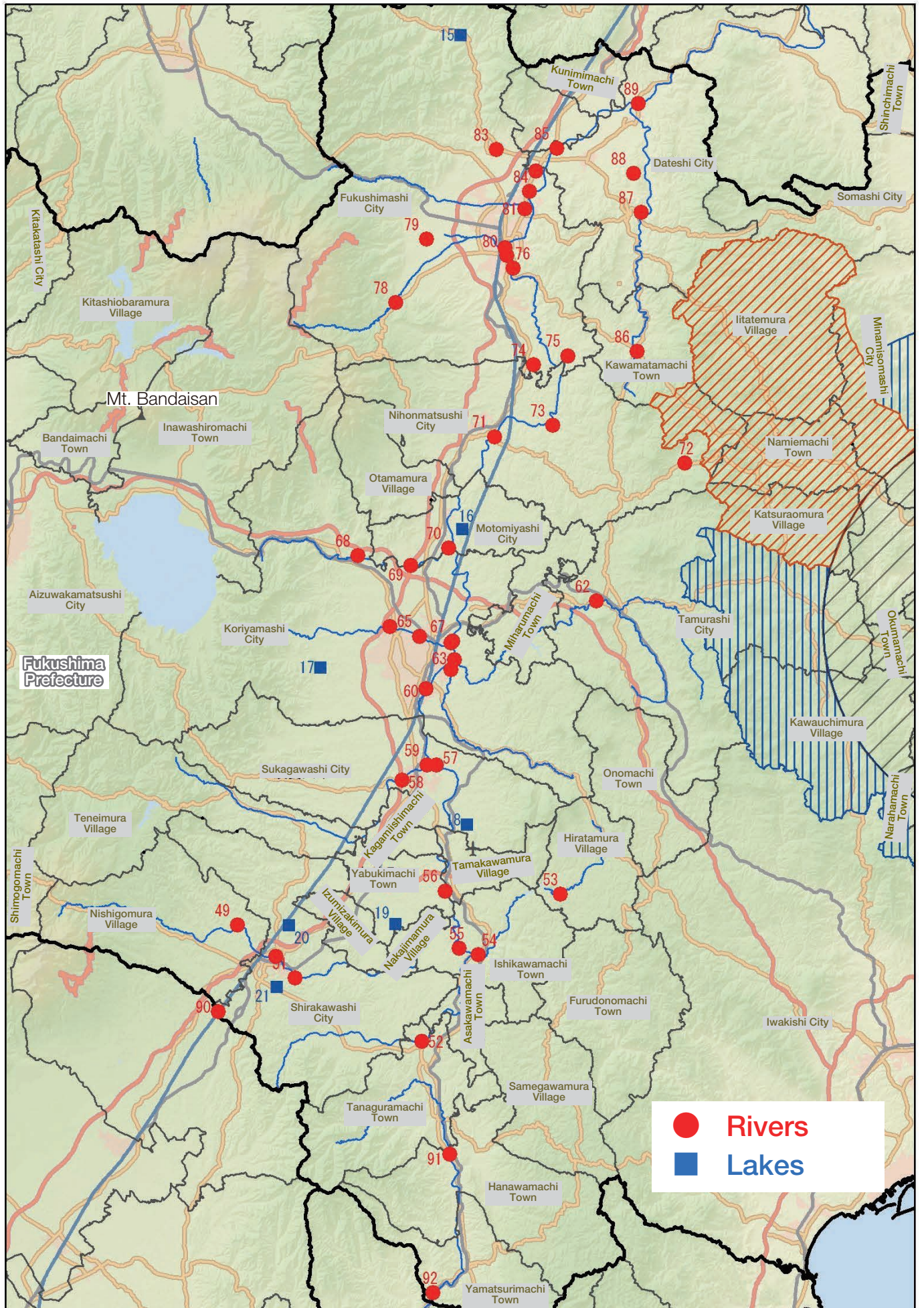
\*Air dose was measured with a survey meter, TCS-172 or TCS-161 of Hitachi-Aloka Medical, Ltd.

•Collection points for rivers are listed from north to south, and for different points along the river, from upstream to downstream.

•Sampling points with no figures for concentration of radioactive material and air dose are those unable to collect samples due to snow on the ground







- Rivers
- Lakes
- ▲ bathing areas

