

(News Release)
The Results of Radioactive Material Monitoring of the Surface Water Bodies
within Fukushima Prefecture
(2nd Time)

Friday, February 17, 2012
Water Environment Division,
Environment Management Bureau,
Ministry of the Environment
Direct line: 03-5521-8316
Switchboard: 03-3581-3351
Director: Nobuo Yoshida (ext. 6610)
Deputy Director: Tetsuo Furuta (ext. 6614)
Coordinator: Hiroaki Hase (ext. 6628)

In accordance with the Comprehensive Radiation Monitoring Plan determined by the Monitoring Coordination Meeting, the Ministry of the Environment (MOE) is continuing to monitor radioactive materials in water environments (surface water bodies (rivers, lakes and headwaters, and coasts), etc.).

Samples taken from the surface water bodies of Fukushima Prefecture during the period of November 15-30 (2nd time) have been measured as part of MOE's efforts to monitor radioactive materials; the results have recently been compiled and are released here. The results for Iwate Prefecture (December 21-January 6 samples) are simultaneously released.)

*The following monitoring results have already been released:

- Fukushima Prefecture (1st time) (September 15-October 14 samples): Released November 15
- Ibaraki Prefecture (August 30-October 8 samples): Released December 2
- Miyagi Prefecture (October 3-November 7 samples): Released December 16
- Tochigi Prefecture (October 5-24 samples): Released December 16
- Yamagata Prefecture (October 24-27 samples): Released December 22
- Chiba Prefecture (October 31-November 4 samples): Released December 22
- Gunma Prefecture (November 23-December 16 samples): Released January 13

1. Survey Overview

(1) Survey Locations

193 environmental reference points, etc. in the surface water bodies within Fukushima Prefecture
(Rivers: 113 locations, Lakes and headwaters: 46 locations, Coasts and bathing areas: 34 locations)

(2) Survey Method

- Measurement of concentrations of radioactive materials (radioactive iodine (I-131), radioactive cesium (Cs-134 and Cs-137)) in water and sediment
- Measurement of concentrations of radioactive materials and spatial dose-rate in soil in the surrounding environment of water and sediment sample collection points (river terraces, etc.)

2. Outline of Results (* denotes the results of the previous survey.)

(1) Water Quality

- Radioactive iodine (I-131) Not detectable (ND) at any location (Lower detection limit: 1Bq/L)
(* ND at any location)
- Radioactive cesium
(Rivers)
 - Cs-134: ND-3Bq/L (Lower detection limit: 1Bq/L)
 - Cs-137: ND-4Bq/L (Lower detection limit: 1Bq/L)
 - (*Cs-134: ND-9Bq/L, Cs-137: ND-11Bq/L)(Lakes and headwaters) ND at any location (Lower detection limit: 1Bq/L)
(*Cs-134: ND-12Bq/L, Cs-137: ND-15Bq/L)
(Coasts and bathing areas) ND at any location (Lower detection limit: 1Bq/L)
(* ND at any location)

<Reference>

“Regulatory Guide: Emergency Preparedness for Nuclear Facilities (Nuclear Safety Commission)”
Standards for Restrictions on the Intake of Food and Drink (Drinking Water)
Radioactive iodine (I-131): 300Bq/kg or more
Radioactive cesium (total for Cs-134 + Cs-137): 200Bq/kg or more

(2) Sediment

- Radioactive iodine (I-131) ND at any location (Lower detection limit: 30Bq/kg (dried mud))
(* ND at any location)
- Radioactive cesium
(Rivers)
 - Cs-134: ND-38,000Bq/kg (dried mud) (Lower detection limit: 10Bq/kg (dried mud))
 - Cs-137: ND-49,000Bq/kg (dried mud) (Lower detection limit: 10Bq/kg (dried mud))
 - (*Cs-134: ND-27,000Bq/kg, Cs-137: ND-33,000Bq/kg)(Lakes and headwaters)
 - Cs-134: ND-31,000Bq/kg (dried mud) (Lower detection limit: 10Bq/kg (dried mud))
 - Cs-137: ND-38,000Bq/kg (dried mud) (Lower detection limit: 10Bq/kg (dried mud))
 - (*Cs-134: ND-17,000Bq/kg, Cs-137: ND-20,000Bq/kg)(Coasts and bathing areas)
 - Cs-134: ND-270Bq/kg (dried mud) (Lower detection limit: 10Bq/kg (dried mud))
 - Cs-137: ND-360Bq/kg (dried mud) (Lower detection limit: 10Bq/kg (dried mud))
 - (*Cs-134: ND-370Bq/kg, Cs-137: ND-430Bq/kg)

(3) Surrounding Environment

- Radioactive iodine (I-131) ND at any location (Lower detection limit: 30Bq/kg (dry))
- Radioactive cesium
(Rivers)
 - Cs-134: ND-49,000Bq/kg (dry) (Lower detection limit: 10Bq/kg (dry))
 - Cs-137: ND-65,000Bq/kg (dry) (Lower detection limit: 10Bq/kg (dry))
 - (*Cs-134: ND-48,000Bq/kg, Cs-137: ND-56,000Bq/kg)(Lakes and headwaters)
 - Cs-134: ND-150,000Bq/kg (dry) (Lower detection limit: 10Bq/kg (dry))
 - Cs-137: 30-190,000Bq/kg (dry) (Lower detection limit: 10Bq/kg (dry))
 - (*Cs-134: 30-26,000Bq/kg, Cs-137: 26-32,000Bq/kg)(Coasts and bathing areas)
 - Cs-134: 19-570Bq/kg (dry) (Lower detection limit: 10Bq/kg (dry))
 - Cs-137: 23-770Bq/kg (dry) (Lower detection limit: 10Bq/kg (dry))
 - (*Cs-134: 23-270Bq/kg, Cs-137: 33-300Bq/kg)
- Spatial dose
 - (Rivers) 0.05-10.64μSv/h
 - (Lakes and headwaters) 0.05-19.68μSv/h
 - (Coasts and bathing areas) 0.04-0.36μSv/h

(Annex for details)
(Map attached)

Future Plans

In coordination with relevant organizations, MOE intends to continue to measure radioactive materials in water, sediment, etc. in rivers, lakes, etc. in Fukushima Prefecture, its neighboring prefectures, etc.

○River (Fukushima Prefecture, Hamadori Area) : Water Quality Monitoring Results

| No. | Sampling point | | | Sampling date | Weather | Air temperature ℃ | Full depth m | General items | | | | | | Concentration of radioactive material Bq/L | | | Remarks |
|-----|----------------------|---|---------------------|---------------|---------|----------------------|-----------------|------------------------|----------------|--------------------|---------------------------------|------------|-----------|--|-------------------------------------|------------------|---|
| | Water body | Point | Municipality | | | | | Water temperature ℃ | Sampling depth | Transparency cm | Electrical conductivity mS/m | SS mg/L | Turbidity | Radioactive iodine I-131 | Radioactive cesium Cs-134 Cs-137 | | |
| 1 | Jizogawa River | Hamahatabashi Bridge | Shinchimachi Town | 2011/11/23 | Cloudy | 10.6 | 3.70 | 13.1 | 0 | 100 or more | 4260.0 | 2 | 3.4 | <1 | <1 | <1 | |
| 2 | Koizumigawa River | Koizumbashi Bridge | Somashi City | 2011/11/24 | Sunny | 11.9 | 0.50 | 11.8 | 0 | 100 or more | 26.2 | 2 | 3.8 | <1 | <1 | <1 | |
| 3 | | Hyakkenbashi Bridge | Somashi City | 2011/11/28 | Cloudy | 12.0 | 1.20 | 9.8 | 0 | 100 or more | 2820.0 | 3 | 4.3 | <1 | <1 | <1 | |
| 4 | Udagawa River | Horisakabashi Bridge | Somashi City | 2011/11/24 | Sunny | 13.5 | 0.60 | 9.0 | 0 | 100 or more | 10.2 | <1 | 1.0 | <1 | <1 | <1 | |
| 5 | | Hyakkenbashi Bridge | Somashi City | 2011/11/28 | Cloudy | 14.0 | 1.00 | 8.6 | 0 | 100 or more | 230.0 | <1 | 1.0 | <1 | <1 | <1 | |
| 6 | Manogawa River | Ochiaibashi Bridge | Minamisomashi City | 2011/11/29 | Sunny | 10.2 | 2.15 | 12.1 | 0 | 100 or more | 13.2 | 2 | 1.9 | <1 | <1 | <1 | |
| 7 | | Majimabashi Bridge | Minamisomashi City | 2011/11/29 | Sunny | 13.6 | 2.52 | 12.1 | 0 | 100 or more | 2660.0 | 2 | 4.0 | <1 | <1 | <1 | Former evacuation-prepared areas in case of emergency |
| 8 | Niidagawa River | Kusano | Itatemura Village | 2011/11/25 | Snow | 4.5 | 0.70 | 5.8 | 0 | 100 or more | 8.5 | 1 | 1.6 | <1 | <1 | <1 | Deliberate evacuation areas |
| 9 | | Komiya | Itatemura Village | 2011/11/25 | Snow | 3.4 | 0.70 | 5.8 | 0 | 100 or more | 8.5 | 1 | 1.6 | <1 | <1 | <1 | Deliberate evacuation areas |
| 10 | | Kidouchibashi Bridge | Minamisomashi City | 2011/11/29 | Sunny | 12.8 | 1.38 | 8.9 | 0 | 100 or more | 7.7 | <1 | 1.1 | <1 | <1 | <1 | Former evacuation-prepared areas in case of emergency |
| 11 | | Sakekawabashi Bridge | Minamisomashi City | 2011/11/29 | Sunny | 12.0 | 1.63 | 11.3 | 0 | 100 or more | 139.5 | 1 | 1.6 | <1 | <1 | <1 | Former evacuation-prepared areas in case of emergency |
| 12 | Otagawa River | Ishiwatadobashi Bridge | Minamisomashi City | 2011/11/28 | Cloudy | 13.4 | 0.50 | 10.3 | 0 | 100 or more | 6.0 | <1 | 0.8 | <1 | <1 | <1 | Former evacuation-prepared areas in case of emergency |
| 13 | | Kaminouchihashi Bridge | Minamisomashi City | 2011/11/29 | Sunny | 13.2 | 0.30 | 11.1 | 0 | 100 or more | 6.0 | 1 | 1.2 | <1 | <1 | 1 | Former evacuation-prepared areas in case of emergency |
| 14 | | Masudabashi Bridge | Minamisomashi City | 2011/11/29 | Sunny | 9.2 | 0.48 | 11.8 | 0 | 100 or more | 9.3 | 1 | 1.1 | <1 | <1 | <1 | Former evacuation-prepared areas in case of emergency |
| 15 | | JR Tetsudobashi Bridge | Minamisomashi City | 2011/11/29 | Sunny | 11.2 | 0.30 | 11.4 | 0 | 100 or more | 8.9 | 2 | 2.0 | <1 | <1 | <1 | Former evacuation-prepared areas in case of emergency |
| 16 | Maruyamabashi Bridge | Minamisomashi City | 2011/11/21 | Sunny | 10.4 | 0.20 | 13.8 | 0 | 26 | 4220.0 | 28 | 18 | <1 | <1 | <1 | Restricted areas | |
| 17 | Odakagawa River | Zenchobashi Bridge | Minamisomashi City | 2011/11/21 | Cloudy | 8.5 | 0.45 | 10.6 | 0 | 100 or more | 13.5 | 3 | 4.3 | <1 | <1 | <1 | Restricted areas |
| 18 | | Hatsukarabashi Bridge | Minamisomashi City | 2011/11/21 | Cloudy | 9.6 | 1.20 | 14.3 | 0 | 100 or more | 4990.0 | 10 | 6.3 | <1 | <1 | <1 | Restricted areas |
| 19 | Ukedogawa River | Muroharabashi Bridge | Namiemachi Town | 2011/11/21 | Cloudy | 9.6 | 0.55 | 10.0 | 0 | 100 or more | 6.6 | 1 | 2.9 | <1 | <1 | 1 | Restricted areas |
| 20 | | Ukedobashi Bridge | Namiemachi Town | 2011/11/21 | Sunny | 12.9 | 0.30 | 10.8 | 0 | 100 or more | 8.8 | 2 | 2.8 | <1 | <1 | <1 | Restricted areas |
| 21 | Takasegawa River | Keiobashi Bridge | Namiemachi Town | 2011/11/21 | Sunny | 10.0 | 0.20 | 11.0 | 0 | 100 or more | 7.6 | 3 | 2.6 | <1 | <1 | <1 | Restricted areas |
| 22 | Maedagawa River | National Route 6, west | Futabamachi Town | 2011/11/21 | Cloudy | 11.2 | 0.45 | 11.2 | 0 | 100 or more | 13.0 | 4 | 5.5 | <1 | 1 | 2 | Restricted areas |
| 23 | | Nakahamabashi Bridge | Namiemachi Town | 2011/11/21 | Cloudy | 9.8 | 1.10 | 11.2 | 0 | 100 or more | 56.3 | 4 | 7.0 | <1 | 1 | 1 | Restricted areas |
| 24 | Kumagawa River | National Route 6, west | Okumamachi Town | 2011/11/21 | Sunny | 9.2 | 0.25 | 10.6 | 0 | 100 or more | 8.1 | 1 | 1.5 | <1 | <1 | <1 | Restricted areas |
| 25 | | Mikumabashi Bridge | Okumamachi Town | 2011/11/21 | Sunny | 10.2 | 0.33 | 11.2 | 0 | 100 or more | 11.6 | 1 | 2.8 | <1 | <1 | <1 | Restricted areas |
| 26 | Tomiokagawa River | National Route 6, west | Tomiokamachi Town | 2011/11/21 | Sunny | 9.8 | 0.28 | 11.5 | 0 | 100 or more | 8.2 | 1 | 2.0 | <1 | <1 | <1 | Restricted areas |
| 27 | | Kobamabashi Bridge | Tomiokamachi Town | 2011/11/21 | Sunny | 10.3 | 0.31 | 11.2 | 0 | 100 or more | 9.6 | 3 | 3.3 | <1 | <1 | <1 | Restricted areas |
| 28 | Idegawa River | Motogamabashi Bridge | Narahamachi Town | 2011/11/21 | Sunny | 10.0 | 0.20 | 10.7 | 0 | 100 or more | 14.0 | <1 | 0.7 | <1 | <1 | <1 | Restricted areas |
| 29 | Kidogawa River | Nishiyamabashi Bridge | Kawauchimura Villag | 2011/11/17 | Sunny | 9.2 | 0.50 | 8.8 | 0 | 100 or more | 6.1 | 2 | 1.2 | <1 | <1 | <1 | Former evacuation-prepared areas in case of emergency |
| 30 | | Nagatorobashi Bridge | Narahamachi Town | 2011/11/21 | Sunny | 11.4 | 0.32 | 11.1 | 0 | 100 or more | 40.1 | 1 | 2.9 | <1 | <1 | <1 | Restricted areas |
| 31 | | Kidokawabashi Bridge | Narahamachi Town | 2011/11/21 | Sunny | 11.9 | 0.25 | 10.4 | 0 | 100 or more | 4.0 | 3 | 3.1 | <1 | <1 | <1 | Restricted areas |
| 32 | Asamigawa River | Bodabashi Bridge | Hironomachi Town | 2011/11/18 | Cloudy | 9.2 | 0.40 | 8.8 | 0 | 100 or more | 10.0 | <1 | 1.0 | <1 | <1 | <1 | Former evacuation-prepared areas in case of emergency |
| 33 | Ohisagawa River | Kageisobashi Bridge | Iwakishi City | 2011/11/23 | Sunny | 14.2 | 0.30 | 11.2 | 0 | 100 or more | 110.7 | 2 | 3.8 | <1 | <1 | <1 | |
| 34 | Kohisagawa River | Rengobashi Bridge | Iwakishi City | 2011/11/23 | Sunny | 13.6 | 0.55 | 11.2 | 0 | 100 or more | 63.7 | 6 | 9.4 | <1 | <1 | <1 | |
| 35 | Niidagawa River | Kasumidabashi Bridge | Iwakishi City | 2011/11/23 | Cloudy | 11.2 | 0.40 | 11.4 | 0 | 100 or more | 23.4 | 1 | 2.0 | <1 | <1 | <1 | |
| 36 | | Matsubashi Bridge | Iwakishi City | 2011/11/24 | Clear | 14.4 | 1.43 | 12.2 | 0 | 100 or more | 9.4 | 4 | 6.4 | <1 | <1 | <1 | |
| 37 | Natsuigawa River | Kitanouchibashi Bridge | Onomachi Town | 2011/11/29 | Cloudy | 11.3 | 0.30 | 8.2 | 0 | 100 or more | 9.2 | 2 | 2.1 | <1 | <1 | <1 | (Sampling point is in Nakadori) |
| 38 | | Kyudayubashi Bridge | Iwakishi City | 2011/11/21 | Sunny | 9.0 | 0.47 | 10.9 | 0 | 100 or more | 8.3 | 5 | 5.6 | <1 | <1 | <1 | |
| 39 | | Rokujumabashi Bridge | Iwakishi City | 2011/11/24 | Sunny | 12.2 | 1.22 | 11.8 | 0 | 63 | 24.0 | 8 | 9.2 | <1 | <1 | <1 | |
| 40 | Yoshimigawa River | Iwaanatsuribashi Bridge | Iwakishi City | 2011/11/23 | Cloudy | 13.8 | 0.50 | 8.7 | 0 | 100 or more | 10.0 | 1 | 1.8 | <1 | <1 | <1 | |
| 41 | | Before the confluence with Natsuigawa R | Iwakishi City | 2011/11/23 | Cloudy | 13.0 | 0.50 | 10.5 | 0 | 100 or more | 18.0 | 2 | 2.5 | <1 | <1 | <1 | |
| 42 | Fujiwaragawa River | Shimabashi Bridge | Iwakishi City | 2011/11/25 | Sunny | 13.0 | 0.73 | 13.2 | 0 | 47 | 546.0 | 8 | 10 | <1 | <1 | <1 | |
| 43 | | Minatoodhashi Bridge | Iwakishi City | 2011/11/26 | Clear | 8.4 | 3.17 | 11.8 | 0 | 100 or more | 2540.0 | 3 | 4.7 | <1 | <1 | <1 | |
| 44 | Samegawa River | Idosawabashi Bridge | Iwakishi City | 2011/11/22 | Sunny | 11.6 | 0.20 | 11.0 | 0 | 65 | 11.4 | 3 | 6.9 | <1 | <1 | <1 | |
| 45 | | Samegawabashi Bridge | Iwakishi City | 2011/11/23 | Cloudy | 13.2 | 0.50 | 10.2 | 0 | 72 | 21.2 | 5 | 6.3 | <1 | <1 | <1 | |
| 46 | Shitokigawa River | Komurobashi Bridge | Iwakishi City | 2011/11/22 | Sunny | 9.2 | 0.50 | 8.0 | 0 | 100 or more | 11.2 | 1 | 1.6 | <1 | <1 | <1 | |
| 47 | Bindagawa River | Kobanabashi Bridge | Iwakishi City | 2011/11/26 | Clear | 11.0 | 0.27 | 9.8 | 0 | 100 or more | 56.2 | 7 | 6.4 | <1 | <1 | <1 | |
| 48 | | Bindabashi Bridge | Iwakishi City | 2011/11/23 | Cloudy | 12.6 | 2.08 | 11.8 | 0 | 100 or more | 260.0 | 7 | 8.7 | <1 | <1 | <1 | |

(Sampling points for rivers are listed from north to south, and for different points along the river, from upstream to downstream.)

○River (Fukushima Prefecture, Hamadori Area): Sediment Monitoring Results

| No. | Sampling point | | | Sampling date | Weather | Air temperature °C | Full depth m | General items | | | Property | Concentration of radioactive material Bq/kg(dried mud) | | | Remarks |
|-----|--------------------|--|----------------------|---------------|---------|-----------------------|-----------------|-----------------------|--------------------------|------------------|-----------------------|--|--------------------|--------|---|
| | Water body | Point | Municipality | | | | | Mud temperature °C | Mud sampling depth cm | Mud content % | | Radioactive iodine I-131 | Radioactive cesium | | |
| | | | | | | | | | | | | | Cs-134 | Cs-137 | |
| 1 | Jizogawa River | Hamahatabashi Bridge | Shinchimachi Town | 2011/11/23 | Cloudy | 10.6 | 3.70 | 14.2 | 5 | 44.8 | Sand with silt | <30 | 1,900 | 2,500 | |
| 2 | Koizumigawa River | Koizumibashi Bridge | Somashi City | 2011/11/24 | Sunny | 11.9 | 0.50 | 12.1 | 5 | 72.2 | Sand with gravel | <30 | 460 | 600 | |
| 3 | | Hyakkenbashi Bridge | Somashi City | 2011/11/28 | Cloudy | 12.0 | 1.20 | 10.4 | 5 | 73.3 | Sand | <30 | 880 | 1,000 | |
| 4 | Udagawa River | Horisakabashi Bridge | Somashi City | 2011/11/24 | Sunny | 13.5 | 0.60 | 9.0 | 3 | 82.1 | Sand with gravel | <30 | 1,000 | 1,300 | |
| 5 | | Hyakkenbashi Bridge | Somashi City | 2011/11/28 | Cloudy | 14.0 | 1.00 | 9.0 | 5 | 77.5 | Sand | <30 | 220 | 270 | |
| 6 | Manogawa River | Ochiaibashi Bridge | Minamisomashi City | 2011/11/29 | Sunny | 10.2 | 2.15 | 12.0 | 3 | 91.6 | Gravel with sand | <30 | 290 | 370 | |
| 7 | | Majimabashi Bridge | Minamisomashi City | 2011/11/29 | Sunny | 13.6 | 2.52 | 14.0 | 10 | 65.1 | Silt with sand | <30 | 1,500 | 1,900 | Former evacuation-prepared areas in case of emergency |
| 8 | Niidagawa River | Kusano | litatemura Village | 2011/11/25 | Snow | 4.5 | 0.70 | 5.8 | 5 | 92.3 | Sand with gravel | <30 | 560 | 730 | Deliberate evacuation areas |
| 9 | | Komiya | litatemura Village | 2011/11/25 | Snow | 3.4 | 0.70 | 6.1 | 5 | 79.4 | Sand | <30 | 1,900 | 2,500 | Deliberate evacuation areas |
| 10 | | Kidouchibashi Bridge | Minamisomashi City | 2011/11/29 | Sunny | 12.8 | 1.38 | 11.6 | 3 | 90.6 | Sand with gravel | <30 | 1,100 | 1,500 | Former evacuation-prepared areas in case of emergency |
| 11 | | Sakakawabashi Bridge | Minamisomashi City | 2011/11/29 | Sunny | 12.0 | 1.63 | 12.8 | 10 | 86.4 | Sand | <30 | 270 | 340 | Former evacuation-prepared areas in case of emergency |
| 12 | Otagawa River | Ishiwatadobashi Bridge | Minamisomashi City | 2011/11/28 | Cloudy | 13.4 | 0.50 | 10.6 | 5 | 88.4 | Gravel with sand | <30 | 6,300 | 8,100 | Former evacuation-prepared areas in case of emergency |
| 13 | | Kaminouchihashi Bridge | Minamisomashi City | 2011/11/29 | Sunny | 13.2 | 0.30 | 11.6 | 5 | 85.6 | Sand with gravel | <30 | 10,000 | 12,000 | Former evacuation-prepared areas in case of emergency |
| 14 | | Masudabashi Bridge | Minamisomashi City | 2011/11/29 | Sunny | 9.2 | 0.48 | 11.0 | 5 | 89.5 | Sand with gravel | <30 | 1,300 | 1,600 | Former evacuation-prepared areas in case of emergency |
| 15 | | JR Tetsudobashi Bridge | Minamisomashi City | 2011/11/29 | Sunny | 11.2 | 0.30 | 11.4 | 10 | 80.0 | Sand | <30 | 1,300 | 1,700 | Former evacuation-prepared areas in case of emergency |
| 16 | Odakagawa River | Maruyamabashi Bridge | Minamisomashi City | 2011/11/21 | Sunny | 10.4 | 0.20 | 11.6 | 3 | 86.1 | Sand with gravel | <30 | 32 | 39 | Restricted areas |
| 17 | | Zenchobashi Bridge | Minamisomashi City | 2011/11/21 | Cloudy | 8.5 | 0.45 | 10.0 | 3 | 80.5 | Gravel with sand | <30 | 300 | 420 | Restricted areas |
| 18 | | Hatsukarabashi Bridge | Minamisomashi City | 2011/11/21 | Cloudy | 9.6 | 1.20 | 13.0 | 3 | 77.3 | Sand | <30 | 670 | 830 | Restricted areas |
| 19 | Ukedogawa River | Muroharabashi Bridge | Namiemachi Town | 2011/11/21 | Cloudy | 9.6 | 0.55 | 10.4 | 3 | 80.1 | Sand with gravel | <30 | 38,000 | 49,000 | Restricted areas |
| 20 | | Ukedobashi Bridge | Namiemachi Town | 2011/11/21 | Sunny | 12.9 | 0.30 | 11.2 | 5 | 79.6 | Sand with gravel | <30 | 16,000 | 21,000 | Restricted areas |
| 21 | Takasegawa River | Keibashi Bridge | Namiemachi Town | 2011/11/21 | Sunny | 10.0 | 0.20 | 11.0 | 5 | 82.2 | Sand with gravel | <30 | 770 | 880 | Restricted areas |
| 22 | Maedagawa River | National Route 6, west | Futabamachi Town | 2011/11/21 | Cloudy | 11.2 | 0.45 | 11.6 | 5 | 82.4 | Sand with silt | <30 | 8,300 | 10,000 | Restricted areas |
| 23 | | Nakahamabashi Bridge | Namiemachi Town | 2011/11/21 | Cloudy | 9.8 | 1.10 | 12.1 | 5 | 89.8 | Sand with gravel | <30 | 1,300 | 1,600 | Restricted areas |
| 24 | Kumagawa River | National Route 6, west | Okumamachi Town | 2011/11/21 | Sunny | 9.2 | 0.25 | 10.8 | 10 | 84.6 | Sand with gravel | <30 | 3,100 | 4,000 | Restricted areas |
| 25 | | Mikumabashi Bridge | Okumamachi Town | 2011/11/21 | Sunny | 10.2 | 0.33 | 11.1 | 10 | 80.1 | Sand | <30 | 4,700 | 6,100 | Restricted areas |
| 26 | Tomiokagawa River | National Route 6, west | Tomiokamachi Town | 2011/11/21 | Sunny | 9.8 | 0.28 | 11.6 | 5 | 82.2 | Sand with gravel | <30 | 1,200 | 1,600 | Restricted areas |
| 27 | | Kobamabashi Bridge | Tomiokamachi Town | 2011/11/21 | Sunny | 10.3 | 0.31 | 11.3 | 5 | 76.3 | Sand with gravel | <30 | 7,700 | 9,900 | Restricted areas |
| 28 | Idegawa River | Motogamabashi Bridge | Narahamachi Town | 2011/11/21 | Sunny | 10.0 | 0.20 | 11.0 | 5 | 80.0 | Sand with gravel | <30 | 1,500 | 2,000 | Restricted areas |
| 29 | Kidogawa River | Nishiyamabashi Bridge | Kawauchimura Village | 2011/11/17 | Sunny | 9.2 | 0.50 | 9.8 | 5 | 68.8 | Sand | <30 | 310 | 380 | Former evacuation-prepared areas in case of emergency |
| 30 | | Nagatorobashi Bridge | Narahamachi Town | 2011/11/21 | Sunny | 11.4 | 0.32 | 11.4 | 5 | 76.2 | Sand | <30 | 230 | 300 | Restricted areas |
| 31 | | Kidokawabashi Bridge | Narahamachi Town | 2011/11/21 | Sunny | 11.9 | 0.25 | 12.4 | 5 | 53.6 | Gravel/sand with silt | <30 | 1,100 | 1,400 | Restricted areas |
| 32 | Asamigawa River | Bodabashi Bridge | Hironomachi Town | 2011/11/18 | Cloudy | 9.2 | 0.40 | 9.2 | 5 | 80.0 | Sand | <30 | 370 | 460 | Former evacuation-prepared areas in case of emergency |
| 33 | Ohisagawa River | Kageisobashi Bridge | Iwakishi City | 2011/11/23 | Sunny | 14.2 | 0.30 | 11.2 | 5 | 94.2 | Sand with gravel | <30 | 820 | 1,000 | |
| 34 | Kohisagawa River | Rengobashi Bridge | Iwakishi City | 2011/11/23 | Sunny | 13.6 | 0.55 | 11.8 | 5 | 88.4 | Sand with gravel | <30 | 84 | 100 | |
| 35 | Niidagawa River | Kasumidabashi Bridge | Iwakishi City | 2011/11/23 | Cloudy | 11.2 | 0.40 | 11.4 | 5 | 83.8 | Gravel/sand with silt | <30 | 71 | 77 | |
| 36 | | Matsubashi Bridge | Iwakishi City | 2011/11/24 | Clear | 14.4 | 1.43 | 12.8 | 5 | 83.2 | Sand with gravel | <30 | 280 | 330 | |
| 37 | Natsugawa River | Kitanouchibashi Bridge | Onomachi Town | 2011/11/29 | Cloudy | 11.3 | 0.30 | 8.4 | 5 | 88.3 | Sand with gravel | <30 | 34 | 42 | (Sampling point is in Nakadori) |
| 38 | | Kyudayubashi Bridge | Iwakishi City | 2011/11/21 | Sunny | 9.0 | 0.47 | 10.7 | 5 | 67.1 | Sand | <30 | 190 | 250 | |
| 39 | | Rokujumabashi Bridge | Iwakishi City | 2011/11/24 | Sunny | 12.2 | 1.22 | 11.4 | 5 | 88.9 | Sand with gravel | <30 | 26 | 32 | |
| 40 | Yoshimagawa River | Iwaanatsuribashi Bridge | Iwakishi City | 2011/11/23 | Cloudy | 13.8 | 0.50 | 9.0 | 10 | 81.4 | Sand | <30 | 160 | 220 | |
| 41 | | Before the confluence with Natsugawa River | Iwakishi City | 2011/11/23 | Cloudy | 13.0 | 0.50 | 10.7 | 10 | 77.6 | Sand with gravel | <30 | 190 | 250 | |
| 42 | Fujiwaragawa River | Shimabashi Bridge | Iwakishi City | 2011/11/25 | Sunny | 13.0 | 0.73 | 14.2 | 5 | 83.5 | Sand with silt | <30 | 67 | 90 | |
| 43 | | Minatoohashi Bridge | Iwakishi City | 2011/11/26 | Clear | 8.4 | 3.17 | 14.2 | 5 | 79.9 | Sand with silt | <30 | 99 | 140 | |
| 44 | Samegawa River | Idosawabashi Bridge | Iwakishi City | 2011/11/22 | Sunny | 11.6 | 0.20 | 11.2 | 5 | 95.4 | Gravel | <30 | 11 | 19 | |
| 45 | | Samegawabashi Bridge | Iwakishi City | 2011/11/23 | Cloudy | 13.2 | 0.50 | 11.5 | 10 | 79.5 | Gravel/sand with silt | <30 | 190 | 250 | |
| 46 | Shitokigawa River | Komurobashi Bridge | Iwakishi City | 2011/11/22 | Sunny | 9.2 | 0.50 | 10.6 | 5 | 84.3 | Sand | <30 | 53 | 68 | |
| 47 | Bindagawa River | Kobanabashi Bridge | Iwakishi City | 2011/11/26 | Clear | 11.0 | 0.27 | 9.8 | 5 | 83.3 | Sand with gravel | <30 | 140 | 160 | |
| 48 | | Bindabashi Bridge | Iwakishi City | 2011/11/23 | Cloudy | 12.6 | 2.08 | 10.8 | 10 | 70.8 | Sand with silt | <30 | 590 | 760 | |

(Sampling points for rivers are listed from north to south, and for different points along the river, from upstream to downstream.)

○River (Fukushima Prefecture, Hamadori Area) : Surrounding Environment Monitoring Results

| No. | Sampling point | | | Sampling date | Weather | Air temperature ℃ | Left bank | | | | | Right bank | | | | | Remarks |
|-----|--------------------|-------------------------------------|---------------------|---------------|---------|----------------------|------------|---|-------------------------------------|--------|-------------------|------------|---|-------------------------------------|--------|-------------------|---|
| | Water body | Point | Municipality | | | | Property | Soil Concentration of radioactive material Bq/kg(dry) | | | Air dose μSv/h | Property | Soil Concentration of radioactive material Bq/kg(dry) | | | Air dose μSv/h | |
| | | | | | | | | Radioactive iodine I-131 | Radioactive cesium Cs-134 Cs-137 | | | | Radioactive iodine I-131 | Radioactive cesium Cs-134 Cs-137 | | | |
| 1 | Jizogawa River | Hamatabashi Bridge | Shinchimachi Town | 2011/11/23 | Cloudy | 10.6 | Sandy | <30 | 1,500 | 1,900 | 0.28 | Sandy | <30 | 590 | 770 | 0.22 | |
| 2 | Koizumigawa River | Koizumibashi Bridge | Somashi City | 2011/11/24 | Sunny | 11.9 | Loamy | <30 | 1,200 | 1,600 | 0.34 | Loamy | <30 | 1,300 | 1,600 | 0.35 | |
| 3 | | Hyakkenbashi Bridge | Somashi City | 2011/11/28 | Cloudy | 12.0 | Loamy | <30 | 1,400 | 2,000 | 0.38 | Loamy | <30 | 1,600 | 2,000 | 0.35 | |
| 4 | Udagawa River | Horisakabashi Bridge | Somashi City | 2011/11/24 | Sunny | 13.5 | Loamy | <30 | 840 | 1,000 | 0.41 | - | - | - | - | - | |
| 5 | | Hyakkenbashi Bridge | Somashi City | 2011/11/28 | Cloudy | 14.0 | Loamy | <30 | 1,200 | 1,400 | 0.40 | Loamy | <30 | 1,400 | 1,800 | 0.32 | |
| 6 | Manogawa River | Ochiaibashi Bridge | Minamisomashi City | 2011/11/29 | Sunny | 10.2 | Loamy | <30 | 750 | 930 | 0.57 | Loamy | <30 | 1,100 | 1,400 | 0.96 | |
| 7 | | Majimabashi Bridge | Minamisomashi City | 2011/11/29 | Sunny | 13.6 | Clayey | <30 | 520 | 660 | 0.32 | Clayey | <30 | 450 | 640 | 0.29 | Former evacuation-prepared areas in case of emergency |
| 8 | Niidagawa River | Kusano | Iitamura Village | 2011/11/25 | Snow | 4.5 | Loamy | <30 | 8,500 | 10,000 | 4.48 | Loamy | <30 | 13,000 | 16,000 | 4.37 | Deliberate evacuation areas |
| 9 | | Komyia | Iitamura Village | 2011/11/25 | Snow | 3.4 | Loamy | <30 | 8,900 | 11,000 | 4.70 | Loamy | <30 | 8,100 | 10,000 | 4.96 | Deliberate evacuation areas |
| 10 | | Kidouchibashi Bridge | Minamisomashi City | 2011/11/29 | Sunny | 12.8 | Loamy | 38 | 3,000 | 3,800 | 1.17 | Loamy | <30 | 1,200 | 1,500 | 1.36 | Former evacuation-prepared areas in case of emergency |
| 11 | Otagawa River | Sakekawabashi Bridge | Minamisomashi City | 2011/11/29 | Sunny | 12.0 | Loamy | <30 | 100 | 140 | 0.22 | Loamy | <30 | 390 | 460 | 0.36 | Former evacuation-prepared areas in case of emergency |
| 12 | | Ishiwatadobashi Bridge | Minamisomashi City | 2011/11/28 | Cloudy | 13.4 | Loamy | <30 | 4,300 | 5,500 | 2.10 | Loamy | <30 | 2,500 | 3,300 | 2.23 | Former evacuation-prepared areas in case of emergency |
| 13 | | Kaminouchihashi Bridge | Minamisomashi City | 2011/11/29 | Sunny | 13.2 | Loamy | <30 | 2,600 | 3,400 | 1.09 | Loamy | <30 | 2,900 | 3,800 | 1.12 | Former evacuation-prepared areas in case of emergency |
| 14 | | Masudabashi Bridge | Minamisomashi City | 2011/11/29 | Sunny | 9.2 | Loamy | <30 | 1,400 | 1,800 | 0.50 | Loamy | <30 | 600 | 780 | 0.47 | Former evacuation-prepared areas in case of emergency |
| 15 | | JR Tetsudobashi Bridge | Minamisomashi City | 2011/11/29 | Sunny | 11.2 | Loamy | <30 | 1,000 | 1,300 | 0.41 | Loamy | <30 | 2,000 | 2,500 | 0.48 | Former evacuation-prepared areas in case of emergency |
| 16 | | Maruyamabashi Bridge | Minamisomashi City | 2011/11/21 | Sunny | 10.4 | Loamy | <30 | 320 | 450 | 0.16 | - | - | - | - | - | Restricted areas |
| 17 | Odakagawa River | Zenchobashi Bridge | Minamisomashi City | 2011/11/21 | Cloudy | 8.5 | - | - | - | - | - | Loamy | <30 | 1,000 | 1,200 | 0.45 | Restricted areas |
| 18 | | Hatsukarabashi Bridge | Minamisomashi City | 2011/11/21 | Cloudy | 9.6 | Sandy | <30 | 44 | 54 | 0.08 | - | - | - | - | - | Restricted areas |
| 19 | Ukedogawa River | Muroharabashi Bridge | Namiemachi Town | 2011/11/21 | Cloudy | 9.6 | Loamy | <30 | 49,000 | 65,000 | 10.64 | - | - | - | - | - | Restricted areas |
| 20 | | Ukedobashi Bridge | Namiemachi Town | 2011/11/21 | Sunny | 12.9 | Sandy | <30 | 3,200 | 4,100 | 1.43 | - | - | - | - | - | Restricted areas |
| 21 | Takasegawa River | Keiobashi Bridge | Namiemachi Town | 2011/11/21 | Sunny | 10.0 | Loamy | <30 | 16,000 | 20,000 | 1.75 | - | - | - | - | - | Restricted areas |
| 22 | Maedagawa River | National Route 6, west | Futabamachi Town | 2011/11/21 | Cloudy | 11.2 | Loamy | <30 | 21,000 | 29,000 | 5.72 | - | - | - | - | - | Restricted areas |
| 23 | | Nakahamabashi Bridge | Namiemachi Town | 2011/11/21 | Cloudy | 9.8 | - | - | - | - | - | Loamy | <30 | 2,200 | 2,900 | 0.88 | Restricted areas |
| 24 | Kumagawa River | National Route 6, west | Okumamachi Town | 2011/11/21 | Sunny | 9.2 | - | - | - | - | - | Clay-loamy | <30 | 6,400 | 7,900 | 4.71 | Restricted areas |
| 25 | | Mikumabashi Bridge | Okumamachi Town | 2011/11/21 | Sunny | 10.2 | - | - | - | - | - | Loamy | <30 | 26,000 | 33,000 | 8.51 | Restricted areas |
| 26 | Tomiokagawa River | National Route 6, west | Tomiokamachi Town | 2011/11/21 | Sunny | 9.8 | Loamy | <30 | 41,000 | 52,000 | 6.67 | - | - | - | - | - | Restricted areas |
| 27 | | Kobamabashi Bridge | Tomiokamachi Town | 2011/11/21 | Sunny | 10.3 | Loamy | <30 | 3,300 | 4,100 | 3.01 | - | - | - | - | - | Restricted areas |
| 28 | Idegawa River | Motogamabashi Bridge | Narahamachi Town | 2011/11/21 | Sunny | 10.0 | - | - | - | - | - | Loamy | <30 | 3,700 | 4,700 | 0.93 | Restricted areas |
| 29 | | Nishiyamabashi Bridge | Kawauchimura Villag | 2011/11/17 | Sunny | 9.2 | Sandy | <30 | 730 | 940 | 0.82 | Sandy | <30 | 1,000 | 1,200 | 0.68 | Former evacuation-prepared areas in case of emergency * |
| 30 | Kidogawa River | Nagatorobashi Bridge | Narahamachi Town | 2011/11/21 | Sunny | 11.4 | Clay-loamy | <30 | 2,500 | 3,200 | 0.92 | - | - | - | - | - | Restricted areas |
| 31 | | Kidokawabashi Bridge | Narahamachi Town | 2011/11/21 | Sunny | 11.9 | - | - | - | - | - | Loamy | <30 | 2,000 | 2,500 | 0.93 | Restricted areas |
| 32 | Asamigawa River | Bodabashi Bridge | Hironomachi Town | 2011/11/18 | Cloudy | 9.2 | Loamy | <30 | 1,200 | 1,500 | 1.33 | Loamy | <30 | 1,800 | 2,200 | 1.66 | Former evacuation-prepared areas in case of emergency * |
| 33 | Ohisagawa River | Kageisobashi Bridge | Iwakishi City | 2011/11/23 | Sunny | 14.2 | - | - | - | - | - | Sandy | <30 | 570 | 720 | 0.41 | |
| 34 | Kohisagawa River | Rengobashi Bridge | Iwakishi City | 2011/11/23 | Sunny | 13.6 | Loamy | <30 | 1,500 | 1,900 | 0.62 | Loamy | <30 | 2,400 | 2,900 | 0.66 | |
| 35 | | Kasumidabashi Bridge | Iwakishi City | 2011/11/23 | Cloudy | 11.2 | Loamy | <30 | 1,300 | 1,700 | 0.28 | Loamy | <30 | 1,200 | 1,400 | 0.36 | |
| 36 | Niidagawa River | Matsubabashi Bridge | Iwakishi City | 2011/11/24 | Clear | 14.4 | Loamy | <30 | 1,300 | 1,600 | 0.36 | Sandy | <30 | 1,000 | 1,300 | 0.46 | |
| 37 | | Kitanouchibashi Bridge | Onomachi Town | 2011/11/29 | Cloudy | 11.3 | Loamy | <30 | 620 | 840 | 0.23 | Loamy | <30 | 390 | 540 | 0.20 | (Sampling point is in Nakadori) |
| 38 | Natsugawa River | Kyudayubashi Bridge | Iwakishi City | 2011/11/21 | Sunny | 9.0 | Sandy | <30 | 80 | 92 | 0.20 | Loamy | <30 | 430 | 560 | 0.29 | |
| 39 | | Rokujumabashi Bridge | Iwakishi City | 2011/11/24 | Sunny | 12.2 | Loamy | <30 | 1,900 | 2,400 | 0.42 | Loamy | <30 | 1,800 | 2,300 | 0.41 | |
| 40 | Yoshimagawa River | Iwaanatsuribashi Bridge | Iwakishi City | 2011/11/23 | Cloudy | 13.8 | Loamy | <30 | 1,400 | 1,800 | 0.22 | Loamy | <30 | 410 | 510 | 0.20 | |
| 41 | | Before the confluence with Natsugaw | Iwakishi City | 2011/11/23 | Cloudy | 13.0 | Loamy | <30 | 440 | 480 | 0.21 | Loamy | <30 | 650 | 850 | 0.22 | |
| 42 | Fujiwaragawa River | Shimabashi Bridge | Iwakishi City | 2011/11/25 | Sunny | 13.0 | Clay-loamy | <30 | 810 | 1,000 | 0.23 | Loamy | <30 | 150 | 190 | 0.12 | |
| 43 | | Minatoohashi Bridge | Iwakishi City | 2011/11/26 | Clear | 8.4 | Sandy | <30 | 430 | 530 | 0.15 | Sandy | <30 | 600 | 810 | 0.35 | |
| 44 | Samegawa River | Idosawabashi Bridge | Iwakishi City | 2011/11/22 | Sunny | 11.6 | Sandy | <30 | 340 | 420 | 0.23 | - | - | - | - | - | |
| 45 | | Samegawabashi Bridge | Iwakishi City | 2011/11/23 | Cloudy | 13.2 | Sandy | <30 | 380 | 510 | 0.15 | Sandy | <30 | 770 | 970 | 0.14 | |
| 46 | Shitokigawa River | Komurobashi Bridge | Iwakishi City | 2011/11/22 | Sunny | 9.2 | Loamy | <30 | 320 | 420 | 0.21 | Sandy | <30 | 100 | 120 | 0.21 | |
| 47 | | Kobanabashi Bridge | Iwakishi City | 2011/11/26 | Clear | 11.0 | Sandy | <30 | 340 | 460 | 0.19 | Loamy | <30 | 570 | 800 | 0.21 | |
| 48 | Bindagawa River | Bindabashi Bridge | Iwakishi City | 2011/11/23 | Cloudy | 12.6 | Sandy | <30 | 950 | 1,100 | 0.15 | Sandy | <30 | 570 | 680 | 0.20 | |

*Air dose was measured with a survey meter, TCS-172 or TCS-161 of Hitachi-Aloka Medical, Ltd. For points with *1 in the Remarks column, a survey meter, Model 3 of Ludlum Measurement Inc., and for those with *2, a Model 5000 of Health Physics Instruments was used. Figures measured with either a Model 3 or a Model 5000 had a tendency to be a little higher than those measured with a TCS-172 or TCS-161 (about 1.6 times higher).

(Sampling points for rivers are listed from north to south, and for different points along the river, from upstream to downstream.)

○River (Fukushima Prefecture, Nakadori Area) : Water Quality Monitoring Results

| No. | Sampling point | | | Sampling date | Weather | Air temperature °C | Full depth m | General items | | | | | | Concentration of radioactive material Bq/L | | | Remarks |
|-----|---------------------|--|-------------------------|---------------------|------------|-----------------------|-----------------|-------------------------|----------------|--------------------|---------------------------------|------------|-----------|--|--------------------|--------|---------|
| | Water body | Point | Municipality | | | | | Water temperature °C | Sampling depth | Transparency cm | Electrical conductivity mS/m | SS mg/L | Turbidity | Radioactive iodine I-131 | Radioactive cesium | | |
| | | | | | | | | | | | | | | | Cs-134 | Cs-137 | |
| 1 | Abukumagawa River | Habutobashi Bridge | Nishigomura Village | 2011/11/22 | Sunny | 6.8 | 0.42 | 9.8 | 0 | 100 or more | 91.2 | 3 | 2.7 | <1 | <1 | <1 | |
| 2 | | Tamachiohashi Bridge | Shirakawashi City | 2011/11/26 | Sunny | 4.7 | 0.60 | 7.5 | 0 | 100 or more | 12.6 | 1 | 2.0 | <1 | <1 | <1 | |
| 3 | Yantagawa River | Before the confluence with Abukumagawa River | Shirakawashi City | 2011/11/25 | Cloudy | 7.6 | 0.40 | 11.5 | 0 | 100 or more | 66.5 | 1 | 1.4 | <1 | <1 | <1 | |
| 4 | Yashirogawa River | Yashirogawabashi Bridge | Tanaguramachi Town | 2011/11/25 | Sunny | 7.8 | 0.40 | 10.0 | 0 | 100 or more | 12.6 | 2 | 2.4 | <1 | <1 | <1 | |
| 5 | Kitasugawa River | Yanagibashi Bridge | Hiratamura Village | 2011/11/24 | Cloudy | 5.4 | 0.40 | 8.9 | 0 | 100 or more | 12.7 | 1 | 1.8 | <1 | <1 | <1 | |
| 6 | Imadegawa River | Nekonakibashi Bridge | Ishikawamachi Town | 2011/11/24 | Cloudy | 10.2 | 0.87 | 10.2 | 0 | 63 | 13.3 | 5 | 5.2 | <1 | <1 | <1 | |
| 7 | Yashirogawa River | Ojibashi Bridge | Ishikawamachi Town | 2011/11/25 | Cloudy | 6.1 | 0.75 | 7.6 | 0 | 88 | 13.6 | 4 | 4.9 | <1 | <1 | <1 | |
| 8 | Abukumagawa River | Kawanomebashi Bridge | Tamakawamura Village | 2011/11/25 | Cloudy | 7.9 | 0.60 | 8.6 | 0 | 100 or more | 16.8 | 3 | 4.0 | <1 | <1 | <1 | |
| 9 | | Emochibashi Bridge | Sukagawashi City | 2011/11/24 | Sunny | 8.2 | 0.50 | 10.0 | 0 | 100 or more | 16.7 | 6 | 6.0 | <1 | <1 | <1 | |
| 10 | Shakadogawa River | Sukagawashi City water intake point | Sukagawashi City | 2011/11/25 | Rain | 4.7 | 0.50 | 7.9 | 0 | 100 or more | 14.7 | 9 | 7.1 | <1 | <1 | <1 | |
| 11 | | Before the confluence with Abukumagawa River | Sukagawashi City | 2011/11/24 | Sunny | 10.6 | 0.30 | 10.6 | 0 | 100 or more | 15.9 | 4 | 5.6 | <1 | <1 | <1 | |
| 12 | Sasaharagawa River | Shinbashi Bridge | Koriyamashi City | 2011/11/24 | Sunny | 10.8 | 0.40 | 10.1 | 0 | 100 or more | 20.3 | 4 | 5.1 | <1 | <1 | <1 | |
| 13 | Yatagawa River | Yatagawabashi Bridge | Koriyamashi City | 2011/11/24 | Sunny | 11.5 | 0.40 | 9.9 | 0 | 100 or more | 21.4 | 3 | 3.3 | <1 | <1 | <1 | |
| 14 | Otakinegawa River | Funehikibashi Bridge | Tamurashi City | 2011/11/28 | Cloudy | 15.9 | 0.30 | 7.9 | 0 | 100 or more | 10.2 | 1 | 2.5 | <1 | <1 | <1 | |
| 15 | | Before the confluence with Abukumagawa River | Koriyamashi City | 2011/11/28 | Cloudy | 14.7 | 0.30 | 8.9 | 0 | 100 or more | 11.1 | 4 | 5.5 | <1 | <1 | <1 | |
| 16 | Ousegawa River | Before the confluence with Babagawa River | Koriyamashi City | 2011/11/24 | Sunny | 7.1 | 0.15 | 8.3 | 0 | 100 or more | 33.4 | 2 | 3.5 | <1 | <1 | <1 | |
| 17 | | Makunouchibashi Bridge | Koriyamashi City | 2011/11/23 | Cloudy | 12.3 | 0.40 | 10.0 | 0 | 100 or more | 34.5 | 5 | 6.4 | <1 | <1 | <1 | |
| 18 | | Before the confluence with Abukumagawa River | Koriyamashi City | 2011/11/23 | Sunny | 13.0 | 0.30 | 11.5 | 0 | 100 or more | 38.8 | 5 | 5.6 | <1 | <1 | <1 | |
| 19 | Abukumagawa River | Akutsubashi Bridge | Koriyamashi City | 2011/11/23 | Sunny | 10.4 | 0.50 | 8.6 | 0 | 100 or more | 22.7 | 5 | 5.5 | <1 | <1 | <1 | |
| 20 | Gohyakugawa River | After the confluence with Ishimurogawa River | Koriyamashi City | 2011/11/23 | Cloudy | 4.9 | 0.30 | 6.7 | 0 | 100 or more | 10.0 | 1 | 0.8 | <1 | <1 | <1 | |
| 21 | | Kamisekishitabashi Bridge | Motomiyashi City | 2011/11/23 | Sunny | 6.0 | 1.10 | 6.6 | 0 | 100 or more | 12.1 | 2 | 1.7 | <1 | <1 | <1 | |
| 22 | Abukumagawa River | Before the confluence with Abukumagawa River | Motomiyashi City | 2011/11/22 | Sunny | 8.6 | 0.50 | 8.0 | 0 | 64 | 19.9 | 12 | 12 | <1 | <1 | <1 | |
| 23 | | Takadabashi Bridge | Nihonmatsushi City | 2011/11/22 | Sunny | 8.9 | 0.50 | 9.2 | 0 | 100 or more | 20.8 | 11 | 9.4 | <1 | <1 | <1 | |
| 24 | Kuchibutogawa River | Kuchibutogawabashi Bridge | Nihonmatsushi City | 2011/11/29 | Cloudy | 14.8 | 0.30 | 7.5 | 0 | 100 or more | 13.7 | 2 | 2.2 | <1 | <1 | <1 | |
| 25 | Utsushigawa River | Osegawabashi Bridge | Nihonmatsushi City | 2011/11/26 | Clear | 5.3 | 0.70 | 5.1 | 0 | 47 | 15.7 | 28 | 13 | <1 | 3 | 4 | |
| 26 | Mizuharagawa River | Getouchibashi Bridge | Fukushima City | 2011/11/25 | Rain | 3.8 | 0.40 | 7.7 | 0 | 100 or more | 11.6 | 2 | 2.6 | <1 | <1 | <1 | |
| 27 | Megamigawa River | Tsurumakibashi Bridge | Fukushima City | 2011/11/26 | Snow | 4.8 | 0.40 | 7.9 | 0 | 100 or more | 25.4 | 1 | 2.0 | <1 | <1 | <1 | |
| 28 | Abukumagawa River | Horaibashi Bridge | Fukushima City | 2011/11/26 | Clear | 4.5 | 0.30 | 7.6 | 0 | 100 or more | 20.1 | 4 | 5.1 | <1 | <1 | <1 | |
| 29 | Nigorigawa River | Before the confluence with Oorigawa River | Fukushima City | 2011/11/17 | Clear | 5.8 | 0.20 | 9.6 | 0 | 95 | 19.1 | 5 | 8.6 | <1 | <1 | <1 | |
| 30 | Arakawa River | Hinokurabashi Bridge | Fukushima City | 2011/11/16 | Clear | 7.6 | 0.30 | 8.8 | 0 | 70 | 30.3 | 6 | 7.5 | <1 | <1 | <1 | |
| 31 | Sukawa River | Sukawabashi Bridge | Fukushima City | 2011/11/16 | Sunny | 7.8 | 0.30 | 9.8 | 0 | 100 or more | 54.1 | <1 | 0.3 | <1 | <1 | <1 | |
| 32 | Arakawa River | Before the confluence with Abukumagawa River | Fukushima City | 2011/11/16 | Clear | 8.6 | 0.50 | 11.6 | 0 | 74 | 31.6 | 12 | 5.6 | <1 | <1 | <1 | |
| 33 | Matsukawa River | Before the confluence with Abukumagawa River | Fukushima City | 2011/11/16 | Sunny | 8.2 | 0.30 | 9.0 | 0 | 75 | 19.6 | 8 | 7.7 | <1 | <1 | <1 | |
| 34 | Hattandagawa River | Hattandabashi Bridge | Fukushima City | 2011/11/16 | Sunny | 5.2 | 0.30 | 8.0 | 0 | 40 | 18.1 | 17 | 14 | <1 | <1 | <1 | |
| 35 | Surikamigawa River | Totsunabashi Bridge | Fukushima City | 2011/11/30 | Cloudy | 10.6 | 0.40 | 10.6 | 0 | 100 or more | 5.9 | 3 | 2.6 | <1 | <1 | <1 | |
| 36 | | Before the confluence with Abukumagawa River | Fukushima City | 2011/11/30 | Cloudy | 9.6 | 0.40 | 10.0 | 0 | 100 or more | 6.0 | 2 | 1.9 | <1 | <1 | <1 | |
| 37 | Abukumagawa River | Taishobashi Bridge | Dateshi City | 2011/11/15 | Sunny | 12.4 | 0.50 | 12.3 | 0 | 85 | 19.6 | 6 | 6.8 | <1 | <1 | <1 | |
| 38 | Hirosegawa River | Tatenokoshibashi Bridge | Kawamatamachi Town | 2011/11/29 | Sunny | 15.0 | 0.50 | 10.9 | 0 | 100 or more | 11.7 | 4 | 3.4 | <1 | <1 | <1 | |
| 39 | | Jizogawarabashi Bridge | Dateshi City | 2011/11/15 | Cloudy | 7.8 | 0.30 | 11.0 | 0 | 100 or more | 13.6 | 2 | 2.0 | <1 | <1 | <1 | |
| 40 | Ogunigawa River | Before the confluence with Hirosegawa River | Dateshi City | 2011/11/15 | Cloudy | 8.6 | 0.30 | 11.6 | 0 | 100 or more | 28.0 | 2 | 2.3 | <1 | <1 | <1 | |
| 41 | Hirosegawa River | Before the confluence with Abukumagawa River | Dateshi City | 2011/11/15 | Sunny | 12.4 | 0.50 | 12.4 | 0 | 100 or more | 17.0 | 2 | 2.5 | <1 | <1 | <1 | |
| 42 | Kurokawa River | Tochigi Prefecture Border | Shirakawashi City | 2011/11/26 | Clear | 2.5 | 0.40 | 6.6 | 0 | 100 or more | 9.0 | 1 | 1.2 | <1 | <1 | <1 | |
| 43 | Others | Matsuokabashi Bridge | Tanaguramachi Town | 2011/11/25 | Cloudy | 10.5 | 0.50 | 10.4 | 0 | 100 or more | 13.4 | 1 | 1.8 | <1 | <1 | <1 | |
| 44 | | Kujigawa River | Takachiharabashi Bridge | Yamatsurimachi Town | 2011/11/25 | Cloudy | 9.5 | 0.70 | 9.0 | 0 | 100 or more | 10.8 | 2 | 1.6 | <1 | <1 | <1 |

(Sampling points are listed along the river, from upstream to downstream.)

○River (Fukushima Prefecture, Nakadori Area) : Sediment Monitoring Results

| No. | Sampling point | | | Sampling date | Weather | Air temperature °C | Full depth m | General items | | | | Concentration of radioactive material Bq/kg(dried mud) | | | Remarks | |
|-----|---------------------|--|----------------------|--------------------|------------|-----------------------|-----------------|-----------------------|--------------------------|------------------|------------------|--|--------------------|--------|---------|--|
| | Water body | Point | Municipality | | | | | Mud temperature °C | Mud sampling depth cm | Mud content % | Property | Radioactive iodine I-131 | Radioactive cesium | | | |
| | | | | | | | | | | | | | Cs-134 | Cs-137 | | |
| 1 | Abukumagawa River | Habutobashi Bridge | Nishigomura Village | 2011/11/22 | Sunny | 6.8 | 0.42 | 10.1 | 5 | 83.6 | Sand | <30 | 34 | 47 | | |
| 2 | | Tamachiohashi Bridge | Shirakawashi City | 2011/11/26 | Sunny | 4.7 | 0.60 | 8.2 | 5 | 74.8 | Sand | <30 | 98 | 130 | | |
| 3 | Yantagawa River | Before the confluence with Abukumagawa River | Shirakawashi City | 2011/11/25 | Cloudy | 7.6 | 0.40 | 11.3 | 10 | 87.6 | Sand | <30 | 150 | 180 | | |
| 4 | Yashirogawa River | Yashirogawabashi Bridge | Tanaguramachi Town | 2011/11/25 | Sunny | 7.8 | 0.40 | 9.3 | 5 | 83.0 | Sand with gravel | <30 | 57 | 51 | | |
| 5 | Kitasugawa River | Yanagibashi Bridge | Hiratamura Village | 2011/11/24 | Cloudy | 5.4 | 0.40 | 9.0 | 10 | 82.2 | Sand | <30 | 65 | 100 | | |
| 6 | Imadegawa River | Nekonakibashi Bridge | Ishikawamachi Town | 2011/11/24 | Cloudy | 10.2 | 0.87 | 10.4 | 10 | 84.6 | Sand with silt | <30 | 19 | 28 | | |
| 7 | Yashirogawa River | Ojibashi Bridge | Ishikawamachi Town | 2011/11/25 | Cloudy | 6.1 | 0.75 | 7.8 | 5 | 86.6 | Sand with gravel | <30 | 16 | 20 | | |
| 8 | Abukumagawa River | Kawanomebashi Bridge | Tamakawamura Village | 2011/11/25 | Cloudy | 7.9 | 0.60 | 8.2 | 5 | 89.2 | Sand with gravel | <30 | 11 | 23 | | |
| 9 | | Emochibashi Bridge | Sukagawashi City | 2011/11/24 | Sunny | 8.2 | 0.50 | 9.0 | 5 | 83.0 | Sand with gravel | <30 | 56 | 68 | | |
| 10 | Shakadogawa River | Sukagawashi City water intake point | Sukagawashi City | 2011/11/25 | Rain | 4.7 | 0.50 | 7.6 | 5 | 87.8 | Sand with gravel | <30 | 43 | 54 | | |
| 11 | | Before the confluence with Abukumagawa River | Sukagawashi City | 2011/11/24 | Sunny | 10.6 | 0.30 | 10.1 | 5 | 88.8 | Sand with gravel | <30 | 41 | 48 | | |
| 12 | Sasaharagawa River | Shinbashi Bridge | Koriyamashi City | 2011/11/24 | Sunny | 10.8 | 0.40 | 9.9 | 5 | 86.2 | Sand with gravel | <30 | 110 | 150 | | |
| 13 | Yatagawa River | Yatagawabashi Bridge | Koriyamashi City | 2011/11/24 | Sunny | 11.5 | 0.40 | 9.5 | 5 | 88.4 | Sand with gravel | <30 | 31 | 48 | | |
| 14 | Otakinegawa River | Funehikibashi Bridge | Tamurashi City | 2011/11/28 | Cloudy | 15.9 | 0.30 | 8.0 | 5 | 87.6 | Sand | <30 | 51 | 68 | | |
| 15 | | Before the confluence with Abukumagawa River | Koriyamashi City | 2011/11/28 | Cloudy | 14.7 | 0.30 | 9.0 | 5 | 86.3 | Sand | <30 | 120 | 150 | | |
| 16 | Ousegawa River | Before the confluence with Babagawa River | Koriyamashi City | 2011/11/24 | Sunny | 7.1 | 0.15 | 8.0 | 5 | 80.4 | Sand with gravel | <30 | 410 | 550 | | |
| 17 | | Makunouchibashi Bridge | Koriyamashi City | 2011/11/23 | Cloudy | 12.3 | 0.40 | 10.4 | 5 | 86.7 | Sand with gravel | <30 | 140 | 190 | | |
| 18 | | Before the confluence with Abukumagawa River | Koriyamashi City | 2011/11/23 | Sunny | 13.0 | 0.30 | 11.5 | 5 | 88.6 | Sand with gravel | <30 | 310 | 380 | | |
| 19 | Abukumagawa River | Akutsubashi Bridge | Koriyamashi City | 2011/11/23 | Sunny | 10.4 | 0.50 | 9.8 | 5 | 88.5 | Sand with gravel | <30 | 49 | 67 | | |
| 20 | Gohyakugawa River | After the confluence with Ishimurogawa River | Koriyamashi City | 2011/11/23 | Cloudy | 4.9 | 0.30 | 6.1 | 5 | 79.9 | Sand with gravel | <30 | 84 | 100 | | |
| 21 | | Kamisekishitabashi Bridge | Motomiyashi City | 2011/11/23 | Sunny | 6.0 | 1.10 | 7.8 | 5 | 78.9 | Sand with gravel | <30 | 320 | 380 | | |
| 22 | | Before the confluence with Abukumagawa River | Motomiyashi City | 2011/11/22 | Sunny | 8.6 | 0.50 | 8.1 | 5 | 87.8 | Sand with gravel | <30 | 190 | 260 | | |
| 23 | Abukumagawa River | Takadabashi Bridge | Nihonmatsushi City | 2011/11/22 | Sunny | 8.9 | 0.50 | 10.1 | 5 | 71.2 | Sand with silt | <30 | 280 | 330 | | |
| 24 | Kuchibutogawa River | Kuchibutogawabashi Bridge | Nihonmatsushi City | 2011/11/29 | Cloudy | 14.8 | 0.30 | 7.8 | 5 | 81.8 | Sand | <30 | 670 | 770 | | |
| 25 | Utsushigawa River | Osegawabashi Bridge | Nihonmatsushi City | 2011/11/26 | Clear | 5.3 | 0.70 | 5.2 | 5 | 83.6 | Sand | <30 | 230 | 320 | | |
| 26 | Mizuharagawa River | Getouchibashi Bridge | Fukushimashi City | 2011/11/25 | Rain | 3.8 | 0.40 | 7.8 | 5 | 76.8 | Sand | <30 | 250 | 320 | | |
| 27 | Megamigawa River | Tsurumakibashi Bridge | Fukushimashi City | 2011/11/26 | Snow | 4.8 | 0.40 | 7.9 | 5 | 80.2 | Sand | <30 | 680 | 890 | | |
| 28 | Abukumagawa River | Horaibashi Bridge | Fukushimashi City | 2011/11/26 | Clear | 4.5 | 0.30 | 7.7 | 5 | 84.8 | Sand | <30 | 76 | 100 | | |
| 29 | Nigorigawa River | Before the confluence with Oorigawa River | Fukushimashi City | 2011/11/17 | Clear | 5.8 | 0.20 | 10.0 | 5 | 84.4 | Sand with gravel | <30 | 280 | 370 | | |
| 30 | Arakawa River | Hinokurabashi Bridge | Fukushimashi City | 2011/11/16 | Clear | 7.6 | 0.30 | 8.8 | 5 | 69.3 | Sand | <30 | 120 | 150 | | |
| 31 | Sukawa River | Sukawabashi Bridge | Fukushimashi City | 2011/11/16 | Sunny | 7.8 | 0.30 | 9.8 | 5 | 81.0 | Sand with gravel | <30 | 59 | 78 | | |
| 32 | Arakawa River | Before the confluence with Abukumagawa River | Fukushimashi City | 2011/11/16 | Clear | 8.6 | 0.50 | 11.4 | 5 | 75.9 | Sand | <30 | 190 | 270 | | |
| 33 | Matsukawa River | Before the confluence with Abukumagawa River | Fukushimashi City | 2011/11/16 | Sunny | 8.2 | 0.30 | 8.4 | 5 | 85.0 | Sand with gravel | <30 | 180 | 220 | | |
| 34 | Hattandagawa River | Hattandabashi Bridge | Fukushimashi City | 2011/11/16 | Sunny | 5.2 | 0.30 | 8.8 | 5 | 84.1 | Sand with gravel | <30 | 1,200 | 1,500 | | |
| 35 | Surikamigawa River | Totsunabashi Bridge | Fukushimashi City | 2011/11/30 | Cloudy | 10.6 | 0.40 | 10.4 | 5 | 85.7 | Sand with gravel | <30 | 76 | 110 | | |
| 36 | | Before the confluence with Abukumagawa River | Fukushimashi City | 2011/11/30 | Cloudy | 9.6 | 0.40 | 9.9 | 5 | 80.7 | Sand | <30 | 260 | 370 | | |
| 37 | Abukumagawa River | Taishobashi Bridge | Dateshi City | 2011/11/15 | Sunny | 12.4 | 0.50 | 11.8 | 5 | 53.8 | Sand with silt | <30 | 1,200 | 1,500 | | |
| 38 | Hirosegawa River | Tatenokoshibashi Bridge | Kawamatamachi Town | 2011/11/29 | Sunny | 15.0 | 0.50 | 10.8 | 10 | 79.9 | Sand | <30 | 450 | 580 | | |
| 39 | | Jizogawarabashi Bridge | Dateshi City | 2011/11/15 | Cloudy | 7.8 | 0.30 | 11.0 | 5 | 82.9 | Sand | <30 | 380 | 490 | | |
| 40 | Ogunigawa River | Before the confluence with Hirosegawa River | Dateshi City | 2011/11/15 | Cloudy | 8.6 | 0.30 | 11.8 | 5 | 80.7 | Sand | <30 | 2,100 | 2,500 | | |
| 41 | Hirosegawa River | Before the confluence with Abukumagawa River | Dateshi City | 2011/11/15 | Sunny | 12.4 | 0.50 | 14.4 | 5 | 85.3 | Sand | <30 | 540 | 740 | | |
| 42 | Kurokawa River | Tochigi Prefecture Border | Shirakawashi City | 2011/11/26 | Clear | 2.5 | 0.40 | 6.0 | 5 | 81.1 | Sand | <30 | 18 | 32 | | |
| 43 | Others | Kujigawa River | Matsuokabashi Bridge | Tanaguramachi Town | 2011/11/25 | Cloudy | 10.5 | 0.50 | 9.6 | 5 | 92.9 | Sand | <30 | 10 | 13 | |
| 44 | | Takachiharabashi Bridge | Yamatsurimachi Town | 2011/11/25 | Cloudy | 9.5 | 0.70 | 8.6 | 5 | 87.3 | Sand | <30 | <10 | 14 | | |

(Sampling points are listed along the river, from upstream to downstream.)

○River (Fukushima Prefecture, Nakadori Area): Surrounding Environment Monitoring Results

| No. | Sampling point | | | Sampling date | Weather | Air temperature °C | Left bank | | | | | Right bank | | | | | Remarks |
|-----|--|--|---------------------|---------------|---------|-----------------------|------------|--|-------------------------------------|-------------------|------------|--|-------------------------------------|-------------------|--------|------|---------|
| | Water body | Point | Municipality | | | | Soil | | | Air dose μSv/h | Soil | | | Air dose μSv/h | | | |
| | | | | | | | Property | Concentration of radioactive material Bq/kg(dry) | | | Property | Concentration of radioactive material Bq/kg(dry) | | | | | |
| | | | | | | | | Radioactive iodine I-131 | Radioactive cesium Cs-134 Cs-137 | | | Radioactive iodine I-131 | Radioactive cesium Cs-134 Cs-137 | | | | |
| 1 | Abukumagawa River | Habutobashi Bridge | Nishigomura Village | 2011/11/22 | Sunny | 6.8 | Loamy | <30 | 2,600 | 3,100 | 0.65 | Loamy | <30 | 1,100 | 1,400 | 0.79 | |
| 2 | | Tamachiohashi Bridge | Shirakawashi City | 2011/11/26 | Sunny | 4.7 | Loamy | <30 | 1,900 | 2,400 | 0.34 | Loamy | <30 | 890 | 1,100 | 0.40 | |
| 3 | Yantagawa River | Before the confluence with Abukumagawa River | Shirakawashi City | 2011/11/25 | Cloudy | 7.6 | Loamy | <30 | 6,300 | 8,000 | 0.60 | Loamy | <30 | 3,700 | 4,500 | 0.48 | |
| 4 | Yashirogawa River | Yashirogawabashi Bridge | Tanaguramachi Town | 2011/11/25 | Sunny | 7.8 | Loamy | <30 | 420 | 540 | 0.18 | Loamy | <30 | 870 | 1,000 | 0.16 | |
| 5 | Kitasugawa River | Yanagibashi Bridge | Hiratamura Village | 2011/11/24 | Cloudy | 5.4 | Loamy | <30 | 510 | 630 | 0.18 | Loamy | <30 | 190 | 220 | 0.17 | |
| 6 | Imadegawa River | Nekonakibashi Bridge | Ishikawamachi Town | 2011/11/24 | Cloudy | 10.2 | Loamy | <30 | 400 | 540 | 0.17 | Loamy | <30 | 350 | 450 | 0.15 | |
| 7 | Yashirogawa River | Ojibashi Bridge | Ishikawamachi Town | 2011/11/25 | Cloudy | 6.1 | Loamy | <30 | 270 | 380 | 0.12 | Loamy | <30 | 850 | 1,100 | 0.15 | |
| 8 | Abukumagawa River | Kawanomebashi Bridge | Tamakawamura Villa | 2011/11/25 | Cloudy | 7.9 | Loamy | <30 | 220 | 270 | 0.10 | Loamy | <30 | 720 | 940 | 0.12 | |
| 9 | | Emochibashi Bridge | Sukagawashi City | 2011/11/24 | Sunny | 8.2 | Loamy | <30 | 1,600 | 1,900 | 0.23 | Loamy | <30 | 1,100 | 1,400 | 0.21 | |
| 10 | Shakadogawa River | Sukagawashi City water intake point | Sukagawashi City | 2011/11/25 | Rain | 4.7 | Loamy | <30 | 750 | 910 | 0.23 | Loamy | <30 | 850 | 1,000 | 0.24 | |
| 11 | | Before the confluence with Abukumagawa River | Sukagawashi City | 2011/11/24 | Sunny | 10.6 | Loamy | <30 | 1,700 | 2,100 | 0.30 | Loamy | <30 | 1,900 | 2,400 | 0.28 | |
| 12 | Sasaharagawa River | Shinbashi Bridge | Koriyamashi City | 2011/11/24 | Sunny | 10.8 | Loamy | <30 | 1,700 | 2,200 | 0.51 | Loamy | <30 | 2,100 | 2,600 | 0.48 | |
| 13 | Yatagawa River | Yatagawabashi Bridge | Koriyamashi City | 2011/11/24 | Sunny | 11.5 | Loamy | <30 | 2,100 | 2,700 | 0.34 | Loamy | <30 | 1,800 | 2,400 | 0.37 | |
| 14 | Otakinegawa River | Funehikibashi Bridge | Tamura City | 2011/11/28 | Cloudy | 15.9 | Loamy | <30 | 930 | 1,200 | 0.27 | Sandy | <30 | 1,800 | 2,200 | 0.29 | |
| 15 | | Before the confluence with Abukumagawa River | Koriyamashi City | 2011/11/28 | Cloudy | 14.7 | Sandy | <30 | 4,000 | 5,000 | 0.54 | Sandy | <30 | 1,600 | 2,100 | 0.52 | |
| 16 | Ousegawa River | Before the confluence with Babagawa River | Koriyamashi City | 2011/11/24 | Sunny | 7.1 | Loamy | <30 | 950 | 1,200 | 0.54 | Clay-loamy | <30 | 1,700 | 2,100 | 0.59 | |
| 17 | | Makunouchibashi Bridge | Koriyamashi City | 2011/11/23 | Cloudy | 12.3 | Loamy | <30 | 4,400 | 5,600 | 0.79 | Loamy | <30 | 3,700 | 4,500 | 0.79 | |
| 18 | Before the confluence with Abukumagawa River | Koriyamashi City | 2011/11/23 | Sunny | 13.0 | Clay-loamy | <30 | 7,700 | 10,000 | 0.99 | Clay-loamy | <30 | 4,600 | 5,700 | 1.27 | | |
| 19 | Abukumagawa River | Akutsubashi Bridge | Koriyamashi City | 2011/11/23 | Sunny | 10.4 | Sandy | <30 | 3,100 | 4,000 | 0.38 | Loamy | <30 | 1,200 | 1,500 | 0.57 | |
| 20 | Gohyakugawa River | After the confluence with Ishimurogawa River | Koriyamashi City | 2011/11/23 | Cloudy | 4.9 | Loamy | <30 | 2,700 | 3,500 | 0.38 | Loamy | <30 | 2,300 | 3,100 | 0.37 | |
| 21 | | Kamisekishitabashi Bridge | Motomiyashi City | 2011/11/23 | Sunny | 6.0 | Loamy | <30 | 6,300 | 8,000 | 0.80 | Loamy | <30 | 3,900 | 5,100 | 0.87 | |
| 22 | Before the confluence with Abukumagawa River | Motomiyashi City | 2011/11/22 | Sunny | 8.6 | Clay-loamy | <30 | 3,700 | 4,500 | 0.99 | Clay-loamy | <30 | 3,000 | 3,800 | 0.98 | | |
| 23 | Abukumagawa River | Takadabashi Bridge | Nihonmatsushi City | 2011/11/22 | Sunny | 8.9 | Sandy | <30 | 16 | 34 | 0.42 | Sandy | <30 | 680 | 800 | 0.42 | |
| 24 | Kuchibutogawa River | Kuchibutogawabashi Bridge | Nihonmatsushi City | 2011/11/29 | Cloudy | 14.8 | Loamy | <30 | 1,500 | 1,900 | 0.53 | Clay-loamy | <30 | 1,200 | 1,500 | 0.49 | |
| 25 | Utsushigawa River | Osegawabashi Bridge | Nihonmatsushi City | 2011/11/26 | Clear | 5.3 | Loamy | <30 | 1,800 | 2,300 | 0.93 | Loamy | <30 | 1,300 | 1,600 | 1.08 | |
| 26 | Mizuharagawa River | Getouchibashi Bridge | Fukushima City | 2011/11/25 | Rain | 3.8 | Loamy | <30 | 1,600 | 2,000 | 1.41 | Loamy | <30 | 910 | 1,200 | 1.40 | |
| 27 | Megamigawa River | Tsurumakibashi Bridge | Fukushima City | 2011/11/26 | Snow | 4.8 | Loamy | <30 | 1,000 | 1,300 | 1.07 | Loamy | <30 | 2,800 | 3,600 | 0.94 | |
| 28 | Abukumagawa River | Horaibashi Bridge | Fukushima City | 2011/11/26 | Clear | 4.5 | Loamy | <30 | 1,900 | 2,400 | 0.79 | Loamy | <30 | 13,000 | 17,000 | 1.08 | |
| 29 | Nigorigawa River | Before the confluence with Omorigawa River | Fukushima City | 2011/11/17 | Clear | 5.8 | Loamy | <30 | 4,300 | 5,400 | 2.46 | Loamy | <30 | 4,100 | 5,200 | 2.30 | * |
| 30 | Arakawa River | Hinokurabashi Bridge | Fukushima City | 2011/11/16 | Clear | 7.6 | Loamy | <30 | 680 | 820 | 0.39 | Loamy | <30 | 620 | 800 | 0.39 | * |
| 31 | Sukawa River | Sukawabashi Bridge | Fukushima City | 2011/11/16 | Sunny | 7.8 | Loamy | <30 | 900 | 1,000 | 1.24 | Loamy | <30 | 2,900 | 3,600 | 1.02 | * |
| 32 | Arakawa River | Before the confluence with Abukumagawa River | Fukushima City | 2011/11/16 | Clear | 8.6 | Clay-loamy | <30 | 2,000 | 2,400 | 3.20 | Loamy | <30 | 8,500 | 10,000 | 3.74 | * |
| 33 | Matsukawa River | Before the confluence with Abukumagawa River | Fukushima City | 2011/11/16 | Sunny | 8.2 | Loamy | <30 | 7,900 | 9,600 | 3.74 | Loamy | <30 | 5,100 | 6,500 | 2.72 | * |
| 34 | Hattandagawa River | Hattandabashi Bridge | Fukushima City | 2011/11/16 | Sunny | 5.2 | Loamy | <30 | 7,700 | 9,700 | 1.63 | Loamy | <30 | 3,900 | 5,000 | 1.75 | * |
| 35 | Surikamigawa River | Totsunabashi Bridge | Fukushima City | 2011/11/30 | Cloudy | 10.6 | Loamy | <30 | 5,500 | 7,000 | 1.04 | Sandy | <30 | 6,200 | 7,800 | 1.03 | |
| 36 | | Before the confluence with Abukumagawa River | Fukushima City | 2011/11/30 | Cloudy | 9.6 | Loamy | <30 | 16,000 | 20,000 | 1.07 | Loamy | <30 | 2,500 | 3,200 | 1.34 | |
| 37 | Abukumagawa River | Taishobashi Bridge | Dateshi City | 2011/11/15 | Sunny | 12.4 | Loamy | <30 | 2,200 | 2,700 | 1.69 | Loamy | <30 | 11,000 | 14,000 | 1.71 | * |
| 38 | Hirosegawa River | Tatenokoshibashi Bridge | Kawamatamachi Town | 2011/11/29 | Sunny | 15.0 | Loamy | <30 | 2,200 | 2,700 | 0.87 | Loamy | <30 | 5,200 | 6,500 | 0.85 | |
| 39 | | Jizogawarabashi Bridge | Dateshi City | 2011/11/15 | Cloudy | 7.8 | Loamy | <30 | 1,300 | 1,700 | 1.94 | Loamy | <30 | 4,900 | 6,200 | 1.93 | * |
| 40 | Ogunigawa River | Before the confluence with Hirosegawa River | Dateshi City | 2011/11/15 | Cloudy | 8.6 | Loamy | <30 | 4,200 | 5,300 | 1.77 | Loamy | <30 | 6,700 | 8,400 | 1.87 | * |
| 41 | Hirosegawa River | Before the confluence with Abukumagawa River | Dateshi City | 2011/11/15 | Sunny | 12.4 | Loamy | <30 | 4,200 | 5,300 | 1.96 | Loamy | <30 | 1,000 | 1,300 | 1.46 | * |
| 42 | Kurokawa River | Tochigi Prefecture Border | Shirakawashi City | 2011/11/26 | Clear | 2.5 | Loamy | <30 | 1,700 | 2,200 | 0.37 | Loamy | <30 | 2,700 | 3,400 | 0.38 | |
| 43 | Others Kujigawa River | Matsuokabashi Bridge | Tanaguramachi Town | 2011/11/25 | Cloudy | 10.5 | Loamy | <30 | 460 | 570 | 0.13 | Loamy | <30 | 630 | 800 | 0.13 | |
| 44 | | Takachiharabashi Bridge | Yamatsurimachi Town | 2011/11/25 | Cloudy | 9.5 | Loamy | <30 | 36 | 40 | 0.08 | Loamy | <30 | 76 | 97 | 0.08 | |

*Air dose was measured with a survey meter, TCS-172 or TCS-161 of Hitachi-Aloka Medical, Ltd. For points with * in the Remarks column, a survey meter, a Model 5000 of Health Physics Instruments was used. Figures measured with a Model 5000 had a tendency to be a little higher than those measured with a TCS-172 or TCS-161 (about 1.6 times higher).

(Sampling points are listed along the river, from upstream to downstream.)

○River (Fukushima Prefecture, Aizu Area): Water Quality Monitoring Results

| Sampling point | | | | Sampling date | Weather | Air temperature °C | Full depth m | General items | | | | | | Concentration of radioactive material Bq/L | | | Remarks | |
|----------------|--------------------|--|-----------------------|-----------------------|------------|-----------------------|-----------------|-------------------------|----------------|--------------------|---------------------------------|------------|-----------|--|--------------------|--------|---------|--|
| No. | Water body | Point | Municipality | | | | | Water temperature °C | Sampling depth | Transparency cm | Electrical conductivity mS/m | SS mg/L | Turbidity | Radioactive iodine I-131 | Radioactive cesium | | | |
| | | | | | | | | | | | | | | | Cs-134 | Cs-137 | | |
| 1 | Aganogawa River | Tajimabashi Bridge | Minamiaizumachi Town | 2011/11/15 | Cloudy | 6.8 | 0.40 | 10.1 | 0 | 100 or more | 7.3 | 3 | 1.9 | <1 | <1 | <1 | | |
| 2 | | Okawabashi Bridge | Aizuwakamatsushi City | 2011/11/24 | Rain | 7.5 | 0.30 | 9.9 | 0 | 100 or more | 5.6 | 1 | 2.3 | <1 | <1 | <1 | | |
| 3 | Yukawa River | Takimibashi Bridge | Aizuwakamatsushi City | 2011/11/24 | Rain | 6.2 | 0.60 | 8.3 | 0 | 100 or more | 7.3 | 4 | 2.8 | <1 | <1 | <1 | | |
| 4 | | Shinyukawabashi Bridge | Aizuwakamatsushi City | 2011/11/17 | Sunny | 7.6 | 0.30 | 9.4 | 0 | 100 or more | 11.6 | 3 | 2.4 | <1 | <1 | <1 | | |
| 5 | | Before the confluence with Aganogawa River | Aizuwakamatsushi City | 2011/11/17 | Sunny | 7.4 | 0.40 | 9.6 | 0 | 100 or more | 23.1 | 3 | 2.8 | <1 | <1 | <1 | | |
| 6 | Miyakawa River | Saikunabashi Bridge | Aizubangemachi Town | 2011/11/17 | Sunny | 9.9 | 0.30 | 10.2 | 0 | 100 or more | 11.4 | 4 | 3.9 | <1 | <1 | <1 | | |
| 7 | Aganogawa River | Miyakobashi Bridge | Aizubangemachi Town | 2011/11/17 | Sunny | 10.3 | 0.60 | 10.4 | 0 | 100 or more | 10.9 | 7 | 4.5 | <1 | <1 | <1 | | |
| 8 | Nippashigawa River | Minamiohashi Bridge | Kitakatashi City | 2011/11/18 | Sunny | 12.8 | 0.30 | 10.2 | 0 | 100 or more | 12.9 | 4 | 4.6 | <1 | <1 | <1 | | |
| 9 | Kyuyukawa River | Awanomiyabashi Bridge | Yugawamura Village | 2011/11/17 | Sunny | 12.9 | 0.30 | 10.8 | 0 | 78 | 20.4 | 9 | 9.1 | <1 | <1 | <1 | | |
| 10 | Kyumiyakawa River | Josukebashi Bridge | Aizubangemachi Town | 2011/11/19 | Cloudy | 9.9 | 0.50 | 11.3 | 0 | 59 | 13.8 | 22 | 11 | <1 | <1 | <1 | | |
| 11 | Tatsukigawa River | Ohashi Bridge | Kitakatashi City | 2011/11/15 | Cloudy | 7.5 | 0.60 | 10.1 | 0 | 100 or more | 12.6 | 1 | 1.5 | <1 | <1 | <1 | | |
| 12 | | Shimokawarabashi Bridge | Kitakatashi City | 2011/11/15 | Cloudy | 6.7 | 0.30 | 12.2 | 0 | 100 or more | 14.3 | 4 | 2.9 | <1 | <1 | <1 | | |
| 13 | Nigorigawa River | Nigorigawabashi Bridge | Kitakatashi City | 2011/11/15 | Cloudy | 7.0 | 0.30 | 12.1 | 0 | 100 or more | 12.6 | 2 | 2.7 | <1 | <1 | <1 | | |
| 14 | | Yamazakibashi Bridge | Kitakatashi City | 2011/11/19 | Cloudy | 9.6 | 0.30 | 10.5 | 0 | 100 or more | 14.3 | 4 | 3.8 | <1 | <1 | <1 | | |
| 15 | Inagawa River | Aoyagibashi Bridge | Minamiaizumachi Town | 2011/11/15 | Rain | 4.2 | 0.50 | 8.5 | 0 | 100 or more | 6.3 | 1 | 1.0 | <1 | <1 | <1 | | |
| 16 | | Kurosawabashi Bridge | Tadamimachi Town | 2011/11/24 | Rain | 4.0 | 0.30 | 5.9 | 0 | 7.5 | 3.5 | 220 | 160 | <1 | <1 | <1 | | |
| 17 | Tadamigawa River | Nishitanibashi Bridge | Kaneyamamachi Town | 2011/11/24 | Rain | 4.2 | 0.30 | 6.7 | 0 | 4.5 | 4.0 | 81 | 79 | <1 | <1 | <1 | | |
| 18 | | Fujibashi Bridge | Aizubangemachi Town | 2011/11/16 | Sunny | 9.6 | 0.30 | 10.7 | 0 | 24 | 8.4 | 31 | 30 | <1 | <1 | <1 | | |
| 19 | Aganogawa River | Shingo Dam | Kitakatashi City | 2011/11/16 | Clear | 8.6 | 0.40 | 10.6 | 0 | 29.5 | 9.0 | 21 | 20 | <1 | <1 | <1 | | |
| 20 | Others | Sukawa River | Sukawano | Inawashiro-machi Town | 2011/11/17 | Sunny | 3.7 | 0.40 | 6.2 | 0 | 100 or more | 91.0 | <1 | 0.7 | <1 | <1 | <1 | |
| 21 | | Nagasegawa River | Koganebashi Bridge | Inawashiro-machi Town | 2011/11/17 | Sunny | 10.3 | 0.60 | 8.6 | 0 | 52 | 36.7 | 6 | 7.1 | <1 | <1 | <1 | |

(Sampling points are listed along the river, from upstream to downstream.)

○River (Fukushima Prefecture, Aizu Area): Sediment Monitoring Results

| No. | Sampling point | | | Sampling date | Weather | Air temperature °C | Full depth m | General items | | | | Concentration of radioactive material Bq/kg(dried mud) | | | Remarks |
|-----|--------------------|--|-----------------------|---------------|---------|-----------------------|-----------------|-----------------------|--------------------------|------------------|------------------|--|--------------------|--------|---------|
| | Water body | Point | Municipality | | | | | Mud temperature °C | Mud sampling depth cm | Mud content % | Property | Radioactive iodine I-131 | Radioactive cesium | | |
| | | | | | | | | | | | | | Cs-134 | Cs-137 | |
| 1 | Aganogawa River | Tajimabashi Bridge | Minamiaizumachi Town | 2011/11/15 | Cloudy | 6.8 | 0.40 | 9.2 | 5 | 79.7 | Sand | <30 | <10 | <10 | |
| 2 | | Okawabashi Bridge | Aizuwakamatsushi City | 2011/11/24 | Rain | 7.5 | 0.30 | 9.9 | 5 | 87.9 | Sand with gravel | <30 | <10 | 13 | |
| 3 | Yukawa River | Takimibashi Bridge | Aizuwakamatsushi City | 2011/11/24 | Rain | 6.2 | 0.60 | 8.2 | 5 | 71.7 | Sand with gravel | <30 | 150 | 170 | |
| 4 | | Shinyukawabashi Bridge | Aizuwakamatsushi City | 2011/11/17 | Sunny | 7.6 | 0.30 | 9.4 | 5 | 48.6 | Silt with sand | <30 | 1,300 | 1,700 | |
| 5 | | Before the confluence with Aganogawa River | Aizuwakamatsushi City | 2011/11/17 | Sunny | 7.4 | 0.40 | 9.6 | 5 | 87.6 | Sand with gravel | <30 | 110 | 130 | |
| 6 | Miyakawa River | Saikunabashi Bridge | Aizubangemachi Town | 2011/11/17 | Sunny | 9.9 | 0.30 | 10.2 | 10 | 79.0 | Sand | <30 | 75 | 100 | |
| 7 | Aganogawa River | Miyakobashi Bridge | Aizubangemachi Town | 2011/11/17 | Sunny | 10.3 | 0.60 | 10.2 | 5 | 70.8 | Sand | <30 | 61 | 73 | |
| 8 | Nippashigawa River | Minamiohashi Bridge | Kitakatashi City | 2011/11/18 | Sunny | 12.8 | 0.30 | 10.2 | 5 | 80.0 | Sand | <30 | 68 | 90 | |
| 9 | Kyuyukawa River | Awanomiyabashi Bridge | Yugawamura Village | 2011/11/17 | Sunny | 12.9 | 0.30 | 10.2 | 12 | 35.6 | Silt | <30 | 11,000 | 14,000 | |
| 10 | Kyumiya River | Josukebashi Bridge | Aizubangemachi Town | 2011/11/19 | Cloudy | 9.9 | 0.50 | 11.0 | 10 | 79.0 | Sand with gravel | <30 | 230 | 290 | |
| 11 | Tatsukigawa River | Ohashi Bridge | Kitakatashi City | 2011/11/15 | Cloudy | 7.5 | 0.60 | 10.0 | 5 | 74.2 | Sand with gravel | <30 | 89 | 110 | |
| 12 | | Shimokawarabashi Bridge | Kitakatashi City | 2011/11/15 | Cloudy | 6.7 | 0.30 | 12.0 | 5 | 80.8 | Sand | <30 | 74 | 95 | |
| 13 | Nigorigawa River | Nigorigawabashi Bridge | Kitakatashi City | 2011/11/15 | Cloudy | 7.0 | 0.30 | 12.0 | 12 | 89.2 | Gravel with sand | <30 | 13 | 23 | |
| 14 | | Yamazakibashi Bridge | Kitakatashi City | 2011/11/19 | Cloudy | 9.6 | 0.30 | 10.4 | 10 | 77.2 | Sand | <30 | 56 | 83 | |
| 15 | Inagawa River | Aoyagibashi Bridge | Minamiaizumachi Town | 2011/11/15 | Rain | 4.2 | 0.50 | 8.0 | 10 | 86.0 | Gravel with sand | <30 | <10 | <10 | |
| 16 | | Kurosawabashi Bridge | Tadamimachi Town | 2011/11/24 | Rain | 4.0 | 0.30 | 5.8 | 5 | 75.6 | Sand | <30 | <10 | <10 | |
| 17 | Tadamigawa River | Nishitanibashi Bridge | Kaneyamamachi Town | 2011/11/24 | Rain | 4.2 | 0.30 | 6.7 | 5 | 79.2 | Sand with gravel | <30 | <10 | <10 | |
| 18 | | Fujibashi Bridge | Aizubangemachi Town | 2011/11/16 | Sunny | 9.6 | 0.30 | 10.5 | 10 | 73.3 | Sand with gravel | <30 | <10 | <10 | |
| 19 | Aganogawa River | Shingo Dam | Kitakatashi City | 2011/11/16 | Clear | 8.6 | 0.40 | 10.3 | 10 | 52.4 | Silt | <30 | 560 | 660 | |
| 20 | Sukawa River | Sukawano | Inawashiomachi Town | 2011/11/17 | Sunny | 3.7 | 0.40 | 6.2 | 5 | 82.5 | Sand with gravel | <30 | 25 | 27 | |
| 21 | Nagasegawa River | Koganebashi Bridge | Inawashiomachi Town | 2011/11/17 | Sunny | 10.3 | 0.60 | 9.2 | 5 | 86.1 | Sand with gravel | <30 | 18 | 34 | |

(Sampling points are listed along the river, from upstream to downstream.)

○River (Fukushima Prefecture, Aizu Area): Surrounding Environment Monitoring Results

| No. | Sampling point | | | Sampling date | Weather | Air temperature °C | Left bank | | | | | Right bank | | | | Remarks | | | |
|-----|--|--|--|-------------------------|----------------------|-----------------------|-----------|--|-------------------------------------|-------|-------------------|------------|--|-------------------------------------|-------|---------|-------------------|------|--|
| | Water body | Point | Municipality | | | | Property | Soil | | | Air dose μSv/h | Property | Soil | | | | Air dose μSv/h | | |
| | | | | | | | | Concentration of radioactive material Bq/kg(dry) | | | | | Concentration of radioactive material Bq/kg(dry) | | | | | | |
| | | | | | | | | Radioactive iodine I-131 | Radioactive cesium Cs-134 Cs-137 | | | | Radioactive iodine I-131 | Radioactive cesium Cs-134 Cs-137 | | | | | |
| 1 | A g a n o g a w a | Aganogawa River | Tajimabashi Bridge | Minamiaizumachi Town | 2011/11/15 | Cloudy | 6.8 | Loamy | <30 | 180 | 210 | 0.05 | Loamy | <30 | 42 | 55 | 0.05 | | |
| 2 | | Okawabashi Bridge | Aizuwakamatsushi City | 2011/11/24 | Rain | 7.5 | Sandy | <30 | 530 | 700 | 0.16 | Sandy | <30 | 250 | 380 | 0.10 | | | |
| 3 | Y u k a w a | Yukawa River | Takimibashi Bridge | Aizuwakamatsushi City | 2011/11/24 | Rain | 6.2 | Loamy | <30 | 1,500 | 1,900 | 0.25 | Loamy | <30 | 410 | 550 | 0.22 | | |
| 4 | | | Shinyukawabashi Bridge | Aizuwakamatsushi City | 2011/11/17 | Sunny | 7.6 | Loamy | <30 | 530 | 630 | 0.31 | Loamy | <30 | 950 | 1,200 | 0.30 | | |
| 5 | | | Before the confluence with Aganogawa River | Aizuwakamatsushi City | 2011/11/17 | Sunny | 7.4 | Loamy | <30 | 2,100 | 2,700 | 0.30 | Loamy | <30 | 1,200 | 1,500 | 0.29 | | |
| 6 | R i v e r | Miyakawa River | Saikunabashi Bridge | Aizubangemachi Town | 2011/11/17 | Sunny | 9.9 | Sandy | <30 | 5,600 | 7,200 | 0.30 | Loamy | <30 | 1,600 | 2,000 | 0.30 | | |
| 7 | | Aganogawa River | Miyakobashi Bridge | Aizubangemachi Town | 2011/11/17 | Sunny | 10.3 | Loamy | <30 | 670 | 880 | 0.36 | Loamy | <30 | 1,100 | 1,400 | 0.34 | | |
| 8 | | Nippashigawa River | Minamiohashi Bridge | Kitakatashi City | 2011/11/18 | Sunny | 12.8 | Loamy | <30 | 3,300 | 4,000 | 0.37 | Clay-loamy | <30 | 370 | 500 | 0.36 | | |
| 9 | | Kyuyukawa River | Awanomiyabashi Bridge | Yugawamura Village | 2011/11/17 | Sunny | 12.9 | Loamy | <30 | 1,200 | 1,600 | 0.44 | Loamy | <30 | 1,100 | 1,400 | 0.33 | | |
| 10 | | Kyumiya River | Josukebashi Bridge | Aizubangemachi Town | 2011/11/19 | Cloudy | 9.9 | Loamy | <30 | 1,000 | 1,300 | 0.27 | Clay-loamy | <30 | 1,600 | 2,000 | 0.27 | | |
| 11 | | S y s t e m | Tatsukigawa River | Ohashi Bridge | Kitakatashi City | 2011/11/15 | Cloudy | 7.5 | Loamy | <30 | 37 | 42 | 0.13 | Loamy | <30 | 820 | 1,000 | 0.15 | |
| 12 | | | | Shimokawarabashi Bridge | Kitakatashi City | 2011/11/15 | Cloudy | 6.7 | Loamy | <30 | 620 | 740 | 0.23 | Loamy | <30 | 890 | 1,100 | 0.23 | |
| 13 | | N i g o r i g a w a | Nigorigawa River | Nigorigawabashi Bridge | Kitakatashi City | 2011/11/15 | Cloudy | 7.0 | Loamy | <30 | 460 | 570 | 0.23 | Sandy | <30 | 560 | 720 | 0.22 | |
| 14 | | | | Yamazakibashi Bridge | Kitakatashi City | 2011/11/19 | Cloudy | 9.6 | Clay-loamy | <30 | 1,000 | 1,200 | 0.27 | Loamy | <30 | 1,400 | 1,800 | 0.25 | |
| 15 | | I n a g a w a | Inagawa River | Aoyagibashi Bridge | Minamiaizumachi Town | 2011/11/15 | Rain | 4.2 | Loamy | <30 | 52 | 55 | 0.10 | Loamy | <30 | 82 | 100 | 0.09 | |
| 16 | Kurosawabashi Bridge | | | Tadamimachi Town | 2011/11/24 | Rain | 4.0 | Loamy | <30 | 150 | 160 | 0.13 | Loamy | <30 | 430 | 570 | 0.12 | | |
| 17 | T a d a m i g a w a | Tadamigawa River | Nishitanabashi Bridge | Kaneyamamachi Town | 2011/11/24 | Rain | 4.2 | Sandy | <30 | <10 | <10 | 0.10 | Loamy | <30 | 95 | 110 | 0.12 | | |
| 18 | | | Fujibashi Bridge | Aizubangemachi Town | 2011/11/16 | Sunny | 9.6 | Sandy | <30 | 16 | 14 | 0.08 | Loamy | <30 | 150 | 160 | 0.12 | | |
| 19 | Aganogawa River | Shingo Dam | Kitakatashi City | 2011/11/16 | Clear | 8.6 | Loamy | <30 | 280 | 390 | 0.15 | Loamy | <30 | 240 | 310 | 0.13 | | | |
| 20 | O t h e r s | Sukawa River | Sukawano | Inawashiromachi Town | 2011/11/17 | Sunny | 3.7 | Loamy | <30 | 660 | 870 | 0.15 | Loamy | <30 | 640 | 780 | 0.15 | | |
| 21 | | Nagasegawa River | Koganebashi Bridge | Inawashiromachi Town | 2011/11/17 | Sunny | 10.3 | Loamy | <30 | 520 | 660 | 0.08 | Loamy | <30 | 140 | 200 | 0.07 | | |

*Air dose was measured with a survey meter, TCS-172 or TCS-161 of Hitachi-Aloka Medical, Ltd.
(Sampling points are listed from upstream to downstream.)

○Lake and Headwater (Fukushima Prefecture, Hamadori Area): Water Quality Monitoring Results

| Sampling point | | | Sampling date | Weather | Air temperature °C | Full depth m | General items | | | | | | Concentration of radioactive material Bq/L | | | Remarks | |
|----------------|--|----------------------|---------------|---------|-----------------------|-----------------|-------------------------|---------------------|------------------------|---------------------------------|------------|-----------|--|--------------------|--------|---|---------------------------------|
| No. | Point | Municipality | | | | | Water temperature °C | Sampling depth m | Secchi disk depth m | Electrical conductivity mS/m | SS mg/L | Turbidity | Radioactive iodine I-131 | Radioactive cesium | | | |
| | | | | | | | | | | | | | | Cs-134 | Cs-137 | | |
| 1 | Soso (farm pond) Takei | Shinchimachi Town | 2011/11/23 | Cloudy | 11.5 | 0.5 | 10.9 | 0 | 0.5 or more | 14.6 | 20 | 32 | <1 | <1 | <1 | | |
| 2 | Soso (farm pond) Uchizawa | Somashi City | 2011/11/29 | Sunny | 7.4 | - | - | - | - | - | - | - | - | - | - | - | (No water due to pond drainage) |
| 3 | Matsugabo Dam (Utagawako Lake) | Somashi City | 2011/11/24 | Sunny | 7.4 | 23.9 | 10.6 | 0.5 | 4 | 8.5 | 2 | 3.3 | <1 | <1 | <1 | | |
| | 1 m from the bottom | - | - | - | - | - | 11.1 | 22.9 | - | 13.5 | 3 | 5.7 | <1 | <1 | <1 | | |
| 4 | Mano Dam | Iitatemura Village | 2011/11/24 | Clear | 10.8 | 0.5 | 13.2 | 0.0 | 0.5 or more | 10.3 | 6 | 6.6 | <1 | <1 | <1 | Deliberate evacuation areas (Sampling point changed to the shore due to unavailability of the boat) | |
| 5 | Gambe Dam Reservoir | Iitatemura Village | 2011/11/29 | Sunny | 15.6 | 0.5 | 6.6 | 0 | 0.5 or more | 8.2 | 1 | 3.5 | <1 | <1 | <1 | Deliberate evacuation areas | |
| 6 | Takanokura Dam Reservoir | Minamisomashi City | 2011/11/28 | Cloudy | 14.0 | 0.3 | 9.4 | 0 | 0.3 or more | 9.1 | 14 | 12.0 | <1 | <1 | <1 | Former evacuation-prepared areas in case of emergency | |
| 7 | Yokokawa Dam Reservoir | Minamisomashi City | 2011/11/28 | Cloudy | 11.6 | 0.4 | 10.5 | 0 | 0.4 or more | 7.8 | <1 | 1.2 | <1 | <1 | <1 | Former evacuation-prepared areas in case of emergency | |
| 8 | Ogaki Dam | Namiemachi Town | 2011/11/21 | Sunny | 7.6 | 0.5 | 10.3 | 0 | 0.5 | 6.9 | 4 | 7 | <1 | <1 | <1 | Restricted areas | |
| 9 | Sakashita Dam | Okumamachi Town | 2011/11/21 | Sunny | 7.5 | 3.5 | 11.6 | 0 | 1.8 | 7.3 | 2 | 3 | <1 | <1 | <1 | Restricted areas | |
| 10 | Takikawa Dam | Kawauchimura Village | 2011/11/21 | Sunny | 8.7 | - | 12.4 | 0 | - | 7.2 | 3 | 3.8 | <1 | <1 | <1 | Restricted areas (Sampling point changed due to drainage of the 1st location. Full depth and Secchi disk depth unmeasured due to the sloping land.) | |
| 11 | Kido Dam | Narahamachi Town | 2011/11/21 | Cloudy | 10.2 | 0.3 | 11.0 | 0 | 0.3 or more | 3.7 | 1 | 3 | <1 | <1 | <1 | Restricted areas | |
| 12 | Komachi Dam | Onomachi Town | 2011/11/29 | Sunny | 12.8 | 7.6 | 7.5 | 0.5 | 0.9 | 6.2 | 10 | 16 | <1 | <1 | <1 | | |
| | 1 m from the bottom | - | - | - | - | - | 7.4 | 6.6 | - | 6.0 | 11 | 16 | <1 | <1 | <1 | | |
| 13 | Iwaki (farm pond) Shinike | Iwakishi City | 2011/11/24 | Clear | 15.0 | 0.4 | 10.6 | 0 | 0.4 or more | 15.3 | 2 | 3.5 | <1 | <1 | <1 | | |
| 14 | Kodama Dam Reservoir (Kodamako Lake) | - | 2011/11/24 | Clear | 11.0 | 54.4 | 9.9 | 0.5 | 3.3 | 7.6 | 6 | 1.9 | <1 | <1 | <1 | | |
| | 1 m from the bottom | - | - | - | - | - | 6.3 | 53.4 | - | 8.7 | 1 | 8.8 | <1 | <1 | <1 | | |
| 15 | Iwaki (farm pond) Kanoritsutsumishita | Iwakishi City | 2011/11/25 | Sunny | 8.8 | 0.3 | 10.2 | 0 | 0.3 or more | 53.0 | 6 | 8.4 | <1 | <1 | <1 | | |
| 16 | Takashiba Dam Reservoir (Takashibako Lake) | Iwakishi City | 2011/11/22 | Sunny | 8.1 | 19.6 | 11.2 | 0.5 | 0.6 | 10.3 | 10 | 15.0 | <1 | <1 | <1 | | |
| | 1 m from the bottom | - | - | - | - | - | 9.4 | 18.6 | - | 12.1 | 3 | 5 | <1 | <1 | <1 | | |
| 17 | Shitoki Dam Reservoir | Iwakishi City | 2011/11/22 | Sunny | 9.4 | 36.2 | 10.2 | 0.5 | 2.4 | 6.7 | 2 | 5 | <1 | <1 | <1 | | |
| | 1 m from the bottom | - | - | - | - | - | 9.1 | 35.2 | - | 12.1 | 17 | 36 | <1 | <1 | <1 | | |

(Sampling points are listed from north to south.)

○Lake and Headwater (Fukushima Prefecture, Hamadori Area) : Sediment Monitoring Results

| Sampling point | | | Sampling date | Weather | Air temperature °C | Full depth m | General items | | | | Concentration of radioactive material Bq/kg (dried mud) | | | Remarks |
|----------------|--|----------------------|---------------|---------|-----------------------|-----------------|-----------------------|--------------------------|------------------|------------------|---|--------------------|--------|---|
| No. | Point | Municipality | | | | | Mud temperature °C | Mud sampling depth cm | Mud content % | Property | Radioactive iodine I-131 | Radioactive cesium | | |
| | | | | | | | | | | | | Cs-134 | Cs-137 | |
| 1 | Soso (farm pond) Takei | Shinchimachi Town | 2011/11/23 | Cloudy | 11.5 | 0.5 | 11.2 | 5 | 60.1 | Silt | <30 | 63 | 66 | |
| 2 | Soso (farm pond) Uchizawa | Somashi City | 2011/11/29 | Sunny | 7.4 | - | 7.6 | 5 | 42.6 | Silt | <30 | 23 | 22 | |
| 3 | Matsugabo Dam (Utagawako Lake) | Somashi City | 2011/11/24 | Sunny | 7.4 | 23.9 | 12.0 | 12 | 24.4 | Silt | <30 | 1,600 | 2,000 | |
| 4 | Mano Dam | Itatemura Village | 2011/11/24 | Clear | 10.8 | 0.5 | 13.0 | 5 | 38.8 | Silt | <30 | 5,200 | 6,300 | Deliberate evacuation areas (Sampling point changed to the shore due to unavailability of the boat) |
| 5 | Gainbe Dam Reservoir | Itatemura Village | 2011/11/29 | Sunny | 15.6 | 0.5 | 7.4 | 5 | 80.4 | Sand with gravel | <30 | 5,300 | 6,900 | Deliberate evacuation areas |
| 6 | Takanokura Dam Reservoir | Minamisomashi City | 2011/11/28 | Cloudy | 14.0 | 0.3 | 9.9 | 5 | 59.8 | Sand with gravel | <30 | 17,000 | 22,000 | Former evacuation-prepared areas in case of emergency |
| 7 | Yokokawa Dam Reservoir | Minamisomashi City | 2011/11/28 | Cloudy | 11.6 | 0.4 | 11.0 | 10 | 77.3 | Sand | <30 | 10,000 | 13,000 | Former evacuation-prepared areas in case of emergency |
| 8 | Ogaki Dam | Namiemachi Town | 2011/11/21 | Sunny | 7.6 | 0.5 | 7.5 | 3 | 98.0 | Sand with gravel | <30 | 3,600 | 4,800 | Restricted areas |
| 9 | Sakashita Dam | Okumamachi Town | 2011/11/21 | Sunny | 7.5 | 3.5 | 12.5 | 12 | 23.8 | Silt | <30 | 31,000 | 38,000 | Restricted areas |
| 10 | Takikawa Dam | Kawauchimura Village | 2011/11/21 | Sunny | 8.7 | - | 12.5 | 3 | 38.0 | Silt with sand | <30 | 22,000 | 28,000 | Restricted areas (Sampling point changed due to drainage of the 1st location. Full depth and Secchi disk depth unmeasured due to the sloping land.) |
| 11 | Kido Dam | Narahamachi Town | 2011/11/21 | Sunny | 10.2 | 0.3 | 10.5 | 5 | 35.2 | Silt with sand | <30 | 7,800 | 9,800 | Restricted areas |
| 12 | Komachi Dam | Onomachi Town | 2011/11/29 | Sunny | 12.8 | 7.6 | 8.4 | 10 | 32.2 | Silt with sand | <30 | 650 | 810 | |
| 13 | Iwaki (farm pond) Shinike | Iwakishi City | 2011/11/24 | Clear | 15.0 | 0.4 | 10.0 | 5 | 84.7 | Sand with gravel | <30 | 230 | 310 | |
| 14 | Kodama Dam Reservoir (Kodamako Lake) | | 2011/11/24 | Clear | 11.0 | 54.4 | 5.8 | 10 | 27.6 | Silt | <30 | 590 | 770 | |
| 15 | Iwaki (farm pond) Kanoritsutsumishita | Iwakishi City | 2011/11/25 | Sunny | 8.8 | 0.3 | 10.8 | 5 | 39.1 | Sand with silt | <30 | 1,800 | 2,200 | |
| 16 | Takashiba Dam Reservoir (Takashibako Lake) | Iwakishi City | 2011/11/22 | Sunny | 8.1 | 19.6 | 9.6 | 5 | 48.6 | Silt | <30 | 630 | 800 | |
| 17 | Shitoki Dam Reservoir | Iwakishi City | 2011/11/22 | Sunny | 9.4 | 36.2 | 8.6 | 10 | 23.1 | Silt | <30 | 1,400 | 1,900 | |

(Sampling points are listed from north to south.)

○Lake and Headwater (Fukushima Prefecture, Hamadori Area): Surrounding Environment Monitoring Results

| Sampling point | | | Sampling date | Weather | Air temperature °C | Soil | | | Air dose μSv/h | Remarks | |
|----------------|--|----------------------|---------------|---------|-----------------------|----------|--|--|-------------------|---------|---|
| No. | Point | Municipality | | | | Property | Concentration of radioactive material Bq/kgdry | | | | |
| | | | | | | | Radioactive iodine I-131 | Radioactive cesium Cs-134 Cs-137 | | | |
| 1 | Soso (farm pond) Takei | Shinchimachi Town | 2011/11/23 | Cloudy | 11.5 | Loamy | <30 | 2,100 | 2,500 | 0.38 | |
| 2 | Soso (farm pond) Uchizawa | Somashi City | 2011/11/29 | Sunny | 7.4 | Loamy | <30 | 930 | 1,100 | 0.37 | |
| 3 | Matsugabo Dam (Utagawako Lake) | Somashi City | 2011/11/24 | Sunny | 7.4 | Loamy | <30 | 1,900 | 2,400 | 0.92 | |
| 4 | Mano Dam | Iitatemura Village | 2011/11/24 | Clear | 10.8 | Loamy | <30 | 2,500 | 3,000 | 1.69 | Deliberate evacuation areas |
| 5 | Gambe Dam Reservoir | Iitatemura Village | 2011/11/29 | Sunny | 15.6 | Loamy | <30 | 15,000 | 19,000 | 2.14 | Deliberate evacuation areas |
| 6 | Takanokura Dam Reservoir | Minamisomashi City | 2011/11/28 | Cloudy | 14.0 | Loamy | <30 | 4,800 | 6,000 | 2.97 | Former evacuation-prepared areas in case of emergency |
| 7 | Yokokawa Dam Reservoir | Minamisomashi City | 2011/11/28 | Cloudy | 11.6 | Loamy | <30 | 7,100 | 9,000 | 3.45 | Former evacuation-prepared areas in case of emergency |
| 8 | Ogaki Dam | Namiemachi Town | 2011/11/21 | Sunny | 7.6 | Loamy | <30 | 150,000 | 190,000 | 19.68 | Restricted areas |
| 9 | Sakashita Dam | Okumamachi Town | 2011/11/21 | Sunny | 7.5 | Loamy | <30 | 5,700 | 7,100 | 2.15 | Restricted areas |
| 10 | Takikawa Dam | Kawauchimura Village | 2011/11/21 | Sunny | 8.7 | Loamy | <30 | 2,100 | 2,700 | 4.71 | Restricted areas |
| 11 | Kido Dam | Narahamachi Town | 2011/11/21 | Cloudy | 10.2 | Loamy | <30 | 880 | 1,000 | 0.85 | Restricted areas |
| 12 | Komachi Dam | Onomachi Town | 2011/11/29 | Sunny | 12.8 | Sandy | <30 | 460 | 610 | 0.27 | |
| 13 | Iwaki (farm pond) Shinike | Iwakishi City | 2011/11/24 | Clear | 15.0 | Sandy | <30 | 1,300 | 1,600 | 0.44 | |
| 14 | Kodama Dam Reservoir (Kodamako Lake) | | 2011/11/24 | Clear | 11.0 | Loamy | <30 | 320 | 440 | 0.22 | |
| 15 | Iwaki (farm pond) Kanoritsutsumishita | Iwakishi City | 2011/11/25 | Sunny | 8.8 | Loamy | <30 | 390 | 530 | 0.29 | |
| 16 | Takashiba Dam Reservoir (Takashibako Lake) | Iwakishi City | 2011/11/22 | Sunny | 8.1 | Loamy | <30 | 7,100 | 8,900 | 0.35 | |
| 17 | Shitoki Dam Reservoir | Iwakishi City | 2011/11/22 | Sunny | 9.4 | Loamy | <30 | 2,300 | 2,900 | 0.44 | |

*Air dose was measured with a survey meter, TCS-172 or TCS-161 of Hitachi-Aloka Medical, Ltd.

(Sampling points are listed from north to south.)

○Lake and Headwater (Fukushima Prefecture, Nakadori Area): Water Quality Monitoring Results

| Sampling point | | | Sampling date | Weather | Air temperature | Full depth | General items | | | | | | Concentration of radioactive material Bq/L | | | Remarks |
|----------------|----------------------------|---------------------|---------------|---------|-----------------|------------|-------------------|----------------|-------------------|-------------------------|-------|-----------|--|--------------------|----|---------|
| No. | Point | Municipality | | | °C | m | Water temperature | Sampling depth | Secchi disk depth | Electrical conductivity | SS | Turbidity | Radioactive iodine | Radioactive cesium | | |
| | | | | | °C | m | m | mS/m | mg/L | | I-131 | Cs-134 | Cs-137 | | | |
| 1 | Surikamigawa Dam Reservoir | Fukushimashi City | 2011/11/30 | Cloudy | 8.9 | 64.8 | 9.1 | 0.5 | 4.2 | 3.8 | 2 | 2.5 | <1 | <1 | <1 | |
| | 1 m from the bottom | - | - | - | - | - | 7.2 | 63.8 | - | 3.9 | 1 | 2.7 | <1 | <1 | <1 | |
| 2 | Ken-poku (farm pond) | Handanuma Lake | 2011/11/16 | Sunny | 1.4 | 0.5 | 8.6 | 0 | 0.5 or more | 12.3 | 10 | 9 | <1 | <1 | <1 | |
| 3 | Ken-poku (farm pond) | Oike Pond | 2011/11/22 | Sunny | 12.5 | 0.60 | 11.0 | 0 | 0.6 or more | 6.4 | 4 | 6.7 | <1 | <1 | <1 | |
| 4 | Miharu Dam | Miharumachi Town | 2011/11/29 | Sunny | 7.8 | 26.2 | 10.4 | 0.5 | 1.5 | 10.7 | 5 | 9.3 | <1 | <1 | <1 | |
| | 1 m from the bottom | - | - | - | - | - | 9.6 | 25.2 | - | 10.8 | 8 | 13 | <1 | <1 | <1 | |
| 5 | Kenchu (farm pond) | Hounokusa | 2011/11/24 | Sunny | 8.0 | 0.8 | 9.8 | 0 | 0.8 or more | 10.2 | 11 | 14.0 | <1 | <1 | <1 | |
| 6 | Hatoriko Lake | Teneimura Village | 2011/11/22 | Cloudy | 2.1 | 8.4 | 5.0 | 0.5 | 0.5 | 3.3 | 11 | 15 | <1 | <1 | <1 | |
| | 1 m from the bottom | - | - | - | - | - | 5.2 | 7.4 | - | 3.6 | 10 | 15 | <1 | <1 | <1 | |
| 7 | Kenchu (farm pond) | Hirodaira | 2011/11/25 | Rain | 5.5 | 0.6 | 8.0 | 0 | 0.6 or more | 13.3 | 3 | 6 | <1 | <1 | <1 | |
| 8 | Sengosawa Dam Reservoir | Ishikawamachi Town | 2011/11/24 | Sunny | 9.2 | 16.2 | 10.2 | 0.5 | 2.2 | 11.5 | 3 | 4.8 | <1 | <1 | <1 | |
| | 1 m from the bottom | - | - | - | - | - | 6.4 | 15.2 | - | 35.7 | 60 | 83 | <1 | <1 | <1 | |
| 9 | Ken-nan (farm pond) | Watariike Pond | 2011/11/25 | Cloudy | 7.6 | 0.2 | 9.1 | 0 | 0.2 or more | 23.0 | 7 | 8 | <1 | <1 | <1 | |
| 10 | Ken-nan (farm pond) | Izumikawa River | 2011/11/26 | Clear | 8.6 | 0.50 | 9.1 | 0 | 0.5 or more | 24.1 | 3 | 7 | <1 | <1 | <1 | |
| 11 | Hokkawa Dam | Nishigomura Village | 2011/11/22 | Sunny | 7.2 | 24.5 | 8.0 | 0.5 | 2.1 | 4.1 | 2 | 5 | <1 | <1 | <1 | |
| | 1 m from the bottom | - | - | - | - | - | 8.2 | 23.5 | - | 4.1 | 3 | 5 | <1 | <1 | <1 | |
| 12 | Nanko Lake | Shirakawashi City | 2011/11/26 | Clear | 8.4 | 1.3 | 7.6 | 0 | 1.3 or more | 16.8 | 6 | 8.1 | <1 | <1 | <1 | |

(Sampling points are listed from north to south.)

○Lake and Headwater (Fukushima Prefecture, Nakadori Area): Sediment Monitoring Results

| Sampling point | | | Sampling date | Weather | Air temperature | Full depth | General items | | | | Concentration of radioactive material Bq/kg (dried mud) | | | Remarks |
|----------------|-------------------------------------|---------------------|---------------|---------|-----------------|------------|-----------------|--------------------|-------------|-----------------------|---|--------------------|--------|---------|
| No. | Point | Municipality | | | °C | m | Mud temperature | Mud sampling depth | Mud content | Property | Radioactive iodine | Radioactive cesium | | |
| | | | | | | | °C | cm | % | | I-131 | Cs-134 | Cs-137 | |
| 1 | Surikamigawa Dam Reservoir | Fukushimashi City | 2011/11/30 | Cloudy | 8.9 | 64.8 | 10.3 | 5 | 79.3 | Sand with silt | <30 | 250 | 320 | |
| 2 | Ken-poku (farm pond) Handanuma Lake | Korimachi Town | 2011/11/16 | Sunny | 1.4 | 0.5 | 8.4 | 5 | 29.6 | Silt with sand | <30 | 9,900 | 12,000 | |
| 3 | Ken-poku (farm pond) Oike Pond | Motomiyashi City | 2011/11/22 | Sunny | 12.5 | 0.60 | 11.1 | 5 | 81.0 | Sand | <30 | 1,800 | 2,200 | |
| 4 | Miharu Dam | Miharumachi Town | 2011/11/29 | Sunny | 7.8 | 26.2 | 10.4 | 5 | 37.5 | Silt with sand | <30 | <10 | <12 | |
| 5 | Kenchu (farm pond) Hounokusa | Koriyamashi City | 2011/11/24 | Sunny | 8.0 | 0.8 | 9.7 | 5 | 78.5 | Gravel/sand with silt | <30 | 160 | 240 | |
| 6 | Hatoriko Lake | Teneimura Village | 2011/11/22 | Cloudy | 2.1 | 8.4 | 8.5 | 5 | 25.8 | Silt | <30 | 940 | 1,300 | |
| 7 | Kenchu (farm pond) Hirodaira | Sukagawashi City | 2011/11/25 | Rain | 5.5 | 0.6 | 7.9 | 5 | 63.7 | Silt with sand | <30 | 250 | 320 | |
| 8 | Sengosawa Dam Reservoir | Ishikawamachi Town | 2011/11/24 | Cloudy | 9.2 | 16.2 | 5.5 | 10 | 22.2 | Silt | <30 | 520 | 720 | |
| 9 | Ken-nan (farm pond) Watariike Pond | Yabukimachi Town | 2011/11/25 | Cloudy | 7.6 | 0.2 | 9.0 | 5 | 54.1 | Sand with silt | <30 | 250 | 300 | |
| 10 | Ken-nan (farm pond) Izumikawa River | Shirakawashi City | 2011/11/26 | Clear | 8.6 | 0.50 | 8.7 | 5 | 30.1 | Silt | <30 | 6,200 | 8,000 | |
| 11 | Hokkawa Dam | Nishigomura Village | 2011/11/22 | Sunny | 7.2 | 24.5 | 10.1 | 10 | 26.7 | Silt | <30 | 2,900 | 3,900 | |
| 12 | Nanko Lake | Shirakawashi City | 2011/11/26 | Clear | 8.4 | 1.3 | 9.0 | 5 | 17.7 | Silt | <30 | 980 | 1,000 | |

(Sampling points are listed from north to south.)

○Lake and Headwater (Fukushima Prefecture, Nakadori Area): Surrounding Environment Monitoring Result

| Sampling point | | | Sampling date | Weather | Air temperature °C | Soil | | | Air dose μSv/h | Remarks | |
|----------------|--|---------------------|---------------|---------|-----------------------|------------|--|--|-------------------|---------|---|
| No. | Point | Municipality | | | | Property | Concentration of radioactive material Bq/kgdry | | | | |
| | | | | | | | Radioactive iodine I-131 | Radioactive cesium Cs-134 Cs-137 | | | |
| 1 | Surikamigawa Dam Reservoir | Fukushimashi City | 2011/11/30 | Cloudy | 8.9 | Loamy | <30 | 640 | 800 | 0.26 | |
| 2 | Ken-poku (farm pond) Handanuma Lake | Korimachi Town | 2011/11/16 | Sunny | 1.4 | Clay-loamy | <30 | 290 | 390 | 1.13 | * |
| 3 | Ken-poku (farm pond) Oike Pond | Motomiyashi City | 2011/11/22 | Sunny | 12.5 | Loamy | <30 | 18,000 | 23,000 | 0.78 | |
| 4 | Miharu Dam | Miharumachi Town | 2011/11/29 | Sunny | 7.8 | Loamy | <30 | 570 | 690 | 0.32 | |
| 5 | Kenchu (farm pond) Hounokusa | Koriyamashi City | 2011/11/24 | Sunny | 8.0 | Clayey | <30 | 74 | 87 | 0.28 | |
| 6 | Hatoriko Lake | Teneimura Village | 2011/11/22 | Cloudy | 2.1 | Loamy | <30 | 660 | 810 | 0.30 | |
| 7 | Kenchu (farm pond) Hirodaira | Sukagawashi City | 2011/11/25 | Rain | 5.5 | Loamy | <30 | 520 | 700 | 0.15 | |
| 8 | Sengosawa Dam Reservoir | Ishikawamachi Town | 2011/11/24 | Cloudy | 9.2 | Loamy | <30 | 940 | 1,100 | 0.22 | |
| 9 | Ken-nan (farm pond) Watariike Pond | Yabukimachi Town | 2011/11/25 | Cloudy | 7.6 | Loamy | <30 | 1,700 | 2,300 | 0.29 | |
| 10 | Ken-nan (farm pond) Izumikawa River | Shirakawashi City | 2011/11/26 | Clear | 8.6 | Loamy | <30 | 1,200 | 1,400 | 0.39 | |
| 11 | Hokkawa Dam | Nishigomura Village | 2011/11/22 | Sunny | 7.2 | Loamy | <30 | 1,200 | 1,500 | 0.63 | |
| 12 | Nanko Lake | Shirakawashi City | 2011/11/26 | Clear | 8.4 | Loamy | <30 | 4,200 | 5,800 | 0.37 | |

*Air dose was measured with a survey meter, TCS-172 or TCS-161 of Hitachi-Aloka Medical, Ltd. For points with * in the Remarks column, a survey meter, Model 5000 of Health Physics Instruments was used. Figures measured with a Model 5000 had a tendency to be a little higher than those measured with a TCS-172 or TCS-161 (about 1.6 times higher).

(Sampling points are listed from north to south.)

Lake and Headwater (Fukushima Prefecture, Aizu Area): Water Quality Monitoring Results

| No. | Sampling point | | Sampling date | Weather | Air temperature | Full depth | General items | | | | | | | Concentration of radioactive material Bq/L | | | Remarks |
|-----|--|--------------------------|----------------------|------------|-----------------|------------|-------------------|----------------|-------------------|-------------------------|-------|-----------|--------------------|--|----|---|---------|
| | Point | Municipality | | | °C | m | Water temperature | Sampling depth | Secchi disk depth | Electrical conductivity | SS | Turbidity | Radioactive iodine | Radioactive cesium | | | |
| | | | | | °C | m | m | mS/m | mg/L | | I-131 | Cs-134 | Cs-137 | | | | |
| 1 | Nicchu Dam | Kitakatashi City | 2011/11/16 | Sunny | 5.4 | 44.6 | 9.8 | 0.5 | 5.1 | 12.9 | <1 | 2 | <1 | <1 | <1 | | |
| | 1 m from the bottom | - | - | - | - | - | 7.4 | 43.6 | - | 54.0 | 9 | 19 | <1 | <1 | <1 | | |
| 2 | Soharako Lake | Kitashiobaramura Village | 2011/11/23 | Clear | 7.2 | 1.0 | 6.4 | 0.0 | 1.0 or more | 27.2 | 2 | 3.6 | <1 | <1 | <1 | (Sampling point changed to the shore due to unavailability of the boat) | |
| 3 | Hibarako Lake | Kitashiobaramura Village | 2011/11/23 | Clear | 5.2 | 20.5 | 8.5 | 0.5 | 2.6 | 4.7 | 3 | 5.5 | <1 | <1 | <1 | | |
| | 1 m from the bottom | - | - | - | - | - | 8.6 | 19.5 | - | 4.7 | 3 | 6 | <1 | <1 | <1 | | |
| 4 | Onogawako Lake | Kitashiobaramura Village | 2011/11/23 | Clear | 8.1 | 16.8 | 7.6 | 0.5 | 4.1 | 4.2 | 1 | 3.4 | <1 | <1 | <1 | | |
| | 1 m from the bottom | - | - | - | - | - | 7.9 | 15.8 | - | 4.1 | 1 | 3 | <1 | <1 | <1 | | |
| 5 | Akimotoko Lake | Inawashiro Town | 2011/11/23 | Cloudy | 6.3 | 31.1 | 8.2 | 0.5 | 3.6 | 37.7 | 2 | 4.7 | <1 | <1 | <1 | | |
| | 1 m from the bottom | - | - | - | - | - | 8.3 | 30.1 | - | 37.8 | 2 | 4.0 | <1 | <1 | <1 | | |
| 6 | Bishamonnuma Lake | Kitashiobaramura Village | 2011/11/17 | Sunny | 7.9 | 8.0 | 9.2 | 0.5 | 5.1 | 77.0 | 1 | 3.5 | <1 | <1 | <1 | | |
| | 1 m from the bottom | - | - | Sunny | - | - | 7.9 | 7.0 | - | 78.0 | 1 | 2.3 | <1 | <1 | <1 | | |
| 7 | Oguninuma Lake | Kitashiobaramura Village | 2011/11/23 | Cloudy | 4.1 | 4.2 | 4.0 | 0.5 | 2.6 | 1.4 | 2 | 3.9 | <1 | <1 | <1 | | |
| | 1 m from the bottom | - | - | - | - | - | 4.0 | 3.2 | - | 1.4 | 3 | 4.7 | <1 | <1 | <1 | | |
| 8 | Aizu (farm pond) | Onuma Lake | Nishiaizumachi Town | 2011/11/16 | Clear | 6.4 | 0.4 | 10.4 | 0 | 0.4 | 7.2 | 6 | 6.5 | <1 | <1 | <1 | |
| 9 | Inawashiroko Lake | Aizuwakamatsushi City | 2011/11/19 | Cloudy | 9.3 | 94.0 | 11.3 | 0.5 | 13.5 | 12.8 | 1 | 1.2 | <1 | <1 | <1 | | |
| | 1 m from the bottom | - | - | - | - | - | 5.7 | 93.0 | - | 12.7 | <1 | 1.1 | <1 | <1 | <1 | | |
| 10 | Higashiyama Dam Reservoir | Aizuwakamatsushi City | 2011/11/16 | Cloudy | 7.1 | 34.4 | 9.8 | 0.5 | 3.1 | 5.4 | 2 | 3.3 | <1 | <1 | <1 | | |
| | 1 m from the bottom | - | - | - | - | - | 5.0 | 33.4 | - | 6.8 | 5 | 8.4 | <1 | <1 | <1 | | |
| 11 | Numazawako Lake | Kaneyamamachi Town | 2011/11/25 | Snow | 3.1 | 95.4 | 8.8 | 0.5 | 12.5 | 3.7 | <1 | 1.0 | <1 | <1 | <1 | | |
| | 1 m from the bottom | - | - | - | - | - | 4.1 | 94.4 | - | 3.5 | 1 | 2.5 | <1 | <1 | <1 | | |
| 12 | Aizu (farm pond) | Terairi | Aizumisatomachi Town | 2011/11/16 | Cloudy | 8.7 | 0.6 | 9.1 | 0 | 0.6 or more | 7.8 | 3 | 6.7 | <1 | <1 | <1 | |
| 13 | Okawa Dam Reservoir | Aizuwakamatsushi City | 2011/11/28 | Cloudy | 4.2 | 32.2 | 8.9 | 0.5 | 3.6 | 5.2 | 1 | 2.5 | <1 | <1 | <1 | | |
| | 1 m from the bottom | - | - | - | - | - | 8.2 | 31.2 | - | 5.1 | 3 | 4 | <1 | <1 | <1 | | |
| 14 | Tagokura Reservoir | Tadamimachi Town | 2011/11/18 | Sunny | 1.7 | 3.5 | 11.4 | 0.0 | 1.8 | 3.8 | 5 | 8.3 | <1 | <1 | <1 | (Sampling point changed to the shore due to unavailability of the boat) | |
| 15 | Minamiaizu (farm pond) | Fukui | Tadamimachi Town | 2011/11/18 | Sunny | 5.3 | 0.6 | 9.7 | 0 | 0.3 | 3.0 | 13 | 19 | <1 | <1 | <1 | |
| 16 | Tajima Dam Reservoir (Funehanako Lake) | Minamiaizumachi Town | 2011/11/15 | Cloudy | 6.2 | 10.4 | 9.8 | 0.5 | 3.4 | 4.9 | 2 | 3.1 | <1 | <1 | <1 | | |
| | 1 m from the bottom | - | - | - | - | - | 9.8 | 9.4 | - | 4.2 | 2 | 2.7 | <1 | <1 | <1 | | |
| 17 | Okutadami Reservoir | Tadamimachi Town | 2011/11/23 | Clear | 7.2 | 5.0 | 11.5 | 0.0 | 0.6 | 3.9 | 6 | 11.0 | <1 | <1 | <1 | (Sampling point changed to the shore due to unavailability of the boat) | |

(Sampling points are listed from north to south.)

○Lake and Headwater (Fukushima Prefecture, Aizu Area): Sediment Monitoring Results

| Sampling point | | | Sampling date | Weather | Air temperature | Full depth | General items | | | | Concentration of radioactive material Bq/kg (dried mud) | | | Remarks | |
|----------------|--|--------------------------|----------------------|------------|-----------------|------------|-----------------|--------------------|-------------|------------------|---|--------------------|-------|---|--|
| No. | Point | Municipality | | | °C | m | Mud temperature | Mud sampling depth | Mud content | Property | Radioactive iodine | Radioactive cesium | | | |
| | | | | | °C | cm | % | | I-131 | Cs-134 | Cs-137 | | | | |
| 1 | Nicchu Dam | Kitakatashi City | 2011/11/16 | Sunny | 5.4 | 44.6 | 7.8 | 10 | 31.6 | Silt | <30 | 620 | 760 | | |
| 2 | Soharako Lake | Kitashiobaramura Village | 2011/11/23 | Clear | 7.2 | 1.0 | 6.6 | 5 | 82.3 | Sand with gravel | <30 | 86 | 110 | (Sampling point changed to the shore due to unavailability of the boat) | |
| 3 | Hibarako Lake | Kitashiobaramura Village | 2011/11/23 | Clear | 5.2 | 20.5 | 9.0 | 10 | 19.8 | Silt | <30 | 170 | 310 | | |
| 4 | Onogawako Lake | Kitashiobaramura Village | 2011/11/23 | Clear | 8.1 | 16.8 | 8.2 | 10 | 24.8 | Silt | <30 | <10 | 57 | | |
| 5 | Akimotoko Lake | Inawashiro Town | 2011/11/23 | Cloudy | 6.3 | 31.1 | 8.5 | 10 | 34.5 | Silt | <30 | 920 | 1,100 | | |
| 6 | Bishamonnuma Lake | Kitashiobaramura Village | 2011/11/17 | Sunny | 7.9 | 8.0 | 11.5 | 10 | 5.8 | Silt with sand | <30 | <10 | <21 | | |
| 7 | Oguninuma Lake | Kitashiobaramura Village | 2011/11/23 | Cloudy | 4.1 | 4.2 | 4.2 | 10 | 12.0 | Silt | <30 | 680 | 990 | | |
| 8 | Aizu (farm pond) | Onuma Lake | Nishiaizumachi Town | 2011/11/16 | Clear | 6.4 | 0.4 | 10.2 | 12 | 66.2 | Gravel/sand with silt | <30 | 12 | 16 | |
| 9 | Inawashiroko Lake | Aizuwakamatsushi City | 2011/11/19 | Cloudy | 9.3 | 94.0 | 5.7 | 10 | 21.5 | Silt | <30 | <10 | <18 | | |
| 10 | Higashiyama Dam Reservoir | Aizuwakamatsushi City | 2011/11/16 | Cloudy | 7.1 | 34.4 | 5.1 | 10 | 27.8 | Silt with sand | <30 | 110 | 180 | | |
| 11 | Numazawako Lake | Kaneyamamachi Town | 2011/11/25 | Sunny | 3.1 | 95.4 | 5.1 | 10 | 19.2 | Silt | <30 | <11 | 59 | | |
| 12 | Aizu (farm pond) | Terairi | Aizumisatomachi Town | 2011/11/16 | Cloudy | 8.7 | 0.6 | 9.0 | 10 | 35.4 | Silt | <30 | 730 | 910 | |
| 13 | Okawa Dam Reservoir | Aizuwakamatsushi City | 2011/11/28 | Cloudy | 4.2 | 32.2 | 8.4 | 10 | 40.7 | Silt | <30 | 490 | 630 | | |
| 14 | Tagokura Reservoir | Tadamimachi Town | 2011/11/18 | Sunny | 1.7 | 3.5 | - | - | - | - | - | - | - | (Unmeasured due to unavailability of the boat) | |
| 15 | Minamiaizu (farm pond) | Fukui | Tadamimachi Town | 2011/11/18 | Sunny | 5.3 | 0.6 | 9.4 | 10 | 69.1 | Sand with silt | <30 | 23 | 24 | |
| 16 | Tajima Dam Reservoir (Funehanako Lake) | Minamiaizumachi Town | 2011/11/15 | Cloudy | 6.2 | 10.4 | 10.4 | 12 | 24.3 | Silt | <30 | <10 | <10 | | |
| 17 | Okutadami Reservoir | Tadamimachi Town | 2011/11/23 | Clear | 7.2 | 5.0 | 11.4 | 5 | 82.0 | Gravel with sand | <30 | <10 | 18 | (Sampling point changed to the shore due to unavailability of the boat) | |

(Sampling points are listed from north to south.)

○Lake and Headwater (Fukushima Prefecture, Aizu Area): Surrounding Environment Monitoring Results

| Sampling point | | | Sampling date | Weather | Air temperature °C | Soil | | | Air dose μSv/h | Remarks | |
|----------------|--|-----------------------------------|---|---------|-----------------------|----------|--|--|-------------------|---------|--|
| No. | Point | Municipality | | | | Property | Concentration of radioactive material Bq/kgdry | | | | |
| | | | | | | | Radioactive iodine I-131 | Radioactive cesium Cs-134 Cs-137 | | | |
| 1 | Niechu Dam | Kitakatashi City | 2011/11/16 | Sunny | 5.4 | Loamy | <30 | 92 | 150 | 0.10 | |
| 2 | Soharako Lake | Kitashiobaramura Village | 2011/11/23 | Clear | 7.2 | Loamy | <30 | 2,600 | 3,200 | 0.23 | |
| 3 | Hibarako Lake | Kitashiobaramura Village | 2011/11/23 | Clear | 5.2 | Loamy | <30 | 560 | 740 | 0.21 | |
| 4 | Onogawako Lake | Kitashiobaramura Village | 2011/11/23 | Clear | 8.1 | Loamy | <30 | 1,200 | 1,600 | 0.31 | |
| 5 | Akimotoko Lake | Inawashiro Town | 2011/11/23 | Cloudy | 6.3 | Loamy | <30 | 980 | 1,200 | 0.20 | |
| 6 | Bishamonnuma Lake | Kitashiobaramura Village | 2011/11/17 | Sunny | 7.9 | Loamy | <30 | 2,100 | 2,600 | 0.14 | |
| 7 | Oguninuma Lake | Kitashiobaramura Village | 2011/11/23 | Cloudy | 4.1 | Loamy | <30 | 220 | 290 | 0.16 | |
| 8 | Aizu (farm pond) | Onuma Lake Nishiaizumachi Town | 2011/11/16 | Clear | 6.4 | Loamy | <30 | 22 | 30 | 0.07 | |
| 9 | Inawashiroko Lake | | For the surrounding environments, see the monitoring results of Inawashiroko Lake Bathing Areas | | | | | | | | |
| 10 | Higashiyama Dam Reservoir | Aizuwakamatsushi City | 2011/11/16 | Sunny | 7.1 | Loamy | <30 | 420 | 510 | 0.09 | |
| 11 | Numazawako Lake | Kaneyamamachi Town | 2011/11/25 | Snow | 3.1 | Sandy | <30 | 760 | 890 | 0.18 | |
| 12 | Aizu (farm pond) | Terairi Aizumisatomachi Town | 2011/11/16 | Cloudy | 8.7 | Loamy | <30 | 390 | 540 | 0.12 | |
| 13 | Okawa Dam Reservoir | Aizuwakamatsushi City | 2011/11/28 | Cloudy | 4.2 | Loamy | <30 | 410 | 460 | 0.10 | |
| 14 | Tagokura Reservoir | Tadamimachi Town | 2011/11/18 | Sunny | 1.7 | Sandy | <30 | 55 | 93 | 0.09 | |
| 15 | Minamiaizu (farm pond) | Fukui Tadamimachi Town | 2011/11/18 | Sunny | 5.3 | Loamy | <30 | 50 | 61 | 0.14 | |
| 16 | Tajima Dam Reservoir (Funehanako Lake) | Minamiaizumachi Town | 2011/11/15 | Cloudy | 6.2 | Loamy | <30 | 58 | 61 | 0.05 | |
| 17 | Okutadami Reservoir | Tadamimachi Town | 2011/11/23 | Clear | 7.2 | Loamy | <30 | <10 | 71 | 0.05 | For surrounding environment (soil and air dose), surveys conducted at 2 locations. |
| | | | | | | Sandy | <30 | 23 | 44 | 0.07 | |

*Air dose was measured with a survey meter, TCS-172 or TCS-161 of Hitachi-Aloka Medical, Ltd.

(Sampling points are listed from north to south.)

OCoast and Bathing Area: Water Quality Monitoring Results

| No. | Sampling point | | | Sampling date | Weather | Air temperature °C | Full depth m | General items | | | | | | Concentration of radioactive material Bq/L | | | Remarks | |
|---|---|---|-----------------------|--------------------|------------|-----------------------|-----------------|-------------------------|---------------------|------------------------|----------|------------|-----------|--|--------------------|--------|---------|--|
| | Water body | Point | Municipality | | | | | Water temperature °C | Sampling depth m | Secchi disk depth m | Salinity | SS mg/L | Turbidity | Radioactive iodine I-131 | Radioactive cesium | | | |
| | | | | | | | | | | | | | | | Cs-134 | Cs-137 | | |
| 1 2 3 4 5 6 7 8 9 | Neighboring sea area of Soso | Approx. 2,000 m offshore of Tsurushihama Fishing Port | Shinshimachi Town | 2011/11/28 | Cloudy | 14.0 | 14.9 | 13.7 | 0.5 | 6.3 | 33.0 | 1 | 1.4 | <1 | <1 | <1 | | |
| | | 1 m from the bottom | | - | - | - | - | 14.2 | 13.9 | - | 33.3 | 2 | 1.8 | <1 | <1 | <1 | | |
| | Matsukawaura sea area | Around center of Fishing Right Area-1 | | 2011/11/27 | Cloudy | 13.6 | 1.8 | 12.9 | 0.5 | 1.8 or more | 32.6 | 1 | 1.3 | <1 | <1 | <1 | | |
| | | 1 m from the bottom | | - | - | - | - | 12.9 | 0.8 | - | 32.5 | 1 | 1.7 | <1 | <1 | <1 | | |
| | Neighboring sea area of Soso | Approx. 2,000 m offshore of Manogawa River | | Shinshimachi Town | 2011/11/27 | Cloudy | 13.8 | 19.8 | 13.9 | 0.5 | 4 | 33.3 | 2 | 2.1 | <1 | <1 | <1 | |
| | | 1 m from the bottom | | | - | - | - | - | 13.9 | 18.8 | - | 33.2 | 6 | 4.9 | <1 | <1 | <1 | |
| | Neighboring sea area of Haramachi City | Approx. 1,000 m offshore of Niidagawa River | | | 2011/11/27 | Cloudy | 13.6 | 11.2 | 13.7 | 0.5 | 2.3 | 33.0 | 5 | 5.0 | <1 | <1 | <1 | |
| | | 1 m from the bottom | | | - | - | - | - | 13.8 | 10.2 | - | 33.2 | 15 | 8.5 | <1 | <1 | <1 | |
| | Approx. 1,000 m offshore of Asamigawa River Estuary | | | | 2011/11/29 | Cloudy | 14.4 | 11.0 | 15.5 | 0.5 | 4 | 32.9 | 4 | 3.3 | <1 | <1 | <1 | |
| 1 m from the bottom | | - | - | | - | - | 14.4 | 10.0 | - | 33.2 | 5 | 3.4 | <1 | <1 | <1 | | | |
| Approx. 1,000 m offshore of Ohisagawa River Estuary | | 2011/11/29 | Cloudy | | 14.6 | 11.0 | 14.1 | 0.5 | 3.8 | 33.2 | 4 | 2.9 | <1 | <1 | <1 | | | |
| | 1 m from the bottom | - | - | | - | - | 14.2 | 10.0 | - | 33.3 | 8 | 2.8 | <1 | <1 | <1 | | | |
| Neighboring sea area of Iwakishi City | Approx. 1,500 m offshore of Natsugawa River | Shinshimachi Town | 2011/11/29 | | Cloudy | 15.0 | 18.2 | 14.6 | 0.5 | 7 | 33.4 | 1 | 1.6 | <1 | <1 | <1 | | |
| | 1 m from the bottom | | - | - | - | - | 14.6 | 17.2 | - | 33.5 | 4 | 2.6 | <1 | <1 | <1 | | | |
| Onahama Port | Approx. 400 m north of Nishibouhatei No. 2 | | 2011/11/29 | Cloudy | 18.2 | 17.0 | 15.3 | 0.5 | 4 | 31.9 | 2 | 2.4 | <1 | <1 | <1 | | | |
| | 1 m from the bottom | | - | - | - | - | 15.1 | 16.0 | - | 33.2 | 2 | 2.7 | <1 | <1 | <1 | | | |
| Joban coastal sea area | Approx. 1,000 m offshore of Bindagawa River | | 2011/11/29 | Cloudy | 17.5 | 17.8 | 14.3 | 0.5 | 6 | 32.5 | 1 | 1.6 | <1 | <1 | <1 | | | |
| | 1 m from the bottom | | - | - | - | - | 14.9 | 16.8 | - | 33.2 | 2 | 2.0 | <1 | <1 | <1 | | | |
| 10 | Tsurushihama Fishing Port | | Tsurushihama Beach | Shinshimachi Town | 2011/11/23 | Sunny | 12.8 | 0.7 | 12.9 | 0 | - | - | 4 | 5 | <1 | <1 | <1 | |
| 11 | Somakowan Bay | | Haragama/Obama | Somashi City | 2011/11/29 | Cloudy | 7.0 | 0.8 | 12.1 | 0 | - | - | 3 | 2.7 | <1 | <1 | <1 | |
| 12 | Kitazumichikukaigan Seashore | | Kitazumi | Minamisomashi City | 2011/11/29 | Sunny | 13.8 | 0.3 | 13.7 | 0 | - | - | 7 | 5.2 | <1 | <1 | <1 | |
| 13 | Hattachikaigan Seashore | Hisanohama Beach/Hattachi | Iwakishi City | 2011/11/23 | Cloudy | 12.6 | 0.2 | 14.8 | 0 | - | - | 10 | 6.3 | <1 | <1 | <1 | | |
| 14 | Yotsukurakaigan Seashore | Yotsukura | Iwakishi City | 2011/11/24 | Sunny | 12.2 | 0.3 | 14.6 | 0 | - | - | 41 | 25.0 | <1 | <1 | <1 | | |
| 15 | Natsukaigan Seashore | Shinmaiko Beach | Iwakishi City | 2011/11/24 | Sunny | 13.8 | 0.2 | 14.6 | 0 | - | - | 28 | 19 | <1 | <1 | <1 | | |
| 16 | Usuisokaigan Seashore | Usuiso | Iwakishi City | 2011/11/25 | Sunny | 11.0 | 0.2 | 13.8 | 0 | - | - | 10 | 5.8 | <1 | <1 | <1 | | |
| 17 | Toyomakaigan Seashore | Toyoma | Iwakishi City | 2011/11/25 | Sunny | 13.8 | 0.2 | 14.4 | 0 | - | - | 7 | 5.4 | <1 | <1 | <1 | | |
| 18 | Nagasakikaigan Seashore | Nagasaki | Iwakishi City | 2011/11/25 | Sunny | 12.8 | 0.2 | 13.8 | 0 | - | - | 12 | 8.5 | <1 | <1 | <1 | | |
| 19 | Obamakaigan Seashore | Obama | Iwakishi City | 2011/11/26 | Clear | 11.8 | 0.3 | 14.6 | 0 | - | - | 6 | 6 | <1 | <1 | <1 | | |
| 20 | Nakosokaigan Seashore | Nakoso | Iwakishi City | 2011/11/26 | Clear | 11.6 | 0.2 | 14.0 | 0 | - | - | 1 | 1.7 | <1 | <1 | <1 | | |
| 21 | Inawashiroko Lake | Nagahama Beach | Inawashiromachi Town | 2011/11/16 | Sunny | 9.0 | 0.5 | 9.5 | 0 | - | - | 2 | 0.9 | <1 | <1 | <1 | | |
| 22 | Inawashiroko Lake | Tenjinhama Beach | Inawashiromachi Town | 2011/11/17 | Sunny | 6.9 | 0.5 | 8.5 | 0 | - | - | 150 | 79.0 | <1 | <1 | <1 | | |
| 23 | Inawashiroko Lake | Shidahama Beach | Inawashiromachi Town | 2011/11/17 | Sunny | 6.8 | 0.5 | 10.7 | 0 | - | - | 28 | 17.0 | <1 | <1 | <1 | | |
| 24 | Inawashiroko Lake | jokohama Beach | Inawashiromachi Town | 2011/11/17 | Sunny | 6.2 | 0.5 | 10.3 | 0 | - | - | 5 | 2.8 | <1 | <1 | <1 | | |
| 25 | Inawashiroko Lake | Hamajihama Beach | Koriyamashi City | 2011/11/17 | Sunny | 6.0 | 0.5 | 10.2 | 0 | - | - | 6 | 3.7 | <1 | <1 | <1 | | |
| 26 | Inawashiroko Lake | Yokozawahama Beach | Koriyamashi City | 2011/11/17 | Sunny | 6.9 | 0.5 | 9.8 | 0 | - | - | 7 | 4.6 | <1 | <1 | <1 | | |
| 27 | Inawashiroko Lake | Tatehama Beach | Koriyamashi City | 2011/11/18 | Sunny | 3.1 | 0.5 | 8.8 | 0 | - | - | 1 | 2.1 | <1 | <1 | <1 | | |
| 28 | Inawashiroko Lake | Funatsuhama Beach | Koriyamashi City | 2011/11/18 | Sunny | 4.6 | 0.5 | 9.5 | 0 | - | - | <1 | 0.6 | <1 | <1 | <1 | | |
| 29 | Inawashiroko Lake | Funatsuko Park | Koriyamashi City | 2011/11/18 | Sunny | 5.2 | 0.5 | 10.3 | 0 | - | - | <1 | 0.5 | <1 | <1 | <1 | | |
| 30 | Inawashiroko Lake | Seishogahama Beach | Koriyamashi City | 2011/11/18 | Sunny | 5.4 | 0.5 | 10.2 | 0 | - | - | <1 | 0.7 | <1 | <1 | <1 | | |
| 31 | Inawashiroko Lake | Akiyahama Beach | Koriyamashi City | 2011/11/18 | Sunny | 6.2 | 0.5 | 8.0 | 0 | - | - | <1 | 1.4 | <1 | <1 | <1 | | |
| 32 | Inawashiroko Lake | Sekkahama Beach | Aizuwakamatsushi City | 2011/11/18 | Sunny | 7.4 | 0.5 | 12.5 | 0 | - | - | <1 | 0.5 | <1 | <1 | <1 | | |
| 33 | Inawashiroko Lake | Nakatahama Beach | Aizuwakamatsushi City | 2011/11/18 | Sunny | 10.3 | 0.5 | 11.8 | 0 | - | - | <1 | 0.5 | <1 | <1 | <1 | | |
| 34 | Inawashiroko Lake | Koishigahama Beach | Aizuwakamatsushi City | 2011/11/16 | Sunny | 9.2 | 0.5 | 10.9 | 0 | - | - | 1 | 0.6 | <1 | <1 | <1 | | |

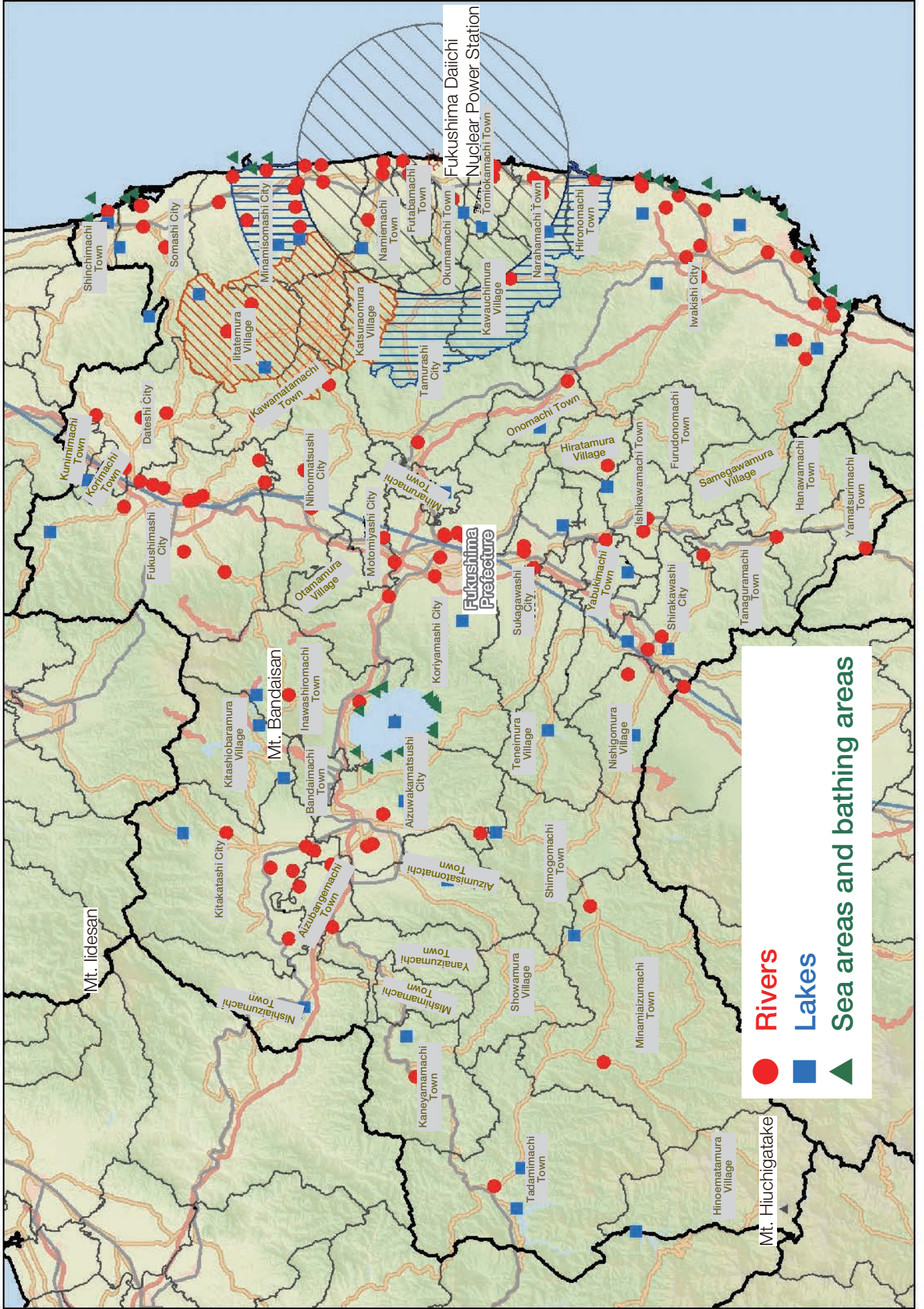
○Coast and Bathing Area: Sediment Monitoring Results

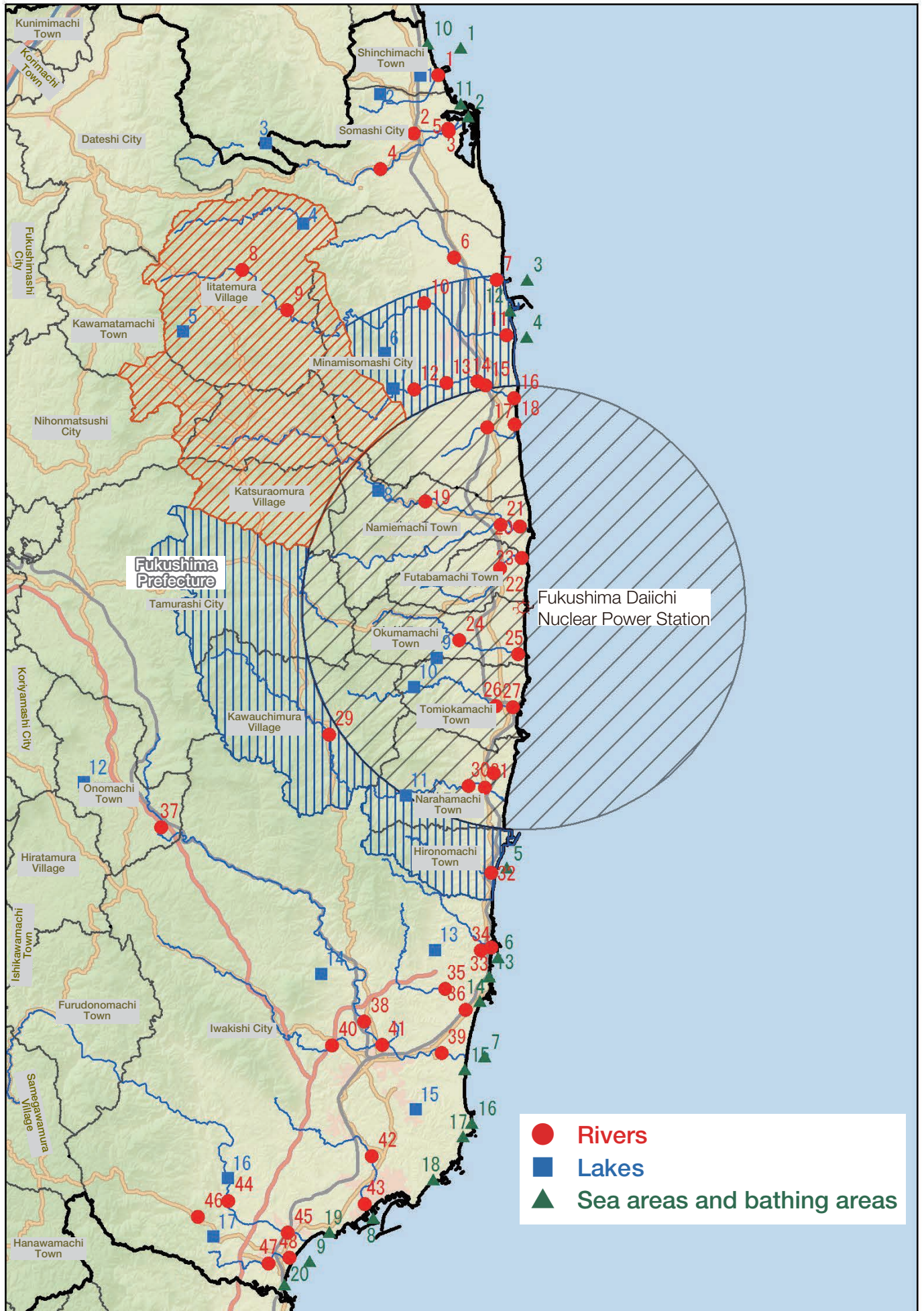
| Sampling point | | | | Sampling date | Weather | Air temperature | Full depth | General items | | | | Concentration of radioactive material Bq/kg (dried mud) | | | Remarks | |
|----------------|--------------------------------------|---|-----------------------|---------------|---------|-----------------|------------|---------------|-----------------|--------------------|------------------|---|--------------------|--------------------|---------|--|
| No. | Water body | Point | Municipality | | | °C | | m | Mud temperature | Mud sampling depth | Mud content | Property | Radioactive iodine | Radioactive cesium | | |
| | | | | | | °C | | cm | % | | I-131 | Cs-134 | Cs-137 | | | |
| 1 | Sea area | Neighboring sea area of Soso Approx. 2,000 m offshore of Tsurushihama Fishing | | 2011/11/28 | Cloudy | 14.0 | 14.9 | 14.3 | 12 | 77.3 | Sand | <30 | 54 | 69 | | |
| 2 | | Matsukawaura sea area Around center of Fishing Right Area-1 | | 2011/11/27 | Cloudy | 13.6 | 1.8 | 13.4 | 12 | 76.8 | Sand with silt | <30 | 15 | 17 | | |
| 3 | | Neighboring sea area of Soso Approx. 2,000 m offshore of Manogawa River | | 2011/11/27 | Cloudy | 13.8 | 19.8 | 14.0 | 12 | 80.1 | Sand | <30 | 24 | 33 | | |
| 4 | | Neighboring sea area of Haramachi City Approx. 1,000 m offshore of Niidagawa | | 2011/11/27 | Cloudy | 13.6 | 11.2 | 13.8 | 12 | 82.0 | Sand | <30 | 16 | 33 | | |
| 5 | | Approx. 1,000 m offshore of Asamigawa River Estuary | | 2011/11/29 | Cloudy | 14.4 | 11.0 | 13.8 | 3 | 79.4 | Sand | <30 | 220 | 260 | | |
| 6 | | Approx. 1,000 m offshore of Ohisagawa River Estuary | | 2011/11/29 | Cloudy | 14.6 | 11.0 | 13.9 | 3 | 80.8 | Sand | <30 | 210 | 280 | | |
| 7 | | Neighboring sea area of Iwakishi City Approx. 1,500 m offshore of Natsugawa R | | 2011/11/29 | Cloudy | 15.0 | 18.2 | 14.2 | 3 | 80.7 | Sand | <30 | 91 | 120 | | |
| 8 | | Onahama Port Approx. 400 m north of Nishibouhatei No. 2 | | 2011/11/29 | Cloudy | 18.2 | 17.0 | 15.1 | 12 | 43.0 | Silt with sand | <30 | 270 | 360 | | |
| 9 | | Joban coastal sea area Approx. 1,000 m offshore of Bindagawa River | | 2011/11/29 | Cloudy | 17.5 | 17.8 | 14.6 | 3 | 75.5 | Sand | <30 | 160 | 200 | | |
| 10 | Beach | Tsurushihama Fishing Port Tsurushihama Beach | Shinchimachi Town | 2011/11/23 | Sunny | 12.8 | 0.7 | 13.2 | 5 | 88.9 | Sand | <30 | <10 | <10 | | |
| 11 | | Somakowan Bay Haragama/Obama | Somashi City | 2011/11/29 | Cloudy | 7.0 | 0.8 | 12.2 | 10 | 78.6 | Sand | <30 | 11 | 14 | | |
| 12 | | Kitaizumichikukaigan Sea: Kitaizumi | Minamisomashi City | 2011/11/29 | Sunny | 13.8 | 0.3 | 15.0 | 5 | 84.7 | Sand | <30 | 18 | 18 | | |
| 13 | | Hattachikaigan Seashore Hisanohama Beach/Hattachi | Iwakishi City | 2011/11/23 | Cloudy | 12.6 | 0.2 | 14.2 | 5 | 92.2 | Sand with gravel | <30 | 55 | 57 | | |
| 14 | | Yotsukurakaigan Seashore Yotsukura | Iwakishi City | 2011/11/24 | Sunny | 12.2 | 0.3 | 14.6 | 5 | 84.7 | Sand | <30 | 66 | 83 | | |
| 15 | | Natsukaigan Seashore Shinmaiko Beach | Iwakishi City | 2011/11/24 | Sunny | 13.8 | 0.2 | 14.8 | 5 | 90.3 | Sand with gravel | <30 | 25 | 36 | | |
| 16 | | Usuisokaigan Seashore Usuiso | Iwakishi City | 2011/11/25 | Sunny | 11.0 | 0.2 | 13.8 | 5 | 83.1 | Sand | <30 | 53 | 83 | | |
| 17 | | Toyomakaigan Seashore Toyoma | Iwakishi City | 2011/11/25 | Sunny | 13.8 | 0.2 | 14.4 | 5 | 85.7 | Sand | <30 | 51 | 70 | | |
| 18 | | Nagasakikaigan Seashore Nagasaki | Iwakishi City | 2011/11/25 | Sunny | 12.8 | 0.2 | 14.2 | 5 | 84.6 | Sand | <30 | 62 | 66 | | |
| 19 | | Obamakaigan Seashore Obama | Iwakishi City | 2011/11/26 | Clear | 11.8 | 0.3 | 14.6 | 5 | 86.4 | Sand with gravel | <30 | 27 | 39 | | |
| 20 | | Nakosokaigan Seashore Nakoso | Iwakishi City | 2011/11/26 | Clear | 11.6 | 0.2 | 14.0 | 5 | 82.8 | Sand | <30 | 61 | 80 | | |
| 21 | | Inawashiroko Lake Nagahama Beach | Inawashiroko Town | 2011/11/16 | Sunny | 9.0 | 0.5 | 10.7 | 10 | 83.5 | Sand with gravel | <30 | 48 | 64 | | |
| 22 | | Inawashiroko Lake Tenjinama Beach | Inawashiroko Town | 2011/11/17 | Sunny | 6.9 | 0.5 | 8.4 | 5 | 82.9 | Sand with gravel | <30 | <10 | <10 | | |
| 23 | | Inawashiroko Lake Shidahama Beach | Inawashiroko Town | 2011/11/17 | Sunny | 6.8 | 0.5 | 9.8 | 5 | 85.1 | Sand with gravel | <30 | 46 | 62 | | |
| 24 | | Inawashiroko Lake jokohama Beach | Inawashiroko Town | 2011/11/17 | Sunny | 6.2 | 0.5 | 10.8 | 5 | 87.6 | Sand | <30 | 44 | 46 | | |
| 25 | | Inawashiroko Lake Hamajihama Beach | Koriyamashi City | 2011/11/17 | Sunny | 6.0 | 0.5 | 10.2 | 5 | 79.0 | Sand | <30 | 46 | 62 | | |
| 26 | | Inawashiroko Lake Yokozawahama Beach | Koriyamashi City | 2011/11/17 | Sunny | 6.9 | 0.5 | 9.6 | 5 | 85.5 | Sand with gravel | <30 | <10 | 14 | | |
| 27 | | Inawashiroko Lake Tatehama Beach | Koriyamashi City | 2011/11/18 | Sunny | 3.1 | 0.5 | 8.9 | 5 | 82.3 | Sand with gravel | <30 | 46 | 62 | | |
| 28 | | Inawashiroko Lake Funatsuhama Beach | Koriyamashi City | 2011/11/18 | Sunny | 4.6 | 0.5 | 9.9 | 5 | 76.8 | Sand | <30 | 69 | 91 | | |
| 29 | | Inawashiroko Lake Funatsukoen Park | Koriyamashi City | 2011/11/18 | Sunny | 5.2 | 0.5 | 10.4 | 5 | 86.4 | Sand with gravel | <30 | 66 | 85 | | |
| 30 | | Inawashiroko Lake Seishogahama Beach | Koriyamashi City | 2011/11/18 | Sunny | 5.4 | 0.5 | 10.4 | 5 | 84.5 | Sand with gravel | <30 | 24 | 29 | | |
| 31 | | Inawashiroko Lake Akiyamahama Beach | Koriyamashi City | 2011/11/18 | Sunny | 6.2 | 0.5 | 8.0 | 5 | 70.4 | Sand | <30 | 19 | 22 | | |
| 32 | | Inawashiroko Lake Sekkahama Beach | Aizuwakamatsushi City | 2011/11/18 | Sunny | 7.4 | 0.5 | 12.2 | 5 | 84.7 | Sand with gravel | <30 | 44 | 66 | | |
| 33 | | Inawashiroko Lake Nakatahama Beach | Aizuwakamatsushi City | 2011/11/18 | Sunny | 10.3 | 0.5 | 11.6 | 5 | 87.6 | Sand | <30 | 16 | 20 | | |
| 34 | Inawashiroko Lake Koishigahama Beach | Aizuwakamatsushi City | 2011/11/16 | Sunny | 9.2 | 0.5 | 10.1 | 10 | 85.5 | Sand with gravel | <30 | 69 | 92 | | | |

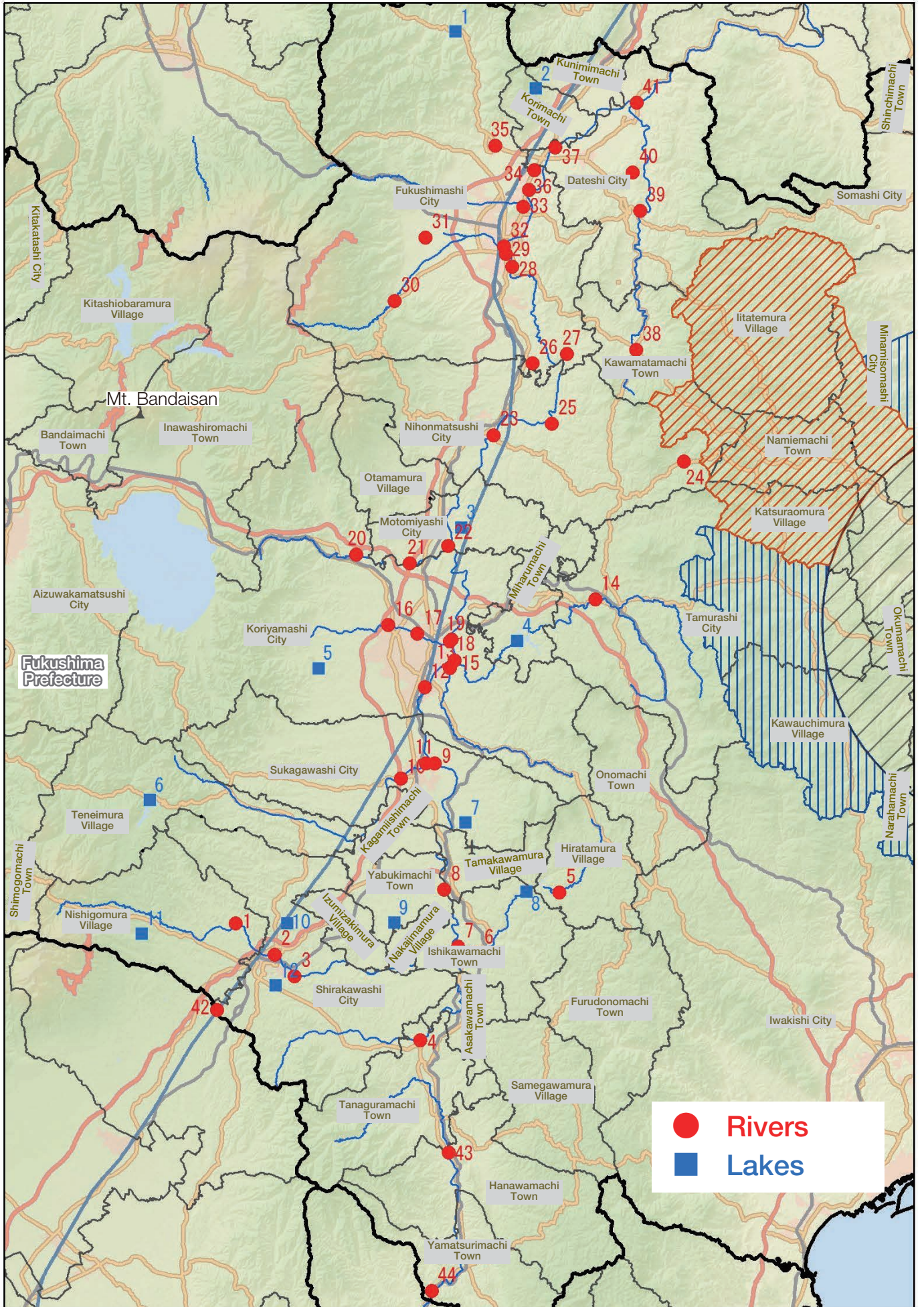
○Bathing Area: Surrounding Environment Monitoring Results

| Sampling point | | | Sampling date | Weather | Air temperature °C | Soil | | | | Air dose μSv/h | Remarks | |
|----------------|---------------------------|---------------------------|-----------------------|------------|-----------------------|----------|--|--|-----|-------------------|---------|--|
| No. | Point | Municipality | | | | Property | Concentration of radioactive material Bq/kgdry | | | | | |
| | | | | | | | Radioactive iodine I-131 | Radioactive cesium Cs-134 Cs-137 | | | | |
| 10 | Tsurushihama Fishing Port | Tsurushihama Beach | Shinchimachi Town | 2011/11/23 | Sunny | 12.8 | Sandy | <30 | 25 | 26 | 0.07 | |
| 11 | Somakowan Bay | Haragama/Obama | Somashi City | 2011/11/29 | Cloudy | 7.0 | Sandy | <30 | 35 | 42 | 0.07 | |
| 12 | Kitazumichikukaigan Sea | Kitazumi | Minamisomashi City | 2011/11/29 | Sunny | 13.8 | Sandy | <30 | 19 | 23 | 0.07 | |
| 13 | Hattachikaigan Seashore | Hisanohama Beach/Hattachi | Iwakishi City | 2011/11/23 | Cloudy | 12.6 | Sandy | <30 | 310 | 430 | 0.36 | |
| 14 | Yotsukurakaigan Seashore | Yotsukura | Iwakishi City | 2011/11/24 | Sunny | 12.2 | Sandy | <30 | 290 | 350 | 0.23 | |
| 15 | Natsuikaigan Seashore | Shinmaiko Beach | Iwakishi City | 2011/11/24 | Sunny | 13.8 | Sandy | <30 | 96 | 120 | 0.19 | |
| 16 | Usuisokaigan Seashore | Usuiso | Iwakishi City | 2011/11/25 | Sunny | 11.0 | Sandy | <30 | 100 | 140 | 0.27 | |
| 17 | Toyomakaigan Seashore | Toyoma | Iwakishi City | 2011/11/25 | Sunny | 13.8 | Sandy | <30 | 41 | 40 | 0.11 | |
| 18 | Nagasakikaigan Seashore | Nagasaki | Iwakishi City | 2011/11/25 | Sunny | 12.8 | Sandy | <30 | 77 | 93 | 0.12 | |
| 19 | Obamakaigan Seashore | Obama | Iwakishi City | 2011/11/26 | Sunny | 11.8 | Sandy | <30 | 210 | 240 | 0.13 | |
| 20 | Nakosokaigan Seashore | Nakoso | Iwakishi City | 2011/11/26 | Clear | 11.6 | Sandy | <30 | 110 | 150 | 0.16 | |
| 21 | Inawashiroko Lake | Nagahama Beach | Inawashiromachi Town | 2011/11/16 | Sunny | 9.0 | Loamy | <30 | 570 | 770 | 0.10 | |
| 22 | Inawashiroko Lake | Tenjinhama Beach | Inawashiromachi Town | 2011/11/17 | Sunny | 6.9 | Sandy | <30 | 290 | 350 | 0.08 | |
| 23 | Inawashiroko Lake | Shidahama Beach | Inawashiromachi Town | 2011/11/17 | Sunny | 6.8 | Sandy | <30 | 150 | 190 | 0.08 | |
| 24 | Inawashiroko Lake | jokohama Beach | Inawashiromachi Town | 2011/11/17 | Sunny | 6.2 | Sandy | <30 | 300 | 370 | 0.11 | |
| 25 | Inawashiroko Lake | Hamajihama Beach | Koriyamashi City | 2011/11/17 | Sunny | 6.0 | Sandy | <30 | 75 | 110 | 0.07 | |
| 26 | Inawashiroko Lake | Yokozawahama Beach | Koriyamashi City | 2011/11/17 | Sunny | 6.9 | Sandy | <30 | 73 | 110 | 0.08 | |
| 27 | Inawashiroko Lake | Tatehama Beach | Koriyamashi City | 2011/11/18 | Sunny | 3.1 | Sandy | <30 | 120 | 180 | 0.06 | |
| 28 | Inawashiroko Lake | Funatsuhama Beach | Koriyamashi City | 2011/11/18 | Sunny | 4.6 | Sandy | <30 | 76 | 110 | 0.05 | |
| 29 | Inawashiroko Lake | Funatsukoen Park | Koriyamashi City | 2011/11/18 | Sunny | 5.2 | Sandy | <30 | 58 | 73 | 0.06 | |
| 30 | Inawashiroko Lake | Seishogahama Beach | Koriyamashi City | 2011/11/18 | Sunny | 5.4 | Sandy | <30 | 42 | 51 | 0.05 | |
| 31 | Inawashiroko Lake | Akiyamahama Beach | Koriyamashi City | 2011/11/18 | Sunny | 6.2 | Sandy | <30 | 95 | 110 | 0.04 | |
| 32 | Inawashiroko Lake | Sekkahama Beach | Aizuwakamatsushi City | 2011/11/18 | Sunny | 7.4 | Sandy | <30 | 460 | 750 | 0.06 | |
| 33 | Inawashiroko Lake | Nakatahama Beach | Aizuwakamatsushi City | 2011/11/18 | Sunny | 10.3 | Sandy | <30 | 150 | 190 | 0.06 | |
| 34 | Inawashiroko Lake | Koishigahama Beach | Aizuwakamatsushi City | 2011/11/16 | Sunny | 9.2 | Sandy | <30 | 32 | 48 | 0.07 | |

*Air dose was measured with a survey meter, TCS-172 or TCS-161 of Hitachi-Aloka Medical, Ltd.







- Rivers
- Lakes
- ▲ bathing areas

