

(News Release)
The Results of Radioactive Material Monitoring of the Surface Water Bodies
within Fukushima Prefecture

Tuesday, November 15, 2011
Water Environment Division,
Environment Management Bureau,
Ministry of the Environment
Direct line: 03-5521-8316
Switchboard: 03-3581-3351
Director: Nobuo Yoshida (ext. 6610)
Deputy Director: Tetsuo Furuta (ext. 6614)
Coordinator: Hiroaki Hase (ext. 6628)

In accordance with the Comprehensive Radiation Monitoring Plan determined by the Monitoring Coordination Meeting, the Ministry of the Environment (MOE) is continuing to monitor radioactive materials in water environments (surface water bodies (rivers, lakes and headwaters, and coasts), etc.).

Samples taken from the surface water bodies of Fukushima Prefecture during the period of September 15-October 14 have been measured as part of MOE's efforts to monitor radioactive materials; the results have recently been compiled and are released here.

1. Survey Overview

(1) Survey Locations

193 environmental reference points, etc. in the surface water bodies within Fukushima Prefecture
(Rivers: 113 locations, Lakes and headwaters: 46 locations, Coasts and bathing areas: 34 locations)

(2) Survey Method

- Measurement of concentrations of radioactive materials (radioactive iodine (I-131), radioactive cesium (Cs-134 and Cs-137)) in water and sediment
- Measurement of concentrations of radioactive materials and spatial dose-rate in soil in the surrounding environment of water and sediment sample collection points (river terraces, etc.)

2. Outline of Results

(1) Water Quality

- Radioactive iodine (I-131) Not detectable (ND) at any location (Lower detection limit: 1Bq/L)
- Radioactive cesium
(Rivers)
 - Cs-134: ND-9Bq/L (Lower detection limit: 1Bq/L)
 - Cs-137: ND-11Bq/L (Lower detection limit: 1Bq/L)(Lakes and headwaters)
 - Cs-134: ND-12Bq/L (Lower detection limit: 1Bq/L)
 - Cs-137: ND-15Bq/L (Lower detection limit: 1Bq/L)(Coasts and bathing areas) ND at any location (Lower detection limit: 1Bq/L)

<Reference>

“Regulatory Guide: Emergency Preparedness for Nuclear Facilities (Nuclear Safety Commission)”
Standards for Restrictions on the Intake of Food and Drink (Drinking Water)
Radioactive iodine (I-131): 300Bq/kg or more
Radioactive cesium (total for Cs-134 + Cs-137): 200Bq/kg or more

(2) Sediment

- Radioactive iodine (I-131) ND at any location (Lower detection limit: 30Bq/kg (dried mud))
- Radioactive cesium
(Rivers)

Cs-134: ND-27,000Bq/kg (dried mud) (Lower detection limit: 10Bq/kg (dried mud))
Cs-137: ND-33,000Bq/kg (dried mud) (Lower detection limit: 10Bq/kg (dried mud))
(Lakes and headwaters)
Cs-134: ND-17,000Bq/kg (dried mud) (Lower detection limit: 10Bq/kg (dried mud))
Cs-137: ND-20,000Bq/kg (dried mud) (Lower detection limit: 10Bq/kg (dried mud))
(Coasts and bathing areas)
Cs-134: ND-370Bq/kg (dried mud) (Lower detection limit: 10Bq/kg (dried mud))
Cs-137: ND-430Bq/kg (dried mud) (Lower detection limit: 10Bq/kg (dried mud))

(3) Surrounding Environment

- Radioactive iodine (I-131) ND at any location (Lower detection limit: 30Bq/kg (dry))
- Radioactive cesium
(Rivers)
Cs-134: ND-48,000Bq/kg (dry) (Lower detection limit: 10Bq/kg (dry))
Cs-137: ND-56,000Bq/kg (dry) (Lower detection limit: 10Bq/kg (dry))
(Lakes and headwaters)
Cs-134: 30-26,000Bq/kg (dry) (Lower detection limit: 10Bq/kg (dry))
Cs-137: 26-32,000Bq/kg (dry) (Lower detection limit: 10Bq/kg (dry))
(Coasts and bathing areas)
Cs-134: 23-270Bq/kg (dry) (Lower detection limit: 10Bq/kg (dry))
Cs-137: 33-300Bq/kg (dry) (Lower detection limit: 10Bq/kg (dry))
- Spatial dose
(Rivers) 0.07-more than 17.12 μ Sv/h*
*The level exceeded the upper detection limit.
(Lakes and headwaters) 0.05-19.17 μ Sv/h
(Coasts and bathing areas) 0.05-0.29 μ Sv/h

(Annex for details)
(Map attached)

Future Plans

In coordination with relevant organizations, MOE intends to continue to measure radioactive materials in water, sediment, etc. in rivers, lakes, etc. in the following prefectures: Fukushima, Miyagi, Yamagata (some parts), Ibaraki, Tochigi, Gunma, and Chiba (some parts).

○River (Fukushima Prefecture, Hamadori Area): Sediment Monitoring Results

Sampling point			Sampling date	Weather	Air temperature ℃	Full depth m	General items				Concentration of radioactive material Bq/kg(dried mud)			Remarks
Water body	Point	Municipality					Mud temperature ℃	Mud sampling depth cm	Mud content %	Property	Radioactive iodine I-131	Radioactive cesium Cs-134 Cs-137		
Jizogawa River	Hamahatabashi Bridge	Shinchimachi Town	2011/9/19	Light rain	18.5	3.10	20.4	10	58.7	Sand with silt	<30	1,200	1,400	
Koizumigawa River	Koizumibashi Bridge	Somashi City	2011/9/17	Cloudy	25.2	0.25	21.8	10	68.6	Sand with gravel	<30	2,400	2,900	
	Hyakkenbashi Bridge	Somashi City	2011/9/19	Cloudy	18.5	1.40	22.0	5	64.1	Sand with silt	<30	1,300	1,600	
Udagawa River	Horisakabashi Bridge	Somashi City	2011/9/28	Sunny	21.3	0.95	15.2	5	85.6	Sand with gravel	<30	590	710	
	Hyakkenbashi Bridge	Somashi City	2011/9/19	Cloudy	18.0	0.90	23.4	10	86.0	Sand	<30	110	130	
Manogawa River	Ochiaibashi Bridge	Minamisomashi City	2011/9/15	Sunny	30.1	0.85	24.0	5	73.6	Gravel/sand with silt	<30	1,800	2,200	
	Majimabashi Bridge	Minamisomashi City	2011/9/16	Sunny	29.8	0.30	23.4	10	30.1	Silt	<30	13,000	15,000	Former evacuation-prepared areas in case of emergency
Niidagawa River	Kusano	Iitatemura Village	2011/9/17	Cloudy	29.6	0.50	22.4	10	94.6	Sand	<30	1,400	1,800	Deliberate evacuation areas
	Komiya	Iitatemura Village	2011/9/17	Cloudy	27.4	1.00	19.2	10	81.7	Sand	<30	2,200	2,700	Deliberate evacuation areas
	Kidouchibashi Bridge	Minamisomashi City	2011/9/15	Sunny	30.2	0.80	24.0	5	87.4	Sand with gravel	<30	5,100	6,100	Former evacuation-prepared areas in case of emergency
	Sakekawabashi Bridge	Minamisomashi City	2011/9/16	Sunny	30.2	1.10	28.0	5	75.4	Sand with silt	<30	5,900	7,100	Former evacuation-prepared areas in case of emergency
Ottagawa River	Ishiwatadobashi Bridge	Minamisomashi City	2011/9/16	Sunny	31.0	0.30	21.8	5	78.9	Sand with gravel	<30	4,400	5,300	Former evacuation-prepared areas in case of emergency
	Kaminouchihashi Bridge	Minamisomashi City	2011/9/15	Sunny	27.8	0.50	22.2	5	83.7	Sand	<30	15,000	18,000	Former evacuation-prepared areas in case of emergency
	Masudabashi Bridge	Minamisomashi City	2011/9/16	Sunny	26.2	0.75	20.0	5	47.3	Silt with sand	<30	27,000	33,000	Former evacuation-prepared areas in case of emergency
	JR Tetsudobashi Bridge	Minamisomashi City	2011/9/16	Sunny	28.5	0.30	21.0	5	82.4	Sand	<30	1,200	1,400	Former evacuation-prepared areas in case of emergency
	Maruyamabashi Bridge	Minamisomashi City	2011/9/26	Cloudy	19.6	0.20	19.8	10	84.9	Gravel with sand	<30	100	130	Restricted areas
Odakagawa River	Zenchobashi Bridge	Minamisomashi City	2011/9/26	Sunny	18.4	0.58	16.6	10	89.5	Gravel with sand	<30	130	180	Restricted areas
	Hatsukarabashi Bridge	Minamisomashi City	2011/9/26	Cloudy	20.6	0.98	18.6	15	82.1	Sand	<30	78	95	Restricted areas
Ukedogawa River	Muroharabashi Bridge	Namiemachi Town	2011/9/26	Cloudy	19.2	1.68	17.8	5	70.8	Gravel/silt with sand	<30	19,000	24,000	Restricted areas
	Ukedobashi Bridge	Namiemachi Town	2011/9/26	Cloudy	19.5	0.35	17.7	5	80.4	Sand	<30	1,500	1,800	Restricted areas
Takasegawa River	Keiobashi Bridge	Namiemachi Town	2011/9/26	Sunny	17.9	0.18	16.2	5	64.3	Sand with gravel	<30	11,000	13,000	Restricted areas
Maedagawa River	National Route 6, west	Futabamachi Town	2011/9/26	Sunny	18.7	0.40	17.0	5	82.9	Sand	<30	5,700	7,100	Restricted areas
	Nakahamabashi Bridge	Namiemachi Town	2011/9/26	Sunny	19.7	0.50	17.5	5	81.9	Sand	<30	1,800	2,100	Restricted areas
Kumagawa River	National Route 6, west	Okumamachi Town	2011/9/26	Cloudy	21.2	0.75	16.2	5	82.3	Gravel with sand	<30	2,400	2,900	Restricted areas
	Mikumabashi Bridge	Okumamachi Town	2011/9/26	Sunny	20.8	0.20	18.0	8	79.0	Sand	<30	4,300	5,300	Restricted areas
Tomiokagawa River	National Route 6, west	Tomiokamachi Town	2011/9/26	Sunny	20.3	0.25	16.8	5	88.5	Gravel with sand	<30	430	500	Restricted areas
	Kobamabashi Bridge	Tomiokamachi Town	2011/9/26	Sunny	17.8	0.20	26.7	5	71.8	Sand	<30	18,000	22,000	Restricted areas
Idegawa River	Motogamabashi Bridge	Narahamachi Town	2011/9/28	Cloudy	14.9	0.50	15.0	5	87.1	Sand	<30	250	280	Restricted areas
Kidogawa River	Nishiyamabashi Bridge	Kawauchimura Village	2011/9/17	Sunny	27.8	1.05	20.7	5	94.5	Sand	<30	47	64	Former evacuation-prepared areas in case of emergency
	Nagatorobashi Bridge	Narahamachi Town	2011/9/27	Cloudy	19.6	0.65	15.9	5	86.2	Sand	<30	180	220	Restricted areas
	Kidokawabashi Bridge	Narahamachi Town	2011/9/27	Cloudy	16.3	0.70	15.2	5	88.6	Sand with gravel	<30	90	110	Restricted areas
Asamigawa River	Bodabashi Bridge	Hironomachi Town	2011/9/17	Sunny	25.2	0.38	21.8	5	82.3	Sand	<30	310	400	Former evacuation-prepared areas in case of emergency
Ohisagawa River	Kageisobashi Bridge	Iwakishi City	2011/9/16	Sunny	29.2	0.80	25.1	5	88.4	Gravel/sand with silt	<30	1,400	1,700	
Kohisagawa River	Rengobashi Bridge	Iwakishi City	2011/9/16	Sunny	25.2	0.47	26.2	5	82.7	Sand with gravel	<30	170	210	
Niidagawa River	Kasumidabashi Bridge	Iwakishi City	2011/9/16	Sunny	25.0	0.30	24.6	10	86.0	Gravel/sand with silt	<30	210	250	
	Matsubabashi Bridge	Iwakishi City	2011/9/16	Sunny	24.8	1.45	27.1	5	83.7	Sand	<30	270	310	
Natsugawa River	Kitanouchibashi Bridge	Onomachi Town	2011/9/29	Clear	22.4	1.06	19.2	10	85.8	Gravel with sand	<30	29	37	(Sampling point is in Nakadori)
	Kyudayubashi Bridge	Iwakishi City	2011/9/29	Clear	21.4	0.70	15.6	15	85.1	Gravel with sand	<30	35	45	
	Rokujumabashi Bridge	Iwakishi City	2011/9/27	Cloudy	23.5	1.03	15.8	15	89.1	Gravel with sand	<30	21	22	
Yoshimagawa River	Iwaanatsuribashi Bridge	Iwakishi City	2011/9/27	Sunny	23.9	0.60	17.0	5	77.6	Sand	<30	280	340	
	Before the confluence with	Iwakishi City	2011/9/27	Sunny	24.4	0.59	18.0	5	81.6	Sand	<30	84	98	
Fujiwaragawa River	Shimabashi Bridge	Iwakishi City	2011/9/27	Sunny	21.2	1.75	20.4	10	87.9	Gravel with sand	<30	30	34	
	Minatoohashi Bridge	Iwakishi City	2011/9/30	Cloudy	23.8	2.80	22.2	10	67.3	Sand with silt	<30	240	290	
Samegawa River	Idosawabashi Bridge	Iwakishi City	2011/9/29	Clear	21.8	0.43	16.6	10	99.1	Gravel	<30	<10	<10	
	Samegawabashi Bridge	Iwakishi City	2011/9/30	Sunny	26.0	1.52	19.2	15	81.3	Sand	<30	34	44	
Shitokigawa River	Komurobashi Bridge	Iwakishi City	2011/9/30	Sunny	19.6	1.00	15.2	10	82.5	Gravel with sand	<30	31	43	
Bindagawa River	Kobanabashi Bridge	Iwakishi City	2011/9/28	Sunny	24.2	0.45	20.0	10	76.0	Gravel/silt with sand	<30	97	140	
	Bindabashi Bridge	Iwakishi City	2011/9/30	Sunny	23.6	3.53	22.5	15	81.3	Sand	<30	250	320	

(Sampling points for rivers are listed from north to south, and for different points along the river, from upstream to downstream.)

○River (Fukushima Prefecture, Nakadori Area): Water Quality Monitoring Results

		Sampling point			Sampling date	Weather	Air temperature	Full depth	General items					Concentration of radioactive material Bq/L			Remarks	
Water body	Point	Municipality	℃	m			℃	Sampling depth	Transparency cm	Electrical conductivity mS/m	SS mg/L	Turbidity	Radioactive iodine I-131	Radioactive cesium				
														Cs-134	Cs-137			
A b u k u m a g a w a R i v e r S y s t e m	Abukumagawa River	Habutobashi Bridge	Nishigomura Village	2011/9/30	Cloudy	22.3	0.45	16.8	Surface layer	100 or more	11.6	7	5.3	<1	<1	<1		
		Tamachiohashi Bridge	Shirakawashi City	2011/9/28	Sunny	16.7	0.32	13.6	Surface layer	95	10.7	6	4.7	<1	<1	<1		
	Yantagawa River	Before the confluence with Abukumagawa River	Shirakawashi City	2011/9/28	Sunny	20.4	0.50	20.0	Surface layer	96	39.8	10	5.6	<1	<1	<1		
	Yashirogawa River	Yashirogawabashi Bridge	Tanaguramachi Town	2011/9/28	Sunny	22.6	0.50	17.4	Surface layer	71	9.8	11	8.1	<1	<1	<1		
	Kitasugawa River	Yanagibashi Bridge	Hiratomura Village	2011/9/28	Sunny	12.8	0.30	12.6	Surface layer	100 or more	12.0	6	5.1	<1	<1	<1		
	Imadegawa River	Nekonakibashi Bridge	Ishikawamachi Town	2011/9/27	Sunny	21.8	1.20	18.4	Surface layer	27.5	10.4	19	22	<1	<1	<1		
	Yashirogawa River	Ojibashi Bridge	Ishikawamachi Town	2011/9/27	Sunny	25.8	1.00	16.4	Surface layer	48.5	10.7	13	13	<1	<1	<1		
	Abukumagawa River	Kawanomebashi Bridge	Tamakawamura Village	2011/9/27	Sunny	17.4	1.10	17.6	Surface layer	38	12.7	18	13	<1	<1	<1		
		Emochibashi Bridge	Sukagawashi City	2011/9/26	Cloudy	18.8	0.80	16.8	Surface layer	42	13.4	22	16	<1	<1	<1		
	Shakadogawa River	Sukagawashi City water intake point	Sukagawashi City	2011/9/27	Sunny	15.4	0.60	16.2	Surface layer	46	12.5	13	10	<1	<1	<1		
		Before the confluence with Abukumagawa River	Sukagawashi City	2011/9/27	Cloudy	14.4	0.40	14.8	Surface layer	31	13.3	24	12	<1	<1	<1		
	Sasaharagawa River	Shinbashi Bridge	Koriyamashi City	2011/9/26	Cloudy	19.4	0.80	18.0	Surface layer	71	19.4	8	8.8	<1	<1	<1		
	Yatagawa River	Yatagawabashi Bridge	Koriyamashi City	2011/9/26	Cloudy	20.0	1.00	17.0	Surface layer	50	16.2	16	9.8	<1	<1	<1		
	Otakinegawa River	Funehikibashi Bridge	Tamurashi City	2011/9/26	Sunny	18.0	0.40	15.8	Surface layer	38.5	14.8	15	10	<1	<1	<1		
		Before the confluence with Abukumagawa River	Koriyamashi City	2011/9/26	Cloudy	20.0	0.80	18.0	Surface layer	15	12.7	28	40	<1	<1	<1		
		Before the confluence with Babagawa River	Koriyamashi City	2011/9/17	Cloudy	26.2	0.30	23.4	Surface layer	100 or more	28.5	5	3.6	<1	<1	<1		
	Ousegawa River	Makunouchibashi Bridge	Koriyamashi City	2011/9/17	Cloudy	24.2	0.50	23.9	Surface layer	100 or more	37.7	4	3.8	<1	<1	<1		
		Before the confluence with Abukumagawa River	Koriyamashi City	2011/9/18	Cloudy	25.3	0.35	24.4	Surface layer	100 or more	33.9	4	3.4	<1	<1	<1		
	Abukumagawa River	Akutsubashi Bridge	Koriyamashi City	2011/9/17	Sunny	29.5	0.60	26.2	Surface layer	88.5	36.9	6	4.3	<1	<1	<1		
		After the confluence with Ishimurogawa River	Koriyamashi City	2011/9/16	Sunny	28.9	0.30	23.5	Surface layer	100 or more	10.1	4	2.6	<1	<1	<1		
	Gohyakugawa River	Kamisekishitabashi Bridge	Motomiyashi City	2011/9/16	Sunny	31.3	1.05	26.3	Surface layer	100 or more	11.5	8	5.1	<1	<1	<1		
		Before the confluence with Abukumagawa River	Motomiyashi City	2011/9/15	Sunny	29.5	0.30	28.7	Surface layer	82	16.5	6	5.7	<1	<1	<1		
	Abukumagawa River	Takadabashi Bridge	Nihonmatsushi City	2011/9/15	Sunny	29.6	2.20	25.9	Surface layer	63	20.4	8	6.5	<1	<1	<1		
	Kuchibutogawa River	Kuchibutogawabashi Bridge	Nihonmatsushi City	2011/9/25	Sunny	17.5	0.50	15.6	Surface layer	47	10.7	17	10	<1	<1	<1		
	Utsushigawa River	Osegawabashi Bridge	Nihonmatsushi City	2011/9/15	Sunny	31.5	0.30	22.6	Surface layer	75	60.8	8	6.1	<1	<1	<1		
	Mizuharagawa River	Getouchibashi Bridge	Fukushima City	2011/9/16	Sunny	29.6	0.30	27.2	Surface layer	100 or more	11.4	7	5.8	<1	<1	<1		
	Megamigawa River	Tsurumakibashi Bridge	Fukushima City	2011/9/15	Sunny	32.5	0.30	26.4	Surface layer	100 or more	26.0	4	3.0	<1	<1	<1		
	Abukumagawa River	Horaibashi Bridge	Fukushima City	2011/9/17	Cloudy	25.6	0.40	25.8	Surface layer	64	20.1	12	10	<1	<1	<1		
	Nigorigawa River	Before the confluence with Omorigawa River	Fukushima City	2011/9/19	Cloudy	21.8	0.70	24.1	Surface layer	94.5	24.4	7	7.4	<1	<1	<1		
	Arakawa River	Hinokurabashi Bridge	Fukushima City	2011/9/19	Light rain	20.9	0.40	19.7	Surface layer	100 or more	31.1	4	3.9	<1	<1	<1		
	Sukawa River	Sukawabashi Bridge	Fukushima City	2011/9/19	Cloudy	20.4	0.30	20.3	Surface layer	100 or more	59.3	<1	0.1	<1	<1	<1		
		Before the confluence with Abukumagawa River	Fukushima City	2011/9/19	Cloudy	23.0	0.50	20.2	Surface layer	61	33.6	18	8.7	<1	<1	<1		
	Matsukawa River	Before the confluence with Abukumagawa River	Fukushima City	2011/9/17	Cloudy	27.5	0.20	22.6	Surface layer	100 or more	21.8	1	0.6	<1	<1	<1		
	Hattandagawa River	Hattandabashi Bridge	Fukushima City	2011/9/17	Cloudy	29.0	0.30	23.9	Surface layer	100 or more	22.9	9	6.3	<1	<1	<1		
	Surikamigawa River	Totsunabashi Bridge	Fukushima City	2011/9/18	Clear	34.2	1.53	22.9	Surface layer	100 or more	7.8	4	2.7	<1	<1	<1		
		Before the confluence with Abukumagawa River	Fukushima City	2011/9/18	Sunny	32.4	0.60	25.9	Surface layer	100 or more	9.7	5	3.1	<1	<1	<1		
	Abukumagawa River	Taishobashi Bridge	Dateshi City	2011/9/17	Cloudy	30.9	0.30	25.7	Surface layer	67	21.2	10	7.7	<1	<1	<1		
	Hirosegawa River	Tatenokoshibashi Bridge	Kawamatamachi Town	2011/9/25	Sunny	25.2	0.40	17.2	Surface layer	35	10.1	25	11	<1	<1	<1		
		Jizogawarabashi Bridge	Dateshi City	2011/9/18	Sunny	30.0	0.30	22.9	Surface layer	100 or more	15.6	2	2.5	<1	<1	<1		
	Ogunigawa River	Before the confluence with Hirosegawa River	Dateshi City	2011/9/18	Sunny	29.0	0.30	25.0	Surface layer	100 or more	33.6	6	5.4	<1	<1	<1		
	Hirosegawa River	Before the confluence with Abukumagawa River	Dateshi City	2011/9/17	Sunny	28.9	0.30	26.9	Surface layer	100 or more	18.3	10	6.6	<1	<1	<1		
	Others	Kurokawa River	Tochigi Prefecture Border	Shirakawashi City	2011/9/28	Sunny	11.8	0.65	12.8	Surface layer	100 or more	7.6	3	1.9	<1	<1	<1	
		Kujigawa River	Matsuokabashi Bridge	Tanaguramachi Town	2011/9/28	Sunny	21.2	0.80	17.4	Surface layer	78	12.6	18	10	<1	<1	<1	
			Takachiharabashi Bridge	Yamatsurimachi Town	2011/9/28	Sunny	20.6	0.60	15.0	Surface layer	92	10.2	11	6.0	<1	<1	<1	

(Sampling points for rivers are listed from north to south.)

ORiver (Fukushima Prefecture, Nakadori Area) : Sediment Monitoring Results

Sampling point			Sampling date	Weather	Air temperature °C	Full depth m	General items			Concentration of radioactive material Bq/kg(dried mud)			Remarks		
Water body	Point	Municipality					Mud temperature °C	Mud sampling depth cm	Mud content %	Property	Radioactive iodine I-131	Radioactive cesium Cs-134 Cs-137			
A b u k u m a g a w a r i v e r S y s t e m	Abukumagawa River	Habutobashi Bridge	Nishigomura Villag	2011/9/30	Cloudy	22.3	0.45	16.1	5	79.6	Sand	<30	37	29	
		Tamachiohashi Bridge	Shirakawashi City	2011/9/28	Sunny	16.7	0.32	18.7	5	76.5	Sand	<30	90	110	
	Yantagawa River	Before the confluence with Abukumagawa River	Shirakawashi City	2011/9/28	Sunny	20.4	0.50	20.4	4	83.5	Sand	<30	140	150	
	Yashirogawa River	Yashirogawabashi Bridge	Tanaguramachi To	2011/9/28	Sunny	22.6	0.50	21.0	3	84.0	Sand with gravel	<30	34	43	
	Kitasugawa River	Yanagibashi Bridge	Hiratomura Village	2011/9/28	Sunny	12.8	0.30	12.8	3	81.7	Sand with gravel	<30	10	17	
	Imadegawa River	Nekonakibashi Bridge	Ishikawamachi To	2011/9/27	Sunny	21.8	1.20	17.8	6	83.4	Sand	<30	22	23	
	Yashirogawa River	Ojibashi Bridge	Ishikawamachi To	2011/9/27	Sunny	25.8	1.00	18.5	5	86.3	Sand with gravel	<30	17	18	
	Abukumagawa River	Kawanomebashi Bridge	Tamakawamura Vi	2011/9/27	Sunny	17.4	1.10	18.8	3	82.6	Sand	<30	24	47	
		Emochibashi Bridge	Sukagawashi City	2011/9/26	Cloudy	18.8	0.80	17.0	5	60.9	Sand	<30	<10	<11	
	Shakadogawa River	Sukagawashi City water intake point	Sukagawashi City	2011/9/27	Sunny	15.4	0.60	16.0	3	86.4	Sand with gravel	<30	33	39	
		Before the confluence with Abukumagawa River	Sukagawashi City	2011/9/27	Cloudy	14.4	0.40	15.4	3	82.2	Sand with gravel	<30	240	310	
	Sasaharagawa River	Shinbashi Bridge	Koriyamashi City	2011/9/26	Cloudy	19.4	0.80	21.0	2	69.9	Sand with gravel	<30	560	680	
	Yatagawa River	Yatagawabashi Bridge	Koriyamashi City	2011/9/26	Cloudy	20.0	1.00	18.0	4	86.5	Sand with gravel	<30	67	70	
	Otakegawa River	Funehikibashi Bridge	Tamurashi City	2011/9/26	Sunny	18.0	0.40	15.0	5	93.0	Sand with gravel	<30	12	15	
		Before the confluence with Abukumagawa River	Koriyamashi City	2011/9/26	Cloudy	20.0	0.80	18.8	5	71.1	Sand	<30	360	390	
	Ousegawa River	Before the confluence with Babagawa River	Koriyamashi City	2011/9/17	Cloudy	26.2	0.30	23.3	5	83.5	Sand with gravel	<30	320	380	
		Makunouchibashi Bridge	Koriyamashi City	2011/9/17	Cloudy	24.2	0.50	23.9	5	83.4	Sand with gravel	<30	470	590	
		Before the confluence with Abukumagawa River	Koriyamashi City	2011/9/18	Cloudy	25.3	0.35	24.3	5	74.2	Sand with silt	<30	6,300	7,200	
	Abukumagawa River	Akutsubashi Bridge	Koriyamashi City	2011/9/17	Sunny	29.5	0.60	26.4	5	75.0	Sand with silt	<30	3,500	4,300	
		After the confluence with Ishimurogawa River	Koriyamashi City	2011/9/16	Sunny	28.9	0.30	25.0	5	76.6	Sand with silt	<30	550	660	
	Gohyakugawa River	Kamisekishitabashi Bridge	Motomiyashi City	2011/9/16	Sunny	31.3	1.05	23.0	5	46.1	Silt	<30	10,000	12,000	
		Before the confluence with Abukumagawa River	Motomiyashi City	2011/9/15	Sunny	29.5	0.30	27.5	5	84.6	Sand	<30	250	310	
	Abukumagawa River	Takadabashi Bridge	Nihonmatsushi City	2011/9/15	Sunny	29.6	2.20	25.2	10	43.9	Silt	<30	14,000	16,000	
	Kuchibutogawa River	Kuchibutogawabashi Bridge	Nihonmatsushi City	2011/9/25	Sunny	17.5	0.50	16.0	5	80.1	Sand with gravel	<30	880	1,000	
	Utsushigawa River	Osegawabashi Bridge	Nihonmatsushi City	2011/9/15	Sunny	31.5	0.30	22.0	10	65.6	Sand with silt	<30	830	950	
	Mizuharagawa River	Getouchibashi Bridge	Fukushimashi City	2011/9/16	Sunny	29.6	0.30	26.0	5	72.9	Sand with gravel	<30	2,900	3,500	
	Megamigawa River	Tsurumakibashi Bridge	Fukushimashi City	2011/9/15	Sunny	32.5	0.30	25.9	10	83.4	Sand with gravel	<30	870	1,000	
	Abukumagawa River	Horaibashi Bridge	Fukushimashi City	2011/9/17	Cloudy	25.6	0.40	25.6	5	78.1	Sand	<30	3,000	3,500	
	Nigorigawa River	Before the confluence with Omorigawa River	Fukushimashi City	2011/9/19	Cloudy	21.8	0.70	24.0	3	84.7	Gravel with sand	<30	540	620	
	Arakawa River	Hinokurabashi Bridge	Fukushimashi City	2011/9/19	Light rain	20.9	0.40	19.7	4	67.6	Sand	<30	520	640	
Sukawa River	Sukawabashi Bridge	Fukushimashi City	2011/9/19	Cloudy	20.4	0.30	20.3	4	78.1	Sand with gravel	<30	360	430		
Arakawa River	Before the confluence with Abukumagawa River	Fukushimashi City	2011/9/19	Cloudy	23.0	0.50	20.3	5	80.8	Sand with gravel	<30	570	720		
Matsukawa River	Before the confluence with Abukumagawa River	Fukushimashi City	2011/9/17	Cloudy	27.5	0.20	22.8	5	79.8	Sand with gravel	<30	7,000	8,200		
Hattandagawa River	Hattandabashi Bridge	Fukushimashi City	2011/9/17	Cloudy	29.0	0.30	21.5	5	83.8	Sand with gravel	<30	1,300	1,700		
Surikamigawa River	Totsunabashi Bridge	Fukushimashi City	2011/9/18	Clear	34.2	1.53	24.0	4	84.2	Sand with gravel	<30	470	570		
	Before the confluence with Abukumagawa River	Fukushimashi City	2011/9/18	Sunny	32.4	0.60	25.6	4	78.9	Sand with gravel	<30	950	1,200		
Abukumagawa River	Taishobashi Bridge	Dateshi City	2011/9/17	Cloudy	30.9	0.30	26.3	5	61.7	Sand with gravel	<30	6,400	7,800		
Hirosegawa River	Tatenokoshibashi Bridge	Kawamatamachi T	2011/9/25	Sunny	25.2	0.40	19.0	5	86.1	Sand	<30	190	250		
	Jizogawarabashi Bridge	Dateshi City	2011/9/18	Sunny	30.0	0.30	22.8	5	82.3	Sand	<30	600	740		
Ogunigawa River	Before the confluence with Hirosegawa River	Dateshi City	2011/9/18	Sunny	29.0	0.30	24.8	5	75.5	Sil/sand with gravel	<30	4,200	5,000		
Hirosegawa River	Before the confluence with Abukumagawa River	Dateshi City	2011/9/17	Sunny	28.9	0.30	25.1	5	87.7	Sand with gravel	<30	340	400		
t h e r	Kurokawa River	Tochigi Prefecture Border	Shirakawashi City	2011/9/28	Sunny	11.8	0.65	13.1	5	81.4	Sand with gravel	<30	43	62	
	Kujigawa River	Matsuokabashi Bridge	Tanaguramachi To	2011/9/28	Sunny	21.2	0.80	17.2	4	83.8	Sand	<30	11	28	
		Takachiharabashi Bridge	Yamatsurimachi T	2011/9/28	Sunny	20.6	0.60	15.8	4	83.3	Sand	<30	26	37	

(Sampling points for rivers are listed from north to south.)

ORiver (Fukushima Prefecture, Aizu Area): Water Quality Monitoring Results

Sampling point				Sampling date	Weather	Air temperature	Full depth	General items						Concentration of radioactive material Bq/L			Remarks
Water body	Point	Municipality	°C			Water temperature		Sampling depth	Transparency	Electrical conductivity	SS	Turbidity	Radioactive iodine	Radioactive cesium			
			°C			°C		cm	mS/m	mg/L	I-131	Cs-134	Cs-137				
A g a n o g a w a R i v e r S y s t e m	Aganogawa River	Tajimabashi Bridge	Minamiaizumachi Town	2011/9/26	Cloudy	16.9	0.50	13.9	Surface layer	100 or more	5.0	2	1.8	<1	<1	<1	
		Okawabashi Bridge	Aizuwakamatsushi City	2011/9/29	Clear	24.4	0.70	14.9	Surface layer	54.5	6.6	9	9.8	<1	<1	<1	
	Yukawa River	Takimibashi Bridge	Aizuwakamatsushi City	2011/9/29	Clear	25.0	0.30	15.7	Surface layer	50	8.0	9	8.7	<1	<1	<1	
		Shinyukawabashi Bridge	Aizuwakamatsushi City	2011/9/27	Sunny	18.2	0.70	16.2	Surface layer	49.5	9.1	21	14	<1	<1	<1	
		Before the confluence with Aganogawa River	Aizuwakamatsushi City	2011/9/27	Sunny	16.8	0.60	15.2	Surface layer	49	10.5	20	11	<1	<1	<1	
	Miyakawa River	Saikunabashi Bridge	Aizubangemachi Town	2011/9/19	Rain	20.2	1.10	19.8	Surface layer	100 or more	13.4	13	4.0	<1	<1	<1	
	Aganogawa River	Miyakobashi Bridge	Aizubangemachi Town	2011/9/27	Sunny	23.2	0.70	17.4	Surface layer	100 or more	8.3	7	6.3	<1	<1	<1	
	Nippashigawa River	Minamiohashi Bridge	Kitakatashi City	2011/9/27	Clear	23.1	0.45	19.6	Surface layer	100 or more	10.7	9	7.1	<1	<1	<1	
	Kyuyukawa River	Awanomiyabashi Bridge	Yugawamura Village	2011/9/28	Sunny	23.2	0.50	20.2	Surface layer	47.5	16.1	16	15	<1	<1	<1	
	Kyumiya River	Josukebashi Bridge	Aizubangemachi Town	2011/9/27	Sunny	20.2	0.40	17.7	Surface layer	39.5	14.2	30	20	<1	<1	<1	
	Tatsukigawa River	Ohashi Bridge	Kitakatashi City	2011/9/27	Clear	22.0	0.50	16.4	Surface layer	100 or more	8.2	2	1.6	<1	<1	<1	
		Shimokawarabashi Bridge	Kitakatashi City	2011/9/27	Clear	21.2	0.40	17.4	Surface layer	100 or more	11.3	3	2.5	<1	<1	<1	
	Nigorigawa River	Nigorigawabashi Bridge	Kitakatashi City	2011/9/27	Clear	24.2	0.30	18.4	Surface layer	63	11.6	4	4.2	<1	<1	<1	
		Yamazakibashi Bridge	Kitakatashi City	2011/9/19	Rain	21.1	0.30	22.9	Surface layer	100 or more	18.3	3	2.2	<1	<1	<1	
	Inagawa River	Aoyagibashi Bridge	Minamiaizumachi Town	2011/9/27	Cloudy	17.1	0.40	13.0	Surface layer	26	5.3	14	13	<1	<1	<1	
		Kurosawabashi Bridge	Tadamimachi Town	2011/9/27	Sunny	20.8	0.40	18.9	Surface layer	21	6.4	47	43	<1	<1	<1	
	Tadamigawa River	Nishitanibashi Bridge	Kaneyamamachi Town	2011/9/27	Clear	19.4	0.30	16.1	Surface layer	14	8.3	42	58	<1	<1	<1	
		Fujibashi Bridge	Aizubangemachi Town	2011/9/28	Sunny	19.9	0.45	18.4	Surface layer	17	7.3	52	59	<1	<1	<1	
Aganogawa River	Shingo Dam	Kitakatashi City	2011/9/28	Sunny	15.8	1.00	17.3	Surface layer	15	8.8	32	41	<1	<1	<1		
Others	Sukawa River	Sukawano	Inawashiro-machi Town	2011/9/29	Clear	21.7	0.33	16.2	Surface layer	100 or more	76.1	8	4.7	<1	<1	<1	
	Nagasegawa River	Koganebashi Bridge	Inawashiro-machi Town	2011/9/28	Clear	19.3	0.28	17.3	Surface layer	100 or more	29.9	5	6.1	<1	<1	<1	

(Sampling points for rivers are listed from north to south.)

○Rivers (Fukushima Prefecture, Aizu Area) : Sediment Monitoring Results

Sampling point			Sampling date	Weather	Air temperature ℃	Full depth m	General items				Concentration of radioactive material Bq/kg(dried mud)			Remarks
Water body	Point	Municipality					Mud temperature	Mud sampling depth	Mud content	Property	Radioactive iodine I-131	Radioactive cesium		
							℃	cm	%			Cs-134	Cs-137	
Aganogawa River	Tajimabashi Bridge	Minamiaizumachi Town	2011/9/26	Cloudy	16.9	0.50	15.1	5	85.5	Sand	<30	<10	<10	
	Okawabashi Bridge	Aizuwakamatsushi City	2011/9/29	Clear	24.4	0.70	14.9	5	79.9	Sand	<30	11	16	
Yukawa River	Takimibashi Bridge	Aizuwakamatsushi City	2011/9/29	Clear	25.0	0.30	15.6	5	78.4	Sand	<30	130	160	
	Shinyukawabashi Bridge	Aizuwakamatsushi City	2011/9/27	Sunny	18.2	0.70	16.1	5	46.0	Silt	<30	3,900	4,800	
	Before the confluence with Aganogawa River	Aizuwakamatsushi City	2011/9/27	Sunny	16.8	0.60	15.3	5	50.3	Silt	<30	1,100	1,200	
Miyakawa River	Saikunabashi Bridge	Aizubangemachi Town	2011/9/19	Rain	20.2	1.10	16.0	12	80.5	Sand	<30	54	72	
Aganogawa River	Miyakobashi Bridge	Aizubangemachi Town	2011/9/27	Sunny	23.2	0.70	17.4	5	74.7	Sand with silt	<30	180	200	
Nippashigawa River	Minamiohashi Bridge	Kitakatashi City	2011/9/27	Clear	23.1	0.45	19.6	5	78.2	Coarse sand	<30	77	90	
Kyuyukawa River	Awanomiyabashi Bridge	Yugawamura Village	2011/9/28	Sunny	23.2	0.50	19.8	5	40.0	Silt	<30	5,900	7,100	
Kyumiya River	Josukebashi Bridge	Aizubangemachi Town	2011/9/27	Sunny	20.2	0.40	17.5	5	75.9	Sand	<30	280	330	
Tatsukigawa River	Ohashi Bridge	Kitakatashi City	2011/9/27	Clear	22.0	0.50	18.2	5	78.6	Gravel/sand with silt	<30	300	370	
	Shimokawabashi Bridge	Kitakatashi City	2011/9/27	Clear	21.2	0.40	18.4	5	79.8	Sand with gravel	<30	160	180	
Nigorigawa River	Nigorigawabashi Bridge	Kitakatashi City	2011/9/27	Clear	24.2	0.30	17.8	5	80.7	Sand with gravel	<30	32	37	
	Yamazakibashi Bridge	Kitakatashi City	2011/9/19	Rain	21.1	0.30	23.1	5	64.1	Sand with gravel	<30	80	100	
Inagawa River	Aoyagibashi Bridge	Minamiaizumachi Town	2011/9/27	Cloudy	17.1	0.40	14.8	5	82.3	Sand	<30	<10	<10	
	Kurosawabashi Bridge	Tadamimachi Town	2011/9/27	Sunny	20.8	0.40	17.8	5	78.9	Sand	<30	<10	<10	
Tadamigawa River	Nishitanibashi Bridge	Kaneyamamachi Town	2011/9/27	Clear	19.4	0.30	16.0	5	90.4	Gravel	<30	<10	<10	
	Fujibashi Bridge	Aizubangemachi Town	2011/9/28	Sunny	19.9	0.45	18.2	5	78.9	Sand with silt	<30	<10	14	
Aganogawa River	Shingo Dam	Kitakatashi City	2011/9/28	Sunny	15.8	1.00	17.3	5	49.8	Silt	<30	54	75	
Others	Sukawa River	Sukawano	2011/9/29	Clear	21.7	0.33	16.4	5	77.7	Sand with gravel	<30	71	90	
	Nagasegawa River	Koganebashi Bridge	Inawashiromachi Town	2011/9/28	Clear	19.3	0.28	19.6	5	86.9	Sand with gravel	<30	11	13

(Sampling points for rivers are listed from north to south.)

ORiver (Fukushima Prefecture, Aizu Area) : Surrounding Environment Monitoring Results

Sampling point			Sampling date	Weather	Air temperature °C	Left bank					Right bank				Remarks		
						Soil			Air dose μSv/h	Soil			Air dose μSv/h				
Water body	Point	Municipality	Property	Concentration of radioactive material Bq/kg(dry)			Property	Concentration of radioactive material Bq/kg(dry)									
				Radioactive iodine I-131	Radioactive cesium Cs-134 Cs-137			Radioactive iodine I-131	Radioactive cesium Cs-134 Cs-137								
A g a n o g a w a R i v e r S y s t e m	A g a n o g a w a R i v e r	Tajimabashi Bridge	Minamiaizumachi Town	2011/9/26	Cloudy	16.9	Loamy	<30	110	130	0.09	Loamy	<30	97	100	0.09	
		Okawabashi Bridge	Aizuwakamatsushi City	2011/9/29	Clear	24.4	Sandy	<30	120	160	0.20	Sandy	<30	230	290	0.15	*
	Y u k a w a R i v e r	Takimibashi Bridge	Aizuwakamatsushi City	2011/9/29	Clear	25.0	Clay-loamy	<30	780	910	0.36	Sandy	<30	670	870	0.37	*
		Shinyukawabashi Bridge	Aizuwakamatsushi City	2011/9/27	Sunny	18.2	Sandy	<30	890	1,100	0.56	Sandy	<30	1,100	1,300	0.58	*
		Before the confluence with Aganogawa River	Aizuwakamatsushi City	2011/9/27	Sunny	16.8	Loamy	<30	1,400	1,600	0.54	Loamy	<30	1,000	1,300	0.54	*
	Miyakawa River	Saikunabashi Bridge	Aizubangemachi Town	2011/9/19	Rain	20.2	Loamy	<30	750	870	0.20	Sandy	<30	200	230	0.19	
	Aganogawa River	Miyakobashi Bridge	Aizubangemachi Town	2011/9/27	Sunny	23.2	Loamy	<30	600	670	0.59	Sandy	<30	3,500	4,200	0.60	*
	Nippashigawa River	Minamiohashi Bridge	Kitakatashi City	2011/9/27	Clear	23.1	Loamy	<30	2,900	3,200	0.65	Sandy	<30	520	590	0.61	*
	Kyuyukawa River	Awanomiyabashi Bridge	Yugawamura Village	2011/9/28	Sunny	23.2	Sandy	<30	1,700	2,000	0.76	Sandy	<30	1,200	1,500	0.65	*
	Kyumiya River	Josukebashi Bridge	Aizubangemachi Town	2011/9/27	Sunny	20.2	Loamy	<30	1,300	1,600	0.50	Loamy	<30	1,200	1,400	0.50	*
	T a t s u k i g a w a R i v e r	Ohashi Bridge	Kitakatashi City	2011/9/27	Clear	22.0	Loamy	<30	230	300	0.13	Loamy	<30	570	720	0.16	
		Shimokawabashi Bridge	Kitakatashi City	2011/9/27	Clear	21.2	Loamy	<30	930	1,100	0.26	Loamy	<30	670	840	0.24	
	N i g o r i g a w a R i v e r	Nigorigawabashi Bridge	Kitakatashi City	2011/9/27	Clear	24.2	Loamy	<30	1,300	1,500	0.24	Loamy	<30	790	960	0.23	
		Yamazakibashi Bridge	Kitakatashi City	2011/9/19	Rain	21.1	Loamy	<30	530	620	0.18	Loamy	<30	5,600	7,100	0.17	
	I n a g a w a R i v e r	Aoyagibashi Bridge	Minamiaizumachi Town	2011/9/27	Cloudy	17.1	Loamy	<30	47	60	0.15	Loamy	<30	38	52	0.14	
Kurosawabashi Bridge		Tadamimachi Town	2011/9/27	Sunny	20.8	Loamy	<30	280	330	0.10	Loamy	<30	<10	<10	0.08		
T a d a m i g a w a R i v e r	Nishitanibashi Bridge	Kaneyamamachi Town	2011/9/27	Clear	19.4	Loamy	<30	<10	33	0.09	Loamy	<30	35	38	0.08		
	Fujibashi Bridge	Aizubangemachi Town	2011/9/28	Sunny	19.9	Sandy	<30	17	18	0.16	Sandy	<30	82	110	0.20	*	
Aganogawa River	Shingo Dam	Kitakatashi City	2011/9/28	Sunny	15.8	Sandy	<30	550	670	0.25	Loamy	<30	310	370	0.21	*	
O t h e r s	Sukawa River	Sukawano	Inawashiromachi Town	2011/9/29	Clear	21.7	Loamy	<30	600	800	0.28	Loamy	<30	1,000	1,200	0.26	
	Nagasegawa River	Koganebashi Bridge	Inawashiromachi Town	2011/9/28	Clear	19.3	Loamy	<30	130	160	0.13	Sandy	<30	200	260	0.11	

*Air dose was measured with a survey meter, TCS-172 or TCS-162 of Hitachi-Aloka Medical, Ltd. For points with * in the Remarks column, a survey meter, Model 3 of Ludlum Measurement Inc. was used. Figures measured with a Model 3 had a tendency to be a little higher than those measured with a TCS-172 or TCS-161 (about 1.6 times higher).

(Sampling points for rivers are listed from north to south.)

OLake and Headwater (Fukushima Prefecture, Hamadori Area): Water Quality Monitoring Results

Sampling point		Sampling date	Weather	Air temperature	Full depth	General items						Concentration of radioactive material Bq/L			Remarks	
Point	Municipality			°C		Water temperature	Sampling depth	Secchi disk depth	Electrical conductivity	SS	Turbidity	Radioactive iodine	Radioactive cesium			
					m	°C	m	m	mS/m	mg/L		I-131	Cs-134	Cs-137		
Soso (farm pond)	Takei	Shinchimachi Town	2011/9/20	Rain	16.0	0.4	21.7	0	0.4 or more	23.4	40	28	<1	<1	<1	
Soso (farm pond)	Uchizawa	Somashi City	2011/9/20	Rain	16.0	0.3	18.4	0	0.3 or more	29.9	200	280	<1	1	2	
Matsugabo Dam (Utagawako Lake)		Somashi City	2011/9/28	Cloudy	17.6	22.9	18.2	0.5	2	8.2	2	2.5	<1	<1	<1	
	1 m from the bottom	-	-	-	-	-	7.9	21.9	-	10.4	3	6.9	<1	<1	1	
Mano Dam		Iitatemura Village	2011/9/30	Cloudy	22.6	56.9	20.2	0.5	2.2	7.0	1	1.7	<1	<1	<1	Deliberate evacuation areas
	1 m from the bottom	-	-	-	-	-	7.0	55.9	-	15.1	11	13	<1	10	12	
Gainbe Dam Reservoir		Iitatemura Village	2011/9/20	Rain	15.6	0.7	19.0	0	0.7 or more	6.2	4	7.9	<1	<1	1	Deliberate evacuation areas
Takanokura Dam Reservoir		Minamisomashi City	2011/9/16	Sunny	29.2	0.3	26.0	0	0.3 or more	7.1	13	2.4	<1	<1	<1	Former evacuation-prepared areas in case of emergency
Yokokawa Dam Reservoir		Minamisomashi City	2011/9/16	Sunny	30.0	0.3	27.0	0	0.3 or more	5.5	7	1.6	<1	2	3	Former evacuation-prepared areas in case of emergency
Ogaki Dam		Namiemachi Town	2011/9/26	Cloudy	17.4	0.5	17.2	0	0.5	4.8	16	21	<1	12	15	Restricted areas
Sakashita Dam		Okumamachi Town	2011/9/26	Sunny	18.8	0.5	19.0	0	0.3	6.5	26	41	<1	1	1	Restricted areas
Takikawa Dam		Kawauchimura Villag	2011/9/26	Cloudy	17.9	0.3	19.3	0	0.3 or more	6.4	9	9.8	<1	<1	1	Restricted areas
Kido Dam		Narahamachi Town	2011/9/27	Sunny	21.8	0.3	17.2	0	0.4 (Transparencyc m)	47.2	6	12	<1	<1	<1	Restricted areas
Komachi Dam		Onomachi Town	2011/9/29	Sunny	19.7	11.5	21.2	0.5	0.5	7.8	23	23	<1	<1	<1	
	1 m from the bottom	-	-	-	-	-	12.1	10.5	-	14.5	42	49	<1	<1	<1	
Iwaki (farm pond)	Shinike	Iwakishi City	2011/9/20	Rain	25.0	0.5	24.1	0	0.7 (Transparencyc m)	13.1	4	5.8	<1	<1	<1	
Iwaki (farm pond)	Kanoritsutsumishita	Iwakishi City	2011/9/27	Sunny	20.6	0.5	21.2	0	0.4	48.4	8	6.4	<1	<1	<1	
Takashiba Dam Reservoir (Takashibako Lake)		Iwakishi City	2011/9/27	Sunny	22.1	21.8	16.1	0.5	1.7	10.3	2	5.0	<1	<1	<1	
	1 m from the bottom	-	-	-	-	-	14.7	20.8	-	10.4	14	14	<1	<1	<1	
Shitoki Dam Reservoir		Iwakishi City	2011/9/27	Sunny	22.2	35.6	17.4	0.5	0.4	5.4	22	33	<1	<1	<1	
	1 m from the bott	-	-	-	-	-	9.3	34.6	-	10.7	14	23	<1	<1	<1	

(・ Sampling points are listed from north to south.)

○Lake and Headwater (Fukushima Prefecture, Hamadori Area): Sediment Monitoring Results

Sampling point		Sampling date	Weather	Air temperature	Full depth	General items				Concentration of radioactive material Bq/kg (dried mud)			Remarks	
Point	Municipality			°C		m	Mud temperature	Mud sampling depth	Mud content	Property	Radioactive iodine	Radioactive cesium		
						°C	cm	%		I-131	Cs-134	Cs-137		
Soso (farm pond)	Takei	Shinchimachi Town	2011/9/20	Rain	16.0	0.4	21.8	5	67.3	Silt with gravel	<30	66	74	
Soso (farm pond)	Uchizawa	Somashi City	2011/9/20	Rain	16.0	0.3	20.4	5	56.6	Silt with gravel	<30	110	140	
Matsugabo Dam (Utawawako Lake)		Somashi City	2011/9/28	Cloudy	17.6	22.9	7.3	10	27.6	Silt	<30	10,000	12,000	
Mano Dam		Iitatemura Village	2011/9/30	Cloudy	22.6	56.9	6.4	13	22.2	Silt	<30	4,600	5,300	Deliberate evacuation areas
Ganbe Dam Reservoir		Iitatemura Village	2011/9/20	Rain	15.6	0.7	18.8	5	77.8	Sand	<30	3,700	4,500	Deliberate evacuation areas
Takanokura Dam Reservoir		Minamisomashi City	2011/9/16	Sunny	29.2	0.3	23.9	5	58.3	Gravel/sand with silt	<30	10,000	12,000	Former evacuation-prepared areas in case of emergency
Yokokawa Dam Reservoir		Minamisomashi City	2011/9/16	Sunny	30.0	0.3	27.0	5	70.3	Sand	<30	6,300	7,500	Former evacuation-prepared areas in case of emergency
Ogaki Dam		Namiemachi Town	2011/9/26	Cloudy	17.4	0.5	16.8	5	97.1	Gravel with sand	<30	5,700	7,400	Restricted areas
Sakashita Dam		Okumamachi Town	2011/9/26	Sunny	18.8	0.5	18.4	15	28.1	Silt with sand	<30	17,000	20,000	Restricted areas
Takikawa Dam		Kawauchimura Village	2011/9/26	Cloudy	17.9	0.3	19.0	3	43.8	Silt	<30	14,000	17,000	Restricted areas
Kido Dam		Narahamachi Town	2011/9/27	Sunny	21.8	0.3	22.1	5	34.5	Silt with sand	<30	5,400	6,000	Restricted areas
Komachi Dam		Onomachi Town	2011/9/29	Sunny	19.7	11.5	10.0	10	29.7	Silt	<30	730	1,000	
Iwaki (farm pond)	Shinike	Iwakishi City	2011/9/20	Rain	25.0	0.5	23.2	5	60.2	Sand with silt	<30	140	170	
Iwaki (farm pond)	Kanoritsutsumishita	Iwakishi City	2011/9/27	Sunny	20.6	0.5	20.6	15	50.5	Silt with sand	<30	280	320	
Takashiba Dam Reservoir (Takashibako Lake)		Iwakishi City	2011/9/27	Sunny	22.1	21.8	15.0	10	43.8	Silt with sand	<30	840	1,100	
Shitoki Dam Reservoir		Iwakishi City	2011/9/27	Sunny	22.2	35.6	11.8	10	28.5	Silt with sand	<30	1,400	1,600	

(・ Sampling points are listed from north to south.)

○Lake and Headwater (Fukushima Prefecture, Hamadori Area):Surrounding Environment Monitoring Results

Sampling point		Sampling date	Weather	Air temperature °C	Soil				Air dose μSv/h	Remarks	
Point	Municipality				Property	Concentration of radioactive material Bq/kg (dry)					
						Radioactive iodine I-131	Radioactive cesium Cs-134 Cs-137				
Soso (farm pond)	Takei	Shinchimachi Town	2011/9/20	Rain	16.0	Loamy	<30	960	1,100	0.40	
Soso (farm pond)	Uchizawa	Somashi City	2011/9/20	Rain	16.0	Clay-loamy	<30	1,000	1,100	0.41	
Matsugabo Dam (Utagawako Lake)		Somashi City	2011/9/28	Cloudy	17.6	Sandy	<30	2,700	3,200	0.62	
Mano Dam		Iitatemura Village	2011/9/30	Cloudy	22.6	Loamy	<30	5,800	6,700	1.84	Deliberate evacuation areas
Ganbe Dam Reservoir		Iitatemura Village	2011/9/20	Rain	15.6	Loamy	<30	2,500	2,900	2.54	Deliberate evacuation areas
Takanokura Dam Reservoir		Minamisomashi City	2011/9/16	Sunny	29.2	Loamy	<30	8,900	10,000	3.32	Former evacuation-prepared areas in case of emergency
Yokokawa Dam Reservoir		Minamisomashi City	2011/9/16	Sunny	30.0	Sandy	<30	9,700	11,000	3.74	Former evacuation-prepared areas in case of emergency
Ogaki Dam		Namiemachi Town	2011/9/26	Cloudy	17.4	Clay-loamy	<30	26,000	32,000	19.17	Restricted areas
Sakashita Dam		Okumamachi Town	2011/9/26	Sunny	18.8	Loamy	<30	10,000	12,000	2.20	Restricted areas
Takikawa Dam		Kawauchimura Village	2011/9/26	Cloudy	17.9	Loamy	<30	3,800	4,500	4.68	Restricted areas
Kido Dam		Narahamachi Town	2011/9/27	Sunny	21.8	Clay-loamy	<30	1,100	1,300	0.92	Restricted areas
Komachi Dam		Onomachi Town	2011/9/29	Sunny	19.7	Loamy	<30	160	210	0.28	
Iwaki (farm pond)	Shinike	Iwakishi City	2011/9/20	Rain	25.0	Clay-loamy	<30	450	520	0.47	
Iwaki (farm pond)	Kanoritsutsumishita	Iwakishi City	2011/9/27	Sunny	20.6	Loamy	<30	840	970	0.29	
Takashiba Dam Reservoir (Takashibako Lake)		Iwakishi City	2011/9/27	Sunny	22.1	Loamy	<30	1,300	1,500	0.26	
Shitoki Dam Reservoir		Iwakishi City	2011/9/27	Sunny	22.2	Loamy	<30	710	840	0.33	

(・ Sampling points are listed from north to south.)

○Lake and Headwater (Fukushima Prefecture, Nakadori Area): Water Quality Monitoring Results

Sampling point		Sampling date	Weather	Air temperature	Full depth	General items						Concentration of radioactive material Bq/L			Remarks
Point	Municipality			°C	m	Water temperature °C	Sampling depth m	Secchi disk depth m	Electrical conductivity mS/m	SS mg/L	Turbidity	Radioactive iodine I-131	Radioactive cesium Cs-134 Cs-137		
Surikamigawa Dam Reservoir		2011/9/20	Rain	17.3	69.1	22.8	0.5	3.8	5.2	<1	0.9	<1	<1	<1	
	1 m from the bottom	-	-	-	-	7.1	68.1	-	8.6	<1	1.3	<1	<1	<1	
Ken-poku (farm pond)	Handanuma Lake	2011/9/20	Rain	17.0	0.5	12.7	0	1.1	13.1	21	22	<1	2	3	
Ken-poku (farm pond)	Oike Pond	2011/9/16	Sunny	23.3	0.55	26.4	0	0.55 or more	6.6	7	4.8	<1	<1	<1	
Miharu Dam		2011/9/20	Rain	15.5	26.5	23.0	0.5	1.9	15.0	7	8.6	<1	<1	<1	
	1 m from the bottom	-	-	-	-	7.8	25.5	-	19.6	13	19	<1	<1	<1	
Kenchu (farm pond)	Hounokusa	2011/9/17	Cloudy	26.4	0.9	27.5	0	0.9 or more	10.6	7	7.1	<1	<1	<1	
Hatoriko Lake		2011/9/30	Cloudy	17.7	17.6	18.0	0.5	0.7	3.5	7	10	<1	<1	<1	
	1 m from the bottom	-	-	-	-	14.0	16.6	-	4.0	11	16	<1	<1	<1	
Kenchu (farm pond)	Hirodaira	2011/9/21	Rain	17.0	0.6	20.9	0	0.6 or more	14.0	9	13	<1	<1	<1	
Sengosawa Dam Reservoir		2011/9/21	Rain	16.2	18.3	21.8	0.5	1.7	11.5	7	7.2	<1	<1	<1	
	1 m from the bottom	-	-	-	-	16.8	17.3		21.3	34	38	<1	<1	<1	
Ken-nan (farm pond)	Watarike Pond	2011/9/21	Rain	17.2	0.4	19.4	0	0.4 or more	20.8	8	10	<1	<1	<1	
Ken-nan (farm pond)	Izumikawa River	2011/9/28	Sunny	17.5	0.23	20.4	0	0.23 or more	20.8	12	14	<1	<1	<1	
Hokkawa Dam		2011/9/30	Cloudy	20.9	30.6	17.8	0.5	0.65	4.2	16	26	<1	<1	<1	
	1 m from the bottom	-	-	-	-	14.3	29.6	-	4.5	19	30	<1	<1	<1	
Nanko Lake	Shirakawashi City	2011/9/30	Sunny	23.6	1.4	20.2	0	1.4 or more	13.1	1	2.1	<1	<1	<1	

(・ Sampling points are listed from north to south.)

○Lake and Headwater (Fukushima Prefecture, Nakadori Area): Sediment Monitoring Results

Sampling point		Sampling date	Weather	Air temperature	Full depth m	General items				Concentration of radioactive material Bq/kg (dried mud)			Remarks
Point	Municipality			°C		Mud temperature	Mud sampling depth	Mud content	Property	Radioactive iodine I-131	Radioactive cesium		
				°C		cm	%	Cs-134			Cs-137		
Surikamigawa Dam Reservoir	Fukushimashi City	2011/9/20	Rain	17.3	69.1	19.2	4	66.5	Sand with silt	<30	1,000	1,300	
Ken-poku (farm pond)	Handanuma Lake Korimachi Town	2011/9/20	Rain	17.0	0.5	10.9	5	25.0	Silt with sand	<30	1,700	2,100	
Ken-poku (farm pond)	Oike Pond Motomiyashi City	2011/9/16	Sunny	23.3	0.55	25.1	10	77.1	Sand with silt	<30	1,100	1,300	
Miharu Dam	Miharumachi Town	2011/9/20	Rain	15.5	26.5	7.0	6	33.8	Silt with sand	<30	36	33	
Kenchu (farm pond)	Hounokusa Koriyamashi City	2011/9/17	Cloudy	26.4	0.9	27.3	5	78.5	Sand	<30	520	620	
Hatoriko Lake	Teneimura Village	2011/9/30	Cloudy	17.7	17.6	10.0	5	25.0	Silt	<30	960	1,100	
Kenchu (farm pond)	Hirodaira Sukagawashi City	2011/9/21	Rain	17.0	0.6	21.9	5	60.8	Sand with silt	<30	150	140	
Sengosawa Dam Reservoir	Ishikawamachi Town	2011/9/21	Rain	16.2	18.3	7.5	10	25.4	Silt	<30	100	200	
Ken-nan (farm pond)	Watariike Pond Yabukimachi Town	2011/9/21	Rain	17.2	0.4	19.2	5	65.5	Gravel/silt with sand	<30	45	57	
Ken-nan (farm pond)	Izumikawa River Shirakawashi City	2011/9/28	Sunny	17.5	0.23	18.2	5	42.9	Silt	<30	5,200	6,100	
Hokkawa Dam	Nishigomura Village	2011/9/30	Cloudy	20.9	30.6	8.3	13	27.3	Silt	<30	920	1,000	
Nanko Lake	Shirakawashi City	2011/9/30	Sunny	23.6	1.4	20.0	10	16.7	Silt	<30	420	480	

(・ Sampling points are listed from north to south.)

○Lake and Headwater (Fukushima Prefecture, Nakadori Area): Surrounding Environment Monitoring Results

Sampling point		Sampling date	Weather	Air temperature °C	Property	Soil			Air dose μSv/h	Remarks
Point	Municipality					Concentration of radioactive material Bq/kg (dry)				
						Radioactive iodine I-131	Radioactive cesium Cs-134 Cs-137			
Surikamigawa Dam Reservoir	Fukushimashi City	2011/9/20	Rain	17.3	Sandy	<30	520	670	0.27	
Ken-poku (farm pond)	Handanuma Lake Korimachi Town	2011/9/20	Rain	17.0	Clay-loamy	<30	850	990	0.58	
Ken-poku (farm pond)	Oike Pond Motomiyashi City	2011/9/16	Sunny	23.3	Sandy	<30	420	480	1.12	
Miharu Dam	Miharumachi Town	2011/9/20	Rain	15.5	Loamy	<30	3,000	3,600	0.36	
Kenchu (farm pond)	Hounokusa Koriyamashi City	2011/9/17	Cloudy	26.4	Clayey	<30	68	68	0.34	
Hatoriko Lake	Teneimura Village	2011/9/30	Cloudy	17.7	Loamy	<30	1,500	1,800	0.21	
Kenchu (farm pond)	Hirodaira Sukagawashi City	2011/9/21	Rain	17.0	Sandy	<30	200	260	0.26	
Sengosawa Dam Reservoir	Ishikawamachi Town	2011/9/21	Rain	16.2	Sandy	<30	160	200	0.24	
Ken-nan (farm pond)	Watariike Pond Yabukimachi Town	2011/9/21	Rain	17.2	Loamy	<30	420	530	0.30	
Ken-nan (farm pond)	Izumikawa River Shirakawashi City	2011/9/28	Sunny	17.5	Loamy	<30	3,300	3,900	1.06	
Hokkawa Dam	Nishigomura Village	2011/9/30	Cloudy	20.9	Loamy	<30	10,000	12,000	0.64	
Nanko Lake	Shirakawashi City	2011/9/30	Sunny	23.6	Clay-loamy	<30	980	1,100	0.64	

(・ Sampling points are listed from north to south.)

OLake and Headwater (Fukushima Prefecture, Aizu Area): Water Quality Monitoring Results

Sampling point		Sampling date	Weather	Air temperature °C	Full depth m	General items						Concentration of radioactive material Bq/L			Remarks	
Point	Municipality					Water temperature °C	Sampling depth m	Secchi disk depth m	Electrical conductivity mS/m	SS mg/L	Turbidity	Radioactive iodine I-131	Radioactive cesium Cs-134 Cs-137			
Necchu Dam		Kitakatashi City	2011/9/28	Clear	15.7	46.4	15.6	0.5	0.7	7.2	14	16	<1	<1	<1	
	1 m from the bottom	-	-	-	-	-	7.2	45.4	-	54.5	11	16	<1	<1	<1	
Soharako Lake		Kitashiobaramura Village	2011/9/29	Clear	17.1	6.6	18.7	0.5	3.4	4.0	1	2.0	<1	<1	<1	
	1 m from the bottom	-	-	-	-	-	18.3	5.6	-	4.0	1	2.0	<1	<1	<1	
Hibarako Lake		Kitashiobaramura Village	2011/9/29	Clear	17.6	22.3	18.2	0.5	3.6	6.3	2	2.1	<1	<1	<1	
	1 m from the bottom	-	-	-	-	-	10.0	21.3	-	6.1	6	13	<1	<1	<1	
Onogawako Lake		Kitashiobaramura Village	2011/10/4	Sunny	14.8	13.2	16.3	0.5	2.4	6.7	1	3.2	<1	<1	<1	
	1 m from the bottom	-	-	-	-	-	13.4	12.2	-	7.1	5	10	<1	<1	<1	
Akimoto Lake		Inawashiro Town	2011/9/29	Clear	18.3	30.6	18.8	0.5	3.2	5.6	2	2.3	<1	<1	<1	
	1 m from the bottom	-	-	-	-	-	8.8	29.6	-	5.0	3	3.5	<1	<1	<1	
Bishamonnuma Lake		Kitashiobaramura Village	2011/9/30	Cloudy	16.6	8.3	16.0	0.5	6	77.9	2	2.8	<1	<1	<1	
	1 m from the bottom	-	-	-	-	-	15.4	7.3	-	77.0	<1	1.5	<1	<1	<1	
Oguninuma Lake		Kitashiobaramura Village	2011/9/30	Cloudy	16.4	4.4	15.9	0.5	2.2	2.0	2	3.5	<1	<1	<1	
	1 m from the bottom	-	-	-	-	-	15.8	3.4	-	2.6	4	4.5	<1	<1	<1	
Aizu (farm pond)	Onuma Lake	Nishiaizumachi Town	2011/9/20	Rain	19.2	0.5	21.9	0	0.5 or more	9.2	7	4.4	<1	<1	<1	
Inawashiroko Lake		Aizuwakamatsushi City	2011/9/30	Cloudy, rain, etc.	16.2	92.8	19.6	0.5	13.5	11.7	1	1.4	<1	<1	<1	
	1 m from the bottom	-	-	-	-	-	5.7	91.8	-	11.9	<1	0.9	<1	<1	<1	
Higashiyama Dam Reservoir		Aizuwakamatsushi City	2011/9/22	Cloudy	21.2	38.1	19.1	0.5	1.7	4.9	4	3.6	<1	<1	<1	
	1 m from the bottom	-	-	-	-	-	6.7	37.1	-	6.0	4	4.1	<1	<1	<1	
Numazawako Lake		Kaneyamamachi Town	2011/9/27	Sunny	15.2	97.5	21.7	0.5	10.5	4.9	<1	0.3	<1	<1	<1	
	1 m from the bottom	-	-	-	-	-	4.7	96.5	-	8.8	4	9.2	<1	<1	<1	
Aizu (farm pond)	Terairi	Aizumisatomachi Town	2011/9/20	Rain	21.6	0.6	21.2	0	0.6 or more	6.8	4	8.6	<1	<1	<1	
(* Sampling points are listed from north to south.)		Aizuwakamatsushi City	2011/9/29	Clear	17.8	30.0	14.3	0.5	1.2	6.1	6	9.4	<1	<1	<1	
	1 m from the bottom	-	-	-	-	-	9.2	29.0	-	6.2	12	15	<1	<1	<1	
Tagokura Reservoir		Tadamimachi Town	2011/10/4	Cloudy	13.5	97.8	17.5	0.5	1.4	3.7	5	5.4	<1	<1	<1	
	1 m from the bottom	-	-	-	-	-	11.5	96.8	-	3.3	30	51	<1	<1	<1	
Minamiaizu (farm pond)	Fukui	Tadamimachi Town	2011/9/29	Clear	14.6	0.4	20.6	0	0.4 or more	2.9	22	18	<1	<1	<1	
Tajima Dam Reservoir (Funehanako Lake)		Minamiaizumachi Town	2011/9/27	Clear	16.4	11.4	14.4	0.5	2.4	3.7	2	2.8	<1	<1	<1	
	1 m from the bottom	-	-	-	-	-	13.2	10.4	-	3.8	7	5.7	<1	<1	<1	
Okutadami Reservoir		Tadamimachi Town	2011/9/28	Clear	17.4	122.0	19.4	0.5	5.8	4.2	1	1.3	<1	<1	<1	
	1 m from the bottom	-	-	-	-	-	7.4	121.0	-	3.3	49	79	<1	<1	<1	
Ozenuma Lake		Hinoemamura Village	2011/10/14	Clear	13.2	7.8	11.2	0.5	2.5	3.6	3	5.2	<1	<1	<1	
	1 m from the bottom	-	-	-	-	-	11.0	6.8	-	4.4	4	5.3	<1	<1	<1	

(* Sampling points are listed from north to south.)

○Lake and Headwater (Fukushima Prefecture, Aizu Area): Sediment Monitoring Results

Sampling point		Sampling date	Weather	Air temperature °C	Full depth m	General items				Concentration of radioactive material Bq/kg (dried mud)			Remarks	
Point	Municipality					Mud temperature °C	Mud sampling depth cm	Mud content %	Property	Radioactive iodine I-131	Radioactive cesium			
											Cs-134	Cs-137		
Nicchu Dam	Kitakatahi City	2011/9/28	Clear	15.7	46.4	7.2	12	25.9	Silt	<30	98	200		
Soharako Lake	Kitashiobaramura Village	2011/9/29	Clear	17.1	6.6	16.8	10	31.4	Silt with sand	<30	160	220		
Hibarako Lake	Kitashiobaramura Village	2011/9/29	Clear	17.6	22.3	10.8	10	19.1	Silt with sand	<30	220	410		
Onogawako Lake	Kitashiobaramura Village	2011/10/4	Sunny	14.8	13.2	10.4	5	26.0	Silt	<30	110	160		
Akimotoko Lake	Inawashiromachi Town	2011/9/29	Clear	18.3	30.6	8.8	10	38.1	Silt with sand	<30	200	240		
Bishamonnuma Lake	Kitashiobaramura Village	2011/9/30	Cloudy	16.6	8.3	15.6	10	6.6	Silt with sand	<30	<100	150		
Oguninuma Lake	Kitashiobaramura Village	2011/9/30	Cloudy	16.4	4.4	15.8	4	11.5	Silt	<30	550	780		
Aizu (farm pond)	Onuma Lake	Nishiaizumachi Town	2011/9/20	Rain	19.2	0.5	20.4	7	58.7	Gravel/silt with sand	<30	19	42	
Inawashiroko Lake	Aizuwakamatsushi City	2011/9/30	Cloudy, rain, etc.	16.2	92.8	5.4	10	18.5	Silt	<30	<10	<16		
Higashiyama Dam Reservoir	Aizuwakamatsushi City	2011/9/22	Cloudy	21.2	38.1	6.8	10	25.3	Silt	<30	57	100		
Numazawako Lake	Kaneyamamachi Town	2011/9/27	Sunny	15.2	97.5	5.0	13	23.0	Silt	<30	<10	100		
Aizu (farm pond)	Terairi	Aizumisatomachi Town	2011/9/20	Rain	21.6	0.6	21.2	3	64.8	Gravel/silt with sand	<30	230	280	
Okawa Dam Reservoir	Aizuwakamatsushi City	2011/9/29	Clear	17.8	30.0	14.0	10	28.9	Silt	<30	670	780		
Tagokura Reservoir	Tadamimachi Town	2011/10/4	Cloudy	13.5	97.8	11.2	7	29.5	Silt	<30	<13	90		
Minamiaizu (farm pond)	Fukui	Tadamimachi Town	2011/9/29	Clear	14.6	0.4	20.4	5	72.5	Sand	<30	<11	22	
Tajima Dam Reservoir (Funehanako Lake)	Minamiaizumachi Town	2011/9/27	Clear	16.4	11.4	11.2	12	20.4	Silt	<30	180	230		
Okutadami Reservoir	Tadamimachi Town	2011/9/28	Clear	17.4	122.0	7.4	10	32.4	Silt	<30	430	550		
Ozenuma Lake	Hinoemamura Village	2011/10/14	Clear	13.2	7.8	10.2	10	7.4	Silt	<30	<24	<85		

(・ Sampling points are listed from north to south.)

○Lake and Headwater (Fukushima Prefecture, Aizu Area): Surrounding Environment Monitoring Results

Sampling point		Sampling date	Weather	Air temperature °C	Soil			Air dose μSv/h	Remarks		
Point	Municipality				Property	Concentration of radioactive material Bq/kg (dry)					
						Radioactive iodine I-131	Radioactive cesium Cs-134 Cs-137				
Nicchu Dam	Kitakatashi City	2011/9/28	Clear	15.7	Loamy	<30	100	110	0.18		
Soharako Lake	Kitashiobaramura Village	2011/9/29	Clear	17.1	Loamy	<30	740	980	0.27		
Hibarako Lake	Kitashiobaramura Village	2011/9/29	Clear	17.6	Loamy	<30	450	530	0.24		
Onogawako Lake	Kitashiobaramura Village	2011/10/4	Sunny	14.8	Loamy	<30	200	270	0.19		
Akimotoko Lake	Inawashiro Town	2011/9/29	Clear	18.3	Loamy	<30	280	320	0.21		
Bishamonnuma Lake	Kitashiobaramura Village	2011/9/30	Cloudy	16.6	Clay-loamy	<30	2,100	2,400	0.24		
Oguninuma Lake	Kitashiobaramura Village	2011/9/30	Cloudy	16.4	Loamy	<30	300	430	0.22	*	
Aizu (farm pond)	Onuma Lake	Nishiazumachi Town	2011/9/20	Rain	19.2	Loamy	<30	62	72	0.05	
Inawashiroko Lake	For the surrounding environments, see the monitoring results of Inawashiroko Lake Bathing Areas										
Higashiyama Dam Reservoir	Aizuwakamatsushi City	2011/9/22	Cloudy	21.2	Loamy	<30	270	370	0.16		
Numazawako Lake	Kaneyamamachi Town	2011/9/27	Sunny	15.2	Loamy	<30	240	290	0.18		
Aizu (farm pond)	Terairi	Aizumisatomachi Town	2011/9/20	Rain	21.6	Loamy	<30	200	220	0.08	
Okawa Dam Reservoir	Aizuwakamatsushi City	2011/9/29	Clear	17.8	Clay-loamy	<30	430	510	0.11		
Tagokura Reservoir	Tadamimachi Town	2011/10/4	Cloudy	13.5	Clay-loamy	<30	90	120	0.06		
Minamiaizu (farm pond)	Fukui	Tadamimachi Town	2011/9/29	Clear	14.6	Loamy	<30	30	26	0.25	*
Tajima Dam Reservoir (Funehana Lake)	Minamiaizumachi Town	2011/9/27	Clear	16.4	Loamy	<30	110	120	0.07		
Okutadami Reservoir	Hinoemamura Village	2011/9/28	Clear	17.4	Loamy	<30	840	1,100	0.06		
					Sandy	<30	37	47	0.09		
Ozenuma Lake	Hinoemamura Village	2011/10/14	Clear	13.2	Sand混壤	<30	710	1,000	0.20	*	

*Air dose was measured with a survey meter, TCS-172 or TCS-161 of Hitachi-Aloka Medical, Ltd. For points with * in the Remarks column, a survey meter, Model 3 of Ludlum Measurement Inc. was used. Figures measured with the Model 3 had a tendency to be a little higher than those measured with a TCS-172 or TCS-161 (about 1.6 times higher).

(・ Sampling points are listed from north to south.)

OCoast and Bathing Area: Water Quality Monitoring Results

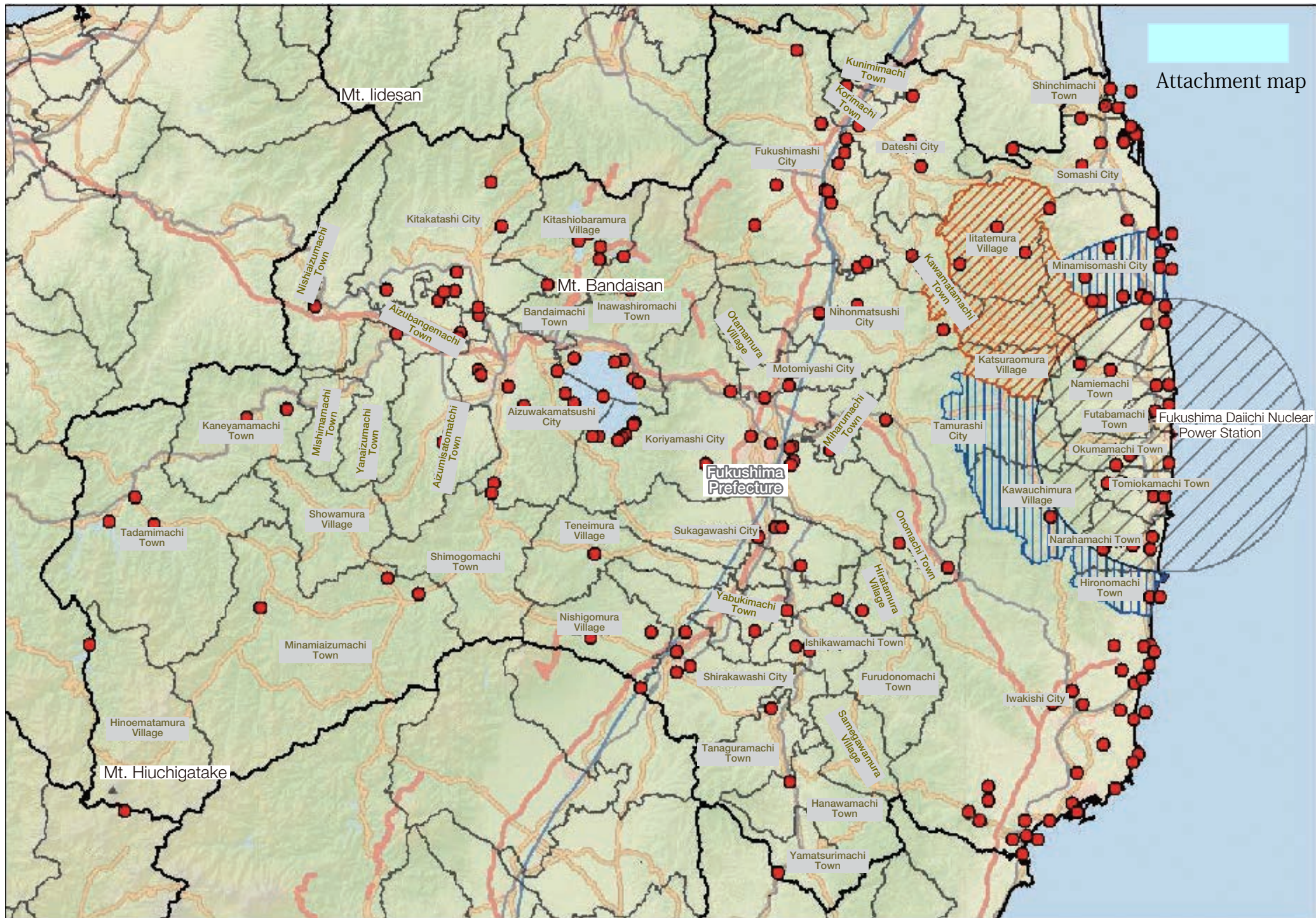
Sampling point			Sampling date	Weather	Air temperature °C	Full depth m	General items						Concentration of radioactive material Bq/L			Remarks	
Water body	Point	Municipality					Water temperature °C	Sampling depth m	Secchi disk depth m	Salinity	SS mg/L	Turbidity	Radioactive iodine I-131	Radioactive cesium Cs-134 Cs-137			
C o a s t s	Neighboring sea area of Soso Approx. 2,000 m offshore of Tsurushihama Fishing Port	1 m from the bottom	2011/10/4	Sunny	14.4	14.8	19.6	0.5	3.5	Sunny	30.5	1	2.0	<1	<1	<1	
			-	-	-	-	19.8	13.8	-	33.4	2	1.7	<1	<1	<1		
	Matsukawaura sea area Around center of Fishing Right Area-1	1 m from the bottom	2011/10/4	Sunny	17.6	1.7	20.3	0.5	1.7 or more	30.7	4	1.9	<1	<1	<1		
			-	-	-	-	20.2	0.7	-	30.7	4	2.0	<1	<1	<1		
	Neighboring sea area of Soso Approx. 2,000 m offshore of Manogawa River	1 m from the bottom	2011/10/4	Sunny	14.6	19.9	19.6	0.5	6.8	30.6	1	0.2	<1	<1	<1		
			-	-	-	-	20.0	18.9	-	33.2	2	1.3	<1	<1	<1		
	Neighboring sea area of Haramachi City Approx. 1,000 m offshore of Niidagawa River	1 m from the bottom	2011/10/4	Sunny	14.6	11.8	20.0	0.5	8.5	30.9	1	<0.1	<1	<1	<1		
			-	-	-	-	20.0	10.8	-	31.5	1	0.1	<1	<1	<1		
	Approx. 1,000 m offshore of Asamigawa River Estuary	1 m from the bottom	2011/10/5	Cloudy	18.4	10.8	19.4	0.5	10.8 or more	33.1	<1	0.3	<1	<1	<1		
			-	-	-	-	19.4	9.8	-	33.1	1	0.5	<1	<1	<1		
	Approx. 1,000 m offshore of Ohisagawa River Estuary	1 m from the bottom	2011/10/5	Cloudy	18.2	10.8	19.6	0.5	10.4	33.1	<1	0.1	<1	<1	<1		
			-	-	-	-	19.4	9.8	-	33.1	2	0.8	<1	<1	<1		
	Neighboring sea area of Iwakishi City Approx. 1,500 m offshore of Natsugawa River	1 m from the bottom	2011/10/5	Rain	17.8	17.2	19.4	0.5	11.5	33.0	<1	0.2	<1	<1	<1		
			-	-	-	-	19.3	16.2	-	33.2	<1	0.3	<1	<1	<1		
Onahama Port Approx. 400 m north of Nishibouhatei No. 2	1 m from the bottom	2011/10/5	Cloudy	17.2	16.4	19.2	0.5	5.4	31.5	1	1.1	<1	<1	<1			
		-	-	-	-	19.6	15.4	-	33.1	1	1.6	<1	<1	<1			
Joban coastal sea area Approx. 1,000 m offshore of Bindagawa River	1 m from the bottom	2011/10/5	Cloudy	17.4	17.6	19.4	0.5	7.2	32.4	<1	0.5	<1	<1	<1			
		-	-	-	-	19.4	16.6	-	32.7	<1	0.6	<1	<1	<1			
B a t h i n g a r e a s	Tsurushihama Fishing Port Tsurushihama Beach	Shinchimachi Town	2011/9/19	Rain	18.0	0.8	20.2	0	-	-	30	16	<1	<1	<1		
	Somakowan Bay Haragama/Obama	Somashi City	2011/9/28	Sunny	20.5	1.0	21.2	0	-	-	13	3.6	<1	<1	<1		
	Kitaizumichikukaigan S Kitaizumi	Minamisomashi City	2011/9/16	Sunny	19.0	0.5	24.6	0	-	-	8	3.1	<1	<1	<1		
	Hattachikaigan Seashore Hisanohama Beach/Hattachi	Iwakishi City	2011/9/16	Sunny	24.8	0.4	21.8	0	-	-	26	8.9	<1	<1	<1		
	Yotsukurakaigan Seashore Yotsukura	Iwakishi City	2011/9/16	Sunny	29.8	0.4	23.6	0	-	-	7	3.5	<1	<1	<1		
	Natsukaigan Seashore Shinmaiko Beach	Iwakishi City	2011/9/27	Sunny	21.4	0.4	20.4	0	-	-	32	14	<1	<1	<1		
	Usuisokaigan Seashore Usuiso	Iwakishi City	2011/9/27	Cloudy	19.5	0.5	20.0	0	-	-	8	4.1	<1	<1	<1		
	Toyomakaigan Seashore Toyoma	Iwakishi City	2011/9/28	Cloudy	21.4	0.5	20.3	0	-	-	9	3.8	<1	<1	<1		
	Nagasakikaigan Seashore Nagasaki	Iwakishi City	2011/9/28	Cloudy	23.1	0.5	20.6	0	-	-	13	6.5	<1	<1	<1		
	Obamakaigan Seashore Obama	Iwakishi City	2011/9/28	Sunny	25.4	0.5	21.2	0	-	-	100	68	<1	<1	<1		
	Nakosokaigan Seashore Nakoso	Iwakishi City	2011/9/28	Sunny	24.5	0.5	21.2	0	-	-	8	3.9	<1	<1	<1		
	Inawashiroko Lake Nagahama Beach	Inawashirokami Town	2011/9/29	Clear	24.1	0.4	22.5	0	-	-	2	0.6	<1	<1	<1		
	Inawashiroko Lake Tenjinham Beach	Inawashirokami Town	2011/9/29	Clear	23.4	0.3	22.8	0	-	-	1	0.6	<1	<1	<1		
	Inawashiroko Lake Shidahama Beach	Inawashirokami Town	2011/9/29	Clear	23.3	0.4	22.0	0	-	-	2	1.3	<1	<1	<1		
	Inawashiroko Lake jokohama Beach	Inawashirokami Town	2011/9/29	Clear	23.0	0.4	21.2	0	-	-	<1	0.5	<1	<1	<1		
	Inawashiroko Lake Hamajihama Beach	Koriyamashi City	2011/9/29	Clear	22.6	0.3	20.3	0	-	-	1	1.0	<1	<1	<1		
	Inawashiroko Lake Yokozawahama Beach	Koriyamashi City	2011/9/29	Clear	18.1	0.4	13.2	0	-	-	2	2.2	<1	<1	<1		
	Inawashiroko Lake Tatehama Beach	Koriyamashi City	2011/9/29	Clear	17.7	0.4	19.1	0	-	-	1	1.3	<1	<1	<1		
	Inawashiroko Lake Funatsuhama Beach	Koriyamashi City	2011/9/29	Clear	14.4	1.0	18.3	0	-	-	2	0.7	<1	<1	<1		
	Inawashiroko Lake Funatsukoen Park	Koriyamashi City	2011/9/29	Cloudy	13.6	1.0	18.2	0	-	-	1	0.1	<1	<1	<1		
Inawashiroko Lake Seishogahama Beach	Koriyamashi City	2011/9/29	Clear	16.9	1.0	19.3	0	-	-	1	0.3	<1	<1	<1			
Inawashiroko Lake Akiyamahama Beach	Koriyamashi City	2011/9/29	Clear	18.4	0.5	20.1	0	-	-	1	0.7	<1	<1	<1			
Inawashiroko Lake Sekkahama Beach	Aizuwakamatsushi City	2011/9/29	Clear	19.8	0.7	20.4	0	-	-	<1	0.1	<1	<1	<1			
Inawashiroko Lake Nakatahama Beach	Aizuwakamatsushi City	2011/9/29	Clear	24.6	1.0	20.1	0	-	-	1	<0.1	<1	<1	<1			
Inawashiroko Lake Koishigahama Beach	Aizuwakamatsushi City	2011/9/29	Clear	20.7	0.7	22.0	0	-	-	<1	<0.1	<1	<1	<1			

○Coast and Bathing Area: Sediment Monitoring Results

Sampling point			Sampling date	Weather	Air temperature ℃	Full depth m	General items				Concentration of radioactive material Bq/kg (dried mud)			Remarks
Water body	Point	Municipality					Mud temperature ℃	Mud sampling depth cm	Mud content %	Property	Radioactive iodine I-131	Radioactive cesium		
												Cs-134	Cs-137	
Sea area	Neighboring sea area of Soso Approx. 2,000 m offshore of Tsurushihama Fishing Port		2011/10/4	Sunny	14.4	14.8	19.6	2	79.1	Sand	<30	17	18	
	Matsukawaura sea area Around center of Fishing Right Area-1		2011/10/4	Sunny	17.6	1.7	19.9	3	73.6	Sand with silt	<30	42	52	
	Neighboring sea area of Soso Approx. 2,000 m offshore of Manogawa River		2011/10/4	Sunny	14.6	19.9	19.6	2	79.9	Sand	<30	34	47	
	Neighboring sea area of Haramachi City Approx. 1,000 m offshore of Niidagawa River		2011/10/4	Sunny	14.6	11.8	20.4	1	81.9	Sand	<30	82	95	
	Approx. 1,000 m offshore of Asamigawa River Estuary		2011/10/5	Cloudy	18.4	10.8	19.4	1	80.8	Sand	<30	330	400	
	Approx. 1,000 m offshore of Ohisagawa River Estuary		2011/10/5	Cloudy	18.2	10.8	19.4	1	82.0	Sand	<30	220	300	
	Neighboring sea area of Iwakishi City Approx. 1,500 m offshore of Natsugawa River		2011/10/5	Rain	17.8	17.2	19.4	1	81.2	Sand	<30	260	330	
	Onahama Port Approx. 400 m north of Nishibouhatei No. 2		2011/10/5	Cloudy	17.2	16.4	19.6	3	57.7	Silt with sand	<30	170	210	
	Joban coastal sea area Approx. 1,000 m offshore of Bindagawa River		2011/10/5	Cloudy	17.4	17.6	19.5	2	75.4	Sand	<30	370	430	
Bathing area	Tsurushihama Fishing Port Tsurushihama Beach	Shinchimachi Town	2011/9/19	Rain	18.0	0.8	20.0	10	93.1	Sand	<30	12	16	
	Somakowan Bay Haragama/Obama	Somashi City	2011/9/28	Sunny	20.5	1.0	21.8	5	82.7	Sand	<30	18	13	
	Kitaizumichikukaigan S Kitaizumi	Minamisomashi City	2011/9/16	Sunny	19.0	0.5	24.5	10	81.5	Sand	<30	35	39	
	Hattachikaigan Seashore Hisanohama Beach/Hattachi	Iwakishi City	2011/9/16	Sunny	24.8	0.4	23.2	10	97.9	Sand	<30	120	140	
	Yotsukurakaigan Seashore Yotsukura	Iwakishi City	2011/9/16	Sunny	29.8	0.4	24.3	10	83.3	Sand	<30	160	190	
	Natsuikaigan Seashore Shinmaiko Beach	Iwakishi City	2011/9/27	Sunny	21.4	0.4	22.0	15	89.7	Sand with gravel	<30	38	43	
	Usuisokaigan Seashore Usuiso	Iwakishi City	2011/9/27	Cloudy	19.5	0.5	19.8	10	84.7	Sand	<30	78	110	
	Toyomakaigan Seashore Toyoma	Iwakishi City	2011/9/28	Cloudy	21.4	0.5	19.0	15	83.4	Sand	<30	93	95	
	Nagasakikaigan Seashore Nagasaki	Iwakishi City	2011/9/28	Cloudy	23.1	0.5	20.4	15	83.3	Sand	<30	110	110	
	Obamakaigan Seashore Obama	Iwakishi City	2011/9/28	Sunny	25.4	0.5	21.6	10	89.5	Sand with gravel	<30	29	36	
	Nakosokaigan Seashore Nakoso	Iwakishi City	2011/9/28	Sunny	24.5	0.5	22.4	15	82.6	Sand	<30	50	83	
	Inawashiroko Lake Nagahama Beach	Inawashiro-machi Town	2011/9/29	Clear	24.1	0.4	21.2	5	78.4	Sand	<30	22	37	
	Inawashiroko Lake Tenjin-hama Beach	Inawashiro-machi Town	2011/9/29	Clear	23.4	0.3	23.2	5	82.1	Sand	<30	69	83	
	Inawashiroko Lake Shidahama Beach	Inawashiro-machi Town	2011/9/29	Clear	23.3	0.4	20.5	5	81.5	Sand with gravel	<30	36	56	
	Inawashiroko Lake jokohama Beach	Inawashiro-machi Town	2011/9/29	Clear	23.0	0.4	20.6	5	84.4	Sand with gravel	<30	65	75	
	Inawashiroko Lake Hamajihama Beach	Koriyamashi City	2011/9/29	Clear	22.6	0.3	19.2	5	77.9	Sand	<30	20	28	
	Inawashiroko Lake Yokozawahama Beach	Koriyamashi City	2011/9/29	Clear	18.1	0.4	15.1	5	82.6	Sand with gravel	<30	<10	<10	
	Inawashiroko Lake Tatehama Beach	Koriyamashi City	2011/9/29	Clear	17.7	0.4	18.7	5	77.7	Sand with gravel	<30	63	100	
	Inawashiroko Lake Funatsuhama Beach	Koriyamashi City	2011/9/29	Clear	14.4	1.0	18.6	10	77.2	Sand	<30	120	170	
	Inawashiroko Lake Funatsuko-en Park	Koriyamashi City	2011/9/29	Cloudy	13.6	1.0	18.3	5	84.2	Sand with gravel	<30	85	110	
Inawashiroko Lake Seishogahama Beach	Koriyamashi City	2011/9/29	Clear	16.9	1.0	19.2	5	79.5	Sand with gravel	<30	93	110		
Inawashiroko Lake Akiyamahama Beach	Koriyamashi City	2011/9/29	Clear	18.4	0.5	20.2	10	76.1	Sand with silt	<30	39	54		
Inawashiroko Lake Sekkahama Beach	Aizuwakamatsushi City	2011/9/29	Clear	19.8	0.7	20.5	10	79.8	Sand	<30	56	68		
Inawashiroko Lake Nakatahama Beach	Aizuwakamatsushi City	2011/9/29	Clear	24.6	1.0	21.2	12	83.0	Sand	<30	10	18		
Inawashiroko Lake Koishigahama Beach	Aizuwakamatsushi City	2011/9/29	Clear	20.7	0.7	21.6	12	76.7	Sand	<30	61	89		

OBathing area: Surrounding Environment Monitoring Results

Sampling point		Sampling date	Weather	Air temperature °C	Soil			Air dose μSv/h	Remarks		
					Property	Concentration of radioactive material Bq/kg (dry)					
						Radioactive iodine I-131	Radioactive cesium Cs-134 Cs-137				
Tsurushihama Fishing Port	Tsurushihama Beach	Shinchimachi Town	2011/9/19	Rain	18.0	Sandy	<30	23	33	0.10	
Somakowan Bay	Haragama/Obama	Somashi City	2011/9/28	Sunny	20.5	Sandy	<30	32	46	0.05	
Kitaizumichikukaigan Seashore Kitaizumi		Minamisomashi City	2011/9/16	Sunny	19.0	Sandy	<30	25	34	0.07	
Hattachikaigan Seashore	Hisanohama Beach/Hattachi	Iwakishi City	2011/9/16	Sunny	24.8	Sandy	<30	86	110	0.18	
Yotsukurakaigan Seashore	Yotsukura	Iwakishi City	2011/9/16	Sunny	29.8	Sandy	<30	87	100	0.13	
Natsuikaigan Seashore	Shinmaiko Beach	Iwakishi City	2011/9/27	Sunny	21.4	Sandy	<30	37	67	0.12	
Usuisokaigan Seashore	Usuiso	Iwakishi City	2011/9/27	Cloudy	19.5	Sandy	<30	95	96	0.29	
Toyomakaigan Seashore	Toyoma	Iwakishi City	2011/9/28	Cloudy	21.4	Sandy	<30	51	58	0.11	
Nagasakikaigan Seashore	Nagasaki	Iwakishi City	2011/9/28	Cloudy	23.1	Sandy	<30	100	120	0.13	
Obamakaigan Seashore	Obama	Iwakishi City	2011/9/28	Sunny	25.4	Sandy	<30	140	180	0.10	
Nakosokaigan Seashore	Nakoso	Iwakishi City	2011/9/28	Sunny	24.5	Sandy	<30	140	160	0.15	
Inawashiroko Lake	Nagahama Beach	Inawashiro-machi Town	2011/9/29	Clear	24.1	Sandy	<30	270	300	0.12	
Inawashiroko Lake	Tenjinhama Beach	Inawashiro-machi Town	2011/9/29	Clear	23.4	Sandy	<30	39	52	0.07	
Inawashiroko Lake	Shidahama Beach	Inawashiro-machi Town	2011/9/29	Clear	23.3	Sandy	<30	130	170	0.08	
Inawashiroko Lake	jokohama Beach	Inawashiro-machi Town	2011/9/29	Clear	23.0	Sandy	<30	180	230	0.12	
Inawashiroko Lake	Hamajihama Beach	Koriyamashi City	2011/9/29	Clear	22.6	Sandy	<30	100	100	0.07	
Inawashiroko Lake	Yokozawahama Beach	Koriyamashi City	2011/9/29	Clear	18.1	Sandy	<30	59	83	0.07	
Inawashiroko Lake	Tatehama Beach	Koriyamashi City	2011/9/29	Clear	17.7	Sandy	<30	140	200	0.07	
Inawashiroko Lake	Funatsuhama Beach	Koriyamashi City	2011/9/29	Clear	14.4	Sandy	<30	31	50	0.07	
Inawashiroko Lake	Funatsukoen Park	Koriyamashi City	2011/9/29	Cloudy	13.6	Sandy	<30	77	97	0.09	
Inawashiroko Lake	Seishogahama Beach	Koriyamashi City	2011/9/29	Clear	16.9	Sandy	<30	64	79	0.08	
(* Sampling points are listed fr Akiyamahama Beach		Koriyamashi City	2011/9/29	Clear	18.4	Sandy	<30	35	60	0.07	
Inawashiroko Lake	Sekkahama Beach	Aizuwakamatsushi City	2011/9/29	Clear	19.8	Sandy	<30	80	100	0.07	
Inawashiroko Lake	Nakatahama Beach	Aizuwakamatsushi City	2011/9/29	Clear	24.6	Sandy	<30	53	62	0.07	
Inawashiroko Lake	Koishigahama Beach	Aizuwakamatsushi City	2011/9/29	Clear	20.7	Sandy	<30	86	120	0.10	



Attachment map

Fukushima Daiichi Nuclear Power Station

Fukushima Prefecture

Mt. Iidesan

Mt. Bandaisan

Mt. Hiuchigatake