

## FY2016 Saitama Prefecture Survey Results

[Outline of results]

(1) Water

Rivers

Radioactive cesium (Cs-134, Cs-137): Not detectable at any location

(2) Sediments

Rivers

Cs-134: ND - 9.3 Bq/kg (dry)

Cs-137: 2.4 - 43 Bq/kg (dry)

(3) Surrounding Environment

(a) Soil

Rivers

Cs-134: ND - 62 Bq/kg (dry)

Cs-137: 26 - 270 Bq/kg (dry)

(b) Ambient dose rate

Rivers

0.04 - 0.07  $\mu$ Sv/h

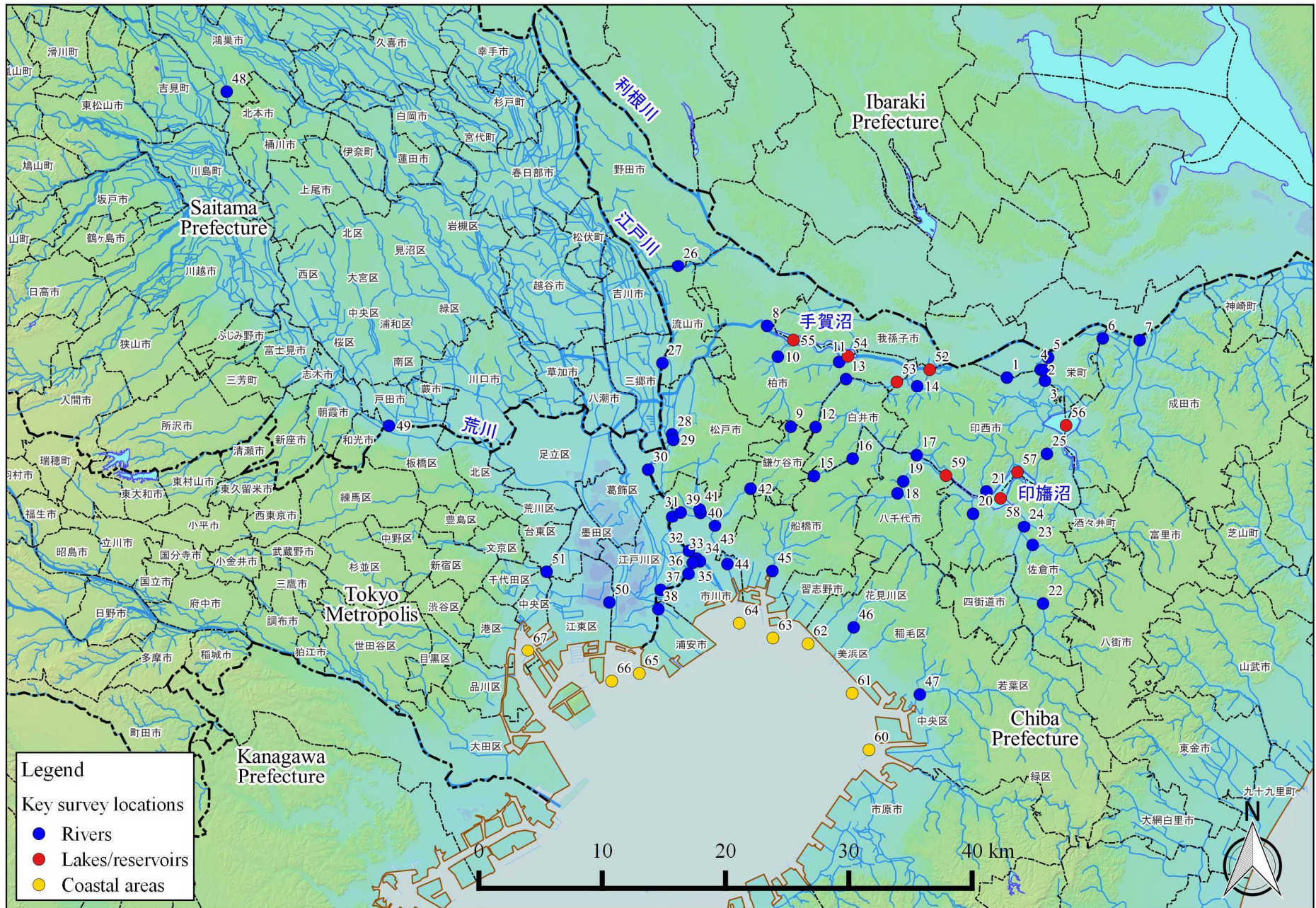
# Saitama River (Water) 1/1

	Location				Sampling Date	Weather	Air temperature (°C)	Water depth (m)	Water										Remarks
	No.	Water area	Location	Municipality					General items							Activity concentration(Bq/L)			
									Water temperature (°C)	Sampling depth (m)	Color	Odor	Transparency (cm)	Electrical conductivity (mS/m)	SS (mg/L)	Turbidity (FNU)	Radioactive cesium		
																	Cs-134	Cs-137	
R i v e r s	48	Arakawa River System	Arakawa River Middle Reaches	Onari Bridge	Konosu City	2016/5/19	Sunny	20.3	1.8	18.0	0.0	Light grayish greenish yellow	None	63	18.4	10	4.0	<0.75	<0.88
						2016/8/10	Sunny	31.4	2.0	26.2	0.0	Light grayish greenish yellow	None	75	23.9	10	4.8	<0.74	<0.92
						2016/11/15	Sunny	13.2	2.2	11.6	0.0	Light grayish greenish yellow	None	85	25.4	6	3.5	<0.84	<0.55
						2017/1/26	Sunny	4.2	2.4	3.9	0.0	Light grayish greenish yellow	None	>100	27.4	4	2.5	<0.60	<0.92
	49	Arakawa River System	Arakawa River Lower Reaches	Sasame Bridge	Toda City /Wako City /Itabashi City	2016/5/19	Sunny	22.8	0.6	21.5	0.0	Light grayish yellow	Faint sewage	32	40.1	19	5.3	<0.89	<0.84
						2016/8/10	Sunny	30.3	0.6	29.2	0.0	Grayish greenish yellow	Faint sewage	56	35.9	6	2.0	<0.56	<0.66
						2016/11/15	Cloudy	15.0	0.5	15.2	0.0	Grayish greenish yellow	Faint sewage	55	42.0	6	4.1	<0.51	<0.75
						2017/1/26	Sunny	8.8	0.5	12.8	0.0	Light grayish yellow	Faint sewage	64	64.0	4	4.7	<0.51	<0.75

# Saitama River (Sediment) 1/1

R i v e r s	Location				Sampling Date	Weather	Air temperature (C)	Water depth (m)	Sediment																Remarks					
	No.	Water area		Location					Municipality	Sediment temperature (C)	Sample length (cm)	Color	Odor	General items										Sediment content (%)		Density (g/cm <sup>3</sup> )	Property	Activity concentration [Bq/kg(dry)]		
														Grain size distribution(%)														Radioactive cesium		
														Coarse gravel	Medium gravel	Fine gravel	Coarse sand	Medium sand	Fine sand	Silt	Clay	Cs-134	Cs-137					Total		
48	Arakawa River System	Arakawa River Middle Reaches		Onari Bridge	Kosono City	2016/5/19	Sunny	20.3	1.8	19.1	5	Black	Faint sewage	0.0	29.2	17.3	13.0	28.7	9.2	1.0	1.5	82.5	2.714	Sand/gravel	<3.5	3.9	3.9			
						2016/8/10	Sunny	31.4	2.0	27.1	3	Blackish brown	Faint sewage	1.8	30.0	7.0	4.7	49.1	3.5	1.2	1.8	81.8	2.681	Sand/gravel	1.2	4.9	6.1			
						2016/11/15	Sunny	13.2	2.2	12.0	3	Black	None	0.0	41.0	39.8	14.2	3.8	0.8	0.0	0.4	90.1	2.721	Gravel/sand	<0.47	2.4	2.4			
						2017/1/26	Sunny	4.2	2.4	3.8	3	Blackish brown	Faint sewage	0.0	34.9	51.5	8.7	3.0	1.4	0.1	0.4	94.5	2.641	Sand/gravel	<0.63	2.5	2.5			
						2016/5/19	Sunny	22.8	0.6	20.0	3	Olive black	Faint sewage	0.0	6.4	1.8	2.4	35.3	44.8	4.9	4.5	69.6	2.732	Sand/silt	5.5	23	27.5			
						2016/8/10	Sunny	30.3	0.6	28.2	3	Blackish brown	Faint sewage	5.1	25.9	2.6	2.0	18.4	24.3	15.9	5.8	62.7	2.683	Silt/sand	<5.8	43	43			
49	Arakawa River Lower Reaches	Susame Bridge		Toda City /Wako City /Habuishi City	2016/11/15	Cloudy	15.0	0.5	14.5	1	Dark olive brown	Faint sewage	2.4	42.7	6.8	2.3	12.6	17.0	11.7	4.6	45.0	2.724	Silt/sand	9.3	41	52.3				
					2017/1/26	Sunny	8.8	0.5	10.8	3	Blackish brown	Faint sewage	0.0	37.4	5.5	3.0	19.6	19.6	9.5	5.5	57.1	2.656	Sand/silt	<7.3	34	34				





Survey Locations (Chiba,Saitama,Tokyo Prefectures)