

FY2016 Gunma Prefecture Survey Results

[Outline of results]

(1) Water

Rivers

Radioactive cesium (Cs-134, Cs-137): Not detectable at any location

Lakes and reservoirs

Radioactive cesium (Cs-134, Cs-137): Not detectable at any location

(2) Sediments

Rivers

Cs-134: ND - 170 Bq/kg (dry)

Cs-137: ND - 930 Bq/kg (dry)

Lakes and reservoirs

Cs-134: ND - 410 Bq/kg (dry)

Cs-137: 26 - 2,100 Bq/kg (dry)

(3) Surrounding Environment

(a) Soil

Rivers

Cs-134: ND - 980 Bq/kg (dry)

Cs-137: 2.7 - 6,400 Bq/kg (dry)

Lakes and reservoirs

Cs-134: ND - 770 Bq/kg (dry)

Cs-137: 14 - 4,700 Bq/kg (dry)

(b) Ambient dose rate

Rivers

0.04 - 0.20 μ Sv/h

Lakes and reservoirs

0.04 - 0.20 μ Sv/h

Gunma River (Water) 1/5

Location				Sampling Date	Weather	Air temperature (°C)	Water depth (m)	Water										Remarks	
No.	Water area	Location	Municipality					General Items						Activity concentration(Bq/L)					
								Water temperature (°C)	Sampling depth (m)	Color	Odor	Transparency (cm)	Electrical conductivity (mS/m)	SS (mg/L)	Turbidity (FNU)	Radioactive cesium			
													Cs-134	Cs-137					
R i v e r s	1	Tonegawa River	Hirose Bridge	Minakami Town	2016/5/12	Sunny	15.1	0.3	7.2	0.0	Light grayish yellow green	None	>100	3.5	1	0.7	<-0.75	<-0.55	
					2016/8/4	Sunny	25.8	0.2	19.1	0.0	Light grayish greenish yellow	None	>100	5.2	1	0.8	<-0.79	<-0.80	
					2016/11/25	Sunny	8.1	0.2	9.1	0.0	Light grayish greenish yellow	None	72	5.6	4	3.3	<-0.73	<-0.70	
					2017/1/17	Snow	0.8	-	-	-	-	-	-	-	-	-	-	-	Unable to collect samples due to freezing
					2016/5/20	Sunny	18.3	0.4	8.8	0.0	Light grayish yellow green	None	78	3.3	4	1.6	<-0.82	<-0.75	
					2016/6/8	Cloudy	19.5	0.2	10.9	0.0	Light grayish yellow green	None	>100	3.4	1	0.8	<-0.73	<-0.75	
		2	Tonegawa River	Tsukiyono Bridge	Minakami Town	2016/7/1	Sunny	29.7	0.3	18.8	0.0	Light grayish yellow green	None	>100	5.9	<1	0.4	<-0.96	<-0.80
						2016/8/31	Sunny	28.2	0.4	19.1	0.0	Light grayish yellow green	None	>100	7.3	1	1.2	<-0.60	<-0.69
						2016/9/12	Sunny	24.8	0.2	19.5	0.0	Light grayish yellow green	None	>100	8.6	1	0.6	<-0.69	<-0.80
						2016/11/25	Sunny	6.6	0.3	8.9	0.0	Grayish yellow green	None	85	5.7	2	2.7	<-0.69	<-0.63
						2017/1/17	Cloudy	1.2	0.3	3.6	0.0	Grayish yellow green	None	85	6.2	4	2.1	<-0.63	<-0.92
						2016/5/20	Sunny	22.9	0.4	13.7	0.0	Light grayish yellow green	None	78	8.8	1	0.6	<-0.66	<-0.69
	3	Akaya River	Kosode Bridge	Minakami Town	2016/8/31	Sunny	29.0	0.4	19.0	0.0	Grayish yellow green	None	86	8.5	5	2.9	<-0.77	<-0.75	
					2016/11/25	Sunny	7.0	0.3	9.1	0.0	Light grayish greenish yellow	None	>100	9.9	<1	0.7	<-0.80	<-0.61	
					2017/1/17	Cloudy	2.1	0.5	4.0	0.0	Light grayish yellow green	None	>100	11.0	<1	1.1	<-0.68	<-0.69	
	4	Sakura River	In Oozaya Yachi	Kawaba Village	2016/5/13	Sunny	20.7	0.3	13.3	0.0	Light grayish yellow green	None	>100	5.7	<1	0.3	<-0.61	<-0.80	
					2016/6/8	Cloudy	20.3	0.2	13.3	0.0	Light grayish yellow green	None	>100	6.9	1	0.3	<-0.78	<-0.74	
					2016/7/1	Sunny	28.5	0.2	16.8	0.0	Light grayish yellow green	None	>100	6.8	<1	0.4	<-0.61	<-0.55	
					2016/8/4	Sunny	27.7	0.3	17.2	0.0	Grayish yellow	None	90	6.1	4	2.3	<-0.47	<-0.69	
					2016/9/12	Sunny	24.2	0.2	16.3	0.0	Light grayish yellow green	None	>100	6.3	2	0.8	<-0.51	<-0.69	
					2016/11/24	Snow	0.2	0.2	4.2	0.0	Grayish greenish yellow	None	>100	6.2	<1	0.2	<-0.73	<-0.92	
	5	Tonegawa River System	Tonegawa River Area	Kintoshina Village	2017/1/11	Cloudy	0.0	0.2	2.6	0.0	Light grayish yellow green	None	>100	7.0	<1	0.4	<-0.72	<-0.84	
					2016/5/26	Sunny	28.4	0.3	15.0	0.0	Light grayish yellow	None	>100	4.8	<1	0.3	<-0.69	<-0.63	
					2016/8/19	Cloudy	24.4	0.3	18.4	0.0	Light grayish greenish yellow	None	>100	5.4	2	0.8	<-0.84	<-0.75	
					2016/11/15	Sunny	16.9	0.4	8.0	0.0	Light grayish yellow	None	>100	5.0	1	0.5	<-0.56	<-0.70	
					2017/1/12	Sunny	-1.2	0.4	1.0	0.0	Light grayish yellow	None	>100	5.5	<1	0.5	<-0.80	<-0.75	
					2016/5/26	Sunny	24.7	0.5	19.0	0.0	Light grayish yellow	None	>100	8.7	<1	0.4	<-0.66	<-0.80	
	6	Kintoshina River	Tonemachitakatoya	Numata City	2016/6/8	Cloudy	23.3	0.5	15.8	0.0	Light grayish greenish yellow	None	>100	9.6	<1	0.3	<-0.79	<-0.80	
					2016/7/1	Sunny	27.6	0.4	20.3	0.0	Light grayish yellow	None	>100	11.2	<1	0.3	<-0.68	<-0.75	
					2016/8/19	Sunny	29.4	0.3	21.3	0.0	Grayish yellow green	None	64	9.3	4	3.4	<-0.57	<-0.75	
					2016/9/12	Sunny	25.1	0.5	18.3	0.0	Light grayish yellow	None	>100	7.8	1	0.7	<-0.54	<-0.63	
					2016/11/15	Sunny	17.0	0.4	10.0	0.0	Light grayish yellow green	None	>100	9.3	<1	0.5	<-0.78	<-0.84	
					2017/1/12	Sunny	5.2	0.5	3.4	0.0	Light grayish yellow	None	>100	11.1	<1	0.6	<-0.76	<-0.69	
	7	Kintoshina River	Futae Bridge	Numata City	2016/5/19	Sunny	23.2	0.5	15.7	0.0	Grayish greenish yellow	None	>100	10.3	<1	0.8	<-0.75	<-0.80	
					2016/6/8	Cloudy	26.4	0.4	17.5	0.0	Grayish greenish yellow	None	>100	11.4	1	0.6	<-0.78	<-0.61	
					2016/7/1	Sunny	29.0	0.5	22.3	0.0	Light grayish greenish yellow	None	>100	12.5	2	0.9	<-0.61	<-0.55	
					2016/8/31	Sunny	29.3	0.7	18.2	0.0	Light grayish yellow green	None	26	7.8	14	7.5	<-0.67	<-0.75	
					2016/9/12	Sunny	25.5	0.5	18.0	0.0	Grayish greenish yellow	None	>100	9.7	7	4.0	<-0.65	<-0.75	
					2016/11/2	Cloudy	12.5	0.5	10.7	0.0	Grayish greenish yellow	None	>100	11.4	2	1.3	<-0.68	<-0.80	
	8	Agatsuma River	Shinto Bridge	Naganohara Town	2017/1/11	Sunny	6.4	0.5	5.5	0.0	Grayish greenish yellow	None	>100	12.5	<1	1.1	<-0.77	<-0.69	
					2016/5/31	Sunny	20.1	0.4	13.2	0.0	Light grayish yellow green	None	45	23.9	20	12	<-0.61	<-0.80	
					2016/8/9	Sunny	27.9	0.3	18.3	0.0	Light grayish yellow green	None	58	20.5	20	9.8	<-0.83	<-0.74	
2016/11/21					Cloudy	10.2	0.4	7.8	0.0	Light grayish yellow green	None	55	22.5	16	10	<-0.73	<-0.70		
9	Shirasuma River	Shuttatsu Bridge	Nakanonojo Town	2017/1/11	Sunny	2.4	0.4	3.4	0.0	Light grayish yellow green	None	48	20.1	15	14	<-0.76	<-0.75		
				2016/5/31	Sunny	16.9	0.2	13.8	0.0	Light grayish yellow green	None	>100	13.9	<1	0.1	<-0.82	<-0.75		
				2016/8/9	Sunny	25.3	0.2	20.2	0.0	Light grayish yellow green	None	>100	24.0	<1	0.7	<-0.72	<-0.80		
				2016/11/21	Sunny	11.2	0.4	9.3	0.0	Light grayish green	None	72	51.2	8	7.9	<-0.72	<-0.80		
				2017/1/11	Sunny	3.2	0.4	4.0	0.0	Light grayish yellow green	None	55	45.7	7	7.1	<-0.77	<-0.84		

Gunma River (Water) 2/5

Location				Sampling Date	Weather	Air temperature (°C)	Water depth (m)	Water										Remarks
No.	Water area							General items						Activity concentration(Bq/L)				
	Water area	Location	Municipality					Water temperature (°C)	Sampling depth (m)	Color	Odor	Transparency (cm)	Electrical conductivity (mS/m)	SS (mg/L)	Turbidity (FNU)	Radioactive cesium		
												Cs-134	Cs-137					
R i v e r s	10	Agatsuma River	Downstream of Azuma Bridge	Higashi-Agatsuma Town	2016/5/20	Cloudy	20.9	0.3	17.2	0.0	Light grayish yellow	None	22	21.1	28	19	<0.67	<0.69
					2016/6/9	Cloudy	24.1	0.3	19.1	0.0	Grayish greenish yellow	None	62	34.1	3	2.0	<0.74	<0.66
					2016/7/11	Sunny	33.4	0.3	23.7	0.0	Light grayish yellow	None	>100	20.9	4	2.1	<0.65	<0.61
					2016/8/31	Sunny	25.2	0.3	18.6	0.0	Grayish yellow	None	30	15.7	34	18	<0.63	<0.63
					2016/9/6	Sunny	28.2	0.3	23.1	0.0	Light grayish yellow green	None	72	25.4	10	7.4	<0.77	<0.92
					2016/11/22	Sunny	11.6	0.3	10.1	0.0	Light grayish yellow green	None	34	36.0	35	28	<0.74	<0.69
					2017/1/11	Sunny	8.8	0.3	6.6	0.0	Light grayish greenish yellow	None	65	24.4	13	10	<0.87	<0.92
	11	Nakuta River	Tonoda Bridge	Takayama Village	2016/5/20	Sunny	21.8	0.4	17.4	0.0	Light grayish yellow green	None	75	13.0	3	1.7	<0.64	<0.80
					2016/8/31	Sunny	23.2	0.4	17.4	0.0	Light grayish yellow green	None	>100	10.2	5	2.4	<0.81	<0.92
					2016/11/22	Sunny	15.4	0.4	10.1	0.0	Light grayish yellow green	None	>100	13.4	<1	0.7	<0.79	<0.75
					2017/1/11	Sunny	6.6	0.4	4.3	0.0	Light grayish yellow green	None	>100	12.3	<1	0.7	<0.76	<0.63
	12	Agatsuma River	Agatsuma Bridge	Shibukawa City	2016/5/19	Sunny	26.8	0.5	20.7	0.0	Light grayish yellow green	None	85	19.8	2	1.4	<0.77	<0.75
					2016/6/9	Cloudy	26.1	0.5	20.6	0.0	Light grayish yellow green	None	>100	20.9	3	1.3	<0.66	<0.55
					2016/7/11	Sunny	33.8	0.2	26.0	0.0	Light grayish yellow green	None	>100	20.9	2	0.8	<0.60	<0.84
					2016/8/31	Sunny	30.7	0.5	19.7	0.0	Light grayish yellow	None	22	14.7	51	19	<0.89	<0.80
					2016/9/6	Sunny	31.3	0.3	21.3	0.0	Light grayish yellow green	None	71	16.8	10	5.4	<0.81	<0.75
					2016/11/2	Cloudy	14.6	0.3	10.0	0.0	Light grayish yellow green	None	25	29.3	40	27	<0.61	<0.66
					2017/1/12	Sunny	10.4	0.4	4.3	0.0	Light grayish yellow green	None	57	31.6	12	11	<0.51	<0.88
	13	Tonegawa River	Taisho Bridge	Shibukawa City	2016/5/19	Sunny	27.2	0.5	12.7	0.0	Grayish yellow green	None	85	5.1	2	1.3	<0.61	<0.92
					2016/6/9	Cloudy	26.0	0.6	14.4	0.0	Light grayish yellow green	None	>100	6.2	4	0.8	<0.73	<0.75
					2016/7/11	Sunny	34.1	0.4	23.8	0.0	Light grayish yellow green	None	>100	14.6	<1	1.0	<0.69	<0.55
					2016/8/31	Sunny	31.1	0.7	20.6	0.0	Grayish yellow	None	24	9.7	16	6.9	<0.65	<0.80
					2016/9/6	Sunny	31.8	0.5	22.0	0.0	Grayish yellow green	None	77	15.2	7	4.1	<0.66	<0.69
					2016/11/2	Cloudy	15.6	0.5	12.2	0.0	Grayish yellow green	None	30	23.3	36	22	<0.76	<0.75
					2017/1/12	Sunny	9.8	0.4	5.2	0.0	Grayish yellow green	None	70	21.3	6	5.1	<0.83	<0.73
	14	Takizawa River	Shintakizawa Bridge	Shibukawa City/Yoshioka Town	2016/5/19	Sunny	22.6	0.2	20.8	0.0	Light grayish yellow green	None	>100	21.1	4	1.7	<0.72	<0.88
					2016/8/31	Sunny	30.2	0.2	24.0	0.0	Light grayish yellow green	None	27	19.3	27	13	<0.60	<0.69
					2016/11/2	Cloudy	13.8	0.2	13.5	0.0	Light grayish yellow green	None	75	24.9	5	3.1	<0.65	<0.66
					2017/1/12	Sunny	9.4	0.1	5.9	0.0	Light grayish yellow green	None	>100	20.8	1	1.6	<0.66	<0.69
	15	Tonegawa River	Gunna-ohashi Bridge	Maebashi City	2016/5/28	Cloudy	19.3	0.5	12.1	0.0	Light grayish yellow green	None	>100	9.5	4	2.8	<0.67	<0.69
					2016/8/1	Sunny	30.3	0.4	21.5	0.0	Light grayish greenish yellow	None	37	15.1	13	7.0	<0.74	<0.84
					2016/11/1	Cloudy	14.3	0.4	11.3	0.0	Light grayish yellow green	None	58	17.9	12	8.5	<0.60	<0.84
					2017/1/17	Sunny	7.7	0.3	4.8	0.0	Light grayish yellow green	None	>100	17.6	5	4.0	<0.71	<0.63
					2016/5/27	Sunny	22.9	0.4	14.4	0.0	Light grayish yellowish green	None	65	11.8	5	2.4	<0.71	<0.84
	16	Tonegawa River	Fukushima Bridge	Tamamura Town	2016/8/1	Sunny	28.4	0.3	23.1	0.0	Grayish yellow green	None	49	17.4	16	6.2	<0.83	<0.66
					2016/11/16	Sunny	14.2	0.3	11.5	0.0	Light grayish yellowish green	None	80	19.3	7	5.8	<0.81	<0.74
					2017/1/13	Sunny	7.1	0.3	7.2	0.0	Light grayish yellow green	None	78	18.8	5	3.4	<0.76	<0.84
					2016/5/31	Sunny	19.5	0.2	20.6	0.0	Light grayish yellow	None	>100	11.8	2	0.5	<0.75	<0.55
					2016/8/9	Sunny	31.3	0.2	22.6	0.0	Light grayish yellow	None	>100	13.6	7	2.0	<0.73	<0.66
	17	Nagai River	Kamigonda Bridge	Takasaki City	2016/11/17	Sunny	13.0	0.2	9.6	0.0	Light grayish yellow	None	>100	12.2	1	0.7	<0.61	<0.80
					2017/1/14	Cloudy	1.2	0.3	5.2	0.0	Light grayish yellow	None	>100	11.7	1	0.6	<0.71	<0.80
					2016/5/31	Sunny	24.2	0.3	20.4	0.0	Grayish yellow	None	>100	12.3	2	0.4	<0.77	<0.75
					2016/8/9	Sunny	31.2	0.3	22.4	0.0	Light grayish yellow	None	>100	10.7	4	1.3	<0.70	<0.84
	18	Karasu River	Karasugawa Bridge	Takasaki City	2016/11/17	Sunny	13.2	0.4	9.7	0.0	Grayish greenish yellow	None	>100	11.3	6	1.9	<0.66	<0.66
					2017/1/14	Sunny	3.4	0.4	4.3	0.0	Grayish yellow	None	>100	11.6	<1	0.5	<0.67	<0.80
					2016/5/16	Cloudy	14.5	0.5	15.8	0.0	Grayish yellow	None	>100	17.0	1	0.6	<0.73	<0.63
					2016/8/9	Sunny	32.6	0.4	24.8	0.0	Grayish yellow	None	>100	14.2	2	1.7	<0.71	<0.70
19	Usui River	Nakase Bridge	Amaka City	2016/11/17	Sunny	16.3	0.4	11.3	0.0	Grayish yellow	None	>100	15.6	2	1.2	<0.63	<0.63	
				2017/1/14	Cloudy	3.2	0.4	3.7	0.0	Light grayish yellow green	None	>100	17.9	2	1.2	<0.84	<0.73	

Gunma River (Water) 3/5

No.	Location				Sampling Date	Weather	Air temperature (°C)	Water depth (m)	Water								Remarks
	Water area	Location	Municipality	General items					Activity concentration(Bq/L)								
				Water temperature (°C)					Sampling depth (m)	Color	Odor	Transparency (cm)	Electrical conductivity (mS/m)	SS (mg/L)	Turbidity (FNU)	Radioactive cesium Cs-134	
20	Usui River	Hanataka Bridge	Takasaki City	2016/5/31	Sunny	24.6	0.4	23.7	0.0	Grayish yellow	None	>100	42.3	3	1.8	<-0.62	<-0.81
				2016/8/2	Sunny	32.1	0.4	24.2	0.0	Dark grayish yellow	None	22	14.5	67	24	<-0.71	<-0.80
				2016/11/17	Sunny	15.0	0.7	11.7	0.0	Dark grayish yellow	None	>100	32.4	2	1.4	<-0.63	<-0.78
21	Kabura River	Tadakawa Bridge	Shimonita Town	2017/1/14	Sunny	5.7	0.3	3.9	0.0	Grayish yellow	None	>100	46.4	3	1.3	<-0.57	<-0.92
				2016/5/16	Cloudy	16.4	0.4	18.2	0.0	Grayish yellow green	None	>100	31.8	1	0.4	<-0.85	<-0.96
				2016/8/9	Sunny	33.0	0.7	24.3	0.0	Light grayish yellow green	None	>100	21.2	4	1.3	<-0.54	<-0.69
22	Kabura River	Kaburagawa Bridge	Takasaki City/Fujioka City	2016/11/17	Sunny	18.1	0.6	11.2	0.0	Grayish greenish yellow	None	>100	27.7	1	1.1	<-0.87	<-0.75
				2017/1/14	Cloudy	3.6	0.4	2.5	0.0	Light grayish yellow green	None	>100	31.8	2	1.5	<-0.86	<-0.80
				2016/5/31	Sunny	25.7	0.5	24.4	0.0	Light grayish yellow green	None	>100	30.7	4	1.3	<-0.76	<-0.69
23	Ogawa River	Kinzan Bridge	Kanra Town	2016/8/2	Sunny	32.1	0.3	26.6	0.0	Grayish yellow green	None	28	17.9	83	52	<-0.79	<-0.84
				2016/11/16	Sunny	16.2	0.3	12.9	0.0	Light grayish yellow green	None	>100	30.9	5	2.4	<-0.59	<-0.66
				2017/1/13	Sunny	9.2	0.3	5.5	0.0	Light grayish yellow green	None	>100	35.1	<1	1.4	<-0.71	<-0.84
24	Nanmoku River	Ozawa Bridge	Nanmoku Village	2016/5/17	Rain	17.0	0.2	15.8	0.0	Light grayish yellow green	None	>100	20.0	3	0.9	<-0.81	<-0.84
				2016/8/9	Sunny	30.2	0.2	22.1	0.0	Light grayish yellow green	None	>100	19.3	1	0.6	<-0.73	<-0.70
				2016/11/18	Sunny	11.4	0.2	10.0	0.0	Light grayish yellow green	None	>100	18.5	4	1.4	<-0.83	<-0.69
25	Someya River	Yakushi Bridge	Shinto Village	2017/1/14	Cloudy	3.9	0.2	7.2	0.0	Light grayish yellow green	None	>100	20.1	<1	0.6	<-0.87	<-0.92
				2016/5/16	Cloudy	17.2	0.2	16.7	0.0	Light grayish yellow green	None	>100	22.1	<1	0.1	<-0.76	<-0.75
				2016/8/9	Sunny	32.1	0.3	24.7	0.0	Light grayish yellow green	None	>100	15.7	<1	0.5	<-0.78	<-0.75
26	Inogawa River	Kamakura Bridge	Takasaki City	2016/11/17	Sunny	18.1	0.2	10.7	0.0	Grayish yellow green	None	>100	20.4	<1	0.4	<-0.50	<-0.61
				2017/1/14	Cloudy	3.1	0.2	1.7	0.0	Light grayish yellow green	None	>100	21.5	<1	0.9	<-0.60	<-0.92
				2016/5/19	Sunny	24.0	0.1	19.8	0.0	Grayish greenish yellow	None	80	26.7	2	0.6	<-0.64	<-0.75
27	Karasu River	Iwakura Bridge	Takasaki City/Tamamura Town	2016/8/2	Sunny	29.2	0.1	25.0	0.0	Grayish greenish yellow	None	24	15.5	20	4.9	<-0.65	<-0.55
				2016/11/2	Sunny	13.5	0.1	12.9	0.0	Grayish greenish yellow	None	82	25.5	8	3.7	<-0.73	<-0.55
				2017/1/12	Sunny	6.6	0.1	5.0	0.0	Grayish greenish yellow	None	>100	26.1	2	2.2	<-0.61	<-0.99
28	Shinkaname Bridge	Ueno Village	Takasaki City	2016/5/27	Cloudy	22.8	0.2	20.8	0.0	Grayish yellow green	None	72	37.5	10	2.7	<-0.52	<-0.69
				2016/8/10	Sunny	31.7	0.3	27.3	0.0	Grayish yellow green	None	>100	27.6	3	1.9	<-0.83	<-0.61
				2016/11/16	Sunny	13.8	0.3	12.5	0.0	Grayish yellow green	None	>100	39.3	5	2.1	<-0.74	<-0.69
29	Morito Bridge	Kanna Town	Takasaki City/Tamamura Town	2017/1/13	Sunny	8.2	0.2	8.6	0.0	Light grayish yellow green	None	>100	43.1	4	2.1	<-0.74	<-0.80
				2016/5/27	Cloudy	24.9	0.4	23.2	0.0	Grayish yellow green	None	50	36.0	4	2.3	<-0.75	<-0.75
				2016/8/10	Sunny	34.2	0.2	23.3	0.0	Grayish yellow green	None	84	36.7	8	5.4	<-0.72	<-0.88
30	Kanna River	Tobukyo Bridge	Fujioka City/Kamisato Town	2016/11/16	Sunny	15.6	0.3	15.1	0.0	Grayish yellow green	None	60	35.0	5	3.1	<-0.49	<-0.74
				2017/1/13	Sunny	10.4	0.4	10.0	0.0	Grayish yellow	None	52	36.5	7	7.0	<-0.79	<-0.88
				2016/5/17	Sunny	20.4	0.4	16.7	0.0	Light grayish yellow green	None	>100	17.4	<1	0.5	<-0.60	<-0.75
31	Kannagawa Bridge	Kamisato Town	Kanna River	2016/11/18	Sunny	9.4	0.3	9.7	0.0	Light grayish yellow green	None	>100	17.3	2	0.9	<-0.66	<-0.96
				2016/5/17	Sunny	18.6	0.3	17.3	0.0	Light grayish yellow green	None	>100	18.7	<1	0.2	<-0.68	<-0.84
				2016/11/18	Sunny	11.4	0.4	8.3	0.0	Light grayish yellow green	None	>100	18.2	<1	0.6	<-0.66	<-0.61
32	Tonegawa River	Bando-ohashi Bridge	Horjo City	2016/5/27	Cloudy	22.4	0.2	20.6	0.0	Light grayish yellow green	None	>100	24.9	2	0.3	<-0.71	<-0.69
				2016/11/16	Sunny	17.3	0.2	14.8	0.0	Light grayish greenish yellow	None	>100	20.7	3	2.6	<-0.70	<-0.88
				2016/5/27	Cloudy	22.8	0.2	19.8	0.0	Greenish yellowish pale gray	None	>100	24.6	1	0.6	<-0.69	<-0.84
32	Tonegawa River Area	Bando-ohashi Bridge	Horjo City	2016/11/16	Sunny	15.4	0.3	14.0	0.0	Light grayish yellow green	None	>100	21.3	2	1.6	<-0.74	<-0.61
				2016/5/28	Cloudy	21.5	0.4	18.1	0.0	Light grayish yellow green	None	>100	23.1	12	2.7	<-0.59	<-0.63
				2016/8/18	Sunny	30.7	1.0	25.2	0.0	Grayish yellow	None	77	24.7	9	2.9	<-0.60	<-0.80
32	Tonegawa River Area	Bando-ohashi Bridge	Horjo City	2016/11/5	Sunny	11.1	0.3	13.0	0.0	Light grayish yellow green	None	53	27.9	6	4.4	<-0.56	<-0.78
				2017/1/18	Sunny	10.3	0.5	6.1	0.0	Light grayish yellow green	None	82	23.9	5	3.5	<-0.73	<-0.99

Gunma River (Water) 4/5

No.	Location				Sampling Date	Weather	Air temperature (°C)	Water depth (m)	Water								Remarks	
	Water area	Location	Municipality	General items					Activity concentration(Bq/L)									
				Water temperature (°C)					Sampling depth (m)	Color	Odor	Transparency (cm)	Electrical conductivity (mS/m)	SS (mg/L)	Turbidity (FNU)	Radioactive cesium		
				Cs-134	Cs-137													
33	Akagishinakawa River	In Shimohosoi Town	Maebashi City	2016/5/28	Sunny	20.9	0.3	16.0	0.0	Light grayish yellow green	None	38	15.4	15	4.7	<-0.75	<-0.80	
				2016/8/1	Sunny	32.4	0.4	25.3	0.0	Light grayish yellow green	None	51	20.3	15	4.0	<-0.79	<-0.80	
				2016/11/1	Sunny	15.2	0.3	12.3	0.0	Light grayish yellow green	None	>100	23.6	5	1.4	<-0.84	<-0.75	
		2017/1/17		Sunny	7.2	0.3	6.2	0.0	Light grayish yellow green	None	>100	26.0	3	1.6	<-0.81	<-0.80		
		2016/5/28		Cloudy	20.5	0.2	16.3	0.0	Light grayish yellow green	None	72	21.7	5	2.1	<-0.75	<-0.75		
		2016/8/1		Sunny	33.7	0.3	24.8	0.0	Light grayish yellow green	None	46	20.4	17	6.5	<-0.60	<-0.75		
	34	Momonoki River	Utsuboi Bridge	Maebashi City	2016/11/1	Sunny	18.6	0.2	12.8	0.0	Light grayish yellow green	None	>100	25.3	5	3.4	<-0.61	<-0.61
					2017/1/17	Sunny	5.8	0.4	7.5	0.0	Light grayish yellow green	None	>100	28.0	3	2.7	<-0.74	<-0.88
					2016/5/28	Sunny	26.5	0.3	20.6	0.0	Grayish yellow	None	70	25.2	10	1.8	<-0.59	<-0.69
	35	Arato River	Okuhara Bridge	Maebashi City	2016/8/1	Sunny	33.7	0.3	25.6	0.0	Grayish yellow	None	42	21.8	29	7.3	<-0.65	<-0.74
					2016/11/1	Sunny	19.2	0.3	14.5	0.0	Light grayish yellow	None	38	27.4	11	2.9	<-0.70	<-0.69
					2017/1/17	Sunny	5.3	0.3	3.4	0.0	Grayish yellow	None	>100	25.9	7	5.0	<-0.71	<-0.80
36	Kasukawa River	Hozumi Bridge	Maebashi City	2016/5/28	Cloudy	20.0	0.4	19.2	0.0	Grayish reddish yellow	None	80	27.3	13	2.5	<-0.49	<-0.80	
				2016/8/18	Sunny	29.2	0.5	24.5	0.0	Dark grayish yellow	None	24	25.0	8	4.6	<-0.70	<-0.69	
				2016/11/5	Sunny	15.2	0.2	13.1	0.0	Grayish reddish yellow	None	>100	35.8	6	3.8	<-0.66	<-0.66	
				2017/1/17	Sunny	9.6	0.4	6.3	0.0	Grayish yellow green	None	>100	38.3	5	4.9	<-0.74	<-0.75	
				2016/5/28	Cloudy	21.7	0.5	21.0	0.0	Grayish yellow green	None	72	22.8	9	1.5	<-0.71	<-0.80	
				2016/8/18	Cloudy	29.7	0.3	24.8	0.0	Grayish yellow	None	62	23.2	19	5.0	<-0.70	<-0.80	
37	Hirose River	Nakajima Bridge	Isesaki City	2016/11/5	Sunny	17.4	0.2	13.0	0.0	Grayish yellow green	None	>100	33.6	4	2.6	<-0.76	<-0.69	
				2017/1/18	Sunny	8.2	0.3	6.5	0.0	Light grayish yellow green	None	>100	34.2	4	3.4	<-0.65	<-0.75	
				2016/5/28	Cloudy	27.2	0.3	16.6	0.0	Light grayish yellow green	None	82	18.5	7	2.0	<-0.52	<-0.80	
38	Hayakawa River	Hayakawa Bridge	Isesaki City	2016/8/1	Cloudy	28.2	0.5	22.9	0.0	Grayish yellow green	None	30	17.1	17	9.0	<-0.51	<-0.75	
				2016/11/1	Sunny	18.3	0.3	16.7	0.0	Grayish yellow green	None	>100	22.0	3	1.3	<-0.69	<-0.78	
				2017/1/17	Sunny	8.1	0.5	5.5	0.0	Grayish yellow green	None	>100	26.5	2	2.1	<-0.54	<-0.92	
39	Tonegawa River System	Macjima Bridge	Ota City	2016/5/28	Sunny	23.1	0.5	19.5	0.0	Grayish yellow	None	85	25.6	9	1.3	<-0.62	<-0.84	
				2016/8/18	Cloudy	29.2	0.7	25.5	0.0	Dark grayish yellow	None	28	24.7	19	4.2	<-0.80	<-0.63	
				2016/11/5	Sunny	18.7	0.3	14.1	0.0	Grayish yellow	None	>100	42.8	3	1.9	<-0.59	<-0.81	
		2017/1/18		Sunny	9.2	0.2	6.4	0.0	Grayish greenish yellow	None	58	47.3	6	4.3	<-0.62	<-0.80		
		2016/5/28		Cloudy	26.6	0.3	17.9	0.0	Grayish yellow	None	35	16.1	15	6.1	<-0.68	<-0.63		
		2016/6/9		Sunny	22.4	0.3	22.1	0.0	Grayish yellow	None	63	17.8	12	5.3	<-0.61	<-0.69		
40	Tonegawa River	Tone-ozeki Weir	Chiyoda Town/Gyoda City	2016/7/11	Sunny	35.1	0.3	26.6	0.0	Grayish yellow	None	31	25.2	16	9.9	<-0.62	<-0.63	
				2016/8/18	Cloudy	29.1	0.7	25.6	0.0	Dark grayish yellow	None	32	21.2	13	6.8	<-0.85	<-0.75	
				2016/9/6	Sunny	33.9	0.3	25.8	0.0	Grayish yellow	None	31	22.6	15	9.5	<-0.75	<-0.88	
				2016/11/5	Sunny	20.2	0.2	14.2	0.0	Grayish yellow	None	49	31.9	13	8.0	<-0.80	<-0.66	
				2017/1/18	Sunny	8.4	0.3	4.6	0.0	Grayish yellow	None	52	28.3	6	7.1	<-0.77	<-0.84	
				2016/5/12	Sunny	21.7	0.3	13.7	0.0	Grayish yellow green	None	>100	6.7	<1	0.3	<-0.75	<-0.69	
				2016/6/2	Sunny	16.0	0.4	11.9	0.0	Light grayish yellow green	None	>100	7.8	<1	0.2	<-0.81	<-0.80	
				2016/7/13	Rain	18.9	0.3	16.4	0.0	Light grayish yellow green	None	>100	8.3	<1	0.6	<-0.83	<-0.63	
				2016/8/4	Sunny	28.4	0.4	17.5	0.0	Grayish yellow	None	27	6.4	15	4.5	<-0.71	<-0.48	
41	Koguro River	Kayano Bridge	Kiryu City	2016/9/2	Sunny	19.7	0.5	16.4	0.0	Grayish yellow green	None	78	6.4	2	0.7	<-0.70	<-0.75	
				2016/11/24	Snow	1.1	0.2	5.3	0.0	Grayish yellow green	None	>100	7.5	<1	0.2	<-0.86	<-0.88	
				2017/1/23	Sunny	-3.2	0.4	2.7	0.0	Light grayish yellow green	None	>100	7.6	6	1.5	<-0.69	<-0.84	
				2016/5/9	Cloudy	20.0	0.3	14.1	0.0	Light grayish yellow green	None	>100	10.1	2	1.3	<-0.85	<-0.75	
				2016/8/8	Sunny	32.4	0.3	20.7	0.0	Light grayish yellow green	None	>100	9.8	3	2.1	<-0.65	<-0.55	
				2016/11/21	Cloudy	13.1	0.3	10.9	0.0	Light grayish yellow green	None	>100	12.5	2	1.7	<-0.72	<-0.80	
	42	Watarase River	Takatsudo	Midori City	2017/1/23	Sunny	3.6	0.3	3.9	0.0	Light grayish yellow green	None	>100	13.2	<1	1.1	<-0.84	<-0.80
					2016/5/9	Cloudy	21.2	0.2	15.3	0.0	Yellow greenish pale gray	None	>100	10.2	2	0.9	<-0.65	<-0.80
					2016/6/2	Sunny	23.7	0.2	18.4	0.0	Yellow greenish pale gray	None	>100	10.3	2	1.0	<-0.75	<-0.70
			2016/7/13		Rain	24.0	0.2	20.7	0.0	Yellow greenish pale gray	None	>100	12.5	10	2.2	<-0.57	<-0.75	
			2016/8/8		Sunny	28.7	0.3	22.1	0.0	Yellow greenish pale gray	None	>100	9.8	4	2.2	<-0.63	<-0.75	
			2016/9/2		Sunny	33.5	0.3	19.8	0.0	Yellow greenish pale gray	None	>100	8.3	7	1.7	<-0.70	<-0.84	
43	Watarase River	Intake for Akaiwayosui water channel	Kiryu City	2016/11/21	Cloudy	14.1	0.2	11.2	0.0	Grayish yellow green	None	>100	12.3	2	1.1	<-0.67	<-0.75	
				2017/1/18	Sunny	9.2	0.2	6.0	0.0	Grayish yellow green	None	>100	13.3	<1	0.9	<-0.68	<-0.75	

Gunma River (Water) 5/5

Location					Sampling Date	Weather	Air temperature (°C)	Water depth (m)	Water								Remarks			
No.	Water area		Location	Municipality					General items						Activity concentration(Bq/L)					
									Water temperature (°C)	Sampling depth (m)	Color	Odor	Transparency (cm)	Electrical conductivity (mS/m)	SS (mg/L)	Turbidity (FNU)		Radioactive cesium		
				Cs-134	Cs-137															
R i v e r s	44	Tonegawa River System	Watarase River Area	Tatara River	Ejiri Bridge	Oura Town	2016/5/18	Sunny	21.2	0.5	17.0	0.0	Light grayish yellow	None	>100	16.9	6	2.3	<-0.81	<-0.63
							2016/8/25	Sunny	28.6	0.5	24.4	0.0	Light grayish yellow	None	>100	21.8	8	3.3	<-0.86	<-0.55
							2016/11/21	Cloudy	14.1	0.1	14.1	0.0	Light grayish yellow	None	>100	32.6	7	3.9	<-0.67	<-0.75
							2017/1/10	Sunny	12.6	0.1	7.4	0.0	Light grayish yellow	None	>100	32.5	5	4.7	<-0.75	<-0.99
	45	Tonegawa River System	Watarase River Area	Kiryu River	Kannon Bridge	Kiryu City	2016/5/9	Cloudy	20.2	0.3	14.9	0.0	Greenish yellowish pale gray	None	>100	8.1	<1	0.4	<-0.71	<-0.63
							2016/8/8	Sunny	26.6	0.3	20.0	0.0	Light grayish greenish yellow	None	>100	7.0	3	1.4	<-0.92	<-0.70
							2016/11/21	Cloudy	13.6	0.4	11.2	0.0	Grayish yellow	None	>100	8.6	<1	0.5	<-0.68	<-0.75
							2017/1/23	Sunny	7.6	0.4	2.8	0.0	Grayish greenish yellow	None	>100	8.5	2	0.8	<-0.74	<-0.75
	46	Tonegawa River System	Watarase River Area	Kiryu River	Sakai Bridge	Kiryu City/Ashikaga City	2016/5/9	Cloudy	21.5	0.2	16.8	0.0	Light grayish yellow green	None	>100	7.9	2	0.8	<-0.74	<-0.84
							2016/8/8	Sunny	28.6	0.3	22.9	0.0	Light grayish yellow green	None	>100	8.1	5	1.6	<-0.72	<-0.69
							2016/11/21	Cloudy	13.0	0.2	12.3	0.0	Light grayish yellow green	None	>100	10.5	<1	0.6	<-0.73	<-0.55
							2017/1/10	Sunny	10.6	0.2	5.3	0.0	Light grayish greenish yellow	None	>100	11.7	<1	0.4	<-0.58	<-0.88
	47	Tonegawa River System	Watarase River Area	Tsuruuda River	Lake Jonuma	Tatebayashi City	2016/5/18	Sunny	26.6	1.0	23.8	0.0	Grayish yellow	None	23	24.3	8	7.6	<-0.71	<-0.80
							2016/8/25	Sunny	33.6	1.0	28.5	0.0	Grayish yellow	None	25	25.4	7	3.0	<-0.70	<-0.63
							2016/11/5	Sunny	21.4	1.0	16.0	0.0	Grayish yellow	None	37	39.9	15	13	<-0.91	<-0.69
							2017/1/10	Sunny	12.4	1.2	6.9	0.0	Grayish yellow	None	23	32.1	8	17	<-0.67	<-0.88
	48	Tonegawa River System	Watarase River Area	Yatagawa River	Togoda Bridge	Meiwa Town/Itakura Town	2016/5/18	Sunny	27.0	1.8	24.3	0.0	Grayish yellow	None	40	44.3	14	4.5	<-0.77	<-0.96
							2016/8/25	Sunny	33.2	1.5	27.8	0.0	Grayish yellow	None	40	34.7	15	6.4	<-0.50	<-0.61
							2016/11/5	Sunny	18.5	1.5	18.1	0.0	Grayish yellow	None	75	80.6	6	4.6	<-0.81	<-0.70
							2017/1/10	Sunny	13.8	1.4	10.0	0.0	Light grayish greenish yellow	None	50	47.2	7	6.3	<-0.60	<-0.69

Gunma River (Sediment) 5/5

Location				Sampling Date	Weather	Air temperature (°C)	Water depth (m)	Sediment																Remarks								
No.	Water area	Location	Municipality					Sediment temperature (°C)	Sample length (cm)	Color	Odor	General items									Sediment content (%)	Density (g/cm ³)	Property		Activity concentration [Bq/kg(dry)]							
												Coarse gravel	Medium gravel	Fine gravel	Grain size distribution(%)		Fine sand	Silt	Clay	Cs-134					Cs-137	Total						
R i v e r s	45	Tonegawa River System	Watarase River Area	Kannon Bridge	Kiryu City	2016/5/9	Cloudy	20.2	0.3	15.1	5	Dark brown	None	0.0	14.2	19.7	24.2	33.1	6.3	0.3	2.2	77.7	2.848	Sand/gravel	11	48	59					
						2016/8/8	Sunny	26.6	0.3	21.3	5	Brown	None	0.0	0.4	5.5	25.7	48.4	9.7	7.1	3.3	70.2	2.724	Sand	16	74	90					
						2016/11/21	Cloudy	13.6	0.4	11.8	5	Dull yellowish brown	None	0.0	45.9	27.7	14.2	9.9	1.0	0.8	0.5	84.3	2.738	Gravel/sand	6.3	42	48.3					
				2017/1/23	Sunny	7.6	0.4	4.0	5	Dark brown	None	0.0	36.6	13.8	11.4	23.6	4.8	1.6	2.3	65.3	2.715	Gravel/sand	7.9	65	72.9							
				2016/5/9	Cloudy	21.5	0.2	17.2	5	Blackish brown	None	0.0	43.8	32.4	16.1	6.9	0.1	0.3	0.5	92.4	2.730	Sand/gravel	<2.9	6.5	6.5							
				2016/8/8	Sunny	28.6	0.3	23.1	5	Dark brown	None	0.0	31.6	23.6	19.7	19.6	2.5	0.9	2.2	77.1	2.748	Gravel/sand	4.8	35	39.8							
	46	Tonegawa River System	Watarase River Area	Kiryu River	Sakai Bridge	Kiryu City/Ashikaga City	2016/11/21	Cloudy	13.0	0.2	12.3	7	Blackish brown	None	0.0	45.8	27.9	16.6	8.8	0.2	0.3	0.3	91.7	2.762	Gravel/sand	<4.2	11	11				
							2017/1/10	Sunny	10.6	0.2	6.7	7	Blackish brown	None	0.0	45.2	30.1	14.4	9.1	0.5	0.3	0.3	79.2	2.684	Gravel/sand	<3.7	18	18				
							2016/5/18	Sunny	26.6	1.0	23.9	10	Olive black	Faint sewage	0.0	0.0	0.0	0.8	5.8	14.1	66.3	13.0	24.9	2.372	Silt	26	130	156				
					2016/8/25	Sunny	33.6	1.0	30.1	7	Olive black	Faint swamp	12.3	6.0	1.6	2.2	6.5	20.3	33.7	17.4	27.9	2.382	Silt	47	280	327						
					2016/11/5	Sunny	21.4	1.0	16.2	5	Olive black	Faint swamp	0.0	1.2	0.2	2.3	6.8	18.1	57.0	14.5	17.5	2.244	Silt	170	930	1,100						
					2017/1/10	Sunny	12.4	1.2	7.5	7	Olive black	None	0.0	0.0	0.0	0.3	1.5	9.1	70.5	18.7	20.4	2.291	Silt	120	820	940						
	47	Tonegawa River System	Watarase River Area	Tsuruda River	Lake Jonuma	Tatebayashi City	2016/5/18	Sunny	27.0	1.8	24.0	5	Olive black	Faint sewage	0.0	0.0	0.0	3.9	43.2	5.8	32.4	14.7	26.0	2.503	Silt	29	140	169				
							2016/8/25	Sunny	33.2	1.5	28.0	3	Olive black	None	0.0	10.1	7.7	19.4	54.5	3.5	1.3	3.8	75.6	2.745	Sand/gravel	<4.0	12	12				
							2016/11/5	Sunny	18.5	1.5	18.2	5	Olive black	None	0.0	0.2	0.7	0.3	37.2	42.5	11.8	7.4	61.7	2.686	Silt	8.5	51	59.5				
					2017/1/10	Sunny	13.8	1.4	11.4	9	Olive black	Faint sewage	0.0	0.7	2.9	5.7	55.3	26.1	4.3	5.1	58.5	2.709	Sand/silt	6.1	29	35.1						
					48	Tonegawa River System	Watarase River Area	Yatagawa River	Togoda Bridge	Mauiwa Town /Itakura Town	2016/5/9	Cloudy	20.2	0.3	15.1	5	Dark brown	None	0.0	14.2	19.7	24.2	33.1	6.3	0.3	2.2	77.7	2.848	Sand/gravel	11	48	59
											2016/8/8	Sunny	26.6	0.3	21.3	5	Brown	None	0.0	0.4	5.5	25.7	48.4	9.7	7.1	3.3	70.2	2.724	Sand	16	74	90
2016/11/21	Cloudy	13.6	0.4	11.8							5	Dull yellowish brown	None	0.0	45.9	27.7	14.2	9.9	1.0	0.8	0.5	84.3	2.738	Gravel/sand	6.3	42	48.3					

Gunma River (Surrounding Environment) 1/5

Location				Sampling Date	Weather	Air temperature (°C)	Surrounding Environment (Soil/Air dose)														Remarks	
No.	Water area	Location	Municipality				Left bank						Right bank									
							Color	Odor	Property	Activity concentration [Bq/kg(dry)]			Air Dose (µSv/h)	Color	Odor	Property	Activity concentration [Bq/kg(dry)]			Air Dose (µSv/h)		
										Cs-134	Cs-137	Total					Cs-134	Cs-137	Total			
R i v e r s	Tonegawa River System	Tonegawa River Area	Hirose Bridge	Minakami Town	2016/5/12	Sunny	15.1	Dark brown	Faint earth	Loamy	23	130	153	0.10	Brown	Faint earth	Loamy	51	240	291	0.11	(Left bank) Unable to collect samples due to snow on the ground
					2016/8/4	Sunny	25.8	Dark brown	Faint earth	Loamy	20	100	120	0.11	Dull yellowish brown	Faint earth	Loamy	14	83	97	0.12	
					2016/11/25	Sunny	8.1	Dark brown	Faint earth	Loamy	7.7	45	52.7	0.09	Dark brown	Faint earth	Loamy	46	280	326	0.10	
					2017/1/17	Snow	0.8	-	-	-	-	-	-	-	Blackish brown	Faint earth	Loamy	57	340	397	0.04	
					2016/5/20	Sunny	18.3	Blackish brown	Faint earth	Loamy	37	210	247	0.08	Dull yellowish brown	Faint earth	Loamy	99	530	629	0.07	
					2016/6/8	Cloudy	19.5	Dark brown	Faint earth	Loamy	74	430	504	0.09	Grayish yellowish brown	None	Loamy	170	960	1,130	0.08	
			2016/7/1	Sunny	29.7	Blackish brown	None	Loamy	39	200	239	0.07	Dull yellowish brown	None	Loamy	210	1,000	1,210	0.09			
			2016/8/31	Sunny	28.2	Blackish brown	None	Loamy	24	150	174	0.08	Blackish brown	None	Loamy	31	200	231	0.07			
			2016/9/12	Sunny	24.8	Blackish brown	Faint earth	Loamy	35	230	265	0.07	Blackish brown	Faint earth	Loamy	380	2,000	2,380	0.07			
			2016/11/25	Sunny	6.6	Blackish brown	Faint earth	Loamy	41	250	291	0.06	Blackish brown	Faint earth	Loamy	190	1,500	1,690	0.06			
			2017/1/17	Cloudy	1.2	Blackish brown	Faint earth	Loamy	74	490	564	0.04	Blackish brown	Faint earth	Loamy	250	1,700	1,950	0.05			
			2016/5/20	Sunny	22.9	Black	None	Clay-loamy	32	200	232	0.06	Blackish brown	Faint earth	Loamy	47	190	237	0.06			
		2016/8/31	Sunny	29.0	Brown	None	Sandy	<5.2	21	21	0.07	Dull yellowish brown	None	Loamy	10	69	79	0.07				
		2016/11/25	Sunny	7.0	Black	Faint earth	Loamy	15	94	109	0.05	Blackish brown	Faint earth	Loamy	38	240	278	0.05				
		2017/1/17	Cloudy	2.1	Black	Faint earth	Loamy	11	88	99	0.04	Dark brown	Faint earth	Loamy	34	200	234	0.04				
		2016/5/13	Sunny	20.7	Dark brown	None	Loamy	460	2,300	2,760	0.15	Dark brown	None	Loamy	400	2,100	2,500	0.14				
		2016/6/8	Cloudy	20.3	Grayish brown	Faint earth	Loamy	510	2,800	3,310	0.20	Dull yellow orange	Faint earth	Loamy	520	2,700	3,220	0.15				
		2016/7/1	Sunny	28.5	Dark brown	None	Loamy	230	1,300	1,530	0.14	Dull yellowish brown	Faint earth	Loamy	310	1,700	2,010	0.12				
		2016/8/4	Sunny	27.7	Blackish brown	None	Loamy	140	790	930	0.12	Dark brown	None	Loamy	300	1,600	1,900	0.12				
		2016/9/12	Sunny	24.2	Blackish brown	Faint earth	Loamy	420	2,700	3,120	0.13	Dull yellowish brown	Faint earth	Loamy	550	3,100	3,650	0.10				
		2016/11/24	Snow	0.2	Blackish brown	Faint earth	Loamy	290	1,700	1,990	0.10	Blackish brown	Faint earth	Loamy	270	1,700	1,970	0.10				
		2017/1/11	Cloudy	0.0	Blackish brown	Faint earth	Loamy	230	1,500	1,730	0.12	Blackish brown	Faint earth	Loamy	420	2,500	2,920	0.10				
		2016/5/26	Sunny	28.4	Grayish yellowish brown	Faint earth	Loamy	21	80	101	0.09	Dull yellowish brown	Faint earth	Loamy	56	330	386	0.10				
		2016/8/19	Cloudy	24.4	Blackish brown	Faint earth	Loamy	51	280	331	0.07	Blackish brown	Faint earth	Loamy	76	520	596	0.08				
		2016/11/15	Sunny	16.9	Blackish brown	Faint earth	Loamy	12	67	79	0.06	Blackish brown	Faint earth	Loamy	72	450	522	0.07				
		2017/1/12	Sunny	-1.2	Grayish yellowish brown	Faint earth	Loamy	25	210	235	0.07	Blackish brown	Faint earth	Loamy	320	2,100	2,420	0.07				
		2016/5/26	Sunny	24.7	Grayish yellow	Faint earth	Loamy	11	60	71	0.06	Dull yellowish brown	Faint earth	Loamy	11	42	53	0.11				
		2016/6/8	Cloudy	23.3	Grayish white	Faint earth	Loamy	<7.5	26	26	0.09	Brown	Faint earth	Sandy	10	49	59	0.09				
		2016/7/1	Sunny	27.6	Grayish yellow	None	Sandy	<6.9	29	29	0.07	Grayish yellowish brown	None	Sandy	<6.8	29	29	0.07				
		2016/8/19	Sunny	29.4	Dark grayish yellow	Faint earth	Loamy	<6.0	21	21	0.07	Dark grayish yellow	Faint earth	Sandy	<6.2	25	25	0.06				
		2016/9/12	Sunny	25.1	Yellowish brown	None	Sandy	9.8	37	46.8	0.07	Brown	Faint earth	Loamy	15	88	103	0.07				
		2016/11/15	Sunny	17.0	Yellowish brown	None	Sandy	13	57	70	0.06	Brown	Faint earth	Sandy	<7.7	23	23	0.06				
		2017/1/12	Sunny	5.2	Dark grayish yellow	None	Sandy	<6.4	12	12	0.06	Brown	Faint earth	Sandy	8.7	72	80.7	0.06				
		2016/5/19	Sunny	23.2	Blackish brown	Faint earth	Loamy	99	490	589	0.06	Dull yellowish brown	Faint earth	Loamy	94	470	564	0.06				
2016/6/8	Cloudy	26.4	Dull yellowish brown	Faint earth	Loamy	110	540	650	0.07	Grayish yellowish brown	Faint earth	Loamy	80	410	490	0.09						
2016/7/1	Sunny	29.0	Dark brown	None	Loamy	53	300	353	0.06	Dark brown	None	Loamy	98	470	568	0.07						
2016/8/31	Sunny	29.3	Dull yellowish brown	Faint earth	Loamy	49	370	419	0.06	Brownish gray	Faint earth	Sandy	7.8	39	46.8	0.07						
2016/9/12	Sunny	25.5	Blackish brown	Faint earth	Loamy	120	620	740	0.05	Dark brown	Faint earth	Loamy	16	97	113	0.06						
2016/11/2	Cloudy	12.5	Blackish brown	Faint earth	Loamy	120	610	730	0.05	Dark brown	Faint earth	Loamy	36	200	236	0.06						
2017/1/11	Sunny	6.4	Blackish brown	Faint earth	Loamy	170	950	1,120	0.05	Dark brown	Faint earth	Loamy	45	280	325	0.05						
2016/5/31	Sunny	20.1	Dark brown	None	Loamy	54	300	354	0.05	Dark brown	None	Loamy	38	220	258	0.05						
2016/8/9	Sunny	27.9	Dark brown	Faint earth	Loamy	15	97	112	0.04	Grayish yellowish brown	Faint earth	Loamy	45	190	235	0.05						
2016/11/21	Cloudy	10.2	Blackish brown	Faint earth	Loamy	27	190	217	0.05	Blackish brown	None	Loamy	3.7	21	24.7	0.05						
2017/1/11	Sunny	2.4	Blackish brown	Faint earth	Loamy	79	570	649	0.04	Blackish brown	Faint earth	Loamy	16	120	136	0.04						
2016/5/31	Sunny	16.9	Blackish brown	None	Loamy	71	430	501	0.07	Blackish brown	None	Loamy	120	750	870	0.05						
2016/8/9	Sunny	25.3	Dark brown	Faint earth	Loamy	180	1,100	1,280	0.04	Blackish brown	Faint earth	Loamy	110	590	700	0.05						
2016/11/21	Sunny	11.2	Dark brown	None	Loamy	43	320	363	0.04	Blackish brown	None	Loamy	26	170	196	0.05						
2017/1/11	Sunny	3.2	Blackish brown	Faint earth	Loamy	26	180	206	0.04	Blackish brown	Faint earth	Loamy	130	800	930	0.04						

Gunma River (Surrounding Environment) 2/5

No.	Location				Sampling Date	Weather	Air temperature (°C)	Surrounding Environment (Soil, Air dose)											Remarks				
	Water area	Location	Municipality	Left bank					Right bank														
				Color				Odor	Property	Activity concentration [Bq/kg(dry)]			Air Dose (µSv/h)	Color	Odor	Property	Activity concentration [Bq/kg(dry)]			Air Dose (µSv/h)			
										Radioactive cesium							Radioactive cesium						
Cs-134	Cs-137	Total	Cs-134	Cs-137	Total																		
10	Agatsuma River	Downstream of Azama Bridge	Higashi-Agatsuma Town	2016/5/20	Cloudy	20.9	Grayish yellowish brown	None	Sandy	-3.6	7.2	7.2	0.04	Blackish brown	Faint earth	Loamy	65	370	435	0.04			
				2016/6/9	Cloudy	24.1	Grayish yellowish brown	None	Sandy	-4.4	17	17	0.05	Dark brown	Faint earth	Loamy	97	480	577	0.06			
				2016/7/11	Sunny	33.4	Grayish yellowish brown	None	Sandy	-5.9	7.0	7.0	0.04	Blackish brown	None	Loamy	27	180	207	0.04			
				2016/8/31	Sunny	25.2	Grayish yellowish brown	None	Sandy	-4.5	5.0	5.0	0.04	Blackish brown	Faint earth	Loamy	30	160	190	0.04			
				2016/9/6	Sunny	28.2	Grayish yellowish brown	None	Sandy	-4.0	12	12	0.04	Blackish brown	Faint earth	Loamy	38	220	258	0.04			
				2016/11/22	Sunny	11.6	Brownish gray	None	Sandy	-5.7	5.9	5.9	0.04	Blackish brown	None	Loamy	140	880	1,020	0.04			
				2017/1/11	Sunny	8.8	Grayish yellowish brown	None	Sandy	-6.2	12	12	0.04	Blackish brown	Faint earth	Loamy	24	190	214	0.04			
11	Nakuta River	Tonoda Bridge	Takayama Village	2016/5/20	Sunny	21.8	Dark brown	Faint earth	Loamy	33	170	203	0.05	Dull yellowish brown	Faint earth	Loamy	29	150	179	0.04			
				2016/8/31	Sunny	23.2	Blackish brown	Faint earth	Loamy	120	710	830	0.04	Dark brown	Faint earth	Loamy	14	67	81	0.04			
				2016/11/22	Sunny	15.4	Dark brown	None	Loamy	77	420	497	0.04	Blackish brown	None	Loamy	26	190	216	0.04			
12	Agatsuma River	Agatsuma Bridge	Shibukawa City	2017/1/11	Sunny	6.6	Blackish brown	Faint earth	Loamy	59	350	409	0.04	Dark brown	Faint earth	Loamy	19	90	109	0.04			
				2016/5/19	Sunny	26.8	Dark brown	Loamy	110	530	640	0.04	Blackish brown	Faint earth	Loamy	190	1,000	1,190	0.05				
				2016/6/9	Cloudy	26.1	Dark brown	Faint earth	Loamy	100	560	660	0.05	Blackish brown	None	Loamy	130	690	820	0.05			
				2016/7/11	Sunny	33.8	Dark brown	Faint earth	Loamy	61	330	391	0.04	Grayish yellowish brown	Faint earth	Loamy	120	580	700	0.05			
				2016/8/31	Sunny	30.7	Blackish brown	Faint earth	Loamy	30	160	190	0.05	Blackish brown	None	Loamy	130	760	890	0.06			
				2016/9/6	Sunny	31.3	Dark brown	Faint earth	Loamy	82	410	492	0.04	Grayish yellowish brown	Faint earth	Loamy	74	420	494	0.04			
				2016/11/2	Cloudy	14.6	Dark brown	Faint earth	Loamy	89	400	489	0.04	Grayish yellowish brown	Faint earth	Loamy	110	730	840	0.04			
13	Tonegawa River	Taisho Bridge	Shibukawa City	2017/1/12	Sunny	10.4	Blackish brown	Faint earth	Loamy	130	720	850	0.04	Blackish brown	Faint earth	Loamy	140	700	840	0.04			
				2016/5/19	Sunny	27.2	Dark brown	Faint earth	Loamy	78	330	408	0.04	Grayish yellowish brown	None	Loamy	73	370	443	0.04			
				2016/6/9	Cloudy	26.0	Dull yellowish brown	Faint earth	Loamy	84	460	544	0.04	Grayish yellowish brown	None	Loamy	72	330	402	0.05			
				2016/7/11	Sunny	34.1	Dull yellowish brown	None	Loamy	58	350	408	0.04	Dull yellowish brown	None	Loamy	510	3,000	3,510	0.04			
				2016/8/31	Sunny	31.1	Blackish brown	None	Loamy	230	1,200	1,430	0.04	Dull yellowish brown	None	Loamy	58	260	318	0.04			
				2016/9/6	Sunny	31.8	Dark brown	Faint earth	Loamy	110	730	840	0.04	Blackish brown	Faint earth	Loamy	840	4,800	5,640	0.04			
				2016/11/2	Cloudy	15.6	Dark brown	Faint earth	Loamy	49	300	349	0.05	Blackish brown	Faint earth	Loamy	36	210	246	0.04			
14	Takizawa River	Shintakizawa Bridge	Shibukawa City/Yoshioka Town	2017/1/12	Sunny	9.8	Dark brown	Faint earth	Loamy	23	170	193	0.04	Blackish brown	Faint earth	Loamy	980	6,400	7,380	0.04			
				2016/5/19	Sunny	22.6	Dull yellowish brown	Faint earth	Loamy	46	220	266	0.04	Dull yellowish brown	Faint earth	Loamy	13	82	95	0.04			
				2016/8/31	Sunny	30.2	Dark brown	None	Loamy	39	250	289	0.04	Blackish brown	None	Loamy	53	300	353	0.04			
				2016/11/2	Cloudy	13.8	Dull yellowish brown	Faint earth	Loamy	13	72	85	0.04	Dull yellowish brown	Faint earth	Loamy	23	190	213	0.04			
				2017/1/12	Sunny	9.4	Dark brown	Faint earth	Loamy	36	320	356	0.04	Dull yellowish brown	Faint earth	Loamy	20	150	170	0.04			
				2016/5/28	Cloudy	19.3	Dull yellowish brown	Faint earth	Loamy	-8.9	18	18	0.04	Dull yellow orange	Faint earth	Loamy	20	110	130	0.04			
				2016/8/1	Sunny	30.3	Brown	None	Loamy	-1.0	7.5	7.5	0.05	Brown	None	Loamy	27	130	157	0.05			
15	Tonegawa River	Gunma-ohashi Bridge	Maebashi City	2016/11/1	Cloudy	14.3	Yellowish brown	Faint earth	Loamy	-7.0	14	14	0.04	Brown	Faint earth	Loamy	31	230	261	0.04			
				2017/1/17	Sunny	7.7	Dull yellowish brown	Faint earth	Loamy	-7.6	49	49	0.04	Dull yellowish brown	Faint earth	Loamy	21	110	131	0.04			
				2016/5/27	Sunny	22.9	Dull yellowish brown	Faint earth	Loamy	20	140	160	0.05	Dull yellow orange	Faint earth	Loamy	19	78	97	0.05			
				16	Fukushima Bridge	Tamamura Town	2016/8/1	Sunny	28.4	Dull yellowish brown	None	Loamy	-5.3	30	30	0.04	Dull yellowish brown	None	Loamy	26	130	156	0.05
							2016/11/16	Sunny	14.2	Dull yellowish brown	Faint earth	Loamy	13	61	74	0.04	Blackish brown	Faint earth	Loamy	18	110	128	0.04
							2017/1/13	Sunny	7.1	Dull yellowish brown	Faint earth	Loamy	6.3	32	38.3	0.04	Blackish brown	Faint earth	Loamy	15	110	125	0.05
							2016/5/31	Sunny	19.5	Dark brown	None	Loamy	95	440	535	0.06	Dark brown	None	Loamy	270	1,500	1,770	0.05
2016/8/9	Sunny	31.3	Dull yellowish brown				Faint earth	Loamy	110	650	760	0.06	Grayish yellowish brown	Faint earth	Loamy	67	420	487	0.07				
2016/11/17	Sunny	13.0	Black				None	Loamy	100	750	850	0.06	Black	None	Loamy	100	640	740	0.07				
2017/1/14	Cloudy	1.2	Blackish brown				Faint earth	Loamy	88	570	658	0.05	Black	Faint earth	Loamy	240	1,700	1,940	0.07				
17	Nagai River	Kamigonda Bridge	Takasaki City	2016/5/31	Sunny	24.2	Dark brown	None	Loamy	66	400	466	0.05	Brown	None	Loamy	70	370	440	0.06			
				2016/8/9	Sunny	31.2	Grayish yellowish brown	Faint earth	Loamy	72	450	522	0.05	Dull yellowish brown	Faint earth	Loamy	26	140	166	0.05			
				2016/11/17	Sunny	13.2	Blackish brown	None	Loamy	91	590	681	0.05	Blackish brown	None	Loamy	44	300	344	0.05			
				2017/1/14	Sunny	3.4	Dark brown	Faint earth	Loamy	33	330	363	0.05	Dull yellowish brown	Faint earth	Loamy	27	220	247	0.05			
				2016/5/16	Cloudy	14.5	Brown	None	Loamy	140	630	770	0.07	Grayish yellowish brown	None	Loamy	120	620	740	0.07			
				2016/8/9	Sunny	32.6	Dull yellowish brown	None	Loamy	58	310	368	0.06	Grayish yellowish brown	None	Loamy	41	200	241	0.06			
				2016/11/17	Sunny	16.3	Dull yellowish brown	None	Loamy	78	490	568	0.05	Grayish yellowish brown	None	Loamy	180	1,100	1,280	0.06			
18	Karasu River	Karasugawa Bridge	Annaka City	2017/1/14	Cloudy	3.2	Dark brown	Faint earth	Loamy	140	970	1,110	0.06	Dark brown	Faint earth	Loamy	64	420	484	0.06			

Gunma River (Surrounding Environment) 3/5

No.	Location				Sampling Date	Weather	Air temperature (°C)	Surrounding Environment (Soil/Air dose)											Remarks				
	Water area	Location	Municipality	Left bank						Right bank													
				Color				Odor	Property	Activity concentration [Bq/kg(dry)]			Air Dose (µSv/h)	Color	Odor	Property	Activity concentration [Bq/kg(dry)]			Air Dose (µSv/h)			
										Cs-134	Cs-137	Total					Cs-134	Cs-137			Total		
R i v e r s	Tonegawa River System	Karasu River Area	Usui River	Hanataka Bridge	Takasaki City	2016/5/31	Sunny	24.6	Dull yellowish brown	None	Loamy	27	160	187	0.05	Brown	None	Loamy	33	230	263	0.06	
						2016/8/2	Sunny	32.1	Dark brown	Faint earth	Loamy	47	240	287	0.04	Dull yellowish brown	Faint earth	Loamy	35	190	225	0.05	
						2016/11/17	Sunny	15.0	Grayish yellowish brown	None	Loamy	48	390	438	0.04	Blackish brown	None	Loamy	42	290	332	0.05	
						2017/1/14	Sunny	5.7	Dark brown	Faint earth	Loamy	39	270	309	0.04	Dark brown	Faint earth	Loamy	43	320	363	0.04	
			21	Kabura River	Tadakawa Bridge	Shimonita Town	2016/5/16	Cloudy	16.4	Dull yellowish brown	None	Loamy	48	300	348	0.07	Grayish yellowish brown	None	Loamy	39	200	239	0.08
							2016/8/9	Sunny	33.0	Brown	None	Loamy	40	220	260	0.06	Grayish yellowish brown	None	Loamy	91	420	511	0.07
							2016/11/17	Sunny	18.1	Dull yellowish brown	None	Loamy	36	230	266	0.06	Grayish yellowish brown	None	Sandy	22	150	172	0.07
							2017/1/14	Sunny	3.6	Grayish yellowish brown	None	Loamy	31	240	271	0.05	Brownish gray	None	Loamy	64	490	554	0.08
			22	Kaburagawa Bridge	Takasaki City/Fujioka City	2016/5/31	Sunny	25.7	Dull yellowish brown	None	Loamy	11	49	60	0.05	Brown	None	Loamy	9.2	47	56.2	0.05	
						2016/8/2	Sunny	32.1	Brown	Faint earth	Loamy	17	82	99	0.05	Dull yellowish brown	Faint earth	Loamy	<4.1	20	20	0.04	
						2016/11/16	Sunny	16.2	Dull yellowish brown	Faint earth	Loamy	10	86	96	0.04	Dull yellowish brown	Faint earth	Loamy	9.1	47	56.1	0.04	
						2017/1/13	Sunny	9.2	Dull yellowish brown	Faint earth	Loamy	17	140	157	0.04	Blackish brown	Faint earth	Loamy	<5.8	27	27	0.04	
			23	Ogawa River	Kinzan Bridge	Kanra Town	2016/5/17	Rain	17.0	Dull yellowish brown	None	Loamy	10	44	54	0.06	Brownish gray	None	Loamy	50	250	300	0.06
							2016/8/9	Sunny	30.2	Brownish gray	None	Loamy	8.5	66	74.5	0.05	Grayish yellowish brown	None	Loamy	23	120	143	0.05
							2016/11/18	Sunny	11.4	Blackish brown	None	Loamy	11	75	86	0.04	Blackish brown	None	Loamy	36	210	246	0.05
							2017/1/14	Cloudy	3.9	Brownish gray	None	Loamy	14	110	124	0.04	Dark brown	None	Loamy	43	330	373	0.04
			24	Nanomoku River	Ozawa Bridge	Nanomoku Village	2016/5/16	Cloudy	17.2	Brown	None	Loamy	66	330	396	0.05	Brownish gray	None	Loamy	150	850	1,000	0.06
							2016/8/9	Sunny	32.1	Grayish yellowish brown	None	Loamy	42	300	342	0.05	Brownish gray	None	Loamy	96	540	636	0.06
							2016/11/17	Sunny	18.1	Dull yellowish brown	None	Loamy	34	200	234	0.04	Blackish brown	None	Loamy	19	140	159	0.05
							2017/1/14	Cloudy	3.1	Grayish yellowish brown	None	Loamy	16	150	166	0.04	Blackish brown	None	Loamy	120	720	840	0.05
			25	Someya River	Yakushi Bridge	Shinto Village	2016/5/19	Sunny	24.0	Blackish brown	Faint earth	Loamy	45	250	295	0.04	Dull yellowish brown	Faint earth	Loamy	14	110	124	0.04
							2016/8/2	Sunny	29.2	Blackish brown	Faint earth	Loamy	31	170	201	0.04	Dark brown	Faint earth	Loamy	14	73	87	0.04
							2016/11/2	Sunny	13.5	Blackish brown	Faint earth	Loamy	19	120	139	0.04	Dull yellowish brown	Faint earth	Loamy	10	78	88	0.04
							2017/1/12	Sunny	6.6	Blackish brown	Faint earth	Loamy	67	350	417	0.04	Dark brown	Faint earth	Loamy	48	310	358	0.04
			26	Inogawa River	Kamakura Bridge	Takasaki City	2016/5/27	Cloudy	22.8	Grayish yellowish brown	Faint earth	Loamy	13	82	95	0.06	Grayish yellowish brown	Faint earth	Loamy	20	92	112	0.05
							2016/8/10	Sunny	31.7	Brownish gray	None	Loamy	10	55	65	0.04	Brownish gray	None	Loamy	22	130	152	0.05
							2016/11/16	Sunny	13.8	Dark brown	Faint earth	Loamy	6.0	26	32.0	0.04	Blackish brown	Faint earth	Loamy	22	130	152	0.05
							2017/1/13	Sunny	8.2	Blackish brown	Faint earth	Loamy	<7.2	36	36	0.04	Blackish brown	Faint earth	Loamy	27	170	197	0.04
			27	Karasu River	Iwakura Bridge	Takasaki City/Tamamura Town	2016/5/27	Cloudy	24.9	Grayish yellowish brown	Faint earth	Loamy	31	160	191	0.05	Dull yellow orange	None	Loamy	20	130	150	0.05
							2016/8/10	Sunny	34.2	Grayish yellowish brown	Faint earth	Loamy	26	150	176	0.05	Grayish yellowish brown	None	Loamy	18	110	128	0.05
							2016/11/16	Sunny	15.6	Dull yellowish brown	Faint earth	Loamy	8.7	60	68.7	0.04	Dull yellowish brown	Faint earth	Loamy	21	150	171	0.04
							2017/1/13	Sunny	10.4	Dark brown	Faint earth	Loamy	23	200	223	0.04	Dark brown	Faint earth	Loamy	<6.6	32	32	0.04
			28	Shinkaname Bridge	Ueno Village	2016/5/17	Sunny	20.4	Dull yellowish brown	None	Loamy	29	150	179	0.05	Grayish yellowish brown	None	Loamy	50	250	300	0.05	
						2016/11/18	Sunny	9.4	Dark brown	Faint earth	Loamy	19	150	169	0.06	Dark brown	None	Loamy	120	680	800	0.06	
						2016/5/17	Sunny	18.6	Dull yellowish brown	None	Loamy	23	100	123	0.05	Brownish gray	None	Sandy	<4.6	8.0	8.0	0.05	
						2016/11/18	Sunny	11.4	Blackish brown	None	Loamy	50	320	370	0.05	Brownish gray	None	Sandy	<5.0	8.7	8.7	0.05	
			29	Morito Bridge	Kanna Town	2016/5/27	Cloudy	22.4	Dull yellowish brown	Faint earth	Loamy	140	600	740	0.06	Grayish yellowish brown	Faint earth	Loamy	50	260	310	0.05	
						2016/11/16	Sunny	17.3	Olive black	Faint earth	Loamy	22	160	182	0.05	Grayish olive	Faint earth	Loamy	23	160	183	0.05	
						2016/5/27	Cloudy	22.8	Brownish gray	None	Loamy	16	110	126	0.06	Yellowish brown	None	Loamy	19	99	118	0.06	
						2016/11/16	Sunny	15.4	Blackish brown	Faint earth	Loamy	12	92	104	0.04	Blackish brown	Faint earth	Loamy	10	79	89	0.04	
			30	Tobakyo Bridge	Fujioka City/Kamisato Town	2016/5/28	Cloudy	21.5	Dull yellowish brown	Faint earth	Loamy	16	64	80	0.05	Dull yellowish brown	Faint earth	Loamy	9.5	37	46.5	0.06	
2016/8/18	Sunny	30.7				Blackish brown	None	Loamy	14	91	105	0.05	Dull yellowish brown	None	Loamy	<7.4	26	26	0.04				
2016/11/15	Sunny	11.1				Brown	Faint earth	Loamy	18	120	138	0.04	Dull yellowish brown	Faint earth	Loamy	7.3	44	51.3	0.06				
2017/1/18	Sunny	10.3				Blackish brown	Faint earth	Loamy	8.9	64	72.9	0.04	Dark brown	Faint earth	Loamy	7.9	56	63.9	0.04				
31	Kannagawa Bridge	Kamisato Town	2016/5/27	Cloudy	22.8	Grayish yellowish brown	Faint earth	Loamy	140	600	740	0.06	Grayish yellowish brown	Faint earth	Loamy	50	260	310	0.05				
			2016/11/16	Sunny	17.3	Olive black	Faint earth	Loamy	22	160	182	0.05	Grayish olive	Faint earth	Loamy	23	160	183	0.05				
			2016/5/27	Cloudy	22.8	Brownish gray	None	Loamy	16	110	126	0.06	Yellowish brown	None	Loamy	19	99	118	0.06				
			2016/11/16	Sunny	15.4	Blackish brown	Faint earth	Loamy	12	92	104	0.04	Blackish brown	Faint earth	Loamy	10	79	89	0.04				
32	Tonegawa River	Bando-ohashi Bridge	Honjo City	2016/5/28	Cloudy	21.5	Dull yellowish brown	Faint earth	Loamy	16	64	80	0.05	Dull yellowish brown	Faint earth	Loamy	9.5	37	46.5	0.06			
				2016/8/18	Sunny	30.7	Blackish brown	None	Loamy	14	91	105	0.05	Dull yellowish brown	None	Loamy	<7.4	26	26	0.04			
				2016/11/15	Sunny	11.1	Brown	Faint earth	Loamy	18	120	138	0.04	Dull yellowish brown	Faint earth	Loamy	7.3	44	51.3	0.06			
				2017/1/18	Sunny	10.3	Blackish brown	Faint earth	Loamy	8.9	64	72.9	0.04	Dark brown	Faint earth	Loamy	7.9	56	63.9	0.04			

Gunma River (Surrounding Environment) 5/5

R i v e r s	Location				Sampling Date	Weather	Air temperature (°C)	Surrounding Environment (Soil, Air dose)											Remarks					
	No.	Water area	Location	Municipality				Left bank					Right bank											
								Color	Odor	Property	Activity concentration [Bq/kg(dry)]			Air Dose (μSv/h)	Color	Odor	Property	Activity concentration [Bq/kg(dry)]			Air Dose (μSv/h)			
											Radioactive cesium							Radioactive cesium						
Cs-134	Cs-137	Total	Cs-134	Cs-137	Total	Cs-134	Cs-137	Total																
45	45	Tonegawa River System	Watarase River Area	Kannon Bridge	Kiryu City	2016/5/9	Cloudy	20.2	Brown	None	Loamy	34	140	174	0.06	Dull yellowish brown	None	Loamy	<6.7	26	26	0.04		
						2016/8/8	Sunny	26.6	Blackish brown	Faint earth	Loamy	110	620	730	0.08	Dull yellowish brown	Faint earth	Loamy	17	79	96	0.05		
						2016/11/21	Cloudy	13.6	Blackish brown	Faint earth	Loamy	17	130	147	0.05	Blackish brown	Faint earth	Loamy	<10	21	21	0.06		
						2017/1/23	Sunny	7.6	Blackish brown	Faint earth	Loamy	9.4	65	74.4	0.05	Blackish brown	Faint earth	Loamy	<8.6	20	20	0.05		
						2016/5/9	Cloudy	21.5	Dull yellow orange	None	Loamy	11	58	69	0.05	Dull yellow orange	None	Loamy	6.1	31	37.1	0.05		
						2016/8/8	Sunny	28.6	Dull yellowish brown	Faint earth	Loamy	9.3	58	67.3	0.06	Brown	Faint earth	Loamy	46	200	246	0.06		
	46	46	Tonegawa River System	Watarase River Area	Sakai Bridge	Kiryu City/Ashikaga City	2016/11/21	Cloudy	13.0	Grayish yellowish brown	Faint earth	Loamy	9.1	54	63.1	0.06	Blackish brown	Faint earth	Loamy	18	120	138	0.06	
							2017/1/10	Sunny	10.6	Dark brown	Faint earth	Loamy	22	130	152	0.04	Blackish brown	Faint earth	Loamy	24	150	174	0.06	
							2016/5/18	Sunny	26.6	Dark brown	None	Loamy	17	110	127	0.04	Blackish brown	None	Loamy	85	450	535	0.04	
	47	47	Tonegawa River System	Watarase River Area	Tsurunda River	Lake Jonuma	Tatebayashi City	2016/8/25	Sunny	33.6	Brown	Faint earth	Loamy	46	290	336	0.04	Grayish yellowish brown	Faint earth	Loamy	53	300	353	0.04
								2016/11/5	Sunny	21.4	Dull yellowish brown	Faint earth	Loamy	34	240	274	0.05	Dark brown	Faint earth	Loamy	92	640	732	0.04
								2017/1/10	Sunny	12.4	Blackish brown	Faint earth	Loamy	34	230	264	0.04	Blackish brown	Faint earth	Loamy	31	210	241	0.04
	48	48	Tonegawa River System	Watarase River Area	Yatagawa River	Togoda Bridge	Meiwa Town/Itakura Town	2016/5/18	Sunny	27.0	Dull yellowish brown	None	Loamy	<4.5	14	14	0.04	Dull yellowish brown	None	Loamy	87	330	417	0.04
								2016/8/25	Sunny	33.2	Brown	Faint earth	Loamy	<7.2	12	12	0.04	Dull yellowish brown	Faint earth	Loamy	29	190	219	0.04
								2016/11/5	Sunny	18.5	Brown	Faint earth	Loamy	<5.9	9.1	9.1	0.05	Dull yellowish brown	Faint earth	Loamy	20	110	130	0.05
2017/1/10								Sunny	13.8	Blackish brown	Faint earth	Loamy	16	87	103	0.04	Blackish brown	Faint earth	Loamy	22	110	132	0.04	

Gunma Lakes and Reservoirs (Water) 1/4

No.	Water area	Location		Sampling Date	Weather	Air temperature (°C)	Water depth (m)	Water										Remarks	
		Location	Municipality					General items						Activity concentration(Bq/L)					
								Water temperature (°C)	Sampling depth (m)	Color	Odor	Secchi disk depth (m)	Electrical conductivity (mS/m)	SS (mg/L)	Turbidity (FNU)	Radioactive cesium			
Cs-134	Cs-137																		
L a k e s a n d R e s e r v o i r s	49	Lake Okutone (Yagisawa Dam)	Center	Minakami Town	Surface layer	2016/5/12	Sunny	14.8	96.2	12.2	0.5	Dark grayish yellow green	None	5.0	2.5	<1	0.3	<0.63	<0.92
					Deep layer				5.6	95.2	-	None		3.0	5	2.8	<0.78	<0.69	
					Surface layer	2016/8/4	Sunny	29.0	70.7	25.7	0.5	Dark grayish yellow green	None	3.4	2.9	1	2.2	<0.68	<0.69
					Deep layer				8.8	69.7	-	None		3.0	2	2.0	<0.89	<0.88	
					Surface layer	2016/10/14	Sunny	8.2	82.6	17.7	0.5	Dark grayish yellow green	None	6.2	2.9	<1	0.7	<0.74	<0.80
					Deep layer				8.5	81.6	-	None		3.2	<1	0.6	<0.90	<0.80	
		Surface layer	2016/11/25	Sunny	2.4	83.5	11.1	0.5	Grayish yellow green	None	3.6	3.3	<1	1.6	<0.76	<0.63			
		Deep layer				8.4	82.5	-	None		3.2	2	1.8	<0.57	<0.75				
		Surface layer	2016/5/12	Sunny	19.7	99.3	14.4	0.5	Grayish yellowish green	None	6.2	3.1	<1	0.4	<0.80	<0.84			
		Deep layer				6.4	98.3	-	None		7.5	29	25	<0.72	<0.88				
		Surface layer	2016/8/4	Sunny	29.1	77.4	25.2	0.5	Greenish light gray	None	4.7	4.2	<1	0.9	<0.42	<0.66			
		Deep layer				7.0	76.4	-	None		5.0	1	1.7	<0.56	<0.66				
	Surface layer	2016/10/14	Sunny	14.7	82.4	17.7	0.5	Grayish yellowish green	None	5.2	4.1	<1	0.5	<0.76	<0.69				
	Deep layer				12.2	81.4	-	None		4.1	<1	1.1	<0.84	<0.69					
	Surface layer	2016/11/24	Cloudy	2.4	83.7	11.5	0.5	Greenish light gray	None	7.5	4.2	<1	0.4	<0.73	<0.61				
	Deep layer				5.1	82.7	-	None		9.3	11	24	<0.73	<0.66					
	Surface layer	2016/5/12	Sunny	19.8	46.5	9.3	0.5	Grayish yellow green	None	5.8	3.2	<1	0.6	<0.85	<0.84				
	Deep layer				5.4	45.5	-	None		3.2	10	4.1	<0.61	<0.80					
	Surface layer	2016/8/5	Sunny	27.6	44.2	26.4	0.5	Grayish yellow green	None	2.6	4.1	1	1.8	<0.83	<0.66				
	Deep layer				7.6	43.2	-	None		3.4	1	1.5	<0.77	<0.70					
	Surface layer	2016/10/13	Cloudy	12.6	39.6	16.5	0.5	Grayish yellow green	None	4.9	4.4	1	1.7	<0.65	<0.75				
	Deep layer				7.2	38.6	-	None		4.8	6	8.3	<0.81	<0.69					
	Surface layer	2016/11/24	Sunny	2.4	39.2	9.8	0.5	Grayish yellow green	None	3.4	3.7	1	1.8	<0.68	<0.55				
	Deep layer				7.2	38.2	-	None		4.6	6	8.2	<0.88	<0.80					
Surface layer	2016/5/26	Sunny	24.2	41.3	15.9	0.5	Grayish green	None	7.4	6.9	<1	0.3	<0.73	<0.63					
Deep layer				6.1	40.3	-	None		10.9	<1	0.9	<0.73	<0.75						
Surface layer	2016/8/19	Sunny	24.8	40.2	22.2	0.5	Dark grayish blue green	None	9.5	6.9	<1	0.5	<0.80	<0.66					
Deep layer				7.3	39.2	-	None		11.2	2	2.5	<0.72	<0.69						
Surface layer	2016/10/6	Sunny	17.4	38.6	15.4	0.5	Dark grayish yellow green	None	6.8	6.3	<1	0.8	<0.60	<0.75					
Deep layer				7.0	37.6	-	None		11.1	<1	1.0	<0.66	<0.75						
Surface layer	2016/11/14	Cloudy	10.7	40.2	10.5	0.5	Dark grayish yellow green	None	6.1	6.3	<1	0.6	<0.49	<0.48					
Deep layer				7.4	39.2	-	None		10.0	<1	0.7	<0.60	<0.80						
Surface layer	2016/5/13	Sunny	22.6	56.1	11.7	0.5	Grayish yellow green	None	3.8	3.1	<1	1.0	<0.80	<0.84					
Deep layer				6.7	55.1	-	None		4.0	3	1.8	<0.68	<0.63						
Surface layer	2016/8/4	Sunny	29.2	42.2	21.8	0.5	Grayish yellow green	None	1.8	4.9	2	1.7	<0.71	<0.69					
Deep layer				6.7	41.2	-	None		3.8	20	6.4	<0.72	<0.75						
Surface layer	2016/10/13	Sunny	14.2	57.2	15.1	0.5	Grayish yellow green	None	3.5	4.3	<1	1.0	<0.74	<0.75					
Deep layer				6.9	56.2	-	None		4.4	4	4.3	<0.97	<0.63						
Surface layer	2016/12/1	Sunny	9.7	34.0	8.6	0.5	Light grayish yellow green	None	2.0	4.1	2	3.3	<0.80	<0.75					
Deep layer				8.3	33.0	-	None		4.4	93	36	<0.68	<0.80						
Surface layer	2016/5/13	Sunny	17.0	42.0	12.0	0.5	Grayish yellowish green	None	7.8	3.6	<1	0.3	<0.68	<0.75					
Deep layer				7.0	41.0	-	None		3.6	<1	0.5	<0.70	<0.80						
Surface layer	2016/8/5	Sunny	24.3	36.0	23.4	0.5	Grayish yellowish green	None	6.0	3.1	<1	0.2	<0.60	<0.92					
Deep layer				12.5	35.0	-	None		3.6	<1	0.4	<0.75	<0.75						
Surface layer	2016/10/12	Sunny	16.4	33.1	15.2	0.5	Dark grayish yellow green	None	8.3	3.7	<1	0.5	<0.71	<0.80					
Deep layer				14.5	32.1	-	None		4.0	<1	0.8	<0.66	<0.80						
Surface layer	2016/11/15	Sunny	15.4	38.3	11.0	0.5	Dark grayish yellow green	None	3.5	4.1	1	1.3	<0.66	<0.80					
Deep layer				11.0	37.3	-	None		4.5	1	1.3	<0.84	<0.69						

Gunma Lakes and Reservoirs (Water) 3/4

No.	Water area	Location		Municipality	Sampling Date	Weather	Air temperature (°C)	Water depth (m)	Water										Remarks	
		Location	Center						General items							Activity concentration(Bq/L)				
									Water temperature (°C)	Sampling depth (m)	Color	Odor	Secchi disk depth (m)	Electrical conductivity (mS/m)	SS (mg/L)	Turbidity (FNU)	Cs-134	Cs-137		
61	Lake Haruna	Center	Takasaki City/ Higashi-Agatsuma Town	Surface layer	2016/5/31	Sunny	21.0	13.8	19.9	0.5	Dark grayish yellow green	None	4.7	9.5	<1	0.4	<0.62	<0.69		
				Deep layer					9.2	12.8	-	None			10.2	3	2.8	<0.71	<0.61	
				Surface layer	2016/8/2	Sunny	23.9	14.7	23.4	0.5	Dark grayish yellow green	None	6.0	8.6	<1	0.5	<0.61	<0.55		
				Deep layer					9.9	13.7	-	None			11.1	5	8.4	<0.65	<0.55	
				Surface layer	2016/10/20	Sunny	18.6	14.3	16.0	0.5	Dark grayish yellow green	None	4.5	8.6	<1	0.5	<0.75	<0.84		
				Deep layer					9.6	13.3	-	None			10.9	7	10	<0.58	<0.80	
	62	Lake Kirizumi (Kirizumi Dam)	Center	Anaka City	Surface layer	2016/11/15	Sunny	14.2	14.5	10.4	0.5	Greenish yellowish white	None	2.8	9.3	<1	1.2	<0.82	<0.75	
					Deep layer					9.8	13.5	-	None			9.2	<1	1.0	<0.59	<0.92
					Surface layer	2016/5/16	Cloudy	11.2	23.0	16.3	0.5	Grayish yellow	None	5.2	9.1	<1	0.3	<0.60	<0.80	
					Deep layer					5.8	22.0	-	None			11.5	10	2.4	<0.77	<0.84
					Surface layer	2016/8/9	Sunny	27.7	14.0	23.3	0.5	Light grayish yellow	None	2.3	8.8	2	2.0	<0.72	<0.88	
					Deep layer					15.2	13.0	-	None			14.9	25	8.5	<0.58	<0.63
63		Lake Usui (Sakamoto Dam)	Center	Anaka City	Surface layer	2016/10/6	Sunny	23.4	15.0	15.5	0.5	Grayish yellow green	None	4.2	8.6	<1	1.0	<0.58	<0.84	
					Deep layer					8.5	14.0	-	Faint hydrogen sulfide			17.4	4	7.9	<0.60	<0.88
					Surface layer	2016/12/9	Sunny	7.4	8.5	6.3	0.5	Grayish greenish yellow	None	2.5	11.0	3	2.4	<0.48	<0.80	
					Deep layer					5.5	7.5	-	None			11.0	3	2.4	<0.72	<0.99
					Surface layer	2016/5/16	Sunny	11.7	15.0	15.8	0.5	Light grayish yellow green	None	5.4	10.6	<1	0.8	<0.80	<0.75	
					Deep layer					9.0	14.0	-	None			11.5	2	2.5	<0.63	<0.92
	64	Lake Arafune (Dodairagawa Dam)	Center	Shimonita Town	Surface layer	2016/8/9	Sunny	28.7	11.0	21.1	0.5	Grayish yellowish green	None	2.4	9.5	1	1.5	<0.67	<0.66	
					Deep layer					10.4	10.0	-	None			14.5	10	6.8	<0.48	<0.74
					Surface layer	2016/10/6	Sunny	24.4	12.0	16.6	0.5	Grayish yellow green	None	5.4	9.4	<1	0.9	<0.64	<0.70	
					Deep layer					14.0	11.0	-	None			9.6	2	1.5	<0.73	<0.61
					Surface layer	2016/12/9	Sunny	7.4	12.5	6.4	0.5	Dark grayish yellow green	None	3.5	11.0	<1	1.3	<0.70	<0.75	
					Deep layer					6.4	11.5	-	None			11.4	2	1.4	<0.66	<0.75
65		Lake Oshio (Oshio Dam)	Center	Tomioaka City	Surface layer	2016/5/16	Cloudy	16.2	33.0	18.9	0.5	Light grayish yellow green	None	3.0	33.2	1	0.9	<0.87	<0.80	
					Deep layer					6.0	32.0	-	None			33.0	10	4.6	<0.69	<0.69
					Surface layer	2016/8/9	Sunny	34.2	24.0	24.2	0.5	Grayish yellow green	None	1.7	17.6	5	6.6	<0.68	<0.63	
					Deep layer					9.2	23.0	-	None			34.6	4	4.7	<0.74	<0.69
					Surface layer	2016/10/6	Sunny	26.0	26.0	18.0	0.5	Light grayish yellow green	None	3.4	22.4	<1	2.3	<0.68	<0.75	
					Deep layer					9.5	25.0	-	None			30.7	11	8.7	<0.76	<0.75
	66	Lake Kama (Shimokubo Dam)	Center	Fujioka City/ Kamikawa Town	Surface layer	2016/12/9	Sunny	13.2	29.5	8.2	0.5	Grayish reddish yellow	None	2.0	33.0	3	4.9	<0.79	<0.88	
					Deep layer					6.7	28.5	-	None			34.8	14	15	<0.68	<0.84
					Surface layer	2016/5/17	Cloudy	16.5	16.0	17.6	0.5	Light grayish yellow green	None	4.8	21.6	<1	0.7	<0.63	<0.75	
					Deep layer					15.1	15.0	-	None			21.8	5	2.3	<0.63	<0.92
					Surface layer	2016/8/10	Sunny	28.4	18.0	25.0	0.5	Light grayish yellow green	None	2.4	16.8	2	1.4	<0.73	<0.55	
					Deep layer					21.6	17.0	-	None			18.8	12	7.2	<0.80	<0.55
67		Lake Hebikami (Shiozawa Dam)	Center	Kanna Town	Surface layer	2016/10/6	Sunny	25.2	18.0	21.4	0.5	Grayish yellow green	None	3.2	14.3	<1	0.8	<0.80	<0.66	
					Deep layer					19.2	17.0	-	None			14.8	8	5.7	<0.77	<0.61
					Surface layer	2016/12/8	Sunny	9.7	9.2	9.6	0.5	Dark grayish yellow green	None	3.8	19.9	<1	0.6	<0.76	<0.63	
					Deep layer					9.1	8.2	-	None			20.1	7	2.7	<0.78	<0.69
					Surface layer	2016/5/17	Cloudy	17.7	77.0	18.6	0.5	Grayish bluish green	None	8.8	16.4	<1	0.4	<0.72	<0.75	
					Deep layer					5.6	76.0	-	None			16.6	2	2.9	<0.69	<0.88
	67	Lake Kama (Shimokubo Dam)	Center	Fujioka City/ Kamikawa Town	Surface layer	2016/8/10	Sunny	30.3	53.0	25.7	0.5	Dark grayish bluish green	None	1.7	19.2	4	4.0	<0.76	<0.84	
					Deep layer					7.9	52.0	-	None			18.6	12	12	<0.72	<0.75
					Surface layer	2016/10/7	Sunny	22.3	72.0	20.1	0.5	Light grayish yellow green	None	2.3	13.8	2	3.2	<0.70	<0.63	
					Deep layer					7.5	71.0	-	None			17.4	13	16	<0.65	<0.63
					Surface layer	2016/12/8	Sunny	11.9	60.5	12.1	0.5	Light grayish greenish yellow	None	1.2	14.3	4	7.1	<0.75	<0.88	
					Deep layer					7.4	59.5	-	None			16.8	80	85	<0.67	<0.80
67		Lake Hebikami (Shiozawa Dam)	Center	Kanna Town	Surface layer	2016/5/17	Cloudy	18.0	11.5	18.3	0.5	Light grayish yellow green	None	3.7	16.2	<1	0.3	<0.61	<0.69	
					Deep layer					9.5	10.5	-	None			17.1	2	1.6	<0.57	<0.80
					Surface layer	2016/8/10	Sunny	29.7	7.0	22.6	0.5	Light grayish yellow green	None	2.8	14.0	<1	0.8	<0.62	<0.70	
					Deep layer					18.0	6.0	-	None			12.8	5	3.0	<0.54	<0.69
					Surface layer	2016/10/7	Sunny	24.7	10.0	16.9	0.5	Dark grayish yellow green	None	5.8	13.6	<1	0.8	<0.83	<0.66	
					Deep layer					15.2	9.0	-	None			13.6	6	2.2	<0.46	<0.70
67	Lake Hebikami (Shiozawa Dam)	Center	Kanna Town	Surface layer	2016/12/8	Sunny	6.7	15.0	7.7	0.5	Dark grayish yellow green	None	3.5	16.2	<1	0.9	<0.82	<0.88		
				Deep layer					7.2	14.0	-	None			16.2	4	1.6	<0.74	<0.92	

Gunma Lakes and Reservoirs (Surrounding Environment) 1/3

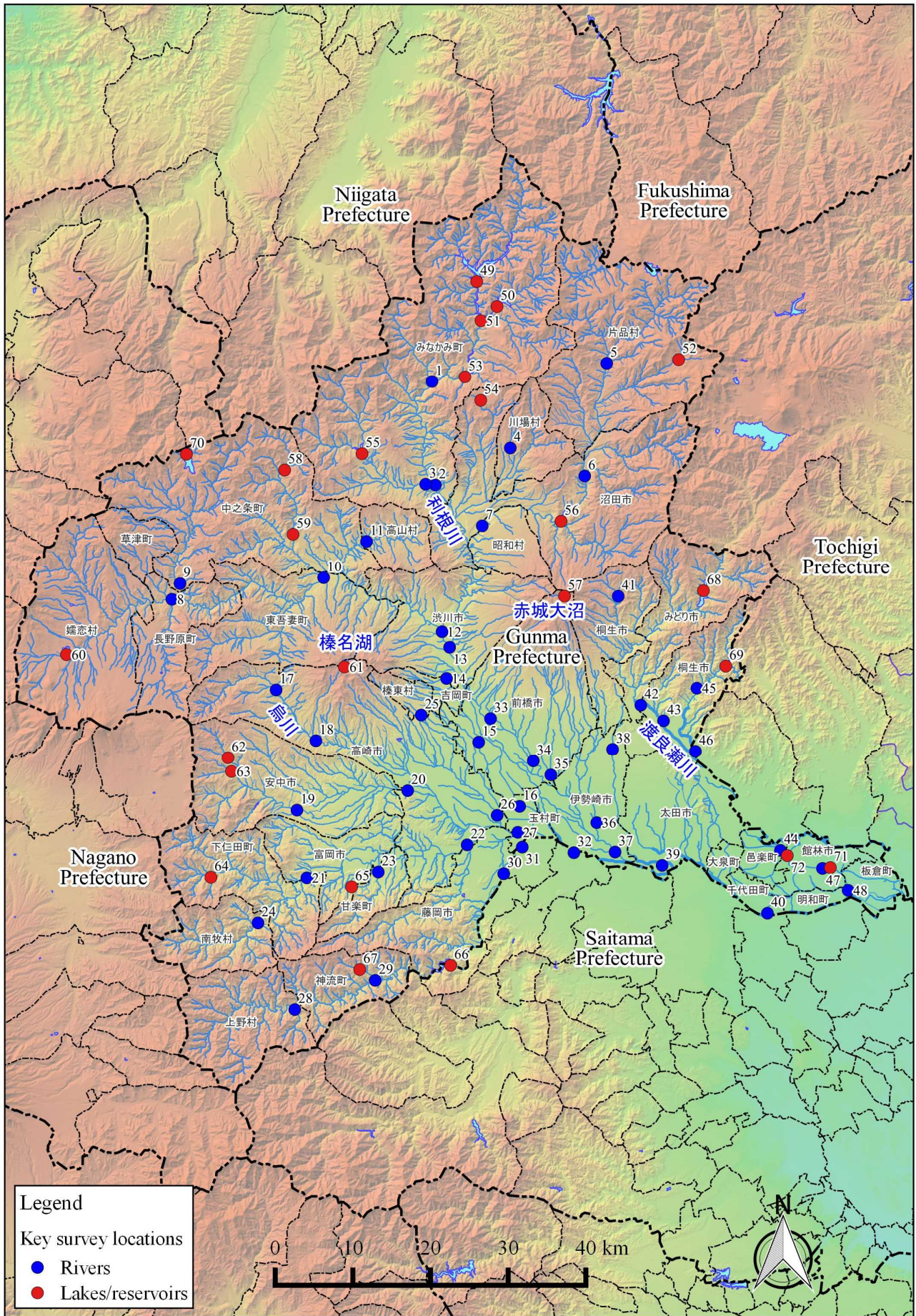
No.	Water area	Location		Municipality	Sampling Date	Weather	Air temperature (°C)	Surrounding Environment(Soil,Air dose)						Remarks	
								Soil			Air Dose (μSv/h)				
		Color	Odor					Property	Activity concentration [Bq/kg(dry)]						
									Radioactive cesium						
			Cs-134	Cs-137	Total										
L a k e s a n d R e s e r v o i r s	Tonegawa River Area	Lake Okutone (Yagisawa Dam)	Center	Minakami Town	2016/5/12	Sunny	14.8	Brown	Faint earth	Loamy	140	640	780	0.11	
					2016/8/4	Sunny	29.0	Brown	Faint earth	Loamy	36	160	196	0.16	
		2016/10/14	Sunny		8.2	Dull yellowish brown	Faint earth	Loamy	96	460	556	0.13			
		2016/11/25	Sunny		2.4	Dull yellowish brown	Faint earth	Loamy	46	230	276	0.12			
		2016/5/12	Sunny		19.7	Olive brown	Faint earth	Loamy	47	280	327	0.17			
		2016/8/4	Sunny		29.1	Dark grayish yellow	Faint earth	Loamy	140	720	860	0.20			
		2016/10/14	Sunny		14.7	Olive brown	Faint earth	Loamy	74	470	544	0.16			
		2016/11/24	Cloudy		2.4	Olive brown	Faint earth	Loamy	13	79	92	0.16			
		2016/5/12	Sunny		19.8	Dark brown	Faint earth	Loamy	75	350	425	0.15			
		2016/8/5	Sunny		27.6	Dark brown	Faint earth	Loamy	45	250	295	0.16			
		2016/10/13	Cloudy		12.6	Brown	Faint earth	Loamy	88	470	558	0.11			
		2016/11/24	Sunny		2.4	Blackish brown	Faint earth	Loamy	130	800	930	0.12			
		52	Lake Marunuma (Marunuma Dam)	Center	Katahina Village	2016/5/26	Sunny	24.2	Grayish yellowish brown	Faint earth	Loamy	37	210	247	0.11
						2016/8/19	Sunny	24.8	Grayish yellowish brown	Faint earth	Loamy	18	98	116	0.08
						2016/10/6	Sunny	17.4	Grayish yellowish brown	Faint earth	Loamy	19	87	106	0.08
						2016/11/14	Cloudy	10.7	Blackish brown	Faint earth	Loamy	8.6	60	68.6	0.07
		53	Lake Fujiwara (Fujiwara Dam)	Center	Minakami Town	2016/5/13	Sunny	22.6	Dark brown	Faint earth	Loamy	88	370	458	0.06
						2016/8/4	Sunny	29.2	Extremely dark brown	Faint earth	Loamy	90	540	630	0.07
						2016/10/13	Sunny	14.2	Dark brown	Faint earth	Loamy	100	740	840	0.05
						2016/12/1	Sunny	9.7	Dull yellowish brown	None	Loamy	63	470	533	0.05
		54	Lake Tanbara (Tanbara Dam)	Center	Numata City	2016/5/13	Sunny	17.0	Dull yellowish brown	None	Loamy	400	2,100	2,500	0.15
						2016/8/5	Sunny	24.3	Dull yellowish brown	None	Loamy	210	1,300	1,510	0.12
						2016/10/12	Sunny	16.4	Dull yellowish brown	None	Loamy	120	750	870	0.15
						2016/11/15	Sunny	15.4	Dull yellowish brown	Faint earth	Loamy	140	870	1,010	0.15
		55	Lake Akaya (Aimata Dam)	Center	Minakami Town	2016/5/13	Sunny	18.7	Blackish brown	Faint earth	Loamy	130	650	780	0.07
						2016/8/5	Sunny	32.4	Blackish brown	Faint earth	Loamy	110	640	750	0.08
						2016/10/13	Cloudy	14.2	Blackish brown	Faint earth	Loamy	120	700	820	0.06
						2016/12/1	Sunny	13.6	Blackish brown	None	Loamy	89	560	649	0.07
56	Lake Sonohara (Sonohara Dam)	Center	Numata City	2016/5/13	Sunny	25.6	Blackish brown	None	Loamy	31	180	211	0.07		
				2016/8/5	Sunny	31.2	Dark brown	None	Loamy	20	110	130	0.06		
				2016/10/12	Cloudy	19.7	Blackish brown	Faint earth	Loamy	160	830	990	0.07		
				2016/12/15	Sunny	3.6	Blackish brown	Faint earth	Loamy	130	860	990	0.07		
57	Lake Akagionuma	Center	Maebashi City	2016/5/12	Sunny	22.0	Dark brown	None	Loamy	85	460	545	0.05		
				2016/8/4	Sunny	26.3	Grayish yellowish brown	None	Loamy	52	320	372	0.06		
				2016/10/24	Sunny	10.7	Dull yellowish brown	Faint earth	Loamy	100	580	680	0.05		
				2016/11/14	Cloudy	9.7	Dark brown	Faint earth	Loamy	66	410	476	0.06		

Gunma Lakes and Reservoirs (Surrounding Environment) 2/3

L a k e s a n d R e s e r v o i r s	Location				Sampling Date	Weather	Air temperature (°C)	Surrounding Environment(Soil,Air dose)						Remarks	
	No.	Water area	Location	Municipality				Soil			Air Dose (μSv/h)				
								Color	Odor	Property	Radioactive cesium				
											Activity concentration [Bq/kg(dry)]	Cs-134	Cs-137		Total
58	Agatsuma River Area	Lake Okushima (Shimagawa Dam)	Center	Nakanajo Town	2016/5/20	Sunny	17.8	Dull yellowish brown	Faint earth	Loamy	480	2,700	3,180	0.12	
					2016/8/31	Sunny	24.1	Brown	Faint earth	Loamy	230	1,200	1,430	0.12	
					2016/10/20	Sunny	17.5	Brown	Faint earth	Loamy	320	1,900	2,220	0.11	
		2016/12/19	Sunny		5.8	Dull yellowish brown	Faint earth	Loamy	770	4,700	5,470	0.12			
		2016/5/20	Sunny		16.2	Blackish brown	Faint earth	Loamy	120	580	700	0.06			
		2016/8/31	Sunny		26.8	Blackish brown	Faint earth	Loamy	50	370	420	0.06			
	59	Agatsuma River Area	Lake Shimako (Nakanajo Dam)	Center	Nakanajo Town	2016/10/20	Sunny	19.7	Blackish brown	None	Loamy	79	580	659	0.06
						2016/12/19	Sunny	9.3	Blackish brown	Faint earth	Loamy	130	710	840	0.07
						2016/5/30	Cloudy	10.2	Dull yellowish brown	None	Loamy	31	150	181	0.05
			2016/8/10	Sunny		27.2	Brown	None	Loamy	48	260	308	0.05		
			2016/10/19	Sunny		19.7	Grayish yellowish brown	None	Loamy	16	120	136	0.06		
			2016/11/21	Cloudy		7.3	Dark brown	None	Loamy	48	280	328	0.05		
60	Agatsuma River Area	Lake Tashiro (Kazawa Dam)	Center	Tsumagoi Village	2016/5/31	Sunny	21.0	Grayish yellowish brown	None	Loamy	300	1,700	2,000	0.15	
					2016/8/2	Sunny	23.9	Black	None	Loamy	240	1,400	1,640	0.12	
					2016/10/20	Sunny	18.6	Blackish brown	Faint earth	Loamy	320	1,900	2,220	0.12	
		2016/11/15	Sunny		14.2	Black	None	Loamy	160	970	1,130	0.13			
		2016/5/16	Cloudy		11.2	Dull yellowish brown	Faint earth	Loamy	110	680	790	0.06			
		2016/8/9	Sunny		27.7	Dull yellowish brown	None	Loamy	140	650	790	0.05			
61	Karasu River Area	Lake Kirizumi (Kirizumi Dam)	Center	Annaka City	2016/10/6	Sunny	23.4	Brown	None	Loamy	55	310	365	0.06	
					2016/12/9	Sunny	7.4	Dull yellowish brown	Faint earth	Loamy	250	1,500	1,750	0.05	
					2016/5/16	Sunny	11.7	Dark brown	Faint earth	Loamy	190	1,100	1,290	0.06	
		2016/8/9	Sunny		28.7	Dark brown	None	Loamy	21	97	118	0.05			
		2016/10/6	Sunny		24.4	Brownish gray	None	Loamy	71	550	621	0.06			
		2016/12/9	Sunny		7.4	Blackish brown	Faint earth	Loamy	61	520	581	0.05			
62	Karasu River Area	Lake Utsuiko (Sakamoto Dam)	Center	Annaka City	2016/5/16	Cloudy	16.2	Brown	None	Loamy	130	600	730	0.07	
					2016/8/9	Sunny	34.2	Grayish yellowish brown	None	Loamy	17	110	127	0.06	
					2016/10/6	Sunny	26.0	Brown	None	Loamy	84	360	444	0.05	
		2016/12/9	Sunny		13.2	Grayish yellowish brown	Faint earth	Loamy	65	480	545	0.06			
63	Karasu River Area	Lake Arafune (Dodairagawa Dam)	Center	Shimonita Town	2016/5/17	Cloudy	16.5	Brown	None	Loamy	140	640	780	0.07	
					2016/8/10	Sunny	28.4	Dull yellowish brown	None	Loamy	54	310	364	0.06	
					2016/10/6	Sunny	25.2	Blackish brown	None	Loamy	55	330	385	0.07	
		2016/12/8	Sunny		9.7	Dull yellowish brown	Faint earth	Loamy	48	280	328	0.06			
64	Karasu River Area	Lake Arafune (Dodairagawa Dam)	Center	Shimonita Town	2016/5/16	Cloudy	16.2	Brown	None	Loamy	130	600	730	0.07	
					2016/8/9	Sunny	34.2	Grayish yellowish brown	None	Loamy	17	110	127	0.06	
					2016/10/6	Sunny	26.0	Brown	None	Loamy	84	360	444	0.05	
		2016/12/9	Sunny		13.2	Grayish yellowish brown	Faint earth	Loamy	65	480	545	0.06			
65	Karasu River Area	Lake Arafune (Dodairagawa Dam)	Center	Shimonita Town	2016/5/17	Cloudy	16.5	Brown	None	Loamy	140	640	780	0.07	
					2016/8/10	Sunny	28.4	Dull yellowish brown	None	Loamy	54	310	364	0.06	
					2016/10/6	Sunny	25.2	Blackish brown	None	Loamy	55	330	385	0.07	
		2016/12/8	Sunny		9.7	Dull yellowish brown	Faint earth	Loamy	48	280	328	0.06			

Gunma Lakes and Reservoirs (Surrounding Environment) 3/3

	Location				Sampling Date	Weather	Air temperature (°C)	Surrounding Environment(Soil,Air dose)						Remarks	
	No.	Water area	Location	Municipality				Soil			General items				Air Dose (μSv/h)
								Color	Odor	Property	Activity concentration [Bq/kg(dry)]				
											Radioactive cesium				
			Cs-134	Cs-137	Total										
L a k e s a n d R e s e r v o i r s	66	Karasu River Area	Lake Kanna (Shimokubo Dam)	Center	Fujioka City/Kamikawa Town	2016/5/17	Cloudy	17.7	Dark brown	None	Loamy	14	93	107	0.04
						2016/8/10	Sunny	30.3	Brown	None	Loamy	53	270	323	0.04
						2016/10/7	Sunny	22.3	Dark brown	None	Loamy	42	210	252	0.04
						2016/12/8	Sunny	11.9	Blackish brown	Faint earth	Loamy	53	300	353	0.05
	67		Lake Hebikami (Shiozawa Dam)	Center	Kanna Town	2016/5/17	Cloudy	18.0	Dull yellowish brown	None	Loamy	11	49	60	0.05
						2016/8/10	Sunny	29.7	Dull yellowish brown	Faint earth	Loamy	41	210	251	0.06
						2016/10/7	Sunny	24.7	Grayish yellowish brown	None	Loamy	21	110	131	0.05
						2016/12/8	Sunny	6.7	Dull yellowish brown	None	Loamy	6.6	42	48.6	0.05
	68	Watarase River Area	Lake Kusaki (Kusaki Dam)	Center	Midori City	2016/5/12	Sunny	21.3	Dark brown	None	Loamy	94	470	564	0.09
						2016/8/4	Sunny	30.6	Grayish yellowish brown	None	Loamy	58	360	418	0.08
						2016/10/4	Sunny	27.5	Dark brown	Faint earth	Loamy	75	460	535	0.08
						2016/12/2	Sunny	12.5	Blackish brown	Faint earth	Loamy	120	780	900	0.08
	69		Lake Umeda (Kiryugawa Dam)	Center	Kiryu City	2016/5/9	Cloudy	21.1	Dull yellowish brown	None	Loamy	48	250	298	0.05
						2016/8/8	Sunny	27.1	Brown	Faint earth	Loamy	35	220	255	0.05
						2016/10/4	Sunny	27.7	Brown	Faint earth	Loamy	34	230	264	0.04
						2016/12/8	Sunny	12.0	Dull yellowish brown	Faint earth	Loamy	42	210	252	0.04
	70	Nakatsu River Area	Lake Nozori (Nozori Dam)	Center	Nakanojo Town	2016/5/30	Cloudy	11.4	Brown	None	Loamy	56	300	356	0.06
						2016/8/10	Sunny	25.5	Brown	None	Loamy	29	190	219	0.05
						2016/10/19	Sunny	20.5	Brown	None	Loamy	41	210	251	0.06
						2016/11/21	Cloudy	7.2	Dull yellowish brown	None	Loamy	47	310	357	0.05
	71	Watarase River Area	Lake Jonuma	Center	Tatebayashi City	2016/5/18	Sunny	25.4	Dull yellowish brown	None	Loamy	39	190	229	0.04
						2016/8/25	Sunny	31.5	Dull yellowish brown	Faint earth	Loamy	55	280	335	0.04
						2016/10/3	Rain	23.8	Dull yellowish brown	Faint earth	Loamy	18	81	99	0.04
						2016/12/20	Sunny	8.8	Dull yellowish brown	Faint earth	Loamy	26	130	156	0.04
72		Lake Tataranuma	Center		2016/5/18	Sunny	24.6	Brown	None	Loamy	<5.8	14	14	0.04	
					2016/8/25	Sunny	29.2	Brown	Faint earth	Loamy	<5.8	21	21	0.04	
					2016/10/3	Cloudy	22.8	Dull yellowish brown	Faint earth	Loamy	<7.2	21	21	0.04	
					2016/12/20	Sunny	13.1	Dull yellowish brown	Faint earth	Loamy	3.2	16	19.2	0.04	



Survey Locations (Gunma Prefecture)