

FY2015 Tochigi Prefecture Survey Results

[Survey Results]

(1) Water

Rivers

Radioactive cesium (Cs-134, Cs-137): Not detectable at any location

Lakes and reservoirs

Radioactive cesium (Cs-134, Cs-137): Not detectable at any location

(2) Sediments

Rivers

Cs-134: ND - 210 Bq/kg (dry)

Cs-137: 0.66 - 800 Bq/kg (dry)

Lakes and reservoirs

Cs-134: 23 - 360 Bq/kg (dry)

Cs-137: 80 - 1,400 Bq/kg (dry)

(3) Surrounding Environment

(a) Soil

Rivers

Cs-134: ND - 3,700 Bq/kg (dry)

Cs-137: 5.5 - 14,000 Bq/kg (dry)

Lakes and reservoirs

Cs-134: 8.8 - 380 Bq/kg (dry)

Cs-137: 32 - 1,600 Bq/kg (dry)

(b) Ambient dose rate

Rivers

0.04 - 0.33 μ Sv/h

Lakes and reservoirs

0.05 - 0.19 μ Sv/h

Tochigi Rivers (Water) 1/6

Rivers	Location				Sampling Date	Weather	Air temperature (°C)	Water depth (m)	Water										Remarks
	No.	Water area		Municipality					General items						Activity concentration(Bq/L)				
		Location	Location						Water temperature (°C)	Sampling depth (m)	Color	Odor	Transparency (cm)	Electrical conductivity (mS/m)	SS (mg/L)	Turbidity (FNU)	Radioactive cesium Cs-134	Cs-137	
Rivers	1	Nakagawa River	Ikuyobashishita	Nasushiobara City	2015/5/12	Cloudy	16.2	0.2	12.0	0.0	Light grayish yellow green	None	>100	15.7	<1	0.2	<0.79	<0.84	
					2015/8/1	Sunny	27.5	0.2	17.8	0.0	Light grayish yellow green	None	>100	15.4	<1	0.2	<0.71	<0.75	
					2015/11/12	Cloudy	10.7	0.5	10.9	0.0	Light grayish yellow green	None	>100	16.9	<1	0.2	<0.94	<0.80	
					2016/2/4	Sunny	1.3	0.5	6.3	0.0	Light grayish yellow green	None	>100	17.8	2	0.4	<0.65	<0.80	
					2015/5/12	Sunny	18.5	0.2	11.2	0.0	Light grayish yellow green	None	>100	10.5	<1	0.4	<0.79	<0.69	
					2015/8/1	Sunny	30.9	0.2	20.7	0.0	Grayish yellow	None	>100	12.8	2	0.7	<0.85	<0.69	
			Komei Bridge	2015/11/12	Sunny	10.4	0.2	11.2	0.0	Light grayish greenish yellow	None	>100	13.6	2	0.7	<0.87	<0.75		
				2016/2/4	Sunny	1.6	0.2	3.6	0.0	Light grayish greenish yellow	None	>100	17.1	<1	0.2	<0.60	<0.84		
				2015/5/12	Cloudy	18.9	0.2	12.1	0.0	Light grayish yellow	None	>100	16.8	11	4.2	<0.88	<0.84		
				2015/8/1	Sunny	31.3	0.2	18.0	0.0	Grayish yellow green	None	>100	17.0	2	0.6	<0.74	<0.84		
				2015/11/12	Cloudy	10.3	0.2	11.4	0.0	Light grayish yellow	None	>100	18.3	4	0.9	<0.74	<0.84		
				2016/2/4	Sunny	1.6	0.2	5.0	0.0	Light grayish yellow	None	>100	17.4	3	0.5	<0.82	<0.84		
		3	Takaomata River	Takaomata Bridge	Nasu Town	2015/5/12	Cloudy	19.6	0.2	14.5	0.0	Light grayish greenish yellow	None	>100	31.5	2	2.1	<0.88	<0.84
						2015/8/1	Sunny	31.5	0.2	23.4	0.0	Light grayish greenish yellow	Faint hydrogen sulfide	72	31.0	5	2.7	<0.76	<0.84
						2015/11/12	Cloudy	11.6	0.2	12.1	0.0	Light grayish greenish yellow	None	>100	32.6	5	2.0	<0.94	<0.88
						2016/2/4	Sunny	3.3	0.2	7.0	0.0	Light grayish greenish yellow	None	>100	32.3	3	2.0	<0.66	<0.69
						2015/5/11	Sunny	18.0	0.5	15.6	0.0	Light grayish yellow	None	>100	6.6	1	0.8	<0.82	<0.75
						2015/6/19	Cloudy	21.3	0.3	16.9	0.0	Grayish yellow	None	>100	19.2	3	0.6	<0.86	<0.63
		5	Nakagawa River	Kamikuroiso	Nasushiobara City/ Nasu Town	2015/7/6	Cloudy	19.3	0.4	17.3	0.0	Light grayish greenish yellow	None	>100	20.1	2	0.8	<0.61	<0.80
						2015/8/1	Sunny	32.5	0.3	22.8	0.0	Light grayish greenish yellow	None	>100	20.9	2	0.7	<0.71	<0.80
						2015/9/19	Sunny	25.0	0.5	15.3	0.0	Light grayish yellow green	None	50	11.1	20	5.7	<0.63	<0.88
						2015/11/5	Sunny	14.4	0.4	11.4	0.0	Light grayish greenish yellow	None	>100	15.5	<1	0.4	<0.58	<0.81
						2016/2/4	Sunny	2.8	0.3	3.7	0.0	Light grayish greenish yellow	None	>100	23.1	1	0.5	<0.73	<0.88
						2015/5/12	Cloudy	20.6	0.3	16.5	0.0	Grayish yellow	None	>100	16.3	1	1.3	<0.60	<0.63
	2015/8/1					Sunny	33.4	0.3	26.7	0.0	Grayish yellow	None	>100	15.9	2	0.7	<0.60	<0.63	
	2015/11/12					Cloudy	8.1	0.2	10.4	0.0	Grayish yellow	None	>100	16.9	<1	0.3	<0.66	<0.75	
	2016/2/4					Sunny	3.2	0.2	6.4	0.0	Grayish yellow	None	>100	17.3	1	0.3	<0.65	<0.88	
	2015/5/12					Sunny	18.1	0.4	14.3	0.0	Grayish reddish yellow	None	>100	11.4	2	2.1	<0.88	<0.63	
	2015/8/1					Sunny	35.7	0.3	26.5	0.0	Grayish greenish yellow	None	>100	12.0	3	1.2	<0.60	<0.69	
	2015/11/5					Sunny	20.2	0.4	10.6	0.0	Grayish reddish yellow	None	>100	10.7	<1	0.5	<0.66	<0.61	
	2016/2/4	Sunny	7.3	0.4	2.6	0.0	Grayish reddish yellow	None	>100	11.3	<1	0.5	<0.68	<0.88					
	8	Yosasa River	Kawada Bridge	Otawara City	2015/5/11	Sunny	21.9	0.3	18.4	0.0	Light grayish yellow green	None	85	6.7	2	1.9	<0.76	<0.63	
					2015/6/19	Cloudy	19.7	0.4	18.8	0.0	Light grayish yellow green	None	>100	27.7	2	1.6	<0.68	<0.75	
					2015/7/6	Cloudy	19.5	0.5	19.3	0.0	Light grayish greenish yellow	None	70	23.3	5	2.1	<0.92	<0.69	
					2015/8/1	Sunny	34.0	0.3	27.7	0.0	Light grayish yellow green	None	>100	50.9	1	0.8	<0.58	<0.92	
					2015/9/19	Sunny	23.9	0.5	18.3	0.0	Light grayish yellow green	None	>100	18.4	3	1.5	<0.59	<0.88	
					2015/11/5	Sunny	21.1	0.4	12.4	0.0	Light grayish yellow green	None	>100	20.6	<1	0.4	<0.71	<0.84	
					2016/2/4	Sunny	4.7	0.3	2.8	0.0	Light grayish greenish yellow	None	>100	14.5	<1	0.5	<0.80	<0.75	
					2015/5/12	Cloudy	23.7	0.3	17.4	0.0	Grayish yellow	None	>100	15.6	2	1.2	<0.60	<0.92	
					2015/6/19	Cloudy	20.3	0.3	19.8	0.0	Grayish yellow	None	>100	15.5	3	1.9	<0.77	<0.75	
					2015/7/6	Cloudy	21.7	0.5	19.2	0.0	Light grayish yellow green	None	>100	15.2	3	1.6	<0.73	<0.84	
					2015/8/1	Sunny	36.8	0.2	26.5	0.0	Grayish yellow	None	>100	15.8	<1	0.5	<0.47	<0.92	
					2015/9/19	Sunny	27.7	0.3	19.3	0.0	Light grayish yellow green	None	>100	12.6	4	2.0	<0.82	<0.55	
	2015/11/5	Sunny	18.8	0.2	13.2	0.0	Light grayish yellowish green	None	>100	15.2	3	0.8	<0.72	<0.92					
	2016/2/4	Sunny	8.8	0.2	5.9	0.0	Grayish yellow green	None	>100	17.0	<1	0.4	<0.78	<0.80					

Tochigi Rivers (Water) 2/6

No.	Location			Sampling Date	Weather	Air temperature (°C)	Water depth (m)	Water										Remarks	
	Water area	Location	Municipality					General items							Activity concentration(Bq/L)				
								Water temperature (°C)	Sampling depth (m)	Color	Odor	Transparency (cm)	Electrical conductivity (mS/m)	SS (mg/L)	Turbidity (FNU)	Cs-134	Cs-137		
Rivers	Nakagawa River System	Matsuba River	Tributary	Otawara City	2015/5/12	Cloudy	23.1	0.3	16.5	0.0	Grayish yellow	None	>100	13.3	4	1.8	<0.76	<-0.75	
					2015/6/19	Cloudy	20.3	0.4	18.1	0.0	Grayish yellow	None	>100	11.7	3	1.1	<0.48	<-0.88	
					2015/7/6	Cloudy	21.5	0.5	18.7	0.0	Grayish yellow	None	80	10.0	6	2.1	<0.69	<-0.63	
					2015/8/1	Sunny	34.5	0.4	26.3	0.0	Grayish yellow	None	>100	10.4	1	0.7	<0.71	<-0.80	
					2015/9/19	Sunny	27.7	0.5	19.0	0.0	Grayish yellow	None	>100	8.9	3	0.9	<0.68	<-0.63	
					2015/11/5	Sunny	18.3	0.4	12.5	0.0	Grayish yellow	None	>100	9.5	<1	0.3	<0.70	<-0.84	
		2016/2/4	Sunny	8.8	0.4	8.5	0.0	Grayish yellow	None	>100	11.2	<1	0.4	<0.87	<-0.96				
		11	Sabigawa River	Udagawa Bridge	Otawara City	2015/5/12	Cloudy	20.9	0.1	16.9	0.0	Light grayish yellow	None	>100	14.2	3	1.2	<0.76	<-0.69
						2015/8/2	Sunny	32.8	0.2	21.8	0.0	Light grayish yellow	None	>100	14.4	1	0.5	<0.59	<-0.75
						2015/11/6	Sunny	16.3	0.2	14.7	0.0	Light grayish yellow	None	>100	14.0	<1	0.4	<0.70	<-0.63
						2016/2/1	Cloudy	4.1	0.2	8.0	0.0	Light grayish yellow	None	>100	14.1	<1	0.4	<0.77	<-0.84
		12	Momura River	Momuranaka Bridge	Otawara City	2015/5/14	Sunny	25.2	0.4	15.1	0.0	Light grayish yellow green	None	>100	17.2	1	0.7	<0.67	<-0.70
						2015/8/2	Sunny	32.6	0.4	19.7	0.0	Light grayish yellow green	None	>100	17.6	1	0.5	<0.62	<-0.84
						2015/11/6	Sunny	20.7	0.4	16.3	0.0	Light grayish yellow green	None	>100	18.4	<1	0.3	<0.72	<-0.80
						2016/2/1	Cloudy	5.0	0.4	13.2	0.0	Light grayish yellow green	None	>100	18.6	<1	0.4	<0.72	<-0.80
		13	Yunohara		Nasushiobara City	2015/6/1	Sunny	24.6	0.4	20.2	0.0	Light grayish greenish yellow	None	>100	24.1	1	0.8	<0.70	<-0.55
						2015/8/2	Rain	28.3	0.4	22.2	0.0	Light grayish greenish yellow	None	>100	22.8	1	0.8	<0.79	<-0.88
						2015/11/7	Cloudy	13.9	0.2	11.7	0.0	Light grayish greenish yellow	None	>100	22.7	<1	0.4	<0.62	<-0.69
						2016/2/5	Sunny	7.5	0.3	7.0	0.0	Light grayish yellow green	None	>100	27.1	11	3.8	<0.63	<-0.92
		14	Sekiba Bridge		Nasushiobara City	2015/5/14	Sunny	23.2	0.4	13.7	0.0	Grayish yellow green	None	>100	20.8	<1	0.8	<0.89	<-0.84
						2015/8/2	Sunny	33.8	0.4	22.0	0.0	Grayish yellow green	None	>100	21.2	7	2.3	<0.84	<-0.80
						2015/11/7	Cloudy	17.6	0.5	12.6	0.0	Grayish yellow green	None	>100	22.5	<1	0.4	<0.65	<-0.84
						2016/2/5	Sunny	5.8	0.8	5.8	0.0	Light grayish yellow green	None	>100	25.6	<1	0.5	<0.76	<-0.69
		15	Hokigawa River	Iwai Bridge	Otawara City	2015/5/14	Sunny	27.8	0.4	18.8	0.0	Light grayish greenish yellow	None	>100	18.0	1	0.8	<0.98	<-0.70
2015/8/2	Sunny					31.5	0.4	23.5	0.0	Light grayish yellow green	None	>100	19.0	<1	0.6	<0.56	<-0.69		
2015/11/6	Sunny					21.2	0.4	15.6	0.0	Light grayish greenish yellow	None	>100	19.3	<1	0.3	<0.70	<-0.88		
2016/2/1	Cloudy					5.2	0.4	5.6	0.0	Light grayish greenish yellow	None	>100	20.8	<1	0.4	<0.67	<-0.80		
16	Hokigawa River		Otawara City	2015/5/14	Sunny	29.9	0.3	21.9	0.0	Dark grayish yellow	None	>100	16.6	2	1.2	<0.63	<-0.88		
				2015/6/19	Rain	18.4	0.4	18.5	0.0	Dark grayish yellow	None	>100	17.3	2	1.0	<0.61	<-0.92		
				2015/7/6	Cloudy	22.0	0.4	19.4	0.0	Grayish yellow green	None	>100	16.2	4	1.2	<0.85	<-0.84		
				2015/8/2	Sunny	33.2	0.5	26.5	0.0	Grayish yellow	None	>100	17.0	1	0.6	<0.77	<-0.84		
				2015/9/19	Sunny	27.6	0.5	20.9	0.0	Grayish yellow green	None	>100	14.8	7	3.0	<0.72	<-0.69		
				2015/11/6	Sunny	26.0	0.4	17.6	0.0	Grayish yellow green	None	>100	17.6	2	0.5	<0.76	<-0.88		
				2016/2/1	Cloudy	6.3	0.4	10.3	0.0	Light grayish yellow green	None	>100	18.3	1	0.5	<0.63	<-0.84		
				2015/5/14	Sunny	30.3	0.3	23.7	0.0	Dark grayish yellow green	None	>100	15.9	3	2.0	<0.68	<-0.84		
17	Nakagawa River	Shimaka Bridge	Nakagawa Town	2015/6/22	Sunny	24.1	0.3	21.3	0.0	Dark grayish yellow green	None	72	16.0	9	2.3	<0.67	<-0.69		
				2015/7/7	Cloudy	21.5	0.3	18.5	0.0	Grayish yellow green	None	>100	16.2	4	2.1	<0.59	<-0.80		
				2015/8/2	Sunny	34.2	0.3	27.2	0.0	Grayish yellow green	None	>100	16.8	<1	0.6	<0.76	<-0.84		
				2015/9/19	Sunny	22.3	0.4	18.7	0.0	Light grayish yellow green	None	>100	14.1	3	1.7	<0.74	<-0.84		
				2015/11/6	Sunny	22.5	0.2	17.2	0.0	Grayish yellow green	None	>100	17.1	1	0.5	<0.70	<-0.80		
				2016/2/1	Cloudy	7.1	0.2	9.5	0.0	Grayish yellow green	None	>100	17.9	<1	0.6	<0.87	<-0.80		
				2015/5/14	Sunny	23.5	0.3	21.7	0.0	Light grayish greenish yellow	None	>100	12.8	2	1.4	<0.77	<-0.74		
				2015/6/22	Sunny	25.3	0.3	20.8	0.0	Dark grayish yellow	None	77	12.0	6	3.6	<0.93	<-0.84		
18	Mumogawa River	Kosoi Bridge	Nakagawa Town	2015/7/7	Cloudy	22.0	0.6	18.2	0.0	Light grayish greenish yellow	None	>100	12.0	5	2.0	<0.79	<-0.69		
				2015/8/9	Sunny	32.2	0.3	24.6	0.0	Light grayish greenish yellow	None	>100	12.1	<1	0.5	<0.62	<-0.69		
				2015/9/19	Sunny	23.7	0.6	19.8	0.0	Grayish yellow green	None	>100	11.4	1	0.8	<0.74	<-0.80		
				2015/11/9	Cloudy	20.0	0.3	14.7	0.0	Light grayish yellow green	None	>100	12.1	3	1.3	<0.74	<-0.80		
				2016/2/1	Cloudy	8.6	0.4	4.3	0.0	Light grayish yellow green	None	>100	12.8	2	0.9	<0.58	<-0.80		

Tochigi Rivers (Water) 3/6

No.	Location				Sampling Date	Weather	Air temperature (°C)	Water depth (m)	Water										Remarks	
	Water area	Location	Municipality	General items										Activity concentration(Bq/L)						
				Water temperature (°C)					Sampling depth (m)	Color	Odor	Transparency (cm)	Electrical conductivity (mS/m)	SS (mg/L)	Turbidity (FNU)	Radioactive cesium Cs-134	Cs-137			
Rivers	Nakagawa River System	Arakawa River	Saikachi Bridge	Shioya Town	2015/5/14	Sunny	27.2	0.3	15.9	0.0	Light grayish yellowish green	None	>100	6.7	6	2.6	<0.79	<0.84		
					2015/8/2	Sunny	31.8	0.3	22.1	0.0	Light grayish yellowish green	None	>100	6.6	4	1.5	<0.77	<0.80		
					2015/11/7	Cloudy	17.7	0.4	14.6	0.0	Light grayish yellow green	None	>100	7.1	2	0.6	<0.62	<0.75		
			2016/2/5	Sunny	11.8	0.8	8.7	0.0	Grayish yellow green	None	>100	7.0	<1	0.8	<0.72	<0.69				
			2015/5/14	Sunny	29.2	0.3	21.2	0.0	Light grayish yellow	None	97	12.9	3	1.7	<0.50	<0.61				
			2015/8/9	Sunny	29.2	0.3	22.7	0.0	Light grayish yellow	None	>100	15.8	<1	0.3	<0.70	<0.80				
		Uchikawa River	Tanaka Bridge	Yaita City	2015/11/9	Cloudy	18.2	0.2	16.3	0.0	Light grayish yellow green	None	>100	15.2	3	0.7	<0.67	<0.88		
					2016/2/1	Cloudy	7.7	0.2	7.4	0.0	Light grayish yellow green	None	>100	14.0	<1	0.4	<0.72	<0.92		
					2015/5/14	Sunny	29.7	0.2	22.3	0.0	Light grayish yellow	None	>100	12.2	3	2.2	<0.73	<0.80		
			2015/8/2	Sunny	32.2	0.2	23.6	0.0	Light grayish yellow	None	>100	13.7	2	1.2	<0.68	<0.55				
			2015/11/7	Cloudy	20.5	0.2	15.3	0.0	Light grayish yellow	None	>100	10.2	2	1.2	<0.78	<0.80				
			2016/2/5	Sunny	5.3	0.2	4.0	0.0	Light grayish yellow	None	>100	11.0	<1	0.5	<0.78	<0.80				
	Egawa River	Asahi Bridge	Sakura City	2015/5/14	Sunny	27.6	0.3	21.2	0.0	Grayish greenish blue	None	55	19.3	5	2.4	<0.93	<0.70			
				2015/8/9	Sunny	30.4	0.2	24.0	0.0	Grayish yellow	None	>100	16.7	4	1.4	<0.78	<0.88			
				2015/11/9	Cloudy	18.2	0.2	16.8	0.0	Grayish yellow green	None	85	15.2	1	0.6	<0.65	<0.92			
				2016/2/1	Cloudy	7.9	0.2	12.0	0.0	Grayish yellow green	None	>100	16.4	<1	0.7	<0.57	<0.75			
				2015/5/15	Sunny	26.0	0.4	23.2	0.0	Light grayish yellow	None	>100	17.2	4	2.1	<0.76	<0.80			
				2015/6/22	Sunny	26.6	0.4	23.3	0.0	Light grayish reddish yellow	None	52	11.1	8	3.4	<0.80	<0.75			
		Mukada Bridge	Nasu Karasuyama City	2015/7/7	Cloudy	24.3	0.4	19.6	0.0	Light grayish yellow green	None	90	13.1	6	2.3	<0.75	<0.63			
				2015/8/9	Sunny	33.0	0.4	27.0	0.0	Light grayish yellow	None	>100	17.8	1	0.7	<0.76	<0.55			
				2015/9/19	Sunny	25.0	0.4	20.7	0.0	Light grayish yellow green	None	>100	11.8	3	2.2	<0.84	<0.80			
				2015/11/9	Cloudy	18.2	0.2	16.7	0.0	Light grayish greenish yellow	None	>100	18.6	1	0.7	<0.68	<0.80			
				2016/2/1	Cloudy	9.0	0.2	7.5	0.0	Light grayish greenish yellow	None	>100	21.2	3	1.7	<0.70	<0.84			
				2015/5/15	Sunny	29.8	0.3	23.6	0.0	Grayish yellow	None	65	17.8	7	4.1	<0.55	<0.74			
Tributary		2015/6/22	Sunny	27.6	0.3	24.9	0.0	Dark grayish yellow red	None	24	15.6	20	9.1	<0.98	<0.75					
		2015/7/7	Cloudy	24.0	0.4	20.2	0.0	Grayish yellow	None	55	15.5	17	5.2	<0.73	<0.69					
		2015/8/9	Sunny	32.8	0.3	26.8	0.0	Grayish yellow	None	85	17.1	6	2.5	<0.73	<0.88					
		2015/9/19	Sunny	24.3	0.4	21.8	0.0	Grayish yellow	None	82	14.7	9	2.6	<0.84	<0.84					
		2015/11/9	Cloudy	19.6	0.3	16.0	0.0	Grayish yellow	None	58	17.1	6	2.5	<0.83	<0.75					
		2016/2/1	Sunny	13.9	0.3	5.8	0.0	Grayish greenish yellow	None	75	18.0	4	2.1	<0.67	<0.84					
Tonogawa River System	Kinugawa River System	Kinugawa River	Kawaji Daiichi Power Station, front	2015/5/29	Sunny	26.2	0.4	11.5	0.0	Light grayish greenish yellow	None	>100	7.1	4	2.1	<0.80	<0.88			
				2015/8/31	Cloudy	22.4	0.4	19.9	0.0	Light grayish greenish yellow	None	>100	7.6	<1	0.4	<0.80	<0.80			
				2015/11/10	Cloudy	18.3	0.4	13.7	0.0	Light grayish yellow green	None	63	8.6	5	8.0	<0.63	<0.80			
				2016/2/5	Sunny	6.8	0.4	8.0	0.0	Light grayish greenish yellow	None	>100	9.0	2	1.5	<0.68	<0.69			
				2015/5/29	Cloudy	21.9	0.2	14.7	0.0	Light grayish green	None	>100	8.4	<1	0.2	<0.66	<0.61			
				2015/8/31	Cloudy	19.6	0.3	15.8	0.0	Light grayish green	None	>100	8.0	1	0.5	<0.54	<0.88			
	Yunishi River	Masawa Bridge	Nikko City	2015/11/10	Cloudy	14.5	0.3	11.1	0.0	Light grayish green	None	>100	9.3	<1	0.2	<0.67	<0.75			
				2016/2/5	Sunny	1.3	0.2	3.2	0.0	Light grayish green	None	>100	10.0	<1	0.1	<0.65	<0.84			
				2015/5/29	Cloudy	17.5	0.3	13.4	0.0	Light grayish greenish yellow	None	>100	10.0	<1	0.2	<0.83	<0.88			
				2015/8/31	Cloudy	21.8	0.3	18.4	0.0	Light grayish greenish yellow	None	>100	9.3	1	0.6	<0.68	<0.92			
				2015/11/10	Cloudy	18.0	0.3	13.4	0.0	Light grayish greenish yellow	None	>100	8.7	1	0.9	<0.63	<0.69			
				2016/2/5	Sunny	7.1	0.4	5.3	0.0	Light grayish greenish yellow	None	>100	8.5	1	0.8	<0.79	<0.69			
Ojika River	Tributary		2015/5/28	Cloudy	23.4	0.3	13.3	0.0	Light grayish yellow green	None	>100	6.9	<1	0.9	<0.60	<0.63				
			2015/8/9	Sunny	26.0	0.3	22.7	0.0	Light grayish yellow green	None	>100	7.4	1	0.8	<0.58	<0.92				
			2015/11/10	Cloudy	16.8	0.3	14.3	0.0	Light grayish yellowish green	None	>100	8.9	4	3.6	<0.65	<0.75				
			2016/2/5	Sunny	8.9	0.2	6.9	0.0	Light grayish yellow green	None	>100	10.0	<1	0.5	<0.81	<0.92				

Tochigi Rivers (Water) 4/6

Location				Sampling Date	Weather	Air temperature (°C)	Water depth (m)	Water								Activity concentration(Bq/L)		Remarks
No.	Water area		Location					Municipality	Water temperature (°C)	Sampling depth (m)	Color	Odor	Transparency (cm)	Electrical conductivity (mS/m)	SS (mg/L)	Turbidity (FNU)	Radioactive cesium Cs-134	
Rivers	Tonegawa River System	Itaana River	Tributary	Nikko City	2015/5/15	Sunny	22.1	0.3	17.8	0.0	Light grayish yellow green	None	>100	8.2	<1	0.3	<0.83	<0.63
					2015/6/23	Cloudy	20.9	0.3	14.3	0.0	Light grayish yellow green	None	>100	6.6	<1	0.3	<0.67	<0.84
					2015/7/8	Cloudy	23.0	0.4	25.0	0.0	Light grayish yellow green	None	>100	7.2	<1	0.3	<0.63	<0.80
					2015/8/9	Sunny	26.3	0.3	20.5	0.0	Light grayish yellow green	None	>100	7.9	<1	0.3	<0.80	<0.84
					2015/9/29	Sunny	21.0	0.3	14.9	0.0	Light grayish yellow green	None	>100	6.8	2	1.1	<0.77	<0.69
					2015/11/10	Cloudy	15.5	0.2	14.2	0.0	Light grayish yellow green	None	>100	7.3	<1	0.3	<0.63	<0.84
					2016/2/5	Sunny	6.6	0.2	6.9	0.0	Light grayish yellow green	None	>100	7.5	<1	0.3	<0.78	<0.75
					2015/6/4	Sunny	13.1	0.3	11.3	0.0	Grayish yellow	None	>100	18.4	3	1.3	<0.54	<0.84
					2015/8/7	Sunny	25.7	0.3	16.4	0.0	Grayish yellow	None	>100	16.5	2	0.8	<0.61	<0.80
					2015/11/25	Cloudy	1.6	0.3	7.5	0.0	Grayish reddish yellow	None	>100	18.2	<1	0.5	<0.65	<0.69
		Yukawa River	Tributary	Nikko City	2016/2/12	Sunny	1.2	0.3	5.0	0.0	Grayish reddish yellow	None	>100	19.1	2	1.1	<0.74	<0.92
					2015/5/28	Cloudy	20.2	0.2	11.6	0.0	Light grayish yellow green	None	>100	11.4	1	0.6	<0.80	<0.80
					2015/8/8	Sunny	22.7	0.2	14.6	0.0	Light grayish yellow green	None	>100	11.5	<1	0.4	<0.70	<0.96
					2015/11/7	Cloudy	14.5	0.3	9.0	0.0	Light grayish yellow green	None	>100	11.3	2	0.6	<0.58	<0.88
					2016/2/2	Sunny	4.6	0.2	6.3	0.0	Light grayish yellow green	None	>100	11.8	<1	0.2	<0.81	<0.75
					2015/5/28	Sunny	23.6	0.2	15.5	0.0	Light grayish yellow	None	>100	11.7	<1	0.5	<0.70	<0.61
					2015/8/8	Sunny	26.5	0.2	19.8	0.0	Light grayish yellow	None	>100	7.3	<1	0.4	<0.78	<0.55
					2015/11/7	Sunny	14.2	0.2	11.3	0.0	Light grayish yellow	None	>100	10.4	<1	0.3	<0.80	<0.80
					2016/2/2	Sunny	4.9	0.2	4.9	0.0	Light grayish yellow	None	>100	11.6	<1	0.4	<0.68	<0.69
					2015/5/8	Sunny	24.7	0.5	16.6	0.0	Light grayish yellowish green	None	>100	11.5	1	0.8	<0.72	<0.69
		Daiya River	Shinky Bridge	Nikko City	2015/6/23	Cloudy	21.5	0.4	13.4	0.0	Light grayish yellowish green	None	>100	11.2	1	0.5	<0.70	<0.66
					2015/7/8	Cloudy	24.0	0.3	15.3	0.0	Light grayish yellowish green	None	>100	11.3	<1	0.4	<0.69	<0.69
					2015/8/9	Sunny	25.2	0.3	17.8	0.0	Light grayish yellowish green	None	>100	11.6	5	1.3	<0.78	<0.80
					2015/9/29	Sunny	23.5	0.2	14.1	0.0	Light grayish yellowish green	None	>100	10.7	<1	0.3	<0.54	<0.75
					2015/11/7	Cloudy	14.8	0.2	11.8	0.0	Light grayish yellowish green	None	>100	11.2	<1	0.3	<0.71	<0.75
					2016/2/2	Sunny	0.9	0.2	5.3	0.0	Light grayish yellowish green	None	>100	11.8	<1	0.3	<0.81	<0.84
					2015/5/15	Sunny	27.2	0.3	15.5	0.0	Grayish yellow green	None	>100	8.3	1	0.9	<0.93	<0.70
					2015/6/23	Cloudy	20.6	0.3	16.0	0.0	Grayish yellow green	None	>100	9.2	1	0.7	<0.82	<0.88
					2015/7/8	Cloudy	25.5	0.4	17.5	0.0	Grayish yellow green	None	>100	9.7	<1	0.7	<0.75	<0.88
					2015/8/9	Sunny	29.1	0.2	21.9	0.0	Grayish yellow green	None	>100	10.3	<1	0.7	<0.78	<0.78
		Shidobuchi River	Sujichigai Bridge	Nikko City	2015/9/29	Sunny	25.1	0.2	16.2	0.0	Light grayish yellowish green	None	25	9.3	14	2.3	<0.82	<0.63
					2015/11/7	Cloudy	14.7	0.2	13.2	0.0	Light grayish yellow green	None	65	10.7	<1	0.5	<0.70	<0.75
					2016/2/5	Sunny	8.2	0.1	8.6	0.0	Light grayish yellow green	None	>100	11.8	5	1.7	<0.57	<0.80
					2015/5/15	Sunny	23.7	0.4	13.8	0.0	Grayish yellow green	None	>100	9.5	9	2.2	<0.84	<0.88
					2015/8/3	Sunny	27.4	0.4	19.2	0.0	Light grayish greenish yellow	None	>100	11.5	3	1.3	<0.69	<0.75
					2015/11/11	Sunny	12.9	0.4	12.1	0.0	Light grayish yellow green	None	>100	10.8	4	1.6	<0.63	<0.80
					2016/2/2	Sunny	6.8	0.4	4.9	0.0	Light grayish yellow green	None	>100	12.1	1	0.5	<0.69	<0.63
					2015/6/2	Sunny	25.7	0.3	17.1	0.0	Light grayish greenish yellow	None	>100	12.0	1	0.8	<0.76	<0.69
					2015/8/3	Sunny	30.8	0.3	22.1	0.0	Light grayish greenish yellow	None	>100	13.3	2	1.0	<0.71	<0.75
					2015/11/11	Sunny	14.5	0.3	13.8	0.0	Light grayish greenish yellow	None	>100	12.5	2	1.3	<0.72	<0.84
		Kinugawa River	Kinugawa Bridge (Hoshakuji Temple)	Utsunomiya City	2016/2/2	Sunny	6.4	0.4	10.9	0.0	Light grayish greenish yellow	None	>100	13.7	<1	0.3	<0.57	<0.80
					2015/6/2	Sunny	25.7	0.3	17.1	0.0	Light grayish greenish yellow	None	>100	12.0	1	0.8	<0.76	<0.69
2015/8/3	Sunny				30.8	0.3	22.1	0.0	Light grayish greenish yellow	None	>100	13.3	2	1.0	<0.71	<0.75		
2015/11/11	Sunny				14.5	0.3	13.8	0.0	Light grayish greenish yellow	None	>100	12.5	2	1.3	<0.72	<0.84		
2016/2/2	Sunny				6.4	0.4	10.9	0.0	Light grayish greenish yellow	None	>100	13.7	<1	0.3	<0.57	<0.80		
2015/6/2	Sunny				27.4	0.3	23.0	0.0	Grayish yellow green	None	>100	16.5	2	0.9	<0.62	<0.55		
2015/8/6	Sunny				31.5	0.2	25.8	0.0	Grayish yellow green	None	>100	17.4	1	0.6	<0.72	<0.88		
2015/11/16	Sunny				18.8	0.3	15.0	0.0	Grayish yellow green	None	>100	16.7	5	1.5	<0.51	<0.75		
2016/2/8	Cloudy				6.8	0.2	7.5	0.0	Grayish yellow green	None	>100	19.3	<1	0.4	<0.61	<0.69		
Daidoizumi Bridge	Mooka City				Mooka City	2015/5/15	Sunny	22.1	0.3	17.8	0.0	Light grayish yellow green	None	>100	8.2	<1	0.3	<0.83
		2015/6/23	Cloudy	20.9		0.3	14.3	0.0	Light grayish yellow green	None	>100	6.6	<1	0.3	<0.67	<0.84		
		2015/7/8	Cloudy	23.0		0.4	25.0	0.0	Light grayish yellow green	None	>100	7.2	<1	0.3	<0.63	<0.80		
		2015/8/9	Sunny	26.3		0.3	20.5	0.0	Light grayish yellow green	None	>100	7.9	<1	0.3	<0.80	<0.84		
		2015/9/29	Sunny	21.0		0.3	14.9	0.0	Light grayish yellow green	None	>100	6.8	2	1.1	<0.77	<0.69		
		2015/11/10	Cloudy	15.5		0.2	14.2	0.0	Light grayish yellow green	None	>100	7.3	<1	0.3	<0.63	<0.84		
		2016/2/5	Sunny	6.6		0.2	6.9	0.0	Light grayish yellow green	None	>100	7.5	<1	0.3	<0.78	<0.75		
		2015/6/4	Sunny	13.1		0.3	11.3	0.0	Grayish yellow	None	>100	18.4	3	1.3	<0.54	<0.84		
		2015/8/7	Sunny	25.7		0.3	16.4	0.0	Grayish yellow	None	>100	16.5	2	0.8	<0.61	<0.80		
		2015/11/25	Cloudy	1.6		0.3	7.5	0.0	Grayish reddish yellow	None	>100	18.2	<1	0.5	<0.65	<0.69		

Tochigi Rivers (Water)5/6

R i v e r s	Location					Water											Remarks					
	No.	Water area		Location	Municipality	Sampling Date	Weather	Air temperature (°C)	Water depth (m)	General items						Activity concentration(Bq/L)						
		Water area	Location							Water temperature (°C)	Sampling depth (m)	Color	Odor	Transparency (cm)	Electrical conductivity (mS/m)	SS (mg/L)		Turbidity (FNU)	Radioactive cesium Cs-134	Cs-137		
38	Tonegawa River System	Kinugawa River System	Egawa River	Tributary	Shimotsuke City	2015/5/20	Sunny	27.1	0.4	19.8	0.0	Grayish yellow green	None	42	18.0	8	4.1	<0.84	<0.55			
						2015/6/22	Sunny	23.9	0.5	17.5	0.0	Grayish greenish yellow	None	>100	14.2	4	1.4	<0.75	<0.88			
						2015/7/9	Cloudy	19.5	0.7	19.4	0.0	Grayish yellow	None	65	18.7	10	2.5	<0.77	<0.69			
						2015/8/6	Sunny	32.5	0.3	24.9	0.0	Light grayish greenish yellow	None	>100	17.3	5	1.6	<0.85	<0.92			
						2015/9/4	Sunny	26.6	0.4	21.2	0.0	Grayish yellow green	None	65	21.6	13	3.6	<0.78	<0.92			
						2015/11/16	Sunny	18.5	0.3	17.7	0.0	Light grayish yellow green	None	>100	21.1	3	0.8	<0.75	<0.92			
						2016/2/8	Cloudy	8.7	0.2	8.1	0.0	Light grayish yellow green	None	>100	25.3	1	1.1	<0.65	<0.63			
						2015/5/15	Sunny	23.3	0.2	12.6	0.0	Light grayish greenish yellow	None	>100	11.5	1	0.5	<0.72	<0.75			
						2015/8/8	Sunny	30.4	0.2	15.6	0.0	Light grayish greenish yellow	None	>100	11.3	7	0.9	<0.79	<0.80			
						2015/11/7	Sunny	13.2	0.2	9.8	0.0	Light grayish greenish yellow	None	>100	11.3	<1	0.3	<0.60	<0.88			
						2016/2/2	Sunny	4.0	0.2	4.5	0.0	Greenish yellowish white	None	65	17.8	1	1.5	<0.62	<0.75			
						2015/5/15	Sunny	26.4	0.2	16.5	0.0	Grayish greenish yellow	None	>100	13.7	5	1.3	<0.76	<0.61			
			39	Tonegawa River System	Kinugawa River System	Akabori River	Nikko City Hall, front	Nikko City	2015/8/8	Sunny	32.5	0.2	17.8	0.0	Grayish greenish yellow	None	>100	15.3	3	1.2	<0.78	<0.66
									2015/11/7	Sunny	12.8	0.2	12.2	0.0	Light grayish yellow green	None	>100	15.5	2	0.3	<0.51	<0.88
									2016/2/2	Sunny	0.2	0.2	8.4	0.0	Grayish greenish yellow	None	>100	15.0	2	0.6	<0.74	<0.75
									2015/5/15	Sunny	26.0	0.2	21.5	0.0	Grayish yellow	None	75	15.1	4	2.0	<0.83	<0.69
			40	Tonegawa River System	Kinugawa River System	Akabori River	Kiwadajima	Nikko City	2015/6/23	Cloudy	26.2	0.4	20.2	0.0	Grayish yellow	None	>100	13.4	8	2.3	<0.70	<0.55
									2015/7/8	Cloudy	25.2	0.3	26.8	0.0	Light grayish yellow green	None	>100	13.6	5	1.4	<0.69	<0.80
									2015/8/3	Sunny	34.2	0.4	23.9	0.0	Grayish yellow	None	>100	13.6	4	1.4	<0.47	<0.84
									2015/9/29	Sunny	26.2	0.3	20.2	0.0	Dark grayish yellow green	None	80	15.1	13	3.7	<0.66	<0.80
			41	Tonegawa River System	Kinugawa River System	Tagawa River	Ozobashi Bridge	Utsunomiya City	2015/11/11	Sunny	18.8	0.3	16.6	0.0	Light grayish yellow green	None	>100	15.8	2	0.8	<0.99	<0.69
									2016/2/2	Sunny	8.6	0.2	10.1	0.0	Light grayish yellow green	None	>100	16.2	2	0.8	<0.65	<0.92
									2015/5/15	Cloudy	24.2	0.2	21.9	0.0	Grayish reddish yellow	None	>100	20.2	3	1.8	<0.84	<0.66
									2015/8/3	Sunny	36.8	0.2	23.8	0.0	Grayish reddish yellow	None	>100	19.9	3	1.3	<0.72	<0.80
			42	Tonegawa River System	Kinugawa River System	Kamagawa River	Tsukushi Bridge	Utsunomiya City	2015/11/11	Sunny	16.4	0.2	17.6	0.0	Grayish reddish yellow	None	>100	20.1	5	1.5	<0.72	<0.80
									2016/2/2	Sunny	8.3	0.1	12.8	0.0	Grayish reddish yellow	None	>100	20.8	3	1.1	<0.82	<0.80
									2015/5/20	Sunny	27.9	0.4	23.0	0.0	Grayish reddish yellow	None	55	21.4	5	2.7	<0.77	<0.63
									2015/8/6	Sunny	31.6	0.3	25.1	0.0	Grayish yellow	None	>100	21.9	2	0.8	<0.79	<0.88
			43	Tonegawa River System	Kinugawa River System	Tagawa River	Meiji Bridge	Kaminokawa Town	2015/11/16	Sunny	17.8	0.3	15.4	0.0	Light grayish reddish yellow	None	>100	21.7	2	0.7	<0.68	<0.84
									2016/2/8	Cloudy	9.4	0.3	10.8	0.0	Grayish reddish yellow	None	>100	25.1	4	1.7	<0.76	<0.75
									2015/5/20	Cloudy	26.7	0.4	21.8	0.0	Grayish yellow	None	40	20.3	13	4.9	<0.65	<0.55
									2015/8/6	Sunny	33.8	0.3	28.5	0.0	Grayish yellow	None	>100	24.2	2	0.7	<0.63	<0.75
			44	Tonegawa River System	Kinugawa River System	Tagawa River	Yanabashi Bridge	Oyama City	2015/11/16	Cloudy	19.9	0.3	16.5	0.0	Grayish yellow	None	>100	23.7	4	0.9	<0.78	<0.84
									2016/2/8	Sunny	4.3	0.3	8.3	0.0	Light grayish yellow	None	>100	27.0	2	1.4	<0.91	<0.97
									2015/5/18	Sunny	25.3	0.2	20.2	0.0	Light grayish yellow	None	>100	11.9	3	1.5	<0.81	<0.80
									2015/8/8	Sunny	30.9	0.2	25.7	0.0	Light grayish yellow	None	>100	8.9	1	0.6	<0.68	<0.88
			45	Tonegawa River System	Kinugawa River System	Kurokawa River	Kaijima Bridge	Kanuma City	2015/11/20	Cloudy	14.5	0.3	14.5	0.0	Light grayish yellow	None	>100	9.1	1	0.4	<0.77	<0.69
									2016/2/9	Sunny	5.9	0.3	9.4	0.0	Light grayish yellow green	None	>100	10.9	<1	0.3	<0.85	<0.69
									2015/5/18	Sunny	22.6	0.2	21.2	0.0	Grayish yellow green	None	85	23.7	4	1.8	<0.46	<0.61
									2015/8/8	Sunny	29.0	0.2	24.3	0.0	Light grayish yellow green	None	>100	14.6	1	0.7	<0.71	<0.74
			46	Tonegawa River System	Kinugawa River System	Kurokawa River	Onari Bridge	Mibu Town	2015/11/13	Cloudy	16.8	0.1	16.0	0.0	Grayish yellow green	None	>100	19.7	17	2.6	<0.68	<0.80
									2016/2/9	Sunny	11.6	0.3	12.4	0.0	Light grayish yellow green	None	>100	19.7	3	0.9	<0.85	<0.84
									2015/5/18	Sunny	28.2	0.1	22.3	0.0	Light grayish yellow	None	>100	9.8	<1	0.4	<0.81	<0.84
									2015/8/8	Sunny	32.2	0.2	26.2	0.0	Light grayish yellow	None	>100	8.7	<1	0.4	<0.51	<0.92
			47	Tonegawa River System	Kinugawa River System	Oashi River	Akaishi Bridge	Kanuma City	2015/11/20	Cloudy	16.0	0.2	14.7	0.0	Light grayish yellow	None	>100	6.9	<1	0.2	<0.76	<0.80
									2016/2/9	Sunny	4.8	0.3	8.5	0.0	Light grayish yellow	None	>100	7.1	<1	0.2	<0.58	<0.80
									2015/5/18	Sunny	28.2	0.1	23.9	0.0	Dark grayish yellow green	None	80	19.2	6	5.2	<0.69	<0.74
									2015/8/8	Sunny	32.0	0.1	28.7	0.0	Grayish yellow green	None	>100	17.4	2	0.9	<0.72	<0.63
48	Tonegawa River System	Kinugawa River System	Koyabu River	Koyabu Bridge	Kanuma City	2015/11/20	Cloudy	16.0	0.4	15.5	0.0	Grayish yellow green	None	>100	16.6	2	1.3	<0.68	<0.92			
						2016/2/9	Sunny	6.8	0.1	5.2	0.0	Light grayish yellow	None	>100	18.3	<1	0.6	<0.68	<0.63			

Tochigi Rivers (Water)6/6

No.	Location				Sampling Date	Weather	Air temperature (°C)	Water depth (m)	Water										Remarks
	Water area		Location	Municipality					General items						Activity concentration(Bq/L)				
									Water temperature (°C)	Sampling depth (m)	Color	Odor	Transparency (cm)	Electrical conductivity (mS/m)	SS (mg/L)	Turbidity (FNU)	Radioactive cesium Cs-134	Cs-137	
Rivers	Tonegawa River System	Omoi River Area	Omoi River	Tamotsu Bridge	Tochigi City	2015/5/18	Sunny	25.6	0.2	20.1	0.0	Light grayish reddish yellow	None	>100	14.0	<1	0.2	<0.68	<-0.88
						2015/8/8	Sunny	26.9	0.2	23.4	0.0	Light grayish reddish yellow	None	>100	12.1	4	0.6	<0.51	<-0.69
						2015/11/13	Cloudy	15.5	0.3	15.5	0.0	Light grayish greenish yellow	None	>100	13.3	3	0.8	<0.63	<-0.88
						2016/2/9	Sunny	13.6	0.1	10.7	0.0	Light grayish reddish yellow	None	>100	14.8	<1	0.2	<0.78	<-0.84
						2015/5/20	Sunny	25.2	0.3	21.7	0.0	Grayish greenish yellow	None	30	15.6	23	5.3	<0.84	<-0.70
						2015/6/22	Sunny	25.2	0.5	21.3	0.0	Grayish greenish yellow	None	15	11.3	75	23	<0.78	<-0.75
				2015/7/9	Cloudy	21.2	0.5	20.0	0.0	Grayish greenish yellow	None	85	15.0	29	4.2	<0.69	<-0.84		
				2015/8/11	Sunny	25.7	0.3	25.5	0.0	Grayish greenish yellow	None	>100	16.6	6	1.6	<0.77	<-0.80		
				2015/9/4	Sunny	29.2	0.3	22.9	0.0	Grayish greenish yellow	None	92	14.5	2	0.8	<0.69	<-0.75		
				2015/11/16	Sunny	19.2	0.3	17.1	0.0	Grayish greenish yellow	None	>100	16.8	5	1.4	<0.67	<-0.92		
				2016/2/8	Sunny	2.5	0.3	7.6	0.0	Grayish greenish yellow	None	>100	21.7	2	0.8	<0.97	<-0.69		
				2015/6/2	Cloudy	25.6	0.8	24.1	0.0	Grayish yellow	None	66	28.1	13	6.1	<0.66	<-0.88		
		2015/6/22	Sunny	30.3	0.9	25.2	0.0	Light grayish yellow	None	38	21.1	13	4.3	<0.73	<-0.96				
		2015/7/9	Cloudy	23.7	1.0	20.3	0.0	Grayish yellow	None	80	23.2	13	4.0	<0.84	<-0.92				
		2015/8/11	Sunny	34.5	0.7	26.6	0.0	Grayish yellow	None	88	27.9	5	1.0	<0.55	<-0.88				
		2015/9/4	Sunny	30.0	0.8	24.8	0.0	Grayish yellow	None	55	26.2	5	1.9	<0.69	<-0.75				
		2015/11/13	Cloudy	18.5	0.7	16.6	0.0	Grayish yellow	None	>100	26.8	10	1.8	<0.72	<-0.96				
		2016/2/10	Sunny	7.8	1.0	10.5	0.0	Grayish yellow	None	>100	27.5	3	1.3	<0.70	<-0.84				
		2015/5/28	Cloudy	19.8	0.3	14.8	0.0	Light grayish yellow green	None	>100	9.2	<1	0.2	<0.83	<-0.84				
		2015/6/24	Cloudy	20.9	0.3	15.1	0.0	Light grayish yellow green	None	>100	8.7	<1	0.3	<0.80	<-0.96				
		2015/7/8	Rain	20.1	0.3	14.7	0.0	Light grayish yellow green	None	>100	7.7	<1	0.3	<0.80	<-0.88				
		2015/8/25	Cloudy	17.0	0.3	16.7	0.0	Light grayish yellow green	None	>100	8.8	<1	0.3	<0.51	<-0.80				
		2015/9/7	Rain	19.7	0.4	16.5	0.0	Light grayish yellow green	None	>100	7.7	<1	0.3	<0.77	<-0.88				
		2015/11/16	Cloudy	16.3	0.2	10.9	0.0	Light grayish yellow green	None	>100	9.8	<1	0.1	<0.70	<-0.88				
	2016/2/12	Sunny	4.2	0.2	3.5	0.0	Light grayish yellow green	None	>100	22.2	<1	0.3	<0.57	<-0.75					
	2015/6/1	Sunny	29.0	0.4	24.3	0.0	Light grayish yellow green	None	>100	13.6	14	6.1	<0.77	<-0.78					
	2015/8/10	Sunny	30.2	0.3	27.1	0.0	Light grayish yellow green	None	>100	14.5	<1	0.6	<0.70	<-0.80					
	2015/11/13	Sunny	16.1	0.3	14.2	0.0	Light grayish yellow green	None	>100	15.3	6	2.5	<0.80	<-0.75					
	2016/2/10	Sunny	5.3	0.4	4.1	0.0	Light grayish yellow green	None	>100	15.7	<1	0.4	<0.63	<-0.75					
	2015/6/1	Sunny	29.3	0.6	24.8	0.0	Dark grayish green	None	>100	15.6	6	3.0	<0.72	<-0.69					
	2015/8/10	Sunny	30.7	0.5	27.4	0.0	Grayish yellow green	None	>100	14.8	2	1.2	<0.78	<-0.75					
	2015/11/13	Sunny	17.0	0.8	15.2	0.0	Grayish yellow green	None	>100	16.7	<1	0.4	<0.82	<-0.80					
	2016/2/10	Sunny	7.0	0.5	6.3	0.0	Dark grayish green	None	>100	17.0	<1	0.5	<0.76	<-0.96					
	2015/6/1	Sunny	28.3	1.0	25.2	0.0	Reddish yellowish light gray	None	72	21.4	3	2.1	<0.76	<-0.80					
	2015/8/10	Sunny	33.2	0.9	30.9	0.0	Reddish yellowish light gray	None	55	20.9	6	2.0	<0.65	<-0.84					
	2015/11/13	Sunny	17.7	0.4	15.2	0.0	Light grayish yellow green	None	>100	22.6	2	1.4	<0.65	<-0.69					
	2016/2/10	Sunny	7.8	0.5	7.0	0.0	Grayish greenish yellow	None	>100	24.2	9	4.0	<0.51	<-0.88					
	2015/6/2	Cloudy	27.6	0.1	27.2	0.0	Light grayish yellow	None	15	28.0	35	29	<0.78	<-0.80					
	2015/6/22	Sunny	27.2	0.3	26.2	0.0	Light grayish yellow green	None	35	22.8	14	7.9	<0.52	<-0.80					
	2015/7/9	Cloudy	24.0	0.3	21.3	0.0	Light grayish yellow	None	80	23.5	10	3.7	<0.67	<-0.75					
	2015/8/11	Cloudy	32.4	0.1	32.7	0.0	Light grayish yellow	None	52	26.1	10	4.2	<0.77	<-0.84					
	2015/9/4	Sunny	30.2	0.3	26.5	0.0	Light grayish greenish yellow	None	85	20.9	6	2.5	<0.82	<-0.92					
	2015/11/13	Sunny	18.4	0.1	15.7	0.0	Light grayish greenish yellow	None	>100	26.4	16	3.6	<0.73	<-0.75					
	2016/2/10	Sunny	8.6	0.2	8.6	0.0	Grayish greenish yellow	None	>100	27.3	4	2.6	<0.68	<-0.99					

Tochigi Rivers (Sediment) 1/6

No.	Location			Sampling Date	Weather	Air temperature (°C)	Water depth (m)	Sediment																	Remarks			
	Water area	Location	Municipality					Sediment temperature (°C)	Sample length (cm)	Color	Odor	General items							Grain size distribution(%)			Sediment content (%)	Density (g/cm ³)	Property		Activity concentration [Bq/kg(dry)]		
												Coarse gravel	Medium gravel	Fine gravel	Coarse sand	Medium sand	Fine sand	Silt	Clay	Cs-134	Cs-137					Total		
R i v e r s	Nakagawa River System	Nakagawa River	Buyobashichita	Nasuhiobara City	2015/5/12	Cloudy	16.2	0.2	12.5	5	Grayish olive	None	0.0	38.6	34.0	21.2	5.4	0.4	0.1	0.3	90.7	2.674	Gravel/sand	3.0	11	14		
					2015/8/1	Sunny	27.5	0.2	19.5	5	Dark olive	None	0.0	45.1	24.5	19.9	8.3	0.4	0.6	1.2	84.7	2.702	Gravel/sand	<3.5	15	15		
					2015/11/12	Cloudy	10.7	0.5	11.2	5	Grayish olive	None	0.0	40.7	30.8	20.8	6.3	0.3	0.5	0.7	89.0	2.719	Sand/gravel	<4.1	9.6	9.6		
			2016/2/4		Sunny	1.3	0.5	6.6	5	Dark olive	None	0.0	49.4	23.3	12.8	11.2	1.4	0.3	1.6	78.2	2.703	Gravel/sand	<4.5	21	21			
			2015/5/12		Sunny	18.5	0.2	12.3	5	Dim yellowish brown	None	0.0	35.2	27.2	25.1	11.9	0.1	0.1	0.4	82.5	2.755	Sand/gravel	5.7	17	22.7			
			2015/8/1		Sunny	30.9	0.2	22.1	5	Dim yellowish brown	None	0.0	63.0	31.4	3.9	1.1	0.0	0.1	0.5	93.1	2.726	Gravel/sand	<4.2	21	21			
		2015/11/12	Sunny	10.4	0.2	12.6	5	Grayish olive	None	0.0	25.2	21.4	25.1	24.2	2.1	0.3	1.7	84.6	2.872	Sand/gravel	2.0	11	13					
		2016/2/4	Sunny	1.6	0.2	3.8	5	Olive black	None	0.0	36.2	28.8	22.0	10.4	0.7	0.4	1.7	79.6	2.729	Sand/gravel	<4.3	16	16					
		2015/5/12	Cloudy	18.9	0.2	13.0	5	Blackish brown	None	3.0	37.7	19.6	19.4	15.1	2.8	0.9	1.5	80.1	2.817	Sand/gravel	11	36	47					
		2015/8/1	Sunny	31.3	0.2	19.7	5	Blackish brown	None	16.5	43.5	13.4	9.2	8.4	3.6	3.5	1.9	71.7	2.749	Sand/gravel	15	67	82					
		2015/11/12	Cloudy	10.3	0.2	11.6	5	Blackish brown	None	2.2	41.6	32.5	15.9	6.1	0.8	0.0	0.9	77.3	2.744	Sand/gravel	7.1	31	38.1					
		2016/2/4	Sunny	1.6	0.2	5.6	5	Blackish brown	None	4.2	29.4	15.2	15.0	26.2	6.2	1.0	2.9	73.8	2.820	Sand/gravel	8.2	41	49.2					
	2015/5/12	Cloudy	19.6	0.2	14.7	5	Dark brown	None	2.6	25.6	21.8	20.8	24.1	3.3	0.7	1.0	81.5	2.907	Sand/gravel	9.0	30	39						
	2015/8/1	Sunny	31.5	0.2	24.5	5	Dark brown	None	2.8	36.9	22.3	17.7	16.4	1.9	0.7	1.4	95.2	2.807	Sand/gravel	5.2	15	20.2						
	2015/11/12	Cloudy	11.6	0.2	12.5	5	Dark brown	None	0.0	34.3	27.2	20.4	16.0	1.1	0.4	0.7	86.8	2.842	Sand/gravel	<3.9	17	17						
	2016/2/4	Sunny	3.3	0.2	7.5	3	Dark brown	None	0.0	14.4	28.0	32.0	19.9	1.9	0.6	3.3	71.9	2.695	Sand/gravel	12	52	64						
	2015/5/11	Sunny	18.0	0.5	15.7	5	Olive brown	None	5.1	29.4	13.9	22.0	27.1	1.9	0.0	0.5	84.8	2.749	Sand/gravel	11	36	47						
	2015/6/19	Cloudy	21.3	0.3	17.8	5	Dark grayish yellow	None	0.0	3.3	4.5	13.1	63.0	11.5	1.0	3.6	79.1	2.740	Sand/gravel	31	100	131						
	2015/7/6	Cloudy	19.3	0.4	17.3	5	Dark grayish yellow	Faint fish	0.0	15.2	22.9	36.6	21.2	1.1	0.1	2.9	78.5	2.714	Sand/gravel	8.1	32	40.1						
	2015/8/1	Sunny	22.5	0.3	22.6	6	Grayish olive	None	0.0	35.6	36.8	10.5	14.5	1.7	0.4	0.5	81.8	2.696	Sand/gravel	11	48	59						
	2015/9/19	Sunny	25.0	0.5	15.3	5	Yellowish brown	None	0.0	16.4	8.0	7.7	29.9	30.6	5.0	2.6	72.4	2.741	Sand	13	53	66						
	2015/11/5	Sunny	14.4	0.4	11.4	7	Grayish olive	None	1.4	34.6	25.4	16.5	17.5	2.4	0.7	1.5	80.3	2.790	Sand/gravel	5.9	24	29.9						
	2016/2/4	Sunny	2.8	0.3	4.2	7	Grayish olive	None	0.0	43.2	22.5	15.7	14.5	2.5	0.0	1.6	80.3	2.791	Sand/gravel	7.4	29	36.4						
	2015/5/12	Cloudy	20.6	0.3	17.3	5	Blackish brown	None	8.1	53.3	21.5	10.0	5.2	1.1	0.2	0.7	94.8	2.754	Gravel/sand	5.5	19	24.5						
2015/8/1	Sunny	33.4	0.3	27.8	3	Blackish brown	None	12.8	65.1	12.4	4.1	3.9	0.9	0.3	0.6	87.1	2.764	Gravel/sand	<4.2	17	17							
2015/11/12	Cloudy	8.1	0.2	11.6	5	Blackish brown	None	5.2	44.2	20.0	13.6	14.4	1.3	0.3	1.1	79.1	2.776	Gravel/sand	<4.4	19	19							
2016/2/4	Sunny	3.2	0.2	6.9	5	Blackish brown	None	0.0	57.3	27.2	10.0	4.4	0.2	0.0	0.9	75.2	2.737	Gravel/sand	<4.1	17	17							
2015/5/12	Sunny	18.1	0.4	17.2	5	Dark brown	None	0.0	9.2	9.2	16.7	53.1	9.1	0.5	1.6	81.5	2.837	Sand/gravel	15	66	75							
2015/8/1	Sunny	35.7	0.3	26.3	5	Dark brown	None	0.0	13.7	12.9	29.2	40.2	2.3	0.4	1.4	84.6	2.842	Sand/gravel	14	46	60							
2015/11/5	Sunny	20.2	0.4	13.3	5	Dark brown	None	0.0	46.0	33.6	13.2	6.0	0.2	0.2	0.9	88.9	2.937	Gravel/sand	8.5	35	43.5							
2016/2/4	Sunny	7.3	0.4	3.4	5	Dark brown	None	6.0	36.2	21.0	16.2	17.7	1.3	0.0	1.7	82.2	3.080	Gravel/sand	7.5	30	37.5							
2015/5/11	Sunny	21.9	0.3	17.7	4	Grayish olive	None	0.0	30.2	39.3	24.4	5.8	0.1	0.0	0.3	89.5	2.836	Gravel/sand	6.9	36	42.9							
2015/6/19	Cloudy	19.7	0.4	19.5	5	Grayish olive	None	0.0	43.2	26.3	19.6	9.5	0.3	0.3	0.9	92.1	2.836	Gravel/sand	11	43	54							
2015/7/6	Cloudy	19.5	0.5	19.5	5	Grayish olive	None	0.0	13.9	3.2	5.8	52.1	20.6	1.6	3.1	78.8	3.020	Sand	23	100	123							
2015/8/1	Sunny	24.0	0.3	27.2	6	Grayish olive	None	0.0	0.0	0.3	4.7	71.1	18.8	0.4	4.8	80.6	2.866	Sand/gravel	16	66	82							
2015/9/19	Sunny	23.9	0.5	18.6	4	Grayish olive	None	11.8	43.5	7.1	9.1	22.5	4.1	0.5	1.4	79.7	2.850	Gravel/sand	15	53	68							
2015/11/5	Sunny	21.1	0.4	16.5	7	Grayish olive	None	0.0	0.2	0.7	9.2	70.4	12.7	2.5	4.3	74.2	2.824	Sand	14	57	71							
2016/2/4	Sunny	4.7	0.3	3.2	5	Grayish olive	None	0.0	11.9	6.3	7.2	53.4	14.3	2.3	4.6	75.7	2.814	Sand	12	68	80							
2015/5/12	Cloudy	23.7	0.3	17.7	5	Grayish olive	None	0.0	34.8	25.4	26.1	13.1	0.1	0.1	0.4	87.1	2.694	Sand/gravel	4.2	23	27.2							
2015/6/19	Cloudy	20.3	0.3	20.8	5	Grayish olive	None	0.0	41.5	20.6	22.3	13.3	0.5	0.4	1.4	85.1	2.678	Sand/gravel	<4.4	15	15							
2015/7/6	Cloudy	21.7	0.5	19.6	5	Gray	None	0.0	23.4	23.6	31.8	17.6	0.4	0.1	3.0	83.6	2.726	Gravel/sand	6.1	18	24.1							
2015/8/1	Sunny	26.8	0.2	26.7	5	Grayish olive	None	0.0	29.4	25.4	30.5	12.6	0.0	0.2	1.9	89.0	2.694	Gravel/sand	6.5	21	27.5							
2015/9/19	Sunny	27.7	0.3	20.3	5	Grayish olive	None	2.1	23.5	11.3	24.0	36.2	1.2	0.4	1.2	80.1	2.727	Sand/gravel	7.7	29	36.7							
2015/11/5	Sunny	18.8	0.2	13.6	7	Olive gray	None	2.2	26.6	23.4	25.6	18.8	1.1	0.3	2.0	85.4	2.740	Gravel/sand	<5.0	23	23							
2016/2/4	Sunny	8.8	0.2	6.6	7	Olive gray	None	2.6	39.3	24.3	21.4	11.1	0.3	0.2	0.8	90.8	2.718	Gravel/sand	<4.1	19	19							

Tochigi Rivers (Sediment) 2/6

No.	Location			Sampling Date	Weather	Air temperature (°C)	Water depth (m)	Sediment																			Remarks
	Water area	Location	Municipality					Sediment temperature (°C)	Sample length (cm)	Color	Odor	General items										Sediment content (%)	Density (g/cm ³)	Property	Activity concentration [Bq/kg(dry)]		
												Coarse gravel	Medium gravel	Fine gravel	Grain size distribution(%)		Fine sand	Silt	Clay	Cs-134	Cs-137				Total		
												Coarse sand	Medium sand	10	20	0.2	0.07										
10	Matsuba River	Tributary	Oiwake City	2015/5/12	Cloudy	23.1	0.3	17.4	5	Grayish olive	None	1.8	37.5	32.7	19.3	8.2	0.2	0.0	0.3	87.6	2.791	Gravel/sand	6.5	30	36.5		
				2015/6/19	Cloudy	20.3	0.4	18.9	5	Grayish olive	None	0.0	47.5	11.3	8.2	20.0	7.6	2.1	3.3	82.8	2.716	Gravel/sand	5.8	24	29.8		
				2015/7/6	Cloudy	21.5	0.5	19.0	5	Gray	Faint rottenness	3.0	13.1	6.7	10.1	48.2	11.7	2.6	4.6	77.2	2.684	Sand/gravel	35	130	165		
				2015/8/1	Sunny	34.5	0.4	26.1	6	Grayish olive	None	1.5	36.3	16.3	12.9	27.8	2.8	0.1	2.2	87.1	2.711	Sand/gravel	7.1	29	36.1		
				2015/9/19	Sunny	27.7	0.5	20.3	5	Grayish olive	None	0.0	50.8	20.5	11.9	13.5	2.2	0.2	1.1	86.5	2.681	Gravel/sand	8.4	40	48.4		
	Subigawa River	Udagawa Bridge	Oiwake City	2015/11/5	Sunny	18.3	0.4	13.7	7	Grayish olive	None	0.0	49.1	32.4	13.0	3.8	0.6	0.2	0.9	92.6	2.707	Gravel/sand	6.2	30	36.2		
				2016/2/9	Sunny	8.8	0.4	9.3	7	Grayish olive	None	2.1	44.3	17.5	13.3	2.1	0.1	0.2	0.4	92.2	2.674	Gravel/sand	5.5	27	32.5		
				2015/5/12	Cloudy	20.9	0.1	17.3	5	Dark olive	None	1.9	62.4	20.7	6.0	4.8	2.9	0.7	0.6	87.0	2.670	Gravel/sand	5.0	14	19		
				2015/8/2	Sunny	32.8	0.2	21.5	5	Grayish olive	None	0.0	71.1	17.0	7.5	2.5	1.1	0.1	1.0	96.9	2.687	Gravel/sand	9.0	30	39		
				2015/11/6	Sunny	16.3	0.2	15.1	7	Dark olive	None	23.7	25.6	15.2	8.3	15.7	7.9	2.0	1.7	78.8	2.748	Gravel/sand	6.4	23	29.4		
Momura River	Momuranaka Bridge	Oiwake City	2016/2/1	Cloudy	4.1	0.2	8.5	5	Dark olive	None	0.0	43.0	20.5	12.9	16.9	4.9	0.0	1.8	82.8	2.719	Gravel/sand	4.3	24	28.3			
			2015/5/14	Sunny	25.2	0.4	15.7	5	Dark grayish yellow	None	0.0	34.8	27.7	28.0	8.9	0.1	0.1	0.4	90.6	2.646	Sand/gravel	7.1	21	28.1			
			2015/8/2	Sunny	32.6	0.4	20.0	3	Dark grayish yellow	None	0.0	29.7	22.3	25.2	20.1	0.6	0.7	1.4	91.7	2.688	Sand/gravel	6.9	35	41.9			
			2015/11/6	Sunny	20.7	0.4	16.9	5	Dark grayish yellow	None	2.3	60.0	19.5	6.7	9.0	1.4	0.4	0.7	85.9	2.714	Gravel/sand	13	69	82			
			2016/2/1	Cloudy	5.0	0.4	13.5	5	Olive brown	None	7.5	39.2	11.4	15.7	22.8	1.0	0.1	2.4	76.8	2.647	Gravel/sand	14	63	77			
13	Yunohara	Naushobara City	2015/6/1	Sunny	24.6	0.4	20.5	5	Dark grayish yellow	None	0.0	39.5	34.4	16.3	8.3	0.3	0.5	0.7	90.5	2.713	Sand/gravel	<4.0	8.5	8.5			
			2015/8/2	Rain	28.3	0.4	23.8	5	Dark brown	None	0.0	20.3	5.3	6.2	50.1	14.0	0.5	3.7	73.2	2.721	Sand/gravel	<5.8	32	32			
			2015/11/7	Cloudy	13.9	0.2	12.0	7	Dark grayish yellow	None	0.0	8.2	20.6	22.7	37.4	8.3	0.1	2.8	79.6	2.766	Sand/gravel	<4.8	24	24			
			2016/2/5	Sunny	7.5	0.3	7.6	7	Dark grayish yellow	None	0.0	5.7	15.5	21.1	43.1	10.9	0.8	3.0	74.4	2.791	Sand/gravel	7.2	32	39.2			
			2015/5/14	Sunny	23.2	0.4	15.8	5	Dim yellowish brown	None	10.6	39.2	18.5	15.3	13.1	2.2	0.4	0.6	82.2	2.622	Gravel/sand	12	62	74			
14	Sokuba Bridge	Naushobara City	2015/8/2	Sunny	33.8	0.4	27.3	5	Dim yellowish brown	None	0.0	71.7	20.8	3.5	1.1	0.1	0.1	0.6	82.2	2.669	Gravel/sand	11	38	49			
			2015/11/7	Cloudy	17.6	0.5	13.1	7	Grayish olive	None	0.0	36.6	29.4	20.4	10.7	0.9	0.7	1.3	67.8	2.698	Sand/gravel	<6.7	39	39			
			2016/2/5	Sunny	5.8	0.8	6.4	5	Grayish olive	None	3.1	16.8	34.1	31.1	11.4	0.9	0.9	1.8	75.1	2.677	Sand/gravel	7.3	34	41.3			
			2015/5/14	Sunny	27.8	0.4	18.5	5	Dark brown	None	0.0	8.5	4.1	5.9	62.3	17.3	0.4	1.7	78.3	2.749	Sand/gravel	<4.1	18	18			
			2015/8/2	Sunny	31.5	0.4	23.2	3	Gray	None	0.0	1.6	0.6	1.2	79.9	13.5	0.3	2.9	71.8	2.700	Sand	5.0	23	28			
15	Iwai Bridge	Oiwake City	2015/11/6	Sunny	21.2	0.4	15.5	8	Dark grayish yellow	None	0.0	4.8	19.8	40.4	31.2	0.8	0.5	2.5	76.7	2.712	Sand/gravel	<3.9	13	13			
			2016/2/1	Cloudy	5.2	0.4	7.9	5	Blackish brown	None	0.0	8.4	1.5	7.5	62.5	16.2	0.0	4.3	72.5	2.805	Sand/gravel	<4.7	17	17			
			2015/5/14	Sunny	29.9	0.3	21.4	5	Yellowish brown	None	0.0	44.7	20.7	17.4	14.9	2.6	0.1	0.3	83.3	2.718	Gravel/sand	11	54	65			
			2015/6/19	Rain	18.4	0.4	18.9	5	Dark grayish yellow	None	0.0	40.9	18.5	12.6	18.6	5.3	2.1	2.1	82.3	2.760	Gravel/sand	<3.9	13	13			
			2015/7/6	Cloudy	22.0	0.4	19.7	3	Yellowish brown	None	4.0	35.2	19.2	14.5	20.1	3.6	1.4	2.2	82.9	2.677	Gravel/sand	10	35	45			
16	Hokigawa Bridge	Oiwake City	2015/8/2	Sunny	33.2	0.5	26.8	5	Yellowish brown	None	0.0	12.6	2.3	4.8	65.0	9.9	1.3	4.1	83.5	2.665	Sand/gravel	<4.1	12	12			
			2015/9/19	Sunny	27.6	0.5	22.5	5	Yellowish brown	None	1.9	49.4	21.2	15.6	10.2	0.7	0.0	1.1	85.3	2.687	Gravel/sand	<3.6	10	10			
			2015/11/6	Sunny	26.0	0.4	18.1	7	Yellowish brown	None	0.0	19.3	15.0	21.4	38.6	2.6	0.5	2.6	76.8	2.705	Sand/gravel	<3.6	13	13			
			2016/2/1	Cloudy	6.3	0.4	18.5	5	Olive brown	None	0.0	24.5	7.1	13.9	38.3	9.8	3.3	3.2	77.1	2.716	Sand/gravel	<4.5	14	14			
			2015/5/14	Sunny	30.3	0.3	22.8	5	Olive brown	None	2.8	47.0	29.6	13.5	6.5	0.5	0.0	0.2	92.7	2.703	Gravel/sand	3.2	12	15.2			
17	Nakagawa River	Shimaka Bridge	Nakagawa Town	2015/6/22	Sunny	24.1	0.3	23.2	5	Dark olive brown	None	0.0	45.5	28.3	16.2	8.5	0.4	0.2	1.0	80.5	2.765	Gravel/sand	<4.2	15	15		
				2015/7/7	Cloudy	21.5	0.3	18.8	3	Dark grayish yellow	None	0.0	33.1	29.5	19.0	14.2	2.4	0.4	1.5	85.7	2.725	Gravel/sand	4.6	16	20.6		
				2015/8/2	Sunny	34.2	0.3	27.8	5	Olive brown	None	6.9	34.3	25.7	22.3	8.9	0.1	0.8	1.2	81.5	2.730	Sand/gravel	<3.6	13	13		
				2015/9/19	Sunny	22.3	0.4	18.8	5	Gray	None	0.0	44.8	9.5	6.8	31.0	5.8	0.5	1.8	80.4	2.756	Gravel/sand	<4.1	11	11		
				2015/11/6	Sunny	22.5	0.2	16.7	5	Olive brown	None	0.0	38.0	23.2	11.9	19.6	5.6	0.2	1.5	82.0	2.716	Gravel/sand	<3.6	12	12		
18	Mumogawa River	Kosei Bridge	Nakagawa Town	2016/2/1	Cloudy	7.1	0.2	9.7	5	Olive brown	None	0.0	42.9	27.6	8.9	14.4	4.5	0.3	1.4	89.4	2.762	Gravel/sand	<4.2	10	10		
				2015/5/14	Sunny	23.5	0.3	20.8	5	Blackish brown	None	0.0	6.1	6.9	23.4	59.9	2.7	0.1	0.9	82.5	2.732	Sand/gravel	<5.0	13	13		
				2015/6/22	Sunny	25.3	0.3	20.3	5	Blackish brown	None	0.0	18.9	12.7	20.3	40.5	3.3	1.3	3.2	81.4	2.761	Sand/gravel	<5.7	9.3	9.3		
				2015/7/7	Cloudy	22.0	0.6	18.3	5	Yellowish gray	None	0.0	6.1	6.5	23.4	58.2	2.2	0.2	3.4	78.6	2.693	Sand/gravel	<5.4	17	17		
				2015/8/9	Sunny	32.2	0.3	24.8	5	Gray	None	2.6	6.1	7.0	12.8	59.7	11.1	0.1	0.6	78.6	2.749	Sand	<4.6	7.9	7.9		
2015/9/19	Sunny	23.7	0.6	20.2	5	Gray	None	0.0	3.5	0.9	18.8	71.1	2.0	0.9	2.8	74.8	2.703	Sand	<4.1	14	14						
2015/11/9	Cloudy	20.0	0.3	15.2	7	Grayish olive	None	0.0	3.1	3.4	15.4	70.2	3.4	0.5	3.9	73.9	2.760	Sand	<4.5	14	14						
2016/2/1	Cloudy	8.6	0.4	5.2	7	Grayish olive	None	0.0	0.2	1.2	10.0	75.6	7.3	1.9	3.8	74.5	2.699	Sand	<4.7	12	12						

Tochigi Rivers (Sediment) 3/6

No.	Location			Sampling Date	Weather	Air temperature (C)	Water depth (m)	Sediment																	Remarks		
	Water area	Location	Municipality					Sediment temperature (C)	Sample length (cm)	Color	Odor	General items									Sediment content (%)	Density (g/cm ³)	Property	Activity concentration [Bq/kg(dry)]			
												Coarse gravel	Medium gravel	Fine gravel	Grain size distribution(%)			Silt	Clay	Cs-134				Cs-137		Total	
															Coarse sand	Medium sand	Fine sand										
Rivers	Nakagawa River System	Arikawa River	Sakachi Bridge	Shiyoa Town	2015/5/14	Sunny	27.2	0.3	16.7	5	Dim yellowish brown	None	6.0	62.8	22.4	6.2	2.0	0.2	0.1	0.4	86.3	2.745	Gravel/sand	14	57	71	
					2015/8/2	Sunny	31.8	0.3	24.3	5	Dim yellowish brown	None	0.0	76.7	20.4	2.6	0.3	0.0	0.0	0.0	96.2	2.721	Gravel/sand	12	43	55	
					2015/11/7	Cloudy	17.7	0.4	14.8	3	Dark olive	None	6.0	40.9	16.0	10.1	18.0	5.1	1.8	2.2	82.8	2.728	Gravel/sand	<4.5	14	14	
			2016/2/5	Sunny	11.8	0.8	9.3	3	Dark olive	None	1.8	31.8	18.5	17.1	24.0	4.4	0.5	1.9	77.2	2.746	Sand/gravel	6.6	26	32.6			
			2015/5/14	Sunny	29.2	0.3	21.8	5	Olive brown	None	0.0	44.7	24.5	18.1	12.1	0.2	0.1	0.3	87.1	2.666	Sand/gravel	2.2	8.9	11.1			
			2015/8/9	Sunny	29.2	0.3	23.2	5	Olive brown	None	0.0	11.2	6.1	13.1	62.3	6.7	0.0	0.6	77.1	2.681	Sand	<4.9	17	17			
		2015/11/9	Cloudy	18.2	0.2	17.2	5	Olive brown	None	0.0	33.8	22.7	19.1	39.9	1.9	0.3	1.4	82.5	2.781	Sand/gravel	<3.8	8.2	8.2				
		2016/2/1	Cloudy	7.7	0.2	10.4	5	Olive brown	None	11.5	13.0	6.8	13.8	38.4	12.5	0.1	3.9	76.0	2.770	Sand/gravel	<4.3	7.7	7.7				
		2015/5/14	Sunny	29.7	0.2	23.1	10	Dark brown	None	8.1	66.5	20.1	4.2	0.3	0.0	0.2	0.5	95.8	2.674	Gravel/sand	12	47	59				
		2015/8/2	Sunny	32.2	0.2	26.0	10	Dark brown	None	5.3	74.9	11.4	5.3	1.5	0.1	0.3	1.0	93.6	2.730	Gravel/sand	6.1	32	38.1				
		2015/11/7	Cloudy	20.5	0.2	15.3	10	Dark brown	None	0.0	26.8	31.8	26.7	12.7	0.4	0.4	1.2	90.7	2.743	Sand/gravel	<4.8	26	26				
		2016/2/5	Sunny	5.3	0.2	4.7	10	Dark brown	None	0.0	39.6	22.1	22.7	13.9	0.6	0.0	1.1	78.0	2.725	Gravel/sand	7.5	43	50.5				
	2015/5/14	Sunny	27.6	0.3	19.6	5	Dark brown	None	0.0	29.9	15.4	29.5	24.5	0.1	0.1	0.5	83.1	2.757	Sand/gravel	9.8	35	44.8					
	2015/8/9	Sunny	30.4	0.2	24.5	3	Dim yellowish brown	None	8.5	22.5	13.3	28.1	26.6	0.7	0.1	0.4	79.0	2.728	Sand/gravel	9.6	38	47.6					
	2015/11/9	Cloudy	18.2	0.2	17.6	5	Dark grayish yellow	None	0.0	27.1	24.2	24.5	21.0	0.5	0.3	2.5	81.0	2.699	Sand/gravel	5.5	29	34.5					
	2016/2/1	Cloudy	7.9	0.2	12.3	5	Dark grayish yellow	None	5.3	25.7	22.7	23.9	20.0	0.1	0.5	1.8	79.1	2.666	Sand/gravel	6.9	32	38.9					
	2015/5/15	Sunny	26.0	0.4	22.8	5	Dark brown	None	0.0	31.6	33.9	21.3	10.6	2.1	0.2	0.4	92.9	2.662	Gravel/sand	<4.4	9.6	9.6					
	2015/6/22	Sunny	26.6	0.4	24.3	5	Blackish brown	None	4.5	37.6	18.1	18.5	16.5	2.9	0.7	1.3	84.6	2.669	Gravel/sand	<4.3	15	15					
	2015/7/7	Cloudy	24.3	0.4	19.5	3	Dim yellowish brown	None	0.0	39.1	19.2	14.5	25.1	1.3	0.1	0.8	82.2	2.758	Gravel/sand	4.2	12	16.2					
	2015/8/9	Sunny	33.0	0.4	27.5	3	Grayish yellowish brown	None	8.9	24.1	25.9	21.0	19.4	0.4	0.0	0.3	80.7	2.631	Sand/gravel	<4.7	12	12					
	2015/9/19	Sunny	25.0	0.4	21.0	5	Yellowish gray	None	0.0	0.0	0.1	0.4	90.6	42.2	1.9	4.8	73.8	2.736	Sand	<4.5	12	12					
	2015/11/9	Cloudy	18.2	0.2	16.8	7	Brown	None	0.0	29.8	17.5	19.8	26.9	3.1	0.3	2.8	83.4	2.712	Sand/gravel	<3.6	11	11					
	2016/2/1	Cloudy	9.0	0.2	7.8	7	Brown	None	0.0	50.2	27.2	13.9	6.4	1.0	0.3	1.1	88.8	2.692	Sand/gravel	<4.0	8.5	8.5					
	2015/5/15	Sunny	29.8	0.3	21.0	5	Dark brown	None	0.0	33.9	23.8	16.5	20.3	4.0	0.2	1.2	83.8	2.744	Sand/gravel	4.4	14	18.4					
2015/6/22	Sunny	27.6	0.3	24.3	5	Dark brown	None	3.8	51.8	23.1	10.1	8.0	1.9	0.4	1.1	90.5	2.732	Sand/gravel	<5.0	16	16						
2015/7/7	Cloudy	24.0	0.4	20.2	5	Olive brown	None	0.0	36.0	8.8	15.2	36.5	1.4	0.0	2.2	78.8	2.683	Sand/gravel	<5.2	12	12						
2015/8/9	Sunny	32.8	0.3	27.1	3	Dark grayish yellow	None	0.0	0.0	0.7	9.4	73.9	14.2	1.1	0.8	73.3	2.639	Sand	<5.4	21	21						
2015/9/19	Sunny	24.3	0.4	21.8	5	Grayish yellowish brown	None	0.0	25.8	23.8	28.3	17.8	2.4	0.6	1.9	88.9	2.742	Gravel/sand	<6.0	5.3	5.3						
2015/11/9	Cloudy	19.6	0.3	16.8	5	Dark brown	None	5.9	41.1	18.7	9.6	15.5	6.1	2.0	1.2	81.6	2.763	Sand/gravel	<4.1	12	12						
2016/2/1	Sunny	13.9	0.3	11.2	7	Dark brown	Faint sewage	7.7	13.0	4.3	3.3	17.4	28.9	15.0	10.5	55.3	2.622	Sand/silt	1.6	89	105						
2015/5/29	Sunny	26.2	0.4	12.6	3	Yellowish gray	None	2.9	47.1	38.5	8.4	2.9	0.1	0.1	0.1	90.4	2.668	Gravel/sand	6.7	18	24.7						
2015/8/31	Cloudy	22.4	0.4	21.8	3	Grayish olive	None	2.8	40.5	46.0	7.7	1.8	0.2	0.4	0.6	95.8	2.713	Gravel/sand	<3.7	8.6	8.6						
2015/11/10	Cloudy	18.3	0.4	14.5	3	Yellowish gray	None	3.4	27.3	22.9	25.4	19.2	0.5	0.3	1.1	82.6	2.812	Gravel/sand	5.1	24	29.1						
2016/2/5	Sunny	6.8	0.4	8.5	3	Olive brown	None	0.0	27.9	29.0	27.6	14.4	0.3	0.1	0.9	84.8	2.721	Gravel/sand	4.6	16	20.6						
2015/5/29	Cloudy	21.9	0.2	14.6	5	Gray	None	0.0	27.3	30.1	25.5	15.1	0.2	0.2	1.6	85.0	2.656	Sand/gravel	<5.2	9.5	9.5						
2015/8/31	Cloudy	19.6	0.3	17.3	5	Gray	None	1.8	40.9	14.1	18.9	22.1	3.8	0.2	0.3	81.6	2.714	Sand/gravel	<4.5	14	14						
2015/11/10	Cloudy	14.5	0.3	11.7	5	Gray	None	0.0	40.4	15.7	17.6	22.3	2.7	0.4	0.8	80.0	2.789	Sand/gravel	<4.1	7.1	7.1						
2016/2/5	Sunny	1.3	0.2	2.5	5	Grayish olive	None	0.0	3.3	4.3	7.5	56.3	24.0	1.0	3.6	76.1	2.680	Sand/gravel	<5.8	13	13						
2015/5/29	Cloudy	17.5	0.3	14.5	5	Dark olive	None	3.7	39.9	30.3	18.7	17.3	7.7	0.4	0.5	0.8	84.8	2.704	Sand/gravel	<4.3	8.8	8.8					
2015/8/31	Cloudy	21.8	0.3	19.8	3	Dark olive	None	1.9	34.3	27.4	18.2	17.3	0.7	0.0	0.3	82.3	2.662	Sand/gravel	5.5	21	26.5						
2015/11/10	Cloudy	18.0	0.3	14.1	3	Grayish olive	None	0.0	50.7	22.7	16.7	8.7	0.2	0.0	1.0	90.4	2.699	Sand/gravel	<3.1	4.5	4.5						
2016/2/5	Sunny	7.1	0.4	6.1	5	Dark olive	None	5.0	52.9	18.7	11.6	9.9	0.6	0.5	0.9	84.9	2.681	Gravel/sand	<4.0	8.6	8.6						
2015/5/28	Cloudy	23.4	0.3	14.2	5	Dark grayish yellow	None	3.6	48.7	19.9	11.8	14.3	1.8	0.2	0.6	82.7	2.727	Sand/gravel	7.0	33	40						
2015/8/9	Sunny	26.0	0.3	22.3	5	Dark grayish yellow	None	7.4	64.8	13.5	7.5	5.5	1.2	0.1	0.1	82.7	2.641	Gravel/sand	23	72	95						
2015/11/10	Cloudy	16.8	0.3	15.1	5	Dark grayish yellow	None	0.0	12.9	15.5	17.7	40.4	10.7	0.7	2.1	79.1	2.794	Sand/gravel	<4.5	14	14						
2016/2/5	Sunny	8.9	0.2	7.5	5	Dark grayish yellow	None	0.0	53.9	6.7	9.8	57.4	14.3	2.8	3.7	74.7	2.795	Sand/gravel	<6.1	16	16						

Tochigi Rivers (Sediment) 4/6

No.	Location				Sampling Date	Weather	Air temperature (°C)	Water depth (m)	Sediment																	Remarks			
	Water area	Location	Municipality	General items										Sediment content (%)			Density (g/cm ³)	Property	Activity concentration [Bq/kg(dry)]										
				Sediment temperature (°C)					Sample length (cm)	Color	Odor	Grain size distribution(%)							Fine sand	Silt	Clay	Cs-134	Cs-137	Total					
												Coarse gravel	Medium gravel	Fine gravel	Coarse sand	Medium sand													
Rivers	Tonegawa River System	Kinugawa River System	Ihama River	Tributary	Nikko City	2015/5/15	Sunny	22.1	0.3	16.2	5	Dark brown	None	0.0	1.1	7.0	40.3	45.9	4.3	0.5	0.9	77.5	2.688	Sand/gravel	14	48	62		
						2015/6/23	Cloudy	20.9	0.3	16.0	3	Dim yellowish brown	None	0.0	17.1	9.1	12.1	42.7	13.2	2.2	3.6	74.9	2.709	Sand/gravel	11	52	63		
						2015/7/8	Cloudy	23.0	0.4	25.0	5	Blackish brown	None	0.0	62.0	33.2	4.3	0.4	0.1	0.0	0.0	91.1	2.661	Sand/gravel	8.5	41	49.5		
						2015/8/9	Sunny	26.3	0.3	20.7	5	Dark brown	None	0.0	35.8	20.5	23.6	18.3	1.5	0.0	0.3	81.0	2.708	Gravel/sand	9.0	34	43		
						2015/9/29	Sunny	21.0	0.3	15.8	5	Olive black	None	0.0	6.3	67.2	24.1	0.9	0.3	0.2	1.0	93.1	2.658	Gravel/sand	5.9	23	28.9		
						2015/11/10	Cloudy	15.5	0.2	15.2	5	Grayish yellowish brown	None	2.5	48.2	18.5	13.8	14.9	0.9	0.0	1.2	79.9	2.722	Gravel/sand	<5.3	25	25		
						2016/2/5	Sunny	6.6	0.2	7.3	5	Dim yellowish brown	None	2.2	22.4	13.0	16.3	25.2	12.7	4.9	3.3	77.2	2.706	Gravel/sand	16	100	116		
						2015/6/4	Sunny	13.1	0.3	11.5	5	Blackish brown	None	0.0	29.3	22.3	25.2	20.4	0.6	0.5	1.8	85.9	2.850	Gravel/sand	<0.65	0.66	0.66		
						2015/8/7	Sunny	25.7	0.3	16.9	5	Blackish brown	None	0.0	36.8	20.8	16.9	23.1	2.0	0.1	0.3	77.9	2.882	Sand/gravel	<0.64	1.7	1.7		
						2015/11/25	Cloudy	1.6	0.3	8.0	5	Blackish brown	None	0.0	50.1	20.5	10.4	14.4	3.4	1.0	0.2	76.7	2.774	Sand/gravel	<4.5	1.7	1.7		
			2016/2/12	Sunny	1.2	0.3	2.5	5	Blackish brown	None	0.0	33.6	16.6	14.1	29.8	4.9	0.6	0.3	81.6	3.186	Sand/gravel	<2.9	4.3	4.3					
			2015/5/28	Cloudy	20.2	0.2	12.2	3	Blackish brown	None	0.0	42.6	31.3	20.2	4.9	0.3	0.2	0.5	91.0	2.691	Gravel/sand	<5.3	14	14					
			2015/8/8	Sunny	22.7	0.2	14.4	5	Blackish brown	None	0.0	38.8	34.3	21.0	5.1	0.6	0.0	0.2	85.1	2.885	Gravel/sand	<4.5	15	15					
			2015/11/7	Cloudy	14.5	0.3	9.4	3	Gmy	None	0.0	62.5	27.6	2.6	5.5	1.5	0.1	0.3	93.2	2.821	Gravel/sand	<4.5	11	11					
			2016/2/2	Sunny	4.6	0.2	7.6	5	Olive brown	None	4.1	41.9	26.2	13.9	10.8	1.7	0.3	1.1	87.2	2.747	Gravel/sand	<4.1	13	13					
			2015/5/28	Sunny	23.6	0.2	17.4	5	Olive black	None	0.0	54.6	28.6	12.5	3.9	0.2	0.0	0.3	95.8	2.693	Gravel/sand	22	73	95					
			2015/8/8	Sunny	26.5	0.2	21.2	5	Olive black	None	2.5	52.4	31.4	11.7	1.8	0.1	0.0	0.1	94.5	2.701	Gravel/sand	19	62	81					
			2015/11/7	Sunny	14.2	0.2	11.5	3	Olive black	None	0.0	36.5	25.8	23.2	12.1	0.8	0.2	1.3	81.2	2.742	Sand/gravel	26	120	146					
			2016/2/2	Sunny	4.9	0.2	5.0	5	Olive black	None	5.0	41.2	31.2	17.2	3.5	0.1	0.1	1.7	77.1	2.693	Gravel/sand	18	82	100					
			2015/5/8	Sunny	24.7	0.5	17.1	5	Blackish brown	None	0.0	7.6	14.5	32.8	39.5	4.5	0.2	0.8	82.3	2.697	Sand/gravel	6.0	19	25					
			2015/8/8	Sunny	22.7	0.2	14.4	5	Blackish brown	None	0.0	38.8	34.3	21.0	5.1	0.6	0.0	0.2	85.1	2.885	Gravel/sand	<4.5	15	15					
			2015/7/8	Cloudy	24.0	0.3	15.5	5	Blackish brown	None	0.0	0.0	0.5	18.0	67.8	10.0	0.8	3.0	73.4	2.673	Sand	<4.8	18	18					
			2015/8/9	Sunny	25.2	0.3	20.5	5	Blackish brown	None	0.0	2.6	7.5	31.8	48.5	8.0	1.0	0.6	74.1	2.700	Sand/gravel	<3.9	15	15					
			2015/9/29	Sunny	23.5	0.2	16.0	5	Blackish brown	None	0.0	0.0	0.8	28.5	61.4	5.1	0.3	3.8	76.2	2.665	Sand	<4.7	11	11					
			2015/11/7	Cloudy	14.8	0.2	12.1	5	Blackish brown	None	0.0	33.7	20.3	15.9	23.3	5.1	0.3	1.5	82.0	2.793	Sand/gravel	<3.6	6.7	6.7					
			2016/2/2	Sunny	0.9	0.2	4.6	5	Blackish brown	None	0.0	1.1	3.7	21.5	55.0	12.3	1.8	4.6	76.0	2.709	Sand	<4.9	20	20					
			34	Kinugawa River	Samaki	Shiroya Town	2015/5/15	Sunny	27.2	0.3	16.7	5	Black	None	0.0	0.0	0.1	2.6	81.9	14.3	0.2	1.0	75.9	2.707	Sand	<4.1	13	13	
							2015/6/23	Cloudy	20.6	0.3	16.0	3	Blackish brown	None	0.0	0.0	0.0	2.0	83.4	10.7	0.1	3.9	72.4	2.729	Sand	2.6	8.0	10.6	
							2015/7/8	Cloudy	25.5	0.4	17.5	5	Black	None	0.0	0.0	0.0	2.7	7.5	71.5	15.3	1.1	1.9	73.5	2.713	Sand	6.3	25	31.3
							2015/8/9	Sunny	29.1	0.2	22.8	5	Black	None	1.9	13.7	8.9	19.6	50.6	4.7	0.0	0.5	75.0	2.727	Sand	<6.6	12	12	
							2015/9/29	Sunny	25.1	0.2	18.6	5	Blackish brown	None	0.0	17.4	17.0	39.7	22.7	0.8	0.0	2.5	81.6	2.711	Sand/gravel	<3.5	6.4	6.4	
							2015/11/7	Cloudy	14.7	0.2	13.5	8	Blackish brown	None	0.0	0.0	0.0	0.2	54.9	39.0	3.0	2.9	69.9	2.709	Sand	<4.4	17	17	
							2016/2/5	Sunny	8.2	0.1	9.6	8	Blackish brown	None	0.0	0.0	0.3	0.9	42.1	46.5	5.8	4.3	72.5	2.703	Sand	<5.0	19	19	
							2015/5/15	Sunny	23.7	0.4	15.2	5	Dark brown	None	0.0	50.8	13.6	11.0	22.6	1.6	0.0	0.4	85.0	2.712	Gravel/sand	<5.8	14	14	
							2015/8/3	Sunny	27.4	0.4	21.2	7	Grayish olive	None	0.0	26.1	10.5	15.0	34.0	9.3	2.8	2.4	81.1	2.744	Sand/gravel	5.7	25	30.7	
							2015/11/11	Sunny	12.9	0.4	13.1	5	Dim yellowish brown	None	0.0	12.8	7.3	11.5	31.8	20.8	10.2	5.1	66.5	2.700	Silt/sand	36	160	196	
			35	Nishi-Kinugawa River	Nishi-Kinugawa Bridge	Utsunomiya City	2016/2/2	Sunny	6.8	0.4	8.3	5	Dim yellowish brown	None	0.0	0.5	0.4	1.8	8.8	49.4	26.7	13.2	67.1	2.702	Silt/sand	39	120	149	
							2015/6/2	Sunny	25.7	0.3	17.1	5	Blackish brown	None	0.0	30.2	18.1	23.8	23.0	2.3	0.5	2.0	82.3	2.811	Sand/gravel	<3.5	8.5	8.5	
							2015/8/3	Sunny	30.8	0.3	23.2	5	Blackish brown	None	0.0	27.8	14.2	11.6	21.8	16.7	3.7	4.3	80.4	2.698	Sand/gravel	<4.6	9.4	9.4	
							2015/11/11	Sunny	14.5	0.3	15.8	5	Olive brown	None	0.0	3.9	4.2	7.3	27.8	45.2	8.1	3.6	67.9	2.775	Sand	<5.7	12	12	
							2016/2/2	Sunny	6.4	0.4	12.1	7	Grayish olive	None	0.0	2.8	4.2	4.6	30.1	48.4	4.9	5.0	73.1	2.745	Sand/gravel	<5.1	15	15	
							2015/6/2	Sunny	27.4	0.3	22.9	8	Yellowish brown	None	4.4	29.7	24.4	16.5	18.0	5.2	0.7	1.1	81.6	2.686	Sand/gravel	<4.1	7.0	7.0	
			36	Kinugawa River	Kinugawa Bridge (Hoshokaji Temple)	Mooka City	2015/8/8	Sunny	31.5	0.2	21.3	8	Yellowish brown	None	0.0	10.2	22.2	38.8	23.9	4.5	0.1	0.5	79.8	2.844	Sand/gravel	<3.8	6.4	6.4	
							2015/11/16	Sunny	18.8	0.3	15.4	5	Dark grayish yellow	None	1.5	43.4	12.1	7.9	24.9	7.4	0.9	1.7	77.6	2.754	Sand/gravel	<4.5	11	11	
							2016/2/8	Cloudy	6.8	0.2	8.3	8	Dark grayish yellow	None	6.0	38.6	6.4	9.3	25.9	10.4	2.2	1.1	78.2	2.706	Sand/gravel	<4.8	13	13	

Tochigi Rivers (Sediment) 5/6

No.	Location				Sampling Date	Weather	Air temperature (°C)	Water depth (m)	Sediment																Activity concentration [Bq/kg(dry)]			Remarks
	Water area	Location	Municipality	Sediment temperature (°C)					Sample length (cm)	Color	Odor	Grain size distribution(%)						Sediment content (%)	Density (g/cm³)	Property	Radioactive estium							
												Coarse gravel	Medium gravel	Fine gravel	Coarse sand	Medium sand	Fine sand				Silt	Clay	Cs-134	Cs-137	Total			
R i v e r s	Tonegawa River System	Egawa River	Tributary	Shimotsuke City	2015/5/20	Sunny	27.1	0.4	20.1	5	Blackish brown	None	0.0	48.4	22.6	17.1	10.4	0.6	0.4	0.6	91.6	2.721	Gravel/sand	<5.0	21	21		
					2015/6/22	Sunny	23.9	0.5	18.7	8	Blackish brown	None	0.0	9.0	9.5	16.2	51.3	7.4	1.1	5.6	78.3	2.703	Sand/gravel	11	34	45		
					2015/7/9	Cloudy	19.5	0.7	19.7	3	Blackish brown	None	1.7	60.3	18.9	11.2	6.9	0.4	0.2	0.6	89.1	2.708	Gravel/sand	<3.9	18	18		
					2015/8/6	Sunny	32.5	0.3	25.2	7	Brownish gray	Faint sewage	7.0	27.7	8.6	7.8	34.3	11.7	2.5	0.4	71.9	2.689	Sand/gravel	8.4	40	48.4		
					2015/9/4	Sunny	26.6	0.4	22.8	5	Blackish brown	None	0.0	21.6	8.6	9.0	29.2	15.2	2.7	3.7	71.7	2.729	Sand/gravel	8.5	31	39.5		
					2015/11/16	Sunny	18.5	0.3	17.7	5	Dim yellowish brown	None	0.0	13.2	36.3	9.9	9.1	20.1	6.3	2.1	3.2	75.3	2.673	Sand/gravel	8.0	40	48	
					2016/2/8	Cloudy	8.7	0.2	8.9	6	Dark olive	None	2.9	18.5	37.1	26.3	19.6	0.4	0.0	0.3	82.8	2.685	Sand/gravel	<4.3	17	17		
		2015/5/15	Sunny	23.3	0.2	18.3	5	Blackish brown	None	0.0	2.8	2.9	6.0	30.6	30.1	18.8	8.8	44.8	2.568	Sand/gravel	210	800	1010					
		2015/8/8	Sunny	30.4	0.2	17.0	5	Blackish brown	None	0.0	4.8	9.1	24.0	54.7	6.1	0.8	0.6	74.5	2.693	Gravel/sand	52	210	262					
		2015/11/7	Sunny	13.2	0.2	10.0	5	Grayish yellowish brown	None	0.0	4.0	11.4	43.4	30.0	6.0	2.3	2.0	77.1	2.757	Sand	16	56	72					
		2016/2/2	Sunny	4.0	0.2	4.5	5	Blackish brown	None	0.0	27.3	29.4	23.2	16.1	1.5	0.7	1.8	88.9	2.872	Sand/gravel	12	52	64					
		2015/5/15	Sunny	26.4	0.2	18.0	5	Blackish brown	None	0.0	16.2	3.9	15.9	55.4	5.9	1.1	1.6	77.0	2.729	Sand/gravel	6.8	23	29.8					
		2015/8/8	Sunny	32.5	0.2	18.8	5	Blackish brown	None	0.0	6.0	6.4	7.6	76.9	14.3	0.1	0.7	76.6	2.905	Gravel/sand	8.3	29	37.3					
		2015/11/7	Sunny	12.8	0.2	12.0	5	Grayish yellowish brown	None	0.0	0.4	2.1	3.7	45.1	37.2	5.8	5.7	65.8	2.756	Sand	19	83	102					
	2016/2/2	Sunny	0.2	0.2	8.6	5	Blackish brown	None	2.1	25.5	17.7	19.6	27.8	4.3	1.0	2.0	77.7	2.863	Sand/gravel	<5.1	20	20						
	2015/5/15	Cloudy	26.0	0.2	21.7	5	Dark brown	None	0.0	36.9	28.7	22.7	10.9	0.4	0.1	0.3	95.4	2.761	Gravel/sand	<4.8	10	10						
	2015/6/23	Cloudy	26.2	0.4	20.9	5	Dark brown	None	2.2	23.2	9.3	14.5	43.1	5.0	0.2	2.5	78.0	2.817	Gravel/sand	<8.4	14	14						
	2015/7/8	Cloudy	25.2	0.3	27.0	5	Dark brown	Faint sewage	3.8	34.3	23.8	22.3	12.3	1.7	0.8	1.1	87.4	2.728	Gravel/sand	<5.5	14	14						
	2015/8/3	Sunny	34.2	0.4	24.8	5	Dark brown	None	0.0	24.1	27.8	30.2	15.4	0.2	0.4	1.8	87.4	2.676	Gravel/sand	<5.2	12	12						
	2015/9/29	Sunny	26.2	0.3	20.6	5	Dark brown	None	0.0	1.7	5.6	33.2	55.3	0.5	0.2	3.6	84.0	2.651	Sand/gravel	<4.5	6.6	6.6						
	2015/11/11	Sunny	18.8	0.3	16.8	5	Brown	None	0.0	4.0	23.7	47.5	20.1	0.5	1.4	2.8	75.8	2.662	Sand	<4.4	11	11						
	2016/2/2	Sunny	8.6	0.2	10.4	7	Brown	None	0.0	23.5	24.4	30.1	19.4	0.5	0.1	2.0	80.4	2.716	Sand/gravel	<4.1	11	11						
	2015/5/15	Cloudy	24.2	0.2	21.9	5	Blackish brown	None	0.0	36.3	23.2	20.1	17.5	1.7	0.4	0.8	77.8	2.662	Sand/gravel	9.5	35	44.5						
	2015/8/3	Sunny	36.8	0.2	26.3	3	Blackish brown	None	0.0	37.3	38.4	14.8	14.8	7.6	0.5	0.2	1.2	84.0	2.712	Gravel/sand	<5.2	25	25					
	2015/11/11	Sunny	16.4	0.2	17.3	5	Blackish brown	None	9.5	45.5	21.1	14.0	8.7	0.3	0.0	0.9	87.9	2.725	Sand/gravel	<6.3	14	14						
	2016/2/2	Sunny	8.3	0.1	13.2	5	Grayish yellowish brown	None	0.0	35.7	30.0	17.2	13.0	1.6	0.9	1.8	81.1	2.742	Sand/gravel	4.4	18	22.4						
	2015/5/20	Sunny	27.9	0.4	23.3	8	Dark brown	None	0.0	60.0	31.8	4.2	3.3	0.5	0.1	0.2	91.2	2.656	Gravel/sand	<5.0	7.9	7.9						
	2015/8/8	Sunny	31.6	0.3	23.6	8	Dim yellowish brown	None	0.0	49.1	35.5	10.7	4.2	0.3	0.0	0.1	84.1	2.640	Gravel/sand	<4.4	9.1	9.1						
2015/11/16	Sunny	17.8	0.3	15.9	5	Dark brown	None	0.0	45.8	29.7	13.8	7.9	1.7	0.3	0.8	85.4	2.705	Gravel/sand	<3.5	9.6	9.6							
2016/2/8	Cloudy	9.4	0.3	11.4	8	Blackish brown	None	0.0	43.0	32.8	10.1	7.0	5.1	1.2	0.9	80.8	2.734	Sand/gravel	3.9	19	22.9							
2015/5/20	Cloudy	26.7	0.4	23.0	5	Blackish brown	None	0.0	19.8	25.6	29.4	20.3	2.2	1.1	1.6	86.1	2.675	Sand/gravel	11	40	51							
2015/8/6	Sunny	33.8	0.3	28.7	3	Dark brown	None	0.0	34.9	28.3	20.8	9.4	5.0	1.3	0.3	82.8	2.634	Gravel/sand	15	48	63							
2015/11/16	Cloudy	19.9	0.3	17.1	5	Dim yellowish brown	None	3.9	45.8	11.4	8.8	13.3	6.9	7.0	3.1	74.1	2.603	Sand/gravel	<4.4	12	12							
2016/2/8	Sunny	4.3	0.3	8.8	5	Dark brown	None	4.7	41.5	17.3	14.8	13.4	5.0	1.9	1.4	80.1	2.672	Sand/gravel	6.0	22	28							
2015/5/18	Sunny	25.3	0.2	21.1	5	Blackish brown	None	2.0	45.2	37.9	15.4	0.9	0.3	0.1	0.2	91.9	2.684	Gravel/sand	1.1	3.7	4.8							
2015/8/8	Sunny	30.9	0.2	26.0	5	Blackish brown	None	1.6	38.0	25.7	24.5	9.7	0.3	0.0	0.3	88.3	2.643	Gravel/sand	<4.4	8.9	8.9							
2015/11/20	Cloudy	14.5	0.3	14.5	3	Brownish gray	None	0.8	61.1	25.5	9.3	3.9	0.5	0.4	0.6	92.7	2.730	Gravel/sand	<0.66	2.4	2.4							
2016/2/9	Sunny	5.9	0.3	9.8	7	Dark olive	None	8.0	26.8	26.5	25.1	11.5	1.8	0.1	0.3	80.6	2.677	Sand/gravel	<4.5	8.2	8.2							
2015/5/18	Sunny	22.6	0.2	20.9	5	Blackish brown	None	16.2	29.7	9.7	10.2	19.0	8.0	3.8	3.4	84.1	2.656	Gravel/sand	<4.0	8.9	8.9							
2015/8/8	Sunny	29.0	0.2	24.3	5	Dim yellowish brown	None	4.6	44.5	25.5	10.9	10.6	3.0	0.7	0.2	87.4	2.669	Gravel/sand	<0.94	4.1	4.1							
2015/11/13	Cloudy	16.8	0.1	16.4	5	Dim yellowish brown	None	1.8	49.5	20.9	5.7	14.4	5.8	0.3	1.6	90.2	2.784	Gravel	<2.9	3.7	3.7							
2016/2/9	Sunny	11.6	0.3	13.4	6	Dim yellowish brown	None	3.7	46.4	23.1	12.3	11.0	2.6	0.7	0.2	82.2	2.675	Gravel/sand	<0.70	3.7	3.7							
2015/5/18	Sunny	28.2	0.1	21.3	5	Brownish gray	None	9.0	55.3	17.0	12.2	8.3	0.1	0.0	0.2	89.1	2.680	Gravel/sand	0.88	3.5	4.8							
2015/8/8	Sunny	32.2	0.2	29.0	5	Blackish brown	None	0.0	51.5	27.0	15.0	5.5	0.5	0.3	0.2	88.4	2.687	Gravel/sand	<4.0	6.4	6.4							
2015/11/20	Cloudy	16.0	0.2	15.0	3	Brownish gray	None	0.0	45.0	16.9	9.4	15.9	9.0	1.7	2.0	81.3	2.720	Sand/gravel	<3.8	10	10							
2016/2/9	Sunny	4.8	0.3	8.1	7	Grayish olive	None	0.0	9.6	16.9	20.2	43.8	9.1	0.0	0.5	78.0	2.736	Sand/gravel	<5.0	8.5	8.5							
2015/5/18	Sunny	28.2	0.1	26.8	5	Dark brown	None	11.7	49.0	15.7	10.7	11.7	0.8	0.0	0.5	88.2	2.782	Gravel/sand	5.1	19	24.1							
2015/8/8	Sunny	32.0	0.1	29.0	5	Dark brown	None	3.2	54.0	22.1	11.1	7.5	1.4	0.5	0.2	89.7	2.647	Gravel/sand	<4.5	13	13							
2015/11/20	Cloudy	16.0	0.4	15.7	3	Brownish gray	None	0.0	43.0	22.1	19.5	12.8	0.6	0.9	1.1	85.0	2.820	Sand/gravel	4.1	14	18.1							
2016/2/9	Sunny	6.8	0.1	4.5	5	Dark olive	None	0.0	52.2	21.1	15.0	9.2	1.3	1.0	0.2	81.3	2.671	Gravel/sand	<3.8	13	13							

Tochigi Rivers (Sediment) 6/6

No.	Location				Sampling Date	Weather	Air temperature (°C)	Water depth (m)	Sediment																	Activity concentration [Bq/kg(dry)]			Remarks
	Water area	Location	Municipality	Sediment temperature (°C)					Sample length (cm)	Color	Odor	General items									Sediment content (%)	Density (g/cm³)	Property	Radioactive estium					
												Coarse gravel	Medium gravel	Fine gravel	Grain size distribution(%)			Fine sand	Silt	Clay				Cs-134	Cs-137	Total			
															Course sand	Medium sand	Fine sand												
49	Onnai River Area	Onnai River	Tamotsu Bridge	Tochigi City	2015/5/18	Sunny	25.6	0.2	23.1	5	Dark brown	None	2.8	34.6	34.6	20.7	6.3	0.4	0.4	0.3	87.8	2.690	Gravel/sand	0.88	3.3	4.18			
					2015/8/8	Sunny	26.9	0.2	26.0	5	Dark brown	None	2.3	40.6	21.5	16.1	16.9	2.3	0.1	0.3	88.6	2.678	Gravel/sand	<4.2	4.6	4.6			
					2015/11/13	Cloudy	15.5	0.3	15.3	3	Dark brown	None	1.4	33.6	49.0	12.6	2.5	0.3	0.0	0.6	86.8	2.658	Gravel/sand	<4.5	4.8	4.8			
					2016/2/9	Sunny	13.6	0.1	11.8	7	Dim yellowish brown	None	8.2	39.0	20.2	16.0	14.4	1.7	0.3	0.2	79.8	2.656	Sand/gravel	<3.6	3.8	3.8			
					2015/5/20	Sunny	25.2	0.3	22.2	5	Grayish olive	None	1.9	45.2	17.1	11.4	14.1	8.2	0.8	1.4	89.4	2.713	Sand/gravel	3.5	19	22.5			
		Oyama City	Otome-ohashi Bridge	2015/6/22	Sunny	25.2	0.5	22.1	7	Grayish olive	None	3.6	43.1	13.7	7.6	20.0	8.0	1.6	2.3	86.1	2.712	Sand/gravel	<4.6	3.5	5.5				
				2015/7/9	Cloudy	21.2	0.5	20.3	5	Grayish yellowish brown	Faint fab	0.0	48.2	8.2	7.7	20.4	16.4	0.5	1.7	81.6	2.749	Sand/gravel	<3.6	1.4	1.4				
				2015/8/11	Sunny	25.7	0.3	25.7	5	Grayish olive	None	11.5	76.6	6.5	1.6	2.6	1.1	0.1	0.1	94.0	2.655	Sand/gravel	0.91	3.2	4.11				
				2015/9/4	Sunny	29.2	0.3	22.3	6	Olive brown	None	8.5	45.0	10.3	4.6	15.3	12.1	2.1	2.1	85.8	2.738	Sand/gravel	<0.87	2.6	2.6				
				2015/11/16	Sunny	19.2	0.3	17.1	5	Olive brown	None	2.4	33.9	5.3	4.9	36.8	12.9	0.6	3.4	75.8	2.698	Sand/gravel	<0.64	2.6	2.6				
	2016/2/8	Sunny	2.5	0.3	8.4	6	Olive brown	None	29.2	32.5	5.9	5.5	14.0	9.4	1.7	1.7	80.0	2.706	Sand/gravel	<4.1	8.0	8.0							
	50	Uzuma River Area	Uzuma River	Uzuma Bridge	Tochigi City	2015/6/2	Cloudy	25.6	0.8	23.6	7	Blackish brown	Faint sewage	0.0	1.1	2.6	1.4	3.2	10.5	53.0	28.3	23.2	2.449	Silt	33	130	163		
						2015/6/22	Sunny	30.3	0.9	23.8	4	Blackish brown	Faint sewage	0.0	0.0	0.0	0.7	0.7	2.6	63.1	32.8	20.9	2.356	Silt	37	160	195		
						2015/7/9	Cloudy	23.7	1.0	20.7	5	Brown	Faint sewage	0.0	3.3	0.6	11.8	77.0	12.6	40.6	14.1	47.9	2.693	Silt	<1.0	1.3	1.3		
						2015/8/11	Sunny	34.5	0.7	24.3	7	Brown	Faint sewage	0.0	1.0	0.5	1.5	5.3	9.8	57.4	24.4	57.8	2.640	Silt	<0.84	1.4	1.4		
						2015/9/4	Sunny	30.0	0.8	24.6	3	Dark brown	None	0.0	1.1	0.6	1.9	6.4	12.8	66.0	11.2	47.3	2.709	Silt/sand	14	53	67		
						2015/11/13	Cloudy	18.5	0.7	17.2	5	Blackish brown	None	0.0	0.0	0.0	0.2	6.7	43.5	32.3	17.3	43.5	2.648	Silt	17	81	98		
						2016/2/10	Sunny	7.8	1.0	10.3	3	Brown	None	5.2	5.6	2.1	4.8	15.5	14.5	45.6	6.8	54.9	2.695	Silt	<7.5	13	13		
						2015/5/28	Cloudy	19.8	0.3	15.7	5	Dark grayish yellow	None	0.0	34.9	35.2	24.1	4.7	0.0	0.3	0.9	88.9	2.671	Gravel/sand	2.7	11	13.7		
						2015/6/24	Cloudy	20.9	0.3	17.4	5	Blackish brown	None	0.0	24.7	16.8	23.6	28.6	4.7	0.6	2.2	81.8	2.722	Sand	<5.0	13	13		
2015/7/8						Rain	20.1	0.3	15.7	5	Dark grayish yellow	None	3.2	53.9	20.8	11.4	9.3	1.0	0.6	0.4	80.7	2.824	Gravel/sand	<4.6	13	13			
51	Tongogawa River System	Watarase River Area	Watarase River intake weir at Sori Power Station	Nikko City	2015/8/23	Cloudy	17.0	0.3	17.3	5	Dark grayish yellow	None	5.2	32.8	13.9	15.7	25.1	6.9	0.1	0.4	80.1	2.726	Gravel/sand	<4.7	23	23			
					2015/9/7	Rain	19.7	0.4	17.4	5	Dark grayish yellow	None	0.0	18.9	12.9	21.7	31.3	11.9	0.7	2.6	80.0	2.723	Sand/gravel	<5.4	23	23			
					2015/11/16	Cloudy	16.3	0.2	11.2	7	Dark grayish yellow	None	0.0	30.5	33.1	24.8	9.6	0.7	0.0	1.4	78.0	2.705	Gravel/sand	4.5	15	19.5			
					2016/2/12	Sunny	4.2	0.2	4.7	5	Dark grayish yellow	None	0.0	35.1	31.0	28.0	5.5	0.1	0.0	0.2	87.6	2.699	Gravel/sand	<4.8	7.5	7.5			
					2015/6/1	Sunny	29.0	0.4	24.7	10	Blackish brown	None	3.0	42.7	31.0	17.2	4.6	0.2	0.4	1.0	87.8	2.737	Gravel/sand	<4.0	5.4	5.4			
					2015/8/10	Sunny	30.2	0.3	28.4	10	Gray	None	0.0	24.7	37.2	28.6	8.9	0.4	0.0	0.3	90.4	2.748	Gravel/sand	<3.9	5.7	5.7			
					2015/11/13	Sunny	16.1	0.3	14.6	3	Gray	None	0.0	37.0	30.5	22.1	8.8	0.4	0.0	1.3	89.3	2.730	Gravel/sand	<3.7	7.8	7.8			
					2016/2/10	Sunny	5.3	0.4	4.0	3	Grayish yellowish brown	None	0.0	41.4	27.4	19.0	10.6	1.0	0.3	0.2	79.6	2.749	Gravel/sand	4.7	21	25.7			
					2015/6/1	Sunny	29.3	0.6	25.2	10	Blackish brown	None	0.0	37.5	17.2	19.8	21.7	1.8	1.2	0.9	82.2	2.800	Gravel/sand	0.90	3.7	4.6			
					2015/8/10	Sunny	30.7	0.5	26.9	10	Blackish brown	None	0.0	26.0	26.0	23.0	21.0	3.6	0.1	0.4	90.9	2.793	Sand/gravel	<4.0	6.5	6.5			
52	Watarase River Area	Watarase River	Nakabashi Bridge	Ashikaga City	2015/11/13	Sunny	17.0	0.8	15.1	3	Blackish brown	None	0.0	14.6	16.0	31.3	33.5	2.7	0.4	1.6	79.0	2.857	Sand/gravel	<3.7	5.5	5.5			
					2016/2/10	Sunny	7.0	0.5	6.0	3	Olive black	None	0.0	30.1	33.1	21.5	14.5	0.3	0.1	0.3	81.6	2.780	Sand/gravel	<4.0	5.2	5.2			
					2015/6/1	Sunny	28.3	1.0	25.5	10	Olive black	Faint earth	0.0	2.1	2.5	3.8	10.1	35.9	29.1	16.4	60.3	2.670	Sand	55	240	295			
					2015/8/10	Sunny	33.2	0.9	31.3	10	Black	Faint earth	0.0	25.0	23.5	17.4	23.3	9.3	2.4	1.0	84.3	2.701	Sand/gravel	<4.7	14	14			
					2015/11/13	Sunny	17.7	0.4	15.3	5	Grayish olive	None	0.0	30.7	16.9	23.4	24.2	3.3	0.1	1.5	81.7	2.802	Sand/gravel	<4.0	10	10			
					2016/2/10	Sunny	7.8	0.5	7.0	5	Yellowish gray	None	0.0	24.4	31.1	21.3	18.1	4.9	0.0	0.3	83.1	2.753	Gravel/sand	<3.7	8.1	8.1			
					2015/6/2	Cloudy	27.6	0.1	26.4	5	Olive black	None	0.0	16.8	12.6	10.8	21.2	18.9	14.7	5.0	76.5	2.737	Sand/silt	<4.1	7.8	7.8			
					2015/6/22	Sunny	27.2	0.3	24.8	5	Olive black	None	0.0	32.2	14.3	9.0	18.3	12.9	8.0	5.5	72.3	2.766	Silt/sand	<5.4	12	12			
					2015/7/9	Cloudy	24.0	0.3	21.3	3	Gray	Faint sewage	7.4	32.7	16.5	8.9	15.9	9.2	5.7	3.8	77.3	2.778	Silt/sand	<4.1	5.2	5.2			
					2015/8/11	Cloudy	32.4	0.1	32.6	5	Grayish olive	None	2.7	51.1	17.3	8.2	13.4	6.1	1.1	0.2	83.9	2.761	Sand/silt	<4.2	4.4	4.4			
53	Watarase River Area	Watarase River	Shinkai Bridge	Tochigi City	2015/9/4	Sunny	30.2	0.3	27.1	5	Olive black	None	0.0	21.9	8.8	6.6	21.6	25.0	9.8	6.4	70.4	2.744	Silt/sand	9.7	42	51.7			
					2015/11/13	Sunny	18.4	0.1	15.5	3	Blackish brown	Faint sewage	0.0	30.0	29.1	13.3	16.3	8.8	1.2	0.8	82.1	2.863	Sand/gravel	<3.9	8.5	8.5			
					2016/2/10	Sunny	8.6	0.2	8.0	3	Yellowish gray	None	2.4	41.7	12.4	7.5	17.4	15.0	2.1	1.6	77.3	2.755	Sand/silt	4.7	17	21.7			

Tochigi Rivers (Surrounding Environment) 1/6

No.	Location			Sampling Date	Weather	Air temperature (°C)	Surrounding Environment(Soil,Air dose)												Remarks							
	Water area	Location	Municipality				Left bank			Right bank																
							Color	Odor	Property	Activity concentration [Bq/kg(dry)]			Air Dose (μSv/h)	Color	Odor	Property	Activity concentration [Bq/kg(dry)]			Air Dose (μSv/h)						
			Radioactive cesium			Radioactive cesium			Radioactive cesium																	
			Cs-134	Cs-137	Total	Cs-134	Cs-137	Total	Cs-134	Cs-137	Total															
R i v e r s	Nakagawa River System	Nakagawa River	Ikuyobashishita	Nasushiobara City	2015/5/12	Cloudy	16.2	-	-	-	-	-	-	-	-	Blackish brown	Faint earth	Loamy	250	1,000	1,250	0.09	(Left bank)Unable to collect samples due to privately owned land			
					2015/8/1	Sunny	27.5	-	-	-	-	-	-	-	-	-	-	-	Blackish brown	Faint earth	Loamy	320	1,300	1,620	0.09	(Left bank)Unable to collect samples due to privately owned land
					2015/11/12	Cloudy	10.7	-	-	-	-	-	-	-	-	-	-	-	Blackish brown	Faint earth	Loamy	290	1,300	1,590	0.07	(Left bank)Unable to collect samples due to privately owned land
			2016/2/4		Sunny	1.3	-	-	-	-	-	-	-	-	-	-	-	Blackish brown	Faint earth	Loamy	85	440	525	0.06	(Left bank)Unable to collect samples due to privately owned land	
			2015/5/12		Sunny	18.5	Dim yellowish brown	Faint earth	Loamy	940	3,400	4,340	0.15	Dim yellowish brown	Faint earth	Loamy	450	1,700	2,150	0.14						
			2015/8/1		Sunny	30.9	Dim yellowish brown	Faint earth	Loamy	370	1,500	1,870	0.17	Dim yellowish brown	Faint earth	Loamy	130	470	600	0.17						
		2	Komci Bridge			2015/11/12	Cloudy	10.4	Blackish brown	Faint earth	Loamy	860	3,900	4,760	0.16	Dim yellowish brown	Faint earth	Loamy	270	1,200	1,470	0.16				
						2016/2/4	Sunny	1.6	Dark brown	Faint earth	Loamy	940	4,600	5,540	0.12	Dim yellowish brown	Faint earth	Loamy	280	1,400	1,680	0.12				
		3	Takaomata River	Takaomata Bridge		Nasu Town	2015/5/12	Cloudy	18.9	Dim yellowish brown	Faint earth	Loamy	300	1,100	1,400	0.14	Dark brown	Faint earth	Loamy	700	2,400	3,100	0.19			
							2015/8/1	Sunny	31.3	Blackish brown	Faint earth	Loamy	340	1,400	1,740	0.16	Blackish brown	Faint earth	Loamy	690	2,800	3,490	0.18			
							2015/11/12	Cloudy	10.3	Blackish brown	Faint earth	Loamy	310	1,500	1,810	0.14	Blackish brown	Faint earth	Loamy	1,100	4,700	5,800	0.18			
							2016/2/4	Sunny	1.6	Brown	Faint earth	Loamy	200	980	1,180	0.12	Dark brown	Faint earth	Loamy	230	1,200	1,430	0.13			
		4	Yukawa River	Yukawa Bridge		Nasu Town	2015/5/12	Cloudy	19.6	Dim yellowish brown	Faint earth	Loamy	250	940	1,190	0.23	Brown	Faint earth	Loamy	600	2,200	2,800	0.17			
							2015/8/1	Sunny	31.5	Dim yellowish brown	Faint earth	Loamy	460	1,800	2,260	0.23	Dim yellowish brown	Faint earth	Loamy	480	2,000	2,480	0.17			
							2015/11/12	Cloudy	11.6	Blackish brown	Faint earth	Loamy	210	980	1,190	0.23	Blackish brown	Faint earth	Loamy	700	3,200	3,900	0.18			
							2016/2/4	Sunny	3.3	Dark brown	Faint earth	Loamy	98	500	598	0.13	Dark brown	Faint earth	Loamy	350	1,600	1,950	0.13			
		5	Nakagawa River	Kamikuroiso		Nasushiobara City/ Nasu Town	2015/5/11	Sunny	18.0	Dim yellowish brown	Faint earth	Loamy	640	2,000	2,640	0.17	Dim yellowish brown	Faint earth	Loamy	390	1,500	1,890	0.13			
							2015/6/19	Cloudy	21.3	Dim yellowish brown	Faint earth	Loamy	210	960	1,170	0.18	Blackish brown	Faint earth	Loamy	280	1,100	1,380	0.14			
							2015/7/6	Cloudy	19.3	Dim yellowish brown	Faint earth	Loamy	240	930	1,170	0.16	Gray	None	Sandy	15	49	64	0.13			
							2015/8/1	Sunny	32.5	Blackish brown	Faint earth	Loamy	400	1,600	2,000	0.16	Brown	Faint earth	Loamy	1,000	4,100	5,100	0.13			
							2015/9/19	Sunny	25.0	Dim yellowish brown	Faint earth	Loamy	420	1,700	2,120	0.15	Dim yellowish brown	Faint earth	Loamy	42	170	212	0.10			
							2015/11/15	Sunny	14.4	Dim yellowish brown	Faint earth	Loamy	540	2,000	2,540	0.16	Dim yellowish brown	Faint earth	Loamy	530	2,200	2,730	0.11			
							2016/2/4	Sunny	2.8	Blackish brown	Faint earth	Loamy	350	1,500	1,850	0.13	Blackish brown	Faint earth	Loamy	260	1,200	1,460	0.10			
							2015/5/12	Cloudy	20.6	Dim yellowish brown	Faint earth	Loamy	1,800	6,300	8,100	0.21	Brown	Faint earth	Loamy	1,000	3,700	4,700	0.18			
		6	Yosasa River	Yosasa Bridge		Nasu Town	2015/8/1	Sunny	33.4	Dim yellowish brown	Faint earth	Loamy	3,700	14,000	17,700	0.24	Dim yellowish brown	Faint earth	Loamy	320	1,200	1,520	0.17			
							2015/11/12	Cloudy	8.1	Dim yellowish brown	Faint earth	Loamy	970	4,200	5,170	0.23	Blackish brown	Faint earth	Loamy	1,000	4,200	5,200	0.14			
2016/2/4	Sunny						3.2	Dim yellowish brown	Faint earth	Loamy	360	1,700	2,060	0.15	Dim yellowish brown	Faint earth	Loamy	350	1,600	1,950	0.12					
2015/5/12	Sunny						18.1	Dim yellowish brown	Faint earth	Loamy	190	780	970	0.25	Dim yellowish brown	Faint earth	Loamy	990	3,600	4,590	0.20					
7	Kurokawa River	Shinden Bridge		Nasu Town	2015/8/1	Sunny	35.7	Dim yellowish brown	Faint earth	Loamy	670	2,700	3,370	0.25	Brown	Faint earth	Loamy	600	2,500	3,100	0.20					
					2015/11/15	Sunny	20.2	Dark brown	Faint earth	Loamy	150	630	780	0.24	Dim yellowish brown	Faint earth	Loamy	560	2,400	2,960	0.19					
					2016/2/4	Sunny	7.3	Blackish brown	Faint earth	Loamy	220	990	1,210	0.22	Blackish brown	Faint earth	Loamy	470	2,200	2,670	0.17					
					2015/5/11	Sunny	21.9	Brown	Faint earth	Loamy	350	1,400	1,750	0.19	Dim yellowish brown	Faint earth	Loamy	590	2,200	2,790	0.27					
8	Yosasa River	Kawada Bridge		Otawara City	2015/6/19	Cloudy	19.7	Blackish brown	Faint earth	Loamy	270	1,200	1,470	0.18	Dark brown	Faint earth	Loamy	480	1,700	2,180	0.27					
					2015/7/6	Cloudy	19.5	Blackish brown	None	Loamy	680	2,600	3,280	0.17	Dim yellowish brown	Faint earth	Loamy	320	1,300	1,620	0.26					
					2015/8/1	Sunny	34.0	Blackish brown	Faint earth	Loamy	290	1,300	1,590	0.15	Dim yellowish brown	Faint earth	Loamy	400	1,500	1,900	0.30					
					2015/9/19	Sunny	23.9	Blackish brown	Faint earth	Loamy	760	3,000	3,760	0.14	Brown	Faint earth	Loamy	650	2,800	3,450	0.26					
					2015/11/15	Sunny	21.1	Dim yellowish brown	Faint earth	Loamy	400	1,700	2,100	0.15	Dim yellowish brown	Faint earth	Loamy	330	1,500	1,830	0.24					
					2016/2/4	Sunny	4.7	Blackish brown	Faint earth	Loamy	160	820	980	0.14	Blackish brown	Faint earth	Loamy	210	960	1,170	0.22					
9	Nakagawa River	Kurobane		Otawara City	2015/5/12	Cloudy	23.7	Dim yellowish brown	Faint earth	Loamy	170	570	740	0.11	Blackish brown	Faint earth	Loamy	87	370	457	0.09					
					2015/6/19	Cloudy	20.3	Dim yellowish brown	Faint earth	Loamy	120	490	610	0.10	Blackish brown	Faint earth	Loamy	71	250	321	0.08					
					2015/7/6	Cloudy	21.7	Dim yellowish brown	Faint earth	Loamy	170	600	770	0.11	Grayish yellowish brown	None	Loamy	190	820	1,010	0.10					
					2015/8/1	Sunny	36.8	Dim yellowish brown	None	Loamy	120	470	590	0.10	Dim yellowish brown	Faint earth	Loamy	74	330	404	0.08					
					2015/9/19	Sunny	27.7	Dim yellowish brown	Faint earth	Loamy	110	460	570	0.10	Blackish brown	Faint earth	Loamy	270	1,000	1,270	0.07					
					2015/11/15	Sunny	18.8	Blackish brown	Faint earth	Loamy	99	380	479	0.10	Blackish brown	Faint earth	Loamy	150	690	840	0.08					
					2016/2/4	Sunny	8.8	Blackish brown	Faint earth	Loamy	74	340	414	0.10	Blackish brown	Faint earth	Loamy	120	570	690	0.09					

Tochigi Rivers (Surrounding Environment) 2/6

R i v e r s	Location				Sampling Date	Weather	Air temperature (°C)	Surrounding Environment(Soil,Air dose)											Remarks			
	No.	Water area		Municipality				Left bank						Right bank								
		Location	Property					Color	Odor	Property	Activity concentration [Bq/kg(dry)]			Air Dose (µSv/h)	Color	Odor	Property	Activity concentration [Bq/kg(dry)]			Air Dose (µSv/h)	
											Radioactive cesium							Radioactive cesium				
						Cs-134	Cs-137	Total				Cs-134	Cs-137	Total								
10	Matsuba River	Tributary	Otawara City	2015/5/12	Cloudy	23.1	Blackish brown	Faint earth	Loamy	250	980	1,230	0.09	Grayish yellowish brown	Faint earth	Loamy	79	300	379	0.09		
				2015/6/19	Cloudy	20.3	Dim yellowish brown	Faint earth	Loamy	150	620	770	0.09	Dark brown	Faint earth	Loamy	110	470	580	0.09		
				2015/7/6	Cloudy	21.5	Grayish yellowish brown	None	Loamy	150	590	740	0.09	Grayish yellowish brown	Faint earth	Loamy	53	220	273	0.09		
				2015/8/1	Sunny	34.5	Dim yellowish brown	None	Loamy	220	880	1,100	0.09	Dim yellowish brown	Faint earth	Loamy	110	470	580	0.10		
				2015/9/19	Sunny	27.7	Blackish brown	Faint earth	Loamy	160	590	750	0.09	Dark brown	Faint earth	Loamy	190	770	960	0.08		
				2015/11/5	Sunny	18.3	Grayish yellowish brown	Faint earth	Loamy	120	560	680	0.09	Blackish brown	Faint earth	Loamy	100	360	460	0.09		
				2016/2/4	Sunny	8.8	Grayish yellowish brown	Faint earth	Loamy	280	1,200	1,480	0.09	Blackish brown	Faint earth	Loamy	68	390	458	0.09		
				2015/5/12	Cloudy	20.9	Dim yellowish brown	Faint earth	Loamy	110	380	490	0.09	Blackish brown	Faint earth	Loamy	73	240	313	0.08		
				2015/8/2	Sunny	32.8	Dim yellowish brown	None	Loamy	31	160	191	0.08	Blackish brown	None	Loamy	69	280	349	0.08		
				2015/11/6	Sunny	16.3	Blackish brown	Faint earth	Loamy	57	290	347	0.07	Blackish brown	Faint earth	Loamy	62	250	312	0.06		
				2016/2/1	Cloudy	4.1	Dark brown	Faint earth	Loamy	160	780	940	0.07	Dark brown	Faint earth	Loamy	38	160	198	0.06		
				11	Sabigawa River	Udagawa Bridge	Otawara City	2015/5/14	Sunny	25.2	Blackish brown	Faint earth	Loamy	300	1,200	1,500	0.10	Blackish brown	Faint earth	Loamy	250	930
	2015/8/2	Sunny	32.6					Dark brown	None	Loamy	260	560	820	0.09	Blackish brown	None	Loamy	230	950	1,180	0.09	
	2015/11/6	Sunny	20.7					Blackish brown	Faint earth	Loamy	1,200	4,900	6,100	0.10	Blackish brown	Faint earth	Loamy	60	330	390	0.08	
	2016/2/1	Cloudy	5.0					Blackish brown	Faint earth	Loamy	1,200	5,600	6,800	0.08	Blackish brown	Faint earth	Loamy	230	1,200	1,430	0.08	
	12	Momura River	Momuranaka Bridge	Otawara City	2015/6/1	Sunny	24.6	Dim yellowish brown	Faint earth	Loamy	200	760	960	0.13	Dim yellowish brown	Faint earth	Loamy	230	850	1,080	0.10	
					2015/8/2	Rain	28.3	Dark brown	Faint earth	Loamy	200	870	1,070	0.09	Dim yellowish brown	Faint earth	Loamy	200	840	1,040	0.07	
					2015/11/7	Cloudy	13.9	Dark brown	Faint earth	Loamy	290	1,200	1,490	0.11	Dim yellowish brown	Faint earth	Loamy	130	640	770	0.08	
					2016/2/5	Sunny	7.5	Dark brown	Faint earth	Loamy	270	1,200	1,470	0.10	Dim yellowish brown	Faint earth	Loamy	380	1,800	2,180	0.06	
	13	Yunohara	Nasushiobara City	Nasushiobara City	2015/5/14	Sunny	23.2	Blackish brown	Faint earth	Loamy	560	1,900	2,460	0.22	Blackish brown	Faint earth	Loamy	270	990	1,260	0.32	
					2015/8/2	Sunny	33.8	Dark brown	Faint earth	Loamy	810	3,000	3,810	0.22	Blackish brown	Faint earth	Loamy	520	2,100	2,620	0.33	
					2015/11/7	Cloudy	17.6	Blackish brown	Faint earth	Loamy	160	740	900	0.18	Blackish brown	Faint earth	Loamy	250	1,200	1,450	0.25	
					2016/2/5	Sunny	5.8	Blackish brown	Faint earth	Loamy	94	400	494	0.17	Blackish brown	Faint earth	Loamy	170	710	880	0.22	
	14	Sekiba Bridge	Nasushiobara City	Nasushiobara City	2015/5/14	Sunny	27.8	Dark brown	Faint earth	Loamy	200	610	810	0.08	Dark brown	Faint earth	Loamy	170	720	890	0.08	
					2015/8/2	Sunny	31.5	Brown	None	Loamy	150	590	740	0.07	Brown	None	Loamy	100	430	530	0.09	
					2015/11/6	Sunny	21.2	Dark brown	Faint earth	Loamy	270	1,200	1,470	0.08	Blackish brown	Faint earth	Loamy	150	630	780	0.07	
					2016/2/1	Cloudy	5.2	Dark brown	Faint earth	Loamy	290	1,300	1,590	0.07	Dark brown	Faint earth	Loamy	120	650	770	0.06	
	15	Hokigawa River	Iwai Bridge	Otawara City	2015/5/14	Sunny	29.9	Dim yellowish brown	Faint earth	Loamy	240	1,000	1,240	0.09	Dim yellowish brown	Faint earth	Loamy	59	210	269	0.07	
					2015/6/19	Rain	18.4	Dim yellowish brown	Faint earth	Loamy	58	250	308	0.10	Brown	Faint earth	Loamy	14	57	71	0.08	
					2015/7/6	Cloudy	22.0	Grayish yellowish brown	Faint earth	Loamy	980	3,600	4,580	0.09	Dim yellowish brown	Faint earth	Loamy	56	220	276	0.07	
					2015/8/2	Sunny	33.2	Grayish yellowish brown	None	Loamy	110	410	520	0.08	Dim yellowish brown	None	Loamy	67	300	367	0.08	
	16	Hokigawa Bridge	Otawara City	Otawara City	2015/9/19	Sunny	27.6	Dim yellowish brown	Faint earth	Loamy	130	570	700	0.07	Yellowish brown	Faint earth	Loamy	51	180	231	0.06	
					2015/11/6	Sunny	26.0	Dim yellowish brown	Faint earth	Loamy	140	620	760	0.07	Brown	Faint earth	Loamy	63	270	333	0.06	
					2016/2/1	Cloudy	6.3	Dim yellowish brown	Faint earth	Loamy	100	510	610	0.06	Brown	Faint earth	Loamy	9.5	53	62.5	0.06	
					2015/5/14	Sunny	30.3	Dim yellowish brown	Faint earth	Loamy	25	110	135	0.06	Dark brown	Faint earth	Loamy	38	120	158	0.06	
	17	Nakagawa River	Shinnaka Bridge	Nakagawa Town	2015/6/22	Sunny	24.1	Dark brown	Faint earth	Loamy	9.5	22	31.5	0.06	Dark brown	Faint earth	Loamy	19	79	98	0.06	
					2015/7/7	Cloudy	21.5	Dim yellowish brown	None	Loamy	26	92	118	0.06	Dark brown	Faint earth	Loamy	21	94	115	0.07	
					2015/8/2	Sunny	34.2	Grayish yellowish brown	None	Loamy	16	66	82	0.06	Grayish yellowish brown	None	Loamy	48	160	208	0.06	
					2015/9/19	Sunny	22.3	Dim yellowish brown	None	Loamy	25	130	155	0.06	Blackish brown	None	Loamy	65	270	335	0.06	
	18	Mumogawa River	Kosei Bridge	Nakagawa Town	2015/11/6	Sunny	22.5	Dim yellowish brown	Faint earth	Loamy	44	190	234	0.06	Dark brown	Faint earth	Loamy	46	190	236	0.06	
					2016/2/1	Cloudy	7.1	Brown	Faint earth	Loamy	37	180	217	0.06	Dim yellowish brown	Faint earth	Loamy	54	280	334	0.06	
					2015/5/14	Sunny	23.5	Dim yellowish brown	Faint earth	Loamy	17	53	70	0.06	Dark reddish brown	Faint earth	Loamy	35	140	175	0.06	
2015/6/22					Sunny	25.3	Dark brown	Faint earth	Loamy	27	120	147	0.07	Blackish brown	Faint earth	Loamy	57	200	257	0.06		
18	Mumogawa River	Kosei Bridge	Nakagawa Town	2015/7/7	Cloudy	22.0	Blackish brown	None	Loamy	53	240	293	0.06	Blackish brown	None	Loamy	31	140	171	0.07		
				2015/8/9	Sunny	32.2	Grayish yellowish brown	None	Loamy	26	87	113	0.07	Blackish brown	None	Loamy	17	110	127	0.07		
				2015/9/19	Sunny	23.7	Blackish brown	None	Loamy	67	250	317	0.06	Blackish brown	None	Loamy	41	160	201	0.06		
				2015/11/9	Cloudy	20.0	Dim yellowish brown	Faint earth	Loamy	9.0	60	69	0.06	Dark reddish brown	Faint earth	Loamy	26	110	136	0.07		
						2016/2/1	Cloudy	8.6	Blackish brown	Faint earth	Loamy	17	70	87	0.06	Dark reddish brown	Faint earth	Loamy	12	41	53	0.06

Tochigi Rivers (Surrounding Environment) 3/6

No.	Location			Sampling Date	Weather	Air temperature (°C)	Surrounding Environment(Soil,Air dose)											Remarks			
	Water area	Location	Municipality				Left bank			Radioactive cesium					Right bank						
							Color	Odor	Property	Activity concentration [Bq/kg(dry)]			Air Dose (μSv/h)	Color	Odor	Property	Activity concentration [Bq/kg(dry)]				
										Radioactive cesium							Radioactive cesium				
Cs-134	Cs-137	Total	Cs-134	Cs-137	Total	Air Dose (μSv/h)															
Rivers	Nakagawa River System	Arakawa River	Saikachi Bridge	Shioya Town	2015/5/14	Sunny	27.2	Dim yellowish brown	Faint earth	Loamy	88	300	388	0.09	Dark brown	Faint earth	Loamy	120	400	520	0.10
					2015/8/2	Sunny	31.8	Dim yellowish brown	Faint earth	Loamy	210	840	1,050	0.10	Dark brown	Faint earth	Loamy	330	1,300	1,630	0.08
					2015/11/7	Cloudy	17.7	Dim yellowish brown	Faint earth	Loamy	89	360	449	0.07	Dark brown	Faint earth	Loamy	96	370	466	0.08
			2016/2/5	Sunny	11.8	Dim yellowish brown	Faint earth	Loamy	75	430	505	0.09	Dark brown	Faint earth	Loamy	70	350	420	0.09		
			2015/5/14	Sunny	29.2	Dim yellowish brown	Faint earth	Loamy	110	400	510	0.08	Dark brown	Faint earth	Loamy	83	320	403	0.08		
			2015/8/9	Sunny	29.2	Dim yellowish brown	None	Loamy	66	290	356	0.07	Dim yellowish brown	None	Loamy	61	290	351	0.07		
		2015/11/9	Cloudy	18.2	Dark brown	Faint earth	Loamy	76	410	486	0.07	Dark brown	Faint earth	Loamy	21	95	116	0.06			
		2016/2/1	Cloudy	7.7	Blackish brown	Faint earth	Loamy	39	190	229	0.07	Dim yellowish brown	Faint earth	Loamy	33	160	193	0.06			
		2015/5/14	Sunny	29.7	Dark brown	Faint earth	Loamy	250	810	1,060	0.11	Dark brown	Faint earth	Loamy	170	600	770	0.09			
		2015/8/2	Sunny	32.2	Dark brown	Faint earth	Loamy	180	810	990	0.09	Dark brown	Faint earth	Loamy	90	350	440	0.08			
		2015/11/7	Cloudy	20.5	Dark brown	Faint earth	Loamy	150	800	950	0.09	Dark brown	Faint earth	Loamy	140	640	780	0.07			
		2016/2/5	Sunny	5.3	Dark brown	Faint earth	Loamy	150	790	940	0.08	Dark brown	Faint earth	Loamy	130	690	820	0.08			
	2015/5/14	Sunny	27.6	Dark brown	Faint earth	Loamy	140	490	630	0.10	Dark brown	Faint earth	Loamy	81	300	381	0.07				
	2015/8/9	Sunny	30.4	Dim yellowish brown	Faint earth	Loamy	69	290	359	0.09	Dim yellowish brown	None	Loamy	30	190	220	0.06				
	2015/11/9	Cloudy	18.2	Dark brown	Faint earth	Loamy	71	280	351	0.08	Dark grayish yellow	Faint earth	Loamy	57	270	327	0.06				
	2016/2/1	Cloudy	7.9	Dark brown	Faint earth	Loamy	49	250	299	0.08	Blackish brown	Faint earth	Loamy	25	120	145	0.06				
	2015/5/15	Sunny	26.0	Dim yellowish brown	Faint earth	Loamy	34	130	164	0.07	Dim yellowish brown	Faint earth	Loamy	46	200	246	0.05				
	2015/6/22	Sunny	26.6	Dark brown	Faint earth	Loamy	63	310	373	0.07	Dark brown	Faint earth	Loamy	64	290	354	0.06				
	2015/7/7	Cloudy	24.3	Dim yellowish brown	None	Loamy	40	190	230	0.07	Dim yellowish brown	Faint earth	Loamy	38	130	168	0.06				
	2015/8/9	Sunny	33.0	Dim yellowish brown	None	Loamy	68	300	368	0.07	Dim yellowish brown	None	Loamy	67	220	287	0.06				
2015/9/19	Sunny	25.0	Blackish brown	None	Loamy	100	450	550	0.07	Dim yellowish brown	None	Loamy	39	130	169	0.05					
2015/11/9	Cloudy	18.2	Dim yellowish brown	Faint earth	Loamy	60	300	360	0.06	Dim yellowish brown	Faint earth	Loamy	31	150	181	0.05					
2016/2/1	Cloudy	9.0	Dim yellowish brown	Faint earth	Loamy	28	150	178	0.06	Dim yellowish brown	Faint earth	Loamy	39	220	259	0.05					
2015/5/15	Sunny	29.8	Dark brown	Faint earth	Loamy	47	160	207	0.05	Dark brown	Faint earth	Loamy	26	120	146	0.05					
2015/6/22	Sunny	27.6	Dark brown	Faint earth	Loamy	30	100	130	0.05	Dark brown	Faint earth	Loamy	26	100	126	0.05					
2015/7/7	Cloudy	24.0	Dark brown	Faint earth	Loamy	42	160	202	0.05	Dim yellowish brown	None	Loamy	<5.0	10	10	0.05					
2015/8/9	Sunny	32.8	Dim yellowish brown	None	Loamy	32	130	162	0.06	Brown	Faint earth	Loamy	<4.6	5.5	5.5	0.05					
2015/9/19	Sunny	24.3	Dark brown	None	Loamy	28	110	138	0.05	Brown	None	Loamy	1.9	8.3	10.2	0.05					
2015/11/9	Cloudy	19.6	Dim yellowish brown	Faint earth	Loamy	43	180	223	0.05	Dark brown	Faint earth	Loamy	22	100	122	0.04					
2016/2/1	Sunny	13.9	Dim yellowish brown	Faint earth	Loamy	15	100	115	0.06	Dark brown	Faint earth	Loamy	25	110	135	0.05					
2015/5/29	Sunny	26.2	Dim yellow orange	Faint earth	Loamy	120	470	590	0.12	Blackish brown	Faint earth	Loamy	210	930	1,140	0.12					
2015/8/31	Cloudy	22.4	Dark brown	None	Loamy	52	310	362	0.12	Black	Faint earth	Loamy	210	800	1,010	0.12					
2015/11/10	Cloudy	18.3	Dim yellowish brown	Faint earth	Loamy	74	320	394	0.11	Black	Faint earth	Loamy	76	270	346	0.10					
2016/2/5	Sunny	6.8	Dim yellowish brown	Faint earth	Loamy	130	520	650	0.10	Black	Faint earth	Loamy	130	740	870	0.10					
2015/5/29	Cloudy	21.9	Dark grayish yellow	Faint earth	Loamy	<5.0	18	18	0.07	Blackish brown	Faint earth	Loamy	<6.4	13	13	0.05					
2015/8/31	Cloudy	19.6	Dark grayish yellow	None	Loamy	19	76	95	0.07	Dark brown	None	Loamy	6.2	27	33.2	0.05					
2015/11/10	Cloudy	14.5	Blackish brown	None	Loamy	17	60	77	0.06	Blackish brown	None	Loamy	39	140	179	0.04					
2016/2/5	Sunny	1.3	Grayish yellowish brown	Faint earth	Loamy	14	58	72	0.06	Blackish brown	Faint earth	Loamy	13	61	74	0.04					
2015/5/29	Cloudy	17.5	Olive black	Faint earth	Loamy	53	250	303	0.12	Yellowish brown	Faint earth	Loamy	300	1,200	1,500	0.12					
2015/8/31	Cloudy	21.8	Olive black	Faint earth	Loamy	390	1,700	2,090	0.16	Yellowish brown	Faint earth	Loamy	290	1,300	1,590	0.11					
2015/11/10	Cloudy	18.0	Black	Faint earth	Loamy	220	1,100	1,320	0.15	Grayish yellow	Faint earth	Loamy	49	180	229	0.10					
2016/2/5	Sunny	7.1	Black	Faint earth	Loamy	100	510	610	0.11	Grayish yellow	None	Sandy	41	200	241	0.09					
2015/5/28	Cloudy	23.4	Brown	Faint earth	Loamy	220	840	1,060	0.14	Dim yellowish brown	Faint earth	Loamy	410	1,600	2,010	0.12					
2015/8/9	Sunny	26.0	Brown	Faint earth	Loamy	280	1,000	1,280	0.14	Brown	Faint earth	Loamy	260	1,000	1,260	0.12					
2015/11/10	Cloudy	16.8	Dim yellowish brown	Faint earth	Loamy	300	1,200	1,500	0.15	Dim yellowish brown	Faint earth	Loamy	140	560	700	0.11					
2016/2/5	Sunny	8.9	Dark brown	Faint earth	Loamy	190	810	1,000	0.11	Brown	Faint earth	Loamy	14	55	69	0.11					

Tochigi Rivers (Surrounding Environment) 4/6

Rivers	Location				Sampling Date	Weather	Air temperature (°C)	Surrounding Environment(Soil,Air dose)															Remarks							
	No.	Water area		Municipality				Left bank						Right bank																
		Location	Location					Color	Odor	Property	Activity concentration [Bq/kg(dry)]			Air Dose (µSv/h)	Color	Odor	Property	Activity concentration [Bq/kg(dry)]			Air Dose (µSv/h)									
											Radioactive cesium							Radioactive cesium												
						Cs-134	Cs-137	Total				Cs-134	Cs-137	Total																
29	Tonegawa River System	Kinugawa River System	Ihara River	Tributary	2015/5/15	Sunny	22.1	Blackish brown	Faint earth	Loamy	98	400	498	0.17	Dark brown	Faint earth	Loamy	220	800	1,020	0.17									
					2015/6/23	Cloudy	20.9	Blackish brown	Faint earth	Loamy	450	1,700	2,150	0.16	Blackish brown	Faint earth	Loamy	310	1,100	1,410	0.18									
					2015/7/8	Cloudy	23.0	Blackish brown	None	Loamy	360	1,300	1,660	0.17	Dim yellowish brown	None	Loamy	270	970	1,240	0.16									
					2015/8/9	Sunny	26.3	Dim yellowish brown	Faint earth	Loamy	290	1,300	1,590	0.15	Dark brown	Faint earth	Loamy	270	1,100	1,370	0.13									
					2015/9/29	Sunny	21.0	Blackish brown	Faint earth	Loamy	600	2,300	2,900	0.17	Dark brown	Faint earth	Sandy	45	130	175	0.10									
					2015/11/10	Cloudy	15.5	Blackish brown	Faint earth	Loamy	270	1,100	1,370	0.15	Dark brown	Faint earth	Loamy	83	380	463	0.10									
					30			Yukawa River	Tributary	2016/2/5	Sunny	6.6	Dark brown	Faint earth	Loamy	210	1,100	1,310	0.13	Blackish brown	Faint earth	Loamy	300	1,500	1,800	0.07				
										2015/6/4	Sunny	13.1	Dim yellowish brown	Faint earth	Loamy	<8.6	32	32	0.07	-	-	-	-	-	-	-	-	(Right bank)Unable to collect samples due to privately owned land		
										2015/8/7	Sunny	25.7	Dim yellowish brown	Faint earth	Loamy	13	69	82	0.06	-	-	-	-	-	-	-	-	-	(Right bank)Unable to collect samples due to privately owned land	
										2015/11/25	Cloudy	1.6	Dim yellowish brown	Faint earth	Loamy	46	210	256	0.06	-	-	-	-	-	-	-	-	-	(Right bank)Unable to collect samples due to privately owned land	
										2016/2/12	Sunny	1.2	Dim yellowish brown	Faint earth	Loamy	220	1,100	1,320	0.04	-	-	-	-	-	-	-	-	-	-	(Right bank)Unable to collect samples due to privately owned land
										2015/5/28	Cloudy	20.2	Blackish brown	Faint earth	Loamy	160	620	780	0.09	Blackish brown	Faint earth	Loamy	260	990	1,250	0.09				
					31			Daiya River	Shinkyo Bridge	2015/8/8	Sunny	22.7	Blackish brown	Faint earth	Loamy	71	210	281	0.10	Blackish brown	Faint earth	Loamy	250	1,100	1,350	0.08				
										2015/11/7	Cloudy	14.5	Blackish brown	None	Loamy	79	290	369	0.08	Blackish brown	Faint earth	Loamy	170	860	1,030	0.09				
										2016/2/2	Sunny	4.6	Black	Faint earth	Loamy	140	630	770	0.08	Blackish brown	Faint earth	Loamy	270	1,200	1,470	0.09				
										2015/5/28	Sunny	23.6	Blackish brown	Faint earth	Loamy	240	950	1,190	0.12	Blackish brown	Faint earth	Loamy	350	1,300	1,650	0.12				
										2015/8/9	Sunny	26.5	Blackish brown	Faint earth	Loamy	270	1,100	1,370	0.16	Blackish brown	Faint earth	Loamy	410	1,500	1,910	0.12				
										2015/11/7	Sunny	14.2	Blackish brown	None	Loamy	130	530	660	0.11	Black	None	Loamy	520	2,600	3,120	0.12				
					32			Shidobuchi River	Sujichigai Bridge	2016/2/2	Sunny	4.9	Blackish brown	Faint earth	Loamy	140	650	790	0.12	Blackish brown	Faint earth	Loamy	530	2,400	2,930	0.11				
										2015/5/8	Sunny	24.7	Blackish brown	Faint earth	Loamy	250	950	1,200	0.13	Gray	None	Sandy	2.7	9.1	11.8	0.06				
										2015/6/23	Cloudy	21.5	Blackish brown	Faint earth	Loamy	320	1,200	1,520	0.13	Blackish brown	Faint earth	Sandy	<6.5	9.9	9.9	0.07				
										2015/7/8	Cloudy	24.0	Blackish brown	None	Loamy	87	290	377	0.11	Gray	None	Sandy	<5.0	6.5	6.5	0.06				
										2015/8/9	Sunny	25.2	Dark brown	Faint earth	Loamy	250	1,000	1,250	0.13	Brownish gray	None	Sandy	<2.5	10	10	0.07				
										2015/9/29	Sunny	23.5	Blackish brown	Faint earth	Loamy	290	1,200	1,490	0.12	Gray	None	Sandy	<5.4	9.7	9.7	0.05				
					33			Daiya River	Kaishin Bridge (Harigai)	2015/11/7	Cloudy	14.8	Blackish brown	None	Loamy	170	720	890	0.10	Yellowish gray	None	Sandy	<6.1	11	11	0.05				
										2016/2/2	Sunny	0.9	Blackish brown	Faint earth	Loamy	290	1,300	1,590	0.12	Blackish brown	None	Sandy	<4.2	7.3	7.3	0.05				
										2015/5/15	Sunny	27.2	Dark brown	Faint earth	Loamy	16	58	74	0.11	Dark brown	Faint earth	Loamy	110	490	600	0.13				
										2015/6/23	Cloudy	20.6	Dark brown	Faint earth	Loamy	180	750	930	0.11	Dim yellowish brown	Faint earth	Loamy	430	1,700	2,130	0.11				
										2015/7/8	Cloudy	25.5	Dark brown	None	Loamy	300	1,100	1,400	0.11	Dark brown	Faint earth	Loamy	800	3,300	4,100	0.12				
										2015/8/9	Sunny	29.1	Dark brown	Faint earth	Loamy	210	940	1,150	0.10	Brown	Faint earth	Loamy	770	3,000	3,770	0.12				
					34			Kinugawa River	Sanuki	2015/9/29	Sunny	25.1	Dark brown	Faint earth	Loamy	40	190	230	0.11	Dark brown	Faint earth	Loamy	320	1,400	1,720	0.13				
										2015/11/7	Cloudy	14.7	Dark brown	Faint earth	Loamy	130	500	630	0.09	Dark brown	Faint earth	Loamy	300	1,400	1,700	0.10				
										2016/2/5	Sunny	8.2	Dark brown	Faint earth	Loamy	110	550	660	0.10	Dark brown	Faint earth	Loamy	360	1,600	1,960	0.11				
										2015/5/15	Sunny	23.7	Blackish brown	Faint earth	Loamy	25	110	135	0.05	Blackish brown	Faint earth	Loamy	24	120	144	0.06				
										2015/8/3	Sunny	27.4	Blackish brown	Faint earth	Loamy	26	120	146	0.07	Blackish brown	Faint earth	Loamy	77	330	407	0.07				
										2015/11/11	Sunny	12.9	Dark brown	Faint earth	Loamy	23	99	122	0.05	Dark brown	Faint earth	Loamy	120	540	660	0.06				
					35			Nishi-Kinugawa River	Nishi-Kinugawa Bridge	2016/2/2	Sunny	6.8	Blackish brown	Faint earth	Loamy	15	70	85	0.05	Dark brown	Faint earth	Loamy	18	89	107	0.05				
										2015/6/2	Sunny	25.7	Blackish brown	Faint earth	Loamy	79	270	349	0.06	Grayish yellowish brown	Faint earth	Loamy	140	560	700	0.08				
										2015/8/3	Sunny	30.8	Blackish brown	None	Loamy	64	290	354	0.06	Grayish yellowish brown	None	Loamy	99	430	529	0.07				
										2015/11/11	Sunny	14.5	Dim yellowish brown	None	Loamy	<5.3	20	20	0.05	Blackish brown	Faint earth	Loamy	54	230	284	0.06				
										2016/2/2	Sunny	6.4	Dim yellowish brown	Faint earth	Sandy	10	37	47	0.05	Olive black	Faint earth	Sandy	10	50	60	0.05				
										2015/6/2	Sunny	27.4	Dark brown	Faint earth	Loamy	36	130	166	0.06	Grayish yellowish brown	Faint earth	Loamy	<6.8	7.7	7.7	0.06				
					36			Kinugawa River	Daidoizumi Bridge	2015/8/6	Sunny	31.5	Dark brown	Faint earth	Loamy	15	77	92	0.06	Grayish yellow	Faint earth	Loamy	<8.8	26	26	0.06				
										2015/11/16	Sunny	18.8	Dim yellowish brown	Faint earth	Loamy	46	220	266	0.06	Grayish yellowish brown	Faint earth	Loamy	<5.6	11	11	0.06				
										2016/2/8	Cloudy	6.8	Dark brown	Faint earth	Loamy	9.7	60	69.7	0.06	Dim yellowish brown	Faint earth	Loamy	<4.3	7.6	7.6	0.06				

Tochigi Rivers (Surrounding Environment) 5/6

R i v e r s	Location				Sampling Date	Weather	Air temperature (°C)	Surrounding Environment (Soil, Air dose)													Remarks						
	No.	Water area		Municipality				Left bank						Right bank													
		Color	Odor					Property	Activity concentration [Bq/kg(dry)]			Air Dose (µSv/h)	Color	Odor	Property	Activity concentration [Bq/kg(dry)]			Air Dose (µSv/h)								
									Radioactive cesium							Radioactive cesium											
			Cs-134	Cs-137	Total							Cs-134	Cs-137	Total													
38	Tonegawa River System	Egawa River	Tributary	Shimotsuke City	2015/5/20	Sunny	27.1	Blackish brown	Faint earth	Loamy	21	70	91	0.05	Dark brown	Faint earth	Loamy	27	90	117	0.05						
					2015/6/22	Sunny	23.9	Black	Faint earth	Loamy	220	880	1,100	0.06	Blackish brown	Faint earth	Loamy	70	270	340	0.05						
					2015/7/9	Cloudy	19.5	Blackish brown	None	Loamy	900	700	890	0.05	Dark brown	None	Loamy	39	140	179	0.05						
					2015/8/6	Sunny	32.5	Blackish brown	Faint earth	Loamy	25	120	145	0.05	Brown	Faint earth	Loamy	31	140	171	0.05						
					2015/9/4	Sunny	26.6	Blackish brown	Faint earth	Loamy	120	510	630	0.06	Dark brown	Faint earth	Loamy	31	150	181	0.05						
					2015/11/16	Sunny	18.5	Blackish brown	Faint earth	Loamy	93	370	463	0.05	Brown	Faint earth	Loamy	52	220	272	0.05						
					2016/2/8	Cloudy	8.7	Blackish brown	Faint earth	Loamy	48	260	308	0.06	Dark brown	Faint earth	Loamy	16	91	107	0.05						
		39	Tonegawa River System	Akabori River	Nikko City Hall, front	Nikko City	2015/5/15	Sunny	23.3	-	-	-	-	-	-	-	Blackish brown	Faint earth	Loamy	63	200	263	0.08	(Left bank) Unable to collect samples due to privately owned land			
							2015/8/8	Sunny	30.4	-	-	-	-	-	-	-	-	-	-	Blackish brown	Faint earth	Loamy	21	140	161	0.09	(Left bank) Unable to collect samples due to privately owned land
							2015/11/7	Sunny	13.2	-	-	-	-	-	-	-	-	-	-	Blackish brown	None	Loamy	90	470	560	0.06	(Left bank) Unable to collect samples due to privately owned land
							2016/2/2	Sunny	4.0	-	-	-	-	-	-	-	-	-	-	Blackish brown	Faint earth	Loamy	22	120	142	0.07	(Left bank) Unable to collect samples due to privately owned land
							2015/5/15	Sunny	26.4	Blackish brown	Faint earth	Loamy	160	600	760	0.11	Blackish brown	Faint earth	Loamy	250	880	1,130	0.09				
							2015/8/8	Sunny	32.5	Blackish brown	Faint earth	Loamy	120	450	570	0.08	Blackish brown	Faint earth	Loamy	210	860	1,070	0.08				
							2015/11/7	Sunny	12.8	Dark brown	None	Loamy	81	360	441	0.07	Grayish yellowish brown	None	Loamy	55	290	345	0.07				
	40	Tonegawa River System		Kiwadajima		Nikko City	2016/2/2	Sunny	0.2	Blackish brown	Faint earth	Loamy	860	1,050	0.07	Blackish brown	Faint earth	Loamy	42	230	272	0.06					
							2015/5/15	Cloudy	26.0	Blackish brown	Faint earth	Loamy	28	140	168	0.05	Blackish brown	Faint earth	Loamy	81	300	381	0.06				
							2015/6/23	Cloudy	26.2	Dark brown	Faint earth	Loamy	42	170	212	0.04	Black	Faint earth	Loamy	330	1,400	1,730	0.06				
							2015/7/8	Cloudy	25.2	Blackish brown	Faint earth	Loamy	40	180	220	0.05	Dark brown	None	Loamy	26	94	120	0.06				
							2015/8/3	Sunny	34.2	Blackish brown	Faint earth	Loamy	41	140	181	0.05	Blackish brown	Faint earth	Loamy	270	990	1,260	0.06				
							2015/9/29	Sunny	26.2	Blackish brown	Faint earth	Loamy	35	170	205	0.04	Blackish brown	Faint earth	Loamy	110	480	590	0.05				
							2015/11/11	Sunny	18.8	Dim yellowish brown	Faint earth	Loamy	23	130	153	0.05	Blackish brown	Faint earth	Loamy	210	920	1,130	0.06				
	41		Tonegawa River System	Tagawa River	Ozobashi Bridge	Usunomiya City	2016/2/2	Sunny	8.6	Blackish brown	Faint earth	Loamy	36	150	186	0.05	Blackish brown	Faint earth	Loamy	30	160	190	0.05				
							2015/5/15	Cloudy	24.2	Dark brown	Faint earth	Loamy	41	120	161	0.05	Blackish brown	Faint earth	Loamy	160	620	780	0.06				
							2015/8/3	Sunny	36.8	Dark brown	Faint earth	Loamy	<6.8	25	25	0.06	Blackish brown	Faint earth	Loamy	160	670	830	0.06				
							2015/11/11	Sunny	16.4	Dark brown	Faint earth	Loamy	10	58	68	0.05	Blackish brown	Faint earth	Loamy	150	710	860	0.06				
							2016/2/2	Sunny	8.3	Blackish brown	Faint earth	Loamy	22	150	172	0.06	Blackish brown	Faint earth	Loamy	140	510	650	0.06				
							2015/5/20	Sunny	27.9	Grayish yellowish brown	Faint earth	Loamy	62	240	302	0.04	Dim yellowish brown	Faint earth	Loamy	19	73	92	0.05				
							2015/8/6	Sunny	31.6	Brownish gray	Faint earth	Loamy	44	190	234	0.04	Dim yellowish brown	None	Loamy	33	190	223	0.06				
42	Tonegawa River System	Kamagawa River		Tsukushi Bridge	Kaminokawa Town	2015/11/16	Sunny	17.8	Grayish yellowish brown	Faint earth	Loamy	56	230	286	0.05	Dark brown	Faint earth	Loamy	30	160	190	0.05					
						2016/2/8	Cloudy	9.4	Grayish yellowish brown	Faint earth	Loamy	36	190	226	0.04	Dim yellowish brown	Faint earth	Loamy	22	110	132	0.05					
						2015/5/20	Cloudy	26.7	Dim yellowish brown	Faint earth	Loamy	9.5	34	43.5	0.05	Dark brown	Faint earth	Loamy	17	64	81	0.04					
						2015/8/6	Sunny	33.8	Brown	Faint earth	Loamy	43	150	193	0.05	Dim yellowish brown	Faint earth	Loamy	12	42	54	0.04					
						2015/11/16	Cloudy	19.9	Dim yellowish brown	Faint earth	Loamy	29	110	139	0.05	Dark brown	Faint earth	Loamy	35	160	195	0.04					
						2016/2/8	Sunny	4.3	Dim yellowish brown	Faint earth	Loamy	15	68	83	0.05	Blackish brown	Faint earth	Loamy	41	160	201	0.04					
						2015/5/18	Sunny	25.3	Brown	Faint earth	Loamy	21	76	97	0.07	Dark brown	Faint earth	Loamy	17	49	66	0.06					
43		Tonegawa River System	Tagawa River	Meiji Bridge	Kaminokawa Town	2015/8/8	Sunny	30.9	Dim yellowish brown	Faint earth	Loamy	15	71	86	0.06	Dim yellowish brown	Faint earth	Loamy	52	260	312	0.04					
						2015/11/20	Cloudy	14.5	Brown	None	Loamy	13	69	82	0.06	Blackish brown	None	Loamy	28	110	138	0.06					
						2016/2/9	Sunny	5.9	Blackish brown	Faint earth	Loamy	39	150	189	0.07	Blackish brown	Faint earth	Loamy	45	190	235	0.06					
						2015/5/18	Sunny	22.6	Dark brown	Faint earth	Loamy	37	180	217	0.07	Dark brown	Faint earth	Loamy	45	170	215	0.09					
						2015/8/8	Sunny	29.0	Dim yellowish brown	Faint earth	Loamy	320	1,300	1,620	0.05	Dim yellow orange	Faint earth	Loamy	24	68	92	0.06					
						2015/11/13	Cloudy	16.8	Blackish brown	Faint earth	Loamy	88	390	478	0.06	Dim yellowish brown	Faint earth	Loamy	29	110	139	0.06					
						2016/2/9	Sunny	11.6	Blackish brown	Faint earth	Loamy	42	240	282	0.06	Blackish brown	Faint earth	Loamy	42	160	202	0.07					
44	Tonegawa River System		Yanabashi Bridge		Oyama City	2015/5/18	Sunny	28.2	Brown	Faint earth	Loamy	42	150	192	0.07	Dark brown	Faint earth	Loamy	28	110	138	0.07					
						2015/8/8	Sunny	32.2	Brown	Faint earth	Loamy	41	170	211	0.07	Brownish gray	Faint earth	Loamy	92	400	492	0.04					
						2015/11/20	Cloudy	16.0	Dim yellowish brown	Faint earth	Loamy	24	120	144	0.06	Brownish gray	None	Sandy	9.3	45	54.3	0.07					
						2016/2/9	Sunny	4.8	Brown	Faint earth	Loamy	24	120	144	0.06	Dark brown	Faint earth	Loamy	52	220	272	0.06					
						2015/5/18	Sunny	28.2	Brown	Faint earth	Loamy	59	210	269	0.07	Brown	Faint earth	Loamy	34	120	154	0.07					
						2015/8/8	Sunny	32.0	Dim yellowish brown	Faint earth	Loamy	84	290	374	0.06	Dim yellowish brown	Faint earth	Loamy	49	210	259	0.07					
						2015/11/20	Cloudy	16.0	Grayish yellowish brown	None	Loamy	44	220	264	0.06	Brownish gray	None	Loamy	47	230	277	0.06					
45		Tonegawa River System	Kurokawa River	Kajijima Bridge	Kanuma City	2016/2/9	Sunny	6.8	Blackish brown	Faint earth	Loamy	31	120	151	0.06	Blackish brown	Faint earth	Loamy	20	100	120	0.07					

Tochigi Rivers (Surrounding Environment) 6/6

R i v e r s	Location				Sampling Date	Weather	Air temperature (°C)	Surrounding Environment(Soil,Air dose)										Remarks				
	No.	Water area		Municipality				Left bank			Right bank											
		Color	Odor					Property	Activity concentration [Bq/kg(dry)]			Air Dose (µSv/h)	Color	Odor	Property	Activity concentration [Bq/kg(dry)]			Air Dose (µSv/h)			
									Radioactive cesium							Radioactive cesium						
				Cs-134	Cs-137	Total					Cs-134	Cs-137	Total									
49			Omoi River	Tamotsu Bridge	Tochigi City	2015/5/18	Sunny	25.6	Dark brown	Faint earth	Loamy	40	160	200	0.08	Dark brown	Faint earth	Loamy	14	73	87	0.07
						2015/8/8	Sunny	26.9	Brown	Faint earth	Loamy	36	200	236	0.07	Brownish gray	Faint earth	Loamy	41	180	221	0.05
50			Omoi River	Otome-ohashi Bridge	Oyama City	2015/11/13	Cloudy	15.5	Dark brown	None	Loamy	47	230	277	0.07	Dark brown	None	Loamy	67	300	367	0.07
						2016/2/9	Sunny	13.6	Blackish brown	Faint earth	Loamy	39	180	219	0.07	Dark brown	Faint earth	Loamy	36	180	216	0.07
						2015/5/20	Sunny	25.2	Dim yellowish brown	Faint earth	Loamy	110	450	560	0.06	Dark brown	Faint earth	Loamy	45	150	195	0.06
						2015/6/22	Sunny	25.2	Blackish brown	Faint earth	Loamy	84	290	374	0.08	Blackish brown	Faint earth	Loamy	74	250	324	0.07
						2015/7/9	Cloudy	21.2	Dim yellowish brown	None	Loamy	31	130	161	0.06	Dark brown	None	Loamy	45	180	225	0.06
						2015/8/11	Sunny	25.7	Brown	Faint earth	Loamy	63	270	333	0.08	Brown	Faint earth	Loamy	45	170	215	0.07
						2015/9/4	Sunny	29.2	Dim yellowish brown	Faint earth	Loamy	64	240	304	0.08	Dark brown	Faint earth	Loamy	47	210	257	0.06
						2015/11/16	Sunny	19.2	Dim yellowish brown	Faint earth	Loamy	36	140	176	0.07	Dark brown	Faint earth	Loamy	37	140	177	0.06
						2016/2/8	Sunny	2.5	Brown	Faint earth	Loamy	33	180	213	0.08	Dark brown	Faint earth	Loamy	20	120	140	0.06
						51			Uzuma River	Uzuma Bridge	Tochigi City	2015/6/2	Cloudy	25.6	Dim yellowish brown	Faint earth	Loamy	60	250	310	0.07	Brown
2015/6/22	Sunny	30.3	Blackish brown	Faint earth	Loamy							45	180	225	0.07	Blackish brown	Faint earth	Loamy	31	120	151	0.07
2015/7/9	Cloudy	23.7	Dim yellowish brown	None	Loamy							25	130	155	0.06	Dim yellowish brown	None	Loamy	34	120	154	0.06
2015/8/11	Sunny	34.5	Dim yellowish brown	Faint earth	Loamy							35	180	215	0.05	Dim yellowish brown	Faint earth	Loamy	35	160	195	0.06
2015/9/4	Sunny	30.0	Dark brown	Faint earth	Loamy							68	330	398	0.07	Dim yellowish brown	Faint earth	Loamy	36	160	196	0.06
2015/11/13	Cloudy	18.5	Dark brown	None	Loamy							44	190	234	0.06	Grayish yellowish brown	None	Loamy	30	150	180	0.05
2016/2/10	Sunny	7.8	Brown	None	Loamy							18	100	118	0.06	Dim yellowish brown	None	Loamy	32	140	172	0.06
2015/5/28	Cloudy	19.8	Grayish olive	None	Sandy							<7.9	19	19	0.13	Dark grayish yellow	None	Sandy	<9.0	28	28	0.12
2015/6/24	Cloudy	20.9	Grayish olive	None	Sandy							9.7	30	39.7	0.13	Dark grayish yellow	None	Sandy	11	42	53	0.14
2015/7/8	Rain	20.1	Grayish olive	None	Sandy							8.5	28	36.5	0.14	Dark grayish yellow	None	Sandy	12	40	52	0.13
52	Tonegawa River System	Watarase River Area	Watarase River	Watarase River intake weir at Sori Power Station	Nikko City	2015/8/25	Cloudy	17.0	Grayish olive	None	Sandy	<4.9	16	16	0.14	Dark grayish yellow	None	Sandy	20	88	108	0.14
						2015/9/7	Rain	19.7	Grayish olive	None	Sandy	<5.0	20	20	0.14	Dark grayish yellow	None	Loamy	17	70	87	0.12
						2015/11/16	Cloudy	16.3	Grayish olive	None	Sandy	<6.0	24	24	0.15	Dark grayish yellow	None	Sandy	7.8	26	33.8	0.13
						2016/2/12	Sunny	4.2	Dark olive	None	Sandy	<4.4	11	11	0.15	Olive brown	None	Sandy	8.5	45	53.5	0.12
						2015/6/1	Sunny	29.0	Grayish yellowish brown	Faint earth	Loamy	31	120	151	0.05	Dim yellowish brown	None	Loamy	<7.9	15	15	0.07
						2015/8/10	Sunny	30.2	Grayish yellowish brown	None	Loamy	100	380	480	0.05	Dim yellowish brown	None	Loamy	40	160	200	0.08
						2015/11/13	Sunny	16.1	Black	None	Loamy	56	260	316	0.05	Blackish brown	None	Loamy	35	180	215	0.06
						2016/2/10	Sunny	5.3	Blackish brown	None	Loamy	17	79	96	0.05	Blackish brown	None	Loamy	32	120	152	0.07
						2015/6/1	Sunny	29.3	Dim yellowish brown	None	Loamy	21	77	98	0.05	Grayish yellowish brown	None	Loamy	16	50	66	0.05
						2015/8/10	Sunny	30.7	Brown	None	Loamy	31	120	151	0.05	Grayish yellowish brown	None	Loamy	34	120	154	0.06
54			Watarase River	Nakabashi Bridge	Ashikaga City	2015/11/13	Sunny	17.0	Dim yellowish brown	None	Loamy	30	120	150	0.04	Blackish brown	None	Loamy	9.3	36	45.3	0.05
						2016/2/10	Sunny	7.0	Brown	None	Loamy	22	130	152	0.05	Black	None	Loamy	22	130	152	0.04
						2015/6/1	Sunny	28.3	Brown	None	Loamy	43	190	233	0.07	Dark olive brown	None	Loamy	16	59	75	0.07
						2015/8/10	Sunny	33.2	Dim yellowish brown	None	Loamy	25	110	135	0.06	Blackish brown	None	Loamy	38	170	208	0.07
55			Watarase River	Watarase-ohashi Bridge	Tatebayashi City	2015/11/13	Sunny	17.7	Brownish gray	None	Loamy	22	80	102	0.06	Blackish brown	None	Loamy	9.7	59	68.7	0.06
						2016/2/10	Sunny	7.8	Grayish yellowish brown	None	Loamy	38	200	238	0.06	Grayish yellowish brown	None	Loamy	12	42	54	0.07
						2015/6/2	Cloudy	27.6	Grayish yellowish brown	Faint earth	Loamy	26	110	136	0.06	Dim yellowish brown	Faint earth	Loamy	34	130	164	0.07
						2015/6/22	Sunny	27.2	Blackish brown	Faint earth	Loamy	47	230	277	0.06	Black	Faint earth	Loamy	54	280	334	0.07
56			Watarase River	Shinkai Bridge	Tochigi City	2015/7/9	Cloudy	24.0	Grayish yellowish brown	Faint earth	Loamy	21	94	115	0.06	Dim yellowish brown	None	Loamy	70	310	380	0.07
						2015/8/11	Cloudy	32.4	Dim yellowish brown	Faint earth	Loamy	42	170	212	0.08	Brownish gray	Faint earth	Loamy	110	510	620	0.09
						2015/9/4	Sunny	30.2	Grayish yellowish brown	Faint earth	Loamy	38	160	198	0.05	Blackish brown	None	Loamy	43	170	213	0.07
						2015/11/13	Sunny	18.4	Blackish brown	None	Loamy	27	140	167	0.05	Blackish brown	Faint earth	Loamy	44	190	234	0.06
						2016/2/10	Sunny	8.6	Grayish yellowish brown	None	Loamy	31	140	171	0.04	Blackish brown	None	Loamy	23	150	173	0.05

Tochigi Lakes and Reservoirs (Water) 1/2

L a k e s a n d R e s e r v o i r s	Location				Sampling Date	Weather	Air temperature (°C)	Water depth (m)	Water										Remarks			
	No.	Water area	Location						Municipality	Water temperature (°C)	Sampling depth (m)	Color	Odor	Secchi disk depth (m)	Electrical conductivity (mS/m)	SS (mg/L)	Turbidity (FNU)	Activity concentration(Bq/L)				
			Location	Center														Radioactive cesium Cs-134		Cs-137		
57	Nakagawa River System	Miyama Dam Reservoir	Center	Nasushiobara City	Surface layer	2015/6/1	Sunny	29.6	32.4	15.6	0.5	Grayish bluish green	None	12.0	8.1	<1	0.3	<-0.83	<-0.75			
					Deep layer								8.8		31.4	-	None	7.8	3	1.2	<-0.83	<-0.80
					Surface layer	2015/8/4	Sunny	29.5	29.7	22.8	0.5	Grayish yellow green	None		5.7	8.8	<1	0.6	<-0.65	<-0.84		
					Deep layer								11.6			28.7	-	None	8.5	<1	0.5	<-0.79
					Surface layer	2015/10/6	Sunny	14.3	41.1	13.7	0.5	Light grayish yellow green	None		0.6	6.4	4	4.6	<-0.63	<-0.69		
					Deep layer					12.7	40.1	-	None			7.0	5	5.3	<-0.82	<-0.75		
		Surface layer	2015/12/10		Cloudy	6.9	23.6	6.7	0.5	Grayish yellowish green	None	3.2	9.9	2	1.4	<-0.79	<-0.80					
		Deep layer						6.6	22.6	-	None		10.1	4	1.3	<-0.69	<-0.63					
		58	Shiobara Dam Reservoir		Center	Nasushiobara City	Surface layer	2015/6/1	Sunny	26.5	23.6	21.3	0.5	Dark grayish yellow green	None	3.7	16.8	<1	0.5	<-0.96	<-0.75	
							Deep layer					9.4	22.6	-	Faint hydrogen sulfide		18.7	8	10	<-0.42	<-0.48	
							Surface layer	2015/8/4	Sunny	34.0	19.6	26.7	0.5	Grayish yellow green	None	2.1	14.3	2	1.5	<-0.77	<-0.69	
							Deep layer					15.1	18.6	-	Faint hydrogen sulfide		16.2	7	7.9	<-0.71	<-0.63	
	Surface layer			2015/10/6			Sunny	17.5	22.0	16.6	0.5	Grayish yellow green	None	2.5	16.3	<1	0.6	<-0.63	<-0.92			
	Deep layer									14.8	21.0	-	None		17.3	2	1.8	<-0.83	<-0.80			
	Surface layer		2015/12/10	Cloudy	9.9		31.2	8.9	0.5	Dark grayish green	None	4.5	21.4	2	1.0	<-0.80	<-0.69					
	Deep layer							8.1	30.2	-	None		22.6	1	0.7	<-0.81	<-0.84					
	59		Kawaji Dam Reservoir	Center	Nasushiobara City		Surface layer	2015/5/29	Cloudy	21.3	79.6	18.3	0.5	Light grayish green	None	7.2	6.7	<1	0.3	<-0.70	<-0.66	
							Deep layer					7.8	78.6	-	None		7.7	<1	1.3	<-0.70	<-0.55	
							Surface layer	2015/8/31	Cloudy	23.3	67.8	21.7	0.5	Dark grayish green	None	7.3	7.0	<1	0.4	<-0.77	<-0.84	
							Deep layer					6.2	66.8	-	None		9.4	21	19	<-0.74	<-0.80	
		Surface layer				2015/10/5	Sunny	18.4	65.8	16.9	0.5	Grayish greenish yellow	None	1.1	6.2	5	6.5	<-0.68	<-0.96			
		Deep layer								13.4	64.8	-	None		7.6	270	340	<-0.68	<-0.63			
		Surface layer	2015/12/7	Sunny		10.6	78.5	11.0	0.5	Grayish green	None	1.5	9.0	3	4.7	<-0.65	<-0.75					
		Deep layer						10.4	77.5	-	None		8.9	10	9.9	<-0.68	<-0.75					
		60	Ikari Dam Reservoir	Center		Nikko City	Surface layer	2015/5/29	Sunny	22.8	62.2	18.3	0.5	Dark grayish green	None	4.8	5.5	<1	0.3	<-0.73	<-0.75	
							Deep layer					5.5	61.2	-	None		8.2	7	5.2	<-0.76	<-0.84	
							Surface layer	2015/8/31	Cloudy	22.4	59.0	21.8	0.5	Grayish yellow green	None	4.6	6.4	<1	0.5	<-0.63	<-0.75	
							Deep layer					6.5	58.0	-	None		10.1	6	5.6	<-0.68	<-0.80	
Surface layer	2015/10/5				Sunny		19.4	49.5	15.8	0.5	Light grayish greenish yellow	None	0.8	7.0	7	9.7	<-0.75	<-0.84				
Deep layer									13.9	48.5	-	None		6.9	38	46	<-0.67	<-0.88				
Surface layer	2015/12/7		Sunny	11.0	50.5		9.5	0.5	Light grayish greenish yellow	None	2.0	7.6	3	3.3	<-0.62	<-0.75						
Deep layer							9.5	49.5	-	None		7.6	6	5.3	<-0.75	<-0.69						
61	Kawamata Dam Reservoir		Center	Nikko City	Surface layer		2015/5/29	Cloudy	23.5	73.0	17.4	0.5	Grayish yellowish green	None	9.6	7.6	<1	0.3	<-0.66	<-0.61		
					Deep layer						6.6	72.0	-	None		12.3	<1	0.6	<-0.84	<-0.55		
					Surface layer		2015/8/31	Cloudy	20.5	68.1	20.9	0.5	Dark grayish yellowish green	None	6.8	10.6	<1	0.4	<-0.74	<-0.84		
					Deep layer						5.3	67.1	-	Faint rottenness		16.8	6	6.2	<-0.80	<-0.63		
		Surface layer			2015/10/5	Sunny	16.5	69.3	16.3	0.5	Grayish yellow	None	0.5	7.6	10	16	<-0.71	<-0.80				
		Deep layer							14.8	68.3	-	None		8.5	40	53	<-0.67	<-0.75				
	Surface layer	2015/12/7	Sunny		8.1	60.7	10.2	0.5	Grayish yellowish green	None	2.5	10.3	4	4.0	<-0.69	<-0.84						
	Deep layer						9.6	59.7	-	None		10.7	14	11	<-0.68	<-0.84						
	62	Lake Yunoko	Center		Nikko City	Surface layer	2015/6/4	Sunny	12.7	12.5	12.5	0.0	Dark grayish yellow green	None	2.1	15.8	<1	0.7	<-0.61	<-0.75		
						Deep layer					11.2	11.5	-	None		17.4	1	1.8	<-0.76	<-0.84		
						Surface layer	2015/8/7	Sunny	33.4	12.1	20.2	0.5	Grayish greenish yellow	None	1.8	14.5	1	0.7	<-0.70	<-0.80		
						Deep layer					12.1	11.1	-	None		19.6	3	1.5	<-0.54	<-0.84		
Surface layer				2015/10/6		Sunny	16.5	12.6	11.6	0.5	Dark grayish yellow green	None	3.7	15.8	<1	0.8	<-0.74	<-0.69				
Deep layer									10.4	11.6	-	None		16.2	<1	0.8	<-0.76	<-0.69				
Surface layer				2015/12/4		Cloudy	-1.6	12.5	5.8	0.5	Dark grayish yellow green	None	2.7	15.2	1	0.9	<-0.93	<-0.69				
Deep layer									5.4	11.5	-	None		15.1	1	0.8	<-0.74	<-0.96				

Tochigi Lakes and Reservoirs (Water) 2/2

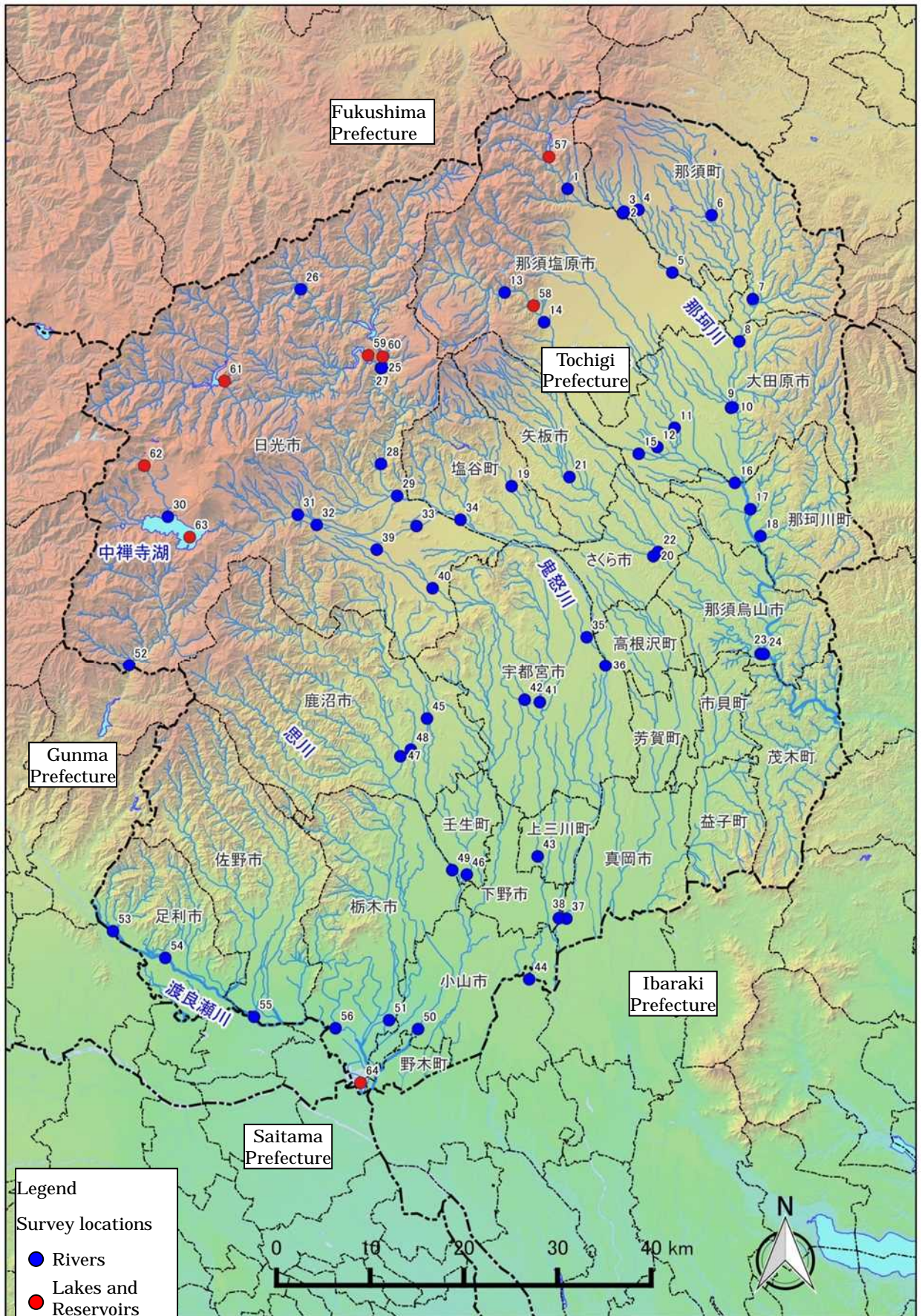
L a k e s a n d R e s e r v o i r s	Location				Sampling Date	Weather	Air temperature (°C)	Water depth (m)	Water								Remarks		
	No.	Water area	Location	Municipality					Water temperature (°C)	Sampling depth (m)	General items			Electrical conductivity (mS/m)	SS (mg/L)	Turbidity (FNU)		Activity concentration(Bq/L)	
											Color	Odor	Secchi disk depth (m)					Radioactive cesium Cs-134	Cs-137
63	Kinugawa River System	Lake Chuzeiji	Center	Nikko City	Surface layer	2015/6/17	Sunny	16.5	163.0	16.2	0.5	Dark grayish greenish blue	None	9.9	11.2	<1	0.2	-0.75	<-0.63
					Deep layer				5.8	162.0	-	None	11.6		<1	0.4	-0.92	<-0.84	
					Surface layer	2015/8/7	Sunny	24.0	162.6	24.1	0.5	Dark grayish bluish green	None	11.2	11.0	<1	0.3	-0.58	<-0.63
					Deep layer				5.9	161.6	-	None	12.2		<1	1.4	-0.82	<-0.84	
					Surface layer	2015/10/6	Sunny	12.8	163.6	15.9	0.5	Dark grayish bluish green	None	9.7	10.8	<1	0.2	-0.85	<-0.88
					Deep layer				4.5	162.6	-	None	12.5		2	3.4	-0.76	<-0.75	
					Surface layer	2015/12/14	Cloudy	4.2	162.6	7.6	0.5	Dark grayish bluish green	None	9.9	10.3	<1	0.3	-0.76	<-0.84
					Deep layer				3.9	161.6	-	None	11.7		1	2.2	-0.71	<-0.66	
					Surface layer	2015/6/1	Sunny	25.0	6.3	23.8	0.5	Grayish yellow green	None	0.8	22.2	8	6.3	-0.50	<-0.66
					Deep layer				23.5	5.3	-	None	22.2		6	4.9	-0.91	<-0.80	
					Surface layer	2015/8/10	Sunny	33.4	2.8	30.5	0.5	Grayish greenish yellow	None	0.9	20.5	12	8.5	-0.73	<-0.63
					Deep layer				30.7	1.8	-	None	20.6		15	10	-0.77	<-0.88	
Surface layer	2015/10/13	Sunny	23.5	5.6	19.6	0.5	Dark grayish yellow green	None	0.9	15.9	7	5.6	-0.78	<-0.75					
Deep layer				18.7	4.6	-	None	16.3		10	6.6	-0.58	<-0.92						
Surface layer	2015/12/9	Sunny	11.5	7.0	11.4	0.5	Dark grayish yellow green	None	1.2	16.9	8	6.9	-0.76	<-0.80					
Deep layer				11.2	6.0	-	None	16.9		12	7.4	-0.91	<-0.88						

Tochigi Lakes and Reservoirs (Sediment)1/1

No.	Location				Sampling Date	Weather	Air temperature (°C)	Water depth (m)	Sediment															Remarks		
	Water area	Location		Municipality					Sediment temperature (°C)	Sample length (cm)	Color	Odor	General items									Sediment content (%)	Density (g/cm ³)		Property	
													Coarse gravel	Medium gravel	Fine gravel	Grain size distribution(%)			Fine sand	Silt	Clay					
																Coarse sand	Medium sand	Fine sand								
Activity concentration [Bq/kg(dry)]																										
57	Nakagawa River System	Miyama Dam Reservoir	Center	Nanushiobara City	2015/6/1	Sunny	29.6	32.4	7.6	10	Yellowish brown	Faint sewage	0.0	0.0	0.0	0.0	0.0	0.1	65.4	34.5	28.4	2.562	Silt	190	770	960
					2015/8/4	Sunny	29.5	29.7	13.7	10	Grayish olive	None	0.0	0.0	0.0	0.0	0.6	68.0	31.5	31.3	2.564	Silt	180	660	820	
					2015/10/6	Sunny	14.3	41.1	12.6	10	Grayish olive	Faint sewage	0.0	0.0	0.0	0.0	0.0	73.9	26.1	30.0	2.597	Silt	110	470	580	
		2015/12/10	Cloudy		6.9	23.6	7.5	10	Grayish olive	Faint sewage	0.0	0.0	0.4	0.2	1.7	12.5	60.0	25.2	29.3	2.556	Silt	84	430	514		
		2015/6/1	Sunny		26.5	23.6	8.9	10	Blackish brown	Faint sewage	0.0	0.0	0.0	0.0	0.3	68.2	31.2	33.1	2.558	Silt	230	730	960			
		2015/8/4	Sunny		34.0	19.6	15.2	10	Blackish brown	Faint sewage	0.0	0.0	0.0	0.2	0.0	1.0	71.8	27.1	36.0	2.530	Silt	230	900	1,130		
	58	Shiobara Dam Reservoir	Center	Nanushiobara City	2015/10/6	Sunny	17.5	22.0	15.5	10	Blackish brown	None	0.0	0.0	0.0	0.0	0.2	23.7	62.0	14.1	60.6	2.654	Silt	60	230	290
					2015/12/10	Cloudy	9.9	31.2	9.7	10	Blackish brown	None	0.0	0.0	0.0	0.1	0.2	15.8	69.7	14.2	42.2	2.664	Silt	50	240	290
					2015/5/29	Cloudy	21.3	79.6	8.4	10	Olive black	Faint earth	0.0	0.0	0.0	0.1	0.1	60.8	48.8	51.0	38.7	2.617	Silt	82	300	382
					2015/8/31	Cloudy	23.3	67.8	5.8	10	Grayish olive	Faint earth	0.0	0.0	0.0	0.0	0.2	46.8	53.0	41.3	2.645	Silt	57	200	257	
					2015/10/5	Sunny	18.4	65.8	15.1	10	Dum yellowish brown	None	0.0	0.0	0.0	0.0	0.0	58.9	41.1	41.2	2.628	Silt	51	210	261	
					2015/12/7	Sunny	10.6	78.5	10.8	10	Grayish olive	None	0.0	0.0	0.0	0.1	0.2	6.6	42.9	56.2	39.9	2.626	Silt	48	170	215
59	Kawaji Dam Reservoir	Center	Nanushiobara City	2015/5/29	Sunny	22.8	62.2	10.2	10	Grayish olive	Faint sewage	0.0	0.0	0.0	0.1	0.7	40.0	58.5	28.6	2.552	Silt	360	1,400	1,760		
				2015/8/31	Cloudy	22.4	59.0	14.4	10	Grayish olive	Faint sewage	0.0	0.2	0.9	2.6	6.5	3.1	34.7	52.0	28.0	2.571	Silt	230	820	1,050	
				2015/10/5	Sunny	19.4	49.5	14.9	10	Dum yellowish brown	Faint sewage	0.0	0.0	0.0	0.0	0.0	1.0	76.1	22.9	30.5	2.483	Silt	65	210	275	
				2015/12/7	Sunny	11.0	50.5	11.0	5	Dum yellowish brown	Faint sewage	0.0	0.0	0.0	0.0	0.0	0.3	72.1	27.7	30.5	2.492	Silt	73	260	333	
				2015/5/29	Cloudy	23.5	73.0	5.6	10	Olive black	Faint sewage	0.0	0.0	0.0	0.1	0.1	38.2	61.5	33.5	2.590	Silt	31	160	191		
				2015/8/31	Cloudy	20.5	68.1	5.8	10	Olive black	Faint sewage	0.0	0.0	0.0	0.1	0.0	43.0	56.8	34.2	2.616	Silt	35	150	185		
60	Ikari Dam Reservoir	Center	Nikko City	2015/10/5	Sunny	16.5	69.3	15.3	10	Grayish olive	Faint sewage	0.0	0.0	0.0	0.0	0.0	39.3	60.7	33.2	2.638	Silt	27	120	147		
				2015/12/7	Sunny	8.1	60.7	9.3	10	Dark olive	None	0.0	0.0	0.0	0.1	0.4	0.9	49.2	49.4	34.5	2.616	Silt	45	240	285	
				2015/6/4	Sunny	12.7	12.5	11.3	8	Olive black	Faint hydrogen sulfide	0.0	0.0	0.0	0.0	0.2	0.2	58.3	41.4	14.3	2.363	Silt	110	410	520	
				2015/8/7	Sunny	33.4	12.1	13.1	10	Olive black	Faint sewage	0.0	0.0	0.0	0.2	0.9	0.9	55.7	42.3	17.2	2.119	Silt	95	440	535	
				2015/10/6	Sunny	16.5	12.6	10.7	8	Olive black	Faint sewage	0.0	0.0	0.0	0.0	0.1	0.3	56.1	43.6	15.9	2.398	Silt	32	100	132	
				2015/12/4	Cloudy	4.6	12.5	5.3	8	Olive black	Faint sewage	0.0	0.0	0.0	0.1	0.2	1.7	49.9	48.1	10.5	2.124	Silt	240	1,000	1,240	
61	Kawamuta Dam Reservoir	Center	Nikko City	2015/6/17	Sunny	16.5	163.0	4.3	5	Black	None	0.0	0.0	0.0	0.0	0.3	55.9	43.8	12.8	2.256	Silt	150	720	870		
				2015/8/7	Sunny	24.0	162.6	5.8	10	Black	Faint sewage	0.0	0.0	0.0	0.0	0.2	60.0	39.8	11.5	2.262	Silt	130	510	640		
				2015/10/6	Sunny	12.8	163.6	7.1	8	Black	Faint sewage	0.0	0.0	0.0	0.0	0.5	52.2	47.3	12.5	2.261	Silt	160	850	1,010		
				2015/12/14	Cloudy	4.2	162.6	5.0	5	Black	Faint sewage	0.0	0.0	0.0	0.0	0.0	0.8	50.4	48.8	12.3	2.261	Silt	200	680	880	
				2015/6/1	Sunny	23.0	6.3	24.0	6	Dark grayish yellow	None	0.0	0.0	0.0	0.1	1.9	18.4	60.7	18.9	44.4	2.660	Silt	23	80	103	
				2015/8/10	Sunny	33.4	2.8	32.3	6	Dark grayish yellow	None	0.0	1.2	0.2	0.4	2.8	12.6	62.0	21.1	39.1	2.573	Silt	24	99	123	
64	Watarase River System	Watarase Reservoir	Center	Tochigi City	2015/10/13	Sunny	23.5	5.6	19.2	8	Dark grayish yellow	None	0.0	0.7	1.5	0.5	1.0	8.6	64.9	22.8	42.7	2.654	Silt	27	110	137
					2015/12/9	Sunny	11.5	7.0	11.6	5	Yellowish gray	None	0.0	0.0	0.0	0.1	1.5	19.2	61.0	18.2	32.1	2.608	Silt	28	120	148

Tochigi Lakes and Reservoirs (Surrounding Environment) 1/1

	Location				Sampling Date	Weather	Air temperature (°C)	Surrounding Environment(Soil,Air dose)							Remarks
								Soil			Air Dose (μSv/h)				
	General items														
	No.	Water area	Location	Municipality				Color	Odor	Property		Activity concentration [Bq/kg(dry)]			
Radioactive cesium															
				Cs-134	Cs-137	Total									
Lakes and Reservoirs	57	Nakagawa River System	Miyama Dam Reservoir	Center	Nasushiobara City	2015/6/1	Sunny	29.6	Blackish brown	Faint earth	Loamy	59	250	309	0.09
						2015/8/4	Sunny	29.5	Dim yellowish brown	Faint earth	Loamy	96	430	526	0.09
						2015/10/6	Sunny	14.3	Blackish brown	Faint earth	Loamy	120	640	760	0.08
			2015/12/10	Cloudy		6.9	Dark brown	Faint earth	Loamy	110	610	720	0.08		
			2015/6/1	Sunny		26.5	Dim yellow orange	Faint earth	Loamy	270	960	1,230	0.17		
			2015/8/4	Sunny		34.0	Dim yellowish brown	Faint earth	Loamy	300	1,300	1,600	0.19		
	58	Shiobara Dam Reservoir	Center	Nasushiobara City	2015/10/6	Sunny	17.5	Dim yellowish brown	Faint earth	Loamy	150	630	780	0.14	
					2015/12/10	Cloudy	9.9	Brown	Faint earth	Loamy	380	1,600	1,980	0.14	
					2015/5/29	Cloudy	21.3	Blackish brown	Faint earth	Loamy	130	570	700	0.12	
					2015/8/31	Cloudy	23.3	Dim yellowish brown	Faint earth	Loamy	140	670	810	0.14	
					2015/10/5	Sunny	18.4	Yellowish brown	Faint earth	Loamy	180	810	990	0.16	
					2015/12/7	Sunny	10.6	Grayish yellowish brown	Faint earth	Loamy	240	990	1,230	0.12	
	60	Ikari Dam Reservoir	Center	Nasushiobara City	2015/5/29	Sunny	22.8	Brown	Faint earth	Loamy	180	650	830	0.15	
					2015/8/31	Cloudy	22.4	Brown	Faint earth	Loamy	76	330	406	0.13	
					2015/10/5	Sunny	19.4	Dark brown	Faint earth	Loamy	64	240	304	0.12	
					2015/12/7	Sunny	11.0	Dark brown	Faint earth	Loamy	200	980	1,180	0.11	
					2015/5/29	Cloudy	23.5	Dim yellowish brown	Faint earth	Loamy	11	42	53	0.05	
					2015/8/31	Cloudy	20.5	Blackish brown	Faint earth	Loamy	9.1	32	41	0.05	
	61	Kinugawa River System	Kawamata Dam Reservoir	Center	Nikko City	2015/10/5	Sunny	16.5	Grayish yellowish brown	Faint earth	Loamy	14	50	64	0.06
						2015/12/7	Sunny	8.1	Dark brown	Faint earth	Loamy	39	160	199	0.05
						2015/6/4	Sunny	12.7	Brown	Faint earth	Loamy	24	71	95	0.07
						2015/8/7	Sunny	33.4	Brown	Faint earth	Loamy	19	87	106	0.06
						2015/10/6	Sunny	16.5	Dim yellowish brown	None	Sandy	8.8	48	57	0.07
						2015/12/4	Cloudy	-1.6	Dim yellowish brown	None	Sandy	13	56	69	0.07
62	Lake Yunoko	Center	Nikko City	2015/6/17	Sunny	16.5	Blackish brown	Faint earth	Loamy	190	770	960	0.09		
				2015/8/7	Sunny	24.0	Blackish brown	None	Loamy	17	77	94	0.07		
				2015/10/6	Sunny	12.8	Blackish brown	Faint earth	Loamy	43	250	293	0.08		
				2015/12/14	Cloudy	4.2	Blackish brown	Faint earth	Loamy	72	310	382	0.07		
				2015/6/1	Sunny	25.0	Dim yellow orange	None	Loamy	18	100	118	0.07		
				2015/8/10	Sunny	33.4	Dim yellow orange	None	Loamy	64	240	304	0.06		
63	Lake Chuzenji	Center	Nikko City	2015/10/13	Sunny	23.5	Brown	Faint earth	Loamy	78	380	458	0.06		
				2015/12/9	Sunny	11.5	Dark brown	Faint earth	Loamy	42	220	262	0.05		
				2015/6/1	Sunny	25.0	Dim yellow orange	None	Loamy	18	100	118	0.07		
				2015/8/10	Sunny	33.4	Dim yellow orange	None	Loamy	64	240	304	0.06		
64	Watarase River System	Watarase Reservoir	Center	Tochigi City	2015/10/13	Sunny	23.5	Brown	Faint earth	Loamy	78	380	458	0.06	
					2015/12/9	Sunny	11.5	Dark brown	Faint earth	Loamy	42	220	262	0.05	
					2015/6/1	Sunny	25.0	Dim yellow orange	None	Loamy	18	100	118	0.07	
					2015/8/10	Sunny	33.4	Dim yellow orange	None	Loamy	64	240	304	0.06	



Survey Locations(Tochigi Prefecture)