

FY2015 Miyagi Prefecture Survey Results

[Survey Results]

(1) Water

Rivers

Radioactive cesium (Cs-134, Cs-137): Not detectable at any location

Lakes and reservoirs

Radioactive cesium (Cs-134, Cs-137): Not detectable at any location

Coastal areas

Radioactive cesium (Cs-134, Cs-137): Not detectable at any location

(2) Sediments

Rivers

Cs-134: ND - 360 Bq/kg (dry)

Cs-137: ND - 1,500Bq/kg (dry)

Lakes and reservoirs

Cs-134: ND - 790 Bq/kg (dry)

Cs-137: 1.8 - 3,700 Bq/kg (dry)

Coastal areas

Cs-134: ND - 160 Bq/kg (dry)

Cs-137: ND - 750 Bq/kg (dry)

(3) Surrounding Environment

(a) Soil

Rivers

Cs-134: ND - 770 Bq/kg (dry)

Cs-137: 5.7 - 3,200Bq/kg (dry)

Lakes and reservoirs

Cs-134: ND - 540 Bq/kg (dry)

Cs-137: 6.2 - 1,800 Bq/kg (dry)

(b) Ambient dose rate

Rivers

0.04 - 0.30 μ Sv/h

Lakes and reservoirs

0.04 - 0.18 μ Sv/h

Miyagi Rivers (Water) 1/4

Location				Sampling Date	Weather	Air temperature (°C)	Water depth (m)	Water										Remarks		
No.	Water area	Location	Municipality					General items											Activity concentration(Bq/L)	
								Water temperature (°C)	Sampling depth (m)	Color	Odor	Transparency (cm)	Electrical conductivity (mS/m)	SS (mg/L)	Turbidity (FNU)	Radioactive cesium				
														Cs-134	Cs-137					
1	Shishiori River	Kinzan Bridge	Kesennuma City	2015/5/17	Sunny	15.2	0.2	11.0	0.0	Colorless transparent	None	>100	13.1	<1	0.2	<0.77	<0.48			
				2015/8/7	Sunny	29.8	0.2	20.0	0.0	Colorless transparent	None	>100	14.7	<1	0.2	<0.67	<0.84			
				2015/11/15	Cloudy	17.0	0.2	12.1	0.0	Colorless transparent	None	>100	13.6	<1	0.3	<0.78	<0.55			
				2016/1/18	Snow	1.8	0.2	2.1	0.0	Colorless transparent	None	>100	7.1	<1	0.3	<0.58	<0.75			
				2015/5/19	Cloudy	17.2	1.5	14.1	0.0	Grayish yellow green	Faint algae	23	3,000	17	10	<0.94	<0.80			
		2015/8/7		Sunny	31.6	2.0	26.7	0.0	Grayish yellowish green	None	>100	2,370	<1	0.4	<0.80	<0.75				
		2015/11/16		Sunny	15.5	2.2	13.9	0.0	Grayish yellow green	Faint seaweed	>100	1,510	2	14	<0.66	<0.69				
		2016/1/19		Cloudy	4.1	2.3	6.8	0.0	Grayish yellow green	None	90	711	3	2.1	<0.80	<0.84				
		2015/5/19		Cloudy	21.3	0.6	15.3	0.0	Yellow greenish pale gray	None	40	40	11.1	10	5.2	<0.84	<0.66			
		2015/8/8		Cloudy	24.2	0.4	22.0	0.0	Greenish yellowish white	None	>100	14.3	2	1.3	<0.59	<0.88				
2015/11/16	Sunny	17.3	0.3	12.5	0.0	Colorless transparent	None	>100	10.6	2	0.9	<0.68	<0.88							
2016/1/19	Cloudy	1.7	0.4	4.0	0.0	Light grayish yellow green	None	90	7.3	3	1.9	<0.68	<0.75							
2015/5/20	Sunny	20.4	0.2	16.6	0.0	Light grayish yellow green	None	89	620	5	2.5	<0.68	<0.80							
2015/8/8	Cloudy	26.2	0.8	23.5	0.0	Light grayish greenish yellow	None	>100	402	2	1.4	<0.71	<0.84							
2015/11/16	Sunny	17.9	0.8	14.7	0.0	Light grayish yellow	Faint seaweed	55	2,580	4	2.4	<0.73	<0.80							
2016/1/19	Cloudy	1.3	1.5	3.6	0.0	Light grayish greenish yellow	None	62	17.8	4	3.7	<0.74	<0.88							
2015/5/20	Sunny	20.2	0.5	16.4	0.0	Greenish yellowish white	Faint seaweed	49	2,420	23	7.4	<0.73	<0.55							
2015/8/8	Cloudy	25.1	0.9	24.9	0.0	Light grayish yellow green	None	>100	3,900	1	0.5	<0.93	<0.69							
2015/11/16	Sunny	19.7	0.6	15.7	0.0	Greenish yellowish pale gray	Faint seaweed	>100	4,210	3	1.5	<0.70	<0.69							
2016/1/19	Cloudy	2.7	0.8	5.8	0.0	Grayish yellow green	None	40	1,600	7	5.1	<0.75	<0.88							
2015/5/20	Sunny	17.8	0.9	22.5	0.0	Light grayish greenish yellow	None	48	347	5	4.3	<0.79	<0.99							
2015/8/7	Sunny	30.2	1.1	29.5	0.0	Grayish yellow green	None	59	1,780	3	1.9	<0.68	<0.88							
2015/11/16	Sunny	18.7	0.7	15.4	0.0	Grayish greenish yellow	None	22	1,800	13	10	<0.83	<0.80							
2016/1/20	Sunny	1.5	1.3	4.1	0.0	Grayish yellow green	None	90	1,700	4	2.4	<0.82	<0.69							
2015/5/15	Sunny	24.8	0.5	21.8	0.0	Light grayish greenish yellow	Faint algae	73	19.9	7	5.0	<0.79	<0.74							
2015/8/6	Sunny	37.1	0.2	33.2	0.0	Light grayish yellow green	None	81	19.9	6	3.5	<0.88	<0.75							
2015/11/13	Sunny	11.5	0.4	8.2	0.0	Colorless transparent	None	>100	16.2	1	1.5	<0.54	<0.75							
2016/1/21	Cloudy	0.3	0.2	0.7	0.0	Light grayish greenish yellow	None	88	19.4	3	2.4	<0.70	<0.84							
2015/5/15	Sunny	24.7	0.2	24.0	0.0	Light grayish yellow	Faint algae	15	24.7	21	17	<0.79	<0.69							
2015/8/6	Sunny	37.1	0.1	31.6	0.0	Light grayish yellow	None	90	21.1	4	3.1	<0.68	<0.92							
2015/11/13	Sunny	10.5	0.2	7.5	0.0	Yellowish pale gray	None	>100	15.1	3	2.6	<0.80	<0.63							
2016/1/21	Sunny	1.9	0.3	1.0	0.0	Light grayish greenish yellow	None	>100	53.8	4	3.2	<0.61	<0.69							
2015/5/22	Sunny	22.4	0.4	16.8	0.0	Yellowish white	Faint swamp	22	10.9	31	15	<0.89	<0.78							
2015/8/10	Sunny	29.2	0.5	27.7	0.0	Light grayish yellow	None	38	16.1	11	4.5	<0.69	<0.66							
2015/11/17	Sunny	19.4	0.5	12.6	0.0	Light grayish yellow	None	78	10.8	7	3.6	<0.85	<0.92							
2016/1/20	Sunny	3.2	0.3	2.3	0.0	Light grayish yellow green	None	>100	19.5	2	2.1	<0.70	<0.96							
2015/5/21	Cloudy	14.1	1.5	9.9	0.0	Yellow greenish white	None	>100	9.8	2	1.5	<0.82	<0.75							
2015/8/9	Rain	23.4	1.0	21.4	0.0	Yellow greenish white	None	>100	15.5	<1	0.9	<0.61	<0.75							
2015/11/10	Sunny	14.5	2.4	12.4	0.0	Light grayish yellow green	None	83	12.7	2	1.5	<0.59	<0.84							
2016/1/17	Sunny	1.6	2.5	2.3	0.0	Light grayish yellow green	None	>100	12.0	<1	1.3	<0.63	<0.75							
2015/5/21	Cloudy	17.6	0.4	13.2	0.0	Yellow greenish white	Faint swamp	>100	11.6	1	1.5	<0.80	<0.66							
2015/8/9	Rain	24.1	0.2	22.9	0.0	Yellow greenish white	None	>100	12.2	3	2.0	<0.81	<0.61							
2015/11/18	Sunny	17.4	0.4	13.0	0.0	Yellow greenish white	None	>100	11.5	3	2.7	<0.57	<0.69							
2016/1/17	Sunny	-0.1	0.2	1.6	0.0	Colorless transparent	None	>100	13.0	<1	1.3	<0.76	<0.80							
2015/6/4	Sunny	21.2	0.3	16.6	0.0	Colorless transparent	None	>100	8.2	<1	0.3	<0.70	<0.66							
2015/8/9	Rain	24.7	0.3	16.0	0.0	Colorless transparent	None	>100	8.7	<1	0.4	<0.68	<0.75							
2015/11/18	Cloudy	15.3	0.4	12.2	0.0	Colorless transparent	None	>100	8.4	2	1.1	<0.74	<0.69							
2016/1/16	Sunny	1.8	0.3	8.0	0.0	Colorless transparent	None	>100	8.4	<1	0.2	<0.67	<0.92							
2015/5/15	Sunny	19.1	0.3	15.7	0.0	Light grayish yellow green	None	43	14.4	10	9.0	<0.46	<0.55							
2015/8/6	Sunny	35.1	0.5	27.3	0.0	Grayish yellow	None	53	20.1	9	5.4	<0.71	<0.80							
2015/11/13	Sunny	7.1	0.6	8.9	0.0	Grayish yellow green	None	76	16.8	6	4.7	<0.58	<0.84							
2016/1/17	Sunny	4.0	0.3	3.4	0.0	Light grayish yellow	None	67	10.6	5	5.3	<0.76	<0.88							

Miyagi Rivers (Water) 2/4

No.	Location			Sampling Date	Weather	Air temperature (°C)	Water depth (m)	Water								Activity concentration(Bq/L)		Remarks
	Water area	Location	Municipality					Water temperature (°C)	Sampling depth (m)	Color	Odor	Transparency (cm)	Electrical conductivity (mS/m)	SS (mg/L)	Turbidity (FNU)	Radioactive cesium		
																Cs-134	Cs-137	
14	Hasama River	Yamayoshida Bridge	Tome City	2015/5/22	Sunny	26.2	0.8	17.7	0.0	Light grayish greenish yellow	Faint swamp	17	14.5	34	22	<-0.57	<-0.66	
				2015/8/10	Sunny	29.2	0.9	27.3	0.0	Light grayish yellow	None	37	18.6	14	7.7	<-0.56	<-0.66	
				2015/11/17	Cloudy	18.8	0.7	13.8	0.0	Grayish greenish yellow	None	33	15.1	17	8.4	<-0.61	<-0.88	
				2016/1/20	Sunny	4.2	0.8	2.9	0.0	Grayish yellow	None	25	13.4	19	13	<-0.58	<-0.84	
15	Eai River	Todoroki Bridge (Todoroki)	Osaki City	2015/5/21	Cloudy	15.6	0.4	12.9	0.0	Yellow greenish white	None	>100	7.2	2	1.5	<-0.79	<-0.92	
				2015/8/9	Rain	22.4	0.8	18.2	0.0	Light grayish yellow green	None	>100	10.6	<1	0.7	<-0.61	<-0.75	
				2015/11/18	Cloudy	12.4	0.5	11.2	0.0	Light grayish yellow green	None	>100	7.2	2	1.1	<-0.74	<-0.84	
				2016/1/16	Cloudy	-2.3	0.9	2.3	0.0	Light grayish yellow green	None	>100	13.2	<1	0.5	<-0.81	<-0.63	
16	Shinborisaihon, entrance	Shinborisaihon, entrance	Osaki City	2015/5/23	Sunny	23.9	0.7	16.9	0.0	Yellow greenish white	None	>100	10.7	2	1.7	<-0.73	<-0.55	
				2015/8/11	Cloudy	30.9	0.7	23.3	0.0	Colorless transparent	None	>100	15.0	2	1.3	<-0.75	<-0.63	
				2015/11/17	Cloudy	17.7	0.4	13.2	0.0	Grayish yellowish green	None	57	12.4	7	4.3	<-0.81	<-0.96	
				2016/1/15	Sunny	3.6	0.3	5.5	0.0	Light grayish yellow green	None	90	9.9	3	2.3	<-0.58	<-0.75	
17	In Furukawa District, Osaki City	Shinborisaihon, entrance	Osaki City	2015/5/23	Sunny	28.2	1.5	19.6	0.0	Light grayish yellow green	Faint swamp	50	15.1	11	6.8	<-0.72	<-0.69	
				2015/8/11	Cloudy	31.1	1.5	27.4	0.0	Light grayish greenish yellow	None	87	17.1	5	4.2	<-0.66	<-0.75	
				2015/11/18	Cloudy	14.4	1.4	14.5	0.0	Light grayish yellow	Faint swamp	21	23.2	10	9.0	<-0.68	<-0.84	
				2016/1/15	Sunny	3.9	1.8	3.9	0.0	Grayish yellow green	None	95	10.8	3	2.7	<-0.68	<-0.75	
18	Dekigawa River	Kogota Bridge	Misato Town	2015/5/23	Sunny	30.8	1.8	21.7	0.0	Light grayish greenish yellow	Faint swamp	22	14.5	19	15	<-0.76	<-0.69	
				2015/8/11	Cloudy	30.3	2.2	27.3	0.0	Light grayish yellow	Faint algae	40	18.6	8	6.2	<-0.78	<-0.88	
				2015/11/19	Sunny	7.8	0.7	11.7	0.0	Grayish yellow	None	16	16.3	46	18	<-0.85	<-0.55	
				2016/1/15	Sunny	0.4	0.4	3.0	0.0	Grayish yellow	None	75	14.1	6	5.8	<-0.68	<-0.96	
19	Eai River	Oikawa Bridge (Tandai)	Wakuya Town /Ishinomaki City	2015/5/24	Sunny	22.7	0.7	19.7	0.0	Light grayish greenish yellow	None	25	12.8	31	16	<-0.53	<-0.61	
				2015/8/12	Cloudy	28.2	0.7	26.2	0.0	Grayish yellow	None	25	16.2	39	13	<-0.70	<-0.80	
				2015/11/19	Sunny	10.1	0.6	11.9	0.0	Light grayish greenish yellow	None	30	14.3	28	12	<-0.68	<-0.92	
				2016/1/15	Cloudy	-0.4	0.6	3.7	0.0	Light grayish yellow green	None	>100	9.3	4	3	<-0.78	<-0.63	
20	Kyu-Kitakami River	Kadonowaki	Ishinomaki City	2015/6/3	Cloudy	21.2	1.8	20.6	0.5	Dark grayish greenish yellow	Faint algae	49	660	13	6.8	<-0.95	<-0.78	
				2015/8/12	Sunny	31.7	6.5	29.2	0.0	Grayish yellow green	None	56	329	7	4.0	<-0.79	<-0.69	
				2015/11/19	Sunny	13.6	3.2	12.3	0.0	Grayish yellow green	None	76	128	6	3.9	<-0.54	<-0.69	
				2016/1/14	Sunny	3.3	2.7	3.3	0.0	Grayish yellowish green	None	>100	21.7	2	1.7	<-0.70	<-0.84	
21	Narusu River	Ono Bridge (Ono)	Higashi-Matsushima City	2015/5/24	Sunny	24.1	0.7	24.0	0.0	Light grayish yellow green	Faint swamp	22	14.6	25	19	<-0.60	<-0.80	
				2015/8/12	Sunny	29.8	1.7	27.8	0.0	Grayish yellow	None	46	21.9	8	6.1	<-0.70	<-0.84	
				2015/11/19	Sunny	12.7	0.6	13.5	0.0	Grayish yellow green	None	21	14.8	27	14	<-0.68	<-0.63	
				2016/1/14	Sunny	3.1	1.2	5.3	0.0	Grayish yellow green	None	67	11.9	6	3.1	<-0.70	<-0.75	
22	Sunaoshi River	Tagajozeki Weir	Tagajo City	2015/6/3	Cloudy	22.4	0.3	21.5	0.0	Light grayish greenish yellow	None	16	33.6	29	16	<-0.76	<-0.84	
				2015/8/13	Rain	23.6	0.8	24.7	0.0	Grayish yellow	None	29	20.2	34	19	<-0.79	<-0.80	
				2015/11/20	Cloudy	12.1	0.6	11.0	0.0	Grayish yellow green	None	41	40.1	12	9.6	<-0.66	<-0.88	
				2016/1/13	Sunny	5.5	0.4	3.7	0.0	Grayish greenish yellow	None	20	19.3	22	22	<-0.58	<-0.75	
23	Nenbutsu Bridge	Nenbutsu Bridge	Tagajo City	2015/6/3	Cloudy	21.1	0.8	20.1	0.0	Grayish greenish yellow	None	15	2,400	5	9.7	<-0.73	<-0.75	
				2015/8/13	Rain	24.1	0.7	25.4	0.0	Grayish yellow	Faint algae	35	771	8	3.0	<-0.75	<-0.96	
				2015/11/20	Cloudy	11.3	0.8	14.6	0.0	Grayish yellow green	None	66	2,410	5	3.8	<-0.54	<-0.69	
				2016/1/13	Sunny	6.8	0.8	9.5	0.0	Grayish yellow green	None	65	34.0	4	3.6	<-0.65	<-0.84	
24	Teizan-unga Canal (Kyu-sunaoshi River)	Teizan Bridge	Shichigahama Town/Tagajo City	2015/6/4	Sunny	21.5	0.4	19.6	0.0	Dark grayish yellow green	None	56	4,000	9	4.4	<-0.77	<-0.81	
				2015/8/14	Cloudy	25.8	1.9	25.8	0.0	Light grayish yellow green	None	65	2,660	4	0.6	<-0.61	<-0.84	
				2015/11/20	Cloudy	10.5	1.6	14.9	0.0	Dark grayish yellow green	Faint seaweed	35	3,230	5	2.6	<-0.72	<-0.77	
				2016/1/12	Cloudy	4.3	1.6	8.7	0.0	Dark grayish yellowish green	None	65	30.4	5	1.6	<-0.72	<-0.63	
25	Nanakita River System	Nanakita River	Sendai City	2015/6/3	Cloudy	19.4	0.3	20.6	0.0	Yellow greenish pale gray	None	60	23.3	8	4.3	<-0.74	<-0.70	
				2015/8/13	Rain	23.2	0.5	23.5	0.0	Light grayish yellow	None	29	15.4	18	8.7	<-0.78	<-0.84	
				2015/11/20	Cloudy	7.9	0.6	11.2	0.0	Yellow greenish pale gray	None	>100	15.9	4	3.4	<-0.60	<-0.80	
				2016/1/14	Sunny	2.8	0.3	3.9	0.0	Colorless transparent	None	>100	13.8	1	1.1	<-0.63	<-0.84	
26	Fukuda-obashi Bridge	Fukuda-obashi Bridge	Sendai City	2015/6/4	Sunny	22.6	0.4	23.1	0.0	Greenish yellowish pale gray	None	41	2,090	5	2.8	<-0.74	<-0.66	
				2015/8/14	Rain	24.4	0.7	22.8	0.0	Grayish yellow	None	22	15.6	26	17	<-0.68	<-0.80	
				2015/11/21	Sunny	14.1	0.4	10.8	0.0	Yellowish pale gray	None	>100	24.7	3	3.3	<-0.51	<-0.84	
				2016/1/13	Sunny	4.3	0.3	3.6	0.0	Light grayish yellow green	None	92	33.9	2	1.4	<-0.63	<-0.75	

Miyagi Rivers (Water) 3/4

R i v e r s	Location				Sampling Date	Weather	Air temperature (°C)	Water depth (m)	Water								Remarks	
	No.	Water area	Location	Municipality					General items					Activity concentration(Bq/L)				
									Water temperature (°C)	Sampling depth (m)	Color	Odor	Transparency (cm)	Electrical conductivity (mS/m)	SS (mg/L)	Turbidity (FNU)		Radioactive cesium
				Cs-134	Cs-137													
27	Nanakita River System	Umeda River	Fukuda Bridge	Sendai City	2015/6/4	Sunny	24.4	0.7	20.2	0.0	Dark grayish yellow green	Faint swamp	29	99.4	17	11	<-0.63	<-0.84
					2015/8/14	Cloudy	25.5	0.9	23.7	0.0	Grayish yellow	None	24	13.4	23	8.0	<-0.75	<-0.92
					2015/11/21	Sunny	11.3	0.8	10.0	0.0	Light grayish yellow green	None	97	27.0	5	4.7	<-0.63	<-0.84
		2016/1/13	Sunny		0.4	0.6	0.9	0.0	Light grayish yellow green	None	>100	35.1	4	2.1	<-0.70	<-0.80		
		2015/6/4	Sunny		20.1	0.4	20.4	0.0	Grayish greenish yellow	None	25	3,230	11	5.3	<-0.83	<-0.88		
		2015/8/14	Cloudy		23.0	0.8	22.9	0.0	Grayish yellow	None	23	76.1	21	11	<-0.77	<-0.75		
	28	Nanakita River	Takasago Bridge	Sendai City	2015/11/21	Cloudy	15.5	0.8	12.3	0.0	Light grayish yellow green	None	50	586	7	6.3	<-0.74	<-0.84
					2016/1/12	Sunny	2.4	0.8	4.5	0.0	Light grayish yellowish green	None	>100	33.7	3	2.1	<-0.84	<-0.92
					2015/6/2	Cloudy	21.5	0.8	20.2	0.0	Light grayish yellow green	None	>100	4,100	2	1.3	<-0.91	<-0.63
	29	Natori River	Yuriage-obashi Bridge	Sendai City/Natori City	2015/8/16	Cloudy	25.0	0.6	27.6	0.0	Light grayish greenish yellow	None	38	2,210	10	2.1	<-0.76	<-0.63
					2015/11/21	Sunny	15.8	0.6	13.2	0.0	Light grayish yellow	None	74	1,190	6	3.4	<-0.83	<-0.84
					2016/1/12	Sunny	3.7	0.6	5.2	0.0	Light grayish yellow green	None	>100	2,100	4	2	<-0.60	<-0.75
					2015/6/2	Sunny	23.9	0.3	17.9	0.0	Yellowish pale gray	None	>100	12.4	2	1.5	<-0.95	<-0.81
					2015/8/16	Cloudy	24.3	0.4	20.4	0.0	Yellowish white	None	>100	9.0	1	0.9	<-0.69	<-0.75
					2015/11/22	Sunny	8.7	0.4	9.7	0.0	Colorless transparent	None	>100	8.8	<-1	0.4	<-0.74	<-0.69
	30	Natori River System	Yakushi Bridge	Natori City	2016/1/11	Sunny	2.9	0.2	4.1	0.0	Colorless transparent	None	>100	27.0	<-1	0.2	<-0.51	<-0.99
					2015/6/2	Sunny	24.1	0.4	21.3	0.0	Grayish yellow	Faint swamp	49	15.1	11	6.2	<-0.79	<-0.69
					2015/8/16	Cloudy	24.7	0.8	23.8	0.0	Grayish yellow	Faint swamp	31	17.0	25	8.1	<-0.61	<-0.75
					2015/11/22	Sunny	10.9	0.4	11.1	0.0	Yellowish pale gray	None	>100	14.9	4	2.3	<-0.51	<-0.80
					2016/1/12	Sunny	-1.3	0.4	2.2	0.0	Light grayish greenish yellow	None	>100	9.7	6	3.4	<-0.74	<-0.80
					2015/6/2	Sunny	23.9	1.1	26.1	0.0	Grayish yellow green	None	21	258	10	12	<-0.54	<-0.74
	31	Masuda River	Koyama Bridge	Natori City	2015/8/16	Cloudy	25.2	0.7	26.3	0.0	Grayish yellow	None	19	26.2	28	9.0	<-0.63	<-0.84
					2015/11/22	Sunny	11.7	1.4	11.9	0.0	Light grayish greenish yellow	None	45	165.0	7	5.7	<-0.74	<-0.75
					2016/1/11	Sunny	3.9	1.3	4.9	0.0	Light grayish yellow green	None	95	28.4	3	1.8	<-0.94	<-0.84
					2015/4/27	Sunny	28.1	0.5	13.6	0.0	Light grayish yellow green	None	95	12.3	7	4.7	<-0.82	<-0.80
					2015/5/31	Sunny	22.3	0.4	23.0	0.0	Grayish yellow green	None	74	21.2	5	3.3	<-0.90	<-0.61
					2015/6/30	Cloudy	22.6	0.5	19.9	0.0	Grayish greenish yellow	None	25	16.3	14	6.4	<-0.58	<-0.84
	32	Bishamon Bridge	Hadeniwa Bridge	Marumori Town	2015/7/19	Sunny	27.4	0.6	23.9	0.0	Grayish yellow	None	24	14.1	18	6.8	<-0.61	<-0.84
					2015/8/25	Cloudy	19.6	0.6	21.8	0.0	Yellow greenish white	None	60	19.2	7	2.8	<-0.90	<-0.80
					2015/9/17	Rain	18.2	1.0	18.9	0.0	Light grayish yellow green	None	41	15.7	14	4.3	<-0.75	<-0.80
					2015/10/24	Sunny	21.0	0.5	17.8	0.0	Light grayish greenish yellow	None	>100	19.8	4	1.7	<-0.82	<-0.63
					2015/12/13	Cloudy	7.1	0.7	8.7	0.0	Grayish greenish yellow	None	22	8.2	19	12	<-0.65	<-0.55
					2016/1/7	Sunny	7.1	0.6	6.6	0.0	Light grayish greenish yellow	None	>100	18.1	3	2.4	<-0.78	<-0.80
					2016/2/6	Snow	1.9	0.8	3.7	0.0	Light grayish yellow green	None	75	21	4	2.9	<-0.72	<-0.84
2015/4/27					Sunny	23.3	0.7	13.8	0.0	Light grayish yellow green	None	70	13.1	5	4.4	<-0.61	<-0.70	
2015/5/31					Sunny	26.1	0.4	24.4	0.0	Light grayish yellow green	None	68	21.1	3	2.2	<-0.42	<-0.61	
2015/6/30					Cloudy	20.8	0.4	20.7	0.0	Grayish greenish yellow	None	34	15.8	8	4.3	<-0.80	<-0.80	
2015/7/19					Sunny	29.1	0.4	24.9	0.0	Grayish yellow	None	24	14.1	20	6.8	<-0.83	<-0.69	
2015/8/28					Cloudy	21.8	0.3	20.0	0.0	Greenish yellowish white	None	46	16.5	13	6.8	<-0.57	<-0.80	
33	Abukuma River System	Abukuma River	Marumori Town	2015/9/17	Rain	20.6	0.6	19.0	0.0	Light grayish yellow green	None	36	17.6	13	4.8	<-0.54	<-0.75	
				2015/10/24	Sunny	19.4	0.6	17.2	0.0	Light grayish yellow green	None	>100	19.8	2	1.3	<-0.70	<-0.80	
				2015/12/15	Sunny	12.7	0.6	9.1	0.0	Yellow greenish white	None	71	15.2	8	5.0	<-0.68	<-0.75	
				2016/1/7	Sunny	7.8	0.5	7.1	0.0	Light grayish greenish yellow	None	>100	17.7	3	2.3	<-0.67	<-0.80	
				2016/2/6	Cloudy	3.1	0.6	4.2	0.0	Light grayish yellow green	None	75	20.6	3	2.6	<-0.56	<-0.75	

Miyagi Rivers (Water) 4/4

Rivers	Location				Sampling Date	Weather	Air temperature (°C)	Water depth (m)	Water								Activity concentration(Bq/L)		Remarks
	No.	Water area	Location	Municipality					Water temperature (°C)	Sampling depth (m)	Color	Odor	Transparency (cm)	Electrical conductivity (mS/m)	SS (mg/L)	Turbidity (FNU)	Radioactive cesium		
																	Cs-134	Cs-137	
Rivers	35	Abukuma River	Higashine Bridge	Kakuda City	2015/4/27	Sunny	28.1	0.4	16.6	0.0	Light grayish yellow	None	65	12.7	8	5.1	<-0.76	<-0.84	
					2015/6/29	Sunny	23.9	0.4	22.3	0.0	Light grayish yellow	None	14	15.0	28	9.9	<-0.63	<-0.75	
					2015/8/27	Rain	20.1	0.5	20.4	0.0	Grayish yellow	None	21	16.2	48	16	<-0.55	<-0.80	
					2015/10/17	Sunny	13.0	0.4	15.4	0.0	Yellow greenish white	None	>100	19.4	4	2.0	<-0.74	<-0.75	
					2015/12/14	Cloudy	8.0	0.5	8.7	0.0	Light grayish greenish yellow	None	42	13.4	15	8.6	<-0.73	<-0.75	
					2016/1/10	Sunny	5.5	0.3	5.3	0.0	Light grayish yellow green	None	85	19.0	3	2.4	<-0.89	<-0.88	
					2015/4/26	Sunny	20.1	0.4	10.7	0.0	Light grayish yellow green	None	55	5.4	16	7.0	<-0.65	<-0.61	
		36	Shiroishi River	Before the confluence with Kawaharakozawa (Sunaoishi Bridge)	Shiroishi City	2015/7/18	Cloudy	27.3	0.7	20.0	0.0	Grayish yellow green	None	91	7.3	4	2.3	<-0.70	<-0.69
						2015/11/23	Rain	8.6	0.4	10.9	0.0	Grayish yellow green	None	>100	7.4	2	1.9	<-0.74	<-0.84
						2016/1/9	Sunny	3.8	0.5	5.4	0.0	Yellow greenish white	None	>100	5.1	<1	1.2	<-0.91	<-0.88
						2015/4/26	Sunny	25.2	0.3	15.6	0.0	Grayish yellow green	None	82	10.4	4	4.6	<-0.67	<-0.80
		37	Saikawa River	Etsubo Bridge	Shiroishi City	2015/7/18	Cloudy	28.9	0.4	24.4	0.0	Light grayish yellow	None	40	13.8	11	6.1	<-0.67	<-0.80
						2015/11/23	Rain	8.9	0.5	11.0	0.0	Grayish yellow green	None	>100	12.2	3	2.2	<-0.58	<-0.92
						2016/1/9	Sunny	6.4	0.3	6.0	0.0	Light grayish greenish yellow	None	>100	7.0	2	1.7	<-0.93	<-0.96
	38	Matsukawa River	Miya-ohashi Bridge	Zao Town	2015/4/26	Sunny	21.6	0.3	10.8	0.0	Light grayish yellow green	None	97	13.2	4	2.8	<-0.92	<-0.70	
					2015/7/18	Cloudy	27.8	0.4	23.3	0.0	Light grayish yellow green	None	>100	21.9	3	1.4	<-0.66	<-0.69	
					2015/11/23	Rain	10.0	0.4	10.3	0.0	Greenish yellowish pale gray	None	>100	20.0	3	1.8	<-0.73	<-0.80	
	39	Arakawa River	Niragami Bridge	Murata Town/Ogawara Town	2016/1/9	Sunny	7.8	0.3	7.0	0.0	Greenish yellowish white	None	>100	20.6	3	2.0	<-0.78	<-0.84	
					2015/5/31	Sunny	27.8	0.4	23.6	0.0	Grayish yellow	Faint swamp	28	17.2	24	12	<-0.83	<-0.69	
					2015/8/28	Cloudy	23.5	0.5	20.8	0.0	Grayish yellow	None	36	18.6	18	11	<-0.57	<-0.75	
					2015/11/23	Rain	8.5	0.6	10.6	0.0	Grayish yellow	None	77	17.8	7	4.7	<-0.81	<-0.75	
	40	Abukuma River System	Shiroishi River	Shirahata Bridge	Shibata Town	2016/1/9	Sunny	5.6	0.6	4.4	0.0	Greenish yellowish white	None	>100	19.8	3	3.0	<-0.89	<-0.75
						2015/5/31	Sunny	25.4	0.4	23.1	0.0	Greenish yellowish pale gray	None	73	14.2	7	3.5	<-0.61	<-0.61
						2015/8/22	Sunny	27.1	0.5	22.4	0.0	Yellowish white	None	56	16.0	8	4.8	<-0.61	<-0.63
						2015/11/22	Cloudy	11.8	0.4	11.5	0.0	Greenish yellowish pale gray	None	>100	16.0	4	2.2	<-0.68	<-0.75
						2016/1/10	Sunny	7.4	0.3	6.2	0.0	Yellow greenish white	None	>100	14.5	1	1.7	<-0.68	<-0.80
	41	Abukuma River	Tsukinoki-ohashi Bridge	Kakuda City/Shibata Town	2015/5/1	Sunny	20.6	0.5	16.5	0.0	Grayish yellow	None	55	10.3	7	6.7	<-0.64	<-0.84	
					2015/6/29	Sunny	23.8	0.6	20.7	0.0	Grayish yellow	None	28	14.5	14	7.8	<-0.70	<-0.69	
					2015/8/22	Cloudy	26.9	0.8	23.4	0.0	Light grayish yellow	None	50	16.9	10	5.6	<-0.72	<-0.69	
					2015/10/17	Sunny	19.5	0.5	17.1	0.0	Yellow greenish white	None	>100	14.5	3	1.7	<-0.74	<-0.80	
					2015/12/14	Cloudy	3.7	0.6	7.5	0.0	Light grayish greenish yellow	None	74	8.5	5	2.7	<-0.80	<-0.75	
					2016/1/10	Sunny	8.2	0.3	6.4	0.0	Light grayish yellow green	None	>100	8.4	2	1.7	<-0.95	<-0.80	
					2015/5/1	Sunny	22.3	0.7	17.6	0.0	Grayish yellow green	None	56	13.1	5	4.9	<-0.47	<-0.80	
					2015/5/31	Sunny	23.7	0.8	23.5	0.0	Light grayish yellow green	None	37	19.8	7	4.0	<-0.72	<-0.88	
					2015/6/29	Sunny	20.3	0.4	20.3	0.0	Grayish greenish yellow	None	27	14.5	18	8.4	<-0.80	<-0.84	
					2015/7/19	Sunny	26.8	0.9	24.3	0.0	Light grayish greenish yellow	None	25	12.9	21	7.4	<-0.80	<-0.84	
	42	Abukuma River	Abukuma-ohashi Bridge (Iwanuma)	Iwanuma City/Watarai Town	2015/8/22	Cloudy	25.2	0.8	24.0	0.0	Greenish yellowish white	None	72	19.9	9	6.0	<-0.66	<-0.63	
					2015/9/17	Rain	19.9	1.0	19.1	0.0	Grayish yellow green	None	26	14.5	17	5.5	<-0.48	<-0.84	
					2015/10/17	Sunny	19.8	1.0	16.3	0.0	Yellow greenish white	None	>100	18.3	3	1.7	<-0.66	<-0.80	
					2015/12/14	Cloudy	7.9	0.5	8.2	0.0	Grayish greenish yellow	None	36	7.9	15	8.2	<-0.67	<-0.66	
					2016/1/10	Sunny	8.2	0.8	6.0	0.0	Light grayish yellow green	None	>100	9.2	2	1.9	<-0.70	<-0.84	
					2016/2/6	Cloudy	4.0	0.6	4.6	0.0	Light grayish greenish yellow	None	70	19.0	3	3.0	<-0.73	<-0.92	
					2015/5/1	Sunny	19.4	0.6	18.5	0.0	Dark grayish yellow	None	70	120	5	3.9	<-0.88	<-0.84	
					2015/6/29	Cloudy	17.7	0.5	20.7	0.0	Grayish yellow	None	38	25.9	10	7.0	<-0.58	<-0.96	
					2015/8/22	Cloudy	25.2	0.7	24.3	0.0	Yellow greenish white	None	>100	2.570	3	2.5	<-0.66	<-0.84	
					2015/10/17	Sunny	17.7	0.9	18.3	0.0	Light grayish yellow	None	>100	577	4	2.6	<-0.70	<-0.69	
	43	Offshore of Abukuma River Estuary (Watarai-ohashi Bridge)			2015/12/14	Cloudy	7.5	0.7	8.8	0.0	Grayish yellow	None	40	17.4	10	<-0.83	<-0.99		
2016/1/11					Sunny	1.1	0.3	6.6	0.0	Light grayish yellow green	None	>100	1,160	3	1.7	<-0.54	<-0.88		

Miyagi Rivers (Surrounding Environment) 1/4

Location				Sampling Date	Weather	Air temperature (°C)	Surrounding Environment (Soil, Air dose)														Remarks
							Left bank							Right bank							
							Color	Odor	Property	Activity concentration [Bq/kg(dry)]			Air Dose (µSv/h)	Color	Odor	Property	Activity concentration [Bq/kg(dry)]			Air Dose (µSv/h)	
Cs-134	Cs-137	Total	Cs-134	Cs-137	Total																
R i v e r s	1	Shishiori River	Kinzan Bridge	Kesennuma City	2015/5/17	Sunny	15.2	Blackish brown	Faint earth	Loamy	100	400	500	0.08	Dim yellowish brown	Faint earth	Loamy	120	410	530	0.08
					2015/8/7	Sunny	29.8	Brownish gray	Faint earth	Loamy	180	640	820	0.07	Dim yellowish brown	Faint earth	Loamy	110	440	550	0.07
					2015/11/15	Cloudy	17.0	Blackish brown	Faint earth	Loamy	100	560	660	0.07	Dim yellowish brown	Faint earth	Loamy	64	300	364	0.07
					2016/1/18	Snow	1.8	Blackish brown	Faint earth	Loamy	180	960	1,140	0.09	Dark brown	Faint earth	Loamy	120	480	600	0.07
					2015/5/19	Cloudy	17.2	Dark brown	Faint earth	Sandy	97	360	457	0.06	Blackish brown	Faint earth	Loamy	80	310	390	0.06
			2015/8/7		Sunny	31.6	Grayish yellowish brown	Faint earth	Sandy	120	560	680	0.07	Grayish yellowish brown	Faint earth	Loamy	53	210	263	0.05	
			2015/11/16		Sunny	15.5	Blackish brown	Faint earth	Loamy	69	320	389	0.07	Blackish brown	Faint earth	Loamy	73	290	363	0.05	
			2016/1/19		Cloudy	4.1	Grayish yellowish brown	Faint earth	Sandy	66	310	376	0.07	Grayish yellowish brown	Faint earth	Loamy	25	110	135	0.06	
			2015/5/19		Cloudy	21.3	Dark brown	Faint grass	Sandy	72	260	332	0.07	Dark brown	Faint grass	Loamy	31	170	201	0.07	
			2015/8/8		Cloudy	24.2	Grayish yellowish brown	Faint earth	Sandy	34	160	194	0.07	Dim yellowish brown	Faint earth	Loamy	32	110	142	0.07	
	2015/11/16	Sunny	17.3	Dark brown	Faint earth	Loamy	75	330	405	0.07	Dark brown	Faint earth	Loamy	86	360	446	0.07				
	2016/1/19	Cloudy	1.7	Blackish brown	Faint earth	Loamy	31	210	241	0.06	Blackish brown	Faint earth	Loamy	35	160	195	0.07				
	2015/5/20	Sunny	20.4	Dark brown	Faint grass	Loamy	78	300	378	0.06	Dark brown	Faint grass	Loamy	140	500	640	0.06				
	2015/8/8	Cloudy	26.2	Grayish yellowish brown	Faint earth	Loamy	43	170	213	0.06	Grayish yellowish brown	Faint earth	Loamy	120	520	640	0.06				
	2015/11/16	Sunny	17.9	Brown	Faint earth	Loamy	34	170	204	0.06	Dark brown	Faint earth	Loamy	100	450	550	0.05				
	2016/1/19	Cloudy	1.3	Grayish yellowish brown	Faint earth	Loamy	57	260	317	0.06	Blackish brown	Faint earth	Loamy	92	380	472	0.06				
	2015/5/20	Sunny	20.2	Blackish brown	Faint grass	Loamy	15	67	82	0.06	Dim yellowish brown	Faint earth	Loamy	42	150	192	0.06				
	2015/8/8	Cloudy	25.1	Grayish yellowish brown	None	Loamy	8.3	32	40.3	0.06	Dim yellowish brown	None	Loamy	34	120	154	0.06				
	2015/11/16	Sunny	19.7	Dark brown	Faint earth	Loamy	4.9	20	24.9	0.05	Dark brown	Faint earth	Loamy	13	74	87	0.06				
	2016/1/19	Cloudy	2.7	Dark greenish gray	Faint earth	Loamy	9.9	46	55.9	0.06	Dark brown	Faint earth	Loamy	26	110	136	0.06				
2015/5/20	Sunny	17.8	Dim yellowish brown	Faint grass	Loamy	56	180	236	0.06	Dim yellowish brown	Faint grass	Loamy	35	110	145	0.04					
2015/8/7	Sunny	30.2	Grayish yellowish brown	None	Loamy	48	230	278	0.06	Dim yellowish brown	None	Loamy	23	96	119	0.05					
2015/11/16	Sunny	18.7	Brown	Faint earth	Loamy	18	67	85	0.05	Dark brown	Faint earth	Loamy	70	280	350	0.04					
2016/1/20	Sunny	1.5	Brown	Faint earth	Loamy	39	160	199	0.05	Dark brown	Faint earth	Loamy	19	79	98	0.06					
2015/5/15	Sunny	24.8	Yellowish brown	Faint grass	Loamy	190	730	920	0.12	Dark brown	Faint grass	Loamy	170	620	790	0.11					
2015/8/6	Sunny	37.1	Dim yellowish brown	Faint earth	Loamy	450	1,900	2,350	0.11	Dim yellowish brown	Faint earth	Loamy	180	710	890	0.11					
2015/11/13	Sunny	11.5	Dark brown	Faint grass	Loamy	240	1,200	1,440	0.11	Dark brown	Faint grass	Loamy	190	860	1,050	0.10					
2016/1/21	Cloudy	0.3	Blackish brown	Faint earth	Loamy	250	1,100	1,350	0.09	Dark brown	Faint earth	Loamy	170	740	910	0.08					
2015/5/15	Sunny	24.7	Yellowish brown	Faint grass	Loamy	180	780	960	0.13	Dark brown	Faint grass	Loamy	100	400	500	0.12					
2015/8/6	Sunny	37.1	Dim yellow orange	Faint earth	Loamy	470	1,800	2,270	0.13	Dim yellowish brown	Faint earth	Loamy	280	1,100	1,380	0.12					
2015/11/13	Sunny	10.5	Dark brown	Faint earth	Loamy	440	1,900	2,340	0.12	Dark brown	Faint earth	Loamy	170	760	930	0.10					
2016/1/21	Sunny	1.9	Dim yellowish brown	Faint earth	Loamy	240	1,100	1,340	0.10	Dark brown	Faint earth	Loamy	210	970	1,180	0.08					
2015/5/22	Sunny	22.4	Dark brown	Faint grass	Loamy	220	910	1,130	0.08	Dark brown	Faint grass	Loamy	95	300	395	0.06					
2015/8/10	Sunny	29.2	Dark brown	Faint grass	Loamy	31	210	241	0.07	Dim yellowish brown	Faint grass	Loamy	120	550	670	0.05					
2015/11/17	Sunny	19.4	Dark brown	Faint earth	Loamy	32	190	222	0.06	Dark brown	Faint earth	Loamy	57	290	347	0.05					
2016/1/20	Sunny	3.2	Dark brown	Faint grass	Loamy	57	230	287	0.06	Blackish brown	Faint earth	Loamy	51	210	261	0.05					
2015/5/21	Cloudy	14.1	Dim brown	Faint earth	Loamy	200	760	960	0.10	Blackish brown	Faint earth	Loamy	440	1,600	2,040	0.10					
2015/8/9	Rain	23.4	Brown	Faint earth	Loamy	190	760	950	0.09	Blackish brown	Faint earth	Loamy	460	1,900	2,360	0.09					
2015/11/10	Sunny	14.5	Dark brown	Faint earth	Loamy	200	830	1,030	0.09	Blackish brown	Faint earth	Loamy	380	1,500	1,880	0.09					
2016/1/17	Sunny	1.6	Brown	Faint earth	Loamy	170	780	950	0.09	Dark brown	Faint earth	Loamy	220	970	1,190	0.10					
2015/5/21	Cloudy	17.6	Dim yellowish brown	Faint grass	Loamy	200	740	940	0.10	Dark brown	Faint grass	Loamy	370	1,400	1,770	0.10					
2015/8/9	Rain	24.1	Dark brown	Faint grass	Loamy	160	680	840	0.10	Blackish brown	Faint grass	Loamy	240	1,000	1,240	0.09					
2015/11/18	Sunny	17.4	Dim yellowish brown	Faint earth	Loamy	130	580	710	0.09	Dark brown	Faint earth	Loamy	240	1,100	1,340	0.10					
2016/1/17	Sunny	-0.1	Dim yellowish brown	Faint earth	Loamy	180	840	1,020	0.09	Blackish brown	Faint earth	Loamy	310	1,400	1,710	0.09					
2015/6/4	Sunny	21.2	Grayish yellowish brown	Faint grass	Loamy	400	1,500	1,900	0.13	Dark brown	Faint grass	Sandy	160	600	760	0.12					
2015/8/9	Rain	24.7	Dark brown	Faint grass	Loamy	260	1,100	1,360	0.11	Blackish brown	Faint grass	Loamy	230	880	1,110	0.09					
2015/11/18	Cloudy	15.3	Blackish brown	Faint earth	Loamy	250	1,200	1,450	0.10	Dark brown	Faint earth	Loamy	83	360	443	0.06					
2016/1/16	Sunny	1.8	Blackish brown	Faint earth	Loamy	380	1,700	2,080	0.10	Dim yellowish brown	Faint earth	Loamy	27	110	137	0.07					
2015/5/15	Sunny	19.1	Blackish brown	Faint earth	Loamy	110	350	460	0.07	Brown	Faint earth	Loamy	89	310	399	0.09					
2015/8/6	Sunny	35.1	Dark brown	Faint earth	Loamy	110	430	540	0.06	Brown	Faint earth	Loamy	95	370	465	0.09					
2015/11/13	Sunny	7.1	Blackish brown	Faint earth	Loamy	81	410	491	0.06	Dark brown	Faint earth	Loamy	35	190	225	0.07					
2016/1/17	Sunny	4.0	Dark brown	Faint earth	Loamy	89	400	489	0.06	Grayish yellowish brown	Faint earth	Loamy	31	150	181	0.09					

Miyagi Rivers (Surrounding Environment) 3/4

Location				Sampling Date	Weather	Air temperature (°C)	Surrounding Environment (Soil, Air dose)										Remarks					
No.	Water area	Location	Municipality				Left bank					Right bank										
							Color	Odor	Property	Activity concentration [Bq/kg(dry)]			Air Dose (μSv/h)	Color	Odor	Property		Activity concentration [Bq/kg(dry)]			Air Dose (μSv/h)	
				Radioactive cesium			Radioactive cesium		Radioactive cesium													
				Cs-134	Cs-137	Total	Cs-134	Cs-137	Total	Cs-134	Cs-137	Total										
Rivers	27	Nanakita River System	Umeda River	Fukuda Bridge	Sendai City	2015/6/4	Sunny	24.4	Dim yellow orange	None	Sandy	41	180	221	0.07	Dim yellow orange	None	Sandy	28	100	128	0.06
						2015/8/14	Cloudy	25.5	Dim yellowish brown	Faint earth	Sandy	58	240	298	0.06	Dim yellowish brown	Faint earth	Sandy	33	160	193	0.05
						2015/11/21	Sunny	11.3	Dark brown	Faint earth	Loamy	84	460	544	0.07	Dark brown	Faint earth	Loamy	42	240	282	0.05
			2016/1/13	Sunny		0.4	Dark brown	Faint earth	Sandy	75	360	435	0.07	Brown	Faint earth	Sandy	88	330	418	0.06		
			2015/6/4	Sunny		20.1	Dim yellowish brown	Faint earth	Sandy	<6.4	25	25	0.05	Dim yellow orange	Faint earth	Loamy	130	540	670	0.07		
			2015/8/14	Cloudy		23.0	Dark brown	Faint earth	Sandy	25	100	125	0.04	Dim yellowish brown	Faint earth	Loamy	120	500	620	0.05		
	28	Nanakita River	Takasago Bridge	Sendai City	2015/11/21	Sunny	15.5	Blackish brown	Faint earth	Loamy	13	63	76	0.04	Dark brown	Faint earth	Loamy	35	140	175	0.06	
					2016/1/12	Sunny	2.4	Dim yellowish brown	Faint earth	Sandy	15	59	74	0.05	Dark brown	Faint earth	Loamy	15	95	110	0.05	
					2015/6/2	Cloudy	21.5	Dim yellow orange	None	Sandy	4.1	9.1	13.2	0.04	Grayish yellowish brown	Faint earth	Loamy	160	680	840	0.06	
					2015/8/16	Cloudy	25.0	Brown	Faint grass	Loamy	<9.1	7.3	7.3	0.04	Dark brown	Faint earth	Loamy	59	240	299	0.05	
					2015/11/21	Sunny	15.8	Brown	Faint earth	Loamy	<5.7	11	11	0.04	Dark brown	Faint earth	Loamy	73	350	423	0.05	
					2016/1/12	Sunny	3.7	Dark brown	None	Sandy	<8.6	17	17	0.04	Brown	Faint earth	Loamy	48	240	288	0.06	
	29	Natori River	Yuriage-ohashi Bridge	Sendai City/Natori City	2015/6/2	Sunny	23.9	Dim yellowish brown	None	Loamy	18	91	109	0.05	Dim yellowish brown	Faint earth	Loamy	340	1,400	1,740	0.07	
					2015/8/16	Cloudy	24.3	Dark brown	Faint earth	Loamy	78	350	428	0.05	Blackish brown	Faint earth	Loamy	58	270	328	0.05	
					2015/11/22	Sunny	8.7	Dark brown	Faint earth	Loamy	13	73.0	86.0	0.05	Blackish brown	Faint earth	Loamy	72	330	402	0.05	
					2016/1/11	Sunny	2.9	Brown	Faint earth	Loamy	16	53	69	0.06	Blackish brown	Faint earth	Loamy	130	470	600	0.06	
					2015/6/2	Sunny	24.1	Dark brown	Faint earth	Loamy	230	780	1,010	0.10	Dark brown	Faint earth	Loamy	160	590	750	0.12	
					2015/8/16	Cloudy	24.7	Blackish brown	Faint earth	Loamy	210	950	1,160	0.10	Blackish brown	Faint earth	Loamy	160	730	890	0.09	
	30	Natori River System	Yakushi Bridge	Natori City	2015/11/22	Sunny	10.9	Dark brown	Faint earth	Loamy	140	600	740	0.08	Dark brown	Faint earth	Loamy	180	840	1,020	0.08	
					2016/1/12	Sunny	-1.3	Dark brown	Faint earth	Loamy	180	770	950	0.09	Dark brown	Faint earth	Loamy	130	700	830	0.10	
					2015/6/2	Sunny	23.9	Dim yellowish brown	Faint earth	Loamy	84	350	434	0.05	Grayish yellowish brown	Faint earth	Loamy	160	570	730	0.06	
					2015/8/16	Cloudy	25.2	Blackish brown	Faint earth	Loamy	<3.8	14	14	0.05	Dim yellowish brown	Faint earth	Loamy	110	430	540	0.06	
					2015/11/22	Sunny	11.7	Dim yellowish brown	Faint earth	Loamy	43	210	253	0.05	Dark brown	Faint earth	Loamy	130	550	680	0.06	
					2016/1/11	Sunny	3.9	Dim yellowish brown	Faint earth	Loamy	77	360	437	0.07	Blackish brown	Faint earth	Loamy	170	770	940	0.07	
	31	Masuda River	Koyama Bridge	Natori City	2015/4/27	Sunny	28.1	Dark brown	Faint earth	Loamy	380	1,400	1,780	0.30	Dark brown	Faint earth	Loamy	360	1,200	1,560	0.19	
					2015/5/31	Sunny	22.3	Dim yellowish brown	Faint grass	Sandy	320	1,200	1,520	0.26	Dim yellowish brown	Faint grass	Loamy	400	1,700	2,100	0.17	
					2015/6/30	Cloudy	22.6	Dim yellowish brown	None	Sandy	160	520	680	0.22	Dark brown	Faint earth	Loamy	290	1,100	1,390	0.15	
					2015/7/19	Sunny	27.4	Dim yellowish brown	Faint earth	Sandy	160	710	870	0.22	Blackish brown	Faint grass	Loamy	420	1,700	2,120	0.15	
					2015/8/25	Cloudy	19.6	Dim yellowish brown	Faint grass	Sandy	170	660	830	0.22	Blackish brown	Faint grass	Loamy	630	2,500	3,130	0.16	
					2015/9/17	Rain	18.2	Dim yellowish brown	Faint earth	Loamy	180	730	910	0.21	Dark brown	Faint earth	Loamy	260	1,100	1,360	0.18	
	32	Bishamon Bridge	Sendai City	Sendai City	2015/10/24	Sunny	21.0	Dim yellowish brown	Faint earth	Loamy	220	1,000	1,220	0.21	Grayish yellowish brown	Faint earth	Loamy	450	1,900	2,350	0.14	
					2015/12/13	Cloudy	7.1	Dark brown	Faint earth	Loamy	370	1,600	1,970	0.21	Blackish brown	Faint earth	Loamy	430	1,900	2,330	0.14	
2016/1/7					Sunny	7.1	Dim yellowish brown	Faint earth	Sandy	400	1,800	2,200	0.24	Dark brown	Faint earth	Loamy	370	1,800	2,170	0.15		
2016/2/6					Snow	1.9	Dim yellowish brown	Faint earth	Loamy	300	1,400	1,700	0.23	Grayish yellowish brown	Faint earth	Loamy	230	1,200	1,430	0.15		
2015/4/27					Sunny	23.3	Dim yellowish brown	Faint earth	Loamy	100	410	510	0.14	Dark brown	Faint earth	Loamy	160	620	780	0.14		
2015/5/31					Sunny	26.1	Dim yellowish brown	Faint earth	Loamy	180	700	880	0.15	Dim yellowish brown	Faint earth	Loamy	150	660	810	0.11		
33	Abukuma River System	Abukuma River	Marumori Town	2015/6/30	Cloudy	20.8	Dim yellowish brown	Faint grass	Loamy	88	340	428	0.13	Dark brown	Faint earth	Loamy	190	740	930	0.11		
				2015/7/19	Sunny	29.1	Dim yellowish brown	Faint earth	Loamy	100	470	570	0.15	Dim yellowish brown	Faint earth	Loamy	190	820	1,010	0.10		
				2015/8/28	Cloudy	21.8	Dark brown	Faint earth	Loamy	160	650	810	0.16	Grayish yellowish brown	Faint earth	Loamy	140	580	720	0.12		
				2015/9/17	Rain	20.6	Grayish yellowish brown	Faint earth	Loamy	190	810	1,000	0.16	Grayish yellowish brown	Faint earth	Loamy	260	990	1,250	0.14		
				2015/10/24	Sunny	19.4	Dim yellowish brown	Faint earth	Loamy	210	920	1,130	0.17	Dim yellowish brown	Faint grass	Loamy	140	620	760	0.13		
				2015/12/15	Sunny	12.7	Dim yellowish brown	Faint earth	Loamy	110	520	630	0.15	Brown	Faint earth	Loamy	180	700	880	0.13		
34	Marumori Bridge	Marumori Town	Marumori Town	2016/1/7	Sunny	7.8	Brown	Faint earth	Loamy	150	640	790	0.16	Brown	Faint earth	Loamy	220	1,100	1,320	0.12		
				2016/2/6	Cloudy	3.1	Dim yellowish brown	Faint earth	Loamy	140	720	860	0.16	Grayish yellowish brown	Faint grass	Loamy	210	930	1,140	0.13		

Miyagi Rivers (Surrounding Environment) 4/4

Location				Sampling Date	Weather	Air temperature (°C)	Surrounding Environment (Soil, Air dose)												Remarks			
No.	Water area	Location	Municipality				Left bank						Right bank									
							Color	Odor	Property	Activity concentration [Bq/kg(dry)]			Air Dose (μSv/h)	Color	Odor	Property	Activity concentration [Bq/kg(dry)]			Air Dose (μSv/h)		
Cs-134	Cs-137	Total	Cs-134	Cs-137	Total																	
R i v e r s	Abukuma River System	Abukuma River	Higashine Bridge	Kakuda City	2015/4/27	Sunny	28.1	Dark brown	Faint earth	Loamy	580	2,000	2,580	0.20	Brown	Faint earth	Loamy	94	450	544	0.14	
					2015/6/29	Sunny	23.9	Dark brown	Faint earth	Loamy	580	2,200	2,780	0.17	Dark brown	Faint grass	Loamy	87	360	447	0.12	
					2015/8/27	Rain	20.1	Dim yellowish brown	Faint earth	Loamy	540	310	850	0.12	Brown	Faint earth	Loamy	78	350	428	0.12	
					2015/10/17	Sunny	13.0	Dark brown	Faint earth	Loamy	540	2,400	2,940	0.18	Dim yellowish brown	Faint earth	Loamy	97	400	497	0.13	
					2015/12/14	Cloudy	8.0	Blackish brown	Faint earth	Loamy	690	3,200	3,890	0.19	Blackish brown	Faint earth	Loamy	120	550	670	0.12	
					2016/1/10	Sunny	5.5	Blackish brown	Faint earth	Loamy	540	2,200	2,740	0.20	Dark brown	Faint earth	Loamy	98	420	518	0.13	
		2015/4/26	Sunny	20.1	Brown	Faint earth	Loamy	210	810	1,020	0.11	Dark brown	Faint earth	Loamy	200	760	960	0.12				
		2015/7/18	Cloudy	27.3	Blackish brown	Faint earth	Loamy	430	1,800	2,230	0.12	Dark brown	Faint earth	Loamy	210	970	1,180	0.11				
		2015/11/23	Rain	8.6	Blackish brown	Faint earth	Loamy	300	1,300	1,600	0.14	Blackish brown	Faint earth	Loamy	130	620	750	0.11				
		2016/1/9	Sunny	3.8	Blackish brown	Faint earth	Loamy	200	980	1,180	0.12	Dim yellowish brown	Faint earth	Loamy	160	720	880	0.13				
		2015/4/26	Sunny	25.2	Dark brown	Faint earth	Loamy	240	900	1,140	0.12	Dark brown	Faint earth	Loamy	270	940	1,210	0.12				
		2015/7/18	Cloudy	28.9	Dim yellowish brown	Faint earth	Loamy	350	1,300	1,650	0.12	Dark brown	Faint earth	Loamy	180	660	840	0.10				
		2015/11/23	Rain	8.9	Blackish brown	Faint earth	Loamy	410	1,700	2,110	0.11	Blackish brown	Faint earth	Loamy	180	820	1,000	0.10				
		2016/1/9	Sunny	6.4	Blackish brown	Faint earth	Loamy	430	2,000	2,430	0.12	Dark brown	Faint earth	Loamy	190	880	1,070	0.11				
		2015/4/26	Sunny	21.6	Dark brown	Faint earth	Loamy	76	350	426	0.12	Dark brown	Faint earth	Loamy	260	1,000	1,260	0.12				
		2015/7/18	Cloudy	27.8	Dark brown	Faint earth	Loamy	110	380	490	0.09	Blackish brown	Faint earth	Loamy	320	1,300	1,620	0.10				
		2015/11/23	Rain	10.0	Blackish brown	Faint earth	Loamy	140	600	740	0.10	Blackish brown	Faint earth	Loamy	150	660	810	0.11				
		2016/1/9	Sunny	7.8	Dark brown	Faint earth	Loamy	140	700	840	0.11	Blackish brown	Faint earth	Loamy	180	930	1,110	0.12				
	2015/5/31	Sunny	27.8	Dim yellowish brown	Faint earth	Loamy	140	570	710	0.10	Dim yellowish brown	Faint grass	Loamy	260	1,000	1,260	0.09					
	2015/8/28	Cloudy	23.5	Grayish yellowish brown	Faint earth	Loamy	150	620	770	0.10	Dark brown	Faint earth	Loamy	150	670	820	0.09					
	2015/11/23	Rain	8.5	Dark brown	Faint earth	Loamy	130	580	710	0.11	Blackish brown	Faint earth	Loamy	180	890	1,070	0.11					
	2016/1/9	Sunny	5.6	Dim yellowish brown	Faint earth	Loamy	450	2,200	2,650	0.09	Brown	Faint earth	Loamy	300	1,300	1,600	0.12					
	2015/5/31	Sunny	25.4	Dim yellowish brown	Faint earth	Loamy	110	490	600	0.08	Dim yellowish brown	Faint earth	Loamy	210	890	1,100	0.11					
	2015/8/22	Sunny	27.1	Blackish brown	Faint earth	Loamy	100	430	530	0.08	Dark brown	Faint earth	Loamy	72	310	382	0.09					
	2015/11/22	Cloudy	11.8	Blackish brown	Faint earth	Loamy	96	400	496	0.07	Dim yellowish brown	Faint earth	Loamy	110	500	610	0.08					
	2016/1/10	Sunny	7.4	Blackish brown	Faint earth	Loamy	72	370	442	0.08	Dim yellowish brown	Faint earth	Loamy	98	510	608	0.10					
	2015/5/1	Sunny	20.6	Brown	Faint earth	Loamy	640	2,300	2,940	0.11	Dark brown	Faint earth	Loamy	480	1,800	2,280	0.12					
	2015/6/29	Sunny	23.8	Blackish brown	Faint earth	Loamy	380	1,500	1,880	0.10	Blackish brown	Faint earth	Loamy	140	540	680	0.11					
	2015/8/22	Cloudy	26.9	Blackish brown	Faint earth	Loamy	420	1,700	2,120	0.08	Blackish brown	Faint earth	Loamy	190	760	950	0.09					
	2015/10/17	Sunny	19.5	Grayish yellowish brown	Faint earth	Loamy	400	1,600	2,000	0.10	Dim yellowish brown	Faint earth	Loamy	170	750	920	0.10					
	2015/12/14	Cloudy	3.7	Blackish brown	Faint earth	Loamy	310	1,300	1,610	0.08	Blackish brown	Faint earth	Loamy	170	880	1,050	0.10					
	2016/1/10	Sunny	8.2	Blackish brown	Faint earth	Loamy	200	930	1,130	0.11	Blackish brown	Faint earth	Loamy	180	850	1,030	0.10					
	2015/5/1	Sunny	22.3	Dim yellowish brown	Faint earth	Loamy	430	1,600	2,030	0.18	Dark brown	Faint earth	Loamy	290	1,200	1,490	0.13					
	2015/5/31	Sunny	23.7	Dim yellowish brown	Faint earth	Loamy	690	2,500	3,190	0.24	Dark brown	Faint earth	Loamy	220	860	1,080	0.12					
	2015/6/29	Sunny	20.3	Blackish brown	Faint earth	Loamy	770	3,000	3,770	0.13	Blackish brown	Faint earth	Loamy	190	780	970	0.12					
	2015/7/19	Sunny	26.8	Grayish yellowish brown	Faint earth	Loamy	300	1,200	1,500	0.13	Blackish brown	Faint earth	Loamy	250	910	1,160	0.10					
	2015/8/22	Cloudy	25.2	Dark brown	Faint earth	Loamy	360	1,400	1,760	0.13	Grayish yellowish brown	Faint earth	Loamy	160	620	780	0.11					
	2015/9/17	Rain	19.9	Dark brown	Faint earth	Loamy	370	1,500	1,870	0.12	Blackish brown	Faint earth	Loamy	210	870	1,080	0.12					
	2015/10/17	Sunny	19.8	Dim yellowish brown	None	Loamy	270	1,100	1,370	0.13	Grayish yellowish brown	None	Loamy	220	860	1,080	0.12					
	2015/12/14	Cloudy	7.9	Grayish yellowish brown	Faint earth	Loamy	290	1,400	1,690	0.12	Dark brown	Faint earth	Loamy	240	880	1,120	0.11					
	2016/1/10	Sunny	8.2	Dark brown	Faint earth	Loamy	220	1,100	1,320	0.12	Blackish brown	Faint earth	Loamy	170	780	950	0.10					
	2016/2/6	Cloudy	4.0	Grayish yellowish brown	Faint earth	Loamy	310	1,600	1,910	0.13	Grayish yellowish brown	Faint earth	Loamy	180	910	1,090	0.13					
	2015/5/1	Sunny	19.4	Dim yellowish brown	Faint earth	Loamy	20	79	99	0.09	Brown	Faint earth	Loamy	100	440	540	0.09					
	2015/6/29	Cloudy	17.7	Dark brown	None	Sandy	95	330	425	0.10	Dark brown	Faint earth	Loamy	210	870	1,080	0.11					
	2015/8/22	Cloudy	25.2	Dark brown	Faint earth	Loamy	110	520	630	0.09	Blackish brown	Faint earth	Loamy	200	800	1,000	0.10					
	2015/10/17	Sunny	17.7	Dark brown	Faint earth	Loamy	160	650	810	0.10	Grayish yellowish brown	None	Loamy	260	1,100	1,360	0.10					
	2015/12/14	Cloudy	7.5	Blackish brown	Faint earth	Loamy	190	830	1,020	0.10	Blackish brown	Faint earth	Loamy	170	730	900	0.10					
	2016/1/11	Sunny	1.1	Dark brown	Faint earth	Loamy	110	480	590	0.09	Blackish brown	Faint earth	Loamy	160	700	860	0.10					

Miyagi Lakes and Reservoirs (Water)2/3

No.	Location				Sampling Date	Weather	Air temperature (°C)	Water depth (m)	Water											Remarks	
	Water area	Location		Municipality					General items									Activity concentration(Bq/L)			
									Water temperature (°C)	Sampling depth (m)	Color	Odor	Secchi disk depth (m)	Electrical conductivity (mS/m)	SS (mg/L)	Turbidity (FNU)	Radioactive cesium				
		Cs-134	Cs-137																		
51	Urushizawa Dam	Dam site	Kami Town	Surface layer	2015/5/25	Sunny	19.6	26.1	14.7	0.5	Dark grayish yellowish green	None	4.0	4.3	1	0.9	<0.77	<0.66			
				Deep layer	-	-	-	-	-	7.5	25.1	-	None	-	4.4	42	19	<0.83	<0.55		
				Surface layer	2015/8/24	Cloudy	22.6	10.6	19.3	0.5	Light grayish greenish yellow	None	1.2	7.3	13	12	<0.86	<0.75			
				Deep layer	-	-	-	-	-	7.6	9.6	-	None	-	5.4	5	3.1	<0.63	<0.84		
				Surface layer	2015/10/22	Sunny	14.9	27.4	14.2	0.5	Grayish yellow green	None	1.3	5.8	5	6.8	<0.76	<0.80			
				Deep layer	-	-	-	-	-	11.8	26.4	-	None	-	5.0	140	150	<0.80	<0.96		
		Surface layer	2015/12/18	Cloudy	3.1	28.2	5.3	0.5	Grayish yellowish green	None	1.8	5.5	3	4.0	<0.52	<0.84					
		Deep layer	-	-	-	-	-	5.1	27.2	-	None	-	5.5	4	4.4	<0.65	<0.74				
		Surface layer	2015/6/1	Sunny	24.6	24.7	22.2	0.5	Grayish yellow green	None	3.5	8.7	2	1.9	<0.82	<0.75					
		Deep layer	-	-	-	-	-	8.0	23.7	-	None	-	8.4	23	17	<0.54	<0.75				
		Surface layer	2015/8/19	Sunny	25.4	24.4	25.4	0.5	Light grayish yellow green	None	3.2	9.1	3	2.0	<0.87	<0.80					
		Deep layer	-	-	-	-	-	9.5	23.4	-	None	-	9.7	15	7.6	<0.74	<0.80				
	Surface layer	2015/10/21	Sunny	9.6	24.2	14.8	0.5	Grayish greenish yellow	None	0.9	6.8	10	10	<0.62	<0.92						
	Deep layer	-	-	-	-	-	9.1	23.2	-	Faint sewage	-	10.6	180	180	<0.68	<0.84					
	Surface layer	2015/12/19	Sunny	2.1	22.3	6.6	0.5	Grayish yellow	None	1.0	8.7	11	14	<0.74	<0.75						
	Deep layer	-	-	-	-	-	6.5	21.3	-	None	-	8.0	98	110	<0.74	<0.55					
	Surface layer	2015/6/1	Sunny	21.6	1.0	22.7	0.0	Light grayish yellow green	None	>1.0	10.8	3	1.7	<0.69	<0.69	Collected only from the surface layer due to shallow water					
	Deep layer	-	-	-	-	-	-	-	-	-	-	-	-	-	-	-					
	Surface layer	2015/10/20	Sunny	14.9	1.0	16.7	0.0	Light grayish yellow green	None	>1.0	8.6	3	3.7	<0.87	<0.80	Collected only from the surface layer due to shallow water					
	Deep layer	-	-	-	-	-	-	-	-	-	-	-	-	-	-	-					
	54	Sunoashi River System	Sounoseki Dam	Rifu Town	Surface layer	2015/6/1	Sunny	22.0	10.7	22.9	0.5	Grayish yellow green	None	1.3	18.3	3	2.6	<0.72	<0.80		
					Deep layer	-	-	-	-	-	8.9	9.7	-	Faint sewage	-	19.9	20	11	<0.69	<0.80	
					Surface layer	2015/8/19	Sunny	30.1	9.1	28.3	0.5	Grayish yellow green	None	0.8	20.7	6	3.9	<0.70	<0.80		
					Deep layer	-	-	-	-	-	12.0	8.1	-	None	-	24.3	12	13	<0.68	<0.69	
Surface layer					2015/10/19	Cloudy	18.4	6.5	16.8	0.5	Grayish yellow green	None	1.7	14.3	7	5.2	<0.88	<0.84			
Deep layer					-	-	-	-	-	15.2	5.5	-	None	-	16.6	10	3.9	<0.79	<0.80		
Surface layer		2015/12/19	Sunny	3.2	5.0	5.7	0.5	Grayish yellow	None	1.2	18.1	7	6.6	<0.83	<0.92						
Deep layer		-	-	-	-	-	6.1	4.0	-	None	-	18.7	7	6.8	<0.52	<0.81					
Surface layer		2015/5/29	Sunny	21.9	2.7	19.7	0.5	Grayish yellowish green	None	>2.7	7.2	<1	1.0	<0.76	<0.75						
Deep layer		-	-	-	-	-	19.4	1.7	-	None	-	7.2	<1	0.9	<0.79	<0.75					
Surface layer		2015/8/19	Sunny	28.4	1.5	25.9	0.0	Grayish yellow green	None	>1.5	7.1	3	3.2	<0.76	<0.69	Collected only from the surface layer due to shallow water					
Deep layer		-	-	-	-	-	-	-	-	-	-	-	-	-	-	-					
56	Marutazawatameike Pond	Pond exit	Sendai City	Surface layer	2015/10/20	Sunny	20.2	0.6	16.4	0.0	Light grayish yellowish green	None	>0.6	7.2	5	3.0	<0.80	<0.69	Collected only from the surface layer due to shallow water		
				Deep layer	-	-	-	-	-	-	-	-	-	-	-	-	-	-			
				Surface layer	2015/12/17	Cloudy	3.6	6.0	7.8	0.5	Light grayish yellow green	None	1.0	7.0	3	3.3	<0.52	<0.84			
				Deep layer	-	-	-	-	-	7.9	5.0	-	None	-	7.0	2	3.2	<0.86	<0.61		
				Surface layer	2015/5/29	Sunny	23.4	0.2	27.7	0.0	Light grayish yellow	Faint sewage	0.1	25.8	18	8.4	<0.76	<0.75	Collected only from the surface layer due to shallow water		
				Deep layer	-	-	-	-	-	-	-	-	-	-	-	-	-	-	-		
	Surface layer	2015/8/19	Sunny	25.9	0.2	33.2	0.0	Yellow greenish white	None	>0.2	14.7	8	4.7	<0.54	<0.92	Collected only from the surface layer due to shallow water					
	Deep layer	-	-	-	-	-	-	-	-	-	-	-	-	-	-	-					
	Surface layer	2015/10/19	Sunny	22.5	0.2	21.5	0.0	Light grayish greenish yellow	None	>0.2	37.6	4	3.6	<0.68	<0.74	Collected only from the surface layer due to shallow water					
	Deep layer	-	-	-	-	-	-	-	-	-	-	-	-	-	-	-					
	Surface layer	2015/12/17	Sunny	8.2	0.2	9.3	0.0	Yellowish white	None	>0.2	26.0	13	7.4	<0.84	<0.63	Collected only from the surface layer due to shallow water					
	Deep layer	-	-	-	-	-	-	-	-	-	-	-	-	-	-	-					
57	Natori River System	Okura Dam	Dam site	Surface layer	2015/5/29	Sunny	24.0	33.1	20.7	0.0	Grayish yellowish green	None	4.5	5.3	<1	0.6	<0.88	<0.92			
				Deep layer	-	-	-	-	-	8.1	32.1	-	None	-	5.4	3	1.9	<0.85	<0.69		
				Surface layer	2015/8/20	Cloudy	23.1	25.7	24.9	0.5	Grayish yellow green	None	1.6	7.9	3	3	<0.82	<0.63			
				Deep layer	-	-	-	-	-	8.7	24.7	-	None	-	6.2	5	3.8	<0.75	<0.75		
				Surface layer	2015/10/20	Sunny	20.4	24.1	16.5	0.5	Grayish yellow green	None	1.5	7.1	4	4.5	<0.72	<0.88			
				Deep layer	-	-	-	-	-	13.0	23.1	-	None	-	6.5	51	55	<0.66	<0.80		
	Surface layer	2015/12/17	Cloudy	4.4	35.0	6.7	0.5	Grayish yellow green	None	1.5	7.2	2	2.5	<0.59	<0.70						
	Deep layer	-	-	-	-	-	6.3	34.0	-	None	-	7.1	12	6.7	<0.75	<0.75					

Miyagi Lakes and Reservoirs (Sediment) 2/2

Location				Sampling Date	Weather	Air temperature (°C)	Water depth (m)	Sediment															Activity concentration [Bq/kg(dry)]			Remarks		
No.	Water area	Location	Municipality					Sediment temperature (°C)	Sample length (cm)	Color	Odor	Grain size distribution(%)						Sediment content (%)	Density (g/cm ³)	Property	Radioactive cesium							
												Coarse gravel	Medium gravel	Fine gravel	Coarse sand	Medium sand	Fine sand				Silt	Clay	Cs-134	Cs-137	Total			
L a k e s	58	Lake Amanuma	Lake exit					Sendai City	2015/5/28	Cloudy	18.1	0.4	21.0	3	Olive black	Faint sewage	0.0	7.0	17.4	23.8	38.8	7.9	2.0	3.1	76.7		2.650	Sand/silt
				2015/8/20	Cloudy	23.3	0.6		24.2	3	Black	Faint sewage	0.0	8.5	14.1	22.0	37.2	9.6	4.0	4.6	72.6	2.657	Sand/gravel	130	580	710		
				2015/10/19	Sunny	19.3	0.4		17.3	5	Olive black	Faint sewage	0.0	0.0	0.0	3.8	16.3	22.9	41.0	15.9	19.5	2.388	Silt	790	3,700	4,490		
				2015/12/16	Cloudy	13.1	0.3		10.4	3	Black	Faint sewage	0.0	1.9	7.2	18.3	43.8	18.2	3.6	7.0	62.4	2.645	Silt/sand	250	1,100	1,350		
	59	Natori River System	Kamafusa Dam	Dam site	Kawasaki Town	2015/5/28	Cloudy	16.0	28.4	10.5	5	Olive black	Faint sewage	0.0	0.0	0.0	0.1	0.0	0.0	46.5	53.4	24.3	2.502	Silt	75	270	345	
						2015/8/20	Sunny	25.6	21.9	15.2	5	Grayish olive	Faint sewage	0.0	0.0	0.0	0.2	0.3	3.8	57.9	37.8	29.9	2.461	Silt	67	310	377	
						2015/10/16	Sunny	16.8	23.7	15.4	10	Grayish olive	Faint sewage	0.0	0.0	0.0	0.0	0.5	0.0	53.4	46.2	24.7	2.523	Silt	59	260	319	
						2015/12/22	Sunny	9.0	21.5	8.3	5	Olive black	Faint sewage	0.0	0.8	1.2	1.5	2.1	18.4	56.3	19.8	36.0	2.556	Silt	30	150	180	
	60	Natori River System	Tarumizu Dam	Dam site	Natori City	2015/5/28	Cloudy	18.6	0.9	21.4	3	Olive black	Faint swamp	0.0	13.9	16.9	10.0	17.6	15.1	21.9	4.6	66.8	2.739	Sand/gravel	23	98	121	
						2015/10/19	Sunny	18.9	0.9	17.5	3	Dark brown	Faint algae	0.0	12.7	12.9	8.2	19.9	25.3	16.1	4.7	68.2	2.761	Sand/gravel	30	160	190	
	R e s e r v o i r s	61	Abukuma River System	Murata Dam	Dam site	Murata Town	2015/5/28	Cloudy	16.7	0.4	20.4	3	Olive brown	Faint swamp	0.0	3.0	11.6	5.7	18.3	28.9	23.4	9.2	65.7	2.507	Silt/sand	30	91	121
							2015/10/15	Sunny	17.9	1.1	15.5	3	Dim yellowish brown	Faint algae	0.0	19.1	15.8	17.8	25.1	11.0	5.6	5.6	77.2	2.625	Sand/gravel	8.7	36	44.7
2015/5/30							Sunny	26.1	1.0	20.8	3	Dark olive	None	0.0	23.2	22.9	13.9	14.0	5.8	15.8	4.5	67.5	2.708	Silt/gravel	41	190	231	
2015/8/21							Cloudy	21.2	0.4	22.1	3	Dim yellowish brown	Faint sewage	0.0	1.0	3.4	4.1	6.8	23.6	53.8	7.3	43.3	2.491	Silt/sand	100	400	500	
62		Abukuma River System	Kawarago Dam	Dam site	Shiroishi City	2015/10/15	Sunny	13.0	1.0	12.8	3	Brown	None	0.0	14.2	27.2	22.5	16.4	5.5	11.7	2.6	71.1	2.723	Sand/gravel	76	320	396	
						2015/12/16	Cloudy	8.3	0.7	8.8	3	Blackish brown	Faint sewage	0.0	0.0	0.0	0.1	0.2	5.8	63.0	30.9	19.7	2.339	Silt	140	540	680	
						2015/5/30	Sunny	23.9	30.4	10.4	5	Olive gray	Faint sewage	0.0	0.0	0.0	0.1	0.0	0.2	40.2	59.5	30.4	2.594	Silt	530	1,800	2,330	
						2015/8/21	Cloudy	21.8	24.8	12.9	5	Dark grayish yellow	Faint sewage	0.0	0.0	0.0	0.0	0.0	0.5	31.4	68.1	30.9	2.609	Silt	570	2,400	2,970	
63		Abukuma River System	Shichikasyuku Dam	Dam site	Shichikashuku Town	2015/10/24	Sunny	18.9	27.1	9.6	5	Grayish olive	Faint sewage	0.0	0.9	1.1	0.6	0.7	1.2	30.2	65.3	29.7	2.646	Silt	560	2,400	2,960	
						2015/12/23	Sunny	-0.2	31.5	7.3	5	Grayish olive	Faint sewage	0.0	1.3	1.9	2.6	8.2	8.4	24.3	53.3	36.9	2.668	Silt	560	2,700	3,260	
						2015/5/30	Sunny	28.4	0.7	28.1	3	Blackish brown	Faint sewage	0.0	22.7	26.6	16.6	16.0	5.0	8.7	4.4	71.0	2.666	Silt/gravel	50	220	270	
						2015/8/21	Rain	21.0	1.0	22.4	5	Dark brown	Faint sewage	0.0	0.0	1.5	1.0	3.0	11.2	61.2	22.1	15.7	2.039	Silt	220	1,100	1,320	
64	Lake Bagyunuma	Lake exit	Shiroishi City	2015/10/15	Sunny	23.0	1.0	16.2	5	Blackish brown	Faint sewage	0.0	0.9	2.7	5.3	4.8	4.2	57.0	25.1	16.6	2.093	Silt	200	870	1,070			
				2015/12/16	Cloudy	13.6	1.0	8.7	5	Blackish brown	Faint sewage	0.0	0.9	0.6	1.2	3.1	2.5	70.1	21.5	17.2	2.535	Silt	220	850	1,070			

Miyagi Lakes and Reservoirs (Surrounding Environment) 1/2

	Location				Sampling Date	Weather	Air temperature (°C)	Surrounding Environment(Soil,Air dose)							Remarks
								Soil				Air Dose (μSv/h)			
	General items														
	No.	Water area	Location	Municipality				Color	Odor	Property	Activity concentration [Bq/kg(dry)]				
Radioactive cesium															
							Cs-134	Cs-137	Total						
L a k e s a n d R e s e r v o i r s	44	Kurikoma Dam	Dam site	Kurihara City	2015/6/4	Sunny	19.6	Dim yellowish brown	None	Loamy	140	520	660	0.10	
					2015/8/18	Cloudy	28.4	Blackish brown	Faint earth	Loamy	280	1,100	1,380	0.10	
					2015/10/23	Sunny	14.8	Dim yellowish brown	Faint earth	Loamy	220	860	1,080	0.09	
					2015/12/20	Cloudy	4.1	Blackish brown	Faint earth	Loamy	330	1,500	1,830	0.10	
					2015/5/26	Sunny	30.4	Dark brown	Faint grass	Loamy	540	1,800	2,340	0.13	
					2015/8/18	Cloudy	26.8	Dim yellowish brown	Faint earth	Loamy	99	370	469	0.06	
		45	Hanayama Dam	Dam site	Kurihara City	2015/10/23	Sunny	14.7	Dim yellowish brown	Faint earth	Loamy	270	1,100	1,370	0.09
						2015/12/21	Rain	4.6	Blackish brown	Faint earth	Loamy	370	1,800	2,170	0.08
						2015/5/26	Sunny	26.5	Dark brown	Faint earth	Loamy	130	470	600	0.06
						2015/8/25	Cloudy	19.8	Dark brown	Faint earth	Loamy	120	600	720	0.06
						2015/10/23	Sunny	15.7	Blackish brown	Faint earth	Loamy	160	620	780	0.07
						2015/12/21	Cloudy	4.1	Dark brown	Faint earth	Loamy	72	270	342	0.07
	46	Kitakami River System	Naruko Dam	Dam site	Osaki City	2015/5/22	Sunny	25.5	Dark brown	Faint earth	Loamy	34	150	184	0.05
						2015/10/21	Sunny	16.9	Dim yellowish brown	None	Loamy	<3.6	6.2	6.2	0.04
						2015/5/22	Sunny	26.0	Blackish brown	Faint grass	Loamy	80	300	380	0.05
						2015/8/10	Sunny	31.1	Blackish brown	Faint grass	Loamy	50	250	300	0.05
						2015/10/21	Sunny	18.0	Grayish yellowish brown	None	Loamy	73	370	443	0.05
						2015/12/19	Sunny	3.7	Blackish brown	Faint earth	Loamy	47	230	277	0.05
	47	Lake Izunuma	Lake exit	Tome City	2015/5/25	Sunny	19.9	Brown	Faint earth	Loamy	35	160	195	0.06	
					2015/8/17	Cloudy	24.7	Dark brown	Faint earth	Loamy	66	210	276	0.06	
					2015/10/21	Sunny	18.9	Dim yellowish brown	Faint earth	Loamy	61	260	321	0.04	
					2015/12/18	Sunny	6.4	Brown	Faint earth	Loamy	53	260	313	0.05	
					2015/5/25	Sunny	24.5	Dim yellowish brown	Faint earth	Loamy	48	210	258	0.07	
					2015/8/24	Cloudy	19.5	Dark brown	Faint earth	Loamy	22	140	162	0.05	
	48	Lake Naganuma	Lake exit	Tome City	2015/10/22	Sunny	14.7	Brown	Faint earth	Loamy	52	210	262	0.05	
					2015/12/21	Cloudy	4.3	Dim yellowish brown	Faint earth	Loamy	24	99	123	0.05	
					2015/5/25	Sunny	19.6	Dark brown	Faint earth	Loamy	48	200	248	0.06	
					2015/8/24	Cloudy	22.6	Dark brown	Faint earth	Loamy	36	160	196	0.05	
2015/10/22					Sunny	14.9	Blackish brown	Faint earth	Loamy	88	400	488	0.05		
2015/12/18					Cloudy	3.1	Dark brown	Faint earth	Loamy	57	250	307	0.05		
49	Shukunosawatameike Pond	Pond exit	Kurihara City	2015/6/1	Sunny	24.6	Grayish yellowish brown	Faint earth	Loamy	160	570	730	0.05		
				2015/8/19	Sunny	25.4	Dark brown	Faint earth	Loamy	120	490	610	0.04		
				2015/10/21	Sunny	9.6	Dark brown	Faint earth	Loamy	100	520	620	0.04		
				2015/12/19	Sunny	2.1	Dark brown	Faint earth	Loamy	59	230	289	0.04		
				2015/6/1	Sunny	21.6	Blackish brown	Faint earth	Clay-loamy	96	340	436	0.06		
				2015/10/20	Sunny	14.9	Blackish brown	Faint earth	Loamy	43	190	233	0.05		
50	Futatsuishi Dam	Dam site	Kami Town	2015/5/25	Sunny	24.5	Dim yellowish brown	Faint earth	Loamy	48	210	258	0.07		
				2015/8/24	Cloudy	19.5	Dark brown	Faint earth	Loamy	22	140	162	0.05		
				2015/10/22	Sunny	14.7	Brown	Faint earth	Loamy	52	210	262	0.05		
				2015/12/21	Cloudy	4.3	Dim yellowish brown	Faint earth	Loamy	24	99	123	0.05		
				2015/5/25	Sunny	19.6	Dark brown	Faint earth	Loamy	48	200	248	0.06		
				2015/8/24	Cloudy	22.6	Dark brown	Faint earth	Loamy	36	160	196	0.05		
51	Naruse River System	Urushizawa Dam	Dam site	Kami Town	2015/10/22	Sunny	14.9	Blackish brown	Faint earth	Loamy	88	400	488	0.05	
					2015/12/18	Cloudy	3.1	Dark brown	Faint earth	Loamy	57	250	307	0.05	
					2015/6/1	Sunny	24.6	Grayish yellowish brown	Faint earth	Loamy	160	570	730	0.05	
					2015/8/19	Sunny	25.4	Dark brown	Faint earth	Loamy	120	490	610	0.04	
					2015/10/21	Sunny	9.6	Dark brown	Faint earth	Loamy	100	520	620	0.04	
					2015/12/19	Sunny	2.1	Dark brown	Faint earth	Loamy	59	230	289	0.04	
52	Minamikawa Dam	Dam site	Taiwa Town	2015/6/1	Sunny	21.6	Blackish brown	Faint earth	Clay-loamy	96	340	436	0.06		
				2015/10/20	Sunny	14.9	Blackish brown	Faint earth	Loamy	43	190	233	0.05		
				2015/5/25	Sunny	24.5	Dim yellowish brown	Faint earth	Loamy	48	210	258	0.07		
				2015/8/24	Cloudy	19.5	Dark brown	Faint earth	Loamy	22	140	162	0.05		
				2015/10/22	Sunny	14.7	Brown	Faint earth	Loamy	52	210	262	0.05		
				2015/12/21	Cloudy	4.3	Dim yellowish brown	Faint earth	Loamy	24	99	123	0.05		
53	Miyatoko Dam	Dam site	Taiwa Town	2015/5/25	Sunny	24.5	Dim yellowish brown	Faint earth	Loamy	48	210	258	0.07		
				2015/8/24	Cloudy	19.5	Dark brown	Faint earth	Loamy	22	140	162	0.05		
				2015/10/22	Sunny	14.7	Brown	Faint earth	Loamy	52	210	262	0.05		
				2015/12/21	Cloudy	4.3	Dim yellowish brown	Faint earth	Loamy	24	99	123	0.05		
				2015/5/25	Sunny	19.6	Dark brown	Faint earth	Loamy	48	200	248	0.06		
				2015/8/24	Cloudy	22.6	Dark brown	Faint earth	Loamy	36	160	196	0.05		

Miyagi Lakes and Reservoirs (Surrounding Environment) 2/2

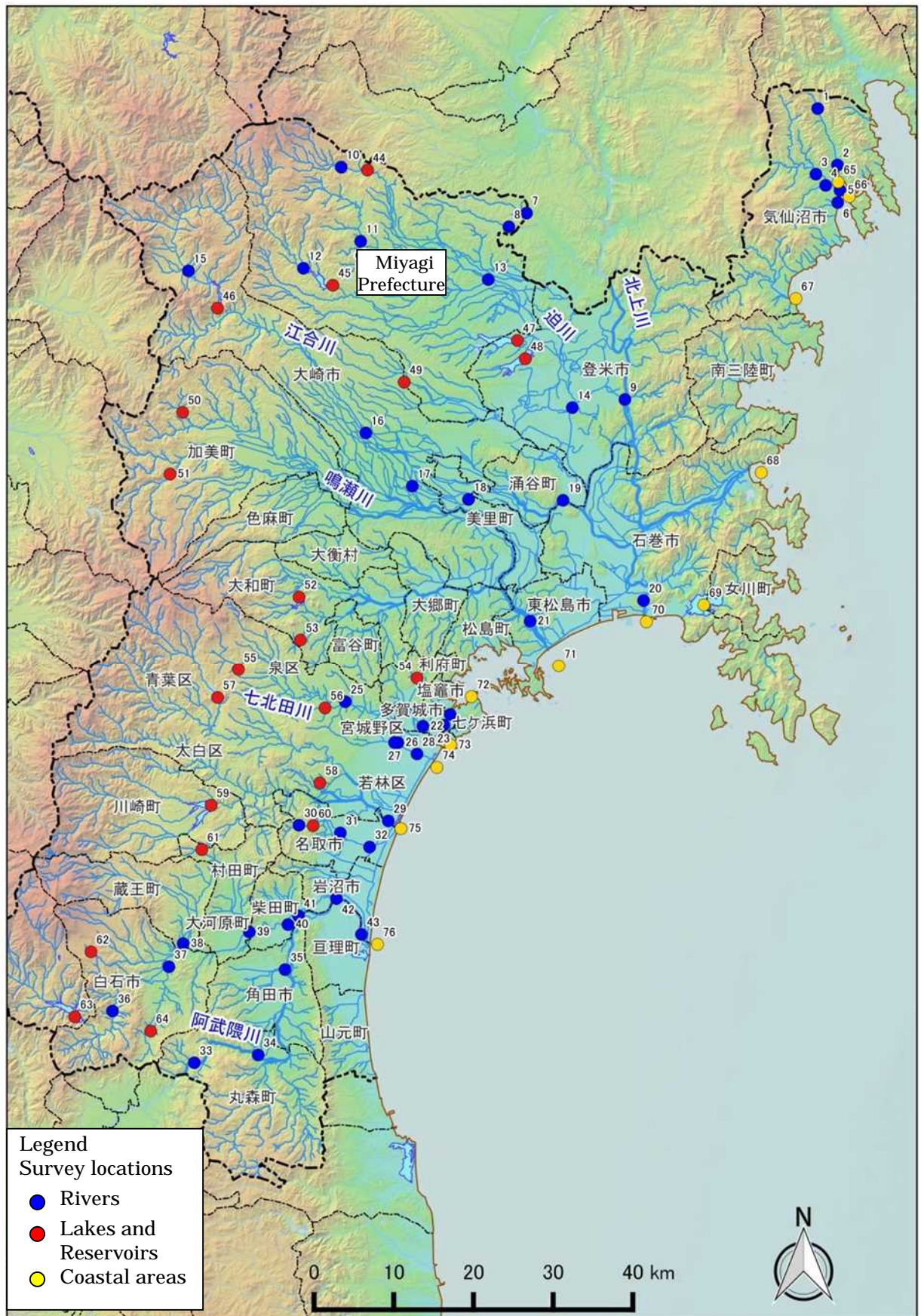
L a k e s R e s e r v o i r s	Location				Sampling Date	Weather	Air temperature (°C)	Surrounding Environment(Soil,Air dose)						Remarks	
								Soil				Air Dose (μSv/h)			
	General items														
	No.	Water area	Location	Municipality				Color	Odor	Property	Activity concentration [Bq/kg(dry)]				
Radioactive cesium															
							Cs-134	Cs-137	Total						
54	Sunaoshi River System	Sounoseki Dam	Dam site	Rifu Town	2015/6/1	Sunny	22.0	Dim yellowish brown	Faint earth	Loamy	83	360	443	0.05	
					2015/8/19	Sunny	30.1	Dark brown	Faint earth	Loamy	130	460	590	0.05	
					2015/10/19	Cloudy	18.4	Dim yellowish brown	Faint earth	Loamy	78	370	448	0.06	
					2015/12/19	Sunny	3.2	Dark brown	Faint earth	Loamy	68	330	398	0.05	
	55	Nanakita River System	Nanakita Dam	Dam site	Sendai City	2015/5/29	Sunny	21.9	Dark brown	Faint earth	Loamy	63	210	273	0.05
						2015/8/19	Sunny	28.4	Dark brown	Faint earth	Loamy	15	95	110	0.05
						2015/10/20	Sunny	20.2	Blackish brown	Faint earth	Loamy	45	280	325	0.05
						2015/12/17	Cloudy	3.6	Blackish brown	Faint earth	Loamy	99	370	469	0.05
	56	Marutazawatameike Pond	Pond exit	Sendai City	2015/5/29	Sunny	23.4	Grayish yellowish brown	Faint earth	Loamy	45	210	255	0.04	
					2015/8/19	Sunny	25.9	Blackish brown	Faint earth	Loamy	18	79	97	0.04	
					2015/10/19	Sunny	22.5	Grayish yellowish brown	Faint earth	Loamy	39	170	209	0.04	
					2015/12/17	Sunny	8.2	Blackish brown	Faint earth	Loamy	120	520	640	0.04	
	57	Natori River System	Okura Dam	Dam site	Sendai City	2015/5/29	Sunny	24.0	Blackish brown	Faint grass	Loamy	50	200	250	0.04
						2015/8/20	Cloudy	23.1	Blackish brown	Faint earth	Loamy	29	150	179	0.04
						2015/10/20	Sunny	20.4	Blackish brown	Faint earth	Loamy	47	230	277	0.04
						2015/12/17	Cloudy	4.4	Blackish brown	Faint earth	Loamy	65	260	325	0.04
	58	Lake Amanuma	Lake exit	Sendai City	2015/5/28	Cloudy	18.1	Dim yellowish brown	Faint grass	Loamy	74	260	334	0.07	
					2015/8/20	Cloudy	23.3	Dark brown	Faint grass	Loamy	60	290	350	0.07	
					2015/10/19	Sunny	19.3	Dim yellowish brown	Faint earth	Loamy	77	350	427	0.06	
					2015/12/16	Cloudy	13.1	Dim yellowish brown	Faint earth	Loamy	69	320	389	0.07	
	59	Natori River System	Kamafusa Dam	Dam site	Kawasaki Town	2015/5/28	Cloudy	16.0	Dim yellowish brown	Faint earth	Loamy	57	210	267	0.05
						2015/8/20	Sunny	25.6	Blackish brown	Faint earth	Loamy	37	180	217	0.05
						2015/10/16	Sunny	16.8	Dark brown	Faint earth	Loamy	51	230	281	0.05
						2015/12/22	Sunny	9.0	Blackish brown	Faint earth	Loamy	63	300	363	0.05
60	Natori River System	Tarumizu Dam	Dam site	Natori City	2015/5/28	Cloudy	18.6	Dim yellowish brown	Faint grass	Loamy	110	440	550	0.06	
					2015/10/19	Sunny	18.9	Greenish gray	Faint earth	Loamy	110	450	560	0.06	
61	Abukuma River System	Murata Dam	Dam site	Murata Town	2015/5/28	Cloudy	16.7	Dark brown	Faint earth	Loamy	100	400	500	0.06	
					2015/10/15	Sunny	17.9	Blackish brown	Faint earth	Loamy	86	550	636	0.06	
62	Abukuma River System	Kawarago Dam	Dam site	Shiroishi City	2015/5/30	Sunny	26.1	Dim yellowish brown	Faint earth	Loamy	300	1,100	1,400	0.08	
					2015/8/21	Cloudy	21.2	Blackish brown	Faint earth	Loamy	220	900	1,120	0.07	
					2015/10/15	Sunny	13.0	Brown	Faint earth	Loamy	94	430	524	0.07	
					2015/12/16	Cloudy	8.3	Dark brown	Faint earth	Loamy	200	890	1,090	0.07	
63	Abukuma River System	Shichikasyuku Dam	Dam site	Shichikashuku Town	2015/5/30	Sunny	23.9	Dim yellowish brown	Faint grass	Loamy	180	690	870	0.15	
					2015/8/21	Cloudy	21.8	Dim yellowish brown	Faint earth	Loamy	210	880	1,090	0.14	
					2015/10/24	Sunny	18.9	Dim yellowish brown	Faint earth	Loamy	210	890	1,100	0.13	
					2015/12/23	Sunny	-0.2	Dark brown	Faint earth	Loamy	180	820	1,000	0.13	
64	Lake Bagyunuma	Lake exit	Shiroishi City	2015/5/30	Sunny	28.4	Grayish yellowish brown	Faint earth	Loamy	340	1,300	1,640	0.18		
				2015/8/21	Rain	21.0	Dark brown	Faint earth	Loamy	190	700	890	0.16		
				2015/10/15	Sunny	23.0	Dim yellowish brown	Faint earth	Loamy	240	1,100	1,340	0.18		
				2015/12/16	Cloudy	13.6	Blackish brown	Faint earth	Loamy	120	520	640	0.17		

Miyagi Coastal areas (Water) 1/2

No.	Location Water area		Sampling Date	Weather	Air temperature (°C)	Water depth (m)	Water										Remarks			
							General items							Activity concentration(Bq/L)						
							Water temperature (°C)	Sampling depth (m)	Color	Odor	Secchi disk depth (m)	Salinity (‰)	SS (mg/L)	Turbidity (FNU)	Radioactive cesium					
							Cs-134	Cs-137												
65	Kesennuma Bay (B)	Offshore of Hachigasaki	Surface layer	2015/6/1	Sunny	23.0	14.5	14.6	0.5	Dark grayish yellow green	None	6.5	28.0	<1	0.4	<0.76	<0.88			
			Deep layer					11.3	13.5	-	None		30.0	<1	0.2	<0.84	<0.70			
			Surface layer	2015/8/24	Cloudy	21.1	18.8	21.8	0.5	Dark grayish yellowish green	None	3.7	28.3	<1	0.4	<0.74	<0.80			
			Deep layer					20.4	17.8	-	None		30.8	<1	0.3	<0.63	<0.69			
			Surface layer	2015/11/18	Cloudy	14.7	18.1	15.3	0.5	Dark grayish yellow green	None	5.5	30.4	<1	0.5	<0.65	<0.80			
			Deep layer					15.5	17.1	-	None		31.2	2	0.9	<0.80	<0.80			
	Surface layer	2016/2/11	Sunny	2.8	17.2	7.5	0.5	Dark grayish green	None	8.8	31.0	<1	0.5	<0.70	<0.80					
	Deep layer					7.2	16.2	-	None		31.2	<1	0.5	<0.76	<0.80					
	66	Kesennuma Bay (C)	Offshore of Oshimakita	Surface layer	2015/6/1	Sunny	22.4	37.5	14.0	0.5	Dark grayish yellow green	None	4.5	27.0	<1	0.5	<0.82	<0.63		
				Deep layer					9.6	36.5	-	None		30.0	<1	0.2	<0.70	<0.48		
				Surface layer	2015/8/24	Cloudy	20.2	38.0	20.9	0.5	Dark grayish yellowish green	None	3.9	20.9	<1	0.3	<0.82	<0.75		
				Deep layer					17.5	37.0	-	None		30.8	1	0.8	<0.70	<0.80		
Surface layer				2015/11/18	Cloudy	14.0	40.1	15.1	0.5	Dark grayish green	None	9.0	30.1	<1	0.3	<0.70	<0.84			
Deep layer								15.6	39.1	-	None		31.3	2	1.4	<0.68	<0.99			
Surface layer		2016/2/11	Sunny	4.5	37.7	8.0	0.5	Dark grayish green	None	11.5	31.4	<1	0.4	<0.61	<0.84					
Deep layer						8.6	36.7	-	None		32.2	<1	0.4	<0.67	<0.84					
67		Offshore of Tsuyagawa River Estuary	Offshore of Tsuyagawa River Estuary	Surface layer	2015/6/2	Sunny	20.5	11.0	14.3	0.5	Dark grayish bluish green	None	7.0	29.0	<1	0.4	<0.88	<0.75		
				Deep layer					13.3	10.0	-	None		30.0	<1	0.1	<0.81	<0.74		
				Surface layer	2015/11/21	Sunny	14.4	10.9	15.3	0.5	Grayish green	None	3.2	31.0	3	1.6	<0.66	<0.84		
				Deep layer					15.6	9.9	-	None		31.2	4	1.6	<0.83	<0.88		
	68			All other neighboring sea areas	Oppa Bay (Jyusanhama Beach)	Surface layer	2015/6/2	Sunny	21.0	18.5	18.2	0.5	Dark grayish green	None	6.0	22.0	<1	0.8	<0.79	<0.88
						Deep layer					11.4	17.5	-	None		31.0	<1	0.1	<0.77	<0.55
Surface layer		2015/8/28	Cloudy			25.0	17.9	21.2	0.0	Grayish yellow green	None	2.5	20.2	4	2.2	<0.75	<0.88			
Deep layer								20.9	16.9	-	None		30.6	<1	0.6	<0.54	<0.80			
Surface layer		2015/11/20	Cloudy			10.7	18.8	15.3	0.5	Grayish green	None	4.5	28.1	3	1.8	<0.79	<0.84			
Deep layer								15.9	17.8	-	None		31.4	3	2.5	<0.54	<0.88			
Surface layer		2016/2/11	Sunny	5.7	17.2	8.5	0.5	Dark grayish green	None	10.5	30.5	<1	0.6	<0.63	<0.88					
Deep layer						9.2	16.2	-	None		31.5	<1	0.4	<0.76	<0.84					
69		Neighboring sea area of Ishinomaki (C)	Lake Mangokuura , M-6 (center)	Surface layer	2015/5/28	Cloudy	18.2	3.3	18.0	0.5	Grayish yellowish green	None	3.0	29.2	1	0.7	<0.79	<0.75		
				Deep layer					17.8	2.3	-	None		29.1	1	0.9	<0.79	<0.80		
				Surface layer	2015/8/25	Cloudy	19.2	3.0	22.1	0.0	Grayish yellow green	None	2.3	29.3	3	1.3	<0.66	<0.84		
				Deep layer					22.5	2.0	-	None		29.4	3	1.6	<0.51	<0.80		
	Surface layer			2015/11/20	Rain	11.2	3.5	14.3	0.5	Grayish yellowish green	None	>3.5	30.0	1	1	<0.63	<0.55			
	Deep layer							14.4	2.5	-	None		30.0	1	0.9	<0.75	<0.75			
	Surface layer	2016/2/9	Sunny	7.9	3.3	5.5	0.5	Dark grayish yellow green	None	>3.3	30.3	<1	0.7	<0.67	<0.75					
	Deep layer					5.4	2.3	-	None		30.4	<1	0.7	<0.83	<0.80					
	70	Neighboring sea area of Ishinomaki (B-3)	Offshore of Kitakami River Estuary	Surface layer	2015/5/28	Cloudy	17.1	8.5	15.9	0.5	Grayish yellow green	None	1.8	17.6	5	3.9	<0.79	<0.75		
				Deep layer					12.8	7.5	-	None		30.4	6	4.1	<0.68	<0.84		
				Surface layer	2015/8/29	Rain	20.6	8.1	22.0	0.0	Dark grayish yellowish green	None	3.0	20.7	7	2.4	<0.54	<0.75		
				Deep layer					22.2	7.1	-	None		30.0	2	0.9	<0.68	<0.84		
Surface layer				2015/11/20	Cloudy	7.2	8.0	13.7	0.5	Grayish green	None	4.2	20.1	3	2	<0.79	<0.84			
Deep layer								15.1	7.0	-	None		30.5	3	1.7	<0.76	<0.84			
Surface layer		2016/2/9	Sunny	6.5	6.0	6.4	0.5	Dark grayish yellow green	None	4.0	19.2	6	3.7	<0.89	<0.80					
Deep layer						7.9	5.0	-	None		29.8	4	2.8	<0.68	<0.69					
71		Neighboring sea area of Ishinomaki (C)	Offshore of Naruse	Surface layer	2015/5/27	Cloudy	19.2	14.4	18.4	0.5	Grayish yellow green	None	2.8	24.5	4	2.5	<0.70	<0.55		
				Deep layer					10.2	13.4	-	None		30.4	2	1.9	<0.85	<0.69		
				Surface layer	2015/8/19	Sunny	26.1	15.0	24.3	0.0	Grayish yellow green	None	3.8	24.8	6	3.6	<0.81	<0.80		
				Deep layer					22.8	14.0	-	None		27.6	17	12	<0.63	<0.69		
	Surface layer			2015/11/17	Sunny	15.6	15.0	15.6	0.5	Grayish yellow green	None	3.2	28.3	3	2.4	<0.79	<0.63			
	Deep layer							15.8	14.0	-	None		30.0	5	5	<0.86	<0.84			
Surface layer	2016/2/10	Sunny	5.7	14.3	7.2	0.5	Dark grayish yellow green	None	2.5	30.5	4	2.9	<0.78	<0.84						
Deep layer					8.1	13.3	-	None		31.1	13	6.5	<0.70	<0.69						

Miyagi Coastal areas (Water) 2/2

No.	Location		Sampling Date	Weather	Air temperature (°C)	Water depth (m)	Water										Remarks	
							General items						Activity concentration(Bq/L)					
	Water temperature (°C)	Sampling depth (m)					Color	Odor	Secchi disk depth (m)	Salinity (‰)	SS (mg/L)	Turbidity (FNU)	Radioactive cesium					
								Cs-134	Cs-137									
C o a s t a l a r e a s	72	Matsushima Bay (B) Nishihama Beach	Surface layer	2015/5/27	Sunny	19.1	13.5	19.1	0.5	Grayish yellowish green	None	1.6	29.2	5	3.7	<0.58	<0.60	
			Deep layer					13.0	12.5	-	None		30.0	18	10	<0.87	<0.70	
			Surface layer	2015/8/19	Sunny	27.6	13.3	25.6	0.0	Grayish yellowish green	None	1.7	26.9	2	1.6	<0.80	<0.55	
			Deep layer					23.2	12.3	-	None		27.3	<1	0.6	<0.66	<0.84	
			Surface layer	2015/11/17	Sunny	15.9	13.2	14.7	0.5	Grayish yellowish green	None	2.2	29.6	5	3.8	<0.65	<0.75	
			Deep layer					14.7	12.2	-	None		29.8	7	5.1	<0.82	<0.80	
			Surface layer	2016/2/10	Sunny	4.1	13.0	4.7	0.5	Dark grayish yellowish green	None	4.5	30.1	4	2.8	<0.60	<0.84	
			Deep layer					5.9	12.0	-	None		31.7	5	3.4	<0.70	<0.80	
	73	Neighboring sea area of Sendai Port (A)	Naiko Inner Port, 4-Nai	Surface layer	2015/5/27	Sunny	19.0	19.0	16.6	0.5	Grayish yellow green	None	2.0	26.8	3	2.1	<0.79	<0.75
				Deep layer					9.1	18.0	-	None		30.9	11	8.3	<0.72	<0.54
				Surface layer	2015/8/19	Sunny	25.0	19.7	23.4	0.0	Grayish yellowish green	None	2.5	24.4	1	0.5	<0.74	<0.84
				Deep layer					20.9	18.7	-	None		27.7	2	2	<0.69	<0.80
				Surface layer	2015/11/17	Sunny	14.3	19.2	15.9	0.5	Grayish green	None	3.0	30.0	2	1.7	<0.82	<0.75
				Deep layer					16.3	18.2	-	None		30.9	22	18	<0.85	<0.84
				Surface layer	2016/2/10	Snow	2.0	19.5	7.2	0.5	Dark grayish yellow green	None	3.6	30.6	4	2.4	<0.85	<0.99
				Deep layer					7.0	18.5	-	None		30.4	4	2.3	<0.92	<0.80
	74	Neighboring sea area of Sendai Port (B)	Gamo-3	Surface layer	2015/5/27	Sunny	18.9	17.0	16.8	0.5	Grayish yellowish green	None	3.4	29.3	2	1.2	<0.61	<0.61
				Deep layer					9.5	16.0	-	None		31.2	11	6.5	<0.82	<0.69
				Surface layer	2015/8/19	Sunny	25.2	18.3	24.8	0.0	Dark grayish yellowish green	None	2.9	24.9	<1	0.6	<0.72	<0.80
				Deep layer					21.3	17.3	-	None		27.5	2	1.5	<0.72	<0.80
				Surface layer	2015/11/17	Sunny	13.9	17.7	15.5	0.5	Grayish bluish green	None	3.3	29.7	5	2.2	<0.70	<0.96
				Deep layer					15.9	16.7	-	None		30.8	19	19	<0.60	<0.80
				Surface layer	2016/2/10	Snow	1.8	17.5	6.8	0.5	Dark grayish yellowish green	None	10.5	30.5	1	0.9	<0.79	<0.88
				Deep layer					6.5	16.5	-	None		30.1	3	1.7	<0.84	<0.69
75	All other neighboring sea areas	Ido-5	Surface layer	2015/5/26	Sunny	18.1	5.5	16.6	0.5	Dark grayish yellow green	None	2.6	29.1	3	1.6	<0.65	<0.66	
			Deep layer					16.2	4.5	-	None		29.2	2	1.2	<0.61	<0.70	
			Surface layer	2015/8/20	Cloudy	22.8	6.3	24.3	0.0	Dark grayish yellow green	None	2.5	19.8	5	2.1	<0.63	<0.55	
			Deep layer					24.8	5.3	-	None		24.9	3	2.8	<0.73	<0.75	
			Surface layer	2015/11/22	Sunny	7.1	6.7	13.7	0.5	Grayish yellow green	None	4.5	28.6	2	1	<0.74	<0.80	
			Deep layer					14.3	5.7	-	None		29.9	4	1.5	<0.72	<0.84	
			Surface layer	2016/2/4	Sunny	0.2	4.0	6.2	0.5	Dark grayish green	None	>4.0	29.0	1	1.1	<0.63	<0.84	
			Deep layer					6.0	3.0	-	None		29.8	2	1.4	<0.68	<0.63	
76	Offshore of Abukuma River Estuary	Offshore of Abukuma River Estuary	Surface layer	2015/5/29	Sunny	19.8	10.6	18.9	0.5	Grayish green	None	3.3	26.3	2	1.6	<0.87	<0.55	
			Deep layer					16.7	9.6	-	None		30.4	1	0.5	<0.82	<0.92	
			Surface layer	2015/6/24	Sunny	22.4	10.0	23.4	0.5	Dark grayish yellow green	None	2.0	18.4	3	1.3	<0.60	<0.80	
			Deep layer					18.7	9.0	-	None		30.3	2	0.8	<0.48	<0.69	
			Surface layer	2015/7/16	Rain	22.5	9.2	22.8	0.5	Dark grayish green	None	3.2	22.5	4	1.1	<0.85	<0.88	
			Deep layer					20.1	8.2	-	None		25.5	<1	0.3	<0.91	<0.88	
			Surface layer	2015/8/20	Cloudy	23.5	10.1	24.8	0.0	Dark grayish bluish green	None	2.8	19.2	3	1.3	<0.96	<0.75	
			Deep layer					23.8	9.1	-	None		26.9	5	2.3	<0.86	<0.80	
			Surface layer	2015/9/16	Cloudy	22.3	10.8	21.1	0.5	Dark grayish greenish yellow	None	1.5	15.2	12	6.8	<0.70	<0.75	
			Deep layer					21.9	9.8	-	None		25.9	5	3.4	<0.63	<0.55	
			Surface layer	2015/10/21	Sunny	19.7	10.1	17.7	0.5	Dark grayish yellowish green	None	5.4	22.4	1	0.6	<0.58	<0.80	
			Deep layer					18.3	9.1	-	None		30.1	25	10	<0.68	<0.80	
			Surface layer	2015/11/22	Sunny	9.6	10.5	14.9	0.5	Grayish green	None	5.5	29.2	<1	0.4	<0.74	<0.75	
			Deep layer					15.4	9.5	-	None		30.3	<1	0.6	<0.58	<0.63	
			Surface layer	2015/12/10	Cloudy	5.6	10.5	10.8	0.5	Dark grayish yellow green	None	3.0	21.6	4	2.6	<0.48	<0.75	
			Deep layer					13.5	9.5	-	None		30.9	1	0.9	<0.81	<0.63	
			Surface layer	2016/1/17	Sunny	-0.1	10.6	7.7	0.5	Dark grayish yellowish green	None	5.5	22.1	1	1	<0.75	<0.63	
			Deep layer					9.9	9.6	-	None		31.1	2	1.3	<0.88	<0.92	
			Surface layer	2016/2/4	Sunny	5.4	10.5	7.0	0.5	Dark grayish green	None	6.3	30.6	1	0.8	<0.68	<0.84	
			Deep layer					7.8	9.5	-	None		31.2	1	1.1	<0.86	<0.63	



Survey Locations(Miyagi Prefecture)