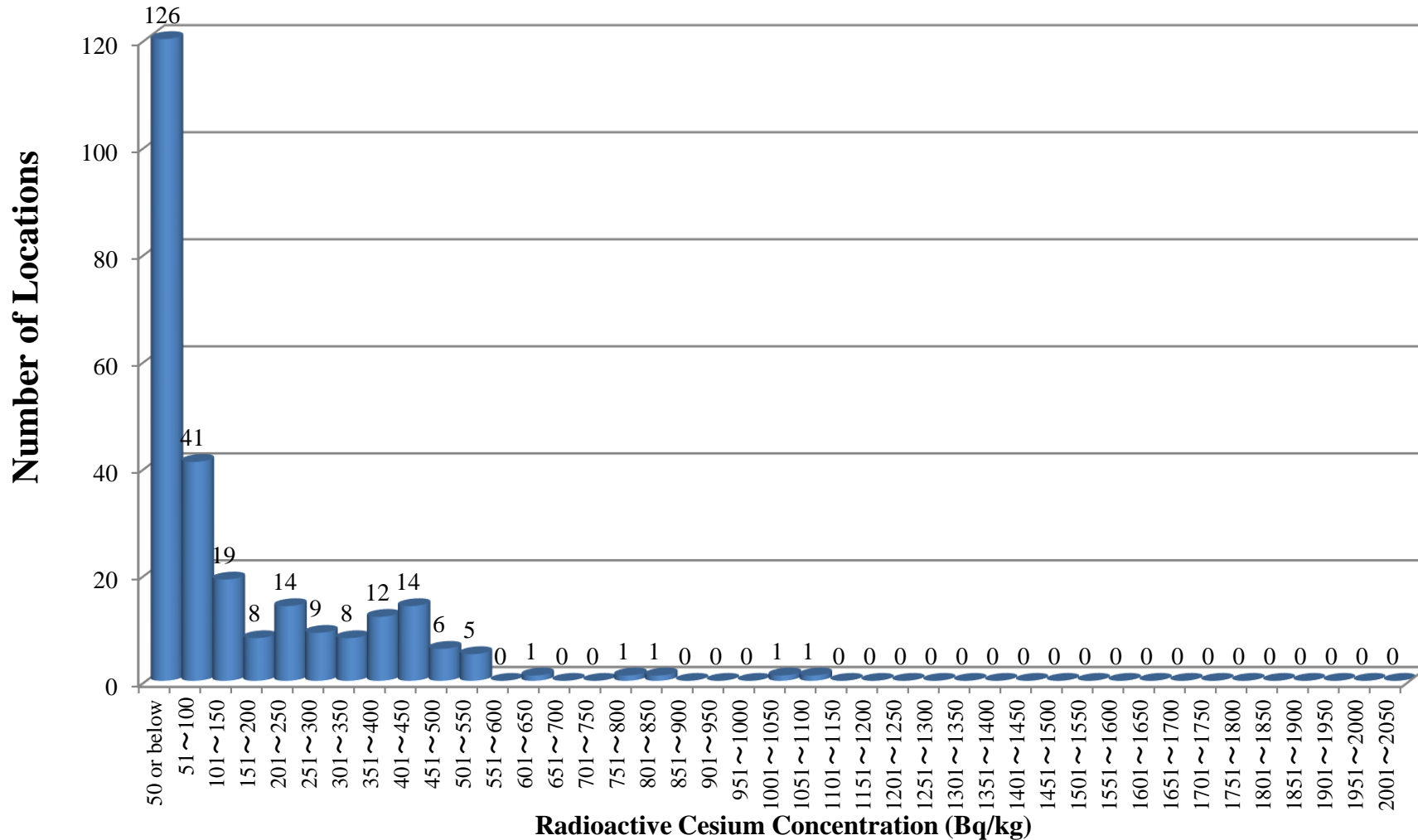


**Sea areas: 1-2km from the coast (Sediment): Number of locations by radioactive cesium concentration (50 Bq/kg) (FY2014)**



\*FY2014 Survey Results: Prefectures of Iwate (4), Miyagi (52), Fukushima (150), Ibaraki (20), Chiba/Tokyo (41): Total of 267 Locations

**FY2014 Radioactive Material Monitoring in the Water Environment in and around Fukushima Prefecture  
(Environment Management Bureau, Ministry of the Environment)**