

FY2013 Ibaraki Prefecture Survey Results

[Survey Results]

(1) Water

Rivers

Radioactive cesium (Cs-134, Cs-137): Not detectable at any location

Lakes and reservoirs

Radioactive cesium (Cs-134, Cs-137): Not detectable at any location

Coastal areas

Radioactive cesium (Cs-134, Cs-137): Not detectable at any location

(2) Sediments

Rivers

Cs-134: ND - 1,400 Bq/kg (dry)

Cs-137: 7.2 - 2,900 Bq/kg (dry)

Lakes and reservoirs

Cs-134: 2.0 - 1,700 Bq/kg (dry)

Cs-137: 9.5 - 3,700 Bq/kg (dry)

Coastal areas

Cs-134: ND - 23 Bq/kg (dry)

Cs-137: 1.7 - 44 Bq/kg (dry)

(3) Surrounding Environment

(a) Soil

Rivers

Cs-134: 1.7 - 3,200 Bq/kg (dry)

Cs-137: 5.2 - 6,500 Bq/kg (dry)

Lakes and reservoirs

Cs-134: 6.9 - 1,600 Bq/kg (dry)

Cs-137: 18 - 3,200 Bq/kg (dry)

(b) Ambient dose rate

Rivers

0.03 - 0.31 μ Sv/h

Lakes and reservoirs

0.05 - 0.19 μ Sv/h

Ibaraki River (Water) 1/5

No.	Location			Sampling Date	Weather	Air temperature (°C)	Water depth (m)	Water										Remarks
	Water area	Location	Municipality					General items							Activity concentration(Bq/L)			
								Water temperature (°C)	mping de (m)	Color	Odor	Transparency (cm)	Electrical conductivity (mS/m)	SS (mg/L)	Turbidity (FNU)	Radioactive cesium		
														Cs-134	Cs-137			
R i v e r s	1	Satone River	Yamagoya Bridge	Kitaibaraki City	2013/5/29	Cloudy	18.5	0.2	15.0	0.0	Colorless transparent	None	>100	7.6	<1	0.7	<0.49	<0.56
					2013/8/26	Sunny	24.5	0.3	17.6	0.0	Grayish yellow	None	>100	12.7	13	2.3	<0.69	<0.81
					2013/11/14	Sunny	5.1	0.2	8.7	0.0	Grayish yellow green	None	>100	11.7	2	0.7	<0.61	<0.52
					2014/2/12	Cloudy	5.4	0.4	6.9	0.0	Greenish light gray	None	51	15.2	7	7.6	<0.61	<0.56
					2013/5/29	Light rain	19.3	0.3	17.2	0.0	Yellow greenish white	None	>100	12.1	2	1.5	<0.70	<0.50
			2013/8/26		Sunny	25.7	0.4	21.0	0.0	Dark grayish yellow	None	>100	20.8	2	1.6	<0.66	<0.69	
			2013/11/14		Sunny	1.6	0.5	7.6	0.0	Grayish yellow green	None	>100	17.9	<1	1.2	<0.56	<0.65	
			2014/2/12		Cloudy	4.1	0.6	5.6	0.0	Light grayish green	None	>100	22.0	5	1.9	<0.69	<0.66	
			2013/5/29		Cloudy	19.2	0.4	14.1	0.0	Colorless transparent	None	>100	7.0	<1	0.6	<0.59	<0.53	
			2013/8/26		Sunny	27.5	0.4	18.1	0.0	Light grayish greenish yellow	None	>100	6.2	<1	1.3	<0.80	<0.77	
			2013/11/14		Sunny	7.1	0.4	7.4	0.0	Light grayish yellow green	None	>100	6.3	2	0.4	<0.44	<0.51	
			2014/2/13		Sunny	4.4	0.4	4.4	0.0	Dark grayish reddish yellow	None	>100	7.2	<1	0.3	<0.72	<0.55	
			2013/5/28		Cloudy	23.2	0.6	21.7	0.0	Greenish white	None	>100	27.0	4	2.4	<0.56	<0.60	
			2013/8/27		Sunny	23.4	0.7	21.9	0.0	Dark grayish yellow red	None	72	17.5	11	2.0	<0.65	<0.52	
			2013/11/25		Cloudy	15.2	0.5	11.0	0.0	Light grayish yellow	None	>100	22.4	3	1.7	<0.54	<0.62	
	2014/2/10	Sunny	5.5	0.5	5.4	0.0	Grayish reddish yellow	None	83	37.3	4	3.6	<0.67	<0.71				
	2013/5/29	Cloudy	20.0	0.4	14.0	0.0	Colorless transparent	None	>100	4.8	2	1.0	<0.71	<0.76				
	2013/8/26	Sunny	25.0	0.5	17.7	0.0	Light grayish yellow	None	>100	6.5	2	1.3	<0.80	<0.64				
	2013/11/14	Sunny	9.6	0.5	6.9	0.0	Grayish yellow	None	>100	6.3	<1	0.3	<0.48	<0.42				
	2014/2/13	Sunny	3.1	0.3	3.3	0.0	Bluish faint gray	None	>100	7.7	<1	0.2	<0.63	<0.63				
	2013/5/28	Sunny	23.3	0.4	22.4	0.0	Greenish pale gray	None	92	12.9	10	3.2	<0.56	<0.65				
	2013/8/27	Sunny	25.4	0.5	20.9	0.0	Dark grayish yellow red	None	60	12.9	6	4.1	<0.73	<0.70				
	2013/11/25	Light rain	12.6	0.5	10.3	0.0	Light grayish yellow green	None	>100	14.7	1	0.9	<0.63	<0.59				
	2014/2/10	Cloudy	5.2	0.8	5.2	0.0	Dark grayish greenish yellow	None	92	15.3	4	2.2	<0.68	<0.52				
	2013/5/28	Sunny	23.8	0.5	23.1	0.0	Light grayish reddish yellow	None	>100	10.1	6	2.4	<0.60	<0.52				
	2013/8/27	Sunny	25.4	0.3	21.7	0.0	Grayish reddish yellow	None	85	12.5	7	1.7	<0.56	<0.59				
	2013/11/14	Sunny	9.8	0.4	12.2	0.0	Grayish reddish yellow	None	>100	11.0	3	0.9	<0.54	<0.65				
	2014/2/10	Sunny	6.0	0.4	6.7	0.0	Grayish reddish yellow	None	77	13.7	7	2.0	<0.67	<0.58				
	2013/5/28	Sunny	25.1	0.7	22.6	0.0	Light grayish yellow	None	>100	16.8	3	1.5	<0.73	<0.55				
	2013/8/27	Sunny	25.8	0.3	25.6	0.0	Dark grayish reddish yellow	None	90	12.9	2	1.0	<0.48	<0.62				
	2013/11/15	Cloudy	9.5	0.5	9.4	0.0	Dark grayish yellow	Dark olive	>100	10.9	<1	0.6	<0.61	<0.62				
	2014/2/7	Sunny	2.4	0.4	3.8	0.0	Dark grayish yellowish green	None	>100	12.4	1	0.7	<0.68	<0.68				
	2013/5/28	Sunny	21.8	0.5	20.9	0.0	Grayish yellow	None	60	9.3	6	4.1	<0.67	<0.59				
2013/8/27	Sunny	26.3	0.5	23.6	0.0	Dark grayish yellow red	None	44	14.2	17	5.8	<0.60	<0.59					
2013/11/15	Cloudy	9.4	0.6	10.0	0.0	Light grayish yellow	None	>100	12.7	2	0.8	<0.55	<0.74					
2014/2/7	Sunny	-3.1	0.5	2.3	0.0	Dark grayish yellow	None	>100	14.2	1	0.7	<0.56	<0.68					
2013/5/27	Sunny	23.1	0.7	21.6	0.0	Grayish greenish yellow	None	88	12.3	8	3.0	<0.62	<0.73					
2013/8/28	Sunny	27.8	0.4	24.7	0.0	Grayish yellow	None	>100	16.1	2	1.3	<0.70	<0.78					
2013/11/21	Sunny	12.8	0.4	12.9	0.0	Grayish yellow green	None	>100	21.9	3	0.8	<0.54	<0.49					
2014/2/18	Sunny	5.8	0.5	6.7	0.0	Dark grayish greenish yellow	None	>100	25.0	3	1.6	<0.55	<0.65					
2013/5/27	Cloudy	22.0	1.2	21.6	0.0	Grayish greenish yellow	None	73	23.6	7	3.9	<0.67	<0.68					
2013/8/28	Sunny	28.1	0.5	24.0	0.0	Grayish greenish yellow	None	92	16.1	3	1.6	<0.61	<0.52					
2013/11/21	Sunny	9.2	0.7	10.8	0.0	Grayish yellow green	None	>100	26.5	2	1.1	<0.58	<0.63					
2014/2/18	Sunny	9.2	1.5	7.0	0.0	Light grayish greenish yellow	None	80	43.0	6	2.6	<0.65	<0.47					

Ibaraki River (Water) 2/5

No.	Location			Sampling Date	Weather	Air temperature (°C)	Water depth (m)	Water										Remarks	
	Water area	Location	Municipality					General items						Activity concentration(Bq/L)					
								Water temperature (°C)	mping de (m)	Color	Odor	Transparency (cm)	Electrical conductivity (mS/m)	SS (mg/L)	Turbidity (FNU)	Radioactive cesium			
														Cs-134	Cs-137				
R i v e r s	12	Nakagawa River	Katsuta Bridge	Mito City/Hitachinaka City	2013/5/27	Cloudy	24.9	3.3	22.1	0.0	Grayish yellow	None	76	883.0	6	3.8	<-0.62	<-0.49	
					2013/8/28	Sunny	24.1	3.6	25.4	0.0	Grayish greenish yellow	None	80	35.9	2	2.7	<-0.56	<-0.58	
					2013/11/21	Sunny	5.1	4.8	10.5	0.0	Dark grayish yellow green	None	>100	170.5	2	1.7	<-0.54	<-0.63	
					2014/2/14	Cloudy	0.6	1.7	5.8	0.0	Yellowish gray	None	49	951.0	5	3.0	<-0.65	<-0.55	
		13	Nakamaru River	Yanagisawa Bridge	Hitachinaka City	2013/5/27	Sunny	22.9	0.8	21.4	0.0	Dark grayish greenish yellow	Faint mold	46	302.0	19	9.2	<-0.60	<-0.66
						2013/8/28	Sunny	22.3	1.2	24.3	0.0	Dark grayish reddish yellow	None	44	111.7	12	6.8	<-0.61	<-0.74
						2013/11/21	Sunny	2.8	1.7	9.9	0.0	Dark grayish greenish yellow	None	66	226.0	4	3.1	<-0.48	<-0.65
						2014/2/14	Cloudy	0.4	0.4	6.9	0.0	Yellowish gray	Faint drain	52	358.0	13	4.2	<-0.60	<-0.65
		14	Hinumamae River	Nagaoka Bridge	Ibaraki Town	2013/5/24	Sunny	14.0	0.3	17.5	0.0	Grayish reddish yellow	None	57	10.7	6	4.9	<-0.69	<-0.51
						2013/8/19	Cloudy	27.7	0.3	25.8	0.0	Dark grayish yellow green	None	60	25.6	14	2.6	<-0.66	<-0.58
						2013/11/28	Cloudy	13.2	0.6	12.9	0.0	Grayish yellow green	None	94	27.7	2	2.1	<-0.76	<-0.71
						2014/2/11	Cloudy	1.8	0.3	6.3	0.0	Dark grayish yellow red	None	81	27.6	6	3.4	<-0.65	<-0.49
	15	Hinuma River	Takahashi	Ibaraki Town	2013/5/24	Sunny	17.5	0.4	19.8	0.0	Light grayish reddish yellow	None	61	9.8	11	4.5	<-0.68	<-0.56	
					2013/8/19	Cloudy	28.6	0.5	27.7	0.0	Dark grayish reddish yellow	None	50	25.5	16	1.5	<-0.65	<-0.64	
					2013/11/28	Cloudy	12.5	0.4	11.8	0.0	Light grayish yellow green	None	>100	28.6	1	1.1	<-0.69	<-0.66	
					2014/2/11	Cloudy	0.4	0.4	4.9	0.0	Grayish yellow red	None	>100	25.8	3	2.1	<-0.52	<-0.52	
	16	Kansei River	Kansei Bridge	Ibaraki Town	2013/5/24	Sunny	28.1	0.7	17.4	0.0	Grayish reddish yellow	Faint mold	63	13.4	6	5.4	<-0.54	<-0.60	
					2013/8/19	Sunny	30.6	0.2	24.3	0.0	Grayish reddish yellow	None	54	26.2	6	2.3	<-0.59	<-0.52	
					2013/11/28	Cloudy	11.4	0.3	13.0	0.0	Grayish yellow green	None	87	31.7	4	1.8	<-0.66	<-0.66	
					2014/2/11	Cloudy	1.4	0.4	7.2	0.0	Grayish reddish yellow	None	78	28.5	7	3.5	<-0.73	<-0.87	
	17	Daiya River	Oya Bridge	Hokota City	2013/5/24	Sunny	29.2	1.1	17.0	0.0	Dark grayish yellow	None	73	17.8	3	2.5	<-0.79	<-0.68	
					2013/8/19	Sunny	29.7	0.3	23.8	0.0	Dark grayish yellow red	None	53	35.6	19	3.0	<-0.62	<-0.77	
					2013/11/28	Cloudy	10.9	0.4	12.6	0.0	Dark grayish yellow green	None	61	52.8	7	2.0	<-0.61	<-0.62	
					2014/2/11	Cloudy	1.4	0.6	6.4	0.0	Dark grayish yellow	None	98	75.4	7	3.1	<-0.68	<-0.63	
18	Hinuma River	Hinuma Bridge	Mito City/Onmi Town	2013/5/27	Sunny	21.3	0.6	17.1	0.0	Light grayish yellow green	None	83	3,930.0	5	3.0	<-0.74	<-0.80		
				2013/8/19	Sunny	24.4	0.5	26.6	0.0	Dark grayish yellow green	None	33	2,300.0	30	6.3	<-0.72	<-0.59		
				2013/11/28	Cloudy	9.4	0.5	11.9	0.0	Dark grayish yellow green	None	39	1,095.0	15	5.3	<-0.61	<-0.62		
				2014/2/11	Cloudy	0.4	0.3	4.9	0.0	Grayish yellow green	None	53	1,754.0	12	5.1	<-0.68	<-0.90		
19	Hokota River	Asahi Bridge	Hokota City	2013/5/23	Sunny	22.0	1.0	21.4	0.0	Dark grayish reddish yellow	None	43	18.3	14	7.6	<-0.68	<-0.58		
				2013/8/21	Sunny	29.7	0.9	24.7	0.0	Dark grayish greenish yellow	None	62	34.0	7	3.9	<-0.72	<-0.64		
				2013/11/5	Sunny	19.0	1.0	14.8	0.0	Dark grayish reddish yellow	None	77	36.3	3	2.9	<-0.54	<-0.51		
				2014/2/11	Cloudy	2.4	0.9	7.8	0.0	Grayish reddish yellow	None	48	33.3	13	5.4	<-0.68	<-0.51		
				2013/5/23	Sunny	20.1	0.8	20.6	0.0	Grayish reddish yellow	None	44	13.1	25	7.6	<-0.65	<-0.76		
				2013/8/21	Sunny	28.2	0.2	23.6	0.0	Dark grayish reddish yellow	None	52	28.1	10	4.0	<-0.65	<-0.76		
	20	Tomoe River	Shintomoegawa Bridge	Hokota City	2013/11/5	Sunny	15.8	0.5	15.2	0.0	Dark grayish reddish yellow	None	63	26.1	19	5.4	<-0.69	<-0.51	
					2014/2/11	Cloudy	2.0	1.5	7.3	0.0	Grayish reddish yellow	None	68	28.8	10	4.8	<-0.73	<-0.63	
					2013/5/23	Cloudy	16.2	0.2	16.4	0.0	Grayish yellow red	None	79	14.0	5	5.6	<-0.65	<-0.68	
					2013/8/6	Cloudy	24.0	0.2	20.2	0.0	Grayish yellowish green	None	80	27.5	4	2.8	<-0.53	<-0.52	
					2013/11/1	Sunny	10.9	0.2	13.3	0.0	Light grayish yellow	None	54	22.8	17	5.7	<-0.65	<-0.59	
					2014/2/10	Sunny	-2.3	0.3	5.4	0.0	Yellowish pale gray	None	42	23.2	9	4.6	<-0.52	<-0.68	
21	Taiyo River	Tazuka Bridge	Hokota City	2013/5/23	Sunny	19.4	0.7	19.8	0.0	Grayish reddish yellow	None	51	14.5	14	8.5	<-0.79	<-0.72		
				2013/8/21	Cloudy	27.4	0.2	21.5	0.0	Grayish yellow	None	70	29.5	15	3.8	<-0.69	<-0.70		
				2013/11/5	Sunny	15.6	0.9	14.6	0.0	Dark grayish reddish yellow	None	13	27.7	9	5.2	<-0.59	<-0.59		
				2014/2/11	Cloudy	2.4	0.6	7.3	0.0	Light grayish yellow	None	55	26.1	18	7.3	<-0.70	<-0.68		
22	Takeda River	Uchijuku-ohashi Bridge	Namegata City	2013/5/23	Sunny	19.0	0.4	19.1	0.0	Grayish reddish yellow	None	48	14.6	17	8.1	<-0.71	<-0.63		
				2013/8/21	Cloudy	25.4	0.3	24.9	0.0	Dark grayish yellow red	None	35	38.0	17	7.5	<-0.55	<-0.59		
				2013/11/5	Sunny	14.5	0.3	13.8	0.0	Dark grayish yellow red	None	15	27.6	35	14	<-0.67	<-0.55		
				2014/2/11	Light snow	2.2	0.4	5.5	0.0	Light grayish yellow	None	52	25.0	12	6.5	<-0.59	<-0.68		
23	Yamada River	Nioroshi Bridge	Namegata City	2013/5/22	Sunny	28.1	0.6	26.0	0.0	Light grayish yellowish red	None	35	14.6	37	39	<-0.69	<-0.73		
				2013/8/21	Cloudy	24.6	0.5	25.2	0.0	Dark grayish reddish yellow	None	41	29.0	21	8.8	<-0.84	<-0.63		
				2013/11/5	Sunny	13.5	0.5	13.0	0.0	Dark grayish yellow red	None	43	26.4	4	7.7	<-0.61	<-0.59		
				2014/2/11	Cloudy	0.4	1.1	4.9	0.0	Grayish reddish yellow	None	38	24.5	12	7.3	<-0.52	<-0.63		
24	Kurakawa River	Kurakawa Bridge	Namegata City	2013/5/23	Sunny	19.0	0.4	19.1	0.0	Grayish reddish yellow	None	48	14.6	17	8.1	<-0.71	<-0.63		
				2013/8/21	Cloudy	25.4	0.3	24.9	0.0	Dark grayish yellow red	None	35	38.0	17	7.5	<-0.55	<-0.59		
				2013/11/5	Sunny	14.5	0.3	13.8	0.0	Dark grayish yellow red	None	15	27.6	35	14	<-0.67	<-0.55		
				2014/2/11	Light snow	2.2	0.4	5.5	0.0	Light grayish yellow	None	52	25.0	12	6.5	<-0.59	<-0.68		

Ibaraki River (Water) 3/5

No.	Location				Sampling Date	Weather	Air temperature (°C)	Water depth (m)	Water								Remarks	
	Water area	Location	Municipality	General items					Activity concentration(Bq/L)									
				Water temperature (°C)					Sampling depth (m)	Color	Odor	Transparency (cm)	Electrical conductivity (mS/m)	SS (mg/L)	Turbidity (FNU)	Radioactive cesium		
													Cs-134	Cs-137				
R i v e r s	Kitaura River	Gantsu River	JA Yokohashi Bridge	Namegata City	2013/5/22	Sunny	26.4	0.2	25.8	0.0	Light grayish yellowish red	None	35	18.8	12	8.3	<-0.67	<-0.74
					2013/8/21	Cloudy	24.7	0.2	23.6	0.0	Dark grayish yellow red	None	63	31.6	9	2.7	<-0.49	<-0.50
					2013/11/5	Sunny	9.9	0.2	12.8	0.0	Dark grayish yellow	None	57	27.9	6	4.6	<-0.59	<-0.76
					2014/2/11	Light snow	-2.0	0.4	5.1	0.0	Yellowish pale gray	None	31	24.6	13	12	<-0.65	<-0.68
		Nagare River	Suhoi Bridge	Kashima City	2013/5/23	Sunny	18.0	0.2	17.3	0.0	Light grayish reddish yellow	None	>100	19.8	2	5.4	<-0.55	<-0.64
					2013/8/6	Cloudy	24.0	0.2	24.0	0.0	Yellow-greenish light gray	faint sewage	95	40.2	18	3.1	<-0.56	<-0.60
					2013/11/1	Sunny	12.1	0.1	14.1	0.0	Light grayish yellow	None	>100	38.1	3	2.4	<-0.63	<-0.65
					2014/2/10	Sunny	1.2	0.4	5.4	0.0	Yellowish pale gray	Faint drain	50	37.3	5	3.9	<-0.44	<-0.49
		Sonobe River	Sonobeshin Bridge	Omitama City	2013/5/21	Cloudy	21.1	1.3	20.6	0.0	Grayish reddish yellow	None	26	15.0	26	14	<-0.54	<-0.47
					2013/8/1	Cloudy	26.9	0.8	24.3	0.0	Dark grayish reddish yellow	None	33	23.9	22	12	<-0.54	<-0.42
					2013/11/10	Light rain	15.8	0.8	14.7	0.0	Dark grayish yellow green	None	66	25.9	6	3.2	<-0.56	<-0.58
					2014/2/5	Sunny	2.2	1.7	4.9	0.0	Grayish reddish yellow	None	39	30.8	6	4.6	<-0.58	<-0.62
	Sanno River	Tokoro Bridge	Omitama City	2013/5/21	Cloudy	23.2	0.9	21.5	0.0	Dark grayish greenish yellow	None	69	18.6	4	4.3	<-0.65	<-0.60	
				2013/8/1	Cloudy	24.5	1.3	24.2	0.0	Dark grayish reddish yellow	None	27	36.3	32	11	<-0.60	<-0.58	
				2013/11/10	Cloudy	15.2	1.2	16.4	0.0	Grayish yellow	None	73	40.7	2	1.5	<-0.63	<-0.55	
				2014/2/5	Sunny	0.4	0.5	3.6	0.0	Yellowish gray	None	41	52.4	7	5.3	<-0.82	<-0.74	
	Koise River	Heiwa Bridge	Ishioka City	2013/5/21	Cloudy	20.1	0.7	20.0	0.0	Dark grayish greenish yellow	None	28	17.8	20	13	<-0.67	<-0.44	
				2013/8/1	Cloudy	24.3	0.8	24.0	0.0	Dark grayish reddish yellow	None	51	24.0	13	6.9	<-0.76	<-0.85	
				2013/11/10	Cloudy	14.6	0.6	14.5	0.0	Grayish reddish yellow	None	62	20.2	8	3.4	<-0.60	<-0.55	
				2014/2/5	Sunny	-3.4	0.9	1.2	0.0	Yellowish pale gray	None	82	19.9	6	3.6	<-0.74	<-0.66	
	Kajinashi River	Kamishuku Bridge	Namegata City	2013/5/21	Cloudy	21.5	0.7	21.0	0.0	Grayish yellow	None	42	18.6	10	9.0	<-0.48	<-0.51	
				2013/8/1	Cloudy	28.8	1.0	23.8	0.0	Dark grayish reddish yellow	None	38	30.8	13	8.7	<-0.59	<-0.47	
				2013/11/10	Cloudy	16.9	0.4	15.8	0.0	Dark grayish reddish yellow	None	69	30.6	2	4.3	<-0.46	<-0.58	
				2014/2/5	Sunny	4.6	0.5	6.7	0.0	Dark grayish reddish yellow	None	42	37.0	4	3.6	<-0.69	<-0.66	
	Hishiki River	Hishiki Bridge	Kasumigaura City	2013/5/21	Cloudy	25.3	0.7	24.7	0.0	Dark grayish yellow	None	34	15.0	24	10	<-0.52	<-0.52	
				2013/8/1	Cloudy	30.7	0.6	25.0	0.0	Dark grayish reddish yellow	None	39	27.7	11	7.1	<-0.67	<-0.49	
				2013/11/17	Sunny	16.2	0.5	13.3	0.0	Grayish yellow red	None	74	28.7	2	2.0	<-0.58	<-0.66	
				2014/2/5	Sunny	5.2	0.6	6.3	0.0	Light grayish yellow	None	89	30.2	2	2.1	<-0.56	<-0.49	
	Ichinose River	Kawanaka Bridge	Kasumigaura City	2013/5/21	Sunny	26.7	1.1	25.0	0.0	Grayish reddish yellow	None	32	15.7	30	12	<-0.63	<-0.53	
				2013/8/1	Cloudy	29.8	1.1	25.7	0.0	Dark grayish yellow	None	54	25.9	10	5.0	<-0.72	<-0.70	
2013/11/17				Sunny	16.3	1.4	13.6	0.0	Dark grayish reddish yellow	None	5	25.7	62	50	<-0.64	<-0.66		
2014/2/5				Sunny	5.0	0.9	5.6	0.0	Grayish yellow	None	37	28.2	8	6.4	<-0.65	<-0.58		
Sakai River	Sakai Bridge/National Route 354	Tsuchiura City	2013/5/17	Sunny	24.1	0.3	24.7	0.0	Dusky greenish yellow	None	14	18.9	20	5.8	<-0.58	<-0.68		
			2013/8/2	Cloudy	21.9	0.4	22.0	0.0	Dark grayish yellow	None	69	38.1	8	3.1	<-0.45	<-0.52		
			2013/11/8	Sunny	8.8	0.6	13.8	0.0	Dark grayish yellow	None	51	36.4	6	5.7	<-0.58	<-0.55		
			2014/2/6	Sunny	-4.6	0.4	3.6	0.0	Light grayish yellowish red	None	42	47.1	7	3.4	<-0.63	<-0.60		
Shinkawa River	Shinten Bridge	Tsuchiura City	2013/5/17	Sunny	24.7	2.3	22.2	0.0	Soft greenish yellow	Faint mold	20	27.8	14	8.5	<-0.52	<-0.66		
			2013/8/2	Cloudy	22.1	2.5	25.2	0.0	Very dark greenish yellow	None	34	27.2	14	7.9	<-0.67	<-0.82		
			2013/11/8	Sunny	9.6	2.4	14.6	0.0	Dark grayish reddish yellow	None	33	32.7	9	6.6	<-0.58	<-0.52		
			2014/2/6	Sunny	-0.5	1.0	4.5	0.0	Dark grayish yellow	None	36	36.1	10	4.4	<-0.61	<-0.65		
Sakura River	Eiri Bridge	Tsuchiura City/Tsukuba City	2013/5/17	Sunny	23.3	0.4	20.8	0.0	Soft greenish yellow	None	43	18.8	16	15	<-0.51	<-0.66		
			2013/8/2	Cloudy	26.1	0.4	25.2	0.0	Dark grayish yellow	None	45	23.2	12	5.4	<-0.54	<-0.55		
			2013/11/8	Sunny	16.7	0.5	14.7	0.0	Dark grayish reddish yellow	None	61	21.5	11	6.3	<-0.54	<-0.55		
			2014/2/6	Sunny	5.5	0.7	7.0	0.0	Grayish greenish yellow	None	36	26.7	6	3.1	<-0.58	<-0.71		
Bizen River	Bizengawa Bridge	Tsuchiura City	2013/5/17	Sunny	21.2	1.7	20.9	0.0	Dull yellow	None	26	30.6	4	8.0	<-0.48	<-0.51		
			2013/8/2	Cloudy	22.5	1.0	24.2	0.0	Dark grayish greenish yellow	None	35	27.3	18	8.4	<-0.60	<-0.41		
			2013/11/8	Sunny	10.8	0.7	15.0	0.0	Dark grayish yellow green	None	47	32.5	6	3.0	<-0.56	<-0.49		
			2014/2/6	Sunny	4.1	1.2	4.4	0.0	Dark grayish yellow red	None	31	32.6	14	11	<-0.58	<-0.56		
Hanamuro River	Shinwa Bridge	Tsuchiura City	2013/5/26	Sunny	26.5	0.2	22.6	0.0	Light grayish yellow	None	47	15.5	16	8.6	<-0.75	<-0.64		
			2013/8/2	Cloudy	24.1	0.2	23.8	0.0	Dark grayish yellow	None	64	27.8	16	6.0	<-0.63	<-0.65		
			2013/11/8	Sunny	15.1	0.3	15.3	0.0	Grayish yellow green	None	54	27.8	4	4.4	<-0.52	<-0.58		
			2014/2/6	Sunny	6.0	0.4	6.6	0.0	Grayish yellow	None	64	33.2	4	3.5	<-0.63	<-0.65		
Seimei River	Katsuhashi Bridge	Ami Town	2013/5/26	Cloudy	23.0	0.6	21.9	0.0	Dark grayish reddish yellow	Faint mold	26	18.9	16	11	<-0.69	<-0.64		
			2013/8/16	Sunny	31.5	0.4	28.4	0.0	Dark grayish reddish yellow	None	31	33.6	11	8.0	<-0.63	<-0.47		
			2013/11/13	Sunny	9.7	0.5	12.3	0.0	Dark grayish yellow	None	58	29.4	4	3.3	<-0.55	<-0.66		
			2014/2/4	Light rain	4.0	0.6	8.4	0.0	Grayish reddish yellow	None	43	38.2	17	6.7	<-0.58	<-0.81		

Ibaraki River (Water) 4/5

No.	Location			Sampling Date	Weather	Air temperature (°C)	Water depth (m)	Water								Activity concentration(Bq/L)		Remarks
	Water area	Location	Municipality					Water temperature (°C)	Sampling depth (m)	Color	Odor	Transparency (cm)	Electrical conductivity (mS/m)	SS (mg/L)	Turbidity (FNU)	Radioactive cesium		
																Cs-134	Cs-137	
39	Onogawa River	Okuhara-obashi Bridge	Sryogasaki City-Utsuha City	2013/5/26	Cloudy	25.5	0.3	21.7	0.0	Grayish yellow	None	27	16.7	10	13	<-0.69	<-0.73	
				2013/8/16	Sunny	31.3	0.5	27.5	0.0	Dark grayish reddish yellow	None	33	29.4	18	9.5	<-0.60	<-0.35	
40	Shintone River	Shintone Bridge	Inashiki City	2013/11/13	Sunny	6.3	0.6	11.4	0.0	Dark grayish yellow green	None	76	34.0	1	1.8	<-0.64	<-0.56	
				2014/2/4	Cloudy	4.1	0.4	8.7	0.0	Grayish yellow	None	40	48.2	12	7.6	<-0.58	<-0.74	
41	Yorokoshi River	Horinouchi Bridge	Itako City	2013/5/22	Cloudy	15.2	1.1	21.1	0.0	Dark grayish reddish yellow	Faint mold	30	14.9	16	12	<-0.70	<-0.59	
				2013/8/6	Cloudy	28.0	1.2	27.8	0.0	Dark grayish yellow green	None	13	50.9	16	12	<-0.60	<-0.50	
42	Maekawa River	Ayame Bridge	Itako City	2013/11/1	Sunny	19.7	1.1	18.4	0.0	Dark grayish yellow red	None	38	20.8	12	9.2	<-0.65	<-0.68	
				2014/2/10	Sunny	5.9	0.6	6.7	0.0	Grayish yellow red	None	31	50.4	18	11	<-0.50	<-0.58	
43	Kinugawa River	Kawashima Bridge	Chikusei City	2013/5/22	Sunny	21.0	0.8	20.6	0.0	Grayish reddish yellow	None	33	18.6	22	9.3	<-0.45	<-0.49	
				2013/8/6	Cloudy	28.0	0.6	26.3	0.0	Light grayish yellow	None	27	37.9	17	8.0	<-0.56	<-0.60	
44	Tagawa River	Tagawa Bridge	Moriya City	2013/11/1	Sunny	16.9	0.6	15.2	0.0	Grayish yellow	None	53	32.2	11	6.0	<-0.61	<-0.55	
				2014/2/10	Sunny	5.0	0.4	6.1	0.0	Grayish yellow red	None	34	26.0	16	12	<-0.55	<-0.71	
45	Kokai River	Kuroko Bridge	Chikusei City	2013/5/22	Cloudy	18.9	2.5	21.5	0.0	Dark grayish reddish yellow	None	33	13.6	12	12	<-0.48	<-0.42	
				2013/8/6	Cloudy	28.0	2.6	28.3	0.0	Dark grayish yellow green	None	23	51.7	24	12	<-0.61	<-0.66	
46	Yatagawa River	Maruyama Bridge	Tsukuba City	2013/11/1	Sunny	14.9	2.5	17.3	0.0	Dark grayish reddish yellow	None	35	27.5	13	7.8	<-0.45	<-0.59	
				2014/2/10	Sunny	4.1	2.0	5.3	0.0	Grayish yellow red	None	32	25.6	28	25	<-0.71	<-0.71	
47	Nishiyata River	Sakaimatsu Bridge	Tsukuba City	2013/5/15	Sunny	23.9	0.4	21.1	0.0	Grayish greenish yellow	None	>100	19.9	4	2.0	<-0.70	<-0.65	
				2013/8/15	Sunny	30.9	0.3	26.9	0.0	Dark grayish greenish yellow	None	>100	19.3	2	0.9	<-0.71	<-0.66	
48	Inari River	Oguki Bridge	Sryogasaki City-Utsuha City	2013/11/12	Sunny	7.5	0.3	10.9	0.0	Grayish yellow green	None	91	14.9	5	1.2	<-0.61	<-0.59	
				2014/2/3	Sunny	15.4	0.5	9.1	0.0	Greenish pale gray	None	96	17.5	1	0.9	<-0.75	<-0.68	
49	Inari River	Oguki Bridge	Sryogasaki City-Utsuha City	2013/5/16	Cloudy	23.4	0.4	22.8	0.0	Light yellow	Faint mold	30	22.3	12	13	<-0.42	<-0.43	
				2013/8/16	Sunny	30.4	0.6	29.1	0.0	Dark grayish greenish yellow	None	51	22.3	10	3.3	<-0.56	<-0.59	
50	Inari River	Oguki Bridge	Sryogasaki City-Utsuha City	2013/11/13	Sunny	5.7	0.4	11.0	0.0	Grayish yellow green	None	80	19.8	1	1.2	<-0.64	<-0.42	
				2014/2/4	Cloudy	7.9	0.4	8.0	0.0	Light grayish reddish yellow	None	51	23.8	24	9.7	<-0.61	<-0.56	
51	Inari River	Oguki Bridge	Sryogasaki City-Utsuha City	2013/5/15	Cloudy	24.6	0.3	23.2	0.0	Light grayish yellow	None	>100	25.4	5	2.4	<-0.63	<-0.60	
				2013/8/15	Sunny	33.5	0.4	27.3	0.0	Dark grayish yellow	None	76	22.5	5	1.4	<-0.71	<-0.59	
52	Inari River	Oguki Bridge	Sryogasaki City-Utsuha City	2013/11/12	Sunny	7.7	0.3	13.2	0.0	Dark grayish yellow green	None	>100	25.4	1	0.4	<-0.64	<-0.59	
				2014/2/3	Sunny	15.0	0.5	11.9	0.0	Yellowish pale gray	None	61	29.6	7	7.9	<-0.62	<-0.80	
53	Inari River	Oguki Bridge	Sryogasaki City-Utsuha City	2013/5/15	Sunny	21.6	0.4	23.1	0.0	Grayish greenish yellow	None	33	17.3	14	9.0	<-0.44	<-0.55	
				2013/8/15	Sunny	34.4	0.4	28.8	0.0	Dark grayish reddish yellow	None	30	22.0	7	3.6	<-0.69	<-0.72	
54	Inari River	Oguki Bridge	Sryogasaki City-Utsuha City	2013/11/12	Sunny	10.7	0.4	13.1	0.0	Dark grayish yellow green	None	64	24.2	5	3.6	<-0.73	<-0.59	
				2014/2/3	Sunny	13.2	0.4	8.8	0.0	Yellowish reddish light gray	None	68	28.3	11	7.7	<-0.61	<-0.68	
55	Inari River	Oguki Bridge	Sryogasaki City-Utsuha City	2013/5/16	Sunny	26.3	3.3	21.7	0.0	Grayish yellow	Faint mold	30	19.2	4	10	<-0.62	<-0.49	
				2013/8/20	Sunny	33.4	3.2	28.5	0.0	Dark grayish greenish yellow	None	55	20.3	6	5.0	<-0.73	<-0.70	
56	Inari River	Oguki Bridge	Sryogasaki City-Utsuha City	2013/11/11	Cloudy	11.4	1.6	13.9	0.0	Dark grayish yellow	None	58	22.7	6	3.1	<-0.65	<-0.63	
				2014/2/7	Sunny	6.4	0.6	5.4	0.0	Grayish yellow	None	46	27.9	4	2.8	<-0.70	<-0.63	
57	Inari River	Oguki Bridge	Sryogasaki City-Utsuha City	2013/5/17	Sunny	12.9	1.8	20.3	0.0	Grayish reddish yellow	None	43	26.5	19	8.6	<-0.60	<-0.63	
				2013/8/20	Sunny	28.7	1.3	27.2	0.0	Dark grayish yellow red	None	34	27.4	14	9.9	<-0.74	<-0.53	
58	Inari River	Oguki Bridge	Sryogasaki City-Utsuha City	2013/11/11	Cloudy	9.8	1.1	13.9	0.0	Dark grayish yellow green	None	84	25.9	2	1.9	<-0.65	<-0.67	
				2014/2/7	Sunny	1.6	1.2	3.9	0.0	Grayish reddish yellow	None	41	28.6	5	3.9	<-0.65	<-0.58	
59	Inari River	Oguki Bridge	Sryogasaki City-Utsuha City	2013/5/16	Light rain	21.6	0.4	22.8	0.0	Grayish yellow	Faint mold	50	22.1	12	8.1	<-0.73	<-0.70	
				2013/8/20	Sunny	30.5	1.2	28.0	0.0	Dark grayish yellow red	Faint mold	30	23.8	11	8.5	<-0.49	<-0.65	
60	Inari River	Oguki Bridge	Sryogasaki City-Utsuha City	2013/11/11	Cloudy	9.4	0.4	14.4	0.0	Grayish yellow red	faint sewage	89	33.2	3	2.6	<-0.65	<-0.60	
				2014/2/7	Sunny	5.0	0.4	6.3	0.0	Light grayish reddish yellow	None	46	28.1	6	4.1	<-0.62	<-0.80	
61	Inari River	Oguki Bridge	Sryogasaki City-Utsuha City	2013/5/17	Sunny	18.2	1.1	18.7	0.0	Grayish yellow	None	85	28.7	6	3.7	<-0.58	<-0.61	
				2013/8/20	Sunny	28.2	0.9	25.4	0.0	Dark grayish yellowish green	None	79	24.8	6	9.3	<-0.81	<-0.74	
62	Inari River	Oguki Bridge	Sryogasaki City-Utsuha City	2013/11/11	Cloudy	9.2	0.4	14.2	0.0	Dark grayish yellow red	None	86	24.4	2	1.8	<-0.56	<-0.55	
				2014/2/7	Sunny	-3.0	0.5	3.3	0.0	Yellow reddish faint gray	None	>100	28.3	2	1.2	<-0.75	<-0.58	

Ibaraki River (Water) 5/5

R i v e r s	Location				Sampling Date	Weather	Air temperature (°C)	Water depth (m)	Water										Remarks	
	No.	Water area							Location	Municipality	General items						Activity concentration(Bq/L)			
											Water temperature (°C)	Sampling depth (m)	Color	Odor	Transparency (cm)	Electrical conductivity (mS/m)	SS (mg/L)	Turbidity (FNU)		Radioactive cesium
		Cs-134	Cs-137																	
51	Tonegawa River System	Tonegawa River	Tonegawa River	Kurihashi Bridge	Koga City	2013/5/15	Cloudy	19.6	0.5	17.4	0.0	Grayish greenish yellow	None	75	12.8	7	3.7	<0.67	<0.65	
						2013/8/15	Sunny	31.1	0.4	27.6	0.0	Dark grayish yellow	None	67	18.9	6	3.3	<0.61	<0.64	
						2013/11/12	Sunny	5.6	0.3	8.6	0.0	Dark grayish yellow green	None	61	20.2	3	3.3	<0.44	<0.51	
						2014/2/3	Sunny	7.8	0.5	6.0	0.0	Yellowish pale gray	None	61	28.0	4	2.5	<0.56	<0.80	
	52	Tonegawa River System	Tonegawa River	Tonegawa River	Fukawa	Tone Town	2013/5/16	Sunny	17.4	0.4	20.7	0.0	Dark grayish greenish yellow	None	58	19.5	7	5.3	<0.76	<0.70
							2013/8/16	Sunny	26.1	0.5	28.8	0.0	Dark grayish reddish yellow	None	49	21.4	12	4.9	<0.53	<0.52
							2013/11/13	Sunny	2.6	0.9	10.2	0.0	Dark grayish yellow green	None	>100	21.0	2	1.5	<0.54	<0.47
							2014/2/4	Cloudy	6.6	0.4	7.5	0.0	Yellowish pale gray	None	54	28.9	6	4.4	<0.69	<0.74
	53	Tonegawa River System	Tonegawa River	Tonegawa River	Sawara	Inashiki City	2013/5/22	Cloudy	18.0	0.3	21.6	0.0	Grayish reddish yellow	Faint mold	52	13.5	8	6.4	<0.50	<0.49
							2013/8/6	Cloudy	28.0	0.2	28.5	0.0	Grayish reddish yellow	Faint algae	38	25.8	13	6.7	<0.66	<0.63
							2013/11/1	Sunny	18.0	0.2	18.2	0.0	Dark grayish yellow red	None	62	24.7	5	3.2	<0.51	<0.62
							2014/2/10	Sunny	6.2	0.5	8.5	0.0	Light grayish reddish yellow	None	36	31.7	19	17	<0.76	<0.78

Ibaraki River (Sediment) 5/5

R i v e r s	Location				Sampling Date	Weather	Air temperature (°C)	Water depth (m)	Sediment																Remarks					
	No.	Water area							Location	Municipality	Sediment temperature (°C)	Sample length (cm)	Color	Odor	General items									Sediment cont. (%)		Density (g/cm ³)	Property	Activity concentration [Bq/kg(dry)]		
															Grain size distribution(%)			Fine sand	Silt	Clay	Cs-134	Cs-137	Total							
															Coarse gravel	Medium grav.	Fine gravel											Coarse sand	Medium sand	Fine sand
51	Tonegawa River System	Tonegawa River	Tonegawa River	Kurihashi Bridge	Koga City	2013/5/15	Cloudy	19.6	0.5	17.4	10	Olive brown	Faint swamp	0.0	0.0	0.1	4.4	28.2	48.6	7.8	10.9	70.2	2.694	Sand/silt	34	75	109			
						2013/8/15	Sunny	31.1	0.4	27.6	8	Faint hydrogen sulfide	Faint algae	0.0	0.0	1.1	24.1	35.6	34.7	1.7	2.9	80.4	2.725	Sand/silt	13	42	55			
						2013/11/12	Sunny	5.6	0.3	8.5	5	Dark olive brown	None	0.0	0.2	1.1	21.3	52.2	23.3	0.4	1.6	79.6	2.798	Sand	9.5	23	32.5			
						2014/2/3	Sunny	7.8	0.5	6.4	5	Faint hydrogen sulfide	None	0.0	0.0	0.6	8.7	56.5	29.0	2.7	2.6	78.0	2.809	Sand	8.4	26	34.4			
						2013/5/16	Sunny	17.4	0.4	20.8	10	Olive brown	None	0.0	1.3	0.6	0.6	9.2	55.3	16.4	16.7	59.1	2.704	Silt/sand	100	190	290			
						2013/8/16	Sunny	26.1	0.5	28.8	8	Dark olive brown	Faint algae	6.9	9.3	0.8	0.8	13.8	47.5	9.3	11.6	67.8	2.668	Sand/silt	51	120	171			
	52	Tonegawa River System	Tonegawa River	Tonegawa River	Fukawa	Tone Town	2013/11/13	Sunny	2.6	0.9	10.0	7	Faint hydrogen sulfide	None	0.0	0.0	0.1	2.2	33.8	48.2	15.7	51.7	2.578	Silt/sand	52	150	202			
							2014/2/4	Cloudy	6.6	0.4	7.7	3	Faint hydrogen sulfide	None	0.0	1.2	0.4	0.4	12.7	69.7	10.5	5.2	76.1	2.788	Sand/silt	15	47	62		
							2013/5/22	Cloudy	18.0	0.3	21.2	7	Blackish brown	None	0.0	9.5	5.5	3.7	48.5	31.6	0.3	0.8	80.9	2.691	Sand/gravel	37	80	117		
							2013/8/6	Cloudy	28.0	0.2	28.0	5	Olive brown	Dark olive	0.0	11.1	20.9	12.7	40.8	12.1	0.2	2.2	88.6	2.723	Gravel/sand	29	72	101		
							2013/11/1	Sunny	18.0	0.2	18.6	8	Dark olive brown	None	0.0	11.5	30.5	15.9	29.1	11.7	0.3	1.0	83.8	2.667	Gravel/sand	30	85	115		
							2014/2/10	Sunny	6.2	0.5	8.2	5	Faint hydrogen sulfide	None	0.0	50.0	18.9	7.8	19.2	2.9	0.2	1.0	86.7	2.703	Gravel/sand	31	57	88		
53	Tonegawa River System	Tonegawa River	Tonegawa River	Sawara	Inashiki City	2013/8/6	Cloudy	28.0	0.2	28.0	5	Olive brown	Dark olive	0.0	11.1	20.9	12.7	40.8	12.1	0.2	2.2	88.6	2.723	Gravel/sand	29	72	101			
						2013/11/1	Sunny	18.0	0.2	18.6	8	Dark olive brown	None	0.0	11.5	30.5	15.9	29.1	11.7	0.3	1.0	83.8	2.667	Gravel/sand	30	85	115			
						2014/2/10	Sunny	6.2	0.5	8.2	5	Faint hydrogen sulfide	None	0.0	50.0	18.9	7.8	19.2	2.9	0.2	1.0	86.7	2.703	Gravel/sand	31	57	88			
						2013/5/22	Cloudy	18.0	0.3	21.2	7	Blackish brown	None	0.0	9.5	5.5	3.7	48.5	31.6	0.3	0.8	80.9	2.691	Sand/gravel	37	80	117			

Ibaraki River (Surrounding Environment) 1/5

Location				Sampling Date	Weather	Air temperature (°C)	Surrounding Environment(Soil,Air dose)										Remarks					
No.	Water area		Location				Municipality	Left bank					Right bank									
								Color	Odor	Property	Activity concentration [Bq/kg(dry)]			Air Dose (μSv/h)	Color	Odor		Property	Activity concentration [Bq/kg(dry)]			
											Radioactive cesium								Radioactive cesium			
Cs-134	Cs-137	Total	Cs-134	Cs-137	Total																	
R i v e r s	1	Satone River	Yamagoya Bridge	Kitabaraki City	2013/5/29	Cloudy	18.5	Dark brown	faint earth	Loamy	2,100	4,200	6,300	0.27	Blackish brown	faint earth	Loamy	2,400	4,800	7,200	0.31	
					2013/8/26	Sunny	24.5	Blackish brown	faint earth	Loamy	2,100	4,500	6,600	0.25	Blackish brown	Faint mold	Loamy	3,200	6,500	9,700	0.29	
					2013/11/14	Sunny	5.1	Black	Faint mold	Loamy	2,400	5,500	7,900	0.26	Black	Faint mold	Loamy	940	2,200	3,140	0.25	
			2014/2/12		Cloudy	5.4	Black	faint earth	Loamy	720	1,700	2,420	0.12	Black	faint earth	Loamy	660	1,600	2,260	0.11		
			2013/5/29		Light rain	19.3	Dark brown	faint earth	Loamy	800	1,600	2,400	0.12	Dark brown	faint earth	Loamy	1,100	2,300	3,400	0.13		
			2013/8/26		Sunny	25.7	Dim yellowish brown	faint earth	Loamy	990	2,000	2,990	0.14	Dark grayish yellow	None	Loamy	1,700	3,900	5,600	0.09		
		2	Murayama Bridge	Kitabaraki City	2013/11/14	Sunny	1.6	Blackish brown	None	Loamy	840	2,000	2,840	0.12	Blackish brown	None	Loamy	1,800	4,200	6,000	0.12	
					2014/2/12	Cloudy	4.1	Blackish brown	faint earth	Loamy	420	1,100	1,520	0.07	Blackish brown	faint earth	Loamy	1,100	2,900	4,000	0.10	
					2013/5/29	Cloudy	19.2	Olive black	faint earth	Sandy	550	1,200	1,750	0.13	Dim reddish brown	faint earth	Sandy	250	490	740	0.10	
					2013/8/26	Sunny	27.5	Dark grayish yellow	None	Loamy	580	1,300	1,880	0.14	Dark brown	Faint mold	Loamy	470	980	1,450	0.13	
					2013/11/14	Sunny	7.1	Blackish brown	None	Loamy	420	1,100	1,520	0.13	Brown	None	Loamy	190	430	620	0.12	
					2014/2/13	Sunny	4.4	Blackish brown	faint earth	Loamy	410	1,000	1,410	0.06	Blackish brown	faint earth	Loamy	110	280	390	0.06	
	3	Hanazono River	Kurabeishi	Kitabaraki City	2013/5/28	Cloudy	23.2	Dark brown	faint earth	Sandy	330	640	970	0.12	Dark brown	faint earth	Sandy	680	1,300	1,980	0.20	
					2013/8/27	Sunny	23.4	Blackish brown	None	Loamy	490	1,000	1,490	0.12	Brown	Faint mold	Loamy	470	1,000	1,470	0.19	
					2013/11/25	Cloudy	15.2	Dark brown	None	Loamy	580	1,400	1,980	0.10	Dark brown	faint earth	Loamy	530	1,200	1,730	0.19	
					2014/2/10	Sunny	5.5	Blackish brown	faint earth	Loamy	410	940	1,350	0.07	Dim yellowish brown	Faint grass	Loamy	480	1,100	1,580	0.15	
					2013/5/29	Cloudy	20.0	Yellowish brown	faint earth	Sandy	46	100	146	0.10	Blackish brown	faint earth	Sandy	270	590	860	0.09	
					2013/8/26	Sunny	25.0	Dim yellowish brown	Faint mold	Sandy	46	88	134	0.09	Blackish brown	Faint mold	Loamy	300	650	950	0.08	
	4	Tagagawa River System	Hanazono River	Isonare Bridge	Takahagi City	2013/11/14	Sunny	9.6	Dim yellowish brown	Faint grass	Sandy	42	110	152	0.08	Dark brown	None	Loamy	210	530	740	0.07
						2014/2/13	Sunny	3.1	Dark grayish yellow	faint earth	Loamy	82	210	292	0.06	Dark grayish yellow	faint earth	Loamy	100	300	400	0.06
						2013/5/28	Sunny	23.3	Blackish brown	faint earth	Sandy	510	1,000	1,510	0.12	Blackish brown	faint earth	Sandy	300	590	890	0.17
						2013/8/27	Sunny	25.4	Dark brown	faint earth	Loamy	550	1,100	1,650	0.16	Dark brown	Faint mold	Loamy	350	750	1,100	0.16
						2013/11/25	Light rain	12.6	Dark grayish yellow	None	Loamy	340	730	1,070	0.14	Dark grayish yellow	None	Loamy	390	920	1,310	0.17
						2014/2/10	Cloudy	5.2	Blackish brown	faint earth	Loamy	270	730	1,000	0.09	Blackish brown	Faint mold	Loamy	270	720	990	0.11
	5	Tagagawa River System	Okita River	Sakae Bridge	Takahagi City	2013/5/28	Sunny	23.8	Brown	faint earth	Sandy	200	400	600	0.14	Brown	faint earth	Sandy	580	1,100	1,680	0.12
						2013/8/27	Sunny	25.4	Dark brown	Faint grass	Loamy	540	1,200	1,740	0.14	Dim yellowish brown	Faint grass	Loamy	640	1,400	2,040	0.11
						2013/11/14	Sunny	9.8	Brown	None	Loamy	340	790	1,130	0.14	Brown	faint earth	Loamy	660	1,500	2,160	0.14
						2014/2/10	Sunny	6.0	Blackish brown	Faint grass	Loamy	130	320	450	0.10	Blackish brown	Faint grass	Loamy	530	1,400	1,930	0.07
						2013/5/28	Sunny	25.1	Olive black	faint earth	Sandy	69	160	229	0.11	Grayish yellow	faint earth	Sandy	30	49	79	0.09
						2013/8/27	Sunny	25.8	Dark grayish yellow	Faint mold	Loamy	110	190	300	0.11	Dim yellowish brown	faint earth	Loamy	46	130	176	0.09
	6	Tagagawa River System	Okita River	Sakai Bridge	Kitabaraki City	2013/11/15	Cloudy	9.5	Dark brown	Faint mold	Sandy	68	130	198	0.07	Dark grayish yellow	faint earth	Sandy	15	32	47	0.09
						2014/2/7	Sunny	2.4	Dim yellowish brown	Faint grass	Loamy	84	200	284	0.10	Dark grayish yellow	None	Sandy	45	130	175	0.09
						2013/5/28	Sunny	21.8	Grayish brown	faint earth	Sandy	170	320	490	0.11	Grayish brown	faint earth	Sandy	200	430	630	0.11
2013/8/27						Sunny	26.3	Blackish brown	faint earth	Loamy	220	430	650	0.08	Blackish brown	faint earth	Loamy	210	470	680	0.10	
2013/11/15						Cloudy	9.4	Dark brown	faint earth	Loamy	120	300	420	0.06	Blackish brown	faint earth	Loamy	160	360	520	0.10	
2014/2/7						Sunny	-3.1	Dark brown	faint earth	Loamy	110	300	410	0.09	Dim yellowish brown	faint earth	Loamy	220	570	790	0.09	
7	Tagagawa River System	Hananuki River	Shinhanamki Bridge	Takahagi City	2013/5/27	Sunny	23.1	Dim yellowish brown	None	Sandy	200	410	610	0.08	Brown	None	Sandy	12	14	26	0.06	
					2013/8/28	Sunny	27.8	Blackish brown	Faint rottenness	Loamy	260	640	900	0.10	Dark brown	Faint grass	Sandy	36	73	109	0.09	
					2013/11/21	Sunny	12.8	Blackish brown	faint earth	Loamy	210	510	720	0.09	Blackish brown	None	Loamy	14	41	55	0.08	
					2014/1/8	Sunny	5.8	Blackish brown	faint earth	Loamy	210	520	730	0.09	Dark olive brown	Faint grass	Loamy	61	150	211	0.10	
					2013/5/27	Cloudy	22.0	Brown	faint earth	Sandy	54	130	184	0.08	Brown	Faint grass	Loamy	130	260	390	0.09	
					2013/8/28	Sunny	28.1	Dim yellowish brown	faint earth	Loamy	95	210	305	0.07	Dark brown	Faint grass	Loamy	290	680	970	0.12	
8	Nakagawa River System	Nakagawa River	Noguchi	Mito City	2013/11/21	Sunny	9.2	Dark brown	faint earth	Loamy	64	150	214	0.09	Blackish brown	None	Loamy	220	530	750	0.08	
					2014/2/18	Sunny	9.2	Dark brown	Faint grass	Loamy	33	98	131	0.08	Dark brown	faint earth	Loamy	230	590	820	0.09	

Ibaraki River (Surrounding Environment) 2/5

Location				Sampling Date	Weather	Air temperature (°C)	Surrounding Environment(Soil,Air dose)													Remarks		
No.	Water area	Location	Municipality				Left bank						Right bank									
				Color	Odor	Property	Activity concentration [Bq/kg(dry)]			Air Dose (μSv/h)	Color	Odor	Property	Activity concentration [Bq/kg(dry)]			Air Dose (μSv/h)					
							Radioactive cesium							Radioactive cesium								
			Cs-134			Cs-137			Total			Cs-134			Cs-137			Total				
R i v e r s	Nakagawa River System	Nakagawa River	Katsuta Bridge	Misaki-Nakagawa City	2013/5/27	Cloudy	24.9	Brown	None	Sandy	230	440	670	0.08	Brown	None	Sandy	200	400	600	0.08	
					2013/8/28	Sunny	24.1	Dim yellowish brown	faint earth	Loamy	150	320	470	0.09	Dim yellowish brown	faint earth	Loamy	110	280	390	0.10	
					2013/11/21	Sunny	5.1	Dark brown	faint earth	Loamy	93	190	283	0.08	Dark brown	faint earth	Loamy	130	320	450	0.10	
		Nakamaru River	Yanagisawa Bridge	Hitachinaka City	2014/2/14	Cloudy	0.6	Blackish brown	faint earth	Loamy	65	180	245	0.08	Grayish brown	faint earth	Loamy	110	250	360	0.10	
					2013/5/27	Sunny	22.9	Dark brown	faint earth	Sandy	310	610	920	0.08	Brown	None	Sandy	140	270	410	0.08	
					2013/8/28	Sunny	22.3	Dim yellowish brown	faint earth	Loamy	330	670	1,000	0.10	Dark brown	faint earth	Loamy	130	320	450	0.09	
	Hinumamae River	Nagaoka Bridge	Ibaraki Town	2013/11/21	Sunny	2.8	Dark brown	faint earth	Loamy	310	780	1,090	0.10	Blackish brown	faint earth	Loamy	57	120	177	0.09		
				2014/2/14	Cloudy	0.4	Dark grayish yellow	faint earth	Loamy	93	260	353	0.11	Dark grayish yellow	faint earth	Loamy	18	54	72	0.08		
				2013/5/24	Sunny	14.0	Dark brown	faint earth	Sandy	62	120	182	0.08	Dark brown	None	Sandy	330	610	940	0.11		
				2013/8/19	Cloudy	27.7	Dim yellowish brown	None	Loamy	49	100	149	0.08	Blackish brown	Faint mold	Loamy	180	380	560	0.12		
				2013/11/28	Cloudy	13.2	Dim yellowish brown	faint earth	Loamy	48	90	138	0.08	Dim yellowish brown	faint earth	Loamy	220	480	700	0.10		
				2014/2/11	Cloudy	1.8	Blackish brown	Faint mold	Loamy	51	130	181	0.07	Dark brown	faint earth	Loamy	270	760	1,030	0.09		
	Hinuma River	Takahashi	Ibaraki Town	2013/5/24	Sunny	17.5	Dark brown	faint earth	Sandy	180	350	530	0.08	Blackish brown	None	Sandy	31	76	107	0.07		
				2013/8/19	Cloudy	28.6	Dim yellowish brown	None	Loamy	30	65	95	0.06	Dim yellowish brown	Faint grass	Loamy	250	540	790	0.12		
				2013/11/28	Cloudy	12.5	Dim yellowish brown	faint earth	Loamy	23	53	76	0.09	Dim yellowish brown	faint earth	Loamy	170	410	580	0.06		
				2014/2/11	Cloudy	0.4	Dark brown	Faint grass	Loamy	51	95	146	0.07	Blackish brown	Faint mold	Loamy	120	290	410	0.07		
				2013/5/24	Sunny	28.1	Blackish brown	None	Sandy	170	350	520	0.10	Blackish brown	faint earth	Loamy	450	920	1,370	0.09		
				2013/8/19	Sunny	30.6	Blackish brown	None	Loamy	200	460	660	0.09	Dim yellowish brown	Faint mold	Loamy	380	800	1,180	0.13		
	Kansei River	Kansei Bridge	Ibaraki Town	2013/11/28	Cloudy	11.4	Blackish brown	faint earth	Loamy	130	280	410	0.08	Blackish brown	faint earth	Loamy	280	670	950	0.09		
				2014/2/11	Cloudy	1.4	Blackish brown	Faint mold	Loamy	130	330	460	0.07	Blackish brown	None	Loamy	280	710	990	0.07		
				2013/5/24	Sunny	29.2	-	-	-	-	-	-	0.08	-	-	-	-	-	-	-	0.08	Soil not exposed
				2013/8/19	Sunny	29.7	-	-	-	-	-	-	0.07	-	-	-	-	-	-	-	0.07	Soil not exposed
				2013/11/28	Cloudy	10.9	-	-	-	-	-	-	0.07	-	-	-	-	-	-	-	0.08	Soil not exposed
				2014/2/11	Cloudy	1.4	-	-	-	-	-	-	0.08	-	-	-	-	-	-	-	0.07	Soil not exposed
Daiya River	Oya Bridge	Hokota City	2013/5/27	Sunny	21.3	Dim yellowish brown	None	Sandy	400	830	1,230	0.14	Olive black	None	Sandy	740	1,400	2,140	0.12			
			2013/8/19	Sunny	24.4	Black	None	Loamy	510	1,100	1,610	0.18	Dark grayish yellow	faint earth	Loamy	430	960	1,390	0.14			
			2013/11/28	Cloudy	9.4	Blackish brown	faint earth	Loamy	260	590	850	0.20	Dim yellowish brown	faint earth	Loamy	400	1,100	1,500	0.12			
			2014/2/11	Cloudy	0.4	Blackish brown	faint earth	Loamy	590	1,400	1,990	0.13	Blackish brown	Faint mold	Loamy	510	1,300	1,810	0.13			
			2013/5/23	Sunny	22.0	-	-	-	-	-	-	0.08	-	-	-	-	-	-	-	0.04	Soil not exposed	
			2013/8/21	Sunny	29.7	-	-	-	-	-	-	0.06	-	-	-	-	-	-	-	0.07	Soil not exposed	
Hokota River	Asahi Bridge	Hokota City	2013/11/5	Sunny	19.0	-	-	-	-	-	-	-	-	-	-	-	-	-	0.08	Soil not exposed		
			2014/2/11	Cloudy	2.4	-	-	-	-	-	-	0.09	-	-	-	-	-	-	-	0.09	Soil not exposed	
			2013/5/23	Sunny	20.1	Dark brown	faint earth	Sandy	290	570	860	0.11	Dark brown	faint earth	Sandy	80	210	290	0.09			
			2013/8/21	Sunny	28.2	Dim yellowish brown	Faint mold	Loamy	220	460	680	0.11	Dim yellowish brown	faint earth	Loamy	180	430	610	0.11			
			2013/11/5	Sunny	15.8	Blackish brown	faint grass	Loamy	220	500	720	0.09	Dark brown	Medium grass	Loamy	150	320	470	0.11			
			2014/2/11	Cloudy	2.0	Dim yellowish brown	faint earth	Loamy	12	35	47	0.09	Dim yellowish brown	faint earth	Loamy	62	160	222	0.09			
Tomoe River	Shimomogawa Bridge	Hokota City	2013/5/23	Cloudy	16.2	Brown	None	Sandy	180	360	540	0.09	Blackish brown	None	Sandy	100	200	300	0.06			
			2013/8/6	Cloudy	24.0	Dark brown	Faint mold	Loamy	390	770	1,160	0.07	Blackish brown	Faint mold	Loamy	120	260	380	0.07			
			2013/11/1	Sunny	10.9	Dark brown	faint earth	Loamy	330	750	1,080	0.07	Dark brown	faint earth	Loamy	120	300	420	0.09			
			2014/2/10	Sunny	-2.3	Brownish gray	faint earth	Loamy	150	380	530	0.08	Brownish gray	faint earth	Loamy	97	250	347	0.08			
			2013/5/23	Sunny	19.4	Dim yellowish brown	faint earth	Sandy	280	570	850	0.08	Dim yellowish brown	faint earth	Sandy	440	870	1,310	0.11			
			2013/8/21	Cloudy	27.4	Brown	None	Loamy	160	350	510	0.10	Dark grayish yellow	Faint grass	Loamy	270	630	900	0.12			
Takeda River	Uchijaku-obashi Bridge	Hokota City	2013/11/5	Sunny	15.6	Dark brown	Medium grass	Loamy	190	420	610	0.10	Dark brown	Medium grass	Loamy	200	480	680	0.11			
			2014/2/11	Cloudy	2.4	Dark grayish yellow	faint earth	Loamy	56	120	176	0.09	Dark grayish yellow	faint earth	Loamy	190	470	660	0.08			
			2013/5/23	Sunny	19.0	Brown	faint earth	Sandy	49	120	169	0.06	Dark grayish yellow	None	Sandy	520	1,100	1,620	0.08			
			2013/8/21	Cloudy	25.4	Dim yellowish brown	None	Loamy	70	130	200	0.08	Dim yellowish brown	faint earth	Loamy	490	1,100	1,590	0.11			
			2013/11/5	Sunny	14.5	Dark brown	Medium grass	Loamy	44	110	154	0.08	Dark brown	Medium grass	Loamy	530	1,100	1,630	0.09			
			2014/2/11	Light snow	2.2	Dark grayish yellow	faint earth	Loamy	61	130	191	0.08	Dark grayish yellow	faint earth	Loamy	120	280	400	0.08			
Yamada River	Nioroshi Bridge	Namegata City	2013/5/22	Sunny	28.1	Dim yellowish brown	faint earth	Sandy	140	270	410	0.09	Dim yellowish brown	None	Sandy	180	390	570	0.09			
			2013/8/21	Cloudy	24.6	Dim yellowish brown	None	Loamy	210	490	700	0.11	Dark grayish yellow	faint earth	Loamy	500	1,000	1,500	0.08			
			2013/11/5	Sunny	13.5	Dark brown	Medium grass	Loamy	440	980	1,420	0.10	Dark brown	Medium grass	Loamy	590	1,300	1,890	0.10			
			2014/2/11	Cloudy	0.4	Blackish brown	faint earth	Loamy	120	290	410	0.08	Blackish brown	faint earth	Loamy	130	270	400	0.08			
			2013/5/22	Sunny	26.4	Dim yellowish brown	None	Sandy	240	530	770	0.09	Dark grayish yellow	None	Sandy	370	730	1,100	0.05			
			2013/8/21	Cloudy	24.7	Dark grayish yellow	Faint mold	Loamy	490	1,100	1,590	0.09	Dark grayish yellow	Faint grass	Loamy	360	770	1,130	0.10			
Gantsu River	JA Yokohashi Bridge	Kaijima City	2013/11/5	Sunny	9.9	Blackish brown	Medium grass	Sandy	270	650	920	0.10	Blackish brown	Medium grass	Sandy	470	1,200	1,670	0.11			
			2014/2/11	Light snow	-2.0	Blackish brown	faint earth	Loamy	110	280	390	0.08	Blackish brown	faint earth	Loamy	99	290	389	0.08			

Ibaraki River (Surrounding Environment) 4/5

Location				Sampling Date	Weather	Air temperature (°C)	Surrounding Environment (Soil, Air dose)												Remarks		
No.	Water area	Location	Municipality				Left bank						Right bank								
							Color	Odor	Property	Activity concentration [Bq/kg(dry)]			Air Dose (μSv/h)	Color	Odor	Property	Activity concentration [Bq/kg(dry)]				
										Radioactive cesium							Radioactive cesium				
			Cs-134	Cs-137	Total				Cs-134	Cs-137	Total										
R i v e r s	Tonegawa River System	Onogawa River	Okahara-obashi Bridge	Fuyuhiko City/Utsunomiya City	2013/5/26	Cloudy	25.5	Dim yellowish brown	faint earth	Sandy	290	600	890	0.11	Dim yellowish brown	faint earth	Sandy	380	750	1,130	0.12
					2013/8/16	Sunny	31.3	Dark brown	Faint grass	Loamy	350	680	1,030	0.11	Dark brown	Faint grass	Loamy	500	1,200	1,700	0.10
					2013/11/13	Sunny	6.3	Dark brown	faint earth	Loamy	280	770	1,050	0.12	Dark brown	faint earth	Loamy	310	810	1,120	0.09
					2014/2/4	Cloudy	4.1	Blackish brown	faint earth	Loamy	170	460	630	0.10	Dark brown	faint earth	Loamy	220	510	730	0.10
					2013/5/22	Cloudy	15.2	Dim yellowish brown	None	Sandy	260	530	790	0.09	Dark brown	faint earth	Sandy	260	580	840	0.08
					2013/8/6	Cloudy	28.0	Dim yellowish brown	None	Loamy	220	440	660	0.10	Dark brown	None	Loamy	160	360	520	0.11
		Shintone River	Shintone Bridge	Inashiki City	2013/11/1	Sunny	19.7	Brown	faint earth	Loamy	110	260	370	0.09	Dark brown	faint earth	Loamy	280	610	890	0.10
					2014/2/10	Sunny	5.9	Dim yellowish brown	faint earth	Loamy	89	220	309	0.08	Dark brown	faint earth	Loamy	300	760	1,060	0.08
					2013/5/22	Sunny	21.0	Dark brown	None	Sandy	93	160	253	0.06	Dark brown	faint earth	Sandy	98	200	298	0.07
					2013/8/6	Cloudy	28.0	Dark brown	None	Loamy	170	370	540	0.07	Blackish brown	None	Loamy	110	240	350	0.09
					2013/11/1	Sunny	16.9	Dark brown	faint earth	Loamy	130	260	390	0.09	Dark brown	faint earth	Loamy	140	320	460	0.08
					2014/2/10	Sunny	5.0	Dim yellowish brown	faint earth	Loamy	60	140	200	0.06	Dark brown	faint earth	Loamy	170	420	590	0.07
		Maekawa River	Ayame Bridge	Itako City	2013/5/22	Cloudy	18.9	Dim yellowish brown	None	Sandy	59	130	189	0.03	Dark brown Olive gray	None	Sandy	190	400	590	0.04
					2013/8/6	Cloudy	28.0	Olive black	None	Sandy	70	170	240	0.03	Olive black	None	Sandy	65	140	205	0.06
					2013/11/1	Sunny	14.9	Brown	faint earth	Loamy	61	170	231	0.07	Dark brown	faint earth	Sandy	42	96	138	0.06
					2014/2/10	Sunny	4.1	Dim yellowish brown	faint earth	Loamy	54	130	184	0.06	Dark brown	faint earth	Loamy	33	83	116	0.06
					2013/5/15	Sunny	23.9	Dark olive brown	faint grass	Sandy	63	140	203	0.09	Faint hydrogen sulfide	Faint grass	Sandy	62	140	202	0.08
					2013/8/15	Sunny	30.9	Blackish brown	Faint grass	Loamy	78	130	208	0.08	Blackish brown	Faint grass	Loamy	22	71	93	0.08
		Kinugawa River	Kawashima Bridge	Chikusei City	2013/11/12	Sunny	7.5	Blackish brown	faint earth	Loamy	54	110	164	0.08	Blackish brown	faint earth	Sandy	52	130	182	0.07
					2014/2/3	Sunny	15.4	Blackish brown	faint earth	Loamy	84	190	274	0.09	Dark brown	faint earth	Loamy	160	350	510	0.10
					2013/5/16	Cloudy	23.4	Dim yellowish orange	faint earth	Sandy	440	960	1,400	0.12	Dark brown	Faint grass	Sandy	640	1,200	1,840	0.15
					2013/8/16	Sunny	30.4	Dark brown	None	Loamy	370	770	1,140	0.14	Dark brown	Faint grass	Loamy	850	1,800	2,650	0.17
					2013/11/13	Sunny	5.7	Dark brown	faint earth	Loamy	390	910	1,300	0.15	Dark brown	faint earth	Loamy	770	1,800	2,570	0.15
					2014/2/4	Cloudy	7.9	Blackish brown	faint earth	Loamy	300	740	1,040	0.10	Blackish brown	faint earth	Loamy	96	260	356	0.13
		Tagawa River	Tagawa Bridge	Chikusei City	2013/5/15	Cloudy	24.6	Dark olive brown	Faint grass	Sandy	49	110	159	0.07	Dim yellowish brown	faint earth	Sandy	15	31	46	0.06
					2013/8/15	Sunny	33.5	Dark brown	Faint grass	Loamy	53	130	183	0.07	Dim yellowish brown	Faint grass	Loamy	26	56	82	0.07
					2013/11/12	Sunny	7.7	Blackish brown	faint earth	Loamy	64	130	194	0.06	Dark brown	faint earth	Loamy	12	28	40	0.08
					2014/2/3	Sunny	15.0	Grayish brown	faint earth	Loamy	20	61	81	0.08	Blackish brown	faint earth	Loamy	11	24	35	0.07
2013/5/15	Sunny				21.6	Dark brown	faint earth	Sandy	110	200	310	0.08	Dark brown	Faint grass	Sandy	71	170	241	0.08		
2013/8/15	Sunny				34.4	Dark brown	Faint grass	Loamy	99	230	329	0.08	Dark brown	Faint grass	Loamy	190	370	560	0.08		
Kokai River	Kuroko Bridge	Chikusei City	2013/11/12	Sunny	10.7	Dark brown	faint earth	Sandy	67	130	197	0.09	Dark brown	faint earth	Loamy	75	200	275	0.08		
			2014/2/3	Sunny	13.2	Blackish brown	faint earth	Loamy	73	170	243	0.08	Blackish brown	faint earth	Loamy	57	150	207	0.09		
			2013/5/16	Sunny	26.3	Dim yellowish brown	faint earth	Sandy	510	1,000	1,510	0.13	Brown	faint earth	Sandy	140	290	430	0.12		
			2013/8/20	Sunny	33.4	Dim yellowish brown	None	Loamy	380	760	1,140	0.13	Dim yellowish brown	None	Loamy	200	400	600	0.12		
			2013/11/11	Cloudy	11.4	Dark brown	faint earth	Loamy	400	960	1,360	0.13	Dark brown	faint earth	Loamy	320	740	1,060	0.11		
			2014/2/7	Sunny	6.4	Dim yellowish brown	faint earth	Loamy	420	1,100	1,520	0.12	Dim yellowish brown	faint earth	Loamy	120	340	460	0.11		
Yatagawa River	Maruyama Bridge	Toride City	2013/5/17	Sunny	12.9	Dim yellowish brown	faint earth	Sandy	350	750	1,100	0.12	Dim yellowish brown	faint earth	Sandy	610	1,300	1,910	0.11		
			2013/8/20	Sunny	28.7	Brown	faint earth	Loamy	550	1,200	1,750	0.09	Dim yellowish brown	None	Loamy	290	660	950	0.12		
			2013/11/11	Cloudy	9.8	Dark brown	faint earth	Loamy	520	1,200	1,720	0.13	Dark brown	faint earth	Loamy	680	1,700	2,380	0.12		
			2014/2/7	Sunny	1.6	Blackish brown	faint earth	Loamy	310	830	1,140	0.12	Blackish brown	faint earth	Loamy	300	810	1,110	0.10		
			2013/5/16	Light rain	21.6	Dark brown	faint earth	Sandy	25	63	88	0.06	Grayish olive	faint earth	Sandy	240	510	750	0.09		
			2013/8/20	Sunny	30.5	Dark grayish yellow	Faint mold	Loamy	210	510	720	0.05	Dark grayish yellow	None	Loamy	300	580	880	0.10		
Nishiyata River	Sakaimatsu Bridge	Tsukuba City	2013/11/11	Cloudy	9.4	Blackish brown	faint earth	Sandy	42	91	133	0.05	Dark brown	faint earth	Sandy	100	270	370	0.10		
			2014/2/7	Sunny	5.0	Blackish brown	faint earth	Loamy	29	64	93	0.07	Blackish brown	faint earth	Loamy	32	81	113	0.07		
			2013/5/17	Sunny	18.2	Faint hydrogen sulfide	None	Sandy	360	730	1,090	0.12	Olive black	None	Sandy	790	1,600	2,390	0.17		
			2013/8/20	Sunny	28.2	Dim yellowish brown	None	Loamy	760	1,700	2,460	0.16	Dim yellowish brown	Faint mold	Loamy	540	1,100	1,640	0.11		
			2013/11/11	Cloudy	9.2	Blackish brown	faint earth	Loamy	720	1,700	2,420	0.12	Blackish brown	faint earth	Loamy	440	1,100	1,540	0.17		
			2014/2/7	Sunny	-3.0	Dark grayish yellow	faint earth	Loamy	360	920	1,280	0.12	Brownish gray	faint earth	Loamy	270	670	940	0.12		
Inari River	Oguki Bridge		2013/5/17	Sunny	18.2	Faint hydrogen sulfide	None	Sandy	360	730	1,090	0.12	Olive black	None	Sandy	790	1,600	2,390	0.17		
			2013/8/20	Sunny	28.2	Dim yellowish brown	None	Loamy	760	1,700	2,460	0.16	Dim yellowish brown	Faint mold	Loamy	540	1,100	1,640	0.11		

Ibaraki River (Surrounding Environment) 5/5

Location					Sampling Date	Weather	Air temperature (°C)	Surrounding Environment(Soil,Air dose)												Remarks			
								Left bank						Right bank									
No.	Water area			Location	Municipality	Color	Odor	Property	Activity concentration [Bq/kg(dry)]			Air Dose (μSv/h)	Color	Odor	Property	Activity concentration [Bq/kg(dry)]			Air Dose (μSv/h)				
									Radioactive cesium							Radioactive cesium							
									Cs-134	Cs-137	Total					Cs-134	Cs-137	Total					
R i v e r s	51	Tonegawa River System	Tonegawa River	Tonegawa River	Kurihashi Bridge	Koga City	2013/5/15	Cloudy	19.6	Dim yellowish brown	faint earth	Sandy	2.7	5.2	7.9	0.06	Brown	Faint grass	Sandy	70	130	200	0.08
							2013/8/15	Sunny	31.1	Brown	Faint grass	Loamy	2.6	9.1	11.7	0.06	Dim yellowish brown	Faint grass	Loamy	92	210	302	0.09
							2013/11/12	Sunny	5.6	Blackish brown	faint earth	Sandy	2.1	7.8	9.9	0.06	Dark brown	faint earth	Loamy	98	260	358	0.09
							2014/2/3	Sunny	7.8	Dark grayish yellow	None	Loamy	1.7	6.8	8.5	0.05	Dark grayish yellow	faint earth	Loamy	44	99	143	0.05
							2013/5/16	Sunny	17.4	Dim yellowish brown	faint earth	Sandy	320	650	970	0.15	Yellowish brown	faint earth	Sandy	210	460	670	0.08
							2013/8/16	Sunny	26.1	Dim yellowish brown	Faint grass	Loamy	410	880	1,290	0.17	Dark grayish yellow	faint earth	Sandy	31	58	89	0.08
	52	Tonegawa River System	Tonegawa River	Tonegawa River	Fukawa	Tone Town	2013/11/13	Sunny	2.6	Dark brown	None	Loamy	240	530	770	0.14	Dark brown	None	Loamy	55	160	215	0.08
							2014/2/4	Cloudy	6.6	Blackish brown	faint earth	Loamy	190	490	680	0.10	Grayish brown	faint earth	Loamy	22	73	95	0.06
							2013/5/22	Cloudy	18.0	Brown	None	Sandy	91	200	291	0.07	Dim yellowish brown	faint earth	Sandy	88	180	268	0.06
							2013/8/6	Cloudy	28.0	Olive black	None	Loamy	66	150	216	0.07	Extremely dark brown	faint earth	Sandy	15	41	56	0.05
							2013/11/1	Sunny	18.0	Dim yellowish brown	faint earth	Loamy	46	110	156	0.07	Dark brown	faint earth	Loamy	55	110	165	0.06
							2014/2/10	Sunny	6.2	Dark grayish yellow	faint earth	Loamy	58	130	188	0.07	Blackish brown	faint earth	Loamy	43	78	121	0.07
53	Tonegawa River System	Tonegawa River	Tonegawa River	Sawara	Inashiki City	2013/5/15	Cloudy	19.6	Dim yellowish brown	faint earth	Sandy	2.7	5.2	7.9	0.06	Brown	Faint grass	Sandy	70	130	200	0.08	
						2013/8/15	Sunny	31.1	Brown	Faint grass	Loamy	2.6	9.1	11.7	0.06	Dim yellowish brown	Faint grass	Loamy	92	210	302	0.09	
						2013/11/12	Sunny	5.6	Blackish brown	faint earth	Sandy	2.1	7.8	9.9	0.06	Dark brown	faint earth	Loamy	98	260	358	0.09	

Ibaraki Lakes and Reservoirs (Water) 1/4

Location			Surface layer/ Deep layer	Sampling Date	Weather	Air temperature (°C)	Water depth (m)	Water										Remarks
No.	Water area	Location						General items						Activity concentration(Bq/L)				
								Water temperature (°C)	Sampling depth (m)	Color	Odor	Secchi disk depth (m)	Electrical conductivity (mS/m)	SS (mg/L)	Turbidity (FNU)	Radioactive cesium		
														Cs-134	Cs-137			
L a k e s a n d R e s e r v o i r s	54	Hiroura	Surface layer	2013/5/20	Cloudy	17.4	2.5	20.5	0.5	Dull yellow	None	0.9	1,543.0	7	10	<0.79	<0.74	
			Deep layer					20.6	1.5	-	None		1,462.0	9	9.0	<0.70	<0.59	
			Surface layer	2013/8/13	Sunny	29.6	2.4	30.5	0.5	Dark grayish greenish yellow	None	1.2	1,100.0	5	6.1	<0.58	<0.58	
			Deep layer					30.5	1.4	-	None		1,100.0	7	5.4	<0.77	<0.72	
			Surface layer	2013/11/20	Sunny	12.6	2.8	13.4	0.5	Dark grayish yellow green	None	0.9	567.0	8	8.5	<0.48	<0.58	
			Deep layer					12.3	1.8	-	None		540.0	8	8.5	<0.48	<0.41	
	Surface layer	2014/2/13	Sunny	5.8	2.5	6.1	0.5	Dark grayish yellow	None	2.1	1,795.0	4	4.1	<0.67	<0.52			
	Deep layer					6.2	1.5	-	None		1,975.0	4	4.2	<0.62	<0.41			
	55	Hinuma	Miyamae	Surface layer	2013/5/20	Cloudy	18.8	3.1	21.0	0.5	Dull yellow	None	0.9	1,434.0	8	8.4	<0.56	<0.62
				Deep layer					20.6	2.1	-	None		1,524.0	7	8.0	<0.48	<0.52
				Surface layer	2013/8/13	Sunny	30.0	3.2	31.3	0.5	Dark grayish greenish yellow	None	1.2	1,019.0	6	4.0	<0.64	<0.66
				Deep layer					30.8	2.2	-	None		1,052.0	5	3.8	<0.67	<0.61
				Surface layer	2013/11/20	Sunny	12.6	3.3	12.3	0.5	Dark grayish yellow green	None	1.0	513.0	6	7.6	<0.54	<0.60
				Deep layer					12.4	2.3	-	None		647.0	7	7.5	<0.54	<0.63
	Surface layer	2014/2/13	Sunny	7.9	3.1	6.4	0.5	Dark grayish yellow	None	1.9	2,150.0	5	4.3	<0.59	<0.62			
	Deep layer					5.9	2.1	-	None		2,250.0	5	4.6	<0.59	<0.55			
	56		Oyazawa	Surface layer	2013/5/20	Light rain	18.4	2.2	20.7	0.5	Dark yellow	None	0.7	1,343.0	13	15	<0.74	<0.88
				Deep layer					20.5	1.2	-	None		675.0	11	14	<0.64	<0.69
				Surface layer	2013/8/13	Sunny	30.1	2.1	31.3	0.5	Dark grayish greenish yellow	None	0.9	737.0	13	7.4	<0.60	<0.50
				Deep layer					31.3	1.1	-	None		739.0	14	6.6	<0.58	<0.54
				Surface layer	2013/11/20	Sunny	12.7	2.3	12.8	0.5	Dark grayish yellow green	None	1.1	648.0	8	8.0	<0.56	<0.45
				Deep layer					13.1	1.3	-	None		804.0	10	8.0	<0.62	<0.52
	Surface layer	2014/2/13	Sunny	6.8	2.1	7.5	0.5	Dark grayish yellow	None	1.7	1,592.0	7	4.9	<0.60	<0.52			
	Deep layer					7.3	1.1	-	None		2,260.0	6	4.7	<0.60	<0.49			
57		Offshore of Tamatsukuri	Surface layer	2013/6/5	Sunny	26.8	6.8	25.1	0.5	Dark greenish yellow	None	0.9	31.4	11	8.9	<0.60	<0.74	
			Deep layer					22.2	5.8	-	None		30.6	21	15	<0.54	<0.76	
			Surface layer	2013/8/7	Sunny	31.0	6.9	28.8	0.5	Dull yellow green	Faint mold	0.5	31.4	18	15	<0.82	<0.78	
			Deep layer					27.6	5.9	-	None		29.5	31	26	<0.73	<0.53	
			Surface layer	2013/11/6	Sunny	17.8	6.7	17.0	0.5	Dark grayish greenish yellow	None	0.9	24.2	10	11	<0.56	<0.55	
			Deep layer					16.5	5.7	-	None		25.6	10	9.9	<0.47	<0.63	
	Surface layer	2014/2/19	Sunny	5.4	6.6	5.7	0.5	Dull yellow green	None	0.9	26.2	9	9.7	<0.48	<0.76			
	Deep layer					5.1	5.6	-	None		26.4	10	9.5	<0.84	<0.80			
	58	Lake Kasumigaura	Offshore of Kakumai	Surface layer	2013/6/5	Sunny	25.0	1.8	23.7	0.5	Dusky greenish yellow	None	0.8	31.3	13	12	<0.62	<0.58
				Deep layer					23.3	0.8	-	None		31.5	14	13	<0.55	<0.65
				Surface layer	2013/8/7	Sunny	29.4	2.0	29.6	0.5	Dark grayish yellow	None	0.6	31.8	19	14	<0.54	<0.65
				Deep layer					29.2	1.0	-	None		32.0	16	14	<0.53	<0.62
Surface layer				2013/11/6	Sunny	10.1	2.0	16.3	0.5	Dark grayish yellow red	None	0.6	21.9	15	13	<0.61	<0.55	
Deep layer								16.0	1.0	-	None		21.9	17	10	<0.63	<0.55	
Surface layer	2014/2/19	Sunny	2.6	1.9	5.9	0.5	Dusky greenish yellow	None	0.4	24.7	21	19	<0.70	<0.68				
Deep layer					5.6	0.9	-	None		25.5	20	19	<0.49	<0.68				
59		Center	Surface layer	2013/6/5	Sunny	25.7	6.2	24.4	0.5	Dark greenish yellow	None	1.0	32.0	7	9.8	<0.51	<0.65	
			Deep layer					21.5	5.2	-	None		32.4	14	11	<0.54	<0.60	
			Surface layer	2013/8/7	Sunny	31.0	6.3	29.0	0.5	Dull yellow green	Faint mold	0.7	32.7	16	11	<0.50	<0.49	
			Deep layer					27.5	5.3	-	None		32.6	16	14	<0.68	<0.60	
			Surface layer	2013/11/6	Sunny	15.2	6.2	17.7	0.5	Dark grayish yellow	None	0.8	28.9	7	8.5	<0.46	<0.52	
			Deep layer					16.5	5.2	-	None		28.8	9	9.5	<0.45	<0.52	
Surface layer	2014/2/19	Sunny	1.7	6.4	5.0	0.5	Soft yellow green	None	0.8	29.3	11	9.9	<0.65	<0.58				
Deep layer					4.8	5.4	-	None		28.6	10	11	<0.43	<0.63				

Ibaraki Lakes and Reservoirs (Water) 2/4

No.	Location		Surface layer/ Deep layer	Sampling Date	Weather	Air temperature (°C)	Water depth (m)	Water										Remarks
	Water area	Location						General items						Activity concentration (Bq/L)				
								Water temperature (°C)	Sampling depth (m)	Color	Odor	Secchi disk depth (m)	Electrical conductivity (mS/m)	SS (mg/L)	Turbidity (FNU)	Radioactive cesium		
														Cs-134	Cs-137			
60	Lake Kasumigaura	Offshore of Aso	Surface layer	2013/6/5	Sunny	27.2	1.6	24.1	0.5	Dark grayish greenish yellow	None	0.7	32.3	21	16	<0.63	<0.78	
			Deep layer					24.1	0.6	-	None		32.5	26	15	<0.71	<0.51	
			Surface layer	2013/8/7	Sunny	31.0	2.3	29.5	0.5	Dull yellow green	Faint mold	0.5	38.3	15	14	<0.56	<0.55	
			Deep layer					29.5	1.3	-	Faint mold		37.9	11	15	<0.54	<0.51	
			Surface layer	2013/11/6	Sunny	18.1	2.3	17.0	0.5	Dark grayish yellow	None	0.8	30.4	10	10	<0.56	<0.59	
			Deep layer					17.0	1.3	-	None		30.5	10	10	<0.61	<0.71	
	Surface layer	2014/2/19	Sunny	3.9	2.5	5.6	0.5	Dull yellow green	None	1.0	33.4	11	11	<0.52	<0.55			
	Deep layer					5.7	1.5	-	None		32.9	10	12	<0.50	<0.55			
	61	Lake Kitaura	Offshore of Kamaya	Surface layer	2013/6/5	Sunny	20.8	6.6	23.2	0.5	Dull yellow green	None	0.8	30.4	19	11	<0.52	<0.55
				Deep layer					21.6	5.6	-	None		30.6	17	12	<0.55	<0.70
				Surface layer	2013/8/7	Sunny	27.9	6.8	28.1	0.5	Dull yellow green	None	0.8	32.8	16	12	<0.54	<0.63
				Deep layer					27.7	5.8	-	None		33.1	16	10	<0.54	<0.63
Surface layer				2013/11/6	Sunny	15.2	6.8	17.5	0.5	Dark yellow	None	0.9	26.8	8	7.6	<0.52	<0.45	
Deep layer								16.9	5.8	-	None		26.8	13	8.7	<0.60	<0.75	
Surface layer		2014/2/19	Sunny	3.6	6.7	5.5	0.5	Dark yellow	None	1.4	27.5	6	6.2	<0.51	<0.42			
Deep layer						5.6	5.7	-	None		27.4	6	6.2	<0.63	<0.59			
62		Jingu Bridge	Jingu Bridge	Surface layer	2013/6/5	Sunny	21.6	2.3	23.0	0.5	Dull yellow	None	0.7	38.8	15	17	<0.51	<0.62
				Deep layer					23.0	1.3	-	None		39.8	17	16	<0.58	<0.41
				Surface layer	2013/8/7	Sunny	29.0	2.8	29.2	0.5	Dark greenish yellow	None	0.5	44.0	23	19	<0.59	<0.49
				Deep layer					29.2	1.8	-	None		43.0	19	24	<0.66	<0.60
	Surface layer			2013/11/6	Sunny	18.0	2.3	17.7	0.5	Dark yellow	None	0.6	29.2	18	15	<0.65	<0.51	
	Deep layer							16.8	1.3	-	None		30.3	18	15	<0.67	<0.65	
	Surface layer	2014/2/19	Sunny	7.4	2.9	6.0	0.5	Dark reddish yellow	None	1.0	27.9	12	9.7	<0.58	<0.50			
	Deep layer					6.1	1.9	-	None		28.0	13	9.2	<0.66	<0.56			
	63	Hitachitone River	Lake Sotomatsukaura	Surface layer	2013/6/5	Sunny	23.7	2.2	23.2	0.5	Dull yellow	None	0.7	48.2	9	19	<0.60	<0.53
				Deep layer					23.0	1.2	-	None		48.5	18	16	<0.54	<0.62
				Surface layer	2013/8/7	Sunny	29.3	3.6	29.1	0.5	Deep greenish yellow	None	0.7	76.0	14	14	<0.65	<0.68
				Deep layer					28.7	2.6	-	None		76.2	16	14	<0.70	<0.56
Surface layer				2013/11/6	Sunny	20.6	2.5	17.4	0.5	Dark yellow	None	0.8	31.4	12	11	<0.52	<0.63	
Deep layer								17.2	1.5	-	None		31.2	12	11	<0.48	<0.55	
Surface layer		2014/2/19	Cloudy	6.9	4.0	6.1	0.5	Dull yellow green	None	0.9	32.8	11	10	<0.55	<0.56			
Deep layer						6.9	3.0	-	None		31.9	13	12	<0.74	<0.66			
64		Ikisu	Ikisu	Surface layer	2013/6/5	Sunny	23.6	4.9	22.8	0.5	Dark yellow	None	0.8	49.4	11	12	<0.60	<0.52
				Deep layer					22.4	3.9	-	None		50.2	12	11	<0.79	<0.53
				Surface layer	2013/8/7	Sunny	28.9	5.0	29.3	0.5	Dark greenish yellow	None	0.7	112.9	13	12	<0.56	<0.77
				Deep layer					28.2	4.0	-	None		114.2	13	12	<0.74	<0.51
	Surface layer			2013/11/6	Sunny	19.8	5.0	17.3	0.5	Dark yellow	None	0.9	31.5	8	8.6	<0.45	<0.55	
	Deep layer							16.9	4.0	-	None		31.4	8	8.0	<0.63	<0.68	
Surface layer	2014/2/19	Sunny	9.0	5.1	5.7	0.5	Dark yellow	None	0.8	32.1	13	12	<0.61	<0.82				
Deep layer					5.8	4.1	-	None		32.3	14	13	<0.56	<0.63				
65	Lake Ushikunuma	Center of Lake Ushikunuma	Surface layer	2013/5/16	Sunny	19.9	1.9	21.9	0.5	Dark grayish greenish yellow	None	0.5	22.9	16	15	<0.54	<0.59	
			Deep layer					21.6	0.9	-	None		23.5	15	15	<0.47	<0.65	
			Surface layer	2013/8/14	Sunny	29.5	1.8	31.3	0.5	Dark grayish green	Faint mold	0.6	23.2	12	14	<0.56	<0.55	
			Deep layer					31.0	0.8	-	Faint mold		22.7	23	14	<0.56	<0.69	
			Surface layer	2013/11/25	Cloudy	6.9	1.8	10.8	0.5	Dark grayish reddish yellow	None	1.0	33.6	12	7.3	<0.48	<0.71	
			Deep layer					10.7	0.8	-	None		25.0	12	7.8	<0.56	<0.52	
			Surface layer	2014/2/13	Sunny	2.6	1.6	4.6	0.5	Grayish yellow	None	>1.6	26.9	9	5.6	<0.63	<0.55	
			Deep layer					4.5	0.6	-	None		27.2	26	8.4	<0.59	<0.65	

Ibaraki Lakes and Reservoirs (Water) 3/4

L a k e s a n d R e s e r v o i r s	Location			Surface layer/ Deep layer	Sampling Date	Weather	Air temperature (°C)	Water depth (m)	Water										Remarks	
	No.	Water area	Location						General items						Activity concentration(Bq/L)					
									Water temperature (°C)	Sampling depth (m)	Color	Odor	Secchi disk depth (m)	Electrical conductivity (mS/m)	SS (mg/L)	Turbidity (FNU)	Radioactive cesium			
													Cs-134	Cs-137						
66	Mizunuma Dam	Center	Surface layer	2013/6/7	Cloudy	18.0	16.0	18.1	0.5	Dark grayish yellowish green	None	2.3	5.8	2	2.3	<0.76	<0.53			
			Deep layer					9.5	15.0	-	None		6.1	3	2.7	<0.59	<0.55			
			Surface layer	2013/8/8	Sunny	26.5	13.2	22.9	0.5	Dark grayish reddish yellow	None	1.8	6.3	2	2.0	<0.54	<0.68			
			Deep layer					12.1	12.2	-	Dim yellow		8.9	8	8.2	<0.52	<0.65			
			Surface layer	2013/11/27	Cloudy	11.4	17.1	9.7	0.5	Dark grayish yellow green	None	1.8	6.5	2	2.1	<0.56	<0.58			
			Deep layer					9.1	16.1	-	None		6.3	6	2.0	<0.65	<0.60			
		Surface layer	2014/2/3	Sunny	11.1	18.0	4.8	0.5	Dark grayish reddish yellow	None	2.5	7.1	4	4.0	<0.52	<0.83				
		Deep layer					4.0	17.0	-	None		6.5	3	4.1	<0.62	<0.51				
		67	Koyama Dam	Center	Surface layer	2013/6/7	Cloudy	20.8	15.2	21.1	0.5	Grayish yellow green	None	1.9	7.1	4	3.6	<0.64	<0.58	
					Deep layer					9.4	14.2	-	None		7.4	1	1.8	<0.73	<0.74	
					Surface layer	2013/8/8	Sunny	27.6	15.1	26.3	0.5	Very dark greenish yellow	None	2.1	7.3	1	1.8	<0.54	<0.70	
					Deep layer					12.6	14.1	-	None		8.0	2	2.1	<0.63	<0.55	
	Surface layer				2013/11/27	Cloudy	8.5	20.4	9.7	0.5	Dark grayish yellow green	None	1.8	8.0	2	2.7	<0.54	<0.58		
	Deep layer								7.9	19.4	-	None		11.2	3	5.0	<0.58	<0.60		
	Surface layer			2014/2/3	Sunny	4.6	17.3	4.8	0.5	Dark grayish yellow	None	3.2	10.3	2	1.5	<0.62	<0.63			
	Deep layer							4.1	16.3	-	None		8.1	2	1.4	<0.46	<0.68			
	68			Hananuki Dam	Center	Surface layer	2013/6/7	Cloudy	18.9	24.3	17.5	0.5	Grayish yellow green	None	2.3	5.9	2	1.8	<0.51	<0.47
						Deep layer					6.6	23.3	-	None		7.0	1	1.0	<0.52	<0.63
						Surface layer	2013/8/8	Cloudy	26.6	19.5	24.1	0.5	Very dark greenish yellow	None	1.3	6.4	4	2.4	<0.47	<0.55
						Deep layer					10.2	18.5	-	None		9.3	4	6.3	<0.61	<0.62
		Surface layer	2013/11/26			Sunny	15.1	28.3	12.6	0.5	Dark grayish yellow green	None	2.8	7.3	4	2.3	<0.59	<0.71		
		Deep layer							10.8	27.3	-	Dim yellow		6.5	4	1.9	<0.56	<0.65		
		Surface layer	2014/2/4		Light snow	0.2	27.6	4.0	0.5	Yellowish dark gray	None	3.5	7.2	1	2.0	<0.59	<0.59			
		Deep layer						3.9	26.6	-	None		6.6	1	2.2	<0.61	<0.35			
69		Jyuou Dam	Center		Surface layer	2013/6/4	Sunny	19.3	21.7	19.0	0.5	Dark grayish yellow	None	2.0	11.0	3	4.1	<0.39	<0.52	
					Deep layer					6.0	20.7	-	None		13.4	2	3.7	<0.67	<0.74	
					Surface layer	2013/8/9	Sunny	30.9	18.3	28.1	0.5	Very dark yellow	None	2.7	12.6	<1	2.4	<0.69	<0.61	
					Deep layer					8.3	17.3	-	None		13.4	4	4.2	<0.72	<0.66	
	Surface layer			2013/11/26	Sunny	11.4	29.8	11.8	0.5	Dark grayish yellow	None	1.8	11.9	2	2.0	<0.52	<0.49			
	Deep layer							7.7	28.8	-	None		16.6	6	4.7	<0.52	<0.71			
	Surface layer		2014/2/4	Light snow	1.8	27.0	3.6	0.5	Yellow greenish gray	None	3.5	11.4	2	1.5	<0.67	<0.62				
	Deep layer						3.5	26.0	-	None		11.8	<1	1.6	<0.59	<0.55				
	70		Ryuji Dam	Center	Surface layer	2013/6/4	Sunny	26.8	22.5	17.1	0.5	Dark grayish reddish yellow	None	1.8	6.9	3	3.6	<0.56	<0.42	
					Deep layer					6.5	21.5	-	None		11.5	12	13	<0.50	<0.52	
					Surface layer	2013/8/9	Sunny	32.6	19.3	24.6	0.5	Dark grayish reddish yellow	None	1.1	8.2	4	3.1	<0.56	<0.57	
					Deep layer					10.4	18.3	-	None		13.2	6	5.6	<0.56	<0.50	
Surface layer		2013/11/15			Cloudy	11.4	23.2	13.2	0.5	Dark grayish yellow red	None	2.4	7.6	3	2.1	<0.58	<0.81			
Deep layer								11.4	22.2	-	None		15.9	9	10	<0.55	<0.74			
Surface layer		2014/2/7		Cloudy	1.5	19.2	4.1	0.5	Grayish yellow	None	4.0	8.9	1	1.1	<0.64	<0.76				
Deep layer							4.0	18.2	-	None		8.6	1	1.2	<0.65	<0.76				

Ibaraki Lakes and Reservoirs (Water) 4/4

	Location			Surface layer/ Deep layer	Sampling Date	Weather	Air temperature (°C)	Water depth (m)	Water										Remarks		
	No.	Water area	Location						General items											Activity concentration(Bq/L)	
									Water temperature (°C)	Sampling depth (m)	Color	Odor	Secchi disk depth (m)	Electrical conductivity (mS/m)	SS (mg/L)	Turbidity (FNU)	Radioactive cesium				
																	Cs-134	Cs-137			
k e s e r v o i	71	Fujiigawa Dam	Center	Surface layer	2013/6/11	Cloudy	20.5	10.2	23.4	0.5	Dark grayish bluish green	None	2.3	16.1	2	2.7	<0.56	<0.49			
				Deep layer					19.5	9.2	-	faint sewage		17.1	5	9.2	<0.70	<0.65			
				Surface layer	2013/8/12	Sunny	30.6	9.9	29.7	0.5	Very dark greenish yellow	None	14.3	2	2.1	<0.52	<0.50				
				Deep layer					23.6	8.9	-	None	15.2	6	5.1	<0.58	<0.66				
				Surface layer	2013/11/18	Sunny	12.3	12.6	11.9	0.5	Dark grayish red	None	15.0	2	1.9	<0.71	<0.50				
				Deep layer					10.7	11.6	-	None	15.9	3	1.9	<0.69	<0.66				
	Surface layer	2014/2/6	Sunny	3.5	13.3	4.5	0.5	Dark grayish reddish yellow	None	16.2	2	1.5	<0.56	<0.63							
	Deep layer					4.5	12.3	-	None	18.0	1	1.1	<0.63	<0.55							
	R e s e r v o i	72	Iida Dam	Center	Surface layer	2013/6/11	Cloudy	21.0	16.2	23.4	0.5	Grayish green	None	4.2	9.1	2	1.3	<0.58	<0.58		
					Deep layer					7.4	15.2	-	None		10.7	4	7.5	<0.65	<0.63		
					Surface layer	2013/8/12	Sunny	33.4	15.6	30.8	0.5	Very dark greenish yellow	None	9.8	<1	1.9	<0.57	<0.36			
					Deep layer					9.0	14.6	-	None	13.8	13	15	<0.67	<0.70			
Surface layer					2013/11/18	Sunny	15.2	17.4	13.6	0.5	Dark grayish reddish yellow	None	17.7	1	0.9	<0.64	<0.71				
Deep layer									8.1	16.4	-	Dim yellow	9.7	33	18	<0.69	<0.66				
Surface layer	2014/2/6	Sunny	4.7	15.2	4.8	0.5	Grayish yellow green	None	12.8	2	1.2	<0.59	<0.51								
Deep layer					4.5	14.2	-	None	12.6	1	1.3	<0.76	<0.62								

Ibaraki Lakes and Reservoirs (Sediment) 2/2

Location			Sampling Date	Weather	Air temperature (°C)	Water depth (m)	Sediment															Activity concentration [Bq/kg(dry)]			Remarks
							General items										Sediment content (%)	Density (g/cm ³)	Property						
No.	Water area	Location	Sediment temperature (°C)	Sample length (cm)	Color	Odor	Grain size distribution(%)						Radioactive cesium												
							Coarse gravel	Medium gravel	Fine gravel	Coarse sand	Medium sand	Fine sand	Silt	Clay	Cs-134	Cs-137	Total								
L a k e s	66	Mizunuma Dam	Center	2013/6/7	Cloudy	18.0	16.0	8.9	10	Dark olive brown	Faint drain	0.0	0.0	0.0	0.0	0.1	3.4	56.2	40.3	19.3	2,256	Silt	1,700	3,400	5,100
				2013/8/8	Sunny	26.5	13.2	12.2	8	Blackish brown	Faint ingot	0.0	0.0	0.0	0.2	4.7	11.2	49.9	34.0	19.3	2,172	Silt	1,700	3,700	5,400
				2013/11/27	Cloudy	11.4	17.1	8.9	8	Grayish olive	faint sewage	0.0	0.0	0.0	0.1	0.2	0.9	63.3	35.6	20.0	2,271	Silt	1,100	2,500	3,600
				2014/2/3	Sunny	11.1	18.0	3.8	8	Dark brown	Faint algae	0.0	0.0	0.1	0.3	0.4	1.4	55.0	42.9	17.5	2,281	Silt	1,200	3,000	4,200
	67	Koyama Dam	Center	2013/6/7	Cloudy	20.8	15.2	9.2	10	Gray	Faint drain	0.0	0.0	0.0	1.5	12.5	15.7	29.2	41.2	26.2	2,460	Silt/sand	310	630	940
				2013/8/8	Sunny	27.6	15.1	8.8	8	Faint hydrogen sulfide	faint sewage	0.0	0.0	0.0	0.2	0.2	3.0	45.4	51.2	24.2	2,421	Silt	220	470	690
				2013/11/27	Cloudy	8.5	20.4	7.6	8	Grayish olive	faint sewage	0.0	0.0	0.4	0.2	0.5	0.6	38.2	60.1	28.1	2,528	Silt	270	620	890
				2014/2/3	Sunny	4.6	17.3	4.0	8	Faint hydrogen sulfide	Faint swamp	0.0	0.0	0.0	0.4	0.9	1.8	43.8	53.2	28.3	2,523	Silt	360	890	1,250
	68	Hanauki Dam	Center	2013/6/7	Cloudy	18.9	24.3	6.4	10	Gray	Faint drain	0.0	0.0	0.0	0.5	1.4	7.0	56.7	34.4	25.5	2,322	Silt	830	1,900	2,730
				2013/8/8	Cloudy	26.6	19.5	10.2	8	Blackish brown	faint earth	0.0	0.0	0.0	0.1	0.1	2.6	57.0	40.2	21.9	2,336	Silt	820	1,700	2,520
				2013/11/26	Sunny	15.1	28.3	10.6	8	Faint hydrogen sulfide	None	0.0	0.0	0.0	0.1	0.2	0.3	52.1	47.3	18.1	2,355	Silt	600	1,400	2,000
				2014/2/4	Light snow	0.2	27.6	3.8	8	Faint hydrogen sulfide	Faint swamp	0.0	0.0	0.0	0.0	0.4	1.3	61.5	36.8	19.4	2,369	Silt	540	1,400	1,940
69	Jyuou Dam	Center	2013/6/4	Sunny	19.3	21.7	5.9	10	Gray	Faint drain	0.0	0.0	0.0	0.1	0.2	0.6	54.4	44.7	25.3	2,424	Silt	180	440	620	
			2013/8/9	Sunny	30.9	18.3	7.6	8	Faint hydrogen sulfide	faint earth	0.0	0.0	0.5	0.9	2.6	17.6	45.2	33.2	25.7	2,483	Silt	180	340	520	
			2013/11/26	Sunny	11.4	29.8	7.5	8	Faint hydrogen sulfide	None	0.0	0.0	0.0	0.0	0.1	0.3	48.9	50.7	22.6	2,451	Silt	450	1,300	1,750	
			2014/2/4	Light snow	1.8	27.0	3.3	8	Faint hydrogen sulfide	None	0.0	0.0	0.0	0.0	0.1	0.1	40.1	59.7	16.8	2,355	Silt	240	710	950	
70	Ryuji Dam	Center	2013/6/4	Sunny	26.8	22.5	6.5	10	Grayish olive	Faint drain	0.0	0.0	0.0	0.1	0.2	0.5	52.4	47.0	18.5	2,307	Silt	360	660	1,020	
			2013/8/9	Sunny	32.6	19.3	7.8	8	Faint hydrogen sulfide	faint sewage	0.0	0.0	0.0	0.0	0.2	0.9	53.0	45.9	20.3	2,318	Silt	340	670	1,010	
			2013/11/15	Cloudy	11.4	23.2	11.3	9	Faint hydrogen sulfide	faint sewage	0.0	0.0	0.0	0.1	0.4	0.7	49.1	49.7	20.7	2,336	Silt	220	540	760	
			2014/2/7	Cloudy	1.5	19.2	3.8	8	Faint hydrogen sulfide	Faint swamp	0.0	0.0	0.0	0.0	0.2	0.5	53.3	46.0	21.0	2,353	Silt	270	840	1,110	
71	Fujigawa Dam	Center	2013/6/11	Cloudy	20.5	10.2	19.2	10	Faint hydrogen sulfide	None	0.0	0.0	0.8	1.5	1.6	17.4	53.2	25.5	29.8	2,394	Silt	170	330	500	
			2013/8/12	Sunny	30.6	9.9	22.0	8	Dark olive brown	faint earth	0.0	0.0	0.1	0.3	0.8	24.8	45.4	28.7	36.4	2,407	Silt	150	330	480	
			2013/11/18	Sunny	12.3	12.6	10.5	9	Faint hydrogen sulfide	faint sewage	0.0	0.0	0.0	0.1	0.4	13.5	60.9	25.1	33.1	2,439	Silt	120	330	450	
			2014/2/6	Sunny	3.5	13.3	4.3	8	Blackish brown	Faint swamp	0.0	0.0	0.0	0.1	0.4	9.4	61.1	29.1	26.7	2,477	Silt	160	490	650	
72	Iida Dam	Center	2013/6/11	Cloudy	21.0	16.2	7.4	10	Faint hydrogen sulfide	Faint drain	0.0	0.0	0.2	0.0	0.1	0.2	49.5	49.9	17.2	2,395	Silt	6.4	18	24.4	
			2013/8/12	Sunny	33.4	15.6	8.2	8	Faint hydrogen sulfide	Dim yellow	0.0	0.0	0.0	0.2	0.5	1.7	70.2	27.5	20.7	2,392	Silt	2.0	9.5	11.5	
			2013/11/18	Sunny	15.2	17.4	7.9	9	Faint hydrogen sulfide	Dim yellow	0.0	2.0	0.2	0.3	1.7	3.2	47.3	45.4	24.8	2,558	Silt	13	32	45	
			2014/2/6	Sunny	4.7	15.2	4.5	8	Black	Faint drain	0.0	0.0	2.7	5.7	9.7	8.5	37.1	36.4	21.6	2,560	Silt	13	40	53	

Ibaraki Lakes and Reservoirs (Surrounding Environment)1/2

L a k e s a n d R e s e r v o i r s	Location			Sampling Date	Weather	Air temperature (°C)	Surrounding Environment(Soil,Air dose)							Remarks	
							Soil					Air Dose (μSv/h)			
	General items						Activity concentration [Bq/kg(dry)]								
	No.	Water area	Location				Color	Odor	Property	Radioactive cesium					
Cs-134				Cs-137	Total										
54	Hiroura	2013/5/20	Cloudy	17.4	Dark brown	faint earth	Sandy	260	540	800	0.13				
		2013/8/13	Sunny	29.6	Dim yellowish brown	Faint grass	Sandy	460	990	1,450	0.13				
		2013/11/20	Sunny	12.6	Brown	faint earth	Loamy	190	450	640	0.15				
		2014/2/13	Sunny	5.8	Dark brown	Faint mold	Loamy	180	450	630	0.13				
	55	Hinuma	Miyamae	2013/5/20	Cloudy	18.8	Dark brown	faint earth	Loamy	13	18	31	0.07		
				2013/8/13	Sunny	30.0	Brown	Faint grass	Sandy	9.4	20	29.4	0.08		
				2013/11/20	Sunny	12.6	Dim yellowish brown	faint earth	Loamy	8.2	24	32.2	0.07		
				2014/2/13	Sunny	7.9	Brown	Faint mold	Loamy	6.9	21	27.9	0.08		
	56		Oyazawa	2013/5/20	Light rain	18.4	-	-	-	-	-	-	-	No soil samples	
				2013/8/13	Sunny	30.1	-	-	-	-	-	-	-	No soil samples	
				2013/11/20	Sunny	12.7	-	-	-	-	-	-	-	-	No soil samples
				2014/2/13	Sunny	6.8	-	-	-	-	-	-	-	-	No soil samples
	57		Offshore of Tamatsukuri	2013/6/5	Sunny	26.8	Gray	None	Sandy	24	54	78	0.10		
				2013/8/7	Sunny	31.0	Blackish brown	None	Sandy	17	45	62	0.06		
				2013/11/6	Sunny	17.8	Olive black	None	Sandy	41	75	116	0.08		
				2014/2/19	Sunny	5.4	Blackish brown	None	Sandy	18	37	55	0.08		
	58	Lake Kasumigaura	Offshore of Kakeuma	2013/6/5	Sunny	25.0	Dim yellowish brown	faint earth	Sandy	120	250	370	0.10		
				2013/8/7	Sunny	29.4	Olive black	None	Sandy	62	120	182	0.10		
				2013/11/6	Sunny	10.1	Olive black	None	Sandy	45	93	138	0.10		
				2014/2/19	Sunny	2.6	Dark olive brown	None	Loamy	12	33	45	0.09		
59		Center	2013/6/5	Sunny	25.7	-	-	-	-	-	-	-	No soil samples		
			2013/8/7	Sunny	31.0	-	-	-	-	-	-	-	No soil samples		
			2013/11/6	Sunny	15.2	-	-	-	-	-	-	-	No soil samples		
			2014/2/19	Sunny	1.7	-	-	-	-	-	-	-	No soil samples		
60		Offshore of Aso	2013/6/5	Sunny	27.2	Brown	faint earth	Sandy	81	130	211	0.12			
			2013/8/7	Sunny	31.0	Dark olive brown	None	Sandy	75	180	255	0.10			
			2013/11/6	Sunny	18.1	Olive black	Faint grass	Sandy	44	97	141	0.10			
			2014/2/19	Sunny	3.9	Dark olive brown	None	Sandy	45	100	145	0.08			
61	Lake Kitaura	Offshore of Kamaya	2013/6/5	Sunny	20.8	Olive black	Faint grass	Sandy	260	510	770	0.08			
			2013/8/7	Sunny	27.9	Blackish brown	medium gra	Sandy	250	540	790	0.09			
			2013/11/6	Sunny	15.2	Dark olive brown	medium gra	Loamy	290	690	980	0.08			
			2014/2/19	Sunny	3.6	Dark olive brown	Faint grass	Loamy	110	290	400	0.08			
62		Jingu Bridge	2013/6/5	Sunny	21.6	Light brown	faint earth	Sandy	9.5	19	28.5	0.05			
			2013/8/7	Sunny	29.0	Brown	Faint grass	Loamy	22	61	83	0.05			
			2013/11/6	Sunny	18.0	Dark brown	medium gra	Loamy	14	39	53	0.05			
			2014/2/19	Sunny	7.4	Dark brown	Faint grass	Loamy	18	66	84	0.06			
63	Hitachitone River	Lake Sotomasakaura	2013/6/5	Sunny	23.7	Dim yellowish brown	faint earth	Loamy	69	130	199	0.07			
			2013/8/7	Sunny	29.3	Dark brown	Faint grass	Loamy	79	180	259	0.06			
			2013/11/6	Sunny	20.6	Dark brown	medium gra	Loamy	59	160	219	0.06			
			2014/2/19	Cloudy	6.9	Dark brown	Faint grass	Loamy	41	110	151	0.06			
64		Ikisu	2013/6/5	Sunny	23.6	Dim yellowish brown	faint earth	Sandy	91	200	291	0.06			
			2013/8/7	Sunny	28.9	Dark brown	Faint grass	Loamy	120	260	380	0.07			
			2013/11/6	Sunny	19.8	Dark brown	medium gra	Loamy	100	230	330	0.06			
			2014/2/19	Sunny	9.0	Dark brown	Faint grass	Loamy	73	200	273	0.08			
65	Lake Ushikunuma	Center of Lake Ushikunuma	2013/5/16	Sunny	19.9	Dim yellowish orange	faint earth	Sandy	140	310	450	0.11			
			2013/8/14	Sunny	29.5	Brown	Faint grass	Sandy	110	250	360	0.09			
			2013/11/25	Cloudy	6.9	Dim yellowish brown	None	Loamy	110	260	370	0.06			
			2014/2/13	Sunny	2.6	Dark brown	faint earth	Loamy	63	140	203	0.08			

Ibaraki Lakes and Reservoirs (Surrounding Environment) 2/2

L a k e s a n d R e s e r v o i r s	Location			Sampling Date	Weather	Air temperature (°C)	Surrounding Environment(Soil,Air dose)						Remarks
							Soil					Air Dose (μSv/h)	
	General items												
	No.	Water area	Location				Color	Odor	Property	Activity concentration [Bq/kg(dry)]			
Radioactive cesium													
						Cs-134	Cs-137	Total					
66	Mizunuma Dam	Center	2013/6/7	Cloudy	18.0	Dim yellowish brown	faint earth	Sandy	380	790	1,170	0.15	
			2013/8/8	Sunny	26.5	Blackish brown	Faint grass	Loamy	280	580	860	0.15	
			2013/11/27	Cloudy	11.4	Dim yellowish brown	faint earth	Loamy	270	640	910	0.15	
			2014/2/3	Sunny	11.1	Dark brown	Faint mold	Loamy	250	610	860	0.14	
	67	Koyama Dam	Center	2013/6/7	Cloudy	20.8	Dim yellowish orange	Faint grass	Sandy	310	680	990	0.13
				2013/8/8	Sunny	27.6	Dim yellowish brown	medium gra	Sandy	320	610	930	0.13
				2013/11/27	Cloudy	8.5	Olive black	faint earth	Sandy	260	610	870	0.14
				2014/2/3	Sunny	4.6	Dim yellowish brown	faint earth	Sandy	140	360	500	0.13
	68	Hananuki Dam	Center	2013/6/7	Cloudy	18.9	Brown	faint earth	Sandy	170	330	500	0.17
				2013/8/8	Cloudy	26.6	Dim yellowish brown	Faint grass	Loamy	870	2,000	2,870	0.18
				2013/11/26	Sunny	15.1	Olive black	faint earth	Sandy	460	1,100	1,560	0.19
				2014/2/4	Light snow	0.2	Brown	faint earth	Loamy	490	1,300	1,790	0.18
69	Jyuou Dam	Center	2013/6/4	Sunny	19.3	Dim yellowish brown	Faint grass	Sandy	1,600	3,200	4,800	0.15	
			2013/8/9	Sunny	30.9	Dim yellowish brown	Faint grass	Loamy	1,500	3,100	4,600	0.16	
			2013/11/26	Sunny	11.4	Olive brown	None	Clay-loamy	1,100	2,700	3,800	0.14	
			2014/2/4	Light snow	1.8	Dim yellowish brown	int rottenn	Loamy	1,300	3,200	4,500	0.14	
70	Ryuji Dam	Center	2013/6/4	Sunny	26.8	Dim yellowish brown	Faint grass	Sandy	71	140	211	0.09	
			2013/8/9	Sunny	32.6	Blackish brown	Faint grass	Loamy	240	520	760	0.09	
			2013/11/15	Cloudy	11.4	Blackish brown	faint earth	Loamy	170	420	590	0.09	
			2014/2/7	Cloudy	1.5	Dark grayish yellow	Faint mold	Loamy	160	410	570	0.09	
71	Fujiigawa Dam	Center	2013/6/11	Cloudy	20.5	Faint hydrogen sulfide	faint earth	Sandy	250	540	790	0.13	
			2013/8/12	Sunny	30.6	Black	Faint grass	Loamy	380	840	1,220	0.14	
			2013/11/18	Sunny	12.3	Blackish brown	faint earth	Loamy	220	540	760	0.12	
			2014/2/6	Sunny	3.5	Black	faint earth	Loamy	320	800	1,120	0.12	
72	Iida Dam	Center	2013/6/11	Cloudy	21.0	Yellowish brown	faint earth	Loamy	220	500	720	0.11	
			2013/8/12	Sunny	33.4	Brown	Faint grass	Loamy	180	410	590	0.10	
			2013/11/18	Sunny	15.2	Dark brown	faint earth	Loamy	440	1,000	1,440	0.10	
			2014/2/6	Sunny	4.7	Dim yellowish brown	faint earth	Loamy	180	530	710	0.12	

Ibaraki Coastal (Water) 1/1

Location		Sampling Date	Weather	Air temperature (°C)	Water depth (m)	Water										Remarks	
No.	Water area					General Items						Activity concentration (Bq/L)					
						Water temperature (°C)	Sampling depth (m)	Color	Odor	Secchi disk depth (m)	Salinity (‰)	SS (mg/L)	Turbidity (FNU)	Radioactive cesium			
														Cs-134	Cs-137		
73	Offshore of Satone River Estuary	Surface layer	2013/6/10	Cloudy	18.0	12.9	15.9	0.5	Dark grayish bluish green	None	5.0	29.4	2	1.3	<0.52	<0.61	
		Deep layer					14.6	11.9	-	None		29.7	2	1.1	<0.60	<0.61	
		Surface layer	2013/8/5	Cloudy	28.0	13.8	23.2	0.5	Dark grayish yellowish green	None	4.0	27.8	1	1.1	<0.59	<0.35	
		Deep layer					18.4	12.8	-	None		30.9	6	1.3	<0.70	<0.55	
		Surface layer	2013/11/19	Sunny	15.6	13.5	16.2	0.5	Grayish yellow green	None	1.7	30.6	5	2.8	<0.71	<0.58	
		Deep layer					16.1	12.5	-	None		30.4	6	2.5	<0.59	<0.68	
	Surface layer	2014/2/21	Sunny	7.7	13.0	9.1	0.5	Strong yellowish green	None	2.5	28.8	6	3.6	<0.54	<0.52		
	Deep layer					9.0	12.0	-	None		29.6	16	9.7	<0.67	<0.57		
	74	Offshore of Okita River Estuary	Surface layer	2013/6/10	Cloudy	18.9	11.3	16.3	0.5	Grayish green	None	4.5	28.8	4	1.6	<0.48	<0.58
			Deep layer					14.3	10.3	-	None		29.6	4	1.6	<0.67	<0.60
			Surface layer	2013/8/5	Sunny	28.0	12.8	23.4	0.5	Dark grayish yellowish green	None	8.5	16.8	1	1.0	<0.76	<0.74
			Deep layer					19.1	11.8	-	None		30.2	2	1.1	<0.63	<0.59
Surface layer			2013/11/19	Sunny	15.2	12.5	16.7	0.5	Grayish yellow green	None	3.5	30.4	1	1.8	<0.65	<0.68	
Deep layer							16.5	11.5	-	None		31.1	2	3.3	<0.59	<0.58	
Surface layer	2014/2/21	Sunny	7.5	12.5	9.9	0.5	Deep bluish green	None	1.8	26.9	4	3.7	<0.55	<0.57			
Deep layer					10.7	11.5	-	None		29.3	11	6.0	<0.72	<0.71			
75	Offshore of Momiya River/Kujigawa River Estuaries	Surface layer	2013/6/10	Cloudy	16.8	9.6	17.1	0.5	Grayish blue green	None	3.5	26.9	1	1.9	<0.49	<0.56	
		Deep layer					15.5	8.6	-	None		29.1	2	1.7	<0.54	<0.52	
		Surface layer	2013/8/5	Cloudy	28.0	10.2	24.3	0.5	Dark grayish yellowish green	None	3.5	22.6	3	1.5	<0.56	<0.58	
		Deep layer					23.3	9.2	-	None		31.2	3	1.5	<0.70	<0.78	
		Surface layer	2013/11/19	Cloudy	13.5	10.5	18.3	0.5	Grayish yellow green	None	3.0	28.8	2	1.8	<0.68	<0.58	
		Deep layer					19.0	9.5	-	None		30.7	1	1.2	<0.52	<0.63	
Surface layer	2014/2/21	Sunny	8.1	10.6	10.3	0.5	Strong bluish green	None	3.0	23.8	4	1.6	<0.72	<0.50			
Deep layer					10.7	9.6	-	None		29.8	5	2.0	<0.67	<0.71			
76	Neighboring water body of Ken-o Offshore of Nakagawa River	Surface layer	2013/6/10	Cloudy	16.8	6.4	17.2	0.5	Grayish yellow green	None	1.6	25.4	8	4.0	<0.67	<0.59	
		Deep layer					17.1	5.4	-	None		25.1	9	3.8	<0.64	<0.66	
		Surface layer	2013/8/5	Cloudy	28.0	5.5	24.3	0.5	Dark grayish green	None	1.5	6.1	7	3.6	<0.51	<0.52	
		Deep layer					23.8	4.5	-	None		24.3	10	3.0	<0.52	<0.49	
		Surface layer	2013/11/19	Sunny	13.4	6.2	14.0	0.5	Dark grayish yellow green	None	1.5	7.5	3	2.1	<0.68	<0.80	
		Deep layer					17.4	5.2	-	None		28.2	12	6.2	<0.65	<0.72	
Surface layer	2014/2/21	Sunny	4.6	6.1	8.3	0.5	Dull yellowish green	None	1.7	16.2	4	2.9	<0.64	<0.52			
Deep layer					8.4	5.1	-	None		30.1	6	3.5	<0.54	<0.65			
77	Offshore of Tonegawa River Estuary	Surface layer	2013/6/18	Cloudy	21.4	8.8	22.3	0.5	Dark grayish greenish yellow	None	1.8	6.1	7	7.1	<0.48	<0.55	
		Deep layer					18.2	7.8	-	None		27.6	2	1.0	<0.70	<0.53	
		Surface layer	2013/8/23	Sunny	29.4	9.1	25.7	0.5	Dark grayish yellow green	None	2.3	18.1	5	4.4	<0.48	<0.47	
		Deep layer					22.5	8.1	-	None		30.4	2	0.9	<0.55	<0.58	
		Surface layer	2013/11/22	Sunny	6.9	8.9	17.1	0.5	Grayish yellow green	None	2.5	28.5	4	1.5	<0.64	<0.52	
		Deep layer					16.7	7.9	-	None		28.7	6	1.8	<0.51	<0.65	
Surface layer	2014/2/24	Cloudy	5.9	7.8	8.2	0.5	Dark yellow green	None	1.8	17.6	5	4.1	<0.50	<0.55			
Deep layer					8.6	6.8	-	None		23.8	5	3.6	<0.50	<0.60			

C o a s t a l

Ibaraki Coastal (Sediment) 1/1

Location		Sampling Date	Weather	Air temperature (°C)	Water depth (m)	Sediment																	Activity concentration [Bq/kg(dry)]			Remarks
No.	Water area					Sediment temperature (°C)	Sample length (cm)	Color	Odor	General items									Sediment content (%)	Density (g/cm ³)	Property	Radioactive cesium				
										Coarse gravel	Medium gravel	Fine gravel	Grain size distribution (%)		Fine sand			Silt				Clay	Cs-134	Cs-137	Total	
C o a s t a l	73	Offshore of Satone River Estuary	2013/6/10	Cloudy	18.0	12.9	14.2	10	Grayish olive	None	0.0	0.0	0.0	0.3	16.0	79.1	0.8	3.9	76.1	2.697	Sand	13	22	35		
			2013/8/5	Cloudy	28.0	13.8	17.5	8	Faint hydrogen sulfide	None	0.0	0.0	0.4	0.9	9.1	79.5	3.1	7.1	78.5	2.715	Sand	11	30	41		
			2013/11/19	Sunny	15.6	13.5	16.0	7	Grayish olive	None	0.0	0.1	0.4	0.5	6.0	64.6	21.5	6.9	69.7	2.688	Sand	13	40	53		
			2014/2/21	Sunny	7.7	13.0	9.0	8	Faint hydrogen sulfide	None	0.0	0.1	0.6	2.1	12.1	72.5	6.1	6.6	73.7	2.653	Sand	23	44	67		
			2013/6/10	Cloudy	18.9	11.3	14.2	10	Gray	None	0.0	0.0	0.1	0.1	3.5	79.9	10.1	6.4	74.1	2.677	Sand	10	32	42		
	74	Offshore of Okita River Estuary	2013/8/5	Sunny	28.0	12.8	18.6	8	Faint hydrogen sulfide	None	0.0	0.0	0.1	0.2	10.7	82.5	2.7	3.8	74.4	2.803	Sand	10	18	28		
			2013/11/19	Sunny	15.2	12.5	16.4	8	Grayish olive	None	0.0	0.0	0.2	1.3	44.8	47.5	2.6	3.7	81.2	2.799	Sand	2.7	4.6	7.3		
			2014/2/21	Sunny	7.5	12.5	10.7	8	Faint hydrogen sulfide	None	0.0	0.0	0.5	1.0	21.0	66.5	6.5	4.8	77.4	2.771	Sand	<0.0	13	13		
			2013/6/10	Cloudy	16.8	9.6	15.0	10	Grayish olive	None	0.0	0.0	0.0	0.1	1.8	81.4	11.0	5.8	73.7	2.655	Sand/silt	5.9	14	19.9		
			2013/8/5	Cloudy	28.0	10.2	21.7	8	Dark olive brown	None	0.0	0.0	0.1	0.2	16.8	72.8	5.6	4.6	71.8	2.718	Sand	1.6	2.6	4.2		
e s t u a r y	75	Offshore of Momiya River/Kujigawa River Estuaries	2013/11/19	Cloudy	13.5	10.5	18.9	8	Grayish olive	None	0.0	0.0	0.0	0.1	6.3	71.5	16.5	5.7	77.6	2.673	Sand	4.1	9.9	14.0		
			2014/2/21	Sunny	8.1	10.6	10.7	8	Gray	None	0.0	0.0	0.0	0.2	3.5	79.7	11.0	5.7	70.5	2.647	Sand	3.7	11	14.7		
			2013/6/10	Cloudy	16.8	6.4	16.8	10	Gray	None	0.0	0.0	0.2	0.1	49.7	74.1	2.1	4.1	77.7	2.788	Sand	4.7	11	15.7		
			2013/8/5	Cloudy	28.0	5.5	23.3	8	Faint hydrogen sulfide	None	0.0	0.2	0.2	2.6	71.1	22.8	0.0	3.1	80.6	2.763	Sand	<0.98	2.6	2.6		
			2013/11/19	Sunny	13.4	6.2	17.4	8	Olive brown	None	0.0	0.0	0.6	8.5	83.5	5.4	0.4	1.6	82.1	2.701	Sand	1.6	2.8	4.4		
	76	Neighboring water body of Ken-o Offshore of Nakagawa River	2014/2/21	Sunny	4.6	6.1	8.4	8	Grayish olive	None	0.0	0.0	1.0	5.6	76.0	14.0	1.2	2.3	76.6	2.692	Sand	2.1	4.9	7.0		
			2013/6/18	Cloudy	21.4	8.8	18.0	7	Gray	None	0.0	0.0	0.1	0.1	1.2	96.0	0.8	1.9	78.9	2.683	Sand	1.3	2.4	3.7		
			2013/8/23	Sunny	29.4	9.1	22.4	5	Olive black	None	0.0	0.0	0.1	0.3	1.4	95.4	1.0	1.8	77.1	2.672	Sand	0.72	1.7	2.42		
			2013/11/22	Sunny	6.9	8.9	16.5	7	Grayish olive	Dark olive	0.0	0.0	0.1	0.1	1.2	88.2	6.3	4.1	77.8	2.713	Sand	1.3	5.6	6.9		
			2014/2/24	Cloudy	5.9	7.8	8.6	8	Grayish olive	None	0.0	0.0	0.2	0.3	3.6	87.7	4.2	4.0	76.2	2.702	Sand	1.6	2.6	4.2		
77	Offshore of Tonegawa River Estuary	2013/8/23	Sunny	29.4	9.1	22.4	5	Olive black	None	0.0	0.0	0.1	0.3	1.4	95.4	1.0	1.8	77.1	2.672	Sand	0.72	1.7	2.42			

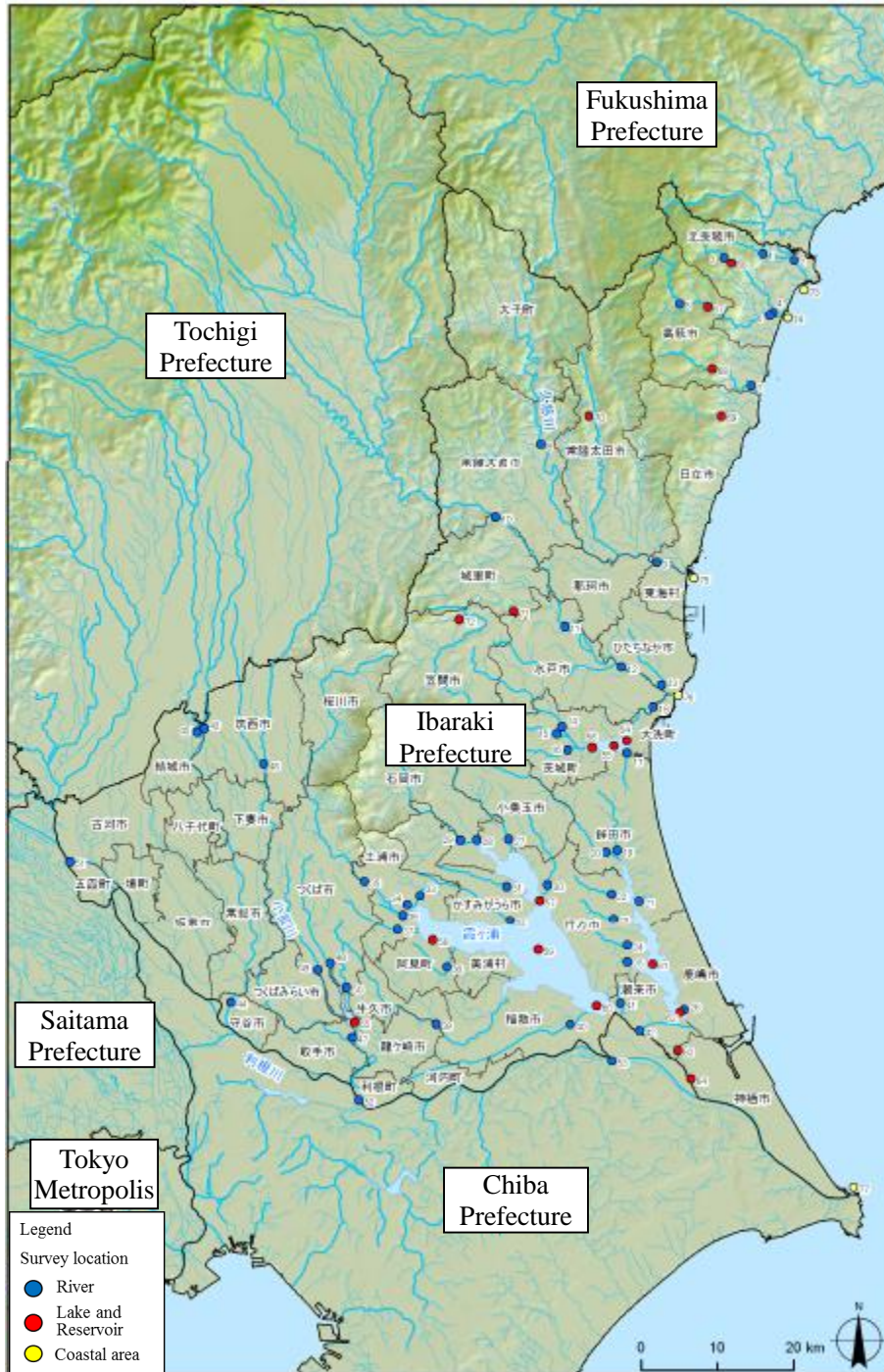


Figure 3.5.5 Survey Locations (Ibaraki Prefecture)