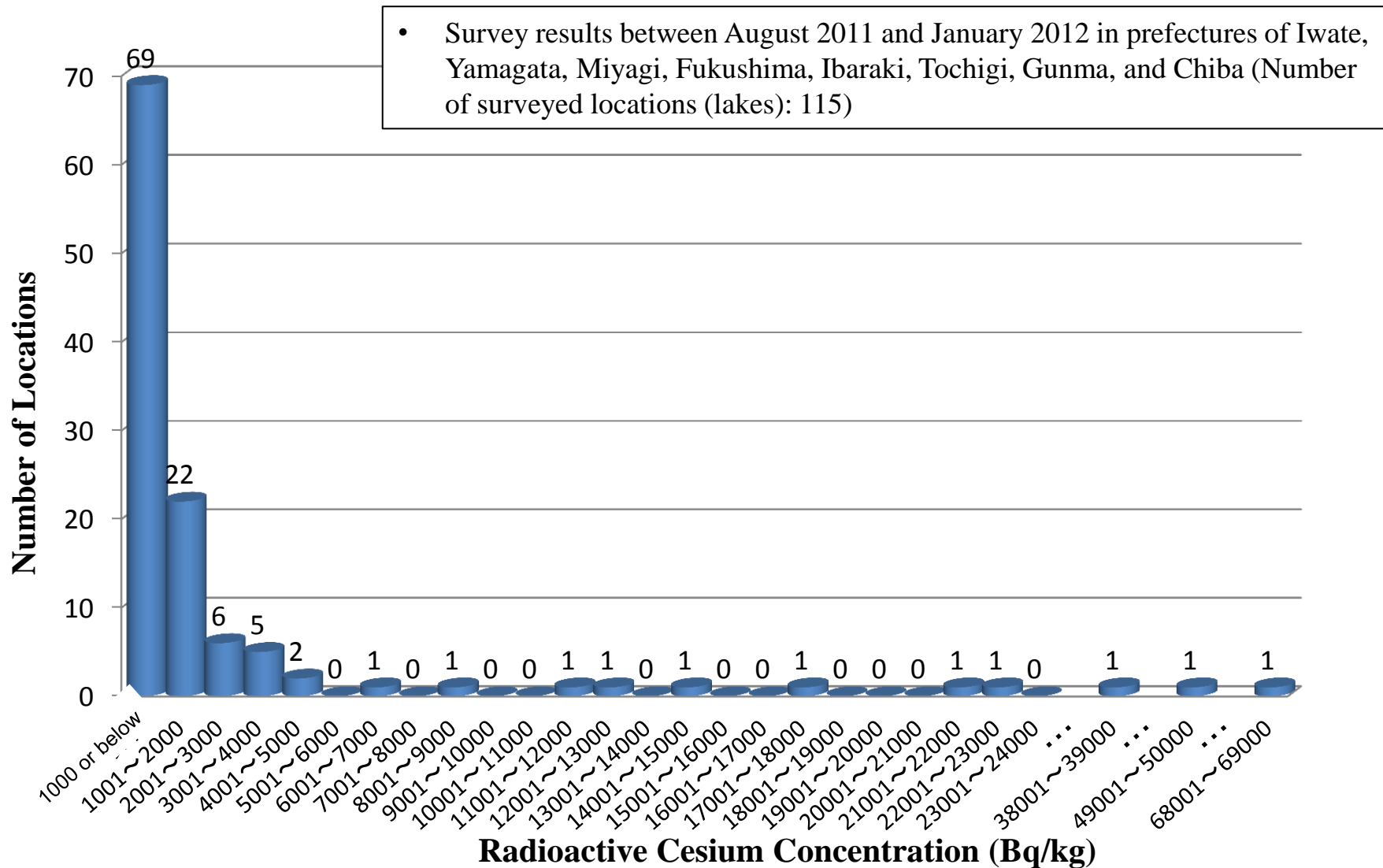
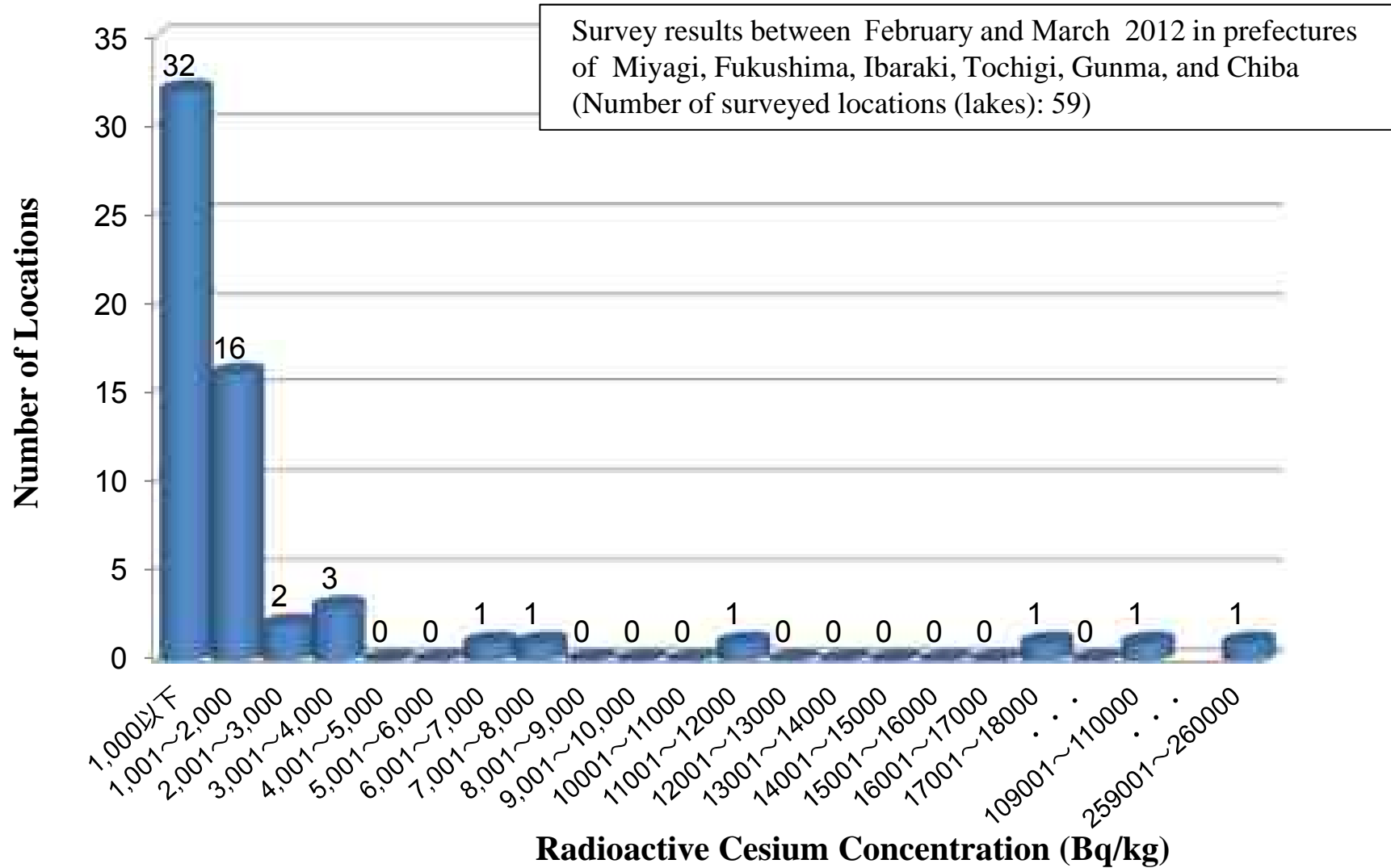


# Lakes (Sediment): Number of Locations by Radioactive Cesium Concentration (1,000Bq/kg) (August 2011-January 2012)



# Lakes (Sediment): Number of Locations by Radioactive Cesium Concentration (1,000Bq/kg) (February - March 2012)



FY2011 Water Environment Radioactive Material Monitoring Results  
 (Environment Management Bureau, Ministry of the Environment)