

## FY2011 Tokyo, Saitama, and Chiba Prefectures Survey Results

### [Survey Dates]

Survey	Rivers	Lakes	Sea Areas	Bathing Areas
1 <sup>st</sup> Time	Oct. 31-Nov. 4, 2011	Nov. 1, 2011	—	—
2 <sup>nd</sup> Time	Feb. 13-17, 2012	Feb. 14, 2012	—	—

※1st Time: Chiba Prefecture

2nd Time: Tokyo, Saitama and Chiba Prefectures

### [Survey Results]

#### ○1<sup>st</sup> Time (Chiba Prefecture):

##### Water Quality (Lower detection limit: 1Bq/L)

- Radioactive iodine (I-131) was not detectable at any of the locations tested
- Radioactive cesium (Cs-134, Cs-137) was not detectable at any of the locations tested

##### Sediment

- Radioactive iodine (I-131) was not detectable at any of the locations tested (Lower detection limit: 30Bq/kg (dried mud))

- Radioactive cesium

##### Rivers

Cs-134: 18-4,300Bq/kg (dried mud)

Cs-137: 26-5,400Bq/kg (dried mud)

##### Lakes and headwaters

Cs-134: 320-1,500Bq/kg (dried mud)

Cs-137: 410-1,800Bq/kg (dried mud)

##### Surrounding Environment

- Radioactive iodine (I-131) was not detectable at any of the locations tested (Lower detection limit: 30Bq/kg (dry))

- Radioactive cesium

##### Rivers

Cs-134: 51-3,000Bq/kg (dry)

Cs-137: 63-3,600Bq/kg (dry)

##### Lakes and headwaters

Cs-134: 210-840Bq/kg (dry)

Cs-137: 290-1,000Bq/kg (dry)

- Spatial dose

Rivers 0.04-0.74μSv/h

Lakes and headwaters 0.22-0.44μSv/h

#### 2<sup>nd</sup> Time (Tokyo, Saitama, and Chiba Prefectures):

##### Water Quality (Lower detection limit: 1Bq/L)

- Radioactive iodine (I-131) was not detectable at any of the locations tested
- Radioactive cesium (Cs-134, Cs-137) was not detectable at any of the locations tested

##### Sediment

- Radioactive iodine (I-131) was not detectable at any of the locations tested (Lower detection limit: 30Bq/kg (dried mud))

- Radioactive cesium

##### Rivers

Cs-134: 12-3,900Bq/kg (dried mud)

Cs-137: 23-5,100Bq/kg (dried mud)

##### Lakes and headwaters

Cs-134: 320-1,500Bq/kg (dried mud)

Cs-137: 270-4,300Bq/kg (dried mud)

Surrounding Environment

- Radioactive iodine (I-131) was not detectable at any of the locations tested (Lower detection limit: 30Bq/kg (dry))

- Radioactive cesium

Rivers

Cs-134: 85-1,900Bq/kg (dry)

Cs-137: 130-2,500Bq/kg (dry)

Lakes and headwaters

Cs-134: 340-1,000Bq/kg (dry)

Cs-137: 500-1,600Bq/kg (dry)

- Spatial dose

Rivers 0.06-0.46 $\mu$ Sv/h

Lakes and headwaters 0.12-0.26 $\mu$ Sv/h

River (Chiba Prefecture) : 1st Water Quality Monitoring Results

Sampling point				Sampling date	Weather	Air temperature	Full depth m	Water quality											Remarks
No.	Water body	Point	Municipality					General items							Radioactive material concentrations (Bq/L)				
								Water temperature °C	Sampling depth m	Color	Odor	Transparency cm	Electrical conductivity mS/m	SS mg/L	Turbidity	Radioactive iodine I-131	Radioactive cesium Cs-134 Cs-137		
1	Tongogawa River System	Shogogawa River	Fukamaohashi Bridge	Inzaishi City/Sakamachi Town	2011/11/4	Sunny	19.1	1.30	18.0	0.0	Greenish brown	Faint seaweed	36	29.9	10	11	<1	<1	<1
2		Shinbeihashi Bridge	Inzaishi City/Sakamachi Town	2011/10/31	Clear	21.9	0.56	19.8	0.0	Greenish brown	None	57	28.0	20	17	<1	<1	<1	
3		Nagatogawa River	Intake at Machibashi Water Purification Plant	Inzaishi City/Sakamachi Town	2011/10/31	Sunny	20.0	0.32	19.2	0.0	Greenish brown	None	21	26.3	34	33	<1	<1	<1
4		Nagatogawa River	Nagatobashi Bridge	Inzaishi City/Sakamachi Town	2011/10/31	Clear	22.3	0.25	21.0	0.0	Greenish brown	None	66	28.7	19	22	<1	<1	<1
5		Nagatogawa River	Fujimbashi Bridge	Sakamachi Town	2011/10/31	Sunny	20.6	0.32	19.1	0.0	Greenish brown	None	100 or more	27.7	6	6.0	<1	<1	<1
6		Ryudagawa River	Ryumatsunohashi Bridge	Ninashi City/Sakamachi Town	2011/11/1	Clear	18.8	0.08	15.9	0.0	Colorless transparent	Faint sewage	18	138.8	26	31	<1	<1	<1
7		Nekonagawa River	Shinkawa Floodgate	Naritashi City	2011/11/1	Clear	22.0	1.98	17.9	0.0	Grayish yellow green	Faint sewage	40	56.8	9	10	<1	<1	<1
8	Feeder rivers of Teganuma Lake	Ohorigawa River	Kitakashiwabashi Bridge	Kashiwashashi City	2011/11/1	Clear	22.2	0.73	18.0	0.0	Grayish green	Strong sewage	100 or more	34.0	6	7.1	<1	<1	<1
9		Otsugawa River	Sannobashi Bridge, under	Kamagayashi City	2011/11/3	Cloudy	21.1	0.43	18.0	0.0	Colorless transparent	None	100 or more	37.8	11	9.3	<1	<1	<1
10		Otsugawa River	Kaminumabashi Bridge	Kashiwashashi City	2011/11/1	Sunny	21.0	0.67	18.6	0.0	Dark grayish yellow green	None	100 or more	54.3	5	6.4	<1	<1	<1
11		Someiritoshi	Someishinbashi Bridge	Kashiwashashi City	2011/11/1	Clear	20.5	0.52	20.2	0.0	Colorless transparent	Sewage	81	48.6	5	5.0	<1	<1	<1
12		Kanayamaotoshi	Downstream of Kanayamaotoshi Bridge	Kamagayashi City/Usahi City	2011/11/3	Cloudy	19.2	0.10	17.5	0.0	Colorless transparent	None	100 or more	37.9	9	7.6	<1	<1	<1
13		Kanayamaotoshi	Nauchibashi Bridge	Shirotsu City	2011/11/1	Clear	18.8	0.40	17.6	0.0	Colorless transparent	None	100 or more	36.8	3	3.4	<1	<1	<1
14		Kamenarigawa River	Kamenaribashi Bridge	Inzaishi City	2011/10/31	Sunny	16.9	0.48	16.4	0.0	Greenish brown	None	100 or more	33.0	11	11	<1	<1	<1
15		Igusai Channel	Downstream of Igusai Channel	Kamagayashi City	2011/11/3	Cloudy	20.0	0.08	18.5	0.0	Colorless transparent	None	100 or more	42.5	5	5.6	<1	<1	<1
16		Futaegawa River	Tomigayabashi Bridge	Funabashashi City/Usahi City	2011/11/3	Cloudy	17.0	0.28	15.4	0.0	Colorless transparent	None	100 or more	36.5	5	3.8	<1	<1	<1
17		Kanzakigawa River	Kanzakibashi Bridge	Yachiyo City/Inzaishi City	2011/11/1	Sunny	20.2	1.60	17.8	0.0	Greenish brown	Faint mold	100 or more	41.3	3	4.4	<1	<1	<1
18	Kannogawa River	Kannobashi Bridge	Yachiyo City	2011/11/3	Cloudy	16.1	0.28	16.2	0.0	Colorless transparent	None	100 or more	41.2	7	6.9	<1	<1	<1	
19	Feeder rivers of Inbanuma Lake	Inba Discharge Channel (upper reaches)	Yachiyobashi Bridge	Yachiyo City	2011/11/3	Cloudy	18.2	3.10	17.8	0.0	Greenish brown	Faint mold	26	35.5	35	26	<1	<1	<1
20		Tegurigawa River	Mumeibashi Bridge	Sakurashi City	2011/11/3	Sunny	19.0	0.30	15.6	0.0	Colorless transparent	None	100 or more	40.6	6	5.7	<1	<1	<1
21		Morotogawa River	Morotobashi Bridge	Inzaishi City	2011/11/1	Sunny	15.2	0.98	17.0	0.0	Greenish brown	None	72	28.5	4	6.6	<1	<1	<1
22		Kashimagawa River	Iwatombashi Bridge	Sakurashi City	2011/11/3	Cloudy	22.2	0.90	16.4	0.0	Colorless transparent	Faint sewage	100 or more	38.6	5	5.6	<1	<1	<1
23		Takasakigawa River	Ryutobashi Bridge	Sakurashi City	2011/11/3	Cloudy	22.2	0.78	16.5	0.0	Colorless transparent	Faint mold	100 or more	40.0	4	5.2	<1	<1	<1
24	Kashimagawa River	Kashimabashi Bridge	Sakurashi City	2011/11/3	Cloudy	19.8	2.51	16.8	0.0	Dark grayish yellow green	Faint mold	100 or more	41.1	5	5.9	<1	<1	<1	
25	Inbasu Channel	Tsurumakibashi Bridge	Inzaishi City	2011/11/4	Sunny	19.5	2.10	18.2	0.0	Greenish brown	Faint seaweed	30	22.0	24	22	<1	<1	<1	
26	Edogawa River System	Toneunga Canal	Ungabashi Bridge	Nagareyama City	2011/11/3	Cloudy	21.0	0.40	19.3	0.0	Dark grayish yellow green	Faint sewage	59	46.6	15	14	<1	<1	<1
27		Edogawa River	Nagareyama Bridge	Nagareyama City/Mitsushi City	2011/11/3	Cloudy	22.6	0.50	17.0	0.0	Dark grayish yellow green	None	100 or more	28.8	6	6.2	<1	<1	<1
28		Sakagawa River	Bentenbashi Bridge	Matsudoshi City	2011/11/3	Cloudy	20.6	1.86	18.2	0.0	Dark grayish yellow green	Faint mold	74.5	39.6	10	12	<1	<1	<1
29		Shinsakagawa River	Sakanebashi Bridge	Matsudoshi City	2011/11/3	Cloudy	22.8	0.60	18.7	0.0	Dark grayish yellow green	Faint mold	70	34.3	10	9.9	<1	<1	<1
30		Edogawa River	Shinkatsushikabashi Bridge	Matsudoshi City/Kanashiki City	2011/11/3	Cloudy	16.9	0.70	16.5	0.0	Dark grayish yellow green	Faint mold	65	28.0	11	10	<1	<1	<1
31		Edogawa River	Shingyotokubashi Bridge	Ichikawashi City	2011/11/4	Sunny	21.8	0.50	19.7	0.0	Dark grayish yellow green	Faint sewage	70	4190.0	5	6.0	<1	<1	<1
32		Kyuedogawa River	Urayasubashi Bridge	Urayasubashi City/Edogawa City	2011/11/4	Sunny	18.4	7.34	17.9	0.0	Greenish brown	Faint sewage	68	86.0	7	8.1	<1	<1	<1
33		Mamagawa River	Nemoto Floodgate	Ichikawashi City	2011/11/4	Sunny	21.4	1.27	17.4	0.0	Dark grayish yellow green	None	70	28.9	6	6.8	<1	<1	<1
34		Kokubugawa River	Suwadabashi Bridge	Ichikawashi City	2011/11/4	Sunny	21.2	1.21	18.4	0.0	Dark grayish yellow green	Faint sewage	100 or more	49.4	5	6.3	<1	<1	<1
35		Harukigawa River	Before the confluence with Kujukigawa River	Ichikawashi City	2011/11/4	Sunny	24.4	0.86	19.4	0.0	Grayish yellow green	Faint detergent	56	74.2	8	9.0	<1	<1	<1
36	Hasen-okashiwagawa River	Downstream of Nakazawaibashi Bridge	Kamagayashi City/Ichikawashi City	2011/11/4	Sunny	23.3	1.10	20.2	0.0	Dark grayish yellow green	Faint sewage	100 or more	48.9	5	5.1	<1	<1	<1	
37	Okashiwagawa River	Sengenbashi Bridge	Ichikawashi City	2011/11/4	Sunny	20.2	1.93	17.8	0.0	Dark grayish yellow green	Faint sewage	100 or more	70.1	4	4.9	<1	<1	<1	
38	Mamagawa River	Mitomaebashi Bridge	Ichikawashi City	2011/11/4	Sunny	23.6	3.45	17.7	0.0	Dark grayish yellow green	Faint sewage	100 or more	16.5	5	5.8	<1	<1	<1	
39	Rivers flowing into Tokyowan inner bay	Ehigawa River	Yachiyobashi Bridge	Funabashashi City	2011/11/4	Sunny	22.8	2.55	19.0	0.0	Dark grayish yellow green	Faint sewage	100 or more	19.0	3	3.5	<1	<1	<1
40		Inba Discharge Channel (lower reaches)	Shinhanamigawabashi Bridge	Chibashi City	2011/11/4	Sunny	20.9	3.23	18.4	0.0	Dark grayish yellow green	Faint sewage	69	14.2	6	6.9	<1	<1	<1
41		Miyakobashi Bridge	Chibashi City	2011/11/4	Clear	19.4	1.60	16.5	0.0	Dark grayish yellow green	Faint sewage	100 or more	802.0	7	9.1	<1	<1	<1	

Note: Sampling points for rivers are listed from north to south, and for different points along the river, from upstream to downstream.



River (Chiba Prefecture) : 1st Surrounding Environment (River Terrace (Left Bank)) Monitoring Results

No.	Sampling point			Sampling date	Weather	Remarks	Surrounding environment (soil/herb/air dose)												
	Water body	Point	Municipality				Left bank												
							Soil			Herb			Air dose (μSv/h)						
							Color	Odor	Property	Radioactive cesium Cs-134	Radioactive cesium Cs-137	Radioactive iodine I-131		Radioactive cesium Cs-134	Radioactive cesium Cs-137				
1	Tonegawa River System	Shogogawa River	Fukamaohashi Bridge	Isahaya City/Sakamauchi Town	2011/11/4	Sunny	19.0	Dark grey yellow	Faint earth	Sandy	<30	770	960	<30	480	640	0.42	*1	
		Shogogawa River	Shinbeihashi Bridge	Isahaya City/Sakamauchi Town	2011/10/31	Clear	21.9	Olive brown	None	Loamy	<30	200	250	<30	14	20	0.09		
		Nagatogawa River	Inoue at Marubashi Water Purification Plant	Isahaya City/Sakamauchi Town	2011/10/31	Sunny	20.0	Dark olive brown	None	Loamy	<30	480	610	<30	<10	14	0.07		
		Nagatogawa River	Nagatobashi Bridge	Isahaya City/Sakamauchi Town	2011/10/31	Clear	22.3	Olive brown	None	Loamy	<30	51	63	<30	<10	11	0.09		
		Nagatogawa River	Futimbashi Bridge	Sakaemachi Town	2011/10/31	Sunny	20.6	Brownish black	None	Loamy	<30	310	360	<30	<10	<10	0.19		
		Ryudogawa River	Ryudaisuinobashi Bridge	Isahaya City/Sakamauchi Town	2011/11/1	Clear	18.8	Dark olive brown	Faint earth	Sandy	<30	430	510	<30	10	15	0.11		
2	Feeder rivers of Teganuma Lake	Nekonogawa River	Shinkawa Floodgate	Naritashi City	2011/11/1	Clear	22.0	Dark olive brown	Faint green grass	Loamy	<30	110	170	<30	<10	10	0.08		
		Ohorigawa River	Kitakashwabashi Bridge	Kashiwashu City	2011/11/1	Clear	22.2	Dark brown	Faint earth	Loamy	<30	960	1,100	<30	19	28	0.61		
		Otsugawa River	Sannobashi Bridge, under	Kamagawashi City	2011/11/3	Cloudy	21.1	Dark brown	None	Loamy	<30	650	790	<30	<10	13	0.15		
		Otsugawa River	Kamumabashi Bridge	Kashiwashu City	2011/11/1	Sunny	21.0	Dark olive brown	Earth	Loamy	<30	1,400	1,800	<30	11	15	0.53		
		Somemotoshu River	Somershibashi Bridge	Kashiwashu City	2011/11/1	Clear	20.5	Brownish black	Faint earth	Loamy	<30	1,400	1,700	<30	<10	<10	0.36		
		Kanayamaotsu River	Downstream of Kanayamaotsu Bridge	Kamagawashi City/Usuzaki City	2011/11/3	Cloudy	19.2	—	—	—	—	—	—	—	—	—	—	Surrounding environment (soil/herb/air dose) : Unable to collect soil due to private property, etc.	
		Kanayamaotsu River	Nauchibashi Bridge	Shiroishi City	2011/11/1	Clear	18.8	Brownish black	Earth	Loamy	<30	1,100	1,300	<30	67	76	0.36	*2	
		Kamenarigawa River	Kamenaribashi Bridge	Inzaishi City	2011/10/31	Sunny	16.9	Brownish black	None	Sandy	<30	3,000	3,600	<30	20	26	0.16		
		Igasasuro Channel	Downstream of Igasasuro Channel	Kamagawashi City	2011/11/3	Cloudy	20.0	—	—	—	—	—	—	<30	40	54	0.11	Surrounding environment (soil/herb/air dose) : Unable to collect soil due to no exposed soil	
3	Feeder rivers of Inbanuma Lake	Futagawa River	Tomigawabashi Bridge	Futatabi City/Usuzaki City	2011/11/3	Cloudy	17.0	Olive brown	Faint green grass	Loamy	<30	750	890	<30	<10	23	0.13		
		Kanzakigawa River	Kanzakibashi Bridge	Fuchino City/Inzaishi City	2011/11/1	Sunny	20.2	Dark olive brown	None	Loamy	<30	340	430	<30	<10	<10	0.10		
		Kanogawa River	Kanobashi Bridge	Yachiyoishi City	2011/11/3	Cloudy	16.1	Olive brown	None	Loamy	<30	440	530	<30	16	23	0.09		
		Yachiyobashi River	Yachiyobashi Bridge	Yachiyoishi City	2011/11/3	Cloudy	18.2	Brownish black	None	Loamy	<30	920	1,100	<30	350	470	0.31	*2	
		Teurugawa River	Mumebashi Bridge	Sakurashi City	2011/11/3	Sunny	19.0	Brownish black	Faint earth	Loamy	<30	860	1,000	<30	<10	<10	0.35	*2	
		Morotogawa River	Morotobashi Bridge	Inzaishi City	2011/11/1	Sunny	15.2	Dark green yellow	None	Sandy	<30	680	880	<30	<10	12	0.09		
		Kashimigawa River	Iwatombashi Bridge	Sakurashi City	2011/11/3	Cloudy	22.2	Brownish black	Faint earth	Loamy	<30	270	360	<30	20	20	0.17	*2	
		Takasakigawa River	Ryutobashi Bridge	Sakurashi City	2011/11/3	Cloudy	22.2	Dark olive brown	None	Loamy	<30	300	410	<30	<10	<10	0.18	*2	
		Kashimigawa River	Kashimabashi Bridge	Sakurashi City	2011/11/3	Cloudy	19.5	Brownish black	None	Loamy	<30	200	230	<30	<10	16	0.16	*2	
		Inbasuro Channel	Isurumakabashi Bridge	Inzaishi City	2011/11/4	Sunny	19.3	Olive brown	Faint earth	Sandy	<30	260	310	<30	22	31	0.36	*1	
4	Edogawa River System	Yoneuma Canal	Yoneumabashi Bridge	Nagareyama City	2011/11/3	Cloudy	21.0	Brownish black	Faint earth	Loamy	<30	780	970	<30	<10	<10	0.48	*1	
		Edogawa River	Nagareyama Bridge	Nagareyama City/Matsudo City	2011/11/3	Cloudy	22.6	Brownish black	Faint earth	Loamy	<30	680	840	<30	120	170	0.61	*1	
		Sakagawa River	Bentenbashi Bridge	Matsudoshi City	2011/11/3	Cloudy	20.6	—	—	—	—	—	—	<30	620	820	0.35	Surrounding environment (soil/herb/air dose) : Unable to collect soil due to no exposed soil *1	
		Shinsakagawa River	Sakanebashi Bridge	Matsudoshi City	2011/11/3	Cloudy	22.3	—	—	—	—	—	—	—	—	—	0.34	Surrounding environment (soil/herb/air dose) : Unable to collect soil due to no exposed soil *1	
		Edogawa River	Shinkatasukabashi Bridge	Matsudoshi City/Sakamauchi Town	2011/11/3	Cloudy	16.9	Dark brown	Faint earth	Sandy	<30	1,000	1,100	<30	17	17	0.48	*1	
		Edogawa River	Shinyotokubashi Bridge	Ichikawashi City	2011/11/4	Sunny	21.3	Brownish black	Faint earth	Loamy	<30	150	220	<30	<10	25	0.08		
		Kyuudogawa River	Urayasubashi Bridge	Urayasu City/Edogawa City	2011/11/4	Sunny	18.4	Brownish black	Earth	Loamy	<30	1,700	2,100	<30	25	29	0.23	*2	
		Mamagawa River	Nemoto Floodgate	Ichikawashi City	2011/11/4	Sunny	21.4	Brownish black	Faint earth	Loamy	<30	1,500	1,800	<30	27	39	0.22	Surrounding environment (soil/herb/air dose) : Unable to collect soil due to no exposed soil *2	
		Kokubogawa River	Suwadabashi Bridge	Ichikawashi City	2011/11/4	Sunny	21.2	—	—	—	—	—	—	—	—	—	—	0.25	Surrounding environment (soil/herb/air dose) : Unable to collect soil due to no exposed soil *2
		Harukigawa River	Before the confluence with Kitagawa River	Ichikawashi City	2011/11/4	Sunny	24.4	—	—	—	—	—	—	—	—	—	—	0.25	*2
5	Rivers flowing into Tokyowan inner bay	Hasen-okashiwagawa River	Downstream of Nakayamaohashi Bridge	Komuro City/Ichikawashi City	2011/11/4	Sunny	23.3	Brownish black	Faint earth	Loamy	<30	560	670	<30	<10	12	0.28	*1	
		Okashiwagawa River	Senagaebashi Bridge	Ichikawashi City	2011/11/4	Sunny	20.2	Brownish black	Faint earth	Loamy	<30	1,000	1,200	<30	890	760	0.24	*2	
		Mamagawa River	Mitomaebashi Bridge	Ichikawashi City	2011/11/4	Sunny	23.6	Dark brown	Faint earth	Loamy	<30	320	370	<30	<10	<10	0.07		
		Ebigawa River	Yachiyobashi Bridge	Funabashi City	2011/11/4	Sunny	22.8	—	—	—	—	—	—	<30	47	48	0.04	Surrounding environment (soil/herb/air dose) : Unable to collect soil due to no exposed soil	
6	Tokyowan inner bay	Shinbanamiyawabashi Bridge	Shinbanamiyawabashi Bridge	Chiba City	2011/11/4	Sunny	20.9	Brownish black	Faint earth	Loamy	<30	110	150	<30	<10	<10	0.07		
		Miyakogawa River	Miyakobashi Bridge	Chiba City	2011/11/4	Clear	19.4	—	—	—	—	—	—	—	—	—	0.04	Surrounding environment (soil/herb/air dose) : Unable to collect soil due to no exposed soil	

Note : \* Air dose was measured with a survey meter, TCS-172 or TCS-161 of Hitachi-Aloka Medical, Ltd. For points with \*1 in the Remarks column, a survey meter, Model 3 of Ludlum Measurement Inc., and for those with \*2, a Model 5000 of Health Physics Instruments was used.

Figures measured with either a Model 3 or a Model 5000 had a tendency to be a little higher than those measured with a TCS-172 or TCS-161 (about 1.6 times higher).

\* Sampling points for rivers are listed from north to south, and for different points along the river, from upstream to downstream.

River (Chiba Prefecture): Surrounding Environment (River Terrace (Right Bank)) Monitoring Results

No	Sampling point			Sampling date	Weather	Air temperature	Surrounding environment (soil/herb/air dose)										Remarks
							Right bank					Herb					
	Soil						Radioactive cesium		Radioactive cesium		Radioactive cesium		Radioactive cesium				
	Color	Odor	Property				Radioactive cesium (Bq/kg)	Cs-134	Cs-137	Radioactive cesium (Bq/kg)	Cs-134	Cs-137	Radioactive cesium (Bq/kg)	Cs-134	Cs-137		
1	Tonegawa River System	Shogengawa River	Fukamaohashi Bridge	Isahaya City/Sakamauchi Town	2011/11/4	Sunny	19	Dark olive	Faint earth	Loamy	<30	280	370	<30	19	24	0.48 *
2		Shogengawa River	Shinbeshashi Bridge	Isahaya City/Sakamauchi Town	2011/10/31	Clear	21.9	Olive brown	None	Loamy	<30	180	200	<30	22	47	0.08
3		Nagatogawa River	Ende in Mashuda Water Pollution Plant	Isahaya City/Sakamauchi Town	2011/10/31	Sunny	20.0	Olive brown	None	Clay-loamy	<30	300	370	<30	<10	<10	0.07
4		Nagatogawa River	Nagatobashi Bridge	Isahaya City/Sakamauchi Town	2011/10/31	Clear	22.3	Dark olive brown	None	Sandy	<30	360	420	<30	<10	<10	0.09
5	Teganuma Lake	Nagatogawa River	Futimbashi Bridge	Sakaemachi Town	2011/10/31	Sunny	20.6	Olive brown	None	Sandy	<30	830	1100	<30	77	120	0.08
6		Ryudagawa River	Ryumasunobashi Bridge	Isahaya City/Sakamauchi Town	2011/11/1	Clear	18.8	Dark olive brown	None	Loamy	<30	310	390	<30	14	15	0.12
7		Nekonagawa River	Shinkawa Floodgate	Naritashi City	2011/11/1	Clear	22.0	Dark olive brown	None	Loamy	<30	550	670	<30	<10	<10	0.07
8		Ohorigawa River	Kitakashwabashi Bridge	Kashiwashi City	2011/11/1	Clear	22.2	Brownish black	Earth	Loamy	<30	1,200	1,400	<30	56	57	0.74
9		Otsugawa River	Sannobashi Bridge, under	Kamagawashi City	2011/11/3	Cloudy	21.1	Olive brown	Faint green grass	Loamy	<30	530	650	<30	20	24	0.16
10		Otsugawa River	Kamamabashi Bridge	Kashiwashi City	2011/11/1	Sunny	21.0	Olive brown	Earth	Loamy	<30	590	710	<30	41	50	0.57
11		Somenrotoshi	Somershibashi Bridge	Kashiwashi City	2011/11/1	Clear	20.3	Dark brown	Earth	Loamy	<30	650	710	<30	<10	<10	0.37
12	Feeder rivers of Inbanuma Lake	Kanayamaotoshi	Downstream of Kanayamaotoshi Bridge	Kamagawashi City/Inzaiashi City	2011/11/3	Cloudy	19.2	—	—	—	—	—	—	—	—	—	Surrounding environment (soil/herb/air dose): Unable to collect soil due to private property, etc.
13		Kanayamaotoshi	Nauchibashi Bridge	Shiroishi City	2011/11/1	Clear	18.8	Brownish black	Earth	Loamy	<30	1,100	1,300	<30	39	46	0.37 *
14		Kamenarigawa River	Kamenaribashi Bridge	Inzaishi City	2011/10/31	Sunny	16.9	Brownish black	None	Sandy	<30	1,300	1,700	<30	17	17	0.14
15		Igasasuro Channel	Downstream of Igasasuro Channel	Kamagawashi City	2011/11/3	Cloudy	20.0	—	—	—	—	—	—	<30	140	180	0.11
16		Futaigawa River	Tomigayabashi Bridge	Futatabiashi City/Usahi City	2011/11/3	Cloudy	17.0	Olive brown	None	Loamy	<30	740	950	<30	10	12	0.14
17		Kanzakigawa River	Kanzakibashi Bridge	Fuchisawa City/Inzaiashi City	2011/11/1	Sunny	20.3	Brownish black	None	Sandy	<30	600	710	<30	<10	<10	0.10
18	Feeder rivers of Inbanuma Lake	Kanogawa River	Kanobashi Bridge	Yachiyoashi City	2011/11/3	Cloudy	16.1	Olive brown	Faint earth	Loamy	<30	570	700	<30	13	19	0.11
19		Yachigogawa River	Yachiyobashi Bridge	Yachiyoashi City	2011/11/3	Cloudy	18.2	Olive brown	None	Loamy	<30	1,400	1,700	<30	<10	15	0.32 *
20		Teurugawa River	Mumebashi Bridge	Sakurashi City	2011/11/3	Sunny	19.0	Dark brown	Faint earth	Loamy	<30	1,000	1,300	<30	39	55	0.35 *
21		Morotogawa River	Morotobashi Bridge	Inzaishi City	2011/11/1	Sunny	15.0	Brownish black	None	Sandy	<30	460	560	<30	<10	<10	0.09
22		Kashimigawa River	Iwatombashi Bridge	Sakurashi City	2011/11/3	Cloudy	22.2	Brownish black	None	Loamy	<30	160	200	<30	11	24	0.16 *
23		Takasakigawa River	Ryutobashi Bridge	Sakurashi City	2011/11/3	Cloudy	22.2	Dark olive brown	None	Loamy	<30	300	370	<30	<10	<10	0.17 *
24	Edogawa River System	Kashimigawa River	Kashimabashi Bridge	Sakurashi City	2011/11/3	Cloudy	19.8	Brownish black	None	Loamy	<30	1,000	1,200	<30	<10	<10	0.18 *
25		Inbasuro Channel	Isurumakubashi Bridge	Inzaishi City	2011/11/4	Sunny	19.3	Olive brown	Faint earth	Sandy	<30	710	920	<30	13	24	0.35 *
26		Ikoneuma Canal	Ungabashi Bridge	Nagareyamaashi City	2011/11/3	Cloudy	21.0	Dark brown	Faint earth	Sandy	<30	600	750	<30	12	18	0.60 *
27		Edogawa River	Nagareyamaashi Bridge	Nagareyamaashi City/Matsudoshi City	2011/11/3	Cloudy	22.0	Dark brown	Faint earth	Loamy	<30	400	500	<30	<10	12	0.48 *
28		Sakagawa River	Bentenbashi Bridge	Matsudoshi City	2011/11/3	Cloudy	20.6	—	—	—	—	—	—	—	—	—	0.41
29		Shinsakagawa River	Sakanebashi Bridge	Matsudoshi City	2011/11/3	Cloudy	22.3	—	—	—	—	—	—	—	—	—	0.38
30		Edogawa River	Shmkatasushikabashi Bridge	Matsudoshi City/Kanagawaashi City	2011/11/3	Cloudy	16.9	Dark brown	Faint earth	Loamy	<30	1,200	1,500	<30	26	25	0.42 *
31		Edogawa River	Shimogotokubashi Bridge	Ichikawashi City	2011/11/4	Sunny	21.3	Brownish black	Earth	Loamy	<30	330	410	<30	29	39	0.11
32	Edogawa River System	Kyudogawa River	Unayabusashi Bridge	Ichikawashi City/Edogawaashi City	2011/11/4	Sunny	18.4	Brownish black	Faint earth	Loamy	<30	530	670	<30	<10	20	0.23 *
33		Mamagawa River	Nemoto Floodgate	Ichikawashi City	2011/11/4	Sunny	21.4	—	—	—	—	—	—	—	—	—	0.22
34		Kokubugawa River	Suwadabashi Bridge	Ichikawashi City	2011/11/4	Sunny	21.2	—	—	—	—	—	—	—	—	—	0.26
35		Hanukigawa River	Before the confluence with Kitagawa River	Ichikawashi City	2011/11/4	Sunny	24.3	Brownish black	Faint earth	Loamy	<30	390	510	<30	31	31	0.23 *
36		Hasen-okushiwagawa River	Downstream of Nakayamaohashi Bridge	Enryuashi City/Ichikawashi City	2011/11/4	Sunny	23.3	Dark brown	Faint earth	Sandy	<30	760	900	<30	<10	<10	0.27 *
37		Okashiwagawa River	Senagaashi Bridge	Ichikawashi City	2011/11/4	Sunny	20.2	Dark brown	Faint earth	Loamy	<30	940	1,100	<30	28	32	0.28 *
38		Mamagawa River	Mitomaashi Bridge	Ichikawashi City	2011/11/4	Sunny	23.6	Dark brown	Faint earth	Loamy	<30	250	320	<30	11	21	0.06
39	Rivers flowing into Tokyowan inner bay	Ebigawa River	Yachiyobashi Bridge	Funabashiashi City	2011/11/4	Sunny	22.8	—	—	—	—	—	—	<30	41	44	0.04
40		Shinbanamiogawabashi Bridge	Chibashi City	2011/11/4	Sunny	20.9	Olive black	Faint earth	Loamy	<30	170	250	<30	<10	11	0.07	
41	Tokyowan inner bay	Miyakogawa River	Miyakobashi Bridge	Chibashi City	2011/11/4	Clear	19.4	—	—	—	—	—	—	<30	34	30	0.05
		Miyakogawa River	Miyakobashi Bridge	Chibashi City	2011/11/4	Clear	19.4	—	—	—	—	—	—	<30	34	30	0.05

Note: \* Air dose was measured with a survey meter, TCS-172 or TCS-161 of Hitachi-Aloka Medical, Ltd. For points with \*1 in the Remarks column, a survey meter, Model 3 of Ludlum Measurement Inc., and for those with \*2, a Model 5000 of Health Physics Instruments was used.

Figures measured with either a Model 3 or a Model 5000 had a tendency to be a little higher than those measured with a TCS-172 or TCS-161 (about 1.6 times higher).

\*Sampling points for rivers are listed from north to south, and for different points along the river, from upstream to downstream.

Lake and Headwater (Chiba Prefecture): 1st Water Quality Monitoring Results

Sampling point				Sampling date	Weather	Air temperature	Full depth m	Water quality											Remarks
No.	Water body	Point	Municipality					General items								Radioactive material concentrations (Bq/L)			
				Water temperature	Sampling depth m	Color	Odor	Secchi disk depth m	Factual conductivity/μm	SS mg/L	Turbidity	Radioactive iodine-131	Radioactive cesium Cs-134	Cs-137					
42	Teganuma Lake	Fusashita	—	2011/11/1	Sunny	20.5	2.1	17.8	0.5	Greenish brown	None	0.3	26.4	25	22	<1	<1	<1	
		1 m from the bottom	—	—	—	—	—	17.6	1.1	—	None	—	26.0	23	20	<1	<1	<1	
43	Teganuma Lake	Shimoteganuma Chuo	—	2011/11/1	Sunny	20.0	1.3	18.5	0.5	Dark grayish yellow red	None	0.6	27.6	20	18	<1	<1	<1	
		0.5 m from the bottom	—	—	—	—	—	18.2	0.8	—	None	—	29.2	25	20	<1	<1	<1	
44	Teganuma Lake	Teganuma Chuo	—	2011/11/1	Sunny	20.7	1.3	18.3	0.5	Dark grayish yellow red	None	0.7	28.9	19	17	<1	<1	<1	
		0.5 m from the bottom	—	—	—	—	—	18.2	0.8	—	None	—	29.2	19	18	<1	<1	<1	
45	Teganuma Lake	Nedoshita	—	2011/11/1	Sunny	21.0	2.0	18.4	0.5	Greenish brown	None	0.9	28.5	11	12	<1	<1	<1	
		1 m from the bottom	—	—	—	—	—	18.2	1.0	—	None	—	28.9	11	11	<1	<1	<1	
46	Inbanuma Lake	Kita Inbanuma Chuo	—	2011/11/1	Clear	20.5	1.6	17.0	0.5	Greenish brown	None	0.5	23.2	43	35	<1	<1	<1	
		1 m from the bottom	—	—	—	—	—	16.9	0.6	—	None	—	23.4	45	38	<1	<1	<1	
47	Inbanuma Lake	Ipponmatsushita	—	2011/11/1	Clear	21.1	1.5	17.0	0.5	Dark grayish yellow red	None	0.5	19.6	33	25	<1	<1	<1	
		0.5 m from the bottom	—	—	—	—	—	17.2	1.0	—	None	—	19.7	64	41	<1	<1	<1	
48	Inbanuma Lake	Lower area of Josuido water intake	—	2011/11/1	Clear	18.8	1.5	17.1	0.5	Dark grayish yellow red	None	0.5	21.5	40	33	<1	<1	<1	
		0.5 m from the bottom	—	—	—	—	—	17.3	1.0	—	None	—	21.6	43	30	<1	<1	<1	
49	Inbanuma Lake	Asobashi Bridge	—	2011/11/1	Clear	19.7	1.8	17.5	0.5	Dark grayish yellow red	None	0.8	29.4	21	19	<1	<1	<1	
		1 m from the bottom	—	—	—	—	—	17.7	0.8	—	None	—	29.6	26	20	<1	<1	<1	

### Lake and Headwater (Chiba Prefecture): 1st Sediment Monitoring Results

Sampling point				Sampling date	Weather	Air temperature	Full depth m	Sediment																Remarks	
No.	Water body	Point	Municipality					General items										Concentration of radioactive material							
								Mud temperature	Mud sampling depth (m)	Color	Odor	Mechanical composition						Mud content	Reference (mg/kg)	Property	Radioactive cesium				
		Coarse gravel	Medium gravel	Fine gravel	Coarse sand	Medium sand	Fine sand	Silt	Clay			Radioactive iodine-131	Cs-134	Cs-137											
42	Teganuma Lake Fusashita	1 m from the bottom	—	2011/11/1	Sunny	20.5	2.1	18.5	5	Olive black	None	—	—	1.0	1.2	24.3	60.6	6.7	6.2	66.5	2.688	Silt	<30	380	490
		0.5 m from the bottom	—	—	—	—	—	—	—	—	—	—	—	—	—	—	—	—	—	—	—	—	—	—	—
43	Teganuma Lake Shimoteganuma Chuo	1 m from the bottom	—	2011/11/1	Sunny	20.0	1.3	18.5	5	Olive black	None	—	—	0.1	5.8	45.4	28.0	20.7	36.7	2.646	Silt	<30	600	750	
		0.5 m from the bottom	—	—	—	—	—	—	—	—	—	—	—	—	—	—	—	—	—	—	—	—	—	—	
44	Teganuma Lake Teganuma Chuo	1 m from the bottom	—	2011/11/1	Sunny	20.7	1.3	19.2	5	Olive black	None	—	—	0.2	2.0	14.2	58.0	25.6	24.4	2.593	Silt	<30	400	590	
		0.5 m from the bottom	—	—	—	—	—	—	—	—	—	—	—	—	—	—	—	—	—	—	—	—	—	—	
45	Teganuma Lake Nedoshita	1 m from the bottom	—	2011/11/1	Sunny	21.0	2.0	18.5	5	Olive black	None	—	—	0.2	4.2	15.8	46.0	33.8	29.0	2.615	Silt	<30	1,500	1,800	
		0.5 m from the bottom	—	—	—	—	—	—	—	—	—	—	—	—	—	—	—	—	—	—	—	—	—	—	
46	Inbanuma Lake Kita Inbanuma Chuo	1 m from the bottom	—	2011/11/1	Clear	20.5	1.6	18.0	5	Olive black	Faint earth	—	—	0.1	1.8	5.6	51.6	40.9	23.8	2.571	Silt	<30	320	410	
		0.5 m from the bottom	—	—	—	—	—	—	—	—	—	—	—	—	—	—	—	—	—	—	—	—	—	—	
47	Inbanuma Lake Ipponmatsushita	1 m from the bottom	—	2011/11/1	Clear	21.1	1.5	18.2	5	Olive black	None	—	—	0.3	0.1	2.0	13.7	57.2	26.7	24.1	2.598	Silt	<30	520	640
		0.5 m from the bottom	—	—	—	—	—	—	—	—	—	—	—	—	—	—	—	—	—	—	—	—	—	—	
48	Inbanuma Lake Lower area of Jousido water intake	1 m from the bottom	—	2011/11/1	Clear	18.8	1.5	17.8	5	Brownish black	None	—	—	—	—	1.7	28.5	43.0	26.8	29.0	2.620	Silt	<30	480	620
		0.5 m from the bottom	—	—	—	—	—	—	—	—	—	—	—	—	—	—	—	—	—	—	—	—	—	—	
49	Inbanuma Lake Asobashi Bridge	1 m from the bottom	—	2011/11/1	Clear	19.7	1.8	17.8	5	Olive black	None	—	—	1.3	1.3	30.3	60.0	—	7.1	68.2	2.699	Silt with sand	<30	540	620
		0.5 m from the bottom	—	—	—	—	—	—	—	—	—	—	—	—	—	—	—	—	—	—	—	—	—	—	

### Lake and Headwater (Chiba Prefecture): 1st Surrounding Environment (Lake Shore) Monitoring Results

Sampling point				Sampling date	Weather	Air temperature	Full depth m	Surrounding environment (soil/herb/air dose)										Remarks
No.	Water body	Point	Municipality					Soil			Concentration of radioactive material			Herb			Air dose (μSv/h)	
								Color	Odor	Property	Radioactive iodine	Radioactive cesium Cs-134	Radioactive cesium Cs-137	Radioactive iodine	Radioactive cesium Cs-134	Radioactive cesium Cs-137		
42	Teganuma Lake Fusashita	1 m from the bottom	—	2011/11/1	Sunny	20.5	2.1	—	—	—	—	—	—	—	—	—	—	
		0.5 m from the bottom	—	—	—	—	—	—	—	—	—	—	—	—	—	—	—	
43	Teganuma Lake Shimoteganuma Chuo	1 m from the bottom	—	2011/11/1	Sunny	20.0	1.3	Dark brown	None	Loamy	<30	770	930	<30	34	41	0.34	
		0.5 m from the bottom	—	—	—	—	—	—	—	—	—	—	—	—	—	—	—	
44	Teganuma Lake Teganuma Chuo	1 m from the bottom	—	2011/11/1	Sunny	20.7	1.3	—	—	—	—	—	—	—	—	—	—	
		0.5 m from the bottom	—	—	—	—	—	—	—	—	—	—	—	—	—	—	—	
45	Teganuma Lake Nedoshita	1 m from the bottom	—	2011/11/1	Sunny	21.0	2.0	Dark brown	None	Loamy	<30	380	510	<30	31	41	0.44	
		0.5 m from the bottom	—	—	—	—	—	—	—	—	—	—	—	—	—	—	—	
46	Inbanuma Lake Kita Inbanuma Chuo	1 m from the bottom	—	2011/11/1	Clear	20.5	1.6	Dark olive brown	Faint earth	Loamy	<30	840	1,000	<30	13	16	0.44	
		0.5 m from the bottom	—	—	—	—	—	—	—	—	—	—	—	—	—	—	—	
47	Inbanuma Lake Ipponmatsushita	1 m from the bottom	—	2011/11/1	Clear	21.1	1.5	—	—	—	—	—	—	—	—	—	—	
		0.5 m from the bottom	—	—	—	—	—	—	—	—	—	—	—	—	—	—	—	
48	Inbanuma Lake Lower area of Jousido water intake	1 m from the bottom	—	2011/11/1	Clear	18.8	1.5	—	—	—	—	—	—	—	—	—	—	
		0.5 m from the bottom	—	—	—	—	—	—	—	—	—	—	—	—	—	—	—	
49	Inbanuma Lake Asobashi Bridge	1 m from the bottom	—	2011/11/1	Clear	19.7	1.8	Olive brown	None	Loamy	<30	210	290	<30	12	13	0.22	
		0.5 m from the bottom	—	—	—	—	—	—	—	—	—	—	—	—	—	—	—	

Note: Air dose was measured using the survey meter MODEL3 of Ludlum Measurement Inc.



River (Chiba Prefecture) : 2nd Water Quality Monitoring Results

Sampling point				Sampling date	Weather	Air temperature °C	Full depth m	Water quality										Remarks	
No.	Water body	Point	Municipality					General items						Radioactive material concentrations					
				Water temperature	Sampling depth	Color	Odor	Transparency	Electrical conductivity	SS mg/L	Turbidity	Radioactive iodine	Radioactive cesium Cs-134	Radioactive cesium Cs-137					
1	Tonegawa River System	Shogengawa River	Fukamaohashi Bridge	Inzaishi	2012/2/14	Cloudy	5.8	1.10	6.2	0.0	Greenish	None	41	33.8	11	16	<1	<1	<1
2		Shogengawa River	Shinbeibashi Bridge	Inzaishi City/Sakumashi Town	2012/2/14	Rain	6.2	0.60	6.2	0.0	Greenish brown	None	30	34.7	19	20	<1	<1	<1
3		Nagatogawa River	Inake at Maeshinden Water Purification Plant	Inzaishi City/Sakumashi Town	2012/2/14	Cloudy	6.0	0.60	6.7	0.0	Greenish brown	None	35	33.2	19	18	<1	<1	<1
4		Nagatogawa River	Nagatobashi Bridge	Inzaishi City/Sakumashi Town	2012/2/14	Rain	6.2	0.50	6.3	0.0	Greenish brown	None	29	34.8	20	23	<1	<1	<1
5		Nagatogawa River	Fujimabashi Bridge	Sakae-machi Town	2012/2/14	Cloudy	6.4	0.30	7.0	0.0	Greenish brown	None	65	39.0	8	9.7	<1	<1	<1
6		Ryudogawa River	Ryumatsunobashi Bridge	Inzaishi City/Sakumashi Town	2012/2/13	Cloudy	3.6	0.20	6.8	0.0	Greenish brown	Faint sewage	38	111.4	24	22	<1	<1	<1
7		Nekorogawa River	Shinkawa Floodgate	Naritashi City	2012/2/13	Cloudy	3.2	1.50	6.0	0.0	Dark grayish yellow green	None	45	54.1	10	14	<1	<1	<1
8		Ohorigawa River	Kitakashibashi Bridge	Kashiwashi City	2012/2/13	Cloudy	6.4	0.60	7.4	0.0	Dark grayish yellow green	Faint mold	68	38.1	9	9.0	<1	<1	<1
9		Otsugawa River	Sannobashi Bridge, under	Kamagayashi City	2012/2/15	Rain	8.3	0.40	11.0	0.0	Colorless transparent	Faint sewage	98	44.7	3	4.7	<1	<1	<1
10		Feeder rivers of Teganuma Lake	Otsugawa River	Kamimabashi Bridge	Kashiwashi City	2012/2/13	Cloudy	5.2	0.60	6.6	0.0	Dark grayish yellow green	Faint mold	85	68.5	6	6.0	<1	<1
11	Otsugawa River		Someishinbashi Bridge	Kashiwashi City	2012/2/13	Cloudy	4.6	0.60	4.6	0.0	Greenish brown	None	65	48.0	3	4.0	<1	<1	<1
12	Kanayamaotoshi		Downstream of Kanuzawaisakibashi Bridge	Kanayamaotoshi City/Tsukuba City	2012/2/15	Cloudy	8.1	0.10	11.6	0.0	Colorless transparent	Strong sewage	100 or	42.7	2	3.5	<1	<1	<1
13	Kanayamaotoshi		Nauchibashi Bridge	Shiroishi City	2012/2/13	Cloudy	3.3	0.30	5.6	0.0	Colorless transparent	None	100 or	40.3	2	2.1	<1	<1	<1
14	Kamenarigawa River		Kamenaribashi Bridge	Inzaishi City	2012/2/14	Cloudy	6.2	0.30	6.4	0.0	Greenish brown	None	100 or	35.1	4	5.1	<1	<1	<1
15	Igasasui Channel		Downstream of Igasasui Channel	Kamagayashi City	2012/2/15	Cloudy	7.4	0.10	7.8	0.0	Colorless transparent	Faint sewage	70	34.1	13	10	<1	<1	<1
16	Feeder rivers of Inbanuma Lake	Futaegawa River	Tomiyabashi Bridge	Inzaishi City/Tsukuba City	2012/2/15	Cloudy	6.9	0.20	10.1	0.0	Colorless transparent	Faint sewage	93	32.4	9	5.1	<1	<1	<1
17		Kanzakigawa River	Kanzakibashi Bridge	Yachiyo City/Kanashi City	2012/2/13	Cloudy	5.5	1.30	7.0	0.0	Dark grayish yellow green	None	53	40.1	9	7.9	<1	<1	<1
18		Kanogawa River	Kannobashi Bridge	Yachiyo City	2012/2/15	Cloudy	6.4	0.40	8.5	0.0	Colorless transparent	Faint sewage	46.5	33.7	9	11	<1	<1	<1
19		Inba Discharge Channel	Yachiyobashi Bridge	Yachiyo City	2012/2/14	Rain	4.7	1.50	6.9	0.0	Dark grayish yellow green	Faint sewage	48.5	38.3	8	8.4	<1	<1	<1
20		Tegurigawa River	Mumebashi Bridge	Sakurashi City	2012/2/14	Rain	5.0	0.50	7.7	0.0	Colorless transparent	None	100 or	41.9	3	3.3	<1	<1	<1
21		Morotogawa River	Morotobashi Bridge	Inzaishi City	2012/2/13	Cloudy	6.7	0.70	5.9	0.0	Dark grayish yellow green	None	90	28.6	5	3.5	<1	<1	<1
22		Kashimagawa River	Iwatobashi Bridge	Sakurashi City	2012/2/14	Rain	5.7	0.50	9.3	0.0	Colorless transparent	Faint sewage	79	32.3	5	4.1	<1	<1	<1
23		Takakigawa River	Ryutobashi Bridge	Sakurashi City	2012/2/14	Rain	5.6	0.50	9.2	0.0	Dark grayish yellow green	Faint sewage	83	41.0	6	5.4	<1	<1	<1
24		Kashimagawa River	Kashimabashi Bridge	Sakurashi City	2012/2/14	Rain	5.3	1.70	8.6	0.0	Dark grayish yellow green	None	62	37.5	10	8.0	<1	<1	<1
25		Inbassui Channel	Isumakibashi Bridge	Inzaishi City	2012/2/13	Cloudy	6.8	2.10	6.3	0.0	Dark grayish yellow green	None	35	33.5	19	20	<1	<1	<1
26	Edogawa River System	Tonegawa Canal	Ungabashi Bridge	Nagareyama City	2012/2/13	Sunny	5.0	0.53	5.8	0.0	Greenish brown	Faint sewage	80	53.4	5	6.4	<1	<1	<1
27		Edogawa River	Nagareyamabashi Bridge	Nagareyama City/Miurashi City	2012/2/13	Cloudy	4.5	0.63	5.1	0.0	Dark green	Faint sewage	70	29.8	7	6.6	<1	<1	<1
28		Sakagawa River	Bentenbashi Bridge	Matsudoshi City	2012/2/13	Cloudy	7.2	2.17	7.8	0.0	Dark green	Faint mold	46	37.5	8	8.7	<1	<1	<1
29		Shinsakagawa River	Sakanebashi Bridge	Matsudoshi City	2012/2/13	Sunny	7.0	0.60	8.5	0.0	Greenish brown	Sewage	78	39.7	5	6.8	<1	<1	<1
30		Edogawa River	Shinkatashikabashi Bridge	Matsudoshi City/Kanashi City	2012/2/13	Sunny	9.4	0.50	6.9	0.0	Dark grayish yellow green	Faint mold	55	29.0	8	8.3	<1	<1	<1
31		Edogawa River	Shingyotokubashi Bridge	Ichikawashi City	2012/2/15	Cloudy	9.4	0.40	7.8	0.0	Brown	Faint mold	65	4400.0	11	11	<1	<1	<1
32		Kyudogawa River	Uraysubashi Bridge	Utsunomiya City/Edogawa City	2012/2/14	Rain	6.0	7.20	8.4	0.0	Greenish brown	Faint mold	46	1779.0	9	8.0	<1	<1	<1
33		Mamagawa River	Nemoto Floodgate	Ichikawashi City	2012/2/15	Cloudy	5.9	1.10	6.7	0.0	Dark grayish yellow green	None	75	53.4	7	7.1	<1	<1	<1
34		Kokubugawa River	Suwadabashi Bridge	Ichikawashi City	2012/2/15	Cloudy	7.3	0.50	10.6	0.0	Dark grayish yellow green	Faint sewage	75	53.1	9	8.0	<1	<1	<1
35		Harukigawa River	Before the confluence with Kokubugawa River	Ichikawashi City	2012/2/15	Cloudy	6.2	0.60	9.9	0.0	Dark green	Sewage	77	89.5	4	5.6	<1	<1	<1
36		Hirosakiogawa River	Downstream of Nakazawashinbashi Bridge	Kamagayashi City/Kanashi City	2012/2/15	Cloudy	8.2	0.40	11.7	0.0	Dark grayish yellow green	Faint sewage	48	50.6	13	8.9	<1	<1	<1
37		Okashiwagawa River	Sengenbashi Bridge	Ichikawashi City	2012/2/15	Cloudy	7.3	1.20	10.0	0.0	Dark grayish yellow green	Faint mold	100 or	54.0	5	6.8	<1	<1	<1
38		Mamagawa River	Mitomaebashi Bridge	Ichikawashi City	2012/2/16	Cloudy	4.1	3.30	8.1	0.0	Dark grayish yellow green	Sewage	100 or	420.0	4	6.5	<1	<1	<1
39		Rivers flowing into Tokyowan inner bay	Ehigawa River	Yachiyobashi Bridge	Funabashi City	2012/2/16	Cloudy	3.8	2.50	8.5	0.0	Dark grayish yellow green	Faint sewage	100 or	918.0	3	5.0	<1	<1
40	Inba Discharge Channel		Shinhanamigawabashi Bridge	Chibashi City	2012/2/16	Snow	3.6	2.40	6.9	0.0	Dark grayish yellow green	None	60	1699.0	7	10	<1	<1	<1
41	Miyakogawa River		Miyakobashi Bridge	Chibashi City	2012/2/16	Snow	4.0	1.00	8.1	0.0	Dark grayish yellow green	None	100 or	937.0	3	4.4	<1	<1	<1

Note: Sampling points for rivers are listed from north to south, and for different points along the river, from upstream to downstream.

### River (Saitama Prefecture): 2nd Water Quality Monitoring Results

Sampling point				Sampling date	Weather	Water temp. (°C)	Diss. oxygen (mg/L)	pH	Total depth (m)	Water quality										Remarks	
No.	Water body		Point							Municipality	General items						Radioactive material				
	Water body	Point									Municipality	Water temp.	Diss. oxygen	Color	Odor	SS mg/L	Turbidity	Radioactive cesium Cs-134	Radioactive cesium Cs-137		
1	Arakawa River	Arakawa River	Onarihashi Bridge	Chuo City/Sumida City	2012/2/17	Clear	3.4	2.18	4.2	0.0	Yellow green	None	100 or more	27.9	4	4.2	<1	<1	<1	Collected from a bridge in lower reaches due to difficulty in water and mud	
2	River	Arakawa River	Sasamehashi Bridge	Matsuyama City/Higashi City	2012/2/17	Clear	10.2	1.00	12.4	0.0	Brow	None	30	67.3	17	26	<1	<1	<1		

### River (Tokyo Prefecture): 2nd Water Quality Monitoring Results

Sampling point				Sampling date	Weather	Water temp. (°C)	Diss. oxygen (mg/L)	pH	Total depth (m)	Water quality										Remarks	
No.	Water body		Point							Municipality	General items						Radioactive material concentrations (Bq/L)				
	Water body	Point									Municipality	Water temp.	Diss. oxygen	Color	Odor	SS mg/L	Turbidity	Radioactive cesium Cs-134	Radioactive cesium Cs-137		
1	Arakawa River	Arakawa River	Kasaibashi Bridge	Konosushi City	2012/2/17	Cloudy	7.6	1.20	10.2	0.0	Dark	Faint	61	2.4	9	9.9	<1	<1	<1		
2	River	Sumidagawa River	Ryogokubashi Bridge		2012/2/17	Sunny	8.6	6.47	11.0	0.0	Dark	Faint	93	2.6	3	5.0	<1	<1	<1		
3	Edogawa River System	Edogawa River	Edogawa Floodgate, down	Saito City/Edogawa City	2012/2/20	Sunny	12.6	0.40	9.8	0.0	Dark	None	73	1334.0	6	9.0	<1	<1	<1		

Note: Sampling points for rivers are listed from north to south, and for different points along the river, from upstream to downstream.



### River (Saitama Prefecture): 2nd Sediment Monitoring Results

Sampling point				Sediment																		Remarks				
No.	Water body	Point	Municipality	Sampling date	Weather	Water temp.	Flow depth (m)	General items										Radioactive material								
								Turbidity (NTU)	Color	Odor	Mechanical composition						Moisture (%)	Property	Radioactive cesium							
											Coarse gravel (mm)	Medium gravel (mm)	Fine gravel (mm)	Coarse sand (mm)	Medium sand (mm)	Fine sand (mm)			Silt	Clay	Cs-134	Cs-137				
1	Arakawa River	Onarihashi Bridge	Chuo City/Saitama City	2012/2/17	Clear	3.4	2.18	4.3	5	Black	None	—	—	0.4	0.2	27.1	67.5	4.8	75.8	2.700	Silt with sand	<30	12	23	Collected from a bridge in lower reaches due to difficulty in water and mud sampling	
2	System	Arakawa River	Sasamehashi Bridge	Chikuzono City/Saitama City	2012/2/17	Clear	10.2	1.00	11.9	5	Black	Sewage	—	—	—	—	0.6	17.4	51.5	30.5	47.8	2.612	Silt	<30		240

### River (Tokyo Prefecture): 2nd Sediment Monitoring Results

Sampling point				Sediment																		Remarks				
No.	Water body	Point	Municipality	Sampling date	Weather	Water temp.	Flow depth (m)	General items										Radioactive material								
								Turbidity (NTU)	Color	Odor	Mechanical composition						Moisture (%)	Property	Radioactive cesium							
											Coarse gravel (mm)	Medium gravel (mm)	Fine gravel (mm)	Coarse sand (mm)	Medium sand (mm)	Fine sand (mm)			Silt	Clay	Cs-134	Cs-137				
1	Arakawa River System	Kasubashi Bridge	Konosushi City	2012/2/17	Cloudy	7.6	1.20	9.2	12	Black	None	—	—	2.6	0.0	0.4	1.9	66.2	28.9	40.0	2.578	Silt	<30	280	420	
2	Sumidagawa River	Ryogokubashi Bridge	Chiyoda City/Tokyo City	2012/2/17	Sunny	8.6	6.47	10.4	10	Black	For biological culture	—	—	2.1	1.5	9.1	38.5	30.1	18.7	47.3	2.654	Silt with sand	<30	250	330	
3	Edogawa River System	Edogawa River	Edogawa Floodgate, down	Soto City/Edogawa City	2012/2/20	Sunny	12.6	0.40	8.4	5	Black	Faint mold	—	2.7	1.2	1.9	16.5	27.2	31.3	19.2	54.9	2.655	Silt with sand	<30	350	

Note: Sampling points for rivers are listed from north to south, and for different points along the river, from upstream to downstream.

River (Chiba Prefecture) : 2nd Surrounding Environment (River Terrace (Left Bank)) Monitoring Results

No.	Sampling point			Sampling date	Weather	Air temperature	Surrounding environment (soil and air dose)							Remarks		
							Left bank								Air dose (μSv/h)	
							Soil									
							General items			Radioactive material concentrations (Bq/g (dry))						
Color	Odor	Property	Radioactive substance (1)	Cs-134	Cs-137											
1-7	Tonegawa River System	Shiogogawa River	Tukamaobashi Bridge	Shiohara City	2012/2/14	Cloudy	5.8	Brownish black	Faint earth	Loamy	<30	1,000	1,400	0.20		
		Shiogogawa River	Shinbeibashi Bridge	Shiohara City	2012/2/14	Rain	6.2	Brownish black	None	Loamy	<30	180	270	0.13		
		Nagatogawa River	Inatake Maeshinden Water Purification Plant	Shiohara City	2012/2/14	Cloudy	6.0	Dark brown	Faint earth	Loamy	<30	86	140	0.12		
		Nagatogawa River	Nagatobashi Bridge	Shiohara City	2012/2/14	Rain	6.2	Dark olive brown	None	Sandy	<30	95	140	0.13		
		Nagatogawa River	Fujimibashi Bridge	Sakaemachi Town	2012/2/14	Cloudy	6.4	Brownish black	None	Loamy	<30	230	330	0.13		
		Ryudatogawa River	Ryumatsunobashi Bridge	Shiohara City	2012/2/13	Cloudy	3.6	Brownish black	Faint earth	Loamy	<30	390	550	0.17		
		Nekogogawa River	Shinkawa Floodgate	Naritashi City	2012/2/13	Cloudy	3.2	Brownish black	Faint earth	Loamy	<30	190	290	0.12		
8-15	Feeder rivers of Teganuma Lake	Ohorigawa River	Kitakashiwabashi Bridge	Kashiwashashi City	2012/2/13	Cloudy	6.4	Dark brown	Faint earth	Loamy	<30	450	680	0.33		
		Osugawa River	Sannobashi Bridge, under	Kamagayashi City	2012/2/15	Rain	8.3	Brownish black	Faint earth	Loamy	<30	670	920	0.20		
		Osugawa River	Kaminumabashi Bridge	Kashiwashashi City	2012/2/13	Cloudy	5.2	Brownish black	Earth	Loamy	<30	520	690	0.28		
		Someirotoshi	Someishinbashi Bridge	Kashiwashashi City	2012/2/13	Cloudy	4.6	Brownish black	Faint earth	Loamy	<30	1,900	2,500	0.16		
		Kanayamaotoshi	Downstream of Karuzawasakabashi Bridge	Shiohara City	2012/2/15	Cloudy	8.1	—	—	—	—	—	—	—	Surrounding environment (soil/herb/air dose): Unable to collect soil due to private property, etc.	
		Kanayamaotoshi	Nauchibashi Bridge	Shiroishi City	2012/2/13	Cloudy	3.3	Black	Faint earth	Loamy	<30	660	950	0.19		
		Kanayamaotoshi	Kamenaribashi Bridge	Inzaishi City	2012/2/14	Cloudy	6.2	Dark brown	Faint earth	Loamy	<30	1,200	1,700	0.22		
16-31	Feeder rivers of Inbanuma Lake	Igasuuro Channel	Downstream of Igasuuro Channel	Kamagayashi City	2012/2/15	Cloudy	7.4	—	—	—	—	—	—	0.16	Surrounding environment (soil and air dose): Unable to collect soil due to no exposed soil	
		Futagawa River	Tomigayabashi Bridge	Maebashi City	2012/2/15	Cloudy	6.9	Brownish black	Faint earth	Loamy	<30	660	950	0.18		
		Kanzakigawa River	Kanzakibashi Bridge	Yachiyo City	2012/2/13	Cloudy	5.5	Brownish black	Faint earth	Loamy	<30	560	750	0.16		
		Kanogawa River	Kanobashi Bridge	Yachiyoshi City	2012/2/15	Cloudy	6.4	Brownish black	Faint earth	Loamy	<30	670	880	0.14		
		Iba Discharge Channel	Yachiyobashi Bridge	Yachiyoshi City	2012/2/14	Rain	4.7	Brownish black	Faint earth	Loamy	<30	1,000	1,200	0.17		
		Teguriga River	Mumerbashi Bridge	Sakurashi City	2012/2/14	Rain	5.0	Brownish black	Faint earth	Loamy	<30	1,400	1,700	0.17		
		Morotogawa River	Morotobashi Bridge	Inzaishi City	2012/2/13	Cloudy	6.7	Brownish black	Faint earth	Loamy	<30	310	380	0.14		
		Kashimaga River	Iwatombashi Bridge	Sakurashi City	2012/2/14	Rain	5.7	Brownish black	Faint earth	Loamy	<30	240	340	0.09		
		Takakigawa River	Ryutobashi Bridge	Sakurashi City	2012/2/14	Rain	5.6	Brownish black	Faint earth	Loamy	<30	320	470	0.11		
		Kashimaga River	Kashimabashi Bridge	Sakurashi City	2012/2/14	Rain	5.3	Brownish black	Faint earth	Loamy	<30	85	130	0.09		
		Ibasuuro Channel	Isumakabashi Bridge	Inzaishi City	2012/2/13	Cloudy	6.8	Very dark brown	Faint earth	Loamy	<30	1,300	1,700	0.20		
		Tonunga Canal	Ungabashi Bridge	Nagareyama City	2012/2/13	Sunny	5.0	Dark olive brown	Faint earth	Clay-loamy	<30	690	910	0.24		
		Edogawa River	Nagareyama Bridge	Nagareyama City	2012/2/13	Cloudy	4.5	Dark olive brown	Faint earth	Loamy	<30	840	1,100	0.29		
		Sakagawa River	Bentenbashi Bridge	Matsudoshi City	2012/2/13	Cloudy	7.2	—	—	—	—	—	—	—	0.17	Surrounding environment (soil and air dose): Unable to collect soil due to no exposed soil
		Shimokagawa River	Sakanebashi Bridge	Matsudoshi City	2012/2/13	Sunny	7.0	—	—	—	—	—	—	—	0.17	Surrounding environment (soil and air dose): Unable to collect soil due to no exposed soil
		32-41	Edogawa River System	Edogawa River	Shinkatsushikabashi Bridge	Maebashi City	2012/2/13	Sunny	9.4	Dark brown	Faint earth	Loamy	<30	920	1,200	0.24
Edogawa River	Shingyotokubashi Bridge			Ichikawashi City	2012/2/15	Cloudy	9.4	Brownish black	Faint earth	Loamy	<30	100	140	0.14		
Kyuudogawa River	Uravayubashi Bridge			Maebashi City	2012/2/14	Rain	6.0	Brownish black	None	Loamy	<30	950	1,300	0.16		
Mamagawa River	Nemoto Floodgate			Ichikawashi City	2012/2/15	Cloudy	5.9	Brownish black	Faint earth	Loamy	<30	880	1,200	0.16	Surrounding environment (soil and air dose): Unable to collect soil due to no exposed soil	
Kokubugawa River	Suwadabashi Bridge			Ichikawashi City	2012/2/15	Cloudy	7.3	—	—	—	—	—	—	—	0.15	Surrounding environment (soil and air dose): Unable to collect soil due to no exposed soil
Hanokigawa River	Before the confluence with Kokubugawa River			Ichikawashi City	2012/2/15	Cloudy	6.2	—	—	—	—	—	—	—	0.14	
Ito-no-kashibagawa River	Downstream of Nakazawashinbashi Bridge			Maebashi City	2012/2/15	Cloudy	8.2	Brownish black	Faint earth	Loamy	<30	1,000	1,500	0.14		
Okashinagawa River	Sengenbashi Bridge			Ichikawashi City	2012/2/15	Cloudy	7.3	Brownish black	Faint earth	Loamy	<30	200	270	0.12		
Mamagawa River	Mitomaebashi Bridge			Ichikawashi City	2012/2/16	Cloudy	4.1	Dark brown	Faint earth	Loamy	<30	270	350	0.09		
39-41	Rivers flowing into Tokyowan inner bay			Ebigawa River	Yachiyobashi Bridge	Funabashi City	2012/2/16	Cloudy	3.8	—	—	—	—	—	—	0.08
		Iba Discharge Channel	Shinhanamagawabashi Bridge	Chibashi City	2012/2/16	Snow	3.6	Brownish black	Faint earth	Loamy	<30	480	660	0.10		
		Miyakogawa River	Miyakobashi Bridge	Chibashi City	2012/2/16	Snow	4.0	—	—	—	—	—	—	0.08	Surrounding environment (soil and air dose): Unable to collect soil due to no exposed soil	

Note: · Air dose was measured with a survey meter, TCS-172 or TCS-161 of Hitachi-Aloka Medical, Ltd.

· Sampling points for rivers are listed from north to south, and for different points along the river, from upstream to downstream.

River (Chiba Prefecture) : 2nd Surrounding Environment (River Terrace (Right Bank)) Monitoring Results

Sampling point				Sampling date	Weather	Air temperature	Surrounding environment (soil and air dose)							Remarks
No.	Water body	Point	Municipality				Right bank							
							Soil			Air dose				
							Color	Odor	Property	Radioactive material concentrations (Bq/kg (dry))	Air dose (μSv/h)			
			Radioactive cesium											
			Cs-134		Cs-137									
1	Shogengawa River	Fukamohashi Bridge	Maebashi City	2012/2/14	Cloudy	5.8	Dark brown	Faint earth	Loamy	<30	710	950	0.26	
2	Shogengawa River	Shinbeibashi Bridge	Maebashi City	2012/2/14	Rain	6.2	Dark brown	None	Sandy	<30	120	170	0.12	
3	Nagatogawa River	Intake at Maeshinden Water Purification Plant	Maebashi City	2012/2/14	Cloudy	6.0	Dark brown	Faint earth	Loamy	<30	280	370	0.12	
4	Tonegawa River System	Nagatobashi Bridge	Maebashi City	2012/2/14	Rain	6.2	Dark brown	None	Sandy	<30	120	160	0.13	
5	Nagatogawa River	Fujimibashi Bridge	Sakaemachi Town	2012/2/14	Cloudy	6.4	Brownish black	Faint earth	Loamy	<30	400	520	0.13	
6	Ryudogawa River	Kyumatsumohashi Bridge	Maebashi City	2012/2/13	Cloudy	3.6	Brownish black	Faint earth	Loamy	<30	420	580	0.17	
7	Nekongawa River	Shinkawa Floodgate	Narutashi City	2012/2/13	Cloudy	3.2	Brownish black	Faint earth	Loamy	<30	760	1,000	0.11	
8	Ohirigawa River	Kitakashiwabashi Bridge	Kashiwashi City	2012/2/13	Cloudy	6.4	Brownish black	None	Loamy	<30	830	1,100	0.46	
9	Osugawa River	Sannobashi Bridge, under	Kamagayashi City	2012/2/15	Rain	8.3	Brownish black	Faint earth	Loamy	<30	460	650	0.20	
10	Osugawa River	Kammumabashi Bridge	Kashiwashi City	2012/2/13	Cloudy	5.2	Dark brown	Faint earth	Loamy	<30	460	640	0.30	
11	Feeder rivers of Teganuma Lake	Someiritoshi	Kashiwashi City	2012/2/13	Cloudy	4.6	Brownish black	Faint earth	Loamy	<30	610	810	0.17	
12	Kanayamaotoshi	Downstream of Karuzawasakabashi Bridge	Kanayama City	2012/2/15	Cloudy	8.1	—	—	—	—	—	—	0.16	Surrounding environment (soil/herb/air dose): Unable to collect soil due to private property, etc.
13	Kanayamaotoshi	Nauchibashi Bridge	Shiroishi City	2012/2/13	Cloudy	3.3	Brownish black	Faint earth	Loamy	<30	910	1,200	0.18	
14	Kanemangawa River	Kamenaribashi Bridge	Inzaishi City	2012/2/14	Cloudy	6.2	Brownish black	None	Loamy	<30	440	610	0.20	
15	Igasuuro Channel	Downstream of Igasuuro Channel	Kamagayashi City	2012/2/15	Cloudy	7.4	—	—	—	—	—	—	0.15	Surrounding environment (soil and air dose): Unable to collect soil due to no exposed soil
16	Hiragawa River	Tomgayabashi Bridge	Maebashi City	2012/2/15	Cloudy	6.9	Brownish black	Faint earth	Loamy	<30	1,100	1,600	0.20	
17	Kanzakigawa River	Kanzakibashi Bridge	Maebashi City	2012/2/13	Cloudy	5.5	Brownish black	Faint earth	Loamy	<30	580	860	0.16	
18	Kamigawa River	Kannobashi Bridge	Yachiyoshi City	2012/2/13	Cloudy	6.4	Brownish black	Faint earth	Loamy	<30	660	840	0.17	
19	Yasuhigashi Channel	Yachiyobashi Bridge	Yachiyoshi City	2012/2/14	Rain	4.7	Brownish black	Faint earth	Loamy	<30	900	1,200	0.17	
20	Yasurigawa River	Mumebashi Bridge	Sakurashi City	2012/2/14	Rain	5.0	Brownish black	Faint earth	Loamy	<30	730	970	0.19	
21	Motogawa River	Motobashi Bridge	Inzaishi City	2012/2/13	Cloudy	6.7	Brownish black	Faint earth	Loamy	<30	410	550	0.14	
22	Kashinogawa River	Iwatombashi Bridge	Sakurashi City	2012/2/14	Rain	5.7	Brownish black	Faint earth	Loamy	<30	370	600	0.11	
23	Fukakigawa River	Ryutobashi Bridge	Sakurashi City	2012/2/14	Rain	5.6	Brownish black	Faint earth	Loamy	<30	300	440	0.10	
24	Kashinogawa River	Kashimabashi Bridge	Sakurashi City	2012/2/14	Rain	5.3	Brownish black	Faint earth	Loamy	<30	100	180	0.10	
25	Ibasuuro Channel	Tsurumakabashi Bridge	Inzaishi City	2012/2/13	Cloudy	6.8	Brownish black	Faint earth	Loamy	<30	810	1,100	0.19	
26	Tonegawa Canal	Ungabashi Bridge	Nagareyama City	2012/2/13	Sunny	5.0	Dark olive brown	Faint earth	Loamy	<30	710	1,000	0.26	
27	Edogawa River	Nagareyama Bridge	Nagareyama City	2012/2/13	Cloudy	4.5	Brownish black	Faint earth	Clay-loamy	<30	530	720	0.23	
28	Sakagawa River	Bentenbashi Bridge	Matsudoshi City	2012/2/13	Cloudy	7.2	—	—	—	—	—	—	0.21	Surrounding environment (soil and air dose): Unable to collect soil due to no exposed soil
29	Shimokigawa River	Sakanebashi Bridge	Matsudoshi City	2012/2/13	Sunny	7.0	—	—	—	—	—	—	0.19	Surrounding environment (soil and air dose): Unable to collect soil due to no exposed soil
30	Edogawa River	Shinkatsushikabashi Bridge	Matsudoshi City	2012/2/13	Sunny	9.4	Dark brown	Faint earth	Loamy	<30	930	1,100	0.24	
31	Edogawa River	Shingyotokubashi Bridge	Ichikawashi City	2012/2/15	Cloudy	9.4	Dark brown	Faint earth	Sandy	<30	380	460	0.16	
32	Kiyadogawa River	Urawasubashi Bridge	Matsudoshi City	2012/2/14	Rain	6.0	Brownish black	Faint earth	Loamy	<30	650	830	0.16	
33	Mamagawa River	Nemoto Floodgate	Ichikawashi City	2012/2/15	Cloudy	5.9	—	—	—	—	—	—	0.14	Surrounding environment (soil and air dose): Unable to collect soil due to no exposed soil
34	Kokubugawa River	Suwabashi Bridge	Ichikawashi City	2012/2/15	Cloudy	7.3	—	—	—	—	—	—	0.14	Surrounding environment (soil and air dose): Unable to collect soil due to no exposed soil
35	Hanagawa River	Before the confluence with Kokubugawa River	Ichikawashi City	2012/2/15	Cloudy	6.2	Brown	Faint iron	Sandy	<30	530	700	0.13	
36	Shimokigawa River	Downstream of Nakazawashinbashi Bridge	Matsudoshi City	2012/2/15	Cloudy	8.2	Brownish black	Faint earth	Sandy	<30	500	650	0.14	
37	Kashinogawa River	Sengenbashi Bridge	Ichikawashi City	2012/2/15	Cloudy	7.3	Brownish black	Faint earth	Loamy	<30	370	490	0.13	
38	Mamagawa River	Mitomebashi Bridge	Ichikawashi City	2012/2/16	Cloudy	4.1	Brownish black	None	Sandy	<30	530	740	0.10	
39	Rivers flowing into Tokyoan inner bay	Ehigawa River	Funabashi City	2012/2/16	Cloudy	3.8	—	—	—	—	—	—	0.07	Surrounding environment (soil and air dose): Unable to collect soil due to no exposed soil
40	Shinohara Channel	Shinhanamigawabashi Bridge	Chihashi City	2012/2/16	Snow	3.6	Dark brown	Faint earth	Sandy	<30	230	310	0.11	
41	Miyakogawa River	Miyakobashi Bridge	Chihashi City	2012/2/16	Snow	4.0	—	—	—	—	—	—	0.09	Surrounding environment (soil and air dose): Unable to collect soil due to no exposed soil

Note: • Air dose was measured with a survey meter, TCS-172 or TCS-161 of Hitachi-Aloka Medical, Ltd.

• Sampling points for rivers are listed from north to south, and for different points along the river, from upstream to downstream.

### River (Saitama Prefecture): 2nd Surrounding Environment (River Terrace) Monitoring Results

Sampling point				Sampling date	Weather	Surrounding environment (soil/herb/air dose)							Surrounding environment (soil/herb/air dose)							Remarks		
No.	Water body		Point			Municipality	Left bank			Soil				Right bank			Soil					
				General items			Radioactive material concentrations (Bq/kg (dry))		Air dose (μSv/h)	General items			Radioactive material concentrations (Bq/kg (dry))		Air dose (μSv/h)							
	Color	Odor	Property	Cs-134	Cs-	Color	Odor	Property		Cs-	Cs-137											
1	Arakawa River	Arakawa River	Onarihashi Bridge	Utsunomiya City/Saitama City	2012/2/17	Clear	3.4	Dark brown	Faint earth	Loamy	<30	100	140	0.08	Dark brown	None	Loamy	<30	100	160	0.09	Collected from a bridge in lower reaches due to difficulty in water and mud
2	River	Arakawa River	Sasamchashi Bridge	Utsunomiya City/Saitama City	2012/2/17	Clear	10.2	Dark brown	Faint earth	Loamy	<30	200	260	0.07	Faint mold	Faint earth	Loamy	<30	130	200	0.08	

### River (Tokyo Prefecture): 2nd Surrounding Environment (River Terrace) Monitoring Results

Sampling point				Sampling date	Weather	Surrounding environment (soil and air dose)							Surrounding environment (soil and air dose)							Remarks		
No.	Water body		Point			Municipality	Left bank			Soil				Right bank			Soil					
				General items			Radioactive material concentrations (Bq/kg (dry))		Air dose (μSv/h)	General items			Radioactive material concentrations (Bq/kg (dry))		Air dose (μSv/h)							
	Color	Odor	Property	Cs-134	Cs-	Color	Odor	Property		Cs-	Cs-137											
1	Arakawa River	Arakawa River	Kasaibashi Bridge	Konosushi City	2012/2/17	Cloudy	7.6	Dark brown	Faint earth	Loamy	<30	440	600	0.13	Black	None	Loamy	<30	260	330	0.12	Surrounding environment (soil and air dose): Unable to collect soil due to no
2	River	Sumidagawa River	Ryogokubashi Bridge	Utsunomiya City/Saitama City	2012/2/17	Sunny	8.6	—	—	—	—	—	0.06	—	—	—	—	—	—	—	0.07	
3	Edogawa River	Edogawa River	Edogawa Floodgate, down	Saitama City/Edogawa City	2012/2/20	Sunny	12.6	Dark brown	Faint earth	Loamy	<30	440	570	0.15	Black	Faint earth	Clay-loamy	<30	250	360	0.15	

Note: • Air dose was measured with a survey meter, TCS-172 or TCS-161 of Hitachi-Aloka Medical, Ltd.

• Sampling points for rivers are listed from north to south, and for different points along the river, from upstream to downstream.

Lake and Headwater (Chiba Prefecture): 2nd Water Quality Monitoring Results

Sampling point			Sampling date	Weather	Air temperature °C	Full depth m	Water quality											Remarks
No.	Point	Municipality					General items							Radioactive material concentrations (Bq/L)				
							Water temperature	Sampling depth	Color	Odor	Secchi disk depth	Electrical conductivity	SS mg/L	Turbidity	Radioactive iodine-131	Radioactive cesium Cs-134 Cs-137		
42	Teganuma Lake Fusashita	—	2012/2/14	Rain	6.3	2.2	5.9	0.5	Dark grayish yellow red	None	0.6	35.8	25	39	<1	<1	<1	
			—	—	—	—	—	—	1.2	—	None	—	35.9	29	41	<1	<1	<1
43	Teganuma Lake Shimoteganuma Chuo	—	2012/2/14	Rain	4.9	1.3	6.0	0.5	Dark grayish yellow red	None	0.7	33.3	28	38	<1	<1	<1	
			—	—	—	—	—	—	0.8	—	None	—	33.2	30	37	<1	<1	<1
44	Teganuma Lake Teganuma Chuo	—	2012/2/14	Rain	5.2	1.3	5.8	0.5	Dark grayish yellow red	None	0.6	34.7	24	24	<1	<1	<1	
			—	—	—	—	—	—	0.8	—	None	—	34.8	24	24	<1	<1	<1
45	Teganuma Lake Nedoshita	—	2012/2/14	Cloudy	5.8	1.9	6.3	0.5	Greenish brown	None	1.1	32.6	10	9.3	<1	<1	<1	
			—	—	—	—	—	—	0.9	—	None	—	33.7	10	9.4	<1	<1	<1
46	Inbanuma Lake Kita Inbanuma Chuo	—	2012/2/14	Cloudy	5.8	1.6	5.8	0.5	Dark grayish yellow red	None	0.7	33.6	19	20	<1	<1	<1	
			—	—	—	—	—	—	0.6	—	None	—	34.0	18	20	<1	<1	<1
47	Inbanuma Lake Ipponmatsushita	—	2012/2/14	Cloudy	5.8	1.6	6.1	0.5	Dark grayish yellow red	None	0.8	31.2	17	18	<1	<1	<1	
			—	—	—	—	—	—	0.6	—	None	—	31.0	16	18	<1	<1	<1
48	Inbanuma Lake Lower area of Josuido water intake	—	2012/2/14	Rain	6.1	1.5	6.3	0.5	Dark grayish yellow red	None	0.6	32.3	19	25	<1	<1	<1	
			—	—	—	—	—	—	1.0	—	None	—	31.9	21	24	<1	<1	<1
49	Inbanuma Lake Asobashi Bridge	—	2012/2/14	Rain	6.0	1.9	6.6	0.5	Greenish brown	None	1.0	34.1	9	12	<1	<1	<1	
			—	—	—	—	—	—	1.5	—	None	—	34.0	10	13	<1	<1	<1



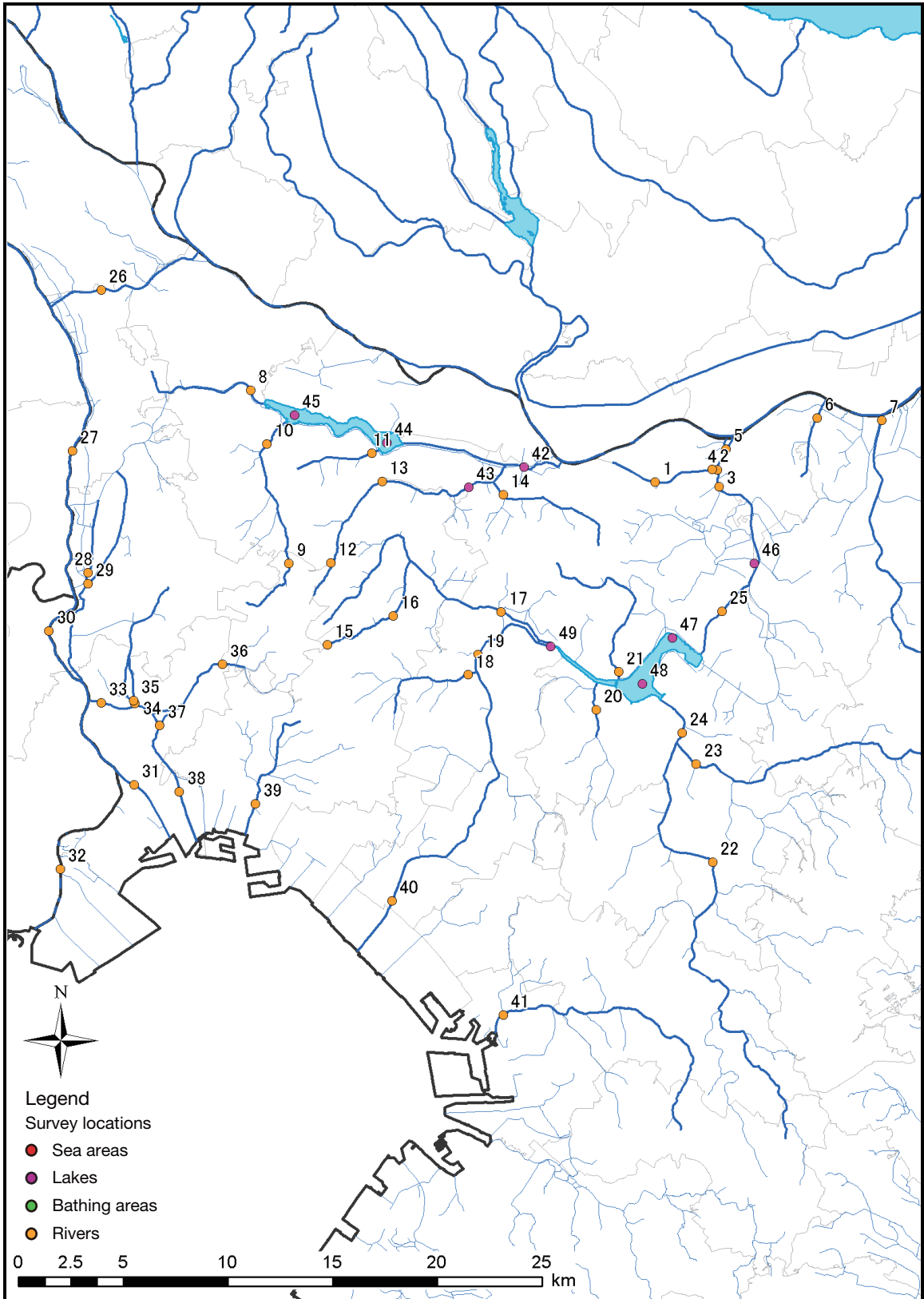
Lake and Headwater (Chiba Prefecture): 2nd Sediment Monitoring Results

Sampling point			Sampling date	Weather	Air temperature	Full depth m	Sediment																	Remarks	
No.	Point	Municipality					General items											Radioactive material concentrations							
							Mud sampling	Color	Odor	Mechanical composition							Mud content	Soil particle	Property	Radioactive iodine	Radioactive cesium Cs-134	Radioactive cesium Cs-137			
42	Teganuma Lake Fusashita 1 m from the bottom	—	2012/2/14	Rain	6.3	2.2	6.1	10	Black	None	—	—	—	0.2	0.3	9.1	67.4	9.5	13.5	58.0	2.686	Silt	<30	470	620
43	Teganuma Lake Shimoteganuma Chuo 0.5 m from the bottom	—	2012/2/14	Rain	4.9	1.3	6.2	12	Black	None	—	—	—	0.3	2.9	47.3	27.0	22.5	34.9	2.640	Silt	<30	450	690	
44	Teganuma Lake Teganuma Chuo 0.5 m from the bottom	—	2012/2/14	Rain	5.2	1.3	6.0	12	Black	None	—	—	—	0.3	1.4	11.0	54.2	33.1	23.3	2.592	Silt	<30	670	1,000	
45	Teganuma Lake Nedoshita 1 m from the bottom	—	2012/2/14	Cloudy	5.8	1.9	6.8	12	Olive black	None	—	—	—	0.2	2.4	11.6	54.3	31.5	29.1	2.587	Silt	<30	3,100	4,300	
46	Inbanuma Lake Kita Inbanuma Chuo 1 m from the bottom	—	2012/2/14	Cloudy	5.8	1.6	5.5	12	Olive black	None	—	—	—	—	0.7	3.1	65.6	30.6	21.8	2.571	Silt	<30	420	460	
47	Inbanuma Lake Ipponmatsushita 1 m from the bottom	—	2012/2/14	Cloudy	5.8	1.6	6.3	12	Olive black	None	—	—	—	—	1.1	5.7	68.0	25.2	22.9	2.583	Silt	<30	390	680	
48	Inbanuma Lake Lower area of Josaido water intake 0.5 m from the bottom	—	2012/2/14	Rain	6.1	1.5	7.0	12	Olive black	None	—	—	—	—	0.5	17.3	54.4	27.8	26.6	2.606	Silt	<30	570	680	
49	Inbanuma Lake Asobashi Bridge 0.5 m from the bottom	—	2012/2/14	Rain	6.0	1.9	6.8	10	Olive black	Faint petroleum	—	—	—	0.8	0.8	13.7	53.2	13.9	17.6	53.4	2.672	Silt with sand	<30	170	270

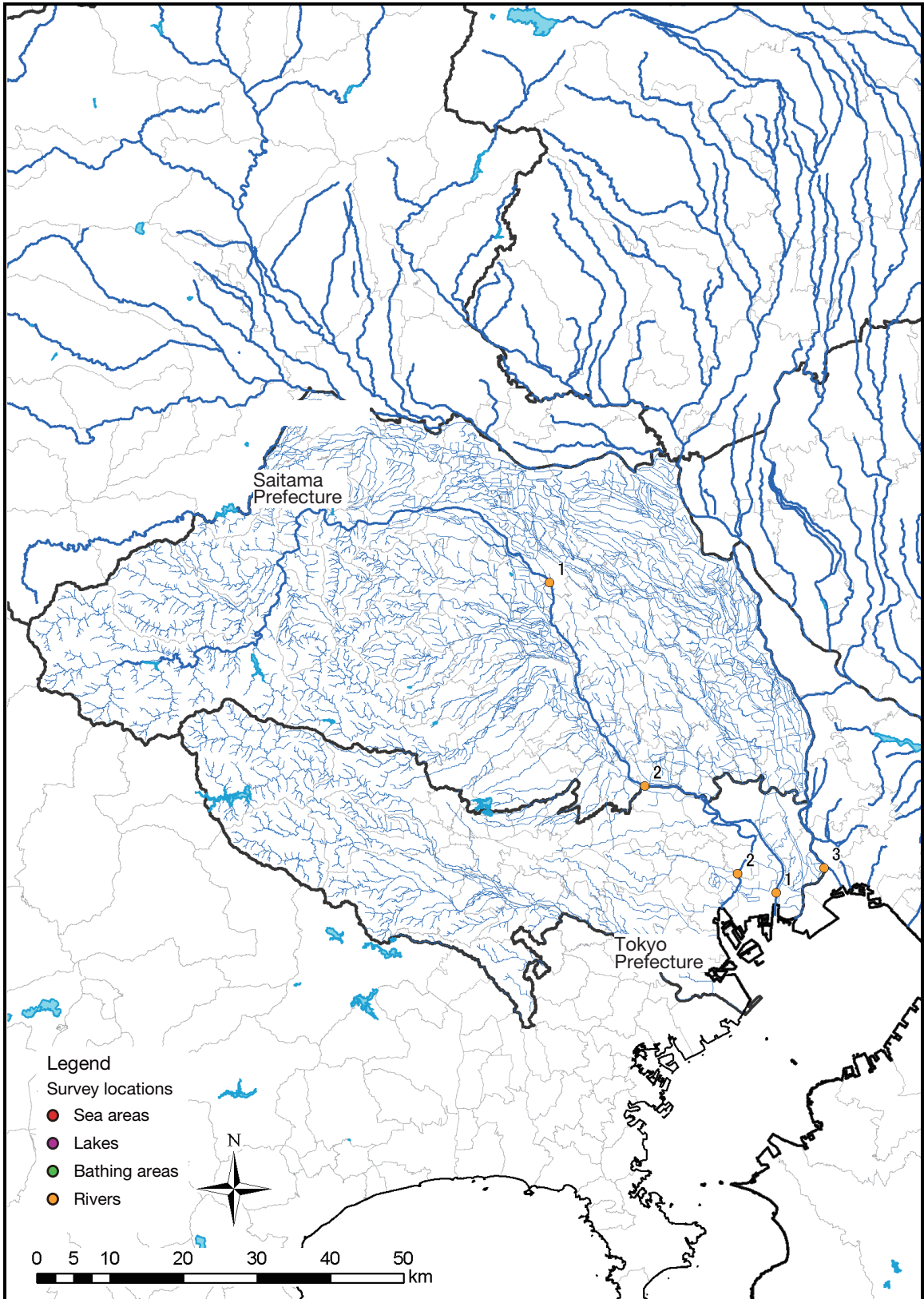
Lake and Headwater (Chiba Prefecture): 2nd Surrounding Environment (Lake Shore) Monitoring Results

Sampling point			Sampling date	Weather	Air temperature	Surrounding environment (soil and air dose)							Remarks									
No.	Point	Municipality				General items			Radioactive material concentrations		Air dose (μSv/h)											
						Color	Odor	Property	Radioactive iodine-131	Radioactive cesium Cs-134		Radioactive cesium Cs-137										
42	Teganuma Lake Fusashita 1 m from the bottom	—	2012/2/14	Rain	6.3	—	—	—	—	—	—	—	—	—	—	—	—	—	—	—	—	—
43	Teganuma Lake Shimoteganuma Chuo 0.5 m from the bottom	—	2012/2/14	Rain	4.9	Brownish black	Faint earth	Loamy	<30	1,000	1,600	0.20	—	—	—	—	—	—	—	—	—	—
44	Teganuma Lake Teganuma Chuo 0.5 m from the bottom	—	2012/2/14	Rain	5.2	—	—	—	—	—	—	—	—	—	—	—	—	—	—	—	—	—
45	Teganuma Lake Nedoshita 1 m from the bottom	—	2012/2/14	Cloudy	5.8	Dark brown	Faint earth	Loamy	<30	810	1,100	0.26	—	—	—	—	—	—	—	—	—	—
46	Inbanuma Lake Kita Inbanuma Chuo 1 m from the bottom	—	2012/2/14	Cloudy	5.8	Brownish black	Faint earth	Loamy	<30	340	510	0.25	—	—	—	—	—	—	—	—	—	—
47	Inbanuma Lake Ipponmatsushita 1 m from the bottom	—	2012/2/14	Cloudy	5.8	—	—	—	—	—	—	—	—	—	—	—	—	—	—	—	—	—
48	Inbanuma Lake Lower area of Josaido water intake 0.5 m from the bottom	—	2012/2/14	Rain	6.1	—	—	—	—	—	—	—	—	—	—	—	—	—	—	—	—	—
49	Inbanuma Lake Asobashi Bridge 0.5 m from the bottom	—	2012/2/14	Rain	6.0	Brownish black	Faint earth	Loamy	<30	360	500	0.12	—	—	—	—	—	—	—	—	—	—

Note: \* Air dose was measured with a survey meter, TCS-172 or TCS-161 of Hitachi-Aloka Medical, Ltd.



Survey Locations (Chiba Prefecture)



Survey Locations (Saitama and Tokyo Prefectures)