

Case Study

Take back of illegal shipment

Jittiya CHUTONG

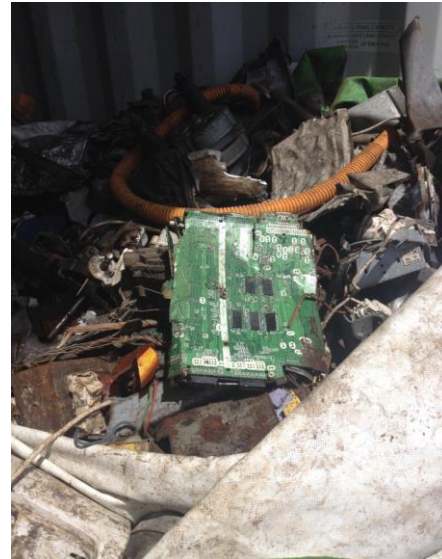
Department of Industrial Works

Ministry of Industry

7 September 2016

Semarang, Indonesia

Containers Investigation



Factory Inspection

Date : 21 October 2014

Place : Sriracha, Chonburi Province

Factory type : 105 (Segregation of non-hazardous industrial waste specifically for paper, plastic, wood and metal scraps)



3 December 2014 : Official illegal shipment informed

1. Under Thailand's national legislation, Hazardous wastes movement controlled under Basel Convention and the Hazardous Substance Law B.E. 2535 (List 5.2: Chemical Wastes)
2. WEEE and scraped electronic circuit boards are controlled in List A: 1180 and List 5.12 : No. 2.18
3. All wastes in List 5.2 are allowed to import to Thailand only for using as raw material to importer's factory (Not for disposal)
4. Scraped EEEs are considered illegal traffic under Article 9 of Basel Convention, written consent and approval needed prior imported to Thailand



January -November 2015

Take back processing under Customs' Law

12 August 2016

Containers shipped back





Thank you

Q&A