

Customs Activities in Asia and the Pacific Region regarding Hazardous Wastes

Workshop 2016 of the Asian Network for
Prevention of Illegal Transboundary
Movement of Hazardous Wastes

6-8 September 2016,
Semarang, Indonesia



RILO AP

Regional Intelligence Liaison Office for Asia and the Pacific

Bridge across borders

Regional Intelligence Liaison
Office for Asia and the Pacific

Contents

- Customs High-Risk Areas
- World Customs Organization
- Introduction of RILO A/P
- Seizure Cases by Member Administrations

Customs High-Risk Areas

In 2011, the WCO Policy Commission endorsed five key risk areas for Customs enforcement.

HIGH-RISK AREAS FOR CUSTOMS ENFORCEMENT

Revenue

Security

IPR, Health
and Safety

Drugs

Environment

+ Emerging risks

Environmental Risks

Environmental risks in the Customs context relates to the illegal cross border trafficking of :

Endangered
Species

Hazardous
and Toxic
Waste

Ozone
Depleting
Substances

etc.

[Threatening sustainable development and ecological balance]

World Customs Organization

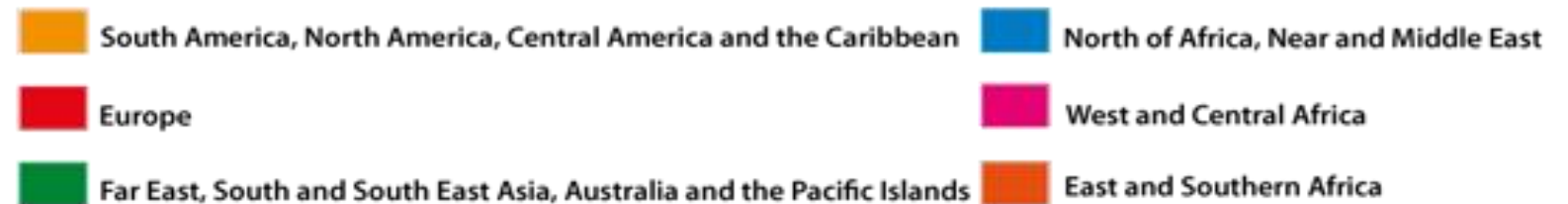
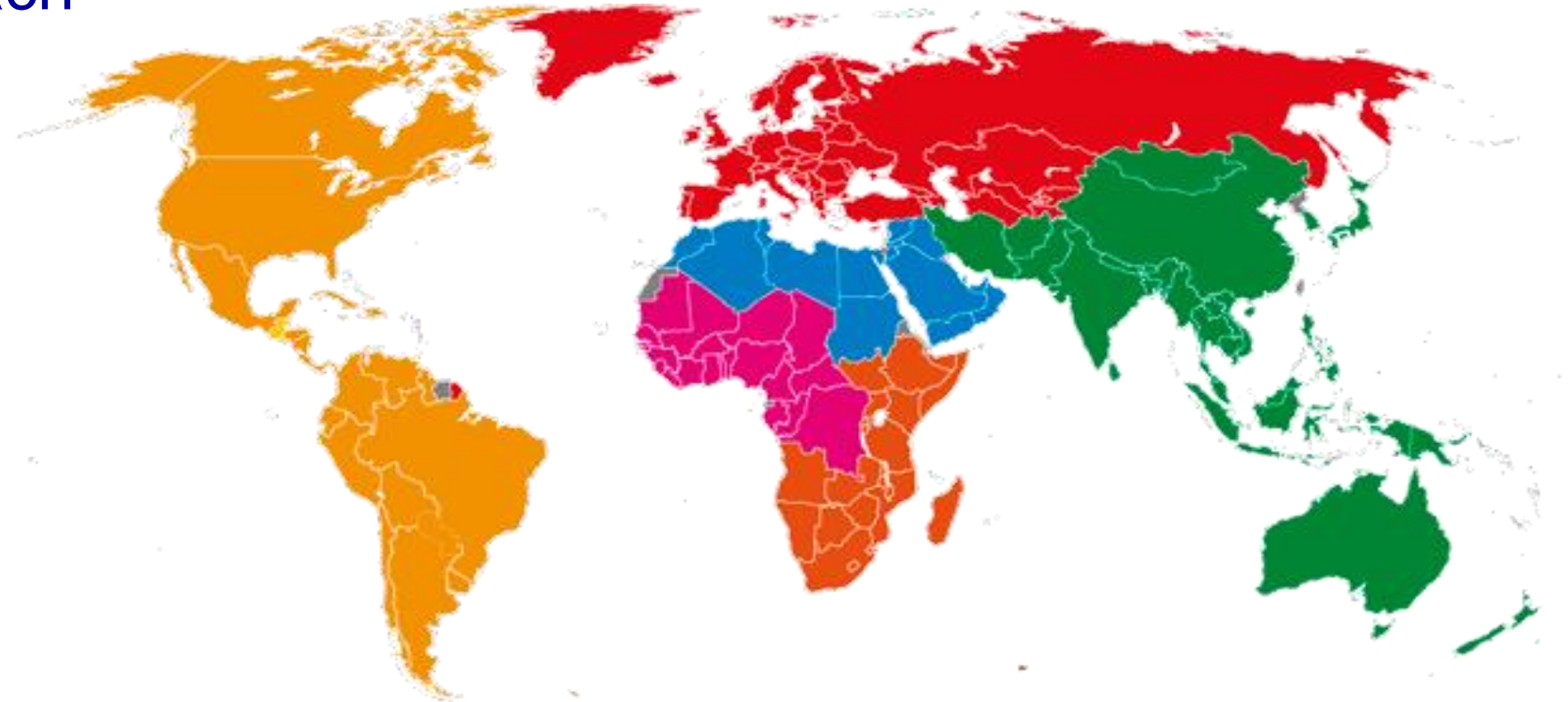


The World Customs Organization (WCO)

- Established in 1952 as the Customs Co-operation Council (CCC)
- An independent intergovernmental body whose mission is to enhance the effectiveness and efficiency of Customs administrations.
(The **only international organization** with competence in **Customs matters**)
- Member Administrations : **180 Customs administrations** across the globe.
(= Covering approximately 98% of world trade).
They are divided into 6 regions.

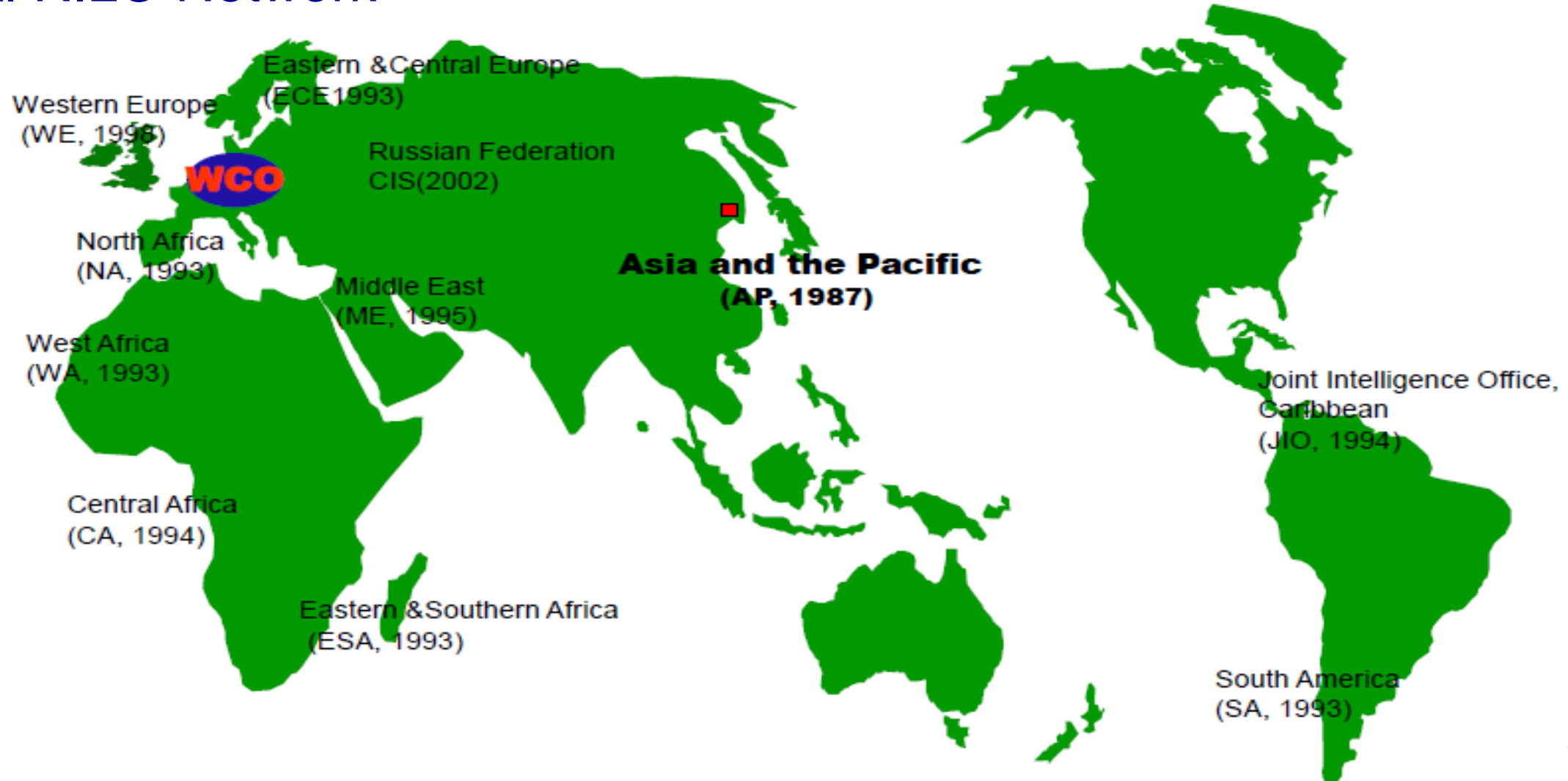
World Customs Organization

Regional Approach



World Customs Organization

Global RILO Network



Introduction of RILO A/P

Regional Intelligence Liaison Office for Asia and the Pacific

- Established in 1987 in Hong Kong. now **hosted by Korea Customs Service**
- Member Administrations : **32 Customs administrations** (as of August 2016).
- Major Activities
 - Conducting **intelligence analysis** and provide members with the achievements in forms of publications etc.
 - Managing **CEN** (Customs Enforcement Network, including seizure database)
 - Acting as a **focal point for intelligence exchange** at the regional and global level.
 - Coordinating specific **operations** and projects (both covering our region and world wide).
 - Providing members with various **capacity building programs** in the field of intelligence and enforcement.

Introduction of RILO A/P

History in Brief



Introduction of RILO A/P



RILO AP
Regional Intelligence Liaison Office for Asia and the Pacific
Bridge across borders

Current
Staff
Members



Head
Lee So-Myun

Deputy Head
Lee Chul-hun

Park Sang-yong Yum Jung-sub Kim JiYoung Choi Jinho



AU Lisa SAITO Kazushige Wang Liang

- Intelligence Analyst (4)
- CEN Manager (1)
- Project Manager (1)
- Liaison Officer (1)

Introduction of RILO A/P



RILO AP
Regional Intelligence Liaison Office for Asia and the Pacific
Bridge across borders

Intelligence Products



ALERT 16/2015

Drug Camouflaged as Document

DATE: 4 September 2015

SOURCE OF INFORMATION:
1. Drug System Immediate Notification System (Ari) (DSINS (Ari))
2. WCO/OMD Customs Enforcement Network (CEN)

CONTACT: Regional Intelligence Liaison Office for Asia and the Pacific
#721, Leong-ae, Gangnam-gu, Seoul, 150-702, Korea
Tel: 82-2-510-1390
Fax: 82-2-2015-7974
Email: officer@riilo.org

DESCRIPTION:

According to DSINS (Ari) database, the first record of drugs camouflaged as document was detected in January 2009 from a Brazilian air passenger at Hong Kong International Airport. Later, in July 2012, an air parcel arriving from Panama via US to Hong Kong was found concealed 1.64 kg of cocaine inside four document folders. There were only 2 reports of detection between 2009 and 2014.

However, in 2015, there is a rising trend for drugs to be concealed in plastic document folders or camouflaged as document.

Reporting Country	Arrest Date	Seizure	Quantity	Seizure Method	Concealment Method
HK	08-2015	1.44 kg of methamphetamine	HK-AE1	In parcel	<ul style="list-style-type: none"> Parcel declared as "Two Design Docs." Concealed in plastic folders which were covered by paper and magazines
HK	12-1-2015	0.71 kg of methamphetamine	HK-AE1	In parcel	<ul style="list-style-type: none"> Parcel declared as "Two Design Docs." Concealed in plastic folders which were covered by paper and magazines
HK	2-6-2015	0.99 kg of methamphetamine	HK-AE1	In parcel	<ul style="list-style-type: none"> Parcel declared as "Two Documents" & "Journal with documents" Concealed in plastic folders which were covered by paper and magazines

On a timely basis



Analysis Report

2nd Issue of 2014

WCO Regional Intelligence Liaison Office for Asia and the Pacific

RESTRICTED

Every two months



RILO AP Annual Report 2015

WCO Regional Intelligence Liaison Office for Asia and the Pacific

RILO AP Bridge across borders

Every year

Introduction of RILO A/P



RILO AP

Regional Intelligence Liaison Office for Asia and the Pacific

Bridge across borders



Customs Enforcement Network

is a global enforcement *Information* & intelligence *sharing* and communication *tool* available to Customs



Key Features

- Internet based Seizures Database
- Global Database of Customs seizures and offences
- Non-nominal information
- Divided into 15 commodities
- Predefined structure to facilitate data input
- Minimal mandatory data to ensure the quality of analysis

Select commodity type ▾ Add Commodity

- Beverages
- CITES
- Currency
- Drug precursor chemicals
- Drugs
- Hazardous materials
- IPR
- Other prohibitions and restrictions
- Pornography/Paedophilia
- Radioactive and nuclear materials
- Tax and duty evasion
- Tobacco
- Weapons and explosives

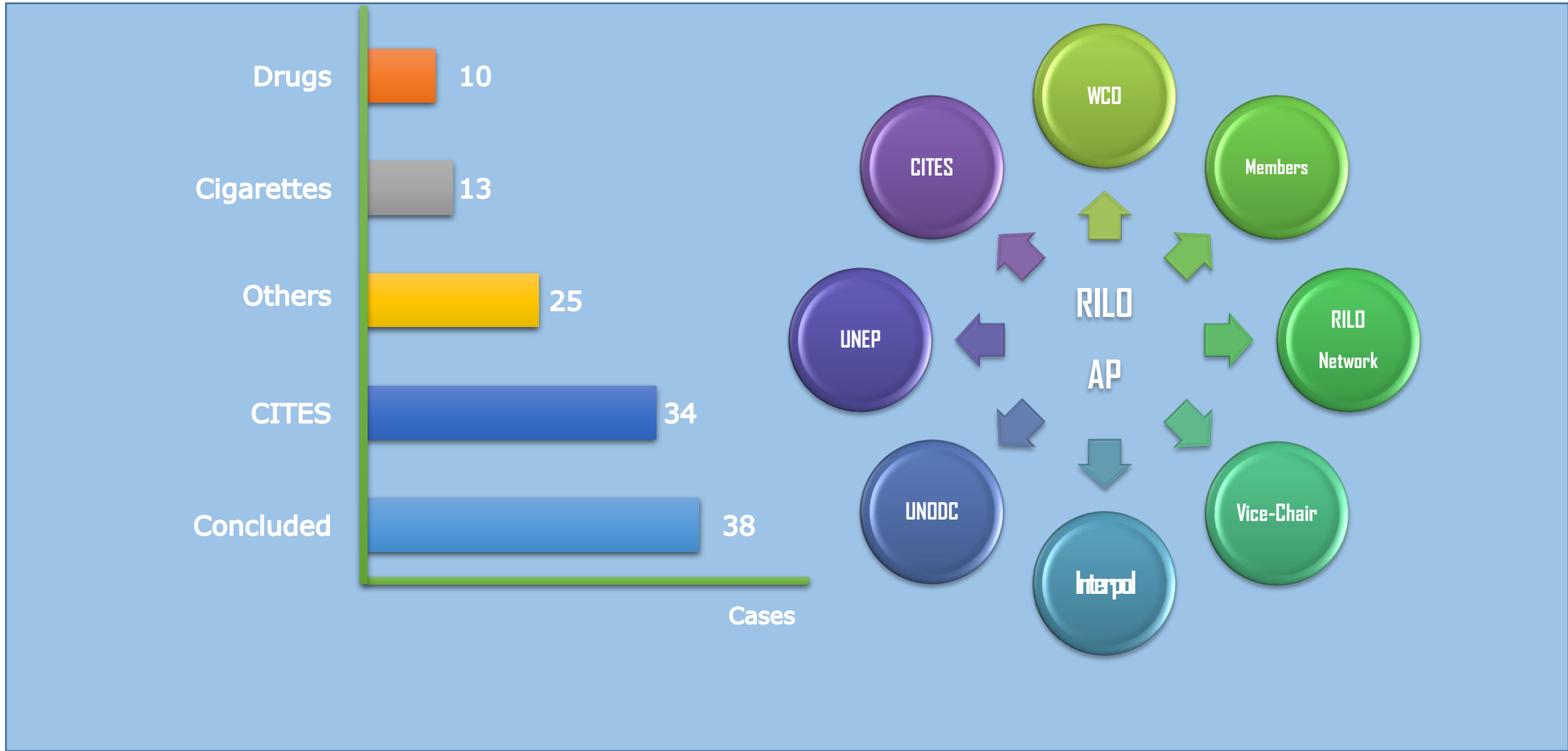
Detection Method

Add Detection Aid

Add Consignment

Introduction of RILO A/P

Information & Intelligence Exchange



Introduction of RILO A/P



Regional Level



Op. CADS
(6 JUL ~ 17 JUL '15)

Drug by Air Passengers /
24 cases reported



DSINS Air(from '08)
DSINS Sea Cargo(from '15)

Drug /
471 Notifications for 1,650kg (Air)
13 Notifications for 107kg (Sea)



Project Crocodile (from '04)

Tobacco /
717 Notifications
for 38 bil sticks
of cigarettes ('15)



Project Sky-Hole-Patching (from '06)

ODS & Hazardous wastes /
39 Notifications
for 7,300 tons('15)

Introduction of RILO A/P

Capacity Building Programs

In-house Capacity Building Programs

Expert Missions

Seminars / Workshops

Operation Related Capacity Building

Introduction of RILO A/P



- Dispatch 3 experts to A/P Members
- Capacity building in intelligence & CEN usage promotion
- (2015) Vietnam(April), Malaysia(August)



Introduction of RILO A/P



RILO AP
Regional Intelligence Liaison Office for Asia and the Pacific
Bridge across borders



- Invite 4~5 officers from A/P Member for a week
- Capacity building in CEN database and intelligence analysis
- Three or Four times each year



1st Attachment Training in 2015
(9-20 Mar, Seoul Korea)



2nd Attachment Training in 2015
(14-18 Dec, Seoul Korea)

Seizure Cases by Member Administrations

- Successful Achievement of “Project SKY-HOLE-PATCHING” -

Summary of Seizure Cases

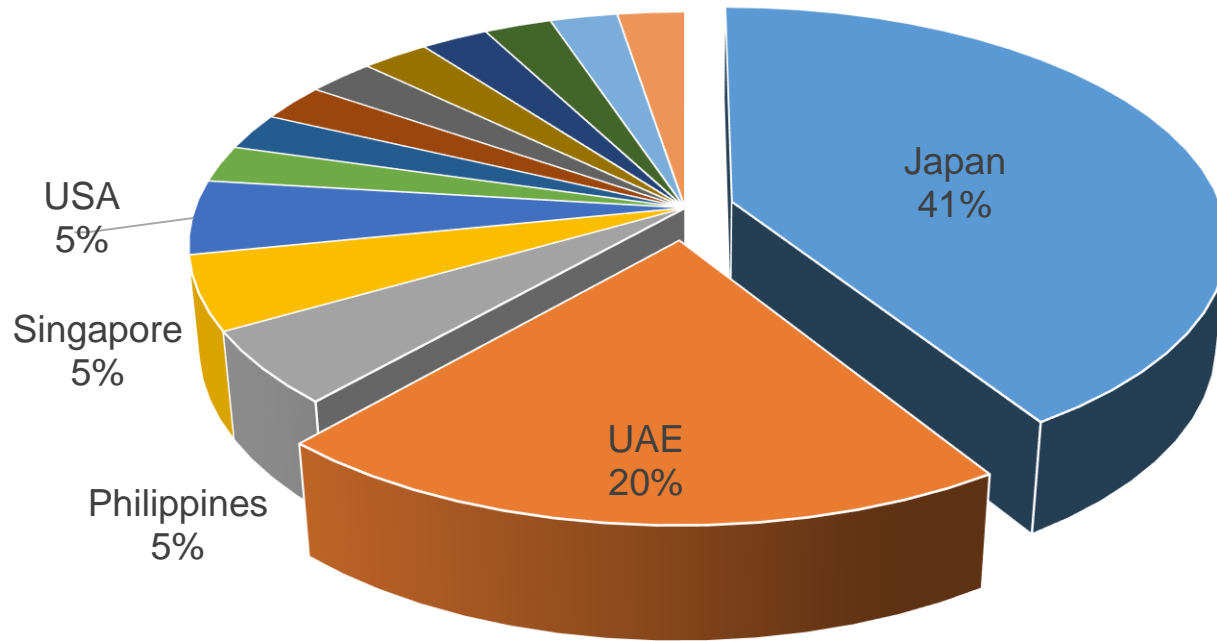
(Source : CEN database (seizure data of “Hazardous Waste”))

- Total 39 seizures made in 2015 have been reported from Hong Kong Customs
- Modus Operandi of all cases are “Misdeclaration”, in other words, there is no use of sophisticated concealment methods e.g. hidden inside other legal commodities etc.)

Summary of Seizure Cases

(Source : CEN database (seizure data of “Hazardous Waste”))

- According to the available information such as shipping documents, the biggest “Source” country is Japan, followed by UAE



Origin	Reported Cases	%	Origin	Reported Cases	%
Japan	16	41.0%	Brazil	1	2.6%
UAE	8	20.5%	Canada	1	2.6%
Philippines	2	5.1%	China	1	2.6%
Singapore	2	5.1%	Germany	1	2.6%
USA	2	5.1%	Dominican Republic	1	2.6%
			UK	1	2.6%
			Korea	1	2.6%
			Malaysia	1	2.6%
			Turkey	1	2.6%
			Total	39	100.0%

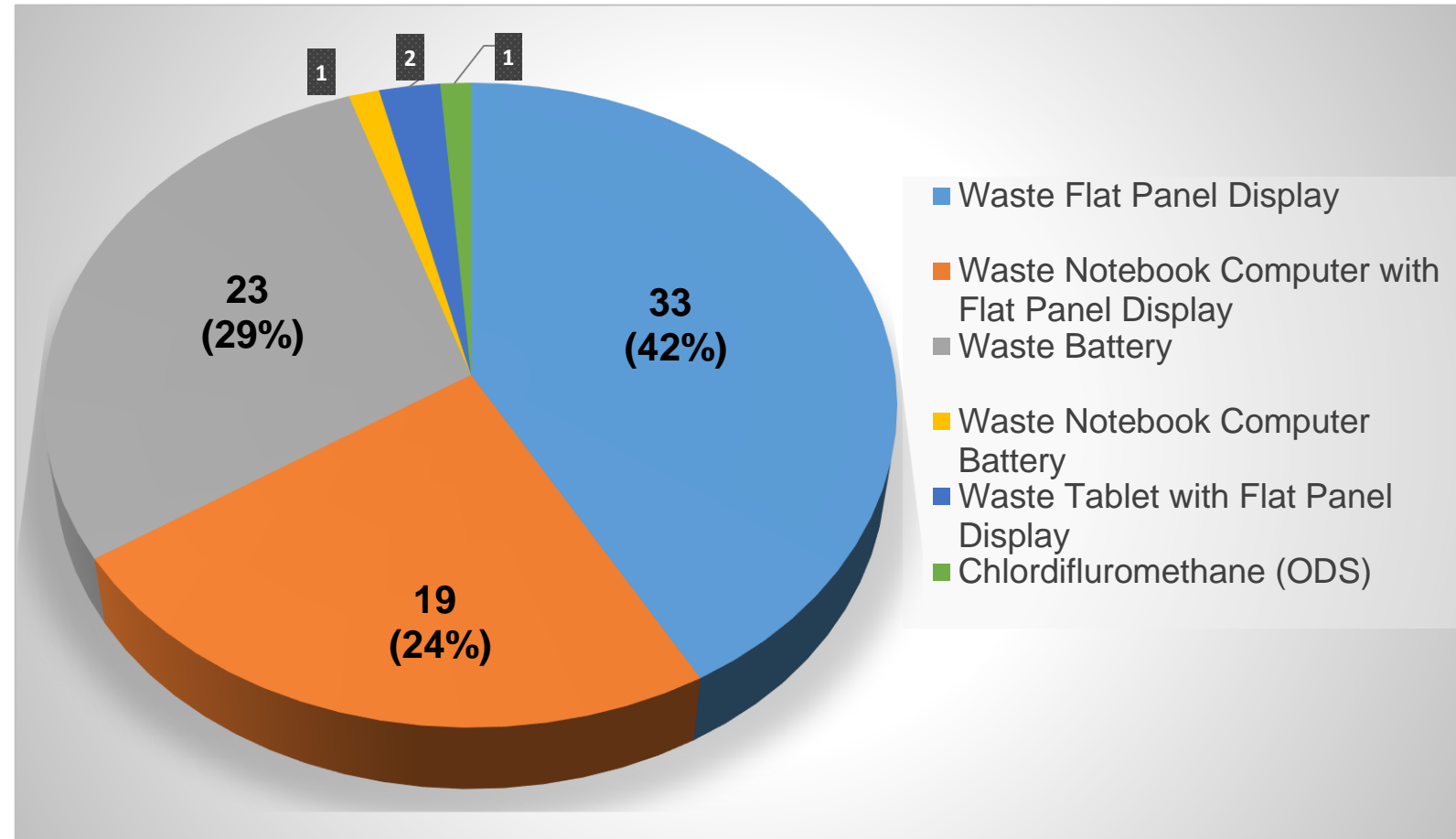
Summary of Seizure Cases

(Source : CEN database (seizure data of “Hazardous Waste”))

Seized Items:

- Flat Panel Display
- Notebook Computer
- Battery

(Note: Total number is different from cases on previous slide since two or more items were seized in one case)



Summary of Seizure Cases

(Source : CEN database (seizure data of “Hazardous Waste”))

Seized Amount by Items:

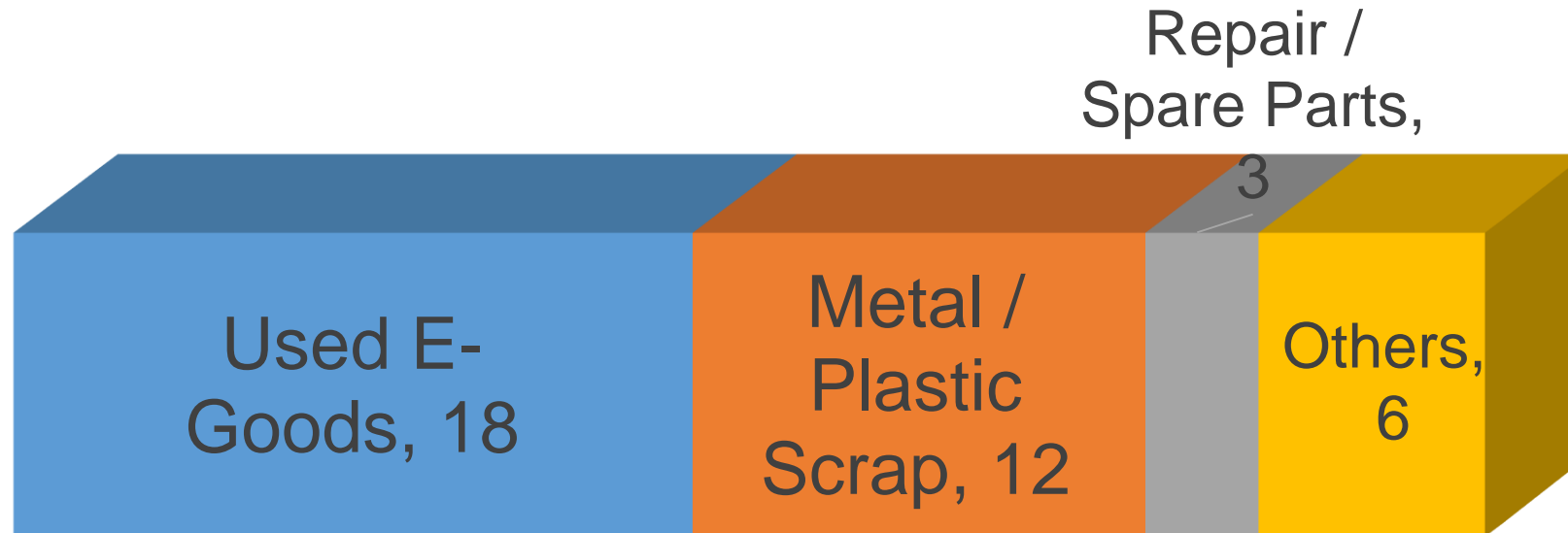
ITEMS	KG	Pieces
Waste Flat Panel Display	-	480,317
Waste Notebook Computer with Flat Panel Display	-	22,114
Waste Battery	22,097	2,200
Waste Notebook Computer Battery	500	-
Waste Tablet with Flat Panel Display	-	5,440
Chlordifluoromethane (ODS)	294	-



Summary of Seizure Cases

(Source : CEN database (seizure data of “Hazardous Waste”))

- Declared items on the seizure cases:



Summary of Seizure Cases

(Jan – Feb 2016)

(Source : CEN database (seizure data of “Hazardous Waste”))

- Total 8 seizures made in Jan to Feb 2016 were recorded in database, all cases have been reported from Hong Kong Customs
- Modus Operandi of all cases are “Misdeclaration”, as the same in 2015.
- 3 seizures were made from sea cargo consignment from USA, while Japan was still “Major Source” country.

Example of Seizure Cases

(Source : CEN database (seizure data of “Hazardous Waste”))

- On April 2015, Customs officers at Tsing Yi seaport examined container cargo from Dubai, United Arab Emirates via Tanjung Pelepas, Malaysia.
- The importing goods were declared as “Used computer parts in accordance with description on cargo manifest.
- As a result of the examination, 3,340 pieces of waste flat panel display were found.

Example of Seizure Cases



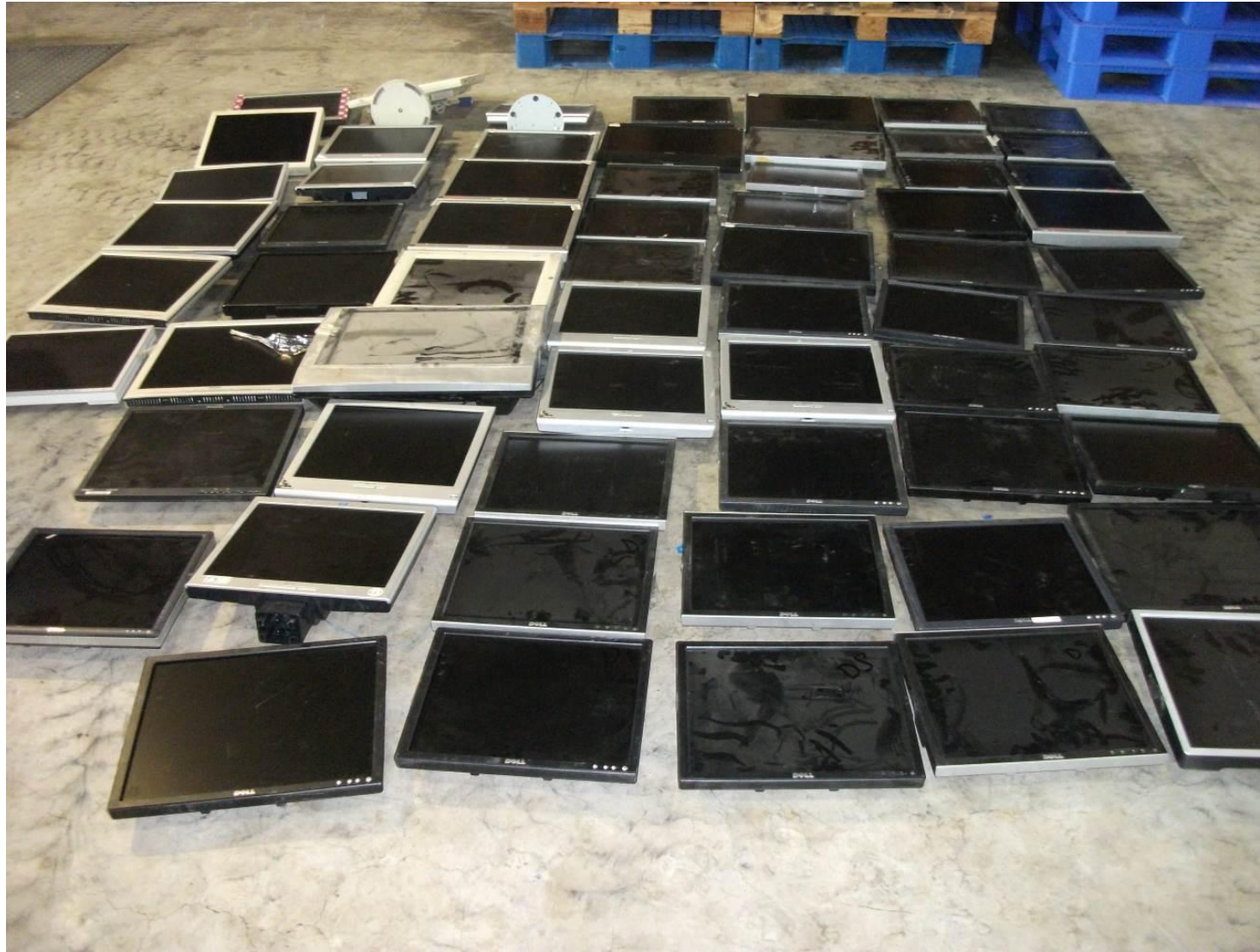
The consignment
inside container

Example of Seizure Cases

The seized items



Example of Seizure Cases



The seized items

Example of Seizure Cases

(Source : CEN database (seizure data of “Hazardous Waste”))

- On April 2015, Customs officers at Tsing Yi seaport examined container cargo from Santos, Brazil.
- The importing goods were declared as “Cell phone, refrigerator, tablet PC, LCD screen cell phone, Lap top, washing machine” in accordance with description on cargo manifest.
- As a result of the examination, 5,400 pieces of waste tablet with flat panel display, 700 pieces of waste notebook with flat panel display, 230 kg of waste batteries were found.

Example of Seizure Cases



The consignment inside container

Example of Seizure Cases

The seized items



Example of Seizure Cases

(Source : CEN database (seizure data of “Hazardous Waste”))

- On December 2015, Customs officers at Kwai Chung seaport examined container cargo from Fukuoka, Japan.
- The importing goods were declared as “Used amusement machine” in accordance with description on Bill of Lading.
- As a result of the examination, 220 pieces of waste flat panel display were found.

Thank you for your attention

Contact for more information :

WCO RILO AP (Seoul)

#721 Eonju-ro, Gangnam-gu, Seoul, 06050, Korea

Phone: +82-2-510-1935 | Fax: +82-2-2015-7874

Email: office@riloap.org