

Workshop 2014 of Asian Network Border Control Practice against Import of Hazardous Waste



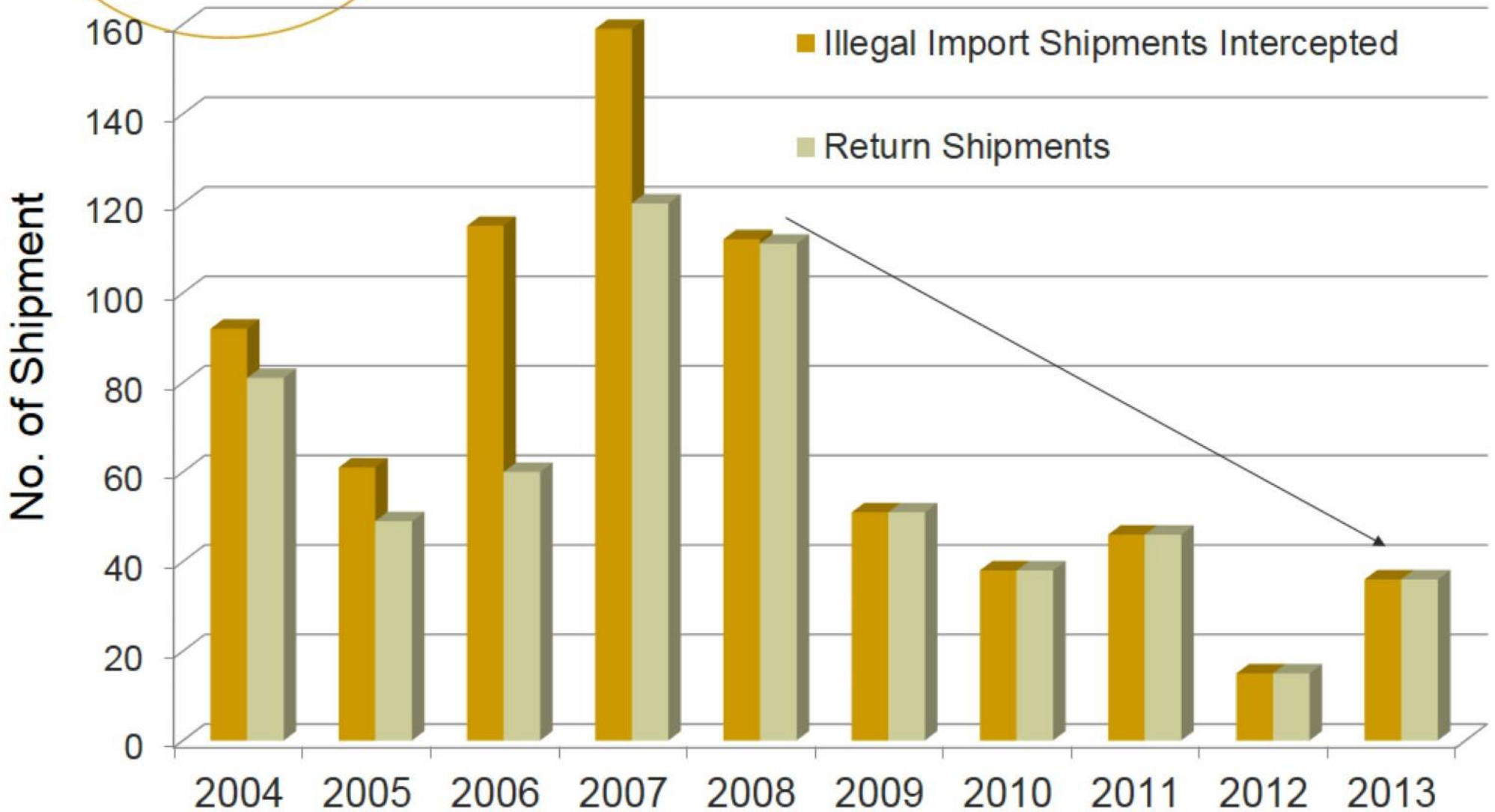
Jeffrey Chan
Environmental Protection Department
Hong Kong SAR Government
27 November 2014

Illegal Import and Export in 2013

- HK is a major transshipment port in the Asia-Pacific Region.
- In 2013, EPD intercepted 36 hazardous waste shipments (45 containers), amounting to 771 tonnes.
- All illegal shipments were returned to the exporting countries promptly after the incidents.



The Effect of Return Shipment



Border Control in Practice – Detailed Inspection

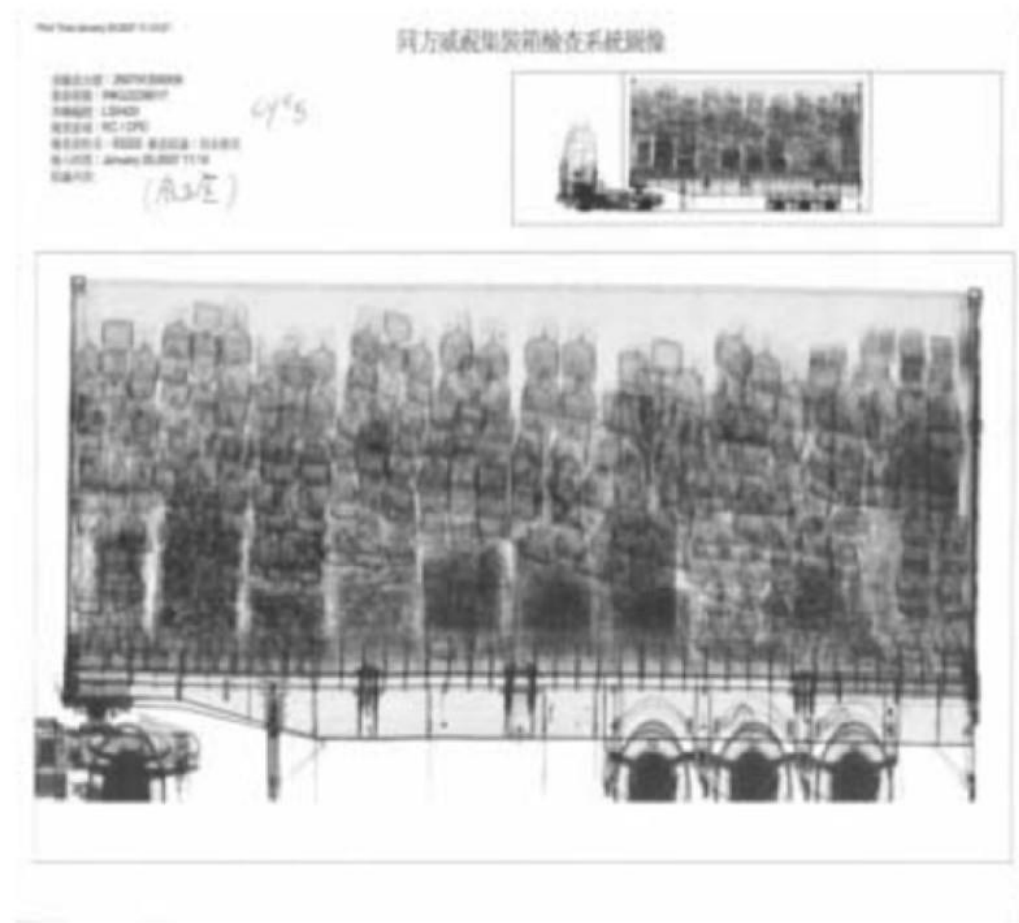


Inspections by X-Ray





Used Monitors

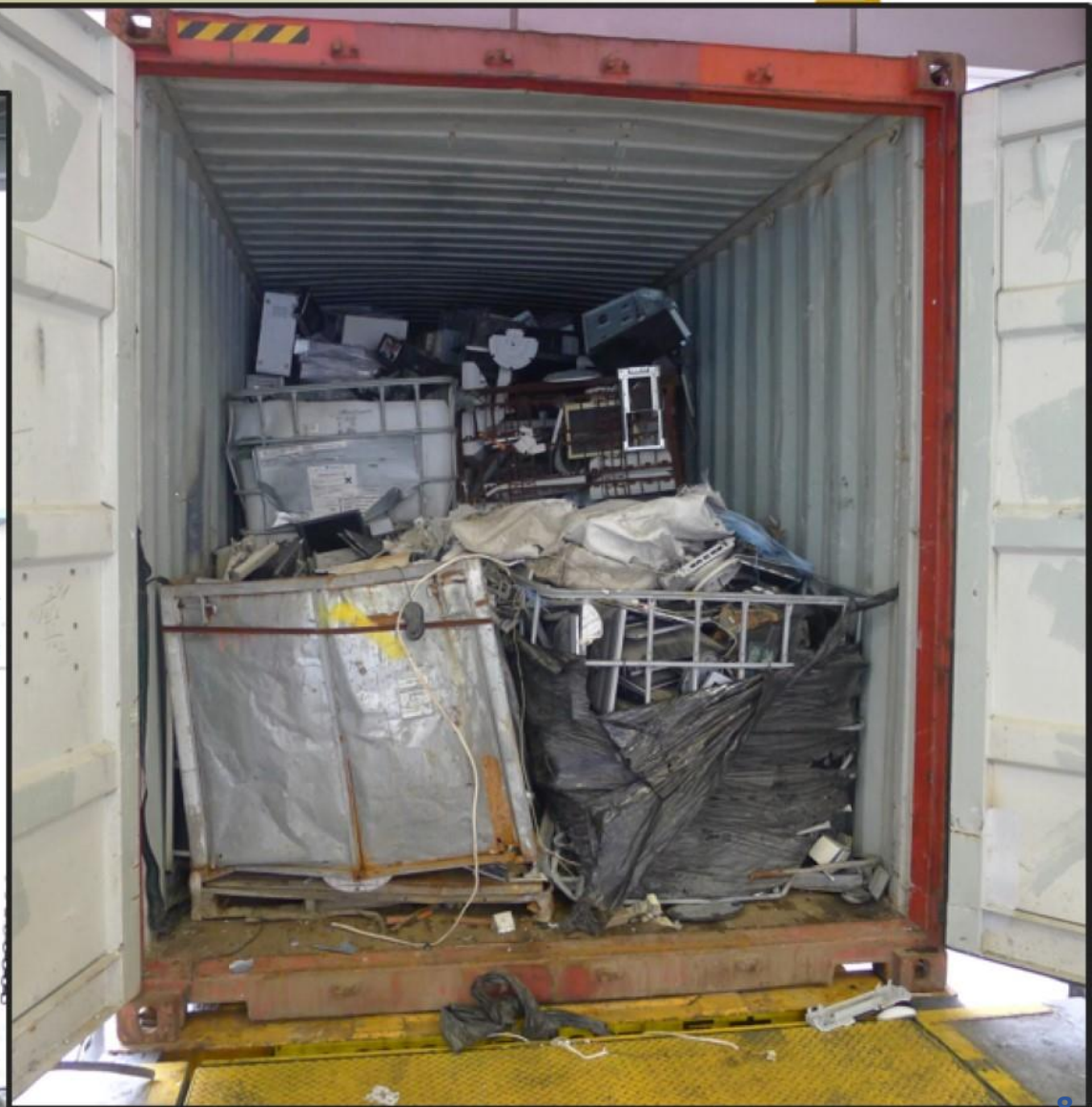


X ray image

Border Control in Practice – Checking of Seal



Border Control in Practice – Detailed Inspection



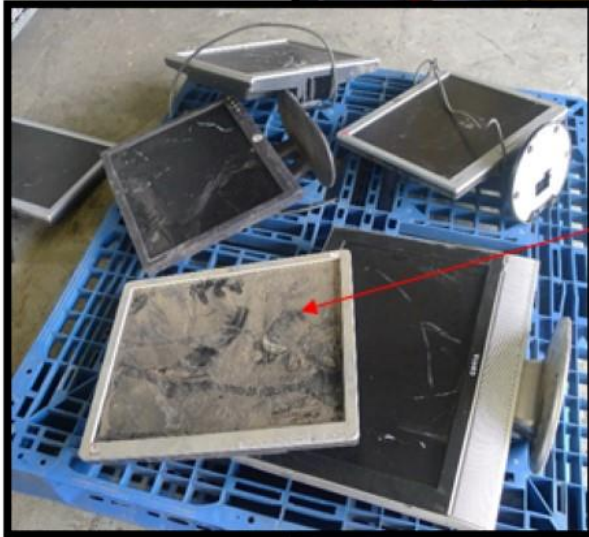
Border Control in Practice – Detailed Inspection



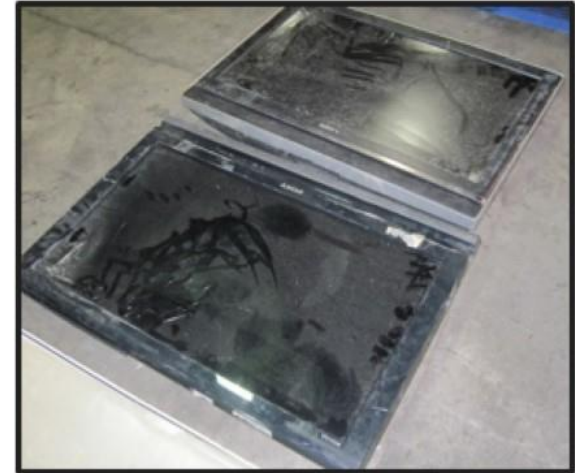
Border Control in Practice – Detailed Inspection



Border Control in Practice – Detailed Inspection



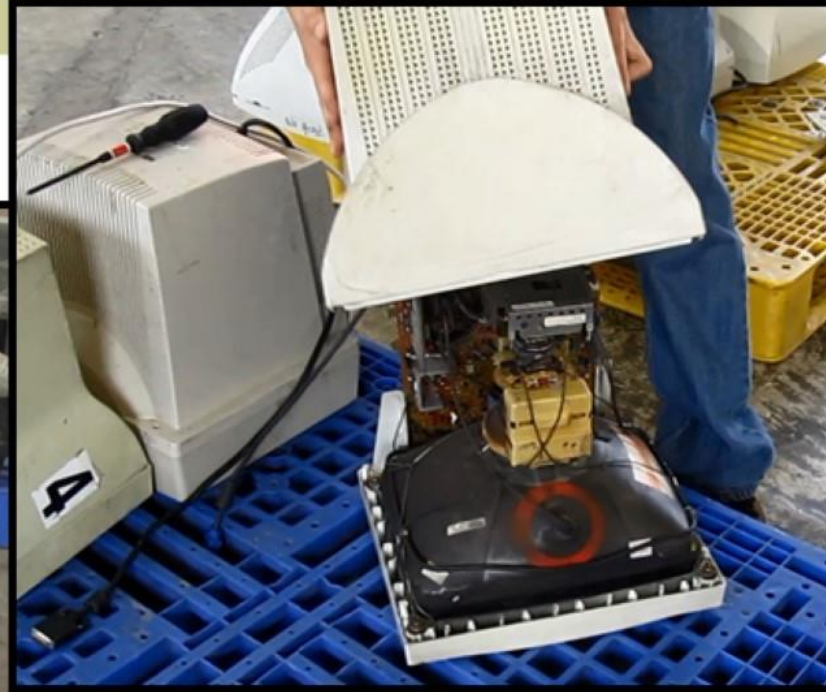
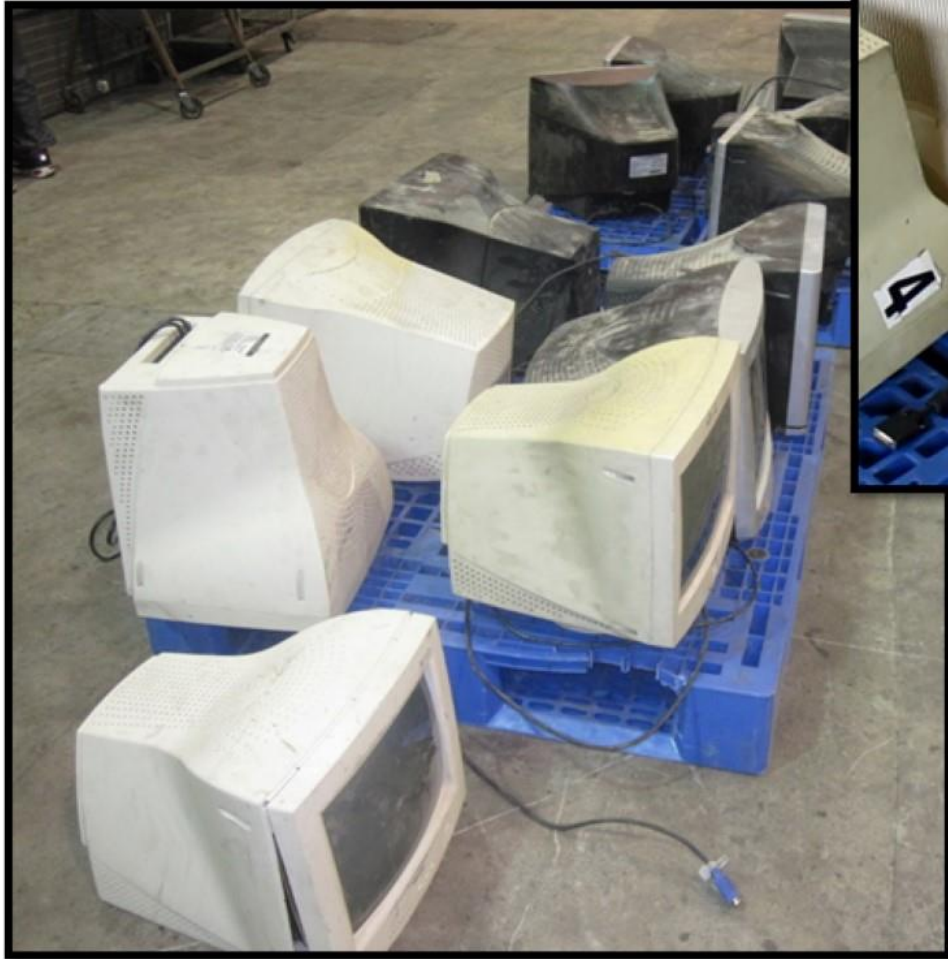
Detailed Inspection – Waste LCD Panels



Detailed Inspection – Waste LCD Panels



Border Control in Practice – Waste CRT Monitors



Detailed Inspection – Waste Vehicle Batteries



Detailed Inspection



Detailed Inspection – Waste Li-ion Batteries



Detailed Inspection – Waste Li-ion Batteries



Detailed Inspection



Collection of Evidence for Legal Proceedings



Collection of Evidence for Legal Proceedings



Return Shipment and Prosecution

- All illegal shipments will be returned to the exporting country.
- Coordinate with the control authority of the exporting country for investigation and parallel enforcement action.
- Legal proceedings against the offenders under the Waste Disposal Ordinance Chapter 354:
 - ① For first conviction, maximum fine is \$200,000 & 6 months' imprisonment
 - ② For second or subsequent conviction, maximum fine is \$500,000, 2 years' imprisonment

Enforcement Work in Practice - Collaboration with Local Parties

- Customs and Marine Police
 - Manifest screening
 - Waste shipment referrals
 - Joint inspections
- Landfill Operators
 - Interception of illegal disposal of imported waste
- Local Shipping Companies and Agents
 - Referrals of dubious waste shipments
 - Advance information of waste shipments heading HK



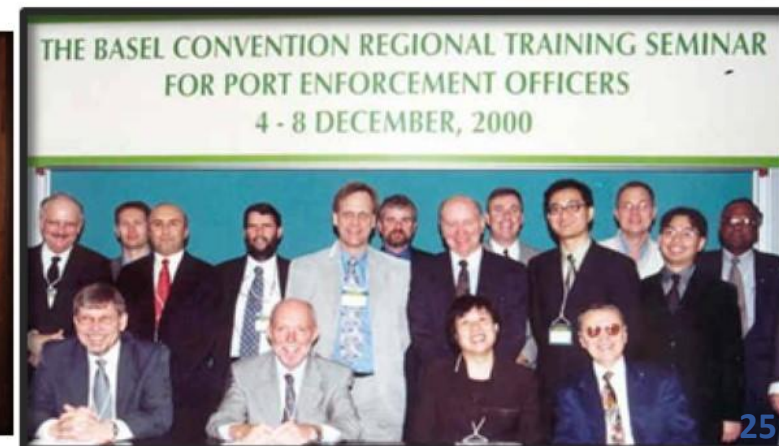
Cooperation with Other Enforcement Arms - Hong Kong Customs and Hong Kong Police

- Support and take over cases when necessary
- Frequent meetings to review the trade practices
- 24-hours contact points
- Training and seminars



Overseas Intelligence Links

- Connection at working level with MEP and overseas control authorities, e.g. customs, CAs, etc.
- Exchange information of dubious waste shipments and latest control requirements
- Coordination of returning illegal waste shipments
- Participating international networks and joint enforcement projects



Thank You



Environmental Protection Department
Hong Kong SAR Government
27 November 2014