

Workshop 2011 of Asian Network Update on Waste Import and Export Control in Hong Kong



Jeffrey Chan
Environmental Protection Department
Hong Kong SAR Government
29 November 2011

Waste Import/Export Activities in HK

- Convenient location
- Gateway to the Southern China
- Efficient harbour facilities
- Major cargo transshipment port in the Asia-Pacific Region



Control under the Waste Disposal Ordinance Through a Permit System

- A permit is required for import/export of -
 - any hazardous waste;
 - any contaminated waste; or
 - any waste NOT for recycling
- Basel Ban
- No permit required for import and export of uncontaminated recyclable green waste for recycling purposes



Update - Waste Import and Export Statistics



Request for Transit under the Basel Convention – 2010

■ Transit Notifications

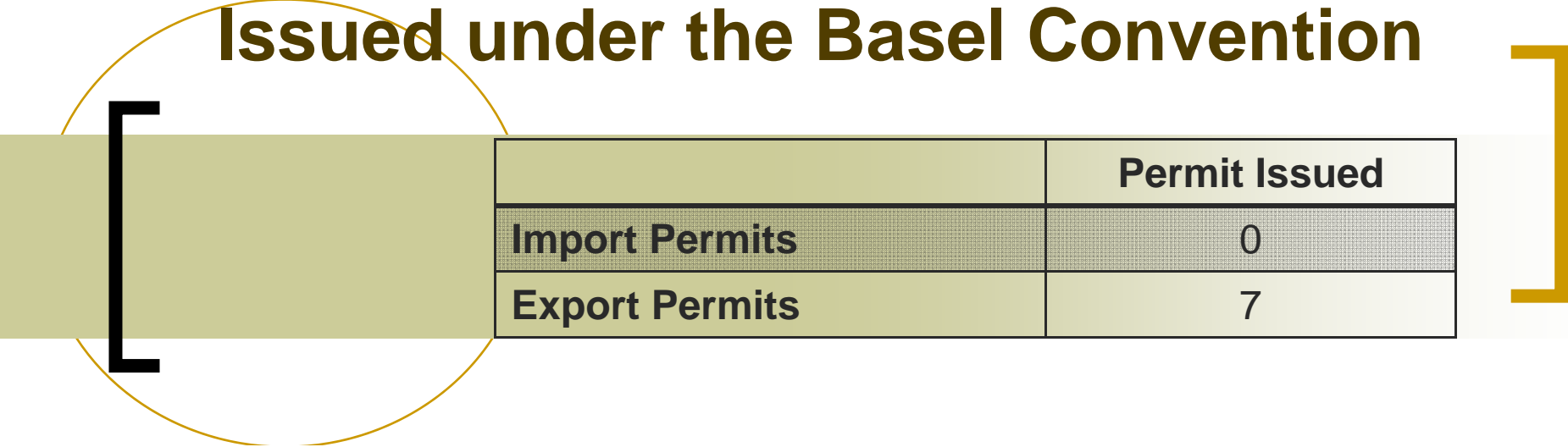
Applications	6
Consented	4
Withdrawn	1
Rejected	1

Waste Types: copper cake, metal sludge, CRT
monitor glass & battery waste.

Export Countries: Jamaica, Malaysia, China, Korea,
Germany, Indonesia & Mauritius

Import Countries: Korea, Germany, Malaysia & Japan

Import and Export Permits Issued under the Basel Convention



	Permit Issued
Import Permits	0
Export Permits	7

Waste Types :	Precious metal ashes, used office equipment, used office supplies, toners and rechargeable batteries.
---------------	---

Receiving Countries :	Thailand, Italy and Korea
-----------------------	---------------------------

Export Permits Issued under the Basel Convention

■ Waste Types

Batteries



Metal Ash



Office Equipment



Toner



Recyclable Green Waste

Scrap Metal



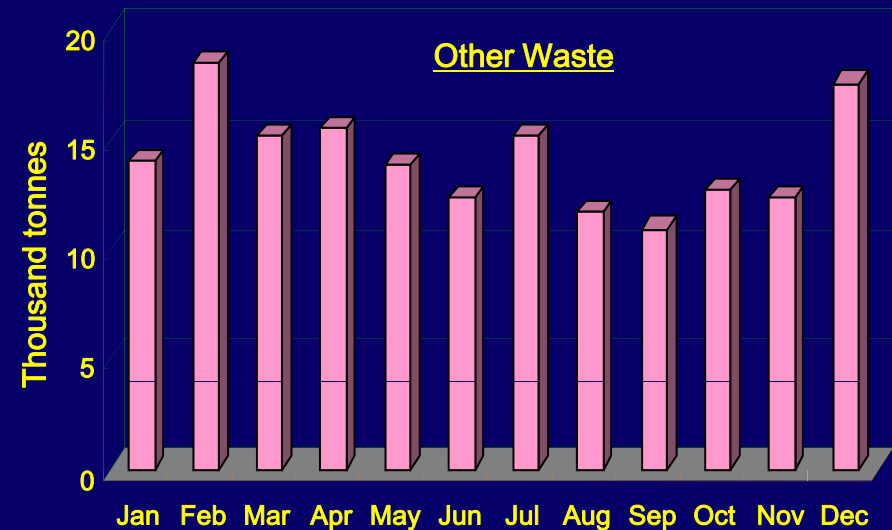
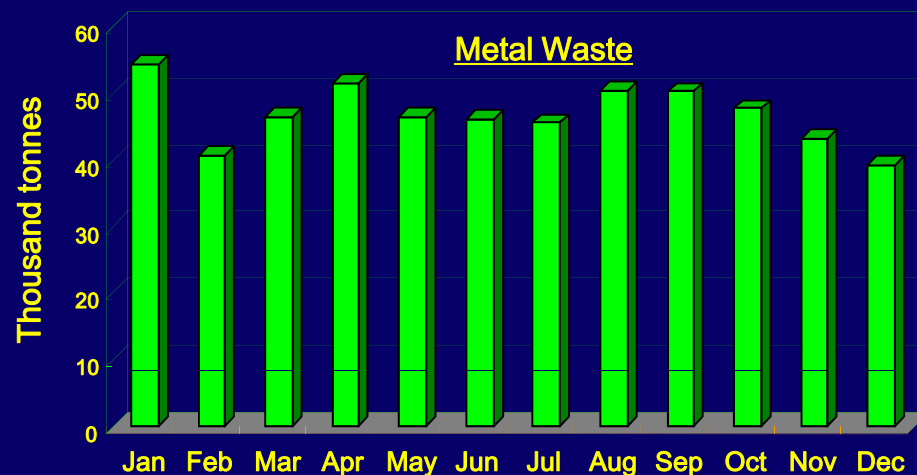
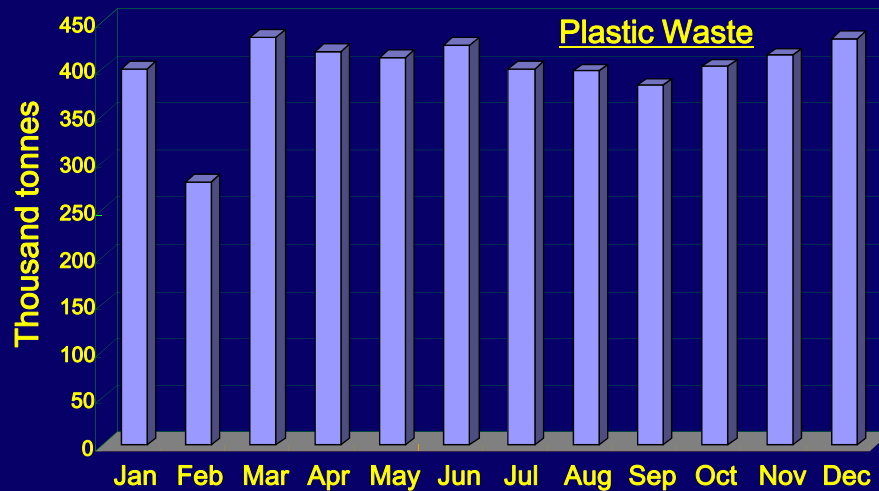
Plastic



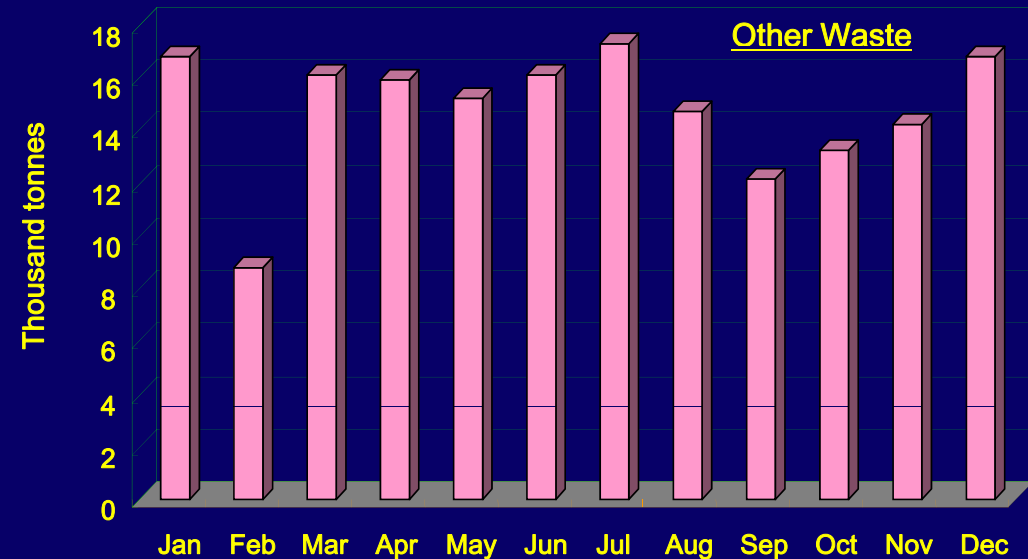
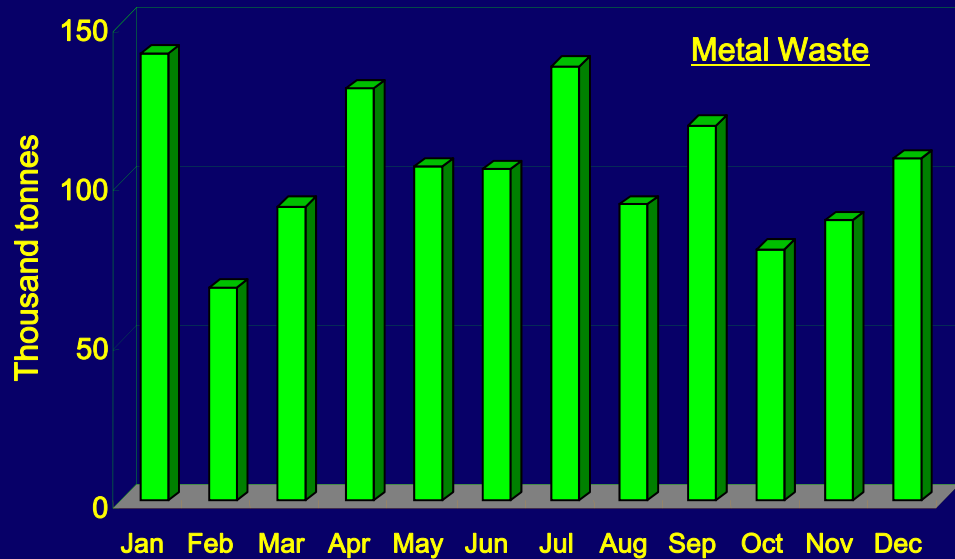
Waste Paper



Hong Kong's Waste Import Statistics (January – December 2010) Total: 5.7M Tonnes



Hong Kong's Waste Export Statistics (January – December 2010) Total: 6.9M Tonnes



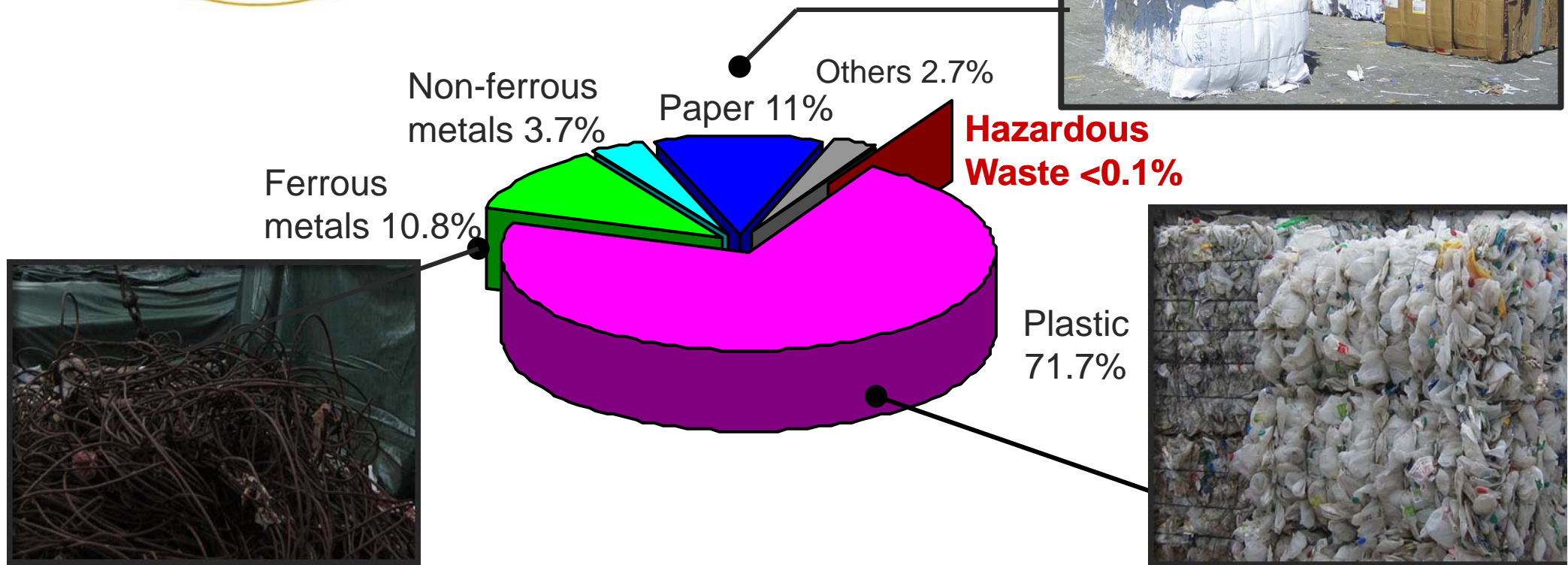
Import and Export Statistics 2010

Total Waste Volume

(mainly plastic, metal and paper)



Breakdown of Waste Types Total Import and Export



**Total Waste Imported and Exported in 2010
(12.6 million tonnes)**

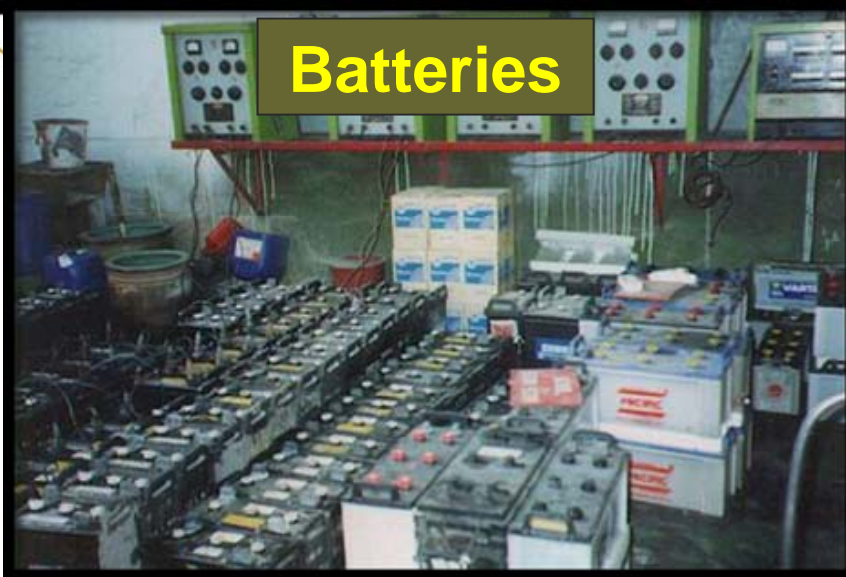
Illegal Import and Export Cases 2010

- Hong Kong is located in a convenient location and has efficient harbour facilities. Therefore, HK is a major transshipment port in the Asia-Pacific Region.
- Intercepted 38 hazardous waste shipments (45 containers), amounting to 760 tonnes.



Common Hazardous Waste

Batteries



CRTs



Illegal Import and Export Cases 2010

Major Export Regions	No. of Shipment	Weight (tons)
North America	27	596
Asia	5	81
Europe	3	35
Central America	2	23
South America	1	23



**Monitors &
Cathode Ray Tubes**



Batteries

Enforcement Work – Collaboration with Local Parties

- Customs and Marine Police
 - Manifest screening
 - Waste shipment referrals
 - Joint inspections
- Landfill Operators
 - Interception of illegal disposal of imported waste
- Local Shipping Companies and Agents
 - Referrals of dubious waste shipments
 - Advance information of waste shipments heading HK



Cooperation with Other Enforcement Arms - Hong Kong Customs and Hong Kong Police

- Support and take over cases when necessary
- Frequent meetings to review the trade practices
- 24-hours contact points
- Training and seminars

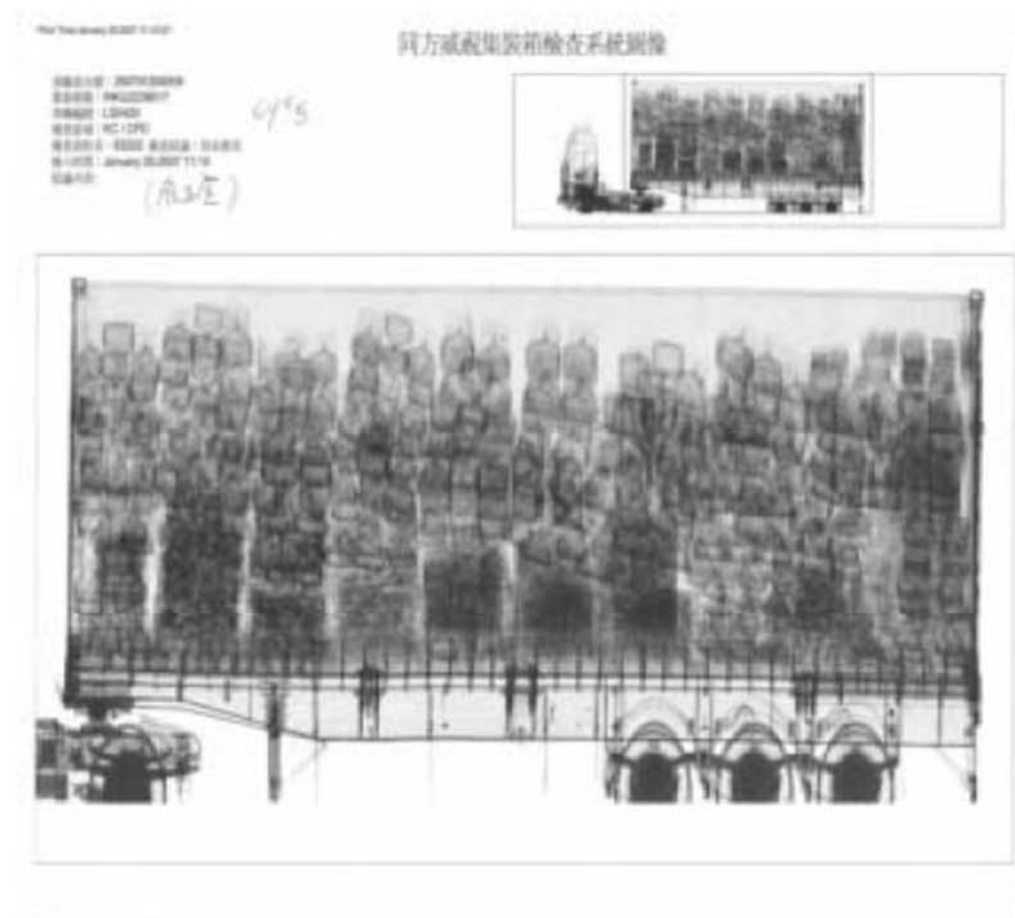


Hong Kong Customs Inspections using X-Ray





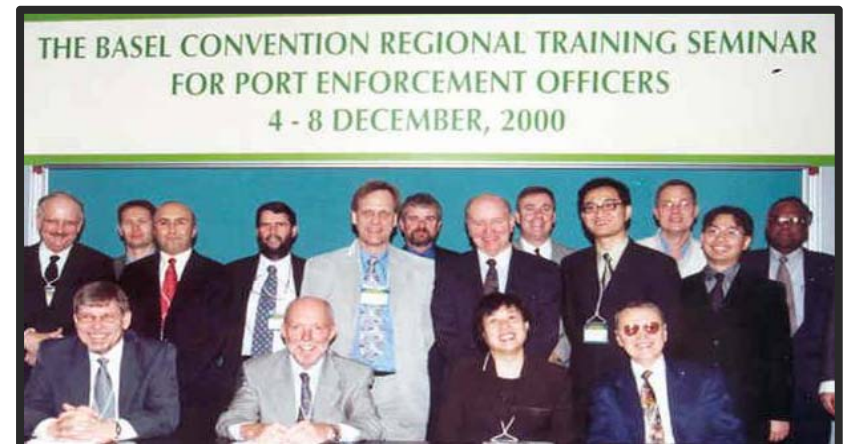
Used Monitors



X ray image

Overseas Intelligence Links

- Connection at working level with overseas control authorities, e.g. customs, CAs, etc.
- Exchange information of dubious waste shipments and latest control requirements
- Coordination of returning illegal waste shipments
- Participating international networks and joint enforcement projects

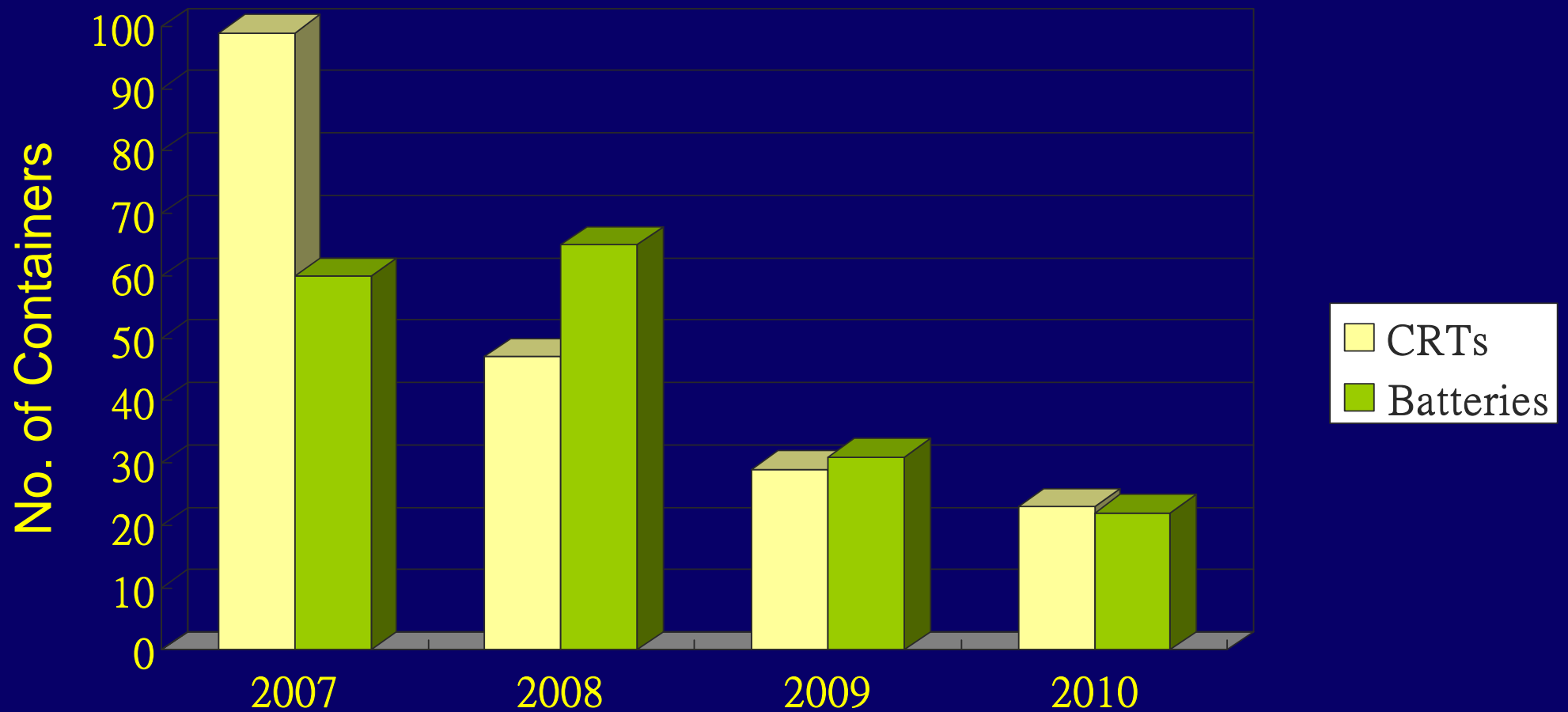


Enforcement Results from 2007 to 2010 on Import of Hazardous Waste

- Illegal Shipments Intercepted = 360
- Prosecutions = 290

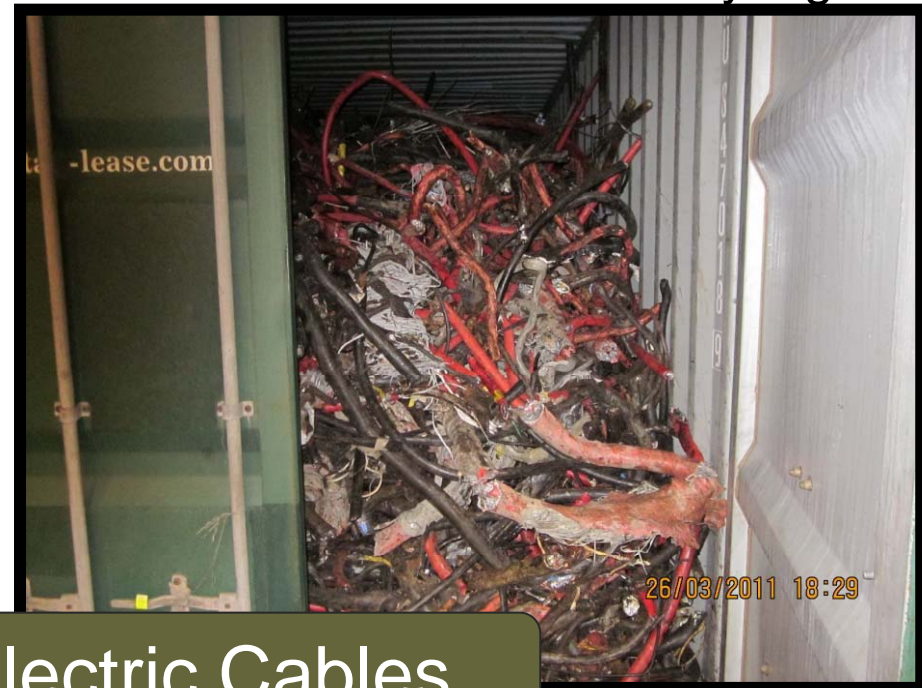


Enforcement Results from 2007 to 2010 - Hazardous Waste Containers Intercepted

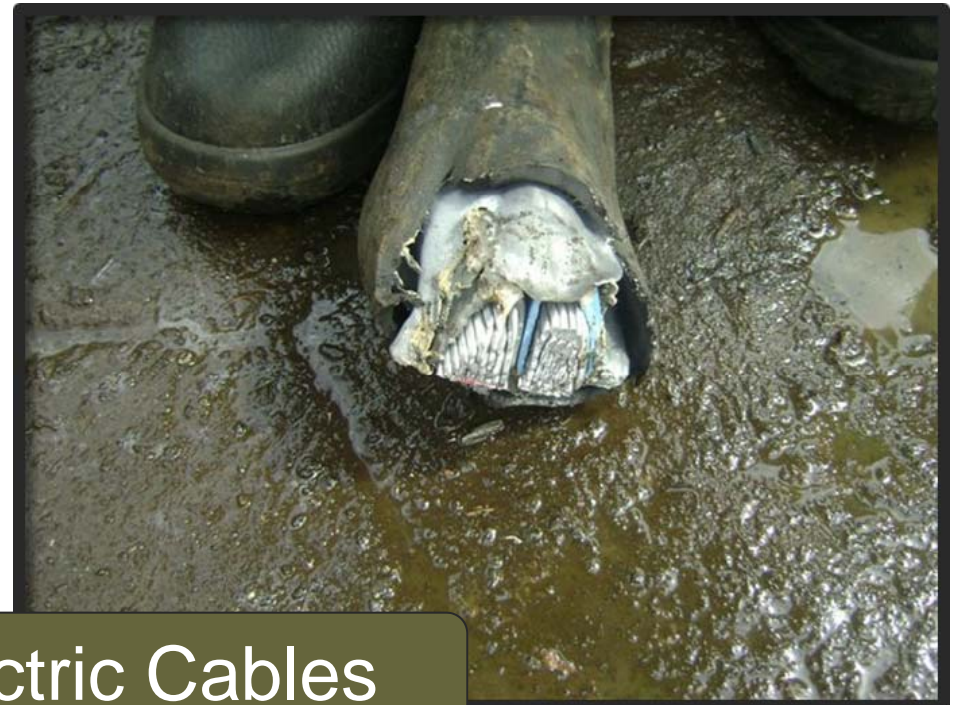


An Example of Joint Operation China - Netherlands

- 11 Containers of waste cables were shipped from the Netherlands to China via Hong Kong in May 2011. Most of them were contaminated oil sealed cables.
- Intercepted by HK EPD in conjunction with MEP China and VROM Netherlands.
- Successfully returned to the Netherlands within 4 weeks followed by legal actions against the exporter.

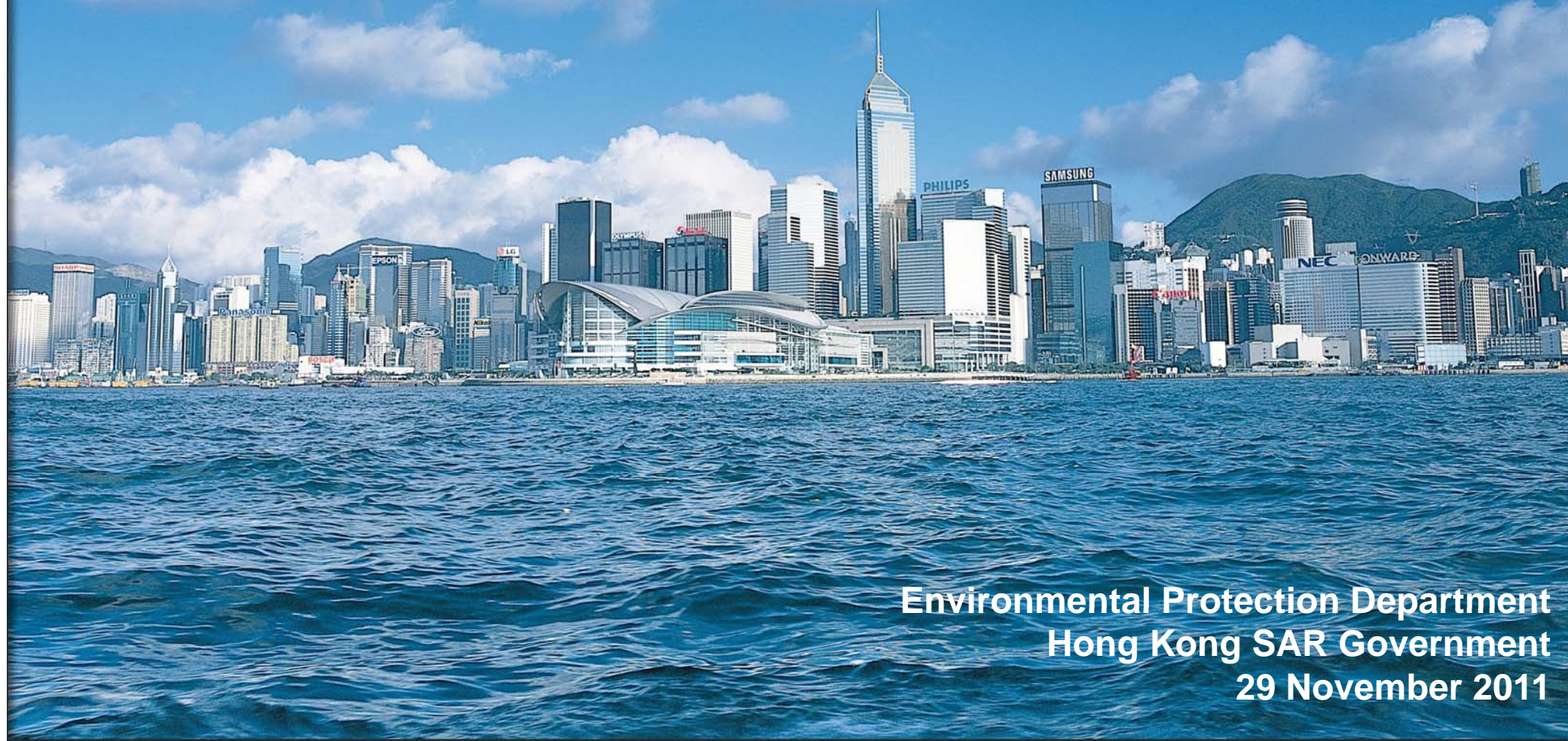


Oil Sealed Electric Cables



Oil Sealed Electric Cables

Thank You



Environmental Protection Department
Hong Kong SAR Government
29 November 2011