



Royal Thai Customs

**WORKSHOP 2010
ON ASIAN NETWORK
FOR PREVENTION OF ILLEGAL
TRANSBOUNDARY MOVEMENT
OF HAZARDOUS WASTES**

**YOKOHAMA , JAPAN
27-29 JANUARY 2010**



Director General

Internal Audit Group

DDG for Strategy

- Planning and International Affairs Bureau
- Information & Communication Technology Bureau
- Efficiency Improvement Bureau
- Office of the Customs Minister Counsellor, Brussels, Belgium
- Office of The Customs Consulate-General, Hong Kong, China
- Office of The Customs Consulate-General, Guangzhou, China
- Suvarnabhumi Int'l Airport Customs Bureau (Passenger Service)
- Suvarnabhumi Int'l Airport Customs Bureau (Cargo Service)

DDG for Administration

- Legal Affairs Bureau
- Human Resource Management and Development Bureau
- Central Office Bureau
- Bangkok Customs Bureau
- Laem Chabang Port Customs Bureau
- Lad Krabang Cargo Inspection Customs Bureau

DDG for Tax and Incentives

- Customs Tariff Classification Directorate
- Standard Customs Procedures And Valuation Directorate
- Customs Formalities and Value Bureau
- Tax Incentives Bureau
- Bangkok Port Customs Bureau

DDG for Enforcement

- Investigation and Suppression Bureau
- Post-Clearance Audit Bureau
- Regional Customs Bureau 1 to 4
- Customs Houses Under Cabinet Notification (45 Customs Houses)

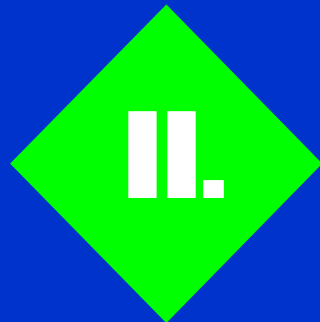
Organization Structure of Royal Thai Customs



Outline : Hazardous Wastes under Basel Convention



**I. Implementation Process
on Hazardous Waste**



II. Seizure Cases

I. Implementation Process on Hazardous Waste



Manual/Guideline of Basel Convention on 'Hazardous Waste'

Outline

- Background, definition & content of Basel Convention**
- Transference of hazardous wastes across the border**
- Illegal transference**
- List of restricted hazardous wastes under Basel Convention,**
- Etc.**

Role&Responsibility of Thai Customs Department

To control & examine that Entrepreneur imports and exports or transfers hazardous wastes in line with related Rules & Regulations of the competent authorities;

- Department of Industrial Works**
- Department of Foreign Trade**
- Customs Department**

Enhancing Control And Supervision

- ❖ **Enhanced Risk Management**
- ❖ **Compiled Blacklist Of Suspicious Companies**
- ❖ **Strengthened Verification Of Permits**
- ❖ **Inspection by X-ray equipment**
- ❖ **Enhanced Cooperation With related Agencies**

Process of Transfer of Hazardous Wastes Under Basel Convention

Request for permission from competent authority of Import Country to transfer Hazardous Wastes



Follow up the process of transfer on
Importer → Carrier → Customs Admin of export country
→ Competent authority of export country → person/unit
responsible for hazardous wastes elimination



Check up that exporter covers all processes to be done for the transfer of hazardous wastes

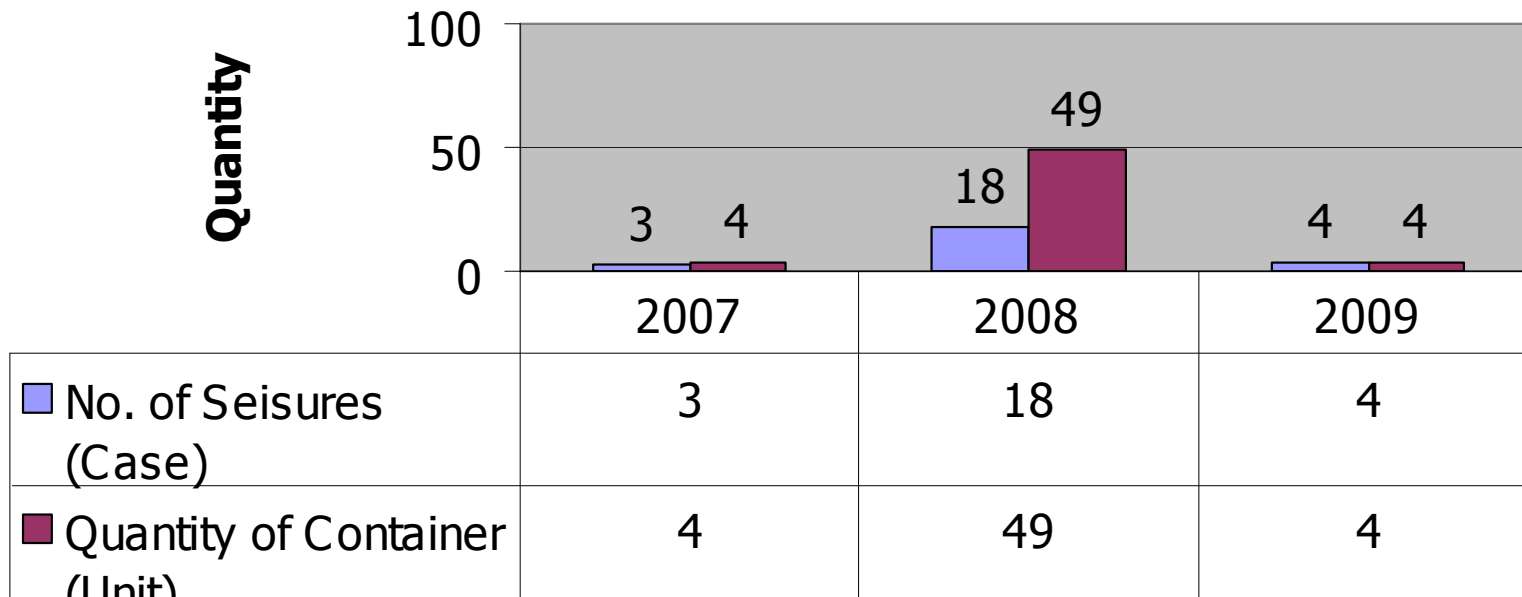


II. Seizure Cases



Seizure made by Thai Customs

Record of Illegal Electronic Waste & Hazard Trade



Year

■ No. of Seisures (Case)

■ Quantity of Container (Unit)

Seizure made by Thai Customs

Duration: 27 August 2007

Seizure: 22 pcs. of used batteries

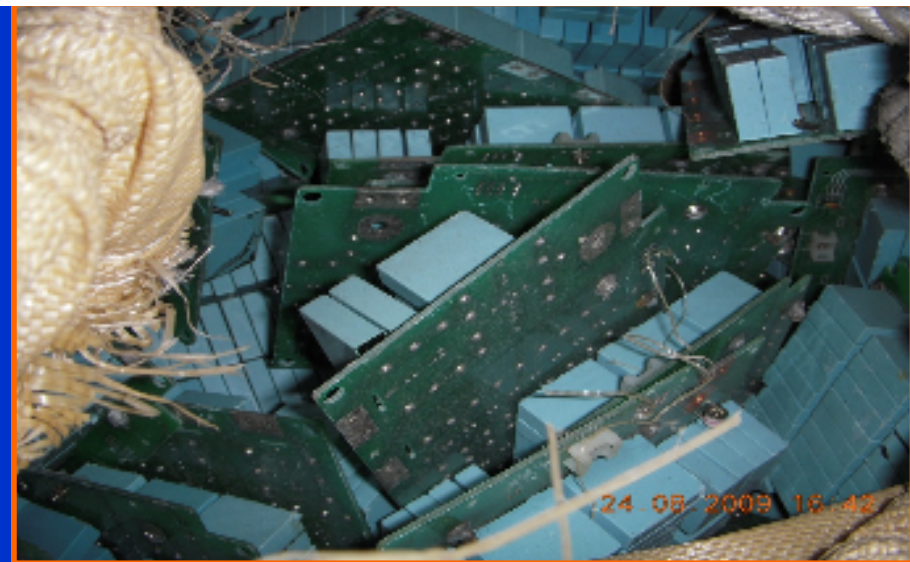
Concealment Method: In transport → Pick up Truck → In Structure

Routing: MY → TH (Su-ngai Kolok Border Check-point)





Date : 02 April 2009
Seizure Result : e-waste found in containers to be exported outbound
Place : Bangkok Port



Date : 28 August 2009
Seizure Result : e-waste found in containers to be exported outbound
Place : Bangkok Port



Date : 11 December 2009
Seizure Result : e-waste found in containers to be exported outbound
Place : Bangkok Port



Thank You

www.customs.go.th