

Workshop 2009 of the Asian Network for Prevention of Illegal Transboundary Movement of Hazardous Wastes

**Session 1 – Update on Enforcement
Activities of the Basel Convention –
Hong Kong SAR, China**

Gary C.W. Tam

Environmental Protection Department of Hong Kong SAR China



Import and Export Statistics under the Basel Convention (2008)

Transit Notifications

- Waste types include metal ashes, sludge, spent catalysts and battery waste.
- Re. the applications, the export countries are Cuba, Malaysia, Philippines and China (Mainland & Taiwan) and the final import countries are Korea, Germany and Japan.

➤ Transit Notification

| | |
|---------------------|---|
| <u>Application:</u> | 8 |
| Consented: | 7 |
| Stop Processed: | 1 |
| Rejected: | 0 |
| Processing: | 1 |



Import and Export Statistics under the Basel Convention (2008)

➤ Import Permit

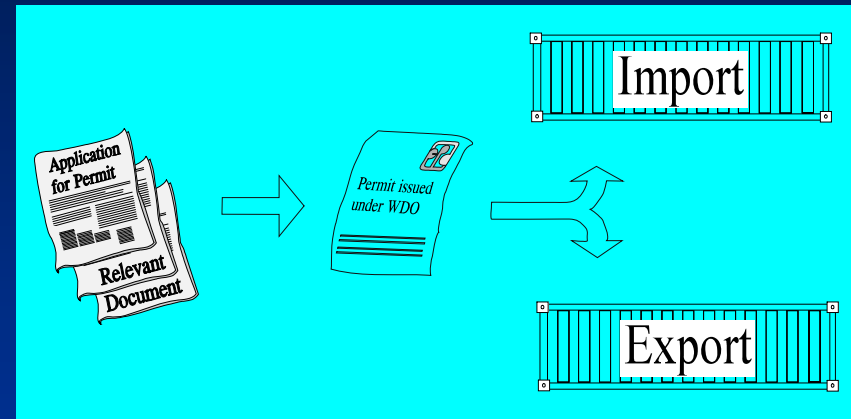
Application: 0

➤ Export Permit

- Waste types include precious metal ashes, used office equipment, used office supplies containing residual toner and rechargeable batteries.
- Re. the applications, the export countries are Thailand, Italy, Singapore and Korea.

Application: 6

Permit Issued: 3

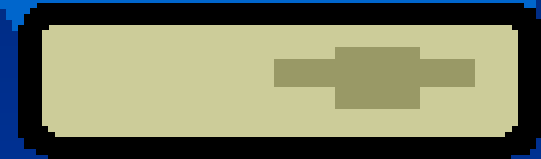
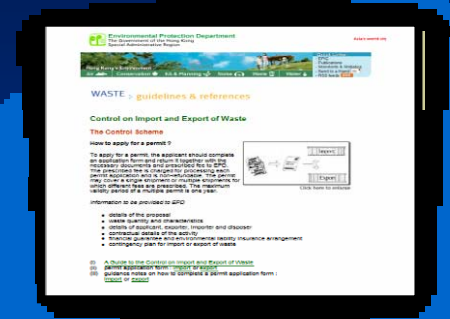


Waste under Export Permit



Measures taken to facilitate the efficiency of the import/export procedures

- Application forms and guidance notes are available in the EPD website.
- Necessary documents have been clearly stipulated in the guidance notes.
- Notification documents would be sent by fax and by post.
- Dedicated enquiry hotline is available to the public for enquiries.



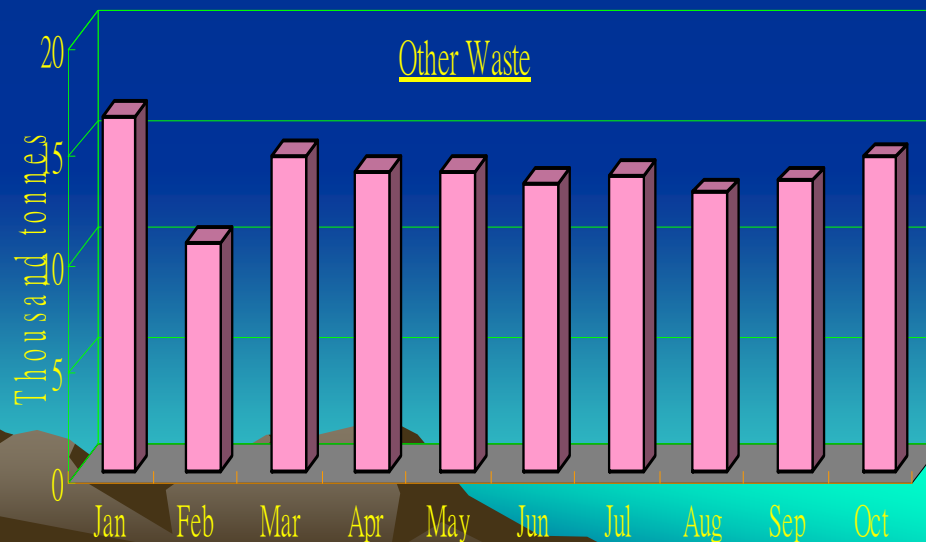
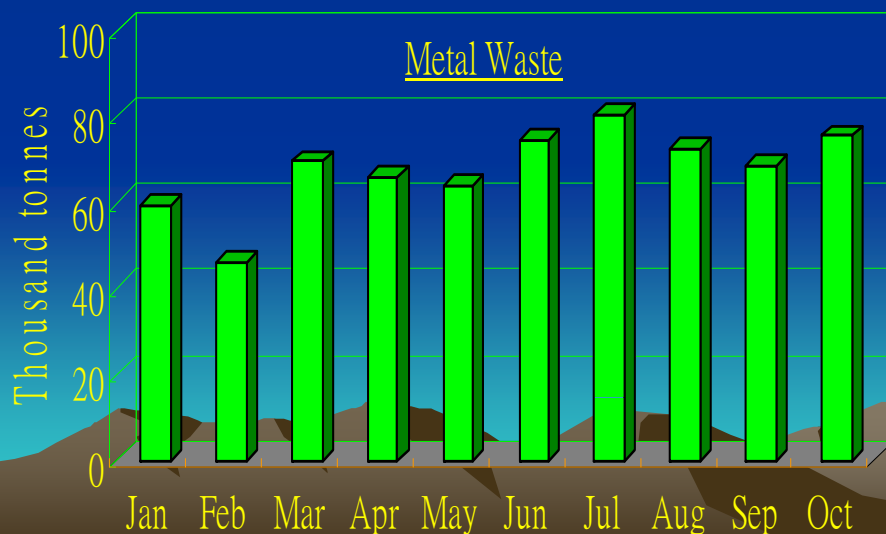
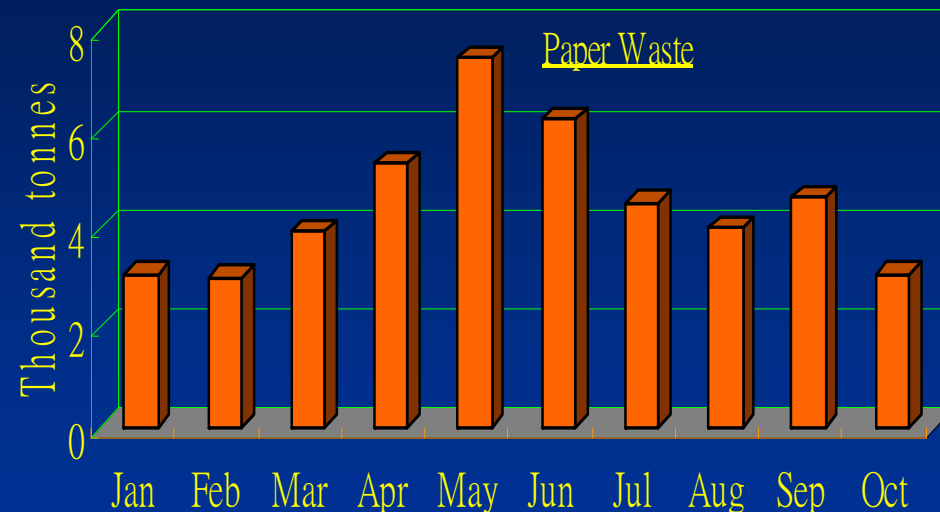
Achievement on the effective handling import/export procedures

In 2008, from the day relevant documents have been submitted, :

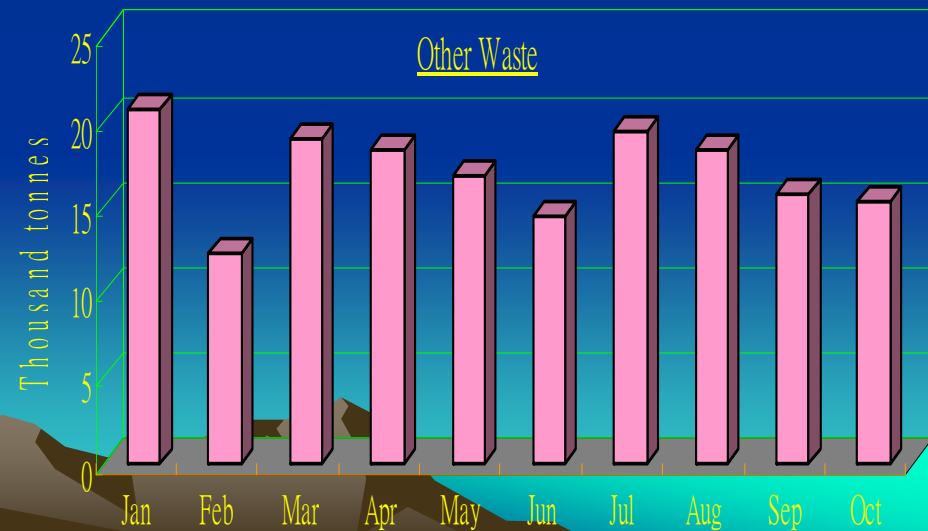
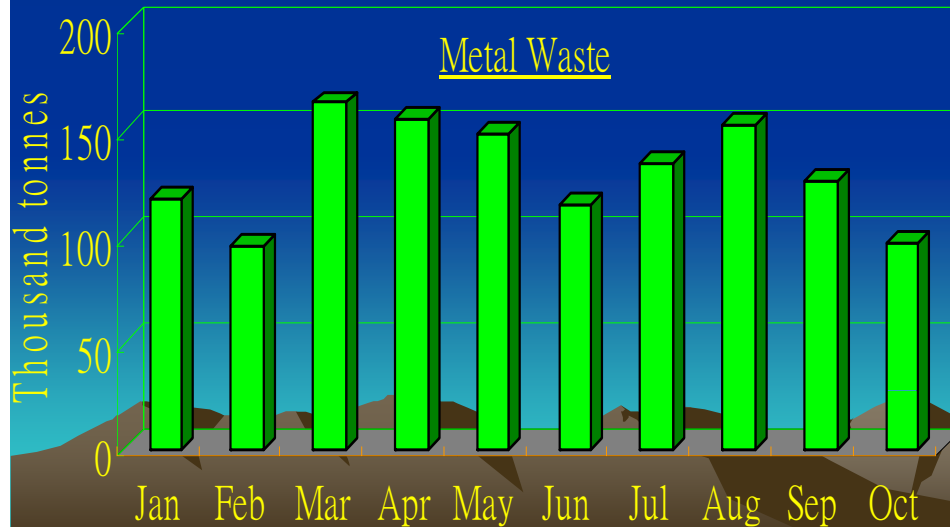
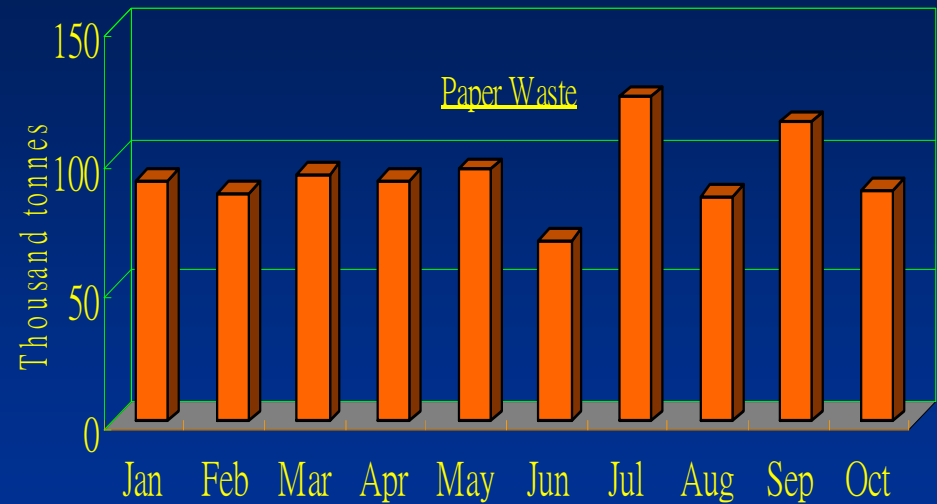
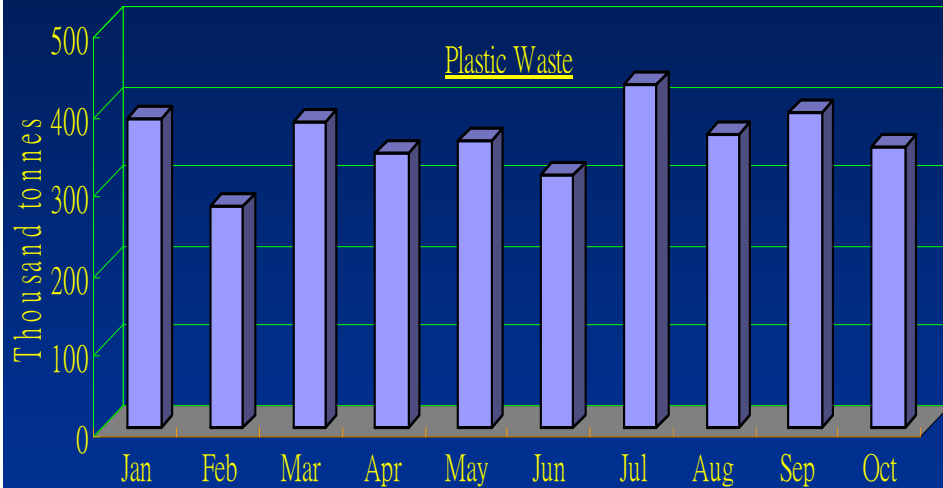


- the average number of days to process the granting of export licence is 14 days.
- the average number of days to process the granting of transit notification is 6 days.
- for import procedures, there is no such application in recent years.

Hong Kong's Waste Import Statistics (January – October 2008)



Hong Kong's Waste Export Statistics (January – October 2008)



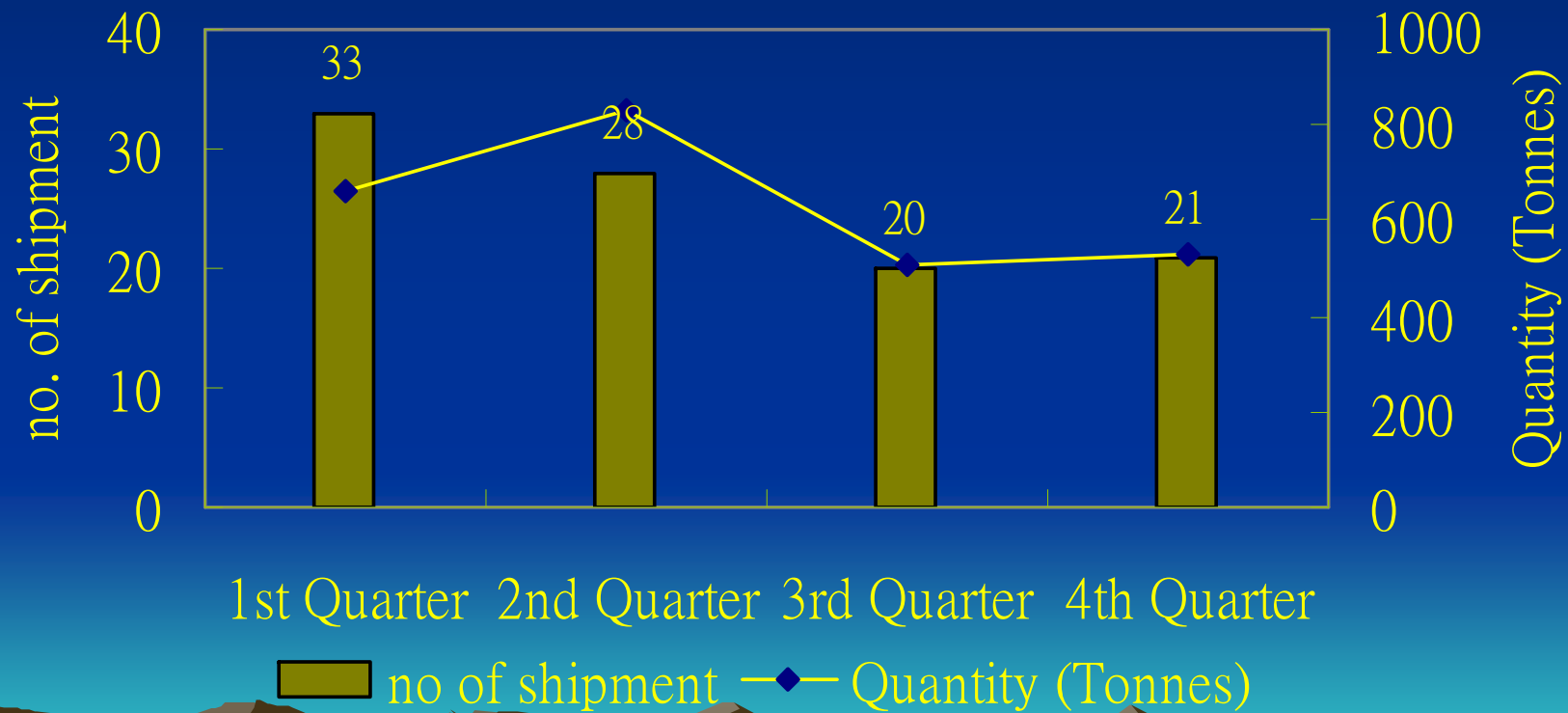
Illegal Import and Export Cases in Hong Kong (2008)

- Hong Kong is located in a convenient location and has efficient harbour facilities. Therefore, HK is a major transshipment port in the Asia-Pacific Region.
- Intercepted 112 hazardous e-waste shipments (136 containers), amounting to 2536 tones



Illegal Import and Export Cases in Hong Kong (2008)

Quarterly Breakdown of Hazardous e-waste intercepted



Illegal Import and Export Cases in Hong Kong (2008)

- The relevant major export countries are North America (71 shipments, 1518T), Asia (10 shipments, 198 T), Central America (13 shipments, 301 T), Europe (1 shipment, 16 T), Africa (9 shipments, 276 T) and others (Australiasia, 8 shipments. 227 T).
- Major hazardous waste types are computer monitors and television with cathode ray tubes and batteries.



Major Activities and Initiatives in 2008

- Strengthen collaboration with Shipping Companies to secure the return shipment arrangement.

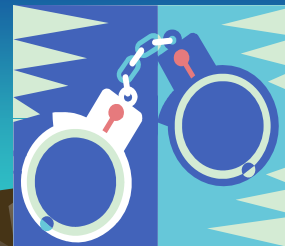


RETURN SHIPMENT



Major Activities and Initiatives in 2008

- Follow up actions from export countries on return shipment cases (Purposes of the Article 9 of the Basel Convention) – (i) “disposal of the wastes in an environmentally sound manner); (ii) punish illegal traffic.
 - e.g. Proper disposal of the returned hazardous wastes
 - e.g. Enforcement action against the exporters in the export country.



Major Activities and Initiatives in 2008

- Special operation between EPD and C&ED to monitor the import of hazardous waste from certain export countries.



Hazardous
waste found



The Way Forward (Achievements and Challenges)

- High standard of environmental protection. The trade is now convinced that waste is something given up (“discarded”) by the original user irrespective whether it is still workable or can be sold for a value.



The Way Forward

(Achievements and Challenges)

- Hong Kong EPD emphasized the build up of close collaboration with various intelligent network and sources. In 2008, there were 67 intelligent cases (80 containers, 1370T) leading to successful enforcement actions.



- Hong Kong EPD has close collaboration with Hong Kong Customs to combat illegal transboundary movement of hazardous wastes (special operation in Dec.).

The Way Forward

(Achievements and Challenges)

- For return shipment cases, less than 10% we have received any responses from export countries. Responses from export countries are important for us. We appeal for follow up actions from the export countries



A panoramic view of the Hong Kong skyline, featuring the Bank of China Tower and other skyscrapers, with the water in the foreground and mountains in the background. The text "THE END" is overlaid in red.

THE END

Thank You