

Environmental issues
in 7th ASEM Customs
DG-Commissioner Meeting
(12-13 Nov. 2007, Yokohama, Japan)

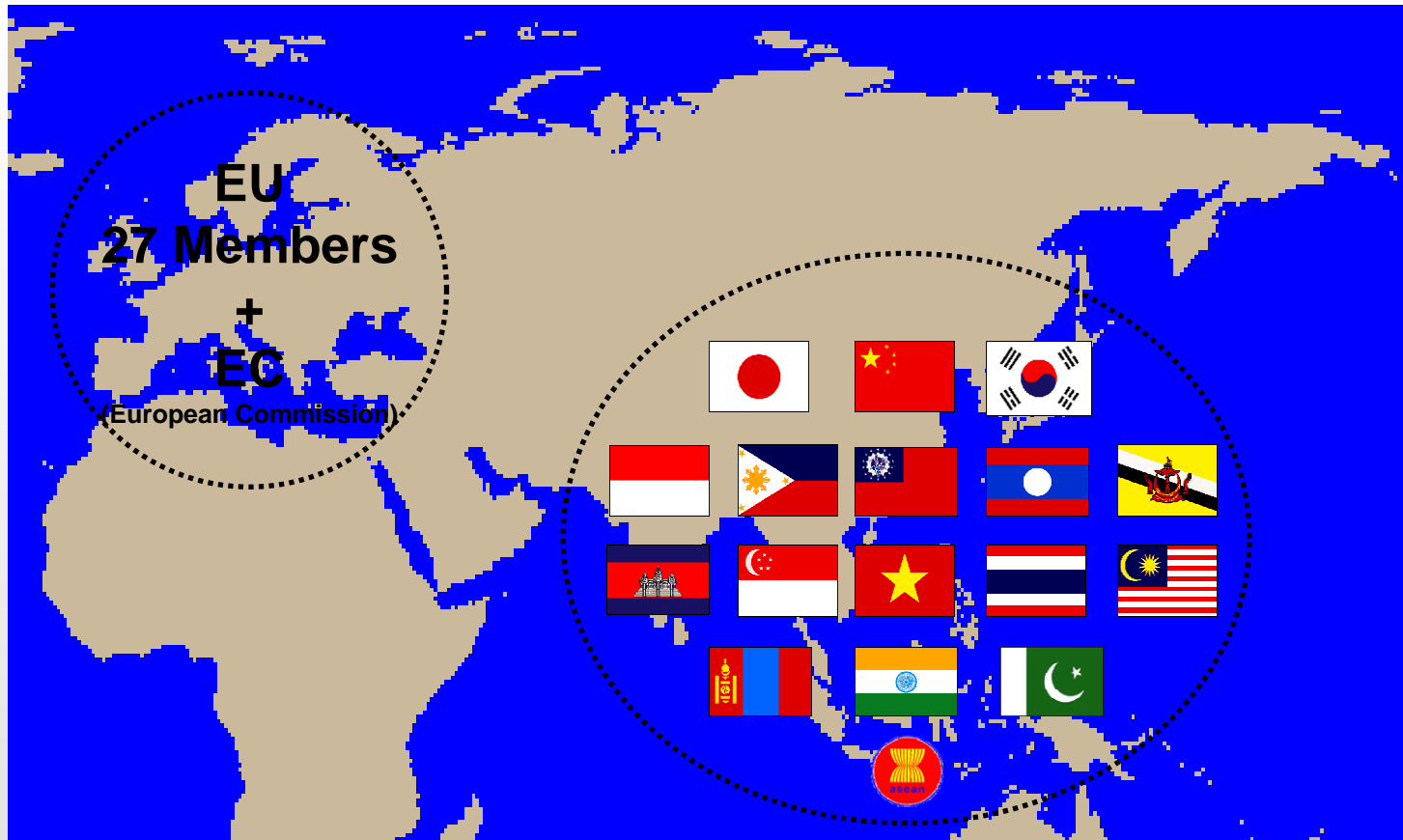


Naoki Ida

Deputy Director, Office of Regional Cooperation,
Customs and Tariff Bureau,
Ministry of Finance, Japan

E-mail: asem@mof.go.jp

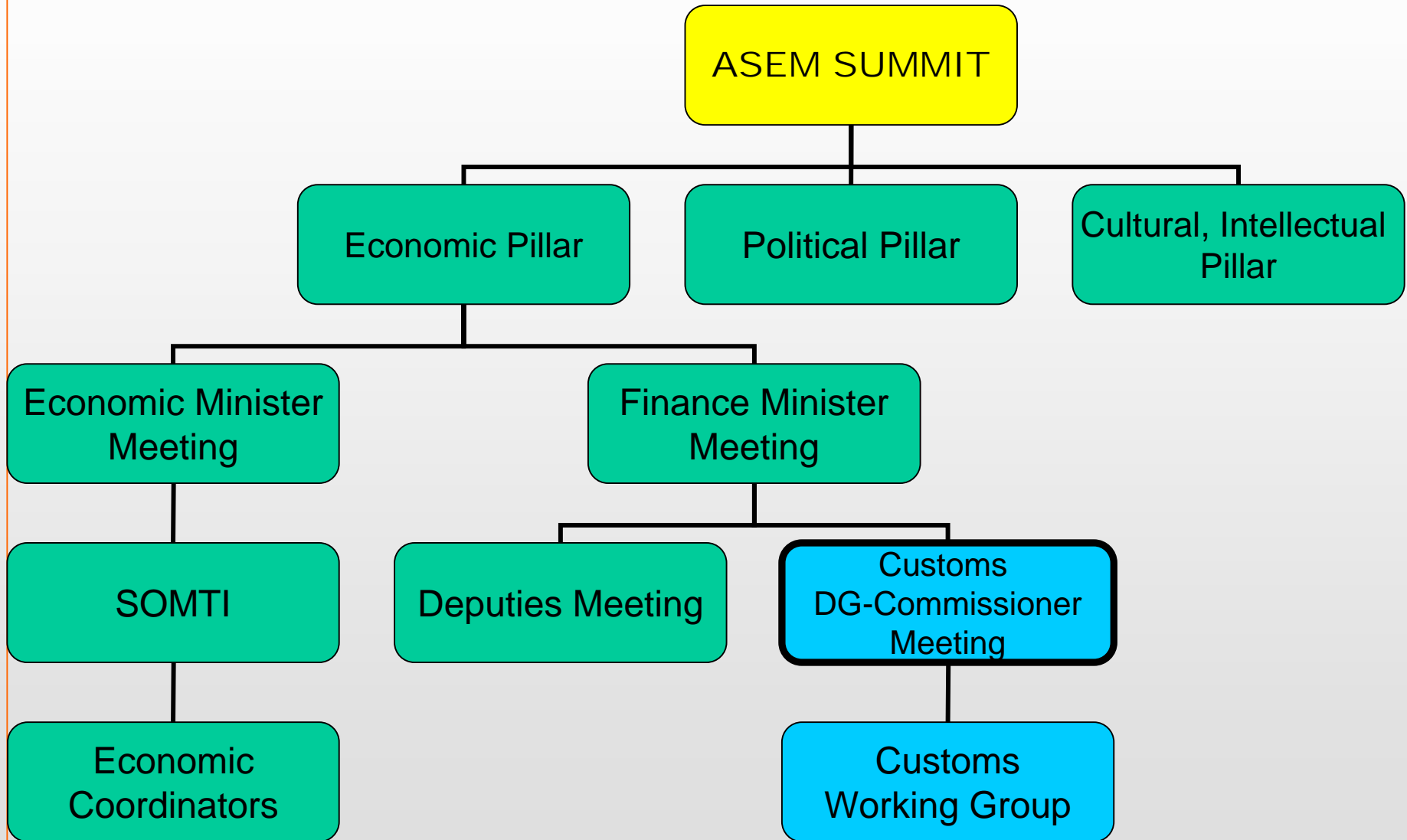
ASEM (Asia-Europe Meeting)



ASIA- ASEAN10, Japan, China, Korea, India, Mongolia,
Pakistan, ASEAN Secretariat

EUROPE- EU 27 Members, EC (European Commission)

The ASEM Structure



Customs DG-Commissioner Meeting

- Established in 1996 and held almost every two years
- Represented by DG-Commissioner level

7th DG-Commissioner Meeting

- Date: 12-13 November 2007
- Venue: Yokohama, Japan
- Participants: DG, Commissioner, Representative of ASEM Members, Deputy Secretary General of WCO etc,
- Deliverables: Yokohama Declaration
 - Secure and Facilitate Trade
 - Protection of IPR
 - Protect societies against new threats and fraud methods
 - Environmental Issues
 - Cooperation and Capacity Buildings

Yokohama Declaration

- Environmental matters -

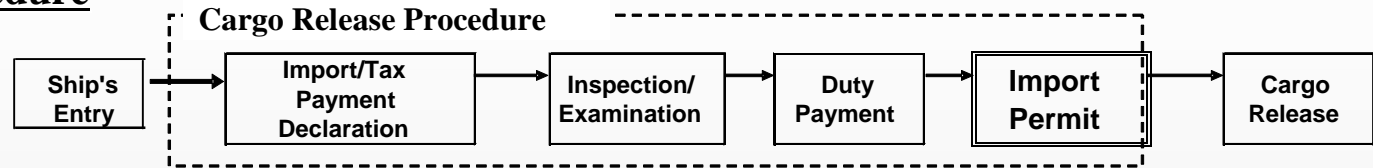
- Environmental issues are universal challenges that are essential to assure human security and quality of life, to protect the ecosystem and global environment, for which international efforts are indispensable. ASEM has focused on this challenge of utmost importance, releasing for example “the ASEM 6 Declaration on Climate Change” at the last ASEM Summit in 2006.
- Recognizing that ASEM Customs should also respond to this challenge, the 7th ASEM Customs DG-Commissioners Meeting discussed this issue for the first time, which
 - confirmed that ASEM Customs should strictly enforce the Multilateral Environmental Agreements (MEAs) such as the Basel Convention, the CITES, and the Montreal Protocol, in cooperation with related international organizations.
 - agreed to continue international dialogue and cooperation through the exchange of information on MEA enforcement, and to make further efforts towards solving these global problems.

(ASEM Info-board : <http://www.aseminfoboard.org/Calendar/OfficialsMeetings/?id=221>)

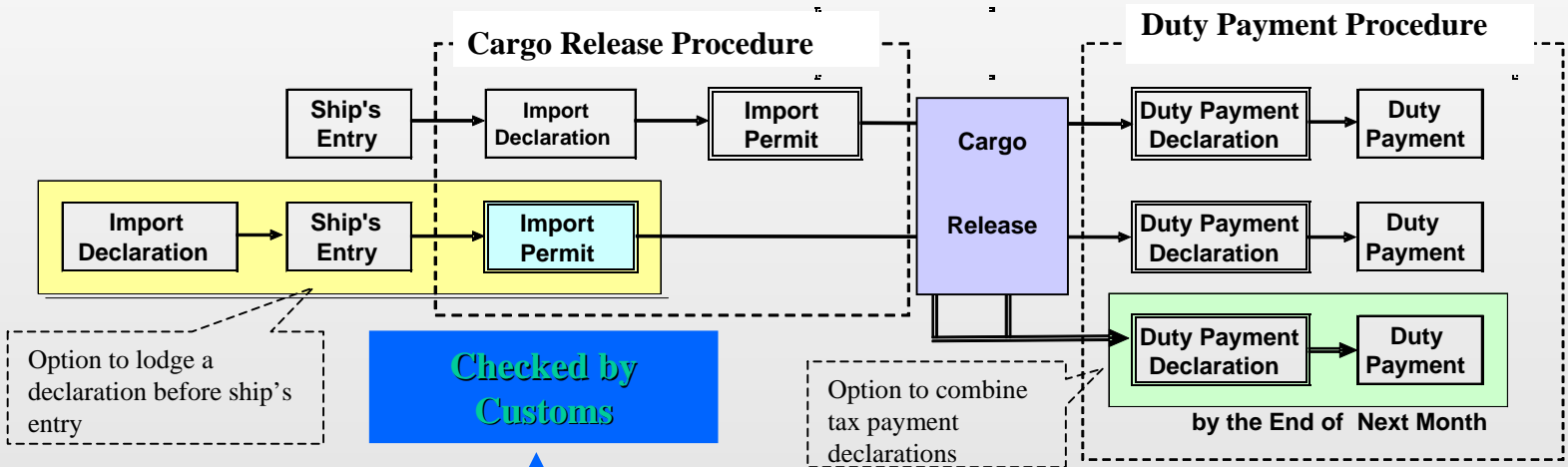


Import Procedure

Normal Procedure



Procedure for Authorized Importer



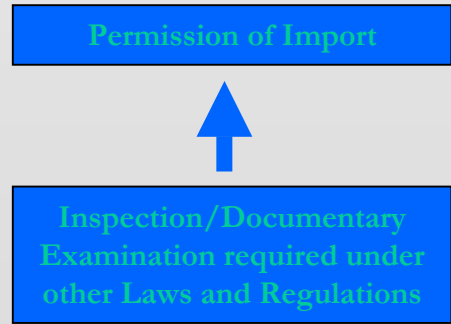
Checked by Customs

Option to lodge a declaration before ship's entry

Option to combine tax payment declarations

by the End of Next Month

Relevant Agencies

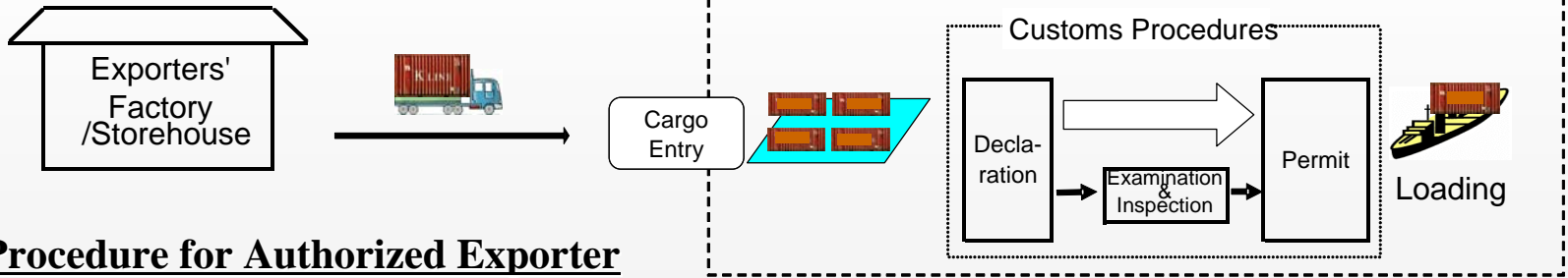


- Other Laws and Regulations**
- Foreign Exchange Law (METI)
 - Cabinet Order of Import Control (METI)
 - Law with regard to control of specific hazardous waste (METI and MOE)
 - Law with regard to control of manufacturing and examination of chemicals (METI, MOE and MHLW) etc

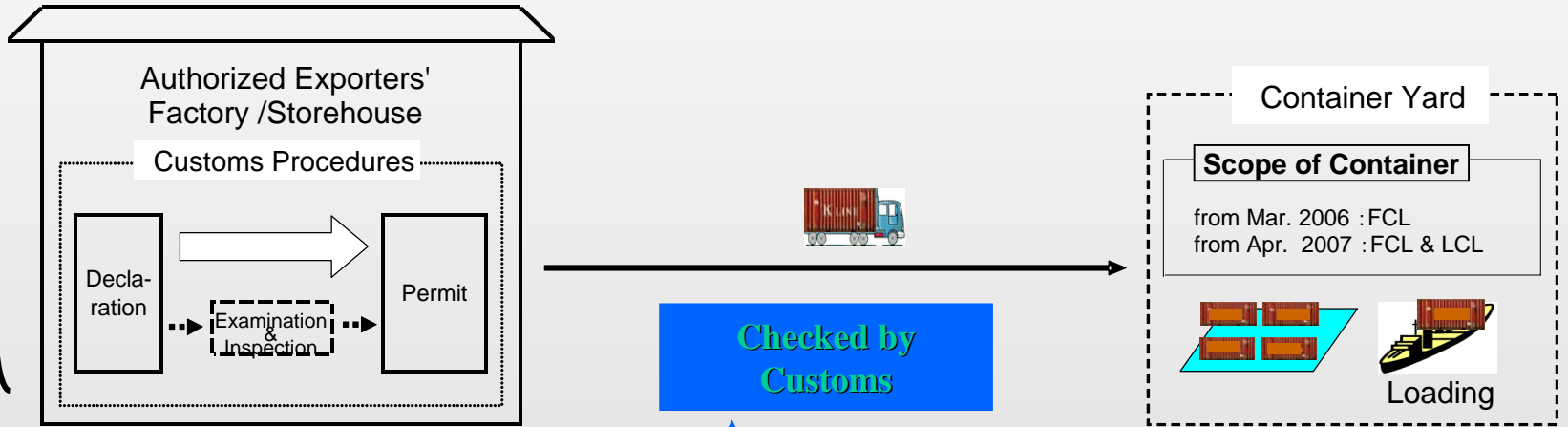
Customs

Export Procedure

Normal Procedure

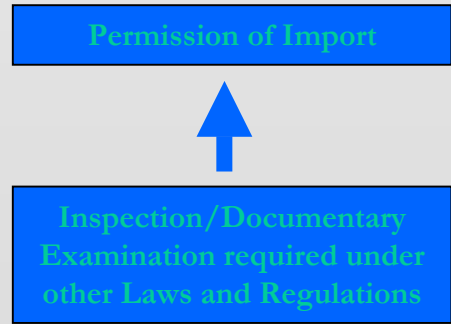


Procedure for Authorized Exporter



Customs

Relevant Agencies



- [Other Laws and Regulations]**
- Foreign Exchange Law (METI)
 - Cabinet Order of Export Control (METI)
 - Law with regard to control of specific hazardous waste (METI and MOE)
 - Law with regard to control of manufacturing and examination of chemicals (METI, MOE and MHLW) etc

Thank you very much!