

Sharing of experiences and difficulties through implementing the Basel Convention

TEERAPORN WIRIWUTIKORN
POLLUTION CONTROL DEPARTMENT,
THAILAND



กรมควบคุมมลพิษ
Pollution Control Department

Contents

-  **Implementing scheme in Thailand**
-  **Amounts of export and import**
-  **Illegal traffic**
-  **Difficulties**
-  **Challenges**

Implementing Scheme

Thailand participation to the Basel Convention

- Signed in 1990
- Ratified in 1997
- Designated the implementing agencies as follows:
 - DIW as the Competent Authority
 - PCD as the Focal Point
 - Several supportive agencies, e.g. Customs Dept., Port Authority of Thailand, Marine Dept., Dept. of Insurance, etc.

Administrative & Legal Framework

- Policy on totally ban to import for final disposal and restrictly control to import for recovery
- National sub-committee for implementation of the Basel Convention, under the umbrella of the pollution control committee
- Provisions for the control/restriction of transit, import, and export of hazardous wastes

Special Administrative Resolution

Resolution of National Environmental Board
at its meeting on 15 December 1993

**Prohibit the importation of
the used lead-acid batteries or its lead scraps**

Basel Sub-Committee

■ Composition:

- Dept. of Industrial Works
- Customs Dept.
- Harbour Dept.
- Port Authority of Thailand
- Dept. of Insurance
- Office of the Council State
- Dept. of Treaties and Legal Affairs
- Dept. of International Organizations
- Pollution Control Dept.

■ Responsibilities:

- Determine and formulate the appropriate legal & technical measures for implementing of the Convention
- Consider and arrange the ratification to the Protocol and the Amendment of the Basel Convention
- Cooperate among the relevant gov. & private agencies to implement the Basel Convention



Legal system

Transboundary Movement

- **Hazardous Substances Act B.E. 2535 (1992)**
 - Defining the general permitting criteria for possession, production, import & export of Hazardous Substances
 - Defining the list of hazardous substances including Basel Wastes (List A, Annex VIII)
 - Defining the specific permitting criteria for the importation of hazardous wastes (List A, plastic scarps)

Hazardous Waste Management

- **Factory Act B.E. 2535 (1992)**
 - Notification of MOI No. 6 B.E. 2540 (1997): Defining the control of industrial wastes within the country

Control System

Permission Procedure

- The Import and export of hazardous wastes and special wastes (i.e. plastic wastes) are required the permission from Department of Industrial Works in accordance with the national law and the Basel Convention
- Perform the waste sample & its analytical compositions and the condition of waste container/packaging
- Report the work plan for the importation of hazardous waste on the yearly basis
- Notify/declare the necessary documents before importation not less than 15 days

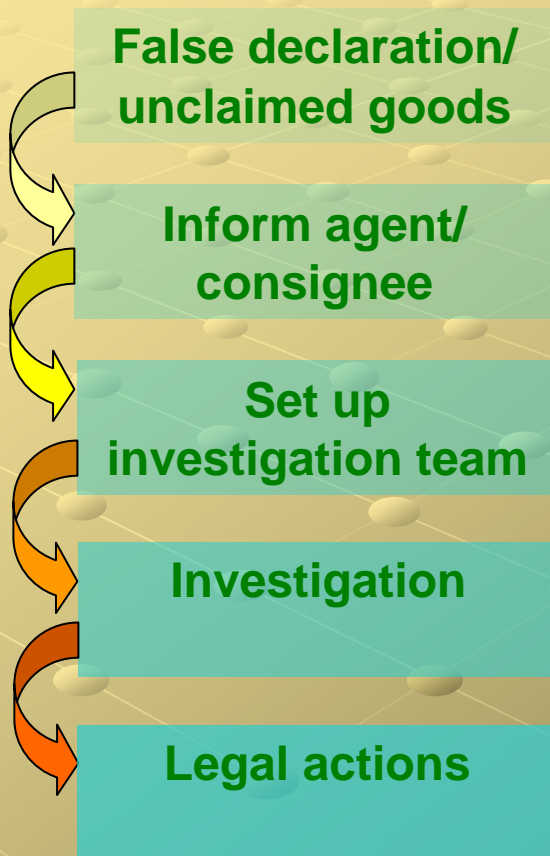
Notification/
Apply the Permit

Waste Samples
Waste Compositions
Waste Conditions

Yearly plan for
importation/shipment

Control System (con't)

Illegal Traffic/Investigation



- Discrepancy in document (false declaration) or unclaimed goods (> 2 months)
- Inform shipping agent/consignee in 15 days
- Set up the investigation team incl. customs investigators, port officers & other agencies
- Investigate the container and other relevant evidence
- Report to the authorized agencies for further legal actions

Amount of Export and Import

Amount of Export and Import

Data compilation on
Import & Export of HW

Waste Stream

Code

Amount

Operations

Exporter/Notifier

Generator

Importer

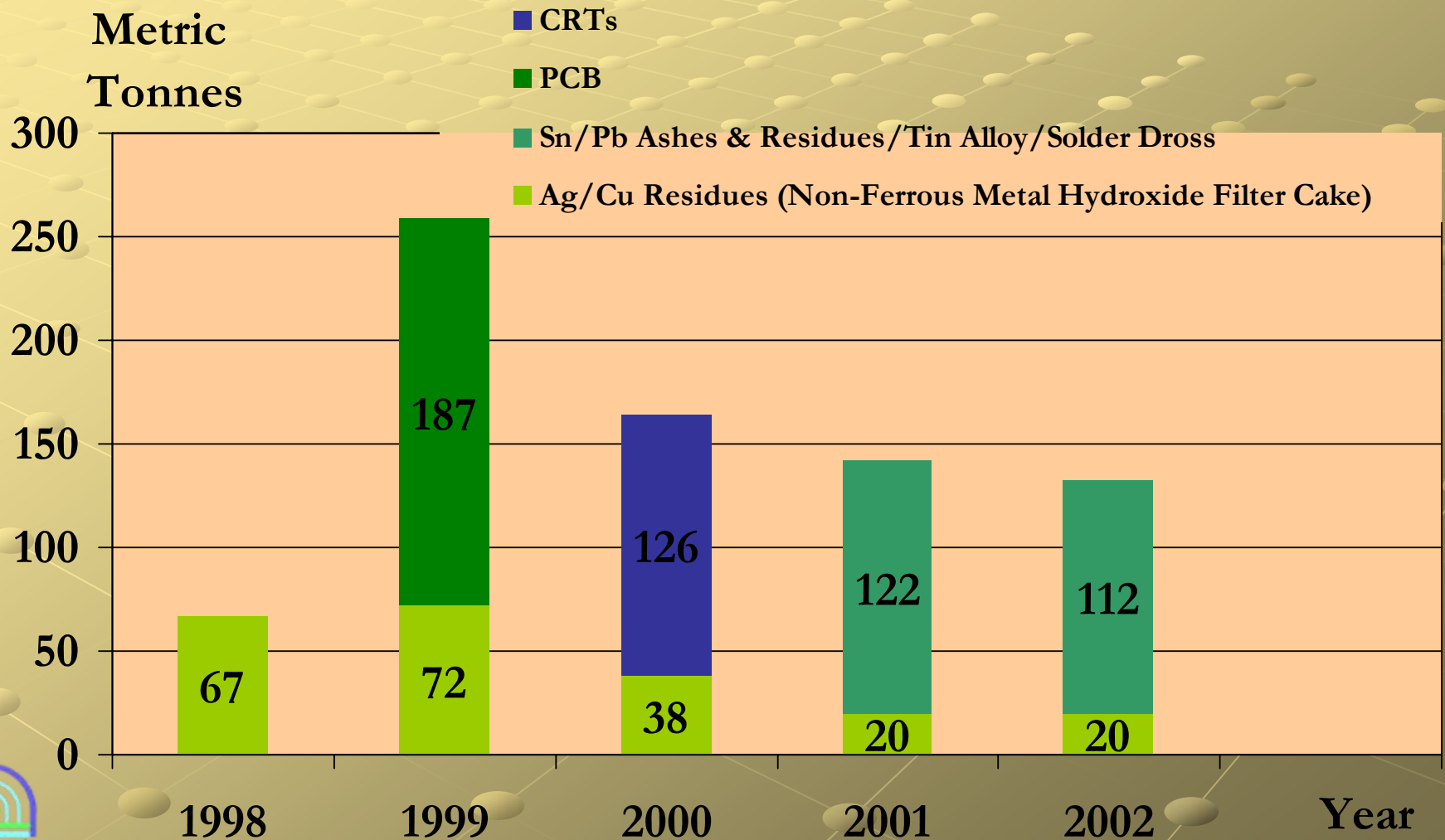
Amount of Export and Import (con't)

Ex. of Record Keeping

Year	Exported Waste	Code	Amount (MT)	Operation	Exporter/Notifier	Generator	Importer/Disposer
1998	Ag/Cu residues (non-ferrous metal hydroxide filter cake)	Y17/Y22	67	R4	Sumiko Leadframe (Thailand) Co., Ltd. [Ayuthaya]	Sumiko Leadframe (Thailand) Co., Ltd. [Ayuthaya]	Metallurgie Nbranda [Canada]
1999	PCBs	Y10	17.022	D10	Globe Care Service [Philippines]	International Broadcasting Bureau [Ayuthaya]	Rechem International., Ltd. [United Kingdom]
1999	PCBs	Y10	150	D11	Electrical Generating Authority of Thailand	Electrical Generating Authority of Thailand	Rechem International., Ltd. [United Kingdom]
1999	PCBs	Y10	9.31	D12	Franco Pacific (Thailand) Co., Ltd. [Bangkok]	United Nations [Bangkok]	Tred Centre de Saint Vubas [France]
1999	PCBs	Y10	10.68	D13	Franco Pacific (Thailand) Co., Ltd. [Bangkok]	Provincial Electricity Authority [Bangkok]	Tred Centre de Saint Vubas [France]

Amount of Export and Import (con't)

Exported HW

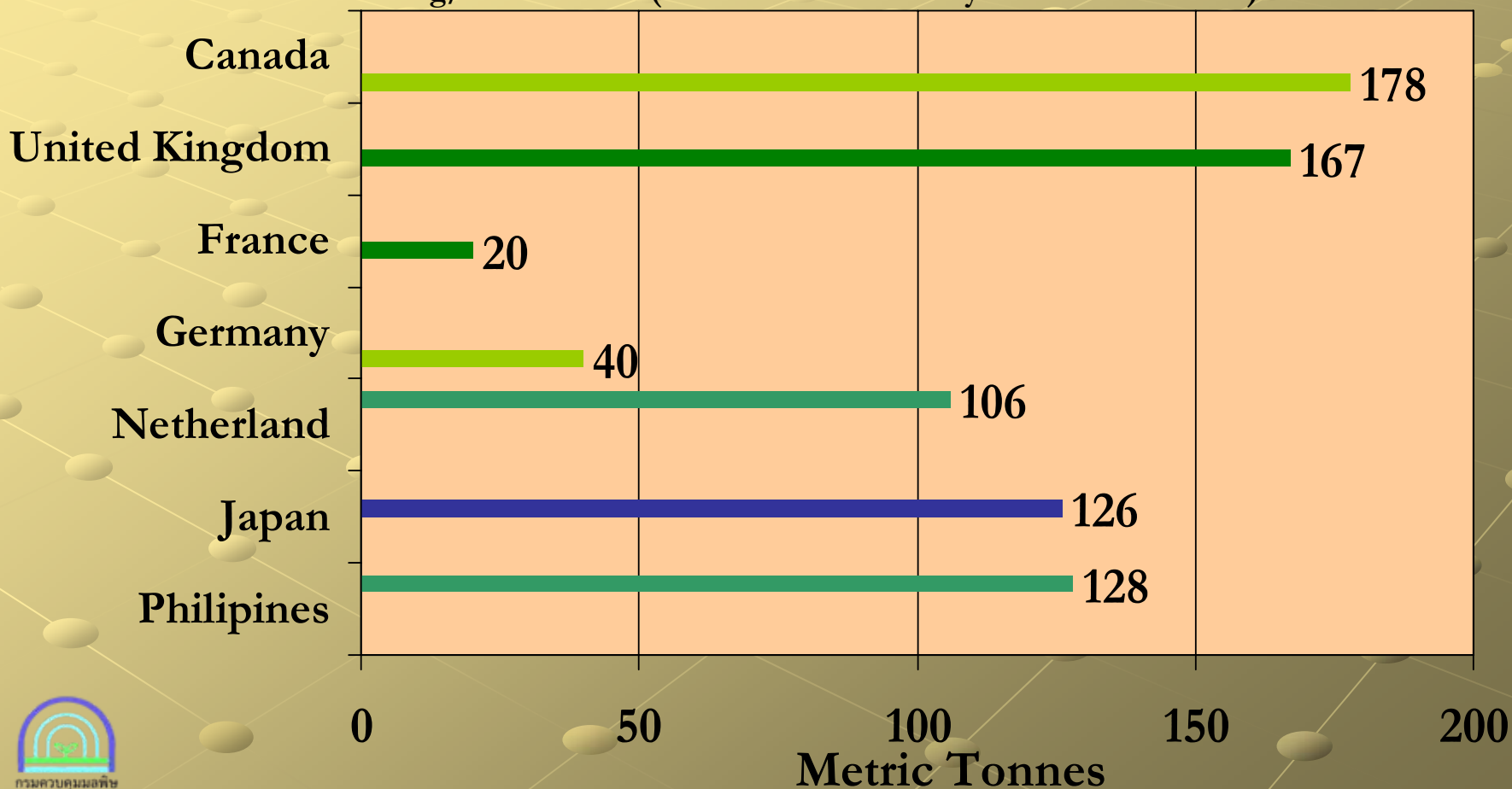


Amount of Export and Import (con't)

Importing Countries

- Sn/Pb Ashes & Residues/Tin Alloy/Solder Dross
- CRTs
- PCB
- Ag/Cu Residues (Non-Ferrous Metal Hydroxide Filter Cake)

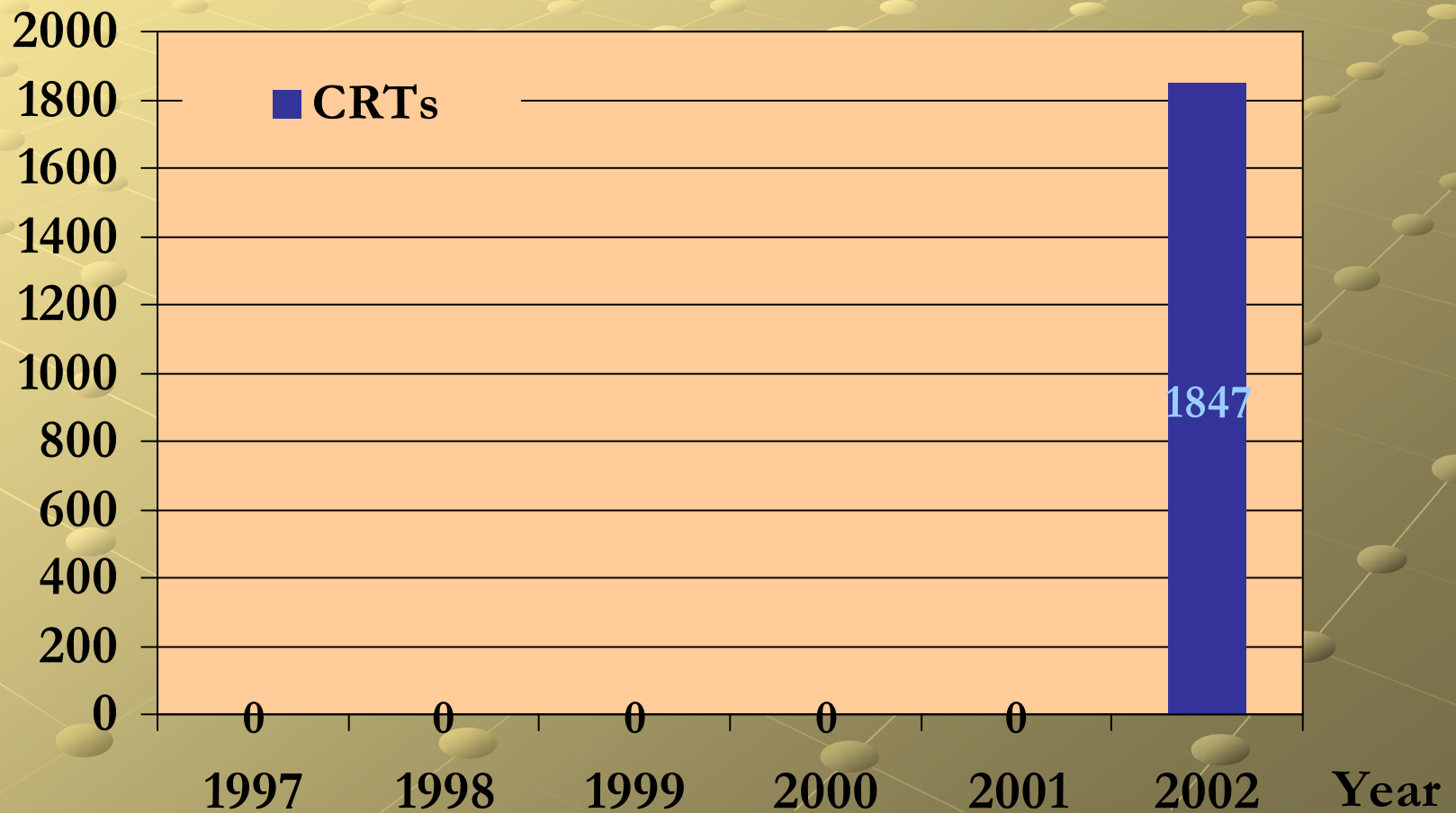
Importing country



Amount of Export and Import (con't)

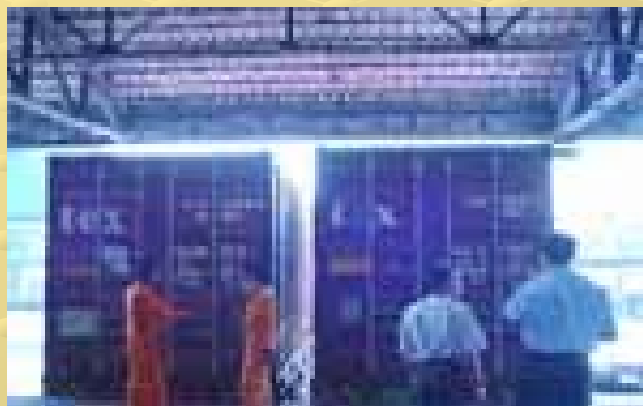
Metric
Tonnes

Imported HW
Exporting Country: Singapore



Illegal Traffic

Waste Computer Monitor



Plastic Scarps

