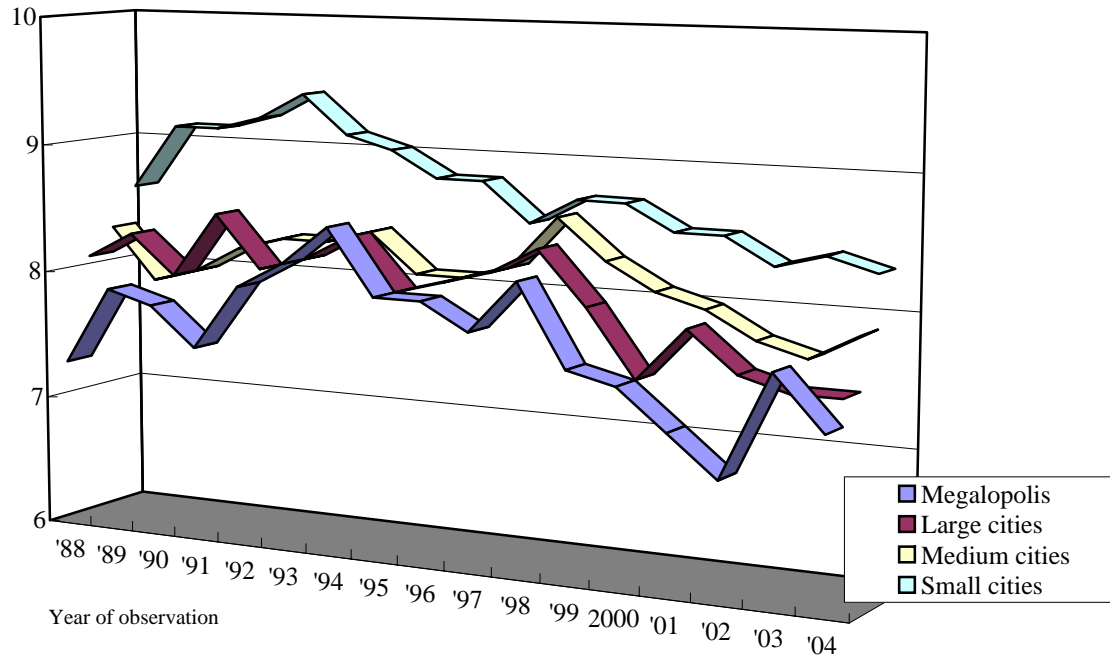


Fig. 2 Changes in Average Stellar Magnitude Observed According to City Scale



- Notes:
1. Stellar magnitude  
 Stellar magnitude is the brightness of stars expressed in figure when they are observed from the ground. To distinguish from absolute magnitude which is brightness of star itself, which is an absolute magnitude, it is expressed as an apparent magnitude. As number decreases by 1, apparent brightness becomes 2.5 times brighter. Fig. 2 shows that as the number get larger, the darker stars are visible.
  2. Cities are classified according to their population.  
 Megalopolis: More than 1 million  
 Large city: 300 thousand to 1 million  
 Medium city: 100 thousand to less than 300 thousand  
 Small city: Less than 100 thousand