



1 Kutcharo-ko



2 Sarobetsu-genya



3 Uryunuma-shitsugen



4 Miyajima-numa



5 Onuma



6 Utonai-ko



7 Tofutsu-ko



8 Notsuke-hanto and Notsuke-wan



9 Furen-ko and Shunkuni-tai



10 Kiritappu-shitsugen



11 Akkeshi-ko and Bekambeushi-shitsugen



12 Kushiro-shitsugen



13 Akan-ko



14 Hotokenuma



15 Izu-numa and Uchi-numa



16 Kabukuri-numa and the surrounding rice paddies



# 46 Ramsar Sites in Japan

Total surface area: 137,968 hectares  
Wetlands in Japan  
under the efforts of locals for  
their maintenance and wise use  
in harmony with nature and biodiversity.

- Ramsar Sites designated in 1980-2008
- Ramsar Sites designated in 2012



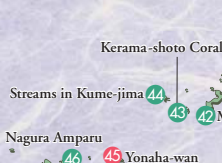
17 Kejo-numa



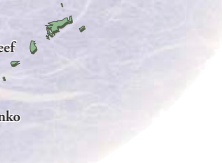
18 Oyama Kami-ike and Shimo-ike



19 Hyo-ko



20 Kume-jima



21 Manko



22 Sakata



23 Oze



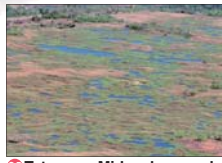
24 Oku-Nikko-shitsugen



25 Watarase-yusuichi



26 Yatsu-higata



27 Tateyama Midagahara and Dainichidaira



28 Katano-kamoike



29 Nakaikemi-shicchi



30 Mikata-goko



31 Tokai Hilly Land Spring-fed Mires



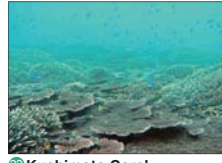
32 Fujimae-higata



33 Biwa-ko



34 Lower Maruyama River and the surrounding rice paddies



35 Kushimoto Coral Communities



36 Nakaumi



37 Shinji-ko



38 Miyajima



39 Akiyoshidai Groundwater System



40 Kuju Bogatsuru and Tadewara-shitsugen



41 Arao-higata



42 Imuta-ike



43 Yakushima Nagata-hama



44 Manko



45 Kerama-shoto Coral Reef



46 Streams in Kume-jima



47 Yonaha-wan



48 Nagura Amparu

Photographs Contributed by: FUJITA PRINTING Co., Ltd, Fuku Shinbon, Fumiyasu, SADO, Gunma Prefecture, Hamanobetsu Lake Kushiro Waterbird Observatory, Hamanobetsu Lake, Wild Bird Society of Japan, Kamejima Prefecture Society, Kurikino NAGANO, Nakano NIBUNURA, Morio Waterbird and Wetland Center, Misuru ZAMAMI, Nakaumi Waterbird International Exchange Foundation, Non Profit Organization Yakushima University, Otsuki City, Sakumawada City, Shikoku Synchro, Takahiko SADO, Taniyama-genyo office of River, Toyoko City, Torokko City, Wild Bird Society of Japan, Yonaha ABE, Yonaha SADO (Sakura Waterbird and Wetland Center).

