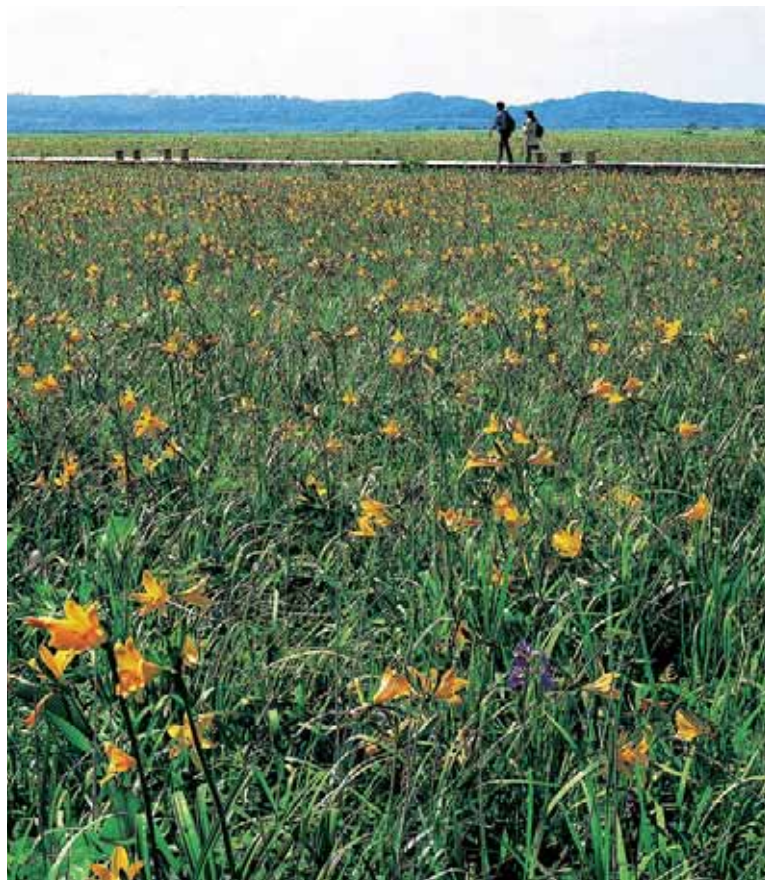


Kiritappu-shitsugen

Salt Marsh, Brackish Lake, River, Moor

Geographical Coordinates: 43°05'N, 145°05'E / Altitude: 0-3m / Area: 2504ha / Major Type of Wetland: Salt marsh, brackish lake, river, high moor, low moor / Designation: Special Protection Zone of National Wildlife Protection Area / Municipalities Involved: Hamanaka Town, Hokkaido Prefecture / Ramsar Designation: June 1993



Kiritappu-shitsugen

Iris ensata var. spontanea



canda chinensis are in full bloom. In July, the marshland is blanketed with orange broad dwarf day-lily *Hemerocallis dumortieri*. The annual broad dwarf day-lily Festival attracts a large number of visitors from all over the country.

Wetland Conservation:

Most areas surrounding Kiritappu-shitsugen are privately-owned. In 1986, an NGO called "Kiritappu-shitsugen Fan Club" was established by locals to conserve the marshland by renting properties. Such a unique approach attracted much public attention, resulting in increased membership. In 2000, the NPO "Kiritappu-shitsugen Trust" was established to create a wetland trust to purchase private properties.

Ecotourism:

A variety of ecotourism activities are offered by a local fishery cooperative,



Aerial view of Kiritappu-shitsugen



Eriophorum vaginatum

Principal Features:

Kiritappu-shitsugen is a 3168ha marshland in eastern Hokkaido situated along the coastline of Biwase Bay and Hamanaka Bay, facing the Pacific Ocean. 2504ha constituting the main area of the marshland and the lakes Shichirippu and Mochirippu to the west are designated by the Ramsar Convention. Within this area, 803ha is also designated as a national natural monument under the title, "Peat bog vegetation in Kiritappu". It is composed primarily of sphagnum peat bog.

As eastern Hokkaido is one of the coldest areas in Japan, Kiritappu-shitsugen freezes in winter. In spring and autumn, large numbers of migratory birds stopover the site. The marshland is an important habitat for the red-crowned crane and is also a part of the Waterbird Site Network based on the Partnership for the East Asian-Australasian Flyway.

Marshland with Diverse Flowers:

Between May and October, wetland plants such as Japanese Rose *Rosa rugosa*, Hare's tail cotton grass *Eriophorum vaginatum*, and Blackberry lily *Belam-*

tourism agencies and NGOs, which attract many visitors every year. The Kiritappu-shitsugen Center, a base for environmental education, displays exhibits providing an overview of the marshland, organizes nature observation activities, and conducts wetland research.

[Wetland Trust] Kiritappu-shitsugen is home to the first wetland trust in Japan. The NGO "Kiritappu-shitsugen Trust" spearheads activities, where property facing development is either rented or purchased. Currently 330ha is owned by the trust.

Contact Information:

Kiritappu-shitsugen Center
<http://www.Kiritappu.or.jp/center/>

