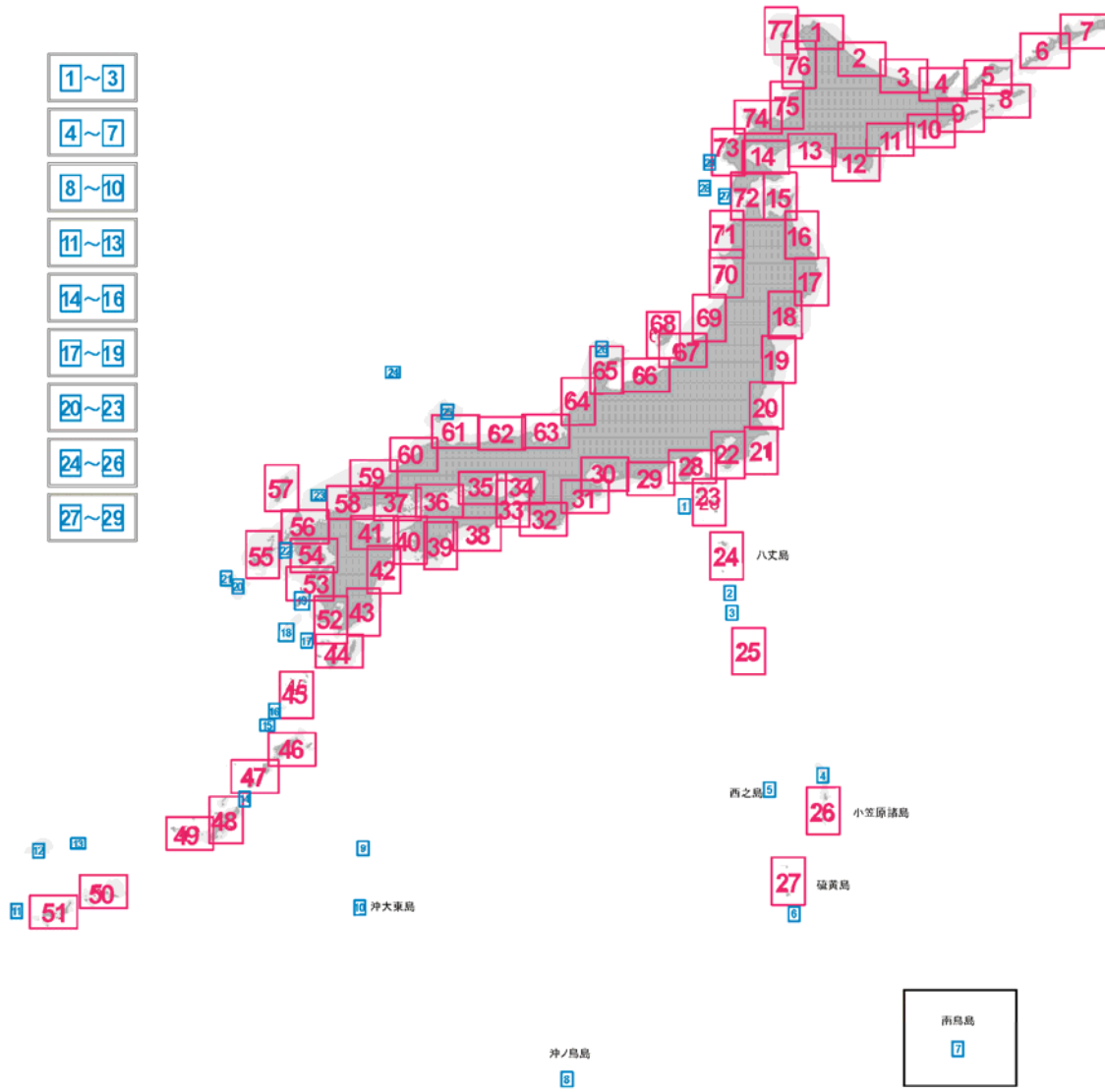


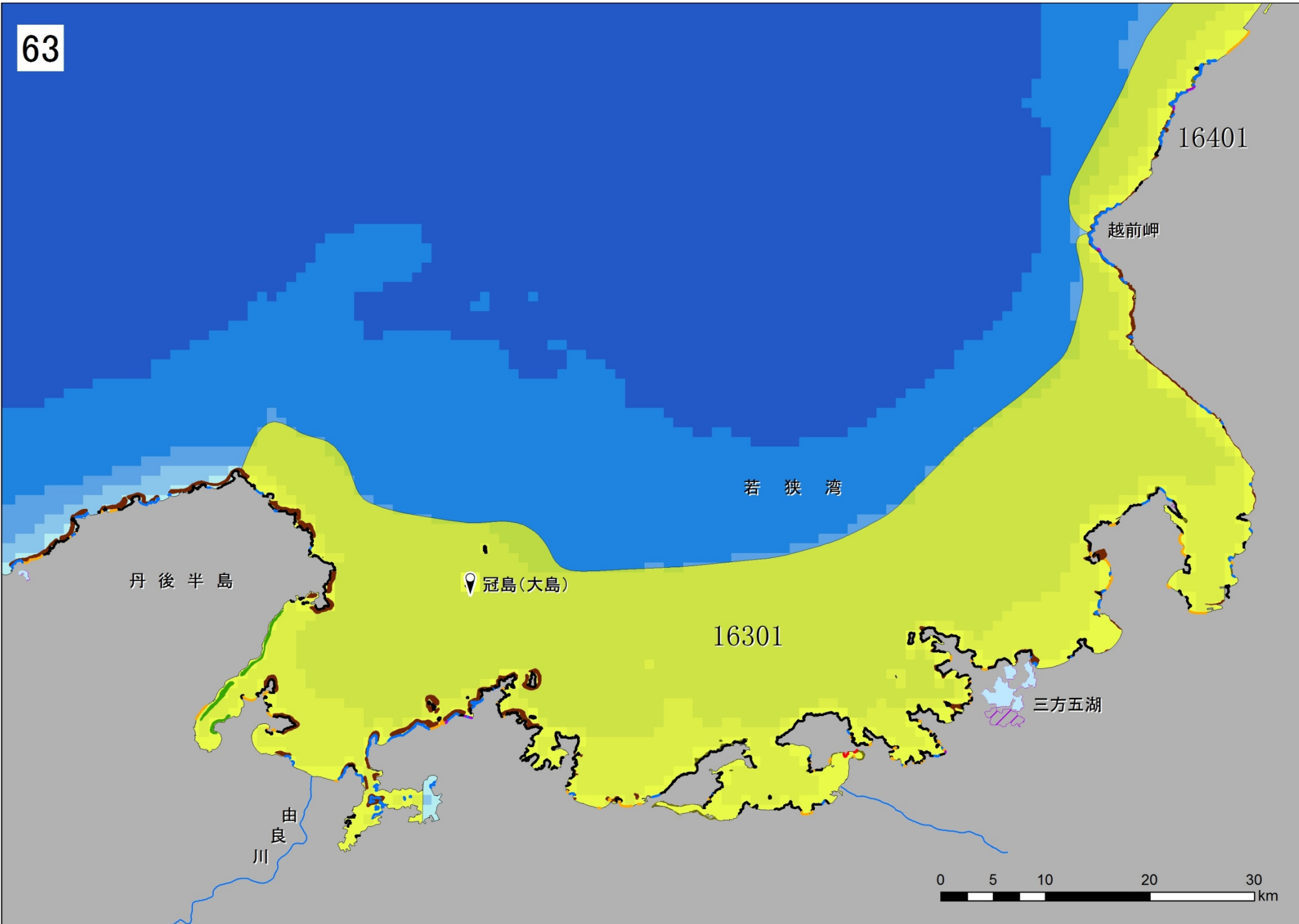
Map Number

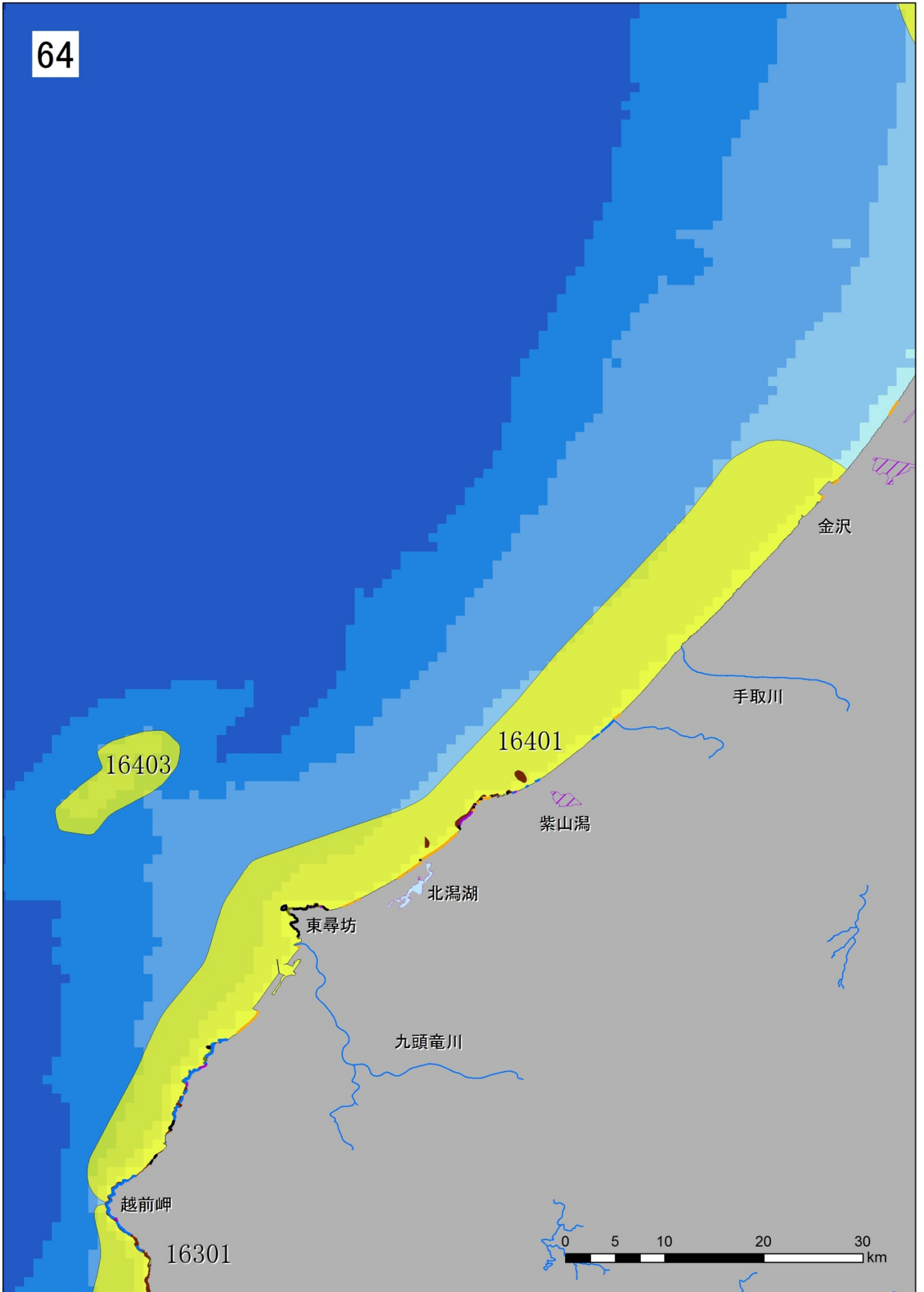


- 1~3
- 4~7
- 8~10
- 11~13
- 14~16
- 17~19
- 20~23
- 24~26
- 27~29

Legend

- EBSAs of Japan
- Special Natural Monument, Natural Monument
- Star sands (Foraminifera) coast
- Submerged cave
- Oyster reefs
- Wetland
- Mangroves
- Lagoons
- Natural coast**
- Cliffed coastline
- Muddy beach coastline
- Sandy beach coastline
- Rocky coastline
- gravel sediment coastline
- Moba (seaweed bed)
- Moba (seagrass bed)
- Moba (seagrass/ seaweed mixed bed)
- Others
- Tidal mud flats
- Coral/ Coral reefs





65

22601

七ツ島

16503

16504

珠洲岬

16501

能登半島

七尾湾

能登島

富山湾

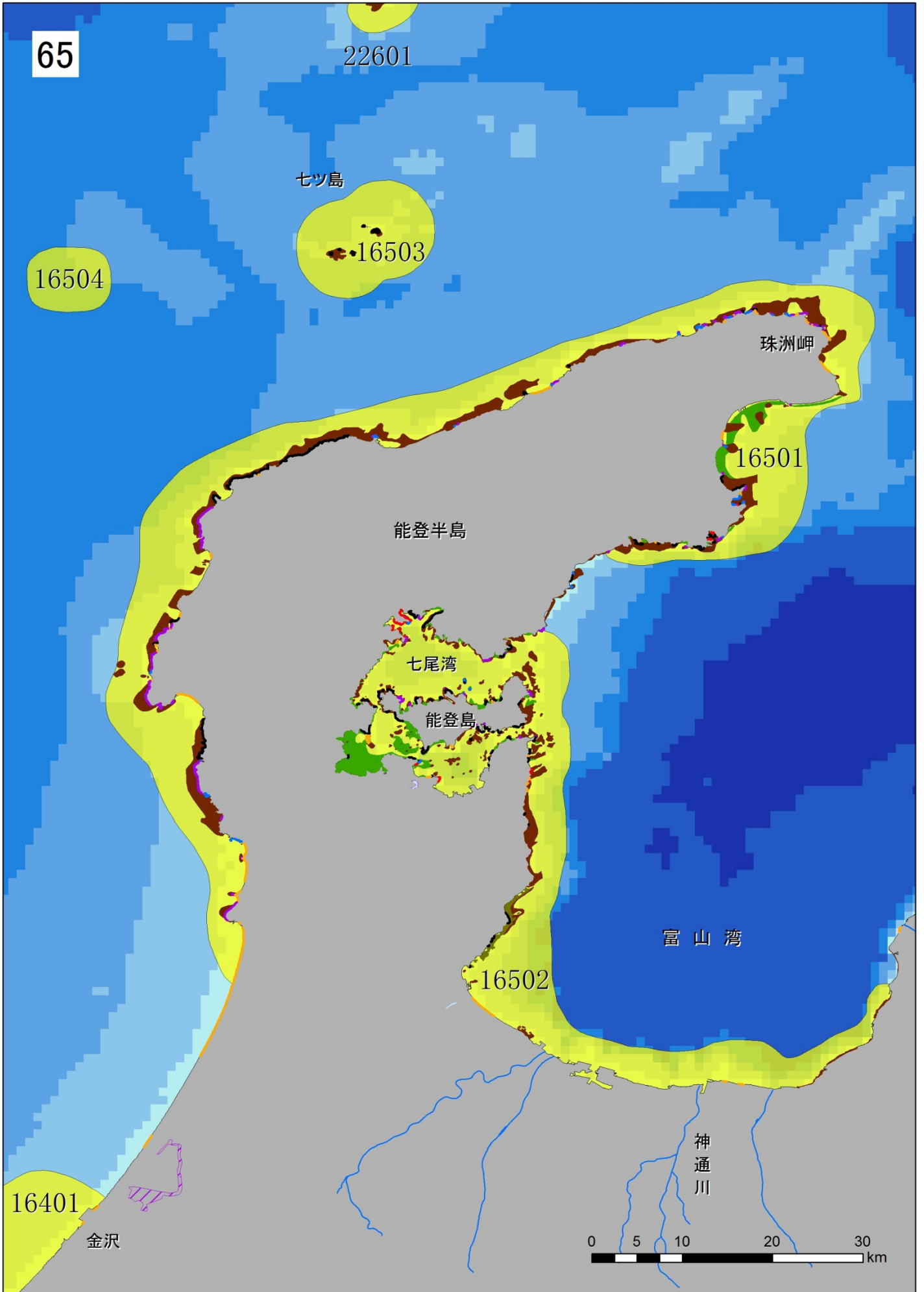
16502

16401

金沢

神通川

0 5 10 20 30 km



66

16701

上越

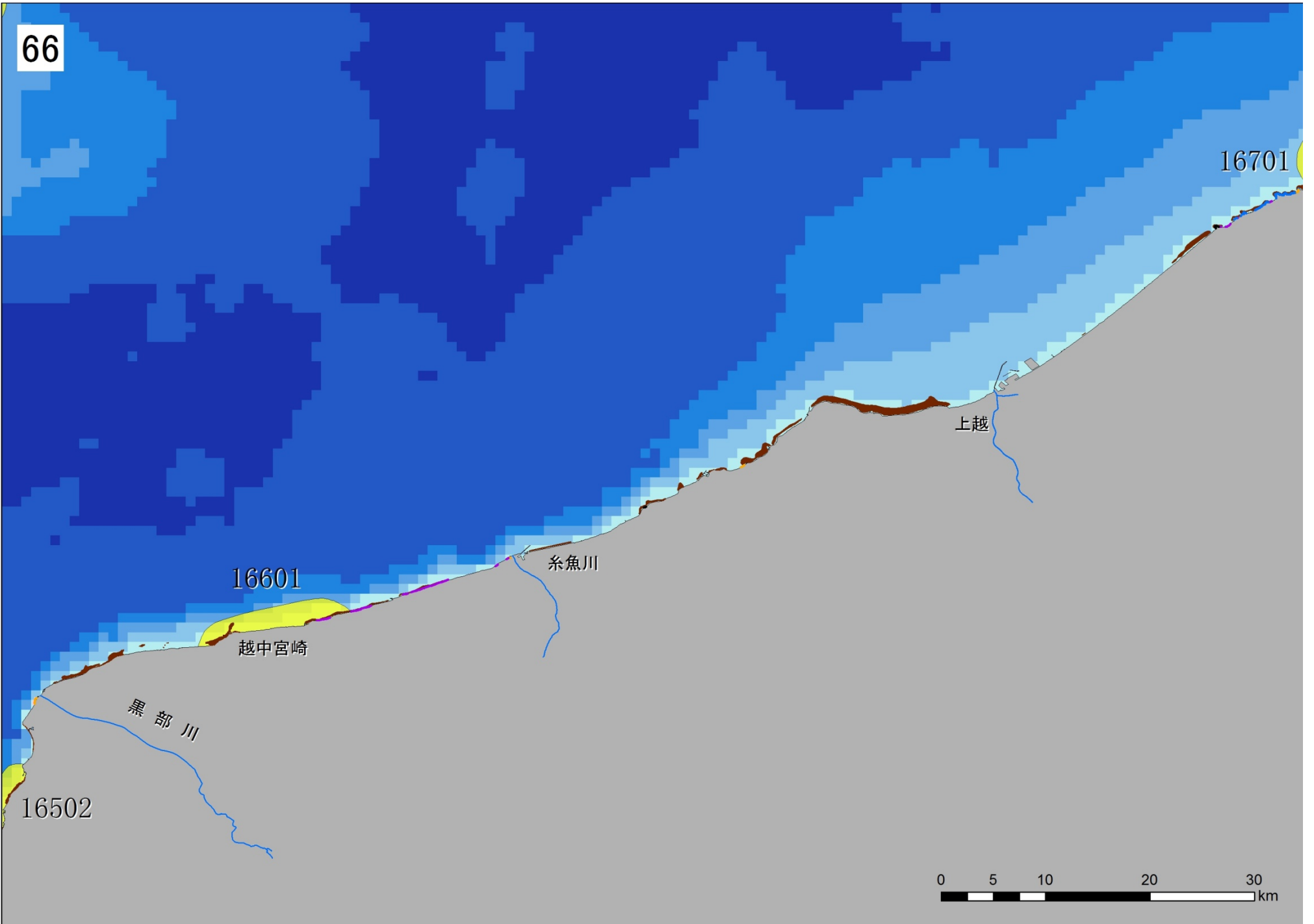
16601

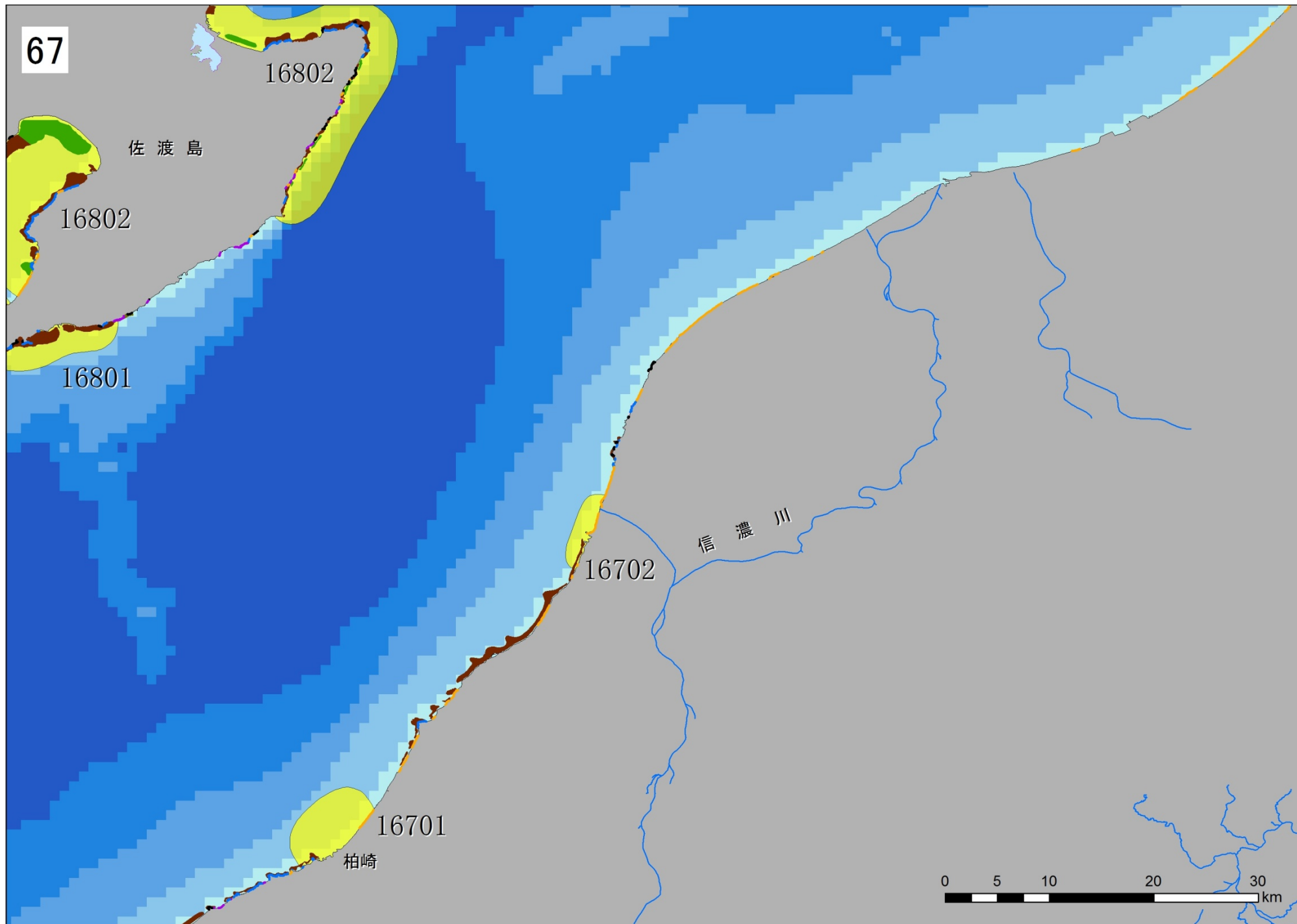
糸魚川

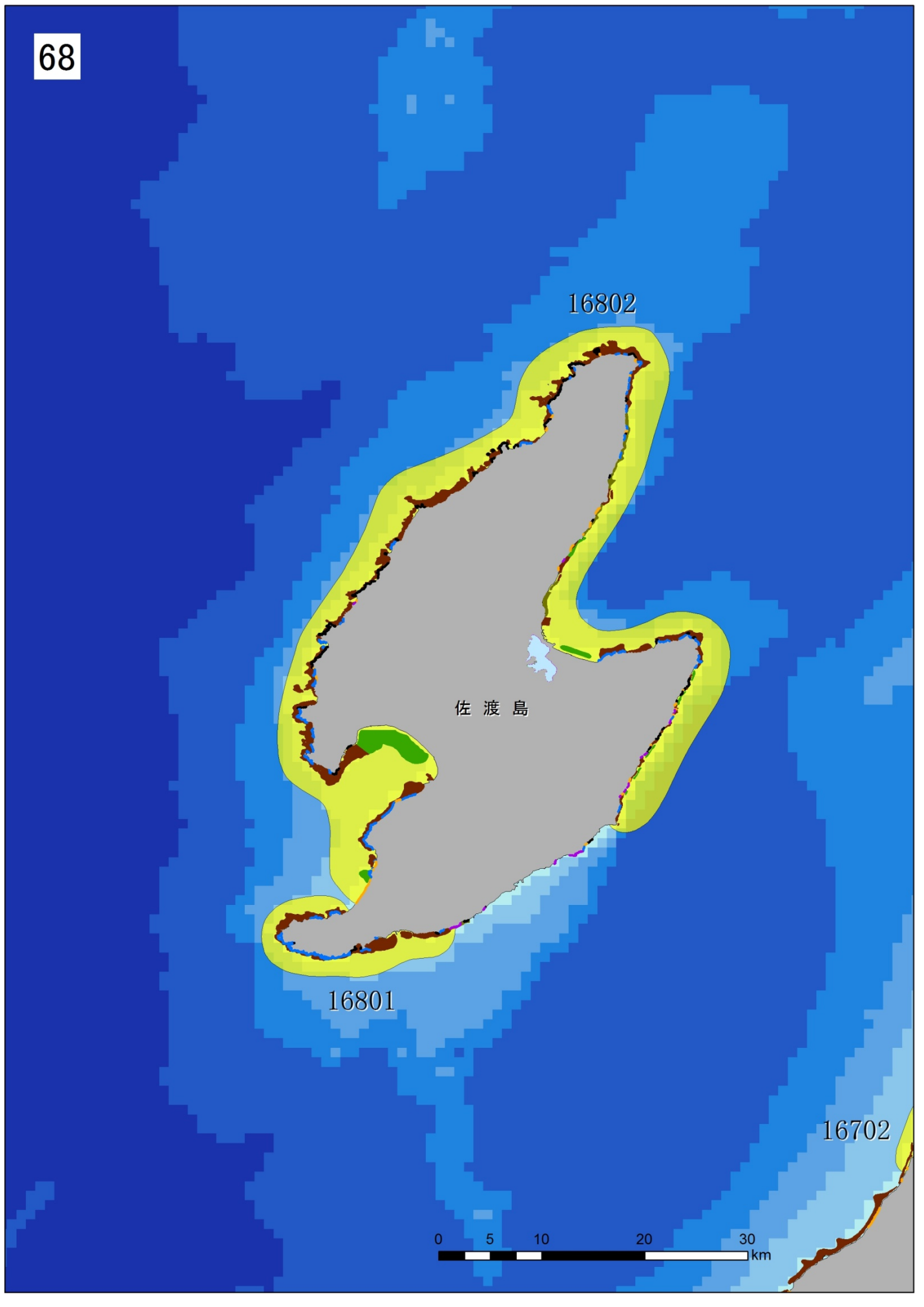
越中宮崎

黒部川

16502







佐渡島

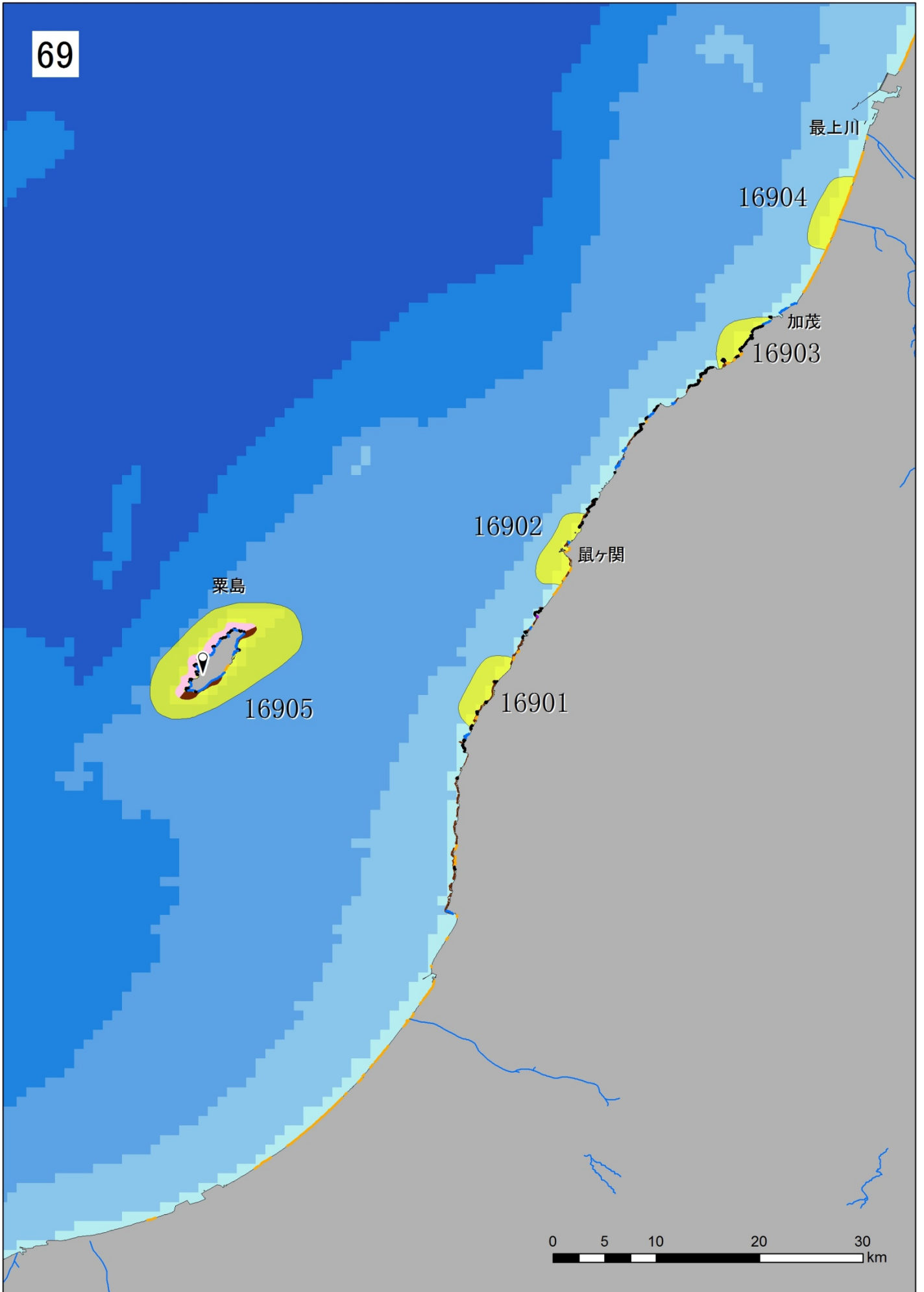
16802

16801

16702



69



70

男鹿半島

17004

17003

雄物川

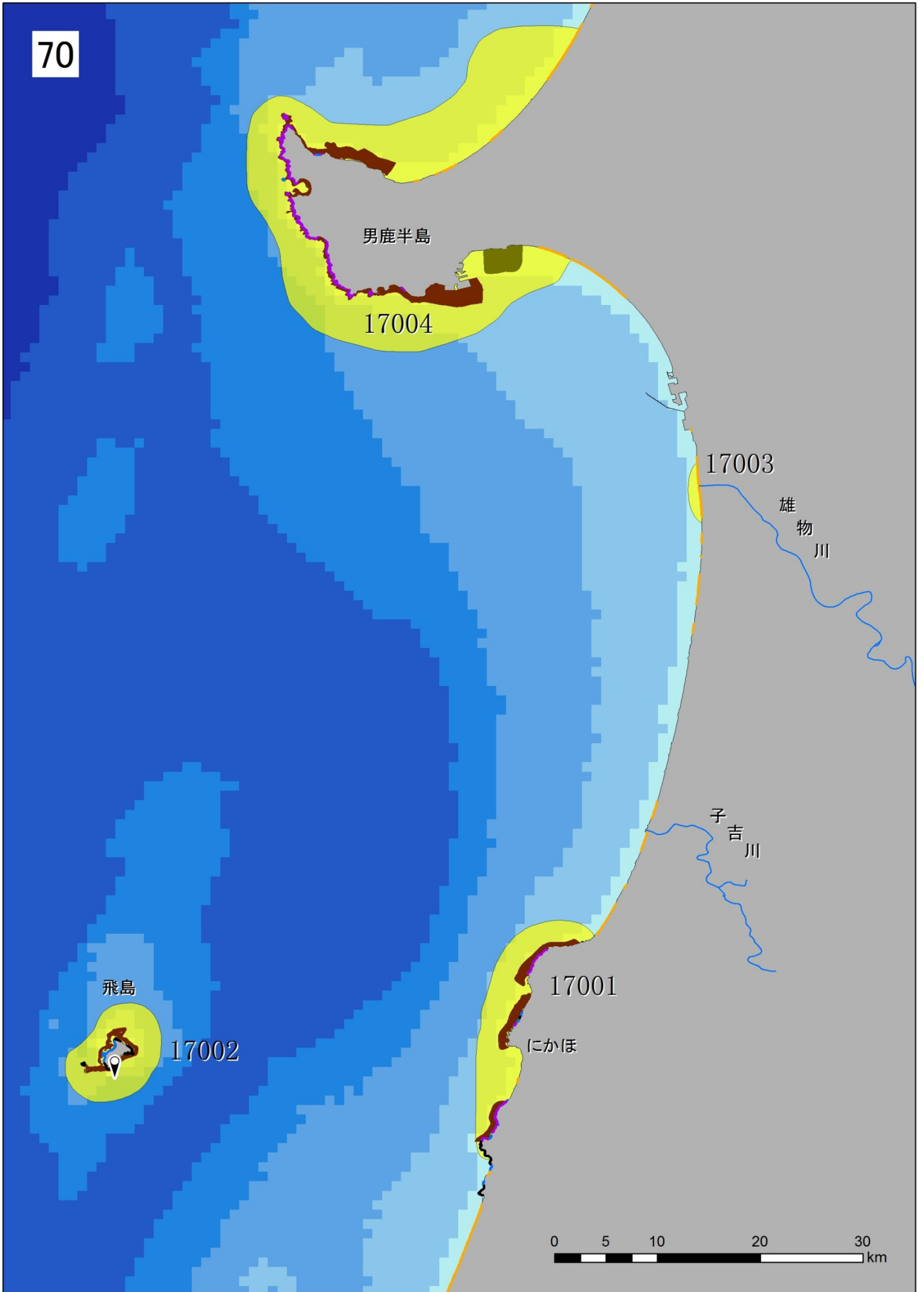
子吉川

17001

にかほ

飛島

17002



71

17201

鱒ヶ沢

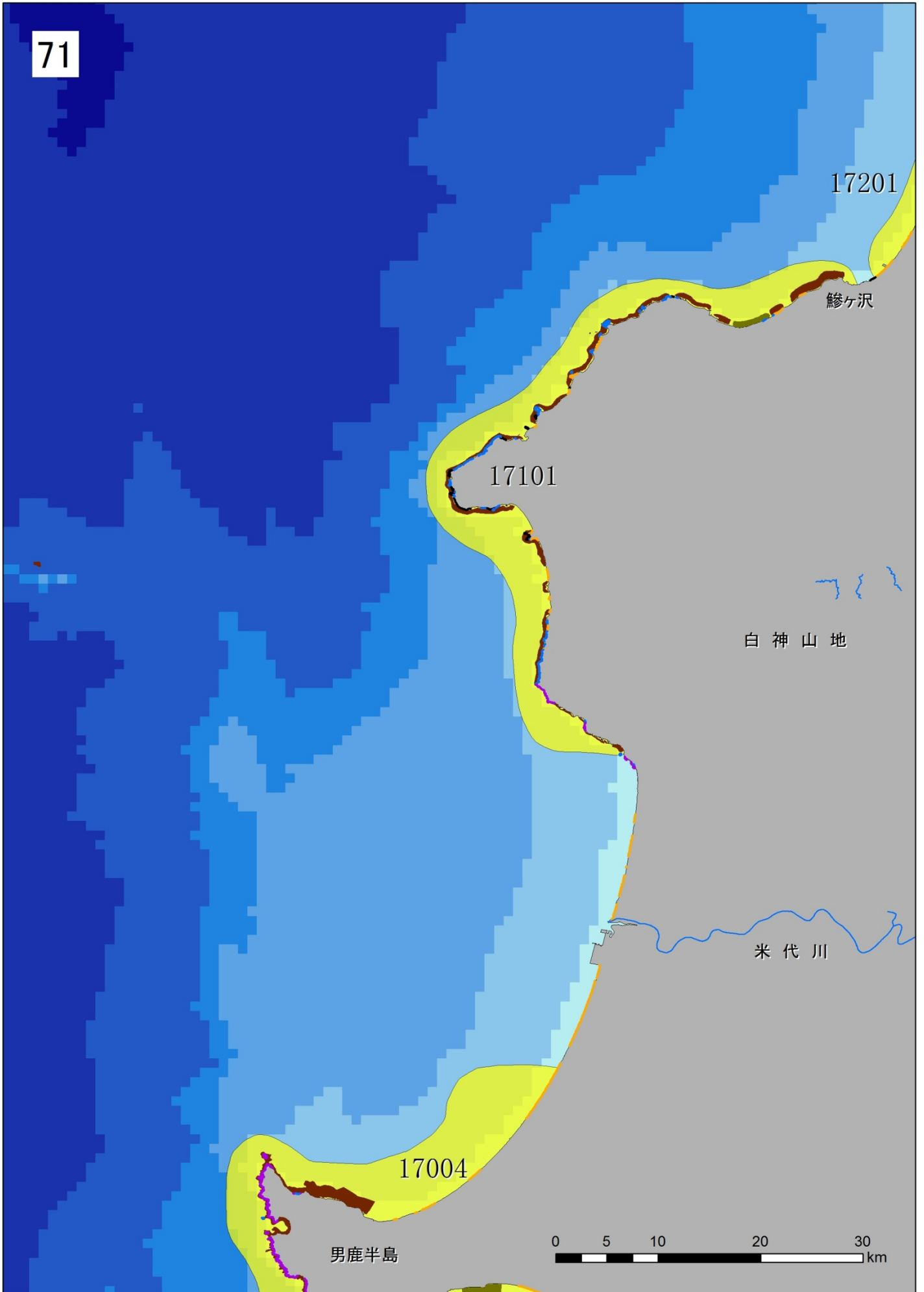
17101

白神山地

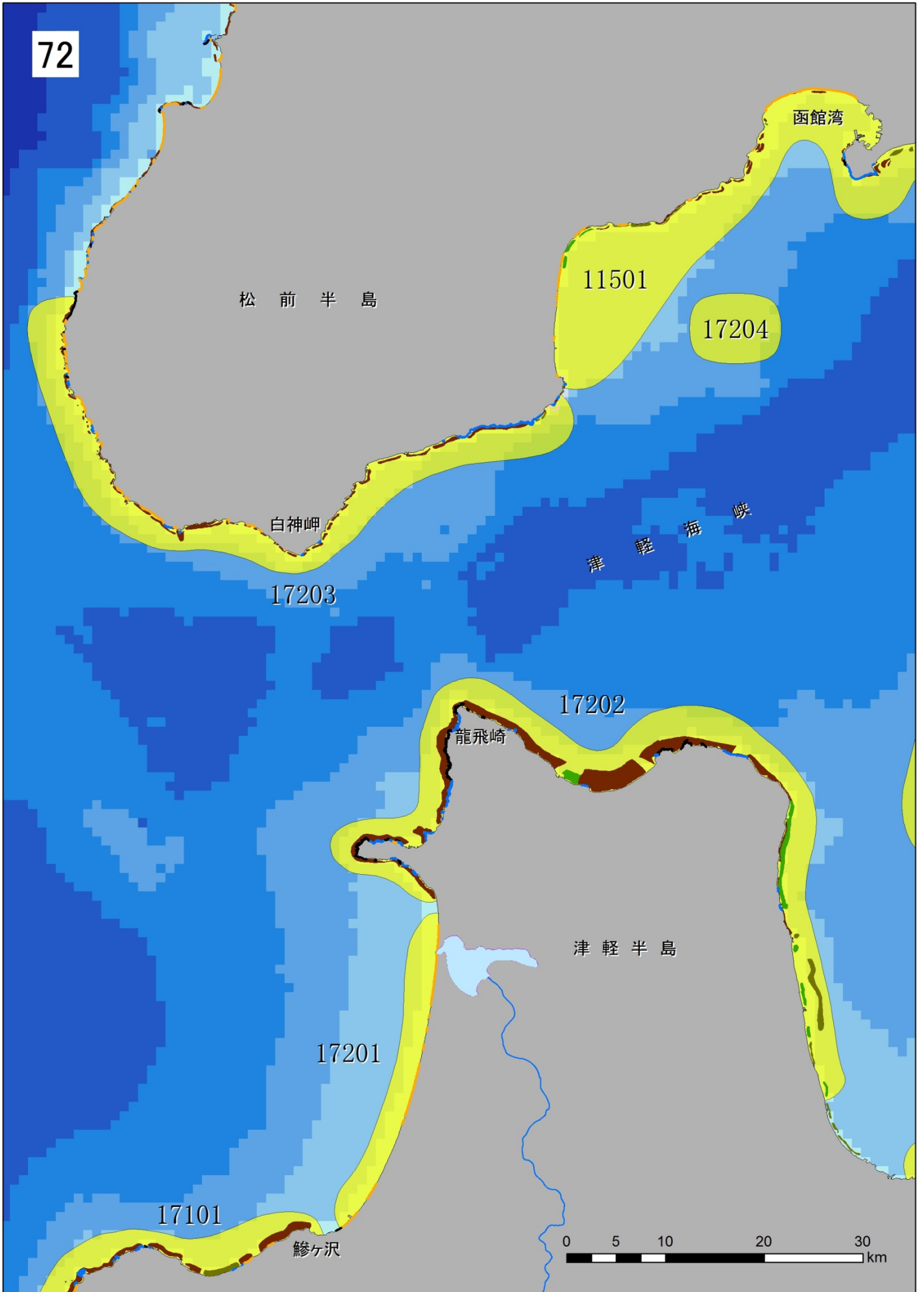
米代川

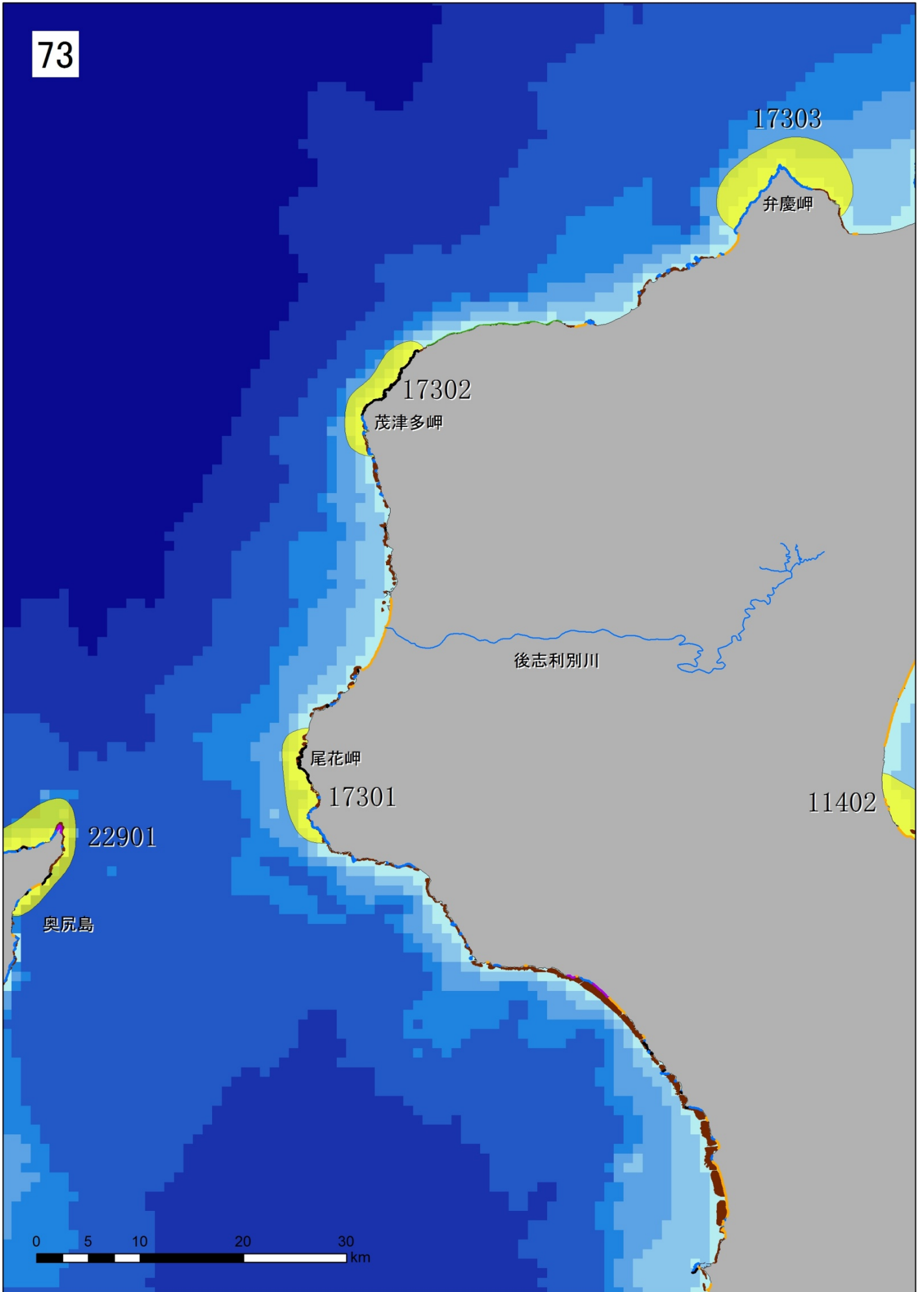
17004

男鹿半島

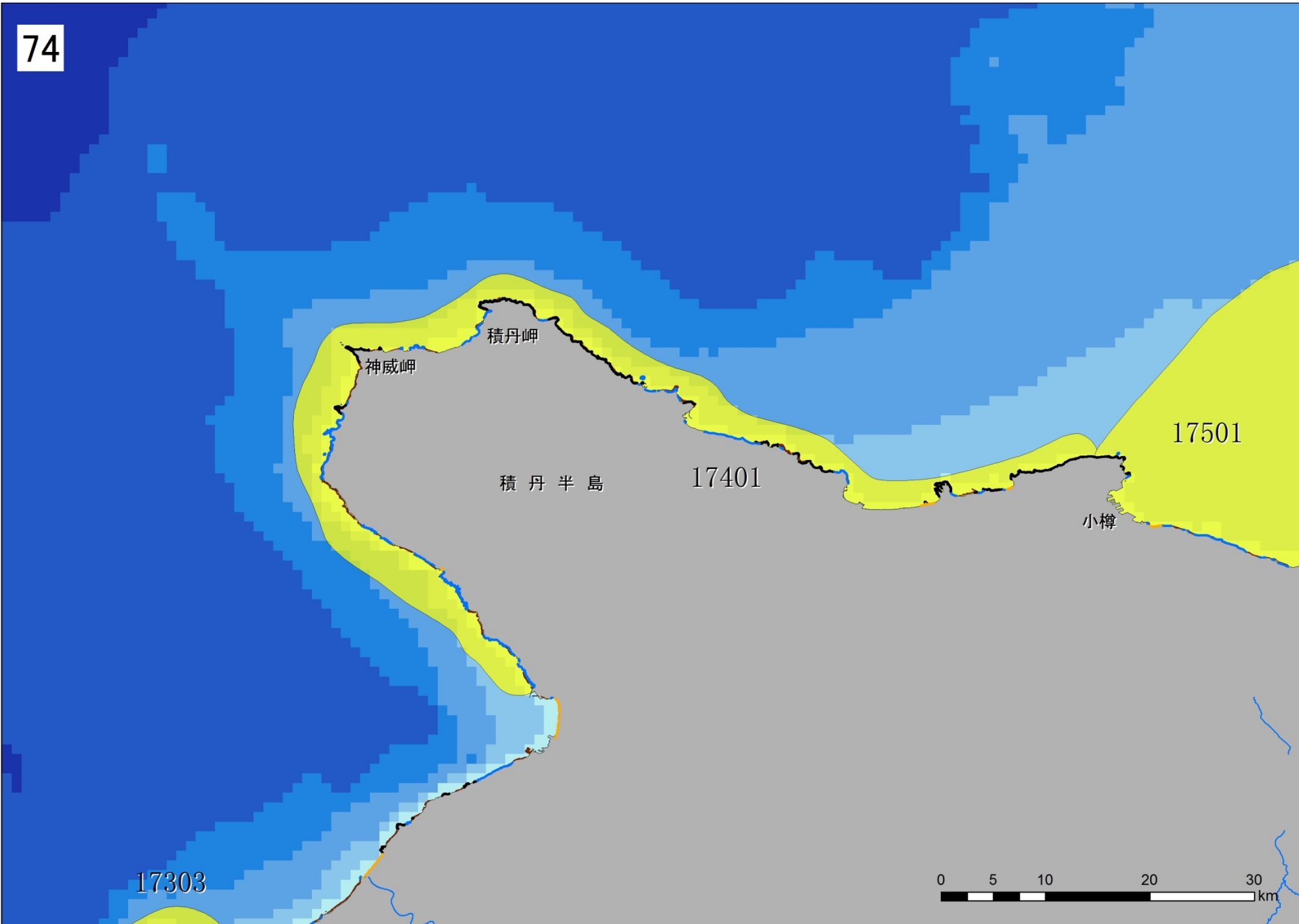


72





74



75

17501

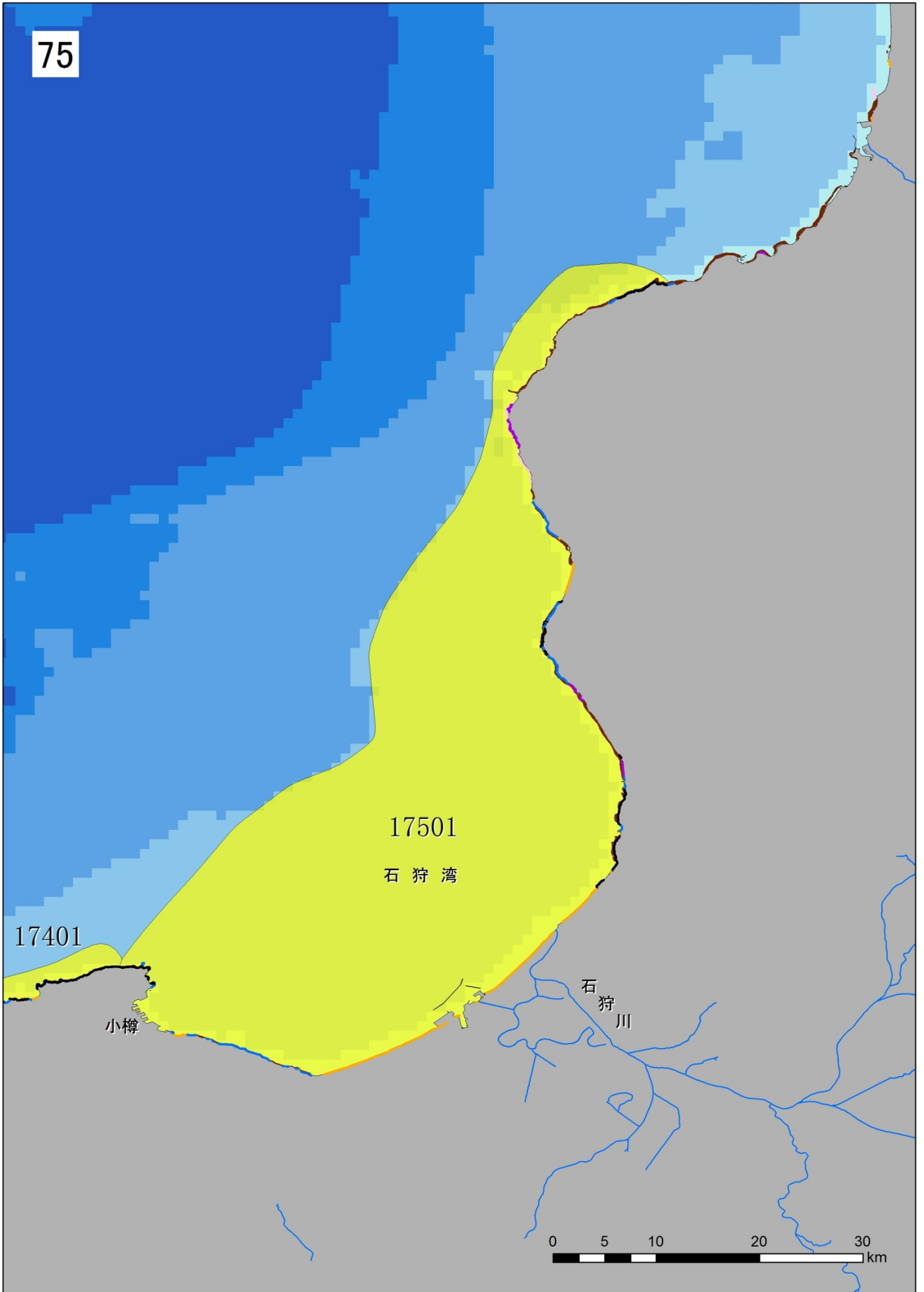
石狩湾

17401

小樽

石狩川

0 5 10 20 30 km



76

10101

天塩川

天売島

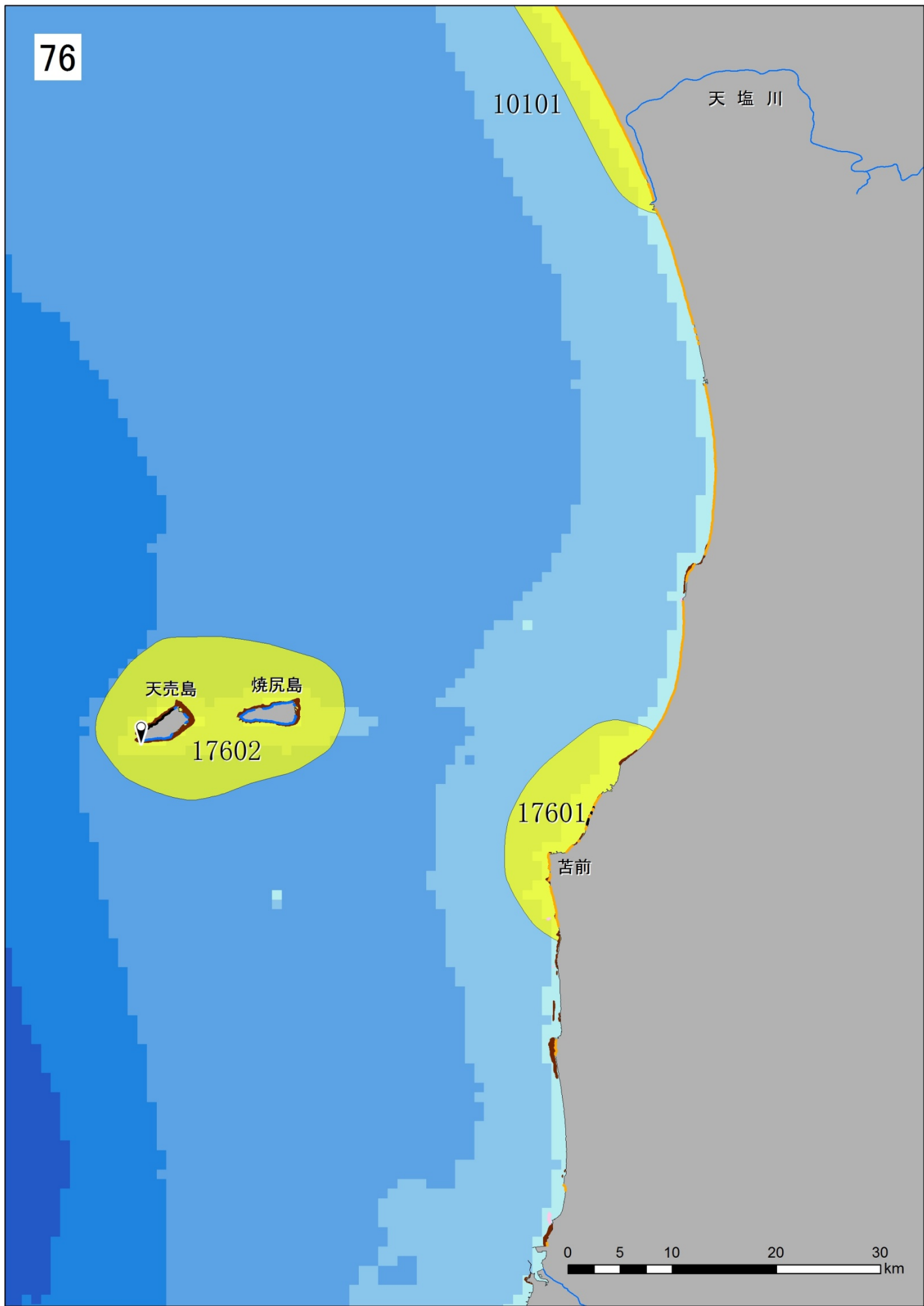
焼尻島

17602

17601

苫前

0 5 10 20 30 km





No. 63,64の参考図
(沖合まで含めた縮尺の図)

